

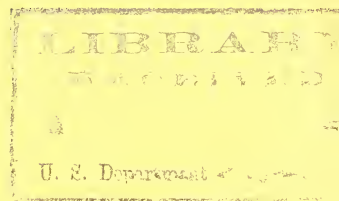
Historic, Archive Document

Do not assume content reflects current scientific knowledge, policies, or practices.

FEB 7 1928

1928 Catalog

Rainbow Gardens Inc.



On the Jefferson Highway

*Importers and Growers
of Choice and Rare*

**Peonies, Irises, Phloxes, Delphinium
and Other Perennials and Gladiolus**



FARMINGTON, MINNESOTA
The Gateway to the Twin Cities

Introduction

The prices on fine Irises, Peonies, Phloxes, Delphinium and Gladiolus, the finest flowers for the home have been reduced so materially the past few years that every home lover can easily acquire the finest of varieties for a small expenditure. There is a pleasure in growing beautiful flowers and in making your home attractive that cannot be anticipated. Named varieties increase this interest enabling you to look forward each year to a definite time when you can expect those certain varieties to bloom.

Rainbow Gardens has had the reputation for many years of growing the finest varieties and are constantly adding new and improved varieties.

You are invited to visit our Gardens and see our flowers in bloom. In our Exhibition Garden we have over 700 varieties enabling you to pick out the colors and varieties you prefer. We will be glad to help our customers at any time in making their selections.

We thank you for past favors and solicit your further patronage, assuring you at all times of our co-operation.

RAINBOW GARDENS

Jefferson Highway
FARMINGTON, MINNESOTA

How To Order By Mail

Orders: When sending orders please use the Order Blank furnished with this catalogue, being very careful that your name and address are written plainly.

All orders are booked in the rotation in which they are received. The earlier they come in the more certain will be the patron of securing the plants and bulbs of his choice. All sales are made subject to stock on hand at time of filling order.

Terms: Cash should accompany each order. Remittances can be made by post office or express money order or bank draft or check.

On account of the expense of handling we cannot fill orders amounting to less than \$1.00.

Prices: All prices in this catalog are net and will not be deviated from as we wish to treat everyone alike.

Shipping Facilities: We prepay delivery charges on Tulips and Gladiolus. Peonies and other perennials are shipped either by express or by parcel post the purchaser paying charges. We pack in cartons whenever possible and the charge for shipment, usually by parcel post, is a very small item. Customers who desire us to prepay express charges or parcel post can remit enough to cover and any surplus will be returned, or if preferred extra plants will be sent to cover the difference. We will deliver orders free of charge to either St. Paul or Minneapolis, or within fifty miles of our Gardens.

Orders for Irises, Peonies, Phloxes and other perennials received after the ground freezes in the fall will be forwarded early the following spring. Spring orders for Peonies if received too late will be forwarded in the fall.

Quality of Stock: We propose to send out strong plants and sound bulbs true to name and hold ourselves in readiness at any time to replace, on proper proof, any stock that may prove otherwise: but we shall not at any time be liable for any amount greater than the original price of the stock. Every purchase is made from us on these terms.

Complaints: If any, as to quality of goods, etc., can be entertained only when made immediately on receipt of goods.

Substitution: Carrying as we do, such a large number of varieties of roots, etc. it is obvious that at times, particularly at the end of a season, we may be unable to furnish some varieties. Therefore we ask permission to substitute varieties of equal merit in their place. On our order blank please fill in yes or no on the correct line. If you do not wish us to substitute we will return your money for the varieties not supplied. In case you write neither "yes" nor "no" we shall understand that you do not object to our substituting as above.

Packing: We make no charge for packing. After they pass out of our control we do not guarantee that they will live as we then have no control over conditions surrounding them and the care they will receive.

**PRICES IN THIS CATALOG CANCEL ALL PREVIOUS PRICES
AND ARE SUBJECT TO CHANGE WITHOUT NOTICE**

Our 1928 Message

Rainbow Gardens is located on the Jefferson Highway, at Farmington, Minn., only an hour's drive south of the Twin Cities over paved Highways. They can also be reached by railroad or by the Jefferson Highway Transportation Busses which stop at our gates.

Here we have some 22 acres planted in Peonies, Irises, Phloxes, Delphinium and other Hardy Perennials and Gladiolus, presenting a beautiful sight from May until November and attracting thousands of visitors.

In sending you our catalog, we hope that we may be the ones to help you add to the beautification of your garden and to receive your 1928 orders.

We have been in business since 1914 and since that time have tried out hundreds of varieties of our specialties in selecting our stock, eliminating those varieties from time to time which would not withstand the rigors of our Minnesota climate, where the temperature ranges from thirty below to one hundred above, so that our stock thriving here under such conditions of temperature will thrive in all parts of the United States.

Perennials and bulbs grow particularly well in our rich soil, enabling us to ship strong, vigorous roots and good sound bulbs to all parts of the United States, which should arrive in just as good condition as if our Gardens were close to you.

We are especially careful in sending out varieties true to name and our prices are based on such. Daily verifications of our varieties during their flowering period, assures the purchaser of accuracy in filling orders and enables us to give the best of service.

We carry the highest rated and reasonably priced varieties and in purchasing from us you are assured finer flowers for your garden.



John S. Crooks
Pres. and Treas.



(Mrs. John S.) Grace
W. Crooks, Vice Pres.



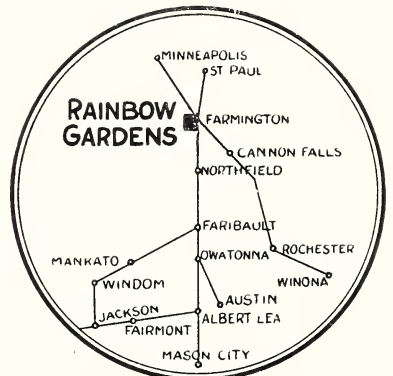
Kathleen O'Donnell
Secretary

We are always pleased to see you and to hear about your garden and your success with our roots and bulbs and trust to hear from you often during 1928.

JOHN S. CROOKS, Pres. & Treas.
GRACE W. CROOKS, Vice Pres.
KATHLEEN O'DONNELL, Secy.

DISCOUNTS ON EARLY ORDERS

Early orders aid us materially in getting them out more promptly during the shipping period in April and May. To encourage early orders we will allow the following discounts on cash orders for named varieties only, (not on Special Collections) when the order amounts to \$3.00 and over, viz: On orders mailed to us in January and up to February 15th, 7%; to March 5th, 5%; to April 5th, 3%; after April 5th, NET.



HIGHWAYS TO RAINBOW GARDENS
AT FARMINGTON, MINNESOTA
(THE GATEWAY TO THE TWIN CITIES)

RATINGS

Peonies and Irises have been rated by the American Peony Society and the American Iris Society, these Societies having published Symposiums of votes by their members upon the merits of the different varieties in general cultivation. Ten points means that the variety is perfect, 9 nearly perfect, 8 extra good, 7 good, 6 medium. The first number denotes the rating and the number before the name of the variety our field and catalog number. In some cases the variety has not been voted on and there is no rating. Gladioli have been rated by members of the American Gladiolus Society but in the case of Gladiolus 100 has been used as a basis of perfection instead of 10.

PEONIES (Hardy Perennials)

Flowering from May 25th to July 5th, depending on variety.

Peonies are amongst the best and most beautiful of the herbaceous plants. They are one of the hardiest and are adapted to almost any soil. They require but little attention and withstand intense cold winters with no serious effects.

Our stock of peonies has been selected from the highest rated and most reliable of the distinct varieties.

We send our customers good three to five eye roots true to name and our prices are as low as we can possibly make them commensurate with the quality and correctness of the stock furnished. One and two eye divisions offered by some firms do not prove satisfactory, often developing into sickly or diseased plants and not flowering for a considerable length of time.

We also offer in many of the varieties two and three year clumps to enable our customers to obtain quicker results and a better showing in their gardens.

Planting and Care: Peonies may be shipped and planted in April and May before the growth is too far advanced and in the fall from early in September until the ground freezes in November. Plant from three to four feet apart. Do not cover the eyes or new buds with over two to three inches of soil. Too deep planting prevents blooming. Do not let manure come in contact with the roots as this will cause club root and sickly plants. Bone meal is a good fertilizer to use.

The first number denotes the rating of the peony, according to the American Peony Society, and the number immediately before the name of the variety our field and catalog number. As to ratings, see top of page. **Remember we do not ship orders amounting to less than \$1.00. See Page 2.**

8.5 1000—**Adolphe Rousseau** (Dessert & Mechin). Very large, semi-double. Purple garnet, very tall, vigorous grower; dark foliage, veined red. One of the darkest and earliest reds. **\$1.50.** Clumps, **\$2.50** and **\$3.50.**

8.6 1001—**Albert Crousse** (Crousse). Very large, full bloom fresh salmon pink; bomb type; one of the finest pinks; fragrant; late. **\$1.00.** Clumps, **\$1.75** to **\$2.50.**

8.8 1002—**Alsace-Lorraine** (Lemoine). Very large, flat flower with petals arranged like those of a water-lily. Creamy white with a golden halo. Tall, free bloomer. Distinct and beautiful. Late. **\$3.00.**

8.1 1004—**Asa Gray** (Crousse). Large, compact flower of semi-rose type. Pale lilac sprinkled with darker lilac dots. Beautiful. Fragrant. Midseason **\$1.00.** Clumps, **\$1.75** to **\$2.50.**

7.3 1005—**Auguste Villaume** (Crousse). Rose type; late. Rich violet-rose. Fragrant. **\$1.00.** Clumps, **\$1.75** and **\$2.50.**

7.8 1006—**Augustin d'Hour** (Calot). Dark, brilliant, solferino red, silvery reflex. Bomb shape. Midseason. **\$1.00.** Clumps, **\$1.75** and **\$2.50.**

8.7 1007—**Avalanche** (Crousse). Very large, globular, rose-type. Pure white edged with a light line of carmine. Midseason. Fine variety. **\$1.00.** Clumps, **\$1.75** to **\$2.50.**

9.1 1008—**Baroness Schroeder** (Kelway). Very large, flesh-white to milk-white. Fragrant, tall grower. Midseason. One of the finest peonies. **\$1.50.** Clumps, **\$2.50** to **\$3.50.**

7.6 1009—**Ben Franklin** (Brand). Brilliant crimson with darker shading at base of petals; very tall, blooms with great profusion; medium early; a striking dark peony. **\$1.00.** Clumps, **\$1.75** to **\$2.50.**

7. 1010—**Berloiz** (Crousse). Rose type; late mid-season. Enormous full globular imbricated blooms, bright currant red. Center tinted rose and shaded with amaranth. A showy, beautiful variety. **75c.** Clumps, **\$1.25** to **\$1.75.**

8.7 1011—**Brand's Magnificent** (Brand). Mid-season. Color deep, dark red with a bluish cast. Large roselike petals, broad and symmetrically arranged. Semi-rose type. **\$4.00.**

8. 1013—**Charles McKellip** (Brand). A large, rich, bright red peony; opens rose shaped and develops into the plume type. **\$2.00.**

8.6 1014—**Cherry Hill** (Thurlow). Large flowers of deep garnet, with a sheen which makes them very noticeable; semi-rose type; midseason. **\$5.00.**

8.4 1015—**Chestine Gowdy** (Brand). Cone-shaped; shell pink with rich cream colored collar; the broad pink petals are splashed with crimson; medium late. Fragrant. **\$2.00.**

8.7 1016—**Claire Dubois** (Crousse). Large, globular flower, rose type, a clear deep violet rose with silvery tips; erect, tall, late. Splendid flower. **\$1.50.** Clumps, **\$2.50** to **\$3.50.**

8.1 1019—**Couronne d'Or** (Calot). Large flat semi-rose type. Pure white with a ring of yellow stamens around a tuft of center petals, tipped carmine. Medium tall. Late. **75c.** Clumps, **\$1.25** to **\$1.75.**

To Rainbow Gardens, Inc.,
Farminḡton, Minn.

Gentlemen:

Please send your FREE 1928
Catalog to the following Flower Lovers
who are interested in your specialties.

(Please give Name, Street Address
and Town).

Name_____

Street No._____

Town_____

Name_____

Street No._____

Town_____

Name_____

Street No._____

Town_____



7.1 1020—Delachei (Delache). Large, medium compact, rose type, violet crimson, slightly tipped silver. Strong erect, free bloomer, fragrant. Late midseason. **75c.** Clumps, **\$1.25 to \$1.75.**

7.7 1021—Dorchester (Richardson). Very large and very full, creamy flesh color tinged with pink. Late midseason. **75c.** Clumps, **\$1.25 to \$1.75.**

7.8 1022—Duc de Wellington (Calot). Bomb, with white guards and sulphur center. A vigorous, tall-growing plant. Fragrant. Late. **50c.** Clumps, **\$1.00 and \$1.50**

8.1 1023—Duchess de Nemours (Calot). Crown type; early. Superb, cup-shaped, sulphur-white flowers with greenish reflex; gradually changes to a pure snow white without spot or blemish. Fragrant. **50c.** Clumps, **\$1.00 to \$1.50.**

7.6 1024—Edulis Superba (Lemon). Large, loose, flat crown. Bright mauve pink, collar mixed with narrow lilac. Fragrant. Early. **50c.** Clumps, **\$1.00 to \$1.50.**

9.2 1025—Elizabeth Barrett Browning (Brand). Soft shell-pink when first opening, outer petals and center marked crimson; tall grower, very late, large, glossy foliage. Fragrant; a grand white peony. Each, **\$5.00.**

7.6 1026—Ella Wheeler Wilcox (Brand). Deep shell pink, bomb shaped; very fragrant; late; blossoms in clusters. **\$1.50.**

8.7 1027—Elwood Pleas (Pleas). Pink. Rose type, late midseason. Comes in clusters, opening several large blooms to the stalk. Large, flat, full double; light shell pink. **\$4.00.**

8.9 1028—Enchantresse (Lemoine.) White. Rose type, very late. Large, globular flower. Creamy white, guards splashed crimson. Center of flower faintly flecked crimson. Fragrant. Beautiful, **\$5.00.**

8.0 1029—Etta (Terry). Large, semi-flat flowers of a fine shade of deep shell pink. One of Terry's best. Very late. **\$1.50.** Clumps, **\$2.50 and \$3.50.**

8.3 1030—Eugene Bigot (Dessert). Semi-rose; slightly silver tipped; brilliant red; midseason to late. Striking red. **\$1.00.** Clumps, **\$1.75 and \$2.50.**

8.6 1031—Eugenie Verdier (Calot). Semi-rose type. Early. Hydrangea pink, tinted lighter; center flushed crimson. Often flowers to perfection for two weeks. Enormous fragrant blooms on 3 to 4 foot stems. A great beauty. **\$1.00.** Clumps, **\$1.75 to \$2.50.**

7.5 1032—Fanny Crosby (Brand). One row of lovely shade of soft pink guard petals, surmounted by a canary yellow; large size, tall, midseason; one of the best yellows. **\$3.00.**

8.2 1033—Faribault (Brand). Deep rose with a silver sheen, different from any other rose shade; center petals silver tipped; fragrant; medium height, large flowers. Very late. **\$2.00.**

8.4 1035—Felix Crousse (Crousse). Large, compact, globular bomb. Brilliant red. Fragrant. Strong grower. Free bloomer. Midseason. One of the finest reds. **\$1.00.** Clumps, **\$1.75 to \$2.50.**

9.3 1036—Festiva Maxima (Mieliez). Very large globular, rose type. Pure white, flecked crimson. Very fragrant, tall. Early. Most popular white variety. **75c.** Clumps, **\$1.25 to \$1.75.**

- 7.5 1037—Floral Treasure** (Rosenfield). (Syn. *Delicatissima*). Large, rose type. Pale lilac rose. Fragrant, strong, tall grower. Early. **50c.** Clumps, **\$1.00 to \$1.50.**
- 8.1 1038—Florence Nightingale** (Brand). Large beautiful, tall, fragrant, pure white, with faint crimson markings on edges of a few petals; rose type, very late; one of the finest whites. **\$1.00.**
- 9.1 1039—Frances Willard** (Brand). Tall, strong grower; cream white flowers of large size, yet delicate texture; remains a pinkish cream; fragrant; very attractive. Late midseason. **\$2.50.**
- 8.8 1047—Grandiflora** (Richardson). Rose type; very late. Bright sea-shell pink overlaid with delicate lilac and salmon pink. An immense, grand and beautiful peony. **\$1.50.** Clumps, **\$2.50 to \$3.50.**
- 8.2 1049—Grover Cleveland** (Terry). Very large, dark crimson, rose type; strong grower; one of Terry's best; late. **\$2.00.**
- 7.8 1050—H. F. Reddick** (Brand). Large, semi-rose, brilliant dark crimson, with golden stamens among the petals. Very floriferous and fine; fragrant, late midseason. **\$1.00.**
- 8.2 1051—Harriet Farnsley** (Brand). Beautiful soft pink, similar to *Madam Emile Galle*, but blooms later and of better substance; rose type, large flowers; very late. **\$1.00.**
- 8.7 1055—James Kelway** (Kelway). Large rose white, changing to milk white; semi-rose type; tall, strong, free bloomer; early midseason. **\$1.50.** Clumps, **\$2.50 to \$3.50.**
- 7.9 1056—Jeanne d'Arc** (Calot). Soft rose; center white, tinted carmine; midseason. Produces large tri-colored blooms. Beautiful. **50c.** Clumps, **\$1.00 to \$1.50.**
- 8.9 1058—Jubilee** (Pleas). Extremely large, flat flower, rose type; flesh-white fading to pure white. Fragrant, strong grower, greatly admired; midseason. **\$3.00.**
- 8.6 1059—Judge Berry** (Brand). Delicate pink of surpassing beauty, 7-8 inches in diameter; flat semi-rose type, medium tall, profuse bloomer, very early, very fragrant, fine for cutting. **\$5.00.**
- 8.8 1061—Karl Rosenfield** (Rosenfield). Large, globular, semi-rose type; dark crimson. Strong, tall and free bloomer; midseason; a very brilliant striking and favorite variety; fragrant. **\$1.50.** Clumps, **\$2.50 and \$3.50.**
- 9.1 1064—Lady Alexandra Duff** (Kelway). Immense cup-shaped flower, rose type. Outer petals of a delicate pale pink, fading to white; beautiful, free flowering. Fragrant; one of the finest. Midseason. **\$3.00.**
- 9. 1066—LaFrance** (Lemoine). Very large, compact, globular, rose type; uniform rose-white color, outer guard petals splashed crimson; tall, strong, very fragrant; late midseason; one of the finest. **\$5.00.**
- 8.5 1068—La Perle** (Crousse). Rose type; midseason. Large, compact, globular flowers; white overlaid with lilac, with a blush center; central petals flecked with carmine, sometimes splashed; fragrant. Beautiful. **\$1.00.** Clumps, **\$1.75 to \$2.50**
- 8.3 1071—La Roserie** (Crousse). White. Large flowers in large clusters. Straw yellow at center, shading to a creamy white border. Fragrant. A striking variety. **\$1.00.** Clumps, **\$1.75 and \$2.50.**
- 8.1 1073—La Tendresse** (Crousse). White. Rose type, early. Tall flowers of immense size in clusters, petals, wax-like. Color creamy white, changing to pure white, guards slightly splashed, center flecked crimson. **\$1.00.** Clumps, **\$1.75 to \$2.50.**
- 7.5 1074—La Tulipe** (Calot). Semi-rose type; late mid-season. Globular, fragrant flowers, delicate blush-white, shading to ivory white with red tulip markings on outside of guard petals. Beautiful in bud. **65c.** Clumps, **\$1.25 to \$1.75.**
- 9.9 1077—Le Cygne** (Lemoine). Enormous, perfectly formed, globular, pure milk white flower, fragrant, erect, medium tall, stiff stem; free bloomer; mid season; considered the finest peony in the world and has the highest rating. **\$15.00.**
- 8.1 1078—Livingstone** (Crousse). Large, compact flower of perfect rose type. Pale lilac-rose, center petals flecked carmine. Very late. Extra good variety. **\$1.00.** Clumps, **\$1.75 to \$2.50.**
- 9. 1079—Longfellow** (Brand). Large flower of brilliant cherry crimson; claimed to be the brightest peony in existence; having golden stamens surrounding center petals, while the outer petals are slightly reflexed. Midseason. **\$4.00.**
- 8.3 1080—Lora Dexheimer** (Brand). Flaming crimson shading darker at base of petals; medium height, immense flowers, semi-rose type; early. **\$2.00.**
- 7.6 1081—Lord Kitchener** (Renault). Bomb type; medium tall, very early; bright cherry-red. A fine early red. Free and strong in bloom and growth. **\$1.00.**
- 7.3 1082—Louisa Brand** (Brand). Exquisite blush white fading to white; when first opens resembles a beautiful white water lily; semi-rose type; late midseason; tall, very attractive. **\$1.00.** Clumps, **\$1.75 and \$2.50.**
- 7.5 1085—Mme. De Galhau** (Crousse). Soft, fleshy pink, shaded salmon. Globular, rose type. Guards, rose white, center pale lilac-rose. Fragrant. Strong. Late. **75c.** Clumps, **\$1.25 to \$1.75.**
- 8.1 1086—Madam Calot** (Miellez). Large rose type. Pale hydrangea-pink, center shaded slightly darker with a somewhat sulphur-tint in the collar. Tall strong grower, free bloomer. Early. Fragrant. **75c.** Clumps, **\$1.25 to \$1.75.**
- 7.9 1153—Mme. de Verneville** (Crousse). Large, bomb. Pure white, center blush when first open, fading to pure white; prominent carmine flecks. Fragrant. Early. An extra good variety. **75c.** Clumps, **\$1.25 to \$1.75.**
- 8.5 1087—Madam Emile Galle** (Crousse). Rose type; late midseason. Large, double, cup-shaped, imbricated flowers; delicate sea-shell-pink with touches of heliotrope and lavender. One of the finest. **\$1.00.** Clumps, **\$1.75 to \$2.50.**
- 8.9 1088—Madam Emile Lemoine** (Lemoine). Large, globular, compact, semi-rose type. Milk-white. Tall, strong, vigorous grower. Midseason. Beautiful. Fragrant. **\$1.50.** Clumps, **\$2.50 to \$3.50.**
- 7.7 1089—Madam Forel** (Crousse). Enormous, compact, rose-type bloom. Violet-rose with a silvery tipped center. Very fragrant. Medium tall. Late. Fine variety. **75c.** Clumps, **\$1.25 to \$1.75.**
- 7.9 1090—Madam Geissler** (Crousse). Rose type; midseason. Violet rose, tipped silver, fragrant, One of the largest of peonies. **75c.** Clumps, **\$1.25 to \$1.75.**
- 9.4 1094—Mme. Jules Dessert** (Dessert). Large flowers of exquisite coloring. White, but shaded with buff and salmon tints; one of the most beautiful peonies in existence; late midseason. **\$3.50.**

8.4 1096—**Marguerite Gerard** (Crousse). Large, semi-rose type. Very pale hydrangea-pink, fading to nearly white, central petal minutely flecked dark carmine. Very strong. Late. Extra fine. **\$1.00.** Clumps, **\$1.75 to \$2.50.**

8.5 1101—**Marie Lemoine** (Calot). Rose type, very late. Enormous and massive, often 8 to 10 inches across. Ivory-white with occasional narrow carmine tracings on the edge of some of the petals. **\$1.00.** Clumps, **\$1.75 to \$2.50.**

9.1 1102—**Martha Bullock** (Brand). Mammoth cup-shaped blossoms, often nine to twelve inches across; the largest of the good peonies; soft rose pink; tall strong grower, exquisitely beautiful and fragrant. Late. **\$10.00.**

8.7 1104—**Mary Brand.** (Brand). A vivid crimson with silky sheen; golden stamens scattered through the center of irregularly fringed petals; medium height, large flowers; one of the best dark red peonies; midseason. **\$2.00.**

7.9 1107—**Mathilde de Roseneck** (Crousse). Large, globular, rose type. Uniform pale lilac-rose. Very wide petals. Center deep carmine. Fragrant. Late. Beautiful. **\$1.00.** Clumps, **\$1.75 to \$2.50.**

9. 1111—**Milton Hill** (Richardson). Very large, globular, rose type; pure lilac rose; very delicate and beautiful coloring; one of the finest; late. **\$5.00.**

8.3 1112—**Mons. Dupont** (Calot). Large flat flower with a milk white center, splashed crimson and showing stamens. Tall. Midseason. **\$1.00.** Clumps, **\$1.75 to \$2.50.**

9.2 1113—**Monsieur Jules Elie** (Crousse). Bomb type; early mid-season; a king among peonies. Immense globular, very full flowers. Glossy lilac-pink, shading to deeper rose at the base, the entire flower overlaid with a sheen of silver that fairly shimmers in the sunlight. **\$1.50.** Clumps, **\$2.50 to \$3.50.**

9. 1114—**Mons. Martin Cahuzac** (Dessert). Globular flower of very dark purple garnet with black reflex. Darkest peony in existence. Handsome; early midseason. **\$2.50.**

8.5 1119—**Octavie Demay** (Calot). Large, full flower of crown type. Delicate pink and white. Dwarf. Fragrant and beautiful. Early. **\$1.00.** Clumps, **\$1.75 to \$2.50.**

8.6 1155—**Officinalis Rubra.** Red. A large round bloom of vivid crimson. This is the old deep bright red peony of the old-time garden. Earliest of peonies. In most parts of the United States it is generally in bloom on Decoration Day. Earlier than the new varieties. **\$1.00.**

7.6 1120—**Old Silver Tip** (Brand). Red. Silvery effect on the edge of the petals. Color, a soft madder-red. Semi-rose type. **\$1.00.**

8.8 1124—**Phyllis Kelway** (Kelway). Pink. Very large flower of exquisite beauty. Lavender flesh, passing to white in the center. **\$8.00.**

7.6 1125—**Pierre Dessert** (Dessert). Red. Large medium compact, semi-rose type. Dark crimson purple, silvery tipped. One of the earliest dark reds. **\$1.00.**

8.6 1128—**Primevere** (Lemoine). Large, bomb type, having outer petals buff and center sulphur yellow; tall, strong grower. Fragrant, very fine; midseason. **\$2.50.**

7.6 1129—**Prince of Darkness** (Brand). Rich dark maroon peony; one of the darkest; opens early and lasts long; semi-rose; good bloomer; **\$1.00.**

7.9 1130—**Rachel** (Terry). Semi-rose. Mid-season. Large brightest garnet red, shaded richest ruby red. **\$1.00.**

8.8 1134—**Richard Carvel** (Brand). Very early, deep red; immense globular bomb; tall, fragrant and beautiful; best of all early dark reds. **\$4.00.**

7.2 1137—**Rubra Superba** (Richardson). Large, rose type. Deep rose carmine or crimson. Fragrant. Very late. **\$1.00.** Clumps, **\$1.75 to \$2.50.**

9. 1139—**Sarah Bernhardt** (Lemoine). Large, semi-rose type; apple blossom pink with each petal silver-tipped. Fragrant; late midseason. **\$2.00.**

9.7 1141—**Solange** (Lemoine). Large, globular, crown type; outer petals very delicate lilac white, deepening toward the center with salmon shading; rare beauty; considered one of the three best in the world; very late. **\$5.00.**

7.6 1142—**Solfatare** (Calot). Crown type; mid-season; milk-white, guards, sulphur collar, fading to sulphur white. One of the nearest to a yellow peony. Fragrant. **75c.** Clumps, **\$1.25 to \$1.75.**

8.5 1144—**Tenuifolia fl. pl.** Early double crimson, very finely cut fern-like foilage. **\$3.00.**

9.8 1145—**Therese** (Dessert). Rose type; flowers enormous in great quantities on stout stems; delicate, rich satiny pink with glossy reflex; early; very handsome; one of the most desirable varieties; a prize winner at every exhibition. **\$4.00.**

9.4 1146—**Tourangelle** (Dessert). Large, flat flower, of rose type; flesh pink tinged with salmon; exquisitely delicate in shading; one of the finest Fragrant; midseason. **\$3.00.**

8.3 1147—**Venus** (Kelway). Large delicate shell-pink. Beautiful. Ideal cut-flower. Fragrant. Midseason. **\$1.00.**

9.3 1150—**Walter Faxon** (Richardson). Large, globular semi-rose type. Bright rose, deepening toward the center. Distinct and delicate. Mid-season, scarce. **\$4.50.**

SINGLE JAPANESE HERBACEOUS PEONY

8.6 1154—**Mikado.** Large flower, dark crimson with narrow filamental petals, crimson edged and tipped golden; very late; very attractive. **\$2.50.**

(See prices on special collection on page eighteen).

You are cordially invited to come and see our Peonies which are in flower throughout the month of June.

IRISES (Hardy Perennials)

Flowering from April 25th to August 1st
depending on variety.

The Iris is a magnificent hardy perennial. They are the most satisfactory and beautiful perennial in the garden. They flower during a long period of time; require practically no care; multiply rapidly; grow in practically any kind of soil; are inexpensive; gorgeous in coloring, which with their fragrance gives them a charm not possessed by any other flower; they withstand extreme heat and cold and are the best drought resisters amongst the perennials.

The stately habits of Irises, their gorgeous effects, their wonderful coloring and their freeness of bloom have well entitled them to the name of the "Orchid of the Hardy Garden," but Irises have the advantage of the orchid in delicacy of structure and in greater facility of culture.

Planting and Care. Irises should be planted in April and May as soon as the roots have sufficient growth to permit transplanting and in the fall from July 20th until the ground freezes in November. Fresh manure should not be used as a fertilizer as it rots the roots. Bone meal is always a safe as well as a good fertilizer. The roots should be planted so that the top of the root is at least two inches below the surface and from two to two and one-half feet apart. The dwarf Irises, however, can be planted closer. We advise covering all Irises with a light covering of marsh hay or straw as soon as the ground freezes, where winters are severe, to prevent the roots freezing out.

The first number denotes the rating of the Iris, according to the American Iris Society, and the number immediately before the name of the variety, our field and catalog number. As to ratings, see page 4.

In the descriptions of the Irises the S refers to the Standards or upright petals and the F to the Falls or drooping petals.



Dwarf Early Bearded Hybrid Crimean Irises

April and Early May Flowering Irises

These are excellent plants for permanent borderings or rockeries, growing from 6 to 18 inches high, and flower during April and May. They are very hardy, succeed in almost any soil or situation, thriving in a dry sunny location same as the Tall Bearded Irises. When planted in a double row, about four inches apart, they make a very effective edging. They can also be planted in front of the taller varieties.

Culture. Same as the Tall Bearded Iris.

- | | |
|--|--|
| 2— Biflora. S. and F. rich purple. 9 in. 25c. | 10— Nana Alba. S. and F. white shaded blue. 25c. |
| 6.5 4— Cyanea, Pumila. (G. & K.) S. rich bright blue; F. dark satiny blue, large, handsome. 15c. | 11— Prairie Gem. S. and F. Orange. 25c. |
| 5— Die Fee, syn. Fairy. S. and F. pale blue, fine. 25c. | 12— Royal Purple, Pumila. S. and F. a handsome shade of rich purple. 12 in. 25c. |
| 7.3 7— Excelsa. (G. & K.) Deep clear yellow with orange beard, fine, large. 20c. | 7.4 13— Schneekuppe, Pumila. (G. and K.) 1910. Large, flowering, showy, pure white; falls reticulated yellow at base. 25c. |
| 6.8 8— Florida. (G. & K.) S. citron yellow; F. deeper yellow, beautifully veined. 10 in. 20c. | |

Intermediate Bearded Irises

May Flowering Irises

The Intermediate Irises comprise a new group of hybrids derived mostly from crosses between the Dwarf Crimean Irises and the Tall Bearded Irises, forming an intermediate race, both in height, and period of blooming. The flowers are very large, most beautifully colored, growing from 12 to 18 inches in height and bloom two weeks before the Tall Bearded Irises, viz: from about May 10th to June 1st in this latitude, thus forming a connecting link between the Dwarf Crimean Irises and the handsome Tall Bearded Irises.

Culture. Same as the Tall Bearded Irises.

6.7 35—Blue Boy (Fos.). A charming Iris of rich violet blue practically self-colored, even beard being blue. One of the best of Intermediates. 18 in. **35c.** 3 for **90c.** 12 for **\$3.00.**

7.1 37—Dolphin (Cap.). S. light blue; F. velvety, violet purple, tall, handsome. 18 in. **35c.**

7.6 39—Dorothea (Cap.). Porcelain white tinged with lilac. Huge and handsome. 15 in. **35c.** 3 for **90c.** 12 for **\$3.00.**

7.8 40—Eclipse (Cap.). Reddish purple, early. **35c**
41—Empress (Cap.). Creamy white. **35c.**

7.4 43—Fritzof (G. and K.). S. soft lavender; F. soft purple, shaded lavender, beautiful. **35c.**

7.1 45—Halfdan (G. & K.). Rich creamy yellow. 2 ft., **35c.** 3 for **90c.** 12 for **\$3.00.**

6.6 55—Helga (G. & K.). Lemon yellow with pearl shadings. 2 feet, **35c.**

7.7 46—Ingeborg (G. & K.). Very fine, pure white, immense flower. 2 feet, **35c.**

7.3 47—Ivorine (Cap.). Very large creamy white. 18 in., **25c.**

6.4 49—Lurida. S. bronze crimson; F. glossy bronze maroon. **25c.**

51—Midnight. S. & F. rich deep dark purple. **35c.**

7.7 52—Prince Victor (Cap.). S. blue; F. violet, large flowers. **35c.**

8. 53—Royal (Cap.). Blue and violet. 12 in. **35c.**

7.3 54—Walhalla (G. & K.). S. light blue; F. velvety violet-purple, handsome. 30 in., **35c.** 3 for **90c.** 12 for **\$3.00.**

(See prices on special collections on page eighteen.)



Tall Bearded Irises (Pogoniris)

Late May and June Flowering Irises—Fleur-de-lis

The flowers are large and exceedingly handsome and most of them deliciously fragrant and are in bloom during late May and June. Their beauty outrivals that of the Orchids in their delicacy of structure and wide range of coloring. There are the richest yellows, the most intense purples, delicate blues, the softest mauves and beautiful claret-reds. There are also whites, primroses and bronzes of every shade. They are especially adapted for flower borders, shrubberies, woodland walks and wild gardens and for surrounding lakes and ponds. If planted around pools or lakes they should be placed well above the water level.

Late May Flowering Irises

7.8 76—Amas (syn. *Macrantha*). A handsome giant from Asia Minor. S. rich blue; F. violet. 32 in. **35c.**

77—American Black Prince. S. purple lilac; F. rich velvety black, very early. 2 ft., **25c.**

8.9 78—Crimson King. Rich claret purple. 2 ft., **25c.**

7.1 79—Fontarable. S. violet blue; F. rich violet purple. **25c.** (Fall delivery only).

7. 81—Kochii. S. and F. rich claret purple; very handsome. **25c.**

7.4 83—Purple King. Full purple, very effective and handsome. 2 ft. **25c.** 3 for **60c.** 12 for **\$2.00**

(See prices on special collections on page 18.)

June Flowering Irises

8.6 100—Afterglow (Sturt.). A soft grayish lavender shading to a rich Pinard yellow through the center. Strong grower. 3 ft. **75c.**

7.9 101—Albert Victor. A great favorite. S. soft blue; F. beautiful lavender. large and beautiful flower. **25c.** 3 for **60c.** 12 for **\$2.00.**

8.9 102—Alcazar (Vlm.). A giant flower. S. light bluish violet; F. deep purple, bronze veined at the throat. Beautiful. 4 ft. **35c.**

8.3 104—Ambigu (Vlm.). A French variety of novel coloring. A distinct reddish purple. 30 in. **\$1.00.**

7.4 103—Ambassadeur (Vilmorin). Stout stiff stems about 4 ft. high. Smoky reddish violet standards, falls a velvety dark reddish violet. Beard, yellow. A magnificent variety. **75c.**



Unless otherwise specifically stated, where 6, 12 or more roots of one variety of Iris are ordered same will be furnished at the following prices, viz:

Varieties listed at 20c each are **\$2.00** per doz.; at 25c each **\$2.50** per doz.; at 35c each **\$3.50** per doz.; at 50c each **\$5.00** per doz.; at 75c each **\$7.50** per doz.; at **\$1.00** each **\$10.00** per doz. Six roots will be sold at the dozen rate. Large lists of one or two of a kind will be charged at the single rate. Remember we do not ship orders amounting to less than **\$1.00.** See Page two.

JUNE FLOWERING IRISES—Continued

- 7.7 107—**Anne Leslie**. Sturt. S. white, rose tinted; F. dahlia carmine, orange beard. 27 in. **75c.**
- 9.2 111—**Asia** (Yeld.). A grand importation with unusually large flowers. S. broad and massive pale silvery lavender, deepening at the base to yellow and gold; F. pale reddish purple lightening in color toward the margin. Beard bright golden yellow. 4½ ft. **\$3.00.**
- 7.4 113—**Aurea** (Jac.). S. and F. rich chrome yellow. 2 ft. **25c.** 3 for **60c.** 12 for **\$2.00.**
- 7.4 114—**Aurora** (Fos.). A very tall Iris with pale lavender pink shaded flowers and orange beard. Handsome. 3-4 ft. **50c.**
- 9.4 126—**Ballarine** (Vilm.1920). S. light violet blue; F. deeper. Splendidly formed, large. Fragrant Strong grower. 48 in. **\$2.50.**
- 127—**Bluebeard**. S. and F. an even blue. One of the best blues. **35c.**
- 8.3 128—**Blue Bird** (Bliss). Self-colored flowers of the brightest blue. F. at right angles to the S. Unusual on account of intense blue coloring, 30 in. **\$1.00.**
- 7.1 129—**Blue Jay** (Farr.). S. bright clear blue; F. intense dark blue. 30 in. **35c.**
- 9.1 131—**Brandywine** (Farr). S. and F. pale silvery blue; distinct orange beard. Effect is clear blue. **\$3.00.**
- 8.5 132—**B. Y. Morrison** (Sturt.). S. pale lavender-violet; F. velvety raisin-purple with broad lavender border. Distinct, handsome. **\$1.00.**
- 7.9 138—**Camelot** (Bliss). Madam Chereau type; spikes 4 ft. high. S. and F. creamy white, edged with pale violet. **35c.**
- 7.5 139—**Caprice** (Vilm.). S. reddish purple; F. deeper and richer. A good wine red Iris. Handsome. 3 ft. **35c.** 3 for **90c.** 12 for **\$3.00.**
- 8.1 140—**Carthusian** (Mar.). Handsome. S. clear lavender-blue; F. darker blue, ret. brown at claw; large, fragrant. 2 ft. **50c.**
- 7.1 150—**Celeste** (Lum.). Pale azure blue, large flower. **25c.**
- 7.8 142—**Clematis** (Bliss). Unique. Shaped like a fine Japanese Iris or a large six petaled Clematis. All six segments of the flower reflects horizontally. Light clear violet with variable veining at base. Strong, free flowering and fragrant. 30 inches. **\$1.00.**
- 7.3 143—**Clio**. S. lavender; shaded white; F. rich purple edged white. Pretty. **35c.**
- 7.1 146—**Cordelia** (Park.). S. rosy lilac; F. rich crimson purple, handsome, floriferous, late flowering. **35c.**
- 8.4 148—**Cretonne** (Bliss). S. pale bronze-purple; F. rich red maroon with striking orange beard. Very striking. Strong grower. 3 ft. **75c.**
- 8.7 149—**Crusader** (Fos). S. a light shade and F. a deep shade of violet blue, beard orange yellow, 42 in. **50c.**
8. 157—**Dalila** (Den.). S. palest flesh white; F. rich red purple; yellow beard. Striking. **\$1.00.**
- 159—**Daphne** (Bliss). S. pure white; F. large ret. purple on a white ground, deepening to a rich purple below, with a distinct white margin. A greatly improved Rhein Nixe. One of Bliss' handsomest seedlings. **\$1.50.**
- 163—**Diadem** (Bliss). S. pale mauve; F. deep reddish mauve, with brilliant orange beard. Very striking. 3 ft. **\$1.00.**
- 8.3 164—**Dimity** (Bliss). S. White slightly veined mauve; F. veined lavender, beard white tipped brown. 3 ft. **50c.**
- 7.4 169—**Dr. Bernice**. S. coppery bronze; F. velvety crimson. Large, handsome. A good reddish variety. **35c.**
- 8.2 170—**Drake** (Bliss). On the lines of P. Dalmatica with flowers of the palest Cambridge blue. Free flowering. 3 ft. **75c.**
- 8.5 171—**Dream** (Sturt.) Very near to a perfect pink, self color. Beautiful large flowers. 38 in. **75c.**
- 174—**Dusky Maid** (Bliss). Similar to Mrs. Cowley. S. pale buff; F. large, wide, spreading, of a deep mauve-purple with pale broad margin. Fine. 30 in. **50c.**
- 186—**Edward VII** (Perry). S. blue; F. bright reddish violet, fine for cutting. 32 in. **35c.**
- 7.8 188—**Eldorado** (Vilm). S. yellowish-bronze shaded beautifully with heliotrope; F. bright violet-purple, center of flower golden yellow. 30 in. **50c.**
- 7.6 189—**E. L. Crandall** (Farr). S. pure white; F. white heavily bordered deep blue at the base. **50c.**
8. 197—**Fairy** (Kem.). White, delicately suffused soft blue. The tallest standard variety giving a white effect. Popular, sweet smelling beautiful variety. 40 in. **25c.** 3 for **60c.** 12 for **\$2.00.**
- 7.5 202—**Fro**. (G. & K.) S. deep gold; F. brilliant chestnut-brown with narrow border of gold. **25c.**
- 7.3 220—**Her Majesty** (Per.). S. rose pink; F. bright crimson tinged a darker shade; a beautiful pink. 30 in. **25c.** 3 for **60c.** 12 for **\$2.00.**
- 7.4 222—**Hiawatha** (Farr). S. pale lavender, flushed rose; F. royal purple, bordered lavender. 28 in. **35c.**
- 7.9 230—**Iris King** (G. & K.). S. clear lemon yellow; F. rich maroon, bordered yellow, brilliant large flowers; handsome. **35c.** 3 for **90c.** 12 for **\$3.00.**
7. 241—**James Boyd** (Farr). S. immense, broad, incurved, clear light blue; F. dark violet tipped and edged lighter; handsome. 30 in. **50c.**
- 7.8 243—**Jeanne d'Arc** (Verd.). White, frilled lilac. A beautiful plicata. **35c.**
- 8.1 245—**Juniata** (Farr). S. and F. beautiful clear blue. Huge, sweet scented. 44 in. **35c.** 3 for **90c.** 12 for **\$3.00.**
- 7.6 254—**Knysna** (Bliss). Fine, free-flowering vigorous grower. S. of clear deep yellow; F. a deep velvety red-brown. 33 in. **75c.**
- 8.3 269—**La Neige** (Verd.). A pure wax white. Beard clear yellow. **\$1.00.**
9. 262—**Lent A. Williamson** (Wmsn.). S. campanula-violet; F. rich royal purple; beard yellow. Tall and large. **75c.**
- 7.3 263—**Leonidas**. S. clear mauve; F. rosy mauve. Large, handsome. **35c.** 3 for **90c.** 12 for **\$3.00.**
- 8.2 266—**Lohengrin** (G. & K.). Lilac rose; very large and beautiful. 30 in. **35c.** 3 for **90c.** 12 for **\$3.00.**
- 9.1 267—**Lord of June** (Yeld). Handsome huge Iris. S. of lavender blue; F. rich violet blue. One of the finest Irises. 40 in. **\$1.00.**
- 7.9 268—**Loreley** (G. & K.). S. light yellow; F. ultra-marine blue, bordered cream. **25c.** 3 for **60c.** 12 for **\$2.00.**

Special Bargain Rate **25¢** 15 MONTHS

The price of The Farm Journal is \$1.00 for 4 years; but since the number of our friends and patrons to whom we are glad to recommend this wide-awake farm and household magazine is very large, we have arranged this

“Special Bargain” Offer

with the publishers so you can give it a thorough trial, 15 months—15 big issues—for only 25 cents.

The Farm Journal, published monthly, with beautiful color covers, fine pictures, 52 to 140 pages, is 50 years old, and has over 6,500,000 readers from Maine to California.

Suits Them All—Will Suit You

Full of gumption—full of sunshine; boiled down; clean; truthful—stands for the right—kow-tows to no one.

All the world-famous old favorites: Aunt Harriet, Tim Webb, B. W. Snow, Farmer Vincent, Peter Tumbledown, Walt Mason, Sam Loyd, Boyer, Ross and many others.

Articles on livestock; poultry; soil-building and fertilizers; radio, tractors, engines, autos; field crops, orchard, garden; insect pests; farm organization, taxation, legislation, transportation, and co-operative selling. Big departments for women, patterns, embroidery, recipes; pages for young folks; absorbing stories of love, adventure and mystery; poetry; Bird Club; National Service, etc., etc.

Try it—mail this Mutual Benefit Coupon TODAY, with 25 cents direct to The Farm Journal, Philadelphia. If you're sorry after you see it, they will refund cheerfully.

RAINBOW GARDENS

Importers & Growers of Choice

Iris, Peonies, Phloxes, Gladiolus

Jefferson Highway, Farmington, Minn.

Try this - it's a bargain
15 Months for only

YOU will be delighted with The Farm Journal and wonder how such a splendid, illustrated magazine can cost so little. Its special features and big departments for the whole family will prove its value is many times this price.

This special price of 15 issues for 25 cents is for new subscribers only. It's a big bargain; at news-stands you pay 10 cents a copy. So to save money now, mail this Coupon AT ONCE. Money refunded on request.

1500 Pages
1500 Pictures
1500 Ways to
make money—
all in the most
widely read
Farm, Home and
Garden Magazine

25¢



TO THE FARM JOURNAL, Philadelphia, Pa.

Enclosed find 25 cents, for which send me THE FARM JOURNAL
15 months for a thorough trial. I am not now a subscriber.

My name is.....

R. F. D..... Box..... or Street.....

P. O..... State.....

IMPORTANT: This coupon must be sent direct to The Farm Journal, Philadelphia, Pa.
(If you live in Philadelphia, Canada, or a foreign country, send 50 cents.)

See
Other Side

8.5 276—**Madam Chobaut** (Denis). Pale yellow shaded and veined pale brown. Three feet. Unusual coloring. **\$1.50.**

277—**Magnifica**. S. olive, shaded red; F. dark brown red, a beautiful variety. **35c.** 3 for **90c.** 12 for **\$3.00.**

9.1 278—**Magnifica** (Vilm). S. Light violet blue; F. dark reddish violet with brown stripes at base; beard yellow. Not to be confused with old standard variety of like name. 3 ft. **\$1.00.**

8.1 279—**Ma Mie** (Cay.). White frilled with blue, an improved Mme. Chereau. 3 ft. **50c.**

7.3 280—**Mandalisca**. Rich lavender purple, tall, large, handsome, early. 40 in. **25c.** 3 for **60c.** 12 for **\$2.00.**

8.7 282—**Marsh Marigold** (Bliss). One of the most striking yellow varieties. 30 in. S. pale golden yellow; F. deep purple-brown with a bright yellow margin. **\$1.00.**

7.8 283—**Mary Garden** (Farr). S. pale yellow, flushed pale lavender; long drooping; F. creamy white, minutely dotted and veined maroon; stigmas clear yellow. 28 in. **35c.**

7.3 284—**Mary Gray** (Farr). S. clear lavender-blue; F. dark lobelia-blue. Handsome, large flowers. 3 ft. **50c.**

7.8 288—**Minnehaha** (Farr). S. creamy white, shaded yellow; F. creamy white, heavily ret. maroon; stigmas, clear yellow. Fragrant. Large. **\$1.00.**

289—**Miranda** (Hort.). Clear violet blue with orange beard. Distinct and striking. 40 in. **50c.**

7.5 290—**Mithras** (G. & K.). S. light yellow; F. brilliant wine red with narrow border of deep yellow. Beautiful **35c.** 3 for **90c.** 12 for **\$3.00.**

7.4 292—**Mme. Chereau** (Lmn.). White, frilled with wide border of pale blue. Handsome and popular. 32 in. **25c.** 3 for **60c.** 12 for **\$3.00.**

7.8 294—**Mme. de Sevigne** (Den.). Fine large Madam Chereau type, with violet-purple markings. **75c.**

8.7 291—**Mlle. Schwartz** (Den.). Color, palest mauve. One of M. Denis' best seedlings. 4 ft. **\$1.00.**

8.4 297—**Monsignor** (Vilm.). Beautiful rich coloring. S. pale unveined violet; F. a ground work of same shade but richly overlaid and veined except for a broad margin), with deep purple. **25c.** 3 for **60c.** 12 for **\$2.00.**

8.2 299—**Morwell** (Bliss). S. and F. large pale blue purple color. 30 in. **50c.**

301—**Mother of Pearl** (Sturt.). S. and F. light blue lavender with faint creamy undertone. Large flowers, vigorous grower, very fine. 40 in. **50c.**

8.2 300—**Mount Penn** (Farr). S. lavender rose; F. crimson lilac, deep orange beard. Tall and handsome. 30 in. **50c.**

7.6 302—**Mrs. Alan Gray** (Fos.). A delightful lilac shade which gives the impression of pink. Often flowers again in August. Beautiful. 30 in. **35c.** 3 for **90c.** 12 for **\$3.00.**

7.8 303—**Mrs. Cowley** (Bliss). Early, free flowering. S. coppery pink; F. deep rich rosy-purple. Striking and beautiful. 27 in. **\$1.00.**

6.8 308—**Mrs. H. Darwin** (Fos.). S. white; F. slightly ret. violet. 2 ft. **25c.**

7. 304—**Mrs. Kingscote** (Perry). S. silvery rose; F. rose pink with conspicuous yellow crest. A near pink. **50c.**

6.8 305—**Mrs. Neubronner** (Ware). Deep golden yellow, darker than Aurea. Fine. 2 ft. **35c.**

3 for **90c.** 12 for **\$3.00.**

306—**Mrs. Tinley** (Bliss). Early, large flowers of intense self violet blue, with a golden blotch. 3 ft. **75c.**

7.4 321—**Navajo** (Farr). S. light bronze yellow shaded lavender; F. deep maroon heavily veined white and yellow; stigmas, yellow, deep orange beard. 20 in. **35c.**

8.1 322—**Neptune** (Yeld). S. bright pale blue; F. rich dark purple-blue. Splendid flower. **\$1.00.**

7.3 324—**Nibelungen** (G. & K.). S. fawn; F. violet purple on bronze, large, strong, free bloomer. **35c.** 3 for **90c.** 12 for **\$3.00.**

7.6 326—**Nuee d'Orange** (Ver.). Grayish slaty blue with bronze shading; F. purplish, appropriately called Storm Cloud. Vigorous, large. **50c.**

7.8 332—**Odoratissima**. Uniform shade of rich lavender blue, sweetly scented. Very tall, stout stems. 4 ft. **50c.**

7.9 331—**Ochracea** (Denis). Variegated yellow, with purple tinge in falls; S. long and narrow. **\$2.00.**

8.7 335—**Opera** (Vilm.). S. dark purple bronze; F. similar coloring but much deeper and richer. 33 in. The effect is bronze red. **75c.**

7.9 336—**Oporto** (Yeld). S. and F. rich purplish mauve with conspicuous orange beard. Large flowers. **35c.**

7.2 337—**Oriental** (Farr). S. clear blue; F. rich royal blue, with a heavy bright orange beard. 32 in. **50c.**

7.8 338—**Oriflamme** (Vilm.). S. lavender of great size; F. deep velvety violet blue. An immense handsome flower. **50c.**

8.8 347—**Pallida Dalmatica**. S. lavender; F. clear deep lavender; flowers very large, extra fine. A grand variety. 42 in. **35c.** 3 for **90c.** 12 for **\$3.00.**

8.1 349—**Parc de Neuilly** (Verd.). Rich purple self approaching plum; large blooms. Beautiful. 30 in. **35c.**

7.9 351—**Parisiana** (Vilm.). S. white, dotted and shaded light purple; F. white frilled and edged with lilac. Large and beautiful. **50c.**

7.5 352—**Pauline** (Farr). S. and F. Unusually large, rich pansy violet, deep orange beard; fragrant. 3 ft. **50c.**

7. 354—**Penge** (Fos.). S. light bluish violet; violet-purple. **50c.**

7.8 355—**Perfection** (Barr). S. light blue; F. dark violet, black orange beard. Handsome. **25c.** 3 for **60c.** 12 for **\$2.00.**

8.9 356—**Phyllis Bliss** (Bliss). Flowers of a self pale rose lavender. Strong and erect grower. **\$1.00.**

7.7 357—**Pocahontas** (Farr). S. and F. pure white, S. faintly bordered pale blue. Orchid type flower with frilled petals. 28 in. **35c.**

7.7 359—**Powhatan** (Farr). S. light bishop violet with deeper border; F. deep purple with crimson shade; horizontal spreading flower. 38 in. **35c.**

7.2 362—**Princess Victoria Louise** (G. & K.). S. soft primrose yellow; F. reddish purple with a distinct narrow primrose edge. 2 ft. **25c.** 3 for **60c.** 12 for **\$2.00.**

8.3 363—**Prosper Laugier** (Ver.). F. very broad of deepest velvety crimson, richly veined at the throat. Handsome, large. 32 in. **35c.**

364—**Prospero**. Vigorous, tall growing, bearing enormous flowers. S. pale lavender flushed with yellow at base; F. deep red-purple with lighter

shading at margin. Deep orange beard. Handsome. 4 feet. **\$1.50.**

8.4 373—**Quaker Lady** (Farr). S. smoky lavender with yellow shading; F. ageratum-blue and old gold, stigmas yellow. Yellow beard. 38 in. **35c.** 3 for **90c.** 12 for **\$3.00.**

7.5 374—**Queen Alexandra** (Barr). S. fawn, shot with lilac; F. lilac, ret. at base bronze, beard yellow. 30 in. **50c.**

9.1 375—**Queen Caterina** (Sturt.). Pale lavender violet self with a white haft veined with bronze and a rich orange beard. 3 to 4 ft. **\$1.50.**

7.4 376—**Queen of May** (Sal.). A lovely rose lilac, almost pink. Beautiful. 32 in. **25c.** 3 for **60c.** 12 for **\$2.00.**

7.8 382—**Red Cloud** (Farr). S. rosy lavender-bronze; F. velvety maroon-crimson, ret. yellow. Stigmas old gold. Very near red. 2 ft. **35c.**

8.4 385—**Rhein Nixe** (G. & K.). S. white, very large; F. rich violet purple with a narrow distinct white edge. Handsome. **35c.** 3 for **90c.** 12 for **\$3.00.**

8.3 389—**Rodney** (Bliss). Large flowers of dark self violet blue. Very blue tone. 39 in. **50c.**

8.2 392—**Roseway** (Bliss). Deep red pink. Early. Strong branching spikes. Almost a self red with a broad orange beard. **75c.**

6.9 393—**Rose Unique** (Farr). S. and F. bright violet rose, known as a pink Iris. Large flowering Handsome. Too low rated. **35c.**

8.3 403—**Seminole** (Farr). S. soft violet rose; F. rich velvety crimson, brilliant orange beard. One of the finest reds. **75c.**

8.7 405—**Shekinah** (Sturt.). Pale lemon-yellow, deepening through center. Beard orange-yellow. The best clear yellow. 36 in. **\$1.25.**

7.6 408—**Sherwin Wright** (Koh.). S. and F. golden yellow; vigorous grower, free flowering. 24 in. **25c.** 3 for **60c.** 12 for **\$2.00.**

7.5 409—**Shrewsbury** (Farr). S. rosy bronze; F. violet purple with lighter shading, the conspicuous heavy orange beard. Striking. **50c.**

9.3 411—**Souv. de Mme. Gaudichau** (Mil.). A tall, early and very distinct variety; a deep purple bicolor of unusual velvety appearance. Very beautiful. Strong grower. One of the finest Irises. 42 in. **\$3.00.**

7.9 415—**Swatara** (Farr). S. lobelia-blue suffused bronzy-yellow at base. F. bright violet with conspicuous orange beard. Large. 3 ft. **35c.**

7.3 417—**Syphax** (Bliss). S. pale violet; F. deep crimson purple, boldly ret. at the haft; F. hang almost vertical giving the flower a unique shape. Large flower of rich coloring. A beauty. 30 in. **\$1.00.**

8. 431—**Tom Tit** (Bliss). Flowers are small, 3-4 on a stem of a deep self violet-blue. F. almost horizontal. A charming shade of blue. 2 ft. **75c.**

8.2 433—**Tristram** (Bliss). S. of clearest white; deep rich purple, richly ret. at haft. Distinctive and beautiful. 27 in. **50c.**

8.1 434—**Trojana** (Kerner). A magnificent plant 3-4 ft. high, with very large flowers. S. light violet-blue; F. deep purple violet. **35c.**

8.4 435—**Troost** (Den. 1908). S. deep rosy purple; F. paler, veined violet, which changes to brown in the upper part, the general color being a wonderful shade of very deep pink. 3 ft. **\$1.50.**

8.3 446—**Ute Chief** (Farr). S. light blue-violet; F. rich royal purple, heavily ret. extra large. 3 ft. **\$1.00.**

7.5 452—**Viola** (Fos.). Flowers of a uniform light bluish violet on erect three foot stems. Handsome. **35c.**

8. 453—**Violacea Grandiflora** (pall. 1860). S. rich blue; F. violet blue. Handsome. **35c.** 3 for **90c.** 12 for **\$3.00.**

8.1 454—**Virginia Moore** (Shull). The tallest yellow self to date standing 33 inches. The same shade of Hemerocallis flower. **\$1.25.**

8.3 459—**White Knight** (Saunders 1915). A beautiful absolutely snow white Iris, without markings. Sweet scented. **50c.**

(See prices on special collections on page eighteen.)



Beardless Irises (Apogon)

These Irises are hardy and quite distinct from the Bearded Irises. They are tall and beautiful and a number of them may be treated as semi-aquatics.

No Iris, no matter how much it loves moisture, will thrive well where water stands in winter, except our native water flag (Versicolor) and the European yellow flag (Pseudo-Acorus) which may be grown partially in water, and are unexcelled for ponds and boggy places. Plant if possible in early autumn or spring.

Beardless Irises—Section 1 Siberian Irises

June and Early July Flowering

The most delicate and elegant of all the small-flowered Iris. Narrow, grassy foliage, with tall stems and flowers of various shades of blue, with white markings; very free-flowering, and one of the best for cutting.

802—Baxteri. S. blue; F. white, slightly veined blue. 4 ft. **25c.**

803—Corean Species. Rich shades of violet purple, very handsome. 2 ft. **25c.** 3 for **60c.** 12 for **\$2.00.**

805—Flore Pleno. Deep blue, semi-double flowers. 2½ ft. **25c.** 3 for **60c.** 12 for **\$2.00.**

806—George Wallace. Azure-blue; F. marked white. Extra fine. 3 ft. **25c.** 3 for **60c.** 12 for **\$2.00.**

807—Grandis. Violet, reticulated white. 5 ft. **25c.** 3 for **60c.** 12 for **\$2.00.**

810—Orientalis (sny. Sanguinea). Intensely brilliant blue flowers, the bud being enclosed in conspicuous crimson spathe valves. 3 ft. **25c.** 3 for **60c.** 12 for **\$2.00.**

812—Orientalis, Snow Queen. Large, ivory-white flowers. Found in Japan by Mr. Barr. **25c.** each. **\$2.50** per dozen.

813—Orientalis Superba. Large, violet-blue; handsome foliage, reaching almost to the flowers. **25c.** 3 for **60c.** 12 for **\$2.00.**

814—Perry's Blue (Perry). Beautiful, Considered finest yet introduced; large flowers, over 4½ inches across. S. sky blue, broad falls standing at right angles, a wonderful shade of old China blue. **\$1.09.**

(See prices on special collections on page eighteen.)

Beardless Irises—Section 2

Late June and July Flowering.

The Irises in this group, besides being handsome subjects for the flower and shrubbery border, may be planted by the waterside, but with their crowns above the water-level. The varieties are grand and stately plants, growing from 3 to 5 feet in height, with beautiful erect, dark green foliage, which retains its beauty until well into winter. Grown together in masses the effect is most striking and beautiful.

834—**Guldenstadtiana Coerulea.** Robust grower, foliage yellow in spring, changing to green and remains green until snow comes; flowers blue. July. **50c.**

848—**Spuria, Mrs. A. W. Tait** (syn. Longipetala Superba). Porcelain-blue, with long pale blue falls, having a golden blotch at the base; fine foliage, free bloomer, and very hardy. Fine for massing. Foliage remains green until late fall. 3 feet. **35c** each. **\$3.50** per dozen.

849—**Spuria Notha.** Rich violet; blue, spotted yellow; handsome; very strong grower. 3 ft. **35c.**

Beardless Irises—Section 3

June and July Flowering

Irises suitable for planting by the waterside, and in very damp or wet places. These will also do well in any good, loamy soil that is kept well cultivated and mellow.

824—**Pseudo-acorus** (The Common Yellow Water Flag). Bright yellow; suitable for marshes and water course. These and Versicolor varieties are the only Irises that may be safely planted where water habitually stands. 3 ft. May and June. **25c.** **\$2.50** per dozen.

825—**Versicolor.** A native species, common to our streams and marshes, flowering in June and July, remaining in bloom a long time; very showy violet-blue flowers. **25c.** **\$2.50** per dozen.

Japanese Iris (*Iris Kaempferi*) (Apogon)

Late June and July Flowering

The magnificence of Japanese Irises is such that no written description gives them justice. Some of the flowers measure from 10 to 12 inches. The prevailing colors are white, rose-purple, crimson, rose, lilac, lavender, silvery gray, purple, violet and blue; each flower usually representing several shades. They flower from late June to August 5th in this latitude.

Culture. These Irises are really semi-aquatic, and are seen in their full glory when grown at the water's edge.

They can be planted either as a water garden plant, or in a dry location. They can be planted at the margin of streams or ponds. In dry soils they can be grown to perfection if the ground is kept hoed. **Always cover Japanese Irises with a good covering of straw or hay during the winter as they require protection.**

There is always a heavy demand for our stock. They cannot be imported now and it is getting more difficult each year to obtain stock. They do not usually attain sufficient growth in the spring for transplanting until after May 10th. We only sell mixed varieties.

Mixed varieties of Japanese Irises **30c** each; **\$3.00** per dozen.

DELPHINIUM (Hardy Perennial)

Indispensable to the herbaceous garden, their long showy spikes of flowers continuing from June until frost, furnishing the most satisfactory different shades of blue to any color scheme, making the most wonderful effect in the garden. Many of the hybrids produce wonderful colorings, many having beautiful shades of mauve, pink and purple mingled with the various shades of blue. Our stock includes not only the always popular Belladonna and Bellamosum varieties, but the new Blackmore & Langdon and Wrexham strains, which have attracted so much attention and have been in such great demand the past year. Fine for backgrounds.

Culture: They grow well in any good cultivated soil. Fertilize with bone meal.

We advise our customers to send in their orders early to obtain stock.

Belladonna. Clear turquoise blue. **25c.** 3 for **65c.** 6 for **\$1.25.** 12 for **\$2.50.**

Bellamosum. Dark blue form of Belladonna. **25c.** 3 for **65c.** 6 for **\$1.25.** 12 for **\$2.50.**

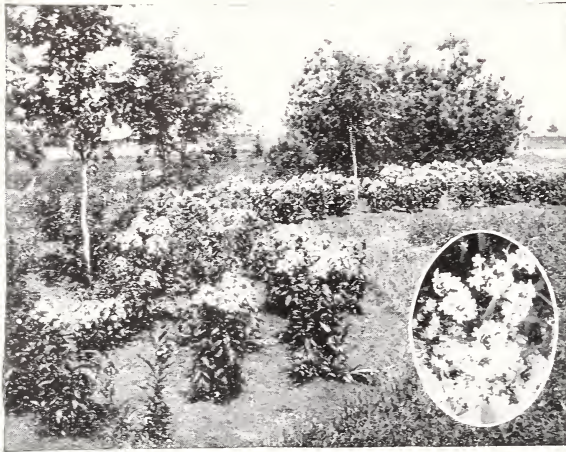
Chinensis Album. A pure white form of the above. **25c.** 3 for **65c.** 6 for **\$1.25.** 12 for **\$2.50.**

English Hybrids. (Blackmore & Langdon's best strains). Stands in a class by itself. From palest blues to deepest indigo with a strong run of the most delicate shades of rose, double and single. **35c.** 3 for **\$1.00.** 6 for **\$1.75.** 12 for **\$3.50.**

English Wrexham or Hollyhock Strain. Strong mammoth flowers of choicest mixed colors. **35c.** 3 for **\$1.00.** 6 for **\$1.75.** 12 for **\$3.50.**

PHLOXES—HARDY PERENNIAL

Flowering from June 20th until late in October.



Phloxes are hardy floriferous perennials, handsome for borders, in beds and amongst the shrubbery. For best effects they should be massed in solid colors of 3 or more roots of a variety. They can be used, however, as single specimens. They give a garden a wonderful color effect, flowering as they do from June until in October, and filling in a period between the Irises and Peonies and the Gladiolus.

Culture: They grow and succeed almost everywhere and in almost any position, and will do best in soil that has been enriched. Give a liberal supply of water during the flowering season. Plant at any time during the spring or late fall, spacing the roots from 15 to 18 inches apart. If the first spikes that bloom are removed as soon as over, they will produce a second supply of flowers continuing the display until late in the autumn. Clumps should be divided and replanted at least every fourth year. To prevent phloxes

reverting to type do not allow them to go to seed. After freezing weather starts in in the fall cover the beds with straw or marsh hay as a protection.

Our Collection includes a number of the better varieties which produce large trusses of beautiful and brilliant flowers. Shipments are made in April and May and from Sept. 15th until the ground freezes.

Prices of all varieties—35c per root; 3 for \$1.00; 6 for \$1.50; 12 for \$3.00. On Phloxes we allow you to make a selection of any combination of varieties you desire at these prices.

Antonin Mercier. Beautiful lilac with white eye.
B. Compte. Deep rich ox-blood red. One of the finest red shades; strong and large.

Beacon. A brilliant cherry red.

Champs Elysee. Fine rich purplish-crimson of compact form. Early and exceedingly attractive.

Europa. New. Large, well formed white flowers with crimson-carmine eye. Very large individual flower and truss. Sturdy erect habit.

Miss Lingard. Waxy white with lavender eye. Longest spikes of any Phlox; blooms from the ground up. Earliest of flower and continuing for a long period.

Mrs. Jenkins. White immense panicles. One of the best. Early.

R. P. Struthers. Rose carmine with claret eye. Very bright. Tall.

Rynstroom. Bright rose pink. Extra large flower and truss. Tall. Midseason to late.

Thor. A beautiful lively shade of pure salmon-pink, suffused and overlaid with a scarlet glow; has aniline-red eye.

W. C. Egan. A delicate lilac with fine large flowers.

Widar. Bright reddish-violet with large white center. Fine head.

See Prices above. One each of the above 12 varieties, \$3.00; 3 of each (36 plants), \$8.50; 6 of each (72 plants), \$16.00. Remember we do not ship orders amounting to less than \$1.00. See Page 2.

OTHER HARDY PERENNIALS

All particularly fine perennials flowering from June until frost and giving a continuation of fine blooms for cutting. You will find that a selection of each of the following will prove most satisfactory.

Roots. 25c each, or 3 of a kind for 65c; 6 for \$1.25; 12 for \$2.50.

(No orders shipped for less than \$1.00. See Page 2 of Catalog.)

Coreopsis (Lanceolata). A beautiful hardy border plant 15 to 18 in. high with bright yellow flowers in great profusion. July until frost. 25c.

Gaillardia (Grandiflora). A beautiful and desirable perennial, with scarlet crimson, bordered golden yellow flowers, blooming from June until frost. 25c.

Hollyhocks. We carry only a fine strain of double varieties of various shades of pink, red, crimson, yellow and white. 25c each.

(Hollyhocks and Delphinium are wonderful perennials for backgrounds, to hide unsightly views against Garages, etc.)

Gypsophilla (Baby's Breath). Bush of tiny flowers in light feathery panicles. Fine for cutting, excellent for borders and rock gardens. 25c.

Pyrethrum (Painted Daisies). Red, white and pink mixed, blooms in June and July, a most beautiful and hardy plant for the garden and for cutting. 25c.

GLADIOLUS (Bulbs)

Flowering from July 15th until October, depending on variety.

For beautiful flowers from July until late fall there are none so dependable and magnificent or that give more satisfaction than gladiolus. As cut flowers, they have no peer and when planted in clumps and masses in the garden they invariably make a grand showing.

A number of exquisitely beautiful varieties have been introduced the past few years and after several years of experimenting and discarding we are offering a collection of the best and choicest varieties, any one or all of which the flower lover will be justly proud of. In purchasing gladioli bulbs it is best to get what is worth while and the best named varieties give the most satisfaction. By ordinary care and in cutting as explained below, your collection will steadily increase so that your garden will soon have a considerable showing.

When To Order The Bulbs. Orders for gladiolus are shipped in November, weather conditions permitting, and from April 1st until May 25th, when we plant our stock. Shipments ordered during the winter must be at the purchaser's risk. We send out first-class, sound, northern grown bulbs of large size. Some varieties do not make as large bulbs as others, however. Send in your order as early as possible to assure early delivery and of the varieties desired for although we usually carry a large supply, the demand for our beautiful varieties is very heavy. All quotations are subject to stock being unsold on receipt of order. No substitution will be made except upon your directions.

Planting Instructions. If weather conditions permit start planting the first part of May and plant at intervals up to June 10th to secure a succession of flowers from July until late fall. It usually takes from 65 to 80 days from time of planting until flowering, depending on the variety, size of bulb, soil and weather conditions. If possible use a new location each year not planting in the same location oftener than every third year. If a good coating of manure is spaded in deeply in the fall and well spaded and pulverized in the spring, the soil will be in fine condition. If used only at planting, it is better to use high-grade commercial fertilizers such as bone meal, pulverized sheep manure or a liquid fertilizer applied to the soil near the rows but not too close to the bulbs. Deep planting is necessary in order to properly develop the new bulb which grows on top of the old one. Plant six inches deep with less on very heavy soils. Deep planting gives a heavy stalk and saves the necessity of using stakes. By planting the bulbs 4 to 6 inches apart in either single or double rows making your Gladiolus beds either round, oval, oblong or square and leaving a space of one and a half to two feet apart between the rows will allow sufficient room not only to plant a large number of bulbs but will give sufficient space between the rows for hoeing and cultivating and for hilling up the bulbs (same as for potatoes). This conserves the moisture around the bulbs and checks the growth of weeds and the space between the rows allows sufficient room to reach the flowers. To prevent soil crust forming keep the soil well worked. Thorough waterings in the evening during development aid considerably.

Cutting. When cutting the flowers leave at least two to four leaves. The bulbs need them to assist in their ripening. If the spikes are cut when the first buds open, their stems cut off a bit every day and the water changed, every bud will open. Treated in this way the flowers will last from ten days to two weeks.



Digging and care of the Bulbs. Before the ground freezes in the fall dig up the bulbs using a spading fork if possible. Take up the bulbs carefully if you desire to save the bulblets and cut off the stalk about one-half inch from the bulb. Allow to dry for a week or more before removing the old corm from the new bulb and the bulblets. The old corm is worthless and should be thrown away. Plant the bulblets the following spring in shallow trenches and the second year they should flower. After removing the old corm and bulblets allow the bulbs to be exposed to the sun or other heat until thoroughly dried and cured, then pack in bags or shallow boxes and place for the winter in a cool, dry place in the cellar where the temperature will not go below freezing point.

Ratings. The American Gladiolus Society has published a report with ratings on 150 varieties of Gladiolus from 65 large growers. Nearly all of our varieties have been included in this rating and those omitted will be rated later. See top of page 4.

As far as possible we give the name of introducer after name of variety. Prices quoted on Gladiolus include parcel post charges. No charge for packing. See directions for ordering on inside page of front cover.

Remember we do not ship orders amounting to less than \$1.00. See Page 2.

On account of dry summers throughout the Country the past two years, which has effected the growth of bulbs, there is a prevailing custom of sending out No. 2 size bulbs (1¼ in.) instead of No. 1 (1½ in. up) We will continue however to send out No. 1 stock of each variety, reserving the right to send No. 2 stock when our No. 1 stock of any variety is exhausted. Both sizes give practically the same size flowers.

Six bulbs will be furnished at dozen rates, 25 at the 100 rate.

	Each	Dozen	100
80.3 America (Banning). A beautiful soft flesh-pink, and very popular.....	\$0.05	\$0.50	\$4.00
American Beauty (Diener). Brilliant American Beauty color. Throat creamy yellow striped with ruby. Many flowers open at once.....	.25	2.50	
87.9 Anna Eberius (Diener). Dark velvety purple-rose. Deep Rhodamine purple, shading into a very deep Bordeaux center. Handsome.....	.10	1.00	7.50
Bengal Tiger (Pratt). Large blossoms of a peculiar shade of smoky red, striped and lined with smoky blue gray. Certainly well named. Unusual colorings. Highly recommended.....	.20	2.00	
78.9 Baron Hulot (Lemoine). A beautiful rick indigo blue. Fine blue.....	.10	1.00	7.50
81.9 Bertrex (Austin). Pure white with pale lilac flecks. Ruffled.....	.08	.80	6.00
82.2 Byron L. Smith (Kundred). Lavender pink on white ground, equal to a very choice cattleya orchid. Fine as a cut flower.....	.15	1.50	11.00
Chateau Thierry (Vos). Bright scarlet red bordered by light yellow on lower petals, enormous flowers, fine spike.....	.12	1.20	
87.1 Crimson Glow (Betcher). Extra tall strong spike with mammoth brilliant crimson flowers. The finest crimson. Handsome.....	.10	1.00	7.50
88.4 E. J. Shaylor (Kundred). Tall, very strong plant with large blooms. A beautiful deep rose-pink. Ruffled. Very early.....	.10	1.00	7.50
Elizabeth Tabor (Kinkle). A delicate rosy pink, lower petals bearing a rich dark crimson blotch, tall, large flower, exceptionally beautiful.....	.15	1.50	
84.4 Europa (Pfitzer). Pure white, large, finest exhibition white.....	.15	1.50	11.00
88.2 Evelyn Kirtland (Austin). Rosy pink, darker at the edges, fading to shell pink at center, brilliant scarlet blotches on lower petals.....	.10	1.00	7.50
George Paul (Lemoine). A perfect Harvard red. Large flowers.....	.10	1.00	7.50
Giant Nymph (Coleman). Very large light salmon rose. Tall, strong and one of the best pinks. Often grows 6 feet high with blooms 6 in. in diameter.....	.20	2.00	
Gold (Hoeg). A rich golden variety. Large flowers; many open at a time. An excellent beautiful spike. Winner of many prizes.....	.15	1.50	11.00
90.1 Golden Measure (Kelway). Large blooms of rich golden yellow with no markings. A strong grower with very large spike of blooms.....	.10	1.00	
82.7 Goliath (Velthuys). Extra large wide open flower, deep velvety wine; extra fine, dark red, large spike; beautiful.....	.12	1.20	8.50
81.8 Gretchen Zang (Austin). Large sparkling blooms, most beautiful soft melting pink, blending into scarlet on long petals.....	.06	.60	4.50
81.7 Halley (Velthuys). Large delicate salmon pink with light creamy blotch, earliest large flowering Gladiolus to bloom; fine for cutting.....	.05	.50	4.00
86.7 Herada (Austin). Large blooms of pure mauve, glistening and clear, with deeper markings in throat. Very attractive and unusual color.....	.08	.80	6.00
Jack London (Diener). Light salmon with vermilion stripes, canary yellow throat with ruby stripes, a perfect flower.....	.20	2.00	
85.5 Le Marechal Foch (Deursen). Extremely large, light rose pink and blooms early. The finest cut flower variety that ever came from Holland.....	.05	.50	4.00
81.6 l'Immaculee . An excellent white, exceedingly tall, strong spike.....	.08	.80	6.00
85.1 Louise (Wright). A very popular lavender. Dark rose purple with a light amaranth purple blotch on lower petals. Throat shaded darker.....	.10	1.00	7.50
87.1 Mary Pickford (Kundred). Delicate creamy-white. Throat finest soft sulphur yellow. Stem and calix also white.....	.10	1.00	7.50
Mona Lisa (Kundred). palest rose pink. A most delicately colored gladiolus. Ruffled and exceedingly beautiful.....	.12	1.20	
78 Mr. Mark (Velthuys). An attractive light blue with darker blotch.....	.12	1.20	8.50
89.1 Mrs. Dr. Norton (Kundred). Finest cream with edges suffused soft La France pink. Very beautiful. Awarded the highest honors.....	.08	.80	6.00

	Each	Dozen	100
Mrs. F. C. Peters (Fischer). A beautiful amaranth-pink with a purplish blotch in the throat. Beautiful gladiolus and prize winner.....	.20	2.00	
83.3 Mrs. Frances King (Coblentz). A striking shade of light scarlet or flame color, most effective both for beds and cutting.....	.05	.50	4.00
87.6 Mrs. Frank Pendelton (Kundred). Light pink, heavily blotched with blood red on throat. A remarkably attractive and beautiful variety.....	.08	.80	6.00
86.8 Mrs. Geo. W. Moulton (Kundred). A giant violet red or cerise. Many open. Nicely placed on spike. An occasional blossom comes double.....	.12	1.20	8.50
Mrs. H. E. Bothin (Diener). Light geranium pink heavily ruffled. Flame scarlet center. Strong spikes. First class show and cut flower variety.....	.20	2.00	15.00
Mrs. Leon Douglas (Diener). Salmon-rose pink striped with flame and scarlet. One of the tallest, largest and showiest in existence. Several enormous blooms open at once.....	.35	3.50	
84. Muriel (Pfitzer). Pale violet, orchid blue with purplish blotch on lower petals. Distinct, showy and beautiful. One of the finest blues.....	.20	2.00	15.00
82.3 Orange Glory (Kundred). Massive flowers of orange color with lighter throat. Heavily ruffled. Very rich and striking color. Beautiful.....	.12	1.20	8.50
84.8 Peace (Groff). Grand large flowers, white with claret blotch on lower petal and pale lilac featherings. Late.....	.06	.60	4.50
Persia . Very deep red almost black. Best in this color.....	.30	3.00	
80.5 Pink Perfection . Delicate apple blossom with white stripe in the center of each petal and a dark rose feathered border. Beautiful flowers.....	.10	1.00	7.50
86.9 Pink Wonder (Kemp). Many flowers open at one time. A giant pale pink, blooms 6½ inches in diameter.....	.15	1.50	11.00
Pola Negri (Diener). Apricot with yellow lip, Ruffled, shading into rose and salmon on outer edges. A lovely color combination.....	.20	2.00	
Pride of Goshen . A very large bloom of flesh pink with waved petals. A strong grower and strikingly beautiful.....	.10	1.00	7.50
Pride of Hillegom . Light scarlet red. Lower petals deeper red. Fine spikes. Many flowers open.....	.12	1.20	8.50
Pride of Lancaster (Kundred). Brilliant orange salmon, deeper orange throat; large spike, massive flowers. A beautiful ruffled variety.....	.10	1.00	7.50
82.9 Prince of Wales . A grenadine pink or deep buff, with throat markings of a deeper tone. The tips of petals shaded darker or apricot buff.....	.08	.80	6.00
Purple Glory (Kundred). Tyrian-rose, suffused amaranth-purple, slightly flaked; dark, velvety-purple in throat. Excellent show variety. Ruffled.....	.20	2.00	15.00
84. Red Emporer . Bright nopal red, self color except the lower petals are speckled white in throat. One of the best scarlet reds.....	.15	1.50	11.00
Richard Diener (Diener). Beautiful shade of rose salmon, creamy yellow throat. Immense blossoms nearly whole spike open at once. One of the most beautiful in existence.....	.30	3.00	
Romance (Kundred). Salmon-rose, bordered blue. Odd and pretty. Several blooms open at once. In great demand.....	.20	2.00	
84.8 Rose Ash (Metzner). A blending of light old rose and ashes of roses. Ruffled. Very unusual and exceedingly attractive.....	.10	1.00	7.50
Scarlet Princeps (Kundred). A beautiful red with six or more massive blooms open at a time, throat a little deeper. Massive spike.....	.15	1.50	
Scarsdale (Cowee). Rosy magenta, splashed with a deeper shade.....	.08	.80	6.00
80.9 Schwaben (Pfitzer). Pure canary-yellow, shading to a soft sulphur yellow. Magnificent.....	.06	.60	4.50
Sydonia . Fine Amaryllis formed (Lily shaped) flowers of a clear violet.....	.10	1.00	7.50
Tyrian Beauty (Kundred). Magnificent spike of large flowers of pure Tyrian rose. Tall, beautiful and attractive.....	.15	1.50	
84.3 Violet Beauty (Kundred). Tall, large cerise-violet. Grand red throat blotches. Ruffled. A beautiful flower.....	.15	1.50	11.00
84.1 War (Groff). Deep scarlet; paler in throat, flaked blood red with lighter middle line. One of the finest reds. Blooms very late.....	.10	1.00	7.50
W. H. Phipps (Diener). A real wonder. Light rose salmon, twenty or more enormous flowers on a spike and nearly all open at once. A prize winner at all shows. One of the finest in existence.....	1.00	10.00	
78.4 Wilbrink . A sport of Halley. Retains Halley's earliness and has the color of America, soft yellow blotch on lower petals; very attractive.....	.05	.50	4.00
Willie Wigwam . Beautiful blush, white, long bright scarlet blotch on lower petals; most attractive.....	.08	.80	6.00
Primulinus Hybrids . A smaller type of Gladiolus than any of the above but exquisitely beautiful. Dainty in form and arrangement on graceful spikes. Colors range from lightest primrose, through apricots, yellows, orange and bronze, to deep, rich rose and reds. Flower earlier than other varieties. Fine for cutting. Mixed.....	.04	.40	3.00

(Continued on next page, also see special collections of Gladiolus on page 19.)

	Each	Doz.	100
Alice Tiplady (Kundred). A grand, large primulinus of most beautiful orange saffron color. Very choice.....	.08	.80	\$6.00
Jewell (Zee) Prim. A beautiful salmon-pink with a clear golden-yellow throat. A large wide-open flower which attracts considerable attention.....	.12	1.20	11.00
Rainbow Mixture of Gladiolus. This is a superb mixture of a large number of high class beautiful varieties of Gladiolus and includes many of the above named fine expensive varieties. A wide range of color and many of the blooms are ruffled.			
Large bulbs: Per dozen, 50c ; Per 100, \$4.00 ; Per 250, \$8.50 ; Per 500, \$15.00 ; Per 1,000, \$28.00 .			

SPECIAL COLLECTIONS

To introduce our Specialties and in order to get our customers interested in Irises, Peonies, Phloxes, Delphinium and other Choice Hardy Perennials and Gladiolus, we have listed a series of Special Collections made up of first class varieties, which have always been popular and in great demand. The following collections will be found to be of the same high standard.

IRISES

A—12 fine named varieties, our selection, all colors, red, pink, lavender, blue, purple, etc., list price over \$4.00.....	\$ 3.00
B—15 fine named high rated varieties and more expensive than A, all colors, our selection, list price over \$6.00.....	5.00
Collection A is of different varieties from B so that both may be ordered if desired. Irises in all collections are labeled.	
C—25 named varieties, high rated, all colors, our selection, list price, \$12.00.....	10.00
D—Continuous Blooming Collection: 3 Dwarf; 3 Intermediate; 2 Late May; 8 Tall Bearded; 2 Siberian and 2 Japanese; total, 20 varieties, our selection, list price over \$6.00.....	5.00
E—Continuous Blooming Collection; Same but twice the number of each of the foregoing Collection, our selection, (list price over \$12.00).....	10.00

PEONIES

Special Collections of Magnificent All Color Combinations.

Each of the following Collections of Peonies is of different varieties so that more than one Collection may be ordered if a larger number of roots is desired. Each of the Collections is made up of different shades of red, white and pink and flower at different times, giving a long succession of bloom.

F—One root each of Festiva, Maxima, Couronne d'Or, Edulis, Superba, Madam Forel, Berloiz and Delachei, all labeled, list price, \$4.15.....	\$ 3.50
G—One root each of Albert Crousse, La Perle, Mons. Dupont, Mme. de Verneville, Ben Franklin and Felix Crousse, list price, \$5.75.....	5.00
H—One root each of Avalanche, Marie Lemoine, Marguerite Gerard, Etta, Mons. Jules Elie, Karl Rosenfield and Prince of Darkness, list price \$8.50.....	7.50
I—One root each Baroness Schroeder, La Tendresse, James Kelway, Asa Gray, Mathilde de Roseneck, Grandiflora, Grover Cleveland, Old Silver Tip and Rachel, list price, \$11.50.....	10.00
J—A de Luxe Collection—All high rated, beautiful, commanding attention in any garden—One root each of Charles McKillip, Mary Brand, Mons. Martin Cahuzac, Richard Carvel, Sarah Bernhardt, Walter Faxon, Lady Alexander Duff, Therese, Madam Emile Lemoine and Alsace Lorraine, list price \$28.50.....	25.00

From.....

.....

.....

RAINBOW GARDENS, Inc.

Farmington, Minnesota

(The Gateway to the Twin Cities)

*Importers and Growers of Choice and Rare
IRISES, PEONIES, PHLOXES, DELPHINIUM
and other Perennials and GLADIOLUS*



SPECIAL COLLECTIONS --- Continued.

PHLOXES—For collections, see page 14. Note also on Page 14 that as to Phloxes we allow you to select any combination of varieties you desire so you can take advantage of our special prices when ordering 3, 6, 12 or more roots of our Phloxes.

OTHER HARDY PERENNIALS—SUMMER AND FALL FLOWERING

These Collections together with our Irises, Peonies and Phloxes give a continuous blooming period of perennials throughout the summer and fall; the Hollyhocks and Delphinium furnishing the finest flowers for backgrounds.

K—Three roots of each of our five varieties of Delphinium and three roots each of our Coreopsis, Gaillardia, Gypsophilla, Pyrethrum and one root each of six different colors of our double Hollyhocks, list price \$7.80..... **\$ 7.00**

L—Same collection—six roots of each excepting as to Hollyhocks of which two roots of each of six different colors of double Hollyhocks will be sent, list price, \$15.60.. **13.50**

GLADIOLUS

Our Special Collections of Gladiolus are made up of the following fine varieties, viz:

M—One bulb each of our 63 named varieties, list price, \$9.01..... **\$ 8.00**

N—Three bulbs each of 14 varieties, viz: America, Anna Eberius, Gretchen Zang, Halley, Le Marechal Foch, L'Immaculee, Mrs. Francis King, Mrs. Frank Pendleton, Peace, Prince of Wales, Scarsdale, Schwaben, Willie Wigman, Alice Tiplady, list price, \$2.80..... **2.50**

O—Three each of 18 more expensive varieties, viz: Baron Hulot, Bertrex, Byron L. Smith, Crimson Glow, E. J. Shaylor, Evelyn Kirtland, George Paul, Golden Measure, Mary Pickford, Mona Lisa, Mrs. Dr. Norton, Mrs. Geo. W. Moulton, Pride of Goshen, Pride of Lancaster, Rose Ash, Sydonia, War, Jewell, list price \$5.61.. **5.00**

P—Two each of 29 fine varieties, viz: American Beauty, Bengal Tiger, Chateau Thierry, Crimson Glow, Elizabeth Tabor, Europa, Giant Nymph, Gold, Goliath, Herada, Jack London, Louise, Mr. Mark, Mrs. H. E. Bothin, Mona Lisa, Mrs. Dr. Norton, Muriel, Orange Glory, Pink Perfection, Pink Wonder, Pola Negri, Pride of Hillegom, Purple Glory, Red Emperor, Romance, Scarlet Princeps, Tyrian Beauty, Violet Beauty, War. List price \$8.66..... **7.50**

Q—Three each of 42 varieties, viz: America, Anna Eberius, Baron Hulot, Bertrex, Chateau Thierry, Crimson Glow, E. J. Shaylor, Evelyn Kirtland, George Paul, Golden Measure, Goliath, Gretchen Zang, Halley, Herada, Le Marechal Foch, L'Immaculee, Louise, Mary Pickford, Mona Lisa, Mr. Mark, Mrs. Dr. Norton, Mrs. Francis King, Mrs. Frank Pendleton, Mrs. Geo. W. Moulton, Orange Glory, Peace, Pink Perfection, Pride of Goshen, Pride of Hillegom, Pride of Lancaster, Prince of Wales, Red Emperor, Rose Ash, Scarsdale, Schwaben, Sydonia, Violet Beauty, War, Wilbrink, Willie Wigman, Alice Tiplady, Jewell, list price \$11.73..... **10.00**

R—One each of 20 best varieties, viz: American Beauty, Bengal Tiger, Chateau Thierry, Europa, Giant Nymph, Gold, Mrs. F. C. Peters, Mrs. H. E. Bothin, Mrs. Leon Douglas, Muriel, Orange Glory, Persia, Pink Wonder, Purple Glory, Richard Diener, Romance, Rose Ash, Scarlet Princeps, Tyrian Beauty, W. H. Phipps, list price \$4.74..... **4.25**

NOTE—When sold out of any varieties of Gladiolus in the collections we reserve the right to substitute with varieties of equal or better value. See also prices on Rainbow Mixture of Gladiolus at top of Page 18.

Hang up and Hang on to this Catalog.

Fall Supplement

We issue a Fall Supplement to this Catalog listing a fine assortment of Holland grown Tulips and other fall planting bulbs; also giving any Catalog revisions and additions. If you do not receive this Supplement by August 10th send for it.

Hang Up and Hang On To This Catalog.

Gift Boxes

No gift is more acceptable to a flower lover than a gift of fine roots or bulbs for his or her particular garden. They can be of any of our Collections on page 18 or of any Special roots or bulbs desired to be sent. They make ideal Birthday, Anniversary or other Special Day gifts of lasting nature and affording continuous pleasure and remembrance.

They can be ordered any time, to be forwarded during the shipping season and when such Special Day comes during our Shipping Season we will do our part in forwarding the gift so it will arrive on the desired date. Also, if you desire we will notify the party of such gift to be sent to him and advise him when same will be shipped.

Garden Planning and Planting

In the Twin Cities or elsewhere, where the distance is not too great from our Gardens we have made arrangements so that we can plan and plant a Garden of our Specialties for you, which will give you the most beautiful of flowers from April until November. If you are interested and desire us to plan and plant your garden write us and we will be glad to take up the matter with you at once.

At Our Gardens

We carry certain plants, etc., for sale at our Gardens not listed in this catalog for the reason of difficulty of shipping for any distance, viz; Plants and Flowers for Easter, Mother's Day and Decoration Day. Plants for Window Boxes, Clematis Vines, Fertilizers, etc. Also throughout the Spring, Summer and Fall, we sell Cut Flowers of all of our specialties at very reasonable prices. We can supply Flowers in quantities for Weddings, Parties, Banquets, etc.