

## **Historic, Archive Document**

Do not assume content reflects current scientific knowledge, policies, or practices.



INDEXED



WHOLESALE  
PRICE LIST  
FALL, 1928

# PRINCETON NURSERIES

PRINCETON, N. J.

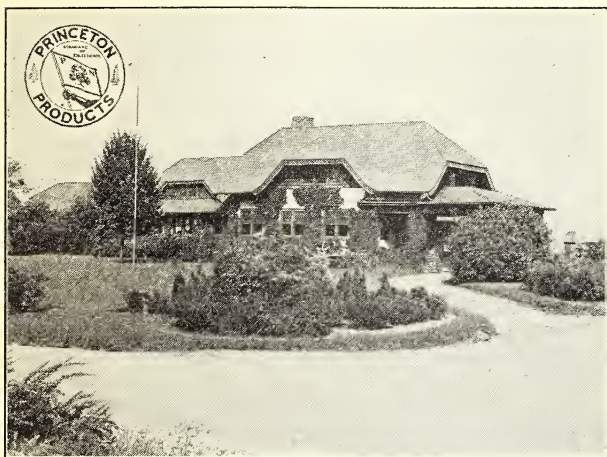
WM. FLEMER'S SONS, INC.

ALSO PROPRIETORS  
F. & F. NURSERIES  
SPRINGFIELD, N. J.

**A COMPLETE ALPHABETI-  
CAL LISTING UNDER BOT-  
ANICAL NAMES OF**



**F**OR CLASSIFIED LISTS OF  
TREES, EVERGREENS, ETC.  
OR INDEX OF BOTH COM-  
MON AND BOTANICAL  
NAMES REFER TO PAGES  
IN BACK OF CATALOGUE.



Office and grounds, Princeton Nurseries

Members: American Association of Nurserymen.

Eastern Nurserymen's Association.

New Jersey Nurserymen's Association.

Quotations, prices, and grading are based on HORTICULTURAL STANDARDS adopted by the American Association of Nurserymen, June 1923.

---

THIS PRICELIST IS FOR THE WHOLESALE TRADE ONLY. IF ANY ONE FINDS IT IN THE WRONG HANDS PLEASE REPORT AT ONCE

Our Nursery at Princeton comprises over 600 acres devoted to the production of the highest grade stock in wide variety.

We are always on the alert to improve our stock, our methods of handling it and our business generally and we ask your co-operation, for we take pride in our work and we want you to profit by our efforts.

You have our assurance that all stock will be in good condition when it leaves our hands, but we naturally cannot guarantee it to grow under all conditions, nor can we make up losses arising from climatic effects or culture.

You are most cordially invited to visit our nursery and if it is possible for you to do so, a map and more detailed instructions will be found on the last page of this booklet. A visit is more convincing than anything we can say about the quality of our stock, and we trust we may have the pleasure of meeting you at our nursery this year.

## PRICES

Prices are F. O. B. Kingston, N. J., packing extra, and are as low as is consistent with the market, taking into consideration that the stock offered is of the best quality, carefully grown, with ample room for full development. "Princeton Products" should not be compared with poorly grown plants frequently offered. Prices are for Fall 1928.

## CREDIT AND TERMS

We are glad to extend credit on the basis of our regular terms to established nurserymen who are known to us, or are rated satisfactorily. Cash before shipment is required from parties unknown to us, who have no commercial rating.

Terms, 2% 10 days, 1% 30 days from date of invoice, 60 days net. Interest at 6% will be charged on overdue accounts, Spring accounts from July 1st, Fall accounts from Jan. 1st.

## LIABILITY AND CLAIMS

We are not liable for injury to stock from frost, hail, fire or other causes beyond our control, and book all orders with this understanding. Errors made by us will be gladly corrected, but complaints must be made within ten days after receipt of stock.

Plants become your property upon delivery to transportation company, and we cannot be responsible for loss, damage, or delay in transit.

## TRUCK DELIVERY

We can make deliveries by auto truck within 100 miles of our nurseries. There are several marked advantages of truck deliveries which are obvious; boxing, freight and cartage are eliminated and the stock arrives with the minimum of exposure and handling. Our charge for this service is very moderate and we feel sure you will find this method satisfactory if located within the radius mentioned.

## PACKING

Bales and Boxes charged at cost. No packing charge is made for stock packed in full carlots. Boxes are made in the following sizes:

31 in. x 36 in.—10 ft. long .....	\$5.25
28 in. x 32 in.—10 ft. long .....	4.75
23 in. x 28 in.—10 ft. long .....	4.25
19 in. x 24 in.—10 ft. long .....	3.75
17 in. x 20 in.—10 ft. long .....	3.25
15 in. x 16 in.—10 ft. long .....	2.75
12 in. x 15 in.—10 ft. long .....	2.00

Add 50 cents for each additional 2 feet of length.

Decreases are in the same proportion, 50 cents for each 2 feet.

## Deciduous Trees, Shrubs, Evergreens and Vines

(See Index In Back of Book)

NOTE—The figures following each variety, indicate in feet the approximate height of that plant when mature. It must be understood, however, that many varieties in their native habitat greatly exceed this height, but soil and climatic conditions modify their growth and character to a variable extent, and allowance for this has been made in the heights given here.

We recommend that all varieties marked with an asterisk be lifted with a ball of earth and burlapped. Experience has shown that the loss in these plants, which is otherwise high, is reduced to a minimum if handled in this way. This will involve an extra charge per plant, as follows:

2'-4', 25c            4'-6', 40c            6'-8', 60c            8'-10', 75c

Larger sizes in proportion. In all instances where varieties are marked B. & B., these charges are included in the printed price.

	Each	Per 10	Per 100
ABELIA grandiflora, 3'-4' <span style="float: right;">GLOSSY ABELIA</span>			
Evergreen. Choice small shrub, with white tinted lilac flowers, produced throughout the entire summer months.			
12 to 18 in., B. & B. ....	.35	\$3.00	\$25.00
18 to 24 in., B. & B. ....	.45	4.00	35.00
2 to 3 ft., B. & B. ....	.55	5.00	45.00
ABIES concolor, 70'-80' <span style="float: right;">WHITE FIR</span>			
Evergreen. Grows quickly and forms symmetrical, beautiful specimen. Large, gray-green needles.			
18 to 24 in., B. & B. ....	\$ 2.50	—	—
2 to 2½ ft., B. & B. ....	3.25	—	—
2½ to 3 ft., B. & B. ....	4.00	—	—
3 to 4 ft., B. & B. ....	6.00	—	—
—douglasi (See PSEUDOTSUGA douglasi)			
—Spruce (See PICEA)			
—veitchi <span style="float: right;">VEITCH FIR</span>			
Very hardy specimen in the Northern states and when young one of the most beautiful of fir trees.			
2 to 2½ ft., B. & B. ....	\$ 3.50	\$30.00	—
2½ to 3 ft., B. & B. ....	4.00	37.50	—
3 to 4 ft. ....	5.00	45.00	—
4 to 5 ft. ....	6.00	55.00	—
ACANTHOPANAX pentaphyllum, 7'-8', <span style="float: right;">FIVE LEAF ARALIA</span>			
Graceful, arching habit; splendid for banks; very adaptable; good foliage for smoky exposures.			
18 to 24 in. ....	.25	2.00	15.00
2 to 3 ft. ....	.30	2.50	20.00
3 to 4 ft. ....	.40	3.50	30.00
4 to 5 ft. ....	.55	4.50	—
ACER campestre, 25'-30' <span style="float: right;">HEDGE MAPLE</span>			
Useful for dry locations in undergrowth: has corky bark; grows slowly.			
2 to 3 ft. ....	.60	4.50	35.00

ACER—continued	Each	Per 10	Per 100
—dasycarpum, 60'-80'			SILVER MAPLE
Quick growing, graceful shade tree; leaves silvery underneath.			
6 to 8 ft. ....	.75	6.00	—
8 to 10 ft. ....	1.25	10.00	90.00
8 to 10 ft.—1¼ to 1½ in. ..	1.50	13.50	125.00
10 to 12 ft.—1½ to 1¾ in. ..	2.00	19.00	185.00
10 to 12 ft.—1¾ to 2 in. ....	2.75	25.00	—
12 to 13 ft.—2 to 2¼ in. ....	3.50	—	—
12 to 13 ft.—2¼ to 2½ in. ..	4.00	—	—
12 to 14 ft.—2½ to 3 in. ....	5.00	—	—
— pyramidale, 30'-40'			PYRAMIDAL SILVER MAPLE
A narrow form, useful for accent or screen. Grows quickly.			
6 to 8 ft. ....	1.00	9.00	—
8 to 10 ft. ....	1.50	14.00	—
8 to 10 ft.—1¼ to 1½ in. ..	2.25	20.00	—
9 to 10 ft.—1½ to 2 in. ....	3.00	28.00	—
10 to 11 ft.—2 to 2¼ in. ....	3.50	—	—
11 to 12 ft.—2¼ to 2½ in. ....	4.00	—	—
— wieri, 60'-80'			WIER CUTLEAF MAPLE
Graceful, drooping form; very desirable.			
6 to 8 ft. ....	1.25	11.00	85.00
8 to 10 ft. ....	1.50	12.50	110.00
8 to 10 ft.—1¼ to 1½ in. ....	2.00	17.50	160.00
10 to 12 ft.—1½ to 1¾ in. ....	2.50	22.50	—
10 to 12 ft.—1¾ to 2 in. ....	3.00	27.50	—
— negundo, 60'			BOXELDER
Will grow where other trees fail; especially good for dry, barren places and seashore.			
4 to 6 ft. ....	.40	3.00	—
6 to 8 ft. ....	.50	4.00	—
8 to 10 ft. ....	.80	7.00	—
8 to 10 ft.—1¼ to 1½ in. ....	1.00	9.00	—
10 to 12 ft.—1½ to 1¾ in. ....	1.35	12.50	—
— palmatum (polymorphum), 12'-15'			GREEN JAPANESE MAPLE
Develops into a splendid specimen for lawn planting.			
18 to 24 in. ....	1.25	10.00	85.00
2 to 2½ ft. ....	1.50	12.50	100.00
3 to 4 ft. ....	2.25	20.00	—
4 to 5 ft. ....	3.00	27.50	—
— atropurpureum, 6'-8'			PURPLE LEAF JAPANESE MAPLE
A good dwarf tree with rich purple-red leaves all summer. Best in sun.			
12 to 15 in. ....	2.50	22.50	200.00
15 to 18 in. ....	3.75	32.50	—
18 to 24 in. ....	5.00	45.00	—
2 to 2½ ft. ....	6.25	—	—
— pennsylvanicum (striatum), 20'-30'			STRIPED MAPLE
Green bark, striped with white; thrives in wet soils.			
3 to 4 ft. ....	.75	6.50	—
4 to 5 ft. ....	1.00	9.00	—
5 to 6 ft. ....	1.35	12.50	—



ACER—continued	Each	Per 10	Per 100
—platanoides, 50'-75'		NORWAY	MAPLE
The most popular street tree; retains its green leaves until late autumn.			
6 to 8 ft. ....	1.75	16.50	125.00
8 to 10 ft. ....	2.35	22.50	200.00
8 to 10 ft.—1¼ to 1½ in.	3.25	30.00	275.00
10 to 12 ft.—1½ to 1¾ in.	3.75	35.00	—
10 to 12 ft.—1¾ to 2 in. ....	4.50	—	—
—schwedleri, 40'-60'		SCHWEDLER	PURPLE LEAF MAPLE
Probably the best large growing purple leaf tree. Useful as lawn specimen.			
5 to 6 ft. ....	1.75	16.00	150.00
6 to 8 ft. ....	2.50	23.50	225.00
8 to 10 ft. ....	3.50	32.50	—
—rubrum, 50'-75'		RED OR SCARLET	MAPLE
Best in moist locations; also thrives in upland; brilliant red autumn coloring.			
8 to 10 ft. ....	2.35	22.50	—
8 to 10 ft.—1¼ to 1½ in.	3.00	27.50	—
10 to 12 ft.—1½ to 1¾ in.	3.50	32.50	—
12 to 14 ft.—1¾ to 2 in. ....	4.50	42.50	—
13 to 14 ft.—2 to 2¼ in. ..	5.50	—	—
13 to 14 ft.—2¼ to 2½ in.	6.50	—	—
—saccharum, 50'-75'		SUGAR	MAPLE
Most popular in northern states; best planted in spring.			
6 to 8 ft. ....	1.50	13.50	125.00
8 to 10 ft. ....	2.00	18.50	175.00
8 to 10 ft.—1¼ to 1½ in.	2.50	—	—
—tataricum ginnala, 10'-12'		TARTARIAN	MAPLE
Graceful and valuable for bright red autumn coloring.			
13 to 24 in. ....	.35	3.00	—
2 to 3 ft. ....	.50	4.00	35.00
3 to 4 ft. ....	.65	6.00	50.00
4 to 5 ft. ....	1.00	9.00	—
ACTINIDIA arguta, 20'-30'		BOWER	ACTINIDIA
Greenish white, July. Rich, dark green foliage. Yellow berries.			
2 yr. ....	.40	3.50	30.00
3 yr. ....	.50	4.50	40.00
AESCULUS hippocastanum, 60'-80'		HORSE	CHESTNUT
A beautiful symmetrical shade tree covered with showy panicles of white flowers against the dark green leaves.			
3 to 4 ft. ....	1.00	8.50	75.00
4 to 5 ft. ....	1.25	11.50	—
AILANTHUS glandulosa, 50'-60'		TREE OF	HEAVEN
Succeeds under most adverse city conditions.			
6 to 8 ft. ....	\$1.00	\$8.50	\$75.00
8 to 10 ft. ....	1.25	11.50	100.00
10 to 12 ft. ....	1.75	16.50	150.00
12 to 14 ft. ....	2.50	22.50	—
AKEBIA quinata, 15'-20'		FIVELEAF	AKEBIA
Dainty beautiful vine, purple flower. May. Deep green leaves—persisting till winter.			
2 yr. ....	.40	3.50	30.00

	Each	Per 10	Per 100
AMELANCHIER <i>bartramiana</i>	BARTRAM SHADBLOW		
( <i>oligocarpa</i> ), 8'			
18 to 24 in. ....	.40	3.50	30.00
2 to 3 ft. ....	.45	4.00	35.00
3 to 4 ft. ....	.60	5.00	—
— <i>canadensis</i> ( <i>botryapium</i> ), 12'-15'	DOWNY SHADBLOW		
White flowers in early spring before leaves; fruits are relished by birds. Also called June Berry.			
18 to 24 in. ....	.40	3.50	—
2 to 3 ft. ....	.50	4.00	—
3 to 4 ft. ....	.60	5.00	—
AMORPHA <i>canescens</i> , 2'-3'	LEAD PLANT		
Bluish purple flowers in June.			
18 to 24 in. ....	.40	3.50	30.00
— <i>fruticosa</i> , 8'-10'	INDIGO BUSH		
Deep purple flowers, June, spreading habit.			
18 to 24 in. ....	.25	2.00	—
2 to 3 ft. ....	.30	2.50	20.00
3 to 4 ft. ....	.40	3.00	25.00
AMPELOPSIS <i>heterophylla</i> , 25'-30'	PORCELAIN AMPELOPSIS		
A good sturdy vine with good foliage and very attractive turquoise colored fruit.			
2 year 2 to 3 ft. ....	.40	3.00	—
— <i>humulifolia</i> , 25'-30'	HOPE AMPELOPSIS		
Similar to above, not quite so robust. Good green foliage.			
2 year 2 to 3 ft. ....	.40	3.00	—
— <i>quinquefolia</i> , 30'-50'	VIRGINIA CREEPER		
Valuable for rich, fiery autumn coloring. Quick grower.			
1 year 18 to 24 in. ....	.12	1.00	6.00
2 year 2 to 3 ft. ....	.20	1.60	12.00
— <i>engelmanni</i> , 30'-40'	ENGELMANN CREEPER		
A good, self-clinging woodbine; very hardy. Good fall coloring.			
1 year, 18 to 24 in. ....	.15	1.20	8.00
2 year, 2 to 3 ft. ....	.20	1.80	15.00
— <i>tricuspidata</i> ( <i>veitchi</i> ), 40'-50'	BOSTON IVY		
Brilliant autumn coloring, blue berries, turning black; closely self clinging. Also called Japanese Creeper.			
2 year med., 18 to 24 in. ....	.35	3.00	25.00
2 year 1st cl., 2 to 2½ ft. ....	.40	3.50	30.00
— <i>lowi</i> , 6'-8'	DWARF CUTLEAF BOSTON IVY		
A good variety of the type, with smaller, deeply cut foliage. Very graceful and distinct.			
3 inch pots .....	.35	2.50	—
AMYGDALUS <i>nana</i> , 5'-6'	FLOWERING ALMOND		
Flowers double, May; very showy; there are Pink and White varieties.			
18 to 24 in. ....	.30	2.50	20.00
2 to 2½ ft. ....	.45	3.50	30.00
2½ to 3 ft. ....	.50	4.00	35.00
3 to 3½ ft. ....	.55	4.50	40.00

AMYGDALUS—continued	Each	Per 10	Per 100
—persica (PRUNUS), 8'-10'			
	PINK, RED AND WHITE FLG. PEACH		
Very decorative double flowering form; blooms before leaves.			
3 to 4 ft. ....	.55	5.00	—
4 to 5 ft. ....	.65	6.00	—
5 to 6 ft. ....	.75	—	—
ANDROMEDA aborea (See OXYDENDRUM)			
—catesbaei (See LEUCOTHOE)			
—japonica (See PIERIS)			
ARALIA pentaphyllum (See ACANTHOPANAX)			
—spinosa, 18'-20'		HERCULES CLUB	
Useful for tropical effects and shadows; white flowers, July.			
2 to 3 ft. ....	.30	2.50	20.00
3 to 4 ft. ....	.35	3.00	25.00
4 to 5 ft. ....	.40	3.50	30.00
5 to 6 ft. ....	.50	4.50	35.00
ARISTOLOCHIA sipho		DUTCHMAN'S PIPE	
2 year 2 to 3 ft. ....	.50	4.00	—
ARONIA arbutifolia, 6'-8'		RED CHOKEBERRY	
Valuable because of its red berries; very handsome in fall.			
18 to 24 in. ....	.50	4.50	35.00
2 to 3 ft. ....	.60	5.00	40.00
3 to 4 ft. ....	.65	6.00	45.00
4 to 5 ft. ....	.75	6.50	55.00
—brilliantissima			
18 to 24 in. ....	.45	4.00	—
2 to 3 ft. ....	.55	5.00	45.00
3 to 4 ft. ....	.65	6.00	50.00
—melanocarpa (nigra), 8'-10'		BLACK CHOKEBERRY	
Delicate white flowers in May; black berries persist until late.			
18 to 24 in. ....	.40	3.50	25.00
2 to 3 ft. ....	.50	4.00	30.00
3 to 4 ft. ....	.60	5.00	40.00
4 to 5 ft. ....	.70	—	—
AZALEA amoena, 3'-4'			
Evergreen. Conspicuous purple-red flowers. April-May. Leaves turn a rich, bronze-green in winter.			
6 to 8 in. ....	.80	6.50	60.00
8 to 10 in. ....	1.00	9.00	80.00
10 to 12 in., B. & B. ....	1.25	11.00	100.00
12 to 15 in., B. & B. ....	1.50	13.50	125.00
—arborescens, 10'-12'		SWEET AZALEA	
Fragrant white flowers, June.			
15 to 18 in., B. & B. ....	1.35	12.50	—
18 to 24 in., B. & B. ....	1.60	15.00	140.00
2 to 2½ ft., B. & B. ....	2.00	18.50	175.00
—calendulacea, 4'-5'		FLAME AZALEA	
The great flame Azalea of Carolina Mountains; very showy; burnt orange flowtrs.			
15 to 18 in., B. & B. ....	1.35	12.50	—
18 to 24 in., B. & B. ....	1.85	17.50	—
2 to 3 ft., B. & B. ....	2.50	22.50	—
3 to 4 ft., B. & B. ....	3.25	30.00	—



*Deutzia gracilis* and *lemoinei*. Two year old, fine compact bushy material. Ideal for either landscape work or forcing. Offered at very reasonable prices. See page 21.

AZALEA—continued

Each Per 10 Per 100

—hinodegiri, 3'-4'

Evergreen. Larger leaves and looser growth than above; flowers very bright carmine-pink; effective in masses or with *Rhododendron*.

6 to 8 in. ....	1.00	8.50	75.00
8 to 10 in., .....	1.25	11.00	100.00
10 to 12 in., B. & B. ....	1.50	13.50	125.00
12 to 15 in., B. & B. ....	1.75	16.00	150.00

—indica alba (*ledifolia* alba), 3'-4'

SNOW AZALEA

Evergreen. Pure white flowers and a profuse bloomer.

10 to 12 in., B. & B. ....	1.00	8.50	75.00
12 to 15 in., B. & B. ....	1.25	11.50	—
15 to 18 in., B. & B. ....	1.50	13.50	—

—lilacina, 3'-4'

Evergreen. A beautiful addition to the indica type with very large individual flowers of pure lilac color.

10 to 12 in., B. & B. ....	1.00	8.50	—
12 to 15 in., B. & B. ....	1.25	11.50	—

—kaempferi, 4'-5'

TORCH AZALEA

Warm brick-red flowers, May. Very hardy and desirable.

12 to 15 in., B. & B. ....	1.50	14.00	130.00
15 to 18 in., B. & B. ....	2.00	17.50	150.00
18 to 24 in., B. & B. ....	2.25	20.00	175.00

—macrantha, 2½'-3'

RED SALMON AZALEA

Evergreen. A beautiful plant, with large flowers that appear at intervals, and not at one time like the preceding. Single and double varieties.

8 to 10 in., B. & B. ....	1.00	9.00	80.00
10 to 12 in., B. & B. ....	1.25	11.50	100.00
12 to 15 in., B. & B. ....	1.50	14.00	125.00
15 to 18 in., B. & B. ....	1.75	16.00	150.00

—mollis, 4'-6'

CHINESE AZALEA

Large showy flowers in shades of orange and red. May-June. Large hairy leaves. Likes sun.

12 to 15 in., B. & B. ....	1.25	11.50	100.00
15 to 18 in., B. & B. ....	1.75	16.00	150.00
18 to 24 in., B. & B. ....	2.35	22.00	200.00

AZALEA—continued	Each	Per 10	Per 100
—nudiflora, 6'-8'			PINXTERBLOOM
Sweet scented pink flowers in May. Prefers moist, slightly shady place. A beautiful variety.			
12 to 15 in., B. & B. ....	1.00	9.00	—
15 to 18 in., B. & B. ....	1.35	12.50	—
—vaseyi, 5'-6'			PINK SHELL AZALEA
Delicate pink, April and May. Very attractive, one of the best hardy azaleas.			
12 to 15 in., B. & B. ....	1.75	16.00	150.00
15 to 18 in., B. & B. ....	2.00	18.50	170.00
18 to 24 in., B. & B. ....	2.50	—	—
—viscosa, 4'-5'			SWAMP AZALEA
White, very fragrant, June, July.			
15 to 18 in., B. & B. ....	1.50	—	—
18 to 24 in., B. & B. ....	1.60	15.00	140.00
2 to 2½ ft., B. & B. ....	2.00	18.50	—
—yodogawa, 3'-4'			YODOGAWA AZALEA
Double pinkish-lavender flowers, May. Very hardy and of exceptional merit.			
12 to 15 in., B. & B. ....	1.25	11.00	100.00
15 to 18 in., B. & B. ....	1.50	13.50	—
18 to 24 in., B. & B. ....	2.25	20.00	—
2 to 2½ ft., B. & B. ....	2.75	—	—

KURUME AZALEAS

A new evergreen Japanese type, with semi-double flowers in white, pink, red and lavender. These are suitable in protected locations, and perfectly hardy from Washington south.

8 to 10 in., B. & B. ....	1.25	10.00	—
10 to 12 in., B. & B. ....	1.50	12.50	—
12 to 15 in., B. & B. ....	1.75	15.00	—

- Christmas Cheer, red, semi-double.
- Flame, orange red, single.
- Pink Pearl, salmon rose, semi double.
- Snow, pure white, semi-double.
- Salmon Beauty.
- Hexe.

HARDY JAPANESE AZALEAS

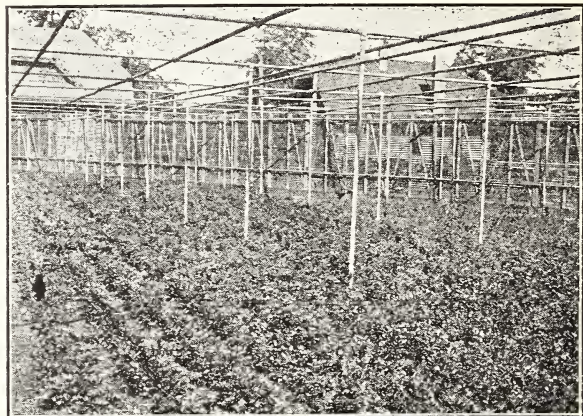
We have a number of named varieties of Japanese Azaleas which have proven hardy in this section. They are very desirable for landscape work. The following varieties are offered.

8 to 10 in. ....	1.25	10.00	—
10 to 12 in. ....	1.50	12.50	—
12 to 15 in. ....	1.75	15.00	—

- Beni-Giri. —Kirishima.
- Fuyi-mango. —Omurasaki.
- Hatzu-giri. —Oryukyu-Shibori.

BACCHARIS halimifolia, 9'-10'			GROUNDSEL BUSH
Conspicuous fluffy seed pods in Sept. Good for seashore planting.			
18 to 24 in. ....	.35	2.50	—
2 to 3 ft. ....	.40	3.50	—
3 to 4 ft. ....	.50	—	—

BENZOIN aestivale (LINDERA benzoin), 10'-12'			SPICEBUSH
Flowers yellow, April. Scarlet berries, beautiful autumn coloring, leaves aromatic.			
18 to 24 in. ....	.40	3.50	—
2 to 3 ft. ....	.50	4.50	—



*Azalea hinodegiri* at Princeton. Note how symmetrical and bushy the plants are. See page 10.

BERBERIS dielsiana	Each	Per 10	Per 100	
A new introduction similar in general habit to subcauliata.				
2 years, 12 to 18 in., bushy	.50	4.00	35.00	
—ilicifolia, 5'-6'				HOLLY BARBERRY
Evergreen. Holly-like leaves, persisting until new foliage appears; flowers yellow. Semi-evergreen.				
12 to 15 in., B. & B. ....	.75	6.00	—	
15 to 18 in., B. & B. ....	1.00	8.00	—	
18 to 24 in., B. & B. ....	.95	8.50	—	
—subcaulialata, 5'-6'				
A new Chinese introduction similar in habit to Wilsonii but stronger grower. Especially attractive in the winter months, with its mass of pink berries.				
2 years, 12 to 18 in., bushy	.50	4.00	35.00	
	Each	Per 10	Per 100	Per 1000
—thunbergii, 4'-5'				JAPANESE BARBERRY
A splendid low hedge plant, or for massing; brilliant autumn coloring; scarlet berries.				
9 to 12 in. ....	.10	.75	5.00	\$40.00
12 to 15 in. ....	.15	1.00	7.00	60.00
15 to 18 in. ....	.20	1.50	9.00	80.00
18 to 24 in. ....	.25	2.00	14.00	120.00
2 to 2½ ft. ....	.30	2.50	20.00	—
	Each	Per-10	Per 100	
—minor, 2'-3'				BOX BARBERRY
A dwarf, compact form of Japanese Barberry; fruits sparingly. Used for edging where Box is not hardy.				
9 to 12 in. ....	.25	2.00	18.00	
12 to 15 in. ....	.30	2.50	22.00	
15 to 18 in. ....	.35	3.00	25.00	
—verruculosa, 2'-3'				WARTY BARBERRY
Evergreen. Dwarf spreading type. Very handsome with its dense dark green and lustrous foliage.				
2 years, 6 to 9 in. ....	1.50	12.50	100.00	

BERBERIS—continued Each Per 10 Per 100  
 —vulgaris, 7'-8' EUROPEAN BARBERRY

Yellow flowers, May; fruit red, persisting to mid-winter; upright habit.

18 to 24 in. ....	.20	1.50	\$10.00
2 to 3 ft. ....	.25	2.00	15.00
3 to 4 ft. ....	.30	2.50	20.00

— — — purpurea, 7'-8' PURPLE EUR. BARBERRY

Has pleasing soft purplish foliage.

18 to 24 in. ....	.25	2.00	15.00
2 to 3 ft. ....	.30	2.50	20.00
3 to 4 ft. ....	.35	3.00	25.00

NEW HARDY EVERGREEN BERBERIS

We have a good assortment of these new varieties which are very attractive in both dark green holly like foliage and showy flowers. We consider this class of stock one of the most valuable additions to the broad leaved evergreens.

2 year, 12 to 18 in. ....	1.50	12.50	100.00
---------------------------	------	-------	--------

- acuminata —sargenti
- julianae —triacanthophora
- laevis —trifoliata

\*BETULA alba, 30'-50' EUROPEAN WHITE BIRCH

Known by its white bark.

4 to 5 ft. ....	.85	7.50	—
5 to 6 ft. ....	1.00	9.00	75.00
6 to 8 ft. ....	1.50	13.50	120.00
8 to 10 ft. ....	2.00	—	—

\* — — laciniata, 30'-40' CUTLEAF WEEPING BIRCH

Excellent tree for lawn planting. Very graceful.

3 to 4 ft. ....	1.00	8.00	60.00
4 to 5 ft. ....	1.50	12.50	85.00
5 to 6 ft. ....	2.00	17.50	135.00
6 to 8 ft. ....	2.25	20.00	165.00
8 to 10 ft. ....	3.00	27.50	—

\* — — pyramidalis, 30'-40' PYRAMIDAL WHITE BIRCH

Very desirable small pyramidal tree, rarely listed. Dense and columnar.

3 to 4 ft. ....	2.00	17.50	—
4 to 5 ft. ....	2.50	22.50	—
5 to 6 ft. ....	3.25	30.00	—

\* — — youngi, 20'-30' YOUNGS WEEPING BIRCH

A dwarf, spreading, pendulous tree; unique form. Rugged looking.

3 to 4 ft. ....	2.50	—	—
4 to 5 ft. ....	3.50	—	—

\* — — lenta, 40'-60' SWEET BIRCH

Has attractive, smooth, reddish bark, and conspicuous catkins in spring.

4 to 6 ft. ....	1.00	8.50	75.00
6 to 8 ft. ....	1.50	12.50	—
8 to 10 ft. ....	1.75	15.00	—
10 to 12 ft. ....	2.25	20.00	—

\* — — lutea, 50'-70' YELLOW BIRCH

Makes fine windbreak.

4 to 6 ft. ....	.85	7.50	—
6 to 8 ft. ....	1.50	12.50	110.00
8 to 10 ft. ....	1.75	15.00	—
10 to 12 ft. ....	2.25	20.00	—

BETULA—continued	Each	Per 10	Per 100
*— <i>nigra</i> , 50'-60'			RIVER BIRCH
Thrives in moist places; its torn, ragged bark is quite unique.			
4 to 6 ft. ....	1.25	11.00	—
6 to 8 ft. ....	1.75	16.00	—
10 to 12 ft. ....	2.50	22.50	—
*— <i>payrifera</i> , 40'-50'			PAPER OR CANOE BIRCH
Picturesque paper bark, very white when older.			
4 to 6 ft. ....	1.00	9.00	80.00
6 to 8 ft. ....	1.25	11.00	100.00
8 to 10 ft. ....	1.75	16.50	150.00
10 to 12 ft. ....	2.50	22.50	—
*— <i>populifolia</i> , 30'-40'			GRAY BIRCH
Will grow in poor soil and dry places. Commonly found native in New Jersey.			
4 to 6 ft. ....	.85	7.50	70.00
6 to 8 ft. ....	1.25	11.50	100.00
BIGNONIA <i>radicans</i> , 20'-30'			
			TRUMPET VINE
Showy, trumpet-shaped flowers, scarlet and orange, July. Roots as it climbs.			
2 year, 18 to 24 in. ....	.25	2.00	15.00
3 year, 2 to 3 ft. ....	.30	2.50	20.00
— — <i>grandiflora</i> , 10'-20'			CHINESE TRUMPETVINE
One of the handsomest of flowering vines with large trusses of orange yellow flowers, July and August.			
2 yr. grafts ....	.50	4.00	30.00
3 yr. grafts ....	.60	5.00	40.00
— — Mad. Gallen, 10'-20'			
An improved variety better than <i>grandiflora</i> of a darker red. Very handsome and a valuable addition to our list.			
2 yr. grafts ....	.50	4.00	35.00
3 yr. grafts ....	.60	5.00	45.00
BIOTA <i>orientalis</i> , 20'-25'			
			ORIENTALIS ARBORVITAE
Evergreen. Rather stiff, columnar habit; bright green foliage, bronze in winter; a good accent plant.			
18 to 24 in., B. & B. ....	1.25	10.00	75.00
2 to 2½ ft., B. & B. ....	1.75	15.00	125.00
2½ to 3 ft., B. & B. ....	2.25	20.00	175.00
3 to 3½ ft., B. & B. ....	3.00	27.50	250.00
3½ to 4 ft., B. & B. ....	3.50	32.50	—
4 to 4½ ft. ....	4.00	37.50	—
4½ to 5 ft. ....	4.75	45.00	—
— — <i>aurea conspicua</i> , 7'-8'			GOLD SPIRE ARBORVITAE
Golden yellow in spring, bronze yellow in winter. Distinctive.			
18 to 24 in., B. & B. ....	2.00	17.50	150.00
2 to 2½ ft., B. & B. ....	2.50	23.50	—
— — <i>aurea nana</i> , 2½'-3'			BERCKMAN'S GOLDEN ARBORVITAE
A gem for dwarf planting; compact, roundish shape; warm golden yellow foliage. Especially good for formal work and edging.			
8 to 10 in., B. & B. ....	1.00	9.00	85.00
10 to 12 in., B. & B. ....	1.25	11.00	100.00
12 to 15 in., B. & B. ....	1.75	16.00	140.00



BIOTA—continued		Each	Per 10	Per 100
—elegantissima, 7'-8'      YELLOW COLUMN ARBORVITAE				
Assumes a rich, deep golden bronze color in winter. Compact, columnar.				
15 to 18 in., B. & B. ....		1.25	11.50	100.00
18 to 24 in., B. & B. ....		2.00	17.50	—
2 to 2½ ft., B. & B. ....		2.75	25.00	—
2½ to 3 ft., B. & B. ....		3.25	—	—
—rosedale, 3'-4'      ROSEDALE HYBRID				
Fine foliage; soft texture.				
12 to 15 in., B. & B. ....		1.00	8.50	75.00
15 to 18 in., B. & B. ....		1.25	11.00	100.00
18 to 24 in., B. & B. ....		1.50	13.50	—
BUDDLEIA davidi magnifica, 5'-6'      BUTTERFLY BUSH				
Very effective with gray-green foliage and deep lilac flowers; likes sun. June, September.				
18 to 24 in. ....		.15	1.20	10.00
2 to 3 ft. ....		.25	2.00	15.00
—nanhoensis, 3'-4'				
A good new variety recently introduced from China. Bloom similar to the type but of good dwarf compact habit.				
2 yr. ....		.50	4.00	30.00
BUXUS sempervirens (bush form), 12'-15'      BOXWOOD				
Evergreen. Useful for formal hedges.				
8 to 10 in. ....		.60	5.00	40.00
10 to 12 in. ....		.85	7.50	65.00
12 to 15 in. ....		1.10	10.00	85.00
15 to 18 in., B. & B. ....		1.25	11.50	100.00
18 to 24 in., B. & B. ....		1.75	16.50	150.00
2 ft. ....		2.75	25.00	—
			Per 10	Per 100
—suffruticosa, 3'-4'      DWARF BOX EDGING				
Evergreen. Extensively used for edging. We have a fine lot to offer this season.				
3 to 4 in. ....		1.00	8.00	100.00
4 to 6 in. ....		2.50	18.00	150.00
6 to 8 in. ....		3.50	30.00	250.00
			Each	Per 10
CALLICARPA japonica, 2'-5'      JAPANESE BEAUTYBERRY				
Flowers, light pink and violet fruits				
18 to 24 in. ....		.40	3.50	25.00
2 to 3 ft. ....		.45	4.00	30.00
—purpurea, 3'-4'      CHINESE BEAUTYBERRY				
Lilac-violet berries, especially attractive in August. Graceful habit.				
15 to 18 in. ....		.25	2.00	15.00
18 to 24 in. ....		.35	3.00	25.00
2 to 3 ft. ....		.40	3.50	30.00
3 to 4 ft. ....		.50	4.50	35.00
CALLUNA, 1'-2'      HEATHER				
Evergreen. These excellent evergreen plants are best in masses and may be planted to advantage on well drained slopes. Plants offered are first class bushy specimens.				
2 year, 6 to 9 in. ....		.60	5.00	45.00
—vulgaris alba, bright green foliage, white flowers.				
—minor, bright green foliage, white flowers.				
—alporti, bright green foliage, reddish-purple flowers.				
—carnea, dark green yew-like leaves, flesh colored flowers.				
—aurea, yellow green foliage, mauve colored flowers.				
—humilis, bright green foliage, white flowers.				
—pilosa, bright green foliage, white flowers.				
—rosea, bright green foliage, rose colored flowers.				



Mugo Pines. These are six years old, several times transplanted and raised ourselves from seed. A mighty fine lot of this desirable dwarf evergreen. See page 41.

CALLUNA—continued	Each	Per 10	Per 100
—rubra, spreading habit, purplish-red flowers.			
—tomentosa, gray green leaves, mauve colored flowers.			
—vagans, dark green yew-like leaves, spreading habit, reddish-purple flower.			
CALYCANTHUS floridus, 4'-5'			SWEETSHRUB
15 to 18 in. ....	.30	2.50	—
18 to 24 in. ....	.35	3.00	—
2 to 3 ft. ....	.50	4.00	—
CARAGANA arborescens, 10'-12'			SIBERIAN PEA-TREE
Yellow pea-shaped flowers, May-June.			
2 to 3 ft. ....	.30	2.50	—
3 to 4 ft. ....	.40	3.00	—
4 to 5 ft. ....	.45	3.50	—
CARPINUS betulus, 60'-70'			EUROPEAN HORNBEAM
Leaves like Caroliniana but stronger grower.			
2 to 3 ft. ....	.85	7.00	—
3 to 4 ft. ....	1.10	9.00	—
—caroliniana, 30'-40'			AMERICAN HORNBEAM
Bushy, low and often pendulous branches. Dark blueish green foliage with fine autumn coloring.			
18 to 24 in. ....	.50	4.00	30.00
2 to 3 ft. ....	.75	6.00	50.00
3 to 4 ft. ....	1.00	8.00	—
CARYOPTERIS incana (mastacantha), 2'-3'			BLUE SPIREA
Lavender-blue flowers, Sept.-Oct. Splendid for massing. Requires protection. Also called Bluebeard.			
12 to 15 in. ....	.30	2.50	20.00
15 to 18 in. ....	.40	3.50	30.00
CATALPA bungei, 10'-15'			UMBRELLA CATALPA
Useful in formal planting.			
Light Heads, 1 yr., 5 to 6 ft., 1 in. ....	1.25	10.00	75.00
Med. Heads, 1 yr., 5 to 6 ft., 1¼ in. ....	1.35	12.50	90.00
First Class Heads, 2 yr., 5 to 6 ft., 1½ in. ....	1.60	14.00	110.00
Large Heads, 2 yr., 5 to 6 ft., 1¾ in. ....	2.00	17.50	150.00
Extra Large Heads, 2 in. ....	2.50	21.00	—

CATALPA—continued	Each	Per 10	Per 100
—speciosa, 30'-35'	WESTERN CATALPA		
4 to 6 ft., whips .....	.50	4.00	—
6 to 8 ft., whips .....	.60	5.00	—
8 to 9 ft., 1¼ in., branched	.75	—	—
9 to 10 ft., 1½ in., branched	1.25	—	—
CEANOTHUS americanus, 3'-4'	JERSEY-TEA		
Very attractive, dwarf native shrub; white flowers.			
12 to 18 in. ....	.40	3.00	25.00
18 to 24 in. ....	.50	4.00	35.00
CELASTRUS orbiculatus	ORIENTAL BITTERSWEET		
(articulatus), 15'-20'			
Has very decorative orange and crimson berries which persist all winter. Picturesque, shrubby growth.			
2 year .....	.30	2.50	—
—scandens, 20'-25'	AMERICAN BITTERSWEET		
Most adaptable vine with orange and red berries that retain color when cut and dried.			
2 year—2 to 3 ft. ....	.25	2.00	15.00
3 year—3 to 4 ft. ....	.35	2.50	20.00
CELTIS occidentalis, 50'-60'	HACKBERRY		
Similar foliage and habit as Elm.			
18 to 24 in. ....	.40	—	—
2 to 3 ft. ....	.50	—	—
CEPHALANTHUS occidentalis, 5'-6'	BUTTONBUSH		
Round heads of creamy white flowers, July-Sept. Good foliage; likes moisture.			
18 to 24 in. ....	.35	2.50	20.00
2 to 3 ft. ....	.50	4.00	30.00
3 to 4 ft. ....	.60	5.00	—
CERASUS (See Prunus)			
*CERCIDIPHYLLUM japonicum, 60'-80'	KATSURA TREE		
Develops into a magnificent symmetrical tree; beautiful spring and autumn colors.			
3 to 4 ft. ....	.85	7.50	—
4 to 5 ft. ....	1.25	10.00	—
5 to 6 ft. ....	1.50	—	—
10 to 12 ft. ....	4.00	—	—
CERCIS canadensis, 12'-15'	AMERICAN REDBUD		
Rosy-pink, April, very effective when planted with Dogwood; good foliage. Also called Judas Tree.			
2 to 3 ft. ....	.40	3.50	30.00
3 to 4 ft. ....	.60	5.00	45.00
4 to 5 ft. ....	.75	6.50	—
—chinensis, 10'-12'	CHINESE REDBUD		
Flowers a little larger and darker than above, but more compact habit of growth.			
12 to 18 in. ....	.40	3.50	—
18 to 24 in. ....	.50	4.00	35.00
2 to 3 ft. ....	.60	5.50	45.00
3 to 4 ft. ....	.75	6.50	—
CHIONANTHUS virginica, 15'-18'	WHITE FRINGE		
Fragrant tassel-like white flowers. May-June. Blue-black plum-like fruits follow.			
18 to 24 in. ....	.60	5.00	—
2 to 3 ft. ....	.85	7.50	—
3 to 4 ft. ....	1.25	—	—
CLADRASTIS lutea (tinctoria), 30'-40'	YELLOW-WOOD		
A striking tree with long panicles of fragrant white flowers in June.			
2 to 3 ft. ....	1.00	—	—

	Each	Per 10	Per 100
<b>CLEMATIS jackmani, 10'-15'</b>	<b>JACKMAN CLEMATIS</b>		
Large, very showy, rich purple flowers.			
2 year No. 1 .....	.60	5.50	50.00
<b>—montana rubens, 15'-20'</b>	<b>PINK ANEMONE CLEMATIS</b>		
A strong climber with pink anemone like flowers covering the entire plant through the spring months.			
2 year —3 inch pots .....	.50	4.00	30.00
<b>—paniculata, 20'-25'</b>	<b>SWEET AUTUMN CLEMATIS</b>		
White, fragrant flowers, Sept. Woolly seed pods also attractive.			
2 year first class .....	.30	2.00	16.00
2 year extra .....	.35	2.50	20.00
3 year .....	.40	3.00	22.00
<b>CLETHRA alnifolia, 4'-5'</b>	<b>SWEET PEPPER BUSH</b>		
Spikes of very fragrant flowers, July-Sept. Prefers moist, shady places. Also called Summersweet.			
18 to 24 in. ....	.45	4.00	30.00
2 to 2½ ft. ....	.55	4.50	—
2½ to 3 ft. ....	.65	5.50	—
<b>COLUTEA arborescens, 8'-10'</b>	<b>BLADDER SENNA</b>		
Yellow flowers, June-August. Useful for dry places.			
2 to 3 ft. ....	.30	2.50	—
3 to 4 ft. ....	.35	3.00	25.00
4 to 5 ft. ....	.40	3.50	—
<b>CORNUS alba (sibirica), 8'-10'</b>	<b>RED BRANCHED DOGWOOD</b>		
Bright red bark, porcelain blue fruits. Quick grower; useful for winter effect.			
18 to 24 in. ....	.20	1.50	10.00
2 to 3 ft. ....	.25	2.00	15.00
3 to 4 ft. ....	.30	2.50	20.00
4 to 5 ft. ....	.40	3.50	30.00
<b>—elegantissima, 5'-6'</b>	<b>WHITE VARIEGATED DOGWOOD</b>		
Silver and green leaves; red bark. Also called Silver Blotch Dogwood.			
18 to 24 in. ....	.30	2.50	—
2 to 3 ft. ....	.40	3.50	—
3 to 4 ft. ....	.50	4.50	—
4 ft. ....	.60	5.00	—
<b>—alternifolia, 15'-18'</b>	<b>BLUE DOGWOOD</b>		
Branches spread horizontally; most picturesque. Blue-black fruit. Also called Pagoda Dogwood.			
2 to 3 ft. ....	.50	4.00	—
3 to 4 ft. ....	.60	5.00	—
4 to 5 ft. ....	.75	—	—
<b>—amomum (sericea), 8'-9'</b>	<b>SILKY DOGWOOD</b>		
Pale blue fruits; young twigs purple. Prefers moist places.			
18 to 24 in. ....	.20	1.50	10.00
2 to 3 ft. ....	.25	2.00	15.00
3 to 4 ft. ....	.30	2.50	20.00
4 to 5 ft. ....	.35	3.00	—
<b>*—florida, 15'-25'</b>	<b>WHITE FLOWERING DOGWOOD</b>		
Among the best of the spring flowering small trees. Nursery grown, well formed stock.			
2 to 3 ft. ....	.75	6.50	50.00
3 to 4 ft. ....	1.00	8.50	75.00
4 to 5 ft. ....	1.25	10.00	—
6 to 8 ft. ....	2.25	—	—
8 to 10 ft. ....	3.00	—	—

CORNUS—continued		Each	Per 10	Per 100
*—	<i>rubra</i> , 15'-20'	RED FLOWERING DOGWOOD		
	The pink flowers are more persistent than the white.			
	18 to 24 in. ....	2.00	18.50	175.00
	2 to 2½ ft. ....	2.50	22.50	200.00
	2½ to 3 ft. ....	3.00	25.00	—
	3 to 4 ft. ....	4.00	—	—
	4 to 5 ft. ....	5.00	—	—
	5 to 6 ft. ....	7.50	—	—
—	<i>kousa</i> , 16'-18'	KOUSA DOGWOOD		
	White flowers in June. Conspicuous cherry-like scarlet fruits, attractive to birds.			
	18 to 24 in. ....	.60	5.00	—
—	<i>mascula</i>	CORNELIAN CHERRY		
	Handsome large shrub. Small yellow flowers in April. Shining scarlet fruit in fall.			
	18 to 24 in. ....	.50	—	—
	2 to 3 ft. ....	.60	—	—
—	<i>paniculata</i> , 10'-12'	GRAY DOGWOOD		
	Numerous small white flowers in May, followed by white fruits on red stems.			
	2 to 3 ft. ....	.35	3.00	22.00
	3 to 4 ft. ....	.45	4.00	30.00
	4 to 5 ft. ....	.60	5.00	—
—	<i>sanguinea</i>	BLOODTWIG DOGWOOD		
	18 to 24 in. ....	.20	1.50	10.00
	2 to 3 ft. ....	.25	2.00	15.00
	3 to 4 ft. ....	.30	2.50	20.00
	4 to 5 ft. ....	.50	3.50	30.00
—	<i>stolonifera</i> , 7'-8'	RED-OSIER DOGWOOD		
	Spreading habit, dark red bark, white fruits. Does well in moisture.			
	18 to 24 in. ....	.20	1.50	10.00
	2 to 3 ft. ....	.25	2.00	15.00
	3 to 4 ft. ....	.30	2.50	20.00
	4 to 5 ft. ....	.50	3.50	30.00
—	<i>lutea</i> , 6'-7'	GOLDEN BARK DOGWOOD		
	Has distinct yellow bark; fine for winter effects.			
	18 to 24 in. ....	.25	2.00	15.00
	2 to 3 ft. ....	.30	2.50	20.00
	3 to 4 ft. ....	.40	3.00	25.00
CORYLUS	<i>americana</i> , 8'-9'	HAZEL-NUT		
	Useful for natural plantings, delights in half-shade.			
	2 to 3 ft. ....	.75	—	—
	3 to 4 ft. ....	1.00	—	—
COTONEASTER	<i>acutifolia</i> , 5'-6'	PEKING COTONEASTER		
	Red flowers—black fruit.			
	2 to 2½ ft. ....	.50	4.00	—
—	<i>francheti</i> , 5'-6'	FRANCHET COTONEASTER		
	Evergreen. Upright growing variety with spreading branches. Leaves dark green, white tomentum underneath. Berries bright orange, freely produced.			
	18 to 24 in. ....	.60	5.00	—
—	<i>horizontalis (davidiana)</i> , 1'-1½'	ROCK COTONEASTER		
	Evergreen. Small box-like leaves; bright red berries; effective among rocks.			
	3 inch pots ....	.40	4.00	35.00
—	<i>microphylla</i> , 1½'-2'	ROCKSPRAY		
	Evergreen. Very small leaves, very deep green. Rather more bushy than the Rock Cotoneaster.			
	3 inch pots ....	.50	4.00	30.00

COTONEASTER—continued		Each	Per 10	Per 100
—thymifolia, 1½'-2'		THYME COTONEASTER		
Evergreen.				
3 inch pots	.....	.60	5.00	40.00
4 inch pots	.....	.75	6.00	—
—rotundifolia (buxifolia), 1½'-2'				
Evergreen. Prostrate growing. Semi-evergreen shrub with small round green foliage and bright red berries.				
12 to 15 in., B. & B.	.....	.50	4.50	40.00
—simonsi, 5'-6'		SIMONS COTONEASTER		
Almost evergreen. Good grower with loose habit.				
18 to 24 in., B. & B.	.....	.60	5.00	—
*CRATAEGUS coccinea, 15'-20'		THICKET HAWTHORN		
Shrubby habit with long curved spines and oval shaped leaves. Has large white flowers and large dull red fruits in Autumn.				
3 to 4 ft.	.....	1.00	—	—
4 to 5 ft.	.....	1.50	—	—
*—cordata, 12'-15'		WASHINGTON HAWTHORN		
Berries are small, brilliant red, and persist nearly all winter. Brilliant autumn foliage.				
2 to 3 ft.	.....	.85	—	—
3 to 4 ft.	.....	1.00	—	—
4 to 5 ft.	.....	1.35	—	—
5 to 6 ft.	.....	1.75	—	—
6 to 8 ft.	.....	2.25	—	—
*—crusgalli, 15'		COCKSPUR THORN		
Deep green, shiny leaves make this Hawthorn distinctive; white flowers are also conspicuous.				
2 to 3 ft.	.....	1.00	7.50	—
3 to 4 ft.	.....	1.25	10.00	—
4 to 5 ft.	.....	1.50	—	—
*—Charles Tenth, 12'-15'		SINGLE RED THORN		
Similar to Pauls Scarlet except with single flower of a lighter shade with yellow center; very good in a collection.				
2 to 3 ft.	.....	1.00	8.50	—
3 to 4 ft.	.....	1.35	12.50	—
4 to 5 ft.	.....	1.50	—	—
5 to 6 ft.	.....	1.75	—	—
*—mollis, 15'		DOWNY HAWTHORN		
Vigorous, large leaves, red berries.				
2 to 3 ft.	.....	.75	6.00	—
3 to 4 ft.	.....	1.00	7.50	—
4 to 5 ft.	.....	1.50	12.50	—
*—oxycantha, 12'-15'		ENGLISH HAWTHORN		
Single white flowers.				
18 to 24 in.	.....	.40	3.50	25.00
2 to 3 ft.	.....	.50	4.00	30.00
3 to 4 ft.	.....	.75	6.00	50.00
*—pauli, 12'-15'		PAULS SCARLET HAWTHORN		
Double scarlet flowers.				
2 to 3 ft.	.....	1.00	8.50	—
3 to 4 ft.	.....	1.25	10.00	—
4 to 5 ft.	.....	1.50	12.50	—
*—dbl. white or double pink, 12'-15'				
2 to 3 ft.	.....	1.00	8.50	—
3 to 4 ft.	.....	1.25	10.00	—
4 to 5 ft.	.....	1.50	12.50	—
*—pyracantha lalandi (See PYRACANTHA)				



Oriental Planes. A general view of our eight to ten foot block in which there are approximately 20,000. They are good straight well grown trees and will please your most exacting customers. See page 42.

<b>CYDONIA japonica, 4'-5'</b>		<b>FLOWERING QUINCE</b>		
Scarlet flowers in April, May.	Each	Per 10	Per 100	
15 to 18 in. ....	.25	2.00	15.00	
18 to 24 in. ....	.35	2.50	20.00	
2 to 2½ ft. ....	.45	3.50	30.00	

<b>CYTISUS scoparius, 4'-6'</b>		<b>SCOTCH BROOM</b>		
Thin, green branches, covered with yellow flowers.				
1 year .....	.35	2.50	—	

<b>DAPHNE cneorum, 1'</b>		<b>ROSE DAPHNE</b>		
Evergreen. Gray-green foliage, low spreading. Pretty pink flowers in April-May. Delightful fragrance.				
3 inch pots .....	.50	4.50	—	
6 to 8 in. ....	.75	6.00	50.00	
8 to 10 in. ....	1.00	8.50	75.00	
10 to 12 in. ....	1.25	11.00	—	

**DESMODIUM (See LESPEDEZA)**

<b>DEUTZIA gracilis, 3'</b>		<b>SLENDER DEUTZIA</b>			
Profuse bloomer, pure white, May. Useful "facing" shrub.					
	Each	Per 10	Per 100	Per 1000	
12 to 15 in. ....	.30	2.50	15.00	100.00	
15 to 18 in. ....	.40	3.50	20.00	150.00	
18 to 24 in. ....	.50	4.00	25.00	—	
2 to 2½ ft. ....	.60	4.50	—	—	

<b>—rosea, 3'</b>		<b>ROSE PANICLE</b>			
Similar in growth to above but with pinkish flowers.					
		Each	Per 10	Per 100	
12 to 18 in. ....		.40	3.00	—	
18 to 24 in. ....		.50	4.00	—	

<b>—lemoinei, 4'-5'</b>		<b>LEMOINE DEUTZIA</b>			
Large white flowers, June, graceful.					
	Each	Per 10	Per 100	Per 1000	
12 to 18 in. ....	.25	2.00	15.00	100.00	
18 to 24 in. ....	.35	3.00	20.00	150.00	
2 to 3 ft. ....	.45	4.00	30.00	250.00	
3 to 3½ ft. ....	.55	5.00	45.00	—	

DEUTZIAS—continued	Each	Per 10	Per 100
—longifolia veitchii, 3'-4'	LONG LEAVED DEUTZIA		
Beautiful variety with large light pink individual flowers produced in large corymbs.			
2 year .....	.50	4.00	30.00
—mont rose			
Very desirable new shrub of foreign introduction. Medium grower with attractive pink flowers.			
2 yr. 12 to 18 in. ....	.75	6.00	50.00
—parviflora, 3'	MONGOLIAN DEUTZIA		
Semi-erect habit, white, June. Distinctive.			
18 to 24 in. ....	.30	2.50	—
2 to 2½ ft. ....	.40	3.00	25.00
2½ to 3 ft. ....	.40	3.50	—
—scabra candidissima, 9'-10'	SNOWFLAKE DEUTZIA		
Graceful habit, double white, June.			
18 to 24 in. ....	.25	2.00	15.00
2 to 3 ft. ....	.25	2.00	18.00
3 to 4 ft. ....	.35	2.50	—
——crenata fl. pl., 6'-8'	DOUBLE PINK DEUTZIA		
Pink, slightly fragrant, June.			
18 to 24 in. ....	.25	2.00	15.00
2 to 3 ft. ....	.30	2.50	18.00
3 to 4 ft. ....	.35	3.00	20.00
——magnifica			
One of the most desirable newer sorts of robust growth and very showy panicles of large double white flowers.			
18 to 24 in. ....	.35	3.00	25.00
2 to 3 ft. ....	.40	3.50	30.00
3 to 4 ft. ....	.50	4.50	40.00
——Pride of Rochester, 9'-10'	LARGE FLWD. DEUTZIA		
Vigorous, large flower tinged pink, June.			
2 to 3 ft. ....	.30	2.50	20.00
3 to 4 ft. ....	.40	3.00	25.00
4 to 5 ft. ....	.50	4.00	—
—vilmorinae	VILMORINE DEUTZIA		
Graceful spreading habit, white flowers in loose clusters in May and June.			
18 to 24 in. ....	.25	2.00	—
2 to 3 ft. ....	.30	2.50	—
DIERVILLA trifida, 3'	DWARF BUSH HONEYSUCKLE		
Yellow, June-July. A good low shrub for shady places.			
12 to 18 in. ....	.40	3.00	25.00
18 to 24 in. ....	.50	4.00	—
—sessilifolia (lutea), 4'-5'	SOUTHERN BUSH HONEYSUCKLE		
Yellow, more vigorous than preceding, June-July.			
2 to 3 ft. ....	.35	2.50	22.00
3 to 4 ft. ....	.45	3.50	30.00
DIOSPYROS virginiana, 15'	PERSIMMON		
Handsome foliage.			
2 to 3 ft. ....	.55	4.00	35.00
3 to 4 ft. ....	.65	5.00	—
ELAEAGNUS angustifolia, 15'-18'	RUSSIAN-OLIVE		
Silver-gray leaves and branchlets, orange berries; good for massing.			
2 to 3 ft. ....	.30	2.50	—
3 to 4 ft. ....	.35	3.00	—



ELAEAGNUS—continued	Each	Per 10	Per 100	
—longipes, 6'-8'	CHERRY ELAEAGNUS			
Silvery leaves, fragrant yellow flowers. May. Large red berries ripe in July.				
18 to 24 in. ....	.50	4.00	30.00	
2 to 3 ft. ....	.60	5.00	—	
ELSHOLTZIA stauntoni, 4'-5'				
Very attractive late summer shrub, dense lilac purple flowers. Very showy.				
12 to 18 in. ....	.40	3.00	—	
18 to 24 in. ....	.50	4.00	—	
EUONYMUS alatus, 9'-10'	WINGED EUONYMUS			
Interesting corky bark, warm crimson autumn coloring. Makes fine specimen shrub.				
	Each	Per 10	Per 100	Per 1000
18 to 24 in. ....	.50	4.00	35.00	300.00
2 to 2½ ft. ....	.60	5.00	45.00	400.00
2½ to 3 ft. ....	.75	6.50	55.00	500.00
3 to 4 ft. ....	1.00	8.00	70.00	650.00
	Each	Per 10	Per 100	
—americanus, 7'8'	BROOK EUONYMUS			
Pink fruits; prefers moist locations.				
18 to 24 in. ....	.30	2.50	20.00	
2 to 3 ft. ....	.45	3.50	30.00	
3 to 4 ft. ....	.55	4.50	40.00	
—bungeanus, 12'-14'	WINTERBERRY EUONYMUS			
Fruits profusely. The orange and white seed pods persist on bush for a long time. Good autumn coloring.				
2 to 3 ft. ....	.45	3.50	30.00	
3 to 4 ft. ....	.55	4.50	40.00	
4 to 5 ft. ....	.65	5.50	—	
—europaeus, 12'-14'	EUROPEAN BURNINGBUSH			
Pink fruits on long stalks, persisting a long time.				
2 to 3 ft. ....	.45	3.50	30.00	
3 to 4 ft. ....	.60	5.00	45.00	
4 ft. ....	.75	6.50	—	
—japonicus, 5'-6'	EVERGREEN BURNINGBUSH			
Evergreen. Lustrous, deep green leaves; upright bushy habit; needs winter protection here.				
10 to 12 in. ....	.50	3.50	30.00	
12 to 15 in. ....	.75	6.00	50.00	
15 to 18 in. ....	.85	7.50	70.00	
—patens (sieboldianus), 6'-8'	SPREADING EUONYMUS			
Evergreen. Grows vigorously, forming broad, rather loose shrub; leaves persist until late winter. Ornamental fruits. Effective among denser conifers.				
12 to 15 in. ....	.60	5.00	40.00	
15 to 18 in. ....	.85	7.50	—	
—microphyllus (pulchellus), 6"-9"	BOX LEAVED EUONYMUS			
Evergreen. Low growing variety, with box like foliage, suitable for edging. Hardy in protected locations in vicinity of Philadelphia. Perfectly hardy from Washington south.				
3 inch pots ....	.25	2.00	15.00	
—radicans, climbing to 15'	WINTERCREEPER			
Evergreen. Self-clinging vine. Good for covering low walls, also useful for under planting among evergreens.				
9 to 12 in., 2 year, bushy	.25	2.00	15.00	
12 to 15 in., 3 year, bushy	.30	2.50	20.00	

EUONYMUS—continued		Each	Per 10	Per 100
—acutus, 6"-12"	SHARPLEAF WINTERCREEPER			
Evergreen. A graceful form, with long narrow leaves, white veins, purplish underneath.				
2 year		.30	2.50	20.00
—carrieri, 3'-4'	GLOSSY WINTERCREEPER			
Evergreen. Has large, shiny, pointed leaves; bushy habit.				
9 to 12 in.		.30	2.50	20.00
12 to 15 in., 2 year		.35	3.00	25.00
15 to 18 in., 3 year		.40	3.50	30.00
18 to 24 in., 3 year		.45	4.00	—
—colorata, 6'-12'				
Evergreen. Long narrow leaves purple underneath, tinged purple above. Very effective in winter.				
2 year		.35	3.00	25.00
	Each	Per 10	Per 100	Per 1000
—minus (kewensis), 6"-12"	BABY WINTERCREEPER			
Evergreen. Has tiny evergreen leaves and dainty trailing habit. Charming rock subject.				
3 inch pots		.35	2.50	20.00 180.00
	Each	Per 10	Per 100	
—variegatus, 12"-15"	VARIEGATED LEAF WINTERCREEPER			
Evergreen. Leaves veined and marked yellowish white and pink. Clinging vine.				
9 to 12 in., 2 year, bushy		.25	2.00	15.00
12 to 15 in., 2 year, bushy		.30	2.50	20.00
—vegetus, 3'-4'	BIGLEAF WINTERCREEPER			
Evergreen. Bushy, interesting growth. Leaves, round, dull green. Bright scarlet fruits, freely produced. Handsome among evergreens. Also called Evergreen Bittersweet.				
9 to 12 in., 2 year		.35	3.00	25.00
12 to 15 in., 3 year		.40	3.50	30.00
15 to 18 in., 3 year, bushy		.45	4.00	35.00
EXOCHORDA grandiflora, 6'-9'	PEARLBUSH			
Dazzling white flowers, May. Is improved by pruning.				
2 to 3 ft.		.40	3.00	25.00
3 to 4 ft.		.50	3.50	30.00
4 to 5 ft.		.60	4.50	40.00
5 to 6 ft.		.75	6.50	55.00
*FAGUS sylvatica, 75'-100'	EUROPEAN BEECH			
Slow growing but makes a large, handsome tree.				
18 to 24 in.		1.00	—	—
2 to 3 ft.		1.25	—	—
FORSYTHIA intermedia, 6'-8'	BORDER GOLDEN BELL			
Bright yellow flowers in April before leaves unfold. Profuse and beautiful.				
18 to 24 in.		.25	2.00	15.00
2 to 3 ft.		.30	2.50	20.00
3 to 4 ft.		.35	3.00	25.00
4 to 5 ft.		.40	3.50	—
—spectabilis, 6'-8'	SHOWY BORDER GOLDEN BELL			
Most profuse of all, with large rich golden yellow flowers.				
18 to 24 in.		.30	2.50	—
2 to 3 ft.		.40	3.00	25.00
3 to 4 ft.		.50	4.00	30.00

	Each	Per 10	Per 100	
— <i>suspensa</i> , 4'-6'				WEeping GOLDEN BELL
Graceful drooping habit; excellent for massing or banks.				
18 to 24 in. ....	.30	2.50	20.00	
2 to 3 ft. ....	.35	3.00	25.00	
3 to 4 ft. ....	.45	4.00	30.00	
4 to 5 ft. ....	.50	4.50	—	
— <i>fortunei</i> , 7'-8'				FORTUNE GOLDEN BELL
Good habit, arching branches, vigorous grower.				
18 to 24 in. ....	.25	2.00	15.00	
2 to 3 ft. ....	.30	2.50	20.00	
3 to 4 ft. ....	.40	3.00	25.00	
4 to 5 ft. ....	.50	4.00	30.00	
— <i>viridissima</i> , 7'-8'				GREEN STEM FORSYTHIA
Most vigorous; has green bark and thick, dark green leaves. Last to flower.				
18 to 24 in. ....	.25	2.00	15.00	
2 to 3 ft. ....	.30	2.50	20.00	
3 to 4 ft. ....	.35	3.00	25.00	
FRAXINUS <i>americana</i> , 70'-80'				WHITE ASH
Fairly rapid grower; assumes pleasing golden tones in autumn; good in moist soils.				
	Each	Per 10	Per 100	Per 1000
6 to 8 ft. ....	1.00	8.50	75.00	650.00
8 to 10 ft. ....	1.25	11.00	100.00	850.00
8 to 10 ft.—1¼ to 1½ in. ....	1.50	13.50	125.00	1000.00
10 to 12 ft.—1½ to 1¾ in. ....	2.00	18.50	175.00	—
	Each	Per 10	Per 100	
GENISTA <i>tinctoria</i> , 3'				WOADWAXEN
Yellow pea-shaped flower, June.				
18 to 24 in. ....	.35	3.00	—	
2 to 2½ ft. ....	.40	3.50	—	
— <i>scoparia</i> (See CYTISUS)				
GINKGO <i>biloba</i> ( <i>Salisburia</i> ), 50'-75'				MAIDENHAIR TREE
Picturesque, interesting, quite distinct leaves shaped like maidenhair fern; immune from insects.				
6 to 8 ft. ....	1.75	15.00	—	
8 to 10 ft. ....	2.25	—	—	
8 to 10 ft.—1¼ to 1½ in. ....	3.00	—	—	
10 to 12 ft.—1½ to 1¾ in. ....	3.50	—	—	
10 to 12 ft.—1¾ to 2 in. ....	4.50	—	—	
GLEDITSIA <i>triacanthos</i> , 60'-70'				HONEYLOCUST
Thorny tree with fragrant white flowers in May; good for gravelly soil. Not affected by borers.				
3 to 4 ft. ....	.50	4.50	40.00	
4 to 6 ft. ....	.65	6.00	50.00	
6 to 8 ft. ....	.80	7.00	—	
GYMNOCLADUS <i>dioica</i> , 40'-50'				KENTUCKY COFFEE TREE
Light blue-green foliage of slow growth; picturesque outline.				
3 to 4 ft. ....	.75	6.50	—	
4 to 5 ft. ....	1.00	9.00	—	
HALESIA <i>tetraptera</i> , 12'-15'				SILVERBELL
Snow-white, bell-shaped flowers in May, profusely borne along the branchlets. Can be grown as single specimen or massed.				
2 to 3 ft. ....	.55	4.50	35.00	
3 to 4 ft. ....	.65	5.50	45.00	
4 to 5 ft. ....	.75	6.50	55.00	
5 to 6 ft. ....	.85	7.50	65.00	
6 to 8 ft. ....	1.00	—	—	

	Each	Per 10	Per 100
<b>HAMAMELIS virginiana, 10'-12'</b> WITCH-HAZEL			
Yellow, ribbon-like flowers, Oct.-Nov. Bushy habit, good foliage. Succeeds best in moist, half-shady places.			
18 to 24 in. ....	.40	3.00	—
2 to 3 ft. ....	.55	4.50	40.00
3 to 4 ft. ....	.70	6.00	—
<b>HEDERA colchica dentata, 20'-50'</b> GIANT ENGLISH IVY			
Evergreen. Strong growing climber, with large evergreen heart-shaped leaves, very decorative.			
2 year .....	.50	4.00	30.00
— <i>gracilis</i> , 8'-10'			
MINIATURE ENGLISH IVY			
Evergreen. Similar to English Ivy, with small dark green foliage. A most graceful vine.			
3½ inch pots .....	.25	2.00	15.00
— <i>helix</i> , 20'-50'			
ENGLISH IVY			
Evergreen. Good ground cover in shady locations. An ideal wall cover.			
	Each	Per 10	Per 100
2 yr., pot grown	.40	3.00	25.00
			200.00
	Each	Per 10	Per 100
<b>HIBISCUS syriacus (Althea), 10'-12'</b> ROSE OF SHARON			
Rather formal in outline, flowering in August and September. Pink, purple, red, and white, single and double.			
18 to 24 in. ....	.25	2.00	—
2 to 3 ft. ....	.35	2.50	—
3 to 4 ft. ....	.45	3.50	—
—variegated, 6'-8'			
VARIEGATED LEAVED ROSE OF SHARON			
Leaves striped yellow; compact grower.			
15 to 18 in. ....	.30	2.50	—
<b>HIBISCUS</b>			
MALLOW			
1 year, field grown .....	.15	1.20	10.00
Crimson eye, moscheutos, militaris, mallow marvel.			
<b>HYDRANGEA arb. grandiflora alba (sterilis), 4'-5'</b>			
SNOWHILL.			
Large double white flower panicles, very showy. August.			
18 to 24 in. ....	.35	2.50	20.00
2 to 3 ft. ....	.45	3.50	25.00
3 to 4 ft. ....	.55	4.50	35.00
— <i>paniculata</i> (type), 8'-9'			
PANICLE HYDRANGEA			
Bears long, loose panicles of white flowers. August.			
18 to 24 in. ....	.35	3.00	25.00
2 to 3 ft. ....	.45	3.50	30.00
3 to 4 ft. ....	.55	4.50	—
— <i>grandiflora</i> , 8'-9'			
PEEGEE HYDRANGEA			
Very showy, blooming in August.			
18 to 24 in. ....	.35	2.50	20.00
2 to 3 ft. ....	.50	4.00	30.00
3 to 4 ft. ....	.60	5.00	40.00
— — — standard			
TREE HYDRANGEA			
First Class, 3 to 4 ft. ....	.85	7.50	65.00
Extra, 4 to 5 ft. ....	1.00	8.50	75.00
— <i>quercifolia</i> , 3'-4'			
OAKLEAF HYDRANGEA			
Leaves shaped like an oak leaf. Splendid autumn coloring; succeeds in shade.			
15 to 18 in. ....	.55	4.50	—
18 to 24 in. ....	.65	5.50	—



Lombardy Poplars, the type grown at Princeton. Note how evenly branched from the ground up. See page 42.

	Each	Per 10	Per 100
<b>HYPERICUM aureum, 3'-4'</b>	<b>GOLDEN ST. JOHNSWORT</b>		
Yellow. July-August. Blue-green foliage; dense habit.			
18 to 24 in. ....	.40	3.00	25.00
2 to 2½ ft. ....	.45	3.50	30.00
2½ to 3 ft. ....	.50	4.00	—
<b>—densiflorum, 4'-5'</b>	<b>DENSE FLOWERING ST. JOHNSWORT</b>		
Yellow, July-Sept. Free flowering; good for sandy soil.			
18 to 24 in. ....	.35	3.00	25.00
2 to 2½ ft. ....	.40	3.50	30.00
2½ to 3 ft. ....	.45	4.00	—
<b>—kalmianum, 4'-5'</b>	<b>KALM ST. JOHNSWORT</b>		
Blue green leaves, glaucous under side. Withstands drought and shade. July-September, yellow.			
18 to 24 in. ....	.30	2.50	—
2 to 2½ ft. ....	.40	3.00	—
2½ to 3 ft. ....	.45	3.50	—
<b>—moserianum, 2'</b>	<b>GOLDFLOWER</b>		
Large waxy yellow flowers. July-August. Dainty, half-herbaceous, splendid mass plant.			
12 to 15 in. ....	.40	3.00	25.00
15 to 18 in. ....	.35	3.00	25.00
<b>—patulum grandiflora, 2½'</b>			
Unusual flowers. July to August.			
12 to 15 in. ....	.40	3.00	25.00
15 to 18 in. ....	.45	3.50	30.00
<b>—patulum henryi, 2½'-3'</b>	<b>HENRY HYPERICUM</b>		
Of shrub-like growth, with large clear yellow flowers in July and August.			
2 yr., 12 to 15 in. ....	.40	3.00	25.00
2 yr., 15 to 18 in. ....	.45	3.50	30.00
<b>ILEX crenata, 8'-10'</b>	<b>JAPANESE HOLLY</b>		
Evergreen. Box-like leaves, rich, deep green. Stiff branching, makes a good hedge. Black berries.			
12 to 15 in., B. & B. ....	1.00	8.50	75.00
15 to 18 in., B. & B. ....	1.50	13.50	125.00
18 to 24 in., B. & B. ....	2.00	—	—

	Each	Per 10	Per 100
<b>ILEX—continued</b>			
—microphylla, 6'-8'	SMALL-LEAF JAPANESE HOLLY		
Evergreen. Smaller leaves and more hardy than preceding.			
12 to 15 in., B. & B. ....	1.00	8.50	75.00
15 to 18 in., B. & B. ....	1.50	13.50	125.00
18 to 24 in., B. & B. ....	2.00	—	—
—glabra, 5'-6'	INKBERRY		
Evergreen. Shining, dark green leaves, purplish in winter; black berries. Useful for shady spots, also succeeds in sun.			
12 to 15 in., B. & B. ....	1.00	8.50	—
—opaca	AMERICAN HOLLY		
Evergreen. Does best in moist, partially shaded place. Rather difficult to transplant.			
12 to 18 in., B. & B. ....	1.50	14.00	—
18 to 24 in., B. & B. ....	2.50	24.00	—
—verticillata (primos), 6'-8'	WINTERBERRY		
Bright red berries persisting to mid-winter, not eaten by birds. Prefers moist soil. Also called Black Alder.			
18 to 24 in. ....	.45	3.50	30.00
2 to 2½ ft. ....	.55	4.50	40.00
2½ to 3 ft. ....	.60	5.00	—
ITEA virginica, 3'-4'	SWEETSPIRE		
Spikes of fragrant white flowers, July. Good for low places; brilliant autumn coloring.			
18 to 24 in. ....	.40	3.50	30.00
2 to 2½ ft. ....	.50	4.50	—
JASMINUM nudiflorum, 3'	WINTER JASMINE		
Yellow. April-May. Needs protection in northern States. One of the first to bloom in the spring.			
15 to 18 in. ....	.30	2.50	—
18 to 24 in. ....	.40	3.00	—
JUNIPERUS chinensis columnaris (pyramidalis), 15'-20'			
Evergreen. Grows rapidly forming tall narrow column of gray-green foliage. Spir-like effect. Very useful in evergreen planting.			
2 to 2½ ft., B. & B. ....	3.00	—	—
2½ to 3 ft., B. & B. ....	3.75	35.00	—
3 to 3½ ft., B. & B. ....	4.50	42.50	—
—neaboriensis, 7'-8'	CONICAL CHINESE JUNIPER		
Evergreen. Very formal, narrow pyramid. Prickly leaves. Useful accent plant.			
18 to 24 in., B. & B. ....	1.75	15.00	—
2 to 2½ ft., B. & B. ....	2.35	—	—
—oblonga, 7'-8'			
Evergreen. Forms a broad, irregular pyramid with feathery branches. Grayish foliage.			
18 to 24 in., B. & B. ....	1.75	15.00	—
2 to 2½ ft., B. & B. ....	2.50	22.50	—
2½ to 3 ft., B. & B. ....	3.00	28.50	—
3 to 3½ ft., B. & B. ....	3.75	—	—
—pfitzeriana, 5'-6'	PFITZER JUNIPER		
Evergreen. Broad, bushy habit. Gray green foliage, giving feathery appearance. A most adaptable hardy evergreen; highly recommended.			
18 to 24 in., B. & B. ....	2.00	18.50	175.00
2 to 2½ ft., B. & B. ....	3.00	28.00	250.00
2½ to 3 ft., B. & B. ....	4.25	40.00	—
3 to 3½ ft., B. & B. ....	5.00	—	—

JUNIPERUS—continued		Each	Per 10	Per 100
—sargentii (green), 1½'		SARGENT JUNIPER		
Evergreen. Prostrate habit, grass-green foliage. A valuable ground cover and rock plant.				
12 to 15 in., B. & B. ....	2.00	17.50	—	—
15 to 18 in., B. & B. ....	2.50	22.50	—	—
18 to 24 in., B. & B. ....	3.00	27.50	—	—
—communis, 2'-2½'		COMMON JUNIPER		
Evergreen. Forms a vase shaped bush.				
12 to 15 in., B. & B. ....	.75	6.00	50.00	—
15 to 18 in., B. & B. ....	1.00	8.00	70.00	—
18 to 24 in., B. & B. ....	1.50	12.50	115.00	—
2 to 2½ ft., B. & B. ....	2.00	17.50	—	—
—aurea, 1'-1½'		GOLDEN COMMON JUNIPER		
Evergreen. Low spreading habit. Golden foliage, particularly bright in spring.				
12 to 15 in., B. & B. ....	1.00	9.50	85.00	—
15 to 18 in., B. & B. ....	1.50	12.50	—	—
—canadensis, 2½'-3'		CANADA JUNIPER		
Evergreen. Forms a low vase-shaped bush. Leaves dark green above, bluish underneath.				
12 to 15 in., B. & B. ....	1.00	8.50	65.00	—
15 to 18 in., B. & B. ....	1.25	11.00	100.00	—
18 to 24 in., B. & B. ....	1.75	16.00	150.00	—
2 to 2½ ft., B. & B. ....	2.25	18.00	—	—
—cracovica, 4'-5'		POLISH JUNIPER		
Evergreen. Upright, branching from ground, mak- ing very narrow column.				
12 to 15 in., B. & B. ....	1.00	8.50	75.00	—
15 to 18 in., B. & B. ....	1.25	10.00	90.00	—
18 to 24 in., B. & B. ....	1.50	12.50	115.00	—
2 to 2½ ft., B. & B. ....	2.25	20.00	—	—
—depressa (prostrata), 1'-1½'		PROSTRATE JUNIPER		
Evergreen. Branches spread almost along ground. A useful ground cover and rock plant.				
12 to 15 in., B. & B. ....	.75	6.50	—	—
15 to 18 in., B. & B. ....	1.00	9.50	—	—
18 to 24 in., B. & B. ....	1.50	12.50	—	—
—hibernica, 7'-8'		IRISH JUNIPER		
Evergreen. A very narrow pyramid. Useful for its spire-like effect.				
18 to 24 in., B. & B. ....	1.25	11.00	100.00	—
2 to 2½ ft., B. & B. ....	1.75	15.00	135.00	—
2½ to 3 ft., B. & B. ....	2.25	20.00	—	—
3 to 3½ ft., B. & B. ....	2.75	—	—	—
—suecica, 4'-5'		SWEDISH JUNIPER		
Quick growing. Narrow, upright form.				
15 to 18 in., B. & B. ....	1.25	10.00	85.00	—
18 to 24 in., B. & B. ....	1.50	12.50	—	—
2 to 2½ ft., B. & B. ....	2.00	18.00	—	—
—excelsa stricta, 4'-5'		SPINY GREEK JUNIPER		
Evergreen. Compact, well-shaped pyramid. Foliage gray-green. Most useful for formal effects.				
10 to 12 in., B. & B. ....	1.00	9.00	75.00	—
12 to 15 in., B. & B. ....	1.35	12.00	110.00	—
15 to 18 in., B. & B. ....	1.75	16.00	140.00	—
18 to 21 in., B. & B. ....	2.50	22.50	200.00	—
21 to 24 in., B. & B. ....	3.00	27.50	260.00	—
—horizontalis (sabina prostrata), 1'-1½'		CREEPING SAVIN		
Evergreen. Branches trail along ground. Adapted to rockwork and ground covering.				
15 to 18 in., B. & B. ....	1.00	—	—	—

JUNIPERUS—continued		Each	Per 10	Per 100
— — douglasi, 1'-1½'	WAUKEGAN JUNIPER			
Evergreen. Long branches trailing along ground. Steely-blue foliage. A splendid ground cover; also effective among rocks. Distinct purple hue in winter.				
12 to 15 in., B. & B. ....		1.00	—	—
15 to 18 in., B. & B. ....		1.50	—	—
— — glauca, 1'-1½'	BLUE CREEPING SAVIN			
15 to 18 in., B. & B. ....		1.25	—	—
18 to 24 in., B. & B. ....		1.75	—	—
2 ft., B. & B. ....		2.25	—	—
— japonica, 3'-4'	JAPANESE JUNIPER			
Evergreen. Low grower, spreading branches, dark green, scaly leaves. Adapted to rock planting. Grows slowly.				
12 to 15 in., B. & B. ....		1.25	11.00	100.00
15 to 18 in., B. & B. ....		1.50	13.50	—
18 to 24 in., B. & B. ....		2.25	21.00	—
2 to 2½ ft., B. & B. ....		3.00	—	—
— sabina, 6'-7'	SAVIN JUNIPER			
Evergreen. Dense, dark green foliage. Spreading branches, forming irregular vase-shaped bush.				
12 to 15 in., B. & B. ....		1.25	9.00	80.00
15 to 18 in., B. & B. ....		1.75	15.00	—
18 to 24 in., B. & B. ....		2.00	18.50	—
— tamariscifolia, 1'-1½'	TAMARIX SAVIN			
Evergreen. Flat, spreading growth, making compact but soft texture in low evergreen planting.				
10 to 12 in., B. & B. ....		1.10	—	—
12 to 15 in., B. & B. ....		1.50	—	—
— virginiana, 25'-30'	REDCEDAR			
Evergreen. Forms a dense column, deep green foliage, purplish in winter. Useful in formal work, or mixed plantings.				
3 to 4 ft., B. & B. ....		3.00	28.50	—
4 to 5 ft., B. & B. ....		4.00	38.50	—
5 to 6 ft., B. & B. ....		5.50	53.50	—
6 to 7 ft., B. & B. ....		7.00	68.50	—
— glauca, 15'-20'	SILVER REDCEDAR			
2 to 2½ ft., B. & B. ....		2.75	26.50	—
2½ to 3 ft., B. & B. ....		3.25	30.00	—
3 to 3½ ft., B. & B. ....		4.25	40.00	—
3½ to 4 ft., B. & B. ....		4.75	45.00	—
— tripartita, 4'-5'	FOUNTAIN REDCEDAR			
Evergreen. A bushy, half upright grower with feathery branches.				
15 to 18 in., B. & B. ....		1.25	10.00	—
18 to 24 in., B. & B. ....		1.75	15.00	—
2 to 2½ ft., B. & B. ....		2.50	22.50	—
2½ to 3 ft., B. & B. ....		3.00	—	—
— waukegan (See horizontalis douglasi)				
KALMIA latifolia, 5'-7'	MOUNTAIN LAUREL			
Evergreen. Most effective in June when the clusters of pink flowers open. This stock is nursery grown. Good foliage; likes shade.				
12 to 15 in., B. & B. ....		1.25	11.00	90.00
15 to 18 in., B. & B. ....		1.50	12.50	100.00
18 to 24 in., B. & B. ....		1.75	15.00	135.00
2 to 2½ ft., B. & B. ....		2.50	22.50	—



KERRIA japonica, 4'-5'	SINGLE JAPANESE KERRIA			
Golden yellow flowers, June-Sept.	Green branches useful for winter effects.			
	Each	Per 10	Per 100	
18 to 24 in. ....	.40	3.50	25.00	
2 to 2½ ft. ....	.50	4.00	35.00	
2½ to 3 ft. ....	.55	4.50	40.00	
—fl. pl., 4'-5'	DBL. JAPANESE KERRIA			
Desirable double form of above and stronger grower.				
18 to 24 in. ....	.45	3.50	30.00	
2 to 3 ft. ....	.55	4.50	40.00	
3 to 4 ft. ....	.65	5.50	50.00	
—variegata, 3'-4'	SILVER KERRIA			
Similar to type but variegated leaves and more dwarf habit.				
12 to 18 in. ....	.40	3.00	25.00	
18 to 24 in. ....	.45	3.50	30.00	
KOELREUTERIA paniculata, 25'-30'	VARNISH TREE			
Has bright yellow flowers in July; is a valuable small flowering tree. Also called Goldenrain Tree.				
3 to 4 ft. ....	.50	4.00	—	
4 to 5 ft. ....	.70	6.00	—	
LABURNUM vulgare, 20'-25'	GOLDENCHAIN			
Beautiful clusters of yellow flowers in spring.				
2 to 3 ft. ....	.60	5.00	—	
3 to 4 ft. ....	.70	6.00	—	
LARIX europaea, (decidua), 50'-60'	EUROPEAN LARCH			
Especially good for spring effects; grows rapidly.				
18 to 24 in. ....	.75	—	—	
2 to 3 ft. ....	1.00	—	—	
—leptolepis, (kaemferi), 50'-60'	JAPANESE LARCH			
Fast growing, handsome tree, similar to above.				
2 to 3 ft. ....	1.00	—	—	
3 to 4 ft. ....	1.25	—	—	
4 to 5 ft. ....	1.50	—	—	
LESPEDEZA bicolor, (Desmodium bicolor), 5'-6'	BUSHCLOVER			
Rose and white flower, September.	Slender, graceful shrub.			
18 to 24 in. ....	.30	2.50	20.00	
2 to 3 ft. ....	.35	3.00	25.00	
3 to 4 ft. ....	.40	3.50	—	
—formosa (Desmodium penduliflorum), 3'-4'	PURPLE BUSHCLOVER			
	Each	Per 10	Per 100	Per 1000
Rosy purple flower conspicuous in Sept. An attractive herbaceous shrub.				
2 year ....	.40	3.50	25.00	200.00
3 year ....	.50	4.00	30.00	—
LEUCOTHOE catesbaei, 3'-4'	DROOPING LEUCOTHOE			
Evergreen. Attractive white flowers, May. Handsome, lustrous leaves, rich autumn coloring. Splendid for under planting in shade.				
	Each	Per 10	Per 100	
12 to 15 in., B. & B. ....	1.00	9.50	90.00	
15 to 18 in., B. & B. ....	1.35	12.50	120.00	
LIGUSTRUM amurense, 14'-15'	AMUR PRIVET			
Half evergreen; very hardy.				
18 to 24 in. ....	.15	1.00	8.00	
2 to 3 ft. ....	.20	1.50	10.00	
3 to 4 ft. ....	.25	2.00	—	
—ibota, 9'-10'	IBOTA PRIVET			
Good dense habit; flowers and fruits freely. Decorative black berries. Very hardy.				
18 to 24 in. ....	.20	1.50	10.00	
2 to 3 ft. ....	.25	2.00	12.00	
3 to 4 ft. ....	.30	2.50	—	



Regal's Privet, two years old, grown from cuttings and of the true spreading type. Note how uniform they are in appearance.

LIGUSTRUM—continued                      Each    Per 10    Per 100  
 —regelianum (cuttings), 5'-6'

TRUE SPREADING REGAL PRIVET

Makes a splendid, low, dense hedge; also good in shrubbery or evergreen plantings. Very desirable.

15 to 18 in. ....	.20	1.50	10.00
18 to 24 in. ....	.25	2.00	12.00
2 to 2½ ft. ....	.30	2.50	18.00
2½ to 3 ft. ....	.35	3.00	25.00
3 ft. ....	.40	3.50	30.00

—lodense, 2½'                                      DWARF PRIVET

Very compact, dwarf form.

6 to 12 in. ....	.20	1.20	8.00
12 to 15 in. ....	.25	1.80	12.00

—lucidum, (macrophyllum), 6'-8'                      GLOSSY PRIVET

Evergreen. Very attractive privet with rich, glossy leaves. Not hardy in the North. Also called Wax Leaf Privet.

6 to 12 in., 3 inch pots	1.00	9.00	—
12 to 15 in., 5 inch pots	1.50	14.00	—

—ovalifolium, 9'-10'                                      CALIFORNIA PRIVET

Most popular hedge plant. We offer good bushy 2 yr. stock well worth the price.

	Per 10	Per 100	Per 1000
12 to 18 in. ....	.50	3.00	20.00
18 to 24 in. ....	.80	4.00	25.00
2 to 3 ft. ....	1.00	6.00	40.00
3 to 4 ft. ....	1.50	7.50	60.00
4 to 5 ft. ....	2.00	10.00	—

—globes (sheared)                                      Each    Per 10    Per 100

15 to 18 in. ....	1.00	8.00	60.00
18 to 24 in. ....	1.25	10.00	80.00

—standard, TREE FORM

Sheared round hedge, straight stems.

2 year, 12 in. heads	1.00	8.00	—
3 year, 15 in. heads	1.25	10.00	—

—aureum, 8'-9'                                      GOLDEN PRIVET

Grows rather slowly.

12 to 15 in. ....	.30	2.50	20.00
15 to 18 in. ....	.40	3.50	30.00
18 to 24 in. ....	.50	4.50	40.00

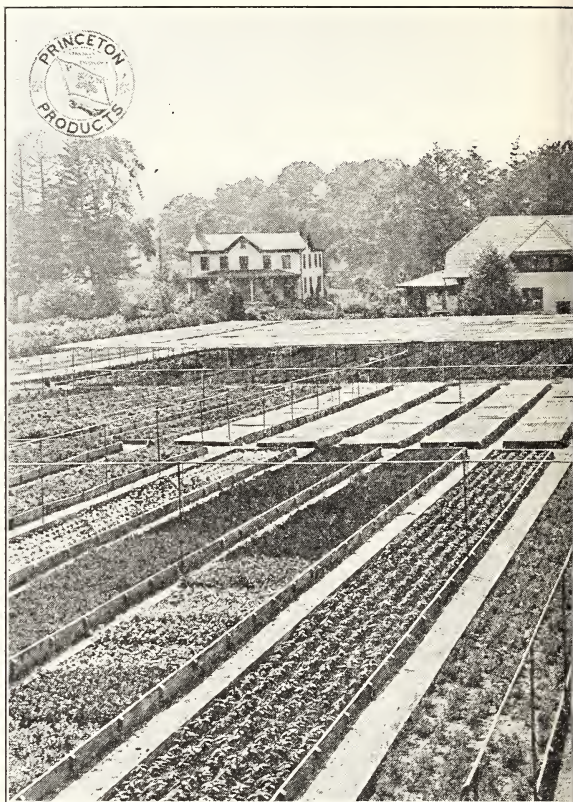
LIGUSTRUM—continued	Each	Per 10	Per 100
—vulgare, 10'-12'			EUROPEAN PRIVET
Creamy-white flowers. June-July.			Black berries.
2 to 3 ft. ....	.25	2.00	18.00
3 to 4 ft. ....	.30	—	—
*LIQUIDAMBAR styraciflua, 50'-60'			SWEET GUM
One of the best trees for autumn color; grows well in moist places; has corky bark; rather difficult to transplant.			
4 to 5 ft. ....	1.50	12.50	—
5 to 6 ft. ....	1.75	15.00	—
6 to 8 ft. ....	2.25	20.00	—
*LIRIODENDRON tulipifera, 60'-80'			TULIPTREE
A quick grower; the yellow tulip-like flowers are produced in June.			
4 to 6 ft. ....	.80	7.00	60.00
6 to 8 ft. ....	1.25	11.00	100.00
8 to 10 ft. ....	1.75	15.00	—
10 to 12 ft. ....	2.25	20.00	—
LONICERA bella albida, 8'-9'			WHITE BELLE HONEYSUCKLE
Grows vigorously.			
2 to 3 ft. ....	.25	2.00	16.00
3 to 4 ft. ....	.35	2.50	20.00
4 to 5 ft. ....	.45	3.50	—
—fragrantissima, 6'-8'			WINTER HONEYSUCKLE
Fragrant white flower, April-May.			Half-evergreen.
2 to 3 ft. ....	.30	2.50	20.00
3 to 4 ft. ....	.40	3.00	25.00
—heckrottii, 15'-20'			EVERBLOOMING HONEYSUCKLE
Flowers purple outside, yellow inside, July-Sept.			
2 year ....	.40	3.00	—
—japonica (brachypoda), 15'-20'			JAPANESE HONEYSUCKLE
Rapid grower and blooms freely from June to Sept. Useful for covering steep banks. Almost evergreen.			
2 year ....	.25	2.00	15.00
3 year ....	.30	2.50	20.00
—reticulata aurea, 15'-20'			JAPANESE GOLDEN HONEYSUCKLE
Leaves veined golden yellow.			
2 year ....	.25	2.00	15.00
3 year ....	.30	2.50	20.00
—halliana, 15'-25'			HALL JAPANESE HONEYSUCKLE
Grows rampant. Blooms freely, deliciously fragrant.			
2 year, first class ....	.35	2.50	20.00
—maackii, 8'-9'			AMUR HONEYSUCKLE
Large white flowers; June. Scarlet berries persisting until midwinter. Very desirable.			
2 to 3 ft. ....	.35	2.50	—
3 to 4 ft. ....	.40	3.00	—
4 to 5 ft. ....	.50	4.50	—
—podocarpa, 8'-9'			LATE HONEYSUCKLE
Smaller pinkish flowers, better fruit than preceding, holds leaves longer, vigorous.			
2 to 3 ft. ....	.35	2.50	—
3 to 4 ft. ....	.40	3.00	—

LONICERA—continued	Each	Per 10	Per 100
—morrowi, 7'-8'	MORROW	HONEYSUCKLE	
Spreading habit, white, good foliage.	May-June.	Red	fruits,
18 to 24 in. ....	.25	2.00	15.00
2 to 3 ft. ....	.30	2.50	18.00
3 to 4 ft. ....	.40	3.00	22.00
— (upright)			
18 to 24 in. ....	.25	2.00	15.00
2 to 3 ft. ....	.30	2.50	18.00
3 to 4 ft. ....	.40	3.00	22.00
—pileata, 2'	PRIVET	HONEYSUCKLE	
Evergreen. Dwarf evergreen shrub; needs protection in cold regions.			
9 to 12 in., bushy, B. & B.	.50	4.00	—
—ruprechtiana, 8'-9'	MANCHURIAN	HONEYSUCKLE	
Creamy white flowers, June.	Berries red, sometimes orange.		
18 to 24 in. ....	.25	2.00	15.00
2 to 3 ft. ....	.35	2.50	20.00
3 to 4 ft. ....	.40	3.00	—
—sempervirens, 15'-20'	TRUMPET	HONEYSUCKLE	
Bright, scarlet, showy flowers, July-Sept.			
2 year .....	.35	2.50	—
—spinosa alberti, 2'	ALBERT	HONEYSUCKLE	
Rose-pink fragrant flowers. Bluish-green leaves. Dwarf in habit.	May-June.		
15 to 18 in. ....	.45	3.50	—
18 to 24 in. ....	.60	5.00	—
—syringantha, 4'-5'	LILAC	HONEYSUCKLE	
Attractive, but little known, slow growing shrub. Fragrant pale rosy lilac flowers.			
18 to 24 in. ....	.60	5.00	—
2 to 2½ ft. ....	.70	6.00	—
—tatarica, Pink, Red and White, 9'-10'	TARTARIAN	HONEYSUCKLE	
Flowers and fruit freely produced. A most adaptable shrub.			
18 to 24 in. ....	.25	2.00	12.00
2 to 3 ft. ....	.30	2.50	16.00
3 to 4 ft. ....	.35	3.00	20.00
LYCIUM barbarum, 10'-12'	BARBARY	MATRIMONY-VINE	
Violet flowers in June, followed by bright red fruits; useful for banks or hanging over retaining walls.			
18 to 24 in. ....	.20	1.50	10.00
2 to 3 ft. ....	.25	2.00	12.00
3 to 4 ft. ....	.35	2.50	15.00
—chinense, 12'-15'	CHINESE	MATRIMONY-VINE	
More vigorous and fruitful than preceding.			
18 to 24 in. ....	.20	1.50	10.00
2 to 3 ft. ....	.25	2.00	12.00
3 to 4 ft. ....	.35	2.50	15.00
MAGNOLIA acuminata, 70'-80'	CUCUMBER	TREE	
Pyramidal habit, vigorous growth; large leaves; flowers greenish yellow; pink fruit.			
3 to 4 ft. ....	1.25	10.00	—
4 to 5 ft. ....	1.50	12.50	—
5 to 6 ft. ....	2.00	17.50	—

MAGNOLIA—continued	Each	Per 10	Per 100
—glauca, 15'-20'			SWEET BAY
Delightfully fragrant creamy flowers in May. Glaucous leaves, nearly evergreen. Prefers moist location.			
18 to 24 in., B. & B. ....	1.75	15.00	—
2 to 3 ft., B. & B. ....	2.25	20.00	—
—soulangeana, 15'-18'			SAUCER MAGNOLIA
Large purplish-pink and white flowers in May. Best transplanted in early spring.			
18 to 24 in., B. & B. ....	4.00	35.00	300.00
2 to 3 ft., B. & B. ....	5.00	45.00	—
3 to 4 ft., B. & B. ....	6.50	—	—
4 to 5 ft., B. & B. ....	8.50	—	—
—tripetala, 30'-40'			UMBRELLA MAGNOLIA
Very large leaves; flowers white, and seed pods are pink.			
2 to 3 ft. ....	1.25	10.00	—
3 to 4 ft. ....	1.50	13.50	—
4 to 5 ft. ....	2.00	17.50	—
MAHONIA aquifolium, 4'-5'			OREGON HOLLY GRAPE
Evergreen shining green leaves turn rich scarlet in Autumn; striking in May when yellow flowers appear; blue-black fruits. Best in half shade.			
12 to 15 in., B. & B. ....	1.00	9.00	80.00
15 to 18 in., B. & B. ....	1.25	11.00	—
18 to 24 in., B. & B. ....	1.50	—	—
—bealei (japonica), 6'-7'			LEATHERLEAF HOLLY GRAPE
Large holly-like leaves, bluish underneath; thick upright branches. Yellow flowers followed by grape-like blue-black fruits. Succeeds best in half shade.			
12 to 15 in. ....	1.15	10.00	—
MALUS arnoldiana, 8'-10'			ARNOLD CRAB
White flowers. Compact habit.			
3 to 4 ft. ....	.85	7.50	—
4 to 5 ft. ....	1.00	9.00	—
5 to 6 ft. ....	1.25	—	—
—atrosanguinea, 10'-15'			CARMINE CRAB
Deeper flowering form of above.			
3 to 4 ft. ....	.80	7.00	60.00
4 to 5 ft. ....	1.00	8.50	75.00
5 to 6 ft. ....	1.25	10.00	90.00
—coronaria, 15'-20'			WILD SWEET CRAB
Blush pink flowers in early spring.			
3 to 4 ft. ....	.70	6.00	—
4 to 5 ft. ....	.85	7.50	—
5 to 6 ft. ....	1.00	8.50	—
—floribunda, 10'-15'			JAPANESE FLOWERING CRAB
Literally covered with rose-colored flowers in early spring.			
3 to 4 ft. ....	.75	6.50	60.00
4 to 5 ft. ....	1.00	8.50	—
5 to 6 ft. ....	1.25	—	—
—purpurea, 10'-15'			PURPLE CRAB
A very attractive purple foliated type of the above.			
3 to 4 ft. ....	.75	6.50	—
4 to 5 ft. ....	1.00	8.50	—
5 to 6 ft. ....	1.25	—	—
—halliana parkmani, 10'-15'			PARKMAN CRAB
Semi-double pink; flowers on long stems; good compact habit.			
3 to 4 ft. ....	1.25	10.00	85.00
4 to 5 ft. ....	1.75	—	—

MALUS—continued	Each	Per 10	Per 100
— <i>ioensis plena</i> , 10'-15'			BECHTEL CRAB
Large double pure pink flowers with noticeable fragrance; vigorous grower.			
2 to 3 ft. ....	.65	5.00	40.00
3 to 4 ft. ....	1.00	8.00	60.00
4 to 5 ft. ....	1.25	10.00	85.00
5 to 6 ft. ....	2.00	—	—
— <i>prunifolia rinki</i> , 12'-15'			CHINESE APPLE
Large fruits, red or yellow; white flowers.			
3 to 4 ft. ....	.75	6.50	—
4 to 5 ft. ....	1.00	8.50	—
5 to 6 ft. ....	1.35	12.00	—
— <i>sargentii</i> , 5'-6'			SARGENT CRAB
Pure white; very compact.			
2 to 3 ft. ....	1.00	—	—
3 to 4 ft. ....	1.50	12.50	—
4 to 5 ft. ....	1.75	—	—
— <i>scheideckeri</i> , 10'-15'			SCHEIDECKER CRAB
Double pink; handsome flower clusters.			
3 to 4 ft. ....	.85	7.50	—
4 to 5 ft. ....	1.00	—	—
— <i>seiboldii</i> , 15'-18'			TORINGO CRAB
Pale pink flowers, showy red fruits.			
3 to 4 ft. ....	1.00	—	—
4 to 5 ft. ....	1.25	—	—
5 to 6 ft. ....	1.50	—	—
— <i>spectabilis</i> , 10'-15'			CHINESE FLOWERING CRAB
Beautiful pink or white flowers; sweet scented; double.			
3 to 4 ft. ....	1.00	—	—
MITCHELLA <i>repens</i> , 4"-6"			PARTRIDGE BERRY
Delicate pink flower in April-May, red berries follow. Thick green leaves. Good for ground cover in shade.			
clumps .....	.40	3.00	20.00
MORUS <i>alba pendula</i> , 8'-10'			TEA'S WEEPING MULBERRY
The most popular small "weeping" tree.			
Medium Grade, 1 yr. heads	2.25	20.00	175.00
First Class, 2 yr. heads ...	2.75	25.00	225.00
Extra, 3 yr. heads. ....	3.25	30.00	—
MYRICA <i>carolinensis (cerifera)</i> , 4'-5'			NORTHERN BAYBERRY
Does well in poor, gravelly soil. Has decorative gray berries, and glossy green foliage. Good for seashore.			
12 to 15 in. ....	.35	3.00	25.00
15 to 18 in. ....	.45	4.00	30.00
18 to 24 in. ....	.55	4.50	40.00
2 to 2½ ft. ....	.70	6.00	—
NANDINA <i>domestica</i> , 4'-6'			NANDINA
Evergreen. One of the handsomest broad leaved evergreens in the South. Foliage is light in effect. Beautiful fall coloring. Has large trusses of red berries.			
5 inch pots .....	.75	6.00	—

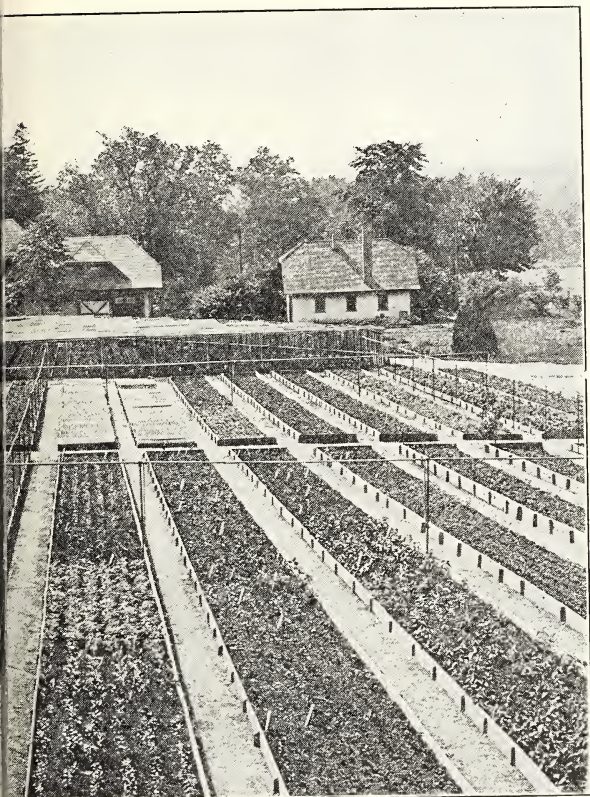
	Each	Per 10	Per 100
<b>NYSSA sylvatica, 40'-60'</b> <span style="float: right;">SOUR GUM</span>			
One of our finest ornamental trees, with handsome foliage, assuming brilliant autumn tints. Will grow in wet places.			
2 to 3 ft. ....	.75	6.50	—
3 to 4 ft. ....	1.00	7.50	—
<b>OSMANTHUS aquifolium, 3'-4'</b> <span style="float: right;">HOLLY OSMANTHUS</span>			
Evergreen shrub, with holly-like leaves, dark green and glossy. Suitable for protected locations.			
3 inch pots, 12 to 15 in. ....	.75	5.00	—
4 inch pots, 15 to 18 in. ....	1.00	7.50	—
<b>OSTRYA virginiana, 25'-30'</b> <span style="float: right;">HOP HORN-BEAM</span>			
Slender spreading branches; handsome beech-like foliage, clear yellow in autumn. Smooth blue-gray bark, hop like fruits. Useful for dry locations.			
18 to 24 in. ....	.75	6.50	—
2 to 3 ft. ....	1.00	7.50	—
<b>OXYDENDRUM aboreum, 25'-30'</b> <span style="float: right;">SOURWOOD</span>			
Graceful clusters of white flowers. August. Good leathery foliage. Fine autumn coloring.			
2 to 3 ft. ....	.75	6.50	—
3 to 4 ft. ....	1.00	7.50	—
4 to 5 ft. ....	1.35	—	—
	Each	Per 10	Per 100
<b>PACHYSANDRA terminalis, 6"-8"</b> <span style="float: right;">JAPANESE SPURGE</span>			
Evergreen. One of the best bedding plants for green effect in shady places.			
Pot grown .....	.20	1.50	10.00
			80.00
	Each	Per 10	Per 100
<b>PAULOWNIA tomentosa</b> <span style="float: right;">EMPRESS TREE</span>			
(imperialis), 30'-40'			
Grows rapidly; very large leaves; purple flowers; not quite hardy in North.			
4 to 6 ft. ....	.85	—	—
6 to 8 ft. ....	1.50	—	—
8 to 10 ft. ....	2.00	—	—
<b>PHELLODENDRON chinense, 50'-60'</b> <span style="float: right;">CHINESE CORKTREE</span>			
A rapid growing, tropical appearing small tree.			
4 to 6 ft. ....	1.00	8.50	—
6 to 8 ft. ....	1.50	12.50	—
<b>PHILADELPHUS avalanche, 3'-4'</b> <span style="float: right;">DWARF MOCKORANGE</span>			
Graceful arching habit.			
18 to 24 in. ....	.35	2.50	20.00
2 to 3 ft. ....	.40	3.00	25.00
3 to 4 ft. ....	.45	3.50	—
—bouquet blanc, 4'-5' <span style="float: right;">WHITE BOUQUET MOCKORANGE</span>			
Low, dense habit. Blooms freely. May-June.			
18 to 24 in. ....	.30	2.50	20.00
2 to 3 ft. ....	.35	3.00	25.00
3 to 4 ft. ....	.40	3.50	—
—coronarius, 9'-10' <span style="float: right;">SWEET MOCKORANGE</span>			
White fragrant flowers profusely borne in May-June.			
2 to 3 ft. ....	.30	2.50	20.00
3 to 4 ft. ....	.35	3.00	—
4 to 5 ft. ....	.40	—	—
—aurea, 4'-5' <span style="float: right;">GOLDEN LEAF MOCKORANGE</span>			
Dwarf compact form. Yellow leaves.			
12 to 15 in. ....	.35	3.00	25.00
15 to 18 in. ....	.40	3.50	30.00
18 to 24 in. ....	.50	4.00	—
2 to 2½ ft. ....	.60	—	—



General view from the greenhouses toward the office showing

PHILADELPHUS—continued	Each	Per 10	Per 100
—grandiflorus, 7'-8'	LARGE FLOWERED MOCKORANGE		
Has no fragrance.			
18 to 24 in. ....	.25	2.00	15.00
2 to 3 ft. ....	.30	2.50	20.00
3 to 4 ft. ....	.40	3.00	—
—gordonianus (lewisi), 10'-12'	GORDON MOCKORANGE		
Flowers in June-July. Slightly fragrant. Blooms late.			
2 to 3 ft. ....	.30	2.50	16.00
3 to 4 ft. ....	.40	3.00	20.00
4 to 5 ft. ....	.50	4.00	—
—lemoine, 4'-5'	LEMOINE MOCKORANGE		
Good compact habit. Flowers sweetly scented.			
15 to 18 in. ....	.25	2.00	15.00
18 to 24 in. ....	.30	2.50	20.00
2 to 2½ ft. ....	.35	3.00	—
—nivalis, 4'-5'	SNOWBANK MOCKORANGE		
Free flowering, fragrant.			
2 to 3 ft. ....	.35	2.50	20.00
3 to 4 ft. ....	.40	3.00	—
—sericanthus	SILK MOCKORANGE		
An attractive, but very little known Philadelphus of moderate growth.			
18 to 24 in. ....	.40	3.50	—
2 to 3 ft. ....	.50	4.00	—





transplanting beds with lath house for azaleas in the distance.

**PHILADELPHUS—continued**      Each    Per 10    Per 100

—*virginalis*, 7'-8'      **VIRGINAL MOCKORANGE**

Beautiful semi-double flowers produced intermittently all summer.

18 to 24 in. ....	.40	3.50	—
2 to 3 ft. ....	.50	4.00	—

**PHOTINIA glabra**, 6'-8'

Similar to *villosa* but not such a strong grower.

3 to 4 ft. ....	.65	5.50	—
4 to 5 ft. ....	.75	6.50	—

—*villosa*, 12'-15'      **REDBERRIED PHOTINIA**

Flowers white, June. Rich scarlet berries profusely borne in autumn. Splendid foliage for color and texture.

2 to 3 ft. ....	.55	4.50	35.00
3 to 4 ft. ....	.65	5.50	45.00
4 to 5 ft. ....	.75	6.50	—

**PHYSOCARPUS opulifolius**, 9'-10'      **NINEBARK**

Creamy white, June. Vigorous. Good for shade.

2 to 3 ft. ....	.30	2.50	16.00
3 to 4 ft. ....	.35	3.00	20.00
4 to 5 ft. ....	.40	3.50	30.00

PHYSOCARPUS—continued		Each	Per 10	Per 100
—aureus, 9'-10'		GOLDLEAF NINEBARK		
Golden-leaved variety; white flowers in early June.				
2 to 3 ft.	.....	.35	2.50	—
3 to 4 ft.	.....	.40	3.00	—
PICEA canadensis (alba), 50'-60'		WHITE SPRUCE		
Evergreen. Silvery foliage; develops into shapely specimen of close texture.				
15 to 18 in., B. & B.	.....	1.25	10.00	85.00
18 to 24 in., B. & B.	.....	1.50	13.50	125.00
2 to 2½ ft., B. & B.	.....	2.00	17.50	—
—excelsa, 80'-100'		NORWAY SPRUCE		
Evergreen. Has dark green foliage and grows rapidly. Makes a good windbreak, and also lends itself well to trimmed hedges.				
12 to 15 in., B. & B.	.....	.75	6.50	50.00
15 to 18 in., B. & B.	.....	1.00	8.50	70.00
18 to 24 in., B. & B.	.....	1.25	11.00	90.00
2 to 2½ ft., B. & B.	.....	1.75	15.00	135.00
2½ to 3 ft., B. & B.	.....	2.00	18.50	175.00
3 to 3½ ft., B. & B.	.....	3.00	27.50	—
3½ to 4 ft., B. & B.	.....	3.50	32.50	—
4 to 5 ft., B. & B.	.....	4.00	37.50	—
5 to 6 ft., B. & B.	.....	4.50	—	—
—pungens, 60'-80'		COLORADO SPRUCE		
Evergreen. Branches in distinct whorls, forming handsome lawn specimen.				
12 to 15 in., B. & B.	.....	1.25	11.00	100.00
15 to 18 in., B. & B.	.....	1.50	13.50	125.00
18 to 24 in., B. & B.	.....	2.00	17.50	—
PIERIS floribunda, 4'		MOUNTAIN ANDROMEDA		
Evergreen. Waxy white flowers in May. Good deep green foliage best in half shady places. Very hardy.				
12 to 15 in., B. & B.	.....	2.50	22.50	200.00
15 to 18 in., B. & B.	.....	3.00	27.50	250.00
18 to 24 in., B. & B.	.....	3.50	32.50	—
—japonica (ANDROMEDA), 5'-6'		JAPANESE ANDROMEDA		
Evergreen. Thick, shiny leaves, turning bronze in winter. Drooping clusters of small white flowers open in May. Grows slowly. Best in moist, partially shaded place.				
12 to 15 in., B. & B.	.....	1.85	17.50	—
15 to 18 in., B. & B.	.....	2.35	22.50	—
18 to 24 in., B. & B.	.....	3.00	—	—
—mariana, 5'-6'		STAGGER BUSH		
Waxy white flowers, May-June.				
15 to 18 in.	.....	.60	5.00	—
18 to 24 in.	.....	.85	7.50	—
PINUS banksiana, 60'-70'		JACK PINE		
Most northern of all Pines and very hardy. Useful for exposed locations.				
2 to 3 ft.	.....	2.00	17.50	—
3 to 4 ft.	.....	3.00	27.50	—
—densiflora		JAPANESE RED PINE		
Evergreen. Foliage dark green. A good desirable variety.				
2 to 2½ ft., B. & B.	.....	1.50	14.00	130.00
2½ to 3 ft., B. & B.	.....	2.25	20.00	175.00
3 to 4 ft., B. & B.	.....	3.00	27.50	250.00
4 to 5 ft., B. & B.	.....	3.75	35.00	—

PINUS—continued		Each	Per 10	Per 100
—flexilis, 30'-40'		LIMBER PINE		
Evergreen. Dark bluish green foliage; very hardy.				
18 to 24 in., B. & B. ....	1.75	15.00	—	—
2 to 2½ ft., B. & B. ....	2.25	—	—	—
—montana mughus, 2½'-3'		MUGHO PINE		
Evergreen. Forms a round-topped clump. Useful for rock planting and foundation work.				
9 to 12 in., B. & B. ....	1.50	13.50	125.00	—
12 to 15 in., B. & B. ....	2.25	20.00	185.00	—
15 to 18 in., B. & B. ....	2.75	25.00	—	—
18 to 24 in., B. & B. ....	3.75	35.00	—	—
—nigra austriaca, 60'-70'		AUSTRIAN PINE		
Evergreen. Rich, dark green. Vigorous, dense grower. Good for background. Thrives at seashore.				
18 to 24 in., B. & B. ....	1.50	12.50	—	—
2 to 2½ ft., B. & B. ....	2.00	17.50	—	—
2½ to 3 ft., B. & B. ....	2.75	25.00	—	—
—ponderosa		WESTERN YELLOW PINE		
Evergreen. A rapid-growing Pine, reaching large dimensions. Silvery-green foliage.				
2 to 2½ ft., B. & B. ....	1.50	—	—	—
2½ to 3 ft., B. & B. ....	2.00	—	—	—
3 to 4 ft., B. & B. ....	2.50	—	—	—
—rigida, 40'-50'		PITCH PINE		
Evergreen. Irregular, picturesque habit. Useful for dry, poor soil and seashore planting; quick grower.				
2 to 2½ ft., B. & B. ....	1.50	12.50	—	—
2½ to 3 ft., B. & B. ....	2.00	17.50	—	—
3 to 4 ft., B. & B. ....	2.50	22.50	—	—
4 to 5 ft., B. & B. ....	3.00	27.50	—	—
—strobis, 80'-100'		WHITE PINE		
Evergreen. Probably our most adaptable and useful pine. Very picturesque when old.				
2 to 2½ ft., B. & B. ....	2.00	17.50	—	—
2½ to 3 ft., B. & B. ....	2.50	22.50	—	—
3 to 4 ft., B. & B. ....	3.50	30.00	—	—
4 to 5 ft., B. & B. ....	5.50	50.00	—	—
5 to 6 ft., B. & B. ....	7.50	70.00	—	—
—sylvestris, 25'-30'		SCOTCH PINE		
Evergreen. A rapid-growing, handsome tree, especially when young. Good for windbreaks.				
18 to 24 in., B. & B. ....	1.25	10.00	75.00	—
2 to 2½ ft., B. & B. ....	1.75	15.00	125.00	—
2½ to 3 ft., B. & B. ....	2.25	20.00	175.00	—
3 to 4 ft., B. & B. ....	3.25	30.00	—	—
—thunbergii		JAPANESE BLACK PINE		
Evergreen. A large growing tree with rich, dark green foliage and long needles; good for grouping effects.				
2 to 2½ ft., B. & B. ....	1.75	16.00	—	—
2½ to 3 ft., B. & B. ....	2.25	21.50	—	—
3 to 4 ft., B. & B. ....	3.00	27.50	—	—
4 to 5 ft., B. & B. ....	4.00	37.50	—	—
PLATANUS occidentalis				
AMERICAN PLANE TREE OR AMERICAN SYCAMORE				
4 to 5 ft. ....	.75	6.50	—	—
5 to 6 ft. ....	1.00	8.50	—	—
6 to 8 ft. ....	1.25	11.50	—	—
8 to 10 ft. ....	1.75	—	—	—

## PLATANUS—continued

—orientalis, 70'-80'

## EUROPEAN PLANE TREE

A good tree for park and street use; grows rather quickly; withstands smoky city conditions.

	Each	Per 10	Per 100	Per 1000
5 to 6 ft. ....	1.00	8.50	75.00	500.00
6 to 8 ft. ....	1.25	11.50	100.00	750.00
8 to 10 ft. ....	1.75	16.50	150.00	1250.00
8 to 10 ft.—1¼ to 1½ in. .....	2.25	21.00	200.00	1850.00
10 to 12 ft. 1½ to 1¾ in. .....	3.00	28.50	275.00	—
10 to 12 ft.—1¾ to 2 in. .....	3.75	35.00	—	—
12 to 13 ft.—2 to 2¼ in. .....	4.25	40.00	—	—

## POLYGONUM auberti

 Each Per 10 Per 100  
 CHINA FLEECEVINE

Climbing plant of vigorous growth attaining a height of 25 feet and producing through summer and fall great foamy sprays of white flowers.

2 yr. Med. ....	.50	4.00	—
-----------------	-----	------	---

## POPULUS bolleana, 50'-60'

## BOLLEANA POPLAR

Leaves white underneath; similar columnar character to Lombardy Poplar.

4 to 6 ft. ....	.75	6.50	55.00
6 to 8 ft. ....	1.00	8.50	75.00
8 to 10 ft. ....	1.25	11.00	—
8 to 10 ft.—1¼ to 1½ in. .....	1.50	—	—

## —monilifera, 75'-90'

## CAROLINA POPLAR

A rapid grower; succeeds even in dry places and near seashore.

6 to 8 ft. ....	.40	3.00	20.00
8 to 10 ft. ....	.50	4.00	30.00
8 to 10 ft.—1¼ to 1½ in. ..	.65	5.00	40.00

## —nigra italica, 60'-80'

## LOMBARDY POPLAR

Tall spire-like character; valued for landscape work and screens.

	Each	Per 10	Per 100	Per 1000
6 to 8 ft. ....	.50	4.00	30.00	250.00
8 to 10 ft. ....	.75	6.00	45.00	350.00
10 to 12 ft.—1¼ to 1½ in. .....	1.00	8.50	65.00	550.00
11 to 13 ft.—1½ to 1¾ in. .....	1.25	11.00	90.00	800.00
12 to 14 ft.—1¾ to 2 in. .....	1.75	15.00	125.00	—
12 to 14 ft.—2 to 2¼ in. .....	2.25	20.00	—	—
12 to 14 ft.—2¼ to 2½ in. .....	2.75	25.00	—	—

## POTENTILLIA fruticosa, 3'-4'

 Each Per 10 Per 100  
 SHRUBBY CINQUEFOIL

Blooms profusely, yellow, June-Sept. Very adaptable and useful shrub.

15 to 18 in. ....	.35	3.00	25.00
18 to 24 in. ....	.40	3.50	30.00
2 to 2½ ft. ....	.50	4.00	35.00

## PRINOS (See ILEX)

Each Per 10 Per 100

PRUNUS cerasifera pissardi, 12'-15' PURPLELEAF PLUM  
Valued chiefly because of purplish foliage; should be pruned every year for best color effect.

2 to 3 ft. ....	.50	4.00	30.00
3 to 4 ft. ....	.60	5.00	—
4 to 5 ft. ....	.70	6.00	—
5 to 6 ft. ....	.85	7.00	—

—maritima, 9'-10' BEACH PLUM  
Small white flowers, April. Fruits are purple. Splendid subject for sandy soils or near seashore.

18 to 24 in. ....	.40	3.00	—
2 to 3 ft. ....	.50	4.00	—
3 to 4 ft. ....	.65	—	—

—padus, 30'-40' EUROPEAN BIRD CHERRY  
Decorative flowering tree; has long drooping racemes of white flowers, black fruit.

3 to 4 ft. ....	.50	4.00	—
4 to 5 ft. ....	.60	5.00	—

—persica (See Amygdalus Persica)

#### JAPANESE DOUBLE FLOWERING CHERRY

We have a nice stock of the best varieties of this beautiful class of plants that is attracting so much attention. Will gladly send list of varieties.

2 to 3 ft. ....	3.00	27.50	—
3 to 4 ft. ....	3.50	30.00	—

\*—subhirtella pendula, 12'-15' WEEPING JAPAN CHERRY  
A most beautiful and graceful tree, covered with pink blossoms in early spring.

Grafted low and trained to stake.

3 to 4 ft. ....	2.50	—	—
4 to 5 ft. ....	3.50	32.50	—
5 to 6 ft. ....	4.00	—	—

Grafted high, on standards.

3 to 4 ft. stems, 1 yr. hds.	2.00	—	—
4 to 5 ft. stems, 1 yr. hds.	2.50	—	—
5 to 6 ft. stems, 1 yr. heads, extra	3.00	—	—
5 to 6 ft. stems, 2 yr. heads, extra	3.50	—	—

—tomentosa, 6'-7' NANKING CHERRY  
Fruits are light red. Flowers white, before leaves appear. Very showy.

2 to 3 ft. ....	.40	3.50	—
3 to 4 ft. ....	.50	4.50	—
4 to 5 ft. ....	.65	5.50	—

—triloba plena, 7'-8' DOUBLE FLG. PLUM  
Double pink flowers, April-May. Handsome and useful.

18 to 24 in. ....	.40	3.50	25.00
2 to 3 ft. ....	.50	4.00	30.00
3 to 4 ft. ....	.60	5.00	—

PSEUDOTSUGA douglasi, 70'-80' DOUGLAS FIR  
Evergreen. Very hardy; dark bluish-green coloring. Prefers well drained situation.

18 to 24 in., B. & B. ....	1.75	15.00	—
2 to 2½ ft., B. & B. ....	2.75	25.00	—
2½ to 3 ft., B. & B. ....	3.25	30.00	—
3 to 4 ft., B. & B. ....	3.75	35.00	—
4 to 5 ft., B. & B. ....	4.75	—	—

	Each	Per 10	Per 100
<b>PTELEA trifoliata, 10'-12'</b>			<b>HOP TREE</b>
Has clusters of fruit that look and smell like hops.			
3 to 4 ft. ....	.20	2.50	—
4 to 6 ft. ....	.40	3.50	—
6 to 8 ft. ....	.50	4.50	—
<b>PYRACANTHA coccinea lalandi, 9'-12'</b>			<b>EVERGREEN FIRETHORN</b>
Evergreen. A beautiful broad-leaved evergreen with large clusters of orange berries in the fall. Needs protection in the North.			
3" pots, strong 3 yr. old plants .....	.75	6.00	50.00
<b>QUERCUS alba, 100'</b>			<b>WHITE OAK</b>
Best planted in spring. The most rugged oak of all, slow in growth but makes magnificent tree.			
4 to 6 ft. ....	2.00	—	—
— <b>coccinea, 75'-90'</b>			<b>SCARLET OAK</b>
Most striking autumn colors; tall, stately grower, deeply cut leaves.			
6 to 8 ft. ....	1.90	17.50	—
8 to 10 ft.—1¼ to 1½ in.	3.00	29.00	—
— <b>macrocarpa, 75'-80'</b>			<b>MOSSY CUP OAK</b>
Vigorous grower of picturesque appearance owing to its corky branches.			
4 to 6 ft. ....	1.50	14.00	—
6 to 8 ft. ....	2.00	18.00	—
8 to 10 ft. ....	2.75	25.50	—
— <b>palustris, 75'-90'</b>			<b>PIN OAK</b>
Takes most kindly to cultivation; prefers moist soil, but is very adaptable. Particularly fitting as a street tree; good autumn effects.			
8 to 10 ft. ....	2.25	20.00	—
8 to 10 ft.—1¼ to 1½ in.	3.25	30.00	—
9 to 10 ft.—1½ to 1¾ in.	3.75	35.00	—
10 to 11 ft.—1¾ to 2 in....	4.50	—	—
11 to 12 ft.—2 to 2¼ in....	5.50	—	—
12 to 13 ft.—2¼ to 2½ in.	6.50	—	—
13 to 14 ft.—2½ to 3 in....	8.00	—	—
13 to 15 ft.—3 to 3½ in....	10.00	—	—
14 to 15 ft.—3½ in. ....	12.00	—	—
— <b>phellos, 60'-80'</b>			<b>WILLOW OAK</b>
Leaves long and entire, like the Willow; retain their green color until late in autumn.			
4 to 6 ft. ....	1.50	—	—
6 to 8 ft. ....	2.00	—	—
— <b>prinus</b>			<b>CHESTNUT OAK</b>
6 to 8 ft. ....	2.00	—	—
8 to 10 ft. ....	2.75	—	—
— <b>rubra, 75'-90'</b>			<b>RED OAK</b>
Comparatively quick growth; rich autumn coloring in greens and reds.			
6 to 8 ft. ....	2.25	20.00	—
8 to 10 ft. ....	2.75	25.00	—
8 to 10 ft.—1¼ to 1½ in.	3.25	30.00	—
9 to 10 ft.—1½ to 1¾ in.	3.75	35.00	—
9 to 11 ft.—1¾ to 2 in....	4.50	—	—
10 to 12 ft.—2 to 2¼ in....	6.50	—	—



Retinosporas. The variety squarrosa shows in the foreground with pisifera next. In the background is a row of Juniper Hibernica. Note how well shaped and compact these evergreens are because of careful pruning.

RETINOSPORA obtusa compacta, 2½'-4'

FOOTBALL CYPRESS

Evergreen. Almost spherical in shape. Good green throughout winter. Very useful in foundation or formal work.

	Each	Per 10	Per 100
12 to 15 in., B. & B. ....	1.25	10.00	85.00
15 to 18 in., B. & B. ....	1.75	15.00	125.00
18 to 24 in., B. & B. ....	2.25	20.00	175.00
2 ft., B. & B. ....	3.25	—	—

—gracilis, 12'-15'

SLENDER HINOKI CYPRESS

Narrow irregular pyramid, rich dark green foliage. Slow grower—picturesque.

	Each	Per 10	Per 100
2 to 2½ ft., B. & B. ....	2.75	—	—
2½ to 3 ft., B. & B. ....	3.50	—	—
3 ft., B. & B. ....	5.00	—	—

—pisifera, 25'-35'

SAWARA CYPRESS

Evergreen. Quick grower. Loosely pyramidal.

	Each	Per 10	Per 100
15 to 18 in., B. & B. ....	1.35	12.00	100.00
18 to 24 in., B. & B. ....	1.50	13.50	125.00
2 to 2½ ft., B. & B. ....	2.00	18.50	175.00
2½ to 3 ft., B. & B. ....	2.75	25.00	—
3 to 3½ ft., B. & B. ....	3.75	35.00	—

—aurea, 25'-35'

GOLDEN SAWARA CYPRESS

Evergreen. Foliage bright yellow, especially in spring.

	Each	Per 10	Per 100
15 to 18 in., B. & B. ....	1.40	13.00	110.00
18 to 24 in., B. & B. ....	1.75	15.00	135.00
2 to 2½ ft., B. & B. ....	2.50	22.50	200.00
2½ to 3 ft., B. & B. ....	3.00	27.50	—
3 to 3½ ft., B. & B. ....	3.75	—	—

—filifera, 15'-20'

THREAD BRANCHED CYPRESS

Evergreen. Has long, stringy, drooping branches and bright green foliage. Graceful and decorative.

	Each	Per 10	Per 100
15 to 18 in., B. & B. ....	1.50	14.00	130.00
18 to 24 in., B. & B. ....	2.25	20.00	185.00
2 to 2½ ft., B. & B. ....	2.75	26.00	250.00
2½ to 3 ft., B. & B. ....	3.50	32.50	—
3 to 3½ ft., B. & B. ....	4.00	37.50	—

RETINOSPORA—continued	Each	Per 10	Per 100
— — — aurea, 10'-12' GOLDEN THREAD BRANCHED CYPRESS Evergreen. Very bright, conspicuous, golden yellow. Grows more slowly than preceding.			
8 to 10 in., B. & B. ....	1.00	9.00	—
10 to 12 in., B. & B. ....	1.35	12.50	—
12 to 15 in., B. & B. ....	1.75	—	—
— — — plumosa, 25'-35' PLUME CYPRESS Evergreen. Forms a dense cone of fine texture. Useful for shearing into formal shapes.			
12 to 15 in., B. & B. ....	1.00	7.50	60.00
15 to 18 in., B. & B. ....	1.25	10.00	90.00
18 to 24 in., B. & B. ....	1.50	13.50	125.00
2 to 2½ ft., B. & B. ....	2.00	18.50	175.00
2½ to 3 ft., B. & B. ....	2.75	26.50	—
3 to 3½ ft., B. & B. ....	3.75	36.00	—
3½ to 4 ft., B. & B. ....	4.50	—	—
4 ft., B. & B. ....	5.50	—	—
— — — aurea, 20'-25' GOLDENPLUME CYPRESS Evergreen.			
12 to 15 in., B. & B. ....	1.10	10.00	85.00
15 to 18 in., B. & B. ....	1.50	13.50	125.00
18 to 24 in., B. & B. ....	2.00	17.50	160.00
2 to 2½ ft., B. & B. ....	2.50	23.50	—
2½ to 3 ft., B. & B. ....	3.00	—	—
— — — lutescens, 2½'-3' DWARF YELLOW PLUME CYPRESS Evergreen. Forms a low, broad, round-topped bush; bright yellow tipped branchlets.			
12 to 15 in., B. & B. ....	1.25	11.00	100.00
15 to 18 in., B. & B. ....	2.00	18.00	170.00
18 to 24 in., B. & B. ....	2.50	22.50	—
2 ft., B. & B. ....	3.50	—	—
— squarrosa nana Evergreen. A very attractive dwarf evergreen of slow growth, very desirable for rock work. Color same as Squarrosa.			
6 to 8 in. ....	1.00	9.00	—
8 to 10 in. ....	1.25	11.50	—
— squarrosa veitchi, 25'-30' VEITCH MOSS CYPRESS Evergreen. Foliage blue-gray, feathery and dense, giving soft woolly appearance. Broad pyramidal outline when young.			
12 to 15 in., B. & B. ....	1.00	9.00	75.00
15 to 18 in., B. & B. ....	1.25	11.00	100.00
18 to 24 in., B. & B. ....	1.75	16.00	150.00
2 to 2½ ft., B. & B. ....	2.75	25.00	—
— — — ericoides, 3'-4' HEATH RETINOSPORA Evergreen. Has heather-like leaves, giving woolly effect. Forms a round, broad bush.			
12 to 15 in., B. & B. ....	.70	6.00	50.00
15 to 18 in., B. & B. ....	.90	8.00	75.00
18 to 24 in., B. & B. ....	1.25	11.00	—
RHAMNUS cathartica, 9'-10' COMMON BUCKTHORN Dark green leaves, black berries. Valuable background shrub.			
2 to 3 ft. ....	.30	2.50	—
3 to 4 ft. ....	.40	3.50	—
— frangula, 8'-9' GLOSSY BUCKTHORN Berries red, changing to black.			
2 to 3 ft. ....	.25	2.00	15.00
3 to 4 ft. ....	.35	2.50	20.00
4 to 5 ft. ....	.40	3.00	—



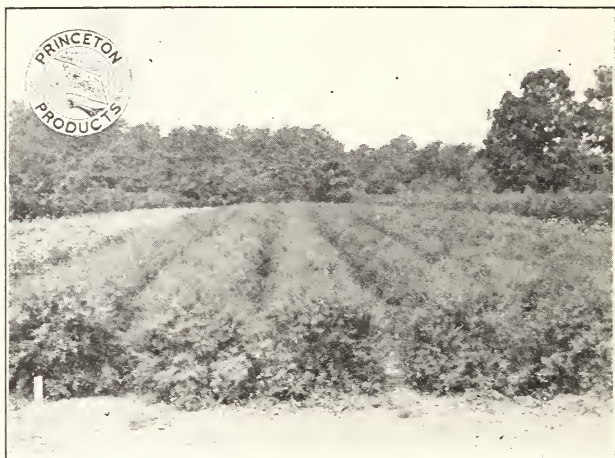
	Each	Per 10	Per 100
<b>RHODODENDRON carolinianum, 4'-6'</b>			
CAROLINA RHODODENDRON			
Bright pink flowers, May-June. Best in open places.			
15 to 18 in., B. & B. ....	2.50	22.50	—
18 to 24 in., B. & B. ....	3.00	27.50	—
2 to 2½ ft., B. & B. ....	3.50	—	—
<b>—catawbiense, 6'-9'</b>			
CATAWBA RHODODENDRON			
Large rosy purple flowers. May-June. Deep green leaves. Prefers half shade.			
15 to 18 in., B. & B. ....	2.50	22.50	200.00
18 to 24 in., B. & B. ....	2.75	25.00	235.00
2 to 2½ ft., B. & B. ....	3.25	30.00	—
2½ to 3 ft. B. & B. ....	4.00	—	—
<b>—maximum, 8'-12'</b>			
ROSEBAY RHODODENDRON			
Evergreen. Beautiful light pink flowers freely produced in May-June. Large, handsome foliage, most effective in masses.			
18 to 24 in., B. & B. ....	2.50	22.50	200.00
2 to 2½ ft., B. & B. ....	3.00	27.50	250.00
2½ to 3 ft. B. & B. ....	3.50	32.50	300.00
3 to 4 ft., B. & B. ....	4.00	37.50	350.00
4 to 5 ft., B. & B. ....	5.00	45.00	425.00
<b>RHODOTYPOS kerrioides, 4'-5'</b>			
WHITE KERRIA			
Fresh green foliage, pure white flowers, May-June. Shining black bead-like berries all winter. Also called Jetbead.			
18 to 24 in. ....	.40	3.00	20.00
2 to 3 ft. ....	.45	3.50	25.00
3 to 4 ft. ....	.55	4.50	—
<b>RHUS canadensis (aromatica), 4'-5'</b>			
FRAGRANT SUMAC			
Clusters of small yellow flowers, April-May. Most attractive in June when covered with coral-red fruits. Withstands drought. Aromatic foliage.			
15 to 18 in. ....	.35	3.00	25.00
18 to 24 in. ....	.45	3.50	—
2 to 3 ft. ....	.60	5.00	—
<b>—copallina, 12'-13'</b>			
SHINING SUMAC			
Showy crimson fruits; good autumn coloring. Makes show in poor arid situations; good for massing.			
18 to 24 in. ....	.30	2.50	20.00
2 to 3 ft. ....	.35	3.00	25.00
3 to 4 ft. ....	.40	3.50	30.00
<b>*—cotinus, 10'-12'</b>			
SMOKE TREE			
Also called Purple Fringe.			
18 to 24 in. ....	.70	6.00	—
2 to 3 ft. ....	.80	7.00	—
3 to 4 ft. ....	1.00	8.50	—
<b>—glabra, 10'-12'</b>			
SMOOTH SUMAC			
Crimson fruits in bunches; rich autumn coloring; thrives in poor soils.			
2 to 3 ft. ....	.25	2.00	—
3 to 4 ft. ....	.30	2.50	—
4 to 5 ft. ....	.35 <sup>2</sup>	3.00	—
<b>—laciniata, 4'-5'</b>			
CUTLEAF SMOOTH SUMAC			
Delicately cut leaves; grows slowly.			
18 to 24 in. ....	.45	3.50	30.00
2 to 3 ft. ....	.50	4.00	35.00
3 to 4 ft. ....	.55	4.50	—

RHUS—continued	Each	Per 10	Per 100
—typhina, 15'-18'		STAGHORN	SUMAC
Picturesque habit; brilliant autumn effect.			
2 to 3 ft. ....	.25	2.00	15.00
3 to 4 ft. ....	.35	2.50	20.00
4 to 5 ft. ....	.45	3.50	30.00
5 to 6 ft. ....	.50	4.00	—
6 to 8 ft. ....	.55	4.50	—
—laciniata, 14'-15'		CUTLEAF STAGHORN	SUMAC
Leaves are finely cut, giving attractive feathery appearance.			
2 to 3 ft. ....	.35	2.50	20.00
3 to 4 ft. ....	.45	3.50	30.00
4 to 5 ft. ....	.55	4.50	—
5 to 6 ft. ....	.60	5.50	—
RIBES odoratum (aureum), 7'-8'		GOLDEN CURRANT	
Fragrant yellow flowers in May. Useful for under planting.			
2 to 3 ft. ....	.30	2.50	20.00
3 to 4 ft. ....	.40	3.00	25.00
4 to 5 ft. ....	.40	3.50	—
ROBINIA hispida, 5'-6'		ROSE ACACIA	
Rosy pink, attractive flowers, May-June. Soon develops into a mass.			
18 to 24 in. ....	.40	3.00	25.00
2 to 3 ft. ....	.50	4.00	35.00
3 to 4 ft. ....	.60	5.00	—
—pseudoacacia, 60'-80'			LOCUST
Has fragrant white flowers in May.			
4 to 6 ft. ....	.50	4.00	30.00
6 to 8 ft. ....	.70	6.00	50.00
8 to 10 ft. ....	1.00	8.50	—
10 to 12 ft. ....	1.50	12.50	—
ROSA blanda, 4'-5'		MEADOW ROSE	
Pink, May. Almost thornless; reddish branches.			
18 to 24 in. ....	.35	2.50	20.00
2 to 3 ft. ....	.45	3.50	30.00
—hugonis, 5'-6'		GOLDEN ROSE OF CHINA	
A very desirable border rose with very attractive yellow flowers.			
18 to 24 in. ....	.50	4.00	—
2 to 3 ft. ....	.65	5.50	—
—humilis		PASTURE ROSE	
12 to 18 in. ....	.30	2.50	20.00
18 to 24 in. ....	.35	3.00	25.00
—lucida, 5'-6'		VIRGINIA ROSE	
Pink, June. Red decorative fruits.			
15 to 18 in. ....	.30	2.50	20.00
18 to 24 in. ....	.35	3.00	25.00
—multiflora, 9'-10'		JAPANESE ROSE	
White, June. Vigorous, free flowering and fragrant.			
3 to 4 ft. ....	.40	3.00	25.00
4 to 5 ft. ....	.45	3.50	30.00
—nitida, 3'-4'		BRISTLY ROSE	
Deep pink, June. Good for holding banks and general mass planting; good autumn coloring.			
15 to 18 in. ....	.30	2.50	20.00
18 to 24 in. ....	.35	3.00	25.00
—palustris (carolina), 6'-7'		SWAMP ROSE	
Pink, May-July. Good for swampy places.			
18 to 24 in. ....	.40	3.00	—
2 to 2½ ft. ....	.45	3.50	—

ROSA—continued	Each	Per 10	Per 100
—rubiginosa, 5'-6'		SWEETBRIEF	
Bright pink flowers, June. Good foliage with aromatic odor.			
18 to 24 in. ....	.30	2.50	20.00
2 to 3 ft. ....	.40	3.00	25.00
3 to 4 ft. ....	.50	4.00	35.00
—rubrifolia (ferruginea), 5'-6'		REDLEAF ROSE	
Has distinct purplish-red leaves and bark; good winter subject.			
18 to 24 in. ....	.40	3.50	—
2 to 3 ft. ....	.50	—	—
—rugosa, 4'-5'		RED RUGOSA ROSE	
Handsome shrub, large pink flowers, June-Sept. Rich green foliage and large red fruits; useful in either shrubbery border or as hedge.			
18 to 24 in. ....	.25	2.00	15.00
2 to 3 ft. ....	.40	3.00	25.00
3 to 4 ft. ....	.45	—	—
—alba, 4'-5'		WHITE RUGOSA ROSE	
18 to 24 in. ....	.40	3.00	25.00
2 to 3 ft. ....	.50	4.00	35.00
3 to 4 ft. ....	.55	—	—
—setigera, 5'-6'		PRAIRIE ROSE	
Deep rose flower, June-July. Vigorous grower.			
2 to 3 ft. ....	.30	2.50	20.00
3 to 4 ft. ....	.35	3.00	25.00
4 to 5 ft. ....	.45	3.50	30.00
—spinosissima, 3'-4'		SCOTCH ROSE	
A dainty grower, but compact; branches covered with soft thorns; attractive small foliage.			
12 to 15 in. ....	.30	2.50	20.00
15 to 18 in. ....	.45	3.50	30.00
18 to 24 in. ....	.55	4.50	40.00
—moyesi, 6'		MOYES ROSE	
Large blood red flowers, beautiful foliage. Develops into a fine bushy specimen.			
2 year ....	.60	5.00	—
CLIMBING AND TRAILING ROSES			
—wichuraiana, white		MEMORIAL ROSE	
2 to 3 ft. ....	.40	3.00	25.00
3 to 4 ft. ....	.50	4.00	30.00
—albertine			
Very free flowering rambler with well-shaped large double flowers of a pleasing cameo pink with silvery suffusion. Sweetly scented.			
2 yr. ....	.50	4.50	40.00
—American pillar,—single red, white center			
2 to 3 ft. ....	.40	3.00	25.00
3 to 4 ft. ....	.45	3.50	30.00
—Dr. W. Van Fleet, shell pink			
18 to 24 in. ....	.35	2.50	20.00
2 to 3 ft. ....	.40	3.00	25.00
3 to 4 ft. ....	.45	3.50	30.00
—Dorothy Perkins, pink			
18 to 24 in. ....	.25	2.00	15.00
2 to 3 ft. ....	.30	2.50	20.00
3 to 4 ft. ....	.35	3.00	25.00
—white			
18 to 24 in. ....	.30	2.00	—
2 to 3 ft. ....	.35	2.50	—
3 to 4 ft. ....	.40	3.00	—

ROSA—continued	Each	Per 10	Per 100
—Emily Gray			
A real yellow climbing rose with well-shaped long pointed buds. Color beautiful orange yellow.			
2 yr. ....	.60	5.00	—
—excelsa.	RED DOROTHY PERKINS		
2 to 3 ft. ....	.30	2.50	20.00
3 to 4 ft. ....	.35	3.00	25.00
—gardenia, yellow			
2 to 3 ft. ....	.40	3.00	25.00
3 to 4 ft. ....	.45	3.50	30.00
—silver moon, semi-double white			
18 to 24 in. ....	.40	3.00	25.00
2 to 3 ft. ....	.45	3.50	30.00
3 to 4 ft. ....	.50	4.00	35.00
—yellow rambler			
2 to 3 ft. ....	.30	2.00	—
3 to 4 ft. ....	.35	2.50	—
RUBUS odoratus, 5'-6'	FLOWERING RASPBERRY		
Rose-colored, fragrant flowers produced all summer. Particularly good for covering banks, especially in shade.			
2 to 3 ft. ....	.35	2.50	20.00
3 to 4 ft. ....	.40	3.00	25.00
4 to 5 ft. ....	.40	3.50	—
SALISBURIA adiantifolia (See GINKGO)			
SALIX babylonica, 50'-60'	BABYLON WEeping WILLOW		
Particularly appropriate for waterside planting with its long pendulous branches.			
6 to 8 ft. ....	1.00	8.50	60.00
8 to 10 ft. ....	1.50	12.00	90.00
10 to 12 ft. ....	2.00	16.00	135.00
10 to 12 ft.—2 to 2½ in. ....	2.50	20.00	180.00
—blanda (dolorosa), 40'-50'	WISCONSIN WEeping WILLOW		
Very hardy.			
4 to 6 ft. ....	.65	5.00	40.00
6 to 8 ft. ....	.85	6.50	50.00
8 to 10 ft. ....	1.00	9.00	—
—caprea (bush form), 15'-20'	PUSSY WILLOW		
Very desirable for spring effects. Will do well on dry as well as wet places.			
2 to 3 ft. ....	.25	2.00	—
3 to 4 ft. ....	.30	2.50	—
4 to 5 ft. ....	.35	3.00	—
5 to 6 ft. ....	.40	3.50	—
—elegantissima, 60'-70'	THURLOW WEeping WILLOW		
Vigorous upright grower; best for street planting.			
6 to 8 ft. ....	1.00	8.50	60.00
8 to 10 ft. ....	1.50	12.00	90.00
10 to 12 ft. ....	1.85	15.00	—
10 to 12 ft.—2 to 2½ in. ....	2.25	20.00	—
—incana (rosmarinifolia), 12'-15'	ROSEMARY WILLOW		
Good for fine texture in foliage effects.			
18 to 24 in. ....	.25	2.00	15.00
2 to 3 ft. ....	.30	2.50	20.00
—pentandra, 20'-30'	LAUREL WILLOW		
Shining rich dark green leaves make this a worthwhile background; valuable for seashore planting.			
3 to 4 ft. ....	.40	3.00	20.00
4 to 6 ft. ....	.50	4.00	30.00
6 to 8 ft. ....	.75	5.00	40.00

	Each	Per 10	Per 100
<b>SALIX—continued</b>			
—salamoni, 60'-70'	SALAMON WEEPING WILLOW		
The most vigorous of all "weeping willows."			
6 to 8 ft. ....	.65	5.00	—
8 to 10 ft. ....	.75	—	—
—vitellina aurea, 25'-30'	RUSSIAN GOLDEN WILLOW		
3 to 4 ft. ....	.35	2.50	20.00
4 to 6 ft. ....	.50	4.00	30.00
6 to 8 ft. ....	.75	6.00	50.00
— — britzensis, 20'-25'	BRONZE GOLDEN WILLOW		
Particularly good when used with the preceding variety.			
4 to 6 ft. ....	.50	4.00	30.00
6 to 8 ft. ....	.75	6.00	50.00
— — pendula	WEeping GOLDEN WILLOW		
Weeping habit, similar to <i>babylonica</i> , with yellow branches.			
4 to 6 ft. ....	.75	6.00	50.00
6 to 8 ft. ....	1.00	8.50	70.00
8 to 10 ft. ....	1.50	12.50	100.00
10 to 12 ft. ....	2.00	17.50	—
<b>SAMBUCUS canadensis, 8'-9'</b>	AMERICAN ELDER		
Useful for swampy places; fragrant flowers, June-July.			
2 to 3 ft. ....	.35	2.50	20.00
3 to 4 ft. ....	.40	3.00	25.00
4 to 5 ft. ....	.40	3.50	30.00
— — acutiloba, 8'-9'	CUTLEAF AMERICAN ELDER		
Leaves intricately cut.			
2 to 3 ft. ....	.35	2.50	20.00
3 to 4 ft. ....	.40	3.00	25.00
4 to 5 ft. ....	.40	3.50	30.00
— — aurea, 10'-12'	GOLDEN AMERICAN ELDER		
Has conspicuous yellow foliage.			
18 to 24 in. ....	.25	2.00	15.00
2 to 3 ft. ....	.35	2.50	20.00
3 to 4 ft. ....	.45	3.50	25.00
— — pubens, 7'-8'	SCARLET ELDER		
Flowers in April-May. Bright red fruits ripen in June. Very attractive.			
2 to 3 ft. ....	.30	—	—
3 to 4 ft. ....	.40	—	—
4 to 5 ft. ....	.50	—	—
— — racemosa, 8'-10'	EUROPEAN RED ELDER		
2 to 3 ft. ....	.30	—	—
3 to 4 ft. ....	.40	—	—
4 to 5 ft. ....	.50	—	—
<b>SOPHORA japonica, 30'-40'</b>	CHINESE SCHOLARTREE		
White flowers in late summer; noticeable green bark in winter. Also called Pagoda Tree.			
2 to 3 ft. ....	1.00	—	—
3 to 4 ft. ....	1.25	—	—
4 to 5 ft. ....	1.50	—	—
<b>SORBARIA aitchisoni, 4'-5'</b>	KASHMIR FALSE SPIRAEA		
Graceful, compound foliage; flowers creamy white, July-Sept.			
2 to 3 ft. ....	.40	3.00	25.00
3 to 4 ft. ....	.50	4.00	—



*Spiraea thunbergi*. Three year old good bushy plants, a beautiful lot of this very desirable spiraea. Be sure to stock some for they are always in demand.

SORBARIA—continued	Each	Per 10	Per 100
—sorbifolia, 4'-5'	URAL FALSE SPIRAEA		
Fluffy heads of white flowers, June-August.			
2 to 3 ft. ....	.35	—	—
3 to 4 ft. ....	.40	—	—
4 to 5 ft. ....	.50	—	—
SORBUS americana, 25'-30'	MOUNTAIN ASH		
A valuable tree with orange scarlet berries.			
3 to 4 ft. ....	.75	6.50	—
4 to 5 ft. ....	.85	7.00	—
—aucuparia, 25'-30'	EUROPEAN MOUNTAIN ASH		
A valuable tree on a small lawn; the scarlet berries are quite striking.			
4 to 5 ft. ....	.75	6.50	—
5 to 6 ft. ....	.75	6.00	—
6 to 8 ft. ....	1.25	10.00	—
8 to 10 ft. ....	1.50	12.50	—
10 to 12 ft. ....	2.50	22.50	—
—pendula			
5 to 6 ft. stems—2 yr. ....	2.00	17.50	—
SPIRAEA arguta, 5'-6'	GARLAND SPIRAEA		
Small light green leaves; very free flowering. May. Similar to, but more vigorous than thunbergi.			
12 to 18 in. ....	.25	2.00	—
18 to 24 in. ....	.30	2.00	—
2 to 2½ ft. ....	.35	2.50	—
—billiardi, 5'-6'	BILLIARD SPIRAEA		
Bright pink fluffy flower spikes, July-October. Valuable for dry places.			
18 to 24 in. ....	.20	1.50	12.00
2 to 3 ft. ....	.35	2.50	18.00
3 to 4 ft. ....	.40	3.00	22.00
—bumalda, 3'	BUMALDA SPIRAEA		
Light pink flower, July-Sept. A good dwarf "facing" shrub.			
15 to 18 in. ....	.30	2.00	16.00
18 to 24 in. ....	.35	2.50	22.00
2 to 2½ ft. ....	.50	4.00	30.00
2½ to 3 ft. ....	.55	4.50	35.00

SPIRAEA—continued		Each	Per 10	Per 100	Per 1000
—anthony waterer, 3'					
				WATERER SPIRAEA	
Deeper rose pink than preceding; very free flowering all summer.					
12 to 15 in. ....	.20	1.50	12.00	80.00	
15 to 18 in. ....	.25	2.00	15.00	100.00	
18 to 24 in. ....	.35	2.50	20.00	150.00	
2 to 2½ ft. ....	.40	3.00	25.00	200.00	
2½ to 3 ft. ....	.50	4.00	30.00	—	
—froebeli, 4'					
				FROEBEL SPIRAEA	
Smaller, but more vigorous than preceding.					
		Each	Per 10	Per 100	
18 to 24 in. ....	.25	2.00	15.00		
2 to 3 ft. ....	.35	2.50	20.00		
3 to 4 ft. ....	.45	3.50	25.00		
—fortunei (callosa rosea), 4'					
				FORTUNE SPIRAEA	
Pink flowering; more vigorous form of following variety.					
18 to 24 in. ....	.25	2.00	15.00		
2 to 3 ft. ....	.35	2.50	20.00		
3 to 4 ft. ....	.40	3.00	25.00		
—henryi, 6'-8'					
				HENRY SPIRAEA	
A rather new variety, not widely known.					
18 to 24 in. ....	.30	2.50	—	—	
2 to 3 ft. ....	.35	3.00	—	—	
3 to 4 ft. ....	.40	3.50	30.00		
—japonica (callosa alba), 3'					
				JAPANESE SPIRAEA	
White, June-July. Purplish-green foliage when young.					
12 to 15 in. ....	.30	2.00	15.00		
15 to 18 in. ....	.35	2.50	18.00		
18 to 24 in. ....	.40	3.00	22.00		
2 to 2½ ft. ....	.45	3.50	30.00		
—latifolia (salicifolia)					
				MEADOW SPIRAEA	
18 to 24 in. ....	.20	1.80	—	—	
2 to 3 ft. ....	.25	2.00	15.00		
3 to 4 ft. ....	.30	2.50	20.00		
—nipponica rotundifolia, 8'-9'					
				BIG NIPPON SPIRAEA	
White, June. Good dark green leaves persisting till late fall.					
2 to 3 ft. ....	.35	—	—	—	
3 to 4 ft. ....	.40	—	—	—	
—opulifolia (See PHYSOCARPUS OPULIFOLIA)					
		Each	Per 10	Per 100	Per 1000
—prunifolia, 7'-8'					
				BRIDALWREATH	
White, May. Free-flowering; handsome dark green shining foliage, turning orange in autumn.					
2 to 3 ft. ....	.35	2.50	20.00	150.00	
3 to 4 ft. ....	.40	3.00	25.00	200.00	
4 to 5 ft. ....	.50	4.00	30.00	250.00	
—reevesiana, 7'-8'					
				REEVES SPIRAEA	
Pure white, May-June. Graceful, arching habit; retains leaves until late.					
18 to 24 in. ....	.25	2.00	15.00		
2 to 3 ft. ....	.35	2.50	20.00		
3 to 4 ft. ....	.40	3.00	25.00		
—sorbifolia (See SORBARIA sorbifolia)					

## SPIRAEA—continued

—thunbergi, 4'-5'

THUNBERG SPIRAEA

Slender, arching branches clothed with pure-white flowers, April-May. Small, feathery, light-green leaves. Valuable for seaside planting.

	Each	Per 10	Per 100	Per 1000
18 to 24 in. ....	.35	2.50	20.00	150.00
2 to 2½ ft. ....	.40	3.50	25.00	200.00
2½ to 3 ft. ....	.50	4.00	35.00	250.00

Each Per 10 Per 100

—tomentosa, 3'-4'

HARDHACK

Woolly, rose-pink flowers, July-Sept. Leaves brownish underside. Good in masses for low ground.

18 to 24 in. ....	.30	2.00	15.00	
2 to 3 ft. ....	.35	2.50	20.00	

—van houttei, 8'-9'

VANHOUTTE SPIRAEA

White, May-June. Graceful habit. Extremely free flowering and very adaptable.

18 to 24 in. ....	.25	2.00	12.00	
2 to 3 ft. ....	.35	2.50	15.00	
3 to 4 ft. ....	.40	3.00	20.00	

STAPHYLEA colchica, 10'-12'

COLCHIS BLADDERNUT

Flowers white, May-June. Fragrant. Decorative seed pods.

2 to 3 ft. ....	.70	6.00	—	—
3 to 4 ft. ....	.80	—	—	—

STEPHANANDRA flexuosa, 5'-6'

CUTLEAF STEPHANANDRA

Graceful, compact habit; handsome foliage.

18 to 24 in. ....	.35	2.50	22.00	
2 to 2½ ft. ....	.45	3.50	25.00	
2½ to 3 ft. ....	.50	4.00	30.00	
3 to 4 ft. ....	.55	4.50	35.00	

STRANVAESIA davidiana, 4'-6'

Evergreen. These are handsome shrubs with lustrous leaves and small white flowers. Scarlet fruits.

2 yr. grafts .....	.75	6.50	50.00	
--------------------	-----	------	-------	--

STYRAX japonica, 12'-15'

JAPANESE STORAX

White, bell-shaped, pendant flowers, June-July. Makes a handsome specimen.

18 to 24 in. ....	.30	2.50	—	—
2 to 3 ft. ....	.45	3.50	30.00	
3 to 4 ft. ....	.55	4.50	40.00	
4 to 5 ft. ....	.65	5.50	50.00	
5 to 6 ft. ....	.75	7.00	—	—

SYMPHORICARPOS racemosus, 5'-6'

SNOWBERRY

Conspicuous, white berries, attractive foliage. Most adaptable, but best in half shady moist locations.

18 to 24 in. ....	.30	2.00	15.00	
2 to 3 ft. ....	.40	3.00	20.00	
3 to 4 ft. ....	.45	3.50	25.00	

—vulgaris, 4'-5'

CORALBERRY

Coral red berries persisting throughout winter. Good for shade, and bank planting.

18 to 24 in. ....	.30	2.00	12.00	
2 to 3 ft. ....	.35	2.50	15.00	
3 to 4 ft. ....	.40	3.00	20.00	

SYRINGA chinensis (rothomagensis), 8'-9'

CHINESE LILAC

Slender branches, graceful habit. Violet flowers in May. Free flowering.

18 to 24 in. ....	.35	3.00	25.00	
2 to 3 ft. ....	.40	3.50	30.00	
3 to 4 ft. ....	.50	4.00	—	—



SYRINGA—continued		Each	Per 10	Per 100
— saugeana 8'-9'		PURPLE CHINESE LILAC		
Deep purple flowers.				
18 to 24 in. ....		.35	3.00	25.00
2 to 3 ft. ....		.45	3.50	30.00
3 to 4 ft. ....		.55	4.50	40.00
— japonica, 18'-20'		JAPANESE TREE LILAC		
Loose bunches creamy white flowers, June-July. Handsome foliage; grows into well-shaped specimen.				
2 to 3 ft. ....		.40	3.50	30.00
3 to 4 ft. ....		.60	4.50	40.00
4 to 5 ft. ....		.80	7.00	65.00
— josikaea, 9'-10'		HUNGARIAN LILAC		
Violet flowers, June. Good shining dark green foliage.				
18 to 24 in. ....		.35	3.00	25.00
2 to 3 ft. ....		.45	3.50	30.00
3 to 4 ft. ....		.50	4.00	35.00
4 to 5 ft. ....		.60	4.50	—
— persica, 9'-10'		PERSIAN PURPLE LILAC		
Blooms freely, lilac, May-June.				
18 to 24 in. ....		.45	3.50	—
2 to 3 ft. ....		.50	4.00	—
— villosa, 7'-8'		LATE LILAC		
Pale pinkish-lilac, June. Fragrant; bushy, compact habit.				
18 to 24 in. ....		.35	3.00	25.00
2 to 3 ft. ....		.50	4.00	30.00
3 to 4 ft. ....		.60	5.00	40.00
4 to 5 ft. ....		.65	5.50	45.00
— vulgaris, 12'-15'		COMMON PURPLE LILAC		
Blooms in early May.				
	Each	Per 10	Per 100	Per 1000
18 to 24 in. ....	.35	2.50	20.00	160.00
2 to 3 ft. ....	.40	3.00	25.00	220.00
3 to 4 ft. ....	.45	3.50	—	—
— alba, 12'-15'		Each	Per 10	Per 100
COMMON WHITE LILAC				
18 to 24 in. ....		.40	3.00	25.00
2 to 3 ft. ....		.50	4.00	35.00
3 to 4 ft. ....		.60	5.00	—

FRENCH LILACS—NAMED VARIETIES

These are all grown from cuttings and are on their own roots, which is the best way Lilacs can be grown, as they will not sucker. It is the most expensive way to grow them, but our prices compare favorably with the cheap, grafted stock. These named Lilacs generally grow from 6'-12' in height, depending on the variety and locality.

18 to 24 in. ....	.50	4.50	35.00
2 to 3 ft. ....	.65	5.50	45.00
3 to 4 ft. ....	.80	7.00	60.00

- Alphonse Laval, double light purple.
- Charles The Tenth, reddish purple single.
- Ludwig Spaeth, single reddish purple.
- Marie Le Graye, single white.
- Michel Buchner, double lilac.
- Mme. Casimir Perrier, double white.
- Mme. Lemoine, double white.
- President Grevy, double blue.
- Rubra de Marly, single light blue.
- Wm. Robinson, double violet pink.



*Taxus cuspidata*. Part of our stock of this desirable evergreen. By frequent trimming we produce a compact handsome plant.

Each Per 10 Per 100

**TAMARIX africana, 12'-14'** AFRICAN TAMARIX

Pink, April-May. Has feathery gray-green foliage. Very effective near water; thrives at seashore.

2 to 3 ft. ....	.30	2.00	15.00
3 to 4 ft. ....	.35	2.50	20.00
4 to 5 ft. ....	.35	3.00	25.00

—*gallica*, 8'-9'

FRENCH TAMARIX

Light pink, May-June, blue-green foliage.

18 to 24 in. ....	.25	1.50	10.00
2 to 3 ft. ....	.25	2.00	15.00
3 to 4 ft. ....	.30	2.50	—

**TAXUS baccata adpressa erecta, 3'-5'**

SHORTLEAF ENGLISH YEW

Evergreen. Compact, upright habit. Stiff, dark green leaves crowded on branches.

10 to 12 in., B. & B. ....	1.00	9.00	—
12 to 15 in., B. & B. ....	1.25	11.00	—

—*repandens*, 18"-24"

SPREADING ENGLISH YEW

Evergreen. Spreading, horizontal branches, dark blue-green leaves. Valuable for low planting.

10 to 12 in., B. & B. ....	1.00	9.00	75.00
12 to 15 in., B. & B. ....	1.75	15.00	125.00
15 to 18 in., B. & B. ....	2.25	20.00	175.00
18 to 24 in., B. & B. ....	2.75	25.00	—

—*canadensis*, 2'-2½'

CANADA YEW

Evergreen. Spreading habit. Bronzy in winter. Prefers shade; good for underplanting.

10 to 12 in., B. & B. ....	1.00	9.00	—
12 to 15 in., B. & B. ....	1.25	11.00	—
15 to 18 in., B. & B. ....	2.00	18.50	—

—*cuspidata*, 4'-5'

SPREADING JAPANESE YEW

Evergreen. Rich, deep green leaves. Spreading, bushy habit. Valuable in foundation plantings. Exceptionally hardy.

12 to 15 in., B. & B. ....	1.75	15.00	125.00
15 to 18 in., B. & B. ....	2.50	22.50	200.00
18 to 24 in., B. & B. ....	3.50	32.50	300.00
2 to 2½ ft., B. & B. ....	4.50	42.50	—

TAXUS—continued	Each	Per 10	Per 100
—capitata, 5'-10'	UPRIGHT JAPANESE YEW		
Evergreen. The upright type of <i>Taxus Cuspidata</i> .			
12 to 15 in., B. & B. ....	1.75	—	—
15 to 18 in., B. & B. ....	2.25	—	—
18 to 24 in., B. & B. ....	3.50	—	—
—nana (brevifolia), 2'-3'	DWARF JAPANESE YEW		
Evergreen. Broad, thick leaves, blackish green. Slow growing and irregular, spreading habit. Exceptionally hardy.			
9 to 12 in., B. & B. ....	1.75	15.00	125.00
12 to 15 in., B. & B. ....	2.50	21.50	200.00
15 to 18 in., B. & B. ....	3.25	30.00	—
THUJA occidentalis, 15'-30'	AMERICAN ARBORVITAE		
Evergreen. Slender pyramid with broad base. Bronzy winter coloring. Good accent plant or for a hedge.			
18 to 24 in., B. & B. ....	1.25	10.00	75.00
2 to 2½ ft., B. & B. ....	1.50	12.50	100.00
2½ to 3 ft., B. & B. ....	2.00	17.50	150.00
3 to 3½ ft., B. & B. ....	2.75	25.00	225.00
3½ to 4 ft., B. & B. ....	3.25	30.00	285.00
4 to 5 ft., B. & B. ....	4.25	40.00	—
5 to 6 ft., B. & B. ....	5.00	—	—
—compacta, 2½'-4'	PARSONS ARBORVITAE		
Evergreen. Almost globe-shaped. Bright green. Useful in formal or foundation planting.			
9 to 12 in., B. & B. ....	.75	6.00	50.00
12 to 15 in., B. & B. ....	1.00	8.50	70.00
15 to 18 in., B. & B. ....	1.35	12.00	100.00
18 to 24 in., B. & B. ....	1.85	16.00	140.00
—elegantissima, 10'-15'	GOLDENTIPPED ARBORVITAE		
Evergreen. Branches tipped with yellow. Rich, lustrous green.			
18 to 24 in., B. & B. ....	1.50	13.50	—
2 to 2½ ft., B. & B. ....	2.00	—	—
2½ to 3 ft., B. & B. ....	2.75	—	—
3 to 3½ ft., B. & B. ....	3.25	—	—
—ellwangeriana, 4'-6'	TOM THUMB ARBORVITAE		
Evergreen. Has heather-like leaves; dense habit; soft, close texture. Forms low, broad, blunt pyramid. Rich purple winter coloring.			
12 to 15 in., B. & B. ....	.75	6.00	50.00
15 to 18 in., B. & B. ....	.90	8.00	70.00
18 to 24 in., B. & B. ....	1.25	11.00	—
2 to 2½ ft., B. & B. ....	1.50	13.50	—
2½ to 3 ft., B. & B. ....	1.75	—	—
—globosa, 2½'-3'	GLOBE ARBORVITAE		
Evergreen. Useful in formal work. Naturally globe shaped.			
9 to 12 in., B. & B. ....	1.00	8.00	65.00
12 to 15 in., B. & B. ....	1.25	10.00	80.00
15 to 18 in., B. & B. ....	1.50	12.50	100.00
18 to 24 in., B. & B. ....	1.75	16.50	—
—hoveyi, 3'-4'	HOVEY ARBORVITAE		
Evergreen. Oval in shape, nearly as broad as high. Bright green foliage.			
12 to 15 in., B. & B. ....	1.00	8.50	65.00
15 to 18 in., B. & B. ....	1.25	11.00	90.00
18 to 24 in., B. & B. ....	1.50	14.00	125.00
2 to 2½ ft., B. & B. ....	2.00	17.50	150.00

THUJA—continued	Each	Per 10	Per 100
—lutea, 10'-15'	GEO. PEABODY ARBORVITAE		
Evergreen. Conspicuous golden yellow form. Columnar outline.			
15 to 18 in., B. & B. ....	1.25	10.00	—
18 to 24 in., B. & B. ....	1.50	13.50	—
2 to 2½ ft., B. & B. ....	2.00	17.50	—
2½ to 3 ft., B. & B. ....	2.75	25.00	—
—plicata, 10'-20'	MOSS ARBORVITAE		
Evergreen. Rich, deep blue-green foliage. Short, stiff branchlets give pleasing effect in light and shade. Formal pyramid.			
18 to 24 in., B. & B. ....	1.50	13.50	120.00
2 to 2½ ft., B. & B. ....	2.00	17.50	150.00
2½ to 3 ft., B. & B. ....	2.50	22.50	—
3 to 3½ ft., B. & B. ....	3.00	27.50	—
—pyramidalis, 15'-30'	PYRAMIDAL ARBORVITAE		
Evergreen. Retains bright green coloring throughout winter. Narrow columnar shape; splendid for accents or formal planting.			
15 to 18 in., B. & B. ....	1.15	10.00	90.00
18 to 24 in., B. & B. ....	1.75	15.00	125.00
2 to 2½ ft., B. & B. ....	2.00	18.00	165.00
2½ to 3 ft., B. & B. ....	2.50	23.50	220.00
3 to 3½ ft., B. & B. ....	3.00	28.50	275.00
3½ to 4 ft., B. & B. ....	3.75	35.00	—
—rosenthalii, 6'-10'	ROSENTHAL ARBORVITAE		
Evergreen. Dense, rugged, columnar form. Slow grower.			
15 to 18 in., B. & B. ....	1.65	15.00	—
18 to 24 in., B. & B. ....	2.00	18.00	—
2 to 2½ ft., B. & B. ....	2.50	23.50	—
2½ to 3 ft., B. & B. ....	3.25	—	—
—umbraculifera, 2'-3'	UMBRELLA ARBORVITAE		
Particularly good—low mushroom shape form with rich green foliage. Very hardy.			
12 to 15 in., B. & B. ....	1.35	12.00	—
15 to 18 in., B. & B. ....	1.75	16.00	—
18 to 24 in., B. & B. ....	2.25	20.00	—
—vervaeneana, 8'-12'	VERVAENE ARBORVITAE		
Evergreen. Variegated with greenish yellow foliage, bronzy in winter. Broadly pyramidal.			
18 to 24 in., B. & B. ....	1.50	13.50	—
2 to 2½ ft., B. & B. ....	2.00	18.00	—
2½ to 3 ft., B. & B. ....	2.50	24.00	—
3 to 3½ ft., B. & B. ....	3.50	32.00	—
—wareana, 12'-15'	SIBERIANA ARBORVITAE		
Evergreen. Light green, fleshy foliage. Broadly pyramidal, rugged in appearance.			
12 to 15 in., B. & B. ....	.85	7.50	65.00
15 to 18 in., B. & B. ....	1.25	11.00	90.00
18 to 24 in., B. & B. ....	1.50	12.50	110.00
2 to 2½ ft., B. & B. ....	2.00	18.00	160.00
2½ to 3 ft., B. & B. ....	2.50	24.00	230.00
—standishi, 15'-20'	STANDISH ARBORVITAE		
Evergreen.			
18 to 24 in., B. & B. ....	1.75	—	—
2 to 2½ ft., B. & B. ....	2.50	—	—
2½ to 3 ft., B. & B. ....	3.25	—	—

	Each	Per 10	Per 100	Per 1000
<b>TILIA americana, 75'-90'</b>				
	AMERICAN LINDEN			
Grows rather quickly, forming an open head. Has fragrant yellow flowers.				
6 to 8 ft. ....	1.50	13.50	125.00	
8 to 10 ft. ....	2.00	17.50	—	
<b>—platyphyllos, 60'-75'</b>				
	BIGLEAF EUROPEAN LINDEN			
6 to 8 ft. ....	2.00	19.00	—	
8 to 10 ft.—1¼ to 1½ in.	2.25	—	—	
9 to 10 ft.—1½ to 1¾ in.	3.50	—	—	
<b>—tomentosa (argentea), 60'-70'</b>				
	SILVERLEAF LINDEN			
Symmetrical and compact. Leaves silvery gray underneath; very noticeable when blown by wind.				
6 to 8 ft. ....	1.75	16.00	—	
8 to 10 ft. ....	2.00	19.00	—	
8 to 10 ft.—1¼ to 1½ in.	2.50	24.00	—	
9 to 11 ft.—1½ to 1¾ in.	3.00	—	—	
<b>—vulgaris, 70'-90'</b>				
	EUROPEAN SMALL LEAF LINDEN			
In late June the fragrant flowers are noticeable; grows symmetrical and compact.				
6 to 8 ft. ....	2.00	18.50	—	
8 to 10 ft. ....	2.25	21.50	—	
8 to 10 ft.—1¼ to 1½ in.	2.50	—	—	
10 to 12 ft.—1½ to 1¾ in.	3.00	—	—	
10 to 12 ft.—1¾ to 2 in.	3.75	—	—	
11 to 12 ft.—2 to 2¼ in.	4.75	—	—	
12 to 14 ft.—3 to 4 in. ....	10.00	—	—	
<b>TSUGA canadensis, 75'-90'</b>				
	CANADA HEMLOCK			
Evergreen. Most graceful and adaptable, the spreading horizontal branches making effective shadow effects. Useful as either clipped hedge or informal planting.				
18 to 24 in., B. & B. ....	2.00	17.50	165.00	
2 to 2½ ft., B. & B. ....	2.75	25.00	240.00	
2½ to 3 ft., B. & B. ....	3.75	35.00	325.00	
3 to 3½ ft., B. & B. ....	4.50	42.50	—	
<b>—caroliniana</b>				
	CAROLINA HEMLOCK			
Evergreen. One of our choicest native evergreens; slower in growth than above.				
2 to 2½ ft., B. & B. ....	3.00	—	—	
2½ to 3 ft., B. & B. ....	4.00	—	—	
3 to 4 ft., B. & B. ....	5.00	—	—	
	Each	Per 10	Per 100	Per 1000
<b>ULMUS americana, 80'-100'</b>				
	AMERICAN ELM			
Stateliness and dignity are here exemplified. Fairly rapid in growth, this typical American tree soon assumes regal proportions and commands respect of all who look upon it.				
4 to 6 ft. ....	.75	6.00	50.00	350.00
6 to 8 ft. ....	1.00	8.50	70.00	600.00
8 to 10 ft. ....	1.50	12.50	110.00	1000.00
8 to 10 ft.—				
1¼ to 1½ in. ....	2.00	18.50	175.00	1650.00
9 to 11 ft.—				
1½ to 1¾ in. ....	2.50	23.50	225.00	—
10 to 12 ft.—				
1¾ to 2 in. ....	3.00	28.50	—	—

ULMUS—continued	Each	Per 10	Per 100
— — moline, 80'-100'			MOLINE ELM
A remarkable new variety of extremely strong growth and large handsome deep grain foliage. Very desirable.			
	Each	Per 10	Per 100
6 to 8 ft. ....	1.25	10.00	90.00
8 to 10 ft. ....	1.75	15.00	125.00
8 to 10 ft.—1¼ to 1½ in.	2.00	18.50	175.00
10 to 12 ft.—1½ to 1¾ in.	2.50	23.50	—
ULMUS, vase shape			
This is the typical spreading elm which has been selected for its splendid characteristics. Large foliage, straight clean stem, quick growth and uniform in shape.			
6 to 8 ft. ....	1.25	10.00	—
8 to 10 ft. ....	1.75	15.00	—
VACCINIUM corymbosum, 5'-6'			HIGHBUSH BLUEBERRY
18 to 24 in. ....	.65	5.50	—
2 to 2½ ft. ....	.75	6.50	—
2½ to 3 ft. ....	1.00	8.50	—
VIBURNUM acerifolium, 4'-5'			MAPLELEAF VIBURNUM
White, May-June. Black fruits, maple-like leaves, turning purple in autumn; good for dry shady places.			
18 to 24 in. ....	.45	3.50	—
—americanum (oxycoccos), 8'-9'			AMERICAN CRANBERRYBUSH
Bright scarlet berries in large bunches, persisting all winter.			
18 to 24 in. ....	.40	3.00	25.00
2 to 3 ft. ....	.50	4.00	35.00
3 to 4 ft. ....	.60	5.00	40.00
—cassinoides, 5'-6'			WITHE-ROD
White, June-July. Berries pink, changing to dark blue. Rich autumn coloring; splendid for massing and near water.			
18 to 24 in. ....	.40	3.50	30.00
2 to 3 ft. ....	.55	4.50	40.00
3 to 4 ft. ....	.65	5.50	—
	Each	Per 10	Per 100
—dentatum, 10'-12'			ARROW-WOOD
White, May-June. Berries blue-black, autumn coloring purple and red; thrives in wet soil.			
2 to 3 ft. ....	.40	3.00	20.00
3 to 4 ft. ....	.50	4.00	30.00
4 to 5 ft. ....	.60	4.50	35.00
	Each	Per 10	Per 100
—dilatatum, 8'-9'			LINDEN VIBURNUM
White, May-June. Scarlet showy berries persisting. Handsome and valuable.			
18 to 24 in. ....	.50	4.00	—
2 to 3 ft. ....	.60	5.00	—
—lantana, 15'-18'			WAYFARING TREE
White, May-June. Handsome, dark green, wrinkled leaves. Berries red, changing to black.			
18 to 24 in. ....	.40	3.50	30.00
2 to 3 ft. ....	.50	4.00	35.00
3 to 4 ft. ....	.60	5.00	45.00
4 to 5 ft. ....	.70	—	—

VIBURNUM—continued		Each	Per 10	Per 100
— rugosum, 15'-18'		WRINKLELEAF WAYFARING TREE		
Has larger and more wrinkled leaves.				
18 to 24 in.	.....	.40	3.50	—
2 to 3 ft.	.....	.50	4.00	—
3 to 4 ft.	.....	.60	5.00	—
— lentago, 18'-20'		NANNYBERRY		
White, May-June. Handsome, shining leaves. Blue-black fruits. Splendid shrub for massing.				
		Each	Per 10	Per 100
18 to 24 in.	.....	.35	3.00	25.00
2 to 3 ft.	.....	.50	4.00	35.00
3 to 4 ft.	.....	.60	5.00	40.00
4 to 5 ft.	.....	.70	6.00	50.00
— molle, 10'-12'		KENTUCKY VIBURNUM		
Larger, darker green leaves, but otherwise similar to "dentatum."				
2 to 3 ft.	.....	.40	3.00	25.00
3 to 4 ft.	.....	.50	4.00	30.00
4 to 5 ft.	.....	.60	4.50	40.00
		Each	Per 10	Per 100
— opulus, 9'-10'		EUROPEAN CRANBERRYBUSH		
18 to 24 in.	.....	.40	3.50	30.00
2 to 3 ft.	.....	.50	4.00	35.00
— nanum, 18"-24"		DWARF CRANBERRYBUSH		
Useful for edging or facing shrub. Rarely flowers. Very compact.				
4 to 6 in.	.....	.15	1.20	10.00
6 to 9 in.	.....	.35	2.50	20.00
9 to 12 in.	.....	.40	3.00	25.00
12 to 15 in.	.....	.50	4.00	—
— sterile, 9'-10'		COMMON SNOWBALL		
Has showy, round head of white flowers, May-June.				
18 to 24 in.	.....	.40	3.00	25.00
2 to 3 ft.	.....	.50	4.00	35.00
3 to 4 ft.	.....	.60	5.00	—
— prunifolium, 10'-12'		BLACKHAW		
Pure white flowers, April-June. Blue-black, glaucous berries. Sturdy habit; handsome shrub.				
18 to 24 in.	.....	.50	4.00	—
2 to 2½ ft.	.....	.60	5.00	—
— rhytidophyllum, 6'-8'		LEATHERLEAF VIBURNUM		
Evergreen. Large, oblong leaves, deep green above, gray beneath; a bold, handsome shrub.				
9 to 12 in., B. & B.	.....	.50	4.00	—
12 to 15 in., B. & B.	.....	.75	6.50	—
15 to 18 in., B. & B.	.....	1.00	9.00	—
18 to 24 in., B. & B.	.....	1.50	13.50	—
2 to 2½ ft., B. & B.	....	2.00	18.50	—
— sieboldi (japonicum), 9'-10'		SIEBOLD VIBURNUM		
White, May-June. Berries pink, changing to black. Handsome, large, dark green leaves. Vigorous.				
18 to 24 in.	.....	.35	3.00	—
2 to 3 ft.	.....	.50	4.00	—
— tomentosum, 7'-8'		DOUBLEFILE VIBURNUM		
Flat heads of white flowers, June. Berries red to black. Good foliage.				
18 to 24 in.	.....	.40	3.50	30.00
2 to 3 ft.	.....	.50	4.00	35.00
3 to 4 ft.	.....	.60	5.00	45.00

VIBURNUM—continued	Each	Per 10	Per 100	
—plicatum, 7'-8'	JAPANESE SNOWBALL			
Showy white flowers in balls, June. Handsome foliage with purple autumn coloring.				
12 to 18 in. ....	.40	3.50	30.00	
18 to 24 in. ....	.50	4.00	35.00	
2 to 2½ ft. ....	.55	4.50	40.00	
2½ to 3 ft. ....	.60	5.00	—	
3 to 4 ft. ....	.70	6.00	—	
4 to 5 ft. ....	.90	8.00	—	
Vinca minor	PERIWINKLE OR MYRTLE			
Evergreen.	Each	Per 10	Per 100	Per 1000
3 in. pots .....	.15	1.20	9.00	80.00
VITEX agnus castus, 4'-5'	Each	Per 10	Per 100	
CHASTE-TREE				
Dainty shrub, lilac flowers. August to September. Gray-green, star-shaped leaves, prefers sun.				
18 to 24 in. ....	.30	2.50	—	
2 to 3 ft. ....	.40	3.00	—	
—macrophylla, 3'-4'				
A great improvement on the type, fine blue flowers, very attractive.				
18 to 24 in. ....	.40	3.00	—	
2 to 3 ft. ....	.50	4.00	—	
WEIGELA amabilis, 7'-8'	ROSE WEIGELA			
Light Pink.				
2 to 3 ft. ....	.35	2.50	20.00	
3 to 4 ft. ....	.40	3.00	25.00	
4 to 5 ft. ....	.50	4.00	—	
—candida, 7'-8'	WHITE WEIGELA			
Large, pure white flowers.				
2 to 3 ft. ....	.40	3.00	25.00	
3 to 4 ft. ....	.45	3.50	30.00	
4 to 5 ft. ....	.60	4.50	40.00	
—desboisi, 6'-7'	DESBOIS WEIGELA			
Deep rose pink, flowers profusely.				
2 to 3 ft. ....	.40	3.00	25.00	
3 to 4 ft. ....	.45	3.50	30.00	
—Eva Rathke, 4'-5'	RED FLOWERED WEIGELA			
Carmine, June-August. Most floriferous.				
	Each	Per 10	Per 100	Per 1000
18 to 24 in. ....	.40	3.00	25.00	200.00
2 to 3 ft. ....	.45	3.50	30.00	250.00
3 to 4 ft. ....	.55	4.50	40.00	350.00
—floribunda, 7'-8'	Each	Per 10	Per 100	
CRIMSON WEIGELA				
Crimson, June. Free flowering.				
18 to 24 in. ....	.30	2.50	20.00	
2 to 3 ft. ....	.45	3.50	25.00	
3 to 4 ft. ....	.50	4.00	35.00	
—lavelle, 7'-8'	BRIGHT CRIMSON FLWD. WEIGELA			
Bright crimson.				
2 to 3 ft. ....	.35	3.00	22.00	
3 to 4 ft. ....	.45	3.50	30.00	
—nana variegata, 4'-5'	VARIEGATED LEAF WEIGELA			
Pale pink flower; variegated leaves; dwarf, compact growth.				
	Each	Per 10	Per 100	Per 1000
18 to 24 in. ....	.30	2.00	15.00	100.00
2 to 3 ft. ....	.40	3.00	25.00	200.00
3 to 4 ft. ....	.50	4.00	30.00	250.00
4 to 5 ft. ....	.60	5.00	45.00	—





Weigela. Part of the two year block of rosea and nana variegata. They are all stocky well branched shrubs and offered at prices that are especially attractive.

WEIGELA—continued

—rosea, 7'-8' PINK WEIGELA  
 Showy, pink flowers freely produced. June. Vigorous grower.

	Each	Per 10	Per 100	Per 1000
2 to 3 ft. ....	.35	2.50	20.00	150.00
3 to 4 ft. ....	.40	3.00	25.00	200.00
4 to 5 ft. ....	.50	4.00	—	—

Each Per 10 Per 100

WISTERIA frutescens, 20'-25' AMERICAN WISTERIA  
 Lilac purple, fragrant flowers in short clusters in June. A beautiful slender vine.

2 to 3 ft. ....	.40	3.00	25.00
3 to 4 ft. ....	.50	4.00	35.00

—multijuga (seedlings), 40'-50' LONGCLUSTER WISTERIA  
 Deep blue, long clusters. May. Seen to best advantage when trained on old trees or open trellises.

2 to 3 ft. ....	.45	3.50	—
3 to 4 ft. ....	.50	4.00	—
4 to 5 ft. ....	.60	5.00	—

—sinensis (seedlings), 40'-50' CHINESE WISTERIA  
 Purple-blue flowers about week before preceding.

2 to 3 ft. ....	.40	3.00	—
3 to 4 ft. ....	.50	4.00	—

—alba (seedlings), 40'-50' CHINESE WHITE WISTERIA

2 to 3 ft. ....	.40	3.50	—
3 to 4 ft. ....	.50	4.50	—

—grafted (from good fig. plants) BLUE AND WHITE  
 This is by far the best stock to plant in wisterias because they will really bloom.

18 to 24 in. ....	.50	4.00	30.00
2 to 3 ft. ....	.60	5.00	40.00

YUCCA filamentosa, 2'-3' ADAM'S NEEDLE.

Evergreen. Long lance-like leaves. Tall flower spike grows up quickly in June-July. Numerous creamy flowers and general appearance give tropical effect. Useful for massing with either evergreens or shrubbery.

	Each	Per 10	Per 100
2 year trsp., B. & B. ....	.20	1.50	10.00

	Each	Per 10	Per 100
ZANTHORHIZA apiifolia, 2'-3'			YELLOWROOT
Good ground cover. Will succeed on dry, sandy soil, banks, etc. Small purplish flowers, May-June.			
12 to 15 in. ....	.30	2.50	—
15 to 18 in. ....	.35	3.00	—

## FRUIT DEPARTMENT

Graded according to Horticultural Standards, 1923, of the American Association of Nurserymen. Caliper taken two inches above bud.

## APPLES

## STANDARDS AND CRABS

	Each	Per 10	Per 100
1 in. and up ....7 ft. and up ....XX	\$1.00	\$9.00	—
$\frac{7}{8}$ to 1 in. ....6 ft. and up ....X	.60	5.00	—
$\frac{11}{16}$ to $\frac{7}{8}$ in. ....5 ft. and up ....A	.40	3.50	—
$\frac{9}{16}$ to $\frac{11}{16}$ in. .4 ft. and up ....M	.30	2.50	—
$\frac{7}{16}$ to $\frac{9}{16}$ in. .3½ ft. and up ....B	.25	1.50	10.00

## SUMMER

Gravenstein  
Melba  
Red Astrachan  
Yellow Transp.  
Williams Early Red

## AUTUMN

Duchess  
Fall Pippin  
Grimes Golden  
McIntosh  
Wolf River

## WINTER

Baldwin  
Ben Davis  
Delicious  
Golden Russet  
Lobo  
R. I. Greening  
Northern Spy  
Rome Beauty  
Wealthy  
Staymans Winesap  
Stark  
York Imperial  
Winter Banana

Crab Apples:—Hyslop, Transcendent.

## DWARF APPLES

	Each	Per 10	Per 100
1 in. and up ....6 ft. and up ....XX	.85	7.50	—
$\frac{3}{4}$ to 1 in. ....5 ft. and up ....X	.70	6.00	—
$\frac{5}{8}$ to $\frac{3}{4}$ in. ....4 ft. and up ....A	.50	4.00	—
$\frac{1}{2}$ to $\frac{5}{8}$ in. ....3 ft. and up ....M	.40	3.00	—

Dwarf Apples:—Baldwin, Delicious, Fall Pippin, Red Astrachan, R. I. Greening, Stayman Winesap, Yellow Transparent.

## CHERRIES (SOUR)

$\frac{7}{8}$ to 1 in. ....4 ft. and up ....X	1.00	8.50	—
$\frac{11}{16}$ to $\frac{7}{8}$ in. ....3½ ft. and up ....A	.75	6.00	—
$\frac{5}{8}$ to $\frac{11}{16}$ in. ....3 ft. and up ....M	.60	5.00	—

Sour Cherries:—Early Richmond, Montmorency.

## CHERRIES (SWEET)

$\frac{7}{8}$ to 1 in. ....5 ft. and up ....X	1.00	8.50	—
$\frac{11}{16}$ to $\frac{7}{8}$ in. ....4 ft. and up ....A	.75	6.00	—
$\frac{5}{8}$ to $\frac{11}{16}$ in. ....3½ ft. and up ....M	.60	5.00	—

Sweet Cherries:—Black Tartarian, Napoleon, Windsor, Schmidt's Biggareau.

Each Per 10 Per 100

PEACHES

$1\frac{1}{16}$ to $1\frac{3}{16}$ in. .5 ft. and up	.....X	.35	3.00	—
$\frac{9}{16}$ to $1\frac{1}{16}$ in. .4 ft. and up	.....A	.30	2.50	—
$\frac{7}{16}$ to $\frac{9}{16}$ in. ....3 ft. and up	.....M	.25	2.00	—
$\frac{5}{16}$ to $\frac{7}{16}$ in. ....2 ft. and up	.....B	.20	1.50	—

Peaches:—Belle of Georgia, Elberta, Early Elberta, Cumberland, Iron Mountain.

Golden Jubilee—A new and very desirable variety. Prices on request.

PEARS (STANDARD)

$\frac{7}{8}$ to 1 in. ....6 ft. and up	.....X	.75	6.00	—
$1\frac{1}{16}$ to 1 in. ....5 ft. and up	.....A	.50	4.50	—
$\frac{9}{16}$ to $1\frac{1}{16}$ in. .4 ft. and up	.....M	.40	3.50	—
$\frac{7}{16}$ to $\frac{9}{16}$ in. ....3½ ft. and up	B	.35	3.00	25.00

Standard Pears:—Bartlett, Clapps Favorite, Duchess, Kieffer, Lawrence, Seckel, Sheldon, Beurre d'Anjou.

PLUMS

(ALL BUDDED ON PLUM ROOTS)

1 in. and up ....7 ft. and up	.....XX	1.00	—	—
$\frac{7}{8}$ to 1 in. ....6 ft. and up	.....X	.75	6.50	—
$1\frac{1}{16}$ to $\frac{7}{8}$ in. ....5 ft. and up	.....A	.50	4.00	—
$\frac{9}{16}$ to $1\frac{1}{16}$ in. .4 ft. and up	.....M	.50	4.00	35.00

Plums:—Abundance, Bradshaw, Burbank, Imperial Green Gage, Wickson, Yellow Egg.

QUINCES

$\frac{5}{8}$ in. and up .3 ft. and up	.....A	.70	6.00	55.00
$\frac{1}{2}$ to $\frac{5}{8}$ in. ....2½ ft. and up	.....M	.55	4.50	40.00
$\frac{3}{8}$ to $\frac{1}{2}$ in. ....2 ft. and up	.....B	.40	3.00	25.00

Quinces:—Champion, Orange.

NUTS

WALNUT, black

2 to 3 ft. ....		.75	6.50	—
3 to 4 ft. ....		1.00	9.00	—
4 to 5 ft. ....		1.25	11.50	—

—English

2 to 3 ft. ....		1.00	9.00	—
3 to 4 ft. ....		1.50	14.00	—

## PLANTS SUITABLE FOR THE ROCK GARDEN

*Evergreens*

Botanical Name	Common Name
Azalea amoena—2½'-3'	
Azalea Hinodegiri—3'-4'	
Calluna vulgaris—1'-2'	Heather
Cotoneaster horizontalis—1½'-2'	Rock Cotoneaster
Cotoneaster microphylla—2'-2½'	Rock Spray
Cotoneaster thymifolia—1½'-2'	Thyme Cotoneaster
Daphne cneorum—1'	Rose Daphne
Euonymus radicans minimus—2'-3'	Baby Winter Creeper
Euonymus japonicus microphyllus	
Juniperus chinensis sargentii—1½'	Sargent Juniper
Juniperus communis cracovica—4'-5'	Polish Juniper
Juniperus communis suecica—3'	Swedish Juniper
Juniperus horizontalis—1'-1½'	Creeping Savin
Juniperus horizontalis doug. 1' 1½'	Waukegan Juniper
Juniperus japonica—3'-4'	Japanese Juniper
Juniperus sabina tamariscifolia—1'	Tamarix Savin
Lonicera pileata—2'	Privet Honeysuckle
Mitchella repens—4'	Partridge Berry
Pinus montana mughus—2½'-3'	Mugho Pine
Retinospora obtusa grac. com. 4'-5'	Football Cypress
Taxus baccata erecta—3'-5'	Short Leafed English Yew
Taxus baccata repandens—1½'-2'	Spreading English Yew
Taxus canadensis—2'-2½'	Canada Yew
Taxus cuspidata nana—2'-3'	Dwarf Japanese Yew
Thuja occidentalis compacta—2'-4'	Parson Arborvitae
Thuja occidentalis globosa—2½'-3'	Globe Arborvitae
Thuja occidentalis umbraculif. 2'-3'	Umbrella Arborvitae
Thuja orientalis nana aurea 2½'-3'	Berkmans Arborvitae

*Deciduous Shrubs*

Caryopteris incana—2'-3'	Blue Beard
Ceanothus americana—3'-4'	Jersey Tea
Cytisus scoparius—4'-5'	Scotch Broom
Deutzia gracilis—3'	Slender Deutzia
Genista tinctoria—3'	Woadwaxen
Hypericum moserianum—2'	Gold Flower
Hypericum patulum grandifl.—2½'	
Hypericum patulum Henryi—2'-3'	Henry Hypericum
Jasminum nudiflorum—3'	Winter Jasmine
Lonicera syringantha—3'-5'	Lilac Honeysuckle
Lonicera spinosa alberti—2'	Albert Honeysuckle
Potentilla fruticosa—3'-4'	Shrubby Cinquefoil
Rosa spinosissima—3'-4'	Scotch Rose
Spiraea japonica—3'	Japanese Spiraea
Viburnum opulus nanum—1½'-2'	Dwarf Cranberry Bush

## GROUND COVERS

*For Shady Places*

Euonymus radicans minimus	Baby Wintercreeper
Hedera helix and varieties	Ivy
Mitchella repens	Partridge Berry
Pachysandra terminalis	Japanese Spurge
Taxus canadensis	Canada Yew
Vinca minor	Myrtle

*For Sunny Places*

Calluna vulgaris and varieties	Heather
Juniperus communis depressa	Prostrate Juniper
Juniperus horizontalis	Creeping Savin
Juniperus sargentii	Sargent Juniper
Juniperus tamariscifolia	Tamarix Savin
Pachysandra terminalis	Japanese Spurge
Zanthorhiza apiifolia	Yellow Root

## PLANTS FOR SHADED SITUATIONS

*Deciduous Shrubs and Small Trees*

Acanthopanax pentaphyllum—7'-8'	Five-Leaf Aralia
Amelanchier canadensis—12'-15'	Downy Shadblow
Aronia arbutifolia—6'-8'	Red Chokeberry
Aronia melanocarpa—8'-10'	Black Chokeberry
Azalea arborescens—10'-12'	Sweet Azalea

*Deciduous Shrubs and Small Trees—Continued*

Botanical Name	Common Name
<i>Azalea nudiflora</i> —6'-8'	Pinxterbloom
<i>Azalea vaseyi</i> —5'-6'	Pink Shell Azalea
<i>Azalea viscosa</i> —4'-5'	Swamp Azalea
<i>Benzoin aestivale</i> —10'-12'	Spicebush
<i>Calycanthus floridus</i> —4'-5'	Sweetshrub
<i>Ceanothus americanus</i>	Jersey Tea
<i>Cephalanthus occidentalis</i> —5'-6'	Buttonbush
<i>Cercis canadensis</i> —12'-15'	American Redbud
<i>Chionanthus virginica</i> —15'-18'	White Fringe
<i>Clethra alnifolia</i> —4'-5'	Summersweet
<i>Cornus alternifolia</i> —15'-18'	Pagoda Dogwood
<i>Cornus amomum</i> —8'-9'	Silky Dogwood
<i>Cornus florida</i> —15'-25'	White Flowering Dogwood
<i>Cornus florida rubra</i> —15'-20'	Red Flowering Dogwood
<i>Halesia tetraptera</i> —12'-15'	Great Silverbell
<i>Hamamelis virginiana</i>	Witch-Hazel
<i>Hydrangea arborescens</i> —4'-5'	Smooth Hydrangea
<i>Hydrangea quercifolia</i> —3'-4'	Oakleaf Hydrangea
<i>Hypericum aureum</i> —3'-4'	Golden St. Johnswort
<i>Ligustrum ibota regelianum</i> —5'-6'	True Spreading Regal Privet
<i>Ligustrum vulgare</i> —10'-12'	European Privet
<i>Lonicera fragrantissima</i> —6'-8'	Winter Honeysuckle
<i>Lonicera morrowi</i> —7'-8'	Morrow Honeysuckle
<i>Lonicera tatarica</i> —9'-10'	Tartarian Honeysuckle
<i>Myrica cerifera</i> —4'-5'	Waxmyrtle or Bayberry
<i>Oxydendrum arboreum</i> —25'-30'	Sourwood
<i>Philadelphus</i> —9'-10'	Mockorange
<i>Physocarpus opulifolius</i> —9'-10'	Ninebark
<i>Rhodotypos kerrioides</i> —4'-5'	Jetbead
<i>Rubus odoratus</i> —5'-6'	Flowering Raspberry
<i>Symphoricarpos racemosus</i> —5'-6'	Snowberry
<i>Symphoricarpos vulgaris</i> —4'-5'	Coralberry
<i>Viburnum dentatum</i> —10'-12'	Arrow-wood
<i>Viburnum lentago</i> —18'-20'	Nannyberry
<i>Viburnum molle</i> —10'-12'	Kentucky Viburnum

*Evergreens*

<i>Andromeda floribunda</i> —4'	
<i>Andromeda japonica</i> —4'-5'	
<i>Azalea amoena</i> —3'-4'	
<i>Azalea hinodigiri</i> —3'-4'	
<i>Buxus sempervirens</i> —12'-15'	Boxwood
<i>Ilex crenata microphylla</i> —6'-8'	Small Leaf Japanese Holly
<i>Ilex glabra</i> —5'-6'	Inkberry
<i>Juniperus canadensis</i> —2½'-3'	Canada Juniper
<i>Kalmia latifolia</i> —5'-7'	Mountain Laurel
<i>Leucothoe</i> —3'-4'	
<i>Mahonia aquifolium</i> —4'-5'	Oregon Holly Grape
<i>Pachysandra terminalis</i> —6"-8"	Japanese Spurge
<i>Rhododendron carolinianum</i> —5'-6'	Carolina Rhododendron
<i>Rhododendron catawbiense</i> —6'-9'	Catawba Rhododendron
<i>Rhododendron maximum</i> —8'-12'	Rosebay Rhododendron
<i>Taxus canadensis</i> —2'-2½'	Canada Yew
<i>Taxus cuspidata</i> —4'-5'	Spreading Japanese Yew
<i>Taxus cuspidata nana (brevifolia)</i> 2'-3'	Dwarf Japanese Yew
<i>Tsuga canadensis</i> —75'-90'	Canada Hemlock

## PLANTS FOR DRY SOILS

*Trees*

<i>Acer negundo</i> —50'	Boxelder
<i>Ailanthus glandulosa</i> —50'-60'	Tree of Heaven
<i>Betula populifolia</i> —30'-40'	Gray Birch
<i>Phellodendron chinense</i> —50'-60'	Chinese Corktree
<i>Quercus rubra</i> —75'-90'	Red Oak

• *Shrubs*

<i>Acanthopanax pentaphyllum</i> —7'-8'	Five Leaf Aralia
<i>Colutea arborescens</i> —8'-10'	Bladder Senna
<i>Cornus paniculata</i> —10'-12'	Gray Dogwood
<i>Hypericum kalmianum</i> —4'-5'	Kalm St. Johnswort
<i>Lespedeza bicolor</i> —5'-6'	Bushclover
<i>Myrica cerifera</i> —4'-5'	Waxmyrtle or Bayberry
<i>Prunus maritima</i> —9'-10'	Beach Plum
<i>Rhamnus cathartica</i> —9'-10'	Common Buckthorn
<i>Rhus canadensis</i> —4'-5'	Fragrant Sumac
<i>Rhus typhina</i> —15'-18'	Staghorn Sumac
<i>Ribes odoratum</i> —7'-8'	Golden Currant
<i>Robinia hispida</i> —5'-6'	Rose Acacia
<i>Rosa setigera</i> —5'-6'	Prairie Rose

*Shrubs—Continued*

Botanical Name	Common Name
<i>Symphoricarpos racemosus</i> —5'-6'	Snowberry
<i>Symphoricarpos vulgaris</i> —4'-5'	Coralberry
<i>Vaccinium corymbosum</i> —5'-6'	Highbush Blueberry
<i>Viburnum lantana</i> —15'-18'	Wayfaring Tree

*Evergreens*

<i>Juniperus communis</i> —2'-2½'	Common Juniper
<i>Juniperus communis depressa</i> (prostrata)—1'-1½'	Prostrate Juniper
<i>Juniperus horizontalis</i> (sabina prostrata)—1'-1½'	Creeping Savin
<i>Juniperus sabina</i> —6'-7'	Savin Juniper
<i>Mahonia aquifolium</i> —4'-5'	Oregon Holly Grape
<i>Pachysandra terminalis</i> —8"	Japanese Spurge
<i>Pinus montana mughus</i> —2½'-3'	Mugho Pine
<i>Pinus resinosa</i> —50'-60'	Red Pine
<i>Pinus rigida</i> —40'-50'	Pitch Pine
<i>Pinus strobus</i> —80'-100'	White Pine

## PLANTS FOR WET AND MARSHY PLACES

*Trees*

<i>Acer rubrum</i> —50'-75'	Red or Scarlet Maple
<i>Betula nigra</i> —50'-60'	River Birch
<i>Larix leptolepis</i> —50'-60'	Japanese Larch
<i>Liquidambar styraciflua</i> —50'-60'	Sweet Gum
<i>Quercus palustris</i> —75'-90'	Pin Oak
<i>Salix babylonica</i> —50'-60'	Babylon Weeping Willow
<i>Salix caprea</i> —15'-20'	Pussy Willow
<i>Ulmus americana</i> —80'-100'	American Elm

*Shrubs*

<i>Aronia arbutifolia</i> —6'-8'	Red Chokeberry
<i>Aronia melanocarpa</i> —8'-10'	Black Chokeberry
<i>Azalea viscosa</i> —4'-5'	Swamp Azalea
<i>Benzoin aestivale</i> —10'-12'	Spicebush
<i>Calycanthus floridus</i> —4'-5'	Sweetshrub
<i>Cephalanthus occidentalis</i> —5'-6'	Buttonbush
<i>Clethra alnifolia</i> —4'-5'	Summersweet
<i>Cornus amomum</i> —8'-9'	Silky Dogwood
<i>Cornus stolonifera</i> —7'-8'	Red-Osier Dogwood
<i>Ilex verticillata</i> —6'-8'	Winterberry
<i>Itea virginica</i> —3'-4'	Sweetspire
<i>Rosa palustris</i> —6'-7'	Swamp Rose
<i>Sambucus canadensis</i> —8'-9'	American Elder
<i>Spiraea tomentosa</i> —3'-4'	Hardhack
<i>Viburnum cassinoides</i> —5'-6'	Withe-Rod
<i>Viburnum dentatum</i> —10'-12'	Arrow-wood
<i>Viburnum lentago</i> —18'-20'	Nannyberry

*Evergreens*

<i>Ilex Glabra</i> —5'-6'	Inkberry
---------------------------	----------

DECIDUOUS PLANTS FOR BINDING AND COVERING  
SOIL ON STEEP BANKS

<i>Acanthopanax pentaphyllum</i> —7'-8'	Five Leaf Aralia
<i>Berberis thunbergi</i> —4'-5'	Japanese Barberry
<i>Celastrus scandens</i> —20'-25'	American Bittersweet
<i>Lonicera japonica</i> —15'-20'	Japanese Honeysuckle
<i>Lonicera tartarica</i> —9'-10'	Tartarian Honeysuckle
<i>Lycium chinense</i> —12'-15'	Chinese Matrimony-Vine
<i>Myrica cerifera</i> —4'-5'	Waxmyrtle or Bayberry
<i>Rhus canadensis</i> —4'-5'	Fragrant Sumac
<i>Rhus glabra</i> —10'-12'	Smooth Sumac
<i>Rhus typhina</i> —15'-18'	Staghorn Sumac
<i>Rosa lucida</i> —5'-6'	Virginia Rose
<i>Rosa rugosa</i> —4'-5'	Red Rugosa Rose
<i>Rosa nitida</i> —3'-4'	Bristly Rose
<i>Rosa setigera</i> —5'-6'	Prairie Rose
<i>Rosa wichuriana</i>	
<i>Sambucus canadensis</i> —8'-9'	American Elder
<i>Spiraea tomentosa</i> —3'-4'	Hardhack
<i>Symphoricarpos racemosus</i> —5'-6'	Snowberry
<i>Symphoricarpos vulgaris</i> —4'-5'	Coralberry

## DECIDUOUS PLANTS FOR AUTUMN COLORING

*Trees*

<i>Acer rubrum</i> —50'-75'	Red or Scarlet Maple
<i>Acer saccharum</i> —50'-75'	Sugar Maple
<i>Cornus florida</i> —15'-25'	White Flowering Dogwood
<i>Crataegus cordata</i> —12'-15'	Washington Hawthorn
<i>Liquidambar styraciflua</i> —50'-60'	Sweet Gum
<i>Quercus palustris</i> —75'-90'	Pin Oak

*Shrubs*

Botanical Name	Common Name
<i>Aronia arbutifolia</i> —6'-8'	Red Chokeberry
<i>Aronia melanocarpa</i> —8'-10'	Black Chokeberry
<i>Berberis thunbergii</i> —4'-5'	Japanese Barberry
<i>Cornus alternifolia</i> —15'-18'	Pagoda Dogwood
<i>Cornus paniculata</i> —10'-12'	Gray Dogwood
<i>Euonymus alatus</i> —9'-10'	Winged Euonymus
<i>Euonymus americanus</i> —7'-8'	Brook Euonymus
<i>Oxydendrum aboreum</i> —25'-30'	Sourwood
<i>Rhus canadensis</i> —4'-5'	Fragrant Sumac
<i>Rhus copallina</i> —12'-13'	Shining Sumac
<i>Rhus glabra</i> —10'-12'	Smooth Sumac
<i>Vaccinium corymbosum</i> —5'-6'	Highbush Blueberry
<i>Viburnum</i> (all species)	

## BERRY-BEARING TREES AND SHRUBS

*Red Berries*

<i>Aronia arbutifolia</i> —6'-8'	Red Chokeberry
<i>Benzoin aestivale</i> —10'-12'	Spicebush
<i>Berberis thunbergii</i> —4'-5'	Japanese Barberry
<i>Berberis vulgaris</i> —7'-8'	European Barberry
<i>Cornus florida</i> —15'-25'	White Flowering Dogwood
<i>Cotoneaster horizontalis</i> —1'-1½'	Rock Cotoneaster
<i>Crataegus coccinea</i> —15'-20'	Thicket Hawthorn
<i>Crataegus cordata</i> —12'-15'	Washington Hawthorn
<i>Crataegus crusgalli</i> —15'	Cockspur Hawthorn
<i>Euonymus alatus</i> —9'-10'	Winged Euonymus
<i>Euonymus bungeanus</i> —12'-14'	Winterberry Euonymus
<i>Euonymus europaeus</i> —12'-14'	European Burningbush
<i>Ilex verticillata</i> —6'-8'	Winterberry
<i>Lonicera maackii</i> —8'-9'	Amur Honeysuckle
<i>Lonicera morrowi</i> —7'-8'	Morrow Honeysuckle
<i>Lonicera tatarica</i> —9'-10'	Tartarian Honeysuckle
<i>Photinia villosa</i>	Redberried Photinia
<i>Pyracantha coccinea</i> Lelandi	
<i>Rosa blanda</i> —4'-5'	Meadow Rose
<i>Rosa rubiginosa</i> —5'-6'	Sweetbrier
<i>Rosa rugosa</i> —4'-5'	Red Rugosa Rose
<i>Sambucus racemosa</i> —8'-10'	European Red Elder
<i>Sorbus aucuparia</i> —25'-30'	European Mountain Ash
<i>Stranvaesia davidiana</i>	
<i>Viburnum americanum</i> —8'-9'	American Cranberrybush
<i>Viburnum dilatatum</i> —8'-9'	Linden Viburnum
<i>Viburnum opulus</i> —9'-10'	European Cranberrybush

*White Berries*

<i>Cornus alba</i> —8'-10'	Coral Dogwood
<i>Cornus stolonifera</i> —7'-8'	Red-Osier Dogwood
<i>Symphoricarpos racemosus</i> —5'-6'	Snowberry

*Yellow Berries*

<i>Elaeagnus angustifolia</i> —15'-18'	Russian-Olive
<i>Elaeagnus longipes</i> —6'-8'	Cherry Elaeagnus
<i>Elaeagnus umbellata</i>	Autumn Elaeagnus

*Black Berries*

<i>Amelanchier canadensis</i> —12'-15'	Downy Shadblow
<i>Aralia spinosa</i> —18'-20'	Hercules Club
<i>Aronia melanocarpa</i> —8'-10'	Black Chokeberry
<i>Ligustrum regelianum</i> —5'-6'	Regal Privet
<i>Ligustrum vulgare</i> —10'-12'	European Privet
<i>Phellodendron</i>	Cork Tree
<i>Rhamnus cathartica</i> —9'-10'	Common Buckthorn
<i>Rhodotypos kerrioides</i> —4'-5'	Jetbead
<i>Sambucus canadensis</i> —8'-9'	American Elder
<i>Viburnum acerifolium</i> —4'-5'	Mapleleaf Viburnum
<i>Viburnum lantana</i> —15'-18'	Wayfaring Tree
<i>Viburnum plicatum</i> —7'-8'	Japanese Snowball
<i>Viburnum prunifolium</i> —10'-12'	Blackhaw
<i>Viburnum sieboldi</i> —9'-10'	Siebold Viburnum

*Deep Blue-Black Berries*

<i>Ilex crenata microphylla</i> —6'-8'	Small leaf Japanese Holly
<i>Ilex glabra</i> —5'-6'	Inkberry
<i>Mahonia aquifolium</i> —4'-5'	Oregon Holly Grape
<i>Vaccinium corymbosum</i> —5'-6'	Highbush Blueberry
<i>Viburnum cassinoides</i> —5'-6'	Withe-Rod
<i>Viburnum dentatum</i> —10'-12'	Arrow-Wood
<i>Viburnum lentago</i> —18'-20'	Nannyberry
<i>Viburnum molle</i> —10' 12'	Kentucky Viburnum

*Blue Berries*

<i>Ampelopsis</i> (several varieties)	Ivy
<i>Callicarpa japonica</i> —2'-5'	Japanese Beautyberry
<i>Callicarpa purpurea</i> —3'-4' (Mauve)	Chinese Beauty Berry
<i>Cornus amomum</i> —8'-9'	Silky Dogwood

## CLASSIFIED INDEX

## EVERGREENS (Complete List)

Botanical Name	Common Name	Page
<i>Abelia grandiflora</i> .....	Glossy Abelia .....	5
<i>Abies</i> .....	Fir .....	5
<i>Andromeda catesbaei</i> .....		31
“ <i>japonica</i> .....		40
<i>Azalea amoena</i> .....		9
“ <i>hinodegiri</i> .....		10
“ <i>indica alba</i> .....		10
“ “ <i>lilacina</i> .....		10
“ Japanese .....		11
“ <i>macrantha</i> .....		10
“ Kurume varieties .....		11
<i>Berberis</i> .....		12-13
<i>Biota</i> .....	Oriental Arborvitae .....	14
<i>Buxus</i> .....	Box .....	15
<i>Chamaecyparis</i> .....	Retinospora .....	45-46
<i>Cotoneaster</i> .....		19-20
<i>Crataegus pyracantha lalandi</i> .....		41
<i>Daphne</i> .....		21
<i>Euonymus</i> .....	Burningbush—Wintercreeper .....	23-24
<i>Hedra</i> .....	Ivy .....	26
<i>Ilex</i> .....	Holly .....	27-28
<i>Juniperus</i> .....	Juniper .....	28-29-30
<i>Kalmia</i> .....	Mountain Laurel .....	30
<i>Leucothoe</i> .....	Drooping Leucothoe .....	31
<i>Ligustrum lucidum</i> .....	Glossy Privet .....	32
<i>Lonicera pileata</i> .....	Privet Honeysuckle .....	34
<i>Mahonia</i> .....		35
<i>Nandina</i> .....		36
<i>Osmanthus</i> .....		37
<i>Pachysandra</i> .....	Japanese Spurge .....	37
<i>Picea</i> .....	Spruce .....	40
<i>Pieris</i> .....	Andromeda .....	40
<i>Pinus</i> .....	Pine .....	40-41
<i>Pseudotsuga douglasi</i> .....	Douglas Fir .....	43
<i>Pyracantha coccinea lalandi</i> .....	Laland Firethorn .....	44
<i>Retinospora</i> .....	Cypress .....	45-46
<i>Rhododendron</i> .....		47
<i>Stranvaesia davidiana</i> .....		54
<i>Taxus</i> .....	Yew .....	56-57
<i>Thuja</i> .....	Arborvitae .....	57-58
<i>Tsuga</i> .....	Hemlock .....	59
<i>Viburnum rhytidophyllum</i> .....	Leatherleaf Viburnum .....	62
<i>Vinca minor</i> .....	Periwinkle or Myrtle .....	62
<i>Yucca</i> .....	Adam's Needle .....	63

## EVERGREEN SHRUBS AND VINES—BROADLEAVED

<i>Azalea</i> (some varieties) .....
<i>Berberis ilicifolia</i> .....
<i>Berberis julianae</i> .....
<i>Buxus</i> .....
<i>Calluna</i> .....
<i>Cotoneaster</i> (most varieties) .....
<i>Daphne cneorum</i> .....
<i>Euonymus patens</i> .....
<i>Euonymus radicans</i> and varieties .....
<i>Hedra</i> .....
<i>Ilex crenata</i> and varieties .....
<i>Ilex glabra</i> .....
<i>Ilex opaca</i> .....
<i>Kalmia latifolia</i> .....
<i>Leucothoe catesbaei</i> .....
<i>Ligustrum lucidum</i> .....
<i>Lonicera pileata</i> .....
<i>Mahonia aquifolium</i> .....
<i>Nandina</i> .....
<i>Mitchella repens</i> .....
<i>Osmanthus</i> .....
<i>Pachysandra</i> .....
<i>Pieris floribunda</i> (Andromeda) .....
<i>Pieris japonica</i> (Andromeda) .....
<i>Pyracantha</i> .....
<i>Rhododendrons</i> in variety .....
<i>Stranvaesia davidiana</i> .....
<i>Viburnum rhytidophyllum</i> .....
<i>Vinca minor</i> .....
<i>Yucca filamentosa</i> .....



GENERAL INDEX OF BOTANICAL AND  
COMMON NAMES

	Page		Page
A			
Abelia .....	5	Cladrastis .....	17
Abies .....	5	Clematis .....	18
Acanthopanax .....	5	Clethra .....	18
Acer .....	5-7	Colutea .....	18
Actinidia .....	7	Coral Berry .....	54
Adam's Needle .....	63	Cork Tree .....	37
Aesculus .....	7	Cornus .....	18-19
Ailanthus .....	7	Corylus .....	19
Akebia .....	7	Cotoneaster .....	19-20
Almond, Flowering .....	8	Crab Apples .....	64
Althaea .....	26	Crab Apple, Flowering ...	35-36
Amelanchier .....	8	Cranberry .....	60-61
Amorpha .....	8	Crataegus .....	20
Ampelopsis .....	8	Cucumber Tree .....	34
Amygdalus .....	8-9	Currant, Flowering .....	48
Andromeda .....	40	Cydonia .....	21
Apples .....	64	Cypress .....	45-46
Aralia .....	9	Cytisus .....	21
Arborvitae .....	14-15, 57-58	D	
Aristolochia siphon .....	9	Daphne .....	21
Aronia .....	9	Desmodium .....	31
Arrow-Wood .....	60	Devil's Walking Stick .....	9
Ash .....	25-52	Deutzia .....	21-22
Azaleas .....	9-10-11	Diervilla .....	22
B			
Baccharis .....	11	Diospyros .....	22
Barberry .....	12-13	Dogwood .....	18-19
Bay Berry .....	36	Douglas Fir .....	43
Beauty Berry .....	15	Dutchman's Pipe .....	9
Beech .....	24	E	
Beech Plum .....	43	Elaeagnus .....	22-23
Benzoin .....	11	Elder .....	51
Berberis .....	12-13	Elm .....	59-60
Betula .....	13-14	Empress Tree .....	37
Bignonia .....	14	Elsholtzia .....	23
Biota .....	14	Euonymus .....	23-24
Birch .....	13-14	Exochorda .....	24
Bittersweet .....	17	F	
Black Alder .....	28	Fagus .....	24
Black Haw .....	61	False Spiraea .....	51-52
Bladder Senna .....	18	Filbert .....	19
Bladder Nut .....	54	Fir .....	5, 43
Bluebeard .....	16	Firethorn .....	44
Blue Berry .....	60	Fleecevine .....	42
Blue Spiraea .....	16	Forsythia .....	24-25
Boston Ivy .....	8	Fraxinus .....	25
Box Elder .....	6	G	
Boxwood .....	15	Genista .....	25
Bridal Wreath .....	53	Ginkgo .....	25
Broom .....	21	Gleditsia .....	25
Buddleia .....	15	Golden Bell .....	24-25
Buckthorn .....	46	Golden Chain .....	31
Burningbush .....	23	Goldenrain Tree .....	31
Bush Clover .....	31-32	Gold Flower .....	27
Buttonbush .....	17	Groundsel Bush .....	11
Butterfly Bush .....	15	Gymnocladus .....	25
Buxus .....	15	H	
C			
Callicarpa .....	15	Hackberry .....	17
Calluna .....	15-16	Halesia .....	25
Calycanthus .....	16	Hamamelis .....	26
Caragana .....	16	Hardhack .....	54
Carpinus .....	16	Hawthorn .....	20
Caryopteris .....	16	Hazel Nut .....	19
Catalpa .....	16-17	Heather .....	15-16
Ceanothus .....	17	Hedera .....	26
Cedar .....	30	Hemlock .....	59
Celtis .....	17	Hercules Club .....	9
Celastrus .....	17	Hibiscus .....	26
Cephalanthus .....	17	Holly .....	27-28
Cercidiphyllum .....	17	Holly Grape .....	35
Cercis .....	17	Holly Osmanthus .....	37
Chamaecyparis .....	45-46	Honey Locust .....	25
Chaste Tree .....	62	Honeysuckle .....	22, 33-34
Cherries .....	64	Hop Tree .....	44
Cherry, Flowering .....	43	Hop Hornbeam .....	37
Chinese Scholar Tree .....	51	Hornbeam .....	16
Chionanthus .....	17	Horse Chestnut .....	7
Chokeberry .....	9	Huckleberry .....	60
Cinquefoil .....	42	Hydrangea .....	26
		Hypericum .....	27

	Page		Page
I			
Ilex .....	27-28	Phellodendron .....	37
Indian Currant .....	54	Philadelphus .....	37-38-39
Indigo Bush .....	8	Photina .....	39
Inkberry .....	28	Physocarpus .....	39-40
Itea .....	28	Picea .....	40
Ivy, English .....	26	Pieris .....	40
J			
Japanese Maple .....	6	Pine .....	40-41
Japanese Snowball .....	62	Pinus .....	40-41
Japanese Spurge .....	37	Pinxterbloom .....	11
Jasmine .....	28	Plane Tree .....	41-42
Jasminum .....	28	Platanus .....	41-42
Jersey Tea .....	17	Plum Double Flowering .....	43
Jetbead .....	47	Plums .....	65
Judas Tree .....	17	Polygonum .....	42
June Berry .....	8	Poplar .....	42
Juniper .....	28-29-30	Populus .....	42
Juniperus .....	28-29-30	Potentilla .....	42
K			
Kalmia .....	30	Privet .....	32-33
Katsura Tree .....	17	Prunus .....	43
Kentucky Coffee Tree .....	25	Pseudotsuga .....	43
Kerria .....	31	Ptelea .....	44
Koelreuteria .....	31	Purple Fringe .....	47
L			
Laburnum .....	31	Purple Leaf Plum .....	43
Larch .....	31	Pyracantha .....	44
Larix .....	31	Q	
Lead Plant .....	8	Quercus .....	44
Lespedeza .....	31	Quince, Flowering .....	21
Leucothoe .....	32	Quinces .....	65
Ligustrum .....	32-33	R	
Lilac .....	54-55	Raspberry, Flowering .....	50
Linden .....	59	Redbud .....	17
Lindera .....	11	Redcedar .....	30
Liquidambar .....	33	Red Maple .....	7
Liriodendron .....	33	Retinospora .....	45-46
Locust .....	25, 48	Rhamus .....	46
Lonicera .....	33-34	Rhododendron .....	47
Lycium .....	34	Rhodotypos .....	47
M			
Magnolia .....	34-35	Rhus .....	47-48
Mahonia .....	35	Ribes .....	48
Maidenhair Tree .....	25	Robina .....	48
Mallow Marvels .....	26	Rockspray .....	19
Malus .....	35-36	Rosa .....	48-49-50
Maple .....	5-7	Rose of Sharon .....	26
Marsh Mallow .....	26	Rose of Acacia .....	48
Matrimony Vine .....	34	Roses .....	48-49-50
Mitchella .....	36	Rubus .....	50
Mock Orange .....	37-38-39	Russian Olive .....	22
Morus .....	36	S	
Mountain Ash .....	52	Salisburia .....	25
Mountain Laurel .....	30	Sambucus .....	51
Mulberry, Weeping .....	36	Smoke Tree .....	47
Myrica .....	36	St. Johnswort .....	25
Myrtle .....	62	Salix .....	50-51
N			
Nandina .....	36	Savin .....	30
Nannyberry .....	61	Scotch Broom .....	21
Ninebark .....	39-40	Shadblow .....	8
Norway Maple .....	7	Silver Bell .....	25
Nuts .....	65	Snowball .....	61-62
Nyssa .....	37	Snowberry .....	54
O			
Oak .....	44	Sophora .....	51
Osmanthus .....	37	Sorbaria .....	51-52
Ostrya .....	38	Sorbus .....	52
Oxydendrum .....	37	Sour Gum .....	37
P			
Pachysandra .....	37	Sourwood .....	37
Pagoda Tree .....	51	Spice Bush .....	11
Paulownia .....	37	Spiraea .....	52-53-54
Partridge Berry .....	36	Spruce .....	40
Pears .....	65	Spurge .....	37
Peaches .....	65	Stagger Bush .....	40
Peach, Flowering .....	9	Staphylea .....	54
Pea Tree .....	16	Stephanandra .....	54
Pearl Bush .....	24	Storax .....	54
Periwinkle .....	62	Stranvaesia .....	54
Persimmon .....	22	Styrax .....	54
		Sugar Maple .....	7
		Sumac .....	47-48
		Summer Sweet .....	18
		Sweet Bay .....	35
		Sweet Gum .....	33
		Sweet Pepper Bush .....	18
		Sweet Shrub .....	16
		Sweetspire .....	28
		Sycamore .....	41-42
		Symphoricarpos .....	54
		Syringa .....	54-55

	Page		Page
T		W	
Tamarix .....	56	Wayfaring Tree .....	60-61
Taxus .....	56-57	Wax Myrtle .....	36
Thuja .....	57-58	Weigela .....	62-63
Thorn .....	20	White Fringe .....	17
Filia .....	59	White Ash .....	25
Tree of Heaven .....	7	Willows .....	50-51
Trumpet Vine .....	14	Winterberry .....	28
Tsuga .....	59	Witch Hazel .....	26
Tulip Tree .....	33	Wintercreeper .....	23-24
U		Withe-Rod .....	60
Ulmus .....	59-60	Wisteria .....	63
Umbrella Tree .....	16	Woadwaxen .....	25
V		Woodbine .....	8
Vaccinium .....	60	Y	
Varnish Tree .....	31	Yellowroot .....	64
Viburnum .....	60-61-62	Yellow Wood .....	17
Vinca .....	62	Yew .....	56-57
Virginia Creeper .....	8	Yucca .....	63
Vitex .....	62	Z	
		Zanthorhiza .....	64





## LOCATION

Our Nurseries are located at Kingston, Middlesex County, New Jersey, three miles east of Princeton and just off the Lincoln Highway. We are exactly halfway between New York City and Philadelphia.

The nearest railroad stations are Princeton and Princeton Junction and we will be glad to meet you at either station.

Phone Mommouth Junction 242.

