

## **Historic, Archive Document**

Do not assume content reflects current scientific knowledge, policies, or practices.



62.41

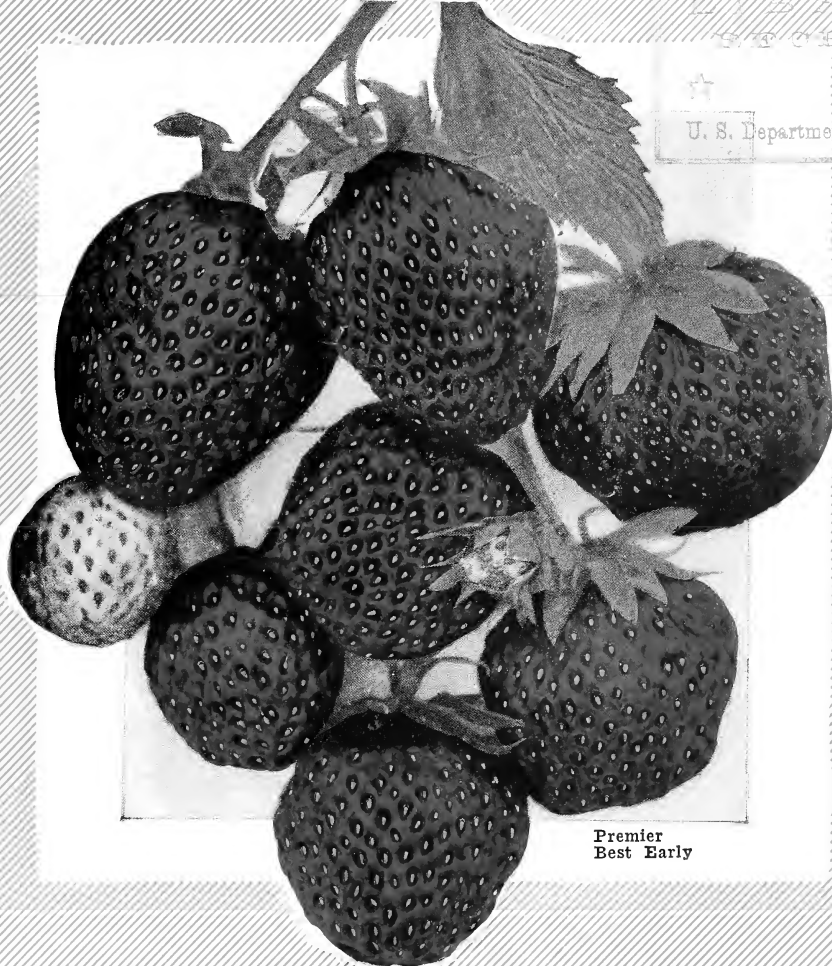
# ROKELY'S

## SMALL FRUIT PLANTS

### FRUIT TREES and ORNAMENTALS

LIBRARY  
STONED

U. S. Department of Agriculture



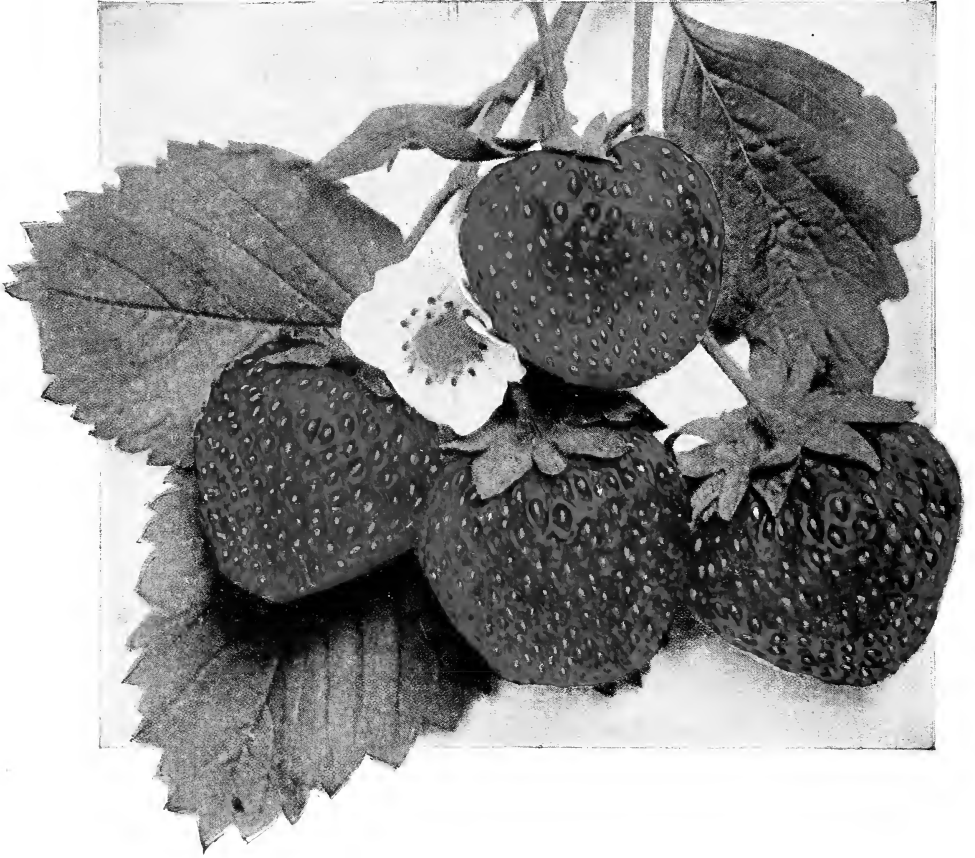
Premier  
Best Early

# J. N. Rokely & Son

## Bridgman, Michigan

*Season of 1928*

# Mastodon Everbearing Strawberry



The Wonderfully Profitable Mastodon Everbearing

## **THREE FULL CROPS INSTEAD OF ONE**

Planted in the spring Mastodon begin to bear about July 15th of the same season. Pickings rapidly increase until September and from then until freezing weather Mastodon produces an enormous crop of large, delicious berries. The following spring Mastodon produces a regular crop during June. This spring crop is fully equal to the average June bearing variety and brings top prices on any market. Again about July 15th they start bearing their fall crop and continue until freezing weather. This gives you three full crops of berries in the same time you would be getting only one from June bearing varieties. It surely pays to plant Mastodon. (For complete description see Page 8).

# OUR GREETING

We have reserved this page to tell you something of ourselves and our aims in order that we may all feel better acquainted.

Since 1889 the name of Rokely has been associated with plant and berry growing here at Bridgman. Thirty-eight years ago Mr. J. N. Rokely

began raising fruit here on this farm where our nursery is now located. At first his main attention was given to the production of better berries. After a few years he began selling berry plants also and this business gradually increased until it grew into our large business of today. Seventeen years ago Rokely's first catalog was issued—less than a thousand copies of a small folder listing only a few varieties of berry plants. The sales, while small, were very



J. N. Rokely



A. J. Rokely

gratifying and each year since our business has enjoyed a steady and prosperous growth until we are now shipping millions of berry plants, fruit trees and ornamentals each year into nearly every state of the Union.

Mr. A. J. Rokely, born and raised on this farm, entered the business in 1921 and since then has devoted his entire time to the work. Growing up as he did in the nursery business, he has a full and practical knowledge of every phase of the production and sale of nursery stock.

Our aim has always been, and always will be, to produce the best possible stock and sell at the lowest possible prices. Our long experience has taught us the best and cheapest methods of growing stock and our common sense advertising helps cut our overhead expense to a point where we can afford to sell our stock at reasonable prices. We do not claim to sell our stock cheaper than any other nursery in the country, but we do claim our prices to be as low as possible for quality stock. During our seventeen years of selling direct by mail our prices have been consistently lower than those of any other nursery of our size and reputation in this section of the country.

This catalog, every word of it written by ourselves, is sent you from an earnest desire to help you make your fruit growing more profitable. We have endeavored to have every word and every illustration in it absolutely true, carefully avoiding exaggeration and painting of extravagant word pictures to attract attention. When ordering from us you know everything will be exactly as represented.

By expanding our nursery business to take in a line of general nursery stock, including fruit trees and ornamentals, we have made it possible for you to purchase your complete needs in fruits and home beautifying shrubs and flowers at our money saving prices. We are sure you will appreciate the convenience of being able to secure everything in one order.

We both live here on the farm and every order and every letter receives our personal attention. Place your orders early, take advantage of our big cash discounts on early orders and be assured of real satisfaction.

Very truly yours,

## J. N. ROKELY & SON

## OUR LONG EXPERIENCE MEANS MUCH TO YOU

Several causes combine to make Rokely's Berry Plants the big, sure cropper that they are. Chief among these is our 38 years' experience in selecting, propagating, growing and shipping plants. Thirty-eight years doing one thing and doing it well. These many years of valuable experience have taught us how to produce the best of berry plants and produce them with a minimum of expense. The best soils, the best fertilizers, the best cultural methods, the best packing methods, and above all the best varieties, have been learned through years of painstaking work and study. Nor are we through yet. We are constantly experimenting and seeking new and better methods of growing and handling our stock, and each new variety before being offered in our catalog is thoroughly tested out under all conditions and must prove itself better than some of the older varieties before we offer it to you. We do not ask you to spend your hard-earned money for new varieties of problematical value.

Thirty-eight years of successful growing and selling proves both our honesty and the high quality of our stock. Our plants must have been money-makers and our methods of dealing must have been honest; otherwise we would either be today a very small and unreliable concern, or else we would long since have been out of business entirely. Our present prosperity is due entirely to the fact that year after year we have produced and sold stronger, more productive and more profitable fruit plants than ever before. This is your assurance that your order with us will bring you good, healthy, true-to-name plants.

## PRODUCED IN THE FRUIT PLANT CENTER OF THE WORLD

Berrien County, Michigan, where we are located, is first in the United States in the yearly number of strawberry plants grown and shipped. The reason is not far to seek. Natural conditions here are almost perfect. The soil is ideal—deep, rich and loose. The climate is tempered by Lake Michigan, and very equable. An abundant rain-fall makes possible enormous yields. It is in such environments that Rokely's Berry Plants are grown, and nowhere can better stock be produced. In fact the enormous root systems of our plants are a surprise and delight to those who receive them for the first time. Such stock cannot help but grow if given proper care.



Rokely Root System

## OUR GUARANTEE REALLY MEANS WHAT IT SAYS

Thousands of our customers will tell you that our guarantee, reproduced below, really does protect them. Guarantees do not mean a thing unless backed by a reliable and responsible concern; one which really intends to stay in business and which has the interest of its customers honestly at heart. Our thirty-eight years' success in growing and selling berry plants proves the strength of our guarantee—you run absolutely no risk when you order nursery stock from Rokely's.

### OUR GUARANTEE

We guarantee all nursery stock shipped by us to be strong, healthy, free from disease, full count, and true to name. We guarantee all nursery stock to be freshly dug, properly packed, and promptly shipped. We guarantee that all nursery stock shipped by express or parcel post will reach its destination in good growing condition. Any stock not as we claim will be replaced free of charge, or purchase price will be promptly refunded upon receipt of proper proof. All complaints, except untruthness to name, must be made within five days after receipt of the shipment.

We wish it fully understood, however, that we do not guarantee continued growth of any nursery stock sold by us. The welfare of plants, trees, and shrubs is entirely dependent upon care, weather conditions, and other matters entirely beyond our control. Our liability, except as above noted, ends upon delivery of good live stock—the rest is up to you.

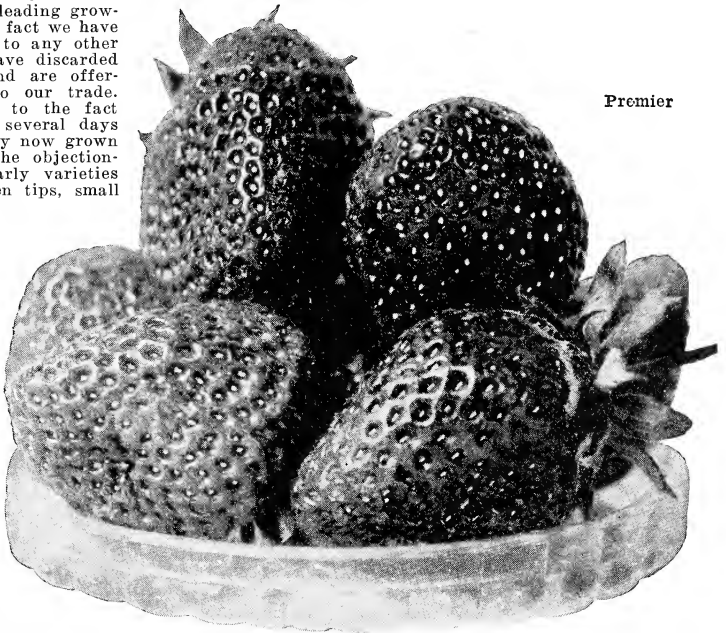
## PREMIER, Earliest Good Strawberry

Premier is now recognized as the peer of early berries by leading growers over the country. In fact we have found it so far superior to any other early variety that we have discarded all other early kinds and are offering only the Premier to our trade. This superiority is due to the fact that the Premier is by several days the earliest ripening berry now grown and possesses none of the objectionable features of other early varieties such as poor color, green tips, small size, poor flavor and freezing of blossoms.

The blossoms of the Premier are so nearly frost proof that the danger of freezing is negligible. We have known Premier to withstand frosts that would entirely ruin the later varieties. The vines bear an enormous crop of large, uniform sized berries, while the berry is bright red clear to the center, is perfect in shape, and ripens without green tips. The fruit presents a very pleasing appearance on the market and possesses a flavor equal to the later varieties, which is very unusual in an early berry. Ripening a week to ten days ahead of

other kinds, it matures the best part of its crop while prices are at the peak which spells profit to the grower. The plants are sturdy, healthy, and long rooted, making them drought resistant. The foliage is a beautiful dark green and very abundant.

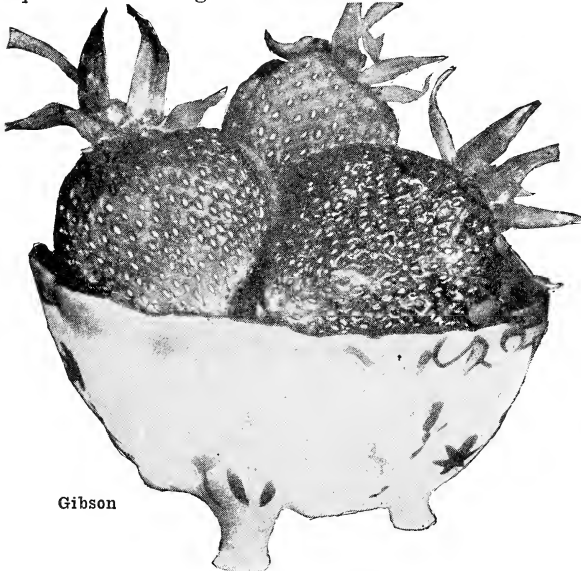
Since first offering this excellent variety our sales on it have doubled each year and we cannot urge you too strongly to plant heavily of Premier this season.



Premier

## GIBSON the Midseason Moneymaker

As a money maker we know the Gibson has no superior and we are sure it has no equal. The fruit growers of this section—the famous Michigan Fruit Belt—plant them



Gibson

almost exclusively for a commercial crop and for home use and canning. The Gibson berry is a beautiful dark red clear to the center, of excellent quality and flavor, firm, and will stand shipping as well as any variety we know. The plants yield an enormous crop of fruit, beginning to ripen with the Senator Dunlap and continuing over a long period. Unlike most varieties the Gibson does not become small during the last picking but retain their large size and good quality to the last berry. The plants are long rooted and will withstand much dry weather. The foliage is very rank affording protection for the blossoms and fruit, and is dark green in color. The fruit stems are large and strong. The plants propagate freely and will make nice heavy picking rows. We cannot recommend this splendid variety too highly.

# Other Valuable Midseason Varieties

## DUNLAP

### "KING OF THE CANNERS"

If you love shortcake, you will appreciate one made with Senator Dunlap, and a can of them during the winter months is a treat unsurpassed in firmness and rich flavor.

Both the canning factory and the housewife demand this grand old variety on account of its splendid flavor and dark, rich, beautiful color. Dunlap has been the old standby for years and is still as largely grown as any other one variety.

It produces wonderfully large crops of handsome dark red berries of the highest quality. It makes a profuse plant growth, and is so healthy and hardy that it does well in every section of the country.

The plants are medium in size, hardy, long rooted, very prolific, and will hold their own under most any rough and tumble methods of cultivation. If allowed to grow unrestricted they will cover the ground with a mat of vines but for best results they should be kept down to a good sized fruiting row.

## COOPER

After a thorough test in our own fields we can recommend Cooper highly to growers desiring an extra large and showy market berry. This variety makes a wonderfully thrifty growth of foliage, the plants standing erect and presenting a beautiful appearance on account of their great size. The fruit stems, which are protected by the foliage, are very stocky and erect and set an exceptionally heavy crop of berries. The berries are the largest we have ever seen, being two or three times as large as ordinary varieties, and have a rich, luscious flavor all their own. Commence ripening in midseason bearing an enormous crop of fruit. Berries ripen evenly without green tips.

## EATON

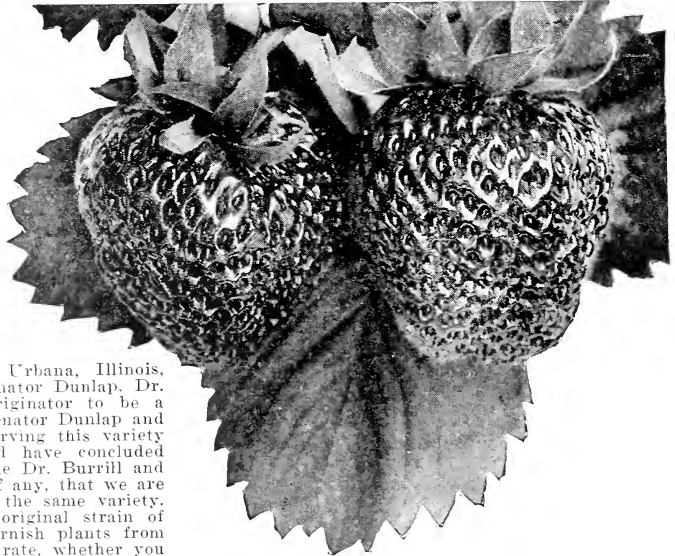
The plant is medium large in size and is a nice clean, thrifty grower. Foliage has a tendency to be upright, holding the fruit from the ground, which is a desirable feature. Berries are deep red in color, conical in shape and of great size, holding their shape and size well until the end of the season. Fruit is firm and will stand much rough handling, making it an excellent shipper. We recommend the Eaton as a valuable market or home garden variety.

## BUN SPECIAL

We have had the opportunity of observing this variety since its introduction and are convinced that it is one of the best varieties introduced within the last few years. The berries are a deep red clear to the center, have an excellent flavor, are evenly shaped and of large size, and present a beautiful appearance when packed for shipment. Plants are vigorous and prolific growers, making extra heavy picking rows.

## DR. BURRILL

This variety which is known as "The Million Dollar Strawberry" was originated by Dr. Reasoner, of Urbana, Illinois, who originated the famous Senator Dunlap. Dr. Burrill is claimed by the originator to be a scientific cross between the Senator Dunlap and Crescent. We have been observing this variety closely for several years and have concluded that the difference between the Dr. Burrill and Senator Dunlap is so slight, if any, that we are safe in calling them one and the same variety. However, we have kept our original strain of Dr. Burrill pure, and can furnish plants from this strain if desired. At any rate, whether you plant Dr. Burrill or Senator Dunlap, you are sure of getting a mighty good berry.



Cooper



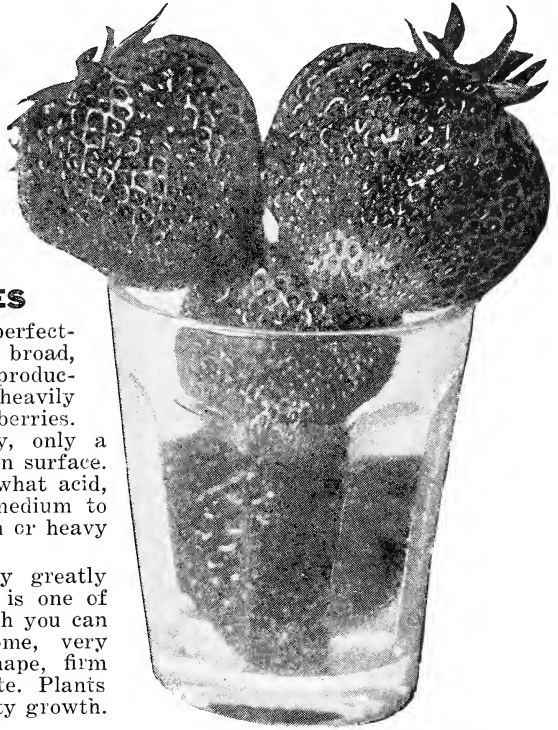
# AROMA, the Standard Late Strawberry

Widely grown throughout the country, Aroma is the standard late variety. It is planted in large acreage for late market as it is extra firm and a splendid shipper. It produces a quantity of large berries, uniformly round in shape and deep glossy red in color. The plant is a hardy grower in any climate, producing healthy, dark green foliage. The berry has a pleasing aromatic flavor peculiar to this variety alone. It is a fancy berry and brings top market anywhere. For several years past we have been unable to supply the demand for Aroma but with increased acreage this year we hope to fill all orders. However, better order early and be sure of getting them.

## OTHER LATE VARIETIES

**BRANDYWINE.** A vigorous, perfect-blooming plant; tall fruit stalks; broad, heavy, dark green foliage. Plants productive, having four and five stalks heavily loaded with large to very large berries. Medium red, somewhat like Gandy, only a little more dull; large yellow seeds on surface. Flesh red clear through, firm, somewhat acid, but with sprightly flavor; ripens medium to quite late. Does best on heavy loam or heavy clay.

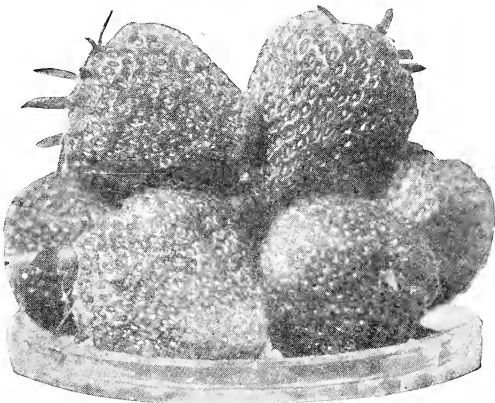
**GANDY.** A profitable late variety greatly resembling the popular Aroma. It is one of the old standard varieties upon which you can depend. The berries are handsome, very large, well colored, uniform in shape, firm and a good shipper. Season very late. Plants are healthy, hardy and make a thrifty growth. Does best on heavy soils.



Aroma

**WM. BELT.** This valuable variety is at its best in the middle and northern states. The berries are very large and the first ones to ripen are inclined to the irregular or cox-combed in shape. The later berries are uniformly conical. Their excellent flavor combined with their beautiful appearance make them one of our best late varieties and we recommend them highly. The plants are vigorous and thifty, making just enough runners for a good fruiting row.

*For Prices on small fruits see page twenty. Also Special Cash Discount for early orders.*



Brandywine

## IMPORTANT TO PLANTERS

All varieties of strawberries we list are PERFECT FLOWERING. Any one variety may be planted alone and will do just as well as though planted with other varieties. This is important as some growers have the mistaken idea that all varieties must be mated with other varieties to produce fruit.

# Mastodon, Everbearing Strawberries

## THE PERFECT EVERBEARER

Although Everbearing Strawberries have been grown quite extensively for many years, the Mastodon is so far superior to any of the Everbearing varieties yet introduced that it may rightly be termed the Perfect Everbearing.

Mastodon berries are the largest of any known Everbearer. Not just a few, but all the berries, are fully twice the size of the average Everbearer. Neither do they become small during the latter part of the bearing season but retain their large size to the last berries. The berries are glossy red in color and with their bright yellow seeds present a beautiful appearance. Firm flesh and tough skin make them an excellent shipper. Flavor is rich and good. More acid than the Champion.

The Mastodon plant is large and bushy with a thrifty foliage that protects the berries from hot suns as well as fall frosts. Unlike most Everbearers, the Mastodon is a prolific plant maker and under favorable conditions will cover the ground with plants the first season.

The Mastodon's spring crop of berries is fully equal in quantity and quality to the regular spring bearing varieties, something that can be said of no other Everbearer in existence.

After a thorough test in our own fields and the receipt of favorable reports from customers in all parts of the country we do not hesitate to state that the Mastodon Everbearer is a decided success and urge everyone to plant Mastodon this season.

Mastodon



## Champion, Everbearing Strawberry

Until the introduction of the Mastodon, Champion was the leading Everbearer and is still preferred by many of our customers for home use as the flavor is very rich and pleasing and is less acid than the Mastodon. The Champion bears large quantities of medium sized berries, uniformly conical in shape, and a beautiful dark red to the center. They are one of the first berries to ripen in the spring and the fall crop is borne over a long period.

# CHOICE RASPBERRIES

We especially urge all customers to have their raspberry plants shipped as early in the spring as possible. Raspberry plants shipped before April 15th will go through in better shape than later when the new tender sprouts are started. If not ready to plant when your order arrives the plants may be heeled in the ground and kept until ready. We will ship as long as stock lasts but urge early shipment for the good of the plants.

## EARLY KING

### THE EARLY MARKET RED

We recommend this variety as the best early red raspberry grown. It is extremely early and enormously productive of large, firm, bright red berries. The berries are very attractive in appearance, easy to pick and unlike other varieties, will not turn dark if allowed to become over-ripe. They are excellent shippers and will bring the top market price. The canes are hardy and thrifty and the plant practically immune from disease. The Early King is rapidly becoming the leading variety of red raspberry in all parts of the country, as it is well adapted to all soils and climatic conditions. Here in Berrien County, where at least three-fourths of the country's raspberries are grown, nine out of every ten fields is planted to Early King. We have a first class stock of genuine Early King plants at a new low price and hope you will let us reserve yours right away.



Cuthbert

## CUTHBERT

### THE RICHEST FLAVORED RED

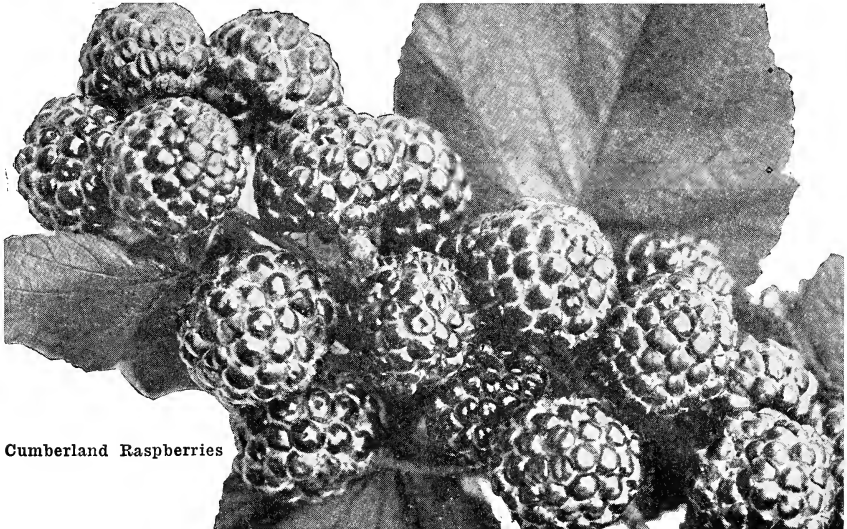
This is the leading late variety all over the country. The canes are very thrifty growers, upright in shape, light yellow in color and very hardy. The berries are large, deep red in color, oblong in shape, and firm enough to stand shipping in pint boxes. Very productive. However, it is the flavor of the Cuthbert that gives it distinction. It is sweet, rich and luscious and surpasses all others for home use and canning.

A great market sort and will stand shipping long distances. Both north and south.

## CUMBERLAND

### THE MOST PROFITABLE BLACKCAP

The most extensively grown variety of Black Caps. In this section they are planted almost exclusively for fruit. The berries are immense in size, firm and extra productive. Fruit is jet black in color, giving it a beautiful appearance in the crate and is of excellent quality. Canes are hardy, strong and vigorous, and will withstand most severe winters unharmed. We guarantee our Cumberland to be first class and true to name. They are all freshly dug in the spring and are not storage stock.

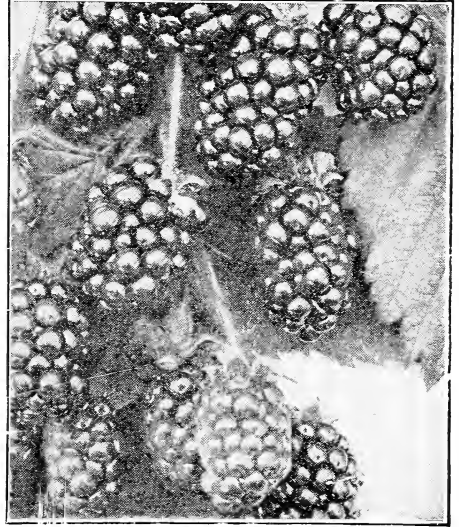


Cumberland Raspberries

# ELDORADO BLACKBERRIES

## THE GREATEST BLACKBERRY UNDER CULTIVATION

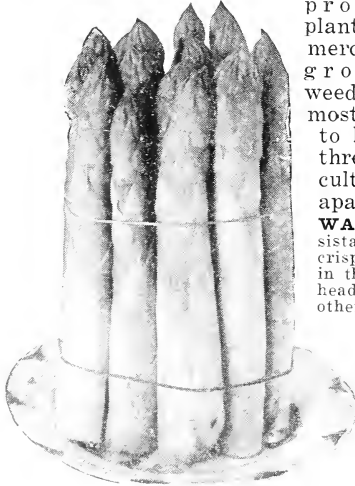
This is the finest blackberry grown. Its large size and delicious quality put it far in advance of other standard varieties. It is the hardiest blackberry under cultivation and will withstand the northern climate uninjured. It is very productive and has not failed to ripen a crop since its introduction, so we have confidence in recommending it as far superior to anything we know of on the market. It has been cultivated twenty years and under careful tests at the experiment stations has never winter killed or failed to produce a full crop of the finest fruit. The canes are very vigorous and hardy, enduring the winters of the far northwest without injury, and their yield of fruit is enormous. The berries are large, jet black, borne in large clusters and ripen well together. They are large, sweet, melting and pleasing to the taste, have no hard core and keep four or five days after picking with quality unimpaired.



Eldorado Blackberry

## ASPARAGUS

Asparagus is a good crop to have in the home garden and can be made to yield large



Palmetto Asparagus

profits when planted for commercial use. It grows like a weed and is almost impossible

to kill. Set the plants in the ground so the crowns are three to four inches under the surface and give decent cultivation. Plants should be planted about ten inches apart in the row with rows any convenient distance apart.

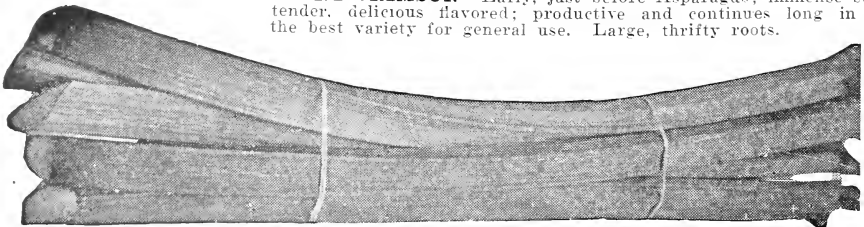
**WASHINGTON RUST RESISTANT**—The new valuable rust resistant variety. Stalks extra large in size, purple color, very tender, crisp and extra fine flavored. Grows very fast and comes up thick in the rows, making it the most productive variety in existence. The heads stay very compact, solid and always bring a premium over other variety.

**PALMETTO**—Old standard variety and very popular. Stalks purple, medium size and very prolific. Season early and regular in growth.

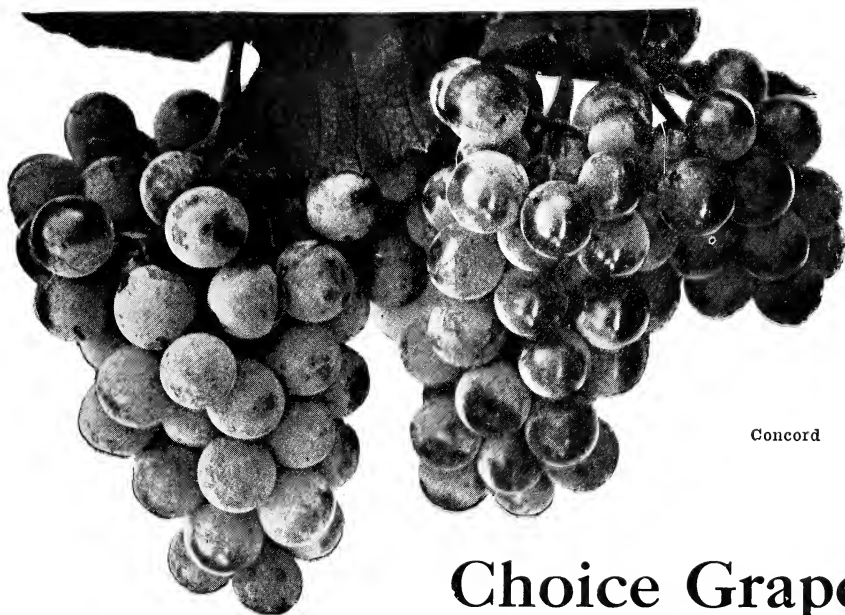
## Rhubarb or Pieplant

Coming on so early, Rhubarb finds a ready market, being relished by everyone. The city garden should have a dozen or more hills and every farm can add to its income by raising Rhubarb. It is easily produced in a commercial way, yields immensely, can be shipped almost any distance, and is easily gathered and packed.

**GIANT CRIMSON**—Early, just before Asparagus; immense stalks, tender, delicious flavored; productive and continues long in use; the best variety for general use. Large, thrifty roots.



Giant Crimson Rhubarb



Concord

## Choice Grapes

When you plant a vineyard you invest in something permanent. You will receive a regular yearly income from it as long as you live. Practically all the cultivation is done by horse power and very little hand work is required. Returns per acre are high considering the amount of labor required to produce a crop. Grapes are being planted extensively in all sections of the country and an ever expanding market creates a demand far ahead of the supply. Plant a vineyard of our Concord plants this spring and cash in on this opportunity for pleasant, profitable fruit growing.

### CONCORD

#### THE STANDARD COMMERCIAL GRAPE

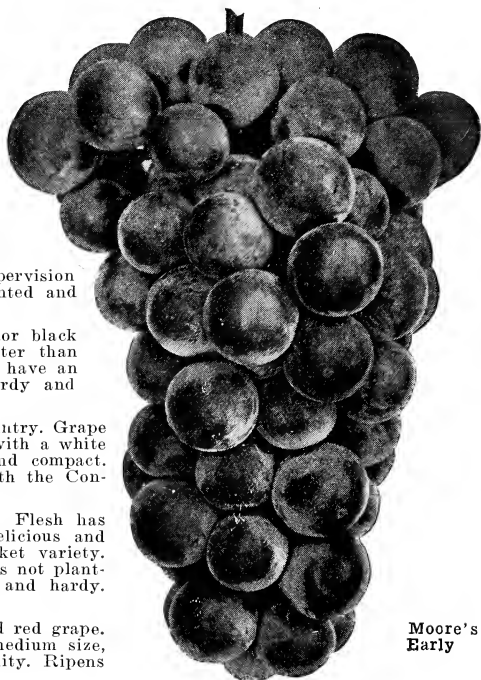
The fine old popular market variety and the leading commercial grape of today. A large, purplish black grape, very hardy and productive. The bunches are large and well filled and vines vigorous, hardy and free from disease. Does well on any soil and is the biggest money maker in grapes. Is well and favorably known wherever grapes are sold and has an established reputation on the market. Is considered the standard by which grape prices are judged. We have a large stock of Concord in all grades this year and are offering them at bargain prices. These plants were all grown and graded under our personal supervision and we guarantee them to be exactly as represented and to be an exceptional value at the price asked.

**MOORE'S EARLY**—Very large and round. Color black with a blue bloom. Quality very fine and sweeter than Concord. They stand handling and shipping and have an established reputation on the market. Vines hardy and productive. Ripens early.

**NIAGARA**—The standard white grape of the country. Grape large, slightly oval in shape, pale yellow in color with a white bloom. Quality of the best. Bunches are large and compact. Vines vigorous, hardy and productive. Ripens with the Concord.

**WORDEN**—Large, round grape, black in color. Flesh has a fine flavor unequalled by any other grape; delicious and melting; excellent for home use and a good market variety. Does not produce so heavily as the Concord so it is not planted so extensively for market. Vines are thrifty and hardy. Ripens with the Concord.

**BRIGHTON**—In our estimation the best all-round red grape. Bunches large, long and shouldered. Berries are medium size, skin thin, flesh very tender, sweet and best quality. Ripens early and is very productive and vigorous.

Moore's  
Early

# Hardy Northern Grown Fruit Trees

We have selected an offering of the time-tried varieties of fruit trees. The trees are all healthy, thrifty stock, and quality and size have not been skimped to make a price. If you do not find varieties you want, send us your list and we will quote special prices as we can furnish many varieties not listed below.

PLEASE DO NOT ORDER 1 OR 2 TREES

While we will fill orders for only 1 or 2 trees, we ask that when possible you make your tree order for at least 3 trees. We pack these trees in the best possible manner and it is expensive. We cannot make our "Each Price" high enough to cover this packing expense on orders for only 1 or 2 trees, so ask your kind consideration in ordering.

## CHERRIES

**EARLY RICHMOND**—(Sour) Excellent for cooking. Medium size. Red, juicy, acid flavor. Hardy. One of the best.

**MONTMORENCY** (Sour)—Early, red, large, rich, acid. Heavy yielder.

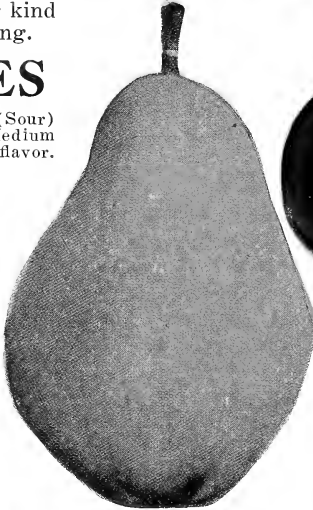
**NAPOLEON** (Sweet)—Light lemon-yellow, with red cheek. Flesh firm, colorless. Best light sweet cherry.

**BING** (Sweet)—Very large dark brown—almost black. Rich and delicious. Flesh firm and good shipper.

### PRICES OF CHERRY TREES

Sour varieties, 2 yr., 4 to 6 ft., Ea., 60c; 10, \$5.50; 100, \$50.00.

Sweet varieties, 1 yr., 4 to 6 ft. trees, Ea. 75c; 10, \$7.00; 100, \$60.00.



Bartlett Pear



Montmorency Cherry

## PEARS

**BARTLETT**—Big producer. Early; golden colored with red cheek. Best of flavor and quality.

**KIEFFER**—Best for large commercial planting because of its sure crop, heavy yield and good shipping qualities. Ripens in October. Fruit large, yellowish, and of good quality.

**DUCHESS**—Very large, good flavor; fine for cooking. Golden color with blush.

**SECKEL** (Sugar Pear)—Small, very juicy and sweet. Popular for pickling and preserving.

### PRICES OF PEAR TREES

All varieties, 2 yr., 4 to 6 ft. trees, each, 70c; 10, \$6.50; 100, \$60.00.

## PLUMS

**BRADSHAW**—A splendid early. Large, dark violet red. Flesh yellow, juicy, good. Fine for canning.

**BURBANK**—Fruit large, oval, with reddish purple skin. Heavy yielder and very hardy.

**GERMAN PRUNE**—Old favorite. Large, purple with thick blue bloom. Flesh firm, sweet, delicious, free-stone.

**LOMBARD**—Favorite for canning. Medium size. Oval, violet red, juicy, pleasant, good.

**MONARCH**—Late. Large. Dark purplish blue; perfect free-stone. Abundant bearer.

### PRICES OF PLUM TREES

All varieties 1 and 2 yr., 4 to 6 ft. trees, each, 50c; 10, \$4.50; 100, \$40.00.



Lombard Plum

# Hardy Northern Grown Apples

The apple is universally recognized as the most desirable fruit of the United States, because of its great varieties of delicious flavors, nutritious qualities and nutritive value.

Delicious  
Apple

## SUMMER APPLES

**DUCHESS OF OLDENBURG**—The old-time favorite. Round, beautiful streak of red and yellow. Early. Fine flavor. Hardy.

**RED ASTRACHAN**—Earliest and best red apple. Good size, dark red. Vigorous, hardy and productive.

**YELLOW TRANSPARENT**—Fruit a clear yellowish-white. Begins to ripen in July. Especially hardy.

## FALL APPLES

**MAIDEN BLUSH**—Old favorite. Strictly fall apple. Medium sized, smooth, beautifully blushed with red on creamy yellow.

**WEALTHY**—Old standby. Fine flavor, juicy red. Extra hardy.

## WINTER APPLES

**BALDWIN**—Popular in north. Bright red, medium to large, firm, finest quality.

**DELICIOUS**—Grand champion of apples. Red with pin dots of yellow. Fine grain, crisp, juicy, sweet. Good keeper.

**JONATHAN**—Old reliable. Brilliant red, rich, fine acid flavor, hardy. Good market sort.

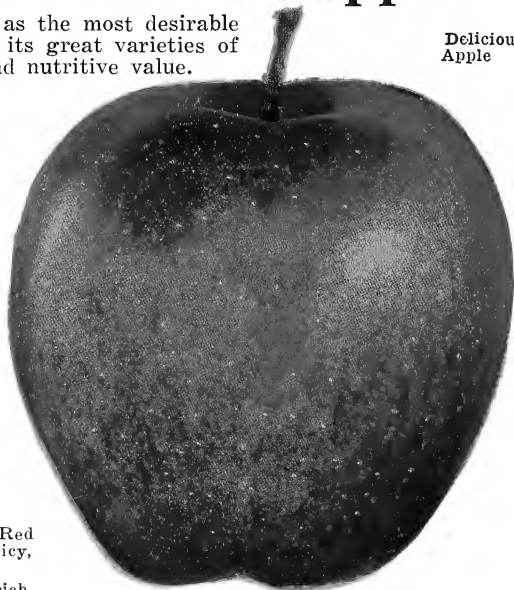
**GRIMES GOLDEN**—Large yellow, high quality, very rich subacid pear flavor.

**M'INTOSH RED**—Large deep crimson. Flesh white and tender. Tree hardy and vigorous.

**NORTHERN SPY**—Large, pale yellow skin mottled with carmine. Firm, tender, crisp, juicy, sub-acid. Popular everywhere.

**R. I. GREENING**—Large; flesh yellowish, firm, fine grained, crisp. Fine cooking. Tree large and vigorous.

**STAYMAN'S WINESAP**—Dark rich red striped with crimson. Flesh tinged with yellow; firm, crisp, fine-grained, very juicy, sub-acid flavor. A good one



### PRICE OF APPLE TREES

	Each	10	100
All varieties, 2-yr., 4 to 6 ft. trees .....	\$ .50	\$ 4.50	\$ 40.00

## PEACHES

If you have a small farm or a little garden space that will grow a tree, by all means plant peaches. They come into bearing in two or three years, bear heavy crops, always bring high prices and nothing is so delicious as a good ripe, juicy peach with the sweet juice running down the corners of your mouth while eating it, especially if it is picked fresh from your own trees.

Every home should have a few Peach trees as there is no more delicious fruit in its season.

**ELBERTA**—Free stone. Good all-around peach. Large. Skin lemon-yellow partly crimson. Hardy. One of the most widely planted varieties and very popular.

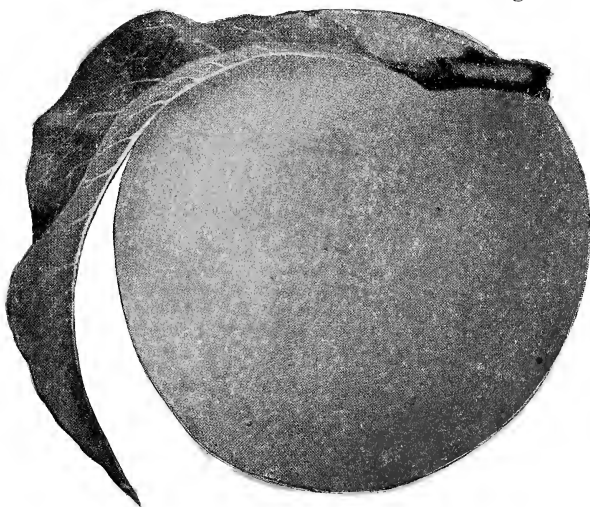
**J. H. HALE**—Tree perfectly hardy. Fruit extra large, ripens about a week earlier than Elberta. Color beautiful golden yellow with deep carmine blush. Quality and flavor excellent. A fine variety.

**KALAMAZOO**—A big money maker. Midseason. Yellow; a heavy bearer.

**ROCHESTER**—First large, yellow free-stone peach to ripen. Finest flavor and good shipper.

### PRICES OF PEACH TREES

All varieties, 1-yr. Ea.	10	100
4 to 6 ft. trees—	\$ .40	\$ 3.50 \$ 30.00



Rochester Peach

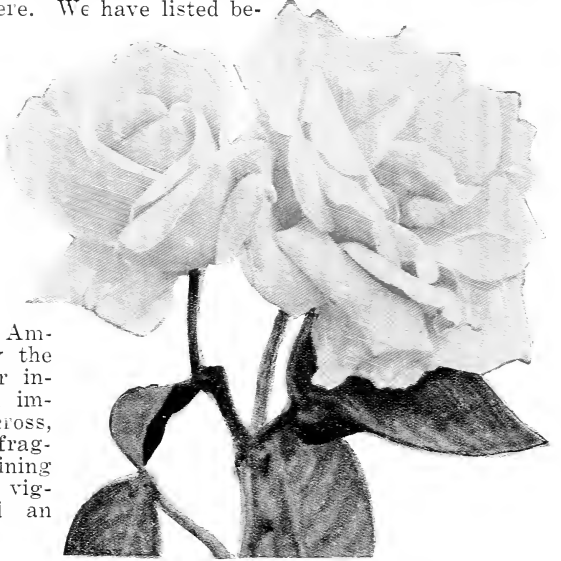
# BEAUTIFUL ROSES

## HARDY PERPETUAL OR JUNE ROSES

The Hybrid Perpetuals are the hardiest of all bush roses, and require little care after once planted. Perhaps the most valuable of all hardy bushes for permanent planting, as they will succeed anywhere. We have listed below low hardy, vigorous kinds, suitable for the far north. They thrive in all sections of the country and bloom profusely and regularly at the usual time. Although called perpetual, they are not normally everblooming with the exception of some varieties, notably General Jacqueminot and Paul Neyron, which with us have bloomed all summer long.

Price, each, 50c; 3 for \$1.40; 10 for \$4.00.

**FRAU KARL DRUSCHKI** (White American Beauty)—This is undoubtedly the greatest hardy pure white rose ever introduced. Makes splendid buds and immense flowers four to five inches across, perfectly double and delightfully fragrant. Large thick petals. Bright shining leaves, elegantly veined; a healthy, vigorous grower, entirely hardy and an abundant bloomer.



Madam Caroline Testout



General Jacqueminot

**GENERAL JACQUEMINOT**—Strong, vigorous grower, entirely hardy; an early and abundant bloomer. Buds and flowers are considered models of perfection. Its brilliant, shining crimson color is the standard by which other roses are judged. Unequaled in beauty of form and velvety richness. A real favorite.

**PAUL NEYRON**—One of the largest roses ever produced, sometimes measuring six inches across. In color it is a most beautiful clear rose-pink and possesses a delicious distinctive fragrance. Flowers are very double and full. Strong, upright grower, large leathery foliage, and a most abundant bloomer.

**ULRICH BRUNNER**—Makes immense blooms, almost as large as Paul Neyron. Flowers are full and of exquisite shape. Color, bright cherry red. Shell-shaped petals. Well known and popular.

---

No doubt you will note on your records that I have been a customer to you for the past several years and must acknowledge you for the splendid thrifty and true to name plants.—Wilson J. Jacoby, Bethlehem, Pa., Feb. 19, '27.



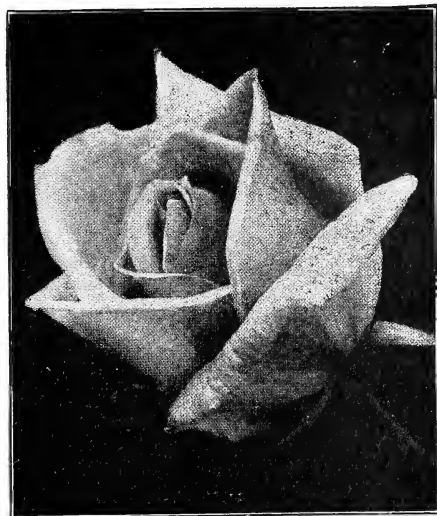
## EVERBLOOMING HYBRID TEA ROSES

This class is rapidly taking the foremost rank of roses for garden culture. They are the result of crossing Tea Roses with Hybrid Perpetuals, are perpetual bloomers with all summer and fall, appear in the richest and varied colors, and are comparatively hardy. In the far northern states they should be given winter protection. Their beautiful and continued bloom throughout the summer will well repay the slight care needed to protect them through the winter.

Price, each 60c; 3 for \$1.65; 10 for \$5.00.

**MRS. AARON WARD**—Few roses attract so much attention as this beautiful variety. The flowers, which are of splendid form, full double, are equally attractive when in full bloom as in the bud stage. In color they are a distinct Indian yellow shading lighter towards the edges. Under certain weather conditions the entire flower will sometimes come a yellow tinted white, but it is beautiful under all color variations. A strong, vigorous, but compact grower.

**MADAM CAROLINE TESTOUT**—One of the most popular and valuable varieties. Flowers are very large and full. Color of bright satiny rose with brighter center. Very free and fragrant.



Mrs. Aaron Ward

**GRUSS AN TEPLITZ**—This grand Rose has proven one of the best and most valuable hardy crimson everblooming roses for garden planting ever introduced. The color is dark rich crimson, passing to velvety, fiery red, the very brightest colored rose we know. Flowers large, full, and sweet; blooms constantly, throwing up fresh buds and flowers the whole growing season.

## HARDY CLIMBING ROSES

These roses are necessary for the home, giving it a touch of beauty and adding more to the attractiveness than any other ornamental plants. They may be used to screen undesirable views of buildings or for shade on porches or arbors. They are hardy everywhere and require very little attention to produce a profusion of blossoms.

Price, each, 40c; 3 for \$1.10; 10 for \$3.50.

**CRIMSON RAMBLER**—One of the best roses known today. Hardy as oak; withstands every climate; grows rapidly and blooms all season long. Double deep crimson flowers borne in large clusters. A plant under favorable conditions grows to a great height the first season.

**DOROTHY PERKINS**—The finest of all pink ramblers. Flowers perfectly double and borne in immense clusters. Color exquisite shell pink. Sweetly scented. Very hardy and grows from 10 to 15 feet in one season.



Dorothy Perkins

# Hardy Ornamental Shrubs

The planting of shrubs has become so popular in recent years that hardly a home is without some ornamental plantings. Aside from the beauty of their colored flowers and foliage, they add materially to the property value, often causing an increase of 10 to 20 per cent. Considering this valuable feature you cannot afford to neglect the planting of more shrubbery when a few dollars spent now will mean several hundred dollars in a few year's time, together with all the pleasure you will derive from their beauty.

Our shrubs are all first grade and mostly 18 to 24 inches in size, the most economical and satisfactory size for general planting. In the case of dwarf growing and hedging shrubs we are offering a smaller size. Our stock in all sizes is well branched and thrifty.

**ALTHEA** (Rose of Sharon)—Handsome late summer blooming shrubs, coming into bloom when few shrubs are in flower. It is beautiful, free blooming, clean and hardy. Large showy flowers. Valuable for hedges or single specimens. A hedge or planting of mixed colors is especially beautiful. Can furnish in white, pink, red or blue. Price each, 25c; 3 for 70c; 10 for \$2.00.

**BARBERRY, JAPANESE**—Not only an invaluable shrub where a low compact hedge is wanted, but fits in admirably with other shrubs in every planting. Has handsome foliage of tiny bright green oval leaves that turn most brilliant shades of orange and red in the fall. The slender, graceful branches are thickly lined with attractive yellow blossoms followed by scarlet berries which hang throughout the winter. Especially valuable as a hedge for it needs no trimming. Has nothing to do with the White Pine Blister Rust which attacks wheat, and may be planted freely. Price, each, 20c; 3 for 55c; 10 for \$1.50. Hedging size, \$7.50 per 100

**BUDDLEIA, BUTTERFLY BUSH**—This shrub of comparative recent introduction has grown into favor almost immediately. It is a semi-herbaceous plant, by which we mean in some latitudes it will die down to the ground during winter, and while perfectly hardy, we recommend covering the roots with manure, leaves, or other material as winter approaches, as it will help to produce a heavy growth the next season. It is very hardy; blooms the first season, usually from June until frost. The blossoms are borne on long, graceful stems, which terminate in tapering panicles of lilac-colored flowers that are of miniature size, the flower head frequently being ten inches long. Price each, 40c; 3 for \$1.00.

**CORNUS, SIBERIAN DOGWOOD**—A tall shrub with bright, coral-red branches, making it especially ornamental during the winter. Has abundant small white blossoms borne in early summer and followed by white fruit. Foliage is a bright green and very attractive. For best winter effect they should be planted in large groups but are attractive and very attractive. Price, each, 25c; 3 for 70c; 10 for \$2.00.

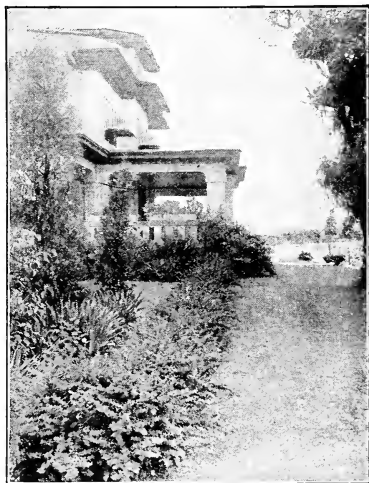
**DEUTZIA** (Pride of Rochester)—One of the most elegant shrubs ever introduced. An erect, vigorous grower; has a profusion of large showy flowers in May. Flowers are white, with back petals tinged with pink; very double. Grows 6 to 8 feet high. Price, each 25c; 3 for 70c; 10 for \$2.00.

**FORSYTHIA INTERMEDIA** (Golden Bell)—A handsome upright bush with deep green foliage turning to a purplish tint in the autumn. It is the first to greet the springtime with its shower of golden yellow trumpet shaped flowers that appear in advance of the leaves. One of the showiest shrubs. Price, each, 30c; 3 for 80c; 10 for \$2.35.

**HIGHBUSH CRANBERRY**—Tall growing shrub adapted to shady locations. Foliage and manner of growth almost identical with common Snowball. Has white flowers followed by beautiful clusters of bright red berries from which it derives its name. Price each, 60c; 3 for \$1.60.

**HYDRANGEA** (*Paniculata Grandiflora*)—It beats the world; the fine dwarf growing Hydrangea. It is hardy, enduring the severest winters outdoors without protection, and is easily transplanted, not one in a thousand dying. Never fails to bloom the first year planted. The flowers are produced in mammoth trusses and when fully expanded are white in color, but later assume tones of rose and bronze on the exposed sides. Commence blooming in August and continue into the autumn. The shrub is attractive immediately after it is planted and continues gaining in beauty for ten to twenty years. Severe pruning in early spring insures large trusses. Price, each 50c; 3 for \$1.40; 10 for \$4.00.

**HYDRANGEA ARBORESCENS** (Hills of Snow)—A hardy bush that grows to a height of 6 to 8 feet. Begins to bloom in June and continues throughout August, bearing large trusses of pure dazzling white flowers. Very beautiful and desirable. Price, each, 50c; 3 for \$1.40; 10 for \$4.00.



Barberry



Forsythia



Spirea Van Houttei

**LILAC** (Purple)—One of the best of the old-fashioned flowers. Blooms freely when once established and will grow anywhere. Bears dense panicles of purple flowers. The most fragrant of the Lilacs. Price, each 40c; 3 for \$1.00.

**SNOWBALL** — Handsome native shrub, attaining 8 to 10 feet in height, with rather smooth, light gray branches and stems. The pure white flowers appear in May and June, followed by decorative fruits, which begin to color by the end of July and remain on the branches and keep its bright scarlet color until the following spring. The berries are not eaten by birds. A well known old favorite and one of the most popular shrubs on the market. Hardy everywhere. You will want some of these hardy plants in your yard next summer to enjoy. Price each, 50c; 3 for \$1.40.

**PRIVET, AMOOR RIVER NORTH**—Very hardy. Has dark green leaves which persist almost through the winter. Where a stiff, upright hedge is wanted nothing surpasses the Amoor. To add to its attractiveness in foliage it bears erect panicles of beautiful white flowers in June, followed by black berries. The privet has been called a living fence, for one made of plants that are covered with bright green foliage, pretty flowers, or bright berries in winter, is so much more pleasing than the still, rigid, mechanical effect obtained by the similar use of wood or metal, and it will not rust out or rot down, but year after year increase in beauty and value. Hedging 12-18 in. 25 for \$2.00; 50 for \$3.75, 100 for \$5.00.

**SNOWBERRY** (White)—A perfectly hardy shrub from 2 to 3 feet high, excellent for massing in the lower parts of a bed or border. The pinkish white flowers appear in loose racemes in July and August, followed by clusters of wax-like milk-white berries that remain on the branches until winter. Price each, 30c; 3 for 80c; 10 for \$2.35.

**SNOWBERRY** (Red) (Coral Berry)—Very similar to white except that its berries are red. Price, each 30c; 3 for 80c; 10 for \$2.35.

**SPIREA, ANTHONY WATERER**—A very compact, round bush, dwarf growing shrub which attains a height of 18 to 24 inches. Has rose red flowers

in large clusters all over the bush and blooms from May to September. Perfectly hardy and fine for low clumps. Dark green foliage. Price each, 50c; 3 for \$1.40; 10 for \$4.00.

**SPIREA, VAN HOUTTEI** (Bridal Wreath)—A well known Spirea, and a beautiful ornament for the lawn at any season, but when in flower it is a complete fountain of white bloom, the foliage hardly showing. It is of a drooping habit, reaching a height of 6 to 8 feet when matured, producing a profusion of white flowers in June. The Spirea is very often used for hedge fencing where its luxuriant growth and flowering qualities are very desirable. The most useful of all shrubs and planted by everyone. Price each, 15c; 3 for 40c; 10 for \$1.15; 100 for \$9.00.

**SYRINGA** (Mock Orange)—A hardy, free flowering shrub with the most showy, fragrant, white flowers. Grows 8 to 10 feet high with spreading and often arching branches. Blossoms in spring and flowers are especially fragrant. Price each 30c; 3 for 80c.

**WIEGELA, ROSEA**—The most popular of all the Weigelas. Foliage is a deep green and bush is a vigorous grower. Flowers are a bright rose color, appearing in greatest abundance in June, and more sparsely at intervals throughout the summer. Oftimes blossoms so profusely as to completely cover bush. Price each 40c; 3 for \$1.00; 10 for \$3.00.

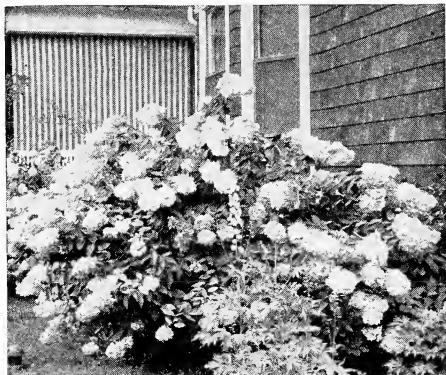


Amoor River Privet

## Madonna Lilies

### LILIUM CANDIDUM

This is one of the oldest, loveliest and best known lilies. The flowers, of which there are three to twenty on each stem, are snow-white, with heavy yellow stamens and of the most delightful fragrance. Ours is the thick-petaled type. It is hardy and will thrive in any ordinary soil, preferring plenty of light and air. Blooms in the open ground about June 20th to July 1st. Can be planted only in the fall but orders should be sent in when you send your order for other stock this spring. We will then forward the bulbs at proper planting time in the fall. Price, selected large bulbs, 30c each; \$3.00 per doz.



Hydrangea

# Very Choice Dahlias

PRICE EXCEPT NOTED, ANY VARIETY, each 20; 6 for \$1.10; 12 for \$2.00.

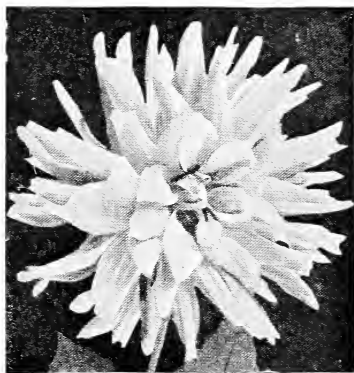
When thinking of Dahlias today we must forget the old fashioned small dark red Dahlias our mothers used to have in their gardens for the present day Dahlias have been developed to a point where there is almost no comparison. For gorgeous colors, enormous size and sheer beauty there is no flower today that surpasses the Dahlia. Their great ease of culture and quantity of bloom is again bringing them to the front as one of the most popular bedding plants in America. Our Dahlia field when in full bloom the past summer was one solid mass of colors and never failed to bring forth exclamations of delight from visitors. We offer here a few of the choicest varieties of Dahlias and urge you to try them this season. We know you will come back for more. They will thrive in any soil that will raise good potatoes and should be planted the very last of April or first of May, according to location, placing the bulbs about six inches in the ground. Give occasional cultivation and you will be rewarded with a mass of bloom that will repay you many times over for the slight expense and bother in getting them started. We are sure you will find our prices on these Dahlias much lower than asked by most Dahlia growers. However, we guarantee our bulbs to be strictly first class and as good as money can buy.

**AMERICAN BEAUTY** (Hybrid Show)—The flowers are of gigantic size and are produced on long, heavy stems, well above the foliage. The color of this valuable acquisition is a gorgeous wine-crimson. Price, each 25c; 6 for \$1.40; \$2.50 per doz.

**JACK ROSE** (Decorative)—Bright carmine-red overlaid violet, resembling the color of the rose of the same name. A splendid variety for decorative use in the garden.

**MME. VAN BYSTEIN** (Peony Flowered)—A distinct new shade, lilac blue throughout. The flowers are very freely produced on long, straight stems, holding the flowers high above the foliage. We had a heavy demand for these beautiful blossoms from our flower trade. Price, each 25c; 6 for \$1.40; \$2.50 per dozen.

**MARJORIE CASTLETON** (Cactus)—The outer florets are pleasing shade of rose-pink, while the tips and central florets are creamy-white. In shape the flower greatly resembles a giant Aster.



Marjorie Castleton

**MAUD ADAMS** (Show)—Ideal new show Dahlia. The color is a pure snowy white, very effectively overlaid clear delicate pink. Usually sells for 50c each.

**MISS HELEN HOLLIS** (Show)—Gigantic Scarlet Show Dahlia. Color deep scarlet. Blossoms are on long, stiff stems, well above foliage.

**OREGON BEAUTY** (Decorative)—Outstanding new decorative sort which is a real beauty and a giant. Long stiff stems and a ball-shaped bloom with a wonderful brilliancy. Color is intense oriental red, suffused with garnet, a golden sheen over all.

**OSCEOLA** (Single)—Large single type flowers of a beautiful bright red overlaid with a golden sheen. A perfect specimen of this type of Dahlia.

**ROEIN ADAIR** (Show)—Terra-cotta color. Very free bloomer. Exceptionally showy and attractive.

**STORM KING** (Show)—Color a pure white. Flower produced on good stems, well above the foliage. Free flowering and beautiful. The best white Show Dahlia grown.

**STRADELLA** (Show)—Beautiful deep purple-crimson. Exceptionally free-flowering. The stems are long and wiry.

**SWEET MAY** (Decorative)—Beautiful dark mahogany red in color. Large thrifty plants and profusion of flowers.

**WM. MILLER** (Decorative)—Large crimson flowers with purple sheen. Grow on long wiry stems well above the foliage. Plant is thrifty and free bloomer.

**YELLOW DUKE** (Hybrid Show)—Pure canary yellow. Large size flowers on good stiff stems. Because of its bright yellow brilliance this was the most commented on of our Dahlia varieties by visitors to our field.



American Beauty

# Very Choice Gladioli

The following list of varieties is made up of popular tried and proven Gladioli and we know you will find their bloom the most attractive you have ever seen. We think we have as good a strain of Gladioli as there is on the market today. The many visitors to our fields during blooming time without exception pronounced our Gladioli the best they had seen anywhere this season. We wish we could convey to you by printed word the wonderful beauty of these Gladioli when in full bloom but as it is impossible we urge you to try them for yourself this coming summer. We know you will be delightfully surprised at their size and gorgeous colors. The bulbs we will send you are all strictly No. 1 bulbs and should not be confused with the so-called "flowering size" bulbs offered by many growers.

Gladioli do their very best in a rich, sandy loam, but they will thrive in most any soil except very stiff clay. Bulbs should be planted during April or May. In planting the rule is to plant each bulb at least three times the depth of its diameter, the pointed side of the bulb, of course should always be up.

**ALICE TIPLADY**—A grand, large Primulinus of most beautiful orange saffron color. Winner of hundreds of awards. Very choice. Price, each 8c; doz., 50c; 100 for \$3.00.

**AMERICA**—Exquisite soft lavender pink. No other like it. Most popular pink in the world. Price each, 8c; doz., 50c; 100 for \$3.00.

**BARON J. HULOT**—Dark rich velvety purple, straight spikes; good size. The leading purple variety. Price, each, 10c; doz., \$1.00.

**CAPTAIN FRYATT**—Large bright red bloom with white tracings in the throat. The largest red we have and exceedingly attractive. Price, each, 10c; doz., 75c.

**EMPRESS OF INDIA**—Rich, dark mahogany red; uniquely veined. Small white dash in the throat around which color is lighter. Blooms very early. Price, each, 10c; doz., \$1.00.

**HALLEY**—One of the earliest bloomers. Beautiful salmon pink with a creamy blotch and dark red stripes. Price, each, 8c; doz., 50c; 100 for \$3.00.

**LINTON**—Delicate reddish pink petals with cream throat splashed with red. A good light shade. Price, each, 5c; doz., 40c; 100 for \$2.50.

**MRS. FRANCES KING**—Brilliant vermilion-scarlet. Most popular and effective variety for all occasions. Extra long spikes and well expanded flowers. Price, each, 8c; doz., 50c; 100 for \$3.00.

**MRS. FRANK PENDLETON**—Flushed salmon-pink, with rich maroon blotch on the three lower petals. The most popular flower in florists' shops. Price, each, 8c; doz., 50c; 100 for \$3.00.

**MYRA**—Another Primulinus. Beautiful peach blossom tint with light throat faintly traced with red. Very dainty and exquisite. Price, each, 5c; doz., 40c; 100 for \$2.50.

**NIAGARA**—A delightful cream shade blending to canary-yellow, splashed with carmine. Each 10c; doz., 60c.

**1910 ROSE**—Very large flower, pure rose pink of extra fine shade. Narrow white central line on lower petals. Each, 8c; doz., 50c; 100 for \$3.00.

**PEACE**—Very large nearly white, with pale violet feathering on lower petals; flowers correctly placed on a tall graceful spike. A wonderful flower that will be a credit to your collection and a source of much pleasure when in bloom. Price, each, 8c; doz., 50c.

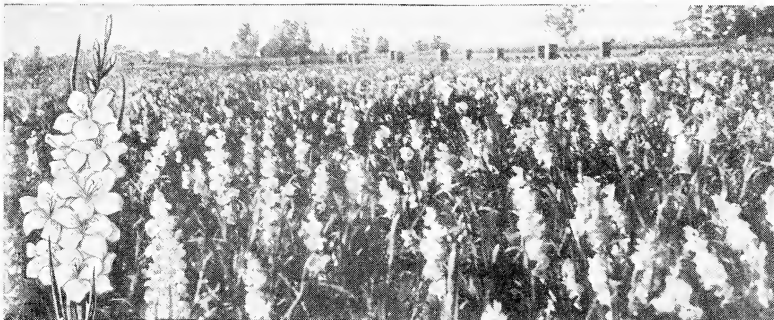
**RUBY KING**—Intense dark, ruby-red. Blooms quite early. Large flower heads and beautiful blossoms make this one of the best. Very popular. Each, 8c; doz., 50c; 100, \$3.00.

**SCHWABEN**—Best yellow. Golden yellow; center blotched with brilliant brownish carmine. Opens six to eight at a time. This variety has developed into a real favorite and those who want a yellow Gladioli can make no mistake in ordering some of the Schwaben. Price, each, 8c; doz., 50c; 100 for \$3.00.

**SMALL PINK**—We have a large stock of a small pink we are offering at a bargain to close out the stock. The flowers, which are clear pink with white throat striped with red, grow very close on the spike and open eight and ten at a time, making a very attractive bloom. Please do not judge this gladioli by the price for it is a beautiful flower and we are offering it at this low price only to clean up the stock. This is your opportunity to purchase a good lot of No. 1 bulbs at a bargain. Price, 40c per doz., 100 for \$2.50.

**WAR**—Giant; deep blood-red shade crimson-black. Very large, showy flowers. A leader among the large reds. Price, each, 10c; doz., 75c.

**OUR EXTRA FINE MIXED** A special garden collection made up of dozens of the very best varieties mixed. Our mixture contains many high priced varieties, some of them originally costing us as high as \$1.00 for a single bulb. When in full bloom they furnish a veritable riot of colors that will thrill any true flower lover. We furnish this mixture in first size bulbs same as offered in our named varieties above. Order a hundred and plant every ten days from early April to June 1st. You will then have flowers continually from August to October. Price, dozen, 40c; \$2.50 per 100; \$20.00 per 1000.



A Field of Our Extra Fine Mixed Gladiolus

**NOTE:** To those wishing to purchase a quantity of Gladioli Bulbs, we can furnish a No. 2 size bulb in quantities of 100 or more bulbs of a variety at a reduction of 20 percent from the prices for No. 1 size bulbs listed above. The No. 2 size bulbs are used extensively by growers engaged in cut flower trade, are satisfactory for outdoor planting.

# Price List For 1928

We are sure you will find our prices as low as any other firm selling the same high grade stock, and in nine out of ten cases they are lower. We will always meet any competitive prices for the same quality stock, but will not ship out poor stock in order to meet the competition of some firms who have nothing to recommend their stock except low price.

(NOTE: You may select 50 or 75 plants of a variety at the 100 rate and 500 or more of a variety at the thousand rate. Amounts between 100 and 200 of a variety at the 100 rate, between 200 and 300 of a variety at the 200 rate, etc. On Parcel Post shipments see back of order sheet for extra charges to cover postage).

## STRAWBERRIES

### EARLY

	25	100	200	300	400	1000
Premier .....	\$.45	\$1.20	\$1.85	\$2.50	\$3.00	\$7.00

### MIDSEASON

Bun Special .....	.20	.55	.80	1.10	1.30	2.95
Cooper .....	.45	1.20	1.85	2.50	3.00	7.00
Dr. Burrill .....	.30	.80	1.20	1.65	2.00	4.50
Eaton .....	.35	.90	1.30	1.80	2.20	5.00
Gibson .....	.35	.90	1.30	1.80	2.20	5.00
Senator Dunlap .....	.30	.80	1.20	1.65	2.00	4.50

### LATE

Aroma .....	.40	1.00	1.50	2.10	2.60	6.00
Brandywine .....	.35	.90	1.30	1.80	2.20	5.00
Gandy .....	.35	.90	1.30	1.80	2.20	5.00
Wm. Belt .....	.45	1.20	1.85	2.50	3.00	7.00

## EVERBEARING STRAWBERRIES

Champion .....	.50	1.50	2.65	3.70	4.45	10.00
Mastodon .....	.75	2.25	4.00	5.50	6.70	15.00

## RASPBERRIES

Cuthbert (Red) .....	.90	2.50	4.50	6.00	7.00	16.00
Early King (Red) .....	.75	2.25	3.65	5.00	6.15	14.00
Cumberland (Black) .....	.90	2.70	4.80	6.50	8.00	18.00

## BLACKBERRIES

Eldorado .....	.90	2.50	4.50	6.00	7.00	16.00
----------------	-----	------	------	------	------	-------

## ASPARAGUS

Palmetto, 2 yr. ....	.45	1.25	2.25	3.00	3.50	8.00
Washington, 2 yr. ....	.45	1.35	2.40	3.25	4.00	9.00

## GRAPE PLANTS

	Each	6	12	25	100	1000
Concord, 1 yr. No. 2 .....	.06	.30	.50	.70	2.15	17.00
Concord, 1 yr. No. 1 .....	.10	.50	.70	1.10	3.65	25.00
Concord, 2 yr. No. 1 .....	.15	.70	1.10	1.55	4.65	35.00
Moore's Early, 1 yr. No. 1 .....	.17	.80	1.25	1.75	5.00	40.00
Moore's Early, 2 yr. No. 1 .....	.30	1.35	2.10	3.00	8.00	
Worden, 1 yr. No. 1 .....	.20	.90	1.40	2.00	6.00	45.00
Worden, 2 yr. No. 1 .....	.30	1.35	2.10	3.00	8.00	
Niagara, 1 yr. No. 1 .....	.15	.70	1.10	1.55	4.65	35.00
Niagara, 2 yr. No. 1 .....	.20	.90	1.40	2.00	6.00	
Brighton, 2 yr. No. 1 .....	.30	1.35	2.10	3.00	8.00	

## RHUBARB

Giant Crimson, 2 yr. ....	.09	.40	.70	1.15	4.00	35.00
---------------------------	-----	-----	-----	------	------	-------

### CASH DISCOUNTS ON EARLY ORDERS

We will allow the following discounts from list price on all orders for \$5.00 or more accompanied by cash in full:

January 1st to January 30th .....	10% discount
February 1st to February 28th .....	8% discount
March 1st to March 31st .....	5% discount

# ORDER SHEET

## J. N. ROKELY & SON Bridgman, Michigan

**AMOUNT ENCLOSED**

For Plants .....\$.....

For Postage (If by  
Mail) .....\$.....

Total .....\$.....

Date .....

Name .....  
(Write very plainly)

Rural Route No. .... Street .....

Post Office ..... Ship by .....  
How to Ship.Express Office ..... Ship about .....  
When to Ship.

State ..... County .....

If we are sold out of any variety ordered, may we substitute? Please say "Yes" or "No".  
In case you do not indicate your wish in this space we will assume that you intend us to make second choice.

Number of Plants	NAMES OF PLANTS WANTED	Dollars	Cents

If you are ordering your plants shipped by Parcel Post be sure to include postage with your order.  
See Page 22 for postal rates.

Number of Plants	NAMES OF PLANTS WANTED	Dollars	Cents

**GENERAL INFORMATION**

**TIME TO ORDER:**—Early. Make up your order and send to us as soon as you receive this catalogue. You may then rest assured that your plants will be delivered when you are ready for them. Use blank order sheet which is provided, being careful to fill all blanks properly and **WRITE PLAINLY**. Always keep a copy of your order for your own reference. We acknowledge receipt of your order promptly.

**TERMS:**—Our terms are cash with order or part cash and the balance any time before shipment is to be made. Orders amounting to \$5.00 or more we will ship C. O. D., providing 25 per cent of the total is remitted with order. Remit by personal check, Express or Postoffice Money Order, Bank Draft, or Registered Letter.

**REFERENCES:**—For information as to our reliability we refer you to Farmers and Merchants National Bank, Benton Harbor, Michigan, or Bridgman State Bank, Bridgman Michigan. Also the Postmaster or Express Agent at Bridgman.

**SHIPPING SEASON:**—We begin shipping the last of March or first of April according to season, and continue until about May 15th. We do not advise our customers to order stock shipped after this date. We make shipment of strawberry plants in the spring only. Please do not order for late summer or fall shipment as we cannot ship at this time. We will ship other stock, such as raspberry, blackberry, and grape plants, shrubby, etc., any time after October 15th in the fall if wanted at that time.

**METHODS OF SHIPPING:**—For most orders express is the safest and all things considered the best way to have your plants shipped. All express orders are shipped charges collect. Many of our small orders are now shipped by Parcel Post and arrive in good shape. We do not recommend it for any but small orders, however, as it is very expensive on large shipments.

Inquire from your Postmaster or Rural Carrier what zone you are in from Bridgman, Michigan. By referring to the following table you may then determine the amount of money you must add to your order if you wish it forwarded by Parcel Post. These amounts include the safe wrapping of your order to reach you in good growing condition.

Add to your order for each 100 plants of:	1st & 2nd Zone	3rd Zone	4th Zone	5th Zone	6th Zone	7th Zone	8th Zone
Strawberries and Asparagus .....	\$0.10	\$0.15	\$0.20	\$0.25	\$0.30	\$0.35	\$0.40
Red Raspberries .....	.12	.18	.25	.35	.40	.48	.55
Black Raspberries and Blackberries.....	.20	.30	.40	.65	.85	1.05	1.25
Currants, Gooseberries, Grapes, Rhubarb, Roses .....	Every 12 plants same rate as 100 strawberries						
All Ornamental Shrubs .....	Every 6 plants same rate as 100 strawberries						
All Bulbs .....	12 bulbs or less, one-half rate of 100 strawberries						

Fruit Trees are too large to be shipped by mail.

This table has been carefully prepared and after filling thousands of orders, and we believe it to be as correct as it is possible to get it. Plants do not all weigh the same when packed for shipment and no table could prove correct. We do not try to adjust small differences in postage.

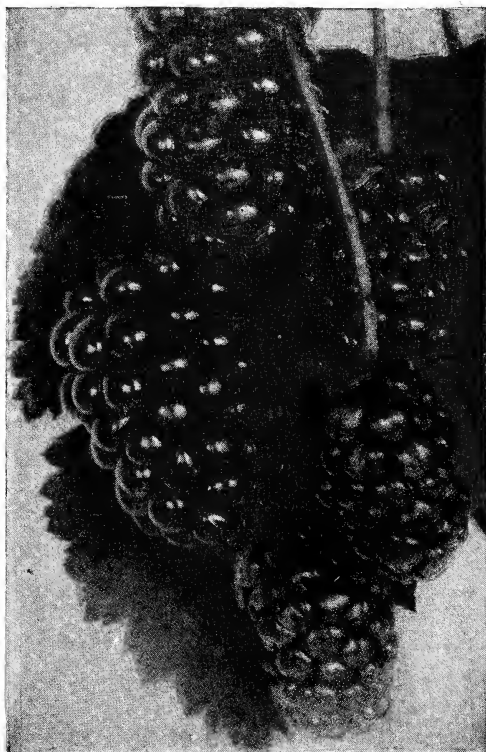


# An Early Market Raspberry



We recommend this variety as the best early red raspberry grown. It is extremely early and enormously productive of large, firm, bright red berries. The berries are very attractive in appearance, easy to pick, and unlike other varieties, will not turn dark if allowed to become over-ripe. They are excellent shippers and will bring the top market price. The canes are hardy and thrifty and the plant practically immune from disease. The Early King is rapidly becoming the leading variety of red raspberry in all parts of the country, as it is well adapted to all soils and climatic conditions. Here in Berrien County, where at least three-fourths of the country's raspberries are grown, nine out of every ten plants is planted to Early King. We have a first class stock of genuine Early King plants at a new low price and hope you will let us reserve yours right away.

Early King



Eldorado

## ELDORADO

### THE WORLD'S GREATEST BLACKBERRY

We have grown practically all varieties of Blackberries, but Eldorado is so much superior to all others that we now grow and sell only that one variety. Eldorado is unusually hardy. We have never known it to winter-kill or fail to produce an exceptionally fine crop of fruit. Even in the far northwest it is grown without winter protection. The berries are very large, jet black and of excellent quality. They are borne in large clusters and ripen well together. In a word, Eldorado is the greatest blackberry in cultivation and we can assure you that you will not be disappointed in it. Our plants are strong and heavily rooted but our supply is small this year, so it will not be safe to delay placing your order for the amount you will want.

The plants you sent me last year sure were fine. 97 per cent grew and are doing fine. Thanks for the prompt delivery.

Yours for success, C. H. Frost,  
Yellow Springs, Ohio.

# Gibson Strawberries



The Gibson berry is a beautiful dark red clear to the center, of excellent quality and flavor, firm, and will stand shipping as well as any variety we know.

## *Has Made More Money for Fruit Growers than Any Other Variety Ever Known*

Growers everywhere report that for size, color, and quality of berries produced, the famous GIBSON is certainly a wonder. A better and more productive berry has never been grown. When set out with Premier as an extra early variety, Senator Dunlap as a medium early, and Aroma or Gandy for late, it makes a combination that will supply you with berries during a long season.

Whether you have a home market, distant market or canning factory to supply, plant GIBSON for your main crop and you will make more money than with any other variety.

**J. N. Rokely & Son**  
**Bridgman, Michigan**