

Historic, Archive Document

Do not assume content reflects current scientific knowledge, policies, or practices.

HARDY PERENNIALS

HOW TO GROW THEM

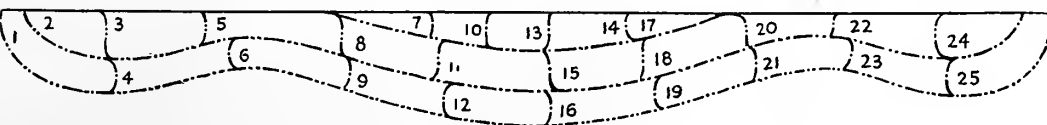
Outdoors they may be sown any time in June to August—the earlier the better, for the plants will then become stronger and better established before winter. A cold-frame is an ideal place in which to sow Perennials, but, if you have none, prepare a seed-bed of finely sifted light soil, made rich by adding and mixing with it thoroughly well-rotted barnyard manure, sheep manure, or humus. Sow the seed in shallow drills or squares of suitable size, partitioned off with laths; cover 1/4 inch or more, according to the size of the seed—the very fine ones should only be pressed into the soil; press down with a flat board; water gently but thoroughly through a fine rose and do not allow the soil to become dry while the seed is in the process of germination, for as soon as the seed has sprouted and until it becomes a plant with roots, its life depends entirely on soil-moisture. It is fatal to allow the soil to become dry for even five minutes during this period and nearly all failures in growing perennials are attributable to this

neglect. Seed-beds must, therefore, be shaded from the sun in summer and carefully watched and watered until the plants have made from four to five leaves. While most of the hardy flowers germinate in from eight to fourteen days, there are some which take a month or more before they come up, so do not become impatient. If seedlings come up too thick, pull out some and transplant elsewhere in boxes or other seed-beds, and when plants are finally large enough they will be ready for setting out in their permanent places. This, however, should not be done later than October 1, in order to allow sufficient time for them to take a firm hold in the soil before frost. Cover over winter with leaves or salt hay, applied after the ground is frozen (about the middle of December). Too early covering sometimes causes heating and consequent decay of plants, and it also encourages field-mice, which often do harm to the plants. Explicit cultural directions will be found on each packet of our seeds.

	Height	Time of Flowering	Color	Pkt.
<i>Acanthus mollis</i>	3 ft.	July, Aug.	White	\$o 10
<i>Achillea millefolium rubrum</i>	2 ft.	June-Oct.	Pink	25
<i>Parmica, the Pearl</i>	2 1/2 ft.	June-Sept.	White	25
<i>Aconitum Napellus</i>	3 ft.	Aug.-Oct.	Dark blue	25
<i>Wilsoni</i>	5 ft.	Aug.-Nov.	Pale blue	25
<i>Adlumia cirrhosa</i> (Allegheny Vine).....	15 ft.	July-Sept.	Pale rose	25
<i>Agrostemma coronaria atrosanguinea</i> (Rose Campion).....	2 ft.	July-Sept.	Crimson	10
<i>Allwoodii alpinus</i> . (New) for Rocks.....	4 in.	June-Sept.	Mixed	1 00
<i>Alstroemeria</i> , Mixed Hybrids.....	2 ft.	July, Aug.	Yel. and or. shades	25
<i>Alyssum saxatile compactum</i>	9 in.	April, May	Golden yellow	25
<i>Anchusa italica</i> , Dropmore.....	4 ft.	June-Sept.	Purple	25
<i>italica, Opal</i> . (New.).....	4-5 ft.	June-Aug.	Pale blue	50
<i>Anemone Pulsatilla</i>	9-12 in.	April, May	Violet-purple	25
<i>St. Brigid</i>	10 in.	May, June	Mixed	25
<i>silvestris</i>	12 in.	May, June	White	25
<i>Aquilegia cærulea</i>	3 ft.	May, June	Pale blue and white	25
<i>chrysantha</i>	2 ft.	May, June	Pale yellow	25
<i>Copper Queen</i> . (New.).....	3 ft.	May, June	Copper and buff	75
<i>glandulosa major</i>	3 ft.	April-June	Blue and white	25
<i>glandulosa superba</i>	2-3 ft.	May, June	Light blue and white	1 00
<i>Mrs. Scott Elliott's strain of Long-spurred Hybrids</i>	3 ft.	May, June	Mixed	50
<i>Rose Queen</i> . Long-spurred.....	3 ft.	May, June	Pink	50
<i>Schling's Giant Long-spurred Hybrids</i>	3 ft.	May, June	Mixed	25
<i>White Queen</i> . Long-spurred.....	2 1/2 ft.	May, June	White	25
<i>Arabis alpina</i> . (Rock Cross).....	5 in.	April, May	White	25
<i>Armeria Lauchea</i> (Double Sea Thrift).....	6 in.	June-Aug.	Rosy crimson	35
<i>Aster subæruleus</i>	2 ft.	Sept., Oct.	Lilac-blue	50
<i>Asters</i> , Perennial. (Michaelmas Daisy).....	3 ft.	Sept., Oct.	Mixed	15
<i>alpinus, Blue</i> . (Dwarf.).....	12 in.	June-Sept.	Blue	25
<i>alpinus, Gouatin</i> . (Dwarf.).....	6-10 in.	May, June	Bluish purple	50
<i>alpinus superbus</i>	12 in.	June-Sept.	Rich blue	50
<i>Amellus hybridus</i>	2 ft.	July-Oct.	Ass't largest flowering	50
<i>Aubrietta deltoidea græca</i> (Wall Cress).....	6 in.	April, May	Dark violet	50
<i>deltoidea Leichtlini</i>	6 in.	April, May	Rosy carmine	25
<i>Bellis perennis</i> , Schling's Giant Double.....	6 in.	April-June	White	25
<i>Giant Pink</i>	6 in.	April-June	Pink	25
<i>Giant Red</i>	6 in.	April-June	Red	25
<i>Giant Mixed</i>	6 in.	April-June	Mixed	25
<i>Campanula carpatica</i>	12 in.	June-Aug.	Deep blue	15
<i>carpatica alba</i>	12 in.	June-Aug.	White	15
<i>grandiflora</i> . Blue.....	2 ft.	June, July	Blue	20
<i>persicifolia grandiflora</i> . Blue.....	2 ft.	June, July	Blue	25
<i>persicifolia alba grandiflora</i>	2 ft.	June, July	White	25
<i>persicifolia Moerheimi</i>	2 ft.	June, July	White, double	30
<i>pyramidalis</i> . Blue.....	4 ft.	Aug., Sept.	Blue	20
<i>pyramidalis</i> . White.....	4 ft.	Aug., Sept.	White	20
<i>Candytuft</i> . See <i>Iberis</i> .				

	Height	Time of Flowering	Color	Pkt.
<i>Campanula Medium</i> . (Canterbury Bells).....	3 ft.	June, July	Blue	\$o 15
<i>Blue</i>	3 ft.	June, July	Blue	15
<i>Carmine-rose</i>	3 ft.	June, July	Carmine-rose	15
<i>Mauve</i>	3 ft.	June, July	Mauve	15
<i>White</i>	3 ft.	June, July	White	15
<i>Mixed</i>	3 ft.	June, July	Mixed	15
<i>Campanula Medium calycanthema</i>	3 ft.	June, July	Mixed	15
(Cup and Saucer). <i>Blue</i>	3 ft.	June, July	Blue	25
<i>Mauve</i>	3 ft.	June, July	Mauve	25
<i>Rose-pink</i>	3 ft.	June, July	Rose-pink	25
<i>White</i>	3 ft.	June, July	White	25
<i>Mixed</i>	3 ft.	June, July	Mixed	25
<i>Carnations</i> , Hardy Double Border.....				
<i>Aurora</i>	12 in.	May-July	Buff	50
<i>Double Early-flowering</i> . White.....	12 in.	May-July	White	25
<i>Early-flowering American Hybrids</i>	18 in.	June-Oct.	Mixed	1 00
<i>Vienna, Finest Mixed</i>	12 in.	May-July	Mixed	20
<i>Schling's Prize Hardy Border</i> . A superb free-flowering strain with highest percentage double flowers of finest quality on long stems; invaluable for cutting. Yellow and yellow ground vars. Pkt. 50c. Triumph, Rose Tints. Pkt. 50c. Pure White, fringed. Pkt. 50c. Schling's Prize Mixture. Pkt. 25c.				
<i>Centaurea macrocephala</i> . Rays of Gold.....	3-4 ft.	June-Aug.	Golden yellow	50
<i>montana</i>	2 ft.	June-Sept.	Blue	25
<i>Cerastium tomentosum</i> (Snow-in-Summer).....	4 in.	May-July	Silvery white foliage	25
<i>Chrysanthemums</i> . <i>Shasta Daisy</i>	2 1/2 ft.	May-Sept.	White	15
<i>King Edward VII</i>	3 ft.	July-Sept.	White	15
<i>maximum laciniatum</i> (Fringed Moonpenny Daisy). A beautiful white Marguerite.....	3 ft.	July-Sept.	White	50
<i>Præcox</i> . White Lady.....	2 ft.	July-Sept.	White	35
<i>New Single Early-flowering Hybrids</i>	2 ft.	Sept., Oct.	Mixed	1 00
<i>Japanese</i> . Hardy; early flowering.....	2 ft.	Sept., Oct.	Assorted	25
<i>Cimicifuga racemosa</i> (Snakeroot).....	4-5 ft.	June-July	White	1 00
<i>Coreopsis lanceolata grandiflora</i>	2 ft.	June-Oct.	Golden yellow	10
<i>California Sunbeam</i>	2 ft.	June-Oct.	Golden yellow	15
<i>Dianthus Allwoodi</i>	1 1/2 ft.	June to frost	Mixed	25
<i>deltoides</i> (Maiden Pink).....	8 in.	June, July	Pink	75
<i>plumarius</i> . Double Mixed.....	1 ft.	June, July	Mixed	25
<i>plumarius</i> . Double Scoticus.....	1 ft.	June, July	Mixed	75
<i>plumarius</i> . Single Mixed.....	1 ft.	June, July	Mixed colors	15
<i>Schling's Prize Strain</i>	1 ft.	June, July	Assorted	25
<i>Dictamnus Fraxinella</i> . Mixed.....	3 ft.	June, July	Assorted	25
<i>Delphinium</i> , Kelway's Show Variety.....	5 ft.	June, July	Col. 6 named sorts	1 50
Hybridum. 9 new varieties:				
<i>Bellamosa</i>	3 ft.	July-Oct.	Dark blue	75
<i>Fanny Stormouth</i>	4 ft.		Light azure-blue	1 00
<i>Hugo Poortman</i> . Heavy spikes.....	6 ft.		Light blue	1 00
<i>King of Delphiniums</i>	6 ft.		Deep blue	1 00
<i>Lady Ravensworth</i>	6 ft.		Porcelain-blue	1 00
<i>Lize</i> . Yellow eye.....	5 ft.		Azure-blue	1 00
<i>Mastodonte</i> . Very massive.....	6 1/2 ft.		Dark purplish blue	1 00
<i>Queen Wilhelmina</i>	5 ft.		Soft blue	1 00
<i>Rev. E. Lascelles</i> . Large flowers.....	5 ft.		Deep blue, white center	1 00

COLLECTION: 1 pkt. each of the above 9 Hybrid Delphiniums, \$7.50



- Border A. Especially Attractive as a Foreground to Shrubbery Borders**
25 CHOICE PERENNIALS FOR \$5.00
- | | | |
|--|--|---|
| 1. Sweet William, Newport Pink.....25c | 9. <i>Erinus alpinus</i>25c | 19. <i>Lychnis viscaria splendens</i>25c |
| 2. <i>Chrysanthemum</i> , Fringed Moon-penny Daisy.....50c | 10. <i>Echinops Ritro</i>20c | 20. <i>Campanula Medium</i>15c |
| 3. <i>Pentstemon Torreyi</i> . Pink.....50c | 11. Sweet Rocket.....15c | 21. Siberian Wallflower.....50c |
| 4. <i>Iberis gibraltarica</i> . Pink.....35c | 12. <i>Arabis alpina</i> . White.....25c | 22. Gaillardia, Schling's New Hybrids.....25c |
| 5. <i>Campanula pyramidalis</i> . Blue.....20c | 13. <i>Delphinium</i> , Gold Medal Hybrids.....25c | 23. <i>Dianthus plumarius</i> , Double.....20c |
| 6. <i>Alyssum saxatile compactum</i>25c | 14. <i>Hibiscus</i> , Mallow Marvel.....25c | 24. <i>Lupinus polyphyllus</i> . Blue.....15c |
| 7. <i>Digitalis gloxinoides</i> , Rose.....15c | 15. <i>Coreopsis</i> , California Sunbeam.....15c | 25. <i>Pentstemon</i> , New Dwarf Hybrids.....75c |
| 8. <i>Centaurea montana</i> . Blue.....25c | 16. <i>Pyrethrum roseum hybridum</i>25c | |
| | 17. <i>Anchusa italica</i> , Dropmore.....25c | |
| | 18. <i>Delbeckia purpurea</i>25c | |
- Regular value.....\$6 95

TEN OUTSTANDING FAVORITES OF UNUSUAL HARDY FLOWERS \$4.00

<i>ANCHUSA ITALICA, OPAL</i> . Hardy pale blue Alkanet. 4 to Pkt. 5 ft. June to Aug. \$o 50
<i>AQUILEGIA GLANDULOSA PERFECTA</i> . Violet and white. 2 to 3 ft. May, June. 35
<i>CHRYSANTHEMUM PRÆCOX, WHITE LADY</i> . Giant daisies, filled with quilled and twisted petals. 35
<i>DELPHINIUM, BLACKMORE and LANGDON'S NEW GIANT EXHIBITION STRAIN</i> . 6 to 7 ft. June, July.... 50
<i>DIANTHUS ALLWOODI</i> . Assorted colors. 1 1/2 ft. June to Sept. 75
<i>GEUM, LADY STRATHEDEN</i> . Double, golden yellow. 50
<i>ICELAND POPPY, SUNBEAM</i> . Pastel shades. May to Sept. 25
<i>SIDALCEA, HEMSLEY'S NEW HYBRIDS</i> . Long, graceful spikes of pale pink, deep pink, salmon, or red flowers. 2 to 3 ft. June to Sept. 75
<i>VIOLA CORNUTA, JERSEY GEM</i> . Very large, extremely fragrant, deep blue blooms on 10 to 12-inch stems. From May to frost. 75
<i>WALLFLOWER, HARDY ALPINE</i> . Mauve; fragrant. 50

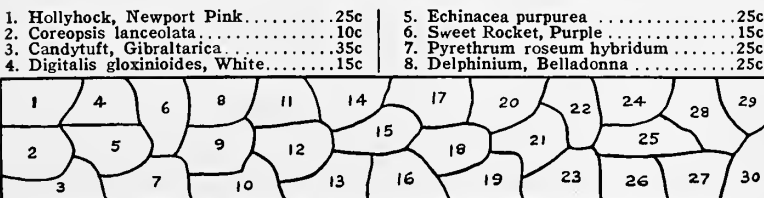
Regular value.....\$5 20

LIST OF HARDY PERENNIALS

Table listing various hardy perennials such as Delphinium, Digitalis, Echinacea, and others, including their height, flowering time, color, and price per packet.

Table listing various hardy perennials including Pansies, Phlox, Pyrethrum, Rudbeckia, Salvia, Scabiosa, Sedum, and others, including their height, flowering time, color, and price per packet.

A HARDY BORDER PROPERLY PLANNED AND PLANTED



This sketch of a Hardy Border (B) 50 x 5 feet, consisting of 30 choicest Perennials for continual bloom, shows how to proceed with the laying out and placement of the plants.

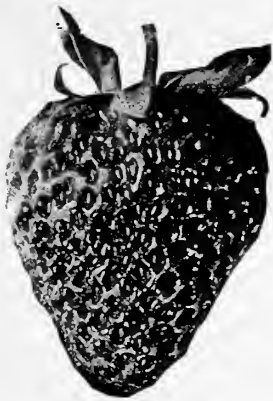
Planting Key to Border B

A key listing 30 perennials corresponding to the numbered plots in the diagram, including species like Stokessia cyanea, Sweet William, Campanula, and others.

SPECIAL OFFER (B) 1 pkt. each of above 30 varieties \$6.00 (regular price \$8.50)

Plant a Strawberry Bed this Summer

ENJOY YOUR OWN BERRIES NEXT JUNE



One hundred plants, with fair cultivation, will yield thirty quarts of berries the first year in a space of only 4 by 50 feet.

Utilize the vacant spaces in your garden. Our Pot-grown Strawberry Plants can be set out any time during July and August, and even as late as September 15. Early plantings produce biggest crops. Set plants in rows, 1 foot apart. Allow space of 2 feet between rows for cultivation. Pinch off all runners as they appear and cover the bed lightly with leaves, salt hay, or manure in December after the ground is frozen. Remove covering in early spring; if salt hay is used it may be left between the rows as a soil-mulch to keep the soil moist and the berries clean.

Pot-grown Strawberry Plants

Ready for shipment July 25, but order now. Early Orders always assure Strongest Plants

All varieties offered are perfect flowering, of largest size and best flavor

Three Specials for the Home Garden

PREMIER. (Extra early.) The largest and by far the firmest of all early varieties. Fruit of a brilliant scarlet-crimson color and very luscious, having a delightful aroma and a rich, wild Strawberry flavor. No variety ripens earlier. Excels all others.

BIG JOE. (Midseason.) An unusually healthy, vigorous, and productive variety. The berries are large, light glossy crimson, and of excellent flavor. It is one of the very best of the mid-season varieties and we cannot recommend it too highly. The color is particularly attractive.

CHESAPEAKE. (Late.) Possibly the finest and most luscious of all Strawberries for the home garden. The berries are very large and firm and have the luscious flavor of the wild Strawberry. The plant produces Strawberries in great quantities.

In planting the above three varieties, you will lengthen your Strawberry season considerably and have berries for fully a month.

Pot-grown plants of the above, \$3 for 25, \$8.50 per 100

Marshall. A very large midseason berry of rich flavor and almost devoid of acid; of a beautiful dark crimson color when fully ripe; very productive.

Barrymore. (Midseason.) Large, broad and bluntly conical; firm and of excellent quality.

Bushel Basket. Recognized as the largest Strawberry. The fruit is firm and of finest flavor. \$3 for 25, \$10 per 100.

Early Ozark. Large, broad, extra-early; fruit almost square and of a rich flavor.

Edmund Wilson. The Giant Strawberry, introduced by Dr. Van Fleet. Very dark in color, of immense size—individual berries are often the size of a small apple. \$3.50 for 25, \$12 per 100.

Schofield. Berries of enormous size, very broad and thick, of rich aromatic flavor.

Strong pot-grown plants, except where especially priced, \$2.75 for 25, \$8 per 100

Fall or Everbearing Strawberry Plants

Just as luscious as the June varieties. Bearing in September and October; in fact, they fruit continuously from June until frost, but if you want a heavier crop of berries in the fall, pinch out all blossoms until about July 20 or August 1.

PROGRESSIVE. We consider this the best and most productive of the fall-fruiting varieties. The berries are produced in large clusters and have a fine aromatic flavor.

LUCKY BOY. Berries conical in shape, deep red in color, and of good flavor.

SUPERB. A very vigorous variety that produces quantities of fruit of fine flavor.

Strong pot-grown plants of Everbearing varieties, \$4 for 25, \$15 per 100

Beautiful German Iris

Bearded Iris, or Fleur-de-Lis

We offer here a list of the choicest and most improved of the more recent developments in this wonderful flower.

	Each	Doz.
Alcazar. Light violet standards; falls deep purple. Very large.....	\$0 50	\$5 00
Ambassadeur. Standards smoky lavender; falls deep violet-red, with a rich orange beard.....	1 00	10 00
Candelabre. Lavender-blue, dotted darker blue.....	50	5 00
Caprice. Rosy red, yellow beard.....	35	3 50
Caterina. Standards clear blue; falls soft lilac.....	50	5 00
Empress of India. Very large flowers of a rich but delicate blue color.....	1 00	10 00
Flaming Sword. A fine new Iris. Color a gorgeous combination of bright yellow and red-brown.....	1 50	15 00
Her Majesty. Clear rose-pink, bright crimson falls.....	35	3 50
Iroquois. Smoky lavender and maroon.....	35	3 50
Lent A. Williamson. Broad, soft lavender standards; falls royal purple and very large.....	75	7 50
Mother of Pearl. Pale bluish lavender with a creamy undertone.....	1 00	10 00
Monsignor. Satiny violet standards; velvety purple falls.....	35	3 50
Pallida Dalmatica. Lavender, shaded blue. Very fragrant.....	35	3 50
Quaker Lady. Smoky lavender, yellow shadings; falls blue and old-gold.....	50	5 00
Rhein Nixe. Pure white standards; violet-blue falls.....	35	3 50
Sherwin-Wright. Golden yellow. Very free and fine.....	50	5 00
White Knight. Pure snow-white.....	50	5 00

Special Collection Offer: 3 each of above 17 varieties (51 in all), \$26.

Very Special: GERMAN IRIS IN MIXTURE for Mass Planting

A beautiful mixture comprising only the modern improved varieties, just what you want for mass planting, to naturalize in beds, as an outline to shrubbery, along woodland walks, etc.

Strong flowering roots, very specially priced, 50 for \$4, \$7 per 100, \$60 per 1,000

Superb Modern Peonies

FOR FALL PLANTING

A selection made now assures a special pick of the strongest roots

WE BEGIN TO SHIP OUR PEONY ROOTS IN SEPTEMBER—ORDER NOW

Always plant Peonies in the fall, for the roots are then in prime condition. While they grow well in any good garden soil, they will amply repay any time spent in manuring the surface. Care should be taken to keep the manure a few inches away from the crowns of the plants, except the first winter, when a coarse mulch an inch or more deep may be placed directly over the plants to prevent the frost from heaving them. It is not necessary to fertilize rich soil. In poor soil, the manure should be kept 10 inches from the surface, and well mixed with the subsoil; after planting, apply manure to surface, as previously advised. Never allow manure to come in contact with the roots as it rots them. Set roots 2 feet or more apart and cover top eyes not more than 2 to 3 inches; deep planting often results in blind growth.

Our Peonies are extra-strong 1-year-old field-grown roots (not divisions)

THE BEST PEONIES FOR 1928

	1-year
* Alexandre Dumas. Early midseason. Predominating color brilliant pink; chamois, white, and salmon petals intermingling.....	\$1 50
Asa Gray. Midseason. Pale pink, powdered with rosy dots.....	2 50
Aurore. Midseason. Creamy pink, with striking collar of yellow stamens; faintly fragrant.....	2 00
Avalanche. Midseason. Blush-white, with pale pink center.....	1 50
Boule de Neige. Early midseason. Milky white; outer and center petals marked crimson.....	1 25
* Canari. Midseason. Fleishy white, changing to white; yellow center.....	1 25
Couronne d'Or. Late. Snow-white, reflecting yellow; center petals edged carmine. Yellow stamens visible.....	1 50
* Delachei. Late midseason. Dark crimson.....	1 00
Duchesse de Nemours. Early. Outer petals white; center sulphur-white, changing to white. Popular for cut-flowers.....	1 00
* Duchesse d'Orleans. Late midseason. Deep pink guard petals; center soft pink and salmon.....	1 00
* Edulis Superba. Early. Rich rose-pink. Very fragrant. Fine for cut-flowers.....	1 00
* Felix Crousse. Midseason. Even shade of clear red.....	1 50
* Festiva Maxima. Early. Pure white; center petals edged carmine. Most popular white peony.....	1 00
* Jeanne d'Arc. Midseason. Sulphur-white, soft pink, and rose. Center petals spotted carmine.....	1 25
La Tulipe. Midseason. Very delicate blush. Center petals edged and outer petals striped carmine.....	1 00
Mme. Auguste Dessert. Early midseason. Old-rose pink with golden center.....	2 50
Mme. Calot. Early. Fleish-pink. Beautiful.....	1 00
* Mme. de Galhau. Late. Salmon-flesh pink; silvery reflex.....	1 25
* Mme. Ducl. Midseason. Silvery pink, compact bomb-shaped flowers.....	1 50
* Mme. de Verneville. Early midseason. Pure white, center shaded blush, with few petals edged carmine.....	1 00
* Marguerite Gerard. Midseason. Very large; flesh-pink deepening to rose... ..	1 25
Marie Lemoine. Very late. Large, ivory-white flower; center occasionally traced carmine.....	1 50
Modele de Perfection. Late. Flesh-pink, deepening to bright rose in center.....	1 50
Philomele. Midseason. Bright rose outer petals enclosing a golden tufted center.....	1 25
Pierre Reignoux. Early midseason. Uniform light Tyrian-rose. Very distinct.....	2 00
Queen Victoria. Early. White, tinted blush.....	1 00

Any of the above sold separately at the prices quoted

A. The entire collection, 1 root each of the 26 varieties, 1 year old, \$30 (regular value \$36)

B. Collection, 1 root each of 12 varieties marked (*), \$12 (regular value \$14.50)

RARE PEONIES

* Baroness Schroeder. Late midseason. Very large, pale flesh-white flowers tinted cream, outer petals often shaded faint pink; fragrant.....	2 00
* Chestine Gowdy. Late. Large, light rose blooms, collar creamy white; delightfully fragrant.....	4 00
Elizabeth Barrett Browning. Very late. Very large flower opening creamy blush, passing to white with pale yellow glow in its depths and prominent red marks in center and on outer petals; very fragrant.....	6 00
* Elwood Pleas. Late. Flower large, flat, with many crinkled petals of pale rose-pink passing to light flesh-pink at center.....	5 00
* Eugenie Verdier. Late. Large, light rose-pink bloom paler at center, with some creamy yellow petaloids and occasional petals tipped crimson; mild fragrance.....	2 25
* Frances Willard. Late midseason. Flower large, pale pink, changing to white with yellow suffusion in collar; mild fragrance.....	5 00
Jubilee. Midseason. Very large white flower with a greenish tinge and an occasional pinkish flush on outer petals.....	5 00
* Karl Rosenfeld. Midseason. Large, very bright crimson flower with very little blue in it; not fragrant.....	2 50
* Lady Alexandra Duff. Midseason. Large, pale pink blooms borne in clusters, with smaller saucer-shaped side flowers and yellow stamens; mildly fragrant... ..	5 00
* Mme. Emile Lemoine. Midseason. Blooms large, opening with crimson streaks on outer petals and a faint flush of tiny pink dots fading to creamy white with crimson flakes on center petals; mildly fragrant.....	2 00
* Mme. Jules Dessert. Late midseason. Very large flesh-white blooms with long, smooth petals symmetrically arranged; mildly fragrant.....	5 00
Mons. Jules Elie. Early. Blooms very large, light rose-pink of a dull, opaque quality seen in pink chrysanthemums; moderately fragrant.....	2 50
* Sarah Bernhardt. Late. Very large, dark rose-pink blooms edged a trifle lighter, with inconspicuous red edges on a few central petals; agreeably fragrant.....	3 50
* Solange. Late. Large, globular, cream-white flower with a suffusion of buff and pale salmon-pink; very faint fragrance.....	6 00
Therese. Midseason. Very large flower with enormous, long petals of pale, translucent, old-rose-pink, paling toward the base and illumined by a golden yellow glow in the depths.....	5 00
* Victorie de la Marne. Midseason. Flower very large, dark old-rose-pink, with lighter edges.....	8 50

C. Novelty Collection, 1 each of above 16 varieties \$60 (regular value \$69.25)

D. Novelty Collection, 1 each of 12 varieties marked (*), \$45 (regular value \$50.75)

GROW YOUR OWN

HARDY FLOWERS FROM SEED

It's Lots More Fun—NOW is the Best Time to Do It

1928

United States Dept. of Agriculture,
Dept. of Horticulture,
Washington, D. C.

U. S. POSTAGE

1½c. Paid.

New York, N. Y.
Permit No. 2785.

Everybody wants Perennials—and wants them in generous measure, to secure the desired effects in color and charm. If you delay and finally buy plants, the cost mounts high; an attractive Perennial border may require several hundred dollars' worth of plants.

Exactly the same result can be secured with \$10 to \$15 worth of SEEDS! And aside from the money-saving you have the fascination of growing your own plants, nursing them from the beginning, and loving them all the more! Sow your seeds now, and the plants will bloom next year.

Schling's Seeds

618 Madison Ave.,
at 59th Street,
New York City

POT-GROWN STRAWBERRY PLANTS. See page 3

The Rock-Garden

What a wealth of pleasure awaits the garden-lover who plans and builds a rock-garden, and there are really few places where something of this sort might not be attempted, especially where rocks and stones are plentiful. And how interesting to watch the development of the many rare and charming plants that spread, creep, and cover the ground, and hang over and partly hide the rocks.

Here is a select list of seeds of hardy plants which are happy growing between the crevices of stones and on elevated positions. To enhance the pleasure derived from a rock-garden, grow your own plants from seed.

The entire Collection of seeds for the Rock-Garden—50 varieties, \$15.45 value for \$12



Achillea millefolium rubrum.....	\$0 25
Agrostemma coronaria atrosanguinea.....	10
Alyssum saxatile compactum.....	25
Anemone pulsatilla. Violet-purple. 9 to 12 in.....	25
Anemone sylvestris. White. 1 ft.....	25
Aquilegia cærulea. Blue.....	25
Aquilegia, Long-spurred Hybrid.....	25
Arabis alpina (Rock Cress). White.....	25
Armeria (Felbach Beauty). Soft rose. 1 ft.....	50
Aster alpinus, Blue. (Dwarf.) 1 ft.....	25
Aster alpinus, Goliath. Blush-purple. 6 to 10 in.....	50
Aster alpinus superbus. Rich blue. 1 ft.....	50
Aster alpinus, amellus hybrids. (Dwarf.) 2 ft.....	50
Aubrietia Leichtlinii (Pink Rock Cress).....	25
Campanula carpatica. Blue.....	10
Candytuft (Iberis) gibraltaria. Lavender-pink.....	35
Candytuft (Iberis) sempervirens. White.....	25
Cerastium tomentosum (Snow-in-Summer).....	25
Delphinium chinense. Blue Butterfly. 8 in.....	25
Delphinium chinense. Ultramarine-blue. 1½ ft.....	35
Dianthus deltooides (Maiden Pink).....	25
Edelweiss. 6 in.....	25
Erinus alpinus. 6 in. Blue.....	25
Geum, Mrs. Bradshaw. 1½ ft.....	25
Gypsophila repens, Trailing. Clouds of white flowers.....	35
Heuchera sanguinea splendens. 1½ ft.....	25
Incarvillea Delavayi. 1 ft.....	25
Linum, Gold Cup. 1 ft.....	50
Linum, Heavenly Blue. 1 ft.....	50
Lychnis Haageana hybrida. 1 ft.....	25
Lychnis viscaria splendens. 1 ft.....	25
Myosotis palustris semperflorens. 10 in.....	25
Oenothera Youngi. Yellow. 1 ft.....	20
Pentstemon Torreyi. Coral-pink. 2½ ft.....	50
Physostegia virginica. Pink. 2 ft.....	25
Polyanthus Giant-flowering. 6 in.....	25
Potentilla. Assorted Art Shades. 1½ ft.....	35
Primula vulgaris (English Primrose). 6 to 9 in.....	20
Primula veris (Cowslip). 10 in.....	50
Primula officinalis hybrida. Blue and yellow. 10 in.....	20
Poppy, Iceland. 1 ft.....	20
Salvia pratensis. Blue. 2 ft.....	25
Sedum acre (Yellow Stonecrop). 3 in.....	25
Sedum Maximowiczii (Golden Stonecrop). 6 in.....	25
Sempervivum (Liveforever). 3 in.....	1 00
Statice latifolia (Sea Lavender). 2 ft.....	25
Tunica Saxifraga. Pink. 1 ft.....	25
Veronica spicata (Blue Speedwell). 1½ ft.....	35
Viola cornuta, Sensation. Dark blue. 10 in.....	50
Wallflower, Siberian. 10 to 15 in.....	50

INDIVIDUAL SELECTION AT PACKET PRICE \$15 45

NEW AND RARE FLOWERS FOR 1928

- Delphinium, Hollyhock, Wrexham Pkt. Hybrids.** Very long, massive, tapering spikes of immense flowers in beautiful colors. \$2 00
- Leucanthemum maximum, Dwarf Avalanche.** Showy, dwarf Marguerite. Large white flowers cover the plants..... 75
- Digitalis gloxiniaeflora, Isabellina.** A pure yellow Foxglove without a spot..... 50
- Caillardia, Portola Hybrids.** Long stems; extremely large flowers ranging in color through shades of bronzy red. Vigorous grower.... 50
- Meconopsis Baileyi.** Beautiful, blue perennial Poppy from Tibet. Leafy stems, 2 to 3 feet high, with broad sea-green leaves, and at the tips, large four-petaled, beautiful sky-blue blooms with yellow anthers..... 75
- Poppy, Iceland, Coonara Pink.** Warm rose-pink, Australian Poppy, faintly suffused with salmon-pink. Vigorous and free-blooming.. 75
- Pansies, Schling's New Giant, Majestic Splendor.** New colors, more vigorous growth, longer stems, larger blooms, of finer form and substance, in pink, salmon, brown, bronze silver-gray, copper, velvety wine-red, blotched, picoteed and bordered.. 1 00
- Hollyhock, Double Imperator.** Cup-shaped flowers 5½ to 6½ inches across. Elegantly frilled and deeply fringed and a 2-inch rosette in center. Colors, cerise-salmon, center cream reflexing rose; delicate pink, center rose, flushed yellow; light yellow flushed rose, with canary-yellow center, etc..... 50
- Primula Florindæ.** Grows 3 to 4 feet high, has huge leaves, and, from late June to late August, bears 60 to 80 fragrant, bright yellow, pendent flowers in umbels..... 1 00
- Oenothera Clutei.** Large, soft yellow blooms, open all day, in profusion on a stout central stalk 4 feet high..... 50
- Dianthus Allwoodii alpinus.** Grows 4 inches high; blooms from spring to late fall. Colors pink, white, and purple..... 1 00
- Aquilegia cærulea Cuprea, Copper Queen.** Deep copper color, with long spurs of deeper hue; inside lovely shade of buff or tan..... 75
- Centaurea macrocephala, Rays of Gold.** Deep golden yellow flowers, resembling a Scotch thistle in shape and size, borne in profusion on 3 to 4-foot stems..... 50
- Eryngium planum azureum, Heavenly Blue.** Stems and flower-heads of a beautiful steel-blue color. Can be dried..... 50
- Pentstemon, Schling's Giant-flowering Dwarf.** Blooms profusely all season; flowers larger than old sorts in shades of pink, rose, cream, lavender, blue, etc., blotched with a distinct color of softer hue..... 75
- Lupines, Giant Hybrid.** Plants 3½ to 5 feet high, with 2 to 3-foot spikes of flowers in purples, yellows, blues, white..... 75
- Wallflower, Hardy Siberian.** Survives the severest winters. Gorgeous orange flowers all season and shining dark green foliage. 15 in. 50
- Delphinium cardinale, Illumination.** Cardinal-red flowers on 5 to 6-foot spikes.. 35
- Digitalis, The Shirley.** Grow 5 to 7 feet high with 4-foot spikes of flowers in white to dark rose, with large spots and blotches of crimson, maroon, and chocolate..... 35

COLLECTION of the above Novelties, regular value \$13.70, for \$10