

## **Historic, Archive Document**

Do not assume content reflects current scientific knowledge, policies, or practices.



7261

1928

RECEIVED  
NOV 10 1928  
U. S. Department of Agriculture

David J. Scott

Corfu  
Genesee County

*New York  
State*



# *Our Policy and Service*

**I**N presenting this booklet it is our desire not only to list the merchandise we have for sale, but to give a brief outline of the history of Tulips and other interesting information. Preceding the list of each class of Tulips you will find an interesting narrative of their origin.

In our extensive Corfu greenhouses, we force annually one million Holland Tulip bulbs, the flowers being shipped to the flower markets of the large cities. On our Corfu Bulb Farm we plant out many thousands each Fall, both for commercial and trial purposes. Our ultimate aim being to ship only the highest class flowers, it is naturally to our advantage to contract with the leading Holland growers for their highest quality bulbs. Your order will be filled with the same class of bulbs used for our own purposes. We aim to keep our prices as low as possible, but cannot always and do not pretend to compete with those whose purchases are made only with the view as to how cheaply the bulbs can be sold.

Visitors are cordially invited to call at our greenhouses during the forcing period, January, February and March; or at our bulb farm during May and June, when the Daffodils and Tulips are in bloom.

All prices quoted include delivery, either parcel post or express, within the 4th zone, approximately 600 miles from Buffalo. We strongly urge that you send in your order as early as possible.

On all orders placed before June 15th, a discount of 5% is allowed. Early orders need not be paid for in advance, except that we request a deposit of approximately 10%.

*David J. Scott*



## Outline of the History of the Tulips

IT is quite natural that when we think of Tulips we should associate them with Holland. For in this little country and in very restricted areas are produced practically all the Tulip bulbs planted annually in all parts of the civilized world. But it is not right to assume that the Tulip is a native of Holland. The original species are found growing wild in countries bordering the northern shores of the Mediterranean and occasionally in countries extending east as far as Japan.

We are told it was some time during the 16th century when the first bulbs were sent to the Netherlands. And in certain sections of Holland where the Summers are never hot, the Winters not excessively cold and the soil conditions to its liking, the Tulip has found its home. Great credit is due the methodical and painstaking Dutch hybridizer and grower for the present day state of perfection of this flower. More beautiful varieties are still to come, for we in America are allowed to see only those which are produced on a commercial scale while back home in the trial plot of the hybridizer are many new varieties, created perhaps ten or more years ago and only now reaching the stage when their good or bad qualities may be judged. Among the thousands on trial, some will survive and be sent to us to add more gorgeous coloring to our gardens.

It is our purpose in the limited space available to briefly review the different species or classes of Tulips. Much confusion exists in the average mind as to what is meant by a Darwin, a Breeder or a Cottage Tulip, and indeed, it is a difficult matter in some instances to draw a distinct dividing line. During the many years of bulb cultivation in Holland, the industry has passed through many changes, and at certain stages one or another class of Tulips has reached the height of its popularity. Various species have been imported from other countries; these were crossed with the best existing varieties and these again crossed with other species, until today with some of our wonderful new varieties it is a difficult matter to say positively, this is a Darwin or this is a Cottage Tulip. However, most classes have certain characteristics by which they may be distinguished.



*The glorious color of the Tulips is tempered by the more delicate shades of the early Spring background.*

When a new class appears, a temporary term used is "hybrid," which is the result of a cross between two species. But when hybrids of like parentage become too plentiful the whole class is given a new name, as for instance the two new classes of Tulips: the Triumph and the Mendel.



# The Breeder Tulips

This is one of the old Tulips of Holland, known for many years as the unbroken form of the old-time "florist" Tulip. In the early varieties the colors were dull and not desirable and they were prized and cultivated largely because they had a tendency to throw what is known as a "sport"—that is a variation of form or color. These sports from the Breeders were classed as Bizarres and Bybloems and for a time were all the rage, creating as long back as 1635 the famous "Tulip craze" in Holland. With the advent of the taste for so-called art colors, the Dutch hybridizers sought out these old Breeders which had been more or less neglected and from them evolved the wonderful purple, bronze, buff, and brown shades which we have today. They are distinguished by their odd shades of coloring, large flowers and long, strong stems. It requires somewhat the eye of an artist to appreciate the Breeders. They show to best advantage when grouped with other more highly colored Tulips or in clusters among shrubbery.

	Each	10	100
<b>Apricot.</b> Ruddy apricot edged with buff, yellow base; an unusual color in Tulips and a very attractive variety....	\$0.10	\$0.70	\$6.50
<b>Bronze Queen.</b> Soft buff colored petals, shaded with bronze, the inside of the flower is golden bronze with a yellow base .....	.05	.40	3.50
<b>Indian Chief.</b> Reddish purple; a flower of most artistic shape, carried on a tall, strong stem .....	.12	1.00	9.00
<b>Jaune d'Oeuf.</b> Ruddy apricot with yellow edge; an odd but attractive variety, producing a large flower on a strong stem..	.08	.60	5.00
<b>Louis XIV.</b> Rich dark purple with a shade of steel-blue, heavily flushed bronze, edged golden brown; a flower with broad petals and enormous size and stately bearing. We consider this one of the finest of all Tulips and offer it at a special price .....	.10	.80	7.00
<b>Lucifer.</b> A bright terra cotta-orange, a large, well shaped flower on a graceful stem .....	.25	2.00	15.00
<b>St. James.</b> Dark lilac, edged bronze; a large flower on a tall stem .....	.08	.60	5.00
<b>Turenne.</b> Dark blue, intensifying with age; heavily flushed bronze at margin; one of the largest.	.12	1.00	9.00
<b>Velvet King.</b> Velvety blue-black. This immense flower on the strongest stem of all, has a royal-purple color. Its robust growth makes it one of the showiest and most conspicuous of its class .....	.10	.70	6.50
<b>Vulcan.</b> Reddish apricot with broad margin of bright buff-yellow, inside darker. Beautifully shaped flower in a color unlike any other .....	.12	1.00	9.00

Write for prices on larger quantities.



These colorful Breeders indeed pay tribute to the old Dutch hybridizers. Note particularly the strong contrasting colors and sturdy appearance.

There are many undesirable varieties among the Breeders, which, if you happen to plant as your first experience, would be disappointing. These are generally offered in mixtures and we have eliminated them from our list. We offer a collection of 100 bulbs in an assortment of the better varieties, all correctly labeled, for \$7.00 prepaid. As is evident, this is not a competitive offer, but made with the hope of being able to place in your hands some of the choicer varieties, with which you will be greatly pleased.



# The Cottage Tulips

The Tulips belonging to this class owe their name to the fact that many of them have been found growing in the gardens of country homes and cottages of England and France. In the hands of skilful gardeners, planted in the right soil and by careful hybridizing, the number of varieties has become very large. All colors are to be found among them and as they all have long stems, some gracefully drooping, they form an interesting and desirable class.

The Cottage Tulips come into bloom in early May. They are hardy and robust. Flowers are mostly long and oval, many of them with the petals gracefully reflexed.

They make a wonderful showing when planted among shrubbery and in beds, as their brilliant colors make a beautiful show against the green background.

All prices quoted include delivery.

	Each	10	100
<b>Argo.</b> Round flower on a strong stem, yellow mottled red, the red intensifying with age. A very beautiful Tulip when in full bloom. One of the newer varieties .....	\$0.12	\$1.00	\$9.00
<b>Ellen Willmott.</b> Primrose-yellow. The flower is long and narrow and very attractive ..	.06	.45	4.25
<b>Fairy Queen.</b> Rosy heliotrope with a broad amber-yellow margin .....	.05	.40	3.50
<b>Gesneriana Lutea.</b> Golden yellow; one of the best garden Tulips .....	.06	.45	4.25
<b>Inglescombe Pink.</b> Soft rose with a salmon flush .....	.05	.40	3.50
<b>Inglescombe Yellow.</b> Canary-yellow. Sometimes called the yellow Darwin, on account of its Darwin type .....	.05	.40	3.50
<b>Isabella.</b> Creamy white, shaded carmine-rose .....	.06	.45	4.25
<b>John Ruskin.</b> A medley of apricot-rose and mauve, with a pale yellow edge .....	.08	.60	5.00
<b>Moonlight.</b> A soft luminous canary-yellow, very long, oval-shaped flower with the outer petals reflexed at the tip ...	.08	.60	5.00
<b>Mrs. Moon.</b> Golden yellow. Petals reflexing at top, forming a large, beautiful flower .....	.08	.60	5.00
<b>Sirene.</b> Glistening satin-rose, petals reflexing. The most popular of the so-called lily-flowering varieties .....	.08	.60	5.00

Write for prices on larger quantities.



*A splendid example of a Cottage Tulip. Its delicate shape and shading make it a great favorite.*

Collection of 100 Cottage Tulips in a wide range of colors, named varieties, correctly labeled, for \$4.00 prepaid.



# The Darwin Tulips

This class is of comparatively recent introduction. They were found and probably originated in Northern France from seedlings of choice Bybloem varieties. It is evident they are closely related to the Breeders. The Dutch growers immediately recognized the wonderful possibilities of these new seedlings and by skillful hybridizing, soon developed varieties covering a wide range of colors. It became necessary to distinguish this new collection by a class name and along in the latter part of the last century they were named in honor of the illustrious naturalist, Charles Darwin.

It is safe to say that today the Darwin is the popular Tulip. They are most satisfactory for the garden and in the greenhouses all over America are forced by the millions, gradually displacing the early-flowering type of Tulip. In the private conservatory, some varieties may be had in bloom the last of January and in the average home after the middle of February. Their chief characteristics are the perfect cup shape of the flower, fleshy, substantial petals, tall, strong stems and bright colors, ranging from white through all the shades of pink and red to purple and violet, and almost black. Although new varieties are constantly being introduced, which, because of the limited amount of stock, are high in price, most of the Darwins are very reasonable and may be planted generously.

All prices quoted include delivery.



*It is easy to distinguish the Darwin Tulip by its strong characteristics, which are shown in this illustration. There is almost an endless variety of colors to choose from.*

	Each	10	100
<b>Afterglow.</b> Deep rosy orange petals edged with buff-yellow; inside rich salmon and yellow. An unusually splendid variety that makes a brilliant display in the garden .....	\$0.08	\$0.60	\$5.00
<b>Bartigon.</b> Fiery red, large flowers on strong stems. A fine Tulip either for the garden or for forcing ....	.05	.40	3.50
<b>Baronne de la Tonnaye.</b> Soft rose, beautifully margined with pink. Large, splendidly shaped flower .....	.05	.40	3.50
<b>Clara Butt.</b> Clear pink, flushed salmon-rose. For garden purposes this is one of the finest and most popular of the Darwin Tulips .....	.05	.40	3.50
<b>Chant de Cygne.</b> Brilliant scarlet, shaded salmon-rose. A large and beautiful novelty .....	.12	1.00	9.00
<b>City of Haarlem.</b> A very brilliant dark scarlet .....	.10	.70	6.50
<b>Farncombe Sanders.</b> Brilliant dark rosy red with a clear white base. This is one of the finest of the Darwins for outside planting .....	.05	.40	3.50
<b>Faust.</b> Deep purple-maroon. The darkest blue-purple; of unsurpassed brilliancy .....	.08	.60	5.00
<b>Frans Hals.</b> An extra large blue-violet flower .....	.10	.70	6.50
<b>Giant.</b> Dark violet with a light blue base. Very large flower on a long, strong stem .....	.12	1.00	9.00
<b>King George V.</b> Brilliant salmon-scarlet, an immense flower of unusual substance. One of the newer varieties of exceptional merit .....	.25	2.00	15.00
<b>La Fiancee.</b> Deep rose shaded lilac .....	.10	.70	6.50





This illustration shows the contrasting colors in which the Darwins may be had.

	Each	10	100
<b>La Tulipe Noire</b> (The Black Tulip). Comes nearest of all to black; flower of large size..	\$.06	\$0.45	\$4.25
<b>Le Notre.</b> Light rose. The earliest forcing pink Darwin. Not suitable for outside planting .....	.06	.45	4.25
<b>Matchless.</b> Beautiful violet-rose. One of the best Darwins for late forcing in pots .....	.10	.70	6.50
<b>Madame Krelage.</b> Soft lilac-rose with a broad margin of blush-pink. Long, graceful stem. One of the finest Darwins for the garden ..	.05	.40	3.50
<b>Professor Rauwenhof.</b> Deep cherry-rose with a salmon glow inside. A good garden variety and equally good for forcing .....	.06	.45	4.25
<b>Princess Elizabeth.</b> Clear silvery pink. One of the finest of the Darwins either for the garden or late forcing .....	.05	.40	3.50
<b>Pride of Haarlem.</b> Brilliant rosy carmine with blue base. In the garden no Tulip makes a more gorgeous showing. Very large flower on a long, strong stem ....	.05	.40	3.50
<b>Rev. Ewbank.</b> Silvery heliotrope going over into lavender-violet toward the base. A good outside variety .....	.05	.40	3.50
<b>The Bishop.</b> Pure violet. One of the newer varieties which is very highly thought of .....	.50	4.00	
<b>Venus.</b> Beautiful silvery rose. One of the novelties. Extra fine .....	1.00	9.00	
<b>Wm. Copland.</b> Lavender Tulip which we see so often in the flower stores during January and February. The earliest flowering of the Darwins .....	.08	.60	5.00
<b>Wm. Pitt.</b> Brilliant dark scarlet. A companion to Copland in earliness. One of the finest forcing varieties. Other reds are more suitable for outside .....	.08	.60	5.00

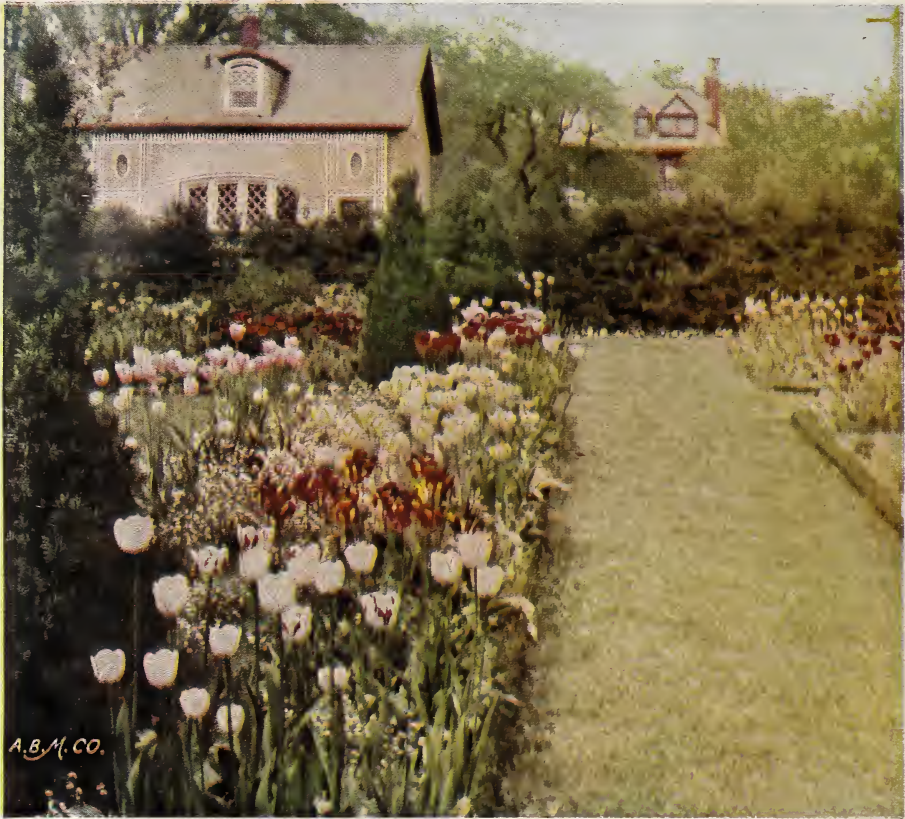
Write for quotations on larger quantities.



This illustration shows the marked difference between the Darwin and Breeder. The uppermost three are Darwins, while the lower one is a Breeder.

From the above list of Darwins we have selected ten of the most satisfactory outdoor varieties covering a wide range of colors. We offer these in special collections of 100 bulbs—10 each of 10 named varieties—all correctly labeled.

Special Darwin Collection— 100 bulbs—\$ 3.50, prepaid.  
 Special Darwin Collection—1000 bulbs—\$30.00, prepaid.



*In all my Autumn dreams,  
A future Summer gleams;  
Passing the fairest glories of the present.*

## Early Flowering Tulips

This is the class of Tulips which until recently was used for practically all purposes. They are available in practically all colors and in both single and double varieties. Today their chief value is in their early flowering quality making them indispensable to the florist for very early forcing, before the late-flowering Tulips can be had in bloom. Most of the varieties are suitable for flowering in the home and may be had in bloom from the first of February on. They are also used extensively outdoors for formal bedding and mass planting, and are through flowering in time to follow with annuals or Summer bedding plants. The colors are bright and cheerful.

All prices quoted include delivery.

### Single Early Tulips

	Each	10	100		Each	10	100
<b>Cullinan.</b> White, heavily shaded rose; a good variety for early forcing	\$.08	\$.60	\$5.00	<b>Flamingo.</b> A brilliant rose-pink on white ground. An unusually good kind of splendid substance and lasting qualities	\$.08	\$.60	\$5.00
<b>De Wet.</b> Beautiful deep orange, shaded golden yellow at the base of the petals. A very artistic flower and one of the finest newer sorts in cultivation. Equally satisfactory for early forcing or outside planting	.10	.70	6.50	<b>Goldfinch.</b> A pure rich yellow, especially fine for early forcing	.10	.70	6.50
<b>Fred Moore.</b> A splendid forcing and outdoor Tulip of bright orange shaded with scarlet	.06	.45	4.25	<b>Ibis.</b> A large brilliant dark pink flower that is very fine either outdoors or when forced for Winter bloom	.10	.70	6.50
				<b>Keizerskroon.</b> Carmine-scarlet with broad yellow border. A favorite and a splendid bedder.	.10	.70	6.50
				<b>La Reine.</b> White, slightly shaded rose. A very early forcer	.06	.45	4.25



SINGLE EARLY TULIPS—Continued.

	Each	10	100
Prosperity. A sport of La Reine of slightly deeper coloring ....	\$0.08	\$0.60	\$5.00
Prince of Austria. Orange shaded scarlet. A fine bedding variety and good for forcing .....	.06	.45	4.25
Primrose Queen (Herman Schlegel). Soft primrose shaded red. Good for forcing or bedding ...	.08	.60	5.00
Rising Sun. Very deep golden yellow. Huge flower of very handsome form and in habit resembles the Darwins. One of the finest yellow .....	.10	.70	6.50
Yellow Prince. Golden yellow; slightly striped with red. One of the best early flowering yellows for outdoor planting and an early forcer .....	.08	.60	5.00

Double Early Tulips

	Each	10	100
Azalea. Dark rose .....	\$0.10	\$0.70	\$6.50
Couronne d'Or (Crown of Gold). Golden yellow, flushed orange..	.08	.60	5.00
El Toreador. Reddish orange with buff yellow border .....	.12	1.00	9.00
Imperator Rubrorum. Glowing scarlet .....	.10	.70	6.50
Mr. Van Der Hoef. Golden yellow.	.10	.70	6.50
Orange Globe. The entire flower is of the same shade as the orange in Couronne d'Or, of which variety it is a sport. ...	.20	1.50	12.00
Peach Blossom. Bright rose ....	.10	.70	6.50

The above list comprises the best of the varieties and covers all the desirable colors. Write for quotations on larger quantities.

The Mendel and the Triumph Tulips

Two new classes of Tulips have just made their bow to the public, though not at a price which make them an attractive purchase. The Mendel is the result of a cross between the very early flowering Duc Van Thol and the Darwins, while the Triumph is the result of crossing various other early flowering varieties with the Darwins. They are presumed to have inherited the early-flowering quality of the one with the strength and vigor of the other. Of the many hundreds of varieties on trial, some will eventually come to us somewhat reasonable in price and worthy of our attention. It has been our privilege to have tried out some of the newer varieties for the Holland growers and we believe they have a promising future. Those which show outstanding merit are in demand in Holland for propagating purposes and are unusually high in price. The undesirable ones we do not want. As soon as conditions warrant, we will offer a general list.

In all the classes of Tulips, we import each year a limited quantity of the choice newer varieties, kinds which because of the price are not generally listed. If you happen to be a connoisseur of Tulips and interested in trying out these very newest introductions to the extent of being willing to make the necessary expenditure, we shall be pleased to have you correspond with us as to what we can furnish.

New Triumph Tulip

To introduce this newer class of Tulips to our customers, we offer one variety, Lord Carnavon, which we consider a first class Tulip in every respect and representative of the type. Suitable for forcing or outdoor planting. The base of the flower is white gradually turning into a beautiful pink and again toning into white at the tip. The flower is of immense depth and slightly reflexing at the top.

Bulbs of Lord Carnavon, 20c each; \$1.50 per 10; \$12.00 per 100.



Plant early Tulips to lengthen the blooming season, and follow them with Darwin and Cottage Tulips.

# Narcissi (Daffodils)

Originally coming from Southern Europe, Asia and Africa, the bulbs produced in these more or less warm sections were small and they produced small flowers. But when brought to England and Holland, and under the care of skillful growers and hybridizers, wonderful advances have been made. For many years we have been one of the largest forcers in America of Holland-grown Daffodils, the cut flowers being shipped to the larger cities throughout the country. Previous to our Government putting into effect the Narcissus Embargo, we imported from Holland, for planting at Corfu, several hundred thousand of the finest varieties, our purpose being to insure a supply for our own greenhouses. In spite of the pessimistic belief of some people as to our ability to grow Daffodils in America, we can truthfully say that results have been up to our fondest hope. Our stock has reached the point when we can offer some of the bulbs to our customers and we do so with the assurance that flowering results for whatever purpose will be just as satisfactory and in some instances more so than with the former Holland grown bulb. Due to labor and other conditions, American grown bulbs cost more to produce, therefore, have to be sold at a slightly higher price than those formerly imported from Holland.

During the month of May, usually from the fifth to the twentieth, our Daffodil fields present a beautiful sight and we extend a cordial invitation to those interested to pay us a visit.

Daffodils should be planted early in the Fall. Most of our stock is replanted in the field during September and unless your order is received previous to that time we are apt to be out of some varieties. Therefore, send in your Daffodil order early.

All prices quoted include delivery.

	Each	10	100
<b>CLEOPATRA.</b> A giant yellow Trumpet Daffodil with a very broad yellow perianth and a deep yellow trumpet. One of the newer Daffodils .....	\$0.75	\$6.00	
<b>EMPEROR.</b> Trumpet Daffodil of large size and good substance. Pale yellow perianth, darker trumpet. One of the best and reasonable in price .....	.20	1.75	16.00
<b>GOLDEN SPUR.</b> Golden yellow Daffodil of medium size. Its chief value is for early forcing either in the greenhouse or home. Not suitable for planting outside as there are so many better ones .....	.15	1.35	12.00
<b>GLORY OF SASSENHEIM (Bicolor).</b> Daffodil of large size. White perianth, large golden trumpet. A fine variety for any purpose .....	.25	2.00	16.00
<b>GLORY OF LISSE.</b> An improved form of the Poeticus (Pheasant's Eye). Very late flowering .....	.18	1.50	12.00
<b>HORACE.</b> Pure white perianth, conspicuous red eye; early flowering .....	.20	1.75	15.00
<b>HELIOS (Poetaz).</b> Bears clusters of flowers. Pure yellow cup .....	.20	1.75	15.00
<b>HERBERT SMITH.</b> Trumpet Daffodil. Sharply pointed light yellow perianth, long fluted yellow trumpet of large size. ....	.20	1.75	16.00
<b>JACONDE (Poetaz).</b> Bears a cluster of flowers, pale yellow petals, deep golden cups .....	.20	1.75	15.00
<b>KING ALFRED.</b> Trumpet Daffodil. A giant flower with both perianth and trumpet of purest yellow. A large, bold flower on a long, stiff stem. One of the best of them all .....	.25	2.25	20.00
<b>L'INNOCENCE.</b> Perianth and trumpet pure white. Medium size .....	.15	1.25	12.00
<b>LAURENS KOSTER (Poetaz).</b> Bears a cluster of flowers with pure white petals and orange cup .....	.15	1.25	12.00



This illustration shows a long trumpet Narcissus and the apparent difference between the delicate shades of the trumpet and the outer petals.

	Each	10	100
<b>MINISTER TALMA.</b> A large trumpet variety of much the same form and color as King Alfred, but not quite so large...\$0.20	\$0.20	\$1.75	\$16.00
<b>OLYMPIA.</b> An improved Emperor. Large size .....	.25	2.25	20.00
<b>POETICUS ORNATUS.</b> The well known and popular "Poet's" Narcissus. Very sweet scented. May be left undisturbed and will last for years .....	.15	1.20	10.00
<b>PRIMROSE PHOENIX.</b> Primrose-yellow. Large, semi-double flower on a long, graceful stem. A very pretty flower ..	.25	2.25	20.00
<b>ROBERT SYDENHAM.</b> Sulphur-yellow perianth, exceptionally large yellow trumpet handsomely frilled. A choice variety .....	.75	6.00	
<b>SIR WATKIN (Incomparabilis).</b> Perianth primrose-yellow. Cup deeper yellow. A very hardy free-flowering variety and increases rapidly .....	.20	1.75	16.00
<b>SPRING GLORY (Bicolor).</b> One of the large trumpet varieties. Perianth pure white. Trumpet golden yellow. One of the very best Bicolors .....	.25	2.25	20.00
<b>SOUTHERN GEM (Leeds).</b> Beautiful pure white petals; large lemon cup. Not a large flower but very dainty .....	.25	2.25	20.00
<b>TRESSERVE.</b> One of the largest yellow Daffodils and a very choice variety. A shade lighter yellow than King Alfred. ....	.35	3.00	28.00
<b>VAN WAVEREN'S GIANT (Bicolor).</b> The largest of this class and a very showy flower in every way .....	.25	2.25	20.00





A field of Narcissi at our grounds at Corfu. This probably is one of the finest displays of Narcissi in this country, and it is repeated every year early in the Spring time.

**NARCISSI—Continued.**

	Each	10	100
VAN SION. The old-fashioned double yellow Daffodil .....	\$0.20	\$1.75	\$15.00
VICTORIA (Bicolor). When forced, for which purpose it is best suited, the form and color are beautiful. For outside planting we consider it inferior to any of the Bicolors listed above .....	.20	1.75	15.00
WHITE LADY (Leeds). White, with pale canary cup. Long, graceful stem. A splendid kind for naturalizing .....	.18	1.75	15.00

Prices quoted above are for strong, double-nose bulbs which should average two flowers.

If you are interested in the purchase of bulbs for naturalizing, or for the purpose of growing commercially, we shall be pleased to have you correspond with us.

**Muscari, Grape Hyacinth**

Of all the flowers which poke their heads through the ground in early Spring, none is daintier than the Grape Hyacinth. They are perfectly hardy and thrive and increase in most any location, coming up year after year if undisturbed.

We offer only one kind, an improved strain of the Heavenly Blue, which produces larger flowers on longer stems than the common variety.  
**MUSCARI, HEAVENLY BLUE.** Improved strain. 10 for 40c; 100 for \$3.50, prepaid.

**Narcissus, Paper-White Grandiflora**

The Narcissus embargo put a stop to the importation of this bulb which formerly came to us from Southern France and was flowered by the million all over America. There has been much uncertainty as to the American grower being able to produce bulbs which would flower satisfactorily. From tests made in our greenhouses, we have located a source of supply, from which we have cut 98% perfect flowers. We offer these in the belief that they are the best Paper-White bulbs available.

Too high a temperature is a frequent cause of failure when flowering these bulbs in the home. Start them off in a cool place. The dormant bulb may be stored in a cool, dry place, so you can start some of them growing at intervals. 3 bulbs, 35c; 10 for \$1.00; 100 for \$9.00.

**Calla Lily**

Have you noticed the greatly increased popularity of the Calla Lily during the past two or three years? They are now being used for all occasions. They are very easily grown and make excellent house plants. Simply place the dormant bulb in a suitable size pot, using ordinary garden soil. Keep only moderately moist until top shows growth.

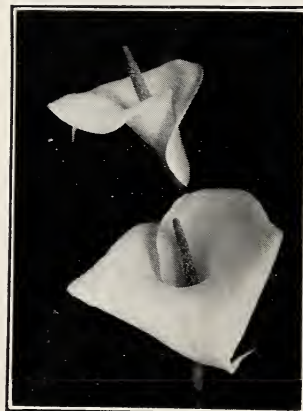
**WHITE CALLA.** Large bulbs, 30c each; 4 bulbs for \$1.00; 10 bulbs or more at 22c each.  
**YELLOW CALLA.** Golden yellow flowers. 30c each; 4 bulbs for \$1.00; 10 bulbs or more at 22c each.



Paper-White Narcissi.



Grape Hyacinths.



White Calla Lilies.





## GARDEN COLLECTION OF TULIPS

**100 Bulbs**

*10 Each of 10  
Named Varieties*

**\$3.50**

PREPAID

Among the many hundreds of varieties of Darwin, Breeder and Cottage Tulips, there are a number that are reasonable in price, and which, in their respective colors are leading standard varieties. From the entire list we have selected ten varieties embracing a wide range of colors, and of proven merit. We are putting these up in a collection of 100 bulbs—10 bulbs of 10 named varieties, each variety wrapped separately and correctly labeled. We cannot recommend the collection too highly, particularly to those who desire a nice assortment of Tulips at a reasonable price and do not know which varieties to choose.

**50 Bulbs**

*10 Each of 5  
Named Varieties*

**\$2.00**

PREPAID