

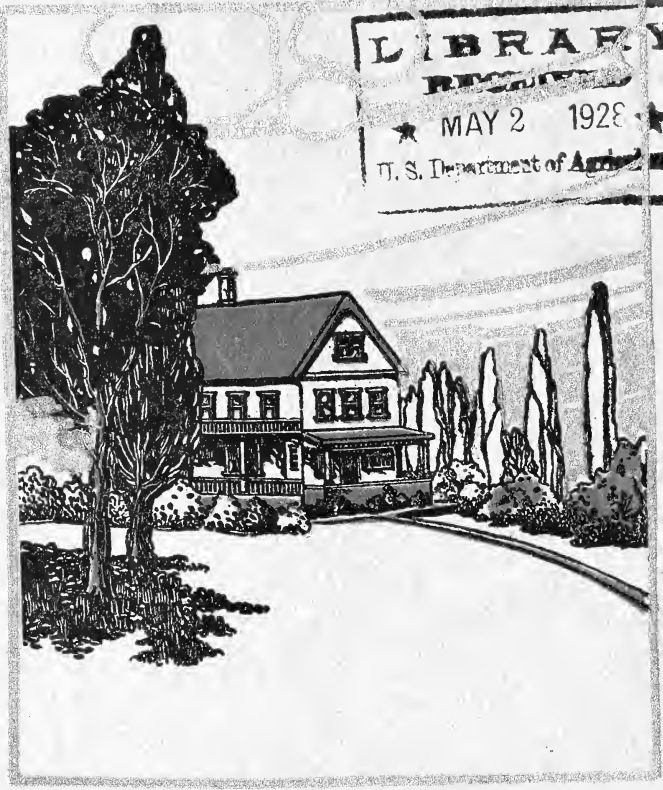
## **Historic, Archive Document**

Do not assume content reflects current scientific knowledge, policies, or practices.



5273

INDEXED



# A. W. Smith Company

Keenan Bldg., Liberty and Sixth Aves.  
Pittsburg, Pa.



Evergreens, Trees, Shrubs  
Roses, Vines, Perennials



# Landscape Department



GREAT MANY American residence grounds are laid out and planted without the aid of professional advice. The result is usually unsatisfactory and often the expenditure would have secured the maximum of beauty combined with the maximum of utility, if directed by professional advice.

We make the plans, complete with specifications and estimates, furnish the necessary materials and perform all service required to do the work. We do any or all of these things satisfactorily as to results, moderately as to cost.

For small grounds we can make satisfactory plans, if furnished with plot drawn to scale. For large country residence estates, and where extensive improvements are desired, a personal visit would be necessary and can be arranged for on reasonable terms.

Avail yourself of the services of our experts, whose practical landscape experience will save you money in the improvement of your grounds.

## A. W. Smith Company

Landscape Architects

Landscape Engineers and Contractors

Keenan Bldg., Liberty and Sixth Aves.

Pittsburgh, Pa.

## REVISED PRICES

For Spring, 1928

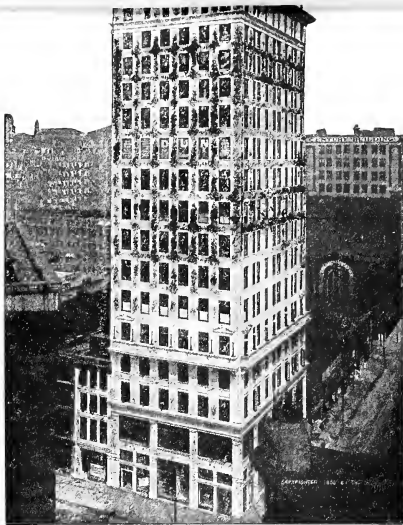
See Catalogue for Description

		Each		
Page 4—	Juniperus Com. Hibernica, 2½/3 ft.....	\$ 5.00		
	(Irish Juniper)			
Page 4—	Juniperus Virginiana, ¾ ft. ....	7.50		
	(Red Cedar) 4-5 ft. ....	10.00		
Page 6—	Taxus Cuspidata, (Yew), 18/24 in.....	6.00		
Page 6—	Thuya Occidentalis, 2½/3 ft. ....	4.00		
	(American arborvitae), ¾ ft.....	6.00		
	4/5 ft.....	7.50		
Page 7—	Acer dasycarpum (Silver Maple) 8/10 ft.....	3.00		
	—Acer dasycarpum (Silver Maple) 10/12 ft.....	4.50		
	—Acer dasycarpum (Silver Maple) 12/14 ft.....	6.00		
Page 7—	Acer Platanoides (Norway Maples) 8/10 ft.....	5.00		
	—Acer Platanoides (Norway Maples) 10/12 ft.....	7.50		
	—Acer Platanoides (Norway Maples) 12/14 ft.....	10.00		
Page 7—	Acer Rubrum (Red or Scarlet Maples) 8/10 ft.	5.00		
	—Acer Rubrum (Red or Scarlet Maples) 10/12 ft.	7.50		
Page 7—	Betula Alba (White Birch) 6/8 ft.....	3.50		
	—Betula Alba (White Birch) 8/10 ft.....	6.00		
Page 7—	Betula alba laciniata pendula, 5/6 ft.....	5.00		
	—Cut leaf Weeping white birch, 6/8 ft.....	7.50		
Page 9—	Platanus Orientalis (Oriental Plane) 8/10 ft..	3.50		
	—Platanus Orientalis (Oriental Plane) 10/12 ft..	6.00		
	—Platanus Orientalis (Oriental Plane) 12/14 ft..	8.00		
Page 9—	Salix Salamoni (Weeping Willow) 8/10 ft....	3.00		
Page 10—	Ulmus Americana (American Elm) 8/10 ft....	3.00		
	—Ulmus Americana (American Elm) 10/12 ft....	5.00		
	—Ulmus Americana (American Elm) 12/14 ft....	7.50		
Page 11—	Barberry (Berberis Thunbergi)	<u>Each</u>	<u>12</u>	<u>100</u>
	15/18 in. ....	\$ .30	\$3.00	\$20.00
	—Barberry (Berberis Thunbergi)			
	18/24 in. (3 yrs.).....	.40	4.00	25.00
Page 14—	Privet—California 18/24 in. ....	.15	1.00	7.00
	—Privet—California 2/3 ft.....	.20	1.50	10.00
Page 14—	Privet—Ibota 18/24 in. ....	.30	3.00	20.00
	—Privet—Ibota 2/3 ft.....	.40	4.00	30.00
Page 14—	Privet—Regal 18/24 in.....	.40	4.00	25.00
	—Privet—Regal 2/3 ft.....	.50	5.00	40.00
Page 42—	White (Dutch) Clover Seed 60c per 1/2 lb.			
	—White (Dutch) Clover Seed..\$1.00 per lb.			

Note—Stock of the following is very limited—prices on application—

Blood leaved Japanese Maples.  
Magnolias, Soulangeana, Stellata, Lenni.  
Hybrid rhododendrons.





Keenan Building, Pittsburgh, Pa.  
The Home of A. W. Smith Company.

## *Directions to Customers*

### *Prices and Delivery*

The prices given in this catalog are all f. o. b. Pittsburgh, and are subject to stock being unsold when ordered. We make no charge for boxes or packing or for delivery to freight or express offices in Pittsburgh. Small packages can be sent by parcel post and all such shipments are sent insured—the insurance and postage to be paid by customer. Express and freight shipments are all forwarded at purchaser's expense. Local delivery, for sales amounting to two dollars or over, is made free of charge within a ten cent carfare radius of our Liberty Avenue store.

### *Non-Warranty*

The majority of cases of failure of crops of seeds, plants, bulbs, shrubs and trees are assignable to some cause entirely beyond our control. For this reason we give no warranty, express or implied, regarding the success or failure of the planting. Unfavorable weather or soil conditions, too shallow or too deep planting, browsing and trampling by animals or molestation by man would be conducive to poor results, for which we do not hold ourselves responsible. It is our honest endeavor to supply only such goods as will, under proper conditions, produce utmost satisfaction. A. W. Smith Co. give

no warranty, however, as to description, quality, or productiveness of any goods sent out, and will not be responsible in any way for the crop. If the customer does not accept the goods on these terms they are at once to be returned.

## Complaints

All complaints must be made immediately upon receipt of stock. We exercise the utmost care for accuracy of details in filling orders and yet we realize that errors will occur at times. We recommend that customer keep copy of order.

Claim for damage while in transit must be made to the Transportation Company as our responsibility ceases when delivery in good order is made to the Transportation Company.

## Remittances

Payment for orders should be made to cover the entire bill, and no goods will be sent C. O. D. unless remittance is made on account, that will guarantee acceptance.

Remittances are acceptable by post office, telegraph or express money orders; or by drafts on Pittsburgh or New York banks. If these means of remitting are not available, the enclosure should be by registered mail. Coin should never be sent.

## Premiums

With every order for goods sold from this catalog, the customer has the opportunity of a generous premium benefit.

All cash sales are acknowledged by the issuance of a cash-sale slip, or duplicate of the order, which is **redeemable at 10 per cent of its face value in premiums** as described on page 46.

"Charge" customers paying bills on or before the 10th of the month following date of purchase will be handed or mailed Premium Certificate worth 5 per cent of face value in Premiums so listed or displayed. (This does not apply on landscape work or other contracts, unless definitely stated therein.)

Delivery of premiums is made free of charge in Pittsburgh. All out-of-town deliveries are made at the customer's expense.

# CONTENTS

Bedding Plants .....	36-40
Deciduous Shrubs .....	11-17
Deciduous Trees .....	7-10
Directions to Customers .....	1, 2
Evergreen Trees and Shrubs .....	4-6
Fruits and Small Fruits .....	33
Grass Seed .....	42
Hardy Vines .....	26
Herbaceous Perennials .....	18-24
House Plants .....	41
Index of Botanical and Common Names .....	47-48
Landscape Department .....	Inside Front
Lilies .....	Cover
Miscellaneous Supplies .....	25
Ornamental Grasses .....	43-45
Porch and Window Boxes .....	25
Premiums and How to Get Them .....	40
Roots, Tubers and Bulbs for Spring Planting .....	46
Roses .....	34-35
Tree Surgery .....	27-31
Water Lilies .....	10
	32





Residence Grounds—Carrol S. Weir, Esq., Erie, Pa.



Pool and Pergola—Residence Grounds, D. I. McCahill, Esq., Pittsburgh, Pa.



Details of Walls and Fountain—Residence Grounds, Edw. F. Clark, Youngstown, Ohio.



## Evergreen Trees and Shrubs

Our Evergreens include the hardiest and most robust varieties and we will cheerfully aid you in the selection of specimens for your particular purposes.

In many varieties we also have larger specimens than listed below and will be pleased to quote prices, on application.

All Evergreens properly balled, burlapped, and packed for shipment without extra charge.

	Each
<b>ABIES concolor</b> (White Fir). 2 feet .....	\$ 5.00
— <b>Nordmanniana</b> (Nordmann's Fir). 2 feet .....	5.00
<b>AZALEA amoena</b> (Japanese Azalea). Purplish red flowers. 12-15 inches .....	3.50
— <b>Hinodegiri</b> (Japanese Evergreen Azalea). Carmine-pink flowers—very showy. 12-15 inches .....	4.00
<b>BUXUS</b> (Boxwood). Prices on application.	
<b>JUNIPERUS chinensis Pfitzeriana</b> . Beautiful foliage, of spreading growth and very ornamental. Stands Pittsburgh conditions better than any other evergreen. 15-18 inches.....	3.00
18-24 inches .....	5.00
2-2½ feet .....	8.00
2½-3 feet .....	10.00
— <b>communis canadensis</b> (Common Juniper). 2 feet .....	3.50
— <b>communis hibernica</b> (Irish Juniper). 2 feet .....	2.50
3 feet .....	3.50
— <b>excelsa stricta</b> . 18-24 inches .....	4.00
2-2½ feet .....	6.00
— <b>japonica aurea</b> (Golden Japanese Juniper). 1½-2 feet .....	4.00
— <b>Sabina</b> . 15-18 inches spread .....	5.00
18-24 inches spread .....	6.00
— <b>Sabina tamariscifolia</b> . 15-18 inches .....	4.00
18-24 inches .....	5.00
— <b>virginiana</b> (Red Cedar). 2 feet .....	2.50
3 feet .....	4.00
4 feet .....	6.00
5-6 feet .....	10.00
— <b>glauca</b> (Blue Cedar). 3 feet .....	6.00
4 feet .....	10.00
4-5 feet .....	12.50
5-6 feet .....	15.00
<b>KALMIA latifolia</b> (Mountain Laurel). Nursery grown. 18-24 inches.....	4.00
Collected stock. 18-24 inches .....	2.00
2-2½ feet .....	3.00
Prices on collected stock, in carload lots, on application.	
<b>LEUCOTHOE Catesbaei</b> (Drooping Andromeda). 15-18 inches...	2.50

A. W. SMITH COMPANY, PITTSBURGH, PA.

	Each
<b>PICEA canadensis alba</b> (White Spruce). 2-3 feet .....	\$3.50
3-4 feet .....	6.00
<b>—excelsa</b> (Norway Spruce). 2-3 feet .....	3.00
3-4 feet .....	5.00
4-5 feet .....	7.50
<b>—pungens</b> (Green Colorado Spruce). 3-4 feet .....	10.00
<b>—glauca</b> (Colorado Blue Spruce.) 3-4 feet .....	15.00
<b>—Kosteriana</b> (Koster's Blue Spruce). 2-2½ feet	12.00
2½-3 feet .....	15.00

Prices on larger specimens on application.

<b>PINUS austriaca</b> (Austrian Pine). 2-3 feet .....	5.00
3-4 feet .....	7.50
<b>—montana</b> Mughus (Dwarf Mountain Pine). 18-24 Inches .....	6.00
<b>—ponderosa</b> (Bull Pine). 2 feet .....	4.50
3 feet .....	6.00
<b>—Strobus</b> (White Pine). 2-3 feet. ....	3.50
3-4 feet .....	5.00
<b>—sylvestris</b> (Scotch Pine). 2-3 feet .....	3.50
3-4 feet .....	5.00

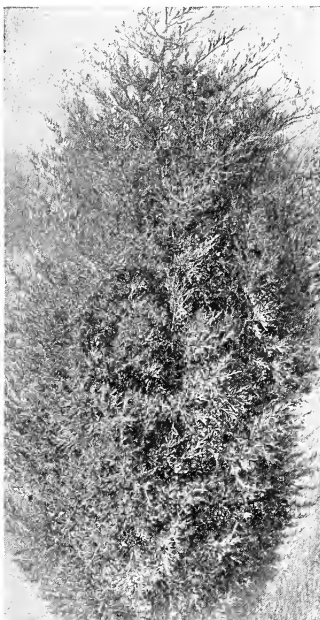
<b>RETINISPORA pisifera</b> (Pea-fruited Cypress). 2-3 feet .....	7.00
3-4 feet .....	10.00
<b>—aurea</b> (Golden Pea- fruited Cypress). 2-3 feet .....	7.00

<b>—plumosa</b> (Green Plumed Cypress). 2-3 feet .....	\$ 6.00
3-4 feet .....	9.00
<b>—aurea</b> (Golden Plumed Cypress). 2-2½ feet .....	6.00
2½-3 feet .....	9.00
<b>—squarrosa Veitchi</b> (Silver Retinispora). 18-24 inches .....	4.00
2-3 feet .....	6.00

**RHODODENDRON hybrids** (Assorted Colors). We still have a few hundred of these imported Rhododendrons on hand in sizes ranging from 2-3 to 4-5 feet. Prices, \$5.00 to \$15.00 each, according to size.

<b>—maximum</b> (Native Rhododendron). *Collected stock. 2-3 feet	3.50
3-4 feet .....	5.00

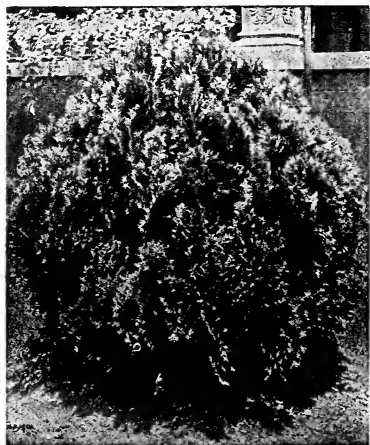
Prices per 100 or per carload, on collected Rhododendron maximum, on application.



**Juniperus Virginiana—Red Cedar.**  
(See page 4).



**Rhododendrons.**



**Thuja Occidentalis Globosa.**

—Wareana (Siberian Arbor-vitae).	2 feet	4.00
<b>TSUGA canadensis</b> (Hemlock Spruce).	3 feet	6.00
	4 feet	7.50
<b>YUCCA filamentosa</b> (Spanish Bayonet; Adam's Needle).	Strong clumps	2.00
	Plants	.50

		Each
<b>TAXUS cuspidata</b> (Japanese Yew).	15-18 inches	\$ 4.50
— <b>brevifolia</b> (Short-Leaved Japanese Yew).	8-10 inches	3.00
	10-12 inches	4.00

<b>THUJA occidentalis</b> (American Arbor-vitae).	2-3 feet	5.00
	3-4 feet	8.00
	4-5 feet	8.00
— <b>globosa</b> (Globe Arbor-vitae).	15-18 inches	3.50
	18-24 inches	5.00
— <b>Hoveyi</b> (Hovey's Golden Arbor-vitae).	18-24 inches	5.00
— <b>lutea</b> (George Peabody's Arbor-vitae.)	Golden yellow foliage.	
	2 feet	5.00
— <b>pyramidalis</b> (Pyramidal Arbor-vitae).	2-3 feet	5.00
	3-4 feet	6.00
	4-5 feet	8.00
— <b>Vervaeana.</b>	3 feet	6.00
	4 feet	8.00

## Evergreen Trees in Pittsburgh

Plants, as well as animals, must breathe in order to keep up their life process. To this end they are provided on the foliage surface with tiny stomata or breathing organs, which perform a function very similar to that of the human lungs. They breathe in gases and exhale waste products, and at no time are inactive.

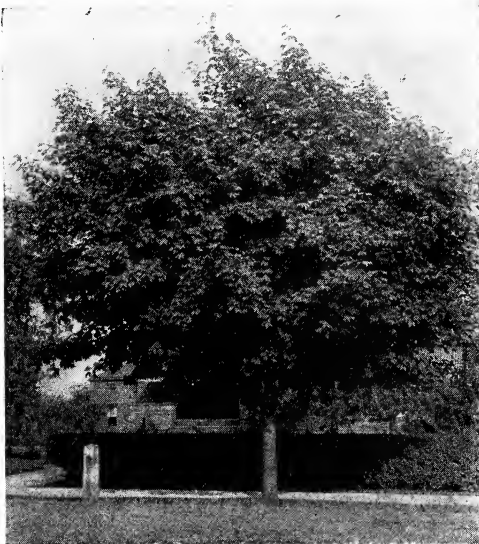
The atmosphere of Pittsburgh and environs has a tendency to clog up these little organs with soot and dust. The new leaves borne in the spring of each year do not seem to be in number adequate to supply the needs of evergreens as they are with deciduous varieties. As a consequence, evergreens first begin to look scraggly, languish for a period, and then die.

Another element that seems to attack the hardiest living plants is the volatile sulphurous gas which is here in such great quantity. Evergreens are particularly susceptible to this form of poisoning.

We try to discourage the use of evergreens except where temporary effects are desired or on estates removed from the smoke zone.



**Thuja Occidentalis.**



*Acer Platanoides*—Norway Maple.

## Deciduous Ornamental Trees

To one who wishes to enhance the value of property, no form of improvement is quite as effective as the tasteful planting of trees. You can scarcely imagine a landscape or planting problem in which shade and flowering trees do not play a very important part.

Prices on larger trees than listed below will be furnished on application. Each

<b>ACER dasycarpum</b> (Silver Maple). 8-10 feet .....	\$ 2.00
10-12 feet .....	3.00
12-14 feet .....	5.00
— <b>Wieri</b> (Wier's Cut-leaved Maple). 10-12 feet .....	5.00
— <b>platanoides</b> (Norway Maple). Very desirable for street planting. (Special rate per 100 or by carload). 8-10 feet .....	3.50
10-12 feet .....	5.00
12-14 feet .....	7.50



*Betula Alba Laciniata Pendula*—Weeping Cut-leaved White Birch.

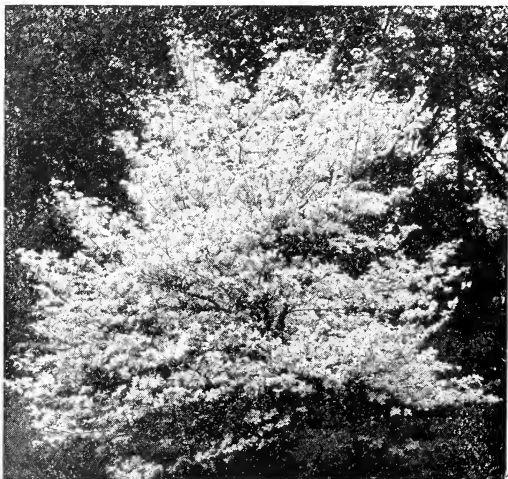
— <b>polymorphum atropurpureum</b> (Blood-leaved Japanese Maple). 2-3 feet .....	7.50
3-4 feet .....	10.00
— <b>rubrum</b> (Scarlet Maple). 8 to 10 feet .....	3.50
10-12 feet .....	5.00
— <b>saccharum</b> (Sugar Maple). 8-10 feet .....	3.00
10-12 feet .....	5.00
12-14 feet .....	7.50
<b>AESCULUS Hippocastanum</b> (European or Common Horse-Chestnut). 8-10 feet .....	5.00
10-12 feet .....	7.50
<b>AILANTHUS glandulosa</b> (Tree of Heaven). 6-8 feet .....	2.50
8-10 feet .....	3.50
<b>ANDROMEDA.</b> (See <i>Oxydendrum</i> .)	
<b>BETULA alba</b> (White Birch). 6-8 feet .....	2.00
8-10 feet .....	3.50
— <b>laciniata pendula</b> (Weeping Cut-leaved White Birch.) 6-8 feet .....	4.00
8-10 feet .....	6.00
— <b>lutea</b> (Yellow Birch). 6-8 feet .....	3.50

See revised price blue slip page 1



Catalpa Bungei—Chinese Catalpa.

<b>CASTANEA americana</b> (American Sweet Chestnut). 6-8 feet .....	Each \$2.50
8-10 feet .....	3.00
<b>CATALPA Bungei</b> (Chinese Catalpa). (Umbrella Tree). 2 year heads. 5-6 feet .....	4.00
—speciosa (Indian Bean). 8-10 feet .....	2.00
<b>CELTIS occidentalis</b> (Hackberry). 6-8 feet .....	2.50
<b>CERASUS avium</b> (Double White Flowering Cherry). 4-5 feet .....	3.50
—japonica rosea pendula (Pink-flowered Weeping Japanese Cherry). 2 year heads. 3-4 feet .....	7.50
<b>CERCIS canadensis.</b> (See Shrub List).	
<b>CLADRASTIS tinctoria</b> (Yellow Wood). 4-5 feet	2.50
<b>CORNUS florida alba</b> (White Dogwood). 3-4 feet ...	2.00
—rubra (Red-flowered Dogwood). 3-4 feet ...	4.00
<b>FAGUS ferruginea</b> (American Beech). 5-6 feet .....	4.00
—sylvatica purpurea Riversi (River's Purple Beech). 4-5 feet..	7.50
<b>FRAXINUS americana</b> (White Ash). 8-10 feet .....	3.00
10-12 feet .....	5.00
<b>GLEDITSIA triacanthos</b> (Honey Locust). 4-5 feet.....	1.25
5-6 feet .....	2.00
<b>GINKGO biloba.</b> (See Salisburia).	
<b>GYMNOCLADUS dioica</b> (Kentucky Coffee Tree). 4-5 feet .....	2.50
<b>JUGLANS cinerea</b> (Butternut). 6-8 feet .....	3.00
—nigra (Black Walnut). 6-8 feet .....	2.50
<b>KOELREUTERIA paniculata</b> (Varnish Tree). 5-6 feet.....	2.50
<b>LARIX europea</b> (European Larch). 5-6 feet .....	3.50
<b>LIQUIDAMBAR styraciflua</b> (Sweet Gum). 5-6 feet .....	3.50
<b>LIRIODENDRON tulipifera</b> (Tulip Tree). 8-10 feet .....	3.50
10-12 feet .....	5.00
<b>MAGNOLIA acuminata</b> (Cucumber Tree). 6-8 feet .....	3.50
—glauca (Sweet Bay). 3-4 feet .....	4.00
—Lennei (Lenne's Magnolia). Large purple flowers. 3-4 feet ...	10.00
—Soulangeana. Large pink and white flowers. 3-4 feet .....	10.00
—stellata. Dwarf variety, star shape white flowers. 2-2½ feet..	10.00



Cornus Florida Alba—White-flowering Dogwood.

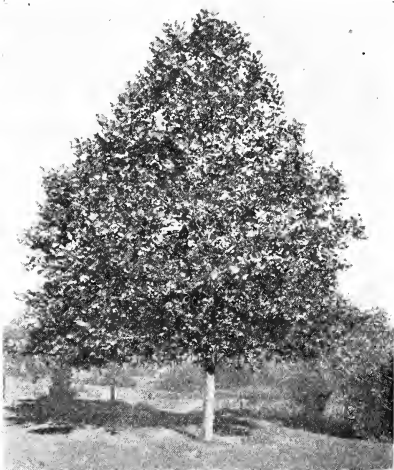
A. W. SMITH COMPANY, PITTSBURGH, PA.

	Each
<b>MALUS baccata</b> (Siberian Crabapple). 3-4 feet .....	\$ 2.00
— <b>coronaria</b> (Wild Crabapple). Sweet scented. 4-5 feet.....	2.00
— <b>floribunda</b> (Japanese Crab). 4-5 feet .....	2.50
— <b>ioensis Bechteli</b> (Bechtel's Crab). Double fragrant shell pink flowers. 4-5 feet .....	3.00
— <b>spectabilis</b> (Chinese Crab). Very showy, deep coral red flowers. 4-5 feet .....	3.00
<b>MORUS alba</b> (White Mulberry). 6-8 feet .....	4.00
— <b>tatarica pendula</b> (Teas' Weeping Mulberry). 2-yr. heads.....	6.00
<b>OXYDENDRUM arboreum</b> (Andromeda. Sorrel Tree). 4-5 feet	3.00
<b>PLATANUS orientalis</b> (Oriental Plane Tree). Best tree for street planting in the Pittsburgh District. (Special prices per 100 or carload). 8-10 feet .....	2.00
10-12 feet .....	3.00
12-14 feet .....	5.00
<b>POPULUS alba Bolleana</b> (Bolle's Silver Poplar). 8-10 feet.....	2.50
— <b>monilifera</b> (Carolina Poplar). 8-10 feet .....	1.50
10-12 feet .....	2.00
12-14 feet .....	3.50
— <b>nigra fastigiata</b> (Lombardy Poplar). 8-10 feet .....	1.50
10-12 feet .....	2.50
12-14 feet .....	3.50
<b>PRUNUS Pissardi</b> . (See Shrub List).	
<b>PTELEA trifoliata</b> (Hop Tree). 5-6 feet .....	1.50
<b>PYRUS</b> . (See Malus.)	
<b>QUERCUS palustris</b> . (Pin Oak). 8-10 feet .....	5.00
— <b>rubra</b> (Red Oak). 8-10 feet .....	5.00

<b>ROBINIA pseudacacia</b> (Black Locust). 4-5 feet .....	1.00
<b>SALISBURIA adiantifolia</b> (Ginkgo or Maidenhair Tree). 8-10 feet....	3.50
<b>SALIX babylonica</b> (Weeping Willow). 8-10 feet .....	3.00
— <b>incana</b> (Rosemary Willow; Dwarf Tree). 3-4 feet .....	1.00
— <b>pentandra</b> (Laurel-leaved Willow). 8-10 feet .....	2.50
— <b>Salamoni</b> . 8-10 feet .....	2.00
— <b>Caprea</b> (Bush Pussy Willow). 4-5 feet .....	1.50



**Populus Fastigiata—Lombardy Poplar.**



**Platanus Orientalis—Oriental Plane.**



*Ulmus Americana*—American Elm.

	Each
<b>SASSAFRAS officinale</b> (Native Sassafras). 5-6 feet .....	\$ 2.50
<b>SORBUS aucuparia</b> (Mountain Ash). 6-8 feet .....	2.50
8-10 feet .....	3.50
<b>TAXODIUM distichum</b> (Bald Cypress). 5-6 feet .....	3.50
<b>TILIA americana</b> (American Linden, Lime, or Basswood Tree).	
8-10 feet .....	3.50
10-12 feet .....	5.00
<b>ULMUS americana</b> (American Elm). (Special price per 100 or	
per carload). 8-10 feet .....	2.50
10-12 feet .....	3.50
12-14 feet .....	5.00
— <b>scabra pendula</b> (Camperdown Weeping Elm). 2 yr. heads...	6.00

## Tree Surgery

The owners of fine mature trees should protect them from insect and fungous pests.

The removal of dead wood, creosoting, concreting, reinforcing, spraying and pruning, constitute the care essential to the healthy growing condition in trees.

The length of time necessary in growing sizable lawn or avenue trees is a consideration that should make us particularly careful of the good trees we now possess.

Our expert tree-men will put your trees in proper condition, in a scientific manner, at a reasonable cost.







**Berberis Thunbergi—Japanese Barberry.**

## Deciduous Shrubs

Whether planted individually or collectively, the shrub is an important feature in the adornment of any grounds. We grow the most approved hardy varieties of shrubs, which, when judiciously chosen and harmoniously arranged, will give a variety of color, both of foliage and flower, during the entire summer.

In the following list, ultimate height, color of flower and time of blooming are indicated as follows: Figures following the letter "H" indicate height, color comes next and then the blooming season. This is only approximately as height and time of flowering vary with different soils and climates.

Shrubs marked † will grow in shade or partial shade, if soil conditions are good.

Shrubs marked \* are fruit-bearing and most of them furnish food for birds.

Four or more of a variety at the dozen rate.

	Each	Doz.	
* <b>AMELANCHIER botryapium</b> (Dwarf Shadbush). 2-3 feet.	\$0.75	\$8.00	
H. 10-15 feet. White. May.			
<b>AMORPHA fruticosa</b> (False Indigo). 2-3 feet	.75	8.00	
H. 6-8 feet. Purple. June.			
<b>AMYGDALUS chinensis alba plena</b> (Flowering Almond).			
2-3 feet	1.50		
H. 4-5 feet. White. May.			
— <b>rosea plena</b> (Flowering Almond). 2-3 feet	1.50		
H. 4-5 feet. Pink. May.			
<b>ARALIA pentaphylla</b> (Five-leaved Aralia). 2-3 feet	.75	8.00	
H. 5-6 feet. Yellow. June.			
— <b>spinosa</b> (Hercules Club). 4-5 feet	1.25		
H. 15-20 feet. Green; white. July.			
* <b>ARONIA arbutifolia</b> (Red Chokeberry). 2-3 feet	1.00		
H. 6-10 feet. White. April.			
*— <b>melanocarpa nigra</b> (Black Chokeberry). 2-3 feet	1.00		
H. 4-5 feet. White. April-May.			
† <b>AZALEA arborescens</b> (Fragrant Azalea). 1½-2 feet	3.50		
H. 5-7 feet. Rose. July.			
†— <b>calendulacea</b> (Flame Azalea). 1½-2 feet	3.50		
H. 5-6 feet. Orange. June.			
†— <b>Ghent and mollis</b> . 18-24 inches	6.00		
H. 5-6 feet. Yellow, Orange, Red and White. April-May.			
†— <b>nudiflora</b> (Woods' Azalea). 2 feet	3.50		
H. 6-8 feet. Pink. May.			
†— <b>Vaseyi</b> (Southern Azalea). 18-24 inches	3.50		
H. 8-10 feet. Shell pink. June.			
	Each	10	100
*† <b>BERBERIS Thunbergi</b> (Japanese Barberry).			
12-18 inches	\$0.50	\$4.50	\$35.00
18-24 inches	.75	6.00	50.00
H. 4-5 feet. Yellow. June.			



**Clethra Alnifolia—Sweet Pepper.**

	Each	Doz.
<b>BUDDLEIA variabilis</b> (Butterfly Bush; Summer Lilac). 2-3 feet .....	\$ 0.75	\$8.00
H. 4-5 feet. Violet. Purple. July-August.		
<b>CALYCANTHUS floridus</b> (Strawberry Shrub). 2-3 feet....	.75	8.00
H. 5-6 feet. Chocolate brown. All summer.		
<b>CARAGANA arborescens</b> (Siberian Pea). 2-3 feet .....	.75	8.00
H. 8-10 feet. Yellow. May and June.		
<b>CEANOTHUS americana</b> (New Jersey Tea). 18-24 inches.	.75	8.00
H. 2-3 feet. White. June.		
<b>CEPHALANTHUS occidentalis</b> (Button Bush). 2-3 feet...	.75	8.00
H. 5-6 feet. White. July.		
<b>CERCIS canadensis</b> (Judas Tree or Red Bud). 3-4 feet....	1.00	
H. 12-15 feet. Rose pink. April.		
<b>CHIONANTHUS virginica</b> (White Fringe). 2-3 feet.....	1.50	
H. 10-12 feet. White. May.		
<b>CLETHRA alnifolia</b> (Sweet Pepper). 18-24 inches .....	.75	8.00
H. 3-5 feet. White. July.		
<b>COLUTEA arborescens</b> (Bladder Senna). 2-3 feet .....	.75	8.00
H. 7-8 feet. Red-yellow. July.		
† <b>CORNUS alba</b> (Red Twigged Dogwood). 2-3 feet .....	.75	8.00
H. 6-8 feet. Cream. June.		
—florida. (See Tree List).		
*— <b>mascula</b> (Cornelian Cherry). 3-4 feet .....	.75	8.00
H. 6-8 feet. Yellow. April.		
*— <b>paniculata</b> (Panicked Dogwood). 2-3 feet .....	.75	8.00
H. 8-10 feet. White. June.		
*†— <b>stolonifera</b> (Red Osier). 2-3 feet .....	.75	8.00
H. 6-8 feet. White. June.		
*— <b>stolonifera aurea</b> (Yellow Twigged Dogwood). 2-3 feet	.75	8.00
H. 4-5 feet. White. June.		
<b>CORYLUS americana</b> (American Hazelnut). 2-3 feet.....	.75	8.00
H. 8-10 feet.		
<b>CYDONIA japonica</b> (Japan Quince). 2-3 feet .....	1.00	10.00
H. 4-5 feet. Scarlet. May.		
<b>DEUTZIA candidissima</b> (Double White Deutzia). 2-3 feet..	.75	8.00
H. 6-7 feet. White.		
— <b>crenata rosea pl.</b> (Double Pink Deutzia). 2-3 feet .....	.75	8.00
H. 6-7 feet. Pink.		
— <b>gracilis</b> (Dwarf White). 15-18 inches .....	.75	8.00
H. 2-3 feet. White. June.		
— <b>rosea</b> (Dwarf Pink). 15-18 inches .....	.75	8.00
H. 2-3 feet. Pink. June.		
— <b>Lemoinei</b> (Lemoine's Deutzia). 18-24 inches .....	.75	8.00
H. 3-4 feet. White. June.		
— <b>Pride of Rochester</b> (Double Pink). 2-3 feet .....	.75	8.00
H. 7-8 feet. June.		



Diervilla, Eva Rathke

	Each	Doz.
<b>DIERVILLA amabilis</b> (Rose-colored Weigela). 2-3 feet...	\$ 0.75	\$8.00
H. 6-8 feet. Rose. June.		
— <b>candida</b> (White Weigela). 2-3 feet .....	.75	8.00
H. 6-8 feet. White. June.		
— <b>Desboisi</b> (Rose-colored Weigela). 2-3 feet .....	.75	8.00
H. 6-8 feet. Rose. June.		
— <b>Eva Rathke</b> (Red Flowering Weigela). 2-3 feet.....	1.00	
H. 4-5 feet. Red. June.		
— <b>Van Houttel</b> . 3-4 feet .....	.75	8.00
H. 6-8 feet. June. Pink and white flowers.		
* <b>ELEAGNUS angustifolia</b> (Russian Oleaster). 2-3 feet...	.75	8.00
H. 10-12 feet. Yellow.		
*— <b>longipes</b> (Japanese Oleaster). 2-3 feet .....	.75	8.00
H. 6-8 feet. Pale yellow.		
* <b>EUONYMUS alata</b> (Winged or Cork-Barked Euonymus).		
2-3 feet .....	2.00	
H. 6-8 feet. Yellow-red. June.		
*— <b>europaea</b> (Burning Bush). 2-3 feet .....	.75	8.00
H. 8-10 feet. Yellow. May.		
<b>EXOCHORDA grandiflora</b> (Pearl Bush). 2-3 feet .....	1.00	
H. 8-10 feet. White. May.		
<b>FORSYTHIA Fortunei</b> (Golden Bell) 2-3 feet .....	.75	8.00
H. 6-8 feet. Yellow. April.		
— <b>intermedia</b> (Golden Bell). 3-4 feet .....	.75	8.00
H. 8-10 feet. Yellow. April.		
— <b>suspensa</b> (Drooping Golden Bell). 2-3 feet .....	.75	8.00
H. 6-8 feet. Yellow. April.		
— <b>viridissima</b> (Golden Bell). 2-3 feet .....	.75	8.00
H. 8-10 feet. Yellow. April.		
<b>HALESIA tetraptera</b> (Silver Bell) 4-5 feet .....	1.50	
H. 10-12 feet. White. May.		
<b>HAMAMELIS virginica</b> (Witch Hazel). 3-4 feet .....	1.00	
H. 8-10 feet. Yellow. November.		
<b>HIBISCUS syriacus</b> (Althea or Rose of Sharon). 2-3 ft....	.75	8.00
H. 8-10 ft. Pink, Purple, Red, White. August-Sept.		
† <b>HYDRANGEA arborescens grandiflora</b> (Native Hydrangea).		
15-18 inches .....	.75	8.00
H. 4-5 feet. White. June-July.		
— <b>paniculata</b> (Single-flowered Hydrangea). 2-3 feet.....	1.00	
H. 5-6 feet. White. September-October.		
— <b>grandiflora</b> (Common Hydrangea). 2-3 feet.....	1.00	10.00
H. 6-8 feet. White. September-October.		
— <b>grandiflora, standard</b> (Tree Form). 3-4 feet .....	2.50	
White. September-October.		
<b>HYPERICUM densiflorum</b> . 2-3 feet .....	.75	8.00
H. 5-6 feet. Yellow. July-August.		



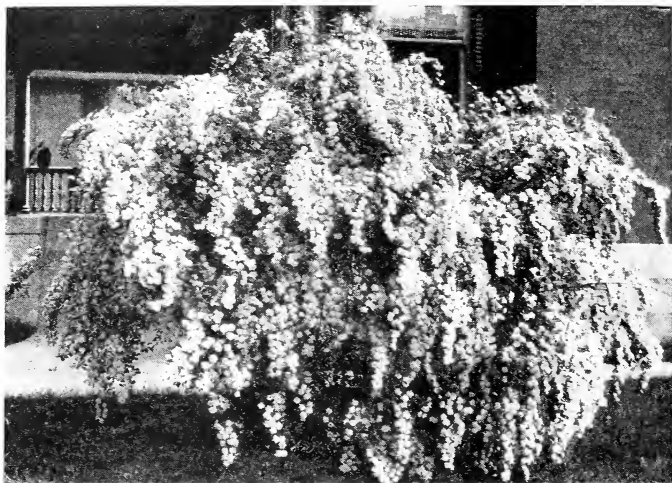
**Ligustrum Ovalifolium—California Privet.**

	Each	Doz.
<b>ITEA virginica</b> (Virginian Willow), 2-3 feet .....	\$ 1.00	\$10.00
H. 4-5 feet. White. June-July.		
<b>KERRIA japonica</b> (Globe Flower), 18-24 inches .....	1.00	10.00
H. 4-5 feet. Yellow. June.		
—fl. pl. (Double Globe Flower), 18-24 inches .....	1.00	
H. 4-5 feet. Yellow. June.		
	Each	10 100
*† <b>LIGUSTRUM amurense</b> (North; Hardy Amoor River Privet), 18-24 inches .....	\$0.45	\$4.00 \$35.00
2-3 feet .....	.60	5.00 45.00
H. 8-10 feet.		
— <b>aurea</b> (Golden Privet), 18-24 inches .....	Each \$ 0.75	Doz. \$8.00
	Each	10 100
*† <b>ibota</b> (Japanese Privet), 18-24 inches .....	\$ 0.50	\$3.50 \$25.00
2-3 feet .....	.60	4.50 35.00
H. 8-10 feet. White. June.		
*— <b>ovalifolium</b> (California Privet), 18-24 inches ..	.35	2.50 10.00
2-3 feet .....	.50	3.00 15.00
H. 8-10 feet. White. July.		
*† <b>Regelianum</b> (Regel's Privet), 18-24 inches ..	.60	5.00 40.00
2-3 feet .....	.75	6.00 50.00
H. 8-10 feet. White. June-July.		
†— <b>vulgaris</b> (English Privet), 18-24 inches .....	.35	3.00 25.00
2-3 feet .....	.50	4.50 40.00
H. 8-10 feet. White. June-July.		
<b>LILACS.</b> (See Syringa )		
	Each	Doz.
* <b>LONICERA fragrantissima</b> (Fragrant Bush Honeysuckle), 2-3 feet .....	\$0 .75	\$8.00
H. 6-8 feet. Pink. April-May.		
*— <b>Morrowi</b> (Japanese Bush Honeysuckle), 2-3 feet.....	.75	8.00
H. 6-8 feet. White. May-June.		
*— <b>Ruprechtiana</b> (Manchurian Honeysuckle), 2-3 feet....	.75	8.00
H. 6-8 feet. White. May-June.		
*— <b>tatarica alba</b> (White Tatarian Honeysuckle), 2-3 feet	.75	8.00
H. 6-8 feet. White. May-June.		
*— <b>tatarica rubra</b> (Pink Tatarian Honeysuckle), 2-3 feet.	.75	8.00
H. 6-8 feet. Pink. May-June.		
* <b>MYRICA cerifera</b> (Bayberry or Candle Berry), 18-24 in.	.75	8.00
H. 4-6 feet.		



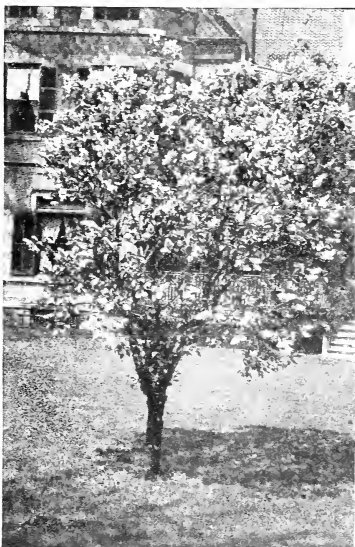
**Philadelphus Coronarius—Mock Orange.**

	Each	Doz.
<b>PHILADELPHUS coronarius</b> (Sweet-scented Mock Orange). 3-4 feet .....	\$ 0.75	\$8.00
H. 8-10 feet White. May-June.		
— <b>aurea</b> (Golden-leaved Mock Orange). 13-24 inches....	.75	8.00
H. 5-6 feet. White. May-June.		
— <b>grandiflora</b> (Large-flowered Mock Orange). 3-4 feet ...	.75	8.00
H. 8-10 feet. White. May-June.		
— <b>Lemoinei</b> (Lemoine's Mock Orange). 2-3 feet .....	.75	8.00
H. 4-5 feet. White. June.		
<b>PRIVET.</b> (See Ligustrum).		
<b>PRUNUS Pissardi</b> (Purple-leaved Plum). 4-5 feet .....	1.50	
H. 8-10 feet. Pink. May.		
* <b>RHAMNUS cathartica</b> (Common Buckthorn). 2-3 feet..	.75	8.00
H. 8-10 feet.		
* <b>RHODOTYPOS kerrioides</b> (White Kerria). 2-3 feet....	.75	8.00
H. 4-5 feet. White. May-June.		
<b>RHUS aromatica</b> (Sweet Sumach). 2-3 feet .....	.75	8.00
H. 5-6 feet. Yellow. May.		
* <b>copallina</b> (Shining Sumach). 2-3 feet .....	.75	8.00
H. 5-6 feet. Yellow-green. July and August.		
* <b>cotinus</b> (Purple Fringe or Smoke Bush). 3-4 feet ...	2.00	
H. 8-10 feet. Yellow-green. June.		
* <b>glabra</b> (Smooth Sumach). 2-3 feet .....	.75	8.00
H. 15-20 feet.		
* <b>typhina laciniata</b> (Cut-leaved Staghorn Sumach). 2-3 ft.	.75	8.00
H. 8-10 feet.		
* <b>RIBES aureum</b> (Yellow Flowering Currant). 2-3 feet ..	.75	8.00
H. 5-6 feet. Yellow. May.		
* <b>sanguineum</b> (Red Flowering Currant). 2-3 feet .....	.75	8.00
H. 5-6 feet. Purple-red. May.		
<b>ROBINIA hispida</b> (Rose Acacia). 2-3 feet.....	.75	8.00
H. 4-5 feet. Rose. May and June.		
<b>RUBUS odorata</b> (Flowering Raspberry or Thimbleberry). 2-3 feet. ....	.75	8.00
H. 5-6 feet. Rose-purple. All summer.		
* <b>SAMBUCUS canadensis</b> (Common Elder). 2-3 feet .....	.75	8.00
H. 6-8 feet. White. June.		
— <b>canadensis acutiloba</b> (Cut-leaved Elder). 2-3 feet.....	.75	8.00
H. 5-7 feet. White. June.		
* <b>—nigra aurea</b> (Golden Elder). 3-4 feet .....	.75	8.00
H. 6-8 feet. White. June.		
* <b>—racemosa</b> (Red-berried Elder). 2-3 feet .....	.75	8.00
H. 6-8 feet. White. May-June.		



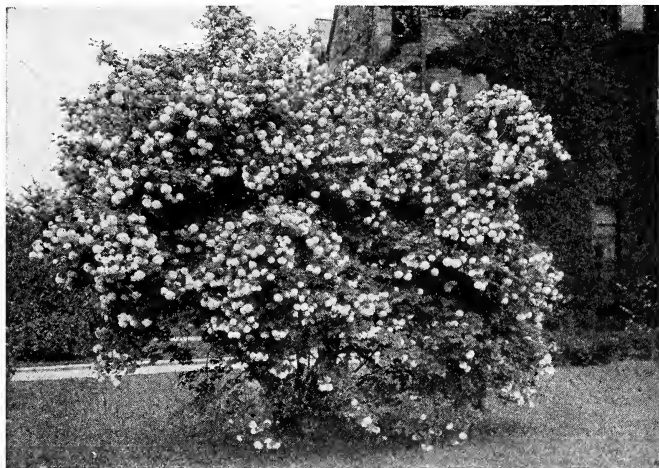
**Spirea Van Houttei.**

	Each	Doz.
<b>SPIREA arguta.</b> 2-3 feet .....	\$ 0.75	\$8.00
H. 5-6 feet. White. May.		
— <b>Billardi.</b> 2-3 feet .....	.75	8.00
H. 5-6 feet. Pink. July-August.		
— <b>bumalda</b> (Dwarf Pink). 18-24 inches .....	.75	8.00
H. 2-3 feet. Light pink. July-August.		
— <b>Anthony Waterer</b> (Improved Dwarf Pink). 18-24 in. . .	.75	8.00
H. 2-3 feet. Pink. July-August.		
— <b>callosa alba</b> (Dwarf White). 18-24 inches .....	.75	8.00
H. 2-3 feet. White. July-August.		
— <b>Douglasi</b> (Douglas' Spirea). 2-3 feet .....	.75	8.00
H. 5-6 feet. Deep pink. July.		
— <b>opulifolia</b> (Ninebark). 2-3 feet .....	.75	8.00
H. 7-8 feet. White. June.		
— <b>aurea</b> (Golden Ninebark). 2-3 feet .....	.75	8.00
H. 7-8 feet. White. June.		



**Syringa—Lilac.**

— <b>prunifolia</b> (True Bridal Wreath). 2-3 feet .....	.75	8.00
H. 6-8 feet. White. May.		
— <b>salicifolia</b> (Willow-leaved Spirea). 2-3 feet .....	.75	8.00
H. 6-8 feet. Pink. June-July.		
— <b>sorbifolia</b> (Ash-leaved Spirea). 2-3 feet .....	.75	8.00
H. 5-6 feet. White. July.		
— <b>Thunbergi</b> (Thunberg's Spirea). 18-24 inches ..	.75	8.00
H. 4-5 feet. White. April-May.		
— <b>tomentosa</b> (Hardhack; Steeplebush). 2-3 feet. .	.75	8.00
H. 5-6 feet. Pink. July, August, September.		
— <b>Van Houttei</b> (Van Houtte's Spirea). 2-3 feet .....	.60	6.00
3-4 feet .....	.75	8.00
H. 5-6 feet. White. May-June.		



**Viburnum Opulus Sterile—Common Snowball.**

	Each	Doz.
<b>STAPHYLEA colchica</b> (Bladder Nut). 2-3 feet .....	\$ 0.75	\$8.00
H. 10-12 feet. White. May and June.		
<b>STEPHANANDRA flexuosa</b> (Lace Shrub). 2-3 feet.....	.75	8.00
H. 3-5 feet. White. July.		
<b>STYRAX japonica</b> (Styrax). 2-3 feet .....	.75	8.00
H. 10-15 feet. White. June.		
*† <b>SYMPHORICARPOS racemosus</b> (White Snowberry). 2-3 ft.	.75	8.00
H. 4-5 feet. Pink. July.		
*† <b>vulgaris</b> (Red Snowberry; Indian Currant). 2-3 feet..	.75	8.00
H. 4-5 feet. Pink. July.		
<b>SYRINGA Josikaea</b> (Hungarian Lilac). 3-4 feet .....	1.00	
H. 8-10 feet. Violet. June.		
— <b>persica</b> (Persian Lilac). 2-3 feet .....	1.00	
H. 8-10 feet. Pale lilac. May-June.		
— <b>rothomagensis</b> (Rouen Lilac). 2-3 feet .....	.75	8.00
H. 8-10 feet. Red. May-June.		
— <b>villosa</b> (Late flowering Lilac). 3-4 feet .....	1.00	
H. 8-12 feet. Pink. May-June.		
— <b>vulgaris</b> (Common Purple and White Lilac). 2-3 feet...	.75	8.00
3 to 4 feet .....	1.00	10.00
H. 8-12 feet. Purple and White. May.		
(Potted plants of named varieties of Lilacs, \$3.00 each and upward.)		
<b>TAMARIX africana</b> (Tamarisk). 2-3 feet .....	.75	8.00
H. 8-10 feet. Pink. April-May.		
* <b>VIBURNUM cassinoides</b> (Withe Rod). 2-3 feet .....	.75	8.00
H. 6-8 feet. White. June.		
*— <b>dentatum</b> (Arrow-wood). 2-3 feet .....	.75	8.00
H. 6-8 feet. White. May-June.		
*— <b>dilatatum</b> (Japanese Bush Cranberry). 2-3 feet .....	.75	8.00
H. 6-8 feet. White. May-June.		
*— <b>lantana</b> (Wayfaring Tree). 2-3 feet .....	.75	8.00
H. 8-10 feet. White. May-June.		
*— <b>lentago</b> (Sheepberry). 2-3 feet. ....	.75	8.00
H. 8-10 feet. White. May-June.		
*— <b>opulus</b> (High Bush Cranberry).		
3-4 feet .....	1.00	
H. 8-10 feet. White. May-June.		
— <b>sterile</b> (Common Snowball). 3-4 feet .....	1.00	10.00
H. 8-10 feet. White. May-June.		
— <b>plicatum</b> (Japanese Snowball). 2-3 feet .....	1.50	
H. 7-8 feet. White. June.		
— <b>tomentosum</b> (Single Snowball). 2-3 feet .....	1.00	
H. 8-10 feet. Single white. May.		
<b>WEIGELA.</b> (See Diervilla).		
† <b>ZANTHORHIZA apiifolia</b> (Shrub Yellow Root). 15-18 in.	.75	8.00

**Why Does A.W. Smith Co. Give Premiums?**

Because cash buyers and prompt-pay charge buyers should be favored, and, with prices and service the same to all, premiums open the only way to favor these good customers. See page 46.



## Herbaceous Perennials

A garden of herbaceous perennials gives more real pleasure than almost any other collection of plants and with less labor for the gardener, too. The plants increase in size every year and each season produce larger and lovelier flowers.

The assortment we offer contains the best known varieties and we can recommend them as being well adapted to this section of the country.

In the following list, height, color of flower and time of blooming are indicated as follows: Figures following the letter "H" indicate height, color comes next and then the blooming season. This is only approximate as height and time of flowering vary with different soils and climates.

Plants suitable for growing in the shade are marked \*—suitable for rockeries are marked †.

Prices on following herbaceous plants (except where noted): 25c each; \$2.50 per dozen. Four or more of a variety at the dozen rate.

**ACHILLEA millefolium roseum** (Milfoil).

H. 1-2 feet. Rose. June-August.

—**ptarmica, The Pearl.**

H. 2 feet. White. July-August.

\***ACONITUM napellus** (Monkshood).

H. 2-2½ feet. Purplish blue. July-August.

‡**AEGOPODIUM podagraria variegata** (Goutweed).

H. 1 foot. White. June.

‡**AJUGA reptans** (Bugleweed).

H. 4-6 inches. Blue. May-June.

‡**ALYSSUM saxatile** (Goldentuft).

H. 1 foot. Yellow. May.

**ANCHUSA italica** (Alkanet).

H. 3-4 feet. Blue. June.

\*‡**ANEMONE japonica, Queen Charlotte** (Japanese Anemone).

H. 2-3 feet. Rose. September to frost.

\*‡—**japonica, Whirlwind.**

H. 2-3 feet. White. September to frost.

\*‡—**pennsylvanica** (Pennsylvania Windflower).

H. 1½ feet. White. June.

**ANTHEMIS tinctoria Kelwayi** (Chamomile).

H. 2-3 feet. Yellow. July-August.

\*‡**AQUILEGIA** (Columbine).

In variety. H 2-4 feet. Various colors. May-July.

\*‡**ARABIS alpina** (Rock Cress).

H. 6 inches. White. April-May.

‡**ARMERIA maritima** (Sea Pink or Thrift).

H. 5-6 inches. Pink. May-June.



**ARTEMISIA abrotanum** (Old Man or Southernwood).

H. 3-4 feet. Fragrant foliage. White. August.

—**lactiflora**.

H. 3-4 feet. White. August.

—**stelleriana** (Old Woman).

H. 1½ feet. Yellow. July.

**ASCLEPIAS tuberosa** (Butterfly Weed).

H. 1½-2 feet. Orange. July-August.

**ASTILBE**, Queen Alexandra.

H. 2-3 feet. Pink. June-July.

**ASTER** (Michaelmas Daisy).

In variety. Hardy. H. 2-4 feet. Various colors. September-October.

**BAPTISIA australis** (False Indigo).

H. 3-4 feet. Dark blue. June.

†**BELLIS perennis** (English Daisy).

H. 4-5 inches. Pinkish white. May-June.

**BOCCONIA cordata** (Plume Poppy).

H. 6-8 feet. Creamy white. July-August.

**BOLTONIA asteroides** (False Chamomile).

H. 4-5 feet. White. September.

—**latisquama** (Starwort).

H. 4-5 feet. Pink. August.

†**CAMPANULA carpatica** (Bluebell)

H. 8-10 inches. Blue. July to September.

—**medium** (Canterbury Bell).

H. 2-3 feet. Mixed colors. June-July.

—**persicifolia**.

H. 2 feet. Blue. June-July.

—**pyramidalis** (Chimney Campanula).

H. 4-5 feet. Blue. August.

**CARYOPTERIS mastacanthus** (Blue Spirea).

H. 2-3 feet. Lavender. September-October.

**CASSIA marylandica** (Wild Senna).

H. 3-4 feet. Yellow. July-August.

**CENTAUREA cyanus** (Bluebottle; Cornflower).

H. 1-2 feet. Blue, Pink, White. July-October.

—**montana** (Perennial Cornflower).

H. 18-24 inches. Blue. June-August.

†**CERASTIUM Biebersteini** (Snow-in-Summer).

H. 4-6 inches. White. June.

**CHRYSANTHEMUM**.

Hardy. Large flowering. H. 3-4 feet. White, Pink, Yellow. September-October.

—**pompon** (Button Mums).

H. 2-3 feet. Various colors. August-October.

\*—**maximum** (Shasta Daisy).

H. 1-1½ feet. White. July-August.

**CLEMATIS recta**.

H. 2-3 feet. White. June-July.

**COREOPSIS grandiflora** (Tickseed).

H. 1½-2 feet. Yellow. All summer. Fine for cut flowers.

**CONOCLINIUM**.

(See Eupatorium).

\*\*†**CONVALLARIA majalis** (Lily-of-the-Valley).

H. 6-8 inches. White. April-May. 10c each; 75c per dozen; \$5.00 per 100.

**DELPHINIUM belladonna** (Larkspur).

H. 3-5 feet. Sky blue. June to September.

—**bellamosum** (Larkspur).

H. 3-5 feet. Dark blue. June-September.

—**mixed colors** (Larkspur).

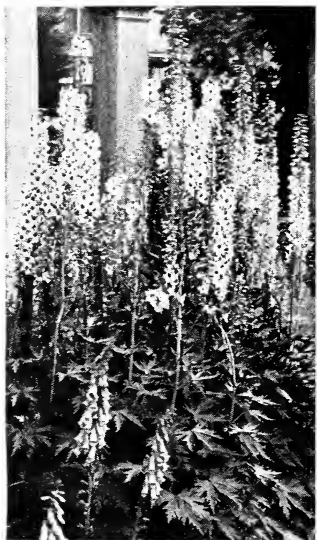
H. 3-5 feet. June-September.



Campanula Medium—  
Canterbury Bell.



Coreopsis Grandiflora.



Delphinium—Larkspur.



Digitalis—Foxglove.

- DIANTHUS barbatus** (Sweet William).  
H. 10-15 inches. All colors. June-July.
- †**—deltoides** (Grass Pink).  
H. 6-9 inches. Pink. June.
- plumarius** (Scotch Pink).  
H. 1 foot. Pink. June-July.
- double red** (Double Scotch Pink).  
H. 8-12 inches. Red. June-July.
- semperflorens** (Scotch Pink).  
H. 6-8 inches. Pink. May-August.
- \*†**DICENTRA spectabilis** (Bleeding Heart).  
H. 1-1½ feet. Pink. May-June.
- DICTAMNUS fraxinella** (Gas Plant).  
H. 2-3 feet. White. June-July.
- \***DIGITALIS** (Foxglove or Thimble Flower).  
H. 2-3 feet. Various colors. June-July.
- DORONICUM plantagineum** (Leopard's Bane).  
H. 1½-2 feet. Orange. May-June.
- ERYNGIUM amethystinum** (Sea Holly).  
H. 1-2 feet. Blue. July-August.
- EUPATORIUM ageratoides** (White Snakeroot).  
H. 3-4 feet. White. August-September.
- coelestinum** (Mistflower).  
H. 1-2 feet. Blue. September-October.
- EUPHORBIA corollata** (Flowering Spurge).  
H. 1½-3 feet. White. July-September.
- \*†**FERNS** (Assorted, Native Varieties).  
H. 1½-3 feet.
- \*†**FUNKIA subcordata grandiflora** (White Day or Plantain Lily).  
H. 12-18 inches. White. August-September.
- \*†**—lancifolia alba marginata**.  
H. 1-2 feet. Variegated foliage.
- GAILLARDIA grandiflora** (Blanket Flower).  
H. 1-2 feet. Yellow and crimson. All summer.
- \*†**GENTIANA Andrewsii** (Closed, Blind or Bottled Gentian).  
H. 2 feet. Purplish blue. July-August.
- †**GEUM atrosanguineum** (Avens).  
H. 1 foot. Dark red. All summer.
- GYPSOPHILA paniculata** (Baby's Breath).  
H. 2-3 feet. White. June-July.

**HELENIUM autumnale** (Sneeze-  
wort).

H. 4-5 feet. Yellow. August-  
September.

—**Riverton Gem.**

H. 4-5 feet. Old-gold. Sep-  
tember-October.

**HELIANTHUS Maximiliana** (Hardy  
Sunflower).

H. 5-8 feet. Yellow. Septem-  
ber-October.

—**Miss Mellish.**

H. 4-5 feet. Yellow. August-  
September.

—**in variety** (Hardy Sunflower).

H. 4-7 feet. August-September.

**HEMEROCALLIS aurantiaca major**  
(Day Lily).

H. 2½-3 feet. Orange-yellow.  
July.

—**Dumortieri** (Yellow Day Lily).

H. 1-2 feet. Orange-yellow.  
June-July.

—**flava** (Lemon Day Lily).

H. 2½-3 feet. Yellow. June.

—**Florham** (Yellow Day Lily).

H. 3 feet. Golden yellow. June-  
July.

—**kwanso fl. pl.** (Double Yellow Day  
Lily).

H. 2-3 feet. Orange. July-Au-  
gust.

\*—**Thunbergi.**

H. 3-4 feet. Lemon-yellow. July-  
August.

**HESPERIS matronalis** (Sweet  
Rocket).

H. 2-2½ ft. Purple. June-August.

**HOLLYHOCKS** (Assorted Colors).

H. 4-6 feet. Single and Double Varieties.

\*†**IBERIS sempervirens** (Hardy Candytuft).

H. 10-12 inches. White. April-May.

**IRIS germanica** (German Iris; Assorted Varieties).

H. 1½-3 feet. Assorted colors. May-June.

—**Kaempferi** (Japanese Iris).

H. 2-3 feet. Assorted colors. July.

—**sibirica** (Siberian Iris).

H. 2-3 feet. Purplish blue. June.

†—**tectorum** (Dwarf Iris).

H. 1½ feet. Violet streaked. April-May.

**LARKSPUR.** (See Delphinium).

†**LATHYRUS latifolius** (Perennial Sweet Pea).

H. 5-7 feet. White, Pink, Red. June to August.

†**LAVANDULA vera** (Sweet Lavender).

H. 1-2 feet. Violet. July-August.

**LIATRIS pycnostachya** (Blazing Star; Kansas Gayfeather).

H. 3-5 feet. Purple. August-September.

†**LINUM perenne** (Blue Flax).

H. 1-1½ feet. Blue. June-July.

**LOBELIA cardinalis** (Cardinal Flower; Indian Pink).

H. 2-3 feet. Scarlet. August-September.

**LUPINUS polyphyllus** (Hardy Lupine).

H. 3-4 feet. Blue. June-August.

—**polyphyllus albus.**

H. 3-4 feet. White. June-August.

**LYCHNIS chalconica** (London Pride or Maltese Cross).

H. 2-3 feet. Scarlet. July.

†**LYSIMACHIA nummularia** (Creeping Jenny).

H. 2-4 inches. Yellow. June to August.



Iris.



Iberis Sempervirens—Candytuft.



Phlox.



Peonies.

**LYTHRUM roseum superbum** (Loose-strife).

H. 4-5 feet. Rose. June-July.

†**MERTENSIA virginica** (Blue Bell).

H. 2 feet. Purplish blue. April to May.

\***MONARDA didyma** (Bergamot).

H. 2 feet. Red. July-August.

†**MYOSOTIS palustris** (Forget-me-not).

H. 10-12 inches. Blue. April-September.

**OENOTHERA Fraseri** (Evening Primrose).

H. 1½-2 feet. Lemon yellow. All summer.

\*†**PACHYSANDRA terminalis** (Japanese Spurge).

H. 4-6 inches. White. June.

**PAEONY.**

White, Pink, Red, Named Varieties. H. 2-3 feet. June. According to size, 75c to \$2.00 each.

—*officinalis*.

White, Pink, Red. H. 2-3 feet. June. 75c to \$2.00 each.

—*tenuifolium* (Cut Leaf Paeony).

H. 1-1½ feet. Red. May-June. \$1.00 each.

†**PAPAVER nudicaule** (Iceland Poppy).

H. 6-8 inches. Yellowish. All summer.

—*orientale* (Oriental Poppy).

H. 2-3 feet. Red. June. 50c each; \$5.00 per doz.

**PARDANTHUS chinensis** (Blackberry Lily).

H. 2-3 feet. Orange. July-August.

**PENTSTEMON** (Mixed).

H. 2-3 feet. Crimson, Orange, Purple. July-August.

†**PHLOX Arendsi** (Dwarf Varieties).

H. 12-18 inches. Assorted colors. May and June.

\*†**divaricata** (Canadian Phlox or Wild Sweet William).

H. 10-15 inches. Lavender. May-June.

**PHLOX paniculata.** In the following varieties.

H. 2-3 feet.

**Albion.** Pure white with faint red eye.

**Bacchante.** Rose with carmine eye.

**Bridesmaid.** Pure white, carmine eye.

**Champs Elysee.** Bright rosy magenta.

**Day Break.** Fine pale pink.

**Eclairer.** Brilliant rosy magenta.

**Europe.** White with crimson-carmine eye.

**Frederick Passy.** Light mauve-pink; white center.

**LaVague.** Fine mauve with red eye.

**Miss Lingard.** Extra fine white; pink eye.

**Miss Jenkins.** Large white.

**Pantheon.** Bright carmine-red.

**Rheinlander.** Salmon-pink; red eye.

**Rynstrom.** Fine carmine-rose.

**R. P. Struthers.** Cherry-red, suffused with salmon.

**Thor.** Beautiful salmon-pink; distinct and fine.

**Widar.** Reddish violet with white center.

†—*subulata* (Moss Pink).

H. 4-6 inches. White and pink. April and May.



**Stokesia Cyanea.**



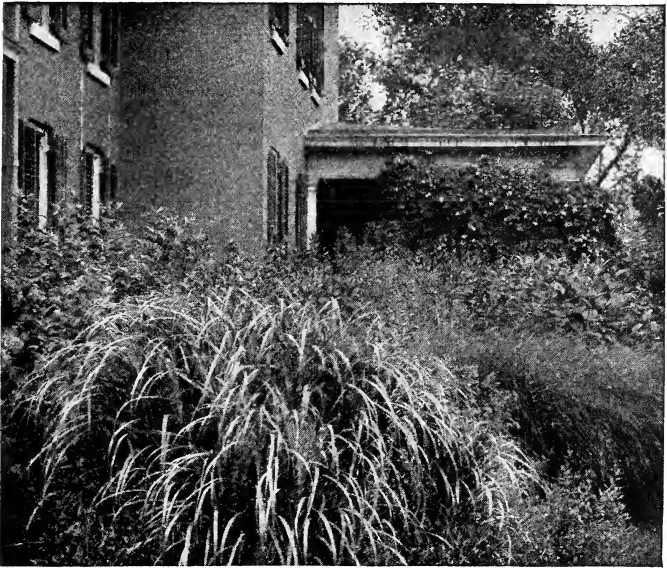
**Sedum Spectabile.**

- PHYSALIS Francheti** (Chinese Lantern Plant).  
H. 2-2½ feet. Orange-red fruits. September-October.
- PHYSOSTEGIA virginica** (False Dragon Head).  
H. 2-3 feet. Lilac. August.
- †**PLATYCODON grandiflora** (Japanese Bellflower).  
H. 1-2 feet. Blue. July-September.
- †—**grandiflora alba** (White Japanese Bellflower).  
H. 1-2 feet. White. July-September.
- †**PLUMBAGO larpentae** (Leadwort).  
H. 4-6 inches. Blue. August-September.
- POPPIES.** (See Papaver).
- \*†**PRIMULA veris** (English Cowslip).  
H. 6-8 inches. Yellow. April and May.
- PYRETHRUM roseum** (Painted Daisy).  
H. 2-2½ feet. Various colors. May-July.
- uliginosum** (Giant Daisy).  
H. 3-4 feet. White. August-September.
- †**RANUNCULUS repens** (Buttercup).  
H. 6-10 inches. Golden yellow. June.
- RUDBECKIA laciniata** (Golden Glow).  
H. 6-8 feet. Yellow. August.
- hirta** (Black-Eyed Susan).  
H. 1-2 feet. Yellow. August-September.
- purpurea** (Purple Coneflower).  
H. 2-3 feet. Purple. July-October.
- subtomentosa** (Sweet Coneflower).  
H. 3-4 feet. Lemon-yellow. Purple center. July-September.
- †**SALVIA argentea** (Silver-leaved Sage).  
H. 2-3 feet. Pinkish white. June.
- †**SAPONARIA caucasica** (Bouncing Bet).  
H. 2-3 feet. White tinted rose. All summer and fall.
- †**SAXIFRAGA cordifolia**.  
H. 1 foot. Rosy purple. April to June.
- SCABIOSA caucasica** (Cushion Flower).  
H. 1½-2 feet. Lavender. All summer.
- †**SEDUM acre** (Golden Moss; Moss Stonecrop).  
H. 3-4 inches. Yellow. June and July.
- †—**Sieboldi**.  
H. 9-12 inches. Pink. July and August.
- †—**spectabile** (Showy Sedum).  
H. 8-10 inches. Pink. August-September.
- SIDALCEA rosea** (Greek Mallow).  
H. 2-3 feet. Pink. June-July.
- \***SPIRAEA aruncus** (Goat's Beard).  
H. 3-4 feet. White. June-July.
- †—**filipendula** (Dropwort).  
Fern-like foliage. H. 2-3 feet. White. June-July.
- ulmaria** (Meadow Sweet).  
H. 2-4 feet. White. June-July.



*Yucca Filamentosa.*

- †**STACHYS lanata** (Woolly Woundwort).  
H. 1-1½ feet. Purple. June and July.
- STATICE latifolia** (Sea Lavender).  
H. 1½-2 feet. Deep blue. July and August.
- †**STOKESIA cyanea** (Stokes' Aster).  
H. 1-1½ feet. Lavender. August and September.
- SWEET WILLIAM.** (See *Dianthus Barbatus*).
- THALICTRUM aquilegifolium** (Feathered Columbine).  
H. 2-3 feet. White. June-July.
- adiantifolium** (Dwarf Meadow Rue).  
Fern-like foliage. H. 1 foot. Yellow. June-July.
- †**THYMUS vulgaris** (Common Thyme; Aromatic Herb).  
H. 1-2 feet. Lilac. June-July.
- TRADESCANTIA virginiana** (Spiderwort; Widow's Tears).  
H. 1-2 feet. Purple. All summer.
- \*†**TRILLIUM erectum** (Purple Trillium).  
H. 9-12 inches. Purple. May.
- \*†—**grandiflorum** (Wood Lily or Wake Robin).  
H. 12-18 inches. White. May.
- TRITOMA Pfitzeri** (Red Hot Poker; Torch Lily).  
H. 2-3 feet. Bright coral red. August to October. 50c each; \$5.00 per doz.
- †**TUNICA saxifraga** (Coat Flower).  
H. 6-8 inches. Light pink. July-August.
- VALERIANA officinalis** (Garden Heliotrope).  
Very fragrant. H. 2-3 feet. Pink. June-July.
- †**VERONICA incana** (Hoary Speedwell).  
H. 12-18 inches. Pale blue. July to September.
- longifolia subsessilis** (Long-leaved Speedwell).  
H. 2 feet. Blue. August to October.
- †—**rupestris** (Rock Speedwell).  
H. 4-5 inches. Blue. April-May.
- spicata** (Spiked Speedwell).  
H. 2-3 feet. Blue. June to August.
- \*†**VINCA minor** (Periwinkle or Trailing Myrtle).  
Fine for covering ground where nothing else will grow. H. 3-4 inches. Violet. April to June.
- †**VIOLA cornuta** (Horned Violet; Bedding Pansy).  
H. 5-8 inches. Mixed colors. April-October.
- †—**odorata alba** (Sweet-scented Violet).  
H. 5-8 inches. White. April-October.
- †**YUCCA filamentosa** (Spanish Bayonet or Adam's Needle).  
(See above illustration). H. 3-5 feet. White. June and July.  
Plants, 50c each. Clumps, \$2.00 each.



Ornamental Grass, Eulalia.

### Lilies - Lilium

Lilies are a valuable addition to the garden and should be planted more extensively. The auratum and speciosum varieties do not arrive from Japan until very late in the fall and the ground where they are to be planted should be covered with a straw or manure mulch to keep the soil in condition for planting when the bulbs arrive.

	Each	Doz.
<b>LILIUM auratum</b> (Gold-banded Lily). Very large, handsome white flowers, spotted with red and carrying a bright golden stripe in the center of each petal .....	\$.60	\$6.00
— <b>speciosum Melpomene</b> . Frosted white spotted, clouded and bordered with pinkish crimson. Petals deeply recurved and widely bordered. One of the handsomest and brightest of all Lilies .....	.50	5.00
— <b>speciosum album</b> . Large, white flowers, with a band of green in the center of each petal .....	.50	5.00
— <b>speciosum rubrum</b> . White flowers, heavily spotted with rosy crimson; exquisitely beautiful .....	.50	5.00
— <b>candidum</b> (The Madonna Lily). The old-fashioned white garden Lily; pure white, fragrant flowers in June. Must be planted early in the fall. Bulbs ready in September .....	.30	3.00
— <b>superbum</b> . The best of our native varieties and of the easiest culture. Blooms in July .....	.25	2.50
— <b>tigrinum splendens</b> . The improved Tiger Lily .....	.20	2.00
<b>LILY-OF-THE-VALLEY PIPS</b> .....		.75

### Ornamental Grasses (See illustration above)

The Eulalia, commonly called Pampas Grass, are strong growing, ornamental Grasses which are best used in masses. Foliage is attractive throughout the season while the graceful plumes add to their beauty in the autumn. They grow from four to six feet high and should be more generally used.

	Each	Doz.
<b>EULALIA gracillima</b> . Narrow leaves and very graceful ...	\$.50	\$5.00
— <b>japonica variegata</b> . Leaves striped white and green .....	.50	5.00
— <b>zebrina</b> . Leaves marked from edge to edge with white and yellow stripes .....	.50	5.00



*Lonicera Halliana*—Japanese Honeysuckle.

## Hardy Climbing Vines

Except where noted all vines are strong pot grown plants.

	Each
<b>AKEBIA</b> <i>quinata</i> . Graceful vine, wonderful foliage. Purple. May. . . . .	\$0.75
<b>AMPELOPSIS</b> <i>Engelmanni</i> (Woodbine). . . . .	.50
— <i>quinquefolia</i> (Virginia Creeper). Wonderful foliage in fall . . . . .	.50
— <i>Veitchi</i> . The popular "Boston Ivy" . . . . .	.50
<b>ARISTOLOCHIA</b> <i>sipho</i> (Dutchman's Pipe). Best vine for shady places . . . . .	1.50
<b>BIGNONIA</b> <i>radicans</i> (Trumpet Creeper). Orange flowers in mid-summer . . . . .	.50
<b>CELASTRUS</b> <i>scandens</i> (Bittersweet). Orange-yellow fruit, rapid growing. Field grown . . . . .	.75
<b>CLEMATIS</b> <i>Henryi</i> . Large flowering white . . . . .	1.25
— <i>Jackmani</i> . Large flowering purple . . . . .	1.25
— <i>paniculata</i> (Star Clematis; Bridal Bower). White, fragrant flowers in late summer; very desirable. Should be severely pruned late in the winter . . . . .	.50
<b>EUONYMUS</b> <i>radicans</i> (Evergreen Creeper). Fine for stone or brick walls, and as ground cover . . . . .	.50
— <i>variegata</i> . Variegated foliage—same as above . . . . .	.50
— <i>vegetus</i> (Broad-leaved Evergreen Creeper). Scarlet fruit and handsome foliage . . . . .	.50
<b>HEDERA</b> <i>helix</i> (English Ivy) . . . . .	.50
<b>LONICERA</b> <i>Halliana</i> (Japanese Honeysuckle). White and yellow. Sweet-scented flowers. . . . .	.50
— <i>japonica aurea reticulata</i> (Golden Honeysuckle). . . . .	.50
— <i>sempervirens</i> (Scarlet Trumpet Honeysuckle). . . . .	.50
<b>LYCIUM</b> <i>chinense</i> (Matrimony Vine). Purple flowers in late summer followed by red fruit. A good climber and also very effective for covering banks. Field grown . . . . .	.50
<b>PUERARIA</b> <i>Thunbergiana</i> (Kudzu Vine). . . . .	.75
<b>WISTERIA</b> <i>sinensis</i> (Chinese Purple Wisteria) . . . . .	1.00
— <i>alba</i> (Chinese White Wisteria). . . . .	1.00



*Ampelopsis Veitchi*—Boston Ivy.





## Roses

All Roses in our list are grown in pots and can be planted at any time from spring until fall.

Hybrid Perpetual Roses are entirely hardy, of vigorous growth, and have large, fragrant flowers. They should always be planted in an open location and improve greatly with rich soil and good cultivation.

**Prices on all Roses: \$1.00 each; \$10.00 per dozen, except where noted. Three or more of a variety at the dozen rate. We have a large stock of Ramblers, Climbing and Trailing Roses, in large pots, suitable for quick effects, ranging in price from \$2.00 each to \$5.00 each, according to size.**

### Hybrid Perpetual (Hardy)

**Anna de Diesbach.** Lovely shell pink—an old favorite.

**Ball of Snow (Boule de Neige).** Pure white, very full and double.

**Capt. Christy.** Delicate flesh pink, shading deeper at center—a popular variety for the garden.

**Capt. Hayward.** Fine, bright scarlet—one of the best.

**Clio.** Delightful satiny flesh with pink center. Fine for cutting.

**Coquette des Alps.** Lovely pure white. Fragrant and free bloomer.

**Frau Karl Druschki.** Commonly called the White American Beauty.

Large, snow-white flowers; prolific bloomer.

**Gen. Jacqueminot.** The old favorite "Jack" Rose and still very popular. Large, brilliant, scarlet, fragrant flowers.

**Geo. Dickson.** Velvety black crimson. Extra fine.

**His Majesty.** The "Crimson Druschki." Dark crimson; free and perpetual. Fine foliage.

**La Reine.** Clear, bright rose. Beautiful in color and form.

**Madame Masson.** Massive double and full flowers of intense red with crimson hue. A striking variety.

**Magna Charta.** Extra large full flowers. Rosy pink. One of the hardiest and best bloomers.

**Marshall P. Wilder.** Deep rich, glowing red. A very strong grower.



General Jacqueminot  
Roses.



Margaret Dickson.

**HYBRID PERPETUAL ROSES—**  
Continued.

- Mrs. John Laing.** Beautiful clear, shining pink flowers. Sweetly scented. A very popular Rose.
- Mrs. Sharman-Crawford.** Large flowers of deep rosy pink, outer petals delicately flushed with pale flesh.
- Paul Neyron.** Very large, bright, shining pink flowers. Very beautiful and sweetly fragrant. Vigorous grower, and stems almost thornless.
- Ulrich Brunner.** Brilliant cherry red flowers of immense size and bold, globular form.

**Hybrid Tea Roses**

**(EVERBLOOMING OR MONTHLY)**

These Hybrids are among the choicest, and their fragrant flowers are borne continuously from June until late frosts. In this vicinity they should have the protection of a strawy manure mulch over winter.

Varieties marked (\*) can be supplied in extra strong, five-inch pot plants at \$1.50 each or \$15.00 per dozen. These are extra fine plants.

- \***Angelus.** Fine white with sometimes a creamy center when open; buds pure white on long, stiff stems; foliage deep glossy green.
- Antoine Rivoire.** Creamy white, delicately tinted pink.
- Bessie Brown.** Fine white, flushed with pink.
- Columbia.** Peach-blow pink flowers. A large Rose with long, stiff stems; nearly thornless.
- \***Double White Killarney.** One of the most exquisite of the white varieties.
- Etoile de France.** Brilliant shade of clear red crimson velvet.
- Francis Scott Key.** Red, shading to cerise; very large flowers.
- Gruss an Teplitz.** Vivid, dazzling crimson flowers.
- \***Hoosier Beauty.** Glowing crimson-scarlet with darker shadings. Fragrant; blooms all summer.
- Jonkheer J. L. Mock.** Clear, imperial pink, reverse of petals rosy, silvery white. Very large flowers. One of the best.
- Kaiserin Augusta Victoria.** Fine, pure white. A most sturdy grower, blooming from early summer until late frost.
- Killarney Brilliant.** New. Wonderful bright true pink.
- La France.** Silvery rose, with pink shades.
- Madame Caroline Testout.** Brilliant satiny rose.

\***Mme. Butterfly.** All the color tones of the Ophelia are intensified in this variety, but it produces more blooms to the plant.

**My Maryland.** Soft salmon-pink; extra fine.

\***Ophelia.** Brilliant salmon-pink, shaded rose on outer edge of petals. Very fragrant and free bloomer.

\***Premier.** Color is deep rose-pink without shadings. Highly fragrant. Immense flowers borne on heavy canes almost thornless.

**Sunburst.** Orange-copper or golden orange and golden yellow. Extra large flowers. Long pointed buds.

Prices on all Roses, \$1.00 each; \$10.00 per dozen, except where noted. Three or more of a variety at the dozen rate.



Gruss an Teplitz.



Crimson Rambler Roses.

### Baby Rambler and Dwarf Polyantha

These are of the dwarf habit but bloom freely, are easy to handle and always delight the rose enthusiast. They are especially useful for edging beds of taller growing Roses or in masses. They should have the same protection in winter as the Hybrid Teas.

**Ellen Poulsen.** Dark brilliant pink, large full flowers, and very sweet-scented.

**Mme. Norbert Levavasseur.** The Crimson Rambler in dwarf form with the same clear brilliant red flowers. Grows about 20 inches in height and blooms freely until frost.

**Orleans.** Brilliant geranium red, suffused rose and deep cerise. Grows and blooms freely. About the showiest of the pink "Baby" class.

### Climbing Polyantha or Ramblers

We have a large stock of the Rambler, Climbing and trailing Roses named in the above list, in large pots, suitable for quick effects, ranging in price from \$2.00 to \$5.00 each, according to size.

**American Pillar.** Large, single flowers of rich, rosy pink, approaching brilliant carmine. Just a glint of white at center and golden yellow stamens. A new and valuable climber originated by the U. S. Government Department of Plant Introduction.

**Crimson Rambler.** The most popular out-of-door climber of today. Rich clusters of bloom form a mass of vivid crimson beauty until late in the season.

**Gold Finch.** Good yellow; opening to medium size; cream colored blossoms.

**Graf Zeppelin.** An attractive coral red of vigorous growth. Blooms abundantly. Highly recommended.

**Keystone Rambler.** Deep lemon-yellow, double flowers. Very fragrant and a rapid climber.

**K. W. Routenstrauch.** Delicate salmon-pink, center bright yellow, reverse of petals whitish. Very floriferous and continuous.

**Pink Rambler.** A vigorous climber, producing large trusses of delightfully fragrant flowers of deep pink.

**Rosarie.** An improved Tausendschoen with same habit of growth but superior in color. Flowers of cerise-pink or carmine. Very free blooming.

Prices on all Roses, \$1.00 each; \$10.00 per dozen, except where noted. Three or more of a variety at the dozen rate.



Tausendschoen Roses.

**CLIMBING POLYANTHA OR RAMBLER ROSES—Continued.**

**Tausendschoen.** Commonly called "Thousand Beauties." Varying shades from a delicately flushed white to deep pink or rosy carmine in bright clusters of blossoms almost covering the handsome pale green foliage. A vigorous climber with few thorns.

**White Rambler.** A strong growing climber with clusters of fine white flowers.

**Yellow Rambler.** Double golden yellow flowers in large clusters.

**Hybrid Wichuraiana Roses**

**Climbing American Beauty.** Deep pink to soft carmine-cerise. A strong grower.

**Debutante.** Light pink, passing to white. Double blooms in clusters with delicate odor of the Sweetbriar.

**Dorothy Perkins.** Beautiful shell pink color which holds for a long time. Very sweet scented flowers.

**Dorothy Perkins.** White. Same as above, except color of flowers.

**Dr. W. Van Fleet.** Delicate shade of flesh pink, deepening to rosy flesh in the center. Buds pointed. Flowers full and double. Open to an immense diameter. Sweetly perfumed, beautiful bronze-green foliage.

**Elizabeth Ziegler.** A more decided pink than Dorothy Perkins.

**Excelsa.** Intense crimson scarlet, double flowers in brilliant clusters set in glossy shining foliage. Extremely vigorous and the handsomest of all red climbers. An improvement over the popular Crimson Rambler.

**Gardenia.** Bright yellow, opening cream; fragrant and early flowering.

**Hiawatha.** Glowing ruby-crimson with a clear white eye. Single flowers in clusters. Light, glossy green foliage.

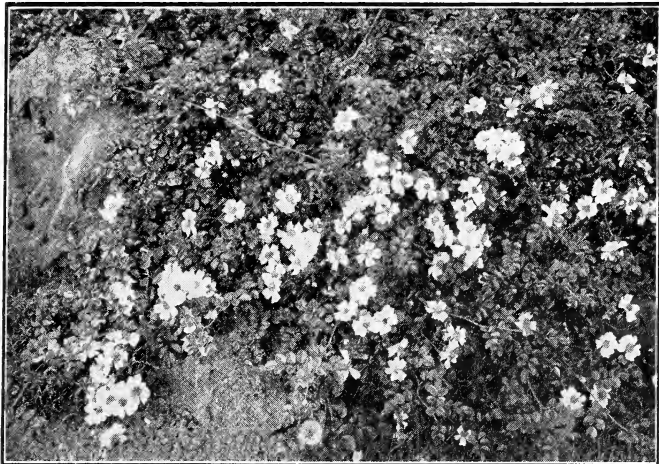
**Lady Gay.** Cherry-pink, fading to soft white. A perfectly hardy variety.

**Paul's Scarlet Climber.** This is probably the most important addition to our list of climbing Roses in many years. No other Rose in any class can compare with it for brilliancy of color, which is a vivid scarlet that is maintained without fading until the petals fall. Flowers are of medium size, semi-double and very freely produced in clusters on much branched canes, the plant being literally covered with flowers from top to bottom. A variety of exceptional merit. Highly recommended.

**Silver Moon.** Clear silvery white with a mass of bright yellow stamens. Exceedingly large and fragrant flowers. A very free blooming variety and highly recommended.

**Universal Favorite.** Beautiful rose-pink; large and double. A rapid climber of free branching and blooming habit.

Prices on all Roses, \$1.00 each; \$10.00 per dozen, except where noted. Three or more of a variety at the dozen rate.



Wichuraiana Roses.

### Setigera or Prairie Roses

- Baltimore Belle.** Pale blush, passing to white. Very double flowers in beautiful clusters. One of the old reliable climbers.
- Prairie Queen.** Bright rosy red, large, compact, globular flowers in clusters. An old favorite.
- Tennessee Belle.** Bright rosy pink. A strong climber and generous bloomer.

### Multiflora Roses

- Seven Sisters.** Flowers in large clusters, varying from rosy red to blush white, several shades being frequently found in the same cluster. Another standard favorite.

### Wichuraiana Roses

- Wichuraiana (Memorial Rose).** Pure shining white single flowers with bright golden center. Glossy dark green leaves. Especially useful on embankments, as it grows close to the ground and roots where the branches touch.

### Moss Roses

- Crimson Globe.** Deep crimson; large and full; nicely mossed.
- Henri Martin.** Light glossy red, tinged with crimson. Finely mossed.
- Mousseline.** Fine pure white. Heavily mossed.
- Princess Adelaide.** Bright rosy pink; large, double and fragrant buds beautifully mossed.
- Salet.** Rose-pink. Very large; full and beautifully mossed.

### Miscellaneous Roses

- Sweet Briar (Eglantine).** Distinguished by the fragrance of its leaves. The fruits are also decorative.
- Rosa rugosa alba.** Handsome, glossy green foliage, and clusters of beautiful, fragrant, single, white flowers nearly all summer. In autumn and winter attractive on account of the large, brilliant red seed pods. Grows to a height of 6 feet and is thickly covered with thorns and bristles, making it excellent for hedge purposes.
- Rosa rugosa rubra.** Same as above, except has rosy carmine flowers.
- Rosa rugosa hybrida (New Century).** Beautiful rosy pink in clusters of large, full, and double flowers.
- Rosa rugosa hybrida (Sir Thos. Lipton).** The best double white rose in its class. Beautiful free bloomer of most vigorous habit.

We have a large stock of the Rambler, Climbing and Trailing Roses named in the above list, in large pots, suitable for quick effects, ranging in price from \$2.00 to \$5.00 each, according to size.

Prices on all Roses, \$1.00 each; \$10.00 per dozen, except where noted. Three or more of a variety at the dozen rate.

## Hardy Nymphaeas or Water Lilies

A select list of the most suitable varieties for all Hardy Water Garden purposes. Ready April 15th to June 1st.

<b>Alba candidissima.</b> A very vigorous and desirable variety, requiring ample space; flowers large, pure white, sepals occasionally flushed with pink .....	Each \$1.50
<b>GLADSTONIANA.</b> Flowers pure dazzling white; cup-shaped and very massive. A robust grower .....	1.50
<b>LAYDEKERI purpurea.</b> Flowers rosy crimson, darker in the center, outer petals light rose .....	2.00
<b>MARLIACEA chromatella.</b> Petals and stamens bright yellow. 4 to 6 inches across. A very strong, free and continuous bloomer. One of the best Water Lilies for cutting.....	2.00
<b>—rosea.</b> A splendid companion to the yellow variety Chromatella, which it resembles in all particulars except color, flowers being a soft rose pink .....	2.50
<b>ODORATA</b> (The Native White Pond Lily). Very desirable for planting in quantity in natural ponds for effect and for cut flowers. All Water Lilies of this type are suitable for naturalizing .....	.50
<b>—gigantea</b> (The Native White Lily of the Southeastern United States). Flowers pure white, 5 to 7 inches across. A very strong, vigorous grower .....	.75
<b>—minor</b> (The Miniature White Water Lily). Very dainty and suitable for tubs and small pools .....	.50
<b>—sulphurea grandiflora.</b> The fragrant flowers are sulphur yellow, 4 to 5 inches in diameter, and stand 3 to 4 inches out of the water .....	1.50
<b>TUBEROSA.</b> A native white variety of very strong growth, flowers from 4 to 9 inches across, produced in moderate quantity. The various varieties of Tuberosa are suitable for planting in deep water, and should have plenty of room to spread .....	.50
<b>—maxima.</b> A free flowering variety of the above; 4 to 8 inches across; pure white; fragrant .....	.50
<b>—Richardsoni.</b> This variety should be included in every collection. Flowers pure white and quite double. No variety in our Water Garden is admired by visitors more than this. The immense snowball-like flower, 8 inches in diameter, was declared to be the finest white Water Lily of all .....	1.00
<b>—rosea.</b> Flowers an exquisite shade of pink. A vigorous grower, of the easiest culture .....	1.00
<b>—Wm. Falconer.</b> Flowers of an intense bright garnet color, with a good ruby tone through it, intensified by the rich golden center .....	5.00

## Nelumbiums or Lotus

Note. Nelumbiums can only be supplied in dormant tubers from May 1st to June 1st.

<b>Album grandiflorum.</b> A grand white variety, whose purity, fragrance, size, majestic foliage and hardiness stamp it as one of the best .....	Each \$3.00
<b>Luteum</b> (American Lotus; Water Chinquapin). A superb variety with yellow flowers; indigenous to the Western and Southern States. It has been introduced into the Eastern States, where, as a rule, it grows as freely as any native plant. Dormant tubers .....	2.00
<b>Roseum.</b> Flowers uniform deep rose-pink; very free blooming....	3.00
<b>Speciosum</b> (Egyptian Lotus). The best known variety and the easiest to grow; desirable for naturalizing in ponds, where the magnificent foliage and superb flowers produce a splendid subtropical effect. Flowers 8 to 12 inches across, of a deep rose color, creamy white at base of petals; exquisite for cutting. Dormant tubers .....	2.00

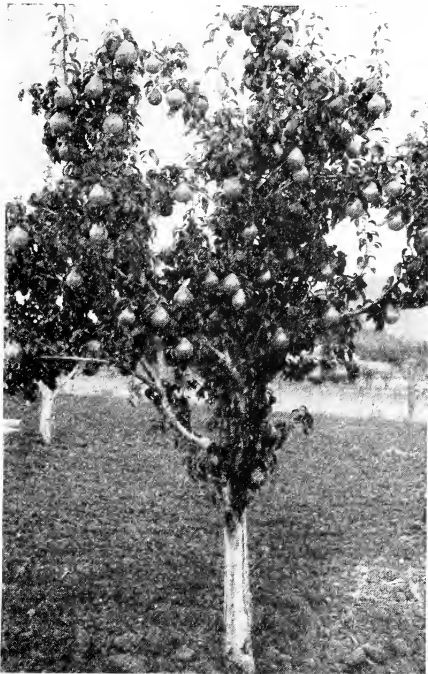
We can also supply miscellaneous aquatics for garden pools and for aquariums. List of varieties and prices on application.



# Fruits

One of the very desirable features of a country estate is its ample provision for the growth of fresh fruits and vegetables. On limited plots of ground it is also possible to grow a few of the most approved prolific bearing trees and bushes for private use. A small group of shrubbery in a backyard, designed to screen the objectionable views of adjacent property, may well be composed of a few bush fruits and dwarf fruit trees instead of flowering shrubs entirely.

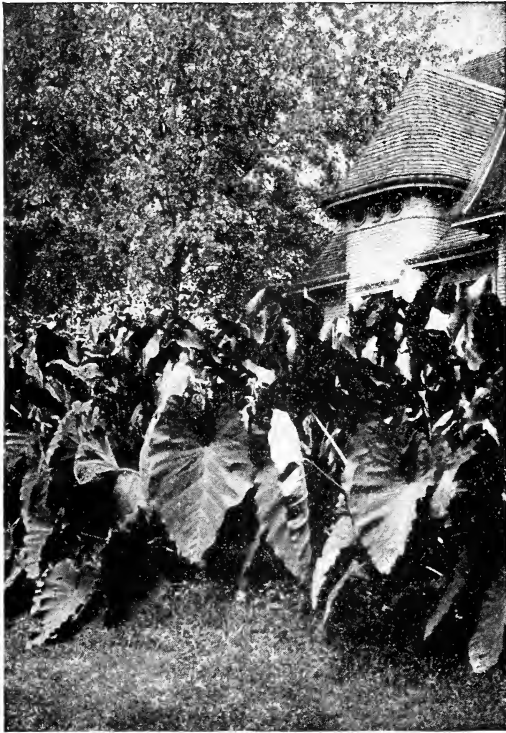
There is little advantage in the planting of large fruit trees. The true worth of a tree rests not in how long it will take to bear, but how well established it may become in the first few years after setting out. Quicker and more satisfactory results are obtained by planting small trees that establish themselves well from the start than by planting a semi-mature tree that has to put up a great struggle for existence by reason of its changed environment and insufficient root system.



Young Standard Pear Tree.

Each

- APPLES.** All standard varieties. 5 to 6 feet ..... \$1.25  
 Summer Apples. Red Astrachan, Yellow Transparent.  
 Autumn Apples. Malden's Blush.  
 Winter Apples. Baldwin, Grimes Golden, Hubbardston, Jonathan, King of Tompkins County, Northwest Greening, Rome Beauty, Spitzenburg, Winesap, Winter Banana, York Imperial.  
 Dwarf Apples. Standard varieties ..... 1.50  
 Crab Apples. Hyslop. Best variety for jelly ..... 2.00  
**CHERRIES.** 5 to 6 feet ..... 2.00  
 Sweet Varieties. Governor Wood, Windsor, Yellow Spanish.  
 Sour Varieties. May Duke, Morello (light).  
**PEARS.** 5 to 6 feet ..... 1.50  
 Seckel, Bartlett, Kieffer, Duchess.  
**PEACHES.** 5 to 6 feet ..... .75  
 Carman, Crawford Early, Crawford Late, Elberta, Ray, Rochester.  
**PLUMS.** 5 to 6 feet ..... 2.00  
 Lombard, Wickson, Abundance.  
**QUINCES.** 4 to 5 feet ..... 1.50  
 Orange, Champion.  
**ASPARAGUS.** 2-year plants, \$1.25 per 25; \$4.00 per 100.  
 Conover's Colossal, Palmetto.  
**BLACKBERRIES.** 20c each; \$1.50 per 10.  
 Early Harvest, Eldorado.  
**CURRENTS** 50c each; \$4.00 per 10.  
 Red Varieties. Fay's Prolific, London Market.  
 White Variety. White Grape.  
 Black Variety. Black Champion.  
**GOOSEBERRIES.** 50c each; \$4.00 per 10.  
 White Variety. Chautauqua.  
 Light Green Variety. Downing.  
 Red Variety. Red Jacket.  
**GRAPES.** Two-year-old vines, 50c each; \$4.50 per 10.  
 Black-blue Varieties. Concord, Moore's Early.
- GRAPES—Continued.** €  
 Red Varieties. Regal, Delaware.  
 White Variety. Niagara.  
**RASPBERRIES.** 15c each; \$1.25 per 10; \$9.00 per 100.  
 Black Varieties. Columbian, Cumberland.  
 Yellow Variety. Golden Queen.  
 Red Varieties. Cuthbert, St. Regis Everbearing.  
**STRAWBERRIES.**  
 Standard Varieties. Layers, 50c per doz.; \$3.00 per 100; \$20.00 per 1000. Pot grown. Ready in August. \$8.00 per 100.  
 Progressive Everbearing. The most prolific variety. Layers, April planting, 60c per doz.; \$4.00 per 100. Pot plants, September planting, \$1.25 per doz.; \$9.00 per 100.



Caladium Esculentum—Elephant's Ear.

## Roots, Tubers and Bulbs for Spring Planting

The culture of these flowers is a comparatively easy task, and yet it provides the best of the showy garden flowers. After the danger from frost has passed in the spring of the year, these flowers may be started, and if they are given a sunny position one can be assured of a very fine effect the same season.

**AMARYLLIS vittata.** A tender plant, with flower stems 2 to 3 feet tall, bearing four to six red flowers, striped and edged with white. A satisfactory house plant. **75c each.**

**BEGONIAS.** **Tuberous-rooted.** Finest single and double, in red, pink, yellow and white. **Roots, 15c each; \$1.50 per doz. Potted plants in bloom, 50c each, and upward.**

**CALLA Elliottiana.** This is the great new Yellow Calla of marvelous beauty. Flowers are large, rich, dark golden yellow, often 4 to 5 inches across the mouth; leaves are beautifully spotted with white. **50c each; \$5.00 per doz.**

**CALADIUM esculentum (Elephant's Ear).** Unequaled as a foliage plant. The leaves are shield-shaped, bright green, often measuring 3 feet or more in length and breadth. Needs very rich soil and an abundance of water.

	Each	Doz.
First size .....	\$0.10	\$1.00
Second size .....	.15	1.50
Large bulbs .....	.20	2.00
Extra large .....	.25	3.00
Mammoth .....	.35	4.00

**CINNAMON VINE.** Hardy, rapid growing climber, with delicate white, fragrant flowers .....

..... **.10 1.00**

**DAHLIAS.** Assorted varieties .....

..... **.25 2.50**

**MADEIRA VINE** .....

..... **.25c and .50**

Extra large roots .....

..... **.75**

**TUBEROSE** .....

..... **.35**

Extra large bulbs .....

..... **.50**





## Gladioli

Summer-flowering bulbs of the very easiest culture, and with a wide range of color. Elegant for the garden or beautiful for cut flower purposes. For the latter use they should be cut when the first flower opens; the balance of buds will develop when the spikes are placed in water and thus greatly prolong the blooming term. Plantings may be made every two weeks to provide for a succession. We offer a selection of the best named varieties.

	Each	Doz.	100
<b>America.</b> Conceded to be one of the finest varieties for cutting or bedding ever set out; color a beautiful soft flesh pink; orchid-like in its coloring and texture .....	\$0.07	\$0.75	\$ 5.00
<b>Baron Hulot or Blue King.</b> A really fine blue Gladiolus; in color a rich, royal violet-blue, very effective when cut and used in conjunction with a yellow variety .....	.12	1.25	10.00
<b>Halley.</b> Large open flowers of a delicate salmon-pink; very early .....	.07	.75	5.00
<b>Mrs. Francis King.</b> A striking shade of light scarlet or flame color; one of the most effective ....	.07	.75	5.00
<b>Mrs. Frank Pendleton.</b> All experts agree that this is one of the finest varieties yet introduced. The flowers are of largest size, borne on strong straight spikes. In color a lovely salmon-pink with brilliant deep red blotches in the throat. A color combination rivalling many of the finest orchids in its richness; exquisite in every way ..	.10	1.00	7.50
<b>Niagara.</b> A charming variety; of a delicate cream-yellow, lightly marked and splashed with rosy carmine in the throat; beautiful as a cut flower.	.10	1.00	7.50
<b>Peace.</b> Immense pure white flowers with a touch of carmine in the lower petals. These are borne on tall, graceful spikes; a beautiful and exceedingly refined variety .....	.10	1.00	7.50
<b>Panama.</b> A favorite wherever high grade varieties are grown; in color a rich, rose-pink .....	.10	1.00	7.50
<b>Schwaben.</b> A most meritorious variety of wonderful vigor, with strong, erect spikes and large well expanded flowers of a clear canary-yellow with a small blotch of deep garnet in the throat. This may now be considered the best and freest growing yellow variety .....	.12	1.25	8.00
<b>War.</b> A magnificent dark variety with tall spikes well filled with large flowers of a rich blood red shaded with crimson-black .....	.15	1.50	10.00
<b>Popular Mixture.</b> This special mixture is composed of good sized bulbs that have a good range of color .....		.50	3.00

0.17 A  
 307  
 1  
 130 1  
 16 5  
 3 94887



Asters.

## Bedding Plants

	Doz.
<b>ABUTILON.</b> Erect and trailing .....	15c to 25c each
<b>ACALYPHA.</b> According to size .....	\$1.50 and \$2.50
<b>ACHYRANTHES.</b> Dark crimson. Narrow leaf .....	75c and 1.00
Green Leaf .....	75c and 1.25
Bright Red .....	75c and 1.25
<b>AGERATUM.</b> In variety .....	75c and 1.00
<b>ALTERNANTHERAS.</b> These plants should be set in a bright, sunny place. The low, compact growth, combined with the green, red and yellow of the foliage, make them of the greatest value in carpet-bedding and for borders. The plants will stand shearing to almost any height, but they are usually kept about 5 inches tall. The foliage is the attractive feature, as the flowers are small and inconspicuous .....	\$5.00 per 100
<b>ALYSSUM</b> .....	.75
<b>ASTERS.</b> Next to sweet peas, Asters are the most popular annual for any garden. The colors—purest white to deepest purple—the size of the blooms, the long stems, put them far ahead of other flowers for cutting and decorations. The branching varieties are the best for general cultivation; they will grow in any decent soil, are comparatively free from disease and insects, and will produce quantities of flowers from the middle of August to late October. We have small plants for growing in the home garden, that we have raised from an extra choice strain of seed. The colors include white, light pink, red, lavender and purple. From 2-inch pots .....	.75
<b>BEGONIA semperflorens.</b> Bedding varieties suitable for sun or shade. 2¼-inch pots.	
—Erfordi. Rosy carmine .....	.75
—gracilis. Delicate rose color .....	.75
—luminosa. Brilliant, fiery, dark scarlet .....	.75
—Vernon. Bright orange-carmine; deep red foliage .....	.75
<b>CALADIUM (Elephant's Ear).</b> Potted plants .....	\$2.00 to 4.00
—Fancy-foliated. Potted plants .....	\$3.00 to 6.00
<b>CALLIOPSIS.</b> Annuals .....	.75

*Revised Prices on*  
**BEDDING PLANTS**  
 For Spring, 1928

*See Catalogue for Description*

	Each	Dozen
<b>ABUTILON</b> .....	\$ .25 to \$ .35	
<b>ACALYPHA</b> , according to size.....		\$2.50 and \$3.50
<b>ACHYRANTHES</b> .....		1.00 and 1.50
Green Leaf .....		1.00 and 1.50
Bright Red .....		1.00 and 1.50
<b>AGERATUM</b> .....		1.50
<b>ALTERNANTHERAS</b> , \$6.00 per 100.....		1.00
<b>ALYSSUM</b> .....		1.00
<b>ASTERS</b> —From 2 inch pots.....		1.00
<b>BEGONIA</b> . Semperflorens—2¼ inch pots		
Erfordi .....		1.00
Gracilis .....		1.00
Luminosa .....		1.00
Vernon .....		1.00
<b>CALADIUM</b> —(Elephant's Ear) bulbs only.....		1.50 and 3.00
<b>CALLIOPSIS</b> .....		1.00

**CANNAS**

*Finest tall and dwarf varieties \$2.50 dozen.*

- ALPHONSE BOUVIER.** Deep Cardinal. 5 to 6 feet.  
**CITY OF PORTLAND.** Pink, green foliage. 3½ feet.  
**FLORENCE VAUGHAN.** Orange-yellow, peppered bright red. 4 feet.  
**KING HUMBERT.** Great orange-scarlet flower; the premium bronze-leaved canna.  
**MRS. ALFRED CONRAD.** Exquisite salmon-pink flowers; green foliage.  
**PRESIDENT.** Scarlet; green foliage; very large flower. 4 feet.  
**WINTZER'S COLOSSAL.** Largest flowers of all Cannas; bright scarlet; vigorous grower and very free flowering. 5 feet.  
**YELLOW HUMBERT.** Yellow flowers dotted orange scarlet; dark green foliage. 4½ feet.  
**STATUE OF LIBERTY.** Bronze foliage, scarlet flower, 6 to 7 ft.

	Each	Doz.
<b>CENTAUREA Gymnocarpa</b> (Dusty Miller).....		\$1.00
—Cyanus (cornflower) .....		1.00
<b>COSMOS</b> —2¼ inch pots.....		1.00
<b>COBAEA Scandens</b> .....	.25	2.50
<b>COLEUS</b> —strong 2¼ inch pots.....		1.00
3 inch pots.....		1.50
—Gettysburg.		
—Verschaffelti.		
—Golden Bedder.		
—And others.		
<b>CROTONS</b> , all sizes.....	\$.50 each	and upwards
<b>CYPERUS</b> (Umbrella plant).....	\$.25 to \$1.00	each
<b>DRACAENA.</b> In variety.....	\$2.00 and upward	
<b>FEVERFEW.</b> From 4 inch pots.....		3.00
<b>FUCHSIAS</b> .....	.35 cents to 50 cents	each

(Over)

**GERANIUMS**

**All varieties \$3.00 per dozen.**

<b>ARD.</b> Scarlet.			
<b>POITEVINE.</b> Salmon.			
<b>D. PRESSILY.</b> Pink.			
<b>D.</b> Salmon.			
<b>BERLIE.</b> Pink Centre.			
<b>K. W. WERT.</b> Scarlet.			
<b>LeFAVORITE.</b> White.			
<b>MAD. BARNEY.</b> Pink.			
<b>MDE. SALLEROI.</b> Variegated foliage. Border Geranium.			
<b>MAD. LANDRY.</b> Deep Salmon.			
<b>RADIO.</b> Scarlet.			
<b>MRS. E. G. HILL.</b> Salmon.			
<b>S. A. NUTT.</b> Dark Red.			
<b>IVY.</b> Hardy English.....	\$ .25	\$ .50	\$ .75 \$1.00 ea.
		Each	Doz.
Parlor or German.....		.25	
<b>LARKSPUR,</b> Annuals .....			1.00
<b>LOBELIA.</b> Compact or trailing.....			.75
<b>MAURANDIA VINE</b> .....		.25	
<b>MOON VINE</b> .....		.25	
<b>NASTURTIUMS.</b> In fine variety 3 in.			1.00
<b>PANSIES.</b> \$6.00 per 100.....			1.00
<b>PETUNIAS</b> —Single varieties \$1.00 dozen—\$6.00 per 100.			
—Giants of California.			
—Rosy Morn.			
—Rose of Heaven.			
—Howard's Star.			
—Snowball.			
—Balcony Varieties trailing.			
<b>DOUBLE Varieties assorted</b> .....	.25		2.50
<b>PENNISSETUM</b> (Flowering Grass) for border			1.00
<b>PHLOX DRUMMONDI.</b> 2 inch pots.....			1.00
<b>SALVIA</b> —2½ inch pots—\$1.00 per doz. 3 inch pots \$1.50 per doz.			
—America (The best)			
<b>SNAPDRAGON.</b> Pink, red, white, yellow or mixed \$6.00			
per 100 .....			1.00
<b>THUNBERGIA</b> —Strong .....			.25
<b>TRADESCANTIA.</b> Plain and variegated,			
from 2 inch pots.....			1.00
<b>TUBE ROSES</b> (bulbs only).....			.50
<b>VINCA. Trailing</b>			
3 inch pots.....			2.00
4 inch pots.....			3.00
—Flowering three colors.....			1.50
<b>VERBENA.</b> \$6.00 per 100.....			1.00
<b>LEMON VERBENA</b> .....			15 to 25 cents each
<b>BASKET or VASE PLANTS. Such as Cupheas,</b>			
Saxifrages, Mesembryanthemum, etc.			1.00

(Over)



Cannas and Other Bedding Plants.

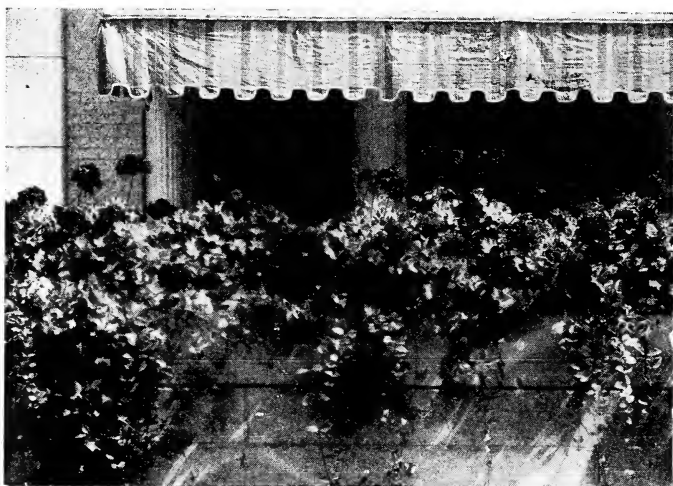
## Cannas

For a showy bed of color in front of a shrub border, or for a lawn bed combined with caladiums and coleus, Cannas are indispensable. The plants should be set in a sunny place, in soil that has been well worked, using a liberal quantity of well-rotted manure. During hot weather, water freely. Cut the flowers as soon as they wilt, to prevent seeds forming. The varieties listed here include the best of the Orchid-flowering and Crozy varieties as well as the old familiar sorts. We have given special care to growing these plants and have a fine assortment.

**Finest Tall and Dwarf Varieties, \$2.00 per dozen.**

- Alphonse Bouvier.** Deep cardinal. 5 to 6 feet.  
**Austria.** Yellow, few streaks of pink.  
**Burbank.** Rich canary-yellow, with crimson spots. 5 feet.  
**David Harum.** Bright vermilion-scarlet, mottled deep red.  
**Duke of Marlborough.** Rich crimson-maroon. 5 feet.  
**Discolor.** Tall foliage variety; red flowers. 7 feet.  
**Egandale.** Bronze foliage; currant-red flowers. 3 to 4 feet.  
**Eureka.** Very best white for all purposes. 4½ feet.  
**Firebird.** Glistening scarlet; immense heads of bloom; green-leaved; very choice variety.  
**Flamingo.** Green foliage, brilliant red flowers. 5 feet.  
**Florence Vaughan.** Orange-yellow, peppered bright red. 4 feet.  
**Gladiator.** Brassy yellow, lower petals crimson. 3 feet.  
**Goldbird.** Flowers soft canary-yellow.  
**Hungaria.** Clear light pink flowers; green foliage. 3 feet.  
**J. D. Eisele.** Brilliant vermilion-scarlet; fine bedder. 5 feet.  
**King Humbert.** Great orange-scarlet flowers; the premium bronze-leaved Canna.  
**Mme. Berat.** Pink; bronze foliage.  
**Mrs. Alfred Conard.** Exquisite pink flowers; green foliage.  
**Pennsylvania.** Tall, with rich green leaves and vermilion-scarlet flowers  
**President Faure.** Massive bronze foliage; red flowers. 6 feet.  
**Queen Charlotte.** Scarlet center, bordered yellow. 3½ feet.  
**Rosea Gigantea.** Large flowers of rich rose; very fine.  
**Rubin.** Dark foliage; ruby-red flowers. 4 feet.  
**Shenandoah.** Red leaves, pink flowers. 4 to 5 feet.  
**Souvenir d'Antoine Crozy.** Crimson-scarlet center, bordered golden yellow. 3½ feet.  
**Wintzer's Colossal.** Largest flowers of all Cannas; bright scarlet; vigorous grower and very free flowering. 5 feet.  
**Yellow Humbert.** Yellow flowers dotted orange-scarlet. Dark green foliage. 4½ feet.

	Doz.
<b>CENTAUREA gymnocarpa</b> (Dusty Miller) .....	.75
—cyanus (Cornflower) .....	.75
<b>COSMOS.</b> A tall, strong growing plant that produces quantities of flowers in the fall. The plants will grow from 3 to 6 feet high, and yield hundreds of flowers 3 inches or more across, and ranging in color from pure white to purple and from dainty pink to the deepest crimson. Strong plants. 2¼-inch pots...	.75



Geraniums in Window Box.

Doz.

**COBAEA scandens.** A rapid growing, tender climber, useful for training about the veranda; flowers large, purple, and shaped like a cup-and-saucer. Strong plants. . . . .15c each; \$1.50

**COLEUS.** We have a splendid assortment of these fancy-leaved plants, all of which are fine for vases, window-boxes, and borders where distinctive color is needed. We list only three varieties, but can supply any others that may be wanted.

Strong 2¼-inch plants, 75c per doz.; 3-inch, \$1.50 per doz.

—**Gettysburg.** Red and white, yellow edge.

—**Verschaffelti.** Rich velvety crimson.

—**Golden Bedder.** Golden yellow.

**CROTONS.** Plants with many forms of foliage, with handsome and brilliant colors, ranging from white to crimson and light pink to deep scarlet with tints of yellow and orange. Some sorts are of one color only, others combine two or three, while still other varieties have all the colors of the rainbow. The Crotons are useful as vase-plants or in veranda boxes, as the lack of moisture in such places is not specially injurious; but they should have ample sunlight if the colors are to be brought out to best advantage. Planted in clumps or masses in the garden they are very attractive; so too, when potted as a single specimen and used as an indoor plant, for which purpose the most brilliantly colored specimens are desirable. We have a large assortment of varieties and in varying sizes. Prices according to size. 75c and upward.

**CYPERUS** (Umbrella Plant). 10c to \$1.00 each.

**DRACAENA.** In variety. 50c each and up.

Doz.

**FEVERFEW.** From 2-inch pots . . . . . \$1.00

From 4-inch pots . . . . . 2.50

**FUCHSIAS.** Do well in partly shaded places; especially good as pot plants . . . . . 3.00

## Geranium

For bedding purposes no plants are superior to Geraniums. They enjoy the hot sun, will grow in any soil, produce quantities of flowers and do not require "petting." Added to these good points is the fact that they are not affected by the soot, smoke, and sulphur in the air of this section. We have an unusually good stock this year—strong, bushy plants in bud and bloom. The list of varieties is large and includes the best and most popular sorts.

All varieties, 25c each; \$2.50 per dozen.

**A. Richard.** Scarlet; best bedder.

**Beaute Poitevine.** Shrimp-pink.

**Boutard.** Salmon; very free.

**Francis Perkins.** Charming deep rose.

**Jean Oberle.** Hydrangea-pink.

**Klippert.** Brightest scarlet; free.

**Margaret Montmort.** Bright violet-red; fine bedder.

**S. A. Nutt.** Dark crimson flowers.



Petunias.

**HELIOTROPE.** 3-inch pots, \$2.00 per doz.; 4-inch pots, \$3.00 per doz.  
**Mme. Bruant.** Dwarf; compact.

**Chieftain.** Strong grower; great bloomer.

**HYDRANGEA hortensis otaksa.** \$1.00 each and upward, according to size.

—French Varieties. \$1.00 each and upward. Each.

**IVY, Hardy** .....25c and \$0.50

**Parlor, or German** .....15

**LOBELIA.** Compact or trailing .....75c per doz.

**MAURANDIA VINE** .....15

**MOON VINE** .....15

**MUSA ensete** (Abyssinian Banana). A splendid plant for the open air in summer, producing a most striking effect when planted singly or in groups. In our hot summers it luxuriates and attains gigantic proportions when freely supplied with manure and water. A tender perennial. Strong plants, \$1.00 up. Doz.

**NASTURTIUMS.** In fine variety .....75c to \$1.00

**PANSIES.** Never buy overgrown Pansy plants. We always furnish young plants in their first bloom, which transplant easily, and, if watered during dry season, will bloom continuously until late autumn. For best results the flowers should be gathered and all seed pods cut off. We grow our own seed and the strain is unrivaled for size, color and brilliancy. The greatest satisfaction with them is expressed ..... \$5.00 per 100 .75

**PETUNIAS.** Petunias are among the most showy of our annual bedding plants. They ought to be set in a sunny place, and the soil should be fairly well fertilized; after that they will take care of themselves. For general purposes the single varieties are best, as they bloom more freely.

Single varieties, 60c per dozen; \$4.50 per 100.

—Giants of California. Large and finely marked.

—Rosy Morn. Pink; white throat.

—Brilliant. Pink.

—Howard's Star. White star in center.

—Snowball. White.

Double varieties, \$1.00 per doz.

—Variegated and White.

**PENNISSETUM** (Flowering Grass). For borders ..... 1.00

**PHLOX Drummondii.** 2-inch pots. .60

**SALVIA.** The flowering Sages are among the most brilliant and showy annuals. The plants begin blooming the latter part of August and continue to give quantities of flowers until frost.

2¼-inch pots, \$1.00 per doz.

—America. Dwarf and very free flowering. Finest of all Salvias in every respect.

—Burning Bush. Flowers of the largest size on long spikes. Grows 2½ feet high.



Pansy.



Verbenas.

- Doz.
- SNAPDRAGON.** Pink, red, white, yellow or mixed. \$5.00 per 100 .....\$0.75
- THUNBERGIA.** Strong vines .....15c each.
- TRADESCANTIA.** Plain and variegated. From 2-inch pots ..... .75
- VINCA, Trailing.**  
 3-inch pots ..... 2.00  
 4-inch pots ..... 3.00
- Flowering.** Three colors.. 1.50
- VERBENA.** These are most effective when planted in large beds. The soil need not be above the average found in any garden, but the plants thrive best in sunshine, and the colors are more brilliant. We can supply a fine assortment of varieties and our plants are extra strong. \$4.00 per 100 ..... .60

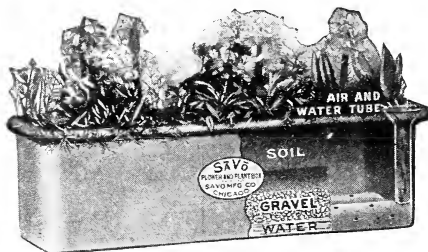
**LEMON VERBENA.** Fragrant, lemon-scented foliage. 15c to 25c each.

**BASKET OR VASE PLANTS.** Such as Cupheas, Saxifrages, Mesembryanthemum, etc. .... .75

## Porch and Window Boxes

The adornment and accentuation of architectural beauties by the use of flowers and foliage of a tasteful choice and arrangement is a consideration that is of no mean importance.

Our representative will be pleased to call and give you suggestions and an estimate of cost that will cover your needs in this respect.



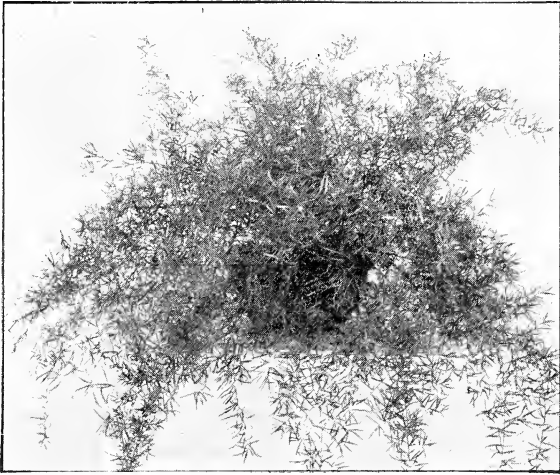
The Savo Flower and Plant Boxes are made of heavy galvanized steel, artistic in design. The watering is easy, the drainage ample, the air circulation perfect. They are beautifully finished in aluminum, gilt or dark green, and will last in constant use many years.

Directions for Using: First place coarse gravel, pebbles, broken flower pots, or moss, about an inch deep over the top of the double-arched reservoir, then fill the box with good, rich, black dirt, fill the reservoir with water, and sow the seed or install the plants and see them grow.

### STANDARD STOCK SIZES AND PRICE LIST

	Height	Width	Length	Each
Model A.	8 inches,	9 1/2 inches,	23 inches	\$3.00
Model B.	8 inches,	9 1/2 inches,	29 inches	4.00
Model C.	8 inches,	9 1/2 inches,	35 inches	4.50
Model D.	8 inches,	9 1/2 inches,	41 inches	5.00
Model E.	8 inches,	12 inches,	12 inches	3.00
Model F.	12 inches,	12 inches,	12 inches	3.50





*Asparagus Sprengeri.*

## Palms, Ferns and Other House Plants

The modern house is not adapted to growing palms, ferns and other plants of this class, because of the lack of proper atmosphere and heat conditions. All such plants thrive best in warm and moist atmospheres, such as are possible within greenhouses in northern climates. Then, too, it requires the skill and knowledge of those who have made the study of such plants their life occupation. The results, therefore, obtained in the care of house plants by those who attempt it are variable; nevertheless, in all instances, the satisfaction of having the beauty of the palm, fern or croton in the home for even a little while is very great, and they do indeed add greatly to the cheerfulness and beauty of the home surroundings. The dry atmosphere caused by the various modern heating arrangements in the home is responsible, more than anything else, for the deterioration of house plants, and the best way to combat this is to spray the foliage frequently with water. Keep the plants out of draughts, either hot or cold, and water carefully and thoroughly when the soil shows signs of drying. Do not allow water to stand in jardinières. Keep the plants as near daylight as possible.

An application of lemon oil, or some other good insecticide is good when the leaves show signs of insect or scale life. A list of some of the most durable house plants, with sizes and prices, follows:

	Each
<b>ASPARAGUS sprengeri.</b> This beautiful plant demands plenty of light, warmth and water. Grown in a hanging basket or in a pot placed on a tall pedestal, it makes a perfect fountain of green. We have them from small pot plants at 25c to large pans at .....	\$3.00
<b>ARECA lutescens.</b> 5- to 6-inch pot, 26 to 28 inches high .....	5.00
7-inch pot, 36 to 42 inches high .....	10.00
8-inch pot, 36 to 42 inches high .....	15.00
10-inch pot, 5 feet high .....	20.00
<b>CROTONS.</b> 5-inch pot, 16 inches high .....	2.00
18 inches high .....	2.50
20 inches high .....	3.00
6-inch pot, 22 inches high .....	3.50
24 inches high .....	4.00
26 inches high .....	5.00
7-inch pot, 28 inches high .....	10.00
30 inches high .....	15.00
10-inch pot, 4 to 5 feet high .....	20.00
<b>CYCAS.</b> 24 inches, 24 inches diameter .....	5.00
30 inches high, 30 inches diameter .....	7.50
36 inches high, 36 inches diameter .....	10.00
<b>DAVALLIA fijiensis.</b> A very ornamental and beautiful Fern. In pots, \$1.00 each; pans measuring 18 to 24 inches in diameter ..	5.00
<b>—bullata</b> (The Common Fern Ball). Made and grown in ball form. When drenched at intervals by dipping into water and hung in the sunlight and warm room, it thrives vigorously .....	1.50

# A. W. SMITH COMPANY, PITTSBURGH, PA.

	Each
<b>DRACAENA terminalis.</b> Red leaves. 4-inch pot .....	\$ 2.00
5-inch pot .....	2.50
6-inch pot .....	3.50
— <b>fragrans.</b> Plain green leaves. 6-inch pot .....	5.00
8-inch pot .....	12.00
— <b>Massangeana.</b> Green leaves; golden stripe. 4-inch pot .....	2.00
6-inch pot .....	5.00
8-inch pot .....	10.00
<b>FERN, Boston.</b> 6-inch pot .....	2.00
7-inch pot .....	4.00
8-inch pot .....	6.00
9-inch pot .....	8.00
10-inch pot .....	10.00
<b>FERN AND CROTON COMBINATIONS.</b> 6- to 8-inch pot .....	5.00
8- to 10-inch pot .....	10.00
<b>MAIDENHAIR FERN.</b> This is very delicate and requires a good, moist atmosphere and a great deal of close attention in the matter of heat and water. 50c each, up to \$2.50 each.	

## Blooming Plants

We carry on hand at all times the seasonable blooming plants such as listed below:

<b>EASTER LILY PLANTS.</b> March and April. 50c per flower or bud.
<b>PRIMROSES.</b> January to May. 50c to \$1.50 each.
<b>CYCLAMEN.</b> November to April. 50c to \$5.00 each.
<b>BEGONIA, Glory of Cincinnati.</b> December to April. \$1.00 to \$5.00 each.
<b>BEGONIAS.</b> Old-fashioned varieties. 25c to \$1.00 each.
<b>CINERARIA stellata.</b> March to April. \$1.00 to \$3.00 each.
<b>GENISTAS.</b> April. \$1.00 to \$5.00 each.

## Palms

	Each
<b>Phoenix Roebeleni.</b> 5-inch pot, 12 inches high, 15 inches spread .....	\$ 3.00
6-inch pot, 15 inches high, 18 inches spread .....	5.00
7-inch pot, 18 inches high, 24 inches spread .....	8.00
8-inch pot, 24 inches high, 24 inches spread .....	12.00
10-inch pot, 30 inches high, 30 inches spread .....	20.00
<b>Kentia Belmoreana.</b> 5-inch pot, 6 to 7 leaves, 18 inches high ...	3.00
6-inch pot, 6 to 7 leaves, 24 inches high .....	5.00
6-inch pot, 6 to 7 leaves, 26 inches high .....	6.00
6-inch pot, 6 to 7 leaves, 28 to 30 inches high .....	7.00
7-inch pot, 6 to 7 leaves, 34 to 36 inches high .....	9.00
7-inch pot, 6 to 7 leaves, 36 to 38 inches high .....	11.00
9-inch pot, 6 to 7 leaves, 40 to 45 inches high .....	15.00
9-inch pot, 6 to 7 leaves, 45 to 48 inches high .....	18.00
9-inch pot, 6 to 7 leaves, 48 to 54 inches high .....	20.00
9-inch pot, 6 to 7 leaves, 5 feet high .....	28.00
9-inch pot, 6 to 7 leaves, 6 feet high .....	45.00
<b>PANDANUS Veitchi.</b> 4-inch pot .....	2.00
5-inch pot .....	3.00
6-inch pot .....	4.00
8-inch pot .....	10.00

## Rubber Plants

<b>FICUS elastica.</b> 4- to 5-inch pot, 18 to 24 inches high .....	\$ 1.00
— <b>pandurata</b> (Violin Rubber). 6-inch pot, 24 inches high .....	2.00
6-inch pot, 30 inches high .....	3.00
7-inch pot, 36 inches high .....	4.00
8-inch pot, 48 inches high .....	5.00

**SMALL FERNS FOR DISHES.** 20c each; \$2.00 per dozen.

**CENTER PLANTS.** Cocos, Areca or Kentia Palms, Pandanus, etc. These are small plants especially grown to be used as centerpieces on the table. 50c each.

## Smith's Velvet-Green Lawn Seed

Is adapted to the country north of Mason and Dixon's Line, except the Far West and Eastern Coastal Section. Lb., 50c; 5 lbs., \$2.25; 10 lbs., \$4.25; 25 lbs., \$10.00. Use one pound to 350 square feet; 125 lbs. per acre.

**White Clover Seed.** ½ lb., 40c; lb., 75c.

It is necessary, in starting a lawn in this latitude, to sow a mixture of varieties of Grass Seed, for the reason that the best and most permanent of all, Blue Grass, is very slow in getting started and making a good sod; in two or three years, however, it will occupy the ground.

Those varieties which have proper habit, color and early covering effect must be depended upon to help out until the Blue Grass can get well established. It is highly important that you sow good, fresh seed of strong germinating power. Our Lawn Grass Seeds are all tested, and, if the conditions are correct, will give the highest germination. A fairly good lawn for one summer can be made by sowing annual grasses, but these die the succeeding winter and you have your work to do again. There is no economy in so-called cheap lawn seed; it may be old and dead, or it may be cheap varieties of grasses not suitable for the purpose or that may not last more than one year.

## Miscellaneous Supplies

### Fertilizer

Commercial Fertilizers are much more satisfactory in lawn making than natural manures, for they contain all of the chemical elements essential to plant life, and are free from the noxious weed seeds that usually accompany manure. Fighting weeds is an endless task, which can be evaded successfully if the proper measures are taken to establish a good, dense catch of grass that will virtually crowd out weeds by its greater vitality.

### Smith's Grower

This is a plant food that is soluble and immediately available to plants. If you will give the young, tender grass plants the advantage of obtaining nourishment without effort or delay, they will thrive, and in a short while will make a surprising growth that will preclude the possibility of weed growth.

Smith's Grower should be scattered upon the lawn areas at the rate of one pound to each 400 square feet, or 100 pounds to the acre, from the beginning to the end of the growing season, at intervals of about one month apart. In order to facilitate even distribution, it should be mixed with two or three times its bulk of pulverized garden soil or sand. During periods of drought the fertilizer cannot get into solution. For this reason it is well to give the lawn a good, thorough soaking subsequent to the scattering. All food is taken up by the root systems of plants when in solution, and is available as food only when in this condition.

Its guaranteed analysis is as follows: Nitrogen, 4.52 per cent; Potash (actual), 2 per cent; Phosphoric Acid, 5 to 6 per cent.

Prices, f. o. b. Pittsburgh, are as follows. Lb., 15c; 2 lbs., 25c; 5 lbs., 50c; 10 lbs., 75c; 25 lbs., \$1.50; 50 lbs., \$2.75; 100 lbs., \$5.00; 1000 lbs., \$40.00; 2000 lbs., \$75.00.

## Insecticides and Fungicides

### Arsenate of Lead

Arsenate of Lead is used to destroy all leaf-eating insects attacking fruit trees, shade trees, vegetables, flowers and shrubbery, such as codling moth, curculio, canker worm, tussock moth, elm-leaf beetle, gypsy and brown-tail moths, potato beetle and all similar insects that feed upon the fruit and foliage. The Arsenate of Lead Paste may be used with either lime-sulphur solution or Bordeaux Mixture, combining in one application treatment for both insects and fungi. Prices, f. o. b. Pittsburgh, are as follows: 10-lb. kegs, \$3.00; 5-lb. jugs, \$1.65; 1-lb. glass jars, 40c.

### Lime-Sulphur Solution

Lime-Sulphur Solution is used as an insecticide to control San Jose scale, oyster-shell scale and all sucking or scale insects. For this purpose it is used at a dilution of one gallon to nine to eleven gallons of water, and applied during the dormant season, either after the leaves drop in the fall or before the buds open in the spring. The spring application, just before the buds open, will control leaf blister mite, plant lice and peach leaf-curl, in addition to the scale insects, and is usually considered advisable in well-cared-for orchards, where the scale is already under control and where the entire orchard can be gone over in the spring. The fall application is advisable where trees have not been previously sprayed, and are badly infested with scale, or where the size of the orchard, together with climatic conditions, renders spring spraying impracticable.

The prices of Lime-Sulphur Solution, f. o. b. Pittsburgh, are as follows: Lb., 40c; 5 lbs., \$1.75; 10 lbs., \$3.00.

### Bordeaux Mixture

Prices of Bordeaux Mixture Paste, f. o. b. Pittsburgh, Pa.: Lb., 35c; 5 lbs., \$1.50; 10 lbs., \$2.75.

Prices of Bordeaux-Arsenate of Lead Mixture Paste, f. o. b. Pittsburgh, Pa.: Lb., 40c; 5 lbs., \$1.75.

**NIKOTEEN.** 30 per cent strength. Oz., 25c; ½ lb., \$1.15; lb., \$2.15; 4 lbs., \$7.00; 8 lbs., \$15.50.

**FUNGINE.** An infallible remedy for mildew, rust, bench-rot and other fungi affecting flower and vegetable plants. ½ pt., 40c; pt., 65c; qt., \$1.00.

INSECTICIDES AND FUNGICIDES—Continued.

**APHINE.** The Insecticide that kills plant lice of every species, such as green and black fly, thrips, red spider, slugs, mealy bug and brown scale.  $\frac{1}{4}$  pt., 25c;  $\frac{1}{2}$  pt., 40c; pt., 75c; qt., \$1.25.

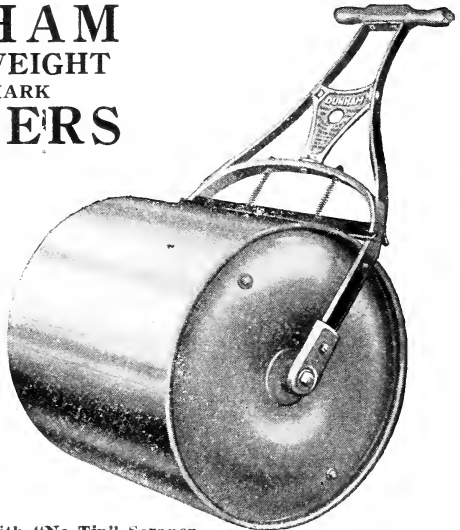
**HAMMOND'S SLUG-SHOT.** Destroys all chewing insects injurious to house and garden plants, shrubs, trees, vines, potatoes, melons, cabbage, currants, etc. Dust on foliage. Lb., 20c.

**TREE TANGLEFOOT.** For protecting trees against climbing insect pests in a simple, economical and effective way, use Tanglefoot, a sticky substance applied directly to the bark of the trees. This should be placed on the tree in a band 4 inches wide, about 7 feet from the ground. One application is good for the entire season. Should be applied in early April, with a small, wooden paddle. Put up in 1-, 5-, 10- and 20-lb. cans. 1-lb. can, 55c; 5-lb. can, \$2.25; 10-lb. can, \$4.25; 20-lb. can, \$8.20.

# DUNHAM WATER-WEIGHT TRADE MARK ROLLERS

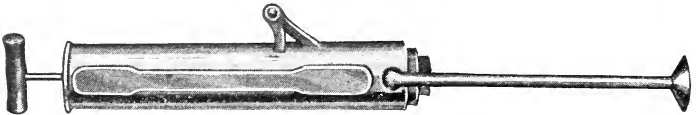
Weighs 50 per cent more when filled with sand—water is most convenient.

Dunham Rollers are painted green on body and ends, with red handle, and always bear the name Dunham.



With "No Tip" Scraper.

No.	Diam. Inches	Length Inches	Sections	Weight Empty	Filled with Water	Price Each
3	14	20	1	46 lbs.	148 lbs.	\$18.50
5	18	24	1	76 lbs.	274 lbs.	22.25
7	24	24	1	95 lbs.	418 lbs.	25.75



## Niagara Hand Dust Gun

\$3.00 each, complete, f. o. b. Pittsburgh.

This little Duster is designed for use around the home on ornamental shrubbery, gardens, vegetables, house plants, etc. It is extremely light and simple and will not get out of order. This hand Duster is sold only in combination with a one pound package of our **All-in-One Mixture** and is accompanied by an attractive **Garden Guide**, describing the treatment of various insects and diseases prevalent around gardens and home grounds. These three articles are contained in a single attractive carton. Instructions for applications and treating insects and diseases accompany the gun.

We represent the Niagara Sprayer Co. and can supply their complete line of spraying devices from the Small Hand Gun illustrated above to the large power machines for large tree plantations, orchards, etc. Prices and full information upon request.

## Dayton Sprinklers Rotary and Oscillating

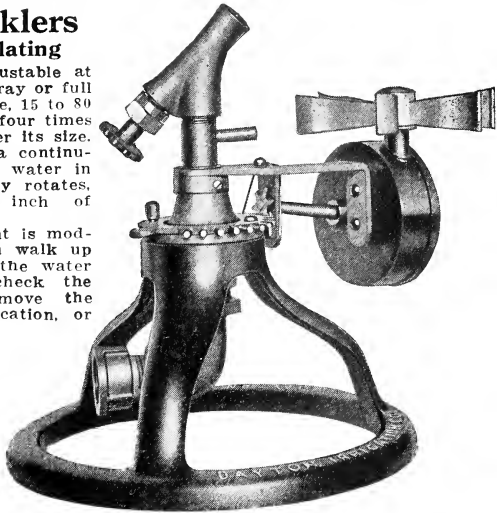
This Sprinkler is adjustable at will from bell-shaped spray or full stream, half or full circle, 15 to 80 feet diameter. It covers four times the area of any sprinkler its size. Instead of spraying in a continuous circle, it sends the water in one direction and slowly rotates, thus covering every inch of ground evenly.

The rotation movement is moderately timed. You can walk up to the machine before the water completes its circle—check the rotation temporarily, move the sprinkler to another location, or change the nozzle or distance adjustment.

The oscillating half-circle movement is a fine convenience for sprinkling from house or walk.

This sprinkler operates on pressure as low as 15 pounds. It is adjustable to supply from one to five gallons of water per minute.

Construction is of the best material — brass, steel and aluminum. It is mounted on stand for hose connection and can also be attached to our specially convenient hose-reel.

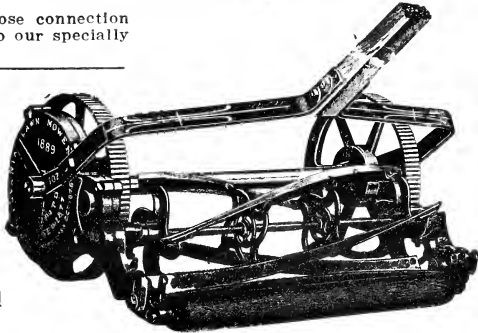


The Lawn Type Mounted on Stand for Hose Installation. Price, \$8.00 Each, F. O. B. Pittsburgh, Pa.

## Lawn Mowers

### Pennsylvania, the "Standard"

#### The World's Standard Lawn Mower



This Mower has been universally recognized as the standard by which all other Mowers are measured. Its reputation for perfect work, easy cutting, long service, and sturdiness has been acquired solely on its merits. It will last longer and do more work, with less labor, than any other Mower.

**Blades.** Four crucible tool steel, oil hardened and water tempered. Extra wide.

**Gears.** Train of triple, giving power and speed.

**Wheel Base.** Extra long. Cuts smoothly over uneven ground.

**Wheels.** 8 or 10½ inches. Open spokes.

**Parts.** Malleable and cast, accurately machined to insure noiseless service.

**Bottom Knife.** Flat pattern, crucible tool steel. Hardened and tempered.

**Height of Cut.** ¼ to 1½ inches. Will cut grass standing 6 inches high.

**Handle.** Hardwood. Iron braces on cross-bar.

The Standard Pennsylvania is the pioneer of all lawn mowers, having an Open cylinder, Open wheels and a Train of Gears.

#### HIGH WHEEL

	10½-inch Wheels.	6½-inch, Four-Blade Cylinder.		
Width of Cut, inches	15	17	19	21
Weight, Boxed, Inc. Handle, pounds	78	82	85	97
List Price, each	\$30.00	\$34.00	\$38.00	\$42.00

#### LOW WHEEL

	8-inch Wheels.	5½-inch Cylinder.	Four Blades.	
Width of Cut, inches	12	14	16	18
Weight, Boxed, Inc. Handle, pounds	54	58	60	63
List Price, each	\$24.00	\$28.00	\$32.00	\$36.00

# PREMIUMS and How to Get Them

## SAVE THE CASH SALE AND RECEIVED-ON-ACCOUNT SLIPS "SAME AS MONEY"

In return for any order received by us, accompanied by the money, we issue a Cash Sale Slip, which is not only the copy of your order and receipt for the money, but also is worth 10 per cent of its face value when applied to the purchase of a Premium article as listed in this catalog.

### EXAMPLE

Cash purchases, as shown by Cash Sale Receipts, amount to \$10.00.

Value of Cash Sale Slip, 10 per cent, \$1.00.

Which will purchase, without money, a Rubber Plant, page 42.

Premiums are delivered free in Pittsburgh, but go by express at purchaser's expense to all points outside of Pittsburgh.

Premiums are on display at the store of A. W. Smith Company, Keenan Building, Pittsburgh, Pa.

A. W. Smith Company reserve the right to discontinue the Premium Service at any time, or make any change in the system deemed by them necessary.

The Premium feature in this catalog, and all conditions pertaining thereto, supersede and render void those of all other catalogs heretofore published by A. W. Smith Company, so far as they are inconsistent herewith.

### RULES

1. A Cash Sale Slip is issued to the customer, or mailed, when the customer, at the time of placing or mailing the order, pays for the purchase.

2. C. O. D. transactions are classed as cash transactions, and Sale Slips are issued when the goods are delivered and paid for.

3. Cash Sale Slips must be presented for payment of a Premium by the original owner or his authorized representative.

4. Cash Sale Slips must be endorsed by the owner upon presentation for Premiums and the owner's address written beneath his name.

5. Cash Sale Slips must be presented in good state of preservation, and are void if found to have been altered.

6. A delivery charge will be made for the delivery of Premiums out of town.

7. No Premiums under the value of 50 cents will be issued.

8. No articles of merchandise will be issued as Premiums unless listed in the Premium Department of this catalog.

9. A. W. Smith Company does not agree to have on hand at all times all Premiums as listed, but will supply the demand as early as possible.

### RECEIVED-ON-ACCOUNT RULE

"Charge" customers paying bills on or before the 10th of the month following date of purchase will be handed or mailed Premium Certificates worth 5 per cent of face value in Premiums so listed or displayed. (This does not apply on landscape work or other contracts, unless definitely stated therein).

### Premiums

Consult your redeemable Cash and Received-on-Account Slips, and make your selections from the following list. Turn to the pages indicated for description, sizes, prices, etc., of the Premium Articles.

Rubber Plants (page 42).

Crotons (page 41).

Dracaenas (page 42).

Pandanus (page 42).

Palms (page 42).

Ferns (page 42).

Ferns and Croton

Combinations (page 42).

Lawn Mowers (page 45).

Lawn Rollers (page 44).

Lawn Sprinklers (page 45).

Remember, if 10 per cent of the amount on your Cash Sale Slips, or 5 per cent of the amounts on your Received-on-Account Slips, separately or together, equal the price of the premium desired, no money is needed. If the Slips amount to more than the price of the article, a Premium Change Slip will be refunded to you for future use. If the Slips amount to less than the price of the Premium, the balance may be made up with money.

# INDEX

- A**
- Abies ..... 4
  - Abutilon ..... 36
  - Acalypha ..... 36
  - Acer ..... 7
  - Achillea ..... 18
  - Achyranthes ..... 36
  - Aconitum ..... 18
  - Adam's Needle ..... 6, 24
  - Aegopodium ..... 18
  - Aesculus ..... 7
  - Ageratum ..... 36
  - Ailanthus ..... 7
  - Ajuga ..... 18
  - Akebia ..... 26
  - Alkanet ..... 18
  - Almond ..... 11
  - Alternanthera ..... 36
  - Althea ..... 13
  - Alyssum ..... 18, 26
  - Amaryllis ..... 34
  - Amelanchier ..... 11
  - Amorpha ..... 11
  - Ampelopsis ..... 26
  - Amygdalus ..... 11
  - Anchusa ..... 18
  - Andromeda ..... 4, 7, 9
  - Anemone ..... 18
  - Anthem. .... 18
  - Apples ..... 3
  - Aquilegia ..... 18
  - Arabis ..... 18
  - Aralia ..... 11
  - Arborvitae ..... 6
  - Areca ..... 41
  - Aristolochia ..... 26
  - Armeria ..... 18
  - Aronia ..... 11
  - Arrow-wood ..... 17
  - Artemisia ..... 19
  - Asclepias ..... 19
  - Ash ..... 8
  - Asparagus ..... 33, 41
  - Asters—Annual ..... 36
  - Asters—Perennial ..... 19
  - Asters—Stokes' ..... 24
  - Astilbe ..... 19
  - Avens ..... 20
  - Azalea ..... 4, 11
- B**
- Baby's Breath ..... 20
  - Bald Cypress ..... 10
  - Baptisia ..... 19
  - Barberry ..... 11
  - Basket Plants ..... 40
  - Basswood Tree ..... 10
  - Bayberry ..... 14
  - Bechtel's Crab ..... 9
  - Beech ..... 8
  - Begonias ..... 34, 36, 42
  - Bellflower ..... 19
  - Bellis ..... 19
  - Berberis ..... 11
  - Bergamot ..... 22
  - Betula ..... 7
  - Bignonia ..... 26
  - Birch ..... 7
  - Bitter Sweet ..... 26
  - Blackberries ..... 33
  - Blackberry Lily ..... 22
  - Black-eyed Susan ..... 23
  - Black Locust ..... 9, 15
  - Bladder Nut ..... 17
  - Bladder Senna ..... 12
  - Bergamot ..... 22
  - Blanket Flower ..... 20
  - Blazing Star ..... 21
  - Bleeding Heart ..... 20
  - Blue Bells ..... 19, 22
  - Blue Bottle ..... 19, 37
  - Blue Flax ..... 21
  - Blue Spirea ..... 19
  - Bocconia ..... 19
- Boltonia** ..... 19
- Boston Ivy** ..... 26
- Bottled Gentian** ..... 20
- Bouncing Bet** ..... 23
- Boxwood** ..... 4
- Bridal Bower** ..... 26
- Bridal Wreath** ..... 16
- Buckthorn** ..... 15
- Buddleia** ..... 12
- Bugleweed** ..... 18
- Burning Bush** ..... 13, 39
- Buttercup** ..... 23
- Butterfly Bush** ..... 12
- Butterfly Weed** ..... 19
- Butternut** ..... 8
- Button Bush** ..... 12
- Buxus** ..... 4
- C**
- Caladium ..... 34, 36
  - Calla ..... 34
  - Calliopsis ..... 36
  - Calycanthus ..... 12
  - Campanula ..... 19
  - Canadian Phlox ..... 22
  - Candleberry ..... 14
  - Candytuft ..... 21
  - Cannas ..... 37
  - Canterbury Bells ..... 19
  - Caragana ..... 12
  - Cardinal Flower ..... 41
  - Caryopteris ..... 19
  - Cassia ..... 19
  - Castanea ..... 8
  - Catalpa ..... 8
  - Ceanothus ..... 12
  - Cedar ..... 4
  - Celastrus ..... 26
  - Celtis ..... 8
  - Centaurea ..... 19, 37
  - Cephalanthus ..... 12
  - Cerastium ..... 19
  - Cerasus ..... 8
  - Cercis ..... 8, 12
  - Chamomile ..... 18
  - Cherry, Flowering ..... 8
  - Cherry, Fruiting ..... 33
  - Chestnut ..... 8
  - Chimney Campanula ..... 19
  - Chinese Lantern ..... 23
  - Chionanthus ..... 12
  - Chokeberry ..... 11
  - Chrysanthemums, Hardy ..... 19
  - Cineraria ..... 42
  - Cinnamon Vine ..... 34
  - Cladrastis ..... 8
  - Clematis ..... 19, 26
  - Clethra ..... 12
  - Clover Seed ..... 42
  - Coat Flower ..... 24
  - Cobaea ..... 38
  - Cocos ..... 42
  - Coleus ..... 38
  - Columbine ..... 18
  - Colutea ..... 12
  - Coneflower ..... 23
  - Conoclinium ..... 19
  - Convallaria ..... 19
  - Coreopsis ..... 19
  - Cornelian Cherry ..... 12
  - Cornflower ..... 19, 37
  - Cornus ..... 8, 12
  - Corylus ..... 12
  - Cosmos ..... 37
  - Cowslip ..... 23
  - Crabapple ..... 9
  - Cranberry Bush ..... 17
  - Creeping Jenny ..... 21
  - Crotons ..... 38, 41
  - Cucumber Tree ..... 8
  - Currant, Flowering ..... 15
  - Currant, Fruiting ..... 33
- Cushion Flower** ..... 23
- Cycas** ..... 41
- Cyclamen** ..... 42
- Cydonia** ..... 12
- Cyperus** ..... 38
- Cypress** ..... 5
- D**
- Dahlia ..... 34
  - Davallia ..... 41
  - Day-Lilies ..... 21
  - Delphinium ..... 19
  - Deutzia ..... 12
  - Dianthus ..... 20
  - Dicentra ..... 20
  - Dictamnus ..... 20
  - Diervilla ..... 13
  - Digitalis ..... 20
  - Dogwood ..... 8, 12
  - Doronicum ..... 20
  - Dracaena ..... 38, 42
  - Dropwort ..... 23
  - Dutchman's Pipe ..... 26
- E**
- Easter Lilies ..... 42
  - Eileagnus ..... 13
  - Elder ..... 15
  - Elm ..... 10
  - English Daisy ..... 19
  - English Ivy ..... 26
  - Eryngium ..... 20
  - Eulalia ..... 25
  - Euonymus ..... 13, 26
  - Eupatorium ..... 20
  - Euphorbia ..... 20
  - Evening Primrose ..... 22
  - Evergreen Creeper ..... 26
  - Exochorda ..... 13
- F**
- Fagus ..... 8
  - False Chamomile ..... 19
  - False Dragonhead ..... 23
  - False Indigo ..... 11, 19
  - Feathered Columbine ..... 24
  - Ferns ..... 20, 42
  - Feverfew ..... 38
  - Ficus ..... 42
  - Fir ..... 4
  - Flowering Spurge ..... 20
  - Forget-me-not ..... 22
  - Forsythia ..... 13
  - Foxglove ..... 20
  - Fraxinus ..... 8
  - Fuchsias ..... 38
  - Funkia ..... 20
- G**
- Gaillardia ..... 20
  - Garden Heliotrope ..... 24
  - Gas Plant ..... 20
  - Genista ..... 42
  - Gentiana ..... 20
  - Geraniums ..... 38
  - Geum ..... 20
  - Giant Daisy ..... 23
  - Ginkgo ..... 8
  - Gladioli ..... 35
  - Gleditsia ..... 8
  - Globe Flower ..... 14
  - Goat's Beard ..... 23
  - Golden Bell ..... 13
  - Golden Glow ..... 23
  - Golden Moss ..... 23
  - Goldentuft ..... 18
  - Gooseberries ..... 33
  - Goutweed ..... 18
  - Grapes ..... 33
  - Grasses, Ornamental ..... 25
  - Grass Pink ..... 20
  - Grass Seed ..... 42
  - Greek Mallow ..... 23
  - Gymnocladus ..... 8
  - Gypsophila ..... 20

<b>H</b>		Lychnis .....	21	Poppy, Iceland .....	22
Hackberry .....	8	Lycium .....	26	Poppy, Oriental .....	22
Halesia .....	13	Lysimachia .....	21	Populus .....	9
Hammamelis .....	13	Lythrum .....	22	Primrose .....	42
Hardhack .....	16	<b>M</b>			
Hazelnut .....	14	Madeira Vine .....	34	Primula .....	40
Hedera .....	26	Magnolia .....	8	Privet .....	14, 15
Helenium .....	21	Maidenhair Tree .....	9	Prunus .....	9, 15
Helianthus .....	21	Maitese Cross .....	21	Ptelia .....	9
Heliotrope .....	39	Malus .....	9	Pueraria .....	26
Hemerocallis .....	21	Maples .....	7	Purple Fringe .....	15
Hemlock .....	6	Marimmony vine .....	26	Pyrethrum .....	23
Hercules Club .....	11	Maurandia vine .....	39	Pyrus .....	9
Hesperis .....	21	Meadow Rue .....	24	<b>Q</b>	
Hibiscus .....	13	Meadow Sweet .....	23	Quercus .....	9
High Bush Cranberry .....	17	Mertensia .....	22	Quince .....	33
Hoary Speedwell .....	24	Michaelmas Daisy .....	19	<b>R</b>	
Hollyhocks .....	21	Milfoil .....	18	Ranunculus .....	23
Honey Locust .....	8	Mistflower .....	20	Raspberry, Flowering .....	10
Honeysuckle Bush .....	14	Mock Orange .....	15	Raspberry, Fruiting .....	33
Honeysuckle Vine .....	26	Monarda .....	22	Red Bud .....	24
Hop Tree .....	9	Monkshood .....	18	Red Hot Poker .....	24
Horned Violet .....	24	Moon-Vine .....	39	Red Osier .....	12
Horse Chestnut .....	7	Morus .....	9	Retinispora .....	5
Hydrangea .....	13, 39	Moss-Pink .....	22	Rhamnus .....	16
Hypericum .....	13	Mossy Stonecrop .....	23	Rhododendron .....	5
<b>I</b>		Mountain Ash .....	10	Rhodotypos .....	15
Iberis .....	21	Mountain Laurel .....	4	Rhus .....	10
Indian Bean .....	8	Mulberry .....	9	Ribes .....	10, 15
Indian Currant .....	17	Musa Enssete .....	39	Robinia .....	9, 15
Indian Pink .....	21	Myosotis .....	22	Rock Cress .....	18
Iris .....	21	Myrica .....	14	Rose Acacia .....	16
Itea Virginica .....	14	Myrtle, Trailing .....	24	Rose of Sharon .....	13
Ivy .....	26, 39	<b>N</b>			
<b>J</b>		Nasturtium .....	39	Roses—	
Japanese Anemone .....	18	Nelumbium .....	32	Baby Ramblers .....	29
Japanese Bellflower .....	23	New Jersey Tea .....	12	Climbing .....	29
Japanese Maple .....	7	Ninebark .....	16	Everblooming .....	28
Japanese Quince .....	12	Norway Spruce .....	5	Hybrid Perpetual .....	27
Japanese Snowball .....	17	Nymphaea .....	32	Hybrid Tea .....	25
Japanese Spurge .....	22	<b>O</b>			
Judas Tree .....	8, 12	Oak .....	9	Hybrid Wichura-	
Juglans .....	8	Oenothera .....	22	iana .....	30
Juniper .....	4	Old Man .....	19	Monthly .....	28
Juniperus .....	4	Old Woman .....	19	Moss .....	31
<b>K</b>		Oleaster .....	13	Polyantha .....	29
Kalmia .....	4	Oriental Plane Tree .....	9	Ramblers .....	29
Kansas Gay Feather .....	21	Oxydendrum .....	7, 9	Rugosa .....	31
Kentia .....	42	<b>P</b>			
Kentucky Coffee Tree .....	8	Pachysandra .....	22	Teas .....	28
Kerria .....	14, 15	Peonies .....	22	Wichuraiana .....	30, 31
Koeleruteria .....	8	Painted Daisy .....	23	Rubber Plants .....	42
Kudzu Vine .....	26	Palms .....	42	Rubus .....	15
<b>L</b>		Pampas Grass .....	25	Rudbeckia .....	23
Lace Shrub .....	17	Pandanus .....	42	<b>S</b>	
Larch .....	8	Pansy, Annual .....	39	Sage, Silver	
Larix .....	8	Pansy, Hardy .....	24	Leaved .....	19, 23
Larkspur .....	19, 21	Papaver .....	22	Salisburya .....	8
Lathyrus .....	21	Pardanthus .....	22	Salix .....	9
Lavender .....	21	Peach, Fruiting .....	33	Salvia .....	9, 23, 39
Lavandula .....	21	Pearl Bush .....	13	Sambucus .....	15
Leadwort .....	23	Pears .....	33	Saponaria .....	23
Leopard's Bane .....	20	Pennisetum .....	39	Sassafras .....	9
Leucothoe .....	4	Penna. Windflower .....	18	Saxifraga .....	23
Liatris .....	21	Pentstemon .....	22	Scabiosa .....	23
Ligustrum .....	14	Periwinkle .....	24	Scotch Pink .....	20
Lilacs .....	14, 17	Phoenix .....	42	Sea Holly .....	20
Lilies .....	25	Physalis .....	23	Sea Lavender .....	24
Lily-of-the-Valley .....	19, 25	Physostegia .....	23	Sea Pink .....	18
Lime Tree .....	10	Picea .....	5	Sedum .....	23
Linden .....	10	Pine .....	5	Shadbush .....	11
Linum .....	21	Pinus .....	5	Shasta Daisy .....	19
Liquidambar .....	8	Plaintain Lily .....	20	Sheepberry .....	17
Liriodendron .....	8	Platanus .....	9	Siberian Pea .....	12
Lobelia .....	21, 39	Platycodon .....	23	Sidalcea .....	23
Locust .....	8	Plum, Fruiting .....	33	Silver Bell .....	13
London Pride .....	21	Plum, Ornamental .....	15	Smoke Bush .....	15
Lonicera, Bush .....	14	Plumbago .....	23	Snapdragon .....	40
Lonicera, Vine .....	26	Plume Poppy .....	19	Sneezwort .....	21
Loosestrife .....	22	Poplar .....	9	Snowball .....	17
Lotus .....	32				
Lupine .....	21				
Lupinus .....	21				







# A. W. SMITH COMPANY

KEENAN BLDG., LIBERTY AND SIXTH AVES.

Pittsburgh, Pa.

Nurseries and Greenhouses

PENNSYLVANIA AND OHIO