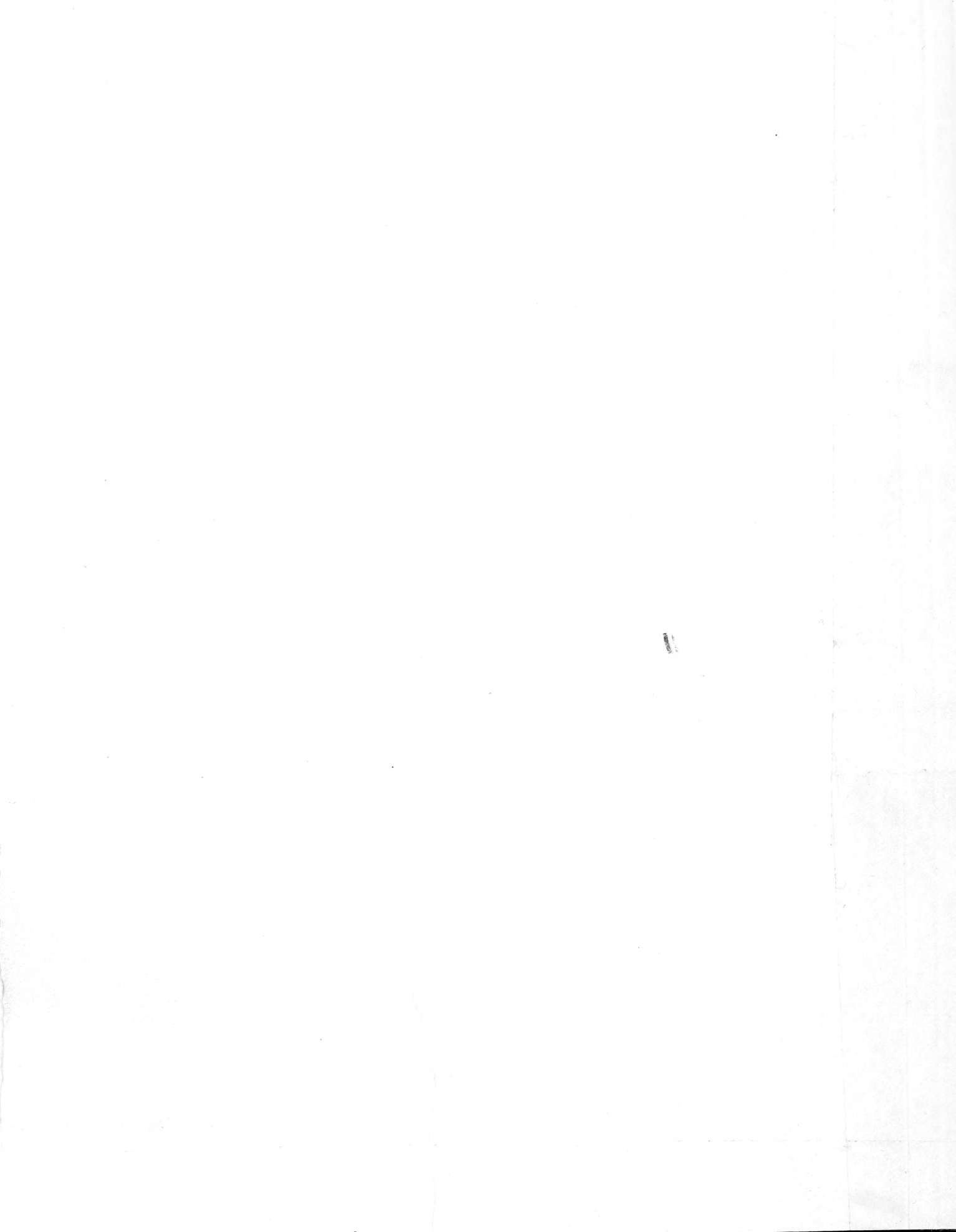


## **Historic, Archive Document**

Do not assume content reflects current scientific knowledge, policies, or practices.





This List Cancels  
All Previous Offers



FALL 1901

U. S. Department of Agriculture  
Washington, D. C.

# VAUGHAN'S

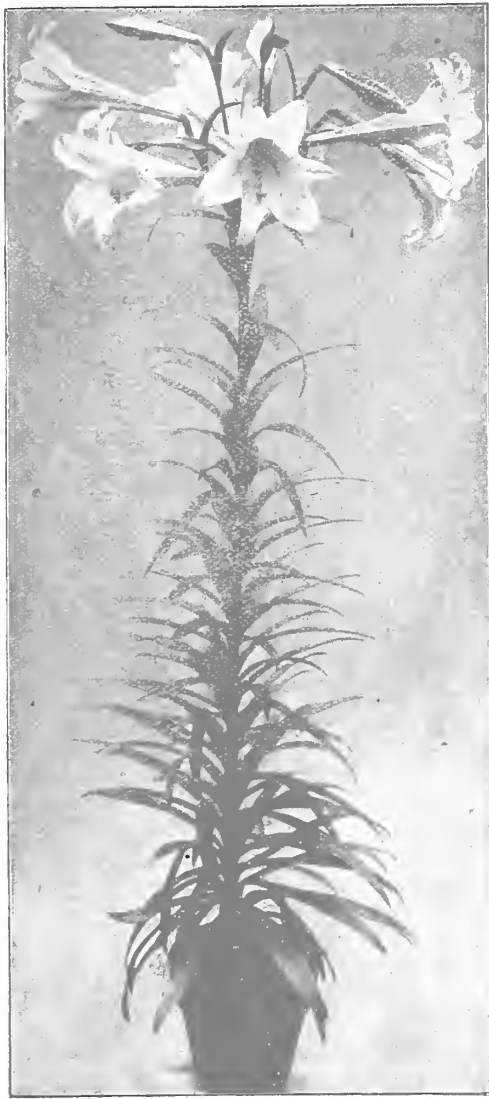
111

OUR MOTTO: "All Florists' Stock in Season."



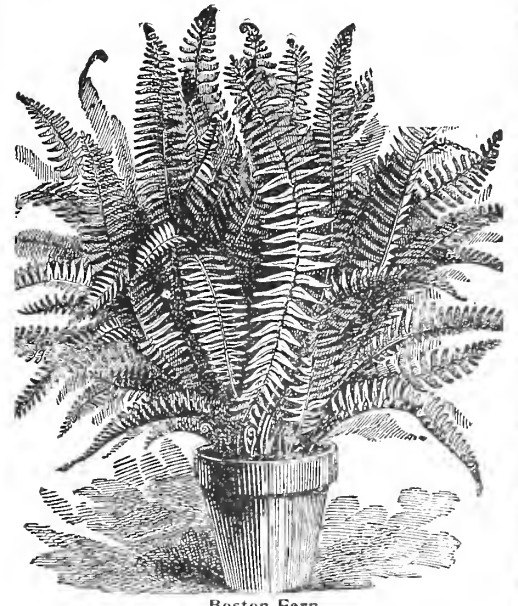
Asparagus Plumosus Nanus

We are Headquarters for both Seeds and Plants.



Lilium Longiflorum "Early MultiNorum"  
Japanese Grown

## Book for Florists



Boston Fern

OUR SPECIAL HOLIDAY CIRCULAR WILL BE READY NOV. 15th

If You are a Buyer of Holly, Bouquet Green, etc., It will Pay You to Get a Copy.

# VAUGHAN'S SEED STORE

NEW YORK, 14 Barclay Street & CHICAGO, 84 @ 86 Randolph Street

GREENHOUSES: WESTERN SPRINGS, ILLINOIS

**BUSINESS CONDITIONS. PLEASE READ CAREFULLY.**

**TERMS** on Florists' stock: To customers of approved credit, **60 Days**, except on certain Cash items. Special 3 per cent. discount for cash in Ten days (from these list prices only), not from the "Special" quotations and excepting Net Cash Items.

**New Accounts:** New customers, if not already well-known, will please send cash with first order if desiring to open an account send good references, property statement or other information concerning their commercial standing as they may be able to furnish. This will avoid delay which is very annoying. We cannot be expected to ship goods to those whose good standing is not known to us. For reference please name bankers, wholesale merchants or other well-known business men with whom you have had dealings—such information will be held in confidence.

**Our Responsibility:** While we always aim to have the best SEEDS, BULBS AND PLANTS which each season affords from reliable houses, we cannot and do not guarantee any of them to flower or produce a crop of flowers at the price given, or will we be responsible for the crop. We assume our customers to be acquainted with these conditions and if the stock is not accepted on such conditions it must be returned at once and any money paid will be refunded. Live plants and like perishable stock should be sent by express; we cannot assume any responsibility whatever for safe arrival when such plants are ordered by freight by the purchaser. The remedy for loss must lie between the buyer and the Railroad Company, but we will gladly render all the aid we can.

We prefer not to send goods C. O. D., but when wanted in that manner some money must accompany order. PERISHABLE stock, plants, etc., are **Positively NOT SENT C. O. D.**

**LOW EXPRESS RATES ON PLANTS.**

We ship plants by all express lines to any part of the country. Under the ruling of the leading express companies plants packed closed boxes or baskets are now being carried at the "GENERAL SPECIAL," rate, which means a reduction of 20 per cent. from the regular merchandise rate. Boxes weighing less than 100 pounds are charged at pound rates, but the minimum charge is 45c. For example, if the general rate is \$5.00 per 100 lbs., a box containing 25 lbs. will cost \$1.00, which is a saving of 25c.

**VAUGHAN'S CHICAGO PARKS LAWN SEED.**

**FLORISTS' SHOULD SELL**  
**VAUGHAN'S CHICAGO PARKS LAWN SEED.**



Prepared for use in the Chicago Parks, named by us and sold at our Chicago Stores for many years with very general satisfaction. It will produce an even, dense growth of permanent sward as early in the season as it is possible to do. This Mixture contains no annual grasses for making quick show to the detriment of a good lawn, but only those of lasting value and hardiness, which, when once established need no reseeding for years.

Price per pound, in 1 lb., packages, 15c.; in 1/2 pound packages, 16c. per pound; 5 lb. bags, 70c.; 10 lb. bags, \$1.30; 15 lb. bags, \$1.75; 100 lbs., \$11.00.

Florists who have a retail store will find this a very profitable article to handle. We can furnish it put up in neat pasteboard boxes, also in neat white cloth bags of 5 pounds, 10 pounds and 15 pounds each, with directions for sowing.

**VAUGHAN'S CHICAGO PARKS LAWN SEED.**

**WHOLESALE PRICE.**

Half pound packages (retail for 15c. each)	Per 100	\$ 8 00
One " " " 25c.		16 00
Five " " " \$1 00		70c.
Per bushel, 15 lb. (retails for 2.75		\$ 2 75
Per 100 pounds.....		12 00

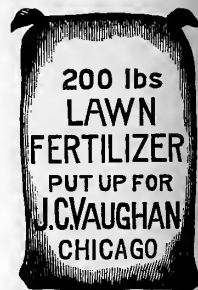
**LAWN SEED.**—Ordinary mixture, per bushel of 15 pounds... 1 25

**LAWN FERTILIZER.**

This fertilizer is non-odorous, dry, fine and easy to apply. Two or three applications during a season, just before a rain or watering, at the rate of one pound to each 100 square feet of grass keeps it in a flourishing condition and enables it to withstand the scorching sun. This fertilizer can also be used on all garden truck, flower and house plants.

**QUANTITIES TO USE AND PRICES.**

10 lb. bag for 1,000 sq. feet of lawn, or 500 sq. feet of garden.....	\$0 40
25 lb. bag for 2,600 sq. feet of lawn, or 1,200 sq. feet of garden.....	70
50 lb. bag for 5,000 sq. feet of lawn, or 2,500 sq. feet of garden.....	1 25
100 lb. bag for 1/4 acre of lawn or 1/2 acre of garden.....	2 25
200 lbs. for 1/2 acre of lawn, or 1/4 acre of garden.....	\$4.25; 400 lbs..... 8 00



**UNLEACHED HARD WOOD ASHES.**

This is also a splendid fertilizer for the lawn and garden, containing all of the fertilizing elements except nitrogen. If used on the lawn at the rate of a ton or more per acre as a first application, a subsequent annual dressing of three hundred pounds will insure a thrifty growth of dark color, exempt from ill effects of dry weather and free from weeds. It is also very beneficial in vegetable and field crops, and especially recommended to Cabbage and Onion Growers.

Price, 1000 lbs., \$8.00; 500 lbs., \$4.25; 100 lbs., \$1.00; 50 lbs., 65c.; 25 lbs., 35c.

<b>KENTUCKY BLUE GRASS, Fancy Cleaned.</b>	100 lbs	
Per bushel 14 lbs.....	1 60	9 00
<b>RED TOP, Fancy Seed.</b> Extra heavy, 10 lbs.....	1 40	11 00
Ordinary. 10 lbs.....	80	7 00
<b>WHITE DUTCH CLOVER.</b> Very fine quality, 10 lbs.....	1 50	14 00
<b>COLUMBIAN LAWN GRASS MIXTURE.</b> 10 lbs.....	1 25	11 00

**VAUGHAN'S "GOLF LINKS" GRASS SEED.**

This is a special mixture of the finest grasses, that will stand the wear and tear and retain its rich velvety appearance. Price, per lb., 20c.; 5 lbs., 65c.; 50 lbs., \$8.00; 100 lbs., \$15.00. Special price on larger lots.

**TABLE OF CONTENTS.**

<b>A</b> butilon.....9	<b>C</b> annas.....11	<b>F</b> ern Fans.....28	<b>I</b> mmortelles.....27	<b>M</b> ushroom Spawn.....28	<b>S</b> eed Bags.....29
<b>A</b> calypha.....9	<b>C</b> ape Flowers.....24	<b>F</b> ertilizers.....25	Letters.....27	<b>N</b> arcissus.....6	<b>S</b> milax.....9, 17
<b>A</b> geratum.....9, 15	<b>C</b> arnations.....14, 16	<b>F</b> icus.....13	<b>I</b> nsecticides.....26-27	<b>N</b> ikoteen.....27	<b>S</b> nowdrops.....8
<b>A</b> llium.....8	<b>C</b> henille.....27	<b>F</b> lower Pots.....28	<b>I</b> ris.....8	<b>N</b> itrate of Soda.....25	<b>S</b> paraxis.....8
<b>A</b> maryllis.....8	<b>C</b> hinese Lily.....6	<b>F</b> lower Seeds.....15 to 20	<b>I</b> xias.....8	<b>O</b> rnithogalum.....8	<b>S</b> piraea.....8
<b>A</b> nemones.....8	<b>C</b> hinese Primrose.....9	<b>F</b> olding Flower Boxes.....24	<b>J</b> onquils.....8	<b>O</b> xalis.....8	<b>S</b> od Crusher.....30
<b>A</b> nomatheca.....8	<b>C</b> hionodoxa.....8	<b>F</b> reesias.....3	<b>K</b> entias.....13	<b>P</b> ampas Plumes.....28	<b>S</b> prinklers.....29
<b>A</b> pron, rubber.....24	<b>C</b> hrysanthemum.....11	<b>F</b> umigators.....25	<b>K</b> nives.....27	<b>P</b> ansies.....18	<b>S</b> yringes.....30
<b>A</b> raucaria.....13	<b>C</b> ineraria.....9, 16	<b>G</b> eraniums.....10	<b>L</b> atania Borbonica.....13	<b>P</b> andanus.....13	<b>S</b> weet Peas.....19
<b>A</b> reca.....13	<b>C</b> occolut.....24	<b>G</b> ladiolus.....3	<b>L</b> atania Borbonica.....13	<b>P</b> elargonium.....10	<b>T</b> in foil.....30
<b>A</b> rum Sanctum.....5	<b>C</b> oleus.....9	<b>G</b> lazing Tools.....25	<b>L</b> abels.....27	<b>P</b> epper.....10	<b>T</b> hermometers.....30
<b>A</b> shes, Hardwood.....25	<b>C</b> rocus.....8	<b>G</b> loxinia.....16	<b>L</b> awn Grass Seed.....2	<b>P</b> lant Food.....25	<b>T</b> obacco Dust.....26
<b>A</b> sparagus.....12, 15	<b>C</b> ycas Plants.....13	<b>G</b> rape Hyacinths.....8	" Fertilizer.....2, 25	<b>P</b> hlox.....17	" Soap.....27
<b>A</b> zalea.....9	<b>C</b> yperus.....9	<b>G</b> revillea.....9	<b>L</b> emon Tree.....9	<b>P</b> hoenix.....13	" Stems.....26
<b>B</b> ay Trees.....9	<b>C</b> yclamen.....8, 16	<b>G</b> uano.....25	<b>L</b> emon Verbena.....9	<b>P</b> oinsettia.....9	" Extract of.....27
<b>B</b> askets.....21	<b>D</b> affodils.....6	<b>H</b> anging Baskets, wire.....27	<b>L</b> ilies, hardy.....8	<b>P</b> rimrose.....9, 17	<b>T</b> rowels.....30
<b>B</b> egonia.....8, 9, 15	<b>D</b> ielytia.....8	<b>H</b> eliotrope.....9, 17	<b>L</b> ily of the Valley.....6	<b>R</b> anunculus.....8	<b>T</b> uberose.....3
<b>B</b> leeding Heart.....8	<b>D</b> ivies.....8	<b>H</b> ibiscus.....9	<b>L</b> ilium Harrisii.....3	<b>R</b> affia.....28	<b>T</b> ulips.....7
<b>B</b> one Meal.....25	<b>D</b> racacna.....9	<b>H</b> orn Shavings.....25	" Longiflorum.....3	<b>R</b> ibbons.....29	<b>T</b> ubs.....30
<b>B</b> owker's Plant Food.....25	<b>F</b> airy Flowers.....24	<b>H</b> ot Bed Mats.....27	" Candidum.....8	<b>R</b> ubber Tree.....13	<b>V</b> ases.....30
<b>B</b> rowallia.....9	<b>F</b> erns.....12, 16	" Sash.....29	<b>M</b> ats, Hot Beds.....27	<b>R</b> ubber Hose.....26	<b>V</b> iolets.....9
<b>B</b> ulb Pans.....28	<b>F</b> ern Balls.....14	" Thermometer.....30	<b>M</b> oss, French Green.....27	<b>R</b> usselia.....9	<b>W</b> heat Sheaves.....31
<b>B</b> uxus.....9		<b>H</b> ycinths.....3, 4, 5	" Sphagnum.....30	<b>R</b> ustic Hanging Baskets.....29	<b>W</b> ire, annealed.....31
<b>C</b> alla Lily.....5, 8, 9		<b>H</b> ydrangea.....9	" Wreaths.....27, 31	<b>S</b> ash, Hot Bed.....29	" Plant Stakes.....28
<b>C</b> ane Stakes.....28				<b>S</b> alvia.....17	<b>W</b> ire designs.....22-23
				<b>S</b> cilla.....8	

**LONG DISTANCE TELEPHONE CONNECTION WITH OUR GREENHOUSES, CALL UP "WESTERN SPRINGS."**

# \* Japan Grown Liliun Longiflorum. \*

If you buy in large quantities write for latest quotations.

Japan Liliun Longiflorum have proved a most desirable substitute for Liliun Harrisii for late or Easter flowering because of their comparative freedom from disease, as well as being unmixed with the latter variety. While they are later blooming than Harrisii, Florists should experience no trouble to bring them into flower in good time for Easter.

	Per 100	1000
5 to 7 inch,	\$2 00	\$17 50
6 to 8 "	3 00	25 00
7 to 9 "	4 25	38 00
9 to 10 "	7 00	65 00

### SPECIAL NOTICE.

As is well-known Japan Liliun Longiflorum usually show several different types. Our Japan growers, however, have had for the past few seasons under separate cultivation two distinct types of this plant, both of which are tall growing, free blooming and with narrow leaved foliage. One of them, "EARLY MULTIFLORUM" coming into flower early and which is desirable for Easter, the other "GIGANTEUM" being a late flowering sort, and recommended for Decoration Day blooming. In booking orders for these new varieties we can give no guarantee as to their being true to name, since this is the first year we have bought these separate. Our Japanese nurserymen assure us, however, they should run 90% true.

**Prices:**

"Giganteum" } 7 to 9 inch	Dark Stem. Per 100.	Per 1000	"Early Multiflorum" } 7 to 9 inch	Per 100.	Per 1000	
	.....	\$6 00		\$50 00	.....	\$6 50
				9 to 10 "	8 50	80 00
				10 to 11 "	13 00	115 00

**Bermuda Liliun Longiflorum.**—5 to 7 inch, per 100, \$5.00; per 1000, \$42.50.

## FREESIA REFRACTA

\* \* ALBA.

<b>CALIFORNIA GROWN.</b>		<b>FRENCH GROWN.</b>			
Per 100.	Per 1000	Per 100.	Per 1000		
Choice.....	\$0 65	\$ 5 00	Mammoth.....	\$1 15	\$9 00

We request our customers to give our bulbs closest inspection on arrival. We guarantee that, so far as can be seen, the bulbs of each kind are sound, healthy, and full sized, and shall be glad to replace at once any stock found otherwise. **BUT YOU MUST TELL US AND AT ONCE.**

### FRENCH ROMAN HYACINTHS.

The crop of Roman Hyacinths has again proved to be a short one; however, after filling our advance orders in full we still have a moderate surplus of the sizes mentioned below, and shall be glad to quote same in thousand lots upon receipt of request.

	Per 100.	1000
<b>White. First quality,</b> 11 to 12 ctm.....	\$2 00	
<b>select,</b> 12 to 15 ctm.....	2 50	
<b>Italian,</b> red skinned.....	2 00	\$17 00
<b>Single Blue.....</b>	2 00	17 00
<b>Yellow.....</b>	8 00	
<b>Dark Rose.....</b>	2 10	17 00

### GLADIOLUS.—For Winter Forcing.

The varieties mentioned below are invaluable for forcing. They are of dwarf habit and can be cultivated in the same manner as Hyacinths. **Colvilli Alba** (The Bride), a light graceful variety having pure white flowers which are freely borne on long stems. It is coming more into favor as its good qualities become better known; equally good for blooming in the open air. Per 100, 50c.; per 1000, \$4.00. **Rubra**, red, per 100, 50c.; per 1000, \$4.00. **GLOXINIA.**—A selected strain for pot culture. Doz., 65c.; 100, \$4.

### TUBEROSES.

If shipped from New York we allow 50c. per 1000 for freight.

We are Growers by Contract of nearly a million Tuberose Bulbs for home trade and export, which are cured and shipped under the supervision of experienced men in our own employ. We supply well cured, carefully handled stock free from disease so prevalent in the cheap cured commission bulbs.

**Bulbs ready by November 15th.** \* \* \*  
\* \* \* **Prices subject to change without notice.**

Write for latest quotations on large quantities.

**EXCELSIOR PEARL**, dwarf, first-class strong bulbs. Telegraphic word, "Modern." Per 100, \$1.00; per 1000, \$7.50.

Our stock of Excelsior Pearl has been bred up by several years of careful selection from bulbs producing the shortest stalks with full heads of double flowers. But two or three firms can supply this extra dwarf "Excelsior" strain.

**EXCELSIOR PEARL**, dwarf, medium, excellent mailing size. Telegraphic word, "Militia." Per 100, 85c.; per 1000, \$5.50.

**TALL DOUBLE**, first-class, strong. Telegraphic word, "Malvern." Per 100, \$1.10; per 1000, \$8.50.

**TALL DOUBLE**, medium. Telegraphic word, "Mignon." Per 100, 85c.; per 1000, \$6.00.

\* \* SINGLE, \* \*

**VARIEGATED LEAVED, ALBINO.**

**Armstrong's Ever-blooming, new.**

WRITE FOR PRICES.



TUBEROSE EXCELSIOR PEARL.



LILIUM LONGIFLORUM "EARLY MULTIFLORUM" JAPANESE GROWN.

**DON'T FAIL TO TRY**  
**THE NEW**  
**Early Multiflorum**  
**JAPAN GROWN**  
**LONGIFLORUM**  
**FOR**  
**EASTER BLOOMING**  
**SOUND, PLUMP BULBS**  
**NOW READY FOR DELIVERY**

### Named Dutch Roman or Miniature HYACINTHS.

Prices quoted are for first size bulbs and NOT for SECOND SIZE as generally supplied; we do not consider the second size worthy of planting.

	Per 100.	1000
<b>Baron van Thuyll</b> , pink, early.....	\$3 00	\$25 00
<b>Bertrude</b> , dark rose, medium early.....	2 75	24 00
<b>Tadam van der Hoop</b> , white, late.....	3 75	32 00
<b>Gigantea</b> , light pink.....	3 00	25 00
<b>Baroness van Thuyll</b> , pure white, early.....	3 75	32 00
<b>La Grandesse</b> , pure white, medium early.....	4 00	36 00
<b>Blanchard</b> , pure white.....	3 75	32 00
<b>Grandeur a Merveille</b> , rosy white.....	3 25	28 50
<b>Paix de l'Europe</b> , pure white.....	3 25	29 00
<b>Baron van Thuyll</b> , bright blue.....	2 50	22 00
<b>Charles Dickens</b> , bright blue.....	3 00	25 00
<b>Czar Peter</b> , light blue, early.....	3 75	34 00
<b>Grand Maitre</b> , deep porcelain.....	3 00	25 00

### SEPARATE COLORS.

Excellent for cut-flowers and frequently used for bedding.

	Per 100	1000		Per 100	1000
<b>Pure White</b> .....	\$3 10	\$27 00	<b>Red, all shades</b> .....	2 35	\$20 00
<b>Blue</b> .....	2 50	21 00	<b>Rose</b> .....	2 50	21 00
<b>Light Blue</b> .....	2 75	24 00			

### LILIUM HARRISII.

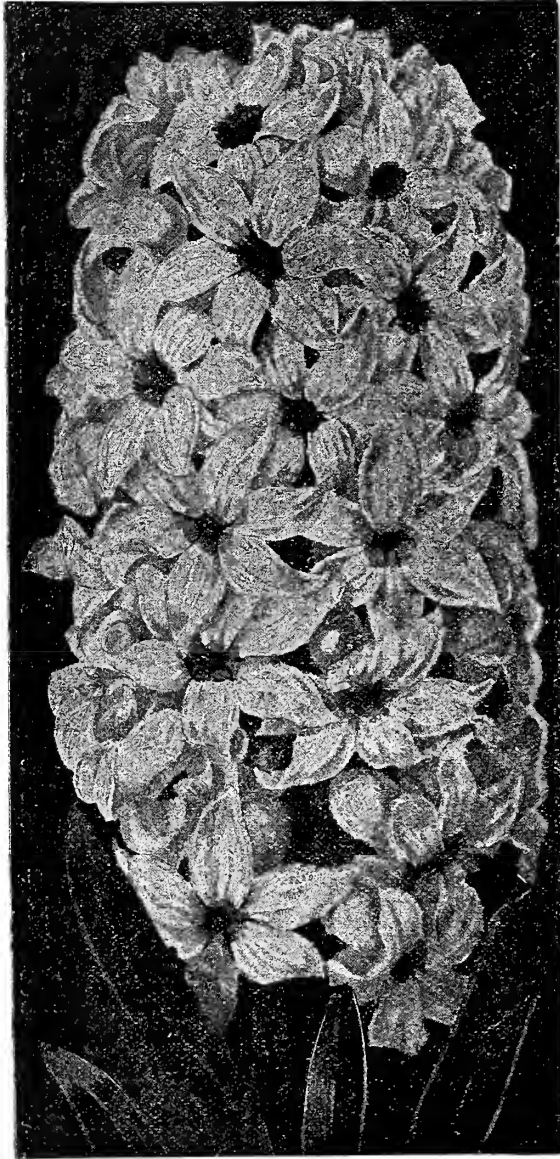
to 7 inches..... 5 00 40 00

# Selected Named Hyacinths.

STRICTLY FIRST SIZE.

These are the very best selected bulbs and are most generally used for pot and glass culture as they produce much finer spikes than either the second size or mixed varieties. Those in full faced or black face type are especially recommended.

Price for our selection, per 100, \$7.50; per 1000, \$70.00.



## SINGLE RED AND ROSE.

	Per 100.
Chas. Dickens, dark rose, large spike.....	\$ 8 50
Fabiola, fine rose.....	6 50
Fiancee Royal, bright red, late.....	7 30
Fireball, early, very fine, dark.....	9 75
Gertrude, dark rose, medium early.....	6 50
Gigantea, blush, medium early.....	6 50
Lord Macauley, soft red.....	8 10
Marie Cornelia, light rose.....	9 75
Moreno, large spike, new.....	9 10
Norma, pink, large spike, early.....	6 50
Robert Steiger, crimson, medium early.....	5 75
Baron van Thuyll, rose, early.....	6 50
Roi des Belges, dark red, early.....	5 50
Von Schiller, dark red, large spike.....	7 30

## SINGLE WHITE.

Alba Superbissima, best for Easter, late.....	8 10
Blanchard, large, pure, early.....	9 75
Baroness van Thuyll, good spike, early.....	8 10
Grandeur a Merveille, blush, late.....	6 50
La Grandesse, large spike, medium early.....	11 35
Madam van der Hoop, large spike late.....	8 10
Mont Blanc, pure, large spike, late.....	13 00
Paix de l'Europe, pure, good spike, late.....	8 10
Voltaire, blush, late.....	6 50
Pavillion Blanc, white.....	9 00

## SINGLE BLUE.

Baron van Thuyll, bright, good spike, early.....	5 20
Bleu Mourant, dark, medium early.....	5 85
Blondin, porcelain, early.....	8 50
Charles Dickens, porcelain, shaded purple.....	6 90
Czar Peter, light, handsome flower.....	12 25
Grand Maitre, dark porcelain, medium early.....	7 30
La Peyrouse, porcelain, late.....	6 50
Leonidas, bright, early.....	6 90
Regulus, light, dark striped, early.....	6 15
William I, dark, velvety, very early.....	8 90
Queen of Blues, light, fine spike.....	9 75

## SINGLE YELLOW.

	Per 100
Alida Jacoba, dark, medium early.....	\$ 6 50
Hermann, orange buff, late.....	6 50
King of Yellows, extra, medium early.....	11 35
La Citroniere, lemon, late.....	7 30
La Pluie d'Or, bright, medium early.....	5 20
William III, orange buff, late.....	8 90

## DOUBLE BLUE.

Blocksberg, porcelain, medium early.....	\$ 7 30
Prince Saxe-Weimar, semi-double, late.....	4 85
Charles Dickens, early.....	6 50
Prince Albert, dark, very early.....	5 85

## DOUBLE RED AND ROSE.

	Per 100
Bouquet Royal, pink, fine spike, early.....	\$ 5 85
Bouquet Tendre, carmine, medium early.....	6 50
Czar Nicholas, rosy blush, late.....	5 85
Gladstone, pink, late.....	5 20

## DOUBLE WHITE.

Flevo,.....	\$ 7 30
La Desse, pure, early.....	8 10
La Tour d'Auvergne, large spike.....	8 10
La Virginite, blush, late.....	6 10

## DOUBLE YELLOW.

Bouquet d'Orange, good spikes.....	6 50
Sunflower, buff, fine spike.....	5 85

## Second Size Named Hyacinths

These are usually sold under the name of Selected first size and in comparing prices please bear this in mind. While it is true that same will not produce as large and full spikes as our first size they will nevertheless give good satisfaction, Particularly commendable for bedding where solid colors are desired. For description as to color, etc., see under first size named.

Price for Our Selection per 100, \$6.50; per 1000, \$60.00.



### SINGLE BLUE.

Baron Van Thuyll.....	Per 100	\$ 4 85
Charles Dickens.....		5 85
Grand Maitre.....		6 50
Uncle Tom.....		5 20
Czar Peter.....	10 55	
King of Blues.....		5 85
Queen of Blues.....		9 70
Leonidas.....		5 85
Regulus.....		5 15

### SINGLE RED AND ROSE.

Charles Dickens.....	Per 100	\$ 7 30
Gertrude.....		5 50
Gigantea.....		5 85
Robert Steiger.....		5 20
Lord Macauley.....		6 50
Marie Cornelia.....		7 30
Norma.....		5 20
Roi des Belges.....		4 55
Von Schiller.....		5 50

### DOUBLE RED AND ROSE.

Bouquet Tendre.....	Per 100	\$ 5 85
Bouquet Royal.....		5 85
Princess Alexandrina.....		4 85

### DOUBLE WHITE.

La Desse.....	Per 100	\$ 6 50
La Virginite.....		5 85
La Tour d'Auvergne.....		7 30
Bouquet Royal.....		6 50

### SINGLE WHITE.

Alba Superbissima.....	Per 100	\$ 7 30
Grandeur of Merveille.....		5 85
Baroness van Thuyll.....		7 30
La Grandesse.....	10 55	
La Candeur.....		7 30
Mont Blanc.....	11 35	
Grand Vainqueur.....		8 90
Mad. van der Hoop.....		6 50
Voltaire.....		5 85

### SINGLE YELLOW.

La Citroniere.....	Per 100	\$ 6 50
Hermann.....		5 20
Ida.....		8 10
La Pluie d'Or.....		4 55

### DOUBLE BLUE.

Blocksberg.....	Per 100	\$ 6 50
Charles Dickens.....		5 20
General Antinck.....		5 20
Garrick.....		6 50

## Mixed Bedding and Forcing Hyacinths

TRY OUR "FANCY" GRADE MIXED HYACINTHS. NONE BETTER.

Vaughan's "Fancy" Mixture. 250 at Thousand Rate.

Regular First Grade. 250 at Thousand Rate.

### SINGLE.

Blue, all shades.....	Per 100	\$4 60	Per 1000	\$43 00
Light Blue.....		4 60		43 00
Red and Rose.....		4 60		43 00
Rose.....		4 60		43 00
White and Blush.....		4 60		43 00
Pure White.....		4 60		43 00
Yellow.....		4 60		43 00

### DOUBLE.

Blue, all shades.....	4 60	43 00
Light Blue.....	4 60	43 00
Red and Rose.....	4 60	43 00
Rose.....	4 60	43 00
White and Blush.....	4 60	43 00
Pure White.....	4 60	43 00
Yellow.....	4 60	43 00

### SINGLE.

Blue, all shades.....	Per 100	\$3 75	Per 1000	\$35 00
Light Blue.....		3 75		35 00
Red and Rose.....		3 75		35 00
Rose.....		3 75		35 00
White and Blush.....		3 75		35 00
Pure White.....		3 75		35 00
Yellow.....		3 75		35 00

### DOUBLE.

Blue, all shades.....	3 75	35 00
Light Blue.....	3 75	35 00
Red and Rose.....	3 75	35 00
Rose.....	3 75	35 00
White and Blush.....	3 75	35 00
Pure White.....	3 75	35 00
Yellow.....	3 75	35 00

## CALIFORNIA GROWN CALLAS

GROWN for us by Experienced Florists and carefully ripened, dug and cured in shade. They are as free from disease as possible.

LARGE SIZES VERY SCARCE THIS YEAR

	Doz.	100
First Size, about 1 1/4 to 1 1/2 inch. in diameter.....	\$0 75	\$5 50
Select, about 1 1/2 to 2 inch. in diameter.....	1 25	8 00



## BLACK CALLA.

(ARUM SANCTUM)

Black Calla Lily of the Holy Land.

We control throughout America the output of one of the largest and most reliable collectors in Syria. Our prices to the trade are very low, and sizes are carefully graded.

Per 100	
First Size.....	\$4 00
Second Size.....	3 00

We request our customers to give our bulbs closest inspection on arrival. We guarantee that so far as can be seen the bulbs of each kind are sound, healthy and full sized, and we shall be very glad to replace at once any stock found otherwise, but you must tell us and at once.



BLACK CALLA.

# Narcissus.

The varieties offered below include the most popular and salable sorts of this favorite forcing flower, which is advancing yearly in popularity. These flowers are especially adapted for florists, being showy, fragrant and lasting.

25 Bulbs of one kind at the 100 rate, or 250 at the 1000 rate.

## Polyanthus Varieties

(BUNCH-FLOWERED NARCISSUS.)

Paperwhite, Totus Albus, first size. Per 100, 85c; per 1000,.....	\$ 7 00
Paperwhite, Grandiflora, "Star Brand," Giant Flowered. Per 100, \$1.25; per 1000.....	10 50
Early Double Roman, lemon and yellow. Per 100, 85c.; per 1000.....	7 00
Grand Monarque, white, citron cup. Per 100.....	2 50
Staten General, white. Per 100.....	2 00
Grand Soleil d'Or, yellow orange cup. Per 100.....	1 50
Gloriosus, white, orange cup. Per 100.....	2 00
Grand Primo, white. Per 100.....	2 00
Yellow Mixed. Per 100, \$1.25; per 1000.....	9 50
White Mixed. Per 100, \$1.10; per 1000.....	9 50



Chinese Narcissus are the most salable bulbs to retail buyers; they are cheap and well known, and give universal satisfaction.

CHINESE NARCISSUS.

### Boston Ferns.

Our Specialty.

We have a Choice Stock of Them in Various Sizes.

SEE BACK PAGE

### DOUBLE VARIETIES.

Von Sion, True Dutch variety, pure yellow, fancy selected. Per 100, \$1.50; per 1000..	13 00
Von Sion, XXX Mammoth, the largest and finest bulbs in existence, each bulb should bring 2 and more flowers. Per 100, \$2.00; per 1000.....	18 00
Alba Plena Odorata, the Double Poeticus, flowers are large and very fragrant, they can be forced slowly but succeed better in the open ground. Per 100, 75c.; per 1000.....	6 50
Incomparable, (Butter and Eggs) light yellow and orange, forces well. Per 100, 80c.; per 1000.....	6 40
Orange Phoenix, (Eggs and Bacon) white and orange. Per 100.....	1 75
Sulphur Phoenix, white and sulphur yellow, one of the best for cutting. Per 100..	4 90

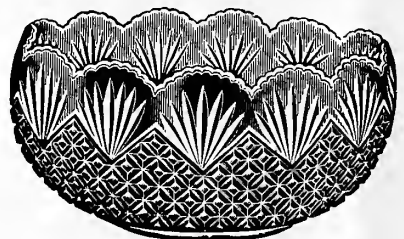
## TRUMPET VARIETIES.

<b>Bulbocodium</b> , (Hoop Petticoat) pale citron, good for forcing.....	\$3 00	Per 100 1000
<b>Bulbocodium Clusii</b> , (Hoop Petticoat) snow white.....	4 00	
<b>Emperor</b> , perianth deep primrose, trumpet rich full yellow, very large flower.....	4 40	
<b>Empress</b> , perianth white and of great substance, trumpet rich yellow, extra.....	4 40	
<b>Bicolor Horsfieldii</b> , same as above but earlier.....	3 00	\$28 00
<b>Obvallaris</b> , (Tenby Daffodil) perianth white and of great substance, trumpet full yellow, stiff flower.....	2 25	
<b>Henry Irving</b> , broad yellow, spreading perianth, large yellow trumpet, very fine.....	4 25	
<b>Princeps</b> , perianth sulphur white, trumpet yellow, large showy flower, early and forces well. These are in great demand at present.....	85	7 90
<b>Trumpet Major</b> , large rich yellow trumpet, very early, fine forcing sort.....	85	7 90
<b>Trumpet Maximus</b> , uniform, rich golden yellow, perianth elegantly twisted.....	4 00	
<b>Trumpet Minor</b> , full yellow, division of perianth gracefully twisted, distinctly lobed.....	1 10	
<b>Golden Spur</b> , perianth large and spreading, trumpet large and distinctly lobed, deep rich sulphur yellow, very early, extra. 3 40	3 40	

## Chinese Narcissus or Oriental Sacred Lily.

This is undoubtedly the best selling bulb for the retail counter trade, flowering in water and gravel in three to five weeks from time of planting. We are headquarters for these; write for prices on larger lots. Select size, per 100, \$4.15; per 1000, \$37.00. Extra large Bulbs, supply limited, per 100, \$6.50. Both grades, 30 in a basket, f.o.b., Chicago or New York.

### VAUGHAN'S CHINESE LILY BOWL.



Crystal Imitation Cut Glass.

7 inch.....	Per doz. \$2 00
8 inch.....	2 25
Pebbles from the sea shore. Peck 30c.; bushel, \$1.00.	

## SINGLE VARIETIES.

<b>Incomparable</b> , perianth yellow, cup margined orange, flower large and well formed.....	\$ 75	\$ 5 50	Per 100 1000
<b>Incomparable Stella</b> , yellow cup, white perianth, one of the best for forcing.....	75	5 50	
<b>Oynosure</b> , primrose perianth changing to white, large orange scarlet cup, remarkably showy.....	75	5 50	
<b>Poeticus</b> , (Pheasant's Eye) the well-known Poet's Narcissus, pearly white with yellow cup, bordered scarlet, fragrant, hardy, late.....	40	3 00	
<b>Poeticus Ornatus</b> , the same as above but larger and four weeks earlier; good forcer, fine for bouquets.....	90	8 00	
<b>Biflorus</b> , pure white perianth. yellow crown.....	85	6 50	

## LILY OF THE VALLEY.

"London Market" Brand.

The Finest Strain of Valley Pips in Existence. Forces for Christmas with Good Foliage.

<b>PRICES:</b> Per 100, \$1.75; 1000 \$14.50.	
✉ Write for prices on larger quantities.	
<b>"PREMIUM" BRAND.</b>	
A High Grade Pip.	
Equal to "London Market" brand for late forcing.	
Per 100.....	\$ 1 50
" 1,000.....	12 50
" 2,000.....	24 50
" 5,000.....	60 00
<b>"INTERNATIONAL" BRAND.</b>	
This is a selected grade of "Berlin" or sand pips and will give excellent satisfaction, not to be compared with "Hamburg" grown "second class" stock offered at low prices.	
Per 100.....	\$ 1 25
" 1,000.....	10 25
" 2,000.....	20 00
" 5,000.....	47 50





# LARGE FLOWERING TULIPS

TRUE TO NAME. FOR FORCING AND OPEN GROUND.

Please bear in mind that all of our Tulips are STRICTLY FIRST size AND UNMIXED with SECOND SIZE BULBS. We make a specialty of Forcing Tulips for florists.

## SINGLE VARIETIES—General List.

	Per 100	Per 1000
Artus, brilliant red.....	\$0 80	\$ 7 00
Belle Alliance, scarlet, large.....	1 25	11 00
Bizard Verdikt, brown and yellow.....	75	6 00
Cardinal's Hat, red.....	75	6 00
Canary Bird, fine clear yellow.....	1 25	11 00
Chrysolara, golden yellow.....	1 25	10 00
Cottage Maid, white, edged rose.....	1 00	8 75
Couleur Ponceau, white and red.....	75	6 50
Cardinal, beautiful shade of crimson.....	2 50	21 75
Crimson King, scarlet.....	80	7 00
Duchess of Parma, brown and orange.....	80	7 00
Duc de Berlin, red and yellow, very early, true.....	1 50	14 00
Duc d'Orange, orange.....	80	7 00
Duc Van Thol, gold striped.....	1 25	10 00
" " " rose.....	1 40	12 00
" " " scarlet.....	90	8 00
" " " red and yellow.....	80	7 00
" " " crimson.....	75	6 50
" " " white, true.....	2 00	17 00
" " " yellow.....	2 00	17 50
" " " vermillion.....	1 25	11 00
Gold Finch, yellow.....	3 00	27 00
Kelzerskroon, red and gold.....	1 25	11 00
Jagt von Delft, fine white.....	85	7 10
Lac von Rhijn, violet and white.....	80	7 00
L'Immaculee, pure white.....	90	8 00
Mon Tresor, yellow.....	2 00	19 00
La Reine, white, Vaughan's "Fancy Stock".....	1 00	9 00
La Reine, white, regular first size.....	85	7 50
"Novelty" or Mammoth La Reine.....	1 35	12 00
Pottebakker, white, fine.....	1 40	12 00
" " " scarlet.....	1 10	9 50
" " " yellow.....	1 50	14 00
President Lincoln, violet.....	1 10	9 50
Princess Marie Anne, white rose shaded, extra large.....	90	8 00
Princess of Austria, orange scarlet.....	2 50	21 00
Proserpine, rich carmine rose.....	2 00	19 00
Purple Crown, dark red.....	90	8 00
Rembrandt, scarlet.....	1 50	13 00
Rosa Mundi, dark rose and white.....	90	8 00
Rose Gris de Lin, white and rose.....	1 50	14 00
Rose Lulsante, satiny rose.....	3 50	30 00
Silver Standard, pink and white.....	1 25	11 00
Thomas Moore, orange.....	1 25	11 00
Van der Neer, clear violet.....	1 10	9 50
Van Vondel, red and white.....	1 00	9 00
Vaughan's "NEW PINK" beautiful rose, shaded white.....	1 35	12 00
Vermillion Brilliant.....	2 60	24 00
Wouverman, dark violet.....	1 00	9 00
Yellow Prince.....	1 25	10 00

## MIXTURES.

Our mixtures are made up from large flowering, bright colors, bloom at same time and will give good satisfaction for bedding.

	Per 100	Per 1000
Single Early, extra fine mixed.....	\$0 80	\$6 50
" " fine mixed.....	70	5 90
Double Early, extra fine mixed.....	90	7 50
" " fine mixed.....	80	6 75
Double Late, extra fine mixed.....	1 00	8 00

## VARIOUS TULIPS.

Gesneriana (true), bright scarlet, black center.....	\$1 60	\$14 50
Greigi, bright red with black blotches.....	8 00	
Darwin Tulips, Mixed.....	1 50	13 00

## VAUGHAN'S SEPARATE COLOR MIXTURES.

The following are selected from varieties of same height and which do bloom at the same period, especially recommended to those florists who do bedding work.

SINGLE.	Per 100	Per 1000	DOUBLE.	Per 100	Per 1000
White shades mixed.....	\$1 10	\$9 50	White shades mixed.....	\$1 10	\$9 50
Yellow " ".....			Striped " ".....		
Striped " ".....			Yellow " ".....		
Red " ".....			Red " ".....		
Pink " ".....					

## PARROT VARIETIES.

There is nothing that will make more of a show for bedding than these on account of their brilliant colors, consisting of all shades of red intermixed and variegated with green and yellow.

	Per 100	Per 1000		
Constantinople, red.....	\$1 00	\$8 75		
Lutea, large yellow.....				
Markgraaf, orange.....				
Perfecta, yellow spotted.....				
Couleur Cafe, brown and yellow.....	1 25	11 50		
Cramolai Brilliant, deep crimson, with large star-shaped center, the finest of the Parrot varieties.....			90	8 00
EXTRA FINE MIXTURE.....				

## SINGLE LATE.

These varieties grow from 18 inches to 2 feet in height, and bloom in May and June.

Bybloems Roses, mixed, white ground.....	2 00	
" " Violets, mixed, white ground.....	2 00	
Bizards, yellow ground fine mixed.....	2 00	
Bouton d'Or, pure deep yellow, fine for cutting.....	1 25	10 50
Extra Fine Mixed, embracing a very large variety of all kinds of single late blooming sorts.....	90	7 50

# Double TULIPS.

## NAMED VARIETIES.

### Double Varieties—General List.

	Per 100	Per 1000
Admiral Kingsbergen, red and yellow.....	\$1 00	\$ 9 00
Blanc Borde, purple, white edge.....	1 00	9 00
(Blue Flag) Lord Wellington, late flowering, violet blue, large, extra.....	1 00	9 00
Crown of Roses, bright early pink.....	3 50	
Crown d'Or, fine yellow.....	3 50	7 50
Duo Van Thol, red and yellow.....	85	9 00
" " " scarlet.....	1 00	9 00
Duke of York, red and white.....	90	8 00
Gloria Solls, brown and yellow.....	1 00	9 00
Imperator Rubrorum, scarlet.....	2 00	18 50
Hellanthus, superb yellow and scarlet.....	1 30	11 00
La Candeur, white.....	1 00	8 50
Lady Grandison, scarlet.....	1 25	11 00
La Citadelle, red, yellow bordered, large.....	1 00	9 00
Le Blason, white.....	1 25	11 00
Murillo, Vaughan's "Fancy Stock," the finest bulbs imported into this country.....	2 60	22 00
Murillo, light rose.....	2 25	20 00
Purpur Kroon, dark red.....	1 50	13 00
Paony Gold, red and gold.....	1 50	14 00
Paony Red.....	1 00	9 00
Rex Rubrorum, scarlet.....	1 40	12 00
Rosalie, carmine pink, extra (Double Proserpine).....	1 50	13 00
Rose Blanche, extra large, white.....	90	8 00
Rosine, white and rose, semi-double.....	1 25	11 00
Salvator Kosa, white and rose.....	3 75	
Titan, deep red, very early.....	1 25	10 00
Tournesol, yellow.....	3 00	27 00
" " red and yellow.....	1 40	12 00
Yellow Rose, golden yellow, late.....	1 00	8 50

# MISCELLANEOUS ITEMS.

## LILIES, HARDY JAPAN.

We repack our imported Japan Lilies in charcoal, thus preventing rot. Keep this fact in mind when comparing prices. This extra care pays the buyer.

Prices below subject to change without notice.

	Per doz.	100	1000
Auratum, good sound bulbs, 8 to 9 inches.....	\$ 90	\$ 5 00	\$43 00
“ “ “ 9 to 11 “ .....	1 25	7 25	69 00
“ “ “ 11 to 13 “ .....	1 70	13 00	.....

### SPECIOSUM SORTS.

Rubrum or Roseum, 8 to 9 inches.....	\$ 90	\$ 4 75	\$45 00
“ “ “ 9 to 11 “ .....	1 00	6 50	62 00
“ “ “ 11 to 13 “ .....	1 35	9 00	.....
Album, pure white, fragrant, 8 to 9 inches.....	90	4 75	45 00
“ “ “ 9 to 11 “ .....	1 20	6 00	54 50
“ “ “ 11 to 12 “ .....	1 35	8 75	.....
Melpomene, 8 to 9 inches.....	1 15	5 25	49 00
“ “ “ 9 to 11 “ .....	1 00	6 50	60 00

Brownii, purple outside, inside white, Longiflorum shape	\$2 00	\$16 00	
Excelsum, buff color, fragrant.....	3 50	22 00	
Tigrinum, (Tiger Lily), single orange red, spotted black	3 00	.....	
“ Splendens, Improved Single Tiger Lily.....	3 50	.....	
“ fl. pl., (Double Tiger Lily).....	4 00	.....	

LILIUM CANDIDUM. (Scarce) Per 100

Imported French.....	\$ 5 00
Thick Petaled.—Extra quality.....	6 50

## GENERAL LIST.

**ALLIUM NEAPOLITANUM.**—These produce immense heads of white flowers which are lasting and free from the disagreeable odor peculiar to other Allium—fine for forcing.

Per dozen, 10c.; per 100, 50c.; per 1000, \$4 50.

**Amaryllis, Formosissima,** (Jacobæan Lily) beautiful trumpet-shape flowers, rich, dark scarlet; forces well and can be grown in water like Hyacinths. Per doz., 50c.; per 100, \$3 00.

“ **Johnsonii,** a very popular sort and one of the best for general culture; large flowers, crimson color, striped white fine large bulbs 7 to 9 inches. Per doz., \$2 00; per 100, \$15 00; 9 to 11 inches, per doz., \$2 50; per 100, \$20 00.

	Doz.	100	1000
Anomatheca Cruenta, Scarlet Freesia.....	\$0 10	\$0 60	\$.....
ANEMONE Fulgens, single, intense scarlet.....	25	1 50	.....
The Bride, single, pure white.....	15	65	.....
Single Superfine, mixed.....	10	60	.....
Double Superfine, mixed.....	20	1 00	.....
Calla Richardia, spotted leaf, choice bulbs.....	40	2 50	20 00
Chionodoxa Lucillae, (Glory of the Snow).....	15	75	6 00
Dielytra Spectabilis, (Bleeding Heart).....	75	5 00	45 00
Hyacinths, Grape, Alba, white.....	10	60	5 00
Hyacinths, Grape, Coerulea, blue.....	10	40	3 25
Iris, Spanish, mixed.....	10	30	2 50
“ English, mixed.....	15	75	6 00
Ornithogalum Arabicum.....	25	1 50	14 50
Ixias, mixed.....	10	50	4 00
Ranunculus, Persian, mixed.....	10	40	3 00
“ Turban, mixed.....	10	60	5 00
“ French, mixed.....	10	40	3 00
Scilla Peruviana Coerulea, blue, first size.....	85	6 00	.....
“ Siberica.....	15	75	6 75
Snowdrops, single.....	10	60	5 00
“ double.....	15	1 00	9 00
“ Elwesi, (Giant).....	10	60	5 00
Sparaxis, mixed.....	10	50	4 00

## NAMED SORTS.

The bulbs of these are three or four times the size of the common Crocus, about an inch in diameter, they are sure bloomers, producing larger and finer flowers than bulbs ordinarily sold.

Albion, blue, striped white.....	Per 100	1000	
Baron von Bruno, dark blue.....			
David Rizzio, deep purple.....			
Dandy, blue.....			
Non Plus Ultra, blue, white bordered..	\$0 50	\$4 00	
Othello, dark purple.....			
Mont Blanc, pure white.....			
Mammoth, white.....			
Queen-Victoria, pure white.....	Per 100	1000	
La Majesteuse, white, violet striped.....	\$0 50	\$4 00	
Madam Mina, white, violet striped.....			
Sir Walter Scott, white, blue striped.....			
Cloth of Gold, yellow and brown.....	40	3 00	
“ Silver, white and lilac.....	50	4 00	
Select Yellow, choice bulbs.....	40	3 00	
Mammoth Yellow, finest canary yellow, large.	85	7 50	
Mammoth Sorts, in best mixture.....	50	4 00	

### MIXED CROCUS.

White.....	\$0 30	\$2 25	Large Yellow.....	\$0 30	\$2 25
Blue and Purple.....			Striped and Variegated.....		
Mixed All Colors.....	25	2 15			

## Giant Flowered Tuberos Rooted BEGONIAS

We offer Bulbs of the leading colors separate at prices lower than ever before, owing to the large quantities imported by us, purchased from the leading Begonia specialists.

Single.	First Size Bulbs.			Double.	First Size Bulbs.		
	Doz.	100	1000		Doz.	100	1000
White.....	\$0 40	\$3 00	\$25 00	White.....	\$0 65	\$4 75	\$40 00
Yellow.....				Yellow.....			
Scarlet.....				Scarlet.....			
Pink.....				Pink.....			
Mixed.....				Mixed.....			

## JONQUILS.

As forcing bulbs Jonquils are very highly recommended, especially the single sweet-scented, the flowers of which are about an inch in diameter and a splendid color; often two blooms on a spike. Can be brought into flower in January and find ready sale.

Single, yellow, sweet-scented.....	Per 100	1000
Double, fragrant.....	\$0 50	\$ 3 50
Campanelles, large yellow for forcing or bedding.....	1 80	16 50
Rugulosus, Giant flowered, wrinkled cup, for cut-flowers, extra fine for forcing.....	60	5 00
	75	6 00

## OXALIS.

Alba, white.....	Doz.	100
Bermuda Buttercup, strong bulbs.....	\$0 15	\$ 1 00
mammoth bulbs.....	15	90
Bowellii, clear red.....	20	1 25
Cernua Lutea, yellow.....	15	1 00
fl. pl., double yellow.....	15	75
Deppei, Speciosa, light carmine.....	25	1 50
Hirta Rosea, pink.....	15	75
Versicolor, red, violet and white.....	15	1 00
	15	1 00

## SPIRAEA.

The popularity of the Spiraea has been of late years decidedly on the wane, however, since the introduction of the grand variety “Gladstone” a new impetus has been added to the demand. As an Easter plant the variety Gladstone cannot be surpassed, producing as it does, enormous spikes of pure white flowers in great profusion of bloom, and resplendent with foliage of a beautiful green.

## New Spiraea-Gladstone.

Per doz., \$2.00; per 100, \$14.00; in New York, per doz., \$1.85; per 100, \$13.00.

**Astilboides Floribunda.**—New, strong and more developed than the common Astilboides, from which it is a sport, produces large, pure white plumes and is unquestionably one of the best Spiraeas. *Fine for Easter Forcing.* Per doz., 75c.; per 100, \$4 50; in New York, \$4.00.

**Japonica,** extra strong clumps. Per doz., 60c., per 100, \$4 00; in New York, \$3 50.

**Compacta Multiflora.**—This new variety which has foliage of a rich green color, grows from 8 to 11 inches in length, and produces larger and finer blossoms than Japonica. It is about two weeks earlier. Per doz., 75c.; per 100, \$4 50; in New York, \$4 00.

## Cyclamen Persicum

### Giganteum.

The bulbs which we offer of this well-known free-blooming plant are grown from seed of the true

### Giant Flowering Strain.

Prices:	Doz.	100
Separate Colors.....	\$1 25	\$8 50
Mixed.....	1 00	7 50

# GREENHOUSE PLANT DEPARTMENT.



AZALEA.

## AZALEAS.

We carry an immense stock of Azaleas for early forcing, also late sorts for Easter. The plants are of good shape and finely set with buds. The varieties we offer are only the best commercial sorts, such as Deutsche Perle and Simon Mardner for early, followed by Vervaeana, Dr. Moore, Sigismund Rucker, Empress of India, Mad. Van der Cruyssen, Bernard Andrea Alba, etc.

	doz.	100
First size, 10-inches in diameter..	\$6 00	\$45 00
Select, 12 " " " "	7 75	55 00
Extra, 14 " " " "	9 00	65 00

We expect to have a fine lot in full bloom for Xmas of Simon Mardner, double red and Deutsche Perle, double white

10-inches in diameter.....	each, \$1 00
12 " " " ".....	1 50
14 " " " ".....	1 75

Get your order in early before stock is all engaged,

## POINSETTIAS.

We will have a limited quantity of this popular plant in full bloom for Xmas, in the following sizes, dwarf grown, in pans;

6-inch pans, each,	\$1 25;	per doz.,	\$12 00
7- " " " ".....	1 50;	" " " "	15 00
8- " " " ".....	2 00;	" " " "	20 00

Order early for December delivery, to secure best stock.

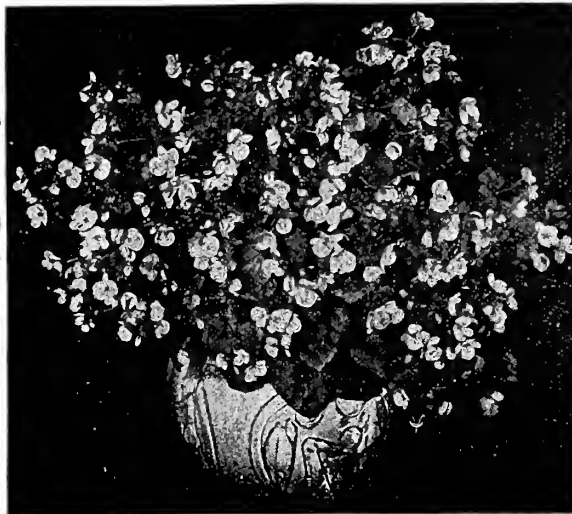
## AMERICAN WONDER LEMON.

Fruit bearing house plant of real value. In growth it resembles the dwarf Orange, but is more free in flowering and producing lemons of enormous size.

2½-inch pots, per doz.,	\$0 75;	per 100.....	\$ 5 00
3- " " " ".....	1 00;	" " " "	8 00
4- " " " ".....	1 50;	" " " "	15 00

## RUSSELLIA ELEGANTISSIMA.

A very striking semi-trailing plant, especially adapted for hanging baskets, vases, or window boxes, where a delicate, graceful effect is sought. The plant is skeleton-like in growth, throwing long spikes of rush-like branching foliage, ½-foot long, which are literally covered with brilliant coral-red florets. Well-grown plants, 3 to 4 feet in diameter, look like a shower of delicate coral blossoms; the effect is unique and graceful. Three-inch pots, per doz., \$0 50; per 100, \$4 00.



NEW WINTER-FLOWERING BEGONIA.

## BEGONIA, GLOIRE DE LORRAINE.

This is undoubtedly the greatest gem in winter-flowering Begonias yet introduced, and is certain to become a popular favorite. It grows from 10 to 12 inches high, forming naturally graceful, bushy specimens, which from October to April are completely hidden in soft, rosy pink flowers. It has been used by the Chicago florists for centerpieces in table decorations. For Xmas sales it cannot be excelled.

We offer for November and December delivery, bushy plants in	
4-inch pots, full of bloom,	Each, \$0 50; per doz., \$ 5 00
5-inch pans.....	75; " " 8 00
6- " " " ".....	1 00; " " 10 00
7- " " " ".....	1 50; " " 15 00

Get your orders in early for Christmas.



NEW AGERATUM, STELLA GURNEY.

## NEW AGERATUM, Stella Gurney.

This is the finest of all dwarf Ageratums. Short, compact growth, 6 to 8-inches high. The individual tufts are very large and dense and the color is the most intense blue we have ever seen in Ageratums. It is a thrifty grower and will bloom all winter as a pot plant. As a bedding plant it is without an equal.

Strong plants, doz., \$0 50; per 100.... \$4 00

New White Ageratum, Louise Bonnet,

Per doz., \$0 50; per 100.....\$3 00

AGERATUM, Princess Pauline.

Per doz., \$0 50; per 100.....\$4 00

## BAY TREES.

Write us for sizes and prices.

## BROWALLIA GIGANTEA (New).

A charming new flowering plant that may be put to many useful purposes; the plant is a strong, compact, bushy grower, producing a profusion of florets about 1 to 1½-inches in diameter, of an intense indigo-blue, fully as intense as the Marie Louise or California Violet, it bids fair to supplant the Lobelia as a bedding plant, is valuable for cut-flowers, as it is never out of bloom, and may be grown as a flowering plant for Easter sales. Doz., \$0 75; 100, \$6 00.

## NEW HIBISCUS PEACHBLOW.

This is one of the finest plant novelties offered in recent years. It is a "sport" from the double red Hibiscus Rosea-Sinensis; the flowers are double and from four to five inches in diameter; of a charming, rich clear pink color, with a deep crimson center, an entirely new and most beautiful shade; it blooms abundantly and continuously even on small plants during the entire summer and fall months; may be easily wintered in greenhouses or dwellings. Large plants, two or three years old make a magnificent show. We are confident it will give entire satisfaction to all who grow it, either in pots, or plants out in the garden. It is also a good winter bloomer in the greenhouse or sunny window. 2 inch pots, doz., \$0 75; per 100.....\$5 00  
Hibiscus, assorted, per 100..... 4 00

## BOX TREES.

Fine for decorating.

12-15-inches high.....	Each, \$0 75
2-foot high.....	1 50
4- " " very fine.....	4 00



HIBISCUS PEACHBLOW.

# GENERAL LIST OF GREENHOUSE PLANTS.

UNLESS OTHERWISE MENTIONED, PLANTS IN THIS LIST ARE FROM 2½-INCH POTS.

Acalypha Sanderi or Chenille Plant.....	Per 100 \$ 5 00	Coleus, 12 to 15 best sorts.....	Per 100 \$ 3 00
4-inch, per doz., \$1 50; 5-inch, per doz., \$3 00.		Dracaena Indivisa, 4-inch.....	12 00
Abutilon Savitsii.....	5 00	Grevillea Robusta, 5-inch, per doz., \$2 50.....	4 00
white and red.....	4 00	Heliotrope, assorted.....	3 00
Alyssum, double.....	3 00	Hydrangea Otaksa, Hortensis and Thos. Hogg.....	4 00
Begonias, flowering sorts.....	4 00	Lemon Verbena, 3-inch pots.....	4 00
Rex, assorted.....	6 00	Primula Chinensis.....	3 00
Cinerarias, best mixed.....	4 00	" Obconica.....	4 00
Calla, Little Gem.....	4 00	Smilax.....	2 50
Caladiums, fancy-leaved, bulbs.....	10 00	Violets California and Princess of Wales, 3-inch pots.....	5 00
Cyperus Alternifolius.....	3 00		

# Geraniums.

READY NOVEMBER 1st.

Our assortment of Geraniums, both in standards and novelties, is large, and we are prepared to supply the steadily increasing demand for these, which are sure to be as popular again as formerly. We have a number of novelties which will be offered in our spring list. All Geraniums offered here will be ready November 1st from 2-inch pots, strong stock.

If you want Geraniums that will do business all summer, this collection of 10 will do it. Among our immense collection we found none better.

## THE GRAND PINK BEDDER, JEAN VIAUD (Bruant).

The best of all new Geraniums sent out for a long time. The plant is of stocky growth; incessant bloomer; flowers of large size, in immense trusses. Flowers are semi-double, very similar to those of *Beaute Poitevine*, but the exquisite light fresh rose tint is entirely different. The upper petals are marked with two beautiful white blotches, adding greatly to the freshness of coloring. It is a plant of the future. Its habit of growth, uninterrupted blooming and hardiness will attract attention at once, and it will be grown in large quantities when better known. Strong plants from 3-inch pots, each, 10c.; per doz., \$1.00; per 100, \$8.00, ready now. 2-inch pots, ready November, each, 10c.; doz., 75c.; per 100, \$5.00.

## BELLEROPHON, (Bruant).

One of the grandest of Geraniums. Will rank with any of the recent introductions. It is one of the freest bloomers in our collection. It is a single, soft scarlet, with large round florets combined into immense trusses which are borne well above the handsome foliage. Each, 10c.; per doz., 75c.; per 100, \$5.00.

## COLUMBIA.

A splendid single bedder. Trusses as large as *Hydrangeas* and of a high scarlet color of dazzling brightness. A good grower in all kinds of weather. If you want a mass of scarlet, this is the one to plant. Each, 10c.; per doz., \$1.00; per 100, \$7.00.

## MATHIEU DE DOMBASLE.

Large full trusses of delicate daybreak salmon, shading to a cream at the edge of the petals. Profuse bloomer. Habit exceptionally strong and vigorous. A great acquisition in this section. Each, 10c.; per doz., \$1.00; per 100, \$7.00.

## JOHN P. CLEARY.

Enormous trusses composed of immense, round, individual florets; single flowers measuring upwards of two inches in diameter. Color, a most beautiful brilliant shade of deep orange-scarlet, so brilliant as to completely dazzle the eye. Each, 10c.; per doz., 75c.; per 100, \$5.00.

## H. M. TILMENT.

Double. Brilliant carmine pink with distinct white blotches in center, upper petals veined and shaded with rosy carmine. Individual flowers measure two inches and upwards. Compact grower and free flowering, also a fine pot plant for store trade. Each, 10c.; per doz., \$1.00; per 100, \$7.00.

## THOS. MEEHAN.

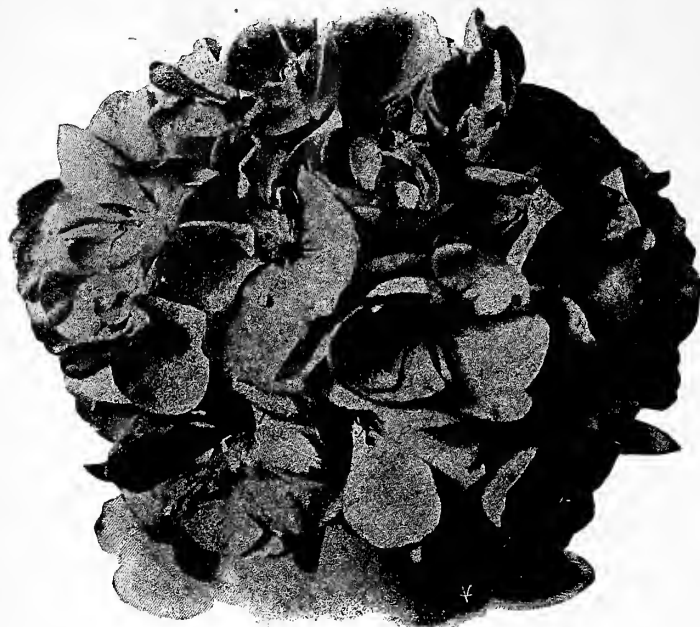
Double. Bruant type. Trusses as large as *Hydrangeas* and florets of fine, circular form. A grand grower in any kind of weather and abundant bloomer. Color, brilliant cerise pink, quite a new and distinct color among Geraniums. Each, 10c.; per doz., \$1.00; per 100, \$7.00.

## LA FRAICHEUR.

Double, pure white flowers with a distinct narrow Picotee edge of clear rosy pink. The effect is especially fresh and delightful; compact and vigorous grower and an abundant bloomer. No florist should be without this variety. Each, 10c.; per doz., 75c.; per 100, \$5.00.

## KLEBER.

Double. Very large trusses, borne in great profusion the entire summer, the trusses standing up prominent above the foliage. Color, dark violet crimson, rich and striking. Each, 10c.; per doz., \$1.00; per 100, \$7.00.



JEAN VIAUD.

## General List of Standard Sorts.

Per 100, \$4.00.

A. Riccard.  
Beaute Poitevine.  
Dr. Baumetz.  
Frances Perkins.  
Heteranthe.  
J. J. Harrison.  
L'Aube.  
La Favorite.  
Mad. Rozain.  
Mary Hill.

Mrs. A. Blanc.  
Mrs. Hill.  
Mad. Guevellet.  
Mad. Jaulin.  
Mad. Bruant.  
Pres. Leon Simons.  
Queen of the West.  
S. A. Nutt.  
Rose Geraniums  
Mad. Salleroi.

## Ivy Geraniums.

Price, per doz., 50c.; per 100, \$4.00.

Jeanne d'Arc.  
Beauty of Jersey.

Souv. de Chas. Turner.  
P. Crozy.  
Gen. Championette.

## Pelargoniums.

We offer fine plants of fall struck cuttings, all strong stock ready for 3-inch pots. Per doz., \$1.25; per 100, \$9.00.

**Madame Thibaut.**—White, richly blotched and marbled with rose and crimson-maroon. Large, white center.

**Mrs. Robert Sandiford.**—Grand variety. Flowers large size, well doubled, beautifully ruffled along the edge, and a pure snow-white in color.

**Countess.**—Dwarf-growing variety, producing enormous panicles of dark, velvety, violet blooms. Very fine.

**Dorothy.**—Rosy salmon, dark maroon blotches on upper petals; a free and early bloomer.

**Edward Perkins.**—Grand, bright orange scarlet, dark maroon blotch on upper petal; early bloomer.

**Mad. Vibert.**—Fine, black-maroon blotches bordered fiery red, edged with rose.

Also the Wonder, Daybreak, Marie Mallet, Mrs. Bradshaw, Lord Salisbury, H. M. Stanley.

## Xmas or Celestial Pepper.

One of the very best of Xmas plants. The plants are covered with bright colored, cone-shaped fruit at Xmas and find ready sale over the counter. Don't miss this New Xmas plant to offer your customers.

For immediate delivery:

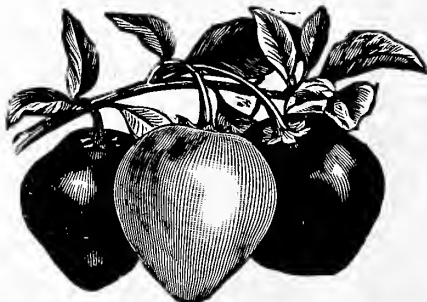
4-inch pots, per doz., \$1.50; per 100, \$12.00.

5-inch pots, per doz., \$2.00; per 100, \$15.00.

For December delivery, full of fruit:

5-inch pots, each, 50c.; per doz., \$4.00.

6-inch pots, each, 75c.; per doz., \$6.00.



CELESTIAL PEPPER.

### SPECIAL OFFER.

The Collection of 10, one each for 65c.  
Two Collections for \$1.20.

# Vaughan's Cannas

Prices are based on delivery up to December 1st and Strong Dormant Roots with 2 or 3 eyes.

## DAVID HARUM, Our Seedling of 1898.

Height 3 to 3½ feet. Dark bronze foliage. Strong grower and one of the freest blooming Cannas we have ever seen. Flowers are of large size with well-rounded petals, good substance and not too compact. Color is a bright vermillion-scarlet dotted with crimson spots. Considered by experts to be one of the best Cannas at the Buffalo Exposition. Dormant roots, each, 25c.; doz., \$2.00; per 100, \$15.00.

## Victory, or Century. (Our Seedling of 1897.)

Height, 5 to 6 feet, extra strong, robust grower, throwing up immense flower stalks, each stalk having from seven to nine flower spikes. The flowers are of the largest size, petals measuring 1½ inches, and suggest a possible crossing of the Italian with the Crozy sorts. In color a bright orange-scarlet, with fine crimson veins running lengthwise of the petal, and bordered with an irregular band of yellow. We know of no Canna to equal it. Per doz., \$3.50; per 100, \$25.00. Stock limited.

## Red Indian. (Our Seedling of 1897.)

Height, 4 to 4½ feet, the finest of bronze-leaved Cannas, sending up numerous flower stalks well above the foliage. Each stalk carries from five to six flowering spikes. Color, deep scarlet; flowers make a grand contrasting effect. Per doz., \$2.00; per 100, \$15.00. Stock limited.

## Black Beauty.

Height, 4 to 5 feet; this is the best of all the dark-leaved Cannas. The flowers are small, but its foliage is superb, being a deep, bronzy red, almost black; flowers of little value. Per doz., \$2.00; per 100, \$15.00.

## Francois Reif.

Height, 3½ to 4 feet. Green foliage; flowers large and rounded, forming a very large flower spike; color a beautiful carmine-rose, slightly bordered yellow. A very fine Canna in every way. Per doz., \$3.50; per 100, \$25.00.

## Mad. Louis Druz.

Height, 3 feet. Green foliage; fine compact flower heads; petals thick and heavy, large and rounding; color bright scarlet with salmon throat; extra fine. Per doz., \$3.50; per 100, \$20.00.

## Lucienne Guillard.

Height, 4 feet. Foliage green; numerous well-formed spikes with large rounded flowers; color, light rose, base of flower yellow; very fine and showy. Per doz., \$2.50; per 100, \$20.00.

## Mad. Alfred Blanc.

Height, 3 feet. Green foliage; very large flower stalks; wide, rounding petals; color, deep salmon with yellow shadings; free flowering; very fine. Per doz., \$2.00; per 100, \$15.00.

## Chas. Molin.

3½ to 4 feet. Green foliage; very vigorous grower, throwing up numerous flower spikes; individual flowers very large; color coppery-rose, passing into light rose, marbled and dotted carmine all over. Per doz., \$2.00; per 100, \$15.00.

## Dwarf Florence Vaughan. (Comtesse de Sartoux Thorene,)

The best of last year's introductions. It is of uniform, dwarf habit, never exceeding 2½ feet in height. Color rich golden-yellow, thickly dotted with bright red. It supplements that grand standard kind by repeating it in a dwarf growth. Per doz., 60c; per 100, \$4.00.

## T. Aymard.

Height, 4½ to 5 feet. Green foliage; strong grower and free flowering; large, loosely formed flower heads; petals long and wide; color cerise pink. Per doz., \$3.50; per 100, \$25.00.

## Comtesse de Breteuil.

Height, 3½ to 4 feet. Green foliage; very free-flowering and early; large well-formed flower spikes; petals wide and rounding, opening up flat; color, soft pink, one shade lighter than Martha Washington. Per doz., \$3.50; per 100, \$25.00.

## Improved Stella Kanst.

Height, 4 feet. Green foliage; originated with Mr. Fred Kanst of South Park; a strong grower, and very early and free-flowering; large, strong, well-formed flower spikes; petals wide and rounding, opening out flat; color, pure orange. Per doz., \$2.50; per 100, \$20.00.

## Choice and Rare Cannas.

Dormant roots, per 100, \$6.00; per 1,000, \$50.00.

- Chicago.—The best to date, clear vermillion.
- Floribunda.—Yellow, faintly spotted.
- Francois Vellermet.—Crimson; improved Bouvier.
- Gloriosa.—Scarlet, banded with yellow.
- L. Patry.—Salmon, shaded rose.
- Leonard Vaughan.—The best bronze-leaved; flower bright scarlet.
- Little Billee.—Very dwarf, color of Queen Charlotte.
- Martha Washington.—Pure bright rose.
- Mandarin.—Bronze leaf; flower orange.
- Monsieur Jarry Desloges.—Dazzling scarlet-orange.
- Petite Mocotte.—Color, rose and carmine.
- Queen Charlotte.—Bright scarlet; wide gold border.
- Souv. de Antoine Crozy.—Bright scarlet; wide border of yellow.
- Semaphore.—Bronze leaf; flower light apricot.
- Souv. de Mad. Nardy.—Yellow with Crimson spots.
- The Burlington.—Clear orange-scarlet.

## Standard, Well-Known Cannas.

Dormant Roots, per 100, \$4.00; per 1,000, \$35.00.

- A. Bouvier.—Large, bright crimson flowers; a grand sort.
- Alsace.—White flowers.
- Beaute Poltevine.—Bright scarlet flowers.
- Chas. Henderson.—Dwarf grower, crimson flower.
- Discolor.—Used on account of its beautiful bronze leaves.
- Duke of Marlborough.—Deep crimson flowers.
- Egandale.—The best dark leaf Canna; flowers cherry-red.
- Florence Vaughan.—The leading Canna; yellow, crimson spots.
- Jeanne Schmidt.—Pink, bordered yellow.
- Mlle. Berat.—Soft shade of rosy carmine.
- Mme. Crozy.—Deep vermillion with gold edge; large flowers.
- Pres. Cleveland.—Large flowers, bright orange-scarlet.
- Paul Marquant.—Deep salmon, shaded orange.
- Pres. McKinley.—The best of the dwarf scarlets.
- Sec. Chabanne.—Orange, shaded salmon.

## Orchid-Flowered Cannas.

Dormant Roots, per 100, \$4.00.

- Alemanna.—Gigantic flowers; Scarlet and orange.
- America.—Bronze-leaved; beautiful glowing red.
- Burbank.—Flowers a beautiful, rich canary-yellow.
- Italia.—Bright orange scarlet, bordered yellow.
- Partenope.—Bright reddish salmon.
- Pandora.—Bronze leaf, resembles America.

STOCK



# CHRYSANTHEMUMS

PLANTS



Stock plants from bench and from 5 and 6 inch pots.

### CHOICE AND RARE VARIETIES

Per Dozen, \$3.00.

- Timothy Eaton.
- Mrs. Elmer D. Smith.
- Omega.
- Chestnut Hill.
- Yanarwa.
- Col. D. Appleton.
- Goldmine.

### STANDARD VARIETIES.

Per Dozen, \$1.50; per 100, \$10.00.

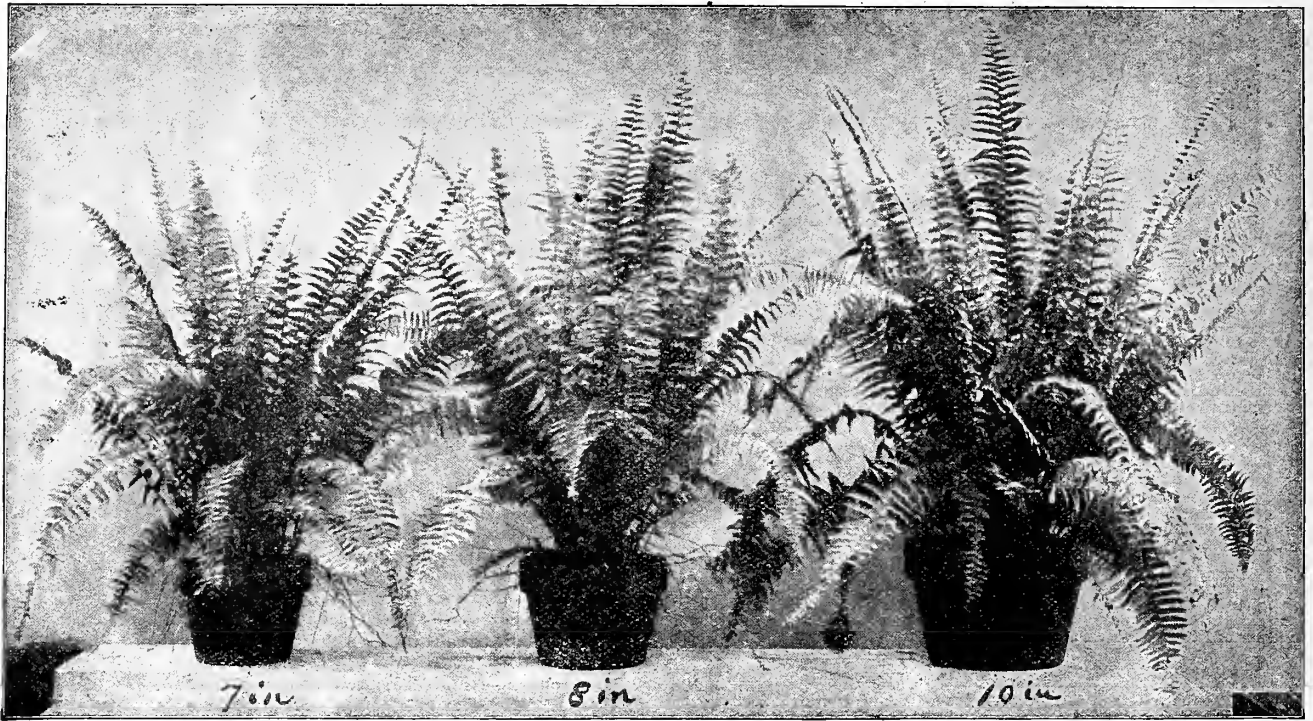
- Chito.
- Intensity.
- Ivory.
- John K. Shaw.
- Mrs. Trenor L. Parks.
- Mrs. Jerome Jones.
- Major Bonnaffon.
- Mrs. H. Robinson.

- Miss Agnes L. Dalskov.
- Superba.
- Vivand Morel.
- Wm. H. Chadwick.
- White Bonnaffon.
- Walter Molatsch.
- Xeno.
- Yellow Mrs. Jerome Jones.

### ANEMONE AND POMPONE VARIETIES.

Per Dozen, \$3.00.

- Delicatum.
- Descartes.
- Garza.
- Mary Stuart.
- Mispha.
- Magnificus.
- Miss May Williamson.
- Surprise.
- Viola.



**MIXED FERNS FOR FLORISTS.**

We have selected the varieties named below as the most useful to florists for filling ferneries and jardiniers and for other florist work. Our stock consists of strong plants from 2 to 2½ inch pots and can at once be reotted into 3-inch pots.

	PER 100	2-in	3-in.
Adiantum Cuneatum.....	4 inch pots per 100, \$10.00.....	\$4 00	\$ 7 00
Adiantum Pubescens.....	4 00	6 00	
Adiantum Princeps.....	4 00	6 00	
Lastrea Opaca.....	4 00	6 00	
Pteris Tremula.....	4 00	6 00	
Pteris Serrulata.....	4 00	6 00	
Pteris Serrulata Cristata.....	5 00	7 00	
Pteris Cretica Alba Lineata.....	4 00	6 00	
Pteris Adiantoides.....	4 00	6 00	
Pteris Longifolia.....	4 00	6 00	
Onychium Japonicum.....	4 00	6 00	
Cyrtomium Falcatum.....	5 00	8 00	
Aspidium Wollastoni.....	6 00	10 00	
Selaginella Emiliana.....	4 00	8 00	

Assorted Ferns for fern dishes, our selection. Per 100, \$4.00.

**ADIANTUM FARLEYENSE.**

We have devoted two large houses to this most beautiful of known Ferns, and can supply it in large quantities of all sizes. Our stock is first class.

2	Inch pots...Per 100,	\$8 00	5-inch pots.....Per doz.,	\$ 9 00
2½	" " " " "	10 00	6 " " " " "	12 00
3	" " " " "	20 00	7 " " " " "	18 00
4	" " " " "	40 00		

Cut fronds can be shipped at any time at \$12.00 per 100.

**CIBOTIUM SCHIEDEI.**

This is undoubtedly the finest of all Tree Ferns for use in decorating. It will stand more rough usage than any of the other Tree Ferns. We offer fine plants in large size only, their fronds average from 2 to 4 feet long and 12 inches broad.

Size.	Height.	No. of Leaves.	Each.
8-inch pots.	24 to 28 in.	6 to 7	\$4 00
12 " "	30 " "	6 to 7	5 00
12 " "	40 " "	7 to 8	7 00

**BOSTON FERNS** *Nephrolepis Exaltata Bostoniensis....*

This popular Fern has proven one of the best decorative plants of recent introduction. It is a rapid grower, works up fast and is a good seller. The distinctive feature of this beautiful Fern is, the fronds are much larger than the common Sword Fern, and do not stand so stiff, but droop over in a graceful manner. Excellent for making large specimen plants. Every florist should grow the Boston Fern. We have the finest stock in the West. All our plants are pot-grown, bushy stock, well furnished with fronds from the pot up, and cannot be compared with the cheap, long-drawn-up, lifted stock from the bench. A sample shipment will convince you of our superior stock. *Stock ready last of August.*

	Each.
2½ inch pot plants.....	@ 06
3 inch " ".....	@ 12
4 inch " ".....	@ 25
5 inch " ".....	@ 50
6 inch pans.....	@ 75
7 inch " ".....	@ 1 00
8 inch " ".....	@ 1 50
9 inch " ".....	@ 2 00 to \$2 50
10 inch " ".....	@ 3 00 to 3 50
12 inch " ".....	@ 4 00 to 5 00
8 " Wire Hanging Baskets full and bushy.....	Each, 1 50
10 " " " ".....	2 50
12 " " " ".....	4 00 to 5 00

	Size.	Each.	Doz.	100
<b>NEPHROLEPIS WITTBOLDII.</b>	2½ inch pot plants.....	\$0 30	\$3 00	\$20 00
	3 inch " ".....	50	5 00	40 00
	4 inch " ".....	75	7 50	60 00
	5 inch " ".....	1 00	10 00	

**ASPARAGUS PLUMOSUS NANUS.**

A grand variety for cutting, either in strong strings like Smilax or divided in smaller pieces for use as Fern fronds. It is also used extensively for filling Fern pans, for which purpose it has proven most valuable, and is now grown by everybody. We offer a fine lot of thrifty young plants. 2½ inch pots, per doz., 75c.; per 100, \$5.00. 3 inch pots, per doz., \$1.00; per 100, \$5.00. 4 inch pots, per doz., \$2.00; per 100, \$15.00. } Ready Sept. 5 inch pots, per doz., \$4.00; per 100, \$30.00. } 15th.

**ASPARAGUS SPRENGERI.**

This fine Asparagus has proven to be useful in a variety of ways, especially so as a pot plant for decorative purposes, or for planting in ferneries or hanging baskets. No up-to-date florists can afford to be without this grand and free-growing Asparagus. We have a grand stock. 2½ inch pots, per doz., 50c.; per 100, \$4.00. 4 inch pots, per doz., \$1.50; per 100, \$12.00. 3 inch pots, per doz., 75c.; per 100, \$7.00. 5 inch pots, per doz., \$2.50; 100, \$20.00. } Ready Sept. 15th.

**ASPARAGUS DECUMBENS.**

Produces vines 3 feet long, freely branched, clothed with very fine bluish-green leaves. The vines are very durable and for decorative purposes of great value. 2½ inch pots, per doz., \$1.50. 3 inch pots, per doz., \$2.00; 4 inch pots, per doz., \$3.00.

**ASPARAGUS TENUISSIMUS.**

2½ in. pots, per doz., 50c.; per 100, \$4.00; 3 in. pots, per doz., \$1.00; per 100, \$8.00; 4 in. pots, per doz., \$1.50; 100, \$12.00.



ASPARAGUS PLUMOSUS NANUS.

# Palms and Decorative Plants.



LATANIA BORBONICA.



ARECA LUTESCENS.



KENTIA PALM.



RUBBER TREE.

## ARAUCARIA EXCELSA.

Our stock of these is especially fine and well-shaped plants.

Size Pots.	Height.	Whorls.	Each.	Doz.
5-inch pots.	10 inches.	3	\$0 60	\$ 7 00
5 "	12 "	3	75	9 00
5 "	14 "	3 to 4	1 00	12 00
6 "	16 "	4 to 5	1 25	15 00
7 "	24 "	5 to 6	2 00	24 00

## ARAUCARIA ROBUSTA COMPACTA.

Size Pots.	Height.	Whorls.	Each.
6-inch pots.	12 to 14 inches.	3 to 4	\$2 00
6 "	18 "	3 to 4	2 50
7 "	24 "	5	3 00

## ARECA LUTESCENS.

Size Pots.	Height.	Each.	Doz.	100
3-inch Pots.	14 in., 2 plants in a pot	\$0 20	\$ 2 00	\$15 00
3 "	10 to 12 " 1 " "	15	1 50	10 00
4 "	15 to 18 " 4 " "	35	4 00	30 00
4 "	24 " 4 " "	1 00	12 00	
7 "	30 to 32 " 4 " "	1 50	18 00	



ARAUCARIA EXCELSA.

## KENTIA BELMOREANA.

All measurements of plants are taken from the top of pot to the top of the plant in its natural position.

Size Pot.	Leaves.	Height.	Each.	Doz.	100
2½ inch.	2 to 3 leaves.	4 to 6 in.	\$ 0 15	\$1 50	\$12 00
3 "	3 to 4 "	8 to 10 in.	20	2 25	18 00
4 "	5 to 6 "	10 to 12 in.	35	4 00	30 00
4½ "	5 to 6 "	15 to 18 in.	50	6 00	50 00
5 "	5 to 6 "	18 to 20 in.	75	9 00	
5 "	6 to 7 "	22 to 24 in.	1 00	12 00	
5 "	5 to 6 "	26 to 28 in.	1 25	15 00	
5 "	5 to 6 "	28 to 30 in.	1 50	18 00	
6 "	6 to 7 "	24 to 26 in., heavy	1 75	20 00	
6 "	6 to 7 "	30 to 32 in.	2 00	24 00	
6 & 7 "	6 to 7 "	34 to 36 in.	2 50		
7 "	6 to 7 "	36 to 38 in.	3 50		
8 "	5 to 6 "	40 to 42 in.	5 00		
9 "	5 to 6 "	45 to 50 in.	7 50		
12 "	6 "	6 ft.	20 00		
14 "	7 to 8 "	6½ ft.	25 00		
10 "	4 plants in a pot,	3 feet, bushy.	6 00		
12 "	4 "	4 "	8 00		

## PHŒNIX RECLINATA.

Size Pots.	Height.	Each.	Doz.
5-inch.	12 to 15 inches.....	\$0 40	\$4 00
6 "	18 ".....	50	6 00
6 "	24 ".....	75	8 00
16 " Tubs	5½ feet.....	12 00	

## PHŒNIX RUPICOLA.

16-inch tubs, 6 feet high.....Each, \$20 00

## KENTIA FOSTERIANA.

Size Pots.	Leaves.	Height.	Each.	Doz.	100
4-inch.	4 to 5 leaves	16 to 18 inches.....	\$0 35	\$ 4 00	\$30 00
5 "	5 "	20 to 24 ".....	75	9 00	70 00
5 "	5 "	24 to 28 ".....	1 00	12 00	
5 "	5 to 6 "	28 to 30 ".....	1 25	15 00	
6 "	5 to 6 "	32 to 36 ".....	1 50	18 00	
7 "	5 to 6 "	36 to 38 ".....	2 00	22 00	
8 "	6 "	44 to 45 ".....	3 50	40 00	
8 "	6 to 7 "	46 to 48 ".....	4 00		
8 "	6 to 7 "	50 to 55 ".....	6 00		
12 "	6 "	5½ to 6 feet.....	12 00		
12 "	6 "	6½ ".....	15 00		
14 "	7 "	7½ ".....	25 00		
10 "	4 plants in pot, 3 feet, bushy.....		Each, \$5 00		
10 "	3 " " 4½ " ".....		" 7 00		

## FICUS ELASTICA--Rubber Tree.

Our stock cannot be excelled for fine shaped perfect plants.

Size Pot.	Height.	Each.	Doz.	100
5-inch.	12 to 14 inches.....	\$0 40	\$ 4 00	\$32 00
5 "	18 to 20 ".....	60	6 00	45 00
5 "	20 to 24 ".....	75	9 00	70 00
6 "	26 to 30 ".....	1 00	11 00	
7 "	34 to 36 ".....	1 50	15 00	

## BRANCHING RUBBERS.

8-inch pots, 3 feet high, 4 to 6 branches.....Each, \$3 00

## PANDANUS VEITCHII.

Size Pots.	Height.	Each.	Doz.
5-inch.	15 inches.....	\$1 00	\$10 00
6 "	18 ".....	1 25	14 00
8 "	26 to 30 ".....	3 00	
10 "	30 to 32 ".....	4 00	
10 "	36 to 40 ".....	5 00	

## PANDANUS UTILIS.

Size Pots.	Height.	Each.	Doz.	100
3-inch	8 to 10 inches.....	\$0 15	\$1 50	\$12 00
4 "	12 ".....	25	3 00	
9 "	Beautiful plants, 30 to 32 inches.....	3 00		

## LATANIA BORBONICA.

Our stock of Latanias is large, and are exceptionally fine bushy, compact plants. Buyers will find the 4, 5 and 6 inch extra good value.

Size Pots.	Character Leaves.	Height.	Each.	Doz.	100
3-inch	2 to 3 inches	12 inches.....	\$0 10	\$ 1 00	\$ 8 00
4 "	3 to 4 " very fine.	15 to 16 ".....	25	2 50	20 00
5 "	4 to 5 ".....	20 ".....	40	4 00	35 00
6 "	5 to 6 ".....	20 ".....	50	6 00	45 00
6 "	5 to 6 ".....	24 ".....	75	9 00	70 00
7 "	5 to 6 ".....	30 ".....	1 00	12 00	
7 "	6 ".....	32 ".....	1 50	18 00	
8 "	6 to 7 ".....	36 ".....	2 00	24 00	

The seven and eight inch pots are not perfect plants; some of their leaves have the ends trimmed, but are exceptionally good value.

## CYCAS REVOLUTA.

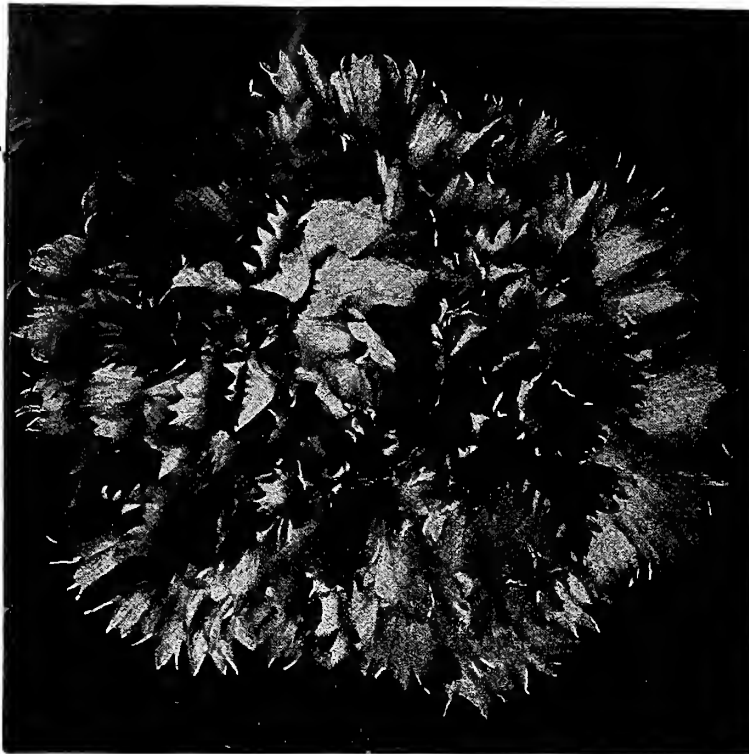
We will have by September first, a fine lot of Cycas, well rooted and in perfect leaf, in sizes from 3 to 10 pound bulbs. We can furnish fine plants at from 75c. to \$5.00.

## ASPIDISTRA--VARIEGATED LEAVED.

We have a fine stock of this valuable store and house plant, in all sizes from 2½-inch pots with 1 leaf to 8-inch pots with 20 leaves, at 10c. per leaf.

If you are a buyer of Palms, Ferns, etc., a personal visit of inspection to our Greenhouses at Western Springs, Ill. (one-half hour's ride from Chicago), will pay you.

Long distance Telephone No. 221 Western Springs, Ill.



MRS. E. A. NELSON.

**MRS. E. A. NELSON.**

A seedling from Armazindy and Scott, of large size; color of Joost, a beautiful shade; strong stem; very free and early. It is much liked by those who have seen it growing on Mr. Nelson's place. It has scored high before the various florists clubs of the country. (Ask for special circular.)

Price for strong Rooted Cuttings.

12 plants for.....	\$2.50	50 plants for.....	\$ 6.00
25 " " " " " " " "	3.50	100 " " " " " " " "	10.00
1000 plants for.....	\$80.00		

**ESTELLE.**

We sent out most of the stock of Estelle two years ago and think now as we did then, that this is one of the best "bread and butter" scarlets in the trade. Of a fine rich color and good size, above the average. Very vigorous and free in growth and a continuous free bloomer. The plants are not very tall and can therefore be grown on low benches. As a producer, it is ahead of Crane. Color does not fade and always comes true. We recommend this variety highly. Price for strong Rooted Cuttings:

12 plants for.....	\$1.25	50 plants at 100 rate.	
25 " " " " " " " "	2.00	100 plants for.....	\$6.00
1000 plants for.....	\$50.00		

**W**E are booking orders now for Rooted Cuttings of the Carnations that, in our judgment, will be in strong demand for spring trade, 1902. [Full list all Carnations ready Jan. 1]. Cuttings ready from January or February on.

N. B.—If you want to see flowers of any of these before buying, write us for them.

**CRESSBROOK.**

Made the highest score at the Spring 1901 meeting (at Baltimore) of the American Carnation Society, reaching 94 points. It is a seedling from Bradt and Scott. Bright pink—flower 3 to 3½ inches in diameter; stem strong and wiry; a fine grower, and has no surplus foliage. Mr. Warburton, the raiser, says he has yet to see the first bursted calyx. This promises to prove a "leader" of all the Pinks for 1902. It has the endorsement of many prominent carnation growers who have seen it growing and blooming. (Send for special circular.)

Price for strong Rooted Cuttings:

12 plants for.....	\$ 1.50
25 " " " " " " " "	5.00
50 plants at 100 rate.	
100 plants for.....	10.00
1000 " " " " " " " "	75.00

**MORNING GLORY.**

This is the only variety of the Daybreak shade which is being generally grown. Flower is of good, medium size and a little darker than Daybreak. A more even, continuous bloomer than that variety. Per 100, \$4.00; per 1000, \$35.00.

**NORWAY.**

There are plenty of good PINKS in the market, but No. 1 WHITES have to be hunted for and seem pretty hard to find. From all reports up to date, we think Norway fills the bill. We believe this to be THE white CARNATION for the florist-grower. In color it is pure white, 2½ to 3½ inches diameter. A wonderfully vigorous rapid grower of splendid habit; responds readily to good culture. The stems are long, strong and graceful; can be cut 2 to 3½ feet long when well established. It is delightfully fragrant, and a keeper of the first water; an excellent shipper. It is a money making carnation in every sense of the word and as such we can recommend it to every grower. We can supply this from January on, and in good sized lots, unless some accident should occur to our stock. All our cuttings will be strictly first-class.

Write us for prices on 5000 lots. Price, Rooted Cuttings.

12 for.....	\$1.00	Per 100.....	\$ 6.00
25 for.....	1.50	Per 1000.....	50.00

(Express charges equalized on Eastern shipments.)

CARNATION, MRS. POTTER PALMER, New Scarlet, per 1000, \$100.00

THE PLANT NOVELTY OF THE AGE

**• "MIKADO FERN BALL" •**

Will Grow and Thrive Under the Most Adverse Conditions.  
A Profitable Fern for Easter Sales.

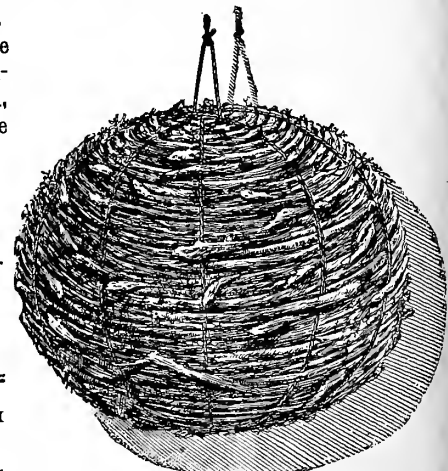
The Demand for this Novelty has Again this Year far Exceeded the Supply, and Owing to the Extensive Advertising they have had, We Anticipate even a Greater Sale for them in 1902

PLACE YOUR ORDER NOW  
AS SUPPLY IS LIMITED.. .

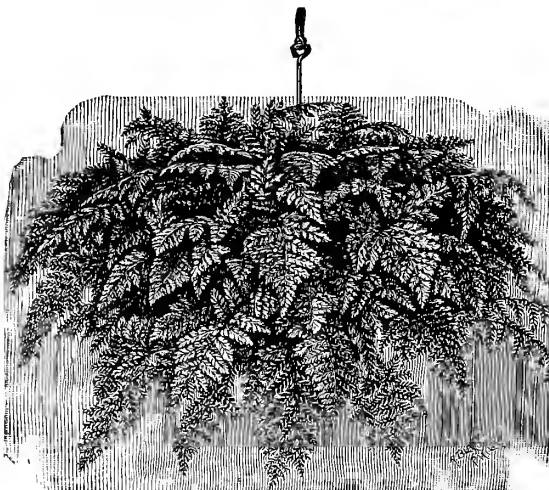
SPECIAL IMPORT PRICES  
MADE TO SEEDSMEN  
NURSERYMEN, ETC., ON  
LOTS OF 1000 AND UPWARD

NEW IMPORTATION ARRIVES FROM  
JAPAN ABOUT DECEMBER.

Directions for Starting.—(Write for circular.



FERN BALL BEFORE WATERING (dormant).



JAPANESE FERN BALL—IN LEAF.

• • PRICES • •

7 to 9 inch diameter.	5 inch diameter.
Each.....	Desirable for mail trade.
Per dozen.....	Each.....
Per 100.....	Per dozen.....
	Per 100.....

\$0 40  
3 50  
25 00

\$0 25  
2 50  
17 50



# Azaleas, Roses, Rhododendrons, Etc., Etc.

WE ARE BOOKING ADVANCE ORDERS NOW FOR DECEMBER DELIVERY.

Place your contract now and secure advantage of Import rates.



CRIMSON RAMBLER.

The following Choice Roses, field-grown, 2-year-old. Doz. \$2.00; per 100, \$15.00.

- |   |  |
|---|--|
| <b>American Beauty.</b> Light red. Budded.  | <b>Harrison's Yellow.</b> Yellow. Budded.  |
| <b>Kaiserin Augusta Victoria.</b> White. Budded.  | <b>Mrs. R. G. Sherman Crawford.</b> Pink. Budded.  |
| <b>Mad. Caroline Testout.</b> Shining pink. Budded.   | <b>Margaret Dickson.</b> Creamy white. Budded.   |
| <b>Souvenir de Malmaison.</b> Light pink. Budded.   | <b>Persian Yellow.</b> Yellow Budded.  |
| <b>Mad. George Bruant.</b> White. Own roots.  | <b>Penzance Sweet Briar Roses,</b> assorted, budded, 2-year, strong. Per doz., \$2.00; per 100, \$15.00. |
| <b>Hermosa,</b> extra fine. Pink. Own roots.  | <b>English Sweet Briar Roses,</b> own roots, 1-year, small. Per 100, \$4.00.                             |
| <b>Manetta Stock,</b> for grafting. Per 100, \$1.50; per 1000, \$10.00.                                       | <b>Mad Plantier,</b> extra strong, 2-year, own roots. Per 100, \$10.00.                                  |
| <b>MOSS ROSES,</b> 2-year-old, strong, own roots, in white, red and pink. Per doz., \$1.50; per 100, \$10.00. | <b>TREE ROSES</b> in red, pink or white. Each, 50c.; doz. \$4.00; 100, \$30.00.                          |
| <b>MEMORIAL ROSES,</b> 2-year-old, own roots. Per doz., \$1.50; per 100, \$10.00.                             | <b>CLIMBING ROSES,</b> 2-year, extra heavy, own roots. Per doz., \$1.50; per 100, \$10.00.               |
| <b>Evergreen Gem.</b> Pink Roamer. Triumph. South Orange Perfection.  | <b>Baltimore Belle.</b> <b>Prairie Queen.</b> <b>Russell's Cottage.</b>                                  |

## THE CRIMSON RAMBLER.

A MOST DESIRABLE POT PLANT FOR EASTER SALES.

As a pot plant for retail sales this rose is incomparable. Its hundreds of blossoms all open together and seem to improve for at least two and even three weeks. The bright crimson color holds without fading and contrasts finely with the glossy foliage. It forces easily. We have fine dormant stock. 100

2-year-old, 2-3 feet, well-branched, own roots.....	\$16 00
3 " " 3-4 " " " budded.....	15 00
3 " " 3-4 " " " own roots.....	18 00
3 " " 4-5 " " " budded.....	18 00

## PAEONIES.

FOR DELIVERY IN OCTOBER.

Having purchased a large consignment of **Paeony Chinensis** in fancy varieties from one of the largest Paeony specialists in Europe. We offer them to the trade put up in cases holding **67 double white, 66 double red, 67 double pink;** each with three eyes and upward. **200 roots in all;** price, per case, \$22.00; 3 cases for \$60.00. We do not break cases.

This is the greatest bargain ever offered in Paeonies, and it will pay you to secure a supply either for fall or spring sales or for dividing roots and growing them on for stock.

TWO-YEAR-OLD

DORMANT

FIELD GROWN



# ROSES....

BUDED STOCK.

Price, per doz., \$1.50; per 100, \$11.00; per 1000, \$100.00.

- Anna de Diesbach.** Bright rose color.
- Alf, Colomb.** Carmine.
- Ball of Snow.** Pure white.
- Baroness Rothschild.** Pink.
- Coquette des Alps.** Pure White.
- Captain Christy.** Delicate flesh color.
- Fisher Holmes.** Dark rich scarlet.
- General Washington.** Bright crimson.
- General Jacqueminot.** Rich velvety crimson.
- Giant of Battles.** Bright red.
- Glory Lyonnaise.** Light Yellow.
- John Hopper.** Brilliant rose pink.
- La France.** Pink.
- Madam G. Luizet.** Shell pink.
- Magna Charta.** Clear rosy red.
- Marshall P. Wilder.** Bright scarlet crimson.
- Marie Bauman.** Bright carmine.
- Mrs. John Laing.** Beautiful soft pink.
- Mabel Morrison.** Pure white.
- Merveille de Lyon.** Creamy white.
- Paul Neyron.** Deep shining pink.
- Prince Camille de Rohan.** Velvety crimson.
- Perle des Blanches.** Pure white.
- Rugosa Rubra.** Red.
- Rugosa Alba.** White.
- Vick's Caprice** Striped white and red.

ROSES on their own roots, 2-year-old. Per doz., \$1.75; per 100, \$13.00.

- |                             |                                 |
|-----------------------------|---------------------------------|
| <b>Coquette des Alps.</b>   | <b>Madam G. Luizet.</b>         |
| <b>General Jacqueminot.</b> | <b>Magna Charta.</b>            |
| <b>General Washington.</b>  | <b>Paul Neyron.</b>             |
| <b>John Hopper</b>          | <b>Prince Camille de Rohan.</b> |

## FOR EASTER FORCING.

The stock as mentioned below is coming into popular favor for Easter flowering owing to the fact that same can be bloomed with little trouble and at a time when few flowering plants are in the market.

### Azalea Mollis.

Mixed colors, large plants with 15-25 buds. Dozen, \$4.00; per 100, \$25.00.

### Deutzia Hybrida Lemoinei.

Dormant pot-grown plants for forcing. Dozen, \$3.00; per 100, \$20.00.

### Deutzia Gracilis.

Bushy dormant plants for forcing. Dozen, \$1.25; 100, \$10.00.

### Hydrangea Hortensis.

Dormant 2-year pot-grown plants for forcing. Otaksa and Thos. Hogg. Doz., \$4.00; 100, \$25.00.

### Parson's Hardy Rhododendrons.

Double White.	} Best named sorts for forcing.
" Pink.	
" Scarlet.	
" Purple.	

Bushy plants with 8-12 buds. Each, 75c.; doz., \$8.00.

Extra Size Plants.

About 3 feet high and 3 foot spread. Each, \$4.00; very fine.

### Pot-Grown Lilacs for forcing.

Strong plants. 6 and 7-inch pots. Chas. X. Best Purple. } Each, 75c.; doz., \$7.00; Mary Legraye. Best White. } per 100, \$50.00.

Also Desirable for Xmas Blooming Forcing in About 25 Days.

# VAUGHAN'S Florists' Flower Seeds.

The Best in America.



ASPARAGUS PLUMOSUS NANUS.

This is one of the most popular plants, both for pots and cutting, grows easily from seed. Our seed is true and germinates well



ALYSSUM, VAUGHAN'S LITTLE GEM.

**Asparagus Plumosus Nanus**, 100 seeds, \$1.00; 250 seeds, \$2.00; 1000 seeds, \$6.50.

**Sprengeri**, 100 seeds, 50c; 1000 seeds \$3 00

Write for prices on larger lots on above two kinds.

**Decumbens**. Produces vines 3 feet long, freely branched, clothed with bluish green leaves. The numerous small flowers, which have the fragrance of the Lily of the Valley, are white, with red stamens, and give the plant a very distinct appearance. The vines are very durable, and for a decorative purpose of great value, especially since the growing period falls in the winter. Cultivate like A. Sprengeri, 25 seeds, 60c; 100 seeds \$2.00.



VAUGHAN'S MAMMOTH DAISY.

	Trade Pkt.	Oz.
<b>Ageratum Mexicanum</b> , blue.....	5	15
Mexicanum Album, white.....	5	15
Imperial Dwarf Blue.....	10	25
" " White.....	10	25
<b>Blue Perfection</b> , dwarf, new.....	10	40
<b>Princess Pauline</b> , new.....	10	60
Mixed.....	5	20
<b>Alyssum Martimum</b> , Sweet Alyssum.....lb.,	\$1.40	5 15
Benthani Compactum, dwarf.....lb.,	\$2.00	10 20
<b>Little Gem</b> , extra fine strain.....lb.,	\$2 50	'J 25
Saxatile, Gold Dust (Perennial).....		5 15
Saxatile Compactum ".....		10 20

## ASTER, Truffaut's Pæony-Flowered Perfection.

A splendid sort for Cut Flowers, large and double. Ht., 2 ft.

- Snow White.** Dark Blue, La Superbe, sky-blue and white.
- Pink.** Crimson.
- Shining Blue-Black.** Gravelotte, deepest blood-red.
- Brilliant Scarlet.** Light Blue.

Each of above, per ¼ oz., 35c.; per oz., \$1.20; per trade pkt., 25c. Five trade packets of any of the above, \$1.00. Many colors in splendid mixture, trade pkt., 25c; ¼ oz., 35c.; oz., \$1.00.

## VAUGHAN'S FLORISTS' MIXTURE OF ASTERS.

This is a mixture of all the best varieties of Asters suitable for cut flowers, consisting principally of white, pink, and the brightest of red, with a small proportion of blue and purple and some intermediate shades. This mixture, being made up by ourselves, we know to contain only the most salable colors for cut-flower use, and offer it as a good substitute for the higher-priced separate colors. Per ¼ oz., 50c.; oz., \$1.75; trade pkt., 25c.

## BELLIS, OR DOUBLE DAISY.

**VAUGHAN'S MAMMOTH MIXED.** For size of flowers, these have no equal. The flowers measure from 1½ to 2 inches in diameter, besides being of the most perfect form, very double, and ranging in colors from the finest snow-white to pink and blood-red, with the most pleasing combinations of pink and white. Trade pkt., 25c.; 1-16 oz., 40c.

**MAMMOTH DAISY WHITE.** Flowers are much larger than those of the well-known Snowball, double, and borne on long, very stiff stems. Trade pkt., 25c., 1-16 oz., 50c.

**NEW MAMMOTH DAISY PINK.** This is a great improvement on "Daisy Longfellow," flowers being much larger, very double, and are borne on stiff, thick stems. A very good novelty. Trade pkt., 25c.

	Trade Pkt.	Oz.
<b>Daisy</b> (Bellis Perennis fl. pl.), double extra mixed.....	1/8 oz., 40c.; 15	\$2 50
Fine mixed.....	1/8 oz., 25c.; 10	1 50
Albus Plenus, double white.....	1/8 oz., 35c.; 15	2 00
"Longfellow," dark pink.....	1/8 oz., 35c.; 15	2 00
"Snowball," double white.....	1/8 oz., 40c.; 15	2 5
<b>Begonia, Single Tuberos Rooted</b> , finest mixed.....		50
<b>Double Tuberos Rooted</b> .....		50
<b>Erfordi.</b> A splendid bedder. Blooms all Summer.....	1-16 oz., 75c.; 25	
<b>Vernon.</b> Spwandil bedder.....	1-16 oz., 40c.; 10	4 50
" Dwarf, grows only 5 inches high, blooms all summer, and is excellent for ribbon, carpet bedding, and pots.....		25
<b>Rex Hybrids.</b> Saved from a very fine collection.....		50

## VICTORIA ASTER.

**Vaughan's Improved.** This is undoubtedly one of the finest Asters in cultivation, and most profitable class for florists, for cut flowers and pot culture.

- Snow White.** White, turning to azure blue. White, tinted with pink.
- Dark Crimson.** Light Blue. Indigo Blue on white ground.

- Bright Scarlet.** Light Blue and White. Dark Blue.
- Bright Pink.** Bright Rose, tinged White.

Each of above, per trade packet, 25c.; ¼ oz., 45c.; oz., \$1.50. Five trade pkts. of any of the above, \$1.00. Many colors, in splendid mixture, trade pkt., 25c.; ¼ oz., 40c.; oz., \$1.25.

## BRANCHING, OR SEMPLE ASTER.

The best late cut-flower sort.

- White Branching**, ¼ oz., 25c.; Red Branching, oz., \$1.00; ¼ oz., 80c., trade packet, 10c.
- Purple Branching**, ¼ oz., 25c.; oz., 85c.; trade packet, 10c.
- Lavender Branching**, ¼ oz., 45c.; oz., \$1.50; trade packet, 25c.
- One trade packet each of the above 5 colors for 50c.
- Branching Aster**, mixed, oz., 85c.; ¼ oz., 25c.; trade packet, 10c.
- Vaughan's New Upright White Branching.** Trade pkt, 15c; ¼ oz., 25c.
- " " Pink " Trade pkt., 25c.; ¼ oz., 40c.

**Queen of the Earliest.**—White, the earliest of all. Trade pkt., 10c.; ¼ oz., 30c.  
**Queen of the Market.**—This is the best early Aster, producing fine, large, double flowers of good form on long wiry stems; flowers should be cut before they are fully opened. White, Pink, Light Blue, Scarlet, Dark Blue and Mixed, each, per oz., 50c.; ¼ oz., 20c.; Trade pkt., 10c.



# A Bargain in Pæonies

FOR OCTOBER 1901 DELIVERY

Having purchased a large consignment of


**PAEONY CHINENSIS..  
**

IN FANCY VARIETIES

From one of the most prominent Pæony specialists in Europe. We offer them to the trade put up in cases holding

67 DOUBLE WHITE.      66 DOUBLE RED.      67 DOUBLE PINK.

 200 ROOTS IN ALL 

EACH CONTAINING THREE EYES AND UPWARD.

PRICE PER CASE \$20.00.

3 CASES FOR \$50.00.

**WE DO NOT BREAK CASES.**

**T**HIS is the greatest bargain ever offered in Pæonies, and it will pay you to secure a supply either for fall or spring sales or for dividing roots and growing them on for stock.    \* \* \* \* \*

## VAUGHAN'S SEED STORE

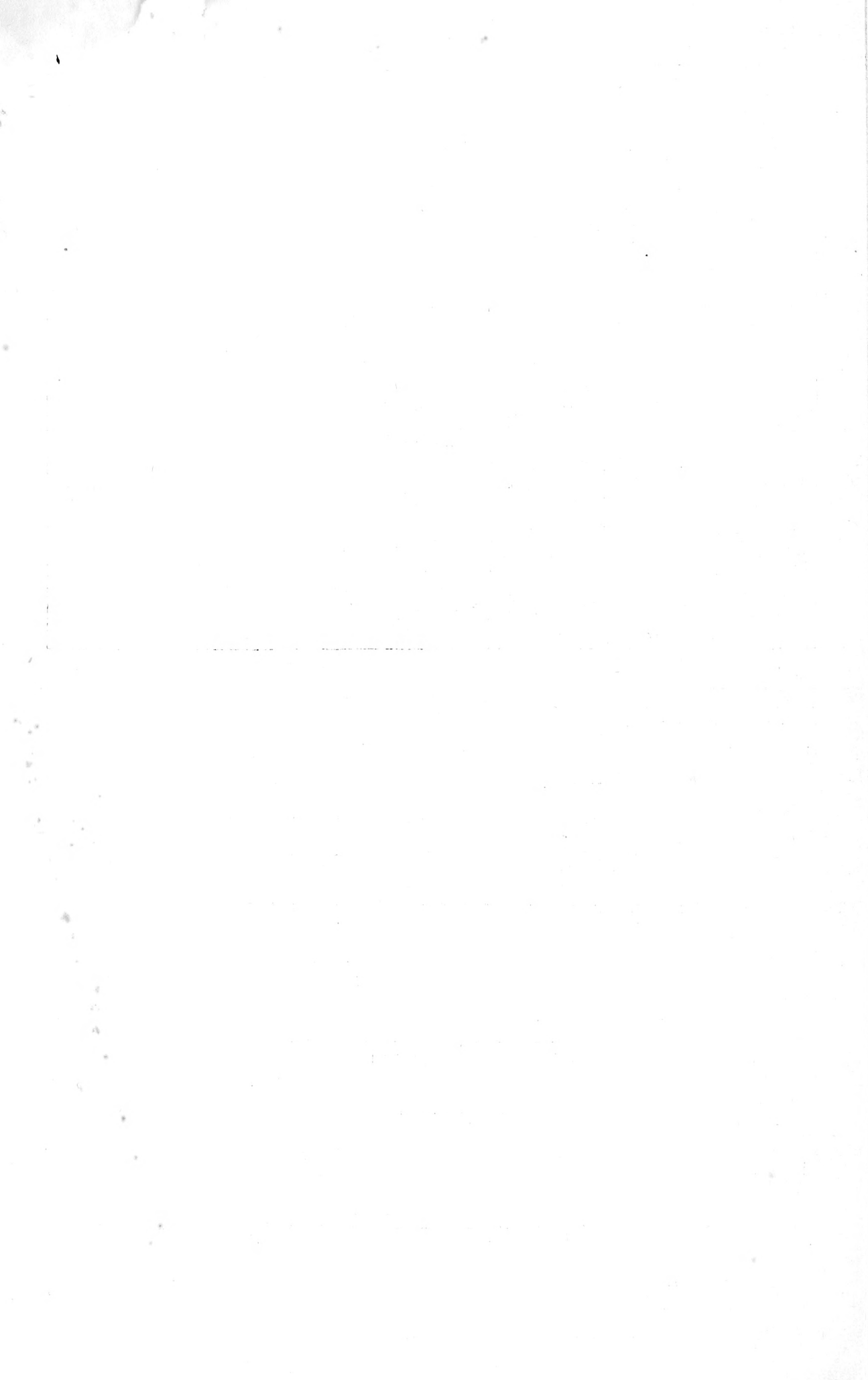
CHICAGO

NEW YORK

84-86 Randolph St.

14 Barclay St.

GREENHOUSES, WESTERN SPRINGS, ILLS.



**CANDYTUFT.**

Trade Pkt. Oz.

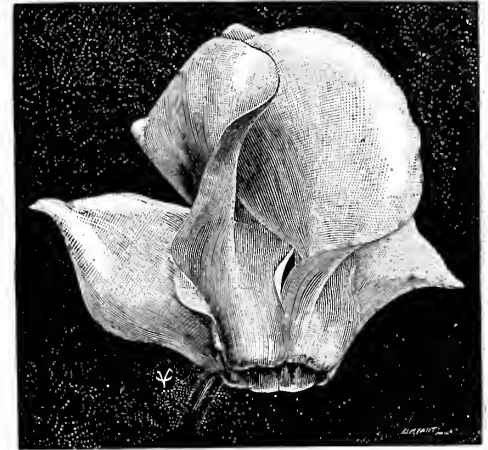
- NEW GIANT HYACINTH-FLOWERED.**—This improved new strain is far superior to that well-known kind, Empress, heretofore the best of its class. The flower-heads are of immense size, six inches long and about three inches across, resembling a Dutch Hyacinth. They are pure white, and furnish excellent material for cutting..... 10 40
- Little Prince**, new, like Empress, but dwarf..... 10 60
- Queen of Italy.** This new Candytuft is probably the most beautiful of all. The plants form dwarf compact bushes which are covered with very large pink blooms. It is one of the best of plants for borders and carpet beds on account of its habit, beautiful color and freedom of bloom..... 10 45
- Empress.**—Our strain of this is extra fine.....lb., \$1.60; 10 20
- Snowflake.**—The plant grows about 7 inches high, forming a very neat, round bush, covered with the finest flowers of the purest white. They are most valuable for pot culture, carpet beds and groups..... 10 30
- CANDYTUFT (Iberis) White Rocket**.....lb., 60c.; 5 10
- Tom Thumb**, white..... 5 15
- Carmine**..... 10 25
- Crimson**..... 5 10
- Odorata**, white, sweet-scented..... 5 10
- Mixed Colors**.....lb., 60c.; 5 10
- Sempervirens, Perennial**..... 10 50
- Tenoriana**, larger than above, earlier..... 10 30
- Gibraltarica**, large flowers, lilac shading off to white.....¼ oz., 50c.; 20 2 00
- Carnation**, Riviera Market, a splendid sort for Winter blooming; comes true from seed and blooms the first Summer..... 50
- Perpetual or Chabaud**, extra choice mixed..... 25 2 50
- Fine double mixed**..... 25 75
- Extra choice mixed**..... 25 1 50
- Vienna Dwarf**, hardy with a little protection and bloom early. A splendid sort for open ground culture.....¼ oz., 25c.; 10 1 00
- Grenadin**, excellent for Florists' use, flowers salmon-red..... 10 1 50
- Grenadin White**, a splendid double white, comes true from seed.....¼ oz., 40c.; 10 60
- Margaret**, blooms in four months from seed.....¼ oz., 20c.; 10 2 50
- New Dwarf Margaret**, an improvement on the above; flowers larger, more durable and better colors, plants shorter and more stocky, and the stalks stiff and wiry, mixed colors..... 25
- Giant Margaret**, mixed.....½ oz., \$1.00; 25
- Giant Margaret White**, flowers very large and double. Pure white, with only an occasional pink streak; plants short and stocky, with stiff spikes.....1-16 oz., \$1.00; 50
- Margaret**, yellow, white, pink, red or striped.....each, 15
- Malmaison**, mixed, very fine..... 50

**NEW LARGE-FLOWERING CINERARIA "Old Rose."**

A splendid strain, producing large flowers, which range in color from pink to rich, coppery red. Trade Pkt., 50c.

- Trade Pkt. Oz.
- CINERARIA Hybrida**, fine large flowering mixed, 500 seeds. 25
- Hybrida Grandiflora Nana**, best mixed, dwarf..... 25
- Hybrida Plenissima**, extra choice double..... 50
- White Leaved Variety.**
- Maritima Candidissima, white-leaved for bedding..... 10 20

**Vaughan's Giant-Flowered Cyclamen.**



Our seed has been grown for us by a Cyclamen specialist, in Europe. This is the third season we are handling his entire crop. The seed is saved only from perfect plants. Shape and size of flowers, foliage and stems and general habit are points on which our seed plants are selected. There is no better Cyclamen seed in the market.

GIANT-FLOWERING CYCLAMEN.

- The seed is saved only from perfect plants. Shape and size of flowers, foliage and stems and general habit are points on which our seed plants are selected. There is no better Cyclamen seed in the market.
- PURE WHITE (Mont Blanc)**..... 100 seeds. 1000 seeds.
- DARK CRIMSON**..... 65c. \$5 00
- ROSA von Marienthal**, "Daybreak"..... 250 seeds at the 1000 rate.
- DARK ROSE**.....
- WHITE WITH CARMINE EYE**.....

**GIANT-FLOWERING CYCLAMEN.**

**Extra Choice Mixed.** This mixture is made up from the above separate colors and includes also some "Monstrosum," a strain with flowers of immense size, secured especially for this mixture. Per 100 seeds, 50c.; 250 seeds, \$1.15; 1000 seeds, \$4.50; 5000 seeds, \$20.00.

**Cyclamen Persicum.** Finest mixed. Trade pkt., 25c.; ¼ oz., 60c.

**FERN SEEDS.**

Any of the following, per trade pkt., 40c.; any 6 kinds for \$2.00.

- |                                       |                              |                            |
|---------------------------------------|------------------------------|----------------------------|
| <b>Adiantum</b> Cuneatum.             |                              | <b>Pteris</b> Ouvrardi.    |
| Fragrantissimum.                      |                              | " Palmata.                 |
| Gracillimum.                          |                              | " Serrulata.               |
| <b>Lomaria</b> Gibba.                 | " " Cristata.                |                            |
| <b>Nephtrolepis</b> Cordata Compacta. | " " Argentea.                |                            |
| " Exaltata.                           | " Winsetti, new, extra fine. |                            |
| <b>Pteris</b> Cretica Alba Lineata.   |                              | <b>Onychium</b> Japonicum. |

**FEVERFEW**, double white, for cut flowers, trade pkt., 10c.; oz., 25c.

**Vaughan's Early and Late Flowering Forget-me-Not.**

This sort will bloom in eight weeks after sowing, and will bring forth its flowers throughout the whole summer and fall and continue through the winter if taken up and potted. The flowers are borne on long, stiff stems, are of most exquisite sky-blue with a delicate white center, and they furnish the best cut flowers. Trade Packet, 10c.; ¼ oz., 30c.; oz., \$1.00.

- Trade Pkt. Oz.
- FORGET-ME-NOT (Myosotis)**, Alpestris, blue..... 10 50
- Alpestris Alba, white..... 10 50
- Eliza Fanrobert, flowers very large, sky-blue..... 10 50
- Victoria**, valuable for cut-flowers and pot culture..... 10 1 00
- Dissitiflora**, one of the best for florists.....¼ oz., 35c.; 15 2 25
- Palustris Sempervirens..... 15

**GLOXINIA HYBRIDA.**

**Gloxinia Seed, Vaughan's Mixture**, is made up by ourselves from the choicest spotted, tigered, edged, marbled and splashed sorts of the upright and horizontal type, and includes such choice new sorts as Emperors William and Frederick, Princess Louise, Defiance, etc., and we know that better seed is not to be had at any price. Pkt. (1000 seeds), 50c.; 3 pkts. for \$1.25.

- Trade Pkt.
- GLOXINIA, Scarlet Defiance**, intense glowing crimson scarlet..... 35

**VAUGHAN'S CARNATION MIXTURE.**

This is a mixture of the best strains of Giant Margaret, Malmaison and Ever-blooming Chabaud Carnations, including the latest selections of yellow types. The plants will produce many flowers that are equal to the best cut-flower sorts. Such a mixture cannot be had elsewhere.

Trade pkt. (300 seeds), 25c.



CINERARIA HYBRIDA.

**Vaughan's International Mixture.**

Like our Pansy mixture of that name, this strain has given unusual satisfaction. It consists of a mixture made up by ourselves of the choicest English, French and German strains and cannot be excelled in variety of colors, size, shape and substance of flowers and perfect habit of plant. Trade pkt., (1000 seeds), 50c.; 3 pkts., \$1.25.



LOBELIA BEDDING QUEEN.

**HELIOTROPE, Lemoine's Giant.**

Blooms from the seed first year, and as early as sweet peas or balsams.

Heliotropes will bloom as easily from seed as any of the common annuals. Sow the seed in February or March, and blooming plants may be had at the planting season. Our packets contain over 300 seeds and include the very best sorts. Trade pkt., 25c.; 1/4 oz., 50c.

**LOBELIA "BEDDING QUEEN."**

This new variety is undoubtedly the most remarkable and magnificent of the dwarf Lobelias. The habit of the plant is very dwarf and compact, forming handsome little bushes which are entirely covered with large flowers of deepest purple, contrasting most charmingly with the pure, white eye. Its freedom and duration of bloom is remarkable, the flowers lasting until late in the Fall. The best Lobelia for carpet beds, borders and pots. Trade pkt., 25c.; 1/4 oz., 50c.

- |  |                |        |
|--|----------------|--------|
|  | Trade pkt.     | Oz.    |
| <b>LOBELIA, Crystal Palace Compacta</b> .....                        | 1/8 oz., 25c.; | 15 25  |
| <b>Speciosa</b> , dark flowers and foliage; for hanging baskets..... | 10             | 75     |
| <b>Erinus, Emperor William</b> , dwarf.....                          | 1/4 oz., 30c.; | 10 100 |

**MIGNONETTE, True Machtet.**

The seed we offer produces dwarf, vigorous plants of pyramidal growth, with very thick, stout flower stalks. Finest in every way for florists' use and for pots. We have tested this with several of the fancy named strains and always with results favorable to our seed. Pkt., 10c.; 1/2 oz., 25c.; oz., 50c.; 2 oz., 75c.; 1/2 lb., \$1.25.

**MIGNONETTE.**

	Trade pkt.	Oz.		
<b>Defiance</b> , Greenhouse grown stock.....	25	1 50	<b>Red Victoria</b> .....	10 30
<b>Grandiflora</b> , large flowering.....	1 lb., 40c.;	5 10	<b>Miles' Spiral</b> .....	5 15
<b>Parson's White</b> .....	5	20	<b>Nana Compacta Multiflora</b> .....	10 25
<b>Golden Queen</b> .....	5	20	<b>Gabriele</b> , extra large and sweet.....	10 30
<b>Golden Machtet</b> .....	10	50	<b>Giant Pyramidal</b> .....	5 20
<b>Red Machtet</b> .....	10	70	<b>Red Giant</b> .....	1 lb., \$4.00; 10 30
			<b>Giant White Spiral</b> .....	5 30
			<b>Many sorts mixed</b> .....	1 lb., 80c.;
				5 15

"Bismarck."—Our Machtet has a very good reputation and is the best strain in existence. This new sort is an improvement on it, both in color and size of flower, and we want every florist to try it. Pkt., 10c.; 1/4 oz., 35c.; oz., \$1.20.

**PETUNIA.**

<b>PETUNIA HYBRIDA</b> , single good mixed.....	10	40
Blotched and striped.....	1/4 oz., 25c.;	10 75
<b>Dwarf Inimitable</b> , nice bushy plants, 8 inches, for pots.....	25	2 00
White.....	1/4 oz., 30c.;	10
<b>Finest Mixed</b> , a very choice strain; partly made up from named sorts and will give good results.....	1/4 oz., 25c.;	10 80
<b>Snowball</b> , new, best dwarf white.....	1/2 oz., 35c.;	15
<b>Large Flowering Fringed Sorts</b> (Fimbriata).—A superb strain of elegant, finely fringed flowers, measuring over 4 inches in diameter, remarkable for their brilliancy and variety of colors.....	1-32 oz., \$1.00;	50
White, Pink, Crimson.....	each	25
<b>Giants of California</b> , mixed.....	1-32 oz., \$1.25;	50
<b>New Giant Ruffled</b> .....	1-32 oz., \$1.50;	50
<b>Emperor</b> , finest mixed.....		25

**"Vaughan's Best" Mixture of Large Flowering Petunias.**

This mixture is made up by ourselves and includes all the above sorts and colors of the Large flowering and Fringed sorts and the unsurpassed Superbissima varieties with their delicately veined throats in various colors, and their truly mammoth flowers. We are positive that no other Petunia Mixture can produce flowers with as wide a range of colors as our Vaughan's Best. Trade Packet (1000 seeds), 50c.; 3 packets for \$1.25.

**VAUGHAN'S DOUBLE PETUNIAS.**

This is a mixture of the best large flowering and fringed double Petunias. Our seed is saved from plants grown in pots, carefully hand-fertilized, and will produce grand flowers. Of course everyone knows that only a certain percentage of double flowers may be expected from seed; but our mixture will produce from 20 to 30 per cent. of doubles; remainder will be choice large, single flowers. Pkt. (600 seeds), \$1.00. Double pure white (250 seeds), 50c.

**Dwarf Double Lilliput**, produces bushy plants, with small double flowers, which are partly spotted, blotched and self-colored; a very pretty plant. Pkt. (500 seeds), 75c.

**Extra Large Flowering Double Fringed**.—This extra choice strain produces about 30 per cent. of splendid double fringed flowers. Packet (500 seeds), 75c.

**\* PHLOX. \***

<b>Many Colors Mixed</b> .....	Trade pkt.	Oz.
<b>Double</b> .—Double Red, Double Yellow, Double Mixed.....	1 lb., \$4.00;	10 40
Double White.....	each	25
<b>Grandiflora</b> , Stellata Splendens, white, scarlet, pink, crimson, striped.....	25	1 25
<b>Large Flowering</b> , finest mixed.....	each	10 70
<b>Nana Compacta</b> , "Fireball".....	10	50
" " "Snowball".....	1/4 oz., 50c.;	25 1 75
" " many colors mixed.....	1/4 oz., 50c.;	25 1 75
<b>Star of Quedlinburg</b> and <b>Fimbriata</b> .....	each	10 60
<b>Hortensiaeflora</b> , Extra Choice, mixed.....	10	60
<b>Graf Gero</b> , for pots.....	1/2 oz., 35c.	20

<b>PRIMULA Obconica</b> .....	Trade pkt.	Oz.
<b>Obconica Grandiflora</b> , mixed.....	1-16 oz., 60c.;	15
" " large flowering, pink.....	1-16 oz., 85c.;	25
" " pure white.....	25	25
" " hybrids, mixed, extra choice.....	25	35
<b>Vulgaris</b> , old fashioned yellow Primrose.....	1/4 oz., 40c.;	15
<b>Japonica</b> (Japanese Primrose).....	25	25
<b>Veris</b> (Polyanthus), fine mixed.....	1/2 oz., 40c.;	15
<b>FORBESI</b> , "Baby Primrose," flowers rosy lilac, free blooming excellent for pots. The seedlings begin to bloom 3 months after sowing. 500 seeds, 25c.		
<b>Forbesi Compacta</b> , new, 500 seeds, 25c.		
<b>PYRETHRUM Golden Feather</b> .....	1/4 oz., 15c.;	10 40
Salaginoides, fern-leaved.....	15	1 00
<b>SALVIA Splendens Compacta</b> , Clara Bedman (Bonfire).....	25	2 50
Splendens, Flowering Sage.....	1/4 oz., 35c.;	25 1 25
" Compacta.....	25	1 75
Patens, blue.....	100 seeds,	30c.
<b>Argentea</b> , Silver-Leaved Sage.....	5	15
<b>Coccinea</b> .....	10	30
<b>"Drooping Spikes"</b> , one of the best.....	1/4 oz., 50c.;	15 2 00
<b>New Silverspot</b> .....	25	25
<b>New Golden-Leaved</b> .....	25	25
<b>New Dark Scarlet Bouquet</b> (Scarlet Dragoon).....	25	25
<b>St. Louis</b> , new, best of all.....	25	25
<b>Santolina Maritima</b> .....	10	50
<b>Smilax</b> , new crop.....	1 lb., \$3.00.	10 30

**STOCKS.**

The following are saved from large-flowering varieties, grown in pots and will give from 75 to 85 per cent. double flowers.

**STOCKS Large-Flowering German Ten Weeks.**

Pure White. Brilliant Rose. Bright Crimson. Blood Red. Purple. Light Blue. Canary Yellow.		
Price each of above per 1/8 oz., 40c.; oz., \$2.50; pkt., 25c.		
One trade packet each of above 7 varieties.....	\$1 25	
Imported Collection of 12 varieties.....	50	
Imported Collection of 6 varieties.....	25	
	Trade pkt. Oz.	
<b>Large-Flowering</b> , extra choice mixed.....	1/2 oz., 35c.;	25 \$2 00
Brilliant colors only, mixed.....	15	2 25
Good mixed.....	10	1 00
<b>Fireflame</b> , the most brilliant red of all.....	1/2 oz., 60c.;	25
<b>Snowflake</b> , forcing, the earliest white Ten weeks		
Stock.....	1/2 oz., \$1.25;	25
Red Victoria, a dark blood-red.....	1/2 oz., 50c.;	20
<b>White Victoria</b> , pure white.....	1/2 oz., 50c.;	20
<b>White Perfection</b> , "Cut and Come Again".....	1/2 oz., 45c.;	25 3 00
Early Intermediate (Autumnal) white or mixed.....	each	25
Emperor (Winter) white, pink, crimson or mixed.....	each	25

**Mammoth White Column**.—The plant is of luxuriant growth attaining in the open ground a height of 3 feet, and producing only a single long and sturdy spike of bloom, closely furnished with enormous faultlessly formed double-flowers of the purest possible white. Pkt., 10c.

**Thunbergia**, mixed..... 10 65

**Torenia Fournieri**, charming pot plant, velvety blue flower..... 25

**Fournieri Compacta**, new..... 25

**White Wings**, new white..... 20

# VAUGHAN'S PANSIES.

## MASTERPIECE—NEW GIANT CURLED.

This strain comes nearer to "Double Pansies" than anything ever introduced under that name. In reality the number of petals is the same as that in other Pansy flowers, but they are crimped and curled in such a fashion that the flowers appear double. The flowers are of enormous size, often 3 inches across, and the color variations and combinations are odd and striking. We have seen these Pansies in bloom in the originator's grounds and have therefore personal knowledge of their exceptional merit.  
**Pkt., 50c.; ¼ oz., \$1.50.**

**VARIABILIS.** Salmon, buff and terra cotta shades, mixed. These shades are entirely new additions to the already large variety of colors found among Pansies. **Pkt. (200 seeds), 10c.**

**DIANA.** Pure cream color; an entirely new shade. **Pkt. (200 seeds), 10c.**

**GIANT PHEASANT'S EYE.** Pretty four-colored variety of the Giant class. **Pkt. (200 seeds), 10c.**

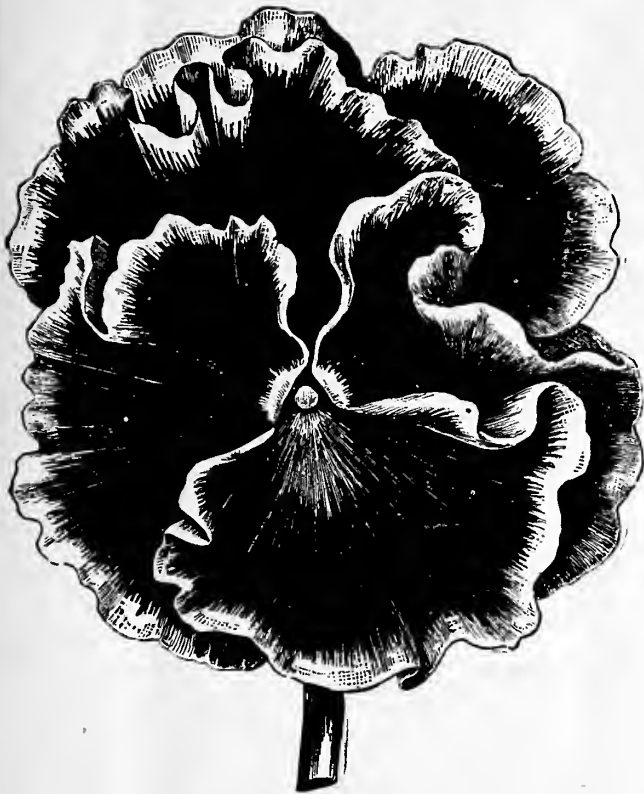
**GIANT BRONZE-COLORED.** Rich metallic shades, Giant flowers. **Pkt. (200 seeds), 10c.**

**NEW GIANT MADAME PERRET.** This novelty is specially distinguished from other Pansies by the plant being full and spreading with very broad and extremely dark green leaves. The straight and stiff stems it possesses cause the flowers to stand out well from the foliage. The color of the blossom ranges through all the shades of red, from a pink to a fine deep purple, with an intermediate bright red edged with white. The face of the flower in some cases is regular in color, while in others it is lined and striped. The extraordinary size of the flowers, which reach as much as 3 to 3½ inches in diameter, make it a novelty of the first rank, and one that is sure to be sought after by lovers of Pansies.  
**Pkt. (200 seeds), 15c.; 2 for 25c.; ½ oz., 50c.**

**EMPRESS AUGUSTA VICTORIA.** A charming new sort. Color porcelain-white with a soft blush cast. The upper petals are margined violet, while the lower petals are marked with a large purple blotch. It was awarded a silver medal at the Hamburg Horticultural Exposition.  
**Pkt. (250 seeds), 10c.; ½ oz., 40c.**

**NEW GIANT SWEET-SCENTED.** The flowers of this choice strain are of enormous size, in Spring and Fall, often measuring 4 inches across, and have a much stronger fragrance than any other Pansy.  
**Pkt., 25c.; 3 for 65c.**

**FAIRY QUEEN.** As a bedder, or as a solitary plant, this is a remarkably effective new Pansy. Size very large, color pure sky-blue, splendidly bordered with white, producing a distinct effect and a delicacy of color combinations which is rare. This is by all odds one of the most pleasing colors we have ever seen in Pansies, and its large size and perfect shape make it more than beautiful.  
**Pk., 10c.; ¼ oz., 30c.; oz., \$1.00.**



MASTERPIECE.

## VAUGHAN'S INTERNATIONAL PANSIES

—THE WORLD'S BEST. This is a combination of as many separate colors, types, blendings and unique kinds as can be found in the world. It has been made up and sold by us for twelve years; it is the best general mixture in existence and is most widely known and popular. It is used by most florists. It received the highest award at the Columbian Exposition and was awarded the gold medal at Omaha in 1898. It contains the cream of the Pansies listed on this page and besides 8 different strains, the crack selections of noted Pansy specialists, which we purchase every year especially for this mixture and which cannot be had in any other way. We beat the world on Pansies. **Price, per oz., \$10.00; ½ oz., \$5.00; ¼ oz., \$1.50; trade pkt., 50c.**

most florists. It received the highest award at the Columbian Exposition and was awarded the gold medal at Omaha in 1898. It contains the cream of the Pansies listed on this page and besides 8 different strains, the crack selections of noted Pansy specialists, which we purchase every year especially for this mixture and which cannot be had in any other way. We beat the world on Pansies. **Price, per oz., \$10.00; ½ oz., \$5.00; ¼ oz., \$1.50; trade pkt., 50c.**

	Trade Pkt.	¼ oz.	Oz.		Trade Pkt.	¼ oz.	Oz.
<b>GIANT White</b> , very large, with violet eye .....	\$0 10	\$0 20	\$1 20	<b>GIANT Violet Blue</b> , a very pleasing shade .....	\$0 10	\$0 20	\$1 25
“ <b>Aurora</b> , pure white without blotches .....	10	25	1 50	“ <b>Striped</b> , mahogany, striped, mottled and flaked white .....	10	20	1 20
“ <b>Adonis</b> , new, light blue with a white center, very fine. 10	25	2 00		“ <b>Parlsian Striped</b> , stripes are broader and louder than the preceding; a good seller .....	10	25	1 60
“ <b>Auricula Colors</b> , metallic shades .....	10	20	1 25	“ <b>Emperor William</b> , dark navy-blue, good form .....	10	20	1 25
“ <b>Black</b> , large, true black .....	10	20	1 25	“ <b>Yellow</b> , immense flowers with dark eye .....	10	20	1 25
“ <b>Beaconsfield</b> , upper petals light lavender, lower ones deep rich purple, almost black .....	10	20	1 20	“ <b>Golden Queen</b> , very large, clear golden-yellow .....	10	25	1 75
“ <b>Freja</b> , new, rich, deep purple violet, with a broad white margin, which shows on back of the petals. 10	25	2 00		“ <b>Trimardeau</b> , mixed .....	10	20	1 00
“ <b>President Carnot</b> , new, the ground color is white and each petal is almost covered with a deep, rich velvety blotch of dark violet blue. ....	15	35	2 25	“ <b>Trimardeau Improved</b> , contains all the Trimardeau colors in the right proportions. ....	15	25	1 50
“ <b>President McKinley</b> , new, the ground color is a deep golden-yellow, while each petal has a large blotch of rich dark violet. ....	25	45	3 00	“ <b>Butterfly</b> , a unique mixture. ....	10	20	1 25
“ <b>“Flery Faces”</b> , very rich scarlet with a gold edge and yellow center .....	25	45	3 00	“ <b>Paris Market</b> , an improved strain of Trimardeau, with better flowers and of compact habit .....	10	25	1 50
“ <b>Pink</b> , lovely shades of pink, same as in Hydrangea ..	25	45	3 00	“ <b>Cassier, 3 spotted</b> .....	15	35	2 00
“ <b>Purple</b> , very large, rich deep purple .....	10	20	1 00	“ “ 5 spotted, an A1 strain .....	25	45	3 00
				“ <b>Bugnot</b> , the flowers are of enormous size, perfectly round, of great substance. Our “Bugnot” contains shades of red, bronze and reddish-brown that are not found in other mixtures .....	25	50	3 50

## VAUGHAN'S "GIANT PANSY MIXTURE."

Embraces, besides all the above shades and colors, five special strains not listed elsewhere in this Catalogue and which can only be had in this and our International Pansy. This mixture includes the richest reds, coppers and bronzes, together with the most delicate rose and pink shadings, all the distinct colors of Trimardeau, the splendid Cassier strain with its delicate veinings. We have spared no expense to secure the newest, richest and finest sorts.  
**Price, ¼ lb., \$14.00; oz., \$4.00; ½ oz., 60c.; trade pkt., 25c.**

## VAUGHAN'S PREMIUM PANSIES MIXED.

Embraces all the varieties of the Fancy German Sorts. We have sold this mixture for the past fifteen years and it has given general satisfaction. **Per pkt., 25c.; ½ oz., 80c.; ¼ oz., \$3.00; oz., \$5.50.**

## IMPROVED GERMAN MIXTURE.

This is a mixture of three strains from different German growers, and is made up mostly of separate colors, with a sufficiently large percentage of white and yellow. **Per large pkt., 15c.; ½ oz., 25c.; ¼ oz., 45c.; oz., \$1.50.**

## CHICAGO PARKS BEDDING PANSIES.

	Trade Pkt.	¼ oz.	Oz.		Trade pkt.	¼ oz.	Oz.
Auricula Colors .....	\$0 10	\$0 25	\$0 80	<b>Emperor Frederick</b> .....	\$0 10	\$0 25	\$0 80
Azure Blue .....	10	25	80	<b>Emperor William</b> .....	10	20	70
Baron Rothschild .....	10	25	80	<b>Prince Bismarck</b> .....	10	25	1 00
Black, with Gold Bronze .....	10	25	80	<b>Fire Dragon</b> .....	10	25	1 00
<b>Blood-Red</b> .....	15	35	1 25	<b>Fire Colors</b> .....	10	25	1 00
Blue-Black .....	10	25	1 00	<b>Fire King</b> .....	10	25	1 00
Bronze .....	10	25	80	<b>Golden Gem</b> , pure yellow .....	10	25	75
Brown and Gold .....	10	35	1 20	<b>Gold Margined</b> .....	10	25	80
<b>Cardinal</b> .....	10	35	1 20	<b>Havana Brown</b> .....	10	25	80
Copper Scarlet .....	10	35	1 25	<b>Light Blue</b> .....	10	25	75
Dark Blue .....	10	25	85	<b>Lord Beaconsfield</b> .....	10	25	75
Dark Colors, Mixed .....	10	25	80	<b>Mahogany Colors</b> .....	10	25	85
<b>Dr. Faust</b> , or King of the Blacks. 10	25		80	<b>Meteor</b> , dark red .....	10	35	1 25
				<b>Odie</b> , a choice strain .....	\$0 15	\$0 45	\$1 50
				<b>Peacock</b> , extra fine .....	10	25	1 00
				<b>Red Ridinghood</b> (Pheasant's Eye) .....	10	25	80
				<b>Red Ridinghood</b> .....	10	35	1 20
				<b>Rosy Lilac</b> .....	10	35	
				<b>Silveredge</b> .....	10	25	80
				<b>Snow Queen</b> , pure white .....	10	25	85
				<b>Striped and Mottled</b> .....	10	25	80
				<b>Victoria</b> , red .....	10	35	1 20
				<b>White</b> , black eye ..lb., \$7 00	10	20	70
				<b>Yellow</b> , black eye ..lb., 7 00	10	20	70
				<b>Yellow, pure</b> .....	10	25	75

**CHICAGO PARKS BEDDING PANSIES, "Choice Mixed."**—In many colors. **Pkt., 10c.; ¼ oz., 30c.; oz., \$1.00; 4 ozs., \$3.00.**  
**PANSY SEED.**—Good mixture of many colors, oz., 50c.; 5 ozs. for \$2.00.

**RED MIXED PANSIES** .....

# SWEET PEAS.

Carefully rogued stock from the best growers, who know the true varieties. They will be found TRUE TO NAME.

Any of the following, per oz., 5c., except where noted.

	¼ Lb.	Lb.	5 Lbs.
America, the brightest blood-red striped.....	\$0 10	\$0 30	\$1 25
Apple Blossom, bright rose and pink.....	10	30	1 25
Aurora, white, flaked with orange salmon.....	10	30	1 25
Black Knight, new, deep maroon.....	15	40	
Blanche Burpee, very large white.....	10	35	1 60
Blanche Ferry, pink and white, early.....	10	25	1 00
“ “ extra early, 10 days earlier.....	10	25	1 00
Blushing Beauty, fine pink, hooded form.....	10	30	
Boreatton, very dark maroon, self.....	10	30	
Bride, the best of the whites.....	10	30	1 25
Brilliant, brilliant scarlet, does not burn.....	10	30	1 25
Butterfly, white, edged lavender.....	10	25	
California, very soft, "Daybreak" pink.....	10	30	
Captain of the Blues, purplish mauve.....	10	30	1 25
Captivation, purplish magenta, entirely distinct.....	10	25	
Cardinal, brilliant cardinal-red.....	10	25	
Coquette, primrose yellow, shaded lavender.....	10	30	
Countess, The New, clear lavender.....	10	30	1 25
Countess of Powis, orange suffused with purple.....	10	30	
Countess Cadogan, new, bright shining violet, wings pure sky-blue.....oz., 10c.;	25	85	
Countess of Radnor, delicate lavender.....	10	30	1 25
Crown Princess of Prussia, flesh and salmon buff.....	10	25	1 00
Delight, white crested with crimson.....	10	25	
Dorothy Tennant, deep rosy mauve.....	10	30	1 25
Duchess of Sutherland, pearl white, suffused pink.....	10	30	
Duke of Clarence, brilliant rose scarlet.....	10	25	
Duke of York, rose and primrose.....	10	25	
Duke of Westminster, new, deep rose-maroon, with bright shining violet.....oz., 10c.;	25	85	
Earliest of All, new, from 10 to 14 days earlier than Extra Early Blanche Ferry; standard bright pink, wings white.....	15	35	1 50
Eliza Eckford, white, shaded rosy pink.....	10	30	
Emily Eckford, reddish mauve, wings blue.....	10	25	
Emily Henderson, white, early and free.....	10	30	1 25
Emily Lynch, pink and white.....	10	30	
Fashion, new, soft reddish lavender, deepening at the base.....oz., 10c.;	20	70	
Firefly, rich, brilliant scarlet.....	10	25	1 00
Golden Gate, pinkish mauve and lavender.....	10	30	
Gorgeous, new, salmon-orange.....oz., 10c.;	20	60	
Gray Friar, watered purple on white ground.....	10	25	
Her Majesty, beautiful rose, large.....	10	25	1 00
Hon. F. Bouverie, new, standard coral pink, wings slightly lighter.....oz., 10c.;	20	75	
Indigo King, maroon.....	10	25	
Juanita, white, flaked with lavender.....	10	30	
Katherine Tracy, soft but brilliant pink.....	10	25	1 10
Lady Grisel Hamilton, new, best of all lavender sorts, of best giant-flowered type.....oz., 10c.;	25	75	
Lady Mary Currie, bright orange pink, delicately shaded rosy-lilac, an extra fine sort.....	10	30	1 25
Lady Nina Balfour, pale lavender, free from any reddish tint.....	10	30	
Lady Penzance, standard orange-pink, wings pink.....	10	25	
Lottie Eckford, white, suffused lavender.....	10	25	1 00
Lottie Hutchins, flaked with pink on cream ground.....	10	30	
Lovely, soft shell pink.....	10	30	1 30
Maid of Honor, white, edged violet.....	10	25	1 10
Mars, large, bright scarlet.....	10	25	
Monarch, deep purplish maroon.....	10	25	
Mrs. Dugdale, new, standard lovely rose-shaded primrose, wings primrose shaded rose; very large.....oz., 10c.;	20	70	
Mrs. Eckford, delicate primrose yellow.....	10	30	1 35
Mrs. Jos. Chamberlain, white, striped and flaked rose.....	10	30	
Mrs. Sankey, white, black-seeded.....	10	30	
Navy Blue, new, deep violet-blue.....oz., 10c.;	30	1 00	
Othello, a very dark maroon self-color.....oz., 10c.;	20	60	
Pink Friar, soft carmine, rose on white ground.....	15	40	
Prima Donna, soft pink.....	10	25	1 10
Prince Edward of York, scarlet and rose.....	10	25	1 00
Prince of Wales, new, bright rose self; of intense color, fine form and substance, having 3 and 4 flowers on long stout stems, very unique.....oz., 10c.;	15	50	2 00
Queen Victoria, new, pale yellow.....	10	30	
Ramona, white, splashed pale pink.....	10	25	
Royal Robe, delicate pink.....	10	25	
Royal Rose, bright pink and blush white.....	10	30	1 35

	¼ Lb.	Lb.	5 Lbs.
Sadie Burpee, new, white, white-seeded.....oz., 10c.;	20	60	
“ “ “ black-seeded.....oz., 10c.;	20	65	
Salopian, new, the best of all reds.....	10	25	1 10
Senator, chocolate, striped white.....	10	25	
Sensation, pale pink standards, with white wings.....	10	30	
Shahzada, new, rich dark maroon.....	10	30	
Stanley, rich dark maroon.....	10	30	
Stella Morse, deep cream, shading to primrose.....	10	25	
Triumph, extra large, bright orange-pink, wings white and flushed purple.....	10	30	
Venus, salmon-buff, shaded pink.....	10	25	

## DOUBLE SWEET PEAS.

	Each of above.....	15	40
Bride of Niagara.....			
Lottie Eckford.....			
Apple Blossom.....			
Splendor.....			
White.....			
Captain of the Blues.....			
Butterfly.....			
Duke of Clarence.....			
Senator.....			
Boreatton.....			
Double Sweet Peas, mixed.....	10	30	

## SWEET PEAS IN MIXTURE.

Vaughan's "Prize" Mixture.—This mixture contains the cream of the new and standard sorts. It is made up entirely of new and separate sorts, carefully proportioned as to its composition, and we can safely say, "There is no better general mixture in existence," no matter at what price or under what name it may be offered. Per ¼ lb., 20c.; 1b., 65c.; 5 lbs., \$2.50.

American Seedlings.—This is a mixture of seedlings not yet named. They are the result of crossing and re-crossing the choicest of the new large-flowering varieties, and this seed will produce flowers of the largest size, finest form, and in an endless variety of colors. Per ¼ lb., 10c.; 1b., 30c.; 10 lbs., \$2.50.

Eckford Mixture.—This mixture contains over thirty varieties, including the novelties of 1900 and other choice varieties. Per ¼ lb., 10c.; 1b., 30c.; 10 lbs., \$2.50.

All Colors Mixed.—Also a very good mixture: contains over 20 varieties. Per lb., 20c., 10 lbs., \$1.75.

Bargain Mixture.—We find ourselves with large stocks of some of best named kinds, and have taken a few hundred pounds and mixed them. Per lb., 18c.; 10 lbs., \$1.40.

	Each.....	Per lb., 40c.
White Mixed.....		
Shades of Mauve. Mixed.....		
Striped, Flaked and Clouded. Mixed.....		
Shades of Yellow. Mixed.....		
Scarlet, Magenta, Claret, Maroon. Mixed.....		
Rose and Pink Shades. Mixed.....		

New Sweet Pea, Mont Blanc. Earliest White. Price, per pkt. (50 seeds), 25c.; 3 pkts., 60c.; 6 pkts., \$1.00.

## VERBENA.

	Trade pkt.	¼ Oz.	Oz.
Verbena Hybrida, fine mixed.....	10	15	50
Extra choice mixed.....	10	25	1 00
Fordhook Mammoth, mixed.....	15	25	1 00
Mammoth Mixed.....	15	25	1 00
“ White.....	15		1 25
“ Purely, new brilliant scarlet.....	25		
“ Pink and Carmine shades.....	25	70	
“ Mayflower, best pink.....	25	50	1 75
Candidissima, white.....	15		1 00
Defiance, brightest scarlet.....	10	25	1 00
Striped.....	10	20	80
Dark Blue, with a white eye.....	10	20	75
Purple.....	10	30	1 25
Nana Compacta, dwarf mixed.....	15	35	1 25
Lemon.....	10	30	1 20
Venosa, fine bedder, purple.....	10		30
Lutea, yellow.....	10		

## "Vaughan's Best" Mixture of Verbenas.

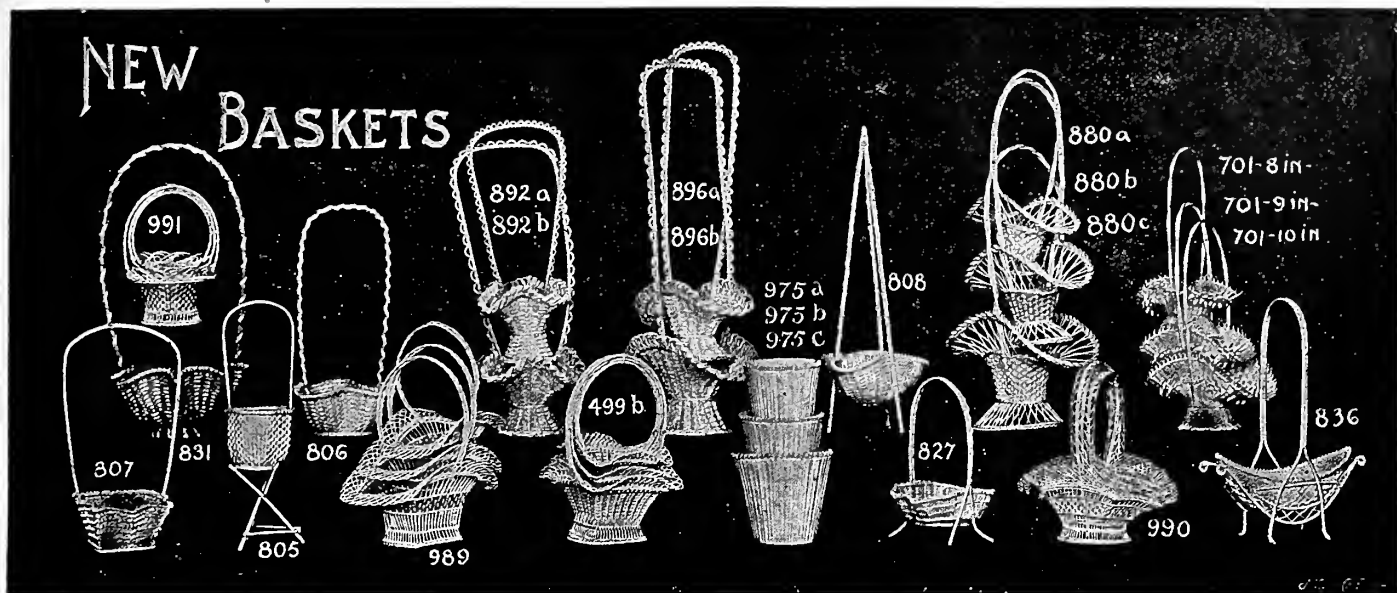
This mixture contains all that is choice and desirable in Verbenas. It includes the Mammoth-Flowered strains of three celebrated Verbena specialists, the beautiful and dazzling Defiance, the Snow-Whites, Purples, Striped and all the Auricula-Flowered varieties, with their large umbels of white-eyed flowers, the New Giant Striped and the Fordhook Mammoth Verbenas. We feel perfectly safe in stating that this mixture of Verbenas will eclipse every other strain offered by any other house.

Oz., \$2.00; ¼ oz., 50c.; trade pkt., 25c.

	Trade Pkt.	Oz.
Viuca Rosea, Rosea Alba, Alba Pura and mixed.....each	15	60
VIOLA Cornuta, mixed.....	¼ oz., 30c.; 10	
Odorata Semperflorens, blue.....	¼ oz., 25c.; 10	1 00
“ The Czar, blue.....	¼ oz., 30c.; 15	
Wahlenbergia Grandiflora, blue.....	¼ oz., 15c.; 10	40
Grandiflora Alba, white.....	¼ oz., 15c.; 10	40
WALLFLOWER, best double mixed.....	¼ oz., 50c.; 25	
Parisian Forcing, blooms the first year from seed.....	10	40
Single mixed, best.....	5	15
Zea Japonica fol. var., Japanese Striped Maize.....	5	10
ZINNIA Elegans fl. pl., double mixed.....	5	20
Elegans Pumila, double-scarlet, golden yellow or white.....each	10	30
Elegans Pumila, double dwarf mixed.....	10	25
Pomponne, finest double mixed.....	10	30
Grandiflora Plenissima (New Giant Mixed).....	10	40
Crested and Curled.....	10	40



# FLOWER BASKETS.



## NOTE REDUCTIONS AND LOW NET PRICES.

We make large importations of all best Florists' stock, and have always on hand a desirable list of **Newest Patterns** as well as all **Standard Styles**. It is impossible to show cuts of all these changing shapes, but customers leaving part of their orders to our own selection may depend on receiving handsome and salable novelties. Note reductions and also net prices.

### NEW STYLES.

No. 840.—Celluloid White, Blue or Pink, 8 inches.....	\$ 80
" 841.—White Braid, 8 inches.....	50
" 842.—Light Brown, 7 inches.....	60
" 843.—White, 5 inches, Pink, Blue or Green.....	60
" 845.—Raffia, 6 inches.....	60
" 846.—Wicker Braided, Pink, Pea Green or Blue, 9½ inches.....	60
" 847.—Raffia, 8 inches.....	55
" 848.—Wicker Braided, Pink, Pea Green, Blue or White, 8 inches.....	50
" 850a.—Wicker Braided, White and Green, high handle, 20 inches.....	1 00
" 850b. Wicker Braided, White and Green, high handle, 18 inches.....	90
" 850c.—Wicker Braided, White and Green, high handle, 16 inches.....	75
" 851.—Wicker Braided, Pink, Pea Green, Blue or White, 7 inches.....	50
" 852.—Pink, Blue and White, 9 inches.....	65
" 853a.—White Willow, 10 inches.....	40
" 853b.— " " 10 inches.....	50
" 854.—Round Raffia, 8 inches.....	95
" 855.— " " 9 inches.....	1 00

### OTHER STANDARD SORTS.

" 770a.—9 inches, dozen, \$2.35.....	22
" 770b.—10 inches, dozen, \$2.65.....	25
" 770c.—11 inches, dozen, \$3.65.....	35
" 880a.—9 inches.....	25
" 880b.—11 inches.....	35
" 880c.—13 inches.....	50
" 805.—High Stand, Pink, Blue or Green, 5 inches.....	45
" 806.—White Braid and Tinsel, 9¼ in.....	75
" 807.—Wicker Braided, Blue or Pink 7 inches.....	60
" 808.—Wicker Braided, with Tinsel, Pink or Green, 8 inches.....	75
" 827.—White Braid, oval, handle, 11 in.....	45
" 828.— " " " 9 in.....	55
" 829.—Square Raffia, " 7½ in.....	60
" 830.—Wicker Braid, Pink or Pea Green, 7 inches.....	45

" 831.—Braid, White and Old Gold, high handle, 11 inches.....	75
" 892 A.—White Braid.....	60
" 892 B.— " " ".....	75
" 896 A.—White Braid.....	60
" 896 B.— " " ".....	75
No. 834.—Braid, White and Old Gold, high handle, 10 inches.....	\$ 70
" 836.—Boat Shaped, with handle, Pink or Pea Green, 10 inches.....	70
" 974.—Rush Hat on Easel, fills handsomely, 10 inch.....	15

### WICKER NESTS.

We import these baskets in large quantities, and can make lowest prices for **fresh, white stock, full measure, best quality**. No baskets can excel them in beauty or salability.

All good shapes, **specially imported by us**. The measures given are those of the smallest size of the nest.

No. 499a.—Fancy Square.....	\$ 1 00
" 499b.— " " nest of 3, pink, or blue, 7 inches.....	1 20
" 559 O.—Fine style, 8 in.....	55
" 559 A.— " " 9 in.....	65
" 559 B.— " " 10 in.....	90
" 844.—White Wicker, 8 inches.....	85
" 832 oval, fine, 10½ in.....	80
" 833 upright style, square, 9½ in.....	80
" 835 oblong, good style, 10¼ in.....	80
" 987 O.—Staudard, 7½ in.....	35
" 987 A.— " " 8½ in.....	40
" 987 B.— " " 9¼ in.....	50
" 987 C.— " " 10½ in.....	65
" 987 D.— " " 11 in.....	75
" 988 " " 10 in.....	75
" 989.—12 inches.....	70
" 990.—12 inches.....	85
" 991.—7 inches.....	55

### WILLOW PLATEAUX.

OVAL.			
16 inch.....	.30	20 inch.....	.45
18 ".....	.38	22 ".....	.55
ROUND.			
14 inch.....	.30	20 inch.....	.45
16 ".....	.33	24 ".....	.60
18 ".....	.38		

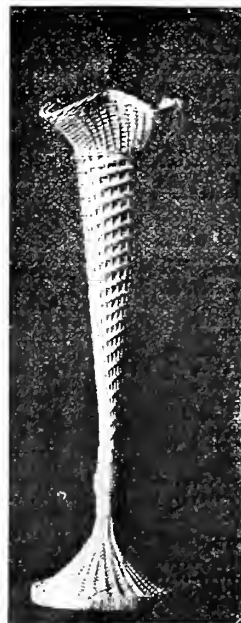
### SWISS MOSS BASKETS.

FRESH WHITE STOCKS; BEST QUALITY.

	GROSS.	DOZEN.
3 inch, plain.....	\$ 2 60	\$ 0 25
3½ " ".....	2 80	28
4 " ".....	3 30	32
5 " ".....	4 75	43
6 " ".....	6 00	55
7 " ".....	8 80	80
8 " ".....	11 00	1 00
9 " ".....	14 00	1 30
6 " Fancy edge.....		1 25
7 " " ".....		1 50
8 " " ".....		1 80

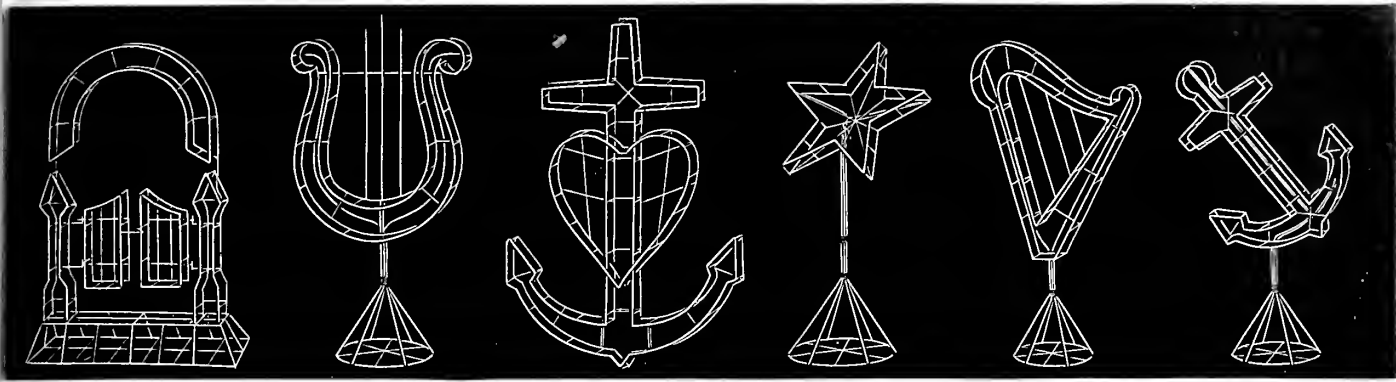
### AMERICAN BEAUTY VASES.

Every retail florist should have a set of these "American Beauty" Vases. When placed in a window, containing a bunch of long stem Roses, Carnations or other flowers, they improve a display one hundred per cent.



	Height	Fa.
Size No. 1.....	19 in.	\$1.75
" 2.....	25 in.	2.25
" 3.....	30 in.	2.45
" 4.....	36 in.	3.50
" 5.....	40 in.	4.50

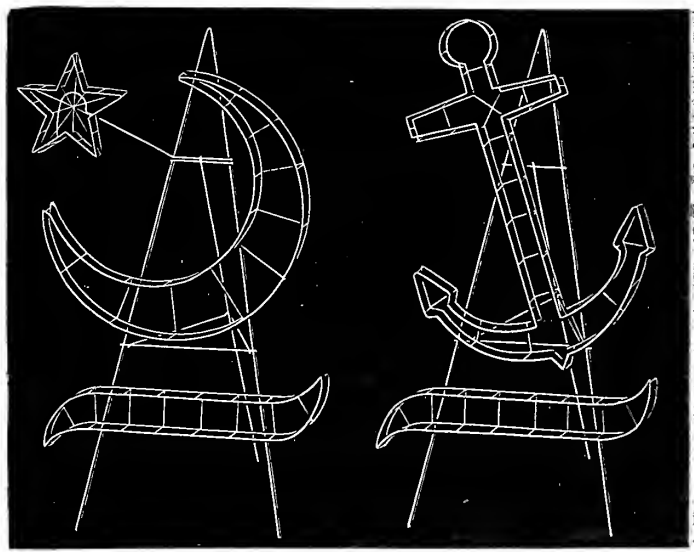




GATES AJAR			
Open Heart—Continued.			
Inch.	Price.	Inch.	Price.
8.....	\$0 15	12.....	\$0 21
10.....	18	14.....	27
ON RECLINING STAND.			
8.....	12	14.....	25
10.....	15	16.....	35
12.....	20	18.....	45
<b>Broken Open Heart.</b>			
WITH SICKLE, ON BASE.			
12.....	45	16.....	55
14.....	50	18.....	65
<b>Hour Glass.</b>			
Half Round. 40   Suspended.... 80			
<b>Horseshoes.</b>			
6.....	05	14.....	13
8.....	07	16.....	16
10.....	09	18.....	20
12.....	11	20.....	25
<b>Keystone.</b>			
FLAT.			
12.....	12	21.....	25
15.....	15	24.....	35
18.....	20		
ON EASEL.			
12.....	20	21.....	40
15.....	25	24.....	50
18.....	30		
<b>Knapsack.</b>			
Ordinary Size.... 65			
<b>Knights of Pythias.</b>			
24..... 2 25   30..... 3 00			
NEW STYLE.			
24.....			1 25
<b>Knights Templar.</b>			
20.....	75	24.....	1 00
<b>Knights of Labor Emblem.</b>			
18.....	25	20.....	30
<b>Ladder.</b>			
WITH FOLDING STAND.			
24.....	45	36.....	65
<b>Letters.</b>			
SINGLE WIRE.			
3.....	01	7.....	03
4.....	01½	8.....	03½
5.....	02	9.....	04
6.....	02½	10.....	05
FLAT, TWO WIRES.			
5.....	06	8.....	10
6.....	08	10.....	12
DOUBLE FRAME.			
5.....	08	10.....	15
6.....	10	12.....	20
8.....	12		
<b>Lovers' Knot.</b>			
SINGLE FRAME.			
24.....	25	36.....	45
DOUBLE FRAME.			
24.....	40	36.....	70
<b>Lyres.</b>			
FLAT.			
Inch.	Price.	Inch.	Price.
10.....	10	18.....	25
12.....	15	21.....	35
15.....	20	24.....	45
ON BASE.			
10.....	18	15.....	35
12.....	21	21.....	45
15.....	25	24.....	65
ON RECLINING STAND, FLAT BASE.			
10.....	15	18.....	30
12.....	18	21.....	40
15.....	24	24.....	50
ON BASE, WITH STAR ABOVE.			
12.....	25	18.....	45
15.....	35	21.....	60
<b>Maccabee.</b>			
WITH TENT IN WREATH, ON EASEL.			
16.....	55	20.....	85
18.....	70		
<b>Lady Maccabee.</b>			
WITH HIVE IN WREATH, ON EASEL.			
16.....	55	20.....	85
18.....	70		
<b>Mandolin.</b>			
18.....	45	24.....	95
21.....	70		
<b>Mantel Basket.</b>			
10.....	09	15.....	14
12.....	11	18.....	18

LYRE ON BASE			
Masonic Design.			
Inch.	Price.	Inch.	Price.
12.....	20	16.....	35
14.....	25	18.....	45
ON BASE.			
12.....	35	16.....	55
14.....	45	18.....	70
<b>Monuments.</b>			
15.....	20	24.....	35
18.....	25	30.....	55
21.....	30	36.....	75
<b>Mystic Shrine.</b>			
ON EASEL.			
14.....	65	18.....	1 00
16.....	85		
<b>Odd Fellows Design.</b>			
FLAT.			
18.....	30	24.....	45
ON BASE.			
18.....	45	24.....	65
<b>Pillows.</b>			
10.....	07	21.....	25
12.....	10	24.....	30
14.....	14	30.....	60
16.....	17	36.....	75
18.....	20		
WITH HEART, STAR OR CROSS ABOVE.			
10.....	17	16.....	30
12.....	20	18.....	35
14.....	25		
WITH LYRE OR HARP ABOVE.			
Inch.	Price.	Inch.	Price.
14.....	30	18.....	45
16.....	35		
WITH GATES AJAR, SINGLE ARCH.			
15.....	70	21.....	1 20
18.....	85	24.....	1 50
DOUBLE ARCH.			
15.....	85	21.....	1 35
18.....	1 00	24.....	1 75
WITH FAITH, HOPE AND CHARITY.			
Separate. Combined.			
18.....	50	18.....	75
<b>Pyramids.</b>			
9.....	10	18.....	20
12.....	12	21.....	25
15.....	15	24.....	30
<b>Rock of Ages.</b>			
32 plain.....	50	32 with basket.....	90
<b>Royal Arcanum.</b>			
24.....			1 75
<b>Scales of Life.</b>			
24.....	80	36.....	1 25
30.....	1 00	42.....	1 75
<b>Scrolls.</b>			
DOUBLE FRAME.			
18.....	45	21.....	65
SINGLE FRAME.			
18.....	30	21.....	45
<b>Shepherd's Crook.</b>			
24.....	25	36.....	45
30.....	35	42.....	55
<b>Sickles.</b>			
FLAT.			
10.....	07	18.....	15
12.....	09	21.....	20
15.....	11	24.....	30
ON BASE.			
10.....	15	18.....	27
12.....	18	21.....	35
15.....	21	24.....	45
ON EASEL.			
12.....	16	18.....	25
15.....	20	21.....	30
<b>Stars.</b>			
FLAT.			
#6.....	03	14.....	11
#8.....	05	16.....	13
10.....	07	18.....	18
12.....	09		
ON STAND SLANTING.			
6.....	06	12.....	12
8.....	08	14.....	16
10.....	10	16.....	25
ON BASE.			
6.....	08	12.....	15
8.....	10	14.....	20
10.....	12	16.....	26

SHIELDS.			
Inch.	Price.	Inch.	Price.
12.....	10	18.....	18
15.....	14	21.....	25
ON BASE.			
12.....	18	18.....	35
15.....	25	21.....	45
<b>Triangle.</b>			
10.....	09	14.....	13
12.....	11	16.....	17
ON BASE.			
10.....	15	14.....	25
12.....	20	16.....	30
<b>Trellises.</b>			
15.....	15	27.....	30
18.....	18	30.....	35
21.....	22	36.....	50
24.....	25		
<b>United Workmen's Design.</b>			
18.....	25	20.....	30
ON BASE.			
18.....	40	20.....	55
<b>Violin.</b>			
18.....	60	24.....	1 00
21.....	75		
<b>Woodman Design.</b>			
LOG, WEDGE, AX AND SLEDGE.			
24.....	1 75	36.....	2 75
30.....	2 15		
<b>Wreaths.</b>			
6.....	01½	11.....	06½
7.....	02½	12.....	07½
8.....	03½	14.....	09
9.....	04½	16.....	10
10.....	05½	18.....	14
ON STAND SLANTING.			
8.....	06	12.....	12
10.....	08	14.....	15
ON BASE.			
8.....	09	12.....	17
10.....	13	14.....	25
WITH BAR.			
10.....	08	14.....	13
12.....	10	16.....	16
WITH REST.			
<b>Double Letters.</b>		<b>Single Letters.</b>	
12.....	40	12.....	16
14.....	50	14.....	23
<b>Wreath Broken with Sickle.</b>			
ON BASE.			
12.....	45	16.....	70
14.....	55	18.....	85
<b>Yoke.</b>			
SINGLE FRAME.			
24.....	35	36.....	55
DOUBLE FRAME.			
24.....	50	30.....	70



STAR AND CRESCENT WITH SCROLL ON EASEL

ANCHOR WITH SCROLL ON EASEL

**IMPORTANT.....**

IF YOU BUY SUPPLIES OF ANY KIND IN LARGE QUANTITIES PLEASE GET OUR NET FIGURES BEFORE PLACING ORDER ELSEWHERE. YOU WILL FIND OUR QUOTATIONS LOW, QUALITY CONSIDERED. x x x x x x x

# REVISED . . . Supplies.

## A. B. C. LIST OF

**NOTICE.**—Prices quoted in this Catalogue are subject to change without notice, owing to the unsteady condition of the market—this applies particularly to Fertilizers, Wire, Tinfoil, etc.

**APRONS, RUBBER.**—These are especially made for us of best quality of Black Sheeting, and are 1½ yards long. Each, \$1.50; 3 for \$4.00; dozen, \$15.00 (6 at a time at dozen rate). If to be sent by mail add 25 cents each extra for postage.

**BARREL CART, Water.**—The best on the market. Each, \$8.00.

**BARREL CART, Water.** Fitted with Myer's Force Pump for spraying orchards. Each, \$14.00.

**BELLOWS, American.** Used for dusting plants with sulphur or like material. Three sizes, each, 50c., 75c., and \$1.00.



**Woodason Liquid Spraying Bellows.** Throws a spray fine as mist, rendering the use of strong solutions perfectly safe on tender plants. Large size, \$2.00; medium size, \$1.40.

**Woodason Powder Bellows.**

Single cone, large, each.....\$1 75 Double cone, each .....\$2 75  
 " " small, " ..... 1-25

**Jumbo Powder Gun,** 20c.; small size, 10c. See also "Sprayers."

## BOOKS.

- Album for Teppich-Gartnerel und Gruppen-Bepflanzung.** With 287 plans for carpet beds, flower and foliage plant groups, 336 illustrations and 947 different ways of planting beds; an elegant, durable cover. Text German; names Latin..... \$3 25
- American Florist, The.** The best paper for the trade; invaluable to every florist. Issued weekly. One year's subscription..... 1 00
- American Florists' Directory.** Every florist should have this..... 2 00
- Art of Propagation.** Treats on trees and plants..... 30
- Asparagus Culture.** (Barnes & Robinson's)..... 50
- Begonia, The Tuberous.** Paper..... 20
- Carnation Culture.** By L. L. Lamborn..... 1 50
- Celery Manual, Vaughan's.** 59 pages..... 50
- Chrysanthemum Culture.** By James Morton. Cloth, \$1.00; paper, 60
- Fertilizers.** J. J. Gregory. Paper..... 40
- Fertilizers.** By Prof. Voorhees, the best book on this important subject written in an easy, comprehensible style..... 1 00
- Floral Designs, Album of.** Long's..... 2 00
- Flower Bulbs.** By Rexford..... 25
- Gardening for Profit.** Henderson's. Cloth..... 1 50
- Grape Growing and Wine Making, American.** By Husman. Illustrated..... 1 50
- Greenhouse Construction.** By L. R. Taft. All the best and most improved structures are fully and clearly described, and over 100 illustrations are given. Cloth..... 1 50
- Hand Book of Plants.** Henderson's. Latest edition..... 3 00
- Horticulturists' Rule Book.** This book contains more valuable information to the square inch than many entire books. By L. H. Bailey. Cloth..... 75
- House Plants.** By Hillhouse. Cloth..... 1 00
- How to Destroy Insects on Plants, etc.**..... 40
- How to Grow Cut Flowers.** By the late M. A. Hunt. 225 pages; cloth. Covers every department, from the erection of the greenhouse to the packing of the product..... 1 75
- Insects and Insecticides.** By Weed. Cloth. Revised edition... 1 50
- Landscape Gardening.** By Waugh. Paper cover..... 50
- Manures, Talks on.** By Joseph Harris. Revised edition. Cloth... 1 50
- Method of Making Manure.** Bommer..... 25
- Mushroom Culture.** Robinson's. Illustrated. Cloth..... 50
- Mushrooms, How to Grow Them.** By Wm. Falconer. Cloth... 1 00
- " How to Grow.** By Fraser. Paper cover..... 10
- Practical Floriculture.** By Henderson..... 1 50
- Small Fruits.** By Fuller. Cloth cover..... 1 50
- Success in Market Gardening.** Rawson's..... 1 00
- The Rose.** By H. B. Ellwanger..... 1 25
- Tobacco Culture.** Paper cover..... 25
- Wallace's Notes on Lilies.** Illustrated. Cloth, 215 pages..... 2 00
- Ve Narcissus.** Beautifully illustrated..... 35

For other Books, see Retail Catalogue.

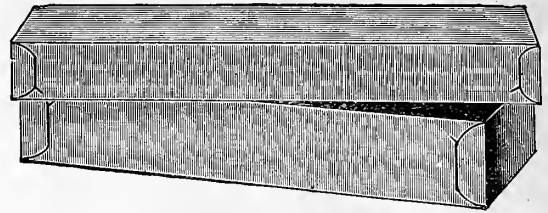
### BOUQUET PAPERS. Fancy Italians.

Measure does not include lace. Many fine new patterns; 12 scallops.

	Doz.	Gro.		Doz.	Gro.
3 inch.....	50	\$2 25	5 inch.....	\$3 40	\$3 85
3½ ".....	27	2 65	5½ ".....	45	4 75
4 ".....	30	3 00	7 ".....	70	7 50
4½ ".....	35	3 30			

### FOLDING FLOWER BOXES.

The Best Box in the Market for the Purpose.



Waterproof, double, manilla-lined strawboard and are shipped flat; packed 100 in a package. An extra charge of \$1.00 for printing card on an order for 100 to 1000 boxes of assorted sizes. We have on hand a good assortment of these in plain style and can fill orders for same in short time. If required printed, this usually takes about a week after order is received.

Shipped from Chicago.

If wanted shipped from New York City please write our New York House for list of sizes and prices.

	Size in inches.	Per 100.		Size in inches.	Per 100.
No. 5.	3x12x5.....	\$1 60	No. 10.	6x18x3½.....	\$2 70
No. 6.	5x15x3.....	1 80	No. 12.	7x18x3½.....	3 25
No. 7.	5x18x3.....	2 20	No. 13.	7x21x3½.....	3 60

We do not sell less than 100 of a kind of above.

### Extra Heavy Boxes for Shipping.

No. 17.	8x21x4.....	\$4 35	No. 22.	8x28x5.....	\$ 6 25
No. 18.	8x24x4.....	4 70	No. 23.	8x35x5.....	7 55
No. 19.	8x28x4.....	5 25	No. 24.	12x30x7.....	10 00
No. 21.	8x24x5.....	5 60			

### Floral Design Boxes.

No. 26.	12x23x5.....	\$5 00	No. 28.	17x26x6.....	\$10 50
No. 27.	20x20x6.....	8 90			

### VIOLET BOXES.

3½x8x4.....	\$1 50	2¾x6½x3¾.....	\$1 25
-------------	--------	---------------	--------

**BROMUS BRIZAEFORMIS.** Used in wreaths, bouquets, etc.

**Sunbleached**.....large, per lb., 35c.; 10 lbs., \$3 00  
**Colored**.....per lb., 60

**CAPE FLOWERS.** { Pure White. Extra fine quality .....\$1 25  
 { Colored. Bright shades..... 1 50

**CANE STAKES, BAMBOO.** (See Plant Stakes.)

**COCOANUT FIBRE.** For Ferns, etc. ½ bbl. \$2.25; bbl..... 4 00

**COCOANUT BARK.** For the manufacture of artificial palms, 10 lbs., \$2.50; 50 lbs., \$10.00; 100 lbs., \$17.50; full bale (250 lbs.).....30 00

**COTTON WADDING.** For packing flowers, etc. **White**.....per dozen sheets, 30c.; per bale, 9 90  
**Colored (black)**..... 25c.; " 8 50

**DANDELION PULLER, Whitnall's.** Each, 25c.; postpaid, 40  
**" English.** The best tool of its kind; made of best steel.....Each, 50c.; dozen, 5 00



### VAUGHAN'S FLEXIBLE DOVES.

We offer this new style dove to the trade with confidence. The wings are set in such a manner that by bending they can be made to assume different positions. We are in a position to fill orders promptly and at low prices offered below.

We carry an excellent stock and give greatest care to packing. Please order by number, indicating position. Special prices for quantity made on application. **First-class Birds.** Perfect in every way; on stands. Each, \$1.00; 6 for \$5.50; 8 or more at the rate of \$10.00 per dozen.

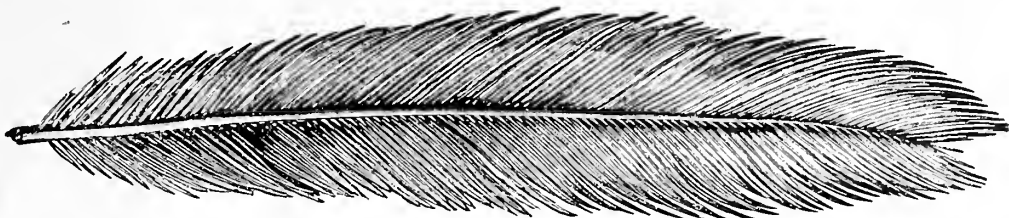
**DIBBER.** For transplanting vegetable plants; steel point; very desirable. Each, 30c; postpaid, 40c.



<b>FAIRY FLOWERS</b> {	Pure White.....	Doz. \$0 20	100. \$0 80	1000. \$6 50
	Colored.....	25	1 10	9 00

**PREPARED CYCAS LEAVES.**

	Each Doz.	\$0 10	\$1 00
14 to 16 inches long	10		
16 to 20 " "	12	1	20
20 to 24 " "	15	1	50
24 to 28 " "	18	1	75
28 to 30 " "	18	1	85
30 to 33 " "	20	2	00
33 to 36 " "	20	2	15
36 to 39 " "	22	2	30
39 to 42 " "	25	2	70



**FERTILIZERS.**

The necessary elements of plant food which are likely to be exhausted are Nitrogen, Phosphoric Acid and Potash. Barnyard manure and Commercial Fertilizers both contain these elements. Commercial Fertilizers contain them in more concentrated, available, better balanced form. Barnyard manure is out of balance—does not contain enough of the mineral elements. There are great differences in Fertilizers as there are in every kind of merchandise.

Prices on Fertilizers are net cash.

**VAUGHAN'S "ROSE GROWER" BONE MEAL.**

This is a special brand we have put up for our trade. It is ground fine, hence acts quickly. It is made from bone accumulated in large slaughter houses, and should not be compared with Bone Meal made from cattle heads and feet gathered on the western prairies. Our "Rose Grower" bone has been slightly steamed to soften it so it can be ground fine, and is thus quicker in its action. A finely ground bone can also be more evenly distributed through the soil. ANALYSIS.—Ammonia, 4 1/2 to 5 1/2 per cent. Total phosphoric acid, 22 to 25 per cent. Total bone phosphate, 48 to 54 per cent.

**PRICE. F. O. B. Chicago.** 5 lbs., 25c.; 10 lbs., 40c.; 25 lbs., 60c.; 50 lbs., \$1.00; 100 lbs., \$2.00; 200 lbs., \$3.50; 500 lbs., \$8.00; 1000 lbs., \$15.00; 2000 lbs., \$30.00.

**F. O. B. New York.** 25 lbs., 70c.; 50 lbs., \$1.20; 100 lbs., \$2.40; 200 lbs., \$4.25; 500 lbs., \$9.75; 1000 lbs., \$18.50; 2000 lbs., \$37.00.

**BONE MEAL, Regular Grade.** A good article.

Price. F. o. b. Chicago. 25 lbs., 50c.; 50 lbs., 85c.; 100 lbs., \$1.65; 200 lbs., \$3.00; 500 lbs., \$7.00; 1000 lbs., \$14.00; 2000 lbs., \$27.00.

F. o. b. New York. 25 lbs., 60c.; 50 lbs., \$1.05; 100 lbs., \$2.10; 200 lbs., \$3.80; 500 lbs., \$8.90; 1000 lbs., \$17.50; 2000 lbs., \$34.00.

**LAWN FERTILIZER.**

Price. F. o. b. Chicago. 25 lbs., 75c.; 50 lbs., \$1.25; 100 lbs., \$2.25; 300 lbs., \$6.00; 500 lbs., \$9.50; 1000 lbs., \$18.50; 2000 lbs., \$37.50.

F. o. b. New York. 25 lbs., 85c.; 50 lbs., \$1.45; 100 lbs., \$2.65; 300 lbs., \$7.20; 500 lbs., \$11.25; 1000 lbs., \$26.00; 2000 lbs., \$45.00.

**Lobos Peruvian Guano.** 5 lbs., 40c.; 10 lbs., 60c.; 25 lbs., \$1.00; 100 lbs., \$3.50. Write for prices on larger lots.

**Nitrate of Soda.** 10 lbs., 50c.; 25 lbs., \$1.00; 100 lbs., \$3.00; 200 lbs., \$5.50.

**Horn Shavings.** 5 lbs., 40c.; 10 lbs., 60c.; 25 lbs., \$1.00; 100 lbs., \$3.50.

**Unleached Hardwood Ashes.** Per 100 lbs., \$1.00; 500 lbs., \$4.50; 1000 lbs., \$8.50.

**VAUGHAN'S SHEEP MANURE.**



From Sheep fed on grain in covered barns. An ideal Fertilizer for all uses. Rich in plant food. No germs of wild seeds. Machine dried, no shrinkage. Ground to a uniform fineness.

Price. F. o. b. Chicago. 25 lbs., 35c.; 50 lbs., 60c.; 100 lbs., \$1.00; 500 lbs., \$4.00; 1000 lbs., \$7.50; 2000 lbs., \$14.00.

F. o. b. New York. 25 lbs., 45c.; 50 lbs., 75c.; 100 lbs., \$1.30; 500 lbs., \$5.40; 1000 lbs., \$10.50; 2000 lbs., \$20.00.

**Clay's Fertilizer.** This valuable imported manure is especially recommended. 5 lbs., 50c.; 10 lbs., 80c.; 25 lbs., \$1.80; 50 lbs., \$3.25; 100 lbs., \$6.25. If shipped from New York, \$5.75.

**Sulphate of Potash.** 100 lbs., \$3.50; 200 lbs., \$6.75; 500 lbs., \$15.00.

**Muriate of Potash.** 100 lbs., \$3.00; 200 lbs., \$5.80; 500 lbs., \$13.75.

**Bone, Blood and Potash.** This is our best brand of concentrated manure, excellent for mixing into potting soil or as a top dressing. It is a money-maker. For potting soil use about 20 lbs. to a cubic yard of soil, and for top dressing scatter it on about as thick as lawn grass is sown, after loosening the surface of the soil. It is excellent for Carnations if applied by the end of October or in November. It can also be applied as a liquid manure by using an 8 inch potful to a barrel of water. Price, 25 lbs., 70c.; 50 lbs., \$1.25; 100 lbs., \$2.00; 200 lbs., \$3.75.

**VAUGHAN'S CONCENTRATED FLOWER FOOD.**



Handsome packages with lithographed labels and directions for using. Is one of the best selling articles a florist can have in his store. Per doz. 1/2-lb. packages, \$1.15 each, 12c.; doz. 1-lb. packages, \$2.00; each, 20c.

**BOWKER'S PLANT FOOD.**

1/2-lb. package, each, 12c.; doz.....\$1 15  
1 " " " 20c.; " ..... 2 15

**DRIED FERNs.** Hartford. Per doz. packages, \$3 00; package of 1 doz..... 30  
Maidenhair. Doz..... 30

**FLOWER GATHERER.** English, nickel-plated, 7-inch, \$1.10; 8-inch..... 1 25

**FUMIGATORS.**

No. 1. Eureka, galvanized, holds 1/2 peck of stems.....\$1 25  
No. 2. " " " 1 " " ..... 1 85  
No. 3. " " " 1/2 bush. " ..... 2 50  
No. 4. " " " 3/4 " " ..... 3 25



**EXTRA HEAVY BRAIDED GARDEN LINE.**

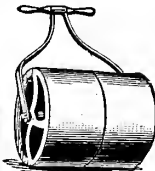


Per 100 ft., 50c; by mail, 60c :  
1,000 ft., \$5.50.



**GARDEN LINE REEL.** Each .....\$0 50

**GARDEN ROLLERS.**

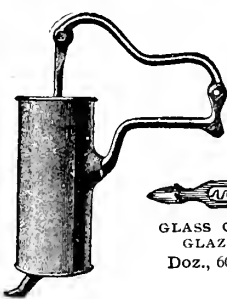


	Diameter.	Face.	Weight.	
1-section.....	20 in.....	20 in.....	250 lbs.....	\$12 00
3 " " " " " "	24 " " " " " "	20 " " " " " "	300 " " " " " "	12 50
2 " " " " " "	20 " " " " " "	20 " " " " " "	300 " " " " " "	12 50
2 " " " " " "	24 " " " " " "	24 " " " " " "	400 " " " " " "	16 00
2 " " " " " "	28 " " " " " "	24 " " " " " "	500 " " " " " "	20 00

Prices subject to advance. Other sizes quoted on application.

**GARDEN ROLLER.** application.

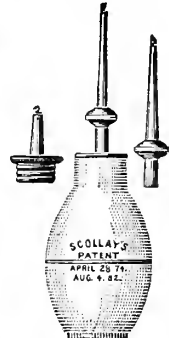
**GLAZING TOOLS AND MATERIALS.**



**GLASS CUTTER AND GLAZING TOOL.**  
Doz., 60c.; each, 7c.



**DIAMOND GLASS CUTTER.** PUTTY BULB.



**MASTICA MACHINE.** Both at Chicago and New York we are headquarters for Mastica jobbing at lowest rates in quantity.

**MASTICA, for Glazing Greenhouses.** The use of "Mastica" avoids the necessity of repeatedly reglazing the houses, saving much time and expense. With "Mastica" can be in or use outside, with a machine. Broken glass can be easily removed and replaced by new without the breakage of other glass, which usually occurs with hard putty. One gallon will cover about 296 running feet (one side). Price, per gal., \$1.25; 6 gals., \$7.00; 10 gals., \$11.25; 22 gals.....\$23 40  
**Mastica Machine.** Each, \$1.25; 5 for ..... 5 50  
**Diamond Glass Cutter.** With guide wheel. Each..... 3 00  
**Glass Cutter and Glazing Tool.** Doz., 60c.; each..... 07  
**Putty Knife.** No 120. A very good tool. Each, 25c.; 3 for..... 65  
**Scollay's Putty Bulb.** A useful tool, similar to the well-known Scollay Sprinkler, with a tube instead of spray for applying liquid putty in glazing greenhouses. Each, 75c.; 3 for \$2.15; doz..... 8.50  
If by mail add 10c. each for postage.

**Twemlow's Old English Glazing Putty.** Semi-liquid. To be used in same manner as Mastica. Per gallon..... 1 25



- Persian Insect Powder, Pure.**—Lb., 40c.; by mail, 50c.; 5 lbs... \$1 85
- Paris Green.**—5 lbs., \$1.00; per lb., 25c., by mail, 35c.; ¼-lb., 10c.; ½-lb. 15
- SLUG SHOT, Hammond's.**—GUARANTEED to destroy Potato Bugs and and those on Tomato and Egg Plants, Currant worms, Cabbage lice and worms, fleas, beetles and striped bugs on melons, turnips, beets, onions, etc., canker worms and caterpillars on fruit and ornamental trees. Price, 5 and 10 lb. packages, 6c. per lb.; 25 and 50 lbs., at 4½c. per lb.
- Slug Shot Duster.**—Made of tin, with handle and perforated bottom, holds ½-gallon..... 35
- Nicto Naptio,** to kill chicken lice, per box..... 25
- Lemon Oil.**—Destroys mealy bug, scale, thrip, red spider, etc. ½-pint, 25c.; p'nt, 40c.; quart, 75c.; ½-gallon, \$1.25; gallon, \$2.00; 5 gallons..... 9 00
- Kerosene Emulsion.**—For plant lice of any kind, cabbage worms, scale, insects on trees, etc. 2-quart can..... 35
- Tobacco Soap.**—One of the best for green fly on roses. Per ½-lb. box, 20c.; by mail 25c.; dozen \$2.00; 2-ounce packages, dozen, 85c.; a splendid article for retailing, sells at 10c. per package.
- "ROSE-LEAF" INSECTICIDE, Extract of Tobacco.**
  - Pint can..... 30
  - Quart can..... 50
  - One-gallon can..... 1 25
  - Five-gallon can..... 4 25
- Fir Tree Oil Soap.**—For thrip, red spider, black and green fly, mealy bug, worms and slugs. Per ½-lb. tin, 25c.; by mail..... 30
- Whale Oil Soap.**—Makes an excellent wash for trees and plants where insects and eggs affect the bark. Per lb., 15c.; 2-lbs., 25c.; 5-lbs., 50c.; 8-lbs., 75c.; by mail add 10c. per lb.
- NIKOTEEN.**—Specially prepared for use in greenhouses and conservatories. Pint, \$1.50; 3 pints..... 4 25
- "How to Destroy Insects"** on plants and flowers in the garden and the house. A useful book..... 40

**IMMORTELLES.**



We have a large stock of these on hand and can supply at bottom rates. If shipped from New-York we will allow \$1.00 per full case of 125 bunches.

**COLORED.** { White, purple, bright scar-  
let, pink, blue, light green.  
Price, per bunch, 30c.; 3 bunches, 80c.;  
doz., \$3.35; 50 bunches, \$13.25; 100 bunches,  
\$26.00.

**NATURAL** { Per bunch, 25c.; doz., \$2.85,  
(Yellow) 50 bunches, \$11.50; per 100  
bunches, \$22.50.

**KNIVES.**

- Asparagus.**—English imported, with saw edge..... \$ 1 00
- American** ..... 35
- Budding.**—Imported, black handle, ivory tip..... 75
- Saynor.**—Ivory handle.....Per doz., \$11.00; 1 00
- Propagating.**—Saynor, ivory handle.....Per doz, \$11 00; 1 00
- Vaughan's Florists.**—75c.; 3 for \$2.10; 6 for..... 4 00
- Saynor.**—Ivory handle, two bladed (budding and propagating)..... 1 50
- Pruning.**—Stag handle, English No. 1..... 1 00
- Stag Handle.**—English No. 2..... 1 25
- German,** extra strong ..... 60
- Two-bladed,** stag handle with pruning and budding blade..... 1 25
- Three-bladed,** stag handle with pruning and budding blade..... 1 25
- Putty Knife.**—No. 120, a very good tool. Each, 25c.; 3 for 65c.

**LABELS, POT AND TREE.**

We now carry the best quality of wooden labels made in this country. They are smooth, strong and neat. Samples free.



**Pot Labels.**

In lots of 5,000 we allow a discount of 5 per cent.		Per 1000	
Wooden, 4-inch, plain.....	10,000, \$4.00;	Plain.	Painted.
" 4 " painted.....	10,000, 6.00;	\$0 50	
" 5 " .....		70	85
" 6 " .....		90	1 25
" 8 " .....		2 50	3 25
" 10 " .....			3 50
" 12 " .....		3 50	4 50
" 3½ " notched, tree labels.....		30	60
" 3½ " iron wired " .....		70	90

**Copper Labels,** wired, indestructible.....per 100, \$1 00.  
larger size, per 100, \$1.25. (See under "P" for Indelible Pencil.)

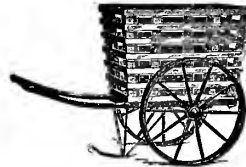
**Glass Tubes,** flat for labels.....per doz., 25c.; 100, \$2.00.

**Leaf Mould.**—For Ferns, etc., clean stock, 6 bbls., \$5.00; per bbl, \$1.00.



**FINLEY ROTARY LAWN RAKE.**

A thoroughly durable and reliable machine, to follow the lawn mower. It takes up all the grass, either long or short, twigs, leaves and small loose litter of any kind, stones included, that a hand rake would not touch. A man can rake three times as fast as with a hand rake. A child can run it. Price, 20-inch, \$12.00; 14-inch, \$10.00. If shipped from New York, 50c. each extra.



**LEAF CART.** This is a hand cart frame with a very light wood rack, designed for carrying leaves and other light material. The rack is adjustable, is 30 inches high and made of elm dressed ¼ inch thick. Wheels are 30 inches in diameter. Bottom of rack or deck of cart 20x32 inches. Price, \$11.25.

**LETTERS AND LETTERING.**

**IMMORTELLE LETTERING.**

We can supply purple, red and any leading color.

**Lettering.**—Per yard, 30c.; 4-yard package, 90c.; 6 packages of 4 yards each, \$5.00.

**Letters and Figures.**—1½ inches, or 2 inches in length, 3c. each; 100, \$2.75; 200 or more at one time, per letter, 2½c.

**Boston Florist's Letters and Figures.**—Patent fastener with each letter; 1½ to 2 inches. Per 100, \$2.00.

**Boston Script Letters.**—Neatest and most correct ever made. Can supply the following words: **Asleep, Baby, Husband, Wife, Grandpa, Grandma, Father, Mother, Brother, Sister, Rest, At Rest, Our, My, Finis and Friend.** Price, per letter, each, 4c.

**Felt or Ribbon Letters.**—Can be easily pasted on ribbon of any kind, and used when letters of other make are not available. Per 100 letters, \$1.25.

**CHENILLE LETTERING.**

**Silk.**—Purple, scarlet, pink, light blue, yellow and white at 75c. per package of 12 yards; \$7.50 per dozen packages.

**Worsted, Large.**—Purple, pink, scarlet, light and dark blue, white or yellow. 12 yards, 30c.; per gross, \$2.25.

**Worsted, Small.**—Same colors as above. 12 yards, 25c.; per gross, \$2.00.

**Screw Chenille, Large.**—12 yards, 30c.; gross, \$2.75 in colors.

**MASTICA,** see "Glazing Tools."

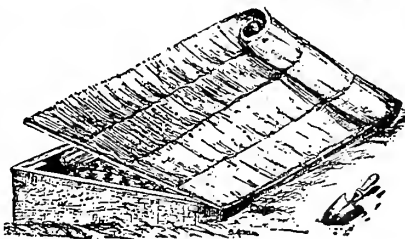
**MATCH STICKS.**

Per 1,000, 5-inch, 50c.; 12-inch, 75c.; 18-inch ..... \$1 00  
Packages contain 250 sticks. We do not break packages.

**Mole Trap, Dean's Automatic Setting.** Gives good satisfaction, Each..... 75

**MATS—HOT-BED.**

Rattan. Singapore Fibre.



This Hot-Bed Mat is mouse and rot proof and almost indestructible. It is made of an air-holding, flexible cane fibre, firmly put together and weighs about 30 lbs. It is without a doubt the best and most durable and hence economical Mat and only little more expensive than straw mats, the defects of which are only too well known. Size 6 feet 2 inches long by 6 feet wide.

Price, each, \$2.00; 5 for \$9.50

**MOSS.**—French green, in square packages. Pkg., 10c.; per doz., \$1.00; per 100..... 7 00

**Sheet Moss.**—Thin; for windows and baskets; barrel or sack containing same amount..... 2 00

**Moss Wreaths.**—Bright green, good sellers, 10-inch, each, 12c., doz., \$1.25; 12-inch, each, 15c.; doz., \$1.50; 14-inch, each, 17c.; doz., \$1.75.



"VAUGHAN'S FLORISTS" (German Propagating) Knife. Each, 75c.; 3 for \$2.10.





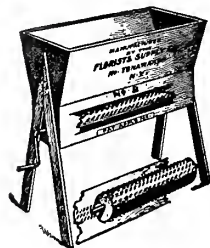


**SPHAGNUM FOR FLORISTS.**

Strictly best grade, clean, hand picked Moss. Special price on larger lots.  
**Burlap Bales.** Each, \$1.00;  
 6 for \$5.00; 10 for \$8 00



**SOD CRUSHER.**



These sod crushers are excellent machines for crushing seed and mixing soil.

**No. 1 Machine,** total height, 3½ feet; height of box, 18 inches; width, 20 inches; length, 24 inches. Price, in N. Y., \$10.00; in Chicago, \$10.60.

**SOD LIFTER,** wooden handle. Each, \$2.50.

**SYRINGES—Brass.**

No. O.	Length	Diameter	Each.
A.	12½ inches	1 5-16 inches	\$ 1 90
B.	Larger, 13½ inches long	1 3-16 inches	2 50
C.	14½ inches long	1 5-16 inches	3 00
D.	15½ inches long	1½ inches	3 50
5.	Best for general Greenhouse use		5 50
11.	14 inches long	1 inch	3 00
<b>English Brass,</b> 18 inches long, 1 stream, 2 sprays, like No. 5.			4 00
<b>Brass, for insecticides</b>			1 65



**THERMOMETERS.**

Thermometers cannot be sent by mail.

<b>Tin Case,</b> 8-inch, each 12c., 12 for \$1.20; 10-inch, each 15c.; doz.....	\$ 1 60
<b>Cabinet.</b> Wood case and metal face. 3 for \$1.00; each.....	40
<b>Imported German.</b> All glass, for propagating bed. Each.....	85
<b>Self-Registering.</b> With magnet, 8-inch. Each.....	2 50
<b>Minimum.</b> For registering cold during absence and showing present temperature. Each.....	1 40
<b>Hot Bed (Mushroom).</b> Brass point, wood frame. Each.....	1 50

**THISTLE CUTTER.**—Narrow blade, with handle, for removing thistles or weeds from lawns. With foot rest..... 50

**TIN FOIL**

Write for Latest Market Quotations on Quantities.

<b>TIN FOIL.—Terms Cash.</b> Cartage free.	
<b>Florist's Foil.</b> —5 or 7-inch, 2 lbs., 25c.; 10 lbs., \$1.00; 50 lbs., \$4.50; 100 lbs.....	8 75
<b>Silk Finish Foil.</b> —Per lb., 25c.; 10 lbs.....	2 25
<b>Violet Foil.</b> —Per lb., 55c.; 5 lbs., \$2.55; 10 lbs.....	5 00

**WIRED TOOTH PICKS.**—Something new—A time and money saver.

These are put up in boxes containing 20,000 wired picks ready for use. Price \$2.00 per box. In order to introduce these Picks we will break boxes and furnish them in lots of 1000 or over, at 15c. per 1000; postage, 4c. per 1000.

**TOOTH PICKS.**—Cutter, Tower & Co.'s. They are pointed both ways, and Florists who have used them will have no other. We keep only first quality. 1 box, 10c.; 3 boxes, 25c.; 7 boxes, 50c.; 17 boxes, \$1.00; 35 boxes, \$2.00; 1 case (100 boxes)..... \$ 5 00

**TRELLISES.**

**Fan-Shaped.**—18-inch, 15c., 3 for 40c.; 24-inch, 25c., 3 for 50c.; 30-inch, 25c., 3 for 60c.; 3½ feet, 21-inch wide, 40c.; 4 feet, 27-inch wide, 50c.; 5 feet, 32-inch wide, 60c.; 6 feet, 38-inch wide, 70c.; 7 feet, 42-inch wide, 80c.  
**Veranda.**—18-inch wide, 5 feet, 55c., 6 feet, 65c., 7 feet, 75c.; 8 feet, \$1.00; 9 feet, \$1.10; 10 feet, \$1.25.

**TREE PRUNERS.**

<b>Water's.</b> —See cut.) Length of pole, 4 feet, 50c.; 6 feet, 75c.; 8 feet, 90c.; 10 feet, \$1.00; 12 feet, \$1.10. Extra blades, each.....	20
<b>Lee's Pole Tree Pruner.</b> —Can be placed on a pole of any size. Price, each, (without pole.).....	1 00
Extra spring, each.....	15

**TROWELS.**

<b>Vaughan's Steel.</b> —Absolutely the best Trowel in the World. It is one solid piece of steel, and will outwear several of the ordinary sort. Each 50c., 3 for \$1.40. Postpaid, each.....	60
<b>Cleve's Angular</b>	
Small.....\$0 15	
Large..... 20	



**Ordinary Garden Trowel.**—6-inch, 5c.; prepaid, 10c.; half doz., not prepaid, 25c.; 7-inch, each, 8c.; prepaid, 12c.; half doz., not prepaid, 50c.; 8-inch, 10c.; prepaid, 15c.; half doz., not prepaid..... \$ 60  
**English Steel.**—An excellent trowel, neat and very durable. 6-inch. Each, 20c.; 3 for 55c.; dozen..... 2 00

**COLUMBIAN FLOWER TUBS.**

12x11 inches.....each, \$0 90	4 for.....	\$3 35
15x14 "....." 1 35	4 ".....	5 00
18x16½ "....." 1 75	4 ".....	6 30
21x18½ "....." 2 20	4 ".....	8 00
24x20½ "....." 2 60	4 ".....	9 25



Natural varnish finish on the wood or painted green or red-brown

**UNION CYPRESS FLOWER TUBS.**

An excellent new tub, cheap, neat and durable. Made from ¾-inch cypress, with iron handles and feet, 3 iron hoops and 2 coats of green paint.



No. 1. 13½ in. diam, 11 in. high.	Each.....	\$0 60;	4 for \$2 20
" 2. 14 " " 13 " "	".....	90;	4 for 3 25
" 3. 16 " " 15 " "	".....	1 20;	4 for 4 40
" 4. 20 " " 18 " "	".....	1 80;	4 for 6 60
" 5. 24 " " 20 " "	".....	2 40;	4 for 8 60

**TURF EDGER, American.** Each.....\$0 50

**TWEEZERS.**—4-inch, 10c.; 5-inch, 15c.; 6-inch, 20c.; 7-inch, large..... 25



TURF EDGER.

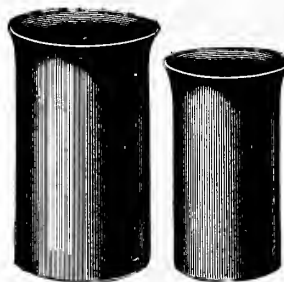
**TWINE.**

**"THE QUEEN" White Cotton Twine,** for tying parcels, flowers, &c.; put up in 5 lb. sacks, price..... \$ 1 00  
**FLORISTS' THREAD,** similar to Silkline. Sample on application, 2-oz. spools, 15c.; doz..... 1 50  
**Hemp, No. 18,** for parcels. Per lb..... 25  
**Linen,** red and white, best for training Smilax (4 balls to pound). 3-lb. package, \$1.25; per lb..... 45  
**Green,** for packages, very strong. Per lb..... 55  
**Jute,** for bunching, 2 or 3 ply, per lb., 12c.; 10 lbs., \$1.10; per 100 lbs..... 10 50

**Florists' Glazed Fibre Vases.**

**BELL TOP.**

Furnished in deep, rich brown glaze, absolutely waterproof. Largely used for displaying cut-flowers. Can be used for many purposes. More desirable than glass or earthen, because they are light, strong and will not break if dropped. They pay for themselves in a short time.



No.	1, depth	11 inches.	Top 7¼ inches.	Bottom 6 inches.....	Each.	Per doz.
" 1.	11	9½	6	4¾	\$0 30	\$3 25
" 2.	11	9½	6	4¾	28	2 85
" 3.	11	9½	6	4¾	25	2 40
" 4.	11	9½	6	4¾	20	1 80
" 11.	11	18	6	4¾	40	4 15
" 22.	11	15	6	4¾	35	3 70
" 33.	11	12	6	4¾	30	3 25
" 0.	11	13	8¼	6¼	35	3 75
" 00.	11	21½	11	9	65	7 00

**SAUCERS (For Flower Pots and Vases.)**

6 inches diameter, 1½ inches deep.....	7	60
8 " " " 1½ " "	8	70
10 " " " 1½ " "	9	80
12 " " " 2 " "	10	90

**Vases, Iron,** for graves. Small, 25c.; medium, 30c.; large..... \$0 35

**T CLARA CEMETERY VASE.**

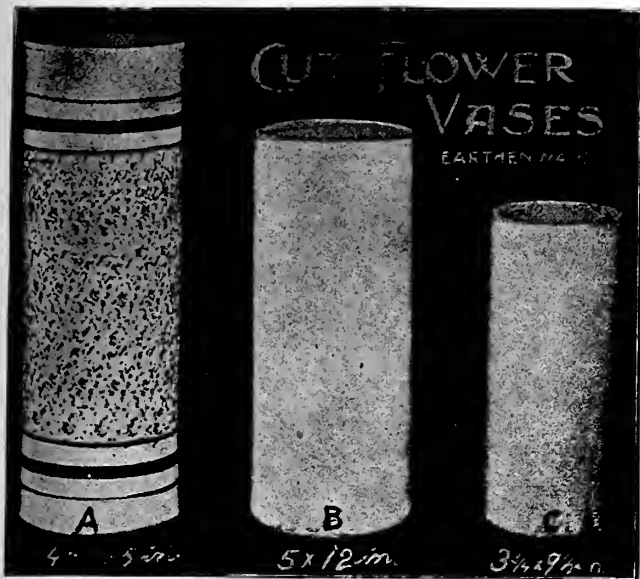
It is one of the most useful as well as handsome articles ever placed on the market. Of beautiful solid mounted glass, 12 inches high. It takes the place of all the old tin cans, bottles, and like unsightly receptacles often used in the cemetery where only the attractive and ornamental should be seen. The lower end is sharp-pointed so it can be embedded about six inches in the ground and stand firm. It will hold sufficient water to keep the flowers fresh and sweet, and will accommodate flowers with long as well as short stems. The vase is bell shaped and the top has a diameter of about five inches.

The CLARA VASE, boxed, per doz., \$3.50; each, 35c.; 3 for 95c.

The CLARA VASE, in barrel lots, per bbl., (3 doz.) packing included, \$10.00.

**American Beauty Vases.**—For description, illustration and prices, see "Flower Baskets" page.



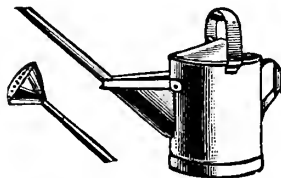


**EARTHEN WARE VASES.**—A. Vaughan's Cylinder, decorated, each, 40c.; doz., \$3.75. B. Plain Earthen Ware, each 25c.; doz., \$2.75. C. Plain Earthen Ware, each, 20c., doz., \$2.25.

**WATERING POTS.**

**American**, heavy galvanized round can, two copper-faced roses, long spouts; 4 quart, \$1.75; 6 quart, \$2.00; 8 quart, \$2.25; 10 quart, \$2.50; 12 quart, \$2.75.

**French Style**, oval, otherwise same make as above, 8 quart, \$2.40; 10 quart, \$2.85; 12 quart, \$3.00.



WEEDERS.	Each.	Doz.	Each.	Doz.
Excelsior Hand.....	\$0 10	\$0 75	Weeding Fork, English...\$	40
Lang's, very useful....	20	2 00	Eureka .....	35
Hazeltine, Hand.....	20	2 00		

**Do You Wish A Nice Lawn? USE B'S WEED EXTRACTOR.**



A simple and effective device for removing weeds of all kinds from the lawn. Easy to operate, and does not injure the sod. Made with and without a foot pressure step, the latter being useful when the ground is very hard.

Price, postpaid, 65c.; by express, 50c.  
Price, postpaid, with step, 75c.; by express, 60c.

**EUREKA WEED KILLER.**



A special preparation, which dissolves in water without boiling over. Will destroy all weeds, moss, etc., on gravel walks, carriage drives, stable yards, etc., and keeps them under for the whole season. It brightens gravel paths without staining or imparting any unpleasant odors, or making the paths greasy. It comes in 3-lb. tins, contents of which makes sufficient dressing for 100 square yards of path. Price, 75c.; prepaid, \$1.00.

**THE GLOBE GARDEN WHEELBARROW.**

Inside measurement of box, 30 inches long, 19 inches wide at wheel end, 24 inches at handle end, 12 inches deep. Has a 20 inch wheel. Nicely painted blue, green or red, or oiled and varnished and striped. When ordering state which color is preferred Bottoms matched and glued.



Price, \$3.25; with steel wheel, \$3.60.

**WIRE.**

**Bright Annealed.**

Prices subject to change.

No.	Per lb.	3 lbs.	6 lbs.	12 lbs.
No. 18	\$0 10	\$0 25	\$0 45	\$0 80
" 20	14	25	45	80
" 22	10	25	48	85
" 24	10	25	50	90
" 26	12	30	55	1 00
" 27	15	35	58	1 05
" 28	15	37	65	1 15
" 36	25	60	1 10	1 95

**Copper**, fine, lb., 65c.; medium, lb., 55c.; coarse, lb., 45c.



**CUT FLORISTS' WIRE.**

**In Wooden Boxes.**

This wire is prepared specially for florists. Is clean, extra soft, white wire, straightened and cut in lengths ready for immediate use, and in a convenient form, 12 lbs. in each box.

Cut to 9 in.	No. 24.	Per box.....	\$1 50	Cut to 12 in.	No. 26.	Per box.....	\$1 75
" 12 "	No. 24.	" .....	1 50	" 9 "	No. 36.	" .....	2 50
" 9 "	No. 26.	" .....	1 75	" 12 "	No. 36.	" .....	2 50

**FRENCH GREEN MOSS WREATHS.**

Coming into popular favor for cemetery decoration; the color is of a bright green, and when decorated with small particles of immortelles they make a good seller to retail trade. 10-inch diameter, each, 12c.; doz., \$1.25; 12-inch; each, 15c.; dozen, \$1.50; 14-inch, each, 17 c.; dozen, \$1.75.

**VAUGHAN'S**



"Italian Brand" Hand-Made

**WHEAT SHEAVES.**

"THE KIND THAT HOLD THEIR SHAPE."

FOR THE PAST TWENTY YEARS

We have supplied the trade with **HIGH GRADE WHEAT SHEAVES**, employing as we do a corps of experienced makers in this line, and using only the choicest imported wheat enables us to turn out the **BEST SHEAF** on the market.

**SOLID SHEAVES.**

AA.	Height, 14 inches.	Each.....	\$0 40
A.	" 15 "	" .....	55
B.	" 16 "	" .....	70
C.	" 18 "	" .....	85
D.	" 20 "	" .....	95

**OPEN OR BASKET SHEAVES.**

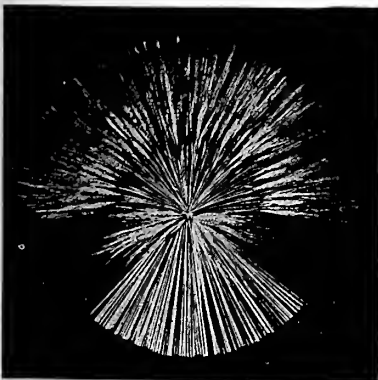
Wheat, bleached, 50c. per lb.; 10 lbs., \$4.50.			
A.....	60c.	B.....	75c.
C.....			90c.

WE ALLOW

YOU... **10** PER CENT.

DISCOUNT

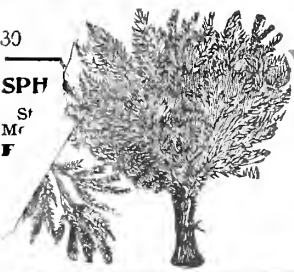
From prices named opposite; larger Discount if order exceeds \$10.00.



Flat A—17 inches long.	Each.....	\$0 15
" B—19 "	" .....	25
" C 21 "	" .....	35
" D—23 "	" .....	45
" E 25 "	" .....	55
" F—27 "	" .....	70
" G—28 "	" .....	90
" H—30 "	" .....	1 00

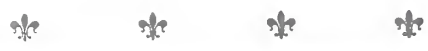
**NOTICE.**—Prices quoted in this Catalogue are subject to change without notice, owing to the unsteady condition of the market--this applies particularly to Fertilizers, Wire, Tin Foil, etc.

SPH  
S  
Mr  
F

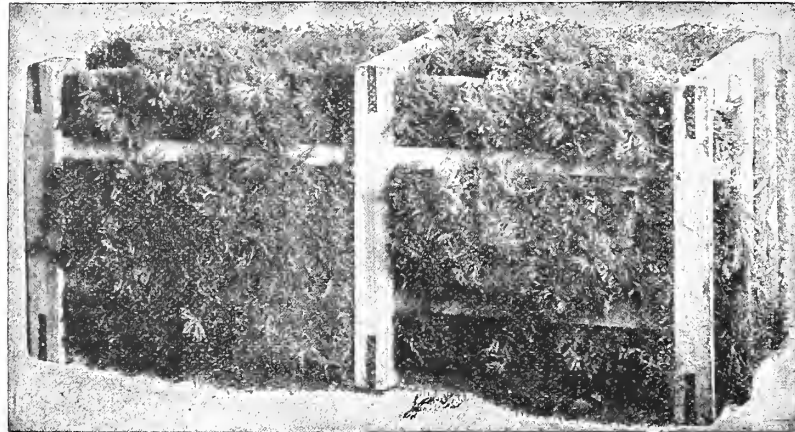


# Vaughan's Deepwoods

INDIAN PICKED.



## Bouquet Green



CRATE OF BOUQUET GREEN.

Cold storage stock (June picked), on hand, 100 lbs., \$5.50.

Also called Ground Pine, Club Moss, etc.  
Bouquet Green from the northern woods is gathered by two classes of pickers, the families of white settlers and by the Chippewa and Menominee Indians. The former class gather nearer home on higher and more open ground and the Lycopodium is lighter in color and often of short, stubby growth and carelessly put up and handled. The Indians live and pick in the deep unsettled woods and gather only the dark green, long, feathery sprays, put up in clean bunches and kept from drying out. Our contracts are made mostly in such localities, from the Indian camps on Evergreen Creek, Little Rib River, Red River and Black River and the stock is carefully inspected by experienced buyers when it is brought in, and by ourselves before loaded on cars for Chicago.

New crop will arrive in small lots as soon as frosts harden the sprays so they will stand packing without heating and mould.

Write or wire us for prices whenever you are ready to buy. Prices are quoted by mail for "this day only" and customers are especially desired to ask us for new prices just when ready to buy, as values on this fluctuate greatly and almost daily.

Per 100 lbs., \$5.00; 25 lbs., \$2.00.

"ON THE DAY"

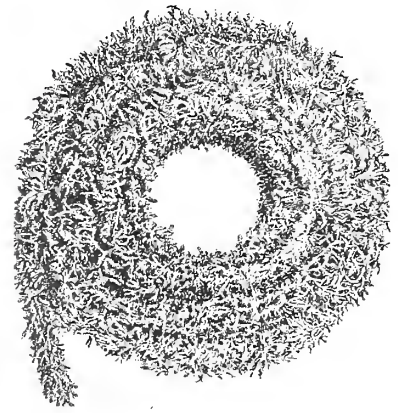
Owing to Various Conditions the PRICE on . . . **Bouquet Green** and Evergreen Wreathing constantly changes. Write or wire for the market price the day you are ready to buy.

**THIS IS THE WAY WE CAN SAVE YOU MONEY.**

### Vaughan's XXX XMAS HOLLY.

We maintain the highest grade Holly Branches in the market. Every case personally inspected by our own agent who has been 14 years in our service; men who gather and pack our Holly are equally well experienced. While other shippers sometimes handle as choice Holly as Vaughan's XXX Brand, yet ours has averaged **THE BEST** one year with another. Our price is sometimes 50 cents or 75 cents higher than common stock. Our values are more than **DOUBLE**.

Per case \$5.00. For larger lots write. Burlap lined for Pacific Coast shipments, 50 cents extra.



WRITE US FOR  
QUANTITY PRICES  
AT ANY TIME.

### MISTLETOE

We expect to have as usual a choice stock of this for delivery about December 15th. Orders should be placed at once.  
Extra quality..... per lb., 25c. 10 lbs., \$2.25. 25 lbs., \$5.00  
Ordinary quality...per lb., 20c. 10 lbs., \$1.90. 25 lbs., \$4.50  
Owing to the perishable nature of this stock we cannot assume any responsibility after delivery to express company.

**SOUTHERN NEEDLE PINES.** These handsome pines are invaluable for house decoration, retaining their form and color for months after being cut. They range from 2 to 5 feet high with long, shiny, dark green needles.  
Each, 20c.; dozen, \$2.40 100..... \$15 00

### Evergreen Wreathing

Commonly called FESTOONING.

The Stock offered below is wound by hand and tied with best annealed wire. Each coil has our careful inspection.

Nothing surpasses this grand decorative material for beautifying homes, churches and stores, manufactured by us in immense quantities and in various grades. Put up in coils containing 20 yards each, ready for use.

Light Grade, per 100 yards.....	\$3 00
Medium Grade, per 100 yards.....	4 00
Extra Heavy Grade, per 100 yards.....	5 00

#### XXX FANCY DELAWARE HOLLY WREATHS.

In making fancy Holly wreaths we use only best grade of Delaware Holly well berried and strongly wound on heavy India reed. Careful attention is given to packing of same which insures arrival in good condition. They sell on sight.

	Per doz	Per 100
Single, wound one side, 12 in. diameter.....	\$1 50	\$11 50
Double, wound both sides, 12 in. diameter.....	2 35	18 00
Single, wound one side, 14 in. diameter.....	2 00	14 00
Double, wound both sides, 14 in. diameter.....	2 75	21 00
Double, wound both sides, 18 in. diameter, for store and church decoration.....	6 00	

