

Historic, Archive Document

Do not assume content reflects current scientific knowledge, policies, or practices.

6281

WOOD'S CROP SPECIAL

Giving Timely Information and Prices of Seasonable Seeds

PUBLISHED BY T. W. WOOD & SONS, SEEDSMEN RICHMOND VA.

VOL. XXIII OCTOBER—NOVEMBER EDITION

1928

SHORTAGE IN SEED WHEAT

In the harvest of 1928 the crop of red winter wheat in the States east of the Mississippi was 100 million bushels short of an average. Practically all of these States show a heavy shortage in all wheats suitable for seed or milling. The Piedmont section of Virginia was more favored in its yield of wheat than most sections, and we are thus enabled to offer wheats of the finest quality, true to type and carefully re-cleaned over our triple-cleaning machines.

The surplus of wheat reported this year was of the hard winter wheat of Kansas and the spring wheat of the Northwest. These of course are not suitable for seed in the East, and as to milling purposes, very few mills in the East are equipped for grinding this hard wheat.

No. 2 Red Winter Wheat is bringing a premium of 35 cents per bushel in St. Louis, Chicago and Toledo over the hard Western wheats. This is due to the shortage of this type of wheat, as above stated.

It will be necessary to place your order early for your requirements of seed wheat. By thus ordering early you can be assured of getting the particular variety you desire, and seed of the best quality.

We Specialize in Better Seeds for the South

Leading Distributors of CERTIFIED SEEDS

Field and Bin Inspected by the Virginia Crop Improvement Association



known origin adaptable seed.

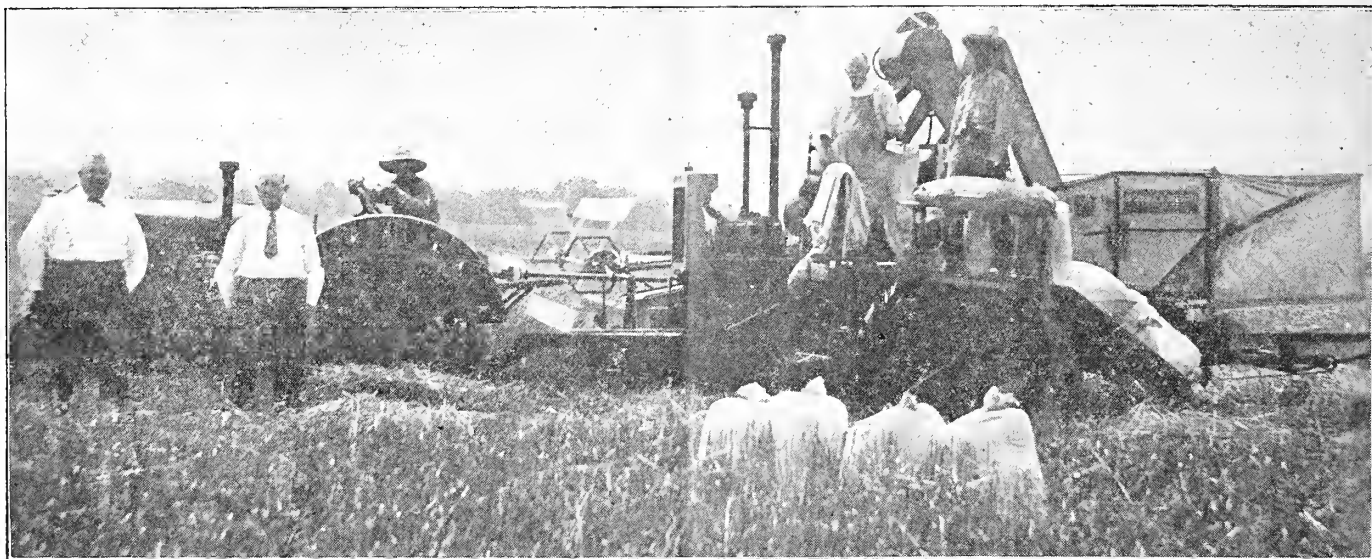
We are authorized by the U. S. Department of Agriculture to issue Verified Origin Certificates on Alfalfa. This is your guarantee of receiving

VIRGINIA CROP
IMPROVEMENT
ASSOCIATION



GROWN IN VIRGINIA

WOOD'S CROP SPECIAL



Harvesting with Combine an excellent crop of Certified Leap's Prolific on the farm of Mr. P. L. Shannon, Spotsylvania County. Mr. Linthicum, County Agent (left). This crop averaged over 30 bushels per acre of fine quality wheat.

WOOD'S SUPER-CLEANED, HIGH YIELDING SEED WHEAT

SELECTED FROM THE FINEST CROPS GROWN IN VIRGINIA.

OUR CLAIM.—No distributor of Seed Wheat in Virginia or any other Southern State has the facilities for cleaning wheat equal to those used in our up-to-date seed cleaning plant.

SUPER-CLEANED OVER FOUR MACHINES.

The first cleaning of Seed Wheat over ordinary clipper machine, which fans and screens, is all that is used by practically all other distributors. This is just the beginning in the cleaning of Wood's Seed Wheat.

After being fanned and screened as designated above, the wheat is conveyed to a "shaker" machine, which by special process eliminates all light weight or shrivelled grains—as well as wild onion and inert matter which may have passed the first cleaning. It is then carried to a "rotary cylinder" which takes out any cockle, partridge pea or cracked grains. From the cylinder it is conveyed again to the first machine, where the wheat is finally fanned, screened and sacked in new heavy grain sacks.

MAKE YOUR OWN COMPARISON

of Wood's Seed Wheat with that of any other distributor. Upon careful inspection you will readily see why **Wood's Super-Cleaned Seed Wheat** produces bumper crops wherever used, and will more than repay you in crop returns next harvest.

SELECTION OF SEED WHEAT

is always our first consideration. We have drawn our supplies from the leading and best Seed Wheat growers in Virginia. Only stocks which we know are **dependable, true to type** and of high yielding crops are offered to our farmer trade.



Two photographs of a fine crop of Wood's Forward Wheat

Wood's Forward Wheat

Disease Resistant, Winter Hardy and High Yielding Strain.

This new variety which we offered our customers last year has more than exceeded our claims as being the largest yielding wheat on the market. From every section of the East our customers are praising **Wood's Forward Wheat**, both from the standpoint of winter hardiness and enormous crop yields. Mr. H. H. Willis, of Culpeper, reports a yield of 47 bushels per acre. Mr. J. W. Sorrell, Dunn, N. C., reports 40 bushels per acre. Mr. R. R. Penn, Manager of the Virginia State Farm, states that it outyielded any other wheat raised on the farm this year. We consider these reports excellent, in view of the fact that the past year was most unfavorable for large crop yields of wheat in most sections of the State.

Wood's Certified Leap's Prolific Wheat

Probably the most popular and widely used variety of the smooth wheats. Our grower, Mr. P. L. Shannon, is recognized as the leading seed wheat grower in the State. We are most fortunate in being able to offer our customers this particularly fine lot, which was designated by the Virginia Crop Improvement Association as being one of the best crops of Certified Leap's Prolific Wheat grown in the State.

OTHER CERTIFIED AND SELECTED VARIETIES

are listed on page 6 of this issue. Every variety offered has been carefully selected from the best crops grown in the State and is backed by the high standing and reputation of Wood's Seeds, which have been first in quality for fifty years.



grown this year by Mr. Walter Sorrell, Harnett County, N. C.

<p>QUALITY PLUS Purity 99½% to 100% Germination 90% to 100% WOOD'S SEED WHEAT</p>
--

WOOD'S CROP SPECIAL

Reliable Strains of Seed Wheat

Grown from Pedigree and Certified Stocks

WOOD'S PURPLE STRAW WHEAT.

The stock which we are offering is the genuine strain, grown on our own farm in Amelia County, Va., having been produced from seed that we have made a three year head selection. Purple Straw Wheat has a good stiff straw, color purple, with small size grain, and is one of the most consistent yielding varieties of wheat on the market.

WOOD'S V. P. I. No. 131 WHEAT.

A product of the Virginia Experiment Station, and one that has become the most popular of the bearded varieties in this State. In comparative tests during the past few years it has outyielded any other bearded wheat on the market. The stock which we are offering is grown from certified seed, and we are confidently recommending it to our customers as one of the largest yielding bearded varieties.

WOOD'S STONER OR MIRACLE WHEAT.

Our strain of this popular variety was grown in the Piedmont-section of Virginia, on limestone land from one of the finest crops of wheat produced in the State. The popularity of Stoner Wheat is due to its ability to withstand adverse weather conditions, and on account of its stooing qualities, makes it one of our most dependable bearded varieties.

WOOD'S FULCASTER WHEAT.

This old established variety needs little if any introduction among the leading wheat growers. This wheat has given better and more uniform results throughout North and South Carolina than any other strain, being wonderfully well adapted to their climatic conditions. The Fulcaster Wheat is just about as hardy and rugged variety as has been produced.

WOOD'S GRAIN PASTURE MIXTURE

To farmers who desire to make a most satisfactory fall, winter and spring pasturage, Wood's Grain Pasture Mixture will yield more pasturage than anything else you can put in. It is composed of the best stooing varieties of Wheat, Abruzzi, Rye, Winter Barley, Fulghum Oats, Winter Vetch, Crimson Clover and Dwarf Essex Rape, combined in the proper proportions to give the best results. We have received some very enthusiastic letters from our customers who have been sowing this mixture for years as to the large quantity of grazing which it gives.

ANOTHER FINE HAY OR GRAZING MIXTURE

Can be had by sowing one bushel of Barley, one bushel of Winter Gray or Fulghum Oats, ten pounds of Crimson Clover and five pounds of Hairy Vetch. This mixture will seed an acre and make an excellent crop.

THE VIRGINIA CROP IMPROVEMENT ASSOCIATION INSPECTOR says:

Judging from the two crops of Wood's Forward Wheat which I have inspected for certification, this wheat gives promise of taking a place among the leading varieties of wheat in the State in hardiness, yields, and its adaptability to different types of soils.
S. A. CROSS, Field Agent.



Mr. R. P. Harris, Vocation Agricultural Teacher, Sampson Co., N. C., and Mr. L. P. Surles, our representative, inspecting a fine field of Virginia Gray Winter Oats grown from Wood's Seeds.



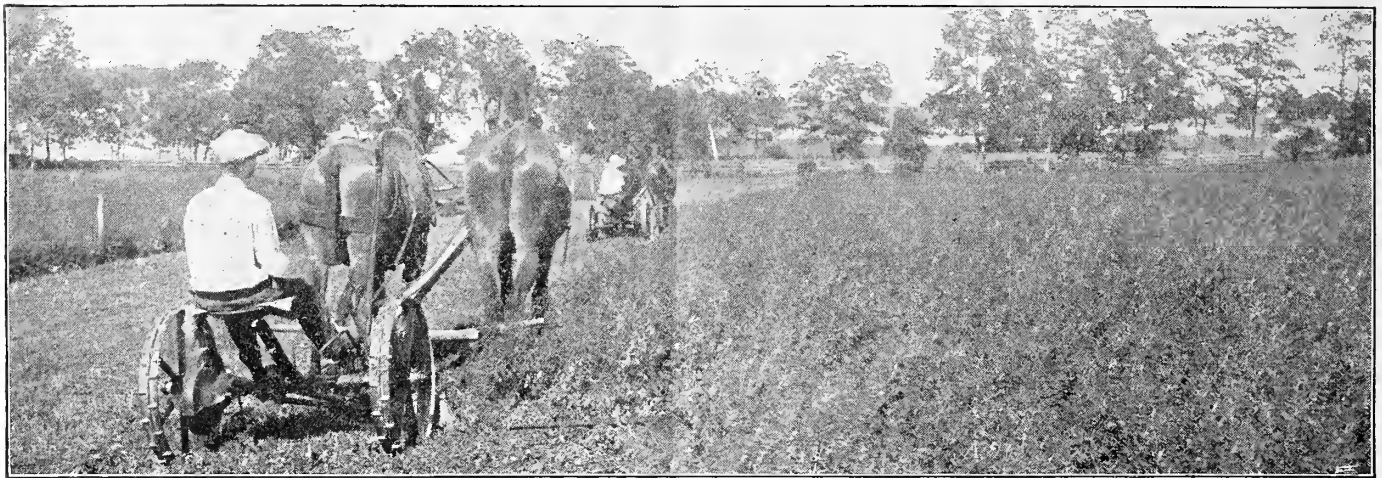
SPECIAL MIXTURES FOR HAY AND PASTURE

Give Larger Tonnage of Better Balanced Feed

Wood's Special Grass and Clover Mixtures contain only our best Trade Mark Brand Quality Seeds, combined in the right proportions to give the largest yields of hay and pasturage. A good stand of grasses and clovers is a permanent investment for your farm, and these mixtures from years of actual use have proven to be the most dependable method of putting down a permanent pasturage or hay crop. They can be satisfactorily sown during October, seeded at the rate of thirty to thirty-five pounds per acre.

The prices at which we are offering these Special Mixtures are most reasonable, and are as low as possible to make consistent with the high grade quality seeds used. Prices of Blue Grass, Herds Grass, together with most other grasses and clovers have advanced considerably since spring, owing to short crops harvested.

See page 7 for complete list of our Special Grass and Clover Mixtures adapted to various soils. Mixtures Nos. 1 to 5 are for permanent pasture and Nos. 6 to 9 for hay.



Wood's Trade Mark Brand Alfalfa safeguards your success with this leading hay crop. Guaranteed origin, Purity over 99.50%; Germination over 90%—is your assurance of adaptability and quality.

WOOD'S TRADE MARK BRAND ALFALFA CLOVER
Proven Strains—Known Origin

THE CREAM OF THE CROP

Wood's Trade Mark Brand Alfalfa is of the highest quality—both purity and germination—and secured from the best Alfalfa producing sections of Kansas and Utah. The source of origin and adaptability are beyond question, having produced the most successful and long lasting crops of Alfalfa for many years past throughout the East.

Your success in Alfalfa depends largely upon the seed used, and we highly recommend the varieties mentioned below as the most productive and permanent strains available:

KANSAS GROWN ALFALFA.—Recognized by leading authorities and experiment stations as the best strain for Virginia and other Southern States. Our Kansas Alfalfa, grown on non-irrigated land, has probably produced more successful crops than any other type. Kansas seed is quicker starting its growth in the spring than the Utah, and as a rule will give earlier cuttings.

UTAH GROWN ALFALFA.—Especially recommended for the Piedmont section of North Carolina, Virginia and the Northern States. Our seed was secured from the Basin Seed Growers Association, at Myton, Utah, and grown at an altitude of one mile above sea level. Seed from this locality is considered the hardiest strain of Utah seed available.

HARDY NORTHWESTERN ALFALFA.—Grown at altitude of over 5,000 feet. An exceptionally hardy strain, well adapted for use where the winters are most severe, and as a desirable substitute for Grimm Alfalfa—the cost of seeding being considerably less, and will give equally as good results.

QUALITY ALFALFA BACKED BY OFFICIAL TESTS

	Kansas Alfalfa	Utah Alfalfa	Hardy Northwestern
Purity.....	99.60%	99.50%	99.72%
Germination.....	94%	96%	97%

Absolutely free from dodder or other noxious seeds.

RED CLOVER

Wood's Trade Mark Brand Clover Seed is selected from the best producing sections of Michigan, Ohio and Illinois, and is the most disease resistant and winter hardy seed obtainable for Virginia and the Eastern States. To every bag is attached the U. S. Verified Origin tag, which, together with the high standing and reputation of Wood's Seeds, is your guarantee of the most adaptable and high grade quality Clover Seed obtainable.

We do not handle imported seed, nor seed from any other localities than stated above. Our main interest is to supply our customers with Clover Seed that is known to be adaptable, and seed that will give lasting crops and large yields.

NEW CROP CRIMSON CLOVER

A Good Year to Sow This Valuable Crop

The price of Crimson Clover is down to such a reasonable price that it is well worth while to take advantage of every opportunity to sow this wonderful soil improver on all fields that are not producing, as well as on all vacant land. The sowing of Crimson Clover is one of the best methods for restoring worn out fields, and will rapidly bring them up to a high state of cultivation. It is an excellent crop to follow all small grains, furnishing good fall, winter and spring grazing, or can be cut for hay, and then the stubble turned under with very considerable improvement to the land..

New crop Crimson Clover was harvested under ideal weather conditions, and the quality is better than for years. Our Trade Mark Brand Seed is carefully re-cleaned and of exceptionally strong germination. Note our prices quoted on page 6 which include the cost of cotton bags.

POA BULBOSA (Bulbous Blue Grass)

A New Perennial Grass

This grass, the parent seed stock of which was secured from the Capitol Grounds of Richmond, is destined to become a valuable winter pasture crop in the Southern States. The plant lies dormant during the summer months, but after the first frost grows off very quickly and produces an excellent winter and spring grazing crop. Stock are very fond of this grass, and judging from the way cattle thrive on it, it has a high feeding value. Poa Bulbosa grows to a good height, making a very dense growth of beautiful green color. We strongly suggest that our customers give this new grass a trial. The U. S. Department of Agriculture has issued a bulletin giving full information about Poa Bulbosa, which they will mail free upon request.

No preparation of ground necessary—just broadcast during September or October for lawns at the rate of 3 to 4 pounds per 1,000 square feet, and for pasture 30 to 40 lbs. per acre.

WOOD'S CROP SPECIAL

A COMPLETE STOCK OF CERTIFIED SEEDS

Most rigid field inspection made of all growing crops under the supervision of the Virginia Crop Improvement Association. Wood's Certified Seed carrying the official yellow tag, assures you of obtaining seed of the best breeding and highest quality.



WE OFFER THE FOLLOWING CERTIFIED SEEDS

- Leap's Prolific Wheat
- V. P. I. No. 131 Wheat
- Wood's Forward Wheat
- Abruzzi Rye

All stocks heavily recleaned, showing a purity above the standard set by the Association.

WOOD'S FAMOUS LAWN GRASS SEED

Composed of Only the Very Finest Turf Making Grasses

Remember in making a lawn that it will be a permanent improvement as well as investment, and that the labor and expense are saved many times over in after years if the best seed is secured and extra care is used in the preparation of the soil.

Our Special Lawn Grass Circular, giving full information about lawn making, will be sent free upon request.

Wood's Evergreen Lawn Grass

This is positively the very finest mixture of Lawn Grasses in existence. Contains only the best and finest of turf-forming grasses, none that are coarse or grow in tufts. Included in this mixture is a generous percentage of Creeping Bent, recognized as probably the best of the turf formers that we now know of.

As no one grass can make a fine lawn the year round, we have put into Wood's Evergreen different varieties that are at their best during different months, so that this mixture presents a succession of verdure through the various seasons of the year.

Wood's Evergreen Lawn Grass is especially suited for places where good care and attention can be given to the lawn.

Postpaid Prices: Lb. 55c.; 5 lbs. \$2.25; 10 lbs. \$4.35; 25 lbs. \$10.15. (See page 6 for prices f.o.b. Richmond.)

NOTHING WILL BEAUTIFY
YOUR HOME MORE THAN
A GOOD WELL-KEPT LAWN

Wood's Dixie Lawn Grass

This mixture is the result of a close and intimate study of grasses suited to lawn making and such as are adapted to the Southern soils and climate. Contains grasses that will stand the heat and drought of the Southern summers.

Postpaid Prices: Lb. 50c.; 5 lbs. \$2.05; 10 lbs. \$3.95; 25 lbs. \$9.15.

Wood's Shady Park Lawn Grass

Only a very few grasses are suitable for shady situations. These we have combined in the Shady Park, thus producing a blend of grasses that is unsurpassed for lawns much shaded by trees. Postpaid Prices: Lb. 60c.; 5 lbs. \$2.45; 10 lbs. \$4.75; 25 lbs. \$11.15.

Sow Lawn Grass at the rate of 1 lb. to 250 square feet, or 90 to 100 lbs. per acre. (See page 6 for prices f.o.b. Richmond.)

WOOD'S HIGH GRADE SHEEP MANURE

ESPECIALLY RECOMMENDED FOR LAWNS, GARDENS AND SHRUBBERY

Gives the soil what it needs to make things grow.

Prices: 25 lbs. 85c.; 50 lbs. \$1.40; 100 lbs. \$2.50; ton \$45.00

WOOD'S HIGH GRADE POULTRY MANURE

A natural grass food and stimulant. Finely pulverized; more soluble and available than other manures.

Prices: 25 lbs. 90c.; 50 lbs. \$1.45; 100 lbs. \$2.60; ton \$46.00

VIGORO IS THE IDEAL PLANT FOOD FOR WHATEVER YOU GROW.

Unlike any other you have ever known. It achieves most remarkable and pleasing results. Used all over the country by discriminating people; tested by time and thousands.

Prices: 5 lbs. 50c.; 25 lbs. \$1.75; 50 lbs. \$3.00; 100 lbs. \$5.00.



THE OLDEST VEGETABLE

The Onion was introduced to the tables of kings, and to the big pots of the poor who had no tables, long before human history began to be written. No one now knows its origin, nor how much it has been improved since it gave strength to the men who built the Pyramids, but onions continue to be known as a most nourishing, health building food for both manual and mental workers, and still are prepared today in ways to please the most dainty epicure. No wonder all gardeners plant them and the many more who are not gardeners buy them through the year.

In the South the fall planting of Onion Sets has usually yielded more profits than spring planting.

YELLOW DANVERS is probably more largely grown than any other onion in this country. The flesh is of a creamy white color and mild. It is a large yielder.

RED WETHERSFIELD makes a large onion, and its color appeals to many. A good onion for poor and dry soils.

SILVER SKIN is mild, flesh pure white, and particularly desirable for pickling.

WHITE PEARL sets are planted only in the fall. This onion is extremely hardy, and while other sets planted in the fall are most profitably used as green bunch onions, the **WHITE PEARL**,

with its pearly whiteness and mild flavor, does equally well for bunching and to sell early as a dry onion. It is excellent for home use.

In a South Carolina garden 24 rows of **WHITE PEARL** (93-foot rows) made something over 30 bushels of onions.

In a North Carolina garden, in a space 32 by 80 feet, a bushel of **WHITE PEARL** sets brought the grower \$39.80.

Prices of market onions are advancing, which indicates that this is a good fall for planting onion sets. Planting is done in October or even in November. If you plant in November, use the intervening time in enriching the land. You can hardly make it too rich for onions.

Plant about four inches apart in rows at least one foot apart and about four inches deep, but taking care that the sets are not entirely covered, except in the case of potato onions, which should be planted nine inches apart in rows fifteen inches apart and covered with one inch of soil.

See present prices on another page of this **Crop Special**.

Mention Crop Special No. 1854 When Ordering. OCTOBER 15, 1928

WOOD'S SUPER-CLEANED SEED WHEAT

Heavily recleaned and shipped in new burlap sacks included. See page 2 regarding our method of cleaning.

BEARDLESS VARIETIES:	10-bus. lots, per bus.	Per bus. 60 lbs.
Leap's Prolific	\$2.15	\$2.25
Red May	2.10	2.15
Genuine Purple Straw	2.25	2.30
Wood's Forward	2.35	2.40
Poole	2.10	2.15
V. P. I. No. 112	2.10	2.15
BEARDED VARIETIES:	10-bus. lots, per bus.	Per bus. 60 lbs.
V. P. I. No. 131	2.15	2.20
Stoner	2.10	2.15
Fulcaster	2.10	2.15

CERTIFIED SEED

Inspected and certified by the Virginia Crop Improvement Association. Shipped in new 2-bushel sealed bags, bearing official certified tags.

	10-bus. lots, per bus.	Per bus.
Certified Wood's Forward Wheat..	\$2.60	\$2.65
Certified Leap's Prolific Wheat...	2.40	2.45
Certified V. P. I. No. 131 Wheat...	2.40	2.45
Certified Abruzzi Rye	2.50

TREATING SEED WHEAT WITH COPPER CARBONATE.

Experimental Stations recommend treating all Seed Wheat with Copper Carbonate for prevention against stinking smut. We will treat any variety quoted above at an extra charge of 10 cents per bushel.

NEW CROP SEED GRAINS

Heavily Recleaned—High Purity and Germination

TRADE MARK BRAND QUALITY

Prices Include New Grain Sacks.

SEED OATS:	10-bus. lots, per bus.	Per bus. 32 lbs.
Texas Red Rust Proof Oats.....	\$.87	\$.90
Fulghum Oats95	.98
V. P. I. Black Winter Oats.....	...	1.35
Virginia Gray Winter Oats—Sold out.		
Appler Oats—Sold out.		

SEED RYE:	10-bus. lots, per bus.	Per bus. 56 lbs.
Rosen Winter Rye	\$1.63	\$1.65
Pedigree Abruzzi Rye	2.25
Certified Abruzzi Rye	2.45
TENNESSEE BEARDED WINTER BARLEY,	10-bus. lots, per bus.	Per bus. 56 lbs.
Bushel of 48 pounds	1.45	1.50

WOOD'S GRAIN PASTURE MIXTURE—(See page 3)
Sow at the rate of two bushels per acre. Price, per bushel of 50 pounds, \$1.65.

VETCHES:	50 to 100-lb. lots and over, per lb.	25 to 49-lb. lots, per lb.	5 to 24-lb. lots, per lb.
Hairy Vetch, American grown..	.11 1/2	.12	.14
Hairy Vetch, Imported10 1/2	.11	.13
Oregon Vetch, American grown	.07 1/2	.08	.10
Hungarian Vetch, Amer. grown	.07	.07 1/2	.09
Austrian Winter Peas09 1/2	.10	.12

500 pounds or over of Vetch or Peas, 1/2 c. lb. discount.

WOOD'S TRADE MARK BRAND CLOVER

Prices include new sacks. See page 4.	Bushel 25 to 49-lb. 60 lbs. and over.	5 to 24-lb. lots, per lb.	5 to 24-lb. lots, per lb.
CRIMSON CLOVER	\$ 7.80	.13 1/2	.15
RED CLOVER —Verified Origin			
U. S. Grown (Michigan)...	19.80	.34	.35
SAPLING CLOVER —Verified Origin			
U. S. Grown (Illinois).....	20.40	.35	.36
ALSIKE CLOVER —Verified Origin			
U. S. Grown (Ohio)	19.80	.34	.35
ALFALFA CLOVER:			
Genuine Kansas Grown.....	15.60	.27	.28
Utah Highland—Ver.-Origin	15.60	.27	.28
Hardy N'Western, Ver-Origin	15.60	.27	.28
Certified Grim—Sold out.			

TRADE MARK BRAND	50 to 100-lb. lots and over, per lb.	25 to 49-lb. lots, per lb.	5 to 24-lb. lots, per lb.
White Sweet Clover11	.12	.13
Grundy County White Sweet Clover			
Scarified—Verified Origin12	.13	.14
White Dutch Clover, lb. 50c.38	.40	.42
Burr Clover, hulled and recleaned	.17	.18	.19
Burr Clover, in burr14	.15	.16
DWARF ESSEX RAPE —Genuine			
Holland Grown08	.08 1/2	.10

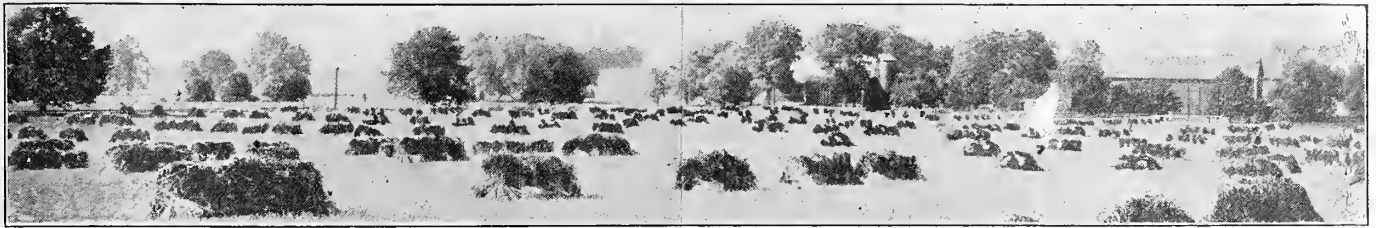
WOOD'S HIGH GRADE GRASS SEED

TRADE MARK BRAND	50 to 100-lb. lots and over, per lb.	25 to 49-lb. lots, per lb.	5 to 24-lb. lots, per lb.
Timothy07 1/2	.08	.09
Orchard Grass16	.17	.18
Kentucky Blue Grass34	.35	.36
Red Top or Herds Grass.....	.18	.18 1/2	.20
Tall Meadow Oat Grass16 1/2	.17 1/2	.18 1/2
Meadow Fescue18 1/2	.19	.20
Carpet Grass—Australian Grown.	.32	.33	.34
Bermuda Grass35	.36	.38
Italian Rye Grass09	.10	.12
Perennial Rye Grass13	.14	.15
Poa Bulbosa (see p. 4) lb. \$1.0090	.95

LAWN GRASS (See page 5)	Per peck, 8 lbs.	Per bus. 32 lbs.
Wood's Evergreen, lb. 45c.....	.36	.38
Wood's Dixie, lb. 40c.32	.34
Wood's Winter, lb. 30c.....	.20	.21
Wood's Shady Park, lb. 50c...	.40	.42

ONION SETS

Containers Included.	Per peck, 8 lbs.	Per bus. 32 lbs.
Yellow Danvers	\$.85	\$2.25
Red Wethersfield85	2.25
Japanese or Ebenezer95	2.75
Silver Skin	1.00	2.80
White Pearl	1.00	3.00
Crystal Wax (White Bermuda).....	1.10	3.25
White Multiplier	1.25	4.25
Yellow Potato—Small	1.40	4.50
Yellow Potato—Medium	1.25	4.00



WOOD'S SPECIAL

GRASS AND CLOVER SEED MIXTURES

MIXTURES Nos. 1 TO 5 FOR PERMANENT PASTURE.

Nos. 6 TO 9 FOR HAY CROPS. (See page 3.)

Mixtures Nos. 1 and 6—For light gravelly and sandy soils.

Mixtures Nos. 2 and 7—For good loam soils.

Mixtures Nos. 3 and 8—For heavy loam and clay soils.

Mixtures Nos. 4 and 9—For moist bottom land.

Mixture No. 5—For wet bottom land.

Prices of Mixtures Nos. 1 to 9: 10-lb. lots 24c. lb.; 50-lb. lots, 22c. lb.; 100-lb. lots and over 21c. lb.

WOOD'S STANDARD FERTILIZERS

Standard Wheat Fertilizer. 12-2-4. 200-lb. bag, \$3.25; ton, \$31.00.

Standard Bone Meal. 3-22. 200-lb. bag, \$5.00; ton, \$48.00.

Imported Basic Slag (Thomas Phosphate). Phosphoric Acid 18%; Lime (Cal. oxide) 45%. 200-lb. bag, \$2.75; ton, \$26.00.

Standard Acid Phosphate, 16%. 200 lbs. \$2.10; ton, \$19.50.

While we exercise great care to have all seeds pure and reliable, we give no warranty, express or implied, as to description, quality, productiveness, or any other matter connected with the goods we send out, and will not be in any way responsible for the crop. Every order for articles named in this price-list will be executed on these conditions.

WOOD'S QUALITY POULTRY FOODS

	10-lb. bag.	50-lb. bag.	100-lb. bag.
Pamunkey Scratch Food	.40	\$1.55	\$2.90
Pamunkey Laying Mash	.45	1.75	3.25
Wood's Scratch Food	.45	1.60	3.00
Hollybrook Scratching Food	.50	1.65	3.10
Hollybrook Chick Food	.50	1.75	3.30
Hollybrook Developing Food	.50	1.65	3.10
Hollybrook Laying Food	.50	1.85	3.60
Hollybrook Egg Forcing Food	.55	2.00	3.75
Hollybrook Pigeon Mixture with corn	.55	2.00	3.80
Hollybrook Pigeon Mixture no corn	.65	2.05	3.90
Wood's Premier Meat Scraps, 55%	.70	2.50	4.75
Hollybrook Meat Scraps, 45%	.65	2.25	4.25
Mica Poultry Grit (3 sizes)	.20	.65	1.10
Alfalfa Meal (choice fine)	.45	1.40	2.60
Cracked Corn—Yellow	.40	1.50	2.75
Crushed Oyster Shells (3 sizes)	.25	.60	1.00
Kaffir Corn	.40	1.60	2.70
Milo Maize	.40	1.65	2.75
Bran, Winter Wheat	2.15
Ship Stuff—Winter Wheat	2.35
Oberco—Mineral Supplement, 50 lbs.	\$1.90;	100 lbs.	\$3.50.
Charcoal—Trial package, 20c.; 50-lb. paper-lined sack,	\$1.10.		
Poultry Wheat—\$1.50 per bushel of 60 pounds.			
Pratts Growing Mash (with buttermilk), 25 lbs.	\$1.25;	50 lbs.	\$2.30;
100 lbs.	\$4.40.		
Corn—Yellow—\$1.40 per bushel of 56 pounds.			
Powdered Sulphur, 5 lbs. 45c.; 25 lbs.	\$1.65;	100 lbs.	\$5.00.
Dried Buttermilk (Collis), 50 lbs.	\$6.00;	100 lbs.	\$11.00.
Pratts Cod Liver Oil, 1 gallon	\$2.50;	5 gallons,	\$11.25.
"O. K." Sanitary Poultry Litter,	\$3.00	bale.	

SPECIAL POSTPAID PRICES BELOW

ALL PRICES QUOTED BELOW ARE POSTAGE PAID To Points in Va., N. C., W. Va., Md., Penn., N. J. and Del. Write for Prices to Other States.

MISCELLANEOUS SEED

HAIRY VETCH, American Grown—25 lbs. \$3.65; 10 lbs. \$1.75; 5 lbs. 95c.

HAIRY VETCH, Imported—25 lbs. \$3.40; 10 lbs. \$1.65; 5 lbs. 90c.

AUSTRIAN WINTER PEAS—25 lbs. \$3.15; 10 lbs. \$1.50; 5 lbs. 85c.

RAPE—Genuine Dwarf Essex, 25 lbs. \$2.80; 10 lbs. \$1.35; 5 lbs. 75c.

POA BULBOSA—25 lbs. \$23.15; 10 lbs. \$9.85; 5 lbs. \$5.00; lb. \$1.10.

FARMOGERM

Inoculation of Clover and Vetch with Farmogerm will increase your yields, and it is real crop insurance. **Order by number.**

No. 1—For Red, Sapling, Alsike, Crimson and White Dutch Clover.

No. 2—For Alfalfa, Sweet and Burr Clover
Postpaid prices Nos. 1 and 2: ¼-bus. size 40c.; ½-bus. size 65c.; 1-bus. size \$1.00; 2½-bus. size \$2.25; 10-bus. size \$8.00.

No. 3—For Vetch. Price postpaid: ½-bus. size 40c.; 1-bus. size 65c.; 5-bus. size \$2.25.

GRASS SEED

ITALIAN RYE GRASS—25 lbs. \$3.15; 10 lbs. \$1.55; 5 lbs. 55c.

PERENNIAL RYE GRASS—25 lbs. \$4.15; 10 lbs. \$1.85; 5 lbs. \$1.00.

TIMOTHY—25 lbs. \$2.65; 10 lbs. \$1.25; 5 lbs. 75c.

ORCHARD GRASS—25 lbs. \$4.90; 10 lbs. \$2.15; 5 lbs. \$1.15.

KENTUCKY BLUE GRASS—25 lbs. \$9.40; 10 lbs. \$3.95; 5 lbs. \$2.00.

RED TOP OR HERDS GRASS—25 lbs. \$5.25; 10 lbs. \$2.30; 5 lbs. \$1.25.

TALL MEADOW OAT GRASS—25 lbs. \$5.05; 10 lbs. \$2.20; 5 lbs. \$1.25.

WOOD'S EVERGREEN LAWN GRASS—Lb. 55c.; 25 lbs. \$10.15; 10 lbs. \$4.35; 5 lbs. \$2.25.

WOOD'S DIXIE LAWN GRASS—Lb. 50c.; 25 lbs. \$9.15; 10 lbs. \$3.95; 5 lbs. \$2.05.

SHADY PARK LAWN GRASS—Lb. 60c.; 25 lbs. \$11.15; 10 lbs. \$4.75; 5 lbs. \$2.45.

SPECIAL GRASS AND CLOVER MIXTURES—Nos. 1 to 9 inclusive: 25 lbs. \$6.15; 10 lbs. \$2.75; 5 lbs. \$1.45.

CLOVER SEED

CRIMSON CLOVER—25 lbs. \$4.05; 10 lbs. \$1.85; 5 lbs. \$1.00.

RED CLOVER—U. S. Grown, 25 lbs. \$9.15; 10 lbs. \$3.85; 5 lbs. \$2.00.

SAPLING CLOVER—U. S. Grown, 25 lbs. \$9.40; 10 lbs. \$3.95; 5 lbs. \$2.05.

ALSIKE CLOVER—U. S. Grown, 25 lbs. \$9.40; 10 lbs. \$3.95; 5 lbs. \$2.05.

ALFALFA CLOVER—Kansas Grown, 25 lbs. \$7.40; 10 lbs. \$3.15; 5 lbs. \$1.70.

Utah Highland, 25 lbs. \$7.40; 10 lbs. \$3.15; 5 lbs. \$1.70.

Hardy Northwestern, 25 lbs. \$7.40; 10 lbs. \$3.15; 5 lbs. \$1.70.

WHITE SWEET CLOVER—25 lbs. \$3.65; 10 lbs. \$1.65; 5 lbs. 95c.

GRUNDY COUNTY SWEET CLOVER—Scarified, 25 lbs. \$3.90; 10 lbs. \$1.75; 5 lbs. 95c.

WHITE DUTCH CLOVER—Lb. 60c.; 10 lbs. \$4.55; 5 lbs. \$2.40.

WOOD'S CROP SPECIAL

BULBS FOR FALL PLANTING GIANT DARWIN TULIPS

These gorgeous new late or May flowering Tulips are very stately and beautiful, producing immense flowers on tall, sturdy stems attaining a height of from two to three feet, and bearing on long stems beautiful globular flowers of remarkably heavy texture, in a large range of colors. They embrace almost every conceivable tint in rose, heliotrope, elaret, maroon, crimson and other rich and rare shades. Unsurpassed for bedding and cutting.



Clara Butt Darwin Tulip

We strongly advise our customers to take advantage of the very low prices of Darwin Tulips this season, as the indications are they will be considerably higher another year.

The sorts offered below were selected out of a large collection as being the best and most distinct.

	By Mail, Postpaid.	
	Each.	Dozen.
Baron de la Tonnaye —Carmine pink, shading to blush; large flower; height 24 inches	.07	.60
Bartigan —Fiery red; height 24 inches	.10	.75
Clara Butt —Delicate salmon pink, shaded rose; height 20 in.	.07	.60
Dream —Beautiful, delicate lilac; height 26 inches	.10	.75
Glow —Brilliant glowing vermilion, blue center, margined white; height 22 inches	.07	.60
Gretchen —Outside of petals delicate bluish; inside soft rose; very pretty; height 22 inches	.07	.60
Inglescombe —Immense, globular rich yellow flower; height 20 inches	.07	.60
Mr. Farncombe Sanders —Brilliant scarlet, white center; height 24 inches	.07	.60
Pride of Haarlem —Deep salmon rose, shaded scarlet; immense flowers; height 26 inches	.10	.75
Princess Elizabeth —Rich rosy pink; height 24 inches	.10	.75
The Sultan —Rich, glossy maroon, almost black; height 25 in.	.07	.60
White Queen —White, slightly tinged with delicate pink; height 24 inches	.07	.60

Collection, 1 each of above Giant Darwin Tulips, 75c., postpaid.

WOOD'S SPECIAL MIXED DARWIN TULIPS—Composed entirely of named sorts, and contains a great variety of all colors and shades. 60c. per dozen; \$3.50 per 100, postpaid. Not prepaid, 50c. per dozen; \$3.25 per 100.

GIANT WHITE NARCISSUS

THE MOST SATISFACTORY WINTER BLOOMING HOUSE PLANT

They will bloom in water from six to eight weeks from time of planting, if not planted too early, and are superior to Chinese Lilies or any other narcissus for growing in water. The flowers are larger, more attractive in color and very fragrant. A very unique and simple way to grow them is to place six or eight bulbs in a shallow bowl with water; support the bulbs with pebbles, and place the bowl in the dark until the roots have started, when they should be brought into the light. Change the water occasionally to keep it pure. From our experiments November, December and January plantings give best results.

Each, 15c.; dozen, \$1.35; 100, \$10.00, postpaid. Not prepaid, \$1.25 per dozen; \$9.50 per 100.

Wood's Superior Hyacinths

IN SEPARATE COLORS

WOOD'S SUPERIOR HYACINTHS

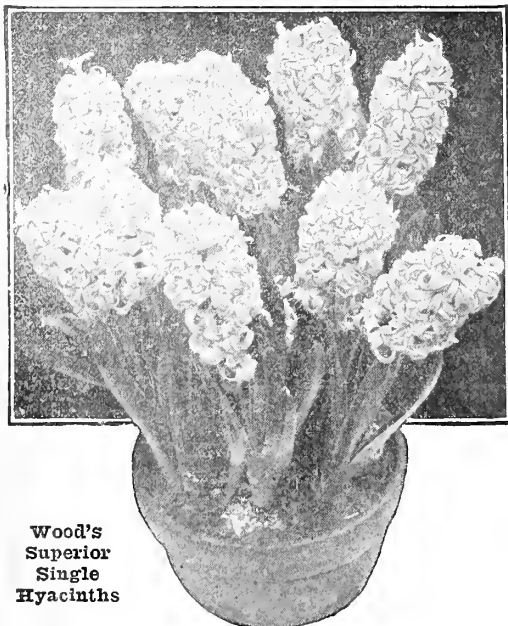
in separate colors can be sold at considerably less price than where it is necessary to keep and name each individual bulb separately. These bulbs are all good sized flowering bulbs much larger than the ordinary mixed Hyacinths, and give excellent satisfaction for general forcing, for cut flowers, or outdoor garden blooming in beds or borders.

Pure White	Red	Light Blue	Yellow
White Shaded	Pink	Dark Blue	All Colors Mixed

All of the above by mail postpaid, 15c. each; \$1.50 per dozen. Not prepaid, \$1.40 per dozen; \$10.00 per 100.



Giant White Narcissus Growing in Water



Wood's
Superior
Single
Hyacinths

Send for our illustrated Bulb Catalog giving descriptions and prices of other seasonable bulbs.