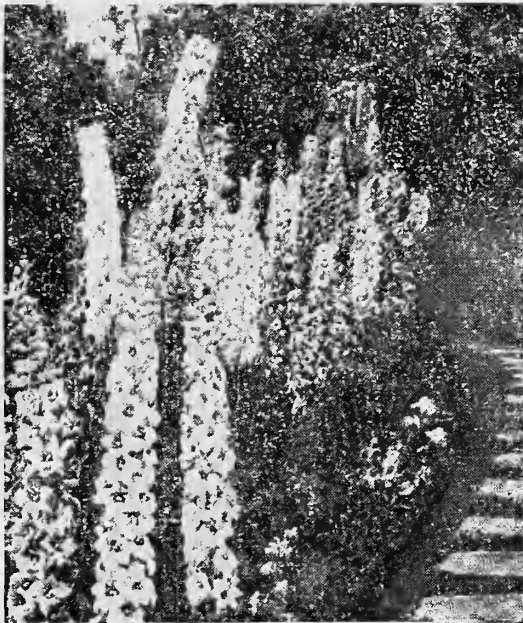


## **Historic, Archive Document**

Do not assume content reflects current scientific knowledge, policies, or practices.



69.73



HYBRID DELPHINIUM (See Hardy Plants)

# 1928 PRICE LIST

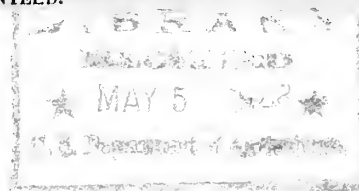
Iris, Pansies, Gladiolus, Asters, Scarlet Sage, Cannas, Bulbs, Shrubs, Etc.

## WILLIAM P. YEAGLE

PLANTS THAT PLEASE

BRISTOL, PA.

RETURN POSTAGE GUARANTEED.



U. S. DEPARTMENT OF AGRICULTURE

WASHINGTON, D. C.

BUREAU OF PLANT INDUSTRY  
Horticulture

GOVERNMENT PRINTING OFFICE J24689

W. P. Yeagle



IN PRESENTING our list for 1928 we wish to thank our customers for their liberal past patronage and take pleasure in soliciting their further orders. We shall endeavor to justify their growing confidence in our offerings and business dealings by continuing to serve them to the best of our ability. We shall endeavor at all times to fill orders with "Plants That Please." If service rendered you has pleased you, we shall be glad to have you say a good word about it to others. Kindly advise us of any dissatisfaction. All plants, bulbs, shrubs, etc., prepaid, except where noted.

**ANNUAL FLOWER OR BEDDING PLANTS**

	Lots of 12	Lots of 50	Lots of 100	Lots of 500	Lots of 1000
ASTERS—Early varieties; large flowering; pink, white and Lavender; strong plants	.30	\$ .60	\$1.00	\$ 4.00	\$ 7.50
ASTERS—Transplanted; same as above; Florists' selected stock	.35	1.00	1.90	8.50	16.00
ASTERS—Late varieties; Semples Late Branching; pink, white, lavender, purple and crimson. Ready June, July and August	.36	.60	1.00	4.00	7.50
PANSIES—Mixed colors; large blooming plants. Ready April and May	.75	2.50	4.25	19.50	
SCARLET SAGE—Strong transplanted plants. Ready April, May and June	.40	1.50	2.75	12.50	
STRAWFLOWERS—Mixed colors; strong plants. Ready May and June	.36	.90	1.75		
VERBENAS—Mammoth mixed colors; transplanted. Ready April and May	.40	1.50	2.75		
ZINNIAS—Giant flowered; mixed colors. Ready May and June	.35	1.25	2.25	9.00	
PANSIES—Small plants to bloom this spring					75 for \$1.00
SNAPDRAGONS—Fine for cut flowers; mixed colors. Ready May and June	12 for 55;	25 for \$1.10;			\$3.75 per 100
DRACENA INDIVISA (Foliage Plant)—Very graceful and a handsome ornamental plant for the window box, vase or urn; green leaves. Ready May and June				35c each;	4 for \$1.10
COLEUS—Handsome foliage plants for bedding. Red shades and yellow		each 20c;	8 for \$1.10;	dozen, \$1.35	
FUCHIAS—Fine bedding or house plants			each 30c;	6 for \$1.65	
AGERATUM—Beautiful bedding plant; blue flowers		each 20c;	6 for \$1.10;	dozen, \$2.00	
VINCA VAR (Periwinkle)—A beautiful variegated vine for hanging baskets and vases			each, 30c;	6 for \$1.65	

**GENERAL LIST OF HARDY PLANTS**

For Spring, Summer and Fall Planting

	6	12	50
ACHILLEA (The Pearl)—White flowers; fine for cutting; 15 inch	\$1.10	\$2.00	
COREOPSIS—Two to three feet; yellow flowers	1.10	2.00	
CANTERBURY BELLS—Two feet; mixed colors	1.10	2.00	
COLUMBINE—Eighteen inches; long spured Hybrids; mixed colors	1.10	2.00	
CORNFLOWER—Two feet; violet blue flowers	1.10	2.00	
DIGITALIS (Foxgloves)—Two and one-half feet; mixed colors	1.10	2.00	
DELPHINIUM (Larkspur)—Turquoise blue; continuous bloomer from July to Frost	1.10	2.10	\$7.50
DELPHINIUM—Extra selected heavy plants; 4 for \$1.10		3.00	10.50
DELPHINIUM—Hybrids; beautiful mixed colors; 3 to 5 ft.; long flower spikes (see cover); ea. 50c	2.65	5.00	
DELPHINIUM—White; dwarf variety	1.10	2.00	
FEVERFEW—Double white flowers; blooms all summer; fine for cutting	1.10	2.00	
GAILLARDIAS—Blanket flowers; 12 to 18 inch; red and yellow flowers	1.10	1.85	
HARDY CARNATIONS—Mixed colors; very fragrant	1.10	2.00	
PYRETHRUM—Two feet; mixed colors; painted daisies	1.10	2.00	
PENSTEMON—Three feet; scarlet flowers	1.10	2.00	
POPPY—Oriental; 2 feet; crimson; 4 for \$1.10			
POPPY—Iceland; 18 inches; mixed colors	1.10	2.00	
SWEET WILLIAM—Newport; pink and scarlet beauty	1.10	1.85	
SALVIA (Blue Sage)—Three feet; sky-blue flowers; August	1.10	2.10	
SHASTA DAISY—Eighteen inch; large white flowers; fine for cutting	1.10	2.00	
TRITOMA—Red hot poker plant; 3 to 4 feet; orange-scarlet bloom	1.10		
VERONICA—Two feet; blue flower spikes; one of the best perennials	1.10	2.00	

**OUTDOOR CHRYSANTHEMUMS**

With slight protection they will stand our severe winters. Plant in spring only so they establish themselves for the vigors of our winters. Do not plant in the fall. Mostly large flowering.

- RED DOTY—Dark red pompom.
- CARRIE—Yellow in cluster from large bloom in August.
- CRANFORDIA WHITE—Purest white; very desirable.
- FIREFLY—Reddish bronze; very early until late frost.
- HARDY PINK—Deep rose pink; medium size; free flowering
- MRS. H. H. CRANE—Mahogany striped golden yellow; a strong grower and early flowering.

6 Plants for \$1.10

**THREE CHOICE FLOWERING CANNAS**

Strong divided roots, ready about April 10 to May 15 delivery.

- PRESIDENT—Splendid variety; produces immense flowers of a rich scarlet; green foliage 4 feet high; 20c each; \$1.75 per dozen; \$12.00 per 100
- APRICOT—Buff yellow base, overspread with salmon pink; 25c each; \$2.00 per dozen.
- VENUS—Rosy-pink mottled creamy yellow border; 20c each; \$1.75 per dozen; \$12.00 per 100.

Plant when all danger of frost is over, about 12 inches in row. Need plenty of water for best results.

- FINE MIXED VARIETIES—Eight for \$1.10; 18 for \$2.20; 50 for \$5.50; 100 for \$10.50.

**GLADIOLUS**

Six Choice Varieties

- ATTRACTION—Deep dark rich crimson, pure white center and throat; each, 20c; \$1.65 per dozen; \$9.50 per 100.
- CRACKER JACK—Dark red throat spotted with yellow and maroon; each, 15c; \$1.25 per dozen; \$7.50 per 100.
- LE MARECHAL FOCH—Good light pink; extra large flowers; 10c each; \$1.00 per dozen; \$5.00 per 100.
- SALMON BEAUTY—Deep salmon; large flower; good variety; 20c each; \$1.75 per dozen; \$12.00 per 100.
- SULPHUR KING—Most valuable yellow variety yet produced; 20c each; \$1.55 per dozen; \$10.50 per 100.
- AMERICA—One of the best pinks on the market; each 10c; 65c per dozen; \$4.00 per 100.

**SUPERB MIXED GLADIOLUS**

A careful blending of good varieties which we feel will give satisfaction. 20 bulbs for \$1.10; 100 for \$4.50.

Plant every 10 days from April 10th to July 10th, about three inches apart and four inches deep.

**HARDY PHLOX**

- RHEINLANDER (Med.)—A most beautiful salmon pink, with flowers of immense size; 50c each; 3 for \$1.35; doz. \$4.25.
- THOR (Med.)—A beautiful shade of deep salmon pink, overlaid with scarlet glow; 50c each; 3 for \$1.25; doz., \$4.25.
- B. COMPTE (Med.)—Brilliant purple; crimson shadings; each, 35c; 3 for 95c; dozen, \$3.60.
- MIXED VARIETIES—25c each; 6 for \$1.10; dozen, \$2.15; 100 for \$14.00; by Express.

## IRIS--Liberty Iris of Unusual Merit. (German Iris)

AMAS—Rich blue; very large and handsome; a most desirable sort; each 25c; 3 for 70c; \$1.85 per dozen.  
 AUREA—Rich chrome yellow; the finest pure yellow; each, 50c; 3 for \$1.25; \$3.35 per dozen.  
 COL. CANDELLOT—"S" smoky copper; "F" deep rich crimson; large flowers; free flowering and vigorous grower; each, \$1.00; 3 for \$2.75.  
 DR. BERNICE—"S" olive shaded red; "F" dark brown red; 25c each; 3 for 70c.  
 LORELY—"S" light yellow; "F" blue bordered cream; free blooming; 35c each; 3 for 85c; \$1.85 per dozen.  
 LOHENGRIN—"S" and "F" uniform shade of cattleya rose; very large; 40c each; 3 for \$1.10; dozen, \$3.25.

MONSIGNOR—"S" crimson dotted lavender; inner petals, ivory; "F" rich crimson edged lavender; 50c each; 3 for \$1.25; per dozen, \$4.00.  
 PALLIDA DALMATICA—A beautiful shade of lavender blue; most desirable; 50c each; 3 for \$1.35; \$4.25 per doz.  
 PRINCESS VICTOR LOUISE—"S" sulphur yellow; "F" plum color; bordered cream; 30c each; 3 for 80c; \$2.00 per doz.  
 PROSPER LAUGIER—"S" brenze; "F" ruby purple, like a pansy bloom; 40c each; 3 for \$1.15; \$3.00 per dozen.  
 One Each of the Above Collection, only \$3.75 Prepaid.  
 Mixed Varieties—15c each; 10 for \$1.10; \$10.00 per 100.  
 JAPANESE IRIS—One year seedlings; mixed colors; 10 for \$1.10; good mixture.

### ORNAMENTAL AND FLOWERING SHRUBS

BERBERIS (Barberry)—Beautiful shrub of neat, dense growth, fine for along drives and walks. Two year plants, 12 to 18 inches, 50c each; 10 for \$4.00; 100 for \$25.00.  
 JAPANESE BARBERRY—Red leaved; foliage is a rich lustrous, bronzy red similar to the red leaf maple. Strong one year plants, 75c; dozen, \$7.50.  
 HYDRANGEA P. G.—Pure white flowers in August; each 50c.  
 PRIVET CALIFORNIA—One year, 12 to 18 in.; \$4.50 per 100.  
 DEUTZIA GRACILIS—Dwarf habit; white flowers in June; 12 to 18 inches; 75c each.

The Above Will Be Shipped Charges Collect.

### ORNAMENTAL VINES

BOSTON IVY—A popular climber. Deep, glossy green foliage turns to crimson and gold in fall; 90c each; 3 for \$2.50.  
 CLEMATIS PANICULATA—During August and September it resembles a sheet of fleecy white; strong roots; 75c each; 3 for \$2.00.  
 WISTARIA—In May its flowers of soft dainty lavender-blue are produced in profusion; strong plants; each 75c; 3 for \$2.00.

### VEGETABLE PLANTS AND

CABBAGE, Early Varieties .....	May and June	.30	.60	\$1.90	\$3.50
CABBAGE, Late Varieties .....	June and July	.30	.60	1.75	3.00
CAULIFLOWER, (Snowball) .....	April and May	.50	.90	3.25	6.00
PEPPERS, Ruby King, Transplanted ..	May and June	.25	.85	1.50	7.00
EGG PLANTS .....	May and June	.25	.85	1.60	7.25
TOMATOES, Leading Varieties .....	May and June	.10	.35	.60	2.25 4.00
ASPARAGUS ROOTS, Washington, 1 Yr.	March and April	.40	.85	1.35	6.00 11.00

### ROOTS

	50	100	500	1000
	.30	.60	\$1.90	\$3.50
	.30	.60	1.75	3.00
	.50	.90	3.25	6.00
	.25	.85	1.50	7.00
	.25	.85	1.60	7.25
	.10	.35	.60	2.25 4.00
	.40	.85	1.35	6.00 11.00

### Why Pay City Prices ?

Full stock of bedding plants such as Geraniums, Petunias, Fuchsias, etc., also Ferns, Pandanas, Dracenas, fancy baskets and cut flowers, at reasonable prices.

By auto from Philadelphia: Bristol Pike to Grand Theatre, turn to left out Bath Road.

## ALL PLANTS AND BULBS NON-WARRANTY

While I take every precaution to have all plants and bulbs true to name, I give no warranty; expressed or implied, as to the description, quality, productiveness, or any other matter of any plants I send out and will not in any way be responsible for the crop. Every order I receive will be filled on these conditions only.

**ORDER EARLY**—Please order early and avoid possible disappointment. All orders are booked subject to prior sales.

**ERRORS**—Should there be any errors or omissions, the customer should report AT ONCE and not wait days or weeks before doing so. We are always glad and willing to correct an error.

**CASH WITH ORDER**—Please remember to write on each order your Name, Post Office, County and State, also Street or R. F. D. number. Always register money; do not send money in plain envelope; send money order or check.

In the event that we are sold out of certain varieties we will substitute in our best judgment, unless ordered not to do so.

At the prepaid prices given, plants will be shipped prepaid to any part of Maine, New Hampshire, Vermont, Massachusetts, Rhode Island, Connecticut, New York, New Jersey, Pennsylvania, Delaware, Maryland, District of Columbia, Virginia and West Virginia. Small lots by mail. No order accepted for less than fifty cents.