

## **Historic, Archive Document**

Do not assume content reflects current scientific knowledge, policies, or practices.



6277

1930

LIBRARY  
RECEIVED  
★ NOV 6 1930 ★  
U. S. Department of Agriculture.

# THE GARDEN

By  
*Bryson Ayres*



*Beautiful Flowers*  
*Delicious Fruits*  
*Fine Vegetables*



**BRYSON AYRES**  
1024 McGee Street, Kansas City, Missouri

Vegetable Seed Trials  
D. N. Shoemaker

# INTRODUCTORY

We spare no effort to personally care for every order, whether large or small, in such a way as to merit continued confidence.

We want you to visit our Big Store, Seed Farms and Nurseries. A most cordial invitation is extended to all.

*Bryson Ayres*

---

## Our New Modern Flower Store 1024 McGee

We wish to call your attention to our modern Flower Store where we carry a beautiful assortment of freshly cut Roses, Sweet Peas, Carnations, Violets, Snapdragons, Chrysanthemums, Orchids, Valley Lilies, etc. Quick service on Wedding Flowers. Floral designs for the bereaved receive our most careful attention.

Just phone Long Distance—Victor 0444.

***Members F. T. D. - - Flowers by Wire any place  
any time***

### ***Specimen Shrubs***

Balled and Burlapped

#### ***For Immediate Effect in Landscaping***

These fine robust Shrubs we have grown for special planting. They are lovely, symmetrical bushes that will furnish blossoms at once.

For immediate delivery from our nurseries we offer Lilacs (all varieties), Spireas, Forsythias, Altheas, Snowballs, Butterfly Bush, Japanese Barberry, Japan Quince, Double-Flowering Crab, Bush Honeysuckle, Tamarix, Weigelas, Rosa Rugosa, and Salix (Pussy-willow).

Extra large Specimen Shrubs, balled and burlapped.

***\$3.50 to \$10.00 Each***

# Suggestions in Ordering

A reading of the following will prove an aid to you and to us; that we can be sure of giving you prompt service and delivery at proper planting time.

**Our Prices**—Include bags, boxes and free cartage to the depot or express office. All Plants, Bulbs and Roots are forwarded by express, purchaser paying the charges.

**Early Orders**—Our rush season is early fall and early spring. Orders sent in soon as possible assure prompt shipment at planting time from full stocks.

**How to Order**—Write your Name, Postoffice, State, Street Address, Express Office if different from your Postoffice plainly on every order and every time that you write us. If you wish, give mail, express or freight directions. If none are given we must use our own judgment at buyer's risk.

**Market Gardeners**—Or those who order seeds in quantities of \$10.00 or more are requested to send their lists for special quotations.

**Plant Orders**—Orders for plants will be shipped either fall or spring when we consider it safe to do so. If ordered for immediate shipment in severe weather they must go at buyer's risk.

**Use Order Sheets**—The use of the order sheet in this booklet will help us fill your order. More will be sent on request. Send us a postal, or if in the city, phone.

**Warranty**—Bryson Ayres gives no warranty, express or implied, as to description, quality, productiveness, or any other matter, of any Seeds, Bulbs or Plants they sell, and will not in any way be responsible for the crop. After the Seeds, Bulbs and Plants leave our care, we have no control over the planting nor condition under such; no responsible seed or nurseryman could do more.

## Special Free Offers

If your order amounts to \$5.00 or more (this cannot include Roses), we will send you free of charge 1/2-dozen of our famous **Exhibition Gladiolus Bulbs**; truly gems in the flower world.

An order of \$10.00 or more (this cannot include Roses), will entitle you to 1/2-dozen of our famous **Exhibition Gladiolus Bulbs**, and \$1.00 packet of **Celosia Brysonia Chrysantheflora**, see listing on page 21.

An order of \$25.00 or more (this cannot include Roses), will entitle you to 2 doz. of our famous **Exhibition Gladiolus Bulbs** and one \$1.00 packet of **Celosia Brysonia Chrysantheflora**.

## Index

Bulbs for Fall.....	20	Peonies.....	2	EVERGREENS.....	14	Calliopsis.....	23	Pyrethrum.....	27
Bulbs for Spring.....	19	Physostegia.....	6	See page.....	14	Campanulas.....	23	Polyanthus.....	27
Cannas.....	19	Phlox.....	2, 3	SHADE TREES.....	15	Canary Bird Vine.....	23	Rhodanthe.....	27
Celosia Brysonia Chrysantheflora.....	21	Poppies.....	3, 6	See page.....	15	Candytuft.....	23	Rosemary.....	27
Climbing Roses.....	9	Primula.....	3, 6	FRUIT TREES.....	16	Celosia.....	21	Ricinus.....	27
Climbing Vines.....	7	Pyrethrum.....	3, 6	Apples.....	16	Carnation.....	23	Rudbeckia.....	27
Dahlia.....	18, 28	Plumbago.....	6	Apricots.....	16	Clarkia.....	23	Salvia.....	27
Delphinium.....	2	Platycodon.....	6	Cherries.....	16	Chrysanthemums.....	23	Strawflowers.....	27
Evergreens.....	2	Ranunculus.....	6	Crab Apples.....	16	Coreopsis.....	23	Salpiglossis.....	27
Everblooming Roses.....	14	Rudbeckia.....	6	Plums.....	16	Columbines.....	2, 2	Saponaria.....	27
Flower Seeds.....	22-28	Salvia.....	3, 6	Peaches.....	16	Centaureas.....	24	Sunflowers.....	25
Fruits and Berries.....	16, 17	Shasta Daisy.....	3	Pears.....	16	Cornflowers.....	24	Scabiosa.....	27
General List of Perennial Plants.....	4-7	Statice.....	6	Quinces.....	17	Cosmos.....	24	Scarlet Runner Bean.....	27
Gladiolus.....	18	Stokesia.....	6	SMALL FRUITS.....	17	Cyclamen.....	24	Schizanthus.....	27
Hedge Plants.....	13	Sweet Peas, Hardy.....	3, 6	Blackberries.....	17	Cypress Vine.....	24	Static.....	27
Iris.....	2	Sweet William.....	5	Currants.....	17	Convolvulus.....	24	Stocks.....	27
Lawn Grass Seeds.....	21	Scotch Pinks.....	6	Grapes.....	17	Delphinium.....	24	Stokesia.....	28
Lilies.....	19	Tritoma.....	6	Gooseberries.....	17	Daisy, Shasta.....	23	Sweet Peas.....	27
Novelties.....	3	Tunica.....	6	Raspberries.....	17	Dianthus.....	24	Sweet Rocket.....	28
Peonies.....	3	Veronica.....	7	Strawberries.....	17	Digitalis.....	24	Sweet William.....	28
Plant Seeds.....	2	Viola.....	7	SHRUBS.....	10-13	Dolichos.....	24	Thunbergia.....	28
Shade Trees.....	15	Violets.....	3, 7	Adonis.....	19	Dimorphotheca.....	24	Verbenas.....	28
Shrubs.....	10-13	Yucca.....	7	Amorpha.....	19	Echinocystis.....	24	Vines.....	28
Vegetable Seeds, Roots and Herbs.....	29-32			Artemisia.....	19	Echinops.....	24	Wallflower.....	28
Zinnias.....	28			Camadidum.....	19	Echscholtzia.....	24	Water Lily.....	28
				Cannas.....	19	Euphorbia.....	24	Xeranthemum.....	28
				Gladiolus.....	18, 28	Eupatorium.....	24	Zinnias.....	28
				Lilies.....	19	Gaura.....	24		
				Madeira Vine.....	19	Geum.....	24	VEGETABLE SEEDS.....	29
				Tuberose.....	19	Gilia.....	24	Artichoke.....	29
						Gaillardia.....	24	Asparagus.....	29
						Globe Amaranth.....	24	Asparagus Roots.....	29
						Gloxinia.....	25	Beans.....	29
						Dahlia.....	24	Brussels Sprouts.....	29
						Geranium.....	24	Brussels Sprouts.....	30
						Gem.....	24	Cabbage.....	30
						Gilia.....	24	Carrots.....	30
						Gaillardia.....	24	Cauliflower.....	30
						Globe Amaranth.....	24	Chicory.....	30
						Gloxinia.....	25	Celery.....	30
						Helianthus.....	25	Celery.....	30
						Helichrysum.....	25	Corn Salad.....	30
						Hemerocallis.....	25	Cress.....	30
						Hesperis.....	25	Cucumbers.....	30
						Ice Plant.....	25	Corn.....	30
						Ipomoea.....	25	Chard.....	32
						Impatiens.....	25	Cantaloupe.....	31
						Kochia.....	25	Dill.....	30
						Larkspur.....	25	Endive.....	30
						Lavender.....	25	Eggplant.....	30
						Liatris.....	25	Garlic.....	30
						Liniaria.....	25	Horseradish.....	30
						Lathyrus.....	25	Kale.....	30
						Lobelia.....	25	Kohl-Rabi.....	30
						Lupinus.....	25	Leek.....	31
						Marigolds.....	25	Lettuce.....	31
						Marvel of Peru.....	25	Mustard.....	31
						Matricaria.....	26	Okra.....	31
						Mignonette.....	26	Onions.....	31
						Myosotis.....	26	Onion Sets.....	31
						Nicotiana.....	26	Peas.....	31
						Nigella.....	26	Parsnip.....	31
						Nasturtiums.....	26	Peppers.....	31
						Ornamental Grasses.....	26	Parsley.....	31
						Petalilla.....	26	Pop Corn.....	30
						Petunias.....	26	Pumpkin.....	32
						Physalis.....	26	Radish.....	32
						Physicodan.....	26	Rhubarb.....	32
						Pansies.....	26	Rhubarb Roots.....	32
						Pinks, Hardy.....	26	Rutabaga.....	32
						Poppies.....	26	Salsify.....	31
						Portulaca.....	26	Sorrel.....	32
								Squash.....	32
								Spinach.....	32
								Turnips.....	32
								Tomato.....	32
								Watermelon.....	31

PECIMEN SHRUBS  
See inside Cover Pages.

# Ayres Hardy Perennial Plants

## Hardy Garden Phlox

For all-round reliability the Phlox is not outdone by any other perennial. They will succeed in almost any soil or position and flower thruout a long season without attention. However, they respond quickly to and are improved by liberal cultivation.

- Beacon**—Fine red, medium height. Each 25c; Doz. \$2.75.  
**B. Compte** (Medium)—Brilliant French-purple. Each 25c; Doz. \$2.75.  
**Eclairer** (Tall)—Pure scarlet. Each 25c; Doz. \$2.75.  
**Elizabeth Campbell** (Medium)—Very light salmon-pink, with dark crimson eye. Each 25c; Doz. \$2.75.  
**Europa** (Medium)—White, with crimson-carmine eye. Each 25c; Doz. \$2.75.  
**Fernand Cortez** (Tall)—Deep crimson. Each 35c; Doz. \$3.50.  
**General Von Heutz**—Brilliant salmon. Each 25c; Doz. \$2.75.  
**Jules Sanders** (Dwarf)—Pure pink; extra fine. Each 25c; Doz. \$2.75.  
**Mme. Paul Dutrie** (Dwarf)—A delicate lilac-rose, reminding one of some of the beautiful soft pink orchids. Each 25c; Doz. \$2.75.  
**Mrs. Jenkins** (Tall)—The best tall early white for massing. Each 25c; Doz. \$2.75.  
**Pantheon**—Brilliant carmine-rose (Medium). Each 35c; Doz. \$3.50.  
**Pink Beauty** (Tall)—Pink flowers; very fine. Each 25c; Doz. \$2.75.  
**R. P. Struthers** (Tall)—Salmon-pink. Each 25c; Doz. \$2.75.  
**Thor** (Dwarf)—Salmon-pink. Each 25c; Doz. \$2.75.  
**Tostoi** (Tall)—Coppery amaranth, carmine red reflex and blood-red center. Each 35c; Doz. \$3.50.  
**Water Groff**—Fine, tall, salmon-pink. Each 25c; Doz. \$2.75.  
**Wm. Ramsey** (Medium)—A fine deep crimson. Each 35c; Doz. \$3.50.

### Phlox Sublata

For rockeries and carpeting. A mass bloom in early spring.  
**Rosea**—Pink. Each 25c; Extra Large Clumps, Each 75c.  
**Lavender**—Each 25c; Extra Large Clumps, Each 75c.



Hardy Garden Phlox

## German Iris



German Iris

These beautiful flowers bloom early in the spring just after the Dutch Bulbs (listed on page 19) have finished blooming, and because of their great variety of colors, they make a magnificent show. They are perfectly hardy and thrive in almost any soil or location, especially when exposed to the full sun. No home garden is complete without a few clumps scattered about, and they are also excellent for massing and bordering. We quote only the best of the old varieties and new ones. "S" means standards or upper petals; "F" means falls or lower petals.

- Aurea**—"S" variegated. "F" rich chrome yellow. 2 ft. Each 25c; Doz. \$2.25.  
**Clarissima**—"S" lavender. "F" reticulated purple on white ground. 2 ft. Each 25c; Doz. \$2.25.  
**Celeste**—Pale azure blue. 30 inches. Each 25c; Doz. \$2.25.  
**Darius**—"S" rich canary yellow. "F" lilac margined white; rich orange beard. Each 25c; Doz. \$2.25.  
**Grand Bouquet**—"S" rosy mauve. "F" purplish crimson, reticulated white and brown. Each 50c; Doz. \$4.50.  
**Her Majesty**—"S" lovely rose-pink. "F" deep rosy-red tinted and veined darker. Late bloomer. 20 inches. Each 25c; Doz. \$2.25.  
**Iris King**—"S" clear lemon-yellow. "F" rich maroon, bordered yellow. Each 25c; Doz. \$2.25.  
**Kochii**—Rich claret purple. One of the darkest of all Iris. Very effective for mass effect. Early bloomer. 2 ft. Each 25c; Doz. \$2.25.  
**Loreley**—"S" canary yellow. "F" creamy white with purple blotches. Ends of petals bordered deep canary. 30 inches. Each 25c; Doz. \$2.25.  
**Lohengrin**—Uniform soft rosy-mauve. Very large. Midseason. 33 inches. Each 35c; Doz. \$3.25.  
**Mary Garden**—"S" pale yellow flushed soft lavender. "F" creamy white, minutely dotted and veined maroon; stigmas clear yellow. Late. 28 inches. Each 50c; Doz. \$4.50.  
**Maori King**—"S" rich golden yellow. "F" velvety crimson margined gold. 18 inches. Each 25c; Doz. \$2.25.  
**Mme. Chereau**—Pure white. Exquisitely frilled with a wide border of clear blue. Each 25c; Doz. \$2.25.  
**Pallida Dalmatica**—Clear lavender-blue, shading to pale silvery blue at the base. Extra large and fragrant. Very fine for cutting. 40 inches. Each 35c; Doz. \$3.25.  
**Pallida Speciosa**—"S" dark lavender. "F" shaded deep purple. Very tall and free-flowering. 42 inches. Each 25c; Doz. \$2.25.  
**Queen of May**—Lovely, soft, rosy-lilac. Very free-flowering and beautiful. 32 inches. Each 25c; Doz. \$2.25.

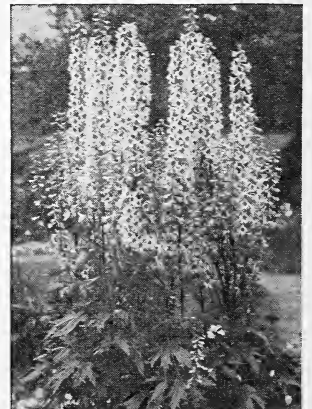
## Siberian Iris

Purple—Each 35c; 3 for 70c; Doz. \$3.25.

## Delphinium

We carry the largest stocks of named varieties in this part of the country. Stately spikes of rare beauty, varying shades of turquoise blue, indigo, pink, lavender, violet and white, characterize the Delphiniums. Some of the very best varieties are included in our stock. They are profuse bloomers thruout early summer and fall, are excellent for cutting and no garden is complete without them. They are of easiest culture and perfectly hardy, establishing themselves in any garden soil and responding liberally to treatment.

- Belladonna**—2½ to 6 feet. A beautiful light blue. A favorite. Each 25c; Doz. \$2.75.  
**D. Bellamosa**—2½ to 4 feet. Dark blue, otherwise similar to D. Belladonna. Each 25c; Doz. \$2.75.  
**D. Chinese**—1 to 1½ feet. A very pretty dwarf species, with fine feathery foliage and intense gentian blue flowers in open panicles. Each 25c; Doz. \$2.75.  
**D. Chinese White**—A pure white form of the above D. Chinese. Beautiful. Each 25c; Doz. \$2.75.  
**D. Gold Medal Hybrids**—Gorgeous flowers on spikes 2 to 3 feet tall. An exquisite collection of colors. We can supply these in mixtures only. Each 25c; Doz. \$2.00.  
**D. English Orchid**—Lovely mauve-lavender shaded pink. A grand Delphinium and one you will be proud to have in your gardens. Each 50c; Doz. \$5.00.  
**D. Prince Charming**—Lilac-pink. Very lovely. Each 50c; Doz. \$5.00.  
**D. Melody**—Exquisite light blue with white eye. Each 50c; Doz. \$5.00.  
**D. Romance**—A bright blue shaded rose on inner petals. Variegated eye. Each 50c; Doz. \$5.00.  
**D. Queen Mary**—Exquisite silvery nemophila blue. Each 50c; Doz. \$5.00.  
**D. Summer Sky**—Sky blue shaded rose-pink. Each 50c; Doz. \$5.00.  
**D. Twilight**—Charming shell pink. Each 50c; Doz. \$5.00.

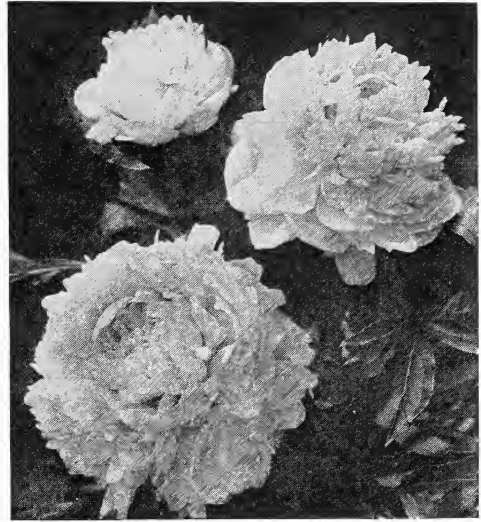


Gold Metal Hybrids

# Peonies

The wonderfully improved Peonies introduced in recent years make these truly the "Queen of Spring Flowers." Well adapted to massing in beds and particularly valuable for planting in groups thruout the shrub and perennial borders. They should be planted 2 feet apart in good garden soil, setting eyes, or crown, 2 1/4 to 3 inches below the surface of the ground. August, September and October is the best time to plant them, but they can be planted in the early spring. We sell Peonies of our own growing; tried and true to color and name.

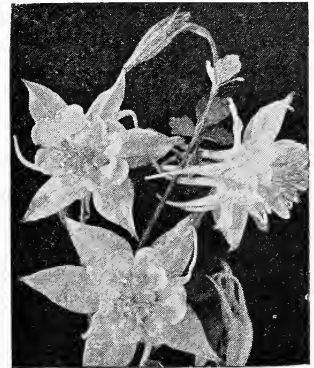
- Albert Crousse**—Crousse 1893. Salmon-pink; striking. **Each \$1.00.**
- Alexander Dumas**—Guerin 1862. Brilliant pink. **Each \$1.00.**
- Asa Gray**—Pale lilac, sprinkled with minute dots of deeper lilac. A very distinct variety. **Each \$1.50.**
- Baron Rothschild**—Salmon; fragrant. **Each 75c.**
- Charles Minot**—Double; fragrant; free bloomer. Bomb. **Each \$3.00.**
- Duke of Devonshire**—Large, late; deep rose. **Each \$1.00.**
- Mme. Emile Lemoine**—Very beautiful and one of the finest white varieties. Mid-season. **Each \$1.00.**
- Edouard Andre**—Deep, crimson-red. **Each \$1.00.**
- Eduis Superba**—Pink, slightly violaceous, intermixed with narrow, whitish petals. Early. **Each 75c.**
- Felix Crousse**—Extra fine; brilliant red. **Each \$1.00.**
- Festiva Maxima**—Enormous white bloom, with an occasional clear purple spot on edges of center petals; very fragrant. **Each 75c.**
- Floral Treasure**—Fragrant; pink. **Each \$1.00.**
- Grandiflora**—Salmon pink; fragrant and strong. **Each \$1.00.**
- Golden Harvest**—Soft pink and golden yellow. **Each 75c.**
- Jeanne D'Arc**—Pink; very fine. **Each \$1.00.**
- Karl Rosenfeld**—Large; deep velvety red. Wonderful. **Each \$1.50.**
- Meissonier**—Brilliant crimson. **Each \$1.00.**
- Marechal Vaillant**—Extra large, mauve lavender. **Each \$1.00.**
- Mme. Crousse**—Snow-white; center petals edged carmine. **Each \$1.50.**
- Marie Lemoine**—Sulphur-white; shaded pink; magnificent. **Each \$1.00.**
- M. Jules Elie**—The most perfect Peony in existence. Flesh-pink, shading to deeper rose at the base. Mid-season. **Each \$1.00.**



Festiva Maxima Peonies

# Novelties; Hardy Plants

- NEW HARDY PHLOX (Commander)**—Most beautiful of all the garden Phlox. Deep vivid scarlet red color. Stately-upright growth, sometimes attaining three feet in height. Robust plants that will bloom this season. **Each 50c; Doz. \$5.00.**
- LIATRIS PYSNOSTACHYA**—Unsurpassed by anything for a gorgeous effect in your garden. The unusual immense flowers are produced on spikes sometimes 5 feet tall and are in continuous bloom from July till September. The shades vary from mauve lavender thru old rose, rosy red, to purple. Robust plants that will bear in profusion this season. **Each 50c; 3 for \$1.25; Doz. \$5.00.**
- BLEEDING HEART (Everblooming)**—This variety is dwarf in growth and produces its beautiful cerise flowers from spring till frost. Robust plants that will bloom this season. **Each 65c.**
- HARDY ADIATUM FERNS (Maiden Hair)**—Nothing will equal this lovely fern for daintiness and artistic beauty. It will thrive in shade and is perfectly hardy. **Each 50c; Doz. \$5.50.**
- HARDY BLUE SALVIA**—This charming plant produces its beautiful azure blue flowers from August on throughout the fall. Grows from 2 to 3 feet high. Robust plants that will bloom this season. **Each 50c; Doz. \$5.00.**
- NEW BLUE COLUMBINE**—A rich shade of blue that adds much color throughout the spring and early summer. **Each 45c.**
- NEW PINK COLUMBINE**—A charming shade of pink, one which lends a lovely contrast, planted with other shades of Columbines. **Each 40c.**
- PURE WHITE COLUMBINE**—A pure snow-white Columbine with beautiful long spurs; should be in every garden. **Each 35c; 3 for \$1.00.**
- DIGITALIS (Hardy Foxglove)**—Nothing is quite so pronounced and distinguished looking in a hardy garden than this beautiful reddish purple Foxglove. Robust plants that will bloom profusely this season. **Each 50c; Doz. \$5.00.**
- CHINESE LANTERN (Physalis Franchetii)**—Immense pods of a gorgeous orange or flame red. It retains its color throughout late summer and autumn. Robust plants that will produce this season. **Each 50c; Doz. \$5.00.**



Columbine



Oriental Poppy

- DELPHINIUM (Gold Medal English Hybrids)**—New varieties are constantly springing from these grand Hybrids. Why not try a dozen of these lovely Hardy Delphinium, which vary in color from the softest pinks and lavender to deep blue? Will bloom this season. **Dozen plants only \$2.00.**
- NEW ORIENTAL POPPY (Vivid Scarlet)**—Surely the most showy of all the gorgeous Hardy Oriental Poppies. So striking is this color it might be described as a glowing flame. **Each 50c; Doz. \$5.00.**
- NEW SHASTA DAISY (Mammoth Snow-White)**—Words can hardly describe this beautiful sturdy flower which is borne on long, stately stems. Truly a gem. Blooms from June till frost. Extra robust plants that will bloom this season. **Each 50c; Doz. \$5.00.**
- NEW DOUBLE VIOLETS (Deep Blue)**—It has perhaps been the ambition of most flower lovers to grow double violets. You can now do this with little care. Plant on south side of a building and give a little protection of old leaves or straw in winter. **Each 35c; Doz. \$3.00.**
- SWEET-SCENTED SCOTCH PINKS**—These spicy garden pinks are so deliciously fragrant one can hardly resist spending hours in the garden about them. Then, too, their flowers are gay in color which makes it a most delightful hardy plant. Extra robust plants that will bloom in abundance this season. **Each 35c; 3 for \$1.00; 12 for \$3.00.**
- HARDY SWEET PEAS**—Fortunately we have produced a new variegated color in Perennial Sweet Peas. We include all colors in our dozen mixture. Remember Hardy Sweet Peas are free from disease, bloom all summer and fall, and when once planted will continue to bloom from year to year with little or no care. We predict that the "Hardier" will take the place of the old annual Sweet Peas. Special introductory plants that will bloom this season. **3 for 50c; Doz. \$1.50.**
- PYRETHRUM (Velvety Red)**—This is a color so much admired yet seldom seen in a Pyrethrum Daisy. This lovely creation starts blooming in May and is often a sheet of color for Mothers' Day, blooming sparsely throughout the summer. **Each 50c.**
- GAILLARDIA (Sunset Glow)**—Immense in size and a gorgeous flower, hard to describe. It radiates its vivid color from Decoration Day on throughout the summer and fall. Robust plants that will bloom this season. **Each 50c; Doz. \$5.00.**

# General List of Hardy Perennial Plants

Altho being popularly known as old-fashioned flowers, perennials have never been in demand so much as at this time. We grow our plants from seed or divisions, and do this every year, thus you will receive hardy, thrifty plants that will produce results the first year you set them out. The following is a list of the Hardy Perennials we have to offer.

## ACHILLEA (Milfoil or Yarrow)

**A. millefolium rosea** (Rosy Milfoil)—2 feet. June to August. Purplish red flower heads; delicately cut foliage. For masses and dry places. **Each 25c; Doz. \$2.75.**

**A. Perry's white**—1 to 2 feet. June to September. Pure white flowers. A fine new sort unexcelled as a cut flower. **Each 25c; Doz. \$2.75.**

**A. ptarmica fl. pl** (The Pearl)—2 feet. June to October. Irregular clusters of small double white flowers. For borders. Good for cutting. **Each 25c; Doz. \$2.75.**

## ACONITUM (Monkshood)

**A. fischeri**—3 feet. October. Pale blue flowers on tall spikes. For planting in shady places and for wild effects. **Each 25c; Doz. \$2.75.**

## AGROSTEMMA (Rose Campion) (Dusty Miller)

**A. Coronaria**—1½ to 2 feet. June to August. Foliage a powdery silver-gray. Velvet-like cerise-carmen flowers resembling single garden pinks. **Each 25c; Doz. \$2.75.**

## ALYSSUM (Golden Tuft)

**A. saxatile var. compactum**—4 to 12 inches. April and May. Showy, bright yellow flowers. Excellent edging plant. **Each 25c; Doz. \$2.75.**

## ANCHUSA (Alkanet or Bugloss)

**A. Italica var. Dropmore**—4 to 5 feet. June and July. Masses provide a sea of much desired blue in the garden. **Each 25c; Doz. \$2.75.**

**ANEMONES (Windflowers)** Upright growing plants 2 to 3 feet tall that bloom from August till frost. The flowers are single, rose-like and excellent for cutting. Thrives in sun or partial shade but prefer protected places.

**A. prince henry**—Dwarf, dark red. **Each 50c; Doz. \$5.00.**

**A. queen charlotte**—Large, semi-double, pink. **Each 50c; Doz. \$5.00.**

**A. whirlwind**—Semi-double, white. **Each 50c; Doz. \$5.00.**

## ANTHEMIS (Golden Marguerite)

**A. tinctoria var. kelwayi**—2 feet. June to September. Daisy-like yellow flowers, excellent for cutting. **Each 25c; Doz. \$2.75.**

## AQUILEGIA (Columbine)

Popular old-fashioned flowers lately greatly improved that bloom in sunny or shady locations and have attractive foliage all season. For borders and rockeries. Mixed, many colors and combinations of colors in the famous long-spurred hybrids. **Each 25c; Doz. \$2.75.**

## ASTERS (Hardy Perennial Types)

Showy plants with myriads of tiny, bright-colored, daisy-like flowers in September and October. Very desirable for mass planting or in natural landscape work.

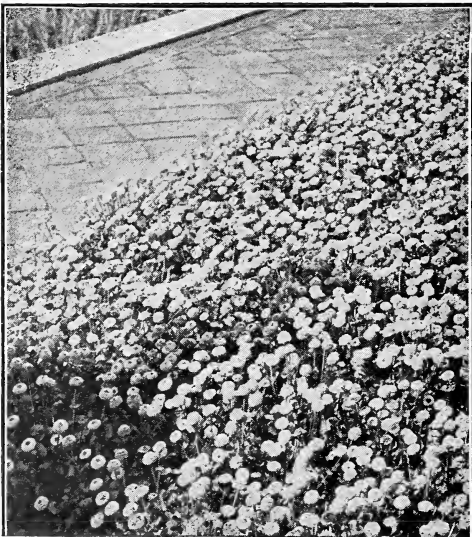
**A. gertrude**—1½ to 2 feet. More dwarf than the other varieties. Pale to light blue. **Each 25c; Doz. \$2.75.**

**A. novae-angliae** (New England Aster)—3 to 5 feet. Rich violet and very showy. **Each 25c; Doz. \$2.75.**

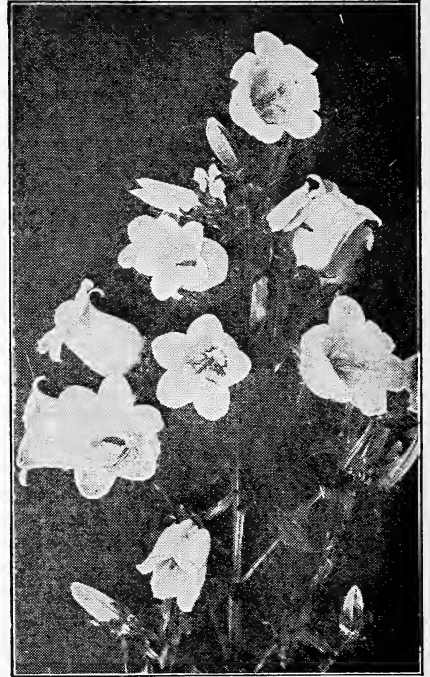
**A. novibelgi St. Egwin**—3 to 4 feet. Very free-blooming, flowers rosy pink. **Each 25c; Doz. \$2.75.**

## ASTILBE (Meadow Sweet)

The plume-like panicles of feathery bloom make these some of the most attractive of the perennials. They thrive in sun or partial shade and deserve a place in every garden. Excellent for cutting. 1½ feet. August. Light rose-pink flowers. **Each 25c; Doz. \$2.75.**



**Bellis (English Daisy)**



**Campanula Medium**

## AUBRIETIA (Purple Rock Cress)

**A. deltoides**—4 to 6 inches. April and May. Small pale violet flowers; evergreen foliage. Highly recommended for wall and rock gardens and borders. **Each 25c; Doz. \$2.75.**

## BELLIS (English Daisy)

Improved double flowering, giant blooms. Separate colors, white, pink and red; also mixed. **Each 25c; Doz. \$2.75.**

## BOLTONIA (False Chamomile)

Very showy, with large single Aster-like flowers. Blooms during summer and autumn with many blooms out at one time. Very effective. **B. asteroides**—4 to 5 feet. August and September. For background plantings. **Each 25c; Doz. \$2.75.**

## BUTTERCUP (See Ranunculus under this list)

## CAMPANULA (Canterbury Bells)

These hardy well-known plants deserve a place in every old-fashioned flower border. They are easy of culture; thrive well in almost any soil. Their bell-shaped flowers of various colors will add a great deal to the appearance of your garden in June and July. Fine for cutting.

**C. Carpatica** (Carpathian Bellflower)—6 to 8 inches. Blue bells borne delicately above tufts of attractive foliage during the summer. **Each 25c; Doz. \$2.75.**

**C. var. alba**—Pure white flowers. **Each 25c; Doz. \$2.75.**

**C. medium** (Canterbury Bells)—3 feet. Panicles of large bells in pink, blue and white. Biennial. **Each 25c; Doz. \$2.75.**

**C. var. calycanthema** (Cup and Saucer Canterbury Bells)—2 feet. Large, unusual flowers in purple, pink and white, resembling a cup and saucer. Biennial. **Each 25c; Doz. \$2.75.**

**C. Blue Bells of Scotland**—Beautiful clear blue flowers from April till June. These are well known in both verse and song; will surely add charm to any garden. **Each 35c; Doz. \$3.50.**

## CARNATIONS (Hardy Double)

Strong plants that will furnish an abundance of large double flowers. **Hardy Double**—Clear pink, rose pink, white, fire-flame red. **Each 25c; Doz. \$2.75.**

## CENTAUREA

**C. montana** (Mountain Blue)—1½ feet. June to September. Violet—blue thistle-like flowers. For sunny places and rockeries.

## CERASTIUM (Snow-in-Summer)

**C. tomentosum**—10 inches. The dense carpet of silvery foliage which this plant bears is almost covered by the myriads of tiny white flowers thru May and June. Splendid subject for rock gardens and edging. **Each 25c; Doz. \$2.75.**



**CHRYSANTHEMUMS, HARDY GARDEN**

These flowers are the glory of the autumn garden. They are the one remaining cheerful note after the frosts have cut down all other flowers. Most excellent for cutting. We recommend the following for outdoor planting:

- C. **Boston**—An excellent bronze variety. Early continuous bloomer.
- C. **Connie Dick**—Pompon. Early yellow, and one of the finest varieties regardless of color.
- C. **Canfordia**—Japanese. Yellow. Extra early and highly recommended.
- C. **Lilian Doty**—Pompon. A delightful soft rose-pink. Strong grower. Early.
- C. **Mrs. W. E. Buckingham**—Single, pink. One of the most popular.
- C. **Normandie**—Varying pink and white. Full aster-like. Earliest.
- C. **Red Doty**—Large, compact; a strong grower. Early.
- C. **Uvalda**—A free-blooming early sort. White.
- C. **White Doty**—Pompon. Large compact heads in clusters on strong stems. Early.

The above varieties. Each 25c; Doz. \$2.75.

**CHRYSANTHEMUMS (Shasta Daisy)**

C. **Maximum** (Shasta Daisy)—1 to 2 feet. A very free-flowering plant with large showy, daisy-like flowers. Blossom white with yellow centers. Each 25c; Doz. \$2.75.

**CONVALLARIA (Lily-of-the-Valley)**

C. **Majalis**—6 inches. May. The old-time favorite, which loves the shade and grows successfully under the trees and among shrubbery. Per dozen 75c.

**COREOPSIS**

C. **Lanceolata**—2 to 3 feet. June and July. Bright golden yellow flowers resembling those of the Cosmos in form. Most excellent for cutting. Each 25c; Doz. \$2.75.

C. **California Sunbeam**—Form of the above with brown center. Each 25c; Doz. \$2.75.

C. **Lanceolata fl. pl.**—Supposedly a double form but does not come true; we do not recommend this as a double but it is a very pretty flower. Each 25c; Doz. \$2.75.

**DIANTHUS BARBATUS (Sweet William)**

1½ to 2 feet. Flower clusters of red, pink, white and many color combinations. Biennial. Mixed colors. Each 25c; Doz. \$2.75.

**DIANTHUS (Hardy Pinks)**

The good old-fashioned pinks so frequently found in Grandmother's garden. Of dwarf habit and their delightful, spicy fragrance scents the air in May and June. The foliage is especially attractive thruout the year, and they are especially useful in edging perennial borders.

**DICENTRA (Bleeding Heart)**

D. **spectabilis**—1 to 2 feet. April to July. An old-time favorite. Its arching stems bear drooping heart-shaped flowers of white and old rose. Valuable for planting in sun or shade. Each 75c. Very scarce.

D. **exima** (Everblooming Dwarf)—Most dainty and beautiful of all. Each 75c.

D. **aurea nana**—Very dwarf yellow Bleeding Heart, fine for rockeries and other situations; among the first flowers to bloom in spring. Each 25c; Doz. \$2.50.

**DIGITALIS (Foxglove)**

The Foxgloves are stately old-fashioned biennials with tall spikes of drooping bells that grow 2 to 5 feet in height. Effective at the back of the border or massed in semi-shady locations.

D. **giant mixed**—Finest mixed; colors range from white and shell-pink to deepest purple. Flower heads upwards of 3 feet long, growing to a height up to 5 feet. Many of the blooms are attractively dotted with contrasting colors. Each 25c; Doz. \$2.75.

D. **Deep Red**—A splendid separate color for particular uses. Each 25c; Doz. \$2.75.

D. **Purpurea**—A fine purple for particular use. Each 25c; Doz. \$2.75.



Hardy Chrysanthemums

D. **deltoides** (Maiden Pink)—6 to 10 inches. Tiny single flowers like miniature pinks, borne above the dense carpet of foliage. Each 25c; Doz. \$2.75.

D. **plumarius** (Hardy Garden Pinks)—Double, everblooming in a grand mixture of colors and shades. Each 25c; Doz. \$2.75.

D. **Sweet Scented Clove**—Everblooming. Pink, purplish and white fragrant flowers on long stems. Handsome glaucous green foliage. For border or rock garden. For continuous bloom cut flowers when they begin to fade. Each 25c; Doz. \$2.75.

**EUPATORIUM (Hardy Ageratum)**

E. **ageratoides**—A useful border plant of strong free growth, 3 to 3½ feet high; with minute white flower in dense flower heads, splendid for cutting. August and September. Each 25c; Doz. \$2.75.

E. **coelestinum**—A pretty hardy plant, with light purple flowers similar to Ageratoides. In flower from August till frost. 18 to 24 inches. Good cut flower. Each 25c; Doz. \$2.75.

**FERNS (Hardy)**

**Adiantum Pedatum** (Hardy Maiden Hair Fern)—Most attractive of our native ferns. Black stems with delicate green fronds. Each 35c; Doz. \$3.50.

**FUNKIA (Plantain Lily)**

These are among the easiest plants to manage; their broad, massive foliage ever is attractive even when not in bloom. Succeed in sun or shade. For the garden border, rock work or marshy ground. 1½ to 3 feet high.

F. **lanceifolia**—August. Narrow leaves; panicles of white flowers overlaid with deep lavender. Each 25c; Doz. \$2.75.

F. **subcordata var. grandiflora**—August. Large full clumps of handsome foliage with large fragrant pure white flowers, make this the best of the Funkias. Each 25c; Doz. \$2.75.

**GAILLARDIA (Blanket Flower)**

G. **grandiflora**—2 feet. June until frost. Beautifully petaled daisy-shaped flowers with scarlet centers. Most excellent for cutting. Each 25c; Doz. \$2.75.

G. **Indian Red**—The most brilliant of all; affording striking color throughout the summer and fall. Each 25c; Doz. \$2.75.

**GYPSOPHILA (Baby's Breath)**

G. **paniculata**—3 to 4 feet. Innumerable tiny white flowers, lightly touched with pink, borne in light, feathery panicles during July and August. Splendid for cutting. Very special. Each 50c.

G. **Paniculata flore plena**—Large double pure white flowers. True grafted stock. Each \$1.00.

**HEMEROCALLIS (Day Lilies)**

Popular hardy plants that are a valuable addition to any collection. They thrive in most soils but feel especially at home near streams or partial shaded situations.

H. **aurantiaca**—3 feet. Deep orange. July and August. Each 25c; Doz. \$2.75.

H. **florham** (Yellow Day Lily)—3½ feet. June and July. Fragrant clear amber yellow flowers. Each 25c; Doz. \$2.75.

**HIBISCUS (Mallow Marvels)**

4 to 6 feet. August. Immense, single, hollyhock-like flowers in red, pink and white. Extremely effective for mass-plantings, especially in moderately dry places or by watersides. Each 25c; Doz. \$2.75.

**HOLLYHOCKS**

Everyone knows these garden plants with their colossal spikes of bloom. 5 to 7 feet high. They make a very effective background for the perennial border, in colonies about the grounds, and in garden corners. Biennial.

**Ayres' Double Flowering**—Crimson, rose, scarlet, yellow, white, Newport pink, maroon and choice mixed. Separate colors and mixed. Each 25c; Doz. \$2.75.

**New Single Hybrids**—Allegheny mixed. The old familiar type. Offered mixed only. Each 25c; Doz. \$2.75.



Gaillardias

**IBERIS (Hardy Candytuff)**

Most desirable dwarf plants, 8 to 10 inches with evergreen foliage, which is completely hidden under dense flower heads in the spring.

**Little Gem**—Dwarf, pure white flowers in June. Splendid rock or edging plant. 6 inches. Perfectly hardy. **Each 25c; Doz. \$2.75.**

**Sempervirens**—Very dwarf and covered with a sheet of white, a particularly fine rock plant. **Each 25c; Doz. \$2.75.**

**Gibraltarica**—One of the finest, 1 foot high, and in color a delicate lilac. **Each 25c; Doz. \$2.75.**

**LATHYRUS (Hardy Sweet Pea)**

**L. latifolius**—3 to 6 feet. July to September. A most popular Sweet Pea with deep violet, white, pink and red blossoms. Used extensively for trellis, fences, or ground covers over rough stony places and is entirely free from disease. **3 for 50c; Doz. \$1.50.**

**LAVANDULA (Sweet Lavender)**

**L. vera**—This is the true Sweet Lavender, growing about 18 inches high; delightfully fragrant blue flowers in July and August. **Each 25c; Doz. \$2.75.**

**LIATRIS**

**L. Pycnostachya**—Nothing that can be planted that will attract more attention on account of its unusual appearance; but it is beautiful as well as odd. It blooms in midsummer and throws up long narrow spikes of rich purple flowers which last a long time. One of the most charming of all hardy perennials. Large clumps. **Each 50c; Doz. \$5.00.**

**L. Spicata**—Similar to above, somewhat earlier in bloom, and not quite so tall. **Each 35c; Doz. \$3.50.**

**LINUM (Perennial Flax)**

**L. Heavenly Blue**—1½ feet. Foliage and bloom are light and feathery, flowers of delicate blue, borne in profusion from mid-May till September. **Each 25c; Doz. \$2.75.**

**MONARDA (Beebalm)**

**M. didyma splendens**—3 to 4 feet. June to August. Bright scarlet flower heads. One of the standbys of the old-fashioned garden. **Each 25c; Doz. \$2.75.**

**ORNAMENTAL GRASSES (Perennial)**

For large beds, in groups on lawns, and around stone work and pools, nothing can give a finer effect. Dried, for winter bouquets, they are fine.

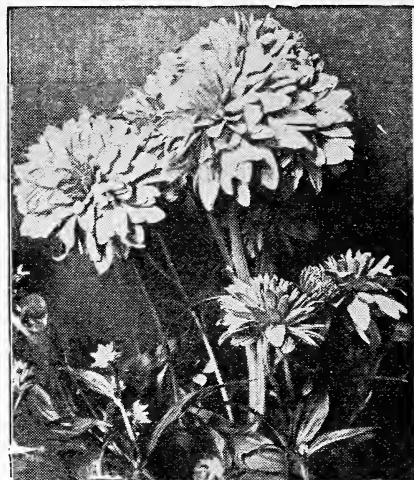
**Gynerium Argenteum** (Pampas Grass)—White silver plumes. 5 feet. **Each 50c; Doz. \$5.00.**

**Eulalia Zebrina** (Zebra Grass)—Light green, barred with creamy white across foliage. 6 feet. **Each 50c; Doz. \$5.00.**

**Variegata**—Long narrow green leaves, striped with white. **Each 25c; Doz. \$2.75.**



Salvia



Golden Glow (Rudbeckia)

**MYOSOTIS (Forget-Me-Not)**

**M. palustris var. semperflorens**—8 to 10 inches. May thru September; the tiny blue flowers having a very appealing charm. **Each 25c; Doz. \$2.75.**

**Chinese Forget-Me-Not**—2 to 3 feet high. Literally covered with deep blue flowers, making a most striking effect. Also very useful for cutting. **Each 25c; Doz. \$2.75.**

**PAPAVER (Poppy)**

**P. orientalis** (Oriental Poppy)—Tremendous scarlet, cup-shaped blooms, with large purplish-black blotches at base of petals, creating a wonderful contrast. Clumps of these in the shrubby or border add a brilliancy no other flower can provide. **Each 25c; Doz. \$2.75.**

**P. Orientalis** (Mrs. Perry)—Like the above, only orange-apricot, very fine. **Each 25c; Doz. \$2.75.**

**Choice Mixed Oriental Poppies**—Grown from a select strain. **Each 25c; Doz. \$2.75.**

**P. nudicaule** (Iceland Poppies)—A profusion of slender leafless stems above fern-like foliage, 1 foot high, bearing charming cup-shaped flowers, in yellow, orange and white. We can supply these in choicest mixture only. **Each 25c; Doz. \$2.75.**

**PYRETHRUM (Painted Daisies)**

**P. hybridum**—2 feet. June and July. Daisy-like flowers shading thru white and pink to bright carmine. **Each 25c; Doz. \$2.75.**

**P. Finest Double**—In finest mixture of pink, red, scarlet, rose and white. **Each 50c; Doz. \$5.00.**

**RANUNCULUS (Double Buttercup)**

**R. Acris fl. pl.**—A pretty double-flowering bright golden yellow buttercup. Bears masses of flowers during May and June. **Each 25c; Doz. \$2.75.**

**RUDBECKIA (Golden Glow)**

**R. lacinata fl. pl.**—5 to 6 feet. July to September. Golden yellow Dahlia-like flowers are borne on tall swaying stems. **Each 25c; Doz. \$2.75.**

**PLATYCODON (Balloon Flower)**

**P. grandiflora**—2 feet. Large, wide open, bell-shaped flowers of violet blue which are borne continuously from July to September. Unusually attractive. **Each 25c; Doz. \$2.75.**

**P. alba**—White variety of the above. **Each 25c; Doz. \$2.75.**

**PLUMBAGO (Lead Wort)**

**P. larpentae**—8 inches. A low, spreading border plant, bearing a profusion of beautiful cobalt-blue flowers from July till frost. Thrives in shade, good for rockeries. **Each 25c; Doz. \$2.75.**

**PHYSOSTEGIA (False Dragonhead)**

**P. virginica**—Forms large clumps 3 to 4 feet high, bearing long spikes of delicate pink flowers, tubular in form. July and August. **Each 25c; Doz. \$2.75.**

**P. virginica alba**—Pure white. **Each 25c; Doz. \$2.75.**

**PRIMULA (Hardy Primrose)**

**P. vulgaris**—The old English Primrose with pale yellow flowers. 6 to 9 inches. **Each 25c; Doz. \$2.75.**

**SALVIA (Meadow Sage)**

**S. farinacea**—A profusion of long spikes of beautiful pale blue flowers. 3 to 4 feet. August to frost. **Each 25c; Doz. \$2.75.**

**STATICE (Sea Lavender)**

**S. latifolia**—18 inches. July to September. A profusion of deep lavender flowers borne in light airy panicles. **Each 25c; Doz. \$2.75.**

**STOKESIA (Stoke's Aster)**

**S. cyanea**—1½ feet. June to October. Large flowers, somewhat resembling the China Aster, in shades of pale violet. **Each 25c; Doz. \$2.75.**

**S. var. alba**—White flowers, same as above. **Each 25c; Doz. \$2.75.**

**TRITOMA (Red Hot Poker)**

**T. pfitzeri**—3 to 4 feet. August to October. Sends up stiff stems of orange-scarlet flowers. Very exceptional. **Each 50c; Doz. \$5.00.**

**TUNICA**

**T. saxifraga**—6 to 10 inches. Delicate, tiny lilac-pink flowers borne at the tips of grass like stems in June and July. **Each 25c; Doz. \$2.75.**

**VERONICA (Speedwell)**

*V. longifolia* var. *subsessilis*—2 feet. A branching type with violet flowers from August to October. Splendid as a cut flower and a particularly choice perennial. Each 25c; Doz. \$2.75.  
*V. spicata*—2 feet. June and July. Light bluish-violet spikes of flowers. Each 25c; Doz. \$2.75.

**VIOLA (Tufted Pansies)**

These plants are rapidly becoming favorites; they are the best in edging plants; they remain in full bloom from May until October. The secret of the continuous blooming period is the fact that they must be sheared a few times during the season so that the plants do not go to seed. Light blue, dark blue, white, golden yellow and mixed. Each 25c; Doz. \$2.75.

**VIOLETS (Hardy Garden)**

**Sweet English**—The old favorite garden violet, flowers of great substance on long stems. Very fragrant; blooms both in early spring and early autumn. Plant beneath shrubbery, along edges, and in rockeries. Each 25c; Doz. \$2.75.

**YUCCA (Adam's Needle)**

*Y. filimentosa*—Sends up tall stalks laden with ivory-white flowers in June and July from a base of spreading sword-like leaves. Desirable alone; in shrubbery or border. Select specimens. Each 75c.



Viola

See pages 22 to 28 for Ayres' Annual and Perennial Flower Seed

# Climbing Vines

These are as necessary to the comfort and the beauty of the home as the trees and shrubs that we plant about it.

**CELASTRUS ORBICULATUS (Japanese Bittersweet)**—Almost an evergreen plant, as leaves and berries hang on until late in winter. Always free from insects and diseases. Blossoms in June followed by the berries which are orange and red, and make a splendid winter decoration for the home. This plant is well adapted for covering walls, banks, terraces, trellises, arbors and fences. Truly a most wonderful vine and our stock is exceptionally fine. Extra Strong Plants, Each \$1.00.

**DUTCHMAN'S PIPE VINE**—A vigorous and rapid growing climber, bearing singular brownish colored flowers resembling in shape the well known Dutchman's Pipe, from which it is named. Large light-green leaves. Each \$1.00.

**VITIS HENRYANA**—Ivy foliage similar but not as large as Virginia Creeper, the leaves being of great substance and very prettily variegated. Each \$1.00.

**BIGNONIA (Trumpet Vine)**—For covering unsightly places, garages, rock work, or wherever a large flowered showy vine is desired. Dark red flowers with orange throat resembling trumpets. Each \$1.00.

**AMPELOPSIS (Ivy)**—Climbers of exceptional merit, for rockery, walls, buildings, arbors, especially where a well established growth is desired over a long period of time. The varieties are all related and are all good.

**A. Quinquifolia (American Ivy or Virginia Creeper)**—Has beautiful digitate leaves that become rich crimson in autumn; a very rapid grower. One of the finest for covering walls, verandas, or trunks of trees. Each 50c.

**A. Engelmanni (Engelmann's Ivy)**—Shorter jointed than Virginia Creeper, and a good climber, growing 6 to 10 feet in a season. Clings to brick, stone, etc. Each 50c.

**A. Veitchii (Boston Ivy)**—Of Japanese origin; entirely hardy with foliage turning brilliant red in autumn. It clings tightly to walls, etc., and is unsurpassed for basket or vase plants. Each 75c.

**WISTERIA**—One of the most decorative of vines. For porch decoration without too much shade it has no superior. Long, twining branches bear great sprays of foliage while its large racemes of beautiful flowers sway with every breeze.



Wisteria

**W. Sinensis (Chinese)**—Great panicles of purple flowers. Each \$1.00.

**W. Sinensis Alba (White Chinese)**—Of similar habit as above, with pure white flowers. Each \$1.00.

**CLEMATIS**—A beautiful class of hardy climbers, excellent for pillars or trellises. They delight in a rich soil and sunny situation. Perfectly hardy. We have the following varieties that are recommended:

**Duchess of Edinburgh**—Double, pure white.

**Henryi**—Single white.

**Jackmanii**—Large single purple.

**Madame Edouard Andre**—Large single red.

**Paniculata**—Pure white in clusters. Any of the above varieties of Clematis, Each, \$1.00.

**HONEYSUCKLE**—Strong climbing vines bearing beautiful small sweet-scented flowers. Perfectly hardy and will grow in most any situation. Our stock is exceptionally strong. We have the following varieties:

**Hall's Japan**—Color white, changing to yellow. Very fragrant. Blooms June to November.

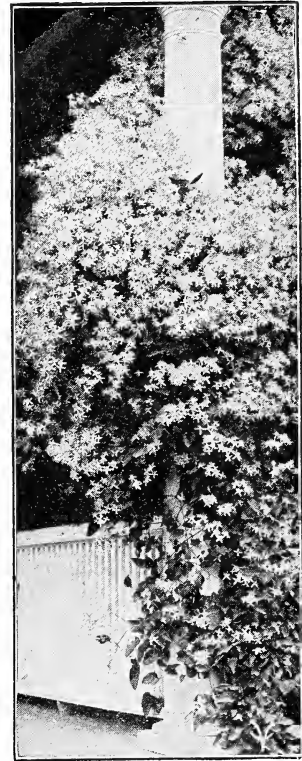
**Scarlet Trumpet**—Strong, rapid climber. Blooms very freely the entire season, bright red, trumpet-shaped flowers.

Either of these varieties listed above, Each 75c.

**POLYGONUM AUBERTII (Silver Lace Vine)**—One of the most desirable flowering climbers. Strong vigorous growth upwards of 25 feet a season. Produces thruout summer and fall great foamy sprays of white flowers which are very fragrant. Each \$1.00.

**KUDZU VINE**—The most rapid growing vine in cultivation, obtaining after being established, a height of 50 feet in a season. Its foliage is large and it furnishes a dense shade. Each \$1.00.

**HARDY VINCA VINE (Evergreen)**—This is a most beautiful vine that remains green throughout the winter and in early spring is covered with lovely blue flowers. Fine for creeping over rocks, embankments or for the cemetery as a ground cover. Each 25c; Doz. \$2.75.



Clematis



American Beauty

Red Radiance

President Wilson

## Bryson Ayres Famous Roses

Roses are particularly adapted to this section and every home should be beautified with these lovely flowers. The Bryson Ayres Rose Farms are perhaps the most extensive in the entire central west. Intensive cultivation and many years of Rose culture has made the Bryson Ayres Roses noted for their beauty, fragrance and hardiness. No home is complete without roses, as they add greatly to its beauty and value.

### How to Plant Roses

When setting the bushes be careful to straighten out the roots and press dirt well around them with the foot. Set them a little deeper than they grew in the nursery—you can tell this by the dark earth line on the stalk. After tramping earth well, it should be two inches lower than the surrounding ground. Give plenty of water at once after planting. Cultivate well to keep clean of weeds and grass.

### Everblooming Roses

PRICES: AYRES' LARGE, THRIFTY  
SELECTED BUSHES, EACH 75c; DOZEN  
\$8.00.

With every order for 1 dozen Rose bushes we give you free, one additional Rose bush.

T—Indicates Sweet Scented Tea Roses. HT—Indicates Sweet Scented Hybrid Tea Roses. HP—Indicates Sweet Scented Hybrid Perpetual Roses.

Admiral Ward (HT)—Velvety Crimson.  
America (HT)—Peach pink.  
American Beauty (HP)—Red to crimson.  
Anna de Diesbach (HP)—Carmine pink.  
Anna Mueller (HP)—Pink.  
Annie Laurie (HT)—Salmon pink.  
Angleus (HT)—Pure white.  
Baroness de Rothschild (HP)—Pink.  
Bessie Brown (HT)—Creamy white.  
Betty (HT)—Golden yellow.  
Black Prince (HP)—Dark crimson.  
British Queen (HT)—White-tipped rose.  
Captain Christy (HP)—Silver pink.  
Cheerful (HT)—Pink.  
Claudius Pernet (P)—See Sou. de C. Pernet.  
Clothilde Soupert (HP)—White.  
Columbia (HT)—Pink.  
Commonwealth (HT)—Deep solid pink.  
Conrad F. Meyer (HP)—Deep pink.  
Couquette des Alps (HP)—White.  
Covent Garden (HT)—Deep rich red.  
Crimson Queen (HT)—Crimson.  
Crusader (HT)—Velvety crimson.  
Dorothy Page Roberts (HT)—Copper pink.  
Duc d'Rohan (HP)—Crimson.  
Duchess of Albany (HT)—Red.  
Duchess of Brabant (T)—Pink.  
Duchess of Wellington (HT)—Saffron yellow.  
Duchess of Luxemborg (HT)—Orange-yellow.  
Earlrate (HT)—Scarlet red.  
Etoile de France (HT)—Clear red crimson velvet.  
Etoile de Lyon (HT)—Golden yellow.  
Frank W. Dunlop (HT)—Clear dark pink.  
Frau Karl Druschki (HP)—White.  
George Arends (HP)—Pink.  
George Dickson (HP)—Velvety crimson.



Sunburst

Souv. de Claudius Pernet

Lady Hillingdon

## Everblooming Roses, Continued

**General Jacqueminot** (HP)—Crimson.  
**General McArthur** (HT)—Bright scarlet.  
**General Washington** (HP)—Red.  
**Gloire de Margottin** (HP)—Scarlet.  
**Gross an Teplitz** (HP)—Bright scarlet.  
**Hadley** (HT)—Velvety crimson.  
**Helen Gould** (HT)—Red.  
**Helen Taft** (HT)—Pink.  
**Henriette** (HT)—Orange red.  
**His Majesty** (HP)—Crimson.  
**Hoosier Beauty** (HT)—Crimson.  
**Hugh Dickson** (HT)—Crimson to scarlet.  
**Irish Fireflame** (HT)—Copper yellow.  
**J. B. Clarke** (HP)—Deep rich scarlet.  
**Jon. J. L. Mook** (HT)—Silver pink.  
**Kaiserin A. Victoria** (HT)—Creamy white.  
**Killarney Brilliant** (HT)—Deep crimson.  
**Killarney** (HT)—Pink.  
**Killarney** (HT)—White.  
**King George V.** (HP)—Blackish crimson.  
**Lady Ashtown** (HP)—Pink.  
**Lady Battersea** (HT)—Cherry red.  
**Lady Hillingdon** (T)—Orange yellow.  
**La France** (HT)—Silver pink.

**Los Angeles** (HT)—Flame pink to yellow.  
**Ludwig Moller** (HP)—Light yellow.  
**Magna Charta** (HP)—Bright rose.  
**Maman Cochet** (T)—Pink shaded salmon.  
**Maman Cochet** (T)—White.  
**Marechal Niel** (T)—Lovely yellow.  
**Meteor** (T)—Dark crimson.  
**Milady** ( )—Fine red.  
**Miss Lolita Armour** (HT)—Pink to yellow.  
**Miss Wilmot** (HT)—Creamy white.  
**Mme. Abel Chatenay** (HT)—Crimson.  
**Mme. Butterfly** (HT)—Salmon pink and yellow.  
**Mme. Cecil Brunner** (T)—Pink.  
**Mme. Caroline Testout** (HT)—Clear pink.  
**Mme. Caroline Testout** (HT)—White.  
**Mme. Edouard Harriot** (HT)—Crimson.  
**Mme. Plantier** (HP)—Pure white.  
**Mrs. Aaron Ward** (HT)—Indian yellow.  
**Mrs. Chas. Russell** (HT)—Rosy pink.  
**Mrs. John Lain** (HP)—Soft pink.  
**Mrs. Dudley Cross** (T)—Yellow.  
**Old Gold** (HT)—Reddish orange.

**Ophelia** (HT)—Yellow, shaded pink.  
**Paul Neyron** (HP)—Deep rose.  
**Premier** (HT)—Deep rose.  
**President Taft** (HT)—Pink.  
**President Wilson** (HT)—Salmon pink and yellow.  
**Prince C. d'Rohan** (HP)—Dark maroon.  
**Radiance, Pink** (HT)—Rosy pink.  
**Radiance, Red** (HT)—Crimson red.  
**Red K. A. Victoria** (HT)—Bright rose.  
**Richmond Red** (HT)—Deep red.  
**Rosa Rugosa** (Shrub Rose)—Pink, ornamental berries.  
**Safrano** (T)—Saffron yellow.  
**Sensation** (HT)—Crimson.  
**Soliel d'Or** (HP)—Yellow.  
**Souvenir de Claudius Pernet** (Pernetiana)—A new yellow rose from Europe. A gorgeous golden-yellow.  
**Souv. de Pres. Carnot** (HT)—Rosy flesh.  
**Sunburst** (HT)—Cadium yellow to orange.  
**Sunset** (T)—Yellow.  
**Ulrich Brunner** (HP)—Cherry red.  
**Wellesley** (HT)—Bright pink.

## Hardy Climbing Roses

( PRICES: EXTRA FINE, SELECT BUSHES, EACH \$1.00; DOZEN \$10.00. )  
 With every order for 1 dozen Climbing Rose Bushes we give you free one additional climber, any variety.

**EH**—Indicates extra heavy Climbers. **MB**—Indicates Monthly Blooming Climbers.

**Alida Lovell** (MB)—Shell pink.  
**American Beauty** (MB)—Rich red.  
**American Pillar** (EH)—Pink, white center.  
**Banksia Yellow** (MB)—Yellow.  
**Crimson Rambler** (EH)—Crimson.  
**Cecil Brunner** (MB)—Pink to salmon.  
**Duchess Wellington** (MB)—Yellow.  
**Gross an Teplitz** (MB)—Bright scarlet red.  
**Killarney** (MB)—Pink.  
**Lady Hillingdon** (MB)—Orange yellow.  
**Maman Cochet** (MB)—Pink.  
**Maman Cochet** (MB)—White.  
**Mrs. Aaron Ward** (MB)—Indian yellow.  
**Dr. Van Fleet** (EH)—Flesh pink.  
**Dorothy Perkins** (EH)—Clear pink.  
**Dorothy Perkins** (EH)—Pure white.  
**Excelsa** (EH)—Red.

**Lady Gay** (EH)—Pink.  
**Miss Messman** (EH)—Everblooming red.  
**Shower of Gold** (MB)—Deep yellow.  
**Silver Moon** (EH)—Pure white.  
**Tausendschoen** (EH)—Light shell pink.



Excelsa

### Hugonis Rosea (Bush) (EH)

A recent introduction from China. Unlike any other Rose. Shrub-like habit of growth, and should be planted as a shrub, with shrubs or as specimens. Delicate yellow, single flowers produced on long sprays in the spring; every branch of the previous years growth lined on all sides to the very tips. Perfectly hardy and a splendid year-round bush. **Extra select specimen plants, Each \$1.50.**

### Paul's Scarlet Climber

We feel that too much cannot be said of Paul's Scarlet Climber which, without doubt, is the **finest climbing red Rose** in existence. It fairly radiates its deep fiery red color. Entirely free from disease and a robust grower producing individual flowers sometimes 2 inches in diameter. The foliage is a beautiful glossy green, good to look at throughout the summer.

**Extra fine selected bushes, Each \$1.00; per Dozen \$10.00.**



Paul's Scarlet Climber



Hardy Shrubs, Perennial Plants, Vines and Shade Trees in an informal garden

## Bryson Ayres Hardy Shrubs

Shrubs are as much a part of the well-balanced garden as the lawn or flower borders. Many of them are as decorative as any ornamental foliage plant, while others are highly useful as cut flowers, and a well-arranged planting presents an attractive appearance throughout the entire year.

Shrubs may be used as a dividing line between the flower and vegetable gardens, or between the lawn and uncultivated land beyond; as a background to a flower border; for hiding an unsightly building, fence or foundation; or they may be planted as a mixed shrubby border, placing the smaller shrubs in front and graduating to the taller varieties in the back.

Our instructive leaflet on the culture and care of shrubs will gladly be sent upon request.

### Azaleas

The varieties offered here are the hardiest and most desirable for general planting.

**A. hinodegiri**—Bright fiery red flowers. Bushy plants, 10 to 12 inches high. **Each \$2.00.**

**A. hinomayo**—A wonderfully pleasing shade of delicate rose pink. Bushy plants, 10 to 12 inches high. **Each \$2.50.**

**A. maxwelli**—Large single carmine red, of dwarf, spreading habit. Bushy plants, 8 to 10 inches high. **Each \$2.50.**

### Almond, Double Flowering

See Prunus Japonica

### Althea (Rose of Sharon)

The Altheas are among the most valuable of our tall, hardy shrubs because of their late season of blooming, which is from August to October.

We offer the following choice sorts:

**Double white**, crimson center; **Double purple**, vigorous flower, with petals quilled; **Double dark red**; **Double pure white**; **Double bluish white**, crimson center; above varieties, **Each \$1.00.**

### Andromeda

**A. japonica**—An evergreen, compact and low-growing shrub with small, dark green foliage. Bushy plants, 15 to 18 inches high. **Each \$1.50.**

### Aralia

**A. pentaphylla**—A very distinct ornamental shrub with graceful arching branches and bright green foliage. **Each \$1.00.**

### Buddleia (Butterfly Bush)

**B. variabilis veitchian** (Butterfly shrub or Summer Lilac)—Beginning to bloom in July, it continues until cut by severe frost. The flowers are of a pleasing shade of violet mauve and are borne in dense cylindrical spikes from 12 to 15 inches in length. It succeeds everywhere and flowers freely the first season. **Each \$1.00.**

### Callicarpa

**C. purpurea** (Beauty Berry)—A splendid berried shrub for bordering or for planting in clumps on the lawn; it grows to the height of about 3 feet, and in August is covered with tiny pink-tinted flowers, followed by masses of violet-purple berries which remain on the plant until mid-winter. **Each \$1.00.**

### Calluna (Scotch Heather)

Small shrubs, growing from one to two feet high, producing their flowers from July to September.

**C. vulgaris**—Rosy pink. **Each \$1.00.**



Althea used as a Hedge

***Calycanthus (Sweet or Strawberry Shrub)***

***C. floridus***—Double strawberry-scented flowers in May. Each \$1.00.

***Cercis (Red Bud)***

***C. canadensis*** (Judas Tree)—A tall, showy shrub or small tree. All the branches and twigs are covered with a mass of small rosy-pink flowers early in the spring before the leaves appear. Each \$1.00.

***Corchorus (or Kerria)***

***C. japonica fl. pl.*** (Globe-Flower)—A valuable shrub, having graceful habit of growth and free, continuous flowering of attractive golden-yellow blooms from June to October. Each \$1.00.

***Cornus (Dogwood)***

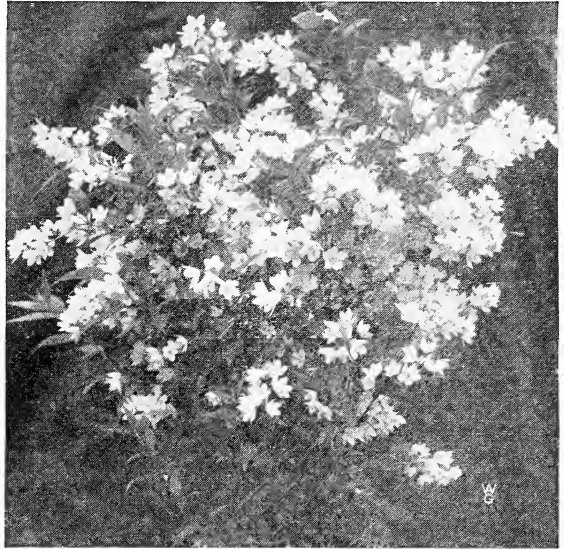
***C. alba sibirica*** (Coral Dogwood)—A strong-growing variety; crimson colored branches in winter. Each \$1.00.  
***C. florida*** (White-Flowering Dogwood)—An ornamental, spreading, irregularly shaped tree, producing large white flowers in spring and rich crimson foliage in autumn. Each \$1.00.  
***C. sanguinea*** (Red-Twigged Dogwood)—A strong-growing bush with crimson-colored branches; especially attractive in winter. Each \$1.00.

***Desmodium***

***D. pendiflorum***—A low-growing shrub, bearing in September attractive sprays of bright, rose-colored, pea-shaped flowers. The plant dies to the ground in winter, but comes up vigorously in the spring, throwing up shoots 3 to 4 feet in height. Each \$1.00.

***Deutzias***

Profuse flowering shrubs, blooming in spring or early summer.  
***D. candidissima plena***—A tall, fine double white. Each \$1.00.  
***D. rosea plena*** (Double-Flowering Deutzia)—Double white, tinged with pink; very desirable tall shrub. Each \$1.00.  
***D. gracilis***—A favorite dwarf bush, covered with spikes of pure white flowers in early summer. Each \$1.00.  
***D. lemoinei***—Flowers very large and produced in cone-shaped heads of pure white, which open out very full. Each \$1.00.  
***D. pride of rochester***—A fine, tall-growing, double, white-flowering variety. Each \$1.00.



Deutzia

***Diervilla***

***D. lutea***—A good shrub for a shady position, having clusters of small yellow flowers in July. Each \$1.00.

***Euonymus***

***E. japonica***—An evergreen shrub with large, round, glossy, dark-green foliage. A splendid plant for foundation planting. Each \$1.00.

***Exochorda (Pearl Bush)***

***E. grandiflora***—A medium-sized shrub bearing white flowers in slender racemes in early spring; very graceful; useful for cut flowers. Each \$1.00.

***Forsythia (Golden Bell)***

***F. fortunei***—Strong, erect habit; bright golden-yellow flowers in early Spring. Each 75c.  
***F. suspensa*** (Weeping Golden Bell)—A tall shrub with gracefully arching branches, bearing showy golden-yellow bells in the early spring. Each \$1.00.  
***F. viridissima***—A fine, hardy shrub, having deep green leaves and bark, with yellow flowers. Very early in spring. Each \$1.00.

***Holly, English***

The Hollies are coming into demand as people get to know what splendid ornamental plants they are. The foliage is always beautiful, the flowers interesting and the fruits ornamental. Rich, green, leathery leaves, retaining color the year around and bearing clusters of large, vivid red berries which remain on the tree for months. Thrifty plants, each \$1.50.

***Hydrangea***

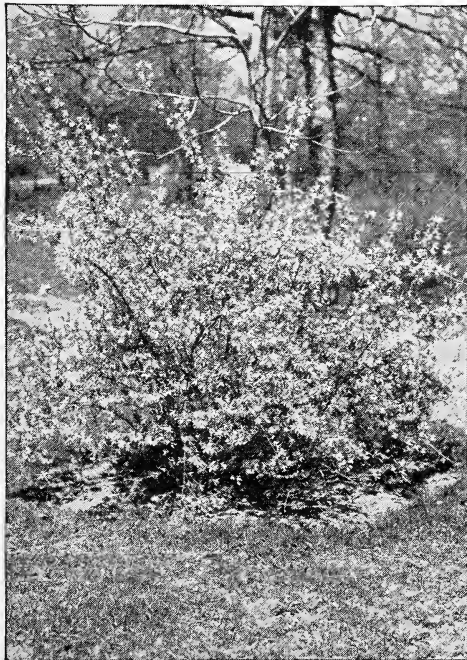
***H. arborescens grandiflora*** (Snowball Hydrangea)—Snow-white blossoms of the largest size; comes into bloom just after the passing of all the early spring-blooming shrubs, flowering from early June until late July. Each \$1.50.  
***H. paniculata grandiflora***—The flowers, borne in dense pyramidal panicles, are white when they first open but gradually change to rose color and remain in good condition for weeks. Each \$1.00.

***Hypericum***

***H. patulum henryi***—Grows from 2½ to 4 feet high, producing masses of large, clear yellow flowers during July and August, and retaining its neat foliage until late in the autumn. Each \$1.00.

***Japan Quince***

See *Pyrus Japonicus*.



Forsythia

## *Syringa* (*Vulgaris*) (*Lilacs*)

- S. Robust purple*—The old favorite, and one of the best. **Each 60c**  
*S. vulgaris alba* (Common white)—Flowers white, fragrant and beautiful. **Each 60c.**  
*S. charles x*—A strong, rapid growing variety, with large shining leaves. Trusses rather loose, large and reddish purple. **Each \$1.00.**  
*S. japonica*—A Japanese species having creamy white flowers in great panicles; a month later than other lilacs. **Each \$1.00.**  
*S. josikaea* (Hungarian Lilac)—A distinct species of stout, erect growth, with dark, shining leaves and purple flowers produced late in June. **Each \$1.00.**  
*S. mi-hael buchner*—Very double flowers in large trusses, lilac shaded blue. **Each \$1.00.**  
*S. mm. casimir perier*—The finest double white Lilac yet produced. The individual flowers, which resemble miniature Tuberoses, as well as the trusses, are of immense size, deliciously scented, fine for cutting. **Each \$1.00.**  
*S. president grevy*—Magnificent panicles of large double blue flowers. **Each \$1.00.**

## *Lilacs*

See *Syringa*.

## *Loniceras* (*Bush Honeysuckles*)

- L. grandiflora rosea*—Rosy red flowers striped with white; blooms in June. **Each \$1.00.**  
*L. ledebouri*—A vigorous-growing shrub with red flowers blooming in May. **Each \$1.00.**  
*L. morrowi*—A handsome Japanese variety having white flowers in May, but especially valuable for its bright red fruit. **Each \$1.00.**  
*L. tatarica* (Tartarian Honeysuckle)—Pink flowers contrasting beautifully with the foliage; blooms in June. **Each \$1.00.**

## *Mahonia*

- M. aquifolium* (Oregon Holly Grape)—A beautiful evergreen shrub of erect habit and glossy holly-like leaves. **Each \$1.00.**

## *Philadelphus* (*Mock Orange*)

- Popular old-fashioned shrubs flowering in May or June; succeed in almost any location.  
*P. coquette*—Large single flowers in clusters. **Each 75c.**  
*P. coronarius* (Garland Mock Orange)—The popular tall variety; very sweet and one of the first to flower. **Each \$1.00.**  
*P. grandiflorus*—A large, white, robust grower. **Each \$1.00.**  
*P. nivalis*—A splendid free-flowering white. **Each 75c.**  
*P. the banner*—A hybrid variety forming a shapely shrub with very large single flowers. **Each \$1.00.**



Philadelphus



Lilacs Robust Purple

## *Prunus*

- P. japonica fl pl.* (Double-flowering Almond)—Producing showy double flowers early in May before the leaves appear. Both white and pink. **Each \$1.00.**  
*P. pissardi* (Purple-Leaved Plum)—Covered with single white flowers in spring. When they first appear, the leaves are a lustrous crimson, changing to a lustrous purple. **Each \$2.00.**  
*P. triloba* (Double-Flowering Plum)—Of medium height, bearing in the early spring semi-double, delicate pink flowers. **Each \$1.50.**

## *Pyrus*

- P. japonicus* (Japan Quince)—Of medium height, blooming profusely in early spring; flowers dazzling scarlet. **Each \$1.00.**

## *Rhus* (*Sumach*)

- R. typhina laciniata* (Cut-Leaved Staghorn Sumac)—The leaves are beautifully cut like those of a delicate Fern, and in the fall assume the most brilliant colors. **Each 75c.**

## *Robenia* (*Locust or Acacia*)

- R. hispida* (Rose Acacia)—Producing large, beautiful rose-pink flowers in June. **Each \$1.00.**

## *Sambucus* (*Elder*)

- S. nigra aurea* (Golden Elder)—One of the best yellow foliage shrubs. The color is remarkably bright, rich and constant, giving a fine contrast in the shrubbery border. **Each 75c.**

## *Spirea* (*Meadow Sweet*)

- S. anthony waterer*—Color, bright crimson; it is of dwarf, dense growth, never exceeding 30 inches in height; in bloom the entire summer and fall. **Each 75c.**  
*S. billardi*—Strong-growing, dense spikes of pink flowers, blooming in June. **Each 75c.**  
*S. billardi alba*—A white flowered form of the preceding. **Each 75c.**  
*S. douglasi*—Spikes of deep pink flowers during July and August. **Each 75c.**  
*S. margaritae*—A free-flowering variety with flat heads of soft pink flowers from June to October. **Each 75c.**  
*S. prunifolia* (Bridal Wreath)—A beautiful shrub of medium size with double white flowers in May. **Each \$1.00.**  
*S. thunbergi*—Delicate foliage and a profusion of small white flowers in April and May. **Each 75c.**  
*S. van houttei*—The grandest of all the white Spireas. It is of compact habit and a beautiful ornament for the lawn at any season, but when in flower in June it is a complete fountain of white bloom. **Each 75c.**

## *Symphoricarpus* (*St. Peter's Wort*)

- S. racemosus* (Snowberry)—Pink flowers and white berries which remain on the plant the greater part of the winter. **Each 75c.**  
*S. vulgaris* (Red-Fruited, or Indian Currant)—Similar to the above, but with bright red fruit. **Each 75c.**



**Tamarix (Tamarisk)**

- T. africana**—Strong, slender, tall-growing, with feathery foliage and small, delicate flowers, borne profusely on gracefully-bending branches. Each \$1.00.
- T. hispida aestivalis**—Delicate, soft, pink sprays of flowers in July and August. Each \$1.00.
- T. indica**—Very strong-growing, with feathery plumes of pale pink flowers in late summer and autumn. Each \$1.00.

**Viburnum**

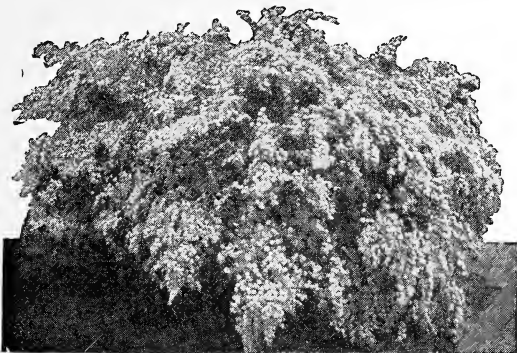
- V. dilatatum**—Of strong, upright, spreading growth; the white heads of flowers which appear in early summer being followed with bright scarlet fruit, which remains on the plant until late in the autumn. Each \$1.00.
- V. plicatum** (Japan Snowball)—The perfect balls of pure white flowers are borne in great profusion in May. Each \$1.00.
- V. opulus** (High Bush Cranberry)—The white flowers in June are followed in autumn by bright scarlet berries, which are very attractive until very late in winter. Each \$1.00.
- V. opulus sterilis** (Snowball)—The popular white Snowball, filled with large pendant balls of white flowers in May. Each \$1.50.

**Weigela**

- W. rosea**—Soft, rosy carmine. Each 75c.
- W. rosea nana variegata**—Variegated green, yellow and pink leaves; flowers delicate rose. Each \$1.50.
- W. eva rathke**—The finest Weigela in cultivation; flowers continually throughout the summer and autumn; of a rich ruby carmine. Each \$1.50.



Weigela Rosea



Spirea Van Houttei, see page 12

**Salix (Willow)**

- S. Caprea** (Pussy Willow)—In winter the branches can be cut and taken into the house where the beautiful silvery catkins will open in a few days, making a lovely all-winter table decoration. One of the most beautiful of all shrubs. Special bushy plants, each 75c; 12 for \$7.00.

**Bryson Ayres Hardy Hedge Plants**



Japanese Barberry

**Althea**

This makes a most wonderful hedge, very colorful throughout the summer and fall. Trims beautifully and makes most gorgeous effect. Red, White, Pink and Purple. Each 50c; per 100 \$35.00.

**Amurense (Amoor River Privet)**

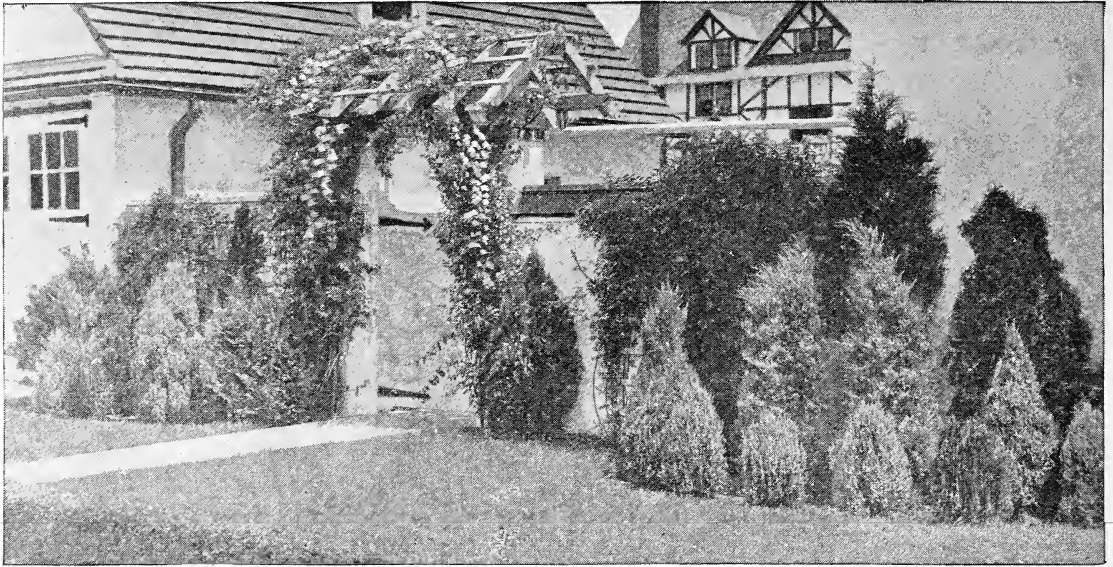
A hardy shrub adapted for hedges in cold and exposed places. Each 35c; \$20.00 per 100.

**Berberis (Barberry)**

**B. thunbergi** (Japanese Barberry)—A dwarf species with glossy green leaves and red berries; in the fall the foliage takes on the most beautiful autumnal tints. Each 50c; \$35.00 per 100.

**Ligustrum (Privet)**

**L. ibota regelianum**—A handsome Japanese Privet, with spreading branches and dark green foliage. Each 50c.  
**L. ovalifolium aureum** (Golden-Leaved Privet)—A beautiful golden variegated form. Each 75c.  
**L. ovalifolium** (California Privet)—One of the best known and most used plants for hedge purposes. Hardy, quick-growing, nearly evergreen, and can be trimmed without harm into almost any desired shape. Each 30c; per 100 \$20.00.



Evergreens make your home cozy in winter and cool in summer

## Evergreens

In this group are contained some of the most valued plants for landscape effects. Only a personal familiarity with the various plants listed below could give an adequate idea of the variety of color effects they present. There are deepest and lightest greens; bright and somber golden tints; soft steel greys and blues.

Evergreens present a great diversity of habit of growth. There are varieties adapted for limited areas of foundation plantings as well as for bed and border plantings on expansive lawns. Many of the larger growing varieties, because they will stand shearing, are adapted for use with the more dwarf types.

For winter cheer, evergreens are unexcelled. Their bright, warm foliage is always a welcome note in the landscape, but with the branches laden with snow, they present a picture of real beauty.

Our evergreens are extra robust and bushy and should be in every yard. We sell only specimen size evergreens, carefully balled and burlapped so that several feet of earth is retained.

### *Abies (Firs)*

**BRACHYPHYLLA (Nikko Fir)**—A fine, hardy fir, of open habit and rapid growth. Fine for groups or specimens on lawns, etc. 6 to 7 feet. **\$15.00.**

**DOUGLASSI (Douglas Fir)**—A fine, upright growing tree. Grows rapidly and thrives well in almost any place. 2 to 3 feet **\$4.50.**

### *Junipers*

**VIRGINIANA (Red Cedar)**—Tall growing, one of the best known of the Junipers. Stands pruning well; excellent for hedges or for lawn specimens. Hardy, of rapid growth, usually conical in habit and very dense; foliage a good dark green, turning to bronze in winter. 2½ to 3 feet. **Each \$4.50; 4 to 5 ft., \$6.00 to \$8.00.**

**VIRGINIANA GLAUCA (Blue Virginia Cedar)**—A vigorous growing variety, with foliage of silvery tinge, compact and conical in form. Makes a fine tree. 4 feet **\$8.50; 4½ feet \$10.00; 5 feet \$12.50.**

**VIRGINIA SCHOTTII**—Best of all the upright green Junipers; fine pyramidal form with foliage of a peculiar bright green. 3½ feet **\$6.50; 4 feet \$7.50.**

### *Picea (Spruce)*

**EXCELSA (Norway Spruce)**—A tall and beautiful tree, the most widely grown of all the spruces, equally adaptable to planting as specimens on lawns, for shelter or windbreak. This is the well-known Christmas tree. 2 feet **\$3.00; 2½ feet \$3.50; 3 feet \$4.50.**

**EXCELSA NIGRA (American Black Spruce)**—A medium sized tree; of great hardiness and particularly useful for specimen planting. 2 feet **\$3.00; 2½ feet \$3.50; 3 feet \$4.50.**

### *Pinus (Pines)*

**MUGHO (Dwarf Pine)**—A low-growing handsome evergreen with vividly colored leaves of a twisty nature and cones of a brown, grayish tinge. Extra fine. 30 inch **\$8.50.**

**STROBUS (White Pine)**—A very beautiful and graceful pine, regular in form with dark green foliage, growing quite tall, surmounted by a symmetrically-formed crown. 5 to 6 feet **\$7.00; 10 feet \$20.00.**

### *Thuja (Arborvitae)*

**OCCIDENTALIS (American Arborvitae)**—A very pretty shapely tree of pyramidal form. The foliage is a fresh vivid green, mellowing to a softer shade on the under side. 3½ feet, each **\$4.00; 5 feet, each \$7.50; 6 feet, \$12.00; 8 feet \$18.00.**

**OCCIDENTALIS GLOBOSA**—A round, compact form, deep green foliage. Very shapely. **Each \$4.50, \$6.00, \$8.00, \$12.00.**

**OCCIDENTALIS ROSENTHALII**—Hardy, compact grower with dense foliage of dark green. 2 to 3 feet **\$4.50.**

**OCCIDENTALIS WAREANA**—The hardiest of American Arborvitae, although of somewhat slow growth; it has most beautiful, dense and symmetrical form with a rich, dark green foliage. 18 in. **\$3.00; 24 in. \$4.00; 2½ ft. \$6.00; 3 ft. \$7.00; 3½ ft. \$8.50; 4 ft. \$10.00; 6 ft. \$15.00; 8 ft. \$20.00.**

**OCCIDENTALIS PYRAMIDALIS (Pyramidal Arborvitae)**—A compact, narrow, pyramidal tree. Branches short and densely clothed with bright green foliage. Very formal and attractive, 2½ to 3 feet. **Each \$4.75.**

### *Evergreen Vines and Shrubs*

**EUONYMUS RADICANS VEGTUS (Bittersweet)**—Beautiful evergreen vine for porches or for trailing on the ground. A splendid ground cover, thriving in sun or shade. The contrast in winter of its beautiful orange-red berries and deep glossy green leaves makes it a most striking sight. **Each 75c; 6 for \$3.50.**

**EUONYMUS JAPONICA**—An evergreen shrub with large, round, glossy dark green foliage. A splendid shrub for foundation plantings. **Specimens, each \$1.50.**

**MAHONIA AQUIFOLIUM**—Beautiful evergreen with holly-like foliage and blue berries. In winter the leaves change from a deep green to a shiny bronze red. Everyone should have this in their plantings. Thrives in partial shade. Rather dwarf, growing about 2 feet high. **Each 75c; 6 for \$4.00.**

**RHODONDENDRON**—Bearing white or light pink flowers in June. Nothing produces a more attractive result than this plant when used as undergrowth in wooded places, for natural effects along walks or drives, and for foundation plantings in shady situations. 2½ to 3 feet. **Each \$4.00.**

**ENGLISH HOLLY**—The hollies are coming into demand as people get to know what splendid ornamental shrubs they are. The foliage is always beautiful; winter and summer, the flowers interesting and the fruits ornamental. Rich green leathery leaves retaining color the year around and bearing large clusters of vivid red berries which remain on the tree for months. Very scarce, but have some fine thrifty plants to offer. **Each \$1.50.**

# Shade Trees

## Specimens

Large specimen trees for fall, winter and early spring plantings. For landscape work where an immediate effect is desired, we have extra select mature trees of Lombardy Poplar, Catalpa Bungeii, American Elm, Mulberry, American Linden, Sugar Maple, White Birch and Persimmon. With these specimen Persimmon trees you can have a very handsome ornamental tree. The fruit, although pungent when green, becomes sweet and palatable if allowed to remain on tree exposed to the early frosts, and if left on, makes a most splendid winter adornment. Our specimen trees run from 10 to 30 feet tall; priced \$10.00 to \$100.00 according to height and general appearance. It will pay you to get in touch with us in regard to these. Our prices are very special in order to acquaint you with the advantages of planting large trees for permanent and quick results.

## Maple (Acer)

**Acer saccharinum** (Sugar Maple)—Will thrive in any soil. For shade, for beauty and for permanent worth in all landscape planting, there are no other trees in its class. 8 to 10 feet \$2.75; 10 to 12 feet \$3.75; larger specimens \$8.00 to \$50.00.

## Cercis (Red Bud)

**C. canadensis** (American Judas)—A small tree of irregular rounded form, with pretty foliage and showy when in bloom; the branches and twigs are covered with a dense mass of pink flowers before the leaves expand. 3 to 4 feet \$1.50; 4 to 5 feet \$2.50; specimen trees \$3.00 to \$10.00.

## Catalpa (Umbrella Tree)

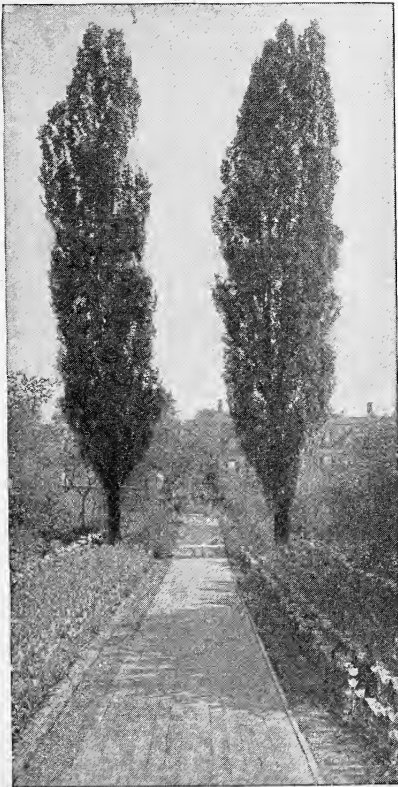
**C. bungeii** (Chinese Catalpa)—A small species that grows 8 to 10 feet high, forming a broad head clothed with a dense mass of heart-shaped leaves. Few if any trees are more effective for park, lawn or street planting. An admirable tree for formal planting. 5 to 7 feet \$3.50; 7 to 8 feet \$4.50; larger specimens \$7.50 to \$50.00.

## Linden (Tilia)

**T. americana** (American Linden or Basswood)—A quick grower and a good shade tree. Fine for street or lawn use. The flowers are numerous and fragrant. This variety is a fine large-sized tree, large leaves and well suited for broad spaces. 6 to 8 feet \$3.50.

## Elm (Ulmus)

**U. americana** (American Elm)—Our native Elm is too well known to need description. It is unsurpassed for city and suburban planting. 8 to 10 feet \$2.00; 12 to 14 feet \$4.00; larger specimen \$10.00 to \$25.00.



Lombardy Poplars

## Liriodendron (Tulip Tree)

**L. tulipifera**—A rapid growing tree which develops into one of the tallest of our native sorts. Attractive tulip-like flowers in June. Spring planting recommended. 6 feet \$3.50.

## Poplars (Populus)

**P. deltoides monilifera** (Carolina Poplar)—A vigorous, healthy native tree of rapid growth, pyramid in form, with large glossy leaves; valuable for park or street planting. 10 to 12 feet \$3.50.

**P. nigra italica** (Lombardy Poplar)—This grows to an immense height and is remarkable for its columnar growth. In landscape work it breaks the monotony of the lower round-topped trees. Very desirable for screens and windbreaks. We have some extra select specimens which must be seen to be appreciated. 6 to 8 feet \$1.50; 10 to 12 feet \$3.00; special prices on lots of 25 or more. Larger specimens \$8.00 to \$25.00.

## Mulberry (Morus)

**M. alba pendula** (Tea's Weeping Mulberry)—A graceful and beautiful hardy tree, forming a perfect umbrella-shaped head, with long, slender, willow, drooping branches touching the ground and gracefully swaying in the wind. Foliage a delightful fresh, glossy green. This weeping tree is needed to set off and give contrast to the landscape. The sweet, fleshy fruits are a great attraction to birds and are considered very delicious by some people. Specimens, extra fine \$10.00 to \$35.00.

**M. tatarica** (Russian Mulberry)—Low-growing and bushy that bears small fruit abundantly. Very hardy and vigorous. The fruit is relished not only by birds but by most people in the form of pies, such as we had when back visiting on the farm in our younger days. We have extra select large bearing size specimens in both the shrub and tree form. **From \$3.50 up.**

## Flowering Plum (Prunus)

**P. pissardii** (Purple-Leaved Plum)—A very remarkable and beautiful tree with black bark and large purple leaves, remaining so until late in the fall. Fine to include in group plantings. 4 to 6 feet. \$3.50.

**P. triloba** (Double-Flowering Plum)—A beautiful small tree or shrub of fine habit, with elegant, double, rosy flowers, borne in profusion and set very closely on slender branches. A sight to behold when in bloom and sure to attract favorable comment and attention. Blooms in May. Green foliage. 3 to 4 feet. \$3.50. Some smaller trees that will bloom abundantly. **Special \$1.50 each.**

## Malus (Flowering Crab)

**M. ioensis Var. Bechteli** (Bechtel's Double-Flowering Crab)—The beauty and delicate fragrance make this variety a gem among hardy plants. The flowers are mistaken for small pink roses, and the perfume tends to increase the delusion. Very fine. 3 to 4 feet, \$2.50; 5 to 6 feet, \$3.50.

**M. floribunda** (Single-Flowering Crab)—Flowers beautiful carmen in bud; white when open; May. Fruit is very ornamental in autumn. 6 to 8 ft. \$4.50.

**M. coronarius** (Sweet-Scented Crab)—Largely used in landscape work, where it gives great contrast to the other flowering shrubs and trees. 4 feet. \$3.00.

## Wild Cherry (Cerasus)

**P. americana** (American Wild Cherry)—A small attractive native tree, grows quite slender. In spring produces clusters of snow-white flowers resembling lace work; followed by the small bright red cherries in the early fall. 6 to 8 feet, \$3.50; specimens \$8.00 to \$25.00.

## Plane Tree (Platanus) (Sycamore)

**P. orientalis** (Plane or Button-Ball)—The best street tree for cities. Of quick growth, spreading habit and stands lots of abuse. Undoubtedly the best of the sycamore varieties. Holds its foliage later in the fall. Prune severely when transplanted. 6 to 8 feet, \$3.50; larger specimens, \$8.00 to \$35.00.

## Sorbus (Ash)

**S. aucuparia** (Mountain Ash)—A tree of neat habit; with attractive compound leaves. Flat corymbs of white flowers in May are followed by extremely showy clusters of bright red berries. Can be left to grow upright or trained to a weeping shape. Very select trees for specimen plantings, \$3.50 up.

## Salix (Willow)

**S. caprea** (Pussy Willow)—In early spring branches can be cut and the little catkins forced in the house for very early effects. If left to develop naturally the silky catkins will come out preceding the leaves. Extra select specimens. **Each \$2.50; Smaller trees, Special \$1.00 each.**

# Ayres Select Specimen

## Bearing Age (for immediate results)

### Fruits and Berries

If you want fresh, juicy fruit and berries, and in sufficient quantities to include it on the family bill-of-fare, plant a few of our magnificent bearing-age fruit trees and berry plants which we are offering our patrons for fall and spring planting. These trees and plants are really a horticultural achievement. Each tree has been grown, cultivated and pruned for a specimen. All trees run symmetrical, are heavily rooted trees and plants that will save you seasons of waiting for fruit and berries of delicious flavor.

#### Apples

Specimen Trees, each \$3.00; Medium sized Trees, each 75c.

##### Summer Varieties

**Yellow Transparent**—Hardest and finest yellow summer apple.  
**Carolina Red June**—Medium size, red, flesh white. Tender and juicy.  
**Early Harvest**—Tree healthy, vigorous, good bearer, tender and juicy. Yellowish-white.

##### Fall and Winter Varieties

**Maiden Blush**—Large flat, pale yellow, slight crimson blush. Best for frying.  
**Mammoth Black Twig**—Large apple of good quality and an excellent keeper. Very dark red; an improved Winesap.  
**Jonathan**—Bright, cheerful red. Juicy and snappy. Thrives throughout the middle west.  
**Rome Beauty**—Large, round, red apple. An all-around market and home fruit.  
**Grimes' Golden**—Best early winter variety. Bright golden-yellow color. Best for an eating apple and finest for pies. Regular producer.  
**Stayman Winesap**—Dark, deep red, indistinctly striped. Flesh firm, fine grained, crisp, juicy and very tender.

#### Crab Apples

Specimen Trees, each \$3.00; Medium-sized trees, each \$1.00.  
**Transcendent**—Medium to large; round, yellowish-red or almost solid red. Very fine for all purposes.  
**Hyslop**—Large, brilliant dark red. Fair quality. Fruit excellent for jelly and preserves.

#### Apricots

A very delicious fruit combining the qualities of both peach and plum. Ripens after cherries and before peaches and plums. Specimen Trees, each \$1.00.  
**Superb**—This variety excels in quality as well as in hardiness and productiveness. Originated near Lawrence, Kansas.  
**Moorpark**—Large, orange-yellow with red cheek. Sweet and rich. Freestone. Ripens before Superb.

#### Pears

A fruit so delicious that it belongs on the table, as a dessert fruit. Pick pears just before maturity and ripen indoors. The quality is improved. Specimen Trees, each \$3.00; medium sized trees each \$1.00.  
**Bartlett**—Large, yellow with a beautiful blush. An old favorite, more generally known and esteemed than any other pear.  
**Kieffer**—Very large, deep yellow with russet dots. Immensely productive. Pick fruit at maturity and finish ripening indoors. Excellent for canning and preserving.

#### Peaches

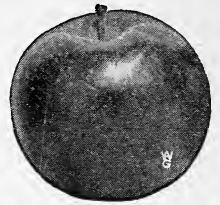
Specimen trees, each \$3.00; medium sized trees, each \$1.00.  
**Heath Cling (Cling)**—Oldest named peach in cultivation. Healthy, hardy and vigorous. Flesh white, skin well colored. Best peach for preserves or pickles.  
**Champion (Free)**—A white-fleshed, superb quality, fine appearing peach. The standard of quality among white peaches. Ripens in August.  
**Eiberta (Free)**—Beautiful yellow, large and shaded with red. Has been the peach for years and still is.

#### Cherries

Specimen trees, each \$3.00; medium sized trees, each \$1.00.  
**Early Richmond**—Favorite early sour cherry. Light color, tender and sprightly. A good canner. We suggest that you set one-half your cherries of this variety and one-half to Montmorency.  
**Montmorency**—Very productive and a regular bearer. Flesh rich and pleasant, colors before being ripe, of reddish color, very fine. A good canner. Will not however equal Early Richmond in production, but the fruit is more colorful, a little larger and about 10 days later.

#### Plums

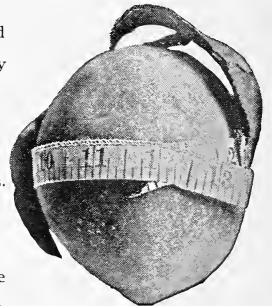
Specimen trees, each \$3.00; medium sized trees, each \$1.00.  
**Compass Cherry Plum**—These trees have set fruit in the nursery row. An annual and heavy bearer. Fruit large, nearly an inch in diameter, bright red, juicy, fine flavored. For canning and table use, and for those wonderful pies that made the cherry famous.  
**Abundance**—Small tree loaded down with fruit. You will have to thin out. Fruit is large, oval, amber colored, changing to cherry. The quality is good.  
**Damson**—Fruit small, oval, skin purple with blue bloom. Finest for preserves.  
**Lombard**—Medium, violet-red, juicy, good, hardy and productive. The leading market variety.  
**Burbank**—Bears very young and is unequalled in productiveness. Fruit large, excellent quality, cherry red with lilac bloom. Ripens in August.



Jonathan Apple



Kieffer Pear



Eiberta Peach



Montmorency Cherries



Lombard Plums

## Quinces

**Specimen trees, each \$3.00; medium sized trees, each \$1.00.**

**Orange**—Standard variety of Quince. Fruit large, bright yellow color, and tree is a good bearer. Quality is fine. Bears in October. Very desirable fruit, much used alone and with other fruits in preserving and canning.

## Grapes

The grape is one of the most dependable of fruits. Hardy, vigorous and very productive. Every garden should have a few grape vines. You always have room some place for a half dozen or more. They take up little room and our select specimen vines are just the thing for ornamental work, arbors, trellises, along fences, over porches. They will produce abundant crops altho neglected. **Our extra heavy, well rooted, thrifty specimen vines, each 50c; Dozen \$5.00; medium sized, fine thrifty vines, each 35c; Dozen \$3.00.**

**Concord (Black)**—Good flavor, fair quality, heavy crops. Third week in August.

**Brighton (Red)**—Early. Large bunch, round berries, excellent flavor and quality.

**Moore's Early (Black)**—Two weeks earlier than Concord. Bunch large with heavy blue bloom. Exceedingly hardy, entirely exempt from disease.

**Niagara (White)**—Large bunches, berries colored light greenish white, semi-transparent. Quality good, very little pulp, sweet to the center.

**Worden (Black)**—A large grape of the Concord type, only earlier. Every way as healthy. Quality is good.



Concord Grapes



Perfection Currants

## Gooseberries and Currants

Gooseberries and Currants require very little room or attention. They will prove satisfactory under trees, or other semi-shaded locations. Prune so that there is a continuous supply of two and three-year-old wood for bearing. The fruits are extremely desirable for many uses. **Specimen plants, extra selected, each 75c; good bushes, each 50c; medium size selected, each 35c.**

### Gooseberries

**Oregon Champion**—Extra large, round, smooth, greenish white, very early and good quality.

**Houghton**—Medium, oval, pale red, sweet, tender and very good.

**Downing**—Large, pale green, of splendid quality for both cooking and table.

### Currants

**Perfection**—The Perfection produces most clusters to the bush than any other variety. Berries are large, bright red, and on account of flavor and color are most excellent for making preserves, spicing and jelly.

**Fay's Prolific**—Extra large red variety. The leading red market variety.



Oregon Gooseberries

## Strawberries

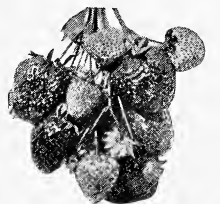
### Everbearing Variety

**Progressive Everbearing Strawberries**—These require no more care than do the standard sorts, and they should be planted in the fall. Set in good soil. They will commence bearing in the spring, will bloom more or less all summer, and then set a heavy crop in the fall. If the blooms are pinched off in the spring and early summer the fall crop will be heavier. The young plants formed in the spring will bear fruit in the fall of the same year, and thus you may replenish or enlarge your bed at will. **Price, Doz. 40c; 25 for 75c; 50 for \$1.25; 100 for \$2.00.**

### Standard Varieties

**Senator Dunlap**—The great market berry, fruit medium to large, regular, bright glossy red. **100 plants for \$1.75.**

**Aroma**—Large, roundish, conical. Excellent quality. **100 plants for \$1.75.**



Aroma Strawberries

## Raspberries

Rich, sweet fruits that everyone knows and likes. Very few people raise Raspberries and we can not understand why. They are easy to raise, very productive, and unless you have plenty of your own you simply do without the fruit as it is so high in price. You'll find the following varieties all good for this locality. They have fruited for us and will fruit for you.

### Red Varieties

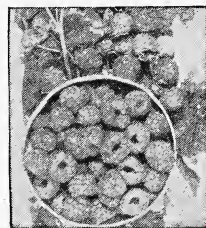
**New Cardinal**—Great crops of rich red berries. Best for this locality as parent plant originated at Lawrence, Kansas. **Select specimen plants, Doz. \$1.50.**

**Cuthbert**—Needs rich soil. Berries sweet and luscious, very large. **Select specimen plants, Doz. \$1.50.**

### Black Varieties

**Cumberland**—Most widely known black. Unusually hardy. Berries large, fine and sweet. **Select specimen plants, Doz. \$1.50.**

**Kansas**—A nice, well-flavored little black-cap. Finest for preserves. **Select specimen plants, Doz. \$1.50.**



New Cardinal Raspberries

## Blackberries

Plant in rows about 5 feet apart and about 3 feet apart in the row. Should be cultivated thoroughly. Cut out all suckers and all old wood. You will then have as fine and luscious fruit as you ever seen or heard of. These berries are tremendously productive and there is a probability you will have more than you can make use of, and if so, you can name your own price. The finest of jams are made from blackberries.

**Early Harvest**—Fruit good size, long, small seeds. A favorite. Never fails. Set at least one-half your space to this variety and the other half to Mersereau. **Select specimen plants, Doz. \$1.50; \$4.00 per 100.**

**Mersereau**—Very large, jet black and luscious. The berry of all berries. One week later than Early Harvest. **Select specimen plants, Doz. \$1.50; \$4.00 per 100.**

**Snyder**—Medium sized, very sweet, no hard core, very melting and juicy, a splendid table berry. **Select specimen plants, Doz. \$1.50; \$4.00 per 100.**



Snyder Blackberries

# Gladiolus

This very attractive flower has grown into popularity with marvelous rapidity. All lovers of flowers find a suitable space for many of the wonderfully distinct varieties. You cannot afford to be without a liberal planting.

The Gladiolus are the most attractive and useful of cut flowers of all the summer flowering bulbs. The long, graceful spikes that carry fifteen to twenty buds may be cut as soon as the first lower buds show color; then, kept in water, each successive bud will develop and thus prolong the blooming many days. No other flower is its equal in ease of cultivation.

The planting season starts in April, and continues until in June, at intervals of two weeks; you thus have flowers from late July until frost time. Best results are obtained in a sunny position, placing the bulbs fully six inches deep, and watering freely.

We have again revised our assortment by cutting out undesirable varieties and adding several very choice new kinds. The following list gives you the very cream of quality and merit. Our bulbs are large, Missouri-grown specimens—full of vigor.

- Alice Tiplady**—Orange-saffron shades. **Each 10c; Doz. \$1.00; 100 \$7.00.**  
**America**—Beautiful, soft lavender-pink, with large spike. A dependable bloomer. **Each 5c; Doz. 50c; 100 \$3.50.**  
**Baron Hulot**—Dark royal purple, very uniform. **Each 9c; Doz. 90c; 100 \$6.00.**  
**Byron L. Smith**—A beautiful lavender-pink on white ground, an orchid shade. **Each 12c; Doz. \$1.25; 100 \$8.00.**  
**Anna Everitt**—Dark velvety-purple, very dark throat. **Each 12c; Doz. \$1.25; 100 \$8.00.**  
**Chicago White (Lily White)**—White with lavender markings in throat. **Each 6c; Doz. 60c; 100 \$4.00.**  
**Crimson Glow**—Large, deep crimson, on a tall strong spike. **Each 10c; Doz. \$1.00; 100 \$7.00.**  
**Early Sunrise**—Bright salmon-scarlet with cream stripe. Vigorous grower, on long spikes. **Each 12c; Doz. \$1.25; 100 \$8.00.**  
**Evelyn Kirtland**—A beautiful, large, salmon-pink, darker at edges, with a sparkling luster. **Each 9c; Doz. 90c; 100 \$6.00.**  
**E. J. Shaylor**—Pure deep rose-pink. Tall stems. **Each 10c; Doz. \$1.00; 100 \$7.00.**  
**Flora**—Beautiful canary-yellow. The best yellow. **Each 10c; Doz. \$1.00; 100 \$7.00.**  
**Gretchen Zang**—Pink, blending into a scarlet on lower petals. **Each 7c; Doz. 75c; 100 \$5.00.**  
**Halley**—Bright salmon-pink, creamy blotch with red stripe. **Each 6c; Doz. 60c; 100 \$4.00.**  
**Herada**—Pure mauve, with deeper markings in throat. Large, on tall stalks. **Each 10c; Doz. \$1.00; 100 \$7.00.**  
**Le Marechal Foch**—Rose-pink, similar to America, though larger. **Each 9c; Doz. 90c; 100 \$6.00.**  
**L'Immaculee**—A grand pure white, much liked. **Each 10c; Doz. \$1.00; 100 \$7.00.**  
**Mrs. Francis King**—Brilliant orange-scarlet. Large blossom and very popular. **Each 5c; Doz. 50c; 100 \$3.50.**  
**Mrs. Frank Pendleton**—Flushed delicate pink, with rich maroon blotch on lower petals. **Each 7c; Doz. 75c; 100 \$5.00.**  
**Mrs. Watt**—A wine color red. Glowing. **Each 10c; Doz. \$1.00; 100 \$7.00.**  
**Mrs. Dr. Norton**—Soft creamy-pink, the tips of La France pink. **Each 10c; Doz. \$1.00; 100 \$7.00.**  
**Myrtle**—A clear, dainty, ruffled rose-pink. Very beautiful and forces well. **Each 10c; Doz. \$1.00; 100 \$7.00.**  
**Niagara**—Cream shade blending to canary-yellow with carmine tints. **Each 7c; Doz. 75c; 100 \$5.00.**  
**Prince of Wales**—A charming coral-pink in very large flowers. Tall and early. **Each 9c; Doz. 90c; 100 \$6.00.**  
**Rose Ash (Ashes of Roses)**—A new color in Gladiolus. Very attractive and wonderfully vigorous grower. **Each 15c; Doz. \$1.50; 100 \$10.00.**  
**1910 Rose**—Pure rose-pink, with narrow line on lower petals. Large. **Each 9c; Doz. 90c; 100 \$6.00.**  
**Yellow Hammer**—Yellow, with red marks in throat. **Each 9c; Doz. 90c; 100 \$6.00.**  
**Primulinus Hybrids**—The range of colors is from the purest of yellows to deepest orange, and from a salmon-pink to rich crimson. Should be in every garden. **Each 5c; Doz. 50c; 100 \$3.50.**  
**Wilbrink**—One of the earliest. Pale livid pink, upper petals tinted slightly darker. Lower petals have a light amaranth purple blotch on a yellowish ground. **Each 7c; Doz. 75c.**

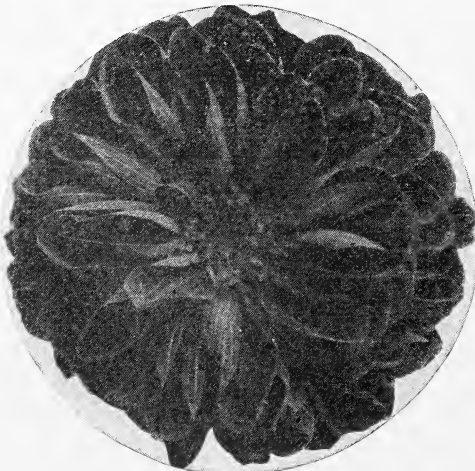


Herada Gladiolus

# Ayres Superb Dahlias

The following list includes the best of the various types. Many beautiful varieties have been introduced; you will find the best listed below; some with flat petals, others reflexed, incurved or curiously twisted, but nearly all are without formality or stiffness, and practically all of them are leaders as cut flowers, bearing their large, perfect blooms on long stems. Furthermore they are of easy culture and adapt themselves to conditions as they find them; certain to be assured of continuous popularity. **All of the Dahlias offered will be supplied in dormant field roots of proper planting size.**

**How to grow:** Plant in the open ground about the 1st of May; if the weather is unfavorable hold up planting for a few days. Lay 6 inches deep, tubers flat, eyes or sprouts up. They are not particular as to soil or location.



- Attraction (Cactus)**—Perfect clear lilac-rose; flowers on long strong stems; finest cut flower variety. **Each 75c; Doz. \$7.50.**  
**Avalanche (Decorative)**—Pure white flowers of enormous size. **Each 60c; Doz. \$6.00.**  
**Azalea (Decorative)**—Cream yellow suffused with salmon and red. **Each 75c; Doz. \$7.50.**  
**Betty Austin (Cactus)**—Yellow blending to rosy carmine; very fine. **Each \$1.00.**  
**Countess of Lonsdale (Cactus)**—Flame pink and yellow. **Each 60c; Doz. \$6.00.**  
**Decision (Cactus)**—Bronze color. Very large. **Each 50c; Doz. \$5.00.**  
**Dream (Decorative)**—A beautiful pink. Fine for cut flowers. **Each 50c; Doz. \$5.00.**  
**Golden West (Cactus)**—Golden shrimp pink. **Each 50c; Doz. \$5.00.**  
**Helen Durnbaugh (Decorative)**—Shell pink. **Each 60c; Doz. \$6.00.**  
**Irene Satis (Decorative)**—Yellow shading to bronze. **Each 50c; Doz. \$5.00.**  
**Kalif (Cactus)**—Vivid turkey red; very large. **Each 50c; Doz. \$5.00.**  
**King Albert (Decorative)**—Purple, excellent cut flower. **Each 50c; Doz. \$5.00.**  
**La Favorite (Hybrid Cactus)**—Bright salmon shading to salmon pink. **Each 60c; Doz. \$6.00.**  
**Liberty Bell (Decorative)**—Yellow and old rose. **Each 60c; Doz. \$6.00.**  
**Mina Burtle (Decorative)**—Dark scarlet. **Each 35c; Doz. \$3.50.**  
**Mme. A. Lumiere (Decorative)**—Very attractive; white edged lilac-rose. **Each 40c; Doz. \$4.00.**  
**Mme. Butterfly (Decorative)**—Violet-rose, shading darker rose at the base. **Each 75c; Doz. \$7.50.**  
**Mme Bystein (Peony)**—Lavender. **Each 35c; Doz. \$3.50.**  
**Mrs. Roosevelt (Decorative)**—Beautiful shell pink. **Each 50c; Doz. \$5.00.**

(Listing continued on page 28).

# Cannas

Our stock includes the very choice and desirable varieties grown by a specialist. Start your bulbs early and you are sure of success. Bulbs ready in March.

**Dormant Bulbs, Each 20c; Doz. \$2.00.**

**King Humbert**—The most popular scarlet, with bronze leaves; 4 to 5 feet tall.

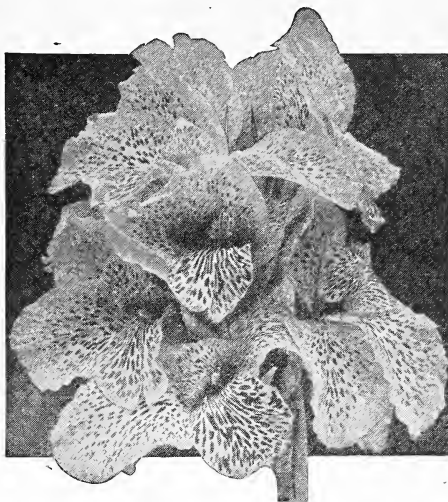
**Richard Wallace**—Large flowers of canary-yellow; green foliage; vigorous grower, averaging 4 feet in height.

**The President**—Rich glowing red with green leaves. Early bloomer with strong stalk that holds flowers erect. Average 4 feet in height.

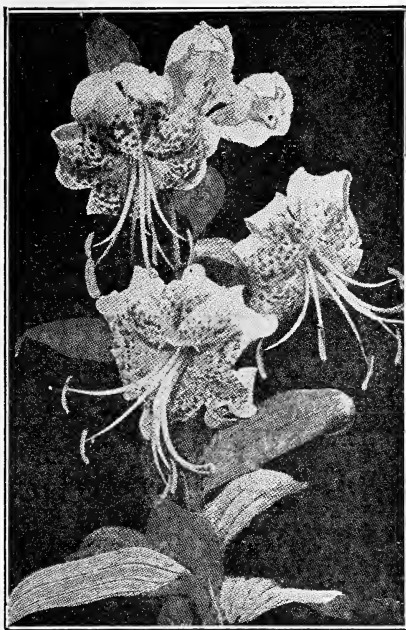
**Wyoming**—An orchid-flowering type, producing large blossoms of deep orange, with bronze leaves. Quite tall, averaging 6 to 7 feet.

**Mrs. Florence Hall**—Rich, deep pink with gold spots in the throat. The blossoms withstand the winds and the sun. Average 3½ feet tall.

**City of Portland**—A beautiful watermelon-pink; a free-flowering, vigorous grower.



City of Portland Canna



Tiger Lilies

## Hardy Garden Lilies

We have a fine stock of hardy Lily Bulbs and you should order liberally while they are available. *Lilium Candidum* is recommended for fall planting and bulbs will be forwarded at proper time for planting. All others should be planted in early spring.

### For Spring Planting

**Album**—Pure white, of medium size flower. **Each 40c; Doz. \$4.00.**

**Auratum**—The beautiful "Golden Banded Lily of Japan" is surely a grand flower. **Each 40c; Doz. \$4.00.**

**Henryi**—A beautiful bright orange-yellow. It is long-stemmed and a very free bloomer; considered hardy, a reasonable protection with litter is advisable. **Each 60c; Doz. \$6.00.**

**Rubrum (Roseum)**—Deep rose to a red with white streaks; very beautiful and much admired. **Each 40c; Doz. \$4.00.**

**Regale**—A grand new Lily from China; the finest of all; white with yellow center, and very fragrant. 3 to 4 feet high. **Each 50c; 3 for \$1.25. We are specialists in this Lily, having in stock over 100,000 bulbs.**

**Tigrinum Splendens (Improved Single Tiger Lily)**—Lives and thrives under nearly all conditions. **Each 20c; Doz. \$2.00.**

**Double Tiger Lily Bulbs**—Similar to the Single Tiger except the double blossom and a lighter color of orange-red. A very profuse bloomer, and keeps well. **Each 30c; Doz. \$3.00.**

**Lily of Valley Pips**—The Dutch stock from Europe. **Doz. 75c; per 100 \$5.00.**

### For Fall Planting

**Lilium Candidum**—The favorite Madonna Lily, producing a large mass of snow-white flowers on straight stems. Plant bulbs in your garden in September or October and during May or June you will have an abundance of flowers. **Jumbo size, each 50c; Doz. \$5.00. Medium size, each 35c; 3 for \$1.00.**

# Miscellaneous Bulbs for Spring

## Tuberose

Much liked for the very exquisite fragrance and beautiful flower. Plant these deliciously fragrant flowers by the dozens; we recommend the Mexican Single Variety.

**Dwarf Pearl**—Come usually double, very abundant bloomers. **Each 10c; Doz. 80c; 25 for \$1.40.**

**Mexican Everblooming**—This is something new and very fine; blooms the whole summer and is very fragrant. Get at least a few for trial; plant from Nov. 15 to April 1. **Each 10c; Doz. 80c.**

## Caladium (Elephant's Ears)

**Large Size**—Grand for center of bed. For best results should be started indoors in March. **Each 25c; Doz. \$2.50.**

## Madeira Vine

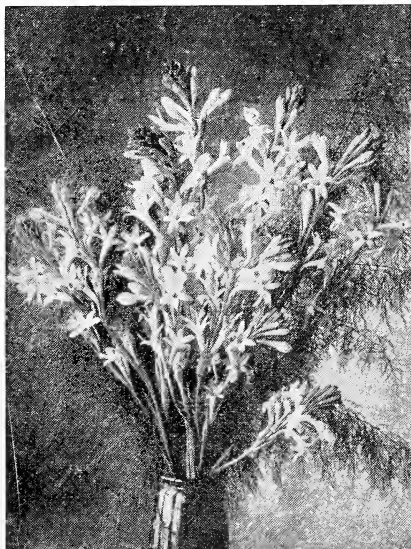
A tender climber much admired for the waxy green leaves and rapidity of growth when in a warm location. Tubers must be taken up each fall. **Select large tubers, each 15c; 2 for 25c; 5 for 50. Small, but good tubers, 3 for 15c; 12 for 50c.**

## Amaryllis

Bulbs are ready from early fall to May 1.

**Equestre**—Beautiful orange-scarlet. **Each 30c; 3 for 75c.**

**Johnsonii**—A beautiful large red which does well in pots or in open ground; must be taken up in the fall. **Each 50c.**



Mexican Everblooming Tuberose



Darwin Tulips



Gertrude Hyacinths



Large Trumpet Narcissus

## Bulbs for Fall Planting

### Darwin Tulips

The loveliest of all the Tulips.  
**Clara Butt**—Salmon-pink; one of the finest of the Darwins. Each 8c; Doz. 75c.  
**Edmee**—Brilliant cherry-red; large, showy and excellent. Each 8c; Doz. 75c.  
**Farncombe Sanders**—Scarlet, for brilliant coloring few varieties are more beautiful than this. Each 8c; Doz. 75c.  
**Inglescombe**—Flowers of brilliant yellow. Each 8c; Doz. 75c.  
**Painted Lady**—Soft heliotrope when opening; the stems are very dark thus making a striking combination. Each 8c; Doz. 75c.  
**Pride of Haarlem**—Rosy carmine, suffused purple; very large, fine form. Each 8c; Doz. 75c.  
**Rev. H. W. Ewbank**—Silvery heliotrope with lighter tint at margins; of splendid form and great beauty. Each 8c; Doz. 75c.  
**Sieraad Van Flora**—Petals of bright red with blue vase; very distinct in coloring. Excellent for forcing. Each 8c; Doz. 75c.  
**Zulu**—Velvety-purple black. Flowers large, egg-shaped and very distinct. Each 8c; Doz. 75c.  
**Mixture**—An especially made assortment of splendid varieties and a great range of colors. Each 7c; Doz. 70c.

### Single Early Tulips

For bedding purposes, these tulips are among the easiest of any plants to grow. Few have greater charm in daintiness of coloring. They are excellent for forcing in pots for mid-winter blooms.  
**Cramoisi Brilliant**—One of the earliest to bloom. Bright, cheerful red. Each 8c; Doz. 75c.  
**Yellow Prince**—Most admired of all the yellows. Sweetly perfumed. Each 8c; Doz. 75c.  
**Keizerkroon**—This grand flower of bright red bordered with yellow is one of the popular kinds for bedding. Each 8c; Doz. 75c.  
**Rose Gris De Lin**—Flowers delicate rose color, shading to white at base. A splendid sort for indoor or outdoor culture. Each 8c; Doz. 75c.  
**Mixture**—Only the finest varieties are used in preparing our mixture, many of which are not included in the above list. Each 6c; Doz. 55c.

### Double Early Tulips

Almost before the single tulips have passed, this race of tulips begins to flower, and, in addition to their many other charms, they continue to bloom longer than most other kinds.  
**Murillo**—Large, beautifully shaped flowers carried on tall stems. The color is white, shading to a delicate pink. Forces very easily and is excellent for outdoor planting. Each 9c; Doz. 95c.  
**Mixture**—Our assorted Double Early Tulips contain many of the finer varieties and are especially attractive when one prefers a variety at least cost. Each 8c; Doz. 85c.

### Crocus

Among the earliest to blossom in the spring is this beautiful little flower, lifting its head almost before the snow begins to disappear. Absolutely hardy for outdoor culture and may be used for pot culture. Blue, yellow, white, variegated or finest mixed. Each 4c; Doz. 40c.

### Hyacinths

For planting in beds out of doors, or for forcing in pots for mid-winter bloom, few flowers possess greater charm or sweeter perfume than those of Hyacinths. They force readily in vases of moss or pebbles filled with water or in pots of soil. For bedding out of doors they are among the finest of bulbs.  
**Grand Maitre**—Gigantic trusses of light blue flowers. One of the finest of its color for forcing or for bedding. Each 25c; Doz. \$2.25.  
**L'Innocence**—Pure white, excellent. Each 25c; Doz. \$2.25.  
**Yellow Hammer**—Pure golden-yellow. Each 25c; Doz. \$2.25.  
**Gertrude**—Deep carmine rose. One of the finest. Each 25c; Doz. \$2.25.  
**La Victoire**—The finest of the dark red varieties. Each 25c; Doz. \$2.25.  
**King of the Blues**—The best dark blue. Each 25c; Doz. \$2.25.

### Narcissus or Daffodils

#### Double Varieties

**Von Sion**—The beautiful old-fashioned double daffodils, deep yellow, always liked. Each 15c; Doz. \$1.35.

#### Large Trumpet Narcissus (often called Daffodils and Jonquils)

**Bi-Color Victoria**—Creamy-white petals, yellow trumpet Jonquil. Each 15c; Doz. \$1.25.  
**Emperor**—Pure yellow Jonquil, gigantic size, very popular. Each 15c; Doz. \$1.25.  
**Empress**—A bi-color; white petals, yellow trumpet Jonquil. Each 15c; Doz. \$1.25.  
**Golden Spur**—A deep rich yellow, early flowering Jonquil. Each 15c; Doz. \$1.25.  
**King Alfred**—Very large, tall-growing all yellow Jonquil. Each 25c; Doz. \$2.50.  
**Spring Glory**—Clear white petals, chrome yellow trumpet Jonquil. Each 20c; Doz. \$2.00.

#### Star or Small Cupped Varieties

**Poeticus Ornatus** (Poet's Narcissus)—Pure white petals, small yellow cup, margined scarlet, very early and fragrant. Each 9c; Doz. 90c.  
**Lucifer Incomparabilis**—Handsome white perianth, cup glowing orange red. Excellent garden variety as color lasts in the sun. Each 15c; Doz. \$1.50.  
**Sir Watkins**—Sulphur petals, deep yellow cup, very handsome large flower. Each 15c; Doz. \$1.50.

### Indoor Forcing Bulbs

**Paper-White Narcissus**—Grows quickly in stones or wet sand, with enough water to keep roots covered. Each 10c; Doz. \$1.00.  
**Gift Boxes**—A nice clean enamel white box, containing 3 select Paper-Whites all complete for 35c, postpaid anywhere. Order for your friends; sending along your card which we will insert and mail for you.  
**Freesias (Purity)**—Very fragrant. Doz. 60c.  
**Chinese Sacred Lilies**—These are usually grown in bowls or dishes of water. A dozen bulbs, started in succession, will give blooms all winter. Each 15c; Doz. \$1.50.





*Celosia Brysonia Chrysantheflora* growing on our farms. You can grow these fine flowers, in bloom from July on through the autumn, just like we do in our own fields, for commercial purposes, for home decoration, and an unsurpassed grandeur in your gardens.

# Celosia Brysonia Chrysantheflora

## *An Everlasting Bloom New to the Flower World*

**N**EARLY twenty years ago Bryson Ayres anticipated the need for a most gorgeous autumn flower, one that would bloom in the early summer, give immediate effect and carry on into the autumn months with increasing grandeur. With this in mind, and after some 12 years of research and experimenting, *Celosia Brysonia Chrysantheflora* was introduced to the horticultural world at large and its success was assured.

The blooms, sometimes eighteen inches in width, are borne on substantial stems from 2 to 6 feet in height, at maturity, and appear when the plant is little more than started. As the plant grows higher, the blooms grow bigger, some taking shapes like fans and ruffles, while others form balls and odd shapes most fantastic. These flower heads are indeed most interesting, in a variety of separate colors and combinations of colors, variegated and bi-color; and the interest is more than ever effected after these blooms have been cut and dried in a dry dark place. They will retain their size, shape and beauty of color throughout the winter, making them a most desirable "Everlasting" flower. They are easy to grow. Sow outdoors during April and May, broadcast or in rows; covering about one-eighth inch with fine pulverized soil. If extra large flowers are desired, transplant to 6 to 12 inches apart; if you want smaller flowers leave from 2 to 4 inches apart. Drying the flowers is simple; just hang upside down in a dark, cool, dry place until well dried out.

**Celosia Brysonia Chrysantheflora**—Separate colors, old rose, salmon, golden, wisteria, shell pink, deep red, violet, mulberry, yellow, lemon, Nile green, crimson, variegated; also finest mixed. **Home Garden Pkt. 25c; Commercial Garden Pkt. \$1.00; Florists' Trade Pkt. (Contains 5 times Commercial Garden Size) \$3.75.**

**Dwarf Variety** (8 to 12 inches high)—For bedding and park use, in separate colors. Red, yellow, orange, violet, old rose, mulberry. **Commercial Packet \$1.00; Florists' Trade Packet \$2.50.**

# Lawn Grass Seeds

**Bryson Ayres Certified Lawn Grass**—This is a mixture our Mr. Ayres has perfected. It will make a lovely, velvety lawn, and withstand the extreme heat and drouth and cold weather of the middle west. With proper care a lasting turf can be expected within six weeks from time of sowing. One pound to a plot 15x15 feet (225 square feet). **1 lb. 50c; 10 lbs. \$4.50.**

**Kentucky Blue Grass**—This is the famous Blue Grass of Kentucky; does equally as well in Missouri and middle west. Nothing excels this strain for a beautiful velvety green lawn. The germination is fine. **1 lb. 50c; 10 lbs. \$4.75.**

**Bryson Ayres Terrace Mixture**—We have successfully developed a mixture of special grasses that are adapted to terraces and embankments. They will root deeply and hold the soil firmly, thus preventing washouts. **1 lb. 60c; 10 lbs. \$5.40.**

**Bryson Ayres Shady Nook**—The finest and most popular grasses which have been found to thrive in shaded locations and form a lasting green turf. **1 lb. 60c; 10 lbs. \$5.40.**

**White Clover**—A low close-growing clover, with round white flower heads, and very fragrant. Excellent for pasture and when mixed with Kentucky Blue grass makes the finest kind of a lawn. **1 lb. 85c.**

**Bermuda Grass Seed**—Valuable alike for lawn and hay crop. Grows on any soil. A dry weather grass, and is most splendid to bind loose soils together. **1 lb. 75c.**

**Ayres Golf Course Mixture**—Write us giving characteristics, such as sunshine and shade, condition of soils and nature, also general weather conditions. We will then be able to advise intelligently and quote prices.



What hath greater charm than a garden of beautiful flowers?

## Ayres Flower Seed

We believe that we are the foremost growers of select FLOWER SEEDS in the United States. Our Sunny Slope Farm in Independence, Mo., and our Blue Ridge Farm on Blue Ridge Blvd., at Thirty-ninth St., in suburban Kansas City, are model flower farms. All operations are under the direct supervision of Bryson Ayres and the greatest care is taken to have all seeds absolutely true to name.

Plant flowers for your table, for home decoration, and for your friends. You can never have too many flowers. The tendency today is for flower gardens, both annual and perennial, and if you desire to raise your perennials from seed, we list the same seeds here that we use in growing our own splendid plants offered on pages 2 to 7. Such an abundance of flowers can be had with so little expense and effort, that every home should have the cheering influence of flowers. The culture of many is so simple that anyone can succeed.

- ACHILLEA** (Perennial)—One of the best hardy whites.  
**Ptarmica** (The Pearl)—2 feet. Blooms from spring until frost, flowering from seed if sown early. Flower heads of purest white. **Pkt. 25c.**
- ACROCLINIUM** (Annual)—An everlasting, 15 inches high, bearing lovely white or rosy-pink flowers.  
**Double Mixed, Pkt. 15c. Single Mixed, Pkt. 15c.**
- AMMOBIUM** (Annual)—An everlasting, 2 feet, grows best in light soil.  
**Alatum Grandiflorum**—Single white with yellow disc. **Pkt. 15c.**
- AGROSTEMMA** (Rose of Heaven) (Perennial)—Pretty blossoms on long stems, fine for cutting, or in masses and beds. Height 2 feet. July to September. White and red. **Pkt. 15c.**
- AMARANTHUS** (Annual)—Brilliant foliage, from 3 to 5 feet high. Useful for borders of tall plants, or in centers of large beds. Like hot sunny location. **Pkt. 15c.**
- AGERATUM** (Annual)—Easily raised from seed. Can start inside, or sow outdoors in May. One of the best of the bedding plants.  
**Blue Perfection**—14 inches. Deep amethyst-blue. **Pkt. 15c.**
- ALYSSUM** (Sweet Alyssum) (Annual)—Pretty little plants for beds, vases, baskets or rock work. Bloom profusely all summer. Sweet scented. Useful for winter flowering.  
**Little Gem**—Dwarf white. **Pkt. 15c.**
- ALYSSUM** (Perennial Variety)—Blooms first season if sown early. 1 foot high and an excellent plant for rock work.  
**Saxatile Compactum** (Basket of Gold)—Showy bright yellow flowers in masses of broad flat flower heads. **Pkt. 15c.**
- ANCHUSA ITALICA** (Perennial)—For producing mass effects of brilliant blue that can not be equalled. May, June and July. 3 to 5 feet high.  
**Italica Drophore**—Rich gentian-blue. **Pkt. 15c.**
- ANEMONE** (Windflower) (Perennial)—Large flowers, fine for bouquets. Sow outdoors in spring, keep shaded until plants appear. Excellent for cutting. Height 2 to 3 feet.  
**Coronariax** (Poppy Anemone)—Gorgeous mixture of colors. **Pkt. 15c.**
- ARCTOTIS** (African Daisy) (Annual)—Large, daisy-like flowers. Splendid for cutting as the bloom will last week to ten days in water. 2 feet. July to frost. Sunny situation.  
**Grandis**—White, with delicate mauve tint on underside of petals. **Pkt. 15c.**
- ARMERIA** (Sea Pink) (Perennial)—Very pretty, dwarf growing. For rockeries or border. Bright green foliage. Height 1 foot. Blooms May to July.  
**Formosa**—Very double flowers in pink shades. **Pkt. 15c.**
- ANTIRRHINUM** (Snapdragon) (Annual)—We offer two distinct types, the large-flowering, tall-growing or giant and the equally large-flowering, half-dwarf variety. Start indoors or open ground in May.  
**Large-Flowering Giant Varieties**  
**Crimson King, Golden King, Fire King, Harmony, Queen Victoria, Rose King, Finest Mixed. Pkt. 15c.**  
**Large-Flowering Half-Dwarf Varieties**  
 A splendid type, growing about 18 inches high.  
**Silver pink, crimson, yellow, orange-scarlet, snow white, rose and gold, choice mixed. Pkt. 15c.**
- ANTHEMIS** (Hardy Marguerite) (Perennial)—Most satisfactory for borders or bedding. Bears daisy-like flowers, all summer; fine for cutting. 2 feet. Sow seed early for first year blooms.  
**Kelwayi**—Deep golden yellow. **Pkt. 15c.**
- ARABIS** (Rock Cross) (Perennial)—Perfectly hardy and one of the earliest and best spring flowers. Spreading tufts covered sheets of flowers as soon as snow disappears. Borders, edges, rock gardens. 6 inches. April until June.  
**Alpina**—Pure white.  $\frac{1}{4}$  oz. 25c; **Pkt. 15c.**
- AQUILEGIA** (Columbine) (Perennial)—Sow seed in open ground early in the spring and will, in some cases, bloom first year. Can plant in August and September, come up in early spring making vigorous plants. These will bloom abundantly. For wealth of color and form these are unsurpassed. 18 inches to 30 inches.  
**California Hybrida**—Yellow and orange shades, long spurs. **Pkt. 15c.**  
**Chrysanthax** (Golden spurred)—Golden yellow. **Pkt. 15c.**  
**Silver Queen**—Long-spurred, pure white. **Pkt. 15c.**  
**Coerulea**—This is the true Rocky Mountain Columbine, the state flower of Colorado. Violet-blue and white. 2 feet.  $\frac{1}{2}$  oz. 50c; **Pkt. 10c.**  
**Long-Spurred Pink Hybrids**—Beautiful selection of pink and rose shades. 5 Pkts. \$1.00; **Pkt. 25c.**  
**Ayres Long-Spurred Hybrids**—A beautiful strain comprising shades and combinations of blue, white, yellow, orange, scarlet, and bright rose-pink. Large flowers, long spurs.  $\frac{1}{2}$  oz. 50c; **Pkt. 15c.**  
**Double Flowering**—All colors mixed.  $\frac{1}{4}$  oz. 30c; **Pkt. 15c.**  
**Single Flowering**—All colors mixed.  $\frac{1}{4}$  oz. 25c; **Pkt. 15c.**

**AYRES' FAMOUS ASTERS** (Annuals)—The varieties offered represent the finest Asters introduced to date and are all firmly established favorites with the most critical growers of this popular flower. These should be in every garden where high quality is considered and appreciated. The culture is simple. Any good soil, carefully prepared. Open, sunny position. The use of fertilizer is recommended. For early flowering sow seed in house, or hotbed, transferring to position as soon as danger of frost is over. For later flowering sow in open ground in May. **American Beauty**—Bright rosy carmine, the real American Beauty Rose shade. Largest size, perfect form.  $\frac{1}{4}$  oz. 50c; Pkt. 15c.

**Crimson Giant**—Vigorous, upright, branching. Stems 18 inches long, bearing fine double flowers 4 inches in diameter, height of plant 24 inches. Bright crimson.  $\frac{1}{4}$  oz. 50c; Pkt. 15c. **Rochester or Mikado**—Superb branching type. Double silvery-lavender pink flowers 4 to 5 inches in diameter. Oz. \$1.55;  $\frac{1}{4}$  oz. 50c; Pkt. 15c.

**White Mikado**—Large, pure white flowers 4 to 5 inches across. Petals curled and twisted. Branching habit, 18 to 24 inches.  $\frac{1}{4}$  oz. 50c; Pkt. 15c.

**Japanese Pompon**—First introduced by Bryson Ayres in 1914. A surprise awaits you; truly a floral treasure. Finest mixed. Pkt. 25c.

**Peerless Pink**—For bedding and cutting. 24 to 30 inches, strong branching growth. Fine double, rich pink flowers of a large size.  $\frac{1}{4}$  oz. 70c; Pkt. 15c.

**Sensation**—The flowers are brilliant cardinal. Branching habit, 18 to 24 inches. Stems 10 to 12 inches. They are truly sensational, as the name indicates.  $\frac{1}{4}$  oz. 85c; Pkt. 15c.

**Lavender Gem**—One of the finest feathery flowers of the beautiful Comet type. Silver white changing to delicate shade of lavender. An excellent early bedding variety.  $\frac{1}{4}$  oz. 85c; Pkt. 15c.

**Crego's Giants, Mixed**—A mixture blended from separate colors to assure right proportions of shades. A beautiful display for many weeks.  $\frac{1}{4}$  oz. 50c; Pkt. 15c.

**ASTER, HARDY** (Perennial)—Single flowering, thriving in any good garden soil. If sown early they will bloom the first season.

**Michaelmas Daisies**—Mixed colors, free-blooming, excellent for cutting.  $\frac{1}{4}$  oz. 60c; Pkt. 15c.

**AUBRETIA** (Perennial)—A beautiful dwarf rock plant, desirable also for beds and borders. Height 6 inches. Early spring and summer.

**Large-Flowering Hybrids**—Mixture of bright colors. Pkt. 15c.

**BALLOON VINE** (Annual)—Pretty, rapid-growing climber, bears light green balloon-shaped fruits. For covering walls, fences, etc. Soak seed a few hours before planting. Sow outdoors in May. The blossoms are white. Pkt. 15c.

**BALSAMS (Lady Slipper)** (Annual)—Double Camelia-flowered. Beautiful brilliant colored flowers in profusion; easy culture; sow outdoors in May. Red, pink, white, yellow, Pkt. 15c.

**BOCCONIA (Plume Poppy)** (Perennial)—Foliage green; bears freely long flower spikes, 2 to 3 feet. Height about 5 feet. Easily raised from seed.

**Cordata**—Creamy-buff colored, excellent for specimens or tall borders. Pkt. 15c.

**BELLIS (English Daisy)** (Perennial)—A favorite, blooms from early spring well into the summer. Easily raised from seed. Sow any time from spring till August. 6 inches high. Raise from seed each year or give winter protection.

**Ayres' Double Mixed**—White, rose and red. Pkt. 15c.

**BOLTONIA (False Chamomile)** (Perennial)—4 to 6 feet high. Aster-like flowers, many open at one time, very showy. July to September.

**Asteroides**—White. Pkt. 15c.

**Latisquama**—Lilac-pink. Pkt. 15c.

**BRACHYCOME (Swan River Daisy)** (Annual)—10 inches high. Covered with small daisy-like flowers. Very suitable for edges or small beds. Pretty blue flowers. Pkt. 15c.



Calendulas



American Beauty Aster

**CALCEOLARIA** (Annual)—An ornamental house plant, producing a mass of pocket-like flowers in the spring. Very decorative. Height one foot. Sow in late August or September.

**Ayres' Perfection**—Spotted and blotched in exceedingly rich and varied colors. Pkt. 50c.

**CALENDULA (Pot Marigold)** (Annual)—One of the best and showiest of the free-flowering annuals. Grows anywhere, producing fine effects in beds or mixed borders, continuing to bloom from early summer until killed by frost. 1 foot high and same diameter. Orange, yellow and variegated, Pkt. 15c.

**CALLIOPSIS** (Annual)—Showy and beautiful free-flowering annuals, of easiest culture. Best to sow where they bloom. Red, gold or mixed, Pkt. 15c.

**CAMPANULA MEDIUM (Canterbury Bells)** (Biennial)—The seeds should be sown by mid-April, in finely prepared rich soil—the colors in separate rows. By the fifteenth of July the plants should be transplanted to the place where they are to bloom the following summer, or else they may be set out in rows a foot apart, and finally transplanted again in October. Height, 3 feet.

**Calycanthemum** (Cup and Saucer)—Effective for either the garden or in pots for table use. Separate colors or else in mixture. Blue, a fine clear shade; Rose pink, very delicate; White, a pure white; Finest mixed, all colors of the Cup and Saucer type. Pkt. 15c.

**CAMPANULAS (Canterbury Bells)** (Perennial)—Bears attractive bell-shaped flowers, thriving best in a light rich soil. Indispensable to the hardy garden. June to August. Will bloom first year if sown early.

**Carpatica** (Carpathian Hare Bell)—Free-flowering, continue whole season. Clear blue. 6 inches. Pkt. 15c.

**Persicifolia Grandiflora Blue** (Peach Bells)—2 to 3 feet. Large blue flowers. Pkt. 15c.

**Rotundifolia** (Blue Bells of Scotland)—A much prized variety. Pkt. 25c.

**CANARY-BIRD VINE** (Annual)—A beautiful rapid-growing climber, the charming little canary-yellow blossoms resemble canary birds, and will keep when cut in good condition for a week. Pkt. 15c.

**CANDYTUFT** (Annual) (For perennial variety—see Iberis)—When sown in April, flowers in June. Successive sowings should be made at intervals. Easy to grow. Height about 1 foot. Pink, carmine, white, lavender or mixed, Pkt. 15c.

**CARNATION** (Perennial)—Sow seed in open ground in May or June. They will bloom profusely and continuously. Double pink, red, white, yellow or mixed, Pkt. 15c.

**CLARKIA** (Annual)—Tall spikes densely covered with handsome double flowers, resembling a spray of apple blossoms. Deserve to be more intensively cultivated. Will do well in either sun or shade. Grow 2 to 2 1/2 feet high, and will open in water when cut. Pink, salmon, mixed, Pkt. 15c.

**CHRYSANTHEMUMS**—Showy and effective garden favorites, grown for cut flowers and general summer flowering plants. The annual varieties are quite distinct from the autumn flowering perennial varieties, being some 2 feet high, bearing large daisy-like flowers. The perennial varieties give a succession of long-stemmed flowers for vase or other decoration over a 4-months' period.

**Annual Varieties**—Yellow, white or mixed, Pkt. 15c.

**Perennial Varieties**—Shasta Daisy mixed. Extra choice hybrids, very fine. Oz. \$2.00; Pkt. 15c.

**COREOPSIS** (Perennial)—One of the finest. Large showy flowers produced in the greatest abundance. July till frost.

**Lanceolata Grandiflora**—Brightest yellow. Oz. \$1.00;  $\frac{1}{4}$  oz. 30c; Pkt. 15c.

**CENTAUREAS** (Annuals)—Under this name is included such popular flowers as the Cornflower, Sweet Sultans, etc., favorites in all sections of the country, are perfectly hardy and will do well anywhere. Much in demand for cut flowers.

**Ayres' Double Cornflowers (Centaurea Cyanus)**

These are also known as Bachelor's Button, Blue Bottle, Ragged Sailor, Bluet, and sometimes as Ragged Robin.

**Double Blue**—It is identical in color to the single blue variety, but being a full double, is much better in every way. Oz. 75c; ¼ oz. 30c; Pkt. 15c.

**Double Rose Pink**—A splendid variety for cutting; clear rose pink. Oz. 75c; ¼ oz. 30c; Pkt. 15c.

**Double White**—Very fine, pure white. Oz. 75c; ¼ oz. 30c; Pkt. 15c.

**Double Maroon**—Very rich and glossy. Oz. 75c; ¼ oz. 30c; Pkt. 15c.

**Double Mauve**—A beautiful shade. Oz. 75c; ¼ oz. 30c; Pkt. 15c.

**Double Rosy Red**—Very attractive. Oz. 75c; ¼ oz. 30c; Pkt. 15c.

**Doubled-Flowered Mixed**—All colors. Oz. 75c; ¼ oz. 30c; Pkt. 15c.

**Royal Sweet Sultans (Centaurea Imperialis)**

The charming sweet-scented, artistic-shaped flowers are borne on long, strong stems, and when cut will stand for several days in good condition. 'It is best to sow in early spring. Separate colors and finest mixed. **Brilliant rose, deep lavender, pure white, finest mixed colors, Pkt. 15c.**

**Dusty Millers** (White-leaved Centaureas)—Pkt. 15c.

**Various Centaureas**

They are showy in the mixed border, and most splendid for cutting.

**Americana** (Basket Flower)—Rosy-lavender. Oz. 75c; ¼ oz. 30c; Pkt. 15c.

**COSMOS, AYRES' SELECT** (Annual)—Strong, tall-growing, bold flowers of exquisite daintiness and airiness, feathery green foliage. Effective in masses or long background borders. Sow in open ground after danger of frost is past. The double-flowering type is very popular.

**Ayres' Extra Early Giant Cosmos**

Bloom two months before the late-flowering kinds, and by careful selection offered seed that produced flowers just as large. **Crimson, pink, white or mixed, Pkt. 15c.**

**Ayres' Early Double Cosmos**

This new type is sure to be appreciated. **Pink, red, white and mixed, Pkt. 15c.**

**Ayres' Autumn Giant Cosmos**

This type produces the largest and finest blooms which are perfected in September and October. **Pink, white, red or mixed, Pkt. 15c; Oz. 50c.**

**CYCLAMEN**—Charming house plants, with beautiful foliage and rich colored, fragrant flowers. Universal favorites for winter and spring blooming. Seed may be sown any time in the spring or autumn. **Mixed, Pkt. 35c.**

**CYPRESS VINE**—One of the most popular vines, with delicate fern-like foliage and masses of beautiful small star-shaped flowers. Sow in May, first soaking seed for few hours. Height, 15 feet.

**Scarlet—Oz. 75c; Pkt. 10c; White—Oz. 75c; Pkt. 10c.**

**Quamoclit Hybrida** (The Cardinal Climber)—The best climber introduced in many years; Fern-like foliage, brilliant scarlet-cardinal flowers. **Pkt. 25c.**

**CONVOLVULUS (Morning Glory)**—Very popular, free-growing climbers. Flowers very brilliant. Will grow in almost any situation. Soak seed to hasten germination.

**Mixed—All colors imaginable. Pkt. 10c.**

**Ayres' Double-Flowering—All colors. Oz. 75c; Pkt. 15c.**

**DELPHINIUM, AYRES' SELECTED (Hardy Larkspur)** (Perennial)—Sow the seeds in early spring in hotbeds or shallow boxes, or in open ground. Respond to liberal manuring and intensive cultivation.

**Mrs. Warren G. Harding**—New turquoise blue. 2 feet. Our own introduction. Oz. \$4.00; Pkt. 25c.

**Gold Medal Hybrids**—The plants are strong and vigorous, with large flower spikes two feet long, in the lighter shades of blue. Oz. \$4.00; Pkt. 25c.

**Belladonna** (Everblooming Hardy Larkspur)—Clear turquoise-blue. Oz. \$3.00; Pkt. 25c.

**Bellamosa**—A rich deep blue, similar to Belladonna but much darker color. Oz. \$4.00; Pkt. 25c.

**Chinese** (Blue Butterfly)—18 inches high; large flowers of intense gentian blue. Oz. \$2.50; Pkt. 15c.

**Album**—White-flowered form. Oz. \$2.50; Pkt. 15c.

**Formosum**—Rich blue flowers, with white center. Oz. \$4.00; Pkt. 25c.

**DIANTHUS (Pinks)**—They are not particular as to soil but should have a sunny location. About one foot high and can be used in beds or borders both in the separate colors and mixed. The double-flowering varieties are as fine as carnations for cutting.

**Annual Varieties**

**Chinensis fl. pl.** (Chinese or Indian Pink)—Flowers very double and of many bright colors. Oz. \$1.00; Pkt. 15c.

**Diadematus fl. pl.** (Double Diadem Pink)—Beautiful colored flowers, mixed; of various tints of lilac, crimson, purple, to very dark purple, with outer edges fringed and nearly white. Oz. \$1.00; Pkt. 15c.

**Perennial Varieties**

**Plumarius** (Grass Pinks, Scotch Pinks or Pheasant's Eye Pinks)—A beautiful single hardy pink with fringed edged flowers of various colors. Oz. \$1.50; Pkt. 15c.

**Plumarius Sempervirens** (Everblooming Hardy Garden Pinks)—Very beautiful, sweet-scented, double, semi-double and single flowers. Oz. \$2.00; Pkt. 25c.

**DIGITALIS (Foxglove)** (Perennial)—With but little attention will give a wealth of flowers during June and July. 3 to 5 feet. Plant in shrubbery, in edges of woods and semi-shady places.

**Purple, rose, white and mixed, Oz. \$2.00; Pkt. 15c.**

**DOLICHOS (Hyacinth Bean)** (Annual)—Rapid growing climber. Sow in open ground in April. Handsome flowers followed by ornamental fruits. **Purple, white or mixed. Pkt. 15c; Oz. 30c.**

**DIDISCUS (Blue Lace Flower)** (Annual)—Profuse bloomer July till November. 18 inches high. Blossoms excellent for cutting. As many as 50 blooms open at one time on one plant.

**Coeruleus**—Exquisite pale lavender. **Pkt. 25c.**

**DIMORPHOTHECA (African Golden Daisy)** (Annual)—A rare and extremely showy annual from S. Africa; highly colored Daisy-like blossoms are 2½ inches across.

**Aurantiaca**—Rich, glossy, orange-gold, with dark disc and halo. **Oz. \$2.00; Pkt. 15c.**

**ECHINOCYSTIS (Wild Cucumber Vine)**—One of the quickest growing annual vines that we know of. Splendid for covering unsightly places, trellis, trees, stumps, fences, etc. July and August.

**Lobata**—Bright green foliage; sprays of white flowers. **Oz. 40c; Pkt. 10c.**

**ECHINOPS (Globe Thistle)** (Perennial)—Striking plants; flowers excellent for cutting. Excellent planted among other tall plants. 3 to 5 feet.

**Rito**—Silvery foliage, steel-blue blossoms, heads round. **Pkt. 15c.**

**ESCHSCHOLTZIA** (California Poppy) (Annual)—Beautiful and brilliant. Seed may be sown any time during the spring. Sow where to stay. 1 foot. For cut flowers, cut in the bud. Fine for bedding. Sunny position. **Pink, red, golden yellow, mixed. Pkt. 15c; ¼ oz. 25c.**

**EUPATORIUM** (Hardy Ageratum) (Perennial)—Strong growing well suited for naturalizing. Will grow and thrive in almost any situation.

**Fraseri**—A very pretty dwarf variety producing clusters of snow white flowers. **Pkt. 15c.**

**EUPHORBIA** (Annual)—Strong growing, suitable for beds and mixed borders. The flowers are inconspicuous, the foliage however is extremely ornamental.

**Variegata** (Snow-on-the-Mountain)—2 feet. Foliage veined and margined with white. **Pkt. 15c.**

**Heterophylla** (Annual Poinsettia)—2 to 3 feet. Resemble greatly the poinsettia, the leaves becoming a beautiful orange-scarlet. **Pkt. 25c.**

**GERANIUM** (Annual)—Finest of varieties. Easily grown from seed and it is extremely interesting to watch these grow and develop. All new varieties are first raised from seed. Start indoors, early, then transfer to open ground.

**Zonale, Mixed—All colors. Pkt. 25c.**

**GEUM (Avens)** (Perennial) Large, showy double flowers all thru the summer.

**Atrorogineum fl. pl.**—Dark crimson. **Oz. \$2.00; Pkt. 15c.**

**GILLIA** (Annual)—Very graceful growing about 2 feet high. Feathery foliage. Globular flower heads over a long season. Flowers 1 inch across. An everlasting, as flowers retain their color and form when dried.

**Capitata**—Rich, lavender blue. **Oz. \$2.00; Pkt. 25c.**

**GALLARDIA (Blanket Flower)**—Very showy flowers, blooming from early summer until November. Should be sown where they are to bloom. 1½ to 2 feet. Will thrive in almost any position or soil.

**Annual Varieties**

**Double Flowering Mixed**—Charming double-flowering colors, crimson, orange, yellow, combinations with Indian-red. **Oz. \$2.00; Pkt. 15c.**

**Perennial Varieties**

**Ayres Grandiflora Superb Mixed**—Our own saving; splendid combinations of crimson, gold and Indian-red in great variety. **Oz. \$1.50; Pkt. 15c.**

**GLOBE AMARANTH** (Annual)—Popularly known as "Bachelor's Button;" flowers resemble red clover heads, fine of form and color and can be dried for winter bouquets.

**Fine Mixed—All colors. Oz. \$1.00; Pkt. 10c.**

**GLOXINIA**—A superb genus of greenhouse plants, producing magnificent flowers in rich colors; splendid house plant. Sow in March in a mixture of peat, loam and sand.

**Hybrida Grandiflora**—Fine strain containing the spotted hybrids as well as the best self-colored sorts. **Pkt. 50c.**



Eschscholtzia

**GODETIA** (Annual)—Produces numerous delicately colored flowers; especially attractive when grown in masses. Plant in shady places in April, thinning plants to one foot apart. 1 foot high.

**Ayres' Fine Mixed**—Pure white, shell pink, brilliant blood-red. **Oz. \$1.50; Pkt. 15c.**

**ORNAMENTAL GOURDS** (Annual)—Ornamental foliage and singular shaped fruits of many colors. 15 to 20 feet. Fine for fences, trellises, etc.

**Dipper, Egg-Shaped, Hercules' Club, Luffa** (Dish-Rag or Sun Bonnet), **Pear-Shaped** (Very showy), **Spoon** (A very odd variety), **Knob Kerrie**, **Pkt. 10c; Oz. 25c.**

**GREVILLEA** (Silk Oak) (Annual)—A very beautiful and graceful decorative plant with Fern-like foliage. Excellent for table decoration; easily raised from seed.

**Robusta**—Produces good sized plants in short time. **Pkt. 10c.**

**GYPSOPHILA** (Baby's Breath)—Delicate mist-like sprays of small flowers, most excellent for bouquets and in the garden to lighten the effect of many of the heavier blooming plants. They are free-flowering and succeed in any soil.

**Annual Varieties**

**Elegans Alba Grandiflora**—Improved large-flowering. Several sowings should be made in a season to keep up the supply. **Oz. 60c; Pkt. 15c.**

**Elegans Delicate Pink**—A very pretty blush-pink form of the above. Equally as valuable for cutting. **Oz. 60c; Pkt. 15c.**

**Perennial Varieties**

**Paniculata**—White-flowering hardy perennial, most fine for bouquets.  $\frac{1}{2}$  oz. **30c; Pkt. 10c.**

**Paniculata Flore Plena**—Double white flowers in much-branched panicles. They retain their beauty for months. **Pkt. 25c.**

**HELIOTROPE** (Annual)—Rich fragrance and long blooming period make this a favorite. An excellent bedding plant, and also does well indoors as a pot plant. Sow seeds indoors early in the spring.

**Mixed**—All colors, height about 2 feet. **Pkt. 25c.**

**HEUCHERA** (Coral Bells) (Perennial)—One of the finest. The flowers are a very rich color and the leaves light green and slightly hairy. Fine for cutting.

**Sanguinea**—Rich coral red, very bright. **Pkt. 25c.**

**HUNNEMANNIA** (Giant Yellow Tulip Poppy) (Annual)—Poppy-like blossoms and never out of flower until hard frost, 2 feet high.

**Fumariæfolia**—Cup-shaped, bright yellow, 3 to 4 inches across. Will keep in water several days. Long smooth stems with feathery foliage. **Oz. \$2.00; Pkt. 25c.**

**HOLLYHOCKS** (Perennial)—One of the most majestic of hardy plants, and a clump or line in any garden gives an effect not attained with any other plant. It has no equal for shrubbery or planting with other flowers.

**Double or Single Varieties**—Yellow, pink, red, white or mixed. **Pkt. 20c.**

**HELENIUM** (Sneeze Wort) (Perennial)—3 to 5 feet. Succeeds in any soil. Used in the hardy border, they will give an enormous crop of flowers in late summer.

**Riverton Gem**—Old gold, changing as they mature to a wall-flower red. **Pkt. 15c.**

**Riverton Beauty**—Rich lemon-yellow. Large purplish black cone. **Pkt. 25c.**

**HELIANTHUS** (Sunflower)—They come into bloom in the early summer and keep up a constant supply of flowers until cut down by frost.

**Annual Varieties**

**Orion**—Artistic and effective. The petals are twisted like a Cactus Dahlia. **Oz. \$2.00; Pkt. 15c.**

**Perkeo**—A charming dwarf variety forming compact bushes 12 inches high by about 14 inches through. There are many places where this can be used to good advantage. **Oz. \$2.00; Pkt. 15c.**

**Perennial Varieties**

**Mixed**—Contains the finest single-flowering sorts. Seeds sown early will produce fine flowering plants the first year. **Pkt. 25c.**

**HELICHRYSUM** (Strawflower) (Annual)—The best of the everlasting. 2½ feet high, producing large Daisy-like flower heads which make a fine display in the garden and when dried retain their shape and color for years. **Red, violet, pink, yellow or mixed, Pkt. 15c; Oz. \$1.50.**

**IBERIS** (Hardy Candytuft) (Perennial)—A profuse blooming, hardy perennial coming into bloom in early spring. Much used for cemeteries, rockeries, etc. 1 foot.

**Gibraltarica Hybrida**—White shading to lilac. **Pkt. 10c.**

**Sempervirens**—White blooming. **Pkt. 15c.**

**ICE PLANT** (Annual)—Dwarf trailing plants, prized for their silvery icy foliage.

**Mesembryanthemum Crystallinum**—White flowers.  $\frac{1}{4}$  Oz. **25c; Pkt. 5c.**

**IPOMOEA** (Annual)—Climbers of rapid growth.

**Grandiflora** (Moonflower)—White, fragrant flowers. **Oz. \$1.00; Pkt. 20c.**

**Quamoclit Hybrida** (The Cardinal Climber)—See Cypress Vine. **Pkt. 25c.**

**Rubro Coerulea** (Heavenly Blue)—Sky blue, beautiful, immense flowers. **Oz. \$2.50; Pkt. 20c.**

**KOCHIA** (Standing Cypress) (Annual)—An easily grown annual, sow in spring. 3 feet tall. Late in autumn the whole plant becomes brilliant red. A splendid hedge plant.

**Improved Tricho phylla**—Lively green of perfect symmetry. **Pkt. 5c.**



**Helichrysum (Strawflowers)**

**LARKSPUR** (Annual)—Seeds sown in the open ground before the close of April will produce flowering plants by the beginning of July and give a continuous bloom of flowers until frost. They make handsome beds, and their free, graceful habit and fine colors are very effective. Height, 2 feet. Separate colors as follows:

**Dark Blue, Ageratum Blue, Lustrous Carmine or Newport Pink, Sky Blue.**

**Exquisite, soft rose pink; Pure White. Oz. \$1.50; Pkt. 20c.**

**Collection**—One packet each of the above 6 colors. **6 Pkts. \$1.05.**

**Finest Mixed**—All colors. **Oz. \$1.00; Pkt. 15c.**

**LAVENDER** (*Lavandula Vera*) (Perennial)—Well-known, sweet-scented, hardy; should be grown in every mixed border. Height, 2 to 3 feet. **Oz. \$2.00; Pkt. 20c.**

**LIATRIS** (*Pycnostachya*) (Perennial)—We consider this one of the finest of all perennials and its popularity is growing in leaps and bounds. It is a native of many parts of North America. Long spikes of beautiful, rosy-red or purple flowers. Nothing will attract more attention than these richly colored flowers which grow from 2 to 6 feet and bloom from July until September.

**LINARIA** (Perennial)—Hardy trailing plant for rock work, baskets, vases, boxes, etc. Very charming and neat.

**Cymbalaria** (Kenilworth Ivy)—Lavender and purple. **Pkt. 15c.**

**LATHYRUS** (Hardy Sweet Pea) (Perennial)—Continually in bloom. Fine for cutting, also for covering trellises, stumps, fences, etc.

**Latifolius** (White Pearl)—The finest white. **Oz. 50c.**

**Pink Beauty**—Rosy-pink. **Oz. 50c.**

**Mixed**—All colors. **Oz. 50c.**

**Plants**—Ayres Giant Mixed Colors, 3 for 50c; Doz. \$1.50.

**LINUM** (Flax)—One of the most effective and showy bedding plants; of long duration and having fine feathery foliage and delicate stems.

**Grandiflora Rubrum** (Scarlet Flax) (Annual)—Brilliant scarlet-crimson flowers. 1 foot. **Oz. 30c; Pkt. 15c.**

**Perenne** (Perennial)—Bright blue flowers. 18 inches. **Pkt. 25c.**

**LOBELIA**—Very desirable for edges, etc. **Pkt. 15c.**

**LUPINUS** (Lupine)—Free-flowering and easily grown. Long, graceful spikes of rich and vari-colored pea-shaped flowers; valuable for mixed borders, beds and for cutting. Prefers a little shade.

**Annual Sorts**—Rich blue, sky blue, rose, white. Separate colors or mixed. **Oz. 75c; Pkt. 25c.**

**Polphyllus Sorts** (Hardy Perennials)—Succeed in any garden soil, bloom May and June. Rose, white, blue, pink or mixed. **Pkt. 25c.**

**MARIGOLDS** (Ayres Select Strains) (Annual)—You all know these free-flowering plants adapted for large beds or mixed borders. Fine for cutting, and with a few Blue Cornflowers or a little Larkspur or Delphinium is very striking as a table or other decoration.

**Double Tall African Marigolds**

Splendid for beds or borders. These tall varieties grow about 2 feet high.

**Orange Prince**—Large, perfect, double, quilled flowers of a rich deep golden orange color; the finest of all and very showy. **Oz. \$2.00; Pkt. 25c.**

**Lemon Queen**—Soft lemon yellow. **Oz. \$2.00; Pkt. 25c.**

**Double Mixed**—African varieties in all the colors. 2 to 3 feet. **Oz. \$1.50; Pkt. 15c.**

**Dwarf Double French Marigolds**

Will form dense bushes not over 12 inches high and are unequalled for beds or borders. Bronze, lemon, gold, mahogany or mixed. **Pkt. 15c; Oz. \$2.00.**

**MARVEL OF PERU** (Four O'Clocks) (Annual)—A very popular garden favorite; sow seed where plants are desired, as they do not readily transplant. Plant in April or May. Blooms open in late afternoon, remaining during the night. 2 feet high.

**Mirabilis Jalapa**—Does well everywhere; mixed colors. **Oz. 50c; Pkt. 10c.**

**MATRICARIA (Feverfew)** (Annual)—18 inches. Free-flowering, producing flowers all season. Sow seed latter part of April or May. Thin to 12 inches apart.

**Capensis Alba Plena**—Fine double white. Oz. \$1.50; Pkt. 20c.

**MIGNONETTE (Reseda)** (Annual)—No garden is complete without a bed of Mignonette; deliciously fragrant. Oz. \$1.50; Pkt. 15c.

**MYOSOTIS (Forget-Me-Not)** (Perennial)—Few spring flowers are more admired than these.

**Alpestris Royal Blue**—Rich indigo-blue flowers. 9 inches. Oz. \$3.00; Pkt. 15c.

**Palustris Semperflorens**—An everblooming variety, beginning to flower in May and continuing until autumn. Blue flowers in pretty sprays. Pkt. 25c.

**Chinese Forget-Me-Not**—Grows 2 to 3 feet high, blooming continually throughout the summer and fall. Seed sown in April blooms in July. Very fine. Pkt. 25c.

**NICOTIANA** (Annual)—In the evening and early morning this plant is covered with deliciously-scented, large tube-shaped flowers. Sow seed in May.

**Affinis (Tuberose-Flowered Tobacco)**—Pure white. 2 to 3 feet. Oz. \$2.00; Pkt. 10c.

**NIGELLA (Love-in-a-Mist)** (Annual)—Compact free-flowering plants, with finely cut foliage, curious looking flowers and seed pods. Easy of culture, grows in any soil.

**Damascena**—Blue and white mixed. 1 foot. Oz. 75c; Pkt. 10c.

**Miss Jekyll**—A lovely blue. Splendid for cutting. Oz. \$1.00; Pkt. 15c.

**NASTURTIUMS** (Annual)—Very fine and distinct. No flower excels in profusion of bloom, wealth of color, nor length of flowering season. This is truly an indispensable garden flower.

**Ayres Finest Dwarf Mixed**—All colors. Pkt. 10c; Oz. 20c; ¼ lb. 60c.

**Ayres Finest Tall Mixed**—All colors. Pkt. 10c; Oz. 20c; ¼ lb. 60c.

**ORNAMENTAL GRASSES**—These are fine for any situation and give wonderful effects. Especially good around pools, stone work, isolated specimens, etc. Very fine when dried and used for winter bouquets. Easy culture. Sow seed where to bloom.

#### Annual Varieties

**Rueppelianum** (Purple Fountain Grass)—Graceful green foliage and purplish plumes. Unequaled as an edging to bed of Cannas or other tall plants. 3 feet. Oz. \$2.00; Pkt. 25c.

#### Perennial Varieties

For large beds or groups on lawn nothing gives a finer effect.

**Gynerium Argenteum** (Pampas Grass)—White silvery plumes. 5 feet. Pkt. 15c.

**Eulalia Zebrina** (Zebra Grass)—Light green, barred with creamy white across foliage. 6 feet. Pkt. 10c.

**Variegata**—Long narrow green leaves, striped with white. Fine feathery plumes. Pkt. 15c.

**PETUNIAS** (Annual)—For outdoor decoration, porch or window boxes, few plants equal the Petunias in effectiveness. The strain we offer can be sown outdoors in May. Crimson, rosy morn, purple, white or finest mixed. Pkt. 25c.

**Elks Pride** (From Portland, Oregon)—Extra fine rich purple. Pkt. 25c.

**Ayres' Fine Mixed**—Good bright colors in profusion. Oz. \$3.00; Pkt. 15c.

**PHLOX DRUMMONDI** (Annual)—The annual Phlox is one of the most brilliant plants. It will grow and thrive in any kind of soil if given a sunny position. Seed may be sown in the open and in a few weeks they are a sheet of bloom, remaining so until frost. 15 inches high.

**Red, Pink, Scarlet, Lilac or Mixed, Pkt. 15c; Oz. \$2.00.**

**PHLOX DECUSSATA** (Perennial)—You all know this extra fine hardy variety that blooms all season. Sow seed in early spring or early fall. A wealth of variety and colors.

**Ayres' Finest Mixed**—All colors and combinations of color. Pkt. 25c.

**Ayres' Finest Mixed**—All colors and combinations of color. Pkt. 25c.

**Ayres' Finest Mixed**—All colors and combinations of color. Pkt. 25c.

**Ayres' Finest Mixed**—All colors and combinations of color. Pkt. 25c.

**Ayres' Finest Mixed**—All colors and combinations of color. Pkt. 25c.

**Ayres' Finest Mixed**—All colors and combinations of color. Pkt. 25c.

**Ayres' Finest Mixed**—All colors and combinations of color. Pkt. 25c.

**Ayres' Finest Mixed**—All colors and combinations of color. Pkt. 25c.

**Ayres' Finest Mixed**—All colors and combinations of color. Pkt. 25c.

**Ayres' Finest Mixed**—All colors and combinations of color. Pkt. 25c.

**Ayres' Finest Mixed**—All colors and combinations of color. Pkt. 25c.

**Ayres' Finest Mixed**—All colors and combinations of color. Pkt. 25c.

**Ayres' Finest Mixed**—All colors and combinations of color. Pkt. 25c.

**Ayres' Finest Mixed**—All colors and combinations of color. Pkt. 25c.

**Ayres' Finest Mixed**—All colors and combinations of color. Pkt. 25c.

**Ayres' Finest Mixed**—All colors and combinations of color. Pkt. 25c.

**Ayres' Finest Mixed**—All colors and combinations of color. Pkt. 25c.

**Ayres' Finest Mixed**—All colors and combinations of color. Pkt. 25c.

**Ayres' Finest Mixed**—All colors and combinations of color. Pkt. 25c.

**Ayres' Finest Mixed**—All colors and combinations of color. Pkt. 25c.

**Ayres' Finest Mixed**—All colors and combinations of color. Pkt. 25c.

**Ayres' Finest Mixed**—All colors and combinations of color. Pkt. 25c.

**Ayres' Finest Mixed**—All colors and combinations of color. Pkt. 25c.

**Ayres' Finest Mixed**—All colors and combinations of color. Pkt. 25c.

**Ayres' Finest Mixed**—All colors and combinations of color. Pkt. 25c.

**Ayres' Finest Mixed**—All colors and combinations of color. Pkt. 25c.

**Ayres' Finest Mixed**—All colors and combinations of color. Pkt. 25c.

**Ayres' Finest Mixed**—All colors and combinations of color. Pkt. 25c.

**Ayres' Finest Mixed**—All colors and combinations of color. Pkt. 25c.

**Ayres' Finest Mixed**—All colors and combinations of color. Pkt. 25c.

**Ayres' Finest Mixed**—All colors and combinations of color. Pkt. 25c.

**Ayres' Finest Mixed**—All colors and combinations of color. Pkt. 25c.

**Ayres' Finest Mixed**—All colors and combinations of color. Pkt. 25c.

**Ayres' Finest Mixed**—All colors and combinations of color. Pkt. 25c.

**Ayres' Finest Mixed**—All colors and combinations of color. Pkt. 25c.

**Ayres' Finest Mixed**—All colors and combinations of color. Pkt. 25c.

**Ayres' Finest Mixed**—All colors and combinations of color. Pkt. 25c.

**Ayres' Finest Mixed**—All colors and combinations of color. Pkt. 25c.

**Ayres' Finest Mixed**—All colors and combinations of color. Pkt. 25c.

**Ayres' Finest Mixed**—All colors and combinations of color. Pkt. 25c.

**Ayres' Finest Mixed**—All colors and combinations of color. Pkt. 25c.

**Ayres' Finest Mixed**—All colors and combinations of color. Pkt. 25c.

**Ayres' Finest Mixed**—All colors and combinations of color. Pkt. 25c.

**Ayres' Finest Mixed**—All colors and combinations of color. Pkt. 25c.

**Ayres' Finest Mixed**—All colors and combinations of color. Pkt. 25c.

**Ayres' Finest Mixed**—All colors and combinations of color. Pkt. 25c.

**Ayres' Finest Mixed**—All colors and combinations of color. Pkt. 25c.

**Ayres' Finest Mixed**—All colors and combinations of color. Pkt. 25c.

**Ayres' Finest Mixed**—All colors and combinations of color. Pkt. 25c.

**Ayres' Finest Mixed**—All colors and combinations of color. Pkt. 25c.

**Ayres' Finest Mixed**—All colors and combinations of color. Pkt. 25c.

**Ayres' Finest Mixed**—All colors and combinations of color. Pkt. 25c.



Nigella

**PHYSALIS (Chinese Lantern Plant)**—2 feet high, produces freely its bright orange-scarlet lantern-like fruits. These fruits can be cut and dried for winter bouquets.

**Francheti**—Highly ornamental. Pkt. 15c.

**PLATYCODON (Balloon Flower)** (Perennial)—This is also known as the Japanese Bellflower. One of the best, producing showy flowers during the whole season. Easily raised from seed. Sow in April for August blooms. Blue, White, Mixed, Pkt. 15c; Oz. \$2.50.

**PANSIES** (Annuals)—Sow seed in April or early May; prepare seed bed most carefully, enriching with leaf mould. Cover seeds about four times their thickness and keep seed bed moist, and protected with branches, etc., until plants appear. Transplant to an open sunny, position, about 9 inches apart, and cultivate well. In dry weather, water freely.

**Ayres Superb Large-Flowering Fringed**—Large size; varied and brilliant colors, beautifully fringed. Pkt. 35c.

**Ayres Orchid Flowered**—Mixed orchid shades. Oz. \$8.00; Pkt. 20c.

**Cassier's Giant**—A grand mixture of the finest blotched varieties. Large size and brilliant colorings. Oz. \$8.00; Pkt. 25c.

**POPPIES, AYRES SELECT**—Great favorites for outdoor display; easy to grow; sow seed where they are to grow and thin out a little, giving 3 to 4 inches each way from each plant. You will have a most gorgeous display and one that will cause a lot of favorable comment. The varieties are so varied that it is possible to create many beautiful effects by combination.

#### Double Annual Poppies

**American Flag**—Flowers very large and double, snow white, bordered with scarlet. Oz. 75c; Pkt. 15c.

**Mikado** (The Japanese Poppy)—The flowers are a brilliant scarlet and white with curved petals like a Japanese Chrysanthemum. Oz. 75c; Pkt. 15c.

**White Swan**—Immense flowers, beautifully fringed and of purest white. Oz. 75c; Pkt. 15c.

**Cardinal**—Two feet high, bearing large globular, fringed flowers of an intense cardinal red. Oz. 75c; Pkt. 15c.

**Shell Pink**—Similar in every way to Cardinal and White Swan, except color which is a soft sea-shell or chamois-pink. Very dainty. Oz. 75c; Pkt. 15c.

**Peony-Flowered**—Large, showy, double, globular flowers. They resemble a double peony; mixed colors. Oz. 75c; Pkt. 15c.

**Collection**—One packet each of 6 above varieties. 75c.

#### Hardy Perennial Oriental Poppies

These should all be sown in the spring, in the open ground as soon as soil can be worked.

**Oriente** (The Large Oriental Poppy)—2½ feet high; large orange-scarlet flowers; having conspicuous black blotches on each petal. Very showy. ¼ oz. 40c; Oz. \$2.50; Pkt. 20c.

**Oriflamme**—A gorgeous orange-scarlet, very large. Pkt. 20c.

**Princess Victoria**—A beautiful salmon-pink. Pkt. 20c.

**Oriental Mixed Hybrids**—Saved from a large number of named sorts, embracing all of the colors. Oz. \$2.50; Pkt. 20c.

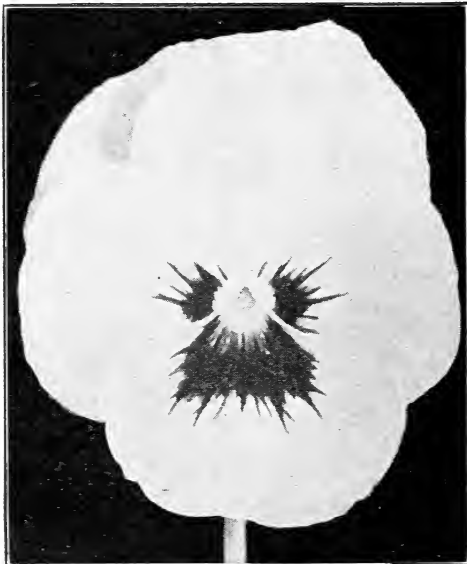
#### Island Poppies

Hardy Perennials blooming the first year from seed almost as quick as the annual sorts. They remain evergreen throughout the winter, coming into bloom early the following spring.

**Papaver Nudicaule**—Separate colors, bright yellow, pure white, orange-scarlet. Pkts. 20c each.

**Collection**—One packet each of the 3 colors above, 50c.

**Ayres Finest Mixed**—All colors. Oz. \$3.00; Pkt. 20c.



Pansy

**POTENTILLA (Cinquofoil)** (Perennial)—18 inches. June to August. Plants for the border, with brilliant colored flowers, mostly orange, red and crimson tones that are produced in profusion. **Pkt. 51c.**

**PHYSOSTEGIA (False Dragon Head)** (Perennial)—2 to 3 feet. Blooms during the summer months. Bears spikes of beautiful flowers similar to giant heather. Becoming very popular. Pink, purple, white. **Pkt. 20c.**

**PORTULACA (Sun Plant or Rose Moss)** (Annual)—6 inches. Blooms all summer. Very fine for borders, edges, mass bed effects, for sowing on sunny banks, etc. Single or double mixed. **Pkt. 10c.**

**PYRETHRUM (Painted Daisies)** (Perennial)—Large daisy-like flowers range in color from pure white to deepest red, with bright yellow centers; blooms in May and June, then again in the fall. Height 3 feet.

**Hybridum, Single Mixed**—A graceful and long lasting cut flower variety. **Oz. \$4.00; Pkt. 15c.**

**Hybridum fl. pl.**—Seed saved from the finest of the double flowers; however, all will not come double. **Pkt. 35c.**

**POLYANTHUS (Primula Elatior)** (Perennial)—9 inches. Showy, early spring, free-flowering plants.

**Invincible Giant**—The finest strain in cultivation; all colors. **5 pkts. \$1.00; Pkt. 25c.**

**RHODANTHE (Swan River Everlasting)** (Annual)—1 foot. Succeeds best in a light soil and a warm, sheltered situation. Valuable for pot culture.

**Mixed Colors**—**Pkt. 20c.**

**ROSEMARY (Rosemarinus)** (Perennial)—An old favorite aromatic herb, delightfully fragrant; flowers light blue, grows about 2 feet high. **Officialis**—**Oz. \$2.00; Pkt. 20c.**

**RICINUS (Castor Oil Bean)** (Annual)—Ornamental plants of stately growth and picturesque foliage with brilliant colored fruit, producing sub-tropical effects.

**Cambodgiensis**—Main stems and leaf stalks are ebony. Richly colored foliage assumes different shades as plant increases in size. 5 feet. **Oz. 50c; Pkt. 15c.**

**RUDBECKIA (Cone Flower)** (Perennial)—Fine free-flowering plants deserving of general planting. **Pkt. 20c.**

**SALVIAS (Scarlet Sage)** (Annual)—A favorite bedding plant, spikes of flowers from July till frost. Sow as early as possible.

**Splendens** (Scarlet Sage)—Beautiful bright scarlet. **Pkt. 20c; Oz. \$4.00.**

**Bonfire**—A compact bush 2 feet by 2 feet. The spikes of scarlet flowers stand clear above the dark green foliage. A most attractive sight. **Oz. \$5.00; Pkt. 25c.**

**Perennial Variety**

**Farinacea**—A perennial variety but best grown as an annual. Sow seed in open ground in May. Will bloom July till frost. Fine light-blue flowers. 2 to 3 feet.

**SALPIGLOSSIS (Painted Tongue)** (Annual)—24 to 30 inches. One of the finest and are of easiest culture. Produce freely from mid-summer till frost. The flowers are trumpet-shaped, self colors, veined with yellow and gold. Sow seed outdoors in April or May, thinning to 12 inches apart.

**Separate Colors**—Crimson, primrose, purple and gold; rose and gold; scarlet and gold; white and gold. **Pkt. 20c.**

**Finest Mixed**—All colors. **Oz. \$2.00; Pkt. 10c.**

**SAPONARIA (Bouncing Bet)**—The flowers are charming for cutting and including in bouquets with other flowers. They are fine as borders, etc., and after you once know these beautiful plants you will find many uses for them.

**Vaccaria** (Annual)—2 feet. Masses of satiny-pink flowers. **Oz. 75c; Pkt. 20c.**

**Ocymoides** (Perennial)—9 inches. Fine rock plant; produces rose flowers in profusion. **Pkt. 20c.**



Long Portulaca (Rose Moss)

**SCABIOSA (Mourning Bride)**—Seed can be sown any time in the spring after danger of frost is past. The beautiful flowers in exquisite shades are borne on long stems and last for a week as cut flowers. Very effective for borders or beds and no garden is complete without Scabiosas, especially when wanting cut flowers. **Large-Flowering Annual Varieties**—Lavender, Scarlet, Pink, White or Mixed, **Pkt. 20c.**

**Hardy Perennial Scabiosas**

**Caucasica** (Blue Bonnet)—One of the handsomest of hardy perennials. Very fine for cutting, blooms last a long time in water; color soft lavender blue. 3 feet. **Pkt. 25c.**

**Japonica**—Bushy plants, 2½ feet in height. Bears on long wiry stems, beautiful flowers of a lavender-blue. **Oz. \$2.50; Pkt. 20c.**

**SCARLET RUNNER BEANS** (Annual)—A great favorite in Europe, not only as an ornamental climber, but for the edible beans. **Lb. 50c; Pkt. 15c.**

**SCHIZANTHUS (Butterfly or Fringe Flower)** (Annuals)—Exceptionally beautiful when in full bloom and literally covered with small orchid-like flowers in the choicest colors. Suitable for either house or garden.

**Wisetonensis**—A variety largely used as a pot plant for the house. **Pkt. 15c.**

**Ayres Mixed**—Plants 18 inches high with fine foliage and covered with bloom throughout the summer. **Oz. \$2.00; Pkt. 15c.**

**STATICE (Sea Lavender)** (Perennial)—Panicles of minute flowers that can be used for winter bouquets.

**Latifolia**—Purplish-blue flowers. **Pkt. 20c.**

**Mixed**—Contains many sorts. **Pkt. 20c.**

**STOCKS (Gilliflower)**—Easily grown, fine foliage, fragrant, free-blooming and a wide range of color. Sow seed in April. Can be sown earlier indoors. **Fine mixed, Pkt. 20c.**

**SWEET PEAS** (Annual)—The Sweet Peas are becoming more and more a garden flower of extreme merit. New and finer varieties and new and better colors, shades and tints of flowers are being brought out. Plant in a deep, rich moist soil, early, as soon as the ground can be worked. Cover 1½ to 2 inches deep in the bottom of a 6-inch trench. When well up thin to 3 or 4 inches apart and furnish support. Cut flowers continuously to insure continued bloom.

(We are recognized among the foremost authorities on Sweet Peas and some of the choicest varieties are of the Bryson Ayres introduction.)

**Ayres Early Spring-Flowering Sweet Peas**

Re-selected stock from our Sunny Slope Farms. **Ayres' Early-Flowering Varieties**—All colors. **White, Red, Rose, Cerise, Scarlet, Pink, Purple, Salmon, Primrose, Blue, Yellow, Lemon, Orange, Lavender, Mauve.** Separate colors or in mixture. **Oz. 35c; Lb. \$4.00.**

**Ayres Spencer Butterfly Sweet Peas**

Re-selected stocks from our Sunny Slope Seed Farms. **Ayres' Spencer-Butterfly Mixed**—A mixture of all the summer flowering varieties, together with 1927 novelties; the finest possible mixture, as to size, quality and color; types of exceeding beauty and the gorgeous colors in combination with its exquisite fragrance lends a most sincere admiration to flower lovers. **½ Oz. 30c; Oz. 50c; ¼ lb. \$1.50; Lb. \$5.00.**



Scabiosa Caucasica

**SWEET PEAS, HARDY** (Perennial)—We firmly believe that throughout the middle west the Hardy Sweet Peas will supplant the annual varieties, as they are free from disease and in continuous bloom from June until frost. Having this in mind we have been improving this grand specie and in our mixture we have colors heretofore unknown. You will also find the flowers to be enormous in size. Roots planted in the spring or fall will bloom the first season. Remember, when once planted, they will grow and improve from year to year and you will not need to be bothered with further planting. We are making a special inducement in price this season that everyone may try some of these plants, they bloomed for us and they will bloom for you.

**Plants**

**Ayres Giant Mixture**—Red, pink, white, variegated and rose. 3 for 50c; Dozen \$1.50.

**Seeds**

**Ayres Giant Mixture**—Saved from above fine strains. Oz. 50c; lb. \$6.00.

**STOKESIA (Cornflower Aster)** (Perennial)—A rare and beautiful flower. Handsome Cornflower-like blossoms. In bloom from July till frost.

**Cyanea**—Fine lavender-blue.  $\frac{1}{4}$  oz. 40c; Pkt. 20c.

**SWEET ROCKET (Hesperis)** (Perennial)—Old-fashioned garden plant. Spikes of snowy-white, lilac and purple flowers. Oz. 75c; Pkt. 20c.

**SWEET WILLIAM (Dianthus Barbatus)** (Perennial)—Free-flowering and hardy; produces a splendid effect in beds and borders with their rich and varied flowers.

**New Watermelon Pink**—Strikingly brilliant and beautiful. Pkt. 25c.

**Scarlet Beauty**—Rich, deep scarlet. Pkt. 20c.

**Double Mixed**—A mixture of all the double varieties in self-colors and combinations of color. Oz. \$2.00; Pkt. 15c.

**THUNBERGIA (Black-Eyed Susan)**—Beautiful, rapid-growing annual climbers; colors buff, white, tan, orange, etc., with dark eyes. Mixed colors, Pkt. 20c.

**VERBENAS** (Annual)—You all know these fine bedding plants, suitable also for vases, boxes, borders, etc. Brilliant colors, free-blooming and of vigorous habit.

**Separate Colors**—Pink, purple, scarlet, striped, white and blue. Oz. \$3.00; Pkt. 20c.

**Mixed**—All colors. Very effective in beds. Oz. \$3.00; Pkt. 20c.

**VINCA (Madagascar Periwinkle or Old Maid)** (Annual)—Bedding or pot plants with glossy deep green leaves and bright myrtle-like flowers, about a foot high and covered all summer with blooms. Sow seed in May for August flowers. White, Pink or Mixed, Pkt. 20c; Oz. \$2.00.

**WALLFLOWER**—Deliciously fragrant, half hardy perennials, blooming early in the spring with spikes of beautiful flowers. Is richly colored and makes a splendid effect planted in beds.

**Single Mixed**—All colors. Oz. \$1.50; Pkt. 15c.

**Double-Flowering Finest Mixed**—Pkt. 25c.

**WATER LILY SEEDS** (Perennial)—Sow on bank of pond or scatter in water. These have been grown with good success in tubs.

**Nymphaea**—Mixed colors, lavender, pinks, reds, white, yellows. Oz. 75c; Pkt. 20c.

**XERANTHEMUM (Everlasting or Immortelle)** (Annual)—Bear an abundance of flowers, which are not only showy in the garden but very useful as dried bouquets for winter.

**Annun**—Everlasting, mixed colors. Oz. \$2.00; Pkt. 20c.

## Ayres Famous Zinnias

We are among America's foremost Zinnia growers. Over one hundred different colors of Zinnias are grown on our seed farms.

Our wonderful Giant Zinnias attain a height of 2 to 3 feet and produce gorgeous double flowers, making them most attractive for beds, borders, etc., remaining in bloom from early summer till late autumn. We feel that our Giant Strain is the finest in existence.

### Ayres Giant Double Zinnias

Giant Golden Yellow

Giant Scarlet

Giant White

Giant Primrose-Yellow

Giant Crimson

Giant Salmon

Giant Flesh

Giant Purple

Giant Pink

Giant Orange

Oz. \$2.50; Large Pkt. 25c.

Collection—Packet each of the ten separate colors,

\$1.50.

Mixture of Giant Double Zinnias—The above and

many other colors. Oz. \$2.00; Pkt. 20c.

### Ayres Double Dahlia-Flowered Zinnias

Canary Bird—Yellow.

Crimson Monarch—Crimson.

Exquisite—Rose-pink.

Old Rose—Most beautiful.

Oriole—Orange and gold bi-color.

Scarlet Flame—Fiery scarlet.

Large Pkt. 25c; 5 for \$1.00.

Collection—One packet each of the 6 colors, \$1.50.

Mixture of Double Dahlia-Flowered Zinnias—

The above and many other colors, not named.

A surprise awaits you. Pkt. 25c; 5 for \$1.00.

### Ayres Miniature Dwarf Zinnias

A most popular Zinnia for bedding purposes, edges etc. Produces perfect shaped double flowers. A1 attractive bushy plant not over 2 feet high, and blooms continuously all summer and fall.

Deep Red—Oz. \$2.50; Pkt. 20c.

Finest Mixed—All colors. Oz. \$2.00; Pkt. 20c.



Ayres Double Dahlia-Flowered Zinnia

## Ayres Superb Dahlias (Continued from page 18)

**Mrs. Warnaar (Peony)**—White overlaid with blush pink. Each 35c; Doz. \$3.50.

**Pacific Glow (Peony)**—Very fine pure pink. Each \$1.00.

**Parthos (Decorative)**—Purple shading to lavender. Each 50c;

Doz. \$5.00.

**Pierrot (Cactus)**—Deep amber, usually tipped white. Each

40c; Doz. \$4.00.

**President Lincoln (Peony)**—Purple with yellow center. Each

40c; Doz. \$4.00.

**Pride of California (Decorative)**—A brilliant, glowing, cardinal-

red of very large size. Each 50c; Doz. \$5.00.

**Queen Mary (Decorative)**—Cerise pink; long stem. Each 40c; Doz. \$4.00.

**Roselia (Pompon)**—Yellow and old rose. Each 40c; Doz. \$4.00.

**Salomy Jane (Decorative)**—Perfect shaped flower of old gold

tinted red. Each \$1.00.

**September Glow (Decorative)**—Bright amber-yellow with

golden-salmon suffusion. Each \$1.00.

**St. Francis (Decorative)**—Color is terra-cotta. A very fine and

exceptional variety. Each 75c; Doz. \$7.50.

**Valiant (Cactus)**—Crimson; fine for exhibition purposes. Each

\$1.00.





Raise your own Vegetables and reduce living expenses

# Ayres Vegetable Seeds, Roots <sup>A</sup><sub>N</sub><sup>D</sup> Herbs

In each class of vegetables we find some varieties that are better than others. Earliness, appearance, flavor or a combination of desirable factors. Such vegetables become leaders and as leaders are particularly sought after by discriminating planters. On this and following pages we offer strains of what we know to be distinctly worth-while vegetables and you can safely plant your garden with them, knowing that they have come to the top through merit alone in gardens of Ayres customers everywhere.

## Artichoke

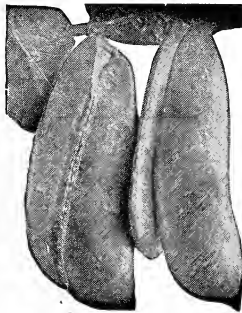
The scales and bottom of flower head are eaten, either boiled with dressing, or raw as a salad.  
**Large Green Globe**—Pkt. 15c; ½ Oz. 60c; Oz. \$1.00.

## Asparagus

**Pedigreed Washington**—Large straight shoots, dark green in color. Pkt. 10c; ½ Oz. 25c; Oz. 40c.  
**Palmetto**—Very early. Large, thick, tender tips. Pkt. 20c; ½ Oz. 30c; Oz. 50c.  
**Argenteuil**—A mammoth size. Pkt. 10c; Oz. 15c.

### Asparagus Roots

**Pedigreed Washington**—A fine variety. Large roots. 75c per doz.; \$5.00 per 100.  
**Colossal or Palmetto**—Both splendid varieties. Stalks are tender and delicious. Good roots. Dozen 50c; \$4.00 per 100.



Fordhook Limas

## Beans

Packets of all varieties, 10c each. If wanted by parcel post, remit extra for postage.

### Dwarf or Bush (Green-podded Varieties)

**Stringless Green Pod**—Pods, round; very large. Sure cropper. Pkt. 10c; Lb. 35c.  
**Improved Red Valentine**—Very early. Light green; very fleshy; long and tender. Pkt. 10c; Lb. 30c.  
**Refugee**—Late. Known as "1000 to 1;" very prolific. Pkt. 10c; Lb. 35c.  
**Bountiful**—Large, tender, curved flat pods. Remains long in bearing. Pkt. 10c; Lb. 30c.

### Dwarf or Bush (Wax Podded Varieties)

**Kentucky Wonder Wax**—Early round-podded; pods, 5 to 6 inches long. Pkt. 10c; Lb. 40c.  
**Improved Golden Wax**—Pods flat and long, nearly straight. Fine snap bean. Pkt. 10c; Lb. 35c.  
**Wardwell's Kidney Wax**—A favorite. Pods long, broad and flat. Golden wax color; very crisp and fine. Pkt. 10c; Lb. 35c.



Kentucky Wonder Wax

## Pole Beans

**Old Homestead**—Long, light-green showy pods in clusters. Pkt. 10c; Lb. 35c.  
**Kentucky Wonder—Improved White**—Pods medium green, round, very long and crisp. Pkt. 10c; Lb. 35c.  
**Lazy Wife Stringless**—Pods 6-7 inches long, wonderfully broad and fleshy. A late green-pod for snaps or green-shell use. Pkt. 10c; Lb. 35c.

## Lima Beans (Dwarf Bush)

**Burpee's Improved**—Early, large seeded. Pods medium green, very large, contain four beans of excellent quality. Pkt. 10c; Lb. 40c.  
**Henderson's Small**—Early and productive. Pods short, flat, contain three to five beans of excellent quality. Pkt. 10c; Lb. 40c.  
**Fordhook**—Prolific. Pods five inches long and very delicious flavored beans. Pkt. 10c; ½ Pt. 25c; Lb. 40c.

## Pole Limas

**Small White or Sieva**—Earliest of all Limas. Pods contain about four beans, small but excellent quality. Pkt. 10c; Lb. 35c.  
**Extra Large White**—The standard pole lima. Furnishes the largest beans. Pkt. 10c; ½ Pt. 25c; Lb. 40c.

## Beets

**Eclipse**—Very early, round, smooth, dark red. Pkt. 10c; ¼ Lb. 35c.  
**Detroit Dark Red**—Roots medium size; turnip shape; dark blood-red color. Crisp, tender, sweet. Pkt. 10c; ¼ Lb. 30c.  
**Crosby's Egyptian**—Roots flattened globe-shape, very smooth. Flesh deep red, sweet and tender. One of the best for market trade. Pkt. 10c; ¼ Lb. 35c.

## Mangel or Sugar Beets

**Long Red, Golden Tankard, Vilmorin's Improved Sugar and K'nin Vanzleben Sugar.** Pkt. 10c; ¼ Lb. 25c; Lb. 60c.

## Brussels Sprouts

A variety of the cabbage family bearing upon the stem 50 to 100 buds, like miniature cabbages. One of the most delicious garden vegetables, equalled only by cauliflower.

**Paris Improved**—Delicious flavor and exceedingly tender. Pkt. 10c; Oz. 30c.

## Cabbage

**Copenhagen Market**—Earliest, round-headed cabbage offered today. Pkt. 10c; Oz. 35c.

**Golden Acre**—Extra early strain of the above, maturing about ten days earlier. Pkt. 15c; Oz. 50c.

**All Season**—Heads hard and solid. Fine for kraut. Pkt. 10c; Oz. 30c.

**Mammoth Dark Red**—Best known red cabbage. Pkt. 10c; Oz. 35c.

**Charleston Wakefield**—Large solid head, not so much pointed. Very popular with market gardeners. Pkt. 10c; Oz. 30c.

**Premium Late Flat Dutch or Drumhead**—Old, popular variety. Heads large, solid, very weighty and uniform. An excellent keeper. Pkt. 10c; Oz. 30c.

## Carrots

**Danvers Half Long** (Ayres Select Strain)—One of the most popular root crop varieties in America. Handsome roots, orange-scarlet in color, tapering to a half point or stump root at the bottom. Remarkably sweet, fine-grained and tender. Pkt. 10c; Oz. 20c;  $\frac{1}{4}$  Lb. 50c; Lb. \$1.50.

**Early Scarlet Horn**—Excellent for early plantings outdoors. Tops small, smooth blocky roots. Orange color. Pkt. 10c;  $\frac{1}{4}$  Lb. 50c; Lb. \$1.50.

**Oxheart or Guerander**—Especially desired for hard, stiff soils. Root short, very thick. Bright orange color, very sweet. Pkt. 10c; Oz. 50c;  $\frac{1}{4}$  Lb. 50c; Lb. \$1.50.

**Improved Long Orange**—The roots are very deep orange, long and comparatively thick. One of the best. Pkt. 10c; Oz. 20c;  $\frac{1}{4}$  Lb. 50c; Lb. \$1.50.

## Cauliflower

A most delicious vegetable and well repays attention to cultivate.

**Extra Selected Dwarf Early Erfurt**—Gardeners' favorite, large, compact form, very early and a sure header. For early market and home use. Pkt. 20c;  $\frac{1}{4}$  Oz. 75c.

**Early Snowball**—Fine white heads of good quality. The outer leaves are short, thus allowing the plants to be set closer together. Pkt. 20c;  $\frac{1}{4}$  Oz. 75c.

## Celery

**Dwarf Golden Self-Blanching**—Without doubt the finest celery in cultivation. Solid, a fine nutty flavor, and when well blanched a handsome golden-yellow color. Pkt. 10c; Oz. 50c.

**Giant Pascal**—A green-leaved variety; for fall and early winter use; blanches to a beautiful yellowish-white color. The stalk is thick. Pkt. 10c; Oz. 30c.

**Improved White Plume**—Very early and for quality surpassed by none; easily grown and does not need to be earthed up. Pkt. 10c; Oz. 30c.

## Celeriac or Turnip-Rooted Celery

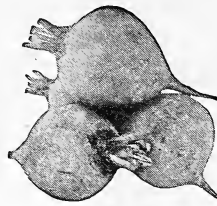
**Large Smooth Prague**—Large, smooth roots, with very few side roots. A variety of celery with turnip-shaped roots, white fleshed, tender, and have the flavor of celery stalks. Pkt. 10c; Oz. 25c.

## Chicory

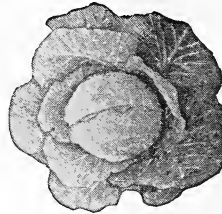
**Whitloff or French Endive**—The famous winter salad. Sow seed in spring; and parsnip-like roots are stored in cool room until wanted for winter forcing. Requires about one month to force. Very valuable as it comes in at a time when no other green stuffs are offered. Pkt. 10c; Oz. 30c.

## Corn Salad

**Broad-Leaved**—Used as a salad throughout winter and spring. Cover slightly first of autumn and sprinkle with straw on approach of severe winter. Pkt. 10c; Oz. 40c.



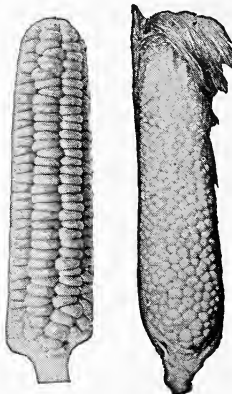
Eclipse Beets



Golden Acre Cabbage



Danvers Half Long



Golden Bantam

Country Gentleman



Kohl-Rabi

## Cress or Pepper Grass

**Extra Curled**—A small plant having a fine flavor; used as a salad. Can be cut two or three times. Pkt. 10c; Oz. 20c.

## Sweet Corn

**Adam's Extra Early**—Not a sugar corn, but largely grown for early use. Ears short, very full. Pkt. 10c; Lb. 35c.

**Golden Bantam**—The finest extra early Sweet Corn, rich and delicious. Bright golden-yellow color when ready to use. Pkt. 10c; Lb. 40c.

**Stowell's Evergreen**—Late. Ears 8 to 9 inches long, 16 to 18-rowed, with a very deep sweet grain. The standard for quality. Pkt. 10c; Lb. 45c.

**Country Gentleman**—Late. Is different from any other sort. Will yield as many as five ears on a stalk. Cob small with deep kernels of pearly whiteness. Uneven rows. Considered the finest of all sweet corns. Pkt. 10c; Lb. 40c.

## Pop Corn

**White Rice; White Pearl and Queen's Golden**—Selected seed. Lb. 25c.

## Cucumber

**Boston Pickling**—Fruit short, smooth, and pointed on each end. Bright green, and a great yielder. Pkt. 10c;  $\frac{1}{4}$  Lb. 35c; Lb. \$1.25.

**Early Fortune**—Finest type of White Spine introduced. Early, productive. Nine inches long. Rich dark green; flesh white. Pkt. 10c;  $\frac{1}{4}$  Lb. 35c; Lb. \$1.25.

**Evergreen White Spine**—Superior for the main crop. Handsome and delicious. 10 to 14 inches. Very hardy. Pkt. 10c;  $\frac{1}{4}$  Lb. 35c; Lb. \$1.25.

**Davis' Perfect**—An extra long dark green white spine. Retains color and good qualities long after being picked. Flesh crisp, solid and almost seedless. Pkt. 10c;  $\frac{1}{4}$  Lb. 35c; Lb. \$1.25.

## Dill

An annual plant of aromatic odor; used for seasoning. Pkt. 10c.

## Eggplant

**New York Improved Purple**—Leading market variety. Best for size. Pkt. 10c; Oz. 50c.

**Black Beauty**—Earlier and nearly as large as above. Fruit very dark in color, which holds for a long time. Pkt. 10c; Oz. 50c.

## Endive

**Large Green Curled**—Large and strong-growing; leaves dark green and beautifully curled. Blanches a cream-white. Pkt. 10c;  $\frac{1}{4}$  Lb. 40c.

## Garlic

Much used in cooking, adding flavor to salads, etc. Sets  $\frac{1}{2}$  Lb. 30c; Lb. 50c.

## Horse-Radish Sets

Roots produce good radish, fit for use in one season's growth. Plant the small end down so that the top will be two inches under soil. 25 for 65c; 50 for \$1.25; 100 for \$2.00.

## Kale or Borecole

**Dwarf Green Curled Scotch**—The plant is low and compact; with large bright green leaves; curled, cut and crimped. Pkt. 10c;  $\frac{1}{4}$  Lb. 35c; Lb. \$1.00.

**Tall Curled Scotch**—Grows about 18 inches in height and spreads, sometimes reaching three feet in diameter. Desirable for winter use. Pkt. 10c;  $\frac{1}{4}$  Lb. 40c; Lb. \$1.10.

## Kohl-Rabi

**Early White Vienna**—Very handsome variety with small tops. Medium sized bulbs, nearly white, and best quality. Eat when two inches in diameter. Makes a very fine cabbage flavored dish. Pkt. 10c; Oz. 30c.

**Purple Vienna**—A little later than the white; color a bluish-purple. Pkt. 10c; Oz. 30c.

**Lettuce**

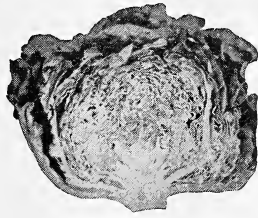
**Romaine, Cos or Celery Lettuce; Giant White**—Universally grown. As a solid lettuce it has no equal. Large size, perfect form, self-folding; very crisp. Pkt. 10c; Oz. 20c; ¼ Lb. 60c.

**Black-seeded Simpson**—Does not form a head. Delicate golden-yellow. Pkt. 10c; Oz. 20c; ¼ Lb. 60c.

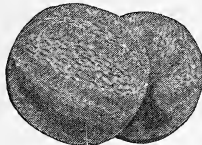
**Grand Rapids**—The favorite loose-leaf lettuce. A forcing variety of superior quality. Keeps crisp and tender without wilting longer than other varieties. Also desirable for sowing in open ground. Pkt. 10c; ¼ Lb. 50c.

**Big Boston**—Desirable large variety. Large compact heads. Exceedingly handsome. Pkt. 10c; Oz. 15c; ¼ Lb. 50c.

**Iceberg**—Large crisp heading lettuce; always tender; stands hot weather well. Color is light green, slightly tinged with brown. Pkt. 10c; Oz. 20c; ¼ Lb. 65c.



Big Boston Lettuce



Burrell's Gem Cantaloupe

**Leek**

**Large London or American Flag**—The oldest, best known and largest grown variety. Pkt. 10c; Oz. 25c; ¼ Lb. 75c.

**Muskmelon or Cantaloupe**

**Honey Dew**—Large size, weighing 8 to 10 lbs. each. Rind smooth and cream colored. Flesh light green in color; very sweet and juicy. Pkt. 10c; Oz. 15c; ¼ Lb. 50c.

**Rocky Ford**—Slightly pointed at both ends; small in size, but superior in flavor. Well ribbed, flesh green with a line of gold just beneath the skin. Pkt. 10c; Oz. 15c; ¼ Lb. 35c.

**Burrell's Gem**—One of the very earliest; an orange-fleshed Rocky Ford. Pkt. 10c; Oz. 15c; ¼ Lb. 35c.

**Edwards' New Perfecto**—A new variety. The best of the Rocky Ford class. Uniform size, nearly round, covered with hard gray netting; flesh salmon colored shading to green near the rind; excellent variety for eating and shipping qualities. Pkt. 10c; Oz. 15c; ¼ Lb. 40c.



A Fine Melon

**Watermelon**

**Halbert Honey**—A rich glossy deep green, flesh beautiful crimson. Excellent for home and local markets. Pkt. 10c; Oz. 15c; ¼ Lb. 35c.

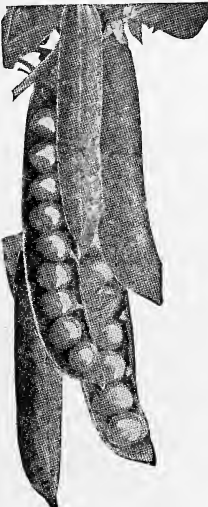
**Excel**—The largest shipping melon. Color dark green with wide bands a darker shade; melons cut a big red heart showing few seeds. Pkt. 10c; Oz. 15c; ¼ Lb. 35c.

**Georgia Rattlesnake**—One of the finest melons grown; oblong shape, slightly striped and mottled with various shades of green; flesh bright red. Pkt. 10c; Oz. 15c; ¼ Lb. 35c.

**Tom Watson**—Large oblong melon; dark green with thick netting on entire surface. Has given entire satisfaction and is strongly recommended. Pkt. 10c; ¼ Lb. 35c.

**Kleckley Sweet**—Fruit oval and of medium size; dark green, flesh a rich bright red. Very sweet and tender. Pkt. 10c; ¼ Lb. 35c.

**Apple Pie Citron Melon**—Excellent for pies, preserving, etc. The flesh is white and solid. They keep fresh and solid all winter; you can use when wanted. One melon will make as many pies as a half-bushel of apples. Pkt. 10c; Oz. 15c; ¼ Lb. 35c.



Telephone Peas

**Mustard**

**Giant Southern Curled**—A highly esteemed variety. Leaves are large and beautifully curled. Very tender and sweet flavor. Pkt. 10c; ¼ Lb. 30c; Lb. 90c.

**Okra or Gumbo**

**Early Dwarf**—Early and productive. Green pods. Pkt. 10c; ¼ Lb. 25c; Lb. 65c.

**White Velvet**—Smooth, velvety, with pods produced in great abundance. Pkt. 10c; ¼ Lb. 25c; Lb. 65c.

**Onions**

**Large Red Weathersfield**—Superior to any other red onion in size, productiveness and keeping qualities. Pkt. 10c; Oz. 25c; ¼ Lb. 50c.

**Philadelphia Silver Skin White**—One of the best white sorts for sets or bunch onions. Mild flavored. Used for pickling onions. Pkt. 10c; Oz. 25c; ¼ Lb. 60c.

**Prizetaker**—Excels any other onion in beauty, size and productiveness. Mild flavor. Flesh white, sweet and tender. Bright straw color. Globe-shaped. Pkt. 10c; Oz. 25c; ¼ Lb. 75c.

**Southport Large White Globe**—Large, globe-shaped. Keeps well. Clear white skin. Commands highest market prices. Pkt. 10c; Oz. 25c; ¼ Lb. 90c.

**Danver's Yellow Globe**—A most popular onion. Earliest yellow variety. Globe-shape, small top. Pkt. 10c; Oz. 25c; ¼ Lb. 60c.

**Chives**—An onion-like plant used as a salad and for flavoring soups, etc. Plants grow about 10 inches high. Grow a pot full for winter use. Pkt. 10c.

**Onion Sets**

**Red and Yellow Bottom Sets**—Treated precisely as top onions are, setting them out in the spring instead of sowing seed. Qt. 25c; Gal. 90c.

**White Silverskin**—Produce beautiful white onions early in the season. Qt. 25c; Gal. 90c.

**Oyster Plant or Salsify**

**Mammoth Sandwich Island**—The largest and most profitable salsify. Very agreeable flavor. Pure white in color. Pkt. 10c.

**Peas**

**Alaska**—2½ feet. Early. Pods dark green. Pkt. 10c; Lb. 25c.

**Gradus or Prosperity**—Vine 3 feet. The finest extra early pea. Pods large and well filled with wrinkled, deep green peas of finest quality. Pkt. 10c; Lb. 40c.

**Nott's Excelsior**—15 inches. Pods always filled with peas of finest quality. Very early. Pkt. 10c; Lb. 35c.

**Telephone**—4 feet. Pods very large, filled with immense peas. Finest introduced in its class. Pkt. 10c; Lb. 40c.

**Laxtonian**—Extra early. 18 inches. Vigorous growth under all conditions. Fine flavored peas from well filled pods. Pkt. 10c; Lb. 40c.

**Thomas Laxton**—Very popular market gardener's variety. 2½ feet. Pods 3½ inches long, medium green, nearly round, containing seven peas. Pkt. 10c; Lb. 40c.

**Parsley**

**Emerald Dwarf Extra Curled**—Leaves finely cut, very early and bright green. Much used for garnishing. Pkt. 10c; Oz. 15c; ¼ Lb. 35c.

**Parsnip**

**Hollow Crown or Sugar Cup**—The best variety; roots medium long, white, smooth and of excellent flavor. Pkt. 10c; ¼ Lb. 35c; Lb. 75c.

**Pepper**

**Chinese Giant**—Largest variety known. Very mild in flavor and red in color when ripe. Pkt. 10c; Oz. 50c.

**Long Red Cayenne**—A small long bright red sort; extremely strong and hot. Pkt. 10c; Oz. 50c.

**Bull Nose or Large Bell**—Plants about two feet high; compact and very productive. Large fruit, thick, mild flesh; green when young, crimson when ripe. Excellent for home use. Pkt. 10c; Oz. 35c.

**Ruby King**—Best and most profitable pepper for home use. So sweet and mild they may be eaten raw. Pkt. 10c; Oz. 50c.

**Chili**—Color red, cone-shaped, very small. Pkt. 10c; Oz. 50c.

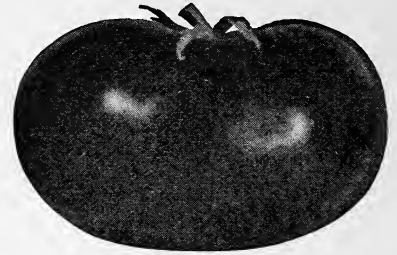
**Pimento**—The mildest flavored of all peppers. Medium early, thick-fleshed, heart-shaped, crimson variety. For both salad and stuffing. Very fine. Pkt. 10c; Oz. 50c.

## Pumpkin



Japanese Pie

**Cushaw or Crookneck**—Grows to very large size; of light cream color; sometimes striped with green. Pkt. 10c;  $\frac{1}{4}$  Lb. 25c; Lb. 75c.  
**Japanese Pie**—Flesh thick, fine-grained and sweet. Makes the finest pies. Pkt. 10c; Oz. 15c;  $\frac{1}{4}$  Lb. 40c; Lb. \$1.50.  
**King of the Mammoths**—The giant among pumpkins. Round, flat, and slightly ribbed. Bright golden-yellow flesh, excellent for pies, but raised principally for stock; keeps well. Pkt. 10c;  $\frac{1}{4}$  Lb. 50c; Lb. \$1.75.  
**Kentucky Field or Large Cheese**—Flat and round like a cheese, color deep orange; flesh a little lighter; one of the best for table use. Pkt. 10c; Oz. 15c;  $\frac{1}{4}$  Lb. 25c; Lb. 75c.



Ponderosa Tomato

## Radish

**Early Deep Scarlet Turnip**—The famous small red variety and the earliest in cultivation. Pkt. 10c; Oz. 15c;  $\frac{1}{4}$  Lb. 35c.  
**Early Scarlet White Tipped**—Fine bright scarlet with clean white tips. Pkt. 10c; Oz. 15c;  $\frac{1}{4}$  Lb. 35c.  
**French Breakfast**—Pink color, olive-shaped and white tipped. A favorite. Pkt. 10c; Oz. 15c;  $\frac{1}{4}$  Lb. 35c.  
**Iceberg**—Finest long white variety. Pkt. 10c; Oz. 15c;  $\frac{1}{4}$  Lb. 35c.

### Winter Varieties

**Long White Spanish**—Flesh white and solid but milder than Black Spanish. Pkt. 10c; Oz. 15c;  $\frac{1}{4}$  Lb. 25c.  
**Long Black Spanish**—Long, black-skinned; flesh white and slightly pungent; one of the latest and hardiest. Pkt. 10c; Oz. 15c;  $\frac{1}{4}$  Lb. 25c.  
**Rose-colored China Winter**—One of the best for fall and winter use. Flesh white, and quality unexcelled. Pkt. 10c; Oz. 15c;  $\frac{1}{4}$  Lb. 25c.

## Rhubarb

**Victoria**—Large and very desirable. Pkt. 10c; Oz. 20c;  $\frac{1}{4}$  Lb. 60c.

### Rhubarb Roots

**Wine-Red Rhubarb**—A most delicious Rhubarb. When cooked it is a rose-red or pink color. It is best to grow with a light mulch of old leaves or manure over the top. Large roots. Each 25c; Doz. \$2.50.

## Sorrel

A hardy plant used for its leaves, which are boiled or used in salad; also in making soups.  
**Broad-Leaved**—Pkt. 10c; Oz. 20c;  $\frac{1}{4}$  Lb. 60c.

## Spinach

**Round, Thick Leaf**—Leaves large and fleshy. Good for both spring and fall sowing. Pkt. 10c;  $\frac{1}{4}$  Lb. 20c; Lb. 50c.  
**Bloomsdale Curled Savoy-Leaved**—The hardest variety; grows very rapidly. Leaves are curled and wrinkled. Weighs heavy. Best for fall sowing. Pkt. 10c;  $\frac{1}{4}$  Lb. 20c; Lb. 50c.  
**New Zealand (Cut-and-Come-Again)**—Grows luxuriously all summer. In appearance entirely distinct from any other. May be cut entire summer, by picking off the leaves. Soak seed in warm water before planting. Pkt. 10c;  $\frac{1}{4}$  Lb. 30c; Lb. \$1.00.

## Squash

**Early White Bush Scallop or Patty Pan**—Matures early. Will bear as long as fruits are kept gathered. Clear white and large size. Very fine quality. Pkt. 10c;  $\frac{1}{4}$  Lb. 40c; Lb. \$1.25.  
**Hubbard**—The finest of any grown. Large pear-shaped fruits, dark green in color. Flesh orange-yellow, fine grained, very dry, sweet and rich flavored. Pkt. 10c;  $\frac{1}{4}$  Lb. 40c; Lb. \$1.25.  
**Winter Crookneck**—Skin green, mottled and striped. Long solid neck. Dry and sweet flesh. Good keeper. Pkt. 10c;  $\frac{1}{4}$  Lb. 40c; Lb. \$1.25.  
**Italian Vegetable Marrow**—Large elongated fruits, dark green at first, but as mature change to marbled in lighter green and stripes. Everyone should grow a few hills. Pkt. 10c;  $\frac{1}{4}$  Lb. 40c; Lb. \$1.25.  
**Giant Summer Crookneck**—Largest and one of the earliest summer varieties. Fruits long, warty and deep orange in color. Dwarf bushy habit and very productive. Pkt. 10c;  $\frac{1}{4}$  Lb. 40c; Lb. \$1.25.



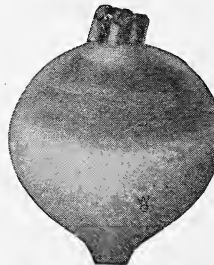
Early Scarlet



Giant Summer Crookneck Squash



Hubbard Squash



Purple Top Strap Leaf Turnip

## Tomatoes

**June Pink**—Very early and medium size. Pkt. 10c; Oz. 50c.  
**Acme**—Early and bears fruit until cut off by frost. Fruit round, purplish and good sized, borne in clusters of four and five. Good canning variety. Pkt. 10c; Oz. 50c.  
**Earliana**—Large early variety. Fruit round, smooth and firm; color bright red. Pkt. 10c; Oz. 50c.  
**John Baer**—Of all the tomatoes this is the most handsome. Early, bright scarlet; good size and smooth. Ripens close to the stem. Wonderful cropper. Pkt. 10c; Oz. 50c;  $\frac{1}{4}$  Lb. \$1.25.  
**Ponderosa**—The largest fruiting tomato. Fine for slicing. Fruit oblong in form, deep through, and generally ridged or ribbed, deep purple-red in color. With care fruits can be grown a pound or more. Pkt. 10c; Oz. 45c.  
**Dwarf Champion**—A purple-pink variety. Plant strong, bushy, about two feet high. Fruit smooth, fairly solid, and fine flavor. Pkt. 10c; Oz. 50c.  
**Stone**—One of the heaviest and most solid fruited of all the large tomatoes. Fruit round, deep scarlet and slightly flattened. Astonishingly heavy. Not subject to rot. Pkt. 10c; Oz. 50c;  $\frac{1}{4}$  Lb. \$1.50.  
**New Marglobe**—We received stock seed of this wonderful variety from the United States Government Department of Agriculture. To them we are indebted for this fine meaty tomato which is unsurpassed for quality. Free from blight and disease. Pkt. 15c; Oz. 75c. Do not fail to try this variety.

## Swiss Chard

**Sea Kale; Silver Beet; The Cut-and-Come-Again Spinach Beet**—Worthy of a place in every garden. The greens are used for boiling and make a very desirable dish. The main rib can be used and prepared like asparagus. Can be grown from early spring until autumn frost. Pkt. 10c;  $\frac{1}{4}$  Lb. 35c; Lb. 75c.

## Turnips

**Amber Globe**—Flesh yellow, firm and sweet. Pkt. 10c;  $\frac{1}{4}$  Lb. 30c; Lb. 75c.  
**Seven Top or Turnip Winter Greens**—Cultivated extensively for the tops, used as greens. Very hardy and will grow all winter but does not produce a good root. Pkt. 10c;  $\frac{1}{4}$  Lb. 30c; Lb. 75c.  
**Red, or Purple Top Strap Leaf**—Early variety. Medium sized roots. Color, purple above, white below, flesh white. Pkt. 10c;  $\frac{1}{4}$  Lb. 25c; Lb. 65c.  
**Extra Early Purple Top Milan**—Beautiful and unusually delicious. Medium sized, flat and thick. Smooth bright purple top, snow-white flesh, few leaves. Either spring or fall maturity. Top-notcher for the home garden. Pkt. 10c;  $\frac{1}{4}$  Lb. 35c; Lb. 75c.  
**Purple Top White Globe**—Large size. Rapid growth. Will produce more tons to the acre than any other sort. Pkt. 10c;  $\frac{1}{4}$  Lb. 35c; Lb. 75c.

## Rutabaga

**American Yellow Purple Top**—Flesh very solid and fine quality. Largely grown for table and for feeding stock. Pkt. 10c;  $\frac{1}{4}$  Lb. 25c; Lb. 75c.

## Rhubarb

**Wine Red**—This Rhubarb should be grown with a slight mulch of old leaves or straw manure. Stalks are a strawberry-red color, tender and very delicious. Large roots. Each 25c; Doz. \$2.50.

# SPECIAL NOVELTIES



## *Delphinium Romance (New)*

**DELPHINIUM ROMANCE**—Truly a gem in the Delphinium World. Bright blue shaded rose. **Each 50c; \$5.00 dozen.**

## *Tamarix Russian Pink (New)*

**TAMARIX RUSSIAN PINK**—This charming variety should be in every garden. Bright pink flowers and beautiful fern-like foliage. **Each \$1.00**

## *Snowberry*

**SNOWBERRY**—Bright pink blossoms followed by most attractive white berries in late Summer and Autumn. **Each 75c.**

## *English Holly*

**ENGLISH HOLLY**—We are the first to introduce this year around decorative shrub in this part of the country. It retains its rich green foliage and bright red berries throughout the winter. **Each \$1.50.**

## *Gladiolus King of Giants (Mixed)*

**KING OF GIANTS (Mixed)**—These gorgeous gladiolus are so beautifully waved they remind one of orchids. You will be thrilled by the colorful blossoms so gigantic in size. **Special \$1.00 per dozen.**

# **BRYSON AYRES**

*“over 100 acres in Flowers”*