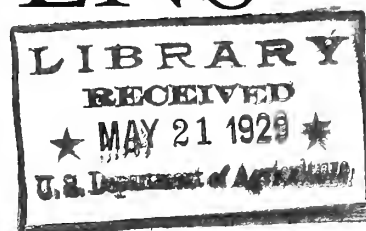


Historic, Archive Document

Do not assume content reflects current scientific knowledge, policies, or practices.

BELMONT GARDENS



Specialties

◆
ROSES
GARDENIAS
GARDEN
PLANTS

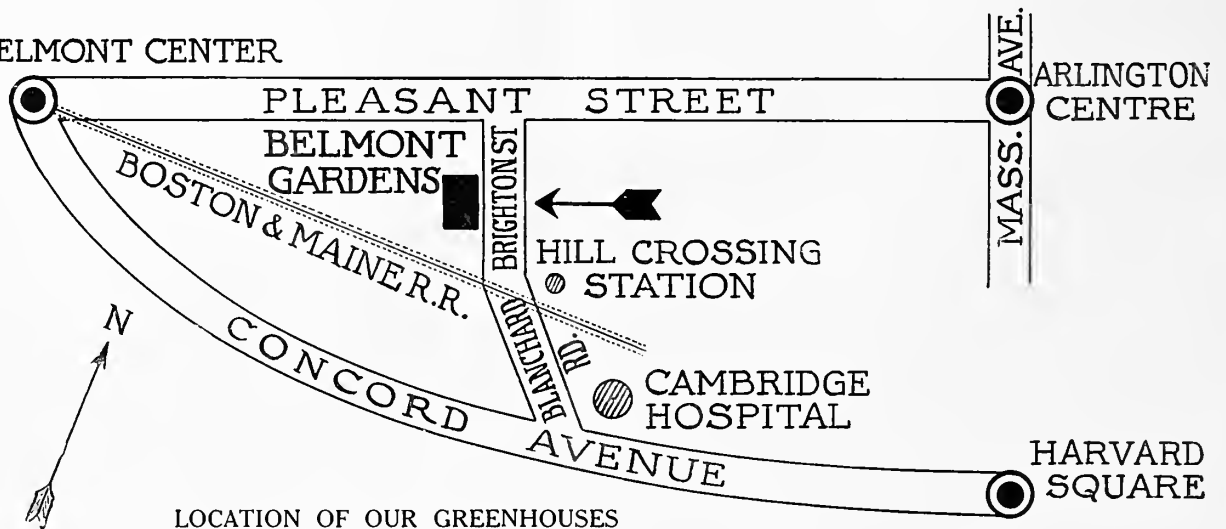
159 BRIGHTON STREET : BELMONT, MASS.

To Our Friends and Patrons



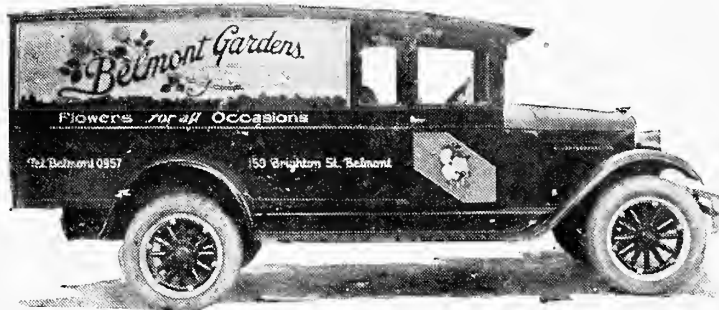
THE list of plants offered to you this year has been carefully selected. We have tried to stock the things that are worthy of your consideration. This is governed by suggestions from our customers and based on our knowledge of plants that will make your garden more beautiful. We do not pretend to carry a full line of plants and flowers but assure our customers that each year we plan to add only the things that will grow successfully in this climate. Our method of selling spring plants from pots has proven to be a big factor in building our growing business. We try to give our customers the best service possible and thank all those who have so many times sent us expressions of appreciation in regard to their business transactions with us. Visitors are always welcome and we invite you to come and pick out the plants you want for your garden.

BELMONT CENTER



LOCATION OF OUR GREENHOUSES

TERMS—All listed prices net, no cash discount. We are glad to open charge accounts but must have references from those we have not previously dealt with. All accounts must be paid within 30 days.



Address all Correspondence to

BELMONT GARDENS, 159 Brighton Street, Belmont, Mass.

Packing Charges

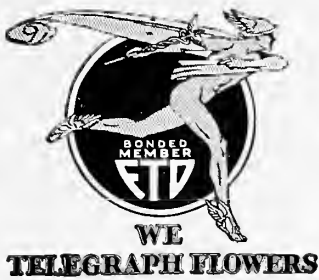
A charge for packing is made on all plants or cuttings shipped by express or parcel post. Add 10 per cent of amount of order for this service.

Free Local Delivery

On distant points, goods will be sent express collect. We do not pay express charges. Add 10 per cent packing charge on all orders to be sent by Parcel Post or Express.

We give no warranty, express or implied, as to the description, quality, productiveness, or any other matter, of any plants, cuttings, bulbs, or nursery stock, and we will not be responsible for the results.

BELMONT GARDENS.



WHOLESALE AND RETAIL GROWERS

FRESH CUT ROSES

FREE DELIVERY FROM OUR GREENHOUSES.

(Telephone: Belmont 0957)



24-inch
\$4.50 per doz.

21-inch
\$4 per doz.

18-inch
\$3.50 per doz.

15-inch
\$3 per doz.

12-inch
\$2.50 per doz.

9-inch
\$2 per doz.

PRICES ARE FROM APRIL 2 TO MAY 30



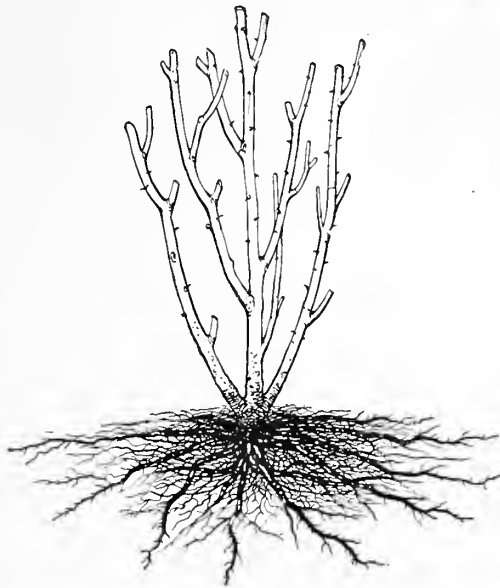
Fresh-Cut Gardenias

Furnished for every occasion, including weddings, luncheons, etc. Corsages made to order with suitable ribbon. Potted Gardenia plants always on sale. For prices, call Belmont 0957.

ARTISTIC FUNERAL DESIGNS
MADE TO ORDER

SEASONAL POTTED PLANTS
ALWAYS ON SALE

Extra-Large Hardy Hybrid Tea Roses



MME. BUTTERFLY

All the color tones of Ophelia are intensified, making it a harmony of bright pink, apricot, and gold. Ophelia ranks at the top in popularity and Mme. Butterfly will surpass it. It averages more petals to the bloom; it produces more bloom to the plant because it makes more branches, every one carrying a bud. The tight buds are a lovely shade of yellow at the base; the opening flowers are perfect in form and texture, clear and brilliant in color and of delicious fragrance.

BRIARCLIFF

A Hybrid Tea of wonderful blooming qualities. It is as free a bloomer as any Tea Rose and blooms all the time. Almost thornless. Wonderfully strong shoots 4 feet or more in length, each producing a magnificent bloom, often measuring 6 inches across the open flower; color a deep peach-pink, deepening into a glowing pink—a perfect color.

These Roses planted April and May, blossom end of June until frost. All varieties will winter in this climate. We recommend a slight protection to winter successfully

Not Potted, 50 cts. each, \$1 for 3

Ramblers—Hardy Climbing Roses

American Pillar. The bright pink flowers are produced in profusion, fairly covering the bush. It is an extremely vigorous grower, being clothed in lively green from earliest spring until late in the fall. Red berries, which are highly ornamental, appear in the fall.

Climbing American Beauty. While its name is somewhat misleading, it is one of the best climbing Roses. A strong healthy, vigorous grower, it frequently makes shoots from 10 to 12 feet long, and good-sized flowers for a climbing Rose that blooms so freely. Color rich rosy crimson, of splendid form and good substance.

Dorothy Perkins. Brilliant pink. One of the older varieties. Very hardy in New England.

Dr. W. Van Fleet. A charming, semi-double climber of vigorous growth with dark, glossy foliage. The long, pointed buds of dainty flesh-pink are borne on stems 12 to 18 inches long and are exquisite as cut-flowers.

Emily Gray. Doubtless the best yellow rambler yet introduced. The large, semi-double blooms are pure golden yellow, produced in huge clusters on long stems ideal for cutting. The foliage is deep glossy green, quite impervious to diseases and insects, and the plant is of strong, rapid growth and has proved unusually hardy.

Mary Wallace. Hardy climber or pillar Rose, making a fine, strong, self-supporting plant 6 to 8 feet high, with large glossy foliage. It blooms with great freedom in spring and bears a considerable number of fine buds in summer and fall. Flowers very large, usually exceeding 4 inches across, well-formed, semi-double, of a bright clear rose-pink with salmon base to the petals. Hardy in any location, having been tested in New York and New England.

Paul's Scarlet Climber. Vivid scarlet, shaded slightly crimson—a most pleasing and striking color. Makes a brilliant display for a long time in the garden. The petals do not fade like many climbing Roses, but retain their bright color and remain in bloom for from two to four weeks. This Rose received the gold medal and cup for the best Climbing Rose at the National Rose Society's exhibit.

Silver Moon. Different from all other Roses, with beautiful, semi-double flowers $4\frac{1}{2}$ inches and over in diameter. They are pure white, with petals of great substance, beautifully cupped, forming a clematis-like flower. The large bunch of yellow stamens in the center adds to its attractiveness.

The above Plants Are All Potted Ready to Transplant into Your Garden. . . \$1 each



American Pillar Roses

We Offer the Best Five Hardy Lilies for Outdoor Culture

MADONNA or Annunciation Lily

(*Lilium candidum*)

FOR IMMEDIATE PLANTING

Choice bulbs of the north of France type so eagerly sought by flower-lovers

One of our loveliest and best-known hardy Lilies and the first of all to bloom in the spring. Glistening white with yellow stamens, delightfully fragrant, too, it is a gem in itself, and when grouped with tall blue larkspur it is very, very effective.

The fact that *Lilium candidum* is known by six different names—Madonna Lily, Ascension Lily, Bourbon Lily, Lent Lily, St. Joseph's Lily, and Annunciation Lily—is proof of its long and wide popularity. This fact also hints at the ease of its adaptability to a wide variety of cultural conditions. Out of several scores of species it is one of the dozen or so most easily grown. Therefore, everyone who has a garden should have it, though his available area be small. It will do well in any good garden soil, either in full sun or partial shade, though better in the latter.

Lilies, though not so well known as many flowers, are among the most beautiful, and should be grown in every garden.

No artificial fertilizers should be used as they tend to make the bulbs diseased. A liberal amount of leaf-mold is recommended for complete success, as this material contains all the plant requires.

These Lilies will not grow successfully unless planted in the fall. All the imported bulbs offered were planted in large pots in August and grown for spring sales. The advantage in potting these bulbs can readily be seen because each pot contains an established plant with a pot full of roots, and no check is felt by these plants when transplanted to your garden. They will bloom freely the first season.

75 cts. each, \$7.50 per doz.

Regale (*myriophyllum*). This variety from western China is admittedly one of the most beautiful garden Lilies yet introduced. It grows 3 to 5 feet high, blooms outdoors in July, is perfectly hardy, flourishes under very varied conditions. The large, trumpet-shaped, delicately scented flowers, which are produced freely, are ivory-white, shaded pink, tinged with canary-yellow at the base of the petals. 75 cts. each, \$7.50 per doz.

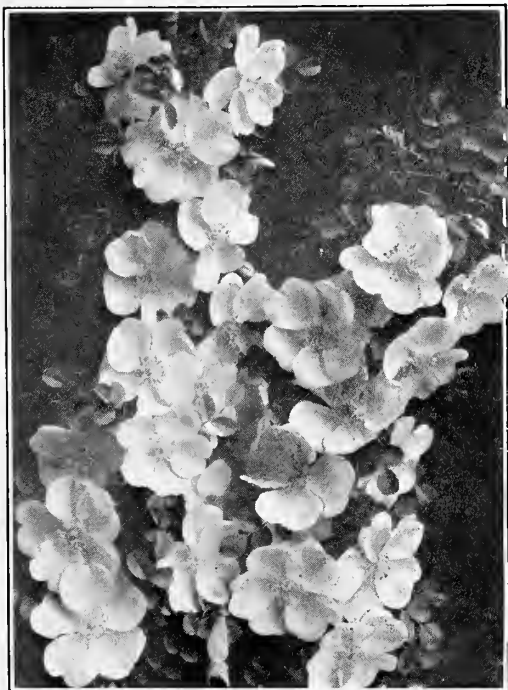
Speciosum magnificum. The large flowers are of magnificent form, ivory-white, suffused rosy crimson. Extra-large flowering bulbs, 50 cts. each, \$5 per doz.

All the above Lilies are grown in large-sized pots, ready to transplant to your garden, the same method as described under the Madonna Lily



Speciosum album. This is one of the most important of all the Japanese Lilies and always satisfactory. It has large, white flowers of great substance, with a greenish band running through the center of each petal. 50 cts. each, \$5 per doz.

Auratum. (Golden-banded Japan Lily.) Undoubtedly one of the finest. Its large, graceful, fragrant flowers from July to September are composed of six petals of a delicate ivory-white color, thickly studded with chocolate-crimson spots, and striped through the center a golden yellow. Height 3 to 5 feet. 50 cts. each, \$5 per doz.



HUGONIS "Golden Rose of China"

An altogether different shrub, bearing no resemblance to any American species or wild Rose, this Chinese native is a notable contribution to American gardens. Every branch of the previous year's growth is, in late April or early May, closely set on both sides to the very tip with exquisitely beautiful, single, clear yellow flowers, almost concealing the foliage. The flowers are really and truly yellow, not merely primrose or straw-color.

The long sprays make Hugonis not only a beautiful shrub, to be planted, if one prefers, with other shrubs, but when cut are charming as table decorations, its crepe-like blooms harmonizing well with snowy linen and silver.

It makes a symmetrical bush about 6 feet wide and high when matured. The beautiful reddish maroon growths spring from the roots and are in themselves most attractive. In late fall the foliage turns to a pleasing purple.

This "Golden Rose of China" is ruggedly hardy everywhere in America. It needs neither protection nor pruning, save in the occasional cutting out of the older shoots. Each spring the previous year's growth of graceful maroon wands will be laden with curving branches of golden loveliness.

Should be planted as a specimen, or grouped in a planting of shrubbery—also makes a fine flowering hedge.

Do not plant it among Roses as it is too vigorous in growth to fit in such a planting.

\$1 each, \$10 per doz. Established in Pots

Hardy Perennial Plants

All Perennial Plants offered for sale are second-season plants established in pots full of roots. This gives the buyer a great advantage in securing plants that will grow and produce without a check. Our business has been built upon this method of growing perennials, and when comparing the old method of digging and replanting perennials when a pot is not used, it is easily seen what a great advantage is gained by confining all the roots in a pot rather than handling plants that have been dug and reset with the roots exposed.

Although the cost is much greater in growing plants by this method, no extra charge is made when pricing our plants. We recommend planting all Perennial Plants early—any time after April 1.

Price of all plants 30 cts. each, \$3 per dozen

Achillea

Ptarmica, The Pearl (Sneezewort). One of the best hardy white perennials. It grows about 2 feet high and is covered with heads of purest white, double flowers from spring to frost.

Aconitum

Napellus (Aconite). This is the finest Aconitum and produces, during July, deep blue flowers on strong, bushy plants 3 feet high. Invaluable for planting under trees or in shady or semi-shady positions.

Alyssum

***Saxatile compactum** (Dwarf Golden Tuft). An indispensable plant for the rockery or border, growing 1 foot high and producing, in May, masses of broad, flat heads of bright yellow flowers.

Anchusa

Italica, Dropmore. A fine, large, hardy herbaceous plant 4 to 5 feet high, and a great improvement on the type, the beautiful forget-me-not-like flowers being much larger, of a lovely gentian blue, and produced in long, loose sprays. Invaluable for the hardy border, as flowers are produced during the entire season and until late in the fall.

Aquilegia

Long-spurred Hybrids (Mrs. Scott Elliot's Strain). The finest of the Columbines, producing large flowers in a variety of delightful colors. They grow 2½ feet high. **Mixed.**



Long-spurred Aquilegia



Achillea Ptarmica, The Pearl

Arabis

***Alpina** (Alpine Rock Cress). A hardy perennial, 6 to 9 inches high, and one of the earliest and prettiest spring flowers. The spreading tufts are covered with a sheet of pure white flowers as soon as the snow disappears. Unequaled for rockeries or edging, withstanding drought, and always neat.

Armeria

***Formosa** (False Thrift). A very pretty hardy perennial edging plant, 1 foot high, bearing rosy pink flowers.

Asclepias

Tuberosa (Butterfly Weed). Grows 2½ feet high and has large heads of very showy, brilliant orange flowers in July and August.

Campanula

Medium (Canterbury Bells; Bellflower). This lovely flower is a great favorite in New England gardens and is very valuable for cut-flowers. It is of easiest culture, growing in either sunny or partly shaded positions, reaching a height of 2 to 2½ feet, and blooming in June and July. Sold in separate colors—Rose, Lavender, White, and Blue. Our strain is imported from England and is, no doubt, the best of all the Campanulas.

Persicifolia, Big Bell. The lovely blue flowers, nearly double the size of the old variety, are wide open, and the whole plant is of a fine round form. It is very beautiful and excellent as a pot plant as well as for cutting.

Aster

Hardy Aster; Michaelmas Daisy

These are among the showiest of our late-flowering plants and the best for the perennial garden. They grow 3½ feet high and bear an abundance of blooms in a great variety of attractive colors.

Centaurea

Babylonica (Syrian Centaurea). Desirable hardy plants with showy, bright yellow, thistle-like flowers from July to September. They grow 3 feet high.

Chelone

Barbata Torreyi (Shell Flower). Stately, handsome perennials, growing about 2 feet high and bearing numerous spikes of large, scarlet flower-heads during the summer and fall.

Choice Garden Chrysanthemums

These are universally popular for outdoor bedding, and considering their many good qualities, it is not surprising to see them cultivated so extensively. They produce a lavish profusion of blooms from September to November, giving color, life, and beauty to the garden at a time when other plants have been destroyed by frost and are looking their worst. Their flowering is not materially affected by frost, and it frequently happens that an armful of flowers can be cut late in November. The following sorts grow 1½ to 3 feet high.

Autumn Glow. Rose-erimson.
Golden Queen. Large; yellow.
Indian. Coppicy red.
Old Homestead. Pink.



Alyssum saxatile compactum

The Plants on this page that are marked with a (*) are good Rock-Garden Varieties

Hardy Perennial Plants

Price of all plants 30 cts. each, \$3 per dozen



Digitalis

Coreopsis

Lanceolata grandiflora. This beautiful, showy variety begins to flower early in June, continuing one mass of golden yellow till killed back by frost. The flowers are borne on long, graceful stems, making them invaluable for cutting. Grows 1 foot high.

Daisy

Elder. A new white Shasta Daisy of great size. It multiplies freely and blooms early.

Delphinium (Perennial Larkspur)

Belladonna. A continuous bloomer with beautiful turquoise-blue flowers on spikes of good size 2 feet high. A very popular variety used by all florists.

Bellamosa. Dark blue. Same habit as Belladonna.

Hybrids, Choice Mixed. Many lovely colors.

Dianthus

Barbatus (Sweet William). An old favorite, bearing sweet, clove-scented flowers in the greatest profusion during May and June. They are indispensable for the edge of the hardy border and for cutting, coming in a variety of colors and combinations from white to darkest red.

★**Plumarius.** The Pheasant-Eye, Grass, or Clove Pink of old-fashioned gardens. One of the most pleasing of our low-growing, hardy perennials, reaching a height of 8 to 10 inches, with grass-like foliage and a profusion of white or light pink flowers with crimson centers, distinctly clove-scented, from April to August. On deep, moist soil they will live and increase from year to year with almost no care.

Dictamnus

Albus (Gas Plant; Burning Bush). An old garden favorite with white flowers that have a strong lemon scent and will sometimes give a flash of light on a sultry summer evening when a lighted match is held near them—hence the name. Grows 3 feet high and succeeds well in partial shade or full sun. Should not be moved after once established.

Digitalis • Foxglove

Gloxiniæflora (Gloxinia-flowered Foxglove). Handsome, highly ornamental, hardy plants of stately growth, succeeding under almost all conditions, and with but little attention will give a wealth of flowers during June and July. They are now used extensively with good effect for naturalizing in shrubberies, the edge of woods, and other half-shady places. Height 3 to 5 feet. Pink, Lavender, or White.

Echinops

Ritro (Steel Globe Thistle). Striking, hardy perennial plants, with handsome, silvery, thistle-like foliage and fine steel-blue flowers in round heads, which can be used for cutting. Excellent for the back of the hardy border among other tall plants, as it reaches a height of 3 to 5 feet.

Funkia

Undulata media variegata (Plantain Lily). A very handsome variety with leaves widely edged and striped white, and lovely purplish mauve flowers in July and August. As they thrive in almost any position, they are invaluable for beds, borders, rock-work, and marshy ground. Height 1½ to 2 feet.

Gaillardia

Grandiflora (Blanket Flower). One of the showiest hardy plants, growing about 2 feet high and succeeding in any soil in a sunny position. The large flowers which begin to appear in June, and continue all season, are of gorgeous coloring. The center is dark red-brown, while the petals are marked with rings of brilliant crimson, orange, and vermilion, and often a combination of all in one flower. Excellent for cutting.

Geum

★**Coccineum, Mrs. J. Bradshaw.** A fine herbaceous plant, 1½ feet high, well adapted for the hardy border. It produces an abundance of extremely large, double, very bright scarlet flowers that are excellent for cutting.

Gypsophila

Paniculata (Baby's Breath). The favorite, old-fashioned, single-flowering variety, a plant possessing a grace not found in any other perennial. When in bloom, during July and August, it forms a symmetrical mass 2 to 3 feet in height, and as much through, of minute, pure white flowers, forming a beautiful gauze-like appearance. When cut it is exquisite in combination with other flowers. Will thrive in any soil in a sunny position.

Hibiscus

Mallow Marvels (Giant-flowering Hibiscus). A wonderfully improved form of our native Marshmallow or Rosemallow, in which flowers of enormous size (frequently 10 to 12 inches in diameter) have been developed, in colorings that comprise rich dark red, soft mallow-pink and pure white. The plants grow from 5 to 8 feet high and are very floriferous, blooming from early in July until late in autumn, and are perfectly hardy. We offer strong two-year-old roots in mixed colors.

Superb Hollyhocks

Stately, majestic, hardy plants, from 6 to 8 feet high, which are a necessary part of every old-fashioned garden, and should also find a place interspersed with shrubbery, as clumps on the lawn, or in the mixed border where their colossal spikes of bloom produce bold, showy effects which cannot be secured with any other flowering plant. A great favorite in New England gardens.

The varieties offered are the finest obtainable. We specialize in these plants and great care has been given to produce the finest double-flowering varieties in existence.

Chater's Double, Scarlet, Crimson, Rose, White with pink center, Maroon, Newport Pink, Yellow, Salmon, and White.

Honesty (Lunaria)

Biennis. Hardy biennial, thriving almost anywhere, but especially useful in shady, damp places. The purple, crimson or white flowers are followed by silvery transparent seed-pods, prized for winter bouquets. Height, 2 feet. **Mixed colors.**



Hollyhocks

The Plants on this page that are marked with a (★) are good Rock-Garden Varieties

Hardy Perennial Plants

Price of all plants 30 cts. each, \$3 per dozen



Oriental Poppies

Iberis

★**Sempervirens** (Hardy Candytuft). Among the many species of plants particularly suitable for dwarf beds, borders, and the rockery, none surpass the Hardy Candytufts in making a rich showing during their flowering season. The foliage also is quite ornamental, while the flowers, climbing and rambling in all directions, lend a picturesque touch wherever the plants are used. Bears pure white flowers in the spring, and the leaves are dark glossy green.

Incarvillea

Delavayi (Hardy Gloxinia). An interesting and showy plant for the hardy border, producing large, gloxinia-like, rose-colored flowers on 15 to 18-inch high stems during June and July. Succeeds either in sun or shade, but should be well protected with leaves or litter during the winter.

Lathyrus

Latifolius (Hardy Everlasting Pea). One of the best and most desirable flowering hardy climbing plants, attractive both in flower and foliage. It grows to a height of 8 to 10 feet, producing clusters of large flowers the entire summer. Fine for cutting, lasting well. **Mixed colors.**

Lily-of-the-Valley

★We have these valuable plants in pots. The clumps are potted during the early fall and offered for sale the following spring, the advantage being that all the roots can be transplanted with the plant in or out of season, thus insuring success. The plants offered are all budded and will flower the first season. Very valuable for shady places and for cemetery use. Blooms early and multiplies rapidly.

Linum

★**Perenne** (Flax). A desirable plant for the border or rockery, growing 1½ feet high, with light, graceful foliage and large blue flowers all summer.

Lobelia

Cardinalis (Cardinal Flower). Handsome border plants with rich, fiery cardinal flowers. The strong plants often produce 10 to 18 spikes, 2 to 2½ feet long. They thrive in any ordinary garden soil but prefer a moist, deep loam where they will not suffer from drought. Few plants are more effective at their season of bloom, which extends from early in August till late in September.

Lupinus

Polyphyllus (Lupine). Very effective plants that produce large spikes of flowers in May and June. They require only well-prepared garden soil, preferably in a semi-shady location. Lupines are becoming very popular and are in great demand. Height 3 feet. Rose, White, or Blue.

Papaver · Poppy

★**Nudicaule** (Iceland Poppy). A plant of neat habit, forming a tuft of bright green, fern-like foliage, from which spring, throughout the entire season, a profusion of slender, leafless stems 1 foot high, each graced with charming cup-shaped flowers, in yellow, orange and white. We can supply these in choice mixed colors.

Oriente (Oriental Poppy). These are the regal representatives of this popular genus, growing 3 to 3½ feet high, and far surpassing in splendor of bloom the annual and biennial kinds. For a gorgeous display of rich and brilliant coloring nothing equals them during their period of flowering in May and June, and whether planted singly or in masses their large flowers and freedom of bloom render them conspicuous in any position. They are of the easiest culture and almost any kind of soil suits them, but they do best in deep, rich loam.

Queen Alexandra. Bright rosy salmon.

Scarlet Prince. Scarlet.

Mrs. Perry. Orange-apricot.

Rembrandt. Orange-scarlet.

Salmon Queen. Salmon.

Monarda

Didyma, Cambridge Scarlet (Oswego Tea). Showy plants 2 to 3 feet high, succeeding in any soil or position, with aromatic foliage, and producing their brilliant crimson-scarlet flowers during July and August.

Trailing Myrtle (Vinca)

★**Minor** (Periwinkle). An excellent dwarf evergreen trailing plant that is used extensively for planting in shady places and for cemetery use. It makes a good cover and is always green. We give these plants the same method that is used in growing the lily-of-the-valley and have these in pots so that they can be transplanted at any time.

Phlox

The Perennial Phlox is a universal favorite and one of the most showy of the garden plants. Each stem grows 2 to 3 feet high, according to variety, and is crowned with large trusses of blooms of varied colors—red, purple, white, salmon, and parti-colored.

It thrives in a cool, moist, but well-drained fertile loam, and blooms in early summer, but can be delayed until late summer or fall when flowers are most needed in the garden, by pinching out the tops of the growing shoots. Our strong, two-year-old plants, that will give satisfactory growth and bloom the same year they are planted, should not be compared with the small plants which do not give an abundance of bloom the first year. The following varieties are highly recommended.

Beacon. A very pleasing brilliant cherry-red.

Rosenberg. Carmine-violet.

Thor. Deep salmon-pink, suffused with a scarlet glow, somewhat lighter in mass effect than General Chanzly.

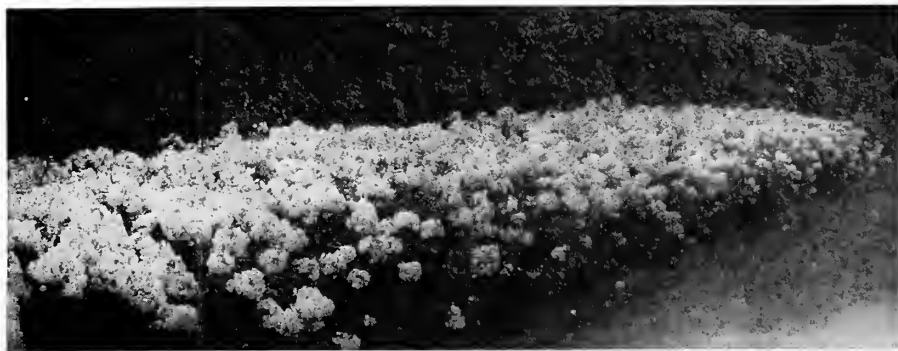
Rijnstroom. An improved form of the popular Pantheon. Fine for massing. Of a Paul Neyron rose-color. Height 2½ feet.

Mrs. Jenkins. The most popular white variety so far introduced. Splendid for mass planting. Blooms early and profusely.

★**Subulata** (Moss Pink). An evergreen creeping plant, excellent for edging the border or in the rock-garden. Produces masses of bloom in April and May, with moss-like foliage that is invaluable carpeting for the ground.

Physostegia

Virginiana (Texas Heath). Fine hardy perennial, resembling a giant heather, with beautiful pink flowers through the summer; fine for cutting. Height 2 feet.



Planting of Hardy Phlox

The Plants on this page that are marked with a (★) are good Rock-Garden Varieties

Hardy Perennial Plants

Price of all plants 30 cts. each, \$3 per dozen

Scabiosa

Caucasica (Blue Bonnet). Handsome border plants, succeeding in any ordinary soil if well drained and in a sunny location. They should be grown in every garden where cut-flowers are wanted as they last a long time when picked and placed in water. The flowers are a charming soft shade of lavender, and are borne from June until September. Height 1½ to 2 feet high.

Sedum

Spectabile. One of the prettiest erect-growing species, attaining a height of 1½ feet, with broad, light green foliage and immense heads of handsome, showy, rose-colored flowers during late summer and fall. Indispensable as a late fall-blooming plant.

★**Sarmentosum.** Hardy, fast-growing trailer, excellent for carpeting bulbs and covering dry, sandy banks making them as green as a velvety lawn. Yellow flowers.

Spiraea (Astilbe)

Some of the most beautiful plants grown, and of easy culture. The graceful, feathery blooms stand above the bright green, fern-like, abundant foliage. Perfectly hardy.

Brunhilde. Tall; large, creamy white flowers on long stems. Good cut-flower variety. June till August.

Kriemhilde. Salmon-rose; very attractive. Probably the finest of the late Spiraea.

Statice

Latifolia (Sea Lavender). Splendid hardy perennials, either for the border or rockery, producing, all summer, panicles of minute white flowers, which can be dried and used for winter bouquets.

Tritoma

Pfitzeri (Red-hot Poker). This perennial plant is in a class by itself for decorative work, showy window, basket-filling, etc. It blooms in August and September and its showy orange-scarlet spikes shade to salmon rose at the edges. Plants must be well protected in winter.



Viola, Jersey Gem



Tritoma pfitzeri

Trollius (Globe Flower)

★**Europæus, Orange Globe.** A beautiful border plant, having handsome dark green foliage and many large showy orange flowers. They are well adapted for half-shady or sunny positions, flowering from May to July, and are fine for moist places and edges of water-gardens, also doing well in good garden soil which does not lack in moisture. Are perfectly hardy if given protection during the winter with a covering of leaves. The supply is very limited. Height 1½ feet.

Valeriana

Rubra, Mixed (Hardy Garden Heliotrope). This plant was greatly prized in old-fashioned hardy gardens for its strong heliotrope fragrance. Produces showy heads of rose-tinted white flowers during June and July.

Veronica

Longifolia subsessilis (Speedwell). Deep, rich blue flowers in dense, erect spikes a foot long and from 4 to 5 inches in circumference, from August to September. Grows 2 feet high.

★Viola, Jersey Gem

We take pleasure in introducing this wonderful new Pansy-Violet. The Jersey Gem is the best improved Violet that has ever been introduced for planting in the outside garden. It is a very hardy perennial, blooms all summer, and its extra-large fragrant flowers are always a deep, rich, violet color. The plants possess the dwarf habit that is so much desired, and they are strong growers. We cannot recommend this new Violet too highly. The roots can be divided from time to time so that one can increase the planting in the garden. These plants are all pot grown, so can be planted early.



Sedum spectabile

Polemonium

Ceruleum (Jacob's Ladder). Popular, hardy perennial border plant, 2 feet high, with bell-shaped flowers, nearly 1 inch across from May to July. Mixed colors.

Pyrethrum

Coccineum (Persian or Painted Daisy). One of the best perennials in our list. It is perfectly hardy, will thrive in any garden soil and in any situation except in dense shade under trees. As a cut-flower it is unsurpassed in daintiness and keeping qualities. Blooms in May and June, and if cut back after first bloom will give flowers throughout the summer and early fall. Grows about 1½ to 2 feet high. Single and Double, Mixed Colors.

Ranunculus

Acris fl.-pl. (Double Buttercup). Well-known, double yellow Buttercup, effective either as a cut-flower or grouped in the hardy border.

Rudbeckia

Laciniata, Golden Glow. Indispensable plants for the hardy border as they grow and thrive anywhere, giving a wealth of bloom that is excellent for cutting. Attains a height of 5 to 6 feet, and produces masses of double, golden yellow cactus dahlia-like flowers from July to September.

Salvia

Azurea (Meadow Sage). Grows 3 to 4 feet high, producing in August and September, pretty sky-blue flowers in the greatest profusion.

Saponaria

★**Ocymoides** (Rock Soapwort). A very useful, hardy plant for the rockery or the border, producing, from May to August masses of attractive small, bright rose flowers. Height 8 inches.

The Plants on this page that are marked with a (★) are good Rock-Garden Varieties

Miscellaneous Plants

Bellis

★ **Perennis** (English Daisy). A favorite, old-fashioned perennial that will live over winter if given a little protection. The small, very double flowers are white and pink, borne in profusion in May and June on plants 5 inches high. 50 cts. per doz., \$3.50 per 100.

Buddleia

Davidi magnifica (Butterfly Bush; Summer Lilac). One of the most desirable summer-flowering shrubs, beginning to bloom in July and continuing until cut down by severe frost. The flowers are a pleasing shade of violet-mauve, and are borne in dense, cylindrical spikes from 12 to 15 inches long and 3 inches in diameter. It succeeds anywhere and flowers freely the first season. First-size, potted plants, 50 cts. each; extra-large, third-season plants, 75 cts. each.

Dahlias

Assorted Colors. An unusual collection of the best Dahlia tubers in the following colors: White, Pink, Red, Purple, Yellow, Lavender, Maroon, and Variegated. \$1.50 per doz.

Dicentra (Dielytra)

Spectabilis (Bleeding-heart). The graceful, heart-shaped, pink flowers of this old-time favorite in April and May, are one of the choicest memories of old-fashioned gardens. They are easily cultivated in borders and wild gardens, and are especially valuable for planting in shady spots, growing 1 to 2 feet high. Our clumps are very large, imported from England, and established in large earthen pots. \$1 each.

Hardy Ostrich Fern Palm of the North

This is the most beautiful of all the hardy Ferns and absolutely hardy. Growing in the deepest shade, it is just the thing to plant in that shady place on your home grounds where neither grass nor flowers will do well. It grows taller and faster than any other hardy Fern, often having fifteen handsome fronds, gracefully arranged. A well-grown specimen is a beautiful object. They require no care beyond planting and provide a very attractive display at small cost. 35 cts. each.



Hardy Ostrich Fern



Lantern Plant

Lantern Plants

Improved Japanese (*Physalis Francketi*). A wonderfully decorative perennial plant bearing a profusion of orange-vermilion fruits that make lovely winter decorations when dried. They are of very easy culture, requiring no special care, and if planted in spring will produce a profusion of gaily colored lanterns in September, and each year thereafter. These plants are grown from root divisions which will be ready about May 1. \$1.25 per doz.

Gardenias

We specialize in growing these wonderfully fragrant flowers and can supply cut blooms in any quantity and flowering plants in pots. They cannot be successfully grown outdoors. We have quantities of both Gardenias and Roses for special occasions, such as tag days, church fairs, dinner parties, weddings, etc., and will quote prices on application.

Gladiolus

We have a fine selection of Gladiolus in a wide variation of colors in the best varieties. They are very valuable for summer cut-flowers and of easy cultivation. Separate colors, 60 cts. per doz.

German Iris

Iris Germanica

- Kharpuz.** Deep, rich purple.
- Mme. Chereau.** White, with blue edge.
- Pallida Dalmatica.** Soft lavender.
- Queen of May.** Orchid-pink.
- Rhein Nixe.** White.
- Yellow Queen.** Yellow.

Japanese Iris

Iris Laevigata

A new variety with very large, beautiful dark purple flowers, 6 to 8 inches across, that appear soon after the German Iris.

Any of the above Irises, potted plants, 2 or more tubers, 35 cts. each, \$3.50 per doz.

Hydrangea

Paniculata grandiflora. One of the best-known and most popular shrubs in cultivation. The flowers, which are borne in dense, pyramidal panicles, are white when they first open but gradually change to rose color and remain in good condition for weeks. Fine, bushy plants, 75 cts. each.

Myosotis

★ **Alpestris** (Forget-me-not). This beautiful border plant comes into bloom with the earliest spring-flowering bulbs and plants, and continues to produce a profusion of its dainty little light blue flowers during May and June. 50 cts. per doz.

Pansies

★ **Selected Strain.** Strong plants with extra-large flowers in a wide variation of colors. 50 cts. per doz., \$3.50 per 100.

Peonies

All the Peonies mentioned below are potted, ready to plant in April or May, and have 3 to 5 eyes and plenty of roots.

Edulis Superba. Early. Large, loose flowers of bright, light pink, mixed with lilac; fragrant.

Felix Crousse. Large, globular flowers solidly and compactly built, of rich, brilliant, ruby-red; exceptionally bright and effective.

Festiva maxima. Pure white.

Any of the above Peonies, \$1 each, \$5 for 6

French Pussy Willow

This attractive Willow furnishes an abundance of branches which, if cut in December, January, or February, and placed indoors in a vase of water, will at once burst into bloom. If taken out of the water when in full bloom, they will retain their beauty for months, or until they become soiled from dust or other causes. Large trees, 75 cts. each; extra-large trees, \$1 each.



Japanese Iris

The Plants on this page that are marked with a (★) are good Rock-Garden Varieties

Hardy Climbing Plants

Ampelopsis

Veitchi (Boston or Japan Ivy). This vine is entirely hardy in the most exposed places, attaining a height of 20 to 30 feet in two to three years and clinging to stones, brick, or woodwork with the greatest tenacity. It forms a great protection to houses, as the leaves, overlapping each other like slates on a roof, effectually prevent rain from penetrating the walls. As a covering for dead trees, boundary walls, etc., it has no equal, and few vines have more attractively colored autumn foliage, for it becomes literally a blaze of red in varying shades. Large, pot-grown, 2-year plants, 75 cts. each.

Aristolochia

Sipho (Dutchman's Pipe Vine). A vigorous, rapid-growing, perfectly hardy vine bearing singular, brownish flowers resembling a pipe in shape. The flowers are of little value compared to its light green leaves, which are of very large size and retain their color from early spring to late fall. Strong plants, 75 cts. each.

Bignonia

Radicans (Trumpet Vine). An excellent vine for covering unsightly places, stumps, rockwork, or wherever a very hardy, showy flowering vine is desired. The dark red flowers, with orange throat, are large, attractive, and borne profusely. 50 cts. each.



Clematis Paniculata

Celastrus

Scandens (Bittersweet). The very attractive, orange-scarlet berries of this shrub of vine habit have become very popular the last few years for winter decoration. They should be cut about Thanksgiving and are excellent for use with everlasting such as Helichrysums, Japanese Lanterns, and Statice. Large, 3-year vines, 75 cts. each.

Clematis

Paniculata (Japanese Clematis). A rapid-growing vine quickly covering trellises with a dense mass of handsome, compound, glossy green foliage and bearing, in late summer, such a profusion of pure white, fragrant, starchy flowers that they quite hide the foliage. It is perfectly hardy and adapted to all soils. Large, pot-grown plants, 75 cts. each.

Euonymus

Radicans (Winter Creeper). This trailing Euonymus is particularly desirable for its dense evergreen foliage and extreme hardiness, some varieties, on account of this, taking the place of English ivy for wall-covering, others that of boxwood as edging plants. 50 cts. each.

Lonicera

Japonica Halliana (Hall's Honey-suckle). A charming climber of rapid, dense growth, with oval, soft green, persistent foliage, and a constant succession of showy clusters of white and yellow flowers throughout the summer. Extra-large plants, 50 cts. each.

Wisteria

Sinensis (Chinese Wisteria). A well-known, hardy, perennial vine of luxuriant, rapid growth, bearing in spring immense panicles of fragrant, lavender-blue flowers in great profusion. Reaches a height of 75 feet. Extra-large, grafted plants, \$1 each.

Annuals

The following list of popular annuals are all greenhouse grown and established in pots. These plants are grown from the finest and best seeds that we can procure and are recommended as the best money can buy. We discard all inferior specimens and sell only strong, healthy plants that will grow. When using these plants in your garden, an early flowering season is enjoyed and it is far more satisfactory than the old method of planting seeds in the open border and awaiting results. We plant the seed during February and carry the plants at the proper temperature in our greenhouses to produce strong, healthy specimens that will yield a wealth of blooms during the long flowering season.

Asters, Queen of the Market. Early.
American Branching. Late. Mixed Colors.

Ageratum, Perfection. Blue.
Alyssum, Little Gem. White.
Bachelor's Button, Mixed Colors.
Calendula, Ball's Strain. Orange.
Candytuft. Pink, Rose, Cardinal, and White.

Carnation. Mixed Colors.
Celosia (Cockscomb). Mixed Colors.
Cosmos. Double dwarf. Mixed colors.

Lobelia, Crystal Palace compacta. Blue.

Marigold, Double Dwarf French and Mammoth African. Mixed Colors.

Petunia. Pink, Blue, and White and **California Ruffled Giants.** Mixed Colors.

Phlox drummondii.

Salvia, Bonfire.

Snapdragon. Intermediate, Yellow, Silver-Pink, Red, Salmon-Pink, White.

Scabiosa. Mixed Colors.

Stocks. Mixed Colors.

Straw Flowers. Mixed Colors.

Verbena. Mixed Colors.

Zinnia, Giant Dahlia-flowered. Mixed Colors.

Any of the above plants, established in small pots, 10 cts. each, \$1 per doz.

We also carry and sell a full line of selected Geraniums, Tuberos-rooted Begonias, and miscellaneous bedding plants, in flower, from 4-inch pots. These should not be planted before June 1, owing to danger of frost in this climate.

Any of the above plants, established in small pots, 10 cts. each, \$1 per doz.

Fertilizers, Etc.

Maplevalle Leafmold checks excessive evaporation from the soil and thus prevents the tiny roots from dying. It is entirely free from weed seeds. Use one-third Leafmold and two-thirds loam for potting your house and greenhouse plants and you will be well repaid by the wonderful growth and dark green foliage. For all outdoor plants, this Leafmold is used the same as manure, digging in and around the roots of plants and shrubs. House-plant pkg. 60 cts., 1-bus. bag \$1.25, large bag \$2.50.

Ideal Peatmoss. Ideal for flower-garden use. The most eminent rose-growers of this country endorse Peatmoss most highly after use in their beds. A soil deeply dug and very liberally mixed with one part Ideal Peatmoss to three parts soil will be desirable. Later a heavy mulch spread on top of the ground will keep out weeds and conserve moisture, prevent a hard crust, require less

attention and give best results. Use a heavy mulch for winter protection and save the rose bushes. Large bale (200 lbs.) \$4. (Will spread 300 square feet 1 inch deep.)

Finely Ground Bone-meal. A splendid general fertilizer for roses and all plants and flowers. Cow manure and bone-meal give all that plants ordinarily require. 5 lbs. 40 cts., 10 lbs. 75 cts., 25 lbs. \$1.25, 100 lbs. \$3.50.

Shredded Cow Manure. A coarse shredded Manure, dried and sterilized, and a splendid substitute for stable manure in gardens and greenhouses or wherever it is desirable to supply plant-food, humus, and organic matter. Especially valuable for composting, mulching, and top dressing. Splendid for roses, ferns, or where a cool, slow-acting manure is wanted. Bag (½bus.) \$1, 100-lb. bag \$4.

POTTED HYBRID TEA ROSES

(ALL EVERBLOOMING VARIETIES)

These plants are all started with a potful of roots in a growing condition, thus insuring immediate results when transplanted to your garden.



Lady Ashtown



Kaiserin Augusta Victoria



Red Radiance



Mrs. Aaron Ward



Duchess of Wellington



Mme. Butterfly



Briarcliffe



Etoile de France



Los Angeles



Mme. Edouard Herriot



Souv. de Claudius Pernet



Radiance

BELMONT COLLECTION. Best twelve varieties endorsed by the most prominent rosarians in the U.S.
\$1 each, \$10 per doz. Add 10 per cent packing charge on express orders