

Historic, Archive Document

Do not assume content reflects current scientific knowledge, policies, or practices.

NOV 14 1929

LIBRARY

RECEIVED

APR 9 1929

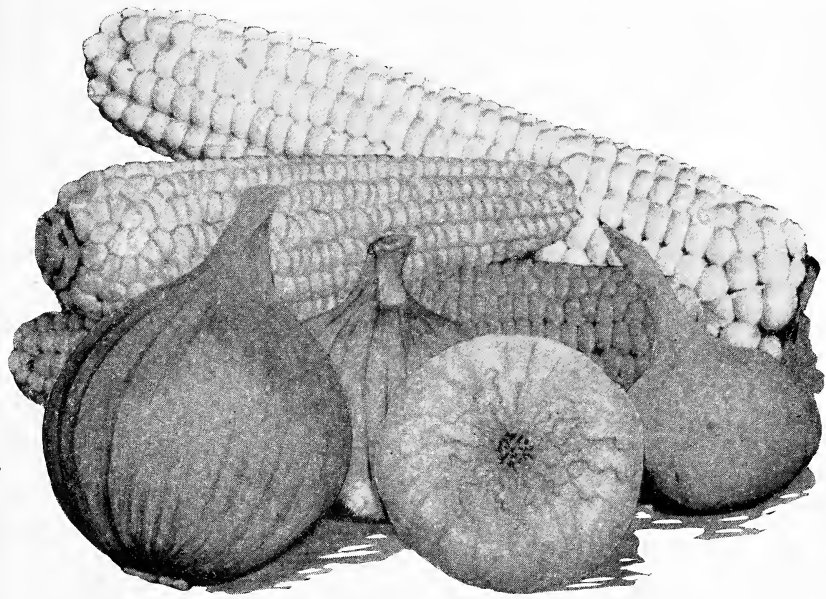
Department of Agriculture

Ninth Annual List of

BANNING'S

-DEPENDABLE-

Seeds, Plants & Nursery Stock



ONION SETS AND PLANTS

1929

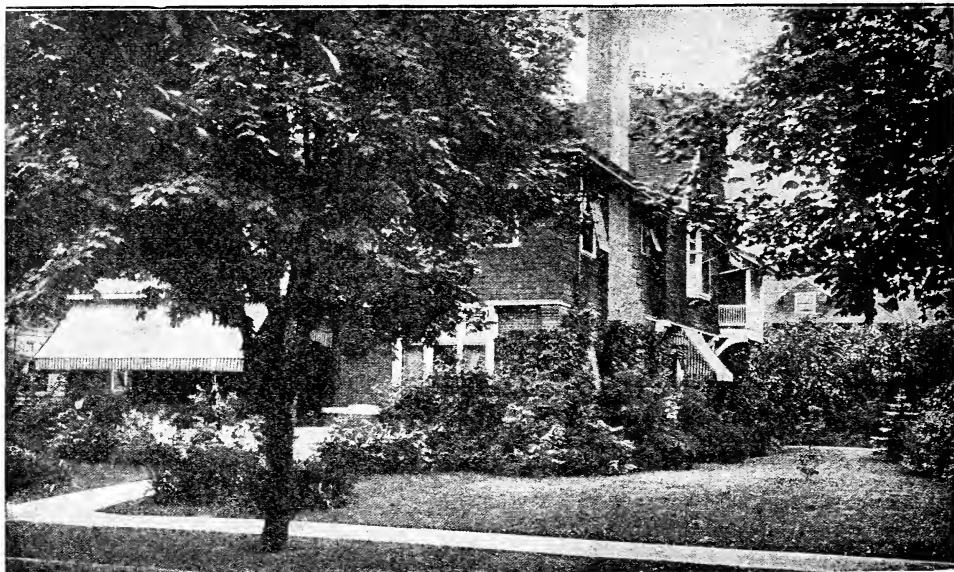
BANNING'S SEED HOUSE

T. G. BANNING

914 Meade St. Phone 141

BROOKFIELD, MO.

Shoemaker
Vegetable Seed Trials
2 6 1929



Planting As It Should Be

Landscape Gardening

The Neosho Nurseries Co., maintain a landscape department with an experienced man in charge. Ornamental planting plans furnished to customers anywhere. A pleased customer wrote the Nursery the letter printed below :

Neosho Nurseries Co.,
Gentlemen :

We were delighted with the plan prepared by your landscape department for beautifying the grounds of our new home. You recommended only the planting necessary to bring about the best results at a minimum cost. A portion of it was done last spring. We have a definite plan to follow in completing the layout, a great help, indeed, especially for the inexperienced in landscaping. The planting already done is growing nicely—do not believe I could have obtained better nursery stock anywhere than that furnished by you, and I shall order from you the plants required to finish the work that was started right.

I again thank you for your kind co-operation and the valuable suggestions given for "Growing Satisfaction."

C. H. M., East St. Louis, Ill.

If you have a problem in landscaping, either home or public grounds, let us help you.

T. G. BANNING.

Dependable Seeds, Plants, Onion Plants, Onion Sets and Nursery Stock

TO MY FRIENDS, MY CUSTOMERS:

To any of my customers who may want to know why I am in this business: It is because of a natural love of growing things. When a boy of twelve years of age, I had gone to the woods and transplanted all the different kinds of wild flowers into a small garden in my father's yard, where they bloomed for many years. When I became older and had to buy plants to set out and found them not always true to name, it gave me a desire to grow plants that would be reliable. When I commenced to grow plants I determined to grow and sell plants that were true to name. By following this rule I feel that I have won and held the confidence of my customers to such an extent that old customers re-order year after year, and many new customers come in each year. Last year nearly 2000 mail orders were filled, and forty orders were received in one day. Orders came from as far away as Ohio and Colorado. Our mailing list is growing rapidly and this year we have added 1000 new names.

In appreciation of my customers, I want to express to them, at this time, that they have always been as fair to me as I have tried to be with them.

Errors are sometimes made, and when an error occurs in your order, write and tell me and it will be corrected by return mail.

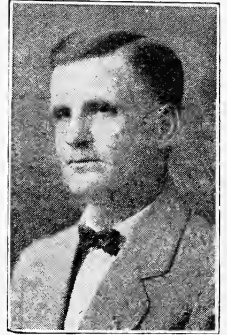
The seeds and nursery stock quoted in this catalogue are first quality in every particular and the plants are grown from strains of seeds of high quality, productiveness and trueness to name.

By fair dealings, I hope to be able to merit a share of your orders again this year.

Yours truly,

January 20, 1929.

T. G. BANNING.



A REQUEST

Our business has grown so much that it is all we can do to take care of it on week-days by working from 15 to 17 hours a day during the rush season, and on *Sunday*, we kindly ask *No Business, Please*.

FREE SEEDS

When you make out your order for garden seeds, flower seeds or onion sets, if it amounts to \$1.00 or more, you may include on your order, your choice of one package of the free seeds listed below. These free seeds are put up in full size packages. Write your choice on your order and mark it free seed.

Mixed Zinnas, Marigolds, Sweet Peas, Dwarf or Tall Nasturtiums, Baby Buster Pop Corn.



Neosho Trees Growing

VEGETABLES BY MAIL

Each year we mail a number of orders for fresh vegetables and will be glad to quote prices on them delivered postpaid by parcel post.

We grow annually, several hundred bushels of carrots, turnips, parsnips, mangoes, hot peppers, sweet potatoes, tomatoes, green stringless beans, green lima beans, radishes, celery, garden sage. Any inquiry about any vegetables will be promptly answered.

NURSERY STOCK

There is as much difference between Neosho Nursery Stock and the general run of nursery stock as there is between a wool suit of clothes and a cotton suit. Every tree or shrub that does not come up to a high standard is thrown on a brush pile and burned. We will be glad to compare prices, quality and sizes of this nursery stock with any stock grown anywhere.

You can buy Neosho Nursery Stock from this list at prices never given before for such number one quality of fruit trees and shrubs. The prices given are F. O. B. the Nursery, buyer paying the small express or mail charges.

With these prices you can buy:

Five 2-yr. apple trees, 5-7 ft.	\$3.25
Five 2-yr. apple trees, 4-6 ft.	2.75
Five 1-yr. apple trees, 4-6 ft.	2.00
Five peach trees, 5 feet up, for	2.50
Five peach trees, 4 ft. up, for	2.00
Five cherry trees, 3½ ft. up, for	4.50
Five cherry trees, 3 ft. up, for	3.50

Buyers to assort varieties to suit their own choice.

Varieties that do best in North Missouri:

Apple—Yellow Transparent, Maiden Blush, Wealthy, Grimes Golden, Jonathan, King David, Delicious and Stayman's Winesap.

Cherry—Early Richmond and Montmorency.

Peach—Early Rose, Champion, Elberta and Heath Cling.

APPLE SPECIAL

How would you like to have an apple tree in your yard bearing several kinds of apples all on the same tree? I can furnish apple trees with more than one variety at the following prices:

5 varieties on 1 tree: Yellow Transparent, Wealthy, Grimes Golden, Jonathan, and Delicious each.....	\$2.00
4 varieties on 1 tree, each.....	\$1.75
3 varieties on 1 tree, each	\$1.50



GUARANTEE

I guarantee the vitality and purity of the seeds I sell to the full amount of the purchase price. Even with the quality of the seeds sold, garden success depends largely upon cultivation, soil and weather conditions. Therefore, it is mutually agreed that in no case, shall I be liable for more than the amount actually paid for the seeds.

Safe arrival of your seeds guaranteed and I guarantee their quality to the amount of the purchase price. You can have your money back any time in 1929 if you are not satisfied with any seeds you may purchase from me. All seeds mailed postpaid at prices quoted.

POSTAGE ON PLANT ORDERS

Postal rates on plant orders as follows and postage should be added as given below: The postal department collects a service charge on all parcel post packages over eight ounces in weight. To all plant orders under \$1.00 please add 8 cents. To order over \$1.00 add 10c postage.

All seeds delivered postpaid at prices quoted.

MAIL ORDERS

Several years ago I placed a small advertisement in a Brookfield paper announcing that I would accept orders for plants to be mailed to any customer. At that time the advertisement stated that all plants were guaranteed to reach destination in good condition. If damaged in transit, that any loss would be made good to customer without charge. This guarantee is still in force and I want all buyers, either old or new, to know that this means exactly what it states. Any buyer who receives an order in damaged condition, just drop me a card and your loss will be made good by return mail. That this rule has been followed is shown by the fact that the first mail order customers that I found by my small advertisements, are still regular buyers, and their orders are welcome visitors each spring. We always attempt to fill all seed orders by return mail and plants immediately unless held up by bad weather. Sometimes all plants on an order are not ready so we send out at once all that we can and send balance as soon as ready. Mail orders are given just as careful attention as orders from customers who come personally for their order. We try to have all orders filled correctly, but errors will occur. Always keep a copy of your order and if you find any error in your order let me know by return mail and correction will be made at once. If you have the slightest complaint, we are



A Cool Nook

more than anxious to make it right. But please remember we cannot know about it unless you tell us.

Each season many letters are received from satisfied customers, expressing their satisfaction. Several letters are printed, but many more are received each year.

Shelbina, Mo., April 15.

T. G. Banning.

Kind Sir: In some way I've misplaced my 1928 catalogue which you were kind enough to mail me and I'm asking, am I entitled to another? If so please mail me one at once, and oblige Mrs. W. E. Gaines.

P. S. Please, may I add I'm a well pleased customer.

North Salem, Mo., April 30, 1928.

Mr. Banning.

Dear Sir: I have always ordered from you since you have been in business and am well pleased with your good measure, so I am sending an order for \$2.30 and want it sent by return mail.

Yours truly, Mrs. Amy Ogle.

Laplata, Mo., May 25, 1928.

Mr. T. G. Banning,
Brookfield, Mo.

Dear Mr Banning: Am sending a little order for some plants for myself and neighbor. I have used your plants for 16 years and have always been so well pleased with them that I have to recommend them to others. Please send by return mail.

Yours respectfully, Mrs. D. E. McDade.

Meadville, Mo., June 16, 1928.

T. G. Banning.

Dear Sir: Enclosed find check for 60 cents for which please mail me 100 Golden Self Bleaching Celery plants. I never saw any celery plants equal yours in hardness and vigor.

Very truly, W. E. Evans.

1460 Mammoth Blvd., Galesburg, Ill.
Jan. 29, 1928.

Mr. T. G. Banning.

Dear Sir: I am sending for one of your catalogues as I want to order some things from you this year. I did not raise a garden last year as we moved from Ethel, Mo. up here. I do not feel that I could raise a garden without your plants, so if you will send me a catalogue I will be very much pleased. Thanking you very much,

Yours truly, Mrs. M. H. Stralman.



A Lawn Like Velvet

LAWN GRASS

CHICAGO PARKS MIXTURE—A blend of lawn grass seeds which is positively the highest grade mixture that can be prepared. Composed of seed of the finest English and American grasses with white clover so that with even ordinary care it cannot fail to make a beautiful lawn. One pound will cover about 300 square feet of soil. The ground should be thoroughly pulverized and raked until it is fine and the surface level. If the soil is not naturally rich, it should be fertilized by sowing ten to fifteen pounds of fine sheep manure to each 200 square feet. After sowing the seed, rake or brush the seed in and finish with a roller. For quickly producing a permanent and velvety sward, this lawn seed cannot be excelled. $\frac{1}{2}$ pound 30c; 1 pound, 55c.

SHADY NOOK LAWN GRASS—Usually it is quite difficult to obtain a good growth of grass under trees and in shady places. For sowing in such places this blend of lawn grass seed is recommended. It will quickly produce an abundant and even growth of beautiful grass. $\frac{1}{2}$ lb., 30c; 1 lb., 55c.

VEGETABLE SEEDS

It is with pleasure that we can again this year offer the same high grade garden seed. This list of seeds does not consist of a great list of varieties, but every one is a tested variety that has proven its worth in our North Missouri soils and climate. Plant any of these seeds, give them clean cultivation and your efforts will be rewarded with a bountiful harvest of quality vegetables. These strains of garden seed have been developed by a seed firm especially to meet the wants of market gardeners, for they are the most critical seed buyers in the country. Thousands of gardeners can recommend their worth. We buy the seed in bulk, and put them up in packages, so you get fresh seed each season. I have such faith in these seeds than any time in 1929 I will refund the purchase price for any seed with which any customer may be dissatisfied. All seed mailed postpaid at price quoted. No order too small for careful attention. Early orders solicited.

BEANS

BURPEE'S STRINGLESS GREEN POD—

The best of all green podded bush beans. Pods are round, entirely stringless and of the best quality. Plants are strong growers and produce tender pods early in the season. The seed is quite hardy and does not rot in cool spring weather near as easily as seed of wax varieties. I make three plantings of this variety during the growing season. The first, the last part of April, the other plantings about the middle of June and July. $\frac{1}{4}$ lb., 10c; 1 lb., 35c.

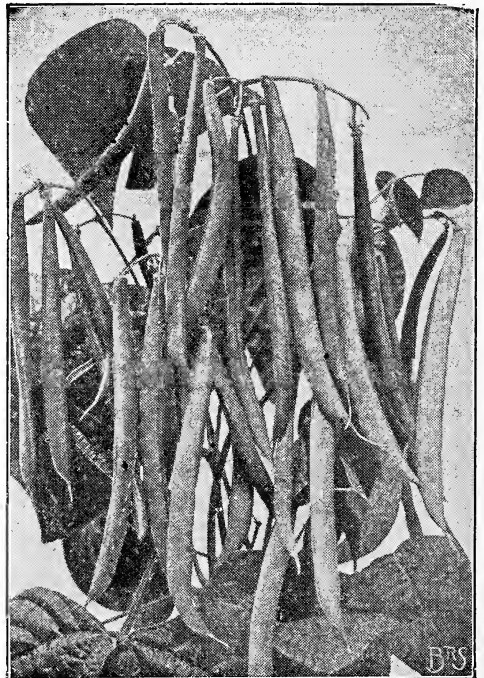
LEONARD'S YELLOW DOT—Without doubt the finest flavored bean ever introduced. It is an early, tender, green pod variety, stringless and of a delicious flavor. $\frac{1}{4}$ lb., 10c; 1 lb., 35c.

EARLY VALENTINE—Plants dwarf and prolific. Pods four inches long, round, meaty and brittle even when full grown. One of the best early green pod varieties. $\frac{1}{4}$ lb., 10c; 1 lb., 35c.

PENCIL POD BLACK WAX—Grows a tall, strong and vigorous bush with long, slender, straight, handsome pods, shaped much like a pencil. $\frac{1}{4}$ lb., 10c; 1 lb., 35c.

WEBBER WAX—An early stringless wax podded bean of high quality. A heavy yielder of pods, which are almost immune from blight and pod spot. Originated by a market gardener and it has met with favor wherever tried. $\frac{1}{4}$ lb., 10c; 1 lb., 35c.

DAVIS WHITE WAX—A prolific white seeded bush variety bearing long, straight, waxy pods. Beans are white, large and yield a fine crop of dry beans to hull out. $\frac{1}{4}$ lb., 10c; 1 lb., 35c.



Burpee's Stringless Green Pod



Webber Wax

KENTUCKY WONDER POLE BEANS—The one best bean, as dry weather does not burn up the vine as it does the bush variety. Not as early as the bush beans but is a heavy yielder of fine beans, either to snap when young or hull later. Often will get two full crops in a season. Drive a lath or any kind of pole in the ground, plant three or four beans to a hill, and see how many beans you get to a hill. $\frac{1}{4}$ lb., 10c; 1 lb., 35c.

MISSOURI WONDER—Pole beans that originated in Missouri. A hardy variety that yields a heavy crop in spite of adverse weather conditions. Pods are green, tender and almost stringless if the pods are picked while young. A great yielder of hulling beans. $\frac{1}{4}$ lb., 10c; 1 lb., 35c.

RED KIDNEY—One of the best dry shell beans; hardy and vigorous grower; heavy yielders of red beans. $\frac{1}{4}$ lb., 10c; 1 lb., 35c.

IMPROVED WHITE NAVY—A strain of seed developed in Western New York. A sure cropper and not only more prolific than the common white bean but of better quality. $\frac{1}{4}$ lb., 10c; 1 lb., 35c; 5 lbs., \$1.40.

HENDERSON'S BUSH LIMA—A very productive bush variety of small lima beans. Vines are literally covered with pods, holding two to four beans. 3 oz., 10c; $\frac{1}{2}$ lb., 25c; 1 lb., 45c.

BURPEE BUSH LIMA—After a test of this variety for three years I believe it is the best and most productive of the large bush lima beans.

It sets a good crop of pods with three to five large beans to a pod. Has the same good qualities of the large pole limas. 3 oz., 10c; $\frac{1}{2}$ lb., 25c; 1 lb., 45c.

POLE LIMA—King of the garden. Strong grower with pods of four to five large beans of

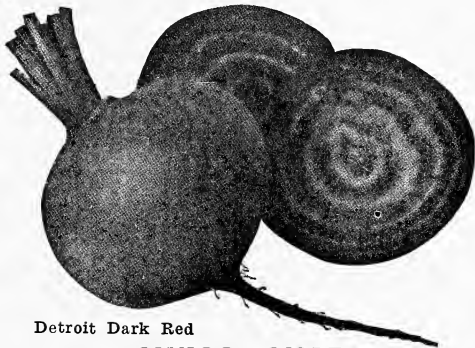
excellent quality. One of the best tall growing lima beans. 3 oz., 10c; $\frac{1}{2}$ lb., 25c; 1 lb., 45c.

FLORIDA SPECKED BUTTER—Will make an abundant crop under weather conditions that cause other varieties to fail. Seed speckled white and brownish red. A quick growing pole or climbing variety. 3 oz., 10c; $\frac{1}{2}$ lb., 25c; 1 lb., 45c.

BEETS

DETROIT DARK RED—Medium early, dark red in color, round with a small tap root. Beets are round, smooth and quality is of the best. Beets remain tender even when of large size. Fine for canning. $\frac{1}{2}$ oz., 10c; oz., 15c; $\frac{1}{4}$ lb., 40c.

MAMMOTH LONG RED—A large stock beet which is eaten in winter by all kinds of stock. Should be thinned in the rows to stand 6 to 8 inches apart. $\frac{1}{2}$ oz., 10c; oz., 15c; $\frac{1}{4}$ lb., 35c.



Detroit Dark Red

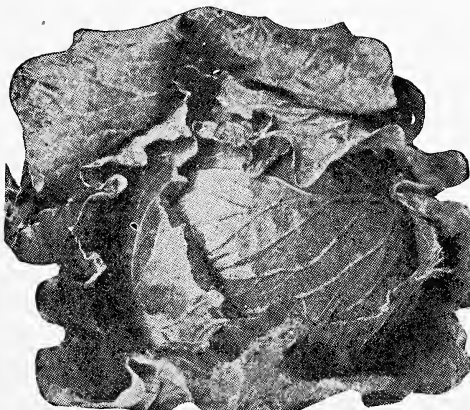
SWISS CHARD

Does not make a bulb but is grown for the leaves and stalks which are used for greens. Can be used all summer after spinach is gone. $\frac{1}{2}$ oz., 10c; oz., 15c; $\frac{1}{4}$ lb., 40c.

CABBAGE

EARLY JERSEY WAKEFIELD—Standard early pointed heads of medium size. Heads early, but does not stand long without bursting. Pkt., 10c; oz., 35c.

COPENHAGEN MARKET—Heads round with few outside leaves. Can be set as close together in a row as Jersey Wakefield and will stand for a long time without bursting. This is the only early variety that I now plant for market. Pkt., 10; oz., 40c.



Copenhagen Market

EARLY FLAT DUTCH—Old standard, flat-headed early cabbage. About two weeks later than the first early cabbage. Heads good size. Pkt., 10c; oz., 35c.

PREMIUM LATE FLAT DUTCH—Standard late cabbage for fall and winter use. Large, solid, flat heads. Pkt., 10c; oz., 35c.

CAULIFLOWER

EARLY SNOWBALL—Good for either early or late, but to make good heads cauliflower needs plenty of moisture. This is an extra good strain. Pkt., 10c.

CELERY

WHITE PLUME—Earliest and easiest blanched. When it has plenty of moisture it grows rapidly and will almost blanch itself without hilling up. Pkt., 10c.

GOLDEN SELF BLANCHING—Almost as early as White Plume, but stalks are larger and better quality. Pkt., 10c.

EASY BLANCHING—Excels in qualities that give self blanching celeries their value. It blanches earlier and easier than most other varieties but if put away green, it is the longest keeping variety known. Pkt., 10c.

GIANT PASCAL—Winter variety with large bunches of heavy ribbed stalks. Plants grow large and when blanched are tender and of fine flavor. Pkt., 10c.

CARROT

DANVERS—The smooth roots are deep orange color; flesh is sweet and tender and are easily pulled. $\frac{1}{2}$ oz., 10c; oz., 15c; $\frac{1}{4}$ lb., 45c.

CHANTENAY—Tops medium sized, roots uniformly smooth, color a deep orange red, flesh crisp and tender and almost coreless. Medium early, a heavy cropper and is a fine winter keeper. Roots grow about six inches long and are easy to pull. $\frac{1}{2}$ oz., 10c; 1 oz., 15c.

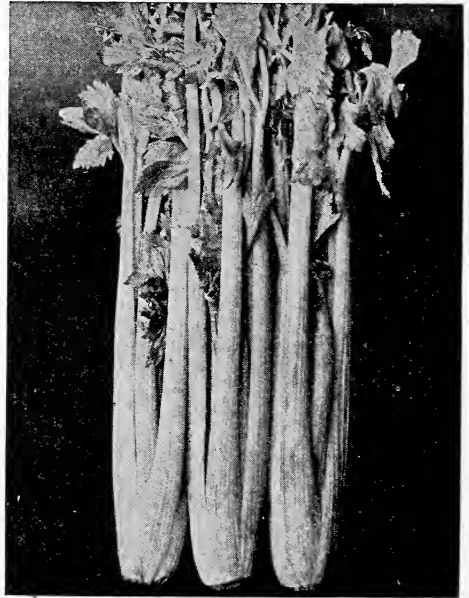
SWEET CORN

GOLDEN BANTAM—Extra early, with golden yellow kernels of fine quality. Ears are medium size, just right for the table. $\frac{1}{4}$ lb., 10c; lb., 35c; 5 lbs., \$1.45.

LEONARD'S EARLY—A new early variety first offered in 1926. The large ears are a beautiful white with a fine sweet flavor and is ready for the table much ahead of many early varieties. This new variety is strongly recommended and growers will want to plant it again after once trying it. $\frac{1}{4}$ lb., 10c; 1 lb., 35c.

STOWELL'S EVERGREEN—A favorite main crop variety excelling in productiveness and quality. Makes a large ear of sugary sweetness. $\frac{1}{4}$ lb., 10c; 1 lb., 35c; 5 lbs., \$1.45.

COUNTRY GENTLEMAN—A productive variety of high quality with deep, slender grains, irregularly arranged on the cob. $\frac{1}{4}$ lb., 10c; lb., 35c; 5 lbs., \$1.45.



Golden Self Blanching

BANTAM EVERGREEN—A cross between Golden Bantam and Stowell's Evergreen, with the quality of Bantam and part of the size of Evergreen. A good sized golden ear of first quality. $\frac{1}{4}$ lb., 10c; lb., 35c; 5 lbs., \$1.45.

EARLY EVERGREEN—The ears of this new corn grow eight inches long with 14 to 18 rows of kernels. It ripens ten to fifteen days ahead of Stowell's Evergreen and is equally as good for all purposes. Kernels are very sweet and tender. $\frac{1}{4}$ lb., 10c; 1 lb., 35c; 5 lbs., \$1.45.

POP CORN

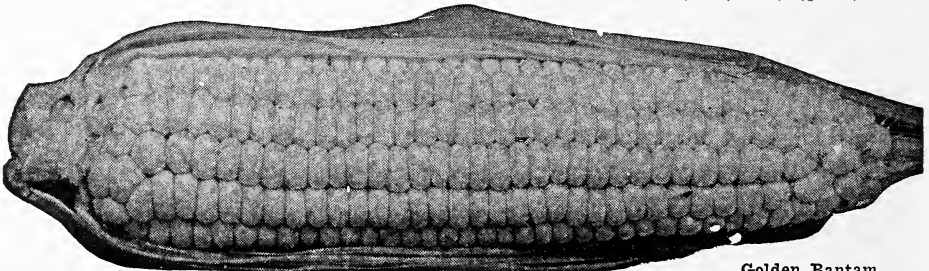
JAPANESE HULLLESS or BABY BUSTER—Small white grained popping corn. A good yielder and a fine popper. Grains when popped are large and tender. Pkt., 10c; $\frac{1}{2}$ lb., 25c; lb., 40c.

CUCUMBER

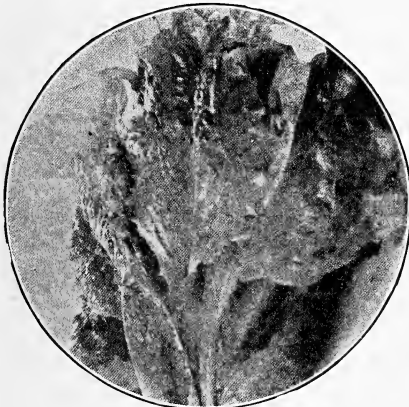
IMPROVED LONG GREEN—Fruits are long, green. Fine for slicing. $\frac{1}{2}$ oz., 10c; oz., 15c; $\frac{1}{4}$ lb., 45c.

CHICAGO PICKLE—Small fruits, grown mostly for pickling. $\frac{1}{2}$ oz., 10c; oz., 15c; $\frac{1}{4}$ lb., 45c.

EARLY WHITE SPINE—Vines vigorous, early and productive. One of the best sorts for table use. $\frac{1}{2}$ oz., 10c; oz., 15c; $\frac{1}{4}$ lb., 45c.



Golden Bantam



Simpson Lettuce

DILL

MAMMOTH—The seed and foliage of this annual herb are used for flavoring. Grow some of it and put up your own dill pickles. Pkt., 10c.

LETTUCE

BLACK SEEDED SIMPSON—A loose, fluffy headed variety of quick growth and good quality. The best variety for outdoor planting. ½ oz., 10c; oz., 15c; ¼ lb., 40c.

PRIZE HEAD—Crisp, tender leaves, shaded a reddish brown. Grows rapidly. A valuable sort for the home garden. ½ oz., 10c; oz., 15c; ¼ lb., 50c.

HANSON—A quick growing lettuce with green, curly leaves. This lettuce is classed as a head lettuce. It makes a loose head that is creamy colored in the center and is about the only variety that I have had success in growing here to make any kind of a head. Stands hot weather well and stands a long time before going to seed. ¼ oz., 10c; 1 oz., 15c.

MELONS

ROCKYFORD—The netted green fleshed cantaloupes shipped in large quantities from the growing centers. Vines productive and melons are sweet to the rind. ½ oz., 10c; oz., 15c; ¼ lb., 45c; 1 lb., \$1.25.

TIP TOP—Muskmelon of large size with fine flavored salmon flesh. Pale green skin distinct-



Rockyford

ly ribbed and slightly netted. A melon that is tip top in quality, appearance and productiveness. ½ oz., 10c; oz., 15c; ¼ lb., 45c; 1 lb., \$1.25.

KLECKLEY SWEETS WATER MELON—Vines vigorous and productive. Fruit medium size. This is the fine dark green melon which is grown so much in the Missouri bottoms. ½ oz., 10c; oz., 15c; ¼ lb., 40c; lb., \$1.00.

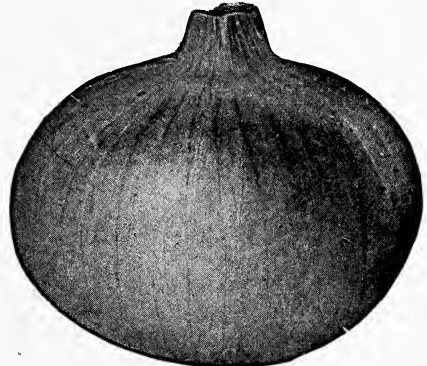
TOM WATSON—Large, long melon of fine flavor. Produces a heavy crop. ½ oz., 10c; oz., 15c; ¼ lb., 40c; 1 lb., \$1.00.

MUSTARD

GIANT CURLED—Used for greens. Plant some in your garden for greens. Hoe up any left before blooming and you will have no trouble with it seeding itself. ½ oz., 10c; oz., 15c.

OKRA

Largely used in the south for soups, etc. Pods should be gathered and used when still young and tender. Seed should be sown after weather is settled and nights are quite warm. Pkt., 10c.



ONIONS

BERMUDA ONION PLANTS—These plants produce large sweet onions in your own garden just as large as any grown in the south. It is surprising how quickly, with ordinary care, you can produce onions three to four inches in diameter. The plants will stand frost and should be set out as early as possible in the spring. To plant, sharpen a stick, make a hole about two inches deep, place the plant in the hole and press the dirt firmly around the plant with the stick. Keep the ground clean with shallow cultivation. Bermuda onions are not long keepers, but by handling the bulbs without bruising, they may be kept until late in the fall. The plants are supposed to be packed 100 to a bunch, but they vary a great deal. Some bunches will run over and some under the count. We always try to buy from reliable growers who try to give a good full count. If your plants do not count out reasonably close let us know and we will make up your shortage. Prices in Brookfield: 1 bunch, 15c; 5 bunches, 65c; 10 bunches, \$1.25. Prices by mail postpaid: 2 bunches, 45c; 5 bunches, 75c; 10 bunches, \$1.40.

ONION SETS

RED, WHITE AND YELLOW—These sets are grown by a pioneer set grower. They are small, clean and have that fine bright color which is so much desired by all buyers. They are properly stored in the fall and reach planters in sound and unsprouted condition. One quart of these sets goes as far as two bunches of onion plants. If you want quick green spring onions, plant sets. Prices in Brookfield: Red, Yellow and White, qt., 15c. Prices by mail postpaid: All colors, 2 qts., 40c; 4 qts., 75c.

ONION SEED

Good onions of first quality can be grown by careful attention in preparing the soil, planting and cultivation, but above all else, the seed planted must be of high quality.

RED GLOBE—Dark red onions of a globe shape. Planted thinly they will make large size bulbs. An extra good strain. Pkt., 10c; oz., 25c.

WHITE GLOBE—A perfect globe shaped white onion of large size. Skin is a clear white. Pkt., 10c; oz., 25c.

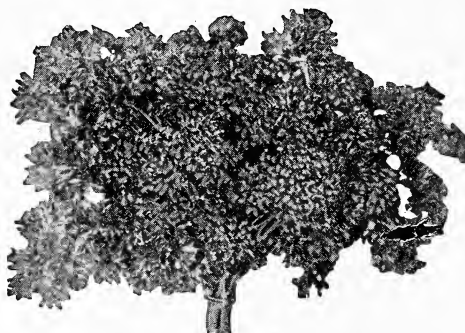
PRIZETAKER—Large yellow onion with firm white flesh. Ripens up hard and firm, is fine grained and mild in flavor. A fine onion for fall market. Pkt., 10c; oz., 25c.

CRYSTAL WHITE and YELLOW BERMUDA—Grow your own Bermuda onions right from seed. Plant the seed early and you can transplant or thin them out and raise fine, mild onions for fall use. Pkt., 10c; ½ oz., 25c; 1 oz., 45c.

PARSNIPS

HOLLOW CROWN—Roots long, tender and sweet. The most popular parsnip. ½ oz., 10c; oz., 15c; ¼ lb., 40c.

GUERNSEY—Roots tender with smooth, clear skin. I grew this variety last year on the recommendation of a customer and found it to be a fine variety. Pkt., 10c; oz., 15c.



PARSLEY

MOSS CURLED—Rich, green color, with leaves curled and twisted. One of the best varieties for garnishing. ½ oz., 10c; oz., 15c.

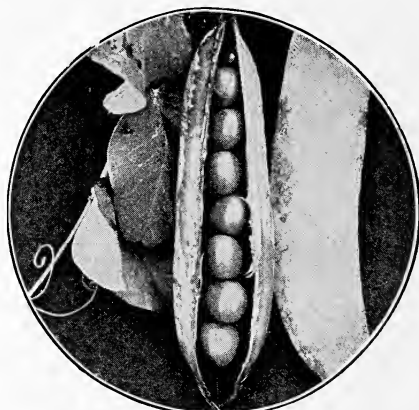
PEAS

CLAUDET—Resembles Alaska peas in general habit and height of vine, ripens at the same time but with much larger pods. Seed is smooth and can be planted real early. Plant this pea in place of Alaska. ¼ lb., 10c; 1 lb., 35c.

LEONARD'S POTLATCH—Strong, vigorous vines, twenty to twenty-four inches in height, dark green foliage with large pods three to four inches in length. Potlatch is a variety from which anyone may expect great things. No variety will produce more pods or shell out more peas. Peas are large and fit for the table early. ¼ lb., 10c; 1 lb., 35c.

LAXTONIAN—Largest podded of the dwarf growing varieties. Vines vigorous and productive, growing fifteen inches high. Foliage dark green with pods about four inches long. An early variety but as the seed is wrinkled, it should not be planted too early. ¼ lb., 10c; lb., 35c.

AMERICAN WONDER—Esteemed for earliness, productiveness and quality. Robust vines about ten inches high which produce quantities of good sized pods closely packed with peas. ¼ lb., 10c; lb., 35c.



Claudet Peas

LITTLE MARVEL—A pea rightly named. Vines grow 12 to 15 inches high. No earlier wrinkled peas and the quality satisfies everybody. Pods dark green, about three inches long, filled with six to seven peas. ¼ lb., 10c; lb., 35c.

TELEPHONE—Foliage large and coarse, light green in color. Height 3 to 4 ft., an early, tall growing variety. Seed large and wrinkled. One of the best climbing peas. Pods large and full. ¼ lb., 10c; 1 lb., 35c.

PEPPERS

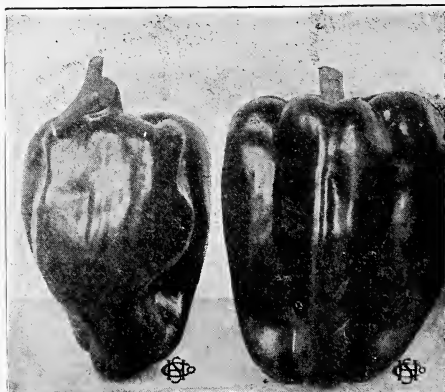
RUBY KING—Large, sweet mangoes. Green at first, turning to deep crimson when ripe. Mangoes are always smooth, even in the largest ones. Pkt., 10c.

CHINESE GIANT—The largest sweet mango grown. Does not bear as much fruit as the Ruby King. Its mammoth size always commands attention. Pkt., 10c.

GOLDEN QUEEN MAMMOTH—Very large green peppers turning to a rich golden yellow when ripe. Sweet and an early variety. Pkt., 10c.

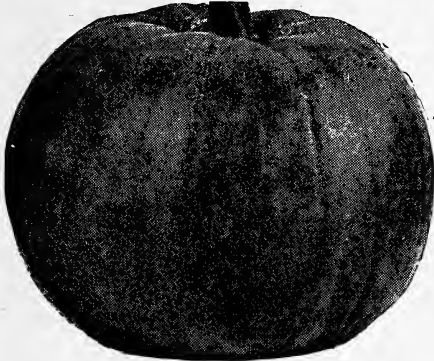
HOT CAYENNE—Peppers are two to three inches long, half inch in diameter and fiery hot. Pkt., 10c.

PIMENTO—Flesh sweet and thicker than any other pepper. Fruits are glossy green, turning to a beautiful dark red when ripe. Fruits measure two to three inches in diameter and one to two inches in depth. Many customers are now canning these sweet thick meated peppers each fall. Pkt., 10c.



Ruby King

NEAPOLITAN—A medium size sweet pepper that is early and a sure cropper. Always sweet. This variety can always be counted on to ripen most of its crop early in the fall, thereby giving plenty of red mangoes for pickles. Pkt., 10c.



Sugar or Pie

PUMPKIN

LARGE CHEESE or KENTUCKY FIELD—One of the best for table use and very productive. Shape of fruit is flat, flesh yellow, thick and tender. $\frac{1}{2}$ oz., 10c; 1 oz., 15c; $\frac{1}{4}$ lb., 40c.

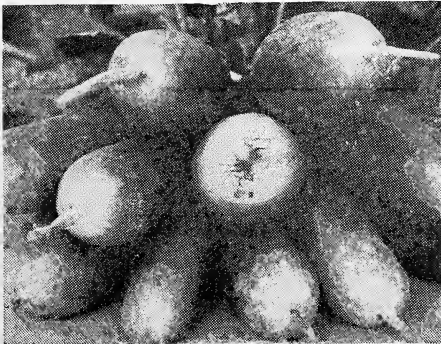
SUGAR or PIE—A rather small but handsome variety. Shape round, skin deep orange colored, flesh fine grained, sweet and superior for pies. $\frac{1}{2}$ oz., 10c; 1 oz., 15c; $\frac{1}{4}$ lb., 40c.

GREEN CUSHAW—Fruit large with crooked necks. Color creamy white, irregularly striped with green. Flesh light yellow, thick and sweet. $\frac{1}{2}$ oz., 10c; 1 oz., 15c; $\frac{1}{4}$ lb., 40c.

RADISH

ICICLE—Early, long white radish. Flesh tender and crisp. $\frac{1}{2}$ oz., 10c; oz., 15c; $\frac{1}{4}$ lb., 40c.

SAXA—An extremely early round red radish of fine quality and no radish makes a prettier bunch than this variety. This radish is a week earlier than any radish that we have ever grown. They are ready to pull when the tops are small and are very crisp and tender. $\frac{1}{2}$ oz., 10c; oz., 15c; $\frac{1}{4}$ lb., 45c.



White Tipped

WHITE TIPPED SCARLET TURNIP—Early round radish with white tap root. Flesh tender and snappy. $\frac{1}{2}$ oz., 10c; oz., 15c; $\frac{1}{4}$ lb., 40c.

CRIMSON GIANT—A large early variety of the round red type. Grows about twice the size of the early turnip type of radishes but is not

as early. Remains solid longer than other round varieties. $\frac{1}{2}$ oz., 10c; 1 oz., 15c; $\frac{1}{4}$ lb., 40c.

WHITE STRASBURG—A popular summer radish with long, thick, white roots. Remains solid for some time after reaching full size. $\frac{1}{2}$ oz., 10c; 1 oz., 15c; $\frac{1}{4}$ lb., 40c.

WHITE CHINA OR CELESTIAL WINTER—Roots are long with beautiful white, skin and flesh is so white as to attract attention even among other white varieties. Radishes grow large but even in the largest size they are sweet, tender and solid. Plant seed at late turnip planting time. Use them through the fall and dig and store balance the same as potatoes and turnips. I never grew them until last fall but they are certainly fine. Pkt., 10c; oz., 15c.

SAGE

Mammoth Broad Leaved Garden Sage used for seasoning. Makes a good sized bush the first season and will live over the winter if protected from severe cold. Pick the leaves before frost and cure in the shade. Pkt., 10c.

SALSIFY

SALSIFY or OYSTER PLANT—This is grown for fall and winter use and is highly esteemed for the fine flavor of the roots. The name of oyster plant has been given to Salsify because the roots have an oyster-like flavor. Sow the seed thinly in shallow drills early in the spring. Pkt., 10c; oz., 20c.

SPINACH

VICTORIA—Early large leaved variety. Should be planted early. $\frac{1}{2}$ oz., 10c; oz., 15c; $\frac{1}{4}$ lb., 40c.



Warty Hubbard

SQUASH

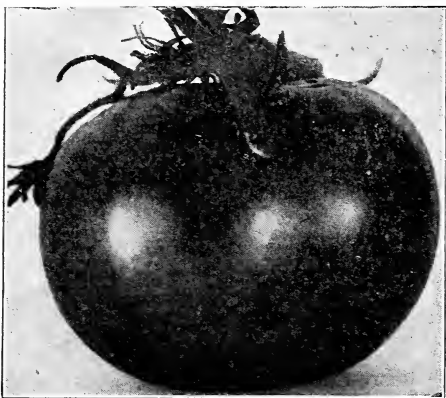
WARTY HUBBARD—Large size winter squash with a hard, warty skin. Splendid for baking. $\frac{1}{2}$ oz., 10c; oz., 15c; $\frac{1}{4}$ lb., 40c.

FORDHOOK—A squash small in size that is fine for cutting in halves and baking. Fruits are 6 to 8 inches long, slightly ridged, and a light lemon in color. Flesh fine grained, free from fiber and of a buttery flavor. Pkt., 10c; oz., 15c.

TOMATO

EARLIANA—Extra early tomatoes. The first fruits are the best but the size soon runs small. Plant a late variety to come on when the best fruits are gone. Pkt., 10c; oz., 35c.

CHALK'S EARLY JEWELL—Not quite as early as Earliana, but far better quality. Fruit is smooth and ripens up evenly to the stem. Pkt., 10c; oz., 35c.



Beef Steak

PONDEROSA—Large, meaty variety of tomato with few seeds. No garden complete without this tomato. Ripens early for such large fruit. Pkt., 10c; oz., 45c.

STONE—A leading variety for main crop, with large smooth fruit. Color bright scarlet. Ripens evenly to stem. One of the best varieties for canning. Pkt., 10c; oz., 35c.

BEEF STEAK—A large red tomato of few seeds and much meat. A great favorite with many customers. Fruit ripens mid-season. Pkt., 10c.

RED HEAD—A fine early red tomato ripening as early as Chalk's Early Jewel. Fruit is large and smooth. A production variety of solid quality tomatoes. Pkt., 10c; oz., 35c.

GOLDEN QUEEN—Rich golden yellow tinged on the blossom side with pink. Solid, smooth, of good size. Pkt., 10c.

TURNIP

PURPLE TOP WHITE GLOBE—An early turnip of globe shape which is rapidly taking the market away from all other varieties. $\frac{1}{2}$ oz., 10c; oz., 15c; $\frac{1}{4}$ lb., 40c; 1 lb., \$1.00.

EARLY PURPLE TOP STRAP LEAF—An early turnip used extensively for table use. The leaves are few and upright in growth. Roots are flat, purple above ground, flesh fine grained. $\frac{1}{2}$ oz., 10c; oz., 15c; $\frac{1}{4}$ lb., 40c; 1 lb., \$1.00.



Purple Top Strap Leaf

RUTABAGA

IMPROVED PURPLE TOP—Hardy and productive. Roots are globular with a small tap root and a small neck. Color bright yellow. Pkt., 10c; oz., 35c.

FLOWER SEEDS

A Home can hardly be called a home without some bright colored flowers blooming in the yard, and adding cheer to the surroundings. Flowers, when care is exercised, are not hard to grow, and every home and every farm should abound in them.

ASTERS

QUEEN OF THE MARKET, MIXED—Early flowers double and large on stems of good length. Fine for cutting. The best colors blended in this mixture. Pkt., 10c.

AMERICAN BRANCHING—Plants grow $2\frac{1}{2}$ to 3 feet high, branching and robust habit. Flowers large and double. Mixed colors. Pkt., 10c.

CALENDULA

DOUBLE ORANGE KING—Seeds may be sown in shallow drills in flower beds when trees are starting to leaf out. Excellent for beds or borders and they last a long time as cut flowers in water. Pkt., 10c.

CASTOR BEANS

Large variety, often growing ten to twelve feet high. Leaves are extra large. Seed should not be planted in the open ground until maples are leafing out. Pkt., 10c.

COSMOS

EXTRA EARLY MAMMOTH FLOWERING—Mammoth flowers in pink, white and crimson are produced by this mixture. One of the best flowers for cutting. Pkt., 10c.

CYPRESS VINE

Beautiful and popular tender climbing vine with fern-like foliage and many scarlet and white star-shaped flowers. Pkt., 10c.



Asters

GOURDS

Mixed varieties. Fast growing climbers with ornamental foliage and singular shaped fruit. Pkt., 10c.

GYPSOPHILA

(Baby's Breath) Pretty, free-flowering plants. Their misty white panicles of bloom are used for mixing with other cut flowers. Pkt., 10c.

HYACINTH BEAN

(Delichos). Mixed. Annual climber of rapid growth with Wistaria-like clusters of flowers followed by bronzy-purple seed pods. Pkt., 10c.

HELICHRYSUM

(Strawflower). Finest mixed. Flowers are round, flat and very full of short incurved petals. Their chief value is for winter use in vases and baskets. Cut blossoms with long stems when they are about a third open. Hang bunch, head down in a cool place until dry. Pkt., 10c.

HOLLYHOCKS

Fine mixed varieties of old time flowers. Seed should be sown in June or July to have flowering plants the next summer. If sown in the house early in the spring, they will bloom the first year. Pkt., 10c.

LARKSPUR

Double mixed. Free flowering annuals with fine spikes of flowers. They do best in cool and moist soil. Pkt., 10c.

MARIGOLDS

This is an old favorite free flowering annual of easiest culture. They have uniformly large, yellow orange colored flowers. They do best when grown with full exposure to the sun. Pkt., 10c.

NASTURTIUMS

DWARF MIXED—One of the best for plenty of flowers. Bright colored flowers are borne with profusion. Fine for edging beds. There is no flower that will give such an abundance of bloom for the little care they take. $\frac{1}{2}$ oz., 10c; oz., 15c.

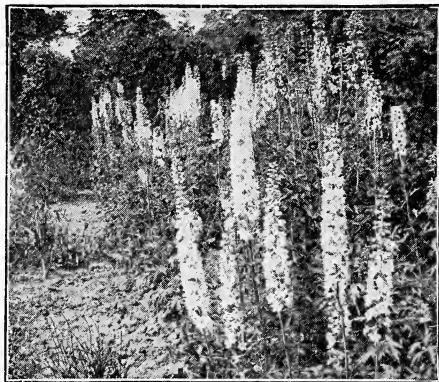
TALL MIXED—These are fine for growing in solid masses. Will grow on fences or can be let trail loose on the ground. $\frac{1}{2}$ oz., 10c; oz., 15c.

PETUNIA

GOOD MIXED—For out door planting few plants are equal to this class of flowers. They bloom early and continue to flower through the summer. Give them rich soil and a sunny location. Pkt., 10c.



Petunia



Larkspur

PINKS

CHINESE DOUBLE MIXED—Flowers of these double pinks are borne on upright strong stems from mid-summer until frost. Pkt., 10c.

PORTULACA

MIXED COLORS—Brilliant garden annual, six inches high blooming profusely from spring until fall. Colors range through red, yellow, pink, white and variegated. When in bloom there is nothing prettier than a bed of these low growing plants. Pkt., 10c.

SALPIGLOSSIS

(Painted Tongue). A fine annual of easiest culture. They like a sunny position in any good soil. Grow two feet high. Splendid for cut flowers. In rich coloring, flowers vie with orchids. Mixed colors. Pkt., 10c.

SUMMER CYPRESS

(Burning Bush). A fine annual-growing plant with light green foliage turning to red early in fall. Makes a fine hedge as it grows fast and can be trimmed to any shape desired. Pkt., 10c.

SWEET ALYSSUM

LITTLE GEM—A dwarf compact plant covered with a mass of small white flowers from spring until fall. Only grows a few inches tall, and is fine for edging beds or walks. Pkt., 10c.

SWEET PEAS

SPENCER VARIETIES MIXED—An extra good mixture of fine Spencer Sweet Peas. This seed produces large flowers on good stems. Many customers have been pleased with the quality of this seed. Pkt., 10c; oz., 25c.

VERBENAS

MAMMOTH CHOICE MIXED—Verbenas thrive in almost any situation or soil. They make attractive borders and beds and are continuous bloomers. Pkt., 10c.

ZINNIA

ZINNIA MIXED—A blend of several colors of good size blossoms. An old fashioned flower which has been much improved. Zinnias will stand more neglect and drought and produce more flowers than most any other flowers. Pkt., 10c.

GIANT ZINNIA—This is a strain of large Zinnias. Flowers are large, with very few single blossoms. No better strain of this seed can be produced anywhere. For largest blossoms the plants should be thinned to stand one foot apart. The small plants can be easily transplanted. Have this seed in three colors, red, purple and rose. Pkt., 15c.

VEGETABLE PLANTS

We have been growing plants for about fifteen years, and it has always been our rule to grow good ones from select strains of seed, and to attempt each year to give our customers better plants. We do not try to see how cheap plants we can grow, but rather try to produce ones that will give good crops when set out and amply repay the buyer for the small amount paid for the plants.

We use seed which we know is true to name and for such seed we have to pay a good price.

Cheap seed is often the most expensive for any planter to use as it is very poor crop insurance. The price asked for plants is less than is often asked by many large growers.

Weather conditions being favorable, all plants ready about May 1. By continued plantings, we endeavor to have plants until July 1.

POSTAGE ON PLANTS

Postal rates on plant orders are as follows and postage should be added as given below. The postal department collects a service charge on all parcel post packages over eight ounces in weight. To all plant orders under \$1.00, please add 8 cents. To orders over \$1.00 add 10 cents postage. All plants are guaranteed to reach customers in good order or any damage will be made good on receipt of a postal card giving amount of loss.

PLANTGARD

An insecticide which will not burn or injure the foliage on flower or vegetable plants, but is sure death to insect pests that sap the vitality of plant life. Comes in powdered form all ready to dust on plants. Two sizes, 35c and 60c.

SEED DISINFECTION

All seed used to grow plants is disinfected before planting. We use Semesan to sterilize the seed against all disease spores that possibly might be on the seed coats. Seed thus treated sprouts quickly, comes up clean and disease free, grows rapidly when set out in your garden and produces earlier and better crops. Last year seed sterilization was given a thorough trial, and never again will we plant any seed without thus preparing the seed.

Bucklin, Mo., March 22, 1927.

Mr. T. G. Banning.

Dear Sir:

I have always had such good luck with your plants I could not do without them, for all ways are ready for hay harvest. Everybody is surprised at my early cabbage.

Yours truly,

Mrs. H. A. Lindberg.

R. R. No. 1.

New Cambria, Mo., May 24, 1927.

Dear Mr. Banning:

I was so pleased with my plants; they were so nice and fresh. Never lost a plant, so I am after more plants. Please send me one hundred Red Head Tomato plants by return mail, and many thanks for the nice plants already received.

Yours for success,

Mrs. Tom Jenkins.

Route 2. Box 2.

TOMATO

EARLIANA—Extra early variety with small, slender vines. Sets fruit early. Tomatoes good size at first but last of crop is small. Do not plant all of your garden to this variety.

CHALK'S EARLY JEWELL—A second early variety from a week to ten days later than Earliana. Fruits large and smooth. Bears over a long season and last fruits are of the same high quality as the first.

RED HEAD—An early tomato possibly a little earlier than Jewell. Fruit smooth, of medium size and of fine quality.

JUNE PINK—Best described as a pink Earliana. Ripens as early as Earliana, but fruit is of better quality.

STONE—A large, smooth red tomato and main crop variety for canning. Vines bear a heavy crop over a long season.

BUCKBEE'S BEEFSTEAK—An extra large smooth tomato, fine for slicing and canning. Few seeds.

PONDEROSA—Very large, purple colored fruit. The large fruits are extra fine for slicing. No garden complete without this variety.

GOLDEN PONDEROSA—Fruit large and solid. Color a beautiful golden yellow, sometimes with a blush of red. Superior quality.

All tomato plants 15c per dozen; 95c per 100.

POTTED TOMATO PLANTS

EARLIANA, JEWELL, RED HEAD, JUNE PINK, STONE, BEEFSTEAK, PONDEROSA—30c per dozen. By mail 65c per dozen.

SWEET POTATOES

RED BERMUDA and NANCY HALL—We grow our sweet potato plants each year from certified seed. This seed generally costs more than common seed, but plants grown from this seed are worth more. Nancy Hall is a fine yellow, vineless sweet potato. Yields well in all North Missouri soils. Red Bermuda is an early variety, yielding a good crop of good sized red potatoes. Each, 50c per 100.

CABBAGE

JERSEY WAKEFIELD—Early pointed heads. **COPENHAGEN MARKET**—Early round heads, as early as Jersey Wakefield and will average twice the size. Fine quality.

EARLY FLAT DUTCH—Second early. Flat heads. An improved strain.

PREMIUM LATE FLAT DUTCH—Standard late cabbage. Large flat heads.

FROST PROOF CABBAGE PLANTS

I do not handle any of the southern grown plants, for a good home grown plant set out after April 15 will do far better than the southern grown plants. Before sending out any cabbage plants I try to get them hardened to outside weather conditions so that they will stand frosty weather without killing. Frost-proof plants are generally ready April 15 to 20. Jersey Wakefield and Copenhagen.

All cabbage plants, 12 for 10c; 25 for 15c; 50 for 25c; 100 for 50c.

CAULIFLOWER

EARLY SNOWBALL—10c per dozen.

PEPPERS

Sweet peppers grow in popularity each year for use in salads, cooking and pickles. A few plants will usually supply all the peppers a family will use. Chinese Giant, Ruby King, Golden Queen Mammoth and Harris's Early Giant are all large sweet peppers. Neapolitan is early but smaller than the later kinds. Pimientos are small but meat is much thicker. Hot cayenne are small hot peppers used for seasoning chilli sauce and pickles. All varieties, 15c doz.

EGG PLANT

NEW YORK PURPLE—Fruit large and smooth. 15c per doz.

SAGE

Plants of Mammoth Broad Leaved Sage grown in pots. Ready about the middle of May. 6 for 25c.

CELERY

Many home owners think celery is a very difficult vegetable to grow in our North Missouri soil. It may not be possible to grow celery on a large commercial scale, but no home garden owner need deprive himself of this luxury. Celery can be classed as a luxury when you grow it at home and get that fine flavor which is completely lacking in the shipped article. Any garden soil that will grow good lettuce and cabbage may easily produce a family supply of this welcome delicacy. Many home owners are finding this out about celery as you will see in the two un-

solicited letters. Last year we sold 30,000 celery plants and will have 100,000 for sale this year. Set the plants 6 to 8 inches apart in a straight row. Keep them hoed clean. When celery is a foot high toward the last of August gather each stalk up straight and tie it at the top with a string. To blanch it use boards against the rows or tie paper around each stalk, or use a tile or anything else that will exclude the light from the stalks and the self-blanching kinds will be ready to use in a short time.

Golden Self Blanching, Henderson's Easy Blanching and White Plume for fall use. Giant Pascal for winter use. Plants ready early in June. 25 plants, 15c; 50 plants 25c; 100 for 50c.

Cora, Mo., March 24, 1927.

Mr. T. G. Banning,
Dear Sir:

The celery plants can be sent when their season comes. I raised some of the finest celery last year from your plants I ever saw. Check for \$3.65 enclosed for seeds and plants.

Mrs. N. C. Morris.

Marceline, Mo., June 22, 1927.

Dear Mr. Banning:

I hope I have not waited too long for my celery plants. This is the third year I have ordered celery plants from you and have always had fine celery for use up until Christmas.

Please send me 100 Golden Self Blanching and 50 Giant Pascal. I don't like the plants too small, please. I am enclosing check for same. I thank you.

Mrs. Arthur Jobson.

FLOWERING PLANTS and BULBS

These plants ready about May 1 for setting out.

CANNAS

Three varieties ready early in May. These cannas are the best three kinds which were grown in the Brookfield Park Oval Canna beds during the summer of 1928. All free bloomers and strong growers. Grow 3 to 4 feet tall.

KING HUMBERT—Bronze leaves. Large scarlet flowers. Height 4 feet.

YELLOW KING HUMBERT—Large green foliage with deep yellow flowers spotted with red. Height 4 feet.

THE PRESIDENT—Large green foliage growing to a height of 4 feet. Flowers a rich glowing red.

Any Canna, 20c each; 6 for \$1.00.



Cannas



Gladiolus

GLADIOLI

More gladioli are planted each year. Easy to grow. Just plant the bulbs, four or five inches deep, hoe them a little and you cannot help having flowers for your home. Blooming size bulbs, mixed colors. 12 bulbs for 35c; 25 bulbs for 65c; 50 bulbs for \$1.00.

ASTERS—Queen of the market and American Branching. Both varieties mixed colors. Doz., 20c.

PANSIES—In bud and bloom, 6 for 25c.

SALVIA or SCARLET SAGE—6 for 25c.

SNAP DRAGON—Mixed colors, 6 for 25c.

VERBENAS—6 for 25c.



Peonies

PEONIES

Peonies are the most widely planted and popular of all hardy flowers. Once planted with hardly any care at all, they will produce flowers for a life time. They are easy to grow, but do best if given rich soil in a sunny place. They are fine for planting in permanent locations for they do not have to be disturbed for years. Fall is the proper time to set them and orders for roots can be filled about September 15. I can take your order any time for fall delivery. Best double varieties are listed. Strong divisions, 3 to 5 eyes.

COURONNE DE OR—White with gold stamens and carmine tips. Late. Each, 50c; 5 for \$2.25.

FESTIVA MAXIMA—White, carmine tips at center. Very early and best white. Each 50c; 5 for \$2.25.

DUC DE WELLINGTON—Ivory white, large, double, fragrant. Midseason. Each 50c; 5 for \$2.25.

DUCHESS DE NEMOURS—White, green tips at center fragrant. Midseason. Each 50c; 5 for \$2.25.

DORCHESTER—Pale pink, large, fragrant. Very late. Each 50c.

MADAME LEBON—Bright cherry pink, very large. Midseason. Each 50c; 5 for \$2.25.

DELACHEI—Deep purple-crimson. Late. Each, 75c; 5 for \$3.00.

MEISSONIER—Brilliant reddish purple. Midseason. Each 75c; 5 for \$3.00.

NIGRICANS—Dark crimson, compact bloom. Midseason. Each, 75c; 5 for \$3.00.

PRINCE IMPERIAL—Brilliant purplish scarlet. Very large. Late. Each 50c; 5 for \$2.25.

PEONY COLLECTION—Selection by the Nursery. 2 white, 1 pink, 1 red, for \$1.50, post-paid.

PERFECTION—Purple and lavender; very beautiful.

QUEEN OF THE MAY—Lilac with rose tint; one of the best.

SAN SOUCI—Canary yellow and crimson brown.

ORIENTALS—Intense blue; beautifully marked.

VIOLETS

Single, purple, fragrant, hardy. Per 25, 75c; per 100, \$2.00.

DUTCH BULBS

Every spring when tulips, hyacinths and narcissus are in their full glory of bloom folks say: Oh, if I had only planted some bulbs last fall. Just look how pretty the flowers are in the yards of my neighbors. These bulbs come from Holland and can only be planted in the fall months. It is hard to set a price on these bulbs at this time of the year. Last fall tulips were cheaper and better than they had been for several years and we sold them a great deal cheaper than we expected to be able to do so. Send in your orders and we will quote the prices about Sept. 1.

TULIPS—Darwin tulips bloom a little later than the early varieties, but are better and hold their color and freshness for a long time. There is no flower that makes more of a show than Darwin tulips on their tall stems.

HYACINTHS—The fragrant flowers push through the ground almost before the leaves of the plant. A bouquet of them will perfume a house. Mixed colors for bedding.

NARCISSUS or DAFFODILS—What is finer than some of these early yellow flowers blooming by your doorstep in the spring, almost before the snow is gone.

IRIS

Sometimes called hardy orchids because of their exquisite coloring.

	Each Rate	5 Rate
Clumps	\$0.50	\$0.40
Strong Divisions15	.60

Each clump makes 10 or more divisions. Named in order of blooming.

AMERICAN BLACK PRINCE—Dark purplish hue; very early.

CELESTA—Pale azure blue, large.

MADAME CHEREAU—White frilled with clear blue. Long season.



Iris

NURSERY STOCK

Nursery stock quoted in this list is grown by the Neosho Nurseries Co., of Neosho, Mo., in the heart of the Ozark Fruit Country, where all fruits reach perfection in growth and quality. This nursery is one of the most reliable in the country with over 800 acres in test orchards and nursery fields.

You would buy their trees if you could see them. They look good. They are good, clean and healthy, with plenty of roots, with sturdy trunks, uniform in size, graded by diameter two inches above the ground, and full of vitality. You will be pleased with their small fruits and shade trees, roses, shrubs, vines and perennials. They guarantee satisfaction on arrival of your order. They try to be longer on performance than they are on promises.

This nursery stock is not to be compared with the small stock advertised by radio and mailed out by some firms. Why buy small size trees and shrubs by mail when for almost the same price, you can get full size stock which will be two or three years ahead of mailing size. We filled a number of mail orders for nursery stock last spring with satisfaction to all.

Prices on fruit trees are usually quoted according to height only. Obviously that is a poor measure of value because the planter cuts off the top when transplanting. That is why the Neosho Nursery Co. grades and sells their fruit trees by diameter of the trees, measuring two inches above the ground. It is the part of the tree left after transplanting that counts in making a good, thrifty fruit tree.

I have sold many orders of this nursery stock and have received many compliments on the quality of stock delivered to customer.



Delivering Neosho Nursery Stock

Meadville, Mo., April 18, 1927.

Mr. T. G. Banning,
Brookfield, Mo.

Dear Sir:

I am enclosing a check to pay for the trees. They came Sunday and are in splendid shape. Many thanks to you for your promptness.

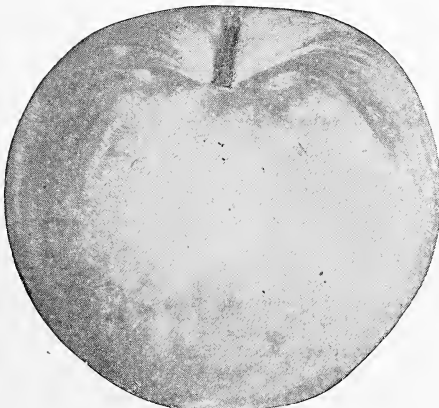
Yours truly,

Belva Humphrey.

If you only need one tree, vine or shrub, your order will be given careful attention. No order too large or too small. A small amount spent for trees or shrubs will add many times their cost to the value of your home.

PRICES

The prices quoted are F. O. B. Nurseries at Neosho, Mo. The prices made are for payment in advance and orders are shipped direct to customers by mail or express, according to size of package.



The nursery guarantees your satisfaction upon arrival of your order. If you should receive any unsatisfactory stock heel it in subject to disposal by nursery and they will replace it free. All claims should be made on arrival of goods.

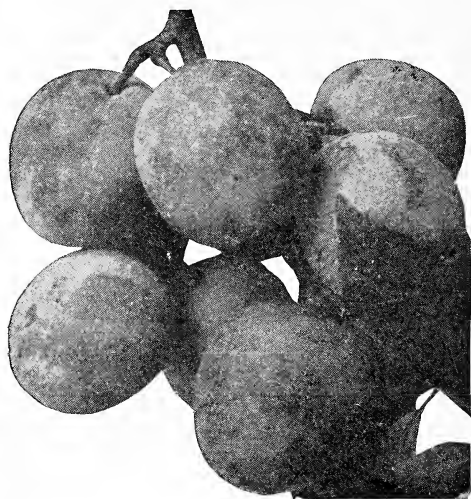
STANDARD APPLES

2 year, 2 year top, 2 year roots:

Diameter	Height	1 to 4	5 to 24	25	100
		Rate	Rate	Rate	Rate
11-16 up	5 ft. up, branches	\$.075	\$.065	\$.055	\$.050
9-16, 11-16	4 ft. up	\$.65	\$.55	\$.45	\$.40
	3 1/2 to 5 ft.	\$.55	\$.45	\$.35	\$.30
	1 year, 1 year top:				
9-16 up	4 to 6 ft.	\$.50	\$.40	\$.35	\$.30
3-8 to 1-2	3 ft. up	\$.40	\$.35	\$.30	\$.25
5-16, 7-16	3 to 4 1/2 ft.	\$.25	\$.20	\$.15	\$.12

- | | |
|----------------------|--------------------|
| Early Summer | Winesap |
| Liveland Raspberry | Rome Beauty |
| Yellow Transparent | Stayman Winesap |
| Red Astrachan | York Imperial |
| Wilson Red June | Northern Spy |
| Duchess of Oldenburg | Mammoth Black Twig |
| Early Harvest | Wealthy |
| | Fall |
| | King David |
| Maiden Blush | Grimes Golden |
| | Winter |
| | Jonathan |
| Ben Davis | Delicious |
| Winter Banana | Willow Twig |

Grimes Golden are double worked and same price as 2 year apple.



PEACHES

Diameter	Height	1 to 4	5 to 24	25	100
11-16 up	5 ft. up	Rate	Rate	Rate	Rate
9-16	4 ft. up	\$.60	\$.50	\$.40	\$.35
	3 ft. up	.40	.30	.25	.20

Early

Mayflower—White Semi-Cling.
 Greensboro—White Semi-Cling.
 Arp Beauty—Yellow Semi-Cling.
 Early Rose—Red and White Cling.
 Carmen—White Semi-Free.

Midseason

Alton—White Semi-Free.
 Hiley—White Free.
 Champion—White Free.
 Belle of Georgia—White Free.
 J. H. Hale—Yellow Free.
 Early Elberta—Yellow Free.
 Elberta—Yellow Free.
 Elberta Cling—Yellow Cling.

Late

Late Crawford—Yellow Free.
 Late Elberta—Yellow Free.
 Krummel—Yellow Free.
 Heath Cling—White Cling.

PLUMS

Diameter	Height	1 to 4	5 to 24	25	100
11-16 up	5 ft. up	Rate	Rate	Rate	Rate
9-16, 11-16	4 ft. up	\$.70	\$.60	\$.50	\$.45
		.60	.50	.40	.35

Wild Goose, very early
 Italian Prune
 American Improved
 Gold
 Endicott Mammoth
 Gold
 Omaha
 Red June
 Abundance
 Burbank
 Shropshire
 Wickson
 Damson

CRAB APPLES

(Same price as apples)

EXCELSIOR—Very large; midseason.
HYSLON—(Late). Florence.

CHERRIES

Diameter	Height	1 to 4	5 to 24	25	100
11-16 up	3½ ft. up	Rate	Rate	Rate	Rate
9-16, 11-16	3½ ft. up	\$1.00	\$.90	\$.80	\$.70
7-16, 9-16	2½ ft. up	.80	.70	.60	.50
		.60	.50	.45	.40

Early Midseason

Early Richmond (May) Montmorency

HANSEN'S HYBRID

Hanska Sapa Waneta Opata



Montmorency Cherries



Elberta

STANDARD PEARS

Anjou	Seckel
Bartlett	Winter Nellis
Flemish Beauty	Kieffer
Lincoln	Garber

Diameter	Height	Each	5
11-16 in. up	4½ ft. up, 2 yr.	Rate	Rate
9-16, 11-16	4 ft. up, 2 yr.	\$.125	\$1.00
		.90	.70

One Year

Height	Each	5
4 feet up	Rate	Rate
3 feet up	\$.60	\$0.50
	.50	.40

DWARF PEARS

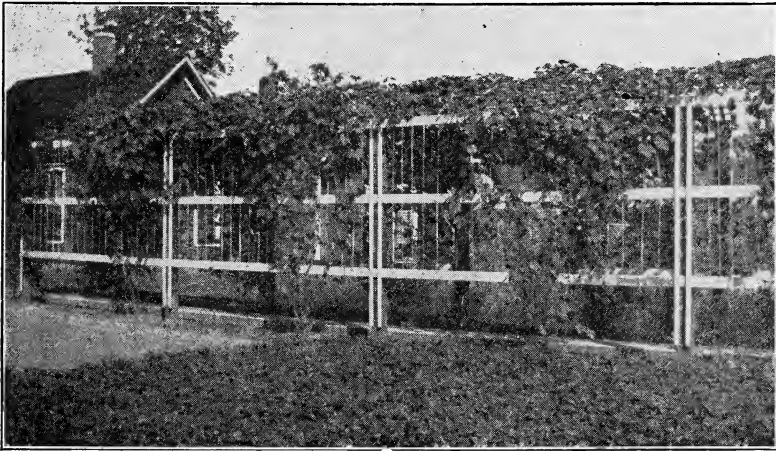
½ to ¾	1 to 4	5
Rate	Rate	Rate
\$.75	\$0.75	\$0.65
Anjou—Midseason	Bartlett—Early	
Duchess—Midseason	Seckel—Midseason	

CURRANTS

Perfection, 2 yr. No. 1	1 to 4 Rate	5 Rate
	\$.35	\$0.30

GOOSEBERRIES

Downing, 2 yr. No. 1	Each	5
	\$.30	\$1.25
Oregon Champion, 2 yr. No. 1	.45	1.75



Brookfield Home Grape Arbor

GRAPES

One of the best fruits to eat right from the vine and one of the easiest to grow. How would you like to have a grape arbor like the one shown in the photograph? This is an actual photograph of a grape arbor right here in Brookfield. The camera was small so only five vines show, but there are six on each side. These one year vines were set out in April, 1922, and the photograph was taken in October, 1923, or a little less than eighteen months after planting. In 1923 the arbor bore all the grapes one family could use. Twelve Concord grape vines to plant an arbor like this cost only \$1.80. Any home owner can get the same results in almost any kind of soil. It is simply a case of doing it. There is a place for grape vines in every yard. These vines came from the Neosho Nursery Co., and I can sell you more just like them.

good black garden soil is all right to set asparagus in. Plant roots a foot apart and make rows two to three feet apart.

2 yr. roots, 12 for 40c; 25 for 70c; 100 for \$2.00.

STRAWBERRIES

Finest of all fruits. Every garden should contain a strawberry patch. A very small plot of ground will furnish all the berries a family can use on the table and some to preserve. With strawberries in your garden you can have fresh berries whenever you want them. To plant a bed, make rows 2½ feet apart and set the plants 15 inches apart in the rows. If you want to put out a patch large enough to cultivate with horse tools, make rows 3½ feet apart and set plants 15 inches apart in the rows. When cold weather comes the following December, cover the strawberries two inches deep with straw or prairie hay. We have three spring bearing varieties, Premier, Senator Dunlap and Aroma.

PREMIER is a large early berry that will generally put out more fruit buds if the first ones are killed by frost.

DUNLAP and **AROMA** are two fine mid-season berries either of which will bear a large crop of fine fruit. Strong thrifty plants. 50 plants 50c; 100 for 90c; 200 for \$1.75.

MASTODON—A new everbearing variety which I believe is the best and largest strawberry of the everbearers. It has been tried out generally and proved its good qualities. We can fill orders for a limited quantity at \$2.75 per 100.

	Each	5	25
Concord (black), 1-yr. No. 1	\$0.20	\$0.15	\$0.12
Niagara (white), 1-yr. No. 1	.25	.20	.15
Agawam (Red), 1-yr. No. 1	.25	.20	.15
Worden (black), 1-yr. No. 1	.20	.18	.15
Moore's Early, 1-yr. No. 1	.20	.15	.12

BLACKBERRIES

	Per	Per	Per
	10	25	100
Early Harvest	\$0.60	\$1.25	\$4.00
Eldorado75	1.50	5.00
McDonald60	1.25	4.00
Lucretia Dewberry60	1.25	4.00

RASPBERRIES

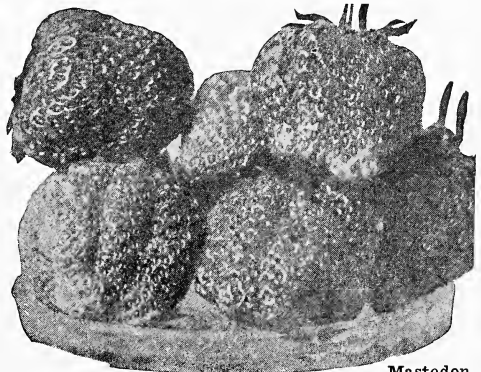
	10	25	100
Cumberland (black)	\$0.60	\$1.25	\$4.00
Cuthbert (red)60	1.25	4.00
Kansas (black)60	1.25	4.00
St. Regis Everbearing (red)60	1.25	4.00
Cardinal (purple)60	1.25	4.00

RHUBARB

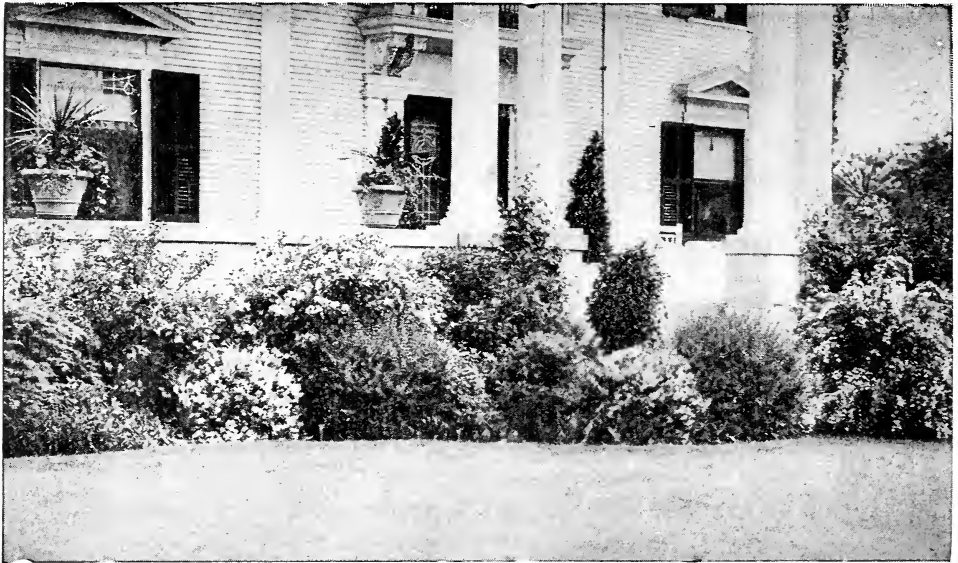
Strong Divisions, 5, 60c; 25, \$2.00.

ASPARAGUS

WASHINGTON—This strain of asparagus was selected by Department of Agriculture, Washington, D. C., and has proved to be almost immune to rust a disease that has weakened and killed much asparagus. It is now considered the best in asparagus. To set roots, dig a small trench, deep enough so that the roots can be spread out, and the crowns three inches deep. Any



Mastodon



Foundation Planting

SHRUBS

Strong, vigorous plants. Sizes varying with varieties.

Each 5 Rate

Althea or Rose of Sharon, pink, white or red, 3-4 ft.	\$0.70	\$0.60
2-3 ft.50	.40
Barberry, Japanese, 2-2½ ft.45	.40
18-24 inches35	.30
12-18 inches25	.20
Bechtel Flowering Crab, 3-4 ft.	1.50	1.25
Butterfly Bush, 2 yr., No. 150	.40
Sweet Shrub, 18-24 in.70	.60
Deutzia Lemoinei, 18-24 in.60	.50
Deutzia, Pride of Rochester, 3-4 ft.50	.40
2-3 ft.45	.35
Dogwood, Red Twigged, 2-3 ft.50	.40
Elder, Golden, 3-4 ft.70	.60
Golden Bell, Weeping, 2-3 ft.50	.40
High Bush Cranberry, 2-3 ft.80	.70
Honeysuckle, Japanese Bush, 3-4 ft.60	.50
Hydrangea Arborescens (Hills of Snow), 2-3 ft.75	.65
Hydrangea P. G., 2-3 ft.75	.65
Hydrangea P. G., tree form, 3-4 ft.	1.50	1.25
2-3 ft.	1.00	.90
Japan Quince, 2-3 ft.70	.60
Lilac Budded (Whips), dark purple, red, double white and pink, 3-4 ft.	1.00	.90
2-3 ft.90	.80
Lilac (Common Purple), 3-4 ft.60	.50
2-3 ft.50	.40
Snow Ball, 2-3 ft.85	.75
Snowberry, 18-24 in.50	.40

SPIREA or BRIDAL WREATH—In the shrub family there is none that is more adapted to all conditions and soils than the spireas. Van Houtti or Bridal Wreath is the best and most beautiful of all spireas. The branches of this shrub gracefully droop under their burden of white flowers when in bloom in May and June. A few spireas planted around a house make a

home. I can furnish strong spireas, Van Houtti, in three sizes as follows:

Large 3-yr. blooming size, each 50c; 5 for \$2.35, delivered in Brookfield; by mail postpaid, each 60c; 5 for \$2.65.

Large 2-yr. size, 2 to 3 ft., each 40c; 5 for \$1.75, delivered in Brookfield; by mail, each 50c; 5 for \$1.90, postpaid.

Large 1-yr. size, 1½ to 2 ft., each 30c; 5 for \$1.25, delivered in Brookfield. By mail postpaid, each, 40c; 5 for \$1.35.

Spirea, pink 2-2½ ft.60	.50
Spirea, crimson, 18-24 inches65	.55
Syringa or Mock Orange, 3-4 ft.60	.50
Tamarisk, pink flower, 3-4 ft.60	.50
Weigela, pink, 3-4 ft.75	.65
2-3 ft.65	.55



Spirea Van Houtti

HEDGE

	5 Rate	25 Rate	100 Rate
California Privet, 5 canes up, 2-3 ft.	\$0.12	\$0.10	\$0.08
4 canes up, 18-24 ins.08	.07	.06
Amoor Hardy Privet, 5 canes up, 2-3 ft.20	.15	.12
4 canes up, 18-24 ins.15	.12	.10
3 canes up, 12-18 ins.12	.08	.06
Spirea, Van Houttei, 2-3 ft.30	.25	.20
18-24 in.25	.20	.15
12-18 in.20	.15	.12
Japanese Barberry, 18-24 in.30	.25	.20
12-18 in.20	.18	.15

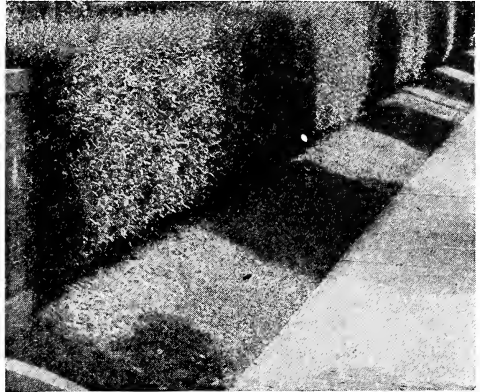
ROSES

2 YEAR FIELD GROWN NO. 1

Everblooming varieties marked with asterisk (*)

Teas and Hybrid Teas—

*Gruss An Teplitz, red, each	\$0.85
*Kaiserin Augusta Victoria (white, hardy)85
*Killarney Pink (clear bright pink, hardy)85



California Privet

Climbing Roses—

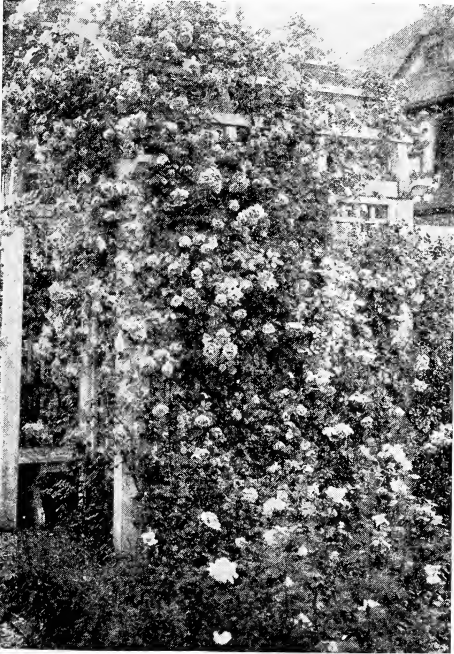
Climbing American Beauty70
Dr. Van Fleet (flesh pink)70
Silver Moon (silvery white)70
Dorothy Perkins (shell pink)60
Excelsa (radiant blood red)60
Paul's Scarlet Climber70
Gardenia (brigh yellow shading to cream)70

CHINESE BRIAR

HUGONIS—Single yellow rose recently introduced from China. The earliest rose to bloom. Generally in bloom early in May. Makes attractive shrub up to six feet tall. Each \$1.00.

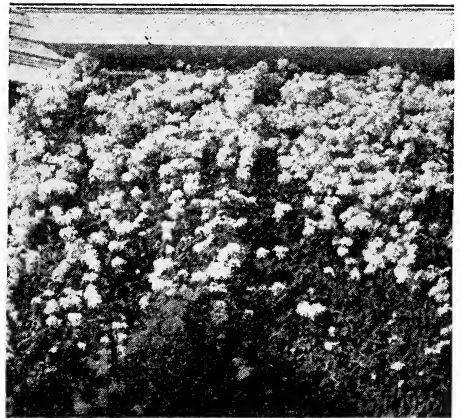
CLIMBING VINES

	1 to 4 Rate	5 Rate
Boston Ivy, 2-yr.	\$0.50	\$0.45
1-yr.40	.35
English Ivy, Evergreen50	.45
Clematis, Japanese (white)50	.45
Clematis (purple), Large Flowering	1.00	.90
Honeysuckle, Halls (white)35	.30
Trumpet Vine35	.30
Wisteria, Japanese50	.45
Honeysuckle (scarlet) Trumpet50	.45
American Ivy35	.30



Climbing Roses

*La France (bright pink)85
*Maman Cochet (rich rosy pink)85
*Madame Caroline Testout (light pink)85
*Ophelia (light salmon, blending to yellow, hardy)85
*Radiance (rosy carmine with yellow)85
Radiance Pink85
*Wm. R. Smith (silvery white and pink)..	.85
*Sunburst (bronze yellow)85
Hybrid Perpetuals—	
Marshall P. Wilder (cherry pink)85
*Frau Karl Druschki (Snow Queen, very hardy)85
Paul Neyron (bright ruddy pink)85
General Jacqueminot (rich red)85
Your choice of any five of these roses.....	3.75



Clematis



Norway Maple

ORNAMENTAL TREES

	1 to 4 Rate	5 Rate
Ash, Mountain, 6-8 ft.	1.75	1.50
Box Elder, 6-8 ft.	\$1.25	\$1.00
Catalpa, Umbrella, 5 ft. stems	2.00	1.75
Crab, Bechtel's Flowering, 3-4 ft.....	1.50	1.25
Dogwood, White Flowering, 2-3 ft.	1.00	.90
Linden, American, 6-8 ft.	2.50	2.25
Maple, Norway, 6-8 ft.	2.50	2.25
Maple, Silver, 8-10 ft.	2.00	1.75
6-8 ft.	1.50	1.25
Maple, Sugar, 6-8 ft.	3.00	2.75
Mulberry, Russian, 6-8 ft.70	.60
Mulberry, American, 6-8 ft.	1.50	1.25
Willow, Weeping, 8-10 ft.	1.75	1.50
6-8 ft.	1.25	1.00

Poplar, Carolina, 8-10 ft.	1.00	.75
6-8 ft.75	.60
5-6 ft.50	.40
Poplar, Lombardy, 10-12 ft.	1.50	1.25
8-10 ft.	1.00	.75
6-8 ft.80	.65
Red Bud or Judas Tree, 5-6 ft.	1.50	1.25
Tulip, 6-8 ft.	2.00	1.75
5-6 ft.	1.25	1.00

EVERGREENS

Neosho Evergreens are carefully hand dug, the balls of earth wrapped with burlap. Frequent transplantings with root prunings in the nursery row develop a mass of fibrous feeding roots within the ball. Our guarantee is to deliver good, thrifty specimens that will meet your approval on arrival. There is positively no guarantee as to growth.

AMERICAN GLOBE ARBOR VITAE (*Thuja Occidentalis Globosa*). 12-15 in. spread, \$3.50; 18-24 in. spread, \$5.00.

AMERICAN PYRAMIDAL ARBOR VITAE (*Thuja Occidentalis Pyramidalis*), 2-3 ft., \$4.50; 3-4 ft., \$7.00.

BAKER'S PYRAMIDAL ARBOR VITAE (*Biota Orientalis Pyramidalis*). 30-36 in., \$5.00; 3-4 ft., \$8.00; 4-5 ft., \$10.00.

BERCKMAN'S GOLDEN ARBOR VITAE (*Biota Orientalis Aurea Nana*)—18-24 in., \$5.00; 24-30 in., \$7.00; 30-36 in., \$9.00; 3-4 ft., \$12.00.

BONITA (*Biota Compacta*)—18 in. spread, \$6.00.

CHINESE COMPACTA ARBOR VITAE (*Biota Orientalis Compacta*)—30-36 in., \$5.00; 3-4 ft., \$7.00.

COMMON CHINESE ARBOR VITAE (*Biota Orientalis*)—Seedling type, 30-36 in., \$3.00; 3-4 ft., \$4.00; 4-5 ft., \$6.00.

IRISH JUNIPER (*Juniperus Hibernica*)—2-3 ft., \$5.00; 3-4 ft., \$7.00; 4-5 ft., \$10.00.

JAPANESE NANDINA (*Nandina Domestica*)—18-24 in., \$3.00.

MAYHEW'S GOLDEN ARBOR VITAE—18-24 in., \$3.50; 24-30 in., \$5.00; 30-36 in., \$7.00.

NORWAY SPRUCE (*Picea Excelsa*)—2-3 ft., \$4.00; 3-4 ft., \$6.00.

PFITZER'S JUNIPER (*Juniperus Chinensis Pfitzeriana*)—12-18 in. spread, \$4.50; 18-24 in. spread, 7.00.

RETINOSPORA PLUMOSA—2-3 ft., \$5.00.

ROSEDALE ARBOR VITAE (*Biota Orientalis Hybrid*)—12-18 in., \$1.75; 18-24 in., \$2.50; 24-30 in., \$3.50; 30-36 in., \$5.00.



Evergreens in Nursery Rows

PERENNIALS

Prices, 25c each; \$2.50 dozen.

- ACHILLEA**, Pearl—White, June-July, 18 ins.
- ALYSSUM**, Saxatile Compactum—Yellow, April-May, 10 inches.
- AQUILEGIA**—Blue, Yellow or Mixed, May-June, 24 inches.
- ASTERS**—Blue and Red. Sept.-Oct., 36 ins.
- CAMPANULA**, Bellflower—Blue, June-Oct., 36 inches.
- CANTERBURY BELLS**—Mixed. July-Aug., 24-36 inches.
- GOLDEN DAISY**—Yellow, June-July, 24 ins.
- CHRYsanTHEMUM**—Hardy, mixed. Sept.-Oct., 36 inches.
- SHASTA DAISY**, Alaska—White, July-Aug., 24 inches.
- LARKSPUR**—Blue, summer, 48 inches.
- LARKSPUR**, Hybrids—Mixed, summer, 48 ins.
- DIANTHUS** (Pinks)—Pink, summer, 8 ins.
- DIANTHUS**, Sweet William—Red, white, mixed, May-June, 18 in.
- FOG GLOVE**—Mixed, June-July, 36 ins.
- FUNKIA**, Plaintain Lily—Blue, July 24 ins.
- GALLARDIA**, Blanket Flower—Yellow, summer, 24 ins.
- HOLLYHOCKS**—Double, mixed, July-August, 40 inches.
- POPPY**, Orientale—Mixed, May-June, 30 ins.
- PHLOX**—White, red, pink, salmon summer, 24 inches.
- PAINTED DAISY**—Mixed, May-June, 18 ins.
- GOLDEN GLOW**—



Phlox

DEAR FRIENDS:

I trust you have found something of interest in this little book. There are many things possible of interest to you that I have not had room enough to put in, but I will be glad to answer any question that may be of interest to you. Just write and let me know. I do not know everything about this business, but am glad to help you in your garden problems if I can.

Yours truly,
T. G. BANNING.

FERTILIZER

I have some inquiries for bone meal, pulverized sheep manure and other fertilizers. I get my supplies from one of the best companies making these goods and can quote prices this spring. F. O. B. Brookfield. Pulverized sheep manure, per 100 lbs., \$2.50. Bone meal, per 100 lbs., \$3.50.



BEAUTIFY YOUR HOME—USE VIGORO

You can beautify your home by having a velvety green lawn, crisp, succulent vegetables, colorful flowers, luxuriant shrubbery, and stately trees if you will keep in mind the fact that plants, like human beings, must be fed—and fed the right kind of plantfood.

VIGORO provides an economical, practical, and effective way to secure finest results. Economical because the cost is only 10c to 20c for every 100 square feet. Practical because it is clean, odorless, easy to apply—can be sown by hand like grass seed or applied with an ordinary kitchen colander. Effective because it contains all of the elements of plant food required to produce early, vigorous growth and bring fruit, flowers and foliage, to full development. Complete directions in every bag. Economical, practical, effective. 100-lb. bag, \$5.00; 50 lb. bag, \$3.00; 25 lb. bag, \$1.75; 5 lb. pkt., 50c. Prices F. O. B. Brookfield.



VIGORO
Specially prepared plant food

A Swift & Company Product.

NEW WAY TO KILL GARDEN BUGS

PROTECT your flowers and vegetables this new way. Surprisingly easy! Simply sprinkle with a new kind of non-poisonous powder called PLANTGARD. Not only are bugs, worms and insects killed, but this almost magical powder also fertilizes the ground. No wonder flowers grow larger and brighter colored! Vegetables mature quicker and are more tasty. Yet it costs only a few cents to protect an entire garden bed.

Ask for Plantgard today.

Plantgard
FOR GARDEN PROTECTION



BANNING'S SEED HOUSE

BROOKFIELD, MO.

Postmaster—Return Postage Guaranteed.

For _____

Missouri

INDEX

Apples	17	VEGETABLE SEEDS	6-12
Apples, Crab	18	Beans	6-7
Asparagus	19	Beets	7
Blackberries	19	Cabbage	7
Cherries	18	Carrot	8
Currants	18	Cauliflower	8
Evergreens	22	Celery	8
Flower Seeds	12-13	Cucumber	8
Flowering Plants and Bulbs	15-16	Dill	9
Fertilizer	23	Lettuce	9
Gooseberries	18	Melons	9
Grapes	19	Mustard	9
Landscape Gardening	2	Okra	9
Lawn Grass Seed	6	Onions	9-10
Mail Orders	5	Onion Sets	9
Nursery Stock, trees	17-18	Parsnips	10
Peaches	18	Parsley	10
Pears, Standard	18	Peas	10
Pears, Dwarf	18	Peppers	10
Plums	18	Pop Corn	8
Perennials	23	Pumpkin	11
Raspberries	19	Radish	11
Rhubarb	19	Sage	11
Roses	21	Salsify	11
Strawberries	19	Spinach	11
Shrubs	20-21	Swiss Chard	7
Trees, Ornamental	22	Sweet Corn	8
Vegetable Plants	14-15	Squash	11
Vegetables by Mail	4	Tomato	11-12
		Turnip	12
		Vines, Climbing	21