

Historic, Archive Document

Do not assume content reflects current scientific knowledge, policies, or practices.

NOV 14 1929

LIBRARY

RECEIVED

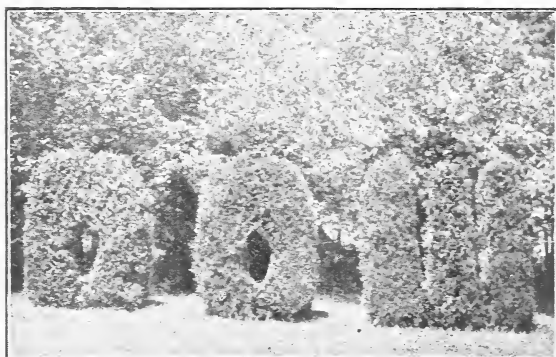
★ APR 9 1929 ★

Department of Agriculture

The **DOW**

Nurseries

North Epping
New Hampshire



Price List

Superseding All Previous Issues

Fruit Trees

Small Fruits

Evergreens

Shrubs Vines Perennials

HARDY VARIETIES FOR NEW ENGLAND



D. WEBSTER DOW, Proprietor

Telephone Epping 74-2

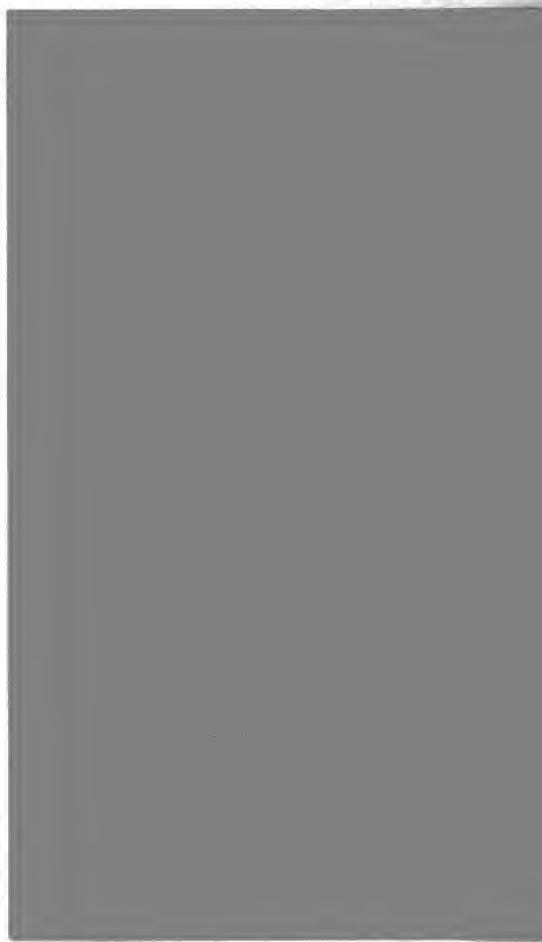
**Please note on page 19
our special offer**

GARDEN SEEDS

AND

LAWN SEED

**of varieties we have tested
and guarantee to give
satisfaction**



The Dow Nurseries are located in North Epping, N. H. three miles north of Epping Village and R. R. Station, on motor road to Durham and Dover. Visitors are cordially invited to inspect our Nurseries.

IMPORTANT.

We have at the nursery varieties which are not listed in this catalog, and larger specimens of various kinds. If you cannot visit the nursery and make your own selection send us your want-list, for quotations.

We can give you better selection of stock and better service if you will favor us with your order before the shipping season commences.

NON GUARANTEE—While we aim to have our trees and plants true to label, and hold ourselves prepared to replace, on proper proof, all that may prove untrue, we do not give any warranty expressed or implied, and in case of any error on our part, it is mutually agreed between the purchaser and ourselves that we shall not, at any time, be held responsible for a greater amount than the original price paid for the stock.

TERMS:

Cash with orders or on delivery.

Prices Net.

ALL PRICES herein named are for Stock at the Nursery or Delivered at the Railroad Station. Boxing and Packing will be charged at actual cost.

When within trucking distance we will deliver at cost, upon special arrangement, thus insuring prompt and safe delivery, and eliminating packing and express charges.

PARCEL POST SHIPMENTS.

If stock is ordered shipped by Parcel Post ten per cent must be added to catalog prices to cover postage and special packing.

Claims for any cause must be made upon receipt of goods.

NOTICE

The varieties of fruits and small fruits listed in this catalog have been approved by horticulturists at the Experiment Stations of all the New England states. We offer only varieties which are desirable for planting in New England.

APPLES.

Standard, Extra Size 3 and 4 years, 75c each
Standard, 5 to 7 feet 2 and 3 years, 50c each

Quantity Prices depend on number and Varieties wanted. Send list for Special Quotations.

SUMMER VARIETIES.

Duchess. Yellow and red. Dwarf grower. Very hardy.
Red Astrachan. Fine for eating and cooking.
Sweet Bough (August Sweet). Large yellow.
William's Favorite. Beautiful bright red, eating apple.
Yellow Transparent. The earliest of all. Very young bearer.

FALL VARIETIES.

Fameuse (Snow). Red. Good dessert apple. Hardy, juicy.
Gravenstein. Yellow and red. Fine for eating and cooking.
Hubbardston. Red. Old favorite eating apple. Productive.
McIntosh Red. Best of all. Tree matures early. Hardy.
Porter. A popular old variety for home gardens.
Pound Sweet. Yellow. Popular variety. For baking.
Wealthy. Red. Very hardy. Young bearer. Good for eating and cooking.
Wolf River. Large. Red.

WINTER VARIETIES.

Baldwin. Red. Still leader of them all.
Cortland. New variety. Red.
Delicious. Dark Red. Fruit large. Coming variety.
Jonathan. Red.
Northern Spy. Red. Large. Juicy. One of the best.
Opalescent. High colored red. Very handsome and good.
Rhode Island Greening. Best cooking apple known.
Roxbury Russet. The best of the long keepers.
Stayman Winesap. Dessert and cooking.
Spitzenberg. Fancy eating.
Tolman Sweet. Yellow. Excellent for winter baking.
Wagner. Beautiful red. Eating and cooking.
Winter Banana. Yellow and red. Large. Good eating.

CRAB APPLES.

Hyslop. Red.
Transcendant. Large, yellow and red. The best.
Standard, 5 to 7 feet, 2 yrs., 75c each.

DWARF APPLES.

Can be shipped by Parcel Post. Add 10% for postage.
3 to 5 feet. Bearing Size. \$1.00 each.

These are popular for small gardens. For description of varieties see above list.

Baldwin
Duchess

Delicious
McIntosh Red

Yellow Transparent

PEACHES.

Standard, 2 yrs., 4 to 6 ft., 40c each, \$3.50 for 10.

All free stone and best for this climate.

- Greensboro.** White. Red cheek. July.
Carman. White. Red cheek. Middle August.
Champion. White. Red cheek. Late August.
Early Crawford. Yellow. Early September.
Belle of Georgia. White. Red cheek. Early September.
Elberta. Yellow. Middle September The best variety
for commercial or home planting.
J. H. Hale. Yellow. Early October.
Rochester. Yellow. Early September.

CHERRIES.

Standard, 2 years, 5 to 7 feet, \$1.00 each.

- Black Tartarian.** Sweet. Most popular variety raised.
Governor Wood. Sweet. Light yellow. Popular.
Napoleon Bigarreau. Sweet. Pale yellow. Red cheek.
Early Richmond. Sour. Red. The best early variety.
Montmorency. Sour. Red. Large. A good cropper.

PEARS.

Standard, 2 yrs., 5 to 7 ft., \$1.00 each.

- Clapp's Favorite.** Summer. Early. Good quality.
Bartlett. Summer. A popular old favorite.
Seckel. Fall. Good. Small and very sweet.
Sheldon. Fall. An old favorite and very delicious.
Beurre Bosc. Fall. Russet. Very popular.
Duchess. Fall. Large, yellow, melting and sweet.
Anjou. Winter. Handsome. The best late variety.

DWARF PEARS.

3 to 5 feet, \$1.00 each. For description of varieties see
above list.

Can be shipped by Parcel Post. Add 10% for postage.

Clapp's Favorite
Bartlett

Seckel
Duchess

PLUMS.

Standard, 2 years, 5 to 6 feet, \$1.00 each.

- Abundance.** Cherry red. Good for table use and canning.
Burbank. Deep red. The best canning variety. Productive.
Wickson. Red. Large fruit.
Lombard. Early red. Juicy. Very hardy and fruitful.
Red June. Early. Vigorous. Hardy. Productive. Good.
Yellow Egg.

QUINCE.

Standard, 2 years, \$1.00 each.

- Orange.** The standard variety. Best known. Most popular.

RHUBARB.

2-year whole roots, Plants, 25c each, \$2.00 for 10.

Prices on larger quantities on request.

Can be shipped by Parcel Post. Add 10% for postage.
Linneaus. Early. Large and tender. The best.

RASPBERRIES.

75c per dozen, \$3.50 for 100, \$30.00 for 1,000,
except Columbian.

Can be shipped by Parcel Post. Add 10% for postage.

St. Regis. Fall bearing. Red. A good shipper.

June. Red. Very hardy, early, productive.

Herbert. Red. Very hardy and productive.

Cuthbert. Standard Commercial. Red. Very reliable.

× **Latham Red.** Strong Grower. Very Productive.

Golden Queen. Yellow. Early. Good home variety.

Columbian. Purple. Does not sucker. Heavy producer.

Transplants: \$1.50 per doz., \$8.50 per 100.

BLACKBERRIES.

75c per doz., \$3.50 for 100, \$30.00 for 1,000.

Can be shipped by Parcel Post. Add 10% for postage.

Snyder. The best of all. Hardy. Abundant bearer.

Currants and Gooseberries—Owing to the danger of spreading the White Pine Blister Rust, we do not offer these.

GRAPES.

1 year, strong vines, 20c each.

2 years, strong vines, 30c each.

3 years, strong vines, 50c each.

Can be shipped by Parcel Post. Add 10% for postage.

Concord. Popular. Standard variety. Purple.

Moore's Early. Seedling of Concord but earlier. Blue.

Brighton. Very desirable. Red.

Niagara. Vigorous. Productive and sweet. White.

Delaware. Well known. Small. Red.

Worden. Large, earlier than Concord. Black.

Caco. Excellent new grape. Large. Red.

Read Planting Suggestions on last page.

STRAWBERRIES.

EVERBEARING VARIETIES.

75c for 25 plants, \$1.25 for 50, \$2.00 for 100, \$14.00
for 1,000.

Can be shipped by Parcel Post. Add 10% for postage.

Champion.

Mastadon.

STANDARD VARIETIES.

50c for 25 plants, \$1.00 for 50, \$1.50 for 100, \$10.00
for 1,000.

Howard 17. No new variety in recent years has received publicity and met with approval as has Howard 17. It is an early berry of exceptionally good size and quality.

First Quality. Mid-season. Very good for market or for home use. Especially recommended for New England.

Brandywine. Late. Extra large. Bright red.

ASPARAGUS ROOTS.

3-year roots, \$1.00 for 25, \$3.00 for 100,
\$20.00 for 1,000.

2-year roots, 75c for 25, \$2.00 for 100,
\$15.00 for 1,000.

Can be shipped by Parcel Post. Add 10% for postage.

Conover's Colossal. Extra large. Very productive.

Washington. New variety. Especially rust resistant.

Asparagus Roots. Make trenches 3 to 4 ft. apart and set the crowns 8 in. deep and 18 in. apart. Cover with 2 in. of soil when planting and fill in as shoots come up.

EVERGREEN TREES.

Evergreen trees excel all others for beautifying new grounds, the effect being immediate and continuous through the year. We have many varieties in different sizes, suitable for lawn specimens, foundation plantings, groups, hedges and windbreaks.

Evergreens from nursery may be transplanted in the spring and during August and September.

SPRUCES.

Koster's Blue Spruce. A grafted variety. Very distinct and constant in color.

Colorado Blue Spruce. A very pretty shade of blue selected specimen. 1 to 1½ ft. \$3.50, 2 ft. \$6.50, 3 ft. \$9.00, 4 ft. \$13.00, 5 ft. \$16.00, 6 ft. \$20.00.

Colorado Spruce. (Green specimens.) Handsome, erect, and vigorous growing trees. 2 ft. \$3.50, 3 ft. \$5.50, 4 ft. \$8.00, 5 ft. \$10.00, 6 ft. \$12.00.

Norway Spruce. Most popular evergreen. 2 ft. \$1.50, 3 ft. \$2.50, 4 ft. \$4.00, 5 ft. \$5.00, 6 ft. \$7.00.

White Spruce. Compact growing, color bluish green. 2 ft. \$1.50, 3 ft. \$2.50, 4 ft. \$4.00, 5 ft. \$5.00, 6 ft. \$7.00.

Red Spruce. Price same as White.

Douglas Spruce. Soft green velvety foliage, hardy, very desirable. 2 ft. \$2.00, 3 ft. \$3.00, 4 ft. \$4.00, 5 ft. \$5.00, 6 ft. \$7.00.

Black Hills Spruce. 2 ft. \$2.00, 3 ft. \$3.00.

FIRS

Silver Fir. One of the prettiest evergreens. Soft bluish green foliage. Absolutely hardy. Rapid grower. 2 ft. \$4.00, 3 ft. \$6.00, 4 ft. \$8.00, 5 ft. \$10.00, 6 ft. \$12.00.

Balsam Fir. Sweet-scented, dark green, tall, pointed and rapid grower. Native to New England mountains. Popular Christmas trees. 2 ft. \$1.50, 3 ft. \$2.50, 4 ft. \$4.00, 5 ft. \$5.00, 6 ft. \$7.00.

PINES.

White Pine. One of our choicest native evergreens. Will thrive on any soil. 2 ft. \$1.00, 3 ft. \$2.00, 4 ft. \$3.00, 5 ft. \$4.00, 6 ft. \$6.00.

Norway or Red Pine. Very rapid growing of deep green color. Especially desirable for windbreaks. 2 ft. \$1.50, 3 ft. \$2.50, 4 ft. \$3.50, 5 ft. \$5.50.

Scotch Pine. Rapid grower with coarse light green foliage. 2 ft. \$1.50, 3 ft. \$2.50, 4 ft. \$4.00, 5 ft. \$5.50, 6 ft. \$7.00.

Austrian Pine. Rapid grower with long dark green needles. Thrives near the seashore. 2 ft. \$3.00, 3 ft. \$4.00, 4 ft. \$5.00, 5 ft. \$7.00, 6 ft. \$9.00.

Mugho or Dwarf Mt. Pine. Slow growing of bushy habit. 1 ft. spread \$2.00, 18 in. \$3.00, 2 ft. \$4.00.

GOOD TREES AND GOOD TREATMENT

EVERGREEN TREES.

(Continued)

JUNIPERS.

- Common Prostrate Juniper.** Very decorative and artistic. 1 ft. spread \$1.00, 2 ft. \$2.00, 3 ft. \$3.00.
- Golden Prostrate Juniper.** Like the habit of the preceding. Very pretty, low growing and spreading. 1 ft. spread \$1.50, 2 ft. \$2.50.
- Pyramidal Juniper.** Narrow and columnar in shape. 2 ft. \$2.00, 3 ft. \$3.00, 4 ft. \$4.00, 5 ft. \$6.00, 6 ft. \$8.00.
- Savin Juniper.** Spreading. Dark green foliage. 1 ft. \$1.50, 1½ ft. \$2.50, 2 ft. \$3.50.
- Pfitzer's Juniper.** Light green foliage. Spreading. 1 ft. \$2.00, 1½ ft. \$3.00, 2 ft. \$4.50.
- Red Cedar.** Native variety. Pointed and decorative, 2 ft. \$2.00, 3 ft. \$3.50, 4 ft. \$5.00, 5 ft. \$7.00, 6 ft. \$9.00.
- Hemlock.** Very popular. Grows compactly and stands any amount of shearing. Thrives in the shade or in the open. 2 ft. \$3.00, 3 ft. \$4.50, 4 ft. \$6.50, 5 ft. \$9.00.

ARBORVITAE.

- American.** Very popular rapid growing hedge tree. Suitable for trimming. Is effective in groups. 2 ft. \$1.50, 3 ft. \$2.50, 4 ft. \$4.00, 5 ft. \$7.00, 6 ft. \$8.50.
- Siberian.** The dark green foliage of this hardy variety does not burn in the winter. 2 ft. \$3.00, 3 ft. \$4.00
- Pyramidal.** Very dense and compact. Narrow and columnar in shape. 2 ft. \$2.50, 3 ft. \$4.00, 4 ft. \$6.00, 5 ft. \$8.00
- Globe.** Dwarf, round trees, very pretty. 1 ft. \$2.00, 18 in. \$2.50, 2 ft. \$3.50.
- Plume-like Cypress.** Fine pale green foliage. 1½ ft. \$2.00, 2 ft. \$3.50, 3 ft. \$5.00.
- Pea-fruited Cypress.** Upright with flat light green foliage. 1 ft. \$1.50, 2 ft. \$2.50, 3 ft. \$3.50.
- Taxus Canadensis (American Yew.)** Very beautiful 1 ft. \$1.50, 1½ ft. \$2.00, 2 ft. \$3.00.
- Mountain Laurel.** Evergreen Shrub. 1½ ft. \$1.50, 2 ft. \$2.50, 3 ft. \$4.00.

We also furnish all varieties of evergreens in tubs for porch, window and house decoration at above prices, plus 50c each for the tub. They are especially useful for winter decoration and Christmas trees.

Special prices for evergreens in quantity for hedges, or windbreaks, and for deciduous trees for street or roadside planting will be given upon request.

WHATEVER YOU WANT WRITE US

DECIDUOUS TREES.

Deciduous trees planted in suitable spots leave little to be desired for long lasting effects.

- Birch, European White.** Effective white bark. Tall and clear white. 6 to 8 ft. \$2.00.
- Birch, Canoe or Paper.** Native white variety, 6 to 8 ft. \$2.00
- Birch, Cut-leaved weeping.** Bark silvery white. Very graceful. 6 to 8 ft. \$3.00.
- Box Elder.** Rapid grower. Fine street tree. 6 to 8 ft. \$1.00, 8 to 10 ft. \$1.50, 10 to 12 ft. \$2.00.
- Catalpa, Speciosa.** Rapid growing. Showy white flowers in July. 6 to 8 ft. \$1.00, 8 to 10 ft. \$1.50.
- Catalpa, Bungei.** Umbrella shaped. Has large leaves and is very ornamental. 2-year heads \$2.50, 3-year heads \$3.50.
- Crab, Betchel's double flowering.** Covered with fragrant, double pinkish flowers in spring. 3 to 4 ft. \$1.50, 4 to 5 ft. \$2.00.
- Dogwood, white flowering.** White flowers in May. 3 to 4 ft. \$1.00, 4 to 5 ft. \$2.00, 5 to 6 ft. \$4.00.
- Elm, American.** Very graceful. 6 to 8 ft. \$1.00, 8 to 10 ft. \$1.50, 10 to 12 ft. \$2.00.
- Fringe.** See Shrubs.
- Hawthorne.** Double white and double scarlet. Handsome flowers in May. 4 to 5 ft. \$3.00, 5 to 6 ft. \$5.00.
- Horse Chestnut.** Common. 6 to 8 ft. \$2.50.
- Larch, European.** Needles light green, turning beautiful yellow in fall. 6 to 8 ft. \$2.00, 8 to 10 ft. \$3.00.
- Lilac, Japanese.** Covered in June and July with long panicles of very sweet white flowers. 3 to 4 ft. \$1.00.
- Linden, American.** An excellent tree with fragrant yellow flowers. 6 to 8 ft. \$1.50.
- Maple, Norway.** One of the most desirable shade trees for street and park purposes. 6 to 8 ft. \$2.50, 8 to 10 ft. \$3.00, 10 to 12 ft. \$4.00.
- Maple, Schwedler's.** Very handsome. Scarlet foliage in spring, changing to deep bronze. 5 to 6 ft. \$2.50, 7 ft. \$3.00, 8 ft. \$4.00.
- Maple, Silver.** Rapid in growth. Valued for avenue planting. 6 to 8 ft. \$1.00. 8 to 10 ft. \$1.50, 10 to 12 ft. \$2.00.
- Maple, Sugar or Rock.** The popular street tree. 6 to 8 ft. \$2.00, 8 to 10 ft. \$2.50, 10 to 12 ft. \$4.00.
- Maple, Weir's Cut-leaved.** Rapid grower. Slender, drooping branches. 6 to 8 ft. \$1.50, 8 to 10 ft. \$2.00. \$2.00.
- Maple Ash-leaved.** See Box Elder.
- Mt. Ash, European.** Covered with clusters of bright red berries in fall. 6 to 8 ft. \$1.50, 8 to 10 ft.
- Mulberry.** Popular with the birds. 6 to 8 ft. \$1.00.

Special Prices for Quantity on Demand.

DECIDUOUS TREES.

(Continued)

- Oak, Pin.** The most graceful oak. Suitable for lawns, streets or roadsides. 6 to 8 ft. \$3.00.
- Oak, Red.** Native variety with large leaves. Bright fall colors. Used for streets. 8 to 10 ft. \$3.00.
- Plum, Purple-leaved.** See Shrubs.
- Smoke.** See Fringe, under Shrubs.
- Willow, Laurel-leaved.** Broad, shiny green leaves. Bush or tree form. Fine for the seaside. 6 to 8 ft. 75c, 8 to 10 ft. \$1.00, 10 to 12 ft. \$1.50.
- Willow, Golden.** Bark bright-yellow. 6 to 8 ft. 75c, 8 to 10 ft. \$1.00.
- Willows Weeping Wisconsin.** 8 to 10 ft. \$1.50.

ORNAMENTAL SHRUBS.

Can be shipped by parcel Post. Add 10% for postage.

We have quoted no sizes on most of the varieties as we make it a practice to fill orders with large, vigorous and well-rooted specimens. If desired we can furnish extra large specimens in some varieties. **Quotations on quantities on request.**

- Almond, double flowering.** Rose and white. Very showy. May. 75c.
- Althea, Rose of Sharon.** Double. White, Pink and Purple. August and September. 60c.
- Aralia.** Glossy deep green leaves. Light gray twigs. Excellent for dry and sandy spots. 50c. Extra size 60c.
- Barberry, Japanese.** The best hedge plant. 12 to 18 in., 3 yr., 20c each, \$15.00 per 100; 18 to 24 in., 3 yr., 25c each, \$20.00 per 100; 2 to 2½ ft., 3 yr., ex. 30c each, \$25.00 per 100; 3 ft. specimens 50 each.
- Barberry, Purple-leaved.** Handsome in hedges, masses or singly. 2 to 3 ft. 50c each.
- Butterfly Bush.** Violet mauve. Very showy flower spikes. Blossoms from July until frost. Kills back to the ground each year. 60c.
- Calycanthus.** Sweet shrub. Reddish brown flower. 60c.
- Clethra.** Sweet Pepper Bush. 60c.
- Coral Berry.** Long slender branches with pink flowers followed by racemes of coral-like fruit. Good in dry spots. 50c.
- Cornus Siberica.** Bright red bark and light blue berries. Beautiful in winter. 40c. Extra size 50c.
- Cornus Variegated.** Silver and green leaves. 60c.
- Deutzia Crenata.** White flowers. June. 50c. Extra size 75c.

CALL AND MAKE SELECTIONS.

ORNAMENTAL SHRUBS.

(Continued)

- Deutzia Pride of Rochester.** Double. Pink and white flowers. June. 50c.
- Deutzia Gracilis.** Low growing. Clusters of beautiful white flowers. June. 50c.
- Deutzia Lemoinei.** White flowers. May. 60c.
- Elder, Golden.** Very showy, Golden-yellow foliage. Fine for massing. 50c.
- Elder Cut-leaved.** 50c.
- Euonymous.** Winged burning bush. Has the most beautiful fall foliage of any of the shrubs. 75c. Extra size \$1.00.
- Forsythia Fortuni.** (Golden Bell) Yellow flowers before the leaves appear in April. 40c. Extra size 60c.
- Forsythia Intermedia.** 40c. Extra size 60c.
- Forsythia Suspensa.** (Weeping Golden Bell.) 50c.
- Fringe, Purple or Smoke tree.** \$1.00.
- Fringe White,** \$1.00.
- High Bush Cranberry.** Flat clusters of white blossoms, followed by bright scarlet berries. 60c. Extra size 75c.
- Honeysuckle, Morrowi White.** Flowers freely. 50c.
- Honeysuckle, Tartarian bush.** Red, Pink and White. Abundance of flowers in May. Colored berries in fall. 50c.
- Hydrangea, Hills of Snow or Everblooming.** Large pure white blossoms throughout July and August. 50c. Extra size, 75c.
- Hydrangea, paniculata grandiflora.** One of the finest of Hardy Shrubs. Especially showy and striking. 50c. Extra size, 75c.
- Hydrangea P. G. Tree Form.** Very showy lawn tree 3 to 4 ft. \$1.25, 4 to 5 ft. \$1.50.
- Japanese, or Flowering Quince.** Large scarlet flowers early in spring, 60c.
- Kerria, Double.** Yellow flowers. Branches vivid green and showy in winter. 60c.
- Kerria, White flowering.** Bright glossy foliage. Single white flowers followed by shining black berries. 60c.
- Lilac, Common.** Purple and white. 50c.
- Lilac, Hungarian.** Purple. Late. 60c.
- Lilac, Japanese.** See Trees.
- Lilac, Persian.** Very pretty, purple and white. Small leaves. 60c.
- Lilac, Rothomagensis.** Deep violet blue. 60c.
- Lilac, Charles X.** Reddish purple. \$1.50.
- Lilac, Congo.** Dark crimson \$1.50.
- Lilac, Marie Le Graye.** Double white. \$1.50.
- Lilac, Dogen Keteler.** Double pale pink. \$1.50.
- Lilac, Chas. Jolly.** Double purple. \$1.50.
- Lilac, Alphonse Lavallee.** Double blue. \$1.50.

ORNAMENTAL SHRUBS.

(Continued)

- Plum, Flowering.** Covered in spring with beautiful double pink flowers. 3 ft., \$1.00.
- Plum, Purple.** The finest of all the Purple-leaved shrubs or small trees. Small white flowers. \$1.00.
- Privet. (Ibota.)** Common hedge plant. Perfectly hardy variety. 12 to 18 in. 12c each, \$10.00 per 100; 18 to 24 in. 18c each, \$15.00 per 100; 2 to 3 ft. 22c each, \$18.00 per 100; 3 to 4 ft. 30c each, \$25.00 per 100.
- Privet (Ibolium.)** Price same as Ibota.
- Snowball, Japan.** The best of the flowering snowballs. 75c.
- Snowball.** Old Fashioned Garden Variety. 60c.
- Snowberry.** Pink flowers in summer. White waxy berries in fall. 50c.
- Spirea, Anthony Waterer.** Dwarf. Bright Crimson. Blooms all summer. 50c.
- Spirea Arguta.** Hybrid Snow Garland. White flowers. \$1.00.
- Spirea, Billardi.** Pink and white. 50c.
- Spirea, Callosa Alba.** Dwarf. White. 50c.
- Spirea, Rosea.** Dwarf. Pink. 50c.
- Spirea, Plum-leaved. (S. prunifolia.)** Beautiful double white flowers in May along slender upright branches. Dark green shining foliage. 50c.
- Spirea, Froebeli.** Pink. 50c.
- Spirea, Opulifolia.** White. June. Good for shade. 50c.
- Spirea, Opulifolia Aurea.** Yellow leaf. 50c.
- Spirea, Thunbergii.** White flowers on slender arching branches. Very pretty on account of its delicate, fine foliage. 50c.
- Spirea, Golden-leaved.** 50c.
- Spirea, Van Houtte.** Bridal wreath. One of the best of all the shrubs. 2 to 3 ft. 50c, 3 to 4 ft. 60c 4 to 5 ft. 75c.
- Sumach, Staghorn.** Brilliant foliage and scarlet fruit in autumn. 4 to 5 ft. 50c, 6 to 8 ft. 75c.
- Sumach, Cut-leaved.** Deeply cut, fern-like foliage. Rich crimson in autumn. 75c.
- Syringa, Golden.** Dwarf. Very showy throughout the season. 60c.
- Syringa, Coronarius.** Mock orange. Pure white. Highly scented flowers. 50c.
- Syringa, Grandiflora.** Large white flower. 50c.
- Syringa, Lemoinei.** Dwarf. Semi-double flowers. 50c.
- Syringa, Viginalis.** Double flowers all summer. 60c.
- Weigela, Rosea.** Old garden favorite. Abundance of pink blossoms. 50c.
- Weigela, Eva Ratka.** Red flowers. Continuous bloomer. 50c. Extra size 75c.
- Weigela, Candida.** White. 50c.
- Weigela, Variegated.** Leaves bordered with white. Pink and white flowers. Very pretty foliage. 60c.

WHATEVER YOU WANT WRITE US

HARDY CLIMBING VINES.

- Can be shipped by Parcel Post. Add 10% for postage.
- Akebia.** Slender growing vine. 75c.
- Bittersweet.** (Roxbury Waxwork.) Shrubby climber with showy crimson yellow fruit in fall and winter. 50c.
- Clematis Paniculata.** Rapid grower with fragrant white star-like blossoms. Very beautiful. 50c.
- Clematis Jackmanii.** Large violet purple flowers. \$1.00.
- Clematis Mad. Edward Andre.** Red. \$1.00.
- Clematis Romona.** Light Blue. \$1.00.
- Dutchman's Pipe.** Rapid grower. Broad leaves. One of the best. Pipe-shaped, yellow flowers. \$1.00.
- Euonymous Radicans Vegetus.** Evergreen vine with red berries. Good for covering walls. 60c.
- Euonymous.** Small leaf. Variegated. 50c.
- Honeysuckle, Hall's Japan.** Fragrant flowers in summer and fall. White, changing to yellow. 50c.
- Honeysuckle, Scarlet Trumpet.** Scarlet flowers. Excellent climber. 50c.
- Ivy, Boston.** Clings to wood, brick and stone. 50c each, \$5.00 dozen.
- Trumpet Vine.** Large, trumpet-shaped, scarlet flowers in August and September. Strong rapid grower. 50c.
- Wistaria, Chinese.** Rapid climber with hanging clusters of purple flowers. One of the best hardy climbers. 75c.
- Wistaria, White.** Free blooming. Very showy. 75c.
- Woodbine.** Very satisfactory rapid grower. 50c.
- Woodbine Engelmann.** 50c.

ROSES.

Hybrid Perpetuals and Teas

A good assortment of leading varieties suitable for New England planting. 75c each, 10 for \$6.50.

Can be shipped by Parcel Post. Add 10% for postage.

- American Beauty.** Bright red. H. P.
- Frau Karl Druschki.** Best of the hardy whites. Strong grower, constant bloomer. H. P.
- General Jacqueminot.** Bright, rich, velvety crimson. One of the best. H. P.
- Gruss an Teplitz. Scarlet.** Great bloomer. Very hardy. and fragrant. H. T.
- Hadley.** Deep velvety crimson. Very fragrant and desirable. H. T.
- Harrisons.** Yellow.
- Killarney.** Pink. H. T.
- Killarney.** White. H. T.
- Lady Hillingdon.** Deep apricot yellow. Strong healthy grower. T.
- Los Angeles.** Coral pink. H. T.
- Magna Charta.** Rosy red. Large and full. H. P.
- Mme. Butterfly.** Apricot yellow. H. T.
- Mme. Caroline Testout.** Clear rich pink. H. T.
- Mrs. Aaron Ward.** Yellow. H. T.

ROSES.

(Continued)

- Ophelia.** Salmon flesh color, shaded rose. Good bloomer.
H. T.
Paul Neyron. Pink. One of the best of any color. H. P.
Radiance. Soft carmine pink. Fragrant. H. T.
Radiance. Red. H. T.
Souvenir de Claudius Pernet. Yellow. H. P.

RUGOSA ROSES.

JAPANESE.

These have very ornamental, rich green foliage. Their long blooming season is followed by big, red, handsome fruit. They are good for cut flowers and the bushes are much used singly or in hedges.

Can be shipped by Parcel Post. Add 10% for postage.

- | | |
|--|----------|
| Rugosa Alba. Single white | 50c each |
| Rugosa Rubra. Single red. | 50c each |
| Sir Thomas Lipton. Double white. | 65c each |
| Hansa. Double red. | 65c each |
| C. F. Meyer. Double pink. | 65c each |
| F. J. Grootendorst Rugosa Baby Rambler. | 65c each |

CLIMBING ROSES.

50c Each

Can be shipped by Parcel Post. Add 10% for postage.

- American Beauty.** Climbing. Brilliant red.
Crimson Rambler. The old favorite.
Dorothy Perkins. Shell pink. Fragrant and very beautiful.
Dr. Van Fleet. Shell pink.
Excelsa, Red, Dorothy Perkins. Great grower. Good foliage.
Gardenia Dul. Yellow.
Hiawatha. Crimson with white eye. Single. Very showy.
Paul's Scarlet Climber. Semi-double.
Thousand Beauties. White to pink.
White Dorothy Perkins.
Wichuriana. Single white, trailing habit. Good for covering banks and rockeries.

HARDY PERENNIALS.

Suitable varieties for permanent old-fashioned gardens. Very good for cut flowers. May be planted in spring or fall. 20c each, \$2.00 per dozen. \$15.00 per 100, except as noted.

Can be shipped by Parcel Post. Add 10% for postage.

- Aconitum.** Monks-hood. Blue. Sept. 30c.
Anthemis. (Chamomile.) Showy daisy-like yellow flowers. Profuse bloomer.
Asters. Hardy. Blue and pink. 5 to 6 ft. Aug. and Sept.
Astible. Pink and white. 2 ft. June and July. 50c.
Bee Balm. Oswego Tea. Bright red flowers from June to September.
Blazing Star. Purple.

HARDY PERENNIALS.

(Continued)

- Bleeding Heart.** Heart-shaped flowers in clusters on drooping stems. 50c.
- Boltonia.** Pink and white. 5 to 7 ft. September and October.
- Buttercup.** (Globe Flower.) Large yellow flowers. 30c each, \$3.00 dozen.
- Buttercup, Trailing.** Small double flowers.
- Canterbury Bells.** Bloom in June and July. 2 to 3 ft. Very beautiful. Assorted colors in the following varieties: Cup and Saucer, Bell shape and Double.
- Chimney Bells.** Blue and white.
- Columbine.** In the shades of white, blue, rose-purple and yellow.
- Coreopsis.** Flowers are golden-yellow and keep well when cut. Blooms profusely all summer.
- Daisy, Persian.** Single flowers in many colors. Will bloom again in fall if cut in June. (Pyrethrum.)
- Daisy, Shasta.** Large, snow-white flowers throughout summer and fall.
- Fox-Glove.** Very showy flowers in June and July on stalks 3 ft. high. White, rose and purple.
- Fraxinella.** Pink and white. 30c each, \$3.00 per dozen.
- Gaillardia.** Blanket-flower. Yellow with dark red center.
- Garden Heliotrope.** 3 ft.
- Golden Glow.** Produces masses of yellow flowers from July to September. 5 and 6 ft.
- Gypsophilla, Baby's Breath.** Very dainty fine white flowers.
- Helenium.** Orange and bronze. September. 5 to 6 ft.
- Hollyhock.** 5 to 7 ft. Double white, pink, red and yellow.
- Iris, German.** May and June. The hardiest and earliest. Yellow, white, purple, light blue and purplish red.
- Iris, Japanese.** June and July Assorted colors.
- Iris, Siberian.** May and June. Showy violet clusters.
- Larkspur.** Very handsome in the garden all summer. Pretty in front of evergreens. 30c each, \$3.00 dozen.
- Lily of the Valley.** Clumps 25c, \$2.50 per dozen.
- Lily.** Day. Yellow. August.
- Lily.** Double. Yellow. August and September.
- Lily.** Lemon. June.
- London Pride.** Scarlet and white.
- Lupine.** Pea-shaped flowers. June to September. Blue, pink and white.
- Platycodon.** Balloon flower. Blue and white. June and July.
- Scotch Pink.**
- Sedum.** Pink. August and September.
- Slokesia.** Light Blue.
- Sweet William.** June and July. Many colors, including scarlet, white, pink and maroon.
- Veronica, Speedwell.** Deep blue flowers in showy spikes. One of the best late flowering perennials. 30c each, \$3.00 dozen.

HARDY PERENNIALS.

(Continued)

Yucca, Adam's Needles. Sword-like foliage with spikes of very showy white flowers in July. 25c each.

PEONIES, DOUBLE.

Red, Pink and White, each 50c, 10 for \$4.50.
Can be shipped by Parcel Post. Add 10% for postage.

PEONIES, DOUBLE.

Named Varieties each 60c, 10 for \$5.50.

Canary. Pale yellow.

Duchess of Orleans. Deep rose. Large.

Duke of Wellington. Large. Creamy white. Late.

Edouard Andre. Crimson maroon, with gold centers.
Mid-season.

Edulis Superba. Deep pink. Early.

Festiva Maxima. Extra large. Pure white with crimson flecks. Early.

Jeanne d'Arc. Pale pink. Mid-season.

L'Indispensable. Shell pink. Very large. Good for cutting. Late.

Louis Van Houtte. Brilliant crimson. Very double.
Mid-season.

Mme. Ducl. Pink. Mid-season.

Old Crimson. (*Officinalis rubra.*) The old-fashioned early red. Large. Sweet. 75c each.

Prince Imperial. Brilliant scarlet. Mid-season.

Queen Victoria. White with full center. Mid-season.

Rubra Triumphans. Intense crimson. Fragrant. Early.

PHLOX, HARDY.

20c each, \$2.00 per doz., \$15.00 per 100.

Can be shipped by Parcel Post. Add 10% for postage.

Baron Von Dedem. Brilliant cochineal-red. Mid-season.
Medium height. Good size.

Champs Elysee. Crimson.

Elclaireur. Carmine.

Europa. White Carmine eye.

Independence. Pure white. Early, tall, and vigorous.

Madam Pape-Carpentier. Large trusses of extra fine waxy-white flowers. Mid-season.

Pearl. Pure white. Late.

Richard Wallace. White with carmine eye. Mid-season.

Siehold. Orange scarlet.

R. P. Struthers. Best bright salmon pink. 30c each,
\$3.00 dozen.

Rynstrom. Bright pink. Large.

Sir Edward Landseer. Bright crimson.

Stella's Choice. Tall, vigorous, late white. Free bloomer.

HARDY VARIETIES FOR NEW ENGLAND

PLANTING TABLE.

Name of Plant	Time of Bloom
§*Aconitum, Monkshood.	September and October.
Anthemis	June to October.
§Asters.	August and September.
‡†Astilbe.	June and July.
Bee Balm.	June to September.
Blazing Star.	July and August.
§Bleeding Heart.	April to July.
§Boltonia.	September and October.
†Buttercup (Globe Flower.)	June and July.
‡Buttercup Trailing.	May and June.
Canterbury Bells.	June and July.
Chimney Bells.	
‡Columbine.	April and June.
§†Coreopsis.	June to September.
Daisy, Persian.	April to June.
Daisy, Shasta.	June to September.
Fox-Glove.	June and July.
Fraxinella.	June and July.
Gaillardia.	July to October.
Golden Glow.	July to September.
‡Gypsophilla, Baby's Breath.	June to August.
Roch Garden Plant.	
Helenium.	September.
Hollyhock.	July to September.
†Iris, German.	May and June.
Iris, Japanese.	June and July.
†Iris, Siberian.	May and June.
Larkspur.	June to September.
Lily, Day.	May.
‡*†Lily of the Valley.	August.
Lily, Double.	August and September.
§*Lily, Lemon.	June.
‡*†London Pride.	July and August.
Lupine.	June to September.
Platycodon.	June and July.
‡†Scotch Pink.	June and July.
‡†Sedum.	August and September.
‡†Stoksia.	July to September.
‡†Sweet William.	June and July.
Veronica, Speedwell.	June to August.
Yucca, Adam's Needles.	July.

Peonies and Phlox Bloom from early season to late and are all colors. Grow from 2—4' high.

In order to plant a successful Perennial Garden, that you may truly enjoy, the plants should be arranged so as to bloom continuously from early to late season, and to be in their proper place according to color of flower and height of plant. Therefore we have put in our Catalog the above planting table to help you in selecting and arranging the plants for your Garden.

FOR PERENNIALS.

Height	Color of Flower
5'	Blue
2—3'	Yellow.
5—6'	Blue and Pink.
2'	Pink and White.
3'	Bright Red.
2'	Purple.
2'	Pink and White.
5—7'	Pink and White.
18"	Yellow.
15—18"	Lemon Yellow.
2—3'	White Blue.
	Blue and White.
2'	Bright Scarlet and Yellow.
1—2'	Golden Yellow.
12—18"	White and Pink. Red Tipped.
15—18"	Snow White.
3'	White, Rose, Purple.
2'	Pink and White.
3'	Yellow, Dark Center.
5—6'	Yellow.
2—3'	White.
5—6'	Orange and Bronze.
5—7'	White, Red, Pink, Yellow.
2—3'	All Colors.
4'	All Colors.
1—2'	Violet.
5—6'	Light and Dark Blue.
6—10"	White.
2—5'	Yellow and Others.
2—5'	Yellow and Others.
2—3'	Lemon Yellow.
4"	Scarlet and White.
3'	Blue, Pink, White.
2—3'	Blue and White.
1'	Pink and White.
1'	Pink.
12—18"	Light Blue.
12—18"	All Colors.
2—3'	Deep Blue.
4—6'	White.

† Best plants for edging.

* Best plants for shady spots.

‡ Best plants for Rock Gardens.

§ Best plants for wet soil.

GLADIOLA.

"The best of all". So easy to grow. Such variety of colors. Successive plantings give blooms June to October.

Choice Mixture—Full size bulbs. 50c per dozen, \$3.00 per 100. \$25.00 per 1000.

Special Dozen Offer—One each of 12 different varieties, our selection, \$1.00.

Special Hundred Offer—Ten each of 10 named varieties; customer's selection, \$5.00.

Can be shipped by Parcel Post. Add 10% for postage.

America. Beautiful pink. Large and strong. This is one of the very best in existence. 50c per dozen, \$3.00 per 100.

Augusta. Strong, white variety with lavender anthers. Very beautiful. 75c per dozen, \$4.00 per 100.

Baron Hulot. The best blue. Very showy. \$1.00 per dozen, \$6.00 per 100.

Brenchleyensis. Vivid vermillion scarlet. 75c per dozen, \$4.00 per 100.

Florida. A free-blooming, very satisfactory, red one. 50c per dozen, \$3.00 per 100.

Halley. An exquisite early bloomer, with large, salmon-pink flowers. A beauty. 75c per dozen, \$4.00 per 100.

Independence. One of the best for cut flowers. Keeps well. Begonia pink. 75c per dozen, \$4.00 per 100.

Klondyke. An early bloomer. Primrose yellow with crimson blotch. \$1.00 per doz., \$6.00 per 100.

Lily White 50c per dozen, \$3.00 per 100.

Mrs. Francis King. A very wonderful variety. Large flame colored flowers on very tall stalks. 75c per dozen, \$4.00 per 100.

Mrs. Frank Pendleton. Orchid-like flowers, bright pink with crimson blotch. \$1.00 per dozen, \$6.00 per 100.

Mrs. Watt. Deep brilliant wine color. Extra good. 75c per dozen, \$5.00 per 100.

Niagara. Cream shade with canary-yellow throat. \$1.00 per dozen, \$7.00 per 100.

Panama. Large, deep pink, beautiful flowers. 75c per dozen, \$5.00 per 100.

Peace. Handsome, large, white with lilac feathering. 75c per dozen, \$5.00 per 100.

Schwaben. Large, vigorous and creamy yellow. 75c per dozen, \$5.00 per 100.

VEGETABLE SEEDS.

For your Vegetable Garden. Northern Grown—Tested and Guaranteed.

12 Full Sized Packages—One each of the following:

Beet	Parsnip
Cabbage	Pumpkin
Carrot	Radish
Cucumber	Spinach
Onion	Squash
Lettuce	Turnip

Will be sent Postpaid on receipt of \$1.00.

6 Full Sized Packages—One each of the following:

Beet	Lettuce
Carrot	Squash
Cucumber	Radish

Will be sent Postpaid on receipt of \$.50.

LAWN SEEDS.

A superior mixture of "SPECIAL LAWN SEED" that is Tested and Guaranteed. We are confident that this will produce a beautiful, green velvety lawn which will meet with your most critical requirements if the soil and weather conditions are favorable.

One pound required for 200 square feet.

Put up in 1, 2 and 4 pound bags.

Price per pound \$.60.

Sent Postpaid on receipt of prices.

GENERAL PLANTING INSTRUCTIONS.

Care of Stock on Arrival. All stock should be planted immediately on arrival. If this is not possible open the box or bundle and "Heel-in" the stock, that is, plant it temporarily, by digging a trench in a shady, cool place and burying the roots carefully. Never allow the roots to be exposed to the sun or wind. If it is very dry and hot, or the roots have become at all dried out, dip them in muddy water.

Preparation of the Ground. Planting should be done on well-cultivated ground. If this is not possible all sods should be shaken out to kill the grass roots. This is preferable to burying the sods under the tree, since this is likely to cut off the water supply from underneath.

Pruning Before Planting. In digging trees, shrubs, etc., it is impossible to retain the entire root-system. On this account the top of the tree should be cut back to restore the natural balance (except with evergreens). Make all cuts just above an outside bud so that an outward growth will be encouraged. Make a clean, slanting cut on the end of all broken or bruised roots, with the cut surface on the under side. Peach trees should have all the branches removed and the top cut back to within two or three feet of the roots, as with apple whips.

Planting. Holes should be sufficiently large to take the roots without cramping or crowding, and deep enough to permit planting about an inch deeper than the tree stood in the nursery. They should not be dug much in advance of planting, as this practice dries out the hole and the soil which is removed. Hold the tree straight and pack the earth firmly on the roots, taking care that no air pockets are left. It is well to put the top soil nearest the root. In order to do this the top-soil and the sub-soil may be thrown in separate piles when the holes are dug. Be sure to protect the roots from sun and wind during the planting process. Unless drought conditions prevail the use of water should not be necessary. If used at all it should be used liberally, pouring at least a gallon in each partly filled hole and filling the hole after the water has soaked in. After packing the soil firmly with the use of one's heel leave the top-soil loose with a dust mulch to prevent drying out.

Cultivation. Moisture is a limiting factor in the growth of trees. Its conservation by cultivation is advisable. When this is not possible a mulch of straw, coarse manure, hay, or the like, should be maintained to shade the soil and keep down the weeds. Weeds and grass rob the tree of moisture and plant food. Cultivation is fertilization and pays good interest.

INDEX

Page

Apples	2
Apples, Dwarf	2
Apples, Crab	2
Asparagus Roots	5
Blackberries	4
Cherries	3
Evergreens	6
Garden Tools	20
Gladiola Bulbs	18
Grapes	4
Landscape Department	21
Peaches	3
Pears	3
Pears,Dwarf	3
Peonies	15
Perennials	13
Perennial Planting Table	16
Phlox	15
Planting Instructions	22
Plums	3
Quince	3
Rhubarb	4
Raspberries	4
Roses	12
Roses, Climbing	13
Roses, Rugosa	13
Seeds, Lawn	19
Seeds, Vegetable	19
Shrubs, Deciduous	9
Trees, Deciduous	8
Strawberries	5
Vines	12
Terms & Shipping Inst.	1

