

## **Historic, Archive Document**

Do not assume content reflects current scientific knowledge, policies, or practices.



# Evergreen Nursery Company

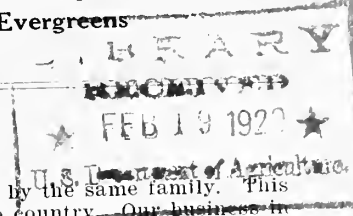
## EVERGREEN SPECIALISTS

Sturgeon Bay,  
Wisconsin

Established 1864



One of the Oldest Nurseries in the  
United States Specializing  
in Evergreens



### A LITTLE EXPLANATION

Since the day this nursery was established in 1864, it has been operated without a break by the same family. This means that we attained stability, as well as an enviable reputation among the nurserymen of the country. Our business in the past has been about 95% wholesale, but we have decided to enter the retail field and offer our customers a grade of stock that is hard to get from dealers and at a price that is very reasonable.

Rather than offer a large descriptive catalog, the cost of which would make it necessary for us to make a greater margin of profit, we are offering this simple price sheet. This means that we can sell cheaper. Look this list over thoroughly as there may be some item in which you are interested hidden down in some corner.

Our 64 years of experience is at your disposal—don't hesitate to ask us any question at any time. We would be mighty glad to hear from you.

**TERMS**—Cash with order or part cash and balance before shipment.

**RATES**—Five trees of same size and variety at ten rates, fifty at one hundred rates.

**SHIPPING INSTRUCTIONS**—Please state whether you want stock shipped by freight or express. Evergreens should always be shipped by express.

**SEEDLINGS**—Seedlings are trees which have been grown from seed, but which have never been removed from the original seed beds, that is, they have never been transplanted.

**TRANSPLANTS** — Are trees that have been taken from the seed beds and grown in rows with cultivation and the best of care. Transplanting a tree always produces a better root system and a far better tree in general. The more times a tree is transplanted the better root system and the more rapid growth it will make when planted in a permanent place.

**Order Early** as the stock is limited. **First come, first served.** Use the enclosed order blank and **do it now.** Evergreens are popular—**You can't go wrong buying them.**

### ONCE TRANSPLANTED EVERGREENS

If you are in the market for quite a number of evergreens, our small once transplanted stock would fill your needs. Once transplanted means trees that have been taken from the seed beds and planted in rows under shades and overhead irrigation. Here they are allowed to remain two years. This produces a tree that will stand transplanting well, and can be either planted in their permanent place or placed in the field and grown on into specimen stock. This stock does not need shade as in the case of seedlings.

	Size	Each	10	100	Size	Each	10	100
Norway Spruce	4-6 in.	\$.15	\$ .90	\$ 7.00	Balsam Fir	4-6 in.	\$.15	\$ 1.00 \$ 9.00
Norway Spruce	6-8 in.	.20	1.50	9.00	Balsam Fir	6-10 in.	.20	1.75 15.00
Norway Spruce	8-12 in.	.25	2.00	12.00	Austrian Pine	4-6 in.	.15	1.00 8.50
Am. Arbor Vitae	4-6 in.	.10	.60	5.00	Austrian Pine	6-8 in.	.20	1.75 10.00
Am. Arbor Vitae	6-10 in.	.15	1.00	9.00	Austrian Pine	8-12 in.	.25	2.25 15.00
Am. Arbor Vitae	8-12 in.	.20	1.75	11.00	Scotch Pine	12-18 in.	.25	2.25 16.00
White Spruce	4-6 in.	.20	1.75	9.50	Norway Pine	4-6 in.	.25	2.00 15.00
					Colorado Blue Spruce—4-6 inches—\$.30 each; \$2.50 per 10; \$22.00 per 100.			

### Evergreen Hedge Plants

**AM. ARBOR VITAE** is the greatest and most used hedge plant. Great for group plantings also. **AM. ARBOR VITAE** does equally well in low and high places. It is a very valuable evergreen because of this wide range of adaptability. If you have a low spot on which nothing else will grow, plant **ARBOR VITAE**.

100 **AM. ARBOR VITAE**, once transplanted—10-12 inches—only **\$9.40**

**SPECIAL PRICES ON LARGER QUANTITIES.**

## Christmas Tree Plantations—A Real Money Maker

You undoubtedly realize how scarce good Christmas trees are becoming. Christmas tree plantations are the only solution, some already having been started. NORWAY SPRUCE is the ideal tree for this purpose as it grows very fast and is extremely hardy. If you are interested we will give you special prices on larger quantities as well as more information regarding these plantations. A small piece of waste land planted with our once transplanted NORWAY SPRUCE will soon grow into money. Norway Spruce are also used extensively for reforestation.

The growing of Christmas trees is a very fertile field, especially so for those who get into it early. **Let us quote you for this spring planting.**

### Twice Transplanted Evergreens

The twice transplanted evergreen is the next step up in quality from the once transplanted evergreen. They are more symmetrical and have a better developed root system. Just the stock where quick effects are desired.

	Size		Each	10		Size		Each	10
White Spruce .....	1 1/2-2	ft.	\$1.25	\$9.00	Black Hills Spruce .....	1 -1 1/4	ft.	\$1.25	\$10.00
White Spruce .....	1 -1 1/2	ft.	.80	7.00	Balsam Fir .....	1 -1 1/4	ft.	1.00	8.00
Norway Spruce .....	1 1/2-2	ft.	.55	5.00	Balsam Fir .....	1 1/4-2	ft.	1.00	12.00
Norway Spruce .....	1 -1 1/2	ft.	.35	3.00	Hemlock .....	1 -1 1/4	ft.	1.00	9.00
Am. Arbor Vitae .....	1 1/2-2	ft.	1.00	9.00	Scotch Pine .....	1 1/2-2	ft.	.90	7.50
Am. Arbor Vitae .....	1 -1 1/2	ft.	.75	7.00	Scotch Pine .....	1 -1 1/2	ft.	.60	5.00
Austrian Pine .....	1 -1 1/2	ft.	.85	8.00	Col. Blue Spruce .....	6 -10	in.	.90	8.50
Col. Green Spruce .....	1 -1 1/4	ft.	1.00	8.50	Col. Green Spruce .....	8 -12	in.	.70	6.00

Write For Special Prices on Larger Quantities.

### Specimen Evergreens Balled and Burlapped

Balling and burlapping an evergreen is the best known method of handling the larger and more expensive evergreens. It consists of digging the tree with the ball of earth which is wrapped with burlap. This permits the least possible disturbance of the tree in transplanting.

Our B & B evergreens are all specimen trees, several times transplanted, and just the thing for an immediate showing on your lawn.

For a description of the following evergreens please refer to the enclosed descriptive folder.

	Size		Each		Size		Each
Am. Arbor Vitae .....	1 -1 1/2	ft.	\$1.00	Austrian Pine .....	1 -1 1/2	ft.	\$1.90
Am. Arbor Vitae .....	1 1/2-2	ft.	1.35	Siberian Arbor Vitae .....	1 -1 1/2	ft.	3.25
Am. Arbor Vitae .....	2 -3	ft.	1.00	White Spruce .....	1 -1 1/2	ft.	1.50
Am. Arbor Vitae .....	3 -4	ft.	3.75	White Spruce .....	1 1/2-2	ft.	2.00
Globe Arbor Vitae .....	12x12 inches		2.90	White Spruce .....	2 -3	ft.	3.50
Pyramidal Arbor Vitae .....	1 -1 1/2	ft.	2.40	White Spruce .....	3 -4	ft.	5.50
Pyramidal Arbor Vitae .....	1 1/2-2	ft.	3.90	Norway Spruce .....	1 -1 1/2	ft.	.90
Pyramidal Arbor Vitae .....	2 -3	ft.	4.75	Norway Spruce .....	1 1/2-2	ft.	1.50
Balsam Fir .....	1 -1 1/2	ft.	1.50	Norway Spruce .....	2 -3	ft.	2.25
Balsam Fir .....	1 1/2-2	ft.	1.90	Norway Spruce .....	3 -4	ft.	3.25
Colorado Green Spruce .....	1 -1 1/2	ft.	1.25	Norway Spruce .....	4 -6	ft.	5.00
Colorado Green Spruce .....	1 1/2-2	ft.	2.25	Colorado Blue Spruce .....	1 -1 1/2	ft.	3.90

ERECTA ARBOR VITAE ..... 1-1 1/4 ft. \$1.90 each

Erecta Arbor Vitae is very similar to Globe Arbor Vitae but grows twice as fast.

### Dwarf Ornamental Evergreens

The planting of evergreens at the entrance way of the home, or even as foundation plantings entirely is becoming more popular every year. But the high cost of these dwarf ornamental evergreens has made it impractical for many to use them. And it has been very hard to get anything but the larger material in these evergreens on the retail market. However, we are offering this year some of our twice transplanted dwarf ornamentals at a very reasonable figure. You can buy ten or more of these trees for the price usually paid for one, and in a few years you will have equally as good a showing with this stock. Here are three of the best and most used varieties of dwarf ornamental evergreens.

		Each	10	100
Pyramidal Arbor Vitae	10-12 inches Twice transplanted	\$.50	\$4.00	\$28.00
Globe Arbor Vitae	8-10 inches Twice transplanted	.45	3.90	27.00
Mugho Pine (true dwarf)	6- 8 inches Twice transplanted	.50	4.00	28.00

### Special Offer

An ideal planting of dwarf ornamentals at the door step consists of a group of three evergreens on each side of the entrance way, each group consisting of one Pyramidal Arbor Vitae, one Globe Arbor Vitae and one Mugho Pine. We will make you a special offer on these six trees, two of each kind for only \$2.50 postpaid.

## Evergreen Seedlings

Seedlings are little trees that are growing in the seed beds and have never been transplanted. Most seedlings offered here are 3 years old.

The transplanting of seedlings requires special care and treatment in order to insure a fair degree of success. However, our planting instructions sent with each order will make it easy for you.

If you have large planting projects in mind which would make the cost of transplanted stock prohibitive, get some of our seedlings and by following our instructions carefully you can soon have a number of first class transplanted stock,

		100	1000			100	1000
Am. Arbor Vitae	4- 8 in.	\$3.50	\$25.00	European Larch	18-24 in.	\$6.00	\$40.00
Am. Arbor Vitae	3- 6 in.	2.00	15.00	Scotch Pine	6- 8 in.	3.00	16.00
Balsam Fir	4- 8 in.	4.00	30.00	Scotch Pine	4- 6 in.	2.50	11.00
Norway Spruce	3- 5 in.	2.00	15.00	Austrian Pine	4- 6 in.	4.00	28.00
European Larch	6-12 in.	3.00	20.00	Austrian Pine	2- 4 in.	3.00	19.00
European Larch	12-18 in.	4.00	30.00	Col. Blue Spruce	2- 4 in.	5.00	35.00

**Write For Special Prices on Larger Quantities.**

### Special Prices on Scotch Pine Seedlings

**SCOTCH PINE** is the fastest grower of all the pines. Not only is it a fast grower but it is very hardy thereby gaining prominence as a windbreak tree and for reforestation purposes.

We are offering very special prices on seedlings in thousand lots. Due to some very good stands in our seed beds we have been able to make you these attractive prices.

**PLANT A FEW THOUSAND OF THESE NOW. YOU WILL BE SURPRISED HOW EASY IT IS TO CARE FOR THEM, AND IN A FEW YEARS YOU WILL HAVE SOME TREES WORTH CONSIDERABLE MONEY.**

#### SCOTCH PINE SEEDLINGS

2- 4 inches	\$ 7.75 per 1000
4- 6 inches	10.50 per 1000
6- 8 inches	15.00 per 1000
8-12 inches	18.75 per 1000
12-18 inches	22.00 per 1000

**DON'T MISS THIS CHANCE—ACT NOW!—We Furnish Complete Planting Instructions.**

### Our Big Windbreak Offer

In this day when all our forests are being cut down we feel the winter winds more than ever before, especially in the open country. A windbreak affords not only protection but adds materially to the beauty of the home, as well as to its value. Read about **WINDBREAKS** in the enclosed descriptive folder.

		Scotch Pine (once transplanted)	Norway Spruce (twice transplanted)	White Spruce (twice transplanted)
250 feet Evergreen Windbreak	25 trees	\$ 5.00	\$ 6.75	\$12.75
500 feet Evergreen Windbreak	50 trees	8.00	13.00	25.00
1000 feet Evergreen Windbreak	100 trees	15.00	25.00	48.00

We select these three varieties of evergreens because we find they are the three best and most used trees for windbreak purposes. These trees are 1 to 1½ feet high and are once or twice transplanted, as indicated which insures a 100% stand and a rapid growth. That means in a comparatively few years you will have an effective windbreak. By taking advantage of the above offer you will save years of time in waiting for your windbreak to be effective. Every windbreak is accompanied by complete instructions, and is sold under our guarantee.



Norway Spruce  
and  
Scotch Pine  
Windbreak  
on our  
Grounds

## WE CAN NOW FILL ALL YOUR NEEDS

Many of our customers who buy their evergreens from us have had to buy their shrubs, fruits and other nursery stock elsewhere, because we did not handle anything but evergreens. However, we have now made arrangements with a large and very reliable nursery to fill our orders for all the stock listed below.

This stock is covered by the same guarantee as is our evergreens. You can't go wrong on them.

### Ornamental Shrubs

All shrubs listed below are well developed plants, and are 2-3 feet in height.  
50c each; \$5.00 per 12; \$40.00 per 100.

Butterfly Bush  
Common Ninebark  
Common Sumac  
Coralberry

Deutzia  
Morrow's Honeysuckle  
Pink Tar. Honeysuckle  
Pink Weigelia

Red Berried Elder  
Snowberry  
Spirea Van Houtte  
White Lilac

### Fruits — Apples

All varieties below are 4 to 5 feet high and selected stock.  
50c each; \$5.00 per 12; \$40.00 per 100.

SUMMER VARIETIES—Duchess, Early Harvest, Red Astrachan, Yellow Transparent and Golden Sweet.

LATE FALL AND EARLY WINTER—Dudley, Gano, Maiden Blush, Snow, Wealthy, Wolf River.

WINTER VARIETIES—Baldwin, Ben Davis, Delicious, Grimes Golden, Jonathan, McIntosh Red, N. W. Greening, Rome Beauty, Salome, Tolman Sweet and Winter Banana.

### Roses—Select No. 1 Plants

90c each; \$9.00 per 12; \$75.00 per 100.

American Beauty  
Gen. Jacqueminot

Paul Neyron  
Magna Charta

Rosa Rugosa (White, Red or Pink)  
Crimson Rambler

### Raspberries—Select No. 1 Plants

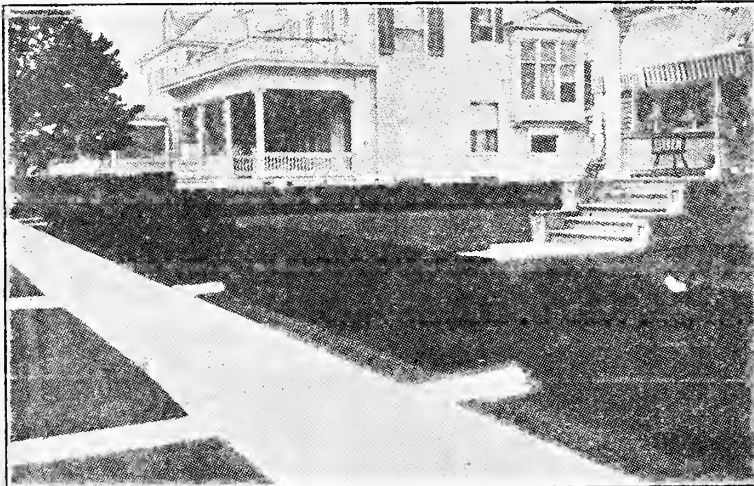
\$1.00 per 6; \$1.90 per 12; \$3.50 per 25.

Cuthbert  
Cumberland

Marlboro  
Latham

St. Regis Everbearing  
Columbian

### Hedging



Haven't you always wanted a hedge like the one pictured at the left.

#### YOU CAN NOW HAVE ONE AT A SMALL COST

Amor River Privet (North) is by far one of the best and most used hedges today. It responds to trimming better than any other hedge plant. It is perfectly hardy too.

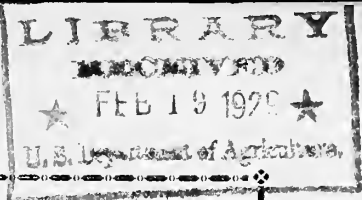
For a one row hedge set these Privet from 8 to 12 inches apart in the row.

No. 1 sturdy well branched plants  
1-1½ feet high  
\$1.25 per 6; \$2.40 per 12; \$4.50 per 25  
and only \$16.00 per 100.

THESE PLANTS WILL GIVE YOU IMMEDIATE EFFECT.

All stock listed above will be shipped by express from Pardeeville, Wis.

62.97



SPRING 1929

Bulletin No. 3

# Wholesale Price List

## EVERGREEN NURSERY COMPANY

STURGEON BAY, WISCONSIN

Established 1864

**TERMS:** — Regular trade terms to customers of known credit.  
Cash with order earns 2% discount and free packing.  
Otherwise packing charged for at actual cost.

### TRANSPLANTED EVERGREENS

#### Norway Spruce—

A hardy rapid grower. Great for Christmas trees and windbreaks. Plant several thousand of the once transplanted trees now and get in on the ground floor for the huge Christmas tree market that is rapidly developing.

	10	100	1000
4- 6 inches X .....	\$	\$ 3.50	\$ 28.00
6- 8 inches X .....		5.00	36.00
8-12 inches X .....		7.00	56.00
8-12 inches XX .....	1.25	10.00	90.00
12-18 inches XX .....	2.50	18.00	150.00
18-24 inches XX .....	5.00	28.00	240.00
12-18 inches XXX .....	3.50	30.00	250.00
18-24 inches XXX .....	7.00	50.00	400.00
2-3 feet XXX B&B \$1.00 each.			
3-4 feet XXX B&B \$1.50 each.			
4-5 feet XXX B&B \$2.50 each.			
5-6 feet XXX B&B \$3.75 each.			
6-8 feet XXX B&B \$4.75 each.			

#### Am. Arbor Vitae—

Extensively used as a hedge plant, screen work, and specimen planting. We are headquarters for Am. Arbor Vitae growing all our trees from seed that has been collected by ourselves from upland specimen trees. This produces an exceptionally hardy tree. Our Am. Arbor Vitae do not winter injure. Our sales on this item vouch for the above.

	10	100	1000
4- 6 inches X .....	\$	\$ 3.00	\$ 26.00
6-10 inches X .....		5.00	35.00
8-12 inches X .....		6.00	45.00
12-15 inches X .....		8.00	65.00
12-18 inches X .....		9.50	78.00
8-12 inches XX .....	1.00	8.00	70.00
12-18 inches XX .....	2.00	15.00	110.00
18-24 inches XX .....	3.00	25.00	225.00
2-3 feet XXX B&B \$1.00 each.			
3-4 feet XXX B&B \$1.50 each.			
4-5 feet XXX B&B \$2.50 each.			
5-6 feet XXX B&B \$3.75 each.			

**250 Trees of Same Size and Variety at Thousand Rates.**

<b>Pyramidal Arbor Vitae—</b>	10	100	1000
10-12 inches XX .....	3.75	\$22.00	\$190.00
2- 3 feet XXX B&B \$2.00 each.			
3- 4 feet XXX B&B \$2.90 each.			

<b>Globe Arbor Vitae (Woodwards)</b>	10	100	1000
8-10 inches XX .....	\$4.00	\$25.00	\$200.00

**Austrian Pine—**

Our Austrian Pine are exceptionally stocky and well rooted. Ask for sample.

	10	100	1000
4- 6 inches X .....		\$ 5.00	\$38.00
6- 8 inches X .....		6.00	45.00
8-12 inches X .....		7.00	58.00
12-15 inches XX .....	2.00	16.00	
2- 3 feet XXX B&B \$1.50 each.			
3- 4 feet XXX B&B \$2.50 each.			

**Scotch Pine—**

A very popular tree, is a fast grower and does very well in sandy or poor soils.

	10	100	1000
6- 8 inches X .....		\$ 5.00	\$40.00
8-12 inches X .....		5.00	48.00
12-18 inches X .....		8.00	68.00
18-24 inches X .....		9.00	85.00
3-4 feet XXX B&B \$1.25 each.			
4-5 feet XXX B&B \$2.00 each.			

We are offering a mighty fine lot of Scotch Pine seedlings at interesting prices. Look them up under seedlings on back page.

<b>Mugho Pine (Dwarf)</b>	10	100	1000
2- 4 inches X .....	\$	\$10.00	\$ 90.00
6- 8 inches XX .....	3.50	28.00	195.00

<b>Norway Pine—</b>	10	100	1000
4- 8 inches X .....	\$	\$ 9.00	\$ 70.00
4- 8 inches XX .....	\$1.75	14.00	

<b>Balsam Fir—</b>	10	100	1000
4- 6 inches X .....	\$	\$ 5.00	\$ 40.00
6-10 inches X .....		9.00	68.00
8-12 inches XX .....	2.00	12.00	
12-15 inches XX .....	3.50	25.00	
18-25 inches XX .....	5.00	45.00	
12-18 inches XXX B&B 60c each.			
18-24 inches XXX B&B 90c each.			

<b>Douglas Fir—</b>	10	100	1000
8-12 inches XX .....	\$2.50	\$22.00	
12-15 inches XX .....	6.00	45.00	

**European Larch—**

This tree is fast gaining the popularity it so well deserves. Not only is a rapid grower, but is as well one of our most ornamental trees with its beautifully delicate foliage. Very easy to grow. Bound to attract attention.

	10	100	1000
12-18 inch X .....		\$10.00	\$70.00
1 yr. seedlings .....			6.00
2 yr. 4- 6 in. seedlings .....			9.00
2 yr. 6- 8 in. seedlings .....			11.00
3 yr. 8-12 in. seedlings .....			15.00
3 yr. 12-18 in. seedlings .....			19.00
4 yr. 18-24 in. seedlings .....			28.00

**250 Trees of Same Variety and Size at 1000 Rates**



### Col. Blue Spruce—

These trees have all been grown from seed selected from Blue Specimens. They will run a high percentage of blue trees.

	10	100	1000
4- 6 inches X .....	\$	\$15.00	\$120.00
6-10 inches XX .....	5.00	45.00	
12-15 inches XX .....	12.00	95.00	

### Selected Blue Spruce (deep blue color)

8-12 inches XXX B&B	\$1.50 each.
12-15 inches XXX B&B	\$3.00 each.
18-24 inches XXX B&B	\$4.50 each.
24-30 inches XXX B&B	\$6.00 each.

### Colorado Green Spruce—

1-1½ feet XX	B&B \$ .75 each.
1½-2 feet XXX	B&B \$1.00 each.
2-2½ feet XXX	B&B \$1.90 each.

### White Spruce—

	10	100	1000
4- 6 inches X .....	\$	\$ 6.00	\$ 50.00
6- 8 inches X .....		8.00	65.00
12-18 inches XX .....	4.00	35.00	
18-24 inches XX .....	7.00	65.00	
12-18 inches XXX .....	5.50	45.00	
18-24 inches XXX .....	8.50	75.00	
2- 3 feet XXX B&B	\$1.90 each.		
3- 4 feet XXX B&B	\$3.00 each.		

### Hemlock (Canadensis)

	10	100	1000
6- 8 inches X .....	\$	\$12.00	\$ 90.00
8-12 inches X .....		16.00	110.00
6-10 inches XX .....	1.50	18.00	
10-12 inches XX .....	4.00	38.00	
12-15 inches XXX .....	8.00	68.00	
15-20 inches XXX B&B	\$1.25 each.		

### Savin Juniper (Juniperus sabina)

	10	100	1000
6- 8 inches XX .....	\$3.00	\$20.00	\$185.00

### Irish Juniper (Juniperus hibernica)

	10	100	1000
8-10 inches X .....	\$2.00	\$18.00	\$150.00

### Pfizers Juniper (Juniperus pfitzeriana)

	10	100	1000
8-10 inches XX .....	\$4.00	\$35.00	\$290.00

## EVERGREEN CUTTINGS .

We happen to have access to an exceptionally fine acreage of native TAXUS CANADENSIS (Am. Yew) as well as to some fine stock plants of JUNIPERUS HORIZONTALIS DOUGLASII (Waukegan Juniper) from which we take the cutting listed below. All cuttings will be made from 6 to 9 in.. long with the proper amount of old wood on each cutting. All cuttings freshly cut, packed in moss, and shipped the same day. Orders not accepted for less than 2000 cuttings.

TAXUS CANADENSIS (Am. Yew) .....\$6.75 per M; \$30.00 for 5000  
JUNIPERUS HORIZONTALIS DOUGLASII \$7.75 per M; \$35.00 for 5000

**SEEDLINGS ON NEXT PAGE**

## EVERGREEN SEEDLINGS

In the growing of seedlings the importance of seed sources cannot be over emphasized. We spare no effort in securing seed that we know is reliable and is collected only from true types. All native seed is collected by our own men. We have a particular section of sandy loam land on which we grow our seedlings. This produces a far better root system than is usually found on seedlings.

<b>SCOTCH PINE—</b>	1 yr. ....	\$ 5.50 per M
	2 yr. 4-6 inch .....	7.50 per M
	2 yr. 6-8 inch .....	11.00 per M

<b>NORWAY SPRUCE—</b>	<b>1000</b>
1 yr. ....	\$ 4.00
2 yr. 4-6 in. ....	8.00
3 yr. 6-8 in. ....	12.50

<b>AUSTRIAN PINE—</b>	<b>1000</b>
1 yr. ....	\$ 7.00
2 yr. 3-6 in. ....	14.50

<b>WHITE SPRUCE</b> 1 yr. ....	15.00
--------------------------------	-------

<b>MUGHO PINE (dwarf)</b>	
2 yr. 2-4 in. ....	26.00

<b>CONCOLOR FIR</b> 1 yr. ....	22.00
--------------------------------	-------

<b>BALSAM FIR—</b>	
2 yr. 3-6 in. ....	24.00

<b>DOUGLAS FIR</b> 1 yr. ....	20.00
-------------------------------	-------

<b>COL. BLUE SPRUCE (select)</b>	
2 yr. ....	18.00

<b>PONDEROSA PINE</b> 1 yr. ....	8.50
----------------------------------	------

We make a specialty of AM. ARBOR VITAE and collect our own seed from upland specimen trees, so these seedlings we are offering are of a very superior grade. See for yourself.

<b>AM. ARBOR VITAE—</b>	2 yr. 2-4 inch .....\$ 9.50 per M
	2 yr. 4-6 inch ..... 14.00 per M
	3 yr. 6-8 inch ..... 18.00 per M

## DECIDIOUS TREE SEEDLINGS

<b>HARD SUGAR MAPLE</b> 100 1000	
8-12 inches .....	\$ 7.75
12-18 inches .....	12.00
18-24 inches .....	16.00
2- 3 feet .....	3.00 12.00
3- 5 feet .....	6.00 36.00

<b>WHITE BIRCH</b> 100 1000	
4- 6 feet .....	\$15.00 70.00

<b>AMERICAN BEECH</b>	
8-12 inches .....	1.00 9.00
12-18 inches .....	2.00 16.00

<b>HARD SUGAR MAPLE—</b>	
Transplanted select straight trees .....	3-5 feet \$25.00 per C

<b>WHITE BIRCH—</b>	
(Betula Papyrifera) transplanted branched stock.....	3-5 feet \$40.00 per C

## COLLECTED EVERGREEN SEEDLINGS

We can still offer collected seedlings of Am. Arbor Vitae and Balsam Fir. We have sold hundreds of thousands of them in years past, and they have always brought forth favorable comment.

Am. Arbor Vitae 3-6 in.....	\$ 7.50 per M
Am. Arbor Vitae 4-8 in.....	11.75 per M

Balsam Fir 3-6 in.....	\$ 8.00 per M
Balsam Fir 4-8 in.....	12.00 per M