

## **Historic, Archive Document**

Do not assume content reflects current scientific knowledge, policies, or practices.



# Forest Nursery Company

ESTABLISHED 1887  
By J. H. H. BOYD

MC MINNVILLE  
TENNESSEE



AMERICAN ELMS



LOMBARDY POPLAR

*Forest and Shade*  
**TREES**

*Ornamental Shrubs*

*Roses - Bulbs*

*Evergreens*

# Bring Beauty to Your Door Yard

PERHAPS when Nature was distributing her gifts in the sunny South she became lazy and as she lifted her arms in a languid gesture of sleepiness she let fall her packet of gifts and scattered broadcast acorns of the oak trees, the seeds of dogwoods and the redbud tree, azaleas and a flutter of wild flowers and grasses to carpet woodland and prairie. Nature has been generous. The southern states are fortunate in having so many beautiful native plants. The virgin forest was a harmonious setting for the pioneer's cabin but the growth of towns, the clearing of land and the rapid growth of industry have made it necessary for man to supplement natural beauty.

Who would fail to draw deep content from a home made a part of its surroundings by a background of stately trees and a setting of green shrubbery to soften the hard architectural lines of masonry or frame? A tastefully decorated interior is a source of pride. Multiply by the hundreds the number of guests who enjoy the indoor charm of your house and you will approximate the number who share the beauty of your grounds. Whether it be a snug little cottage with a garden like a lady's handkerchief or an impressive suburban estate, either might be desolately bare or set among graceful trees and shrubs.

An increase in satisfaction, beauty, and commercial value can be had by planting the home grounds. Selections of things to plant are easy to make from this catalog. We have tried to make the descriptions as brief as possible and the catalog as a whole is both interesting and helpful. It has been a genuine satisfaction to serve our many thousands of customers and we are grateful to them for the support which has enabled us to grow and render them even greater service. We are here to serve you.



NOTICE—If remittance does not accompany order, shipment will be made C. O. D. unless references are furnished. In all cases one-half of amount must accompany order.

To FOREST NURSERY COMPANY, Inc.

McMINNVILLE, TENN.

Date \_\_\_\_\_

Amount Enclosed, \$ \_\_\_\_\_

Ship to \_\_\_\_\_

Street Address or Box Number \_\_\_\_\_

Town \_\_\_\_\_ State \_\_\_\_\_ County \_\_\_\_\_

Ship via \_\_\_\_\_

(Write "Freight," "Express," "Parcel Post" or "Use Your Discretion.")

Many small shipments can be sent by parcel post at a much cheaper rate than express. When instructing a ship by parcel post, ADD AMOUNT OF POSTAGE TO REMITTANCE (about 15% of list price).

In giving this order it is understood that same is subject to stock being sold and no liability is to attach to FOREST NURSERY CO. when frost, drought or other casualties beyond their control prevent delivery of stock that may be contracted for. We give no guarantee other than printed in our catalog.

Quantity	FULL NAME OF VARIETY	Size	Price Each	TOTAL

(Continue order on other side of sheet).

**TOTAL**

IMPORTANT—We never substitute unless authorized. If you wish to substitute, should varieties first ordered be exhausted, write here the word "YES" \_\_\_\_\_

Signature of Customer \_\_\_\_\_

ORDER No. \_\_\_\_\_

Address \_\_\_\_\_

Quantity	FULL NAME OF VARIETY	Size	Price Each	TOTAL	
<b>TOTAL</b>					



## Many Years of Successful Service to Our Customers

**S**INCE 1887, when this nursery was founded by J. H. H. Boyd, our catalogs have often gone to persons who have never purchased stock of us, but who, as prospective customers, we should be glad to have become thoroughly acquainted with us, our products, equipment and our ability and facilities to promptly fill all orders with properly grown, healthy plants at correct prices.

Boyd Brothers, sons of the founder of our business, are still in active control of all operations and continue to adhere to the principles of fair dealing established in the beginning. The climate and soil are ideal for our business of growing plants. The growing seasons are long, the Winters sufficiently cold to thoroughly harden the plants for shipment in safety. We have growing near our office some 300 acres in shade trees, evergreens and ornamental shrubs, and the proper growing of these products have our personal supervision.

Our storage houses were built for the purpose and keep stock in splendid condition. Being only about one block from the depot enables us to ship orders with the least possible delay.

Tennessee stands fifth in the ranks of states producing nursery stock. Each year we make thousands of shipments to northern climates, and letters from these customers prove that our line of hardy ornamental shrubs, shade trees, evergreens, etc., do splendidly in that climate. There are but few varieties that will not thrive in the North, and those are so noted in the catalog.

When you do business with a business house, whether it be the corner grocery handling the daily necessities or a more distant firm dealing in items requiring a more specific knowledge of their production and distribution—you want to have confidence in that firm's ability to serve you in the proper manner.

Your druggist or your doctor, to serve you best, must spend years of his life at hard study to fit himself for his work, so with the nurseryman, it requires years of study to know plants, how to grow them and how to serve the public to the end that best results may be had.

Our experience covers a period of over forty years. During that period we have grown millions of plants. These plants are now growing in every state in the Union. The name and reputation we have made is indeed a satisfaction.

Our climate and soil are ideal for the growing of healthy, well rooted, well developed plants. Our growing seasons are long, which gives a good growth and our Winters are sufficiently cold to harden the plants for shipment in safety.

In this catalog we have tried to give very complete and accurate descriptions. This catalog is our representative. We have no agents. This enables you to make your own selections with the assistance of this catalog and by buying direct you get better prices as there are no agents' commissions to figure in the cost price.

We have many, many customers over the country who have sent to us for their wants in nursery stock each year for over a quarter century; this is a record of which we are justly proud and it is assurance for you. We feel that our plants and our service will please you. Our future depends on the reputation we make.

**T**HE picture above shows the beauty of the Flowering Almond (*Amygdalus*) when in early Spring it bursts forth with multitudes of beautiful double blossoms; both white and pink forms are offered on page three.

# Regarding Orders, Guarantees, Customs

Write plainly and give explicit directions, otherwise we will forward according to our best judgment. All goods travel at purchasers' risk. We assume no responsibility for the goods after delivery to the forwarding companies.

We use every care to secure prompt deliveries, but we are not liable for delay or damage in transit. Our responsibility in this respect ends upon delivery in good order to transportation company; but we will gladly render all the aid we can in case claim becomes necessary.

## Claims

Claims, to receive consideration, must be made within ten (10) days after receipt of goods.

## Guarantee

We are very careful to keep each variety true to name as labeled and are ready at any time to replace, upon proper proof, any that may prove otherwise, free of charge, or refund the amount paid, but it is mutually agreed between the purchaser and ourselves that we shall at no time be liable for an amount larger than the original purchase price.

## Terms

Cash with order unless otherwise arranged. Six per cent interest charged on overdue bills. Five plants at ten rates; fifty at 100 rates. All quotations in this list are net for the goods packed—no extra charges for packing and delivering to carriers.

Customer pays carriage charges. If delayed, or lost on the road, notify us and we will do all possible to get it through, or collect claim, but are not responsible for carrier's neglect. We advise express shipment as cost is little more than freight on small lots, and stock gets through quicker and safer. Light packages can go by parcel post.

Postage should accompany parcel post orders. (15% of list price).

Everything is offered subject to being unsold on receipt of order and subject to shortage or failure of crops and other causes beyond control. By placing orders, buyers are considered to agree with these terms.

Certificate of inspection will be sent with each shipment.

We are members of the American, Southern, Southwestern and Tennessee Associations of Nurserymen.

REFERENCE—Dun's or Bradstreet's, any bank or business house in McMinnville.



Buddleia Variabilis—Butterfly Bush.  
(See page 4).

## INDEX

Abelia .....	27	Cornus .....	5, 16	Hornbeam .....	15	Privet .....	8
Ailanthus .....	14	Corylus .....	16	Horse-Chestnut .....	14	Prunus .....	9
Almond, Flowering .....	3	Craib, Flowering .....	9	Hydrangea .....	7	Quince, Flowering .....	5
Amelanchier .....	14	Crape Myrtle .....	7	Hypericum .....	7	Redbud .....	15
Amorpha .....	3	Cydonia .....	5	Ivy .....	29	Retinispora .....	25
Andromeda .....	14	Deutzia .....	5	Jasmine .....	7	Rhododendron .....	28
Aralia .....	3	Diervilla .....	5, 6	Juniper .....	24	Rhodotypos .....	9
Arbor-Vitae .....	26	Dogwood .....	5, 16	Kerria .....	7	Rhubarb .....	33
Aronia .....	3	Elder .....	10	Koeleruteria .....	7	Roses .....	34
Ash .....	16	Elm .....	22	Lagerstroemia .....	7	Sassafras .....	22
Asparagus .....	33	Euonymus .....	6, 27	Linden .....	22	Shade Trees .....	14-22
Bald Cypress .....	22	Evergreens, Broad-Leaved .....	27, 28	Lindera .....	8	Shrubs .....	3-13
Barberry .....	16	Evergreens, Coniferous .....	24-26	Lilac .....	12	Snowball .....	13
Beech .....	3	Exochorda .....	6	Locust .....	10, 22	Snowberry .....	12
Birch .....	15	Ferns .....	33	Magnolia .....	21, 23	Sour Gum .....	21
Box .....	27	Fir .....	24	Maple .....	14	Spiraea .....	11
Buckthorn .....	22	Forsythia .....	6	Medea .....	21	Stephanandra .....	12
Buddleia .....	4	Fringe Tree .....	15	Mountain Laurel .....	28	Styrax .....	12
Bulbs, Roots .....	31, 32	Fruits .....	35, 36	Mulberry .....	21	Sumac .....	10
Callicarpa .....	4	Gardenia .....	27	Nuts .....	23	Sweet Gum .....	16
Calycanthus .....	4	Gladioli .....	31	Osage Orange .....	21	Sweet Shrub .....	4
Cannas .....	31	Grasses .....	33	Peonies .....	32	Tamarix .....	12
Catalpa .....	15	Hackberry .....	15	Perennials .....	32	Tulip Tree .....	21
Ceanothus .....	4	Hibiscus .....	6	Perimmon .....	16	Vines .....	29, 30
Cedar .....	24	Holly .....	27	Philadelphus .....	9	Vitex .....	13
Cherry Laurel .....	28	Honey Locust .....	16	Phlox .....	32	Weigela .....	5, 6
Cladrastis .....	15	Honeysuckle, Bush .....	9	Pine .....	25	Willow .....	22
Clematis .....	29	Honeysuckle, Climbing .....	29	Platanus .....	21	Wisteria .....	30
Clethra .....	4			Poplar .....	22	Witch Hazel .....	16
Comptonia .....	4						
Cornus .....	5, 16						





## The Hardy Flowering Shrubs

THE planting of ornamental shrubs is very largely on the increase, and this is as it should be, for with a good selection, the lawn can always be beautiful. They are mostly of medium size, enabling one to plant a great variety in a small space, and offer a wonderful assortment of foliage from the darkest green and purple to light orange and silver tints. These, in addition to the great variety in the blossoms, all unite to keep up a never-failing interest. The following list will be found to contain all of the well known standard varieties as well as the best of the newer introductions.

**ABELIA grandiflora.** (See Broad-leaved Evergreens).  
**ALTHEA.** (See Hibiscus).

### Amygdalus - Almond

**Pink-Flowering Almond.** (See illustration, page 17). Double-flowering, not fruiting. Small shrubs whose upright branches are covered their entire length in earliest Spring, before the leaves appear, with blooms like small roses. Plant for early bloom. 6 to 8 feet high when fully grown. Each 10

18 to 24 in. ....	\$0.35	\$3.00
2 to 3 ft. ....	.45	4.00
3 to 4 ft. ....	.75	6.50

**White-Flowering Almond.** Similar to the above except that the flowers are white. Each 10

18 to 24 in. ....	\$0.35	\$3.00
2 to 3 ft. ....	.45	4.00
3 to 4 ft. ....	.75	6.50

### Amorpha

**Fruticosa** (False Indigo). A tall, native shrub of easy cultivation, blooming freely in June, with slender spikes of violet-blue flowers. A large, spreading bush attaining the height of 6 to 10 feet at maturity. Each 10

2 to 3 ft. ....	\$0.25	\$2.00
3 to 4 ft. ....	.30	2.50
4 to 6 ft. ....	.50	4.00

### Aralia

**Pentaphylla.** Strong growing, and making a small tree in time. Abundant foliage of rich, glossy green. Grows in most difficult situations and is suitable for rocky slopes. Good for dense grouping. Does well in shady places. Each 10

18 to 24 in. ....	\$0.40	\$3.00
2 to 3 ft. ....	.60	5.00

### Berberis - Barberry

(See illustration, page 3).

**Thunbergi** (Japanese Barberry). A plant of many uses and varied attractions. Is beautiful every month in the year. In the Spring the leaves are bright green turning to deeper green in the Summer and in the Fall the leaves take on Autumn tints of red, yellow and bronze. The small, inconspicuous flowers are fragrant. They are followed by berries that ripen red and hang on all Winter. Barberry leaves will stand the heat and dust of Summer. It makes a first rate low hedge, works attractively into foundation and porch plantings of shrubs and is attractive enough to stand alone, although at its best in group plantings. The Japanese Barberry is the one that does not harbor wheat-rust; it is perfectly harmless. Grows 3 to 4 feet in height. Healthy and hardy and grows anywhere, in any soil. Each 10

12 to 18 in. ....	\$0.25	\$2.00
18 to 24 in. ....	.40	3.00
2 to 3 ft. ....	.50	4.00

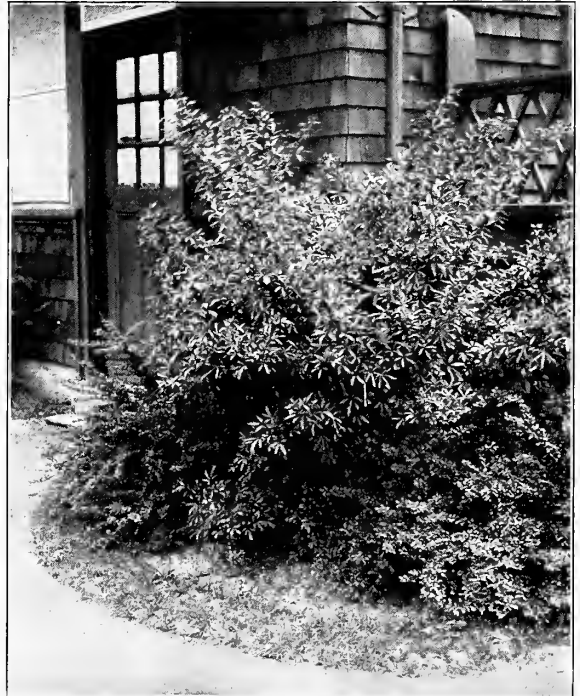
WE HAVE A SURPLUS OF BARBERRY, AND, IF WANTED IN QUANTITIES, CAN MAKE ATTRACTIVE PRICES.

### Aronia - Chokeberry

A useful and perfectly hardy shrub with particularly attractive, pale green foliage, coloring to vivid red in the Fall. Inconspicuous white flowers followed by lasting, berry-like fruits. Prefers a moist location but succeeds well in good, dry soil. Grows 6 to 12 feet tall. We can furnish two varieties; one with red berries (*Arbutifolia*), and the other with black berries (*Melanocarpa*).

	Each	10
18 to 24 in. ....	\$0.15	\$1.25
2 to 3 ft. ....	.25	2.00
3 to 4 ft. ....	.40	3.50

**BENZOIN** (Spice Bush). (See *Lindera Benzoin*).



*Aralia Pentaphylla* with *Berberis Thunbergi* in Foreground.

## Buddleia

These interesting, free-flowering shrubs require light, porous soils and sunny exposures for their best development. For the North, where they are not altogether hardy, sheltered situations should be selected. The handsome flowers are produced throughout the summer season.

**Variabilis** (Butterfly Bush; Summer Lilac). (See illustration, page 17). One of the most desirable Summer-flowering shrubs. Each Spring it throws out 4- to 5-foot stems in numbers, making a bushy plant, covered from July to frost with delicate flowers of dainty beauty and fragrance, attracting so many butterflies as to give it the common name. The cool, pale blue color of the blooms and its constant blooming habit make this one of the best shrubs.

	Each	10
18 to 24 in. ....	\$0.35	\$3.00
2 to 3 ft. ....	.45	4.00
3 to 4 ft. ....	.75	6.00

## Callicarpa

**Americana** (Beautyberry). Valuable for its lovely purple berries borne along the branches in clusters; handsome in early Fall and Winter, a native shrub of attractive beauty. The grace and exquisite beauty of the fruiting sprays are almost without parallel. These berry-bearing plants are becoming more and more popular, adding new and unusual beauty in the garden, in the season when color is most needed. Grows 3 to 6 feet in height. Is not dependably hardy in the northern states. A moist, loamy soil is best suited to their requirements.

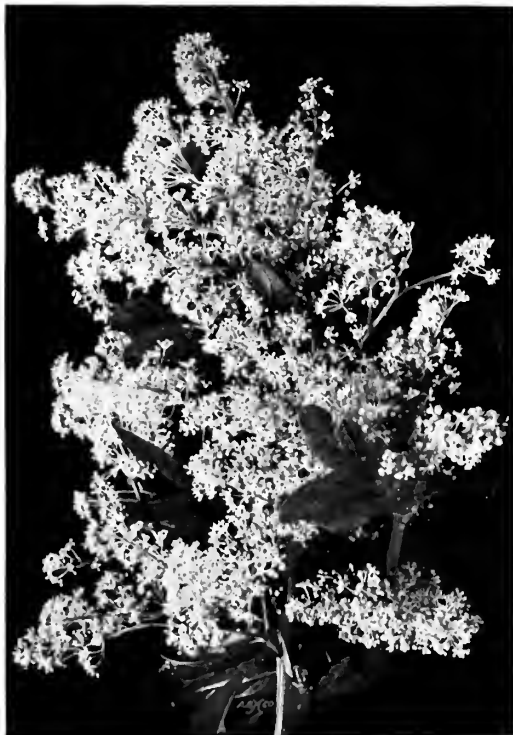
	Each	10
18 to 24 in. ....	\$0.30	\$2.50
2 to 3 ft. ....	.40	3.50

## Calycanthus - Sweet Shrub

A neat shrub and compact bush with large, handsome leaves and a small, double, purple blossom of rare, banana-like fragrance. Another of our fine native plants and worthy of a place in every garden. 6 to 8 feet.

	Each	10
18 to 24 in. ....	\$0.60	\$5.00
2 to 3 ft. ....	.80	7.00

**CARYOPTERIS incana** (Blue Spirea). (See Spirea, page 11).



Bloom of Jersey Tea—Ceanothus.

## Ceanothus

**Americanus** (Jersey Tea). A shrub that is at home in dry soils and is also good for shady locations. Grows three feet tall and bears numerous small white flowers in dense panicles entirely covering the foliage from July to September.

	Each	10
18 to 24 in. ....	\$0.30	\$2.50
2 to 3 ft. ....	.50	4.00

**CHONANTHUS virginica** (White Fringe). (See Shade Trees).

## Clethra

**Alnifolia** (Sweet Pepper Bush). A pretty little shrub growing 3 to 6 feet high that blooms freely for several weeks in the Summer; very fragrant white flowers in great abundance in July.

	Each	10
18 to 24 in. ....	\$0.50	\$4.00
2 to 3 ft. ....	.75	6.00

## Comptonia

**Asplenifolia** (Sweet Fern). A low shrub with fernlike foliage; well adapted for massing on rocky banks and sandy stretches; very hardy and ornamental.

	Each	10
12 to 18 in. ....	\$0.20	\$1.50
18 to 24 in. ....	.25	2.00



Clethra Alnifolia in Bloom.



Calycanthus—Sweet Shrub.



The fruits of *Cornus Sibirica* are bright red.

## Cornus - Dogwood

These plants are especially valuable for their colored berries in Fall and Winter, and for the high coloring of the bark. All have good foliage, too. Another point is that they will thrive in shade. Fine for grouping, grow 8 to 10 feet in height.

**Amomum** (Silky Dogwood). White flowers in June, blue berries later and dull red bark.

**Lutea** (Yellow Twigged Dogwood). Golden yellow branches which afford striking contrast to the other varieties.

**Sibirica** (Coral Dogwood). Branches bright red, making an effective contrast in Winter landscapes.

**Stolonifera** (Red-Osier Dogwood). Heavily branched and spreading, the small white berries lasting into Winter. The bark is bright red and very striking.

Prices, all varieties of Dogwood:

	Each	10
18 to 24 in.....	\$0.25	\$2.00
2 to 3 ft. ....	.30	2.50
3 to 4 ft. ....	.40	3.50

**CRAPE MYRTLE.** (See Lagerstroemia).



*Deutzia, Pride of Rochester.*

## Cydonia - Quince

**Japonica** (Japanese Quince). One of the earliest heralds of Spring, its great splash of scarlet color marking the final departure of Winter. The impatient blooms are out before the leaves appear, dainty single blooms covering the branches with dazzling red. The leaves are glossy green. It bears small fruits, but these are not edible. Valuable for early blooming, is bright colored, grows 3 to 6 feet in height and does best in a sunny location.

## Deutzia

Valuable shrubs growing in all kinds of soils and situations, varying considerably in size and habit, but blooming alike in dainty bell or tassel shapes, borne thickly in wreaths along the branches in June. The taller sorts are used for specimens, groups and the background for smaller shrubs. The dwarfier, for borders or for planting near the house. All are healthy, sturdy growers with good foliage.

**Candidissima.** Upright growing with fine foliage and pure white double flowers. Grows 3 to 6 feet high and blooms in June and July.

**Crenata.** Grows 3 to 6 feet tall and is covered in June and July with light pink, slightly fragrant flowers.

**Fortunei.** Erect branches with handsome broad, dark green leaves; pink flowers in June and July.

**Pride of Rochester.** One of the best. Straight, upright grower, attaining 6 to 8 feet at maturity. White flowers, outer petals tinged with pink, borne in great profusion in June.

Prices of all varieties of *Deutzia*:

	Each	10
18 to 24 in.....	\$0.36	\$2.50
2 to 3 ft. ....	.40	3.50
3 to 4 ft. ....	.50	4.00

	Each	10
18 to 24 in.....	\$0.50	\$4.00
2 to 3 ft. ....	.80	7.00
3 to 4 ft. ....	1.25	10.00



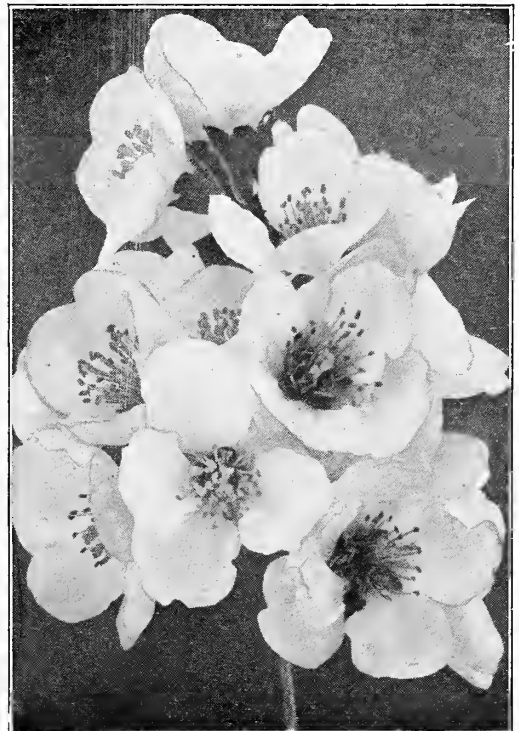
*Weigela Rosea.* (See page 6).

## Diervilla

(*Weigela*.)

The *Weigelas* are another beautiful family of plants, of many colors, adding beauty to all shrub groups where the taller varieties are not out of place. Most varieties grow quickly to an ultimate height of 6 to 8 feet, and with long, arching branches. During May, June and July they bear a great profusion of bell-shaped flowers strung thickly along the stems. The leaves, always bright and green, afford proper background for their colors. No collection of flowering shrubs, however small, can afford to be without the *Weigelas*. They are among the best we have.

**Amabilis.** Grows to about 6 feet, with rich, dark green leaves and very attractive, rose-colored flowers.



Flowers of Japanese Quince—*Cydonia Japonica*.

**DIERVILLA—Continued.**

**Desbolsi.** The flowers are deep rose-colored; one of the best.  
**Hendersoni.** One of the strongest growing Weigelas, with large flowers of a deep rose color.  
**Madame Lemoine.** One of the prettiest Weigelas. Flowers blush changing to deep pink.  
**Rosea.** (See Illustration, page 5). Best known and most popular variety of Weigela. Deep pink blossoms which are borne in wonderful profusion and make a great show in June.  
**Variegated Leaf.** Leaves bordered with yellowish white, making the bush very conspicuous the entire season; pink flowers.

<b>Prices, Above Varieties:</b>	Each	10
18 to 24 in. ....	\$0.25	\$2.00
2 to 3 ft. ....	.30	2.50
3 to 4 ft. ....	.40	3.50

**Candida.** Produces pure white flowers in late Spring and Summer. A choice Weigela growing to height of 4 to 6 ft.  
**Eva Rathke.** (See Illustration, page 18). This is perhaps the favorite Weigela and it deserves its popularity. A very distinct and attractive variety. Flowers deep carmine-red.

	Each	10
18 to 24 in. ....	\$0.40	\$3.50
2 to 3 ft. ....	.60	5.00

**ELDER.** (See Sambucus).  
**EUONYMUS japonicus.** (See Broad-leaved Evergreens).

**Euonymus**

**Americanus** (Strawberry Bush)  
 With long, slender, quadrangular branches of bright green leaves. The rich pink fruits are concealed in scarlet pods. Grows 6 to 8 feet.  
 18 to 24 in. .... Each 10  
 2 to 3 ft. .... \$0.15 \$1.25  
 3 to 4 ft. .... .25 2.00



**Exochorda**

**Grandiflora** (Pearl Bush). See Illustration, page 6). A beautiful Chinese shrub growing 6 to 8 feet tall with large, star-shaped, white flowers in May, and attractive foliage throughout the season.

	Each	10
18 to 24 in. ....	\$0.40	\$3.50
2 to 3 ft. ....	.75	6.00
3 to 4 ft. ....	1.00	8.00

**Forsythia**

They are among the first to bloom and the bright flowers seem the spirit of Spring, opening before the leaves appear. They attain an ultimate height of 8 to 16 feet. The leaves are especially rich green.  
**Fortunei.** Upright and often planted as single specimen. Handsome dark green foliage, golden yellow flowers.  
**Intermedia.** Slender, erect, arching branches, narrow leaves. A vigorous grower and a very popular variety.  
**Suspensa.** Long curving branches superbly adapted for covering arches and trellises; can be made to cover walls.  
**Viridissima.** (See Illustration, page 17). Brilliant green foliage and with the hark green also. Bright golden yellow flowers.

<b>Price, all varieties:</b>	Each	10
18 to 24 in. ....	\$0.30	\$2.50
2 to 3 ft. ....	.40	3.50
3 to 4 ft. ....	.50	4.00



**Forsythia Fortunei is Literally Covered with Yellow Flowers in Early Spring.**

Clean, healthy, hardy, free of all insect pests, grow readily and bloom freely almost anywhere and in all soils and situations. They represent a wide range of colors from pure white, through pink and red to dark purple, and both single and double. They grow to a height of 8 to 12 feet and are good for single specimens, screens or hedges for which purpose they may be trimmed to any desired height. We grow a carefully selected list, including the best varieties.

- Anemonaeformis.** Large, double red blooms, early.
- Ampleximus.** Double, rosy red, blooming early.
- Ardens.** A favorite variety with double, purplish blooms.
- Boule de Feu.** Fine double red.
- Bicolor.** Attractive, double white with red markings.
- Joan of Arc.** Pure white and very double.
- Lady Stanley.** Semi-double, white shaded to rose.
- Pulcherrimus.** Flowers of variegated tints.
- Paeoniaceiformis.** Double, white with carmine center.
- Assorted Single varieties.** Mixed colors.

**Prices of all varieties of Althea:**

	Each	10
18 to 24 in. ....	\$0.20	\$1.50
2 to 3 ft. ....	.30	2.50
3 to 4 ft. ....	.40	3.50

**Mallow Marvels.** A wonderful perennial Hibiscus growing from 4 to 7 feet, and in a clump several feet around, loaded with a mass of enormous, single flowers. Absolutely hardy, thrives well on any soil. Comes to greatest perfection where the ground is rich. All our plants have large roots as they have already bloomed. If interested in large quantities write for special prices.

	Each	10
Two-year, Transplanted. Assorted Colors, Red, Pink, White ....	\$0.15	\$1.25
Two-year, Transplanted. Mixed Colors, Red, Pink, White .....		1.00



**The White Flowers of Exochorda Grandiflora—Pearl Bush.**

**Hibiscus Syriacus** (Althea) gives us Most Beautiful Flowers in Many Colors.

- FRINGE TREE, Purple** — (See Rhus Cotinus).
- FRINGE TREE, White**—(See Chionanthus Virginica).
- HAMAMELIS** — (See Witch Hazel; Shade Trees).
- HIGH BUSH CRANBERRY** — (See Viburnum).

**Hibiscus**

**Syriacus** (Althea; Rose of Sharon). (See Illustration, page 6). The Altheas are ideal flowering shrubs, because during the hot, dry season and always from the middle of July till September they are filled with blossoms. There are not many mid-summer blooming shrubs, and the Altheas are the finest and showiest of them all.



Hydrangea Paniculata Grandiflora.

Jasmine, Cape. (See Broad-leaved Evergreens).

### Jasminum

**Officinale** (Common White Trailing Jasmine). A graceful, vine-like shrub with trailing branches and dark green glossy leaves, and bearing showy, fragrant, small white flowers. Not hardy in the Northern states. Each 10  
 1-yr. plants ....\$0.30 \$2.50  
 2-yr. plants .... .40 3.50

### Kerria

**Japonica.** A very desirable shrub of spreading habit, bearing large yellow flowers in June, attaining a height of 6 to 10 feet. Effective for massing. Does best in partial shade.



Hydrangea Arborescens Grandiflora—Hills of Snow.

	Each	10
18 to 24 in. ....	\$0.35	\$3.00
2 to 3 ft. ....	.45	4.00

### Koelreuteria

**Paniculata** (Varnish Tree). A small growing tree, sometimes attaining 30 feet, with large pinnate leaves; bears in July numerous orange-yellow flowers; an unusually good lawn tree.

	Each	10
18 to 24 in. ....	\$0.40	\$3.50
2 to 3 ft. ....	.75	6.50
3 to 4 ft. ....	1.00	9.00

### Lagerstroemia - Crape Myrtle

(See illustration, page 19).

No one in the South needs to be told about the Crape Myrtle. It is seen everywhere and is in southern gardens like the Lilac is in the North. In time it makes a considerable tree. The flowers are daintily fringed and borne in immense panicles. They bloom in May and continue all Summer. We offer both the crimson and the pink.

	Each	10
18 to 24 in. ....	\$0.50	\$4.00
2 to 3 ft. ....	.80	7.00
3 to 4 ft. ....	1.25	10.00

## Free GLADIOLUS BULBS

Send us the names of five or more prospective customers with your order and we will in return for the favor include Three Gladiolus Bulbs, Mixed Colors, with your order. We want to increase our mailing list and believe our friends who buy from us will be glad to assist.

## Hydrangea

**Arborescens** (Common American Wild Hydrangea). An attractive, upright shrub growing to a height of 4 to 10 feet, bearing white flowers in flat heads in early Summer. Large, light green leaves. A native plant of the mountains. Ideal for garden use. Very hardy. Each 10  
 18 to 24 in., transplanted.....\$0.35 \$3.00  
 2 to 3 ft., transplanted..... .40 3.50

**Arborescens Grandiflora** (Hills of Snow). Round heads of snowy white blooms in great profusion, from early June to September. Succeeds anywhere, especially valuable for its early blooming. Each 10  
 12 to 18 in., transplanted.....\$0.30 \$2.50  
 18 to 24 in., transplanted..... .40 3.50  
 2 to 3 ft., transplanted..... .60 5.00

**Paniculata Grandiflora.** (See illustrations, pages 7 and 18). Individual flowers of the largest size, creamy white, turning in the late Summer to pink. The flowers are very lasting and if cut and taken into the house they can be dried without losing their size or color, and make handsome home decorations in Winter. Begins to bloom in mid-July, the flowers remaining and new ones being added till late October. Grows 4 to 6 feet tall. Worthy of its popularity. Each 10  
 12 to 18 in., transplanted.....\$0.30 \$2.50  
 18 to 24 in., transplanted..... .40 3.50  
 2 to 3 ft., transplanted..... .60 5.00

**Quercifolia** (Oak-Leaved Hydrangea). A very handsome bushy shrub. Flowers in large panicles, creamy white. Foliage dark green above, silvery beneath and turning to glowing red in the Fall. This is a very ornamental shrub. Height 4 to 6 feet. Each 10  
 18 to 24 in. ....\$0.45 \$4.00  
 2 to 3 ft. .... .60 5.00

## Hypericum

**Prolificum** (Shrubby St. John's Wort). A bushy, low-growing shrub with many flowers in mid-summer. Useful in border or where low growth is wanted. It grows well in rocky or in sandy soil. It is 2 to 3 feet in height at maturity. Each 10  
 18 to 24 in. ....\$0.35 \$3.00  
 2 to 3 ft. .... .45 4.00



Crape Myrtle is Justly Popular in the South.





The Foliage and Berries of Amur River Privet North.

back to 6 or 8 inches. This repeated, will form a dense and widely branching growth. Nothing makes so fine, so compact, and so regular a hedge. The clipping shears can make the sides as smooth as a board and impenetrably thick. Do not let the roots dry; puddle when unpacked and plant at once.

**Amur River North** (*L. Amurense*). This variety is very hardy and is widely used in the North; it makes fine, dense hedges.

	Each	10	100
12 to 18 in.....	\$0.10	\$0.80	\$6.00
18 to 24 in., branched .....	.12	1.00	8.00
2 to 3 ft., branched .....	.15	1.25	10.00

**Amur River South** (*L. Sinense*). Southern Evergreen Privet. Most popular evergreen plant in the South. Rich green foliage, compact growth, hardy as far north as Kentucky. Makes a good hedge in one year.

	Each	10	100
18 to 24 in., 1-yr. seedlings .....	\$0.08	\$0.60	\$4.00
18 to 24 in., 2-yr. branched.....	.10	.80	6.00
2 to 3 ft., 2-yr. branched .....	.12	1.00	7.50
3 to 4 ft., 2-yr. branched, heavy.....	.15	1.25	10.00

**California** (*L. Ovalifolium*). Thick glossy green foliage, nearly evergreen. It makes a beautiful hedge, or is good planted as single specimens.

	Each	10	100
12 to 18 in., branched .....	\$0.05	\$0.40	\$3.00
18 to 24 in., branched .....	.08	.60	5.00
2 to 3 ft., branched.....	.10	.80	7.00
3 to 4 ft., branched.....	.15	1.25	10.00



Privet Hedges are Certainly More Beautiful Than Fences.

## Ligustrum - Privet

A large group of plants containing many beautiful varieties, that have dainty white, fragrant flowers followed by colored berries. They are handsome enough to stand singly, but are beautiful in groups where the difference in size of the several varieties gives opportunity for fine grouping with other plants. The California Privet allowed to grow naturally will form a tall screen or fence and is admirably adapted for such use.

But it is as a hedge plant that Privet is pre-eminent. It is more largely used than all other hedging plants together, and is planted in every section of the country. Privet has a tendency to throw many shoots, more than any other shrub; cut back closely, it throws up a mass of growth which bears shearing perfectly. Privet hedge can be kept at any height, low or tall, and regular shearing will preserve a perfectly even surface, wall-like on the sides and on top so dense as to support a man lying on it.

The leaves of all the Privets are abundant and rich green, that of California Privet being very glossy, and holding its rich color under all conditions. In the South and except in the extreme North, it is practically evergreen, as are nearly all the Privets. They succeed in almost any soil. Old neglected hedges can be cut to the ground and yet throw up new growth that can be sheared into a perfect hedge, and the growth is faster than that of any other hedge plant.

A single row of plants will make a good hedge; a fuller and more compact one can be made by planting two rows zig-zag, with the plants at the apexes of, say, 8-inch triangles. When set out, the plants should be cut back to a few inches; or they may be allowed to grow one year and should then be cut down closely to the ground.

They will make a hedge all the better for it, and bushy clear to the ground. The next Spring they should be cut



Privet Hedges May be Trimmed to Any Desired Shape or Size.

**Japonicum** (*L. Japonicum*). (Japanese Privet). A handsome evergreen shrub with thick, dark, glossy green leaves. Small, creamy white blooms in early Spring followed by bluish black berries. Will stand trimming well.

	Each	10
18 to 24 in. ....	\$0.75	\$6.00
2 to 3 ft. ....	1.00	8.00

**Ibota** (*L. Ibota*). A Japanese variety of the most beautiful character; dark oval foliage and white flowers. One of our best hardy hedge plants.

	Each	10
12 to 18 in. ....	\$0.10	\$0.80
18 to 24 in., branched .....	.12	1.00
2 to 3 ft., branched .....	.15	1.25

## Lindera

**Benzoin** (*Benzoin Aestivalls*) (Spice Bush). As soon as the frost is gone the leafless branches are clothed with small yellow flowers, succeeded later by scarlet berries. Splendid shrub for mass effect in natural plantings, and well adapted for planting in wet or moist soil.

	Each	10
18 to 24 in. ....	\$0.40	\$3.50
2 to 3 ft. ....	.50	4.50

## Lonicera - Honeysuckle

(See illustration, page 17).

This group includes only the shrubby or bush Honeysuckles, not the climbing varieties, (for which see Hardy Climbing Vines, page 29). The bush Honeysuckles are upright and bushy, with small fragrant flowers, followed by showy berries that will last through the Fall. They make very desirable and attractive hedging, and are also good in shrub plantings, or planted singly as specimens.

**Bella Albida.** A handsome hybrid of strong growth, with white, sweet-scented flowers and bright red berries.

**Fragrantissima.** The earliest to bloom, with small pale pink flowers. The leaves are bright green and in sheltered situations last nearly all winter. 5 to 6 feet.

**Morrowi.** One of the handsomest. Grows 5 to 6 feet high, with wide spreading branches with especially good foliage. Flowers white. Can be trimmed and made into a compact hedge. Bright red berries lasting into late Fall.

**Tatarica** (Pink Tartarian Honeysuckle). A tall shrub often attaining 10 feet, and blooming in May with small, light pink flowers.

**Tatarica alba** (White Tartarian Honeysuckle). Similar to the Red Tartarian, but with white flowers.

<b>Prices of All Varieties of Honeysuckle:</b>	Each	10
18 to 24 in. ....	\$0.25	\$2.00
2 to 3 ft. ....	.30	2.50
3 to 4 ft. ....	.40	3.50

## Malus

**loensis Bechteli** (Bechtel's Double Flowering Crab). (See illustration, page 17). A small tree attaining 10 to 12 feet in height, and bearing in early Spring, myriads of double pink flowers, resembling miniature roses. So very attractive that it should be planted in every garden.

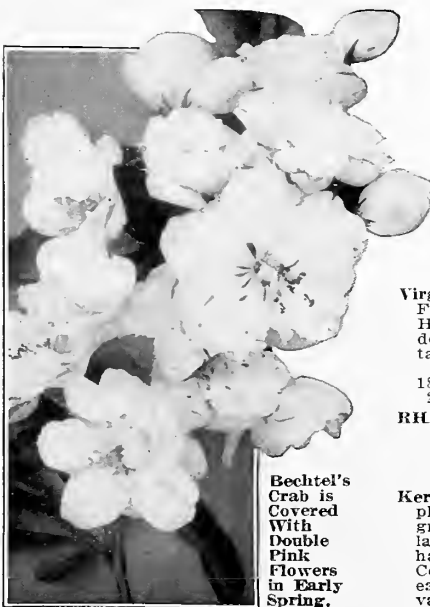
	Each	10.
2 to 3 ft. ....	\$1.10	\$10.00
3 to 4 ft. ....	1.50	12.50

**PEARL BUSH.** (See Exochorda).

## Prunus

**Persica** (Flowering Peach). Can supply Red, White or Pink. During March, the Double Flowering Peach is covered with a mass of beautifully formed and highly colored flowers. These trees cannot be too highly recommended for early Spring blooming. Grows to a small tree, are perfectly hardy and will thrive in any soil.

	Each	10
2 to 3 ft. ....	\$1.10	\$10.00
3 to 4 ft. ....	1.50	12.50



Bechtel's Crab is Covered With Double Pink Flowers in Early Spring.



The Flowers of Honeysuckle Bushes are Followed by Attractive Red Berries.

**Pissardi** (Purple Leaf Plum). A very handsome small tree. Foliage purple. Bluish pink flowers in Spring harmonizing in color with foliage. One of the best purple-leaved trees.

	Each	10
2 to 3 ft. ....	\$0.65	\$5.50
3 to 4 ft. ....	.85	7.50

**Triloba plena** (Double Flowering Plum). A very desirable, early flowering, ornamental shrub, bearing double flowers of a delicate pink shade which are produced in enormous quantities along the slender branches. Blooms in April, attaining a height of 8 to 10 feet at maturity.

	Each	10
2 to 3 ft. ....	\$0.85	\$7.50
3 to 4 ft. ....	1.25	10.00

## Philadelphus

(Mock Orange or Syringa)

Generally upright growing shrub with white flowers, usually single, sometimes half-double. The foliage is attractive at all seasons and the shrub is of great beauty when in bloom.

**Coronarius** (True Mock Orange). Flowers are small, single, of delicious fragrance. Reaches 8 to 10 feet ultimately.

**Gordonianus.** Large, white flowers appearing later than most varieties, therefore very valuable as lengthening the flowering season. Grows 10 to 12 feet high.

**Grandiflorus.** Flowers are large, white; leaves large. One of the leading varieties for specimen planting. Grows 8 to 10 feet high.

**Mont Blanc.** Noted for its great profusion of very large, fragrant blooms literally covering the plant. Dwarf in habit.

**Nivalis.** Free flowering. Large, single white flowers. Strong grower.

<b>Prices of all above varieties of Philadelphia:</b>	Each	10
18 to 24 in. ....	\$0.25	\$2.00
2 to 3 ft. ....	.35	3.00
3 to 4 ft. ....	.50	4.00

**Virginal.** A very beautiful new variety. Flowers are larger and more fragrant. Has long blooming season. Flowers in dense clusters. The bush grows moderately tall. Compact habit. Good foliage.

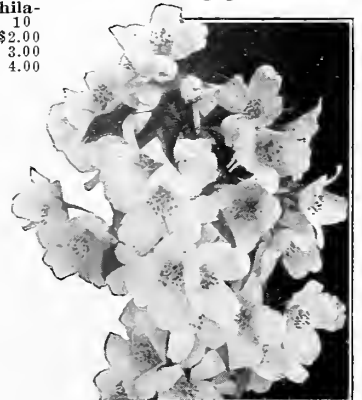
	Each	10
18 to 24 in. ....	\$0.60	\$5.00
2 to 3 ft. ....	.80	7.50

**RHAMNUS—Buckthorn.** (See Shade Trees).

## Rhodotypos

**Kerrioides** (White Kerria). A distinct plant and very attractive, with bright green leaves, and pure white flowers in late Spring. Later come black berries that hang on all Winter. Grows 4 to 5 feet. Coming a little later than most of the early Spring flowers, makes it especially valuable.

	Each	10
18 to 24 in. ....	\$0.40	\$3.50
2 to 3 ft. ....	.50	4.50



Philadelphus—Mock Orange.

## Rhus - Sumac

**Aromatica** (Fragrant Sumac). The Sumacs nearly all have wonderfully colored leaves in the Fall and are highly prized for that attraction; their bright red leaves make a great showing, throwing a marvelous splash of color against the landscape. The *Rhus aromatica* is a short-branched shrub, from 3 to 6 feet tall, with striking leaves and yellow flowers in clusters along the stems. The red berries mature in June and in the Fall the foliage is a riot of brilliant scarlet. Handsome and showy.

18 to 24 in., branched	Each	10
2 to 3 ft., branched	\$0.45	\$4.00
	.60	5.00

**Copallina** (Shining Sumac). A tall shrub, sometimes 20 feet in height; lustrous leaves which change to rich crimson in Fall. Greenish yellow flowers. Very effective; makes a great display in borders and background.

2 to 3 ft.	Each	10
3 to 4 ft.	\$0.25	\$2.00
	.30	2.50

**Cotinus** (Purple Fringe; Smoke Tree). A very large shrub, making in time a fair sized tree of unusual, striking appearance. The great mass of misty, purplish flowers that cover the entire bush in June make it look like a great mass of smoke, hence the name Smoke Tree. The leaves color up in the Fall. Will attain a height of about 15 feet.

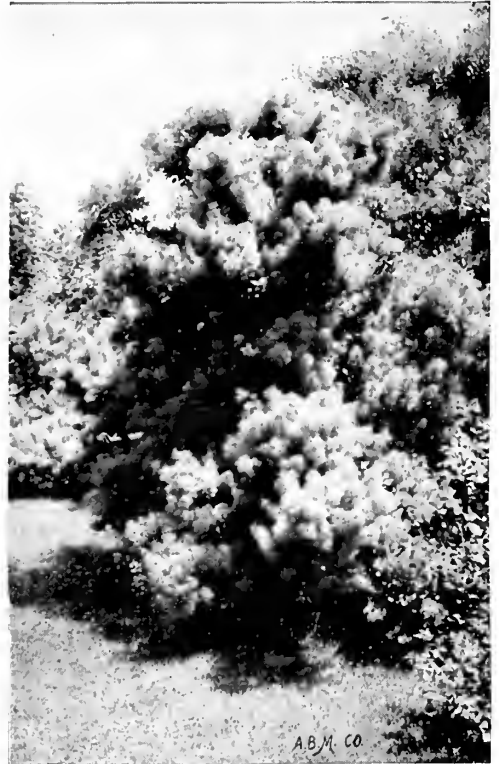
Each	10
3 to 4 ft.	\$0.80 \$ 7.00
4 to 6 ft.	1.00 8.00
6 to 8 ft.	1.50 12.00



Bloom of Robinia Hispida.

**Glabra** (Smooth Sumac). Large and striking foliage, topped in the Fall by great spikes of crimson seeds, very ornamental in effect. Fine Autumn coloring; good on rocky or poor soil; grows to small tree.

Each	10
2 to 3 ft.	\$0.25 \$1.50
3 to 4 ft.	.35 2.00



Masses of Misty Purplish Bloom Feature the Rhus Cotinus in June.



The Elder Combines Beauty With Utility.

**Typhina** (Staghorn Sumac). Grows in irregular bush form up to 10 feet and is very good for grouping in large plantations. The leaves are large and bright green, but become brilliantly colored in the Fall. As with most Sumacs, it has the advantage of thriving in poor soil.

Each	10
3 to 4 ft.	\$0.30 \$2.50
4 to 6 ft.	.50 4.00
6 to 8 ft.	.75 6.00

## Robinia - Locust

**Hispida** (Moss Locust; Rose Acacia). A native dwarf bush that sprawls upon the ground, rarely growing taller than 2 or 3 feet. It is very showy, however, with good leaves and rose colored or lavender colored flowers that hang in clusters like wisteria. They bloom in April and then the flowers appear at intervals all through the Summer. An odd plant that ought to be more widely grown.

Each	10
18 to 24 in.	\$0.35 \$3.00
2 to 3 ft.	.50 4.00

## Sambucus - Elder

**Canadensis** (American Elder). This is the well known native Elderberry. A tall shrub with stout branches filled with pith. The small white flowers come in broad, flat heads in June, and are very fragrant. The fruit is black, ripens in August and September, and is borne in great quantities. Grows 6 to 8 feet tall. In countries where they do not have prohibition, Elderberries are said to be used for making wine of excellent quality and possessing qualities that correct stomach disorders. The bushes are most attractive with beauty in foliage and bloom.

Each	10
18 to 24 in.	\$0.30 \$2.00
2 to 3 ft.	.40 3.50

**Aurea** (Golden Elder). (See illustration, page 17). Hardy, strong growing shrub. Flowers white. Foliage a very showy bright yellow. This shrub is often used in planting for color effect.

Each	10
2 to 3 ft.	\$0.40 \$3.50
3 to 4 ft.	.60 5.00

**Laciniata** (Cut-Leaf Elder). Great handsome cymes of delicate, fragrant flowers in June and July followed by large clusters of fruit. The foliage is deeply cut and has a lacy appearance.

Each	10
2 to 3 ft.	\$0.40 \$3.50
3 to 4 ft.	.50 4.00



## Spiraea - Spirea

One of the most desirable and widely used groups of plants. The great variety of sizes and shapes, the riotous extravagance of their bloom, and the season they cover, from early to late, some being everblooming, give them a place hardly equalled by any other single group. They are much used for hedging, borders and massing.

**Anthony Waterer.** (See illustration, page 17). A low-growing, very bushy plant that bears small heads of bright crimson flowers all during the Summer. This variety rarely exceeds 3 feet in height and is valuable for planting in front of taller shrubs.

	Each	10
12 to 18 in. ....	\$0.35	\$3.00
18 to 24 in. ....	.50	4.00

**Billardi.** (See illustration, page 17). Pink. Makes a narrow, thick shrub growing to 6 feet in height, bearing from July until Fall, dense panicles of light pink flowers.

**Billardi alba.** Similar to the preceding variety except that the flowers are white.

	Each	10
18 to 24 in. ....	\$0.25	\$2.00
2 to 3 ft. ....	.30	2.50
3 to 4 ft. ....	.40	3.50

**Callosa alba.** Dense, low-growing bushes, 3 to 4 feet high, with white flowers in small flat heads; grows freely and blooms nearly all Summer.

	Each	10
12 to 18 in. ....	\$0.35	\$3.00
18 to 24 in. ....	.50	4.00

**Callosa rosea.** Same as above, only the flowers are rose colored.

	Each	10
18 to 24 in. ....	\$0.25	\$2.00
2 to 3 ft. ....	.30	2.50
3 to 4 ft. ....	.40	3.50

**Douglasi.** Flowers deep rose color. One of the best Spireas. The blossoms are large spikes and very attractive. Medium size shrub; upright grower.

	Each	10
2 to 3 ft. ....	\$0.35	\$3.00
3 to 4 ft. ....	.50	4.00

**Opulifolia (Ninebark).** Very vigorous and upright with clusters of flat flowers, followed by red berries.

	Each	10
18 to 24 in. ....	\$0.25	\$2.00
2 to 3 ft. ....	.30	2.50



Another Low-Growing Spirea With Feathery Foliage is Spirea Thunbergi.

**Reevesiana.** This variety grows 4 to 5 feet in height, throwing out long branches that curve gracefully and are covered with clusters of double white flowers in May and June.

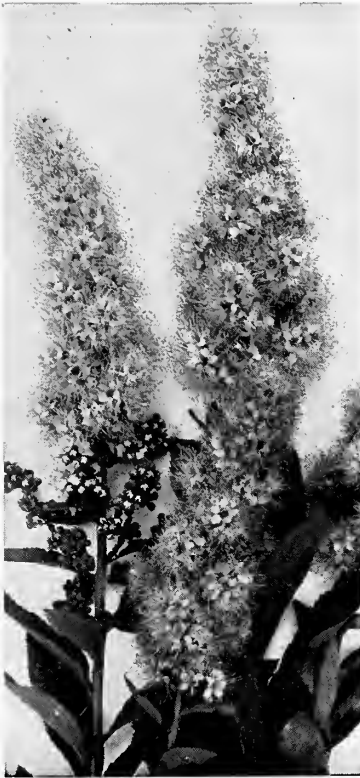
	Each	10
18 to 24 in. ....	\$0.25	\$2.00
2 to 3 ft. ....	.30	2.50

**Opulifolia aurea.** Similar to the Opulifolia but for the golden foliage. Strong grower. Flowers white.

	Each	10
2 to 3 ft. ....	\$0.35	\$3.00
3 to 4 ft. ....	.50	4.50



Spirea Van Houttei is a Fountain of White Bloom in Spring—Justly Popular.



Spirea Billardi Blooms From July Till Frost.

**Prunifolia (True Bridal Wreath).** Strong, irregular growing; shining leaves coloring in Autumn, and diminutive, very double, rose-like flowers borne in great abundance in May. Grows 6 feet tall.

	Each	10
18 to 24 in. ....	\$0.30	\$2.50
2 to 3 ft. ....	.35	3.00
3 to 4 ft. ....	.50	4.00
4 to 5 ft. ....	.75	6.00



Anthony Waterer Spirea—Excellent for Edging Taller Shrubs.

**Thunbergi.** A low, bushy plant with very small leaves and star-like flowers in such profusion that in early Spring the plant looks like a mass of snow. In the Fall the leaves color beautifully. Ideal for a low ornamental hedge or border.

	Each	10
18 to 24 in. ....	\$0.30	\$2.50
2 to 3 ft. ....	.35	3.00

**Van Houttei.** (See illustration opposite). Without doubt the finest of all Spireas, and one of the most useful shrubs in cultivation. Blooming in early Spring, the plant throws out long branches that curve and droop to the ground, weighted with a mass of pure white flowers that suggest a fountain of snow. A very beautiful sight on the lawn and can be massed or planted alone.

	Each	10
18 to 24 in. ....	\$0.25	\$2.00
2 to 3 ft. ....	.35	3.00
3 to 4 ft. ....	.50	4.00



Feathery Foliage of the Tamarix.

18 to 24 in. ....	Each	10
2 to 3 ft. ....	\$0.30	\$2.50
	.40	3.50

**Vulgaris** (Coralberry; Indian Currant). This is the red-fruited Snowberry. A small plant whose slender branches are covered with small, purplish red berries that are very bright and showy, and last all winter. The birds will come and stay with you and enjoy these berries as much as you do. Grows 4 feet high.

18 to 24 in. ....	Each	10
2 to 3 ft. ....	\$0.25	\$2.00
	.30	2.50

## Syringa - Lilacs

Best known and best loved of all the old-time garden shrubs, whose flowers never fail to charm with their delicate beauty nor refresh with their tender fragrance.

**Purple.** (See illustration, page 17). The well known old garden favorite; grows 10 to 15 feet high.

**White.** The same as above, only with pure white flowers.

**Rothomagensis.** Of strong, vigorous growth, attaining a height of 12 feet, with small, narrow leaves and fragrant flowers which are deep reddish lilac and borne in long, loose panicles.

Prices of above varieties:

18 to 24 in. ....	Each	10
2 to 3 ft. ....	\$0.35	\$3.00
3 to 4 ft. ....	.50	4.00
	.75	6.00



The Lilacs Always Charm With Beauty and Fragrance.

## Styrax

**Japanica.** An exceedingly desirable small tree or shrub. Practically covered in June with fragrant racemes of white flowers. A plant desirable for individual or group plantings.

3 to 4 ft. ....	Each	10
4 to 6 ft. ....	\$0.40	\$3.50
	.75	6.00

## Stephanandra

**Flexuosa.** An attractive 3-foot shrub especially suitable for borders of other shrubs and for rocky banks. Branches angular, even zigzagged, with handsome lobed leaves which turn to purplish red, and attractive white flowers in June.

2-yr. plants ....	Each	10
3-yr. plants—clumps, 2 to 3 ft. ....	\$0.40	\$3.50
	.60	5.00

## Symphoricarpos - Snowberry

**Racemosus** (White Snowberry). (See illustration, page 18). Those who plant gardens ought to give more thought to the wonderful beauty of the berry-bearing plants. This is one of the best; a shrub that grows 5 to 6 feet and has small, pink flowers, but its great attraction is the large, milk-white berries that form after the flowers drop; the berries last into mid-winter. They add a very attractive feature to the garden as do all berry-bearing plants.



The Large White Berries of White Snowberry Droop in Graceful Sprays.

## Tamarix - Tamarisk

An irregular spreading tree-like shrub growing 6 to 10 feet tall, with threadlike foliage, bluish gray and very handsome and delicate. In early summer it is covered with clouds of small, pink flowers presenting a very beautiful appearance. Thrives in dry, sandy soils and makes a good shrub for seaside planting, growing well even when close to salt spray. We offer two similar varieties: **Africana** and **Odessana**.

Prices, either variety:

18 to 24 in. ....	Each	10
2 to 3 ft. ....	\$0.25	\$2.00
	.35	3.00

New Mexico, April 13th, 1928.

"The shipment of plants arrived in perfect condition. They were so well packed that despite the extreme dryness of the atmosphere here they were uninjured. I have never had more promising stock from anyone. I appreciate deeply your splendid treatment of me."

## Viburnum - Snowball

This family includes the famous Snowballs. They are all hardy and have unusually rich, glossy, abundant leaves and are especially free from attacks of injurious insects. They are valuable in landscape work and mass planting, in borders and groups. Most of these varieties will grow satisfactorily in shaded places, but, of course, will do better in open sunlight. Beautiful autumnal coloring heightens the attractiveness of the leaves of some varieties, while others have the added beauty of ornamental berries.

**Dentatum** (Arrow-wood). Bright green, heart-shaped leaves that turn to red and purple. The flowers, borne in May and June, are creamy white. Grows from 8 to 12 feet.

	Each	10
18 to 24 in. ....	\$0.25	\$2.00
2 to 3 ft. ....	.40	3.50
3 to 4 ft. ....	.60	5.00

**Opulus** (High Bush Cranberry). A tall shrub, with upright, spreading branches, 8 to 10 feet in height, widely distributed in the northern hemisphere. Leaves broadly ovate, 3-lobed, bright green. Flowers white in late Spring and early Summer. Berries scarlet, persisting all Winter; very showy.

	Each	10
12 to 18 in. ....	\$0.40	\$3.00
18 to 24 in. ....	.60	5.00
2 to 3 ft. ....	1.00	8.00



Bloom of *Viburnum Opulus* is Followed by Scarlet Berries Which Hang all Winter.

**Opulus sterile** (Common Snowball). A fine shrub, 8 to 10 feet tall, bearing globes of snowy white flowers in May. One of the old garden favorites.

	Each	10
18 to 24 in. ....	\$0.45	\$4.00
2 to 3 ft. ....	.55	6.00

**Plicatum** (Japanese Snowball). Upright, attaining a height of 6 to 8 feet, with spreading habit, bearing in May an abundance of white berries that have a wonderful setting in the dark green leaves.

	Each	10
18 to 24 in. ....	\$0.45	\$4.00
2 to 3 ft. ....	.65	6.00
3 to 4 ft. ....	1.00	8.00

**Nudum** (Doublefile Viburnum). Beautiful dark green leaves changing to gorgeous crimson in the Fall. White flowers are borne in clusters in May. Grows 6 to 8 feet.

	Each	10
18 to 24 in. ....	\$0.25	\$2.00
2 to 3 ft. ....	.35	3.00



Japanese Snowball Has Interesting Flowers and Foliage, and White Berries After the Bloom.

## Vitex - Chaste or Lavender Tree

Flowers and foliage noted for the distinctive lavender fragrance. Stands much abuse. Flowers from May until July with some flowers appearing even up to frost.

We offer two varieties: *Agnus-castus* and *Incisa*, which are very similar.

	Each	10
18 to 24 in. ....	\$0.25	\$2.00
2 to 3 ft. ....	.35	3.00
3 to 4 ft. ....	.50	4.00

## Surprise Collection!

Here's your chance to get a pleasant surprise. If you want to do your planting in the Spring, it would pay you to grasp this chance to get a good assortment of Hardy Flowering Shrubs, Shade Trees, Hedge Plants, etc.

**\$4.50**

In the Spring of the year we always have small quantities of many varieties of shrubs, trees, etc., left in our storage house. Yes, it would pay us to line these out in our nursery and grow them for another year and sell them at the regular price, but we have decided to show our appreciation to our customers by offering them this surprise selection, which is indeed a bargain.

We do not give a list of the stock in this selection; if we did, it would not give you the pleasant surprise when receiving it, for you would already know what it contained. It will contain, however, just a nice assortment of flowering shrubs, shade trees, etc., and more than could be bought for the amount at regular prices.

If you are interested in this good buy, place your order as early as possible. Shipment will be made in late April or in first few days of May.

Tennessee, March 8th, 1928.

"I wish to thank you for the splendid nursery stock you sent me. The plants were splendid, much better than I expected. I think you will receive some orders from some of my friends."



*Viburnum tomentosum* in Bloom--Foliage is Remarkably Handsome.

# Forest and Shade Trees

Shade trees are always an attractive setting for the house. They are necessary, too, to add comfort to the hot Summer days. The owner of farm or city property that is well planted with shade trees, windbreaks and shrubbery finds himself possessed not only of a beautiful home, but one that has increased its value many times the original cost of the trees and plants.

## Acer - Maple

**Dasycarpum** (Silver Maple). (See illustration opposite). A very rapid growing tree of graceful, spreading habit, with leaves light green above and silvery beneath. Desirable for lawn or street planting. Will grow in poor and dry soil.

	Each	10
3 to 4 ft. ....	\$0.40	\$ 3.50
4 to 6 ft. ....	.65	6.00
6 to 8 ft. ....	.90	8.00
8 to 10 ft. ....	1.50	12.00

**Negundo** (Box Elder; Ash-Leaved Maple). A very rapid growing tree with widely spreading branches. The leaves are light green and very pale green underneath, the color affording marked contrast to the other Maples, and rendering it very effective in mass planting. Withstands drought and cold.

	Each	10
3 to 4 ft. ....	\$0.50	\$4.00
4 to 6 ft. ....	.65	5.50
6 to 8 ft. ....	.80	7.00

**Platanoides** (Norway Maple). One of the best shade trees for all purposes, whether in the lawn or by the roadside; a favorite street tree. Grows to large size and is of neat, compact habit with a round head.

	Each	10
3 to 4 ft. ....	\$0.50	\$4.00
4 to 6 ft. ....	.85	7.00
6 to 8 ft. ....	1.50	12.50

**Rubrum** (Red or Scarlet Maple). Of excellent habit, with scarlet flowers in early Spring; dense foliage, turning to gorgeous colors in Autumn; will thrive in wet situations.

	Each	10
3 to 4 ft. ....	\$0.40	\$3.50
4 to 6 ft. ....	.65	6.00
6 to 8 ft. ....	.90	8.00



Silver Maples Do Well in Poor and Dry Soils.



The Norway Maple Has Excellent Habits.

**Saccharum** (Sugar Maple). Ideal for lawn and street planting. One of our stateliest native trees, growing to large size; full and compact, with leaves of cool green in Spring and taking on the orange and scarlet tints with Fall. It is from the sap of this tree that the delicious maple sugar is made.

	Each	10
3 to 4 ft. ....	.40	\$3.50
4 to 6 ft. ....	.65	6.00
6 to 8 ft. ....	.90	8.00
8 to 10 ft. ....	1.50	

## Aesculus (Horse-chestnut)

**Octandra** (Yellow Buckeye). A large tree of slow growth and very attractive in its roundish form. Large leaves that are conspicuous in Summer. Flowers in May. A beautiful tree.

	Each	10
18 to 24 in. ....	\$0.25	\$2.00
2 to 3 ft. ....	.35	3.00

## Ailanthus

**Glandulosa** (Tree of Heaven). Extremely rapid grower, open-headed tree; valuable for street planting as it stands smoke and dust well. Fruit clusters often very highly colored. Each 10

3 to 4 ft. ....	\$0.35	\$3.00
4 to 6 ft. ....	.60	5.00

## Amelanchier - Serviceberry

Small tree or large shrub. Round top, branches small and spreading; in early Spring produces white cherry-like blossoms, followed by red fruit of good flavor.

	Each	10
3 to 4 ft. ....	\$0.65	\$6.00
4 to 6 ft. ....	.90	8.00

## Andromeda

**Arborea** (Oxydendrum arboreum). (Sourwood). A very handsome bushy tree, rarely taller than 20 feet. Even when very small it bears masses of small, white flowers. The foliage is its best feature. The abundant green leaves of Summer turn to scarlet in the Fall.

	Each	10
18 to 24 in. ....	\$0.30	\$2.50
2 to 3 ft. ....	.45	3.50



Beauty of Flowers and Unusual Foliage Feature the Horse-chestnut.



Graceful Branches and White Bark of the White Birch.

### Catalpa

*Bungei* (Umbrella Catalpa). (See illustration, page 15). To make these, we bud or graft on straight stems the dwarf variety which makes many short, spreading branches and a roundish head without adding to the height. The foliage is very pleasing and the effect obtained when planted in pairs along walks and driveways or entrances is greatly admired.

	Each	10
4 to 5 ft., 1-yr. heads..	\$1.00	\$ 9.00
5 to 6 ft., 1-yr. heads..	1.50	12.00
6 to 7 ft., 2-yr. heads..	2.00	15.00
7 to 8 ft., 3-yr. heads,		
select .....	2.75	25.00

*Speciosa* (Western Catalpa). A large, handsome tree with immense, tropical-looking leaves and big clusters of white flowers with purple centers. Is very quick growing and makes a fine tree for the lawn. It does well even in poor soil.

	Each	10
4 to 5 ft., branched .....	\$0.35	\$2.75
5 to 6 ft., branched .....	.50	3.50
6 to 8 ft., branched .....	.75	6.00

### Chionanthus - Fringe Tree

*Virginica* (White Fringe Tree). A large, very ornamental native tree-like shrub, covered in early April with pure white flowers in long, fringelike effect. A shrub of unusual beauty.

	Each	10
18 to 24 in. ....	\$0.75	\$ 6.00
2 to 3 ft. ....	1.25	10.00

### Cladrastis

*Lutea* (Yellow Wood). A pretty, low tree with small, egg-shaped leaflets and white flowers in graceful, drooping clusters. It is of very slow growth.

	Each	10
18 to 24 in. ....	\$0.35	\$3.00
2 to 3 ft. ....	.45	4.00

### Betula - Birch

*Alba* (White Birch). The White Birch is a small or medium sized tree with white bark and small, dark green leaves that turn pale yellow in the Fall, and is attractive for its conspicuous bark in Winter. This Birch will thrive in dry soil. Each 10  
 4 to 6 ft. .... \$1.25 \$10.00  
 6 to 8 ft. .... 1.75 15.00

*Nigra* (River Birch). The famous Birch with torn or ragged bark that is often seen along the banks of streams. A graceful, moisture-loving tree that should be in all lawn plantings. The leaves are dark green, turning to a dull yellow in Autumn. Each 10  
 3 to 4 ft. .... \$0.35 \$3.00  
 4 to 6 ft. .... .60 5.00

### Carpinus - Hornbeam

*Caroliniana* (American Hornbeam). A bushy, low-growing tree with slender branches and bluish green leaves that will stand any amount of trimming and is excellent for specimen planting or hedging. The leaves turn to orange and scarlet in Autumn. Each 10

3 to 4 ft. ....	\$0.35	\$3.00
4 to 6 ft. ....	.60	5.00
6 to 8 ft. ....	1.00	9.00

### Celtis - Hackberry

*Occidentalis* (Hackberry; Nettle Tree). A native tree whose worth and beauty are too often overlooked. Of strong growth with full, spreading top and abundant leaves. Has attractive and edible fruits or berries of small size. Excellent for street planting and ideal for lawns. Each 10

2 to 3 ft. ....	\$0.25	\$2.00
3 to 4 ft. ....	.35	3.00

### Cercis - Redbud

*Canadensis* (Redbud or Judas Tree). A small tree, branching irregularly from the ground, spreading in habit, with smooth, heart-shaped leaves; in early Spring has small pink flowers. A tree for the lawn. Each 10

3 to 4 ft. ....	\$0.60	\$5.00
4 to 5 ft. ....	.75	6.00
5 to 6 ft. ....	1.00	8.00
6 to 8 ft. ....	1.25	10.00



Catalpa Bungei is Excellent For Formal Effects.



The Hackberry Makes an Excellent Lawn Tree.



### Cornus

**Florida** (White Flowering Dogwood). A native tree of regular habit, with spreading top; it produces large, snowy white flowers in May, before the leaves appear. The foliage is attractive all Summer and in the Fall colors beautifully; produces red berries that hang on well into the Winter.

	Each	10
3 to 4 ft. ....	\$0.50	\$4.00
4 to 5 ft. ....	.75	6.00
5 to 6 ft. ....	1.00	8.00

### Corylus

**Americana** (Hazelnut). The common native Hazelnut grows well in this section, and produces quantities of nuts which are sweet and of fine flavor. Very hardy.

	Each	10
2 to 3 ft. ....	\$0.30	\$2.50
3 to 4 ft. ....	.50	4.00

### Diospyros - Persimmon

**Virginiana** (American Persimmon). A native of southern states, but will thrive and ripen its fruits as far north as the Great Lakes. The tree reaches the height of 30 feet. The fruit is not large, one-half to one inch in diameter, and must become fully ripe to become edible. A valuable ornamental tree and will thrive on the poorest soil.

	Each	10
2 to 3 ft. ....	\$0.20	\$1.50
3 to 4 ft. ....	.25	2.00

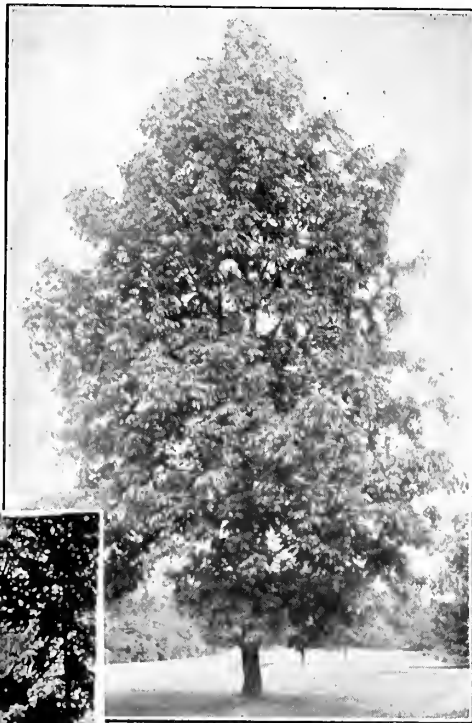
**Kaki** (Japanese Persimmon). The tree is a vigorous grower and an early and most prolific bearer; fruit larger than the common American Persimmon.

	Each	10
2 to 3 ft. ....	\$0.40	\$3.50
3 to 4 ft. ....	.60	5.00

### Fagus - Beech

**Americana** (American Beech). Silvery bark; fine spreading growth and symmetrical rounded head. Its silvery bark is ornamental in Winter.

	Each	10
3 to 4 ft. ....	\$0.60	\$5.00
4 to 6 ft. ....	.90	8.00



Ash Trees are of quick growth and Handsome Form.

### Fraxinus - Ash

**Americana** (Common Native Ash). This is another tree of quick growth; a very healthy tree of spreading branches and light green foliage.

	Each	10
4 to 6 ft. ....	\$0.65	\$6.00
6 to 8 ft. ....	.90	8.00
8 to 10 ft. ....	1.50	12.50

### Gleditsia

**Triacanthos** (Honey Locust). Of quick growth, very hardy, and as it can be clipped into shape, and bears numerous strong thorns, it makes an impenetrable farm hedge when planted closely. Useful rather than ornamental.

	Each	10
18 to 24 in. ....	\$0.10	\$0.80
2 to 3 ft. ....	.15	1.25

### Hamamelis

**Virginiana** (Witch Hazel). This is one of our best native trees or shrubs, making grand growth, much like the Hazel. Showy yellow flowers appear after the ripening of the leaves in November when other shrubs are dormant. Very hardy; will thrive in partially shaded places.

	Each	10
18 to 24 in. ....	\$0.35	\$3.00
2 to 3 ft. ....	.50	4.00
3 to 4 ft. ....	.75	6.00

### Larix - Larch

**Europea** (European Larch). Tall tree with conical head. Soft, light green foliage fading in Autumn to yellowish tone.

	Each	10
2 to 3 ft. ....	\$1.00	\$ 8.00
3 to 4 ft. ....	1.50	12.00
4 to 5 ft. ....	2.00	17.50

### Liquidambar - Sweet Gum

**Styraciflua**. A handsome native tree of stately growth, with corky bark. The leaves resemble those of the Maple, but are more star-shaped and of a glossy green color, turning to a deep purple in the Fall.

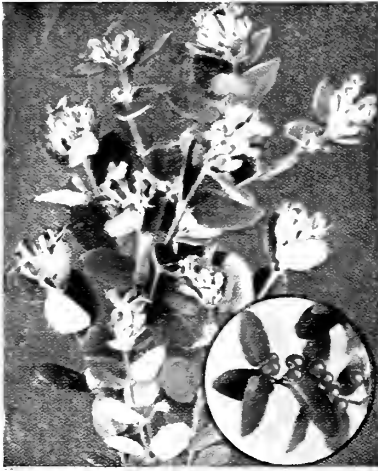
	Each	10
3 to 4 ft. ....	\$0.90	\$ 8.00
4 to 6 ft. ....	1.50	10.00



Dogwood is a Beautiful Sight in May.



Star-Shaped Glossy Leaves of the Sweet Gum.



**Bush Honeysuckle.** (See page 9).



**Purple Lilac.** (See page 12).



**Flowering Crab.** (See page 9).



**Golden Elder.** (See page 10).



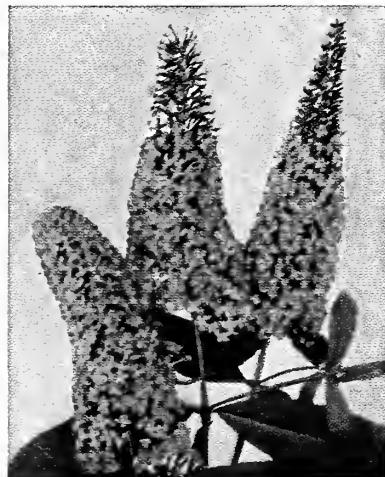
**Flowering Almond.** (See page 3).



**Golden Bell—Forsythia.** (See page 6).



**Spirea Anthony Waterer.** (See page 11).



**Butterfly Bush—Buddleia.** (See page 4).



**Spirea Billiardii, Pink.** (See page 11).



*Deutzia, Pride of Rochester.* (See page 5).



*Hydrangea Paniculata.* (See page 7).

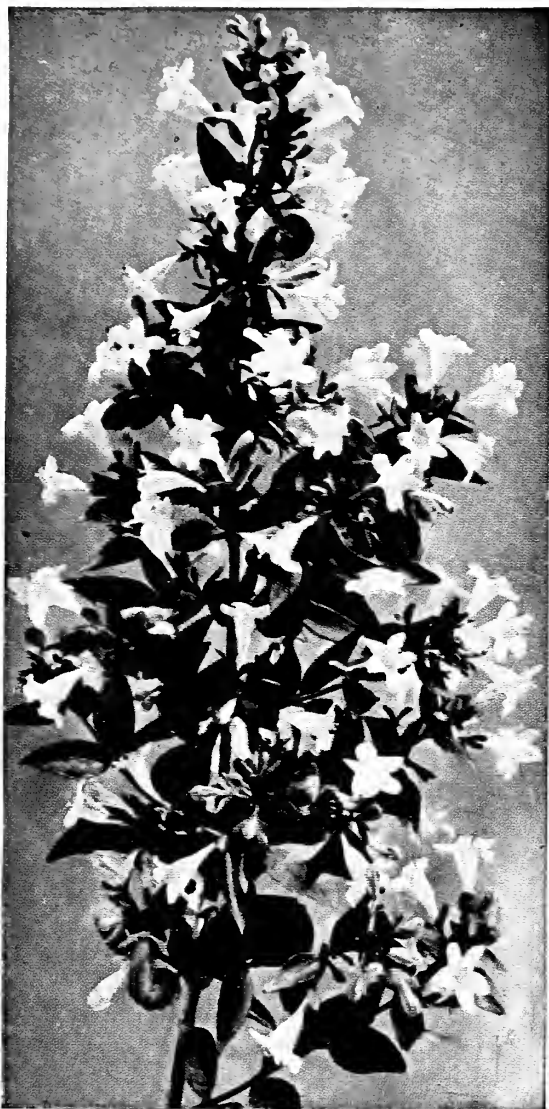


*White Snowberry.* (See page 12).



*Weigela, Eva Rathke.* (See page 6).





*Abelia Grandiflora*, (See page 27).



*Clematis Paniculata*, (See page 29).



*Honeysuckle Vine*, (See page 29).



*Crape Myrtle*, (See page 7).



Phlox, R. P. Struthers. (See page 32).



Festiva Maxima  
Peony.  
(See page 32).



Shasta Daisies. (See page 33).



Gladioli, Panama and Early Snowflake. (See page 31).

## Liriodendron - Tulip Tree

**Tulipifera** (Tulip Poplar). A large and stately tree suitable for lawn or avenue planting. Quick growth, too, making a compact, pyramidal head. The leaves are dark green turning to yellow in the Fall. Has greenish yellow flowers shaped like a tulip. A healthy, green, beautiful tree that does well in all sections. Each 10

4 to 6 ft. ....	\$0.75	\$ 6.00
6 to 8 ft. ....	1.00	8.00
8 to 10 ft. ....	1.50	12.50

## Maclura - Osage Orange

**Pomifera**. An extremely hardy tree, whose wood, being practically indestructible is valuable for fence posts. For farm hedging it is good, because with clipping, when planted close, it can be held to any desired height and soon forms an impassible barrier. Write us for prices on quantity lots. Each 10

18 to 24 in. ....	\$0.10	\$0.80
2 to 3 ft. ....	.15	1.25

## Magnolia

**Acuminata** (Cucumber Tree). The tallest of the Magnolias, growing rapidly to a fine pyramidal tree 60 to 90 feet high. In mid-Summer large, creamy white blossoms appear among the deep green leaves, and large, cucumber-shaped fruits that turn bright crimson succeed them. Each 10

2 to 3 ft. ....	\$0.50	\$ 4.00
3 to 4 ft. ....	.75	6.50
4 to 6 ft. ....	1.25	10.00

**Grandiflora** (Broad-Leaf Magnolia; Southern Magnolia). The grandest of our native broad-leaved evergreen trees. Branches from the ground, spreads widely and attains a height of 30 to 40 feet. Has long, wide, glossy green leaves and immense white, waxlike flowers of great fragrance. Each 10

18 to 24 in. ....	\$1.50	\$12.50
2 to 3 ft. ....	2.00	17.50
3 to 4 ft. ....	3.00	25.00

**Tripetala**. Rarely grows taller than 30 feet. Immense leaves, 10 to 20 inches long, in clusters around the large white flowers; rose colored fruit cones. Each 10

2 to 3 ft. ....	\$0.50	\$ 4.00
3 to 4 ft. ....	.75	6.50
4 to 6 ft. ....	1.25	10.00



The Tulip Tree is Successful in all Situations.

## Melia

**Umbraculiformis** (Texas Umbrella Tree). A distinctive and valuable form of the Chinaberry. The branches start very much like stays of an umbrella and form a dense umbrella-like head. The foliage is very dense and a cool dark green, and while serviceable for shade, the tree is unique and highly ornamental in appearance. Fragrant, lilac colored flowers. Each 10

2 to 3 ft. ....	\$0.15	\$1.25
3 to 4 ft. ....	.35	2.50
4 to 6 ft. ....	.50	4.00

## Morus - Mulberry

**Alba pendula** (Teas' Weeping Mulberry). This is an ornamental Mulberry. The weeping top is budded or grafted at the top of a straight stem of 5 or 6 feet and branching outward and downward, soon reach to the ground on all sides; a fountain-like effect of green leaves. As a lawn ornament, the best of the weeping trees. Each

1-year heads ....	\$2.50
2-year heads ....	4.00

**Alba tatarica** (Russian Mulberry). A very hardy, fairly low-growing tree with a shapely, round head and bearing quantities of small, sweet berries. Each 10

2 to 3 ft. ....	\$0.15	\$1.25
3 to 4 ft. ....	.25	2.00
4 to 6 ft. ....	.40	3.50

**Nigra** (Black Mulberry). A low-growing tree bearing large, black fruits that ripen in July. A favorite tree of the birds and valuable for planting in poultry yards as the fowls are fond of the berries. Each 10

2 to 3 ft. ....	\$0.15	\$1.25
3 to 4 ft. ....	.25	2.00

**Hicks' Everbearing**. Taller than the Russian, not so compact, and with larger leaves. The berries ripen over a period of about four months, are abundant, large, black and sweet. Each 10

3 to 4 ft. ....	\$0.60	\$5.00
4 to 5 ft. ....	.75	6.00
5 to 6 ft. ....	.90	8.50

## Nyssa

**Multiflora** (Sour Gum). An attractive and popular native tree of easy growth, admired for the gorgeous coloring of the leaves and its dark blue berries in the Fall. Each 10

2 to 3 ft. ....	\$0.30	\$2.50
3 to 4 ft. ....	.40	3.00
4 to 6 ft. ....	.65	5.00

## Platanus

**Occidentalis** (American Sycamore). A hardy native tree of lofty height, often reaches 100 feet. Wide-spreading, with large leaves, green above and greyish below. The bark peels annually and the new bark is silvery white. Especially recommended for street planting. Each 10

2 to 3 ft. ....	\$0.40	\$3.00
3 to 4 ft. ....	.60	5.00
4 to 6 ft. ....	1.00	9.00
6 to 8 ft. ....	1.50	12.00



Magnolia Acuminata.

## Populus - Poplar

Inexpensive, hardy, rapid grower, very much in use for quick or temporary effects. Easy to transplant, thriving under almost every condition.

**Alba** (Silver Poplar). A very quick growing tree with silvery leaves. Will thrive in almost any soil and often where other trees fail.

2 to 3 ft. ....	Each	10	
3 to 4 ft. ....		\$0.25	\$2.00
3 to 4 ft. ....		.30	2.50

**Candicans** (Balm of Gilead). Tall tree with spreading branches and leaves dark green above and nearly white beneath. A very handsome, quick growing tree.

2 to 3 ft. ....	Each	10	
3 to 4 ft. ....		\$.025	\$2.00
3 to 4 ft. ....		.35	3.00

**Monilifera** (Carolina Poplar). If quick results are wanted rather than permanent value, plant Carolina Poplars. Planted close they make a thick, dense screen. Planted some distance apart, alternating with some slower growing hardwood trees, the Poplars will furnish shade until the others are large enough, then the Poplars may be cut out. This is often done.

3 to 4 ft. ....	Each	10	
4 to 6 ft. ....		\$.030	\$2.50
4 to 6 ft. ....		.50	4.00
6 to 8 ft. ....		.75	6.00

**Nigra** (Lombardy Poplar). (See Illustration, cover page). A tall, shaftlike column of a tree that grows quickly, like all Poplars, and often reaches 80 to 100 feet in height. The Lombardy Poplar is not for shade, but for ornament, making a fine effect when planted along driveways, and when planted close together the trees make a thick, very high screen. Branched always from the ground up.

3 to 4 ft., branched ....	Each	10	
4 to 6 ft., branched ....		\$.035	\$3.00
4 to 6 ft., branched ....		.50	4.00
6 to 8 ft., branched ....		.75	6.00
8 to 10 ft., branched ....		1.00	9.00

**New Chinese Lombardy Poplar**. Tall grower, branches erect and closely pressed to the trunk. Foliage dark green. Similar to Lombardy Poplar.

3 to 4 ft. ....	Each	10	
4 to 6 ft. ....		\$.035	\$3.00
4 to 6 ft. ....		.50	4.00
6 to 8 ft. ....		.75	6.00
8 to 10 ft. ....		1.00	9.00

## Rhamnus - Buckthorn

**Caroliniana** (Carolina Buckthorn). A native hardy, vigorous small tree or shrub, with handsome foliage and showy berries, usually growing 6 to 10 feet.

3 to 4 ft., transplanted ....	Each	10	
4 to 6 ft., transplanted ....		\$.035	\$3.00
4 to 6 ft., transplanted ....		.60	5.00
6 to 8 ft., transplanted ....		1.00	8.00

## Robinia - Locust

**Pseudoacacia** (Black Locust). Familiar tree of quick growth, thriving in almost any soil and any location. Small sizes can be furnished in quantity for reforestation; write for special prices on large lots.

18 to 24 in. ....	Each	10	100
2 to 3 ft. ....		\$.005	\$0.40
2 to 3 ft. ....		.07	.60
3 to 4 ft. ....		.10	.80
3 to 4 ft. ....		.10	.80
3 to 4 ft. ....		.10	.80

## Salix - Willow

All the Willows are of peculiar, graceful habit. Their distinct form adds beauty to any planting. They thrive best in moist soils and they are most at home by the water's edge. They are of great value in producing the most artistic effects in landscape plantings. All varieties are fast growers.

**Babylonica** (Weeping Willow). Tall, spreading, with long, drooping branches and narrow, green leaves. An imposing tree of much graceful beauty. Prefers a moist location and it is best when planted near a pond or stream.

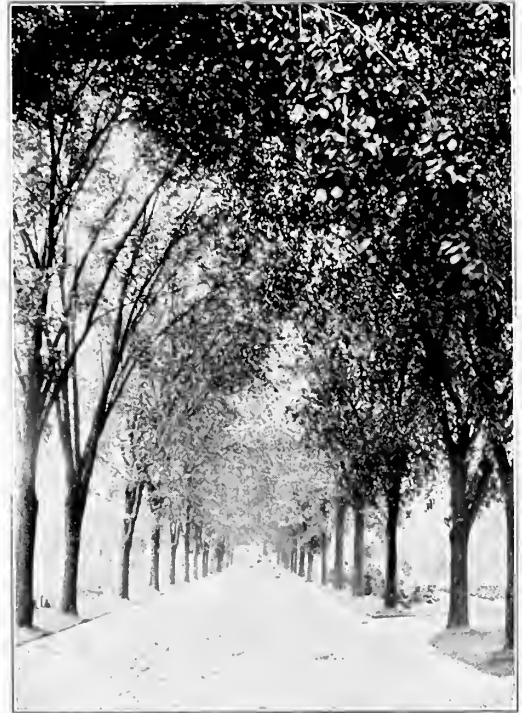
3 to 4 ft. ....	Each	10	
4 to 6 ft. ....		\$.045	\$4.00
4 to 6 ft. ....		.60	5.00
6 to 8 ft. ....		1.00	8.00

**Caprea** (Pussy Willow). A small, shrubby tree or large bush, with numerous, upright branches, not weeping. The catkins are very large, the buds swelling to a great size early in the Spring; silver gray and often with a pinkish tinge. Highly prized for cutting and furnishing the garden's first Spring beauty to house decoration. Florists buy the branches in quantity. Makes a pretty landscape or garden effect.

3 to 4 ft. ....	Each	10	
4 to 6 ft. ....		\$.035	\$3.00
4 to 6 ft. ....		.60	5.00
6 to 8 ft. ....		.90	7.50

**Viminalis** (Basket Willow). This is a new Willow with us, purchased from the Department of Agriculture. It is an upright grower from 10 to 20 feet in height.

2 to 3 ft. ....	Each	10	
3 to 4 ft. ....		\$.025	\$2.00
3 to 4 ft. ....		.35	3.00



The Tall Graceful American Elms.

## Sassafras

**Varifolium** (Official). A native tree of irregular growth; seldom seen in ornamental plantings; worthy of more consideration. The distinctive foliage of varied outline assumes beautiful tints in the Autumn and the horizontal arrangement of the twiggy branches presents a very attractive appearance.

3 to 4 ft. ....	Each	10	
3 to 4 ft. ....		\$.030	\$2.50
4 to 5 ft. ....		.40	3.50

## Tilia - Linden

**Americana** (American Linden; Basswood). A large tree of irregular outline, erect and rather formal, with a dome-shaped head. The leaves are dark green above and light underneath, turning to yellow in the Fall. The flowers are cream colored and inconspicuous, but very sweet. The Linden is popular for street planting and for ornamental shade.

3 to 4 ft. ....	Each	10	
3 to 4 ft. ....		\$.50	\$4.00
4 to 6 ft. ....		.75	6.50
6 to 8 ft. ....		1.25	10.00

## Ulmus - Elm

**Americana** (American Elm). (See Illustration, cover page).

A tall and stately tree with spreading top, combining great strength with peculiar grace, the American White Elm is one of our grandest native trees. It reaches great size and attains great age. An ideal tree for the lawn, casting wide stretches of shade while for roadside planting or for street lining, the mature Elms will meet above the traffic and form arches over shaded lanes.

4 to 6 ft. ....	Each	10	
4 to 6 ft. ....		\$.075	\$6.00
6 to 8 ft. ....		1.25	10.00
8 to 10 ft. ....		1.75	

New York, New York.  
April 8th, 1927.

I have just returned from — — where we have put out trees and I want to tell you, right away, how pleased I am with them.

The thing that astonished me the most was that I wrote to you that I would like to have the trees on April first—they arrived exactly on the morning of April first—and how the thing was timed as close as that is beyond me.

They are all in, wired down and look like a million dollars.

# Hardy Field Grown Nut Trees

## Chestnuts

**American Sweet Chestnut** (*Castanea dentata*). A large, ornamental tree, with handsome foliage, often planted for shade trees. The nuts are the sweetest of any variety.

	Each	10
18 to 24 in. ....	\$0.25	\$2.00
2 to 3 ft. ....	.35	2.50
3 to 4 ft. ....	.50	4.00



Butternuts.

## Walnuts

**Black Walnut** (*Juglans nigra*). Native tree of large size, produces large crops of delicious, meaty nuts. The wood of the Black Walnut tree commands the highest price on the market because of its beauty and value in furniture making.

	Each	10
12 to 18 in. ....	\$0.15	\$1.25
18 to 24 in. ....	.20	1.75
2 to 3 ft. ....	.25	2.00
3 to 4 ft. ....	.35	3.00

**Butternut** (*Juglans cinerea*). White Walnuts. A native tree that is well known and highly prized, producing a large nut with a sweet, oily, nutritious kernel. Valuable for shade and ornament as well as for its nut yield.

	Each	10
3 to 4 ft. ....	\$0.35	\$3.00
4 to 5 ft. ....	.65	6.00
6 to 8 ft. ....	.85	8.00
8 to 10 ft. ....	1.25	10.00

**English Walnut** (*Juglans regia*). The English Walnut requires a rich, well drained and stony soil. Never plant in hard, heavy clay, or soils which are not properly drained. The trees we offer are all grown from the best French seed and have been transplanted.

	Each	10
18 to 24 in. ....	\$0.40	\$3.50
2 to 3 ft. ....	.60	5.00

**Japan Walnut** (*Juglans Sieboldiana*). The tree is very handsome; has large, spreading top. At three years of age the trees commence to bear. The fruit is shaped like the Butternut; shell thicker than that of the English Walnut. Hardy in all parts of the country.

	Each	10
12 to 18 in. ....	\$0.20	\$1.50
18 to 24 in. ....	.30	2.50
2 to 3 ft. ....	.40	3.50
3 to 4 ft. ....	.65	5.50

Not everyone cares to take up nut growing as a commercial proposition, but there is a constant and growing demand for nuts, and a few nut trees supply food and shade, besides adding greatly to the value of property.

## Hickory Nuts

**Shellbark** (*Carya laciniosa*). Vigorous growing tree with dense green leaves. Bears small nuts with edible sweet kernels.

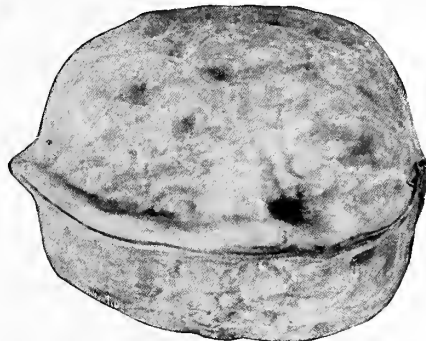
	Each	10
12 to 18 in. ....	\$0.25	\$2.00
18 to 24 in. ....	.35	3.00

## Pecans

**Papershell** (*Carya Pecan*)

Pecans are the highest quality and highest priced nuts in the world. Pecan nuts are in demand constantly at good prices, for culinary purposes and for making candies, etc. The Pecan is long-lived. Budded and grafted trees, if given the proper attention, will begin to bear five years after being set out, but paying results cannot be expected of the trees before eight years of age. A ten-year-old tree should produce from 15 to 20 pounds of nuts. We have the following varieties:

**Frotscher**. Very large nuts, averaging from 45 to 50 to the pound, shell very thin, can be easily cracked with the teeth; meat sweet and of fine quality, and can be removed entirely from the shell.



English Walnut.



Pecans Are Good Shade Trees And Also Good Money Makers.

**Moneymaker**. This variety combines early maturity and heavy productivity; is a good grower and remarkably free from attacks of scab, bud worm and other diseases that attack a great many of the best varieties of Pecans.

**Schley**. Medium to large; 1½ to 1¾ inches long; oblong, slightly flattened; shell thin; plump; rich flavor; good grower. One of the best.

**Stuart**. The hardest and most widely planted of the lot. Large size; quality good; shell medium thin. Good grower, heavy bearer; excellent. One of the best for general planting.

### Prices of above varieties:

	Each	10
2 to 3 ft. ....	\$0.65	\$6.00
3 to 4 ft. ....	.90	8.00
4 to 5 ft. ....	1.50	12.50



Japanese Walnuts.



# The Coniferous Evergreens

Hardy Coniferous Evergreens are particularly valuable for use in all classes of ornamental plantings, inasmuch as they preserve foliage and rich coloring throughout the Summer and Winter, adding much to the charm of the landscape during that period when deciduous trees and shrubs are without foliage. Without the Evergreen, the home is lacking that one thing that makes it complete.

## Abies - Fir

**Balsamea** (Balsam Fir). A tall tree of slender, pyramidal shape, growing to an ultimate height of 60 to 80 feet; dark green foliage; a rapid grower and very hardy. Each

12 to 18 in. ....	\$1.25	\$10.00
18 to 24 in. ....	2.00	18.00

## Cedrus - Cedar

**Deodara** (Deodar Cedar). A stately evergreen with a broad base, tapering to a point at the top and reaching a height of 150 feet. Foliage is a light silvery green and is beautiful as a specimen or in groups. A noticeable tree that adds beauty wherever it is planted.



**Cedrus Deodara.**

	Each	10
18 to 24 in. ....	\$2.50	\$20.00
2 to 3 ft. ....	3.50	30.00
3 to 4 ft. ....	5.00	45.00
4 to 5 ft. ....	7.00	65.00

## Juniperus - Juniper

**Canadensis** (Trailing or Spreading Juniper). Especially useful for edging groups of upright evergreens. It does not grow upright but is spreading and is very attractively used in most plantings.

	Each	10
12 to 15 in. spread ...	\$1.00	\$ 9.00
15 to 18 in. spread ...	1.25	10.00
18 to 24 in. spread ...	2.00	18.00
2 to 3 ft. spread ...	2.75	25.00
3 to 4 ft. spread ...	4.00	35.00

**Communis depressa** (Prostrate Juniper). Finest form, very prostrate to semi-prostrate. Has exquisite blue berries. Much in demand for foundation plantings, for edging paths and for the border of groups.

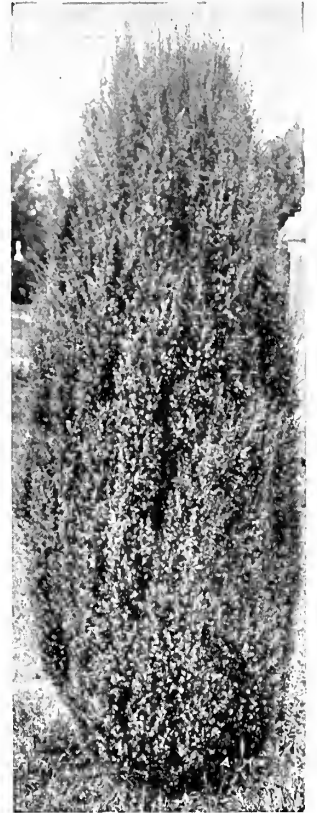
	Each	10
18 to 24 in. spread ...	\$3.00	\$27.50
2 to 3 ft. spread ...	5.00	

**Communis hibernica** (Irish Juniper). Well known evergreen; distinct and beautiful. Very erect and columnar, with dense, silvery green foliage; upright branches. A few of these can be planted to advantage in almost every lawn.

	Each	10
18 to 24 in. ....	\$1.00	\$ 9.00
2 to 3 ft. ....	2.00	17.50
3 to 4 ft. ....	3.00	

**Pfitzeriana** (Pfitzer's Juniper). One of the finest of all low-growing evergreens. Has low, flat, spreading top, and rich, dark green foliage. Hardy in both the North and South.

	Each	10
12 to 18 in. spread ...	\$2.25	\$20.00
18 to 24 in. spread ...	3.25	30.00
2 to 3 ft. spread ...	5.00	45.00



**Irish Juniper.**



**A Roadside Planting of Prostrate Juniper.**



Colorado Blue Spruce.

**JUNIPERUS—Continued.**

**Sabina (Savin Juniper).** A valuable spreading evergreen. Very desirable for groups or border planting. Its rich deep green color makes it one of the most desirable of the Junipers.

	Each	10
15 to 18 in. ....	\$1.50	\$12.50
18 to 24 in. ....	2.00	17.50
24 to 30 in. ....	3.00	25.00

**Stricta (Juniperus excelsa stricta).** A compact and slow-growing Juniper with grayish green foliage. Very desirable for foundation plantings or as a specimen where a low-growing tree is required. A distinct and beautiful evergreen.

	Each	10
18 to 24 in. ....	\$3.00	\$25.00
24 to 30 in. ....	4.00	35.00

**Virginiana (Red Cedar).** A native evergreen, widely used because of its hardiness; easy to grow and very handsome. Can be pruned and sheared into almost any shape. Foliage rich green, taking on a bronze tinge in winter.

	Each	10
12 to 18 in. ....	\$0.25	\$2.00
18 to 24 in. ....	.35	3.00
2 to 3 ft. ....	.75	6.00

**Virginiana glauca (Blue Cedar).** A blue form of the native Red Cedar. Foliage a very beautiful blue. Strikingly handsome in any situation, and should not be overlooked in making a selection in planting.

	Each	10
2 to 3 ft. ....	\$5.00	\$45.00
3 to 4 ft. ....	8.00	75.00
4 to 5 ft. ....	10.00	

**Pinus - Pine**

**Austriaca (Austrian Pine).** A tall, massive tree, growing to 100 feet in height, with spreading branches and gray bark. Has long, stiff, very dark green needles.

	Each	10
18 to 24 in. ....	\$2.00	\$18.00
2 to 3 ft. ....	3.00	25.00
3 to 4 ft. ....	5.00	

**Sylvestris (Scotch Pine).** One of the hardiest of the Pines. Dense growth with bluish green foliage, useful for massing or screen. Ultimate height 70 to 80 feet.

	Each	10
18 to 24 in. ....	\$1.50	\$12.50
2 to 3 ft. ....	2.50	20.00
3 to 4 ft. ....	4.00	35.00

**Picea - Spruce**

Too much cannot be said of the Spruces. They make fine, large trees, with compact growth clear to the ground. They are ideal as single specimens, as well as for grouping, and when once established in a landscape planting, they are a source of much admiration and praise. Rapid growers and thrive on a great variety of soils.

**Pungens glauca (Colorado Blue Spruce).** Rather tall, pyramidal, and regular in outline, and reaches a height of 80 to 100 feet. Rich grayish green foliage, very hardy.

	Each	
18 to 24 in. ....	\$ 7.50	
2 to 3 ft. ....	12.50	
3 to 4 ft. ....	17.50	

**Excelsa (Norway Spruce).** Another well known evergreen, the most generally used of all the Spruces; makes a splendid specimen tree or can be planted close to form a windbreak, for which use it is unexcelled. Attains a height of 150 feet.

	Each	10
12 to 18 in. ....	\$1.25	\$10.00
18 to 24 in. ....	2.00	17.50
2 to 3 ft. ....	2.75	25.00

**Rubra (Red Spruce).** Similar to Norway Spruce, but tree not as large when full grown. Foliage a lighter green than the Norway. A medium size, handsome tree.

12 to 18 in. ....	\$1.25	\$10.00
18 to 24 in. ....	2.00	17.50

**Retinispora**

**Plumosa aurea (Golden Plumed Cypress).** One of the most popular of the golden evergreens and suitable for almost any situation. It has soft plumelike, golden foliage, and its color forms a beautiful contrast to the green grass and surrounding evergreens. Grows to 100 feet in height.

	Each	10
12 to 15 in. ....	\$1.25	
15 to 18 in. ....	1.50	
18 to 24 in. ....	2.00	
2 to 3 ft. ....	3.00	
3 to 4 ft. ....	5.00	
4 to 5 ft. ....	7.00	

**Plumosa, Green (Green Retinispora).** Similar to the golden except that foliage is green. Prices and sizes same as the Plumosa Aurea.



Scotch Pine.



Golden Plumed Cypress.

## Thuya - Arbor-Vitae

A group of most useful hardy evergreens, thriving in a wide variety of soils and exposures. In general, a moist soil with a porous substratum is to be preferred. Many of the formal varieties are used in producing architectural effects. In the extreme North, the American varieties are to be preferred on account of greater hardiness, while in the South the Oriental varieties are adapted to the conditions of climate and environment.

**Occidentalis** (American Arbor-Vitae). Dark green foliage; grows easily and rapidly in most any soil. A tall-growing sort that will attain 60 feet in height and will make a tall screen when planted closely

Each	10
12 to 18 in. ....	\$0.75 \$ 7.00
18 to 24 in. ....	1.00 9.00
2 to 3 ft. ....	1.65 15.00
3 to 4 ft. ....	3.00 25.00

**Occidentalis aurea** (George Peabody's Golden Arbor-Vitae). A broad, low-growing evergreen tree. New growth of yellow or golden color. A striking evergreen. Compact.

Each	10
18 to 24 in. ....	\$3.00 \$25.00
24 to 30 in. ....	4.00 35.00

**Occidentalis Ellwangeriana** (Tom Thumb Arbor-Vitae). Very dwarf, globe-shaped; bright green during Summer, turning to bronze in Winter. A handsome variety.

Each	10
12 to 15 in. ....	\$1.75 \$15.00
15 to 18 in. ....	2.25 20.00
18 to 24 in. ....	3.00 25.00

**Occidentalis globosa** (Globe Arbor-Vitae). A perfect globe when well grown. A dwarf sort with light green foliage, the spread usually equaling the height. Desirable in formal planting.

Each	10
12 in. high ...	\$2.00 \$18.00
15 in. high ....	2.50 22.50
18 in. high ....	3.00 27.50

**Occidentalis Hoveyi** (Hovey's Golden Arbor-Vitae). A dwarf variety with attractive yellow-green foliage; dense; useful for porch boxes or foundation plantings.

Each	10
18 to 24 in. ....	\$3.50 \$30.00
2 to 3 ft. ....	4.50 40.00

**Occidentalis Wareana** (Ware Arbor-Vitae). Of low-growing, pyramidal shape, rather broad, with heavy bluish green foliage. Hardy and very desirable.

Each	10
12 to 18 in. ....	\$1.25 \$15.00
18 to 24 in. ....	2.00 18.00



**Hovey's Golden Arbor-Vitae.**

**Orientalis** (Chinese Arbor-Vitae). Similar to the American Arbor-Vitae. May be used in combinations or groups, or planted as a single specimen. Dark green foliage, more compact than the American, but both varieties are inclined to grow open when left untrimmed.

Each	10
12 to 18 in. ....	\$0.65 \$ 6.00
18 to 24 in. ....	.85 8.00
2 to 3 ft. ....	1.50 12.50
3 to 4 ft. ....	2.50 22.50
4 to 5 ft. ....	5.00 45.00

**Orientalis aurea nana** (Berkman's Golden Arbor-Vitae). Of dense, compact form, golden color and always beautiful whether planted alone in pairs, or on the edge of a group of evergreens. Never gets too tall.

Each	10
12 to 18 in. ....	\$2.00 \$18.00
18 to 24 in. ....	3.50 30.00
24 to 30 in. ....	4.00 40.00
30 to 36 in. ....	4.50 45.00

**Orientalis compacta** (Compact Arbor-Vitae). More compact or dense foliage than the Chinese, and of a finer, lighter green. Broad, cone-shaped growth. Very beautiful.

Each	10
12 to 18 in. ....	\$1.50 \$12.50
18 to 24 in. ....	2.50 20.00
2 to 3 ft. ....	3.50 30.00

**Orientalis** (Baker's Arbor-Vitae). Pyramidal growth, similar to Pyramidalis. Foliage lively green, somewhat lighter in color than Pyramidalis. Compact. Very hardy. Gives satisfaction.

Each	10
2 to 3 ft. ....	\$3.50 \$30.00
3 to 4 ft. ....	5.00 45.00
4 to 5 ft. ....	6.50 55.00



**Berkman's Golden Arbor-Vitae.**

**Orientalis pyramidalis** (Pyramidal Arbor-Vitae). Strong, erect, pyramid-shaped evergreen, densely branched, with rich, dark green, glossy foliage. One of the best for specimen planting or for striking effect when planted as center of groups. Useful to plant to break height of tall houses or at corners and doorways.

Each	10
18 to 24 in. ....	\$2.50 \$20.00
2 to 3 ft. ....	3.00 25.00
3 to 4 ft. ....	4.50 40.00
4 to 5 ft. ....	6.50 55.00

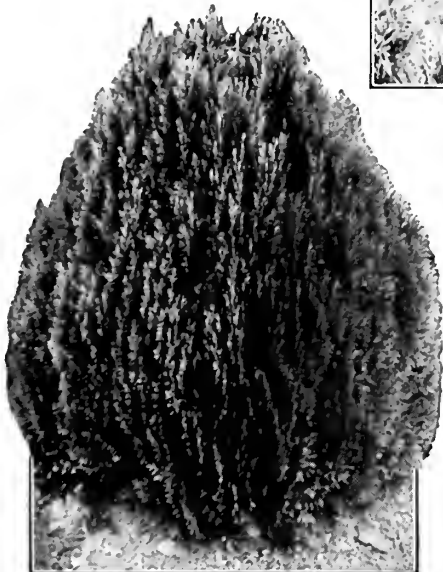
**Orientalis, Rosedale** (Rosedale Arbor-Vitae). Another compact evergreen, with fine, feathery, bluish foliage, somewhat resembling the Retinispora. Holds to regular form. Very popular in the South but not hardy in the extreme North.

Each	10
18 to 24 in. ....	\$2.00 \$17.50
2 to 3 ft. ....	2.50 22.50
3 to 4 ft. ....	4.00 35.00

## Tsuga - Hemlock

**Canadensis** (Hemlock Spruce). A tall, spreading, graceful tree with drooping branches and dark foliage.

Each	10
15 to 18 in. ....	\$2.25 \$20.00
18 to 24 in. ....	3.00 25.00
2 to 3 ft. ....	4.00 35.00
3 to 4 ft. ....	6.00 50.00



**Rosedale Arbor-Vitae.**





Abelia Grandiflora—Fragrant Flowers and Evergreen Foliage.

The Holly is Always Attractive.

## Broad-Leaved Evergreen Shrubs

A great many of the evergreen shrubs do well in locations too shady for either conifers or deciduous shrubs; many of them have not only beautiful green foliage, but flowers as well. We call particular attention to *Abelia grandiflora*, one of the grandest of all the evergreen shrubs. This plant is desirable from every standpoint, developing with proper care into a beautiful specimen; may be trained into a hedge, or in mass planting adds a touch not obtainable by any other plant. In arranging plantings, liberal quantities of the evergreen shrubs should be used for planting among deciduous shrubs, as their beautiful green foliage will serve as a background for the deciduous shrubs while in flower.

### Abelia

**Grandiflora** (Glossy Abelia). (See illustration, page 19). Has the great merit of bearing fragrant and beautiful flowers as well as being evergreen. The leaves are at first bright green, turning later to a darker green. Heat and dust do not injure their beauty. The pinkish white flowers are delicately fragrant and continue from June to November. Grows 3 to 5 feet tall and is well adapted for hedging.

Each	10		
12 to 18 in.	.....	\$0.40	\$3.50
18 to 24 in.	.....	.60	5.00
2 to 3 ft.	.....	.85	7.50
3 to 4 ft.	.....	1.25	10.00

### Euonymus

**Japonicus** (Evergreen Euonymus). An upright shrub, growing 8 feet tall, with smooth, slightly quadrangular or striped branches; leaves dark, shiny green. Fine plant for the lawn and succeeds in almost any situation.

	Each	10	
12 to 18 in.	.....	\$0.75	\$6.00
18 to 24 in.	.....	1.00	9.00

### Buxus - Box

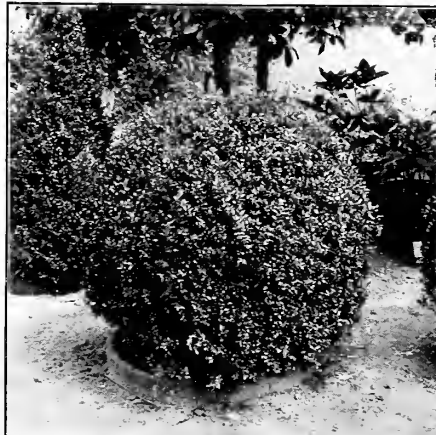
**Sempervirens** (Boxwood). The tall-growing variety that makes a large, roundish bush. The leaves are small, round, and glossy green. Of very slow growth and can be sheared to any shape. Useful for tubs, vases, window boxes or hedges.

	Each	10	
12 to 15 in.	.....	\$0.75	\$ 6.00
15 to 18 in.	.....	1.00	9.00
18 to 24 in.	.....	1.50	12.50
2 to 3 ft.	.....	2.50	20.00

### Cotoneaster

A low-growing shrub with almost horizontal branches. Leaves dark green. Flowers pinkish white. Fruit red.

	Each	
18 to 24 in.	.....	\$1.00



Boxwood May be Trimmed to Any Shape—Always Green.

### Gardenia

**Florida** (Cape Jasmine). This beautiful flowering shrub has again become very popular. The double, waxlike flowers, which are exquisitely fragrant, are greatly in demand as button-hole bouquets. Tender shrub for indoor growth.

	Each	10
12 to 18 in., transplanted.	.....	\$0.75 \$6.00
18 to 24 in., transplanted.	.....	1.00 8.00

### Ilex - Holly

**Opaca** (American Holly). A beautiful tree, growing sometimes to 50 feet in height, with large, glossy leaves and bright red berries; familiarly known as Christmas Holly. It works wonderfully with other trees and landscape plantings.

	Each	10
12 to 18 in.	.....	\$1.00 \$ 8.00
18 to 24 in.	.....	2.00 17.50
2 to 3 ft.	.....	3.00 25.00



**Enonymus Japonica**—A Fine Plant for the Lawn. (See page 27).

## Kalmia

**Latifolia** (Mountain Laurel). One of the most attractive broad-leaved evergreens. Leaves are large, glossy green. Has an abundance of pink and white blooms in June. Will thrive in partial shade. Very desirable. Each  
 18 to 24 in. . . . . \$2.75  
 2 to 3 ft. . . . . 3.50

## Laurocerasus

**Caroliniana** (Cherry Laurel). One of the most beautiful broad-leaved evergreens. Glistening green foliage of medium shade. Upright growth, attaining a considerable height. No recommendation can be too high. Each  
 2 to 3 ft. . . . . \$2.00  
 3 to 4 ft. . . . . 2.50

## Magnolia

**Grandiflora** (Southern Magnolia). This is the grandest of all our native evergreen trees. Succeeds best in rich soil. Nothing more conspicuous can be seen among evergreens when its large white flowers are fully expanded. Its period of blooming begins the middle of April and lasts until August. Each  
 18 to 24 in. . . . . \$1.50  
 2 to 3 ft. . . . . 2.00  
 3 to 4 ft. . . . . 3.00

## Rhododendrons

Rhododendrons do best in good loam soil and should be planted thickly so that the sun cannot shine on never be cultivated, in order to avoid injuring the roots; therefore, it is well to keep a 2- or 3-inch mulch of decomposed vegetable matter around the plants. Soil from the woods where the leaves and other vegetable matter have somewhat decayed makes a splendid mulch.



Cape Jasmine is Again Very Popular. (See page 27).

**Carolinianum** (Carolina Rhododendron). A shrub growing sometimes to 6 feet in height, but usually low and compact. Blooms in May and June, with light to deep pink flowers.

	Each	10
12 to 18 in., transplanted clumps . . . . .	\$2.25	\$20.00
18 to 24 in., transplanted clumps . . . . .	3.00	27.50

**Catawbiense** (Catawba Rhododendron). Grows to a height of 6 to 8 feet and blooms in June; lilac-purple flowers. Valuable for its leaves and its gorgeous blooms.

	Each	10
12 to 18 in., transplanted clumps . . . . .	\$2.25	\$20.00
18 to 24 in., transplanted clumps . . . . .	3.00	27.50

**Maximum** (Rosebay Rhododendron). Sometimes attains a height of 20 feet. Bears large clusters of pinkish white flowers in June. Strongly recommended for mass planting and woodland development.

	Each	10
12 to 18 in., transplanted clumps . . . . .	\$2.25	\$20.00
18 to 24 in., transplanted clumps . . . . .	3.00	27.50

Prices on Rhododendrons are for North Carolina grown plants. We have very few growing in our nursery, but are in connection with a North Carolina grower, who supplies our wants with freshly dug, well developed plants.



Rhododendrons in Masses are an Inspiring Sight.

# The Hardy Climbing Shrubs or Vines



Boston Ivy.

Vines are useful in many ways. They give quick results when planted on a new place before tree and shrubs become established. For covering fences, rocks, walls, banks and trellises, they are peculiarly adapted. A porch without a vine is desolate and incomplete.

## Ampelopsis

**Engelmanni** (Engelmann Ivy). A new variety of Ampelopsis which has some advantage over the older varieties. It has short joints and small, very thick foliage, and in Fall turns to a pretty red color. Will grow in any soil and withstands drought and heat.

	Each	10
2-yr., transplanted	.....	\$0.30 \$2.50

**Quinefolia** (Virginia Creeper or American Ivy). Large, deeply cut leaves that turn beautiful crimson in the Fall. Does not cling to stone or brick but makes a quick and rampant growth, covering entirely any objects that offer support.

	Each	10
2-yr., transplanted	.....	\$0.25 \$2.00
3-yr., transplanted	.....	.30 2.50

**Veitchi** (Boston Ivy). One of the finest climbers for covering walls, as it clings firmly to the smoothest surface, covering it evenly with overlapping leaves which form a perfect blanket of foliage. The leaves turn to brilliant orange and crimson in the Fall. Each 10 Medium .....\$0.25 \$2.00 2-yr., transplanted ..... .40 3.50

## Aristolochia

**Tomentosa** (Dutchman's Pipe Vine). Yellowish or brownish, pipe-shaped flowers. Highly useful for its large leaves, which make a perfect screen for porches.

	Each	10
1-year seedlings	.....	\$0.30 \$2.50
2-year, transplanted	.....	.40 3.50

## Bignonia

**Radicans** (Trumpet Vine). A native, hardy, strong climbing vine with good leaves and scarlet, trumpet-shaped flowers in Summer.

	Each	10
1-yr.	.....	\$0.25 \$2.00
2-yr.	.....	.40 3.50



Clematis Jackmani.

## Celastrus - Bittersweet

**Scandens** (American Bittersweet). A native climber with handsome, glossy foliage and large clusters of beautiful orange-crimson berries remaining all Winter. Very fine in effect and charming for Winter house decorations.

	Each	10
1-yr.	.....	\$0.35 \$3.00
2-yr., transplanted, heavy.	.....	.50 4.50

## Clematis

**Paniculata** (Japanese White Clematis). (See illustration, page 19). This handsome hardy climber is one of the best and most satisfactory climbing flowering plants. The small, creamy white, star-shaped flowers are delicately fragrant, blooming in late Summer in wild profusion. Each 10 2-yr. plants .....\$0.40 \$3.50

**Virginiana** (Wild Clematis). A native climbing Clematis, similar to the paniculata, climbing quickly to a height of 12 to 15 feet. The flowers are white, borne in leafy panicles in July and September. Very hardy. Each 10 2-yr. plants .....\$0.30 \$2.50

**Duchess of Edinburgh.** With very double white flowers. Very fragrant.

**Jackmani.** The most popular of all; extremely free flowering, the blooms four-petaled, ribbed at the middle and of beautiful velvety purple.

**Henry.** Usually five-petaled. Immense, pure white, single blooms. This is the finest of all large-flowering, white Clematis; should be in every collection.

**Madame Edouard Andre.** Has been called the crimson Jackmani. The plant is a strong, vigorous grower, very free-blooming. The color of the blooms is of the finest red.

**Ramona.** Flowers of gigantic size, six inches in diameter, and of a fine light blue color.

Prices, any of above five varieties:	Each	10
Strong, 2-yr. vines	.....	\$0.60 \$5.50



Aristolochia—Dutchman's Pipe.

## Hedera - Ivy

**Helix** (English Ivy). The famous English Ivy with its familiar green leaves. When you read of old "ivy-mantled towers", it means the English Ivy. Clings to stone and grows to great height, covers walls entirely. Fine for the South but hardy only as a ground cover where there are severe Winters with sudden changes.

	Each	10
Small plants	.....	\$0.25 \$2.00
Transplanted	.....	.40 3.50

## Lonicera

**Halliana** (Hall's Japan Honeysuckle). (See illustration, page 19). Dark green, dense foliage, almost evergreen with fragrant, white flowers, changing to yellow. A good old dependable Honeysuckle. Grows rank under any conditions. Each 10

Medium	.....	\$0.15 \$1.00
1-yr., No. 1, transplanted.	.....	.20 1.50
2-yr., No. 1, transplanted.	.....	.30 2.50
<b>Sempervirens</b> (Scarlet Trumpet Honeysuckle). A hardy Honeysuckle with trumpet-shaped flowers of bright scarlet. Each 10		
2-yr., transplanted	.....	\$0.35 \$3.00
3-yr., transplanted	.....	.50 4.50

## Lycium

**Barbarum** (Matrimony Vine). Throws out very long branches with a decided tendency to droop, therefore especially valuable for covering slopes or embankments; suitable for porches, the foliage being very rich and handsome. Will grow in any soil. Has bright red berries. Each 10

2-yr., strong plants	.....	\$0.40 \$3.50
----------------------	-------	---------------

## Passiflora - Passion Flower

A fast-growing vine with deeply cut, sea-green leaves and fragrant blue flowers.

Each	10
1-yr. plants	\$0.15 \$1.00
2-yr., transplanted	.25 2.00

## Pueraria

**Thunbergiana** (Kudzu Bean). Makes the most marvelous growth of any vine, often as much as 50 feet in a season, its large leaves making dense shade. The flowers are rosy purple, pea-shaped, and come in August.

Each	10
1-yr., seedlings	\$0.15 \$1.00
2-yr., strong plants	.25 2.00
3-yr., strong plants	.35 3.00

## Vinca

**Minor** (Blue Myrtle; Common Periwinkle). An old-fashioned popular vine for ground covering, growing well in the shade; useful also for porch and window boxes. Has light blue flowers.

Each	10
Clumps	\$0.40 \$3.50

## Vitis - Grape

**Aestivalis** (Summer Grape). Not planted for fruit, but for the ornamental value of its handsome foliage. A very strong, tall, climbing vine and readily distinguished from other species by the reddish fuzz on the under side of the foliage.

Each	10
2-year	\$0.30 \$2.50

**Cordifolia** (Frost Grape). Vigorous growing vine with bright green foliage and purplish black berries that ripen and hang on until frost. Very ornamental.

Each	10
2-year	\$0.30 \$2.50

**Labrusca** (Fox Grape). Strong, rapid growing vine with large, thick leaves and purplish black berries that change to a reddish brown.

Each	10
2-year	\$0.30 \$2.50



Hall's Japan Honeysuckle.

**Rotundifolia** (Muscadine Grape). Vigorous growing vine with heavy, showy foliage.

Each	10
2-year	\$0.30 \$2.50

## Wisteria

Woody vines of tightly clinging habit, for pergolas, arbors, trellises, etc. Especially ornamental in early Summer when they are resplendent with their large, drooping clusters of fragrant blooms.

**Sinensis** (Chinese Purple Wisteria). Blooms profusely in May. A strong growing, long-lived vine bearing long racemes of purple flowers.

**Sinensis alba** (Chinese White Wisteria). A white-flowering form of the type with graceful pendent clusters of bloom in May. Very rare.

**Magnifica** (Common Purple Wisteria). An unusual and particularly handsome variety with immense clusters of large flowers, lavender colored, in dense, drooping racemes. Blooms in May.

Prices of any of above varieties of Wisteria:

Each	10
2-yr., medium	\$0.40 \$3.50
2-yr., transplanted	.50 4.50



Lycium—Matrimony Vine.



Vinca—Blue Myrtle.



Wisteria.



# Flowering Bulbs, Roots and Perennial Plants

## NOTICE

We have ready for distribution a list giving description and prices of bulbs for Fall planting such as Iris, Tulips, Hyacinths, Narcissus, Peonies, etc. This list we will gladly mail to you on request.

## Cannas

Cannas are still the most magnificent of all Summer-blooming plants for brilliant bedding and massing. They are tropical-looking and the rank green foliage and gay flowers make a brilliant sight. Plant about six inches deep in rich, moist soil when weather is warm and settled.

## Named Varieties

**California.** Deep yellow. 60c per doz.; \$4.75 per 100.  
**Indiana.** Orange-orchid. 60c per doz.; \$4.75 per 100.  
**Pennsylvania.** Orange-scarlet. 60c per doz.; \$4.75 per 100.

**Marvel.** Orange, green foliage. \$1.00 per doz.

**King Humbert Red.** Scarlet flowers; bronze leaves. \$1.00 per doz.

**Venus.** Soft pink with



Canna, Indiana.

mottled creamy yellow border. \$1.00 per doz.  
**City of Portland.** Green foliage, deep rose flower. \$1.00 per doz.  
**Richard Wallace.** Beautiful light yellow; green foliage. \$1.00 per doz.  
**Mixed Varieties and Colors.** 40c per doz.; \$3.50 per 100.

## Gladiolus Bulbs

Gladiolus bulbs are without doubt the most satisfactory bulbs you can plant in your garden, so easy to cultivate, and when planted in rotation, say about two weeks apart, until the end of June, you can have a succession of cut flowers for your home all Summer. Take the bulbs up in the Fall and preserve them in a cool cellar until the following Spring.

	Each	Doz.
<b>Albania.</b> A large self color white. A fine cut flower	\$.07	\$0.75
<b>Halley.</b> A popular and well known variety. Very early giant pink	.05	.50
<b>Crimson Glow.</b> One of the best early deep reds grown	.07	.75
<b>1910 Rose.</b> A fine cut flower. Pink. A distinct shade	.05	.50
<b>Marshal Foeh (Kunderd).</b> A giant salmon-pink, lightly ruffled. We know of no finer Gladiolus of its color	.15	1.35
<b>Mrs. Dr. Norton.</b> A tall growing cream-pink. A very popular flower of superior merits	.08	.85
<b>Diana.</b> A very large, dark brilliant red	.08	.85
<b>L'Immaculee.</b> An excellent pure white	.06	.60
<b>Gold Drop.</b> A large yellow Primulinus variety	.05	.50
<b>Purple Glory.</b> One of the best Gladioli grown. A strong grower with immense ruffled flowers of a rich glowing deep purple color	.10	1.00
<b>Kunderdi Glory.</b> Intensely ruffled flowers of a creamy apricot with red markings. A tall, strong grower	.07	.75
<b>Mrs. Francis King.</b> An old favorite with large flowers of dark pink. Tall spikes	.06	.60
<b>Prince of Wales.</b> One of the best giant early pinks. A distinct sort	.07	.75
<b>Ulian Chief.</b> A very superior variety of a brilliant fiery red with darker shadings. Grand	.08	.85
<b>Carmen Sylva.</b> A very fine white. Feathered throat markings	.08	.85
<b>Anna Eberius.</b> A large rich purple. No other like it	.06	.60
<b>Mrs. Fryer.</b> Brilliant scarlet. Fine for cutting	.07	.75
<b>Mrs. Frank Pendleton.</b> A giant peach-pink, with large conspicuous dark blotches. A very beautiful and popular variety	.07	.75
<b>Baltimore.</b> Pink. Flowers very large. A fine sort	.08	.85
<b>Schwaben.</b> A large creamy yellow	.06	.60

**OUR QUALITY MIXTURE.** An entirely new mixture especially grown for this season and the best one we have ever been able to offer. Contains about seventy-five per cent Kunderd varieties in both plain and ruffled petaled types, the remainder made up of fine named stock of other originators. 65c per doz.; \$1.25 per 25; \$4.75 per 100.



Gladiolus, Mrs. Frank Pendleton.



Festiva Maxima Peonies.

## NOTICE

We have ready for distribution a list giving description and prices of bulbs for Fall planting such as Iris, Tulips, Hyacinths, Narcissi, Peonies, etc. This list we will gladly mail to you on request.

## Peonies

The Peony is a noble and one of the most beautiful flowers. Perhaps there is no other flower so well and favorably known as the Peony. The following varieties have been carefully selected to cover a range of color to please our Peony-loving customers.

The Clumps furnished are what is known as 3- to 5-eye divisions. They should be planted so that the top eye will set two inches below the top of the ground. If planted too deep, they will not bloom.

	Each	10
Alexandrina. Pink .....	\$0.50	\$4.50
Alfred de Musset. Milky white, crimson flecks ..	.60	5.00
Andre Lauries. Large red .....	.80	7.00
Avalanche. White .....	.75	6.50
Candidissima. White, with pale yellow center ..	.50	4.50
Delaciel. Deep red .....	.50	4.50
Delicatissima. Lilac-rose .....	.50	4.50
Duc de Cazes. Dark pink .....	.60	5.00
Duc d'Orleans. Pink .....	.40	3.50
Duc de Wellington. White with creamy center..	.50	4.50
Festiva Maxima. White. (See page 20). ....	.40	3.50
Formosa. Pink .....	.60	5.00
Fragrans. Red .....	.40	3.50
Hamel. Light pink .....	.40	3.50
La Perle. Soft pink shaded to pure white .....	.95	9.00
Madonna. White .....	.40	3.50
Marie Stuart. Delicate lavender flecked with crimson, later changing to soft white .....	1.25	11.00
Queen Victoria. White .....	.40	3.50
Rubra Triumphans. Dark red .....	.50	4.50
Souvenir de Gaspard Clot. Lilac-rose .....	.80	7.00

## Hemerocallis

Few people realize the great beauty of the Day Lilies. They grow quickly in almost any kind of soil and begin flowering early. The tall, grasslike foliage is graceful and handsome, and they are very effective naturalized along streams. They are particularly good for shady places and will thrive luxuriantly in such situations.

**Flava** (Lemon Lily). Grows 2½ feet tall, and the flowers, borne in June, are sweet scented and a clear, rich yellow. 60c per 12; \$4.50 per 100.

**Florham**. 3 to 3½ feet high; the flowers large, rich golden yellow marked with Indian yellow. Blooms June and July. 60c per 12; \$4.50 per 100.

## Hymenocallis

Bulbous plants from the warm parts of the New World, and cultivated for their fragrant white flowers.

**Occidentalis** (Spider Lily). Large bulbs, throwing up thick, strap-shaped, ever-green leaves. Flowers white, the tube 3 to 4 inches long, much narrowed below. 60c per 12; \$4.50 per 100.

## Phlox

One of the most brilliant and lasting of the hardy perennials, blooming from June till frost. Mammoth heads of bloom, 2 feet tall, in white and varied shades of pink, scarlet and crimson. If the first spikes are cut as they fade, and the plant given a good soaking of water, a second set of blooms will be obtained which are often finer than the first. Phlox are especially good for planting in hot, dry, sandy places, and are excellent for rock gardens. The following named varieties will be sure to please.

**Bridesmaid**. White with crimson eye. 20c each; \$1.50 per 10.

**Champs Elysee**. Fine, rich crimson. 20c each; \$1.50 per 10.

**Eclairer**. Rose-carmine, with a tint of purple. 20c each; \$1.50 per 10.

**Pearl**. Beautiful pure white flowers. 20c each; \$1.50 per 10.

**R. P. Struthers**. (See illustration, page 20). Bright, rosy carmine, with claret-red eye. 20c each; \$1.50 per 10.



Perennial Phlox.



Hemerocallis—Day Lily.

## Tuberose

Beautiful, long, compact spikes of fragrant, white flowers in August. 35c per 12; \$2.50 per 100.

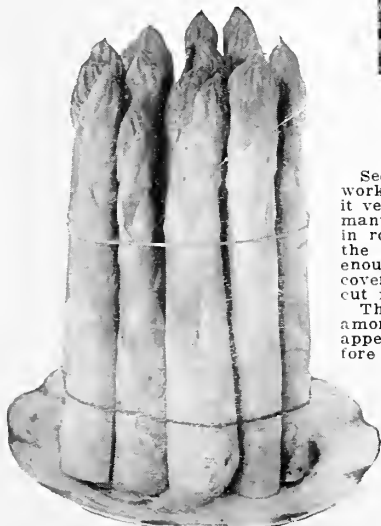


Shasta Daisies.

## Vegetable Roots Rhubarb

Another useful early Spring garden plant. The juicy stalks make tasty sauce and delicious pies with a cool and refreshing tang. We have the Linnaeus and the Victoria, and recommend both for either home or market use.

	Doz.	100
1-year, medium	\$.35	\$2.00
1-year, strong	.50	3.50
2-year, medium	.75	4.00
3-year, strong	1.00	7.00



Asparagus.



Yucca Filamentosa.

## Asparagus

See that the ground is well drained, work it up fine and deep, and make it very rich with well-rotted barnyard manure. Plant eight inches apart in rows four feet apart. Spread out the roots in a trench made deep enough to permit their crown to be covered three or four inches. Do not cut for use until second season.

This well known vegetable is valued among other reasons because of its appearance so early in the Spring, before other vegetables are in the market. We offer two varieties:

**Palmetto.** One of the best of the old standard sorts and a favorite in the South.

**Washington.** A new variety which comes nearer to being rustproof than others. Tips tight and firm; stalks large and tender.

Prices, either variety:

	Doz.	100
1-year roots	\$.25	\$2.00
2-year roots	.35	3.00

## Shasta Daisy

One of Burbank's best known and most widely planted creations. Mammoth white flowers, sometimes 4 inches across, with yellow center and borne in such profusion in July that their position in the garden is a shimmering drift of snowy white. Hardy perennial. (See color plate, page 20). 60c per 12; \$3.00 per 100.

## Ornamental Grasses

Very effective and artistic results may be obtained by the use of these graceful and attractive plants, either informally, as with clumps or masses in connection with other plantings, or in formal beds or borders, where low varieties often stand in symmetrical arrangement in the foreground of tall-growing species.

**Eulalia gracillima univittata** (Japan Rush). Of graceful habit with long, very narrow bright green foliage with a silvery midrib. Grows 6 to 7 feet high. 75c per 12; \$6.00 per 100.

**Eulalia, Dwarf Variegated.** Leaves longitudinally striped. Leaves green, green and silvery stripes. 75c per 12; \$6.00 per 100.

## Hardy Ferns

We offer five varieties of Hardy Ferns. The *Osmunda cinnamomea* and the *Osmunda regalis* are clumps. The other three varieties are small roots.

**Adiantum pedatum** (Maidenhair Fern). Large, deciduous leaves. Soft green in color. Reaches height of 10 to 18 inches. Small roots, \$1.00 per 12; \$5.00 per 100.

**Dicksonia punctilobula** (Hay-Scented Fern). Very handsome, large Fern. Thin, delicate leaves, one to three feet long. Small roots, \$1.00 per 12; \$5.00 per 100.

**Osmunda cinnamomea** (Cinnamon Fern). Rather tall Fern with bright green leaves. An ornamental Fern that is very popular. Clumps, \$1.50 per 12; \$8.00 per 100.

**Osmunda regalis** (Royal Fern). Vigorous grower. Large, broad leaves in clusters. Clumps, \$1.50 per 12; \$8.00 per 100.

**Polystichum acrostichoides** (Christmas Fern). Has deep green leaves. A beautiful evergreen Fern. Clumps, \$1.50 per 12; \$8.00 per 100.

## Yucca

**Filamentosa** (Adam's Needle or Bear Grass). A striking plant with stiff, swordlike, evergreen foliage. Flowers are borne on long stems, 4 to 6 feet tall that branch for several inches near the top, these branches produce numerous showy, creamy white blossoms. Useful and beautiful in all plantings.

	Each	10
1-year plants	\$.20	\$1.50
2-year plants—clumps	.35	3.00

In addition to *Yucca Filamentosa* we have a variety of *Yucca* with thick, narrow foliage with narrow light color stripe running along outer edge of the long, stiff blades. Plant and flower similar to the *Filamentosa* except that it is a more dwarf plant, leaves thicker and not so wide; very ornamental. Same sizes and prices as the *Yucca Filamentosa*.



Maidenhair Fern.

# Roses

## Hardy Outdoor Grown Bush Roses

All Roses should be pruned before planting. They will be pruned ready for planting before shipment unless otherwise ordered. Prices on all Roses, except where otherwise noted, 60c each; \$5.00 per 10.

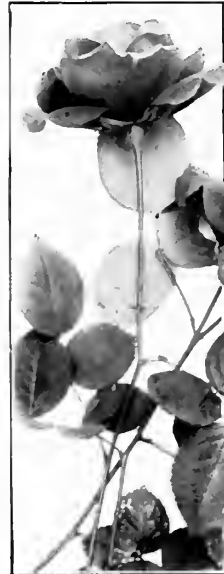
The very name of Rose carries with it the suggestion of the greatest perfection and beauty of the world of flowers. No arrangement that neglects them could be satisfactory for they are indispensable to any balanced planting. The stock we list is field grown, acclimated to the outdoor life and will make much quicker and more hardy growth than the greenhouse plants offered by some of the Rose specialists. All our plants are the two-year No. 1.

**Baby Orleans.** Brilliant geranium-red flowers suffused with a rose-white center.

**Baby Rambler.** The best known Rambler Rose. Plant grows to about two feet. Immense clusters of small, double, crimson blooms. Very pretty and showy.

**Bessie Brown.** Pure white, flushed with pink. Petals large and of fine form.

**Etoile de France.** The bushes are blooming constantly, producing large, massive, deep, full cup-formed flowers on stiff stems. Clear red or velvety crimson.



**Frau Karl Druschki** (White American Beauty).

Color marvelous white, without a tinge of yellow or any other shade; hardy everywhere.

**General Jacqueminot.** Bright, shining crimson.

Makes magnificent buds and flowers; one of the best and most desirable Roses for the open ground.

**Gruss an Teplitz.** Flery crimson shaded dark velvety green; a combination found in no other Rose.

Large flowers.

**Kaiserin Augusta Victoria.** Long, pointed buds, creamy white. One of the most popular white Roses.

**Killarney Pink.** The Queen of Irish Roses. Excels any other in its size and color yet introduced.

**Killarney White.** An offspring of the Pink Killarney, and is one of the best Roses known.

**Lady Hillingdon.** Apricot-yellow shaded to orange on the outer petals, becoming deeper and more intense in the center of the bloom. A strong and healthy grower.

**La France.** The color is a lovely shade of silvery pink tinged with crimson. Flowers very full and beautiful.

**Magna Charta.** An old favorite. A large, deep pink bloom. Plant branches freely

and blooms are produced on long, straight stems.

**Maman Cochet, Pink.** One of the finest of the pink Roses. Buds of great beauty,

exquisitely formed and opening to full, perfect flowers.

**Maman Cochet, White.** Like Pink Cochet, except in color.

**Mrs. Aaron Ward.** One of the most dependable of all the yellow Roses for the garden. The buds are long and attractive, producing very beautiful blooms throughout the season.

**Paul Neyron.** The flowers are immense; probably the largest and finest Rose. The color is bright shiny pink, very beautiful; very double and full.

**Radiance, Pink.** An erect, strong growing Rose producing an abundance of light silvery flesh

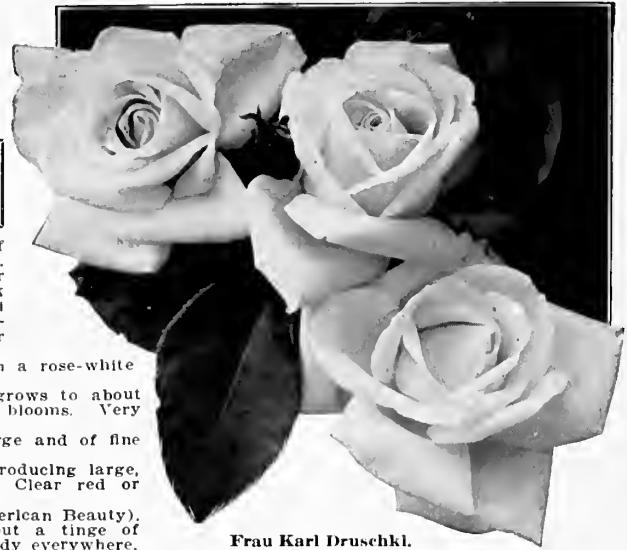
to salmon-pink blooms.

**Radiance, Red.** The name describes it, for its color is deep red. Attractive the whole season

until frost.

**Red Letter Day.** Blooms large, satiny crimson-scarlet, opening from long buds of glowing scarlet-crimson.

**Sunburst.** A magnificent giant yellow forcing Rose; also well adapted for outdoor growing, being a vigorous and healthy plant.



**Frau Karl Druschki.**

## Hardy Climbers and Ramblers

**General Jacqueminot.** American Beauty. Perhaps the best known, most popular and most impressive Rose in cultivation; the color is a glowing crimson-red. This is the climbing form of this beautiful Rose. 40c each; \$3.50 per 10.

**American Pillar.** Flowers are produced in great profusion, fairly covering the bush; the color is bright pink. 40c each; \$3.50 per 10.

**Dorothy Perkins.** The brilliant pink Rambler Rose. The bush is perfectly hardy in all localities. A rapid and thrifty grower, bearing its beautiful flowers in clusters. 40c each; \$3.50 per 10.

**Dr. W. Van Fleet.** The color is a remarkable shade of flesh pink on the outer surface, deepening to rosy flesh in the center. The foliage is deep green the entire season. 40c each; \$3.50 per 10.

**Excelsa** (Red Dorothy Perkins). Free from insects and produces a great quantity of blooms of crimson-maroon with tips of petals scarlet. 40c each; \$3.50 per 10.

**Madame Plantier.** Flowers are pure white, very large and double; continuous bloomer. One of the best hardy Roses. 40c each; \$3.50 per 10.

**Maréchal Niel.** The most brilliant climbing Rose in existence. In the North, if planted in open ground, should have very careful protection during the Winter. 60c each; \$5.00 per 10.

**Paul's Scarlet.** A new hardy climbing Rose of the most vivid bright red. Blooms in clusters of half-double flowers. 40c each; \$3.50 per 10.

**Silver Moon.** Blooms very large, four or more inches in diameter, pure white in color and of good substance. 40c each; \$3.50 per 10.

**Wichurana or Memorial Rose.** Pure shining white with bright golden center. Single large blossoms, glossy dark green leaves. 40c each; \$3.50 per 10.

**Rose Collection No. 10.** We have a block of nice two-year, field-grown Roses, several varieties and colors but not enough of any one of them to offer in named list. We are offering them (our selection), at a very low price. These are good plants and good varieties. The reason we make this low price is because we do not have them in quantity.

10 Roses, 2-year, field grown. Our selection ..... \$3.00



**Etoile de France.**



# FRUITS

We do not grow fruit trees ourselves, but so many of our customers include them in their orders and wish us to furnish them that we list them in our catalog, buying our supply from reliable growers and shipping with our ornamentals, thus making it more convenient for our friends. In doing this, we take great care to buy nothing but the best and handle only what we would be willing to plant ourselves.

## Apples

The Apple is the staple fruit in the United States and can be grown over almost the entire country. The varieties described here have been carefully selected; they are all standard, dependable varieties that have been thoroughly tested for years, and are such that we can recommend for average conditions. We indicate by letters the season for ripening, "S" Summer, "A" Autumn, "W" Winter.

**Baldwin.** (W). Known to almost everyone as a good cooking and eating apple and one that keeps well. Tree is a strong, vigorous grower.

**Delicious.** (W). Striped and marked with light and dark red. Fruit large, of uniform size, round and long, tapering to a markedly ribbed nose. Tree hardy, bears abundantly.

**Early Harvest.** (S). Yellow; not striped. Fruit medium sized, roundish. Popular for table and cooking. Tree productive, comes into bearing very young.

**Gano.** (W). Sour. Red, not striped, flesh pale yellow, fine grained, tender and pleasant. A favorite "apple butter" kind.

**Grimes Golden.** (W). A high quality yellow Apple of delicious flavor; hardy, very productive and a favorite in home orchards.

**Jonathan.** (W). Striped and splashed with dark red; of excellent quality and highly flavored; profitable for market and splendid home garden sort.

**Kinnard's Choice.** (A). Large, dark red; resembling the Arkansas Black. One of the best Fall Apples; is good for market or table.

**Mammoth Black Twig.** (W). A seedling of the Winesap; tree a beautiful and much more vigorous grower; hardier and the fruit much larger.

**Northwestern Greening.** (W). Fruit medium to large, ranks as a dessert Apple. Cooks easily and when cooked has a fine yellow color; keeps very late in good condition.

**Red June.** (S). A handsome red Apple with tender flesh of good quality. One of the most popular early Apples.

**Rome Beauty.** (W). Large, round, red, juicy and of good quality. Bears early.

**Stayman Winesap.** (A). A seedling of Winesap. Improved. Dark rich red. No Apple is being more widely planted.

**Yellow Transparent.** (S). Best and most productive yellow Summer Apple; one of the earliest to ripen. Tree vigorous and does well nearly everywhere.

Prices, all varieties of Apples:

	Each	10	100
3 to 4 ft., 7/16" caliper	\$0.30	\$2.50	\$20.00
4 to 5 ft., 9/16" to 11/16" caliper	.40	3.50	27.00

## Cherries

At least a few Cherry trees should be planted in every garden. The fruit is delicious for pies and fine for canning and preserving. They are almost a sure crop every year. Our Cherry trees are grown in Indiana on soil especially adapted to the growing of sturdy, healthy, and hardy trees, free from disease, and of the best quality. We list the best of both the sweet and sour varieties.

### Sweet Cherries

**Black Tartarian.** A favorite sweet Cherry; fruit large and very dark red, almost black when ripe; flesh firm and of delicate flavor. Very high quality. Ripens in June.

**Governor Wood.** Fruit large, yellow, nearly covered with bright red berries; immediately after the Black Tartarian.

Prices of Sweet Cherries:

	Each	10	100
2 to 3 ft.	\$0.50	\$4.00	\$30.00
3 to 4 ft., 7/16" to 9/16" caliper	.65	5.50	45.00
4 to 5 ft., 9/16" to 11/16" caliper	.75	6.50	55.00

### Sour Cherries

**Early Richmond.** Very early sour Cherry; very popular. Bright red. Hardy and grows to a compact tree.

**Montmorency.** A well known hardy and productive Cherry. The fruit is much larger than that of the Early Richmond and is slightly acid. Bright red, ripens in early July.

Prices of Sour Cherries:

	Each	10	100
2 to 3 ft.	\$0.50	\$4.00	\$30.00
3 to 4 ft., 7/16" to 9/16" caliper	.65	5.50	45.00
4 to 5 ft., 9/16" to 11/16" caliper	.75	6.50	55.00

## Apricots

The Apricots are very valuable and desirable; ripen between the Cherries and the Peaches. They are steady bearers and of easy culture. There are hardly enough of them in the market to supply the demand. Considered as an ornamental tree alone, the Apricot is unsurpassed.

**Moorpark.** Fruit small, 1 1/2 inches in diameter. Pale orange, flesh orange-yellow, trees hardy and productive.

**Royal.** Probably the most extensively planted of any varieties. Size medium, color deep yellow, flesh pale orange with very rich vinous flavor. A most desirable variety for canning and drying.

Prices, all varieties of Apricots:

	Each	10	100
3 to 4 ft., 7/16" to 9/16" caliper	\$0.50	\$4.00	\$35.00
4 to 5 ft., 9/16" to 11/16" caliper	.60	5.00	45.00

## Figs

A unique combination of delicious flavor, healthfulness, adaptability in cooking, heavy sugar content and no acid. Figs are more difficult to transplant than any other tree except the persimmon. Small trees are more likely to live than the larger size and we recommend the 18- to 24-inch size or even smaller. We offer only the one variety that is considered best.

**Brown Turkey.** Large, brown, resembles the Brunswick, probably better; it is sometimes called the Brunswick.

Prices:

	Each	10	100
12 to 18 in.	\$0.20	\$1.80	
18 to 24 in.	.25	2.00	

## Peaches

Without a doubt, the Peach is one of the best paying fruit crops for the South. The southern grown Peaches excel in size, appearance, and quality; there are no crop failures. The tree is valuable for ornament as well as useful for fruit. The pink blossoms in Spring present a beautiful sight. The trees come into bearing early and the luscious fruit forms a welcome addition to the Summer menu.

**Belle of Georgia.** (Free). A medium season Peach, very large; white, with a decided blush; firm flesh of delicious flavor. Bears regularly.

**Carman.** (Free). Early. Large, roundish, pale yellow skin, flesh white and sweet. A very hardy and good all around Peach. Ripens here about July 1st.

**Champion.** (Free). Early, ripens last of July. The flesh is delicious, rich, sweet and juicy; skin creamy with red cheeks. Many specimens have measured 10 inches in circumference.

**Crawford Early.** (Free). Large, rather oblong, with yellow skin and yellow flesh. Of excellent quality.

**Early Elberta.** (Free). Like the Elberta but ripens a little earlier.

**Elberta.** (Free). Medium season variety and a standard Peach wherever Peaches are grown. A large yellow Peach shaded with red; yellow flesh. Dependable as a regular and uniform bearer.

**Heath Cling.** A clingstone Peach, very large, creamy white with delicate red blush; flesh white; slightly splashed red at the tip. Ripens in early September.

**Hiley.** (Free). Early, large, creamy white with red cheek; white flesh, and juicy. Ripens about the first of July.

**Indian Blood Cling.** Red flesh, very firm; fine for preserving.

**J. H. Hale.** (Free). The beautiful midseason Peach named for Hale, the Georgia Peach King. Large, round, yellow and nearly covered with red. Very firm flesh and of fine quality.

**Krummel.** (Free). A freestone Peach, ripening in late September or early October. Fine flavor; skin yellow with carmine blush. A fine, large late Peach.

**Mayflower.** (Free). One of the earliest Peaches. Red all over. Tree a strong grower and heavy bearer.

**Red Bird Cling.** Creamy white, nearly covered with red. A semi-clingstone like most of the early Peaches.

**Slappey.** (Free). The earliest and most handsome freestone Peach that grows. Ripens in July when the market is bare of good Peaches. Best Peach of its season.

**Stump the World.** (Free). A white fleshed Peach of excellent quality; melting, juicy, rich, and good. Trees are large, hardy, vigorous and productive.

Prices, all varieties of Peaches:

	Each	10	100
3 to 4 ft.	\$0.30	\$2.50	\$20.00
4 to 5 ft.	.40	3.50	27.00

## Pears

Pear trees succeed in fairly good soil but they do best in a strong loam or clay. Both quality and juiciness of the fruit may be improved if it is gathered about a week or ten days before maturity and ripened indoors. A cool dark place is the best place for storing them while ripening.

**Bartlett.** Best known and a great favorite. Golden yellow with red cheek, fine-grained, melting, of delicious quality. Bears when very young.

**Garber.** Tree free from blight, immensely productive, fruit large, resembling the Kieffer but ripens two or three weeks earlier.

**Kieffer.** A seedling of the Chinese Sand Pear. Fruit large to very large. The Kieffer is not a high quality pear but is excellent for canning and cooking; bears regularly every year.

Prices, all varieties of Pears:

	Each	10	100
3 to 4 ft., 1-year whips .....	\$0.35	\$3.00	\$25.00
4 to 5 ft., 1-year whips .....	.45	4.00	35.00

## Plums

Plum trees thrive in a great diversity of soils, but require good drainage and do better if the soil is warm. They require but little pruning, but to obtain the best fruit it should be thinned. Plums are always in demand for eating, for pies, sauces, preserves, plum butter, marmalades and jellies.

**Abundance.** One of the largest, best and hardiest of the Japanese plums. Pale amber turning to red; yellow sweet flesh.

**Burbank.** Large, deep red, with yellow flesh; juicy and sweet; tree vigorous and strong. Another of the Japanese varieties.

**Red June.** Japanese. Skin garnet-red; flesh light yellow somewhat meaty, sweet, good; season early, ripens a week or so before the Abundance. Tree large, vigorous, spreading, hardy, productive.

**Shropshire Damson.** Skin purplish black with thick bloom and numerous dots; flesh golden yellow. Season late; fruits small in size; an old, well-known variety.

Prices, all varieties of Plums:

	Each	10	100
3 to 4 ft., 7/16" to 9/16" caliper .....	\$0.45	\$4.00	\$35.00
4 to 5 ft., 9/16" to 11/16" caliper .....	.60	5.00	40.00

## Prunes

Plums of the European class mostly used for drying. Nearly all freestones and very sweet. Do not bear as young as plums of other classes.

**Fellenberg.** (Italian Prune). Skin purplish with very thick bloom; flesh greenish yellow changing to yellow; juicy, firm, sub-acid; freestone. Season late and short.

**Standard.** Very large, blue, sweet and fine for fresh fruit, needs a pollinizer.

**Sugar.** Earlier, larger and sweeter than the French. Not quite so good a dryer. A heavy bearer in some localities, not so good in others.

Prices, all varieties of Prunes:

	Each	10
3 to 4 ft. ....	\$0.65	\$5.00
4 to 5 ft. ....	.75	6.00

## Blackberries

No garden is complete without some Blackberries. They make wonderful pies, shortcakes, and the most delicious jam. Juices can be made into beverages that are healthful as well as pleasing and refreshing and there is always a market for any surplus fruit. They come into bearing the year after they are set out and bear heavily for several years. Fruit after the Raspberry is gone and before the stone fruits are ripe.

**Early Harvest.** Valuable because one of the earliest to ripen; berries medium size and good quality. A strong grower and exceedingly prolific.

**Eldorado.** Very hardy, enduring the Winters of the far North-west without injury; very productive and of extra fine quality. A dependable variety to plant.

**Snyder.** Another hardy and productive variety. Fruit early, medium sweet, and of good size; no hard core. Well known and desirable.

Prices, all varieties of Blackberries:

	Each	10
Good strong plants .....	\$0.05	\$0.40

## Raspberries

Throughout most of the country, take a prominent place among the small fruits and in the North are extensively grown commercially. They bear fruits the year after they are set out and begin to ripen early in July.

**Columbian.** Purple berries, very large, juicy and sweet. Favorite canning variety. Bush of strong growth and a heavy bearer.

**Cumberland.** Black. Early; firm, good size berries of fine quality. Healthy, vigorous and productive; dependable and popular.

**Cuthbert.** Red. An old and tested variety, remarkably strong and hardy, withstanding the cold of the northern states as well as the heat of the southern.

**St. Regis.** Everbearing Red. Large sweet berries of attractive red producing a good crop in July and continues to fruit all Summer. Very profitable as the late berries command high prices. Each, 8c; 40c per 10.

Prices, all varieties except St. Regis:

	Each	10
Good strong plants .....	\$0.05	\$0.40
Common Wild Black Cap .....	.03	.25

## Strawberries

The earliest and one of the best of the small fruits, tempting in appearance and delicious in taste. Much in demand for shortcake, sauces and preserves. Strawberries will succeed in any soil that is adapted to ordinary farm and garden crops. To produce the best fruit, keep in hills, pinching the runners off as soon as they appear. We list the following varieties which we consider the best.

**Aroma.** Lady Thompson.

**Campbell's Early.** Lupton Late.

**Champion.** New York.

**Gandy.** Progressive Everbearing.

**Kellogg's Perfection.** Senator Dunlap.

**Klondike.** Tennessee.

Prices, all varieties: 35c per 10; \$3.00 per 100; \$25.00 per 1000.

## Grapes

The Grape is not only profitable commercially but has many home uses and a few vines planted about the yard to run over the fences or trained up on buildings will add to the attractiveness of the grounds as well as furnishing a supply of luscious fruit. They should be planted where they will have plenty of sunshine which supplies the needed warmth to develop the sugar content of the fruit.

### RED VARIETIES

**Brighton.** Catawba. Delaware. Lutea.

### BLACK VARIETIES

**Moore's Early.** Campbell's Early. Concord. Worden.

### WHITE VARIETIES

**Niagara.** Pocklington. Martha.

Prices, all varieties of Grapes:

	Each	10	100
2-year No. 1 .....	\$0.15	\$1.25	\$10.00
2-year No. 2 .....	.10	.75	7.00
1-year No. 1 .....	.10	.75	7.00

ALL STOCK IN THIS CATALOG IS READY TO PLANT. WRITE FOR PRICES ON LINING OUT STOCK IN QUANTITIES.

Kentucky.  
June 8th, 1928.

Please pardon me for not writing as soon as receiving my plants and bulbs They reached me in good condition and the bulbs were the finest I have ever had.

Alabama.  
April 19th, 1928.

Enclosed find check for account to date. I want to thank you for the nice lot of shrubs you sent me.

Arkansas.  
May 22nd., 1928.

The Junipers I ordered from you came and I am enclosing check for same. They were splendid plants and I was very much pleased with them.

Alabama.  
Feb. 4th, 1928.

I am delighted with the trees and shrubs in the order, each one I consider are excellent specimens.

NOTICE—If remittance does not accompany order, shipment will be made C. O. D. unless references are furnished. In all cases one-half of amount must accompany order.

To FOREST NURSERY COMPANY, Inc.
McMINNVILLE, TENN.

Date \_\_\_\_\_

Amount Enclosed, \$ \_\_\_\_\_

Ship to \_\_\_\_\_

Street Address or Box Number \_\_\_\_\_

Town \_\_\_\_\_ State \_\_\_\_\_ County \_\_\_\_\_

Ship via \_\_\_\_\_ (Write "Freight," "Express," "Parcel Post" or "Use Your Discretion.")

Many small shipments can be sent by parcel post at a much cheaper rate than express. When instructing a ship by parcel post, ADD AMOUNT OF POSTAGE TO REMITTANCE (about 15% of list price).

In giving this order it is understood that same is subject to stock being sold and no liability is to attach to FOREST NURSERY CO. when frost, drought or other casualties beyond their control prevent delivery of stock that may be contracted for. We give no guarantee other than printed in our catalog.

Table with 5 columns: Quantity, FULL NAME OF VARIETY, Size, Price Each, TOTAL. Multiple empty rows for data entry.

(Continue order on other side of sheet).

TOTAL

IMPORTANT—We never substitute unless authorized. If you wish to substitute, should varieties first ordered be exhausted, write here the word "YES" \_\_\_\_\_

Signature of Customer \_\_\_\_\_

ORDER No. \_\_\_\_\_

Address \_\_\_\_\_



# Special Selections

On these pages we are offering at special prices a few well balanced assortments of plants suitable for planting around the home. These selections are made of leading varieties and not of slow sellers. This is done for the benefit of those who want to add beauty and value to their grounds and are not familiar with the names of shrubs, evergreens, etc., or who do not have time to go through the catalog and make up a larger order.

Items in these selections are of good planting size, heavy, 2-year-old stock and the price is fully 25% under the regular catalog price. In ordering any of these selections just give the number of the selection wanted.

## SELECTION NO. 1-D.C.

Selection No. 1-D.C. contains the following hardy flowering shrubs:

- |                                       |                                      |
|---------------------------------------|--------------------------------------|
| 1 Althea, Double Red.                 | 1 Exochorda (Pearl Bush).            |
| 1 Althea, Double Pink.                | 1 Lonicera (Bush Honeysuckle), Pink. |
| 1 Tamarix africana.                   | 1 Lilac, Purple.                     |
| 1 Deutzia crenata.                    | 1 Forsythia, Assorted.               |
| 1 Deutzia, Pride of Rochester.        | 1 Hydrangea P. G.                    |
| 1 Lonicera (Bush Honeysuckle), White. | 1 Philadelphus (Mock Orange).        |

14 Plants, All for \$3.35.

## SELECTION NO. 2-D.C.

Selection No. 2-D.C. contains all of Selection No. 1-D.C. together with the following:

- |                        |                          |
|------------------------|--------------------------|
| 2 Butterfly Bush.      | 1 Spirea Billiardi alba. |
| 2 Barberry Thunbergi.  | White.                   |
| 1 Spirea Van Houttei.  | 1 Weigela rosea, Pink.   |
| White.                 | 1 Weigela Hendersoni.    |
| 1 Spirea callosa alba. | Dark pink.               |
| White.                 | 2 Pink Flowering Almond. |
| 1 Snowball.            | 2 Amorpha fruticosa.     |

28 Plants for \$6.50.

## SELECTION NO. 3-D.C.

This Selection contains Shade Trees, Flowering Shrubs, Evergreens and Roses, our selection, but carefully made. High class evergreens in this selection.

- |                              |                          |
|------------------------------|--------------------------|
| 1 Silver Maple.              | 1 Althea, Double Red.    |
| 1 Liriodendron (Tulip Tree). | 1 Althea, Double Pink.   |
| 2 Forsythia.                 | 2 Chinese Arbor-Vitae.   |
| 2 Spirea Van Houttei.        | 2 Spreading Junipers.    |
|                              | 6 Rose Bushes, Assorted. |

This Selection Contains 2 Shade Trees, 6 Hardy Flowering Shrubs, 4 Evergreens, and 6 Roses, all for \$9.00.

## SELECTION NO. 4-D.C.

- |                                       |
|---------------------------------------|
| 2 Spirea Van Houttei, White.          |
| 2 Spirea callosa rosea, Pink.         |
| 1 Lonicera (Bush Honeysuckle), White. |
| 1 Lonicera (Bush Honeysuckle), Pink.  |
| 1 Ilex opaca (American Holly).        |
| 2 Norway Spruce.                      |
| 1 Althea, Double Red.                 |
| 1 Althea, Double Pink.                |
| 2 Forsythia (Golden Bell), Yellow.    |
| 2 Barberry Thunbergi.                 |
| 2 Philadelphus (Mock Orange).         |
| 2 Spreading Junipers.                 |

19 Plants, all for \$8.00.

## SELECTION NO. 5-D.C.

- |  |
|--|
| 1 Spirea Van Houttei, White.                 |
| 1 Forsythia (Golden Bell), Yellow.           |
| 1 Weigela rosea, Pink.                       |
| 1 Philadelphus (Mock Orange).                |
| 1 Lilac, Purple.                             |
| 1 Juniperus (canadensis (Spreading Juniper). |
| 1 Chinese Arbor-Vitae.                       |

Special Price, \$2.85.

## A COMPLETE HOME PLANTING

### SELECTION NO. 6-D.C.

- |  |
|--|
| 2 Silver Maples.                             |
| 2 Liriodendrons (Tulip Tree).                |
| 2 Catalpa speciosa.                          |
| 2 Lombardy Poplars.                          |
| 10 Spireas, Assorted colors.                 |
| 6 Deutzias, Assorted.                        |
| 6 Lonicera (Bush Honeysuckle), Assorted.     |
| 2 Hydrangea.                                 |
| 2 Philadelphus (Mock Orange).                |
| 2 Almond, Pink Flowering.                    |
| 2 Lilac, Purple.                             |
| 4 Weigela rosea, Pink.                       |
| 2 Abelia grandiflora.                        |
| 2 Spreading Junipers.                        |
| 4 Barberry Thunbergi.                        |
| 6 Althea, Double varieties; assorted colors. |
| 2 Forsythia (Golden Bell).                   |
| 4 Snowberry, Red.                            |
| 2 Chinese Arbor-Vitae.                       |
| 12 Gladiolus Bulbs.                          |
| 2 Canna Bulbs.                               |
| 12 Tuberose Bulbs.                           |

All the above for only \$22.50.

One-half This Entire Selection for only \$12.00.

# Trees

are the noblest of Nature's handiwork. Many homes in our fair land are insufficiently protected from the hot sun of summer by the sheltering shade of our forest friends. The improvement in appearance of the grounds as well as one's comfort in and around the home, resulting from tree plantings, are all out of proportion to the small original cost. Plan to plant another tree or several of them.







1. Pink Radiance.
2. Frau Karl Druschki.
3. Sunburst.
4. Etoile de France.
5. Paul Neyron.

## Rose Garden Collection

These ten beautiful Roses are described in our list of Roses on page 34. They are two-year No. 1 plants, field-grown, and fully acclimated to outdoor life.

One of each \$5.00  
 Three of each \$14.00  
 Six of each \$24.50

6. Red Radiance.
7. Mrs. Aaron Ward.
8. Kaiserin Augusta Victoria.
9. General Jacqueminot.
10. Dr. W. Van Fleet.

**FOREST NURSERY COMPANY**  
 McMinnville, Tenn.