

## **Historic, Archive Document**

Do not assume content reflects current scientific knowledge, policies, or practices.



LIBRARY

RECEIVED

★ APR 29 1929 ★



# Genesee County Nurseries

— L. T. CURTIS & SON —

*Everything that is Good and Hardy*

**FLINT, MICHIGAN**

Member  
American Association  
of Nurserymen

PHONE 3-3242

Member  
Michigan Association  
of Nurserymen

# To Our Customers

THE varieties in this catalog have been purposely limited to those which have proved worthy and dependable in this locality. We have omitted many plants which are not sufficiently hardy to succeed well here; and also a few which are difficult to grow and transplant. As we make a specialty of material for landscape planting, however, we grow many trees and shrubs which we do not catalog. Customers who wish "something different" or distinctive may feel assured that we will be able to supply them.

## IT IS EASY TO ORDER

1. Phone your order direct to Nursery. Our one-party line assures good service. Phone 3-3242.
2. Mail your order. "Flint, Mich.," or "City" is address enough. We send many orders parcel post, prepaid.
3. Drive to Nursery. You may personally select your stock if you wish. During the planting seasons, we are open evenings.
4. Representative will call and take your order upon request. Also help you in making selections, and give general advice.

## ROUTE TO NURSERY

Drive out by way of Fenton St. and Torrey Rd. (W. 12 St.) About five miles out. Watch for our sign at right. (Gas station at left.) You are welcome to look around.

## PLANTING SEASON

In the spring from the time the ground thaws out until the leaves are practically out—usually April 1 to June 1. Evergreens and bulbs a little later.

## FALL PLANTING

Any time after the first heavy frost until the ground freezes solid; ordinarily from October 1 to December 1. There is a long planting season in the fall, and it is just as reliable as spring for hardy stock. Perennials, hardy flowers, may be planted from September 15 to November 1. Fall is a particularly favorable time to do landscape planting.



SPIRAEA VAN HOUTTEI AND HYDRANGEAS

## Hardy Flowering Shrubs

### *A Select List of the Finest and Hardest Kinds*

**A** HOUSE and lawn without shrubs is like a picture without a frame. Trees and vines are of course essential, but shrubs are the most important feature of landscape planting. They furnish the main foliage masses and drifts of color which first catch and delight the eye. Planting of shrubs about the base of the house and porch is now considered a matter of course. Their value and desirability in the shrubbery border, as in enclosing and screening in the back lawn, is not so well known. The taller varieties are at their best planted in groups of three or more at the sides of the back yard.

Nothing else will so quickly and economically give an aspect of finish and completeness to the new home, and add 10% to 20% to its cash value.

#### SHRUBS ARE OUR MAIN SPECIALTY

We are listing the most important and valuable varieties, but grow several kinds not mentioned here. Our shrubs are heavy, well-rooted, and carefully grown and handled; mostly three years old. You are welcome to our advice and help in selecting varieties.

**Quantity Prices:** Six plants of one kind for five times the price of one. (Six 70c plants for \$3.50, etc.) For large lots, planting, etc., ask for special estimates.

#### Althea or Rose of Sharon

Blooming late when flowers in the shrubbery are scarce. It requires protection and should be planted only in the spring. Colors: Red, Pink. 2 to 3 ft., 75c. 3 to 4 ft., \$1.00.

#### Pink Flowering Almond

This old-time favorite with its wealth of double, pink flowers, strung along the stems like so many gems. Their wealth of blossoms come to delight us at a time when there are few other shrubs in bloom. Useful in cemeteries, as it blooms about Decoration Day. 18 to 24 in., 75c. 2 to 3 ft., \$1.00.

#### Aralia

**ARALIA PENTAPHYLLA**—Unusually attractive, lustrous deep green leaves, with five lobes. This Aralia is a very distinct and ornamental shrub. Does well in shade, and indifferent soil. Used in quantity by landscape men for its adaptability and the attractive bright green of its foliage mass. 2 to 3 ft., 75c; 3 to 4 ft., \$1.00.

**ARALIA SPINOSA**—A tall, interesting, tree-like shrub of sub-tropical appearance. Enormous palmate leaves sometimes four feet long. Our stock of this Aralia always interests visitors who want "something different." 3 to 4 ft., \$1.25. 4 to 5 ft., \$2.00. 5 to 6 ft., \$2.50.

SHRUBS—Continued



HONEYSUCKLE

Japanese Barberry

The most valuable and useful shrub in existence. Dwarf, bushy habit, densely furnished with small, numerous leaves. More neat and attractive throughout the season than the flowering shrubs. Strikingly attractive fall coloring, followed by clusters of shiny red berries. Every planting should include it. Plant in clumps of three or more, about two feet apart. (See Hedge Plants.) Bushy, heavy, 3-yr. plants, 15-18 in., 40c each; 6 for \$2.00. 18 to 24 in., extra heavy, 60c each; 6 for \$3.00. 12 to 15 in., 30c each; 6 for \$1.50. 10 to 15 in., 20c each; 6 for \$1.00. Special: extra quality, 4-yr. Barberry, broad, bushy plants, for immediate effect, 90c each; 6 for \$4.50.

New Red Leaf Barberry

This red-leaf form of the Japanese Barberry will add life and sparkle to your

lawn. To bring out the full brilliancy of its beautiful bronzy red coloring, plant it in a sunny place. It is perfectly hardy and easy to grow. This has been in such demand for landscaping that the stock of it is still rather scarce. 2-yr., 15-18 in., \$1.20; 3 for \$3.25; 6 for \$6.00. 12-15 in., \$1.00; 3 for \$2.50. Extra heavy, 3-yr., \$1.50 and \$1.75.

Flowering Crab

**BECHTEL'S DOUBLE FLOWERING CRAB**—One of the most beautiful of the flowering crabs; tree of medium size, covered in early spring with large, beautiful, fragrant flowers of a delicate pink color. 2 to 3 ft., \$1.25. 3 to 4 ft., \$1.75. 4 to 5 ft., \$2.50.

Caragana—Pea Tree

**CARAGANA ARBORESCENS**—Fine, light green, very small leaves. Pretty clusters of yellow, pea-shaped flowers very early in the season. Here is a hardy shrub of real merit, although seldom seen. It makes an interesting little specimen planted alone. 2 to 3 ft., 75c. 3 to 4 ft., \$1.25. 4 to 5 ft., \$1.50.

Calycanthus—Sweet Shrub

Upright growth, reaching 5 to 6 feet. Peculiar, fragrant, chocolate-red flowers. 2 to 3 ft., \$1.00.

Cotoneaster Acutifolia

Upright grower, with handsome, glossy leaves of a rich deep green. Attractive fall coloring and clusters of large black berries. Extremely hardy and may be clipped like Privet. Frequently seen in high-class landscape plantings, but is little known as yet. 2 to 3 ft., \$1.00. 3 to 4 ft., \$1.25.

COTONEASTER HORIZONTALIS

—A dwarf, spreading shrub, with small, shining leaves. Abundant, small, bright scarlet berries in fall. An artistic plant for the rock garden. Slow growing and nearly evergreen. \$1.50 to \$2.50 each.

Alpine Currant—Ribes Alpinum

A very dense, dwarf shrub, absolutely hardy, but seldom seen. The bright green leaves come out very early, and hang on late in the fall. Adds character



## SHRUBS—Continued

to foundation planting. Stands shade well. Here is your chance to get something "different", and meritorious for that new lawn. 3-yr., 15 to 18 in., \$1.00. 4-yr., 18 to 24 in., \$1.25.

**Deutzia**

**PRIDE OF ROCHESTER**—Grows 6 feet high, and blooms very early. Large white flowers, tinged pink. 2 to 3 ft., 65c; 3 to 4 ft., 85c.

**DEUTZIA LEMOINEI**—Large clusters of white flowers. Dwarf habit; splendid bloomer. 18 to 24 in., 70c. 24 to 30 in., 85c.

**The Dogwoods—Cornus**

Dogwoods are almost at their best in a leafless state. The brilliant and varied tints of their branches, ranging from soft gray, yellow, to brilliant red, contribute a most welcome quota of life and color to the shrubby groups. Successful landscape planting usually includes Dogwoods.

**SIBERIAN DOGWOOD**—Grows 6 to 10 feet high. The best Dogwood for winter color; branches blood red. White berries in clusters; flowers in fuzzy heads of white. Do not overlook it in planning your border and screen. 2 to 3 ft., 65c. 3 to 4 ft., 80c. 4 to 5 ft., \$1.00.

**YELLOW BARK DOGWOOD**—Bright yellow bark. Plant it with Siberian Red Bark Dogwood if you like contrast. Prices same as Siberian Dogwood.

**VARIEGATED LEAF DOGWOOD**—One of the most desirable shrubs, with variegated foliage. The leaves are broadly margined with white. 2 to 3 ft., \$1.00. 3 to 4 ft., \$1.50.

**PANICLED DOGWOOD**—Medium height, upright habit. Many clusters of pearly berries, on attractive red stems. Splendid fall coloring. Scores high as a landscape shrub. 2 to 3 ft., 70c. 3 to 4 ft., \$1.00.

**SILKY DOGWOOD**—Medium size. Purplish red bark. White berries, tinted purple. 2 to 3 ft., 60c. 3 to 4 ft., 80c. 4 to 5 ft., \$1.00.

**MASCULA DOGWOOD** (Cornelian Cherry)—Very early clusters of small yellow flowers. Large, bright red fruits. 3 to 4 ft., \$1.50.

**Elder—Sambucus**

**GOLDEN ELDER**—A large shrub with attractive golden yellow foliage retained throughout the season. Adds a welcome note of color and contrast to shrubby clumps. Typical elderberry flowers. 3 to 4 ft., \$1.00. 4 to 5 ft., \$1.25 and \$1.50.

**Euonymus—Wahoo**

**AMERICANUS**—Erect shrub, with slender green branches. Peculiar pink fruits. Good autumn color. 3 to 4 ft., \$1.50. 4 to 5 ft., \$2.00.

**ALATUS**—Interesting corky bark, crimson autumn coloring. Small bright red berries. 2 to 3 ft., \$1.75. 3 to 4 ft., \$2.50.

**Forsythia—Golden Bell**

**FORSYTHIA INTERMEDIA**—The first shrub to bloom in the spring. Like golden glints of sunshine the bell-like blossoms burst forth and light up the garden with masses of bright yellow. Healthy, deep green foliage; fast grower, reaching 6 to 8 feet. Fine for the angles and corners of house foundations. We could not get along without Golden Bell in borders, screens and all good landscape work. 2 to 3 ft., 60c; 6 for \$3.00. 3 to 4 ft., 80c; 6 for \$4.00.

**FORSYTHIA SUSPENS**A — Graceful drooping branches strung with bright rosettes of yellow bloom. Fine for terraces and banks. 2 to 3 ft., 70c. 3 to 4 ft., 90c.

**The Bush Honeysuckles**

**TARTARIAN**—A tall, rapid grower. Very early bright green leaves, soon followed by a profusion of fragrant pink blossoms. Later the branches are clothed with clusters of brilliant red berries lasting for a long time. Honeysuckles are the most useful of all tall shrubs, and landscape gardeners use thousands for borders, screens and for enclosing back lawns. They will grow twice as fast as Lilacs, and make a good tall hedge, as they may be clipped. Don't use a privet hedge in the back lawn where you should have a tall border of Honeysuckle, Syringa, Golden Bell, Lilacs, etc. 2 to 3 ft., 65c; 6 for \$3.25. 3 to 4 ft., 85c; 6 for \$4.25. 4 to 5 ft., \$1.00.

**MORROWI** (Japanese Honeysuckle) —The best variety to plant about houses and porches. More spreading but not so tall as Tartarian. Creamy white flowers and dark red berries. Much favored by landscape men, as their plans show. Prices, same as Tartarian.

**Hydrangeas for Fall Bloom**

**HYDRANGEA PANICULATA**—Flowers are borne in large, globe-shaped panicles, white in color, becoming tinged with a delicate pink at the first frost, and last for weeks after opening up. This plant is absolutely hardy, and blooms the same year it is set out. Very attractive in beds or masses, and should be used for the most part in the foreground. 2 to 3 ft., \$1.00; 6 for \$5.00. 18 to 24 in., 75c; 6 for \$3.75. 12 to 18 in., 50c. Extra heavy, \$1.25.

**ARBORESCENS** (Hills of Snow) —Flowers are very similar to the old-fashioned Snowball. Valuable for its season of bloom, just after the spring-flowering shrubs. Does well in shade, thriving in an eastern or northern exposure. Prices, same as Hydrangea Paniculata.

**TREE HYDRANGEA** — Hydrangea Paniculata grown in tree form. 3 to 5 ft., \$2.00, \$2.50 and \$3.00 each.

**Lilacs**

**COMMON PURPLE LILAC**—Fragrant purple flowers. 18 to 24 in., 60c. 2 to 3 ft., 75c. 3 to 4 ft., \$1.00. Extra heavy, 5-yr., \$2.00 to \$5.00 each.

**SHRUBS—Continued**

**WHITE LILAC**—2 to 3 ft., 90c. 3 to 4 ft., \$1.25.

**PERSIAN LILAC**—Graceful, rounded form; slender, upright branches, with rather fine leaves. Blooms very young, pale to deep lilac color. Moderate in height, 4 to 6 feet. The best Lilac for limited space and foundation planting. Much used in landscape planting. 2 to 3 ft., \$1.00. 3 to 4 ft., \$1.25.

**VILLOSA LILAC**—Why not have Lilac-time last until summer? This one blooms long after the other Lilacs have finished, and is unique in flower and foliage. Flowers are light lilac in bud and silvery rose when open. 2 to 3 ft., \$1.00. 3 to 4 ft., \$1.50.

**French or Hybrid Lilacs**

The Named Hybrid Lilacs, with their larger panicles of delicate and rich hued flowers, always prove a surprise and revelation to those who do not know them. They are a distinct type, rather dwarf in habit, blooming when very young.

**MADAME LEMOINE**—Large trusses; a superb double white.

**PRES. GREVY**—A beautiful double blue.

**LUDWIG SPAETH**—Very dark, reddish purple; single.

**MICHAEL BUCHNER**—Pale pinkish lilac; double.

**CHARLES X**—Large panicles of reddish purple; single.

All French Lilacs: 18 to 24 in., \$1.00. 2 to 3 ft., \$1.50. 3 to 4 ft., \$2.50.

**Dwarf Tartarian Maple**

**ACER GINNALA**—Not a tree, but a large shrub with attractive maple foliage and superb fall coloring. Grows 10 feet high and will grace the finest shrubbery borders. 3 to 4 ft., \$1.75. 4 to 5 ft., \$2.25.



**FLOWERING ALMOND**  
prunus japonica



## SHRUBS—Continued

**Russian Olive  
Elaeagnus**

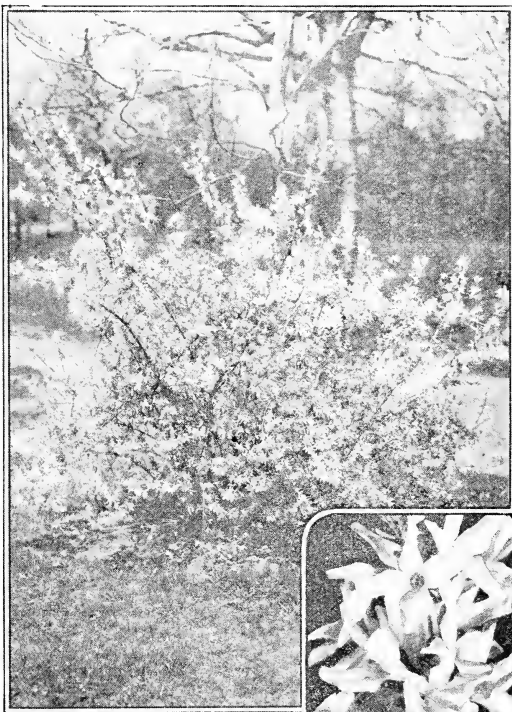
**ELEAGNUS A N-GUSTIFOLIA**—This tall shrub affords a striking contrast among dark leaved associates. Its foliage is most unusual, a rich silvery light green. Small, inconspicuous but very fragrant, yellow flowers. Attaining the size of a small tree, it is of special value in the extreme background to add skyline interest. Keep this shrub in mind to plant with your *Syringas* and *Honeysuckles*. 3 to 4 ft., \$1.00. 4 to 5 ft., \$1.50. 5 to 6 ft., \$2.00.

**Potentilla Fruticosa**

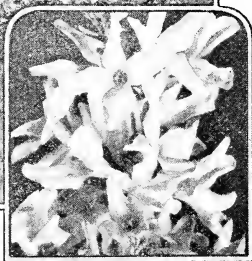
A bright flowered little shrub with yellow flowers from July to frost. Very dwarf with silky gray-green foliage. 18 to 24 in., \$1.00 each.

**Flowering Plum  
Prunus Triloba**

A lovely, spring-blooming shrub which adds a welcome note of color and cheer to the leafless landscape. Very double, closely set, rose-like blooms of light pink. Effective as a specimen. 3 to 4 ft., \$1.50. 4 to 5 ft., \$2.00.



FORSYTHIA

**The Privets—Ligustrum**

We find that few people know of the many attractions of this family. In a clipped hedge, they do not flower or show their blue-black berries. Their panicles of delicate white flowers much resemble the Lilac.

**REGEL PRIVET**—A graceful and distinctive shrub, with low-spreading branches and clear cut, fine foliage. Good landscape architects use it in large numbers. Its lateral habit of growth makes it harmonize with slopes, terraces and low house foundations. It holds its leaves late in the fall and takes on striking tones of purple and red. 15 to 18 in., 50c; 6 for \$2.50. 18 to 24 in., 3-yr., 70c; 6 for \$3.50. 2 to 3 ft., 80c.

**IBOTA PRIVET**—A stronger and taller grower than Regel Privet. Spreading habit; numerous small panicles of white flowers followed by large clusters of attractive black berries. A good shrub for foundations and property lines. 18 to 24 in., 50c; 6 for \$2.50. 2 to 3 ft., 3-yr., 65c; 6 for \$3.25.

**AMOR RIVER PRIVET**—(See Hedge Plants). Most used in hedges, but valuable in general planting. Vigorous, upright grower; very tall and erect. 2 to 3 ft., 4-yr., heavy, 50c; 6 for \$2.50. 3 to 4 ft., 4-yr., heavy, 65c; 6 for \$3.25.

**ENGLISH PRIVET**—Lustrous, bright green leaves. Pretty panicles of white flowers; shining black berries. Tall, upright habit. 2 to 3 ft., 60c. 3 to 4 ft., 75c.

**CALIFORNIA PRIVET**—(See Hedge Plants). Not sufficiently hardy to permit its use in general planting, except as a hedge.

**Japanese Quince—Cydonia**

**CYDONIA JAPONICA**—Dazzling scarlet flowers in early spring. An old favorite. 18 to 24 in., 85c. 2 to 3 ft., \$1.00.

**Shrub Roses—Rosa**

**JAPANESE ROSE** (*Rosa Rugosa*)—The finest bush Rose for landscape planting. It is really a shrub, with very

## SHRUBS—Continued

fine foliage. Leaves of a rich, deep green, deeply crinkled; single pink flowers followed by very large, bright red fruits. Does especially well in clay soil. 2-yr., 75c. 3-yr., 90c.

**ROSA MULTIFLORA**—Tall, arching canes, 4 to 5 feet high, covered with a profusion of great clusters of small white flowers in June. 2-yr., 65c. 3-yr., 85c.

**ROSA SETIGERA**—Deep pink, single roses. One of the best of the wild roses for naturalistic landscapes. 2-yr., 65c. 3-yr., 85c.

**SWEETBRIAR** (*Rosa Rubiginosa*)—The true English Sweet Briar, with sweet-smelling, aromatic leaves. Large, brilliant red berries. 2-yr., 65c. 3-yr., 85c.

**ROSA CAROLINA**—Large pink roses, followed by red berries. 2-yr., 65c. 3-yr., 85c.

**ROSA WICHURIANA**—Attractive glossy leaves; clusters of white flowers. Makes an interesting ground cover for banks and terraces, as it creeps flat on the ground. 2-yr., 65c. 3-yr., 85c.

### Rhodotypos—White Kerria

**RHODOTYPOS KERRIOIDES**—A shrub with many points of excellence, and suited to positions requiring good foliage texture. It has handsome, corrugated leaves, and large, Syringa-like, single white flowers late in May; shining, jet-black berries in clusters lasting all winter. Usually grows 4 to 5 feet high. Rhodotypos appears commonly in the planting lists of landscapers. It will help you avoid the commonplace in developing that new lawn. Plant 3 feet apart. 2 to 3 ft., 85c; 6 for \$4.25. 3 to 4 ft., \$1.15.

### Snowberries for Fall Effects

All good landscape planting includes some of the berried shrubs. Grounds planted with mainly flowering effects in mind will lack interest and prove disappointing. Plant Snowberries 30 to 36 inches apart. Prune back each season.

**WHITE SNOWBERRY**—Their large clusters of milk-white berries persist until winter. Snowberry and Coralberry (*Red Snowberry*) are two of the best shrubs for planting in shade, and are much favored by landscape gardeners. 18 to 24 in., 50c; 6 for \$2.50. 2 to 3 ft., 60c; 6 for \$3.00.

**RED SNOWBERRY**—Similar to the White Snowberry except that its fruits are red and that the smaller red berries cluster in thick ropes along the weighted-down stems. Rather dwarf in form, growing from two to four feet high. This species of the Snowberry is often called "Indian Currant" and "Coralberry." Prices and grades same as White Snowberry.

### Spirea Van Houttei

The most popular shrub and one of the most beautiful. Gracefully arching branches loaded with myriads of tiny white flowers. Very hardy and easy to grow in any soil. Space 3 feet apart. Plant Barberry or dwarf pink Spirea in front of it. Our stock of this shrub is large and the plants are bushy and extra fine. 2 to 3 ft., 50c; 6 for \$2.50. 3 to 4 ft., heavy, 70c; 6 for \$3.50. 1½ to 2 ft., 30c; 6 for \$1.50. 1 to 1½ ft., 6 for \$1.00; 12 for \$1.50.

### Spirea Froebeli

One of the newer sorts. Dwarf, bushy habit, blooming in mid-summer. Flowers of a deep rose shade. A free bloomer, with healthy, bluish-green foliage. Will flower the first season planted. A good edging shrub for Spirea Van Houttei. Hardier, and a little taller grower than Anthony Waterer. Much used for massing in corners and angles of walks and drives. Bushy, 3-yr. plants, 24 to 30 in., 75c each; 6 for \$3.75. 15 to 18 in., 60c each; 6 for \$3.00. 12 to 15 in., 40c each.



HYDRANGEA P. G.

## SHRUBS—Continued

**Spirea Anthony Waterer**

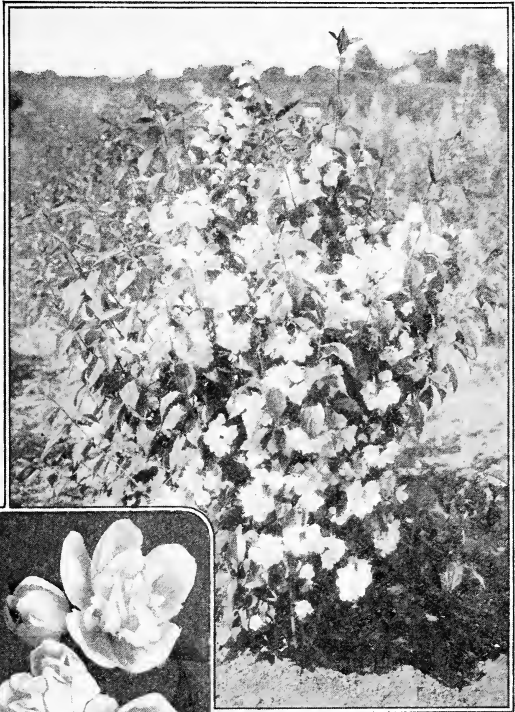
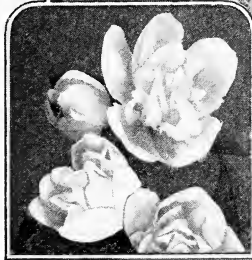
Red, dwarf. This is a valuable variety because it can be used for edging and borders. An excellent low growing shrub with red flowers almost throughout the season. 18 to 24 in., 75c; 6 for \$3.75. 12 to 18 in., 60c; 6 for \$3.00.

**Spirea Thunbergi**

One of the earliest shrubs to bloom, the clouds of tiny white blossoms appearing before the leaves. Very fine, feathery, light green foliage. Medium height. Use it where you want fine texture, as about the house foundation. 24 to 30 in., 80c; 6 for \$4.00. 18 to 24 in., 60c; 6 for \$3.00.

**Golden Spirea SPIREA AU-**

**REA** — Very tall; fast grower with leaves tinged yellow. White flowers and attractive reddish seed pods. One of the best shrubs to make a screen and border about the back lawn. 2 to 3 ft., 65c. 3 to 4 ft., 80c. 4 to 5 ft., \$1.00.



**PHILADELPHUS VIRGINAL**  
The New Double Flowering  
Mock Orange, Blooms in June  
and in the Fall

**Spirea Prunifolia**

The Bridal Wreath of old-time gardens. Very early, double, button-like blooms of pure white. Bridal Wreath and Golden Bell make a frame worthy of your spring bulb garden. 2 to 3 ft., 70c. 3 to 4 ft., \$1.00.

**Spirea Billardi**

Rose-pink, plume-like flowers in dense upright panicles. Blooms "in the dead of summer" when flowers are scarce. Fairly tall grower. 18 to 24 in., 50c. 2 to 3 ft., 60c. 3 to 4 ft., 75c each.

**Spirea Douglasi**

Fairly tall, upright grower. Deep pink spikes of flowers in late July. Very desirable for late bloom. Good with Spirea Van Houttei. 2 to 3 ft., 60c. 3 to 4 ft., 75c.

**Dwarf Ninebark — Spirea Monogynus**

Attractive bright green foliage of fine texture, retained until winter. Flower heads of fine white florets, tinged pink. Fall coloring of purple and wine red.

Compact, bushy habit, and medium size. It ranks high in landscape value. Fine for foundation planting. A rare shrub. 2 to 3 ft., \$1.00. 3 to 4 ft., \$1.50.

**Syringa or Mock Orange**

**SYRINGA CORONARIUS**—(Botanical name is Philadelphus). The "Sweet Syringa" of old-fashioned gardens. A tall, hardy bush. In May and June it bears white flowers resembling orange blossoms, which are fine for cutting and deliciously fragrant. This shrub is valuable for back grounds, screens or specimen plants. 2 to 3 ft., 60c each; 6 for \$3.00. 3 to 4 ft., 80c each; 6 for \$4.00. 4 to 5 ft., \$1.00 and \$1.25 each.

**SYRINGA GRANDIFLORA** — Tall; very fast grower. Extra large flowers in June. Will soon screen off your neighbor's ash heap, and enclose your back lawn. Syringas will grow in almost any soil, and are an old standby for tall borders. Prices and grades same as Syringa Coronarius.

## SHRUBS—Continued

**SYRINGA VIRGINALIS** (Philadelphus)—A magnificent new sort, with remarkably large, semi-double flowers in great profusion. Its sweetly fragrant blooms are produced off and on throughout the entire season. Moderately tall. 2 to 3 ft., \$1.00. 3 ft., \$1.25.

**SYRINGA LEMOINE**—Erect, fine leaved, slender stemmed, about 4 to 5 feet high. Creamy white flowers in June, with a distinct, permeating fragrance. 2 to 3 ft., 75c. 3 ft., \$1.00.

**SYRINGA ALBATRE**—Has very showy, dense panicles of white, double flowers. Plant is bushy, of medium height. 2 to 3 ft., \$1.00. 18 to 24 in., 75c.

**GOLDEN-LEAF SYRINGA**—This is the yellow-leaved shrub you have admired so much planted with *Spirea Van Houttei*. It is a dwarf grower, and should be planted in front of taller shrubs. 18 to 24 in., \$1.10 each; 6 for \$5.50. 15 to 18 in., 90c each; 6 for \$4.50. 12 to 15 in., 70c each; 6 for \$3.50.

### Sumac—Rhus

Sumacs give a blaze of color in the fall, and an interesting skyline all winter. Their bold, pinnate leaves and picturesque habit of growth add a much needed contrast.

**STAGHORN SUMAC**—Very tall, rugged grower; picturesque crooked branches. 3 to 4 ft., 75c. 4 to 5 ft., \$1.00.

**FERN LEAF SUMAC**—Leaves deeply cut and lacinated, giving a fern-like effect. Superb fall coloring. A much-admired shrub and will give variety to your border. 3 to 4 ft., \$1.00. 4 to 5 ft., \$1.25.

### Stephanandra

**STEPHANANDRA flexuosa**—A medium-sized shrub of dense, compact growth, covered with deeply cut leaves tinged with red when opening and changing to brilliant red and yellow tints in autumn. Flowers are creamy-white. 2 to 3 ft., \$1.00. 18 to 24 in., 85c.

### Tamarix

Beautiful, slender, tall growing shrubs, with fine feathery, Juniper-like foliage. Spikes of very delicate pink or rose flowers. Both foliage and flowers are used for cutting.

**TAMARIX AFRICANA**—Early, light pink flowers, in May and June. Olive-green foliage. 2 to 3 ft., 60c. 3 to 4 ft., 80c.

**TAMARIX PENTANDRA**—Attractive silvery blue-green foliage. Rose-pink flowers in large panicles, blooming from July to October. This is a choice shrub, always exciting the admiration of visitors when in bloom on our grounds. 2 to 3 ft., 80c. 3 to 4 ft., \$1.00.

### Viburnum—Snowball

**COMMON SNOWBALL**—18 to 24 in., 85c. 2 to 3 ft., \$1.00. 3 to 4 ft., \$1.50.



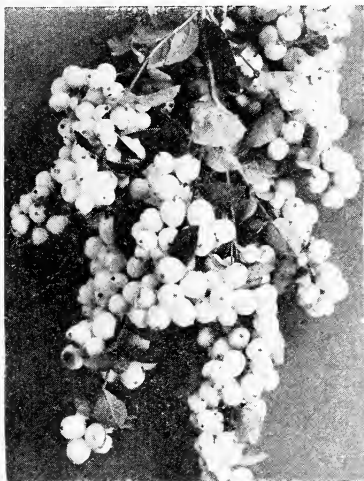
SYRINGA (Mock Orange)

**HIGH BUSH CRANBERRY** (*Viburnum Opulus*)—Tall; one of the best berried shrubs. Clusters of brilliant red berries nearly all winter. 2 to 3 ft., \$1.00. 3 to 4 ft., \$1.50.

**VIBURNUM LANTANA**—Large, white flowers in June, followed by crimson fruits, changing to black. Very handsome, thick, crinkly leaves. A very distinctive tall shrub, with great landscape value. Plant one for the birds. 2 to 3 ft., \$1.00. 3 to 4 ft., \$1.50. 4 to 5 ft., \$2.00.

**VIBURNUM DEN-TATUM** (Arrowwood)—White flower heads in June; blue berries. Glossy, bright green foliage, coloring to purple and red in fall. A large, broad shrub of excellent form and habit. Good for shady places, but needs moisture. 2 to 3 ft., 80c. 3 to 4 ft., \$1.25. 4 to 5 ft., \$1.50.

## SHRUBS—Continued



SNOWBERRY

**VIBURNUM LENTAGO** (Sheepberry)—Tall grower. Foliage a light glossy green; creamy white flowers. 2 to 3 ft., \$1.00. 3 to 4 ft., \$1.25. 4 to 5 ft., \$1.50.

### Weigela

**WEIGELA ROSEA**—An indispensable shrub of great beauty. Arching branches studded with a profusion of rose pink, trumpet-shaped flowers. Blooms in June. Heavy foliage, retained late in the fall, makes it especially valuable in conspicuous positions and foundation planting. Same height as Spirea Van Houttei. Much used about house and porch bases. Plant three feet apart. This is the best of the great number of Weigela varieties. 3 to 4 ft., 90c; 6 for \$4.50. 2 to 3 ft., 65c; 6 for \$3.25. 18 to 24 in., 50c.

**WEIGELA EVA RATHKE**—A small-growing shrub with deep crimson-red flowers. It blooms over a long period, from June to September. Makes a bright spot of color for the foreground. Foliage not heavy. Stock of this Weigela is always scarce. 18 to 24 in., 75c. 2 to 3 ft., 90c.

**VARIEGATED WEIGELA**—Leaves strikingly marked with white and cream. Dwarf, compact grower. Pink flowers. The best variegated shrub. Need a strong green background. 2 to 3 ft., 90c. 18 to 24 in., 75c.

### Witch Hazel—Hamamelis

A tall, native shrub producing peculiar narrow-petalled flowers of light yellow late in the fall. 3 to 4 ft., \$1.00 each.

### A Suggestion to Those Buying Shrubs

Too much consideration is ordinarily given to the flowers. Shrubs should be judged largely by their foliage, berries and year around effect. A selection based upon flowers mainly is sure to be a failure from a landscape viewpoint. Many of the most showy of the flowering shrubs have too sparse foliage for good effect in planting about the house and porch foundation, unless used in front of other shrubs. The trained landscape man thinks in terms of foliage and general mass effects; and less of flowers, and individual plants.

Plant in clumps, groups and "drifts." Single plants, excepting in general positions, are not good.

Remember two things. Practically all houses and porches need a base or "foundation" planting; and all grounds need enclosing by planting on the property lines—in the back lawn as well as the front. If interested, ask for our suggestions.

### Our Policy and Aims

We aim to sell what the customer can use to best advantage, and refuse to take advantage of his ignorance as to varieties or prices. Thorough, first-hand knowledge of what we are selling enables us to give dependable information and advice about planting. As we well realize that a continuation of our success depends upon giving satisfactory stock and service, we are particular about the quality of the plants we deliver. It is our consistent purpose to give full value at all times; to deal honestly and fairly with our customers, and to give prompt attention to all just complaints.



WEIGELA ROSEA

# New and Rare Shrubs

**KOREAN SPIREA** (*Spirea Trichocarpa*)—A handsome new *Spirea* of medium size, blooming two weeks later than *Spirea Van Houttei*. Large, rounded clusters of snow-white flowers strung profusely along the stems. Good foliage. Rates high as a landscape plant. Perfectly hardy. 18 to 24 in., 2-yr., \$1.25 each.

**BEAUTY BUSH** (*Kolkwitzia Amabilis*)—An exceedingly beautiful new shrub of attractive foliage and habit. The

twiggly, arching branches are covered in spring with clusters of small, tubular flowers, borne in great profusion. Color a lovely shade of delicate pink. 18 to 24 in., 2-yr., \$1.60 each.

**SNOWBERRY CHENAULTI**—A new Red Snowberry with very bright green leaves and dense, twiggly branches. The berries are larger than the common Red Snowberry, and are of a rosy red color. It makes a very shapely shrub. 2 to 3 ft., \$1.00 each.

## Other Rare and Interesting Plants

**CHINESE ELM**—A new Elm discovered in China which will grow fully twice as fast as the common Elm. It has unusually fine and attractive foliage and makes a most interesting specimen. 4 to 5 ft., \$2.00.

**MOSS LOCUST** (*Rose Acacia*)—Drooping racemes of beautiful bright rose flowers of sweet-pea form. Graceful pinnate leaves. A charming shrub used as a solitaire. Tree-form. 4 to 5 ft., \$2.75 each.

**DWARF NINEBARK** (*Spirea Monogynus*)—See Shrubs Page 7.

**RED LEAF BARBERRY**—See Shrubs Page 2.

**NEWPORT RED LEAF PLUM**—See Trees Page 13.

**COTONEASTERS, ACUTIFOLIA and HORIZONTALIS**—See Page 2.

**SILVER LACE VINE**—See Vines Page 15.

**CARAGANA** (*Siberian Pea Tree*)—See Shrubs Page 2.

**RUSSIAN OLIVE**—See Shrubs Page 5.

**SIMON'S POPLAR**—An attractive new Poplar, with glossy leaves and slender, upright habit. Discovered in China. Specimen trees, bushy and heavy, 10-12 ft., \$4.00 and \$5.00 each.

**EVERGREEN BITTER-SWEET** (*Euonymus Vegetus*)—A climber with evergreen foliage and clusters of red berries. Not a fast grower, but valuable for low foundations. \$1.00 and \$1.25 each.



BEAUTY BUSH

### Visitors Are Welcome

You may drive out and select your plants personally. There is a lot of satisfaction in seeing just what you are getting.

We always have many "cash and carry" bargains. We are glad to have you look around anyway. Ask questions about anything that interests you.



AMoor RIVER PRIVET—One of the Best Because of Its Extreme Hardiness

## Plant a Hedge

**S**TART a hedge this season. It is the finest kind of a fence, and will increase in beauty for years to come. Aside from its practical value, it frames your house and lawn in a charming manner. Ask us about your hedge problem.

Plant Privets 9 to 12 inches apart in a well prepared trench. If the soil is poor, use plenty of fine manure or fertilizer to mix in. Vigoro Fertilizer is good. A still better way is to use good, loamy fresh soil in filling in the trench. Plant Barberry, etc., in same manner, 12 to 15 inches apart.

Please note that both the Amoor River and California Privet plants we sell are two years old. Much of the Privet sold so cheaply is but one year old.

### Amoor River Privet

The best Privet for this locality, particularly in cold and exposed positions. It forms a dense, compact hedge and will not freeze back in our coldest winters. Its habit is upright and general appearance very similar to California Privet, but it is much hardier. We have grown it for 15 years and find it to be the most dependable Privet. 2 to 3 ft., \$20.00 for 100; \$2.20 for 10. 18 to 24 in., \$14.00 for 100; \$1.75 for 10. 12 to 18 in., \$10.00 for 100; \$1.50 for 10. 20 or more at 100 rates.

### California Privet

The most popular of the hedge plants. Glossy, dark green foliage; rapid grower.

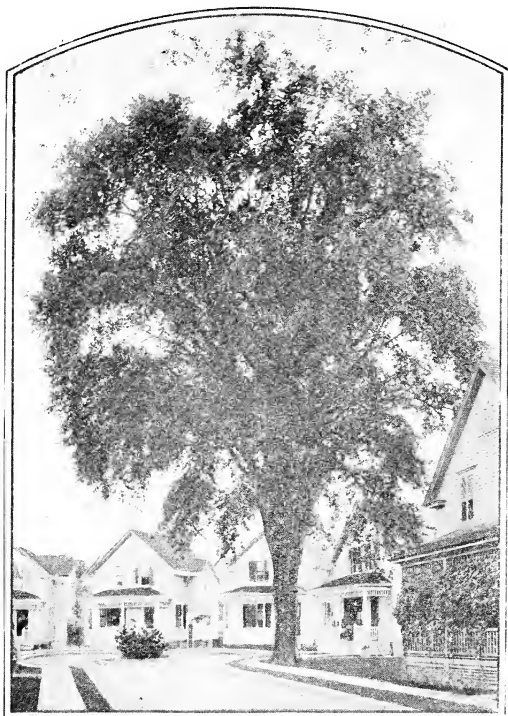
It transplants easily and grows so quickly that in good soil it will often make a hedge the first year. Plant about 10 to 12 inches apart and cut back to 4 to 6 inches above the ground. 2 to 3 ft., \$12.00 for 100; \$1.50 for 10. 18 to 24 in., \$9.00 for 100; \$1.20 for 10. 12 to 18 in., \$6.00 for 100; 90c for 10.

### Japanese Barberry

Where a dwarf hedge is wanted, nothing equals this beautiful Barberry. The leaves are small, light green, and towards fall assume rich, brilliant colors. Absolutely hardy in all parts of the country. Heavy, 3-yr., 18 to 24 in., \$30.00 per 100. 15 to 18 in., \$20.00 per 100. 12 to 15 in., \$15.00 per 100. 10 to 12 in., \$12.00 per 10.

Our stock will help you succeed because it is adapted to the soil and climate of this locality. And because we are interested in our business and your success sufficiently to deliver it to you fresh and in perfect condition.

# Trees for Shade and Beauty



AMERICAN ELM

## Maples

**NORWAY MAPLE** — A handsome tree, forming a dense, rounded head of strong branches and broad, deep green leaves. A hardwood tree, and a rather slow grower. 8 to 10 ft., \$4.00. 10 to 12 ft., \$5.50. 1 3/4 in. caliper, \$7.50. 2 in., \$9.00. We have some very fine Norway Maple in larger sizes, twice transplanted, 3 to 10 in. caliper, \$20.00 each and up.

**SILVER MAPLE** — Of rapid growth, large size and irregular rounded form; foliage bright green above and silvery white beneath. Silver Maple is the best of the fast-growing shade trees. We have a fine stock of quality trees, correctly grown. Sturdy bodies, good tops and plenty of roots. They will be fresh dug, carefully handled, and if desired, properly pruned. Silver Maple is one of our specialties. Note these special prices:

8 to 10 ft., \$1.65; \$6.50 for 5. 10 to 12 ft., \$2.50; \$10.00 for 5. 1 1/2 in. caliper, \$3.25; \$14.00 for 5. 1 3/4 in. caliper, \$4.25; \$19.00 for 5. 2 in. caliper, \$5.50. 2 1/2 in. caliper, \$7.00. Larger trees, \$8.00 to \$30.00.

**BOX ELDER** (Ash Leaf Maple) — A very rapid grower, and succeeds where other kinds fail. Prices, same as Silver Maple.

**RED LEAF MAPLE** (Schwedler's Maple) — A variety of Norway Maple with bright crimson foliage, which gradually turns to a bronze green in summer. Stock is scarce. 6 to 8 ft., \$5.00. 8 to 10 ft., \$7.00. 1 1/2 in., \$10.00.

## Catalpa

**CATALPA SPECIOSA** — Rapid grower, and also a long-lived tree. The Catalpa has the distinction of bearing the most showy flowers of all our ornamental trees. 8 to 10 ft., \$1.75. 10 to 12 ft., \$2.50. 2 in. caliper, \$4.50. 3 in., \$8.00.





## TREES—Continued

**CATALPA BUNGEI** (Umbrella Catalpa)—It makes an umbrella-shaped top without pruning. Its leaves are large and glossy, heart-shaped, deep green and lie like shingles on a roof. 2-yr. heads, \$2.50 and \$3.00. 3-yr. heads, \$3.50 and \$4.50 each.

**Elm—Ulmus**

**AMERICAN WHITE ELM**—One of the most largely used trees for street planting, and as a shade tree for lawns and parks. It is the most characteristic tree of this region and one of the most beautiful. 8 to 10 ft., \$2.00; \$9.00 for 5. 10 to 12 ft., \$3.00; \$13.50 for 5. 1½ in., \$4.25; \$19.00 for 5. 1¾ in., \$6.00; \$25.00 for 5. 2 in., \$7.50. 2½ in., \$10.00. Our Elms are correctly trained and well grown. We dig them fresh for your order.

**Poplar—Populus**

**LOMBARDY POPLAR**—Tall, slender form and erect, rapid growth. Much used for special landscape effects. Valuable for screens and as an accent in shrubby borders. 8 to 10 ft., \$1.50. 10 to 12 ft., \$2.75. 1¾ in., \$4.00.

**BOLLEANA SILVER POPLAR** — A distinct and beautiful tree. Tall, spire-like form. Glossy deep green leaves, silvery beneath. Much favored by landscape architects. 8 to 10 ft., \$3.00. 10 to 12 ft., \$4.00. 1¾ in., \$5.50.

**Walnut  
Native Black**

A beautiful tree, with very attractive foliage which has been too much overlooked. 6 to 8 ft., \$2.00. 8 to 10 ft., \$3.00. 2 in., \$6.00.

**Ornamental Trees**

A small group of trees used mainly for ornament and flowers, rather than shade.

**Mountain Ash  
Sorbus**

**EUROPEAN**—Medium size tree, producing white flowers in the spring, followed by large clusters of scarlet fruit. 6 to 8 ft., \$2.50. 8 to 10 ft., \$3.00.

**Birch  
Cut Leaf Weeping**

Attractive white bark, lacy foliage. 6 to 8 ft., \$4.50 and \$5.50 each.

**Maidenhair Tree—Ginkgo**

A rare tree with interesting fan-shaped leaves. A most distinctive subject for specimen use. 6 to 8 ft., \$5.00. 8 to 10 ft., \$6.00.

**Flowering Crabs—Malus**

**BECHTEL'S DOUBLE FLOWERING**—(See Shrubs). 2 to 3 ft., \$1.25. 3 to 4 ft., \$1.75. 4 to 5 ft., \$2.50.

**FLORIBUNDA**—A small tree with rosy-red flowers followed by attractive red fruits. 4 to 5 ft., \$2.00. 5 to 6 ft., \$3.00.

**SCHEIDECKERI**—Large, semi-double pink flowers. 4 to 5 ft., \$2.25.

**Ornamental Plums—Prunus**

**PRUNUS TRILOBA** (Double Flowered Plum)—(See Shrubs). 3 to 4 ft., \$1.50. 4 to 5 ft., \$2.00.

**PURPLE LEAF** (Prunus Pissardi)—Attractive reddish purple leaves throughout the season. Single white flowers. 5 to 6 ft., \$2.25. 6 to 7 ft., \$3.00 up.

**NEWPORT RED LEAF PLUM**—A new variety, with rich red leaves, tinged purple. Makes a striking specimen. 4 to 5 ft., \$2.00. 4 to 6 ft., \$2.50.



NORWAY MAPLE

TREES—Continued



WISCONSIN WEEPING WILLOW

**Weeping Mulberry**

**TEA'S MULBERRY**—Forms a round, dense head, with long, slender branches drooping to the ground. Attractive, lobed leaves. By far the best weeping tree. 2-yr. heads, \$4.00 to \$6.00. Extra large heads, 4-yrs. old, \$7.00 to \$10.00 each.

**Willow—Salix**

**WISCONSIN WEEPING WILLOW**—Long, pendulous branches. Good for waterside. 6 to 8 ft., \$2.00. 8 to 10 ft., \$3.00.

**LAUREL LEAF**—Used with shrubs for screening and variety. Very dark green, shining leaves. 6 to 8 ft., \$1.75. 8 to 10 ft., \$2.50.

**PUSSY WILLOW**—Very interesting, soft, downy buds in early spring. 4 to 5 ft., \$1.00. Heavy, 4-yr., 5 to 6 ft., \$1.50 and up.

## Quality and Service

We do not sell second grade trees. Our trees are carefully grown, and delivered fresh and alive. Upon request we prune (trim) them correctly, ready to plant. They are delivered when it is convenient for the customer, and at the best time to plant in this locality.

# Hardy Climbing Vines

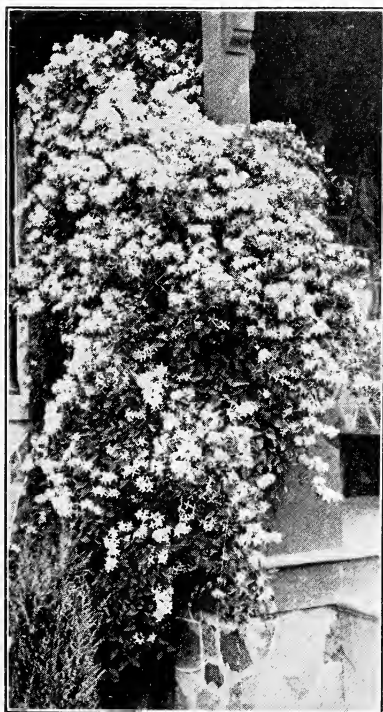
## Ivy—Ampelopsis

**BOSTON IVY** — The beautiful, self-climbing vine that is used to cover walls of stone or brick. Leaves form a dense sheet of green, as they overlap each other. 2-yr., 75c. 3-yr., \$1.00.

**COMMON WOODBINE** or **VIRGINIA CREEPER** — A vigorous high climbing vine of rapid growth; foliage rich crimson in autumn. 2-yr., 60c. 3-yr., 75c.

## Clematis

**CLEMATIS PANICULATA** — A strong, luxuriant grower, with light green foliage that is handsome in itself. At the close of August innumerable star-like flowers cover the vine in a sheet of fragrant white. 2-yr., 75c. 3-yr., \$1.00. 4-yr., \$1.50.



CLEMATIS PANICULATA

**PURPLE CLEMATIS** (C. Jackmani) — Large, single flowers of deep velvety purple. A well known and popular variety. 2-yr., \$1.25.

## Wisteria

**AMERICAN PURPLE WISTERIA** (W. magnifica) — This is the best variety for this locality. It is hardy, a very fast grower, and the best vine we know of for screening porches, windows, etc. Purplish-blue flowers in dense, drooping clusters. An ideal climber for pergolas and summerhouses. Our plants are extra fine. 2-yr., 75c. 3-yr., \$1.00. Extra heavy, 4-yr., \$1.50.

## Hall's Japan Honeysuckle

Of strong growth, has dark, rich foliage, which it holds all winter, and is covered from May to November with fragrant, white flowers. 2-yr., 65c. 3-yr., 85c.

## Aristolochia—Dutchman's Pipe

**SIPHO** — A robust, vigorous plant, bearing very large leaves. 3-yr., heavy, \$1.50. 4-yr., \$2.00.

**SILVER LACE VINE** (Polygonum Auberti) — A new and interesting vine. Quick grower, with small, shiny leaves. Large sprays of foamy white flowers in late summer. 2-yr., \$1.00.

## Bignonia—Trumpet Vine

Abundant flowers in July and August; a rampant grower. Orange flowers. 2-yr., 75c.

## Lycium—Matrimony Vine

**LYCIUM CHINENSE** — Slender, drooping branches; bears pink and purple flowers from June until September. 2-yr., 60c. 3-yr., 75c.

## Bittersweet—Celastrus

A very vigorous grower. Its scarlet fruit, adherent nearly all winter, is an object of much beauty. 2-yr., 75c. 3-yr., \$1.00.

## Perennial Pea—Lathyrus

Perennial Pea. Clusters of large, rosy red flowers, similar to the Sweet Pea. 2-yr., 40c.

Climbing Vines add grace and charm to a home. A porch without a vine is incomplete. They are valued for shade, color and fragrance of flowers.

# EVERGREEN for Beauty



PYRAMIDAL ARBOR VITAE

## Arbor Vitae—*Thuja*

**AMERICAN ARBOR VITAE**—Erect, pyramidal habit, with soft, bright green foliage, dense from ground up; grows rapidly and soon forms a most beautiful tree. Can be trimmed at will, or even closely sheared. 18 to 24 in., \$2.50. 2 to 3 ft., \$3.50. 3 to 4 ft., \$6.00 and \$7.00.

**PYRAMIDAL ARBOR VITAE** — A densely branched Arbor Vitae, of perfectly columnar form. One of the most remarkable Evergreens in respect to its symmetry. It is perfectly hardy and will succeed anywhere that the Arbor Vitae grows. 18 to 24 in., \$3.50. 2 to 3 ft., \$5.00. 3 to 4 ft., \$7.50 to \$8.50.

**GLOBE ARBOR VITAE**—Of dense, dwarf habit, globular in outline. Very fine foliage of a handsome light green. 12 to 15 in., \$3.00. 15 to 18 in., \$4.00 and \$5.00.

For winter cheer plant evergreens. They are unexcelled, and are considered to be the most beautiful of all foliage plants. There is real joy in the possession of good evergreens.

**E**VERGREENS are the aristocrats of the garden. They have the opportunity to produce rich and beautiful plants. They form perfect backgrounds and beautiful beds of permanent color and growth.

A well-balanced planting list for the rich and varied textures of their foliage is the picture.

Our Evergreens are fine, bushy trees that grow in soil about the roots. It should be borne in mind that soil is scarce, and orders should be placed accordingly priced according to their individual value.

**HOVEY'S GOLDEN ARBOR VITAE**—A dwarf Arbor Vitae of oval outline. Very pretty, plaited leaves of light green. 12 to 18 in., \$3.00. 18 to 24 in., \$4.00 and \$5.00.

**SIBERIAN ARBOR VITAE**—Rather dwarf habit; foliage stiff, heavy and of a deep blue-green. 12 to 18 in., \$3.50. 18 to 24 in., \$5.00.

## Spruce—*Picea*

**NORWAY SPRUCE**—Rapid, vigorous grower; dark green foliage. Useful as specimens where height and quick growth are desired. Picturesque pyramidal habit. Typical Christmas tree form. 18 to 24 in., \$2.00. 2 to 3 ft., \$3.50. 3 to 4 ft., \$4.50 and \$5.00.



GLOBE ARBOR VITAE

# GREENS

## and Variety

...ome home. They present a broad oppor-  
 ...ffects that can not be surpassed by other  
 ...nds for flowering shrubs of early spring,  
 ...formed by grouping sorts of moderate

...ew home should include Evergreens. The  
 ...indispensable variety and distinction to

...arefully handled, and dug with a ball of  
 ...mind that good Evergreens are rather  
 ...y. (Plants personally selected will be  
 ...)

**WHITE SPRUCE**—A shapely me-  
 ...ium-tall Spruce of pleasing outline.  
 ...Light green in color, tinged blue. 12  
 ...to 18 in., \$2.00. 18 to 24 in., \$3.00.  
 ...2 to 3 ft., \$4.00.

**COLORADO BLUE SPRUCE**—Sil-  
 ...very blue shades. Attractive symmetrical  
 ...form. Rather long needles, thickly set on  
 ...the branches. Its pronounced blue color  
 ...makes it a valuable specimen tree. \$10.00  
 ...to \$25.00 each.

### Juniper—Juniperus

**VIRGINIAN JUNIPER**—It forms a  
 ...dense column, growing to a considerable  
 ...height. Often specified in landscape plans  
 ...for planting at either side of steps and  
 ...entrances. Deep green in summer, turn-  
 ...ing to bronze and purple hues in win-  
 ...ter. Called Red Cedar. 18 to 24 in.,  
 ...\$2.50. 2 to 3 ft., \$3.50. 3 to 4 ft.,  
 ...\$5.00 and \$6.00 each.

**IRISH JUNIPER**—Much used in  
 ...cemeteries. Erect, slender form, needing  
 ...no shearing. Attractive sage-green foli-  
 ...age. 18 to 24 in., \$3.00. 2 to 3 ft.,  
 ...\$4.00. 3 to 4 ft., \$5.00 and \$6.00.

**JUNIPER, GREEK**—This is an un-  
 ...usually attractive dwarf pyramidal form  
 ...with very compact bluish green foliage.  
 ...15 to 18 in., \$5.00. 18 to 24 in.,  
 ...\$6.00.

### "CANINES AND CONIFERS"

—a bad combination. Screen  
 the Arbor Vitae with low growing  
 shrubs, or tie up the PUP for  
 good results.



MUGHO PINE

**JUNIPER, PFITZER'S**—This is the  
 ...most popular of all the spreading types.  
 ...Its habit of growth, its pendulous  
 ...branches and attractive foliage are strik-  
 ...ingly beautiful. 15 to 18 in., \$5.00. 18  
 ...to 24 in., \$6.00.

**JUNIPER, SAVIN'S (J. sabina)** —  
 ...One of the best. Spreading, fan-shape  
 ...habit, of pleasing color, dark green. 15  
 ...to 18 in., \$4.00. 18 to 24 in., \$5.00.  
 ...2 to 3 ft., \$6.00.



SAVIN'S JUNIPER

## EVERGREENS—Continued

**BLUE JUNIPER** (*Virginiana Glauca*)—Beautiful silvery blue color. Pyramidal form, with gracefully spreading branches. A landscape subject of the first rank. 2 to 3 ft., \$6.00. 18 in., \$5.00.

**CREeping JUNIPER** (*Sabina Prostrata*)—Very low growing. Good foliage and texture. Used in rock gardens. 12 to 18 in. spread, \$3.50. 18 to 24 in., \$4.00 and \$4.50.

### Pine—Pinus

**AUSTRIAN**—Darkest and richest green of the Pines. Quite densely and evenly branched, well furnished with attractive tufts of foliage. 2 to 3 ft., \$4.00. 3 to 4 ft., \$7.00 and \$8.00.

**MUGHO DWARF PINE**—The most dwarf of all the Pine family and a very

beautiful low-growing evergreen. The genuine variety is not at all common, being as broad as high and of very dense, close growth. Rich, dark green, very thickly set needles. Ideal for edging Arbor Vitae and other tall evergreens. Often used in foundation and entrance groups. 12 to 15 in., \$4.00. 15 to 18 in., \$6.00 to \$7.00 each.

**WHITE PINE**—Well known native Pine. Needles silvery light green. 3 to 4 ft., \$5.00 to \$6.00.

**SCOTCH PINE**—An attractive, fast growing Pine, with long, bluish green needles. Grows in almost any soil. 18 to 24 in., \$2.50. 2 to 3 ft., \$3.50. 3 to 4 ft., \$5.00 and \$6.00.

**DOUGLAS FIR**—Dark bluish green foliage. Resembles the Spruce. 2 to 3 ft., \$4.50. 3 to 4 ft., \$6.00 and \$7.00.

## FALL BULBS

Tulips, Hyacinths, Daffodils, Crocus, Lilies

Modern varieties which we have tested on our own grounds. We import a complete line of the finest Holland bulbs obtainable.



EVERGREENS ARE UNEXCELLED FOR FOUNDATION PLANTINGS

# Hardy Garden Roses

Here are the Finest and Hardest Roses for This Locality

**O**UR Roses are 2-year, field grown plants. Here are the best varieties for this section. Why risk failure and disappointment by buying Roses not suited to the climate and soil of this locality? All Roses appreciate good soil, preferably inclined to clay. They require sunshine, good cultivation, and winter protection in the form of a heavy mulch of straw or manure. If the weather is hot and dry when they are planted, protect the tops from the sun by mounding the soil up around them until they start growth.

**NOTE:**—We correctly prune (cut back) all Roses before shipment.

## Everblooming Hybrid Tea Roses

Sometimes called "monthly bloomers." These are all extra good bloomers, but are not so hardy as the Hybrid Perpetuals. They need good winter protection in the form of a mulch of straw or coarse manure. A still better method is to heap the soil up about the plants before applying the mulch. Do this between November 15 and December 1. Strong, 2-yr., field-grown plants, \$1.00 each.

**GRUSS AN TEPLITZ**—Greatest red Rose in existence. Continuous bloomer and hardiest of all Hybrid Teas.

**RADIANCE**—Voted by the American Rose Society as the most popular pink Rose in America. Brilliant rose-pink.

**RED RADIANCE**—Bright pure red; splendid bloomer and strong grower.

**MRS. AARON WARD**—An exquisite shade of rich coppery yellow.

**KAISERIN AUGUSTA VICTORIA**—A fine, very full, fragrant white.

**COLUMBIA**—A much admired rose-pink; warm and glowing.

**LOS ANGELES**—Luminous flame-pink, tinged with coral and gold. Famed for its marvelous coloring.

**SOUV. DE CLAUDIUS PERNET**—A deep, clear, glorious yellow—a rare color. Remarkably beautiful in both color and form.

**DUCHESS OF WELLINGTON**—Yellow, tinged salmon.

**MME. BUTTERFLY**—Color bright pink, apricot and gold. Clear and brilliant in color.

**MAD. EDOUARD HERRIOT**—A glorious commingling of terracotta, bronze, geranium red and dull copper.

**OPHELIA**—White, beautifully tinted with salmon, rose and yellow. Perfect flowers, lavishly produced.

**MAD. CAROLINE TESTOUT**—Light satiny pink.

**GEN. McARTHUR**—Rich crimson-scarlet; fragrant.

**ETOILE DE FRANCE**—A sparkling clear red, with shapely buds and rich fragrance.



RED RADIANCE

## ROSES—Continued

**LADY ALICE STANLEY**—Large, flesh-pink, shaded coral. Strong grower, with fine foliage. Dependable and fine.

**WILLOWMERE**—Robust habit. Large, beautiful buds. Shrimp pink, shaded yellow. Not well known, but one of the finest.

**ETOILE DE HOLLANDE**—A new, just about perfect, deep red Rose with firm, velvety petals. Large, brilliant buds; fragrant. Rose specialists consider it the best red in existence. \$1.60 each.

**BRIARCLIFF**—Bright rose-pink. Fine, high-pointed buds. Vigorous grower. A new variety of real merit. \$1.25 each.

**WILHELM KORDES**—Deep golden salmon, veined and overspread with burnished copper and red. A new Rose of strong growth and marvelous coloring. Fragrant and free flowering. \$1.50 each.

**TALISMAN**—New. Probably the most vividly colored Rose ever intro-

duced. It received four gold medals in 1928. Unique in its rich shadings of scarlet and gold, on a bright yellow ground. Outstanding among all Roses, and a sensation at recent Flower Shows. \$2.50 each.

**NOTE**—The first twelve Roses listed above were selected by the American Rose Society as the dozen finest Hybrid Tea Roses in existence.

**Special Offer**—Six Hybrid Teas, all different, including 2 reds, 2 pinks, 1 yellow and 1 white, carefully labeled and correctly pruned, for \$5.50.

### Hardy Hybrid Perpetual Roses

The old-fashioned hardy garden Roses. The largest, most fragrant and the most brilliant in color of all bush Roses. Not



**RADIANCE**  
A Glorious Pink  
Rose

as continuous bloomers as the Hybrid Teas ("Everbloomers"), but much hardier. Many of the finest Roses are in this class. Strong, 2-yr plants, \$1.00 each; 6 for \$5.00. Special: Six, all different, for \$4.50; our selection of varieties.

**FRAU KARL DRUSCHKI**—Of strong, upright growth. Flowers extra large, of purest possible white.

**GENERAL JACQUEMINOT**—A universal favorite. Bright crimson-scarlet, exceedingly rich and velvety.



**ROSES—Continued**

**MRS. JOHN LAING**—Delicate pink; large, productive and fragrant.

**PAUL NEYRON**—Large; deep rose, a favorite; the largest flower among Hybrid Perpetual Roses.

**PERSIAN YELLOW**—Fine foliage. Early bloomer, with deep yellow, small but very handsome flowers.

**PRINCE CAMILLE DE ROHAN**—The nearest approach to a black Rose, being a deep, velvety crimson.

**SALET MOSS**—An attractive pink moss.

**MAGNA CHARTA**—Bright pink, suffused with carmine; vigorous in growth and very hardy.

**ULRICH BRUNNER**—Brilliant cherry red; fine form, and unusually free bloomer.



F. J. GROOTENDORST

**Miscellaneous Bush Roses**

**BABY RAMBLERS**—Very dwarf bush Roses, with flowers resembling the Ramblers. The most continuous bloomers of all. Fine, healthy foliage. Hardy and of great landscape value. Several varieties in red, pink and white. \$1.00 each; 6 for \$5.00.

**F. J. GROOTENDORST**—Heavy Rugosa foliage. Large clusters of bright red flowers fringed like a carnation. An ever-bloomer, yet entirely hardy. A most attractive subject when used as a shrub in landscape planting. \$1.00 each; 6 for \$5.00.

**ROSA RUGOSA**—Single flowers, large red berries. See Shrubs.

**HUGONIS ROSE** ("Golden Rose of China")—Large, single, bright yellow flowers, very early. Tall grower, used as a shrub. \$1.20 each.

**HANSA**—A double, violet-red Rugosa Rose of great hardiness. \$1.00 each; 6 for \$5.00.

**Rose Garden Collection**

Twelve Roses, all different, for \$10.00.

All heavy, 2-yr. bushes. 6 Hybrid Teas and 6 Hybrid Perpetuals. Carefully pruned, labeled and delivered ready to plant.

Roses for cut flowers never cease to give pleasure; make sure of an abundance of roses in your garden



# The Choicest Climbing Roses

Heavy, 2-year, field-grown plants. Here are the finest tested varieties.

**CLIMBING AMERICAN BEAUTY**—Large, individual flowers of rich red; beautiful, shapely buds. Strong grower, with fine, healthy foliage. 90c. 3-yr., \$1.25.

**EXCELSA**—Fine crimson color. Similar to the old Crimson Rambler, but is a much healthier grower and a better variety. Excelsa and Dorothy Perkins are the best climbers for rapid growth and general hardiness. Profuse bloomers, in large clusters. 2-yr., 75c. 3-yr., heavy, \$1.00. 2-yr., medium grade, 50c.

**DOROTHY PERKINS**—Shell-pink, double blooms in immense clusters. 75c. 3-yr., \$1.00.

**WHITE DOROTHY PERKINS**—White-flowering form of Dorothy Perkins. 75c.

**DR. W. VAN FLEET**—Dainty apple blossom pink. Charming, large, pointed buds of fine form, and resembling fine Tea Roses. A vigorous grower with

leaves of deep rich green. Voted the best Climbing Rose in America by the members of the American Rose Society. 90c. 3-yr., \$1.25.

**PAUL'S SCARLET CLIMBER**—The most vivid scarlet-red Rose in existence. The flowers of large size and fine form. Blooms early, making a most brilliant display for a long time. Not a tall climber, and is at its best when grown as a tall bush Rose. 2-yr., No. 1, 90c.

**GARDENIA**—Buds bright yellow; open flowers cream. 75c.

**AMERICAN PILLAR**—Very large, single flowers of carmine-rose. 75c.

**CHRISTINE WRIGHT**—Bright, wild-rose-pink; lovely form. \$1.00.

**CRIMSON RAMBLER**—The old original red Rambler. 75c.

**MARY WALLACE**—Introduced by the American Rose Society. Lovely, long buds of warm rose-pink, slightly tinted salmon. \$1.00.

**DR. HUEY**—A most striking new climber which always attracts attention by its unusual color, a deep crimson maroon. \$1.00.

**HEART OF GOLD**—New. Distinctive single flowers of dark purplish-crimson with white centers. A variety that is "different" and interesting. \$1.00.

**BREEZE HILL**—A new climber of striking color tones. Large, double blooms of pink suffused with salmon yellow. Fragrant and of value for cutting. Thick, glossy foliage. Introduced and recommended by the American Rose Society. \$1.50.



CLIMBING AMERICAN BEAUTY

Climbing Roses, with their attractive foliage, afford a burst of bloom upon trellises, over fences and against porches and entrances. They grow freely and will endure neglect, and are an object of beauty even when not in bloom. No home is properly planted without a liberal supply, and they take an important part in every landscape planning.

# Choice Named Peonies

OF all the flowers in the hardy garden, the Peony is easily recognized as the Queen. Once Peonies are planted, they last for a lifetime. After blooming, their charm lies in the beauty of their foliage, for even when not in bloom the Peony plant is decorative. Peonies need good rich soil, and full exposure to the sun. Plant rather shallow—only about 2 inches below the surface.

**FESTIVA MAXIMA** — The finest white Peony; large, free bloomer; center tinged red. 75c.

**MME. DE VERNEVILLE** — Pure white, center blushed, very large and full, fragrant. 75c.

**COURONNE d'OR**—A superb yellowish white; late. 75c.

**FELIX CROUSSE** — Clear, brilliant red; the finest in this color. Mid-season. \$1.00.

**OFFICINALIS RUBRA** — The old-fashioned very early red. \$1.00.

**DELACHEI** — Deep rich red; late. 75c.

**KARL ROSENFELD** — Rich, clear, dark glowing crimson; fine form. Full double, large and solidly built. \$1.25.

**MEISSONIER** — Crimson-purple; splendid cut flower. Mid-season. 75c.

**EDULIS SUPERBA** — Bright clear deep pink. Very early and fragrant as a Rose. Free bloomer. 75c.

**GRANDIFLORA** — Rose pink; large, full blossoms. \$1.00.

**FLORAL TREASURE** — Rose type; mid-season; pink. 75c.

**PHILOMELE** — Bright violet-rose, anemone center. Mid-season. 90c.

**ALBERT CROUSSE** — Delicate shell pink; large and full. Fragrant, profuse bloomer. \$1.00.

**CLAIRE DUBOIS**—Rich, clear, satiny pink, overlaid with a sheen of silver. Rose type. \$1.25.

**M. JULES ELIE** — Immense blooms, resembling a Chrysanthemum; clear pink with a silvery tinge. \$1.25.

**REINE HORTENSE**—A universal favorite, very charming, pink with crimson splashes. \$1.50.

**MME. DUCEL**—Large, double, compact flower, with center petals incurved. Color silvery lilac-pink. 75c.

**MME. EMILE GALLE**—Late blooming; one of the daintiest and most delicate, yet full of substance. Shell shaped petals of blush, waxy white at base; center a warm shell pink. \$1.00.

**SARAH BERNHARDT** — Semi-rose type, late mid-season. Silver-tipped, apple-blossom-pink. Simply superb. \$2.00.

**SPECIAL**—6 all different, for \$3.50. (Our selection of varieties).

We are growing over thirty varieties of Peonies, including many of the newer sorts. Visit our grounds while they are in bloom.



EDULIS SUPERBA

# Iris—The Modern Flower

For garden and landscape value, beauty and variety in color and markings, and for ease of culture, no flower equals the Iris. We are growing about forty varieties—many rare ones.

Price, 25c each; three of one variety for 60c; 10 for \$2.00 (assorted or all alike).  
Special: 10, all different (unlabeled) for \$1.80.

- FAIRY**—White, suffused soft blue.  
**FLORENTINA ALBA**—White.  
**LOHENGRIN**—Silvery mauve, tinted rose.  
**RHEIN NIXE**—White, edged violet, extra fine.  
**HER MAJESTY**—Lovely rose-pink and mauve.  
**LORELEY**—Ultramarine-blue, bordered yellow.  
**SHERWIN-WRIGHT**—Clear deep yellow. 30c.  
**KOCHI**—A very striking dark purple.  
**MME. CHEREAU**—White, edged with blue.  
**NIBELUNGEN**—Violet-purple and soft yellow.  
**PALLIDA DALMATICA**—Lavender; extra fine.  
**JUNIATA**—Clear blue, deeper than Dalmatica. 30c.  
**QUAKER LADY**—Smoky lavender shaded yellow.  
**SHEKINAH**—New. Beautiful soft yellow. 50c; 3 for \$1.25.

**LENT A. WILLIAMSON**—A regal Iris. Velvety pansy-purple and lavender. 60c.

**MOTHER OF PEARL**—Bluish-lavender, with a creamy undertone. 50c.

**QUEEN CATERINA**—Large, iridescent lavender-violet; tall, queenly blooms. New. 75c; 3 for \$2.00.

**COL. CANDELLOT**—Rich bronze and red. 50c; 3 for \$1.00.

**AFTERGLOW**—New. Soft yellow, tinged silvery-gray. 50c; 3 for \$1.20.

**AMBASSADOR**—Large blooms of dark velvety maroon and bronze. None finer in this color. \$1.00; 3 for \$2.00.

**SEMINOLE**—Rich dark crimson, tinged purple; magnificent color tones. 50c; 3 for \$1.20.

**LORD OF JUNE**—A tall, impressive Iris with very large flowers of violet-blue and lavender. 75c; 3 for \$1.80.

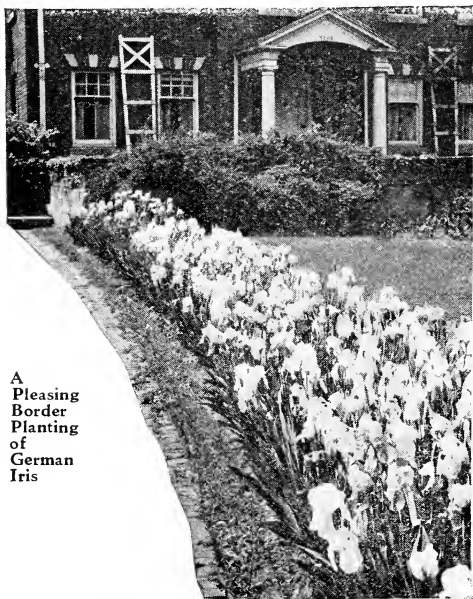
**GEORGIA**—Soft shade of orchid-rose. A large, distinctive, near pink Iris. 75c; 3 for \$1.80.

## Various Irises

**SIBERIAN**—Deep blue flowers; tall, grass-like foliage. 30c; 3 for 75c.

**PSEUDOACORUS** (Water Flag)—Bright yellow. Best for ponds and damp places. 35c; 3 for 75c.

**PUMILA**—Dwarf Iris. Blue or yellow. Used in rock gardens. 30c; 3 for 75c.



A Pleasing Border Planting of German Iris

# Hardy Flowering Plants

## Perennials

**T**HESE old-fashioned hardy flowers continue to increase in popularity from year to year. They are not only most effective in furnishing color and variety to the shrubbery plantings, but yield a prodigal supply of cut flowers from spring until late fall. We have found the following to be the finest and most satisfactory perennials.

Price of all Hardy Flowering Plants, unless otherwise noted, 30c each; 6 for \$1.50; 12 for \$3.00.

**ACHILLEA** (Boule de Neige)—Pure white flowers borne in the grandest of profusion.

**A. rosea**—Becomes a mass of rose-colored flowers. Fine, feathery foliage.

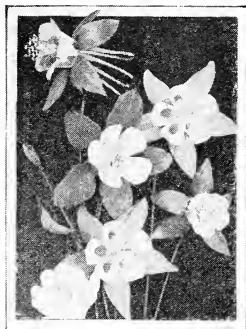
**AGROSTEMMA coronaria**—Bright crimson, with velvety silvery foliage.

**BLEEDING HEART**—A favorite in our grandmothers' gardens. 60c and 75c.

**BUTTERFLY BUSH** (Buddleia)—Tall perennial, with long spikes of purple flowers in August. 50c.

**BABY'S BREATH** (Gypsophila)—Fine, delicate foliage covered with tiny white flowers. Very lasting.

**COLUMBINE** (Aquilegia)—Early flowers in many delicate colors and shades. Fine foliage.



COLUMBINE



COREOPSIS

**COREOPSIS**—Bright yellow, daisy-like flowers in great profusion. Blooms all summer.

**CHRYSANTHEMUM**—Red, yellow, pink, bronze, white pompons—the best bloomers. Finest named sorts.

**CONEFLOWER**—A strong, rigid-growing variety, 2 to 3 feet high, with reddish purple flowers.

**DELPHINIUM**—The garden's finest blue. Tall, showy spikes of pure turquoise-blue to deepest indigo-blue. Fine for cutting. We have light blue, dark blue and Gold Medal hybrids (mixed).

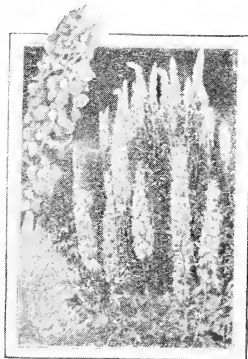
**ERYNGIUM** (Sea Holly)—Finely cut spiny foliage and thistle-like heads of flowers of a beautiful steel blue.

**GAILLARDIA**—No perennial blooms more. Striking color combinations of yellow, orange and red.

**HELENIUM** (Sneezewort)—Distinctive yellow and terra cotta flowers in late summer.

**HIBISCUS** (Mallow)—Giant flowers in red, white and mixed colors. 30c and 40c.

**HEMEROCALLIS** (Yellow Day Lily)—Yellow, lily-like flowers during July and August. Leaves narrow and dark green.



DELPHINIUM

PERENNIALS—Continued



GAILLARDIA

**HOLLYHOCKS** — The old-fashioned flower in red, pink, white and yellow.

**PHYSOSTEGIA** (False Dragon Head)—Especially fine for cut flowers. Dense spikes of delicate pink.

**PLATYCODON** (Balloon Flower) — Blue bell-shaped flowers.

**ORIENTAL POPPY**—Immense flaming flowers of orange scarlet. Most striking flower of spring.

**LIATRIS pycnostachya** (Blazing Star) —Tall spikes of purple flowers in July.

**LYTHRUM ROSEUM** — Spikes of delicate flowers of a bright rose shade. Good for cutting.

**LILY OF THE VALLEY**—Clumps, 40c and 50c.

**HARDY PINK**—A fine edging plant. Fragrant blossoms. 25c; 3 for 60c.

**PYRETHRUM** (Persian Daisy)—Very early, daisy-like flowers in pink, white red, etc. Mixed colors.



PHLOX

**SHASTA DAISY** — The finest "Daisy." Large white flowers with golden center. Fine for cutting.

**SWEET WILLIAM** — Low perennial of many colors. 25c; 3 for 60c.

**VIOLET, JERSEY GEM**—New. Dark velvety violet flowers. Continuous bloomer. 35c; 3 for 90c.

**VERONICA LONGIFOLIA** — Long, slender spikes of deep blue in late summer.

**VERONICA SPICATA**—Dwarf. Small spikes of light blue.

**YUCCA filamentosa**—4 to 5 ft. July. Tall spike of large, drooping cream-white flowers. Long, narrow sword-like foliage. 2 feet high. 40c, 50c and 75c.

**YUCCA, VARIEGATED** — Most strikingly marked with stripes of yellow. 75c to \$1.50.



BUTTERFLY BUSH

Hardy Phlox

Price, except as noted, 30c each; \$3.00 per dozen. Special: 6 Phlox, all different, for \$1.25 (our selection).

**BRIDESMAID**—A fine tall white, red center.

**VON LASSBURG**—Pure white; very large trusses.

**RIJNSTROOM**—Beautiful clear pink; large florets.

**ECLAIREUR**—Purple carmine; lighter center.

**R. P. STRUTHERS**—Cherry red, suffused salmon.

**VON HOCHBERG** — Crimson; large trusses. 35c.

**THOR**—A beautiful lively shade of deep salmon-pink.

**B. COMTE** — Rich satiny amaranth. 35c.

**BEACON**—Brilliant cherry-red.

# Plants for the Rock Garden

**R**OCK gardening is here to stay, and there is no denying its power to charm and interest us. The real rock garden should be a little world in itself. It therefore requires a setting and a background, for seclusion and protection from too much sun and wind. A very tiny corner will suffice, but none of the common garden flowers should be admitted.

**SEDUMS** — Most important group of rockery plants. All have attractive, fleshy leaves and endure dry soil. Easy culture.

**SEDUM ACRE (Gold Moss)** — Tiny yellow flowers and leaves. Creeping habit. 3 in. high. 30c; 3 for 75c.

**SEDUM ALBUM** — White. Fleshy glaucous leaves. 30c; 3 for 75c.

**SEDUM SPURIUM** — Showy pink flowers. Attractive, bronzy foliage. Trailing habit. 35c; 3 for 90c.

**SEDUM KAMCHATICUM** — Yellow, star-shape flowers. Glossy leaves. 40c; 3 for \$1.00.

**CLUMPS** of above Sedums, 40c, 50c and 60c.

**MAIDEN PINK (Dianthus Deltoides)** — Bright, feathery foliage. Neat, low habit. Delicate pink. 30c and 40c.

**CERASTIUM TOMENTOSUM** — Forms a low carpet of silvery foliage and white flowers. 35c; 3 for 90c.

**VERONICA, ROYAL BLUE** — A sheet of gentian blue flowers in early summer. 1 foot high. 40c; 3 for \$1.00.

**VERONICA SPICATA** — Light blue, small spikes. 30c.

**PHLOX SUBULATA (Moss Pink)** — Low; fine foliage; sheets of pink flowers in May. 30c.

**CAMPANULA CARPATICA** — Blue, bell-like blossoms; 6 to 10 in. high. 35c; 3 for 85c.

**NEPETA MUSSINI** — Lavender; low, trailing habit; gray foliage. 30c; 3 for 75c.

**LINUM PERENNE (Flax)** — Dainty, sky-blue flowers. Feathery, bluish foliage. 15 in. 30c; 3 for 75c.

**STATICE LATIFOLIA** — Broad leaves; heads of purple-blue, mist-like flowers. 35c; 3 for \$1.00.

**ALPINE COLUMBINE (Dwarf Aquilegia)** — Blue. 30c.

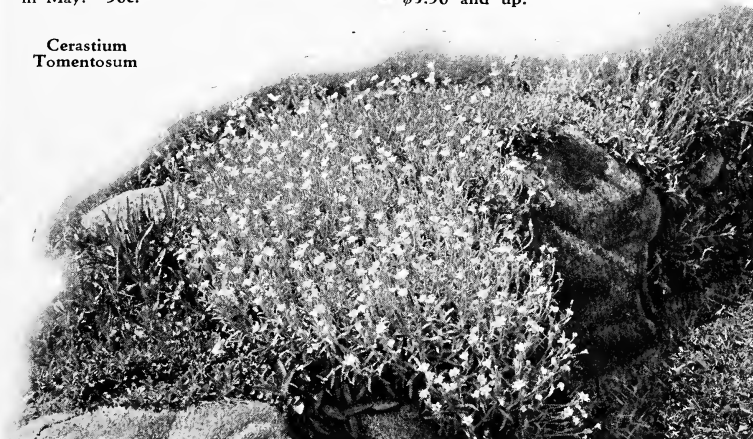
**ARENARIA MONTANA** — Pretty creeping plant; fine white blossoms. 30c; 3 for 75c.

**MYRTLE (Vinca Minor)** — The best "ground cover." Blue flowers. Thick leaves. Clumps, 30c; 3 for 75c. Plants, 20c; 10 for \$1.50; 100 for \$12.00.

**COTONEASTER HORIZONTALIS** — (See Shrubs.) A dwarf shrub, with shining leaves and red berries. \$1.50 and \$2.00.

**DWARF JUNIPERS** — Horizontalis and Japonica are two of the best low-growing evergreens for the rock garden. \$3.50 and up.

Cerastium  
Tomentosum



THE CHARM OF THE ROCK GARDEN LIES IN ITS  
NATURAL PLANTING EFFECT

# Choice Named Dahlias



**A. D. LIVONI**—A favorite soft pink, of ball form. 20c.

**DREER'S WHITE**—Glistening white, beautifully quilled. 25c.

**MINA BURGLE**—A rich, dark scarlet. Immense flowers. 25c.

**F. L. BASSETT**—A free-flowering lavender-purple. 20c.

**QUEEN MARY**—Beautiful soft pearly pink. 20c.

**JACK ROSE**—A favorite bright carmine-red. 20c.

**J. H. JACKSON**—Cactus type of velvety maroon. 30c.

**YELLOW DUKE**—Large, very fine, clear yellow. 25c.

**COUNTESS OF LONSDALE**—Salmon-red cactus. 30c.

**MAUDE ADAMS**—A beautiful white, tinted with lavender. 30c.

**KALIF (Cactus)**—Giant blooms of pure glowing scarlet. 50c.

**PRIDE OF CALIFORNIA**—Gigantic flowers of dark crimson. 30c.

**MRS. CARL SALBACH**—Lovely solferino-pink, tinged white. 50c.

**PATRICK O'MARA**—A beautiful shade of orange buff, tinged rose. 50c.

**DR. TEVIS**—Magnificent blooms of soft salmon-rose and gold. 50c.

**MRS. C. D. ANDERSON**—A very large show Dahlia of rich purplish crimson. 50c.

**JERSEY'S BEAUTY**—The most distinctive new Dahlia and the finest pink Dahlia in existence, a real rose pink of excellent conformation and borne on a wonderful stem. 75c.

**MRS. I. DE VER WARNER**—One of the finest Dahlias ever introduced. A charming, deep mauve pink or orchid color. Extra strong grower, producing its gigantic blossoms freely. 50c.

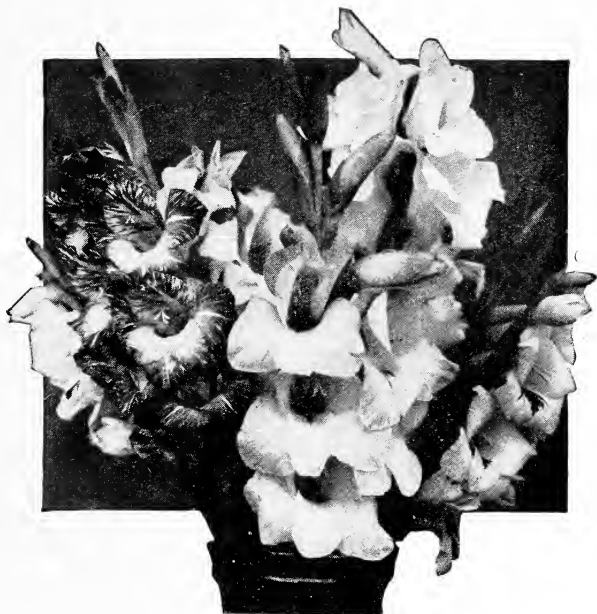
**JUDGE MAREAN**—Large flower of perfect shape. The color range is from salmon-pink, red and orange to yellow and gold. 75c.

**AMUN RA**—Giant flower of coppery orange and gold tints. Distinct form. Very popular. 85c.

**SPECIAL: 10 Named Dahlias (unlabeled), all different, for \$1.75.**

**COLLECTION: 10 extra choice named Dahlias, labeled, all different, for \$4.00.**





A BUNCH OF GLADIOLUS BLOSSOMS

# Gladioli

All largest size bulbs. Six at dozen rates.

**AMERICA**—A fine soft lavender-pink. 5c; 50c per doz.

**MRS. FRANCIS KING**—Light scarlet. 8c; 75c per doz.

**PEACE**—White flower, feathered lilac. 8c; 75c per doz.

**SCHWABEN**—Very large, light yellow, carmine blotch. 8c; 75c per doz.

**MRS. FRANK PENDLETON**—Light salmon-pink, with brilliant red throat. 8c; 75c per doz.

**BARON HULOT**—A rich, royal purplish blue. 12c; \$1.20 per doz.

**HALLEY**—An early, delicate salmon-pink. 8c; 75c per doz.

**CRIMSON GLOW**—Well named; massive spikes of glowing scarlet. 10c; \$1.00 per doz.

**ANNA EBERIUS**—Dark velvety raspberry purple. 10c; \$1.00 per doz.

**MRS. DR. NORTON**—An exquisite blend of white, soft pink and primrose-yellow. 13c; \$1.25 per doz.

**ALICE TIPLADY (Primulinus)**—A beautiful orange-saffron. 8c; 75c per doz.

**GOLDEN MEASURE**—Large flower of deep pure yellow; tall spikes. Called the world's best yellow. 15c; \$1.50 per doz.

**SCARLET PRINCEPS**—Pure glowing scarlet-red. 15c; \$1.25 per doz.

**GOLD STANDARD MIXTURE**—Extra fine mixed. 75c per doz.; 50 for \$2.50.

**SPECIAL RAINBOW MIXTURE**—50c per doz.; 50 for \$1.50.

**FINEST NAMED KINDS MIXED**—\$1.10 per doz.; 50 for \$4.50.

## Ruffled Gladioli

Petals ruffled and fluted in a most interesting manner.

**E. J. SHAYLOR**—A beautiful pure deep rose pink. 8c; 75c per doz.

**JOE COLEMAN**—Beautifully ruffled. Vivid cardinal red, brightened by crimson and maroon. 10c; \$1.00 per doz.

**MRS. H. E. BOTHIN**—Scarlet center flaming off through geranium pink, to a heavily ruffled edge. 12c; \$1.25 per doz.

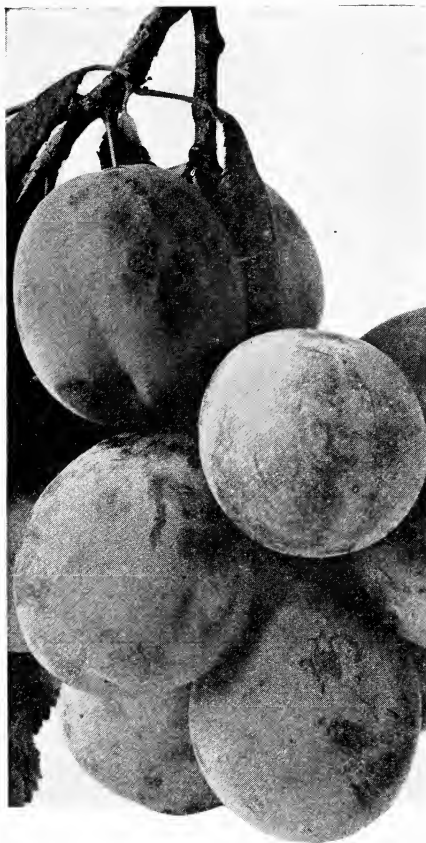
**ORANGE GLORY**—Strong orange color, slightly weakening in the throat. 15c; \$1.50 per doz.

**PURPLE GLORY**—Deeply ruffled, maroon-red, its velvet richness heightened by almost black throat blotches. 20c; \$2.00 per doz.

**SPECIAL:** 3 each of above varieties (15 bulbs), for \$1.50.

# Fresh Fruit Tastes Best

The varieties listed below are the ones which succeed best in this locality. Be wary of the many new kinds of fruits which have not been tested in the soils and climate of this section.



**LOMBARD PLUM**

## Apples

2-yr., first-class, 5 to 6 ft., \$1.00 each; 10 for \$6.50; 20 for \$11.00.

**YELLOW TRANSPARENT** — Early, yellow; fine quality.

**RED ASTRACHAN** — Early, striped red.

**DUCHESS** — Early fall, beautiful, striped red.

**WEALTHY** — Fall, high quality red.

**NORTHERN SPY** — Winter, an old standby.

**BALDWIN** — Winter, large, red; fine quality.

**SNOW** — Red, highest quality.

**GREENING** — Winter, large, green.

**DELICIOUS** — Winter, new, dark red; finest quality.

**McINTOSH RED** — Large, deep crimson. Flesh white and tender.

**JONATHAN** — Old reliable. Brilliant red, rich, fine acid flavor, hardy. Late fall.

**TOLMAN** — Yellow and red, rich, sweet. Winter.

## Pears

2-yr., first-class, 5 to 6 ft., \$1.25 each; 10 for \$9.50; 20 for \$16.00.

**BARTLETT** — Summer, golden yellow, none better.

**CLAPP'S FAVORITE** — Early, juicy, fine quality.

**DUCHESS** — Fall, large, very good.

**SECKEL** — Small, but highest quality of all.

## Sour Cherries

2-yr., first-class, 4 to 6 ft., \$1.25 each; 10 for \$9.00; 20 for \$14.00.

**MONTMORENCY** — Large, red; standard sour sort.

**EARLY RICHMOND** — Light red, sour; very productive.

## Sweet Cherries

2-yr., first-class, 5 to 6 ft., \$1.25 each; 10 for \$9.00; 20 for \$17.00.

**GOV. WOOD** — Large, light color, very sweet.

**BLACK TARTARIAN** — Rich black, juicy and sweet.

## Plums

2-yr., first-class, 5 to 6 ft., \$1.00 each; 10 for \$7.00; 20 for \$12.00.

**LOMBARD** — Standard red, large; late August.

**ABUNDANCE** — Early red, sweet and juicy.

**BURBANK** — Large, dark red; high quality.

**GERMAN PRUNE** — Large, dark purple, sweet, good.

**GREEN GAGE** — Large, round-ovate; green.

**FRUIT—Continued**

**Peaches**

First-class, 4 to 6 ft., 75c each; 10 for \$5.00; 20 for \$7.50.

**EARLY CRAWFORD**—Standard early yellow.

**ELBERTA**—September; hardiest and best.

**J. H. HALE**—Fine quality; large, productive.

**LATE CRAWFORD**—Standard late yellow.

**ROCHESTER**—An unusually early freestone Peach of wonderful sweetness.

**Quinces**

**CHAMPION**—Large, greenish yellow. 2-yr., 4 to 6 ft., \$1.50.

**Grapes**

Price of all Grapes, excepting Concord, heavy, 2-yr., No. 1 plants, 40c each; 10 for \$3.00; 50 for \$10.00.

Concord, 2-yr., No. 1, 30c each; 10 for \$2.00; 50 for \$5.50.

**CONCORD**—The leading black grape for any purpose.

**WORDEN**—Larger, earlier and of better quality than Concord.

**MOORE'S EARLY**—Large size, black, fine quality, hardy.

**NIAGARA**—The standard white grape, large and productive.

**BRIGHTON**—In our estimation the best all-around red grape. Bunches large.

**Currants**

2-yr., No. 1 plants, except as noted, 30c each; 10 for \$2.50; 50 for \$8.00.

**FAY'S PROLIFIC**—Standard red sort; very productive; good stems.

**WILDER**—Good size berries on nice long stems. Good quality.

**PERFECTION**—The finest red currant. Large size; long stems; extra fine flavor. 40c each; 10 for \$3.50; 50 for \$11.00.

**Gooseberries**

**DOWNING**—Light green, smooth, fine quality. 2-yr., No. 1, 40c; 10 for \$3.00.

**Raspberries**

Price, except as noted, \$1.00 per doz.; 25 for \$1.50; 100 for \$4.00; 1000 for \$24.00.

**CUTHBERT**—The standard red variety.

**CUMBERLAND**—The best black raspberry.

**ST. REGIS**—The best everbearer; fine flavor and color.

**COLUMBIAN PURPLE**—The leading purple sort. \$1.25 per doz.; 25 for \$2.00; 100 for \$6.00.

**Blackberries**

\$1.25 per doz.; 25 for \$1.75; 50 for \$2.50.

**ELDORADO**—The best variety for Michigan.

**Rhubarb**

**LINNAEUS**—Large stalks; tender and fine. Heavy, 2-yr. plants, 25c each; 10 for \$2.00; 50 for \$5.50.

**Asparagus**

**WASHINGTON**—A new rust-proof variety. Long, tender shoots of excellent flavor. Strong, 2-yr. plants, 75c per doz.; 25 for \$1.00; 100 for \$2.50.



CONCORD GRAPES



## VIGORO

A Fertilizer Which We Have Thoroughly Tested, and Recommend To Our Customers

A well-balanced, correctly prepared plant food of the highest quality. Clean, odorless and pleasant to handle. We have used Vigoro in our own planting for the past four years with excellent results and recommend it to our customers. Packed in heavy cotton bags, with very complete and detailed directions for use. 25 lbs. for \$1.75; 50 lbs. for \$3.00; 100 lbs. for \$5.00.

We Are Members of  
THE AMERICAN ASSOCIATION OF NURSERYMEN  
THE MICHIGAN ASSOCIATION OF NURSERYMEN

Both of these organizations stand for the highest ideals of business integrity in the growing and selling of nursery stock. The products and service of each member who enters, or remains in them, must measure up to the high standards set by these Associations.

### Scott's Lawn Seed

For those who want the best. It is free from weed seed and is of the highest quality obtainable. Known the country over by all leading landscape architects. 1 lb. for 60c; 5 lbs. for \$2.75; 20 lbs. for \$10.00.

### A Fine Bird Bath for \$10.00

Gray pottery. Of good design and correct proportions. Graceful, flaring bowl. An unusual value. Drive out and see it. We also keep a good assortment of other garden furniture, plant tubs, pots, trellises, benches, etc.

# Landscape Service

**C**ONSULT us about your planting problems. Our plans and recommendations are based on years of experience in this locality. Your place is given individual consideration—no matter how small—by trained landscape men. Our modern methods and fresh stock insure correct design, effective planting and definite results. No charge for this service. Please get in touch with us early. During the planting season we are often unable to give you as prompt attention as we would like to.

---

## INFORMATION AND TERMS

### TERMS

Our prices are made on a basis of cash with order or cash upon delivery. Phone orders strictly C. O. D. Variation from this rule is a matter for special arrangement.

### PERSONALLY SELECTED STOCK

Plants of special value, personally selected, will be priced according to their individual value, and catalog prices will not govern.

### GUARANTEE AND CLAIMS

We exercise the utmost care to have our stock true to name, and will replace free, upon proper proof, any that proves otherwise. It is mutually agreed and understood, however, that in no case shall we be held liable for a sum greater than the amount originally paid us.

### COMPLAINTS AND ADJUSTMENTS

Claims of any nature should be made as soon as possible. We wish to make fair adjustments in all cases of complaints, but are unable to assume responsibility for some classes of stock, such as Evergreens, Perennials, and bulbs. We do guarantee, however, all stock to be in perfect condition when it leaves our hands, or our delivery trucks. Please report any stock which does not prove satisfactory, but do this the same season planted.

---

### THINK IT OVER!

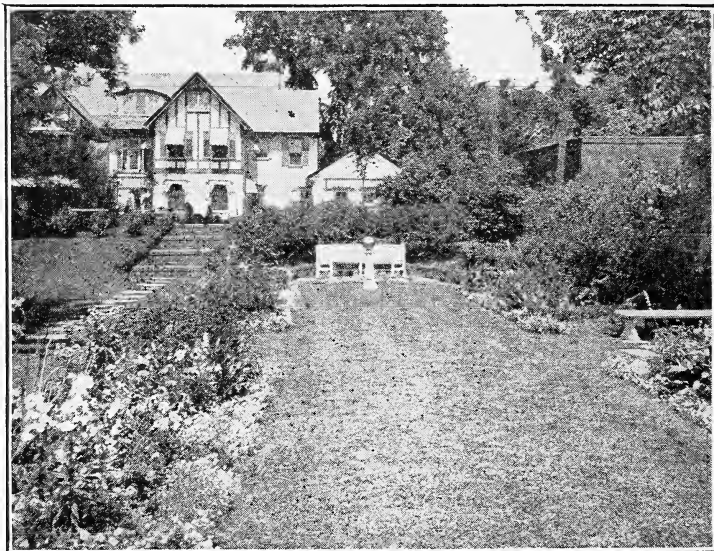
A tree out of ground is "like a fish out of water." A great part of the value of nursery stock lies in the condition in which you receive it. We are able to supply this locality with fresh stock, with all its life and vitality right in it—not dried out by long shipping and careless handling. We often dig and deliver to Flint customers on the same day. Your soil—your climate, and your interests and problems are the same as ours. This enables us to understand your wants, and to give you superior service, and stock adapted to this section.

---

## *Special Service to Our Flint Customers*

---

**T**O CUSTOMERS in Flint we deliver direct by truck from nursery—no shipping, no delays, no dried-out, half-alive stock! You can get your stock when you want it, and when it is most convenient for you to plant. Our trucks make daily deliveries during the planting season. Just think this over before you send that order out of town.



### *It is Easy to Phone Your Order*

---

**O**UR one-party line which we have had recently installed direct to our Nursery office assures good service. During the planting season you may phone your order any time between the hours of 6:30 A. M. and 10:30 P. M.

— Phone 3-3242 —

## Genesee County Nurseries

FLINT,

:-

:-

MICHIGAN

---