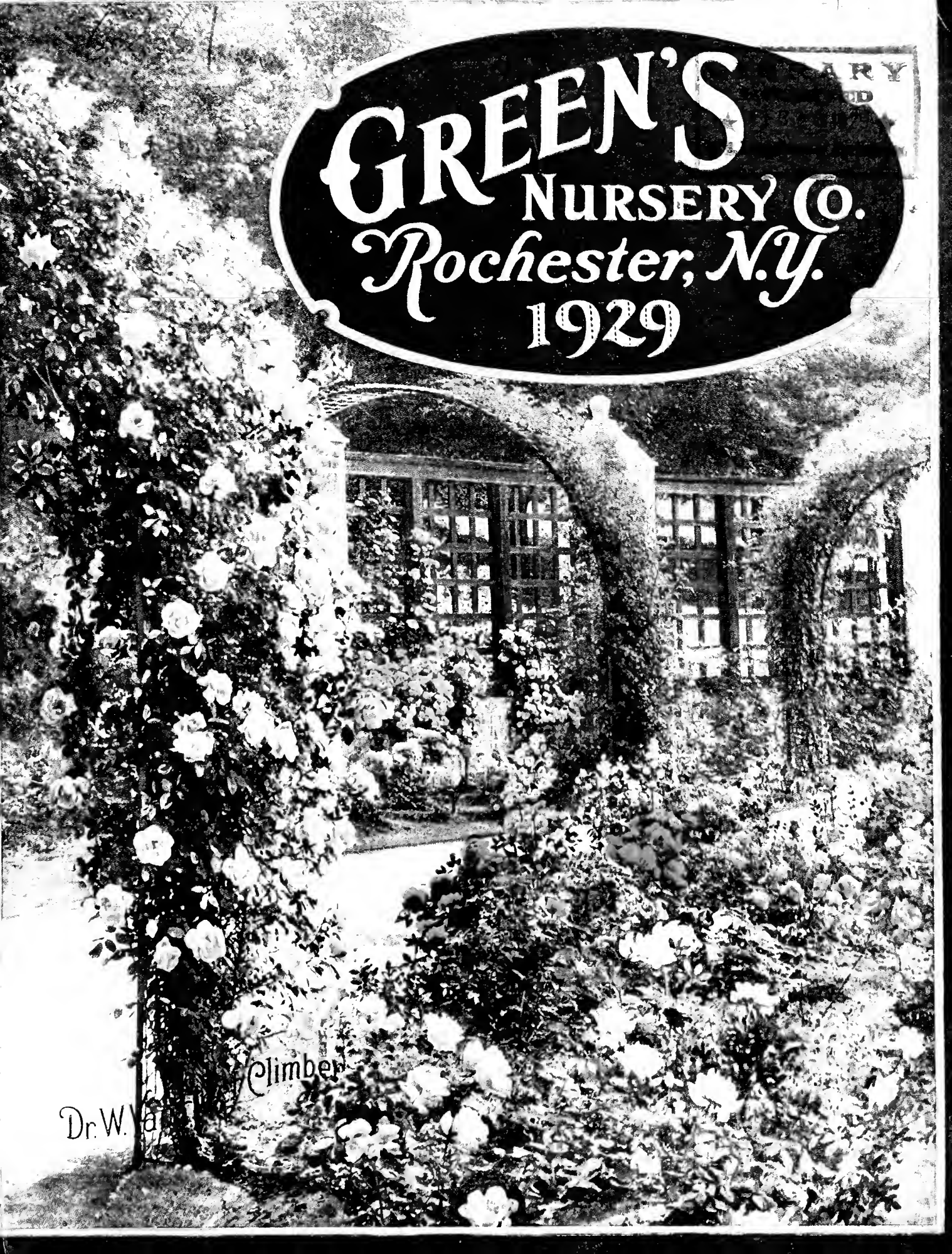


## **Historic, Archive Document**

Do not assume content reflects current scientific knowledge, policies, or practices.



GREEN'S  
NURSERY CO.  
*Rochester, N.Y.*  
1929



Dr. W. Va.

Climber

# To Meet You Personally

One of our good customers whose first order came to us March 12, 1882, wrote us recently: "Enclosed is my small order for fall. I am now eighty years old and have been a customer of yours for forty-six years. I have always wanted to come to Rochester to meet you personally, but I am now too old."

This letter made us realize that there are, no doubt, many of our customers who feel the same way. We would like to meet you all personally and hope to some day, but until that time comes we want to bring ourselves to you in the only way possible inasmuch as you are scattered in every community of our vast country.

To our many thousands of friends, we are indebted for the constant growth of our business since 1878. This growth during the past fifty-one years was made possible through the faith and recommendation of our customers. To them we owe all, and to them we promise that the policies, quality and service that have made this faith possible will always be maintained.

Even greater service in the future will be our expression of appreciation.

Sincerely yours,

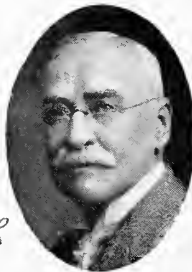
*Green's Nursery Company*



**ROBERT E. BURLEIGH**  
Son-in-law of Mr. Green,  
Associated for 31 Years.



**EDWIN H. BURSON**  
Associated with Mr.  
Green for 46 Years.



**CHARLES A. GREEN**  
Founder.



**KENNETH E. BURLEIGH**  
Grandson of Mr. Green, As-  
sociated for 11 Years.



**WILLIAM L. GLEN**  
Associated with Mr.  
Green for 21 years.



**MARVIN H. GREEN**  
Son of Mr. Green, As-  
sociated for 23 Years.

---

# **SAVE MONEY—ORDER EARLY**

**10 Per Cent Discount**

**For CASH ORDERS received before March 20th**

**5 Per Cent Discount**

**For CASH ORDERS received between**

**March 20th and April 15th**

---



# Why Green's Direct Cash Method Saves You Money

YOU save almost 50c on every dollar when you purchase direct from Green's. This catalog is our only salesman, and when you send your order direct to us you have no agents' commissions to pay, which are usually 30 per cent. Selling for cash only, we lose no money from unpaid accounts. Nurseries who extend credit are fortunate if they collect 80 per cent of money due them. They must overcome this loss by adding 20 per cent to their prices. All this we save by our direct from nursery cash method. We pass this saving on to you, in the form of reduced prices.

## PROGRESSIVE FARMER

Every farmer who buys fruit trees—and that certainly ought to mean every farmer—is to be congratulated on the fact that steps have at last been taken which should largely eliminate the fraudulent fruit-tree agents who have heretofore swindled so many people.

The members of this Association are determined to admit no nurseryman as a member unless he has a reputation for honesty and fair dealing. Every farmer who has to buy fruit trees hereafter will do well to make sure that the nurseryman from whom he orders is a member of this "American Association of Nurserymen" and proves this by use of the official trade-mark.

*From The Progressive Farmer.*



## Satisfaction Guaranteed

We guarantee every Tree, Plant or Vine sold by us to be strong, vigorous and healthy, and to deliver them to you in good condition. If for any reason you are not absolutely satisfied with your stock when it is received, advise us at once, and we will gladly replace the items or refund your money.

Green's Trees are True-to-Name—No human caution could be more exacting than ours. If any trees prove untrue to name, upon proper proof we will replace or refund the purchase price. Obviously, we cannot assume further responsibility than this.

## Liberal Discounts for Early Cash Orders

10 per cent discount on all cash orders received on or before March 20, 1929

5 per cent discount on all cash orders between March 20, 1929, and April 15, 1929

NO DISCOUNTS AFTER APRIL 15, OR ON C. O. D. ORDERS AT ANY TIME

The bulk of our business is crowded into a comparatively short period during the spring of the year. This means that our facilities are taxed to the utmost. If we can induce our customers to send their orders in early it gives us more time to do the necessary work attendant on every order and permits us to handle the thousands of orders we receive with a much smaller force of employees. It also enables us to plan our spring work efficiently and economically. This results in a considerable saving in expense, and we pass this saving on to you in the form of the above liberal discounts.

NOTE—We keep close track of climatic conditions in all parts of the country, and unless instructed otherwise, ship all orders so as to reach our customers at the best time for planting in their localities. Order now while our list of varieties is complete.

## Information to Customers — Read Before Ordering to Avoid Mistakes

Order from this catalog—Simply make your selection, use the order blank found in this catalog and mail it to GREEN'S NURSERY CO., ROCHESTER, N. Y.

### TERMS

Please send payment with order. An express money order, postal money order, or bank draft is the best form of remittance. You can send your personal check if you desire. It is not safe to send silver or bills, except in a registered letter. This "payment with order" plan saves us the enormous expense of making book records and of collecting accounts, and is one of the features of our business that enables us to sell you such high quality trees and plants at such low prices. To new customers, we extend the privilege of C. O. D. shipments, provided one-fourth cash is sent with order—balance to be paid to expressman, mailman or freight agent, when delivery is made. Prices are free on board cars at our nurseries.

### WHEN TO ORDER

It is best to order early, as this enables us to reserve for you the varieties you want, and avoids the possibility of our being sold out. The time of shipment may be left to us, as we keep track of weather conditions throughout the country, and ship each order so as to reach our customers at the very best time for planting in their localities. If it is necessary that an order arrive on a certain date, please note it on your order sheet and we will ship to arrive as near to that date as possible.

### WHEN TO PLANT

Planting can be done any time the trees and bushes are dormant and the ground not frozen. In most states the spring planting season extends from March 1st until June 1st, and the fall season from October 15th until December 1st.

### HOW TO PLANT

We make every effort to help you get best results, and will send you complete planting instructions with your order. Should you desire these planting instructions before shipment, let us know, and we will gladly send them.

### ORDERS FOR LESS THAN THREE DOLLARS

If your order amounts to less than three dollars, please add fifty cents extra for packing costs. In our endeavor to make our prices as low as possible, we have based our packing costs on orders amounting to ten dollars or more. As it costs practically as much to pack a small order as it does a large one, we find we cannot profitably handle orders for less than three dollars without an additional charge for packing. This does not apply to orders for shipment by parcel post. On parcel post orders of less than \$3.00 no charge is made for packing.

Order Direct from this Catalog, which is Our Only Salesman.

# GREEN'S

## Recommended and Popular Varieties

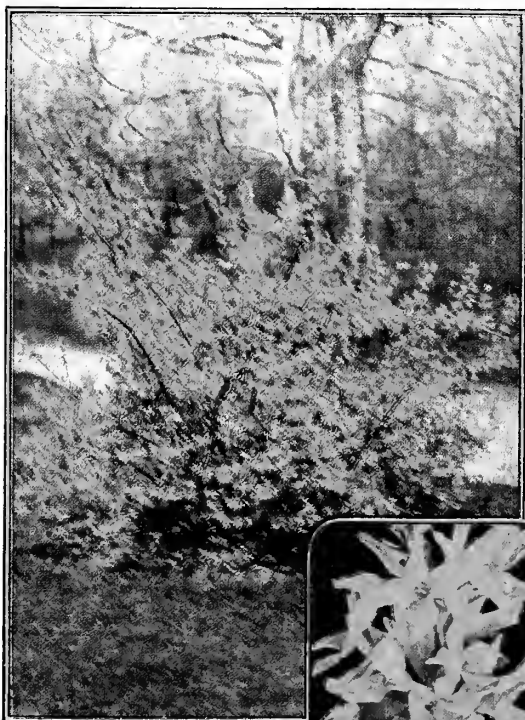


ALTHEA—Rose of Sharon

### Barberries

**Japanese Dwarf Barberry** See page 12 for description.

**Red-Leaved Japanese Dwarf Barberry** New form of Japanese Dwarf Barberry. Foliage reddish bronze in spring, turning to brilliant red as heat of summer intensifies its color. Plant in sun. Scarlet berries remain all winter. Strong Bushes, 1 to 1½ feet, \$1.00 each; \$8.00 per 10.



BORDER FORSYTHIA  
(Golden Bell)

NO other class of ornamentals plays such an important part in the decorative scheme for the home grounds. Plant the tall-growing shrubs in the background and at corners where height is needed. Use the lower-growing shrubs in between groups of the taller growers and in front of them. Consider the height of your windows from the ground in selecting shrubs, and plant those which will not grow too tall and later have to be cut back every year. In general, plant shrubs in masses, using five or more of a kind; leave the center of the lawn open and border it with shrubs and flowers. Make the shrub border irregular and curving in outline, rather than a long, straight line.

See page 7 for a list of Shrubs for special purposes.

### Almonds

**Pink Flowering Almond** Beautiful double pink flowers, early in spring before leaves appear. Grows 6 to 8 feet. Strong Bushes, 2 to 3 feet, 75c each.

**White Flowering Almond** Same as Pink Flowering Almond except flowers are double white. Strong Bushes, 2 to 3 feet, 75c each.

### Altheas (Rose of Sharon)

Beautiful bell-shaped flowers from August until frost. Hardy, erect, compact. Grows 8 to 10 feet high. We offer only double-flowered sorts in Pink, Purple, Red, White, Rose with darker center. Order by color. Strong Bushes, 2 to 3 feet, 50c each.

### Beauty Bush

Handsome new shrub from China and Central Asia. Long, arching branches, covered in the spring with clusters of small, tubular pink flowers of honeysuckle type. 6 to 9 feet high. Strong Bushes, 1½ to 2 feet, \$1.25 each.

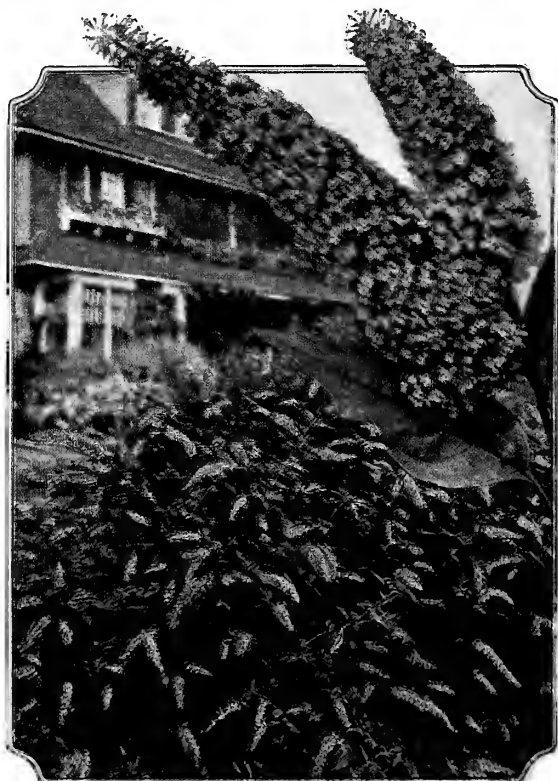
### Butterfly Bush (Summer Lilac)

Long spikes of fragrant, lavender flowers from July until frost. Attracts butterflies in abundance. Grows 3 to 4 feet high. Strong, 2 Year Plants, 50c each.

### Bush Honeysuckles

**Pink Tartarian Honeysuckle** The favorite, old-fashioned bush honeysuckle, with pink flowers in spring and orange and scarlet berries in autumn. Grows 6 to 8 feet high. Extra Size Bushes, 3 to 4 feet, 75c each. Strong Bushes, 2 to 3 feet, 50c each.

**White Tartarian Honeysuckle** Same as Pink Tartarian except flowers are white. Extra Size Bushes, 3 to 4 feet high, 75c each. Strong Bushes, 2 to 3 feet, 50c each.



BUTTERFLY BUSH

Do Not Overlook Our Liberal Cash Discounts for Early Orders. See Page Three.



# SHRUBS

## For Ornamental Garden Beauty

### Common Sweet Shrub (Allspice)

An unusual upright-growing shrub, with reddish brown shoots and spicy, fragrant, chocolate-colored flowers in June. Grows 5 to 6 feet high. Strong Bushes, 2 to 3 feet high, \$1.00 each.

### Cutleaf Stephanandra (Lacebush)

Feathery, fern-like foliage, green in summer, bronze red in autumn. Cream-colored flowers in June. Grows 4 to 5 feet high. Strong Bushes, 2 to 3 feet high, \$1.00 each.

### Deutzias

**Double Rose Deutzia (Deutzia Crenata Plena)** Full, double white, bell-shaped blossoms, tinged with rose in June. Grows 6 to 8 feet high. Extra Size Bushes, 3 to 4 feet, 75c each. Strong Bushes, 2 to 3 feet high, 50c each.

**Lemoine's Deutzia** Rather low growing, 3 to 5 feet high. Medium size, bell-shaped flowers of pure white. Strong Bushes, 2 to 3 feet, 50c each.

**Pride of Rochester Deutzia** An early variety that blooms in May. Bell-shaped flowers of pinkish white, with under side of the petals rose. Grows 6 to 8 feet high. Extra Size Bushes, 3 to 4 feet high, 75c each. Strong Bushes, 2 to 3 feet, 50c each.

**Slender Deutzia (Deutzia Gracilis)** A dwarf, dense-growing shrub, with single, white, bell-shaped flowers in May. Excellent for shrub borders in front of taller kinds. Grows 3 to 4 feet high. Strong Bushes, 1½ to 2 feet high, 75c each.

**Snowflake Deutzia (Deutzia Candidissima)** Double white, bell-shaped flowers in June. Grows 6 to 8 feet high. Strong Bushes, 2 to 3 feet high, 50c each.

### Dogwoods

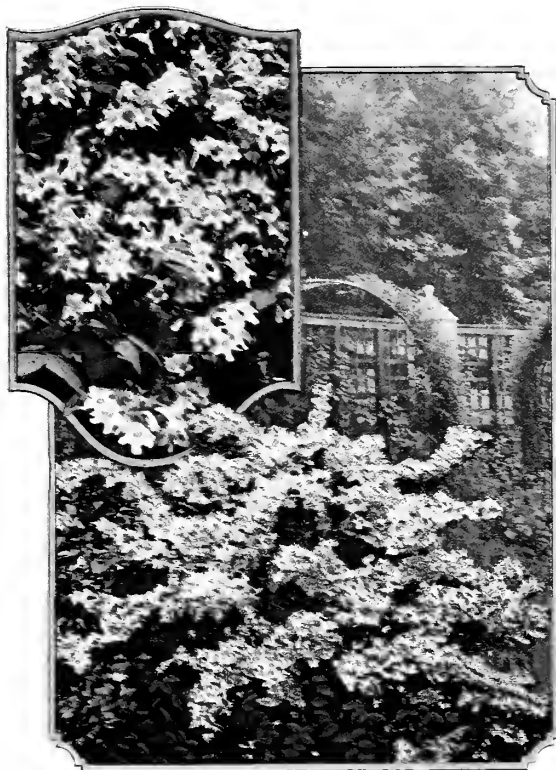
**Coral Dogwood** Striking, bright coral red branches, very ornamental, especially for winter effects. Yellowish white flowers in spring, white berries in winter. Grows 6 to 10 feet high. Strong Bushes, 2 to 3 feet high, 75c each.

**Border Forsythia (Golden Bell)** Star-shaped, golden yellow flowers in April before the leaves appear. Grows 8 to 10 feet high. Extra Size Bushes, 3 to 4 feet high, 75c each. Strong Bushes, 2 to 3 feet high, 50c each.

### Golden Elder

An exceedingly attractive shrub, with golden yellow leaves and white flowers in May and June. Grows 10 to 12 feet high. Should be pruned frequently to intensify color of foliage. Extra Size Bushes, 3 to 4 feet high, 75c each. Strong Bushes, 2 to 3 feet, 50c each.

Shrubs not over 2 to 3 feet high can be sent by parcel post, postpaid, for 5c per shrub extra.

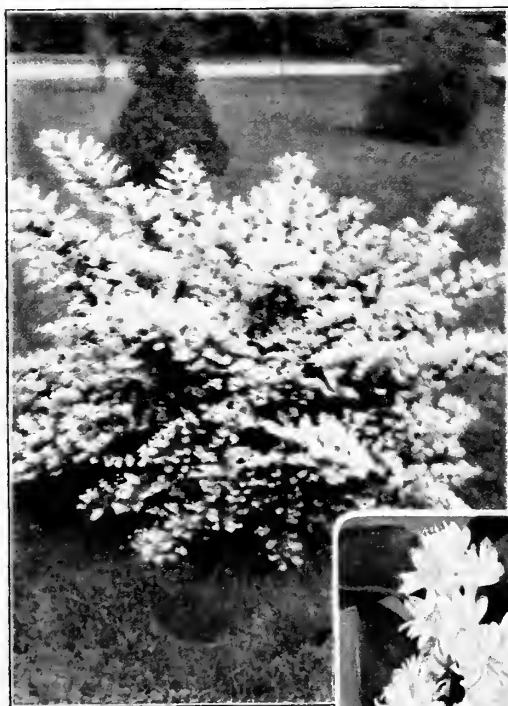


THE NEW BEAUTY BUSH

**Goldtwig Dogwood** A broad bush about 4 feet high, with strikingly conspicuous yellow bark. Very attractive. Strong Bushes, 2 to 3 feet high, 75c each.

### Golden Bells (Forsythia)

**Weeping Golden Bell** A drooping, slender-branched shrub, with brilliant yellow flowers early in the spring before the leaves appear. Grows 6 to 8 feet high. Desirable for planting on banks and slopes. Strong Bushes, 2 to 3 feet high, 75c each.



PRIDE OF ROCHESTER DEUTZIA



NEW RED LEAVED JAPANESE DWARF BARBERRY



Shrubs Over 2 to 3 Feet High Can Not Be Sent by Parcel Post.

# SHRUBS

## Hydrangeas

**Hydrangea Arborescens Grandiflora (Hills of Snow)** Clusters of snow-white flowers from July through September, resembling the Old Fashioned Snowball in appearance. Grows naturally 6 feet high, but by pruning can be kept round, compact and dense, and to a height of 3 to 4 feet. Makes a fine hedge and grows well in shady places. Strong Bushes, 2 to 3 feet high, 75c each.

**Hydrangea Paniculata Grandiflora (Bush Form)** In our opinion, no other shrub gives quite the "value received" of this hardy hydrangea. It is easy to grow, never fails to bloom the first season planted, and produces in abundance immense clusters of greenish white flowers which gradually change to white and later to delicate pink. Normally grows 7 feet high, but severe pruning each spring greatly increases the size of the flower heads. Blooms in August and September, and if the flowers, which keep for an extremely long time, are allowed to dry on the bush, they turn to a bronzy green and are valuable for winter decoration in the home. Makes a beautiful flowering hedge. Extra Size Bushes, 3 to 4 feet high, 75c each; \$6.00 per 10. Medium Size Bushes, 2 to 3 feet, 50c each; \$4.00 per 10. Strong Bushes, 1½ to 2 feet, 40c each; \$3.00 per 10.

**Tree Hydrangeas** We train the bush hydrangea to single stems which form small, compact, miniature trees, very much like the tree rose in appearance. Same characteristics as the bush form except shape. Price of Tree Form Hydrangeas: 2 to 3 feet, \$1.00 each.

## Indian Currant (Coral Berry)

A desirable shrub for shady places. Grows 3 to 5 feet tall, producing inconspicuous, rose-colored flowers in June and July. Its dull red, coral-like berries cling in great profusion along the under side of the branches. Fine as a hedge. Desirable for planting on banks to prevent soil washing away. Strong Bushes, 2 to 3 feet high, 50c each.

**Japanese Tree Lilac** A pyramidal tree-shaped lilac, often attaining a height of 30 feet. Beautiful for lawn specimens. Yellowish white flowers in great profusion in June and July. Extra Size Bushes, 3 to 4 feet, \$1.50 each.

**Late Lilac (S. Villosa)** A bushy lilac, rarely over 6 feet high. Rosy pink flowers late in the spring. Strong Bushes, 2 to 3 feet high, 75c each.

## Hybrid Lilacs (French Lilacs)

Highland Park, Rochester, New York, has the largest collection of lilacs in America. We offer below the cream of this collection. Hybrid Lilacs differ from Common Lilacs in that their flower clusters are larger and even more fragrant. They ultimately reach a height of 6 to 8 feet. Prices of all Hybrid Lilacs, Strong Bushes, 2 to 3 feet high, \$1.00 each.

**Charles Joly** Compact flower heads of very dark reddish purple. Large and double. Rather low growing.

**Charles X** Large trusses of single flowers, light lavender, with a bluish tinge. A rapid grower.

**Ludwig Spaeth** Dark, rich purplish blue flowers. Very large and single.

**Madam Casimer Perier** Medium sized clusters of double white flowers. A rather dwarfish grower.

**Marie Legraye** Beautiful, single white flowers of immense size, very fragrant. A dwarf grower.

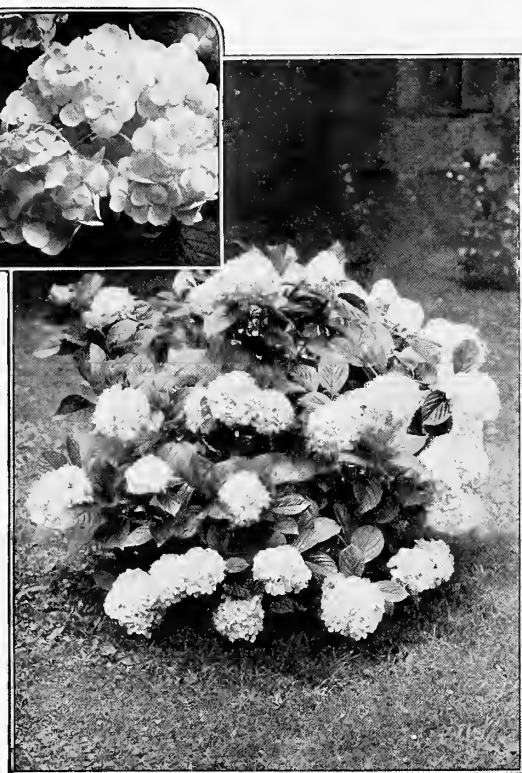
**President Grevy** Immense, full clusters of double flowers, pale wisteria violet, the open faces of which are a pretty contrasting shade of light blue.

## Pearl Bush

Buds, like pearls strung on slender threads, opening up to fragrant clusters of pure white, starry flowers. Grows 6 to 10 feet high. Strong Bushes, 2 to 3 feet, 75c each.

## Regel's Privet

A low-spreading bush, with graceful, drooping branches. White flowers, followed by blue black berries that last all winter. Autumn foliage, rich red. Grows 6 to 8 feet high. Strong Bushes, 2 to 3 feet high, 50c each.



HYDRANGAEA ARBORESCENS—Hills of Snow

## Japan Quince

Completely covered with dazzling scarlet flowers in May. The fruits which follow later on are quince-shaped and quite fragrant. With stout branches armed with fine thorns, it makes not only a desirable flowering hedge, but a defensive one as well. Grows naturally 6 to 8 feet high, but can stand any amount of shearing. Strong Bushes, 1½ to 2 feet, 60c each.

## Double Kerria

Produces an abundance of double flowers, rich yellow, and resembling half-opened rose buds in shape. Grows 6 to 8 feet high. Should be planted in sheltered locations in the North. Strong Bushes, 2 to 3 feet high, \$1.00 each.

## Mock Oranges (Syringas)

**Golden Mock Orange (Golden Syringa)** A compact, dwarf-growing shrub, with very brilliant yellow foliage and white flowers in May and June. Retains its color all season, and is very valuable for creating pleasing and striking contrasts with green-leaved shrubs. Grows 3 to 6 feet high. Strong Bushes, 1½ to 2 feet, 75c each.

**Large Flowered Mock Orange** A large-spreading shrub, with graceful, drooping branches. Large, creamy white flowers in May or June. Grows 8 to 10 feet high. Extra Size Bushes, 3 to 4 feet high, 75c each. Strong Bushes, 2 to 3 feet, 50c each.

**Virginal Mock Orange** A magnificent new variety, probably the finest of all. Large, creamy white flowers, often 2 inches in diameter, from May until frost. A rather compact shrub, attaining a height of 6 to 8 feet. Strong Bushes, 2 to 3 feet high, 75c each.

## Lilacs

**Common Purple (S. Vulgaris)** The well known, old fashioned lilac. Fragrant, lilac-colored flowers in May. Grows 8 to 12 feet high. Strong Bushes, 2 to 3 feet high, 50c each.

**Common White (S. Alba)** Splendid panicles of pure white, single flowers in May. Fragrant. Grows 6 to 8 feet high. Strong Bushes, 2 to 3 feet high, 50c each.

*Our Shrubs Will Bloom the First Season Planted.*

# SHRUBS

## Snowberry

A slender, medium-growing shrub, which does well in any soil and will flourish under trees and in dense shaded places where little else will grow. Leaves are dark green and slender, small rose-colored flowers in June and July. Clusters of attractive, milk-white berries which last until late in winter. Grows 3 to 5 feet high. Very attractive as a hedge. Strong bushes, 2 to 3 feet, 50c each.

## Snowball (Viburnum)

**Old Fashioned Snowball (Common Snowball)** A well-known, favorite shrub, with globular clusters of white flowers the latter part of May. Grows 8 to 10 feet high. Strong Bushes, 2 to 3 feet, 75c each.

**Japanese Snowball** An erect, compact shrub, 6 to 8 feet tall, with purple-tinged foliage. Ball-shaped clusters of white flowers in June. Strong Bushes, 2 to 3 feet, \$1.00 each.

**Single Japan Snowball** Large, flat clusters of white flowers in May. Bush broad and symmetrical. Foliage bronze green, purple hued beneath. Berries red, changing to blue black. Grows 8 to 10 feet high. Strong Bushes, 2 to 3 feet, 85c each.

## Other Viburnums

**Arrow-Wood** White flowers in May ripen into black berries of which the birds are fond. Best in moist soils. Strong Bushes, 2 to 3 feet, 75c each.

**High Bush Cranberry** An upright and spreading shrub; smooth, light grey branches; broad, rough leaves. Produces flat heads of white flowers  $\frac{3}{4}$  inch across, in May and June, followed by scarlet berries which remain and keep their bright color until the following spring. Grows 8 to 10 feet high. Strong Bushes, 2 to 3 feet, 75c each.

**Witherod** Creamy white flowers from June to July, followed by clusters of blue berries. Autumn foliage vinous red. Does well in moist places. Grows 6 to 8 feet high. Strong Bushes, 2 to 3 feet high, \$1.25 each.

## Spiraeas

**Anthony Waterer Spiraea** A dwarf variety, growing 2 to 3 feet high and covered with large heads of crimson flowers. Very desirable for planting in front of taller growing shrubs. If the flowers are removed as they fade, it will cause the plant to keep up a continuous bloom until late in the fall. Strong Bushes, 1½ to 2 feet, 75c each.

**Billard's Spiraea** An erect growing shrub, with dense spikes of rose-pink flowers in July and August, and again in the fall. Grows 4 to 6 feet high. Does well in moist places. Extra Size Bushes, 3 to 4 feet high, 75c each. Strong Bushes, 2 to 3 feet, 50c each.

**Fortune's Spiraea** A beautiful, upright shrub, 4 to 5 feet high. Deep pink flowers from June to September in large, flat clusters. Foliage opens up a pretty purplish color and turns to a deep green. Strong Bushes, 2 to 3 feet, 50c each.



VANHOUTTE SPIRAEA—The Most Popular Shrub of All

You Save Agents' Commissions When You Buy Direct from Us.



LARGE FLOWERED MOCK ORANGE

## Shrubs for Special Purposes

### SHRUBS FOR SHADY PLACES

Japanese Dwarf Barberry, Slender Deutzia, Lemoine's Deutzia, Hydrangea Arborescens, Border Forsythia, Weeping Golden Bell, Coral Dogwood, Goldtwig Dogwood, California Privet, Regel's Privet, Bush Honeysuckles, Mock Oranges (all varieties), Snowberry, Indian Currant, Snowballs (all varieties), Arrowwood, High Bush Cranberry, Witherod.

### DWARF GROWING FOR EDGING SHRUB PLANTINGS

Japanese Dwarf Barberry, Red Japanese Dwarf Barberry, Slender Deutzia, Anthony Waterer Spiraea, Thunberg's Spiraea, Froebel's Spiraea.

### MEDIUM GROWING FOR BACKGROUNDS

Double Rose Deutzia, Pride of Rochester Deutzia, Snowflake Deutzia, Hydrangea P. G., Snowberry, Vanhoutte Spiraea, Indian Currant, Pink Weigela.

### TALL GROWING FOR HEAVY PLANTING AND CORNERS

Altheas, Bush Honeysuckles, Pearl Bush, Common Lilacs, Large Flowered Mock Orange, Snowballs (all varieties).



BLOSSOM OF ANTHONY WATERER SPIRAEA

**VALUE OF HOME INCREASED BY GREEN'S SHRUBS**

In the spring of 1918 we ordered from you one of your collections of shrubs. They thrived well and when they bloomed they beautified the place to such an extent that the valuation was increased from \$2,200 to \$5,000 when we sold in the summer of 1920. We have now bought another place and we want to beautify that too. Enclosed please find our order.

ERNEST L. REYNOLDS,  
Milford, Conn.

# SHRUBS

## Spiraeas—Continued

**Froebel's Spiraea** This is another beautiful red variety. Just a trifle taller than Anthony Waterer. It is a strong, healthy grower, dwarf in nature and can be used as edgings or foundation plantings. Everyone should have a few of these and the Anthony Waterer mixed in with their other plants, or just in front of the graceful Van Houttei or other tall-growing Spiraeas. Strong Bushes, 2 to 3 feet, 50c each.

**Golden Spiraea** A rapid-growing variety, with masses of snowy white flowers in June. Young foliage bright yellow, changing to golden brown in autumn. Very desirable for group plantings. Grows 8 to 10 feet high. Extra Size Bushes, 3 to 4 feet high, 75c each. Strong Bushes, 2 to 3 feet, 50c each.

**Thunberg's Spiraea** A graceful bush, whose thread-like branches bear innumerable small white flowers and tiny leaves. Foliage changes in autumn to bright red and orange. Grows 3 to 5 feet high. Strong Bushes, 2 to 3 feet high, 75c each.

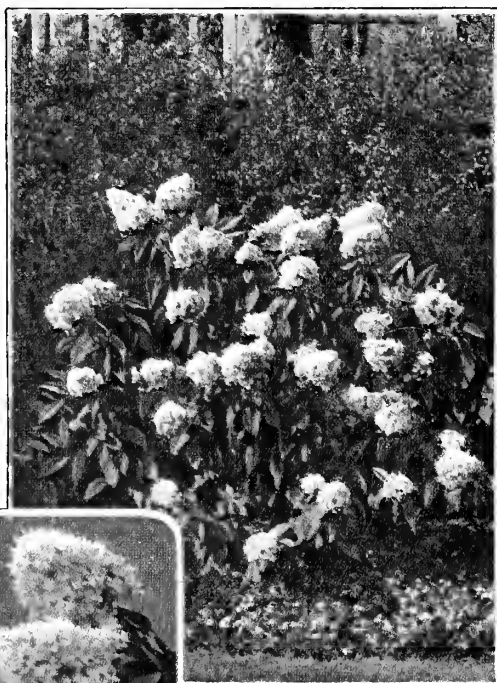
**Vanhoutte Spiraea** Better known and more largely planted than any other shrub. An extremely graceful shrub, with long, drooping branches completely covered with flat clusters of white flowers in May and June. When in blossom, a hedge of Spiraea Vanhoutte is a sight long to be remembered. Cannot be too highly recommended. We consider it the best general purpose shrub. Grows 6 to 8 feet high. Extra Size Bushes, 3 to 4 feet high, 75c each. Strong Bushes, 2 to 3 feet, 50c each.

## Weigelas (Diervilla)

**Candida Weigela** Ivory-white flowers on graceful, arching branches in June. Grows 4 to 6 feet high. Strong Bushes, 2 to 3 feet high, 50c each.

**Eva Rathke Weigela** A fine dark red variety of dwarf habit. Blooms profusely in June and intermittently all summer. Grows 3 to 5 feet high. Strong Bushes, 2 to 3 feet, \$1.00 each.

**Pink Weigela** Deep pink flowers in great profusion in June. Grows 6 to 8 feet high. Strong Bushes, 2 to 3 feet high, 50c each.



HYDRANGEA  
PANICULATA GRANDIFLORA  
Bush Form

## Winged Euonymus (Burning Bush)

Shaped like a miniature tree. 8 to 10 feet high. Small, delicate flowers in spring are followed by attractive red berries. Fine for individual planting on lawn. Strong Bushes, 2 to 3 feet high, \$1.25 each.

You can secure a detailed planting plan, suggesting what and where to plant, at a very small cost. Page 15 tells how to take advantage of Green's Landscape Service.

Do not overlook our liberal discount for early orders. See page 3 for complete details. We have no agents. Buy direct from this catalog and save money.



THE NEW VIRGINAL  
MOCK ORANGE

*Our Shrubs Are All Strong, Field Grown Bushes.*

# Ornamental Vines

**A** HOME planting is seldom complete without at least a few ornamental vines. They add a certain charm and grace not obtained from any other source. Vines keep the home cool in summer and furnish protection and shade to the porch, arbor and pergola. When planted close to a building the top soil should be replaced to a depth of a foot or two with rich garden soil, as the soil immediately about the foundation of a house is usually subsoil thrown up in the digging of the cellar.

**American Ivy—(Virginia Creeper) (Woodbine)**  
**(Ampelopsis quinquefolia)** The well-known native ivy, with five-parted leaves that change to scarlet in fall. Blue-black berries. Hardy and quick-growing. Requires artificial support on walls. Strong, 2 Year Vines, 50c each; \$4.50 per 10.

**Boston Ivy—(Japan Ivy) (Ampelopsis Veitchi)**  
 It is a rapid grower and clings to brick or stone walls without artificial fastening. The foliage is handsome, dark green in summer, changing to crimson and yellow in autumn. It is a little tender while young, and requires protection the first winter, but once established there is no further risk. Strong, 2 Year Vines, 75c each; \$7.00 per 10.

**Bittersweet (Celastrus Scandens)** A popular vine for covering rough fences. Handsome, glossy green foliage and large clusters of orange crimson fruits. Its graceful sprays of berries make charming winter house decorations. Strong, 2 Year Vines, 50c each; \$4.50 per 10.

**Clematis Jackmani** A large-flowering variety, the flowers often 4 to 6 inches in diameter. Intense, violet-purple, with a rich, velvety appearance. It blooms continually from July until frost. Strong, 2 Year Vines, 85c each; \$8.00 per 10.

**Clematis Paniculata** A rapid-growing vine, with handsome, clear, glossy foliage and medium sized, star-shaped, fragrant, white flowers in September when few other vines are in blossom. Very attractive and probably the most largely planted of all the vines. Strong, 2 Year Vines, 50c each; \$4.50 per 10.

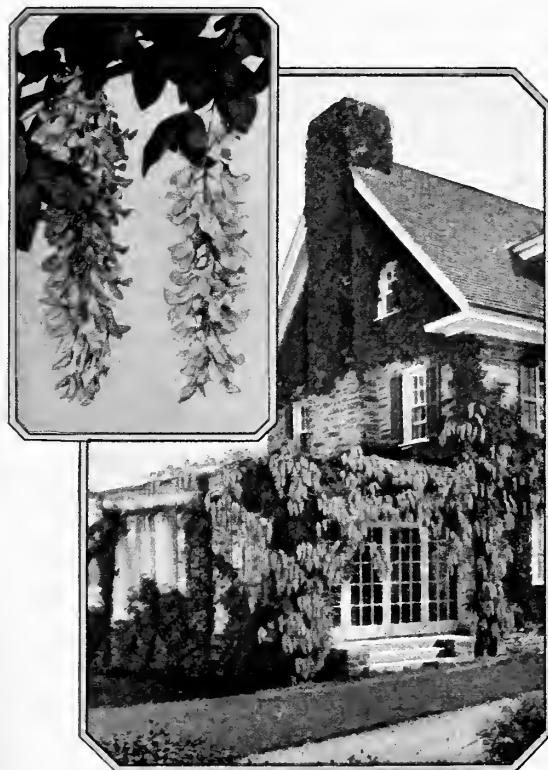
**Dutchman's Pipe (Aristolochia Siphon)** A very rapid-growing vine, which on account of its very large, heart-shaped leaves is desirable when dense shade is required. Obtains its name from its peculiar brownish flowers, resembling in shape a miniature pipe. Strong, 2 Year Vines, \$1.25 each; \$10.00 per 10.

**Hall's Japan Honeysuckle** One of the most popular of all the climbing vines, which in addition to its ordinary uses as a climber is valuable for covering banks, bare spaces, etc., where grass will not grow. Flowers white, changing to yellow, very fragrant and in bloom the whole season. Strong, 2 Year Vines, 50c each; \$4.50 per 10.

**Trumpet Vine** A grand old favorite. Showy, orange-scarlet flowers and ever-green leaves. A strong grower, often over 30 feet tall. Fine for training on walls, trellises, trunks of trees and arbors. Strong, 2 Year Vines, 50c each; \$4.50 per 10.

**Purple Wisteria** Very desirable for heavy trellises and pergolas, also attractive if trained to old trees. Pea-shaped, purple flowers in dense, pendent clusters, sometimes a foot long. Blooms in May. Wisterias grown from seed or cuttings are often tardy in blooming. We sell only grafted vines which assure early flowering. Strong, 2 Year Vines, 75c each; \$7.00 per 10.

**White Wisteria** A white-flowering form of the Purple Wisteria. Same as above except in color of blossom. Strong, 2 Year Vines, 75c each; \$7.00 per 10.



PURPLE WISTERIA

CATALOG DOES NOT MISREPRESENT  
 Rhinebeck, N. Y.

Green's Nursery Company:

Your stock is perfect. Every word you say in your catalog is true. I received your plants, and they are better than you claim in your catalog.

C. ROMANO.



CLEMATIS PANICULATA

*Ornamental Vines Can Be Sent by Parcel Post, Postpaid, for 5 Cents per Vine Extra*

# ORNAMENTAL TREES

## Add Value To Your Property

**T**RULY, "It's not a home until it's planted." Imagine, if you can, what a bleak and barren place this country of ours would be without shade and ornamental trees. Have you ever noticed that the homes which look the most attractive to you invariably are those with a few well-placed ornamental trees around them? There is a growing appreciation of trees. More people are learning to know and love them every day. It is well recognized that shade trees around the farm and city home not only add to its beauty and comfort, but greatly increase the value of the property.

**Ash, American Mountain (Sorbus Americana)** A handsome, little lawn tree, growing 20 to 30 feet high, with long, dark green foliage and clusters of bright red berries. Prices: 4 to 5 feet, \$1.00 each; 5 to 6 feet, \$1.50 each; 6 to 8 feet, \$2.00 each.

**Birch, Cut-Leaved Weeping, White (Betula laciniata pendula)** A tall, graceful, weeping tree, with silvery-white bark and delicately cut foliage. Excellent for lawn and cemetery planting. Reaches 60 feet at maturity. Price: 5 to 6 feet, \$3.00 each.

**Catalpa Bungei—(Umbrella Catalpa)** A beautiful, umbrella-shaped tree, with large, heart-shaped leaves laid with shingle-like precision, forming an even, compact, dome-shaped head; hardy, unique and handsome; very useful in formal plantings. Grows about 8 feet tall. This is a grafted variety of catalpa, and while the top of the tree becomes larger and more compact each year, the trees do not grow any taller. We have these trees grafted on stems of two different heights, 5 to 6 feet, and 6 to 8 feet. Prices: 5 to 6 feet, \$2.00 each; 6 to 8 feet, \$2.50 each.

**Catalpa, Western (Catalpa Speciosa)** One of the most showy flowering trees, noted for its fast and vigorous growth. Fine for lawn and street planting. Large, heart-shaped leaves, with clusters of white flowers tinged with violet and dotted with purple and yellow. Its long, narrow "beans" in autumn are unique. Used extensively for fence posts and railroad ties. Its wood, though soft, is very durable. Grows to a height of 60 feet. Very hardy. Prices: 4 to 5 feet, 50c each; 10 for \$4.50. 5 to 6 feet, 65c each; 10 for \$6.00. 6 to 8 feet, \$1.00 each; 10 for \$9.00.

**Chinese Angelica Tree (Aralia Japonica)** Handsome small tree. Foliage finely divided. Flowers in large, white spikes in July. Price: 6 to 8 feet, \$1.50 each.

**Crab, Bechtel's (Pyrus Ioensis Bechteli)** A handsome bush or little tree, seldom over 20 feet in height. One of the finest for lawn decoration. Produces in profusion double, delicate pink flowers resembling at a distance dainty little roses. Blooms when young and is very fragrant. Prices: 2 to 3 feet, \$1.00 each; 3 to 4 feet, \$1.25 each.

**Dogwood, Red Flowering (Cornus Florida Rubra)**

Similar to White Flowering Dogwood except that flowers vary from pink to light red. Grows 10 to 20 feet high. Price: 2 to 3 feet, \$3.50 each.

**Dogwood, White Flowering (Cornus Florida Alba)**

A slow-growing, dwarf tree, with abundant, large white flowers appearing very early in the spring before the grayish-green leaves, and followed by attractive red berries. Leaves turn to deep red in autumn. Grows 10 to 20 feet high. Price: 2 to 3 feet, \$1.25 each.

**Elm, American (Ulmus Americana)** In our opinion, the handsomest and most dignified of all the native trees. A tall-growing, stately tree, reaching 60 feet, with a wide, arching top and vase-like form. Extensively used for street planting, where its wide-sweeping branches form perfect Gothic arches over the streets. Prices: 6 to 8 feet, \$1.00 each; 10 for \$8.00. 8 to 10 feet, \$1.50 each; 10 for \$12.50.



CATALPA BUNGEI---Umbrella Catalpa



NORWAY MAPLE

LOMBARDY POPULAR

WHITE HORSE CHESTNUT

*This Catalog Is Our Only Salesman. Buy Direct and Save Half.*

# ORNAMENTAL TREES

**European Spindle Tree (Euonymus Europaeus)** Covered with bright yellow flowers in spring, followed by brilliant, rose-colored berries. Grows 15 feet high. Price: 4 to 5 feet, \$1.00 each.

**Flowering Cherry, Japan** A mass of rose-colored blossoms, clinging closely to branches. The tree appears to be buried beneath a wealth of exquisite color and fragrance. Grows 20 feet and upwards. Price: 3 to 4 feet, \$3.00 each.

**Horse Chestnut, White** A large tree of regular outline, 60 to 80 feet tall, completely covered in May with great, upright spikes of white flowers. Satisfactory either as a street or lawn tree, particularly desirable where dense shade is required. Prices: 3 to 4 feet, \$1.00 each; 4 to 5 feet, \$1.25 each; 5 to 6 feet, \$1.75 each.

**Linden, American (Basswood)** A tall-growing, stately tree, growing 60 to 80 feet tall, with large, shining, green leaves and light yellow, fragrant flowers in July. A splendid tree for lawn or street planting. Valuable for its beautiful white wood. Price: 6 to 8 feet, \$1.75 each.

**Linden, European** A medium-growing, symmetrically-shaped tree, with dense foliage. The leaves are deep green above, silvery beneath. Very attractive, yellowish white flowers appear in June in drooping clusters of from five to twenty blossoms to a cluster. Very fragrant. Grows as high as 50 feet. Price: 6 to 8 feet, \$1.75 each.

**Maple, Ash-Leaved (Box Elder)** A very hardy, fast-growing tree about 60 feet high, planted extensively in the West for timber and windbreaks because it endures both drought and cold unusually well. Easily distinguished by its greenish-yellow bark. Bright green leaves which turn to yellow in autumn. Prices: 6 to 8 feet, \$1.00 each; 8 to 10 feet, \$1.25 each.

**Maple, Norway** Without a doubt one of the most desirable shade trees for street and lawn planting. Of fairly rapid growth, reaching a height of 60 feet at maturity. Sturdy, compact and vigorous, forming a rounded head of stout branches and broad, deep green leaves. Prices: 6 to 8 feet, \$2.25 each; 8 to 10 feet, \$3.00 each; 10 to 12 feet, \$5.00 each.

**Maple, Silver (Soft Maple)** The fastest growing of the maples, very valuable where immediate shade is required. Grows to a height of 60 feet, forming a large, spreading head, with bright green leaves, silvery white on the under side. Does equally well in well-drained or low, swampy locations. Prices: 6 to 8 feet, \$1.00 each; 8 to 10 feet, \$1.50 each; 10 to 12 feet, \$2.50 each.

**Maple, Sugar (Hard or Rock Maple)** One of the most useful of all our maples, excellent for street and lawn planting, and used extensively in the production of maple sugar. A tree of magnificent proportions, often 80 feet in height, straight, spreading and symmetrical in shape. Long-lived. It roots deeply, allowing grass to grow about its trunk. Dark green leaves, turning to scarlet and gold in autumn. Price: 6 to 8 feet, \$2.50 each.

**Mulberry, Russian** A very hardy, low-growing tree, 20 to 30 feet high, with beautifully cut foliage and an abundance of fruit which attracts the birds. Not one of the edible varieties. Prices: 4 to 5 feet, 50c each; 5 to 6 feet, 75c each; 6 to 8 feet, \$1.00 each.

**Oak, English** The Royal Oak of England. A spreading, long-lived tree, 60 feet or more at maturity, with dark green leaves, smaller than those of our native species. Well adapted for lawn and public grounds. Price: 4 to 5 feet, \$2.50 each.

**Plane, Oriental** A hardy, rapid-growing shade tree that does well in smoky cities, near the seashore, or in other unfavorable situations. Excellent for street planting. Beautiful foliage. Grows 60 feet and upwards. Price: 6 to 8 feet, \$1.50 each.

**Poplar, Carolina (Southern Cottonwood)** A very rapid-growing tree, giving shade in a very short time. Very easy to transplant and does well on any kind of soil. Desirable for roadside planting, in parks, and along rivers and streams for the protection of the banks. Used extensively for screens to hide unattractive buildings. Attains a height of 60 feet at maturity. Bright, heart-shaped, glossy green leaves, silvery white underneath. Prices: 6 to 8 feet, 50c each; 10 for \$4.00. 8 to 10 feet, 75c each; 10 for \$6.00.



JAPANESE FLOWERING CHERRY

**Poplar, Lombardy** A tall, narrow, tapering tree, 60 feet high at maturity, a striking feature in any landscape. Fine for planting in groups, along driveways, or to make boundary lines. Good for tall screen hedges. Prices: 5 to 6 feet, 60c each; 10 for \$5.00. 6 to 8 feet, 85c each; 10 for \$7.50. 8 to 10 feet, \$1.25 each; 10 for \$10.00.

**Plum, Double Flowered (Prunus Triloba)** A handsome, small lawn tree, with a mass of very double, pink blossoms early in the spring before the leaves appear. Grows 10 to 12 feet high. Prices: 2 to 3 feet, \$1.00 each; 3 to 4 feet, \$1.25 each.

**Plum, Purple-Leaved (Prunus Pissardi)** A handsome, showy little tree, 20 feet in height, with striking, pinkish-purple leaves in the spring that deepen in color as the season advances. Small, white, single flowers. Very striking and ornamental for lawn planting. Prices: 3 to 4 feet, 75c each; 4 to 5 feet, \$1.00 each.

**Thorn, Double White (Hawthorn)** The famous May Thorn of England. Low, dense, little tree about 20 feet in height. A mass of clustered, double, rose-shaped, white flowers in May, followed by a display of showy, scarlet fruits which remain a long time. Makes a pleasing flowering hedge. Price: 3 to 4 feet, \$2.25 each.

**Thorn, Paul's Scarlet (Hawthorn)** Similar to White Flowering Thorn except that the flowers are a deep crimson scarlet. Grows 10 to 12 feet high. Price: 3 to 4 feet, \$2.25 each.

**Willow, Babylon Weeping** Our well-known weeping willow. A large, graceful tree, especially effective when planted near water. Grows 30 to 60 feet high. Prices: 5 to 6 feet, \$1.00 each; 6 to 8 feet, \$1.25 each.

**Willow, Golden (Tree Form)** A very showy, yellow-barked tree, reaching a height of 60 feet at maturity. A handsome tree at all seasons, but particularly conspicuous in winter and early spring before the leaves appear. Prices: 5 to 6 feet, 60c each; 6 to 8 feet, 75c each.

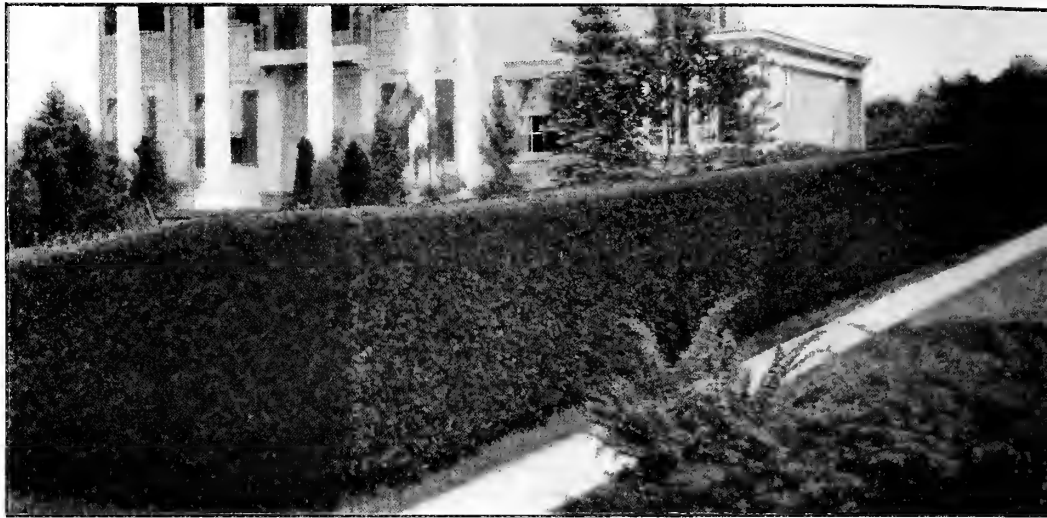
**Willow, Golden (Bush Form)** 4 to 5 feet, 50c each.

*Our Ornamental Trees Cannot Be Sent by Parcel Post.*

# HEDGES

Beautiful as they Serve

**H**EDGES fulfill a universal demand for artistic borders for the home grounds. They afford better protection than unsightly fences. A border formed by hedge plants will grow more beautiful each year, while common fences deteriorate. There are varieties to meet your particular fancy. For a formal or defensive hedge, particularly where a definite outline is desired, we recommend California and Ibolium Privets, American Arbor Vitae and Japanese Dwarf Barberry. Flowering shrubs make beautiful hedges or borders, particularly Van Houttei Spiraea, Hydrangea, Snowberry, Altheas and Bush Honeysuckles.



A HEDGE OF CALIFORNIA PRIVET—Best for Formal Effect

## Privets—Ligustrum

**California Privet (Ligustrum ovalifolium)** An almost evergreen shrub of dense, shapely habit, with shining, dark green foliage and a few minute flowers in June. Universally popular as a hedge plant because it stands trimming well and can be kept at any height or in any shape desired. The most desirable shrub for a hedge 3 to 5 feet high. Usually planted in single rows 10 inches apart, but where a broad hedge is desired, can be set in double rows, the rows 1 foot apart with the bushes 1 foot apart in each row, but alternated or staggered so as to come 6 inches apart in the hedge. Untrimmed, California Privet grows upright to 8 to 12 feet and makes a very fine windbreak for the vegetable garden. Excellent for planting alone as single specimens. Not remarkably hardy in extreme Northern states.

	PRICES	
	10	100
3 to 4 feet .....	\$2.00	\$8.00
2 to 3 feet .....	1.60	6.00
1½ to 2 feet .....	1.00	5.00

Parcel Post Size—18 to 24 inches, \$1.20 per 10, postpaid.

**Ibolium Privet (Ligustrum ibolium)** A remarkably sturdy and cold-resistant variety of privet, very similar in foliage and appearance to the well-known California Privet. We recommend this variety very highly for climates too cold for the California variety.

	PRICES IBOLIUM PRIVET	
	10	100
2 to 3 feet .....	\$2.50	\$16.00
1½ to 2 feet .....	2.00	12.00

Parcel Post Size—18 to 24 inches, \$2.75 per 10, postpaid.

## Barberry—Berberis

**Japanese Dwarf Barberry (Berberis Thunbergi)** A very attractive dwarf shrub, barely 3 feet high under the best conditions. Dense in growth, yet graceful on account of its drooping branches. Its yellow flowers are borne on long stems followed by scarlet berries in great profusion, clinging through most of the winter. The leaves color to scarlet and gold in the autumn. Very desirable for planting as single specimens and used extensively in foundation plantings, or in borders planted in front of taller-growing shrubs. Very desirable for planting in corners where sidewalks meet. For a hedge not over 2 to 3 feet high, this makes a very desirable shrub. Very hardy. As a hedge, set bushes 2 feet apart.

### PRICES JAPANESE DWARF BARBERRY

	Each	10	100
2 to 3 feet .....	\$0.40	\$3.00	\$22.00
1½ to 2 feet .....	.30	2.50	18.00
1 to 1½ feet .....	.25	2.00	15.00

Parcel Post Size—12 to 18 inches, 30c each; \$2.50 per 10, postpaid.

Rates—Less than ten at each rates. Ten to fifty at ten rates. Fifty or more at hundred rates.

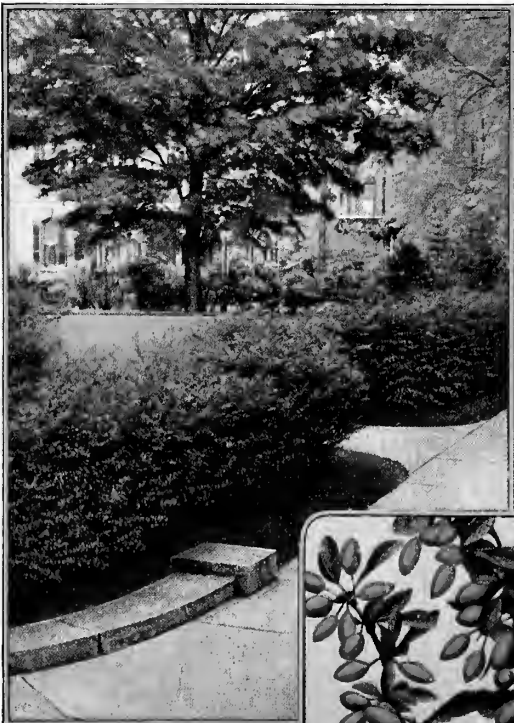
## Windbreaks

For protection against strong winds at all times of the year, particularly during the winter, nature has given trees for this use. The most effective are the Norway Spruce and American Arbor Vitae, descriptions of which are on page 13. Lombardy Poplars and California Privet are also very effective.

### PROPER SPACING FOR WINDBREAKS

Norway Spruce .....	5 to 10 feet apart
American Arbor Vitae .....	3 to 5 feet apart
Lombardy Poplar .....	5 to 10 feet apart
California Privet .....	1 to 3 feet apart

For quick results we recommend planting at the closest distance indicated above.



JAPANESE DWARF BARBERRY HEDGE

An Attractive Hedge Is Useful as Well as Ornamental





**EVERGREENS ADD DIGNITY TO THE HOME GROUNDS**

A Planting of Evergreens in Winter or Summer is Always Pleasing, Adding That Cozy Cheerfulness to the Home.

# EVERGREENS

**T**RULY the aristocrats of freedom, lending year around beauty to your home surroundings. Their varied shades of green, blue and silver make possible the most attractive combination of colors. Planted about the foundation of a home they give dignity, coziness and warmth not attained by any other class of trees or shrubs. Their attractiveness is unsurpassed during any season of the year. Selection of varieties is made easy by our complete descriptions. Our Landscape Department will gladly furnish complete and individual plans for their planting. This service is described on page 15.

## Arborvitae (Thuja)

**American Arborvitae (T. occidentalis)** A beautiful, pyramidal-shaped tree, with deep green, feathery and spray-like foliage. Used extensively for foundation plantings. It should be planted at the corners of the home in groups of twos or threes, or at the entrance as single specimens. We also recommend it very highly for hedges or windbreaks, as described on page 12. Can be kept to any desired height if annually trimmed in late August. We advise trimming, as this thickens its foliage. Allow 3 foot spread. Prices: 1½ to 2 feet, \$1.50 each; \$12.50 per 10. 2 to 3 feet, \$2.00 each; \$17.50 per 10. 3 to 4 feet, \$2.75 each; \$25.00 per 10. Prices on larger quantities given on request.

**Tom Thumb Arborvitae (T. Ellwangeriana)** Another true dwarf variety, with feathery foliage of light green color. Very desirable for foundation plantings. Should be planted in the foreground, affording fine contrast when grouped with Globe Arborvitae. Full at base, tapering to a point. Grows 2 to 3 feet high. Allow for 2½ foot spread. Specimens, 12 to 15 inches, \$2.50 each.

**Globe Arborvitae (T. globosa)** The foliage of this variety is identical with that of the American Arborvitae, but radically different in its habit of growth. This is a truly dwarf-growing type, rarely over 2 to 3 feet high, forming an almost perfect ball shape. Fine for planting in front of taller growing evergreens, also under windows, and unexcelled for tubs. Allow for 2½ to 3 foot spread. Specimens, 15 to 18 inches, \$2.50 each.

**Pyramidal Arborvitae (T. pyramidalis)** An extremely compact, pyramidal-shaped variety, very similar in character to the American Arborvitae. Its foliage, however, is much thicker and of a darker green color. We recommend it for foundation planting in preference to American Arborvitae, particularly when used about the entrance, due to its narrow and compact manner of growth. It retains its fine dark color throughout the winter months and can also be kept to any desired height by annual trimming. Allow 2½ foot spread. Specimens, 2 to 3 feet, \$4.00 each; 3 to 4 feet, \$5.00 each.



MUGHÓ PINE

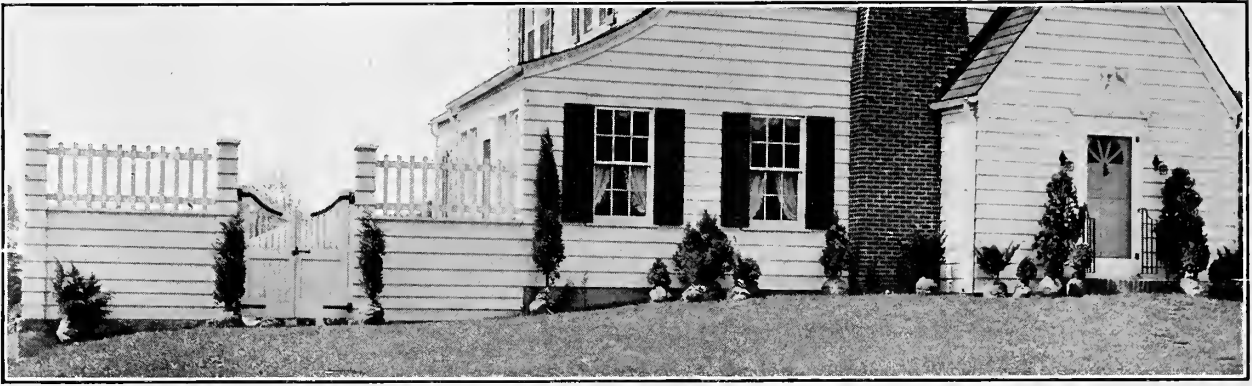


PYRAMIDAL ARBORVITAE



GLOBE ARBORVITAE

All Our Evergreens Sent Balled and Burlapped. No Additional Charge



# EVERGREENS

**Siberian Arborvitae (T. Wareana)** A semi-dwarf evergreen, broad, globe-shaped base, abruptly tapering to a blunt point. The foliage is dark green, heavy and deeply crested. A slow grower, ultimately reaching a height of 5 to 6 feet. Good for foundation planting, centering in front of the pyramidal type on corners. Allow for 3 to 3½ foot spread. Specimens, 15 to 18 inches, \$2.00 each; 1½ to 2 feet, \$3.00 each.

## Junipers (Juniperus)

**Colorado Juniper (J. scopulorum)** A very compact, pyramidal-shaped variety, with lacy foliage of bluish cast. Very striking when grouped with other pyramidal type trees in foundation plantings. Very hardy. Allow for 2 foot spread. Specimens, 1½ to 2 feet, \$3.00 each; 2 to 3 feet, \$4.00 each; 3 to 4 feet, \$5.00 each.

**Pfitzer's Juniper (J. Chinensis pfitzeriana)** A low, spreading type, with lacy foliage of blue-green color. The branches grow horizontally from the stem, forming a flat, spreading top. Very hardy and should be included in every foundation planting in front of taller varieties and under windows. Allow for 3 foot spread. Specimens, 12 to 15 inch spread, \$3.00 each; 18 to 24 inch spread, \$4.00 each.

**Red Cedar (J. virginiana)** A very hardy, pyramidal-shaped variety, with light green foliage, which becomes darker as the season advances, tips having pinkish tinge during winter. A rapid grower and used extensively for foundation planting. Allow 2½ foot spread. Specimens, 2 to 3 feet, \$3.00 each.

**Silver Red Cedar (J. V. glauca)** The entire young growths have an almost silvery whiteness, which changes to a beautiful bluish green as the season progresses. One of the best varieties for foundation planting, affording wonderful contrast. Pyramidal type. Allow 2½ foot spread. Specimens, 18 to 24 inches, \$3.00 each; 2 to 3 feet, \$4.00 each.

**Tamarix-Leaved Juniper (J. Sabina tamariscifolia)** An excellent creeping, dwarf variety, with fine foliage of bluish or grey-green color. A strong grower, forming a compact and perfect mat about a foot in height and spreading to 6 or 8 feet if not trimmed. Fine for specimens or grouping on banks where grass does not do well. Specimens, 2½ to 3 feet, \$8.00 each.

## Pines (Pinus)

**Austrian Pine (P. nigra)** Another fine evergreen of the Christmas tree type, spreading at the base when fully grown to 12 feet or more, and tapers to a rounded point. Its branches are made up of many smaller ones, 4 or 5 inches long, and covered with long needles of fine, dark green color. Excellent for single or group plantings about your grounds. Very hardy. Specimens, 2 to 3 feet, \$4.00 each; 3 to 4 feet, \$5.00 each.

**Mugho Pine (P. Montana mughus)** A dwarf, globe-shaped evergreen, with dark green foliage. Each spring when the new growth starts it is covered with little shoots resembling hundreds of little candles. Its growth is dense and low, making it one of the best varieties for planting under windows, also in front of taller types, never growing over 4 to 5 feet, and can be kept lower by trimming. Highly advised. Allow 3 to 4 foot spread. Specimens, 12 to 18 inch spread, \$4.00 each; 18 to 24 inch spread, \$5.00 each.

## Spruce (Picea)

**Black Hill Spruce (P. canadensis albertirana)** A beautiful tree, very symmetrical, compact and bushy. Foliage fine needles, varying in color from a rich, deep green to a delicate bluish cast. Best adapted to group or specimen plantings, but due to compact nature is sometimes used in foundation plantings. Will eventually spread about 10 feet, tapering into a point 30 feet high, but can be kept within desired bounds by trimming. Specimens, 18 to 24 inches, \$3.00 each; 2 to 3 feet, \$4.00 each.

**Colorado Blue Spruce (P. pungens glauca)** Unquestionably the most beautiful of all evergreens, beyond words of description. Its foliage of rich, glistening blue, its stately and symmetrical growth are admired by all. You will be justly proud of having one or more of these beautiful trees on your grounds. Unexcelled for specimen plantings, which will add distinction to your home. Specimens, 18 to 24 inches, \$7.50 each; 2 to 3 feet, \$10.00 each.

**Colorado Green Spruce (P. pungens glauca)** Having the same fine characteristics of the Blue Spruce except color. When seeds of the Colorado Blue are planted in the nursery, only 25 per cent become blue, the balance are green, with only a slight bluish cast and cannot be classed as true blues. They are exceedingly attractive. Specimens, 18 to 24 inches, \$3.00 each; 2 to 3 feet, \$4.00 each; 3 to 4 feet, \$5.00 each.

**Norway Spruce (P. excelsa)** The time-honored Christmas tree, universally used for this purpose. Its foliage varies from fine shades of rich, dark green color to very light green. Planted more extensively than any other evergreen. Its popularity for planting in tubs for decorating public and private entrances is fast growing. Also used for window boxes and group plantings. Used for windbreaks and hedges more extensively than any evergreen because it is a fast grower, very hardy and gives the most complete protection. (Windbreaks on page 12). Highly recommended.

### PRICES

	Each	10
4 to 5 feet .....	\$5.00	\$40.00
3 to 4 feet .....	3.25	30.00
2 to 3 feet .....	2.00	18.00
1½ to 2 feet .....	1.50	12.00

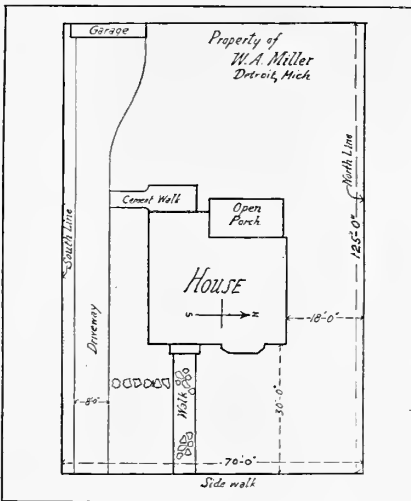
Prices on larger lots quoted on request.

You Can Save Money by Ordering Early. See Page Three.

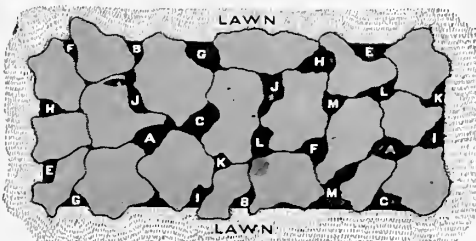
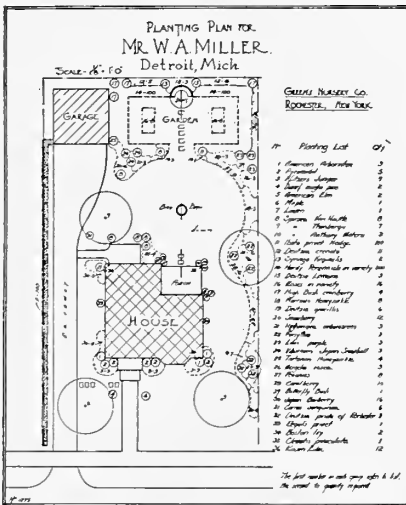
# Green's Landscape Service

Offers you the services of men with thorough knowledge of plant life and landscape design

Customer's Layout on Sketch Blank



Finished Plan Returned to Customer



The above plan can be made any shape desired; the gray parts represent the rocks, the black spaces the pockets in which the plants are placed. The letters correspond with those in the first column of the collection and show just where to place each plant. After selecting the location, dig out the earth to a depth of about 12 inches, fill excavation half full of gravel, small stones or cinders to assure proper drainage. Then place the large stones to form the pockets shown in the sketch along the outer edge first; fill the pockets with the good top soil previously removed. If you desire a raised center, simply pile the gravel or cinders a little higher. Pockets should go straight down to gravel base, giving ample room for the plants' roots. A covering of earth should be placed over the base before the large stones are placed. Any kind of stones can be used, provided they vary in size, shape and color.

## Entrust Your Planting Problems to Us

OUR architects will furnish complete and individual planting plans for beautifying your home grounds. The correctly landscaped home receives the admiration of all. You are proud of your home and should be equally proud of your grounds, whether large or small. Why not have them made beautiful with growing things? It is just as important to have a small planting done right as that of a large estate. For best results, it is advisable to plan the entire layout at one time. However, the actual planting can be done gradually, from year to year, until completed. We furnish plans for small plantings of twenty dollars to that of large estates amounting to hundreds.

## Green's Method Makes It Easy

Send today for special sketch blank that makes it so easy for you to furnish a rough layout of your house and grounds. It is so simple that a child could fill it in. From this our architects will make your planting plan, showing you exactly where to plant each tree or shrub recommended. With your shipment comes our little "How to Plant" booklet, which shows you just how to plant them.

## Only a Small Charge for Plans

We make the small charge of five dollars for planting plans. If, however, your order amounts to fifty dollars or more, you will be allowed full credit for this on your order if purchased within two years.

## Send for Plan Early

As we prepare so many of these plans for our customers, we are obliged to handle them in the order they are received. It will, therefore, be to your advantage to send yours early, so you may also take full advantage of our cash discounts for early orders.

## A Rock Garden Will Give Charm and Distinction to Your Home Surroundings

The beauty and individuality of the rock garden is no longer the dream of garden lovers. Ten years ago there were very few rock gardens, but today they are springing up all over the country. No longer are these gardens found only in parks and on large estates, but in the yards of small city lots as well. There is more interest and enjoyment in rock gardening than any other type, and women are making them their personal part of the home landscape.

## Small Rock Garden Book Tells How

A very interesting and complete book, telling all about rock gardens and how easy they are to make. It is written by F. F. Rockwell, and tells you in simple words just how to go about it yourself for greatest beauty and enjoyment. This will be sent you postpaid, for \$1.00, and is worth many times its cost.

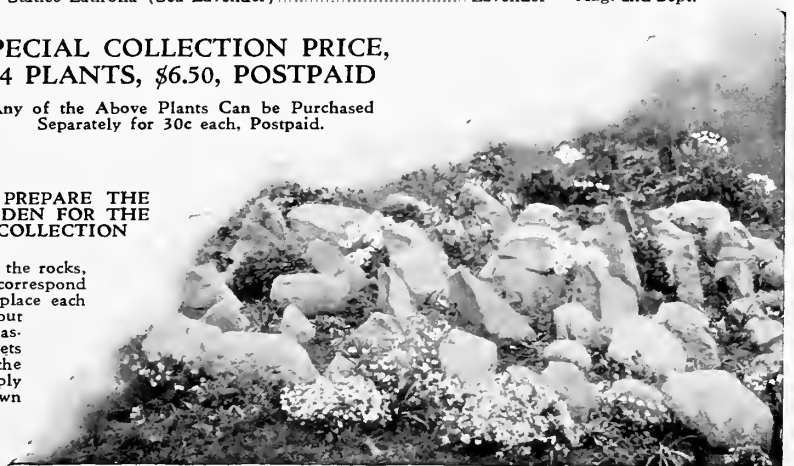
### GREEN'S SPECIAL ROCK GARDEN COLLECTION

Key	No.	Variety	Color	Bloom
A	2	Alyssum Saxatile (Basket of Gold)	Yellow	April and May
B	2	Armeria Maritima (Common Thrift)	Pink	June
C	2	Heuchera Sanguinea (Coral Bells)	Coral	June and July
D	2	Iberis Sempervirens (Hardy Candytuft)	White	June
E	2	Lychnis Viscaria Splendens (Ragged Robin)	Rose	June and July
F	2	Phlox Subulata (Moss Pink)	Pink	April and May
G	2	Primula Veris Superba (Hardy English Primrose)	Yellow	April and May
H	2	Physostegia Vivid (False Dragonhead)	Deep Pink	Oct. and Nov.
I	2	Saponaria Ocymoides (Soapwort)	Pink	June and July
J	2	Sedum Acre (Stone Crop)	Yellow	June and July
K	2	Sedum Sieboldii (Stone Crop)	White	June and July
L	2	Statice Latifolia (Sea Lavender)	Lavender	Aug. and Sept.

## SPECIAL COLLECTION PRICE, 24 PLANTS, \$6.50, POSTPAID

Any of the Above Plants Can be Purchased Separately for 30c each, Postpaid.

### HOW TO PREPARE THE ROCK GARDEN FOR THE ABOVE COLLECTION



It Isn't a Home Until It's Planted.

# Roses

## A Selection of the Best And Most Popular Varieties in America

The Everblooming or Hybrid Tea Roses, commonly called Monthly Roses, are the most popular for the garden because of their long blooming season, beginning in June and continuing until frost. Hardy in the United States with winter protection, which is simply earth hilled 8 to 12 inches high around the bushes. Plant Hybrid Tea Roses 1½ to 2 feet apart.

### Everblooming Roses—Hybrid Teas

Prices of Hybrid Tea Roses, all varieties except Souvenir de Claudius Pernet: Strong, two-year-old bushes, 85c each; 10 for \$7.50. By Parcel Post, postpaid, for 5c per bush extra.

**Columbia** One of Ophelia's daughters or sports, full petaled, rose pink buds, deepening as the blossom opens, held erect on long, sturdy stems. Very vigorous, intensely fragrant and an excellent keeper, lasting 3 or 4 days as a cut flower. See illustration on back cover.

**Duchess of Wellington** Large, well-formed, semi-double, saffron-yellow buds, opening well. The most dependable yellow rose, fragrant, absolutely to be depended upon to produce flowers all during the season. See illustration on back cover.

**Edward Mawley** A perfectly formed rose of deep, blackish-crimson. Strong grower, fragrant and free of bloom.

**Gruss an Teplitz** Dark, rich crimson, the freest of bloomers and one of the favorites among the reds. Strong, tall canes, with a continuous succession of bloom, a heavy grower that does well in the herbaceous border. See illustration on back cover.



PAUL NEYRON

### Kaiserin Augusta Victoria

Well-formed, creamy buds which develop into perfectly formed, ivory-white blooms. Free blooming and hardy. See illustration on back cover.

**Los Angeles** A luminous flame-pink, overlaid with translucent golden yellow deep at the base. A long-pointed bud opening to a most perfect flower of indescribable beauty, with full, reflexed petals. See illustration on back cover.

**Luxemburg** Long, pointed buds on stiff stems, opening up to large, deep yellow, fragrant blooms. Very attractive. Excellent for cutting.

**Madam Butterfly** A strong grower, producing a profusion of large flowers. Color a blending of bright pink, apricot and gold. See illustration on back cover.

**Mrs. Aaron Ward** Very double, pointed buds of deep Indian yellow, vigorous and compact in growth. See illustration on back cover.

**Mme. Edouard Herriot** Sparkling buds of coral-red and orange, opening to large, semi-double flowers of brilliant orange-red and salmon. A free bloomer and one of the most brilliant roses grown. See illustration on back cover.

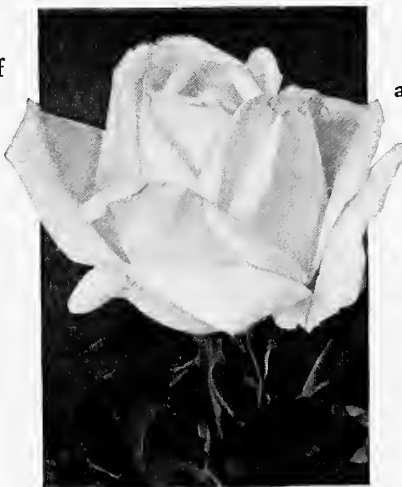
**Ophelia** Delicate salmon flesh, shaded with rose. A variety that has made such an enviable record that it heads the list of garden roses. Long, pointed buds on stiff stems. Free blooming, with beautiful foliage. See illustration on back cover.

**Radiance (Pink)** This rose stands high among amateur growers because of its vigorous growth, hardiness and continuous production of lovely, light silver-pink flowers, with a deeper pink on the reverse side of the petal. See illustration on back cover.

**Red Radiance** As good as its parent, Radiance, in habit of blossom and growth. Lovely, deep red, with an intense fragrance. See illustration on back cover.

**Souvenir de Claudius Pernet** Unlike most yellow roses, the color of this excellent new variety does not fade as the buds open up and the petals become exposed to the sun. Long, pointed buds, opening up to large, full, sunflower-yellow blooms. Bushes vigorous and erect. See illustration on back cover. 95c each; 10 for \$8.50.

The Collection of the twelve best and the most popular Roses in America is offered on the outside back cover of this Catalog.



FRAU KARL DRUSCHKI

Our Roses are all strong, two year old, field grown bushes. Ready to bloom the first season planted.



MAGNA CHARTA

Rates: Less than Ten at Each Rates; Ten or More, at Ten Rates.

# ROSES

## Hardy Climbing Roses

The Climbers or Ramblers not only afford a burst of bloom upon trellises, over fences and hedges, against the porch or the home, but having attractive foliage they are an object of beauty and ornament even when not in bloom.

**Prices of Hardy Climbing Roses: Strong, two-year-old bushes, 60c each; 10 for \$5.00.**

**Climbing American Beauty** One of the best climbing roses. Healthy, vigorous growth, making 10-foot shoots. A lovely, deep, rich, rose-pink bloom of splendid form on a long stem.

**Crimson Rambler** Unusually vigorous. Produces a great profusion of medium size, double red blossoms.

**Dorothy Perkins** Full, double, shell-pink flowers in large clusters, very attractive.

**Dr. Van Fleet** Lightest shell pink to silver flesh. Double. See illustration on front cover.

**Excelsa (Red Dorothy Perkins)** Very double, crimson, produced in large clusters.

**Hiawatha** Single crimson flowers, with white base.

**Paul's Scarlet Climber** The brilliant, vivid scarlet which this rose maintains until the petals fall puts it in a class by itself. Good-sized flowers, freely produced in clusters of from 3 to 20, literally cover the plant with bloom. Strong and perfectly hardy. See illustration.

**Silver Moon** A beautiful, semi-double, pure white rose, four inches in diameter, with a cluster of prominent yellow stamens in the center which greatly adds to its attractiveness.

**Tausendschon (Thousand Beauties)** Varies in color. A beautiful combination of colors, including several shades of pink. Semi-double.

**Veilchenblau (Blue Rambler)** Double flowers of light lilac, fading to light purple and blue.

**White Dorothy** A duplicate of Dorothy Perkins except in color.

**Yellow Rambler** Yellow buds, which fade to creamy white as the flower opens. Strong and hardy.



CRIMSON  
BABY RAMBLER

## Hybrid Perpetual Roses

Hybrid Perpetual Roses bloom tremendously in June and sometimes sparingly until autumn. Plant 2 to 2½ feet apart.

**Prices of Hybrid Perpetual Roses: Strong, two-year-old bushes, 80c each; 10 for \$7.00.**

**Frau Karl Druschki (Snow Queen)** An ideal, hardy, pure snow-white rose. Perfect in flower, strong in growth and very free-flowering.

**General Jacqueminot** An old favorite and one of the best known of all roses. Brilliant scarlet crimson.

**Madam Plantier** Large, white, double flowers, wonderful fragrance, produced in abundance early in the season.

**Magna Charta** Large flowers of rose carmine, very fragrant and free, on strong plants.

**Paul Neyron** Probably the largest rose in existence, fragrant, cream pink blossoms on long stems.

## Miscellaneous Roses

**Strong, two-year-old bushes, 85c each; 10 for \$7.50.**

**Pink Moss** Fragrant, rosy pink buds, crested with rich green moss.

**Red Moss** Large, red flowers of great beauty, heavily mossed with a deep green.

**White Moss** Pure white flowers of medium size, full, free and vigorous.

**Crimson Baby Rambler** A dwarf, shapely little bush, 15 to 18 inches high, entirely covered with clusters of crimson flowers resembling those of the climbing Crimson Rambler. They do equally well indoors, and can be dug up and potted in the fall and kept in bloom all winter. Plant 1½ to 2 feet apart.



PAUL'S SCARLET CLIMBER

# PERENNIALS



**P**ERENNIALS bloom gaily year after year, prospering with little or no attention. With a judicious selection of varieties, you can have a constant supply of flowers for table and house decoration. They can be planted almost anywhere—in beds or borders by themselves; as a foreground for shrubbery plantings; in rockeries; and, of course, are indispensable in the formal garden. To be most effective, several plants of one variety should be massed together.

Prices of all Perennials—unless otherwise noted—Strong Field Grown Plants.  
30 cents each, \$2.50 per 10, postpaid.



DELPHINIUMS—The New Watkins and Simpson's Hybrids

## *Anchusa Dropmore* (Alkanet)

Tall spikes of gentian-blue flowers from June to September. Grows 4 to 5 feet.

## *Baby's Breath* (Gypsophila)

Masses of minute, delicate, pure white flowers in June and July. Its beautiful, gauze-like appearance makes it almost indispensable for use in bouquets of other old-fashioned flowers. Grows 2 to 3 feet high.

## *Blanket Flower* (Gaillardia)

The most satisfactory bedding or border perennial in existence. The gay yellow and orange blossoms, often 5 inches in diameter, are produced in perpetual profusion from June until November. The plants thrive under most any conditions. Our NEW DAZZLER strain was obtained direct from the originator, and in our gardens stands out as the supreme variety of Gaillardia. Grows 12 to 18 inches high. See illustration.

## *Blazing Star* (Liatris)

Long, narrow spikes, 4 to 5 feet tall, of rich purple flowers in July and August. Attract a great deal of attention on account of their unusual appearance. A peculiarity of this plant is its great attraction for butterflies.

## *Bleeding Heart* (Dicentra Spectabilis)

Heart-shaped, pink flowers in long, drooping racemes from April to June. Grows 2 to 3 feet. Strong, field-grown plants, 75c each; \$7.00 per 10.

## *Canterbury Bell* (*Campanula Medium*)

Bell-shaped flowers of various colors in June and July. Fine for cutting. Grows 2 to 3 feet high and thrives in almost any soil. We offer three colors: WHITE, ROSE, BLUE. Order by color. see illustration.



A rockery will add charm and beauty to your garden.  
Page 15 tells you how to plan and plant it.

We Ship Perennials Separately by Parcel Post. Prices Are Postpaid.

# PERENNIALS

## *Delphiniums (Hardy Larkspur)*

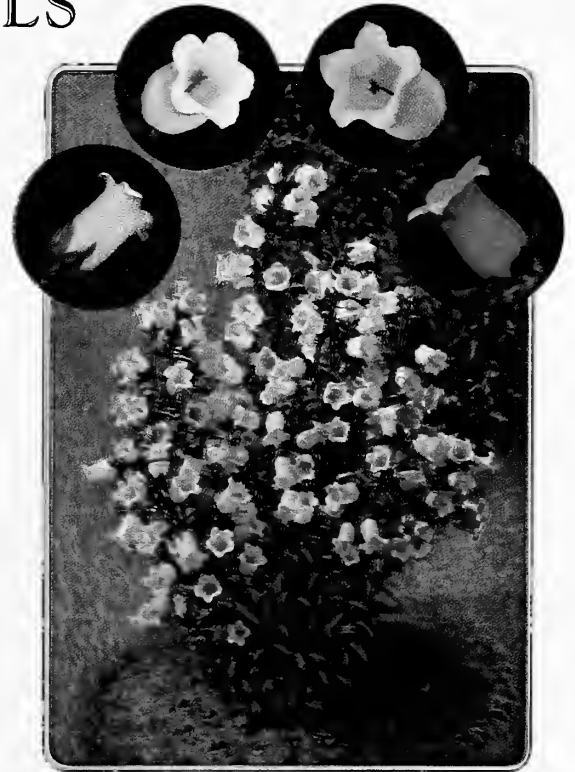
Delphiniums are without question the most beautiful hardy plants in cultivation. Their long, showy spikes of various colored flowers are in bloom from June until frost, and furnish an unlimited supply of cut flowers.

### Watkins and Simpson's Covent Garden Hybrid Delphiniums

This wonderful new English strain was received direct from the originators—Watkins and Simpson, Covent Garden, London, England. It is the best and finest strain to be secured anywhere. Its range of colors vary from the palest shades of blue to the deepest indigo blue and royal purple, with many intermediate tones of mauve, pink and lavender. Among these new hybrids are flowers of huge size, running mostly to double and semi-double flowers. See illustration. Grows 4 to 5 feet high. Strong, field-grown plants, 50c each; \$4.50 per 10, postpaid.

Belladonna Delphinium Magnificent, large spikes of the most delicate turquoise-blue. Excellent for cutting, as they combine well with other flowers. Produce as many as three crops during a season, June to October. Grow 4 to 5 feet high. Strong, field-grown plants, 30c each; \$2.50 per 10, postpaid.

Bellamosum Delphinium A very dark blue variety, excellent for planting in contrast with the lighter blue shade of the Belladonna. Strong, field-grown plants, 30c each; \$2.50 per 10, postpaid.



CANTERBURY BELLS (Campanula)

## *Carnations, Hardy Double*

We offer a selected strain in mixed colors which will furnish an abundance of cut flowers during June and July. Grows 1 foot high.

## *Chrysanthemums, Hardy Garden*

A perfect mass of flowers in October and November after all other outdoor flowers are gone. Often in bloom when the snow is on the ground. Grows 3 to 4 feet high. We offer four colors: PINK, RED, WHITE AND YELLOW. Order by color.

## *Columbine (Aquilegia)*

The daintiest of our outdoor grown flowers. Blooms over a long period, from May to June. Fine for borders, rockeries and as cut flowers. Grows 2 to 3 feet high. The strain we offer, known as MRS. SCOTT ELLIOTT'S LONG SPURRED HYBRIDS, is considered the best mixture grown in the world. This strain has taken the highest awards at all European Exhibitions. A mixture of beautiful new shades of blue, white, yellow, pink and rose.

## *Coreopsis (Tickseed)*

A profusion of golden yellow flowers on long, graceful stems from early June until frost. Excellent for cutting. Grows 2 feet high. See illustration.

## *Day Lilies (Hemerocallis)*

Yellow Day Lily Large, clear, amber-yellow, lily-like flowers in June and July. Fragrant. Thrives best in moist soils and shady places. Grows 3 feet high.

Orange Day Lily Same as Yellow Day Lily except flowers are a beautiful orange color.

## *Foxglove (Digitalis)*

The new GIANT SHIRLEY strain which we offer is considered the finest of all. The tall, stately spikes of big, bell-shaped flowers are of extraordinary size and vigor, growing 5 to 6 feet tall. A mixture of colors ranging from white and shell pink to deepest rose, many attractively dotted with crimson or chocolate.



COREOPSIS (Tickseed)

Prices: Unless Otherwise Noted, 30 Cents Each; \$2.50 per 10, Postpaid.

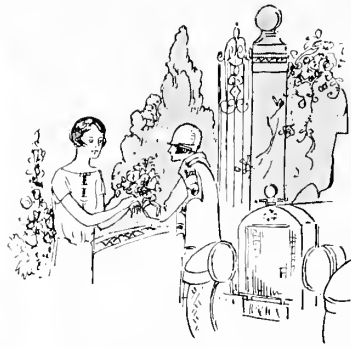
All perennials sold by us are strong, selected, field-grown plants. We guarantee arrival in perfect condition. To insure safe delivery, all perennials will be shipped separately by parcel post. Prices quoted include postage.



PAINTED DAISY (Pyrethrum)

### Painted Daisy (Pyrethrum)

Hybrid Single. A profusion of chrysanthemum-shaped flowers from June through September. A mixture of colors of various shades, including white, pink, rose and darkest crimson. Their long stems and lasting qualities make them exceedingly valuable for cut flowers. Grows 2 to 3 feet high.



# PERENNIALS -

We offer a list of the best selected v  
plant. We guarantee arrival in perfe  
30 cen

### German Iris (Flags)

Orchid-like, delicate flowers in many exquisite shades on spikes 2 to 3 feet high in May and June. Should be in every perennial garden and rockery. Planted in front of shrubs their exquisite colors add warmth and tone to the border or foundation planting. A border of Iris along the path or walk is a beautiful sight to behold. For best effects, plant in groups, a half a dozen of each color to a group. We offer a magnificent range of colors. Order by color.

WHITE	LAVENDER-ROSE	ORCHID COLOR
ROSE-PINK	LIGHT BLUE	YELLOW MAHOGANY
LIGHT VIOLET	CLEAR BLUE	WHITE WITH BLUE EDGE
PURPLE		

### Hollyhocks (Althea Rosea)

Stately, majestic spikes, 6 to 8 feet high, of peony-like flowers in July and August. Planted in groups as a background to the perennial garden or interspersed with shrubbery on the lawn, the bold, striking colors of the blooms produce an effect not double with any other plant or shrub. We offer the following colors:

DOUBLE ROSE	DOUBLE WHITE	DOUBLE NEWPORT-PINK
DOUBLE RED	DOUBLE SALMON	DOUBLE YELLOW

Prices of all above colors, strong, field-grown plants, 30c each; \$2.50 per 10, postpaid.

## A Bargain in Mixed Hollyhocks

For group planting where individual colors are not required, we offer a special mixture comprising all the above colors. Special Price, Strong, Field-grown Plants,

\$2.00 per 10, \$4.00 per 25, postpaid.

### Lupines

Beautiful, showy spikes of pea-shaped flowers from June to August. Grows 3 to 4 feet high. We offer a mixture of colors including clear blue, white and rose.

### Mallow Marvels (Hibiscus)

New Giant-Flowered Marshmallow (Hibiscus). A new, wonderfully improved type, with enormous flowers, frequently 10 or 12 inches in diameter, on dignified spikes 5 to 6 feet tall, from July until late September. Indispensable for large groups and mixed borders. Flowers resemble single Hollyhocks in shape and are exceedingly vivid in color. We offer three distinct colors: WHITE, ROSE and BLUE.

### Monarda (Beebalm)

Cambridge scarlet. Stout, leafy stems, 3 feet high, with heads of brilliant scarlet flowers from June to August.

### Moss Pink (Phlox Subulata)

An early spring flower, with moss-like, evergreen foliage. A mass of rose-pink bloom in April and May. An excellent plant for the rockery and perennial border. Invaluable for carpeting the ground or covering graves. Grows 3 to 6 inches high.

### Oriental Poppy (Papaver Orientale)

Tremendous, cup-shaped blooms of brightest crimson-scarlet, with large, purplish-black blotches at base of petals from May to July. Grows 2 to 3 feet high.

### Red Hot Poker (Tritoma Pfitzeri)

Unique-shaped flower heads of orange-scarlet on spikes 3 to 4 feet high from August to October. A free and continuous bloomer. Should be given winter protection. See illustration.

### Shasta Daisy (Chrysanthemum Maximum)

The ALASKA variety which we offer is a vast improvement over the well-known, old-fashioned Shasta Daisy. Its handsome, large, glistening white blossoms appear in early June and last through July. Grows 2 feet high.

Prices: Unless Otherwise Noted, 30 Cents Each; \$2.50 per 10, Postpaid.



BLANKET FLOWER (Gaillardia)



varieties. Every plant we ship is an extra strong field grown  
 ect condition. Prices of all Perennials, unless otherwise noted,  
 ts each, \$2.50 per 10, postpaid.

### Sweet William (Dianthus Barbatus)

Great masses of extremely rich-colored flowers in May and June. Grows 2 feet  
 high. We offer the following varieties:

- NEWPORT PINK SWEET WILLIAM—Salmon rose-pink.
- SCARLET BEAUTY SWEET WILLIAM—Rich, deep scarlet.
- MIXED COLORS—A mixture of red, white and rose.

### Yucca (Adam's Needle)

Yucca (Filamentosa) Of tropical appearance. Its broad, sword-like, ever-  
 green foliage, and immense, branching spikes of  
 drooping, creamy-white flowers rising to a height of 5 feet.

Variiegated Leaved Yucca Same as ordinary Yucca except that its bayonet-  
 shaped leaves have a dark bronze green center  
 stripe, with an outer edge of yellow on each side.

Strong, 2-year Plants, 75c each; \$7.00 per 10.

## Peonies

### Green's Selected Varieties

**P**AEONIES, the most popular of all perennials, are well adapted  
 for massing in beds, and particularly valuable for planting in  
 groups throughout the Perennial and Shrub border. The bloom-  
 ing period extends from the middle of May through June. Most va-  
 rieties grow 2 to 3 feet high.

Prices—unless otherwise noted—Strong Roots, 3 to 5 eyes, 60c each;  
 \$5.00 per 10, postpaid.

DUCHESS DE NEMOURS—Early. Outer petals pure white, center lemon-  
 yellow. Fragrant.

DUCHESS DE ORLEANS—Outer petals pink, center cream color. Fragrant.  
 Free bloomer. Mid-season.

EDULIS SUPERBA—Clear pink. Very fragrant. One of the earliest to bloom.  
 75c each; \$7.00 per 10.

FELIX CROUSSE—Very brilliant red. Large. Fragrant. Mid-season. \$1.00  
 each; \$9.00 per 10.

FLORAL TREASURE—Pale lilac-rose. Very large and fragrant. Mid-season.

MADAME DE VERNEVILLE—Pure white, center blush, carmine flecks. Fra-  
 grant. Mid-season.

MARECHAL VALLIANT—Dark mauve-pink. Very large; rose type. Late.

MODESTE GUERIN—A bright, deep pinkish-red. Very fragrant. An extra  
 fine variety. Mid-season.

## Phlox

### A Choice Selection of Varieties

**P**HLOX are unsurpassed for their brilliant, bold colors and should  
 have a prominent place in every garden of hardy flowers. Should  
 be planted in groups, not less than five of a variety, otherwise the  
 color effect will be lost. Fine for planting in large groups on lawns  
 or in front of tall-growing shrubs. They bloom in July and August,  
 and by a judicious pinching back of the buds the blooming season can  
 be extended until frost. Usually grow 2 to 3 feet high.

Prices—Strong, Field-grown Plants, 30c each; \$2.50 per 10, postpaid.

GENERAL VON HUETZ—Bright salmon-red, white center.

JULES SANDEAU—Pure pink. Very large heads.

MRS. MILLIE VAN HOBOKEN—Soft pink. A new variety.

MME. BENZANON—Brick-red.

MRS. JENKINS—Pure white. Very early.

PURITY—White.

RICHARD WALLACE—White with carmine eye.

RYNSTROM—Lively rose-pink. Large.

THOR—Rich salmon-pink, with deep crimson eye.



HARDY PRIMROSE (Primula)

### Hardy Primrose (Primula)

The variety we offer—VERIS SUPERBA—is the larg-  
 est flowered and showiest hardy Primrose grown. The  
 flowers, in April and May, are a bright canary-yel-  
 low, with a golden center. Grows 6 to 9 inches high.



RED HOT POKER (Tritoma Pfitzeri)

*Our Perennials Are All Strong, Selected, Field Grown Plants.*

# FRUIT DEPARTMENT

## PEACHES—A Selected List of Choice Varieties

**T**HIS is a selected list of varieties—the cream of hundreds of varieties—all thoroughly tried and tested and found to be possessed with the essential characteristics of a good peach. Our peach trees are all hardy, Northern grown. Peaches prefer a good, sandy loam, but will do well on almost any soil except a heavy clay. Plant 16 feet apart each way.

### PRICES OF GREEN'S PEACH TREES ONE YEAR OLD

Size	Height	Each	10	100
Largest	4 to 5 ft.	\$0.75	\$6.00	\$37.50
Medium	3 to 4 ft.	.60	5.00	32.50
Smaller	2 to 3 ft.	.50	4.00	27.50

By Parcel Post—2 to 3 feet, 55c each; \$4.50 per 10, postpaid.

Rates—Less than ten at each rates. Ten to fifty at ten rates. Fifty or more at hundred rates.

**Belle of Georgia (White, Freestone)** A creamy white peach, with a beautiful crimson cheek. Ripens here in August.

**Carman (White, Freestone)** The color is a brilliant red, splashed with darker red on a creamy-white background. Very good in quality. Ripens here about the middle of August.

**Champion (White, Freestone)** This is considered the highest in quality of all the white-fleshed peaches. The skin is creamy-white, with splashes of carmine and darker red. Ripens in late August or early September.

**Elberta (Yellow, Freestone)** Deservedly Elberta is the peer of all commercial peaches. The two characteristics that enable Elberta to hold first place undisputed are its ability to do well in almost any soil or climate and its fruitfulness. A beautiful, large, golden-yellow peach, with a brilliant red cheek, firm, juicy, rich and sweet. Ripens here early in September.

**Crosby (Yellow, Freestone)** Often called "frost-proof" on account of its extreme hardiness. Yellow, blushed with dull red. Apt to run small in size in soils to which it is not perfectly suited. Ripens here in September.

**Early Crawford (Yellow, Freestone)** Unapproached in quality by any other variety except Rochester, its offspring. Fruit very large, golden-yellow, blushed with dark red. Ripens here in late August or early September.

**Greensboro (White, Freestone)** One of the leading white-fleshed peaches, principally because of its great productiveness and early bearing. Skin is creamy-white, blushed and striped with dark red. Ripens here in July.

**J. H. Hale (Yellow, Freestone)** A notable variety of recent introduction, unusually large in size of fruit and very handsome. Largely advertised as a rival to Elberta for commercial honors, but reported in many sections as not prolific enough to compete with that grand old variety. Of a deep golden-yellow color, overlaid with bright carmine. Ripens here in late August or early September.

**Late Crawford (Yellow, Freestone)** Fruit large and very handsome, deep yellow, blushed and splashed with dark red. Ripens here the last of September.

**Rochester (Yellow, Freestone)** A remarkable new, early peach which seems to combine the high quality of the Early Crawford with the productiveness of the Elberta. Not only an ideal home orchard variety, but an excellent commercial peach as well. The fruit is large, yellow mottled with red in color, with thick, firm, juicy flesh, rich and sweet in flavor. Ripens here the middle of August.

**Wilma (Yellow, Freestone)** A new variety of great promise. It is about ten days later than the Elberta. The fruit is large, handsome and of good quality, yellow mottled and blushed with bright, dark red, with tender, juicy flesh of good flavor and quality. Ripens here about the middle of September.



J. H. HALE  
Large and Luscious

### Green's Peach Collection

FOUR PEACH TREES

(4 to 5 feet)

All for \$2.75

1 ROCHESTER

1 ELBERTA

1 EARLY CRAWFORD

1 WILMA

Special Collection Price \$2.75

We can send this collection in 2 to 3 ft. trees, for \$1.75, postpaid.

Do Not Overlook Our Liberal Discount for Early Orders. See Page Three.

# CHERRIES

**W**E offer a selection of choice varieties—the result of our fifty years' experience as fruit growers. Due to a rapidly increasing demand for fruit juices, cherries are becoming more profitable every year. Every orchard and home garden should have a few of Green's thrifty, vigorous, well rooted cherry trees. Plant sour cherries 15 feet and sweets 20 feet apart each way.

## PRICES OF SWEET CHERRY TREES TWO YEAR OLD TREES

Size	Height	Each	10
Largest	5 to 7 ft.	\$1.00	\$9.00
Medium	4 to 6 ft.	.90	8.00
Smaller	3 to 5 ft.	.80	7.00

By Parcel Post—3 to 4 ft., 85c each; \$7.50 per 10, Postpaid.

## PRICES OF SOUR CHERRY TREES TWO YEARS OLD

Size	Height	Each	10	100
Largest	5 to 6 ft.	\$0.95	\$7.50	\$65.00
Medium	4 to 5 ft.	.85	6.50	55.00
Smaller	3 to 4 ft.	.70	5.50	45.00

By Parcel Post—2 to 3 ft., 50c each; \$4.00 per 10, Postpaid.

Rates—Less than ten at each rates. Ten to fifty at ten rates. Fifty or more at hundred rates.



BLACK TARTARIAN

## Sweet Cherries

**Black Tartarian (Black)** The favorite home garden sweet cherry. Produces immense crops of heart-shaped cherries, bright, glossy, purplish black. Flesh tender, juicy, rich, and of best quality. Ripens middle of June.

**Governor Wood (Yellow)** Large, beautiful, yellowish-white, tinted with shades of crimson, with conspicuous russet dots. The flesh is tender, juicy, the best in quality. Ripens in June.

**Napoleon (Light Red)** Sometimes called Royal Ann. Color bright red on a yellowish background. The flavor is rich and sweet, which, with the abundant juice and firm, crackling flesh, makes it a most delicious and refreshing cherry for dessert and home uses. Ripens in July.

**Windsor (Dark Red)** The leading late sweet cherry. Large, very dark red, with firm, tender, juicy flesh. Prolific and of excellent quality. Ripens in July.

## Sour Cherries

**Early Richmond** The best of the early sour varieties. Medium size, light red, changing to dark red, tender, juicy and of good quality. Vigorous, healthy and fruitful. Ripens in June.

**English Morello** The standard late sour cherry. The fruit is very dark red, becoming almost black in color. The trees are hardy and very dwarfish in habit. Ripens in August.

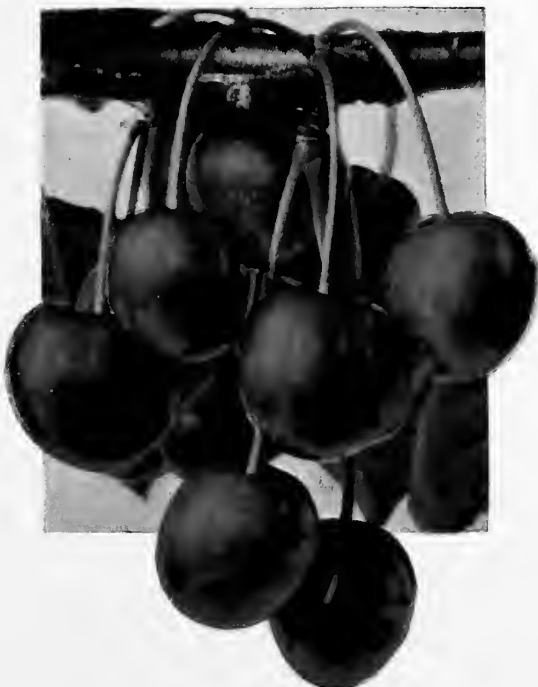
### Montmorency

For any and all purposes to which sour cherries are put Montmorency may be recommended as the best. The fruit is about average in size, rather dark red, tender, juicy and of very good quality. Hardy and very productive. Ripens last of June.

### WE LIST ONLY THE CHOICE VARIETIES

We do not believe in confusing our friends by listing all the varieties of cherries.

Success will be yours if you confine your selection of cherry trees to any of the fine varieties listed above.



MONTMORENCY

The Most Popular Cherry in America



NAPOLEON

The Best Light Sweet Cherry

All Our Fruit Trees Are Budded on the Finest Whole-Root French Stock.



YORK STATE PRUNE

PRICES OF GREEN'S PLUM TREES

Size	Height	Each	10	100
Largest	5 to 7 ft.	\$0.85	\$6.50	\$42.50
Medium	4 to 5 ft.	.75	5.50	32.50
Smaller	3 to 4 ft.	.65	4.50	22.50

By Parcel Post—3 to 4 feet, 70c each; \$5.00 per 10, postpaid. Rates—Less than ten at each rates. Ten to fifty at ten rates. Fifty or more at hundred rates.

**Bradshaw (Purple)** Fruit large, dark reddish purple. Flesh yellow, juicy and sweet. Trees vigorous and productive. Ripens in August.

**Burbank (Red)** One of the largest and best. See illustration below. Its yellow flesh is meaty, firm, juicy and sweet. Very productive. Ripens in late August.

**Lombard (Purple)** Skin dark purplish red. Flesh yellowish, firm and sweet. Extremely hardy. Free-stone. Ripens in late August.

**Monarch (Purple)** Large, rich, purple fruit. Flesh golden yellow, juicy and sweet. Ripens in October.

**Shropshire Damson (Purple)** Small, purplish black fruit, with golden flesh, juicy and of good quality. Excellent for preserves. Ripens in October.

**Yellow Egg (Yellow)** Extremely large yellow fruit, with firm, sweet, rather juicy flesh. Agreeably tart and of good quality. Ripens in late August.

**York State Prune (Purple)** A superior strain of German Prune. Known in some sections as Fellemberg or Italian Prune. Fruit large, purplish black, overspread with thick bloom. Flesh yellow, juicy and of best quality. Free-stone. Ripens in September. See illustration above.

# PLUMS

We offer a selected list of varieties chosen for the size, appearance and flavor of their fruit and hardiness of the trees. Plant plum trees 20 feet apart each way.

UNITED STATES DEPARTMENT OF AGRICULTURE ADVISES YOU TO BUY DIRECT FROM NURSERY

This is what they say: "If the farmer makes his purchases direct from the nurseryman, he will save the expense of the agent and is less liable to mistakes and injury that may occur through repeated handling." United States Department of Agriculture, Farmers' Bulletin Number 113.

## Green's Special Plum Collection

4 Plum Trees, 5 to 7 Feet

- 1 Bradshaw
- 1 Burbank
- 1 Lombard
- 1 York State Prune

SPECIAL BARGAIN PRICE,  
\$2.95

Regular Catalog Price, \$3.40

NOTE:—We can send this collection in 3 to 4 foot trees by parcel post for \$2.20 postpaid.



BURBANK PLUM

Over Two Hundred Thousand Satisfied Customers. This Speaks for Itself.

# APPLES

## Green's Selection of the Choicest and Most Profitable Varieties

THE varieties offered here are a selected list of the choicest and most profitable varieties, the result of fifty years of careful study and investigation on our part. Green's trees, because they are budded on the finest whole root French stocks, are extra strong, thrifty, vigorous and well rooted. Do not confuse Green's trees with those grafted on small pieces of seedling roots. Apples grow well on any good average soil that will produce a good crop of corn or potatoes. Plant 35 feet apart each way.

### PRICES OF GREEN'S STANDARD APPLE TREES ALL VARIETIES EXCEPT McINTOSH

Size	Height	Each	10	100
Largest	5 to 7 ft.	\$0.80	\$6.00	\$45.00
Medium	4 to 5 ft.	.70	5.00	35.00
Smaller	3 to 4 ft.	.60	4.00	25.00

By Parcel Post—3 to 4 ft., 40c each; \$3.00 per 10, postpaid.

Rates—Less than ten standard apple trees at each rates. Ten to fifty at ten rates. Fifty or more at hundred rates.



CORTLAND APPLE

## Cortland

### THE IMPROVED McINTOSH

THE fruit of Cortland is as large or larger than that of McIntosh, round to somewhat conical in shape. In color it is a bright red, blushed with darker red, splashed and striped with carmine and more or less overlaid with a deep purplish bloom. The flesh is white, firm, fine grained, crisp, tender, very juicy, aromatic, perfumed, sprightly sub-acid, and very good to best for dessert. The trees are large, vigorous, upright-spreading, very hardy, productive and healthy. Flowers bloom in mid-season. Fruits about two weeks later than McIntosh. Bears very young and full crop every year. Cortland apples sold this year for \$5.00 per bushel box. We secured our Cortland buds from trees that were propagated at the New York State Agricultural Station at Geneva, New York.

### Nine Reasons Why You Should Plant Cortland Apple Trees

1. Cortland apples are of the highest quality and flavor—equal to McIntosh. Just what the apple eating public demands.
2. Cortland bears quickly—the third and fourth year after planting—a money crop the sixth year. No long wait for returns on your investment.
3. Cortland apples hang on the tree unusually well—do not drop or blow off. No losses from unmarketable fruit. Has an exceedingly long picking season.
4. Cortland apples are very easy to handle and pack—do not bruise easily. Reach the consumer in perfect condition.
5. Cortland apples are large and uniform in size and shape. A large percentage will grade number one.
6. Cortland should be picked later and will keep longer than McIntosh.
7. Cortland is an annual bearer—sets an abundance of fruit buds. No off season.
8. Cortland apple trees are very thrifty and fast growers. The trees develop an abundant framework to carry big crops.
9. Cortland apples have the bright red color that appeals so strongly to the apple eating public. Their beautiful and attractive appearance sells them on the open market.

### CORTLAND RECEIVES ANOTHER MEDAL

Cortland has been given the highest honors obtainable in the horticultural world. Three years ago the American Pomological Society awarded to Cortland the Wilder silver medal for new fruits. To qualify for a Wilder medal, a new fruit must exhibit superiority to all existing varieties with which it will compete. At the last meeting of the Pomological Society, at Grand Rapids in December, 1926, Cortland was one of a collection of new fruits to win another Wilder medal.

### CORTLAND CANNOT BE SURPASSED

Professor U. P. Hedrick, of the New York State Agricultural Station, has this to say about Cortland: "The Cortland cannot be surpassed by apples grown anywhere in the world, and apple growers in New York and New England have opportunity to specialize in a distinctive fruit that will bring renown and profit to the industry of the region."

### CORTLAND HAS MOST GOOD POINTS

Poughkeepsie, N. Y.,  
October 24, 1928.

Green's Nursery Company:

After a close study of Cortland under all available conditions, it promises to have the most good points and the fewest bad ones, for our location and market, of any variety we know. It is almost ideal in size, color, flavor and texture as a dessert apple.

WILLIAM H. HART.

No Extra Charge for Cortland Trees—Same Price as Other Varieties.



DELICIOUS—All the Name Implies

## Summer Apples

**Sweet Bough** A large, pale, greenish-yellow, sweet apple of excellent quality. Should be in every home orchard. Ripens in July.

**Red Astrachan** The best mid-summer cooking and eating apple for home and market. Yellow, splashed with deep crimson. Brisk sub-acid in flavor. Very good in quality. The tree is medium in size, a reliable cropper, moderately productive, very hardy and bears the fourth year. Ripens in July and keeps until September.

**Yellow Transparent** One of the best of the extra early apples; waxy-yellowish white, mild acid, juicy and pleasant. Bears annually, or nearly so, starting the fourth year. Extremely hardy in the North. A good filler tree. Ripens late in July and continues in season until September.

## Autumn Apples

**Gravenstein** A variety of excellent quality. For culinary purposes unexcelled by any of its season. The skin is slightly rough and of an orange-yellow color, overlaid with broken stripes of light and dark red. Sprightly sub-acid in flavor. The trees grow rather large, come into bearing early, are quite productive and are pretty reliable croppers. Moderately hardy. The fruit ripens about the middle of September and continues in season till early November.



Green's Strong, Vigorous Trees, with Splendid Root Foundation, Take Hold Quickly in New Locations.



A Planting Scene at Green's Nursery. We Grow Our Own Trees. You Can Depend Upon Receiving the Varieties You Order.

For Prices of Dwarf Apple Trees See Page Thirty-one.

## Green's Bargain Apple Collection

5 Standard Apple Trees, 4 to 5 Feet

1 Cortland                      1 Northern Spy                      1 Delicious  
1 Baldwin                      1 R. I. Greening

SPECIAL BARGAIN PRICE

**\$3.00**

Regular Catalog Price, \$3.50

(NOTE:—We can send this collection in 3 to 4 foot trees by parcel post for \$1.75 postpaid.)

**Oldenburg** Often called Duchess of Oldenburg, or just Duchess. Has excellent culinary qualities; pleasant to eat out of hand when fully ripe. Skin is yellow, with splashes and stripes of red. A good filler tree, as it is dwarf in habit. Comes into bearing at about the fourth year. In season late August and September.

**Twenty Ounce** One of the most satisfactory of the fall varieties for commercial planting. Large, attractive, greenish-yellow, with broad stripes and splashes of red. Bears young, almost annually, and is a good cropper. Ripens in September and keeps until early winter.

## Winter Apples

**Baldwin** Due to its dependability, desirable season, good size, attractive color and good quality, Baldwin is the leading commercial variety for New York, New England and certain parts of Canada, Ohio and Michigan. Every orchard in the Baldwin belt should have at least a few trees of this grand "old reliable" variety. Large, strong, vigorous trees, producing an abundance of large to very large apples of a bright red color, with yellowish, crisp, tender, very juicy flesh. Agreeably sub-acid in flavor. Very good in quality. Rather slow to come in bearing, but rapidly makes up for lost time when it begins bearing. Long lived. Ripens in November and lasts until April in common storage and to May or later in cold storage.

**Delicious** Sometimes called Stark's Delicious. A really delicious apple, with a distinct flavor all its own. A high quality apple. Fruit large, somewhat conical in shape, tapering at the base into five distinct knobs. Its beautiful crimson and unique shape make it an ideal apple for the fancy or box trade. Sells readily for high prices at the fruit stands. The flesh is crisp and juicy. Mild in flavor, but not a sweet apple. Has a decided aroma which is very pleasing. The tree is hardy, vigorous and productive. Bears about the fourth year. In season from November until May.

**Fameuse** Probably better known as Snow. Its white, tender, exceedingly crisp flesh and mild sub-acid flavor make it a delicious eating apple. It is a moderate grower, producing rather heavy crops of medium-sized, dark red fruit, almost annually. Hardy. Succeeds well in the North. Ripens in November and keeps until January.

**Grimes Golden** Probably the best yellow apple. Desirable for both dessert and culinary uses. Generally not considered a good commercial apple in the Northern States. It is, however, a fine apple for the home garden. Flesh yellow and firm, with a rich, refreshing flavor. Tree bears early. Vigorous. In season November to January.

**Hubbardston** By many known as Hubbardston Nonesuch. Identical, we believe, with American Blush. Considered one of the most profitable varieties of its season, ripening as it does between the autumn varieties and the late ripening winter apples. Fruit large, of good flavor, mottled red and yellow in color. In season October to January.

**Jonathan** A very beautiful, bright red apple, highly flavored, and of excellent quality for either dessert or culinary uses. Is much in demand as a fancy apple during the holiday season. Grows best in the Middle West, where it attains its full size. Under favorable conditions, the tree is a reliable cropper, bearing good crops biennially. In season November to January.

**Northern Spy** An old-time favorite with a distinct flavor that appeals to those who like a brisk, spicy apple that is not actually sour. One of the leading commercial varieties. The fruit is large and attractive, being of bright red color, over-spread with a delicate bloom. The flesh is very juicy, crisp, tender, and most excellent for either dessert or culinary purposes. An excellent keeper. It is too tender and juicy for evaporating. May be slow to come into bearing, but has been known to bear paying crops in seven years. Bears moderate to heavy crops biennially, or almost annually. Being a late bloomer, it sometimes succeeds when others fail from late frost damage. Ripens November.

**Pumpkin Sweet** Generally known in Central and Western New York as Pound Sweet. One of the best sweet apples of its season for baking, and for canning or stewing with quinces, but generally is not valued for dessert. Fruit very large, yellow in color. The tree is a strong grower, long lived and fairly hardy. A pretty reliable cropper, yielding good crops biennially. In season from early October to January.

**Rhode Island Greening** Commonly called by the simple name of Greening. As a cooking apple it is unsurpassed, and as a dessert fruit of its season, has few equals. It is a good variety to grow with Baldwin in commercial orchards, because, being a little earlier in season, it can be picked and marketed before it is necessary to pick Baldwin. The fruit is large, yellowish-green, often with a dull blush. It is long lived, productive and a reliable biennial cropper. In season from October through January.

**Rome Beauty** A medium to large apple, yellowish, more or less mottled with bright red. It is thick skinned, stands handling well and is a good keeper. It has an established reputation in market and sells at a good price. As compared with Baldwin it is not quite as good in quality either for dessert or culinary uses, but the tree comes into bearing at a much earlier age and under right conditions is more nearly an annual bearer. Can be grown successfully except along the Canadian border, but is at its best in New Jersey and along the Ohio River. Flesh is firm, crisp and juicy. Commonly good but not of high quality. Ripens in November and keeps until April or May.

**Roxbury Russet** The most popular russet apple. An excellent keeper, of good size, with a russet-brown skin and a bronze blush in highly colored specimens. Flesh is tinged with yellow or greenish, firm, somewhat coarse, moderately tender and crisp. Sprightly, sub-acid in flavor. Good to very good in quality. A biennial bearer and under favorable conditions a reliable cropper. In season from December to July.

**Stayman's Winesap** At its best in the Middle West and South, but can be grown successfully in almost any apple section. Fruit medium to large in size, yellowish, striped and splashed with dull red in color, and with a firm, crisp, yellow flesh, mildly sub-acid in flavor. Good quality. Comes into bearing about the fourth year and is a reliable annual cropper, alternating heavy with light crops. In season from December to May.

*Green's trees are well branched with straight trunks and an abundance of roots. They are known for their vigor and health.*



A BLOCK OF TWO YEAR OLD APPLE TREES.  
Note the Clean Straight Trunks and Well Shaped Heads.

*Fifty-one Years Service to Garden and Orchard Planters*



## Cortland Has Been Fully Tested

If you want further information as to the merits or adaptability of Cortland to your locality, write the New York State Experiment Station, Geneva, N. Y. For many years they have been testing this variety in all the leading fruit growing sections of the country. They will be glad to furnish advice or information without charge.

**Tompkins King** More often known as King or King of Tompkins County. Fourth in commercial importance in New York State, but the tree lacks the qualities of a good commercial sort. Its excellent, large, attractive, beautiful red fruit makes it worthy of a place in the home orchard. In maturity, it is a regular bearer, yielding moderately heavy crops annually. Fruit tender and juicy, and sub-acid in flavor. In season from October to January.

**Tolman Sweet** A medium size, whitish-yellow, sweet apple, much esteemed for pickling, boiling and baking. Very hardy. Ripens in November.

**Transcendent Crab** This for many years has been one of the most popular of the crab apples. The fruit is medium to rather large, skin clear bright yellow, with red cheek overspread with bloom. Flesh yellow, crisp, juicy, somewhat astringent and sub-acid in flavor. Very good for culinary uses. A good grower, hardy, and usually very productive. In season from late August to middle of September or later.

**Wagener** The fruit is medium to large, bright red in color, having a fine texture, high flavor, and excellent quality. Good for cooking, but especially prized for dessert. A steady bearer, needing to be thinned to keep it from overbearing. Is recommended as a filler between longer lived varieties. In season from October to February or later.

**Wealthy** Particularly valuable in cold climates where a hardy tree is needed. A thrifty grower when young, but forming a medium sized tree. Planted in commercial orchards as a filler between rows of stronger growing varieties. Fruit a very attractive red and yellow color, rated good to very good quality. In season from October to January.

**Winter Banana** An exceedingly attractive yellow apple, usually with a bright red cheek. Has distinct banana flavor and good dessert quality. Keeps well. Have kept them in ordinary home cellar in excellent condition until May. Is thrifty, bearing when young and almost annually. Moderate to heavy crops. In season from mid-November to April first.

**McIntosh** In our opinion, not equaled in quality and flavor by any other variety with the exception of the Cortland, its progeny, which it resembles very much. Due to its very high quality and its exceedingly attractive appearance, it commands a ready sale and a fancy price in all of the large Eastern markets. Has held the record for high price for years in Boston, New York, and Chicago markets. Rapidly making a place for itself as one of the leading if not the leading commercial apple in the East. The fruit is very attractive in appearance, of bright deep red color, which in highly colored specimens is almost purplish-red, overspread with a thin lilac bloom. Fruit above medium in size, with white, firm, very crisp flesh, fine grained, tender, very juicy. Sprightly sub-acid in flavor with a characteristic perfume and aroma. The tree is rather a strong grower, very hardy and healthy. Comes into bearing about the fourth year and is a reliable cropper, yielding good crops. We recommend it highly to orchardists. In season from October to December or later.

### PRICES OF McINTOSH STANDARD APPLE TREES

Size	Height	Each	10	100
Largest	5 to 7 ft.	\$0.90	\$7.00	\$55.00
Medium	4 to 5 ft.	.80	6.00	45.00
Smaller	3 to 4 ft.	.70	5.00	35.00

By Parcel Post—3 to 4 ft., 50c each; \$4.00 per 10, postpaid.

Rates—Less than ten standard trees at each rates. Ten to fifty at ten rates. Fifty or more at hundred rates.

### YOUR SHRUBS ARE PERFECT

144 Woodlawn St., Lynn, Mass.  
November 6, 1928.

Green's Nursery Company:

I received my order of shrubs in very good condition. I had a nurseryman today to plant them for me. He told me that every one of the shrubs was perfect. I thank you so much for taking such pains with my order.

MRS. FRANK W. DANE.



McINTOSH—Unsurpassed in Quality



WINTER BANANA  
An Unusual Apple With a Distinct Banana Flavor

Order Your Cortland Apple Trees Early—the Demand is Far in Excess of the Supply



We can furnish all varieties in dwarf trees except Sheldon, Bosc and Kieffer. These three varieties are grown only as standard trees. For prices on dwarf pear trees see page 31.

# PEARS

## Thoroughly Tested Varieties

After years of experience we have developed this list of selected varieties. They are the cream of hundreds of varieties known to mankind. We recommend all of them without hesitation. Plant standard pear trees 20 feet apart each way.

### Summer Pears

**Bartlett** The most popular pear both for home use and market, a leader among canning pears, commands top prices. Should be in every garden and orchard. Large, golden yellow with reddish blush on the sunny side. Flesh tender, melting and juicy, with a delicious, musky flavor. Tree vigorous, an erect grower, bears abundantly. Ripens in Sept.

**Clapp's Favorite** The most productive pear in cultivation. Very good for the home garden and a desirable commercial variety. Large, long, pale lemon color, richly flushed with russet red on the exposed side. Flesh fine grained, juicy, melting and buttery. A good grower and hardy. Ripens here in August, about ten days ahead of Bartlett.

**Wildier Early** One of the very earliest pears, it always finds a ready sale in the market, and is largely grown by commercial orchardists. Of medium size, pale yellow shaded with russet red, flesh melting and delightful, with a small core. The trees are good bearers, bearing annually. Ripens in early August. This variety was introduced by Charles A. Green several years ago.

### Autumn Pears

**Anjou (Buerre d'Anjou)** A large, greenish pear, shaded with russet-crimson. The flesh is buttery and melting, with a sprightly, vinous flavor. Trees are vigorous and productive. One of the best varieties for late fall and early winter use. Ripens in October and keeps until mid-winter.

### PRICES OF GREEN'S STANDARD PEAR TREES ALL VARIETIES EXCEPT BOSCO

Size	Height	Each	10	100
Largest	5 to 7 ft.	\$0.90	\$8.00	\$60.00
Medium	4 to 5 ft.	.80	7.00	50.00
Smaller	3 to 4 ft.	.70	6.00	40.00

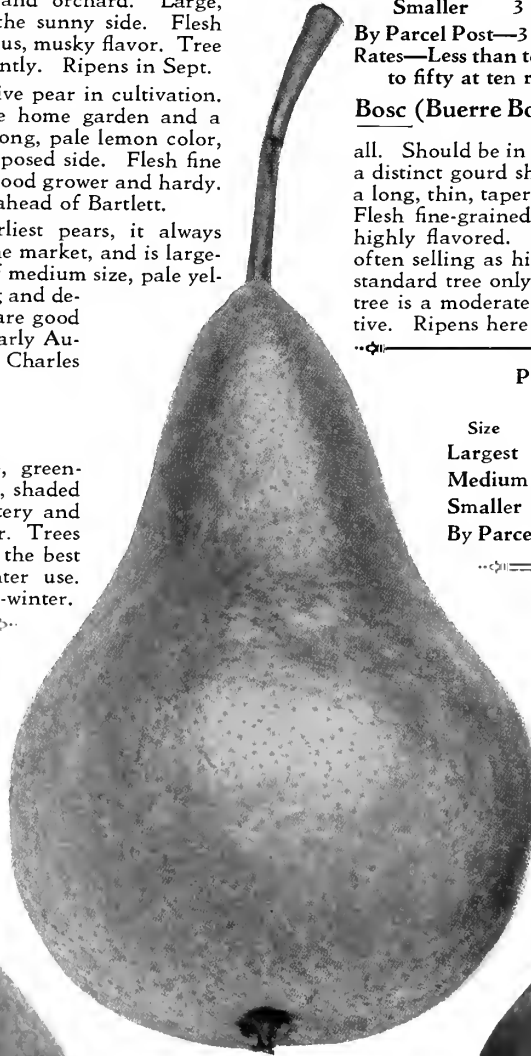
By Parcel Post—3 to 4 ft., 75c each; \$6.50 per 10, postpaid. Rates—Less than ten standard pear trees at each rate. Ten to fifty at ten rates. Fifty or more at hundred rates.

**Bosc (Buerre Bosc)** Without a doubt the highest quality and best flavored pear of all. Should be in every home garden. Very large, having a distinct gourd shape—roundish at the blossom end, with a long, thin, tapering neck. Beautiful golden russet color. Flesh fine-grained, juicy and melting, very delicious and highly flavored. In great demand at fancy fruit stores, often selling as high as 10 cents apiece. We grow it as a standard tree only, as it does not do well as a dwarf. The tree is a moderate grower, fairly erect and rather productive. Ripens here in late September or early October.

### PRICES OF BOSCO STANDARD PEAR TREES

Size	Height	Each	10	100
Largest	5 to 7 ft.	\$1.10	\$9.50	\$75.00
Medium	4 to 5 ft.	.90	7.50	55.00
Smaller	3 to 4 ft.	.80	6.50	45.00

By Parcel Post—3 to 4 ft., 85c each; \$7.00 per 10.



BOSCO



CLAPP'S FAVORITE



BARTLETT

These three choice varieties should be in every home garden. Unsurpassed in flavor and quality

For Prices of Dwarf Pear Trees See Page Thirty-one

## Autumn Pears—(Continued)

**Duchess (Duchess d'Angouleme)** This variety does exceptionally well when grown as a dwarf on quince roots, and we advise our customers to plant dwarf trees of Duchess in preference to standard trees. As a dwarf it is an all around, profitable, market variety, very prolific and a dependable cropper. It is an early bearer, often fruiting the season after planting. The fruit is very large, larger on dwarf than on standard trees. The color, when fully ripe, is bright golden yellow, with a blush on one side, and sometimes slightly russeted. Flesh white, juicy, and of good quality. An excellent keeper. On dwarf roots it is an excellent commercial variety. In season here in October.

**Seckel** The small size and peculiar, rich, juicy flavor of this variety makes it a most desirable variety for pickling and preserving. It is generally conceded to be the sweetest of all pears and is greatly prized as a dessert fruit to eat fresh out of the hand. Although small in size, it is very attractive in appearance, being of a russet-yellow color, with a bright red cheek. It is very prolific. Every home orchard should have a tree or two of this excellent variety. In season in September and October.

**Sheldon** A pear of unusually good quality and high flavor. Large, round, greenish-yellow in color, covered with light russet. It is very juicy, melting and has a tasty flavor. The trees is a fine grower and a good bearer. It is not recommended as a commercial variety as the fruit has a tendency to drop before ready to pick. Grown only as a standard tree, as it does not grow successfully on dwarf roots. In season here in October and November.

**Worden Seckel** An improved Seckel. Equal in quality to its famous parent, which it much resembles in flavor. It is fully as luscious, more juicy, and with an aroma equally as rich and inviting. The fruits are beautifully smooth and regular, golden yellow, with a russet-red cheek. Ripens in October and will keep until Christmas.

### TO CHARLES A. GREEN

By E. J. Archer, Michigan

The American Fruit Grower says: The following unique and interesting poem is written as a tribute to our esteemed friend and horticultural benefactor Charles A. Green, whose untiring efforts in the production of fine fruits is a monument of wealth to our country.

O, happy day when Charlie Green  
A bright, successful future saw  
Upon a homestead lank and lean  
Through dire neglect of labor's law.

He soon renewed the place sublime,  
Slew rats and every robber thing,  
And paved the way for coming time,  
When fields then bare would income bring.

How well he aimed with patient thought  
The truth of fruits to understand,  
With what productive skill he wrought  
To enrich the orchards of our land.

Now we his writings eager scan,  
And learn from all he has to say  
The golden wisdom of the man  
Whose genius made the old farm pay.

## Late Autumn and Winter Pears

**Kieffer** A very profitable market variety on account of its great productiveness and its excellent keeping and shipping qualities. While only fair in quality, it is an excellent canner and is in great demand for this purpose. The fruit is large, golden yellow, sometimes tinted with red on the exposed cheek. The trees are strong, vigorous growers and very healthy. Ripens in October and November. Grown only as a standard tree, as it does not do well on dwarf roots.

**Lawrence** A long keeping winter pear that should be planted more extensively. The fruit is medium to large, golden yellow, melting and aromatic. The trees are moderate growers but abundant bearers. A profitable market variety. Ripens in November.



SECKEL PEAR—Very Prolific

Our trees are all grown on the finest whole-root French stocks. Varieties originate from bearing trees on our own fruit farm. You can absolutely depend upon getting the varieties your order calls for.

## Green's Standard Pear Collection

4 Standard Pear Trees, 4 to 5 Feet

1 Bosc	1 Bartlett
1 Clapp's Favorite	1 Seckel

BARGAIN COLLECTION PRICE

**\$2.75**

Regular Catalog Price, \$3.20

We can send this collection in 3 to 4 foot trees by parcel post for \$2.40 postpaid.



Digging Trees on Green's Nursery. Plenty of Horse Power Enables Us to Keep the Blades of the Tree Digger Down Deep. This Insures an Abundance of Fibrous Roots.

*If You Don't Know, Ask Your Neighbor—He's Probably a Customer of Green's.*

# Dwarf Apple and Dwarf Pear Trees

Require Little Space—Bear Young—Have Large Fruit

**D**UE to their dwarfish habit, dwarf apple and dwarf pear trees will produce an abundance of fruit in a very limited space. The fruit can be easily picked from the ground without the use of ladders. Dwarf trees bear sooner, produce fruit larger in size and of equal flavor, color and quality to standard trees. Dwarf trees are usually planted 10 feet apart each way, but make beautiful and productive hedge rows when set 4 to 5 feet apart in the row.

## Dwarf Apple Trees

### PRICES OF GREEN'S DWARF APPLE TREES

#### TWO YEAR OLD WELL BRANCHED TREES

Size	Height	Each	10	100
Largest	4 to 5 ft.	\$0.85	\$7.50	\$50.00
Medium	3 to 4 ft.	.75	6.50	40.00
Smaller	2 to 3 ft.	.65	5.50	30.00

By Parcel Post—2 to 3 ft., 70c each; \$6.00 per 10, postpaid.

Rates—Less than ten dwarf apple trees at each rates. Ten to fifty at ten rates. Fifty or more at hundred rates.

### GREEN'S SELECTION OF DWARF APPLE TREES

Baldwin	McIntosh	Wealthy
Cortland	Oldenburg	Winter Banana
Delicious	Red Astrachan	Yellow Transparent

We can furnish only the above varieties in dwarf trees. For descriptions of varieties see pages 25 to 28.

## Green's Bargain Dwarf Apple Collection

4 Dwarf Apple Trees, 3 to 4 Feet

1 Cortland	1 Delicious
1 Baldwin	1 Yellow Transparent

### SPECIAL COLLECTION PRICE

**\$2.55**

Regular Catalog Price, \$3.00

We can send this collection in 2 to 3 foot trees by parcel post for \$2.35 postpaid.

## Dwarf Pear Trees

### PRICES OF GREEN'S DWARF PEAR TREES

#### TWO YEAR OLD WELL BRANCHED TREES

Size	Height	Each	10	100
Largest	4 to 5 ft.	\$0.75	\$5.50	\$37.50
Medium	3 to 4 ft.	.65	4.50	27.50
Smaller	2 to 3 ft.	.55	3.50	22.50

By Parcel Post—2 to 3 ft., 60c each; \$4.00 per 10, postpaid.

Rates—Less than ten dwarf pear trees at each rates. Ten to fifty at ten rates. Fifty or more at hundred rates.

### GREEN'S SELECTION OF DWARF PEAR TREES

Anjou	Duchess	Wilder Early
Bartlett	Lawrence	Worden Seckel
Clapp's Favorite	Seckel	

We can furnish only the above varieties in dwarf trees. For descriptions of varieties see pages 29 and 30.

## Green's Dwarf Pear Collection

### BIGGEST BARGAIN OF ALL

4 Extra Fine Trees, 3 to 4 Feet

1 Bartlett	1 Duchess
1 Clapp's Favorite	1 Seckel

### SPECIAL COLLECTION PRICE

**\$2.65**

Regular Catalog Price, \$3.00

We can send this collection by parcel post in 2 to 3 foot trees for \$2.00 postpaid.

### WOULD NOT TAKE \$1000 FOR HIS DWARF PEAR HEDGE

Santa Fe, New Mexico.

Dear Mr. Geen:

I accepted your advice twelve years ago and planted a hedge of dwarf pear trees around my garden. They have lived and have been bearing fruit abundantly every year. I would not take \$1000 for these 120 dwarf pear trees, planted on either side for sunshine and ventilation.

CHAS. A. SIRINGO.



CLAPP'S FAVORITE DWARF PEAR TREE  
(See Letter, This Page.)

### A MARVELOUS SIGHT

Mt. Clemens, Michigan.

My Dear Mr. Green:

About two or three years ago I bought from your company among other things a few dwarf pear trees which I planted, according to your suggestion, in a hedge row—from the back porch steps to the garden gate. The enclosed pictures (see photograph) are ones of the little trees, Clapp's Favorite, one of them showing an ordinary-sized sprinkling can alongside of tree for comparison. The little tree measures just thirty inches from the ground to tip of highest branch, and started out this spring with 27 pears, of which 10 matured into fine, luscious pears. Everyone who saw the tree with fruit on it, marveled at the sight, and some felt like the farmer who said: "There ain't any such animal."

JOHN A. HENK.

Ten Per Cent Discount on Cash Orders Before March 20th. Five Per Cent Between March 20th and April 15th.

# GRAPES



THE NEW CACO  
Unsurpassed In Quality

## Caco Beats Them All

Green's Nursery Co.:

I owe you a report on Caco grapes which you kindly sent me in 1919. They exceed the Concord in growth and are about equal to that variety in fruitfulness, but in appearance and flavor they certainly beat them all. I expect great results from them when they reach their age of full capacity. Thus far I can only say that the Caco seems destined to hold a position among the red grapes as enviable as is that of the Concord among the blues.

J. A. BISCHOFF,

Holyoke, Mass.

### PRICES OF GREEN'S EXTRA SIZE, TWO YEAR OLD VINES

All Varieties Except Caco, Ontario and Concord  
30c each; \$2.50 per 10; \$18.00 per 100

By Parcel Post—5c per vine extra for postage and extra packing.

Rates—Less than ten at each rates. Ten to fifty at ten rates. Fifty or more at hundred rates.

**Agawam (Red)** An excellent keeper that may be kept in common storage until January. Large in both bunches and berries, dull purplish red, rich, sweet and of a decidedly foxy flavor. Vigorous and moderately productive. Ripens here last of September.

**Brighton (Red)** A very handsome dark red grape of high quality that should be in every home garden. Not generally recommended as a commercial variety, as it will not ship to distant markets. Vigorous, productive and easy to grow. Ripens here about the middle of September.

**Campbell's Early (Black)** The characteristics which give this grape its merit are high quality, freedom from foxiness, small seeds, earliness of maturity, large size and attractive appearance both of bunch and berry, hardiness and good keeping qualities. Unfortunately, it is somewhat capricious as to soils and for this reason is not generally rated as a good commercial sort. Ripens here first of September.

**Catawba (Red)** Of all the grapes grown in New York, Catawba is the best keeper, lasting until March or later. Because of its fine quality, it often brings a higher price than other varieties. Berries and bunches of medium size, dull, purplish red. Vines vigorous, hardy and productive. Ripens here last of September.

## Caco (Red)

**T**HIS new red grape has the most delicious flavor and is of the highest quality of any grape that we have ever tested.

It is one of the earliest grapes in ripening. It has a peculiar characteristic not common to other grapes in that, on account of its being so rich in sugar and excellent in flavor, it can be eaten with enjoyment fully two weeks in advance of its being fully ripe. In appearance, it is the most beautiful of hardy grapes, wine red in color with abundant bloom. The berries are unusually large, bunches of good size, compact and of good form. The vines are very strong, vigorous growers, hardy, healthy and prolific. This variety is a cross of the two well-known grapes, Catawba and Concord, and is said by expert grape-growers to have all the good qualities of both of these varieties without the defects of either. Ripens here early in September.

Prices—Extra size, two year old Caco Grape Vines, 60c each; \$5.00 per 10; \$40.00 per 100. By Parcel Post, 5c per vine extra for postage and extra packing.



THE NEW ONTARIO GRAPE  
An Extra High Quality Early White Grape.

Buy Green's Hardy Northern Grown Trees and Vines.

## The New Ontario Grape

**A** NEW, high quality, early white grape originated at the New York State Experiment Station. Large clusters, medium size berries, juicy, tender and sweet. Prolific and a strong grower. Ripens last of August, fully two weeks earlier than Niagara. Extra Size, Two Year Vines, 60c each; \$5.00 per 10. By Parcel Post, 5c per vine extra.

**Concord (Black)** Without any question, the leading commercial grape on the continent. Due to its high degree of fruitfulness and its great adaptability to various soils, it can be produced so cheaply that no other grape can compete with it in the markets. Blossoms late and, therefore, seldom suffers from spring frosts. Grape juice is made almost entirely of Concords. Vines hardy and healthy. Bunches and berries of fair size, glossy black with abundant bloom, and of good quality. Ripens here middle to last of September. Prices of Extra Size, Two Year Old Concord Grape Vines, 20c each; \$1.50 per 10; \$12.00 per 100. By Parcel Post, 5c per vine extra for postage.

**Delaware (Red)** A rich and delicately flavored little red grape that is generally recognized as the standard of quality to judge other grapes by. An exceptionally desirable variety for home gardens on account of its compact habit of growth. Commands a premium in all the markets, often selling for twice the price of Concord. Very hardy. Ripens here about the middle of September.

**Diamond (White)** (Moore's Diamond.) The best white grape for the home garden. Unsurpassed in quality and beauty. Early, hardy, vigorous and productive. A very profitable commercial variety that would take first place among the white grapes as a commercial sort were it not for the fact that Niagara is even more productive. Should be in every home garden collection. Ripens here about the middle of September.

**Lucile (Red)** Recommended where an extra hardy grape is desired, and for localities where the season is short. Its foxy flavor, which condemns it to some, is considered an asset by many who like this foxy taste. Very productive, even more so than Concord. Large in both bunch and berry; very attractive in appearance; quality considered fair to good; ripens here early in September.

**Moore Early (Black)** The best early black commercial grape, ripening as it does two or three weeks ahead of Concord. Vines vigorous, hardy and moderately productive. Bunch and berry medium to large. Fair to good in quality. Ripens here first of September.

**Niagara (White)** The leading commercial white grape, not as high in quality as Diamond, but more productive. In great demand. Holds the place among white grapes that Concord holds among blacks. Bunches and berries large and handsome, compact, and of good quality. Vines vigorous, hardy and very productive. Ripens with Concord, about the middle of September.

**Worden (Black)** This is a seedling of the Concord and while its berries and bunches are larger and the fruit is of better quality, it is not as good a keeper and does not ship as well to distant markets. It is a superior variety for home use and for nearby markets, and, on account of its high quality and large size, usually brings a higher price than Concord. For home use we know of no grape of greater value. Fruit ripens one or two weeks earlier than Concord. Ripens here early in September.



CONCORD  
The Great  
Commercial  
Grape

## Green's Grape Collection

4 Extra Strong, Two Year Vines,

1 Caco                      1 Concord  
1 Niagara                  1 Worden

SPECIAL COLLECTION PRICE


**\$1.25**

Regular Catalog Price, \$1.40

By Parcel Post, for \$1.45, Postpaid

No. 195

STATE OF NEW YORK



DEPARTMENT OF AGRICULTURE AND MARKETS  
BERNE A. PYRKE, Commissioner

Certificate of Inspection of Nursery Stock

This is to Certify that the nursery stock of GREEN'S NURSERY COMPANY  
of ROCHESTER, County of MONROE, State of New York, has  
been duly examined in compliance with the Agriculture and Markets Law and has been found to be apparently  
free from all injurious insects and plant diseases. This certificate is valid until September 1, 1929.

Dated, Albany, N. Y., SEPTEMBER 1, 1928.

*Berne A. Pyrke*  
Commissioner

B. D. VAN BUREN,  
Director, Bureau Plant Industry



A Field of One-Year-Old Grapes in Our Nursery

Our Direct From Nursery Method of Selling Saves You Money.

# NUTS

**Black Walnut** A large tree of majestic form and beautiful foliage. Its wood is exceedingly valuable and in great demand by furniture makers and gunsmiths. Bears large, round nuts of excellent quality. Prices: 6 to 8 feet, \$1.00 each; \$9.50 per 10. 5 to 6 feet, 85c each; \$8.00 per 10. 4 to 5 feet, 75c each; \$7.00 per 10. 3 to 4 feet, 60c each; \$5.50 per 10. By Parcel Post, 2 to 3 feet, 55c each; \$5.00 per 10, postpaid.

**Butternut** Valued for its tropical appearance and beautiful wood. Produces large crops of oblong, nutritious nuts. Bears early. Prices: 6 to 8 feet, \$1.25 each; \$12.00 per 10. 5 to 6 feet, \$1.00 each; \$9.50 per 10. 4 to 5 feet, 85c each; \$8.00 per 10. 3 to 4 feet, 70c each; \$6.50 per 10. By Parcel Post, 2 to 3 feet, 60c each; \$5.50 per 10, postpaid.

**English Filbert (Hazelnut)** A low-growing, bushy tree, producing abundant crops of roundish, tender nuts of fine flavor. Will grow in almost any location. Nuts larger and of better quality than the native American Filbert. Prices: 3 to 4 feet, 70c each; \$6.50 per 10. 2 to 3 feet, 60c each; \$5.50 per 10. By Parcel Post, 18 to 24 inch, 55c each, postpaid.

**English Walnut** A fine, lofty-growing tree, with handsome, spreading head. Produces large crops of nuts, which are apt to vary in size and quality. We offer a seedling strain grown from nuts secured from a successful grove a few miles from Rochester. Prices: 3 to 4 feet, \$1.25 each; \$11.50 per 10. 2 to 3 feet, \$1.00 each; \$9.00 per 10. By Parcel Post, 18 to 24 inch, 90c each; \$8.50 per 10, postpaid.

**Japan Walnut (Sieboldi)** This is a very hardy, handsome, rapid-growing tree with large leaves. Bears young and abundantly. Nuts resemble butternuts, but smaller, smooth and thinner shell. Prices: 4 to 5 feet, \$1.25 each; \$11.50 per 10. 3 to 4 feet, \$1.00 each; \$9.00 per 10. By Parcel Post, 2 to 3 feet, 90c each; \$8.50 per 10.

# MULBERRIES

**New American Mulberry** We consider this the best variety of edible mulberry. A vigorous grower and very productive. Very hardy—the best large fruiting variety for Northern sections. Fruit very large, black, sweet, rich and delicious, ripening from June to September. Prices: Strong Trees, 5 to 6 feet high, \$1.25 each.

# APRICOTS

The apricot is a cross between the peach and the plum. In shape and color it resembles the peach, but in texture and smoothness of skin it is more like the plum. Plant 15 feet apart each way.

**Superb** Considered by many the best flavored, most productive, hardy apricot yet produced. Medium size, light salmon color. Price of trees: 4 to 5 feet, 95c each; \$8.50 per 10. 3 to 4 feet, 85c each; \$7.50 per 10.

# QUINCES

Quinces are especially prized for jellies and preserves. They are easy to grow and usually find a good sale in all local markets.

**Orange** We offer only this variety of quince as we consider it by far the best. There are several strains of this old-fashioned Orange Quince and we are propagating from the most desirable strain. The fruit is large, roundish, bright golden yellow, cooks tender and is of excellent flavor. An excellent variety for baking and preserving. The trees are vigorous and productive. Ripens in late September or early October.

## PRICES OF GREEN'S ORANGE QUINCE TREES

ALL TWO YEARS OLD

Size	Height	Each	10	100
Largest	4 to 5 ft.	\$0.85	\$7.00	\$50.00
Medium	3 to 4 ft.	.75	6.00	40.00

By Parcel Post: 2 to 3 feet, 70c each; \$6.50 per 10, postpaid.



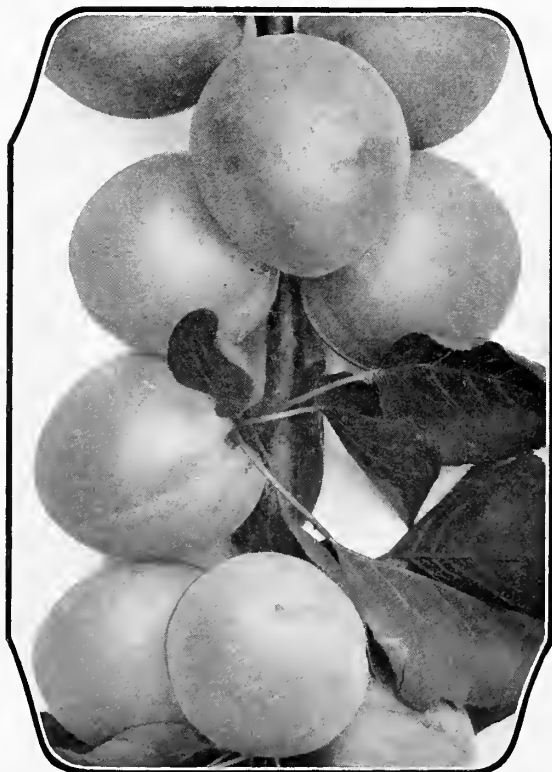
ENGLISH WALNUT

TREES COULD NOT HAVE BEEN ANY BETTER

17 Chandler St., Waverley, Mass.,  
April 27, 1928.

I want to thank you for the quality of the goods and the manner in which my order was packed. Had my order been for ten times the amount the goods could not have been any better. Neither could they have been packed with greater care. Goods received from you previously have always been satisfactory, in fact a little above anticipation.

J. FRANK CLARK.



SUPERB APRICOTS

Less Than Ten Trees at Each Rates. Ten to Fifty at Ten Rates. Fifty or More at Hundred Rates.



CHAUTAUQUA  
Best for the  
Home Garden

## GOOSEBERRIES

### Will Pay You Well

**A**N exceedingly profitable fruit when properly handled. The market is rarely oversupplied, as gooseberries can be gathered and marketed through a very long season. Every home garden should have a dozen or two bushes, as gooseberries are very easy to grow, and the fruit is extremely desirable for cooking and other culinary uses. Plant gooseberries 4 feet apart each way. Gooseberry bushes can be sent by parcel post for 3c per bush extra to pay postage and extra packing.

**Chautauqua** An excellent variety for the home garden. Large, greenish yellow, of excellent quality, sweet and high flavored. Vigorous, upright bushes, hardy and productive. Extra Size, Two Year Old Bushes, 40c each; \$3.50 per 10; \$27.50 per 100.

**Downing** The most profitable commercial variety on account of its great productiveness and remarkable shipping qualities. The fruits are large, pale green, and of excellent quality, both for dessert and cooking. The bushes are vigorous, upright growers, keeping the fruit free from the ground. Mildew proof. Extra Size, Two Year Old Bushes, 25c each; \$2.00 per 10; \$15.00 per 100.

**Red Jacket (Josselyn)** A large, bright red gooseberry of the best quality, that can be planted with entire confidence. Vigorous, upright, hardy and very prolific. Extra Size, Two Year Old Bushes, 40c each; \$3.50 per 10; \$27.50 per 100.

## BLACKBERRIES

### Make Poor Lands Pay Profit

**T**HE ideal crop for obtaining money returns from poor lands. Will do well where other fruits could not hope to succeed. Plant 6 feet apart in rows 8 feet apart. Canes should be pinched back early, when they are 3 to 4 feet high, and only three canes should be allowed to a hill. Ten bushes will produce enough fruit for an average family of four or five.

#### PRICES OF GREEN'S STRONG, TWO YEAR BLACKBERRY BUSHES

10	100	1000
\$1.00	\$7.00	\$45.00

By Parcel Post, postpaid, for 1c per bush extra.

**Blowers** A large, clean, bright berry of exceptionally good quality, with no perceptible core when fully developed. This is a first-class shipper, standing up well in the market for several days. The season of ripening is from the middle of July until frost, with the bulk of the crop maturing in August. The bushes are upright growers, are very hardy and enormously productive.



**Eldorado** An early to medium season berry of great merit. The bushes are hardy and very productive. The berries are large, jet black, borne in large clusters and ripen well together. They are sweet and melting, have no hard core and keep for 8 to 10 days after picking without quality impaired. We consider this the best variety for home and market use.

**Snyder** A very popular early variety, possibly the hardiest of all, and very productive. The berries are of medium size, sweet, melting and delicious.

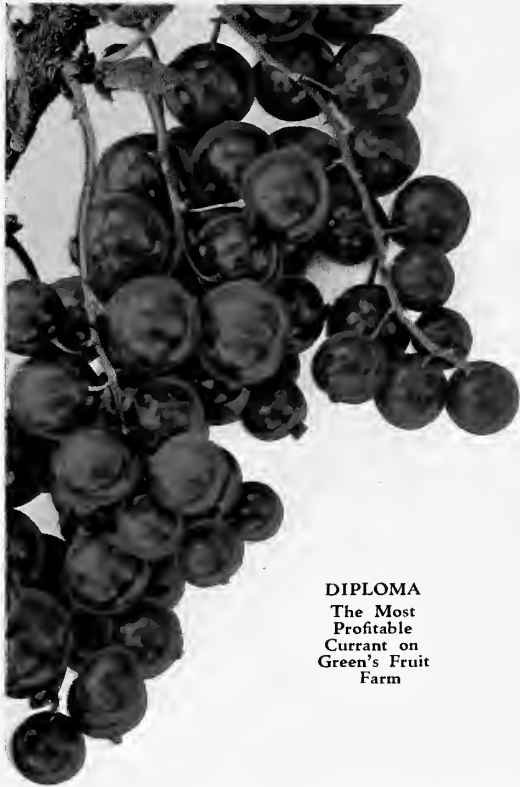


ELDORADO—A Truly  
Delicious Blackberry

Less Than Ten at Each Rates. Ten to Fifty at Ten Rates. Fifty to Three Hundred at Hundred Rates. Three Hundred or More at Thousand Rates

# CURRANTS

On our own fruit farm we make more money out of this fruit than any other crop, with the possible exception of Columbian raspberries. Plant 4 feet apart each way.



**DIPLOMA**  
The Most Profitable Currant on Green's Fruit Farm

## GREEN'S EXTRA SIZE, TWO YEAR OLD BUSHES

### PRICES OF ALL VARIETIES EXCEPT PERFECTION

Each	10	100	1000
\$0.20	\$1.50	\$10.00	\$65.00

By Parcel Post, postpaid, for 2c per bush extra.

Rates—Less than ten at each rates. Ten to fifty at ten rates. Fifty to 300 at hundred rates. Three hundred or more at thousand rates.

**Diploma** Received the World's Fair Diploma at the Pan-American Exposition in 1901. The best of all the red varieties. Recommended by the New York Agricultural Station as a variety well worth planting. Fruit very large, light red, sweet and unusually juicy. The bushes are strong, vigorous growers and exceptionally productive.

**Fay's Prolific** Berries are above average in size, of excellent flavor and not very acid. The clusters are long-stemmed, which makes them easy to pick.

**Perfection** In color it is a beautiful bright red, the berries averaging larger than most varieties, the clusters averaging longer, and the size of the berries is maintained to the end of the bunch. It has a rich, mild, sub-acid flavor, with plenty of pulp and few seeds. Extra Size, Two Year Bushes, 40c each; \$3.50 per 10; \$30.00 per 100.

**Red Cross** A strong growing and exceedingly productive red currant. The clusters are long, with berries of medium size and of bright red color. This variety is unusually sweet for a currant, requiring less sugar in canning than other varieties.

**Wilder** This is an excellent variety for the home garden. Few varieties equal it in productiveness and long keeping qualities. Berries are bright red in color, large in size, with good sized clusters.

**White Grape** This is the best of all white currants. It is an excellent dessert variety because of its mildly acid flavor and large, handsome clusters of golden green or white berries. It is very prolific.

# STRAWBERRIES—Pay Quick Profits

## June Bearing Varieties

**Cooper (Perfect Flowering)** Mid-season. Plants extra large, strong growers, of a decidedly upright habit of growth, and exceedingly productive. The berries, often referred to as the "biggest berries grown," are of a beautiful bright red color, firm and deliciously sweet in flavor. Strong Plants, \$1.00 per 25; \$2.50 per 100, postpaid.

**Kellogg's Premier (Perfect Flowering)** Early. Unquestionably the best extra early variety known. In all soils and climates it will be found producing enormous crops of uniformly large, deep red berries, which have made this variety famous. Strong Plants, \$1.00 per 25; \$2.50 per 100, postpaid.

NOTE—Strawberry Plants Cannot Be Dug As Early As Other Plants. We Ship Them Separately By Parcel Post, Postpaid, Early In May.

## Corsican

### THE PERFECT STRAWBERRY

WE consider this the finest June bearing home garden berry. The berries are unusually large, bright red, firm, juicy and of exceedingly high quality and flavor. The plants are exceedingly vigorous and healthy, resisting disease, drought, weeds and even neglect of cultivation. Very productive. Mid-season. Perfect flowering. Strong Plants, \$1.10 per 25; \$3.00 per 100, postpaid.



CORSICAN—The Strawberry De-luxe

Rates on Strawberry Plants: Less Than Fifty at Twenty Five Rates; Fifty or More at Hundred Rates.



# RASPBERRIES

Raspberries are easy to grow, require but little care, yield good looking, large size, richly flavored fruits—a combination hard to beat. Plant in rows 6 feet apart, bushes 4 feet apart in rows. WE OFFER ONLY EXTRA STRONG, TWO YEAR OLD TRANSPLANTED BUSHES.

## PRICES OF ALL VARIETIES EXCEPT PLUM FARMER AND SYRACUSE

### STRONG TWO YEAR TRANSPLANTED BUSHES

10	100	1000
\$1.25	\$8.00	\$60.00

By Parcel Post, postpaid, for 2c per bush extra.

Rates—Less than fifty at ten rates. Fifty to 300 at hundred rates. Three hundred or more at thousand rates.

**Columbian (Purple)** At Green's Fruit Farm we have found this variety to be the most profitable of all. A strong grower and unexcelled for productiveness. An excellent shipper and in great demand for canning. Very large, dark reddish purple, rich, juicy and delicious. Ripens in mid-season. One of the fields of Columbian, from which our plants are taken, two acres in extent, netted in one season, \$2700.00. A farmer nearby sold his entire crop of wheat from 40 acres for \$900.00. Mr. Adrian Voogdt, Sodus, N. Y., a year or two ago, picked 8350 quarts from two acres of Columbian and sold them for \$1,947.00. Mr. Henry Du Bois, of the same place, recently sold his crop from three acres for \$2,596.00, and the previous year for \$2,450.00.

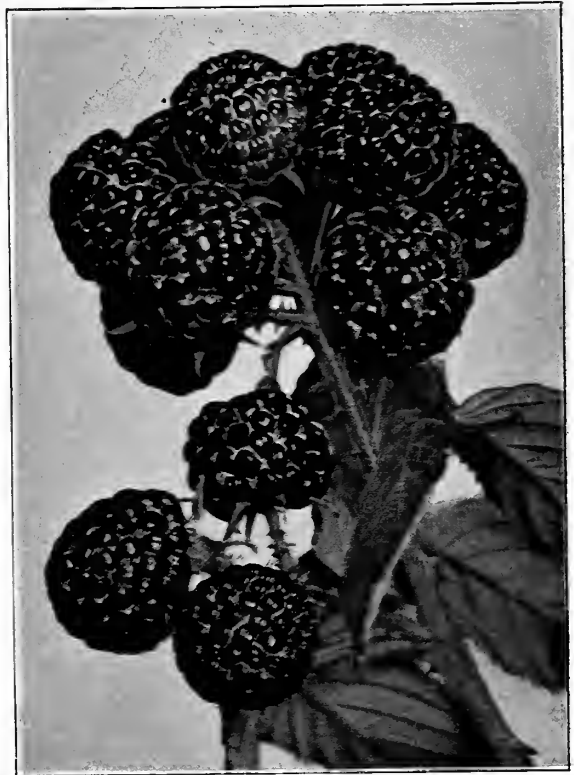
**Cuthbert (Red)** An old favorite, probably the best known of any. Canes tall, vigorous and very productive. Berries large, handsome, rich crimson. A good shipper and of the best quality. Season medium to late.

**Herbert (Red)** This is probably the hardiest and most beautiful red raspberry grown. It originated at Ottawa, Canada, and has stood without injury 40 degrees below zero. The cane of the Herbert is very strong and vigorous, the leaves large and healthy. Fruit oblong, very bright red, and probably the largest of all red raspberries except Syracuse. It is firm, sweet, sub-acid, juicy and of good flavor. Quality very good. Season begins a few days before Cuthbert. An exceptionally fine variety, both for garden and commercial planting.

**Latham (Red)** Sometimes called Redpath or Minnesota No. 4. A new variety of great promise. It has been predicted by authorities that the Latham will soon take first place as a commercial sort, among the red varieties at least. Is being tested on the grounds of the New York Agricultural Station at Geneva, N. Y., and is very highly recommended by them. It is a splendid, strong growing variety and produces immense quantities of bright red, extra large berries. This is the earliest berry to ripen. It is not considered an over-bearer, but the season of ripening is very long, sometimes a month and a half in length. Reports received from the cold Northwestern states indicate that this is an extremely hardy variety.

**Plum Farmer (Black)** In our opinion, the best of the black cap varieties. At Green's Fruit Farm it has not been surpassed in size or productiveness by any other black variety. Ripens early and quickly. Berries large, thick meated, firm and of excellent quality. A profitable early market variety. Sells for the highest prices. Prices of Strong, Two Year, Transplanted Bushes: \$1.00 per 10; \$6.00 per 100; \$50.00 per 1000.

**Syracuse (Red)** A new variety recently introduced by us. We consider it the very best red sort for the home garden and nearby market. Somewhat capricious as to soils, but on a good, rich garden soil it produces an abundance of extra large, bright red berries of exceptionally high quality and most delicious flavor. Grown under favorable conditions, we know of no other berry that will approach it in quality of fruit. Strong, Two Year, Transplanted Bushes: \$1.50 per 10; \$10.00 per 100.

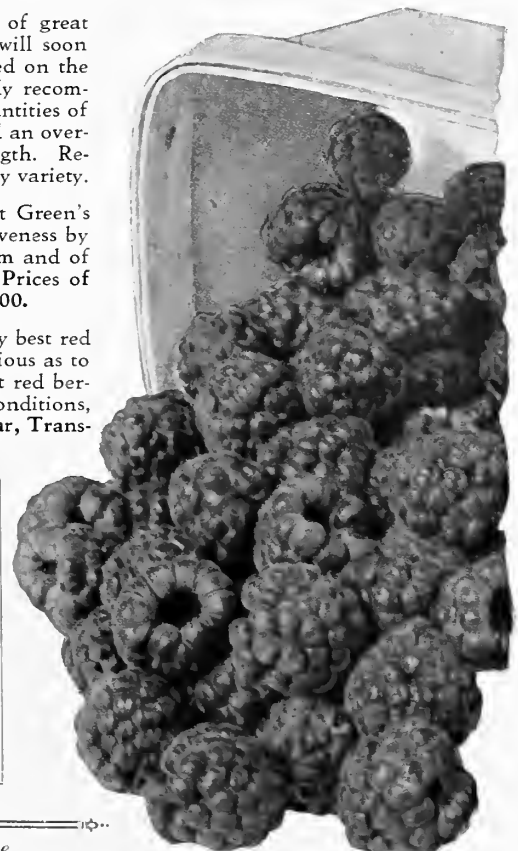


PLUM FARMER RASPBERRIES

### BIG YIELD FROM PLUM FARMER

Green's Nursery Co.:

I am writing to tell you of the wonderful production I got from 25 of your Plum Farmer black raspberries. Such bushes I have never before seen. We got eight quarts from the 25 bushes the first year and this year (1926) we got 63 quarts. Maybe others have done better, but we're satisfied. The fruit was large and of very fine quality. Mr. John Q. A. Gardiner, Barrington, R. I., August 9, 1926.



THE NEW SYRACUSE

## Green's Raspberry Collection

40 Extra Strong, Two Year, Transplanted Bushes,

10 Latham  
10 Cuthbert

10 Columbian  
10 Plum Farmer

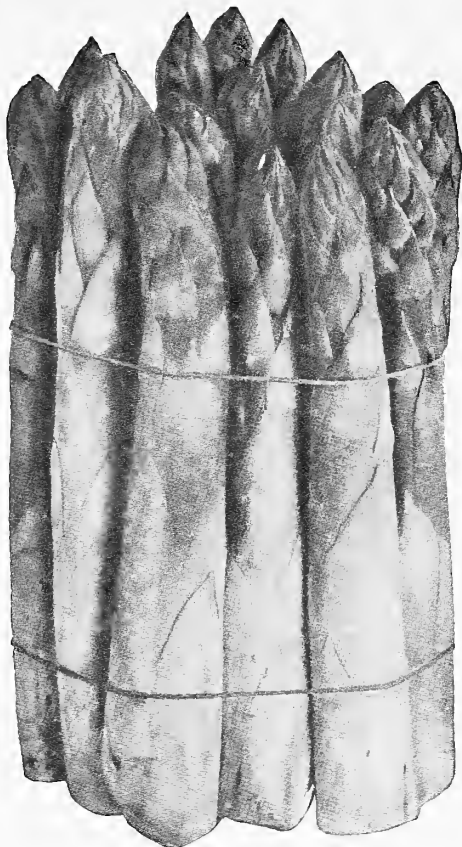
SPECIAL COLLECTION PRICE,

**\$3.75**

By Parcel Post, postpaid, \$4.00

Do Not Forget the Liberal Discount for Early Orders. See Page Three.

# ASPARAGUS



WASHINGTON ASPARAGUS

**R**IGHTFULLY called the "vegetable aristocrat." No vegetable that we know of has its rich, refined, delicious flavor. You never will really know how delicious this vegetable can be until you go out into your own patch and within a short time after cutting, dish out the long, big stalks of this vegetable delicacy.

It is easy to grow asparagus. Asparagus does well in any good well-drained garden soil, with no extra preparation required. Simply work the soil well, as you would prepare any garden for planting. Set the plants 1 foot apart in rows 2 feet apart for garden culture. For field culture, the rows are usually 4 feet apart, with the roots 18 inches apart in each row.

**Palmetto** Probably planted more than any other variety, both for commercial use and the home garden. A very early variety, producing large stalks of even, regular size, of excellent quality. Extra Size, Two and Three Year Old Roots: 60c per 25; \$1.50 per 100; \$10.00 per 1000.

**Washington** A new rust-resistant variety of great promise that is being planted largely in this vicinity. The stalks are large, dark green, with a heavy purple overtone. The tips are tight and firm and do not open out until well out of the ground. Extra Size Two and Three Year Old Roots: \$1.00 per 25; \$2.00 per 100; \$12.00 per 1000. Parcel Post—Postage paid, for 10c per 25; 25c per 100 additional to these prices.

## APPRECIATES OUR HELPFUL SUGGESTIONS

"Fairview," Main St., Box 252,  
Washingtonville, New York.

Green's Nursery Company:

Last April I received shipment of plants from you. At the same time your Mr. Burleigh was at such pains to help me. I feel it may interest you to hear of the result of our summer's work. Everything grew and prospered. The red raspberry bushes have had about 20 on each bush. Next year I expect they will bear well. The bushes all blossomed and grew well. The lawn, following your directions exactly, has been a complete success. Every one says, "your place looks as though you had been there a couple of years." We feel grateful to you for getting us rightly started.

MRS. KATE P. BLANCHARD.

# SAGE

**Holt's Mammoth** Forms a dense mass of beautiful light green leaves, used extensively for flavoring dressings and sauces. Set plants 3 feet apart each way. Prices of Strong, Transplanted Roots: 35c each; \$3.00 per 10; \$20.00 per 100.



MYATT'S LINNAEUS RHUBARB

# HORSE RADISH

**English or Common** The variety in general use. Will stand a great deal of hardship and persist in soil year after year. Does best in deep, rich, cool soil. As high as ten tons have been received from an acre. Plant in rows 3 feet apart and 1 foot apart in row. Prices of Strong Sets: \$1.00 per 25; \$3.00 per 100; \$25.00 per 1000.

# RHUBARB

The first thing in the spring to furnish material for pie and sauce. Its health giving, tonic properties make it invaluable as a spring regulator. Easy to grow. Should be in every home garden. Plant in rows 4 feet apart, with roots 3 feet apart in row.

**Myatt's Linnaeus** The best variety for general use. Stems large, tender and of refined flavor. Yields abundantly. Prices of Extra Strong, Two Year Old Roots: 25c each; \$2.00 per 10; \$10.00 per 100. By Parcel post, postpaid, for 3c per root extra.

# GREEN'S FRUIT GARDEN

Here is something that will delight not only the village and city planter but the farmer's wife as well. Start a fruit garden. You may say you have not room in your vegetable garden for fruits, but you have room by adopting the following plan: Plant a row of fruit trees through the center of your garden. Plant the trees 4 to 5 feet apart. You will be astonished at the amount of fruit you will get from this one row of fruit trees, but you must not crowd other rows alongside this row. You must give the sun a chance to get at your garden row on two sides. You must keep these trees pruned each year so that they will not spread too widely or too highly. We suggest for this garden row three peach trees, two dwarf apple trees, three dwarf pear and two cherry trees. Such a row of fruit trees and plants has delighted C. A. Green's home more than almost anything else for the past thirty years.

**RATES**—Asparagus and Horse Radish: Less than fifty at twenty-five rates. Fifty to three hundred at hundred rates. Three hundred or more at thousand rates.  
Sage and Rhubarb: Less than ten at each rates. Ten to fifty at ten rates. Fifty or more at hundred rates.

☞ When through with this Catalog please hand to a friend or neighbor

# BULBS

## Gladiolus

Gladiolus should be planted early in the spring, two to four inches deep and four inches apart. They should be lifted after blooming and stored in a cool, dry place over winter.

**Strong Bulbs—15c each; 90c per 10; \$6.00 per 100, postpaid.**

AMERICA—Flesh pink, faintly tinged with lavender.

LUCETTE—Ivory white, with lines of faint pink.

1910 ROSE—Rose-pink, shading to rose-red.

CRACKER JACK—Dark red, throat spotted with yellow and maroon.

MRS. FRANCIS KING—Pure light scarlet.

MRS. FRANK PENDLETON, JR.—Delicate salmon-pink, with blood-red throat.

SCHWABAN—Pure canary yellow, sulphur throat blotched with carmine.



A BUNCH OF GLADIOLUS BLOSSOMS

### Green's Rainbow Collection of Gladiolus

Twenty Extra Size Bulbs—A Wonderful Mixture of Colors.

ALL FOR SPECIAL PRICE OF

**\$1.10 postpaid**

## Dahlias

*This good, old-fashioned, fall-blooming plant is very easily grown and is greatly prized on account of its free-blooming habit.*

**Strong Bulbs—50c each; \$4.00 per 10, postpaid.**

ETENARD DE LYON (Cactus)—Rich carmine rose or royal purple.

FLORA (Decorative)—Pure white. One of the finest whites.

FLORID (Cactus)—Bright scarlet. A vivid and pleasing color.

JACK ROSE (Decorative)—Crimson. A general favorite.

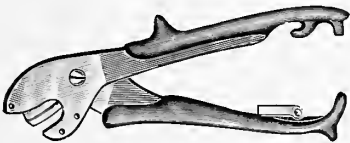
LAWINE (Cactus)—White, lightly suffused with pink.

MINA BURGLE (Decorative)—Rich cardinal red.

PRIMA DONNA (Cactus)—Pure white.

YELLOW CLOSSE (Decorative)—Lemon yellow.

## Needs of the Home Gardener



THE LEVIN TREE AND GRAPE PRUNER

One of the strongest and easiest cutting pruning shears. The Levin is the most practical pruner made.

Price, by mail, postpaid ..... **\$1.25**

### GREEN'S GRAFTING TOOL

A complete tool for grafting, made in one piece of forged steel.



Price, postpaid .. **\$1.50**

### GREEN'S GRAFTING WAX

In convenient pound packages.

Price, pound package, postpaid ..... **\$1.00**  
Price, 5 lbs., postpaid ..... **4.00**

Practical Tools of High Quality That Will Help You in the Garden.

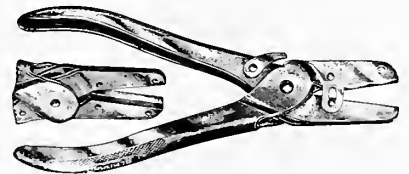


TIFFANY'S PRUNER

Made of steel, cuts very easy, smooth and fast. It is light, handy and efficient. Fully warranted against all flaws. Every fruit grower should have one. Length, 24 inches; weight, 3 lbs.

Price, postpaid..... **\$3.75**

### GRAPE AND ROSE SHEARS



This nickel-plated tool will pick grapes, small fruit, flowers, or those berries which grow in clusters. Clips the fruit or flower stem cleanly and holds it, freeing one hand for holding basket or bouquet.

Price, postpaid..... **\$1.25**



### GREEN'S BERRY HOOK

A new and useful tool for thinning berry bushes and shrubbery. A very handy and practical tool. Length, 30 inches; weight, 1 lb.

Price, postpaid..... **\$1.50**



OPHELIA

# America's Finest Collection of ROSES Everyone has bloomed in our Nurseries



MME. EDOUARD HERRIOT



KAISERIN AUGUSTA  
VICTORIA



RADIANCE (Pink)

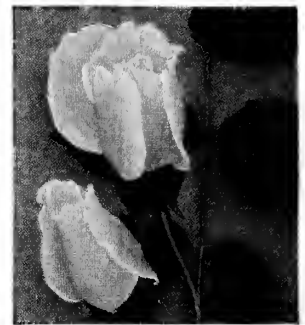


MME. BUTTERFLY

Voted by the American Rose Society as the Twelve Best and Most Popular Varieties

By a referendum vote of the members of the American Rose Society the following "dozen" were selected as the best and most desirable varieties for general cultivation. They are listed below in the order of their popularity.

- RADIANCE (Pink)
- RED RADIANCE
- OPHELIA
- SOUVENIR DE CLAUDIUS PERNET
- LOS ANGELES
- MADAM BUTTERFLY
- DUCHESS OF WELLINGTON
- COLUMBIA
- MADAM EDOUARD HERRIOT
- GRUSS AN TEPLITZ
- MRS. AARON WARD
- KAISERIN AUGUSTA VICTORIA



MRS. AARON WARD

For Descriptions of These Varieties, See Pages 16 and 17

### SPECIAL COLLECTION PRICE

12 Strong, Two-Year-Old Bushes, One Each of the Above Dozen,

All for \$8.50

By Parcel Post, \$9.00  
Postpaid,



RED RADIANCE



GRUSS AN TEPLITZ



COLUMBIA



DUCHESS OF WELLINGTON



LOS ANGELES



SOUVENIR DE CLAUDIUS  
PERNET