

## **Historic, Archive Document**

Do not assume content reflects current scientific knowledge, policies, or practices.



LIBRARY  
RECEIVED  
★ SEP 5 1929 ★  
U. S. Department of Agriculture

72,61

# SOME SPECIAL BARGAINS

## For Autumn 1929

*Selected from our complete lists.*



THE PURPOSE OF THIS BOOKLET is not to list everything we can furnish—but only a few items that we think are of peculiar interest at this time; either specially advantageous prices, or particularly valuable kinds of hardy planting material. For a more complete list write for our 1929 SHORT GUIDE or send us your requirements and we will quote prices. As to smaller sizes, a complete list is pasted inside the Back cover of this Booklet.



### KELSEY NURSERY SERVICE

Fifty Church Street  
NEW YORK CITY

*Member American Association of Nurserymen*

---

## Kelsey Nursery Service

1. *We furnish high quality stock.* Kelsey Nursery stock is grown where it grows best; always, of course, with regard to shipping convenience. Of more than seventy nurseries with over twenty thousand acres of stock we select the nearest nursery growing the material of the quality and grade you may want.

2. *We furnish our stock at the lowest prices made possible by mass production.* Prices of nursery stock vary greatly. One nursery grows stock on land worth, say, \$4,000 or \$5,000 per acre. The stock is no better than that grown at a nearby nursery where land is worth perhaps \$400.00 per acre. Nature has no partiality in this respect. We are, therefore, enabled to sell excellent stock at very low prices.

3. *We are an entirely responsible source of supply.* Established Fifty Years ago, in 1878, we still have among our customers many who have been patrons for forty years or more. In all our dealings we are always willing to make things right on any errors or just causes for complaint.

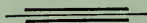
4. *Our Guarantee*—Stock to be in good condition when furnished. We will, however, replace any and all losses at half price.

5. *Scarce and rare varieties:* Why look through a dozen nursery catalogues for them? Send us your list and we will quote promptly. This Short Guide is necessarily confined to standard varieties, but with our facilities we can furnish almost any variety or size grown in the United States.

6. *The policy of this Company* is to make and keep good will by careful and prompt service.

*PRICES*—net, packing at cost. Five will be supplied at the 10 rate, 25 at the 100, and 250 at the 1000 rate.

Claims for errors or shortages to be made within ten days.



## F. W. KELSEY NURSERY COMPANY

Fifty Church Street -:- New York City

Telephones: COR tland 6380 and 2123

Cables: Kelnurco, Newyork

FRED'K. W. KELSEY,  
President

L. E. MANNING, Vice President  
and Manager

---

# Hedge Aristocrats

**EVERGREENS** form a living wall to protect you from wind and weather, as well as to screen out undesirable views. Yet they are effective all winter long. Plant in late August and September and secure this effect during the coming cold season. They can be planted in small sizes at little cost, or large trees can be set out to give immediate results.

## *Arbor Vitae*

**American**—A narrow pyramidal tree to 15 or 20 feet. Dark green foliage. A popular hedge tree. We have many sizes in stock—here are a few:

	(10)	(100)	(1000)
8 to 12 inches X .....	—	10.00	80.00
12 to 18 inches XX .....	—	20.00	150.00
2 to 3 feet B&B .....	—	150.00	1250.00

**Pyramidal**—A dense pyramid with light green foliage. Superior in growth and appearance to the above and does not grow ragged in old age.

12 to 15 inches X .....	—	31.00	295.00
10 to 12 inches XX .....	—	32.00	300.00
18 to 24 inches B&B .....	24.00	200.00	—

(Write for prices on other sizes)

## *Japanese Cypress (Retinospora)*

**Plumosa and Plumosa Aurea**—A pyramidal tree to 15 feet. The first with green, and the second with golden tipped foliage.

10 to 12 inches XX .....	—	50.00	395.00
18 to 24 inches B&B .....	20.00	185.00	—

(Larger sizes on request)

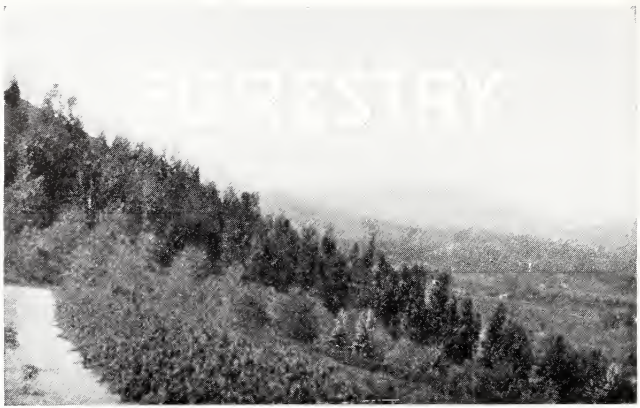
**Obtusa**—A large tree of delicate appearance, but entirely hardy. Good grower. Makes a fine dense hedge.

8 to 10 inches X .....	—	9.00	75.00
------------------------	---	------	-------

Rooted Cuttings of the above, as well as *Pisifera*, *Pisifera Aurea*, *Squarrosa Veitchii*, *Filifera*, etc., listed in the green price list at the back of the book.

Other evergreens famous for hedge purposes include the Hemlock, Boxwood, Pines, Spruces and Yews—all of which will be found priced elsewhere in the book. Write us in detail about your hedge problems and we will advise.





## *Some Amazing Prices*

**BY** special arrangement we offer the entire production of a large nursery in Maine specializing in Evergreen seedlings and small transplants for large Forestry plantings. This stock is exceptionally hardy on account of its Northern origin. The prices are offered with a view to enabling large areas to be reforested with minimum expense.

These prices stand comparison anywhere:-

### *Norway Spruce (Picea excelsa)*

	(1000)
2 year seedlings (2-0) .....	5.00
3 year seedlings (3-0) .....	6.00
3 year transplants (2-1) .....	10.50
4 year transplants (3-1) .....	12.00

### *White Spruce (Picea alba)*

3 year transplants (2-1) .....	10.50
4 year transplants (3-1) .....	12.00

### *Scotch Pine (True Riga variety)*

3 year transplants (2-1) .....	12.00
4 year transplants (3-1) .....	14.00

### *Red Pine (Pinus resinosa)*

3 year seedlings (3-0) .....	6.00
4 year transplants (3-1) .....	16.00

### *White Pine (Pinus Strobus)*

*(New England only)*

3 year seedlings (3-0) .....	6.00
4 year transplants (3-1) .....	12.00

See prices on other sizes and additional varieties in the green price list at the back cover.

## Large Transplants at Low Cost

WHEN rigid economy is not essential, and time is to be considered, it is desirable to plant the largest size of evergreen that can be obtained in the Forestry or Lining-out grade, and at Forestry prices. We specialize in this particular size of once or twice transplanted stock from ten to twenty-four inches. It is shipped without ball of earth, safely, and the enormous cost of freight and express charges are almost entirely obviated, since they weigh little. A full list will be found in the back cover.

### Pines

	(100)	(1000)
<b>Red (Norway)</b>		
12-18 inches X .....	10.00	80.00
12-15 inches XX .....	15.00	125.00
<b>Austrian Pine</b>		
10-12 inches XX .....	18.00	150.00
12-18 inches XX .....	30.00	250.00
<b>Mugho (Dwarf) Pine</b>		
8-10 inches X .....	15.00	100.00
<b>Scotch Pine</b>		
12-18 inches X .....	6.00	30.00
<b>Riga Scotch Pine</b>		
12-18 inches X .....	8.00	60.00
18-24 inches X .....	10.00	80.00

### Spruces

<b>Norway Spruce</b>		
12-15 inches XX .....	15.00	145.00
<b>Colorado Spruce</b>		
10-12 inches XX .....	35.00	295.00
<b>White Spruce</b>		
10-16 inches X .....	9.00	70.00

### Firs

<b>Balsam</b>		
10-16 inches X .....	15.00	100.00
<b>Douglas</b>		
12-18 inches XX .....	35.00	300.00
18-24 inches XX .....	60.00	500.00
<b>Concolor</b>		
12-15 inches XX .....	35.00	325.00
15-18 inches XX .....	50.00	400.00

### Hemlock

<b>American</b>		
4- 8 inches X .....	10.00	60.00
10-15 inches XX .....	50.00	395.00





## *The Red (Norway) Pine*

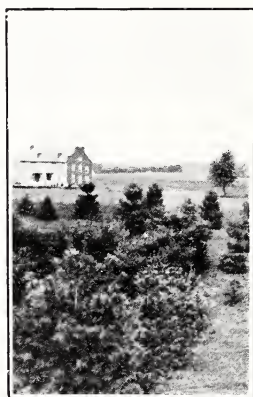
**A**BSOLUTELY hardy and more free from insect pests than any other large evergreen. In addition, it is a fast grower, makes a shapely tree and thrives on a wide variety of soils. Perhaps the best and most popular tree for all purposes. We have some exceptional bargains to offer.

	(100)	(1000)
12 to 18 inches once transplanted	10.00	80.00
12 to 15 inches twice transplanted	15.00	125.00
2 to 3 feet B&B .....	190.00	1500.00
3 to 4 feet B&B .....	225.00	2000.00

We also offer a special size for rough screens, where specimens are not desired. They are good thrifty trees, evenly branched, but not lower than three feet from the ground. Many times transplanted, balled and burlapped, we offer these 8 to 10 feet in height in carload lots at \$750. per 100. We estimate about 100 in a car.

## *The Riga Scotch Pine*

This has long been known among foresters as a type altogether superior to ordinary Scotch. It never makes a straggly growth, but is clean and straight. Needles do not turn yellow in spring. Branches are decidedly more red. It is very long lived. This tree we are offering for the first time in United States—all grown from selected seed from the Gulf of Riga district.



	(100)	(1000)
3 year old transplants .....	2.00	12.00
4 year old transplants .....	2.50	14.00
12 to 18 inches X .....	8.00	60.00
18 to 24 inches X .....	10.00	80.00



# When Winter Winds Blow

THE Pine screen—or just two or three specimens on the exposed corner—form a living protection: Specially designed by nature to withstand heavy winds and cold weather, they are invaluable for this purpose. Besides Red and Riga Pine offered on the opposite page, many varieties will be found in the green price list at the back. The following two varieties are adapted for seashore planting.

## Japanese Red Pine

A large spreading tree with long, bright green needles. It will stand planting very close to the sand and salt, and makes a nice contrast to the Austrian Pine, generally used for such situations.

	(10)	(100)	(1000)
10 to 18 inches X .....	—	8.00	60.00
3 to 4 feet B&B .....	50.00	390.00	—

## Austrian Pine

The bushiest and shapeliest of the Pines. A fine lawn specimen or a good forestry variety. Makes a splendid screen close to the seashore. Hardy and healthy. A good grower. The photograph to the right is of a tree 4 to 5 feet in height. Note the shapely form.



10 to 12 inches XX .....	—	18.00	150.00
12 to 18 inches XX .....	—	30.00	250.00
18 to 24 inches B&B .....	25.00	200.00	—
2 to 3 feet B&B .....	30.00	250.00	—

**Scotch Pine** (*Pinus Sylvestris*—the ordinary type of this species.)

12 to 18 inches X .....	6.00	30.00
4 to 5 feet B&B .....	275.00	2500.00
5 to 6 feet B&B .....	385.00	3500.00

## Mugho Dwarf Pine

This splendid dwarf is dense and low spreading. Absolutely hardy.

8 to 10 inches X .....	—	15.00	100.00
12 to 15 inches B&B .....	12.50	100.00	900.00
15 to 18 inches B&B .....	18.00	150.00	—
18 to 24 inches B&B .....	25.00	195.00	—

# The Glory of Firs

**SOFT**, lustrous needles — longer than with the Spruces — give these majestic trees a beauty all their own. We can offer nearly all the best varieties in many sizes, but a few are specially noted on this page. They are all entirely hardy and fairly fast growing.



## *Silver Fir (Concolor)*

**Silvery or Blue-green Needles**—Dense pyramidal shape. Makes a splendid tree for massing or for single specimens.

	(10)	(100)	(1000)
8 to 12 inches XX .....	—	25.00	200.00
12 to 15 inches XX .....	—	35.00	325.00
15 to 18 inches XX .....	—	50.00	400.00
2 to 3 feet B&B .....	60.00	—	—

(Smaller and larger sizes on request)

## *Douglas Fir (Pseudotsuga)*

Very dense, compact foliage of dark green. Valuable as a forestry tree on good land, and a fine lawn subject.

12 to 18 inches XX .....	—	35.00	300.00
18 to 24 inches XX .....	—	60.00	500.00
2 to 3 feet B&B .....	25.00	200.00	—

(Smaller and larger sizes on request)

## *Balsam Fir*

The famous “Balsam” tree that gives its characteristic clean fragrance to the Northwoods. A good tree for damp land. It grows broadly pyramidal with dark green needles.

10 to 16 inches X .....	—	15.00	100.00
12 to 18 inches B&B .....	—	65.00	—
18 to 24 inches B&B .....	—	130.00	—

(Smaller and larger sizes on request)

## *European Silver Fir (Pectinata)*

A fine silver-leaved type. Hardy and reliable. Good shape.

8 to 10 inches X .....	—	12.00	100.00
------------------------	---	-------	--------

A complete list of smaller sizes of evergreens will be found pasted inside the back cover.

# Consider the Spruces

**SPRUCE** is still the best forestry subject for pulp-wood cutting. It makes a splendid lawn tree for the first fifteen years or so, but tends to lose its lower branches in later years. Prices, however are so low on this genus, in the commoner varieties, that it will probably continue popular.

## Norway Spruce

**T h o r o u g h l y** hardy, Norway Spruce is perhaps one of the two most popular subjects for reforestation. It is widely used for Christmas Tree purposes. Dark shiny needles. Thrives in any good soil and is an excellent variety for underplanting in shady woods. The fast-



A Koster Spruce Planting

est growing Spruce. We offer a complete list from seedlings to specimens—a few on this page.

12 to 15 inches X .....	(100) 9.00	(1000) 70.00
8 to 12 inches XX .....	14.00	95.00
12 to 18 inches XX .....	15.00	145.00
18 to 24 inches B&B .....	55.00	490.00
2 to 3 feet B&B .....	100.00	950.00

## Colorado Spruce

The type of the well known Koster Blue Spruce. It ranges in color from light green to silver blue. About 30% blue. The one most popular lawn evergreen.

6 to 10 inches XX .....	24.00	200.00
10 to 12 inches XX .....	35.00	300.00

## Selected Blue

18 to 24 inches BB .....	(each) 8.50	(10) 60.00
--------------------------	-------------	------------

## Koster (grafted) Blue

12 to 15 inches BB .....	10.00	80.00
15 to 18 inches BB .....	12.00	110.00
18 to 24 inches BB .....	18.00	150.00

## White Spruce

A shapely pyramidal tree, quick growing. In New England and cool climates generally, a more satisfactory tree than Norway Spruce. With its frosty green, dense, unique foliage, it is coming into favor for Christmas Tree planting. In forestry, it makes good pulp wood and timber. At maturity, it reaches a height of fifty to sixty feet and is straight and shapely. Much better specimen than the Norway, on account of its denser form. Write for prices on sizes not noted here.

10 to 16 inches X .....	(10) —	(100) 9.00	(1000) 70.00
8 to 12 inches XX .....	—	15.00	90.00
2 to 3 feet B&B .....	20.00	175.00	—

# Sun-Baked Slopes

CAN be successfully covered with evergreens.

Junipers are the best type. As a family they prefer dry sunny locations and will thrive where many another evergreen will burn. A large assortment of shapes and colors is available. We do not pretend to list here more than a few items that we particularly recommend. Write us your problem, or advise us just what variety and size you want, and we will promptly quote.

## *Pfitzer Juniper*

The most popular, and rightly so. It is a glaucous, grey-green, dense vase-shaped bush about 5 feet high at maturity and as many wide. It stands successfully the poorest of city conditions, and is one of the very few evergreens that smoke and gas will not kill.

	(10)	(100)	(1000)
7 to 9 inches X .....	—	35.00	300.00
8 to 10 inches XX .....	—	50.00	450.00
2 to 3 feet B&B .....	35.00	350.00	—

## *Ground Juniper (Canadensis or Communis)*

Only 3 to 4 feet high but greatly spreading. Excellent to cover banks or rocks. Grey green foliage.

6 to 8 inches S .....	—	8.00	70.00
12 to 18 inches B&B .....	10.00	80.00	—
18 to 24 inches B&B .....	17.00	160.00	—
2 to 3 feet .....	20.00	175.00	—

## *Prostrate Juniper (Horizontalis)*

Very low to the ground, but sending out long side branches that take root and spread. The best ground cover for sunny slopes.

7 to 9 inches X .....	—	25.00	240.00
12 to 18 inches B&B .....	8.00	70.00	—

## *Red Cedar (J. Virginiana)*

The common cedar of New Jersey and New England. A splendid subject for screens and a fine specimen used as a point of accent. Twenty to thirty feet high and very narrow and columnar at maturity.

4 to 6 inches X .....	—	12.00	90.00
18 to 24 inches .....	25.00	190.00	—
3 to 4 feet .....	45.00	390.00	—



## *Evergreens in the Shade*

**M**ANY people think evergreens cannot be grown in dense shade—the North side of the house—under woods, etc. But there are some varieties particularly adapted for this purpose—chiefly the Hemlock and the Yew, although Rhododendrons and Laurel succeed equally well.



### *Hemlock (Tsuga)*

The American Hemlock is a superb tree with drooping, spreading foliage of dark green—very soft in effect. It is hardy in absolutely every respect save one, it must be protected from prevailing winds. We can furnish single specimens or carload lots at surprisingly low prices in all sizes. But for those wishing to use smaller trees, we offer two bargains for immediate order.

	(100)	(1000)
4 to 8 inches X .....	10.00	60.00
10 to 15 inches XX .....	50.00	395.00

### *Yew (Taxus)*

#### **Japanese Yew (Cuspidata)**

Hardy and slow growing, a spreading graceful tree, stands wind and cold and dense shade.

8 to 12 inches X .....	45.00	400.00
8 to 12 inches XX .....	60.00	500.00
2 to 3 feet—\$8. each .....	—	—

### *American Yew (Canadensis)*

A low bush three to four feet high, but spreading arched branches that give the effect of a graceful fern. Crimson berries in winter.

7 to 9 inches X .....	21.00	200.00
18 to 24 inches—\$4. each .....	—	—

(Other varieties and sizes of Yew and Hemlock are available in carlot quantities—write for prices)

## Flowering Evergreen Shrubs

FOR winter cheer and summer beauty and fragrance we offer the following outstanding varieties. Not only remaining green through the winter, this class of planting material furnishes a superb display of bloom.

### *Daphne Cneorum (Garland Flower)*

The most delightful of the dwarf evergreen shrubs. A mass of fragrant pink blooms in May, which continue sparsely through the summer, and then in September it again bears a profusion of blooms. The fact that it blooms twice during the season make it doubly desirable. It thrives in any good soil and likes full sun.

	(Each)	(10)	(1000)
6 to 8 inches .....	1.00	9.00	75.00
8 to 10 inches .....	1.25	12.00	95.00
10 to 12 inches .....	1.50	14.00	125.00
12 to 15 inches .....	2.25	20.00	190.00



### *Azalea Hinodigiri*

#### *(Japanese Evergreen Azalea)*

With its brilliant crimson flowers in early Spring this is the finest of the evergreen Azaleas. Should be planted in a protected position.

6 to 8 inches .....	1.80	15.00	135.00
8 to 10 inches .....	2.00	18.00	150.00
10 to 12 inches .....	2.50	22.00	190.00
12 to 15 inches .....	3.50	33.00	300.00

### *American Holly (Ilex Opaca)*

The well loved Christmas Holly. With its bright red berries and dark lustrous green leaves it is a beautiful all year round shrub. When transplanting the plants should be defoliated, remove all leaves with a sharp knife being careful not to destroy buds which are at the base of leaf stalk.

12 to 15 inches .....	2.00	12.00	100.00
18 inches .....	2.50	16.00	150.00
2 feet .....	3.50	25.00	—

See green folder for smaller sizes.

# Rhododendron and Laurel

THE finest of the broadleaved evergreens, and contrary to popular opinion easily and safely transplanted. An ACID SOIL is their only necessity, given this they will thrive in sun or shade and require practically no further care.



## Small Sizes for Economy

		(100)	(1000)
Rhododendron Maximum	9-12 in. S	8.00	55.00
	9-12 in. with ball	20.00	—
R. Catawbiense and Carolina	6-12 in. S	18.00	150.00
Kalmia Latifolia (Laurel)	9-12 in. S	8.00	55.00

## Carlots Larger Sizes (150 or more)

<b>R. Maximum</b>			
2 to 3 feet	X grade	.....	.75
3 to 4 feet	X grade	.....	.95
2 to 3 feet	XX grade	.....	1.20
<b>R. Catawbiense and Carolinianum</b>			
12 to 24 inches	XX grade	.....	1.20
2 to 3 feet	XX grade	.....	1.60
3 to 4 feet	XX grade	.....	2.80
<b>Kalmia (K. Latifolia)</b>			
18 to 24 inches	XX grade	.....	.80
2 to 3 feet	X grade	.....	.75
2 to 3 feet	XX grade	.....	1.20

Write for special quantity prices F.O.B. your nearest freight depot.

## Hardy Hybrid Rhododendrons

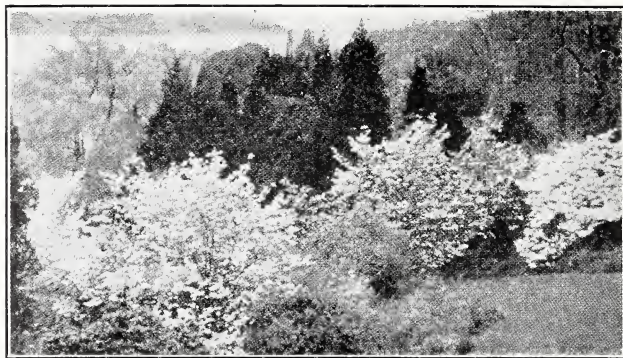
The Hybrids are noted for the beauty, richness and large size of their flowers, and their variety of color. For these reasons they add greatly to the attractiveness of any Rhododendron planting.

The plants priced below are well shaped and with flower buds, they are now in the open field and absolutely hardy. They will be dug with a fine ball of fibrous roots for safe transplanting.

- Amphion—Clear pink with white eye, large bloom.
- Catawbiense Album—White, fine foliage.
- Catawbiense Grandiflorum—Dark rosy lilac.
- Mrs. C. S. Sargent—Deep rose shading to red.
- Roseum Elegans—Clear rose, compact grower.

	(Each)	(10)	(1000)
12 to 18 inches, B&B	6.50	60.00	495.00
18 to 24 inches, B&B	9.00	80.00	750.00

Will furnish 50 plants, 10 each of any five of the above varieties, at the 100 rate.



## *Flowering Dogwood (Cornus)*

SPRING would lose much of its beauty were it not for this species. The large showy flowers in massed effect make a sight never to be forgotten.

Note that we can furnish small sizes as well as large. This is true of all other varieties on these pages. They are listed and priced in the green folder pasted in the back of the book, under the heading "Deciduous Trees." Small sizes of these beautiful flowering trees can be used to obtain a massed effect at low cost, but which in a few years will make as effective a planting as the larger sizes for more immediate effect.

### *Lining-out Size*

	(Each)	(10)	(100)	(1000)
6 to 12 inches .....	—	—	6.50	50.00
12 to 18 inches .....	—	—	9.00	70.00

### *Landscape Grade*

2 to 3 feet .....	1.50	12.00	95.00	—
3 to 4 feet .....	2.00	18.00	150.00	—
8 to 10 feet .....	6.00	40.00	350.00	—
10 to 12 inches .....	7.50	55.00	500.00	—

### *Red Flowering Dogwood*

Same as above with Pink Blooms.

12 to 15 inches .....	—	20.00	150.00	—
18 to 24 inches .....	3.50	30.00	250.00	—
2 to 3 feet .....	5.00	40.00	300.00	—
3 to 4 feet .....	7.50	65.00	550.00	—

### *River's Purple Beech*

50 to 60 ft. A beautiful tree holding its color throughout the Summer.

	(Each)	(10)	(100)
18 to 24 inches .....	3.50	30.00	250.00
12 to 14 feet specimens .....	30.00	250.00	—
14 to 16 feet specimens .....	40.00	350.00	—

(We have trucking and balling facilities near New York City, if required.)

### *Blood-leaf Japanese Maple*

This dwarf tree makes a superb lawn specimen or for mixing in the shrub border, where its brilliant coloring makes a striking effect. We offer only true grafted trees.

	(Each)	(10)	(100)
10 to 12 inches .....	—	25.00	200.00
12 to 18 inches .....	3.50	30.00	250.00



# A Few Shade Tree Bargains

THE market for shade trees adapted to street and avenue planting has been for the past few years enormously understocked. Most varieties are not available in the best sizes at any price. It is at the time of preparing this note still too early to make accurate grade counts of stock available (August 1), but in some cases we can indicate the general price schedule.

In the three varieties listed below we will, however, have exceptional bargains to offer. Write us for quotation on your needs. Also, we offer for the private and municipal nursery all varieties in small sizes for growing on. These are listed in the back of this book.

## *Oriental Plane*

A fine narrow street variety, for its dense neat head. Stands city smoke and gas better than most.

	(100)
18 to 24 ins.	8.00
6 to 8 ft.	100.00
8 to 10 ft.	125.00

These are exceptional prices. Also available in sizes up to 2 inch caliper.



## *Norway Maple*

The best and most popular street tree for all parts of the country. Compact rounded top.

	(100)	(1000)
12 to 18 inches S .....	10.00	70.00
4 to 5 feet X whips .....	50.00	365.00
1½ to 2 inches caliper .....	450.00	4000.00

## *American Elm*

The first citizen of America's Tree world. Fine spreading top and graceful form. Ideal for broad avenues.

12 to 18 inches .....	2.00	10.00
3 to 4 feet .....	6.00	32.00
6 to 8 feet .....	70.00	675.00

Sizes available at good prices up to 2 inches or more in caliper

# Grow Your Own Shrubs

SHRUBS grow quickly. A lining-out size as listed in the green price list at the back at 4c to 6c will in two years be a thrifty specimen plant, worth ten times as much. For those with large areas to be planted the saving is enormous. Moreover, small shrubs grow readily set out in their permanent positions. They require no particular care and are very satisfactory things to plant in small sizes. Before planting, they should be cut down to within two or three inches of the ground. Failure to do this promotes a slower growth and spindling shape.

## Trees and Shrubs for Bird Food

The following list of hardy fruit-bearing shrubs for food for birds will be found convenient for ready reference. It embraces the best varieties that can now be furnished in quantity. The numbers following the bird names refer to the numbered plants as below. Prices are listed in the green folder.

### Game Birds

Grouse: 2-5-6-7-8-11-12-16-20-21-22-26-27.  
Partridge: 6-7-11-12-26.  
Pheasant: 11-12-21-26.  
Prairie Chicken: 8-20.  
Quail: 2-5-6-7-11-12-15-17-19-22.  
Snipe: 2-6-7-11-12-21-22-26-27.  
Wild Geese: 4-5-11-12-22-26-27.  
Woodcock: 5-6-7-17-19-26-27.

### Song and Plumage Birds

Blackbird: 5-6-7-15-19-22.  
Bluebird: 4-5-6-7-8-11-12-15-17-19-21-22-24-26-27.  
Bobolink: 15-17-21-27.  
Cardinal: 4-6-7-15-21-27.  
Chickadee: 6-7-19-21.  
Cuckoo: 15-21-27.  
Finch: 6-7-21.  
Flicker: 4-6-7-11-12-16-17-19-21-22-27.  
Kingbird: 2-6-7-15-17-18-19-21-22-26-27.  
Lark: 1-2-5-6-7-15-17-21-26-27.  
Meadowlark: 1-26-27.  
Mockingbird: 3-4-11-12-15-17-18-19-21-22-27.  
Oriole: 15-17-21-22.  
Starling: 6-7-13-15-16-17-19-21-22-26-27.  
Swallow: 6-7-19.  
Tanager: 15-17.  
Thrush: 6-7-11-12-15-17-18-19-21-26.  
Waxwing: 4-6-7-8-11-12-13-15-17-21-24-26.  
Warbler: 13-19-21-26.  
Woodpecker: 6-7-11-12-15-17-19-21-22-26-27.  
Wren: 2-9-19-21-22.

### Trees and Shrubs

- 1 Aronia arbutifolia
- 2 Berberis Thunbergi
- 3 Callicarpia (French Mulberry)
- 4 Celtis (Hackberry)
- 5 Cephalanthus (Button Bush)
- 6 Cornus Stolonifera
- 7 Cornus Florida
- 8 Eleagnus (Silverberry)
- 9 Euonymus Americana
- 10 Gaylussacia (Huckleberry)
- 11 Ilex Opaca (Holly)
- 12 Ilex Verticillata
- 13 Juniperus Virginiana (Red Cedar)
- 14 Lonicera (Honeysuckle) (bush) (vine)
- 15 Morus (Mulberry)
- 16 Nyssa Multiflora
- 17 Prunus (Choke Cherry)
- 18 Rhamnus Cathartica (Buckthorn)
- 19 Rhus (Sumac) (in variety)
- 20 Rosa (Rose) Lucida and Nitida
- 21 Rubus (Raspberry)
- 22 Sambucus (Elderberry)
- 23 Sassafrass Officinale
- 24 Thuya American (Arbor Vitae)
- 25 Symphoricarpos Vulgaris (Snowberry)
- 26 Viburnum prunifolium
- 27 Vitis (Wild Grape)

# Here are Hurry-Trees

QUITE often occasions arise which call for the very fastest growth possible—a quick screen to shut out an unsightly view, something to hold in a steep bank from washing out, a thousand circumstances arise every season. Now there are a few trees whose rate of growth is so phenomenal as to pass all other varieties. Growths of three to five feet a year are quite possible. No actual figures are given for the varieties below, since this growth depends on circumstances. They are, however, without exception, the fastest of the desirable species.



Chinese Elm

## Chinese Elm (*Ulmus Pumila*)

A new variety introduced by Dr. Wilson of the Arnold Arboretum. It has been proved hardy from Texas to Cape Cod. It can be shipped with dry roots. It thrives in dry locations. The photograph above is of a tree that seven years ago was seed. It must not be planted however in wet heavy land, if quick growth is desired.

	(10)	(100)	(1000)
12 to 18 inches .....	—	9.00	65.00
3 to 4 feet .....	—	20.00	140.00
4 to 5 feet X whips ....	—	60.00	500.00
6 to 8 feet .....	20.00	—	—

## Lombardy Poplar

A narrow column of light green, picturesque and effective. Grows at maturity forty or fifty feet.

3 to 4 feet .....	—	10.00	60.00
8 to 10 feet .....	6.00	50.00	450.00
10 to 12 feet .....	8.00	75.00	—

## Tulip Poplar (*Liriodendron*)

A beautiful native tree, too little used, because of the difficulty of moving large sizes. Smaller sizes can be handled with ease.

2 to 3 feet .....	—	4.00	35.00
18 to 24 inches X .....	—	8.00	70.00

## Lining-Out Grade

THE inside pages of the folder pasted in the back cover opposite contain our up-to-date list of seedlings and small transplanted sizes of evergreens, evergreen shrubs, deciduous trees and deciduous shrubs. These are ideal for lining-out in nurseries or in gardens and will grow into specimen trees if properly taken care of. The value will then be many times the present cost and whether the trees are used for re-sale to others or to be placed on your own estate, it is the most economical way of securing planting material.

### *Varieties for Special Soils*

For special soil conditions we would recommend the following varieties:

#### Light Sand

Scotch Pine (Pinus)  
Black Locust (Robinia)  
Carolina Poplar (Populus)

#### Sandy Loam

Red Pine (Pinus)  
Black Locust (Robinia)  
Carolina Poplar (Populus)  
European Larch (Larix)  
Arbor Vitae (Thuya Occ.)  
Douglas Fir (Pseudotsuga)

#### Good Soil

White Pine (Pinus)  
Norway Spruce (Picea)  
White Ash (Fraxinus)  
European Larch (Larix)

#### Coarse Gravel

Red Pine (Pinus)  
Black Locust (Robinia)

#### Loam

White Pine (Pinus)  
Norway Spruce (Picea)  
White Ash (Fraxinus)  
Carolina Poplar (Populus)  
European Larch (Larix)  
Arbor Vitae (Thuya)

#### Wet Land

Balsam Fir (Abies)  
Arbor Vitae (Thuya Occidentalis)  
Carolina Poplar (Populus)

### *Christmas Tree Growing*

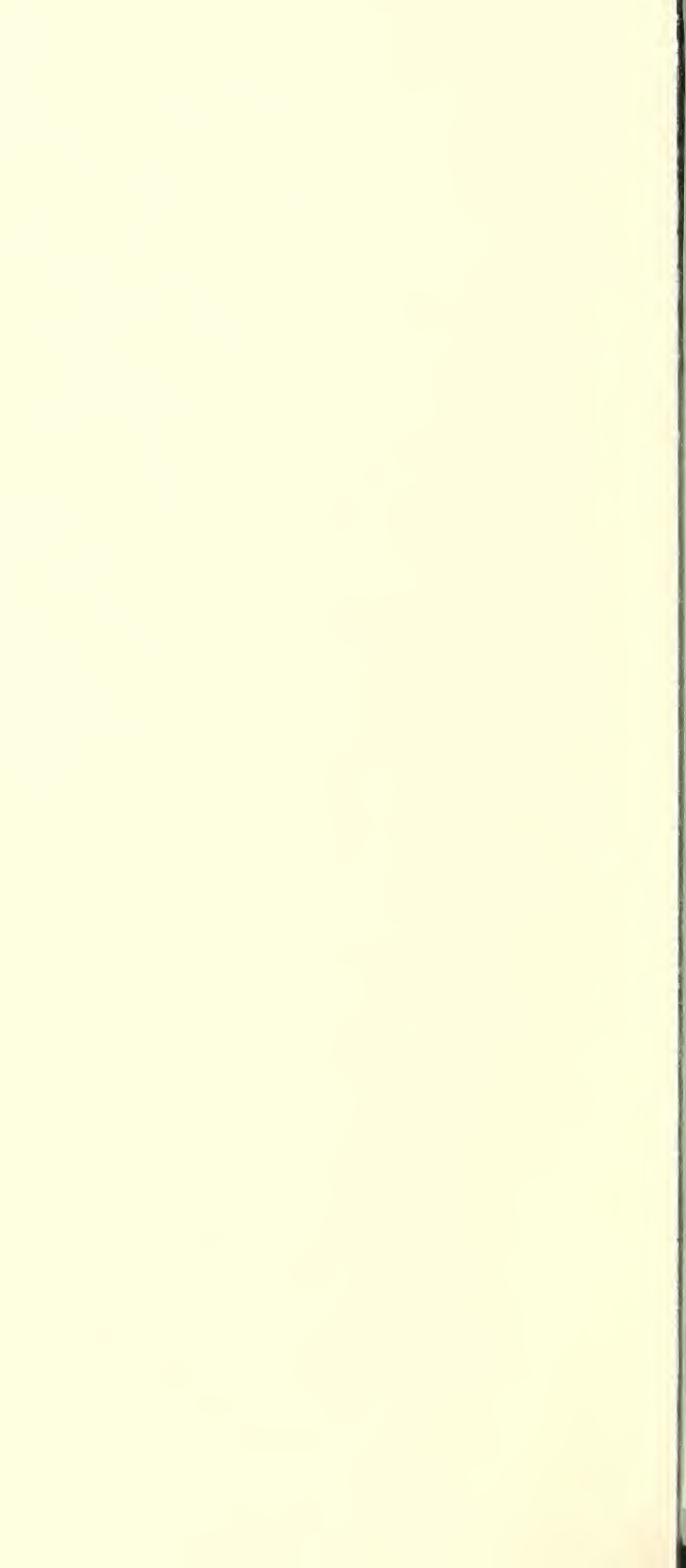
This is particularly profitable in connection with a forest planting for pulp. Plant 3 x 3 feet—about 4,850 trees to the acre. At the end of approximately ten years take out every other tree for sale as Christmas trees, and leaving your planting 6 x 6 feet—the best distance for good timber growth. The best Christmas tree varieties are White and Norway Spruce and Douglas and Balsam Fir. These varieties are mature for Christmas tree cutting in 7 to 10 years from a 3-year-old transplant.

---

F. W. KELSEY NURSERY COMPANY

50 Church St., New York, N. Y.





**PRICES:**—Net, packing at cost. Orders for 250 at thousand rate and 50 at hundred rate. No orders accepted less than 50 of one variety. Prices subject to change without notice.

**TERMS:**—Half cash with order or satisfactory references. Trade accounts are due Dec. 1st. Any claims for errors or shortages to be rendered within ten days after receipt of stock.

## Kelsey Nursery Service—50 Church St., New York City

### EVERGREEN SEEDLINGS AND TRANSPLANTS

"S" Indicates Seedlings not transplanted.  
"X" Indicates each transplanting.

#### ABIES (Fir)

##### Balsamea (Balsam Fir)

Its characteristic clean odor and stately appearance make this a desirable variety even without its well known value as timber. Ideal evergreen for wet land. Popular variety for Christmas trees.

	(100)	(1000)
2 yr. S.....	5.00	25.00
3 to 5 in. X.....	6.00	40.00
10 to 16 in. X.....	15.00	100.00
<b>brachyphilla (Nikko Fir)</b>		
2 yr. S.....	7.00	50.00
4 to 6 in. X.....	12.00	95.00
<b>concolor (White Fir)</b>		
2 yr. S.....	5.00	40.00
4 to 6 in. X.....	10.00	80.00
6 to 8 in. X.....	12.00	100.00
8 to 12 in. XX Bushy.....	25.00	200.00
12 to 15 in. XX Bushy.....	35.00	300.00
15 to 18 in. XX Bushy.....	50.00	400.00

##### douglasi (Douglas Fir)

One of the most beautiful conifers, it is also easy to grow and valuable as lumber. Popular variety for Christmas trees.

2 yr. S.....	\$ 4.00	\$ 20.00
5 to 8 in. X.....	15.00	100.00
12 to 18 in. XX.....	35.00	300.00
18 to 24 in. XX.....	60.00	500.00

##### Nordmanni (Nordmann's Fir)

2 yr. S.....	10.00	75.00
--------------	-------	-------

##### firma (Momi Fir)

2 yr. S.....	5.00	40.00
5 to 7 in. X.....	14.00	120.00

##### Mariesii (Maries Fir)

5 to 7 in. X.....	12.00	100.00
-------------------	-------	--------

##### pectinata (Silver Fir)

8 to 10 in. X.....	12.00	100.00
--------------------	-------	--------

##### veitchi (Veitch's Fir)

2 yr. S.....	5.00	40.00
5 to 7 in. X.....	14.00	120.00

#### CEDRUS (True Cedar)

##### deodora (Deodar)

4 to 6 in. S.....	9.00	70.00
6 to 8 in. X.....	18.00	140.00

##### libani (Cedar of Lebanon)

8 to 10 in. S.....	10.00	90.00
--------------------	-------	-------

#### CUPRESSUS (True Cypress)

##### lawsoniana (Lawson's Cypress)

Thoroughly hardy and a beautiful tree. Similar in foliage to the Retinosporo and Arborvitae.

8 to 10 in. X.....	18.00	140.00
6 to 8 in. S.....	8.00	60.00

#### JUNIPERUS (Junipers)

##### cannarti (Cannart Red Cedar)

Rooted cuttings.....	20.00	225.00
----------------------	-------	--------

##### communis (Common Juniper)

6 to 8 in. S.....	8.00	70.00
-------------------	------	-------

##### communis hibernica (Irish Juniper)

Rooted cuttings.....	7.00	60.00
----------------------	------	-------

7 to 9 in. X.....	17.00	160.00
-------------------	-------	--------

10 to 12 in. X.....	27.00	250.00
---------------------	-------	--------

##### horizontalis (Prostrate Juniper)

R. C. 5 to 7 in.....	21.00	200.00
----------------------	-------	--------

7 to 9 in. X.....	25.00	240.00
-------------------	-------	--------

##### horizontalis Douglasi (Waukegan Juniper) (100) (1000)

R. C. 5 to 7 in.....	26.00	260.00
6 to 8 in. XX.....	40.00	350.00

##### pfitzeriana (Pfitzer's Juniper)

Rooted cuttings.....	18.00	170.00
7 to 9 in. X.....	35.00	300.00
8 to 10 in. XX.....	50.00	450.00

##### sabina (Savin Juniper)

Rooted cuttings, 4 to 6 in.....	11.00	100.00
7 to 9 in. X.....	33.00	300.00
6 to 8 in. XX.....	35.00	300.00

##### virginiana (Red Cedar)

2 yr. S.....	6.00	40.00
4 to 6 in. X.....	12.00	90.00

#### LARIX (Larch)

##### europaea (European Larch)

A tall, straight grower, very different from the native Larch (or Hackmatack). It requires a deep, fairly porous and moderately fresh soil. It is a rapid grower but needs sunlight. Best used in combination with other varieties.

##### europaea

12 to 18 in. S.....	6.00	40.00
12 to 18 in. X.....	16.00	100.00

##### leptolepis (Japanese)

12 to 18 in. S.....	4.00	30.00
---------------------	------	-------

#### PICEA (Spruce)

##### alba (White Spruce)

Most suitable for paper pulp and succeeds wherever Norway Spruce succeeds. It is a trifle quicker in growth. Popular variety for Christmas trees.

3 yr. 2 to 5 in. X.....	2.00	10.50
4 yr. 3 to 5 in. X.....	3.00	12.00
5 to 10 in. X.....	4.00	16.00
5 yr. 6 to 10 in. X.....	5.00	24.00
10 to 16 in. X.....	9.00	70.00
8 to 12 in. XX.....	15.00	90.00

##### canadensis (Black Hills Spruce)

3 yr. 2 to 3 in. X.....	6.00	50.00
5 to 8 in. XX.....	12.00	100.00

##### englemanni (Englemann's Blue)

3 yr. S.....	3.00	16.00
3 yr. X 2 to 5 in.....	4.00	25.00
4 yr. X 4 to 6 in.....	8.00	60.00

##### excelsa (Norway Spruce)

This variety is planted in preference to other spruces for two reasons: It will thrive when set out in dense shade and succeeds in heavy damp soil. Having a flat root system, it is suitable for shallow, rocky soils. Popular variety for Christmas trees.

2 yr. S.....	\$ 1.50	\$ 5.00
3 yr. S.....	2.00	6.00
3 to 5 in. X. 3 yr.....	2.50	10.50
4 yr. X.....	3.00	12.00
6 to 12 in. X.....	3.50	25.00
12 to 15 in. X.....	9.00	70.00
8 to 12 in. XX.....	14.00	95.00
12 to 15 in. XX.....	15.00	145.00

##### Koster's Blue

1 yr. grafts from field.....	200.00	.....
------------------------------	--------	-------

##### polita (Tigertail Spruce)

2 yr. S.....	6.00	40.00
5 to 7 in. X.....	13.00	95.00

# EVERGREEN SEEDLINGS

A D

## SPRUCE (Continued)

### *pungens* (Colorado Blue Spruce)

This variety varies in color from light blue to light green. Unless stated "Selected Blue" our stock runs from 30 to 50% blue. In small sizes, it is usually cheaper to buy unselected trees. Even seed from the Koster blue Spruce does not make all blue seedlings.

	(100)	(1000)
3 yr. S.....	2.50	16.00
2 to 5 in. X 3 yr.....	3.50	25.00
3 to 6 in. X 4 yr.....	8.00	60.00
6 to 10 in. X.....	18.00	150.00
6 to 10 in. XX.....	24.00	200.00
10 to 12 in. XX.....	35.00	300.00
<b>Koyamai Spruce</b>		
3 to 6 in. X.....	9.00	70.00
<b>Oriental Spruce</b>		
2 yr. S.....	7.00	50.00
<b>Sitka Spruce</b>		
2 yr. S.....	5.00	30.00

## PINUS (Pine)

### *austriaca* (Austrian Pine)

A fast grower, hardy, shapely and bushy. Makes a fine specimen or a valuable timber—the Austrian Pine, but also thrives in sea shore screens.

2 yr. S.....	\$ 3.50	\$ 18.00
4 to 6 in. X 3 yr.....	4.00	25.00
5 to 10 in. X 4 yr.....	8.00	50.00
6 to 12 in. XX 5 yr.....	12.00	100.00
10 to 15 in. XX (Bushy).....	18.00	150.00
12 to 18 in. XX (Bushy).....	30.00	250.00

### *banksiana* (Jack Pine)

3 yr. S. 6 to 10 in.....	1.50	6.00
12 to 18 in. X 5 yr.....	8.00	60.00
18 to 24 in. X 5 yr.....	10.00	80.00

### *densiflora* (Jap. Red Pine)

10 to 18 in. X.....	8.00	60.00
---------------------	------	-------

### *mughus* (Mugho Pine)

3 to 5 in. S.....	3.00	25.00
3 yr. X.....	3.50	30.00
5 yr. X 5 to 8 in.....	10.00	80.00
5 yr. X 8 to 10 in.....	15.00	100.00
6 yr. XXX 6 to 10 in. spread, 5 to 8 in. high (Bushy).....	25.00	225.00

### *ponderosa* (Western Yellow Pine)

10 to 12 in. S 3 yr.....	5.00	35.00
--------------------------	------	-------

### *resinosa* (Red Pine)

Perhaps the most popular pine for forestry planting in the east. It has practically no insect enemies and is successful on a wide range of soil—from coarse gravel to heavy clay.

3 yr. S. 3 to 6 in.....	\$2.00	\$6.00
4 yr. 5 to 10 in. X.....	3.00	16.00
4 yr. 6 to 12 in. X.....	4.00	20.00
5 to 10 in. XX.....	5.00	25.00
12 to 18 in. X.....	10.00	80.00
12 to 15 in. XX.....	15.00	125.00

### White Pine (*Pinus Strobus*)

#### New York State only

2 yr. S.....	2.00	12.00
3 yr. S.....	2.50	14.00
4 yr. S.....	3.00	16.00
8 to 10 in. 4 yr. X.....	7.00	50.00
10 to 15 in. X.....	8.00	60.00

#### *strobus* (Ship almost anywhere)

4 to 6 in. X.....	15.00	80.00
2 yr. S.....	3.00	20.00

### *sylvestris* (Scotch Pine)

The variety par excellence for poor soils—even dry sand wastes can be successfully covered with Scotch Pine.

2 yr. S.....	2.00	8.00
12 to 18 in. X.....	6.00	30.00

## RIGA SCOTCH PINE (*P. sylvestris* var. *rigensis*)

This variety has all the good points of the common variety and none of the bad, developing a clean straight trunk and symmetrical head.

3 to 6 in. X 3 yr.....	2.00	12.00
3 to 8 in. X 4 yr.....	2.50	14.00
9 to 12 in. X.....	3.00	16.00
12 to 18 in. X.....	8.00	60.00
18 to 24 in. X.....	10.00	80.00



# AND TRANSPLANTS (Continued)

## PSEUDOTSUGA (See Abies)

### RETINOSPORA (Japanese Cypress)

	(100)	(1000)
<i>filifera</i>		
Rooted cuttings .....	15.00	140.00
6 to 8 in. X.....	30.00	260.00
8 to 10 in. XX.....	45.00	395.00
<i>pisifera</i>		
Rooted cuttings .....	11.00	100.00
7 to 9 in. X.....	30.00	300.00
<i>pisifera aurea</i>		
Rooted cuttings .....	15.00	140.00
6 to 8 in. X.....	20.00	160.00
<i>plumosa</i>		
Rooted cuttings .....	10.00	90.00
7 to 9 in. X.....	21.00	200.00
10 to 12 in. XX.....	50.00	395.00
<i>plumosa aurea</i>		
R. C. ....	13.00	120.00
7 to 9 in. X.....	35.00	300.00
10 to 12 in. XX.....	50.00	395.00
<i>squarrosa veitchii</i>		
Rooted cuttings .....	11.00	100.00
8 to 12 in. X.....	30.00	280.00
<i>obtusata</i>		
2 yr. S 4 to 6 in.....	4.00	28.00
8 to 10 in. X.....	8.00	75.00

### TAXUS (Yew)

#### Canadensis (Canadian Yew)

	(100)	(1000)
Rooted cuttings .....	10.00	90.00
7 to 9 in. X.....	21.00	200.00
<i>cuspidata</i> (Japanese Yew)		
4 to 6 in. X.....	25.00	200.00
8 to 12 in. X.....	45.00	400.00
8 to 12 in. XX.....	60.00	500.00
<i>cuspidata capitata</i> (Upright)		
6 to 8 in. X.....	36.00	300.00
10 to 12 in. X.....	50.00	450.00
<i>cuspidata brevifolia</i> (Dwarf)		
4 to 6 in. R. C.....	28.00	240.00
<i>cuspidata aurea</i> (Golden)		
4 to 6 in. X.....	30.00	.....
6 to 8 in. XX.....	45.00	.....
<i>cuspidata Hicksii</i>		
4 to 6 in. R. C.....	50.00	450.00

### THUJA (Arborvitae)

#### occidentalis (White Cedar)

3 yr. X.....	3.00	20.00
3 to 6 in. X.....	6.00	40.00
8 to 12 in. X.....	10.00	80.00
12 to 18 in. XX.....	20.00	150.00

#### pyramidalis

Rooted cuttings .....	8.00	70.00
7 to 9 in. X.....	21.00	200.00
9 to 12 in. X.....	25.00	240.00
12 to 15 in. X.....	31.00	295.00
8 to 10 in. XX.....	26.00	250.00
10 to 12 in. XX.....	32.00	300.00

#### BEST ARBORVITAE HEDGE

#### Siberian

Rooted cuttings .....	9.00	80.00
7 to 9 in. X.....	21.00	200.00

#### Douglas Golden

Rooted cuttings .....	13.00	120.00
8 to 10 in. X.....	32.00	295.00

#### hoveyi

Rooted cuttings .....	10.00	90.00
8 to 10 in. XX.....	24.00	200.00

#### Tom Thumb

Rooted cuttings .....	10.00	90.00
7 to 9 in. X.....	17.00	160.00
10 to 12 in. XX.....	40.00	300.00

#### globosa

Rooted cuttings .....	11.00	100.00
6 to 8 in. XX.....	20.00	180.00
8 to 10 in. XX.....	24.00	220.00

#### orientalis (Biota)

6 to 8 in. X.....	5.00	45.00
-------------------	------	-------

#### orientalis aurea nana (Berkman's Golden)

6 to 8 in. X.....	30.00	280.00
-------------------	-------	--------

### TSUGA (Hemlock)

#### canadensis (Amer. Hemlock)

2 to 4 in. S.....	2.50	16.00
4 to 6 in. S.....	4.00	20.00
4 to 8 in. X 3 yr.....	10.00	60.00
10 to 15 in. XX.....	50.00	395.00

# D E C I D U O U S

<b>ACER dasycarpum (Silver Maple)</b>		
3 to 4 ft.....	(100)	(1000)
	5.00	30.00
Smaller grades on request.		
<b>★ACER platanoides (Norway Maple)</b>		
Perhaps the best all-around shade tree for streets. The prices quoted include cost of packing and transportation anywhere in U. S. A. except on seedlings.		
12 to 18 in. S.....	10.00	70.00
4 to 5 ft. Whips.....	50.00	365.00
5 to 6 ft. Whips.....	60.00	460.00
<b>ACER rubrum (Red Maple)</b>		
6 to 12 in.....	3.00	25.00
12 to 18 in.....	4.00	30.00
3 to 4 ft. X.....	50.00	450.00
<b>ACER saccharum (Sugar Maple)</b>		
6 to 12 in.....	3.00	25.00
12 to 18 in.....	4.00	30.00
2 to 3 ft.....	6.00	50.00
<b>AESCULUS (Flowering Horse-Chestnut)</b>		
hippocastanum		
6 to 12 in.....	5.00	37.50
<b>BETULA alba (White Birch)</b>		
12 to 18 in.....	12.00	95.00
<b>BETULA populifolia (Gray Birch)</b>		
12 to 18 in.....	3.00	25.00
2 to 3 ft.....	4.00	37.50
<b>BETULA papyrifera (Paper Birch)</b>		
8 to 12 in.....	4.00	30.00
12 to 18 in.....	5.00	35.00
<b>BETULA lutea (Yellow Birch)</b>		
8 to 12 in.....	.....	25.00
<b>BETULA nigra (River Birch)</b>		
12 to 18 in.....	.....	18.00
18 to 24 in.....	.....	25.00
<b>CATALPA speciosa (Western Catalpa)</b>		
12 to 18 in.....	.....	8.00
Larger grades on request.		
<b>CARPINUS americana (Hornbeam)</b>		
6 to 12 in.....	.....	25.00
12 to 18 in.....	.....	30.00
<b>CASTANEA dentata (American Chestnut)</b>		
6 to 12 in.....	11.00	90.00
12 to 18 in.....	14.00	120.00
<b>CERCIS canadensis (Red Bud)</b>		
6 to 12 in.....	.....	22.00
12 to 18 in.....	.....	35.00
18 to 24 in.....	.....	45.00
2 to 3 ft. X.....	13.00	100.00
3 to 4 ft. X.....	16.00	125.00
<b>★CORNUS FLORIDA (Flowering Dogwood)</b>		
6 to 12 in.....	6.50	50.00
12 to 18 in.....	9.00	70.00
18 to 24 in.....	10.00	80.00
2 to 3 ft.....	15.00	130.00
<b>FAGUS ferruginea (American Beech)</b>		
6 to 12 in.....	4.00	30.00
12 to 18 in.....	5.00	35.00
<b>FAGUS sylvatica (Europe Beech)</b>		
6 to 8 in. 1 yr. S.....	8.00	70.00
<b>FRAXINUS (American White Ash)</b>		
12 to 18 in.....	.....	16.00
<b>GINGKO BILOBA (Maidenhair)</b>		
6 to 8 in.....	10.00	90.00
<b>GLEDITSCHIA (Honey Locust)</b>		
6 to 12 in.....	.....	12.50
12 to 18 in.....	.....	17.50
2 to 3 ft.....	.....	30.00
<b>HICORIA alba (Shellbark Hickory)</b>		
6 to 12 in.....	6.00	50.00
<b>HICORIA ovata (Shagbark Hickory)</b>		
6 to 12 in.....	6.00	50.00
<b>JUGLANS nigra (Black Walnut)</b>		
12 to 18 in.....	.....	30.00
18 to 24 in.....	.....	45.00
2 to 3 ft.....	.....	55.00
<b>JUGLANS cinera (Butternut)</b>		
12 to 18 in.....	.....	25.00
18 to 24 in.....	.....	36.00
2 to 3 ft.....	6.00	50.00

# S H A D E T R E E S

	(100)	(1000)
<b>LIQUIDAMBAR (Sweet Gum)</b>		
12 to 18 in.....	.....	35.00
18 to 24 in.....	.....	45.00
<b>LIRIODENDRON (Tulip Poplar)</b>		
12 to 18 in.....	.....	20.00
18 to 24 in.....	.....	25.00
2 to 3 ft. S.....	4.00	35.00
3 to 4 ft.....	6.00	50.00
18 to 24 in. X.....	8.00	70.00
<b>MORUS alba (Russian Mulberry)</b>		
Attractive to birds. Among others, the Grouse, Quail, Lark, Loon, Thrush, Tanager, etc.		
6 to 12 in.....	.....	6.00
12 to 18 in.....	.....	12.00
Larger sizes on request.		
<b>PLATANUS occidentalis (Sycamore)</b>		
12 to 18 in.....	.....	30.00
18 to 24 in.....	.....	40.00
2 to 3 ft.....	.....	60.00
<b>★PLATANUS orientalis</b>		
18 to 24 in.....	8.00	65.00
<b>POPULUS (Poplar)</b>		
Lombardy and Simon's Poplars		
18 to 24 in. whips.....	.....	30.00
3 to 4 ft. whips.....	.....	60.00
Carolina and Norway Poplars		
2 to 3 ft. whips.....	.....	40.00
Other sizes and varieties on request.		
<b>QUERCUS alba (White Oak)</b>		
8 to 12 in.....	7.00	50.00
<b>★QUERCUS palustris (Pin Oak)</b>		
6 to 9 in. S.....	5.00	40.00
9 to 12 in.....	6.50	50.00
12 to 18 in. S.....	8.50	70.00
18 to 24 in. S.....	10.00	80.00
<b>★QUERCUS rubra (Red Oak)</b>		
6 to 8 in.....	.....	25.00
<b>QUERCUS macrocarpa (Burr or Mossycup Oak)</b>		
6 to 12 in.....	.....	40.00
<b>QUERCUS coccinea (Scarlet Oak)</b>		
6 to 9 in.....	6.00	50.00
9 to 12 in.....	8.00	70.00
<b>ROBINIA (Black Locust)</b>		
12 to 18 in.....	.....	12.50
2 to 3 ft.....	.....	25.00
Other sizes on request.		
<b>SALIX babylonica (Weeping Willow)</b>		
2 to 3 ft.....	6.00	45.00
3 to 4 ft.....	9.00	65.00
<b>SORBUS aucuparia (European Mt. Ash)</b>		
8 to 12 in.....	5.00	32.00
12 to 18 in.....	6.00	50.00
18 to 24 in.....	9.00	80.00
<b>TILIA americana (American Linden)</b>		
12 to 18 in.....	6.00	45.00
18 to 24 in.....	7.00	55.00
<b>TILIA cordata (European Linden)</b>		
6 to 12 in.....	7.00	60.00
12 to 18 in.....	10.00	80.00
<b>ULMUS americana (American Elm)</b>		
12 to 18 in.....	2.00	10.00
3 to 4 ft.....	6.00	32.00
<b>★ULMUS pumila (Chinese Elm)</b>		
A new variety, comparatively, that has been attracting so much attention in all parts of the country. We can report four foot growth for the season 1928 near New York City. Phenomenal growth and hardiness, yet a clean, useful shade tree. Growths of 35 ft. and seven inch trunks are reported in trees only eight years from seed.		
12 to 18 in.....	9.00	65.00
18 to 24 in.....	12.00	90.00
2 to 3 ft.....	16.00	110.00
3 to 4 ft.....	20.00	140.00
4 to 5 ft. whips.....	60.00	500.00

# EVERGREEN SHRUBS

## ABELIA grandiflora

	(100)	(1000)
6 to 8 in. S.....	12.00	100.00
8 to 12 in. X.....	20.00	180.00

## AZALEA

<b>Amoena</b>		
2 1/4 in. pots.....	20.00	180.00
<b>Hinodigiri</b>		
2 1/4 in. pots.....	20.00	180.00
<b>Hinamayo. Salmon pink</b>		
2 1/4 in. pots.....	20.00	180.00
<b>Hunnewell</b>		
3 to 4 in. S.....	20.00	180.00
<b>Ledifolia alba. Single white</b>		
2 1/4 in. pots.....	20.00	180.00
<b>Pontica</b>		
3 yr. S.....	16.00	150.00
<b>Maxwelli. Carmine red</b>		
2 1/4 in. pots.....	24.00	200.00
<b>Mollis</b>		
5 to 7 in. S.....	10.00	90.00
4 to 6 in. XX.....	20.00	160.00
<b>Nudiflora</b>		
12 to 18 in. (coll).....	7.50	65.00
<b>Kurume. Named varieties. Pink Pearl, Flame, and Snow.</b>		
2 1/4 in. pots.....	24.00	200.00

## BUXUS (Boxwood)

<b>B. suffruticosa. (Box edging)</b>		
2 to 4 in.....	9.00	80.00
5 to 7 in. X.....	13.00	120.00
<b>B. sempervirens. (True Bush Box)</b>		
4 to 6 in. X.....	10.00	80.00
6 to 8 in. X.....	14.00	120.00

## COTONEASTER

<b>Horizontalis, Divaricata and Franchetti</b>		
2 in. pots .....	24.00	200.00

## ILEX (Holly)

To succeed with Holly, all foliage must be removed before planting.

<b>opaca (Amer. Holly)</b>		
4 to 6 in. S.....	14.00	120.00
6 to 8 in. S.....	20.00	180.00
8 to 12 in. S.....	30.00	250.00
12 to 18 in. S.....	40.00	350.00
<b>crenata (Jap. Holly)</b>		
4 to 6 in. S.....	8.00	70.00
4 to 6 in. X.....	15.00	120.00

## KALMIA

<b>latifolia (Laurel)</b>		
9 to 12 in. S.....	8.00	55.00

## LEUCOTHOE

<b>cataesbaei</b>		
6 to 12 in. S.....	12.00	85.00

## MAHONIA

<b>aquifolium (Oregon Holly)</b>		
6 to 8 in. S.....	10.00	75.00
6 to 8 in. XX.....	20.00	150.00

## MAGNOLIA

<b>magnolia glauca</b>		
12 to 18 in. (Collected).....	10.00	95.00

## PACHYSANDRA Terminalis

well rooted plants.....	10.00	70.00
selected plants .....	14.00	90.00

## PYRACANTHA (Evergreen Thorn)

<b>P. Lalandi (Leland's Fire T.)</b>		
4 to 6 in.....	8.00	70.00
6 to 8 in.....	10.00	95.00

## ★RHODODENDRON

<b>maximum</b>		
9 to 12 in. S.....	8.00	55.00
9 to 12 in. S. with ball.....	20.00	.....
<b>catawbiense and R. Carolina</b>		
3 to 6 in. S.....	12.00	75.00
6 to 12 in. S.....	18.00	150.00

### SPECIAL OFFER.

Hardy Hybrid Rhododendrons, in the following varieties. Order now for Spring delivery.

Abraham Lincoln	Kettledrum		
Catawbiense grandiflorum	Lady Armstrong		
Charles Dickens	Parsons Gloriosum		
Delicatissima	Roseum Elegans		
6 to 8 in. grafts. \$12.00 per 10.....	90.00	800.00	



# DECIDUOUS FLOWERING SHRUBS

<b>ALTHEA (Rose of Sharon (order by color))</b>		
Named varieties, double and single, red, white, purple.	(100)	(1000)
12 to 18 in.....	\$6.00	\$45.00
18 to 24 in.....	8.00	60.00
<b>BARBERRY</b>		
B. Thunbergii		
12 to 15 in. S.....	5.00	30.00
18 to 24 in. X.....	12.00	100.00

<b>Red Leaf Japanese (new)</b>		
1 yr. S.....	8.00	60.00
2 in. Poto.....	15.00	130.00
9 to 12 in.....	36.00	300.00
12 to 15 in.....	50.00	400.00
<b>LIMITED SUPPLY, ORDER EARLY</b>		

<b>BUDDLEIA magnifica (Butterfly Bush)</b>		
18 to 24 in.....	7.00	60.00
2 to 3 ft.....	9.00	80.00
<b>CYDONIA japonica (Japanese Flowering Quince)</b>		
8 to 12 in.....	6.00	50.00
12 to 18 in.....	8.00	60.00

<b>CORNUS (Dogwood)</b>		
Amomum (Silky Dogwood), stolonifera (Red Osier Dogwood) sanguinea (Red Branched Dogwood), paniculata (Gray Dogwood) alba siberica (Coral Dogwood).		
12 to 18 in.....	6.00	45.00
18 to 24 in.....	7.00	50.00
C. Kousa		
6 to 8 in.....	8.00	70.00

<b>★CRATAEGUS (Hawthorne)</b>		
C. coccinea		
12 to 18 in.....	10.00	80.00
C. oxycantha (English Hawthorne)		
8 to 12 in.....	5.00	40.00
12 to 18 in.....	8.00	60.00
C. cordata (Washington Hawthorn)		
12 to 18 in.....	8.00	65.00

<b>DEUTZIA</b>		
Candidissima, crenata, fortunei, Pride of Rochester.		
12 to 18 in.....	5.00	40.00
18 to 24 in.....	6.00	50.00
D. Lemoine and Gracilis		
8 to 12 in.....	8.00	70.00

<b>FORSYTHIA</b>		
Fortunei, intermedia, suspensa, viridissima		
6 to 12 in.....	(100) 5.00	(1000) 40.00
18 to 24 in.....	8.00	70.00

<b>HYDRANGEA</b>		
Paniculata grandiflora		
8 to 12 in.....	8.00	70.00
aborescens grandiflora		
6 to 12 in.....	6.00	55.00
paniculata		
12 to 18 in.....	9.00	80.00

<b>★KOLKWITZIA amabilis (Beauty Bush)</b>		
2 1/4 in. pots.....	15.00	130.00
8 to 10 in X.....	30.00	250.00

<b>LONICERA (Honeysuckle, bush forms)</b>		
Bella albida, fragrantissima, morrowii, tartarica alba and rubra, ruprechtiana		
6 to 12 in.....	4.00	30.00
18 to 24 in.....	8.00	70.00

<b>PHILADELPHUS</b>		
Coronarius, Mt. Blanc, Falconeri, avalanche		
12 to 18 in.....	6.00	55.00
Grandiflora, lemoine, nivalis		
8 to 12 in.....	3.50	40.00
Virginal. New and scarce variety		
12 to 15 in.....	15.00	135.00

<b>RHUS (Sumas)</b>		
R. copalina (Shining Sumac)		
12 to 18 in.....	3.00	20.00
18 to 24 in.....	4.00	30.00
R. glabra (Smooth Sumac). Same as above		
R. typhina (Staghorn Sumac)		
12 to 18 in.....	3.50	25.00

<b>RHODOTYPOS kerroides (Jethead)</b>		
8 to 12 in.....	(100) 6.00	(1000) 50.00

<b>ROSES</b>		
Blanda, Meadow Rose		
10 to 15 in.....	6.00	40.00
Carolina		
12 to 18 in.....	6.00	40.00
Lucida, Virginia Rose		
12 to 18 in.....	6.00	45.00
Multiflora Japanese Rose		
12 to 18 in.....	4.00	20.00
Rubignosa, Sweet Briar		
12 to 18 in.....	10.00	90.00
Rugosa rubra		
8 to 15 in.....	5.00	40.00
Setigira, Prairie Rose		
8 to 12 in.....	4.00	30.00
Wichuriana, Memorial Rose		
8 to 12 in.....	5.00	35.00
Climbing Roses: Dorothy Perkins, White Perkins, Crimson Rambler, Dr. Van Fleet, Clb. Amer. Beauty, Tausendschoen, Silver Moon, Pauls Scarlet.		
2 1/2 inch pots.....	13.00	120.00
We will be glad to quote on Climbing Tea, Hybrid Tea, Hybrid Perpetuals, Polyantha, etc., in any variety that you may wish.		

<b>SPIREA</b>		
Anthony Waterer		
6 to 10 in.....	8.00	70.00
Froebelli		
10 to 15 in.....	6.00	40.00
Billardi		
12 to 18 in.....	6.50	55.00
Thunbergii		
8 to 12 in.....	9.00	80.00
Van Houtte		
12 to 18 in.....	6.00	40.00

<b>STEPHANANDRA flexuosa (Lace Bush)</b>		
6 to 12 in. X.....	9.00	80.00

<b>SYMPHORICARPUS</b>		
Racemosus (Snowberry)		
12 to 18 in.....	4.50	40.00
Vulgaris (Coralberry)		
18 to 24 in.....	5.00	40.00

<b>SYRINGA (Lilac)</b>		
vulgaris, Common purple lilac		
6 to 12 in.....	4.00	30.00
12 to 18 in.....	6.00	40.00
vulgaris alba		
6 to 12 in.....	6.00	50.00
12 to 18 in.....	9.00	70.00
persica, Persian Lilac		
12 to 18 in.....	10.00	85.00
rothomagensis, Chinese Lilac		
12 to 18 in. X.....	15.00	130.00

<b>GAL FOUR</b>		
<b>TAMARIX africana</b>		
2 to 3 ft.....	6.00	45.00

<b>VIBURNUM</b>		
Americanum, Amer. Cranberry Bush		
10 to 18 in.....	10.00	95.00
Dentatum, Arrow Wood		
12 to 15 in.....	6.00	50.00
Lantana, Wayfaring Tree		
8 to 12 in.....	10.00	90.00
Opulus, Europe Cranberry		
8 to 12 in.....	9.00	80.00
Opulus Sterilis, Common Snowball		
6 to 10 in.....	10.00	90.00
Tomentosum Plicatum, Jap. Snowball		
6 to 12 in.....	14.00	120.00
Carlesii grafts		
2 1/4 in. pots.....	80.00	750.00

<b>★WEIGELIA</b>		
Amabilis, Lemoine, Rosea		
6 to 12 in.....	6.00	50.00
12 to 18 in.....	8.00	60.00
Eva Rathke		
12 to 18 in.....	14.00	130.00



