

Historic, Archive Document

Do not assume content reflects current scientific knowledge, policies, or practices.

62,47

c 1929

The

IRIS

and

LILAC

LIBRARY
RECORDED
★ SEP 7 1929 ★
U. S. Department of Agriculture



KELLER
FLOWER GARDENS

St. Joseph, Mo.

JOIN THE AMERICAN IRIS SOCIETY

\$3.00 a Year

Four bulletins each year, with iris notes, names of new varieties, etc. Checks should be made payable to the American Iris Society and sent to the

SCIENCE PRESS PRINTING CO.
LANCASTER, PENN.

The newest book on Irises—one of the Home Garden Handbooks—

IRISES by Rockwell

Price \$1.00 Postfree

or, if requested, will be sent, free of charge, with each \$25.00 order for Irises.

IRIS

from

The Keller Flower Gardens

Noyes Bl. 30th to 31st St.

ST. JOSEPH, MO.

Tel. 6-0252

Well grown rhizomes—healthy stock—over 500 rare and selected kinds—true to name—postage paid on orders of \$1.00 or more.

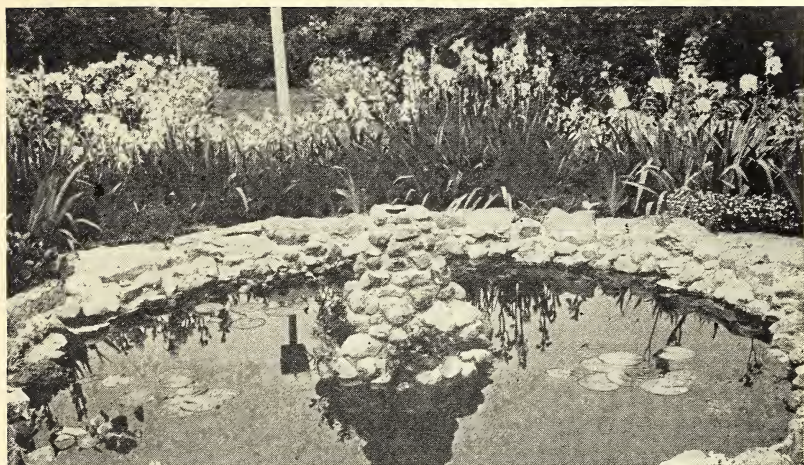
Visit our Iris Garden, Rock Gardens and Water Gardens.

Member of American Iris Society.

Member of Commercial Peony and Iris Growers Assn.

Important Notice—Orders for those Iris marked with an asterisk are accepted with the understanding that the order will be completed subject to their release this summer by the Federal Horticultural Board. While the supply of these varieties is limited, I believe it will be sufficient to justify release by the board.

MRS. F. E. KELLER.



In small clumps or large masses Iris give abundantly any color desired.

BEARDED IRIS

3 of any 25c varieties.....	\$0.50
3 of any 35c varieties.....	.75
3 of any 50c varieties.....	1.00

Afterglow (Sturt)—Artistic light lavender and yellow blend.....	\$.25
Aksarben (J. Sass)—Cream plicata with brown markings.....	2.00
Albatross (Per)—S. white overlaid rose; F. bright crimson purple.....	.25
Alcazar (Vilm)—S. light violet; F. brownish purple.....	.25
Alliquippa (Hall)—Fine tall clear yellow with luminous center.....	6.00
* Allies (Vilm)—S. violet; F. deep velvety purple. Noteworthy for its color in which red predominates. C. M. S. N. H. F.....	7.50
* Allure (Murrell)—Yellow and pink blend. A very beautiful combination. Very much like Midgard. I would choose Midgard.....	25.00
Alvarado (Mohr)—Rich deep purple; 40 inches; vigorous growing.....	1.50
Ambassadeur (Vilm)—Flowers very large; smoky reddish violet; F. rich velvety maroon. A. M. R. H. S. 1921.....	.50
Amber (Dykes)—A yellow self. Exceptionally fine.....	2.00
Ammon (Per)—S. sky blue; 4-5 feet.....	.75
Andrew Jackson (Kirk)—S. Saccardo's violet; F. raisin purple; over 3 feet.....	15.00
* Andromede (Vilm)—S. smoky bright violet; F. bright violet purple. A grand variety. Flowers very large. C. M. S. N. H. F.....	5.00
Anne Bullen (Hort)—S. bluish lavender; F. dark red velvety purple; 30" ..	1.00
Anna Farr (Farr)—White slightly bordered pale blue.....	.50
Anna Leslie (Sturt)—S. white, tinted rose; F. dahlia carmine.....	.50
Ann Page (Hort)—A lovely pale lavender blue self. One of the very best..	.90
Antares (Vilm)—Enormous flower; S. yellow gradually shading off to lighter yellow and dotted with ageratum blue; F. pure white with lemon yellow reverse. Strong and vigorous. Unique and beautiful.....	5.00

Plant the Rhizome Near the Surface of the Ground.

Apache (Farr)—Rich coppery red tones.....	\$ 6.00
Aprodite (Dykes)—Lilac pink. Wonderful form.....	3.00
Archeveque (Vilm)—Deep reddish purple; grape juice odor.....	.25
Arcturus (Vilm)—A grand variety; S. lemon yellow shaded with ageratum violet; F. violet purple; lemon yellow margins. C. M. S. N. H. F.....	5.00
Argos (Vilm)—Immense flower; S. large, of dauphin's blue; F. very long of velvety petunia violet. Claw striated brown. C. M. S. N. H. F.....	5.00
Argynnis (Wilson)—S. yellow; F. dark violet carmine.....	.50
Ariadne (Dykes)—S. silvery blue; F. deep blue; 3½ feet.....	1.75
Ariel (Murrell)—Soft bright harebell blue self; scented; 30 inches.....	2.50
Armenian (Mil)—Rosy salmon flaked violet.....	.50
Arnold (Denis)—S. reddish violet; F. rich velvety pansy violet; 3½ feet....	1.00
Asia (Yeld)—A grand Iris; S. pale silvery lavender; F. raisin purple with gold shading. Very unusual and one of the finest; 4½ feet.....	1.25
Aurea (Jack)—Rich chrome yellow. Can stand moisture.....	.25
Aurora (Fos)—Uniform shade of soft shell pink.....	.25
Autumn King (H. Sass)—Large blue bicolor. Blooms both October and May	1.00
Autumn Queen (H. Sass)—White fall blooming variety. Very beautiful....	5.00
Avalon (Sturt)—Lustrous pinkish lavender; 4 feet.....	1.50
Azure (Bliss)—Clear bright blue bicolor; very tall.....	.25
Azulado (Mohr)—Lustrous pearl blue; very large.....	2.50
27 Avril (Denis)—S. violet purple; F. deeper.....	1.50
Baldwin (H. Sass)—Bright electric blue throughout. Fine form, of great size and heavy substance. A new color and very outstanding; 40 inches	7.50
Ballerine (Vilm)—Enormous light lavender blue flowers; 4½ feet.....	.50
Barton Harrington (Fry)—S. bright golden yellow; F. red-brown; fragrant.	.25
Beau Ideal (J. Sass)—Striking white with deep petunia border.....	.75
Belisaire (Cay)—S. soft tan; F. rich rose; 3 feet. An exquisite flower.....	3.00
Black Prince (Perry)—Very dark rich purple.....	.50
Blue Bird (Bliss)—Flowers of good form and of decided blue tone.....	.50
Blue Boy (Fos)—Distinct shade of blue, with blue beard. Early.....	.25
Blue Lagoon—Richly colored medium deep blue.....	.25
Blue Velvet (Loomis)—A self of richest deep blue velvet. Very fine.....	30.00
Bluet (Sturt)—Blue lavender; free flowering; early; fragrant.....	.35
*Bourem (Cay)—S. bright vinous red. A deeper and redder. Labor resulting from cross between Peau Rouge and Opera.....	5.00
Brandywine (Farr)—Silvery blue with bright golden beard.....	.75
Bruno (Bliss)—S. fawn tinted rose; F. deep rich velvety red purple of great size and substance. This iris is used very much as a parent for hybridizing.....	6.00
Buto (H. Sass)—The largest dark purple I have seen. Blackish tones in the wide velvety falls. This attracts more attention than any other purple in the garden. Immense flower.....	7.50
B. Y. Morrison (Sturt)—Soft lavender with deep velvety purple falls.....	.50
Candlelight (Andr)—Large flowers of pale pinkish lavender strongly illuminated from within by a rich golden glow. Very beautiful.....	10.00
Canopus (Bliss)—A large blue velvety purple. Dominion race.....	1.50
Caporal (Bliss)—Large reddish violet.....	.50
Caprice (Vilm)—Red raspberry color; fragrant.....	.25
Cardinal (Bliss)—S. rose; F. velvety prune purple; cardinal in the sun....	8.00
Caroline E. Stringer (J. Sass)—Delicate apple blossom pink; frilled.....	2.50

Never Use Fresh Manure.

* Cassiopee (Vilm)—Enormous flower; S. broad, of ageratum blue; F. Daphn's blue, edges smoky; very free-flowering (vigorous); C. M. S. N. H. F.	\$ 5.00
Caterina (Fos)—Large lavender bicolor; 4 feet.....	.50
Cavalier (Cleve)—An improved perfection; fine.....	.50
* Caylus (Vilm)—S. smoky bright violet purple; F. blackish red purple; illuminated with yellow beard and styles. A redder and more highly colored Alzazar. Very brilliant; 34 inches. C. M. S. N. H. F.....	5.00
Cecile Minturn (Farr)—Soft clear pink; free flowering.....	.35
Chasseur (Vilm)—One of the best yellow iris in commerce. A very artistic flower due to its opaque tone, the brown etchings on the falls and the brown based buds. Large with rounded standards and falls surpassing in these qualities any other yellow. Very fine garden variety. Awards of Merit Paris 1920 and London 1922.....	1.50
Citronella (Bliss)—S. beautiful clear canary yellow; F. rich golden brown heavily lined carmine. Most brilliant spot in the garden.....	1.00
Clio —Fluffy steel blue blooms. Fine landscape variety.....	.25
Cluny (Vilm)—Wisteria violet; bright orange beard; 4 feet.....	.25
Col. Candelot (Millet)—Tall bronze red.....	.25
Comanche (Farr)—Brilliant orange yellow with slightly brown markings on fall50
Conchobar (Billss)—S. dusky lavender overlaid with bronze; F. rich velvety prune purple; fine shape and substance.....	7.50
Conquistador (Mohr)—Very large bicolor; S. bluish lavender; F. a darker richer tone; growth vigorous; 4-5 feet; fine color; unusual size.....	1.50
Coppersmith (Shull)—A wonderful rich copper red velvet; fine finish.....	6.00
Corrida (Millet)—Cool gray blue; late.....	.25
Cretonne (Farr)—S. pale bronze purple; F. rich maroon.....	.25
Crimson Glow (Per)—Handsome well-shaped flowers of uniform shade of brilliant rose; beautifully frilled; landscape variety.....	2.25
Crusader (Fos)—Clear light blue self; large flower; early.....	.35
S. indicates standards or upper petals.	
F. indicates Falls or lower petals.	
Dalila (Denis)—S. tinted flesh; F. dahlia carmine; beautiful blend.....	.25
Daphne (Bliss)—S. white; F. velvety purple.....	1.00
Dejah (Per)—4½ feet; silvery blue; golden beard.....	.75
Dejazet (Vilm)—Rose bronze; late35
Delicatissima (Mil)—Light violet with very long falls.....	.50
Delight (Sturt)—White delicately edged pink; pink styles. A. M. A. I. S. 1928	3.50
Dolly Madison (Wmsn)—Flowers large; 4½ feet tall; mauvette shading to bright yellow at base; distinctive in size, carriage and form. One of the best ever raised in America. A. M. A. I. S. 36 inches; fragrant.....	18.00
Dominion (Bliss)—Famous violet blue bicolor.....	4.00
* Don Juan (Cay)—Bright red and rosy lilac; 40 inches. C. M. S. N. H. F....	50.00
Dorothea —Gray blue; opens flat like Japanese iris.....	.25
Dorothea K. Williamson (Wmsn)—Rich vivid purple; beardless hybrid....	.75
Doxa —Olive Giant (H. Sass)—An entirely new break in color. Huge flowers of heavy texture with spreading Falls of pale olive green, heavily reticulated red purple on haft. Most unusual.....	7.50
Dream (Sturt)—A very beautiful pallida. One of the best pinks.....	.50
* Dryade (Cay)—S. metallic blue; F. violet crimson; very large; finely formed with an electric blue lustre; late; 36 inches.....	3.25

Top Dress Very Lightly with Bone Meal and Potash.

Duke of Bedford (Bliss)—Dominion race. Fine form and great substance; rich deep violet purple; velvety and brilliant. One of the very finest dark purples in existence. Free flowering. Strong grower; 40 inches; fragrant	\$	3.50
Duke of York (Per)—Soft mauve blue illuminated with orange beard; 48" ..		.65
E. C. Shaw (Farr)—S. light red; F. red shaded black; fragrant.....		.35
Eden Philpotts (Per)—Dark lavender blue.....		.50
Ed Michel (Ver)—S. and F. rich wine red; frilled; fragrant.....		.50
E. H. Jenkins (Bliss)—Fine, tall, blue violet; 45 inches.....		.75
El Capitan (Mohr)—Bluish violet; majestically poised on 40 inch spikes....		3.00
Elsa (Sturt)—Large flower with flaring falls. Well held for mass effect, of the delightful blue lavender of phlox divaricata; 3-4 feet.....		5.00
Etoile du Matin (Vilm)—S. sulphur yellow, dotted brown at base; F. same washed with Dauphin's blue; veined with maroon at base. Very unusual and worthwhile. C. M. S. N. H. F.....		6.50
Euhponi-Firefly (Sass)—Old gold; rose wash on haft; ruffled; very distinctive		3.00
Ewadne (Bliss)—A beautiful red, conspicuous golden beard; tall and well-branched. One of the finest garden Iris. Fragrant.....		2.50
Fairy (Ken)—Lovely white, with blue shading; locust scented.....		.25
Firmament (Gros)—Bright blue bicolor; early; 24 inches.....		.95
Flammenschwert (G. & K.)—S. clear yellow; F. maroon bordered yellow; tall50
Flavescens (de Can)—Pale yellow. Good with pale blues.....		.25
Folkwang (G. & K.)—Very fine; S. lustrous rose pink; Falls deeper.....		1.00
Fra Angelico (Vilm)—S. light bronze gold; F. deeper, overlaid metallic light lavender blue; fine form; great beauty and delicacy of coloring. One of the best of the new things from France; 30 inches.....		8.00
Francina (Bliss)—White; veined violet.....		.35
Frederick —Pale blue25
Frieda Mohr (Mohr)—Pink; sensational for size, shape and substance.....		7.50
Fryers Glory (Fryer)—Bronzy velvety maroon; orange beard; late.....		.25
Fuerstin Longay (G. & K.)—Bright violet rose; splendid form and size; 32" ..		.50
Gaviotta (Mohr)—Creamy white plicata; edged with yellow; unique.....		.75
Georgia (Farr)—Fine rose color; early; free-flowering.....		.35
Geo. Yeld (Per)—Bright apricot shaded rose; F. crimson, edged buff.....		1.50
Germaine Perthuis (Mil)—Exceptional growth and vigor; enormous flowers; S. violet; F. Bishop's violet; unexcelled in velvety appearance; 3 feet..		4.50
Gertrude (Pet)—Clear violet blue; early.....		.25
Glowing Embers (Sturt)—Tan and glowing red; rich coloring.....		2.25
Gold Crest (Dykes)—Fine blue with golden beard.....		.25
Gold Imperial (Sturt)—Large chrome yellow; rare finish.....		1.25
Grand Monarch (Row)—A grand variety; tall; velvety bronze red; illuminated at center by gold of the style, haft and beards.....		25.00
Grenadier (Vilm)—Very tall; large velvety violet flowers.....		3.50
Grevin (Vilm)—Bright violet, tipped yellowish brown.....		.25
Gypsyman Red (Sass)—Brilliant cardinal tone; very attractive; ruffled....		5.00
Gypsy Queen —Rose and bronze.....		.25
Halo (Yeld)—S. lavender blue; F. violet blue.....		.50
Harmony (Dykes)—Deep rich shade of indelible purple, purple beard; A. M. R. H. S. 1923		1.00
* Helios (Cay)—S. sulphur yellow; F. golden yellow; 44 inches.....		40.00
Her Majesty (Per)—Rose pink, darker veined falls.....		.25

Sun and Good Drainage Are Essential—Lime Desirable.

Hermione (Hort)—Large purple bicolor; stout stems.....	\$ 0.75
Hermosa (Dean)—Large, strong flower; very bright pink.....	.75
Honeydrop (Mor)—Blend of henna, brown, yellow and old rose; 3 feet.....	30.00
*Hussard (Vilm)—Large, finely formed flowers of lavender blue; F. lighter shade. C. M. S. N. H. F. 32 inches. Late	3.50
Imperator (Cay)—Rich deep red; splendid garden variety; 42 inches. A. M. R. H. S.....	1.25
Innocenza —White; yellow beard25
Iris King (G. & K.)—S. old gold; F. maroon with golden border; well named25
Isoline (Vilm)—Lustrous pink blend; mauve and russet reflections.....	.25
Jacqueline Guillot (Cay)—Enormous silvery blue flowers.....	1.50
Jacquiesiana (Lem)—Coppery maroon25
Japanesque (Farr)—Opens up flat like a Jap Iris.....	.25
Jeanne D'Arc (Ver)—White; penciled blue.....	.25
Junjata (Farr)—Clear blue; tall; fragrant.....	.25
Jumbo (J. Sass)—S. deep violet; F. mulberry purple; large flowers.....	3.00
Jubilee (J. Sass)—Peach color dotted with brown; ruffled.....	1.50
Julia Marlowe (Shull)—Dark glowing purple, red in the sun.....	2.00
Kalos (Sass)—Pinkish white plicata; Crepy texture.....	1.00
King Karl (J. Sass)—Cream; deeply frilled and heavily dotted cinnamon... ..	2.00
King Tut (H. Sass)—Brilliant brown-red; velvety firm texture; S. cacao brown; F. Hessian brown; beard yellow. Reddest effect we have seen. ..	7.50
Kochii (Native Italy)—A deep blackish purple; black buds; early.....	.25
Koya (Sturt)—Rich, ruffled blue self; white center.....	.25
Labor (Cay)—A new coloring; luminous reddish violet, suffused with a soft coppery glow. Whole effect is wonderfully beautiful. Flowers very large, on stout 40 inch stems. Rated 91 by Percy Murrell of England..	7.50
Lady Byng (Bliss)—Clear pale lavender suffused with rose; 3 feet.....	.65
Lord Lambourne (Per)—S. rose fawn; F. rich madder crimson; 44 inches..	1.50
La Nieve (Verd)—White self; fine.....	.35
*Le Correge (Vilm)—Very large flower; smoky brown S, somewhat of isoline coloring, but deeper; F. big, broad, bright red; prominent beard. Fine fall grower, well branched. Percy Murrell, who saw it growing in Cayeux's garden rated it 93.....	10.00
*Le Grand Ferre (Cay)—S. greyish fawn, tinted heliotrope; F. Vinous red shading to fawn on margins. Award of Merit at International Congress	3.00
Lent A. Williamson (Wsmn)—S. campanula violet; F. rich royal purple....	.25
Leonato (Hort)—S. pale silvery heliotrope; F. darker heliotrope; fragrant..	2.00
Leota (Fryer)—Very early; pure white; free flowering.....	.50
Lepinoux (Mil)—S. aniline blue; F. deep purple with pinkish tint; 52 inches65
Leverrier (Denis)—4½ foot stems; Chinese and pansy violet; fine.....	.75
Lohengrin (G. & K.)—Pinkish lavender; frilled.....	.25
Lona (J. Sass)—Similar to King Karl; lavender stippling.....	2.00
Lord of June (Yeld)—Massive lavender blue flowers. One of the very best. ..	.50
Loreley (G. & K.)—Canary yellow with velvety purple falls.....	3.50
Lorna Doone (H. V.)—White with wide pink margin.....	.25
Los Angeles (Mohr Mit)—Giant white, edged light blue. A glorified Fairy. ..	15.00
Louis Bel (Denis)—Blackest velvety pansy violet. Mme. Gaudichau seedling. ..	5.00
Loute (Vilm)—S. lilac shot bronze; F. red, purple bronze veining.....	.50
Lyceana (Wmsm)—S. white; F. deep purple; margined white.....	.75
Mme. Cecile Bouscant (Mil)—Orchid pink with blue flush in center; 48 inches; free flowering	4.00

Vigorous New Plantings Should Not Be Allowed To Dry Out.

Mme. Cheri (Sturt)—Tall; strong growing; free flowering; ageratum violet, washed with pink; yellow undertone; rich pink effect.....	\$ 0.50
Mme. Chobaut (Denis)—Cream touched with brown; clover scented.....	.35
Mme. Durraud (Denis)—Lilac and amber; 6 inch blooms.....	1.50
Mme. La Mouche (Mil)—S. clear aniline violet; F. reddish violet.....	1.00
Mme. Paquette (Pali)—Tall, ruffled, rosy claret.....	.25
Mme. H. Cayeux (Cay)—Handsome; S. reddish violet purple; F. deep blackish velvety purple. C. M. S. M. H. F. A better Ambassadeur.....	2.50
Mlle. Schwartz (Denis)—Uniform soft mauve with pink lustre; fine form; very delicate and beautiful; tall. A beauty.....	.65
Mme. Susanne Autissier (Denis)—Enormous flowers; S. aniline blue; F. dark velvety purple violet; tall, branching stems, 40 inches. A hardier Magnifica.....	.90
*Magenta (Cay)—Bright pinkish red self.....	20.00
Ma Mie (Cay)—Ruffled white, delicately penciled blue.....	.25
Magnifica (Vilm)—Extraordinarily large; 6 inch flowers; sweetly scented; purple; pinkish tints.....	.50
Magnificent (Fryer)—Large purple. Blooms in October as well as in May.....	5.00
Mariposa (Mohr)—Pale porcelain flaked with red purple.....	.25
Majestic (Bliss)—Dominion seedling; enormous, rich velvety raisin purple.....	2.50
Marjorie Tinley (Per)—Soft lavender blue; great substance; 4 feet.....	1.50
*Marquissette (Cay)—Pale shrimp pink shaded with salmon pink; 3½ feet... ..	10.00
*Marouf (Mil)—Enormous. A more intensely colored Asia.....	5.00
Marsh Marigold (Farr)—S. canary yellow; F. plum bordered yellow; 2 feet.....	.50
Mary Barnett (Cru)—A glorified Princess Beatrice.....	7.00
Mary Elizabeth (Kirk)—Rosy red with deeper velvety falls.....	25.00
Mary Garden (Farr)—Attractive; pale yellow; speckled lavender.....	.25
Mary Gibson (Per)—Delicate shade of light bronze, overlaid old rose.....	1.00
Mary Orth (Farr)—Slaty blue violet.....	.50
Mary Williamson (Wmson)—S. white; F. flaring purple, ruffled white edge.....	1.00
*Marsouin (Vilm)—Large pale violet; falls violet purple; 36 inches. C. M. S. N. H. F.	3.00
Mauvette (To)—Similar to Pallida Dalmatica with pink tint.....	.75
Medrano (Vilm)—Beautiful smoky wine red; rich and distinct color; fine..	.50
Menetrier (Denis)—Tall branching well-formed; S. pale chromium yellow; F. same overlaid with plum violet. Prominent golden yellow beard....	1.00
Merlin (Sturt)—Irrescendent, pink, gold and purple blend.....	.25
Mestor (Per)—Enormous blue purple, overlaid black.....	1.50
Michelline Chairraire (Denis)—Wonderful pure white; 45 inches; S. dome shaped; F. flaring. Mr. Percy Murrell rated it 94.....	4.50
Midgard (H. Sass)—One of the most beautiful. Large heavy-textured flowers of bright pink overlaid with a silver tone blending to yellow on the haft. Dainty and pleasing in effect. Larger than Allure.....	5.00
Midwest (H. Sass)—Large ruffled flower, dotted rose on white.....	.50
Mildred Presby (Farr)—This is Farr's masterpiece; S. white; F. rich dark velvety pansy violet. The Iris that everyone admires.....	1.25
Minnehaha (Farr)—Primrose yellow, spotted maroon.....	.25
Miranda (Hort)—Clear blue; S. arching; F. flaring.....	.40
Moa (Bliss)—Large, violet and pansy purple. Dominion race.....	4.00
Moliere (Vilm)—Enormous flowers; S. violet-blue; F. deep rich velvety purple, veined brown. A really good variety which should be in every garden.....	.35
Moonlight (Dykes)—Warm gray with blue, green, and yellow lights.....	2.00

Use Light Color for Distant Masses.

* M. Arnal (Denis)—Coppery red brown mauve tints; over 3 feet.....	\$ 3.00
M. Hubert (Denis)—S. Parma violet; F. lobelia blue.....	1.50
M. Brun (Denis)—S. ageratum blue; F. light purple, brown shadings.....	2.50
M. Oliver Perthusis (Mil)—S. blue, shaded with mauve; F. bright velvety purple violet; over 4½ feet; tall; large-flowered. A beauty.....	1.00
Monsieur (Vilm)—Rich deep purple; F. velvety black purple.....	.25
Morning Splendor (Shull)—Dark glowing claret red. One of the finest....	1.50
Morwell (Bliss)—Pale uniform blue pallida. Unexcelled as garden variety. Flowers of large size, good form, substance and carriage.....	.50
Mother of Pearl (Sturt)—Soft iridescent shades of pearl.....	.50
Mrs. Alfred Sherman Hoyt (Sass)—Bright pink and white plicata; white background dotted and sprinkled profusely with bright pink; beautifully formed and poised; very much ruffled edges. Very dainty and most pleasing in effect. A perfect beauty.....	5.00
Mrs. Cowley (Bliss)—Coppery pink and rosy purple.....	.25
Mrs. Cuthbertson (Per)—S. pale silvery lavender; F. rose, silvery border; 3 feet.....	1.50
* Mrs. Ed Harding (Per)—A very beautiful pallida. Large, well-formed flowers of great substance freely produced on stems over 4 feet; S. violet purple; F. dark velvety violet purple, overlaid black; bronze yellow beard. A magnificent Iris.....	6.50
* Mrs. E. T. Vieusseux (Per)—S. bright crimson purple; F. purple black. One of the richest dark colored Iris. Very large flowers. Fine form and substance; 42 inches.....	1.50
Mrs. Fryer (Fryer)—S. pale lavender; F. red purple with pale lavender border.....	.50
* Mrs. H. F. Bowles (Per)—Very distinctive and unique shade of brilliant brick red glistening like a piece of silk.....	1.00
* Mme. LaMouche (Mil)—4 feet; large well-formed flowers; S. soft blue suffused with rose; F. intense violet purple, veined brown at the base..	3.50
Mrs. Marion Cran (Per 1923)—This is undoubtedly one of the finest pink iris in the world. Flowers large, of perfect shape, borne on very tall, strong stems; a glorious shade of brilliant light rose. This variety should not be confused with the Iris Marion Cran, introduced by Perry in 1919 which latter is a very inferior Iris. Ours is the true stock as we obtained it direct from Perry himself.....	4.00
Mrs. Neubronner (Ware)—Bright golden yellow self.....	.25
Mrs. Robert Emmett (Per)—One of the finest whites. Stout stems bearing extra large flowers of great substance. Delightful shade of milk-white with very brilliant yellow beard. This Iris is remarkable for its wonderful branching quality. Very floriferous, sometimes bears 7 and 8 flowers open at one time, none of which are touching the others. Tall stems, branching low and wide like a candelabra.....	8.00
Mrs. Valerie West (Bliss)—A new color in Dominion seedlings. The English consider this to be Bliss' masterpiece. S. lavender shot with bronze; F. rich deep crimson-brown; enormous size and substance. Strong stems. The finest growing and richest Iris we have seen.....	25.00
Mrs. Walter Brewster (Vilm)—S. lavender-blue; F. aniline blue; vigorous and floriferous, bearing sometimes 6 blooms at the same time.....	.60
Mount Penn (Farr)—S. lilac; F. lilac-red; bright rose effect.....	.25
Mrs. Tinley —An intense violet blue bicolor; free flowering; 3 feet.....	.75
Navajo (Farr)—Showy yellow; F. deep maroon, veined cream.....	.25
Nancy Orne (Sturt)—Very large fawn pink; 54 inches.....	.50

Nazarin (Fos)—Veiled purple pogocylus, dark beard and spot; early.....	\$ 0.50
Nebraska (H. Sass)—Attractive apricot yellow with heavy reticulation and slight ruffling, very effective planted near King Tut. We consider this the best yellow Iris.....	7.50
Nephtune (Yeld)—Fine large blue bicolor.....	.50
Nimbus (Shull)—S. lobelia blue; F. purple; distinctive; beautiful in mass effect; 40 inches	2.00
Nine Wells (Fos)—Lavender violet and pansy violet.....	.25
Old Gold (Sass)—Beautiful old gold shade throughout.....	3.00
Omaha (H. Sas)—Deep vinous red. Wonderful.....	7.50
Opera (Vilm)—Rich velvety red; vigorous grower and free-bloomer.....	.50
Ophelia (Cay)—One of the most beautiful new Iris. Much the same coloring as the Ophelia Rose. Pink blended with orange. It is perfectly exquisite. Flowers of perfect form and great refinement.....	6.00
Ochracea Coerulea—(See Sunset).	
Otoe (Sass)—Deep velvety red throughout.....	3.00
Oriental (Farr)—Bright rich blue purple.....	.50
Orion (Vilm)—Enormous flower. Greatly improved Alcazar. Colors clearer and very much more refined than Alcazar. S. smoky violet; F. velvety blackish violet; long bright yellow beard; 3 feet. C. M. S. N. A. F.	5.00
Padusoy-Crinoline (J. Sass)—An unusual color. Deep lilac rose self. Flaring falls; perfect shape; heavy texture. A beauty. Outstanding. H. M. A. I. S. 1928.....	10.00
Paladin (Bliss)—Immense clear violet and purple. Brilliant en mass.....	4.00
Pallida Dalmatica (Cultivated before 1600)—Lavender blue.....	.25
Parc. de Neuilly (Verd)—Rich deep purple-blue. Vivid landscape variety..	.25
Parisiana (Vilm)—White, frilled and dotted purple.....	.25
Paxatawny (Far)—Lavender and yellow blend.....	.25
Peau Rouge (Cay)—Translated "Red Skin." S. coppery red; F. deep blood red. Distinct and of brilliant coloring. C. M. S. N. H. F.....	1.25
Peerless (Dykes)—Magnificent flower. Rich glowing light mahogany red. S. 3½ inches long and 3 inches wide with no tendency to "flop"; Falls 4½ inches long, 3 inches wide. Rich golden beard which lights up the whole flower. One of the most beautiful Iris we have seen.....	15.00
*Pegase (Vilm)—Very large. S. campanula violet; F. velvety petunia violet, good form and heavy substance. Yellow beard; 40 inches. C. M. S. N. H. F.	5.00
Perfection (Barr)—Light and dark violet-blue. Attractive; free-flowering.	.25
Perladonna (Per)—Pleasing shade of rich "China Blue".....	.60
Persia (Ayers)—S. smoky blue; F. rich blue-purple. H. M. A. I. S. 1928...	30.00
Phyllis Bliss (Bliss)—Large lavender mauve flowers with a touch of rose lavender. Very fine form and texture.....	.40
Pioneer (Bliss)—A magnificent Iris. Best red-purple in cultivation.....	2.50
Pink Md. Chereau—White, edged pink. Delicate and dainty coloring.....	1.00
Plumed Knight (Sass-T)—White, ruffled veined and stippled pink. Dainty and fine as a cut flower.....	1.50
Pocahontas (Farr)—Splendid tall white, etched lavender. Fine grower....	.25
Prairie Gold (Sass)—Beautiful golden yellow self. Very fine yellow landscape variety	2.50
Primavera (Mohr)—Early primrose yellow; large; fine form; fragrant.....	1.50
Prince Lohengrin (Mohr)—Silvery mauve pink; well branched; 44-48 in....	.50

Strip Off Old Outside Leaves, Rather Than Cut Them.

Princess Beatrice (Barr)—Silvery lavender-blue; large and tall. Should be in every garden	\$ 0.50
Princess Osra (Bliss)—One of most beautiful of all blue plicatas; cream white daintily and attractively dotted and feathered pale blue.....	2.00
Princess Victoria Louise (G. & K.)—Sulphur yellow and plum.....	.25
Prof. Suliger —A rich dark red40
Prosper Laugier (Verd)—S. bronzy crimson; F. rich velvety crimson.....	.25
Prospero (Yeld)—A strong, tall-growing variety, well branched, bearing enormous flowers of fine shape; S. lavender and F. violet purple.....	.50
Purple Haze (Sass)—Large flower; self colored French gray; delicately overlaid purple. Distinct and beautiful.....	7.50
Phyrne (Cay)—Enormous flowers; S. lavender shading to rose; F. reddish lilac shading silver-gray at the edge. Wonderful iris; 40-44 inches....	8.50
Quaker Lady (Parr)—Lavender blue and yellow blend. Winsome.....	.25
Queen Caterina (Sturt)—Pale frosted lavender. Fragrance of water lily...	.25
Queen of May (Salt)—Lovely orchid pink.....	.25
Rajput (Sturt)—Bright luminous violet shading to heliotrope; 40 inch.....	1.25
Ramona (Mohr)—Petunia violet blended with orange.....	.50
Red Wing (Sass)—Rich dahlia carmine; bicolor. Similar to Allies in its splendid shape, size and coloring.....	7.50
Rheingauerle (G. & K.)—New light pink	2.00
Rhein Nixe (G. & K.)—S. white; F. purple with white border; tall.....	.25
Robt. Wallace (Per)—A magnificent dark red purple.....	2.50
Romola (Bliss)—One of finest of the Dominion race. S. pale lilac; F. velvety red violet; strong grower; free-flowering; remarkable branching qualities; 44 inches	7.50
Rosado (Mohr)—Soft, clear pink. Vigorous and free-flowering; 42 inches.	2.00
Rosalba (Bliss)—Deep vinaceous mauve as near red as any.....	.35
Rose Madder (Sturt)—Brilliant velvety rose madder; unusual and lovely...	1.00
Rose Unique (Farr)—Deep violet rose; early.....	.35
Roseway (Bliss)—Bright red-pink pallida. Brilliant pink garden variety..	.25
Rota (G. & K.)—A very clear rosy-pink bicolor, veined at margins.....	1.00
Ruby Perry (Per)—Dark rose pallida. Wonderful landscape variety; 4 feet	1.00
Ruby Queen (Weed)—S. light matthew's purple; F. Rood's violet.....	.50
Rugajo (Weed)—S. pale pink; F. Rood's violet. Distinct color; 34 inches..	.50
* Ruy Blas (Mil)—Huge flowers of perfect shape and substance. S. velvety smoky mauve; F. purplish violet lighter at adges, with maroon reticulations; 4 feet	13.75
Safrano (Dykes)—Straw-colored yellow, very fine form; flaring falls. First prize in yellows in National Iris Show at Freeport, 1928.....	2.50
San Francisco (Mohr-Mit)—Remarkable huge white; penciled lavender. Awarded the Dykes Memorial Medal as best American introduction in 1927	17.25
Santa Barbara (Mohr)—Probably the finest pure lavender blue yet introduced	3.00
Sapphid (Dykes)—Pure Dauphin's blue; conspicuous, brilliant yellow beard. Very free-flowering; 2-2½ feet. Brilliant en masse. Early...	.75
Seminole (Farr)—Rich velvety red; orange beard. One of most popular...	.35
Sensation (Cay)—Enormous flowers of perfect form. Tall stout stems. Wonderful substance. Unusual color—cornflower blue self; 4 feet.....	7.50
Shasta (Mohr-Mit)—Snow white. Named for white-capped Mt. Shasta.....	5.00
Shekinah (Sturt)—Tall, lemon-yellow pallida. Self.....	.25

Sun and Good Drainage Are Essential—Lime Desirable.

Sherwin Wright (Koh)—Bright golden-yellow self. Sturdy.....	3 for \$	0.25
Shrewsbury (Farr)—Rich purple suffused bronze. Heavy orange beard....		.25
Simonne Vaissaire (Mil)—S. white shaded azure; F. brilliant aniline blue..		1.25
Simplicity (McK)—Frilled white placata.....		.50
Sindjak (Sturt)—A deep lavender combined with buff; tall.....		.35
Silver Mist (Dykes)—Uniform pale silvery blue.....		.50
Sir Galahad (Shull)—Lilac and pansy violet, pink tone.....		3.00
Sir Michael (Yeld)—Massive flowers. S. clear lavender blue; F. rich purple suffused red-brown; beard red gold; 4 feet. A great Iris.....		20.00
Solferino (Cay)—An offspring of Aphrodite which it far surpasses; it has the same shape of flower, substance and stem growth as Aprodite, but grows 10 inches taller. Magnificent lilac red. 15 buds on the bloom-stalk the first year. Rated 93 in England. Most beautiful pink we have seen		10.00
Sophronia (Mohr)—Similar to Kashmire white, but a more sturdy and reliable grower. Its smooth and heavy substance reminds one of a Magnolia		4.00
Souv. de Loefitia Michaud (Mil)—Strong rigid stems, over 4 feet. Enormous flowers. Lobelia blue shading to pale blue. One of the finest and most beautiful in the world. Rates 94 in England.....		3.00
Souv. de Md. Gaudichau (Mil)—Deep velvety purple; 3½ feet.....		.50
Spahi (Vilm)—Large flowers; S. bright violet; F. violet purple shading lighter toward the margins. Orange beard. C. M. S. M. H. S.....		3.50
Steepway (Scott)—Indescribable blend; purple, apricot, peacock blue.....		1.00
Sunset (Denis)—This beautiful Iris was given an Award of Merit at the R. H. S. meeting under the name "Ochracea coerulea." S. real gold, finely arched, good substance; F. yellowish copper, suffused violet in the center of the blade; prominent yellow beard. A fascinating mixture of real pastel shades. Fine strong grower, free-flowering; 3 to 3½ feet75
Surprise (Coo)—Soft shades of heliotrope; 42 inches.....	\$	20.00
Susan Bliss (Bliss)—Uniform shade of soft rose pink; popular; 3½ feet....		.75
Swazi (Bliss)—Fine Dominion seedling, on 40 inch stems. S. bluish violet; F. velvety blackish violet; vigorous.....		8.00
Sweet Lavender (Bliss)—Pleasing contrast of pink and blue lavender.....		.50
Taj Mahal (Sturt)—Fine white form; well branched; over 3 feet.....		1.75
Tamerlane (Vilm)—Violet and purple.....		.25
Tenebrae (Bliss)—S. rich violet purple; F. velvety black purple; 3 feet....		1.75
Thais (Cay)—Perfectly formed flower of attractive rosy-mauve, slightly deeper toned; Falls stately and free-flowering; 4 feet.....		7.50
Thalia (Per)—S. light blue; F. crimson purple.....		1.00
Theckla (Wmsn)—S. bright mauve; F. spreading; purple.....		.50
Titan (Bliss)—Largest of the Dominion seedlings; violet purple.....		2.00

Plant the Rhizome Near the Surface of the Ground.

Tom-Tit (Bliss)—A gay little blue violet self (for front of border).....	\$ 0.35
Trianon (Vilm)—S. yellow; F. Isabel yellow with bluish reverse.....	.25
Tristram (Bliss)—S. white; F. velvety purple lined with white.....	.35
Troades (Per)—Bright rose and crimson.....	.75
Troost (Denis)—Brilliant pink; an improved Her Majesty; fine.....	.40
Trojana —S. pale blue; F. purple with orange beard.....	.50
Tro Stringer (H. P. Sass)—An improved Caroline Stringer; ruffled.....	3.00
True Charm (Sturt)—Charming white etched with blue lavender.....	1.00
True Delight (Sturt)—White with rose pink styles and margins.....	2.50
Turco (Vilm)—S. rosy lilac; F. suffused with blue over yellow ground.....	.25
Ute Chief (Farr)—S. light violet; F. velvety royal purple; 4½ inches.....	.50
Valencia (Mohr)—New color buff orange. Has created a furore wherever shown.....	1.75
Valery Mayet (Denis)—S. copper; F. bronzy red; tall.....	.50
Van Dyck (Vilm)—Large flower with broad well-rounded standards of ageratum blue; F. bright violet purple; claw veined brown, beards yellow. A. M. S. N. H. F. 28 inches.....	5.00
Vega (Vilm)—Very large flower. S. honey-colored yellow fringed violet; F. velvety pansy violet; yellow beard; strong grower. C. M. S. N. H. F.....	5.00
* Veloute (Vilm)—S. deep aniline blue; F. velvety black violet.....	2.50
Vingolf (G. & K.)—S. cream; F. rich velvety violet blue.....	1.00
Violacea Grandiflora (G. & K.)—Violet self; free-flowering; ruffled.....	.25
Virginia Moore (Shull)—A fine golden yellow self.....	.50
Walhalla (G. & K.)—Lavender and velvety purple intermediate.....	.25
Watteau (Vilm)—S. campanula violet; F. large and well-rounded violet purple, heavily veined deep purple and shaded lighter toward edges, claws strongly striated; styles white with violet median line; yellow beard. C. M. S. N. H. F.....	5.00
W. C. Terry (Per)—Large; brilliant; S. light violet blue; F. bright crimson purple; 5 feet; sturdy grower.....	1.00
Wedgewood (Dykes)—Similar to Harmony but has white beard.....	2.75
Western Dream (Weed)—Light violet; 5 to 8 blooms on a stem; 36 inches..	.75
White and Gold (Nich)—Exquisite, satiny white; brilliant gold beard.....	15.00
White Knight (Saun)—Pure white self; fragrant.....	.35
Windham (Farr)—Delicate pink.....	.25
William Mohr (Mohr)—A remarkable hybrid; pale lilac, beautifully veined Manganese violet. The largest flower we have seen.....	10.00
Yolande (Millet)—Magnificent dark velvety blue; landscape variety.....	1.50
Zada (Emig)—Tall pure white; fine shape; splendid garden variety.....	1.50
Zouave (Vilm)—White suffused with lobelia blue.....	.50
Zua (Crawford)—Pale lavender; texture of crepe paper; (fragrant).....	.50
Zulu (Bliss)—Fine Dominion seedling; F. rich velvety blue.....	5.00
Zwannenburg (Denis)—Amber shading into olive green; pogocycelus.....	.25

Strip Off Old Outside Leaves, Rather Than Cut Them.

DWARF IRIS

Atroviolacea —6"; purple; fragrant; first to bloom.....	\$.35
* Azurea (Syn. <i>Coerulea</i>)—Sometimes called <i>Spring Skies</i> ; sky blue.....	.25
* Bridesmaid —Cream white shaded azure; 8".....	.35
* Cyanea —The true violet; fine purple velvety fall 6-8".....	.35
Dixmude —Violet purple; one of the very best; 6-8".....	.35
King George —S. purple violet; F. crimson purple; orange beard.....	.50
Pegasus —S. brilliant blue; F. dark purple.....	.75
* Schneekuppe (<i>Snow Cap</i>)—White self; 6".....	.35
Thalia —.....	
Thora Perry —Uniform shade of violet rose; 8". Fine in rock garden....	.50
Stax (<i>Millet</i>)—S. yellow; F. purple; 4-5".....	1.00
Syra (<i>Millet</i>)—Purple; 6".....	.25
One each of the above varieties marked with an *—4 plants.....	1.00

SIBERIAN IRIS

Blue Star —Large deep blue; appearance of six-pointed star.....	1.50
Bob White —Tall pure white with no veining.....	2.00
Butterfly —4'; beautiful sky-blue.....	.50
Dragonfly —S. pale blue violet; F. intense dark blue.....	2.00
Emperor (from Japan)—Large deep violet stems 4'.....	.50
Kingfisher —Very fine, intense bright deep blue, 4-5'.....	2.00
Lady Northcliff —Rich violet reticulated white.....	1.00
* Orientalis —Deep purple; large flowers.....	.35
Peggy Perry —Dark violet blue.....	.50
* Perry's Blue —4-5'; bright porcelain blue; a lovely color.....	.50
Skylark —Exquisite blue, white edge; airily poised on tall graceful stems...	.35
* Snow Queen —Pure white, yellow blotch at throat.....	.35
Sunnybrook —Exquisite shade of Alice blue.....	.35
Special offer—1 each of above marked *; 3 plants.....	1.00

BEARDLESS SPECIES

Cristata (crested species)—Rich amethyst blue, 3"; creeping roots; suitable for rock gardens.....	.50
Dorothea K. Williamson —Brilliant velvety blue; unusual.....	.75
Teetorum (<i>Roof-garden Iris</i>)—Blue purple with white crest.....	.50
Teetorum Alba (<i>Roof-garden Iris</i>)—Pure white, gold crest.....	2.50

JAPANESE IRIS (Special)

1 each of 3 varieties.....	3 plants	1.00
1 each of 12 varieties.....	12 plants	3.50
5 each of 12 varieties.....	60 plants	15.00
1-year seedlings.....	25 plants	\$4.00
	100 plants	10.00
Rock garden plants, sedums, etc., large plants.....	per dozen	2.50

Use Light Color for Distant Masses.

LILACS (French Hybrids)

Few flowering shrubs have shown such remarkable improvement during recent years as lilacs. The French lilacs bloom early, have immense trusses and a wide range of color, and are just as hardy as the old fashioned species.

Belle de Nancy—Double; brilliant satiny rose; 2-3 feet.....	\$ 2.00
Chas. Joly—Double; bright crimson; 2-3 feet.....	2.50
Chas. X—Single; bluish violet red; 2-3 feet.....	2.00
Congo—Single; opens bright red and changes to rosy lilac; 18-24 inches...	2.50
Diderot—Single; rich claret red; 18-24 inches.....	3.00
Edith Cavell—Double; white; one of Lemoine's best; 18-24 inches.....	3.50
Emil Gentil—Double; bright cobalt blue; 12-18 inches.....	2.00
Edouard Andre—Double; clear rose; 18-24 inches.....	2.50
Ellen Willmott—Double; best white; 12-18 inches.....	\$2.50; 18-24 inches
Jan Van Tol—Single; new; largest free blooming white; 18-24 inches.....	5.00
Japonica (tree lilac)—Creamy white; 18-24 inches.....	3.00
Josikae (Hungarian lilac)—Single; large; purple; late; 3-4 feet.....	3.25
Lamartine—Single; mauve pink; early; 18-24 feet.....	\$1.50; 2-3 feet
Leon Gambetta—Double; fine rosy pink; 2-3 feet.....	\$5.00; 18-24 inches
Ludwig Spaeth—Single; fine dark purple; 18-24 inches.....	\$1.50; 1-3 feet
Katharine Havemeyer—Double; Cobalt blue, flushed mauve; 2-3 feet.....	2.50
Marc Micheli—Double; bluish pink; 2-3 feet.....	\$2.00; 3-4 feet
Marie Le Graye—Single; pure white; 2-3 feet.....	1.50
Michael Buchner—Double; pale lilac; 2-3 feet.....	1.50
Mirabeau—Single; large early pink; 18-24 inches.....	\$1.50; 2-3 ft. \$2.25; 3-4 ft.
Mme. Casimir Perier—Double; fine white; 2-3 feet.....	1.50
Mont Blanc—Single; pure white; 18-24 inches.....	1.50
Mme. Lemoine—Double; pure white; very fine; 18-24 inches.....	1.50
Mrs. Ed. Harding—Best double red lilac; 18-24 inches.....	5.00
Persica Rubra (Persian Lilac)—Lavender panicles; 2-3 feet.....	\$1.50; 3-4 feet
Pascal—Single; typical lilac.....	1.50
Philemon—Darkest purple; 2-3 feet.....	2.00
President Faillieres—Double; charming rose pink; trusses enormous; truly magnificent and easily the best; 3 and 4 trusses to a stem; 18-24 inches, \$5.00; 2-3 feet.....	6.50
President Poincare—Double; purple red; 18-24 inches.....	\$5.00; 2-3 feet
President Grevy—Double; blue; 18-24 inches.....	\$2.00; 2-3 feet
President Viger—Double; immense pale blue, pinkish tints; 2-3 feet.....	2.25
Rene Jarry-Desloges—Double; blue with pink hues; 18-24 inches.....	2.50
Vestale—Single; fine; pure white; fragrant; 2-3 feet.....	2.50
Villosa (Species)—Delicate pink; fragrant; 18-24 inches.....	\$2.00; 2-3 feet
Waldeck-Rousseau—Double; large trusses of tender pink; 2-3 feet.....	2.25

COLOR COLLECTION, 2-3 FEET SIZE

Belle de Nancy—Pink.....	\$ 2.00
Chas. X—Red.....	2.00
Katharine Havemeyer—Blue.....	2.50
Lamartine—Mauve.....	2.25
Mirabeau—Light pink.....	2.25
Vestale—White.....	2.75
Total.....	\$13.75
For.....	12.00

FAVORITE COLLECTION

Morning Splendour, Asia,
Mildred Presby, Sunset,
Rose Madder, Gold Imperial,
Mrs. E. T. Vieusseux,
Mon O. Perthius,
Prospero, Ballerine,
Sweet Lavender, Suzanne Autissier,
Moline, Mrs. Walter Brewster,
Lady Byng, Hermosa.

\$14.50 Value **\$10.00**

MASTERPIECE COLLECTION

Labor, Fra Angelico, Antares,
Mrs. Marion Cran, Vega.

\$29.50 Value **\$20.00**

AMBASSADEUR COLLECTION

Ambassadeur, Col. Candelot,
Mother of Pearl, Mme. Chobaut,
Shekinah, Cluny,
Marsh Marigold, Troost, Caporal,
Prof. Seeliger, Ruby Queen, Dalila,
Firmament, Rugajo, Clio.
16 Varieties

\$8.00 Value **\$3.50**

BEGINNERS COLLECTION

Archeveque, Harrington,
Caprice, Celeste, Frederick,
Perfection, Mary Garden,
Lohengrin, Gertrude, Kochin,
Her Majesty, Fryers Glory,
Lovely, Quaker Lady, Stenophila,
Vio Grandflora, Md. Pacquette,
Juanita, Lent A. Williamson,
Walhala.

20 Varieties

\$5.00 Value **\$2.00**

RADIO COLLECTION

Asia, Mrs. E. T. Vieusseux,
Mon O. Perthius, Rose Madder,
Gold Imperial, Moliere, Sunset,
Opera.

\$8.00 Value **\$5.00**

PRIZE COLLECTION

Souv. de Md. Gardichan,
Queen Caterina, Dream.

\$2.00 Value **\$1.00**

SEEDLINGS

Those who like a great variety of Iris but do not care about the names will like this Seedling Collection.

100 plants of not less than 50 varieties, \$5.00

Extra choice seedlings, very fine but too near like other varieties now in commerce to be introduced.

35 varieties for \$5.00
Express charges collect.