

## **Historic, Archive Document**

Do not assume content reflects current scientific knowledge, policies, or practices.



# The Message of The LIVING TREE GUILD



TRADE MARK

The Living Tree Guild is the only organization of its kind in the world. The result of its plan is chiefly educational.

It delivers directly to your home the finest trees and plants at the most economical prices. These trees and plants are selected and grown under ideal conditions in five different states with the advice of the most expert horticulturists in the country.

*The Guild offers to the layman a way to know trees and shrubs and flowers—at slight expense—and with every assurance for success!*

## BOARD OF ADVISORS

PAUL H. DAVEY,  
Vice Pres., Davey Tree Expert Co.  
ARTEMUS L. GATES,  
Vice Pres., New York Trust Co.  
EVERETT G. GRIGGS, 2ND  
St. Paul and Tacoma Lumber Co.,  
Tacoma, Wash.  
LESTER C. LOVETT,  
Past Pres., Eastern Nurseryman's  
Assn.  
F. W. LUENING,  
The Milwaukee Journal

DR. ROBERT T. MORRIS,  
New York Surgeon, Author, Dean  
Northern Nut Growers' Assn.  
PERCIVAL S. RIDSDALE,  
Managing Editor, Nature Magazine  
ERNEST THOMPSON SETON,  
Former Chief Scout, Boy Scouts of  
America and Chief of The Wood-  
craft League of America  
ELLEN EDDY SHAW,  
Brooklyn Botanic Garden

# Grow your own TREES and Save Money!



TRADE MARK

**Note:** For quick results with a shade tree we recommend the Siberian Elm. See the record of this surprising tree in the centre pages of this folder. ~ ~ ~

Copyrighted 1929, by

## The Living Tree Guild

*National Headquarters  
for Guaranteed Living Trees*

468 Fourth Avenue, New York  
at 31st Street

# Resources of



## Guild Group Number 1 Twelve Trees ~ \$15

in any combination

Single trees at \$1.50

**AMERICAN ARBOR VITAE**—12 to 18 inches when delivered. Will make a tall dense pyramid of deep green, lacy foliage. Endures shearing well and is excellent as a screen or hedge plant.

**GLOBE ARBOR VITAE**—6 to 8 inches when delivered. A lovely, compact natural globe which will not exceed four feet in height.

**CANADIAN HEMLOCK**—A tree especially hardy and fragrant. Will grow either in sun or partial shade. Glossy dark green foliage reminiscent of the deep woods. 8 to 12 inches when delivered.

**RED PINE**—8 to 12 inches when delivered, will grow to 70 feet. One of the choicest of the tall pines, in beauty, vigor, and symmetry.

**MUGHO PINE**—Dwarf tree, extremely hardy, very striking with its pin-wheels of needles, 6 to 8 inches when delivered.

**PFITZER'S JUNIPER**—9 to 12 inches when delivered—will make a gorgeous decoration like an explosion of green.

**GREEN RETINOSPORA**—A decorative evergreen for foundation planting. 8 to 10 inches when delivered—will grow vigorously and is easily trimmed.

**GOLDEN RETINOSPORA**—The tips of its foliage are a bright golden hue. 8 to 10 inches when delivered.

**BLUE RETINOSPORA**—Distinct and arresting with dense silver-blue foliage, of a feathery, billowy appearance. 8 to 10 inches when delivered.

## Suggestions

**For a Shady Place**—The Canadian Hemlock.

**For Foundation Planting**—The Arbor Vitae; the Retinosporas, Pfitzer Juniper, Mugho Pine, and Canadian Hemlock. These can all be trimmed and kept within any bounds.

**For Unique Effects**—Pfitzer's Juniper; American Arbor Vitae; Mugho Pine. These have great individuality.

**For a Future Large Tree**—Red Pine. This is one of the kings of the forest.

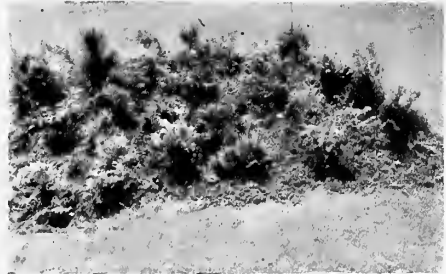


Compared with shade trees and shrubs all evergreens are slow growers. That is why they are more valuable and endearing. Every home owner should raise some evergreens—preferably a choice of all those mentioned above. It is interesting to watch their different personalities develop.

# Evergreens

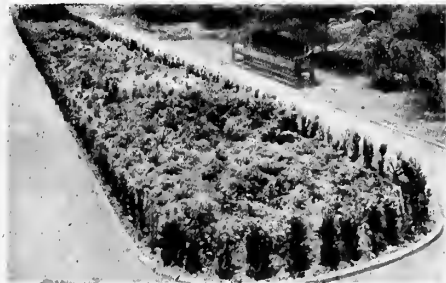
**P**ROFITS in trees are greater when you get *transplants*. These are most economical. And they are in the full vigor of adolescence. If you get seedlings the mortality is great and your labor in thinning is tremendously increased.

**G**UILD transplants are raised in limited quantities under ideal conditions, by the leading foresters of America. That is why they are the premier trees on the market. These trees average much larger than regular transplants of the same ages.



This corner of a tree garden of Guild Trees was planted last year at a cost of \$25. With little care, these trees will be worth \$120. four years from now.

	<i>Per Doz.</i>	<i>Per 100</i>
<b>NORWAY SPRUCE</b> . . . . .	<b>\$3.95</b>	<b>\$25.00</b>
5 yrs. old, 10 to 15 in.		
<b>SCOTCH PINE</b> . . . . .	<b>3.95</b>	<b>25.00</b>
5 yrs. old, 6 to 10 in.		
<b>WHITE SPRUCE</b> . . . . .	<b>3.95</b>	<b>25.00</b>
4 yrs. old, 5 to 10 in.		
<b>AUSTRIAN PINE</b> . . . . .	<b>3.95</b>	<b>25.00</b>
4 yrs. old, 5 to 8 in.		
<b>JACK PINE</b> . . . . .	<b>3.95</b>	<b>25.00</b>
4 yrs. old, 5 to 8 in.		
<b>COLORADO BLUE SPRUCE</b>	<b>2.75</b>	<b>20.00</b>
3 yrs. old, 3 to 5 in.		
<b>ENGELMANN SPRUCE</b> . . . . .	<b>2.75</b>	<b>20.00</b>
3 yrs. old, 3 to 5 in.		
<b>BALSAM FIR</b> . . . . .	<b>2.75</b>	<b>20.00</b>
4 years old, 4 to 8 in.		



You don't have to wait for trees to get tall to be useful. This photograph shows little trees at the entrance to the gardens of Country Life Press. Guild Trees in ensemble make a beautiful effect.

## SPECIAL FOR STARTING A HOME NURSERY

**120 trees.** (Eight varieties—fifteen of each of the above) . . . . . **\$25**

# Profits in young trees



The above photograph shows what can be done with Guild Trees after a few years of growth. The tall growing trees punctuate the dwarf varieties. A few dollars invested now will grow into many dollars worth of trees in four or five years.

Instruction in planting, care and fertilizing is offered free to every planter of Guild Trees. Growing trees is a fascinating pastime—and brings amazing results if you use the best stock. You don't need much ground.

# Choice Varieties—Seldom Seen and of Exquisite Beauty

## Japanese Weeping Pink Flowered Cherry

**A** BRILLIANT importation from the Orient. This is the tree selected by the landscape architects of the beautiful Lincoln Memorial at Washington, D. C. and now helps to make that spot one of the most charming shrines of America. An exceptionally valuable ornamental tree.

*(With six-foot stems and one-year heads when delivered)*

Each.....\$ **6.00**

Three..... **17.50**

Per dozen..... **65.00**

## Siberian Flowering Almond

**T**HIS shrub or dwarf tree bursts into flowers of pink and pure white; and holds its blooms for a long period. So profuse are its flowers that they literally bury the branches. The parents of our specimens were brought from Siberia by Professor N. E. Hansen. The variety is hardy in almost any climate. In the autumn the foliage turns brilliant red and gold.

*Size when delivered, 1½ to 2 feet*

Each tree.....\$ **2.00**

Three..... **5.50**

Per dozen..... **21.00**

## May Day Tree

**A** DWARF tree that turns into a huge bouquet on the lawn in the early spring—it is one of the first to break out with foliage. One especially desirable characteristic of this

tree is that its flowers are splendid for cutting—and they are delightfully fragrant.

*Size when delivered, 3 to 4 feet*

Each tree.....\$ **2.25**

Three..... **6.25**

Per dozen..... **22.00**

## Siberian Flowering Crab

**B**ECAUSE this tree is a native of Siberia, it is one of the hardiest of all the flowering crabs and also the most gorgeous. As a flowering tree it rivals and perhaps surpasses the famous Japanese Cherry. It produces a riot of white and pink flowers of great fragrance in the early spring.

*Size when delivered, 4 to 5 feet*

Each tree.....\$ **2.25**

Three..... **6.25**

Per dozen..... **22.00**

## Japanese Blood-Leaf Maple

**T**HIS dwarf growing tree presents a striking appearance in the spring and early summer months with its brilliant red foliage. It is one of the rarest and most valuable species.

*Size when delivered, 1½ to 2 feet*

Each tree.....\$ **6.50**

Three..... **18.00**

Per dozen..... **70.00**

# - SHADE TREES - with which you are acquainted



**T**HERE is a famine of shade trees in America. The demand for the finest varieties is greater than the supply. However, The Living Tree Guild has been exceedingly fortunate in securing a good

supply of well-grown specimens. We offer these, with full guarantee.

**NORWAY MAPLE**—One of the most popular of all shade trees, and one that can be depended upon to give good results under almost all soil conditions. A symmetrical grower of globular form. 4 to 5 feet high when delivered.

**PUSSY WILLOW**—Can be grown as a dwarf shade tree or as a tall shrub. Here is the familiar, attractive Pussy Willow—one of the most poetic of trees. Height, 3 to 4 feet when delivered.

**LOMBARDY POPLAR**—Of pyramidal growth. One of the most rapid growing of all deciduous trees. Height 4 to 5 feet when delivered.

**SCARLET OR RED MAPLE**—Gives best results in heavy soil, will grow satisfactorily in damp situations, although it also gives good results when grown in well drained soil. Height, 4 to 5 feet when delivered.

**WHITE-FLOWERING DOGWOOD**—Semi-dwarf in growth. Beautiful at all seasons of the year. In the spring when in bloom it is a sheet of white—throughout the summer months, a mass of deep green, clean looking foliage—in the fall, one of the most gorgeously colored of all our deciduous trees—in winter, attractive with its scarlet berries. Height, 4 to 5 feet when delivered.

**SUGAR MAPLE**—Similar in growth to Norway Maple, but taller. In every way a desirable variety, extra hardy; foliage in the fall turns brilliant lemon yellow. 4 to 5 feet when delivered.

*Enhance the value of your property with shade trees.*

You can select all of one kind, or any desired combination

Six of the above trees..... \$ 7.50

Per dozen..... 12.00

# For Quick Results The Siberian Shade Tree of U

*Below*—These Siberian Elms show the rapidity of growth. The top of the tree above the man's hand shows three months' growth after transplanting, which is a time for root establishment rather than growth with most shade trees.



*Left*—Shows a Siberian Elm in front of the State War and Navy Building, Washington, D. C. Planted in 1920 as a whip, it is now 12 inches in caliper (diameter).

*Below*—A Siberian Elm planted May, 1928, at Garden City, L. I. Growth, 5 feet in 5 months. The tree can adapt itself to moist climate as well as dry.



**T**HESE photographs tell the story of the Siberian Elm better than words. It is a story of a tree so friendly and faithful that it will fit into almost any situation and quickly bring fresh, green foliage.

## A Low Cost Shade



# Siberian Elm gives you a Unusual Beauty and Long Life

*Right*—An especially fine specimen at Chestnut Hill, Pa. This tree is only 16 years old, and has a 62-inch girth and a 40-foot spread.



*The horticultural name of Siberian Elm is Ulmus Pumila—Northern Strain.*

*Below*—Shows the clean-cut structure of the tree. The specimen in the picture is three years from planting a 5-foot whip. Note the size of the trunk, although in a very dry location in the southwest.



*Below*—This picture was taken in July, 1928, at College Park, Maryland, and shows a fine specimen. When this tree was planted in the spring of 1923 it had a girth of 2½ inches. Now it measures a 36-inch girth and 32-foot spread.

**N**OW you don't have to wait years to make your land valuable with shade trees. The Siberian Elm grows twice as fast as the American Elm—and it is a beautiful and permanent tree.



Shade Tree for Prices  
see Next Page

Read what people who  
have planted Siberian  
Elms say about them —

# You Can't Fail

Every Tree Carries  
Guild Life Insurance

**F. B. S., Jackson, Miss.:**

"So far as I know it is the most rapid-growing and most graceful shade tree we have, and is free from insect and disease enemies and any pronounced bad qualities."

**D. L. J., Lubbock, Texas:**

"During the spring of 1919, 25 3 to 4 foot trees were set out on the station grounds. Fourteen were placed in a row, spacing the trees 10 feet apart. By the spring of 1926 they averaged 25 feet high and had a trunk diameter ranging from 7 to 9 inches. These trees received no water after the first year."

**Mr. W. B. Lanham, Chief of Division of Horticulture, Texas Agricultural Experiment Station:**

"It is very drought-resistant, having an extensive surface root system. It is very fast growing and easily transplanted."

**E. H. Wilson, Keeper of the Arnold Arboretum, Boston, Mass. (in a recent letter to The Living Tree Guild):**

"Ulmus Pumila in this arboretum has proved to be a very rapid growing tree. Specimens raised from seed, which I gathered in the grounds of the Temple of Heaven at Peking in May, 1910, are now thirty-five feet tall."

**U. S. Department of Agriculture, Bulletin No. 945:**

"It is very hardy and has proved valuable under a greater variety of climatic and soil conditions than any tree yet introduced. Very favorable reports have been received from practically every section of the country. It has proved winter hardy in most trials in the Dakotas, Minnesota, New York, Montana, and in other Northern States."

**A planter, Bridgeport, Neb.:**

Trees planted May 1, 1918 were reported upon as follows on April 7, 1922: "Trees when received were not over 3 feet high and about the size of a lead pencil. On November 1, 1921, by actual measurement they were 16 to 19 inches in circumference and from 15 to 25 feet high."

**Fort Hays Experiment Station, Hays, Kansas:**

"Tree is now 46 feet high and has a trunk 21 inches in diameter. In trials in the eastern United States from New York to Florida it has made a good growth and produced good trees, although in this region they have not made as rapid growth as in the Middle West or Great Plains area."

**Allan MacDougall, Convent, N. J.:**

"The Siberian Elm which I planted this spring has made a remarkable growth. It has completely leafed out and I would venture to say that it has grown at least one foot since we planted it. I am delighted with the tree because of its unusual leaf and will watch its growth with interest."

*Note that these reports come from all parts of the country . . . showing that the Siberian Elm will succeed under many different conditions of soil and climate.*

—such reports from all parts  
of the country

EVERY TREE delivered to you by  
The Living Tree Guild is covered  
by Life Insurance. If you follow in-  
structions and it fails to live for any  
reason at all within six months—a  
replacement will be sent without cost  
to you. The Guild assumes all the risk  
in order that people who plant Guild  
trees may be as successful as possible  
and learn the joys of tree growing.

5-6 ft. Trees	6-8 ft. Trees
ONE . . . . \$2.50	ONE . . . . \$ 4.00
THREE . . . 7.00	THREE . . . 10.00
TEN . . . . 20.00	TEN . . . . 30.00

**Siberian Elm Transplants**  
for starting your own nursery.

2-3 ft. transplants
<b>\$6.00</b> <b>\$45.00</b>
per doz.      per 100

**Note:** There are two types of Siberian Elm. One is grown from the seed of parent trees whose hardiness has been proved, in the coldest and most extreme localities. The other is raised from the seed of trees growing in the South, and is, on that account, not so dependable when planted in a colder climate. Our trees, however, are all of the Northern strain, and can positively be depended on to give the very best results either in cold or warm climates.

62.61

1929

THE LIVING TREE GUILD stands for a personal experience in tree growing. It offers a variety of specially grown trees and plants for that purpose. This stock is recommended as the best for "doing it yourself"—and requires no expert handling or peculiar care. All Guild plants and trees are guaranteed so as to insure as far as possible a really enjoyable experience. Planting instructions go with each shipment.

**LIBRARY RECEIVED**  
**MAY 2 1929** ★  
 U.S. Department of Agriculture

If you care to order, you may do so by checking the number desired in the column beside the variety. If you prefer a fully prepaid

shipment, add 10% to your remittance, otherwise the plants will be sent C.O.D. Shipments will be made at the proper time for planting.

**SHADE TREES**

No. desired	Variety	Size	Price
	Norway Maple	4-5 ft.	6 Trees \$7.50 12 Trees \$12.00 (Any choice or combination)
	Sugar Maple	4-5 ft.	
	Lombardy Poplar	4-5 ft.	
	White Dogwood	4-5 ft.	
	Pussy Willow	4-5 ft.	
	Scarlet Maple	4-5 ft.	

**HEDGES**

	Size	per dozen
Japanese Barberry	6-12 in.	\$1.50
California Privet	9-12 in.	1.00
Ibodium Privet	9-12 in.	2.00
Althea	12-18 in.	2.00

**HARDY SHRUBS**

	Size	Any combination
Butterfly Shrub	2-3 ft.	\$6.00 per dozen
Hardy Hydrangea	6-12 in.	
Purple Lilac	18-24 in.	
Red Weigela	18-24 in.	
Double Pink		
Deutzia	18-24 in.	
Golden Bell	18-24 in.	
Red Twig		
Dogwood	18-24 in.	
Mock Orange	18-24 in.	
Bush Honeysuckle	18-24 in.	
Desmodium		
Penduliflorum	18-24 in.	
Bridal Wreath	16-18 in.	
Syringa Villosa	18-24 in.	
Rosa Multiflora	18-24 in.	
Spiraea Froebelli	18-24 in.	

**EVERGREENS**

	Size	Each	Dozen
American Arbor Vitae	12-18 in.	\$1.50	\$15.00
Globe Arbor Vitae	6-8 in.		
Pfitzer's Juniper	9-12 in.		
Red Pine	8-12 in.		
Mugho Pine	6-8 in.		
Canadian Hemlock	8-12 in.		
Green Retinospora	8-10 in.		
Golden Retinospora	8-10 in.		
Blue Retinospora	8-10 in.		

**JAPANESE WEEPING PINK FLOWERED CHERRY**

(With six-foot stems and one-year heads when delivered)

Each	\$ 6.00
Three	17.50
Per dozen	65.00

**SIBERIAN FLOWERING ALMOND**

Size when delivered, 1 1/2 to 2 feet

Each tree	\$ 2.00
Three	5.50
Per dozen	21.00

**MAY DAY TREE**

Size when delivered, 3 to 4 feet

Each tree	\$ 2.25
Three	6.25
Per dozen	22.00

**SIBERIAN FLOWERING CRAB**

Size when delivered, 4 to 5 feet

Each tree	\$ 2.25
Three	6.25
Per dozen	22.00

**JAPANESE BLOOD-LEAF MAPLE**

Size when delivered, 1 1/2 to 2 feet

Each tree	\$ 6.50
Three	18.00
Per dozen	70.00

**EVERGREEN TRANSPLANTS**

No. desired	Variety	Size	Per Doz.	Per 100
	Norway Spruce	5 yrs. old, 10 to 15 in.	\$3.95	\$25.00
	Scotch Pine	5 yrs. old, 6 to 10 in.	3.95	25.00
	White Spruce	4 yrs. old, 5 to 10 in.	3.95	25.00
	Austrian Pine	4 yrs. old, 5 to 8 in.	3.95	25.00
	Jack Pine	4 yrs. old, 5 to 8 in.	3.95	25.00
	Colorado Blue Spruce	3 yrs. old, 3 to 5 in.	2.75	20.00
	Engelmann Spruce	3 yrs. old, 3 to 5 in.	2.75	20.00
	Balsam Fir	4 yrs. old, 4 to 8 in.	2.75	20.00

**SPECIAL FOR STARTING A HOME NURSERY**

120 trees. (Eight varieties—fifteen of each of the above).....\$25.00

**HARDY PERENNIALS**

	Check One:
Japan Iris	<input type="checkbox"/> Box A \$8.50
Hardy Phlox	
Double Hollyhocks	
Hardy Chrysanthem'm	51 plants
Columbines	
Shasta Daisy	
Larkspur	3 of each
Peonies	
Clove scented pinks	
Baby's Breath	<input type="checkbox"/> Box B \$15.00
Oriental Poppy	
Hardy Violet	
Canterbury Bells	102 plants
Coreopsis	
Hibiscus	
Japanese Pink Lily	6 of each
Lysimachia	
	<input type="checkbox"/> Box C \$25.00

**SPECIAL OFFER SIBERIAN ELMS**

This Elm tree is almost miraculous in the rapidity of its growth. In three or four years it will grow to a size as large as that which the American Elm takes ten years to reach.

Siberian Elms planted around the State Capitol at Bismarck, North Dakota, were among the first of this variety planted in America. Other shade trees had failed where these were planted. Today these trees are growing thriftily and arouse great admiration among visitors.

Besides being graceful and beautiful, the Siberian Elm holds its foliage late in the fall, adding three or four weeks to its usefulness and growing season. It likes dry situations.

The Living Tree Guild offers to its patrons, for the first time, the finest stock of these trees available in America.

(Due to its great beauty combined with rapid growth this tree is ideal for increasing the value of real estate projects. Contract prices gladly submitted on request.)

5-6 ft. Trees	6-8 ft. Trees	2-3 ft. transplants
One—\$2.50	One—\$4.00	
Three—\$7.00	Three—\$10.00	\$6.00 per doz.
Ten—\$20.00	Ten—\$30.00	\$45.00 per 100

# The Living Tree Guild

National Headquarters for Guaranteed Living Trees

408 Fourth Avenue

New York, N. Y.

April 26,  
1929

## BOARD OF ADVISORS

### Care of Trees:

PAUL H. DAVEY,  
Vice President,  
The Davey Tree Expert Co

### Finance:

ARTEMUS L. GATES,  
Vice President,  
New York Trust Company

### Uses of Trees:

EVERETT G. GRIGGS, 2nd  
St. Paul and Tacoma  
Lumber Co.  
Tacoma, Wash

### Production:

LESTER C. LOVETT,  
Past President, Eastern  
Nurseryman's Association

### Public Relations:

F W LUENING,  
The Milwaukee Journal

### Tree Education:

ELLEN EDDY SHAW,  
Brooklyn Botanic Garden

Dr ROBERT T. MORRIS,  
New York Surgeon, Author,  
Dean of the Northern Nut  
Growers' Association

PERCIVAL S. RIDSDALE,  
Managing Editor,  
Nature Magazine

ERNEST THOMPSON SETON,  
Former Chief Scout,  
Boy Scouts of America  
and Chief of  
The Woodcraft League  
of America

United States Department of Agriculture,  
Washington, D. C.

Attention of Mr. E. C. Aughton.

S i r s :

In reply to your circular letter of April 24th, it is a pleasure to enclose a copy of our spring folder.

Yours very truly,

THE LIVING TREE GUILD



TFC:G

See Other Side

# The Living Tree Guild

National Headquarters for Guaranteed Living Trees

468 Fourth Avenue

New York, N. Y.

## BOARD OF ADVISORS

### Care of Trees:

PAUL H. DAVEY,  
Vice President,  
The Davey Tree Expert Co.

### Finance:

ARTEMUS L. GATES,  
Vice President,  
New York Trust Company

### Uses of Trees:

EVERETT G. GRIGGS, 2nd  
St. Paul and Tacoma  
Lumber Co.  
Tacoma, Wash

### Production:

LESTER C. LOVETT,  
Past President, Eastern  
Nurseryman's Association

### Public Relations:

F. W. LUENING,  
The Milwaukee Journal

### Tree Education:

ELLEN EDDY SHAW,  
Brooklyn Botanic Garden

Dr. ROBERT T. MORRIS,  
New York Surgeon, Author,  
Dean of the Northern Nut  
Growers' Association

PERCIVAL S. RIDSDALE,  
Managing Editor,  
Nature Magazine

ERNEST THOMPSON SETON,  
Former Chief Scout,  
Boy Scouts of America  
and Chief of  
The Woodcraft League  
of America

Dear Friend:

When you plant Guild stock, you are assured in advance of success. All Guild trees and plants are covered by Life Insurance. If for any reason, yours do not live, they will be replaced without cost to you if reported within six months.

The Living Tree Guild is the only organization, so far as we know, that backs up its members in this way. That is why it has today over 62,000 satisfied members, -- all growers of Guild trees and plants.

It would be impossible to issue life insurance except on the most superb and hardy stock. Guild stock is beautifully grown and carefully selected. Full instructions for planting are enclosed with each shipment.

There is a vast difference. You can buy evergreens at any price. The lowest prices are often actually the highest. There is no value in a plant that dies. The thing that really counts is the honesty of the producer, and the integrity of his organization. It pays to plant the best stock only.

Moreover, the Guild will gladly advise with you on any personal planting problem. The leading experts of the country are on our Board -- and they will help us to help you. They serve without remuneration because it is a good cause.

In the enclosed folder you will find some of the season's choicest discoveries. We suggest that you look through its pages and imagine just where these trees and shrubs and flowers will show to best effect in your grounds and gardens.

Sincerely yours,

THE LIVING TREE GUILD



# SHRUBS *for* screens and color effects

Choose your own combination of any twelve plants . . . . \$6.00

**BUTTERFLY SHRUB** (*Buddleia Magnifica*)—In general effect like lilacs—each bush remains a mass of color throughout the summer. 2 to 3 feet when delivered, will grow to 4 to 5 feet. Butterflies are almost always hovering about this bush.

**HARDY HYDRANGEA** (*Hydrangea Paniculata Grandiflora*)—Showy blooms, pure white, turning pink. 6 to 12 inches when delivered.

**PURPLE LILAC** (tall)—The shrub our grandmothers gloried in. 18 to 24 inches when delivered.

**RED WEIGELA** (*Weigela Eva Rathke*)—Deep garnet—red flowers in great abundance throughout the summer and fall. 18 to 24 inches when delivered.

**DOUBLE PINK DEUTZIA**—Tall, strong, and symmetrical. Freely flowers with double blossoms in June. 18 to 24 inches when delivered.

**GOLDEN BELL** (*Forsythia*)—The first herald of spring flowers. Branches gloriously burdened with yellow flowers before the foliage comes out. 18 to 24 inches when delivered.

**RED TWIG DOGWOOD** (*Cornus Siberica*)—Especially desirable for winter effect, the brilliant red bark showing up in splendid contrast with drab surroundings. 18 to 24 inches when delivered.

**MOCK ORANGE** (*Philadelphus*)—The old-fashioned *Syringa* of our grandmother's garden. Attains great height with age. 18 to 24 inches when delivered.

**BUSH HONEYSUCKLE**—If you want birds around your home grounds plant this wonderful shrub. Its early winter red fruit is a magnet to the songsters. 18 to 24 inches when delivered.

**BRIDAL WREATH** (*Spirea Van Houttei*)—Absolutely hardy and the joy of every novice in gardening. Thousands of pure white blossoms completely cover every bush. 15 to 18 inches when delivered.

**DESMODIUM PENDULIFLORUM**—Visualize thousands of miniature rosy purple sweet-peas.

**SYRINGA VILLOSA**—Large panicles that turn from light rosy purple in bud to creamy white when open. Very fragrant. It blooms about two weeks later than other lilacs.

**ROSA MULTIFLORA**—Produces large clusters of single white flowers. Excellent for mass effects in corners or backgrounds. This shrub is very hardy. 18 to 24 inches when delivered.

**SPIRAEA FROEBELI**—A dwarf shrub with bright crimson flowers. Lovely for a spot of rich color in the garden. 15 to 18 inches when delivered.

## THE BEST *Hedges* KNOWN

*A*FTER many experiments it has been found that the thicker hedge will grow from the smaller plants.

**JAPANESE BARBERRY**—One dozen Barberry plants will make ten feet of hedge. Height, 6 to 12 inches when delivered—will grow quickly. Thorny protection against animals. *One dozen for* . . . . . \$1.50

**CALIFORNIA PRIVET**—Decidedly popular but will sometimes suffer from winter injury when planted in latitudes north of New York City. Should be planted 6 inches apart in a row. Two dozen Privet plants will make twelve feet of hedge, 9 to 12 inches when delivered; multiple stems. *One dozen* . . . . \$1.00

**IBOLIUM PRIVET**—Hardier than California Privet and better for northern climates. In milder climate it is almost evergreen retaining foliage until after Christmas. Same size and treatment as California Privet. *One dozen*, \$2.00

**ALTHEA** (*Rose of Sharon*)—Plant 15 inches apart in a row. Makes a glorious flowering hedge. 12 to 18 inches when delivered, will grow rapidly. *One dozen* . . . . . \$2.00

# Guild Market Place

*A* FOREGROUND of flowers for your background of trees! Perennials will help you make such a garden of permanent value. They will come up each year with renewed vigor. They never become monotonous.

**JAPAN IRIS**—Various shades of blue, also pure white. They give best results when planted in fairly heavy, well enriched soil.



**HARDY PHLOX**—The great panicles of bloom make the Hardy Phlox one of the most showy of all objects on the lawn during the summer months.



**DOUBLE HOLLYHOCKS**—Extra fine flower stalks, often grow to over five feet in height. A glory for the back fence line.



**HARDY CHRYSANTHEMUMS** — When other flowers are entering on their winter's rest, these Hardy Chrysanthemums are in their prime.



**COLUMBINES**—Can be used in full sunlight or partial shade. Graceful airy flowers.



**Note:** The most important requirement of a perennial flower garden is to provide a succession of blooms throughout the growing season. Guild perennials are chosen for that purpose.

**SHASTA DAISY**—One of the finest of Luther Burbank's productions. Pure white flowers, frequently 2½ or 3 inches in diameter.



**LARKSPUR**—Flower stalks produce blooms of various shades of blue, the stalks sometimes over five feet in height.



**PEONIES**—Pink, red and white. These varieties offered by The Living Tree Guild have been pronounced by experts as the finest on the market.



**CLOVE SCENTED PINKS** — Delightfully sweet scented flowers (like carnations). Early summer flowering in great abundance, more sparingly in mid and late summer. Shades of pink predominate in great range of colors.



**BABY'S BREATH**—One of the most popular old-fashioned perennials.



**ORIENTAL POPPY**—Flowers from five to seven inches across on tall stems. A gorgeous variety.



**HARDY VIOLET**—The finest of the single flower varieties for growing out-of-doors.



# of Hardy Perennials

**CANTERBURY BELLS**—Profusion of bell-shaped blue and pink flowers through July and August.

**COREOPSIS**—The best of the hardy yellow flowers for mass effect. Blooms constantly from June to frost.

**HIBISCUS (or Marshmallow)**—Enormous blossoms sometimes 8 or 10 inches in diameter, white and pink; produced from early August to frost.

**JAPANESE PINK LILY**—The best of all the Japanese lilies; these frosted white, crimson edged flowers are lovely beyond words.

**LYSIMACHIA (or Loose-strife)**—Curved white spikes from July to September. Grows about 2 feet high. Especially fine for cut flowers for the table.

*Exceptional!*

**KOREAN CHRYSANTHEMUM**

*ADD* this new friend to your circle of old garden friends. It is going to be one of the most popular—because of its magnificence—but so far very few people have discovered it.

In the late fall when nearly every other flower has had its day the Korean Chrysanthemum will burst forth in startling abundance—implore you to gather the flowers for your living room and dining room. These flowers are a brilliant claret pink in color.

*Each Plant . . . . \$ 1.00*

*Dozen . . . . . 10.00*

*Fifty . . . . . 33.00*

*While they last!*

Since these perennials are not trees they are not covered by Guild Life Insurance. We guarantee, however, that they will arrive in perfect condition.

**BOX A.** (3 of each of the above) **51 plants. \$ 8.50**

**BOX B.** (6 of each of the above) **102 plants 15.00**

**BOX C.** (12 of each of the above) **204 plants 25.00**

*If you want a special selection—more of one variety and less of another—indicate your choice on the order form. But be sure that the total number of plants is the same.*



# This Surprise Tree

with the Compliments of  
**THE LIVING TREE GUILD**

*A* BEAUTIFUL guaranteed specimen of unusual importance and interest will be included in every shipment of \$5 or more—with the compliments of The Living Tree Guild. The name of this extra specimen will be on the tag.



*W*ITH every shipment of shrubs or flowers amounting to \$5 or more an appropriate surprise plant will be added, instead of a tree. This will be our token of appreciation to everyone who plants trees and flowers this spring.

**EVERY TREE IS COVERED  
by GUILD LIFE INSURANCE**

*and will be replaced at no cost to you within six months if it fails to thrive. The Living Tree Guild backs up everyone who plants these super-quality Guild trees.*

*Mail Enclosed Order Form to*

**THE LIVING TREE GUILD**

*National Headquarters for Guaranteed Living Trees*

**468 Fourth Avenue (at 31st Street) New York, N. Y.**

*Phone ASHland 1990-1991-1936*