

## **Historic, Archive Document**

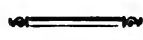
Do not assume content reflects current scientific knowledge, policies, or practices.



6289

LIBRARY  
RECEIVED  
★ MAY 18 1929 ★  
U. S. Department of Agriculture

# MURPHY'S DAHLIA GARDEN



15A PROCTOR STREET  
PEABODY :: MASS.

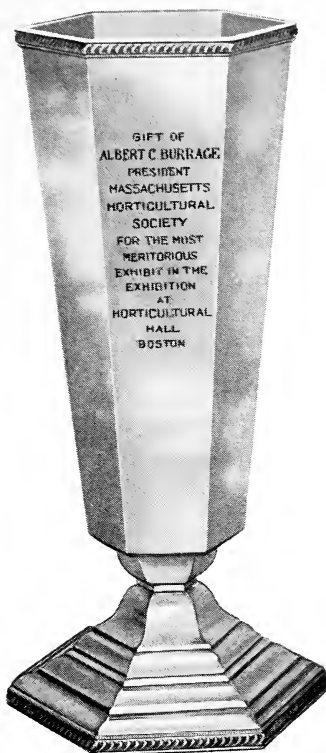


## *Blue Ribbon Seedlings*



ANNUAL CATALOG  
1929 SEASON 1929





\$100.00 Silver Cup, won by Murphy's Dahlia Garden at Horticultural Hall, Boston, with all New Creations, the first time this has ever been accomplished by any grower, past or present. There's a reason.



THOMAS J. MURPHY

DAHLIA SPECIALIST AND  
ORIGINATOR OF BLUE RIBBON  
AND SILVER CUP SEEDLINGS



15<sup>A</sup> PROCTOR STREET  
PEABODY :: MASS.

TELEPHONE PEABODY 112-W



## SEASON OF 1929

### A FEW WORDS TO OUR DAHLIA FRIENDS

Many thanks for past favors

You will see in our 1929 Catalog we have made a price reduction in reach of all. We wish all flower lovers to become interested in the outstanding foremost flower of all time—the Dahlia.

### INFORMATION WORTH WHILE

It is good judgment to order early the demand for some varieties often exceeds the supply.

### TERMS

Cash with orders or in advance of shipment.

Discount to trade, 33 $\frac{1}{3}$ % on orders for six or more of one variety, 25% on orders for less than six of one variety.

Customer pays transportation charges on all plant orders. (We pay all charges on tubers.)

We are releasing 14 new Blue Ribbon seedlings for 1929, all outstanding and marvelous creations, the productions of the many hands of Nature.

### BOSTON SHOW WINS

Once more at the Boston Show, 1928, we carried away our usual large number of ribbons. Pleased to tell you we won the "Blue Ribbon" for the "largest flower" in the show, with a new two-year-old "seedling," and one more "Blue Ribbon" for the best "Decorative," which was also the largest, and one of our new creations, against the world's best; not too bad for 1928. We exhibit our own creations, and naturally feel pleased when we beat the best in the land. "One against many," yet we win our share and then some.



---

MURPHY'S DAHLIA GARDEN CREATIONS

---



953 **SUNRISE** (Dec.). The releasing of one more beauty that has stood the acid test for five seasons, also thrilled the real growers to a point where they can't wait any longer. "Is a free agent for 1929." This creation has beautified our front garden for years, in the foremost display section, where visitors must pass to the larger garden. Oh, my! what a treat! To have the honor of telling your friends, you had the pleasure and felt the thrill of said visit. This new creation derives its name from the fact an artist while giving it the once over, remarked, "I use the same colors in painting a sunrise," hence the name. There seems to be a something about this beautiful "Sunrise" that reminds one of Jersey's Beauty, maybe it's the similarity of growth habit and beauty. "Sunrise" possesses all said points and a great deal more. The most essential point a dahlia could have and that is size, 3 to 11 inches in diameter; also deep and full of substance, very free flowering and don't burn at any stage, also a champion for lasting qualities when cut. Nature does not and has not, to our knowledge after 27 years of actual experience, created any dahlia so near to perfection as "Sunrise." We can truthfully and honorably say it is the outstanding Decorative of all time; giant blooms held high above the foliage in profusion, on the best of great stems, wonderful natural colors, free stately growing plant, an aristocrat of the dahlia family. You haven't the least conception what a two-tone female salmon-pink flower with an overlaid sheen of tyrian purple, gold variations and gold tips looks like. This wonderful combination of colors is very much in harmony with the fundamental European Oriental pastel shades and tints. producing one of the most brilliant decoratives ever put on the dahlia market. This beautiful dahlia has nobly fulfilled its purpose, and has proven true to its trust. If ever a dahlia has a right to be called a real \$25.00 creation, it is "Sunrise," yet we have for a specific purpose decided to put it on the market.

Tubers \$10.00 net, 3 for \$25.00 net.

Plants \$5.00 net, 3 for \$12.50 net.

---

## MURPHY'S DAHLIA GARDEN CREATIONS

---

- 890 **MARY LOUISE PHELAN** ("Wonder Cactus"). After seven years of watchful, patient, tireless labor, and now introducing this wonderful cactus, we feel proud to tell you it is the handsomest dahlia, regardless of class, ever created, and we are not the only ones who think so. One after another are of the same opinion, especially when asked, "Have you ever seen a prettier flower?" "Never." A blue ribbon winner and a sensation at any and all shows. Picture a 10-inch flower, 6 inches deep (American Cactus) with unusual blending in colors of two-tone magenta, plum and purple sheen overcast, pure white center base, with perfect white tips that have run true to form for seven years, on the essential good stem. White tips have never failed, and one of the most prolific bloomers of the dahlia family. Plants 4 to 5 feet high. At base under each petal are numerous white tongue florets. We are not a bit backward in claiming this wonderful flower could win the blue ribbon for the largest number of petals. It's a great pleasure to stroll around the garden and watch this magnificent specimen of man's creation grow to maturity. The beautiful formation of each petal, whittled and carved by the hands of Nature, up to the final perfect symmetrical construction of a 10-inch bloom, is the last word in the most beautiful dahlia ever created. It is only about once in a lifetime a dahlia breeder is favored by the laws of nature to be the creator of her most outstanding masterpiece, now being released after seven tried and true test years. To say this wonder cactus is a \$25.00 creation is putting it mild, yet we are selling this beauty. Tubers \$10.00 net; 3 for \$25.00.  
Plants \$5.00 net; 3 for \$12.50.
- 936 **MARVELOUS** (Dec.). It seems all dahlia growers want size. Yet every once and sometimes twice in a while you hear a grower remark, "I don't care for the great big cabbages." May I ask, did you ever know of any grower that couldn't sleep because he grew one 16 inches? In this new creation we are introducing, we have one of the largest cabbage-size flowers to date, also one of the healthiest and strongest growing plants, immune from pests we have ever grown. Five years old, ne'er a stunt. It will lick any other dahlia that has come under our care to the minute for quantity, quality and size. 8 to 11 inches in diameter, 6 inches deep, good long stems, yes too long for such a heavy flower; stems bent some with the extra large flowers, especially after a rain or heavy dew. It is a grand exhibition flower and creates a loud noise wherever shown. Color of this monster is yellow with a slight red suffusion, giving the flowers an autumn gold-bronze tint. Plant 6 to 7 feet high and loaded all season with cabbage-size flowers, one of the very few extra large, free flowering varieties. This is copied October 15 and plants are still full of large blooms. Tubers \$10.00; 3 for \$20.00.  
Plants \$5.00; 3 for \$10.00.
- 938 **EMILY SCARLET** (H. C.). Now is the time to take a peek at our new catalog and see what we have to offer. Don't overlook the fact that this new scarlet hybrid cactus is one of the new outstanding creations, and won the Silver Cup at Boston, 1926, hands down against a good number of the best seedlings our leading growers could produce. This dahlia creates a lot of comment by the visitors to our garden, for brilliant color, stem and size. It has weathered the necessary five-years perfection test, and came through with flying colors. Plant growth extra good, about 6 feet high. It don't need much trimming or disbudding, it has a very beneficial habit of what we call time blooming, which means it has a natural habit of two or three extra large blooms at a time. Any variety that is fortunate enough to have this habit will always produce extra large exhibition flowers, it's nature's special gift at birth. The new formation of petal and construction of flower proves beyond any doubt the unlimited capacity nature has in store, to draw from when called upon, to trim and shape a new seedling. You will have a hard time trying to find its equal for quality, plant, size, and two-foot clean natural stem. It is almost unbelievable, the wonderful construction of flower and brilliancy of color tone, far



---

## MURPHY'S DAHLIA GARDEN CREATIONS

---

too deep for the imagination to improve upon. Have we reached the limit? is a question hard to answer. Time will tell.

Tubers \$10.00; 3 for \$20.00.

Plants \$5.00; 3 for \$10.00.

- 960 **SHUFFLE ALONG** (Dec.). In dealing with the public, you find quite a variety of growers, men as a rule, like the heavy, fat or round decoratives; women are more partial to the cactus and loose, fluffy varieties. It has been said the dahlia is a he-man's flower, so in 960 you will find a very pleasing, large, deep, round Decorative, plant growth excellent, free growing, with beautiful, light green foliage. The general growth of plant wonderful, a prolific bloomer of large, quality flowers all season. A new odd combination of rose-red and golden-yellow, large flowers held high above the foliage on the best of stems, height of plant 6 to 7 feet. A bloom of beauty and substance, a very attractive exhibition, garden and cut flower, with fine keeping qualities, also a wonderful constitution, backed up with enough power of resistance to ward off disease and pests. A self-styled, special built flower, as different as can be from any of the so-called modern creations.

Tubers \$10.00; 3 for \$20.00.

Plants \$5.00; 3 for \$10.00.

- 1009 **ACCLAMATION** (Dec.). There seems to be something about a red and white tip dahlia that arrests your attention as you pass, especially if you are fond of bi- or tri-colors. 1009 belongs to that class of beauties, a bright crimson red with clear, clean, deep white tips, large flowers of good substance on good rigid stems, looking you in the face. The plant has a nice growing habit, free from extra bush growth, and it don't need but very little if any trimming, which is a most favorable point for a new seedling to have, because it takes care of itself. This is an unusually splendid red and white dahlia.—both colors break clean, the cloudy pink tone you generally see expanding between most red and white varieties is conspicuous by its absence in the color tones of "Acclamation," uniting closer co-operation and harmony of colors, also increasing the valuation of a new variety, good red and white tip dahlias that don't sport are scarce, and now we are pleased to tell you that "Acclamation" is no sport. Plant grows about 5 to 6 feet high, very neat and pretty. You will be happily disappointed when this bi-color beauty blooms.

Tubers \$10.00; 3 for \$20.00.

Plants \$5.00; 3 for \$10.00.

- 1010 **FLAMING YOUTH** (Dec.). They say there is no time like the present, and postponements are dangerous, and you are very apt to lose something good in so doing. "Flaming Youth" is a tried and true variety; it has stood the acid test and is now ready for the market. We feel it is going to be one of the outstanding new creations of 1929. A robust grower with odd distinguished foliage, a new design all its own, a large, noble, attractive flower, full of expression, one of the new, keen varieties that demand your attention at once. The large, 10-inch flowers are held erect on the best of stems, growth of plant is about 6 feet high and a very free flowering variety; color golden light orange, graduating to center or base of flower to a deep orange tone with a golden suffusion, and we predict it has come to stay. A universal standard; to know this flower is to grow it, then you can see the dignified sheen of character at maturity. A splendid garden, exhibition, and cut flower, a prolific bloomer of large flowers, early and late. An eye-opener at sunrise and a dream-baby at sunset. One dahlia you should grow to fill in the poor spots so numerous in the gardens of 1928. It has an unusually strong constitution and pest-proof foliage. The exquisite mechanism within this beauty is positive proof we were not betrayed to the mercy of the elements.

Tubers \$10.00; 3 for \$20.00.

Plants \$5.00; 3 for \$10.00.

- 1066 **MY COUNTRY** (Dec.). Here we have the big noise in the red and white class, and what a beautiful combination of colors. It is hard to believe such harmonious co-operation existed, and it seems more like a dream than a reality. The

---

## MURPHY'S DAHLIA GARDEN CREATIONS

---

flower is very large, 9 to 10 inches in diameter, and 5 to 6 inches deep, on stiff stems, facing you. Plant is a strong, robust grower, 4 to 5 feet high, and a free flowering variety. From bud form to half matured the large, wide 2-inch white petals are edged from base up, about a quarter inch on both sides a deep garnet. Think it over! A pure white petal, edged garnet. You never saw one painted so perfect before. The beauty of one petal is amazing, to say nothing of a large, 9-inch, heavy flower, built with such beautiful petals, painted by the many hands of nature, is a picture hard for the imagination to solve. We are also of the opinion it is one hard job for the artist. When the flower is fully matured and starting to recede, the base center petals change to a dominating garnet, with deep white tips, center of flower is what we term air-tight, which means a very close-petaled center, seldom if ever opened. We are releasing four white tip varieties for 1929, and we consider "My Country" the cream of the four. "Our Country" was released at \$50.00. You are all acquainted with it. "My Country," a far better dahlia from any viewpoint you wish to figure, is released at \$10.00.

Tubers \$10.00; 3 for \$20.00.

Plants \$5.00; 3 for \$10.00.

- 1076 **WHITE ANGEL** (Dec.). As a rule dahlia lovers like a good white; you very seldom find one that don't; it must be the clean, clear white, backed up with green foliage that draws their attention. Someone said it is about time we released another good white. He made a good guess. "White Angel" is a typical decorative, a new formation all its own. Plant grows about 4 to 5 feet high, very large flowers on good, rigid stems, looking you in the eye. The petals are very wide and plentiful, center still producing new petals as flower fades with age. A wonderful bloomer, holding good size all season. "White Angel" is a real white with no suggestion of cream. This season we grew 80 plants in one section. If you can stimulate your imagination by rousing your dahlia instinct, you should be able to picture this special section of 80 "White Angels" in full bloom, and receive your first real dahlia thrill. Whites are not common, and we have very few real good whites. You all have plenty of room in your garden for one more classy white. It is the outstanding white for 1929. You need all the angels in your garden, why not "White Angel"?

Tubers \$10.00; 3 for \$20.00.

Plants \$5.00; 3 for \$10.00.

- 1165 **DREAM BEAUTY** (Dec.). We have been watching the beauty of this variety for three or four years, and must say it is beautiful, odd and outstanding. The flower is large and full of substance. Petals are large and wide, pure white with wine-purple edge on both sides of petal, one-fourth of an inch wide. The effect is both new and surprising. The bud is very large and full, and with 4 to 8 petals opened, you will see one of the handsomest rosebud flowers you ever had the pleasure to look upon; when fully matured it is one extraordinary, sumptuous, magnificent decorative, full of class and color, a conglomeration of wine-purple and heavy deep pure white tips, with an orchid sheen overcast. This "Dream Beauty" has never sported, free growing plant about 5 feet high, flower center always full to frost, very seldom if ever opens. "Dream Beauty" is well named and a new outstanding color beauty. Sorry to say only about 50 per cent of stems are good and hold their heads up, but the brilliant and beautiful new odd color tones, with serrated petals, more than make up for the medium stem. "One real bargain;" don't pass up this "beauty" because the stem is a little faulty. It is a conspicuous, lustrous "beauty" of modern class and one grand garden and exhibition variety.

Tubers \$6.00; 3 for \$12.00.

Plants \$3.00; 3 for \$6.00.

- 1197 **SWEET MARIE** (Dec.). Florists have been complaining for years about the dahlia being too large for their business. In "Sweet Marie" we have the ideal florist variety for special designs and cut flowers. The brilliant colors of silver-pink with white center and serrated petals produce a new forma-

---

## MURPHY'S DAHLIA GARDEN CREATIONS

---

tion of petal and construction of flower, with a tendency to similarity of a hothouse pink, borne on the end of great stems, plant growth very robust and strong, "7 feet high." We have grown dahlias about 27 years, and we consider "Sweet Marie" the handsomest plant to date, a clean, free growing plant, with unusually nice foliage, similar to "Rose Nell," which you all know is very odd and pretty. The flower is a beauty and contains that essential magnetic something that makes you sit up and take notice. It demands your attention, on account of the out-of-the-ordinary position it occupies on the end of stem. Flowers range from 5 to 7 inches across, 3 inches deep, and every inch a classic beauty.

Tubers \$6.00; 3 for \$12.00.

Plants \$3.00; 3 for \$6.00.

**1214 TRIPLETS BEAUTIFUL** (Dec.). This is the fourth white tip dahlia we are releasing this season. We think it is a new record. All individual beauties and hard to produce. If you will sum up the comparatively few white-tip dahlias that have reached the market the last 25 years, you will be able to appreciate the releasing of four white-tippers in one year. 1214 is a combination of light maroon with deep white tips, heavy round Decorative on long, stiff stems, flowers held high above the foliage, on 6 to 7 feet robust growing plant, free bloomer and very attractive flower, excellent for exhibition, especially for basket work; also a fine garden variety and cut flower. We have grown this beauty for quite a few years, and intend to grow more. You all need more white-tip dahlias in your garden, they are "odd and different," "conspicuous and attractive," "beneficial and nobby," "meritorious and outstanding," they create the essential thrill that is otherwise lacking in a garden of all solid colors; visitors wonder what is the matter with your garden; in other words, eternal sameness prevails, you haven't any white tips. Stock limited; a little short. Order early.

Tubers \$10.00; 3 for \$20.00.

Plants \$5.00; 3 for \$10.00.

**1219 BIG TRAIN** (Dec.). The real thrill of the dahlia game comes with each new classy seedling. The first flower was a peach, I hope the next one is better, and so on. It creates new life and stimulates your imagination. The gamble is on; four years have passed; you win. "Big Train" is the seedling we have in mind. "Oh, my! what colors and size." To give you an idea what it looks like, we'll call it an improved champagne, more bronze than champagne, with a deep rose-pink reverse, extra large, free-flowering variety, blooms full of class and substance, on swell stems. It is very much like "W. J. Irwin" in blooming habit, flowers on stem end, with better and higher growth of plant, 4 to 5 feet high, with extra large 10-inch flowers facing the sky. "Big Train" is naturally a very large variety, and one of our special creations. We feel satisfied it will make good in the dahlia market, and then some. Color is chamois to dull golden champagne tints, with heavy rose-pink reverse, closely allied with the popular autumn shades, and it is needless for us to say it is one of the outstanding dahlias that have come to stay.

Tubers \$10.00; 3 for \$20.00.

Plants \$5.00; 3 for \$10.00.

**1220 QUEEN'S TASTE** (Dec.). Again we offer one more florist special, in fact at the Salem show one florist in particular was very anxious to purchase this new light orange-henna beauty. The new color shades are hard to describe, color tints are many, yet all within two color tones, orange and henna. This new creation is right up to the fashion plate minute, a medium to large flower on the best of stems, two feet long and a tireless bloomer all season. Great cut, garden, and exhibition variety, It is sure one dahlia every grower should have in his garden. The fall wedding decoration slogan is dahlia blooms. Henna shades are the outstanding popular color, especially the essential good stem you are after, and now is the time to check up your wants to the Queen's taste. Not any too flush on stock; order early.

Tubers \$10.00; 3 for \$20.00.

Plants \$5.00; 3 for \$10.00.

---

## MURPHY'S DAHLIA GARDEN CREATIONS

---

### NOVELTIES OF OTHER GROWERS

- 930 **ALL YELLOW** (Dec.). In this new sensation we have produced one real yellow that will stand up under its color as the best yellow to date. We have all kinds of yellows and near yellows, but "all yellow" is yellow all over, just one clean, clear yellow tone, unusually large and naturally so, 10-inch flowers. Requires no feeding, free-growing plant and profuse bloomer, on long wiry stems. All above the foliage very healthy, robust-growing habit, the most essential asset a new seedling can have. Tubers \$5.00; Plants \$2.50.
- 926 **ALL RED** (D. P.). It is surprising to know how many flower growers like peonies. All summer the dahlia fans, especially the ladies, paid more attention to this unusually large, bright, cardinal-red decorative peony than any other dahlia I had. It is the brightest red I ever saw, barring none, and if red is your color, send in your order early. You may get left if you wait too long. I feel you can win first prize at most any show, if you'll take care and keep plant from blooming freely. It can and has been grown 8 and 9 inches across, 6 inches deep. Tubers \$3.00; Plants \$1.50.
- AL KORAN** (Dec.). Clear, bright yellow suffused amber, flowers large, stems good. Tubers only \$1.00.
- ADDA PATERSON** (H. C.). One of the best white hybrids on the market. High grown plant with large flowers on good stems. Tubers \$3.00; Plants \$1.50.
- ALEXANDER POPE** (H. C.) A giant hybrid cactus of a beautiful crimson shade. Tubers only \$1.50.
- ALICE WHITTIER** (H. C.). Extra large yellow, golden glow at base, 8 to 9 inches across, on the best of stems. Tubers \$2.00; Plants \$1.00.
- ALICE GREEN** (Dec.). Strong, robust grower, stem good, blooms large, color orange with gold shadings. Plants only \$1.50.
- AZTEC GLORY** (Dec.). A bright lemon-yellow, size very large, on good stems, construction extra good; an outstanding yellow. Plants only \$5.00.
- AMERICA'S GLORY** (Dec.). The color is a light red, bright scarlet, evenly tipped white, and never produces any solid flowers; large flowers on long, stiff stems. Plants only \$2.00.
- ALTAMONT** (Dec.). This new creation is rose-pink, deepening to American Beauty rose at center, tall growing plant, free bloomer, large flowers held erect on long stems. Plants only \$2.00.
- 999 **BABY PINK BEAUTY** (Dec.). Pleased to tell you 999 proved to be one of the outstanding dahlias released last season, 1928. One of our very best eastern growers claims it to be the the best pink in their garden; a letter from the south, "Baby Pink Beauty the best ever," and so on. We are also strong in claiming it to be the best real pink to date. It has everything; great, strong growing plant, great stem, no better, great bloomer early and late, and has the habit of producing three flowers from the end of each lateral, all the same size, with three great stems. Let nature take its course, don't disbud. "My! what a cut flower!" Tubers \$7.50; Plants \$3.75.
- 875 **BECKETT'S ORIENTAL** (Dec.). One more 1928 released seedling that has made good on the dahlia market. Color tones are red and yellow. At opening the flower is bright red with heavy gold tips; about half matured it is suffused with quite a little yellow; full bloom red dominates again, producing quite an interesting color change in flower on the best of good stems. Blooms are large and beautiful, also plentiful. Nice growing habit and a wonderful garden variety. Flowers are very attractive and classy. Tubers \$5.00; Plants \$2.50.
- BERENGARIA** (English Dec.). Color is orange in the center, shading to gold, giving the flower a golden sheen in the sunlight. Immense blooms held erect above sturdy plants. Plants only \$2.50.
- 130 **BEN WILSON** (D.). Orange-red, gold tips, very large, free bloomer, one of the best. Tubers \$1.00; plants \$1.00.

---

## NOVELTIES OF OTHER GROWERS

---

- 433 **BOSTON WHITE** (D.) has proven to be one of the greatest whites I ever produced, improving with age, and the best white you will ever buy for the money. Pure white, large full flower, center air-tight, great plant and stems. Try one: you can't lose. Tubers \$2.00; Plants \$1.00.
- BLACK JACK** (D.). A very dark maroon, almost black; flowers extremely large, with long stout stems; don't burn. Tubers \$1.00; Plants \$1.00.
- BIRD OF PARADISE** (Dec.). Europe's best wine-red and white-tipped new creation. Medium size flowers, held high on the best of stems. A very beautiful flower and one you should grow. Tubers \$2.00; Plants \$1.00.
- BASHFUL GIANT** (Dec.). An unusually large odd autumn shade. Tubers only \$1.00.
- 471 **CITY OF PEABODY** (H. C.). New, deep wine shade, veined white, reverse of petals silver. A grand flower you can't afford to pass up. Stems and centre always good; extra large flower, full of expression: one of the classiest seedlings ever produced. Tubers \$1.00; Plants \$1.00.
- 779 **CITY OF LAWRENCE** (D.). Here we have one of the best yellow decoratives ever produced. Extra large, full, deep flower, on good stems, free bloomer, strong growing plant, great exhibition and cut flower. What more can you ask for? Tubers \$2.00; Plants \$1.00.
- CHARLES STRATTON** (D.). A new combination, salmon-pink and yellow-buff shades that blend and make a nice, unusual flower; very large and attractive. This is one new dahlia you should grow. Tubers only \$1.00.
- CHERMAR'S QUEEN** (Dec.). A very large, bright yellow; there is no trace of any other color in the flower, which averages 9 inches; the large flowers are held erect on long, cane-like stems. Tubers \$5.00; Plants \$2.50.
- CHERMAR'S U. S. A.** (Dec.) For several years we have been experimenting to get a full-center dahlia the color of U. S. A. We have succeeded in this 1924 seedling. Flowers are very deep and large, with air-tight center; stems long and stiff and hold flower erect. Color like the parent, apricot-buff suffused gold. Tubers \$5.00; Plants \$2.50.
- C. P. R.** (D.). An immense flower, color buff yellow and magenta. Odd, handsome flower on good stems. Tubers \$2.00; Plants \$1.00.
- CHARMER'S MASTERPIECE.** A huge incurved cactus flower of orchid pink; the flowers are extra large, of perfect form, on the best of stems, which show their beauty to the best advantage. 1927 sensation. Tubers \$5.00; Plants \$2.50.
- CHEMAR'S PURITY** (Dec.) A new white of much merit. "A Jersey Beauty seedling," they say. Good size blooms on fine stems. Tubers \$5.00; Plants \$2.50.
- COLOR SERGEANT** (Dec.). A very striking dahlia both in form and color, much admired at Camden, where it won as best specimen bloom, and again at Philadelphia, where it was awarded a silver medal as best seedling; one of the outstanding new varieties. Tubers \$5.00; Plants \$2.50.
- COHASSET SUPREME** (Dec.). A very large combination of lavender-pink graduating to lighter shades; great stems. Tubers \$3.00; Plants \$1.50.
- CAYCLERK** (Dec.). An unusually fine imported brown-bronze autumn: a profuse bloomer on the best of stems. Plants only \$2.50.
- EVA COLE** (Dec.). Unusually large, splendidly built, bright, clean red and yellow flower, one of the real extra large varieties; a natural large beauty. Tubers \$3.00; Plants \$1.50.
- EDNA FERBER** (H. C.). New creation. Salmon, shading to gold, Hybrid cactus, combination in coloring that is always admired. Flowers are large and full. One of the best exhibition and cut varieties to date. Tubers \$4.00; Plants \$2.00.
- ELIZA CLARK BULL** (D.). California's best white, that has made quite a hit on this side of the U. S. A. Medium high and a free bloomer; a good, heavy, close-built flower, with the best of stems, and one you need in your garden. Tubers \$3.00; Plants \$1.50.
-

---

## MURPHY'S DAHLIA GARDEN CREATIONS

---

- EL GRANADA** (H. C.). Large hybrid cactus variety; color, orange with yellow reverse. Plants only \$1.00.
- ELSIE DANIELS** (H. C.). The color of this wonderful dahlia is a pale orchid shade on the outer petals, which are long and shaggy; the centre white. A nice-built flower on good stems. Plants only \$1.00.
- EVA WILLIAMS** (D.). An exhibition Decorative of amethyst color, with slight silver shadings; full center, upright and rigid, free bloomer, stems good. Tubers \$1.00; Plants \$1.00.
- ELINOR VANDERVER** (D.). Rose-pink, handsome large flower, that grows on two-foot stems well above the foliage. Tubers \$1.00; Plants \$1.00.
- EAGLE ROCK SUNSHINE** (Cac.). A new large yellow cactus from California, that has done well in the East. Tubers \$2.00; Plants \$1.00.
- EAGLE** (Dec.). Europe's best white and one of the best whites you ever grew. Plant full of blooms all season, on the best of stems. Plant has a healthy, free-growing habit, with nice, dark, clean green foliage. Tubers \$2.00; plants \$1.00.
- EAGLE ROCK BEAUTY** (H. D.). Broomall's celebrated \$50 combination of pink and cream; a very pretty flower and one you should select for 1929. Tubers \$4.00; Plants \$2.00.
- ELITE GLORY** (D.). A 1926 sensation that lived up to expectation; very large red. Tubers \$3.00; Plants \$1.50.
- ELKRIDGE** (H. C.). A large white hybrid cactus, the sensation of the New York Show, 1926. Tubers only \$1.00.
- ELIZABETH WHITE** (Dec.). Rich combination of coral pink and salmon; amber glow at base of petals. Tubers \$2.00; Plants \$1.00.
- EAGLE ROCK JEWEL** (H. C.). Considered the outstanding new creation of California. Color is cream overlaid cameo-pink, and the large flowers are borne on strong stiff stems. Plants only \$5.00.
- FLAME LICK** (Dec.). A new brilliant flame-red large flower, on the end of great stems, looking you full in the face. Profuse bloomer and a nice growing plant that don't need much if any trimming. A special gift from nature. Tubers \$5.00; Plants \$2.50.
- FAITH GARIBALDI** (D.). A deep rose-pink Decorative, large size and good stems; one of the best. Tubers \$2.00; Plants \$1.00.
- FORTH WASHINGTON** (D.). Plant, stem and flower of this large, dark maroon has all the earmarks of a classy dahlia. You need it in your garden. Tubers \$4.00; Plants \$2.00.
- FARNCOT** (Cac.). A medium-size cactus, aster-purple tipped white; very free-flowering variety. Tubers \$1.00; Plants \$1.00.
- F. T. D.** (Dec.). A sport of Trentonian and manifesting the latter's good habit of growth. Color, a rich Tyrian rose on the best of stems. Tubers \$4.00; Plants \$2.00.
- FRANK GALVIN** (Dec.). A new creation that has done well here in the east; a large flower and good stem, a new orchid shade. Tubers \$3.00; Plants \$1.50.
- FEBRA** (Cac.). Here we have a new outstanding fancy European cactus, a combination of white shell-pink with carmine stripes and spots; very odd and pretty. Plants \$2.50.
- FORT MONMOUTH** (H. C.). A new giant flower, released 1928 and has made good here in the East; a dahlia you should and will grow when you see it in the other fellow's garden. Color a rich crimson maroon, shading to bluish violet at tips. Plants only \$5.00.
- GOLDEN OCHRE** (D. P.). A new creation that has made good; a very large flower with long wavy petals; color golden ochre with salmon reverse. Tubers \$4.00; Plants \$2.00.
- GENERAL McRAE** (D.). Apricot buff, suffused with gold; reverse a light coral red. The flowers are very large, perfect type, held erect on stiff stems. This is one of the best decoratives grown. Tubers \$2.00; Plants \$1.00.
- GRENADIER** (D.). A purplish maroon and silver reverse flower that is somewhat unique; held aloft on good long stems. A dahlia that will improve your garden. Tubers \$2.00; Plants \$1.00.
-

---

## NOVELTIES OF OTHER GROWERS

---

- 634 **GEO. S. HARVEY** (D.). I'll say you will have to go some to beat this purplish-magenta flower, full of quality and class, suffused white. One of the handsomest combinations you wish to see, and getting better and larger with age. Very large, deep flower. It is up to you to grow it 10 inches; the goods are there. Tubers \$2.00; Plants \$1.00.
- GLORY OF MONMOUTH** (Dec.). Eosine pink shading to strawberry pink at center, base of petals light orange. A new color combination. Tubers \$1.50.
- GOV. A. H. MOORE** (Dec.). A large yellow flower, shading to buff. Plant full of large blooms all season. Tubers \$2.00; Plants \$1.00.
- GRACE SHERMAN** (D.). A new creation of much merit. Delicate pink, shading to cream, with light orange in center. Large and full on good stems. While they last, Tubers \$2.00.
- GOLDEN RULE** (D.). A very large, deep orange-red that made quite a hit. Extra good for exhibition. Tubers \$1.00.
- GOV. TRUMBULL** (Dec.). A strong-growing plant with large, full flowers on long stems, high above the foliage; one of the up-to-minute mauve-pink, orchid shades. Tubers \$3.00; Plants \$1.50.
- GALLI CURCI** (Dec.). One of the 1928 outstanding new varieties that has made good; blooms are large and deep on good sturdy stems; color brilliant salmon-orange with gold suffusion. A gold medal winner. Tubers \$10.00; Plants \$5.00.
- GOLDEN SONNE** (Cac.). A very bright autumn cactus, one of the best imported to date; very free bloomer on the best of stems. Plants only \$2.50.
- 1139 **HIGH FLIER** (Dec.). Now we have a nice creamy primrose decorative, borne on the best of stems, also a nice plant. Flowers medium to large, which last summer proved to be one of my best cut flowers. Plant is robust and free flowering, about 6 feet high, with very odd, free-growing, clean foliage. Your attention is attracted by the bold flowers, looking you right in the face. A real bargain. Tubers \$3.00; Plants \$1.50.
- 341 **HARLAN** (D.). Extra large yellow; fine plant and good stems on the Estelle Christy type; much better. Tubers \$2.00; Plants \$1.00.
- HAVE-A-LOOK QUEEN OF AUTUMN** (H. D.). Autumn shade with rose-pink predominating. Flowers are nicely constructed and large; good growth of plant and free bloomer; stems good. Tubers \$1.00.
- HARRY MAYER** (Dec.). A new sensation that has lived up to expectations. Color, a very attractive pale Rosalene purple. Plants only \$3.00.
- HARRY SHELDON JR.** (Dec.). A very large, clean, classy, handsome pink and white flower, a sweet pretty combination of color shades hard to beat. Tubers \$2.00; Plants \$1.00.
- IAN** (Cac.). A perfectly incurved cactus. The large flowers are a deep yellow shading to pink; stems good. Tubers \$3.00; Plants \$1.50.
- ITALIAN SUNSET** (Dec.). A very large decorative, with blending colors of cream-yellow, mauve-pink and cerise. Plants \$2.50.
- INDEPENDENCE** (Dec.). Large, well set-up flower of mauve-pink or lilac, on strong stems. Tubers \$2.00; Plants \$1.00.
- IDA MAY PERKINS** (Dec.). A new white, large and nicely constructed; strong grower and free bloomer; a dahlia you should grow. Plants \$3.00.
- 862 **JIM GEORGE** (Dec.). One of the outstanding dark garnet reds, overcast maroon, velvet sheen, a handsome flower on great stems. Tubers \$2.00; Plants \$1.00.
- JERSEY'S BEACON** (D.). New shade of red called Chinese scarlet. Flowers are extra large, on the best of stems. Tubers \$1.00.
- JERSEY'S MAMMOTH** (D.). The largest of Wait's introductions; a rich golden mahogany. Plants \$1.00.
- JUNIOR** (D.). When you come right down to perfection of every flower for exhibition and the health of the plant everywhere and anywhere, it is one of the best that ever left California. Pure lavender and full of class. Tubers only \$1.00.
-

---

## MURPHY'S DAHLIA GARDEN CREATIONS

---

- JERSEY BEAUTY (D.)**. A real pink of intense richness; nice full flower, center and stem always good; very free bloomer and extra nice cut flower. Tubers \$1.00; Plants \$1.00.
- JERSEY JEWEL (D.)**. In this flower we have a very nice shade of mellow pink. A large, long-petaled flower, full of class and beauty. Tubers \$1.00; Plants \$1.00.
- JANE COWL (Dec.)**. A 1928 sensation that has lived up to expectations; a very large bronzy-buff and old gold flower, reverse of petal a pale flesh shade, on the best of stems. Plants only \$5.00.
- KEMP VIOLET WONDER**. The best violet colored dahlia to date; dominating color violet with undertone of royal purple; flowers are large and full of substance with great stems; strong growing plant and free flowering. Plants only \$5.00.
- LA RODA (Dec.)**. One of 1927 outstanding dahlias; color silvery rose-pink; flowers are large and nicely formed, also held erect on stiff stems. Plants only \$5.00.
- 563 **M. F. HEAPHY (Dec.)**. A dahlia that has lived up to expectations, with color shades of magenta, wine, maroon and royal purple; an enormous California Jack rose in dahlia form. Tubers \$2.00; Plants \$1.00.
- MRS. HENRY E. FOLEY (H. C.)**. One of our new creations that has stood the acid test before and after released to market. The colors are a combination of white and two-tone variegated magenta, suffused in a way hard to describe; flowers are very large and held erect on great long lateral stems. Great cut and exhibition variety, especially for baskets. Tubers \$5.00; Plants \$2.50.
- MARGARET WOODROW WILSON (Dec.)**. One of the outstanding dahlias that have the special habit of growing good and healthy every season. This is the type of dahlia you need in your garden. A very large white and pink flower. Tubers \$2.00; Plants \$1.00.
- MANATAUG (Dec.)**. A wonderful dahlia. Color, a rich American beauty rose-crimson; large flowers on great stems; a fine cut and exhibition variety. Tubers \$2.00; Plants \$1.00.
- MRS. J. J. MARSHALL (H. D.)**. A very large, free-flowering variety; color mandarin-bronze, a combination of tan and brown with a sheen lustre of salmon. Flowers borne high above foliage on good stems. Tubers \$3.00; Plants \$1.50.
- MARMION (D.)**. One of the 1926 creations that has made quite a hit here in the East. A large, golden decorative with a bronze tint. Tubers \$3.00; Plants \$1.50.
- MIRIAM FISHER (H. C.)**. An orchid-lavender staghorn type of petal that is as deep as it is large. Plant, stem and flower measure up to the good standard you need in your garden. Tubers \$1.00; Plants \$1.00.
- MRS. C. READING (Dec.)**. New creation; very large flower on good stems; also a good bloomer. Color, gold with lighter shadings, tipped carmine. Great exhibition and cut flower. Plants only \$1.00.
- MORDELLA (Dec.)**. A hard autumn shade to beat. High growing plant, good bloomer and stem. Tubers \$1.00; Plants \$1.00.
- MISS CALIFORNIA (Dec.)**. A large perfectly-formed flower, known as fuschia shade; free bloomer on strong stems. Tubers \$2.00; Plants \$1.00.
- 562 **MARY CURTIN (Dec.)**. One of the very few red and white tipped dahlias that don't sport. Plants only \$1.00.
- MARION BROOMHALL (H. C.)**. Pink and white descendant of Gladys Sherwood, it is more cactus, with better stem and habit. Tubers \$2.50; Plants \$1.25.
- MRS. EDWARD TAYLOR (D.)**. One of the best. Color, a wonderful cerise, magenta shades; giant flowers on perfect stems. Tubers \$2.00; Plants \$1.00.
- MRS. ELEANOR MARTIN (D.)**. Deep mulberry and rose dahlia, that blooms in the limelight always. Tubers \$1.00; Plants \$1.00.
- MYRA VALENTINE (D.)**. Odd, golden-bronze shade, with a very long stem; extra fine cut flower and a free bloomer. Tubers \$1.00; Plants \$1.00.
-



---

## NOVELTIES OF OTHER GROWERS

---

- MARGARET MASSON** (D.). A great silvery rose-pink, full of class in size, stem, construction and color. It is one of the best. Tubers \$1.50; Plants \$1.00.
- 868 **MARY FERGUSON** (D.). Here we have one of the prettiest tri-colored dahlias on the market. Color, orange, yellow, and white tips; free bloomer and very attractive flower. Tubers \$1.00; Plants \$1.00.
- 699 **MAHOGANY** (C.). A real American Cactus. Dark velvet-red, with long, narrow cactus petals, borne on the end of great stiff stems. One of the rich red shades that makes the sun dance. Tubers \$1.00; Plants \$1.00.
- 1001 **MRS. GRACE LONGLEY** (H. C.). One of our new creations we released in 1928, and it is a beauty. The new color shades are white graduating to amethyst and violet, a very odd and pretty combination; also a new formation of petal and construction of the flower. Some of the petals we call tube petals closed up tight with small opening at top. A strong, healthy-growing plant with large flowers on great stems, high above the foliage. Tubers \$5.00; Plants \$2.50.
- MRS. F. A. GALVIN** (Dec.). Here we have a new sensation, released 1928, a brilliant yellow and white tipped flower, one of the best of its kind on the market. Tubers \$3.00; Plants \$1.50.
- MRS. C. R. SHERMAN** (H. C.). This is one of the new outstanding creations and a classy dahlia. Color, a large beautiful peach-pink, on the best of stems and a prolific bloomer. Plants only \$3.75.
- MABEL LAWRENCE** (Dec.). This variety is one of the largest and best dahlias ever imported; the color is a rich blood red, on the best of stems. Plants only \$2.00.
- MISS CAPE ANN** (Dec.). One of the new outstanding whites, with an odd constructed petal, producing a very interesting flower. Tubers \$5.00; Plants \$2.50.
- NAGLES ROEM** (H. C.). Belgium's best; a nice autumn shade that has done well in the U. S. A. Tubers \$3.00; Plants \$1.50.
- NATURE'S MASTERPIECE** (Dec.). A rich combination of old rose, cinnamon and metallic bronze, blended into one color, suffused with mulberry. Large flowers on good stems. Tubers \$3.00; Plants \$1.50.
- NANCY SUE LANG** (Dec.). Immense star-like flower, nice red tipped gold, robust dwarf-growing plant. Flowers are large and very pretty and attract much attention. Tubers \$4.00; Plants \$2.00.
- NETAWAKA** (H. D.). Orange-yellow base, shading to jasper red, reverse of petals bright carmine; petals twist, showing reverse color. Flowers are large, borne on good stems. Plants only \$5.00.
- OYSTER BAY RUBY** (Dec.). A rich ruby-red, perfectly formed flower, held erect on a 2-foot stem as stiff as a cane; never shows center; flowers very large. Tubers \$3.00; Plants \$1.50.
- OYSTER BAY BEAUTY** (Dec.). This rich, dark, velvety-red color will attract your attention the minute you get your eye on it. The plant is covered with blooms all season; the large flower is placed on the end of the long stem. Tubers \$2.00; Plants \$1.00.
- POLAR SNOW** (D.). Judge Marien's white that had a hard time before it was released. Here at last. A nice quality white and a good addition to your garden. Tubers \$1.00.
- POP STEWART** (Giant Dec.). This is a remarkable flower of great size. Color, lilac-pink. Won First Prize for largest flower in Montclair Show, New Jersey. We recommend it as one of the finest dahlias in existence, with great stems. Tubers \$1.50; Plants \$1.00.
- PAUL REVERE** (D.). In this flower we have one of the best ever produced. A bright crimson, full, heavy flower, with fine habit and good stems. Tubers \$2.00; Plants \$1.00.
- PRIMULA REX** (Dec.). New. Another 1926 sensation. Very large, primrose shade flower, on good stems, and vigorous grower. Plants only \$1.25.
-

---

## MURPHY'S DAHLIA GARDEN CREATIONS

---

- 986 **PORT WINE** (Dec.). A new shade of two-tone port wine that made quite a hit last season. It is a free-flowering variety and a strong growing plant; the blooms are always full to center, on the best of stems. Plant is about 5 feet high, and a new addition to any and all gardens.  
Tubers \$3.00; Plants \$1.50.
- PRIDE OF STRATFORD** (Dec.). This is one of the good market creations. Color, cadmium-orange shading to light orange-yellow at base of petals; reverse rose-doree. Very large flowers, held erect on good stems. Plants only \$1.75.
- PREMIER CLEMENCEAU** (H. C.). This is a very pretty dahlia of lemon-yellow and white, one of the handsomest flowers we have. Plants \$1.00.
- 417 **QUEEN OF WHITES** (H. C.). One of the best hybrid cactus dahlias ever put on the market. Never have enough.  
Tubers \$3.00; Plants \$1.50.
- QUEEN OF THE GARDEN BEAUTIFUL** (Dec.). A yellow from California that seems to have made good here in the East. Extra large flowers on the best of stems.  
Tubers \$4.00; Plants \$2.00.
- 945 **ROBIN REDBREAST** (Dec.). This combination is a golden bronze like the breast of a robin, hence the name. A very pretty golden orange with deep coin gold variations, an outstanding new creation, with a free-growing habit. Plant growth is of unusual construction, with very pretty large bloom, held above the foliage on good stems. It is an odd color and a beauty. Tubers \$5.00; Plants \$2.50.
- 985 **REFLECTION** (Dec.). Here we have a new white with a delicate reflection of shell-pink; a free-flowering variety of large blooms on great stems; a very nice garden and cut flower. Tubers \$3.00; Plants \$1.50.
- ROLLO BOY** (H. C.). This dahlia won First Prize for the largest and best dahlia at the Palace Hotel Show, 1924. Color, a delicate amber, shading to old gold. Tubers \$1.00.
- ROMAN EAGLE** (Dec.). One real bronze shade Decorative; Unusually large and deep. 1925 was a banner season for this great flower. Tubers \$2.00; Plants \$1.00.
- RORY O'MORE** (D.). A very striking flower. Color, violet-purple edged white. Flower good size and fine stems. One of the handsomest flowers in the garden. Plants \$1.00.
- ROSE FALLON** (D.). The big 1926 sensation that cleaned up the New York Show as the best in something new. Color, odd shade of old gold. Flowers large, on the best of stems.  
Tubers \$2.00; Plants \$1.00.
- RADIO** (D.). A 1924 sensation that held up in good shape. A very large, attractive red and yellow flower with good stems. One of our best. Tubers \$1.00.
- ROBERT TREAT** (D.). American Beauty rose shade that made a lot of noise for 1925. Also a prize winner in 1923 and 1924. One nice start for Bob. Tubers \$1.00.
- 987 **SHIRLEY E. SHATTUCK** (Dec.). There seems to be something about a real orchid-lavender that attracts your attention, especially when it has all the other qualifications, such as good growth of plant, free bloomer, great stem. You will find all such classy points in 987. It is one of the outstanding all-around new creations that has come to stay.  
Tubers \$5.00; Plants \$2.50.
- SUSAN G. TEVIS** (D.). This is one fine dahlia, which will produce an abundance of flowers all season. A beautiful shade of lilac with a bluish sheen. Tubers \$1.00.
- SISKIYOU** (H. D.). One of the largest dahlias ever produced. The coloring is a combination of yellow buff and watermelon pink; a swell flower for up-to-date growers. Plants \$1.00.
- SAGAMORE** (D.). A wonderful exhibition and cut flower, free-blooming habit of large size flowers, all season. Color, golden yellow, great stems. Tubers \$1.00.
- SOMERSET** (D.). The big winner of the \$175 Samuel W. Heller Memorial Prize at Pasadena, Cal. Color, salmon and old rose. Very large blooms, on fine stems. Tubers \$2.00; Plants \$1.00.
-

---

## NOVELTIES OF OTHER GROWERS

---

- SOLE MIO** (H. C.). The golden color, the size, and the general beauty of this flower will hold your attention at once. Construction of flower is extra good, on the end of good, strong stems. Tubers \$3.00; Plants \$1.50.
- SANHICAN'S MAGNATE** (D.). Great exhibition variety of pale amaranth pink, reverse of petal a solid claret color, heavily veined; large flowers held high above foliage. Tubers \$2.00; Plants \$1.00.
- SANHICAN'S MONARCH** (D.). A deep flower that never shows the center early or late; very dark foliage, cane-like stem, holding flower erect out of the foliage. Color, Tyrian rose. Tubers \$1.00.
- SANHICAN'S BLUEBIRD** (Dec.). We think this Bluebird is the best bird on the market. Tubers \$2.00; Plants \$1.00.
- SILVERADO** (H. C.). A strong robust plant with large flowers of a delicate lavender tint on a white base; blooms held erect on good stems. Tubers \$4.00; Plants \$2.00.
- THE CRYSLER** (D.). In this new seedling we have a large wide-petal flower on the end of a good stiff stem; medium growing plant. An odd shade of watermelon pink, always full to center. A front row variety, 4 feet high. Plants \$1.00.
- THE GIANTESS** (Dec.). One of the largest dahlias grown. Color, amber bronze. Flowers are carried on long, stiff stems. Tubers \$1.00.
- THE LEMONADE** (Dec.). A new creation by R. Ward, and the best primrose-yellow ever produced, east or west. It has the essential everything necessary to make it what it is, the best to date. Tubers \$5.00; Plants \$2.50.
- TOPNOTCH** (Dec.). A Silver Cup seedling that has stood the acid test. The flowers open a light primrose, and as it matures graduates to cream and white. The habits of plant are good: the large blooms hold head up on good stems and never falter. A very profuse bloomer and a splendid exhibition and cut flower. Tubers \$5.00; Plants \$2.50.
- TRENTONIAN** (D.). A giant Decorative. The color is that of an Indian's skin, a wonderful blending of old gold amber and coppery bronze. A well-lasting cut flower on extra good stems. Plants \$1.00.
- THE BASHFUL GIANT** (D.). One of the largest dahlias ever produced, with a nice habit of producing slowly just so many nice, large flowers of apricot and bronze. Tubers only \$1.00.
- THE TELEGRAM** (D.). Here we have the handsomest tango bronze with distinct white tips ever produced. Prolific bloomer and holds its size all season. This is one variety you need in your garden. A bargain for the money. Tubers \$2.00; Plants \$1.00.
- THE GHOST** (Dec.) A new white that has come to stay. The flowers are large and held firm on good long stem: plant grows high and a very free bloomer. Tubers \$3.00; Plants \$1.50.
- THE FLYING AMBASSADOR** (Dec.). One of the 1928 sensations, a very large white with orchid suffusion. Growth of plant is very good and about 5 feet high; extra large flower held erect on fine stems. Tubers \$5.00; Plants \$2.50.
- THE BOY SCOUT** (Dec.). A new outstanding pink creation, very large and handsome: an unusually fine built plant with large pretty flowers on fine stems. Tubers \$5.00; Plants \$2.50.
- VIOLETTA** (H. C.). Large flowers, color a petunia violet, on good stems. Tubers \$1.00.
- VICTORY** (Dec.). A new sensational bordering on purple tones and a prize winner. Plants only \$5.00.
- 855 **WHITE COURT** (H. C.). Something new in the white line. A large, pure, clean white hybrid cactus, a new type of construction all its own. Petals are wavy and waxy, also very long. Creates a sensation wherever shown. Tubers \$2.00; Plants \$1.00.
- 807 **WORLD'S BEST WHITE** (Dec.). Eight years old and still going strong everywhere. We still think it is the best white Decorative ever created, and we are not alone in so thinking, for an all-around white, every quality and quantity point considered. You can add one more blue ribbon to the ten already won. Tubers \$3.00; Plants \$1.50.

---

## MURPHY'S DAHLIA GARDEN CREATIONS

---

- 707 WINTER TIME (C.). The best American white cactus ever produced. The world has been looking for a good white cactus, and here you have it. Fine, strong plant, great stems, flower always looking at you. Fine cut flower and great for exhibition. Tubers \$1.00.
- WONDERLAND (D.). One of the largest dahlias ever produced. Chocolate-maroon with silver reverse and a new odd twist in each petal that makes the flower large and heavy. Tubers \$2.00; Plants \$1.00.
- WARREN'S JUMBO (D.). Very large golden-bronze and one of our real up-to-date dahlias. Tubers \$3.00; Plants \$1.50.
- WM. G. (H. C.). A very odd color cactus that has made quite a hit. Flowers are very large and full. Color, henna-bronze. Tubers \$2.00; Plants, \$1.00.
- W. J. IRWIN (Dec.). A very classy lavender, somewhat on the purple tint. It has great size, also stem. You need one in your garden. It is one of the best. Tubers \$3.00; Plants \$1.50.
- WINIFRED DEVINE (Dec.). A rose-pink decorative, very free flowering, medium size flowers on good stems. Tubers \$2.00; Plants \$1.00.
- WATCHUNG SUNRISE (Dec.). Strong, healthy plant with large, well-formed flowers of gold, with pink suffusion, on great stems, well above the foliage. Plants only \$3.75.
- WALDHEIM SUNSHINE (Dec.). A true deep yellow with darker shadings; a rich golden suffusion heightens its high center; size extra large, the originator says 12 to 14 inches, on fine stems. Plants only \$7.50.
- WHITE KING (Dec.). Europe's best white, medium size flowers on the end of fine stems. Don't miss this new white. Plants only \$2.50.
- YELLOW PRINCESS (Dec.). One of the leading yellows, and a sensation wherever shown; flowers are extra large, on the best of stems. Plants only \$5.00.

### SPECIALS FOR JUNE, 1929

Don't overlook our season's surplus, combination surprise specials for June. In other words, we have two special surprise boxes for sale on and after June 1, 1929, of all surplus stock.

### OUR OWN SELECTION

Four times your money's worth guaranteed.

\$10.00 Special Box of 10 Tubers

Extra good \$40.00 worth

\$5.00 Special Box of 10 Tubers

Also good \$20.00

While they last this is one real bargain for all, and especially so for the new grower.

### POMPONS

30 cents each, \$3.00 a dozen

A fine collection of Pompons that are coming back fast because they last so long when cut.

AILETTE, imperial white and wine tipped, best ever.

AMBER QUEEN, amber-buff shades.

BRUNETTE, red and white.

BLINK, new purple, great pompons.

CATHERINE, yellow.

DONOVAN, white and lavender edge.

DR. KNABBE, white and purple.

ELFIN, pale primrose.

ELEGANTA, pink.

GEO. IRELAND, orchid.

GOLDEN EAGLE, golden bronze.

HIGHLAND MARY, variegated red and white.

JESSICA, amber edged red.

LITTLE JENNIE, buff and red.

LEIDA, small white and pink.

MADLINE, maroon.

NORA, fine yellow and crimson red.

SNOWCLAD, best white.

SNICKER, dark red maroon, almost black.

1290 (SHINE), new yellow, carmine tips.

---

---

**NEW ENGLAND BEAUTY** (Dec.). A new beauty, and we may say a very odd and interesting variety. Color for the most part is white, edged and tipped violet tones; large, graceful flower on rigid stems. Tubers \$7.50; Plants \$3.75.

**EDWIN HILLS** (H. C.) Here is a new white and pink Hybrid that won a Blue Ribbon as best at the show. A strong grower, fine exhibition and cut flower, great stems. Tubers \$5.00; Plants \$2.50.

**NAGLE'S WONDER** (H. C.). A new European creation and a very pretty combination of colors, blending on the autumn tints. Plants only \$2.00.

---

---

# TOWN HOUSE SQ. SALEM

