

## **Historic, Archive Document**

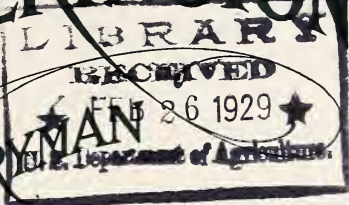
Do not assume content reflects current scientific knowledge, policies, or practices.



NURSERY VIEW AT DURHAM, OREGON

# J. B. PILKINGTON

## NURSERY



PRICE LIST  
No. 28

PORTLAND,  
OREGON

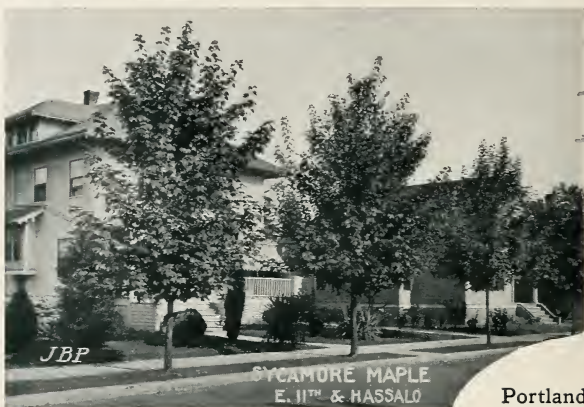
SEASON  
FALL 1928  
SPRING 1929





NORWAY MAPLE  
15<sup>TH</sup> & TILLAMOOK

*JBP*



*JBP*

SYCAMORE MAPLE  
E. 11<sup>TH</sup> & HASSALO

Portland  
Street  
Trees



V. CATALPA & BLK. WALNUT  
E. 9<sup>TH</sup> & DAVIS

*JBP*



TULIP TREES  
E. 16 & CLACKAMAS

*JBP*

## INFORMATION

PRICES for the fall 1928—spring 1929 season are covered by this List No. 28, which cancels all former catalogs. Net f. o. b. Portland or nursery shipping station. Remittance with order unless terms are previously arranged.

LOCATION—City display and sales grounds and office, 220 Second Street, corner Salmon, phone Atwater 1927. Nurseries at Durham, Oregon Electric Railway, 11 miles south. By auto from Portland, out Sixth Street, Terwilliger Boulevard and Newberg Highway, about 8 miles to Red Rock Cheese Factory, turn to left and keep straight ahead about 3 miles. Visitors welcome at the nurseries and display grounds.

CALIFORNIA BRANCH—Demand for our hardy stock has grown to such extent that an agency branch was necessary, and we have established display and sales grounds on Main Highway, 16 miles south of San Francisco, three miles north of Burlingame, Post Office address, J. B. PILKINGTON, Nurseryman, MILLBRAE, CALIF.

A large supply of select specimen Evergreens (Conifers), Broad Leaf and Deciduous Flowering Shrubs, Shade Trees, Vines and Plants are ready at all seasons and personal inspection and selection are earnestly solicited.

PLANTING SEASON—Usually from late October to early April, right through the winter, depending of course upon weather. Early planting is advisable—at any rate, place orders early so that selections made be reserved for delivery or shipment at any time desired.

GUARANTEE—We have been in the nursery business in Portland for 40 years. All plants shall be true to name, well grown and properly dug and packed and delivered to the transportation company in good order, after which our responsibility ceases. We assume no responsibility for failure due to after conditions over which we have no control. In case any plant through error prove untrue to name, we will replace without charge or refund not more than the original purchase price.

LANDSCAPE DEPARTMENT—Fully equipped and under trained and competent management, will make complete plans and specifications for the landscape operations of small or large estates. Simple planting suggestions for home grounds are made without charge, but where landscape problems require special visits, plans, specifications and draughting, study and so on, a reasonable charge must be made, consistent with the time and services rendered. We will be glad to go fully into detail with those who are interested in this.



Visit the Nurseries and Make Personal Selections  
Write Us When in Doubt About What to Plant



BUILDING DONE—RESIDENCE EAST 14TH N. AT STANTON

## BROAD LEAVED EVERGREEN TREES AND SHRUBS

The great beauty of the broad leaved evergreens, makes them most valuable for gardening purposes. Many are among our most spectacular and gorgeous flowering shrubs, while their broad, attractive leaves show out most effectively during the parts of the year when many trees and plants are without foliage. There is practically no end to the charming results that can be obtained by the liberal use of this class of plants, either as single specimens or in masses as well as both background and foreground—for the somber winter picture or the summer floral display. They generally thrive in shady or partially shaded places, giving finest foliage effects when so grown—with better flowers perhaps when grown in the sun.

Our climatic conditions in the Pacific Northwest are particularly congenial to this class of shrubbery and aid in obtaining wonderfully pleasing effects in foliage and flowers. Our Oregon State Flower, Oregon Grape (*Mahonia Aquifolium*) and the state of Washington's choice of the native *Rhododendron* prove conclusively the esteem in which they are held. My stock of these is particularly fine, home grown, thoroughly acclimated, and good results can be depended upon.



AFTER PLANTING—NOTE THE IMPROVEMENT



**ABELIA RUPESTRIS—BEAUTIFUL FLOWERING EVERGREEN**

	Inches	Each
<b>Abelia Rupestris</b> , pink tinged.....	20-30	\$1.00
<b>Abelia Rupestris</b> .....	30-40	1.50

A beautiful dark, glossy, small-leaved evergreen, medium height (3 to 5 feet), graceful spreading habit, bearing attractive clusters of little white flowers tinged pink throughout the entire summer until frost. Ideal for base or foundation planting.

**Andromeda**—See Chamaedaphne and Pieris.

<b>Aralia, Japonica</b> (Fatsia)—Like Rubber Plants. sturdy	2.00
<b>Arbutus Unedo</b> , Strawberry Tree.....	24-30 1.50
<b>Aucuba Japonica</b> , Japanese Laurel, green.....	12-15 1.00
<b>Aucuba Japonica</b> , Japanese Laurel, green.....	18-24 1.50
<b>Aucuba Japonica Aureomaculata</b> , Variegated...	12-15 1.00
<b>Aucuba Japonica Aureomaculata</b> , Variegated...	18-24 1.50

**Azalea**—See page 21.

**Berberis**—Barberry—

Mahonia—See Oregon Grape.

Darwin, Darwin's Barberry.....	15-20 .75
Dulcis, Box Leaved.....	12-15 .75
Illicifolia, Holly Leaved.....	12-18 1.00
Laevis—New. Silvery gray foliage.....	12-18 1.00
Japonica, Japanese Mahonia.....	12-18 1.00
Stenophylla .....	18-24 1.00
Stenophylla diversifolia.....	18-24 1.00

**Box Barberry**—A novelty in hardy Barberry, for dwarf edging. Each, 50c; dozen, \$5.00.

**Buxus**—

Arborescens, Boxwood, pyramidal form....	18-24 2.00
Arborescens, Boxwood, pyramidal form....	24-30 3.00
Few larger—prices on application.	
Arborescens, Common Boxwood, round....	10-12 1.50
Arborescens, Common Boxwood, round....	12-15 1.75
Arborescens, Common Boxwood, round....	15-18 2.00
Suffruticosa, Dwarf Boxwood.....	6- 8 .35
Suffruticosa, Dwarf Boxwood.....	10 for \$3.00

**Camellia**, sturdy plants 15-18 in., \$2.00; 18-24 in., \$3.00. Double, semi-double and single flowered types, in separate colors, Reds, Deep Pink, Light Pink, Shell Pink, Variegated and White. Order by type and color or leave to our selection.

**Chamaedaphne** (Andromeda)—Fetter Bush—

medium .....	2.00
--------------	------

**Choisya Ternata**, Mexican Orange. Small, 75c..18-24 1.50



BUNGALOW PLANTING EAST 16TH STREET N. AT SKIDMORE  
Cotoneaster Horizontalis in foreground; Retinospora Obtusa Aurea,  
Golden Japanese Cypress at porch pillars

### Cotoneaster—

As a family, they cannot be overestimated, furnishing variety of foliage and habit that makes them favorites in landscape planting. Not entirely evergreen, they are so persistent in foliage that they are commonly classed as such. All flower pinkish white in spring, but their main beauty is in the masses of red or orange red berries carried through fall and winter. *Simonsii* or Shining Leaf is upright, tall, orange red berries, fine for background. *Franchetti* is tall but graceful drooping habit, fine foliage, usually evergreen, with masses of berries. *Horizontalis* is very hardy, flat or creeping growth, drops its foliage but loads up with red berries making bright color spots in winter. *Microphylla* is more tender, but evergreen small leaves, dark and glossy, spreading drooping habit making it fine for tops of walls, banks, etc.

<i>Adpressa</i> , trailing, dwarf, fine for rockeries.	12-15	1.00
<i>Applanata</i> , upright.....	36-48	1.50
<i>Franchetti</i> , upright, graceful droopy habit..	24-30	1.00
<i>Franchetti</i> , upright.....	30-42	1.50
<i>Horizontalis</i> , trailing, extra size \$1.00.....	18-24	.75
<i>Microphylla</i> , trailing, extra size \$1.00.....	18-24	.75
<i>Pannosa</i> , upright.....	30-42	1.50
<i>Simonsii</i> , upright.....	36-48	1.00
<i>Salicifolia</i> , Willow Leaved Cotoneaster. New.		
Upright pendulous habit, medium growth, attractive .....	18-24	1.50



NANDINA DOMESTICA—HEAVENLY BAMBOO—IN NURSERY  
ROW. Broad-leaved evergreen, taking gorgeous autumnal colors; pinkish  
white flowers and coral red berries





**CORNER PLANTING, DAPHNE, JAPAN HONEYSUCKLE, EUONYMOUS.** All evergreens of moderate growth, attractive throughout the entire year though requiring little attention

**Daphne Odora**, pink flowered, medium \$2.00, large \$3.00.

The sweetest flower of all, in clusters of little trumpet shaped florets, light pink inside and carmine pink outside, coming in late winter and early spring. Growth is compact and heavy, attains good size, with rich glossy evergreen foliage, usually with narrow marginal white stripe.

**Erica—Heather—Heath—**

We only grow the Ericas or Heather and Heath varieties that have proven hardy and satisfactory here. Successful Landscape Architects are using them more and more. They are helpful in many ways in making effective gardens.

Carnea Rosea, Pink Heather.....	.75
Mediterranea—Mediterranean Heather.....	.75
Vagans, Cornish Heather.....	.75
Vagans alba, White Cornish Heather.....	.75
Calluna vulgaris, Scotch Heather.....	.75
Suecica, Swedish Bell Heather.....	.75
Menziesia (Daboecia), Irish Heather.....	.75
Gray Heather, new, dwarfish, gray foliage, masses of pink bell shaped flowers in spikes all summer long.....	.75



**WHAT A TRANSFORMATION!**



WILSON'S BARBERRY—A FINE SHRUB

Escallonia, Macrantha Rosea, larger, \$1.50.....	18-24	1.00
Escallonia, Macrantha Rubra, larger, \$1.50.....	18-24	1.00
Escallonia, Langleyensis, new pink, hardy, good.	18-24	1.50
Escallonia, Berteriana, white.....	18-24	1.00
Euonymus—Japonicum, evergreen, pots.....	10-15	1.00
Fatsia Japonica, Aralia.....		2.00

## Ilex (Aquifolium)—

The Pacific Northwest is famous for its English Holly, for as a lawn specimen tree there is nothing more attractive especially in the winter months when its masses of red berries, intermingled in the rich glossy evergreen foliage, cheer and warm up the dreary outlook. We have a fine lot of berried Holly this season, especially in the larger and specimen sizes.

English Holly, berry bearing.....	18-24	2.50
English Holly, berry bearing.....	24-30	3.00
English Holly, with berries.....	30-36	4.00
Larger specimens at \$5.00, \$6.00 and up.		
Crenata, Japanese Holly.....	18-24	2.00
Variegated Holly, Silver and Gold.....	24-36	5.00
Kalmia—Mountain Laurel, Calico bush. Strong		6.00



KALMIA FLOWERS—"MOUNTAIN LAUREL OR CALICO BUSH"



AN IRVINGTON RESIDENCE, THOMPSON ST. AT EAST 32ND  
 Note the plant bordered entrance steps, Veronica, Abelia and Cotoneaster. Pyramidal Japanese Cypress against chimney and Lawson Cypress at corner of house. Planting limited to foundations and borders, leaving open lawn

**Laurus (Prunus) Laurels and Laurustinus—**

Well enough known in the Pacific Northwest to omit description. Large growing shrubs with glossy, evergreen foliage useful as specimens, in masses and for evergreen hedges. Laurustinus "Winter Flowering Laurel" blooms in late winter, large umbels of pink and white flowers especially welcome at that season. The others are more valued for foliage than flowers.

Cerasus, English Laurel.....	15-18	.75
Cerasus, English Laurel.....	18-24	1.00
Cerasus, English Laurel.....	24-30	1.50
Cerasus, English Laurel, larger specimens at \$2.50 to \$10.00.		
Lusitanica, Portugal Laurel.....	12-18	1.25
Lusitanica, Portugal Laurel.....	24-30	2.50
Laurustinus, heavy.....	15-18	1.00
Laurustinus, heavy.....	18-24	1.50

**Peat Moss (Torf Mull)—**Humus in available form, indispensable for mulching rose and flower beds, in rock gardens. Ask for descriptive pamphlet.

**ENGLISH HOLLY**

Specimen at 11th and Schuyler Sts. A most satisfactory specimen tree, always attractive for its waxy, evergreen foliage and bright red berries during the Fall and Winter. Also makes excellent thick evergreen hedge.

Also profitable when planted for commercial purposes. The demand during Xmas Holidays for the cut branches, with their beautiful waxy leaves intermingled with brilliant crimson berries, is always hard to supply, even at good prices.





BASE PLANTING STUCCO HOUSE, E. 30TH N. AT THOMPSON  
Japan Cypresses at entrance, Firethorn at chimney, Cypress at corner

## PRUNING OF TREES AND SHRUBS

Deciduous trees and shrubs should be given a severe cutting-back or pruning when transplanted. More or less roots are always bruised and broken during transplanting, and all such should be trimmed off with pruning shears or a sharp knife, as the bark cannot heal over a rough wound. In order to insure a strong and healthy growth, as well as to cause the plant to become bushy or attain any desired shape, it is well to cut off from each branch one-third to one-half of the previous summer's growth. Fruit trees respond especially to free pruning at the time of transplanting.

The matter of when and how to prune established shrubs and trees depends upon their habits and the purpose for which the operation is performed. Shrubs that bloom early in the spring form their flower-buds during the preceding summer, and they should, therefore, not be pruned until immediately after flowering, if their flowering is to be preserved. Late-blooming shrubs flower on wood of the same season's growth, and should be pruned while dormant, in late winter or very early spring. One-third the previous season's growth may be removed. Shrubs planted in masses should be pruned regularly to induce a dense growth, and to prevent individual plants from becoming too tall, with unsightly, open branches.

The shearing or trimming of hedges should never be done later than July 1, as late cutting allows a tender new growth, which does not have time to ripen properly and consequently is liable to winter-kill. The shearing of individual shrubs to form flat topped, globe, pyramidal, or other unnatural-shaped specimens, should, as a general rule, be avoided.

### How to Plant Evergreens

- (1) Dig hole a foot larger and deeper than ball of earth  
Provide good, loamy top soil to fill around ball.





OREGON GRAPE—OUR STATE FLOWER—HARDY EVERGREEN—USEFUL AS SPECIMENS, IN MASSES OR IN HEDGES

**Ligustrum, Evergreen Privet—**

Lucidum or Shining Leaved Privet is one of the attractive evergreen shrubs. Good size, upright spreading habit, exceptionally fine leathery, dark rich green foliage, miniature lilac-like flowers in June and followed by long upright racemes of dark purplish black berries carried entirely through the winter.

Lucidum, New.....	16-20, \$1.00	24-30	1.50
Lonicera Nitida, Evergreen Bush Honeysuckle.		18-24	.60
Lonicera Pileata, Prostrate Evergreen, new....		18-24	.60
Nandina Domestica, Heavenly Bamboo.....		12-18	1.00
Nandina Domestica, Heavenly Bamboo, heavy.		18-24	1.50

A medium size shrub, open graceful habit, evergreen bright, light green foliage in summer, taking on high autumnal colors and fading back to green in spring, valuable for specimens and masses, and charming when intermingled as a foil or contrast with the heavier and more somber leaved evergreens like Laurel or Rhododendron.

**Oregon Grape, Mahonia Aquifolia—**

Mahonia, Oregon Grape.....	15-18	.75
Mahonia, Oregon Grape.....	18-24	1.00
Mahonia, Oregon Grape.....	24-30	1.50

Oregon Grape is deservedly growing in use not only locally, but east of the mountains where it proves entirely hardy, and in California and elsewhere. We can say here that "if the woods were not full of it, the yards would be" for exotics are too often preferred to worthy natives. Rich in foliage both summer and winter, they flower bright yellow in spring and bear an abundance of attractive bluish-black berries in summer and fall. Remember they are entirely hardy and plant more of them, as well as other Berberis.

<b>Pernettya</b> —Three varieties dwarfs.....	10-15	1.00
Photinia Serrulata, larger size \$1.50.....	12-18	1.00
Pieris (Andromeda) Japanese.....	15-20	2.00
Pyracantha, Evergreen or Fire Thorn, red berries .....	18-24	1.50
Pyracantha, Lelandi, orange red berries.....	18-24	1.50
Pyracantha, Yunnanensis, spreading habit, red berry .....	18-24	1.50

A limited number of larger specimens, \$2.00 to \$5.00.

Crataegus Pyracantha, or Fire Thorn, are deservedly popular for their clean upright growth and showy masses of red and orange red berries, carried into late winter.



PINK PEARL RHODODENDRON

Rhododendrons, named Hybrids, strong bushy, \$5.00; larger, \$6.00 to \$10.00.

Album Elegans, white  
 Chas. Dickens, red  
 Chas. Bagley, deep red  
 H. W. Sargent, red  
 Kate Waterer, pink  
 Boule de Neige, white  
 Mad. Carvalho, white

Gen. Grant, deep pink  
 Prince C. de Rohan, early pink  
 H. H. Hunnewell, pink  
 Blandyanum, dark pink  
 Lady Claremont, deep pink  
 Lady Armstrong, light pink

Rhododendron, Pink Pearl, finest of all; enormous size clusters, brilliant shell pink; fine foliage; large plants well shaped, with buds, \$10.00, \$12.50 and \$15.00.

Pink Pearl, small plants, few buds..... 5.00  
 Pink Pearl, medium plants, some buds..... 7.50

Rhododendron Ponticum.....18-24, \$2.50; 24-30, \$3.50

Veronica, Traversi, bushy growth..... .50

Veronica Thymifolia, hardy dwarf, compact, round ..... .50

Veronica Cupressoides, Cypress like, medium.. .50

Viburnum Odoratissimum .....18-20 1.50

Viburnum Odoratissimum, bushy.....24-30 2.50

These are very attractive and showy; bright glossy dark green leathery foliage, showing garnet red in winter with large panicles of fragrant white flowers.

Viburnum Rhitidophyllum.....18-24 1.50

Viburnum Tinus-Laurustinus.....12-18, \$1.00 18-24 1.50



BOXWOOD BORDERS EAST ANKENY AND 33RD STREETS  
 Photograph in August exactly one year from planting. We can supply this in many sizes both globe and pyramidal form. See page 3



A GRACEFUL DROOPING HIMALAYAN CEDAR

## CONIFERS—EVERGREEN TREES

These are largely used as specimen lawn trees, in pairs to mark walks and entrances, for massing, windbreaks, screens, hedges and as backgrounds for planting flowering shrubs and trees, and of late years for foundation plantings around house or buildings especially at corners. Many associate the word "evergreens" with simply cedar or our native fir trees without realizing the diversity of color and form which can be had in these, ranging from every shade of green and blue foliage to garnet and yellow, golden, silver and white tipped, giving even summer tints to the desolate winter landscape.

Always dug with ball of earth and burlapped. We transplant and root prune them frequently, which practically insures successful transplanting, even of the larger specimens of which we have a limited number of large size specimens from 4 to 8 feet high in *Abies*, *Cicilica*, *Concolor* and *Nordmanniana*; *Lawson's Cypress*; *White*, *Englemann's*, *Norway* and *Colorado Blue Spruces*, and will gladly make special quotation upon any in which you may be interested.

### **Abies (Firs)—**

A class of rapid growing trees of extreme hardiness and thriving in exposed situations. They are of great decorative value but need plenty of space for their best development.

Concolor, Colorado Fir .....	4-5 ft.	6.00
Nordmanniana, Nordmanns Fir .....	30-36 in.	4.00
Nordmanniana, Nordmanns Fir .....	4-5 ft.	6.00
Pinsapo, Spanish, Pin Fir .....	36-42 in.	5.00
Pinsapo, Spanish, Pin Fir, large specimens,		\$7.50 to \$15.

**Araucaria Imbricata**, Monkey Puzzle. Out for season.



RESIDENCE EAST OAK AT 36TH

Alumi or Erect Blue Lawson Cypress at entrance, Pyramidal Arbor Vitae at corners, Aucuba or Evergreen Japanese Laurel in front of windows

### Cedrus (Cedars)—

Among the handsomest of coniferous evergreens. The true cedars are few, many of the name belonging to the Cypresses and Junipers, under which headings we list the best.

Atlantica, Glauca, Blue Atlantic Cedar	...30-36 in.	4.00
Deodora, Himalayan Cedar	..... 2-3 ft.	2.00
Deodora, Himalayan Cedar	..... 3-4 ft.	3.00
Deodora, Himalayan Cedar	..... 4-5 ft.	5.00
Deodora, Himalayan Cedar, larger specimens,	\$8 to \$15.	
Red Cedar.	See Juniperus Virginiana.	

### Cupressus (Chamaecyparis) Cypress, Port Orford Cedar—

Extremely graceful trees which thrive here, a native of Southern Oregon and Northern California, but with many hybrid varieties. Satisfactory as specimens, in masses, for screens and hedges.

Lawsoniana, Lawson Cypress	.....24-30 in.	2.00
Lawsoniana, Lawson Cypress	.....30-36 in.	2.50
Lawsoniana, Lawson Cypress	.....36-48 in.	4.00
Lawsoniana, specimens up to 10-12 ft.	Prices on application.	
Erecta Viridis, Erect	.....18-24 in.	1.50
Erecta Viridis, Erect	.....24-30 in.	2.00
Erecta Viridis, Erect	.....30-36 in.	3.50
Erecta Viridis, Erect	.....36-48 in.	6.00
Law. Alumi, Erect Blue Cypress	.....18-24 in.	1.50
Law. Alumi, Erect Blue Cypress	.....24-30 in.	2.00
Law. Alumi, Erect Blue Cypress	.....30-36 in.	3.50
Law. Alumi, Erect Blue Cypress	.....36-48 in.	6.00
Law. Silver Queen, silver tips	.....18-24 in.	2.50
Law. Silver Queen, silver tips	.....24-30 in.	3.50
Law. Triumph of Boskoop, blue, sizes and price as Silver Queen.		
Law. Westermanni, Golden Cypress	.....18-24 in.	2.50
Law. Wisselli, new, bluish, narrow, colum.	18-24 in.	3.00
Law. Wisselli, new, bluish, narrow, colum.	24-30 in.	4.00

Visit the Nurseries and Make Personal Selections





NURSERY VIEW SPECIMEN CYPRESS

**Retinospora (Chamaecyparis) Japan Cypress—**

A beautiful and varied group, mostly dwarfish; formerly imported from Japan, we are now propagating them extensively, and stock here quoted is mostly of our own growing, but we have a number of large size specimens, notably some Obtusa, Filifera Aurea, and Pisifera Aurea, 35 to 45 years of age, imported years ago and carefully grown on, which we will be glad to show and make prices.

Filifera, Thread Branched Cypress.....	15-20 in.	2.00
Filifera, Thread Branched Cypress.....	20-24 in.	2.50
Filifera, Thread Branched Cypress.....	24-30 in.	3.50
Filifera Aurea, Golden Thread Branched.	10-15 in.	2.00
Filifera Aurea, Golden Thread Branched.	15-20 in.	3.00
Obtusa, Japan or Hinoki Cypress.....	12-18 in.	2.00
Obtusa, Japan or Hinoki Cypress.....	18-24 in.	3.00
Obtusa, 30-48 in. specimens, prices on application.		
Obtusa Aurea, Golden Japan Cypress....	12-18 in.	2.50
Obtusa Aurea, 30-48 in. specimens, prices on application.		
Pisifera Aurea, Golden Sawara Cypress..	18-24 in.	1.50
Pisifera Aurea, Golden Sawara Cypress..	24-30 in.	2.50
Pisifera Aurea, Golden Sawara Cypress..	30-36 in.	4.00
Pisifera Aurea, specimens 5-6 feet., prices on application.		
Plumosa, Plume Cypress.....	15-18 in.	1.50
Plumosa, Plume Cypress.....	18-24 in.	2.00
Plumosa, Plume Cypress.....	24-30 in.	3.00
Plumosa, Plume Cypress.....	30-36 in.	5.00
Plumosa Aurea, Golden Plume, same sizes and prices.		
Squarrosa, Moss Cypress.....	15-18 in.	2.00
Squarrosa, Moss Cypress.....	18-24 in.	2.50

**Cryptomeria Elegans, Japan Cedar—**

A beautiful, rather fast growing evergreen with delicate green foliage and graceful habit. The color changes to a rich reddish brown in winter and fades back in spring.

Cryptomeria Elegans, Japan Cedar.....	18-24 in.	2.00
Cryptomeria Elegans, Japan Cedar.....	24-36 in.	3.00



NURSERY VIEW BOXWOOD IN FOREGROUND, SILVER FIRS AND SPRUCES IN DISTANCE



NURSERY VIEW PFITZERS TRAILING JUNIPER  
With other dwarf and creeping conifers suitable for rockeries and  
steep banks

### Juniperus, Juniper—

A group embracing a large variety of sizes, form and habits and distinctive characteristics of foliage and color. Excellent for specimens, and the prostrate or trailing forms are fine for rockeries, sloping banks, or low masses against foundations or in front of large beds, as borders.

Chinese Juniper, Steel Blue.....	18-24 in.	2.00
Chinese Juniper, Steel Blue.....	24-30 in.	3.00
Chinensis Argentea, Silver Variegated Juniper .....	24-30 in.	3.00
Hibernica, Irish Juniper.....	18-24 in.	1.50
Hibernica, Irish Juniper.....	24-30 in.	2.50
Hibernica, Irish Juniper.....	30-36 in.	3.50
Pfitzeriana, Spreading (see illustration)..	18-24 in.	2.00
Pfitzeriana, Spreading .....	24-30 in.	2.50
Prostrata, Prostrate, Creeping, Blue Steel.	12-18 in.	2.00
Sabina, Spreading Juniper, Bright Green.	18-24 in.	2.00
Sabina, Spreading Juniper.....	24-30 in.	2.50
Sabina, Spreading Juniper.....	30-36 in.	3.50
Virginiana, Virginia Red Cedar, large, prices on applica- tion.		
Virginiana, Glauca, Blue.....	24-36 in.	3.00
Larix, European Larch, Deciduous Tamarack.	24-36 in.	2.00
Larix, European Larch, Deciduous Tamarack.	5-6 ft.	4.00



SPREADING JUNIPERS AT ENTRANCE, EAST 39TH STREET  
AT MULTNOMAH. Very effective for use in bordering stairways on  
slopes and in rockeries



PYRAMIDAL ARBOR VITAE IN IRVINGTON, WITH ABELIA RUPESTRIS AT BASE, MAKING ATTRACTIVE BASE PLANTING. COTONEASTER SIMONSI AT RIGHT, WITH MASSES OF RED BERRIES ALL WINTER

**Picea (Spruce)—**

Largely planted as most stately and beautiful specimen trees, thriving in any position except very wet soils. We list them in several sizes below, but can supply most of them in specimens, frequently transplanted, burlapped or boxed, and will quote sizes and prices on application.

Alba, White Spruce.....	24-30 in.	2.00
Alba, White Spruce.....	30-36 in.	3.00
Englemanni, Englemann's Spruce.....	24-30 in.	2.50
Englemanni, Englemann's Spruce.....	30-36 in.	3.50
Excelsa, Norway Spruce.....	24-30 in.	2.00
Excelsa, Norway Spruce.....	30-36 in.	2.50
Excelsa, Norway Spruce.....	36-48 in.	3.50
Pungens Kosteri, Koster's Colorado Blue.....	30-36 in.	10.00
Pungens Kosteri, larger specimens, \$15 to \$50.		

**Pinus (Pines)—**

Austriaca, Austrian Pine.....	24-30 in.	2.00
Austriaca, Austrian Pine.....	36-48 in.	3.50
Tanyosho, Japanese Table Pine.....	24-30 in.	2.00

**Sciadopitys, Verticillata, Umbrella Pine.....** 18-24 in. 3.00

**Taxus (Yews)—**

The English Yew is broad and spreading, responds readily to the knife and can be trained or carved to special shapes or forms. The Irish are fastigate, or compact and columnar, of very slow growth, but rich deep color and are favorites for specimens as entrances, formal effects and special needs.

Baccata, English Yew.....	18-24 in.	2.50
Baccata, English Yew.....	24-30 in.	3.50
Hibernica, Irish Yew.....	18-24 in.	3.00
Hibernica, Irish Yew.....	24-30 in.	4.00
Hibernica, Irish Yew.....	30-36 in.	6.00
Hibernica, Irish Yew.....	36-48 in.	10.00
Hibernica, Aurea, Golden Irish.....	18-24 in.	3.00
Hibernica, Aurea, Golden Irish.....	24-30 in.	4.00
Hibernica, Aurea, Golden Irish Yew.....	30-36 in.	6.00
Hibernica, Elegantissima Aurea.....	30-36 in.	7.50

A limited number of both Green and Golden Irish Yews, in larger sizes, perfect specimens, which we will be glad to show visitors at the nurseries.



**GENUINE GRAFTED KOSTER'S COLORADO BLUE SPRUCE**  
View of specimens in our nursery, sizes six to fifteen feet. Visit the nursery for personal selection of these and other fine specimen plants

**Thuja (Arbor Vitae)—**

Highly ornamental trees, never growing very large, that are appropriate for small lawns as well as for larger areas. They are generally hardy, grow vigorously in all soils and easily transplanted. Both pyramidal and globular forms that retain these characteristics always.

Globosa, Globe Arbor Vitae.....	12-18 in.	1.50
Globosa, Globe Arbor Vitae.....	18-24 in.	2.50
Occidentalis, American Arbor Vitae.....	30-36 in.	2.50
Occidentalis, American Arbor Vitae.....	3-4 ft.	4.00
Occidentalis, Warreana, Siberian.....	2-3 ft.	2.50
Plicata, Native Cedar.....	24-36 in.	2.50
Plicata, Native Cedar.....	36-48 in.	3.50
Pyramidalis, Pyramidal Arbor Vitae.....	18-24 in.	2.00
Pyramidalis, Pyramidal Arbor Vitae.....	24-30 in.	2.50
Pyramidalis, Pyramidal Arbor Vitae.....	30-36 in.	3.50
Pyramidalis, Pyramidal Arbor Vitae.....	36-42 in.	5.00
Pyramidalis, Pyramidal Arbor Vitae.....	42-48 in.	6.00
Pyramidalis, specimens 4-6 ft.,	\$10 to \$15.	

**Thuycopsis Borealis, Alaska Cypress.....** 24-36-in. 3.00

**Tsuga (Hemlocks)—**

Beautiful, graceful trees, characterized by their slender drooping branches and tall conical form. A number of large, frequently transplanted specimens 6 to 10 feet in height.

Canadensis, Canadian Hemlock.....	36-42 in.	4.00
Canadensis, Canadian Hemlock.....	48-60 in.	6.00
Mertensiana, Native Hemlock.....	24-30 in.	3.50
Mertensiana, Native Hemlock.....	30-36 in.	4.00
Mertensiana, Native Hemlock.....	36-48 in.	5.00
Mertensiana, Native Hemlock.....	48-60 in.	6.00



**NATIVE PORT ORFORD CEDAR—LAWSON CYPRESS AT STATE CAPITOL**



EUROPEAN WHITE BIRCH, PYRAMIDAL ARBOR VITAE,  
BOSTON IVY ON CHIMNEY, HARDY SLENDER EVERGREEN

### DECIDUOUS ORNAMENTAL TREES

The following list of deciduous trees (those that lose their leaves in autumn) embraces a selection for all purposes. For street planting, the Norway Maple probably leads in general suitability, with several other varieties of Maples, Elms, Birches, Horse Chestnuts, Tulips, Mountain Ash and others, all favorites; while for lawn and park planting this varied list covers trees of every characteristic in outline and habit, color of foliage and floral diversity.

These trees have been grown from seedlings in my nursery, have been transplanted each a number of times, according to size, will transplant readily and take vigorous hold and grow well when moved to permanent locations. Prices are for different sized trees, and in all cases good value will be given, according to price charged.

As a street or curb tree, Norway Maple easily holds first choice. Park departments, city foresters and landscape architects unite in giving it first position, as it easily combines the greatest number of desirable qualities, it withstands extremes of drought and excessive moisture, does not lift or break sidewalks or curbs thriving in limited soil, of clean, upright and rather compact growth, not affected by city smoke or gases, and holding its foliage late, then dropping its leaves in a comparatively short space, making labor of cleaning up in the fall of little effort. For a small flowering tree for curb or in lawn Pauls Double Scarlet Hawthorne probably is first favorite.

	Height in feet			
	6-8	8-10	10-12	12-15
<b>Maple (Acer)</b>				
Oregon .....	\$1.00	\$1.50	\$2.00	....
Norway .....	1.00	1.50	2.00	3.00
Negundo—Box Elder.....	1.00	1.50	2.00	....
Silver .....	1.00	1.50	2.00	....
Sugar .....	1.00	1.50	....	....
Variegated Ash Leaf Silver, 4-6 ft.,	\$1.50.			
Vine Maple, 3-4 ft.,	\$1.00.			
Japan—Dwarf. See page 20.				
<b>Chestnut (Aesculus)—</b>				
White Horse.....	1.25	1.75	2.50	....
Edible. See page 46.				



MAPLES—BEST STREET TREES—IN NURSERY

<b>Birch (Betula)—</b>	6-8	8-10	10-12	12-15
European White .....	1.00	1.50	....	....
Cut Leaf Weeping.....	1.75	2.50	....	....
<b>Catalpa—</b>				
Speciosa, or Western.....	1.00	1.50	2.00	....
<b>Carpinus Betulus—Hornbeam....</b>	1.50	2.00	....	....
<b>Judas Tree, Cercis.....</b>	3-4 ft.,	1.00	4-6 ft.,	1.50
<b>Dogwood (Cornus)—</b>				
Red Flowering—Out for season.				
Native Oregon .....	5-6 ft.,	1.50	6-8 ft.,	2.00
<b>Ginkgo Biloba—Maidenhair Tree</b>	4-6 ft.,	2.00	6-8 ft.,	3.00
<b>Hawthorne (Crataegus)—</b>	4-6	6-8	8-10	10-12
Carriers White .....	\$1.00	1.50	2.00	....
Washington .....	1.00	1.50	2.00	....
Common or Quick .....	1.00	1.25	2.00	....
Paul's Double Scarlet .....	1.00	1.50	2.00	....
Double White .....	1.00	1.50	2.00	....
<b>Beech (Fagus)—</b>				
American .....	2.00	3.00	....	....
European .....	2.00	3.00	....	....
<b>Honey Locust, Gleditsia.....</b>	....	1.25	2.00	....
<b>Golden Chain, Laburnum.....</b>	1.00	1.50	2.50	....
<b>Sweet Gum, Liquidambar.....</b>	2.00	3.00	....	....
<b>Tulip Tree, Liriodendron .....</b>	1.00	1.50	2.00	....
<b>Mulberry, Russian, Strong.....</b>	1.25	....	....	....
<b>Flowering Crab Apple (Pyrus)—</b>				
Bechtel's.....size 3-4 ft.	\$1.00	1.50	....	....
Scheidecker's .....	1.50	....	....	....
Parkman's .....	1.50	....	....	....
Chinese Double White .....	1.50	....	....	....
Chinese Double Pink.....	1.50	....	....	....
Some larger specimens of Flowering Crabs, well formed heads, 6-8 ft. high at \$2.50. Nothing exceeds the beauty of these for lawn, mass or ornamental plantings, especially Bechtel's Double Flowering Crab, a medium size tree of rather upright growth covered in late spring with large clusters of light pink double flowers.				
<b>Oriental Plane, Sycamore.....</b>	....	1.25	1.75	....
<b>Poplar, Carolina .....</b>	....	.75	1.00	1.50
<b>Poplar, Lombardy .....</b>	....	.75	1.00	1.50
<b>Oak (Quercus)—</b>	4-6	6-8	8-10	10-12
Scarlet, Coccinea .....	1.00	1.50	2.00	3.00
Pin, Palustris .....	1.00	1.50	2.00	3.00



PURPLE LEAF PLUM TREE, INSERT, DOUBLE PINK FLOWERS

**Prunus Flowering Cherry**, 5-7 ft., \$2.50.

Single Pink, Double Pink, New Red, Single White and Double White at \$2.50 and a limited number of Woods Weeping Cherry, a delicate single pink, top grafted on tall stems, at \$3.50 each.

**Flowering Peach**—Selected trees, 4-6 ft., \$1.50; 3-4 ft., \$1.00.

Showy ornamental flowering trees suitable for small grounds as well as in large plantings.

Early Single Red, Late Double Red, Early Single Pink, Double Pink, Camellia Red.

**Purple Leaf Plum (Prunus Pissardi)**—

Extra

	4-5	5-7	Size
White Flower .....	\$1.00	\$1.50	\$2.50
New Double Pink .....	1.00	1.50	2.50

The Purple Leaf Plums, either white or pink flowering, are the most satisfactory of purple foliage trees, holding their color throughout the season without fading as do most other colored foliage trees, and in addition blossoms profusely in the early spring.

**Locust (Robinia)**—Black..... 4-6 6-8 8-10 10-12 1.00 1.50 ....

**Willow, Weeping, Wisconsin**..... 1.50 ....

**Mountain Ash, Rowan Tree**..... 1.50 2.00 ....

The Mountain Ash, or Rowan Tree has been exceptionally good this year, bearing an enormous crop of berries which have attracted much attention. They are extensively planted for curb or street, as well as for lawn specimens.

**Linden (Tilia)**—

Large Leaved.....	1.50	2.00	3.00
-------------------	------	------	------

**Walnuts**—

Grafted Franquette & Mayette ....	1.75	2.50	....
-----------------------------------	------	------	------

**Elm (Ulmus)**—

American, White.....	1.00	1.50	2.00
----------------------	------	------	------

English .....	1.00	1.50	2.00
---------------	------	------	------



MOUNTAIN ASH BERRIES—ROWAN TREE



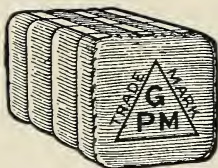
**SPIREA VAN HOUTTEI—VAN HOUTTE'S BRIDAL WREATH**  
 One of the most satisfactory and showy of the really hardy shrubs. Plant in rows, groups or singly

### DECIDUOUS ORNAMENTAL SHRUBS

Flowering shrubs take predominance in all plans for landscape decoration, grounds large or small. Without shrubbery no landscape can be created, but with a careful selection, properly planted, any property can be enhanced in beauty and value. If care is given in selecting, flowers can be had from early spring to late fall. It is my aim to produce everything in flowering shrubbery that is useful, hardy, and worthy of cultivation in this climate. I have been bringing in, trying out and rejecting different shrubs for many years past, adding to my list only those of proven merit in the Pacific Northwest. My stock is large, well grown, every plant being bushy and well furnished in proportion to its height and with exceptionally fine root system. Where no sizes are quoted, prices are for large, well grown shrubs, that will give immediate effect and flower the first year after planting.

<b>Japan Maple (Acer Palmatum)—</b>	Size-in.	Each
Cut Leaf Red.....	16-20	\$4.00
Ribbon Leaf Red.....	18-24	4.00
Broad Leaf Red.....	18-24	4.00
Stock quite limited—a few extra size, \$15.00 to \$25.00.		

## IMPORTED GRANULATED **PEAT MOSS** TORF MULL



*Comes in Bales  
 Like This.  
 Look for triangle  
 trade-mark.*

**HUMUS ADDED TO YOUR SOIL INSURES UNIFORM  
 MOISTURE**





**CYPRESS ALUMI—ERECT BLUE—4 TO 5 FOOT SPECIMENS**  
 Undoubtedly first choice in ornamental trees. Can be supplied in many sizes. Prices lowered this year. See page 12

**Althea—**

- Rose of Sharon, Ardens blue.....24-36 .75
- Rose of Sharon, Boule de Feu—Red.....24-36 .75
- Rose of Sharon, Jeanne d'Arc—White.....24-36 .75
- Rose of Sharon, Lady Stanley—Bluish Wh..24-36 .75
- Rose of Sharon, Rubra plena—Dbl. Red...24-30 .75

The Altheas or Rose of Sharon are strong, erect-growing shrubs, supplied in many colors and blooming in late summer and early fall, when most shrubs are out of bloom and color in the yard is especially welcome.

- Almond, Flowering, Pink, double.....30-42 1.00
- Almond, Flowering, White, double.....30-42 1.00
- Aralia, Hercules Club—strong plants..... 1.00

**Azalea—**

- Southern Oregon—sturdy plants, \$2.50, large..... 3.50
- Evergreen Crimson, medium \$1.50, larger.....2.50
- Viscosa, Flame or Swamp..... 2.00
- Altaclarence, yellow—medium, \$2.00; larger..... 3.00
- Mollis—pink and salmon colors..... 2.00

Azaleas are the most showy and gorgeous of dwarf and medium growth shrubs, effective when planted with other shrubs, they are even more so when massed. The Southern Oregon is our finest native shrub, growing to large size in time, flowering in large clusters, white or light rose, fragrant in late May. The Evergreen Crimson, which we introduced years ago from Japan, and which we propagate in quantity since the federal embargo stopped importations, is dwarf in habit, light delicate glossy foliage in spring and bright purplish garnet in winter, flowering dazzling crimson in spring. Azalea Alta-Clarence has large foliage, deciduous, taking on wonderful autumnal colors, and masses of bright yellow flowers in spring.

**LAWN GRASS SEED**

- Cocoos Creeping Bent (*Agrostis Stolonifera Maritima*),  
 lb. ....\$2.50

We are sole retail distributors for Oregon for the genuine Cocoos Creeping Bent, introduced by Mr. Lyman Carrier, renowned Agronomist. The lawn at our Durham nursery was remade with Peat Moss and this Grass Seed, using three pounds of seed to one thousand square feet. See the lawn and judge for yourself, color, uniformity, springiness. See lawn of Mr. L. G. Woerner, 28th and Alameda, also the greens at Portland Air Port, Columbia and Riverside Golf Clubs. We also supply Winter Blue Grass (*Poa Bulbosa*) at same price.



**RESIDENCE REED COLLEGE DISTRICT**

Note vines on home and the border planting leaving open lawn space

<b>Barberry (Berberis)—</b>	
Japan, Thunbergi—extra strong.....	18-24 .75
<b>Red Leaved Japan Barberry (Thunbergi Atropurpureum)</b> .....	1.00
Strong two year plants of this new novelty, similar to the well-known hardy green leaved Japanese Barberry but the foliage is a rich, lustrous bronzy red similar to the richest red-leaved Japanese Maples. Does not fade with the summer sun but becomes more brilliant and gorgeous until fall when its foliage changes to vivid orange, scarlet and red, carrying its scarlet red berries through the entire winter.	
Wilson's New, splendid, pot grown.....	1.00
Wilson's New—extra size.....	1.50
<b>Buddleia Magnifica, Butterfly Bush</b> .....	36-48 .75
A large, somewhat coarse shrub of upright habit, with long terminal spikes of fragrant, lilac-like flowers for many months in spring and summer. Gives you more flowers for your money than any other shrub. Cut back heavily.	
<b>Sweet Shrub, Calycanthus</b> .....	30-42 .75
<b>Blue Spirea, Caryopteris</b> .....	15-20 .60
<b>Mountain Lilac, Ceanothus Gloire de Versailles</b> .small	1.00
<b>Mountain Lilac, Ceanothus Marie Simon</b> .....small	1.00
<b>Clerodendron Trichotomum</b> .....strong	1.50
<b>Sweet Pepper Bush, Clethra</b> .....	18-30 .75
<b>Bladder Senna, Colutea</b> .....	30-42 .75
<b>Double Globe Flower, Kerria Japonica, Fl. Pl.</b> ..24-36	.75
<b>Dogwood (Cornus)—</b>	
Siberian Red Osier.....	36-48 .75
Red Osier, stolonifera.....	30-42 .75
<b>Purple Leaved Filbert</b> .....	36-48 1.00
<b>Japan Quince (Cydonia)—</b>	
Crimson .....	24-36 .75



**MEDIUM SIZED CONIFERS—EVERGREENS—IN NURSERY ROW.** Left center row, front new Wisselli Cypress, end Retinospora Pisifera Aurea, Golden Sawara Cypress



**HYDRANGEA "PEEGEE" EAST 17TH N. AT TILLAMOOK**  
 Showy late summer blooming shrub of great hardiness. Flowers in terminal panicles white fading pink

<b>White Broom</b> , Portugal, spring flowering.....	24-36	.75
<b>Spanish Broom</b> , yellow, all summer flowering..	24-36	.75
<b>Kew Broom</b> , Cytisus Kewensis, yellow.....	24-36	.75
<b>Scotch Broom</b> , yellow, spring flowering.....	24-36	.50
<b>Red Broom</b> , Andreana, red and yellow blossoms.	24-36	1.00
<b>Pea Shrub</b> , Desmodium, reddish, fall.....	30-42	.75

Of rather tall straggly habit, with masses of reddish purple flowers in late fall, when color is nearly absent from the garden. Usually freezes back in winter, but roots are never injured and if cut back to the ground yearly, it comes out vigorously and flowers freely the same season.

**Deutzia—**

Double, white.....	24-36	.75
Double, pink.....	24-36	.75
Lemoines, white.....	18-30	.75

**Russian Olive**, Eleagnus longpipes.....30-42 .75

**Strawberry Bush**, Euonymus.....30-42 1.00

**Pearl Bush**, Exochora grandiflora.....30-42 1.00

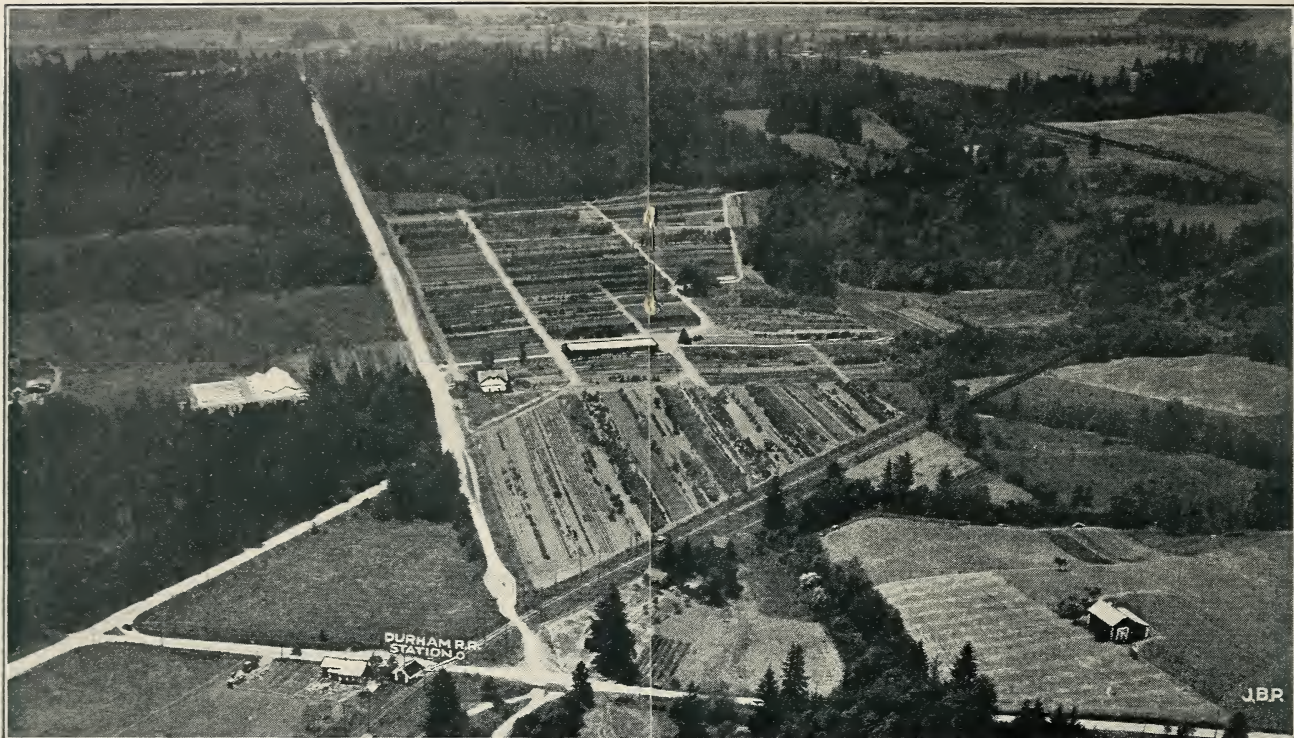
**Golden Bell—**

Forsythia Fortunei.....	36-48	.75
Forsythia Spectabilis.....	30-42	.75
Weeping Forsythia, Suspensa.....	36-48	.75
Dark Green Forsythia, Viridissima.....	36-48	.75

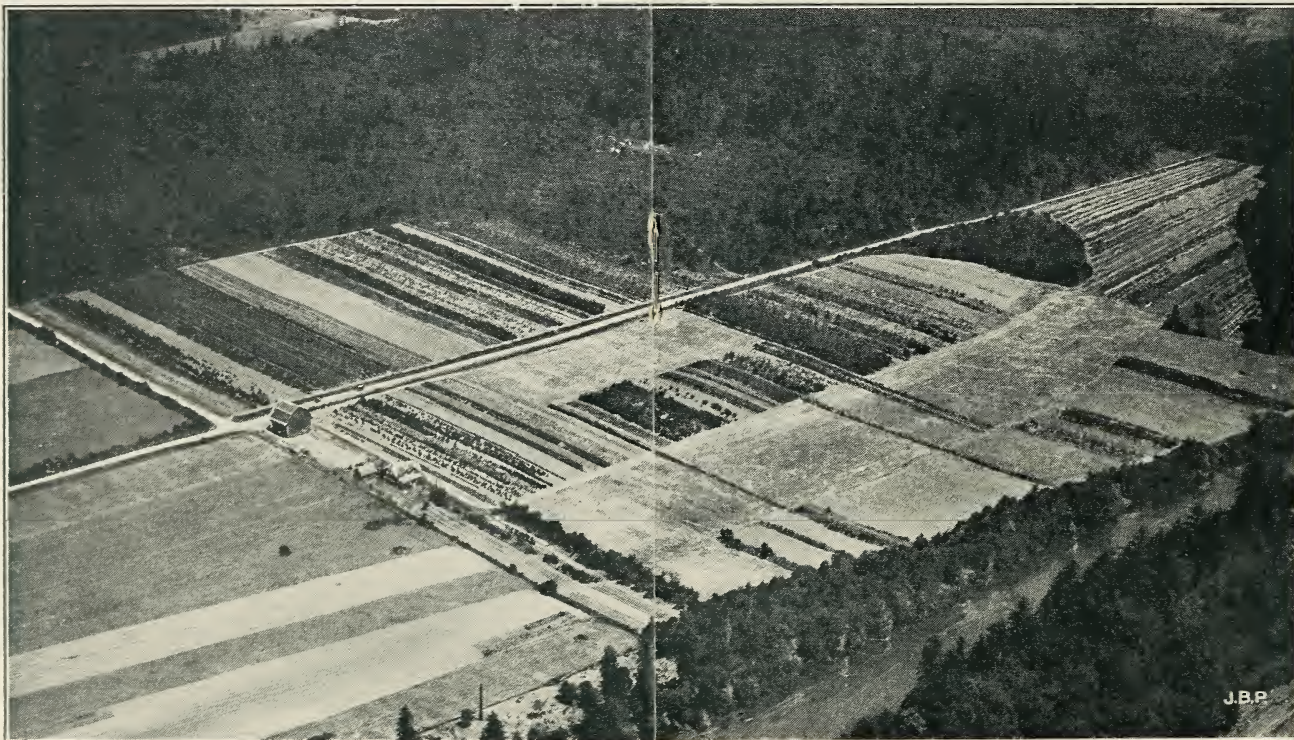
**Hydrangea—**

Arborescens, Hills of Snow.....	24-36	.75
Paniculata .....	24-36	.75
Paniculata Grandiflora .....	24-36	1.00
Paniculata Grandiflora.....tree form		1.50
Oak Leaved, fine autumn foliage.....	24-36	1.50
Japanese or Hortensia, blue, pink, white and others.....	strong, \$1.00; extra	1.50
Hortensia Domoti, novelty, semi-double flowers of lavender white, free flowering.		
Strong plants.....		1.00

The Hydrangeas are among the most satisfactory shrubs, the Hortensia type are very showy in late spring and early summer, thrive in shade or on north side of house. Hydrangea Paniculata graniflora "Peegee," either tree form or bush, flowers from mid-July until early fall, first creamy white and fades to deep pink. The Oak-Leaved flowers also, but is especially valuable for its rich autumnal foliage.



AIRPLANE VIEW, AT ELEVEN HUNDRED FEET ELEVATION, JUNE, 1924, OF NURSERIES AND PROPAGATING DEPARTMENT, DURHAM STATION, OREGON ELECTRIC RAILWAY, TWELVE MILES SOUTH OF PORTLAND, SHOWING GENERAL ASSORTMENT OF HARDY ORNAMENTAL NURSERY STOCK. PURCHASERS INVITED TO VISIT NURSERIES AND MAKE SELECTIONS



AIRPLANE VIEW OF NURSERY ON TUALATIN RIVER



FOUNDATION PLANTING COLONIAL TYPE EAST 17TH N. NEAR STANTON. Pyracantha, Laurustinus, Portugal Laurel, Evergreen Japan Honeysuckle

### Hypericum—

Calycinum, Aaron's Beard, low growing.... .50

Henryii, new, very fine, hardy, bush form 1.00

The Hypericums are nearly evergreen, bear quantities of attractive yellow flowers over a long season in late spring and summer. The new shrub type, Henryii, is a strong four-foot shrub, very free flowering, that will be extensively planted when better known.

**Kerria**, Japonica Flore Plena or Globe Flower .75

A medium sized shrub with attractive bright green branches and foliage bearing rose like bright double yellow flowers in early spring and moderately throughout the summer. Quite hardy and worthy of extensive planting.

### Privet (Ligustrum)—

California, Ovalifolium.....large .75

Golden, fine for color contrast in foundation, base and mass plantings, two year plants .75

Regels—attractive white flowering.....36-42 .75

English, for hedge—per 100, \$8.00, \$10.00.

### Bush Honeysuckle (Lonicera)—

	Size in.	Each
Japanese Morrowi.....	36-48	.75
Ledebouri, new.....	30-42	1.00
White Tartarian.....	36-48	.75
Pink Tartarian.....	36-48	.75

A certificate of inspection, testifying to the freedom of our stock from insect pests or disease, accompanies every shipment.



SPIREA, THUNBERG'S OR JAPANESE—  
A GENERAL FAVORITE



**ORANGE RED BERRIED PYRACANTHA—FIRETHORN**

One of our showiest evergreens. Erect Blue Lawson Cypress at corner of house, Laurustinus beneath window. East 28th Street North at Schuyler. Listed page 8

**Mock Orange (Philadelphus)—**

Gordons .....	36-48	.75
Virginalis, magnificent new variety, largest handsomest and most sweetly fragrant of all Mock Oranges.....	24-36	1.00
Voie Lactee, new, very beautiful.....	36-48	1.00
Albatre, new, large flowered, vigorous.....	30-42	1.00
Norma, new, large single flowers in big sprays .....	30-42	1.00
Glacier, new, comes highly recommended, one of the best novelties. Medium sized shrub; flowers double, rich cream in thick clusters giving appearance of one enormous double flower .....	24-30	1.50
<b>Shrubby Cinquefoil, Potentilla.....</b>	strong	.75
<b>Veitch's Cinquefoil, Potentilla, white.....</b>	strong	1.00
<b>Veitch's Yellow Cinquefoil—new.....</b>		1.00
Medium sized shrubs with quantities of small flowers resembling strawberry blossoms, quite attractive.		
<b>White Kerria, Rhodotyphus.....</b>	30-42	.75
<b>Smooth Sumac, Rhus Glabra... ..</b>	36-48	.75
<b>Cut Leaved Sumac, Rhus.....</b>	36-48	1.00
<b>Elder—</b>		
Golden Leaved.....	36-48	.75
Cut Leaved.....	36-48	.75
Red Berried.....	36-48	.75

**Lawns—Genuine Cocoos Creeping Bent.....** Per lb. \$2.50

Many of the finest lawns and best golf course greens are being made with this native Oregon grass seed. Use Peat Moss and three pounds of grass seed to one thousand square feet of surface.



**FOUNDATION PLANTING EAST 16TH N. NEAR SHAVER**  
 Irish Juniper, Port Orford Cedar at front entrance. English Laurel in corner with Hydrangea, Laurustinus, Evergreen Bush Honeysuckle and Golden Privet



**SPIREA—VAN HOUTTE'S BRIDAL WREATH**  
Adaptable Everywhere

**Spirea (Spiraea)—**

The Spireas as a family are easily the first favorites in deciduous shrubs. Anthony Waterer is a dwarfish bushy plant of attractive foliage, flowering reddish pink and fading to light pink, blooming over a long period in late spring and summer. Thunbergi (Japanese) is one of the first white flowers in early spring and one of the last to lose its foliage in December. Ideal for base planting and massing about the house, and Van Houtte's Bridal Wreath with its masses of drooping white flowers in May and June is probably the most extensively planted flowering shrub in America, thriving everywhere. Aitchisoni is very tall, with Mountain Ash like foliage and long spikes of creamy white flowers suitable for tall background and mass planting. Prunifolia Flore Pleno, the true Bridal Wreath is fine in flower and especially good for its rich autumn foliage.

Aitchisoni (Sorbaria) new, tall.....	36-48	1.00
Anthony Waterer, dwarf.....	18-24	.60
Arguta, Spring flowering.....	24-36	.60
Blue, Caryopteris.....	18-30	.60
Froebeli, bright crimson flowers in mid-summer .....	18-24	.75
Plum Leaved, Prunifolia.....	30-42	.60
Reevesiana, double, white.....	30-42	.60
Thunbergi, Japanese.....	18-24	.60
Van Houtte's Bridal Wreath.....	36-48	.60
<b>Sorbaria Sorbifolia, summer blooming spirea...</b>	<b>30-42</b>	<b>1.00</b>
<b>Stephanandra Flexuosa.....</b>	<b>30-42</b>	<b>.75</b>
<b>Stephanandra Tanakee.....</b>	<b>30-42</b>	<b>.75</b>
<b>Snowberry, Symphoricarpus.....</b>	<b>24-36</b>	<b>.60</b>
<b>Coral Berry, Indian Currant.....</b>	<b>24-36</b>	<b>.60</b>



**PORTLAND RESIDENCE EAST 30TH N. NEAR THOMPSON**  
Note the base and marginal planting with the tall white trunked Birch correctly placed at corner of house



**SPIREA AITCHISONI**

**SPIREA ANTHONY WATERER**

Aitchisoni white summer flowering, tall open growth. Waterer dwarfish, compact, flowering purplish red in early summer

**Lilac (Syringa)—**

Vulgaris, old-fashioned purple, fragrant.....30-42 .75

Vulgaris alba, old-fashioned white.....30-42 .75

**Lilac (Syringa), Grafted French Varieties.....20-30 1.00**

Chas. X, single, fine clusters of lilac flowers, slightly violet

Hugo Koster, single, color lilac with reddish tint

Marie Legraye, single, pure white, very free flowering

Souvenir Louis Spath, single, purplish violet, large trusses

Mme. Casimir Perier, double, white, very fine, free

Mme. Lemoine, double, white, very free

Michael Buchner, double, good truss of pale lilac.

President Grevy, double, blue, large trusses, very fine.

Buffon, new, single, early, elegant clusters of flowers with reflexed lobes, mauve pink, each .....

1.50

Charles Joly, double, dark violet purple, silvery reverse .....

1.50

**Tamarisk (Tamarix)—**

African, pink, June.....36-48 .75

Hispidula Estivalis.....30-42 1.00

**Viburnum—**

Carlesi—Pink Snowball, medium plants..... 2.00

Lantana, Wayfaring Tree.....36-48 .75

Common Snowball.....30-42 1.00

High Bush Cranberry.....36-48 .75

Single Japan Snowball.....36-48 .75

Japan Snowball.....24-36 1.00

**Vitex, Agnus Castus—Chaste Tree.....36-48 1.00**

**Vitex, Macrophylla—An improvement on the Chaste Tree, with larger foliage and attractive trusses of lavender-blue flowers borne from July to September..... 1.00**

**Weigelia—**

Candida, White.....30-42 .75

Eva Rathke, Red.....24-36 .75

Rosea, Pink.....36-48 .75

Variegated, Pink.....30-42 .75





WISTARIA COVERED BUNGALOW E. 37TH N. AT TILLAMOOK  
 Evergreen Darwin's Barberry close clipped for hedge, but equally good  
 as specimens and in groups

### HARDY VINES AND CLIMBERS

The need of vines and creepers for home embellishment is well known, as nothing adds more grace and beauty to the exterior of the house than well-placed and appropriate vines. They cover porches and pergolas, give shade, comfort, perfume and flowers. A porch without a vine always appears desolate and incomplete. Also invaluable for converting offensive looking fences or other unsightly features into things of beauty. In shaded places and beneath old trees where grass will not grow they are often used as a ground cover. On steep slopes and banks they prevent erosion. Churches, depots, factories, outbuildings and all brick and stone edifices can be covered by clinging vines, without trellis work, that will relieve their harshness or lack of architectural beauty and make them things of beauty and joy forever.

	Each
<b>Actinidia Arguta</b> , Silver Sweet Vine.....	\$.75
<b>Ampelopsis—</b>	
Englemanni .....	.75
Quinquifolia, Virginia Creeper, 50c; extra size.....	.60
Tricuspidata, Boston Ivy, Veitchii.....	.50
<b>Hedera Helix</b> , English Ivy, large, pot grown.....	.50
<b>Hedera Palmata</b> , Kenilworth Ivy.....	.60
<b>Bignonia (Tecoma)</b> , Trumpet Vine.....	.75
<b>Bignonia Grandiflora</b> , Chinese Trumpet Vine.....	1.00
<b>Celastrus Scandens</b> , Bittersweet.....	.75
<b>Clematis—</b>	
Popular vine that flowers profusely, and is everywhere planted for covering porches, trellises and arbors and to climb over posts and fences. By planting the small-flow- ered Clematis Montana for early spring flowers followed by the large flowering varieties for mid-season, and the small-flowered Paniculata, which blooms in September to October, flowers can be had the whole season through. Heavy, 2-year, field grown plants that will give satisfaction.	
Henryi, best, large, single, white.....	1.00
Jackmani, best, large, dark, purple.....	1.00
Mad. Edouard Andre, single, crimson.....	1.00
Montana, Spring flowering, white.....	.75
Paniculata, fall flowering, white.....	.75

Nurseries are at Durham, 12 miles south of Portland.  
 Auto road is excellent. Visitors are welcome.



**POLYGONUM AUBERTI—SILVER LACE VINE, SANDY AT E. 36**  
 This is the fastest growing flowering vine we know of, blossoming continuously from mid-July until frost

<b>Euonymus—</b>	
Radicans, green leaved.....	.75
Radicans, Variegata, silver leaved.....	.75
<b>Jasminum—</b>	
Nudiflorum, Yellow Jasmine.....	.60
Officinalis, White Jasmine.....	.60
Bessianum, new, red.....	1.00
<b>Lonicera—</b>	
Belgica, Dutch Honeysuckle.....	.50
Halleana, Hall's Japan Honeysuckle.....	.50
Henryi, New Red Honeysuckle, pots.....	1.00
<b>Polygonum Auberti, silver lace vine, strong white climber, 2 yrs. ....</b>	<b>1.00</b>
<b>Trachelospermum, Rhyncospermum Jasminoides.....</b>	<b>1.00</b>
<b>Vinca—Major, Large Periwinkle.....per 100</b>	<b>\$10.00 .25</b>
Minor, Myrtle.....per 100	10.00 .25
Minor Alba.....per 100	10.00 .25

**Wistaria—**  
 Strong-growing, free-flowering climbers. They are hardy and ornamental, but require deep, rich soils and the occasional use of fertilizers, to obtain best results. When well established, a greater abundance of the lovely flowers can be had by rather severe pruning, cutting back the lateral shoots to short spurs and heading back the leaders conveniently, taking care, however, not to over-do it. The grafted Japanese varieties are strongly recommended as superior to the seedlings.

The new Pink Wistaria was grafted with scions of a fine bright pink, long full panicles, from a notable Pasadena garden. We are propagating it locally and have strong thrifty plants for this season.

<b>Wistaria—Multijuga, Japanese Wistaria, grafted purple</b>	<b>1.50</b>
Multijuga Alba, White Japanese, grafted.....	1.50
Multijuga, Huntington's Pink, new.....	2.50

The planting of trees and shrubbery is not an expense for they enhance real estate values, which makes their purchase a safe and sure investment.

**Peat Moss (Torf Mull)—Humus** in available form, the greatest of soil conditioners. We are Oregon Distributors of G. P. M. brand, imported from Europe, cheapest and best on the market. Ask for descriptive pamphlet and price list.



**HEDGE OF EVERGREEN ENGLISH LAUREL E. 17 N. & KNOTT**  
 One of our best hardy evergreens for hedges, foundation or group plantings. Supplied in many sizes, listed page 7

## HEDGE PLANTS AND LIVE FENCES

The garden craftsman, if he is a true artist, will let Nature make his fences. Old dead walls and stiff fences are becoming obsolete among people of good taste. Anyone who has seen a rightly kept hedge of Privet, English Laurel, Oregon Grape, Holly or Roses, knows what an important feature it is in making truly beautiful grounds.

For medium-sized formal hedges the Privet is probably the most satisfactory—a good grower, responds readily to the pruning knife; is the most economical in cost, perfectly hardy, and practically an evergreen with us. English Laurel and Lawson's Cypress are also fine for formal sheared hedges. For the high hedges, screens or windbreaks, Norway Spruce, Lawson Cypress and the Hemlock are all desirable; the Norway Spruce especially being sturdy, fast-growing and very handsome. These conifers are best pruned or sheared just as new growth starts in spring.

For the untrimmed hedges—those allowed to grow naturally with but little or no pruning, and which in many localities are now a favorite means of enclosing flower and vegetable gardens, edging terraces and defining roads and walks, covering unsightly defensive barb wire or picket fences—nearly any free-growing shrub can be used, such as Spireas, Van Houttes or Thunbergi, Oregon Grape, Abelia, English Laurel, Laurustinus, Cotoneasters and many others.

Boxwood is increasing in popularity, both the dwarf used for formal borders and edgings, and the tree or bush box for large size permanent hedges. Boxwood is priced on page 3 and illustrated on page 10.

	Size in.	100	Size in.	100
Barberry, Japan, transplanted.....	10-12	\$20.00		
Hawthorne, English, 1 yr. seedlings.....	12-15	15.00		
Holly, English, bushy.....	small	30.00		
Laurel, English.....	12-18	40.00	18-24	60.00
Oregon Grape.....	10-15	30.00	15-20	40.00
English Privet, 2 yr., heavy....	12-18	6.00	18-24	8.00

## HARDY GRASSES AND BAMBOOS Each

Phyllostachys Aurea, Golden Bamboo, ex. size, \$2.00..	1.50
Phyllostachys Nigra, Black Bamboo.....	1.50
Arundinaria Metake, Arrow Bamboo, medium height..	1.00
Gynerium Argenteum, Pampas Grass.....	.75
Yucca Filamentosa, Adam's Needle.....	.75



DELPHINEUM-LARKSPUR



IRIS FLOWERS

## PERENNIALS AND HARDY FLOWERS

Beautiful, hardy plants, that will flower year after year without replanting each spring or fall, are growing into popular favor, and the so-called "old-fashioned garden" is to be found everywhere.

The pleasures from a garden of such flowers planted by itself or especially when grouped in front of or among taller growing, hardy permanent shrubbery, cannot be fully described; caring for them is a change and relaxation. They require no skilled or heavy labor, and repay gloriously the attention bestowed upon them.

The following list covers plants that have proven satisfactory in the Northwest. My aim is to supply the best quality of strong, field-grown stock that will give immediate results.

Fall is the best time for planting Peonies, Japanese Lilies, Iris, etc., though they, and all perennials, can be planted any time until late spring, but best results are to be had from early planting.

Strong, Field Grown Clumps that give satisfaction.

	Each	Doz.
Achillea, Mill Foil or Yarrow, Eupatoria.....	\$.25	\$2.50
Aconitum, Aconite, Monk's Hood, Wolf Bane..	.25	2.50
Allium, Fisheri.		
Agrostemma Coronaria, Rose Champion, rosy crimson .....	.25	2.50
Althea Rosea, Hollyhocks.....	.20	2.00
Single Hollyhocks, Flesh Pink, Red, Rose, White, Yellow. Double Hollyhocks, Crimson, Pink, Salmon Yellow, Mixed.		
Alyssum, Saxatile Compactum, Golden Tuft....	.20	2.00
Anchusa, Italica "Dropmore".....	.25	2.50
Anemone Japonicum, Windflower.....	.25	2.50
Mont Rose, semi-double.		
Japan Pink, pale rose.		
Queen Charlotte, rosy flush.		
Whirlwind, large, semi-double, white.		
Aquilegia, Columbine.....	.25	2.50
Veitches Long Spurred Mixed.		
Rocky Mountain blue.		
Long Spurred yellow.		
Arabis Alpina, Rock Cress.....	.20	2.00

When in doubt about your planting problems, please feel free to call upon us, we are always glad to assist in civic and home improvement.

**Visit the Nurseries and Make Personal Selections**



NURSERY VIEW EVERGREENS—CONIFERS 2 TO 4 FEET  
Left to right, Pyramidal Arbor Vitae, Golden Sawara Cypress, Erect  
Blue Cypress, Irish Junipers

<b>Aster, Hardy, Michaelmas Daisy</b> .....	.25	2.50
Climax, light blue.		Feltham blue.
Hon. Vicary Gibbs, rosy white.		Amelus, purple, low.
Lil Fardel, pink.		Robert Parker, blue.
Beauty of Colwell, pink.		Wm. Bowman, purple.
Beauty of Ronsdorf, purple.		White Queen.
<b>Asclepias Tuberosa, Butterfly Weed, orange red</b>	.25	2.50
<b>Bocconia, Cordata, Plume Poppy</b> .....	.25	2.50
<b>Boltonia, Asteroides, False Chamomile</b> .....	.25	2.50
<b>Boltonia, Latisquama, Lavender pink</b> .....	.25	2.50
<b>Campanulas, Bellflowers</b> .....	.25	2.50
Calycanthema, Cup and Saucer Canterbury.		
Carpatica, Hair Bells, white		
Media, Canterbury Bells, blue, white, pink.		
Persicifolia, Peach Bells, blue and white.		
Persicifolia Gigantea Moerhoemi.		
Pyramidalis, Chimney Bellflower, blue and white.		
<b>Carnation, Pinks, in scarlet, pink, white</b> .....	.25	2.50
<b>Centaurea, Montana Alba, White Corn Flower</b> .	.25	2.50
<b>Centaurea, Montana Coerulea, Bachelor Button</b>	.25	2.50
<b>Cerastium, Tomentosum, Snow-in-Summer</b> ....	.20	2.00
<b>Cheiranthus, Wallflowers, assorted colors</b> .....	.25	2.50
<b>Chelone Lyoni, Shell Flower</b> .....	.25	2.50
<b>Chrysanthemum, hardy types, Aster types</b> .....	.25	2.50
Jardin des Plantes, yellow.		Tall White.
Lavender Pink.		Ultramaroon.
Henry Sesquier, early dwarf pink.		Single Pink.
<b>Chrysanthemum, hardy new varieties</b> .....	.50	5.00
Larrie, early yellow, medium.		Oconto, large white, late.
Cranfordia, large yellow, late.		Eldina, pink, medium.
		Large Bronze.
		Firebird, scarlet.
<b>Chrysanthemum Maximum, single flower type</b> ...	.20	2.00
Shasta Daisy, Shasta Daisy Alaska.		
King Edward, Polar Star, Cornet.		
<b>Convallaria Majalis, Lily of the Valley</b> .....	.35	3.50
<b>Coreopsis, Lanceolata Grandiflora</b> .....	.25	2.50
<b>Delphineum—</b>		
Hardy Larkspur, seedings, select strain	.25	2.50
Belladonna, azure blue, good	.35	
Sky Blue, pink center, large spikes, fine	.75	
Storm Cloud, white	.50	

Dianthus Barbatu, Sweet William.....	.20	2.00
Double, mixed colors.		
Single, white, mixed, Newport pink.		
Dicentra (Dielytra), Bleeding Heart.....	.35	3.50
Digitalis Gloxinaeflora, Foxglove.....	.25	2.50
White, Purple, The Shirley.		
Doronicum, Excelsum, long blooming.....	.25	2.50
Echinops Ritro, Globe Thistle .....	.25	2.50
Eryngium, Oliverianum, Sea Holly.....	.30	3.00
Gaillardia, grandiflora, Blanket Flower.....	.25	2.50
Galega, Officinalis, Goat's Rue.....	.35	3.50
Geranium Sanguineum, Crane's Bill, bright crimson .....	.35	3.50
Geum—		
Coccineum, Mrs. Bradshaw, scarlet.....	.25	2.50
Heldrichi Magnifica, new.....	.25	2.50
Lady Stratheden, rich golden yellow.		
Gypsophila, Paniculata Baby's Breath.....	.25	2.50
Gypsophila, pan, Fl. Pl., Double Baby's Breath	.35	3.50
Helenium, Sneeze Work, long flowering.....	.25	2.50
Riverton Gem. Riverton Beauty.		
Helianthus, Perennis, Perennial Sunflower.....	.25	2.50
Giganteus, H. G. Moon, Maximus.		
Miss Willmott, Multiflorus La Perle (Double)		
Heliopsis, Scabra var. Pitcherina semi pl.....	.25	2.50
Hemerocallis, Day Lily.....	.25	2.50
Dumortieri.		
Flava, Middendorffiana.		
Heuchera, Brizoides Gracillima.....	.35	3.50
Heuchera, Sanguinea, Splendens.....	.25	2.50
Iberis Sempervirens, Candy Tuft.....	.20	2.00
Iberis Gibraltarica, large flowering white.....	.20	2.00
Incarvillea Delavayi, Hardy Gloxinia, rose pink	.35	3.50

### IRIS

Each Dozen

Iris—(Germanica). Liberty Iris, Fleur de Lis..\$ .25 \$2.50  
 "F"fall, hanging or lower petals. "S" standard  
 or upright petals.

Berenice, tan.

Ivory, white ivory.

Celeste, pale blue.

Maori King, yellow and crimson.

Florentina Alba, white.

Siberica, purple, tall.

Penelope, white.

Gracchus, crimson.

Recent novelty and newer additions, some  
 of them very fine; strong roots at special  
 price.

Varieties priced at 50c are \$5.00 per dozen.

Each

Archeveque (new), rich purple violet; falls velvety  
 violet .....\$ .50

Black Prince, purple-lilac and velvety black..... .50

Caprice (new), "S" reddish purple, "F" deeper  
 purple .....

Crepusele, "S" and "F" delicate violet purple, quite  
 devoid of markings..... .35

Dorothea, "S" mauve, "F" soft blue, orange veinings .50

Eldorado, bronze shaded heliotrope, "F" purple.... .50

Gertrude, deep violet blue, fragrant..... .35

Isolene, "S" lilac pink, "F" purplish old rose; a  
 splendid flower and deliciously scented..... .50

Jeanne d'Arc, lilac and pure white..... .35

Kharput, "S" violet, "F" velvety violet purple; very large handsome flower.....	.35	
Lohengrin, soft cattlyea-rose, fine.....	.35	
Lorelei, "S" light yellow, "F" ultra marine blue...	.25	
Loute, light blue and heliotrope with reddish purple	.50	
Monsignor, "S" blush lavender, "F" violet with white pencilings at the throat.....	.50	
Oriflame (new), light blue and violet purple.....	.50	
Pallida Mandraliscae, rich lavender purple; large and handsome, very early.....	.50	
Peacock's Eye, as the name indicates.....	.50	
Rhein Nixe (new), "S" pure white. "F" deep violet blue with white edge.....	.50	
Storm Cloud, "S" slaty blue and bronze, "F" purple .....	.50	
Tamerlane, "F" deep violet purple, "S" paler.....	.35	
Foetida, good foliage but especially valuable and attractive for its abundant spikes of orange red seed or berries carried through fall and into winter....	.50	
Lavandula, Vera, Sweet Lavender.....	.30	3.00
Lilium, Myriophyllum, Regal Lily, white suffused pink, medium bulbs 75c, extra strong bulbs .....	1.00	
Linum Perenne, Perennial Flax.....	.20	2.00
Lupinus, Polyphyllus .....	.25	2.50
Lupinus, Dark Blue Lupin.....	.25	2.50
Lupinus, Moerheimi, Pink Lupin.....	.25	2.50
Malva Alcea, Muck Mallow. Pink.....	.25	2.50
Monarda Didyma, Horse Mint, Oswego Tea, red	.25	2.50
Mulgedium Giganteum, grows 6 feet, blue-violet	.35	3.50
Mulgedium Burgaci, 4-6 feet, lavender.....	.35	3.50
Myosotis Alpestris, Hardy Forget-Me-Not....	.25	2.50
Papaver, Nudicale, Iceland Poppy.....	.25	2.50
Papaver Orientale, Oriental Poppy. Dark red. Orange .....	.25	2.50
Penstemon, Barbatus, Beard Tongue.....	.25	2.50
Tacoma Red. Tacoma Pink.		
Phlox, Decussata, Hardy Phlox.....	.25	2.50
Athis, salmon pink.		
Etna, red, good.		
Baron von Dedem, large bright scarlet, large trusses.		
Eclairer, brilliant rosy magenta.		
Elizabeth Campbell, bright salmon pink, best pink.		
Europa, pure white, crimson eye, large trusses.		
Frau Anton Buchner, white, large trusses.		
Frau von Lassburg, white, excellent.		
Miss Lingard, pearly white, fine foliage.		
R. P. Struthers, cherry red with salmon shade.		
Selma, beautiful lightrose, carmine eye.		
A number of others, late introductions.		
Phlox, Deutschland, brilliant oriental red with orange suffusion, crimson red eye.....	.40	4.00
Phlox, Mrs. Milly von Hoboken, a gem, with big trusses of large flowers, rich salmon rose...	.40	4.00
Phlox, Vald Jensen, beautiful shade of salmon pink with small white eye.....	.40	4.00
Phlox Subulata, Moss Pink, low growing.....	.25	2.50
Platycodon, Balloon Flower, blue, white.....	.25	2.50
Physalis, Franchetti, Chinese Lantern Plant....	.25	2.50
Physostegia Virginica, False Dragon Head, vivid pink .....	.25	2.50
Physostegia Virginica, Gigantica, purple and red	.25	2.50
Polygonum, Polystachium.....	.30	3.00
Potentilla, Cinquefoil.....	.25	2.50
Pyrethrum—		
Hybridum, seedlings, mixed color.....	.25	2.50
Hybridum, named varieties, fine.....	.35	3.50



PYRAMIDAL ARBOR VITAE—3 TO 6 FOOT SPECIMENS

**Paeonia—**

Chinensis, Peony, small.....	.50	5.00
Chinensis, Peony, medium.....	.75	8.00
Chrysanthumiflora, large, clear pink.		
Cytharee, flesh to white.		
Faust, soft lilaceous flesh color.		
Duchesse de Nemours, sulphur white, cup shape.		
Festiva Maxima Enormous, full, snow white.		
Jeanne d'Arc, tender rose, center sulphur yellow.		
Lutea Variegata, pink changing red, light center.		
Mad. Breon, outer petals flesh, center creamy.		
Mad. de Verneville, center delicate pink flesh.		
Pottsi Rosea, rose, lighter center.		
Princess Galitzin, Flesh and sulphur white.		
Officinalis, old fashioned early red.		
<b>Rudbeckia, Golden Glow, Cone Flower.....</b>	<b>.25</b>	<b>2.50</b>
Purpurea, purplish; Subtomentosa, yellow		
Newmani. Dark orange-yellow, deep purple cone.		
<b>Saponaria, Ocymoides Spondens, fine for rockeries, clouds of pink flowers, May to October</b>	<b>.25</b>	<b>2.50</b>
<b>Saxifraga (Magasea), Cordifolia, Saxifrage....</b>	<b>.30</b>	<b>3.00</b>
<b>Sedum, Spectabile, light green foliage, pink flowers</b>	<b>.25</b>	<b>2.50</b>
<b>Scabiosa, Japonica, Pin-Cushion Flower.....</b>	<b>.25</b>	<b>2.50</b>
<b>Sidalcea, Greek Mallow, Rosy Gem, bright rose</b>	<b>.25</b>	<b>2.50</b>
<b>Silphium Connatum, Rosin Plant, yellow, 5-6 ft.</b>	<b>.25</b>	<b>2.50</b>
<b>Silphium Laciniatum, Cut Leaved, yellow, 6-8 ft.</b>	<b>.35</b>	<b>3.50</b>
<b>Spirea, Herbaceous, Goat's Beard.....</b>	<b>.35</b>	<b>3.50</b>
<b>Statice Latifolia, Sea Lavender, purplish-blue...</b>	<b>.25</b>	<b>2.50</b>
<b>Stokesia, Cyanea, Corn Flower, blue.....</b>	<b>.25</b>	<b>2.50</b>
<b>Stokesia, Cyanea Alba, White Corn Flower....</b>	<b>.25</b>	<b>2.50</b>
<b>Telekia Cordifolia (Bupthalmum, Ox Eye Daisy, orange</b>	<b>.35</b>	<b>3.50</b>
<b>Thalictrum—</b>		
Adiantifolium, Meadow Rue.....	.25	2.50
Dipterocarpum, beautiful.....	.50	
<b>Tradescantia, Virginica, blue and white.....</b>	<b>.25</b>	<b>2.50</b>
<b>Tritoma (Kniphofia), Red Hot Poker.....</b>	<b>.25</b>	<b>2.50</b>
Pfitziri.		
Tucki.		
<b>Valeriana, Officinalis, Garden Heliotrope.....</b>	<b>.25</b>	<b>2.50</b>
<b>Veronica Herbaceous, Speedwell.....</b>	<b>.25</b>	<b>2.50</b>
Spicata.		
Longifolia, Rosea.		
Spicata alba.		
Longifolia Subsessilis.		
<b>Vinca, Periwinkle or Myrtle.....</b>	<b>.25</b>	<b>2.00</b>
Major, Minor, Minor Alba.		
<b>Viola, Violets, hardy varieties, assorted.....</b>	<b>.20</b>	<b>2.00</b>
<b>Viola, Papilio, blue with white center.....</b>	<b>.20</b>	<b>2.00</b>





MADAM CAROLINE TESTOUT ROSES ON PORTLAND STREET

## ROSES

### Strong Field Grown Two-Year-Old Plants That Give Results

Abbreviations used in descriptions are: H. P., Hybrid Perpetual—vigorous, hardy, flowering in Spring and Fall; require less care and attention than other classes. H. T., Hybrid Tea—more vigorous in growth, free flowering, fine colors; the most satisfactory class for the Pacific Northwest. T., Tea or Everblooming—less vigorous, more tender, finest of flowers. Poly., Polyanthus—fine class of small flowered climbers or pillar roses. Noi., Noisette—rather tender climbers, flowers usually in clusters. G. M., Gold Medal—the Highest Award of Merit given by the National Rose Society of England. Pert, Pernet—Ducher Austrian Briar Hybrids.

These plants are large for mailing unless cut back, though they can be sent this way if desired, in which case add 10 cents for single plants for postage; 20 cents for six, and 30 cents per dozen, in Oregon and Washington, points more distant pay a little more. We pack securely for shipment by express anywhere without extra charge, purchaser paying express charges, which are very light on nursery stock of all kinds.

#### Brief Cultural Instructions

**PLANTING.**—If the situation be not too much exposed where the Roses are to be set out, we prefer **fall planting for all hardy kinds**. Dormant plants set out in the spring should be planted early, for no plant suffers more from being set out late than the Rose. The plants should be put in friable, rich soil, and **firmly pressed in with the foot**, taking care not to bruise the roots. **Budded roses should be planted sufficiently deep, so that the junction of the bud with the stock is from two to three inches below the surface of the earth.** We cannot too forcibly direct attention to the above rule.

**PRUNING.**—This operation is best performed during March. Most Roses do better if moderately pruned; some sorts require two-thirds of the past year's growth removed; for others to remove one-half or one-third is sufficient. **All must be more or less pruned when planted; do not neglect this.** As a general rule, the more vigorous the variety the less it should be pruned. All weak or decayed wood should be entirely cut out, and also any shoots that crowd the plant, and prevent free entrance of light and air. Besides spring pruning, many kinds Hybrid Perpetuals require to be pruned as soon as their first blooming is over, in order to induce a free display of flowers in autumn.



ROSES IN NURSERY ROW, GROWN WITHOUT IRRIGATION,  
PHOTO IN JULY

**PROTECTION.**—All Roses would be better for a light covering. This may be done by hilling up with earth; or better, by strewing leaves or straw lightly over the plants and securing them with evergreen branches, oftentimes the latter are in themselves sufficient.

**INSECTS.**—If proper attention is paid to soil, planting, watering, etc., and a few simple directions heeded, you will not often be greatly troubled. The aphid is among the most annoying foes, and particularly infests plants in houses; healthy plants in the garden are but little liable to its attacks. They can be exterminated by dusting the plants with tobacco dust while they are wet with dew, or by spraying with water in which tobacco stems or leaves have been steeped.

**DISTANCE FOR PLANTING.**—Distances apart for planting roses are regulated somewhat by the varieties used. Hybrid Perpetuals, Hybrid Teas and other strong growing kinds may be set three feet apart, and Teas from two to two and one-half feet apart. In planting several varieties in one bed, the stronger growing kinds should be placed in the center, or if in borders, they should be set back of the weaker growing kinds.

## Late Introductions — Novelties

	Each
<b>Angele Pernet</b> , H. T., awarded Gold Medal, Bagatelle, 1924, one of the most striking novelties; color vivid orange yellow shaded fiery deep reddish apricot, "tango color" covers it. Good grower, long buds that open to medium full, fragrant flower.....	1.50
<b>Betty Uprichard</b> , H. T., G. M., flowing carmine with orange copper at base of petals, upright growth, good form.....	.75
<b>Cuba</b> , H. T., dazzling, vermilion, scarlet overlying an orange ground, semi-double, vigorous .....	1.25
<b>Dame Edith Helen</b> , H. T., G. M., large, full, double flower of brilliant but soft pink, extra good.....	1.50
<b>Diadem</b> , H. T., Irish origin, deep crimson, overlaid orange crimson, suffused salmon and copper. Good grower, large, full flowers, sweetly scented.....	1.00
<b>Doris Traylor</b> , H. T., long buds, rich brilliant salmon orange suffused carmine, full splendid flowers.....	1.50
<b>Frank Reader</b> , H. T., large size pointed flower, buds lemon yellow opening center golden apricot.....	1.25
<b>Imperial Potentate</b> , H. T., splendid shaped buds, opening to large full flowers of crisp rose-pink with silvery suffusion. A Portland introduction and prize winner .....	1.00
<b>J. Otto Thilow</b> , H. T., long pointed bud opening large high centered flower of glowing rose pink.....	1.25

- Lady Margaret Stewart**, H. T., a rose of unique coloring, buds sun-flower yellow, veined orange scarlet, reverse of petals suffused carmine opening into full double flowers of cadmium orange effect..... 2.00
- Lulu**, H. T., a dainty baby rose, larger than Cecil Brunner, of orange red shaded salmon pink, similar to Mme. Edw. Herriot, beautiful in bud form..... 1.00
- Margaret McGredy**, H. T., an Irish masterpiece, full double flowers of rich oriental red, passing to carmine rose, borne on stiff stems, vigorous..... 2.00
- Mary Pickford**, H. T., a California introduction, an exquisite shade of orange yellow, reverse outer petals stained salmon blush..... 1.00
- Mrs. A. R. Barraclough**, H. T., G. M., a distinct and valuable addition to pink roses, bright, sparkling carmine pink, long full bud and large bloom..... 2.00
- Mrs. Beatty**, H. T., G. M., long oval pointed buds of exquisite lemon yellow, long blooming, fragrant 2.00
- Mrs. Erskine Pembroke Thom**, H. T., a California introduction of fine habit and growth, flowers good, full, shapely, of rich deep lemon, sweetly scented.. 2.00
- Mrs. Henry Bowles**, H. T., vigorous free flowering, color deep salmon pink, splendid form..... 1.00
- Mrs. J. C. Ainsworth**, H. T., originated in Portland, vigorous in growth and free flowering with sweetly scented buds of peach-blossom pink, shaded lighter at edges, the blooms opening with lovely crimson-pink centers and of good size..... .75
- Mrs. Henry Morse**, H. T., an Irish introduction of ideal habit and form, blooms lovely pink, shaded salmon base, vermilion veining in petals, fragrant. Bedding and exhibition..... 1.00
- Mrs. Lovell Swisher**, H. T., buds coppery salmon at base, merging salmon pink at tips, developing deeper color ..... 1.00
- Mme. Alexander Dreux**, H. T., brilliant golden coppery orange yellow ..... 1.00
- Norman Lambert**, H. T., medium size and form, center salmon orange, suffused bronze shading yellow at base, bordered outside deep chrome yellow suffused 1.50
- Padre**, H. T., attractive and novel coloring, long petals, coppery scarlet, flushed yellow base, produced on long shoots, free flowering..... 1.00
- Patience**, H. T., G. M., distinct brilliant scarlet carmine lake, opening deep orange at base, orange scarlet shadings, large, perfect form, long lasting 2.00
- Rev. F. Page Roberts**, H. T., flowers rich "Marechal Neil" yellow, with buff veins in bud, opening full and well-formed, delightfully fragrant, strong grower 1.25
- Salmon Spray**, H. T., an Australian introduction, new, unique and attractive. Medium growth, good foliage, bearing clusters or sprays of semi-double salmon pink, reverse petals carmine, long blooming season, mildew proof, ideal for massing and table decorations 1.00
- Sir David Davis**, H. T., color an unfading and deep glowing crimson, even throughout, with light yellow at base of petals, good size rather pointed, fragrant 1.25
- Shot Silk**, H. T., G. M., color bright cherry red over-shot with salmon orange flushed rose and deeply veined base clear yellow. Free bloomer, fine foliage, vigorous ..... 1.00
- Sunstar**, H. T., G. M., deep yellow, edged, veined and splashed crimson and vermilion, very attractive, medium size..... 1.00
- Souvenir de Claudius Pernet**, Per., a distinct sunflower—yellow, deepening in center and retaining its color in hot weather better than other yellows, of good size and form, fine rich foliage and good stems almost thornless. A prize winner at shows..... 1.00



SOUVENIR CLAUDIUS PERNET

OPHELIA

- Souvenir Georges Pernet, Pert. seedling of Mad. Ed Herriott, full globular form, Oriental red, shaded yellow, ends of petals salmon, fine foliage. Bagatelle gold medal rose..... 1.00
- The Queen Alexandra, H. T., a brilliant flower of intense vermilion, base and reverse petals old gold, a striking combination that attracts much attention—habit vigorous, free..... 1.25
- Victor Waddilove, H. T., splendid buds opening moderately full, imperial pink flushed crimson and orange 1.25
- Ville de Paris, H. T., G. M., rich buttercup yellow..... 1.50
- Wilhelm Kordes, H. T., long pointed buds opening full double blooms of rich capucine red overlaying a golden ground, wonderfully prolific..... 1.25

SELECTED ROSES

- America, H. T., large rose-pink, fragrant, good..... .60
- Betty, H. T., long buds, coppery yellow..... .60
- Cecil Brunner, Ply., baby rose, blush white flushed.... .50
- Chateau de Clos Voguet, H. T., velvety scarlet shaded fiery red, changing dark velvety crimson, free..... .75
- Cheerful, H. T., shining orange-flame, fine buds, with heavy orange yellow markings at base of petals... .60
- Constance, H. T., fine long orange yellow buds, crimson, opening full golden yellow..... .60
- Dorothy Page Roberts, H. T., coppery pink apricot.... .50
- Duchess Wellington, H. T., saffron yellow coppery.... .50
- Frau Karl Druschki, H. P., best pure white, large, full .50
- Geo. Dickson, H. T., rich dark red..... .50
- Gen. McArthur, H. T., fine dark velvety crimson..... .50
- Golden Emblem, H. T., beautifully shaped buds of deep, rich golden yellow, outside petals stained carmine ..... .60
- Golden Ophelia, H. T., golden yellow center, lighter outer petals, exceptionally good and free flowering .75
- Gorgeous, H. T., deep orange copper, flushed and veined reddish copper, G. M. .... .60
- Grange Colomb, H. T., soft ivory white with salmon-yellow fawn center, free flowering, splendid variety .50
- Gruss an Teplitz, T., richest crimson-scarlet, free..... .50
- Hadley, H. T., fine bright red, American origin..... .50
- Hoosier Beauty, H. T., velvety crimson, fragrant, free from mildew, American origin, G. M..... .50
- Hugh Dickson, H. T., G. M., brilliant crimson-scarlet .50
- Irish Elegance, H. T., single flower, apricot shades.... .50

Irish Fireflame, H. T., single, long buds, crimson and orange .....	.50
Isobel, single, beautiful orange terra-cotta tipped with rose, yellow stamens. Good foliage, vigorous.....	.75
J. B. Clark, H. T., full, deep blackish scarlet center....	.50
Juliet, Aust, H., vermillion rose, reverse old gold.....	.60
Kaiserin Augusta Victoria, H. T., white, tinted yellow	.50
K. of K., H. T., a semi-double, exceptionally free flowering rose of large size, color a most dazzling that enthuses every lover of red roses.....	.60
Lady Ashton, H. T., pale rose, shaded yellow, good	.50
Lady Hillington, T., G. M., orange yellow, fine buds...	.50
Laurent Carle, H. T., large velvety crimson.....	.60
Los Angeles, H. T., California production, since awarded Grand Prize at Bagatelle Exposition, France. Color luminous pink, toned coral and gold at base of petals, vigorous in growth, fragrant, lasting well when cut, strong field grown 2-year plants....	.50
Louise Catherine Breslau, H. T., shrimp pink, coral and yellow.....	.75
Madam Butterfly, H. T., a brilliant pink, suffused apricot and gold, sport of Ophelia.....	.75
Mad. Caroline Testout, H. T., Portland Official Rose, bright satiny pink, long, free flowering, best.....	.50
Mad. A. Chatenay, H. T., rosy salmon-carmine, fine buds, free .....	.50
Mad. Edouard Herriott, Aust. T., vivid terra-cotta, "Daily Mail Rose," prize winner.....	.50
Mad. Melanie Soupert, H. T., sunset yellow, suffused amethyst, one of the best roses grown.....	.50
Maman Cochet, Pink T., clear silvery pink, extra good	.50
Maman Cochet, White T., creamy white, tinged blush	.50
Miss Lolita Armour, full double flower, chrome yellow base, shading orange and copper. Strong two year plants .....	.75
Mrs. Aaron Ward, H. T., deep rich Indian yellow, good	.50
Mrs. A. R. Waddell, H. T., rosy bud, opening salmon red .....	.50
Mrs. S. K. Rindge, long pointed bud, immense size, deep golden yellow, suffusing pink with age, vigorous grower.....	.60
Mrs. John Laing, H. P., soft pink, large, full, fragrant	.50
Mrs. Joseph H. Welch, H. T., large brilliant rose pink bloom of perfect form and substance, fragrant, free	1.00
Mrs. Wemyss Quinn, H. T., well shaped, lemonchrome, mingled orange, reflex guard petals crimson-orange	1.00
Mrs. W. T. Sumner, H. T., cherry pink flushed crimson, with golden yellow at base of petals, fine buds opening semi-double—very decorative. A basket of these at the Portland Rose Show attracted universal attention and comment. Strong grower....	.60
Ophelia, H. T., salmon flesh shaded rose, perfect shape, fine habit, floriferous, fragrant, one of best.....	.60
Prince Camille de Rohan, H. P., velvety dark crimson	.50
Rayon d'Or, Aust, Br. Hyb., deep canary yellow.....	.50
Red Radiance, H. T., large globular flower deep cerise red .....	.60
Soliel d'Or, Aust., reddish gold nasturtium, large.....	.60



LADY HILLINGTON



HADLEY

- Sunburst, T., deep yellow apricot, free, fragrant, good .50  
 Ulrich Brunner, H. P., large, cherry red, strong, good .50

CLIMBING ROSES

- |  | Each |
|--|------|
| American Pillar, P., large, single, pink, in clusters....  | .50  |
| Austrian Copper, A. B., single nasturtium, red, fine...  | .60  |
| Climbing American Beauty, H. P., fine, large, red.....   | .60  |
| Climbing Belle Siebrecht, H. P., beautiful deep pink...  | .60  |
| Climbing Cecil Brunner, Pol., baby rose, salmon pink..   | .60  |
| Climbing Hoosier Beauty, H. T., fine velvety crimson,<br>as good as the bush form.....   | .75  |
| Climbing Kaiserin, H. T., fine creamy white, free.....   | .60  |
| Climbing Lady Hillington, H. T., climbing form of<br>this favorite, clear apricot yellow.....  | .75  |
| Climbing Testout, H. T., popular pink climbers, best..   | .60  |
| Dr. Huey, H. W., semi-double flowers of dark crimson<br>maroon, with yellow stamens, borne in clusters, very<br>vigorous .....   | .60  |
| Dr. Wm. Van Fleet, Wich., flesh pink, fine foliage....   | .60  |
| Dorothy Perkins, Wich., best climber, small, pink.....   | .50  |
| Excelsa or Red Dorothy Perkins, clear scarlet.....   | .50  |
| Mad. Alfred Carrier, Noi., white tinted flesh, best.....   | .60  |
| Marechal Neil, T., rich golden yellow, semi-hardy.....   | 1.00 |
| Mary Wallace, H. W., large semi-double flowers of<br>bright rose pink, with salmon base, one of the best<br>newer roses .....  | .75  |
| Mrs. Geo. C. Thomas, H. T., G. M. in England and<br>City of Portland Test Gardens. Vigorous climber,<br>good foliage, continuous bloomer, buds medium,<br>orange, flower large, open, light salmon-pink with<br>yellow glow at center, fragrant..... | 1.00 |
| Paul's Scarlet Climber, a vigorous grower, very hardy,<br>fine foliage and profuse bloomer, masses of vivid<br>scarlet flowers, best of red climbers.....  | .60  |
| Silver Moon, Wich., a grand single petaled climber,<br>pure white with yellow stamens, fine foliage.....   | .60  |
| Tausendschon, Poly., soft pink in large clusters, good   | .50  |



### FRUITS

The list of Fruit Trees we offer is carefully selected, for commercial and Home Orchard planting. We aim to grow the best varieties of each species and have eliminated as far as possible the undesirable kinds, for we wish our patrons to feel sure that they can be sure of obtaining varieties of proven merit. We are growers of general nursery stock and not merely dealers. Our soil is a loam that produces an exceptionally good fibrous root system that insures success in transplanting. Grown right, handled properly, sold direct with no agent's commission. The planter gets the benefit.

#### Special Prices on Hundred Lots

See Our Large Sizes for Home Planting at City Sales Yard

#### APPLES

Each Per 10

One year, 4-6 ft. ....	\$ .60	\$4.00
Two year, 5-7 ft., extra.....	1.00	7.50

#### SUMMER

Red Astrachan

Yellow Transparent

#### FALL

Gravenstein

King Tompkins Co.

#### WINTER

Delicious  
 Grimes Golden  
 Northern Spy  
 Esopus-Spitzenberg  
 Baldwin  
 Jonathan  
 Newtown Pippin

Ortley  
 Rome Beauty  
 Stayman Winesap  
 Winter Banana  
 Hyslop Crab  
 Transcendent Crab  
 Red Siberian Crab

#### APRICOTS

One year, 4-6 ft. ....	\$ .75	....
Moorpark	Tilton	Lewis

*PLEASE: If not interested or when you have placed your order will you hand this book to your neighbor who is interested in home improvement. Thank You*



YAMHILL COUNTY PRUNE ORCHARD

**CHERRIES**

Each Per 10

One year, 3-4 ft. ....	\$ .75	\$ 6.00
One year, 4-6 ft. ....	1.00	8.00
Two year, heavy, branched.....	1.50	10.00

- |                         |                  |
|-------------------------|------------------|
| Bing                    | Black Republican |
| Kentish, Early Richmond | Lambert          |
| May Duke                | Late Duke        |
| Royal Anne              | Montmorency      |

**FIGS**

Grown by Willamette Fig Gardens, the kinds that fruit in Portland.

Lattarula, "Honey Fig," white, matures two crops here.

Granata, the Persian Black, one of the best.

Strong rooted select plants, 2 years old, each..\$2.50

**NECTARINES**

One year .....	\$1.00
Boston	New White

**PEACHES**

Each Per 10

One year, 4-6 ft., select.....	\$ .75	\$5.00
--------------------------------	--------	--------

- |                  |                 |
|------------------|-----------------|
| Crawfords, Early | Crawfords, Late |
| Elberta          | Muir            |
| J. H. Hale       | Mayflower       |
| Salway           | Rochester       |

**PEARS**

Each Per 10

One year, 4-6 ft. ....	\$ .75	\$5.00
Two year, branched.....	1.00	7.50

- |        |              |
|--------|--------------|
| Anjou  | Winter Nelis |
| Bosc   | Bartlett     |
| Comice | Seckel       |



APPLES—YELLOW TRANSPARENT





**GRAFTED WALNUTS "TASTE LIKE MORE"**  
 Why not raise your own? Many are planting Walnuts for street or curb trees. Don't put it off. Plant this season, dependable trees, and get results

**PLUMS** Each

One year, 4-6 ft., select.....			\$ .75
Two year, extra.....			1.00
<b>Bradshaw</b>	<b>Satsuma</b>	<b>Wickson</b>	
<b>Peach</b>	<b>Damson</b>	<b>Champion</b>	
<b>Yellow Egg</b>	<b>Green Gage</b>	<b>Bavay</b>	

**PRUNES** Each Per 10

One year, 3-4 ft. ....		\$ .40	\$2.50
One year, 4-6 ft. ....		.50	3.00
Selected trees, 6-8 ft. ....		.60	4.00
Two year extra.....		1.00	
<b>French or Petite</b>	<b>Hungarian</b>	<b>Silver</b>	
<b>Burbank Standard</b>	<b>Italian</b>	<b>Tragedy</b>	

**QUINCES** Each

Heavy branched trees.....		\$1.00
<b>Champion</b>	<b>Orange</b>	

**WALNUTS** Each Per 10

Grafted on California Black, 4-6 ft.....	\$1.50	\$12.50
Grafted trees, select, 6-8 ft. ....	1.75	15.00
Extra size trees, 8-10 ft., select, for street.....	2.50	

**Mayette** **Franquette**

Commercial orchards prefer Franquette and we are prepared to supply them in large quantity; write for prices, stating quantity.

<b>Butternuts</b> , large sizes, each.....	\$1.00 and \$1.25
<b>Black Walnuts</b> , American.....	1.00 and 1.25

**ALMOND** Each

One year, select.....		\$0.75
<b>I. X. L.</b>	<b>Ne Plus Ultra</b>	<b>Nonpareil</b>

**FILBERTS**

	Each	Per 10		Each	Per 10
Select, 3-4 ft....	\$ .75	\$6.00	4-6 ft. ....	\$1.00	\$7.50
<b>Barcelona</b>		<b>Du Chilly</b>	<b>Red Avelene</b>		

**CHESTNUTS**

Strong trees, 4-6 ft....	\$1.00	6-8 ft. ....	\$1.50
<b>American Sweet</b>		<b>Italian or Spanish</b>	



OREGON GROWN BARCELONA FILBERTS—  
 "GROW YOUR OWN"



OREGON STRAWBERRIES

SMALL FRUITS

	Each	Per 12	Per 100
<b>Blackberry—</b>			
Thornless .....	\$ .25	\$2.50	.....
New Mammoth .....	.25	2.50	\$15.00
Himalaya Giant .....	.25	2.00	15.00
Lawton, Kittitanny .....	.10	1.00	8.00
Evergreen .....	.25	2.00	15.00
Loganberry, two year.....	.25	2.50	
Loganberry, tips for spring only.....	1000,	\$40.00;	100, \$6.00
Raspberry, Blackcaps, two year.....	.20	2.00	10.00
Raspberry, Red and Yellow.....	.20	1.50	8.00
Currants, two year, Perfection.....	.30	3.00	....
Reds in variety, etc. ....	.25	2.00	12.00
Gooseberry, Oregon Champion.....	.25	2.00	10.00
Roots, Asparagus (1000, \$15.00).....		.50	2.00
Horse Radish .....		.40	1.50
Rhubarb or Pie Plant.....	.20	1.50	10.00
<b>Conovers, Colossal, Palmetto, Washing-</b>			
<b>ton, best new, blight proof, doz.,</b>			
<b>\$0.75; 100, \$3.00; 1000, \$20.00.</b>			

GRAPES

Strong two year plants—each, 35c; doz., \$3.50; hundred, \$20	
Concord	Worden
Niagara	Moores, Early
Delaware	Campbell's Early, 50c each.

STRAWBERRIES Per 100 Per 1000

Selected plants, packed for shipment.....	\$1.25	\$10.00
Gold Dollar	Clarkes Seedling	
Magoon	New Oregon	
Marshall		

EVERBEARING STRAWBERRIES

	Per 12	Per 100	Per 1000
Selected strong plants.....	\$ .50	\$2.50	\$20.00
Progressive	Superb		

HOME ORCHARD ASSORTMENT

10 Apples, assorted	4 Peaches, assorted
4 Plums, assorted	1 Chestnut
1 Quince	1 Walnut
1 Almond	6 Pears, assorted
6 Cherries, assorted	1 Apricot

These 35 trees, one year select, delivered to any express office in Oregon or Washington for.....\$30.00

SMALL FRUIT ASSORTMENT

12 Rhubarb	6 Mammoth Blackberry
6 Lawton Blackberry	12 Red Currants
12 Champion Gooseberry	6 Blackcaps
12 Red Raspberry	6 Loganberry

Delivered prepaid, express office, as above.....\$12.00

## BOOKS

We carry the following selected works for the convenience of our customers. Will cheerfully refund the price of any book that is not satisfactory if returned in good condition within one week.

### The Amateur's Guide to Landscape Gardening

48-page booklet on general landscape design of benefit to any home owner interested in improving and beautifying home grounds. Mailed for 20 cents in stamps.

### Johnson's Gardener's Dictionary

Complete and up to date, covers the whole field of horticulture and floriculture in 923 pages, giving short cultural and propagation hints. Price \$6.50, by mail \$6.75. We recommend this.

### Practical Landscape Gardening Robert Cridland

#### Are You Planning

- to plant a few trees, shrubs, or hedge?
- to construct a walk, drive, pergola or garden columns; a pretty garden seat or rustic house; fountain, lily pond, swimming pool or bird bath?

#### Do You Want to Know

- how deep and where to plant the trees, shrubs, porch base plants?
- which flowers to use in your garden and borders?
- how to construct your walks and drives, Summer house, arches and pools?
- how to attain this or that effect, and make your home surroundings beautiful?

#### Then You Need This Book—Because:

- It tells how to plant the 20 ft. plot, as well as the larger estate.
- It gives detailed sketches showing where to plant your flower garden, rose, wild or rock garden; lawns, borders, etc.
- It has planting plans telling exactly what varieties to plant for best effects.
- It gives working plans showing how to construct walks, drives, pergolas, terraces, pools, fountains, garden seats and rustic houses, in fact every detail of your home surroundings.
- It contains photographs of actual homes, showing the effect of different plantings, the correct and incorrect method, etc.
- It will be the means of beautifying your home grounds far beyond your own expectations.
- Get this book. It will save you hundreds of dollars of needless expense and much time and thought, because it is written by a landscape architect of national reputation, who tells facts that are worth money.
- Handsomely cloth bound. 276 pages. Contains 91 photographs, 67 sketches and 33 plans, 19 of which are planting plans. Diagrams of plots from 40x100 feet are given. Price: \$2.50 (by mail \$2.65).

### Garden Guide The Amateur Gardener's Handbook

The big seedsmen and nurserymen—the most practical men in the country—recognize this book as THE VERY BEST obtainable and this accounts for the thousands of well satisfied buyers. Written by gardening experts expressly for the amateur and non-professional, therefore concise and readily understood.

#### Covers Every Step from Plowing the Ground to Preserving the Harvest

This book will tell you everything you need to know about your home ground surroundings, your vegetables, fruit and flower garden, trees, shrubs, lawn, etc. Covers in detail:

Growing Tomatoes, Peas, Beans, Cabbage, Celery, Beets, Corn, Onions, and all chief vegetables.

Growing fruits for the small garden or orchard; Apples, Peaches, Grapes, Berries, etc.

Ornamental trees, hedges, gardens and plantings of all kinds.

Constructing hot beds, cold frames, seed boxes, etc.

How to prune and propagate; control insect pests and diseases; all about soils, fertilizers, spraying, tools, etc., and

1001 other live, up-to-date Gardening Facts, simply explained—  
easily followed

The most practical and best selling book of its kind published.  
"Every book sells another book."

#### A Guide to Garden Work for Every Month in the Year

360 pages. Cover in four colors. Over 275 teaching illustrations, planting plans and sketches. Price: Paper cover, \$1.00 (by mail \$1.10).

## J. B. PILKINGTON

NURSERYMAN

Salmon and Second Streets

Portland, Oregon



EUR WHITE BIRCH  
7TH & BROADWAY

JBP



HARD OR SUGAR MAPLE  
E. 11TH & WEIDLER

JBP

Portland  
Street  
Trees



JBP SWEET GUM  
GRAND AVE. & MULTNOMAH



JBP  
MOUNTAIN ASH  
E. 19TH & WEIDLER

NURSERY VIEW AT DURHAM, OREGON

# J. B. PILKINGTON

## NURSERYMAN

CALIFORNIA  
BRANCH  
MILLBRAE,  
CALIF.

TREES  
SHRUBS  
VINES AND  
PLANTS

