

## **Historic, Archive Document**

Do not assume content reflects current scientific knowledge, policies, or practices.



INDEXED.

# Root's Nurseries

*Incorporated*

## MANHEIM

### LANCASTER COUNTY, PENNA.

LIBRARY

RECEIVED

MAR 21 1929

Department of Agriculture



# CATALOGUE

1929



# A PERSONAL MESSAGE

It is with great pleasure that we present our new catalog, and we believe this to be an opportune time for its introduction.

Our Nurseries have reached the reputation we now enjoy through our customers who have made them what they are, and we believe those whom we have had the pleasure of serving in the thirty-four years of our experience in the nursery business have confidence in our organization.

To those who have never purchased nursery stock from us, may we ask that you convince yourself of the reliability of our statements by giving us a trial order. We wish to be understood that we do not sell the "cheapest" trees and plants, but as good as can be grown in the best of soils, and at low prices when quality and services are considered.

## ROOT'S NURSERIES, Inc.

Phone Landisville 104-R-13

### Landscape Service

In this department you are rendered complete service. Not only can we supply you with the plants; but tell you how they should be used to best advantage.

We shall be glad to offer suggestions for arranging the plantings of the new home as well as making additions to existing plantings. If definite plans are required, our landscape department is prepared to serve you in this manner.

Many of our clients prefer to have our men plant the trees and shrubs on their grounds. The cost of this service is nominal, but it is an assurance that the work will be properly done and that the stock will be given the best possible start.

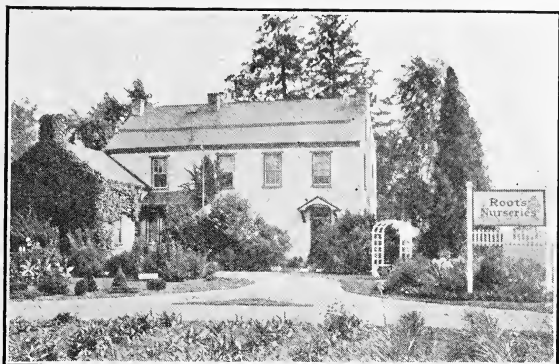
When you have us do the planting of ornamentals, any plants that die during the first season will be resupplied at one-half price, or credited on new selection, provided the original account was paid promptly.

### WHAT YOU WILL FIND IN THIS CATALOGUE

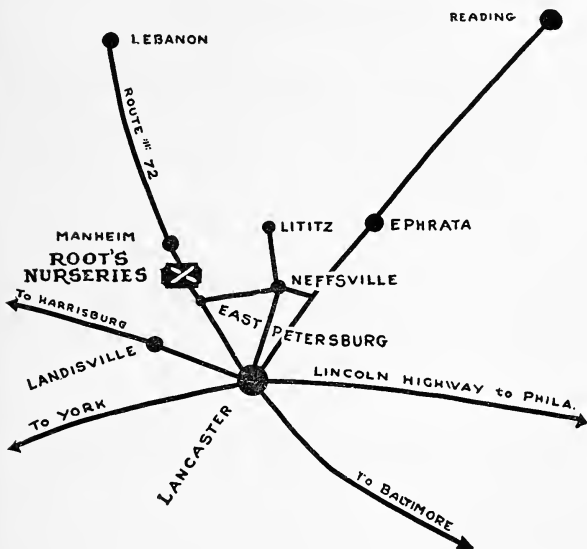
	Pages
Evergreens.....	2 to 7
Broad Leaf Evergreens.....	7 to 9
Ornamental Shrubs.....	10 to 15
Shade and Ornamental Trees.....	16 to 19
Hedge Plants.....	20
Roses.....	21
Hardy Perennial Plants.....	22 to 24
Climbing Vines.....	25
Fruit Trees.....	26 to 31
Small Fruits.....	31
Supplies.....	32 to 34
Instructions to Purchasers.....	35

Complete Index in back of Catalog.

A descriptive booklet on "How To Plant" will be sent with each order.



Above picture shows entrance to our Office and Sales Ground.



TELEPHONE—LANDISVILLE 104-R-13

## HOW TO REACH THE NURSERIES

Our Nurseries are conveniently located on Route 72, or the Lancaster-Lebanon Highway. The newly built concrete road, which is the relocation of the Highway, passes through one of the farms on which we grow Nursery Stock.

Whether you are traveling south from Manheim or north from East Petersburg on this road, you cannot miss our signs placed on the side to the east. After you see one of these signs you will be directed at the next intersection over our private road to the office and sales grounds.

If you are not acquainted with the location of our Nurseries, a little study of the above map will help you to get to us with very little, if any, trouble.



Part of our Large Acreage of Evergreens.

## EVERGREENS

These Evergreens have been transplanted frequently. Each time they have been given ample room for proper growth. Every one is sheared into a symmetrical shape. Freshly dug in the nursery for your individual order. Balled and burlapped.

All of the following varieties may be trimmed and used for Foundation planting, etc., with the exception of the Abies or Firs, the Piceas or Spruces, and the Pinus or Pines. (Except Mugho Pine which is dwarf.) These varieties will grow large and should be used for specimens, screens or for massing where there is plenty of room for them to develop.

Scientific Name Common Name

### ABIES—FIR

**ABIES concolor**, 70'-80' White Fir

Grows quickly and forms symmetrical, beautiful specimen.  
Large, gray-green needles.

Each

18 to 24 in. . . . . \$4.00

2 to 2½ ft. . . . . 5.00

2½ to 3 ft. . . . . 6.00

— **nordmanniana**, 60'-70' Nordmann Fir

Grows slowly when young. Flat leaves are rich, shining green above, silvery white beneath.

18 to 24 in. . . . . 5.00

### JUNIPERUS—JUNIPER

**JUNIPERUS chinensis**, 15'-20' Chinese Juniper

A very hardy, bushy and pyramidal growing variety. Bears small berries of violet brown color when ripe.

3 to 4 ft. . . . . 7.00

— **pyramidalis**, 15'-20' Column Chinese Juniper

Grows rapidly, forming tall narrow column of gray-green foliage. Spire-like effect. Very useful in evergreen planting.

3 to 4 ft. . . . . 7.00

— **pfitzeriana**, 5'-6' Pfitzer Juniper

Broad, bushy habit. Gray-green foliage, giving feathery appearance. A most adaptable hardy evergreen; highly recommended.

12 to 18 in. . . . . 2.00

18 to 24 in. . . . . 3.00

2 to 3 ft. . . . . 5.00

3 to 4 ft. . . . . 8.00

MANHEIM, PENNSYLVANIA.

Scientific Name	Common Name	
— <b>communis aurea</b> , 1'-1½'	Golden Common Juniper	
Low spreading habit. Golden foliage, particularly bright in spring.		
12 to 15 in.....		2.00
15 to 18 in.....		3.00
— — <b>canadensis</b> , 2½'-3'	Canada Juniper	
Forms a low vase-shaped bush. Leaves dark green above, bluish underneath.		
18 to 24 in.....		3.00
— — <b>suecica nana</b> , 3'-3½'	Dwarf Swedish Juniper	
A narrow, compact column.		
12 to 15 in.....		1.50
— <b>excelsa stricta</b> , 4'-5'	Spiny Greek Juniper	
Compact, well-shaped pyramid. Foliage gray-green. Most useful for formal effects.		
10 to 12 in.....		1.50
12 to 15 in.....		2.00
15 to 18 in.....		3.00
18 to 24 in.....		4.00
— <b>horizontalis (sabina prostrata)</b> , 1'-1½'	Creeping Juniper	
Branches trail along ground. Adapted to rock-work and ground covering.		
18 to 24 in.....		3.00
2 to 2½ ft.....		4.00
— — <b>douglasi</b> , 1'-1½'	Waukegan Juniper	
Long branches trailing along ground. Steely-blue foliage. A splendid ground cover; also effective among rock. Distinct purple hue in winter.		
	Each	
15 to 18 in.....		2.50
18 to 24 in.....		3.00
— <b>sabina</b> , 6'-7'	Savin Juniper	
Dense, dark green foliage. Spreading branches, forming irregular vase-shaped bush.		
10 to 12 in.....		1.50
12 to 15 in.....		2.00
15 to 18 in.....		3.00
— <b>virginiana glauca</b> , 15'-20'	Silver Redcedar	
Bluish-gray foliage. Distinct.		
2 to 3 ft.....		6.00
3 to 3½ ft.....		7.00

PICEA—SPRUCE

<b>PICEA excelsa</b> , 80'-100'	Norway Spruce	
Has dark green foliage and grows rapidly. Makes a good windbreak, and also lends itself well to trimmed hedges.		
12 to 18 in.....		1.25
18 to 24 in.....		1.50
2 to 2½ ft.....		2.25
2½ to 3 ft.....		3.25
3 to 4 ft.....		4.00
— <b>pungens glauca</b> , 60'-80'	Blue Colorado Spruce	
Branches in distinct whorls, forming handsome lawn specimen.		
12 to 18 in.....		3.00
18 to 24 in.....		5.00
— — <b>kosteri</b>	Koster Blue Spruce	
12 to 15 in.....		7.50
2 to 2½ ft.....		20.00
3 to 3½ ft.....		25.00

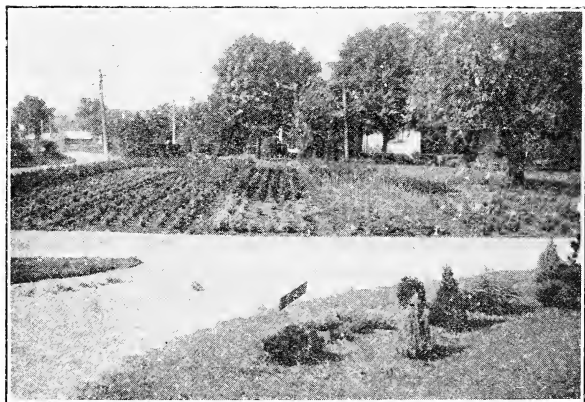
ROOT'S NURSERIES, INC.

PINUS—PINE

Scientific Name	Common Name
<b>PINUS montana mughus</b> , 2½'-3'	Mugho Pine
Forms a round-topped clump. Useful for rock planting and foundation work.	
12 to 18 in.....	3.00
15 to 18 in.....	4.00
— <b>nigra</b> , 60'-70'	Austrian Pine
Rich, dark green. Vigorous, dense grower. Good for background.	
18 to 24 in.....	2.00
2 to 2½ ft.....	3.00
2½ to 3 ft.....	4.00
3 to 4 ft.....	5.00
— <b>strobus</b> , 80'-100'	White Pine
Probably our most adaptable and useful pine. Very picturesque when old.	
18 to 24 in.....	2.00
— <b>sylvestris</b> , 25'-30'	Scotch Pine
A rapid-growing, handsome tree, especially when young. Good for windbreaks.	
18 to 24 in.....	2.00
2 to 2½ ft.....	3.00
2½ to 3 ft.....	4.00
5 to 6 ft.....	8.00

PSEUDOTSUGA—FIR

<b>PSEUDOTSUGA douglasi</b> , 70'-80'	Douglas Fir
Very hardy; dark bluish-green coloring. Prefers well-drained situation.	
12 to 15 in.....	1.50
2 to 2½ ft.....	4.00



Thrifty Evergreens in our three-year beds.

RETINOSPORA—CYPRESS

<b>RETINOSPORA obtusa compacta</b> , 2½'-4'	Football Cypress
Almost spherical in shape. Good green throughout winter. Very useful in foundation or formal work. Each	
15 to 18 in.....	3.00
18 to 24 in.....	4.00
— <b>pisifera</b> , 25'-35'	Sawara Cypress
Quick grower. Loosely pyramidal.	
18 to 24 in.....	2.50
— <b>aurea</b> , 25'-35'	Golden Sawara Cypress
Foliage bright yellow, especially in spring.	
18 to 24 in.....	2.50



## MANHEIM, PENNSYLVANIA.

Scientific Name	Common Name
— — <i>filifera</i> , 15'-20'	Thread Branched Cypress
Has long, stringy, drooping branches and bright green foliage. Graceful and decorative.	
12 to 15 in.....	1.75
15 to 18 in.....	2.50
2 to 2½ ft.....	5.00
— — — <i>aurea</i> , 10'-12'	Golden Thread Branched Cypress
Very bright, conspicuous, golden yellow. Grows more slowly than preceding.	
10 to 12 in.....	2.00
12 to 15 in.....	3.00
— — — <i>plumosa</i> , 25'-35'	Plume Cypress
Forms a dense cone of fine texture. Useful for shearing into formal shapes.	
15 to 18 in.....	1.50
18 to 24 in.....	2.50
2 to 2½ ft.....	3.50
3 to 3½ ft.....	5.00
— — — <i>aurea</i> , 20'-25'	Goldenplume Cypress
Golden form of preceding, and grows more slowly.	
12 to 15 in.....	2.00
15 to 18 in.....	2.50
18 to 24 in.....	3.00
2½ to 3 ft.....	5.00
— — — <i>lutescens</i> , 2½'-3'	Dwarf Yellow Plume Cypress
Forms a low, broad, round-topped bush; bright yellow tipped branchlets.	
9 to 12 in.....	2.00
12 to 15 in.....	2.50
— — — <i>squarrosa veitchi</i> , 25'-30'	Veitch Moss Cypress
Foliage blue-gray, feathery and dense, giving soft woolly appearance. Broad pyramidal outline when young.	
15 to 18 in.....	2.00
18 to 24 in.....	3.00
2 to 2½ ft.....	4.00

### TAXUS—YEW

<b>TAXUS baccata repandens</b> , 18''-24''	Spreading English Yew
Spreading, horizontal branches, dark blue-green leaves. Valuable for low planting.	
15 to 18 in.....	Each 3.25
— <i>cuspidata</i> , 4'-5'	Spreading Japanese Yew
Rich, deep green leaves. Spreading, bushy habit. Valuable in foundation plantings. Exceptionally hardy.	
18 to 24 in.....	5.50
— — <i>capitata</i> , 5'-10'	Upright Japanese Yew
The upright type of <i>Taxus cuspidata</i> .	
18 to 24 in.....	5.50
— — <i>nana (brevifolia)</i> , 2'-3'	Dwarf Japanese Yew
Broad, thick leaves, blackish green. Slow growing and irregular, spreading habit. Exceptionally hardy.	
12 to 15 in.....	3.00
18 to 24 in.....	6.00

### THUJA—ARBORVITAE

<b>THUJA occidentalis</b> , 15'-30'	American Arborvitae
Slender pyramid with broad base. Bronzy winter coloring. Good accent plant or for a hedge.	
12 to 18 in.....	1.00
18 to 24 in.....	1.75
2 to 3 ft.....	2.75
3 to 4 ft.....	3.75

ROOT'S NURSERIES, INC.

Scientific Name	Common Name
— — <b>compacta</b> , 2½'-4'	Parsons Arborvitae
Almost globe-shaped. Bright green. Useful in formal or foundation planting.	
12 to 15 in.....	1.75
15 to 18 in.....	2.25
18 to 24 in.....	3.00
— — <b>globosa</b> , 2½'-3'	Globe Arborvitae
Useful in formal work. Naturally globe-shaped.	
10 to 12 in.....	1.50
12 to 15 in.....	1.75
15 to 18 in.....	2.50
— — <b>hoveyi</b> , 3'-4'	Hovey Arborvitae
Oval in shape, nearly as broad as high. Bright green foliage.	
15 to 18 in.....	2.00
18 to 24 in.....	3.00
— — <b>lutea</b> , 10'-15'	Geo. Peabody Arborvitae
Conspicuous golden yellow form. Columnar outline.	
12 to 15 in.....	1.50
15 to 18 in.....	2.00
18 to 24 in.....	3.00
2 to 2½ ft.....	4.00
— — <b>plicata</b> , 10'-20'	Moss Arborvitae
Rich, deep blue-green foliage. Short, stiff branchlets give pleasing effect in light and shade. Formal pyramid.	
2 to 2½ ft.....	3.00
2½ to 3 ft.....	4.00
3 to 3½ ft.....	5.00
— — <b>pyramidalis</b> , 15'-30'	Pyramidal Arborvitae
Retains bright green coloring throughout winter. Narrow columnar shape; splendid for accents or formal planting.	
12 to 18 in.....	1.00
18 to 24 in.....	1.75
2 to 2½ ft.....	2.75
2½ to 3 ft.....	3.50
3 to 3½ ft.....	4.25
3½ to 4 ft.....	4.75
— — <b>rosenthali</b> , 6'-10'	Rosenthal Arborvitae
Dense, rugged, columnar form. Slow grower.	
12 to 15 in.....	1.75
15 to 18 in.....	2.50
18 to 24 in.....	3.50
— — <b>umbraculifera</b> , 2'-3'	Umbrella Arborvitae
Particularly good low mushroom-shaped form with rich green foliage.	
	Each
12 to 15 in.....	2.00
15 to 18 in.....	2.25
18 to 24 in.....	2.75
— — <b>wareana (Siberiana)</b> , 12'-15'	Ware Arborvitae
Light green, fleshy foliage. Broadly pyramidal, rugged in appearance.	
15 to 18 in.....	1.75
18 to 24 in.....	2.25
2 to 2½ ft.....	3.00
— <b>orientalis aurea nana</b> , 2½'-3'	Berckman's Golden Arborvitae
A gem for dwarf planting; compact, roundish shape; warm golden yellow foliage. Especially good for formal work and edging.	
6 to 8 in.....	1.25
8 to 10 in.....	1.50
10 to 12 in.....	1.75
12 to 15 in.....	2.50

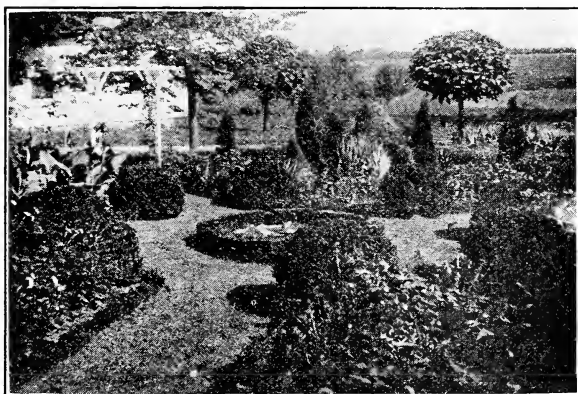
MANHEIM, PENNSYLVANIA.

Scientific Name	Common Name
— — <i>conspicua</i> , 7'-8'	Goldspire Arborvitae
Golden yellow in spring, bronze yellow in winter. Distinctive.	
15 to 18 in.....	2.50
18 to 24 in.....	3.00

**TSUGA—HEMLOCK**

<b>TSUGA canadensis</b> , 75'-90'	Canada Hemlock
Most graceful and adaptable, the spreading horizontal branches making effective shadow effects. Does well in shady or sunny locations.	
18 to 24 in.....	2.50
2 to 2½ ft.....	3.25
2½ to 3 ft.....	4.25
3 to 3½ ft.....	5.00
4 to 5 ft.....	7.00

**BROAD LEAF EVERGREENS**



Garden and Pool at Nurseries.

**ABELIA**

<b>ABELIA grandiflora</b> , 3'-4'	Glossy Abelia
Choice small shrub, with white tinted lilac flowers, produced throughout the entire summer months.	
	Each
18 to 24 in.....	.75

**AZALEA**

<b>AZALEA amoena</b> , 3'-4'	
Conspicuous purple-red flowers, April-May. Leaves turn a rich, bronze-green in winter.	
	Each
8 to 10 in.....	2.00
10 to 12 in.....	2.25
— <i>hinodegiri</i> , 3'-4'	
Larger leaves and looser growth than above; flowers very bright carmine-pink; effective in masses or with Rhododendron.	
10 to 12 in.....	2.50

**BERBERIS—BARBERRY**

<b>BERBERIS ilicifolia</b> , 5'-6'	Holly Barberry
Holly-like leaves, persisting until new foliage appears; flowers yellow. Semi-evergreen.	
15 to 18 in.....	1.25

## ROOT'S NURSERIES, INC.

Scientific Name	Common Name
— <i>julianae</i> , 4'-5'	Wintergreen Barberry
Beautiful hardy variety, of compact growth, with nice glossy green foliage throughout the winter.	
12 to 15 in.....	1.50

### BUXUS—BOXWOOD

<b>BUXUS sempervirens (bush form)</b> , 12'-15'	Boxwood
Useful for formal hedges. Specially desired for planting as individual specimens on lawns or in tubs.	
10 to 12 in.....	1.50
12 to 15 in.....	1.75
15 to 18 in.....	2.00
18 to 24 in.....	3.00
— <i>suffruticosa</i> , 3'-4'	True Dwarf Box
A very low growing variety, used for window boxes and edgings around beds of shrubbery or along walks, etc.	
	Each Per 10 Per 100
3 to 4 in.....	.20 1.50 10.00
4 to 6 in.....	.25 2.00 15.00
6 to 8 in.....	.75 6.50 50.00
8 to 10 in.....	1.00 7.50

### COTONEASTER

<b>COTONEASTER horizontalis</b> , 1'-1½'	Rock Cotoneaster
Small box-like leaves; bright red berries; effective among rocks.	
3-in. pots.....	.80
5-in. pots.....	1.25

### DAPHNE

<b>DAPHNE cneorum</b> , 1'	Rose Daphne
Gray-green foliage, low spreading. Pretty pink flowers in April-May. Delightful fragrance.	
3-in. pots.....	1.00
10 to 12 in.....	2.00

### EUONYMUS

<b>EUONYMUS japonicus</b> , 5'-6'	Evergreen Burningbush
Lustrous, deep green leaves; upright bushy habit; needs winter protection here.	
12 to 18 in.....	1.00
2 to 2½ ft.....	2.50
— <i>radicans vegetus</i> , 3'-4'	Bigleaf Wintercreeper
Bushy, interesting growth. Leaves round, dull green. Bright scarlet fruits, freely produced. Handsome among evergreens. Also called Evergreen Bittersweet.	
12 to 15 in.....	.60
15 to 18 in.....	.75

### ILEX—HOLLY

<b>ILEX crenata</b> , 8'-10'	Japanese Holly
Box-like leaves, rich, deep green, and leathery. Stiff branching, makes a good hedge. Black berries.	
15 to 18 in.....	2.50
18 to 24 in.....	4.00
— <i>glabra</i> , 5'-6'	Inkberry
Shining, dark green leaves, purplish in winter; black berries. Useful for shady spots, also succeeds in sun.	
12 to 15 in.....	1.50
— <i>opaca</i>	American Holly
Does best in moist, partially shaded place. Rather difficult to transplant.	
12 to 18 in.....	3.00

MANHEIM, PENNSYLVANIA.

Scientific Name **KALMIA—LAUREL** Common Name

**KALMIA latifolia**, 5'-7' Mountain Laurel  
 Most effective in June when the clusters of pink flowers open.  
 This stock is nursery grown. Good foliage; like shade.  
 Each Per 10 Per 100  
 12 to 15 in. . . . . 2.50

**LEUCOTHOE**

**LEUCOTHOE catesbaei**, 3'-4' Drooping Leucothoe  
 Attractive white flowers, May. Handsome lustrous leaves,  
 rich autumn coloring. Splendid for under planting in shade.  
 12 to 15 in. . . . . 2.00

**MAHONIA**

**MAHONIA aquifolium**, 4'-5' Oregon Holly Grape  
 Shining green leaves, turn rich scarlet in Autumn; striking  
 in May when yellow flowers appear; blue-black fruits. Best  
 in half shade.  
 12 to 15 in. . . . . 2.00



**PACHYSANDRA—JAPANESE SPURGE**

**PACHYSANDRA terminalis**, 6''-8'' Japanese Spurge  
 One of the best bedding plants for green effect in shady  
 places.  
 4 to 6 in. . . . . .15 1.25 10.00

**RHODODENDRON**

**RHODODENDRON maximum**, 8'-12' Rosebay Rhododendron  
 Beautiful light pink flowers freely produced in May-June.  
 Large handsome foliage, most effective in masses.  
 18 to 24 in. . . . . 3.00  
 2 to 2½ ft. . . . . 3.50

Hybrid Rhododendron

—Hybrid. Beautiful Red or Pink.  
 15 to 18 in. . . . . 5.00  
 18 to 24 in. . . . . 7.00

**VINCA—PERIWINKLE**

**VINCA minor** Periwinkle  
 Very good ground cover.  
 3-in. pots. . . . . .20 1.75

**YUCCA—ADAM'S NEEDLE**

**YUCCA filamentosa**, 2'-3' Adam's Needle  
 Long lance-like leaves. Tall flower spike grows up quickly  
 in June-July. Numerous creamy flowers and general ap-  
 pearance give tropical effect. Useful for massing with either  
 evergreens or shrubbery.  
 3-year plants. . . . . .50 4.00

**ORNAMENTAL SHRUBS**

5 or more of one kind—10¢ less per plant, except Barberry—5¢ less.

Scientific Name Common Name

**ACANTHOPANAX—ARALIA**

**ACANTHOPANAX pentaphyllum**, 7'-8' Five Leaf Aralia  
Graceful, arching habit; splendid for banks; very adaptable; good foliage for smoky exposures. Each  
2 to 3 ft. . . . . \$ .50  
3 to 4 ft. . . . . .60

**AMYGDALUS—FLOWERING ALMOND**

**AMYGDALUS nana**, 5'-6' Flowering Almond  
Flowers double, May; very showy; there are Pink and White varieties.  
18 to 24 in. . . . . .50  
2 to 3 ft. . . . . .60

**AZALEA**

**AZALEA kaempferi**, 4'-5' Torch Azalea  
Warm brick-red flowers, May.  
12 to 15 in. . . . . 2.50  
—**mollis**, 4'-6' Chinese Azalea  
Large showy flowers in shades of orange and red. May-June. Large hairy leaves. Likes sun.  
12 to 15 in. . . . . 2.00  
15 to 18 in. . . . . 2.50  
—**yodogawa**, 3'-4' Yodogawa Azalea.  
Double pinkish-lavender flowers, May. Very hardy and of exceptional merit.  
12 to 15 in. . . . . 2.00  
15 to 18 in. . . . . 2.50

**BERBERIS—BARBERRY**

**BERBERIS ilicifolia**, 5'-6' Holly Barberry  
Holly-like leaves, persisting until new foliage appears; flowers yellow. Semi-evergreen.  
15 to 18 in. . . . . 1.50  
—**thunbergii**, 4'-5' Japanese Barberry  
A splendid low hedge plant, or for massing; brilliant autumn coloring; scarlet berries.  
12 to 15 in. . . . . .20  
15 to 18 in. . . . . .25  
18 to 24 in. . . . . .30  
—**Atropurpurea** New Red-Leaved Japanese Barberry  
12-15 in. . . . . .50

**BUDDLEIA—BUTTERFLY BUSH**

**BUDDLEIA davidi magnifica**, 5'-6' Butterfly Bush  
Very effective with gray-green foliage and deep lilac flowers; likes sun. June, September.  
2 to 3 ft. . . . . .40  
3 to 4 ft. . . . . .50

**CALYCANTHUS—SWEETSHRUB**

**CALYCANTHUS floridus**, 4'-5' Sweetshrub  
Chocolate colored flowers, fragrant.  
18 to 24 in. . . . . .60  
2 to 3 ft. . . . . .75

**CEPHALANTHUS—BUTTONBUSH**

**CEPHALANTHUS occidentalis**, 5'-6' Buttonbush  
Round heads of creamy white flowers, July-Sept. Good foliage; likes moisture.  
18 to 24 in. . . . . .50  
2 to 3 ft. . . . . .75



ROOT'S NURSERIES, INC.

Scientific Name Common Name

**EUONYMUS**

**EUONYMUS alatus**, 9'-10' Winged Euonymus  
 Interesting corky bark, warm crimson autumn coloring.  
 Makes fine specimen shrub. Each

18 to 24 in. . . . . .75  
 2 to 3 ft. . . . . .1.00

**EXOCHORDA—PEARLBUSH**

**EXOCHORDA grandiflora**, 6'-9' Pearlbush  
 Dazzling white flowers, May. Is improved by pruning.

2 to 3 ft. . . . . .60  
 3 to 4 ft. . . . . .75

**FORSYTHIA—GOLDEN BELL**

**FORSYTHIA suspensa fortunei**, 7'-8' Fortune Golden Bell  
 Good habit, arching branches, vigorous grower.

2 to 3 ft. . . . . .40  
 3 to 4 ft. . . . . .50

— **spectabilis**, 6'-8' Showy Border Golden Bell  
 Most profuse of all, with large rich golden yellow flowers.

2 to 3 ft. . . . . .50

**HIBISCUS—ROSE OF SHARON**

**HIBISCUS syriacus** (Althea), 10'-12' Rose of Sharon  
 Rather formal in outline, flowering in August and September. Pink, purple, red, and white, single and double.

2 to 3 ft. . . . . .50

**HYDRANGEA**

**HYDRANGEA arborescens grandiflora**, 4'-5' Snowhill Hydrangea  
 Large double white flower panicles, very showy. August.

18 to 24 in. . . . . .50  
 2 to 3 ft. . . . . .60

— **paniculata grandiflora**, 8'-9' Peegee Hydrangea  
 Very showy, blooming in Sept.

18 to 24 in. . . . . .50  
 2 to 3 ft. . . . . .75

— — **standard** Tree Hydrangea  
 3 to 4 ft. . . . . .1.25

**HYPERICUM—GOLDFLOWER**

**HYPERICUM moserianum**, 2' Goldflower  
 Large waxy yellow flowers. July-August. Dainty, half-herbaceous, splendid mass plant.

18 to 24 in. . . . . .75

**LIGUSTRUM—PRIVET**

**LIGUSTRUM ovalifolium aureum**, 8'-9' Golden Privet

12 to 15 in. . . . . .50  
 15 to 18 in. . . . . .60

**LONICERA—HONEYSUCKLE**

**LONICERA fragrantissima**, 6'-8' Winter Honeysuckle  
 Fragrant white flower, April-May. Half-evergreen.

2 to 3 ft. . . . . .50

— **tartarica**, Pink, Red and White, 9'-10' Tartarian Honeysuckle  
 Flowers and fruit freely produced. A most adaptable shrub.

2 to 3 ft. . . . . .50  
 3 to 4 ft. . . . . .60



## MANHEIM, PENNSYLVANIA.

Scientific Name	Common Name
<b>PHILADELPHUS—MOCKORANGE</b>	
<b>PHILADELPHUS coronarius</b> , 9'-10'	Sweet Mockorange
White fragrant flowers profusely borne in May-June.	
	Each
2 to 3 ft.....	.50
3 to 4 ft.....	.60
— <b>aureus</b> , 4'-5'	Golden Leaf Mockorange
Dwarf, compact form. Yellow leaves.	
15 to 18 in.....	.50
18 to 24 in.....	.60
— <b>virginialis</b> , 7'-8'	Virginal Mockorange
Beautiful semi-double flowers produced intermittently all summer.	
2 to 3 ft.....	1.00
<b>PHYSOCARPUS—NINEBARK</b>	
<b>PHYSOCARPUS opulifolius</b> , 9'-10'	Ninebark
Creamy white, June. Vigorous. Good for shade.	
2 to 3 ft.....	.50
<b>RHODOTYPOS—JETBEAD</b>	
<b>RHODOTYPOS kerrioides</b> , 4'-5'	Jetbead
Fresh green foliage, pure white flowers, May-June. Shining black bead-like berries all winter. Also called Jetbead.	
2 to 3 ft.....	.50
<b>RHUS—SUMAC</b>	
<b>RHUS canadensis (aromatica)</b> , 4'-5'	Fragrant Sumac
Clusters of small yellow flowers, April-May. Most attractive in June when covered with coral-red fruits. Withstands drought. Aromatic foliage.	
2 to 3 ft.....	1.00
— <b>cotinus</b> , 10'-12'	Smoke Tree
Also called Purple Fringe.	
2 to 3 ft.....	1.50
<b>SAMBUCUS—ELDER</b>	
<b>SAMBUCUS canadensis aurea</b> , 10'-12'	Golden American Elder
Has conspicuous yellow foliage.	
2 to 3 ft.....	.50
<b>SPIRAEA—SPIREA</b>	
<b>SPIRAEA bumalda</b> , anthony waterer, 3'	Anthony Waterer Spirea
Deep rose pink; very free flowering all summer.	
12 to 15 in.....	.30
15 to 18 in.....	.40
18 to 24 in.....	.50
— <b>prunifolia</b> , 7'-8'	Bridalwreath
White, May. Free flowering; handsome dark green shining foliage, turning orange in autumn.	
2 to 3 ft.....	.50
— <b>thunbergi</b> , 4'-5'	Thunberg Spirea
Slender, arching branches clothed with pure-white flowers, April-May. Small, feathery, light-green leaves.	
18 to 24 in.....	.50
2 to 2½ ft.....	.60
— <b>van houttei</b> , 8'-9'	Vanhoutte Spirea
White, May-June. Graceful habit. Extremely free flowering and very adaptable.	
18 to 24 in.....	.30
2 to 3 ft.....	.40
3 to 4 ft.....	.50

ROOT'S NURSERIES, INC.

Scientific Name Common Name

**SYMPHORICARPOS—SNOWBERRY**

<b>SYMPHORICARPOS racemosus, 5'-6'</b>	Snowberry
Conspicuous, white berries, attractive foliage. Most adaptable, but best in half shady moist locations.	
	Each
2 to 3 ft.....	.40
3 to 4 ft.....	.50
<b>—vulgaris, 4'-5'</b>	Coralberry
Coral red berries persisting throughout winter. Good for shade, and bank planting.	
2 to 3 ft.....	.40
3 to 4 ft.....	.50

**SYRINGA—Lilac**

**FRENCH LILACS—NAMED VARIETIES**

These are all grown from cuttings and are on their own roots, which is the best way Lilacs can be grown, as they will not sucker. These named Lilacs generally grow from 6'-12' in height, depending on the variety and locality.

- Charles the Tenth, reddish purple single
- Ludwig Spaeth, single reddish purple
- Marie Le Graye, single white
- Michel Buchner, double lilac
- Mme. Lemoine, double white
- President Grevy, double blue
- Rubra de Marly, single light blue
- Wm. Robinson, double violet pink

2 to 3 ft.....	.90
3 to 4 ft.....	1.25

**TAMARIX**

<b>TAMARIX africana, 12'-14'</b>	African Tamarix
Pink, April-May. Has feathery, gray-green foliage. Very effective near water.	
3 to 4 ft.....	.50

**VIBURNUM**

<b>VIBURNUM americanum, 8'-9'</b>	American Cranberrybush
Bright scarlet berries in large bunches, persisting all winter.	
18 to 24 in.....	.60
2 to 3 ft.....	.75
<b>—cassinoides, 5'-6'</b>	Withe-Rod
White, June-July. Berries pink, changing to dark blue. Rich autumn coloring; splendid for massing and near water.	
2 to 3 ft.....	.75
<b>—dentatum, 10'-12'</b>	Arrow-Wood
White, May-June. Berries blue-black, autumn coloring purple and red; thrives in wet soil.	
2 to 3 ft.....	.60
<b>—opulus, 9'-10'</b>	European Cranberrybush
Berries resemble the cranberry very much, cling to branches all winter.	
18 to 24 in.....	.60
2 to 3 ft.....	.75

## MANHEIM, PENNSYLVANIA.

Scientific Name	Common Name
— <i>tomentosum plicatum</i> , 7'-8'	Japanese Snowball
Showy white flowers in balls, June. purple autumn coloring.	Handsome foliage with
	Each
18 to 24 in.....	.75
2 to 2½ ft.....	.90

### WEIGELA

<b>WEIGELA amabilis</b> , 7'-8'	Rose Weigela
Light pink.	
2 to 3 ft.....	.50
3 to 4 ft.....	.60
— <i>candida</i> , 7'-8'	White Weigela
Large, pure white flowers.	
2 to 3 ft.....	.50
— <i>Eva Rathke</i> , 4'-5'	Red Flowered Weigela
Carmine, June-August. Most floriferous.	
18 to 24 in.....	.50
2 to 2½ ft.....	.60
— <i>nana variegata</i> , 4'-5'	Variegated Leaf Weigela
Pale pink flower; variegated leaves; dwarf, compact growth.	
18 to 24 in.....	.40
2 to 2½ ft.....	.50
— <i>rosea</i> , 7'-8'	Pink Weigela
Showy, pink flowers freely produced. June. Vigorous grower.	
2 to 3 ft.....	.50
3 to 4 ft.....	.60



Part of Our Landscape Service, Moving a Large Boxwood.

### HOW TO PLANT THEM SO THEY WILL LIVE

- Get your plants at once.
- Open them immediately.
- Keep them where they cannot dry out until planted.
- Prepare the soil thoroughly before planting.
- Do not allow the roots of the plants to dry out before planting.
- Pack the soil firmly around the roots when planting.
- Mulch after planting.
- Keep the soil moist until after growth starts.
- Give shade and support if necessary.

## SHADE AND ORNAMENTAL TREES

Scientific Name Common Name

### ACER—MAPLE

<b>ACER dasycarpum, 60'-80'</b>	Silver Maple
Quick growing, graceful shade tree; leaves silvery underneath.	
	Each Per 10
8 to 10 ft.....	1.75 15.00
10 to 12 ft.....	3.00 27.50
12 to 14 ft.....	5.00
<b>—wieri, 60'-80'</b>	Wier Cutleaf Maple
Graceful, drooping form; very desirable.	
8 to 10 ft.....	2.50
10 to 12 ft.....	4.00
<b>—platanoides, 50'-75'</b>	Norway Maple
The most popular street tree; retains its green leaves until late autumn.	
6 to 8 ft.....	2.00
8 to 10 ft.....	3.00
10 to 12 ft.....	4.00
15 to 20 ft.....	15.00
<b>—schwedleri, 40'-60'</b>	Schwedler Purple Leaf Maple
Probably the best large growing purple leaf tree. Useful as lawn specimen.	
6 to 8 ft.....	4.00
<b>—saccharum, 50'-75'</b>	Sugar Maple
Similar to Norway Maple, taller, growing straight, spreading, symmetrical.	
6 to 8 ft.....	2.00
8 to 10 ft.....	3.00
10 to 12 ft.....	4.00
<b>—palmatum atropurpureum, 6'-8'</b>	Bloodleaf Japanese Maple
A good dwarf tree with rich purple-red leaves all summer. Best in sun.	
3 inch pots, 1 yr. grafts.....	2.75
12 to 15 in.....	5.00
<b>— — —dissectum, 4'-6'</b>	Purple Cutleaf Japanese Maple
More dwarf than the above with finely cut purple-red leaves, giving the plant a very graceful appearance. Good for rock work.	
3 inch pots, 1 yr. grafts.....	3.00
12 to 15 in.....	6.00
<b>— — —aureum, 6'-8'</b>	Golden Leaf Japanese Maple
Dwarf golden foliage tree. Desirable for color effect in planting.	
3 inch pots, 1 yr. grafts.....	3.00
12 to 15 in.....	6.00

### BETULA—BIRCH

<b>BETULA alba, 30'-50'</b>	European White Birch
Known by its white bark.	
4 to 5 ft.....	1.75 15.00
5 to 6 ft.....	2.00 18.00
6 to 8 ft.....	2.50
<b>— — —laciniata, 30'-40'</b>	Cutleaf Weeping Birch
Graceful tree for lawn planting. Very graceful.	
3 to 4 ft.....	2.25 20.00
4 to 5 ft.....	2.75 25.00
5 to 6 ft.....	3.50
6 to 8 ft.....	4.00
8 to 10 ft.....	5.00

## MANHEIM, PENNSYLVANIA.

### CATALPA

Scientific Name	Common Name	
<b>CATALPA bungei</b> , 10'-15'	Umbrella Catalpa	
Useful in formal planting.		
	Each	Per 10
Light Heads 5 to 6 ft.....	1.75	15.00
Medium Heads 5 to 6 ft.....	2.50	22.50
Large Heads 5 to 6 ft.....	3.50	32.50
— <b>speciosa</b> , 30'-35'	Western Catalpa	
6 to 8 ft.....	1.25	10.00

### CERCIS—REDBUD

<b>CERCIS canadensis</b> , 12'-15'	American Redbud	
Rosy-Pink; April; very effective when planted with Dogwood; good foliage. Also called Judas Tree.		
2 to 3 ft.....	.80	7.50
3 to 4 ft.....	1.10	10.00



One of Our Landscape Plantings.

### CORNUS—DOGWOOD

<b>CORNUS florida</b> , 15'-25'	White Flowering Dogwood	
Among the best of the spring flowering small trees.		
3 to 4 ft.....	1.00	
4 to 5 ft.....	2.00	
— <b>kousa</b> , 16'-18'	Kousa Dogwood	
White flowers in June. Conspicuous cherry-like scarlet fruits, attractive to birds.		
18 to 24 in.....	1.25	10.00
2 to 3 ft.....	1.50	12.00
— <b>rubra</b> , 15'-20'	Red Flowering Dogwood	
The pink flowers are more persistent than the white.		
18 to 24 in.....	3.00	
2 to 3 ft.....	4.00	

### CRATAEGUS—HAWTHORN

<b>CRATAEGUS oxycantha splendens</b> , 12'-15'	Pauls Scarlet Hawthorn	
Double scarlet flowers.		
2 to 3 ft.....	2.00	
3 to 4 ft.....	2.50	
4 to 5 ft.....	3.00	

## ROOT'S NURSERIES, INC.

Scientific Name	Common Name		
<b>FAGUS—BEECH</b>			
<b>FAGUS americana</b> (ferruginea), 75'-100'	American Beech		
One of our best native trees; distinctive silver-gray bark.			
		Each	Per 10
3 to 4 ft.....		3.00	
<b>FRAXINUS—ASH</b>			
<b>FRAXINUS americana</b> , 70'-80'	White Ash		
Fairly rapid grower; assumes pleasing golden tones in autumn; good in moist soils.			
8 to 10 ft.....		2.00	18.00
10 to 12 ft.....		2.50	22.00
<b>GINKGO—MAIDENHAIR TREE</b>			
<b>GINKGO biloba</b> (Salisburia), 50'-75'	Maidenhair Tree		
Picturesque, interesting, quite distinct leaves shaped like maidenhair fern; immune from insects.			
8 to 10 ft.....		3.00	
10 to 12 ft.....		4.00	
<b>LIRIODENDRON—TULIPTREE</b>			
<b>LIRIODENDRON tulipifera</b> , 60'-80'	Tuliptree		
A quick grower; the yellow tulip-like flowers are produced in June.			
6 to 8 ft.....		1.50	
8 to 10 ft.....		2.00	
<b>MAGNOLIA</b>			
<b>MAGNOLIA soulangeana</b> , 15'-18'	Saucer Magnolia		
Large purplish-pink and white flowers in May. Best transplanted in early spring.			
5" pots.....		3.00	
<b>MALUS—CRAB</b>			
<b>MALUS ioensis plena</b> , 10'-15'	Bechtel Crab		
Large double pure pink flowers with noticeable fragrance; vigorous grower.			
2 to 3 ft.....		1.00	
4 to 5 ft.....		1.50	
<b>MORUS—MULBERRY</b>			
<b>MORUS alba pendula</b> , 8'-10'	Tea's Weeping Mulberry		
The most popular small "weeping" tree.			
Medium grade.....		3.00	
Large heads.....		4.00	
<b>PLATANUS—PLANE TREE</b>			
<b>PLATANUS orientalis</b> , 70'-80'	European Plane Tree		
A good tree for park and street use; grows rather quickly; withstands smoky city conditions.			
6 to 8 ft.....		2.00	
8 to 10 ft.....		3.00	
10 to 12 ft.....		4.00	
<b>POPULUS—POPLAR</b>			
<b>POPULUS nigra italica</b> , 60'-80'	Lombardy Poplar		
Tall spire-like character; valued for landscape work and screens.			
8 to 10 ft.....		1.25	10.00
10 to 12 ft.....		1.75	15.00
<b>PRUNUS—PLUM FLW. CHERRY</b>			
<b>PRUNUS cerasifera pissardi</b> , 12'-15'	Purpleleaf Plum		
Valued chiefly because of purplish foliage; should be pruned every year for best color effect.			
3 to 4 ft.....		1.00	
4 to 5 ft.....		1.50	
5 to 6 ft.....		2.00	

**MANHEIM, PENNSYLVANIA.**

---

Scientific Name	Common Name	
— <i>serrulata</i> Kwanzan	Jap. Flw. Cherry	
Double, dark pink. Late.	Each	Per 10
4 to 5 ft.....		3.00
— <i>Beni-Higan</i>	Jap. Flw. Cherry	
Large pink flowers.		
4 to 5 ft.....		3.00
— <i>subhirtella pendula</i> , 12'-15'	Weeping Japan Cherry	
A most beautiful and graceful tree, covered with pink blossoms in early spring.		
3 to 4 ft. stems, 1 yr. heads.....		4.00

**QUERCUS—OAK**

<b>QUERCUS palustris</b> , 75'-90'	Pin Oak	
Takes most kindly to cultivation; prefers moist soil, but is very adaptable. Particularly fitting as a street tree; good autumn effects.		
8 to 10 ft.....		4.00
10 to 12 ft.....		6.00
— <i>rubra</i> , 75'-90'	Red Oak	
Comparatively quick growth; rich autumn coloring in greens and reds.		
8 to 10 ft.....		4.00
9 to 11 ft.....		6.00

**SALIX—WILLOW**

<b>SALIX babylonica</b> , 50'-60'	Babylon Weeping Willow	
Particularly appropriate for waterside planting with its long pendulous branches.		
6 to 8 ft.....		1.50
8 to 10 ft.....		2.00
— <i>caprea</i> (bush form), 15'-20'	Pussy Willow	
Very desirable for spring effects. Will do well on dry as well as wet places.		
4 to 5 ft.....		.75

**SORBUS—ASH**

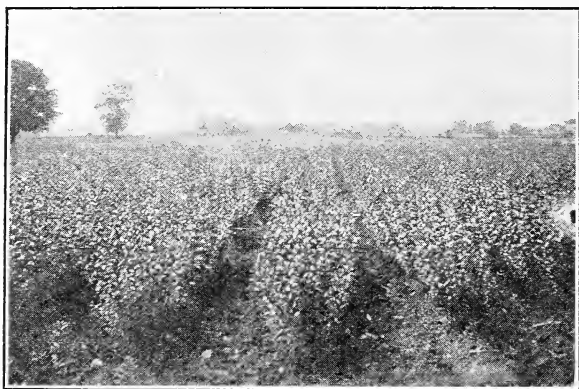
<b>SORBUS aucuparia</b> , 25'-30'	European Mountain Ash	
A valuable tree on a small lawn; the scarlet berries are quite striking.		
5 to 6 ft.....		2.00

**TILIA—LINDEN**

<b>TILIA americana</b> , 75'-90'	American Linden	
Grows rather quickly, forming an open head. Has fragrant yellow flowers.		
8 to 10 ft.....		3.50
10 to 12 ft.....		4.00
— <i>platyphyllos</i> , 60'-75'	Bigleaf European Linden	
8 to 10 ft.....		3.50
10 to 12 ft.....		4.50
— <i>vulgaris</i> , 60'-70'	European Small Leaf Linden	
In late June the fragrant flowers are noticeable; grows symmetrical and compact.		
8 to 10 ft.....		4.00
10 to 12 ft.....		5.00

**ULMUS—ELM**

<b>ULMUS americana</b> , 80'-100'	American Elm	
Stateness and dignity are here exemplified. Fairly rapid in growth, this typical American tree soon assumes regal proportions and commands respect of all who look upon it.		
6 to 8 ft.....		1.75 15.00
8 to 10 ft.....		2.50 20.00
10 to 12 ft.....		4.00
— <i>moline</i> , 80'-100'	Moline Elm	
A remarkable new variety of remarkably strong growth and large handsome deep grain foliage. Very desirable.		
8 to 10 ft.....		3.00



Some fine two-year old California Privet.

## HEDGE PLANTS

Scientific Name Common Name

### BERBERIS—BARBERRY

**BERBERIS thunbergii**, 4'-5' Japanese Barberry  
 A splendid low hedge plant, or for massing; brilliant autumn coloring; scarlet berries.

	Per 10	Per 100
12 to 15 in.....	\$1.50	\$10.00
15 to 18 in.....	2.00	15.00
18 to 24 in.....	2.50	20.00

### LIGUSTRUM—PRIVET

**LIGUSTRUM ovalifolium**, 9'-10'. California Privet  
**California Privet.** The most popular hedge plant on account of its beauty, adaptability, and low cost. Did you ever realize what an admirable and luxuriant privet hedge you could secure at a very small cost, and how much it would add to the value of your property? To find the exact number wanted, measure the space where it is to be planted and multiply the number of feet by two.

They should be planted 3 inches deeper than they stood in the nursery row. Set the plants 6 inches apart in the row. Dip the roots in water before planting. After plants are set, cut them down to 4 inches from the surface of the ground. This will cause a thick new growth to start and is very essential for a beautiful hedge.

When cutting, each time allow about 1 to 2 inches above where it was cut before until you get the height desired.

	Per 10	Per 100	Per 1000
6" to 12 in., 1 yr.....	\$ .20	\$1.50	\$10.00
12 to 18 in., 1 yr.....	.25	2.00	15.00
18 to 24 in., 1 yr.....	.30	2.50	20.00

Two-year—cut back and well branched. Will give immediate effect.

12 to 18 in., 2 yr.....	.35	3.00	25.00
18 to 24 in., 2 yr.....	.40	3.50	30.00
2 to 3 ft., 2 yr.....	.45	4.00	35.00

Many of our Ornamental Shrubs and Evergreens make splendid Hedges, Screens and Windbreaks.



## ROSES

The list we offer is not a large one but contains the "cream" of the ones that do well here. These roses are 2 year No. 1, potted. They will bloom this year.

Scientific Name Common Name

### Everblooming Roses

#### Hybrid Teas and Teas

**Gruss an Teplitz.** Everblooming scarlet crimson. A strong grower. The best everbloomer of its color.

Each Per 10  
1.00 8.50

**Jonkheer J. L. Mock.** A new pink Rose from Holland; vigorous in growth and hardy, with long smooth canes and great freedom of bloom. Flowers are round and full bright pink faced carmine.

1.00 8.50

**Ophelia.** Salmon-flesh, shaded rose. A Rose that is admired by everyone.

1.00 8.50

**Radiance.** Lovely light silvery pink flowers, with beautiful suffusion of deeper color. It may be relied upon to produce flowers under all conditions.

1.00 8.50

**Red Radiance.** A deep red, with great globular flowers. Blooms until frost.

1.00 8.50

**Souv. de Claudius Pernet.** Color a decided and unstained sunflower yellow, even deeper toned at center. Will not fade. Flower form is large and full, the buds long and pointed. Vigorous grower.

1.00 8.50

**Frau Karl Druschki.** Constant bloomer. Best white.

1.00 8.50

### Climbers and Ramblers

**Climbing American Beauty.** Plant a vigorous grower. Color red, same as the famous old American Beauty. Wonderfully free bloomer.

.80 7.50

**Dorothy Perkins.** Rambler. In June and July this one produces immense trusses of delightful pink flowers. Hardest of all roses.

.80 7.50

**Dr. W. Van Fleet.** This is one of the most magnificent and showy roses of any class. Color a delicate shade of flesh pink on the outer surface, deepening to rosy flesh in the center.

.80 7.50

**Paul's Scarlet Climber. Midseason.** The most brilliant, vivid scarlet of any Rose grown. The color is intense and the flowers come in beautiful open cluster-heads with from 5 to 15 blooms, on very long strong stems.

.80 7.50

**ROSA hugonis, 5'-6'** Golden Rose of China  
A very desirable border rose with very attractive yellow flowers. Two year extra.

1.00

## HARDY PERENNIAL PLANTS

Scientific Name	Common Name	
	Each	Per 10
<b>ANEMONE.</b> Pink or White	.30	
<b>ASTILBE Japonica Hybrids (Spirea)</b>		
America. Deep pink; excellent forcing variety.		
Brunhilde. Creamy white, shaded lilac.		
Philadelphia.		
Queen Alexandra. Light pink; good for forcing.		
2-year.....	\$ .50	\$4.00
<b>CAMPANULA carpatica.</b>		
Carpathian Bellflower		
A pretty species growing in compact tufts, not exceeding 8 inches high; flowers clear blue, held erect on wiry stems. It begins blooming in June, continuing until October. As an edging for a hardy border or for the rockery it is unsurpassed.		
1-year.....	.25	2.00

### CANNAS

#### How to Make a Round Canna Bed

Plant 1 Canna in the center, 6 in the first circle, 12 in the second circle, then 18, 24, etc., according to the size of the bed, with the circles 18 inches apart, and the plants in the circle 18 inches apart. A bed 4 feet in diameter takes 7 Cannas; a 7-foot bed, 19 Cannas; a 10-foot bed, 37 Cannas; a 16-foot bed, 91 Cannas.

**King Humbert.** 4 ft. Flower orange-scarlet, streaked crimson. Foliage ebony. Its unusually handsome foliage, which is equaled by no other variety, makes this Canna as popular as is The President for its gorgeous flowers.

**Salmon Queen.** 5 ft. Very good bloomer, salmon color, taller.

**The President.** 4 ft. Far and away superior to any other scarlet Canna ever produced. This beauty, with its massive heads of glowing scarlet, is in a class by itself for brilliant effect and is used by practically every park superintendent who needs a vivid red in his plantings.

	.15	1.25
<b>CHRYSANTHEMUM Maximum, 2'</b>		
Shasta Daisy		
White, July-Sept.	.25	2.00

<b>DELPHINIUM belladonna, 2½'</b>		Larkspur
Light blue, June-Oct.		

They are our best blue cut flower, are perfectly hardy, and established plants produce a number of spikes, giving three crops during the season.

— <b>bellamosum, 2'.</b> June-Oct.		Larkspur
A dark blue of the type of Belladonna with the color of the old Formosum variety, but not liable to mildew like the latter and of stronger growth.		

1-year.....	.25	2.00
-------------	-----	------

<b>DAHLIAS.</b> Fine collection of named varieties..	.35	2.50
Mixed varieties.....	.15	1.00

<b>DIANTHUS barbatus, 1½'</b>		Sweet William
Double flower, May-June.		

	.20	1.50
--	-----	------

— <b>Gertrude, 1', red.</b>		
	.25	2.00

— <b>Her Majesty, 10''.</b> Very large purest double white.		
	.50	4.00

— <b>Plumarius, 1'</b>		Grass Pink
Pink, purplish and white, fragrant flowers and on long spikes. For border or rock garden.		

	.20	1.50
--	-----	------

**MANHEIM, PENNSYLVANIA.**

Scientific Name	Common Name	Each	Per 10
<b>DICENTRA spectabilis</b> , 2'	Bleeding Heart		
Pink and white, May-June.		.80	7.50
<b>DICTAMNUS albus</b> , 2½'	Gas Plant		
The Dictamnus is one of the most satisfactory hardy plants in cultivation, both on account of splendid flowers and its rich, durable foliage.		.75	6.00
— — <b>ruber</b> , 2½'	Rosy purple, June-July.	.75	6.00
<b>DIGITALIS purpurea gloxiniaeflora</b> , 3'-4'	Gloxinia Foxglove		
		.20	1.50
<b>GYPSOPHYLLA paniculata</b> , 2'	Baby's Breath		
— <b>Paniculata compacta</b> . Compact white; fine for cutting and drying.		.20	1.50
<b>HIBISCUS (Mallow)</b> , 4'	Mallow Marvels		
A robust type of upright habit, producing an abundance of flowers of enormous size in all the richest shades of crimson, pink and white.		.35	2.50
<b>IRIS germanica</b> , 1½'-3'	German Iris		
Assorted colors . . . . .		.25	2.00
— <b>Kaempferi</b>	Japanese Iris		
Assorted colors . . . . .		.35	2.50
<b>KNIPHOFIA pfitzeri (Tritoma)</b> , 2'	Bonfire Torchlily		
Rush-like foliage supports smooth thick flower stalks a yard long, with a single fiery cone at the top. Brilliant scarlet, the opened lower petals rimmed with orange. July-September. Must be carefully protected or else carried dormant in dry sand during winter.		.30	2.50
<b>LESPEDEZA formosa</b> , 3'-4'	Purple Bush Clover		
Rosy purple flower conspicuous in Sept. Attractive shrub.		.75	6.00
<b>LILIUM</b>	Madonna Lily		
— <b>Candidum</b> . This is the old-fashioned garden Lily, and one of the most beautiful. Ready in September only.		.25	2.00
<b>LYCHNIS Chalcedonica</b> , 3'	Maltese Cross		
Heads of vivid scarlet flowers, blooming a long time. One of the brightest plants in the hardy border.		.25	2.00
<b>MYOSOTIS scorpioides</b>	True Forget-Me-Not		
		.25	2.00
<b>PAEONIA</b>	Peony		
— <b>Edulis Superba</b> . Soft pink, early.			
3 to 5 eyes . . . . .		.50	4.00
— <b>Felix Crousse</b> . Best brilliant red, midseason.			
3 to 5 eyes . . . . .		.75	7.00
— <b>Festiva Maxima</b> . The ideal white, carmine tipped.			
3 to 5 eyes . . . . .		.50	4.00
— <b>Francis Ortegat</b> . Semi-double, purplish crimson.			
3 to 5 eyes . . . . .		.75	7.00
— <b>Officinalis Rubra fl. pl.</b> Very early double red.			
3 to 5 eyes . . . . .		.75	7.00
<b>PHLOX Decussata</b>	Hardy Phlox		
Perennial Phloxes succeed in almost any soil enriched with manure in Spring, and in hot weather an occasional soaking of water. If the first spikes of bloom are removed as soon as over, they will produce a second supply of flowers, continuing the display until late in Autumn.			
— — <b>Beacon</b> . Brilliant cherry-red.		.25	2.00

ROOT'S NURSERIES, INC.

Scientific Name	Common Name	
	Each	Per 10
— — <b>Elizabeth Campbell.</b> Bright salmon-pink, with lighter shadings and dark red eye; one of the handsomest and most attractive.	.35	3.00
— — <b>Homeland.</b> (Deutschland.) Large trusses of brilliant dark orange-red flowers.	.35	3.00
— — <b>Jules Sandeau.</b> Large, fine, very free-flowering, pure pink.	.25	2.00
— — <b>Mrs. Milly van Hoboken.</b> New. Soft pink, without eye. Large flowers on long erect spike.	.25	2.00
— — <b>Thor.</b> A beautiful lively shade of deep salmon-pink, suffused and overlaid with a scarlet glow; has aniline-red eye.	.25	2.00



**PHLOX Suffruticosa**

— — **Miss Lingard.** The best Phlox in cultivation. It produces immense heads of beautiful white flowers in June and blooms again in September and October.

.25 2.00

**PHLOX Subulata**

Moss Phlox

— — **Alba.** Pure white.

.25 2.00

— — **Lilacina.** Light lilac.

.25 2.00

**PHYSALIS Franchetti, 2' (Chinese Lantern Plant)**

Orange Red Seed Pods, Oct.

.25

**PLATYCODON**

Balloon Flower

— — **Grandiflora.** Blue. 18 inches. June to October. Large, showy, deep blue flowers. Good for rock garden and border.

.25 2.00

**ORNAMENTAL CLIMBING VINES**

Scientific Name	Common Name
<b>AMPELOPSIS quinquefolia</b> , 30'-50'	Virginia Creeper
Valuable for rich, fiery autumn coloring.	Quick grower.
	Each
2 to 3 ft.....	.35
— <b>tricuspidata (veitchi)</b> , 40'-50'	Boston Ivy
Brilliant autumn coloring, blue berries, turning black; closely self clinging. Also called Japanese Creeper.	
18 to 24 in.....	.60
<b>ARISTOLOCHIA siphon</b>	Dutchman's Pipe
Flowers are purple, of quaint pipe shape. Large heart-shaped leaves. Good for porches.	
2-year.....	1.00
<b>BIGNONIA radicans</b> , 20'-30'	Trumpet Vine
Showy trumpet-shaped flowers, scarlet and orange, July.	
3-year, 2 to 3 ft.....	.50
<b>CELASTRUS scandens</b> , 20'-25'	American Bittersweet
Most adaptable vine with orange and red berries that retain color when cut and dried.	
2-year, 2 to 3 ft.....	.50
<b>CLEMATIS</b> , Large Flowered Varieties, 10'-15'	
Grand for pillars and trellises, pegged down for bedding and for running over rockwork, old trees and stumps. They delight in rich soil, and sun.	
— <b>Henryi</b> . Creamy white.	
— <b>Jackmani</b> . Velvety, violet-purple.	
— <b>Mad. Ed. Andre</b> . A distinct crimson red.	
2-year.....	1.00
— <b>Paniculata</b> , 20'-25'	Sweet Autumn Clematis
The flowers are of medium size, fragrant, pure white, borne in immense sheets in September.	
2-year, first class.....	.50
<b>EUONYMUS radicans variegatus</b> , 12''-15''	Variegated Leaf Wintercreeper
Leaves veined and marked yellowish white and pink. Clinging vine.	
2-year.....	.50
— <b>vegetus</b> , 3'-4'	Bigleaf Wintercreeper
Bushy, interesting growth. Leaves round, dull green. Bright scarlet fruits, freely produced. Handsome among evergreens. Also called Evergreen Bittersweet.	
9 to 12 in.....	.60
12 to 15 in.....	.75
<b>HEDERA helix</b> , 20'-50'	English Ivy
Good ground cover in shady locations. An ideal wall cover.	
2-year.....	.50
<b>LONICERA japonica halliana</b> , 15'-25'	Hall Japanese Honeysuckle
Grows rampantly. Blooms freely, deliciously fragrant.	
2-year, first class.....	.50
<b>POLYGONUM auberti</b>	China Fleecevine
Climbing plant of vigorous growth attaining a height of 25 feet and producing through summer and fall great foamy sprays of white flowers.	
2-year.....	.90
<b>WISTERIA sinensis</b> , 40'-50'	Chinese Wisteria
Good for pergolas, porches and trellises; dense drooping clusters of pea-shaped purple-blue flowers.	
2 to 3 ft.....	1.00 9.00
— <b>alba</b> , 40'-50'	Chinese White Wisteria
2 to 3 ft.....	1.00 9.00



One of our signs along Highway—Canna Bed in Foreground, Evergreens in rear.

## APPLES

There is a constantly increasing demand for high-quality fruit of all kinds, and in no class of fruit is the demand more noticeable than in Apples. With the proper selection of varieties and intelligent cultivation, there is no reason why the orchardist who makes a specialty of Apples should not have a business yielding him larger returns for the money and labor invested than almost any other horticultural industry. Where Apples are grown solely for home use, a wide range of varieties may be selected; and the list of distinct kinds offered in our catalog afford the choicest varieties in all desirable types; and cover the entire range of ripening seasons.

Apple trees should be set 32 to 40 feet apart.

**Fillers.** Most commercial orchards are now planted with standard varieties, 40 feet apart each way. Quick, upright growing, early maturing varieties are used as fillers, planting between standards to make 20 ft. apart; fillers to be removed when the standard trees require the room (12 to 18 years). This requires 28 standard and 82 fillers to the acre. We recommend for fillers: Yellow Transparent, Oldenburg, Grimes Golden, McIntosh and Wealthy, or peach trees.

### Price of Apples—2 year

	Each	Per 10	Per 100
6 to 7 ft.....	\$ .75	\$6.50	
5 to 6 ft.....	.65	5.00	\$40.00
4 to 5 ft.....	.50	4.00	35.00
3 to 4 ft.....	.40	3.00	25.00

### Price of Apples—1 year

	Each	Per 10	Per 100
4 to 5 ft.....	\$ .40	\$3.00	\$25.00
3 to 4 ft.....	.35	2.50	20.00
2 to 3 ft.....	.25	2.00	17.50

### SUMMER APPLES

**Benoni.** Attractive, red, best eating apple of its season. Early bearer and very productive.

**Early Harvest.** Medium, pale yellow, tender, juicy.

**Oldenburg (Duchess of Oldenburg).** Good size, yellow, streaked red, juicy, sub-acid, productive.

## MANHEIM, PENNSYLVANIA.

---

**Summer Rambo.** Very large; flesh yellow, firm, tender, very juicy, mild sub-acid.

**Red Astrachan.** Large, beautiful deep crimson. A favorite eating and cooking apple.

**Yellow Transparent.** Earliest and best; white, tender, juicy, sprightly, sub-acid. Grows rapidly, bears young, and makes a profitable "filler."

### AUTUMN APPLES

**Gravenstein.** Large striped, fine quality, one of the best fall sorts.

**Maiden Blush.** Large, beautiful, blush cheek.

**Smokehouse.** An old favorite, originated in Lancaster Co., Pa.

**Wealthy.** Medium size, smooth, round, deep red; handsome and of fine quality.

### WINTER APPLES

**Baldwin.** Red, large, fine quality, tree vigorous.

**Winter Banana.** Size large, golden yellow with bright crimson red.

**Cortland.** This is a promising new variety originated at the Horticultural Experimental Farms, Geneva, N. Y. The fruit is medium to large in size, of a bright red color. Flesh is pure white.

**Delicious.** Red and yellow; fine grained, and quite juicy; flavor slightly acid, but very good.

**Falawater** (sometimes called **Pound Apple**). Large; yellowish green fruit.

**Grimes Golden.** No orchard complete without it. Yellow, best quality and productive. For either home or market for this season there is nothing better.

**Hubbardston.** Large, red, striped, tender, juicy.

**Jonathan.** Medium; red, extra quality.

**McIntosh.** Large, deep crimson, highest quality, juicy, sub-acid.

**Paradise Winter Sweet.** Large; creamy, rosy-cheeked.

**Rome Beauty.** Large, yellow, shaded red; tender, juicy, sub-acid.

**Stark.** Large, striped light and red, juicy, mild, sub-acid. An early and abundant bearer, good keeper.

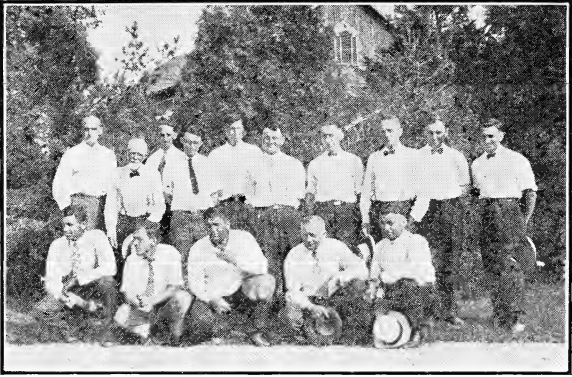
**Stayman Winesap.** Of the several important descendants of Winesap, this variety is leaping into prominence as a splendid sort for the home or commercial orchard. The tree is a sturdy grower and a very heavy producer. It is adapted to a wide range of soils and climates, thriving almost wherever planted. It runs to large sizes. The fruit is of deep red color, with firm flesh, tender, juicy, and the same rich flavor of the parent. We strongly recommend this variety for the home or commercial orchard.

**York Imperial.** Medium to large; yellow, shaded red; firm, juicy, sub-acid.

### CRAB APPLES

**Hyslop.** Large; deep crimson; one of the most beautiful; very popular.

**Transcendent.** For many years the most popular crab apple. Fruit about an inch in diameter, yellow, with red cheek.



**Variety Identification Meeting**

Photo taken on our show grounds just after going over our block of apple trees, in which no trees were discovered that were untrue to name. Prof. F. N. Fagan, State College, could not be with us this day because of illness. He, with Mr. F. M. Trimble, Chief Nursery Inspector, first man to left—front row—is on this committee. We cooperate with Penna. State College and our State Dept. of Agriculture in this work, which is for your additional protection. These men represent nurseries in widely scattered sections of the State.

**PEACHES**

We are offering only a limited number of varieties, ones that you can depend on giving you a good crop of fruit. We do not think it worth while to propagate a large number of varieties, when a few of the best will make more money for our customers. The peach crop is quite sure if you give your trees proper attention.

**Price of Peaches**

	Each	Per 10	Per 100
5 to 7 ft.....	\$.60	\$5.00	\$35.00
4½ to 6 ft.....	.50	4.00	25.00
4 to 5 ft.....	.40	3.00	20.00
3 to 4 ft.....	.30	2.00	15.00

**Arranged in Order of Ripening**

**Greensboro.** The very best extra early commercial sort. Hardy and productive, fruit large and tree healthy. Color white with crimson cheek.

**Carman.** White with red blush. Carman is extra hardy, bears every year, and when it fails all else fails too. Tree a very robust grower and produces heavily.

**Hiley (Early Belle).** The earliest commercial white free-stone peach. It resembles Belle of Georgia, but in quality is superior to most of its white-fleshed competitors. The pretty red cheek and good shipping qualities make it very popular for early market.

**Champion.** Large variety, creamy white, red cheek, sweet, rich and juicy. Hardy and productive.

**Belle (Belle of Georgia).** Very large; skin white with red cheek; flesh white, firm and of excellent flavor. Tree a rapid grower, very prolific.

**Capt. Ede.** A handsome yellow peach of excellent quality; hardy in bud and blossom.



## MANHEIM, PENNSYLVANIA.

**J. H. Hale.** Probably no new peach has ever been introduced claiming to be so much superior in all ways. It averages one-third to one-half larger than Elberta, ripens about five days earlier and is much superior in flavor. Color a beautiful golden-yellow, with deep carmine blush.

**Elberta.** Large, yellow, with red cheek; flesh yellow, firm, juicy, of high quality. Exceedingly prolific, sure bearer and hardy. The leading market variety.

**Late Crawford.** A superb, large, yellow peach.

**Mathews (Dr. Funk's strain).** Very similar to Elberta but of better quality.

**Old Mixon Free.** Large, pale yellow, deep red cheek, white flesh, tender, rich, good.

✓**Roberta (Late Elberta).** Ripens 10 days to 2 weeks later than Elberta which it resembles very closely.

**Stump.** Large, white, bright red cheek.

**Salway.** A late yellow variety. Latter part of September.

**Iron Mountain.** Ripens September 15 to October 1. Fruit is of large size; color, white.

## APRICOTS

	Each	Per 10
4 to 6 ft.....	\$ .85	\$7.50
3 to 4 ft.....	.75	6.00

**Early Golden.** Small, pale orange, juicy and sweet.

**Dallas.** Fruit large, round, early, deep yellow with a fine blush; flesh yellow, firm, juicy and excellent. Tree hardy, a good grower.

**Royal.** Large, yellow, juicy, rich and delicious; a very fine variety.

## CHERRIES

	Each	Per 10
5 to 7 ft.....	\$ .85	\$7.50
4 to 6 ft.....	.75	6.50
3 to 4 ft.....	.65	5.50

### SWEET CHERRIES

**Bing.** Very large, dark brown—almost black; flesh firm, sweet, rich and delicious. One of the most profitable sorts. July.

**Black Tartarian.** Very large, black, juicy. Last of June.

**Gov. Wood.** Large, light red, juicy, rich, delicious. Tree healthy and productive. June.

**Napoleon.** Large, pale yellow or red; firm, juicy, sweet and productive. July.

**Schmidt.** Immense size, deep black; flesh dark, tender, very juicy, fine flavor; productive. July.

**Windsor.** Fruit large, liver-colored, distinct; flesh remarkably firm and of fine quality. Tree hardy and prolific. A valuable late variety. July.

**Yellow Spanish.** Large, yellow and red. June.

### SOUR CHERRIES

**Early Richmond.** Medium, dark red, melting, juicy, sprightly, rich acid.

**English Morello.** Fair size, blackish red, rich acid.

**Montmorency.** Large, deep cherry red, very tender and juicy. It is the best variety for home and market. It ripens at the close of the Early Richmond season, and is of better size than that variety; more meaty and of richer flavor.

## PEARS

	Each	Per 10
5 to 7 ft.....	\$.85	\$7.50
4 to 6 ft.....	.75	6.50
Dwarf Pear 4 to 5 ft.....	.75	6.50

**Bartlett.** Season last of August to September 15th. Good strong grower, flesh is white, fine grained, luscious, large and buttery, has a rich melting flavor and very sweet.

**Clapp's Favorite.** Summer. Fruit large, yellow lemon color, spotted with brown dots; flesh fine, rich and sweet. A very good one.

**Duchesse.** Very large, buttery, rich, juicy, excellent. It succeeds to perfection and is the most popular market variety as a dwarf. Oct. and Nov.

**Kieffer.** Its large size, handsome appearance, and remarkable keeping and shipping qualities make it very profitable for market. Oct. and Nov.

**Seckel.** Small; skin rich yellowish brown when fully ripe, with deep brownish red cheek; flesh very fine-grained, sweet, exceedingly juicy, melting, buttery; one of the richest and highest flavored pears known. Sept. and Oct.

**Sheldon.** A large, round, russet and red pear of very fine quality; melting, rich, delicious. Tree vigorous, erect, handsome; bears well and should be more largely planted. October.

## PLUMS

	Each	Per 10
5 to 7 ft.....	\$.85	\$7.50
4 to 6 ft.....	.75	6.50
3 to 4 ft.....	.60	5.00

**Abundance.** One of the oldest and best varieties; hardy, productive. Fruit large, lemon yellow, with heavy bloom; good quality. Aug.

**Burbank.** Most profitable among growers for market. Ripens 10 days after Abundance. Tree hardy.

**October Purple.** A strong, vigorous grower, hardy, productive, of good quality; a large, round, late purple plum, especially recommended for late market.

**Red June.** One of the vigorous, upright growers; productive; fair size, vermilion red; pleasant quality. Ripens a week before Abundance. Aug.

**Climax.** One of the best of the large, early sweet plums, ripening ahead of other varieties, which makes it a very valuable market sort. July.

**Gold.** Large, oval, bright yellow; rich, juicy, fine quality. A good grower.

**Bradshaw.** A very large and fine early plum, dark violet red, juicy and good. Very productive; valuable for market. The tree is very hardy and vigorous. Middle of August.

**German Prune.** Large, dark purple, sweet, good. One of the most popular for canning, because of its sweetness. September.

**Italian Prune.** Good size, purple, juicy, delicious, fine for drying. September.

**Imperial Gage.** Large, pale green, juicy, sweet, rich, and excellent. August.

**Satsuma (Blood).** Large, globular, with sharp point. Color, purple and red with blue bloom; flesh firm, juicy, dark red or blood color, fine quality; pit very small. Hardy and vigorous grower. August.

MANHEIM, PENNSYLVANIA.

QUINCES

	Each	Per 10
4 to 5 ft.....	\$.85	\$7.50
3 to 4 ft.....	.75	6.50

**Orange.** Fruit large, bright yellow, of excellent quality.

**Champion.** A prolific and constant bearer of oval fruit, averaging larger than Orange and ripening later. Long keeper.

**Meech Prolific.** A vigorous grower and immensely productive of large, orange-yellow fruit of delightful flavor and fine cooking quality.

SMALL FRUITS

GRAPES (2 years)

	Each	Per 10	Per 100
Brighton. Red, high quality, large..	\$.35	\$3.00	\$25.00
Concord. The leading black variety..	.25	2.00	12.00
Moore's Early. Good, early, black..	.25	2.00	15.00
Niagara. The standard white grape..	.25	2.00	15.00
Worden. Earlier than Concord, sweeter.....	.25	2.00	15.00
Caco. New, red.....	.85	7.50	

ASPARAGUS

	Per 10	Per 100	Per 1000
Palmetto. Old reliable, 1 year.....	.20	1.00	8.00
2 year.....	.25	1.50	10.00
Washington. New variety, 1 year...	.20	1.00	8.00
2 year.....	.25	1.50	12.00

STRAWBERRIES

	Per 10	Per 100	Per 1000
Premier. One of the best, early, pro- ductive.....	.25	1.25	7.00
Haverland. Light color, long berry..	.25	1.25	7.00
Big Joe. Large, medium late.....	.25	1.25	7.00
Chesapeake. Large, late, good quality	.25	1.50	8.00

RASPBERRIES

	Per 10	Per 100
Cuthbert. Standard red.....	.75	4.00
Latham. New red.....	1.00	6.00
St. Regis. Everbearing red.....	.75	4.00
Cumberland. Very profitable, black.....	.75	4.00
Plum Farmer. Black.....	.75	4.00

BLACKBERRIES

	Per 10	Per 100
Eldorado. Hardy, vigorous, productive....	.75	6.00
Blowers. Splendid new sort.....	.75	6.00

CURRANTS (2 years)

	Each	Per 10	Per 100
Cherry. Large berries, short bunch..	.25	2.00	15.00
Fays. Old leading market variety...	.25	2.00	15.00
Wilder. Better than Fays.....	.25	2.00	12.00
White Grape. Large, yellowish white	.25	2.00	15.00

GOOSEBERRIES (2 years)

	Each	Per 10	Per 100
Downing. Large, pale green, very good.....	.25	2.00	15.00
Houghton. Medium, pale red, sweet.	.25	2.00	15.00

RHUBARB

	Each	Per 10	Per 100
Linnaeus. Old reliable kind.....	.20	1.50	10.00

## SUPPLIES

### SUNOCO SPRAY OIL

For the control of Aphis, Red Mite, Scale and Apple Red Bug. An efficient remedy for Red Spider on evergreens, scale and other insects on ornamentals. Directions for uses will be sent upon request.

50 gallons in drum @ 50¢.....	\$25.00
30 gallons in drum @ 60¢.....	18.00
15 gallons in drum @ 70¢.....	10.50
5 gallons in can @ \$1.00.....	5.00
1 gallon in can.....	1.25

---

### SHEEP MANURE

5 Lbs.....	\$ .25
10 Lbs.....	.45
25 Lbs.....	1.00
50 Lbs.....	1.50
100 Lbs.....	2.50

Larger quantities, prices on application.

---

### PEAT MOSS

Valuable for mulching and mixing with soil in ornamental plantings, gardens, lawns, etc. GPM.

Splendid litter for poultry houses. Bale covers 240 square feet one inch deep. OKPL.

These brands assure you best quality.

1 Bushel.....	\$ .50
½ Bale.....	2.00
1 Bale.....	3.50

Larger quantities, prices on application.

---

### SOIL

Carefully selected top-soil rich in plant food.

100 Lbs.....	\$ .50
500 Lbs.....	2.00
1000 Lbs.....	3.50
2000 Lbs.....	6.00

# BLOOMMAID

## For Flowers, Shrubs, Vegetables

If you want your flowers to bloom earlier and longer, your shrubs and hedges to be greener, thriftier, we recommend that you use Bloomaid. Brings blooms ten days to two weeks earlier—makes plants double the size of those not treated.

Use it in the vegetable garden, around shrubs and to enrich the soil in window boxes and flower pots.

Fifteen times as rich as manure; does not bring in weed seed or the spores of plant diseases.



### Bloomaid Prices

Tablet Form (125 Tablets) .....	\$ .25
Liquid Form (8-oz. Bottle) .....	.50
Pulverized Form:	
1-lb. Can.....	.25
5-lb. Container .....	.50
25-lb. Bag.....	1.75
100-lb. Bag.....	5.00

# V-C FAIRWAY FERTILIZER

## For Lawns and Grass

To have a lawn of closer, faster-growing grass that resists drought, stays greener—constantly thickens and spreads—use V-C Fairway Fertilizer.

This is the treatment now used on the lawns of country estates, polo fields and on the most famous golf courses.

Fifteen times as rich as manure; costs not more than 10 cents for each 100 square feet to be treated. Practically no odor.

### Prices

100-lb. Bag (enough for 5,000 sq. ft.) .....	\$5.00
50-lb. Bag (enough for 2,500 sq. ft.) .....	3.00
25-lb. Bag (enough for 1,250 sq. ft.) .....	1.75
10-lb. Bag (enough for 500 sq. ft.) .....	1.00

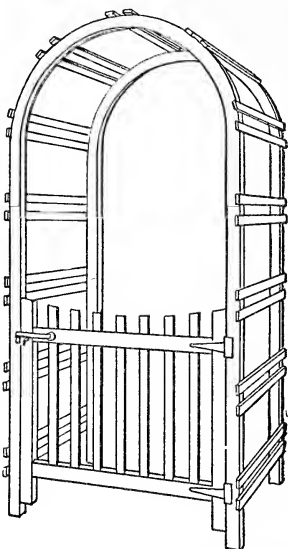
Convenient, easy to handle. Complete directions for lawn treatment on every bag.



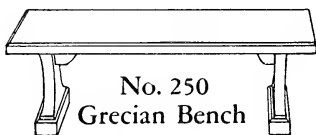
**WOOD AND CON-  
CRETE LAWN AND  
GARDEN FURNITURE**

Lawn Benches, Bird  
Baths, Flower Boxes,  
Urns, Arbors, Trellises,  
Pergolas, etc.

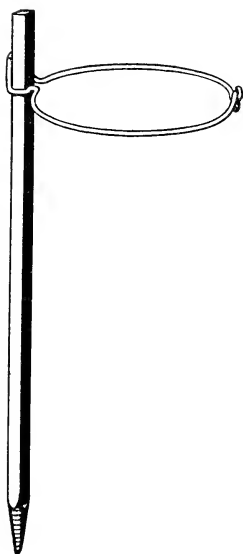
Prices and illustrated  
folder upon request.



**No. 166 Arched Gateway**



**No. 250  
Grecian Bench**



**Adjusto Plant Support**

**It does what it says—**

**Saves your plants**

**Saves your space**

**Saves your time**

**Prices—**

3 ft. height . . . . . 2.40 per doz.

4 ft. height . . . . . 3.00 per doz.

5 ft. height . . . . . 3.60 per doz.

## INSTRUCTIONS TO PURCHASERS

**How to Figure Your Order.** One to four trees or plants of one variety sold at the each rate; 5 to 25 of one variety at the ten rate; 25 to 250 of one variety at the 100 rate; 250 or more at the 1000 rate.

**Orders.** Orders should be sent in just as soon as possible after receiving catalog. By placing orders early you are more certain of getting the varieties wanted, as late in the season we are usually sold out of some of the varieties. If ordered early we can reserve the stock until you want it shipped.

**Shipping.** We have the Pennsylvania and Reading Railroads and the Lancaster Trolley system, and can ship in any direction with the probability of prompt arrival at destination. All shipments travel at the cost and risk of the purchaser.

**Truck Deliveries.** Truck load orders will be delivered free, reasonable distances; long hauls and smaller orders delivered by special arrangement. We are well equipped to give good truck service.

**Guarantee.** We guarantee all stock to be strictly first class and true to name and will upon proper proof refund the purchase price, or replace any stock which proves otherwise. It is understood and agreed that we will not be held responsible for any greater sum than the cost of the stock, should any prove untrue. We strive to avoid mistakes and believe that we are as exact as any in the business.

**Our nurseries are inspected every year and every shipment will be accompanied by a Certificate of the State Examiner.**

**Replacements.** We guarantee all stock we sell to be strictly first class and TRUE TO NAME, dug and packed properly for shipment; we do not charge a price for a tree that, should it die, we could replace it and then still make a profit. Stock often perishes when it is not properly planted and cultivated; also the severe cold and heavy storms of Winter and droughts of Spring and Summer, which are liable to occur, will sometimes cause the best of stock to perish, which is no fault of ours,

It is impossible for us to guarantee trees and plants to live. as this altogether depends on weather conditions and how stock is planted and cared for after planting. The conditions which prevail after stock leaves our hands are such that it is just as impractical for a Nurseryman to guarantee a tree or plant to live as it would be for your best neighbor to sell you a horse or other live stock and guarantee it to live. We can only guarantee to send you good stock up to grade represented, full of life and true to name. Upon request we will furnish 16-page planting booklet with every order.

**Terms Cash,** except when expressly agreed otherwise.

**Substitution.** When sold out of a variety of trees or plants we frankly say so, and when you allow us to substitute we will send a variety similar to the one ordered, as good or better; as we know the many varieties, our substitution, if any, will be of advantage. Late in the season we are sometimes sold out of some varieties of stock; thus when sending your order it is to your advantage to say whether we may substitute or not, that we may get the order off promptly, before the season is too far advanced for successful planting. If you do not wish to exercise this right, please mark your order sheet plainly NO SUBSTITUTION.

**Prices.** The prices quoted in this catalog are F.O.B. Nurseries, except where otherwise noted.

We do not run a regular agency, but some of our stock is sold to dealers, florists and agents, and we are not responsible for their prices nor for any promises made other than those found in our "Instructions to Purchasers."

ROOT'S NURSERIES, INC.

Phone, Landisville 104-R-13.

R. D. 1, Manheim, Pa.

ROOT'S NURSERIES, INC.

INDEX FOR CATALOG

	Page		Page
<b>A</b>			
Abelia . . . . .	7	Cross, Maltese . . . . .	23
Abies . . . . .	2	Currants . . . . .	31
Acanthopanax . . . . .	10	Cydonia . . . . .	11
Acer . . . . .	16	Cypress . . . . .	4
Adam's Needle . . . . .	9	<b>D</b>	
Almond, Flowering . . . . .	10	Dahlia . . . . .	22
Ampelopsis . . . . .	25	Daisy . . . . .	22
Amygdalus . . . . .	10	Daphne . . . . .	8
Anemone . . . . .	22	Delphinium . . . . .	22
Apples . . . . .	26-27	Deutzia . . . . .	11
Apricot . . . . .	29	Dianthus . . . . .	22
Aralia . . . . .	10	Dicentra . . . . .	23
Arborvitae . . . . .	5-6-7	Dictamnus . . . . .	23
Aristolochia Siphon . . . . .	25	Digitalis . . . . .	23
Arrow-Wood . . . . .	14	Dogwood . . . . .	11, 17
Ash . . . . .	18-19	Dutchman's Pipe . . . . .	25
Asparagus . . . . .	31	<b>E</b>	
Astilbe . . . . .	22	Elder . . . . .	13
Azaleas . . . . .	7, 10	Elm . . . . .	19
<b>B</b>			
Baby's Breath . . . . .	23	Euonymus . . . . .	8, 12, 25
Balloon Flower . . . . .	24	Exochorda . . . . .	12
Barberry . . . . .	7, 8, 10, 20	<b>F</b>	
Beech . . . . .	18	Fagus . . . . .	18
Bellflower . . . . .	22	Fir . . . . .	2, 4
Berberis . . . . .	7, 8, 10, 20	Fleecevine . . . . .	25
Betula . . . . .	16	Forget-me-not . . . . .	23
Bignonia . . . . .	25	Forsythia . . . . .	12
Birch . . . . .	16	Foxglove . . . . .	26
Bittersweet . . . . .	25	Fraxinus . . . . .	18
Blackberries . . . . .	31	<b>G</b>	
Bleeding Heart . . . . .	23	Gas Plant . . . . .	23
Boston Ivy . . . . .	24	Ginkgo . . . . .	18
Boxwood . . . . .	8	Golden Bell . . . . .	12
Bridal Wreath . . . . .	13	Gold Flower . . . . .	12
Buddleia . . . . .	10	Gooseberries . . . . .	31
Burning Bush . . . . .	8	Grapes . . . . .	31
Bush Clover . . . . .	23	Gypsophylla . . . . .	23
Butterfly Bush . . . . .	10	<b>H</b>	
Buttonbush . . . . .	10	Hawthorn . . . . .	17
Buxus . . . . .	8	Hedera . . . . .	25
<b>C</b>			
Calycanthus . . . . .	10	Hemlock . . . . .	7
Campanula . . . . .	22	Hibiscus . . . . .	12, 23
Canna . . . . .	22	Holly . . . . .	8
Catalpa . . . . .	17	Honeysuckle, Bush . . . . .	12
Celastrus . . . . .	25	Honeysuckle, Vine . . . . .	25
Cephalanthus . . . . .	10	Hydrangea . . . . .	12
Cercis . . . . .	17	Hypericum . . . . .	12
Cherries . . . . .	29	<b>I</b>	
Cherry, Flowering . . . . .	18-19	Ilex . . . . .	8
Chrysanthemum . . . . .	22	Inkberry . . . . .	8
Clematis . . . . .	25	Iris . . . . .	23
Clethra . . . . .	11	Ivy, Boston . . . . .	25
Coral Berry . . . . .	14	Ivy, English . . . . .	25
Cornus . . . . .	11, 17	<b>J</b>	
Cotoneaster . . . . .	8	Japanese Maple . . . . .	9
Crab Apple, Flowering . . . . .	18	Japanese Snowball . . . . .	16
Cranberrybush . . . . .	13-14		
Crataegus . . . . .	17		





ROOT'S NURSERIES, INC.

INDEX—Continued

V		Willows.....	19
Viburnum.....	14, 15	Wintercreeper.....	8, 25
Vinca.....	9	Wisteria.....	25
Virginia Creeper.....	25	Withe Rod.....	13
W		Y	
Weeping Mulberry.....	18	Yew.....	5
Weigela.....	15	Yucca.....	9
White Ash.....	18		

NEW CUSTOMERS AND OLD

In 1926 we were pleased to do business with 525 customers that had never purchased stock from us before, during 1927—628, and up to the end of the past year, 1928—798. We are glad to announce that this has been accomplished with no apparent loss of our older customers, who are still standing by us. Because of limited space we could print only one of the many fine testimonials we have received.

J. GORDON FETTERMAN

EL RANCHO

MEDIA,

PENNSYLVANIA

Root's Nurseries,  
R. D. 1,  
Manheim, Pa.

Dear Sirs:

I wish to take this opportunity of letting you know that the trees I have purchased from you during the last seven years have been universally satisfactory.

They have always been up to or better than the specifications and also, as far as I am able to tell at this time, true to variety.

It has always been a pleasure to do business with you, as I have always found you considerate and obliging.

Formerly I was in the habit of dividing my orders between several Nurseries, as I felt it was good business not to put all my eggs in one basket, but in recent years my confidence has been such that I now give you my entire order.

Very truly yours,

(Signed) J. GORDON FETTERMAN

## MANHEIM, PENNSYLVANIA.

---

Plant names used in this catalog conform, for the most part, with "Standardized Plant Names," adopted by The American Joint Committee on Horticultural Nomenclature.

Members American Association of Nurserymen, Eastern Nurserymen's Association, Pennsylvania Nurserymen's Association, etc.

---

---

## MEMORANDA

MEMORANDA

# SUCCESSFUL PLANTING AND CARE OF STOCK

## CARE

The bundles should be opened immediately, the roots dipped in water, then heeled in moist ground so that the mellow earth will come in contact with the roots and thoroughly protect them from the air, having the earth tramped solid about them.

When ready to plant, take up only a few at a time, puddle the roots and do not allow them to lie exposed to the sun or air.

The ground should be carefully prepared by deep plowing and firming down with a disc and harrow.

## PLANTING

The holes for planting must be large enough to receive the roots freely, without cramping or bending them from their natural position. All broken or mutilated portions of the roots must be cut off so as to leave the ends smooth and sound. All trees should be planted two or three inches deeper than they stood in the nursery row; pack the soil very firmly about the roots by tamping with the feet or post tamper, being careful not to bark or break the roots. Leave three inches of the surface soil loose to serve as a mulch. If the ground is very dry, apply one to two pails of water before this soil mulch is in place, and after the water has soaked away it can then be placed over the moist soil.

## NUMBER OF TREES OR PLANTS TO THE ACRE

40 feet apart each way	28
30 feet apart each way	48
20 feet apart each way	110
18 feet apart each way	135
15 feet apart each way	205
12 feet apart each way	300
10 feet apart each way	435
8 feet apart each way	680
6 feet apart each way	1,210
5 feet apart each way	1,745
4 feet apart each way	2,725
3 feet apart each way	4,840

Rule—Multiply the distance in feet between the rows by the distance the plants are apart in the rows, and the product will be the number of square feet for each plant, which, divided into the number of square feet in an acre (43,560), will give the number of plants or trees to the acre.

## SUITABLE DISTANCE FOR PLANTING

- Apples—30 to 40 feet apart each way.
- Standard Pears and Cherries—20 feet apart each way.
- Plums, Peaches and Apricots—16 to 18 feet apart each way.
- Dwarf Pears and Quinces—10 to 12 feet apart each way.
- Grapes—rows of 10 to 16 feet apart; 7 to 10 feet in rows.
- Currants and Gooseberries—4 feet apart.
- Raspberries and Blackberries—3 to 4 by 5 to 7 feet.
- Strawberries, for field culture—1 by 3 to 3½ feet.
- Strawberries, for garden culture—1 to 2 feet apart.
- Asparagus, for field culture—18 to 24 inches by 3½ to 4 feet.
- Asparagus, for garden culture—18 to 24 inches apart each way.

