

Historic, Archive Document

Do not assume content reflects current scientific knowledge, policies, or practices.

The
"Kentucky
Bred"
Garden Book

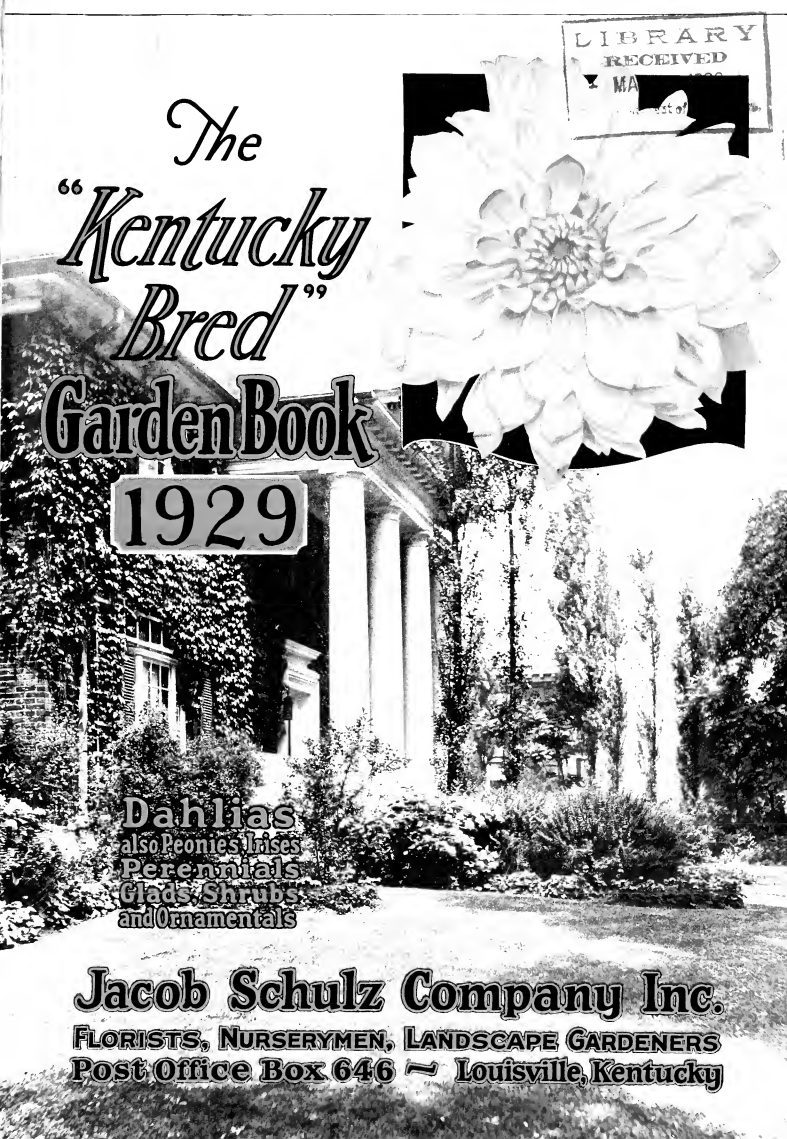
1929

Dahlias
also Peonies, Irises
Perennials
Glads, Shrubs
and Ornaments

Jacob Schulz Company Inc.

FLORISTS, NURSERYMEN, LANDSCAPE GARDENERS
Post Office Box 646 ~ Louisville, Kentucky

LIBRARY
RECEIVED
MA
est of



As One Garden Lover to Another

Let me express the appreciation we feel in having the opportunity of serving you. We present our Garden Book for 1929 with real pride, for it contains what we confidently feel is as fine an assortment of planting as can be found in any nursery in America. It is genuine pleasure to have you look through its pages, study the descriptions of the different varieties, and realize that here is real value in shrubs, trees and flowers.

We trust our friends will look upon the book as our personal representative. It contains the story of our work for the year past, and for many years past—work which we have carried on because we love it, and because we want to share its results with garden lovers everywhere.

"Kentucky Bred"—a Guarantee of Quality

There are flowers and flowers—and still more flowers. Almost anyone can grow them, in one fashion or another. But not everyone can produce the best ones—that's where the rub comes. That's why we ask you to take thought a moment and realize just what "Kentucky Bred" plantings bring you.

"Kentucky Bred"—that's our slogan. It means quality, high quality, in every respect. It describes the kind of plants and flowers we produce, the kind we can conscientiously recommend and supply to our customers. If it's "Kentucky Bred," the class is there, whether it be women, horses, or flowers.

When in Louisville, Don't Fail to Call Upon Us

If ever you have the opportunity, come to see us. Nothing pleases us so much as to have visitors at the Schulz nurseries, for we know only a real interest brings them.

You will be entranced by our fields of magnificent flowering plants and growing shrubs. If it's "Dahlia Time," or "Iris Time," or time when any other special flowers are in bloom, you will be delighted and charmed with the gorgeous and truly inspiring displays.

Remember, Schulz is always at your service. We want our customers to succeed; therein lies our greatest pleasure and satisfaction. We will help you to success, with every means at our command. We will gladly help you plan your plantings, select your specimens, advise you how to grow them best—serve you in every way. Only give us the chance, and we will show you how satisfactory a real flower service can be.

High Spots in This 1929 Garden Book

	PAGE
Announcement	7
Kentucky Cardinal	15
Dahlia Gardens	23
Zinc Labels	34
Glad Gardens	42
Special Offer	43
Announcement	52
Planting Directions	59
INDEX	63



Airplane View of Schulz Nursery

The Home of "Kentucky Bred" Flowers

LIBRARY
RECEIVED
MAY 9 1929
★3
Agricultural Dept.



Courtesy Common Brick Manufacturers Assn.

*STEP INTO THE GARDEN & Away from everyday things
Dream, work, play & A garden fits your every mood.*

Learn to Know Dahlias

A World of Pleasure Awaits You

We specialize in Dahlias because to us they are the most beautiful of flowers. While others may not entirely agree with this opinion, it must be admitted that they are without doubt the most beautiful of late summer's flowers. No garden, no matter how small or how large, is complete without a fair representation of these most gorgeous blooms.

History of the Dahlia

From the years 1571 to 1577 a Spanish physician, one Hernandez, resided in old Mexico. Like other professional men of his time, his interests were broad. No doubt his practice was limited, for he found time to write an extensive work on the animal and plant life of the country.

Some years afterwards, one Reccho brought Dr. Hernandez's work back to Europe with him and published it in Rome. The book contained among other interesting and unusual descriptions of plant and animal life, a brief mention, description and illustration of the plant "Acocctli." His comments lead us to believe that the plant described was the Dahlia. It grew wild in the sandy soil of that country and in single form. This is the first known reference to the flower.

In 1791, Cavanilles, another Spaniard and botanist of note published a technical botanical description of a flower he had grown from seed brought from Mexico. He called it "Dahlia Pinnatta," "Dahlia" after a young Swedish botanist, Andreas Dahl, who had been Cavanilles' student and who had died just two years previous.

Such was the start of the Dahlia in Europe. In the early part of the nineteenth century the Dahlia was introduced into England and France and began to be extensively grown. From the single blossom of "Acocctli" with its yellow disk center and scarlet rays, the various forms of the Dahlia have developed until now we have not only single blossoms in a profusion of colors but a large variety of shapes and forms, each one in as many different colors. Each year brings added varieties from growers, each a new prize to treasure. The Dahlia has become the most loved of all late summer flowers. There is a shape and form for each taste and a color for every mood.

The Culture of the Dahlia

The Dahlia thrives in an open, sunny location, though they will succeed in partial shade in some instances. They will grow in any kind of soil, but a rich, sandy loam is the best. To enrich poor ground in the fall spade in well-rotted manure or decayed vegetation. Use bone meal at planting time, working it well into the soil. Spade the

soil thoroughly as deep as possible before the tuber is planted.

Planting. Dahlias are planted in the spring. It is safe to plant them any time after the danger of frost is over. They usually blossom in from six to eight weeks after planting time. It is a good plan to start planting early and plant tubers about one to two weeks apart up until the middle or late part of



Decorative and Peony-Flowered

May. When ready to plant place stout stakes at least three feet apart, four feet is better; then dig the holes about six inches deep and place the bulb in a horizontal position with the sprout end two inches from the stake. Never stand the bulb on end. This method of planting is known as the "stake" method and is the most successful for general results.

Cultivation. For the most beautiful flowers cultivate often. Keep the soil loose around young plants. Do not permit it to bake or harden. After each rain cultivate them to keep the ground in good condition and prevent weed growth. Later in the season when the fine, silky roots come to the surface stop cultivation and put a mulch of some kind around the plant to retain moisture and protect the small roots.

Training the Plant. After several sprouts appear remove all but one or two from each plant. When they are sufficiently above the ground to show three or four leaves, pinch out the center stem. This will cause branches to grow from the laterals and produce a strong, bushy plant. At this time they should be securely tied to the stake with twine or some soft material. Continue the tying as the plant grows so that it will not be broken down by wind or other causes.

For Large Blooms. For extra large blooms remove the first set of side shoots from the first bud with a sharp knife. This forces the plant life that would have gone into the two side shoots into the first bud, making an extra large flower, much larger and giving a good stem. For exhibition purposes disbud every side shoot down the entire length of the stalk. The one flower that you will get from the plant will be of gigantic size.

Forcing for Exhibition. To produce the finest flowers for exhibition purposes, plant three to five feet apart, using a liberal amount of manure or fertilizers: cultivate frequently; apply fertilizer or manure, broadcast or liquid form, at each or every other hoeing, and disbud, making applications very effective for forcing. Apply when plants are in bud, making applications often, but do not use too much at a time. Apply nitrate of soda in crystal form on top of the ground, or in liquid form, using one table-

(Continued on page 6)



Decorative



Cactus



DAHLIA TYPES—See Page 6

spoon of nitrate of soda crystals to a gallon of water, using sprayer or watering can.

When the flower-buds appear, only one bud should be allowed to come to maturity, enabling each branch to produce one exceptionally fine, perfect flower. The flowers, for quality, must not be allowed to receive the drenching rains or scalding sun when nearing full bloom and should be protected from such.

It is always advisable to cut flowers that are to be exhibited as late as possible at night when the dew is on them, placing them in water and keeping them as cool as possible over night, thereby enabling them to withstand handling, packing and transportation.

Watering. Use very little water until flowering buds appear, after which plants can be thoroughly watered about once a week. Soak the ground until moist at least six inches deep. Rake over the surface the following day. This conserves moisture and lets in air and sunshine.

Harvesting. As soon as the frost kills the foliage and the strength of the stalk recedes into the tubers, harvest your Dahlias. Dig them up carefully, do not pull them up. After removing the clump from the ground, shake gently to remove the soil that will naturally fall off. Cut off at tops two or three inches from the clumps. Lay them in the sun and air for about an hour or two. Pack in a cool, frost-proof place having an average temperature of about 45 to 55 degrees. The cellar provides the best place for their storage. It is a good plan to insulate them from furnace and frost with burlap, paper or canvas. This excludes the air and preserves an even temperature. This is very important, as bulbs will shrivel and dry up if not properly taken care of.

Dividing the Clumps. Divide the clumps in the spring. The dividing should be done carefully with a sharp knife or coping saw and particular care should be taken to avoid the necks of the tubers. The eyes of the tubers are easily recognized. Cut the tubers so that there is at least one eye on each division of the clump.

To Preserve Cut Flowers. Flowers should be cut late in the afternoon or early in the morning. Place tips of the stems in water for about twenty seconds while boiling on the stove and immediately plunge the tips deep into cold water. If blooms droop prematurely place stems deep in hot water and allow them to remain until the water cools. This will usually revive them. A pinch of salt in the water helps.

Classification of Dahlias. We follow the classification of Dahlias as adopted by the American Dahlia Society. Under the different headings and classifications the names and their application as recently defined by the American Dahlia Society follow:

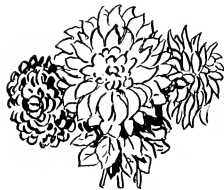
Single. Open-centered flowers, small to very large, with 8 to 12 floral rays (petals) more or less in one circle, margins often decurved or revolute (turned down or backward).

Collarette. Of single type, with not more than nine large floral rays, but with a circle of smaller, narrower, usually different colored, rays standing at base or in front of larger rays and forming a collar between them and open center.

Duplex. Semi-double flowers; center almost exposed

on opening of bud, rays more than twelve, in more than one circle, long and flat, or broad and rounded, not noticeably twisted or curled. Many Dahlias previously classed as Peony-flowered belong here.

Peony-flowered. Flowers are semi-double, having



two, three or more rows of broad, flat, loosely arranged rays or petals, surrounding an open center, which is usually a conspicuous golden-yellow, the inner floral rays being usually curled or twisted, the outer rays either flat, or more or less irregular. Sometimes the rays are pointed, occasionally they curl and twist over the center.

Decorative. Double flowers, full to the center, early in the season at least, flat rather than ball-shaped, with broad, flat, somewhat loosely arranged floral rays with broad points or rounded tips which are straight or decurved (turned down or back), not incurved, and with margins revolute, if rolled at all.

Ball Shaped, Double. Full to the center.

(A) **Show Type.** Flowers globular or ball-shaped, rather than broad or flat, full to the center, showing regular spiral arrangement of florets, with floral rays or petals more or less quilled or with their margins involute (rolled forward or inward) and rounded tip (Dahlias of this type with flowers spotted, variegated or parti-colored, were formerly classed as Fancy, a group no longer recognized).

(B) **Hybrid Show, Giant Show or Colossal Type.** Flowers fully double, broadly hemispherical to flatly globular in form, loosely built so spiral arrangement of florets is not immediately evident; floral rays broad, heavy, cupped or quilled, with rounded tips and more or less involute margins. Verging toward the Decorative Class and sometimes found classed with the Decoratives.

(C) **Pompon Type.** Same shape and form as A and B, but flowers must be under 2 inches in diameter.

Cactus. Double flowers.

(A) **True Fluted Type.** Flowers fully double, floral rays or petals long, narrow, incurved or twisted, with sharp, divided or fluted points and with margins revolute (rolled backward or outward), forming in the outer florets a more or less perfect tube for more than half the length of the ray or petal.

(B) **Hybrid Cactus.** Flowers fully double, floral rays (petals) short as compared with previous type; broad, flat, recurved or twisted, not sharply pointed except when tips are divided (staghorn), margins only slightly revolute, and tubes of outer florets less than half the length of the ray or petal. This type intergrades with the Decorative and Peony-flowered classes.

We are indebted to the Bulletin of the American Dahlia Society for some of the information printed above. If you want to keep up-to-date on Dahlias join the American Dahlia Society. Write us for particulars.

Schulz Special Spring Catalog

Each year, about the last part of June or early part of July, we get out a special catalog of bulbs for fall planting. While smaller than the regular "Kentucky Bred" Garden Book, still it is a beautiful little catalog full of money-saving hints and timely suggestions for planting. Don't fail to send for it during the summer. Get the latest low prices on spring flowers.

Announcing the New Schulz Flower Store



BUYING habits of people change almost overnight. A great many businesses have been entirely reorganized because of this particular trait of humankind. We get started on one thing when along comes something new which changes our lives completely.

We had this brought very close to us just lately. For very many years we had our shop at 550 South Fourth Avenue, Louisville. There, years ago, people came to the shop for flowers, or people dropped in to pick out pieces for parties or funerals. It was thought necessary for success that a florist business must be located as centrally as possible. But with the increasing use of the telephone and automobile, buying habits of people have changed in a marvelous way. More and more people ordered flowers over the telephone, and our trade came not only from people who happened to live near the downtown Louisville, but from people who lived on the outskirts, who drove down to choose flowers.

Another difficulty arose—the question of parking while shopping in the downtown district. Accordingly, after long deliberation, we are leaving our location on Fourth Avenue, have leased our property there and have built a model flower shop and greenhouses out on Bardstown Road, on one corner of the Schulz Dahlia Farm, a short drive from the center of Louisville.

We can deliver now as quickly to nearly every part of town as we could when we had our central location. Furthermore, our friends who come to see us now can choose nursery stock right from the fields as easily as they chose flowers from vases in the downtown shop.

The illustration above shows our building completed. Please note

we are all dressed up for Christmas with signs on the windows advertising Christmas wreaths. Hundreds of motorists driving by have stopped to buy their Christmas decorations here this year.

You can get an idea from this illustration of the beautiful architecture of this building. The greenhouses attached are the finest and most modern in our vicinity. They are big enough to care for our needs for quite a while, and naturally the land provides for necessary expansion as business continues to grow. The main floor of this building is given over to reception hall and sales floor; the second floor is given over to the offices of the Jacob Schulz Co., Inc., where your letters go, where your orders are entered and where supervision of the machinery which supplies you with "Kentucky Bred" flowers is carried on.

We heartily invite you to see our new home. We are immensely proud of it and welcome the opportunity to show it to you. Be sure to come and see us when you are in Louisville.

JACOB SCHULZ CO., Inc.,

G. E. Schulz, President



Cactus Dahlias



Cactus Dahlia, Margaret Bouchon

398. **ALICE WHITTIER.** A dahlia that really needs no introduction. Color, a very delicate shade of primrose yellow. Produces blooms on stiff stems and of exhibition size. Fusion \$2.50 each
39. **ATTRACTION.** (Hybrid.) Large, full flower of a clear, lilac-rose; long, strong stems, holding bloom stiff and upright 75c each
37. **AURORA.** Color, bright yellow 50c each
22. **AUTUMN PRINCE.** A fine Dahlia of the popular Autumn shades. Reddish apricot, gold suffusion. 50c each
25. **BALLET GIRL.** This is a remarkably large, free-blooming Cactus on good stems. The ground color is orange, often tipped and marked white. A well-worthwhile variety in your garden 75c each
28. **BIANCA.** (Hybrid.) A Dahlia of large size and splendid form. Color beautiful rose-lilac with white shadings. Bloom is held perfectly erect on strong, stiff stems. Free flowering \$1.00 each
196. **CALIFORNIA ENCHANTRESS.** (Hybrid.) Color, beautiful shade of pale pink. Free bloomer on fine stem. \$1.00 each
48. **CIGARETTE.** This Dahlia resembles Nobilis, except that the color is creamy white, edged orange. Petals curve back. Good quality blooms and stems. 75c each
51. **CLAREMONT.** This variety produces a large bloom, which is always admired. Color soft peach-pink with amber suffusion 50c each
55. **CONTRAST.** Color a brilliant shade of crimson, tipped white. Very good for cut flowers 35c each
58. **COUNTESS OF LONSDALE.** (Hybrid.) Deep salmon-red. One of the best. Should be in every garden. 35c each
59. **COUNTRY GIRL.** Large; deep golden-yellow, tipped bright amber; beautifully in-curved petals. 25c each
108. **DADDY BUTLER.** This is a beautiful Hybrid Cactus of the American Beauty rose shade or rosy carmine, reverse of petals is a lighter tint. \$1.00 each
399. **EAGLE ROCK SUNSHINE.** A splendid yellow cactus of fine growing habit, producing large, beautifully-formed primrose-yellow flowers on long, erect stems. \$5.00 each
400. **EDNA FERBER.** Color glistening coral shading to old gold at base of petals. We are delighted to recommend this Dahlia \$5.00 each
3. **EL GRANADA.** Color vivid orange, petals twisted and inter-lace, showing at the tip a creamy yellow reverse. The long stem grows well out of the foliage and is absolutely stiff. El Granada produces deep flowers with closed centers from early until late season. \$2.50 each
52. **ELISE OLIVER.** Color, creamy pink shading to cream in center \$1.00 each
141. **EMMA MARIE.** (Hybrid.) Color pleasing shade of clear pink with creamy white center. Fine for exhibition or commercial purpose. This is a splendid grower producing blooms on long stems. \$1.00 each
87. **ETHELIA.** (Incurved.) An exceptionally free-flowering, early-blooming variety. A pleasing reddish apricot shade. Moderately in-curved 35c each
98. **F. W. FELLOWS.** The best orange for exhibition. Large and deep, is almost a scarlet. 50c each
401. **GARDEN GLOW.** Color, beautiful orange red and yellow \$2.50 each
102. **GEORGE WALTERS.** (Hybrid.) Bright salmon-pink, artistically suffused with old gold. It is the largest Hybrid Cactus ever introduced. The flowers are borne on long, stiff, wiry stems 75c each
104. **GLADYS BATES.** One of the popular new Dahlias, in contrasting shades. The blooms are immense, incurved petals of tan with a reverse of rose. This is a splendid bloomer, long, straight stems 50c each
123. **HOFFNUNG.** This variety produces large size flowers of perfect form; color salmony old rose illuminated by a golden suffusion in the center of the flower and each petal lightly tipped with the same color. 75c each
214. **IAN.** Color very clear yellow gradually shading pink on the outer rows of petals. The reverse of these outer petals is also touched with sunset shades. Produces blooms freely on stiff stems. \$2.00 each
131. **JEAN CHAZOT (or Gay Paree).** This is a wonder Dahlia in two respects. First it is a profuse bloomer. Second the color is superb. In it is the spirit of Autumn, with a golden bronze, tinted nasturtium red. Graceful, with long stems 50c each
140. **JERSEY'S RADIANT.** A well-named Dahlia. The blooms of hittersweet color loom large above the foliage. The best orange for garden, house or exhibition. \$1.50 each
35. **JHR. G. F. VAN TETS.** This is a good size white cactus with long incurving petals, blooms held on good stem. Free and early bloomer \$1.00 each
153. **KALIF.** (Hybrid.) A majestic flower, frequently measuring over 9 inches in diameter, of perfect Hybrid Cactus form; color a beautiful pure glowing scarlet. The gigantic flowers, which are produced freely, are held erect on strong stems of wiry stiffness 75c each
154. **KENILWORTH.** Of medium height, on branching bushes, and a free bloomer. Color, old rose with bronze suffusion 75c each
203. **KING SOLOMON.** (Hybrid.) Color, beautiful orange buff of golden orange with an iridescent sheen on the curled petals. Blooms are produced on nice, stiff stems and profusely. Indeed, they are produced in such abundance \$2.00 each
163. **KOINLOOR.** Dark, rich maroon. The velvety petals are pointed. Large and deep on cane-like stems. Never forgets to bloom freely. Much superior to THE GRIZZLY. \$1.00 each
164. **KRIEMHILDE.** Brilliant pink, shading to creamy white center 25c each
165. **LA FAVORITA.** This Dahlia is of a long-desired color but hard to describe. Some think it is reddish salmon, while others insist it is orange, orange-salmon, or several other Autumn shades. But all agree it is lovely 75c each
402. **LEAGUE OF NATIONS.** Color, canary-yellow. \$1.50 each
183. **LOUISE SLOCOMBE.** Color, rose-pink overlaid amaranth-pink \$1.00 each
36. **LUCKY LOU.** Color, bright scarlet with yellow at base of petals. Produces immense blooms with long, incurving petals \$1.00 each
191. **MARGARET BOUCHON.** A charming, bright lively pink, tinting to flesh-pink at center; splendid form 50c each
377. **MARGARET KENNER.** Color, clear pink toning to silver in center. A delightful blend. Twisted petals and curved to form a full, fluffy flower of immense size, borne on long stiff stems; an early bloomer, continuous so right to the end of the season. 75c each

Kentucky Dahlia Garden No. 1

Order by Number

A. D. Livoni \$0.25
Darlene35
Storra King25
Princess Victoria25
Elsie Burgess25
Klein Domitea15

Value \$1.50

One each of the above for **\$1.00**



JEAN CHAZOT

CACTUS DAHLIAS—Continued

195. **MARIPOSA.** This is a perfectly-formed Hybrid type. Color a delightful shade of true pink which is intensified by a deeper colored center. A faint violet suffusion adds to the effect. A good firm stem carries the large bloom with perfection75c each
210. **MME. ESCHENAUER.** An ideal Dahlia of exceptional merit. Most pleasing and effective color—yellow at base of petals, passing to creamy white, suffused and tipped pale lilac. Delicate and chaste50c each
211. **MME. HENRI CAYEUX (Straight).** The flowers are of the largest size, with long, narrow florets, forming a bloom of magnificent form. The color is a beautiful, rich pink daintily tipped white50c each
223. **MRS. C. H. BRECK.** A Dahlia of exceptional merit. Color, creamy yellow, passing to various shades of rose-pink; a distinct and beautiful variety50c each

227. **MRS. FERDINAND JEFFRIES.** A rich, velvety maroon of the Hybrid type. The petals are broad, curled and twisted. A very free bloomer, large and massive ..50c each
239. **MRS. WARNAAR (Holland Dahlia).** A "Garden Cactus" of superior quality, and recommended as one of the finest cut flower varieties in existence. The coloring is a delightful creamy white, overlaid and blending to a charming shade of pink\$1.00 each
310. **MRS. W. E. ESTES.** This is an unusually fine snow-white Cactus; blooms of immense size, its petals deep and full. Blooms produced on long, stiff stems, making it a splendid cut flower variety\$1.00 each

Schulz Special
Dahlia Garden No. 2
 Order by Number

Angus Megar	\$0.50	One each of the above for \$1.50
Baron Shroeder25	
Yellow Colosse50	
Minnie McCulloch25	
Lyndhurst25	
Velmary50	
Value	\$2.25	

CACTUS DAHLIAS—Continued



A Prize-Winning Basket

247. **NIBELUNGENHORT.** This is a giant flower that is fine for both garden and exhibition. Color is a beautiful shade of old rose with a blending of salmon pink and apricot. This is a very free bloomer75c each
250. **NORDLICHT.** This variety produces a large, perfect bloom of a glowing orange, passing to rose at the tins.75c each
263. **PIERROT.** Color is a deep amber, boldly tipped white. The blooms are of large size and incurved.....50c each
267. **PINK PEARL.** (Hybrid). Clear, bright pink.....35c each
271. **PRIMA DONNA.** Distinct and free; flowers large, with long, tubular, twisted, incurved petals, the center ones creamy white, the outer delicate mauve-pink50c each
280. **RED CROSS.** This very popular Dahlia is in great demand; color golden-yellow, heavily suffused and marked with coral-red. A good bloomer and large stem.....75c each
285. **REV. T. W. JAMISON.** Very large, with long incurved petals; a strong, vigorous grower with long stems; color, soft salmon-pink, suffused lilac35c each
312. **RUTH VAN FLEET,** pretty, large yellow hybrid..\$1.00 each
301. **SHERLOCK.** Bright orange-cinnamon; an early, free and continuous bloomer on long stems. One of the best.50c each
403. **SILVERADO.** Color, white shading toward the center to a delicate silvery lavender. Splendid stem holding huge blooms erect\$1.00 each
315. **SILVER HILLS PARK.** This is a beautiful, new, white English Cactus. The blooms are large in size, incurved in form, and have a perfect center.....50c each
93. **SUN KISS.** (Hybrid). Color effect of straw yellow with a heavy fawn suffusion on the outer edge. Free and early bloomer. Good stem and very desirable for cutting.\$1.00 each
66. **SUNSET GLOW.** (Hybrid). Color similar to Red Cross. A very free bloomer.....50c each
315. **SWEET BRIAR.** One of the loveliest shades of clear, soft pink; very long, narrow, incurved petals50c each
322. **THE LION.** Large flowers; bronzy old-rose suffused with yellow and salmon; free and effective50c each
177. **UNION JACK.** This belongs to the list of novelties. Large, red incurved petals, tipped white75c each
331. **VATER RHEIN.** This Hybrid Cactus produces blooms of good size, well above the foliage on stout stems. Color, yellow, suffused with salmon-rose50c each
337. **W. B. CHILDS.** (Hybrid). A reliable variety. Color a beautiful, rich purple. Highly recommended. Flowers extra large35c each
341. **WODAN.** Bold, large, but not coarse flower, frequently 7 inches in diameter. A graceful arrangement of semi-incurved petals of a pleasing delicate salmon-rose color, shading to old gold in center. Unusually free blooming variety50c each
342. **WOLFGANG VON GOETHE.** Color, apricot-shaded carmine. Very pretty50c each
404. **ZANTE.** Color, gold heavily suffused with apricot-pink. Center is of deeper shading.....\$2.00 each

There's Pleasure and Profits in Growing "Kentucky Bred" Dahlias

Perhaps you have always thought of Dahlias only in terms of pleasure to yourself and family. There are many women and men too, who grow Dahlias for the extra money they receive from the sale of cut plants and even from the tubers their friends and neighbors buy. One of our customers, Mrs. A. A. Morrow, of Zanesville, Ohio, is growing Dahlias for profits as well as for the pleasure she gets out of a beautiful garden. Mrs. Morrow says of "Kentucky Bred" Dahlias:

"The bulbs I purchased from you were wonderful."

Here is a picture of Mrs. Morrow's Dahlia Garden.



Entrance to Pine Street Dahlia Gardens—Zanesville, Ohio



CACTUS DAHLIA KING SOLOMON

Three Cactus, Three Decorative Dahlias --- Startling Colors

Red Cross75
Frau G. Scheiff.....	.75
Paul Michael75
Rosa Nell75
Mariposa75
Cigarette75
Value	\$4.50

Order Special Garden No. 11

One each of the above for **\$3.00**

Make a permanent record of your Dahlias

Zinc labels last forever

See page 34

Finest Peony-Flowered Dahlias

7. **AMERICA** (Holland Peony-flowered Dahlia). A beautiful shade of apricot-orange50c each
18. **ARCTIC**. This is claimed to be the largest white Peony Dahlia in cultivation. A very fine exhibition variety75c each
30. **BLOSSOM**. Blooms of great size. Color like apple blossom, being pure white, barely flushed pink. Never stops blooming till frost. A favorite everywhere.75c each
120. **BLUE BIRD**. Color, mauve or lilac, which in certain light has a bluish sheen; produces unusually large blooms held erect on long, stiff stems.75c each
40. **CARDINAL** (Holland Peony-flowered Dahlia). A large flower that early in the season comes nearly full to the center and of a gorgeous maroon-purple. The stems are long and very strong, producing the flowers well above the foliage.50c each
43. **CHATENAY**. Pink. One of the finest for cut flowers35c each
49. **CITY OF PORTLAND**. Color is clear, deep, rich yellow. The flowers are of immense size. They are not coarse, but give a graceful, artistic effect. This is a vigorous grower and produces blooms on good stiff stems.75c each
56. **COPPERSMITH**. Peony duplex. Autumn shade.50c each
60. **CREATION** (Holland Peony-flowered Dahlia). This new variety has a pleasing and unique shade not common in Dahlias—a beautiful rose-red. Flowers of medium size and produced freely upon long stems. Good cut flower sort because of substance and size of blooms50c each
70. **DIEMONT VON BYSTEIN**. A popular new shade of deep blue lilac. Large and fine; a strong grower and free bloomer35c each
75. **DR. A. KUYER**. Color rich orange; a strong grower; early and free bloomer50c each
397. **DRUM MAJOR**. Color, rich, fiery red, with yellow center. Petals more or less tipped and marked yellow\$1.00 each
170. **EL PAJARO**. Pink is the predominating color, rose-pink, outlining the outer edges and throughout the center of the petals. Base of petal is bright golden yellow which is also slightly suffused through the flower\$2.50 each
96. **F. R. AUSTIN**. These beautifully colored flowers are of large size, averaging six to eight inches across. The outer petals are very long, creamy yellow, suffused, banded and shaded rich crimson; the inner petals are yellow at base, tinting lighter, and suffused pink and crimson35c each
100. **GEISHA**. Scarlet, golden base and tips75c each
114. **GORGEOUS**. This is indeed a wonderful Peony Dahlia. The color is yellow, shading to bright scarlet. Very attractive in the garden and unusually fine as a cut flower. See illustration\$1.00 each
117. **HAL CURTIS**. The petals of this exquisite flower are quilled at the base and the tips open out flat. The only Dahlia with this formation. Color old rose and salmon. Unique\$1.00 each
124. **HON. R. L. BORDEN**. Large; distinct; rich golden bronze35c each
144. **JOHN CHURCHILL**. Reddish salmon-pink or nearly peach-pink. Petals broad and twisting. A beautiful flower in every way50c each
158. **KING SAUL**. Color bright, rich carmine; a heavy, deep flower and solid color. This is one of the most beautiful shades of red that can be found in the whole Dahlia family. The flower is of good size.50c each
168. **LA RIANTE** (Holland Peony-flowered Novelty). The color a charming lavender-pink with an exquisite golden yellow center, combines to make the flowers most beautiful25c each
169. **LATONA** (Holland Peony-flowered Dahlia). An unusual blending of orange, buff and yellow. Flowers are nearly full to the center and produce freely upon good stems. Plants are robust, standing up well in strong winds.50c each
188. **MADONNA** (Magnificent Peony-flowered Dahlia). The flowers are borne in profusion upon long, graceful stems of wiry stiffness, making it one of the most desirable. In color a very beautiful white, slightly tinted with a most delicate shade of lavender-pink50c each
200. **MEYERBEER**. Deep, velvety cardinal shading to purple. Holds its head erect75c each
221. **MRS. CARRIE HAYWARD**. A Dahlia that attracts attention across the field. Bright peach-red. Grand and profuse. Early and late.50c each
222. **MRS. CHARLES L. SEYBOLD**. Distinct, bright crimson-pink, each petal tipped white.25c each
355. **MRS. C. E. TROWER**. Color, salmon-rose pink shading to a lighter pink at the tips of the petals and to a bright golden-yellow at the base. Many tiny florets cluster around the golden disk, making it a very artistic blossom. The splendid blooms are held erect by exceptionally long, stiff stems50c each
233. **MRS. JOHN BRAY**. Though this Dahlia is called a peony, it usually comes full as any Decorative. Pleasing combination of white with threads of maroon and a yellow disc, if it comes peony. Dainty\$1.00 each
256. **OSAMEQUIN**. Yellow, striped carmine, which gives it a bronzy appearance.50c each
279. **QUEEN WILHELMINA** (Giant Holland Peony-flowered Dahlia). Largest and finest of the pure white sorts; excellent for decorative work and unsurpassed as a cut flower. Blossoms produced upon long, graceful stems, well above the foliage.35c each
283. **REMBRANDT**. Color, yellow, spotted light pink.50c each
130. **ROSALIE STYLES**, color, good shade of pink, lighter than Jersey Beauty75c each



Peony-Flowered Dahlia, Diemont Von Bystein

Special Dahlia Garden No. 3

Coppersmith	\$0.50
Ariel15
Madonna50
Kitty Dunlap50
Pat. O'Mara50
Geo. Walters75
Value	\$2.90

Order by Number

One each of
the above for **\$2.00**



PEONY-FLOWERED DAHLIA DRUM MAJOR

PEONY-FLOWERED DAHLIAS—Continued

- 289. **ROSE GEM.** A variety imported from Holland. The coloring is very beautiful and something entirely new—a pleasing shade of salmon-pink with a silver sheen. The habit of the plant is perfect, a good, strong-growing variety producing its blooms upon strong, stiff stems well above the foliage.....75c each
- 302. **SHERLOCK HOLMES** (Holland Peony-flowered Dahlia). An ideal flower, possessing remarkable qualities; flowers a beautiful shade of mauve.....35c each
- 405. **SUSAN COE.** Color, rose-pink, passing to a yellow center.....\$1.00 each
- 314. **SUNDOWN.** Orange, yellow and pink. A magnificent flower, resembling George Walters in formation and in its profuse blooming qualities, but it is a deeper shade in color. Large, with a long stem; and its keeping qualities are unequalled among large blooming Dahlias75c each

- 316. **SWEETHEART'S BOUQUET.** A fine blooming peony with good straight stem. Color rich salmon-rose.....50c each
- 320. **THE BILLIONAIRE.** An enormous double to class up with Millionaire. Beautiful shade of golden orange. Indeed Billionaire is a wonderful Dahlia and should be in every garden50c each
- 286. **WHITE DOVE,** one of the best white peony type. 50c each
- 352. **ZEPPELIN.** An extra-fine, free flowering variety. Color a pleasing soft shade of violet-mauve, with silvery suffusion.....50c each
- 354. **ZONSONDERGANG.** This is a Holland introduction. Color is a beautiful salmon-red Autumn tint, a color so much admired. Blooms are large and borne on good stiff stems.75c each

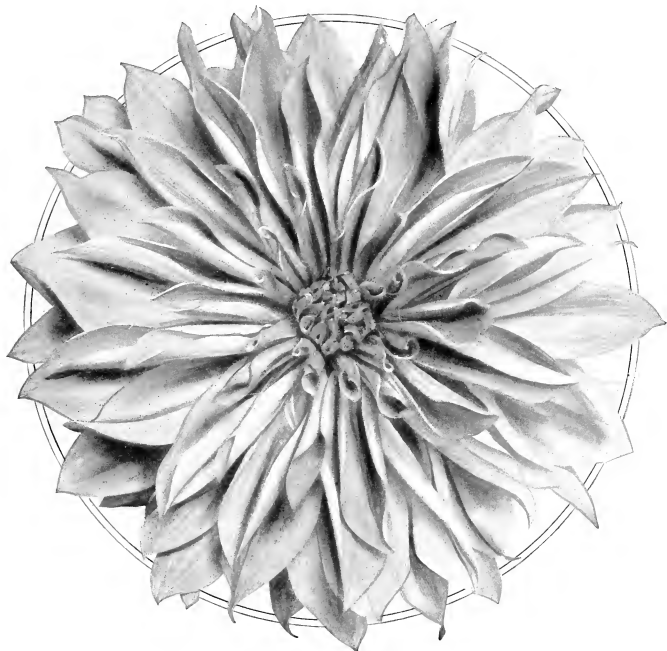
Decorative Dahlias

349. **AIBONITA.** This is an immense flower, color, lavender or violet, pink shading to white with a rich golden-yellow at base of petals; formation is unusual. Blooms well above the foliage on long, stiff stems. \$1.00 each
6. **ALANNAH.** (Hybrid.) Color, a pale yellow with suffusion of rose that marks it as something different and distinctive. Twisted petals, reflexed, deep and large. Good stems and very free bloomer. Awarded premium at New York show, 1924. \$2.00 each
264. **ALEX WADDLE,** color, cream overlaid delicate pink 75c each
8. **ALEXAN BEAUTY.** A seedling from the well-known French variety, Le Colosse, being almost identical in form, shape and size. The flowers are of gigantic size and are produced on long, heavy stems, well above the foliage. The color is a gorgeous wine-crimson. 35c each
10. **AMEN RA.** This Dahlia is in a class by itself. In form and color it is a tropical setting sun. Huge and a grand bloomer. It has won four first prizes in four years at the California Dahlia Show. Colors include copper, orange, gold and amber, shading to deep bronze in center. Fine keeper. 75c each
13. **ANNA MAIER.** Enormous red, difficult to describe. Has a pinkish tinge that suggests worn old velvet. Shades to soft yellow at very center. Long, stiff stems. Good for all purposes. \$1.00 each
382. **APPLEBLOSSOM.** This is a very beautiful light pink; good double flowers. A Holland introduction. 75c each
29. **AURORA B.** Large and fine form on slender, wiry stems. Color reddish purple, with white collars of tiny petals between the layers. 75c each
21. **AUTUMN GLORY.** A soft, golden terra-cotta; rich and pleasing by day and entrancingly lovely under artificial light. 35c each
23. **AYESHY.** A wonderfully handsome, clear light yellow. The flowers are of immense size, beautiful, regular form, with large, shell-like petals and borne on long, stiff stems. A profuse bloomer. 50c each
24. **AZALEA.** This is a large bloom with many rows of long, narrow florets, giving it an unusually attractive shape. Color is soft, creamy yellow and the outer row of petals is tinged pink. 75c each
157. **BARBARA REBECK,** color, blend of old rose and old gold \$7.50 each
26. **BARON SCHROEDER.** Rich, glowing purple. 25c each
406. **BASHFUL GIANT.** Color apricot with golden suffusion and shadings. Blooms of unusual size on good stiff stem. 75c each
27. **BESSIE BOSTON.** Good red of novel form, with cleft petals. Keeps well. 50c each

383. **BOERENHAGE.** Color soft rose on dark brown. Very fine for cutting. A Holland introduction. 75c each
34. **BONANZA.** A California Dahlia of a new shade of red. Deep crimson with fine stems. Petals curve backward \$1.00 each
407. **BOSTON WHITE.** An unusually good white Dahlia \$1.50 each
201. **DOVE,** color, very pretty shade of lavender pink. \$1.00 each
41. **CARMENCITA.** A large Dahlia that is really graceful. Yellow, with short red stripes distributed. Very pleasing to the eye. No two blooms striped alike. Very free. \$1.00 each
293. **CAROLYN WINTJENS.** Color salmon pink with rose shadings. Produces large blossom on good, stiff stem 30c each
408. **CASPER WARE.** Color a pleasing shade of silvery violet rose and in late season it becomes a clear pink. \$2.00 each
44. **CHAMPAGNE.** One of the best of recent introductions. Flowers are immense, the color a beautiful shade of golden champagne and chamois. The stem is heavy and holds the massive flower upright. \$1.00 each
46. **CHESTER S. WOODMAN.** A gigantic flower of rich, reddish purple. The plants are tall and sturdy, producing their blossoms on strong, stiff stems. 50c each
50. **CLARABEL.** Color rich rosy purple. 25c each
134. **CLAUDE HARLAN.** Claimed to be the clearest and purest color in the lavenders. An excellent exhibition, garden or cut flower variety. \$3.00 each
57. **CANTEN (Dec.)** Beautiful Autumn shade. 75c each
53. **CONSTOCK.** This is classified as a Hybrid Cactus. Petals are slightly fluted, forming a beautiful bloom of good substance. Color immense yellow, on long, straight stem, making it a fine cut-flower variety. 50c each
62. **CUBAN GIANT (Dr. J. P. Kirkland).** Dark, velvety crimson large. Stems long and wiry. Plants are tall and sturdy. 35c each
63. **C. W. BRUTON.** A large canary yellow. 25c each
65. **DARIENE.** An exquisite shade of live shell pink with a dainty blending of white at center. The plants make ideal specimens, averaging about 3 feet in height, a single plant making a very effective showing. 35c each
69. **DELICE.** Flowers are of good size, standing well above the foliage. A charming bright pink, suffused with lavender-pink. A well-known cut-flower variety. 35c each
71. **D. M. MOORE.** A rich, deep, velvety Victoria-lake, which is a shade deeper than deep maroon, the nearest approach to black. A mammoth flower produced in profusion on long, stiff stems. 50c each
409. **DOLLY YARDEN.** Color a real pink, just the shade everyone desires. \$2.00 each
73. **DOROTHY FLINT.** A beautiful salmon-pink, striped yellow 50c each
375. **DOROTHY ROBBINS.** Large flowers of a real Autumn shade, buff-carrot, red center. We have found this to be a splendid grower and produces its blooms on long stiff stems 35c each
193. **CLOWN,** color, red and white striped. \$1.00 each
77. **DREER'S YELLOW.** A beautiful Colossal Dahlia of perfect form; stems long and straight, carrying the blooms well above the foliage. The flowers often measure 7 to 8 inch in diameter. Color rich, sulphur yellow. 50c each
78. **DR. TEVIS.** One of the largest and most beautiful Decorative Dahlias in cultivation. Blooms average 9 to 11 inches across; color is a beautiful shade of salmon-rose, suffused with old-gold, shading to a golden apricot. Fine for exhibition purposes. 50c each
410. **EASTERN STAR.** Color soft saffron yellow with old gold shadings. Blooms have great substance and good keeping qualities. \$1.50 each
82. **ELBORADO.** Bessie Boston, introducer of this variety. Size: "A strong feature of its beauty is that the depth corresponds to the size; it has greater substance than any other variety ever seen; we have never seen a blossom of such vivid gold color". \$1.00 each
319. **ELLINOR VANDERVEER.** Color glowing, satiny rose-pink. Blooms are of great depth and are held and good the foliage. Stem exceptionally long and stiff. We have found this to be an unusually free bloomer and of course makes it very desirable. We have no hesitation in recommending this variety. \$1.50 each
85. **ELSIE DAVIDSON.** A beautiful, deep, golden-yellow, fine for cutting. 25c each
86. **EMBASSADOR.** This is a California variety, producing large blooms of good stem. Color is the deepest shade of red or maroon, and grown in slight shade are nearly black 50c each



Decorative Dahlia, Shudow's Lavender



KENTUCKY CARDINAL

One of our own original "Kentucky Bred" Dahlias originated by Mr. G. E. Schulz. A remarkable Dahlia. As charming and vivacious as the bird whose name it bears.

Garden and Home Builder says of it:

"At last someone has fittingly used the name made famous by James Lane Allen. It is fitting that a Kentucky originator has chosen this name for a good Dahlia. Kentucky Cardinal won the American Dahlia Society Certificate of Merit in 1926. It is a bright scarlet Decorative that holds its color under sunshine, and an excellent grower. This is the first time a Kentucky origination has got into the Honor Roll."

We have a limited stock this year and are offering it in our catalog.

Tubers \$5.00 --- Strong Green Plants \$2.50

**"Kentucky Bred"
Dahlia Special**

Paul Michael75
Jean Chazot50
Insulinde75
Blue Bird75
Pride of California50
Rotarian50

One each of above for

\$2.50

Order Special Garden No. 10

Value\$3.75

DECORATIVE DAHLIAS—Continued

411. **EMPELOR.** Color deep rose maroon. Produces very large blooms on good stem. \$1.00 each
294. **E. T. BEDFORD.** Color purple with lighter shadings. Fine exhibition variety of blooms often measure 12 inches. Free bloomer. \$1.00 each
89. **EVENTIDE.** A splendid flower on long, stiff stems. For all purposes it may be termed a white flower, there being but the faintest flush of delicate rose on the edge. 30c each
231. **FAITH GARIBALDI.** This certainly is a wonderful rose-color decorative. It has great depth, large size, and is held up straight on long, stiff stems. If you want a real Dahlia for exhibition and cutting, you will make no mistake planting this variety. \$1.50 each
391. **FAKKEI.** Color bright dark-brown red. Very stiff petals. A splendid variety for cut flowers. A Holland introduction. 75c each
92. **FIREBURST.** The flower is flatly built, has broad, long petals, and is an intense scarlet, slightly shaded orange-red. Some specimens measure 8 inches and over in diameter. The finest scarlet Colossal Dahlia. 50c each
94. **FRANK A. WALKER** (See illustration). Deep lavender-pink. For garden decoration or for cut flowers this variety is exceptionally good, having long stems and producing flowers in great abundance. 35c each
95. **FRAU GEHEIMRAT SCHEIFF** (German Decorative Dahlia). An exquisite blending of apricot-orange and yellow, with reverse of petals coral-red, the unopened central and twisted petals showing the coral-red prominently, making a very unusual and attractive flower. The plants are of good habits, producing their blossoms on exceptionally long stems, well above the foliage. 75c each
189. **FRECKLES.** Color buttermilk yellow streaked and pencilled garnet, some blooms all garnet. An early and free bloomer. 50c each
384. **GLOIRE DE STANHEIS.** (Decorative). Copper color, a very pretty Autumn shade. Grows very much like a chrysanthemum, on top of stem. A Holland introduction. 75c each
309. **GLORIANA.** Color, pure gold with slight reddish glow in the center. Free bloomer on good stiff stem. 75c each
109. **GOLDEN GLOW.** Color apricot shading to amber. This variety produces a beautiful flower on good stem. 50c each
110. **GOLDEN WEST.** Pure yellow. The petals are deeply serrated, giving the flower a fluffy appearance which is most attractive. 50c each
113. **GOODBYE DELICE.** (Hybrid). Clear pink, a shade lighter than Delice and has all the keeping qualities of the same but is a larger and better bloomer. 50c each
116. **GRAND DUKE ALEXIS.** White, suffused lavender; very fine. 25c each
412. **GRANDOLA.** Color brilliant orange medium size, blooms held erect on good stem, a splendid cut flower variety. \$3.50 each
206. **GRENADIER.** Color purplish maroon shade combined with silver. Petals on one side are purple and the other pale silver. Produces large blooms on good stiff stem. \$1.50 each
16. **HALVELLA.** Color old rose pink, with a golden sheen. This is a splendid variety both for exhibition and cutting. The blooms are of great size and substance. The flowers are produced on long, stiff stems and hold their centers all through the season. \$2.00 each
413. **HERCULES.** Color coppery rose, fine large flower, good exhibition variety. \$1.00 each
386. **HOBBEMA.** Color salmon to a light yellow ground, and violet shade. Very fine variety. Holland introduction. 75c each
125. **HORTULANUS FIET** (Wonderful Holland Decorative Dahlia). The coloring of this variety is a beautiful shade of salmon exquisitely blending to yellow at the center. 75c each
127. **INSULINDE.** A very fine, large flower on good stem. Petals are curled and twisted. This makes a wonderful flower for decoration. Color very deep gold with bronze suffusion for decoration. 75c each
414. **JACK O'LANTERN.** Color bright orange red, shading to a dark Spanish red near the center with gold tints to the petals that form the center. \$5.00 each
129. **JACK ROSE.** This is a brilliant crimson-red. Is fine for the garden and for cutting. 25c each
132. **JEAN KERR.** One of the finest whites for decorations. 50c each
133. **JEANNE CHARMET.** The flowers measure from 7 to 10 inches in diameter and are borne on stiff, wiry stems frequently 18 to 24 inches long. Lilac-pink, shading to pure white toward the center, with a tinge of light yellow at the margins. 35c each
135. **JEERSEY'S BEAUTY.** Among artists this is considered the only true pink Dahlia. Practically all pinks have tints of lavender. Large and perfect decorative type, on extra fine stems. \$1.00 each
136. **JEERSEY'S JEWEL.** A nine-inch bloom on good stems. Color mallow-pink, with long petals. Has A. D. S. certificate, and is a prize-winner. \$1.00 each
367. **JEERSEY'S MONARCH** (Decorative). Very large, deep flowers on good stems. Color a deep salmon with yellow at the base of petals. \$1.00 each
138. **JEERSEY'S PRIDE.** (Hybrid). Another large Jersey Dahlia of fine quality and style. Richly blended buff, yellow and pink, make a pleasing effect. \$1.00 each
368. **JEERSEY'S SOVEREIGN** (Decorative). This is a new shade of color hard to describe. It is self-color and the nearest description is a salmon-orange. It is a splendid grower with dark foliage, blooms of good size and on good stiff stems. \$1.00 each
76. **JUDGE LANGFORD.** Color deep rich pansy purple faintly lined white. \$1.00 each
151. **JUDGE MAREAN.** This is a universally known exhibition variety. It is a beautiful combination of colors, almost indescribable. It is a most prolific grower and a free bloomer; of a most wonderful glowing salmon, pink, red, orange, yellow and purple-gold. 75c each
159. **KITTE DUNLAP.** Color, American Beauty Rose shade. Produces immense exhibition blooms. Stems are long and every Kittle Dunlap is a prize-winner and should be in every garden. See front cover illustration. 50c each
415. **LADY LYNDORA.** A very pleasing color combination being a blend of pink and white. A free bloomer. \$5.00 each
392. **LA GRANDE JAUNE** (Decorative). Color a very beautiful light yellow, and a splendid cut flower variety. A Holland introduction. 50c each
172. **LE GRAND MANITOU.** Pure white, artistically striped, splashed and blotched deep violet-purple. The plants occasionally bear a solid purple colored flower. 35c each
174. **LEO XIII.** The habit of this plant is all that can be desired, producing large flowers upon splendid stems, well above the foliage. It is a beautiful, deep yellow. 75c each
387. **LIBERTY** (Decorative). Color peach-pink on yellow ground. Petals terra-cotta tipped. A Holland introduction. 75c each
180. **L. K. PEACOCK.** This is a vigorous grower. Flowers of good form, pure white. 50c each
416. **LILLIAN BALDWIN** (Decorative). A wonderful deep pink decorative. This variety for two years straight has won cup at New York Show for best keeping variety. \$1.50 each
417. **LOGANS WHITE.** A pure snow white Dahlia. Blooms are large on stiff stems and a very free bloomer. \$1.00 each
182. **LOTUS.** This is a great favorite. Color is a luminous flame or a lively orange, intensified with metallic lustre. Blooms produced on long, straight stems. 50c each
184. **LYNDHURST.** Brilliant cardinal red. A fine cut flower. 35c each
418. **MAID OF THE MIST.** Color cream shading to pink. A large deep flower and free bloomer. 75c each
190. **MANITOU.** This variety produces large blooms; color is very pleasing, being an amber bronze with a distinct shading of pink. 35c each

Special Dahlia Garden No. 6

Le Grand Manitou	\$0.35
Insulinde75
Jean Chazot50
Countess of Lonsdale35
Mina Burgle50
Manitou35

One each for

\$1.75

Order by Number

\$2.80



JERSEY'S BEAUTY

The only true pink Dahlia. Dahlia enthusiasts are particularly fond of **Jersey's Beauty** because of its remarkable color. Most pink Dahlias have a slight tinge of lavender in their petals. **Jersey's Beauty** is true pink, almost entirely free from the lavender tinge. The color is a lovely rose-pink. The blooms are large and of true decorative type. Well pointed and artistic in proportion. It has extra fine stems. Our extensive growing facilities and our exceptionally large stock make it possible for us to offer this Dahlia for **\$1.00** each

DECORATIVE DAHLIAS — *Continued*

419. **MARGARET WOODROW WILSON.** Color, an opalescent pink, face of petals creamy white with a phlox pink reverse\$2.50 each

376. **MARGARET MASSON (Decorative).** Color, beautiful, silvery rose-pink of great depth and size. On account of its good-keeping qualities, it makes a wonderful exhibition variety. Blooms are of immense size, blooming quality very free\$1.50 each

284. **MARMION.** Color, pure golden yellow with bronze suffusion on reverse of petals. Florets are long, wavy and curling. We have found Marmion a thrifty grower and satisfactory in every respect.....\$3.00 each

197. **MARY C. BURNS.** This is truly a wonderful Dahlia. The outside of the petals is old gold and the reverse dull red. This combination of red and gold is new and immediately attracts attention. The size is enormous, but the coloring is what makes the blossoms so unique.....\$1.00 each

199. **MEPHISTOPHELES.** Color, ruby red with gold points at the end of each petal. The enormous blooms are produced on stout stems\$1.00 each

DECORATIVE DAHLIAS—Continued

302. **MILLIONAIRE.** This mammoth Decorative Dahlia exceeds any other Dahlia in existence in size. The color is a dainty lavender, with a pink sheen. The flowers are simply immense, deep and heavy. After the first flower, it is produced on extra-long, heavy, stiff stems.**75c each**
303. **MINA BERGLE.** Flowers of gigantic size and remarkable beauty. Color, a glowing, brilliant scarlet. The flowers are of perfect Decorative type and are borne stout, wiry stems well above the foliage.**50c each**
304. **MISS PORTLAND.** Color, soft pale lilac-pink with reverse of petals tourmaline-pink. A very free bloomer and splendid keeper.**\$1.00 each**
305. **MME. BUTTERFLY.** Rich in colors, with a velvety sheen, and a marvelous bloomer, with strong stems.**50c each**
313. **MME. MARZE.** A grand white Colossal variety of perfect form and immense size.**50c each**
316. **MONT BLANC.** A very good white of generous size. Good stems.**35c each**
379. **MORDELLA (Decorative).** Color, beautiful, bright, clear shade of apricot buff, flowers average nine inches in diameter, and are held well above the foliage on stems four to six feet long. This is a strong, vigorous, profuse bloomer. It is claimed for Mordeilla, that it is the best Autumn-bred variety ever introduced.**\$1.50 each**
373. **MR. CROWLEY (Decorative).** Of rather dwarf-bushy growth. Color, bright, glowing hues of salmon-pink. Blooms are produced in great profusion. This is a very pretty variety.**75c each**
320. **MRS. CARL SALBACH.** Color, mauve-pink, shading to white. The immense flower is produced on stout stem. We do not hesitate to recommend this variety as it is one of our favorites.**50c each**
328. **MRS. B. C. DRESSELIHUIS.** A big improvement in every way over Queen Mary. A fresher pink. Stands proud and high.**50c each**
329. **MRS. I. DE VER WALKER.** A Maroon Dahlia with few equals. Enormous mauve-pink blooms on stems too long for most purposes. Superior to Rosa Nell or Kittie Dunlap.**75c each**
330. **MRS. J. GARDNER CASSATT.** Rose colored with grand stems and plenty of substance in flowers.**50c each**
332. **MRS. JOHN BOWMAN.** The center petals are quilled, while the outer ones broaden out to the Decorative type. The color is an exquisite shade of deep, silken trout, with the reverse of the petals slightly tinged magenta. The stems are long and exceptionally stiff.**50c each**
335. **MRS. MALCOLM WHITMAN.** Color, old rose suffused with lavender and softening to yellow at the center. Blooms are produced in good form and color.**75c each**
341. **MRS. WM. H. PEPIN.** One of the best white Decoratives in existence. It is greatly superior in both size and form to the justly celebrated Mme. Marze, which has for several years been regarded as the best white in this class.**50c each**
348. **NOBILIS.** Scarlet and white, mostly white. Unlike Earle Williams or any other scarlet and white. Blooms large all season.**75c each**
388. **ORANGE BOVEN (Decorative).** Color, fine, dark orange. A Holland introduction.**75c each**
254. **ORANGE KING.** It is a beautiful, glistening orange, deep and rich, the clearest and richest of this popular color. Plant is sturdy, healthy, of medium height, bracing habit, and produces the flowers freely on stiff stems.**35c each**
253. **OREGON BEAUTY.** A seedling from William Agnew, resembling the parent in size, shape and color. Flowers are large and full to the center. Color, a glowing, fiery scarlet, making Oregon Beauty distinctive in every garden.**35c each**
257. **OSAM SHUDDOW.** The most prominent feature of this Dahlia is its formation. The big, heavy, loose petals produce a flower more like a gigantic rose than a Dahlia. The coloring is a delightful old rose, slightly suffused with lilac and shading to yellow at the center. The bush is sturdy and tall and the main stalk is the thickest we have ever seen. One bloom is a bouquet.**75c each**
260. **PATRICK O'MARA.** Autumn shade. Claimed an improvement over King of the Autumn.**50c each**
261. **PAUL MICHAEL.** Old gold. Full and deep. One of the most exquisite of the Autumn shades. A grand Dahlia.**75c each**
263. **PERLE DE LYON.** Splendid pure white. Similar to Perle d'Or, but better.**35c each**
268. **PIONEER.** A large Dahlia of mahogany red that is rich and showy. Blooms profusely on wiry stems. Bronze-green foliage.**\$1.00 each**
389. **POTTER (Decorative).** Bright, dark violet with flaked petals. Very elegant type. A Holland introduction.**75c each**
54. **PRESIDENT WILSON.** Color, crimson carmine tipped white, some blooms come all red.**\$1.50 each**
372. **PRIDE OF CALIFORNIA (Decorative).** Color, crimson-red with dark, full center. Immense flowers on long, stiff stems. This is a fine variety for exhibition as well as cut flowers.**50c each**
394. **PRIDE OF SAN FRANCISCO (Decorative).** Color, a brilliant, golden salmon-pink. A very attractive flower, held perfectly erect on good stiff stems. This is an excellent cut flower variety.**75c each**
273. **PRINCESS JULIANA (Holland Decorative Dahlia).** It is perfect as an exhibition flower, ideal for garden decoration and unsurpassed for cutting. Holland Dahlia specialists claim this the finest white Decorative Dahlia.**35c each**
219. **PRINCESS PAT.** Color, beautiful shade of old rose deepening at the center. Particularly beautiful under artificial light.**75c each**
276. **PURPLE DUKE.** The petals are cup-shaped and evenly quilled to the center. Color, a rich, deep purple—a royal color that attracts everyone's attention.**50c each**
278. **QUEEN MAIY.** This is a stronger grower than Delice. A large flower with full, rounded center. The color is a soft shade of pink.**35c each**
420. **REALIZATION.** Color, canary-yellow; produces large blooms freely.**75c each**
287. **ROOKWOOD.** Color, bright cerise-rose. Considered one of the best in its shade. Blooms are borne on strong, upright stem.**\$1.00 each**
381. **ROBERT TREAT (Decorative).** Color, a very pretty American Beauty rose. This variety produces blooms averaging where most new ones show at New York, a depth of great depth. Robert Treat is the winner of many prizes.**\$1.00 each**
291. **ROTARIAN.** A violet maroon of large size and equal to Kivani in formation. Violet-maroon hardly describes it. Very rich and soft. Raise it and name the color yourself.**50c each**
371. **ROSA NELL (Decorative).** Color, clear, bright rose, a rare color in Dahlias, which attracts immediate attention. Blooms are unusually large of very fine formation. Good stiff stems held well above the foliage.**75c each**
390. **ROSE DORE (Decorative).** Color, pink with flushgold, well polsed. Flowers on stragg, stiff stems. A Holland introduction.**75c each**
395. **SAGAMORE (Decorative).** This Dahlia was first exhibited in 1921, winning the honor of being the best single in the American Dahlia show at New York since that time. It has a record of winning many prizes. Color, rich amber gold, shaded toward the center, and in the depth of the large and perfectly-formed bloom with a warm salmon or orange hue at the center, as the great pleasure to recommend this Dahlia very highly.**\$1.00 each**
295. **SAMSON.** This is a very striking combination of red and yellow. Blooms of immense size.**\$2.00 each**
421. **SANHIGAN PRINCESS.** Color, true shrimp-pink that will blend with almost any other color. An early free bloomer; stiff stems.**\$1.50 each**
218. **SHELIKOFF.** Color deep garnet, produces blooms deep and full on strong stems.**50c each**
380. **SHOWER OF GOLD.** Color, brilliant yellow, deepening to soft apricot towards the center.**75c each**
303. **SHUDDOW'S LAVENDER.** The very large flowers are of a silvery lavender, shading to white. In hot weather the white is more pronounced, but as the season advances it will almost disappear. The stem is long and stiff, and holds the large flowers erect. It blooms continuously and freely.**\$1.00 each**
393. **SOLFATARE ROSETTE (Decorative).** Color, deep golden yellow, a very effective color. Rich flowers. A Holland introduction.**75c each**
307. **SOUVENIR DE GUSTAVE DOAZON.** It is the largest Dahlia in existence. Flowers are full to the center and often measure nine inches and over in diameter; they can be forced to measure over twelve inches. The color is a pleasing shade of orange-red. The stem is long and stiff, and holds the large flowers erect. The foliage is a vigorous, green growth, very dark, glossy, and green foliage, and a remarkable constitution.**25c each**

Dahlias Large as Dinner Plates

October 25, 1927.

I received my dahlia bulbs and surely had some wonderful blooms. Some large as small dinner plates. Please send me your 1928 catalog, as I want more bulbs this spring. Thanking you for the nice collection, I remain,

Yours truly,

MRS. R. J. GEE,

Powers Lake, North Dakota.



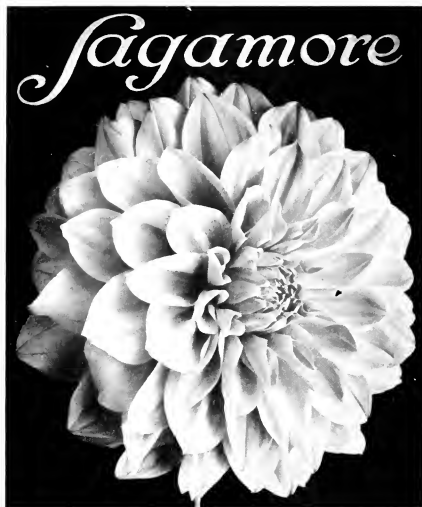
DECORATIVE DAHLIA AMUN RA

DECORATIVE DAHLIAS — *Continued*

237. **STARTLER** (Decorative). A very pleasing crimson-scarlet, this variety produces immense blooms on long, good, upright stems 75c each
317. **SYLVIA**. White edged pink 25c each
321. **THE GRIZZLY**. Color, deep maroon red. This unquestionably is one of the most prolific Dahlias ever known. The blooms are very large and reflexed, which makes it really attractive. You should by all means have this variety in your collection 75c each
366. **THE SULTAN** (Decorative). Color, a bright true red. Blooms are large size and are held well above the bushes on long, stiff stems..... \$1.00 each
324. **THE U. S. A.** Color, deep orange. Petals curled and twisted in a very odd manner. Blooms of enormous size 75c each
335. **THE WIZARD OF OZ**. This is a Dahlia of immense size. Color is a rare shade of glowing amber pink with soft salmon shades. It has a good, straight stem..... \$1.00 each
326. **TILLAMOOK**. Color, delicate blush, deepening at the tips to rose-pink. Its pleasing color, combined with its large size and free blooming habit, make this a prize-winner 35c each

61. **TOMMY ATKINS** (Decorative). This is a most unusual red, the color being entirely different from the general run. Large, deep blossoms, attractively formed on good stems. A splendid bloomer 75c each
422. **TRENTONIAN**. This giant Dahlia is still among the leaders and rightly so. Color, a wonderful blending of old gold, amber, and coppery bronze..... \$1.50 each
306. **TRYPHINIE** (Decorative). Color, bright shell pink, shading lighter at the tips of the petals, at the base and throughout the petals is seen a bright, golden yellow, reverse of petals is rich pink, giving the flower a decidedly new color. This is another splendid exhibition and cut flower variety 75c each
330. **VANITY**. Flowers bounteously on cane-like stems. Color, a glowing coral-pink. Cuts and keeps well. Something truly stylish \$1.00 each
281. **VANITY FAIR**. Color scarlet tipped and bordered white with base lemon-yellow. Blooms are produced on long, wiry stems \$1.00 each

DECORATIVE DAHLIAS — Continued



Decorative Dahlia Sagamore

332. **VELMARY.** A beautiful primrose-yellow, blending to golden-yellow at the center, the whole overed a charming shade of orange-pink50c each
334. **VIRGINIA.** Color, a lavender-pink. Blooms are produced on good, stiff stems. A variety we can recommend without hesitancy50c each
335. **VIRGINIA MAULE.** Delicate tint of shell-pink25c each
338. **W. P. DEXTER.** Fantastic, yet fascinating. Violet-purple, heavily tipped white. The description does not do it justice. Everybody buys it75c each
423. **WINFIELD SLOCUMBE.** Color, burnt-orange shading to gold at the center. Free bloomer\$1.00 each
342. **WM. F. GUDN.** Pure white; long stems, fine for cut flowers25c each
344. **WM. H. SLOCUMBE.** This is a beautiful canary-yellow of splendid form. Flowers very large. A very free and continuous bloomer. Should be in every collection75c each
343. **WM. STARK SMITH.** This plant is a vigorous grower, with heavy, dark, glossy green foliage and a remarkable constitution. The flowers are enormous, and produced upon stiff, wiry stems, well above the foliage. The blossom is perfect in form, of immense size and exceedingly wonderful color combination—a golden-yellow, artistically striped and splashed scarlet50c each
323. **WORLD'S BEST WHITE.** An unusually good white variety for both garden and exhibition. The large, white blooms are borne on good, stiff stems\$1.50 each
347. **YELLOW COLOSSE.** Large, showy flowers of pure primrose-yellow are produced very freely on long, graceful stems. Its golden, cup-shaped petals are daintily arranged, completing this beautiful, perfect flower50c each
348. **YELLOW DUKE.** Canary-yellow, quilled petals, fine for cutting25c each
350. **YELLOW MONS. LE NORMAND** (Giant French Decorative Dahlia). An early and continuous bloomer, of good habit, producing its immense flowers on long, stiff stems. In color, a rich golden-yellow, with occasional reddish markings. The largest and finest of this color. One of the most satisfactory garden varieties and equally good as an exhibition sort.75c each

Testimonial

Jacob Schulz Co.

211 Central Ave., East Point, Ga.
January 6, 1929.

In the fall of 1927 I bought from your agent at the fair: 1 "Jersey Beauty," 2 "Jean Kern," 1 "Kitty Dunlap," and they proved to be fine—especially the Jersey Beauty and Jean Kern.

As I told you I had only one "Jersey Beauty" but have never seen so many large flowers from one stalk. It was the talk of the town. The stalk grew ten feet high. I guess the soil perhaps had lots to do with it, but anyway I wanted you to know what success I had with my Jersey Beauty and that I think your bulbs are far superior to others I have tried.

Very best,

Mrs. W. E. Orr.

Show Dahlias

1. **A. D. LIVONI.** Beautiful, soft pink. Well formed flowers with long stems. Perfectly round, ball-shaped flowers, each petal being very tightly quilled and arranged in exact regularity. Free flowering25c each
12. **ANGUS MEGAR.** New. The largest and finest shaped lavender-purple Show Dahlia to my knowledge; tall and sturdy50c each
68. **DEE-LIGHTED.** A large, deep white with a smile in the center that wins a smile50c each
74. **DOROTHY PEACOCK.** The flowers are of good size, exquisite form, great substance; the color is a beautiful, clear, live pink that appeals to everyone50c each
84. **ELSIE BURGESS.** Color, delicate white ground, tipped and suffused with a beautiful lavender and faint light pink. Free bloomer; fine for cut flowers25c each
424. **FLORENCE.** Color, a very pleasing shade of pale light-lilac50c each
147. **JOHN STANHOPE.** Large red salmon flower on long stems. Most desirable rich color50c each
156. **KING OF SHOWS.** Deep butter-yellow; solid color throughout. Every petal is perfectly quilled and uniquely formed. A mammoth flower, on long stems. It is without doubt the finest Show Dahlia ever grown and should be seen to be appreciated75c each
198. **MAUDE ADAMS.** The color is a pure, snowy white, very effectively overlaid clear, delicate pink. Undoubtedly one of the finest of the show types and highly recommended for all purposes25c each
207. **MISS HELEN HOLLIS** (gigantic Scarlet Show Dahlia). Undoubtedly the largest and best scarlet Show Dahlia in existence. Blossoms are on long, stiff stems, well above the foliage. Plant extremely sturdy and produces very luxuriant foliage. Highly recommended50c each
208. **MISS LILY LARGE.** A clear yellow striped and speckled vermillion. Very large and a free bloomer35c each



DECORATIVE DAHLIA MRS. H. C. DRESSELHUIS

SHOW DAHLIAS—Continued

- 236. MRS. J. P. SMITH. Color vivid cherry-blush over a rich crimson. A very large Show Dahlia50c each
- 275. PRINCESS VICTORIA. Clear, pure canary-yellow, without shade or blemish from bud to old age. Perfect form, on long, slender stems. An extremely early and profuse bloomer25c each
- 277. PURPLE GEM. Deep purple; distinct30c each
- 311. STORM KING. The most reliable pure white Show Dahlia to date. Flowers produced on good stems, well above the foliage. Free flowering25c each

- 323. STRADELLA. Beautiful, deep purple crimson. Exceptionally free flowering. Stems long and wiry. One of the best to date35c each
- 336. VIVIAN. White, effectively edged rose violet. An extremely wonderful blending of color possessed only by the rare novelties. One of our champions and a variety worthy of the highest words of praise. Fanciers who have grown Vivian are enthusiastic over its merits35c each
- 346. W. W. RAWSON. Very large, semi-quilled petals, good stem, color white, overlaid mauve.50c each

Collarette Dahlias

- 9. AMI NONIN. This is considered one of the most beautiful of its type. Color is a charming shade of old rose. A good cut flower variety50c each
- 99. GEANT DE LYON. An enormous velvety maroon flower75c each
- 212. MME LOCHER. Color, Autumn shade, tipped white25c each

- 215. MON AMI. Flaming scarlet, tipped gold. Has a yellow collar with shading of vermilion. Pretty75c each
- 297. SAN MATEO STAR. The grandest collarette in existence. Large cerise, petals edged white, white collar. Back of petals mostly white, but seemingly transparent, with cerise showing through. Beautiful in any receptacle or with any flowers. The large petals hold crisp and fresh for days after cutting50c each



Pompon Dahlias

5. **AIMEE.** A very small flower of bronze color. This is a very free bloomer, on long stems50c each
17. **ARIEL.** Buff tinted orange. Very desirable25c each
425. **BELLE OF SPRINGFIELD.** Color, red, very small50c each
32. **BOBBY.** Very finely formed flowers of an attractive shade of plum color. An extra good Pompon25c each
111. **BRONZE BEAUTY.** Color, golden apricot. Free bloomer50c each
43. **CHALLENGE.** White and dark maroon. A variegated novelty attracting much attention25c each
272. **DAINTY.** Tiny pointed petals; color, white, shading to pink. Splendid for cutting50c each
145. **DANDY.** This is a small, nicely formed free bloomer; color, orange50c each
67. **DEE DEE.** Color, lilac50c each
356. **ELIZABETH.** Color, golden yellow, edged with brownish red. Fine for cutting50c each
139. **EUNICE.** Color, white with lavender edge. Fine for cutting50c each
90. **FAIRY QUEEN.** Sulphur yellow, edged pink25c each
357. **GEORGE IRELAND.** Color beautiful mauve; small flowers50c each
358. **GLOW.** Color, light old rose or coral50c each
359. **GOLDIE.** Color, pure gold; fine for cutting50c each
360. **HECLA.** Small white; free bloomer50c each
361. **HELEN COTTRELL.** Color, light pink; very pretty50c each
121. **HIGHLAND MARY.** Pink and white. Quite large flower and very productive and free25c each
126. **IDEAL.** A very pretty yellow50c each
161. **KLEIN DOMITEA.** Bright golden terra cotta. Profuse10c each

171. **LEADER.** Color, clear lemon-yellow, very heavily tipped rosy purple50c each
160. **LILIAS OR LILAC.** Color, cream ground heavily suffused with pink with a lilac sheen50c each
137. **LITTLE BEE-SWING.** Color, golden yellow, heavily tipped cherry red. Splendid for cutting50c each
179. **LITTLE FRANK.** Amber, shaded salmon25c each
378. **MACBETH.** Color white, tipped pink. Splendid formation; a good variety for cutting75c each
187. **MADELINE.** Pale primrose, edged with rose purple. Very free flowering25c each
300. **MAJOR.** Color deep shade of old rose, shading to buff yellow. Very good75c each
329. **MIKE.** Color, burnt orange, shading lighter at outer petals. A profuse bloomer\$1.00 each
244. **NEATNESS.** Salmon pink25c each
146. **NELLY FRASER.** This is considered one of the best varieties50c each
362. **PANSY.** Color violet or King Tut purple50c each
363. **PERFECT.** Color, yellow tipped with rosy pink. Very attractive50c each
364. **ROSEBUD.** Color, white ground edged rosy pink. Splendid for cutting50c each
304. **SNOWCLAD.** Pure white. This dainty little white flower should be seen to be appreciated. It is very prolific, producing a great abundance of flowers25c each
365. **SUNSET.** Color a beautiful orange25c each
47. **TOM.** Small, compact flower; color, bright yellow, tipped sunset red. A free bloomer75c each
426. **TOM THUMB.** Color, garnet red; considered the finest perfectly formed Dahlia50c each

Single Dahlias

97. **FRINGED TWENTIETH CENTURY.** A great improvement over Twentieth Century; much larger, brighter color, while the stems are long, slender and stiff. Color bright rosy-crimson, with lighter markings. Height, 4 feet25c each
150. **JOSEPHINE.** Flowers very large of splendid regular form, but, unlike so many white single Dahlias, the long, wiry stems hold the flowers erect. Strong grower25c each
192. **MARGARET PERKINS.** One of the most beautiful varieties. The flowers are very large, have rather pointed petals, are wide, but not overlaid, and are borne on long, stiff stems. The color is pure white, with about half of each petal tipped light pink, first flower being tipped cerise pink,

- and like Twentieth Century, of which it is a seedling, growing steadily lighter as the season advances, becoming a clear, soft pink late25c each
299. **SENSATION.** Vivid vermilion, heavily tipped white. An early and profuse bloomer25c each
290. **ROSE PINK CENTURY.** The largest and best deep pink; enormous flowers on long, 3-foot stems; sure and continuous bloomer; vigorous plant. Height 5 feet25c each
340. **WHITE STAR.** Flowers beautiful pure white. Plants 4 feet high, 3 feet through; enormous quantities of blooms25c each



Mabel Taft

Garden No. 4

Dr. Tevis	\$0.50
Mrs. Carl Saibach50
Millionaire75
Mariposa75
King of Show75
Mrs. H. C. Dresselhuus50
One each of the above for	\$3.75
	\$2.50

Garden No. 5

Mrs. John Bowman	\$0.50
Frank A. Walker35
Kriemhilde25
Jean Chazol50
Dorothy Flint50
Delice35
One each of the above for	\$2.45
	\$1.50

Garden No. 7

Amun Ra	\$0.75
Insulnde75
Judge Mareau75
The Sultan	1.00
Margaret Kenner75
Champagne	1.00
One each of the above for	\$5.00
	\$3.50

Garden No. 8

Tommy Atkins	\$0.75
Elinor Vandever	1.50
Mariposa75
Marmion	3.00
Mrs. Malcom Whitman50
Sagamore	1.00
One each of the above for	\$7.50
	\$5.00

DAHLIA SEED

A splendid stock of seed selected from the very best varieties. Grow your own dahlias from "Kentucky Bred" dahlia seed.

50c for 25, 75c for 50 and \$1.00 for 100 seeds

"Kentucky Bred" Economy Gardens Dahlias at Special Prices

Garden No. 9

Countess of Lonsdale	\$0.35
Contrast35
C. W. Bruton25
Ruth Forbes25
Dr. Kuyper50
F. R. Austin25
One each of the above for	\$1.95
	\$1.00

Garden No. 12

Jersey's Beauty	\$1.00
Ian	2.00
Bookwood	1.00
Zante	2.50
Lillian Baldwin	1.50
Elinor Vandever	1.50
One each of the above for	\$9.00
	\$7.50

Garden No. 13

"KENTUCKY BRED" DAHLIA GARDEN

Edna Ferber	\$ 5.00
Marmion	3.00
Silverado	4.00
Garden Glow	2.50
Casper Ware	2.00
Margaret Woodrow Wilson	2.50
Above collection for	\$19.00
	\$15.00



Tommy Atkins

Order by Number



Roses ~

Roses have a hold on the hearts of American garden lovers that no other flower can replace. No matter what sort of garden you plan, always save a place for some beautiful "Kentucky Bred" Roses. They'll repay you amply for the care and attention you give them. June is Rose month. Make June more glorious with more Roses this year.

Hybrid Perpetual Roses

- AMERICAN BEAUTY.** Deep pink and crimson; flowers intensely fragrant. Most desirable for cutting.....
.....\$1.00 each; \$12.00 per doz.
- ANNA DE DIESBACH** (Laeharme 1839). Bright carmine red, producing large, full fragrant flowers which are very attractive. Free bloomer and vigorous grower.....
.....\$1.00 each; \$9.00 per doz.
- FRAU KARL DRUSCHKE** Because of the immense size of the blooms this is frequently called the "White American Beauty"; probably the best white garden Rose.....
.....\$1.00 each; \$12.00 per doz.
- GEN. JACQUEMINOT.** Crimson scarlet, large, full very fragrant.....
.....75c each; \$9.00 per doz.
- J. B. CLARK** (H. Dickson 1905). Deep scarlet, shaded blackish maroon; large full bloom.....
.....\$1.00 each; \$9.00 per doz.
- MAGNA CHARTA.** Bright rose, very large and double; good form and fragrant.....
.....75c each; \$9.00 per doz.
- MRS. JOHN LAING** (Bennett 1887). Soft, clear pink; long buds which open into cup-shape flowers. This is a strong grower and free bloomer.....
.....\$1.00 each; \$9.00 per doz.
- PAUL NERON.** Deep rose, flowers of immense size. Many claim this to be the largest Rose grown.....
.....75c each; \$9.00 per doz.

Tea Roses

- ETOILE DE LYON.** Bright golden yellow; full double and sweetly scented.....
.....75c each; \$9.00 per doz.
- MAMAN COCHET, WHITE.** Clear white with pink markings on the outside of the bud; full double.....
.....75c each; \$9.00 per doz.
- MAMAN COCHET, PINK.** Coral pink, shaded with rosy crimson; flowers large and produced during the whole season.....
.....75c each; \$9.00 per doz.
- Mlle. FRANZISKA KRUGER.** Coppery yellow blooms which are borne in greatest freedom. Desirable for planting in large masses.....
.....75c each; \$9.00 per doz.

Hybrid Tea Roses

- AMELIA GUDE.** Color very similar to Mrs. Aaron Ward, the opening flowers resembling Subburst. By many this is considered an improvement over either of these roses.....
.....\$1.00 each; \$9.00 per doz.
- AMERICA** (Hill 1921). Color, beautiful large rose pink; fine-shaped flower; foliage is a deep, glossy green; very free bloomer.....
.....\$1.50 each; \$15.00 per doz.

- AMERICAN LEGION.** Beautiful crimson. An unusually strong grower.....
.....\$1.00 each; \$9.00 per doz.
- ANGELUS.** This is a very pretty creamy white Rose; fine form, fragrant and a good grower.....
.....\$1.00 each; \$9.00 per doz.
- CAROLINE TESTOUT** (Pernet-Ducher 1890). Can be recommended as a splendid bedding variety; large, full globular flowers of bright satiny rose with brighter center; free and fragrant.....
.....\$1.00 each; \$9.00 per doz.
- COLUMBIA** (E. G. Hill Co. 1917). One of the most popular Winter cut flowers and also one of the best bedding or garden varieties. It is of strong, vigorous habit and exceptionally free blooming. The flowers, which are of good size, are perfect in form, both in bud as well as when fully expanded. In color it is a pleasing shade of rose pink; fragrant.....
.....\$1.00 each; \$9.00 per doz.
- COVENT GARDEN.** This is a rich, deep crimson of splendid form, producing very full blooms.....
.....\$1.00 each; \$9.00 per doz.
- CRUSADER.** A rich, velvety crimson; fine strong growing variety, excellent flower stems and produces very little blind wood. For its size a prolific producer.....
.....\$1.00 each
- DOUBLE PINK KILLARNEY** (Scott 1910). This variety can be highly recommended. Beautiful shade of satiny pink; wonderful color.....
.....75c each; \$9.00 per doz.
- FRANCIS SCOTT KEY.** Color, rich crimson red; of immense size. This is a sturdy grower and a good bloomer.....
.....\$1.00 each; \$12.00 per doz.
- FRANK W. DUNLAP** (Dunlap 1920). At the International Flower Show, New York, this Rose won silver medal, also gold medal sweepstakes for the best new pink Rose. Claimed to be better than Mrs. Chas. Russell.....
.....\$1.00 each; \$9.00 per doz.
- GEN. McARTHUR.** The shape is fine; color brilliant scarlet.....
.....75c each; \$9.00 per doz.
- GOLDEN OPHELIA.** Not a sport, but a seedling from the universal favorite Ophelia. A sturdy, stiff-stemmed grower with wonderful foliage, closely set and glossy. Flower is of medium size, from a beautifully-formed bud of bright golden yellow.....
.....\$1.00 each; \$9.00 per doz.

Pleasure to do Business

Dear Sir: May 6, 1927.
The order arrived in splendid condition, and I wish to add, it is a great pleasure to do business with people who take care of their customers in the competent way you do.

Very truly,
MRS. CHARLES E. DOTY,
Lakewood, Ohio.

HYBRID TEA ROSES—Continued

- HADLEY** (Waban 1915). A splendid garden variety; color, rich crimson, carrying to deep, velvety crimson. Very fragrant; free producer of flowers\$1.00 each; \$9.00 per doz.
- HELEN GOULD** (Lambert 1898). Color, light watermelon red; very free grower; splendid bloomer75c each; \$9.00 per doz.
- HOOSIER BEAUTY** (Dorner & Sons 1915). Well shaped, long buds; full, perfect flowers of an intense, rich dazzling crimson scarlet. Very fragrant\$1.00 each; \$9.00 per doz.
- JONKHEER J. L. MOCK** (Leenders 1910). One of the best bedding varieties. The flowers, which are produced on long, stiff stems, are of large size and of perfect form. Deep imperial pink, the outside of the petals silvery rose white.75c each; \$9.00 per doz.
- KAISERIN AUGUSTA VICTORIA** (Peter Lambert 1890). Soft, pearly white, tinted with just enough lemon in center to relieve the white; remarkably fragrant; beautifully formed flowers on long stems; a strong, healthy grower75c each; \$9.00 per doz.
- KILLARNEY**. Color, pale flesh-pink, flushed deeper pink. A fine bloomer75c each; \$9.00 per doz.
- KILLARNEY, DOUBLE WHITE** (J. A. Badlong & Sons Co. 1913). This is very similar to the well-known Killarney in size, shape, etc., the only difference being that it is absolutely snow white75c each; \$9.00 per doz.
- LADY ASHTOWN** (Dickson & Sons 1904). One of the finest flowering varieties in the collection, and produces perfect blossoms under all weather conditions. Splendid for cutting; color, soft rose, shading to yellow at base of petals\$1.00 each; \$9.00 per doz.
- LA FRANCE** (GUILLOT 1867). Queen of all the Roses. Beautiful bright silvery pink, with pale lilac shading75c each; \$9.00 per doz.
- MME. BUTTERFLY** (E. G. Hill & Co. 1918). More vigorous in growth than Ophelia. The individual bud is larger and the color tints of Ophelia are gratefully intensified, making it a harmony of bright pink, apricot and gold.....\$1.00 each; \$12.00 per doz.
- MME. JULES GROLEZ** (P. Guillot 1907). Clear rose, shaded yellow at base; long, pointed buds.75c each; \$9.00 per doz.
- MME. SECOND WEBER** (Souber & Notting 1908). Color beautiful rosy salmon. This is an excellent grower and a free bloomer.....\$1.00 each; \$9.00 per doz.
- MRS. AARON WARD** (Pernet-Ducher 1907). Strong, vigorous, compact growth; the flowers are of splendid form, full double; in color a distinct Indian yellow, shading lighter toward the edges; under certain weather conditions the entire flower will sometimes come a yellow tinted white, but it is beautiful under all color variations.....75c each; \$9.00 per doz.
- MRS. A. R. WADDELL**. Color delicate, soft rosy salmon, suffused with golden sheen. This is a very free flowering variety\$1.00 each; \$9.00 per doz.
- MRS. HENRY MORSE** (S. McErt & Son 1900). Color beautiful shade of pink, shaded salmon, deeper at base.....\$1.25 each; \$12.00 per doz.



Frau Karl Druiske

- MRS. H. R. DARLINGTON**. Color creamy yellow; almost perfect in form and a splendid yellow;.....\$1.50 each; \$15.00 per doz.
- OPHELIA** (Wm. Paul & Son 1913). A Rose that is admired by everyone; its flowers are held erect on long, stiff stems, are of perfect form, good size, and of a most pleasing, delicate tint of salmon flesh, shaded with rose; very floriferous\$1.00 each; \$9.00 per doz.
- PREMIER**. Too well known to need description. Deep rose; fragrant and thornless; free bloomer.\$1.00 each; \$9.00 per doz.
- RADIANCE** (Cook 1908). An ideal bedding Rose of American origin that produces its large flowers throughout hot Summer weather when many other varieties fail. Brilliant carmine pink, with salmon pink and yellow shadings at base of petals.....\$1.00 each; \$9.00 per doz.
- RED RADIANCE** (Gude 1916). A counterpart of Radiance except in color, which is a clear cerise red.....\$1.00 each; \$9.00 per doz.
- RHEA REID** (E. G. Hill Co. 1908). Rich cherry crimson. Splendid bedding Rose.....\$1.00 each; \$9.00 per doz.
- RICHMOND**. Pure, rich scarlet; very free and continuous flowering75c each; \$9.00 per doz.
- SUNBURST**. This Rose stands above all others of its color, and will rank with American Beauty and the Killarneys in value and grandeur. The color is orange copper or golden orange and golden yellow; extremely brilliant in effect.....75c each; \$9.00 per doz.
- ULRICH BRUNER** (Levet 1881). Cherry red; large size; fine in the garden.....75c each; \$9.00 per doz.
- WHITE OPHELIA**. This is a sport of Ophelia. It produces a large flower with more petals than the parents and has the same qualities of growth, foliage and constitution. This is destined to become one of the most popular Roses.....\$1.00 each; \$12.00 per doz.
- WM. R. SMITH** (Smith 1908). Color soft silvery white, shading into peach pink. Blooms are produced on good, strong stems. This is a very free bloomer.\$1.00 each; \$9.00 per doz.



Premier

Best Catalog This Spring

May 4, 1927.

You may substitute of your own choice if not in stock any of my order. I am very much in love with your catalog. The best I have received this spring and am sure showing it to my friends.

Yours truly,
MRS. SARAH E. WADE,
Edinburg, Indiana.

Polyantha Roses

- BABY RAMBLER.** This is the original Baby Rambler. In bloom all the time. Flowers in large clusters. Color, bright crimson 75c each; \$9.00 per doz.
- BABY DOROTHY.** This is a glorious rose. Flowers resemble the Dorothy Perkins. Completely hides the plant with its bloom. 75c each; \$9.00 per doz.
- BABY TAUSENDSCHOEN (Walter 1911).** Flowers large and much like Tausendschoen. This is a bush form of climbing Tausendschoen or Thousand Beauties, having all the charms in the variable coloring in its flowers that its parent has 75c each; \$9.00 per doz.
- CHATILLON.** Color silvery crimson which gradually passes to a white center. The flowers are semi-double and are produced in large sprays of from 15 flowers or more to the spray \$1.00 each; \$12.00 per doz.
- ERNA TESCHENDORFF (Teschendorff 1911).** Color deep crimson 75c each; \$9.00 per doz.
- IDEAL (J. Speck 1922).** Color very beautiful, dark scarlet; heavy foliage \$1.00 each; \$12.00 per doz.
- LAFALETTE (Joseph Gu.)** Color, bright scarlet red. This is a very free flowering variety, producing semi-double flowers \$1.25 each; \$12.00 per doz.

Hardy Climbing and Rambler Roses

PRICES OF CLIMBING ROSES, \$1.00 EACH

- AVIATEUR BLERIOT (The New Yellow Rambler).** A strong-growing plant with beautiful, glossy, insect and disease-proof foliage, and bearing large clusters of medium-sized almost golden yellow at the center.
- AMERICAN PILLAR.** A single-flowering variety of great beauty. Flowers 3 to 4 inches across, of a lovely shade of pink, with a clear white eye and cluster of yellow stamens.
- BESS LOVETT (Van Fleet 1905).** This resembles climbing American Beauty in shape of blooms and the large foliage is very attractive. Color clear, bright red; very fragrant and one of the hardest climbers.
- CLIMBING AMERICAN BEAUTY.** A strong, healthy, vigorous grower, frequently making shoots from 10 to 12 feet long, and good-sized flowers for a climbing rose that blooms so freely. Color a pleasing rose pink; of splendid form, good substance.
- CRIMSON RAMBLER.** Bright crimson flowers, produced in large clusters of pyramidal form. A grand variety for pillars and arches.
- CHRISTINE WRIGHT (Hoopes Brother & Thomas Co. 1909).** Color bright, clear wild rose pink, producing blooms 3 1/2 to 4 inches in diameter. This strong climbing rose has large, thick, leathery foliage and is not subject to mildew.
- DR. W. VAN FLEET.** A Rose, which on account of its dainty color of exquisitely shaped buds and flowers, has become a great favorite. The long-pointed buds are a rich flesh pink, on stems 12 to 18 inches long; splendid for cutting.



Tausendschoen

- DOROTHY PERKINS.** A very fine deep pink. The flowers are borne in large clusters of small double blooms and are very sweetly scented.
- EMILY GRAY (Williams 1918).** Color clear golden yellow; flowers are double with large buds, dark green foliage. This is a very free flowering variety.
- GARDENIA (Manda 1899).** Color deep, rich golden yellow; passing to creamy white. It is a very profuse bloomer. Flowers are large and splendid for cutting.
- HIAWATHA.** A brilliant, ruby carmine with a clear white eye and a mass of golden stamens—a glowing combination of colors, which can be seen at a great distance.
- LADY GAY.** Delicate cerise pink, passing to soft-tinted pink. The effect of a plant in full bloom and the deep green of the foliage is indeed charming.
- MARY LOVETT (Van Fleet 1915).** This is a pure, matchless, white climber, producing large flowers. By many it is considered the best of the white climbers.
- PAUL'S SCARLET CLIMBER.** Considered one of the greatest climbing Roses grown. This is one of the newer climbers and without doubt the most important addition to the list of climbing Roses. Color vivid scarlet. Does not burn or bleach until the petals fall.

6 Climbers—Your Choice.....\$4.50

Rosa Hugonis

This rose is a spectacular show in itself. Every branch of the previous year's growth becomes lined on both sides to the very tip with closely set, wide open, single flowers, like dainty yellow hollyhocks and the branches bend over with the weight of the bloom.

A symmetrical bush about six feet in height and the same in diameter when matured. Even when through blooming it is a beautiful shrub.

Price, each \$1.00

5 for \$4.50. 20 for \$15.00

Mr. Schulz:—
Kind Sir:
I wish to thank you for sending me such a lovely Rose Hugonis. I bought it two years ago, last spring it bloomed some, but this year it was gorgeous. Passersby stopped to admire it, blooming with my Spirea Van Houtte
Most respectfully,
Mr. Robt. J. Scott



HARDY CLIMBING AND RAMBLER ROSES—Continued

ROSERIE (Witterstaetter 1917). This variety is of the same habit of growth as Tausendschoen, same is true of its blooming qualities. Color is a more even shade of cerise pink or carmine. This is a very free bloomer and of vigorous growth.

TAUSENDSCHOEN. Not stiff or unnatural, but as beautiful as a semi-double azalea. The color is a delicate shade of soft pink when first opening, changing to carmine on the reverse of petals when fully expanded.

WHITE DOROTHY. Among Rambler Roses none has justly gained greater popularity than the beautiful pink Dorothy Perkins. The White Dorothy is a duplicate except in color.

SILVER MOON. Different from all other Roses, with beautiful semi-double flowers $4\frac{1}{2}$ inches and over in diameter; pure white in color; petals of great substance.

SHOWER OF GOLD (Paul & Son 1910). Color deep golden yellow with orange shadings in the center.



Cannas

ALLEMANIA (Orchid-flowered). Salmon with golden markings. 5 feet15c each; \$1.50 per doz.

AMERICAN BEAUTY. This is a very rich color, being a velvety oriental carmine. It is unusually attractive. 5 feet.50c each; \$5.00 per doz.

CANDELABRE. This is a very free bloomer, plant being ablaze with torch-like flame of orange scarlet bloom. 5 feet50c each; \$5.00 per doz.

CITY OF PORTLAND. Color a glowing pink. Flowers borne in great profusion. Green foliage. $3\frac{1}{2}$ feet. .35c each; \$4 per doz.

EUREKA. Very fine, white; grows to a height of 4 feet.20c each; \$2.00 per doz.

GOLDEN WEDDING. Claimed to be the finest dwarf yellow canna grown. Blooms very large and well above the foliage. 3 feet\$1.00 each; \$9.00 per doz.

HUNGARY. Flowers large in good-sized trusses, freely produced. The color is a beautiful rose pink. $3\frac{1}{2}$ feet.20c each; \$2.00 per doz.

KING HUMBERT (Orchid-flowered). The most popular Canna. Great orange scarlet flowers surmount the vigorous dark bronze foliage throughout the season. 5 feet.15c each; \$1.50 per doz.

KING MIDAS. Color glittering gamboge-yellow, this canna produces glorious trusses on straight stems. 5 feet.50c each; \$5.00 per doz.

METEOR. This is a deep red variety of robust habit. A very effective bedder. 5 feet.20c each; \$2.00 per doz.

MRS. ALFRED CONARD. One of the very best Cannas in commerce today. The large, exquisitely shaded salmon pink flowers are produced in great abundance on robust, upright plants. 4 feet.25c each; \$2.50 per doz.

MRS. PIERRE S. DU PONT. Claimed to be the finest of all the pink cannas. Color vivid watermelon-pink, and each individual flower is very large. It is a pleasure to recommend this canna. 4 feet.\$1.35 each; \$12.00 per doz.

ORANGE BEDDER. A particularly bright orange, with just sufficient scarlet infusion to intensify the dazzling mass of color; very free flowering. Awarded a certificate of merit by the S. A. F. and O. H. at New York. 5 feet.20c each; \$2.00 per doz.

PALM BEACH. Broad, long-petaled flowers of maize yellow with a faint blush of pearly pink. Throat and lower petals are soft buff-yellow, shaded with apricot. $3\frac{1}{2}$ -4 feet.50c each; \$5.00 per doz.

STATUE OF LIBERTY. This is a beautiful blazing flame red large leaves of a rich bronze shade. 6-7 feet.25c each; \$2.50 per doz.

SUSQUEHANNA. Color old rose pink, very attractive olive green foliage. Early bloomer. 3 feet. .35c each; \$3.00 per doz.

THE PRESIDENT. When the Canna, Firebird, was introduced, its immense forests and bright red color immediately insured its popularity. The President possesses all of the good qualities of Firebird, enhanced by extraordinary vigor and perfect, healthy foliage. It grows to a height of 5 feet and produces its immense trusses of giant flowers in great profusion.15c each; \$1.50 per doz.

WINTZER'S COLOSSAL (Orchid-flowered). The largest flowered Canna; the flowers often measure 8 inches across, and are bright scarlet. 5 feet.15c each; \$1.50 per doz.

WYOMING (Orchid-flowered). Massive orange flowers, which make a strong contrast with the rich bronze foliage. 6 feet.15c each; \$1.50 per doz.

YELLOW KING HUMBERT (Orchid-flowered). A sport from King Humbert, in which the foliage is green and the flowers yellow with red spots.15c each; \$1.50 per doz.

Thanks for Extra Tuber

February 18, 1927.

Gentlemen:

I received Dahlia tubers in fine condition, for which please accept thanks. Also, I most sincerely wish to thank you for one extra tuber, not named, therefore I cannot look it up to see what it is. Yet I'm sure it's a good one. I find it pleasant to deal with you people. Thank you again for the extra.

Sincerely,

MRS. J. A. JACKSON,
McCauley, Texas.



Hardy Perennials ~

Don't fail to include a liberal selection of hardy perennials with your order for your garden this year. We list all the old-time favorites that will never be out of style. These are flowers that your grandmother loved and grew in her garden in the days of hoop skirts and crinolines. Schulz Hardy Perennials are healthy plants that will quickly respond to the care you give them. Plant many varieties, they'll make gay your garden.

ACHILLEA Ptarmica, The Pearl. Small, white flowers, full double, borne freely through the whole season; 18 inches to 2 feet high.....25c each; \$2.50 per doz.

ANCHUSA italica. A perennial of great worth. It has genuine blue flowers in long sprays like the Larkspur. June and July.....35c each; \$3.50 per doz.

ANTHEMIS tinctoria. Flowers yellow. Splendid for cut flowers.....35c each; \$2.50 per doz.

AQUILEGIA (Columbine). Too well known to need much description.....25c each; \$2.50 per doz.

BAPTISIA australis (False Indigo). 2-3 feet. Blooms in May and June. The attractive blue, pea-shaped flowers are borne on short spikes. Will stand partial shade.....25c each; \$2.50 per doz.

BEGONIA, Hardy. Beautiful pink flowers. Suitable for shady places.....35c each; \$2.50 per doz.

BOCCONIA cordata (Plume Poppy). A unique plant, well adapted for shrubbery, beds, or to plant where a bold group is wanted. White flowers in loose plumes.....25c each; \$2.50 per doz.

BOLTONIA (Starwort). Resembles the asters. Excellent for massing.....25c each; \$2.50 per doz.

CALLIOPSIS. Flowers are rich golden yellow. Very free bloomer and fine for cutting.....25c each; \$2.50 per doz.

CAMPANELA (Bellflower). A hardy garden is incomplete without a collection of these charming perennials.....25c each; \$2.50 per doz.

CENTAUREA montana (Perennial Cornflower). Good foliage, large flowers. Blue, June to September.....25c each; \$2.50 per doz.

CHRYSANTHEMUM maximum (Shasta Daisy). Blooms are typical white Daisy form but immense in size, measuring from 3 to 5 inches in diameter.....25c each

Hardy Varieties. An assortment of colors including white, yellow, bronze, pink and red.....25c each; \$2.50 per doz.

Improved Shasta Daisy. Typical white daisy blooms but larger in size, measuring 2 to 3 inches in diameter. This is the Hartje and Elder daisy, recently originated. It is an improved Shasta daisy. Our variety begins blooming in May and continues blooming more or less all season. This variety is more hardy than the old variety of Shasta daisy. It doesn't freeze out so easily. The shape of the plant is pleasing.....25c each; \$2.50 per doz.

CONVALLARIA majalis (Lily-of-the-Valley). Pure white, bell-shaped flowers on stems from 6 to 10 inches long.....Clumps, 35c each; \$2.50 per doz.

DELPHINIUM belladonna (Larkspur). Color azure blue, with each bloom marked with a white eye; flower spikes will average 2½ feet high.....Clumps, \$2.50 to 5.00 each; \$2.50 to \$5.00 per doz.

DELPHINIUM Hybrids. Colors shading from light to dark blue.....25c each; \$2.50 per doz.

DIANTHUS barbatus (Sweet William). Various colors. May and June.....25c each; \$2.50 per doz.

Flumaris (Scotch Pinks). Semi-double clove fragrant flowers in all colors. May and June.....25c each; \$2.50 per doz.

DICENTRA spectabilis (Bleedingheart). Heart-shaped flowers; pink, marked with white, in long, drooping racemes; an old-fashioned favorite.....25c each

DIGITALIS (Foxglove). Partial to a cool, somewhat shaded position. Attractive old garden favorite. Flowers in showy spikes. Mixed colors.....25c each; \$2.50 per doz.

EULALIA japonica variegata. Variety of ornamental grass with foliage striped white and green.....Clumps, 30c to 50c each

Japonica zebrina. This variety has foliage marked with light green and pale yellow across the leaves rather than lengthwise.....Clumps, 30c to 50c each

Testimonial

Jacob Schulz Company, Inc., Louisville, Ky.
Gentlemen:—

I trust you will pardon my delay in acknowledging the nice iris you sent gratis with my phlox order. You were most generous, and I thank you.

The phlox mixture came in first class condition; I have never received plants packed so carefully. I think they would have traveled around the globe in a green state.

I will remember you with future orders.

Very truly yours,

JESSIE D. WATSON (Mrs. J. D.)

HICKORY HILL, Thomson, Ga., April 13, 1928.

HARDY PERENNIALS—Continued

- FUNKIA subcordata grandiflora** (Day Lily). White flowers in August.....35c and 50c each
Undulata variegata. The margins of the foliage are deep green, while the center is clear white; flowers are pure white on long stems and desirable for cutting.....25c each; \$2.50 per doz.
- GALLARDIA** (Blanket Flower). One of the most satisfactory plants. It flowers in great profusion nearly all Summer long.....25c each; \$2.50 per doz.
- GYPSOPHILA paniculata** (Baby's Breath). Very fine foliage; small, white flowers; valuable for cutting and to combine with larger flowers.....25c each; \$2.50 per doz.
- HELIANTHUS mollis grandiflorus** (Perennial Sunflower). Flowers golden yellow; plant about 5 feet high.....25c and 50c each
Multiflorus fl. pl. Full double flowers, deep golden yellow.....25c and 50c each
Maximiliani. Late blooming; flowers clear yellow, opening in late Summer and continuing until November.....25c each; \$2.50 per doz.
- HELIOPSIS zinniaeflora**. Orange yellow. Fine for the border and splendid for cutting.....25c each; \$2.50 per doz.
- HEMEROCALLIS flava** (Lemon Lily). Sweet scented lemon colored blooms in May.....25c each; \$2.50 per doz.
Fulva kwanso fl. pl. Orange yellow flowers, full double.....35c each
- HESPERIS matronalis** (Sweet Rocket). An old-fashioned plant growing about 2½ feet high; flowers white and lilac, and extremely fragrant.....25c each; \$2.50 per doz.
- HIBISCUS** (Mallow). Hibiscus is best adapted for planting in a damp place.....25c each; \$2.50 per doz.
- HOLLYHOCK**. Too well known to need description. Single and double in all colors.....25c each; \$2.50 per doz.
- IBERIS sempervirens** (Hardy Candytuft). Large heads. White flowers; blooms May and June.....25c each; \$2.50 per doz.
- LATHYRUS** (Hardy Sweet Pea). Pink and white. Blooms all Summer.....50c each
- LOBELIA cardinalis** (Cardinal Flower). A fine hardy plant for the border, producing fine spikes of red flowers in July and August.....25c each; \$2.50 per doz.
- LYCHNIS chalcidonica**. Most desirable variety, orange scarlet; 3 feet high.....25c each; \$2.50 per doz.
- LYTHRUM roseum superbum**. (Rose Loose-strife). Grows 3-4 feet high, and thrives well in almost any position. Produces large spikes of rose-colored flowers.....25c each; \$2.50 per doz.
- MYOSOTIS palustris** (Hardy Forget-me-not).....25c each; \$2.50 per doz.



Hollyhocks

- PAPAVER orientale** (Oriental Poppy). Pink and red.....35c each; \$4.00 per doz.
- PHLOSTEGIA virginiana** (False Dragonhead). Showy rose pink flowers in June and July; plants grow from 2 to 3 feet high and are desirable for border plants.....25c and 50c each
- PLATYCODON grandiflora** (Chinese Bellflower). A very handsome, hardy perennial with beautiful bell-shaped flowers.....25c each; \$2.50 per doz.
- PYRETHRUM roseum hybridum** (*Chrysanthemum eoccineum*). Flowers resembling daisies, and because of the long stems are valuable for cutting; colors white and rose pink.....25c each; \$2.50 per doz.
- RUBECKIA** (Golden Glow). One of the best known hardy flowers, blooming from July to September.....25c each; \$2.50 per doz.
- SALVIA azurea grandiflora**. Slender spikes of blue flowers; blooms in great abundance.....25c each; \$2.50 per doz.
- STOKESIA cyanea** (Stokes' Hardy Aster). Very showy.....25c each; \$2.50 per doz.
- TRADESCANTIA virginiana** (Spiderwort). Blooms all Summer and is desirable for shady places; flowers light blue.....25c each; \$2.50 per doz.
- TRITOMA pfitzeri** (Red Hot Poker). The most curiously formed head of flowers in cultivation. Flamboyant is a very good description of the flower heads. July to October.....35c each; \$3.50 per doz.
- VERONICA spicata** (Speedwell). Flowers in June and July. Magnificent sprays of bright blue flowers.....25c each; \$2.50 per doz.
- YUCCA filamentosa** (Adam's Needle). One of the finest hardy ornamental foliage and flowering plants. Strong plants.....50c each



Hemerocallis—Lemon Lily



Papaver Oriental Poppy

Hardy Chrysanthemums

After the frost has taken all other flowers, the Hardy Chrysanthemum greets us with an abundance of blooms of various hues and colors. It is one of the most satisfactory and popular Fall Flowering Plants. Frost will not harm the blooms, and plants are easily grown, making a fine addition to any garden. The most satisfactory way to carry the plants through the winter is by placing them in cold frames, although they can be successfully handled by planting them in a well drained position and covering with a good mulching of leaves or loose litter. The varieties listed below usually begin flowering about the last of August and continue during October and November. All of our plants are sent out of 2 1/2-inch pots and we begin making delivery in April, continuing until July 1st. Price for good strong plants.....

..... 25c each; per doz., \$2.50; per 100, \$18.00

A. BARIAM. Beautiful orange bronze. Early.

ADIRONDA. (Introduced by E. D. Smith & Co.). The best early golden bronze. Trac pompon type. Matures October 15th.

ALICE HOWELL. A beautiful shade of orange yellow. Single. Early as well as free flowering.

ANGELO. (Introduced by E. D. Smith & Co.). A beautiful light pink. Matures October 25th.



BOSTON. Strong, upright growth; clear bronze.

BRONZE QUEEN (Elmer HBI & Co. 1918). An even shade of golden bronze. A very free flowering and free growth. Dwarf. Matures October 10th.

CARRIE (Syn. Glory of Seven Oaks). Deep yellow. A beauty.

CHALDRON. Reddish crimson with gold tips. Large flower.

CHAMPAIGN. Bright ruby red. Wonderfully colored.

CHAMP D'OR. Canary yellow. Very bushy habit.

CRANFORDIA. Exceptionally early. Deep bronzy yellow.

CRANFORD PINK. Beautiful shade of light pink.

DOROTHY. An early snow white variety. Vigorous.

EDEN. A bright rose. A beauty when disbudded.

HARVEST HOME. Deep bronzy yellow. Excellent.

LA SOMME. Deep mauve pink.

LE PACTOLE. Produces large bronzy yellow flowers. Strong grower.

MRS. HARRISON CRAIG. Yellow overlaid with orange crimson.

NORMANDY. One of the earliest and best cream whites.

OURAY. (Introduced by E. D. Smith & Co. 1919). Dark mahogany brown flowers of medium size. Wiry stem.

PETITE LOUISE. A silvery pink.

WINNETKA. (Introduced by Elmer Smith & Co. 1914). Pure white. Very free flowering.

WOLVERINE. A seedling from Normandy but has a much heavier and stronger stem. Produces large sprays and is also an excellent variety for pot plants. Color bright yellow. Very early flowering outdoors in this locality with Normandy and Carrie, about August 20th.



Auratum Gold Banded Lily

Lilies

They are most graceful in line, brilliant in delicacy of color, and of delightful fragrance. Lilies do best in the hardy border or among shrubbery, as there they get the benefit of the shade of surrounding plants which is so necessary to their welfare.

AUGUST LILY. See Funkia.

AURATUM (Golden-banded Lily). This is one of the prettiest, if not the prettiest, of all Lilies. Flowers creamy white, spotted brown.....50c each; \$5.00 per doz.

CANDIDUM (Madonna Lily). This variety is of easy culture, with plenty of flowers in June; very fragrant.....40c each; \$4.00 per doz.

LILIES—Continued

ISMENE CALATHINA (Peruvian Daffodil). A fine Summer flowering bulb, producing large Anarylis-like, pure white, fragrant flowers. Bulbs must be kept in a dry, warm place. Plant out middle of May. Bulbs must be taken up in the Fall.25c each; \$2.50 per doz.

LEMON LILY. See Hemerocallis.

LILY-OF-THE-VALLEY. See Convallaria.

REGALE (*Lilium Myriophyllum*). This is known as the Royal Lily of China, and is one of the finest Garden Lilies ever introduced in America. It is claimed that this is a rival to the Jassamine in fragrance. The blooms will last for days after being cut, having wonderful substance, perfectly hardy and will thrive and do well in any rich garden loam, either partly shady or all sun. Color a beautiful creamy white, with bright golden throat, outside of flowers white, tinted yellow at the base, with delicate purple mid-ribs having three wide and three narrow petals.75c each; \$9.00 per doz.

SPECIOSUM ALBUM. Similar to the following, but pure white40c each; \$4.00 per doz.

SPECIOSUM RUBRUM. White and deep pink. One bulb produces from eight to twelve flowers.40c each; \$4.00 per doz.

YELLOW DAY LILY. See Hemerocallis.

Phlox

One of the most attractive of our perennial plants. Its erect stems, topped by great clusters of small flowers, puts it in a class by itself.

For border planting, there is nothing to equal the Phlox. Their brilliant blossoms are borne in great profusion and retain their superb colorings for some time, giving color and finish to a mass planting of shrubs and brightening up the duller places.

Prices, except where otherwise noted, 25c each; \$2.50 per doz.

AURORA BOREALE. Salmon scarlet, deep crimson eye.

BOUQUET FLEURL. White, cherry red eye.

ELIZABETH CAMPBELL. Large trusses of flowers of quite a new color—light salmon, changing to pink in center. Extra



Phlox

FRAU ANTOINE BUCHNER. Undoubtedly the finest white Phlox yet introduced. Strong habit; flowers of enormous size and perfect form.

HANS VOLMULLER. A very pretty mottled variety, ground color white, delicately suffused and mottled with soft violet blue.

JEANNE D'ARC (Syn. Pearl). White. Fine late variety.

JULES SANDEAU. Very large, flowering pure pink. Dwarf.

LA FRANCE. Light violet rose, light carmine eye; medium size.

LAMARTINE. Rich parma violet, large white center; very fine.

MISS LINGARD. White, faint lilac eyes. A grand free-blooming variety.

MME. E. LOVE. Large pure white blooms; foliage light green, mottled yellow.

MRS. JENKINS. The best white Phlox on the market; splendid for massing. Comes into flower early in the season.

RHEINLANDER. Color beautiful salmon pink; flowers and trusses of extra large size.

RJNSTROOM. New. Immense trusses with blooms larger than a silver dollar. Beautiful clear pink. Extra fine.

R. P. STRUTHERS (Tall). Salmon pink with crimson center.

THOR. Color a lively shade of deep salmon pink, suffused and overlaid with a scarlet glow, aniline red eye. This is a very popular variety.

Six Hardy Phlox

- Aurora Boreale Frau Antoine Buchner
- Rijnstroom Thor
- Rheinlander Miss Lingard

\$1.00

Mexican Everblooming Single Tuberoses

This is a single, pure white variety and begins to flower in July and continues throughout the season. Wonderfully fragrant.50c per doz.; \$3.50 per 100



Veronica (Speedwell)



Scenes from the home of "Kentucky Bred" Flowers





Lawn Grass

In making a lawn, if the soil is naturally rich, all that is necessary is that it be well spaded, making it as fine and mellow as possible. Otherwise, a good dressing of well-rotted manure should be spaded in and mixed with the soil. The next requisite is good seed of the right varieties, sown at the rate of 60 to 100 pounds per acre. The more freely the seed is used the quicker a thick, velvet-like turf may be secured.

There is no question about the quality of grass seed which is offered our customers—it is of the very best grade to be secured.

- BLUE GRASS** Lb., 50c; 10 lbs. or over, 40c per lb.
LAWN MIXTURE Lb., 60c; 10 lbs. or over, 50c per lb.
SHADY-SPOT MIXTURE. Specially prepared for sowing under trees and in similar locations Lb., 60c; 10 lbs. or over, 50c per lb.
FANCY WHITE CLOVER..... Lb., 75c., ½ lb., 40c; ¼ lb., 25c

Orchid Flowered Sweet Peas

The best of the old-fashioned or Grandiflora varieties are now quite overshadowed by this wonderful type, which is quite distinct, having large, round, open flowers of extraordinary size, usually measuring 2 inches across, with wavy standards and wide-spreading wings and a stem which is long and strong, making them of exceptional value for cutting. All the sorts offered below have been thoroughly tested and are just as easy to grow as the Grandiflora varieties.

Per packet 10c; Oz., 40c; ¼ lb., \$1.25

BARBARA. Beautiful rich orange-salmon. A most brilliant color and makes a most effective bunch.

BLANCHE FERRY SPENCER. Identical in color to the popular pink-and-white Blanche Ferry; immense, wavy flowers.

CONSTANCE HINTON. The most important introduction in years; of strong, vigorous growth, with enormous, wavy white flowers, frequently 2½ inches across, which are borne in sprays of fours, and often fives, on long, strong stems.

DOBBIE'S CREAM. An extra-selected strain and the finest primrose yellow yet introduced; splendid in every way, with very large, wavy flowers.

ELFREDA PEARSON. This is by far the largest and finest light pink variety.

FLORENCE NIGHTINGALE. Nothing yet introduced in lavender Sweet Peas excels this beautiful sort. Very popular.

HERCULES. A lively rose pink.

KING OF WHITE. The largest, finest and purest white-seeded variety.

MARGARET ATLEE. Rich apricot pink on a cream ground color. Very rich.

MARGARET MADISON. Opens a delicate azure blue, developing to a clear, light lavender.

R. F. FELTON. Exquisite, soft lavender blue, slight suffusion of rose. Flowers large.

ROBERT SYDENHAM. This grand variety is a distinct, new color, being a glowing orange throughout; good, strong grower; flowers of characteristic Spencer size and form.

ROYAL PURPLE. Rich royal purple. One of the finest and most distinct varieties.

WEDGWOOD. Bright silvery or wedgwood blue. A beautiful and popular color.

Discarded All Other Bulbs

September 8, 1927.

I ordered dahlia bulbs from you this spring and am very pleased with them, now while the blooming season is at its best. I have noticed other friends and neighbors who have paid more for theirs than I did. I have discarded the bulbs that I had before I bought from you, because there was too much difference. Some I have had to bloom from 8 to 10 inches and very good blooms of your bulbs. Am making up my list for the next season to come, with Schulz's bulbs.

CARL KOEHLER,
Indianapolis, Indiana.

DAHLIA
KY. CARDINAL

A Permanent Record
ZINC LABELS PRINTED
5c Each, 50c per Doz.



Flower Seeds ~

All Flower Seeds 10c per Pkt.
We Handle Dreer's Reliable Flower Seeds

- AGERATUM, Imperial Dwarf Blue (Floss Flower).
- ALYSSUM, Little Gem (Madwort; Carpet of Snow). Sweet (A. Maritimum).
- ANTIRRHINUM (Snapdragon). Giant Mixed. Giant Yellow. Giant Pink. Giant Rose.
- AQUILEGIA (Columbine). Mixed.
- ARCTOTIS Grandis (African Daisy).
- ASTERS, Queen of the Market. Mixed.
- BALLOON VINE (Love-in-a-Puff).
- BALSAM, Double Camellia-flowered (Lady's Slipper).
- CALENDULA, Lemon King. Orange King. Mixed.
- CALLIOPSIS, Mixed.
- CANARY-BIRD VINE (Tropaeolum Canariense).
- CANDYTUFF, White, Fragrant. (Iberis Umbellata). Mixed
- CLOSLIA (Cockscomb). Mixed.
- CENTAUREA cyanus, Single. Blue (Cornflower). White leaved (C. Gymnocarpa) (Dusty Miller).



Platyedon

- CONVOLVULUS major, or Climbing Morning Glories. Mixed.
- COSMOS, Mammoth Perfection. Pink, White and Mixed.
- CYPRINUS VINE (Ipomoea Quamoclit).
- DAHLIA SEED, Mixed.
- DELPHINIUM BELLADONNA.
- DELPHINIUM Gold Medal Hybrids.
- DIGITALIS (Foxglove). Mixed.
- DIANTHUS OR PINKS, Mixed.
- DIANTHUS Chinensis fl. pl. Double (Pinks).
- DOLICHOS, Daylight (Hyalanth Bean). Darkness.
- ECHINOCYSTIS (Wild Cucumber Vine).
- ESCHSCHOLTZIA (California Poppy; Gold Cups). Single Mixed. Double Mixed.
- GALLARDIA, Mixed (Blanket Flower).
- GOURDS, Ornamental, Mixed.
- GYPSOPHILA elegans alba grandiflora (Baby's Breath).
- HELIANTHUS (Sunflower). New Miniature. Mixed.
- HELICHRYSUM, Mixed (Straw Flower).
- HIBISCUS (Marshmallow). Mixed.
- HOLLYHOCK, Large double mixed.
- IPOMOEA grandiflora (Moon-flower).

- KOCHIA trichophylla (Standing Cypress; Belvedere).
- LARKSPUR, Annual.
- LOBELIA, Mixed.
- MARIGOLD, Double African Orange Prince, French, Gold Striped, and Legion of Honor.
- MARVEL OF PERU (Mirabilis Jalapa) (Four O'clock).
- MIGNONETTE (Reseda).
- NASTURTIUM, Dwarf or Bedding Varieties, Mixed. Tall or Climbing Varieties, Mixed.
- NIGELLA (Love in a Mist). Produces cornflower blue blossoms, and is fine for cutting.
- PANSIES, Dreer's Royal Exhibition.
- PETUNIAS, Dreer's Superb Double-Fringed.
- PHLOX Drummondii. Dreer's Superb Single-Fringed.
- PORTULACA, Single Large-Flowered, Mixed (Sunplant).
- PYRETHRUM, Single Mixed.
- RICINUS zanzibarensis (Castor Oil Bean).
- SALPIGLOSIS, Mixed. Considered one of the very finest annuals, and splendid for cutting.
- SALVIA splendens (Scarlet Sage).
- SCABIOSA (Mourning-Bride), Rose, Lavender, Pink, White, and mixed.
- SHASTA DAISY, Large flowering.
- STOCK, Improved Large-Flowering Ten Weeks Gilli-flower.
- SWEET WILLIAM, Mixed.
- VERBENA, Dreer's Mammoth. Finest Mixed.
- ZINNIA (Dreer's Giant Improved), White, Yellow, Orange, Light Pink, Rose, Red and Mixed.
- ZINNIAS, Large Flowering Double Dwarf, Mixed.

Dahlias Blooming Heavily in October

October 20, 1927.

I am anxious for you to know how lovely the dahlias are that I got from you this spring. They are being admired by many neighbors and friends, and are still blooming heavily. I am more than pleased with them. I also had wonderful success with your dahlia seeds, and have two that are especially beautiful. I shall want some more of these next year.

Very truly yours,

MRS. J. C. CANTER,
Flushing, Long Island.

Twelve 10c Packets \$1.00



Peonies

Large Double

Another old favorite that is growing in popularity. Peonies start in late May and bloom throughout June, even into early July in some parts of the country. They are a glorious flower, many of them sweet-scented and rivaling the rose for beauty and delicacy of fragrance. You've never known how beautiful Peonies can be until you've tried some of the "Kentucky Bred" varieties.

ALBATRE (Crousse, 1885). Very large, compact, globular rose type. Milk-white shaded ivory; wide center petals tinged lilac, edged with a minute line of carmine. Fragrant. Strong, vigorous grower. Free bloomer. Midseason. The best white peony in the list\$1.50 each

ALBERT CROUSSE (Crousse, 1893). A large, flat, compact bomb. Color, rose-white, flecked crimson. Free bloomer. Late\$1.00 each

ALEXANDRIANA (Callot, 1856). Double rose type; very large and full. Light violet rose. Free bloomer. Strong, upright grower75c each

AVALANCHE (Crousse, 1886). Large, compact, globular rose type. Pure white, edged with carmine. Midseason.\$1.00 each

BAIONESS SCHROEDER (Kelway, 1890). Very large, globular rose type. Flesh-white bud, bleaching to white when open; fragrant. Strong grower. Late\$1.50 each

BUNCH OF PERFUME (Kelway). Medium compact, rose type. Light Tyrian rose, with silvery border. Fragrant. Free bloomer. Extra good. Late midseason.....\$1.00 each

CAVELIERA RUSTICANA (Kelway). Large, compact, globular semi-rose type. Dark violet crimson, guards streaked in center. Wide petals throughout. Medium tall Midseason\$1.00 each

CHERRY HILL (Thurlo, 1915). Semi-rose type. Very deep garnet with a very noticeable sheen; in blooms not fully developed stamens are visible. Strong grower with long, erect stems. Free flowering and very desirable. Midseason. A. P. S. Rating, 8.6\$5.00 each

COURONNE D'OR (Callot, 1872). This is a large, flat semi-rose type. Pure white with a ring of yellow stamens around a tuft of center petals. Tipped carmine75c each

DELACHEI (Delache, 1856). Medium compact rose type. Large petals. Violet crimson. Strong grower. Late.75c each

DELICATISSIMA (Unknown). Large rose type. Pale lilac rose; fragrant. Strong and tall flower of fine habit. Early75c each

DR. BRETONNEAU (Verdier, 1854). Medium to large bomb type. Pale blue rose. Fragrant. Vigorous, free bloomer and good keeper. Midseason75c each

DUCHESS OF TECK (Kelway). Large rose type, globular. Brilliant rose with rich reflex; edges of petals changing to silvery white. Distinct and beautiful\$1.00 each

ELWOOD PLEAS. Erect, compact grower of medium height. Color uniform, soft violet rose, delicately shading to lilac-white. Unusually large and the form of flower, flat and compact, rose type. For Fall delivery only\$2.50 each

ETTA (Terry). Large, flat rose type. Uniform, pale hyacinth pink; fragrant. Medium height. Late ...\$1.25 each

FELIX CROUSSE (Crousse, 1881). Large, compact bomb type. Brilliant ruby red. Fragrant. Strong grower and free bloomer, absolutely the best all-around red in existence. Midseason\$1.00 each

FESTIVA MAXIMA (Mielze, 1854). Very large, globular, rose type. White flecked crimson. Tall, free grower. Early75c each

FLORAL TREASURE. Very large, showy rose type. Pale lilac rose. Fragrant. Strong, tall upright grower. Midseason75c each

GEORGE W. TRYON (Richardson). Large, compact, flat rose type. Pale lilac rose, salmon shadings at base of center petals. Fragrant. Erect. Medium, compact habit. Late. Extra good\$3.00 each

GEORGINA SHAYLOR (SHAYLOR, 1912). Rose type. Large, globular, compact flower with wide, graceful petals; flesh pink changing to a very delicate whitish flesh-color in the center. Tall, compact, erect; strong grower and very free bloomer. Late midseason. A. P. S. Rating, 8.9...\$3.00 each

GOLDEN HARVEST. Medium-sized, loose bomb or informal rose type. Guards pale lilac rose. Center creamy white. Fragrant. Dwarf habit. Midseason75c each

GRANDIFLORA (Richardson, 1883). Large, flat rose type. Rose white; fragrant. Late, often blooms for three weeks\$1.00 each

GRANDIFLORA NIVEA PLENA (Lemon, 1824). Large, globular rose type. Milk white; fragrant. First white to bloom\$1.00 each

GRETCHEN (Goes & Koeleman, 1911). Perfectly formed; petals lively bluish pink. Center pink, creamy yellow and salmon. A variety of great beauty. For Fall delivery only\$3.50 each

H. F. REDDICK (Brand, 1913). Brilliant dark crimson. Large semi-rose type. Shows stamens.....\$1.00 each

HARRIET FARNSELY (Brand, 1916). Color, soft pink; fades lighter to almost white. Large rose type. Late....\$1.00 each

"Kentucky Favorite" Peony Garden

Delachei	\$0.75
Delicatissima75
Golden Harvest75
Mme. De Verneville.....	.75

Monsieur Krelage75
Umbellata Roseo75
VALUE	\$4.50

Order
Special Garden
No. 201

Single collection
\$3.00
Double collection, \$5.50

LARGE DOUBLE PEONIES—Continued



Albatre

JUBILEE (Pleas, 1910). Rose type. Extremely large, flat flower having long, narrow petals arranged loosely, giving a feathery effect. Buds show delicate opal tints; as they unfold the color changes to ivory-white. Unlike other Peony buds, which are round, these are pointed like those of a rose. Fragrant. Strong grower and free bloomer. Long stems. A very distinctive variety and a great favorite. Midseason. A. P. S. Rating, 5.0,\$2.00 each

KARL ROSENFELD (Rosenfeld, 1908). Large, globular, compact, semi-rose type. Unsurpassed as an early, brilliant red\$1.00 each

KELWAY'S GLORIOUS (Kelway, 1909). Midseason. Very full, enormous flower, gleaming white with a rosy streak on the outside of guard petals. Center of flower is hollow, making it very distinctive in form. In size it has no superior. A. P. S. Rating, 9.8,\$15.00 each

LA FRANCE (Lemoine, 1901). Rose type late midseason. Color, La France pink, as the flower ages, finishing soft apple-blossom pink, reflecting mauve. The outer guard petals have a splash of crimson through the center deepening at the base. The flower appears to light up and glow; simply wonderful. For Fall Delivery only\$4.50 each

LA LORRAINE (Lemoine, 1901). Rose type, midseason. Color, creamy white overlaid with lovely soft pink; sometimes it shows a touch of salmon-pink. Great keeper, no Peony flower lasting so long. For Fall Delivery only\$5.00 each

LAMARTINE (Lemoine, 1908). Large, compact, globular rose type. Carmine rose petals bordered silvery white. Tall, erect, strong grower. Late; extra good.\$3.00 each

LADY ALEXANDRA DUFF (Kela). Large cup-shaped flower, with extremely wide petals. Outer petals are pale rose, gradually shading lighter toward the center to a rosy white\$3.50 each

LA TENDRESSE (Crousse, 1896). Large, compact, flat rose type. Uniform, milk-white guards slightly splashed and center flecked with crimson. Fragrant. Tall, strong grower; free bloomer. Early; extra good\$4.50 each

LE CYGNE (Lemoine, 1907). Rose type, midseason. Christened "The Swan." Color, creamy white with a greenish luminosity at the heart, passing to a clear paper-white with age. Unquestionably the finest of all white Peonies. For Fall delivery only\$10.00 each

LIVINGSTONE (Crousse, 1879). Large, compact and perfect rose type. Pale lilac rose. Strong, medium height and free bloomer. Good for cut flowers. Late\$4.00 each

LONGFELLOW (Brand, 1907). Color, bright crimson with a cherry tone. Gold stamens surround the center petals, while the outer petals are reflexed\$4.00 each

LORA DENHEIMER (Brand, 1913). This is a large, flat, semi-rose type. Color flaming crimson, shaded darker at the base of petals. Of medium height. Early bloomer. \$3.00 each

LORD KITCHENER (Kelway). Purplish crimson; very upright, robust grower. Early flowering and many variety\$2.00 each

LOVELINESS (Hollis, 1907). Large, compact, flat rose type. Uniform hydrangea pink, changing to lilac white. Fragrant. Medium tall. Midseason\$3.50 each

LUCIENNE (Dessert, 1908). White, tinted purple; yellow crown. A. P. S. Rating, 7.7\$1.50 each

LUCITA PEFFER (Brand, 1910). Early, very large semi-double. A pure hydrangea pink with enough golden stamens to make the flower fascinating and beautiful. Free bloomer and a sturdy grower. For Fall delivery only\$4.50 each

MME. JULES DESSERT (Dessert, 1913). Rose type. Midseason. Color, pure white overlaid with a sheen of delicate blush with a pronounced pink center, intermixed with golden stamens. For Fall delivery only\$2.50 each

MME. DE VERNEVILLE (Crousse, 1885). Large, full bomb type. Pure white, center blush when first opened. Free bloomer; delightfully fragrant. Early\$5 each

MME. EMILE LEMOINE (Lemoine, 1899). Large, semi-globular, semi-rose type. Milk white; fragrant. Midseason\$1.50 each

MME. FOULD (Crousse, 1893). Large, globular, compact rose type. Outer petals milk white. Center lilac white, slightly flecked with crimson. Fragrant. The last white variety to bloom. Extra good\$3.00 each

MAGNIFICA (Hellez, 1856). Large, compact, globular rose type. Hydrangea pink; fragrant. Erect. Dwarf habit. Late\$1.00 each



MARGUERITE GAUDICHAU (Millet). Fine cup-shaped flower; white, suffused with pink. Extra fine\$3.00 each

MARIE CROUSSE (Crousse, 1892). Bomb type, midseason. Color, soft salmon-pink, shaded a glossy, satiny lilac. A most desirable Peony. For Fall Delivery only\$2.00 each

MARIE JACQUIN (Verdier). Very large, globular, semi-double, rose white, shading to lilac white. Wide, incurved petals, showing an open center filled with yellow stamens, like a water lily. Strong and free bloomer. Midseason. \$1.00 each

MARTHA BULLOCK (Brand, 1907). Late. Enormous cup-shaped flowers of soft rose pink, well formed and of good substance, supported on strong, stiff stems. A very vigorous free bloomer. Fragrance quite pronounced, but decidedly pleasing. For Fall Delivery only\$10.00 each

MARY HOLLIS (Hollis, 1907). Large, rose type. Guards flat, medium, compact pale lilac rose; center lilac white, showing yellow stamens. Tall, compact habit\$2.50 each

MATHILDE DE ROSENECK (Crousse, 1883). Large, globular rose type. Uniform, pale lilac rose. Wide petals, center deep carmine. Fragrant. Strong grower and free bloomer. Late\$1.00 each

MIGNON (Lemoine, 1908). Rose type; late; large, perfectly-formed flowers of soft light rose, passing to amber cream. For Fall delivery only\$3.50 each

MILTON HILL (Richardson). True. Very large, globular, compact rose type. Pale lilac rose; a distinct, pure color. Strong growth. Medium height. Late\$2.50 each

Rainbow Peony Garden

Dr. Bretonneau	\$0.75
Festiva Maxima75
Cavalier Rust	1.00
Rosy Dawn	1.50
Modeste Guerin75
Livingstone	1.00
VALUE	\$5.75

1 each of above

\$4.00

2 each of above, \$7.00

Order Special Garden No. 204



Baroness Schroeder

LARGE DOUBLE PEONIES—Continued

- MINAMOTA** (Millet). Very outstanding and unusual. Almost semi-double, of the most gorgeous rose-pink fairly sparkling with life. A large mass of yellow stamens interspersed through the center gives a golden glow to the entire flower. Blooms very large, the laterals developing at the same time as the main flower. Very robust grower and free flowering. Medium height and stems erect\$5.00 each
- MISS SALWAY** (Kelway, 1889). Crown type, early. Very large, compact, globular flowers. Primary petals white, center lilac white with collar of sulphur yellow. For Fall delivery only\$4.50 each
- MODESTE GUERIN** (Guerin, 1845). Large, compact, typical bomb type. Described by the Peony Society as *solfierino* red. Darkest of the pinks. Fragrant. Early75c each
- MONS. JULES ELIE** (Crousse, 1888). Very large, compact, bomb type. Pale lilac (rose); fragrant. Strong grower. Early\$1.00 each
- MONSIEUR KRELAGE** (Crousse, 1882). Large, compact, semi-rose type. Dark, *solfierino* red, with silvery tips. Slightly fragrant. Strong and free bloomer. Late75c each
- MONS. MARTIN CAHIZAC** (Dessert, 1899). Globular semi-rose type; very dark pink. The darkest. The darkest Peony. A distinct and handsome variety.....\$2.50 each
- MONT BLANC** (Lemon, 1899). Large, compact, globular rose type. Milk white center slightly tinted rose; fragrant. Free bloomer. Early midseason.....\$3.00 each
- MOONBEAM**. A beautiful variety entirely distinct in form. Flat, saucer-shaped flower, with small tufted center. Soft nearly white, lightly shaded rose\$2.00 each
- MR. L. VAN LEEUWEN** (Nieuwenhuysen, 1916). Late mid-season, semi-rose type. Medium large, erect grower; stems are very wiry, which makes it a very good cut flower variety. The color is uniform dark pink, bordering on rose color, with a delicate silver reflex. Very distinct. The flower is rounded; petals are imbricated, plented and fringed and sometimes of very irregular shape, giving the bloom a distinction not noticed in other kinds. For Fall delivery only\$5.00 each
- OCTAVIE DELAY** (Calot, 1867). Very large, flat crown. Guards and center pale hydrangea pink. Dwarf. Good for cut flowers. Early\$1.00 each
- PHILOMELIE** (Calot, 1861). Medium sized, low, flat crown. Guards bright violet rose; anemone center of amber, yellow petals. Fragrant. Midseason\$1.50 each
- PIERRE DUCHARTRE** (Crousse, 1882). Compact rose type. Delicate flesh pink. Fragrant. Strong grower and free bloomer. Midseason.....\$1.50 each
- PRIMEVERE** (Lemoine, 1907). Bomb type; midseason. Outer petals sulphur white; center petals deep sulphur yellow. Best yellow Peony grown. For Fall delivery only.....\$2.00 each
- RACHEL** (Lemoine, 1904). Lively soft pink, darker when just opening. For Fall delivery only\$1.50 each
- RAOUL DESSERT** (Dessert, 1910). Rose type; late midseason; clear mauve shaded carmine pink and tinted silvery white. Very attractive. For Fall delivery only.....\$10.00 each
- REINE HORTENSE** (Syn. President Taft) (Calot, 1857). Mid-season. Enormous, compact flat flower of soft flesh-color, deepening to shell pink. Center showing crimson splashes, sometimes faint stripes on the face of the petals. Well formed and very striking. Deliciously fragrant. A vigorous grower and profuse bloomer. Rose type. Fine for cut flowers and usually in bloom just about Decoration Day. A. P. S Rating, S.T.\$1.50 each
- R. P. WHITEFIELD** (Richardson). Large, compact, flat rose type. Hydrangea pink; fragrant. Erect. Late.....\$1.50 each
- RUTH BRAND** (Brand, 1907). A large, compact bomb, with guard petals enclosing a grand ball of compact center petals. Color, soft lavender pink, shaded deeper lavender. \$3.00 each



Sarah Bernhardt

- SAMUEL HENSHAW** (Richardson). Large, compact, flat rose type. Delicate shell pink (pale lilac rose). Strong erect habit. Free bloomer. Late\$3.00 each
- SARAH BERNHARDT** (Lemoine, 1916). Semi-rose type; late midseason. Apple blossom pink with each petal silver tipped, giving the appearance of a distinct border of pure white. The strongest growing of all Peonies\$1.50 each
- SOULANGE** (Lemon, 1907). Unusually large, full, compact, globular crown type. Outer petals delicate lilac white, deepening towards the center, with salmon shadings. Tall, erect, strong grower. Late. Extra good\$4.00 each
- SOUVENIR LOUIS BIGOT** (Dessert, 1913). Rose type; mid-season. Color, Bengal rose, turning to salmon-pink, with very bright, silvery reflex. For Fall delivery only.....\$3.50 each
- STRASSBURG** (Goos & Koeneman, 1911). Large bloom eight inches in diameter. Very compact and perfectly formed. Silvery lilac rose. For Fall delivery only\$2.50 each
- THERESE** (Dessert, 1904). Very large, medium compact, rose type developing a high crown later. Violet rose, changing to lilac white in center; strong; medium tall. Free bloomer. Midseason\$3.50 each
- TRIOMPHE DE L'EXPOSITION DE LILLE** (Calot, 1865). Large, compact rose type. Hydrangea pink, mottled with darker tints. A monster flower with evenly-lapped petals. Midseason75c each
- TOURANGELLE** (Dessert, 1910). Rose type; late midseason. Pearly white overlaid with delicate salmon and with shades of la France. For Fall delivery only\$3.50 each
- UMBELLATA ROSEA** (Unknown). Large, informal rose type. Guards violet rose, shading to an amber white center. Strong grower. Free bloomer. Early75c each
- VENUS** (Kelway). Large, compact crown, with hydrangea pink petals. True stock is scarce. Midseason.....\$1.00 each
- VICTOIRE DE LA MARNE** (Dessert, 1915). Velvety amaranth red with silver reflex. A very bright color. For Fall delivery only\$2.50 each
- WALTER FAXON** (Richardson). Medium size, globular semi-rose type. Uniform, pure bright rose, deepening towards the center. Very distinct and delicate color. Free bloomer. Midseason. Scarce variety\$4.00 each

June Pride Peony Garden

Albert Crousse	\$1.00
Baroness Schroeder	1.50
Felix Crousse	1.00
Grandiflora Nivea-Plena	1.00
Magnifica	1.00
Marie Jacquin	1.00
VALUE	\$6.50
Single collection	

\$4.50

2 each of above, \$8.00

Order Special Garden No. 203

People Come to See Her Garden

May 23, 1927.

Five years ago I ordered a single peony, "The Moor," from you. It is such a beautiful peony, and I have so many inquiring about it that I would like to get another root. The peonies and irises that I have purchased from you are just wonderful. People come from all parts to see my garden.

Respectfully,

MRS. A. W. DUFF,
Washington C. H., Ohio.

Japanese

- CRYSTAL QUEEN** (Japanese). Pure white, handsome, large flower. The plant is a strong, free bloomer\$2.00 each
- DAWN** (Japanese) (Wallace). Very large flowers of firm texture. Beautiful soft pink, with central cushion of straw-colored stamens. A lovely flower.\$2.50 each
- DRAGON'S HEAD** (Japanese). Yellow stamens surrounded by large petals; pale rose, striped dark crimson. Very odd.\$1.50 each
- FELICITY** (Japanese). White, yellow filamental petals. The contrasting colors make it very brilliant\$2.00 each
- FLASHLIGHT** (Japanese) (Hollis, 1906). Large, globular. Guards light Tyrian rose; narrow center petals amber yellow shading to pink at base\$3.00 each
- MIKADO** (Barr). Japanese Peony. Color, dark crimson with narrow crimson filamental petals, edged and tipped gold.\$2.50 each
- OLIVIA** (Japanese). Large, flat, Japanese type. Guards lilac white, the center mass of long, thread-like amber petals; fragrant. Strong, erect and of medium height....\$2.00 each
- RUGEENO** (Japanese Type) Dark maroon. For Fall delivery only\$4.00 each
- SEIRU SOMAE** (Japanese). Milk white, outer petals, yellow collar. Late. Strong grower. For Fall delivery only.\$2.00 each
- TORO-NO-MAKI** (Japanese). Very large lilac white with two rows of guard petals. A beautiful cushion center of white and clear amber yellow. Midseason.....\$3.50 each
- YENO** (Japanese). Faint flush outer petals, semi-double. Tuft of thread-like petals in the center, pink heads on brown seed pods. For Fall delivery only\$2.00 each



Albiflora



Albert Crousse

Single Peonies

- ALBIFLORA**. Single, pure white. Very large, tall; free bloomer; early\$1.00 each
- CLEOPATRA** (Kelway). Single. Rosy flesh, shell-like in color and form. A lovely variety\$2.00 each
- CLIO**. A beautiful single Peony. Color, violet rose, fading to soft lavender. This is a deep enough pink so it does not bleach to white\$1.00 each
- DARKNESS** (Brand, 1913). Single. Dark maroon with darker shadings at the base of petals\$1.50 each
- FLAG OF TRUCE** (Kelway). Single. Large size, lilac white; strong grower and free, and a very good variety....\$2.50 each
- HERMES**. Single. Hydrangea pink\$1.00 each
- MADELEINE GAUTHIER** (Dessert). Single. Fine, large, silvery, fleshy pink of an exquisite and delicate tone. Dwarf grower\$2.00 each
- ROSY DAWN** (Barr). Single. Large snow white flower, tinged blush at first, resembling a large white water lily.\$1.50 each
- WATTEAU** (Goos & Koeneman). Large snow white guard petals and center light flesh with golden stamens. For Fall delivery only\$2.00 each

Schulz Special Peony Garden

R. P. Whitfield	\$ 1.50
Walter Faxon	4.00
Lady Alexandra Duff	2.50
Lamartine	3.00
Soulange	4.00
Therese	3.50

VALUE\$18.50

Single collection

\$15.00

Double collection, \$27.50

Order Special Garden No. 202



Karl Rosenfeld

Gladioli

There's nothing that goes farther toward making a home out of a house than flowers both in the garden and about the rooms. There is no flower that will go farther in beautifying the garden than the gladiolus. Their sharp vivid coloring together with variety of form and color have made them one of the most popular flowers of today. They are easy to grow, require a minimum of attention and thrive well in most any kind of soil. The ideal way to plant them is to start in late April and plant a number each week or ten days until mid June. They will bloom in your garden from July until frost. As cut flowers they are far superior to any Summer bloomer for lasting qualities. Glads hold another advantage that means a great deal to the average garden enthusiast; they are so reasonable in price that a comprehensive display may be had for an extremely modest investment. Plant them in beds or in borders, they'll start blooming after Peonies and Irises are gone. The "Kentucky Bred" varieties offered here are the pick of hundreds of varieties now on the market.



E. J. Shaylor

ADELINE KENT. Color delicate light rose pink, heavily ruffled from edges to center. Throat straw color with rufly dashes. Flowers are large, on fine long spikes. 25c each; \$2.50 per doz.

ALBANIA. Pure silvery white with edge of petals daintily ruffled; faint pink markings on the tips of petals. This is a very healthy, vigorous grower. 25c each; \$2.50 per doz.

ALICE TRIPLADY. This is considered the very best of the Trimaldus on account of the large size and delicate color, which is a beautiful rich orange saffron. 7c each; 75c per doz.

AMERICA. Conceded to be one of the finest varieties for cutting or bedding; color a beautiful soft flesh pink, orchid-like in its coloring and texture. 7c each; 75c per doz.; \$5.00 per 100

ANNA EBERGUS. Color dark, velvety purple; throat deeper shade; very large flowers on tall, fine spikes. Greatly in demand. Early ordering advised. 10c each; \$1.00 per doz.

ARIZONA. Color fine dark pink; maroon markings. Very good. 10c each; \$1.00 per doz.; \$7.50 per 100

AGUSTA. A lovely and useful variety, pure white with blue anthers. 7c each; 75c per doz.; \$5.00 per 100

AUTUMN QUEEN. Color cream yellow; upper petals suffused with peach-blossom pink; lower petals striped carmine red. 10c each; \$1.00 per doz.

BERKSHIRE. Delicate pink. 20c each; \$2.00 per doz.

BRENCHLEYENSIS. Color vermilion-scarlet; very fine. 10c each; \$1.00 per doz.; \$7.00 per 100

CATHERINA. Color blue-grey; distinctly marked with brownish red spots. 15c each; \$1.50 per doz.; \$10.00 per 100

CHICAGO WHITE. Pure white, lightly marked with lavender; fine for cutting. 7c each; 75c per doz.; \$5.00 per 100

DAVID STARR JORDAN. A very large flame colored overlaid with scarlet mottled with cream. 15c each; \$1.50 per doz.

DR. F. J. V. SKIEFF. A clear flesh-pink with light ruby center, slightly striped with rose pink. A very vigorous grower. 35c each; \$4.00 per doz.

DR. NORTON. Color is a delicate cream-pink with primrose center. Edges suffused with La France pink and dainty yellow blotch on the lower petals. A favorite among Gladioli. 10c each; \$1.00 per doz.

EARLY SUNRISE. Large flowering beautiful salmon red, a real favorite. 20c each; \$2.00 per doz.

E. J. SHAYLOR. A very pretty rose pink, ruffled, produces very large blooms, early variety. 15c each; \$1.50 per doz.

EVELYN KIRTLAND. Color beautiful shade of light rose, darker at the edges, fading to shell-pink at the center, with brilliant scarlet blotches on lower petals. Tall spike. 15c each; \$1.50 per doz.

ELORA (New Gladiolus). Originated by Luther Burbank. Color creamy white with rich cream spots in throat and three lower petals, these spots overlaid with dainty featherings of American Beauty pink. The back of the petals show a tint of very delicate pink. Blooms measure 4½ to 5 inches in diameter. This is a very remarkable variety, blooms very early on good, stiff stems 4 to 4½ feet tall. "Elora" is certainly queen of all the early varieties. First size bulbs. 15c each; \$1.50 per doz.

Most Beautiful Glads from Us

March 2, 1927

Enclosed please find an order for flowers and plants. I had several Glad collections last summer, the most beautiful of which came from you.

MRS. A. M. GERMAN,
Franklin, Tennessee.

GLADIOLI—Continued

FLORA. This is considered the best of all yellows. It is a splendid grower, producing large spikes of rich canary-yellow blooms, free from any blotch or throat coloring.25c each; \$7.50 per doz.

FRANK J. SYMMES. A ruffled geranium pink, outer edges suffused rose-doree, blotched scarlet red in throat.15c each; \$1.50 per doz.

GLORY OF HOLLAND. A new white with a slight tinting of pale pink and anthers of delicate lavender. One of the best whites.10c each; \$1.00 per doz.; \$7.50 per 100

GOLD DROP. Marguerite yellow deepening to a primrose yellow with light markings of amaranth purple in throat. This is a beautiful yellow primulinus variety.25c each; \$2.50 per doz.

GOLD MEASURE. A rich golden yellow with no markings, produces a very large type bloom.25c each; \$2.50 per doz.

GRETCHE ZANG. A large-growing variety; flowers of a beautiful soft melting shade of pink, blending into a deep salmon on the lower petals. Blooms from small bulbs.15c each; \$1.50 per doz.; \$10.00 per 100

HALLEY. Large open flowers; delicate salmon-pink; very early.7c each; 75c per doz.; \$5.00 per 100

HELEN FRANKLIN. A ruffled white with violet markings in the throat. Very early.10c each; \$1.00 per doz.; \$7.50 per 100

HERADA. Color glistening mauve, self color.10c each; \$1.00 per doz.; \$7.50 per 100

IDA VAN. A beautiful deep salmon red or flaming orange pink. Very rich color.7c each; 75c per doz.; \$5.00 per 100

INDEPENDENCE. This variety produces tall spikes filled with wax-like flowers of vivid orange rose color, with richly marked throat.10c each; \$1.00 per doz.

JACK LONDON. Color light salmon with vermilion stripes, canary yellow throat with ruby stripes. We cannot recommend this variety too highly. Should be in every collection.15c each; \$1.50 per doz.

JOE COLEMAN. A bright spectrum, red with carmine blotch. A very attractive color with many flowers open at a time.15c each; \$1.50 per doz.

JOHN MERLE COULTER. A rich scarlet red, almost black throat. Blooms are large and of a velvety texture.15c each; \$1.50 per doz.

KUNDRED GLORY. Large creamy white flower with crimson stripe in center of each petal; end of petals ruffled.10c each; \$1.00 per doz.; \$7.00 per 100

LA CAROUNNE. Creamy yellow, lower petals shading to deep yellow at base, blotched brilliant scarlet. This is one of the showiest and most pleasing varieties of the blotched class.50c each; \$5.00 per doz.



Flora

LE MARECHAL FOCH. Rose pink, resembling American in color, but deeper. Before long will be the most popular Gladiolus. Blooms are twice as large as America.10c each; \$1.00 per doz.; \$7.00 per 100

L'IMMACULEE. A favorite pure white for cutting; splendid spikes and early.15c each; \$1.50 per doz.; \$10.00 per 100

LILY WHITE. A beautiful, large snow white, nicely colored flower-spikes. A very popular early white.10c each; \$1.00 per doz.

LOUISE. The lavender queen among the Gladiol. Velvety maroon blotch toward the center.15c each; \$1.50 per doz.; \$15.00 per 100

LOVELINESS. Large creamy white flowers, suffused with soft pink; a lovely variety.15c each; \$1.50 per doz.; \$8.00 per 100

LUCETTE. A fine white, back of petals carrying a trace of blotched pink which impart an alluring orchid shown to the Bovera. Lower petals also have a dainty subdued feather of wonderfully soft phlox pink.15c each; \$1.50 per doz.

MAIDEN'S BLUSH. Color beautiful Enchantress pink. Blooms earliest of all Primulinus.7c each; 75c per doz.

MARY FENNEL. Light lavender.20c each; \$2.00 per doz.

MRS. FRANCIS KING. A striking shade of light scarlet or flame color; one of the most effective.7c each; 75c per doz.; \$5.00 per 100

MRS. FRANK PENDLETON. The flowers are of largest size, borne on strong, straight spikes in a color of lovely salmon pink with brilliant deep red blotches in the throat.10c each; \$1.00 per doz.; \$7.50 per 100

MRS. FREDERICK C. PETERS. A beautiful shade of rose lilac with soft, crimson blotch, bordered white on lower petals, resembling an orchid in color. A very choice and popular variety.15c each; \$1.50 per doz.

MRS. H. E. BOTHIN. Light geranium pink, heavily ruffled, flame scarlet center. A very beautiful color combination.25c each; \$2.50 per doz.

MRS. WATT. A most distinct and beautiful sort; rich, deep cherry red.10c each; \$1.00 per doz.; \$7.50 per 100

MRS. WILLIAM KENT. Color ranging from rose to shrimp pink, overlaid and striped with deeper rose pink. Throat straw color mottled with ruby.25c each; \$2.50 per doz.

MYRTLE. Clear, delicate rose pink, considered one of the most beautiful of the many sorts.15c each; \$1.50 per doz.; \$12.00 per 100

NIAGARA. A charming variety; delicate creamy yellow, lightly marked and splashed with rosy carmine in the throat; beautiful as a cut flower.10c each; \$1.00 per doz.; \$7.50 per 100

ODIN. Color dark salmon-pink with carmine blotch. A splendid cut flower variety.15c each; \$1.50 per doz.; \$10.00 per 100

Two Favorite Glad Gardens

"KENTUCKY BRED" GLAD—COLLECTION No. 3

3 Arizona\$0.25
4 Augusta25
5 Autumn Queen50
3 Brenehelyensis25
4 Wilbrink25
3 Kundred Glory25

Value\$1.75

Double Collection
 \$2.25 Above Collection **\$1.25**

"KENTUCKY BRED" GLAD—COLLECTION No. 6

3 E. J. Shaylor\$0.40
4 Joe Coleman50
2 Mrs. H. E. Bothin50
1 Gold Drop25
2 White Glory50
2 Lucette25

Value\$2.40

Double Collection
 \$3.75 Above Collection **\$2.00**

GLADIOLI—Continued

- PANAMA.** Rich rose pink; a favorite wherever high grade varieties are grown.10c each; \$1.00 per doz; \$7.50 per 100
- PARADER.** Very soft begonia rose, flaked scarlet red; heavy scarlet throat; blotched border with zone of Pinard yellow.50c each; \$5.00 per doz.
- PEACE.** Immense pure white flowers with a touch of carmine in the lower petals. These are borne on tall, graceful spikes; a beautiful and exceedingly refined variety.10c each; \$1.00 per doz.; \$7.50 per 100
- PINK WONDER.** A soft La France; pink, flaked geranium pink; a faint yellow shading at the base of the petals is overlaid with rose featherings. It is claimed that this is the largest and finest pink variety ever introduced.25c each; \$2.50 per doz.
- PINK PERFECTION.** This magnificent Gladiolus is a soft apple blossom pink with chamolis suffusion.15c each; \$1.50 per doz.; \$10.00 per 100
- PRINCE OF WALES.** Early flowering; large delicate apricot pink flowers suffused salmon.7c each; 75c per doz.; \$5.00 per 100
- QUEEN OF WHITES.** White25c each; \$2.50 per doz.
- SAN ANSELMO.** Pure white, delicately pencilled ruby pink; produces very large blooms.10c each; \$1.50 per doz.
- SCHWABEN.** A meritorious variety of wonderful vigor. Strong, erect spikes and large, well-expanded flowers of a clear canary yellow, with a small blotch of deep garnet in the throat.10c each; \$1.00 per doz.; \$8.00 per 100
- THOMAS T. KENT.** Color shell pink, overlaid with strawberry. Crimson streak on each petal. Very fine grower, producing tall spikes.35c each; \$1.00 per doz.
- VANITY.** An extraordinary primula hybrid; very large blooms on stalks 4 feet or more in height, with seven to nine flowers open at a time. La France pink flushed over cream ground with stiplings of hermosia pink on cream yellow throat.50c each; \$5.00 per doz.
- VENUS.** Large creamy flowers, overlaid with a blush of pink. Soft and delicate shade. \$1.50 each
- WHITE GIANT.** This is the leader in whites. Blooms pure white; lily-shaped with pointed petals resembling Easter Lilies. Should be in every collection.10c each; \$1.50 per doz.
- WHITE GLORY.** A beautiful, ruffled white, with blotch of dull blue violet.25c each; \$2.50 per doz.
- WHITE KING.** This is a very pretty white variety, and one that has proven very satisfactory with us.10c each; \$1.50 per doz.
- WILBRINCK.** This is a sport of Halley. Early bloomer; color delicate ceram pink with throat markings of Halley.7c each; 75c per doz.; \$5.00 per 100
- YELLOW HAMMER.** Pure yellow, slightly marked with red in the throat; a beautiful variety for cutting.12c each; \$1.25 per doz.; \$8.00 per 100



Glads Make a Charming Bouquet

Special "Kentucky Bred" Gladioli Gardens

Glad Garden No. 1

- | | | |
|-----------------|-------|---------------|
| 3 Ameria | | \$0.31 |
| 1 Anna Eberius | | .15 |
| 1 Flora | | .25 |
| 3 Dr. Norton | | .25 |
| 3 Chicago White | | .21 |
| 3 Hereda | | .25 |
| | | \$1.32 |

Above Collection **\$1.00**

Double collection.....**\$1.75**

Glad Garden No. 2

- | | | |
|-------------------|-------|---------------|
| 3 Schwaben | | \$0.25 |
| 4 Prince of Wales | | .25 |
| 3 Peace | | .25 |
| 3 Panama | | .25 |
| 3 Mrs. Watts | | .25 |
| 4 Alice Tipidy | | .25 |
| | | \$1.50 |

Above Collection **\$1.00**

Double collection.....**\$1.75**

Glad Garden No. 4

- | | | | | | |
|------------------|-------|--------|------------------------|-------|-------------|
| 4 Helen Franklin | | \$0.50 | 4 Mrs. Frank Pendleton | | .35 |
| 4 Halley | | .25 | 4 Maiden's Blush | | .25 |
| 4 Gretchen Zang | | .50 | | | |
| 4 Niagara | | .35 | | | 2.30 |

Above Collection **\$1.75** Double collection.....**\$3.00**

Glad Garden No. 5

- | | | |
|--------------------|-------|---------------|
| 6 Evelyn Kirtland | | \$0.75 |
| 6 Flora | | .75 |
| 6 Ida Van | | .40 |
| 6 Le Marechal Foch | | .50 |
| 6 L'Immaculee | | .75 |
| 6 Loveliness | | .60 |
| | | \$3.75 |

Above Collection **\$2.50**

Double collection.....**\$4.50**



Hardy Vines and Climbers

Vines bring up memories of shaded porches and moonlight; there's a touch of romance connected with them in the minds of most of us. Poets and songwriters have sought inspiration from honeysuckle, clematis and ivy. Certainly no more softening influence can be given to a house than vines planted wisely. "Kentucky Bred" vines are hardy and easy to grow. They are reasonable in price, too. We'll be glad to advise with you about the quantity or kinds that you need for your purpose.



Wistaria

- AMPELOPSIS (Ivy), Veitchi.** Self climber. Very well known. Best of all deciduous vines for clinging to walls. Good strong plants, 75c each
- BIGNONIA radicans (Common Scarlet Trumpet Vine)** Strong plants, 75c each
- CELASTRUS scandens (American Bittersweet).** The scarlet fruit pods are very handsome and showy. Good for covering banks and slopes when creating natural effects. Strong plants, 75c each
- CLEMATIS paniculata.** White, sweet-scented Clematis. A very popular Summer-flowering vine. Blossoms are borne in profusion in July and August, followed by feathery seed. Strong plants, 50c and 75c each
- DOLICHOS.** The wonderful Japanese Kudzu Vine. This is the fastest growing vine that anyone knows about, when well established, making 12 and 14 inches a day. The rosy purple pea-shaped flowers are borne in racemes in August. Good strong plants, 75c each

EUONYMUS radicans vegetus (Evergreen Bittersweet). So called because of its masses of red berries hanging to the vines in Winter time. A most strikingly pretty decoration on walls or trees.

Radicans variegatus (Variegated-leaved Euonymus). Unusually pretty foliage, variegated, white and green. Strong plants, 50c and 75c each

HEDERA (English Ivy). Very attractive effects are possible with this glossy, green-leaved vine, with its foliage remaining Summer and Winter. 15c each; 6 for 75c; \$1.00 per doz.

LATHYRUS (Hardy Sweet Pea). A most desirable, hardy climbing plant with dense clusters of large, pea-shaped flowers in shades of white and pink. Strong plants, 50c each

LONICERA (Honeysuckle Vine), Hal-lam. The rapid growing Japanese Honeysuckle. Beautiful light green foliage and many creamy white, fragrant blossoms all Summer.

Sempervirens (Red Coral Honeysuckle). Large, fleshy leaves and beautiful blossoms about two inches long. Red berries follow the foliage. Strong plants, 50c each

LYCIUM (Matrimony Vine). Produces grand display in the Fall with its scarlet berries. Excellent for covering banks. Strong plants, 50c each



Polygonum Auberti

POLYGONUM Auberti (Silver Lace Vine). It is perfectly hardy, of strong, vigorous growth, attaining a height of twenty-five or more feet, producing during the Summer and Fall great, foamy sprays of white flowers, and a well-established plant. During its long period of flowering is a great mass of bloom. Strong plants, \$1.00 each

WISTERIA. Lilac purple. When well grown and producing a good crop of bloom the Wisteria is a very beautiful vine. It is especially desirable for trellises, pergolas and for covering old tree trunks. Strong plants, \$1.00 each

All True to Name

May 8, 1927.

Gentlemen:

I received much pleasure from dahlias I purchased from you last year. One thing to your credit, they were all true to name.

MRS. B. G. ROBERTS,
Gloucester, Virginia.

Hardy Begonia

This beautiful little plant thrives splendidly in a partly shaded place. It does not require a great deal of sun, but should have good daylight. We can send these plants out May 1st at 25c each; \$1.25 for 6; or \$2.50 per doz.

25c each; \$1.25 for 6; or \$2.50 per dozen

Thanks for Kindly Help



Jacob Shulz Company, Inc. Louisville, Kentucky.
Gentlemen:

I want to thank your company for their generosity in donating to the University the materials for the new arboretum. Without your aid our garden could not go forward as rapidly as it is doing. The garden is a public one and many will see it. We shall always think of your kindly help.

Very sincerely yours, FRANK L. McVEY,

President of the University of Kentucky.

Flowering Shrubs

There are any number of places around your place where flowering shrubs would fit in and not only make it more beautiful, but increase the value materially. These Schulz shrubs we offer are not only desirable for Summer, but many of them will provide color and life to your home throughout the Winter. Shrubs planted as foundation plantings add grace and charm to the exterior of your house. A hedge gives privacy and protection with beauty as well. Fence corners become beauty spots with proper planting. Read over the varieties; it's surprising how much you can accomplish with a small budget.

Write us giving a rough sketch of your home surroundings and we will be glad to recommend the shrubs you need.

ABELIA grandiflora. An extremely desirable evergreen shrub for southern planting, and entirely satisfactory in certain northern sections if provided with Winter protection. Flowers white, tinged with pink.

1 ft.	\$1.69
1½ ft.	1.50
2 ft.	2.00

AMYGDALUS nana (Flowering Almond). Dwarf. Pink and white. About May 1st, before the leaves appear, the bare branches are clothed with a profusion of double flowers.

2 to 3 ft.	\$1.50
3 to 4 ft.	3.00

AKALIA pentaphylla (Acanthopanax pentaphyllum). A compact shrub, growing from 5 to 8 feet in height. Flowers greenish yellow.

2 to 3 ft.	\$0.50
2 to 4 ft.75

ARONIA arbutifolia (Red Chokeberry). The flowers are white, borne freely at the end of the branches and are followed by bright red berries. The shrub grows from 3 to 5 feet high.

3 to 4 ft.	\$0.75
4 to 5 ft.	1.00

BERBERIS thunbergii (Japanese Barberry). A splendid shrub for low hedges and for masses in landscape work. In Autumn the foliage changes to orange and crimson, while brilliant red berries cover the bushes in Winter.

1½ to 2 ft.	\$0.50
2 to 2½ ft.75

Buddleia variabilis magnifica (Butterfly Bush or Summer Lilac). Flowers resemble Purple Line in both shape and color. Especially fine for cutting. They grow to a height of 4 to 5 feet and flower from July to frost.

..... Strong plants, 50c each

New Red-Leaved Japanese Barberry

A worth-while outstanding novelty in hardy shrubs. Foliage a rich, lustrous, bronzy red. Color more brilliant throughout the Summer, changing to orange, scarlet and a livelier red in the fall. Brilliant scarlet berries throughout the entire Winter.

1½ to 2 ft.	\$0.75
2 to 2½ ft.	1.00
2½ to 3 ft.	1.50

CALLICARPA purpurea (Beauty Fruit). The best known variety of the so-called Beach Mulberries. Pink flowers open in midsummer and are followed by violet purple fruits.

1½ to 2 ft.	\$0.50
2 to 3 ft.65
3 to 4 ft.85

CALYCANTHUS floridus (Sweet Shrub). Well known throughout the southern states and in portions of the North. Reddish brown, sweetly scented flowers are borne in late spring and early Summer.

2 to 3 ft.	\$0.50
3 to 4 ft.75

CARYOPHTERIS mastacanthus (Blue Spiraea). Very handsome shrub, bearing clusters of blue flowers in September. North of Philadelphia this shrub requires protection.

1½ to 2 ft.	\$0.50
2 to 3 ft.75



Mock Orange

Philadelphus (Virginal)

A splendid new Mock Orange growing 6 to 8 ft. tall. Produces large double crested white flowers

2 to 3 ft.	\$.75 each
3 to 4 ft.	1.00 each

CHIONANTHUS (White Fringe). Covered with a mist of white flowers in June; large, dark green foliage. Use among evergreens.

2 to 3 ft.	\$1.00
3 to 4 ft.	1.50

CLETHRA alnifolia (Sweet Pepper Bush). Grows from 3 to 5 feet high; the flowers are creamy white, quite fragrant and produced freely.

1 to 1½ ft.	\$0.50
------------------	--------

CORNUS alba sibirica (Siberian Red Osier). The branches are bright red, while the foliage is dark green. The flowers are creamy white and followed by bright blue fruit.

2 to 3 ft.	\$0.50
3 to 4 ft.75

Stolonifera (Red Osier). A spreading shrub, 4 to 6 feet high with reddish purple branches and foliage which is dark green on the upper side and white beneath. Flowers creamy white followed by white fruits.

2 to 3 ft.	\$0.50
3 to 4 ft.75

Sanguinea (European Red Osier). Flowers white; fruit black; branches bright red.

2 to 3 ft.	\$0.50
3 to 4 ft.75

CYDONIA japonica (Japan Quince). This plant is completely covered with red flowers in Spring, which are quite fragrant; the fruits are yellowish green and have a peculiar aromatic fragrance.

2 to 3 ft.	\$0.75
-----------------	--------

DEUTZIA gracilis (Winter Deutzia). From 2 to 3 feet high with arching branches. Flowers white.

1 to 1½ ft.	\$0.50
1½ to 2 ft.75

Magnifica (Crenata magnifica). Probably one of the first shrubs of the Deutzia family to come into bloom. Flowers are pure white, borne in the latter part of May, and the plant continues to flower freely until well into Summer.

3 to 4 ft.	\$0.50
-----------------	--------

FLOWERING SHRUBS—Continued

<i>Scabra arenata</i> . White or bluish colored flowers; reddish brown branches. Grows from 5 to 7 feet high.	
3 to 4 ft.....	\$0.50
4 to 5 ft.....	.75
<i>Scabra, Pride of Rochester</i> . One of the tallest growing of the family; flowers double, pure white.	
3 to 4 ft.....	\$0.50
4 to 5 ft.....	.75
ELAEAGNUS longipes (Chinese Oleaster or "Gouml"). Flowers yellowish white; red fruits on long, slender stems, ripening in midsummer. The fruit can be used for jellies and jams.	
2 to 3 ft.....	\$0.50
4 to 5 ft.....	.75
EUONYMUS alatus (Winged Burning Bush). Foliage bright green in Summer but changes to intense shades of red and crimson in Autumn, making it especially conspicuous as a specimen plant.	
3 to 4 ft.....	\$1.00
4 to 5 ft.....	1.50
<i>Americanus</i> (Strawberry Bush). A branching shrub, quite slender, growing from 5 to 8 feet tall. Flowers inconspicuous, but followed with splendidly colored fruits.	
3 to 4 ft.....	\$0.50
4 to 5 ft.....	.75
Europaeus (Spindle Tree). Grows from 10 to 15 feet tall, yellowish flowers in long clusters are borne freely in early Spring. The fruits are rose pink, while the seeds are enclosed in orange colored skin which bursts, showing the brilliant colored seeds.	
3 to 4 ft.....	\$0.75
4 to 5 ft.....	1.50
EXOCHORDA grandiflora (Pearl Bush). A native of China. Grows from 8 to 10 feet tall. Flowers pure white, somewhat resembling a sweet pea.	
3 to 4 ft.....	\$0.75
4 to 5 ft.....	1.00
FORSYTHIA intermedia (Golden Bell). In early Spring this shrub is a mass of golden yellow blooms. The plant grows about 8 feet high, with slender, arching branches.	
3 to 4 ft.....	\$0.50
4 to 5 ft.....	.75
5 to 6 ft.....	1.00
<i>Suspensa Fortunei</i> (Fortune's Golden Bell). Branches arching, covered clear to the tips with golden yellow flowers. Generally grows 10 feet high.	
3 to 4 ft.....	\$0.50
4 to 5 ft.....	.75
5 to 6 ft.....	1.00
HALESIA tetraptera (Silver Bell). Grows naturally from Illinois to Florida and Texas. Flowers drooping, clear white, and borne freely in Spring.	
2 to 3 ft.....	\$0.75
3 to 4 ft.....	\$1.00
HIBISCUS syriacus (Althea, Rose of Sharon). A tall shrub or small tree. The flowers are both single and double and in a wide range of color.	
2 to 3 ft.....	\$0.50
3 to 4 ft.....	.75
HYDRANGEA arborescens sterilis (Hills of Snow). The mass of creamy white flowers resemble huge snowballs, and the plant is loaded with bloom most of the summer.	
1½ to 2 ft.....	\$0.50
2 to 3 ft.....	.75
3 to 4 ft.....	\$1.00
<i>Paniculata grandiflora</i> . An extremely popular shrub. The large flower-clusters are white, but as they mature take on tints of rose and bronze on the side exposed to the sun. Plants should be severely pruned in early Spring if large blooms are desired.	
1½ to 2 ft.....	\$0.50
2 to 3 ft.....	.75
3 to 4 ft.....	1.00
<i>Paniculata grandiflora</i> . Tree form.	
3 to 4 ft.....	\$2.50
4 to 5 ft.....	3.00
HYPERICUM moserianum . Grows from 2 to 2½ feet high and is most effective in masses or large groups. Showy golden yellow flowers 2 inches across are borne all Summer.	
1 to 1½ ft.....	\$0.50
1½ to 2 ft.....	.75
KERRIA japonica (Globe Flower). Flowers are like a small, bright yellow ball, and because of their number make the shrub extremely conspicuous.	
2 to 3 ft.....	\$0.50
3 to 4 ft.....	.75
LIGSTRUM amurense (Amoor River Privet). A native of China, with dark green leaves which in the South are retained nearly all Winter. The shrub grows from 8 to 12 feet tall and makes a desirable hedge plant.	
	Each Doz. 100
1½ to 2 ft.....	\$0.20 \$1.50 \$10.00
2 to 3 ft.....	.25 2.50 12.00
3 to 4 ft., bushy.....	.50 .50 30.00
Quercifolium (California Privet). Possibly the most popular hedge plant, and in the South is entirely evergreen. Can be pruned to almost any form, or be permitted to take its own shape, in which case it will grow from 12 to 15 feet high.	
	Each Doz. 100
1 to 1½ ft.....	\$0.08 \$0.75 \$ 5.00
1½ to 2 ft.....	.10 1.00 8.00
2 to 3 ft.....	.15 1.50 10.00
3 to 4 ft., bushy.....	.50



Deutzia, Gracilis



Symphoricarpos, Snowberry



Viburnum, Snowball

FLOWERING SHRUBS—Continued

Ibota (Ibota Privet). Desirable for specimen planting and for massing, while in favorable situations can be used for hedges.

3 to 4 ft. \$0.50

ONICERA fragrantissima (Fragrant Honeysuckle). Bright green leaves which remain on the plant until midwinter. The flowers are creamy white or light yellow and are among the first to appear in Spring.

3 to 4 ft. \$0.50

4 to 5 ft.75

Morrows (Japanese Bush Honeysuckle). Pure white flowers which change to yellow are borne in early Spring and midsummer and are followed by bright red fruits.

3 to 4 ft. \$0.50

4 to 5 ft.75

Tartarica (Tartarian Honeysuckle). Probably the tallest growing of the whole family, frequently reaching 10 to 12 feet in height. Flowers white or pink.

3 to 4 ft. \$0.50

4 to 5 ft.75

MAYONIA aquifolium (Oregon Grape). A handsome shrub which holds its green foliage until Winter; at which time it takes on a bronzy color; yellow flowers in Spring.

1 to 1½ ft. \$1.25

1½ to 2 ft. 2.50

PHILADELPHUS coronarius (Mock Orange). Flowers creamy white, and extremely fragrant. One of the most showy shrubs, growing from 8 to 10 feet tall.

3 to 4 ft. \$0.50

4 to 5 ft.75

5 to 6 ft. 1.00

Grandiflorus (Large-flowering Mock Orange). A tall shrub often 10 feet high, with slender, spreading branches. Flowers pure white, extremely fragrant; fully as large as those of any of the other varieties.

3 to 4 ft. \$0.50

4 to 5 ft.75

5 to 6 ft. 1.00

PRUNUS cerasifera pissardi (Purple-Leaved Plum). A small tree with purple foliage which holds its color throughout the Summer. Blush pink flowers are borne freely in early Spring.

3 to 4 ft. \$1.00

4 to 5 ft. 1.50

5 to 6 ft. 2.00

RHODOTYPOS kerrioides (White Kerria). Grows from 4 to 5 feet tall, with pure white flowers, an inch or more in diameter, borne in late Spring. Berries ripen in late Summer or early Fall and remain all Winter.

3 to 4 ft. \$0.50

4 to 5 ft.75

5 to 6 ft. 1.00

RHUS aromatica (Sweet-Scented Sumac). Branching shrub seldom more than 4 feet tall. The flowers are yellow and followed by bright red fruits.

3 to 4 ft. \$0.50

4 to 5 ft.75

Cotinus (Smoke Tree). An old-fashioned shrub or small tree, tall and spreading, with immense quantities of feathery purplish colored flowers in July.

2 to 3 ft. \$0.50

3 to 4 ft.75

Typhina laciniata (Staghorn Sumac). Distinguished by the foliage which resembles a fern leaf and in Autumn turns crimson.

3 to 4 ft. \$0.50

5 to 6 ft. 1.00

SAMBUCUS canadensis (American Elder). Grows naturally throughout eastern United States. Flowers white, in flat-topped clusters, followed by black fruits in August and September. Shrub may grow 10 feet tall.

4 to 5 ft. \$0.75

5 to 6 ft. 1.00

Nigra aurea (Golden Elder). A type of the European Elder, but with yellow foliage. Flowers white, followed by black fruits.

3 to 4 ft. \$0.75

4 to 5 ft. 1.00

Nice Large Shrubs

April 2, 1927

Dear Sirs:

I received plants which I ordered from you some time ago and am very much pleased with them. They are such nice large shrubs.

Yours very truly,

MRS. R. D. OELKERS,
Walthalla, South Carolina.



Buddleia Butterfly Bush

Special Shrub Collection

- 1 Stolonifera, Red Osier Dogwood
- 1 Deutzia Gracillia
- 1 Forsythia
- 1 Spirea Billardi
- 1 Hydrangea P. G.
- 1 Philadelphus, Mock Orange

Above \$3.00 value for \$2.00

25c postage must accompany above order



Persian Lilac, *Syringa Persica*



Spiraea Billiardii

FLOWERING SHRUBS—Continued

- SPIREA bumalda**, Anthony Waterer. A low-growing shrub which carries a profusion of purplish red flowers from June until late Autumn. Splendid for massing or low hedges.
 1 to 1½ ft. \$0.50
 1½ to 2 ft.75
- Billiardii**, Stiff, upright growth; sound, hairy branches. Color bright pink; feathery flowers.
 2 to 3 ft. \$0.50
 3 to 4 ft.75
 4 to 5 ft. 1.00
- Billiardii alba**. Same as above, only white.
 2 to 3 ft. \$0.50
 3 to 4 ft.75
 4 to 5 ft. 1.00
- Callosa alba fortunei** (White Spiraea). Blooms white all Summer.
 1 to 1½ ft. \$0.50
Callosa. This is a dwarf pink Spiraea. Blooms in clusters during June and July.
 2 to 3 ft. \$0.50
- Thunbergi** (Thunberg's Spiraea; Snow Garland). A native of China. Flowers pure white, coming in early Spring and entirely covering the shrub.
 1½ to 2 ft. \$0.50
 2 to 3 ft.75
- Francofolia fl. pl.** (Bridal Wreath). Flowers are pure white, full double, and produced freely in early Spring. A splendid shrub for specimen or in masses.
 3 to 4 ft. \$0.75
 4 to 5 ft. 1.00
- Van houttei**. This shrub is frequently called the Bridal Wreath, although this is incorrect. The flowers are white, produced freely in Spring, but are not quite so double as those of the preceding variety.
 2 to 3 ft. \$0.50
 3 to 4 ft.75
 4 to 5 ft. 1.00
- SYMPHORICARPOS racemosus** (Snowberry). Flowers white or pink, followed by white berries which remain until mid-winter.
 2 to 3 ft. \$0.50
 3 to 4 ft.75
- SYRINGA vulgaris**. The old familiar purple Lilac, blooming freely in June.
 3 to 4 ft. \$1.00
 4 to 5 ft. 1.50
- Vulgaris alba** (White Lilac).
 3 to 4 ft. \$1.00
 4 to 5 ft. 1.50
- Persica** (Persian Lilac). Flowers are pale lilac, in broad panicles; blooms later than the common varieties.
 3 to 4 ft. \$1.00
 4 to 5 ft. 1.50

- TAMARIX africana**. Flowers pinkish, coming in June and July; tall-growing, with spreading branches.
 3 to 4 ft. \$0.50
 4 to 5 ft.75
- Amurensis**. Flowers are very similar to the African Tamarix, but foliage is smaller and branches are more inclined to droop.
 3 to 4 ft. \$0.50
 4 to 5 ft.75

- VIBURNUM lantana** (Wayfaring Tree). A large shrub or small tree with heart-shaped foliage; flowers white and followed by red berries which change to black.
 2 to 3 ft. \$0.75
 3 to 4 ft. \$1.00
 4 to 5 ft. 1.25

- Opulus** (High Bush Cranberry). A native of the United States, growing from 8 to 10 feet tall. Bright scarlet berries follow the white flowers and remain all Winter.
 3 to 4 ft. \$0.75
 4 to 5 ft. 1.00

- Opulus sterile** (Snowball; Guelder Rose). An old-fashioned shrub, with white flowers in round clusters resembling snowballs.
 3 to 4 ft. \$0.75
 4 to 5 feet. 1.00
- Tomentosum plicatum** (Japanese Snowball). Similar to *V. opulus sterile*, but the balls are larger, often measuring 4 inches in diameter. Hardy in most sections, but should be protected from cold winds.
 2 to 3 ft. \$0.75
 3 to 4 ft. 1.00

- VITEX agnus-castus**. A pretty Summer-blooming shrub, with lavender and white flowers.
 3 to 4 ft. \$0.50 and \$0.75

- WEIGELA amabilis** (Diervilla). Flowers rose colored; grows from 6 to 8 feet tall.
 2 to 3 ft. \$0.50
 3 to 4 ft.75
 4 to 5 feet. 1.00

- Amabilis alba** (Diervilla). White.
 2 to 3 ft. \$0.50
 3 to 4 ft.75
 4 to 5 feet. 1.00

- Hybrida**, Eva Rathke. Flowers are ruby carmine, possibly larger than those of other varieties. Habit of growth similar to type.
 2 to 3 ft. \$0.75
 3 to 4 ft. 1.00

- Rosa**. Rosy pink flowers in June.
 2 to 3 ft. \$0.50
 3 to 4 ft.75

- Rosa variegata**. Distinguished by the foliage which is white and green; flowers white or slightly tinted with pink.
 2 to 3 ft. \$0.50
 3 to 4 ft.75

- Sessilifolia**. Blooms late in June; yellow flowers; in Autumn the foliage turns yellow and red.
 2 to 3 ft. \$0.50
 3 to 4 ft.75



Vitex, Agnus Castus

Permanent Zinc Labels
 For Your Shrubs—Page 34



Evergreens

Evergreens are indispensable to a well rounded planting scheme. The main point in their favor is the fact that they provide a warm, live green color during months when no trees and only a few shrubs show any color at all. Evergreens are ideal for windbreaks, for ornamental planting, both formal and informal, and for a screen to shut out any undesirable view. Schulz evergreens are well known for their exceptional hardiness and fine appearance. We exercise extreme care in growing and are especially careful to pack and ship so that the tree is in the best possible condition when it reaches the customer. Turn to the center spread and note the care with which the man is digging and burlapping the small evergreen. Every tree gets the same attention.

ABIES concolor (White Fir). A native evergreen recommended for general planting.

1½ to 2 ft.	\$3.50
2 to 3 ft.	6.00

Nordmanniana (Crimean Fir). Tall; dark, glossy green foliage. Good specimen.

1 to 1½ ft.	\$2.50
1½ to 2 ft.	3.50
2 to 2½ ft.	5.00
2½ to 3 ft.	7.50
3 to 3½ ft.	10.00

BIOTA orientalis. An evergreen with dense, pyramidal growth; the green foliage turns to brown in Autumn.

2 to 3 ft.	\$2.50
3 to 3½ ft.	3.50
3½ to 4½ ft.	4.50
4½ to 5 ft.	6.00

Orientalis aurea nana (Golden Chinese Arbor-Vitae). A dwarf form of *B. orientalis aurea*, with yellow tinged foliage.

1 ft.	\$2.50
1½ to 2 ft.	4.00
2 to 3 ft.	6.00

BUXUS canadensis.

1 ft.	\$2.50
1½ to 2 ft.	4.50

Canadensis pyramidalis.

2½ to 3 ft.	\$6.00
3 to 3½ ft.	8.00

EUONYMUS scheidtiana. Leaves elliptic, long, acuminate, half green; bears beautiful bright fruit.

1 ft.	\$1.50
1 to 1½ ft.	2.00
1½ to 2 ft.	3.00

Japonica. Evergreen Euonymus.

1 ft.	\$1.25
1 to 1½ ft.	1.50
1½ to 2 ft.	2.50

Japonica variegata. Same variety as Japonica, only it has variegated foliage.

1 ft.	\$1.50
1 to 1½ ft.	2.00
1½ to 2 ft.	3.00

JUNIPERUS chinensis pfitzeriana. Distinguished by feathery appearance of foliage and two white lines on the under side. Color silvery green.

1½ to 2 ft.	\$3.25
2 to 2½ ft.	4.50

Specimens 7.50 up

Chinensis procumbens. Specially useful in foundation plantings and for rock gardens. Foliage grayish green.

1½ to 2 ft.	\$3.00
2 to 3 ft.	5.00

Communis (Common Juniper). A low-growing shrub, useful for foundation plantings and as a ground cover.

1 to 1½ ft.	\$2.00
1½ to 2 ft.	2.50

Communis depressa (canadensis). A dwarf spreading shrub; foliage pale green.

1 to 1½ ft.	\$1.50
1½ to 2 ft.	2.50
2 to 3 ft.	5.00

Communis hibernica (Irish Juniper). A slender-growing tree, taking the form of a column. Foliage bluish green.

2 to 2½ ft.	\$2.50
2½ to 3 ft.	3.00
3 to 3½ ft.	4.00

Excelsa striata. A form of the Greek Juniper, with an extremely slender outline.

12 to 15 inches.	\$2.50
15 to 18 inches.	3.50
1½ to 2 ft.	5.00

Sabina (Savin Juniper). A spreading shrub with dense dark green foliage.

1 to 1½ ft.	\$3.00
1½ to 2 ft.	4.00



Pinus Strobus, White Pine

EVERGREENS—Continued

Sabina tamariscifolia. Grayish green foliage. Low spreading.

1 to 1½ ft.....	\$3.00
1½ to 2 ft.....	4.00
2 to 2½ ft.....	5.00

Virginiana (Red Cedar). Native from Canada into the Gulf States; freely branching, and with green or bronze green foliage.

2 to 2½ ft.....	\$2.00
2½ to 3 ft.....	3.50
3 to 4 ft.....	4.00
4 to 5 ft.....	6.00
5 to 6 ft.....	7.50

Virginiana elegantissima (Lee's Golden Cedar). Similar to J. virginiana; ends of branches marked with golden bronze.

1½ to 2 ft.....	\$3.50
2½ to 3 ft.....	6.00

Virginiana glauca (Blue Virginia Cedar). An extremely beautiful form of the Junipers; foliage silvery blue.

2 to 2½ ft.....	\$4.00
2½ to 3 ft.....	5.00
3 to 3½ ft.....	7.50
3½ to 4 ft.....	8.00
4 to 5 ft.....	\$10.00 to \$12.50

PICEA canadensis (P. alba) (White Spruce). Light bluish green foliage. Hardy through all of the northern states and into Canada.

1 to 1½ ft.....	\$2.00
2 to 2½ ft.....	3.50
3 to 4 ft.....	6.00

Excelsa (Norway Spruce). A splendid tree for windbreaks, shelter belts, or as single specimens; the branches are spreading, slightly drooping at the tips.

1 to 1½ ft.....	\$2.00
2 to 2½ ft.....	3.50
2½ to 3 ft.....	5.00
3½ to 4 ft.....	6.00
4 to 5 ft.....	8.00

Pungens (Blue Spruce; Colorado Spruce). Native of the Rocky Mountains; foliage bluish green, rigid and sharply pointed.

1 to 1½ ft.....	\$4.00
1½ to 2 ft.....	6.00
2 to 2½ ft.....	7.50
2½ to 3 ft.....	8.00
3 to 3½ ft.....	10.00

Pungens Kosteri (Koster's Blue Spruce). Foliage pronounced silvery blue; makes a prominent, specimen in an evergreen planting.

Specimens\$25.00 and up

PINUS montana mughus. (Dwarf Pine). A very beautiful dwarf pine, glottular shape and erect branching.

1 to 1½ ft.....	\$3.50
1½ to 2 ft.....	4.50

Nigra austriaca (Austrian Pine). A rapid growing tree which can be adopted to windbreaks and shelter belts.

2 to 3 ft.....	\$3.00
3 to 4 ft.....	4.00
4 to 5 ft.....	6.00
5 to 6 ft.....	8.50
6 to 7 ft.....	12.00

Strobus (White Pine). The best of the family for commercial or ornamental plantings; native of the United States.

2 to 3 ft.....	\$2.50
3 to 4 ft.....	5.00
4 to 5 ft.....	6.50
5 to 6 ft.....	8.00
6 to 7 ft.....	10.00
7 to 8 ft.....	15.00

Sylvestris (Scotch Pine). Largely planted for screens and windbreaks. In Europe it is one of the chief timber trees.

2 to 3 ft.....	\$3.00
3 to 4 ft.....	4.00
4 to 5 ft.....	6.00
5 to 6 ft.....	7.50

PSEUDOTSUGA Douglasi (Abies Douglasi) (Douglas Fir). A tall growing Evergreen with dark green foliage and slightly bending branches.

1½ to 2 ft.....	\$2.50
2 to 3 ft.....	3.50
3 to 4 ft.....	6.00



Koster's Blue Spruce

Morehead, Ky.

Jacob Schulz Co.,
Louisville, Ky.

Gentlemen:—

Have been waiting for your Garden Guide. Please send it to me.

The dahlias I received from you last year took first prize here.

Sincerely,

(MRS.) E. BATTSON,
Morehead, Ky.

EVERGREENS—Continued

RETINISPOEA filifera. A feathery or thread-like Evergreen with pendulous branches. Valuable in group plantings and foundation work.

1 to 1½ ft.	\$2.50
1½ to 2 ft.	3.50
2 to 2½ ft.	4.50
2½ to 3 ft.	6.00

Pilifera (Sawara Cypress). Horizontal branches, with the foliage pressed closely to the stems.

1½ to 2 ft.	\$2.50
2 to 2½ ft.	3.50
2½ to 3 ft.	5.00
3 to 3½ ft.	6.00
3½ to 4 ft.	7.50

Plumosa. Main branches rather upright in growth, with the side shoots bearing plum-like foliage, giving the tree a feathery appearance. May be used for hedge purposes.

1½ to 2 ft.	\$3.00
2 to 2½ ft.	4.00
2½ to 3 ft.	5.00
3 to 3½ ft.	6.00
3½ to 4 ft.	7.50

Plumosa aurca (Golden Retinispora). One of the most popular of the golden-folaged Evergreens.

1½ to 2 ft.	\$3.00
2 to 2½ ft.	4.00
2½ to 3 ft.	5.00
3 to 3½ ft.	6.00

Squarrosa (Silver Cypress). Its silvery blue foliage is soft and extremely graceful, and stands clipping when used in hedges or for formal specimens.

1½ to 2 ft.	\$3.50
2 to 2½ ft.	4.00
2½ to 3 ft.	5.50

TAXUS baccata (English Yew). Glossy green foliage; scarlet berries in Autumn.

1½ to 2 ft.	\$4.00
2 to 2½ ft.	5.00
2½ to 3 ft.	7.50

Baccata repandens. A dwarf or prostrate-growing variety; excellent for hedges, mass planting, and for covering banks.

1 to 1½ ft.	\$3.50
1½ to 2 ft.	5.00

THUYA occidentalis (American Arbor-Vitae). One of the most useful Evergreens for hedges and screen planting. The branches are rather short and horizontal and covered with bright green foliage which is slightly tinged with yellow on the under surface. May grow from 20 to 30 feet high.

2 to 2½ ft.	\$2.50
2½ to 3 ft.	3.00
3 to 3½ ft.	3.50
3½ to 4 ft.	4.50
4 to 4½ ft.	5.50
4½ to 5 ft.	7.00

Occidentalis globosa (Globe Arbor-Vitae).

1 to 1½ ft.	\$3.00
1½ to 2 ft.	4.00

Occidentalis Hoveyi (Hovey's Golden Arbor-Vitae). Foliage tinted yellow or gold.

1 to 1½ ft.	\$3.50
2 to 2½ ft.	4.50

Occidentalis var. Ellwangeriana. Soft green foliage, resembling the Retinisporas.

1½ to 2 ft.	\$2.50
2 to 2½ ft.	3.50

Occidentalis pyramidalis (Pyramidal Arbor-Vitae). Upright Evergreens similar to the Irish Juniper Foliage light green.

1½ to 2 ft.	\$2.50
2 to 2½ ft.	3.00
2½ to 3 ft.	5.00
3 to 3½ ft.	6.00
3½ to 4 ft.	7.50
4 to 5 ft.	10.00

Occidentalis lutea (Peabody's Golden Arbor-Vitae). Pyramidal tree; yellow tinted foliage.

1½ to 2 ft.	\$2.50
2 to 2½ ft.	3.00
2½ to 3 ft.	4.50
3 to 4 ft.	6.00

TSUGA canadensis (Hemlock). For enlivening Winter aspect of deciduous planting, especially in woods or shade, or in graceful masses, as a hedge plant that stands clipping, or as a specimen.

1½ to 2 ft.	\$3.00
2 to 2½ ft.	3.50
2½ to 3 ft.	6.00
3½ to 4 ft.	7.50
4 to 5 ft.	10.00



Thuja Occidentalis, American Arbor-Vitae



Making the Neighbors Envious

Gentlemen:

The Iris I received from you last fall are in bloom now and I must say they are certainly making the neighbors envy me. I am sure you will get some orders from them as they want to know where I got them.

Yours truly,

HENRY N. CONWAY, County Surveyor,
Little Rock, Arkansas.

At the right a snapshot of Mr. Conway's Irises.

Irises a Big Surprise

April 18, 1927.

Dear Sirs:

My Irises ordered from you were a big surprise to me and I know they will surprise others who order as I did. They were planted and bloomed the same season. The rhizomes were all large and healthy, and I sure thank you for the attention given my order. I am sending you an order for dahlias and I know they will be Schulz Quality, as always. Thanking you for service rendered, I remain,

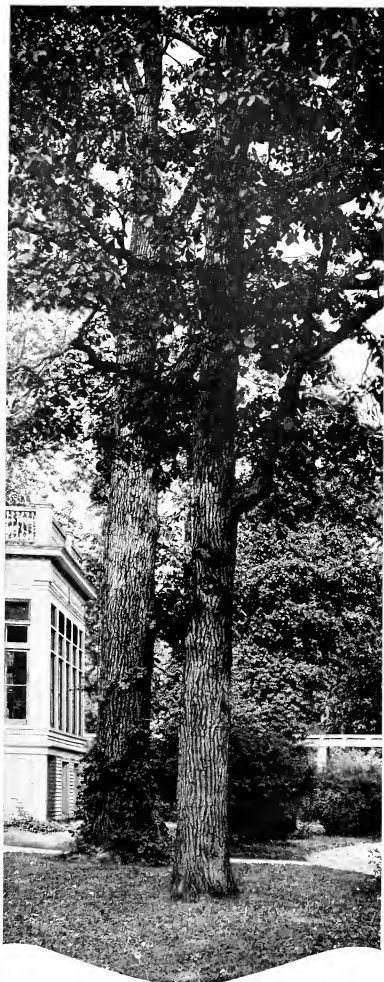
Respectfully,

GEORGE A. SMITH, St. Louis, Missouri.

At the left is a picture of Mr. Smith's Iris Garden. Note the Irises in front are through blooming while those at the rear are still in flower.

May 2, 1927.





Shade Trees ~

{ Deciduous Trees }

Nowhere are more beautiful or desirable trees to be found than the grand old specimens of our American forests. If you want to add greatly to the permanent value of your place, plant shade trees. Like every other good thing, they take some time to grow, but they will repay you a thousand times for the time you wait in grateful shade in Summer and glorious Autumn colors. We list all the old favorites that you know so well and also many other trees that you may not be so familiar with.

ACER platanoides (Norway Maple). Generally considered the best street and shade tree, as it is entirely hardy, growing even under adverse conditions.

8 ft., 1 1/4 to 1 1/2 in. caliper.....	\$2.50
10 ft., 1 1/2 to 2 in. caliper.....	4.50
12 ft., 2 1/2 in. caliper.....	6.00

Saccharum (Sugar Maple). A typical American tree used for street and lawn planting. Its foliage is dark green on the upper side and light on the under surface and in Autumn takes brilliant shades of red and orange.

8 ft., 1 1/4 in. caliper.....	\$4.50
10 ft., 1 1/2 to 2 in. caliper.....	4.50
12 ft., 2 1/2 in. caliper.....	6.00

Saccharinum (dasycarpum) (Silver Maple). A tall-growing shade tree with spreading branches. Better as a lawn specimen than for street planting.

8 ft.	\$1.50
10 ft.	2.00
12 ft.	3.00

BETULA alba laciniata pendula (Cut-leaved Weeping Birch). Long, drooping branches and deeply green foliage. The bark turns white as it reaches maturity.

5 to 6 ft.....	\$3.00
6 to 8 ft.....	3.50

lutea (Yellow Birch). The bark is very thin and toned with silvery grey.

5 to 6 ft.....	\$2.00
6 to 8 ft.....	3.00

CATALPA bungei (Round-headed Catalpa). Used chiefly in formal gardens and to border driveways.

1-yr. heads	\$2.00
2-yr. heads	2.50
3-yr. heads	5.00

CERCIS canadensis (Judas Tree). Native tree with reddish purple flowers in early Spring; of medium height and most effective when planted in large masses.

4 to 5 ft.....	\$1.00
5 to 6 ft.....	1.50
6 to 7 ft.....	2.00

CORNUS florida (White-flowering Dogwood). A bushy tree or large shrub with pure white flowers in early Spring.

3 to 4 ft.....	\$1.50
4 to 5 ft.....	2.00
5 to 6 ft.....	3.50

Florida rubra (Red-flowering Dogwood). Most effective when planted with preceding variety, as the bright pink blossoms are enhanced by the contrast.

18 inch	\$3.00
24 inch	3.50

FRAXINUS americana (White Ash). A desirable shade tree which grows naturally in the central portion of the United States. The green foliage changes to purple and yellow in Autumn.

7 to 8 ft.....	\$2.00
8 to 10 ft.....	3.00

KOELKEUTERIA paniculata (Varnish Tree). Introduced from China. Bears yellow flowers in July which contrast beautifully with the deep green foliage.

5 to 6 ft.....	\$1.50
6 to 8 ft.....	2.00

MAGNOLIA acuminata (Cucumber Tree). The yellowish green flowers open in May and June, followed by rosy red fruits. Upright in growth; a valuable shade tree.

6 to 7 ft.....	\$2.50
7 to 9 ft.....	3.50

SHADE TREES—Continued

MAGNOLIA GRANDIFLORA. This is the Southern Magnolia, producing large white fragrant flowers and beautiful glossy leaf.	
1½ to 2 ft.....	\$3.00
3 to 4 ft.....	5.00
MALUS ioensis Bechtel (Bechtel, Double-Flowering Crab Apple). Double blossoms, deep pink in bud, opening light pink. A beautiful variety, which in fragrance sends everyone into raptures.	
3 to 4 ft.....	\$2.00
4 to 5 ft.....	2.50
POPULUS carolinensis (Carolina Poplar). An exceedingly rapid-growing tree, widely planted where quick effects are desired, but of little permanent value.	
8 to 10 ft.....	\$1.00
10 to 12 ft.....	1.50
Nigra italica (Lombardy). This is chiefly used for backgrounds, windbreaks, etc.	
8 to 10 ft.....	\$1.25
10 to 12 ft.....	1.50
QUERCUS palustris (Pin Oak). The Oak thrives best on soils which are free from lime. The Pin Oak is most charming as a specimen tree. The foliage is deep green but in Autumn changes to scarlet.	
6 to 7 ft.....	\$3.00
7 to 8 ft.....	3.00
8 to 10 ft.....	4.00
SALISBURIA adiantifolia (Ginkgo biloba) (Maidenhair Tree). Introduced from China. A picturesque street or shade tree, reaching its highest type of beauty with extreme age.	
6 to 8 ft.....	\$3.00
8 to 10 ft.....	3.00
SALIX babylonica (Weeping Willow). Picturesque tree with slender, drooping branches covered with tapering foliage, bright green in color.	
7 to 8 ft.....	\$2.50
8 to 10 ft.....	3.50
10 to 12 ft.....	5.00
Caprea (Pussy Willow). A small tree with upright branches, which in early Spring are covered with catkins or "pussies."	
4 to 5 ft.....	\$1.00
5 to 6 ft.....	\$1.50
TILIA americana (American Linden; Basswood). A splendid tree for street, lawn, and park planting. Broad, heart-shaped foliage, dark green on the upper side and lighter green underneath.	
8 to 10 ft.....	\$3.00
10 to 12 ft.....	\$5.00



Bechtel Double-Flowering Crab Apple

For Better House Plants



use *PlanTabbs*, ideal for potted plants. Odorless, simple, easy to use. *PlanTabbs* will help make your house plants healthier and more beautiful. With every order of *PlanTabbs*, we will send you our book explaining how to have lovely potted plants and flowers all year round. Box of 30 Tablets, 30c postpaid. Box of 75 Tablets, 55c postpaid.

"Kentucky Bred" Garden Wins

The Jacob Schulz Co. garden of "Kentucky Bred" flowers won the \$1,000 Sweepstakes prize for the best garden in the National Flower Show held in March of last year in Louisville, Kentucky.

Our friends will also be glad to know that our Rose Garden won the Blue Ribbon for first prize in that class.

The same quality of "Kentucky Bred" flowers that won these prizes will help you make your garden distinctive and beautiful.

Rose Acacia

\$2.50 to \$3.50 each



Rose Acacia

Fruit Trees and Grapes



Apples

YELLOW TRANSPARENT. A Russian apple of splendid quality. The hardiest and finest early apple grown.
WINESAP. A favorite for all purposes. Medium size, conical, red and yellow, flesh fine, crisp, high flavored. November to May.
EARLY HARVEST. Medium; pale yellow; very productive; good either for fresh fruit or for cooking. July and August.
DELICIOUS. This apple is all that its name suggests. It originated in the state of Iowa, and has made its way to every section of the universe. Flesh fine-grained, crisp, juicy, melting and withal delicious.
ROME BEAUTY. Uniformly large, smooth, shaded and striped with bright red.

Crab Apples

TRANSCENDENT. The largest crab apple. Red, showy, very fine. September to October.
HYLSLOP. Large, dark crimson, with bloom, very showy. Tree very hardy. Late.
 All Apples extra strong, 2-year-old trees.....\$1.00 each

Peaches

Our selection of peaches is the best that can be made.
BEER'S SMOCK. A large, yellow-fleshed peach. Late. September and October.
CROSBY. Of medium size and peculiar roundish, flattened shape; flesh yellow, and of good flavor.
ELBERTA. An ideal peach, and a royal fruit from its yellow and red skin to its stone; of enormous size. Freestone. September.
EARLY ELBERTA. Freestone; midseason; of the Elberta type. Large, golden-yellow flesh. A splendid canning variety. Ripens about ten days before Elberta.
STUMP. Large, white, bright red cheek. End of September.
 Extra strong, 2-year-old trees.....\$1.00 each



Pears

BARTLETT. Large size, with beautiful blush; very juicy and highly flavored. August and September.
KIEFFER. This is one of the favorites for canning and preserving. October and November.
FLEMISH BEAUTY. A splendid producer of large, handsome fruit that is excellent in quality every year. September and October.
CLAPP'S FAVORITE. Large, pale lemon-yellow; earlier than Bartlett and resembling the Flemish in growth. August and September.
 Strong 2-year-old trees.....\$1.00 each

Cherries

MONTMORENCY. One of the finest-flavored cherries. The strong hardy tree makes rapid growth and bears enormous crops. Valuable for canning and preserving. Late, sour. June.
DYEHOUSE. Similar to Early Richmond, but several days earlier. June. Sour.

EARLY RICHMOND. A very productive and reliable old variety, with dark red fruits of medium size and sprightly acid flavor. June. Sour.
BLACK TARTARIAN. A fine old variety; very large purplish black fruit. Sweet. Late. June and July.
 Strong, 2-year-old trees.....\$1.00 each

Plums

ABUNDANCE. Lemon-yellow ground; nearly overspread with bright cherry and with a heavy bloom. Large to very large. August.
BURBANK. Large, nearly round and bright cherry red; flesh deep yellow, sweet, meaty, and quite firm. Late. August.
DAMSON. Tree vigorous and enormously productive. One of the old favorites. September and October.
 Strong, 2-year-old trees.....\$1.00 each

Grapes

CAMPBELL'S EARLY. Black. One of the largest fruiting grapes and extremely satisfactory.
CONCORD. Black. The most popular black grape. Can always be depended on to fruit heavily.
WORDEN. Black. Producing grapes in large, compact bunches. An early fruiting variety.
CATAWBA. Red. A very nice berry, having an unusually sweet and aromatic flesh.
NIAGARA. White. This well-known grape needs no description. It should be in every collection.
BRIGHTON. Red. Bunches large and well formed; berries medium to large. A good flavor. Early.
MOORE'S EARLY. Black. Berries of nice size; a fine grape.
 Price for good, strong, 2-year plants.....
30c each; \$2.50 per 10; \$20.00 per 100

Healthy Looking Bulb

April 14, 1927
 Gentlemen:
 The Jersey Beauty dahlia bulb received and am very much pleased with it. It is such a healthy looking bulb. Please accept my many thanks for same.
 MRS. GEORGE K. GODDARD
 Lexington, Kentucky.



Concord Grapes

Is Gardening Your Hobby?

IN THESE days of hustle and bustle when living goes so fast, work claims most of our time and attention. There is an old saying, "All work and no play makes Jack a dull boy." It applies to business men and housewives today just as it does to children. We all need an avocation or hobby to go along with our regular work. It is good to come home from the office or the shop from the every-day grind and to forget it all working in the soil, planting, cultivating and caring for growing things. You don't need a big space to have a garden that you can really enjoy. You can accomplish wonders in a limited space. It may be only a few square feet, but planned judiciously, it will give a great deal of pleasure and beauty.

Gardening is a real exercise. It is a change that everyone needs. It has always seemed a garden is the soul of the home. Without a garden, the home lacks something. Beautify your home outside with beds and borders, inside with cut flowers all through the season.

The garden makes a wonderful place for your children to live and play in during the warmer months. The garden brings happiness, health and satisfaction.

Your Home is Worth More

A small investment in trees, shrubs, plants and flowers will increase the value of your estate as much as 25 per cent. Notice the houses that you see along the streets of your town, village or city. Those that have grounds artistically planned and carried out are the nicest homes, the homes you would care to live in. Ask your real estate man about it. He will confirm our word. Don't forget our landscape offer. We will be glad to plan your home grounds in order to make them more beautiful and attractive. The best part of it is, when you buy plants, shrubs or trees from Schulz you don't have to spend a fortune for them. Our direct selling plan saves you money. You cannot buy equal quality for less price any place.



Courtesy American Face Brick Assn.

Proper Plantings Help Make This Beautiful Home.



Iris ~

For delicacy and exquisite combinations of color there is no flower that excels the Iris. Connoisseurs and garden enthusiasts find a wealth of pleasure and interest in the hundreds of shapes and colors of Irises. Many have referred to it as the poor man's orchid. The varieties we offer are some of the most popular and highly treasured of the known kinds.

Hundreds of our customers have written us telling of the wonderful results they get from "Kentucky Bred" rhizomes. There is something in the exceptional climate and soil of our Louisville location that makes for hardier and more beautiful plants. Try for yourself, you'll find that Irises from Schulz have an added touch of beauty lacking in many others. Learn to know the better varieties of these aristocrats of spring flowers. Study their description before ordering. Get the color and kind that will most suit your taste and needs. Plant them in borders, or clumps, they will thrive under many adverse conditions. Note in the descriptions given hereafter.

Abbreviations: S, standards; F, falls.

AFTERGLOW. Lilac overlaid yellow.....	.50c each	BALARUC (Denis). S. and F. both white, with very little markings; pale golden beard.....	\$1.50 each
AGNES (Plicata). 24-in. S. white, frilled and shaded lilac; F. white traced lilac at the base or claw; a beautiful variety.....	.25c each	BALLERINE (Vilmorin). S. clear light blue; F. deeper blue. This variety grows tall and graceful.....	\$1.00 each
ALCAZAR (Squalens). 36-in. S. blue violet; F. rich ruby, slightly veined. Multiplies rapidly.....	.50c each	BLUE JAY (Neglecta). S. bright, clear blue; F. intense dark blue. Very attractive.....	.25c each
ALETHA. S. and F. pure white, generously frilled with violet purple.....	.50c each	BRANDYWINE (Farr, 1920). 30 in. S. and F. are a pale, silvery blue, with a distinct bright golden beard....	\$1.50 each
AMAS. Tall, bearded. A handsome, giant-flowered form from Asia Minor. S. rich blue, F. violet; 2 feet.....	.35c each	CAPRICE (Pallida). 30 in. S. and F. delicate purple, blending into silky lavender at base.....	.25c each
ANNA FARR (Farr). S. white, lightly bordered blue; F. pure white, pale blue markings at the base.....	\$1.00 each	lavender-violet.....	.50c each
AMBASSADEUR. S. bronzy violet; F. velvety carmine-purple. This is a fine grower and produces flowers of good substance.....	\$1.00 each	CATERINA. Blush lavender, self-falls being slightly flushed	.50c each
ARCHEVEQUE. New. S. deep purple-violet; F. deep velvety violet; an unusual color, rarely found in Iris. Stock scarce.....	.25c each	CECIL MINTURN (Farr, 1922). S. and F. a uniform shade of soft pink.....	.50c each
ARDENTA (Neglecta). S. pale lavender; F. dark velvety violet, reticulated white at claw; a combination of color that immediately calls attention.....	.25c each	CELESTE. Clear azure blue, with suggestion of clean white throughout.....	.25c each
ASIA (Yeld, 1920). 54 in. S. pale lavender, suffused and reticulated yellow at the base; F. light violet-purple, paler at the edges and heavily reticulated at the haft, bright yellow beard. A wonderful Iris.....	\$3.00 each	CHESTNUT HUNT (Pallida). S. celestial blue; F. dark marine blue, bordered pale blue, shaded at base; stigmata light blue.....	.25c each
AURORA. S. and F. pale lavender-pink, orange beard.....	.50c each	CLEMATIS. S. deep lavender; F. deep lavender-purple, with white reticulations at the base. Yellow beard.....	.50c each
		COLONEL CANDELOT (Millet). S. bronze overlaid with red-lavender; F. a rich, velvety crimson-purple, reticulated white at base, beautiful yellow beard.....	.50c each
		DALMATICA (Pallida). 44 in. S. and F. delicate lavender, with pink reflections. Broad, glaucous foliage.....	.25c each
		DANDY (Variegata). 16 in. S. yellow; F. velvety purple. A pleasing combination.....	.25c each

IRIS—Continued

DOMINION. S. light bluish violet; F. of exceptional substance, expanding at base to deep, rich, indigo-purple velvet, with distinct orange beard.....\$3.00 each

DOROTHIA. This is an intermediate, large-flowered, pale blue. 24 inches.....25c each

DRAKE (Bliss). Very similar to Pallida Dalmatica, pale cambrie blue.....50c each

DREAM (Starkevici). S. lilac-pink; F. slightly darker, with some bronze reticulation at haft. This variety has an orange beard; considered one of the best pink iris.....\$1.00 each

EDOUARD MICHAEL (Pallida). 32 in. S. and F. unusual shade of rich, reddish-purple. Stock limited.....50c each

E. L. CRANDALL (Plicatum). S. pure white; F. white, heavily bordered, deep blue at base.....50c each

ELDORADO (Squalens). 32 in. S. fiery opalescent; F. old gold and silhouetted with burnt purple, a distinct harmony of subdued hues and perfect blending.....35c each

FAIRY (Plicata). 36 in. S. and F. resemble sun-kissed snow, outlined by the faint azure of the sky. The crests of the stigmas are a delicate lake blue. The tallest white.....25c each

FANTASY. S. pale yellow; F. white with very dark, narrow line down the center.....50c each

FLORENTINA (Syn. Silver King). Creamy white, faintly flushed lavender. Fragrant. 2 feet.....25c each

GEORGIA. S. and F. uniform shade of cattleya, rose. Bright orange beard.....75c each

GERMANICA. A very fine early variety. F. dark blue; S. light blue.....25c each

GERMAINE PERTHEIS (Millet, 1924). 36 in. S. beautiful red shade of violet-purple, lighted with a lighter tone; F. a deep, rich, bishop violet.....\$10.00 each

GERTRUDE (Pallida). 34 in. S. and F. are violet-blue. Unexcelled for home decoration. (Peterson variety).....25c each

GNOME (Bliss). S. lilac with a touch of pink.....\$1.00 each

HER MAJESTY (Pallida). 30 in. S. pinkish-violet tourmaline; F. deeper shade, heavily veined. A sturdy sort.....20c each

HIAWATHA (Neglecta). S. pale lavender, flushed rose; F. royal purple, bordered lavender.....25c each

HUGO (Pallida). S. petunia violet; F. deep purple, with wide-veined flower.....50c each

INGEBORG. Pure white, very large flowers of handsome form.....25c each

IROQUOIS (Sq.) S. smoky lavender, dotted brown; F. black-maroon, reticulated white at base. Tall and striking.....35c each

ISOLINE (Squalens). 36 in. The Imperial Mandarin. S. opalescent lilac, 3 inches long, surmounting an apron of 3 1/2-inch mauve falls; beautiful artistic and unique combination.....40c each

JACQUESIANA. 30 in. S. bright coppery crimson; F. rich maroon; distinct and beautiful. Scarce.....50c each

JUNIATA (Pallida). S. and F. clear blue, deeper than Dalmatica; large, fragrant flowers. Tallest of bearded Irises, with unusually long, drooping foliage.....35c each



Mother of Pearl

KASHMIR WHITE. A very good white.....\$1.00 each

KING (Squalens). 24 in. S. lemon-yellow; F. maroon, edged yellow.....35c each

KOCHI. Tall bearded. S. and F. rich claret purple; very handsome.....35c each

LA NEIGE. Considered one of the best white varieties. 24 in.....50c each

LENT A. WILLIAMSON. S. broad, soft campanula violet; F. very large. This variety already ranks very high among the newer iris.....50c each

LORD OF JUNE. S. lavender-blue; F. deep aniline blue. Blooms of large size and fragrant.....\$1.00 each

LORELEY (Variegata). 30 in. S. breast of wild canary; F. creamy white, with purple reticulations blending into a velvety purple mass near the ends, which are margined with deep canary.....25c each

Never Received Such Large, Healthy Rhizomes

Dear Sirs:

I received the first shipment of Iris and I want to say that for a collection offer and priced as they were, that they were fine. In fact, I have never before received such large, healthy looking rhizomes. This will verify the statement you made in reference to shipping better rhizomes than could be procured from any other source. I am very much pleased and look forward to some beautiful blooms. Thanking you, I am,

Very truly yours,

L. N. GOLL,

New Orleans, Louisiana.

August 30, 1927.



Mme. Chereau

Rainbow Iris Special

Juniata	\$0.35
Mithras25
Eldorado35
Lohengrin25
Alcazar50
Mt. Penn50
White Knight50
Ambassador	1.00
MaMie50
Hugo50
Value	\$4.70

10 fine Irises
\$3.00
 2 each of above \$5.00
 Order Special
 Garden No. 209

IRIS—Continued

- LOHENGRIN (Pallida)**. 33 in. S. and F. pinkish silvery mauve, shading to near white at the claw. A tall, strong grower with wide foliage25c each
- MADAME BLANCHE PION (Squalens)**. S. soft bronzy yellow; F. standing at right angles, lavender-blue with silver shaded margin; very fine25c each
- MADAME JANIAUD (Cayeux)**. S. lavender, suffused light tan; F. bright violet, margined lilac, old gold at base, with a little white showing4.00 each
- MAGNIFICA (Velm, 1920)**. 36 in. S. light violet-blue; F. dark reddish violet. Produces large blooms on tall stems1.00 each
- MA MIE**. S. and F. white frilled violet-blue50c each
- MARY GARDEN (Squalens)**. S. pale yellow, flushed pale lavender; F. long, drooping, creamy white, minutely dotted and veined maroon; stigmas clear yellow25c each
- MASSASOIT (Farr)**. S. and F. very distinct shade of metallic Venetian blue25c each
- MDLE. SCHWARTZ (Denis)**. Soft light lavender-blue or mauve, this variety is a shade lighter than Mother of Pearl1.00 each
- MISS E. EARDLEY (Variegata)**. 24 in. S. clear golden yellow; F. rich madder red, with yellow edge25c each
- MISS WILLMOTT**. White, slightly tinted lavender, petals of stout, leathery texture50c each
- MITHRAS**. S. light yellow; F. wine red, with narrow border of deep yellow25c each
- MME. CHEREAU (Plicata)**. 28 in. S. lavender-pink, mottled all over; F. creamy white; center bordered with lavender-pink25c each
- MME. CHERI (Sturtevant, 1918)**. Ageratum violet, washed with pink and warmed by the yellow undertone. The falls are slightly darker than the standards1.00 each
- MME. DURRAND (Denis, 1912)**. 60 in. S. dome-shaped, iridescent, cinnamon-buff flecked lilac; F. flushed with lilac on a ground of old gold shading to amber at the throat, with reticulations of cinnamon to liver brown2.00 each

- MME. de SEVIGNE (Denis)**. 30 in. S. and F. white, thickly veined violet-purple50c each
- MONSIGNOR (Neglecta)**. 28 in. S. violet ray; F. clerical velvety purple-crimson, whose dark veining adds dignity to the whole25c each
- MORNING SPLENDOR (Shull, 1922)**. 48 in. S. Petunia violet; F. rich rain-purple. Produces large flowers and in the bright sunlight it produces an almost red effect3.00 each
- MOTHER OF PEARL (Stur, 1921)**. S. and F. very broad, pale lavender with a faint creamy undertone. Flowers are very large and perfect form, stems 40 in. This variety is of vigorous growth and flowers very freely50c each
- MRS. H. DARWIN (Amoena)**. 28 in. S. and F. satiny white with a little purple reticulation at claw25c each
- MRS. NEUBRONNER (Variegata)**. 28 in. S. and F. rich, clear golden yellow, like giant daffodils. Deeper yellow than Aurea25c each
- MRS. W. E. FRYER**. S. pale lavender; F. red purple with lighter border50c each
- MONTEZUMA (Variegata)**. S. deep golden, minutely dotted brown; F. yellow and white, veined purple and dotted brown50c each
- MT. PENN (Pallida)**. S. lavender-rose; F. crimson-lilac, with deep orange beard. Tall50c each
- NAVAJO (Variegata)**. S. light bronzy yellow, shading to lavender; F. deep maroon, heavily veined white and yellow; stigmas yellow; deep orange beard25c each
- NIBELUNGEN (Variegata)**. S. fawn yellow; F. violet-purple with fawn margin25c each
- NOKOMIS (Amoena)**. S. pale lavender-white; F. velvety dark violet-blue, bordered white; medium-sized flowers. Tall growing; free bloomer25c each
- NEUE D'ORAGE**. S. slate blue, with bronze shading; F. bronze and purple. Produces very large flowers35c each



Fairly

Economy Iris Garden

Agnes	\$0.25	Single collection
Archeveque25	\$1.00
Blue Jay25	
Dandy25	2 each of above \$1.50
White Knight50	Order Special Garden No. 206
Isoline40	
Value	\$1.90	

IRIS—Continued

- OPERA** (Velm, 1916). 30 in. S. bright, rich pansy violet, shading to brownish violet at base; F. a rich, velvety violet-purple.....50c each
- ORIENTAL** (Pallida). S. clear blue; F. rich royal blue with a heavy, bright orange beard, forming a striking contrast.....35c each
- ORIFLAMME**. S. dark lavender; F. rich violet-purple. This variety produces handsome blooms, and is a favorite.....50c each
- PARC DE NEUILLY** (Pallida). 28 in. S. and F. a navy blue of reddish tinge, with an ever-changing effect.....35c each
- PARISIANA** (Pienta). 28 in. S. lavender-purple, mottled all over; F. creamy white, center heavily bordered with lavender-pink.....35c each
- PAULINE** (Pallida). S. and F. unusually large, rich pansy violet, deep orange beard; fragrant.....35c each
- PEAN ROUGE** (Cayeux, 1923). 24 in. S. copper red, faintly shaded with violet; F. bronzy blood red, beard light brownish yellow.....\$3.00 each
- PERFECTION** (Neglecta). 30 in. S. fresh lavender, flaked with deeper shade; F. rich, velvety lavender; dark reflections. A pleasing and highly attractive bicolor.....25c each
- PHYLLIS BLISS**. S. and F. pale rose lavender, very beautiful in form, and a strong grower.....\$1.00 each
- PHOENIX** (Pheasant). Orchid type flower, with frilled petals. S. and F. white; standards faintly bordered with pale blue.....35c each
- POWRIAN** (Pallida). S. light bishop violet with deeper border; F. deep purple, shaded crimson. Large, horizontal spreading flower.....35c each
- PRINCESS BEATRICE**. Self. Between light and lavender-violet.....50c each
- PROSPER LAUGIER** (Squalens). 30 in. S. fiery bronze; F. velvety ruby-purple, like a pansy bloom. This new bronze variety outclasses them all, having a harmony of correctly blended colors.....35c each
- QUAKER LADY** (Squalens x Pallida). S. smoky lavender, with yellow shadings; F. ageratum blue and old gold; stigmas yellow; yellow beard.....25c each
- QUEEN ALEXANDRIA** (Squalens). 30 in. S. lavender; F. pale purple. Unusual and scarce.....35c each
- QUEEN CATERINA** (Stur, 1918). S. and F. very broad, pale lavender-violet; flowers of large size and heavy substance.....\$1.00 each
- QUEEN MARY**. A pure white flower with throat and beard greenish white; a splendid bloomer.....75c each
- RED CLOUD** (Squalens). S. rosy lavender-bronze; F. velvety maroon-crimson, reticulated yellow; stigmas of gold.....35c each
- REV. A. H. WURTLE**. Bronze-purple.....35c each
- RHEIN NIXE** (Amoena). 36 in. S. pure white; F. raspberry purple, edged white. A vigorous grower and the only one of the white standards and purple falls worthy of a place in our list.....35c each
- ROSE UNIQUE**. S. and F. bright violet-rose, the nearest approach to pink iris. Early.....25c each
- ROSEWAY** (Bliss, 1919, Pallida). Bright red with orange beard.....50c each
- SAPHO**. S. white frilled lilac, F. pure white, reticulated lilac at the base, 24 in.....35c each
- SAUL** (Denis). S. golden yellow; F. maroon, with darker veining at the base.....\$1.00 each
- SOUV. DE MME. GAUDICHAU** (Millet). An early, deep purple bicolor of an unusual velvety appearance.....\$1.00 each
- SUNSET** (Denis). 30 in. The most wonderful coloring of this iris is hard to describe. S. yellowish buff or real old gold, finely arched and of great substance; F. coppery yellow, heavily suffused blue violet in the center of the segments, and prettily reticulated and dotted brown at the haft—with a very prominent yellow beard.....\$2.00 each
- SUSAN BLISS** (Bliss). This is a uniform shade of deep rose-pink, light orange beard.....\$3.00 each
- SEMINOLE**. S. soft violet-rose; F. rich, velvety crimson; brilliant orange beard. Given honorable mention by American Iris Society, June, 1929.....50c each
- SHEKINAH**. S. and F. pale lemon-yellow, deepening through center, orange-yellow beard.....75c each
- SHEWSBURY** (Squalens). S. rosy bronze; F. violet-purple, with lighter shadings. The conspicuous, heavy orange beard forms a brilliant contrast with the other colors. A unique variety.....35c each
- THE BRIDE**. S. and F. white, primrose beard; very large and handsome.....25c each



- TROJANA** (Syn. Cypriana and Asiatica). Pale blue standards; very long, rich purple-blue falls. Late flowering. Resembles Pallida but is larger and later flowering.....25c each
- TROOST**. S. deep rosy purple; F. paler veined violet. A decided improvement over "Her Majesty".....75c each
- TROPIC SEAS** (Shull, 1924). 50 in. S. Dauphin's violet; F. velvety mulberry-purple and rich golden beard. Produces large flowers.....\$4.00 each
- VICTORINE**. 27 in. S. mottled blue; F. violet-blue, mottled white; beautiful variety.....25c each
- VIOLACEA GRANDIFLORA** (Pallida). 32 in. S. and F. fresh, clear violet. Massive and blooms late. Desirable, but not sufficiently appreciated.....35c each

WALHALLA. Lavender; F. wine-red.....35c each

WHITE KNIGHT (Saunders, 1915). A beautiful snow-white Iris without markings of any kind. Delicately sweet scented.....35c each

WINDHAM (Farr). 20 in. S. soft lavender-pink; F. heavily veined with darker shades.....35c each

WYOMISSING (Amoena). S. creamy white, suffused delicate soft rose; F. deep rose blue, shading to flesh-colored border.....35c each

ZETA. S. and F. pale lavender-white flowers, heavily crimped like fine crepe. Blooms are very beautiful, large and fragrant.....50c each

Dwarf Bearded and Beardless Iris

BALCENG, BLUE BEARD. S. white, flaked pale blue; F. sulphur, handsomely marked purple. They fill a gap between the very earliest dwarf bearded varieties and the tall, later flowering ones.....25c each

BIFLORA (Dwarf Bearded). S. purple, with attractive markings; F. dark blue.....25c each

BUTTERFLY (Dwarf Bearded). Pale yellow, spotted brown; desirable. Dwarf.....25c each

CHIELES (Germanica). S. bright golden-yellow. F. bright red-purple, beautifully reticulated.....30c each

FIEBIERI (Dwarf Bearded). Deep violet-blue. Large and handsome.....25c each

LIBRA (Dwarf Bearded). New S. light blue; F. dark purple, streaked with white at base.....25c each

LONGIPETALA (Beardless). True S. violet-blue; F. white, with lilac veining, gold and bronze spots. Very free blooming.....25c each

NUDICAULIS (Dwarf Bearded). S. violet; F. purple-black.....25c each

OCHROLEUCA (Syn. Orientalls Gigantica). The gold-banded Iris. Grows 5 feet with strong foliage; large ivory-white flowers, orange-yellow, blotched at base of falls.....25c each

OLBIENSIS, *Soreres* (Dwarf Bearded). Bright claret-red; F. deeper scarlet, beard yellow. Handsome.....25c each

PSEUDACORUS. Tall, bright-yellow. Fine for damp places; also does equally well in dry, sandy soil.....25c each

PUMILA HYBRIDA, SCHNEECUPPE (Snow Cup). (Dwarf Bearded). Large flowering white; F. slightly reticulate. Yellow at the base.....50c each

SPURIA, MRS. A. W. TAIT (Syn. Longipetala Superba). Flowers a soft porcelain blue, with long pale blue falls, with golden blotch at the base.....50c each

Siberian Iris

ORIENTALIS (Sibirica). 30 in. S. and F. intense deep blue, with narrow foliage. Suitable for naturalizing.....25c each

ORIENTALIS, BLUE KING. Clear blue flowers. Found by Mr. Peter Barr in Japan.....25c each

ORIENTALIS, SNOW QUEEN. Large Ivory-white flowers.....25c each

ORIENTALIS, SUPERBA. Large violet-blue flowers; handsome foliage.....25c each

SIBIRICA ALBA GRANDIFLORA. Flowers very large, pure white.....25c each

SIBIRICA, DISTINCTION. S. violet; F. white, freely veined and tipped blue.....25c each

Japanese Iris

LAEVIGATA ALBA PURPUREA (New Iris from Japan). Color is a very pleasing combination of blue and white. Six petals. Flowers at the Japan Iris; four to five inches across; borne on stems 20 to 25 inches high. Season of blooming between the German and Japan types. Stock scarce, so early ordering advised.....\$1.00 each

Iris Seed

Raise your own seedlings. Plant them in Fall or Spring.
50 seeds for.....\$0.75
100 seeds for.....1.00

Planting and Cultural Directions— Schulz "Garden Tips"

Roses The most important factor in successful rose culture is the soil. Roses prefer heavy soil, although with proper care, they can be grown in light soils. The bed preparation is similar to the preparation for other plants, being worked to a depth of 18 inches. A well-prepared, heavy soil feels crumbly when taken in the hand. This crumbly structure is easily maintained by frequent cultivation at times when the soil is not soaked with water. Well-rotted manure is the best fertilizer for roses, and should be worked into the soil before planting. Although much moisture is required for rose culture, they will not stand "wet feet" of standing water. Artificial drainage may be necessary.

Planting

When the roses arrive, unpack them immediately. If they can not be planted at the time, they may be "heeled in." This consists of digging a trench, in which the plants are placed in a slanting position, close together, and soil packed around the roots to keep out the air. The roots will need lots of water, to be sure that none dry out. If you have ordered a goodly number of plants, it is advisable to heel them all in before planting, and then remove a few as needed. The important thing is to keep the roots damp or wet. A dried root will die.

Plant the roses about two inches below the crown, or below the point where the first branches rise. Be sure the roots are well spread, and that the soil is well packed around them to keep out the air. Water each plant thoroughly. Hybrid perpetuals may be planted 2½ to 3 feet apart; teas 1½ to 2 feet apart, and ramblers 5 to 6 feet.

Cultivation

During the growing season, keep the top soil well worked, and in dry weather, give enough water to reach the bottom roots. Roses are usually pruned in April, when the weak shoots are cut out, and the growth of the strong ones are cut back considerably. Always cut to an outside eye. It is better to prune Tea Roses the latter part of April. Leave 3 to 4 strong branches with 4 to 6 eyes on each branch.



Courtesy American Face Brick Assn.

The "Home Sweet Home" house, used as a model home in Better Homes demonstrations throughout the country. The charming border of old-fashioned perennials is thoroughly in keeping with the architectural style of the house.

Perennials Like most other garden plants, the perennials do best in a rich, moist soil, where there is plenty of sunlight. A good seed bed preparation, with plenty of manure, and constant cultivation after the plants are up, all help with the success of the garden. Enough kinds should be planted to provide continuous blooming all through the season, at the same time avoiding striking color contrasts. A richer effect may be had by planting in groups of five or more of a kind, rather than singly.

The distance between plants will vary with the size and effect desired. The larger plants, of course, will have more room. Good planting seasons are in April and May or September and October.

Frequent cultivation and watering will help perennials. It is advisable to cover the bed with a few inches of straw in the winter, to guard against alternate freezing and thawing. This may be applied after the ground has frozen.

Peonies Peonies will thrive in most any soil, providing it is well fertilized and worked up. Good soil preparation consists in digging it up to a depth of 18 inches and mixing in about 10% of well-rotted manure and leaf mold. A deep, loose soil for planting holds the moisture longer, contains more air, and gives the roots a better chance to spread out and find nourishment. All of these are essential to successful garden culture. It is easier to keep soils in a "friable" condition when there is plenty of organic matter present, such as manure and leaf mold. These are necessary both for their plant food and their physical aid in cultivation.

Planting

Peony roots may be planted in early spring, as soon as the frost is out of the ground, or in the fall. If planted in the fall, they will need protection their first winter. A covering of four inches of leaves will serve very well. Plant the roots about three inches deep in the well-worked seed bed, from 2 to 3 feet apart.

Cultivation

Peonies are very hardy and will need no winter protection after their first winter. In fact, they will grow and give beautiful blooms with only the minimum care the year around. However, they respond to the careful cultivation of the garden lover with larger and more brilliant flowers. The essence of this cultivation is to keep the soil rich and friable, beginning in early spring, as soon as the ground becomes workable. Well-rotted manure or bone meal may be worked into the soil to a depth of two inches in the spring, being careful to keep any fertilizer away from the crown. Peonies like plenty of watering. If large flowers are desired, pick off the lateral buds. This throws the strength into the top buds.

Sorts I Wished for Most

August 26, 1927.

Dear Sirs:

The Iris roots arrived this A. M. Wish to say the roots are fine. I am very much pleased. Thanks ever so much for the nice selection. Just the sorts I wished for most.

Respectfully,

E. FINKE.

North Little Rock, Arkansas.



Courtesy Common Brick Manufacturers Assn.
A Good Example of Base Planting to Fit in with the Architecture of the House.

Gladioli

A good, rich loam soil is best for "glads." A little effort in fertilizing will be amply repaid in the abundance of blossoms. For heavy soils, plant the bulbs four inches deep, and for lighter soils, five to six inches deep. A good way is to dig a row or bed to the desired depth, thoroughly pulverizing the soil in the bottom, and working in well-rotted manure, or a liberal amount of good fertilizer. Hen manure will give good results, but is rather strong, and should be covered with an inch of fine soil. Plant the bulbs and cover to the desired depth.

Cultivation

As soon as the shoots poke their heads through the ground, cultivation may begin. Cultivation at least once a week until flowering time will aid materially in the size and number of blossoms. Watering also helps, especially during dry spells.

In the fall, after the stems have turned brown, the bulbs may be dug and stored in a cool cellar for the winter. Frost or drying heat will kill the bulbs. After they have been stored six weeks, the tops may be cut off.

Irises

The sunny, well-drained locations are best for Irises. The soil, of course should be rich. Manuring, or other fertilizers such as bone meal or finely ground limestone may be worked into the soil, but kept away from the Rhizomes. The plants will not live in standing water, or a wet soil.

Planting

After the bed has been well prepared, plant the Rhizomes just below the surface, spreading out the roots, and packing the dirt well around them. Irises are always planted shallow, and are injured by manures and fertilizers that are too strong. Although the best time to plant is August and September, giving the roots time to develop before winter, they may be planted any time of year, except when in bloom, or when the ground is frozen.

Cultivation

Irises are very hardy, and easy to cultivate. They will, however, respond to occasional cultivation and fertilization. Since Irises naturally multiply into large clumps from season to season, making it hard to keep up the grass and root rot, it is advisable to dig them out every four or five years, separate, remove the weeds, and reset. The best time to do this is after the blooming season.

Evergreens

On the whole, sandy soils are best for evergreens, although only a few are adapted to poor soils. They prefer a rich, well-drained, sandy loam.

The one thing to watch in transplanting evergreens is to keep the roots wet. If they are a little dry when they arrive, wet them, and keep them well dampened until they are in the soil, and follow the planting with plenty of water. If they can not be planted the day they arrive, dig a trench and cover the roots tightly with burlap and a few inches of dirt and water. To plant, dig a hole twice as large as is necessary, and fill with good loam until there is just room enough for the roots. Place the tree in the hole, and remove the bag after it is in. Spread out the roots if they are not in a ball of dirt. Fill in with good loam soil, packing it tight, and watering considerably. The ground around the tree should be thoroughly soaked twice a week.

Shade Trees and Shrubs

Deciduous tree requirements are very much the same as evergreens, except that there is more variation in soil requirements. However, a rich soil, with plenty of watering, is desirable in all plants. If the trees are large and are likely to be blown over easily, it is best to brace them with guy wires, taking care to where the wire is fastened. Prune the tops after planting. Cut out interfering branches and about one-third of the previous year's growth.

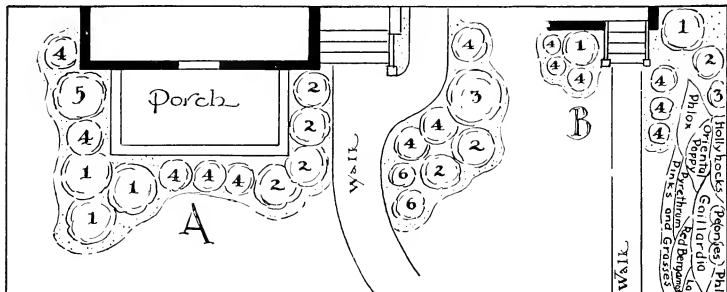


Courtesy Common Brick Manufacturers Assn.
Base Planting Brings Out the Beauty of This Home.

have the tree well protected



Courtesy Common Brick Manufacturers Assn.
Natural Planting of Trees and Shrubs Adds Much to the Charm of This Home.



Simple Plans for Beautiful Plantings

Our customers may have the advantage of our free, individual garden planning service if they so desire. All that is necessary is to send us a rough sketch of the plot to be planted, with buildings, walks, and approximate dimensions shown. We will make out a list of desirable shrubs and plants that will make a handsome garden, and send you a planting plan showing where each is to be set. The experience of our gardeners and landscape artists is at your service, and it costs you nothing. It gives us pleasure to help you get the greatest enjoyment out of your own garden.

Suggested Plantings

DESIGN A

Key	Name	No.
(1)	Forsythia Viridissima...	3
(2)	Spiraea Van Houttei...	6
(3)	Philadelphus Grandiflorus	1
(4)	Weigela Rosea	8
(5)	Viburnum Opulus	1
(6)	Berberis Thunbergii...	2

DESIGN B

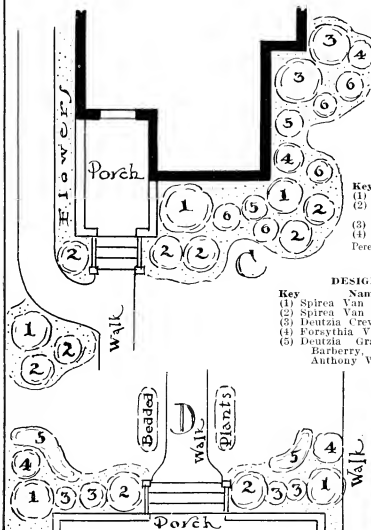
Key	Name	No.
(1)	Lonicera Tatarica	2
(2)	Philadelphus Grandiflorus	3
(3)	Weigela Rosea	4
(4)	Roses	6
Perennials as shown.		

DESIGN C

Key	Name	No.
(1)	Spiraea Van Houttei	3
(2)	Hydrangea Grandiflora	7
(3)	Forsythia	2
(4)	Japan Quince	1
(5)	Spiraea Van Houttei	2
(6)	Barberry	2

DESIGN D

Key	Name	No.
(1)	Spiraea Van Houttei	2
(2)	Spiraea Van Houttei	2
(3)	Deutzia Crevata	4
(4)	Forsythia Viridissima	2
(5)	Deutzia Gracilis, or Barberry, or Spiraea Anthony Waterer	2



Read This -- It's Important

How to Order

Use our order blank. Please write plainly your name, post office address and state. Always tell us how you want the goods to be shipped. Name your express or freight station. Do not write regular letters on our order blanks. Write them separately. Always glad to know just what you have in mind. Perhaps we can help you determine what is the wisest course to pursue. Note: When ordering Dahlias, always give number as well as name of the variety.

Order Early

All orders received by us are filled in rotation. Ordering early will insure the reservation of varieties that later may be sold out and save you disappointment. We do not substitute unless authorized to do so.

Time of Shipment

Unless you give a specific shipping date, your order will be shipped to arrive at the proper time to plant in your locality. If you wish your order shipped at any special time, please so advise us.

How We Ship

We prefer shipping by express, customer to pay the charges. If you prefer sending by parcel post, postage to cover parcel post charges must be included in your remittance. Shrubs, evergreens, perennials and rose plants we will ship by express collect, unless you direct us otherwise and include postage. On dahlia bulbs we prepay the postage and in certain advertisement offers we specify "postage paid." All other commodities go to our customers collect.

Our Guarantee

We guarantee all nursery stock furnished by us to be first class and true to name. We exercise the greatest of care to have all of our trees, plants and shrubs true to name, well grown, packed in the very best possible manner and

hold ourselves in readiness, upon receipt of proper proof, to replace all trees and plants that may accidentally prove untrue to label free of charge or refund the amount paid. We do not guarantee stock to grow or results otherwise in any way. No complaints will be entertained that are not made immediately upon receipt of stock.

Accuracy of Description

All descriptions and other matter in this catalog will be found as nearly in accordance with actual facts as is humanly possible to write them. Great care has been taken to avoid exaggeration in descriptions of varieties. The varieties you select are always sent, unless you grant permission to substitute. If you wish a particular color rather than a particular variety, many times it is to your advantage to mention the fact as we may oftentimes improve upon your selection, with your permission. Therefore, if a substitute is acceptable, be sure to so advise us as otherwise everything is shipped absolutely as ordered.

Our Customers Are Our Friends

Obviously it is impossible for us to visit the homes of all of our customers, but we are always glad to hear from them and always glad to help them in their selections, or to advise them as to the proper methods of planting and culture. It is the human interest in business that adds greatly to its satisfaction. We want your order, but we are just as much concerned about your success in producing to your entire satisfaction. If, after you have gone through this catalog carefully, you fail to find what you want, or are uncertain about your order, write us your plans and we will gladly advise with you as far as our ability will permit. May we ask you to place your order now? We will fill it at the proper time.

Thanking you for your patronage in the past and inviting your continued favors, we are,

Very truly yours,

JACOB SCHULZ COMPANY, INC.

Oyama Plant Food

Makes plants grow. This is a Japanese plant food which we have handled for several years and the many repeat orders we get on this commodity is convincing proof that it gives universal satisfaction. 30c per pkt.; by parcel post, 35c per pkt.

Wizard Brand Sheep Manure

We recommend Wizard Brand Sheep Manure for general use in growing all kinds of plants. Nothing finer for the lawn or for soil that needs fertilizer. 2 lbs., 20c; 5 lbs., 40c; 10 lbs., 75c; 25 lbs., \$1.25; 50 lbs., \$2.00; 100 lbs., \$3.50.

Above prices not prepaid.

Black Leaf 40

A preparation of tobacco-nicotine and sulphate. Used for spraying roses or any other plant life that is subject to attack by insects or parasites. 1 oz. bottle by parcel post, 40c.

Why Raise Roses to Feed Bugs?

Melrosine—the best remedy—endorsed by leading authorities. The General Contact Insecticide that Kills Rosebugs and other insects. Used with any good spray pump, diluted with from 20 to 25 parts of water. Pleasant and harmless to use. Guaranteed effective when used according to directions on can. Pint, \$1.00; trial size, 50c. By mail or express at customer's expense. Trial Size (sufficient to make one gallon when diluted and care for several plants for the season) postpaid for 60c.

Special "Kentucky Bred" Gardens



A Garden of Gladioli
a riot of colors
25 Glad bulbs for
\$1.00

Order Special Garden No. 77



A Hardy Rose Garden
5 Hardy Roses — One of them
climbing if desired

\$2.00

Order Special Garden No. 79

A Perennial Garden
5 Assorted Perennials and
1 Tritomia—Red Hot Poker
[See Illustration above]

\$1.00

Order Special Garden No. 78



An Iris Garden
6 Irises: Alcazar, Montezuma,
Seminole, Mt. Penn, Mrs. G.
Darwin, Pochontas — a \$2.60
value.

\$1.00

Order Special Garden No. 80

Hardy Chrysanthemum
Garden
Ten hardy plants, a beautiful
selection **\$1.00**

Order Special Garden No. 81

