

Historic, Archive Document

Do not assume content reflects current scientific knowledge, policies, or practices.

6209

LIBRARY
RECEIVED
★ MAY 9 1929 ★
U. S. Department of Agriculture



1929

KEYSTONE
L.A.

San Fernando Nursery Co.
San Fernando, California



How To Reach Our Nurseries

This map directs you to our Nurseries, which are located on Brand Boulevard, one mile west of San Fernando. Broad boulevards reach our place from all directions. We are about 15 miles from Hollywood, 10 miles from Burbank and North Hollywood. It is a pleasant drive out to our place.

In order to grow good nursery stock the Nurseryman must find certain conditions which are favorable. These conditions include good soils, climatic situations, abundance of water and pest-free districts; these we have where we are located.

For Your Information

Your business is solicited with the broad guarantee that your dealings with us will be entirely satisfactory to you. We propose to carry out this rule in our business and if at any time you are disappointed we shall consider it a favor if you will tell us.

Believing that you will be pleased, we ask that you kindly tell your friends about us, as in this way, more than in any other, we expect to build up our business.

You are cordially invited to visit our Nurseries. In our gardens you will find a display of plants, trees, shrubs, and roses in large variety. Many of these are large specimen plants, so that you may see how a smaller plant is going to look when full grown.

Courteous salesmen will be here to show you around, answer your questions, and give you information regarding planting and care of trees and plants.

The gardens and sales yard of the San Fernando Nursery Co. adjoin the beautiful Mission Park on the east. This park is a lovely place to visit—lunch tables and warming ovens are provided for visitors. Many rare trees and plants are growing in the park. The old San Fernando Mission is also located across the street.

Trucks will make deliveries to all parts of the San Fernando Valley, Pasadena, Glendale, Burbank, Los Angeles, Hollywood, Beverly Hills, Santa Monica, and adjoining districts free. Greater distances at small cost.

Mail orders will receive our prompt and careful attention. Many ornamentals are grown by us in small containers as quoted in this catalog, especially to lighten transportation charges to points at a distance, but we pack any plant wanted so as to secure the lowest rates. No charge for packing.

Our Nurseries have been carefully inspected by inspectors of the Los Angeles County Horticultural Commission and we guarantee all trees to pass inspection in any district.

Every care is exercised to have all trees and plants true to name, nevertheless, it is understood and agreed hereby that we may replace or refund the purchase price of such trees should any plants prove untrue, and be liable to no greater extent.

Write us for anything you do not find listed, as we have many trees and plants in insufficient quantities to catalog.

We shall be glad to answer any questions either by mail or in person, and give advice to make your planting a success.

Quantity Discounts

On a purchase of ten plants or more—one or more assorted varieties—we give the following discounts. All plants priced at \$2.00 each or less except 4-inch pots, discount 10c per plant. Larger plants priced at more than \$2.00 each, discount 25c per plant. Example: Ten plants in 1-gallon containers priced at 50c each are sold at \$4.00 per 10. Ten plants in 5-gallon containers priced at \$1.50 each are sold at \$14.00 per 10. Ten balled plants priced at \$2.50 each are sold at \$2.25 each. The discount applies on mixed sizes—if 10 plants or more in all are ordered. This refers to all trees and plants priced in this catalog except where the ten-rate is specially quoted. We have a surplus of many varieties on which special prices will be quoted in quantities of 50 plants or more.

The Manager of this business began his career in the nursery business in February, 1896, with the then and now largest nursery in the world. After this experience of seventeen years in the middle west he located in California in 1913 and for more than twelve years was connected in no small capacity with two of the largest nurseries in this State.

He became connected with this business in January, 1927. These thirty-two years' experience are being used to build up a Nursery here to supply its patrons with plants, shrubs, and trees that will prove altogether satisfactory.

San Fernando Nursery Company

J. D. MERIWETHER, President and Manager

One Mile West of San Fernando on Brand Boulevard

P. O. Box Z. Telephone Main 255

San Fernando, California

Evergreen Flowering, Foliage, and Berried Shrubs

For Decorating Home Grounds, Gardens, Parks and Parkways

Evergreen shrubs bearing flowers or berries and those having beautiful foliage have their necessary place in the decoration of the home grounds and in finishing the attractiveness of the home.

A certain amount of color which these plants give, properly placed, increases the beauty of the grounds, not alone for the enjoyment of the owner but also adds value.

Plants with balls of earth around the roots are grown in the field and are well developed; also those in five gallon containers present an immediate effect. The gallon and 4 in. pot plants are smaller, but with care will quickly develop.

See quantity discounts on page 2. Planting and cultural directions on page 30.

ABELIA grandiflora. (*A. rupestris*.) 6 ft. Flowers bell-shaped, small, fragrant, white shading to pink, small leaves at base of flower, red; a gracefully spreading shrub. Balled, 3½ ft., \$2.00; 2½ ft., \$1.75; 5 gal., 2½ ft., \$1.50; 1 gal., 2 ft., 50c; 4 in. pots, 30c.

AUCUBA japonica. "Gold Dust Plant." 6 ft. Large glossy green foliage, variegated yellow. Suitable for porch pot culture and shaded moist situations. 1 gal., 3 to 12 in., 60c.

AZARA microphylla. 6ft. Graceful evergreen shrub, excellent for covering walls. Flowers greenish, orange berries. Thrives in sunny hot locations. Hardy. 1 gal., 15 to 18 in., 50c.

ARALIA. (See **FATSIA.**)

ARBUTUS unedo. "Strawberry Tree." 10 ft. Flowers bell-shaped, white, followed by attractive red fruit; hardy and alkali resistant. Balled, 4 ft., \$3.50; 3 ft., \$3.00; 1 gal., 1½ ft., 50c; 4 in. pots, 30c.

BAUHINIA acuminata. "Orchid Tree." 6 ft. Flowers large, white, 2-3 in. across; orchid-like; odd foliage; attractive appearance. 1 gal., 50c.

BERBERIS darwini. 4 ft. Flowers golden, in great numbers; foliage small, glossy, holly-like; does well in shade. Tubs, 3 ft., \$2.00; 5 gal., 2 ft., \$1.50; 4 in. pots, 30c.

BERBERIS gagnepaini. "Black Barberry." 6 ft. Flowers yellow, 3-8 in. clusters, ½ in. across; branches yellowish gray, slender, rather long spines; leaves 3½ ins. long; fruit bluish black. 1 gal., 1½ ft., 50c.

BERBERIS wilsonae. 3 ft. Low shrub with reddish brown spreading branches, spined. Flowers golden yellow in dense clusters. Handsome shrub assuming brilliant fall colorings. 1 gal., 1½ ft., 50c.

BUDDLEIA davidi (var.) 10 ft. Flowers erect or nodding spikes, 6-12 in. long, lilac with orange centers, fragrant; leaves 4-10 ins. long; rapid growth 3-5 ft. a year. 5 gal., 3 ft., \$1.50; 1 gal., 2 ft., 50c.

BUDDLEIA magnifica. 10 ft. Lilac colored flowers; otherwise same as *davidi*. 1 gal., 50c.

BUXUS japonica. "Boxwood." Flowers insignificant; grown for foliage; leaves small, rounded; excellent tub and hedge plant. Balled, trimmed globes, spread, 22 to 28 in., 2.25; 18 to 22 in., \$1.75. Balled, trimmed pyramids, 3 ft., \$2.50; 5 gal. not trimmed, 2 ft., \$1.50; 1 gal., 1 ft., 50c; 4 in. pots, 8 in., 30c; flats of 100, \$3.00.

BUXUS sempervirens. "English Boxwood." 3 ft. Used as a shrub or small tree. Foliage small and dark green in color. Attractive as a border shrub or for porch decoration. 1 gal., 15 to 18 in., 75c.

CALLISTEMON rigidus. "Bottle Brush." 12 ft. Flowers bright red, in spikes 3-4 in. long; rigid branches; drought resistant. 5 gal., 4 ft., \$1.50; 1 gal., 1 ft., 50c; 4 in. pots, 30c.

CALLISTEMON lanceolatus. (*Metrosideros semperflorens*.) "Bottle Brush." 8 ft. Flowers bright, red, showy, similar in shape to bottle cleaner; drought resistant, hardy, rapid growth. 5 gal., 4-5 ft., \$1.50.

CALLISTEMON salignus. 12 ft. Hardy ornamental shrub with beautiful light pink flowers similar to *C. rigidus*; leaves long and narrow. Good for a dry climate. 5 gal., 4-5 ft., \$1.50.

CAMELLIA japonica. 10 ft. Rare shrub with waxy glossy foliage and showy wax-like flowers opening in the winter time. Pink perfection, delicate light pink. Red or white. Balled plants, 2-2½ ft., \$5.00; 6 in. pots, \$2.50; 4 in. pots, \$1.50.

CANTUA buxifolia. 5 ft. Flowers trumpet-shaped, pendant, orange-yellow shaded with crimson. 5 gal., 2-2½ ft., \$1.50; 1 gal., 50c.

CARISSA grandiflora. See tropical fruit section.

CARPENTERIA californica. 6 ft. Flowers pure white, 2-3 in. in diameter, fragrant; leaves large; needs well-drained soil. 5 gal., 3 ft., \$1.75.

CARYOPTERIS incana. "Blue Spirea." 3 ft. Flowers lavender-blue in great profusion; splendid mid-border plant. 5 gal., 3 ft., \$1.50; 1 gal., 2 ft., 50c; 4 in. pots, 30c.

CASSIA artemisoides. 6 ft. Flowers sulphur-yellow, showy; leaves silver-gray, small; drought resistant. gal. 1 ft., 50c.

CASSIA grandis. "Pink Shower." 6 ft. Flowers rose-colored in long drooping clusters. Heavy bloomer. Drought resistant. 5 gal., 4 ft., \$1.50; 1 gal., 1½ ft., 50c.

CASSIA laevigata. Flowers yellow; followed by 2-3 in. long, cylindrical pod. 5 gal., 3 ft., \$1.50; 4 in. pots, 30c.

CASSIA nainbensis. 8 ft. A semi-dwarf type with large dark green leaves. Flowers golden yellow in long spikes. Very attractive. 1 gal., 1½ ft., 75c.

CASSIA tomentosa. 12 ft. Flowers deep yellow; winter bloomer; grown with little water. 5 gal., 6 ft., \$1.50; 1 gal., 4 ft., 50c.



ABELIA GRANDIFLORA
Flowers Fragrant, White Shading to Pink



DURANTA PLUMIERI
Flowers Lavender Blue, Fruit Golden

CEANOTHUS arboreus. 20 ft. Large tree-like shrub bearing light blue flowers in long panicles. A profuse bloomer. A very beautiful native plant for ornamental purposes. 1 gal., 2 ft., 75c.

CEANOTHUS cyaneus. "Lakeside Wild Lilac." 10 ft. Believe this variety excels all others in the beauty of its flowers, which are borne in long clusters 8 to 12 in. in length. Color intense blue. Fast growing and free blooming. 5 gal., \$2.00.

CEANOTHUS thyrsiflora. "Wild Lilac." 8 ft. A native California plant which may be seen in the foothills in full bloom in the early spring. Flowers light blue. 5 gal., \$1.50.

CERCOCARPUS betulaeifolius. "Mountain Mahogany." 20 ft. Best used for planting on rocky or gravelly slopes. Thrives under very unfavorable conditions. Small hairy leaves; tail-like flowers. 5 gal., 3 ft., \$2.00; 1 gal., 2 ft., 75c.

CESTRUM elegans. "Purple Cestrum." 8 ft. Flowers long, tubular, reddish-purple, blooms most of the time; grows well in shade; hardy; upright grower. Balled, 4 ft., \$2.00; 5 gal., 3 ft., \$1.50; 1 gal., 2 ft., 50c.

CESTRUM elegans smithi. 6 ft. Blush-rose flowers. Profusion of bloom in summer and autumn. Balled, 4 ft., \$2.00; 5 gal., 3 ft., \$1.50; 1 gal., 2 ft., 50c.

CHOISYA ternata. "Mexican Orange." 6 ft. Flowers white, orange scented; leaves glossy; globular shaped shrub. 5 gal., \$1.50; 1 gal., 1 ft., 50c; 4 in. pots, 30c.

CINNAMOMUM zeylanicum. "Cinnamon Tree." 20 ft. Flowers small yellow-white in silky clusters; leaves stiff, 4-7 in. long. 1 gal., 1½ ft., 75c.

CINERARIA platinifolium. (See **SENECIO.**)

CHORIZEMA ilicifolium. 3 ft. Flowers pea-like, orange-red; leaves holly-like; half climbing habit. Very attractive. 1 gal., 50c; 4 in. pots, 30c.

CISTUS purpureus. 6 ft. Flowers mauve, 1½ in. across; leaves silver-gray; growth low, spreading. 5 gal., 4 ft., \$1.50; 1 gal., 1 ft., 50c; 4 in. pots, 30c.

CNEORUM tricoccon. 3 ft. Forms a hemispherical clump of dark green foliage with brilliant red berries in the late fall. A very pretty plant for the garden or border—not common. 1 gal., 10 in., 75c; 4 in. pots, 50c.

COPROSMA baueri. "Looking Glass Plant." 10 ft. Flowers insignificant; admired for its glossy leaves; makes rapid growth. 5 gal., 2 ft., \$1.50; 1 gal., 1½ ft., 50c.

CORONILLA glauca. 4 ft. Flowers yellow, fragrant, 7-8 in. clusters; in bloom most of the time; foliage bluish. 5 gal., 3 ft., \$1.50; 1 gal., 2 ft., 50c; 4 in. pots, 30c.

COTONEASTER franchetti. 6 ft. Flowers small, pink; leaves dark grayish-green, silvery beneath; spreading; fast growing; orange-red berries. Tubs, bushy, 3 ft., \$2.00; 5 gal., 2½ ft., \$1.50; 1 gal., 1 ft., 50c.

COTONEASTER frigida. 15 ft. Flowers small, white in flat clusters. Valuable because of its brick red berries; leaves 2-3 in. long; half deciduous. Balled, 5 ft., \$2.00; 5 gal., 4 ft., \$1.50.

COTONEASTER horizontalis. 2 ft. Flowers small, white, covering the branches; leaves small, coloring in the fall from bronze to red; berries bright red. 5 gal., spread, 1½ ft., \$1.50; 1 gal., spread, 1 ft., 50c; 4 in. pots, 30c.

COTONEASTER microphylla. 3 ft. Flowers small, leaves small, dark green; berries red; growth low; will grow over walls or can be trained upward; good ground coverer. Balled, 2 ft., \$2.00; 1 gal., 1½ ft., 50c; 4 in. pots 30c.

COTONEASTER pannosa. 8 ft. Flowers small, white; foliage greenish white underneath; fast growing; hardy; growth graceful and arching; abundance of red berries. 14 in. bxs., 5 ft., \$2.50; 5 gal., 3 ft., \$1.50; 1 gal., 1 ft., 50c; 4 in. pots, 30c.

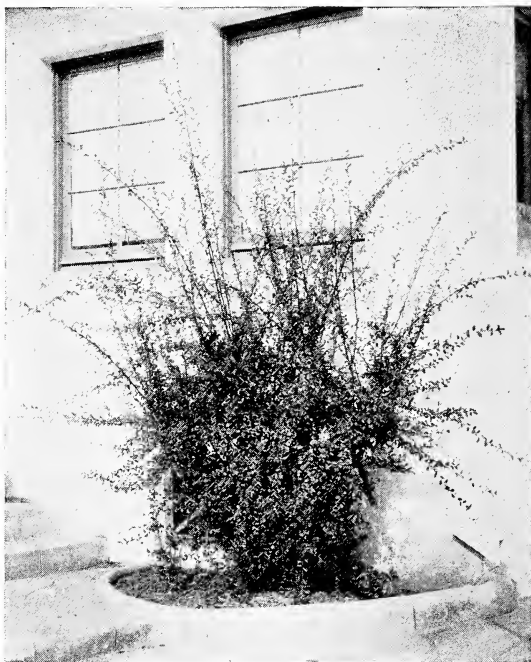
COTONEASTER salicifolia. 5 ft. Flowers white in clusters; berries red; leaves dark green above, yellowish white beneath; growth spreading. 5 gal., 3 ft., \$1.50; 1 gal., 1½ ft., 50c.

COTONEASTER schmidtii. 5 ft. Flowers white, small; leaves thin, bright green above, light green beneath; growth spreading; medium sized berries, bright red, persistent. 5 gal., 3 ft., \$1.50; 1 gal., 1½ ft., 50c.

CYPHOMANDRA betacea. "Tree Tomato." 8 ft. Exceedingly attractive plant bearing egg-shaped, reddish-brown, tomato-like fruits; edible. Flowers small, pinkish, and fragrant. 1 gal., 1½ ft., 75c.

DAPHNE odora-marginata. 3 ft. A small-growing handsome shrub of compact habit. Bright white margined foliage. Flowers borne in bunches, extremely fragrant. Balled, 1-1½ ft., \$2.50.

DIOSMA ericoides. 4 ft. Flowers white, small, star-shaped, abundant; foliage heath-like, fragrant; compact round shrub. Tubs or 14 in. bxs., spread, 3ft., \$1.75; 1 gal., spread, 10 in., 50c; 4 in. pots, 30c.



COTONEASTER PANNOSA
Graceful Branches, Red Berries

DURANTA plumieri. 10 ft. Flowers lavender-blue, long terminal chains; leaves light green; fruit golden yellow; attractive. 14 in. bxs., 4-5 ft., \$1.75; 1 gal., 1½-2 ft., 50c.

ERICA mediterranea. 6 ft. Flowers dark lavender, numerous; compact, globular shrub; rapid growth; plant in masses or informal hedges. 5 gal., 2½-3 ft., \$1.50.

ERICA melanthera. 7 ft. Flowers rosy pink, black eye; spreading, erect, rapid growth; one of the best and most popular bloomers; shipped East in carload lots in December and January. Balled, 4 ft., \$2.00; 1 gal., 1 ft., 50c.

ERICA persoluta rosea. 4 ft. Brilliant deep rose-pink flowers cover the plant in spring. A large beautiful bouquet when in bloom. 1 gal., 10 in., 75c.

ESCALLONIA montevidensis. 10 ft. Flowers white, small bit in large clusters; leaves glossy, light green; large bushy shrub. Balled, 5 ft., \$1.75; 5 gal., 4 ft., \$1.50.

ESCALLONIA rosea. 15 ft. Flowers rose-colored in spikes; fast growing. Balled, 5 ft., \$1.75; 5 gal., 3 ft., \$1.50; 1 gal., 2 ft., 50c.

ESCALLONIA rubra. 6 ft. Flowers dark red, short terminal clusters; leaves glossy dark green; compact shrub; slow growing. Balled, 4 ft., \$1.75.

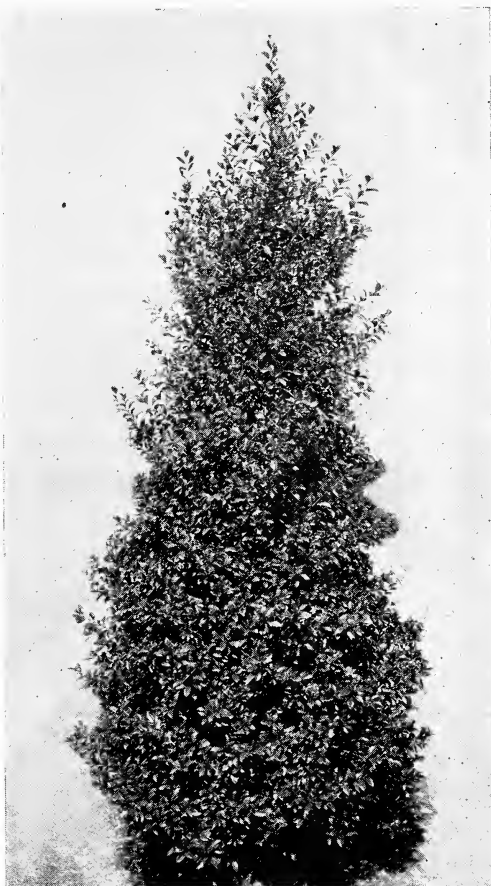
EUGENIA hookeriana. 15 ft. Flowers white in large clusters, followed by red fruit; foliage larger than *E. myrtifolia*. Trim to make compact. Boxed, 8-10 ft., \$15.00; 5 gal., 5 ft., \$1.50; 1 gal., 3 ft., 50c; 4 in. pots, 30c.

EUGENIA myrtifolia. "Australian Brush Cherry." 15 ft. Flowers white, medium size; new foliage colorful with bronze shades; excellent substitute for cypress; trimmed specimens in pyramids and standards; wonderful hedge plant in frostless localities. Trimmed specimens, prices on application; 5 gal., 3 ft., \$1.50; 1 gal., 2 ft., 50c; 4 in. pots, 30c.

EUONYMUS albo-marginata. 8 ft. Foliage plant; leaves shiny green with white margins. Balled, 5 ft., \$2.00; 5 gal., 3 ft., \$1.50; 1 gal., 1½ ft., 50c; 4 in. pots, 30c.

EUONYMUS aurea-marginata. "Golden." 6 ft. Attractive foliage, golden edged. Balled, 2 ft., \$1.75; 5 gal., 1½ ft., \$1.50; 1 gal., 1 ft., 40c.

EUONYMUS aurea-variegata. 8 ft. Glossy medium-sized leaves, distinctive golden blotched center. Balled, 3 ft., \$1.75; 5 gal., 2 ft., \$1.50; 1 gal., 1½ ft., 50c; 4 in. pots, 30c.



EUGENIA MYRTIFOLIA
When Trimmed Makes Striking Columnar Specimen

EUONYMUS beverlyensis. 6 ft. Shiny green leaf, edge of leaf light yellowish green, but not extending over leaf. 1 gal., 1 ft., 50c.

EUONYMUS japonica. 6 ft. Easy to grow, stands abuse and much heat or cold. 5 gal., \$1.50; 1 gal., 50c.

EUONYMUS pulchellus. "Small-leaved Euonymus." 4 ft. Dwarf form, dark green foliage, excellent for low hedge. 4 in. pots, 30c.

EUONYMUS radicans argenteo-marginatus. Low growth, trailing, sometimes climbing to 20 ft.; fruit scarlet showing orange as outer husk opens. Good ground-coverer in semi-shade. 1 gal., 8-10 in., 50c.

EUONYMUS radicans minima. "Baby Creeper." Similar to preceding except leaves are smaller, ¼ to ½ in. long. 1 gal., 1 ft., 50c.

FATSIA japonica. 5 ft. Foliage large, tropical, glossy green; stem straight; leaves near the top; requires shady location. Tubs, 3-4 ft., \$2.50; 1 gal., 1-1½ ft., 50c.

FEIJOA sellowiana. (Seedling.) 15 ft. Flowers are showy white, red stamens; foliage gray-green, silver underneath; drought resistant. Balled, 4 ft., \$2.00; 5 gal., 3 ft., \$1.50; 1 gal., 1½ ft., 50c; 4 in. pots, 30c.

FUCHSIA "Baby." 6 ft. Flower petals blue, outer portions scarlet, pink stamens protruding beyond the blue petals; leaves small. 1 gal., 50c; 4 in. pots, 30c.

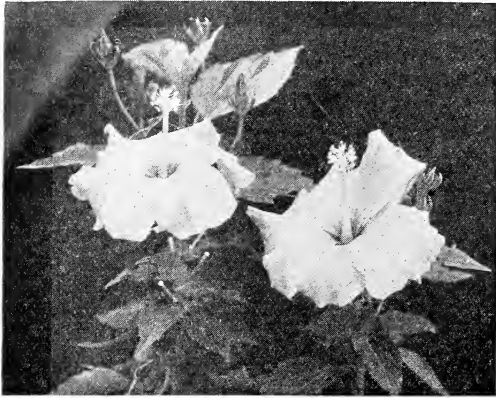
FUCHSIA microphylla. (*F. minima*.) 18 ins. Flowers pink to red, ½ in. long on long stamens; leaves small, ½ in. to ¾ in. long; best in shade or east side of house. 1 gal., 50c; 4 in. pots, 30c.

FUCHSIA speciosa. 8 ft. Flowers 2 ins. long, purple petals ¾ in. long, scarlet outer portion reflexed. 5 gal., 2½ ft., \$1.50; 1 gal., 50c; 4 in. pots, 30c.

GENISTA canariensis. 8 ft. Flowers bright yellow, free flowering; leaves small and grayish-green. 14 in. bxs., \$2.00; 5 gal., \$1.50; 1 gal., 50c; 4 in. pots, 30c.



EUONYMUS AUREA-MARGINATA
Attractive Golden-edged Foliage Plant



HIBISCUS

Flowers Single Red, Double Red and Peach-blow

GENISTA fragrans. (*Cytissus racemosa*.) "Sweet Broom." 6 ft. Regarded as the best *Genista*. Flowers pea-shaped covering the plant in spring and summer. Leaves delicate and silky light green. 1 gal., 1 ft., 50c; 4 in. pots, 30c.

GENISTA hispanica. (*Spartium junceum*.) 8 ft. Flowers yellow, fragrant, pea-shaped, borne on long almost leafless upright branches of olive-green. 5 gal., 4 ft., \$1.50; 1 gal., 2 ft., 50c.

GENISTA multiflora alba. 3 ft. Flowers white; growth dwarf, typical broom. 1 gal., 1 1/2 ft., 50c.

GREVILLEA thelemianiana. 5 ft. Flowers scarlet, numerous; leaves feathery, pale green. Makes a good hedge in well-drained frostless places; drought resistant. Tubs, 3 ft., \$2.00; 5 gal., 2 1/2 ft., \$1.50; 1 gal., 1 ft., 50c; 4 in. pots, 30c.

GREWIA caffra. 5 ft. A rare plant from Natal. An exceedingly attractive bushy plant bearing purple star-shaped flowers during most of the year. 1 gal., 1 1/2 ft., 75c; 4 in. pots, 30c.

HAKEA elliptica. 15 ft. Flowers white, in globe-like clusters; foliage 2-3 in. long, 1-1 1/4 in. broad; new growth bronze colored; drought resistant. 5 gal., 6 ft., \$1.50.

HAKEA gibbosa. 8 ft. Flowers white; leaves cylindrical, rigid, smooth, spine-like; twigs and young leaves hairy; drought resistant. 5 gal., 3 ft., \$1.50.

HAKEA laurina. 25 ft. Flowers crimson, globular; leaves 5-6 in. long; drought resistant. 5 gal., 8 ft., \$1.50.

HAKEA saligna. 8 ft. Flower clusters white, small but numerous; leaves pale green; drought resistant. 5 gal., \$1.50.

HAKEA suaveolens. 10 ft. Flowers white, fragrant; leaves cylindrical with sharp tip, grooved, dense, rounded; fine for barriers; new growth striking in color. 5 gal., 3 ft., \$1.50; 1 gal., 1 1/2 ft., 50c; 4 in. pots, 30c.

HARDENBERGIA monophylla. 12 ft. More of a vine than a shrub, although may be trained as either. Flowers range from white through rose to pink. See *Kennedyia* under "Vines" for purple flowers. 5 gal., 3 ft., \$1.50; 1 gal., 1 ft., 50c.

HETEROMELES arbutifolia. "California Holly." 10 ft. Flowers white, flat clusters; leaves toothed dark green; berries red, are its particular charm at Christmas time, rapid growth; heat, frost, and drought resistant. Commercial planting profitable. 5 gal., 3 ft., \$2.25; 1 gal., 1 ft., \$1.00; 4 in. pots, 50c.

HIBISCUS sinensis. "Chinese Hibiscus." 10 ft. The popular showy California summer blooming shrub. Glossy leaves, large bright colored flowers. Prefers the sun. Colors double red, single red, and peach-blow. 5 gal., 2 1/2 ft., \$1.50; 1 gal., 1-2 ft., ready to bloom, 75c.

HYPERICUM moserianum. "Gold Flower." 2 ft. Flowers large, 2-3 ins. across, golden color heightened by tufted yellow stamens with reddish tops; low growth; good ground-cover for cool or shaded locations. Balled, 3 ft., \$2.00; 5 gal., 2 1/2 ft., \$1.50.

IMPATIENS sultani. 2 ft. Bright green foliage with large purple flowers 1 1/2 in. across. Suitable for warm situations and may also be grown in the house. 4 in. pots, 30c.

IOCHROMA fuchsoides. 6 ft. Flowers scarlet, 2 in. long, cylindrical in pendant clusters; leaves light green, whitish green beneath, 4 in. long. 5 gal., 5 ft., \$1.50.

JACOBINIA carnea. 4 ft. Terminal spike-like clusters of curved-lipped flowers, rose to flesh colored; leaves sometimes a foot long; shaded frostless location. Balled, 3 ft., \$2.50; 1 gal., 1 ft., 50c.

LAGUNARIA pattersoni. 12 ft. Flowers pale rose; leaves oval, dark green above, light gray beneath; trunk and branches spotted with light brown. Makes a symmetrical pyramidal specimen. 5 gal., 3 ft., \$1.50; 1 gal., 1 1/2 ft., 50c.

LANTANA. 3 to 6 ft. Flowers in pink, red or yellow, flat clusters of blooms furnishing color most of the year; rapid growth, trailing or climbing. 1 gal., 50c; 4 in. pots, 30c.

Orange and red—dwarf. Light pink—dwarf.
Clear yellow—dwarf. Orange and red—tall.
Lavender—trailing.

LAUROCERASUS officinalis. "English Laurel." 10 ft. Flowers white, small, side or terminal spikes; leaves glossy; fruit small, blackish; slow growth but compact. 14 in. bxs., \$2.00; balled, 2 ft., \$2.00; 4 in. pots, 30c.

LAVENDULA vera. "Lavender." Flowers blue, in fragrant spikes; leaves small, gray-green, downy; good border plant. 5 gal., 2ft., \$1.50; 1 gal., 8 in., 50c.

LEONOTIS leonurus. "Lion's Tail." 6 ft. Flowers orange-red, long tube, lipped, curved, arranged in dense whorls about the end of the new growth. 5 gal., 4 ft., \$1.50; 1 gal., 3 ft., 50c.

LEPTOSPERMUM laevigatum. "Australian Tea Tree." 20 ft. Flowers white, small numerous; leaves 1/2 in. to 1 in. long, narrow oblong, bluish green, gracefully arching growth; drought resistant. Tubs, 4 ft., \$1.75; 5 gal., 4 ft., \$1.50; 1 gal., 50c.

LEPTOSPERMUM lanigerum. 6 ft. Flowers white, small, abundant; leaves small, 1/4 in. long, 1/4 in. wide, densely clothing the branches, silvery blue-green; fine for hedges, small windbreaks; drought resistant. 5 gal., 3 1/2 ft., \$1.50.

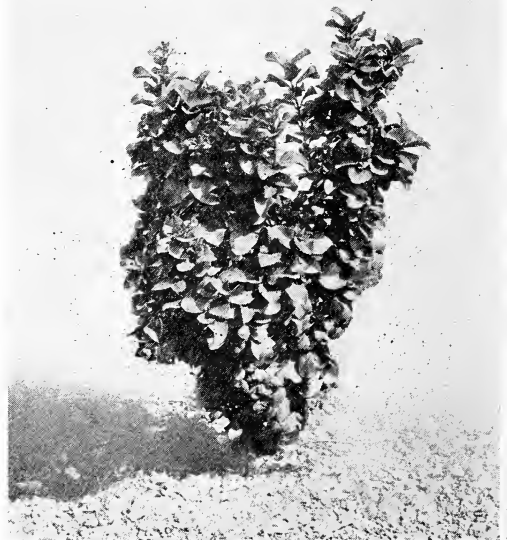
LEPTOSPERMUM scoparium. 10 ft. Flowers delicate pink, small, abundant; leaves small. 5 gal., 3 ft., \$1.50.

LIGUSTRUM acuminatum. 5 ft. Flowers white, small clusters; foliage dark green above, light beneath, leathery; valuable for hedges. 1 gal., 1 ft., 50c.

LIGUSTRUM henryi. 12 ft. Flowers white, large clusters, terminal; foliage small, dark green, glossy; compact when pruned. 5 gal., 3 ft., \$1.50; 1 gal., 2 ft., 50c.

LIGUSTRUM japonicum. "Japanese Privet." Tall growing, suitable for tall, dense hedges. Flats of 100, \$2.50.

LIGUSTRUM lodense nana. 12 in. Flowers white, insignificant; valuable for low hedges of dark green foliage; hardy any where. 1 gal., 25c.



LIGUSTRUM ACUMINATUM
Leathery Leaves, Flowers White in Clusters

LIGUSTRUM nepalense. "Evergreen Privet." Low to 6 ft. Flowers white, fragrant, spikes; leaves small, thin, green; cold and heat resistant; hedge plant. 1 gal., 2 ½ ft., 50c; 4 in. pots, 30c. Flats of 100, \$2.50.

LIGUSTRUM ovalifolium. "California Privet." 12 ft. Flowers white, small spikes, numerous; leaves dark green, glossy; stiff upright growth, can be grown in tree or any other form; popular hedge plant. 1 gal., 2 ½ ft., 50c; flats of 100, \$2.50.

LIGUSTRUM ovalifolium variegatum. "Golden Privet." 15 ft. Flowers white, insignificant; foliage golden; used properly as accent plant. 5 gal., 3 ft., \$1.50; 1 gal., 2 ft., 50c; flats of 100, \$2.50.

LINUM flavum. 4 ft. Flowers yellow, showy from May to December; leaves small; fine garden flower. 1 gal., 1 ½ ft., 50c; 4 in. pots, 30c.

LIPPIA citriodora. "Lemon Verbena." 5 ft. Flowers minute, white, in dense spikes; foliage narrow, fragrant. 1 gal., 2 ft., 50c.

LONICERA nitida. 6 ft. Flowers small, insignificant; leaves small, ¼ to ½ in. long, dark green, glossy above; makes a good hedge plant for low hedges. 5 gal., 2 ½ ft., \$1.50; 1 gal., 50c.

MAHERNIA verticillata. "Honey-Bell." Flowers honey-yellow, bell-shaped, numerous; foliage fine, cut, lacey; growth low trailing; good for window boxes; shady locations. Rare. 1 gal., 1 ½ ft., 50c.

MAHONIA aquifolium. "Oregon Grape." 6 ft. Flowers golden yellow, dense clusters; foliage glossy green turning to red and yellow in the fall; grows well in the shade. Tubs, 2 ft., \$1.75; balled, 3 ½ ft., \$2.00; 5 gal., 2 ft., \$1.50; 1 gal., 1 ½ ft., 50c.

MAHONIA japonica. "Japanese Mahonia." Foliage soft green in color, large, turning yellow with age. Flowers large, followed by black berries. Balled, 2 ½ ft., \$2.00; 1 gal., 50c.

MALVA chinensis. (Meln.) 20 ft. Tall, loose growing shrub. Pink flowers almost all of the year. Attractive. 5 gal., 4 ft., \$1.50; 1 gal., 3 ft., 50c.

MAYTENUS boaria. 18 ft. Flowers greenish, small, insignificant; leaves small, glossy, graceful habit, rapid growth; good hedge or barrier plant. Balled, 6 ft., \$2.00; 5 gal., 4 ft., \$1.50.



PITOSPORUM UNDULATUM
Attractive Glassy-leaved Specimen Plant

MEDICAGO arborea. "Moon Trefoil." 8 ft. Flowers yellow, pea-like; quick growing, densely branched. 5 gal., 4 ft., \$1.50; 1 gal., 2 ft., 50c; 4 in. pots, 30c.

MELALEUCA armillaris. "Bottle Brush." 15 ft. Flowers white, spike-like, showy; leaves needle-like; ½ to ¾ in. long, narrow; best of white flowering variety; growth graceful; stands moisture and heat. Tubs, 5 ft., \$1.75; 5 gal., 3 ft., \$1.50; 1 gal., 2 ½ ft., 50c.

MELALEUCA decussata. 15 ft. Flowers lilac, cylindrical spikes; leaves lanceolate ¼ to ½ in. long, very narrow, blue-green; growth upright, spreading. 5 gal., 4 ft., \$1.50; 1 gal., 2 ½ ft., 50c.

MELALEUCA linariifolia. (M. diosmifolia.) 12 ft. Flowers white, in pairs 1 to 1 ½ in. long; leaves blue-green; graceful shrub when cut back severely; drought resistant. 5 gal., 4 ft., \$1.50; 1 gal., 3 ft., 50c.

MELALEUCA ericifolia. 10 ft. Flowers yellowish white, spikes ½ to 1 in. long, ¾ in. wide; leaves cylindrical about ¼ in. long, curving away from stem. 5 gal., 4 ft., \$1.50; 1 gal., 2 ft., 50c.

MELALEUCA hypericifolia. Tall shrub. Flowers rich red 2 in. long and wide; leaves opposite; one of the best. 5 gal., 4 ft., \$1.50; 1 gal., 3 ft., 50c.

MELALEUCA lateritia. 12 ft. Flowers bright orange, 2 ½ in. long; leaves like those of the diosma, dark green, fine, soft. Tubs, 4 ft., \$1.50.

MELALEUCA leucadendron. 15 ft. Flowers creamy white, spikes 1 ½ to 4 in. long; leaves 2, 4, or 8 in. long; grows to a small tree; drought and alkali resistant. 1 gal., 3 ft., 50c.

MELALEUCA nesophila. 30 ft. Flowers lavender, 1 in. thick; leaves shaped somewhat like Australian tea leaves. Tubs, 6 ft., \$1.75; 5 gal., 4 ft., \$1.50; 1 gal., 3 ft., 50c.

MELALEUCA tenella. 20 ft. Tall, nearly glabrous shrub. Flowers pale yellow in many heads. 5 gal., 5 ft., \$1.50.

MYRTUS communis. 8 ft. Flowers white, small numerous, stamens protruding; leaves pleasing shade of green, shiny; growth mound-like; blue-black berries; stands heat, cold and drought; good hedge and specimen plant. Tubs, 3 ft., \$2.00; balled, 3 ft., \$2.00; 5 gal., 3 ft., \$1.50; 1 gal., 2 ft., 50c; 4 in. pots, 30c.

MYRTUS communis variegata. 5 ft. Flowers the same as above; leaves marked with white; growth lower, graceful. Balled, 2 ½ ft., \$1.75; 5 gal., 2 ft., \$1.50; 1 gal., 1 ft., 50c.

MYRTUS microphylla. "Small-leaved Myrtle." Foliage exceptionally small and closely set. Spreading habit. Balled, 2 ft., \$1.75; 4 in. pots, 30c.



MAHONIA AQUIFOLIUM
"Oregon Grape," Foliage Glossy Green, Red in Autumn



NANDINA DOMESTICA
Foliage Red in Autumn, Berries Red

MENZIESIA polifolia. (*Daboecia polifolia*.) 2 ft. Flowers purple, bell-shaped, drooping; leaves small; shady location in the rock garden. 5 in. pots, 40c.

NANDINA domestica. "Sacred Bamboo." 6 ft. Flowers white in loose spikes; leaves compound, red when young, green at maturity, turns red and copper shades in autumn; blue berries. 14 in. bxs., 3 ft., \$2.00; tubs, 3 ft., \$2.00; 5 gal., 2 ft., \$1.50; 1 gal., 1½ ft., 50c; 4 in. pots, 30c.

NERIUM. "Oleander." 10 ft. Flowers double, pink, showy, blooms continuously; heat and drought resistant. Can be pruned into tree shape. Bush or tree form, balled, 5 ft., \$2.25; tubs, 5 ft., \$2.00; 5 gal., 4 ft., \$1.50; 1 gal., 2 ft., 50c.

NERIUM. "Oleander." "Mrs. F. Roeding." 10 ft. Salmon-colored flowers. Strong grower. Bush or tree form, balled, 5 ft., \$2.25.

PHILADELPHUS mexicanus. "Mock Orange." 8 ft. An exceedingly pretty shrub bearing cream colored flowers with a delightful fragrance. Evergreen. 5 gal., 5 ft., \$1.50.

PITTOSPORUM crassifolium. 20 ft. Flowers small, red, ½ in. long, terminal clusters; leaves 2 to 3 in. long, leathery, dark green above, downy beneath; fruit green; good plant for seaside and windy locations. 5 gal., 4 ft., \$1.50; 1 gal., 10 in., 50c.

PITTOSPORUM eugenioides. 15 ft. Flowers greenish yellow, small, numerous; leaves glossy, light green, 2 to 4 in. long; growth upright; makes good accent plant, hedge or barrier; bark light gray, striking. Balled, 5 ft., \$3.00; 5 gal., 3 ft., \$1.50; 1 gal., 1 ft., 50c; 4 in. pots, 30c. Specimen trees up to 10 ft., write for prices.

PITTOSPORUM grandiflora. 8 ft. Flowers white, large clusters; leaves larger than the others, 6 to 7 in. long, glossy, thin, dark green with light yellow midrib; fast growing. Balled, 3½ ft., \$2.00; 5 gal., 2½ ft., \$1.50; 1 gal., 50c.

PITTOSPORUM phyllaracoides. 20 ft. Flowers yellow, ½ in. long in leaf-axils; leaves narrow, 3 in. long; growth willow-like; branches thickly set with yellow fruit; drought resistant. 5 gal., 2½ ft., \$1.50; 1 gal., 1½ ft., 50c; 4 in. pots, 30c.

PITTOSPORUM rhombifolium. 20 ft. Flowers white, numerous, terminal clusters, fragrant; leaves coarsely toothed, light green; growth pyramidal; berries orange-yellow, in abundance. One of the best. 1 gal., 1½ ft., 50c.

PITTOSPORUM tenuifolium. (*P. Nigricans*.) 20 ft. Flowers black, solitary in leaf-axils; leaves glossy, dark green, thin; growth pyramidal, compact; twigs black; good specimen, accent or hedge plant. 5 gal., 4 ft., \$1.50; 1 gal., 1½ ft., 50c; 4 in. pots, 30c.

PITTOSPORUM tobira. "Japanese Pittosporum." 8 ft. Flowers white, fragrant; leaves wide at end, narrow at base; growth dense, round; stands heat; hedge or specimen plant. Balled, 4 ft., \$2.50; 14 in. bxs., 4 ft., \$2.00; 5 gal., 3 ft., \$1.50; 1 gal., 1½ ft., 50c.

PITTOSPORUM tobira variegatum. "Japanese Variegated Pittosporum." Similar to the green tobira except leaves are variegated with white. Balled, 3½ ft., \$2.50; 14 in. bxs., 3 ft., \$2.00; 5 gal., 2½ ft., \$1.50; 1 gal., 1½ ft., 50c.

PITTOSPORUM undulatum. 20 ft. Flowers white, numerous, fragrant at night; leaves deep green, glossy, 3 to 5 in. long; growth upright, spreading; good specimen, hedge or screen plant. Balled, 4 ft., \$2.50; tubs, 3½ ft., \$2.50; 5 gal., 2½ ft., \$1.50; 1 gal., 1 ft., 50c; 4 in. pots, 30c.

PITTOSPORUM viridiflorum. 20 ft. Flowers greenish yellow, compound clusters, fragrant; leaves like tobira; berries green; growth more upright. Balled, 3½ ft., \$3.00; 1 gal., 1½ ft., 50c.

PLEROMA splendens. 6 ft. Among the handsomest of our pillar or bedding shrubs. Tender and only for warm locations. Flowers reddish-purple to violet during the entire summer. 4 in. pots, 50c.

PLUMBAGO capensis. 12 ft. Flowers light blue, abundant throughout the summer; a semi-climber; good bank cover, fence or foreground. 5 gal., 2½ ft., \$1.50; 1 gal., 1½ ft., 50c; 4 in. pots, 30c.

PODOCARPUS elongata. Foliage handsome, glossy, dark green, narrow. Good house or veranda plant; stands shade; growth graceful, pendant. Balled, 4 ft., \$3.00; 1 gal., 2 ft., 75c; 1 gal., 1½ ft., 50c; 4 in. pots, 30c.

PODOCARPUS macrophylla. Foliage thicker and more upright than the above; branches pendant; leaves pinkish when unfolding. 1 gal., 50c.

POINSETTIA pulcherrima. 10-15 ft. Flower bracts scarlet-red; well-known Christmas flower. 6 in. pots, 75c; 5 in. pots, 60c; 4 in. pots, 40c.

PRUNUS caroliniana. "Carolina Cherry." 15 ft. A splendid tree-like shrub with light green foliage. Flowers white, fruit small and black. Thrives well near the coast. 5 gal., 4 ft., \$1.50.

PRUNUS illicifolia. "Wild Cherry." 10 ft. Native. Large shrub bearing beautiful glossy holly-like leaves which are much used for Christmas decorations. A hardy drought resistant plant. 1 gal., 1 ft., 50c; 4 in. pots, 30c.

PRUNUS lyoni. (*P. integrifolia*.) "Catalina Cherry." 20 ft. Flowers white, clusters followed by purple, nearly black, fruit; growth tree-like, compact, round-headed; glossy leaves. 5 gal., 4 ft., \$1.50; 1 gal. 1 ft., 50c.



NERIUM, "OLEANDER"
Well Known Plant which Blooms Almost Constantly

PUNICA nana. "Dwarf Evergreen Pomegranate." 5 ft. Flowers orange-scarlet followed by crimson fruit; low hedge plant or pot plant; tender. 1 gal., 6 in., 50c; 4 in. pots, 30c.

PYRACANTHA angustifolia. 10 ft. Flowers white; leaves long, narrow, gray-white on under side; berries long, orange-yellow; growth spreading. Balled, 5 ft., \$2.50; 5 gal., 3 ft., \$1.50; 1 gal., 50c; 4 in. pots, 30c.

PYRACANTHA coccinea. "Fiery Thorn." 6 ft. Flowers glossy white, numerous; leaves various, thin; growth slow; berries large, ¼ in. across, numerous, bright red., 1 gal., 1½ ft., 50c.

PYRACANTHA crenulata. 10 ft. Flowers white, small, numerous; leaves long, narrow, toothed, dark green, glossy; growth upright; good hedge plant; berries bright red. 5 gal., 2½ ft., \$1.50; 1 gal., 1½ ft., 50c; 4 in. pots, 30c.

PYRACANTHA formosianum. 6 ft. Flowers white; leaves short, twice as long as wide, thin, gray-green cast to shrub; growth upright, thorns short; good specimen or hedge plant; berries orange. 5 gal., 3 ft., \$1.50; 1 gal., 2 ft., 50c.

PYRACANTHA lalandi. 8 ft. Flowers white, numerous; leaves wider than crenulata, thin; berries bright orange-red. Tubs, 3 ft., \$2.50; 5 gal., 2½ ft., \$1.50.

PYRACANTHA yuannanensis. 8 ft. Flowers white, numerous; leaves vary in shape; berries abundant, small bright coral-red; growth rapid. Tubs, 4 ft., \$2.00; 5 gal., 2½ ft., \$1.50; 1 gal., 1½ ft., 50c.

RAPHIOLEPSIS ovata. 8 ft. Flowers small white, clusters, abundant, pleasing; leaves dark green, leathery; clusters of large purple berries. Balled, 2½ ft., \$1.75; 5 gal., 2 ft., \$1.50; 1 gal., 1 ft., 50c.

RHAMNUS californica. "Coffee Berry." 15 ft. Flowers small white, axillary clusters; leaves 1 to 4 in. long, yellowish green beneath; growth spreading, shrub or small tree; fruit changing from red to purplish black. Native. 5 gal., 4 ft., \$2.00; 4 in. pots, 50c.

RHUS integrifolia. "Sumach." 15 ft. Native shrub noted for its handsome dark green foliage. Flowers white to pink, followed by dark red berries. Excellent for dry hillside plantings. 5 gal., 5 ft., \$1.50; 1 gal., 1 ft., 50c.

RHUS laurina. 10 ft. Native shrub. Foliage glossy and dark green. Greenish white flowers borne in dense panicles 4 in. long; fruit whitish with waxy covering. Will thrive in the hottest and driest places. 1 gal., 1½ ft., 50c; 4 in. pots, 30c.

RHUS ovata. 10 ft. Native shrub similar to preceding Rhus except that yellow flowers are borne in dense spikes; fruit dark red. 5 gal., 4 ft., \$1.50.

RIBES speciosum. "Fuchsia Flowering Gooseberry." 10 ft. A native shrub bearing beautiful bright red flowers on narrow stem; very much resembling that of the Fuchsia; fruit red. 5 gal., 3 ft., \$1.50.

ROSEMARINUS officinalis. "Rosemary." 2 ft. Flowers light blue; aromatic herb. 5 gal., 2½ ft., \$1.50; 1 gal., 1½ ft., 50c.

SALVIA argentea. 4 ft. A showy evergreen having woolly-white foliage and bearing rose-white colored flowers on long 6 to 10 flowered whorls. A very decorative shrub for use amongst bedding plants. 1 gal., 1 ft., 50c.

SALVIA coccinea. "Scarlet Pea." 6 ft. Bright scarlet; grows rapidly. Very attractive. 5 gal., 3 ft., \$1.50; 1 gal., 1½ ft., 50c; 4 in. pots, 30c.

SALVIA farinacea. 3 ft. Flowers lavender, groups of seven at intervals on each side of the long flowering stem; leaves light gray. For the garden border. 1 gal., 2 ft., 50c; 4 in. pots, 30c.

SALVIA. "Firefly." Flowers scarlet, 1¼ in. long, 7 in. spikes. A pleasing perennial for the garden border. 5 gal., 3 ft., \$1.50; 1 gal., 2 ft., 50c.

SALVIA greggi. 3 ft. Bright cerise base of flower, flowering stem purple; leaves small, ½ to 1 in., blue-gray; perennial border plant. 1 gal., 1½ ft., 50c; 4 in. pots, 30c.

SALVIA leucantha. 3 ft. Flower effect lavender in round spreading mounds. One of the most popular. Balled, 2½ ft., \$1.75; 5 gal., 2 ft., \$1.50; 1 gal., 1 ft., 50c; 4 in. pots, 30c.

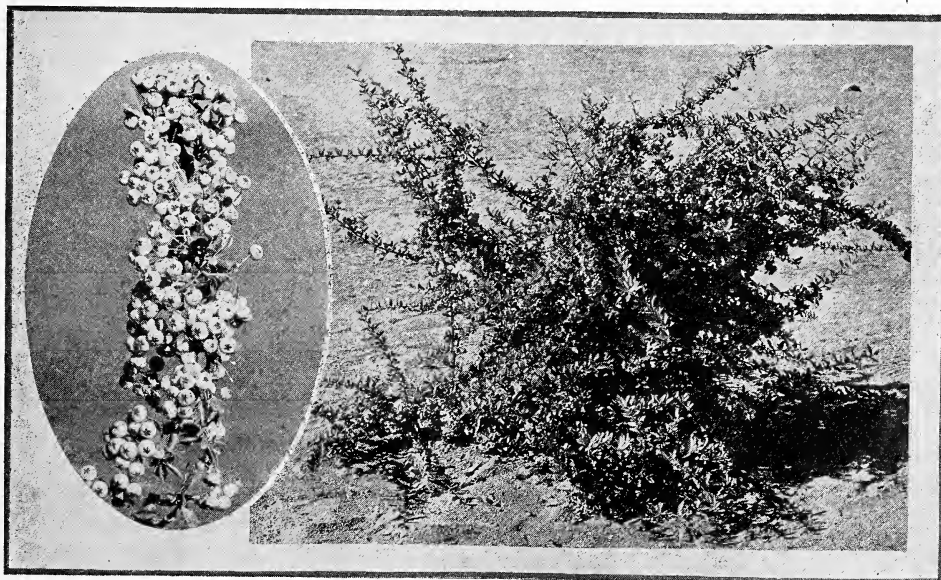
SENECIO platinifolium. ("Bush Cineraria.") 8 ft. Flowers yellow in many headed spikes; leaves 2 to 7 in. broad, dark green, reddish tinged veins; subtropical foliage; does better in the shade in interior valleys. 1 gal., 2 ft., 50c.

SOLANUM flavum. 6 ft. Flowers violet to dark violet, abundant; leaves variable, lance-shaped and lobed; fruit large, egg-shaped, turning yellow to red; attractive in flower and fruit. 5 gal., 4 ft., \$1.50; 1 gal., 2½ ft., 50c.

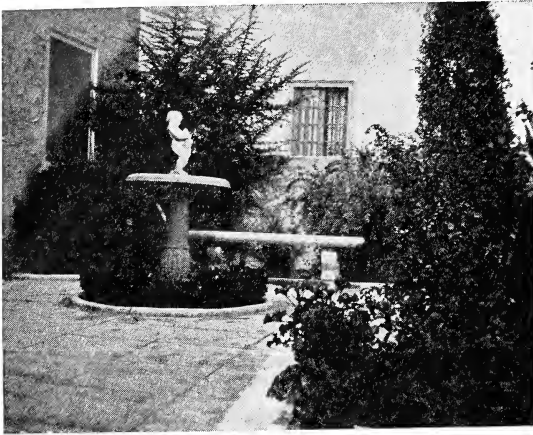
SOLANUM integrifolium. 8 ft. Leaves like egg-plant. Flowers white; fruit 1½ in. long and scarlet in color. Rare and very beautiful; suited to warm climates. 5 gal., 4 ft., \$1.50; 1 gal., 3 ft., 75c.

SOLANUM fuchsioides. 10 ft. Large leaf. Flowers light blue followed by oblong fruits about 1 in. long. 1 gal., 3 ft., 50c.

SOLLYA heterophylla. "Australian Bluebell." 20 ft. Flowers bright blue, bell-shaped; may be used as a vine or shrub by pruning. 1 gal., 2 ft., 50c; 4 in. pots, 30c.



PYRACANTHA ANGUSTIFOLIA
Growth Spreading, Berries Orange-yellow at Thanksgiving Time



A PRETTY PLANTING IN PATIO

STRELITZIA nicolai. "Bird-of-Paradise Flower." Banana-like foliage with odd showy blue flowers. A rare plant. Balled and tubbed plants ranging in price from \$5.00 to \$15.00 each.

STREPTOSOLEN jamesoni. 8 ft. Flowers, orange-red, in terminal clusters; leaves entire, not large. Half-climbing shrub or vine. 1 gal., 1½ ft., 50c; 4 in. pot, 30c.

SUTHERLANDI frutescens. 3 ft. Flowers showy scarlet; leaves minute, gray-green; fruit bladder-like. 5 gal., 3 ft., \$1.50; 1 gal., 2½ ft., 50c.

TRITOMA pfitzeri. (Kniphofia.) "Red Hot Poker." Flowers red and yellow, borne in spikes; leaves grass-like. 5 gal., 3 ft., \$1.50; 1 gal., 2½ ft., 50c.

UMBELLULARIA californica. "California Laurel." 60 ft. Flowers greenish-yellow, insignificant; leaves dark green, fragrant when crushed. 1 gal., 1½ ft., \$1.00.

VERONICA andersoni. 4 ft. Flower bluish-violet, axillary spikes 3 in long, showy; leaves 3 in. long, 1 in. wide; growth round-headed. 1 gal., 1 ft., 50c.

VERONICA cupressoides. 3 ft. Small cypress-like scale-like leaves in distant pairs. Lilac flowers borne in terminal heads. Attractive low growing shrub. Balled, 2½ ft., \$1.75.

VERONICA glaucophylla. 1 ft. Flowers white, slender, spikes; leaves blue-gray, small, ¼ in. long; drought resistant. 1 gal., 1 ft., 50c.

VERONICA imperialis. 4 ft. Flowers dark wine color, numerous in spikes; leaves dark green, red on mid-rib; compact round-headed. 5 gal., 2½ ft., \$1.50; 1 gal., 1 ft., 50c.

VERONICA traversi. 3 ft. Flowers white, spikes 1 to 3 in. long; leaves ½ to 1 in. long, shiny green; bushy growth. 1 gal., 1½ ft., 50c.

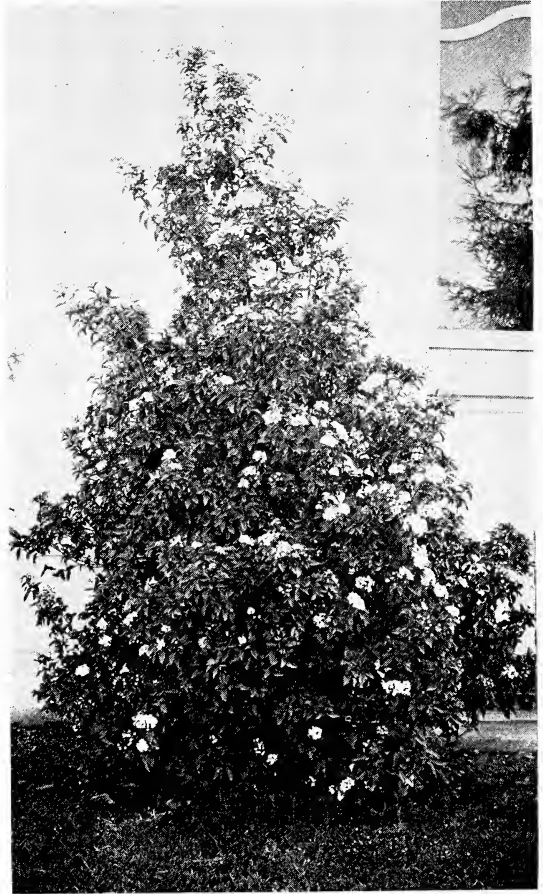
VIBURNUM japonicum. 6 ft. Upright growing shrub. Flowers pinkish white in great profusion followed with red berries. Balled, 1½ ft., \$2.00.

VIBURNUM odoratissimum. 10 ft. Flowers pure white, fragrant, in pyramidal clusters; leaves about 6 in. long, entire, shiny, bright green above light below; growth upright. 5 gal., 4 ft., \$1.50; 4 in. pots, 30c.

VIBURNUM suspensum. 6 ft. Flowers white to cream tinged with pink, half-globe clusters, fragrant; leaves dark green above, wrinkled. Balled, 3 ft., \$2.00; 5 gal., 2 ft., \$1.50; 1 gal., 1 ft., 50c; 4 in. pots, 30c.

VIBURNUM tinus. "Laurustinus." 12 ft. Flowers white to pink, fragrant; leaves somewhat smaller than the others; heat resistant; makes a high hedge plant in the interior. Balled, 2½ ft., \$2.00; 5 gal., 2 ft., \$1.50; 1 gal., 1 ft., 50c.

VIBURNUM virgatum. 8 ft. Flowers white, free flowering; leaves short, hair on the margins. 5 gal., 2 ft., \$1.50; 1 gal., 1½ ft., 50c.



VIBURNUM TINUS
Flowers White to Pink, Heat Resistant

Throughout this catalog you will find many plants and trees priced in 4 in. pots. For long distance shipping by Express or Mail such plants are taken from the pots, wrapped in paper, completely boxed or crated, and forwarded at small cost.

Deciduous trees and plants are packed light with moss around the roots. Roots and trees wrapped in burlap.

Specimen Trees. On our grounds we have several hundred large specimen trees, many of which have been root-pruned and boxed and are ready for transplanting. These include Pines, Arizona Cypress, Pittosporum, Christmas Berries, Italian Cypress, Cocos Palms, and many other rare trees for immediate effect.

Coniferous Evergreen Trees

Including Cedars, Cypresses, Arborvitae, Etc.

Conifers or cone-bearing trees have a very important place in the landscape planting of all home grounds, gardens, and parks.

In our assortment you will find plants for specimen planting, borders, and far mass planting.

The plan to decorate trees for "Christmas Out-of-Doors" is gaining favor on the Pacific Coast. The *Cedrus deodara* is used largely for this purpose, but a varied planting will no doubt be desired. We suggest Pines, *Cedrus libani*, *Cedrus atlantica glauca*, and other similar trees.

See quantity discounts on page 2; planting and cultural directions on page 30.

ARAUCARIA imbricata. "Monkey Puzzle." 50 ft. Leaves 1 to 2 in. long, very stiff, sharp-pointed, bright green on both sides covering the trunk and branches; symmetrical, pyramidal shaped tree. Rare. 10 in. pots, 1-1 1/2 ft., \$2.50; Tubs, 4 ft., \$15.00.

ARBORVITAE golden. (See THUJA.)

ARIZONA CYPRESS. (See CUPRESSUS arizonica.)

CEDRUS atlantica glauca. "Blue Mountain Atlas Cedar." 40 ft. Needle-like leaves, soft, silvery-blue; beautiful specimen for private avenue tree; stands heat and some drought. Balled, 4 1/2 ft., \$6.50; balled, 4 ft., \$6.00; balled, 3 ft., \$4.50; 4 in. pots, 75c.

CEDRUS deodara. "Deodar Cedar." 100 ft. Dark bluish-green, needle less than an inch long; hardy throughout California; fine specimens, wind-break of slow growth. Balled, 3 to 8 ft., \$1.00 per ft.; specimens 8 ft. up quoted on application; 4 in. pots, 50c.

CEDRUS libani. "Cedar of Lebanon." 50 ft. Leaves 1 in. or longer, dark or bright green; growth broad; branches horizontal, large, spreading tree. Balled, 3 to 8 ft., @ \$1.00 per ft.

CEPHALOTAXUS drupacea. 15 ft. Yew-like plants grown for their handsome evergreen foliage. More graceful than the yew. Thrive best in partly shaded positions. 1 gal., 10-12 in., 75c.

CHAMAECYPARIS lawsoniana alumni. 12 ft. Symmetrical columnar habit; foliage flat, upright, bluish metallic hue; the best blue of this shape. Specimen plants in boxes, bushy, 5 ft., \$7.50; balled, 2 1/2 ft., \$2.00; 1 gal., 50c; 4 in. pots, 30c.

CHAMAECYPARIS lawsoniana argentea. Eventually a tall tree; flat branches, leaves closely pressed together, blue-green tipped with silver. Balled, 2 1/2 ft., \$2.00; 4 in. pots, 30c.

CHAMAECYPARIS lawsoniana pendula. Gracefully pendulous branches. Boxed, 4 ft., \$6.00.

CRYPTOMERIA elegans. 15 ft. Compact growth, plum-like changing from green in summer to reddish brown in winter; fine specimen for small tree. Balled, 3 ft., \$2.00; 5 gal., 2 1/2 ft., \$1.50; 1 gal., 1 1/2 ft., 50c.

CRYPTOMERIA japonica. "Japanese Cedar." Forest tree in Japan, small tree here; rapid growth, pyramidal shape. 5 gal., 2 1/2 ft., \$1.50; 1 gal., 1 ft., 50c.

CUNNINGHAMI lanceolata. 75 ft. Foliage like that of the Norfolk Island Pine; growth less formal, lower branches horizontal, upper ascending; leaves sharp-pointed stiff. Boxed, 3 to 4 ft., \$7.50.

CUPRESSUS arizonica. 40 ft. Bluish-green, narrow pyramidal form. Stands drought and heat; excellent for windbreaks. Large specimen trees up to 20 ft. Write for prices. 5 gal., 4 ft., \$1.50; 1 gal., 2 1/2 ft., 50c.

CUPRESSUS lawsoniana argentea. (See CHAMAECYPARIS lawsoniana argentea.)

CUPRESSUS lusitanica. "Portugal Cypress." 50 ft. Foliage blue, branchlets somewhat pendulous. Balled, 3 ft., \$1.50.

CUPRESSUS macrocarpa. "Monterey Cypress." 60 ft. Good, quick growing windbreak; useful on Coast or interior; does well with little water. 5 gal., 5 ft., \$1.50; 1 gal., 2 ft., 50c. Flats of 100, \$2.50.



CEDRUS DEODARA
The Leading "Christmas Out of Doors" Tree

CUPRESSUS sempervirens fastigiata. "Italian Cypress." Well-known column-like growth, upright branchlets growing close to the branches. Seedlings, balled, 7-8 ft., \$2.00; 5 ft., \$1.50; grown from cuttings, balled to 10 ft., 50c per ft. Larger specimens priced on application. 5 gal., 4 ft., \$1.75; 1 gal., 4 ft., 75c; 1 gal. 3 ft., 50c.

JUNIPERUS californica glauca. 40 ft. Pyramidal, many erect branches; leaves in threes; bluish-green. 1 gal. 1 1/2 ft., 50c.

JUNIPERUS chinensis albo-variegata. 10 ft. Dwarf, dense form, conical; foliage bluish-green, creamy white tips. Balled, 3 ft., \$3.00; 2 ft., \$2.00.

JUNIPERUS chinensis mascula. "Pyramidal Chinese Juniper." 15 ft. A hardy compact bluish large shrub or small tree. Hardy. Does best near the coast. Balled, 3 ft., \$3.00.

JUNIPERUS conferta. "Shore Juniper." For a prostrate spreading Juniper this new variety is meeting with much favor. Dense foliage completely covering the ground. Grows fast and seem to thrive under all conditions. Balled, spread, 2 1/2 ft., \$3.00; 2 ft., \$2.00; 5 gal., spread, 1 1/2 ft., \$1.50; 1 gal., spread, 1 ft., 50c; 4 in. pots, 30c.

JUNIPERUS excelsa stricta. "Greek Juniper." 6 ft. Conical in growth; grayish green glaucous foliage. Balled, 4 ft., \$3.00; 3 ft., \$2.00; 1 gal., 1 ft., 50c.

JUNIPERUS hibernica. "Irish Juniper." 8 ft. Blue-green foliage, narrow, upright; growth slow; stands heat. Balled, 3 ft., \$3.00.

JUNIPERUS pfizeriana. "Pfitzer's Juniper." 8 ft. Large half prostrate Juniper with graceful foliage growing to about the same in height and width. Foliage light green. 4 in. pots, 30c.

JUNIPERUS sabina horizontalis. "Prostrate Savin Juniper." Bluish-green or steel blue. Growing flat on ground. Balled, spread, 2 ft., \$2.00; 1½ ft., \$1.50; 1 gal., 1 ft., 50c; 4 in. pots, 30c.

JUNIPERUS sabina tamariscifolia. Spreads to 8 ft. Foliage from grayish green to dark green. Dense and creeping. Balled, spread, 3 ft., \$3.00; 4 in. pots, 30c.

LIBOCEDRUS decurrens. "Incense Cedar." 35 ft. Foliage deep green, compact, fragrant at night; growth pyramidal, symmetrical; native California tree. Tubs, 3 ft., \$3.00; balled, 2 ft., \$2.00; 5 gal., 1½ ft., \$1.50; 1 gal., 1 ft., 50c; quarts, 1 ft., 30c.

PICEA canadensis. "White Spruce." 60 ft. Leaves bluish-green, 1-3 to ¾ in. long; strong, aromatic odor when crushed; growth of branches ascendent with denuous branchlets. 1 gal., 1 ft., 75c.

PICEA pungens glauca. "Colorado Blue Spruce." Compact and pyramidal in form; foliage carrying from bluish-green to silvery-white. Beautiful slow growing specimen plants. 14 in. bxs., 1½ to 2 ft., \$5.00.

PINUS canariensis. "Canary Island Pine." 30 ft. Fast growing; long slender needles, 9 to 12 in., light green, lustrous, pendulous; grows faster than the native California pine. Specimen trees from 6 to 15 ft., prices quoted on application. Balled, 5 ft., \$4.00; 5 gal., 4 ft., \$1.50; 1 gal., 1½ ft., 50c; quarts, 1 ft., 30c.

PINUS coulteri. "Pitch Pine." 50 ft. Large cones, 9 to 14 in. long; leaves stout, dark bluish-green, 6 to 12 in. long; growth pendulous below, upper branches ascending; native California Tree. Tubs, 3 ft., \$3.00.

PINUS halepensis. "Aleppo Pine." 50 ft. Good screening plant; dark green foliage; sparse when old; good hill-side cover. Specimen plants 6 to 15 ft., prices quoted on application. Balled, 5 ft., \$3.00; 5 gal., 3 ft., \$1.50.

PINUS pinea. "Stone Pine." 80 ft. Leaves bright green, 5 to 8 in. long; picturesque habit, lower trunk without branches, upper with wide-spreading branches. Specimen trees, 20 in., boxes, 6 ft., \$10.00.

PINUS radiata. "Monterey Pine." 80 ft. Leaves bright green, 4 to 6 in. long; growth rapid, bushy when young; good windbreak. 1 gal., 1½ ft., 50c; quarts, 1½ ft., 30c.

PINUS sylvestris. "Scotch Pine." 60 ft. Leaves bluish-green; pyramidal head and pendulous branches. Balled, 4 ft., \$3.00; 3 ft., \$2.00.

RETINOSPORA decussata. 10 ft. Gray-green foliage, tall and loosely branches. Balled, 2½ to 3 ft., \$2.00.



JUNIPER CHINENSIS ALBO-VARIEGATA
Dwarf, Dense Form with Creamy White Tips

RETINOSPORA squarrosa plumosa. 50 ft. Bluish-green foliage, almost silvery white. Balled, 1½ ft., \$2.00.

SEQUOIA sempervirens. "Redwood." 100 ft. Leaves ½ to 1 in. long, narrow, spreading in flat sprays; handsome specimens, excellent for screens but slower in growing than some others. 5 gal., 5 ft., \$2.50.

TAMARIX articulata. 30 ft. Flowers pink in terminal clusters; foliage evergreen, compressed, bluish-green; exceedingly rapid upright growth; used for windbreaks in the semi-arid regions; not hardy in Northern California. 12 in. cuttings, \$3.00 per 100.

TAXODIUM mucronatum. "Montezuma Cypress." 150 ft. Native of Mexico. Similar in appearance and growth to Redwood. Boxed, 6 to 8 ft., \$10.00; 5 to 6 ft., \$7.50.

TAXUS baccata dovastonii. "Yew Tree." 60 ft. Foliage dull green; branches wide, spreading, tips nodding. 1 gal., 1 ft., 75c.

TAXUS baccata fastigiata. (T. hibernica.) Foliage dark glossy green; leaves arranged spirally around the branches; growth all upright, compact. 5 gal., 3 to 4 ft., \$2.50.

THUJA aurea nana. "Dwarf Golden Arborvitae." Foliage flat, upright, tipped with golden yellow; growth dwarf pyramidal. Balled, 3½ ft., \$3.00; 3 ft., \$2.50; 2½ ft., \$1.75; 2 ft., \$1.50; 1 gal., 50c.

THUJA beverlyensis. "Golden Column Arborvitae." 15 ft. Grows in narrow column tipped golden-green foliage. Stately and particularly desirable for specimen planting. Balled, 3-4 ft., \$2.50.

THUJA globosa. "Globe Arborvitae." A dwarf dense globular type. Foliage light green; attractive when planted in front lines of groups. Balled, 1½ ft., \$1.50; 4 in. pots, 30c.

THUJA occidentalis pyramidalis. Foliage bright green, tallest and hardiest. Tubs, 5 ft., \$4.00; 4 ft., \$3.50.

THUJA orientalis. "Chinese Arborvitae." 25 ft. Foliage bright green; growth pyramidal or bushy tree. Balled, 4 ft., \$2.50; 3 ft., \$2.00; 2½ ft., \$1.50; 5 gal., 2½ ft., \$1.50; 1 gal., 2 ft., 50c.

THUJA plicata. "Giant Arborvitae." A tall growing native Arborvitae. Graceful when young; more stately as it becomes older and columnar in form. 4 in. pots, 30c.



THUJA, ARBOVITAE
Several Forms to Choose From

Broad-leaved Evergreen Trees

Suitable for Street and Shade Planting

Too few street and shade trees are now growing in the Southwestern states. In this class will be found the flowering varieties of Eucalyptus, Acacias, and the Jacaranda, the Camphor, the Carob, the Grevillea, and other useful and ornamental broad-leaved trees.

In our nurseries we grow great quantities of shade trees and are prepared to supply for extensive planting.

Not alone are the Evergreen trees used for Street and Avenue planting, but are properly used for backgrounds and for screens in the Garden or on the rear of the lot, in fact, almost anywhere, if space permits, it is not amiss to "plant another tree."

Heights given are approximate at maturity.

Due to the sensitiveness of the roots of this class of trees they are almost all grown in containers.

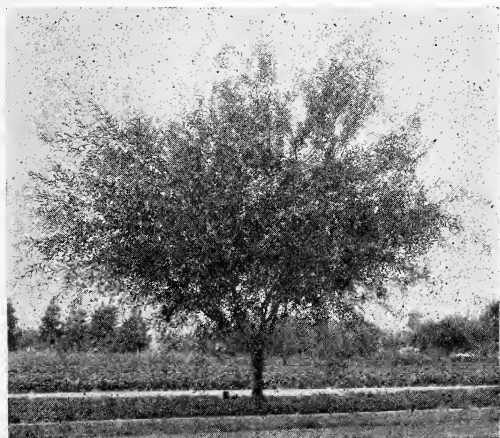
See quantity discounts on page 2; planting and cultural directions on page 30.

ACACIA armata. "Kangaroo Thorn." 10 ft. Flowers light yellow along the branches; growth spreading gracefully or can be trained into a small tree; good barrier, bank or hillside planting. 1 gal., 2 ft., 50c.

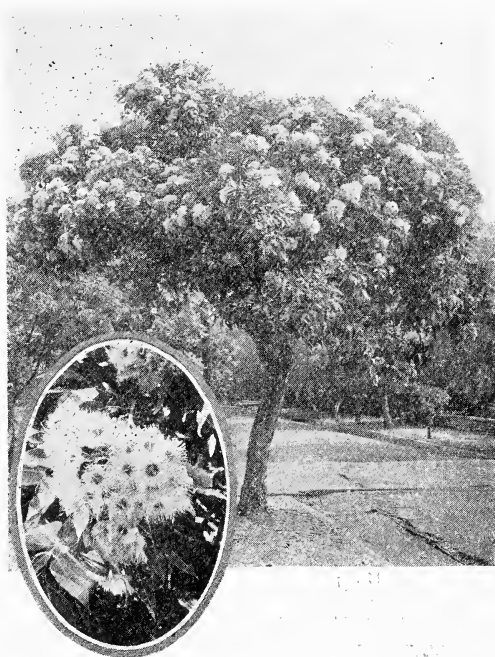
ACACIA baileyana. 30 ft. Flowers golden yellow, abundant; leaves small, feathery, silvery blue; rapid grower; one of the most popular. 5 gal., 5 ft., \$1.50; 1 gal., 3 1/2 ft., 50c; 4 in. pots, 30c.

ACACIA cultriformis. 12 ft. Flowers yellow, 30 or 40 in a head, abundant; leaves gray-green, almost triangular, 1 in. long, 1 1/2 in. wide; can be used for a hedge. 5 gal., 5 ft., \$1.50; 1 gal., 3 ft., 50c; 4 in. pots, 30c.

ACACIA dealbata. "Silver Wattle." 35 ft. Flowers golden yellow, abundant; leaves fern-like, silver gray to light bluish-green. 5 gal., 7-8 ft., \$1.75; 5 gal., 6 ft., \$1.50; 1 gal., 4 ft., 50c; 4 in. pots, 30c.



ACACIA FLORIBUNDA
Graceful Free Blooming Shade Tree



EUCALYPTUS FICIFOLIA
Scarlet Flowering Eucalyptus Tree and Bloom

ACACIA detriechiana. 15 ft. Flowers yellow; leaves 2 in. long, narrow, grayish-green, bark resembling that of the willow. 5 gal., 6 ft., \$1.50.

ACACIA floribunda. 30 ft. Flowers yellow, in bloom most of the year, leaves narrow, light green. Rapid growth and graceful. 5 gal., 7-8 ft., \$1.75; 5 gal., 6 ft., \$1.50; 1 gal., 5 ft., 60c; 1 gal., 4 ft., 50c.

ACACIA latifolia. 40 ft. Flowers golden yellow, larger than *A. floribunda*; leaves lance-shaped, bright green, good screen and sea shore plant. 5 gal., 6 ft., \$1.50; 1 gal., 5 ft., 60c.

ACACIA melanoxylon. "Blackwood Acacia." 60 ft. Flowers lemon yellow; leaves dark green, narrow; growth compact pyramidal. A tree for wide streets; trim to standard shape for a narrow street. 5 gal., 5 ft., \$1.50; 1 gal., 5 ft., 60c; 4 in. pots, 30c.

ACACIA pravissima. 15-20 ft. Flowers 10 or more to a head, golden yellow; leaves triangular, smaller than *Acacia cultriformis*, gray-green; growth tree-like with gracefully pendulant branches. 5 gal., 5 ft., \$1.50.

ACACIA verticillata. "Whorl-leaved Acacia." 20 ft. Flowers light yellow, spikes from axil of the leaves; leaves nearly 1 in. long, narrow, sharp pointed, light green; rapid growth; good rapid screen or hedge. 5 gal., 5 ft., \$1.50; 1 gal., 3 1/2 ft., 60c.

ANGOPHORA intermedia. "Gum Myrtle." 25 ft. Similar in appearance to *Eucalyptus ficifolia*. Flowers white to yellow. A good avenue tree resisting drought. 5 gal., 7-8 ft., \$1.50.

CAMPHORA officinalis. "Camphor Tree." 50 ft. Evergreen street tree or specimen; small leaves, glossy, fragrance of camphor when crushed; new leaves pink or red. 5 gal., 6-7 ft., \$1.50; 1 gal., 4 ft., 60c.

CASUARINA speciosa. "Beefwood." Leafless, slender, green, branch-like growth taking the place of leaves; rapid growth. 5 gal., 6 ft., \$1.50; 1 gal., 4 ft., 60c.

CASUARINA stricta. 30 ft. Branchlets short, grayish-green, erect; can be trimmed to standards; used as a street tree. 5 gal., 6 ft., \$1.50; 1 gal., 4 ft., 60c.

CERATONIA siliqua. "Carob, St. John's Bread." 40 ft. Flowers showy, pea-like, in small side racemes; leaves glossy, dark green; pods edible, 4 to 12 in. long; stock food; street tree or shade tree. 14 in. bxs., 8 ft., \$2.00; 5 gal., 6 ft., \$1.50; 1 gal., 4 ft., 60c; 4 in. pots, 30c.

EUCALYPTUS citriodora. "Lemon Scented Gum." 100 ft. Fine ornamental Eucalyptus. Leaves long and lemon scented. Grows tall and slender with branches at top. Trunk smooth and white. 5 gal., 6 ft., \$1.50; 1 gal., 5 ft., 60c.

EUCALYPTUS corynocalyx. "Sugar Gum." 120 ft. Flowers whitish, attracts the bees; drought resistant; wood lasts well underground. 5 gal., 6 ft., \$1.50; 1 gal., 5 ft., \$1.00; 1 gal., 4 ft., 50c.

EUCALYPTUS ficifolia. "Scarlet-Flowering." 30 ft. Flowers usually red, but not guaranteed, in clusters, showy; leaves are large, glossy; dwarf, irregular growth; street trees, ornamental. 5 gal., 5 ft., \$1.50; 1 gal., 5 ft., \$1.00; 1 gal., 4 ft., 85c. Red color guaranteed, 5 gal., 5 ft., \$3.00.

EUCALYPTUS globulus. "Blue Gum." 150 ft. Flowers small white; leaves bluish-green, especially the new growth; growth rapid; hardiest of all the Eucalyptus. 5 gal., 6 ft., \$1.50; 1 gal., 5 ft., 50c; 1 gal., 3 ft., 40c each, \$3.50 per 10, \$25.00 per 100; flats of 100, \$3.00.

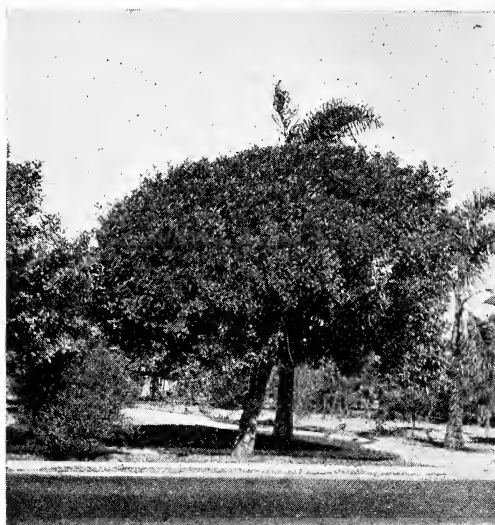
EUCALYPTUS leucoxylon. "White Ironbark." 100 ft. Flowers white, sometimes pink, showy; leaves narrow, long, grayish or dull green; good bee tree; lumber superior. 5 gal., 6 ft., \$1.50; 1 gal., 5 ft., 60c; 1 gal., 4 ft., 50c.

EUCALYPTUS polyanthemus. 50 ft. Bluish foliage makes this valuable as an accent to other planting. 5 gal., 7 ft., \$1.50; 1 gal., 4 ft., 60c.

EUCALYPTUS pulverulenta. 50 ft. Very ornamental dwarfish tree. Blue foliage supplies a pleasing contrast for ornamental planting. 5 gal., 7 ft., \$1.50.

EUCALYPTUS sideroxylon rosea. "Red Ironbark." Flowers rose-colored; leaves green, pendulant; rough colored bark. 5 gal., 7 ft., \$1.50; 1 gal., 4 ft., 60c.

EUCALYPTUS viminalis. 150 ft. One of the hardiest of Eucalyptus which can be grown where many other varieties would not survive. 1 gal., 3 ft., 50c.



CERATONIA. "CAROB"
"St. John's Bread," Excellent Shade Tree

FICUS elastica. "India Rubber Plant." 10 ft. Very attractive house or conservatory plant with large glossy leaves. In green Redwood 14 in. tubs, \$5.00.

FICUS macrophylla. "Moreton Bay Fig." 40 ft. Rubber tree with broad glossy leaves, growing into large tree. Good tree for broad streets. 18 in. box, \$10.00; tubs, \$7.50.

GREVILLEA robusta. "Silk Oak." 100 ft. Flowers golden-red; foliage fern leaved; when young a graceful pot plant, when old a stately tree. 5 gal., 6 ft., \$1.50; 1 gal., 5 ft., 60c.

JACARANDA ovalifolia. (J. mimosaeifolia.) Flowers tubular, violet-blue, in large groups; leaves large, fern-like, tender. 5 gal., 6 ft., \$1.50; 1 gal., 3 ft., 60c.

MAGNOLIA grandiflora. "Bull Bay." 80 ft. Flowers white, fragrant, 7 to 8 in. across; leaves thick, glossy above, rusty beneath, 5 to 8 in. long. 5 gal., 4 to 5 ft., \$1.50; 1 gal., 1½ ft., 50c.

PARKINSONIA aculeata. "Jerusalem Thorn." 15 ft. Flowers showy, yellow, fragrant; leaves 8 to 16 in. long, reed-like with small leaflet; bark of tree bright green. 5 gal., 6 ft., \$1.50; 1 gal., 3 ft., 50c.

QUERCUS agrifolia. "California Live Oak." 50 ft. Best of native oaks; leaves small, edges spiny toothed. 5 gal., 5 ft., \$2.00; 1 gal., 3 ft., 75c.

QUERCUS suber. "Cork Oak." 50 ft. Cork commerce obtained from this tree. Evergreen leaves. 1 gal., 2 to 3 ft., 75c.

SCHINUS molle. "Pepper Tree." 50 ft. Flowers small, white, followed by pendants of red berries; foliage fern-like, pendant. Tub, 8 ft., \$2.50; 5 gal., 6 ft., \$1.50; 1 gal., 3½ ft., 50c.

STERCULIA acerifolia. (Brachychiton.) "Flame Tree." 40 ft. Remarkable for its bright crimson flowers in clusters. A showy tree for lawn and street planting. 5 gal., 5 ft., \$2.00; 1 gal., 1 ft., 50c.

STERCULIA diversifolia. "Bottle Tree." 30 ft. Flowers bell-shaped, greenish-red and white; leaves various shaped, ovate to ovate-lanceolate; base of tree large, tapering to a point; tree for narrow streets. 1 gal., 1 ft., 50c.

ULMUS parvifolia. "Chinese Elm." Evergreen, rapid growth; leaves glossy above, ¾ to 2 in. long; spreading, pendulous; pleasing specimen. 5 gal., 5 ft., \$1.50; 1 gal., 4 ft., 60c.



POPULUS NIGRA ITALICA
"Lombard Poplar" Slender Columnar Habit

Deciduous Street and Shade Trees

Leafless in Winter—Full Shade in Summer

When full shade is wanted in the summer, but is not desired in the winter, the deciduous tree which sheds its leaves in the winter time is the best tree to serve this purpose.

For Street planting these trees are especially desirable, letting the sunshine through to the walks, lawn, and pavements. Serves the same purpose along the Boulevards and particularly if planted on the south and west sides.

Then again the color effect of the foliage in the fall and the bursting out of the bright green leaves in the spring lends much beauty to the landscape during both seasons.

All are hardy and may be planted anywhere in California or Arizona.

Most of them are supplied with bare rooted if purchased early.

See quantity discounts on page 2; planting and cultural directions on page 30.

ACER dasycarpum. "Silver Maple." 50 ft. This variety of Maple grown so extensively in the east is well adapted for California. Makes a rapid growth and is a beautiful tree for all purposes. Leaves in the fall take on various shades of brown. Bare-root, 6-8 ft., \$1.00; 5-6 ft., 85c.

ALBIZZIA julibrissin. 40 ft. Flowers pink, terminal, showy; foliage finely cut, fern-like; shade tree, round-headed. 5 gal., 3-4 ft., \$1.50.

BETULA alba. "European White Birch." 50 ft. Bark white; rapid growth; leaves triangular turning color in the fall. Bare-root, 5-6 ft., \$1.25.

BETULA populifolia laciniata. "Cut Leaf Birch." Smooth white bark; leaves cut and slashed into narrow points. Bare-root, 5-6 ft., \$2.00; 4-5 ft., \$1.50.

CATALPA speciosa. "Western Catalpa." 80 ft. A desirable ornamental tree for specimen and street planting. White flowers in cluster followed by long beans or seed pods. Bare-root, 5-6 ft., \$1.00.

FRAXINUS velutina. "Arizona Ash." 40 ft. Rapid growing. Alkali resistant; excellent shade tree. Bare-root, 6-8 ft., \$1.25; 5-6 ft., \$1.00.

GINKGO biloba. "Maiden Hair Tree." 75 ft. Leaves fan-shaped, resembling those of the fern but larger, 3 to 5 in a cluster. Tree for narrow streets or specimen. Bare-root, 5-6 ft., \$1.00; 4-5 ft., 85c.

MORUS nigra. "Persian or English Mulberry." 25 ft. The best fruiting variety. Fruit large and juicy. Tree grows slow; excellent for small shade tree. Bare-root, 4-5 ft., \$1.25.

PLATANUS orientalis. "European Sycamore." 60 ft. One of the best street trees; foliage bright green, large, maple-like but more deeply cut. Bare-root, 8-10 ft., \$1.25; 6-8 ft., \$1.00; 4-5 ft., 75c.

PLATANUS racemosa. "California Sycamore." 50 ft. The native tree found in the foothills and in the canyons. Foliage attractive. Fast growing tree. Bare-root, 8-10 ft., \$2.00; 6-8 ft., \$1.50; 5-6 ft., \$1.25; 1 gal., 2-3 ft., 75c.

POPULUS monilifera. "Carolina Poplar." 50 ft. Very fast growing tree suitable for street planting. Very shapely. Needs little pruning and will give quick shade. Bare-root, 7-8 ft., 75c; 6-7 ft., 60c.

POPULUS nigra italica. "Lombard" or "Italian Poplar." 60 ft. Slender, columnar habit; all branches, more or less ascending; strong habit of suckering from the roots near trunk as it gets older. More taping base to the leaves than in the other poplars. Valuable for narrow street and driveway planting, also good for accents in the garden. Bare-root, 8-10 ft., \$1.00; 7-8 ft., 85c; 6-7 ft., 75c.



POPULUS MONILIFERA
Shapely, Quick Growing Shade Tree

ROBINIA hispida macrophylla. 30 ft. Regarded by many as the most beautiful flowering tree. Flowers similar to sweet pea, in large clusters. Color beautiful shade of lavender pink. Bare-root, 4-6 ft., \$1.50.

ROBINIA pseudacacia. "Black Locust." 75 ft. Drought resistant for arid and desert districts for shade and wind-breaks. Grows rapidly and with little care. Bare-root, 5-6 ft., 60c; 2-3 ft., 15c each; \$1.25 per 10; \$10.00 per 100.

ULMUS americana. "American White Elm." 70 ft. The large long-lived tree known to those from the eastern states. Grows rapidly, leaves large; makes dense shade. Bare-root, 8-10 ft., \$1.25; 6-8 ft., \$1.00.

ULMUS pumila. "Chinese Elm." 50 ft. A new introduction from China which is adapted to the western United States. Seems to thrive in the dry interior valleys where it meets a need for a good shade tree. Bare-root, 6-7 ft., \$1.25.

UMBRELLA. "Melia." A dense shade tree. Spreads out like an umbrella. Branched, 8-10 ft., \$1.75; 6-8 ft., \$1.50; 5-6 ft., \$1.00.

Weeping Deciduous Trees

MORUS pendula. "Tea's Weeping Mulberry." 8 ft. Desirable to train over a framework in the garden. The long slender branches growing rapidly forming a green roof. Also may be grown as a specimen tree in the lawn. 2 year, headed at the top, 7 ft., \$2.50; 1 year, \$2.00.

SALIX babylonica. (S. pendula.) "Napoleon's Willow." "Weeping Willow." 35 ft. Leaves 2 to 6 in. long; branches slender olive green or purplish. Well-known weeping willow. Bare-root, 6-7 ft., \$1.50; 1 gal., 5-6 ft., 60c.

Hardy Deciduous Flowering Shrubs

Early Spring Flowering Followed by Mass of Green Foliage

It's springtime when the Hardy Flowering Shrubs begin to burst out their buds and flowers, many of them showing full flower before the leaves begin to appear.

Those who have lived in the eastern and southern states appreciate this time of the year and here on the Pacific Coast the same pleasure may be had in as great, if not a larger, degree.

Soon after the early spring flowering shrubs bloom comes "Lilac Time," although Lilacs do best near the coast and are not recommended for the interior valleys. The Snowball, the Deutzia, and the Althea combine to keep blooms in the Garden during a larger portion of the year. Buy these shrubs early as many are supplied with bare roots and may be planted with little effort before they begin leafing out.

See quantity discounts on page 2; planting and cultural directions on page 30.

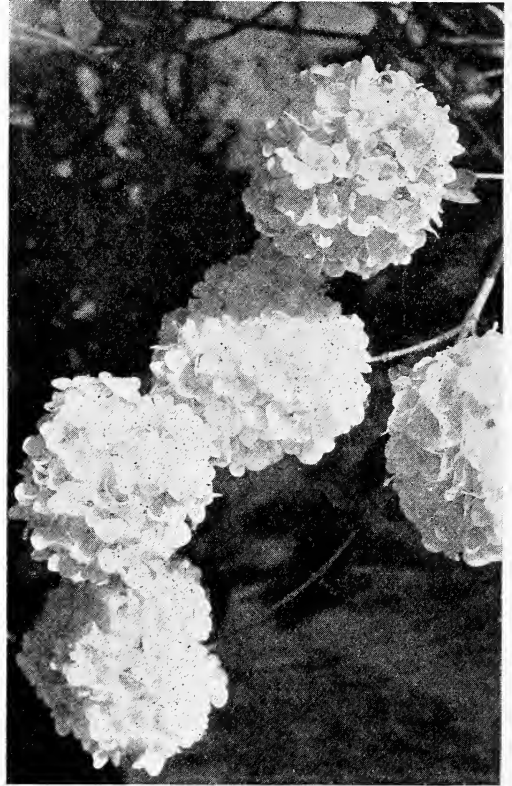
ALTHEA. "Rose of Sharon." 12 ft. Flowers show ranging in color from blue-purple to violet-red, flesh color and white, single and double; leaves small compared to the evergreen Hibiscus. Bare-root, 5-6 ft., \$1.50; 4.5 ft., \$1.25; 1 gal., 50c.

CALYCANTHUS occidentalis. 12 ft. Native shrub. Flowers light brown, slightly fragrant; leaves 3 to 5 in. long, rounded at base. Ovate, light green and thin. 5 gal., 4 ft., \$1.50.

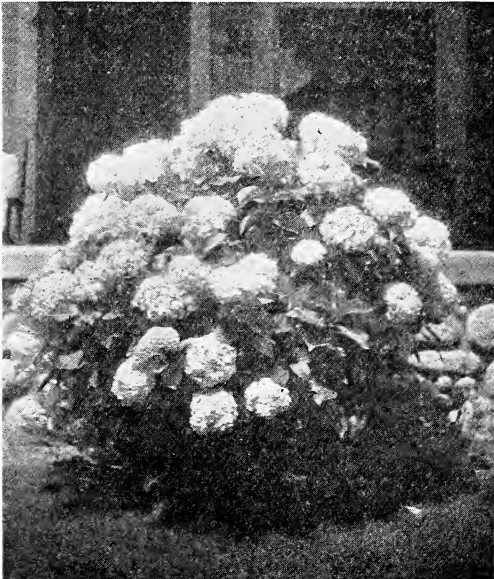
CYDONIA japonica. "Red Flowering Quince." 10 ft. Flowers red in profusion before the leaves appear; leaves glossy green. Bare-root, 2-3 ft., 85c.

DEUTZIA campanulata. Large white, bell-shaped flowers. Bare-root, 3-4 ft., 75c.

DEUTZIA candida. Flowers large, white in panicles; growth upright, spreading; hardy, fast growing. Bare-root, 3-4 ft., 75c.



VIRBURNUM OPULUS STERILE
"Snowball." Hardy Flowering Shrub



HYDRANGEA HORTENSIS
Popular Shrub, Blooms in Mass, Pink Shaded Blue

DEUTZIA carnea. Flowers small pink in upright loose panicles. Bare-root, 3-4 ft., 75c.

DEUTZIA discolorilactea. 6 ft. Flowers white with spreading petals about 3/4 in. across; leaves 2 in. long. A few specimens used among the evergreen shrubby mass creates a charming picture. Bare-root, 3-4 ft., 75c.

DEUTZIA gracilis. 3 ft. Flowers pure white in racemes, borne profusely on slender arching branches; leaves bright green above, bluish below. Bare-root, 3-4 ft., 75c.

DEUTZIA grandiflora. 6 ft. Flowers white, nodding, petals spreading; blooms before the leaves come out. Bare-root, 3-4 ft., 75c.

DEUTZIA magnifica superba. Flowers large white, single bell-shaped. Bare-root, 3-4 ft., 75c.

DEUTZIA scabra crenata. 6 ft. Flowers double white in great profusion. Bare-root, 3-4 ft., 75c.

HYDRANGEA hortensis. 10 ft. Popular shrub. Has large leaves with masses of large heads of light pink flowers shading to blue. Bare-root, 2-3 ft., 75c.

LABURNUM vossi. "Golden Chain." 20 ft. A hybrid. Flowers yellow 3/4 in. wide, numerous on racemes of silky appearance 12 to 18 in. long; leaves long stemmed, in threes, bluish-green above, silky beneath. 5 gal., 4 ft., \$1.50.

LAGERSTROEMIA indica rosea. "Pink Crepe Myrtle." 20 ft. Flowers in pink terminal or side clusters, six petals looking like separate flowers; blooms several months; leaves green, thin, new growth tinged with red; bark light gray, attractive. Bare-root, 6-7 ft., \$1.50; 5 gal., 4 ft., \$1.50; 1 gal., 2 ft., 50c.

LAGERSTROEMIA indica rubra. "Red Crape Myrtle." Bare-root, 6-7 ft., \$1.50.



PHILADELPHUS CORONARIUS
Large Flowering Mock Orange

PERSICA rosea plena. "Early Pink Flowering Peach." 15 ft. Double; blooms very early; beautiful color. Bare-root, 3-4 ft., 75c.

PERSICA rubra plena. "Early Red Flowering Peach." 15 ft. Double; rich red; early and profuse bloomer. Bare-root, 3-4 ft., 75c.

PHILADELPHUS coronarius. "Large Flowering Mock Orange." 6 ft. Among the most beautiful of the spring blooming shrubs. Leaves broad; flowers pure white. Bare-root, 5-6 ft., 85c.

PRUNUS japonica. "Flowering Cherry." Exceedingly early attractive flowering shrub. Exceptionally rare varieties, double pink, double white, and double white and pink on the same plant. Bare-root, 3-4 ft., \$2.00.

PRUNUS pissardi. "Purple-leaved Plum." 15 ft. Well-known graceful tree with purple foliage. Bare-root, \$1.00; 5 gal., \$1.50.

PRUNUS tomentosa. "Flowering Cherry." Flowers bright red, appearing before the leaves from pink buds; leaves dull green, whitish, beneath, numerous; wide spreading tree-like bush; fruit light red, globular, small, edible. Bare-root, 6-8 ft., \$1.50.

PUNICA rubra. "Double Red Flowering Pomegranate." 15 ft. Big double red flowers in spring and summer, followed by bright red fruits in the fall. Bare-root, 4-6 ft., 75c.

PUNICA Mme. Legrelle. "Variegated Pomegranate." 8 ft. Red flowers with petals edged with white. Very attractive. Bare-root, 4-6 ft., 75c.

SNOWBERRY. "Red Flowering." A beautiful shrub bearing large red berries amongst the foliage. Very attractive. Bare-root, 50c.

SPIREA anthony Waterer. 4 ft. Dwarfish but a very attractive Spirea having rosy crimson flowers in great profusion in the early spring. Bush compact. 5 gal., \$1.50.

SPIREA mineranthea. Half deciduous. 5 gal., 5 ft., \$1.50.

SPIREA vanhoutti. 6 ft. Flowers white, numerous, clothing the gracefully arching branches in early spring. Bare-root, 3 ft., 60c; 2 ft., 50c.

SYRINGA vulgaris. "Lilac." 20 ft. Flowers purple in large pyramidal clusters; leaves bright green; shrub or small tree. 5 gal., 2 ft., \$1.00.

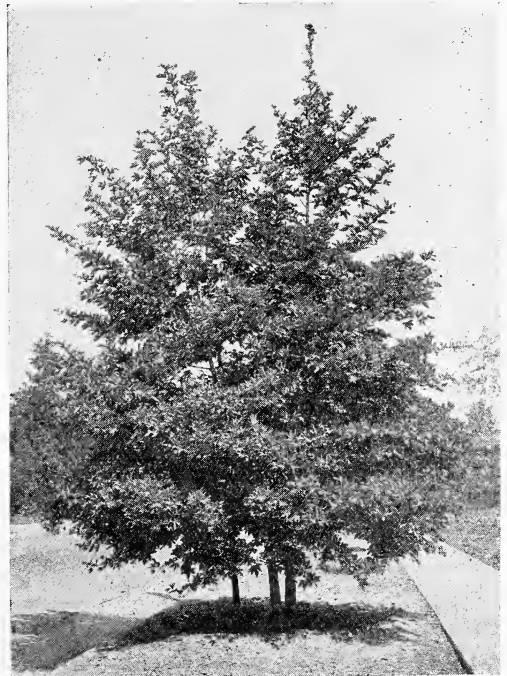
TAMARIX africana. 10 ft. Shrub with reddish brown bark and slender spreading branches. Leaves scale-like and small. Bears beautiful pink flowers along last year's branches. Grown chiefly for showy flowers and fine graceful foliage. Bare-root, 3 1/2 ft., 75c.

VIBURNUM opulus sterile. "Common Snowball." 8 ft. Hardy shrub. White flowers in large globular bunches in June. Bare-root, 2-3 ft., 75c.

WEIGELA rosea variegata. 5 ft. Flowers tubular, 1 1/4 in. long, 1 to 3 in. clusters, pale to deep rose; leaves variegated, Nile green near the margin, dark green on the midrib. 5 gal., \$1.50; 1 gal., 50c; 4 in. pots, 30c.



PLATANUS ORIENTALIS
"European Sycamore." Foliage Maple-like (See Page 15)



PLATANUS RACEMOSA
Group of Native California Sycamore (See Page 15)

Palms, Bamboos and Grasses

These Add Greatly to Our Tropical Landscape

Visitors from the states east of us expect to see great plantings of tropical trees and plants when they arrive in California and we should see to it that they are not disappointed.

Palms, because of their height, will serve to give a large portion of the tropical effect which our climatic conditions warrant.

See quantity discounts on page 2; planting and cultural directions on page 30.

ALPINIA nutans. 8 ft. Flowers yellow and pink, fragrant, terminal, graceful spikes; leaves long, thin, lanceolate, shiny; a bog plant. 1 gal., 2 ft., 50c; 4 in. pots, 30c.

ARUNDO donax variegata. "Giant Reed." 15 ft. Unbranched canes, tall, stout, blade-like leaves, numerous, clasping the canes irregularly, plume-like at top, leaves green with white stripes; windbreak and screening material. 5 gal., 5 ft., \$1.50; 1 gal., 4 ft., 50c.

BAMBOO, golden. (*Arundinaria aurea*.) 15 ft. Stems yellowish, often brilliant in color; leaves 2 to 4 in. long, $\frac{3}{4}$ in. wide, light green above, bluish beneath, serrate on one border only. 5 gal., 5 ft., \$2.00; 1 gal., 4 ft., 50c.

BAMBOO philapense. 8 ft. Low growing Bamboo suitable for gardens, corners of walls, near pools, etc. Spreads rapidly and should have plenty of space. 1 gal., $1\frac{1}{2}$ ft., 50c.



COCOS PLUMOSA
Finest Palm for Southern California Planting

CHAMAEROPS excelsa. "Windmill Palm." 15 ft. Leaves fan-shaped, deeply cut. Growth of trunk slender, straight, terminated by a number of leaves, that turn and twist in the wind. Tubs, 2 ft., \$2.00; 6 in. pots, 75c.

CHAMAEROPS humilis. "Dwarf Fan Palm." Leaves small, fan-shaped, stem spiny; small lawn specimens or tub culture. Balled, 2 ft., \$1.50.

COCOLOBO platyclada. (*Muehlenbeckia platyclada*.) Flowers white, few flowered clusters followed by small bright red to deep purple fruits. Odd growth of flat ribbon-like glossy stems that take the place of leaves; an oddity of the plant world. 5 gal., 4 ft., \$1.50; 1 gal., 2 ft., 50c; 4 in. pots, 30c.

COCOS plumosa. 36 ft. Slender smooth trunks ringed at foot intervals; graceful arching leaves 12 to 15 ft. long; fine specimen or avenue palm; tender while young. Balled, 7-8 ft., \$10.00; 6-7 ft., \$8.00; 5-6 ft., \$6.00; 4-5 ft., \$5.00; 6 in. pots, $1\frac{1}{2}$ ft., \$1.25; 4 in. pots, 1 ft., \$1.00.

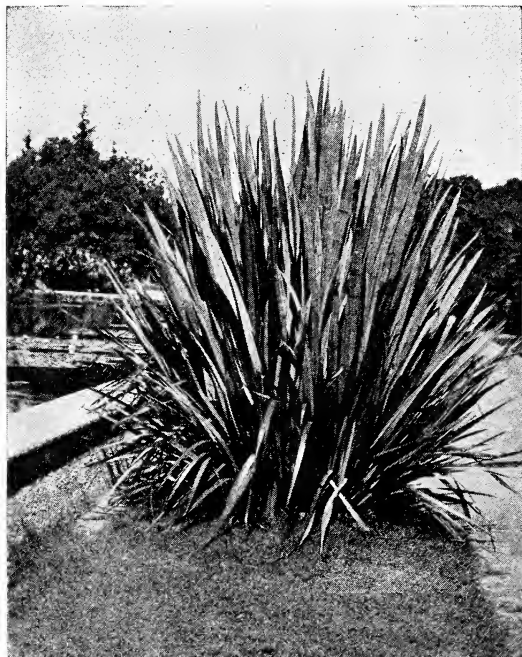
CYPERUS alternifolius. "Umbrella Grass." Foliage borne on upright, round, green stems, leaves in circles drooping. Good semi-aquatic plant. 1 gal., $2\frac{1}{2}$ ft., 50c; 4 in. pots, 30c.

DENDROCALIMUS latiflorus. "Japanese Giant Bamboo." 50 ft. The large Bamboo so greatly admired in California. Clumps form and spread, sending up large canes. 5 gal., \$2.50.

DORYANTHES palmeri. "Spear Lily." Flowers bright scarlet outside, white within; leaves long, 6 ft., when mature, in dense basal rosette. 1 gal., 50c.

DRACAENA draco. "Dragon Tree." 40 ft. One of the oldest of known trees. Very decorative tree of its kind. Branches when of great age. Balled, $1\frac{1}{2}$ ft., \$1.50.

DRACAENA indivisa. (*Cordyline australis*.) 20 ft. Flower small, white, in large clusters at maturity, not while young when the long graceful foliage is at its best; specimen, sometimes used on streets. Not a long lived plant. Balled, 6-7 ft., \$4.00; 5-6 ft., \$3.00; 4-5 ft., \$2.50; 3-4 ft., \$2.00; 5 gal., 3 ft., \$1.50; 1 gal., $1\frac{1}{2}$ -2 ft., 50c.



PHORMIUM TENAX
"New Zeland Flax." Ribbon-like leaves.

JUNCUS effusus. "Common Rush." 3 ft. Grass-like bog-plant; cylindrical stems bearing a cluster of greenish or brownish very small flowers. 4 in. pots, 30c.

KENTIA fosteriana. Dark green foliage, long, graceful arching leaves; slender trunk. House palm. 8 in. pots, 46-50 in., \$6.00; 7 in. pots, 42-46 in., \$5.00; 6 in. pots, 38-42 in., \$4.00; 32-38 in., \$3.00; 28-32 in., \$2.00.

MUSA ensete. "Abyssinian Banana." Flowers whitish. 1½ to 2 in. long, frequently 20 or more in a cluster surrounded by dark claret-brown bracts 9 to 12 in. long; not the edible banana. Pictured in ancient Egyptian sculpture. Tubs, 8 ft., \$7.50; 14 in. bxs., 6 ft., \$5.00.

MUSA rosacea. "Pink Flowering Banana." 15 ft. Large bright green leaves and stalks. Deep rose-colored blooms. Somewhat rare and exceedingly attractive. Balled, 5 ft., \$3.50.

PAMPAS GRASS. (*Cortaderia argentea*.) 10 ft. Silvery plumes on 6 ft. stems; long, thin, blade-like leaves forming a large mound. 5 gal., 4-5 ft., \$1.50; 1 gal., 3-4 ft., 50c.

PENNISETUM japonica. Stout grass with bristly spike-like long, narrow, blades. Used for borders and in bed planting. 1 gal., 50c.

PHOENIX canariensis. "Canary Island Palm." 60 ft. Huge trunk, 1 to 3 ft. in diameter; great top of graceful pinnate leaves 15 ft. long; hardy and most popular. 14 in. bxs., 4-5 ft., \$4.50; 5 gal., 3-4 ft., \$3.00; 2-3 ft., \$1.50; 4 in. pots, 30c.

PHOENIX reclinata. 25 ft. A most beautiful palm with slender stem and a dense crown of reclining soft green leaves. Much more attractive than *P. canariensis* for all purposes, whether used for specimen or street planting. Tubs, 5 ft., \$4.50; 5 gal., 3 ft., \$2.00.

PHOENIX roebelenti. 5 ft. Excels all other palms in grace, elegance and beauty. Suitable for glass enclosed porches and for gardens in warm locations. 6 in. pots, 10 in., \$1.00.

PHORMIUM tenax. "New Zealand Flax." The green stalk variety. Rigid, ribbon-like leaves. 5 gal., \$1.50.

PHORMIUM Tenax atropurpureum. "New Zealand Flax." 6 ft. Flowers yellow, borne on long stalks protruding above the leaves; leaves broad, long, pointed, starting from the fleshy surface root; very pictorial plant. Balled, 3 ft., \$2.00; 5 gal., 2½ ft., \$1.50; 1 gal., 50c; 4 in. pots, 30c.

PHORMIUM tenax variegated. 6 ft. Same as above except that leaves are variegated with stripes of white with yellowish cast. 5 gal., 3 ft., \$1.50.

SEAFORTHIA elegans. Graceful, smooth-stemmed palms somewhat resembling *Cocos plumosa*. 40 in., \$6.00; 36 in., \$5.00; 32 in., \$4.00; 28 in., \$3.00.



PAMPAS GRASS
Bearing Silvery Decorative Plumes

WASHINGTONIA filifera. "California Fan Palm." 75 ft. Tall, stout trunk with huge fan-shaped leaves, dark green, numerous, filament hanging from leaves. 5 gal., 3-4 ft., \$1.50.

WIGANDIA macrophylla. A large leaved form growing to 10 to 12 ft. A Mexican plant. 1 gal., 12 in., 75c.

Four Choice Cannas

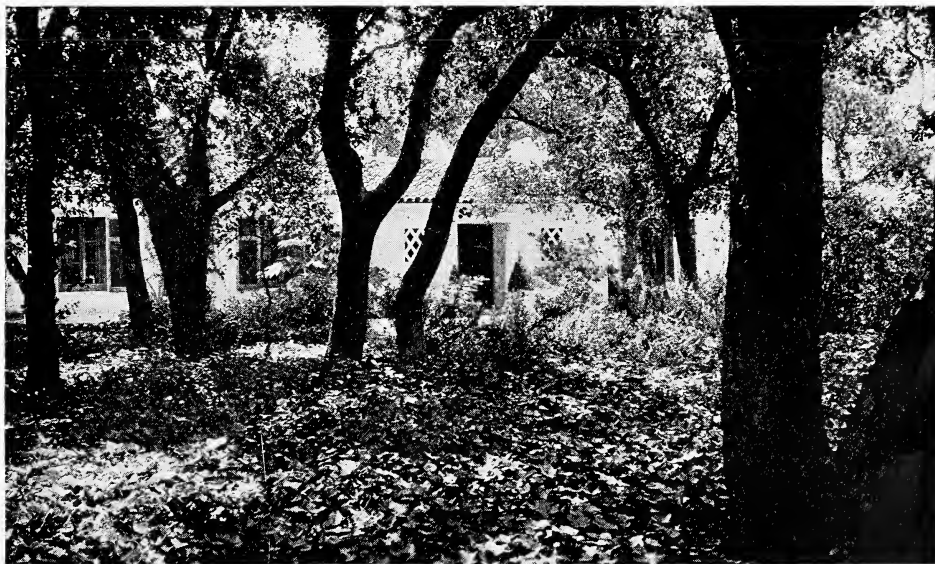
Firebird, red.

Philadelphia, red, tall growing.

Gladiator, yellow dotted red.

Eureka, white shaded with lemon.

These are all choice varieties of Cannas and are growing luxuriantly in our gardens. We can supply the roots properly packed and guaranteed to grow at 15c each; \$1.50 per dozen; \$7.00 per 100; or plants in 1 gallon cans at 50c each; \$4.00 per 10. Postage paid on small quantities or delivery free.



Decorative, Bedding and Border Plants



AGRANTHUS UMBELLATUS
Blue Flowers on Long, Stout Stems

AGAPANTHUS umbellatus. "African Lily." 2 ft. Flowers blue, 10 to 30 clustered at end of a stout stem. Leaves 2 ft. long, numerous, evergreen. 1 gal., 50c; 4 in. pots, 30c.

AGATHAEA. (Felicia.) "Blue Marguerite." A dwarf plant with blue daisy-like flowers. Useful as a border plant. 4 in. pots, 30c.

ANCHUSA. Flowers blue to purple, forget-me-not-like blooms in loose spikes. 1 gal., 50c; 4 in. pots, 30c.

ANEMONE japonica. "Japanese Wind Flower." 1 to 3 ft. Flowers 2 in. across, white, pink, and double pink; numerous strong stems terminated by flowers; does well in shade. 1 gal., 50c.

AQUILEGIA. "Columbine." Bedding and border plant generally well-known. Flowers long-spurred, large size, assorted colors through tones of cream, pink, lavender, etc. 1 gal., 50c; 4 in. pots, 30c.

ASCLEPIAS curassavica. "Blood Flower." 2 ft. Perennial; flowers scarlet, showy. Good foreground plant. 1 gal., 40c.

ASPIDISTRA lurida. Suitable for planting in garden in partially shaded locations, also desirable as a house decorative plant in pots. Potted in 10 in. pots, 15-20 in., \$2.00.

BEAUCARNIA recurrata. (Nolina.) Large round bulb at base. Long narrow recurved leaves. Bedding or house plant. Balled, 1½ ft., \$3.50.

BEGONIAS. Argento-guttata. Leaves thickly dotted with white. Masculata. Large leaves, circular white spots; flowers pale rose or white. 1 gal., 50c.

BEGONIA luminosa. Bronze red foliage; fiery scarlet flowers. Blooms nearly all the time. 4 in. pots, 30c.

COLOCASIA antiquorum esculenta. (Caladium esculenta.) "Elephant's Ear." 3 ft. Foliage plant; leaves bright green, 3 ft. long, nearly as wide. 6 in. pots, 75c.

CUPHEA hyssopifolia. Flowers small, six petaled, light violet color; leaves up to ¼ in. long, ½ in. wide, glossy green on the upper side; branchlets tinged with red. Low-growing plant to 1 ft., small hedge plant in protected locations. 1 gal., 50c.

CUPHEA ignea. "Fiery Cuphea." 2 ft. Flowers bright red with dark ring at the top and white mouth. 1 gal., 1 to 1½ ft., 50c.

DELPHINIUM. "Larkspur." 3 to 5 ft. Shades of blue, turquoise, deep blue with white eyes. Will do well in full sunlight. 4 in. pots, 30c.

GERANIUMS. "Ivy Leaved." Suitable for window boxes, hanging baskets, and for covering banks and parkways. 4 in. pots, 30c.

GERBERA jamesonii hybrids. "Transvaal Daisy." Mixed colors from white to crimson with many pastel shades. Daisy-like flowers on long stems. 4 in. pots, 30c.

GEUM. "Mrs. Bradshaw." A new improved variety bearing immense trusses of double red flowers. 4 in. pots, 30c.

HELIOTROPE. Flowers large trusses, dark blue, fragrant. 1 gal., 40c; 4 in. pots, 30c.

HEMEROCALLIS aurantiaca. "Orange Day Lily." 2½ to 3 ft. Flowers bright orange, fragrant; leaves narrow, grass-like. 1 gal., 40c.

LOPEZIA coronata. A very attractive trailing shrub covered with lilac flowers most of the year. Splendid for trailing over terraces. 1 gal., 40c; 4 in. pots, 30c.

MARGUERITES. 3 ft. Flowers single yellow, daisy-like, free blooming; thrives under most any condition. 1 gal., 2 to 2½ ft., 35c.

MESSEMBRYANTHEMUM. Trailing ground covering with small fleshy leaves. Rosy red, orange, and pink. 4 in. pots, 30c; flats of 100, \$3.00.

MORAEA bicolor. 3 ft. Flowers yellow, 1½ in. across, outer segments marked with dark brown, shading to light golden brown. Blooming from early spring until frosted. 4 in. pots, 30c.

PENSTEMON cordifolius. 3 ft. Flowers long tubular, showy; leaves opposite, herb-like growth, sometimes woody at the base. Mixed colors, 4 in. pots, 30c. Red, 3 ft., 1 gal., 35c.

RUSSELIA juncea. "Coral Plant." Flowers coral red, fall and winter, tubular; reed or rush-like growth, light green; graceful, window boxes, baskets, edges of pools. 1 gal., 50c; 4 in. pots, 30c.

SHASTA DAISY. "Pasadena." Long-stemmed, continuous bloomer; rapid growth. 1 gal., 40c; 4 in. pots, 30c.

STATICE caspia. "Sea Lavender." 2 ft. Flowers lavender, fine, small, numerous, on long stems; foliage, fine, feathery. 1 gal., 40c.

STATICE macrophylla. Flowers small, blue, in rather coarse papery heads on long stalks; leaves broad, shiny. 1 gal., 50c; 4 in. pots, 30c.

STATICE perezii. 3 ft. Flowers purplish-blue in heavy heads, on long stalks; leaves blue-green and large; sunny exposure. 1 gal., 50c; 4 in. pots, 30c.

THALICTRUM adiantifolium. "Meadow Rue." 4 ft. Flowers white in large graceful sprays; leaves small, numerous, resembling the foliage of the Maiden Hair Fern. 1 gal., 40c.

VALERIANA. "Pink and Red." Blooms spring to autumn; numerous branches from the running root stalks. 1 gal., 40c.

WATER IRIS. Yellow flowers for planting around pools and in shaded places. 4 in. pots, 40c.

Special Offer of Gladiolus Bulbs Named Varieties

Selected mixture. This mixture of about 60 different varieties includes some of the finest colorings in existence. Many of these varieties would usually sell at from 25c to 50c each. All are good and worth considerable more than we are asking for them. They were grown in our own fields but were not kept separate. 60c a dozen; 50 for \$2.00; \$3.50 for 100; postage postpaid.

1910 Rose. Deep rose with white pencil stripe. One of the earliest. 8c each; 75c per dozen; \$6.00 per 100.

Hereda. A large deep mauve. Early. 8c each; 75c per dozen; \$6.00 per 100.

Virginia. Large brilliant scarlet. A good all-summer gladiola. Does not burn easily. 8c each; 75c per dozen; \$6.00 per 100.

Vines and Trailing Plants

For Trellises, Pergolas, Walls, and Garden Fences

Climbing vines have more uses than one might suppose on first thought. They are used to cover pergolas, arbors, fences, walls, and unsightly portions of buildings and garages. Then again clinging vines are used to cover chimneys and at the same time may cover the entire house.

A few varieties bloom nearly all the year.

In this section are deciduous as well as evergreen vines.

AMELOPSIS quinquefolia. "Virginia Creeper." The well-known five-leaved clinging vine. Large leaves taking on changes to various hues of scarlet in the fall. Drops leaves in late fall. 1 gal., 50c.

AMPELOPSIS sempervirens. (See *CISSUS striata*.)

AMPELOPSIS tricuspidata. (*A. veitchii*.) "Boston Ivy." Foliage dense, glossy, single, medium pointed; holding by means of discs; foliage turns red and yellow in the fall; deciduous, hardy. 1 gal., 50c; 4 in. pots, 30c.

BIGNONIA australis. 20 ft. Leaves fern-like when young, changing as grows older. Flowers appear in great profusion, cream colored. 5 gal., \$1.50; 1 gal., 50c.

BIGNONIA cherere. "Red Trumpet Vine." An evergreen climbing plant bearing long tubular flowers. Deep red, yellow at base. 4 in. pots, 30c.

BIGNONIA jasminoides. (*Tecoma jasminoides*.) "Bower Vine." A fast growing vine. Shiny leaves. Flowers cream colored in profusion. 5 gal., \$1.50; 1 gal., 50c; 4 in. pots, 30c.

BIGNONIA radicans. "Trumpet-creeper." High climbing shrub. Flowers orange-scarlet, tubular, 3 in. long; leaves pinnate 9 to 11, dark green above, pale green below; can be used as a shrub. 5 gal., \$1.50; 1 gal., 50c.

BIGNONIA tweediana. Flowers yellow, tubular, showy; leaflets long, narrow, glossy. 4 in. pots, 30c.

BIGNONIA venusta. Flowers orange colored, blooming during the winter. Slightly tender, but a very beautiful vine wherever it can be grown. 4 in. pots, 30c.

BIGNONIA violacea. One of the prettiest of all the trumpet vines; flowers of delicate violet shade cover the vine in the spring. 1 gal., 50c.

BOUGAINVILLEA braziliensis. Flowers reddish-purple, brilliant, abundant; leaves bright green; tender in the interior. 1 gal., 50c.

BOUGAINVILLEA. "Crimson Lake." Must be seen to properly appreciate this new variety. Flowers brilliant red and appear in profusion. 1 gal., \$2.50; 4 in. pots, \$1.50.

BOUGAINVILLEA spectabilis. Brick red flowers. A very highly prized variety. 4 in. pots, 50c.

CISSUS capensis. "Evergreen Grape Vine." Strong climber; leaves grape-like, kidney-shaped; three nerved, five-angled. 1 gal., 50c.

CISSUS striata. Flowers yellow. Low evergreen vine, climbing by means of tendrils. Leaves small, 3 to 5 leaflets. 1 gal., 50c; 4 in. pots, 30c.

CONVOLVULUS mauritanicus. Flowers blue to violet-purple, 1 to 2 in. across; growth trailing, prostrate; good ground and bank cover, window boxes, etc. 1 gal., 50c.

FICUS repens. "Climbing Fig." Hardy evergreen climber in California; small neat leaves, dark green; climbing by discs and adhering closely. 1 gal., 50c; 4 in. pots, 30c.

HEDERA helix. "English Ivy." Dark green, evergreen leaves, sometimes used as a ground coverer on banks. 5 gal., \$1.50; 1 gal., 50c; 4 in. pots, 30c.

HEDERA helix variegata. "Variegated English Ivy." Leaves variegated with creamy white. 1 gal., 50c; 4 in. pots, 30c.

HOYA. "Waxplant." 12 ft. Thick glossy leaves; flowers bluish-white, fragrant. 1 gal., 50c; 4 in. pots, 30c.

HOYA carnosa variegata. "Wax Plant." 12 ft. Flowers white with pink center; fragrant in clusters. Tender, needs a protected place. Climbs by means of roots. 1 gal., 50c; 4 in. pots, 30c.

JASMINUM beesianum. 3 ft. Flowers pink or deep rose, very fragrant, small; leaves short stemmed, 1 in. or less long. 1 gal., 50c.

JASMINUM fruticans. 12 ft. Glabrous bush; a half climber; flowers yellow; berries black at maturity. 5 gal., \$1.50.

JASMINUM grandiflorum. "Spanish Jasmine." Flowers white, star-shaped, nearly perpetual bloomer; leaflets 5 to 7 in., light green; growth nearly erect; graceful. 5 gal., \$1.50.

JASMINUM officinalis. Flowers white, 2 to 10 in. clusters, but not as large as *J. grandiflorum*; leaflets 2 to 3 pairs, terminal one longer; needs support as a climber. 1 gal., 50c.

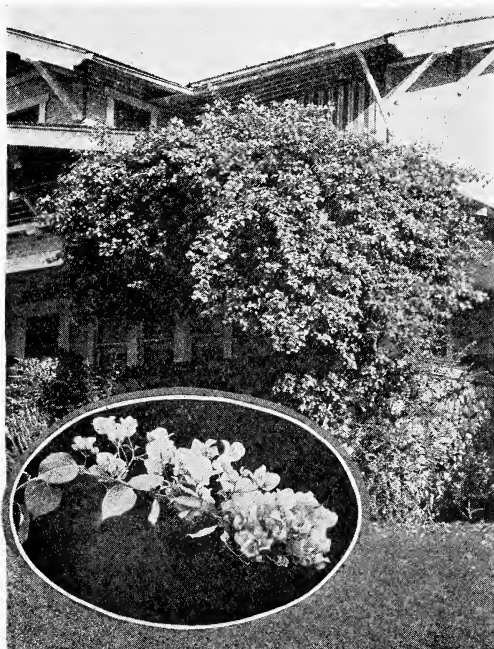
JASMINUM primulinum. Flowers golden, abundant; leaves divided into three leaflets, shiny above, narrow; graceful shrub for bank-coverer. 5 gal., \$1.50; 1 gal., 50c; 4 in. pots, 30c.

KENNEDYA comptoniana. "Australian Climber." A vigorous grower with light foliage and dark blue flowers. Splendid to mix in with foliage plants in half-shaded places. 5 gal., \$1.50; 4 in. pots, 30c.

LONICERA aureo-reticulata. Attractive golden netted leaves; can be used as a ground-coverer, for hanging baskets and window-boxes. 5 gal., \$1.50; 1 gal., 50c; 4 in. pots, 30c.

LONICERA halliana. "Hall's Honeysuckle." Flowers white, changing to yellow, purplish outside, 1 to 1½ in. long very fragrant; rapid growth. 5 gal., \$1.50; 1 gal., 50c; 4 in. pots, 30c.

MUEHLENBECKIA complexa. "Maiden Hair Fern." Flowers white, insignificant; leaves small, dark green; vine should be pruned to keep it within bounds; rapid growth. 1 gal., 50c; 4 in. pots, 30c.



BOUGAINVILLEA BRAZILIENSIS
Flowers Brilliant Reddish Purple

MANDEVILLEA chilensis. "Chilean Jasmine." Flowers white, less than 9 in a cluster, each 2 in. across, fragrant; leaves dark green above, blue-green beneath, heart-shaped, twice as long as wide. 5 gal., \$1.50.

MANDEVILLEA suaveolens. Flowers large white, 2 in. across, about 9 in a cluster, fragrant; leaves red-stemmed, dark green above, blue-green beneath. 5 gal., \$1.50.

PASSIFLORA edulis. "Purple Granadilla," "Passion Vine." Flowers large white, tinted with purple; leaves large, deeply three-lobed. 1 gal., 50c; 4 in. pots, 30c.

TECOMA capensis. Half-climbing or nearly upright shrub. Flowers orange-red to scarlet, 2 in. long; leaves oddly divided with 7 to 9 leaflets; shiny above. 5 gal., \$1.50; 1 gal., 50c; 4 in. pots, 30c.

TECOMA mackeni. (Pandorea ricasoliana.) Flowers light pink striped with red, 2 in. long; leaves evergreen, dark green above, pale beneath. Does well in full sun. 5 gal., \$1.50; 1 gal., 50c.

TECOMA stans. Flowers terminal, yellow, tubular, 1½ in. long; pinnate leaves, bright green above, light green beneath. Can be used as a shrub. 5 gal., \$1.50; 1 gal., 50c.

VINCA minor. "Periwinkle," "Trailing Myrtle." Flowers lilac-blue; trailing evergreen; good for baskets, window boxes, ground coverer when shaded. 4 in. pots, 30c.

WISTERIA chinensis. "Chinese Wisteria." Flowers blue-violet, showy; also flowers white. 5 gal., \$1.50; 4 in. pots, 30c.

WISTERIA floribunda violacea-plena. "Japanese Wisteria." Flowers double, violet shade. Very rare and beautiful; worth the price. 5 gal., \$2.50.

WANDERING JEW. Green trailing vine; thick leaved. 4 in. pots, 30c.

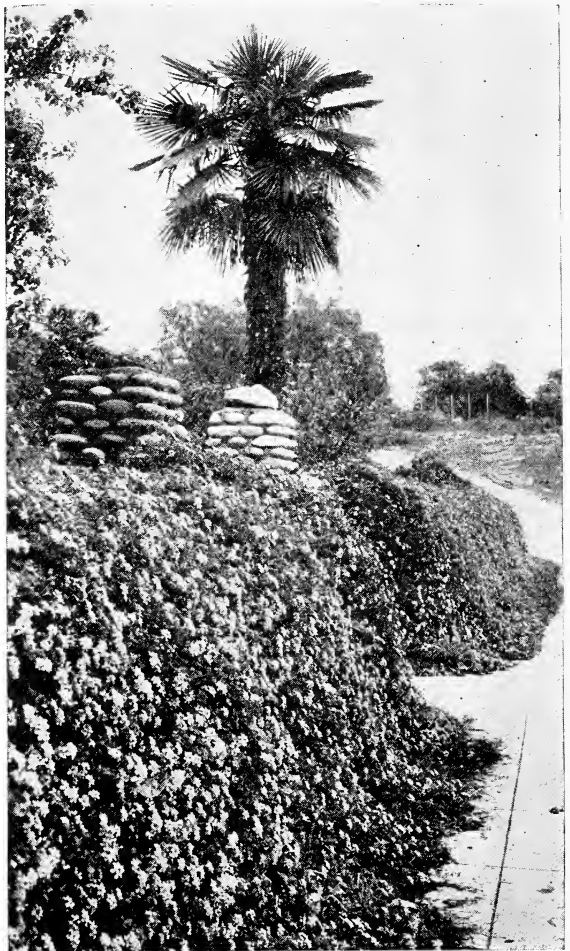
WANDERING JEW variegated. Same as above except that leaves are variegated with stripes of light green. 4 in. pots, 30c.

Ferns

Alsophila australis. "Australian Tree Fern." A graceful rapid growing tree fern, light green in color, brown hair on the stems and unfolded fronds. Specimen plants, priced from \$5.00 to \$15.00.

Asparagus plumosa. Attractive dark green lace-like foliage. Grows bushy in pot; in ground grows long climbing sprays. 5 gal., \$1.50; 1 gal., 50c; 4 in. pots, 30c.

Asparagus sprengerii. "Asparagus Fern." Flowers numerous, whitish pink, fragrant. Berries bright coral red. Very ornamental in hanging baskets, window boxes, or tubs. 4 in. pots, 30c; 6 in. pots, 60c.



TRAILING LANTANA

Lavender Flowers. Ground and Wall Cover. See Page 6.

Boston. Well-known indoor pot fern. 6 in. pots, \$1.50; 5 in. pots, 75c; 4 in. pots, 50c.

Roosevelt. Boston type; crinkly leaves. 6 in. pots, \$2.00; 5 in. pots, \$1.00; 4 in. pots, 75c.

Woodwardia. The best hardy fern. Does well in partial shade. Native to California mountains. 1 gal., 50c.

Cactus

Agave americana. "Century Plant," or American Aloe." Leaves short, stiff, fleshy, margins with teeth, apex tipped with pungent spine. Color bluish-gray. 5 gal., \$1.50; 1 gal., 50c.

Agave marginata. Same as above except that the stems are margined with yellowish-white color. 5 gal., \$1.50; 1 gal., 50c.

Aloe picta. (Obscura.) Leaves in compact rosette, green, with scattered small pale blotches. 1 gal., 50c.

Furcrae gigantea. "Malgache Aloe." Leaves light green, not as numerous toothed as the Century plant, nearly flat, wavy; flower stalk about 25 ft. high. 5 gal., 1-1½ ft., \$1.50.

Pereskopsis ubulata. 3 ft. Stem and branches cylindrical; upright growth; leaves half cylindrical, about 3 in. long, ending in a spine; spines on old plants taking the place of the lower leaves, 2 to 4 in. long. Makes a fine hedge for a cactus garden. 1 gal., 50c.

Rochea coccinea. (Crassula coccinea.) 2 ft. Flowers bright scarlet, 2 in. long, fragrant; leaves ovate, fleshy. 5 gal., \$1.00; 1 gal., 50c.

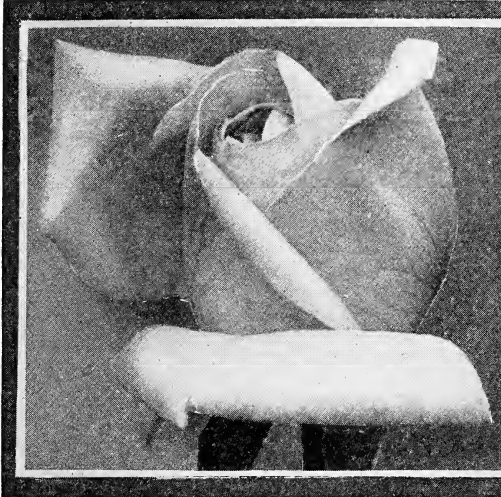
Rochea odoratissima. Flowers yellow or cream color, 1 in. long, fragrant. 1 gal., 50c.



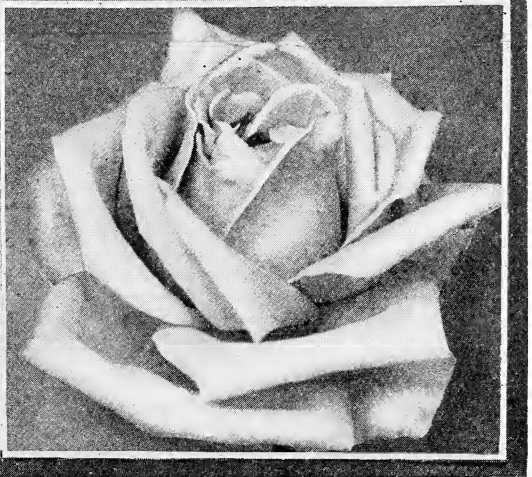
BOSTON FERN
The Hardest House Fern

Choice Roses For The Garden

A Collection of Carefully Chosen Varieties



GOLDEN EMBLEM



LOS ANGELES

There are a great many varieties of roses. Each year new varieties are added. Many of these are discarded in one or two years and only the best are kept.

The climate and soil in the San Fernando Valley is especially favorable for the growing of roses. As a result many carloads of rose plants are grown here and shipped to eastern nurserymen and florists. We grow our roses under these favorable conditions and therefore have for our customers strong and well developed plants which have pleased our patrons in the past and will please all who plant them. All are budded on Ragged Robin roots.

In our collection you will find many of the best roses to be had. To avoid confusion our list has been cut down to include the best new sorts, as well as the tried varieties of recent years. These include all of the pleasing shades.

Abbreviations: H. T., Hybrid Tea. T. Tea. H. P., Hybrid Perpetual. Per., Pernitiana.

See page 30 for Planting Instructions.

Fertilizers

Grossit sheep manure. Ground and baked, no weed seeds. 10 lbs., 20c; 50 lbs., \$1.00; 100 lbs., \$1.75.

Fish Meal. Strong odor. Little goes long way. 7c per lb.; \$6.00 per 100 lbs.

Blood meal. Very strong. Use sparingly. 10 lbs., 70c; 50 lbs., \$3.25; 100 lbs., \$6.00.

Ford ammonium sulphate. Contains high percentage of soluble nitrogen. 10 lbs., 70c; 50 lbs., \$3.25; 100 lbs., \$6.00.

Commercial mixture. 6-9-6. Contains bone-meal, potash, nitrogen, phosphoric acid. Splendid for roses. Use in small amounts. 10 lbs., 50c; 50 lbs., \$2.25; 100 lbs., \$4.00.

Peat humus. Radio brand. Fine to make soil mellow and open. 10 lbs., 25c; 100 lbs., \$1.25.

Five Extra Choice New Hybrid Tea Roses

Price \$1.25

Angele Pernet. H. T. New. Regarded the most striking colored rose in existence. Buds flaming orange, opening to rich brownish orange.

Dame Edith Helen. H. T. New. Possibly the finest pink rose of all time. Beautiful in bud, full in bloom. Extremely free bloomer and delightfully fragrant.

Mrs. Henry Bowles. H. T. New. Another new pink rose of more than usual interest. Flowers large and full. Very free bloomer.

Rev. F. Page Roberts. H. T. New. A sensation among new yellow roses. Buds stained copper, open out buff yellow on inner side of petals with deep salmon on outer side.

Roselandia. H. T. Apricot yellow, shaded cadmium-yellow. Buds and bloom fine form. Free flowering. Stems good.

A Select Half Dozen New Roses

Price \$1.00

Etoile de Feu. H. T. New. Flaming orange. Flowers large, cup shaped. Foliage bright green. Plant spreading.

Golden Ophelia. H. T. New. Deep golden-yellow, outer petals slightly lighter. Medium. Plant stiff stem grower.

Independence Day. H. T. New. Flowers sunflower-yellow overlaid with apricot-orange, fused together in mature bloom. Foliage glossy, deep green.

Mrs. F. R. Pierson. H. T. New. Scarlet-crimson. Resembles its parent, Premier, in form and all good qualities except in color. You will appreciate it in your garden.

Shot Silk. H. T. New. Fine buds of gold and orange opening to flowers of coppery rose shot with golden yellow. Fragrance very pleasing. Clean bright foliage in great abundance.

Sunstar. H. T. New. Flowers deep orange and yellow splashed crimson and vermilion. Bush strong grower.

Tried, Good Roses of Yesteryear

Price 75c; \$6.50 per 10

Columbia. H. T. Deep peach pink, fragrance beyond description.

Constance. H. T. Cadmium-yellow, blooms large and full; buds long and pointed.

Duchess of Wellington. H. T. Saffron-yellow stained with a rich crimson changing to coppery yellow.

Eldorado. H. T. Bright golden flowers touched with scarlet; large, full, fragrant.

Golden Emblem. Per. Clear yellow, marked with stripes of deep carmine. Sweetly fragrant. One of the most satisfactory roses in California.

Irish Fire Flame. H. T. A beautiful single rose. Buds are very rich in coloring, a deep orange streaked with crimson, opening into a large single flower of golden color.

Los Angeles. H. T. Luminous flame pink, toned with coral. Has held the public favor to a greater degree than any other rose.

Louise Catherine Breslau. H. T. A distinct shade in roses. Buds coral-red opening into cup-shaped flowers of salmon shading to various hues of pink, orange, and copper.

Miss Lolita Armour. Per. Color golden copper with a combination of blending colors. Very attractive.

Mrs. Aaron Ward. H. T. Medium sized Indian yellow washed salmon rose. Petals frilled, which gives it a distinctive charm.

Mrs. W. C. Egan. H. T. Shaded tones of pink, gold at base. One of the finest new roses.

Ophelia. H. T. Salmon, shaded with rose. Buds unusually attractive.

Padre. Per. Coppery scarlet flushed with yellow at base of petals. Free flowering.

Rose Marie. H. T. Rose pink with fringed petals. A fine fragrant garden rose.

Souv. de Claudius Pernet. Per. New. Clear sunflower yellow unstained by any other color. Foliage holly-like.

Souv. de Georges Pernet. Per. New. Brilliant pink overlaid with orange yellow. Exceedingly attractive.

Sunburst. H. T. One of the oldest cadmium-yellow roses with orange center, which has not lost its charm.

Souv. de H. A. Verschuren. New. A fine yellow rose with large flowers and long-pointed buds.

Templar. H. T. Clear even shade of red; good size, blooming all seasons. Free and strong.

William F. Dreer. H. T. Soft apricot-pink, exceedingly lovely with additional colors. Profuse bloomer.



MAMAN COCHET

Well Known Favorite Varieties

Price 50c; \$4.00 per 10

Frau Karl Druschki. H. P. Pure white, outer petals occasionally tinged pink. Long handsome buds, flowers large. Plant grows vigorously. Free bloomer.

General McArthur. H. T. Crimson scarlet, free blooming, large double, and fragrant.

Gruss an Teplitz. H. T. A fragrant fiery crimson garden rose. Blooms freely.

Hadley. H. T. Perfectly formed, deep velvety crimson rose. Strong grower.

Hoosier Beauty. H. T. Big blooms of dark red, double, always admired.

Isobel. H. T. Very large single scarlet orange flowers, continuous bloomer. Lovely in bud.

Kaiserin Auguste Viktoria. H. T. Double white, tinted lemon at base. Best white.

Killarney. H. T. Rosy carmine, large semi-double; long buds; free flowering. An old favorite.

Lady Alice Stanley. H. T. Outside petals coral-rose, inside pale flesh-pink. Free blooming plant. A good rose for cutting.

Lady Hillingdon. T. Rich golden yellow, cup-shaped blooms, sweetly scented. Bush strong grower.

Mme. Leon Pain. H. T. Silvery salmon and entirely distinct in color. Bush large and flowers full.

Mme. Abel Chatenay. H. T. A good old favorite. Rosy-carmine, full and free bloomer.

Mme. Edouard Herriott. Per. Buds dusky fire, blooms red hot copper, changing to orange-pink.

Mme. Segond Weber. H. T. Salmon pink, shaded silvery pink. Long buds and fragrant flowers.

Mrs. A. R. Waddell. H. T. Perfect form, good keeper. Rosy scarlet, opening rosy-salmon. Strong grower.

Mrs. Geo. Sawyer. T. Bright peach-pink. Flowers on end of long stems. Wonderful grower and bloomer.

Paul Neyron. H. P. Largest rose in our collection. Double bright shining pink.

Pink Maman Cochet. T. Buds large, elegantly pointed. Flowers span to clear rich pink.

Premier. H. T. Color deep rich pink; excellent for cutting. Highly fragrant.

Radiance. H. T. Heading the list of the American Rose Society for two years. Produces extra large blooms and many of them. Color silvery pink shaded with deeper color.

Red Radiance. H. T. Clear red, otherwise same as Radiance.

Winnie Davis. H. T. Color rich apricot pink. Beautifully formed. Free in growth and bloom.



GENERAL McARTHUR

Superb Climbing Roses

Price 75c; \$6.50 for 10

- Clb. **Belle of Portugal.** Flowers of soft pink and salmon. Long buds, rapid grower. Blooms from January to June.
- Clb. **Mme. Edouard Herriott.** See description of bush rose. Climber blooms well.
- Clb. **Los Angeles.** See description of bush rose.
- Clb. **Marechal Neil.** T. Lemon yellow, highly perfumed. Though an old rose, still a favorite.
- Clb. **Paul's Scarlet.** Vivid scarlet shaded slightly crimson. Immensely attractive.
- Clb. **Sunburst.** Beautiful yellow. Long buds.

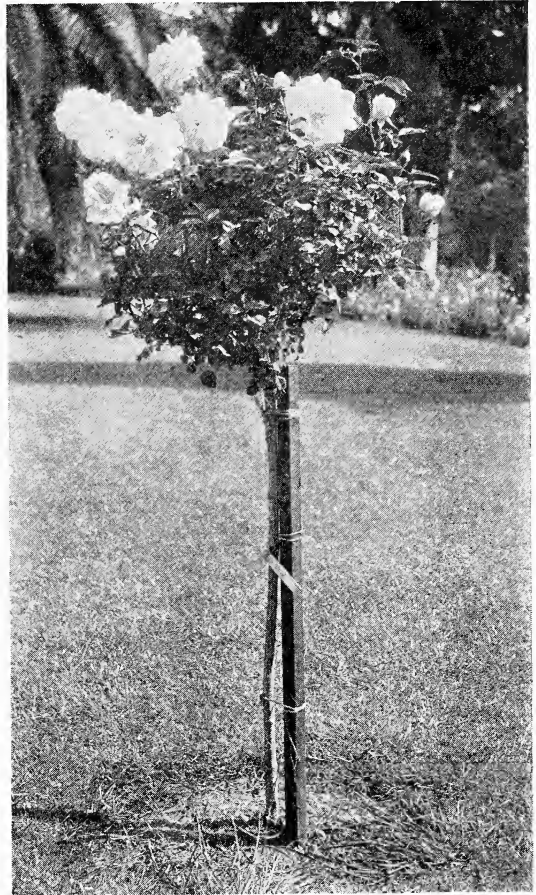
Standard Climbing Roses

Price 50c; \$4.00 per 10

- Clb. **Cecil Brunner.** T. Pink. Small button-hole flowers.
- Clb. **Cherokee, Pink.** A desirable single rose for hedge and fences; blooms freely.
- Clb. **Cherokee, Red.** Effective for banks, fences, etc.
- Clb. **Hadley.** See description of bush rose.
- Clb. **Hoosier Beauty.** See description of bush rose.
- Clb. **General McArthur.** See description of bush rose.
- Clb. **Kaiserin Auguste Viktoria.** See description of bush rose.
- Clb. **Mme. Caroline Testout.** Beautiful large pink. Strong grower.
- Clb. **Pink Maman Cochet.** See description of bush rose.



CLIMBING ROSES



TREE SHAPED ROSE

Tree or Standard Roses

Price in 5 gal., 24 in. stems, \$2.00 each; 30 in. stems, \$2.50 each.

These varieties only. All are strong growing sorts and particularly selected for standard roses.

- | | |
|---------------------------|--------------------------|
| Golden Emblem | Mabel Morse |
| Hadley | Mme. Edouard Herriott |
| Hoosier Beauty | Modesty |
| Kaiserin Auguste Viktoria | Rose Marie |
| Los Angeles | Souv. de Claudius Pernet |
| Louise C. Breslau | William F. Dreer |

Two varieties on one head

Price \$3.00 each

Los Angeles and Golden Emblem

Three varieties on one head

Price \$3.50 each

Hoosier Beauty, Los Angeles and Golden Emblem

Phlox

- Strong clumps, 25c each; \$2.00 per 10.
- Australia. Crimson purple.
- Etna. Pink with rose eye.
- Independence. Pink, white marking near eye.
- La Vogue. Soft pink.
- Louise Abbema. White shot with rose.
- Mad. Marie Kuppenheim. White Dwarf.
- Mrs. Chas. Door. White lavender.
- Light. Lavender.
- Mrs. Jenkins. Old favorite. Pure white.

Sub-Tropical Fruit Trees and Plants

Avocados, Oranges, Lemons, Grapefruit, Etc.

Care must be exercised in the planting of sub-tropical trees as to the climatic condition. Cherimoyas, Sapotas, and other tender varieties should not be planted where the thermometer goes below 26 degrees above zero. Consult us with regard to temperatures for planting trees offered in this section if you are in doubt.

Avocados

Price, 4 to 5 ft., \$3.50

Fuerte. Thick skin. November to June. The favorite avocado for warm situations. Rich quality, creamy buttery flesh; medium size; skin smooth, green.

Puebla. Medium thick skin. December to March. Hardier than many thick skin varieties. Medium size; flesh rich and nutty.

Caliente. Thin skin. September to November. Hardy, purple skin, with excellent quality. Bears regularly. Best of fall fruit.

Ganter. Thin skin. October to December. Well-known old hardy variety. Skin green; quality very good; dependable.

Delicious Sub-Tropical Fruits

CARISSA grandiflora. "Natal Plum." Ornamental flowering and fruiting. White flowers, fruits edible, makes sauce similar to cranberries. 1 gal., \$1.00; 4 in. pots, 60c.

CHERIMOYA (Whaley). "Custard Apple." Sub-tropical fruit. Tree evergreen. Fruit melting and custard-like. Plant only in warm locations. Boxed plants, \$4.00.

FEIJOA. "Coolidge." Budded. Flavor good, size large; excellent bearer and pollinizer. Balled, 1 1/2 to 2 ft., \$2.00.

FEIJOA. Large fruiting varieties. Excellent for jelly and sauce. Makes fine ornamental bush. 1 1/2 to 2 ft., \$2.00.

GUAVA. "Strawberry." Large fine red fruits, ripening in October. 5 gal., \$2.00; 1 gal., 2-3 ft., 50c.

GUAVA. "Yellow Strawberry." Same as above, fruit yellow and considered higher flavor. 1 gal., 2-3 ft., 50c; 3-4 ft., 75c.



ORANGES

Have One or More Trees in Your Garden

JUJUBE. "Chinese Date." Best varieties. Excellent for curing. 4 to 6 ft., \$2.00.

LOQUAT. "Champagne." Large, early, yellow fruit. Flesh white, quality high; ripens in May. Balled, 2-3 ft., \$2.00.

LOQUAT (Thales). Large orange colored fruit, very rich in flavor and late to ripen. Balled, 2-3 ft., \$2.00. June.

MACADAMIA. "Queensland Nut." A beautiful ornamental tree, bearing delicious nuts. 5 gal., 2-3 ft., \$2.50.

OLIVE. "Manzanillo." Fruit large, ripens early and splendid for pickles. Bare-roots, 3-4 ft., \$1.25. October.

PAPAYA. "Fruiting." A delicious tropical fruit. Trees are grown for their tropical appearance. Not guaranteed to bear fruit because fruit bearing trees cannot be determined. Balled, 5-6 ft., \$5.00.

SAPOTA (Wilson). An attractive sub-tropical tree. Fruits of this budded variety are especially delicious. Resembles the Apple in shape. Boxed plants, \$5.00.

Citrus Fruits

Oranges, Lemons, Etc.

Ruby Blood Orange. Flesh streaked with red. Flesh rich, juicy and sweet. 2 yr., \$2.50.

Valencia Orange. The summer orange of California. Sweet and juicy. 2 yr., \$2.50.

Washington Navel Orange. Well-known California winter orange. Sweet, juicy and richly flavored. 2 yr., \$2.50.

Eureka Lemon. The leading lemon of California. Bears continuously. Fruit good size. 2 yr., \$2.50.

Ponderosa Lemon. Very large fruit, adapted to home grounds. Bears early. 2 yr., \$2.75.

Marsh Seedless Grapefruit. The best grapefruit. Large and juicy. Ripens, Feb. to Oct. 2 yr., \$2.50.

Mexican Lime. The small lime of commerce. Full of deliciously flavored juice. 2 yr., \$2.75.

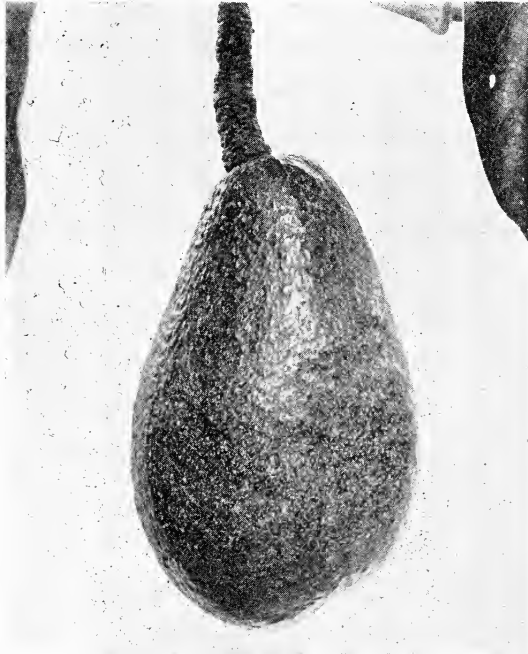
Bearss Seedless Lime. Larger fruit, juicy and rich flavor. 2 yr., \$2.75.

Dancy Tangerine. The leading "Kid Glove" orange. Small but highly flavored and sweet. Ripens, February to May. 2 yr., \$2.75.

King Mandarin. Extra large fruit. Highest quality, almost seedless. March to August. 2 yr., \$2.75.

Satsuma Tangerine. Earlier than Dancy, very delicious. 2 yr., \$2.75.

Kumquats. "Japanese Orange." Small fruit, of olive shape. Make good candied fruit. Tree ornamental. January to April. 2 yr., \$2.50.



FUERTE AVDCADO
Leading High Quality Fruit

Orchard and Garden Fruit Trees

Selected for Planting in the Southwest

Fruit from your own trees in your own Garden is always better than the fruit usually found on the market, which has been picked for several days. Then again, it is real fun to plant a fruit tree and watch it grow and produce luscious fruit for your table and to preserve for the winter.

In our collection of varieties we have selected those which have been proven good in this section and our experience of years enables us to ask the full confidence of our customers that they will receive the very best. We guarantee every tree will be true to name.

Listed in order of ripening.

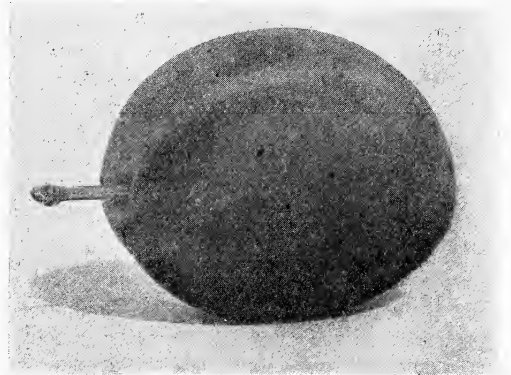
Apples

4 to 6 ft., 75c each; \$6.50 per 10

- Delicious.** Large; red; very high quality. October.
- Gravenstein.** Large; striped red and orange. Canning and eating. August.
- Winter Banana.** Golden Yellow. Splendid cooking apple. September.
- White Winter Pearmain.** Large; pale yellow; tender, juicy and highly flavored. November.
- Transcendent Crabapple.** The best crabapple. Large; yellow. August.



THE J. H. HALE PEACH
Best Yellow Mid-season Freestone Peach



FRENCH PRUNE
Sweet Deliciously Flavored Plum

Peaches

4 to 6 ft., 75c each; \$6.50 per 10.
All Freestone except where noted.

- Mayflower.** Red all over with white flesh; excellent flavor. Earliest peach. June.
- Alexander.** Large; early; red blushed; juicy; sweet, white flesh. July.
- Early Imperial.** Earliest freestone yellow peach. Quality good; ripens when peaches are in demand. July.
- Australian Saucer.** "Chinese Peach." Delicious flat, white, early, freestone, desert peach. July.
- Strawberry.** Highly flavored early peach for the home orchard. Skin white, blushed red; flesh white. July.
- Early Crawford.** Large, yellow skin and flesh; well known. July.
- Foster.** An old time favorite. Freestone. Melting, large, and good to eat.
- Tuscan Cling.** Earliest cling. Desirable for canning. Yellow flesh. July.
- Phillips Cling.** A fine large canning peach. Yellow flesh. September.
- Salway.** Large, yellow; excellent flavor. September.
- J. H. Hale.** Highly colored; flesh yellow, firm. Large; good bearer. Sells better than any other variety. Aug.
- Elberta.** Well-known peach that always pleases. Yellow skin and flesh, highly flavored. August.
- Lovell.** Yellow freestone. Good for canning and eating. August.
- Muir.** Just a very good sweet, yellow, freestone peach. Bears consistently. August.

Apricots

4 to 6 ft., 75c each; \$6.50 per 10

- Newcastle.** The earliest apricot. Very good and relished because of early ripening. July.
- Royal.** The standard market variety. Rich flavor. July.
- Tilton.** Large, firm, excellently flavored late variety. July.
- Moorpark.** Largest freestone; very rich in flavor. Aug.

Nectarines

4 to 6 ft., 75c each; \$6.50 per 10

- Gower.** Firm; rich flavor, very early. Red. Early July.
- Stanwick.** Large; flesh white, tender, juicy. August.

Cherries

4 to 6 ft., 75c each; \$6.50 per 10.

Black Tartarian. Large; bears well in many lower altitudes; almost black. Sweet. June.

English Morello. Dark red, acid, eastern cherry. Bears well everywhere. July.

Royal Anne. Sweet, pale yellow with red cheeks, enormous bearer. July.

Plums

4 to 6 ft., 75c each; \$6.50 per 10.

Plumcot. A cross between the plum and the apricot. Delicious flavor. Early. June.

Climax. Very large; deep red and yellow, flesh yellow and rich. July.

Santa Rosa. Very large; deep crimson; good to eat and for canning. June.

Kelsey. Large; juicy; rich vinous flavor. August.

Satsuma. Dark red from skin to pit; very productive. August.

Wickson. A large, yellow, firm, sugary delicious plum. August.

Damson. Every orchard should include this variety. Excellent for preserves. September.

Prunes

4 to 6 ft., 75c each; \$6.50 per 10.

Tragedy. A juicy and sweet plum, but classed as a prune. Purple. Early. July.

French XX. Valuable to eat fresh or to dry for the breakfast table. August.

Quince

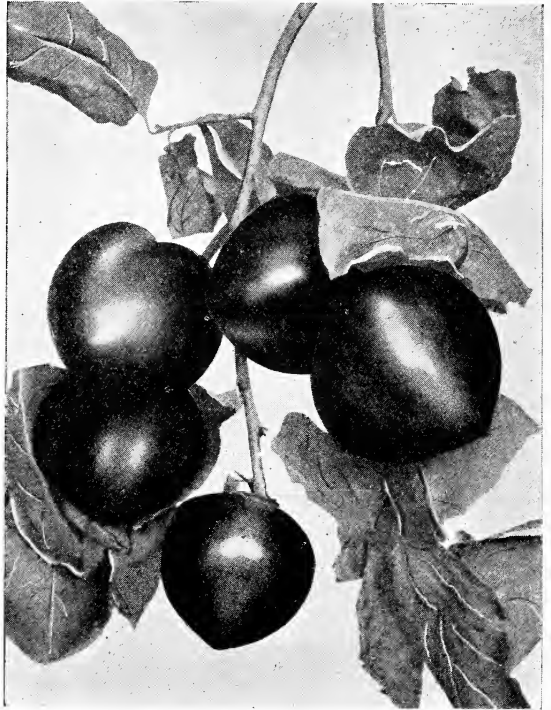
4 to 6 ft., 75c each; \$6.50 per 10.

Pineapple. Large, fine flavored and a good bearer. October.

Pomegranate

4 to 6 ft., 75c each; \$6.50 per 10.

Wonderful. The best variety. Tree and fruit ornamental. Excellent flavor. October.



HACHIYA PERSIMMON
Large, High Quality Variety

Figs

4 to 6 ft., 75c each; \$6.50 per 10.

Black Spanish. Dark purple; large; juicy; sweet; flavor rich.

Black Turkey. Violet-brown color; very prolific. Highly prized. Hardy; ripens early.

Mission. "California Black." The best black or dark colored fig.

Kadota. "White Pacific." Unequaled for all purposes. Eating fresh, drying, or preserving.

Pears

4 to 6 ft., 75c each; \$6.50 per 10.

Bartlett. The standard pear; delicious; rich flavor and buttery. August.

Seckel. Small, sweet, spicy. Excels all other sorts in color. September.

Winter Nelis. Dull russet melting late pear. October.

Dwarf Pears

Double worked. 4 to 6 ft., 90c; 3 to 4 ft., 80c.

Bartlett. See description above.

Beurre de Anjou. Large; russet, blushed crimson. Flesh tender and spicy. September.

Winter Nelis. See description above.

Persimmon

Fuyu. New. Eats like an apple. Good size; flattened; red. Not astringent. 4 to 6 ft., \$1.50.

Hachiya. The large conical variety often seen in the market. Sweet and rich in flavor. 4 to 6 ft., \$1.25.



ROYAL APRICOT
Bears Heavily — Flavor Excellent

Almonds

4 to 6 ft., 75c each; \$6.50 per 10.

Ne Plus Ultra. Nuts large and long; fine flavor; soft shell. Plant with Nonpareil. September.

Nonpareil. Shell very thin; nut good size. September.

Walnuts

Price, 6 to 8 ft., \$1.50 each; \$12.50 for 10.

Price, 8 to 10 ft., \$1.75 each; \$15.00 for 10.
50 or more at 15c less per tree.

Eureka. Large elongated nuts. Blooms later than Placentia.

Placentia. "English Walnut." The best thin-shelled nut. October.

Chestnuts

Spanish. "Italian." Dependable bearer of large nuts; sweet and good. Adapted to Pacific Coast. Tree ornamental. 3 to 4 ft., \$1.00.

American Sweet. "Large." Larger than the ordinary American Sweet. Good bearer, strong grower. Bare-root, 3-4 ft., \$2.00.

Progress. "Sweet." High quality and bears medium sized nuts in second year. Bare-root, 3-4 ft., \$2.00.

Filberts

Plant at least one of each.

Du Chilly. Ornamental. Bears fairly good nuts; polinizer Barcelona. 2 to 3 ft., \$1.00.

Barcelona. Best Filbert for Western States. Nut round sweet and rich flavor. 2 to 3 ft., \$1.00.

Berry Plants

Deciduous plants are packed bare-root in moss.

Price 25c each; \$2.00 for 10; except as noted.

La France. Raspberry. New. A valuable large berry ripening from June to December.

St. Regis Raspberry. Early to ripen. Red. Standard variety.

Crandall's Early Blackberry. The best early variety.

Mammoth Thornless Blackberry. "Cory Thornless." Berries long and highly flavored. Few seeds. Midseason.

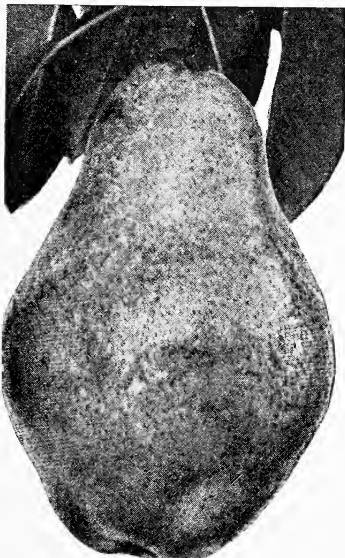
Gardena Dewberry. Early trailing blackberry.

Loganberry. Purplish-red, flavor of raspberry and blackberry combined.

Youngberry. New cross between the Dewberry and Loganberry. Raspberry flavor. Berry large.

Oregon Champion Gooseberry. Large round fruit, 40c each.

Cherry Currant. Bright red; good quality, 40c each.



BARTLETT PEAR
Large, Firm Fruit; Melting When Ripe



PLACENTIA WALNUT
Leading Thin-Shelled Walnut

Asparagus and Rhubarb

Mary Washington Asparagus. New; early; rust resistant. Roots, 75c for 10.

Wagner Giant Cherry Rhubarb. Stalks large with excellent flavor. 35c each; \$2.50 per 10.

Wagner Panama. Rhubarb. New. Very large stem. Tender. 25c each; \$2.50 per 10.

Banner Strawberry. Large fruit, Unexcelled for home gardens. Bears throughout summer season. Per 10, 40c; per 100, \$2.00; per 1000, \$15.00.

Progressive Strawberry. Practically everbearing. Fruit medium size. Per 10, 50c; per 100, \$2.50; per 1000, \$20.00.

California Grapes

Price 25c each; \$2.00 for 10.

Letter T. indicates vine suitable for trellis.

Black Hamburg. T. Large black round berries. Sept.

Black Muscat. Muscat flavor; very delicious. Sept.

Rose of Peru. T. Heavy bearer. Good quality. Sept.

Cornichon. T. Long berries, large bunches. October.

Emperor. Large late red berry. Valuable to pack in redwood sawdust for Christmas.

Flame Tokay. Thick skin, red berry. September.

Gros. Colman. Large black berry—close bunches.

Malaga. T. Large green berry. Sweet. September.

Muscat. White raisin grape. Rich flavor. September.

Thompson Seedless. T. No seeds, sweet and highly flavored. Keeps well; bunches large. July.

Eastern and New California Grapes

Price 35c each; \$3.00 for 10.

Ribier. T. Probably the largest berry of all. Black. Close bunches. September.

Red Malaga. T. A delicious red grape. September.

Concord. T. Known everywhere. Does well in California. Black. Good for juice and jelly. August.

Niagara. White, otherwise similar in flavor and habits to Concord. August.

Pierce. "California Concord." Large berry with Concord flavor. August.

Getting Trees and Plants Started

Balled Plants. By this we refer to trees or shrubs taken out of the Nursery with a ball of earth around the roots, wrapped with burlap and tied with sisal twine. When you plant a tree of this kind, do not remove the burlap. Dig the holes larger and deeper than the ball of earth will take, then throw some loose dirt in the bottom and fill around the ball nearly to the top, then cut the top string and fold the burlap back and fill in with dirt to the level of the ground. While filling, settle the earth with water. This method of planting includes the planting of Citrus, Avocados, and all other kinds of trees delivered with balls of earth around the roots.

Plants in Containers. By this we refer to plants that are delivered in five-gallon and one-gallon cans and other similar containers of whatever size. Cut the cans down the two sides and pull back away from the dirt. This will leave the dirt intact, which do not break in handling, but place in the hole you have prepared after putting loose dirt in the bottom and fill in with loose moist dirt around the clump of dirt that surrounds the roots, settling the earth with water as you fill it in.

Bare-Rooted Trees and Vines. This refers to Deciduous trees and vines which lose their leaves in the winter and are delivered to you without ball of earth around the roots. Dig the holes plenty large enough to take in the roots without folding, cut off extra long side roots, fill in with loose moist dirt and settle with water as you fill in. This method of planting includes Berry vines, Grape vines, and all kinds of deciduous fruit trees.

Distances apart. Plant Orange, Lemon, Grapefruit, Peach, Plum, Apricot, Cherry, Pear, Apple, Almonds, 20 to 24 feet; Avocados 25 to 30 feet apart; Walnuts 40 to 50 feet; Grape Vines 6 to 10 feet; Blackberry and other berry plants 4 to 7 feet; Strawberry plants 1½ feet apart in rows with rows 3 feet apart.

Plants to an acre:

4 feet by 4 feet...2,722	20 feet by 20 feet... 108
6 feet by 6 feet...1,200	22 feet by 22 feet... 90
8 feet by 8 feet... 600	24 feet by 24 feet... 75
10 feet by 10 feet... 435	25 feet by 25 feet... 69
12 feet by 12 feet... 302	30 feet by 30 feet... 48
14 feet by 14 feet... 222	50 feet by 50 feet... 17

Rose Bushes. When received bare-rooted, keep the roots moist and protected from the wind and sun. Roses do well in most soils, prefer the sun. Spade the ground to a depth of 18 inches before planting and mix in some well rotted manure in the soil. Our roses are budded on Ragged Robin roots and are budded low. It is advisable to plant at least two or three inches of the bud below the ground. If any suckers appear as if coming from below the bud, cut them out. Prune the main leaders back two or three inches after you plant them. Give them plenty of water and avoid applying moisture to the leaves and buds except occasionally to wash off the dust.

Pruning. It is well to cut back deciduous plants after planting, leaving three to five branches on fruit trees and on the roses. Evergreen trees are usually pruned as they should be grown when they leave the Nursery, but any unsightly branches may be cut off.

Fertilizer. Plants a rule do not need fertilizer until after they have started to grow and in good soils not for a few weeks after planting. It is a mistake to put fertilizer in the holes, instead spread on top of the ground, and hoe into the soil. The moisture will take the strength to the roots. In adobe soil gypsum may be spaded into the soil with good effect as this will loosen up the soil. To get good roses, a good application of well rotted manure or commercial fertilizer with bone meal content spaded into the top soil after planting is advisable.

Balled trees and trees in 1-gallon, 5-gallon, or other size containers may be planted almost any month of the year in cooler localities. In extremely warm localities it is not advisable to do much planting during the hot summer months. Deciduous trees become dormant usually about December 15th and may be planted any time after that date until April 15th. Many of the deciduous trees and plants that we list are placed in containers in the early spring and may be planted the same as evergreen trees. For instance, we will be able to supply European Sycamore, Poplars, Willows, Rose of Sharon, Deutzias and similar deciduous trees and shrubs any time during the year. Cost of containers additional to prices named in catalog.

Trees and Shrubs Bearing Ornamental Berries

Blue Berries

- Berberis darwini
- Mahonia
- Myrtle—in var.
- Privet
- Raphiolepis

Orange Berries

- Cotoneaster franchetti
- Duranta plumieri
- Pittosporum—in var.
- Pyracantha angustifolia
- Pyracantha lalandi

Red Berries

- California Holly
- Cotoneaster
- Cneorum
- Eugenia hookeriana
- Eugenia myrtifolia
- Euonymus japonicus
- Gold Dust plant
- Irish Yew
- Nandina domestica
- Pepper tree
- Pyracantha crenulata
- Pyracantha yunnanensis
- Strawberry tree
- Viburnum odoratissima

Plants for Seaside Planting

- Acacia armata
- Acacia melanoxylon
- Acacia verticillata
- Arbutus unedo
- Berberis darwini
- Boxwood
- Buddleia
- California Coffee Berry
- Ceanothus
- Convolvulus
- Coprosma
- Coronilla glauca
- Cotoneaster microphylla
- Crataegus
- Cypress, Lawson
- Cypress
- Deutzia
- Eleagnus
- Escallonia
- Euonymus
- Fuchsia
- Genista
- Geranium
- Guava
- Hydrangea
- Honeysuckle (shrub)
- Ivy
- Juniper—in var.
- Lagunaria pattersoni
- Lavender
- Leptospermum
- Muehlenbeckia
- Myrtle
- Pepper Tree
- Philadelphus
- Pine
- Pittosporum tobira
- Privet
- Rock Rose
- Spanish broom
- Spruce, Oriental
- Statice
- Tamarix
- Veronica
- Viburnum
- Weigelia
- Yucca

Plants for Ground Cover

- Agathaea
- Anemone
- Chorizema
- Columbine
- Convolvulus
- Cotoneaster horizontalis
- Cuphea
- Daisy, English
- Fuchsia
- Gazania
- Geum
- Hypericum
- Ivy
- Juniper
- Lantana, creeping
- Lippia repens
- Lobelia
- Lopezia
- Messebryanthemum
- Petunias
- Primrose
- Sedum
- Sollya
- Streptosolen
- Verbena
- Vinca
- Violets
- Vittadinia

Hedge Plants

- Acacia armata
- Acacia latifolia
- Acacia verticillata
- Barberry
- Boxwood
- Cassia
- Crataegus crenulata
- Diosma
- Grevillea thelemiana
- Heather
- Hibiscus
- Lantana
- Monterey Cypress
- Myrtle
- Privet
- Prunus

Drought Resistant Shrubs and Trees

- Acacia—in var.
- Azara
- Bottle brush
- Buddleia
- California cherry
- Carpenteria californica
- Cassia
- Catalina cherry
- Ceanothus
- Century plant
- Coprosma
- Coronilla glauca
- Cotoneaster (prostrate forms)
- Cypress, Arizona
- Dasyliroia
- Dracaena
- Eucalyptus
- Genista
- Hakea
- Honeysuckle (vine)
- Hypericum
- Jerusalem thorn
- Juniper—in var.
- Lagunaria pattersoni
- Laurustinus
- Lavender
- Leptospermum laevigatum
- Melaleuca
- Oleander
- Pittosporum
- Pomegranate
- Jasminum primulinum
- Privet
- Quince, flowering
- Rock rose
- Rosemary
- Tamarix
- Yucca

Plants Giving Autumn Colors in Foliage

Abelia rupestris	Mahonia
Boston Ivy	Maple
Cissus striata	Nandina domestica
Cotoneaster franchetti	Scarlet Maple
Cotoneaster horizontalis	Snowball
Crape myrtle	

Plants for Shady Locations

Abelia	Ficus
Acanthus	Fuchsia
Asparagus	Geum
Anchusa	Heather
Aspidistra	Hoya
Aucuba	Hydrangea
Azara	Hypericum moserianum
Begonia	Iris
Berberis darwini	Ivy
Boxwood	Jasmine, Confederate
Buddleia	Juniperus prostrata
Camellia	Laurel
Ceanothus	Lobelia
Cestrum	Mahonia
Columbine	Papyrus
Coprosma	Periwinkle
Cotoneaster microphylla	Philodendron
Cotoneaster pannosa	Photinia
Cuphea	Plumbago
Daisy, English	Pyracantha crenulata
Daphne	Viburnum
Elephant's ear	Wandering Jew

Raphiolepis ovata
Thuja

Fatsia
Ferns

Tropical Effects

Acacia	Lion's tail
Acanthus	Lotus
Aspidistra	Magnolia
Bamboo	Melaleuca
Banana	Oleander
Bottle brush	Palms
Breath of Heaven	Papyrus
Buddleia	Passion vine
Calla lily	Pepper tree
Camellia	Philodendron
Carpenteria	Plumbago
Century plant	Poinsettia
Coronilla	Pomegranate
Crape Myrtle	Poplar
Cypress, Italian	Raphiolepis
Dracaena	Rubber trees
Elephant's ear	Strelitzia
Eucalyptus	Streptosolen
Evergreen grape	Tecoma (shrub)
Fatsia	Veronica
Ferns	Umbrella grass
Tree ferns	Waxplant
Flax, New Zealand	Weeping bullrush
Genista	Wigandia
Grasses	Yuca
Hibiscus	

INDEX

Abelia	3	Chorizema	4	Heteromeles	6	Pittosporum	8
Acacia	13	Cineraria	4	Hibiscus	6	Platanus	15
Acer	15	Cinnamomum	4	Hoya	21	Pleroma	8
Agapanthus	20	Cissus	21	Hydrangea	16	Plumbago	8
Agathaea	20	Cistus	4	Hypericum	6	Podocarpus	8
Agave	22	Cneorum	4	Impatiens	6	Poinsettia	8
Albizzia	15	Coccolobo	18	Iochochroma	6	Populus	15
Aloe	22	Cocos palm	18	Jacaranda	14	Privet	6-7
Alpinia	18	Colocasia	20	Jacobinia	6	Prunus	8-17
Alsophila	22	Convolvulus	21	Jasminum	21	Punica	9-17
Althea	16	Coprosma	4	Juncus	19	Pyracantha	9
Ameleopsis	21	Coronilla	4	Juniperus	11	Quercus	14
Anchusa	20	Cotoneaster	4	Kennedya	21	Quince, flowering	16
Anemone	20	Crape Myrtle	16	Kentia	19	Raphiolepis	9
Angaphora	13	Cryptomeria	11	Laburnum	16	Retinospora	12
Aquilegia	20	Cunninghami	11	Lagerstroemia	16	Rhamnus	9
Aralia	3	Cuphea	20	Lagunaria	6	Rhus	9
Araucaria	11	Cyressus	11	Lantana	6	Ribes	9
Arborvitae	11	Cydonia	16	Laurastinus	10	Robinia	15
Arbutus	3	Cyperus	18	Laurocerasus	6	Roclea	22
Arizona Cypress	11	Cyphomandra	4	Lavendula	6	Rosemarinus	9
Arundo	18	Cyress	11	Leontis	6	Roses	23-24-25
Asclepias	20	Daphne	4	Leptospermum	6	Russelia	20
Asparagus	22	Delphinium	20	Libocedrus	12	Salix	15
Aspidistra	20	Dendrocalimus	18	Ligustrum	6	Saliva	9
Aucuba	3	Deutzia	16	Linum	7	Schinus	14
Azara	3	Diosma	4	Lippia	7	Seaforthia palm	19
Bamboo	18	Dorvanthes	18	Lonicera	7-21	Senecio	9
Bauhinia	3	Dracaena	18	Lopezia	20	Sequoia	12
Beaucarnea	20	Duranta	5	Magnolia	14	Shasta daisy	20
Bedding plants	20	Erica	5	Mahernia	7	Snowberry	17
Begonia	20	Escallonia	5	Mahonia	7	Solanum	9
Berberis	3	Eucalyptus	14	Malva	7	Sollya	9
Betula	15	Eugenia	5	Mandevillea	22	Spirea	17
Bignonia	21	Euonymus	5	Marguerites	20	Statice	20
Bougainvilleas	21	Fatsia	5	Maytenus	7	Sterculia	14
Boxwood	3	Feljoa	5	Medicago	7	Strawberry tree	3
Buddleia	3	Ferns	22	Melaleuca	7	Strelitzia	10
Buxus	3	Fertilizers	23	Menziesia	8	Streptosolen	10
Cactus	22	Ficus	14-21	Messembryanthemum	20	Sutherlandi	10
Calif. Holly	6	Fraxinus	15	Moraea	20	Syringa	17
Callistemon	6	Fruits	26-27-28	Morus	15	Tamarix	12-17
Calyxanthus	3	Fuchsia	5	Muehlenbeckia	21	Taxodium	12
Camellia	3	Furcrae	22	Musa	19	Taxus	12
Camphora	13	Garden plants—		Myrtus	7	Tecoma	22
Cannas	19	Berry plants	29	Nandina	8	Thalictrum	20
Cantua	3	Asparagus	29	Nerium	8	Thuja	12
Carissa	3	Rhubarb	29	Nut Trees	29	Trailing plants	21-22
Carpenteria	3	Genista	5-6	Oleander	8	Tritoma	10
Caryopteris	3	Geranium	20	Pampas	19	Ulmus	14-15
Cassia	3	Gerbera	20	Parkinsonia	14	Umbellularia	10
Casuarina	14	Geum	20	Passiflora	22	Umbrella	15
Catalpa	15	Ginkgo	15	Peach, flowering	17	Valeriana	20
Ceanothus	4	Gladiolus Bulbs	20	Pennisetum	19	Veronica	10
Cedrus	11	Grape vines	29	Penstemon	20	Viburnum	10-17
Cephalotaxus	11	Grevillea	14-6	Pereskioopsis	22	Vinca	22
Ceratonia	14	Grewia	6	Persica	17	Vines	21-22
Cercocarpus	4	Hakea	6	Philadelphus	8-17	Wandering Jew	22
Cestrum	4	Hardenbergia	6	Phlox	25	Washingtonia palm	19
Chamaecyparis	11	Heather, Erica	5	Phoenix palm	19	Water iris	20
Chamaecyp palm	18	Hedera	21	Phormium	19	Weigelia	17
Cherry, flowering	17	Heliotrope	20	Picea	12	Wigandia	19
Choisya	4	Hemerocallis	20	Pinus	12	Wisteria	22

*Your Home
Grounds
Should Be
As Beautiful
And as
Well Planned
As the
Interior of
Your Home...
Here are
Some
Examples of
Well Planted
Home Grounds*

