

Historic, Archive Document

Do not assume content reflects current scientific knowledge, policies, or practices.

6261

LIBRARY
RECEIVED
★ JUL 20 1929 ★
U.S. DEPT. OF AGRICULTURE



Bulbs ADVANCE OFFERING
1929

STUMPP & WALTER CO.
30 & 32 BARCLAY ST., NEW YORK



Narcissus Conspicuous. One of the charming Barri type listed on page 27 of this catalogue

HIGH QUALITY BULBS WHY WE USE THE EXPRESSION AND HOW WE ENDEAVOR TO MAINTAIN IT

High Quality Bulbs are bulbs of proper flowering age, grown in a careful manner, thoroughly ripened and cured, and selected for size. The bulbs listed in this Advance Offering are grown in Bermuda, California, Japan, France, but principally in Holland. We contract with growers only for each variety listed. No grower in Holland, for example, grows all the varieties of Dutch bulbs offered by us. Therefore, we place advance contracts for the various varieties with specialists. The bulbs are carefully packed and shipped to us in the autumn.

On their arrival in New York they are immediately unpacked so as to avoid becoming "heated" and carefully arranged in our own building, examined and passed on by thoroughly trained men.

Special Import Orders. We do not solicit your order on the basis of special importation and subject it to the possibility of long transportation delay from the country of origin to your home, and then have you assume the risk of having the bulbs arrive "heated," thereby destroying the embryo flower.

Quality versus Price. We give complete assurance that no better bulbs can be purchased from any reputable Bulb Specialist at cheaper prices than those sent out by us. If you think so when you get our bulbs, we ask you to return them, transportation collect.

A careful perusal and comparison of the prices will convince you that they are lower than those of some Specialists who offer good quality. This is due to the fact that we contract for large quantities and do not send miscellaneous small orders to our Holland, French, Japanese, California, and Bermuda growers.

SPECIAL NOTICE!

American-Grown Daffodil Bulbs

As we were advised in the fall of 1923 by the Federal Horticultural Board that importation of Holland Daffodil bulbs, for commercial sale, would be restricted from entry into the United States after January, 1926, we began immediately to experiment with the production of this much-loved spring-flowering, bulbous plant in this country. After extended experiments, we proved that the stock grown at our Long Island farms produced bulbs of high quality, some of the varieties producing hardy, sound, heavier stock than could be grown in Holland.

We are prepared to supply fifty-three of the leading varieties for this fall's delivery, grown on our own farm, under the supervision of an expert bulb-man, and we are soliciting your requirements for these bulbs this year.

Miscellaneous Bulbs. The Government has decided to permit the free and unrestricted entry of what is termed, in the trade, as the following miscellaneous bulbs, Chionodoxa, Eranthis, Galanthus (Snowdrops), Grape Hyacinths, Ixias, and Scillas. These we will supply as usual, our stock being produced by specialists who make a business of growing these varieties in Holland.

Purpose of Illustrations. The illustrations throughout our Advance Offering have been made from actual photographs of gardens of some of our patrons to whom we have supplied bulbs, in many cases for the past ten or more years, and are used with the hope that they may assist the reader to better visualize the possibilities of their use.

STUMPP & WALTER CO.

GEORGE G. STUMPP, *President*
JULIAN H. WALTER, *Treasurer*

NEW YORK

THOMAS F. KEARNEY, *Ass't Treasurer*
WILLIAM A. SPERLING, *Secretary*

Why We Ask for Your Order by July 15

ORDER NOW AND SAVE MONEY

Our growers in Holland, France, and Japan inform us that we will be obliged to pay increased prices on later contracts this year. This will make it necessary to increase prices in our Fall Catalogue. We suggest placing your order now and enjoy this saving. Don't wait until July 15, but send us your order NOW.

TIME OF DELIVERY

Bulbs and roots mature and ripen during the late summer and autumn and shipments will be made as follows in the absence of instructions to the contrary.

SEPTEMBER—includes **Lilium Harrisi, Lilium formosum, Lilium candidum, Freesias, and Bulbous Irises.**

OCTOBER OR MAIN SHIPMENT includes the general line of bulbs, such as **Tulips, Narcissi, Hyacinths, Crocus, and Miscellaneous Bulbs** listed on pages 36 to 38.

NOVEMBER AND DECEMBER—includes Liliums and Lilies-of-the-Valley. We endeavor to get all Liliums and Lilies-of-the-Valley shipped by early December. We, however, frequently do not receive the **three varieties of Japanese Lilies, as listed on pages 34 and 35, namely, auratum, magnificum, and album** from the Orient until the ground has become frozen in some parts of the country. These may be kept in a cool cellar and planted in the spring, or, if you so advise, we can ship these three items in the spring.

Guarantees. Our method of handling bulbs practically precludes the possibility of stock proving unsatisfactory, and the percentage of complaints is really negligible. We guarantee all bulbs sent out to be true to name and of proper flowering age. It is, however, impracticable, owing to contingencies of soil, climate, season, or faulty planting, to guarantee that all bulbs we send out will flower satisfactorily. We make complete trials of all the varieties we send out at our own trial-grounds and know, from extended experience, that all our bulbs flower satisfactorily if given just ordinary attention.

Planning the Garden. In the past we have had many customers and friends who have asked us to help them plan their bulb gardens. We will be very glad to make suggestions, if you will send us a rough sketch of your gardens or borders. Please give planting areas when sending same.

COLOR SCHEMES

TERMS OF PAYMENT

We do not send bulbs C. O. D. unless you request it, but ship your order when bulbs arrive, mailing invoices at the same time, and all bills are due in 30 days, net.

For those who desire to send us cash with the order, and thereby forfeit the use of the interest on the same from the time they send it until bulbs are shipped, we ask that they **deduct a cash discount** of 5 per cent **from their order to compensate them for this loss.**

WE FURNISH ALL BULBS, 6 of a variety at the dozen rate; 25 of a variety at 100 rate; 250 of a variety at 1,000 rate.

SHIPPING INSTRUCTIONS

We ask for full shipping directions. State whether bulbs are to be shipped by parcel post or express, and by what route. In the absence of instructions we ship by whatever method and route we believe best.



Six million Daffodil blooms at our Mile-Front Daffodil Farm at Islip, L. I.

From Grower to Planter. The above illustration is a photograph of our 35-acre farm of Daffodils at Islip, L. I. We have been growing Daffodils on Long Island for the past five years, and the results obtained from bulbs which we have sent out convinces us that the soil and climate are well suited to them there.



A hardy border illustrating the use of Darwin Tulips planted in clumps throughout

GIANT DARWIN TULIPS, May-Flowering

For the herbaceous border, massed in clumps along the edge of shrubbery, or as cut-flowers for vases, these are conceded to be the superior of all the Tulips

The enthusiasm for the Darwin Tulip is not due to fad or popular fancy, but rather to an awakened sense of appreciation of their majestic beauty. The rich, bright colors of the blooms, their somber tones, their many pale and more lovely colors, produced on strong, gigantic stems from 2 to 3 feet, all vie with one another and capture even the casual observer of spring-flowering bulbs. Once grown, the amateur becomes interested and soon becomes a fancier with a hoard of varieties, excusably jealous of every one he or she grows.

For the borders among other hardy flowers, in formal gardens in conjunction with Single Early Tulips, for isolated groupings against a background of shrubs, or for combinations of delicate colors for effects of contrast in the flower-garden, the Darwins are without a peer. They range in color from the daintiest pink, rose, salmon, red, etc., to deep, rich crimson; from lavender through mauve and light blue to violet-purple and the so-called "Black Tulip"; and we also offer one variety of yellow. For a complete list of yellow varieties we suggest selections be made from Cottage and Hybrid Tulips offered on pages 10 and 11. All buff and bronze shades frequently classed as Darwins are Breeders.

CULTURE.—Bulbs should be planted 5 to 6 inches deep and not less than 5 inches apart. Sand to the depth of 1/2 inch at the base of the bulbs will amply repay the trouble by the provision for drainage during wet weather. For forcing, bulbs should be planted as soon as received, and the flowers appear to better advantage if pots a trifle deeper than the ordinary bulb-pans are used. We recommend what are termed azalea-pots for this purpose. A temperature of 55 to 60 degrees is recommended, for if allowed to "come gently," larger flowers and longer stems may be had.

Afterglow. Deep, rosy orange, with salmon shading at edges of petals; inside deep orange with yellowish base. A sport of Baronne de la Tonnaye, which is of remarkable interest because it is the first instance of a Darwin sporting to the Breeder tones. A showy Tulip for outdoors. Height 26 inches.....	Doz.	100	1,000
	\$1 10	\$8 00	\$78 00
Anton Mauve. A splendid exhibition variety on account of its wonderful stately habit. The flower is of unusually large size, and an even tone of deep bluish lilac. Excellent for the border or for pots. Height 32 inches.....	I 10	8 00	78 00
Anton Roozen. Vivid rose-pink, edged pale rose. The large, cup-shaped flowers are borne on strong stems, and each petal is of firm texture. Height 30 inches.....	80	6 00	58 00
Aviator Hawkes. This Novelty, of a similar color and in the same class with Princess Mary, will become more popular as soon as larger stocks are obtainable. The blooms are even tone of deep rose and are borne on tall, strong stems. Attractive exhibition variety. Height 32 inches.....	\$1 10 00	75 00	
Aphrodite. Clear, silvery rose-pink with white base; a good-sized round flower of exquisite color on a very tall, stiff stem. Height 34 inches.....	2 00	15 00	
Bartigon. Fiery crimson with white base. Height 26 inches.....	70	5 00	48 00

Baronne de la Tonnaye. A long and beautiful flower; clear carmine-rose at the midrib, base toning off to soft pink at the edges; white, tinged blue. Excellent for early March forcing and just as fine for outdoor beds, where it keeps up a splendid show for a long time. Height 26 inches.....	Doz.	100	1,000
	\$0 70	\$5 00	\$48 00
Bleu Celeste. A Tulip of wonderful size and shape; the color is a bright violet-purple, white base tinged blue. Height 30 inches.....	3 50	25 00	
Blue Perfection. Quite a new color in Darwins—bright violet, bordered heliotrope; base white with blue ring; anthers black. The petals are pointed and very slightly reflexed. Very fine flowers of good form and substance. Height 30 inches.....	\$1 each.	10 00	75 00
Burgemeester Sandberg. This new, deep purple-garnet variety is very attractive on account of its rich color and splendid size. Height 28 inches.....	50 cts. each.	5 00	40 00
Carl Becker. Pale rosy violet, with center flushed salmon-rose. Splendid Darwin for outdoors; equally good for forcing, but paler in color. Height 32 inches.....		70	5 00 48 00
Centenaire. Rich violet-rose, with a large blue center; immense flower of perfect form. Magnificent for the border; excellent for forcing. Height 32 in.		70	5 00 48 00

Giant Darwin Tulips (May-Flowering), continued

Chant de Cygne. This is a very large flower of a brilliant deep rosy red, tinged soft salmon-rose, borne on strong stem. A new variety of excellent merit. Height 30 inches. Doz. 100 1,000 \$1 50 \$12 00

Cherry Blossom. This beautiful Tulip is a soft rose sport of Pride of Haarlem. The flowers are of splendid substance and an even tone of soft rose. Height 30 inches. 4 00 30 00

City of Haarlem. Intense dark scarlet with darker bloom; large steel-blue base and white halo; wonderful cup-shaped flower, with petals incurving slightly at the tips. One of the finest brilliant red Darwins. Height 27 inches. 2 00 15 00

Clara Butt. Beautiful clear salmon-pink. No other variety offered by us has the same distinctive and pleasing color. Height 22 inches. 60 4 00 \$38 00

Dream. Large flower, perfect in form, on a tall, strong stem; color rosy lilac and mauve, with claret-purple interior. Height 24 inches. 70 5 00 48 00

Duchess of Hohenberg. Pale slaty lilac-mauve, with stripe of rosy heliotrope; inside pale lilac, with white base. Enormous, long flower on a tall, stiff stem. Height 29 inches. 2 00 15 00

Eclipse. A deep rich glowing blood-red. Large flower of fine form; the best of its color. Height 26 inches. 2 00 15 00

Edmee (Beauty). A beautiful shade of cherry-rose with a lighter border. On the order of Baronne de la Tonnaye, but brighter in color. Height 25 inches. 70 5 00 48 00

Euterpe. A beautiful shade of mauve, edged lilac, white center, with a blue halo. A very refined color when forced. Height 26 inches. Doz. 100 1,000 \$0 70 \$5 00 \$48 00

Farncombe Sanders. A bright shade of scarlet, with a clear white base, contrasting well when the flower is fully open. A broad-petaled flower of large size. Fine for forcing. Height 25 inches. 70 5 00 48 00

Faust. Satiny purple, with blue base; very large flower of fine form; a splendid Tulip. Height 30 inches. 1 10 8 00 78 00

Flamingo. An even tone of pale shell-pink. A very exquisitely colored Darwin, of refined coloring and form. Height 28 inches. 1 00 7 00 68 00

Frans Hals. Splendidly formed, very large flower; bright bluish violet, base blue, with white halo. Height 28 inches. 1 20 9 00 88 00

Giant. A flower of enormous size and of wonderful substance; a deep reddish purple in color, shaded violet with a white base. Height 30 inches. 1 20 9 00 88 00

Glow. Deepest shade of crimson-scarlet—a color of wonderful brilliance, not unlike that of the Oriental poppy. The flowers are of large size, borne on stems 20 inches long. 70 5 00 48 00

Joan of Arc (Mary Eaton). A beautiful even tone of sunflower-yellow. Long, rather loose but attractive flower. Height 25 inches. \$2 each. 20 00

Jubilee. Blue-purple, with a white base, marked blue; a flower of large size and heavysubstance. Height 29 in. 1 75 12 00

Kathleen Parlow. A distinct and new shade among the light rose-pink varieties—silvery rose-pink; inside soft old-rose with creamy white base. Flowers are of large size, excellent substance, and are borne on long, strong stems. Height 30 inches. \$1.50 each. \$15 00

King Harold. Intense r u b y -crimson, center rich black; very tall and of fine form; new and stately variety; very distinct. Height 24 inches. 70 \$5 00 \$48 00

King George V. Glowing salmon-scarlet, shaded bright rose; inside brilliant orange-scarlet with blue base. Height 25 inches. 2 00 16 00

King Mauve. This variety has been well named. It is, perhaps, best described as a uniform soft lavender with a silvery sheen. The long, large, well-shaped flower is borne on good strong stem. A fine, if not the finest, of all the recent novelties. Height 30 inches. \$4 each. 40 00

La Fiancee. Deep rose, shading to old-rose and delicate pink at the edges, with blue base. Of large size, and very effective when planted with mauve and dark lavender sorts. Height 30 inches. 1 10 8 00 78 00

La Tristesse. Deep slaty blue, with white base, very distinct in color; medium-sized flower. Height 26 inches. 70 5 00 48 00

La Tulipe Noire (The Black Tulip). The nearest in color to the so-called "Black Tulip." Deep maroon-black, which has a velvety sheen in the sunlight. Height 25 inches. 80 6 00 58 00



A Dutch Bulb-Garden—Darwin Tulips, one variety to each of the various and pleasingly shaped beds



In this well-planned garden, May-Flowering Tulips add a delightful touch of color

Giant Darwin Tulips (May-Flowering), continued

Le Notre. Beautiful shade of bright pink, blue base shaded white. Excellent for early forcing. Height 26 inches.	Doz.	100	1,000			
	\$	80	\$6 00	\$58 00		
Louise de la Valliere. Brilliant cherry-rose with pale blue base starred white. A very clear and beautiful color. Height 24 inches.	I	75	12 00			
Madame Krelage. Bright rosy lilac, with a pale silvery margin. A good forcing variety and excellent for the border as well. Height 28 inches.		70	5 00	48 00		
Margaret. Pale rose ground, faintly flushed white, center white, marked blue—a very delicate color; flower globular in shape, borne on a strong stem. Splendid for forcing. Height 22 inches.		60	4 50	42 00		
Massenet. An exquisite shade of pale rose, with a broad margin of creamy white; base bright blue. A grand acquisition to any collection however rare. Height 30 inches.	I	10	8 00	78 00		
Mauve Clair. Soft lilac-mauve, slightly paler at the edges of petals; inside lilac-mauve, with white base. Height 26 inches.		85	6 00	58 00		
Maya. A large, well-formed flower of soft heliotrope shade, borne on a good strong stem. One of the finest novelties of recent introduction. Height 30 inches.		7 00	50 00			
Melicette. A beautiful pure lavender, shading to paler lavender at the edges, with a beautiful blue base; quite the purest lavender Darwin. A flower of large size. Height 26 inches.		85	6 00	58 00		
Mrs. Potter Palmer. Bright purplish violet, base white; a large flower. Very attractive for border planting. Height 28 inches.		70	5 00	48 00		
Mystery. An unusual flower of a deep shiny black color, base blue. A variety used for exhibition purposes on account of its size. Height 30 inches.		3 50	25 00			
Orange Perfection. Brilliant salmon-orange, shaded scarlet as the flower ages; base bright blue. Large flower of a very attractive color. Height 26 inches.		4 00	30 00			
Painted Lady. A pale creamy white, with a faint tinge of heliotrope, gradually becoming almost pure white as the flower ages. Height 27 inches.	Doz.	100	1,000			
	\$	70	\$5 00	\$48 00		
Philippe de Comines. A grand flower of dark, polished mahogany color, with a purple base. One of the best of the less expensive sorts in this color. Height 24 inches.		70	5 00	48 00		
President Harding. A new variety which has proved very fine for exhibition work. The large, deep purple flower shaded violet, is borne on tall, strong stems, and is of unusual substance. Height 32 inches.		3 00	20 00			
President Taft. Deep ox-blood-red, with dusky bloom. Very large flower, borne on strong stiff stem. Height 30 inches.	I	10	8 00	78 00		
Pride of Haarlem. Magnificently formed flower of immense size, brilliant, deep rose, shaded scarlet, with light blue base. This variety, perhaps the most widely known for its stately habit and glorious color, is unsurpassed for border planting. Height 36 inches.		60	4 00	38 00		
Prince of the Netherlands. Lively shade of cerise-scarlet, edged rose, with a blue base. Height 31 inches.		85	6 00	58 00		
Princess Elizabeth (Julie Vinot). Beautiful clear deep pink, changing with age to rose-pink; white base. Large flower, quite like a rose when first open. Height 26 inches.		70	5 00	48 00		
Princess Mary. Bright carmine-rose with margin of rose-pink; inside clear carmine-rose with blue base and white halo; huge flower on a splendid stem. One of the finest of the new Darwins. Height 28 inches.		7 50	60 00			
Professor Rauwenhoff. Bright cherry-red, beautiful blue base; very large flower of wonderful substance. Height 24 inches.		70	5 00	48 00		
Psyche. Old-rose, edged white, inside lighter rose, base blue. A very lovely variety for pots. Height 26 inches.		70	5 00	48 00		

Giant Darwin Tulips (May-Flowering), continued

Pulcinella. A new tone of dark salmon-orange in the Darwin Tulips. A very attractive variety when grown in pots for exhibition on account of its fine strong stem and large flower. Height 32 in.	Doz.	100	1,000	
	\$1	75	\$12	00
Purple Perfection. The color of the flower is a bright, glossy purple, large in size, and of wonderful substance. A splendid variety in the border, grows to the height of 26 inches.	85	6	00	\$58 00
Queen of Hearts. A very beautiful soft rose sport of the splendid scarlet variety Farncombe Sanders. Splendid for forcing or exhibition. A new Tulip and a very valuable addition, which should be grown in all good collections. Height 28 inches.	10	00	75	00
Raphael. Deep maroon purple of rich tone, with blue base starred white. Very tall, large flower. The best reddish purple. Height 30 inches.	1	00	7	00 68 00
Remembrance. Pale lilac, general tone of the flower silvery. Quite distinct; large flower. Height 25 in.	85	6	00	58 00
Reve d'Armour. A very interesting variety on account of its changing color. It opens white, with carmine spots and edge, but gradually changes to reddish violet while only the base remains white, anthers black. A very beautiful variety of excellent substance. Height 28 inches.			\$2 each.	20 00
Reverend Ewbank. An exquisite shade of soft lavender-violet, slightly shaded silver-gray. A variety of great merit on account of its lovely color, borne on stems 23 inches long	70	5	00	48 00
Richmond. Best described as an even tone of currant-red, base grayish blue, with black anthers. A red sport of the well-known variety, Clara Butt. Height 28 inches.	2	50	20	00
Ronald Gunn. Bright shade of violet, edged pale lavender, with a conspicuous white base. A flower of splendid shape and even more exquisite when grown in pots. Height 26 inches	1	00	7	00 68 00
Sir Trevor Lawrence. Violet-maroon, with flush of ashy purple; inside violet-maroon with white base; very large, cup-shaped flower, on tall stem. Height 33 inches.	1	10	9	00 88 00
Sophrosyne. Soft rosy lilac, edged silvery white; inside deep rose, with striking dull blue base. A large flower of very delicate beauty. Height 29 inches.	70	5	00	48 00
Suzon. Center of petals buff-rose, shading to blush at the margin, with white base, delicately marked blue. A strong grower of fine stately habit. Height 25 in.	70	5	00	48 00
The Bishop. Soft bluish violet, with ashy bloom; inside paler, with white base; a long flower of very artistic color. Height 28 inches	3	50	25	00
Valentin. A magnificent, large, shapely Darwin Tulip. Light violet with a blue base. Height 22 inches.	1	00	7	00 68 00
Venus. A splendid exhibition variety—the finest of its color. Pure, even tone of silvery rose, white base, marked with a pale blue ring. Height 28 in.	4	00	30	00
Village Maid. Soft rose with whitish base. Has a very large flower on a tall stem. Height 30 inches.	1	50	12	00
Whistler. A variety much admired on account of its bright, transparent color—a bright shade of ruby-scarlet. Height 26 inches.	70	5	00	48 00

White Perfection (Helena Eaking). Another pure white Darwin Tulip, differing from Zwanenburg in our list in that the flower is larger. The shape of the flower greatly resembles the variety Farncombe Sanders, of which it is a seedling. We predict large demand for this splendid variety, as soon as large stocks are available and prices can be reduced. Height 29 inches.	Doz.	100	1,000	
	\$5	each.	\$50	00
White Queen. A splendid white variety; when first opening is pale rose but quickly turns white—a truly exquisite color. Height 24 inches	70	\$5	00	\$48 00
William Copeland. Uniform lilac-rose. A variety that was greatly admired in our exhibit of bulbs grown in pots at the New York Flower Show this year. May be forced as early and as easily as the early Tulips. The color, when grown indoors, becomes a most beautiful lavender. Height 24 inches	70	5	00	48 00
William Pitt. Very dark crimson, with purplish bloom on the outer petals. Of great size and beauty. Height 24 inches	70	5	00	48 00
Zulu. Deep, velvety purple-black; large, egg-shaped flower of very distinct form, Fine for border or forcing. Height 27 inches	70	5	00	48 00
Zwanenburg. This variety, which first appeared in a specialist's culture, was noted by us in 1913 when there existed six bulbs. It is the first example of a pure white Darwin. Still high in price on account of its scarcity. Height 28 inches.	3	50	25	00



A border planted in clumps so that the colors may be studied

Superb Prize Mixture. The wonderful interest in these splendid Tulips has brought out a great many varieties too numerous for listing, except those considered the best. In addition to some of the varieties listed above, our mixture contains an equal proportion of many others. Brilliant effects may be obtained by the planting of this mixture of choice named sorts. 60 cts. per doz., \$4 per 100, \$35 per 1,000.



DUTCH BREEDER TULIPS, May-Flowering

Breeder Tulips are very similar in habit to the Darwins, and flower at the same time. Their chief characteristic is their immense blooms, borne on strong, stiff stems, many of them longer than the most gigantic Darwins. The revival of the taste for art colors has made these Tulips, at one time very popular in England, strong favorites with American enthusiasts, who find in their bronze, buff, and brown shades excellent material for contrasting with the light and bright colors of the Darwins. They require the same cultural treatment as the Darwins.

Abd-el-Kader. Dull bronze-yellow, shading to light bronze at edge of petals; inside bronze-brown, with olive-green base; good-sized flower. Height 26 inches. **\$1.10 per doz., \$8 per 100.**

Apricot. Dull, bronzy buff, shaded deep apricot, base olive-green. A splendid border variety, frequently having an extra number of petals. Height 25 inches. **\$1 per doz., \$7 per 100, \$65 per 1,000.**

Bacchus. Dark violet-blue, the outside of the petals having a darker bloom, base starred white. Quite the nearest approach to dark blue in late Tulips. Still high in price on account of scarcity. Height 28 inches. **\$1.30 per doz., \$10 per 100.**

Bronze Queen. Soft golden bronze; large flower of sturdy habit. A very exquisite color when forced and splendid for the border. Height 28 inches. **70 cts. per doz., \$5 per 100, \$48 per 1,000.**

Cardinal Manning. A splendid shade of rosy violet, with a slight edge of bronze. Large-sized flower of fine form. Height 28 inches. **70 cts. per doz., \$5 per 100, \$48 per 1,000.**

Cherbourg. This is, undoubtedly, one of the finest Breeder Tulips ever introduced. We are able to offer only a limited quantity of it. Its color is best described as a deep tone of golden yellow, with a suffusion of terra-cotta, the deeper tone of yellow growing stronger toward the edges of the petals. The flower is much admired on account of its gigantic size and beautiful color. Height 32 inches. **\$2.50 each, \$25 per doz., \$200 per 100.**

Copernicus. Dark coppery bronze, flushed old-rose; interior warm brown with yellow base. An attractive, large flower, borne on strong stems. Height 28 inches. **\$1.10 per doz., \$8 per 100.**

Coridion. Clear yellow, with a faint suffusion of lilac; a flower of very dainty color. Fine for shrubby borders. Height 24 inches. **\$2 per doz., \$15 per 100.**

Dom Pedro. Coffee-brown, shaded maroon, inside rich mahogany; large flower; very fragrant. Height 21 inches. **\$1.30 per doz., \$10 per 100, \$98 per 1,000.**

Dryad. Lilac-old-rose, margined bronzy yellow, shading to buff with age; broader margin inside with bright apple-green base. Height 22 inches. **\$2 per doz., \$15 per 100.**

Fairy. Reddish mahogany, with bronze shading; an extra-large flower of artistic character. Splendid in borders or for late forcing. Height 24 inches. **70c. per doz., \$5 per 100, \$48 per 1,000.**

Garibaldi. One of the finest Breeders as yet introduced. Pale lilac-bronze, with a broad primrose-yellow margin. A long and graceful flower. Height 31 inches. **\$6.50 per doz., \$50 per 100.**

Godet Parfait. Dark blue-purple, with white base and blue halo; very large flower of striking color. Height 30 inches. **\$1.10 per doz., \$8 per 100.**

Golden Bronze. Light brownish yellow, with flush of heliotrope; inside rich mahogany-brown, rich yellow base. A large, well-formed flower of attractive appearance. Height 26 inches. **\$1 per doz., \$7 per 100, \$68 per 1,000.**

Goldfinch. Elegantly formed, large, pointed flower. Rich golden chestnut, inside deep mahogany-brown, yellow base. Height 30 inches. **\$2 per doz., \$15 per 100.**

Heloise. A beautiful shade of dark brown, shaded old-rose; yellow base, marked olive-green. Large-sized flower of wonderful color and very prettily reflexed petals. Height 28 inches. **\$2 per doz., \$15 per 100.**

Ilias. While this variety is classed as a Breeder Tulip, it is really the result of crossing a Darwin with a Breeder Tulip. The exquisitely formed flowers are carried on tall, straight, strong stems. They open purple but soon change to a deep lavender, surpassing any other variety in this shade. Height 30 inches. **\$2 per doz., \$15 per 100.**

Dutch Breeder Tulips (May-Flowering), continued

Indian Chief. Reddish mahogany flushed purple, edged warm brown with age; yellow base. A huge flower of wonderful substance and most artistic shape, carried on a very tall stem. Height 33 inches. **\$1 each, \$10 per doz., \$75 per 100.**

Jaune d'Oeuf. Ruddy apricot, inside soft yellow, with black base and anthers; very striking variety. Height 21 inches. **80 cts. per doz., \$6 per 100, \$58 per 1,000.**

James Watt. A new Breeder of exquisite form and coloring. Deep slaty violet, flushed bronze; inside dark mahogany, shaded brown, fine green base starred white. Height 26 inches. **\$2 per doz., \$15 per 100.**

La Turquoise. An excellent Breeder when grown indoors. Bright brick-red, with broad edge of deep yellow. Large flowers on strong stems of great substance. Height 28 inches. **\$2 per doz., \$15 per 100.**

Le Miroir. An even tone of brilliant violet-blue; large white base margined blue. A very attractive flower and a distinct shade in the Breeders. Height 29 inches. **\$1.30 per doz., \$10 per 100, \$98 per 1,000.**

Louis XIV. An even tone of dark purple, with a broad margin of golden bronze; a very large flower of wonderful substance; green-black base starred yellow. A very fine variety and one that instantly meets with favor when grown. Height 30 inches. **\$1.10 per doz., \$8 per 100, \$78 per 1,000.**

Lucifer. Clear orange, with a rosy flush and olive base, with yellow star; very large flower on a tall stem. A gorgeous color which glows like a fire. Height 24 inches. **\$2 per doz., \$15 per 100.**

Marechal Victor. Pale lavender-violet, with broad edge of buff shaded bronze; inside violet, faintly flushed mahogany with beautiful green base—a wonderful color combination which we have seen in no other Tulip. A large flower of open, graceful form. Tall and holds the bloom well poised. Height 28 inches. **\$4.50 per doz., \$35 per 100.**

Marginata. An attractive variety on account of its effective color—an even tone of apricot-orange, with a distinct yellow border. Height 28 inches. **\$1.50 per doz., \$10 per 100, \$98 per 1,000.**

Marie Louise. Old-rose, flushed orange-salmon, with purplish bloom and olive base. A very beautiful Tulip for border planting and one of the most richly colored. Height 23 inches. **80 cts. per doz., \$6 per 100, \$58 per 1,000.**

Mrs. Beecher Stowe. Large flower of fine form on strong stem. One of the finest deep purple varieties with a velvety bloom on the outer petals. Very effective on account of its large size and strong color. Height 30 inches. **\$4 per doz., \$30 per 100.**

Dutch Breeder Mixture.

A choice mixture of many varieties of this type of Tulip. Magnificent combinations of colors and shades from beautifully flushed white to deep wine-red, art bronze and darkest maroon. **75c. per doz., \$5 per 100, \$45 per 1,000.**

Plant
a
Few
Dutch
Breeder
Tulips
This
Year

Newton. Dark purple, with plum bloom on outer petals. A flower of the same tone as Darwin Jubilee, but not so large. One of the tallest Tulips. Height 35 inches. **90 cts. each, \$9 per doz., \$70 per 100.**

Old Times. Dull garnet, edged primrose-yellow, with greenish base; rather long flower of somewhat pointed form. A showy Breeder of English origin. Height 24 inches. **\$1 per doz., \$8 per 100, \$78 per 1,000.**

Pink Pearl. A new Breeder and quite the finest of its color. The outside of the flower is a lilac-pink, inside rose, beautiful white base. A magnificent, large, egg-shaped flower. Height 26 inches. **\$3.50 per doz., \$25 per 100.**

Plutarchus. Bronzy yellow, with a flush of heliotrope in the center of the petals; a flower of wonderful substance and splendid form. Height 26 inches. **\$1 per doz., \$7 per 100, \$68 per 1,000.**

Prince of Orange. Dark terra-cotta-brown, shaded yellow, with a yellow base starred black. Splendid for the border and good for forcing. Height 24 inches. **\$1.30 per doz., \$10 per 100.**

Prince Albert. Golden brown, with purple flush through center of petals, which disappears as the flower ages. Height 32 inches. **\$1.30 per doz., \$10 per 100, \$98 per 1,000.**

Queen Alexandra. Canary-yellow, broadly flushed lilac-brown at the edges of the petals. A distinct variety for outdoors or forcing. Height 23 inches. **70 cts. per doz., \$5 per 100, \$48 per 1,000.**

Roi Soleil. This new Breeder Tulip is a combination of shades—rich dark violet, flamed with bronze. A large flower borne on strong stems. Height 28 inches. **\$1.75 per doz., \$12 per 100.**

Salomon. Silvery lilac, flushed buff when opening, inside slightly deeper tone, with large, white base; very long, loosely formed flower, carried on a graceful stem. Height 30 inches. **\$1.30 per doz., \$10 per 100, \$98 per 1,000.**

Socrates. Deep rosy violet, with dull blue base; large flower of stately habit, often having an extra number of petals. Height 28 inches. **\$1 per doz., \$7 per 100, \$68 per 1,000.**

St. James. Dark rosy lilac, edged bronzy tan, with coppery rose flush at tips of petals; inside ruddy mahogany, edged golden brown with yellow and green base. A large flower on tall stem. Height 28 inches. **\$1 per doz., \$7 per 100, \$68 per 1,000.**

Turenne. Purplish brown, with a broad margin of soft yellow, very large flower and on account of its unique coloring very attractive for group planting. Height 28 inches. **\$1.20 per doz., \$9 per 100, \$88 per 1,000.**

Velvet King. Deep, glossy purple-maroon, with a white base; a flower of gigantic size, lasting a long time in bloom. A magnificent Tulip for the border or shrubbery and forms an effective contrast when planted with the light-colored Tulips. Height 28 inches. **\$1.20 per doz., \$9 per 100, \$88 per 1,000.**

Vulcain. Reddish apricot, with a broad margin of bright buff-yellow, inside dark apricot, edged yellow, with dark green base starred yellow. A beautifully shaped flower and in color unlike any other Tulip. Height 25 inches. **\$1.30 per doz., \$10 per 100.**



COTTAGE AND HYBRID TULIPS

MAY-FLOWERING

The Cottage Tulips, like the Darwins, flower late. Many of the varieties are used extensively for late bedding and are magnificent for this purpose. The pale primrose, deep yellow, and splendid white varieties are often planted with the Darwins for effects of contrast. The following list we feel sure contains most of the best varieties. Certain varieties, like some of the Darwins, will flower a few days earlier than others, but on the whole the earliest is just at its best when the latest-flowering variety is just beginning to show bloom. We have included many of the finest of the new late-flowering Hybrid Tulips. They are the results of crossing the Darwin with Cottage Tulips, and bloom at the same time as the other May-flowering varieties.

Argo. A very beautiful new hybrid variety on account of its distinct and lovely color. The flowers are round, borne on strong stems, golden yellow, mottled red and passing off to a reddish brown. Delicate bronze-salmon when grown indoors. Height 22 inches. **\$2 per doz., \$12 per 100.**



Cottage Tulip, Barbara Pratt

Alcmene. A hybrid Tulip with Darwin-shaped petals. This new variety is of great beauty, best described as a rich, glowing rose, with creamy white base, having a pale blue border. Height 25 inches. **\$1.30 per doz., \$10 per 100, \$98 per 1,000.**

Ambrosia. This beautiful new variety of Hybrid Tulip contains a combination of shades—bronze with rosy lilac glow; inside of the large, well-shaped flower is a salmon-orange tone. Height 28 inches. **\$2 per doz., \$15 per 100.**

Arethusa. The large, urn-shaped flower is of true Cottage form, of a light shade of chrome-yellow. A new variety greatly admired on account of its size, lovely form, and fine, erect stem. Height 25 inches. **\$5 per doz., \$35 per 100.**

Avis Kennicott. A rich, deep shade of yellow, with a striking black base and anthers. One of the best of the newer varieties. Height 25 inches. **\$1.20 per doz., \$9 per 100, \$88 per 1,000.**

Barbara Pratt. Rich light cochineal-carmine, edges lilac-rose, with narrow green edge; anthers yellow. A very beautiful Tulip with slightly reflexed petals. Highly recommended for exhibition. In a test of over one hundred varieties of New and Rare Tulips in the writer's garden this spring, this variety was very frequently commented on. We consider it one of the finest Tulips of recent introduction. Height 36 inches. **\$1.75 each, \$17.50 per doz.**

Beauty of Bath. Soft rosy lilac, bordered bright canary-yellow. A Tulip of unusual coloring. While not a new variety, its coloring makes an instant appeal. Large, oval flower on fine, strong stem. Height 23 inches. **\$1.50 per doz., \$10 per 100.**

Bouton d'Or. While not a new variety, stocks of better quality are now obtainable. Cup-shaped Tulip of medium size, but of a fine deep golden yellow, with black anthers. Height 20 inches. **70 cts. per doz., \$5 per 100, \$48 per 1,000.**

Carrara. This Tulip, when first exhibited, in 1921, was considered the finest new white variety. Blooms broadly cup-shaped, with rounded petals that all come to the same level when the flower is half open. Height 26 inches. **\$3.50 per doz., \$25 per 100.**

Dido. A large, well-formed flower of rich orange-rose tone, with margin of bright orange-yellow, inside bright orange with yellow base. Height 30 inches. **\$2.50 per doz., \$20 per 100.**

Fairy Queen. Beautiful soft rosy lilac, outer petals broadly margined amber-yellow. A variety that should be included in every collection on account of its unique color. Height 20 inches. **70c. per doz., \$5 per 100, \$48 per 1,000.**

Flava. Canary-yellow, large, exquisitely formed flower with magnificent lasting qualities. Height 25 inches. **\$2 per doz., \$15 per 100.**

Gesneriana lutea. One of the best of the well-known Gesneriana family. A bedder of unsurpassed qualities, with perfect-shaped flowers of purest golden yellow, on strong stems holding the flowers perfectly erect. Height 24 inches. **70 cts. per doz., \$5 per 100, \$48 per 1,000.**

Gesneriana spatulata or major. The beautiful curved flowers are brilliant scarlet, with a bluish black center, on tall stems. Height 18 inches. **70 cts. per doz., \$5 per 100, \$48 per 1,000.**

Grenadier. Brilliant orange-red. A new Tulip of great beauty. Flowers long, borne on very graceful stems. Height, 24 inches. **70 cts. per doz., \$5 per 100, \$48 per 1,000.**

Hammer Hales. Golden brown, flushed old-rose; inside bright apricot, edged bronze-yellow, with a yellow base. Height 24 inches. **\$1 per doz., \$8 per 100, \$78 per 1,000.**

Inglescombe Pink (Salmon Queen). Beautiful soft rosy pink, slightly flushed salmon; large, globular flower of excellent form. Adapted for borders or late forcing. Height 22 inches. **60 cts. per doz., \$4.50 per 100, \$42 per 1,000.**

Cottage and Hybrid Tulips (May-Flowering), continued

Inglescombe Yellow. A beautiful variety. Size, form and height greatly resemble the Darwins, so much so that it is frequently called the "Yellow Darwin," a fitting title: Height 22 inches. **70c. per doz., \$5 per 100, \$48 per 1,000.**

John Ruskin. Salmon-rose, edged soft lemon-yellow, inside deep rosy lilac—a beautiful combination of colors; large flower of fine shape on a graceful stem. Height 16 inches. **70 cts. per doz., \$5 per 100, \$48 per 1,000.**

Kingfisher. Creamy yellow ground, turning whiter, with age irregularly striped and feathered maroon and violet; blue-green base; large flower on sturdy stem; unusual colors. Height 18 inches. **\$3.50 per doz., \$25 per 100.**

La Merveille. Very large, sweet-scented flowers, salmon-rose, overlaid with orange-red. A grand border variety. Height 20 inches. **70 cts. per doz., \$5 per 100, \$48 per 1,000.**

Leda. A very lovely variety, best described as rosy red outside, peach-blossom inside, with splendid light blue and white base. The flowers are large, of excellent form, and are borne on strong stems, held well erect for the size of the flower. Height 25 inches. **\$7.50 per doz., \$60 per 100.**

Lord Carnarvon. A flower with a well-defined margin of clear pink along its fine, well-shaped petals. A true long urn-shaped flower that is instantly admired. Splendid for exhibition. Height 24 inches. **\$2 per doz., \$15 per 100.**

Miss Willmott. A pale primrose-yellow of true Cottage form. In good demand on account of its delicate color. Height 18 inches. **85 cts. per doz., \$6 per 100, \$58 per 1,000.**

Monsieur Mottet. (Bunch-flowered.) White, faintly flushed shell-pink as the flower ages. Round bloom with rather pointed petals. This very interesting Tulip is of branching habit, giving six or more flowers from a single stem. Height 24 inches. **\$1.20 per doz., \$9 per 100, \$88 per 1,000.**

Montaigne. Richest buttercup-yellow, base slightly tinged brown. A flower of most unusual shape, the lower part being very large and almost globular with the top part sharply pointed. Height 28 inches. **\$7.50 per doz., \$60 per 100.**

Moonlight. Bright canary-yellow; splendid, large flower, oval in shape, outer petals slightly reflexed at the tips. An excellent yellow for combination with the Darwin varieties. Height 22 inches. **85 cts. per doz., \$6 per 100, \$58 per 1,000.**

Mrs. Kerrell. Beautiful light rose with a delicate amber tinge, center white, bordered electric blue. A new variety of very refined coloring and shape and destined to win a place for itself among discriminating flower-lovers. Height 18 inches. **\$1.20 per doz., \$9 per 100.**

Mrs. Moon (*Fulgens lutea maxima*). Deep golden yellow; large flowers of good substance, slightly reflexing. Height 24 inches. **\$1 per doz., \$8 per 100, \$78 per 1,000.**

Mrs. Harold Irving Pratt. A Tulip of large size, with well-rounded cup and outer petals slightly reflexing. The color can best be described as a combination of rose and amber, with margin of saffron yellow at the edge of the petals—a rare combination which is greatly enhanced by the black anthers. Height 30 inches. **\$5 each, \$55 per doz.**

Natalie May. Sulphur-white, with some hardly noticeable crimson spots; base white; anthers black. Very tall and graceful. A fine exhibition Tulip. Height 32 inches. **\$7.50 per doz., \$60 per 100.**

Orange King. Beautiful deep orange, shaded rose, inside deep orange-scarlet with a yellow center. Height 23 inches. **70 cts. per doz., \$5 per 100, \$48 per 1,000.**

Pride of Inglescombe. White, broadly edged deep crimson-rose; white base, shaded blue. A long and excellently shaped flower, somewhat like Picotee but brighter in color. Very attractive when planted in masses. Height 25 inches. **\$1.75 per doz., \$12 per 100.**

Quaintness. Old-gold, flushed deep rose; inside old-gold, shaded mahogany. Immense flower with very long petals. Height 24 inches. **\$3.50 per doz., \$25 per 100.**

Rosabella. This beautiful novelty—the finest introduction in Cottage Tulips of recent years—is, perhaps, best described as a beautiful shade of salmon-rose. Height 21 inches. **\$2.50 per doz., \$20 per 100.**

Scarlet Emperor. Where a glowing shade of scarlet is desired, this is one of the finest of its color. Height 22 inches. **\$1.20 per doz., \$9 per 100, \$88 per 1,000.**

Sir Harry. Pale lavender-pink of an unusual tone; yellow. Large flower of pointed shape, quite broad at the base. A fine variety for exhibition or pots. Height 26 inches. **80 cts. per doz., \$6 per 100, \$58 per 1,000.**

Striped Beauty. Silvery rose, blotched and striped dark carmine and white. Large, bold flowers on a graceful stem. Excellent for pot-culture. Height 18 inches. **\$1.50 per doz., \$10 per 100, \$98 per 1,000.**

The Fawn. The coloring is a unique shade of pale rosy fawn, changing to blush-rose. Height 20 inches. **70 cts. per doz., \$5 per 100, \$48 per 1,000.**

Themis. A lovely hybrid Tulip, the result of crossing a Darwin and Cottage Tulip. It is of characteristic Darwin shape, with somewhat reflexing petals, and a beautiful pure white throughout, with fine strong stem. This and Carrara are two of the finest white hybrid Tulips. Height 28 inches. **\$2.50 per doz., \$20 per 100.**

The Lizard. Deep blood-red, with purple bloom, striped and feathered yellow and white. A Tulip of most unusual markings. Height 24 inches. **\$1.10 per doz., \$8 per 100, \$78 per 1,000.**

Vitellina. Pale yellow, becoming creamy white as the flower ages; large flower of great substance and beauty; sweet-scented. Excellent forcer. Height 20 inches. **70 cts. per doz., \$5 per 100, \$48 per 1,000.**

Walter T. Ware. Deep golden yellow, the deepest and richest color among Late Tulips; broad, globular flowers reflexing at the top. Height 18 inches. **\$1.50 per doz., \$12 per 100.**

Zommerschoon. One of the oldest of Cottage Tulips—a combination of ivory and carmine. Height 20 inches. **\$10 per doz., \$75 per 100.**

Superb Mixture. A select assortment, covering almost every conceivable color and shade. Those who have not grown these Tulips, and desire a mixture for trial purposes, can depend on getting every color that obtains in this beautiful class of Tulips. **60 cts. per doz., \$5 per 100, \$45 per 1,000.**



Cottage Tulip, Miss Willmott

LILY-FLOWERING TULIPS

This type of Tulip, which is now becoming popular in American gardens, is the result of crossing the urn-shaped Tulip, *Retroflexa* with one of the pink Darwins. The varieties, some of which we have previously listed among our Cottage and Hybrid Tulips, are very decorative, and the flowers are urn-shaped with long, recurving petals, giving them a lily-like shape. They bloom at the same time as the Darwin, Breeder, and Cottage Tulips.

ALASKA. One of the finest of the new Hybrid Tulips. The flowers are long, the outer petals slightly reflexed and of an even tone of pure yellow. Height 28 inches. **\$3.50 per doz., \$25 per 100.**

ARTEMIS. Best described as a deep clear rose-pink, similar in type to *Retroflexa*, except its color. A splendid Tulip for the herbaceous border. Height 30 inches. **\$1 per doz., \$7.50 per 100, \$72 per 1,000.**

ELEGANS ALBA. Creamy white, with maroon margin of carmine-rose. Large flower, with reflexing petals, similar to *Picotee*, except that the color does not spread as the flower ages. A dainty variety for planting in beds with ground-cover of forget-me-nots. Height 20 inches. **\$1.50 per doz., \$12 per 100.**

PICOTEE (Maiden's Blush). White, margined deep rose, the color suffusing the whole flower as it ages; medium-sized flower, reflexing. A grand Tulip for the border. The sight of a large bed planted wholly to this variety is one that will not easily be forgotten. Height 20 inches: **70 cts. per doz., \$5 per 100, \$48 per 1,000.**

RETROFLEXA SUPERBA. Light yellow, very decorative, urn-shaped Tulip, with long, recurving petals, giving a distinct lily-like effect. Height 18 inches. **\$1.20 per doz., \$9 per 100, \$88 per 1,000.**

SIRENE. This beautiful lily-flowering Tulip is not only a lovely variety on account of its color, but because of the exquisite urn-like shape of the flower. A rich cerise-pink, white base. Splendid for exhibition. Height 26 inches. **\$1 per doz., \$7 per 100.**

YELLOW PICOTEE. Beautiful canary-yellow, margined deep rose. A yellow counterpart to the well-known variety *Picotee*. A showy bedder. Height 20 inches. **\$1 per doz., \$7 per 100, \$68 per 1,000.**



Botanical Tulip, Greigi

BOTANICAL TULIPS AND SPECIES

We offer below a list of the Botanical Tulips as well as species varieties of Tulips which are natives of Asia Minor and Central Asia. The varieties offered, with the exception of *Clusiana* are grown in Holland from collected stocks. We advise our patrons to make a trial of some of these Tulips.

CLUSIANA. The "Little Lady" Tulip. A lovely little variety which originated in Asia Minor. Grows about 8 inches high, flowers as large as a crocus. Outer petals cherry-red, inner petals white with violet base. Should be planted 8 to 9 inches deep in light soils in a sheltered place. Excellent bulb for the rock-garden. We have exhibited pots of this lovely Tulip at the New York Spring Flower Show every year for the past ten years and it is always greatly admired. Bulbs are grown for us by a specialist in the south of France and are excellent for pot-culture as well as for the rock-garden. For indoors plant same as recommended for other Tulips. **\$1 per doz., \$8 per 100, \$78 per 1,000.**

EICHLERI. This splendid Tulip from Turkestan produces large crimson-scarlet flowers with a glistening black center marked with gold. Height 12 inches. **\$2 per doz., \$15 per 100.**

FLORENTINA ODORATA. Fragrant, rich yellow flowers, frequently two to a stem, with bronze interior, carried on slender stems. An interesting species. Height 18 inches. **\$1.30 per doz., \$10 per 100, \$98 per 1,000.**

GREIGI. Flowers very large, brilliant orange-scarlet, with yellow and black center. The curious feature of this Tulip is that the foliage is of a very distinct character, being spotted maroon. Requires a rather dry situation where good drainage prevails. Blooms late in April or early in May. Height 10 inches. **\$3.50 per doz., \$25 per 100.**

KAUFMANNIANA. One of the earliest of all the Tulips to come in flower. Creamy white, tinged rosy red, the markings varying. The flowers are very attractive, large in size, with petals reflexing. Blooms early in April. **\$3.50 per doz., \$25 per 100.**

MARJOLETTI. Pale yellow, mottled toward the outer petals with scarlet. A lovely species, which blooms outdoors during late April. Height 14 inches. **\$1 per doz., \$8 per 100, \$78 per 1,000.**

SPRENGERI. Bright orange-scarlet flowers, very striking and does not bloom until late in May. Grows 8 to 10 inches tall. Splendid for the rock-garden. **\$3.50 per doz., \$25 per 100.**



Lily-flowering Tulip, Sirene

Striped and Feathered May-Flowering Tulips



Rose Bybloem Tulip, Athalia

BYBLOEM AND BIZARRE TULIPS

Bybloem and Bizarre Tulips are "rectified" Breeder types. The Tulips are of an old race which has been grown in Holland and in France since the beginning of the seventeenth century, and which caused the famous Tulip craze in 1635. The Bybloems are queerly striped and feathered rose or violet on a white ground. The Bizarres have dark brown stripes and feathering on a yellow ground. The varieties offered are the newer sorts, and the flowers are larger than the older and smaller-flowering sorts. They flower about the same time as the Breeder and Darwin Tulips but do not grow quite so tall, and are seen at best advantage when planted in clumps in the herbaceous border or among evergreens and shrubs. The stems average from 18 to 23 inches in height.

- ADMIRAL KINGSBERGEN.** (Rose Bybloem.) Bright crimson, feathered and flamed with white; large flower. borne on a stiff stem. **\$2 per doz., \$15 per 100.**
- ATHALIA.** (Rose Bybloem.) White, bordered and feathered bright rose. **\$1.30 per doz., \$10 per 100.**
- BLACK BOY.** (Bizarre.) Yellow ground, feathered and flamed dark brown. **\$1 per doz., \$7 per 100.**
- EMPEROR DU MAROC.** (Bizarre.) Bright yellow ground, feathered and flamed dark red. **\$1.10 per doz., \$8 per 100.**
- GLORY OF HOLLAND.** (Violet Bybloem.) Pure white, feathered and flamed violet-purple. **\$1.50 per doz., \$12 per 100.**
- LADY STANLEY.** (Violet Bybloem.) White, feathered and striped dark violet. **\$1.10 per doz., \$8 per 100.**
- OVIDIUS.** (Bizarre.) Reddish brown ground, feathered yellow; very attractive variety. **\$1.10 per doz., \$8 per 100.**
- PRINS MAURITZ.** Yellow ground, variegated dark brown. **\$1.10 per doz., \$8 per 100.**
- REINE DE HOLLANDE.** (Rose Bybloem.) White, feathered and flamed red; a very attractive and distinctly variegated Tulip. **\$1.10 per doz., \$8 per 100.**
- ROMEA.** (Bizarre.) Bright yellow, feathered and bordered with orange-red; a very striking variety of large size. **\$1.10 per doz., \$8 per 100.**
- VONDEL.** (Violet Bybloem.) White ground, striped dark violet and feathered light violet. **\$2 per doz., \$15 per 100.**
- ROSE BYBLOEM TULIPS, MIXED.** **\$1 per doz., \$7 per 100.**
- VIOLET BYBLOEM TULIPS, MIXED.** **\$1 per doz., \$7 per 100.**
- BIZARRE TULIPS, MIXED.** An excellent mixture of choice named sorts. **\$1 per doz., \$7 per 100.**

REMBRANDT TULIPS

Rembrandt Tulips are in reality "broken" forms of Darwin Tulips. Each year many of our best varieties of Darwin Tulips show a tendency to break, or become variegated. These Tulips, on account of their odd colorings and variegations, were very popular at one time, and while the modern tendency to favor self-colors is recognized generally throughout all countries, these broken forms are sometimes preferred and possess splendid decorative value. The stems average from 18 to 22 in. in height.

- APOLLO.** Lilac-rose and white, striped dark carmine. **\$1.10 per doz., \$8 per 100.**
- CARACALLA.** White, striped and feathered carmine-red; a very attractive variety. **\$1.10 per doz., \$8 per 100.**
- EROS.** Soft lilac, feathered dark violet; not a large but exquisite flower. **\$1.10 per doz., \$8 per 100.**
- JULIENNE.** Rose, striped and feathered carmine-purple and white. Edges of petals broadly blotched white makes splendid contrast with the rich color of the flower. **\$1.20 per doz., \$9 per 100.**
- LA COQUETTE.** Violet, flamed purple and white; not a large but an exquisite flower **\$1.10 per doz., \$8 per 100.**
- MARCO SPADO.** White, flamed bright carmine-red; large flower. **\$1.30 per doz., \$10 per 100.**
- SEMELE.** White, heavily striped and feathered vivid rosy pink. A Tulip of exquisite coloring; large flower. **\$1.10 per doz., \$8 per 100.**
- VICTOR HUGO.** Brilliant carmine, feathered white. **\$1.10 per doz., \$8 per 100.**
- REMBRANDT TULIPS, CHOICE MIXED VARIETIES.** **\$1 per doz., \$7 per 100.**

PARROT TULIPS Three-Year-Old Flowering Bulbs

Fantasy. A glorious Parrot Tulip with a straight, strong stem. It is a sport from the Darwin Tulip, Clara Butt, with exactly the same beautiful true pink color but the quaintly artistic shape of a Parrot Tulip. Several pans of this exhibited in our display at the New York Flower Show this spring created a sensation. **\$1 each, \$10 per doz., \$75 per 100.**

- Amiral de Constantinople.** Large, red flowers, tipped with orange. **Lutea major.** Large; bright yellow, with crimson and green stripes.
- Cramoisi Brilliant.** Deep carmine; very handsome. **Perfecta.** Yellow and red, striped.
- Mixed Parrot Tulips.**

Price, any of the above (except Fantasy), 85 cts. per doz., \$6 per 100



Parrot Tulips

SINGLE EARLY TULIPS

FOR APRIL-BLOOMING OUTDOORS, POTS AND FORCING

Few, if any, of the spring-blooming flowers rival the Tulip for brilliancy of bloom or ease of culture. For formal beds on the lawn or garden borders they are excellent subjects. They do not possess the same size of bloom and length of stem of the May-flowering Darwin, Breeder and Cottage varieties, but where early blooms are desired they are frequently used. Many of the varieties may be forced in bloom in January, while all the varieties may be easily had in flower in pots late in February or early March.

Culture.—For indoor blooming they require the same cultural treatment as Hyacinths.

Outdoor Culture.—Bulbs may be planted with good assurance of success even in early December, if the ground is open. They should be planted not more than 5 inches apart, covering the bulbs about 4 inches over the top. After the first sharp frost which forms a light crust on the surface of the soil, old leaves or litter should be spread about 6 inches thick over beds or borders to prevent frost from going deeper. Do not cover bulbs, if planted early, until the first sharp frost, as field-mice frequently nest among leaves and destroy bulbs, which is impossible if the covering is placed after the first hard frost.

Note.—The letters A, B and C, following the varieties indicate their relative earliness of bloom; but, with few exceptions, most of the varieties, however, bloom outdoors about the same time when planted in masses. The figures indicate the height in inches.

The following list contains the best novelties extant, as well as a complete list of the best standard varieties. We have discarded quite a number of varieties which no longer grow well.

BEST STANDARD AND NEW AND RARE VARIETIES

Belle Alliance. B 11. Brilliant scarlet, Doz. 100 1,000
 yellow base; large
 flower. An excellent variety for early for-
 cing and does very well for bedding also... \$0 85 \$6 00 \$58 00

Brilliant Star. A 12. Bright vermilion-Doz. 100 1,000
 ion-scarlet, same color
 as Vermilion Brilliant, but larger and of
 great substance. Splendid early foreer,
 flowering easily for Christmas... \$1 10 \$8 00 \$78 00

Cerise Gris-de-Lin. C 11. Dark car-
 mine-violet, shad-
 ded fawn and margined creamy white, with
 yellow base; large flowers of globular form.
 A novel bedding variety, but must be
 planted alone; excellent for March forcing... 85 6 00 58 00

Couleur Cardinal. C 12. A bright
 crimson-scarlet,
 with a deeper tone or bloom on the outer
 petals. A bed planted wholly to this variety is
 a grand sight. Grand for midseason forcing. I 10 8 00 78 00

Cramoisi Brillant. C 13. Glowing
 scarlet, with yellow
 base; long, narrow flowers of perfect form. 70 5 00 48 00

Cramoisi Royal. B 14. A large flower of a
 bright carmine-rose,
 borne on strong stems. A lovely satiny rose
 color when grown in pots... I 30 10 00 98 00

De Wet. B 16. Golden yellow, flushed
 deep orange; large, sweet-
 scented flower of erect habit. Quite different
 in color from any other variety... 2 00 15 00

Diadem. A 16. A very beautiful new
 variety when forced early, being
 an even tone of pearly pink. Excellent for
 pots or cutting... IO 00 75 00

Flamingo. B 12. Carmine-rose, shaded
 lighter. The petals are striped
 white and very crinkled, giving the flower
 a decidedly artistic appearance. A very
 popular variety among florists for forcing
 on account of its odd color and habit... 85 6 00 58 00

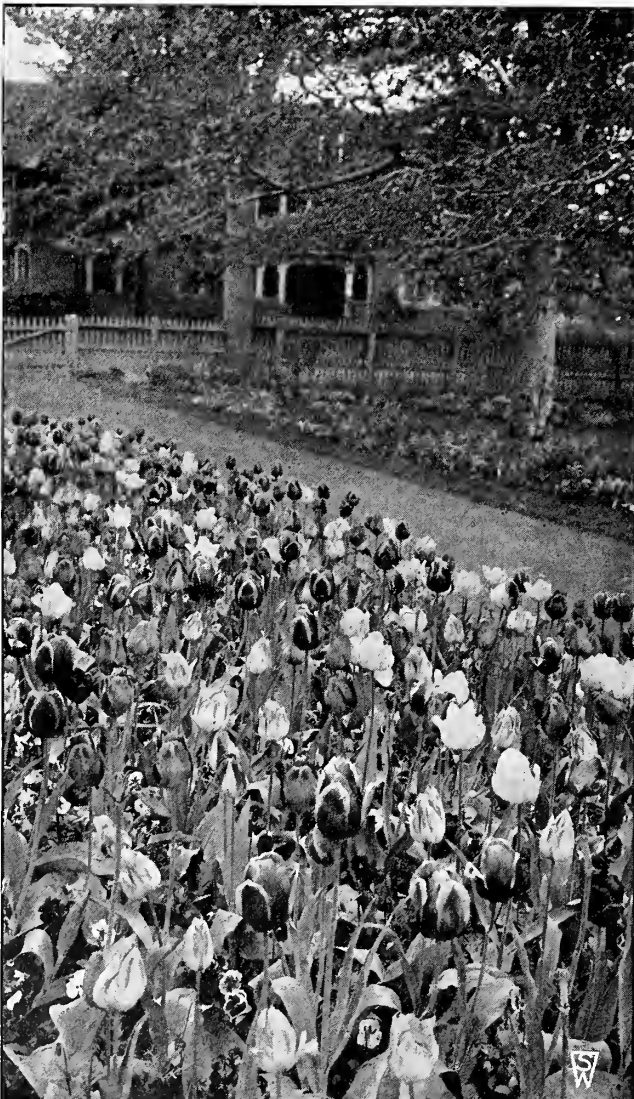
Fortuna. A 14. Perhaps best described as a
 satiny lilac-rose—a very beautiful
 color without the slightest trace of magenta.
 Splendid for early forcing... IO 00 75 00

Fred Moore. B 12. An improved form of
 Thomas Moore. Deep,
 ruddy apricot, shading at the edges of the
 petals to dull orange-yellow, center marked
 olive-green; medium-sized flower; sweet-
 scented. A lovely color when forced... 85 6 00 58 00

Golden Queen. B 13. Golden yellow;
 large flower of extra-
 fine form. Excels all existing yellows for
 substance, and excellent for early forcing... I 10 8 00 78 00

Ibis. B 14. Quite the finest novelty offered
 by us this year. A brilliant dark pink
 color when grown indoors. A grand exhibi-
 tion variety... I 20 9 00 88 00

King of the Yellows. A 14. Deep
 golden yellow;
 low; the flowers are egg-shaped, very sub-
 stantial and carried on a tall stem, which
 makes them excellent for cutting. One of
 the earliest yellows which should be much
 more used for early forcing... I 00 7 00 68 00



A border of Single Early Tulips

Single Early Tulips, continued

Keizerkroon. A 15. Bright crimson-Doz. 100 1,000 scarlet, edged clear, rich yellow; excellent, large flower on long stem. Fine bedder; splendid for forcing..... \$1 20 \$9 00 \$88 00
Lady Boreel (Joost Van Vondel White). B 13. Snowy white; large, long flower of splendid shape. The finest white for bedding, and superb for pots or pans. Cannot be forced so early as Pelican or White Hawk..... 1 00 7 00 68 00
Lady Moore. B 12. This is a much im- proved Fred Moore. The color is red, shaded terra-cotta. A variety of considerable substance..... 2 00 15 00
La Reine Maximus. B 12. White, flushed faintly with pink. Used largely by florists for early forcing and a very lovely variety..... 85 6 00 58 00
La Remarquable. C 13. Brilliant claret- purple, edged and tipped ped old-rose. A very large flower of elegant re- flexing shape and a rather odd color among early Tulips. Good for bedding or late forcing. 1 00 7 00 68 00
Le Reve (Hobbema; Sarah Bernhardt). C 14. This variety caused con- siderable favorable comment in our exhibit of bulbs at the New York Flower Show this spring. The color is old-rose, flushed buff; a very large, globular flower with rounded petals and carried on a strong stem. Excel- lent for late bedding, and retains color well if not forced before March..... 1 10 8 00 78 00
Max Havelaar. Very close in color to watermelon-red; rather large, well-formed flowers..... 1 20 9 00 88 00
Mon Tresor. A 12. Golden yellow; the flowers are large and of a pure color. Mostly used for growing in pots or pans, for which purpose it is best..... 1 20 9 00 88 00
Moonbeam. B 14. Deep primrose-ye- low, shading to soft canary at the edges; very large flower of graceful form. An improved form of Primrose Queen. 1 30 10 00 98 00
Pelican. A 14. A splendid new, pure white variety, and of wonder- fully large size. Excellent for exhibition; sport of the variety White Hawk..... 85 6 00 58 00
Pink Beauty. C 12. Bright cherry-rose, center of petals striped white. It has no equal as a bedder, for the stem is strong and the white center of the big, fleshy petals shows up very conspicuously against the broad, vivid rose edges. Does well in pans, but not before March..... 1 50 12 00
Pink Perfection. A 14. This is consid- ered the finest uni- form shell-pink Early Tulip which has come to our attention in recent years. A splendid exhibition variety that will be more exten- sively grown when better known. \$1 each. 10 00 80 00
President Lincoln. B 12. Large flower of clear magenta- violet, slightly paler in tone when grown indoors. A variety that looks well when bedded out with a pale yellow variety.... 1 00 7 00 68 00
Prince of Austria. B 14. Brilliant orange-scarlet, with a clear yellow base. The flower is large and of a very attractive shade when forced. A splendid bedding variety as well.. 70 5 00 48 00
Princess Wilhelmina. B 13. Deep pink, with striking white flush on outer petals; long pointed flower. Fine for bedding..... 85 6 00 58 00
Proserpine. A 14. Rosy carmine, with a white center marked slate- blue; a very large globular flower. One of the easiest and earliest forcing Tulips; very sweetly scented..... 1 20 9 00 88 00



Le Reve Tulips

Queen of Orange. B 17. This new va-Doz. 100 1,000 riety is considered to be an improvement on the very popular De Wet. It has the same glorious orange color but the flower is somewhat longer.... \$2 00 \$15 00
Rising Sun. B 15. A new variety used for exhibition on account of its pure yellow color, and wonderful size and substance. The finest golden yellow early Tulip introduced to date..... 1 20 9 00 \$88 00
Rose Luisante. C 10. Brilliant, deep rose-pink; large flower. Splendid for bedding, or pots..... 1 00 7 00 68 00
Van Der Neer. B 12. Deep dark pur- ple; a flower of a most brilliant tone and splendid shape..... 1 20 9 00 88 00
Vermilion Brilliant. A 12. Bright, glistening scar- let, with a yellow base; very large flower of perfect shape. Splendid for early forcing... 1 10 8 00 78 00
White Beauty. C 13. A very lovely sport from Pink Beauty, with large, white flowers of beautiful, globu- lar form and great substance. Splendid for forcing and excellent for outside bedding when used with Pink Beauty..... 1 30 9 00
White Hawk. B 12. Lovely pure white, very large, globe-shaped, of great substance. A very early forcer.... 85 6 00 58 00
Yellow Prince. B 12. Clear golden ye- low. A large flower used by florists for early forcing or bedding.... 1 00 7 00 68 00

S. & W. Co.'s Special Mixture. A mixture consisting of 25 named varieties, blended so as to give an assortment of all possible colors and shades, all of vigorous habit and large size, uniform height and time of blooming. 70 cts. per doz., \$5 per 100, \$48 per 1,000.

DOUBLE EARLY TULIPS

FLOWERS JUST AFTER EARLY TULIPS, IN LATE APRIL

Double Tulips are chiefly grown for their showy effects in masses, and are very lasting. Where a display of color is desired they are very satisfactory. Excellent for growing in pots or pans, but should not be forced into bloom very early.

The following list contains many of the best tested novelties, as well as all worth-while standard sorts.

Azalea.	B 12. Beautiful deep rose, flushed salmon. Doz.	100
	A splendid variety for forcing on account of its lovely color.....	\$1 10 \$8 00
Couronne d'Or (Crown of Gold).	B 10. Large, bold flower of rich golden yellow, shaded copper. Excellent for bedding and winter forcing.....	I 10 8 00
Electra.	B 13. Beautiful deep rose, feathered violet; a handsome variety; flowers of enormous size. Excellent for exhibition. Height 12 inches.	I 50 12 00
El Toreador.	B 12. Bright orange-scarlet, with broad margin of buff-yellow. Excellent for pots or bedding.....	I 30 10 00
Golden Giant.	B 12. This is, without a doubt, the finest and largest double yellow Tulip in existence. It is a pure yellow sport of Couronne d'Or. Excellent for exhibition.....	7 50 60 00
Imperator Rubrorum.	B 10. Excellent scarlet for bedding and forcing. Still remains among the best of the older varieties.....	I 00 7 00
Mr. Van Tubergen.	B 16. Beautiful golden yellow. Another good sport of that excellent variety, Couronne d'Or, and while not as large as Golden Giant, it is a decided acquisition.....	I 10 8 00
Murillo.	C 12. Delicate rose-pink, flushed white. Fine for bedding, and excellent for forcing..	70 4 50
Mystery of India.	B 12. Beautiful terra-cotta and orange, slightly shaded old-rose; a large, well-formed flower on a strong stem..	I 00 7 00
Orange Nassau.	B 12. A rather unusual color in double Tulips—orange-red. A sport from that popular variety, Murillo. Very effective for planting in beds or borders.....	6 00 45 00
Peach Blossom.	C 12. Bright rose-pink, flushed white, deepening with age to carmine-rose; large. A sport of Murillo. Excellent for pots.	I 00 7 00
Queen of the Pinks.	B 14. Splendid new shade of rosy pink; fine large flower of a lovely even tone when forced.....	I 00 7 00
Safrano (Brimstone; Tea Rose).	B 12. This variety is a sport of Murillo; flowers open pale yellow, flushed salmon, but develop a rosy apricot in a day or so.....	85 6 00
Salvator Rosa.	B 12. Beautiful deep rose, slightly flushed white. Excellent for beds or forcing.....	85 6 00
Schoonoord.	B 12. A beautiful, pure white sport of Murillo, with the same excellent forcing qualities. One of the best, if not the best white double.....	85 6 00



Border of Double Tulips

Van der Hoef.	C 12. A beautiful pure yellow sport of the variety Murillo. Doz.	100
	Fine new variety for forcing.....	\$1 10 \$8 00
Vuurbaak.	B 12. Brilliant scarlet, when fully open the flower gets an orange hue. One of the best scarlets for bedding owing to its sturdy stem.....	I 10 7 50

S. & W. Co.'s Special Mixture. A mixture consisting of 15 named varieties, blended so as to give an assortment of all possible colors and shades, all of vigorous habit and large size, uniform height and time of blooming. 70 cts. per doz., \$5 per 100, \$48 per 1,000.

DOUBLE LATE TULIPS

Among the recent advances made by Tulip hybridizers in Holland, the Double Late Tulip may be counted as a distinct achievement from the standpoint of the wonderful peony-like flowers, strong stems, and well-filled blooms. For mass effect in the herbaceous border there are few Tulips that will give such a wonderful display. This, taken in connection with the unusual colors, should increase their demand by Tulip-lovers. The four varieties listed below bloom about the same time as the May-flowering Tulips listed in our catalogue under the headings, Darwin, Dutch Breeder, and Cottage and Hybrid Tulips.

Bleu Celeste. Large, soft violet-purple flowers of a very pleasing color. A fine Tulip for cutting and excellent for planting in the herbaceous border. Height 14 inches. \$1.30 per doz., \$10 per 100.

Epicure. One of the finest new Double Late Tulips. Its color strikes a new note in Tulip shades and is perhaps best described as an even tone of rich apricot-salmon that looks particularly attractive in the bright sunshine and is very pleasing under artificial light. Height 20 inches. \$3.50 per doz., \$25 per 100.

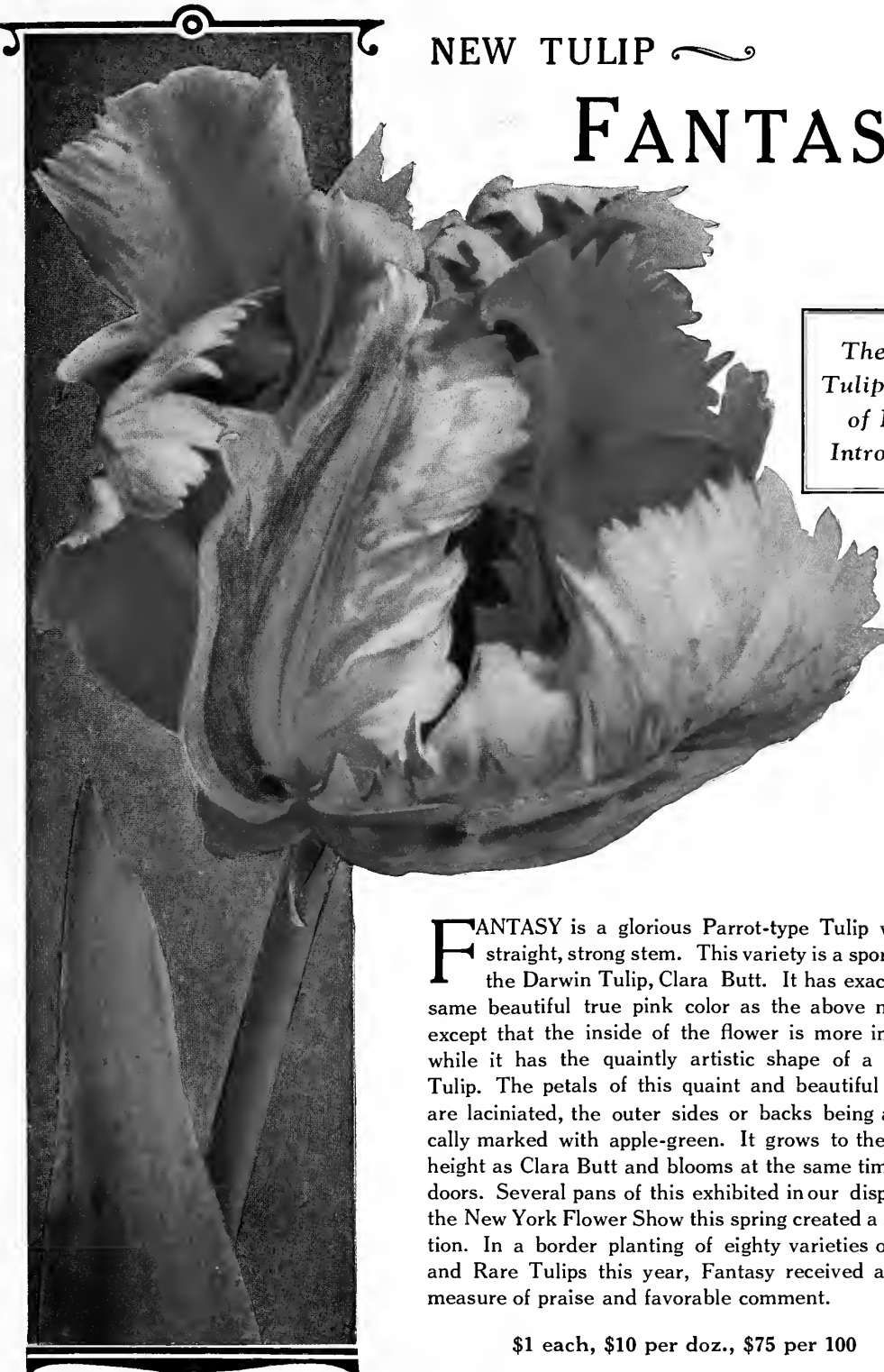
Mount Tacoma. In form this Tulip is somewhat on the order of a semi-double pure white peony, the petals being slightly lacinated. Another real gem for the herbaceous border on account of its well-formed flower and large size. Height 26 inches. \$10 per doz., \$75 per 100.

Pensee Rose. Another Tulip of unique color, which is perhaps best described as a deep rose-lavender. The large, well-formed flowers are borne on stems 24 inches tall. \$4 per doz., \$30 per 100.

NEW TULIP ~

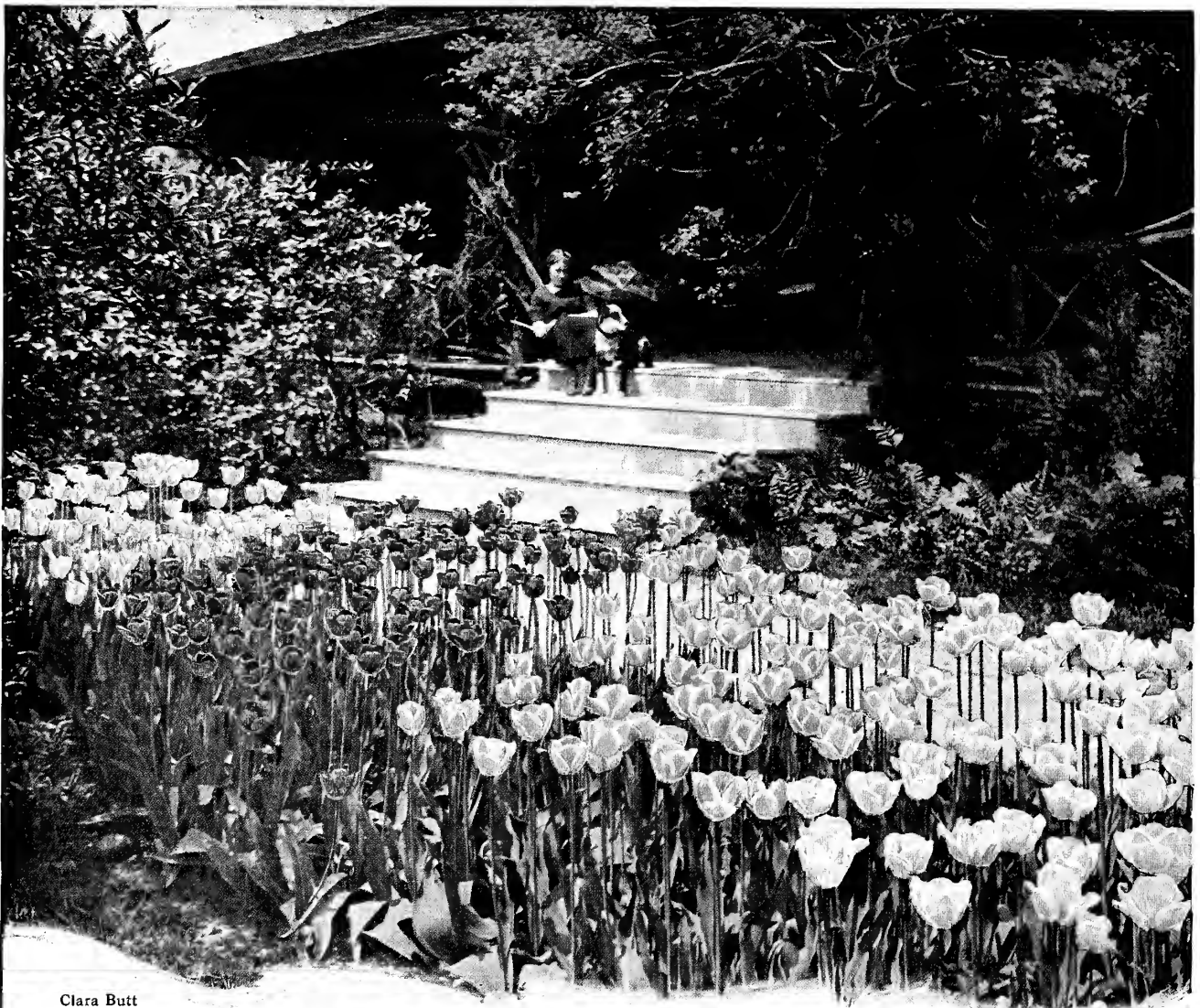
FANTASY

*The Finest
Tulip Novelty
of Recent
Introduction*



FANTASY is a glorious Parrot-type Tulip with a straight, strong stem. This variety is a sport from the Darwin Tulip, Clara Butt. It has exactly the same beautiful true pink color as the above named, except that the inside of the flower is more intense, while it has the quaintly artistic shape of a Parrot Tulip. The petals of this quaint and beautiful flower are lacinated, the outer sides or backs being artistically marked with apple-green. It grows to the same height as Clara Butt and blooms at the same time outdoors. Several pans of this exhibited in our display at the New York Flower Show this spring created a sensation. In a border planting of eighty varieties of New and Rare Tulips this year, Fantasy received a great measure of praise and favorable comment.

\$1 each, \$10 per doz., \$75 per 100



Clara Butt

Mrs. Potter Palmer

Edmee

Dream

FOUR POPULAR DARWIN TULIPS

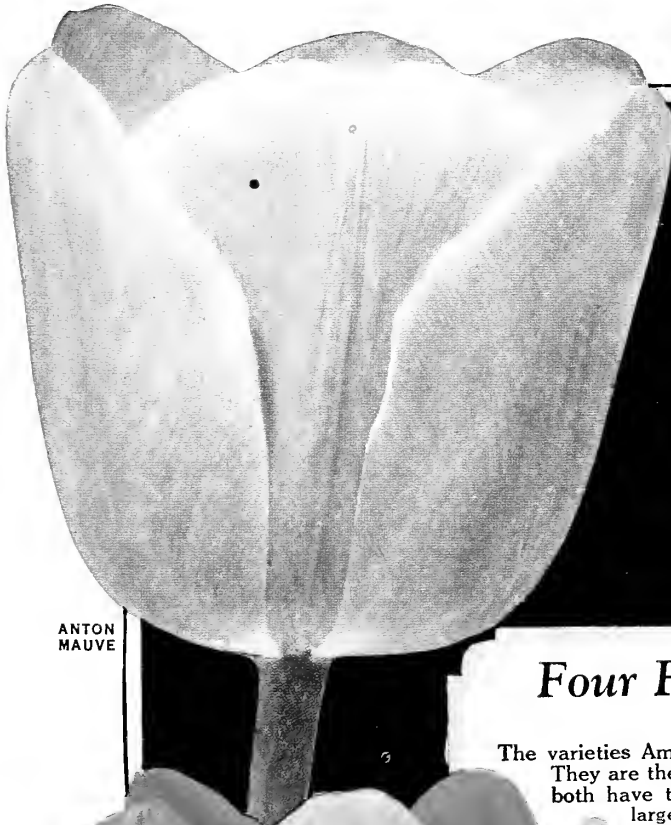
THE modern garden is usually planted to a color scheme. The illustration above suggests the planting of your flower borders in blocks of 25, 50, or 100 of a variety, with a definite color scheme in mind. The four varieties suggested, when planted in the order given, will produce a very lovely color scheme. The lilac and mauve coloring of Dream, followed by the brighter cherry-rose tone of Edmee, and this followed by the bright violet of Mrs. Potter Palmer, with the beautiful pure salmon-pink Darwin, Clara Butt, form a very effective color scheme. They are quite the least expensive of the Darwin Tulips and will always remain prime favorites.

	Doz.	100	1,000		Doz.	100	1,000
Dream	\$0 70	\$5 00	\$48 00	Mrs. Potter Palmer.....	\$0 70	\$5 00	\$48 00
Edmee	70	5 00	48 00	Clara Butt	60	4 00	38 00

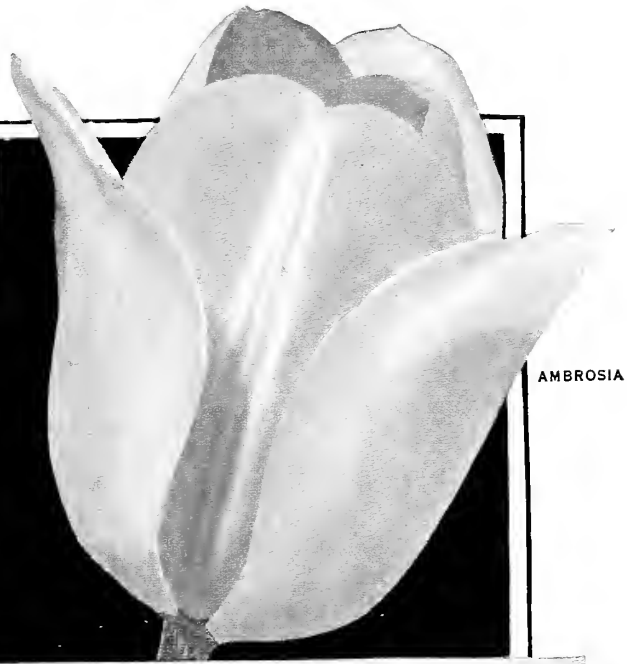
SPECIAL COLLECTION OFFER

25 bulbs each of the above 4 varieties,	100 bulbs	\$4 50
50 bulbs each of the above 4 varieties,	200 bulbs	8 50
100 bulbs each of the above 4 varieties,	400 bulbs	16 00
250 bulbs each of the above 4 varieties,	1,000 bulbs	38 00

For complete descriptions of the varieties mentioned above see pages 5 and 6



ANTON MAUVE



AMBROSIA

Four Fine New and Rare Tulips

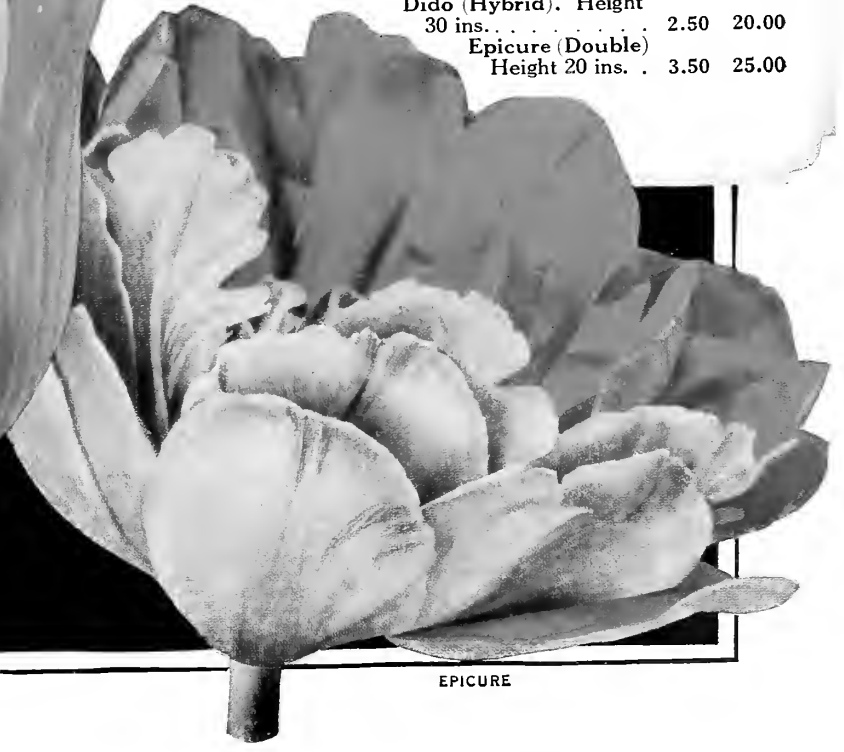
(MAY-FLOWERING)

The varieties Ambrosia and Dido are real gems among the newer Tulips. They are the result of crossing the Darwin with the Cottage Tulips, and both have the vigorous habit of the Darwins, with strong stems and large blooms, as well as a distinctly new and fascinating color. Darwin Tulip, Anton Mauve, is quite the finest of its color. The Double May-flowering Tulip, Epicure, is a decidedly new color-note in its class. The blooms are large, as massive as the peony, and are borne on strong stems. Splendid for planting in the hardy border.

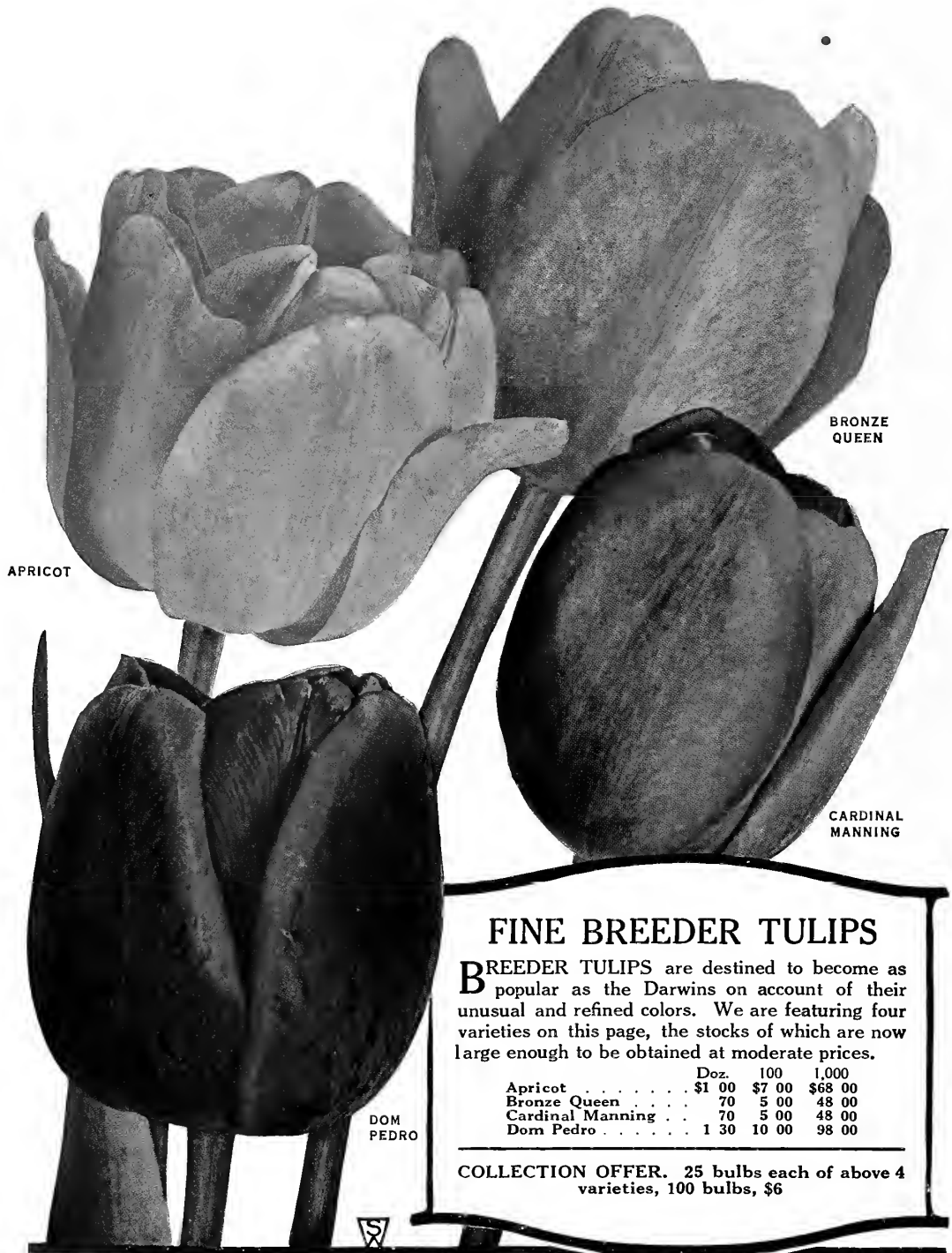
	Doz.	100
Anton Mauve (Darwin). Height 32 ins.	\$1.10	\$8.00
Ambrosia (Hybrid). Height 28 ins.	2.00	15.00
Dido (Hybrid). Height 30 ins.	2.50	20.00
Epicure (Double) Height 20 ins.	3.50	25.00



DIDO



EPICURE



APRICOT

BRONZE
QUEEN

CARDINAL
MANNING

DOM
PEDRO

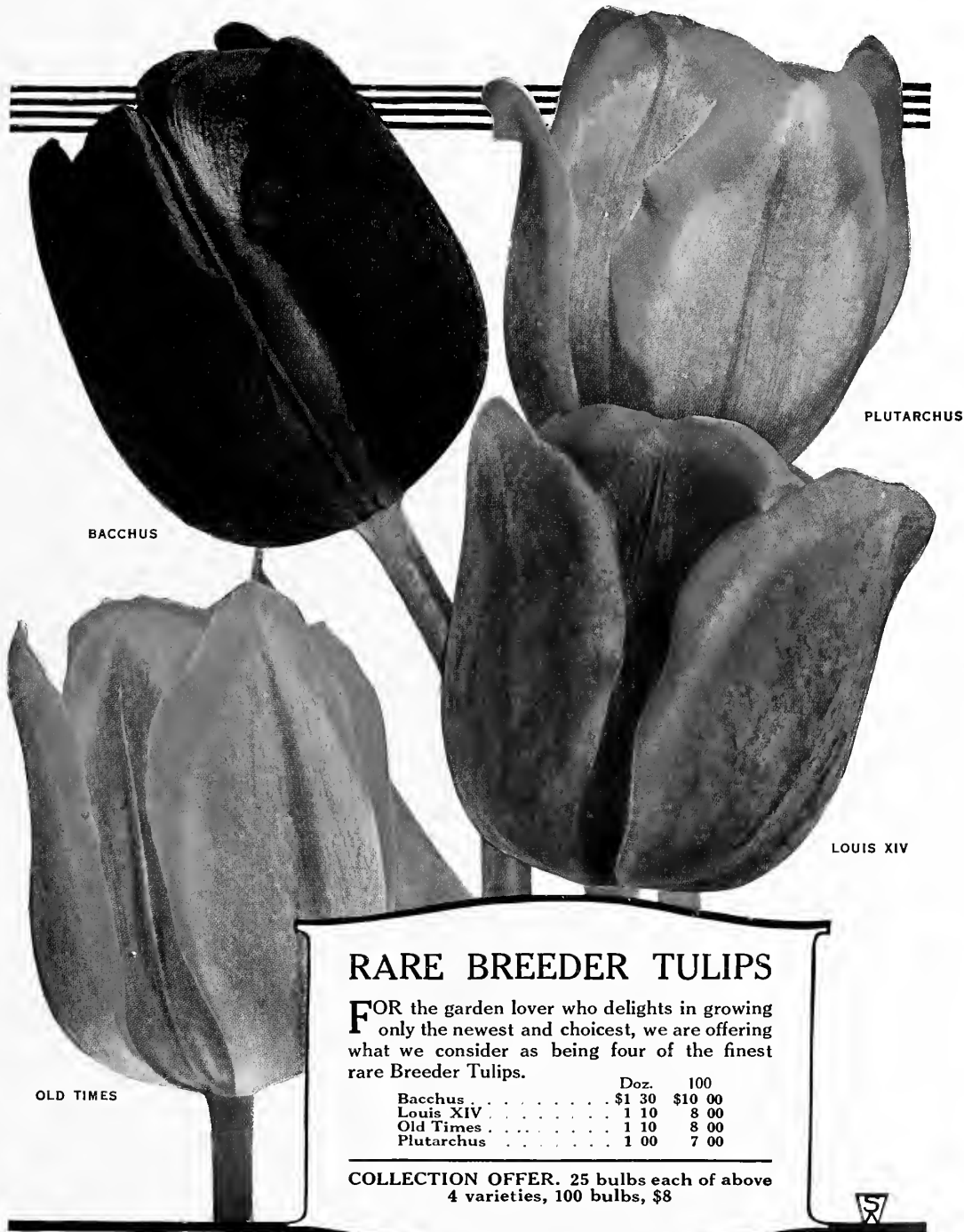
FINE BREEDER TULIPS

BREEDER TULIPS are destined to become as popular as the Darwins on account of their unusual and refined colors. We are featuring four varieties on this page, the stocks of which are now large enough to be obtained at moderate prices.

	Doz.	100	1,000
Apricot	\$1 00	\$7 00	\$68 00
Bronze Queen	70	5 00	48 00
Cardinal Manning	70	5 00	48 00
Dom Pedro	1 30	10 00	98 00

COLLECTION OFFER. 25 bulbs each of above 4 varieties, 100 bulbs, \$6

For complete description of Breeder Tulips listed above see page 8



BACCHUS

PLUTARCHUS

LOUIS XIV

OLD TIMES

RARE BREEDER TULIPS

FOR the garden lover who delights in growing only the newest and choicest, we are offering what we consider as being four of the finest rare Breeder Tulips.

	Doz.	100
Bacchus	\$1 30	\$10 00
Louis XIV	1 10	8 00
Old Times	1 10	8 00
Plutarchus	1 00	7 00

COLLECTION OFFER. 25 bulbs each of above 4 varieties, 100 bulbs, \$8



For complete descriptions of varieties of Breeder Tulips listed above see pages 8 and 9

Three Fine Lilies



LILIUM HUMBOLDTI

(Beautiful Californian Lily)

October Delivery

This beautiful Californian Lily bears its attractive drooping flowers in triangular clusters, each bloom brilliant golden yellow, spotted with purple on the reflexed petals. Prefers rich well-drained soil to permit the basal roots to penetrate easily. Blooms in June and July. 75 cts. each, \$7.50 per doz., \$60 per 100.



Lilium regale

LILIUM CANDIDUM (Madonna Lily)

CHOICE NORTHERN-GROWN
Arrive in August or September

This Lily should be planted in September or October, so that it can root and make a tuft of leaves in the fall. It is usually at its best the latter part of June and is splendid in the hardy border when planted with delphiniums. It resents deep planting. Set bulbs slightly on their side with a little sand under them, and cover with 2 to 3 inches of soil. The bulbs do well almost anywhere, except in heavy clay land, and are not seriously subject to disease. This Lily does not object to a little lime.

	Each	Doz.	100
First Size.....	\$0 35	\$3 50	\$25 00
Mammoth Bulbs.....	40	4 00	30 00
Jumbo Bulbs.....	50	5 00	40 00



Lilium candidum

LILIUM REGALE (A Regal Beauty)

October Delivery

The flowers are white, slightly suffused with pink, with a beautiful shade of canary-yellow at the center, blending out part way up the trumpet. The fragrance is fascinating, similar to the jasmine. A splendid hardy Lily for the garden, flowering about July 1. The easiest of all Lilies to grow and perhaps the handsomest. First Size, 50 cts. each, \$5 per doz., \$40 per 100. Mammoth Bulbs, 75 cts. each, \$7.50 per doz., \$60 per 100.



*SPECIOSUM
ALBUM*

*SPECIOSUM
MAGNIFICUM*

AURATUM

THREE FINE JAPANESE LILIES

WE are featuring what we believe to be the three most popular garden Lilies grown in American gardens. The sizes offered we consider the best for outdoor planting.

	Each	Doz.	100
Auratum . . .	\$0 45	\$4 50	\$35 00
Speciosum Al- bum . . .	45	4 50	35 00
Speciosum Mag- nificum . . .	45	4 50	35 00

For complete descriptions of Liliums listed above see pages 34 and 35



EMPRESS

KING ALFRED

Seven Distinct Fine Daffodils

WHETHER for garden or indoor culture, we can heartily recommend the various types of Narcissi, or Daffodils, featured on this page.

	Each	Doz.	100		Each	Doz.	100
King Alfred	\$0 35	\$3 50	\$25 00	Poeticus Ornatus	\$0 15	\$1 25	\$9 00
Lady Godiva	15	1 50	12 00	Empress	20	2 00	15 00
Lucifer	15	1 50	12 00	White Lady	15	1 50	10 00
Poetaz, Aspasia	15	1 50	12 00				

For complete descriptions of Daffodils listed above see pages 25 to 28

NARCISSI or DAFFODILS

No garden would be complete without the Narcissus or Daffodil. The innumerable positions in the garden in which their use may be availed of is responsible for their popularity. It is not only for garden culture that they are largely used, but many of the varieties are extensively grown in pots or pans for indoor decoration during late winter months. Some varieties in our list may be forced into bloom as early as January. Their simple beauty of form, dignity of habit, elegance of bloom and ease of culture, account for the new interest amounting to enthusiasm of flower-lovers all over Europe. Each year we are greeted with a profusion of novelties, many of which, on account of the high prices, are not available for immediate use.

All the varieties of Narcissi or Daffodils offered in our catalogue, with the exception of the Polyanthus Narcissus and such other few sorts as are especially noted, are perfectly hardy, and will continue to flower outdoors each year if given a congenial location and not disturbed. Where they are used for bedding, and must be lifted, it is wise to permit bulbs to remain after flowering until the foliage turns brown down to the ground, then lifted, and the earth shaken from the bulbs; they should be stored in a cool, dry place. Narcissi, like hyacinths, should be planted by early November, and should not be allowed to remain out of the ground so long as tulips, which may be planted up to hard frost.

CULTURE.—Owing to the various sizes of the bulbs, it is not advisable to state the exact depth to plant, but the simple rule of covering the bulb one and a half times its own depth, and making the distance between the bulbs 3 to 4 inches for the smaller sorts and 5 to 6 inches for the larger ones, is a good one. For greenhouse or window-garden culture treat them the same as hyacinths, except that three or more bulbs of one variety should be planted in a pot, and not single specimens.

Where a succession of blooms is desired for outdoors as well as indoors, we have arranged the following code: A, first early; B, second early; C, midseason; D, late; E, very late.

NOTE.—In describing Daffodils, Narcissi, etc., we have referred to the "perianth" and "trumpet," "crown" or "cup." The "perianth" is the surrounding row of petals or wings, and the other terms apply to the central funnel-like tube.

SPECIAL NOTICE

American-Grown Daffodil Bulbs

As we were advised in the fall of 1923 by the Federal Horticultural Board that importation of Holland Daffodil bulbs, for commercial sale, would be restricted from entry into the United States after January, 1926, we began immediately to experiment with the production of this much-loved spring-flowering bulbous plant in this country. After extended experiments, we proved that the stock grown at our Long Island farms produced bulbs of high quality, some of the varieties producing hardy, sound, heavier stock than could be grown in Holland.

Golden Spur and Victoria

We have omitted and no longer grow at our farm the varieties Golden Spur and Victoria.

Golden Spur, which was largely used as an early variety, cannot be produced in this country in the quality we demand, and we find that where King Alfred is properly handled by the forcer, it can be brought to bloom equally as early and is much superior in size and refinement of bloom.

Victoria, likewise, does not do well. We suggest Empress or Spring Glory for this variety. Spring Glory is much superior in every way.

Giant Trumpet Varieties, Including New and Rare Sorts

The flowers of the Giant Trumpet varieties are of large size; the "perianth," or wing-like petals, according to the variety, measure from 2 to 4 inches across, and the "trumpets," or central funnel-like tubes, vary from 3 to 4 inches in length. Flowers are borne on strong, stiff stems, from 12 to 18 inches high.

Alice Knights. White perianth and creamy white trumpet passing to pure white and elegantly recurved at the brim. One of the earliest white trumpets, and a very fine variety. Height 15 inches. **30 cts. each, \$3 per doz., \$25 per 100.**

Cleopatra. Primrose-yellow perianth, with broad and overlapping petals; rich yellow trumpet, well-frilled at the brim. A variety of refined character and the very finest yellow trumpet of Emperor coloring. Height 18 inches. **50 cts. each, \$5 per doz., \$40 per 100.**



Giant Trumpet Narcissi

1. Van Waveren's Giant.
2. King Alfred.
3. Glory of Noordwijk.
4. Spring Glory.

Giant Trumpet Narcissi, continued

Duke of Bedford. B. White perianth, with loose, spreading petals and long, deep yellow trumpet well frilled at the mouth. The marked contrast in color between the deep trumpet and the glistening white perianth is very effective. A splendid exhibition sort. Height 16 inches. **35 cts. each, \$3.50 per doz., \$25 per 100.**

Emperor. C. Perianth deep primrose-yellow, trumpet rich yellow; a very large flower. Excellent for naturalizing or forcing. Height 18 inches. **20 cts. each, \$2 per doz., \$15 per 100, \$130 per 1,000.**

Empress. C. White perianth of great substance; trumpet rich chrome-yellow. Showy for border or naturalizing. Does equally well forced. Height 18 inches. **20 cts. each, \$2 per doz., \$15 per 100, \$130 per 1,000.**

Glory of Leyden. C. Perianth pale yellow, broad and spreading, very long trumpet of golden yellow; enormous flower of great vigor and substance. An especially fine variety for borders and excellent for pot culture. Should not be forced hard. Must be planted early. Height 15 inches. **30 cts. each, \$3 per doz., \$20 per 100.**

Glory of Noordwijk. B. One of the best and most attractive of the Bicolors; perianth sulphur-white, trumpet chrome-yellow, very long and elegantly reflexed at the brim; of good size and substance. Grand for pots or cutting. Height 14 inches. **30 cts. each, \$3 per doz., \$20 per 100.**

Golden Glory. A seedling of King Alfred; flower is of same size and coloring but the brim of the trumpet is somewhat more elegantly recurved. Height 20 inches. **60 cts. each, \$6 per doz., \$45 per 100.**

King Alfred. C. A king among the new varieties, one that you should grow a few of. For pans or pots for exhibition, its size, general vigor, and depth of color put it in a distinct class of the **Finest Giant Golden Yellow Narcissi.** Wherever this Narcissus has been exhibited it has caused a sensation. Perianth often measures 4 inches across; trumpet fully 2 inches. **Jumbo Bulbs, 35 cts. each, \$3.50 per doz., \$25 per 100.**

Olympia. B. Perianth light chrome-yellow, trumpet deep chrome yellow, of huge dimensions. Splendid exhibition sort; a variety in the same class as King Alfred; of wonderful constitution and size. Height 15 inches. **35c. each, \$3.50 per doz., \$25 per 100.**

Peter Barr. We regard this as one of the finest, if not the finest, pure white Giant Trumpet varieties. A flower of large size and fine form. Height 18 inches. **60 cts. each, \$6 per doz., \$45 per 100.**

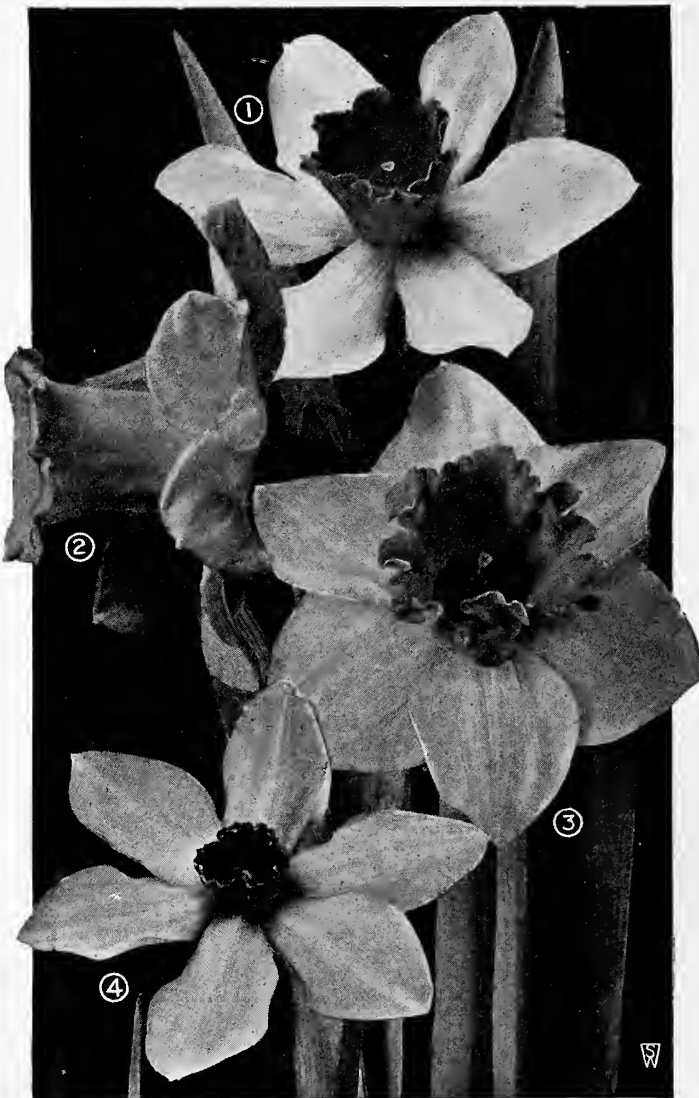
Spring Glory. B. Clear white perianth with long petals of splendid form, long trumpet of deep yellow, well reflexing at the brim. A very vigorous grower and one of the best of the newer Daffodils for pot culture. **30 cts. each, \$3 per doz., \$20 per 100.**

Treserve. B. Yellow Trumpet. Perianth primrose-yellow, slightly hooded; very large trumpet of rich canary-yellow, broad at the mouth and deeply flanged. Height 17 inches. **40 cts. each, \$4 per doz., \$30 per 100.**

Vanilla. C. This is a grand, tall-growing and very handsome variety, having a fine, bold trumpet of deep yellow, with a paler perianth, and possessing the added charm of a most pleasing and delicate odor. It flowers the same time as Emperor, and is a good variety for forcing. Height 20 inches. **20 cts. each, \$2 per doz., \$15 per 100.**

Van Waveren's Giant. B. Bicolor Trumpet. Broad perianth of campanulate form, bright yellow trumpet with very large, open mouth flanged at brim. Huge flower of vigorous habit and very showy character. Height 17 inches. **50 cts. each, \$5 per doz., \$35 per 100.**

Weardale Perfection. Perianth milk-white with broad, overlapping petals; long trumpet of primrose-yellow; elegantly fluted at the mouth. A good grower and free bloomer. **35 cts. each, \$3.50 per doz., \$25 per 100.**



Giant and Medium Trumpet Narcissi

1. Sir Watkin (Medium).
2. Empress (Giant).
3. Emperor (Giant).
4. Conspicuous (Medium).

Giant Trumpets in Mixture. In order to encourage the more liberal use of this splendid spring-flowering bulbous plant in the woodlands and shrubby borders, we are growing a splendid range of seedling varieties for this purpose and offer selected bulbs at \$6 per 100, \$55 per 1,000, \$500 per 10,000.

Medium Trumpet Narcissi, or Daffodils

This is also a very popular type or rather types of the Narcissus or Daffodil family. Splendid for garden culture, in pots or pans, or in flats, for cut-flowers.

The following varieties are grouped in some catalogues under the headings, Barrii, Incomparabilis and Leedsii types.

NOTE.—“Perianth” is surrounding row of petals, or wings; “crown” or “cup” is the central cup or funnel-like tube.

BARRII. Daffodils belonging to this group are crosses between Yellow Giant Trumpets and the Poet's Narcissi. The crown usually is not over one-third the length of the perianth petals.

INCOMPARABILIS. The Incomparabilis varieties are also crosses between the Yellow Giant Trumpets and the Poet's Narcissi, but the crowns are larger than those of the Barrii group, sometimes being three-fourths of the length of the perianth petals. The color of the perianth is either yellow or white.

LEEDSII. These are crosses between White Giant Trumpets and the Poet's Narcissi. The crowns are as large as those of the Barrii and Incomparabilis groups, but the perianth petals are always white, and the crowns are mostly white or light yellow.

Albatross. (Barrii.) Large, flat, white perianth; cup pale citron, with a ribbon edge of scarlet. A fine large flower. Height 20 inches. 20 cts. each, \$2 per doz., \$15 per 100.

Arion. (Leedsii.) One of the finest of the new Leedsii. Pure white, overlapping perianth; short, pale yellow cup, edged orange, frilled. Very nice form and substance. Height 20 inches. 75 cts. each, \$7.50 per doz., \$60 per 100.

Autocrat. (Incomparabilis.) C. Clear golden yellow; broad perianth tending to reflex, cup widely expanded at the mouth. A very handsome variety for the border or pots. Height 20 inches. 20 cts. each, \$2 per doz., \$15 per 100.

Bernardino. (Incomparabilis.) Very large, creamy white perianth of great substance; large cup of pale lemon-yellow, flushed and edged pinkish apricot, and very heavily frilled. Height 20 inches. 40 cts. each, \$4 per doz., \$30 per 100.

Conspicuous. (Barrii.) C. Large, broad-spreading perianth of pale yellow, short darker yellow cup, brightly edged orange-scarlet. Splendid for any position in the garden. Height 21 inches. 15 cts. each, \$1.50 per doz., \$12 per 100, \$110 per 1,000.

Croesus. (Incomparabilis.) Pale primrose perianth with thick, overlapping petals; wide, expanded crown of large size, heavily suffused and stained deep orange-red. A flower of magnificent substance and one of the finest introductions of recent years. \$1.50 each, \$15 per doz.

Duchess of Westminster. (Leedsii.) C. Pure white perianth; cup pale canary-yellow, slightly darker at the edge, passing into ivory-white; large star-like flower of exquisite beauty. Height 16 inches. 20 cts. each, \$2 per doz., \$15 per 100.

Great Warley. (Incomparabilis.) One of the finest of the newer Incomparabilis. Pure white, overlapping perianth; cup an even tone of lemon-yellow, nicely frilled. \$1.50 each, \$15 per doz.

Hera. (Leedsii.) One of the finest of the new Leedsii Daffodils. The pure white perianth petals seem joined together, so perfect is their overlapping; cup pale citron-yellow, elegantly fluted. A very refined variety. Height 18 inches. 60 cts. each, \$6 per doz., \$45 per 100.

Lady Godiva. (Barrii.) C. Large, spreading perianth of pure white, cup large, pale yellow, edged orange-scarlet. A splendid variety in every way. Height 18 inches. 15 cts. each, \$1.50 per doz., \$12 per 100.

Lady Moore. (Barrii.) C. A stately flower with a creamy white perianth, and a large, dark yellow cup, edged orange-scarlet. A variety that is very striking in appearance and sure to be appreciated by discriminating Daffodil lovers. 40 cts. each, \$4 per doz., \$30 per 100.

Lord Kitchener. (Leedsii.) Large, snowy white perianth, broad and flat, of great substance; big crown of the palest primrose, widely open at mouth and elegantly crimped and fluted at the brim. A flower of perfect quality and refinement. Height 21 inches. 35 cts. each, \$3.50 per doz., \$25 per 100.

Lucifer. (Incomparabilis.) C. Perianth sulphur-white, with long, well-rounded petals; cup chrome-yellow, with intense orange-scarlet suffusions. A bold, showy flower for outdoors, holding its color well. Height 18 inches. 15 cts. each, \$1.50 per doz., \$12 per 100, \$110 per 1,000.

Masterpiece. (Barrii.) Perianth sulphur-white with broad, very round petals of great substance and Poeticus character, eye orange-scarlet, quite flat and beautifully crinkled, the color covering the entire surface of the inch-wide eye. Height 22 inches. 40 cts. each, \$4 per doz., \$30 per 100.

Mrs. Langtry. (Leedsii.) D. A remarkably free-flowering variety, each bulb usually producing several flower perianth, white cup opening pale primrose. Height 16 inches. 15 cts. each, \$1.50 per doz., \$10 per 100.

Nannie Nunn. (Barrii.) This is one of the Daffodils that is very much admired at our Daffodil Farm. The perianth is a pure cream-white; cup a vivid orange-scarlet. A brilliant Daffodil and the “so-called” red-cup varieties. Height 18 inches. 60 cts. each, \$6 per doz., \$45 per 100.

Queen of the North. (Leedsii.) C. Broad, large perianth of clear, glistening white and remarkable texture; cup soft primrose-yellow, with narrow rim of sulphur-white. Height 18 inches. 15 cts. each, \$1.50 per doz., \$12 per 100, \$110 per 1,000.

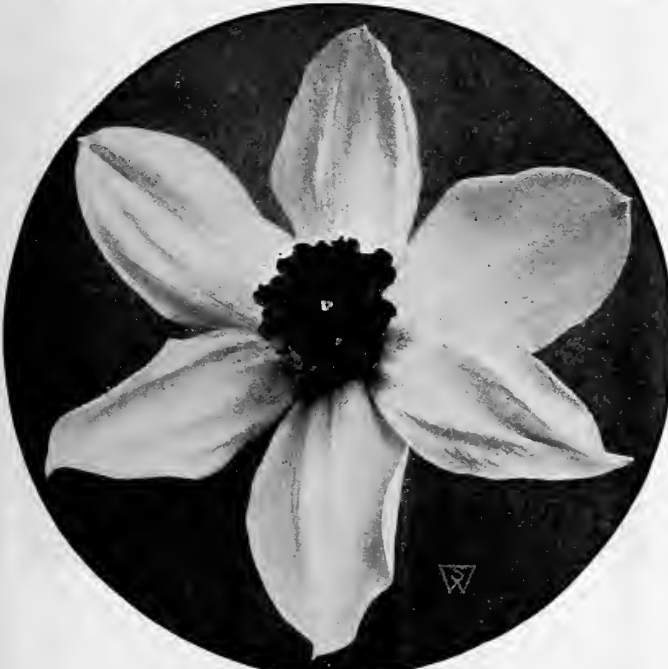
Red Beacon. (Barrii.) Broad white perianth of splendid substance, with broad well-frilled cup of dazzling orange-scarlet. A very striking variety on account of its brilliant scarlet center. 35 cts. each, \$3.50 per doz., \$25 per 100.

Sir Watkin. (Incomparabilis.) C. Perianth primrose-yellow; large and well-formed yellow cup, tinted deep yellow. A giant among the Medium Trumpet sorts. A grand flower of wonderful substance for garden culture or pots, this variety frequently has flowers 5 inches across, and its splendid proportion and ease of culture cause it to be one of the most popular of the older varieties. Height 18 inches. 15 cts. each, \$1.50 per doz., \$12 per 100, \$110 per 1,000.

White Lady. (Leedsii.) C. Broad, white perianth of perfect form; small cup of pale canary, beautifully crinkled. Fine for outdoor planting, making a splendid cut-flower. Height 20 inches. 15 cts. each, \$1.50 per doz., \$10 per 100, \$80 per 1,000.

Whitewell. (Incomparabilis.) Flat, creamy white perianth, with very broad, overlapping petals; large, open cup of deep chrome-yellow. A very large flower of wonderful substance. Height 18 inches. 30 cts. each, \$3 per doz., \$20 per 100.

Will Scarlett. (Incomparabilis.) Creamy white perianth; cup widely expanded and of a brilliant orange-scarlet, elegantly frilled. Very bright, and one of the nearest reds. 20 cts. each, \$2 per doz., \$15 per 100.



Medium Trumpet Narcissus, Lucifer

See our Special Notice on page 25 regarding American-grown Narcissus Bulbs



Narcissus Poetaz, Aspasia



Narcissus Poeticus, King Edward VII

Narcissus Poetaz

THE HARDY CLUSTER-FLOWERED POET'S NARCISSUS

The chief characteristics of this type of Narcissus is that hybridizers by crossing the strong-scented Polyanthus varieties with the Poeticus type, developed a hardy strain of Daffodils which has the bunch-flowered character of the Polyanthus with larger flowers similar to the Poet's described on this page. They are excellent for pot culture or are splendid for the garden border.

ASPASIA. C. Perianth pure white, with soft yellow eye; three or four flowers on a stem. One of the best of this class and especially bright in color. Height 18 inches. 15 cts. each, \$1.50 per doz., \$12 per 100, \$110 per 1,000.

EARLY PERFECTION. One of the handsomest of the new Poetaz varieties. Perianth and cup an even tone of bright yellow; very free flowering. Height 18 inches. 20 cts. each, \$2 per doz., \$15 per 100.

IDEAL. C. Perianth pure white, with a dark orange eye; three or four flowers on a stem. A very easy variety to get in flower in pots and very charming on account of the size of the flowers and striking contrast of the dark orange eye. Height 18 inches. 15 cts. each, \$1.50 per doz., \$12 per 100, \$110 per 1,000.

KLONDYKE. B. Perianth an even tone of pure bright yellow, with golden yellow eye. A variety of wonderful vigor and size giving five to six flowers on a stem. Height 15 inches. 20 cts. each, \$2 per doz., \$15 per 100.

LAURENS KOSTER. B. Perianth pure white, with soft yellow eye. A variety that is much admired on account of the large size of the flowers. It is a strong grower, frequently having five flowers on a stem. Height 18 inches. 15 cts. each, \$1.50 per doz., \$12 per 100, \$110 per 1,000.

The Poet's Narcissi

Narcissus poeticus

This class of Narcissus, instead of having a trumpet or crown, has a small, wide-mouthed cup. They are very hardy, and are used in large numbers for naturalizing, their simplicity of form and delightful fragrance making them highly prized. Cassandra, Epic, King Edward VII, and Ornatus are used with excellent success for growing indoors in pots or pans, or gently forced into bloom for cutting purposes.

POETICUS (Pheasant's Eye). D. The original late-flowering Pheasant's Eye variety so popular for gardens and naturalizing; pure white flowers with orange cup, edged with red. Height 15 inches. 15 cts. each, \$1.25 per doz., \$9 per 100, \$85 per 1,000.

POETICUS, CASSANDRA. This and Horace are quite the largest of the new Poet varieties. Perianth white, cup canary-yellow, rimmed bright red. Height 18 inches. 20 cts. each, \$2 per doz., \$15 per 100.

POETICUS, HORACE. C. Quite the best and largest of the new Poet's varieties. The white perianth is of large size, cup canary-yellow, rimmed bright red. Height 17 inches. 15 cts. each, \$1.50 per doz., \$12 per 100.

POETICUS, KING EDWARD VII. C. Round, white perianth, cup light yellow, margined deep red. A vigorous grower, excellent for pot culture. Height 15 inches. 15 cts. each, \$1.50 per doz., \$10 per 100, \$95 per 1,000.

POETICUS ORNATUS (Improved Poeticus). C. Grand flower for cutting. Larger and more symmetrical than the old variety and considerably earlier. Pure white flowers, saffron cup, tinged rosy scarlet. Magnificent cut-flower. Height 15 inches. 15 cts. each, \$1.25 per doz., \$9 per 100, \$85 per 1,000.

Sweet-Scented Jonquils

Very much prized for their deliciously scented golden flowers; perfectly hardy in gardens or naturalized, also admirably adapted to indoor culture in pots of soil.

Buttercup. This and Gold Sceptre are two of the finest new Jonquils. Pure golden yellow overlapping perianth; straight yellow cup; 5 to 8 flowers on a stem; has a delicate perfume. Height 21 inches. 40 cts. each, \$4 per doz., \$30 per 100.

Golden Sceptre. This free-flowering hybrid is very handsome. Its fine, elegant flowers are a rich golden yellow, sweetly scented. Height 20 inches. 35 cts. each, \$3.50 per doz., \$25 per 100.

Giant Campernelle rugulosus. Much larger and finer than the old favorite Campernelle Jonquils; a much freer bloomer and much more desirable, especially for forcing. Beautiful, single, yellow, star-shaped flowers, exquisitely imbricated, borne in clusters of four to six on a stem; delightfully fragrant. Also very hardy and valuable for outdoor planting. 15c. each, \$1.50 per doz., \$10 per 100, \$95 per 1,000.

Rugulosus, Double. The double form of the large-flowering Campernelle Jonquil. Large, double, yellow flowers; very fragrant and much superior to the common Double Jonquil. Height 20 inches. 15 cts. each, \$1.50 per doz., \$10 per 100, \$95 per 1,000.

Polyanthus Narcissi

BUNCH-FLOWERING

VARIETIES FOR EARLY INDOOR GROWING

Not for Outdoor Planting, except south of the Carolinas

READY FOR DELIVERY OCTOBER 1

We are offering three varieties of this splendid type of Narcissus which are now universally grown indoors in pots of fiber or soil as well as in pebbles and water. The varieties are Paper-White Grandiflora, the popular bunch-flowering white variety, Grand Soleil d'Or, the popular yellow bunch-flowering variety, and Chinese Sacred Lilies or *Narcissus polyanthus orientalis*. These bulbs are produced for us by an expert grower in the South. The importation from France and China is no longer permitted.

Dishes of these, grown in pebbles and water, may be had in bloom continuously from Thanksgiving until Easter. The best method is to keep your bulbs in the containers in which they are shipped to you and to store them in a moderately cool, dry place. Plant different lots every three weeks from October 1 until March 1, and you can enjoy a constant succession of bloom.

Grand Soleil d'Or. This popular bunch-flowering variety of the Polyanthus type is as easy to grow in pebbles and water as in soil or our Shurgrow Bulb Fiber. The flowers are a clear, sunny yellow, with bright orange cups. **\$2.50 per doz., \$18 per 100, \$160 per 1,000.**

Paper-White Grandiflora. The popular, bunch-flowering pure white Narcissus, frequently having thirty individual blooms and splendid decorative foliage from a single bulb. We offer two sizes, each suitable for growing indoors in pebbles and water or in our Shurgrow Bulb Fiber.

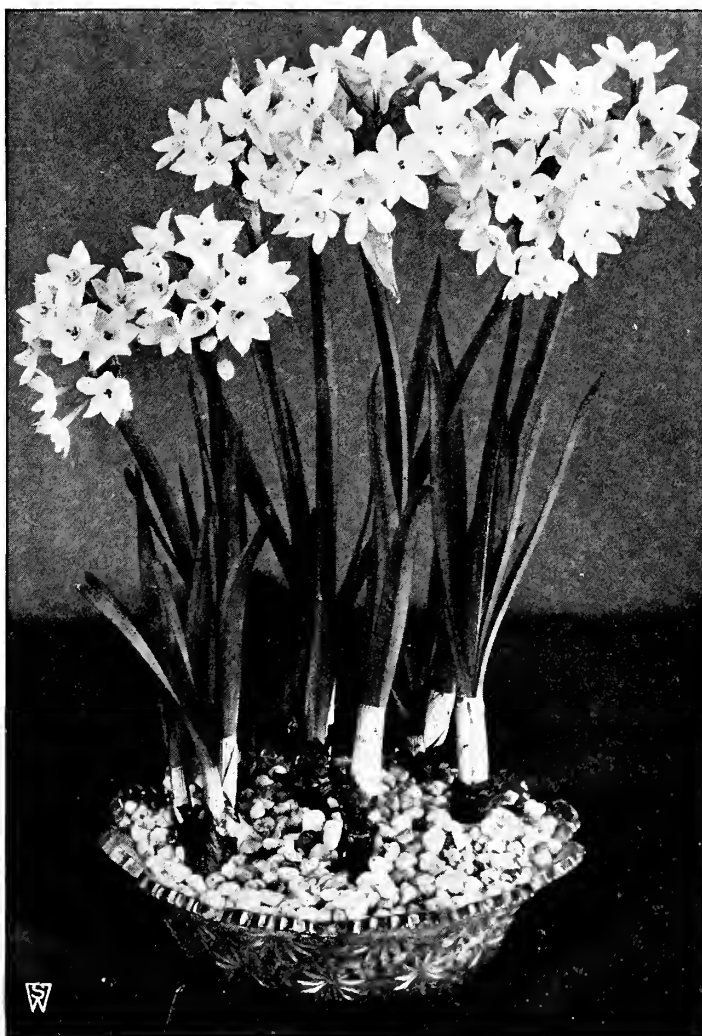
	Doz.	100	1,000
First-Size Bulbs	\$0 75	\$6 00	\$50 00
Jumbo Bulbs	1 00	7 00	60 00

Chinese Sacred Lily

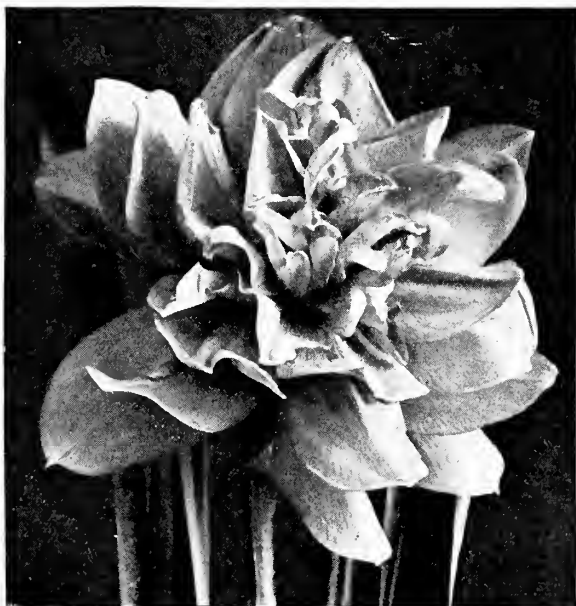
Narcissus Polyanthus Orientalis

The "Shui Sin Far," or Water Fairy Flower, Joss Flower or Flower of the Gods, etc., as it is called by the Celestials, is a variety of Narcissus, bearing in profusion chaste flowers of silvery white, with golden yellow cups. They are of exquisite beauty and entrancing perfume.

The bulbs, of large size and great vitality, are of luxuriant growth, producing several spikes of flowers; the incredibly short time required to bring bulbs into bloom (four to six weeks after planting) is one of the wonders of nature. You can almost see them grow, succeeding almost everywhere and



Paper-White Grandiflora Narcissi growing among pebbles in water



Double Narcissus

with everybody. They do well in pots of earth, but are more novel and beautiful grown in shallow bowls of water, with enough fancy pebbles to prevent them from toppling over when in bloom. Each Doz. 100

Mammoth Bulbs.....\$0 20 \$2 00 \$15 00

SPECIAL OFFER. Containers and Materials for Growing Paper-White and Grand Soleil d'Or Narcissus Indoors.

Glass Bowls. Suitable to plant 3 bulbs. 35 cts. each, \$3.50 per doz.

Glass Bowls. Suitable to plant 6 bulbs. 50 cts. each, \$5 per doz.

Pebbles. Carefully screened and selected. Quart box, 20 cts., 2 qts. 35 cts.

Shurgrow Bulb Fiber. This is a prepared Fiber containing all the ingredients for producing blooms from bulbs indoors. It can be used for any dish, as it does not require drainage. Put up in quart package convenient for use. 15 cts. per qt., \$1.50 per doz. qts.

Double Narcissi (Daffodils)

The Double-flowering Daffodils offered in our list may be planted outdoors, but are admirably adapted for indoor growing in pots and pans, or may be forced in flats for cutting purposes. We have listed this year only one of the newer varieties of Double Daffodils, which is splendid for pot-culture and excellent for outdoor planting as well; owing to the flowers of American-grown Von Sion Narcissus and other double-flowering varieties showing a tendency to "come green," we have decided to omit them from our list.

Argent. C. This variety is best described as a Double Incomparabilis. Very pale primrose perianth with a double row of petals; chrome-yellow cup. A fine new Double Daffodil with a strong stem. Height 14 inches. **20 cts. each, \$2 per doz., \$15 per 100, \$120 per 1,000.**

EXHIBITION HYACINTHS

Every year our growers prepare to select the finest grade of Hyacinths for us for exhibition. These bulbs are of maximum size, and fully aged for this purpose. The varieties listed below are grown especially for us, and intending exhibitors at the International Flower Show next spring will be interested in our selection of varieties which we believe, when grown for exhibition, should capture First Premiums. The Hyacinth enthusiast who is interested in novelty varieties will also find this list valuable.

We offer only the best sorts. There are several hundred varieties grown abroad, but we do not consider that there are over thirty of them worth growing. Bulbs such as we supply should be planted singly in a 5-inch pot, or four bulbs to an 8-inch bulb-pan. As there is a slight variation in the time of flowering between the different varieties, we have therefore indicated the relative time of blooming, 1 being early, 4 the latest.

ARENTEINE ARENSEN. 1. Snowy white; open, wide-petaled bells, and narrow, well-filled spike. A splendid exhibition variety.
CITY OF HAARLEM. 3. Soft Naples yellow, shaded deeper; large, well-formed truss and good stem. One of the best new yellows.

DR. LIEBER. 2. Pale lavender-blue, with a faint tinge of dark violet; large spike, well filled out. A handsome variety for bedding and a very early forcer.

ELECTRA. 2. Light silvery blue; an enormous spike; full and well finished, with large bells. A very lovely shade of blue in Hyacinths.

GENERAL DE WET. 2. Soft light pink; a fine spike with large bells. Pink sport of the well-known variety, Grand Maitre.

GERTRUDE. 1. Dark pink; strong, compact spike. A variety used largely by commercial florists on account of its earliness.

GRAND MAITRE. 2. Dark lavender-blue; large bells, and very long, well-filled truss, on an unusually strong stem.

KING OF THE BLUES. 4. Deep dark blue; splendid spike and bell. Excellent for late forcing.

LADY DERBY. 1. Clear rose-pink variety. A splendid forcing variety as the strong stems hold the truss well. Considered the finest rose-pink Hyacinth.

LA GRANDESSE. 3. Pure white flowers with waxy bells on long, full spike of perfect form.

LA VICTOIRE. 1. Bright, glistening carmine-rose; under glass this variety is a fine dark pink; well-filled spike on a strong stem.

L'INNOCENCE. 1. Pure white; fine truss of large bells, of great substance.

LORD BALFOUR. 1. Lilac-rose, tinged dark violet—a distinct color. The best Hyacinth of this color.

MYOSOTIS. 2. An even tone of light blue; well filled spike of large-sized bells. One of the most attractive of its color.

ORANGEBOVEN. 4. A very lovely and distinct color, different from all the others, perhaps best described as a ruddy apricot. This variety does not make a very large bulb.

PERLE BRILLANTE. 2. Light blue, lavender; big bells on a large, finely formed, stiff spike.

PRINCE HENRY. Clear Naples yellow. Long, narrow truss, with good bells and stem. A splendid new yellow variety.

QUEEN OF THE PINKS. 3. Very bright rose-pink, of unusually clear tone; large spike with large bells.

SCHOTEL. 1. Soft light blue; very long and perfect truss, with large bells; easily forced.

YELLOW HAMMER. 1. Creamy yellow; compact spike and large bells.



These large spikes of Dutch Hyacinths were produced from our Exhibition Grade

Special Offer. We place large contracts for the above varieties and thus secure the pick of the crop. This enables us to offer at a uniform price of 35 cts. each, \$3.50 per doz., \$25 per 100.



MATCHLESS BEDDING HYACINTHS

Special named varieties in distinct shades of color, to flower at the same time

BULBS MEASURE 7 TO 8 INCHES IN CIRCUMFERENCE

The Hyacinth chosen to represent each of the following shades of color is a variety which, we have found from trials, will be best in the three essential requirements: Best in its color; stoutest stem; largest truss of bells; so our customers will know that we have avoided using such varieties that are of weak stem, and that do not support the blooms.

SPECIAL NOTICE: *Owing to the unprecedented demand in Holland from such countries as Sweden, Norway, Denmark, and Germany, for Hyacinth Bulbs, the supply is less than the demand. This has resulted in greatly increased prices. During the war, Hyacinth culture in Holland was greatly reduced, owing to the lack of European demand. These new markets have now opened, with the result that Hyacinths are now at a premium. Rather than contract for inferior sizes, we were obliged to raise our prices.*

CULTURE

These Hyacinths should be planted from 6 to 10 inches apart, and covered with at least 4 inches of soil from the top of the bulb. For beds or borders close to the conservatory or dwelling, 6 inches will make a fine display; but where the beds are planted to be viewed from a distance, they may be planted 10 inches apart. Hyacinths planted alternately with narcissi produce a most graceful effect, and for this combination 6 inches from bulb to bulb is also a very suitable distance. It is advisable to cover, after the bulbs have been planted, with leaves or some heavy material that will prevent them from freezing or being affected by early spring frosts after they have started.

Hyacinths, as well as narcissi, should be planted by November first in this latitude, as they are the better for early planting. Tulips may be planted up to December first, weather permitting.

Delivered (by Express or Parcel Post) anywhere in the United States

	Doz.	100	1,000
Matchless Bedding Scarlet	\$2 00	\$15 00	\$140 00
Matchless Bedding Light Pink	2 00	15 00	140 00
Matchless Bedding Dark Pink	2 00	15 00	140 00
Matchless Bedding Light Blue	2 00	15 00	140 00
Matchless Bedding Dark Blue	2 00	15 00	140 00
Matchless Bedding Pure White	2 00	15 00	140 00
Matchless Bedding Mauve	2 00	15 00	140 00
Matchless Bedding Deep Yellow	2 00	15 00	140 00

Suggestions for Effective Color Combinations

1. Matchless Bedding Pink and Light Blue.
2. Matchless Bedding Light Blue and Deep Yellow.
3. Matchless Bedding Light Blue and Dark Blue.
4. Matchless Bedding Dark Blue and Deep Yellow.

Prepared or Treated Dutch Hyacinths

These Hyacinths are given a special treatment in heated warehouses to advance the final development of the embryo flower and thereby make it possible to have them in bloom about three weeks before the others offered in our list. The bulbs are not as large as our Matchless Bedding or Second Size Hyacinths, but if potted early and given ample time to develop strong roots, will bloom early. We offer five distinct varieties.

L'Innocence. White. **Schotel.** Light blue.
Lady Derby. Rose-pink. **Laura.** Violet-blue.
Nimrod. Delicate rose.

Price, any of the above, 30 cts. each, \$3 per doz., \$20 per 100

Miniature or Dutch Roman Hyacinths

These Hyacinths are the same type as our Exhibition Hyacinths and our Matchless Bedding, except that they are small bulbs averaging 1 1/2 to 1 3/4 inches in diameter. They are splendid for growing in 6-inch pans, and it is advisable to grow one color of a variety in each pan. Largely used by commercial florists for Easter trade. We offer four fine varieties.

City of Haarlem. Yellow. **Gertrude.** Dark pink.
Grand Maitre. Lavender-blue. **La Grandesse.** White.

Price, any of the above, 10 cts. each, \$1 per doz., \$8 per 100

French Roman Hyacinths

French Roman Hyacinths are among the earliest bulbs to be had in flower. The bulbs arrive from France late in August, and, like all bulbs grown in the south of France, they may be had in flower from November all through the winter months, if potted up in September and at intervals of every two weeks. They are much prized for pots or cutting on account of their graceful appearance and delicate fragrance. The flowers are smaller than those of the Dutch Hyacinth, and are borne in great profusion, the larger bulbs frequently having three to five graceful spikes of bloom. They are not hardy in our northern climate, and should not be planted outdoors. The general culture given for Hyacinths on page 30 is suggested.



French Roman Hyacinths

	Doz.	100	1,000
White. Mammoth bulbs, 12 to 15 ctns.	\$3 00	\$20 00	\$190 00
Jumbo bulbs, 13 to 15 ctns.	3 50	25 00	220 00
Single Rose. First-size bulbs.	2 00	15 00	125 00
Single Blue. First-size bulbs.	2 00	15 00	125 00

NEW GIANT-FLOWERING CROCUS (Extra-large Bulbs)

Crocuses, among the earliest bulbs to flower, are most effective when planted in masses on the lawn, or arranged in three or four rows of one color in the border. They are perfectly hardy, and may be left in the ground for three or four years after planting, without being disturbed. The best method is to scatter the bulbs about the lawn and use an ordinary garden dibble or "Slim Jim" trowel, inserting several bulbs in each spot. This makes a very pretty effect in early spring, and the foliage and tops may be safely cut along with the grass when the first mowing is made. They are very ornamental when flowered in pots of eight to ten bulbs to a 5-inch size. They will not flower if exposed to heat, nor must too severe forcing be attempted. After potting set bulbs in a cool cellar and water well. Leave them about six weeks until they are thoroughly rooted and then bring to the light of the conservatory or sunny window. Care should be taken to cover the bulbs about 1 inch, whether planted outdoors or in pots, as planting too deep causes them not to flower.

Ten New Giant-flowering Varieties

The following varieties, offered for the first time by us, are the best of the newer introductions. The flowers are of larger size than any we have heretofore offered.

AGNES. Pale lavender-blue.
AMETHYST. Porcelain-blue.
GLADSTONE. Rich dark blue.

GRAND MAITRE. Indigo-blue, lighter at edges.
LOVELY. Pale lilac, striped.
MASTERPIECE. Light blue-violet.

MOUNT EVEREST. Very large; white.
NEGRO. Maroon-black.
STRIPED BEAUTY. Dark blue, striped.
THE SULTAN. Rich indigo-blue.

Any of the above varieties, 70 cts. per doz., \$5 per 100, \$45 per 1,000.

Standard Large-flowering

Purpurea Grandiflora. Best dark blue.
Julia Culp. Large-flowering purple.
Kathleen Parlow. Purest white; fine large flowers.
La Majestueuse. White, striped purple.
Yellow Mammoth. The largest flowering yellow.
S. & W. Co.'s Mixture. Mixture of above sorts.

Any of the above 50 cts. per doz., \$3.50 per 100, \$30 per 1,000.



Giant-flowering Crocuses

GIANT FREESIAS

Without doubt the most sweetly scented flower grown; a single bloom permeates the living-room with its delicate perfume. Although they are quite popular and very easily raised, we would suggest the following treatment:

Procure the bulbs as early as possible, and plant them in successive batches from August to October, using from six to twenty-five bulbs for a single pan. The soil should be a mixture of loam, to which must be added leaf-mold and sand. The bulbs planted early, say August and September, may be placed outdoors in a sheltered spot until cold weather sets in; of course they must be regularly watered and kept growing all the time. In October, before frosts appear, the pots should be placed in frames, if possible, or near the window of an unheated room. Not before November must the young plants be brought to gentle heat, and if thus cared for they will flower perfectly in January. The foliage of the Freesias is very fine and slender and must be supported with light stakes placed around the outer edge of the pans. The glistening, pure white flowers are borne on long stems, and are very valuable for cutting.



A field of colored Freesias as grown in California

S. & W. CO.'S IMPROVED PURITY

Through painstaking effort our grower of Freesia Purity has maintained such a quality in our strain of this very desirable cut-flower by careful selection as to justify us in offering it as an improved strain.

	Doz.	100	1,000
Monster bulbs.....	\$0 75	\$5 00	\$45 00
Jumbo bulbs.....	60	4 50	40 00
Mammoth bulbs.....	50	3 50	30 00

Novelty Freesias

We offer below two new yellow Freesias which we consider a distinct advance over any of the existing yellows that are now in commercial production at this time.

GOLDEN DAFFODIL. This variety may best be described as a rich daffodil-yellow color, such as seen in the popular variety, King Alfred. The flowers are large, well-formed, and are borne on long, stiff stems. **\$2 per doz., \$15 per 100.**

GOLDEN TREASURE. A rich, sunny yellow, very similar to Golden Daffodil, except that the outer part of the flower is tinged with lilac, which, to our mind, greatly enhances its beauty when seen under artificial light. The blooms are large, well open, and are borne on long, stiff stems. **\$2 per doz., \$15 per 100.**

New and Rare Colored Freesias

Few, if any, of the newer creations in spring-flowering bulbs have been improved by the hybridist as has been the Freesia. We now have a splendid range of colored sorts which can be obtained at moderate prices on account of the supply having been increased by propagation. Our bulbs have been produced for us under contract by California's leading specialist in this lovely bulbous plant for indoor growing.

AURORA. A beautiful large-flowering yellow, suffused with orange. **\$1 per doz., \$8 per 100, \$75 per 1,000.**



S. & W. Co.'s Lily-of-the-Valley

CALIFORNIA. A large flower of bright golden yellow; extra-fine strong grower and long stems. One of the very finest yellow Freesias **\$1 per doz., \$8 per 100, \$75 per 1,000.**

CARRIE BUDAU. A beautiful lavender-pink, much on the order of General Pershing, but of a more beautiful bright pink shade. The flowers are larger and the stems stronger. **\$1.50 per doz., \$1 per 100, \$90 per 1,000.**

CARMENCITA. Medium-sized flower of a beautiful orange-salmon hue, with buff shading on the lower petals. Long, wiry stems. **\$1 per doz., \$8 per 100, \$75 per 1,000.**

FISCHERI. This variety is a pure white of slightly heavier texture than Purity, borne on strong stems. **\$1 per doz., \$8 per 100, \$75 per 1,000.**

FISCHER'S SPLENDENS. The stems are long and stiff, bearing as many flowers as Purity, of a beautiful deep lavender color which seems to be well retained throughout the life of the flower. **\$1 per doz., \$8 per 100, \$75 per 1,000.**

GENERAL PERSHING. Splendid popular lavender-pink; strong grower; on long, stiff stems. **\$1 per doz., \$7 per 100, \$60 per 1,000.**

ILENA. Deep rosy lavender with white throat, deep orange blotch on lower petals. Flowers large and very attractive, on good stiff stems. **\$1.50 per doz., \$10 per 100, \$95 per 1,000.**

JUNE MICHELSEN. Large flowering deep rose-pink with light blush throat; three lower petals are veined purplish crimson with a deep yellow blotch on center petal. Good stiff stem and strong constitution. **\$1.50 per doz., \$10 per 100, \$95 per 1,000.**

MENDOTA. A new giant yellow Freesia par perfection; splendid clear color; extra strong, vigorous growth; long sturdy stems, making it a valuable cut-flower. **\$1.75 per doz., \$12 per 100.**

MRS. MARC PETERS. A very attractive deep rosy salmon with lower petals blotched orange and yellow. Flowers are of good size and open up well. It is a good keeper. **\$1.75 per doz., \$12 per 100.**

OLIVETTE. Bright carmine-red, with light yellow throat. Lower petals have a deep yellow blotch with crimson veins. Very profuse bloomer. **\$1.50 per doz., \$10 per 100, \$95 per 1,000.**

LILY-OF-THE-VALLEY PIPS

For Greenhouse Growing. November Delivery

In judging the price of our Lily-of-the-Valley, please remember that the best is the cheapest. Our Valley is positively among the best. Is bought at open prices, with instructions for a selection of the best-developed pips. Our long experience and large importations have commanded this extra selection. For growing indoors these Pips are the best that can be planted. **25 pips \$2.50, 100 pips \$8, 250 pips \$18, 500 pips \$35, 1,000 pips \$65.**

LILY-OF-THE-VALLEY PIPS

For Outdoor Planting. November Delivery

In the past, many garden enthusiasts have planted clumps of Lily-of-the-Valley in sheltered locations in their gardens. On account of the ruling of the Federal Horticultural Board, these clumps, before leaving Europe, must have all soil removed from their roots. Our experience for the past two years is that clumps received with the soil removed are not satisfactory for outdoor planting. The best way to get a good Lily-of-the-Valley bed, and the method used by professional gardeners, is to plant two-year-old pips 4 inches apart. This method will produce a better bed than by using clumps. We offer pips of smaller size than those used for growing Lily-of-the-Valley indoors for this purpose and at attractive prices. **Bundles of 10 pips 50 cts., 25 pips \$1, 100 pips \$3.50, 1,000 pips \$30.**

HARDY LILIES

We especially recommend deep planting, say, from 6 to 8 inches; varieties like *Speciosum* require at least 8 inches, with an ample amount of sand beneath the bulb to insure proper drainage. Cover the beds with leaves or litter during winter. Lilies thrive well in borders, formal gardens or shrubbery, and usually flower at a time when the shrubbery has ceased blooming, adding increased interest. The following varieties have proved to be sorts that may be planted in the fall or spring with excellent results. We frequently receive orders for *Lilium candidum* for spring delivery. This Lily arrives from France in September, and must be planted by November 1.

Most Lily Bulbs, being of late maturity, do not arrive in our country until October and November, which is conceded to be the best time to plant. Where the ground is liable to freeze before late Lilies arrive, it should be mulched with leaves or manure.

LILIUM CANDIDUM (Madonna Lily)

Choice Northern-Grown. Arrive in August or September

Perhaps the most popular of all the Lilies. Having practically no resting period, this Lily should be planted in September or October, so that it can root and make its fall growth. Unlike other Lilies, *Lilium candidum* makes a tuft of leaves in the fall, which must be protected by rough litter or straw. This Lily, the first to flower, is usually at its best the latter part of June and is splendid in the hardy border when planted in conjunction with delphiniums. It differs from the other varieties in that it resents deep planting. Set bulbs slightly on their side, placing a trowel of sharp builders' sand under the bulb, and cover with 2 to 3 inches of soil. The bulbs do well almost anywhere, except in heavy clay land, and are not subject to serious disease attacks, except leaf-spot, which can be controlled by spraying with Bordeaux Mixture. This Lily does not object to a little lime. Our bulbs of this splendid Lily are grown in northern France, and are of the true thick-petaled variety, which is much superior in habit and flowering qualities to that of the cheap, loose, southern-grown bulbs.

	Each	Doz.	100
First Size	\$0 35	\$3 50	\$25 00
Mammoth Bulbs	40	4 00	30 00
Jumbo Bulbs	50	5 00	40 00



Lilium candidum



Lilium auratum (Golden-rayed Lily of Japan)

LILIUM AURATUM

The Golden-rayed Lily of Japan
November and December Delivery

One of the finest and most popular of the hardy garden Lilies. It thrives best in locations where the lower portion of the plant will be partially sheltered from the hot sun, as among peonies or herbaceous plants in the hardy border, where groups of six to twelve of these Lilies produce a stately and magnificent effect. The flowers are pure white, thickly studded with crimson spots, while through the center of each petal runs a clear golden band. Fully expanded, the flowers measure nearly a foot across, are produced abundantly from June to October, and possess a most delicious fragrance. 3 to 5 feet.

	Each	Doz.	100
9 to 11 in. in circum.....	\$0 45	\$4 50	\$35 00
11 to 13 in. in circum.....	65	6 50	50 00

LILIUM REGALE (A Regal Beauty)

October Delivery

The flowers are white, slightly suffused with pink, with a beautiful shade of canary-yellow at the center, blending out part way up the trumpet. The fragrance is fascinating, similar to the jasmine. A splendid hardy Lily for the garden, flowering about July 1. **First Size, 50 cts. each, \$5 per doz., \$40 per 100. Mammoth Bulbs, 75 cts. each, \$7.50 per doz., \$60 per 100.**

STUMPP & WALTER CO.'S SELECTED BULBS

Lilium speciosum magnificentum.

Oriental Orchids. November and December delivery. Words cannot describe the beauty of this variety. Frosted white, spotted, clouded and bordered with deep pinkish crimson.



Lilium speciosum magnificentum

A much superior variety to the Roseum, Rubrum or Melpomene of the Speciosum type. For the border, among hardy plants or naturalized among rhododendrons, this is an equal favorite with the *Lilium auratum* offered on the previous page. Splendid for pot culture as well. Blooms outside during August.

	Each	Doz.	100
9 to 11 in. in circum.....	\$0 45	\$4 50	\$35 00
11 to 13 in. in circum.....	65	6 50	50 00

Lilium speciosum album Nov. and Dec. Delivery

The white Speciosum, which is usually grown with Magnificum and *Lilium auratum*, is a very dainty Lily.

	Each	Doz.	100
8 to 9 in. in circum.....	\$0 50	\$5 00	\$40 00
9 to 11 in. in circum.....	75	7 50	60 00

OTHER HARDY LILIES October Delivery

HENRYI. Similar to Speciosum. Beautiful orange-yellow flowers with a green band. Hardy and easy to grow, blooming in August and September. 75 cts. each, \$7.50 per doz., \$60 per 100.

HUMBOLDTII. This beautiful Californian Lily bears its attractive drooping flowers in triangular clusters of brilliant golden yellow, spotted with purple on the reflexed petals. Prefers rich well-drained soil so as to permit the basal roots to penetrate easily. Blooms in June and July. 75c. ea., \$7.50 per doz., \$60 per 100.

PARDALINUM. A California variety bearing twelve to thirty flowers on stems 4 to 6 feet high, bright orange, spotted dark crimson. Flowers in July. 40 cts. each, \$4 per doz., \$30 per 100.

SUPERBUM. A native type growing 3 to 6 feet high, frequently bearing twenty to thirty flowers of a brilliant orange-red. Blooms in July. 30 cts. each, \$3 per doz., \$20 per 100.

TESTACEUM. This variety, also known as *L. excelsum*, and the Nankeen Lily, is what might be termed one of the choicest of the border Lilies. The color of the flower, an even tone of dull apricot, is greatly enhanced by its glowing orange anthers. When established it frequently attains a height of 6 to 7 feet. It blooms in June and July. The same cultural requirements that apply to *L. candidum* are recommended for this variety. It should be covered 2 inches above crown. **Extra-strong bulbs, \$2.50 each, \$25 per doz., \$180 per 100.**

TIGRINUM, Single (Single Tiger Lily). Orange-red, spotted black. 30c. each, \$3 per doz., \$20 per 100.

TIGRINUM, Double (Double Tiger Lily). 30 cts. each, \$3 per doz., \$20 per 100.

LILY BULBS FOR INDOOR GROWING

CALLA LILIES

These like a stiff, clayey soil with a small quantity of shredded cow-manure. Bulbs should be set with the crown, or top, protruding just above the surface. When in growing condition, warm water given several times during the week will hasten the flowering period and increase the number of blooms. When using the large-sized bulbs, plant but one in a pot; smaller ones, two. We call especial attention to the Yellow Calla, which is one of the grandest varieties in cultivation, and most valuable for house or conservatory decoration. See the description below. Plant Callas indoors only in the fall of the year.

WHITE CALLA LILY—

	Each	Doz.	100
Jumbo size	\$0 50	\$5 00	\$40 00
Mammoth size	40	4 00	30 00
First size	25	2 50	20 00

YELLOW CALLA LILY. A grand novelty—one that should be planted extensively. The deep golden yellow flowers are truly magnificent and produced in abundance. The green foliage is spotted creamy white, which adds to its beauty.

	Each	Doz.	100
First-size bulbs	\$0 40	\$4 00	\$30 00
Mammoth bulbs	50	5 00	40 00

EASTER LILIES

We offer three types of the Longiflorum Lily usually grown by the florist. Of the three types we recommend *Lilium formosum* as the best for private conservatory growing.

LILIUM HARRISII—

These bulbs arrive from Bermuda in July.	Each	Doz.	100
7 to 9 inches in circumference.....	\$0 50	\$5 00	\$40 00
9 to 11 inches in circumference.....	75	7 50	60 00
11 to 13 inches in circumference.....	1 00	10 00	80 00

L. LONGIFLORUM FORMOSUM—

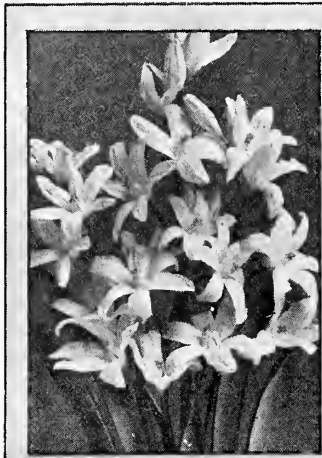
We have contracted for and expect some of each of the following sizes about Sept. 1.

7 to 9 inches in circumference.....	50	5 00	40 00
9 to 10 inches in circumference.....	75	7 50	60 00
10 to 12 inches in circumference.....	90	9 00	70 00
11 to 13 inches in circumference.....	1 00	11 00	80 00

L. LONGIFLORUM GIGANTEUM—

We have contracted for and expect some of each of the following sizes to arrive October or early November.

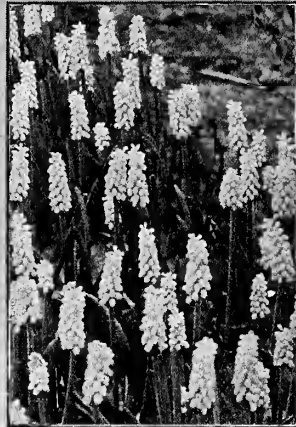
7 to 9 inches in circumference.....	40	4 00	30 00
9 to 10 inches in circumference.....	55	5 50	45 00
10 to 12 inches in circumference.....	75	7 50	60 00



Chionodoxa Lucillæ



Fritillaria Meleagris



Grape Hyacinths



Spanish Iris

AMARYLLIS

Stumpp & Walter Co.'s Giant Hybrids

Few, if any, of the bulbous plants give the amateur greater pleasure for the window-garden than these giant-flowering Amaryllis that are so easily managed. Up to a few years ago, the finest varieties of these were exhibited at our New York Flower Show and were in the hands of just a few fanciers who procured their bulbs from a famous English collection. The United States Department of Agriculture, at Washington, has been improving on these strains for the past fifteen years, and our grower has been producing bulbs from a strain secured from the Government. One of the most glorious sights in March is several thousands of these magnificent pot plants in bloom in the Government greenhouses at Washington, D. C. Our strain of bulbs produces vigorous stems with from four to six blooms of the most perfect form, ranging in color from pure white grounds with varied markings of rose, red, and crimson, to the richest self colors, such as scarlet, crimson, bright red, cherry, and almost maroon.

Mixed colors, Jumbo Bulbs, suitable for 6-inch pots, \$1 each, \$10 per doz., \$75 per 100

We also offer Amaryllis in the following colors:
Scarlet Shades Rose and Pink Shades
Crimson Shades Orange-Scarlet Shades

White, Striped and Penciled in Various Shades

Any of the above, Jumbo Bulbs, suitable for 6-inch pots, \$1.50 each, \$15 per doz., \$125 per 100

CYPRIPEDIUM

Acaule (Pink Lady's-slipper; Moccasin Flower). This beautiful native plant is an excellent subject for a damp, shady situation, woodland or shaded paths, and planted among ferns. It grows about 1 foot high and produces a large, showy, rose-purple bloom. The flowers appear to best effect when the plants are about 8 inches apart, and they should be planted about 3 inches deep. Prefers a mulch of pine or hemlock needles until it becomes established. \$6 per doz., \$40 per 100.

Pubescens. This is the large yellow Lady's-slipper or Moccasin Flower. Its showy, fragrant blooms are produced at the top of a leafy stem. These little plants are very attractive planted in colonies and are excellent for the woodland path or among sheltered evergreens. \$6 per doz., \$40 per 100.

DIELYTRA (*Dicentra spectabilis*)

Bleeding Heart or Seal Flower

An old-fashioned favorite, with long racemes of graceful heart-shaped pink flowers that are always attractive. It is used largely for forcing, but is also excellent for the garden border and especially valuable for planting in the shade. A splendid pot-plant for winter blooming in the greenhouse or conservatory. Strong clumps, 75 cts. each, \$7.50 per doz., \$60 per 100.

ERANTHIS HYEMALIS (Winter Aconite)

Early in spring the golden blossoms look charming, resting on an emerald-green cushion of leaves, and forming a striking contrast to the snowdrops, scillas, and chionodoxas. The foliage remains long after the flowers, making the plant especially valuable in moist situations, such as under trees, which the Winter Aconite enjoys, and where few other flowering plants will thrive. 3 to 8 inches high. 50 cts. per doz., \$3.50 per 100, \$30 per 1,000.

ANEMONES (Windflower)

These popular flowers of French origin are exceedingly useful as a decorative plant for house or garden, and fine for cutting. If planted outdoors in the fall they must be well protected with leaves or other litter; they may also be planted in the spring in well-drained soil, and will flower during the summer.

St. Brigid. We offer a selection of these very popular Anemones, so frequently seen in the florists' shops in the early springtime, from a grower who has specialized in developing a magnificent strain of this popular bulbous plant. The flowers are unusually large, semi-double, with finely divided petals, and of most unusual colors, all showing a handsome blue-black central blotch. They are borne on stems that frequently attain a height of 1 foot. There is a wide range of rich and brilliant colors in this magnificent strain. \$1.50 per doz., \$10 per 100.

Excelsior Mixture. We consider this the finest strain of single-flowering Anemones as yet raised. The plants are taller in growth than the St. Brigid and more single. They contain many fine shades of blue, white, and scarlet. \$1 per doz., \$7.50 per 100.

CHIONODOXA (Glory-of-the-Snow)

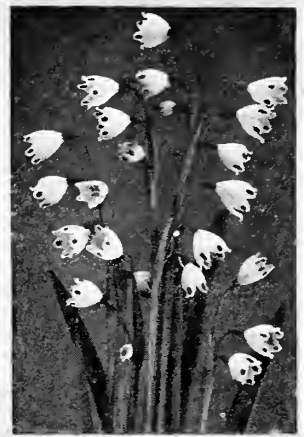
An early-flowering spring bulb for borders or rockery. Produces flower-spikes bearing ten to fifteen scilla-like flowers. Perfectly hardy and should be planted close together for effect.

Lucillæ. Deep blue, with a white center. Doz. 100 1,000
Selected mother bulbs.....\$0 60 \$4 00 \$35 00
Lucillæ alba. Beautiful white form of above. 75 6 00 55 00
Sardensis. The gentian-blue; very striking.
Selected mother bulbs..... 60 4 00 35 00

EREMURUS

This noble and rare bulbous plant from Turkestan is one of the choicest subjects for the permanent hardy border. It thrives best in a well-drained, sheltered, sunny position, and prefers a deep sandy loam to which has been added a liberal quantity of well-rotted cow manure. A covering of 4 to 5 inches of leaves or litter will be beneficial and will save the young shoots, which start early, and are liable to be damaged by late frosts. It produces a tall, majestic flower-stalk, frequently 8 to 10 feet in height, which rises from a crowded tuft of narrow leaves and is crowned by a flower-spike 2 to 3 feet long, composed of closely set bell-shaped flowers which are quite star-like in effect. The colors are tones of rose, yellow, and white. Due to the pyramidal form of the flower-spikes they are excellent for the rear of the hardy border where columnar effect is desired.

Bungei. Very beautiful, deep yellow flowers in July. Each 10
A strong grower, reaching a height of 6 feet.....\$3 00 \$27 50
Elwesi. Beautiful soft pink blooms in June. Broad green foliage. A very vigorous growing variety reaching a height of 10 to 12 feet..... 4 00 35 00
Elwesi albus. Pure white form of the above..... 6 00 55 00
Himalaiicus. Waxy white flowers with golden anthers. Height 6 to 8 feet..... 3 00 \$27 50
Him-Rob. This is a hybrid between *E. himalaiicus* and *E. robustus*, producing 8 to 10-foot stems with flower-spike 3 to 4 feet long, closely set with large flowers of pale silvery pink. Blooms in June..... 5 00 45 00
Robustus. Rosy pink flowers in June on 8 to 10-foot stems. Strong grower..... 4 00 35 00
Shelford. Coppery yellow flowers closely arranged on a 6-foot stem and almost clothing half of it.... 5 00 45 00



Anemone, St. Brigid. See page 36 Cyripedium acaule. See page 36 Eremurus. See page 36 Leucocymum vernum. See page 38

ERYTHRONIUM AMERICANUM

Dog's-tooth Violet

This charming native woodland plant is particularly suitable for the shady dell or woodland and is fine for shaded corners or the rock-garden. It produces, in April, small, lily-like flowers, which vary in color through shades of white, pink, bright yellow, rose, and cream. The beauty of the flowers is greatly enhanced by the richly mottled leaves. They seem to like a light, rather moist, well-drained soil. The bulbs should be planted about 5 inches deep. \$12 per 100.

FRITILLARIA IMPERIALIS

Crown Imperials

Well-known hardy border plants, bearing clusters of immense, pendent, bell-shaped flowers, surmounted with a tuft of green leaves. They are excellent for hardy borders and may be left undisturbed for years.

	Each	Doz.	100
Aurora. Orange	\$0 35	\$3 50	\$25 00
Crown on Crown. Several whorls of red flowers, one above the other	35	3 50	25 00

FRITILLARIA MELEAGRIS

Singular, dwarf, spring-flowering plants, bearing large, pendent bell-shaped flowers of various colors, in yellow, white, black, purple, striped and splashed, and checkered in the most curious way. They are invaluable for pot culture, and exceedingly pretty when grown in large groups in the garden border or wild garden in a dry situation.

	Doz.	100	1,000
Alba. White.....	\$1 00	\$8 00	\$75 00
Calypso. Purple.....	1 00	8 00	75 00
Mixed. Select mixtures.....	80	6 00	55 00

EARLY CURED GLADIOLUS

For Greenhouse Forcing. Delivery September 15 to 20

Quite a few of our friends who have experimented with the varieties of Gladiolus offered below have obtained excellent results from planting these Gladiolus indoors, to flower at Christmas and early in the spring. These bulbs are southern-grown, cured in June, and are ready to be planted in September for forcing. We offer the following varieties:

- Alice Tiplady.** (Primulinus.) Brilliant orange-salmon; very attractive. \$1.50 per doz., \$10 per 100.
- Los Angeles.** Beautiful shrimp-pink, with glowing orange-carmine blotch in throat; tall and graceful; blooms over a long period of time. A very excellent variety for cutting, being in constant demand by florists. \$2.50 per doz., \$20 per 100.
- Mary Pickford.** Delicate creamy white; throat fine, soft sulphur-yellow. \$1.50 per doz., \$10 per 100.
- Mrs. Frank Pendleton.** Salmon-pink with rich, deep maroon blotch on the three lower petals. A favorite variety. \$1.25 per doz., \$8 per 100.
- Souvenir.** (Primulinus.) Pure yellow. Another excellent forcer. \$1.50 per doz., \$10 per 100.
- Virginia.** Beautiful scarlet. One of the best for early forcing. \$1.50 per doz., \$10 per 100.

GRAPE HYACINTHS

Very beautiful little flowers for planting in masses, either in shade or where exposed to the sun. When planted out in herbaceous borders, where they can be left undisturbed, they do exceedingly well, each year adding to their already profuse-blooming qualities. Bloom outdoors during May. They are also excellent for pot culture.

Heavenly Blue. This variety is the largest and best of the Grape Hyacinths. The bells are large and form a fine truss. Splendid effects are produced by massing in the garden or border. 50 cts. per doz., \$3.50 per 100, \$30 per 1,000.

Album. A very beautiful white form of the above and excellent to use for contrasting with Heavenly Blue. 85 cts. per doz., \$6 per 100, \$55 per 1,000.

BULBOUS IRISES (Spanish and Dutch)

We are listing below what we believe to be the best distinct colors in Spanish and Dutch Irises, as well as several hybrid forms, as Wedgwood. They are excellent for growing under glass and may be grown in the garden also. When planted outdoors they should be covered with a heavy mulch and the bulbs planted in a well-drained border, about 5 inches deep.

Cajanus. This is considered one of the finest of the uniform bright yellow Spanish Irises. \$1 per doz., \$8 per 100, \$75 per 1,000.

D. Haring. We believe this one of the finest of the pure white Dutch Irises. Very large flower of great substance. \$1.25 per doz., \$9 per 100, \$85 per 1,000.

E. B. Garnier. Considered a great improvement on the old variety, Imperator. The standards and falls are a uniform deep blue. \$1.25 per doz., \$9 per 100, \$85 per 1,000.

King of the Whites. Undoubtedly the finest white Spanish Iris. Good substance; flowers of good size. \$1 per doz., \$8 per 100, \$75 per 1,000.

S. Rombout. One of the finest of the very dark blue Dutch Irises. Flowers of good size, borne on strong stems. \$1.25 per doz., \$9 per 100, \$85 per 1,000.

Yellow Queen. This Iris, exhibited at New York Flower Show this year, was much admired. We consider it one of the finest of the new yellow Dutch Irises. \$1.25 per doz., \$9 per 100, \$85 per 1,000.

Wedgwood. This Iris somewhat resembles Imperator, only the flowers are much larger and are borne on taller stems. It is one of the finest Irises in our list for forcing indoors. If planted in regular flower-pots or deep azalea-pans by October 1, these bulbs may be had in bloom by the middle of February. A grower who has had record success in the forcing of the Irises suggests that the bulbs be planted in deep azalea pans or flower-pots because they require considerable depth of soil for the bulbs to develop a deep root system. They should be watered sparingly until the flower-buds show, after which a light application of liquid manure will insure best results. It is also advisable to give them a temperature of 45 to 50 degrees when they are brought into the greenhouse. After the flower-buds show they may be brought into a temperature up to 70 degrees in order to hasten blooming-time. \$4 per doz., \$25 per 100, \$225 per 1,000.



Snowdrops



Ranunculus



Scilla nutans

IXIAS

The Ixia is a beautiful little winter-flowering bulb, with long, slender, graceful spikes of bloom. The colors are rich, varied and beautiful, the center always differing in color from the other parts of the flower, so that the blossoms, expanding in the sun's rays, present a picture of gorgeous beauty. Very desirable for pots.

	Doz.	100
Althæa. Large; white, with purplish carmine eye.....	\$0 85	\$6 00
Aurantiaca major. Golden yellow, large dark eye...	85	6 00
Craterioides major. Bright scarlet; very early.....	1 30	10 00
Hubert. Deep maroon; very beautiful.....	70	5 00
Mozart. Pink; lovely color	85	6 00
Finest Mixed	50	3 50

LEUCOJUM VERNUM (Spring Snowflake)

This pretty bulbous plant is similar to the snowdrop but of larger, stronger, and more attractive habit. In rich soil it grows to a height of 8 inches and produces, in late April, beautiful large white flowers, tipped with green, that are excellent for cutting. When once planted they take care of themselves, and should be in all hardy plant collections. They also do well in pots. \$1 per doz., \$7 per 100.

OXALIS

An unrivaled winter-flowering pot-plant of the easiest culture, succeeding with everybody

This is one of the finest flowering plants for pot culture that we have ever seen. It is such a strong, luxuriant grower that five or six bulbs will be sufficient for a 6 or 8-inch pot. Place in a dark, cool position for several days to root thoroughly, and remove to a sunny situation in the window or conservatory in a temperature of about 60 degrees Fahr., and the great profusion of bloom produced in uninterrupted abundance for weeks will astonish and delight you.

Large-flowering. We have a very fine strain of these Oxalis. Flowers are large, and they may be had in blossom, by successional plantings, from October until May. We have four colors—Yellow, Pink, White, and Lavender. 50 cts. per doz., \$3.50 per 100.

RANUNCULUS

The bulbs of Ranunculus resemble tiny clumps of dahlia roots. They look as much like spiders as anything. The flowers are extremely double, almost globular, regular in outline, often exceed 2 inches in diameter, and are to be had in all the colors except blue. The colors are bright, clear, and pure.

French Mixed. We offer a mixture of all colors of the French Ranunculus at \$1 per doz., \$7 per 100, \$65 per 1,000.

SNOWDROPS

These elegant little flowers, the first to open in spring, should be found in every garden, not only because they are the earliest spring flowers, but because they are one of the loveliest.

	Doz.	100	1,000
Single Snowdrops. Selected bulbs.....	\$0 70	\$5 00	\$48 00
Double. Selected bulbs.....	80	6 00	58 00

SCILLA campanulata (Wood Hyacinth)

Bears spikes, 15 inches high, of bell-like flowers, during early May. Plant 5 or 6 inches deep in shady situations. Very effective for borders; will grow under fir or pine trees.

Alba maxima. Clear white, with very fine, large bells. 75 cts. per doz., \$5 per 100, \$45 per 1,000.

Blue Queen. Erect spikes of porcelain-blue flowers; strong grower. 75 cts. per doz., \$5 per 100, \$45 per 1,000.

Excelsior. Bright deep blue, with large bells. 75 cts. per doz., \$5 per 100, \$45 per 1,000.

Rose Queen. Bells of soft lilac-rose; very pretty. \$1 per doz., \$7.50 per 100, \$70 per 1,000.

Scilla sibirica (Siberian Squill)

Spikes 3 to 4 inches high, of small, drooping, bell-like flowers. Fine for massing in borders or naturalizing. Plant 3 to 4 inches deep. Blooms in April.

Blue. Splendid for massing. Jumbo bulbs, 80 cts. per doz., \$6 per 100, \$58 per 1,000.

White. A variety sometimes used for interspersing with the blue sorts. 80 cts. per doz., \$6 per 100, \$58 per 1,000.

Scilla nutans (English Bluebell)

The flowers of this lovely Scilla are similar in type to *S. campanulata* listed opposite, but spikes are not as tall and are more arching in character. Visitors to the English countryside during daffodil time will doubtless remember this pretty flower which is a native of their woodlands and blooms the same time as the daffodils. 40 cts. per doz., \$3 per 100, \$25 per 1,000, \$225 per 10,000.

SPIREA (November delivery)

Gladstone. Large spikes of pure white flowers, borne on strong stems 18 inches high.

Gloria. A recent introduction that is conspicuously beautiful with its dense, feathery plumes of brilliant dark pink flowers.

Queen Alexandra. A popular variety on the order of Gladstone, but of a pale pink color.

Peach Blossom. A very lovely shade of peach-blossom pink. A very free-flowering variety.

Strong Clumps of any of the above 4 varieties, \$1 each, \$10 per doz., \$75 per 100

TRILLIUM

Grandiflorum. This beautiful native woodland plant grows from 8 to 12 inches high and produces large white flowers, turning lilac with age, frequently 2 to 2½ inches long by 2 inches wide. It is becoming extremely popular for garden planting. We offer large, strong clumps at \$2 per doz., \$15 per 100.

Stylosum. Similar to the above but somewhat smaller and has pink flowers. \$2 per doz., \$15 per 100.

TRITONIA CROCATA

This beautiful Cape Bulb is produced in California and is usually treated as a greenhouse bulb and handled like the freesia, which it somewhat resembles in its foliage. The lively orange-red flowers are borne on slender stems in racemes and are about 2 inches across. Splendid pot-plant. 80 cts. per doz., \$6 per 100, \$50 per 1,000.

ORDER SHEET

Dutch, French and Japanese Bulbs · Advance Bulb Catalogue, 1929

We, Stumpp & Walter Co., give no warranty, express or implied, as to description, quality, productiveness or any other matter of any seeds, bulbs, or plants we send out, and will not be responsible for the crop.

STUMPP & WALTER CO.

30 and 32 Barclay St., New York

Name _____
P. O. Box, Street
or Rural Delivery _____

Post Office _____ State _____

Station or Express Office _____
Only if different from Post Office

Send by _____
State if wanted by Mail, Express or Freight

Superintendent or Gardener _____
That we may enter for Catalogues

Date _____ 1929
AMOUNT ENCLOSED
\$ _____
**Advance Bulb
Offering
for Orders up
to July 15th**

QUANTITY	ARTICLES WANTED	PRICE

Insect and Rodent Repellent

Occasionally our patrons advise us that their bulbs are destroyed by the ravages of mice, particularly in the case of Tulips. This happens frequently in borders which are near woodland. Moles get into the borders or beds, leaving holes through which mice enter and devour the bulbs. The ravages of mice can be practically eliminated or minimized, provided the planter will not plant the bulbs too early. In this section of the country Tulip bulbs should not be planted until about Election Day; south of the Carolinas, about December 1. It should be remembered that Tulips immediately begin to make roots, provided the land is warm, and as soon as the roots are developed they have a tendency to make top-growth. More failures are due to *too* early planting rather than to faulty planting. Practically all other bulbs in our list are not affected by rodents. In the case of Tulips that are planted in the perennial border, and where the planter desires to give other plants protection, it is urged that this protection be given after the ground has frozen several inches, that is, defer covering your borders until hard frost has set in. By covering at this time you will keep the frost in, and, in almost every instance, keep the mice out.

It is advisable, however, as a further protection, to use what is perhaps the best insect and rodent-repellent there is, Semesan. This is a mercurial preparation which acts as a disinfectant as well as repellent to rodents or to any insects which might affect the plant during its period of growth in the spring. It is suggested that you use a 1 per cent liquid Semesan solution, that is, 1 ounce of Semesan to 1 gallon of water, soaking the bulbs for a period of 15 minutes before planting. 2 ozs. 50 cts., lb. \$2.75, 5 lbs. \$13, 25 lbs. \$56.25. (*Not mailable—sent by express only.*)

Material for Bulb Fertilization and for Building up Soil Structure

SAWCO BULB FERTILIZER. The professional gardener who plants bulbs in solid blocks in borders frequently, in early October, works well-rotted manure to the depth of 1 foot into the soil, spading it over several times so as to thoroughly incorporate it, and thereby build up the soil-fertility as well as the humus-content. The average home-owner finds it difficult to get this manure to build up his soil, and unless he is well experienced the use of well-rotted horse or cow manure is dangerous, as the preparation of the ground *must* be carefully done and the manure must be entirely decayed before any bulbs are planted.

To meet this situation, we suggest the use of a high-grade bulb fertilizer which contains, in proper analysis, the plant-food for the roots of the bulbs to feed on. We offer Sawco Bulb Fertilizer in the following quantities and suggest that it be broadcasted on the land and worked in with a spade several days before the planting of the bulbs, and that it be used at the rate of 5 pounds for 10 square feet of planting area. 5 lbs. 50 cts., 10 lbs. 90 cts., 25 lbs. \$1.75, 50 lbs. \$3, 100 lbs. \$5, 500 lbs. \$20, ton \$70.

SAWCO BRAND GRANULATED PEAT FIBRE. This brand of Granulated Peat Fibre is excellent for mixing with the soil as a mulch for bulb or rose-beds. It is also particularly good for growing bulbs indoors, there being nothing better, especially in the case of liliiums. Mix one-third to one-half of peat with the soil for this purpose. Use it on bulb-beds in the spring to keep the ground cool and on rose-beds during the summer for the same reason. We offer tightly compressed, burlapped, slatted, wire-bound bales, measuring 40 x 27 x 22 inches, weighing approximately 200 pounds, containing 8 to 9 bushels, or enough to cover 100 square feet to a depth of 2½ inches, at \$5 per bale; in lots of 5 bales at \$4 per bale; in lots of 10 bales at \$3.50 per bale. (Write for prices on carload lots.) Small sample bale (size 22 pounds) \$1.50 each.

STUMPP & WALTER COMPANY

30-32 Barclay Street
NEW YORK CITY

PLEASE BE SURE TO FILL IN YOUR NAME AND ADDRESS ABOVE

Insect and Rodent Repellent

Occasionally our patrons advise us that their bulbs are destroyed by the ravages of mice, particularly in the case of Tulips. This happens frequently in borders which are near woodland. Moles get into the borders or beds, leaving holes through which mice enter and devour the bulbs. The ravages of mice can be practically eliminated or minimized, provided the planter will not plant the bulbs too early. In this section of the country Tulip bulbs should not be planted until about Election Day; south of the Carolinas, about December 1. It should be remembered that Tulips immediately begin to make roots, provided the land is warm, and as soon as the roots are developed they have a tendency to make top-growth. More failures are due to *too* early planting rather than to faulty planting. Practically all other bulbs in our list are not affected by rodents. In the case of Tulips that are planted in the perennial border, and where the planter desires to give other plants protection, it is urged that this protection be given after the ground has frozen several inches, that is, defer covering your borders until hard frost has set in. By covering at this time you will keep the frost in, and, in almost every instance, keep the mice out.

It is advisable, however, as a further protection, to use what is perhaps the best insect and rodent-repellent there is, Semesan. This is a mercurial preparation which acts as a disinfectant as well as repellent to rodents or to any insects which might affect the plant during its period of growth in the spring. It is suggested that you use a 1 per cent liquid Semesan solution, that is, 1 ounce of Semesan to 1 gallon of water, soaking the bulbs for a period of 15 minutes before planting. 2 ozs. 50 cts., lb. \$2.75, 5 lbs. \$13, 25 lbs. \$56.25. (*Not mailable—sent by express only.*)

Material for Bulb Fertilization and for Building up Soil Structure

SAWCO BULB FERTILIZER. The professional gardener who plants bulbs in solid blocks in borders frequently, in early October, works well-rotted manure to the depth of 1 foot into the soil, spading it over several times so as to thoroughly incorporate it, and thereby build up the soil-fertility as well as the humus-content. The average home-owner finds it difficult to get this manure to build up his soil, and unless he is well experienced the use of well-rotted horse or cow manure is dangerous, as the preparation of the ground *must* be carefully done and the manure must be entirely decayed before any bulbs are planted.

To meet this situation, we suggest the use of a high-grade bulb fertilizer which contains, in proper analysis, the plant-food for the roots of the bulbs to feed on. We offer Sawco Bulb Fertilizer in the following quantities and suggest that it be broadcasted on the land and worked in with a spade several days before the planting of the bulbs, and that it be used at the rate of 5 pounds for 10 square feet of planting area. 5 lbs. 50 cts., 10 lbs. 90 cts., 25 lbs. \$1.75, 50 lbs. \$3, 100 lbs. \$5, 500 lbs. \$20, ton \$70.

SAWCO BRAND GRANULATED PEAT FIBRE. This brand of Granulated Peat Fibre is excellent for mixing with the soil as a mulch for bulb or rose-beds. It is also particularly good for growing bulbs indoors, there being nothing better, especially in the case of liliiums. Mix one-third to one-half of peat with the soil for this purpose. Use it on bulb-beds in the spring to keep the ground cool and on rose-beds during the summer for the same reason. We offer tightly compressed, burlapped, slatted, wire-bound bales, measuring 40 x 27 x 22 inches, weighing approximately 200 pounds, containing 8 to 9 bushels, or enough to cover 100 square feet to a depth of 2½ inches, at \$5 per bale; in lots of 5 bales at \$4 per bale; in lots of 10 bales at \$3.50 per bale. (Write for prices on carload lots.) Small sample bale (size 22 pounds) \$1.50 each.



STUMPP & WALTER COMPANY

30-32 Barclay Street

NEW YORK CITY

Two Popular Hardy Perennials for Fall Planting

We offer, below, two of the most popular hardy perennial plants for fall planting. These are grown on our own nurseries and all orders placed at this time will be delivered at the proper planting time this fall.

HARDY PHLOX

CULTURE.—Hardy Phlox may be planted in spring or fall; a mulch of old manure thrown around the roots will be of benefit to the plants. Phlox should be set out 18 inches apart, and if kept well watered will produce both individual blossoms and heads of bloom far larger than otherwise, and amply repay the extra trouble. To procure best effects, plants should be massed in from six to twelve clumps of each variety.

Superb Hardy Phlox

Our plants are choice divisions from field-grown plants which we have found to give excellent satisfaction.

Albion. A vigorous-growing variety; pure white, with a pale pink eye.

Australia. A comparatively new Phlox bearing immense florets. Color, a remarkable shade of crimson-purple.

Blue Hill. Beautiful violet-blue. Unusual.

Bridesmaid. Pure white with large crimson center.

Commander. Crimson-red with darker eye.

Elizabeth Campbell. Large soft pink. 40 cts. each, \$4 per doz., \$30 per 100.

La Vague. Florets of moderate size, borne in large trusses. Soft pink.

Obergartner Reichenau. Extra-large flowers of bright rose. Strong, compact grower; extra-heavy foliage.

Rynstroom. Dark salmon-rose. Easily one of the finest Phlox of its color.

Rheinlander. A beautiful salmon-pink the center of each floret relieved with a distinct carmine-crimson eye.

Selma. A clear, bright rose, highly relieved with a carmine-crimson eye.

Wanadis. Immense trusses with large individual florets. Delicate lilac shade with bluish purple eye.

Wida. Exquisite two-tone color. Lavender, rayed with white.

Price of the above varieties, except Elizabeth Campbell, 30 cts. each, \$3 per doz., \$20 per 100

Early-flowering Hardy Phlox (*Phlox suffruticosa*)

Miss Lingard. A grand variety, which begins flowering after the middle of June and continues throughout the season. Large white flowers, with pale pink eye. Extensively used for cut-flowers. 30 cts. each, \$3 per doz., \$20 per 100.

HERBACEOUS PEONIES

CULTURE.—The culture of Peonies is quite simple. They require a good, deep, rich soil and an abundant supply of water during the growing season. When enriching the ground, the use of too much fresh manure near the roots should be avoided. The main point to observe is, while the ground should be well spaded and cultivated, **not to plant the roots too deep.** The roots should be planted so that the eyes are barely covered (about 1 to 2 inches). Too deep planting is the cause of shy flowering.

Size of Roots.—The roots we offer have been grown two years from root divisions. If planted during September and October these roots should become well established and give some flowers the following year.

Many of the following varieties of Peonies have received a very high rating. They are grown at our own Farmingdale Farm, on Long Island. Each variety offered has been selected by us on account of its merit.

White Shades

Alsace Lorraine. 8.8. (Lemoine, 1906.) A late-blooming variety with pointed white petals suffused with a golden light from the stamens, giving somewhat the appearance of a water-lily. Tall and vigorous. \$2 each, \$20 per doz.

Baroness Schroeder. 9.0. (Kelway, 1880.) Immense, globular flowers with white guard petals and a soft baby-pink center, becoming pure white. One of the best white Peonies. Stems very strong and vigorous. Foliage medium green. Late midseason. \$1.50 each, \$15 per doz.

Duchesse de Nemours. 8.1. (Calot, 1856.) Cup-shaped blooms; broad guard-petals of white and narrower central petals of sulphur-yellow, with oftentimes a marking of green. Early midseason. 75 cts. each, \$7.50 per doz.

Festiva Maxima. 9.3. (Mieliez, 1851.) This is probably the most widely known of all Peonies. Exceptionally large ivory-white flowers of rather feathery appearance, flecked with crimson in the center. 60 cts. each, \$6 per doz.

Primevere. 8.6. (Lemoine, 1907.) Guard petals deep creamy yellow and center petals sulphur-yellow. If not exposed to the full sun the flowers will hold a most attractive canary-yellow. Very fine. Midseason. \$2 each, \$20 per doz.

Queen Victoria. 6.8. (Hort, 1830.) An old favorite variety. A good every-day white, and, when cut, a first-rate keeper, having good substance and color. Bomb type; early midseason, being very attractive in the bud, when it has a faint blush tint. 50 cts. each, \$5 per doz.

Solange. 9.7. (Lemoine, 1907.) One of the very finest Peonies. Extra-large flowers with broad, rounded petals of such fine form that the flower does not look coarse. Petals waxy white but suffused with a reddish golden light, so that the total effect is such as may be seen on a cloud at sunset. Late midseason. \$3 each, \$30 per doz.

Pink Shades

Czarina. A late-blooming variety of deep rose-pink, shading to violet tinted silver. A free bloomer, opening well under ordinary conditions. 50 cts. each, \$5 per doz.

Eduis Superba. 7.6. (Lemon, 1824.) Deep rose-pink with an occasional crimson marking. Guard petals wider than those in the center. Very early. \$1 each, \$10 per doz.

General Joffre. Large bomb-shaped flowers of a clear rose-pink. Guard petals wider than those in the center. \$2 each, \$20 per doz.

Henry Woodward. 8.8. (Richardson, 1883.) Very large, flat flowers of silvery, shell-pink. Petals are pointed, giving a very pretty effect. Very late. \$2 each, \$20 per doz.

Mme. Francois Toscanelli. (Rivière, 1911.) Anemone type. Very large flower of beautiful flesh-pink, shaded soft rose; center dark salmon-rose—a lively color. Upright grower. \$2 each, \$20 per doz.

Mlle. Jeanne Riviere. 8.2. (Rivière, 1908.) Guard petals deep flesh, gradually changing lighter; center petals narrower and of a deep cream shade. Tall, strong stems and abundant flowers. Especially good for garden or mass effects. Midseason. \$1.50 each, \$15 per doz.

Mme. Manchet. 8.5. (Dessert, 1913.) Very full, cup-shaped flowers of rose-pink, with a silvery tint. Tall, stiff stems. \$2 each, \$20 per doz.

Rachel. 8.3. (Lemoine, 1904.) Large, globular flowers of excellent form and fresh, soft rose color, borne on strong stems. \$1.50 each, \$15 per doz.

Suzanne Dessert. 7.7. (Dessert & Méchin, 1890.) Semi-rose type; midseason. Large, very full blooms in clusters; broad petals. Fine clear china-pink, silvery on the tips. Stands very well in full sun and is very showy. \$1 each, \$10 per doz.

Red Shades

Dr. H. Barnsby. 8.1. (Lemoine, 1906.) Large, very full blooms of crimson with darker shades. Free bloomer in clusters, making a good variety for garden effect. Late. \$1.50 each, \$15 per doz.

Felix Crousse. Compact, globular bloom of large size and fine form. Deep ruby-red, center shading deeper. Very choice. Midseason to late. \$1 each, \$10 per doz.

Karl Rosenfeld. 8.8. (Rosenfeld, 1908.) Brilliant, dark crimson; of good form and substance. Stems stiff. Medium height. One of the best in this color. \$1 each, \$10 per doz.

Marquis C. Lagergren. 7.8. (Dessert, 1911.) Brilliant cherry-red, with dark shadings. Flowers borne in clusters on stiff, upright stems, which make it an excellent variety for mass planting. Midseason. \$1.50 each, \$15 per doz.

Single Peonies

L'Étincelante. 8.4. (Dessert, 1905.) Large flowers and broad petals of brilliant carmine with a silvery border. Stems erect and vigorous. \$2.50 each, \$20 per doz.

Nymphe. (Dessert, 1913.) Large, flesh-colored petals, with a central tuft of golden stamens. \$2.50 each, \$25 per doz.

Othello. Deep rose with good stems, good laterals, and excellent for the Peony border. \$2.50 each, \$25 per doz.

Yeso. 7.7. (Japanese.) Guard or outside petals pure white, narrow center petals white, shaded slightly yellow, often with a carmine tip. \$2.50 each, \$25 per doz.

ORDER SHEET. STUMPP & WALTER CO., 30 and 32 Barclay Street, NEW YORK

QUANTITY	ARTICLES WANTED	PRICE	

QUANTITY	ARTICLES WANTED	PRICE	





Planting of Japanese Iris



German Iris

GERMAN IRIS (*Iris germanica*)

AMBASSADEUR. A new variety of splendid merit. Falls of rosy lilac; standards of rich reddish purple, shaded darker. **\$1 each, \$10 per doz.**

BALLERINE. Standards pale blue-violet; falls wisteria-violet, veined red-brown; lemon-yellow beard. **\$1 each, \$10 per doz.**

CLUNY. A tall-growing variety with standards of light lavender; falls darker lavender, shading to blue, with purple-brown markings at the base. **\$1 each, \$10 per doz.**

FAIRY. Standards and falls white, delicately bordered and suffused soft blue. Very beautiful. **30 cts. each, \$3 per doz., \$20 per 100.**

GRACCHUS. Standards clear yellow; falls crimson, reticulated white. **30 cts. each, \$3 per doz., \$20 per 100.**

GREVIN. A tall-growing, rich red-purple Iris. Its height makes it an outstanding variety for the garden. **75 cts. each, \$7.50 per doz.**

KHEDIVE. Standards beautiful soft lavender, falls white, veined brown. **30 cts. each, \$3 per doz., \$20 per 100.**

LENT A. WILLIAMSON. Standards lavender-violet; falls royal purple. Large flowers. **60 cts. each, \$6 per doz., \$40 per 100.**

MAGNIFICA. Standards light violet-blue; falls long, deep red-violet, with brown markings on light ground at the haft; orange beard. Huge size and striking color. **\$1 each, \$10 per doz.**

MEDRANO. Recommended very highly. The standards are red-copper with a suggestion of violet, with falls of dark crimson-purple, flaked buff and lavender. **75 cts. each, \$7.50 per doz.**

MOLIERE. Standards of light blue, overlaid brown; falls purplish maroon, lighter at the edges. Flower of large size, fine form and substance. **\$1 each, \$10 per doz.**

MOTHER OF PEARL. A uniform soft lavender with a faint creamy undertone. Large flowers of exceptional substance and perfect form. The finest new Iris. **\$1 each, \$10 per doz., \$60 per 100.**

PALLIDA, ALBERT VICTOR. Standards soft blue, falls beautiful lavender. **30 cts. each, \$3 per doz., \$20 per 100.**

PAULINE. Standards and falls are a rich pansy-violet. A variety of decided perfume. **20 cts. each, \$2 per doz., \$15 per 100.**

PERFECTION. Standards light blue; falls dark violet. A very free-flowering variety and an excellent one for the garden. **40 cts. each, \$4 per doz., \$30 per 100.**

PRINCESS VICTORIA LOUISE. Standards sulphur-yellow, falls rich plum, bordered cream. **30 cts. each, \$3 per doz., \$20 per 100.**

QUAKER LADY. Standards are a smoky lavender with yellow shadings; falls blue and gold. **35 cts. each, \$3.50 per doz., \$25 per 100.**

QUEEN ALEXANDRA. Standards fawn, shot with lilac, falls bronze, yellow beard. **30 cts. each, \$3 per doz., \$20 per 100.**

RAFFET. Intense violet-blue in the standards, with falls of dark violet, marked white and violet. **50 cts. each, \$5 per doz.**

RHEIN NIXE. A variety with snowy white standards and falls of violet-blue. **35 cts. each, \$3.50 per doz., \$25 per 100.**

SHERWIN-WRIGHT. Fine deep yellow throughout. Perfectly hardy and excellent for landscape work. **35 cts. each, \$3.50 per doz.**

SIBERIAN BLUE. Clear sky-blue. While not of a German Iris type, flowers same time and is a wonderful border variety. **30 cts. each, \$3 per doz., \$20 per 100.**

JAPANESE IRIS (*Iris Kaempferi*)

The Japanese Irises usually flower after the German. They are much admired on account of their variety of color and large size. We offer twelve distinct varieties. Six-petal varieties are termed double; three-petal varieties, single.

Azure. Double. Immense flower of mauve-blue with a darker halo surrounding the yellow blotch at base of petals.

Choseidan. Double. Ruby-crimson, marked white and yellow.

Gold Bound. Double. Pure white. One of the best.

Grace Spurling. Single. Hortense-violet; petaloid stigmas light Hortense-violet. Very early. Extra fine.

Kamata. Single. Sky-blue, veined white.

La Favorite. Double. White, veined blue; purple center.

Mrs. George Stumpp. Single. White, with a cast of blue.

Painted Lady. White center, blotched light purple.

Red Riding Hood. Single. Amaranth, veined and suffused white.

Rose-Anna. Double. Ivory-white, heavily veined ruby-red.

Templeton. Double. Light violet, mottled reddish pink and white.

Violet Beauty. Single. White and pale Hortense-violet.

Any of the above varieties, 50 cts. each, \$5 per doz., \$35 per 100

STUMPP & WALTER CO.

One of the largest Growers and Importers of American, Dutch, French, and Japanese Bulbs for discriminating flower-lovers in the United States

30-32 Barclay and 40 Vesey Streets - NEW YORK CITY

BRANCH STORES: Baltimore, Md.; White Plains, N. Y.; Newark, N. J.