

Historic, Archive Document

Do not assume content reflects current scientific knowledge, policies, or practices.

INDEXED

FRUITS, TREES

and FLOWERS

RECEIVED
★ MAR 11 1929 ★
U.S. DEPARTMENT OF AGRICULTURE

Spring 1929



WHAT A FEW TREES AND SHRUBS WILL DO

SARCOXIE NURSERIES PEONY FIELDS

Wild Brothers Nursery Co., Sarcoxie, Mo.

Not open on Sundays, except during May.

Gladiolus

Probably the most popular of summer and fall blooming bulbs. They are seldom troubled with insects or diseases, are easily grown and increase rapidly. Instructions for growing and increasing your stock sent with the bulbs. By planting as soon as danger of frost is over and at intervals of two weeks you can have gladiolus all summer.

These Gladiolus Prices are Prepaid in Missouri, Iowa, Kansas, Oklahoma and Arkansas. Other states add 10%. Three of a kind at dozen rate, 25 of a kind at 100 rate.

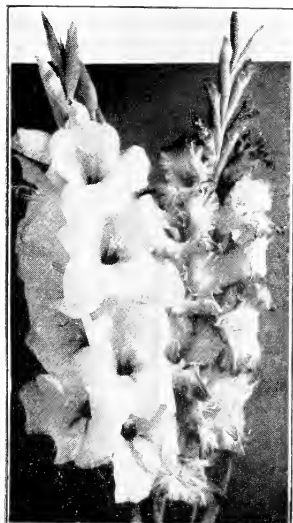
Gladiolus Collection No. 1, 2nd size \$1.40; 3rd size \$1.00.

36 bulbs, 6 each America, Halley, Ida Van, Chicago White, Mrs. Francis King, Sunbeam.

Gladiolus Collection No. 2, 2nd size \$1.75; 3rd size \$1.30

36 bulbs, 6 each, Mrs. H. E. Bothin, Le Marechal Foch, Herada, Lily White, E. J. Shaylor, 1910 Rose.

PLEASE NOTICE WE QUOTE BY SIZE. Gladiolus are graded by size from first to sixth and bulblets. First size is 1½ inch and over in diameter, second 1¼ inch, third 1 inch. Naturally first size gives earlier and larger flowers, but all three are good blooming size and with suitable conditions will give nice results. In fact fifth size will almost all bloom though smaller spikes and flowers, so we hardly know what size is meant when offered as blooming size.



Mixed—Mixed Colors, Types, and Seasons.

Price of Mixed	Each	Per doz.	Per 100
First Size	5c	\$0.40	\$3.00
Second Size	4c	.30	2.50
Third Size	3c	.25	2.00

Price of Following:	Each	Per doz.	Per 100
First Size	6c	\$0.60	\$4.00
Second Size	5c	.50	3.00
Third Size	4c	.35	2.25

3 of a kind at doz. rate; 25 of a kind at 100 rate.

America—Light lavender pink; very large flowers; strong stems; blooms freely; midseason.

Chicago White—Good early white; medium tall.

Halley—Pink tinged salmon, yellow blotched, striped red; early; excellent.

Le Marechal Foch—Large delicate pink; early.

Mrs. Francis King—Large; very tall spikes; vermilion scarlet, sometimes called flame pink.

Peace—Large; white; tall, midseason to late.

Wilbrink—Pale lavender pink; large; early.

Price of Following:	Each	Per doz.	Per 100
First Size	8c	\$0.75	\$5.00
Second Size	6c	.60	4.00
Third Size	5c	.50	3.50

3 of a kind at doz. rate; 25 of a kind at 100 rate.

Helen Franklin—White feathered carmine; lower petals slightly ruffled; excellent.

Herada—Light purple tinged rose; large; good.

Ida Van—Scarlet, deeper throat; midseason.

Lily White—Glistening white; early; good.

Mrs. Frank Pendleton—Rosy flesh blending to white edges, maroon blotch; large; tall.

Schwaben—Canary becoming creamy yellow.

Sunbeam—Clear yellow; not blotched; long slender spikes; very early; Primulinus type.

Price of Following:	Each	Per doz.	Per 100
First Size	10c	\$1.00	\$7.00
Second Size	8c	.80	6.00
Third Size	6c	.60	4.50

3 of a kind at doz. rate; 25 of a kind at 100 rate.

Crimson Glow—Deep scarlet-crimson.

E. J. Shaylor—Deep rose blending lighter.

Mary Piekford—Beautiful creamy white.

Mrs. Dr. Norton—LaFrance pink, creamy base.

1910 Rose—Deep, rich rose; early.

Mrs. H. E. Bothin—Light pink, scarlet center; ruffled.

Scarlet Princeps—Large; scarlet; fine.

Should any of your friends be interested in our catalog, a copy will be sent for the asking.

For Your Information

How to Order

Just make a list of what you want, giving number, name, size and price. Tell us whether to ship by freight or express. If you wish shipment at some special date tell us, otherwise we will ship when we think best according to season and locality. Our terms are cash but we will ship C. O. D. if half is sent with order.

Please Tell Us

Please tell us whether you want us to send a similar variety if we are out of any variety ordered. If you do not want us to do so, mark "No substitution" on your order.

When we substitute the tree is labeled with the correct name of the variety filled. For example, if we sent Stayman Winesap in place of Winesap it would be labeled Stayman Winesap.

Don't forget to tell us if your freight or express office is different from your postoffice.

Copy of certificate attached to each shipment.

Why We Don't Prepay

Prices herein are not prepaid unless so stated. If we prepaid we would have to do like anyone else who prepaays—add it to the price we wanted to get and be sure to estimate it high enough so we wouldn't lose money on it on the average.

Our Guarantee

We exercise care and diligence to have our varieties true to label and sell all our stock with the express guarantee that we will, on proper proof, replace any that may prove otherwise, or refund the amount paid for same, which shall constitute the extent of our liability.

Copyright, 1929 by Wild Bros., Nursery Co.
Printed by CAMPBELL PRINTING COMPANY,
Des Moines, Iowa, U. S. A.

Strawberries

GROWN on new ground, well rooted, properly cleaned and carefully packed. All these are perfect flowered. 500 or more, assorted if you wish, at the 1000 rate. Not less than 25 of a kind sold. If by parcel post, add 7c per 25, 15c per 100, except where quoted postpaid.

Aroma—A heavy bearer; very large; firm; ships well; midseason to late; good; a money maker. 60c per 100, \$3.50 per 1000; 10,000 at \$3.00 per 1000.

Dunlap—Deep red; juicy; excellent; a perfect-flowered Warfield; midseason; bears heavily; succeeds almost everywhere. 60c per 100; \$3.50 per 1000.

Home Strawberry Collection

150 each Aroma and Dunlap for \$1.60, postpaid.



PLANT A PRIVET HEDGE

Turn to page 11 for list of varieties and prices. The stock is excellent.



Peaches Bear the Third Year

Peaches come into bearing quicker than any other tree fruit, under proper conditions giving a crop the third year. Select varieties from early to late and you can have three months of peaches. The trees won't cost as much as you would probably pay for peaches in one year. And none are so delicious as those freshly picked when fully ripened on the tree.

A sandy loam or gravelly soil is best but the peach adapts itself to almost any well drained soil. Planted 16x16 feet requires 170 per acre; 18x18 feet, 134 per acre.

Price of One-Year Peach:	Each	10	100
XX size, 11-16 in. caliper up, about 4 to 6 ft.....	\$0.45	\$4.00	\$35.00
Extra size, 9-16 to 11-16 in. caliper, about 4 to 5 feet40	3.50	30.00
Standard size, 7-16 to 9-16 in. caliper, about 3½ to 4½ feet35	3.00	25.00

Any five or more at the 10 rate; less at the each rate; 50 or more at the 100 rate.

The following list is arranged approximately in the order of ripening. The dates named are the approximate average in this section.

May Flower—The earliest; good size; red all over; semi-cling; productive.

Greensboro—Large, creamy white, with a yellowish cast, beautifully colored crimson; flesh white, very juicy; an excellent early peach; mid June; hardy and a profuse bearer.

Carman—Large; creamy splashed red; juicy, rich, sweet, good; nearly free; hardy; productive.

Champion—Large; white, red cheek; flesh white, sweet, juicy, rich, delicious; freestone; early August, quite hardy; bears young; productive.

Belle of Georgia—Very large; white, red cheek; firm, juicy, high quality; freestone; early August, hardy; very productive; an excellent shipper.

J. H. Hale—A little more round and firmer than Elberta; about the same season.

Elberta—Very large; golden yellow, crimson cheek; firm, juicy, good; freestone; mid August, excellent shipper; vigorous, productive, profitable.

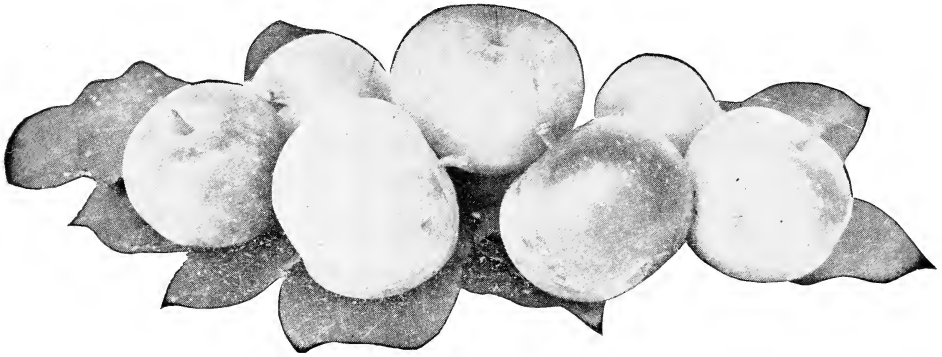
Crawford Late—Large; yellow, deep red cheek; juicy, rich; freestone; latter August-September.

Heath Cling—Very large; creamy white, sometimes faintly blushed; flesh white to the pit, rich, very juicy, sweet, fine; latter September.

PARCEL POST

If plants are wanted by parcel post allow extra for postage, except where quoted postpaid. Trees larger than 3 to 4 ft. cannot be sent by parcel post.

Apple Profits



Ed Hauser, a farmer near Nashville, Kingman county, Kansas, does not live in an orchard section but this fall he made a net income of more than \$600 from a 2½ acre orchard. The 932 bushels of apples which he picked sold for \$732. The cost of spraying and picking was about \$130. The record was taken from Mr. Hauser's answer to a questionnaire on orchard spraying sent out by L. C. Williams, extension horticulturist at the Kansas State agricultural college.—Joplin (Mo.) Globe, Dec. 23, 1922.

Price of Two-Year Apple:	Each	Per 10	Per 100
XX size, about 4½ to 6 ft., 11-16 in., caliper and up, branched.....	\$0.65	\$6.00	\$55.00
Extra size, about 4 to 5 ft., 9½ to 11-16 in., caliper, branched.....	.55	5.00	47.50
Standard size, about 3½ to 4½ ft., ½ to ¾ in. caliper, branched.....	.40	3.50	32.50
Medium size, 3 to 4 feet.....	.30	2.50	20.00

Any five or more at the 10 rate, less at each rate; 50 or more at the 100 rate.

Summer Apples

Ripening dates named are approximate average here; allow 5 to 7 days for each 100 miles north or south. Altitude also affects the date.

Early Harvest—Bright straw; juicy, rich sub-acid; good; very early; bears rather young; productive.

Red June—Very red; juicy, brisk sub-acid, good; medium size; June-July; a young bearer.

Autumn Apples

Maiden Blush—Large; clear yellow, crimson cheek; very juicy, sub-acid; good for cooking and drying; bears rather young.

Winter Apples

Black Ben Davis—Large; rich red to maroon; firm, juicy, mild sub-acid; keeps well, ships well; bears young, regularly and abundantly.

Delicious—Roundish conic, medium to large, pale yellow, mostly covered with red, striped dark carmine; juicy; mild, sub-acid; good.



Grimes' Golden — Of best quality; beautiful golden yellow; medium to large; crisp, juicy, rich sub-acid, aromatic; fine dessert apple, good for cooking, especially fine canned; Oct.-Dec.; blooms late; hardy; bears young.

Jonathan—Very attractive, lively deep red; high flavor; excellent for dessert, cooking and market; firm, crisp, juicy, very aromatic, mild sub-acid; Oct. and later; bears rather young.

Mammoth Black Twig—Greenish, largely over-spread, dull, deep red, sometimes almost black; very firm, moderately juicy, sub-acid, good; keeps late.

Stayman Winesap—Large; attractive shape, greenish-yellow striped and often nearly covered with dark red; firm, crisp, very juicy, aromatic, sprightly pleasant sub-acid; very good; keeps late.

Winesap—Bright deep red, flesh yellow, very rich, crisp, very juicy, sprightly sub-acid, very good; Dec.-March; bears young.

York Imperial—Large; attractive greenish-yellow shaded crimson; crisp, juicy, sub-acid, becoming mild; Dec.; bears heavily and rather young.

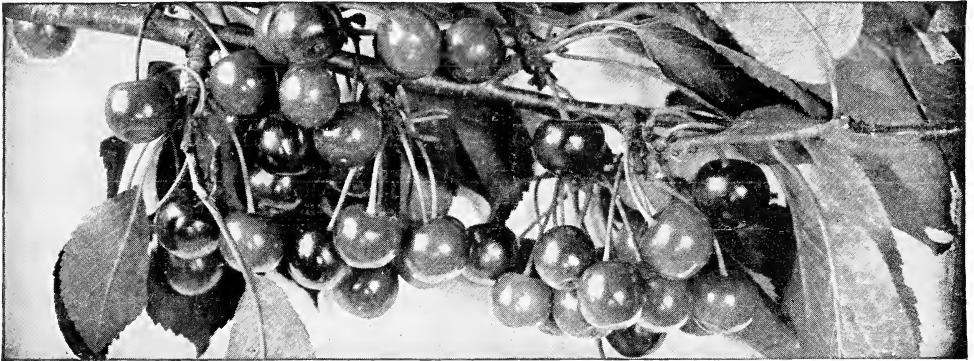
Crab Apples

Transcendent—A large crab; golden yellow, crimson cheek; crisp, juicy, sub-acid; Aug.-Sept.

Parcel Post

If plants are wanted by parcel post, allow extra for postage, except where quoted postpaid. Any balance will be returned. Trees larger than 3 to 4 feet cannot be sent by parcel post.

Made Good with Cherries



SCHUYLER STEVENS of Smith Center has demonstrated beyond question the value of cherries in Western Kansas. In 1915 he planted 500 trees. Now if you will recall the summers since 1915, every one excepting 1915 must be classed as drouthy seasons. In spite of adverse conditions, here is what Mr. Stevens says in a letter dated June 28, 1919: "The Dyehouse were the first to ripen, then the Early Richmond and now the Montmorencies are on hand. The Wragg will follow in July. I will have about 300 crates and they bring me \$3.00 net as I require the crates returned. This will bring me \$900 for the cherries on four acres the fourth season." * * * I know Mr. Stevens personally, and I am familiar with his method of orcharding. * * * The secret of his success has been cultivation. He has never allowed a weed to grow in his orchard.—Chas. A. Scott, in *Kansas Farmer*, March 6, 1920. Wragg and English Morello are very similar if not identical.

Plant 18 to 20 feet apart on well-drained ground. The list is arranged in the order of ripening.

Price of Cherry:	Each	Per 10	Per 100
XXX size 1 year 11-16 in. caliper up, about 4 to 5 feet, branched	\$.75	\$7.00	\$65.00
XX size, 1 year 3½ to 4½ feet, 9-16 to 11-16 in. caliper, branched65	6.00	55.00
Extra size, 1 year, 3 feet to 4 feet, 7-16 to 9-16 in. caliper, branched.....	.50	4.50	40.00

Any five at the 10 rate, less at each rate; 50 or more at the 100 rate.

Early Richmond (May Cherry)—Medium size, round, bright red, darker when fully ripe; very juicy, sprightly acid; latter May-June; hardy, very productive; profitable; succeeds everywhere.

Early Richmond; vigorous, hardy, productive; successful everywhere.

Montmorency—Rather large, dark rich red; juicy, pleasant acid; excellent; a week later than

English Morello—Large, dark red, nearly black; flesh dark purplish crimson; juicy; rich acid; prolific; latter June-July; dwarfish.

Pear Trees

Price of Garber and Kieffer.	Each	Per 10	Per 100
XX size 2 year, 9-16 to 11-16 in. caliper, about 4 to 6 feet.....	\$0.60	\$5.50	\$50.00
X size 2 year, 7-16 to 9-16 in. caliper, about 3½ to 5 feet.....	.55	5.00	45.00

Price of Bartlett.	Each	Per 10	Per 100
XX size 2 year, 9-16 to 11-16 in. caliper, about 4 to 6 ft.....	.70	6.50	60.00
X size 2 year, 7-16 to 9-16 in. caliper, about 3½ to 5 ft.....	.60	5.50	50.00

Any 5 or more at the 10 rate; 50 or more at the 100 rate.

Pears are graded by caliper or diameter. The height is the approximate average and varies with the habit of the tree. Arranged approximately in order of ripening.

Bartlett—Large; waxy yellow with red blush; juicy, rich; latter August; bears young.

DWARF PEARS

Dwarf Pear—Occupy little room, are valuable where space is limited and begin bearing young, often the year after planting.

Garber—Large, waxy yellow, red cheek; early Sept.; good for canning and market and for pollenizing others; hardy; vigorous; very resistant to blight.

They may be planted 10 to 12 feet apart and kept headed back.

Kieffer—Very large, rich, yellow tinted red; very juicy; develops good flavor if ripened slowly in a cool, dark room; very resistant to blight, hardy, very productive, ships well, profitable pear; Sept.-Nov.; bears about the fifth year; plant Garber to pollenize it.

Duchesse d'Angouleme—Very large, greenish yellow, dull red cheek; juicy, melting, slightly granular; Sept. Oct.; productive, hardy, vigorous.

XX. 5-8 in. caliper and up, 75c each; \$7.00 per 10; \$65.00 per 100.



Plum Trees

Price of Plum:	Each	Per 10	Per 100
XX size, 1 1/16 in. caliper up, about 5 to 6 ft.....	\$0.60	\$5.50	\$50.00
Extra size, 5/8 to 1 1/16 in. caliper, about 4 to 5 ft., branched.....	.50	4.50	40.00
Standard size, 1/2 to 5/8 in. caliper, about 3 to 4 ft., branched.....	.40	3.50	30.00
Medium size, under 1/2 in. caliper, 3 ft and up.....	.30	2.50	22.50

Any five at the 10 rate, less at each rate; 50 or more at the 100 rate.



Blackberries

Yield \$394 Per Acre

Early Harvest Blackberry, in experiments by the Missouri Agricultural Experiment Station, yielded gross returns at the rate of \$347.60 per acre in 1919 and \$394.20 per acre in 1920.

Blackberries begin bearing the second year and may be depended on for regular, profitable crops under suitable conditions. They are at their best in a strong, deep loam that will retain moisture, tending toward clay rather than sand. If properly tended they may be planted 2x6 feet, requiring 3600 per acre.

Early Harvest—The most profitable of all on account of its extreme earliness, hardiness and productiveness; glossy black, firm and ships well; growth strong. 35c per 10, 60c per 25, \$2.00 per 100, \$17.50 per 1,000.

50 at the 100 rate; 500 at the 1000 rate.

Raspberries

Bear the Second Year

They begin bearing the second year, ripen between strawberries and blackberries, sell well and are reliable croppers under suitable conditions. Deep soil that will retain moisture during a dry season is desirable. Planted 3x6 feet requires 2,420 per acre.

Cumberland — Black; large; firm; excellent; midseason; hardy; productive. 40c per 10; 85c per 25; \$3.00 per 100.

King—Large; bright red; firm; good flavor; season early and long; hardy; productive. 40c per 10; 85c per 25; \$3.00 per 100.

Currants

Red and White, strong 2-yr. 20c each; \$1.75 pr. 10.

Abundance—Japan. Large bright red over yellow; juicy, sweet, rich; very good; cling; mid July; hardy, very productive; bears young.

America—Large; golden yellow, distinct red cheek; juicy; cling; July; hardy; productive; bears very young, one of the most reliable.

Blue Damson—A blue plum of medium size, valued for canning and preserving.

Red June—Japan; dark coppery red; flesh yellow, juicy, sweet; semi-cling; early; productive.

Parcel Post

If plants are wanted by parcel post, allow extra for postage, except where quoted postpaid. Any balance will be returned. Trees larger than 3 to 4 feet cannot be sent by parcel post.



Blackberries

Dewberries

EARLIER THAN BLACKBERRIES

Lucretia—Large, often 1 1/2 inches long; sweet and luscious throughout; for size and quality is unexcelled by any of the blackberries; ripens at the close of the strawberry season before Early Harvest; the variety most extensively grown for market. 50c per 10; 90c per 25; \$3.50 per 100; \$30.00 per 1,000. 50 at 100 rate; 500 at 1000 rate.

STRAWBERRIES

See page 3 for varieties and prices.

Grapes Bear After Freezing



SINCE living in Kansas I have several times seen the new growth on our grape vines killed by frost; but found that where grapes had been kept well pruned and cultivated they possessed sufficient latent force, owing to their widespread root growth, to push out new shoots from otherwise dormant buds * * * * You will find when your grape vines are frozen, even as late as the first of May, that if all green matter is frozen dead, then otherwise dormant buds will break and the new growth from them will come right on and produce new shoots, from which a fair crop of grapes will grow; but if a single joint of the first crop of shoots is left the new growth will start from the green bud on such shoots, and the resultant growth will not produce any grapes but will produce a shoot with leaves only. So if the new growth is not frozen back to the previous year's wood it should at once be pulled off, thus forcing the latent buds to start.—Wm. H. Barnes, before the Kansas State Horticultural Society.

Agawam—One of the best red grapes; large.

Concord—The most popular; large, black, juicy, sweet; vigorous, very hardy, healthy, productive; mid to late August here.

Niagara—Large; pale yellowish-green; juicy, sweet; good for table or market; a white Concord; ripens with it or a little later.

Moore's Early—Black; about two weeks before Concord; desirable for home and market for its size, season, hardness and productiveness.

Worden—Black; large; about 5 to 10 days earlier than Concord; berries larger, of better quality; vigorous, healthy, productive.

One-year No. 1	One	Two	Three	Ten	Per 100
Agawam	18c	32c	40c	\$1.40	\$12.00
Concord	15c	25c	35c	1.00	8.00
Moore's Early	18c	32c	46c	1.40	12.00
Niagara	18c	32c	46c	1.40	12.00
Worden	16c	28c	40c	1.20	10.00

Five or more of a kind at the 10 rate; 25 or more of a kind at the 100 rate. Lots of 500 and over, Concord, 1/2c each less other varieties 1c each less.

Asparagus

The earliest of vegetables excepting Rhubarb 50 at 100 rate; 500 or more at the 1000 rate.

Conover's Colossal—A standard commercial variety; large; growth rapid; productive.

Two year, 40c per 25; \$1.50 per 100; \$14.00 per 1000.

One year, 35c per 25; \$1.25 per 100; \$10.00 per 1000.

Rhubarb or Pie Plant

Large, tender, delicately flavored stalks. Plant 2 1/2 x 4 ft.; cover the crown 2 in. Easily grown. The secret of success is well drained soil. Divisions, 10c each; \$1.00 per doz.; \$7.50 per 100

Horseradish

Horseradish sets, 25c per dozen; \$1.50 per 100

Gooseberries



Plant 3x5 or 4x5 ft. A northern slope is best, especially in the Central and Southern States. 5 at the 10 rate; 50 or more at the 100 rate.

Houghton—Of medium size, but a profuse bearer and a money maker. Very free from mildew; the best for most sections; glossy pale dull reddish brown when ripe, but usually picked green. One year 15 each, \$1.25 per 10, \$10.00 per 100. Two-year 20c each; \$1.50 per 10; \$12.00 per 100.

Parcel Post

If wanted by parcel post allow extra for postage. Any balance will be refunded.

Hardy Evergreens

Our evergreens have been transplanted several times, to secure an abundance of fibrous roots. At these prices the roots will be dug with a ball of earth wrapped in burlap, termed "balled and burlapped," or B. & B. Five of a kind at the 10 rate, less at the each rate.

Arborvitae, American—Upright habit; foliage bright green assuming bronze tints in winter.
18 to 24 inches.....\$2.00 each; \$17.50 per 10
2 to 3 feet.....2.50 each; 22.50 per 10

Arborvitae, American Pyramidal—In form an almost perfect column; branches short, densely covered with bright green foliage.
18 to 24 inches.....\$2.00 each, \$17.50 per 10
2 to 3 feet.....\$3.00 each, \$27.50 per 10
3 to 4 feet.....\$4.00 each, \$35.00 per 10

Arborvitae, Blue-Green—An attractive variety similar to Rosedale but more spreading in habit.
18 to 24 inches.....\$2.25 each; \$20.00 per 10
2 to 3 feet.....\$2.75 each; \$25.00 per 10
15 to 18 inch globes.....\$2.50 each; \$22.50 per 10
18 to 24 inch globe.....\$3.00 each; \$27.50 per 10

Arborvitae, Chinese Golden Dwarf or Berkman's (Biota aurea nana)—In spring and summer gold suffused with green, in winter green to bronze green; dwarf, compact; of superb shape.
24 to 30 inches.....\$6.00 each; \$55.00 per 10
30 to 36 inches.....\$7.50 each; \$70.00 per 10

Arborvitae, Chinese Pyramidal—A pyramidal type of the Chinese with green foliage.
2 to 3 feet.....\$3.00 each, \$27.50 per 10
3 to 3½ feet.....\$4.25 each; \$40.00 per 10

Arborvitae, Chinese Seedlings, sheared pyramidal.
2 to 3 feet.....\$2.25 each; \$20.00 per 10
3 to 4 feet.....3.25 each; 30.00 per 10
4 to 5 feet.....4.50 each; 40.00 per 10

Arborvitae, Globe—A low, compact form of the American type, globular in outline.
10x10 inches.....\$1.50 each, \$14.00 per 10
12x12 inches.....2.00 each, 18.00 per 10
15x15 inches.....2.50 each, 22.00 per 10
18x18 inches.....3.00 each, 25.00 per 10

Arborvitae, Mayhews—Similar to Berkman's, but green instead of golden.
15 to 18 inches.....\$2.75 each; \$25.00 per 10
18 to 24 inches.....\$3.50 each; \$32.50 per 10



Evergreens "Balled and Burlapped."

Pyramidal Arborvitae (center), Globe Arborvitae (left), Chinese Golden Dwarf Arborvitae (right).

Arborvitae, Rosedale—Bluish green finely cut foliage, its color well retained during winter.
18 to 24 inches.....\$2.50 each; \$22.00 per 10
2 to 3 feet.....3.00 each; 27.50 per 10

Cypress, Plume (Retinospora plumosa)—Conical in outline; feathery, plume-like foliage.
18 to 24 inches.....\$2.50 each; \$22.50 per 10
2 to 3 feet.....3.50 each; 32.50 per 10

Cypress, Plume (Retinospora plumosa)—Trained spreading for foundation planting.
12 to 15 inch spread.....\$2.00 each; \$18.00 per 10
15 to 18 inch spread.....3.00 each; 27.50 per 10

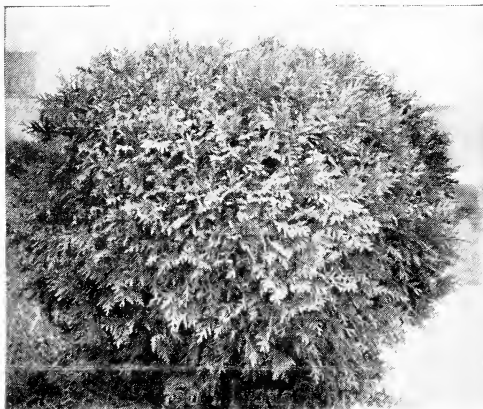
Cypress, Golden Plume (Retinospora plumosa aurea)—Golden tipped foliage, most pronounced when the growth is new.
18 to 24 inches.....\$2.50 each; \$22.50 per 10
2 to 3 feet.....\$3.50 each; \$32.50 per 10

Juniper, Irish—Finely cut bluish green foliage; dense, slender, columnar; growth rapid.
18 to 24 inches.....\$2.50 each; \$22.50 per 10

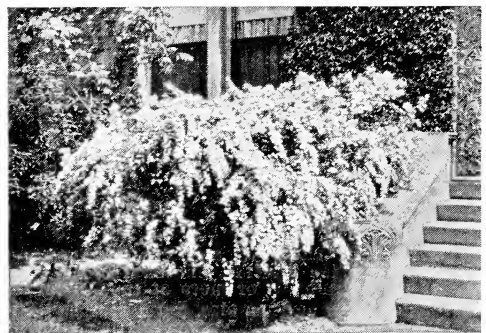
Juniper, Pfitzer—Gray-green; low, broad, irregular; one of the good rarer varieties.
15 to 18 inches.....\$3.50 each; \$32.50 per 10

Juniper, Savin—Low and spreading in habit. An excellent border for large evergreens, and valuable for foundation plantings.
18 inch spread.....\$3.00 each; \$27.50 per 10
15 inch spread.....2.50 each; 22.50 per 10

Pine, Mugho—A many-stemmed, low-branched dense dwarf Pine, thickly covered with dark green needles. It does not have one main trunk, but numerous stems which branch near the ground and turn upward. The new growth somewhat resembles candles ornamenting the plant. 10 to 12 inches, \$2.00 each.



Globe Arborvitae



Spirea Van Houttei, a fountain of white in May. (See page 10)

Hardy Flowering Shrubs

THE early days of Spring are brightened and made more cheerful by the great masses of Golden Bell, often blooming here in March. By a selection of those blooming at different times, for example, Pussy Willow, Dogwood, Deutzias, Bush Honeysuckle, Lilac, Mock Orange, Spirea, Hydrangeas, etc., a succession may be had until September. Shrubs give the lawn an attractive, finished appearance, and make a beautiful display in a year or two. They appear best in groups along the boundaries or division line, at the edges or corners of lawns, at the foundations of buildings, and along walks and drives.

Blooming dates named are for Southern Missouri. Five of a kind at ten rates.

Althea; Rose of Sharon—Of upright habit, reaching a height of 10-15 feet; hollyhock-like, flowers in late summer; easily grown; double white, double pink, double red, single white.

18 to 24 inches	30c each;	\$2.50 per 10
2 to 3 feet	35c each;	3.00 per 10
3 to 4 feet	50c each;	4.00 per 10
4 to 5 feet	60c each;	5.00 per 10

Barberry, Thunberg's (Japanese Barberry)—Dwarf, dense, spreading habit; graceful spiny branches; autumn leaves bronze and crimson; excellent for low hedges. This Barberry does not produce wheat rust. Berries bright red.

	Each	Per 10	Per 100
18 to 24 inches, bushy.....	\$0.30	\$2.50	\$20.00
12 to 18 inches, bushy.....	.25	1.80	12.50

Barberry, Red-Leaved Thunberg's—Foliage a rich, lustrous, bronzy red throughout summer if planted in full sun. Strong 2 yr., No. 1 plants, \$1.00 each; 3 for \$2.50. No. 2 plants, 60c each; 3 for \$1.50.

Butterfly Bush; Summer Lilac—Covered in summer with spikes of violet mauve flowers, resembling lilacs.

Plants will have tops cut back as they die to ground in winter.

Strong plants	30c each;	\$2.50 per 10
---------------------	-----------	---------------

Deutzia gracilis—Grows about 3 feet high; slender, often arching branches; panicles of pure white flowers almost as delicate as Lily of the Valley, in May here.

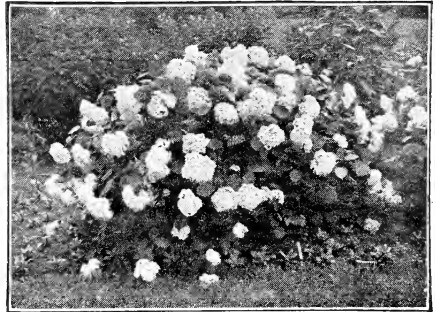
2 year bushy	40c each;	\$3.50 per 10
--------------------	-----------	---------------

Deutzia Pride of Rochester—In early spring fairly covered with double tassel-like flowers in racemes 4 to 6 in., long; white, outer petals rose.

2 to 3 feet.....	35c each;	\$3.00 per 10
3 to 4 feet.....	45c each;	\$4.00 per 10

Elder, Golden—Golden leaves, white flowers.

2 to 3 feet	45c each;	\$4.00 per 10
-------------------	-----------	---------------



This Hydrangea is well named Hills of Snow

Forsythia Fortunei—Bright golden yellow.

18 to 24 inches.....	30c each;	\$2.50 per 10
2 to 3 feet.....	35c each;	\$3.00 per 10

Forsythia intermedia (Border Forsythia)—This variety is intermediate in habit between the other two Golden Bells offered, with somewhat arching branches; golden flowers.

18 to 24 inches.....	30c each;	\$2.50 per 10
2 to 3 feet.....	35c each;	\$3.00 per 10
3 to 4 feet.....	45c each;	\$4.00 per 10

Forsythia viridissima (Greenstem Forsythia)—In early spring a mass of golden flowers, even before the leaves are developed; erect in habit.

18 to 24 inches.....	30c each;	\$2.50 per 10
2 to 3 feet.....	35c each;	\$3.00 per 10



Gaillardia, page 13.

Dogwood, Red-twigged—Grown for its red twigs giving a pleasing winter effect; flowers inconspicuous.

12 to 18 inches.....	15c each;	\$1.25 per 10
----------------------	-----------	---------------

Forsythia suspensa (Weeping Forsythia)—Droops gracefully; very long curving branches, well adapted to covering arches and trellises.

2 to 3 feet.....	35c each;	\$3.00 per 10
3 to 4 feet.....	45c each;	\$4.00 per 10

Globe Flower; Japanese Rose (Kerria Japonica)—Grows 4 to 6 feet tall with slender green branches; abundant single bright yellow flowers in spring.

12 to 18 inches	30c each;	\$2.50 per 10
18 to 24 inches	40c each;	3.50 per 10
2 to 3 feet	50c each;	4.50 per 10

Golden Bell—See Forsythia.

Honeysuckle, Bush—A bush form of Honeysuckle, covered in early spring with white and light pink flowers, followed by an abundance of red berries, even more ornamental than the flowers. Which color do you wish?

18 to 24 inches.....	25c each;	\$2.00 per 10
2 to 3 feet	35c each,	3.00 per 10
3 to 4 feet	50c each,	4.00 per 10

PARCEL POST

If wanted by parcel post allow extra for postage. Any balance will be refunded. Shrubs larger than 2 to 3 ft. cannot be sent by parcel post.



Forsythia intermedia

Shrubs--cont'd

Honeysuckle Fragrantissima (Winter Honeysuckle)—Grows 6 to 8 feet tall; flowers creamy-white or light yellow in very early spring; deliciously fragrant.

2 to 3 feet.....40c each; \$3.50 per 10
3 to 4 feet.....50c each; \$4.50 per 10

Hydrangea Hills of Snow or Everblooming—Well named for its profusion of large snow white flowers from June to August; easily grown.

3 year50c each; \$4.50 per 10
2 year35c each; \$3.00 per 10
1 year25c each; \$2.00 per 10

Hydrangea paniculata grandiflora—Blooms profusely in August and September; flowers in great cone-shaped panicles, white, assuming rose tints

12 to 18 inches25c each; \$2.00 per 10
18 to 24 inches40c each; \$3.50 per 10
2 to 3 feet50c each; \$4.50 per 10

LILACS, HYBRID—The Hybrid Lilacs are more dwarf in habit than the common varieties, more varied in color and bloom younger, sometimes at two years old.

Alphonse Lavalle—Double clear lilac.
Belle de Nancy—Double Satiny rose, white center.
Charles X—A good single purplish-red.
Ludwig Spaeth—Dark crimson-purple; single
Marie Legrave—Single white; blooms freely.
Mad. Abel Chatenay—Large double white.
Mad. Lemoine—Another fine double white.
Michael Buchner—Double pale lilac-blue.
Persian Purple—Single; dwarf; very fragrant.
Pres. Grevy—Large; double; soft blue.
Wm. Robinson—Violet shaded pink; double.

Prices of branched Lilacs Each Per 10
12 to 18 inches\$.50 \$4.50
18 to 24 inches75 7.00
2 to 3 feet 1.00 9.00

Mock Orange—The name is almost a sufficient description. It produces a profusion of creamy white, four-petaled flowers in late spring.

18 to 24 inches.....25c each; \$2.00 per 10
2 to 3 feet30c each; \$2.50 per 10
3 to 4 feet35c each; \$3.00 per 10

Mock Orange, Virginia—A new variety; moderately tall; flowers white, semi-double, fragrant.

18 to 24 inches.....50c each; \$4.50 per 10
Privet Ibota—A large shrub, miniature white lilac-like flowers followed by black berries.

2 to 3 feet25c each; \$2.00 per 10
Privet, Regel's—Very hardy; dark shiny leaves; small white flowers; spreading habit and suitable for foundation plantings. 18 in. spread. 35c each.



Bush Honeysuckle



For wealth of bloom and fragrance nothing can displace well grown lilacs.

Quince, Japan—Covered with brilliant scarlet flowers in early spring before the leaves appear.

18 to 24 inches30c each; \$2.50 per 10
2 to 3 feet40c each; \$3.50 per 10

Rhodotypos kerrioides (White Kerria)—White four-petaled flowers in late spring followed by black berries.

2 to 3 feet45c each; \$4.00 per 10
Snowball, Common—The name is almost a description.

18 to 24 inches40c each; \$3.50 per 10
2 to 3 feet50c each; \$4.50 per 10

Snowball, Japanese—White globes along the branches.

18 to 24 inches60c each; \$5.00 per 10
Spirea Anthony Waterer—Dark crimson flowers in large flat-topped clusters in early summer and at intervals till fall if cut as they fade. Grows about 24-30 in. high.

15 to 18 inches.....40c each; \$3.50 per 10

Spirea Billardi alba—White flowers in dense feathery finger-like panicles in summer.

2 to 3 feet.....35c each; \$3.00 per 10
Spirea Billardi Pink—Pink flowers in dense feathery finger-like panicles in summer.

2 to 3 feet.....35c each; \$3.00 per 10
Spirea Froebeli—Dwarf; similar to Anthony Waterer but a little taller.

18 to 24 inches.....50c each; \$4.50 per 10
Spirea Golden—Splendid for producing bright foliage effects or for screens; bright golden leaves, changing in summer to golden bronze; flowers numerous in clusters along the branches.

2 to 3 feet35c each; \$3.00 per 10
18 to 24 inches25c each; \$2.00 per 10

Spirea Van Houttel (Van Houtte's Bridal Wreath)—A fountain of white in May or June with its dense drifts of flower clusters on gracefully arching branches.

18 to 24 inches25c each; \$2.00 per 10
2 to 3 feet35c each; \$3.00 per 10
3 to 4 feet50c each; \$4.00 per 10

Tamarix—The Tamarisks are shrubs of upright growth with light, feathery foliage similar to Asparagus and miniature flowers in rather dense panicles. Grow 4 to 6 feet tall.

18 to 24 inches, 1 year.....20c each; \$1.50 per 10
2 to 3 feet, 1 year.....30c each; \$2.50 per 10



Mock Orange



Weigela, Rose Color—Trumpet-shaped flowers, rose tinted white, clustered thickly along the branches in late May or early June.

18 to 24 inches 30c each; \$2.50 per 10
2 to 3 feet 40c each; \$3.50 per 10
3 to 4 feet 50c each; \$4.50 per 10

Weigela, Eva Rathke—Carmine-red.
18 to 24 inches 45c each; \$4.00 per 10



Althea; Rose of Sharon. Page 9

Shade Trees

Five or more of a kind at the 10 rate.

Catalpa, Umbrella (Catalpa Bungei)—Forms a dense, round head. Much used for formal work. 5 to 6 ft., 1 year heads, \$2.00 each, 2 for \$3.50

Elm, American White.

6 to 8 feet \$1.00 each; \$ 9.00 per 10
8 to 10 feet \$1.50 each; \$14.00 per 10

Elm, Chinese—Recommended for arid regions.

3 to 4 feet 50c each; \$ 4.00 per 10

Maple, Soft, White or Silver.

5 to 6 feet \$0.50 each; \$4.00 per 10

6 to 8 feet \$0.70 each; \$6.00 per 10

8 to 10 feet \$1.00 each; \$9.00 per 10

1 1/4 to 1 1/2 in. caliper \$1.75 each; \$15.00 per 10

Maple, Sugar (Hard or Rock Maple).

8 to 10 feet \$1.50 each; \$14.00 per 10

1 1/4 to 1 1/2 in. caliper \$2.00 each; \$17.50 per 10

1 1/2 to 2 in. caliper \$2.50 each; \$20.00 per 10

2 to 2 1/2 in. caliper \$3.50 each; \$30.00 per 10

2 1/2 to 3 in. caliper \$5.00 each;

Poplar, Bolleana—Of pyramidal habit, similar to Lombardy; leaves glossy green, silvery beneath.

4 to 6 feet \$1.00 each; \$ 9.00 per 10

6 to 8 feet \$1.50 each; \$14.00 per 10

Poplar, Lombardy—Tall pyramidal habit.

5 to 6 feet 40c each; \$3.50 per 10

6 to 8 feet 60c each; \$5.00 per 10

Poplar, Norway—Similar to Carolina.

6 to 8 feet \$.50 each; \$4.50 per 10

8 to 10 feet \$1.00 each, 9.00 per 10

Poplar, Silver Leaf—Leaves silvery beneath.

5 to 6 feet \$0.50 each; \$4.50 per 10

6 to 8 feet70 each; 6.00 per 10

Tulip Tree—Greenish-yellow tulip like flowers.

4 to 6 feet \$0.75 each; \$7.00 per 10

6 to 8 feet \$1.00 each; \$9.00 per 10

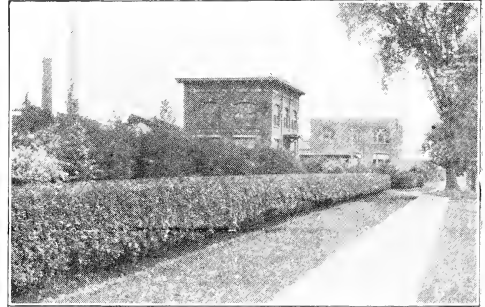
Willow Babylonian Weeping.

4 to 6 feet \$.50 each; \$ 4.00 per 10

6 to 8 feet70 each; 6.00 per 10

8 to 10 feet 1.25 each; 11.50 per 10

Privet Hedging



Amoor River of the North—Resembles California but more spreading and much hardier. Has never frozen down here; white flowers like miniature lilacs.

50 or more at the 100 rate Per 10 Per 100
1-year, 12 to 18 inches, 2 canes \$0.50 \$ 3.50
1-year, 18 to 24 inches, 2 canes60 5.00
1-year, 2 to 3 feet, 2 canes80 7.00
2-year, 18 to 24 inches, 3 to 5 canes 1.00 8.00
2-year, 2 to 3 feet, 4 canes up 1.20 10.00
2-year, 3 to 4 feet, 5 canes up 1.50 12.00

Ibodium—A cross of Ibota and California. The foliage resembles that of California, but Ibodium is much hardier, more branching and more spreading in growth. Use in place of California.

50 or more at the 100 rate. Per 10 Per 100
1-year, 12 to 18 inches, 2 canes \$.50 \$ 4.00
1-year, 18 to 24 inches, 2 canes60 5.00
2-year, 12 to 18 inches, 3 to 5 canes70 6.00
2-year, 18 to 24 inches, 4 canes up 1.00 8.00
2-year, 2 to 3 feet, 5 canes up 1.50 12.00
2-year, 3 to 3 1/2 feet, 5 canes up 2.00 15.00

California—A very popular hedge; dark, glossy leaves, nearly evergreen in the South.

50 or more at the 100 rate. Per 10 Per 100
1-year, 12 to 18 inches, 2 canes \$.35 \$ 2.50
1-year, 18 to 24 inches, 2 canes50 4.00
1-year, 2 to 3 feet, 2 canes60 5.00
2-year, 18 to 24 inches, 3 to 5 canes60 5.00
2-year, 2 to 3 feet, 4 canes up80 7.00



Bush Honeysuckle. Pages 9 and 10



Rambler Roses

Hardy Bush Roses

55c each, 5 or more 50c each; 2 yr. field grown.

Frau Karl Druschki—Long pointed buds; large pure white flowers; the White American Beauty.

Gen. Jack—Handsome blooms of bright shining crimson, rich brilliant and velvety; fragrant.

Hugonis—Fairly covered in early spring with delicate yellow single flowers. Exceptionally good for use with shrubs.

Paul Neyron—Deep shining rose, perhaps the largest of roses; blooms freely; very fragrant.



Climbing
American Beauty

Hardy Climbing Roses

55c each, 5 or more at 50c each; field grown.

American Pillar—Carmine and rosy pink, white center; single; large clusters.

Climbing American Beauty—The same color and fragrance as American Beauty, but a climber. A fine rose; should be in all collections.

Dorothy Perkins, Pink—A beautiful shell pink, becoming lovely deep rose; sweet scented.

Dr. W. Van Fleet—A delicate shade of flesh pink deepening to rosy flesh in the center.

Red Dorothy Perkins (Excelsa)—Brilliant crimson; very double for a rambler; glossy foliage.

Mary Wallace—Bright, clear rose pink with salmon base; very large, often 4 inches wide; semi-double; blooms freely; fine.

Paul's Scarlet—Scarlet shaded crimson; large; semi-double.

Silver Moon—Very large, semi-double flowers; pure white with a thick cluster of yellow stamens.

Thousand Beauties—Soft pink to carmine rose; large clusters; fragrant; vigorous; long stems.

White Dorothy Perkins—A pure white sport of the popular Dorothy Perkins; excellent.

Everblooming Roses

Strong 2 year field grown, budded, 75c each, 5 or more, 70c each.

Gruss an Teplitz—Bright fiery crimson.

Pink Radiance—Beautiful brilliant rose-pink; very fragrant; blooms freely.

Red Radiance—Deep rose-red; fine.

Souv. de Claudius Pernet—The wonderful new brilliant yellow rose; glossy foliage.

White Killarney—Pure snow white.

Dahlias

15c each; \$1.25 per 10.

Jack Rose—Decorative type, the color of Gen. Jack rose.

Maud Adams—Shell pink suffused lavender; show type.

White Swan—Pure white; ball type.

Yellow Duke—Canary yellow; quilled petals....

Books for Better Gardens

The Design of Small Properties, by M. E. Bottomly. More than 50 examples of layouts of small city and country homes. Descriptive lists of trees, shrubs, vines and flowers. 265 pages. \$3.00, postpaid.

Manual of Gardening, by L. H. Bailey. This 20th printing brings up-to-date the information on fruits, vegetables, and ornamental plants, their propagation and culture, and protection from insects and diseases. Illustrated. 539 pages. \$3.00, postpaid.

Standard Cyclopedia of Horticulture, edited by L. H. Bailey. Complete with color pages and nearly 5,000 engravings, these volumes give complete information on kinds, characteristics, and methods of cultivation of all plants grown in North America. Illustrated. 3 volumes, 3637 pages. \$25.00 prepaid.

Shrubs, by F. F. Rockwell. Shows you how to select and plan shrubby plantings for home beautification; how to use various shrubs for flowers, foliage, fruits, and bark effects; how to plant, mulch, prune, and protect the plants from insects and diseases. Illustrated, 96 pages. \$1.00, postpaid.

Cannas

From early June till fall a profusion of dazzling blooms. The feet mentioned is the average height. Easily grown. Plant 18 inches apart. If in circular beds, one plant in center, then with an 18 inch string mark a circle. Lengthen the string 18 inches for each circle. First circle, 6 plants, next 12, next 18 and so on.

Six of a kind at the dozen rate; 50, not less than 10 of a kind, at the 100 rate.

Allemania—Large orchid-flowers; scarlet with a yellow border; green foliage; 4 to 5 feet. 10c each; 50c per dozen; \$3.50 per 100

Austria—Large; canary yellow dotted crimson; orchid-flowered; green foliage; 4½ feet. 10c each; 50c per dozen; \$3.50 per 100

King Humbert—Large, bright orange-scarlet; orchid-flowered; bronze foliage; 4 to 5 feet. 10c each; \$1.00 per dozen; \$7.00 per 100

President—Rich scarlet; large; green foliage; 4 feet. 10c each; \$1.00 per dozen; \$7.00 per 100.

Yellow Humbert—Large; rich yellow dotted red, occasionally a scarlet or scarlet - striped flower; orchid flowered; green leaves; 4 to 5 ft. 10c each; \$1.00 per dozen; \$7.00 per 100



Hardy Flowers

These are hardy, easily grown flowers that live from year to year. Good, strong, outdoor grown plants, not the tiny plants offered in cheap collections by parcel post. Six of a kind at dozen rates. Postage extra if wanted by parcel post.

Blanket Flower (*Gaillardia grandiflora*)—Flowers 2 to 3 in. across, maroon bordered yellow, as gaudy as a Navajo blanket; blooms from June till fall; easily grown. 15c each, \$1.50 per doz.

Coreopsis — Golden-yellow daisy-like flowers from May to October, if cut as they fade. 15c each; \$1.50 per dozen.

Daisy, Shasta Alaska—A flower every one can grow; very large, showy white daisies with a golden center, in great abundance on long stems during summer and fall if cut as they fade. 15c each; 2 for 25c; 12 for \$1.00.

Daisy, Elder Early—An excellent very early blooming here before Mother's Day; white, yellow center; blooms freely; very hardy; of vigorous growth; an attractive border plant when not in bloom. 15c each; 2 for 25c; \$1.00 per doz.

Delphinium—See Larkspur.

Larkspur Belladonna — Beautiful spikes of dainty spurred flowers of the delightful blue of the skies; unrivalled for persistent blooming. 20c each, \$2.00 per doz.

Larkspur Bellamosa—A dark blue form of Belladonna. 20c each, \$2.00 per doz.

Larkspur Formosum — Deep blue, white eye. 20c each; \$2.00 per dozen.

Marvelous Mallows—Six to ten weeks of flowers resembling immense single hollyhocks—the size of a pie plate and larger. Beautiful



Ten weeks of Shasta Daisies

15 cents each; 2 for 25 cents; 12 for \$1.00.

pinks, red blush and white, beginning in July. Makes a grand display the first year. 1 year, separate colors.....25c each, \$2.50 per doz. 1 year, mixed colors.....20c each, 2.00 per doz.



Coreopsis

Sweet William (*Dianthus barbatus*)—A very popular flower, somewhat resembling phlox but with broad, rather flat, compact trusses instead of pyramidal panicles and the Sweet William are more varied in color—white, pink, red, crimson and variegated; blooms profusely in May while most phlox bloom in July; fragrant. These are grown from a specially fine mixture of seed; will bloom the first spring. For the most imposing effects plant in large groups. Mixed (cannot supply separate colors). 15c each, 3 for 40c, \$1.50 per doz.; 2 doz. for \$2.50; 4 doz. and over at \$1.00 per dozen.

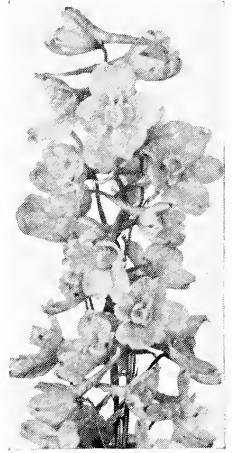
Sweet William—Newport Pink, Watermelon pink or salmon rose—20c each; 3 for 50c; \$1.75 per doz.

Sweet William, Scarlet Beauty—Rich deep scarlet—20c each; 3 for 50c; \$1.75 per dozen.

Violets, Sweet Russian, Single—The hardest of violets; easily grown; in early spring a mass of fine single deep purple violets with delicate fragrance. 10c each, 3 for 25c, 12 for 75c, 25 for \$1.50.

Parcel Post

If wanted by parcel post allow extra for postage except where quoted postpaid. Any balance will be returned.



Larkspur



Liberty Irises—Fleur-de-lis

ALSO called German Irises. To those only familiar with the old common Flags many of the newer kinds will be a revelation. Perfectly hardy, easy to grow, they reward you with a lavish wealth of bloom, their iridescent colors, found in no other flower, shimmering in the sun. Well named "The Orchid of the Garden." They grow almost anywhere but do best in well drained, rich loam or garden soil.

The standards are the upright or standing petals. The falls are the lower or drooping petals. The inches mentioned is the approximate height of the flower stems.

PRICE: 15c each, 3 of a kind for 40c; \$1.50 per dozen except as otherwise quoted. Six of a kind at dozen rates.

Black Prince—Very deep rich velvety royal purple; early; 24 inch, 20c each, \$2.00 per doz.

Caprice—Standards cerise, falls deeper; early; 24 inches, 20c each, \$2.00 per doz.

Caterina—Standards light blue, falls lilac; very large; very tall; fine. 35c each.

Celeste—Azure blue, slightly deeper falls; mid-season; large; 30 inch.

Crimson King—Rich claret purple; 24 inches.

Dr. Bernice—Standards coppery bronze, falls velvety crimson; large; 24 in. 20c each, \$2 pr. doz.

Eldorado—Standards bronze yellow, falls bronze purple; midseason; 30 in., 20c each, \$2.00 per dozen.

Honorabills—Gold and crimson-brown; early; 18 inch.

Ingeborg—Large; pure white; very early; dwarf, about 15 in., 20c each, \$2.00 per doz.

Khedive—Beautiful soft lavender; 30 inches.

Loreley—Standards canary, falls purple edged yellow; early; 30 in. 20c each, \$1.80 per doz.

Mrs. H. Darwin—White, base veined violet; medium early; good; blooms freely; 24 inches.

Monsignor—Standards satiny violet, falls purple-crimson; large late; 24 in. 20c each, \$2.00 per dozen.

Orientalis Blue—Deep blue; late; 24 inches.

Perfection—Standards light blue, falls dark velvety violet-black.

Queen of May—Large lilac-pink; midseason; 32 inch.

Sapho—Violet-blue and royal purple; early; 30 inch.

Speciosa—Lavender purple and reddish purple.

Violaeca grandiflora—Large; rich violet blue; late; 32 inch.

Walhalla—Standards light violet, falls deep purple; early; very large; 24 inches.

Irises to Color, not named—Shades of yellow, lavender, blue, purple, white and pink, 10c each, 90c per doz., \$6.00 per 100.

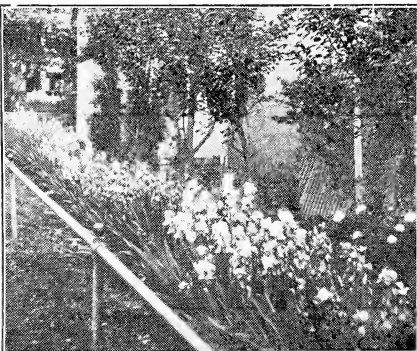
Japanese Irises

The Japanese differ from the Liberty Irises in the flatness of the flower, shades of color, size of flower and breadth of petals. Large and showy. They should be planted in full sun. Any rich, mellow loam will produce flowers of wondrous size. Water must not stand on the roots.

Six-petaled are double, 3-petaled single.

White—Early; double. 25c each, \$2.50 dozen.

FOUNDATION PLANTING—By Leonard H. Johnson. Perhaps the best work on this subject. Over 200 black and white illustrations. Postpaid, \$3.65.



A Border Planting of Irises



Liberty Iris are easily grown.

Special Collection F—Assorted, our selection: Half dozen, three varieties, 70c; one dozen, six varieties, \$1.25; 25, 6 varieties, \$2.00; 100, 6 varieties, \$7.00.



Peonies are Easily Grown

Peony Sizes and Prices

Prices are for good strong divisions averaging 3 to 5 eyes, from blooming plants. We consider them fully equal to one-year plants, they cost less and average larger than those usually sent out, many of which are grown from small divisions to make more plants.

Three of a kind at the dozen rate. Larger lots quoted by letter.

Canari (Guerin, 1861) — Guards white, barely tinted flesh, center sulphur white becoming pure white; large; fragrant; bomb type; late mid-season; long, strong stems; blooms freely; good. 40c each, \$4.00 per dozen.

Duchesse de Nemours (Calot, 1856)—One of the best regardless of price. Superb ivory white with greenish markings toward the center, becoming pure white without a trace of crimson; one of the most beautiful both in the half open bud and full blown; medium to large; crown type; medium early to midseason; strong, vigorous growth; good stems; blooms freely. 40c each, \$4.00 per doz.

Duchesse d'Orleans (Guerin, 1846)—Large carmine pink guards, center soft pink interspersed with salmon, becoming amber yellow; medium to large; bomb type; fragrant; midseason. This peony deserves a better rating than it gets. It is an extra strong, vigorous grower, very tall, a free bloomer and can be depended on for an abundance of blooms year after year. Ships well as a cut flower. 30c each, \$3.00 per doz.

Duke of Wellington (Calot, 1859)—Another indispensable variety. Two rows of broad white guards, center very full, sulphur white becoming pure white; fragrant; very large; bomb type; late; blooms freely; vigorous, with long, strong stems; as a cut flower, keeps and ships well; fine. 50c each, \$5.00 per dozen.

Edulis superba (Lemon, 1824)—Beautiful bright deep rose pink flowers with a quite extraordinary fragrance; crown type; large and of good form; extra early, several days before Festiva maxima. blooms freely over a long period; growth strong, vigorous, with long, strong stems. An extra good variety, both for lawn and cut flowers. 30c each, \$3.00 per dozen.

Felix Crousse (Crousse, 1881)—Very brilliant rich, even dazzling ruby red; large; globular, solid and compact; bomb type; midseason; fragrant; blooms freely; fine. 75c each; \$7.50 per doz.

Festiva Maxima—Very large; white flecked carmine; rose type; fragrant; early; tall; blooms freely. 50c each; \$5.00 per dozen.

Madame de Verneville (Crousse, 1885)—An enormous producer of extra fine flowers; large, compact, and very full, literally packed with petals; broad white guards, center slightly bluish becoming pure white, flecked carmine; large; bomb type; rose fragrance; very early; extra strong, vigorous growth, medium height, good stems; blooms very freely; fine. 50c each, \$5.00 per doz.

Queen Emma—A large, very full, fragrant bright light pink rose type flower; growth strong, erect; stems medium long; blooms freely; mid-season to late; an excellent cut flower variety as it ships and keeps exceptionally well. \$1.00 each.

Zoe Calot (Miellez, 1855)—Very large, very full globular bloom; soft pink tinted lilac; fragrant, midseason; growth strong, upright, good medium height; very stiff stems; blooms freely. 40c each \$4.00 per dozen.



Crown of Gold Peony

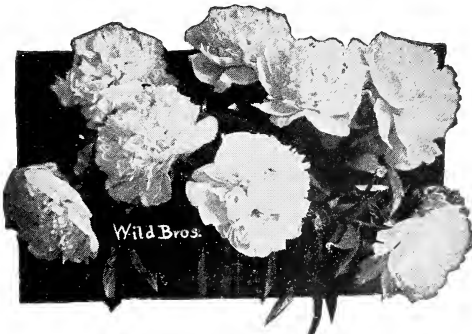
Pennant Mixed Peonies

If you want something good at a moderate price and do not care about the names or just what colors you get just so they are nice, order Pennant Mixed. This is not a cheap lot of undesirable varieties but a really good mixture of named peonies, the leading commercial varieties predominating. Do not ask for certain colors of these as they are grown mixed. 25c each, \$2.50 per doz., \$18.00 per 100.

Peony Surprise Collection

6 for \$2.50; 12 for \$4.50.

We will furnish six good named Peonies, all different, for \$2.50, or twelve, 6 varieties for \$4.50. At this price the selection must be left to us but we promise you a good selection and good value. Postage extra if wanted by parcel post.



Duchess de Nemours Peony

Superb Hardy Phlox



Phlox give brilliant summer effects. Strong field grown plants, \$2.00 per dozen.

THESE are easily grown and give brilliant summer effects. Many are delightfully fragrant. They are excellent in a mixed border, but the most imposing effects are produced by planting masses of each color. Plant 18x24 inches apart.

PRICES: Strong field grown plants that bloom the first summer, 20c each; \$2.00 per doz.

Six or more at the dozen rate.

Eclairer—Rich crimson-carmine, darker eye, lighter halo; strong grower; free bloomer; fine.

F. A. Buchner—A fine large white.

Jules Cambon—Magenta purple, lighter eye.

La Vogue—Mauve pink, aniline red eye; large floret, heavy truss; tall; blooms freely.

Miss Lingard—The earliest in this list; pure white, faint lilac eye; tall, excellent.

Mrs. Jenkins—A good early white; a strong grower and a free bloomer.

Rheinlander—Beautiful salmon pink.

Richard Wallace—White, carmine eye.

R. P. Struthers—Clear cherry red, with darker eye; large floret, heavy truss; tall; growth strong.

Rheinstrom—Salmon-pink, clear and bright; large; a good grower.

Von Hochberg—Ideal dark crimson; large.

Hardy Vines

These vines are outdoor grown and not to be confused with the small plants sold at low prices. Five of a kind at the 10 rate, less than five at the each rate.

Boston Ivy—A graceful vine, clinging to wood, brick or stone; leaves 3 to 5 lobed, in autumn bright red and orange. 60c each; 2 for \$1.10; 5 or more at 50c each.

Clematis Paniculata; Japanese Clematis—One of the most beautiful hardy vines with its thousands of pure white four petaled starry flowers in large panicles fairly covering the upper part of the vine in August or September; its fragrance resembles the English Hawthorn; of rapid growth. 2-year 40c each, \$3.50 per 10.

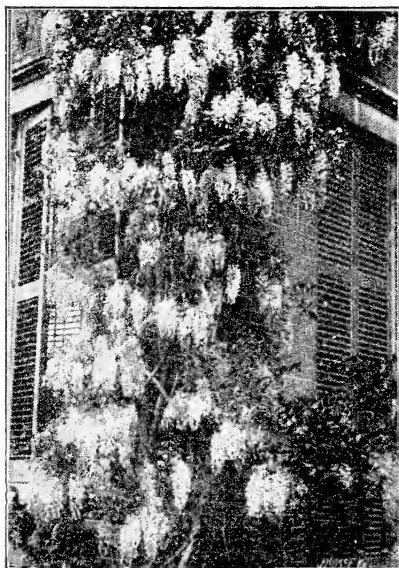
Euonymus radicans (Winter Creeper)—A graceful evergreen clinging vine; small foliage rather larger than boxwood; suitable for northern exposures of brick or stone; rather slow but very dense growth. 25c each; \$2.00 per 10.

Honeysuckle, Scarlet Trumpet—Flowers red, buff inside. 2-year, 40c each.

Honeysuckle, Hall's Japan—Almost evergreen; fragrant white flowers, becoming yellow, xx plants, 35c each; \$3.00 per 10. No. 1 plants, 25c each; \$2.00 per 10.

Ivy, American (Virginia Creeper)—The well-known native five-fingered Ivy; rapid growth; excellent for natural effects; clings to stone or wood. 25c each; \$2.00 per 10.

Wistaria, White—An attractive and rapid grower with numerous hanging clusters of white, pea-shaped flowers. 2 year, 30c each; \$2.50 per 10. 1 year, 25c each; \$2.00 per 10.



Wistaria

PARCEL POST

Allow additional if wanted by parcel post. Any balance will be refunded.