

Historic, Archive Document

Do not assume content reflects current scientific knowledge, policies, or practices.

ALEXANDER'S

Fall

Seed and Bulb

Catalog

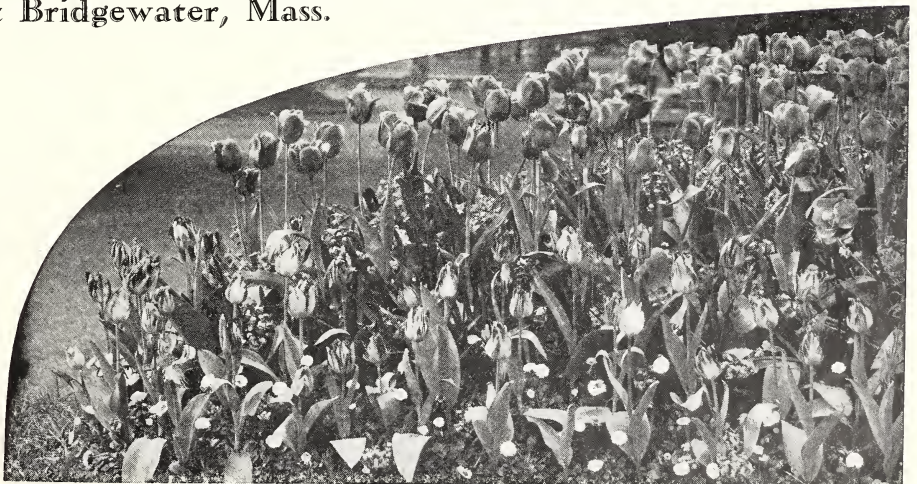
1930

J. K. ALEXANDER

"The Dahlia King"

499 Central Street

East Bridgewater, Mass.





J. K. ALEXANDER

I print this not because I am proud of my own picture, but because most people like to see the man with whom they are doing business.

Introduction

BUT a few short years ago fall planting was considered an experiment, an innovation. Today it is accepted as a fact that certain hardy perennials, especially Iris, Peonies, Lilies and all Hardy Plants listed in this catalog, must be planted in the fall for best results the following spring.

And then of course there are those lovely early spring flowers, the bulbs of which come from Holland. Tulips, Hyacinths, Daffodils, and the Lively Crocuses, must all be planted in the Fall in order to be able to make some root growth before they freeze up and slumber, to awaken bright and early the following spring.

You will find in this modest catalog of mine the best standard varieties of the majority of Dutch bulbs, also a very fine collection of those Peonies that have made the name of Hollis famous wherever Peonies are grown. Iris are ready for immediate shipment. I begin to dig Peonies along the middle of September. The Dutch bulbs generally reach me the last week in September or early in October. Early orders are invited.

The prices on all bulbs and plants in this catalog are **PREPAID** to your Post Office or Express Office, except where noted. **These are hard-time prices;** a third to a half less than others are selling for. Try some of my bulbs and plants this Fall and be convinced. They are all guaranteed to give perfect satisfaction.

Be sure your friends get my catalogues.

With best wishes for your 1931 spring garden, I am as ever,

J. K. ALEXANDER, The Dahlia King,
499 Central St., E. Bridgewater, Mass

Phone E. Bridgewater 1, Long distance.

Tulips for Bedding

The Tulips are universal favorites; the most popular and attractive for early Spring display in the garden or for Winter blooming in the house or conservatory. Tulips can be used many places in the garden, if one wishes to get the most out of them.

Bold masses of one, two or three solid colors are well known and prove one of the showiest and most attractive ways of growing these "Queen of Spring Flowers." In groups, several of one color together, they are very effective, especially along the hardy border, or in beds that will later bloom with Summer colors. It is best to avoid the one-flower spotty effect, as masses of one color make a far more satisfactory showing. For April and May the Tulip adds just the needed bit of color to brighten the entire lawn.

For Spring flowers, plant bulbs outside in October and November. The soil should be thoroughly dug over and a liberal supply of well rotted manure applied. Fertilizer is also good. For best effect, when planting in small clumps, the bulbs should be set four inches deep and four inches apart, but in large beds or borders a distance of five or six inches between the bulbs can be allowed.

Giant Darwin Tulips

The 28 Finest Darwins in Cultivation

The late flowering Darwin Tulip has outclassed all its predecessors in type, style, and beauty, and is at the present time the Queen of the Tulip family. It attains a height of two to three feet, with strong heavy foliage, erect and robust stems, terminating in large and massive flowers. They bloom with the Columbines, three or four weeks after the Single Early Tulips.

Shipped prepaid to any part of the world at prices below. One each of the 28 Finest Darwin Tulips listed for **\$3.00 prepaid.**

NOTICE

My Tulips are all good flowering size. REMEMBER everything is guaranteed to be perfectly satisfactory in every way. Be sure to try some of my Tulips and other Fall Bulbs and Plants this season.

Due to the very severe winter in Holland, the price of certain Tulips is higher than last season, but I have kept the prices down as low as possible, in fact, they are below any other Seedsman or Grower.

BARONNE DE LA TONNAYE. Bright rose, margined blush-rose, flower of large size. **75 cents per dozen; \$5.00 per 100.**

BARTIGON. Fiery crimson, white center; a strong grower and excellent for forcing. **75 cents per dozen; \$5.00 per 100.**

CENTENAIRE. Rich violet rose, with a bright blue base. One of the largest and finest of Darwins. **75 cents per dozen; \$5.00 per 100.**

CLARA BUTT. An exquisite shade of clear pink flushed salmon-rose; a large flower of remarkable beauty. **75 cents per dozen; \$4.00 per 100.**

DREAM. A beautiful soft lilac, large flowers of fine form. **75 cents per dozen; \$5.00 per 100.**

EDMEE. A vivid cherry-rose, edged soft old rose, large flowers of great beauty. **75 cents per dozen; \$5.00 per 100.**

EUROPE. Glowing salmon scarlet, shaded rose, a beautiful flower. **\$1.00 per dozen; \$6.00 per 100.**

FARNCOMBE SANDERS. Fiery rose-scarlet, inside vivid cerise-scarlet with white center marked blue. Large broad petaled flower of perfect shape. One of the finest sorts, if not finest of all the reds. **75 cents per dozen; \$5.00 per 100.**

GLORY. (New.) One of the finest brilliant scarlet tulips found among the Darwins. **\$1.25 per dozen; \$8.00 per 100.**

GLOW. (Claude Gillot.) Dazzling vermilion-scarlet, white base with blue markings, large flower of excellent shape. Like a large poppy, it is so brilliant. **75 cents per dozen; \$5.00 per 100.**

GRETTCHEN. Silvery pale rose, flushed white, inside soft pink with white center marked blue. A very beautiful flower of delicate color. **75 cents per dozen; \$5.00 per 100.**

JOHN RUSKIN. A fine flower of apricot-rose, shaded with mauve and margined with yellow. **75 cents per dozen; \$5.00 per 100.**

LA TULIPE NOIRE. Dark maroon black. **85 cents per dozen; \$6.00 per 100.**

MADAME KRELAGE. Bright lilac-rose, margined pale silvery rose, inside soft rose pink, large flowers. **75 cents per dozen; \$5.00 per 100.**

MASSACHUSETTS. Vivid pink with white center. One of the best of its color for beds; splendid form. **75 cents per dozen; \$5.00 per 100.**

MAY QUEEN. Soft lilac rose with white center marked blue. **\$1.00 per dozen; \$7.00 per 100.**

MRS. CLEVELAND. Beautiful delicate flesh color. **\$1.00 per dozen; \$7.00 per 100.**

MRS. MOON. Rich deep yellow with reflexed pointed petals. **\$1.00 per dozen; \$7.00 per 100.**

PAINTED LADY. Creamy white, faintly tinted soft heliotrope when open. A very beautiful flower resembling a water lily. **75 cents per dozen; \$4.00 per 100.**

PHILIPPE DE COMMINES. Velvety dark purple, the stem is 24 inches long and holds the flowers erect. One of the earliest and best grown. **75 cents per dozen; \$5.00 per 100.**

PRIDE OF HAARLEM. One of the largest tulips grown, of excellent form and great beauty. In color a brilliant rosy-carmin suffused purplish blue at base. For groups this variety is unsurpassed; both for its glorious color and its stately habit. **75 cents per dozen; \$5.00 per 100.**

PRINCESS ELIZABETH. Beautiful clear deep pink, changing with age to rose-pink, white base. Large flower of perfect shape, quite like a rose when first open. Splendid for the border or for forcing. **75 cents per dozen; \$5.00 per 100.**

PRINCESS JULIANA. Salmon orange scarlet, a beautiful flower. **\$1.00 per dozen; \$6.00 per 100.**

REV. EWBANK. Vivid heliotrope lilac, lighter at the edge, a magnificent flower. **75 cents per dozen; \$5.00 per 100.**

THE YELLOW DARWIN. (Inglescombe Yellow.) Large globular flower of canary yellow. A splendid novelty. **75 cents per dozen; \$5.00 per 100.**

THE SULTAN. Maroon black. **75 cents per dozen; \$5.00 per 100.**

WILLIAM COPLAND. Well-formed flowers of a fine lilac tone. The best and finest early forcing Darwin Tulip, and therefore invaluable for cutting. Very fine for the border. **75 cents per dozen; \$5.00 per 100.**

ZULU. Rich velvety purple-black. Large egg-shaped flower. **75 cents per dozen; \$5.00 per 100.**

Breeder Tulips

These are the old Dutch self-colored Tulips. They are of enormous size and vigorous growth, and are borne on extra tall strong stems. These Tulips are very valuable for the garden, producing by their refined colors a most artistic effect.

The size and remarkable color of these Tulips place them distinctly in a class by themselves. The Breeder Tulips are late to bloom, large in size, and many of them are sweet scented and make a very satisfactory cut flower. There is nothing that has the charm and delicate colorings of the old-fashioned Breeder Tulips.

Try these extra selected Bouquet Tulips and have some of the best grown.

Following varieties, 75 cents per doz.; \$5.00 per 100 prepaid; \$40.00 per 1000. Express collect.

One each of the 22 varieties for \$2.00 prepaid, or 6 each for \$8.00 prepaid.

AMAZONE. (New.) One of the most beautiful shades of light violet, very fine.

ARCHERON. Dark brown-red.

ASPASIA. (New.) A very showy cherry-red Breeder Tulip, flushed purple blue. Extra fine.

BRONZE KING. A very distinct reddish bronze. One of the best of this type.

BRONZE QUEEN. Soft buff tinted bronze, very large fine flower.

BUTTERFLY. Bright lilac.

CARDINAL MANNING. Rosy violet, flushed dull bronze, very tall.

COPERNICUS. Dark coppery bronze old rose.

DON PEDRO. Coffee brown, shaded maroon.

DIAMOND. Dark rose, shaded mauve.

KLOPSTOCK. A refined violet-blue.

LOVELY LADY. Pink and scarlet shades. Very beautiful.

MADRAS. Dark bronzy yellow and old gold.

MOONLIGHT. Splendid light canary-yellow; long flower with outer petals reflexing at the tips.

NECTAR. Carmine-red.

PANORAMA. Enormous, goblet-shaped flower of a beautiful reddish mahogany.

PHRYNE. Olive-yellow, shaded bronze and lilac.

PROFESSOR SCHÖTEL. Bright violet blue.

QUEEN ALEXANDER. Soft sulphur yellow with black anthers.

ROSE DES DAMES. Scarlet pink.

VIOLET BLUE. Wonderful shade of violet and blue.

WARRIOR CHIEF. Dark brown, a wonderful flower very strong grower.

Single Early Tulips

One each of the 11 Single Early Tulips listed below for \$1.50 prepaid. Three of each for \$3.50. Six of each for \$6.00 prepaid.

Single Early Tulips should be planted about 5 inches deep and from 5 to 6 inches apart. To obtain the best results, both when forcing and when planting in your garden, the very finest select quality, heaviest top-size bulbs should be used.

It is this very scarce quality of bulbs that we furnish exclusively, and upon such quality our prices have been based.

ARTUS. A large brilliant flower of dazzling scarlet. Splendid for out-of-door planting in mass or groups where it is very showy. Early flowering. **75 cents per dozen; \$5.00 per 100.**

BRILLIANT. (STAR.) Brilliant scarlet, black center, large flower, tall erect stem. A grand variety for forcing and for bedding. **\$1.00 per dozen; \$8.00 per 100.**

COULEUR DE CARDINAL. A warm red Tulip with a plum-colored bloom on the outer petals. Handsome globular form and a strong stem that makes it particularly fine for bedding. Creates a rich effect planted among purple pansies. Its place is essentially in the open where it produces an effect both rich and satisfying. **\$1.25 per dozen; \$9.00 per 100.**

COTTAGE MAID. Soft pink suffused with white. **75 cents per dozen; \$5.00 per 100.**

FLAMINGO. Brilliant dark rose, slightly lighter rose edge. Large round flowers of very great substance, highly recommended for forcing and for bedding. **85 cents per dozen; \$7.00 per 100.**

FRED MOORE. Bright orange, scarlet shaded, early forcer. **85 cents per dozen; \$6.00 per 100.**

KEIZERKROON. (Grand Due.) Of a glorious and attractive blending of colors. Scarlet red with broad yellow margin. Large flower that is well formed, and proves to be one of the showiest. A strong sturdy grower and one of the finest tall varieties for bedding. Early to blossom. **\$1.25 per dozen; \$10.00 per 100.**

PROSPERITY. Brilliant dark rose, extra for forcing, flowers of medium size, best commercial variety. **\$1.00 per dozen; \$7.00 per 100.**

PRINCESS MARIANNE. White, slightly tinged rose, large flowers, excellent for bedding. **\$1.00 per dozen; \$7.00 per 100.**

YELLOW PRINCE. Golden-orange yellow; the best of the low-growing yellow Tulips; sweet-scented. **\$1.25 per dozen; \$8.00 per 100.**

WHITE HAWK. (Albion.) Pure white, very large flowers of great substance, which last very long. It is a grand market variety. **\$1.00 per dozen; \$8.00 per 100.**

Dahlia Labels

Dahlia Labels, Painted, with Wires 3½-inch, iron wire, **75 cents per 100, prepaid; \$3.00 per 1,000 prepaid.** 3½-inch, copper wire, **\$1.00 per 100 prepaid; \$4.00 per 1,000 prepaid.**

Dahlia Labels, Plain, with Wires 3½-inch iron wire, **50 cents per 100, prepaid; \$2.50 per 1,000, prepaid.** 3½-inch, copper wire, **75 cents per 100 prepaid; \$3.50 per 1,000 prepaid.**

Wooden Plant Labels

For any kinds of plants. These are plain labels to be used either in pots or out of doors, with one end pointed.

Plant Labels. 4-inch, plain, **50 cents per 100, prepaid; \$2.00 per 1,000, prepaid.** 5-inch, plain, **60 cents per 100, prepaid; \$3.00 per 1,000, prepaid.** 6-inch, plain, **75 cents per 100, prepaid; \$4.00 per 1,000 prepaid. Not less than 600 at 1,000 rates.**

Selected Double Early Tulips

With few exceptions the Double Tulips should be used for bedding only, as they do not force so well as the single varieties. While the Double Tulips may not be quite so effective as the single sorts, the flowers are more durable, and, as they bloom later, they prolong the flowering period.

Usually it is advisable to use only one variety of Double Tulips in a bed, rather than to combine them as with the Single Tulips. Beds of different varieties can usually be arranged within a few feet of each other, thus permitting the characteristics of each variety to stand out distinctly, and also to give the effect of one large bed of double flowers.

One each of the 6 selected Double Tulips shipped prepaid for 75 cents. Three of each for \$2.00. Six of each for \$3.50.

BOULE DE NEIGE. (White Peony.) Pure white. \$1.00 per dozen; \$7.00 per 100.

COURONNE D'OR. A magnificent full deep golden-yellow slightly shaded orange. An exceptionally good bedding variety and splendid for forcing and cutting. \$1.00 per dozen; \$7.00 per 100.

LUCRETIA, ROSE. Extra fine flowers. \$1.00 per dozen; \$7.00 per 100.

MURILLO. An exquisite soft pink, with white markings. Makes beautiful beds and is the most easily forced. 75 cents per dozen; \$5.00 per 100.

REX RUBRORUM. Scarlet, green tipped, for bedding only. 75 cents per dozen; \$5.50 per 100.

SCHOONOORD. Pure white. \$1.00 per dozen; \$7.00 per 100.

Tulip Mixtures

SINGLE EARLY TULIPS. Finest mixture. 75 cents per dozen; \$5.00 per 100.

DOUBLE EARLY TULIPS. Finest mixture. 75 cents per dozen; \$5.00 per 100.

BEAUTIFUL DARWIN RAINBOW MIXTURE. 75 cents per dozen; \$4.00 per 100; \$35.00 per 1,000.

Single Named Hyacinths

25 cents each; \$2.50 for 12; \$4.00 for 25, prepaid to any part of United States.

My prices are for Exhibition Size bulbs, which produce the finest flowers both in size and quality, and are considered far superior to first, second or third size bulbs offered at lower prices. This grade of bulbs is the best that can be produced, and is considered absolutely the best by all experts.

CITY OF HAARLEM. Strong, large truss of bright golden yellow.

GERTRUDE. Splendid, dark pink; large, compact spike.

L'INNOCENCE. Strong truss with large, pure white bells.

PERLE BRILLIANT. Sky blue, tinged lilac; the finest light blue.

QUEEN OF THE BLUES. A lovely bright blue.

Bulb Planting Schedule

Number of Bulbs Required for Planting Circular Beds.

Diam. of Bed in feet	3 in. apart	4 in. apart	6 in. apart	8 in. apart
3	127	95	37	
4	217	127	61	37
5	331	225	91	78
6	469	271	127	78
7	631	410	169	96
8	817	469	217	127
9	1027	650	271	165
10	1261	721	331	190
11	1519	940	397	240
12	1801	1027	469	271

Any six of one kind at dozen rates, 25 at hundred rates.

Crocus, Spring-Flowering

“The Heralds of Spring”

Choice Mixture of Crocus

The following mixture is well adapted to bedding, naturalizing, or planting in conspicuous places in lawns. The colors include a complete selection of all the shades and markings, as well as the self colors, beautiful pure whites, white varieties delicately tinted, pale yellows and golden yellows, all shades of blue and purple, together with striped and variegated varieties.

50 cents per dozen; \$3.50 per 100; \$25.00 per 1,000; 250 at 1,000 rates.

Oyama Plant Food

A Wonderful Japanese Discovery

MAKES PLANTS THRIVE

By using OYAMA on house plants it will keep them in bloom all Winter and as green and luxuriant as if grown outdoors in the Summer. It will make your flower and vegetable garden wonderfully productive and the envy of your neighbors.

It makes no difference how healthy or delicate

your plants may be, OYAMA will bring out new flowers and foliage and cause a marvelous transformation.

FOOD FOR PLANTS, FLOWERS, VEGETABLES

Clean, Odorless, Safe to Use

Full directions with every package.

PRICE

House Plant Size, makes 6 gallons \$0.30

Garden Size, makes 32 gallons 1.10



Large-flowering Narcissus "Emperor" one of the best for naturalizing.

Narcissi Daffodils and Jonquils

Culture Outside. The large-flowered, or the sorts which have large bulbs, should be planted from 4 to 6 inches deep and about 5 inches apart. Planting should be started as soon as possible after October 1st, but bulbs may be planted any time before ground is frozen too hard to work.

Culture in Pots. As a general rule, treat Narcissi the same as Hyacinths. They should be planted about 6 bulbs in a 6-inch pot or pan and put in a dark and cool place where they may develop their roots. Let them remain until January 1st, when they may be removed to a warmer temperature, but keep in the dark until the foliage is about 6 inches high; then bring to the light and allow them to flower.

There is at the present time a very large assortment of Narcissi from which to make selections, and nearly all are of a quality worthy of cultivation. It is almost impossible to list the complete line of these beautiful Spring flowers, but the following few I offer are varieties which I deem will give the best satisfaction.

I recommend the large Double-Nosed Bulbs, as they are Mother Bulbs that I can guarantee to bloom. They cost a trifle more, but are twice the value, and I can recommend them as far superior to the ordinary sizes. Bulbs shipped prepaid to any part of the world at prices quoted.

One each of the 6 different varieties of Narcissi, Daffodils, and Jonquils for \$2.00 prepaid.

Six each of the 6 varieties for \$6.00 prepaid, or 12 of each for \$10.00.

BICOLOR, EMPRESS. A new giant variety with immense flowers. Rich yellow trumpet with sulphur-white perianth. **\$2.00 per dozen.**

BICOLOR, VICTORIA. Erect flowers with golden-yellow trumpet and pure white perianth. Flowers large. **\$2.25 per dozen.**

EMPEROR. (Ajax Type.) (See above illustration.) New giant variety with immense flowers, often three and one-half inches across. Rich, full, yellow trumpet, deep primrose perianth. **\$2.00 per dozen.**

GOLDEN SPUR. Another giant variety of rich golden-yellow. **\$2.00 per dozen.**

POETICUS ORNATUS. Better than the Poet or Pheasant's Eye Narcissus. Blooms earlier than the others, making it very desirable for Decoration Day. Pure white with orange-red cup; very fragrant. **\$1.50 per dozen.**

KING ALFRED. A new gigantic, remarkably handsome Daffodil; unrivaled in size and beauty. Exceptionally large, golden-yellow flower with deeply frilled mouth; elegantly recurved. **\$4.00 per dozen.**

Fancy Mixed Narcissi

This mixture consists of all the fine varieties such as the Empress, Emperor, etc. **\$1.00 per dozen; \$7.00 per 100; \$65.00 per 1,000.**

Special Combination Offer for \$5.00

25 Tulips, mixed
12 Phlox, mixed

6 Peonies, mixed
12 Iris, mixed

The Iris

Fleur de Lis or Iris Germanica

Familiar and well-beloved flowers of Spring. The purity of their beauty and their haunting fragrance is decidedly refreshing. The winsome, modest beauty of some, forming a striking contrast to their more glorious sisters arrayed in a sheen of iridescent splendor. They fairly out rival the Orchid in the wide range of coloring, which includes yellows, from light canary to deep golden; blues, from soft lavender to intense purples; red, from pinkish mauve to claret and maroon; beautiful bronzes, and pure whites; while some varieties are marked and mingled in exquisite harmony.

The Iris grows well in any kind of soil. Succeeds in partial shade, but gives the most satisfactory results in well-drained, sunny location. Iris Germanica are perfectly hardy and require only ordinary cultivation; growing luxuriantly, but respond quickly to any care, giving larger and more beautiful flowers. They should be planted in the Fall during August, September, and October. Plant the bud or crown about two inches below the surface, hoe or cultivate frequently for best results.

In the following descriptions Standards signify the three standards (erect, or upright curling petals); Falls — the three falls, or drooping petals.

New and Rare Iris

This Collection of 40 New and Rare Iris, one each, post paid for \$25.00

AFTERGLOW. Misty lavender lit with yellow at center. **50 cents each; \$5.00 per dozen.**

ALCAZAR. Standards light bluish-violet, falls brilliant purple. Orange beard. **50 cents each; \$5.00 per dozen.**

ARAGON. Deep, bright, golden yellow, falls bright velvety red. Beard, deep orange. **\$1.00 each.**

BEAUTY'S SECRET. (Alexander.) Deep soft-blue violet, falls deeper blue violet, veined white. **50 cents each.**

BERCAGE. (Alexander.) Pale verbene violet, falls dark violet veined white. **50 cents each.**

DEJAZET. Beautiful bronzed rose, the falls darker than the standards. Large flowers. **\$1.00 each.**

DUSTY MAID. Pale buff, falls deep mauve-purple, shading lighter to the edge with a border of buff. **\$1.00 each.**

ELDORADO. A very distinct and striking blend of bronze, heliotrope, and violet purple. **\$1.00 each.**

FENELLA. White widely branching stalks and flaring falls. **50 cents each; \$5.00 per dozen.**

GENGHIS KHAN. Palest rose, the falls velvety blackish purple. A noble flower. **\$1.00 each.**

IVANHOE. Gray-blue flower, not large or tall, but very attractive. **50 cents each.**

KAWENA. (Alexander.) Pale wisteria violet, falls purple veined white. **50 cents each.**

KNYSNA. Clear yellow, falls velvety-red brown. **\$1.00 each.**

KOYA. A deep violet self, the haft veined on white, free flowering. **\$1.00 each.**

LA NEIGE. Cream white with flaring falls. **\$1.00 each.**

LORD OF JUNE. Large fragrant flowers; standards floppy, of lavender blue; falls long, of lavender violet; **\$1.00 each.**

MAGNATE. A large flower of deep red-purple tones, stalks widely branched. **\$1.00 each.**

MANNORA. (Alexander.) Pale bluish gray, falls dull dusky purple veined white. **50 cents each.**

MARY ORTH. Rich, soft, dull violet tones and with flaring velvety falls. **\$1.00 each.**

MILKY WAY. Clear white, very delicately etched with lavender on the haft. **\$1.00 each.**

MIRANDA. A tall and early violet blue with orange beard. **\$1.00 each.**

MOLIERE. A large violet-purple flower, the falls dark and velvety. Yellow center. **50 cents each; \$5.00 per dozen.**

MONHASSAN. Lemon yellow, falls maroon veined white. **50 cents each.**

MOTHER OF PEARL. Standards and falls pale bluish lavender with a faint creamy undertone. Large flowers of exceptional substance and perfect form on well balanced stems forty inches high. **50 cents each; \$5.00 per dozen.**

NAUSHON. Mauve and pansy violet, very free flowering. **50 cents each.**

OCRACEA COERULEA. Old gold, falls are flushed blue. **\$1.00 each.**

PANHATAN. (Alexander.) Light, dull bluish violet, falls light blue veined white. **50 cents each.**

PFUAENANGE. (Alexander.) Standard yellowish citrine, falls Hay's maroon, a novel shade and strong grower. Should be in every garden. **50 cents each.**

PURPLE LACE. Deep blue-purple except for the white haft that is laced with purple. **\$1.00 each.**

QUEEN CATERINA. A large, iridescent pale lavender violet. **\$1.00 each.**

QUETICO. (Alexander.) Dark bluish violet, falls plum-purple veined white. **50 cents each.**

RACHEL FOX. Pale gold, falls yellow with an iridescent blue flush. **\$1.00 each.**

SHERBERT. Eeru shaded with purple, tall and vigorous. **50 cents each.**

SINDJKHA. A very deep, dull lavender of fine size. **\$1.00 each.**

SYPHAX. Combination of mauve and red-purple velvet, with striking orange beard. **\$1.00 each.**

THUNDERCLOUD. Deep grayish lavender and rich heliotrope gray. **\$1.00 each.**

TRIANON. Pinkish buff, falls yellow washed blue. A beautiful blend, of fresh coloring. **\$1.00 each.**

VALERY MAYET. Rose-purple and velvety dahlia purple, with a strongly contrasting flush of tawny orange at the center. **\$1.00 each.**

WALLACE. (Alexander.) Falls dark violet, standards light bluish violet, a strong grower with long, flowering spikes. Flowers good sized. **\$1.00 each.**

WHITE KNIGHT. A compact rounded flower of pure white. **\$1.00 each.**

Let me send copies of this catalog to your friends.

You will find my stock the best and cheapest in the end, as it is all guaranteed.

Iris of Exceptional Merit

This superb collection of 44 wonderful Iris, one each, for \$10.00 prepaid to any part of the world. These varieties, all 25 cents each. Three of any one variety, 50 cents. Twelve of a variety, \$1.50.

ASSENDUS. Standards lavender-blue; falls same shade of blue but darker toward the tips, and with veining of dark red at the base.

CANDELABRE. Standards pale lavender flecked violet at base; falls plum-purple with white reticulations.

CAPRICE. Standards rosy red; falls deeper rosy red.

CELEBRITY. A clear light blue.

DOROTHEA. This is an intermediate large-flowered pale blue.

DR. BERNICE. Standards bronze-yellow; falls maroon-red.

FLAVESCENS. Standards and falls a delicate shade of soft yellow.

FLORENTINA ALBA, Syn. SILVER KING. The finest white variety. Standards and falls porcelain changing to pure white.

GERTRUDE. Standards and falls same shade, rare violet blue. 34 inches tall, very fine for house decorations where a clear, uniform shade is desired.

HECTOR. Standards soft clouded yellow; falls rich purple color with velvety reflex.

HELGA. Lemon yellow with pearl shading.

HERANT. Standards beautiful lavender-blue; falls blue.

HER MAJESTY. Standards heliotrope of tissue-like delicacy; inner petals straw and lavender; falls light mauve traced with white.

HONORABILIS. The most popular of all Iris. Similar to Sans Souci. Standards beautiful golden yellow; falls rich mahogany brown.

INGEBORG. Pure white. Large flowers of handsome form.

IRIS KING. Standards rich golden yellow with shades of fawn; falls deep crimson-wine; all petals of peculiar velviness and superb coloring.

KHEDIVE. A beautiful soft lavender, with distinct orange beard.

KOCHI OR NIGHT. Standards and falls effective rich purple.

KOENIG. Very similar to Honorabilis with golden-yellow standards and mahogany brown falls. The falls are darker than in Honorabilis.

LOHENGRIN. Standards and falls of catalyca-rose; one of the largest and best of the Irises to my knowledge, and without exception the finest lavender-pink shade.

LORD GREY. Standards fawn; falls fawn overlaid rose.

LORELEY. Splendid landscape variety, with lemon-yellow sometimes splashed with purple. Standards and falls ultra-marine blue, bordered cream, and veined white.

LORD SALISBURY. Standards lavender shaded a smoky fawn; falls deep purple with a veining of white at the base.

MADAME CHEREAU. Standards white, edged and fringed mauve, interspersed with lilac; inner petals white; falls, white, edged the same as the standards.

MAD. PACQUETTE. Rosy claret. Beautiful and fragrant.

MONSIGNOR. Standards violet; falls heavily veined a deeper purple.

MRS. H. DARWIN. A pure white. Falls slightly reticulated violet.

NIBELUNGEN. Standards of fawn-yellow; falls of violet purple with fawn margins.

PALLIDALMATIC, or PRINCESS BEATRICE
A much-desired variety, with strong, broad leaves, large plants, producing tall, stately, clear lavender flowers.

PALLIDA SPECIOSA or TURKEY FLAG. Standards dark lavender shaded lighter; falls shaded light purple.

PANCHUREA. Standards a light, smoky shade; falls dull violet-red.

PRINCESS VICTORIA LOUISE. An exceptionally good landscape variety with light yellow standards and plum-colored falls bordered cream. Similar to "Loreley," but in general of slightly lighter colors. Mid-season.

PROSPER LAUGIER. Standards light cinnamon-drab with a pinkish sheen; falls velvety carmine; 3 feet.

QUEEN ALEXANDRA. Standards fawn, shot with lilac. Falls lilac, reticulated bronze at base. Beard yellow.

QUEEN OF MAY. An early flowering delicate old rose.

QUEEN OF THE GYPSIES. Standards smoky or dusky light bronze; falls purplish red.

RHEIN NIXE. Standards pure white; falls deep violet-blue, with a white edge.

ROSE UNIQUE. Bright violet-rose. Nearest approach to a pink Iris.

SEA GULL. Standards white, dome shaped; falls white, netted blue. Large and distinct flower, 2 feet.

SHERWINWRIGHT. Color clear, deep golden yellow.

VIOLA. A free flowering Ciengialti hybrid of light violet.

WANETA. Falls light blue; standards silvery.

WALHALLA. Standards lavender; falls wine red. Very showy.

WYOMISSING. Standards, creamy white, suffused soft rose; falls deep rose.

These Iris can be transplanted at any time you wish them in Fall or Spring; very hardy.

Siberian Iris

Siberian Iris is a vigorous free-flowering Iris and should be planted in great masses around shrubbery and trees, and a wonderful flower for a rock garden, also for water-side planting around water pools.

For large estates it is hard to find an Iris that will give more satisfaction for borders and massing.

For massing and borders Iris should be purchased in quantity lots. Liberal prices are allowed in such cases and special quotations will be gladly submitted.

SIBERICA. (Siberian Blue.) Rich blue flowers of exquisite beauty. 25 cents each; \$2.50 per dozen.

SIBERICA ALBA. Siberian White. A beautiful white flower. 25 cents each; \$2.50 per dozen.

\$12.00 per 100 express prepaid; \$75.00 per 1,000 express prepaid;
250 at 1,000 rate express prepaid.

These Iris are very beautiful in June.

Japanese Iris—*Iris Kaempferi*

The Japanese Iris is without doubt the king of all Irises. If grown in a favorable location, the flowers will attain a size of from eight to twelve inches across and stand over four feet from the ground.

They should be planted in a location that has plenty of moisture but which is well drained, especially in Winter. Standing water during the Winter months will probably kill the plants. They should be planted in the Spring or early Fall and if properly planted and cared for will give excellent results the following season.

They start blooming the last of June just at a time when cut flowers are most appreciated in the garden, and continue for about six weeks. When used for cut flowers they should be cut in the bud and allowed to open in water. Order by name or number.

I will sell this complete collection of 30 Japanese Iris, each one labelled with its name or number for \$15.00 prepaid.

No. 39 — A. L. SHERWOOD. Three petals; two-color flowers, lavender, blue, and white. **35 cents each; \$3.50 per dozen.**

No. 8 — AMISKOOKI. Falls plain white with six petals; standards white. **50 cents each; \$5.00 per dozen.**

No. 19 — AOIGATA. Reddish lavender falls, orange dash radiating into lines in dark plum field; standards dark plum. Three petals. **35 cents each; \$3.50 per dozen.**

No. 72 — CHOISEDEN. Six petals. Early. White, bordered light crimson-rose. **\$1.00 each.**

No. 10 — DATEDOGUE. Six petals. Late. Falls, white splashed violet. Petaloid stamens white, tipped violet. **\$1.00 each.**

No. 16 — GOLD BOUND. Tall and showy with flowers of enormous size. Six petals, pure white with gold-banded center. **50 cents each; \$5.00 per dozen.**

No. 6 — GENJIYAMA. Standards and falls rich dark purple, long orange blotch with blue halo, very double, six petals. **\$1.00 each; \$10.00 per dozen.**

No. 7 — GINGYOKU. Three petals. Early. Pure white with orange bar. **35 cents each.**

No. 45 — HATSUKAMURI. Three petals; both standards and falls a purple-blue. **35 cents each; \$3.50 per dozen.**

No. 30 — HELEN VON SEABOLD. Three petals, reddish violet and white shadings, strong grower. **35 cents each; \$3.50 per dozen.**

No. 22 — HOREN. Three petals; falls are white with large orange blotch radiating into white. **35 cents each; \$3.50 per dozen.**

No. 1 — KAGARIBI. A very beautiful all-lavender flower, except a yellow beauty spot in the center of each of its six petals. An exceptionally well-formed flower. **50 cents each; \$5.00 per dozen.**

No. 38 — KBATA. Standards and falls purple blue, three petals. **35 cents each; \$3.50 per dozen.**

No. 37 — KOHIO-HARE. Light lavender ground mottled and veined purple. Three petals, large. **35 cents each; \$3.50 per dozen.**

No. 61 — KMOCHI-GUMA. Six petals, very double. Deep violet-purple. **\$1.00 each; \$10.00 per dozen.**

No. 17 — KUMO-NO-UYE. Six petals, deep purple with yellow center set in sky blue field. **\$1.00 each; \$10.00 per dozen.**

No. 4 — KUMA-FUNGIN. (Excited Bear.) Falls purple-blue, stigmas lighter, long orange bars, six petals, very tall grower. **50 cents each; \$5.00 per dozen.**

No. 44 — KUMA-NO-ISHO. Falls rich dark purple with blue radiating lines, six petals. **50 cents each; \$5.00 per dozen.**

No. 2 — OTOMENEWOODE. Three petals. Early bloomer. Falls and standards royal purple. **35 cents each; \$3.50 per dozen.**

No. 27 — OYODO. This flower for beauty excels them all, with three large petals with yellow far set in a maroon field, this radiating into a wine-colored margin center. Very large. **\$1.00 each; \$10.00 per dozen.**

No. 20 — POCAHONTAS. A late, six-petal variety of beautiful dark blue. **\$1.00 each; \$10.00 per dozen.**

No. 21 — MEIRAN. Falls very light lilac, veined purple. Petaloid stamens lavender-white. Three petals, violet tips. **35 cents each; \$3.50 per dozen.**

No. 12 — MANADZURA. Six petals, white closely veined with blue, standards dark violet, tipped white. **\$1.00 each; \$10.00 per dozen.**

No. 555 — SNOWSTORM. New. Three petal white, very free-flowering, one of the best grown. **50 cents each; \$5.00 per dozen.**

No. 13 — TAKARA-DAMA. Six rich purple falls, with blue halo surroundings, center yellow bars. Strong six-petal flower. **\$1.00 each; \$10.00 per dozen.**

No. 3 — TEMPLETON. Violet-blue mottled pink and white. Extra fine flower, one of the best. Large. **50 cents each; \$5.00 per dozen.**

No. 11 — TSURO-NO-KEGOROMO. Three petals. Mid-season Pure white with yellow blotch. Very large flower. **35 cents each; \$3.50 per dozen.**

No. 9 — WASI-BAURI. Three wide petals, pure white, veined with violet-blue, uprights rhodamine-violet edged white. A wonderful striking flower, very largest strong grower. **50 cents each; \$5.00 per dozen.**

No. 71 — WHITE SWAN. A wonderful new seedling for 1930, with three pure white petals with a golden bar in center. **35 cents each; \$3.50 per dozen.**

No. 15 — YEZONISHITAI. Falls red-lavender shaded purple, and beautifully veined white, yellow blotch in center, three-petal flower. Extra fine. **35 cents each; \$3.50 per dozen.**



Japanese Iris Seedlings

15 cents each; \$1.50 per dozen; \$12.00 per 100.

Special Offer of Japanese Iris

Gold Bound	Kagaribi
Kuma-Fungin	Otomenewoode
Templeton	White Swan

1 each of Six Above Varieties, \$2.00

2 each of Six Above Varieties, \$3.00

These are the most beautiful of all the Iris family. They flower much later than the other kinds, wonderful long stems for cutting. Try them and have a REAL Iris garden.



MARY BAKER EDDY — \$2.00 (See Page 11)

Peonies

The Peonies are among the noblest and most magnificent of our herbaceous plants. They are the "Queen of Spring Flowers," and are well adapted for massing in beds, and particularly valuable for planting in groups throughout the perennial or shrubby border, where their brilliant hues add beauty to the entire surroundings. Their requirements are so simple — a good rich, deep soil; they are perfectly hardy, and produce their wealth of flowers in great abundance.

TIME TO PLANT. Peonies may be planted with perfect safety any time from the middle of August till the ground freezes in the Fall, and in the early Spring until growth has advanced too far. September and October even as late as the ground is kept open is the best time, as they then make a root growth before Winter sets in, usually blooming the following Spring.

After being transplanted, Peonies will not produce typical blooms the first season, many fine double varieties throwing single or semi-double flowers, and it is not until the third year that the finest flowers are produced.

They will abundantly repay good care and nourishment; but they resent an over abundance of fresh manure too near the roots. Well decayed manure is far better. A division of the clumps at long intervals, when they become so crowded as to interfere with freedom of bloom; and the soil kept loose and free from weeds, is all that is necessary. Where grown for cut flowers, they should not be disturbed oftener than is necessary; where they are grown for the sale of roots, they may be divided every second or third year. Plant so the eyes will be from two to three inches below the surface. Lay roots flat. Do not stand them on ends.

My prices are for good strong roots that, planted in the Fall, and given proper care, may reasonably be expected to bloom the following Spring. Varieties differ so greatly in habit that the expressions one-year and two-year, or the number of eyes, convey no meaning whatever; a strong root with one eye often being far better than a weak one with many. My prices are as low as the true varieties, and the size of the roots I send out will warrant I grow and sell my own roots, and make no pretense of competing with those who have no stock of their own, but buy and sell indiscriminately.

All Peonies shipped prepaid to any part of the world at prices given.

The Famous Hollis Peonies

Special Offer of One of each of the 22 varieties for \$30.00 prepaid. Regular price \$40.35.

ADMIRAL DEWEY. (Hollis 1903.) Rose-pink, shaded heliotrope; large, high built flower. According to color chart, color, total effect, solferino red, clear; guards solferino red, center same as guards; fades silver tipped, linear petals concealed throughout bloom. **\$3.00 each; \$30.00 per dozen.**

ADMIRAL TOGO. (Hollis 1907.) Deepest mahogany red, large high-built flower, luminous. According to color chart, total color effect crimson-carmine; guards clear, collar same as guards; center clear. Holds color well, no silver tip. Type of bloom semi-rose. Form of bloom flat, medium compact. Plant medium tall, erect. Mid-season. **\$1.00 each; \$10.00 per dozen.**

DAYBREAK. (Hollis.) A large flowering Peony with long stems. Color a deep rose-pink fading out lighter as the flower gets fully open. Very fragrant. **\$1.00 each; \$10.00 per dozen.**

EDWIN FORREST. (Hollis.) Semi-rose type, late mid-season. Large convex-shaped flower, very full and double. Color light solferino red with silvery reflex. **\$2.00 each; \$20.00 per dozen.**

EVENING GLOW. (Hollis 1907.) Large semi-double flower. Hydrangea-pink tipped with white. Fragrant. Early. **\$2.00 each; \$20.00 per dozen.**

FLASHLIGHT. (Hollis 1906.) A very large, globular, medium compact to loose bloom of Japanese type. First impression, a crimson-pink with golden center. Not as dark a shade as "Attraction." According to color chart, the total color is tyrian rose; guards have light streak, center clear. The center is amber yellow, shading pink at base. **\$2.00 each; \$20.00 per dozen.**

GEORGE HOLLIS. (Hollis 1907.) Large, globular rose type. Center is a pale rose-pink with lilac-white guards. Very late blooming. **\$2.00 each; \$20.00 per dozen.**

GEORGE WASHINGTON. (Hollis 1904.) A large, flat, loose bloom of semi-rose type. One of the brightest light crimson-red varieties. Guards clear, collar same as guards; center clear, uniform color. Stamens intermingled with petals. Blooming time mid-season. Habit of plant, erect, medium compact, medium height. **\$1.00 each; \$10.00 per dozen.**

GETTYSBURG. (Hollis 1909.) Deep blood-red, large, loose, semi-rose type, tall, upright and strong grower. **\$3.00 each; \$30.00 per dozen.**

GOLDMINE. (Hollis 1907.) Japanese type. Flat, loose, medium size. Guards tyrian rose, center same as guards, tipped golden yellow. Medium tall, erect variety of good habit. Mid-season. **\$2.00 each; \$20.00 per dozen.**

HITY-TITY. (Hollis.) A very attractive Japanese type, outer petals soft tyrian rose, center golden yellow; large flowers of wonderful color, very free flowering. **\$3.00 each; \$25.00 per dozen.**

These Peonies are the cream of the Peony World!

INNOCENCE. (Hollis 1904.) A medium-sized, flat, compact Japanese type bloom. General impression, pale-pink guard with golden center. According to color chart, lilac-rose; guards clear, center canary-yellow fading to cream-white, pale pink at base of stamens. Mid-season. **\$3.00 each; \$30.00 per dozen.**

JOHN HANCOCK. (Hollis 1907.) A very large, globular, semi-double flower. Its color is one not at all common in Peonies, total effect being bright rosy magenta, guards streaked light; center clear; secondary stamens absent. **\$2.00 each; \$20.00 per dozen.**

JONTEEL. (Hollis.) Large globular, high crown, guards and crown deep pink, outer petals deep rose-pink, center flecked deep carmine. **50 cents each; \$5.00 per dozen.**

LOVELINESS. (Hollis 1907.) Large, compact, flat, rose type. Hydrangea-pink changing to lilac-white. Strong stems and blooms in clusters. **\$2.00 each; \$20.00 per dozen.**

LUCY E. HOLLIS. (Hollis 1907.) Large, flat, medium compact rose-type blossom. First impression, pale pink and white. According to color chart lilac-white, guards clear, collar same as guards; center slightly flecked scarlet; secondary stamens present. Center of bloom, shaded to pale lilac-rose. Fragrance pleasant. Blooming time very late. **\$1.50 each; \$15.00 per dozen.**

MARY A. LIVERMORE. (Hollis 1907.) One of the most beautiful of the rose type. A very large, flat, medium compact, not differentiated, and entirely transformed blossom. General impression rose-pink and white. Petals are a beautiful rose-pink, passing to silver and white at the tips. Fragrance pleasant. Blooming time mid-season to late. **\$1.00 each; \$10.00 per dozen.**

MARY BAKER EDDY. (Hollis.) Large, compact, globular rose type. Deep rose-pink with silvery tips. Plants of medium height, long, strong stems. Mid-season to late. **\$2.00 each; \$20.00 per dozen.**

MAUD L. RICHARDSON. (Hollis.) Large, flat rose type. Pale lilac-rose, center lighter. Fragrant. Blooming time late. **\$2.00 each; \$20.00 per dozen.**

RED CROSS. (Hollis 1904.) A brilliant crimson; medium size, full, double; very late bloomer. **\$3.00 each; \$30.00 per dozen.**

WELCOME GUEST. (Hollis 1904.) One of the very finest of the semi-double Peonies. A very large, loose, bright silvery rose fading to rose-white. Very strong and healthy, with long stem. **\$1.00 each; \$10.00 per dozen.**

ZEST. (Hollis.) A silvery shade of pink, very soft and very beautiful. The petals are long and loosely arranged. Late bloomer. **35 cents each; 3 for \$1.00, 12 for \$2.50.**

Be sure your friends get all my catalogs, as I guarantee all my stock to grow true to name, or stock is cheerfully replaced free of all expense.

Rare and Selected Peonies

Special Offer of 41 Selected Peonies one of each for \$30.00 prepaid. Regular price \$37.00.

ALEXANDER DUMAS. (See illustration.) (Guerin 1862.) Medium-sized, light violet-rose crown; has creamy white collar of narrow petals, mingled with wide center petals; fragrant. Medium height, free bloomer, mid-season. **50 cents each; \$5.00 per dozen.**

AVALANCHE. (Crousse 1886.) Medium to large, fairly compact white crown type, flecked with carmine, with cream-white collar. Collar well differentiated. Tuft of short, narrow, cream petals in center of bloom. Occasional carmine splashed on outside of guards. **50 cents each; \$5.00 per dozen.**

AUGUSTIN D'HOUE. (Calot 1867.) Large, medium compact, showy, bomb-type blossom. General impression, dark reddish pink with slight silvery reflex. According to color chart, a solferino red. Mid-season. Medium tall. **50 cents each; \$5.00 per dozen.**

BARONESS SCHROEDER. (Kelway.) A very beautiful rose-type bloom. Form of bloom, globular compact, not differentiated, not entirely transformed. Color total effect, flesh-white fading to milk-white; guards clear; collar same as guards, center clear; pleasant fragrance. Mid-season. **\$1.00 each; \$10.00 per dozen.**

BEAUTE FRANCAISE. (Guerin 1850.) A good medium-sized, compact, crown type. General impression, pink and white. According to color chart, pale lilac-rose and cream-white, with prominent carmine flecks on center petals. Strong, vigorous plant of rather dwarf habit, strong medium to short stems. **50 cents each; \$5.00 per dozen.**

BERLOTZ. (Crousse 1886.) A very large, beautiful, compact rose-type blossom. A light carmine-rose or rosy magenta, tipped silver with golden-yellow stamens concealed in bloom. Color is somewhat splashed on tips of petals fading to nearly white. Guards not differentiated, perfect rose-type flower. **\$1.00 each; \$10.00 per dozen.**

COURONNE D'OR. (Calot 1872.) Large full flower of pure white with a circle of golden stamens. A very beautiful variety and valuable as a cut flower. Late. **50 cents each; \$5.00 per dozen.**

CURIOSITY. (Dessert & Mechin, 1886.) Type, bloom anemone. Weak blooms nearly single while very strong ones may be semi-double. Form of bloom medium globular, compact. Differentiated. Color, total effect violet-red; guards clear, collar same as guards; center clear, with occasional yellow tips. Occasional wide petals appearing in center. Fragrance pleasant, one of the largest of the anemone type. Blooming time mid-season. **50 cents each; \$5.00 per dozen.**

DORCHESTER. (Richardson 1870.) Large, compact, rose type. Pale hydrangea-pink. Fragrant. Medium dwarf. Upright, free bloomer. **50 cents each; \$5.00 per dozen.**

DUK D'WELLINGTON. (Calot 1859.) Large bomb type. White guards, and sulphur-yellow center. One of the finest white varieties. Medium tall, vigorous grower, free flowering. Very fragrant. Mid-season to late. **50 cents each; \$5.00 per dozen.**



Peony — Alexander Dumas, 50 cents each.
(One-third actual size.)

EDULIS SUPERBA. (Lemoine 1824.) The popular early "Decoration Day" Peony. Large, loose, flat-crown type. Bright, deep mauve-pink; color mixed with lilac. Large tuft of wide petals same color as guards, surrounding a few narrow petals in extreme center of bloom, prominent collar. **50 cents each; \$5.00 per dozen.**

EUGENIE VERDIER. (Calot 1864.) (Also called Pottsi Alba.) Pale pink, center deeper, flecked crimson. Large, flat, rose type, rather loose; fragrant; tall, free. Mid-season. **\$1.00 each; \$10.00 per dozen.**

FELIX CROUSSE. (Crousse 1881.) Large, globular, typical bomb type. First impression, brilliant red. According to color chart, tyrian rose. Same color throughout. Compact and globular when first opening, but opens out somewhat with age, exposing linear petals in extreme center of bloom. Odor pleasant. Strong, vigorous grower, with long stem, rather spreading habit, medium height. **\$1.00 each; \$10.00 per dozen.**

FESTIVA MAXIMA. (Miellez 1851.) Very large, globular, rose type. Pure-white center, prominently flecked crimson; outer petals sometimes faint lilac-white on first opening. Very tall, strong, vigorous grower. **50 cents each; \$5.00 per dozen.**

GOLDEN HARVEST. (Rosenfield 1900.) Bomb type. Guard petals lilac-rose, creamy-yellow collar. Blooms in mid-season. **50 cents each; \$5.00 per dozen.**

JUBILEE. (Pleas.) Unusually large, flat, compact rose type. Uniform blush-white, with fragrance. Very tall, erect, strong grower. Mid-season. **\$2.00 each; \$20.00 per dozen.**

Rare and Selected Peonies—Continued

KARL ROSENFELD. (Rosenfeld 1908.) A very brilliant crimson-scarlet, high built and a first-class bloomer. Tall, strong grower. **\$1.00 each; \$10.00 per dozen.**

LA COQUETTE. (1861.) Large, globular, high crown. Guards and crown light pink; collar rose-white, center flecked carmine. Strong, erect, medium height, free bloomer. Fragrant. Mid-season. **50 cents each; \$5.00 per dozen.**

LA ROSIERE. (Crousse 1888.) A dainty variety with semi-double white blooms having yellow tints like a tea rose. Foliage dark green and "crinkled." Mid-season. **50 cents each; \$5.00 per dozen.**

LORD ROSEBERRY. Crimson. Very fine. **\$2.00 each; \$20.00 per dozen.**

LA TULIPE. (Calot 1872.) Synonym "Multicolore." Very large, flat, semi-rose type flower. Lilac-white, outer petals striped with crimson. Fragrant. Tall, strong grower. Late mid-season. **50 cents each; \$5.00 per dozen.**

LIBERTY. This is without doubt one of the best lively rose-pink shades introduced. The flowers are very large, somewhat flat in appearance. Six to eight inches across, borne on good strong stems; the color grows lighter with age. **\$1.00 each; \$10.00 per dozen.**

MME. BOULANGER. (Crousse 1886.) Glossy soft pink, tinged lilac, silvery flesh border; large, compact, rose type; upright, very fragrant. Late mid-season. **50 cents each; \$5.00 per dozen.**

MME. CROUSSE. (Calot 1866.) A very large and beautiful pure-white flower, sometimes showing a crimson fleck on a central petal. Mid-season. **50 cents each; \$5.00 per dozen.**

MADAME CHAUMY. (Calot 1864.) Medium size, globular, very compact, perfect rose type. Satiny rose-pink, or pale lilac-rose, with silver reflex; central petals slightly darker, flecked crimson occasionally. Mid-season. **50 cents each; \$5.00 per dozen.**

MADAME DUCEL. (Mechin 1880.) Large, globular, typical bomb type, petals incurring somewhat resembling a chrysanthemum. Light mauve-rose, with silvery reflex. Fragrant. Mid-season. **\$1.00 each; \$10.00 per dozen.**

MADAME GEISSLER. (Crousse 1880.) Very large, compact, globular, imbricated, rose type. Violet-rose, tipped silver. Mid-season. **\$2.00 each; \$20.00 per dozen.**

MARIE STUART. (Calot 1856.) Crown type. First impression, white. Cream-white with pale-pink guards, center flecked crimson, all fading to white. Guard petals are well differentiated; thick collar of narrow yellowish petals, on young bloom. **50 cents each; \$5.00 per dozen.**

MILLAIS. Single flowers deep crimson with golden-yellow stamens. **50 cents each; \$5.00 per dozen.**

MONSIEUR BOUCHARLAT AINE. (Calot 1868.) Large, full, compact, semi-rose type. Uniform light violet-rose, with silvery reflex. Mid-season to late. **\$1.00 each; \$10.00 per dozen.**

MONSIEUR DUPONT. (Calot 1872.) Large, flat, semi-rose type bloom. Cream to milk-white, petals are intermingled with stamens at all stages of development, but mostly concealed; petals streaked or splashed crimson. Plant is a strong, tall grower, with a very stout stem, and upright habit. Mid-season to late. **50 cents each; \$5.00 per dozen.**

MONSIEUR JULES ELIE. (Crousse 1888.) A very large, medium compact, bomb-type flower. Total effect, pale lilac-rose, guards and center clear, collar tinted lighter than guards. A very attractive pink; base of collar petals amber-yellow. Fragrance very pleasant. One of the finest pink varieties grown. **\$1.00 each; \$10.00 per dozen.**

MONSIEUR MARTIN CAHUZAC. (Dessert 1899.) Semi-rose type. Mid-season. Large, full, massive, well-formed flower, a perfect solid ball of deep maroon with garnet hues and brilliant black luster. One of the darkest Peonies in existence. **\$3.00 each; \$30.00 per dozen.**

PETITE RENEE. (Dessert 1899.) Large blooms in clusters, collar of very broad petals, clear carmine purple; central petals very narrow, clear carmine striped white, golden extremities, yellow background. Free bloomer and very showy. **\$1.00 each; \$10.00 per dozen.**

PROLIFERA TRICOLOR. (Lemoine 1825.) Broad, soft, flesh guard petals, center ligulated golden yellow, with a red tuff. **50 cents each; \$5.00 per dozen.**

QUEEN VICTORIA. (Kelway.) Large, globular in form, medium loose, low crown. Milk-white guards tinted flesh; center cream-white, with crimson flecks. Very fragrant. Medium height, strong, free bloomer. Mid-season. **50 cents each; \$5.00 per dozen.**

SARAH BERNHARDT. (Lemoine 1906.) A very large, beautiful, flat, imbricated, compact semi-rose type blossom. Flowers of remarkable size and freshness in huge clusters, and of unusual perfection in form. First impression is an apple-blossom pink, with each petal silver tipped. According to color chart, a mauve-rose; guards clear, collar same as guards, center clear. Pleasant fragrance, late blossoming. Habit of plant, medium erect, tall, medium compact, growth strong. **\$1.50 each; \$15.00 per dozen.**

SIR THOMAS LIPTON. (Kelway.) Large, loose, flat, semi-double flower. A uniform bright rosy crimson, showing the golden-yellow stamens prominently in the center. Pleasant fragrance. Mid-season. **\$1.00 each; \$10.00 per dozen.**

THERESE. (Dessert 1904.) One of the finest Peonies grown. Very large, compact, rose type; violet-rose, lighter in center. Mid-season. **\$3.00 each; \$30.00 per dozen.**

UMBELATA ROSEA. (Unknown.) Informal rose type. Guards violet-rose shading to amber-white center. Strong, upright grower. **50 cents each; \$5.00 per dozen.**

VENUS. (Kelway 1888.) Rose type, almost white but tinged with shell-pink. Mid-season. Fragrant. **\$1.00 each; \$10.00 per dozen.**

Mixed Peonies

Each season, in handling our Peonies, a small amount becomes mixed, many times the very choicest varieties. It does not prove worth while for me to plant these separately, to ascertain their names, so I am offering them at **35 cents each (3 for \$1.00)** as long as they last. This mixture is apt to include some of the best new creations not offered in my catalog; and includes both Double and Single varieties.

SPECIAL PEONY OFFER. To give you an opportunity to have a more complete choice and collection of Peonies, I am making the following offer:

I will ship you Three Choice Peonies for **\$5.00**, transportation charges prepaid to any part of the United States or Canada. These to be three distinct varieties, that I can recommend to give satisfaction.

Hardy Perennial Phlox

Among hardy herbaceous plants, none are more showy or more easily grown than the Phlox. They are very desirable planted in groups. Individual clumps throughout perennial beds make a very satisfactory display, while mass plantings of one color make the most effective showing.

They produce magnificent trusses of flowers, commencing to bloom in July, and lasting for weeks, making them always favorites of the garden. Their flowers have a very agreeable odor, and are produced in abundance. The plants are perfectly hardy and will grow year after year with but little care. I recommend frequent cultivation, however, as they quickly respond to it, producing much larger trusses, and larger and more beautiful individual flowers. Simply keep the ground clear of weeds and well hoed. They will grow and do well in any soil; but prefer a good rich well-drained loam. They may be planted in the Fall during August, September, and October; and in the Spring during April, May, and until the plants are too far advanced in June. In planting be sure that the crown of the root—that is, the part where the new shoots start, is two inches below the surface of the ground.

Choice New Phlox for 1930

BARON VON DEDEM. Salmon-red, very effective. 90 cents for three; \$2.40 for 10.

BEACON. Brilliant, cherry-red, one of the best red shades grown. 90 cents for three; \$2.40 for ten.

B. COMTE. Dark red, very large trusses, not so tall a grower as many others. 90 cents for three; \$2.40 for ten.

BLUE HILLS. A beautiful shade of lavender-blue, very large trusses. \$1.05 for three; \$3.00 for ten.

COQUELICOT. Brilliant new Phlox. The finest and brightest red of all the Phlox; the color is a bright orange scarlet. The plants are dwarf, exceptionally sturdy, and the individual flowers and trusses are very large. \$1.05 for three; \$3.00 for ten.

DEBS. The finest red Phlox there is. Color is bright fiery crimson. 50 cents each; \$5.00 for ten.

JOHNSON'S FAVORITE. Light salmon-pink with a dark red eye, resembling Elizabeth Campbell, but far superior in every way. 50 cents each; \$4.50 for ten.

MAID MARIAN. A soft shade of lavender, very even in color. \$1.05 for three; \$3.00 for ten.

MRS. MILLIE VON HOBOKEN. Pure soft pink without eye. Large flower heads on long, erect stems. \$1.05 for three; \$2.70 for ten.

These nine Phlox prepaid; one each for \$3.00.

Select Standard Phlox

All Phlox 30 cents each; three of one kind 75 cents; ten for \$6.00; \$18.00 per 100.

These twenty-two Phlox, one each, for \$6.00.

ALBION. White with faint red eye.

ATLAS OR LOTHAIR. Deep clear salmon. Very fine.

BRIDESMAID. White with large rose-crimson center. Very showy and desirable.

ECLAIREUR. Bright carmine with light halo. Large flower.

EUGENE DANZANVILLIER. Soft lavender with light center.

FRAU ANTON BUCHNER. An exquisite pure white variety. Plants are of medium height, and very sturdy.

GRUPPENKOENIGIN. Deep mallow pink with tyrian rose eye. Very large trusses; individual flower of enormous size.

L'ESPERANCE. A light lavender-pink with a white center.

LE MAHDI. The flower is a rich, dark violet-purple, a color rare among Phlox.

LE SOLEIL. One of the most beautiful Phlox grown. Brilliant china rose, with white ring around a deep rose eye.

JEANNE D'ARC or SNOW QUEEN. Undoubtedly the very finest pure-white variety to date. The plants are extra-strong growers of medium height, producing exceptionally large heads.

JULIUS SANDEAU. Large, fine, very free-flowering, pure pink.

MISS LINGARD. A pure-white flushed-pink variety and known as early-flowering Phlox.

MRS. CHAS. DORR. A very beautiful shade of lavender.

PANTHEON. Brilliant rose with a lighter center; a very effective combination.

PEACH BLOW. One of the most delicate shades among the new Phlox. Deep rose-pink with white ring and tyrian pink eye.

PROF. VIRCHOW. Bright carmine, overlaid with orange scarlet.

R. P. STRUTHERS. Very strong grower with large heads of fiery salmon-red. Very showy.

RICHARD WALLACE. White with distinct violet eye.

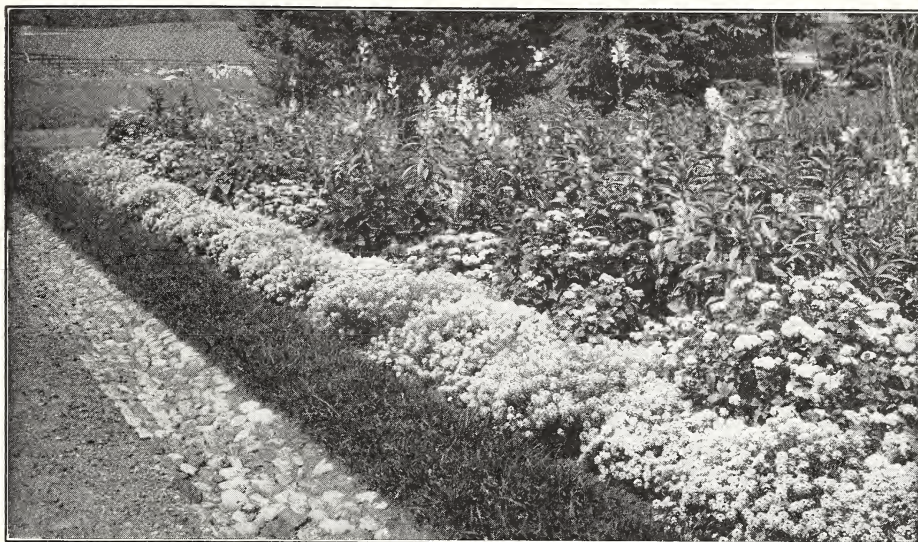
THOR. A most beautiful and lively shade of deep salmon-pink, suffused and overlaid with a scarlet glow; with a light, almost white halo surrounding the aniline-red eye. Gigantic size.

W. C. EGAN. One of the very finest Phloxes yet introduced. The individual flowers, according to color chart, are of a delicate lilac, illuminated by a large, bright solferino eye; the color effect, as a whole, is a pleasing shade of soft pink.

WIDAR. Pure purple with a prominent white center

Mixed Phlox

We have an extra-fine assortment of Mixed Phlox, consisting of the best varieties to date. The mixture contains the following colors: Crimson, scarlet, violet, lavender, pink, white, variegated or striped varieties, and the above mentioned colors with deeper colored eyes. \$1.50 per dozen, prepaid; \$8.00 per 100, express collect.



Hardy Perennials

We are sure that nothing gives our customers greater satisfaction about their grounds than a well-arranged flower garden of Hardy Plants. With the proper selection of varieties, flowers may be had in bloom from early Spring until severe frost; many of them will succeed where less hardy varieties would prove a total failure; once planted they make a permanent bed and are therefore less trouble and expense than where tender plants are used, and while they are of the easiest culture and do better with less care than most other varieties, yet they well repay any extra attention that may be given them. A properly prepared bed to receive them should be deeply forked or spaded with a liberal supply of well-rotted manure thoroughly worked in. Bone-dust and also some commercial fertilizers produce excellent results and may be applied in small quantities several times during the season and lightly raked into the soil.

Although not absolutely necessary, a Winter covering of long, strong, coarse litter or similar material will afford such protection as to guard against sudden changes of freezing and thawing, and the plants will be in a stronger condition to make an early start in the Spring to pay for the little trouble incurred. Manure can also be used, but a heavy covering on evergreen varieties would be likely to rot and kill them. Roots cannot be shipped until about March 15th, because our ground is frozen or snow-covered until about that date, usually making it impossible to dig them. All hardy plants shipped prepaid at prices quoted.

ACHILLEA — "The Pearl"

A Summer-blooming variety, worthy of a place in every garden. The flowers are pure white, very double, and are produced in large sprays on long stems; are much used by florists for cut-flower work. Perfectly hardy. Particularly desirable for cemetery planting. 18 inches. **25 cents each; \$2.50 per dozen, prepaid.**

AFRICAN DAISY, OXEYE

This is one of the most beautiful orange-yellow daisies ever grown, with deep brownish center; flowers are borne on long, stiff stems, 2 to 3 feet high, very free, and never drop their petals. Finest cut flower in the world, wonderful for decorating purposes. **35 cents each; 90 cents for three; \$2.50 for ten; \$20.00 per 100.**

ALTHEA ROSEA HOLLYHOCK

The double hollyhocks are like large double roses, and really need no introduction. As an old-fashioned flower, everybody admires them for backgrounds and for planting among shrubbery; pink, yellow, white, red, maroon, salmon and crimson can be had in separate colors. **25 cents each; three for 65 cents; ten for \$2.20; \$15.00 per 100.**

ANTHEMIS — CAMOMILE

These are very hardy, bushy plants with daisy-like flowers and strongly scented. They are excellent and enduring subjects for the Perennial border and require only ordinary soil and full sunlight to grow to perfection.

ANTHEMIS NOBILIS. (Common Camomile.) 18 inches high, single, white-rayed flowers; a beautiful bushy plant with fernlike foliage, and flowers in July. **35 cents each; three for 90 cents; ten for \$2.50.**

A. TINCTORIA. (Yellow Camomile.) 2 to 3 feet, flowers June to November. Strong grower with angular stems and daisy-like foliage, golden-yellow flowers, fernlike foliage, extra fine for cutting. **35 cents each; three for 90 cents; ten for \$2.50.**

A. TINCTORIA KELWAYI. (Kelway Camomile.) 2 to 3 feet, June to October, pretty lemon-yellow flowers, fernlike foliage, extra fine for cutting. **35 cents each; three for 90 cents; ten for \$2.50.**

AQUILEGIAS or COLUMBINES

The Columbines are one of the most elegant and beautiful of hardy plants, producing their graceful spurred flowers on stems rising two or more feet above a beautifully divided foliage. No other plant has so airy a grace as the Columbine, is more generous of its blooms, or is more effectively adapted for cut flowers. They are not at all particular as to soil or location, although they prefer a sandy loam and a moist but well-drained, sunny position. Their period of flowering covers the late Spring and early Summer months.

COERULEA HYBRIDS. (Rocky Mountain Columbines.) Including all the well-known colors and shades, blue, pink, red, salmon and yellow. **25 cents each; \$2.50 per dozen.**

Hardy Perennials—Continued

LONG-SPURRED HYBRIDS. All colors. Three for 75 cents; \$2.20 for ten; \$15.00 per 100.

A. FORMOSA. (Long-spurred Hybrids.) Blackmore and Langdon strain; a wealth of delicate coloring with spurs extra long and fine. 50 cents each; \$5.00 per dozen.

ARABIS — Rock Cress

ARABIS, ALPINA. Small white flowers, in clusters. One of the best rock-garden plants. 25 cents each; \$2.50 per dozen.

ARMERIA — THRIFT

These are fine for rock gardens or for edging plants, growing from 3 to 6 inches high, with wonderful blooms in May and June, in red, pink, lavender-pink and white. 25 cents each; three for 65 cents; ten for \$2.00.

ASTILBE

ASTILBE, QUEEN ALEXANDER. Beautiful pink flowers on plants 12 to 18 inches tall. 35 cents each; \$3.50 per dozen.

W. E. GLADSTONE. Pure white, fine for cutting. 35 cents each; \$3.50 per dozen.

ACONITUM — MONKSHOOD

A. NAPELLUS. (True Monkshood.) Grows from 18 inches to 2 feet high, blooms from July to August. Large dark blue flowers in a raceme. 50 cents each; \$5.00 per dozen.

A. FISCHERI. Azure. Grows from 18 inches to 2 feet high, blooms from July to August. Large dark-blue flowers in a raceme. 50 cents each; \$5.00 per dozen.

ARTEMISIA — Silver King

A. VULGARIS LACTIFLORA. (White Mugwort.) 3 to 4 feet. August and September. Unlike the other varieties, which are grown for their foliage, this introduction from China bears sprays of creamy white flowers on tall, erect stems which are clothed with fine cut, dark green foliage. It makes a splendid cut flower for mixing with flowers of decided color or form, such as delphiniums. 35 cents each; \$3.50 per dozen.

BUDDLEIA or BUTTERFLY BUSH

BUDDLEIA, VARIABILIS VIETCHIANA. Beautiful violet-mauve flowers, with a distinctive odor. A continuous and very satisfactory Summer-flowering plant. Flowers are borne on long, cylindrical spikes, 6 to 12 inches in length. Blossoms satisfactory first year planted. 50 cents each; \$5.00 per dozen.

CAMPANULA — Bellflower

C. TRACHELIUM. (Coventry Bells.) A good border plant of 2 to 3 feet in height with large racemes of purple, bell-shaped flowers which droop a little. 25 cents each; \$2.50 per dozen.

CENTAUREA

CENTAUREA, MONTANA. (Perennial Cornflower.) Plants from 12 to 15 inches in height; a rosy purple, flowering from July to September. 25 cents each; \$2.50 per dozen.

CENTAUREA, WHITE LEAVED, or DUSTY MILLER. Fine plants of easy culture, that are suitable for hot, sunny situations, in the border or rocky. Their white foliage contrasting with the foliage of other hardy plants, making them very showy. 25 cents each; \$2.50 per dozen.

CHIDE

A fine border perennial with onionlike foliage and masses of lavender-pink flowers. 25 cents each; \$2.50 per dozen.

COREOPSIS

Large, cosmos-like flowers of pure yellow. An excellent showy garden plant, continuous bloomer. 25 cents each; \$2.50 per dozen.

DELPHINIUM or HARDY LARKSPUR

Mrs. Ely, author of "A Woman's Hardy Garden," says:

"Perennial Larkspur may be planted as soon as the Spring has opened. The ground should be well drained and carefully prepared, but manure must not be allowed to come in contact with the roots, or grubs are apt to destroy the plants. A little finely ground bone meal dug around each plant early in May will be of benefit, and in late Autumn, coal ashes should be sifted over the crowns of the plants to protect them from the white grub, which is their only enemy.

BELLADONNA. The freest and most continuous bloomer of all, never being out of flower from the end of June until cut down by hard frost. The clear turquoise-blue of its flowers is not equalled for delicacy and beauty by any other flower. 35 cents each; \$3.50 per dozen; \$25.00 per 100.

BELLAMOSUM. A dark-blue form of the popular light-blue Belladonna. A very sturdy grower and a free bloomer. Flowers from June until frost. Grows 3 feet high. 35 cents each; \$3.50 per dozen; \$25.00 per 100.

HOLLYHOCK VARIETIES from the greatest Delphinium grower in the world, Blackmore and Langdon. Special select seedlings of all colors — blue, lavender, purple, pinkish-lavender, mauve and white. Some of the flowering spikes grow over three feet long, plants even seven feet tall, and some even much higher. The most wonderful Delphinium ever offered. \$1.00 each; \$10.00 per dozen; \$75.00 per 100.

GOLD MEDAL STRAIN HYBRIDS. Blackmore and Langdon; these grow 3 to 5 feet high in some of the most beautiful colorings ever seen in Delphinium — all shades of blue, lavender, mauve and pink — and will flower three times in a season. After your flowering spikes have finished blooming, cut them down close to crowns, and they will start new flowering shoots at once, and you can do this three times a season. 50 cents each; \$5.00 per dozen; \$35.00 per 100; 6 at dozen rates; 25 at 100 rates.

DIANTHUS — PINKS

DIANTHUS BARBATUS. (Sweet William.) 10 to 20 inches high, blossoming in July and August. One of the oldest garden flowers, which perpetuates itself by self-sowing. Colors, a good mixture of the most beautiful shades of crimson, white and Newport pink. 25 cents each; \$2.50 per dozen.

DIANTHUS PLUMARIUS DELICATA. New seedling pink, from *Dianthus plumarius*. The earliest of all to blossom. Very delicate, beautiful cameo-pink flowers, blossoming in June. 9 inches in height. 35 cents each; \$3.50 per dozen.

DIANTHUS, SEMPERFLORENA. 9 to 12 inches. Single and semi-double flowers. Pink, with crimson-red center. 25 cents each; \$2.50 per dozen.

DICENTRA

D. SPECTABILIS. (Bleeding Heart.) Large, rose-red, heart-shaped flowers, in April and July. An old-fashioned favorite. 50 cents each.

DIGITALIS — FOXGLOVE

In mixed colors only; the Foxgloves should be planted at the back of the border or in separate groups and are invaluable for permanent and settled effects. 25 cents each; \$2.50 per dozen.

FEVERFEW — MATRICARIA

LITTLE GEM. A most useful border plant and valuable as a cut flower with yellowish white flowers blooming from June to October. 18 to 24 inches tall. 25 cents each; \$2.50 per dozen.

GAILLARDIA

GAILLARDIA ARISTATA. The blooms are 2 to 3 inches across, with dark red and brown centers, orange, crimson and red rays shaped into rings of colors. 35 cents each; three for 90 cents; ten for \$2.50; \$18.00 per 100.

GYPSOPHILA — BABY'S BREATH

GYPSOPHILA PANICULATA. (Bristol Fairy.) A highly improved form of Double Baby's Breath, with larger flowers and blooming two weeks earlier. The stock is still very limited. **50 cents each.**

HARDY GARDEN HELIOTROPE

(*Valeriana* — Spurred Flower.)

VALERIANA OFFICINALIS. The old-fashioned garden Heliotrope with pinkish or lavender flowers with Heliotrope fragrance; flowers in June and July. Height, 4 feet. **25 cents each; \$2.50 per dozen.**

HEMEROCALLIS — YELLOW DAY LILY

Popular hardy plants, belonging to the Lily family. They succeed everywhere and should always be included in the border of old-fashioned, hardy plants.

Our stock of Hemerocallis is field-grown, and can be depended upon to be true to name.

APRICOT. Rich apricot-colored flowers. Plants grow 2½ feet tall. **25 cents each; \$2.50 per dozen.**

AURANTIACA. (Carolina Lily.) A beautiful, large trumpet-shaped Day Lily with fragrant orange flowers. One of the most satisfactory; height 2 to 3 feet; flowers in June and July. Easy to grow. **35 cents each; \$3.50 per dozen.**

FLAVA. (Yellow Day Lily.) The best-known variety; very fragrant, deep, clear lemon-yellow; flowers in June; height 2 to 3 feet. **25 cents each; \$2.50 per dozen.**

HELIANTHUS — SUNFLOWER

HELIANTHUS AUREA. A big, showy plant suitable for bordering woodland paths and massing effects before shrubbery. Fine golden-yellow flowers on long, graceful sprays. **25 cents each; \$2.50 per dozen.**

HEUCHERA — ALUM-ROOT

H. BRIZOIDES. (Pink Bells.) Dwarf, compact bushy plants growing from 1½ to 2 feet high, flowering during July and August, with delicate, rosy-carmine flowers on slender red stems. **25 cents each; \$2.50 per dozen.**

HIBISCUS (Mallow or Malva)

From Old Greek, meaning to soften, referring to its soft, mucilaginous qualities.

Tall, vigorous-growing perennials of the most ancient culture. Used among the Romans as a vegetable, and still serves as food to the Chinese.

MALLOW MARVELS or GIANT FLOWERING

Hibiscus. (Marshmallow.) An improved form of our native Marshmallow or Rosemallow, in which the colors have been greatly intensified. Robust, upright habit, producing an abundance of flowers of enormous size, in all the richest shades of crimson and pink. Strong roots. **35 cents each; \$3.50 per dozen.**

HOSTA (Funkia) — PLAINTAIN LILY

HOSTA CAERULEA. (Blue Plantain Lily.) Shade-loving plants that look well just at the edge of a heavy shrub border. Shiny foliage and lavender-blue flowers. **25 cents each; \$2.50 per dozen.**

HOSTA VARIEGATA. Blue flowers and a fine foliage plant with leaves variegated with white. **35 cents each; \$3.50 per dozen.**

IBERIS — CANDYTUFT

IBERIS SEMPERVIRENS. Spreading habit and distinctly narrow foliage. Flowers pure white, covering the plant. **25 cents each; \$2.50 per dozen.**

LAVANDULA

L. SPICA. (Spike Lavender.) Grows about 1 foot and blooms July and August with short, dense spikes of fragrant blue flowers. **50 cents each; \$5.00 per dozen.**

LILIUM

LILIUM REGALE. (Royal Lily.) Enormous white flowers shaded pink or purple with a yellow center. Probably the easiest of the white lilies to grow, and will grow almost anywhere. Blooming size, **50 cents each, \$5.00 per dozen.**

TIGER LILY. Flowering in August, very bright red, thickly covered with large purple spots in a pyramidal cluster, 3 feet high. **35 cents each; three for 90 cents; ten for \$2.50.**

LIATRIS — CAT-TAIL GAYFEATHER

LIATRIS PYNOSTACHYA. A striking plant with great rocket-like spikes of pale purple flowers which start to open at the top of the spike. Will grow 4 feet high. **35 cents each; three for \$1.00; ten for \$2.50; \$18.00 per 100.**

LUPINUS

THE LUPINES are a coming flower. While they have been grown to a limited extent, they are now becoming very popular and will grow in very dry, sandy places and come in pink, blue, white and variegated. **Three for \$1.05; ten for \$2.70.**

LYCHNIS — CAMPION

L. CHALCEDONICA. (Maltese Cross.) A most desirable plant blooming in June and July with heads of brilliant orange-scarlet flowers; grows 2 to 3 feet high. **25 cents each; \$2.50 per dozen.**

L. VISCARIA FLORE-PLENO. (Double Rose-pink Campion.) A distinct variety with large double rose-colored flowers blooming in June and July; 12 to 15 inches high. **35 cents each; \$3.50 per dozen.**

MONARDA — BEEBALM

MONARDA DIDYMA. (Oswego Beebalm.) Showy flowers of brilliant scarlet in rich profusion, blooming from June to September. **25 cents each; \$2.50 per dozen.**

M. DIDYMA ROSEA. Same characteristics as above, but flowers are reddish rose in color. **25 cents each; \$2.50 per dozen.**

M. DIDYMA VIOLACEA SUPERBA. (Amaranth Beebalm.) A very distinct sort with purple-red flowers. **25 cents each; \$2.50 per dozen.**

PHYSOSTEGIA

PHYSOSTEGIA VIRGINIANA. (Ladies' Pink.) An elegant plant with dark, glossy, green foliage and long spikes of soft rose flowers; excellent for cutting. It produces its flowers during July, August, and September when few flowers are in bloom. Height, 2 to 3 feet. **25 cents each; \$2.20 for ten.**

PHLOX AMOENA

Grows 4 to 5 inches and flowers in April and May. Slender, erect plants with clusters of bright pink flowers. **75 cents for three; \$2.20 for ten.**

PHLOX SUBULATA

(Moss Pink.)

75 cents for three; \$2.20 for ten; \$15.00 per 100.
PHLOX SUBULATA. Dwarf Moss Pinks. A much-prized old-time garden plant, useful for colonizing, where it is desired to cover the earth with a tufted, dense, evergreen mat. It is much used in cemeteries, rockeries, for borders, and old-fashioned gardens. Blooms profusely in the Spring and is sweetly scented.

ALBA. Pure white.

LILACIANA. Flowers clear lilac.

ROSA. Soft pink very showy.

PHYSALIS — CHINESE LANTERN PLANT

PHYSALIS FRANCHETI. Large, heart-shaped leaves, with small, whitish flowers, followed in the Autumn with large, bright orange-red, balloon-shaped bag of papery texture. Fine for winter decorations. **35 cents each; 3 for \$1.00.**

Hardy Perennials—Continued

HARDY HYBRID ORIENTAL POPPIES

THE ORIENTAL POPPIES are unrivaled in their bright oriental colorings ranging from silvery white, soft pink, and reddish salmon to deep blood crimson and maroon. **50 cents each; \$4.00 for ten; \$30.00 per 100; twenty-five at hundred rates.**

PYRETHRUM

PYRETHRUM. A very pretty hardy plant with fern-like foliage resembling the daisy in form, but more beautiful colorings of pink, deep pink, red, lavender and white; fine for rock gardens. **25 cents each; three for 65 cents; ten for \$2.00.**

RANUNCULUS — BUTTERCUP

ACRIS FL.PL. Tall, double Buttercup. **35 cents each; three for \$1.00; ten for \$2.50.**

REPENS. Creeping Buttercup. **35 cents each; three for \$1.00; ten for \$2.50.**

RUBECKIA — CONE FLOWER

Indispensable plants for the hardy border; grow and thrive anywhere, giving a wealth of bloom, well suited for cutting.

GOLDEN GLOW. A well-known popular plant, strong, robust grower, attaining a height of 5 to 6 feet; produces masses of double golden-yellow flowers from July to September. **25 cents each; \$2.50 per dozen.**

SEDUM — STONECROP

S. ALBUM. White Stonecrop. A creeping variety, small foliage and tiny white flowers.

S. KAMTSCHATICUM. Orange Stonecrop. Bright evergreen foliage, golden flowers in flat clusters.

S. PRUINATUM FORSTERIANUM. Small tufted plant with round bunches of tiny yellow flowers.

S. SARMENTOSUM. Stringy Stonecrop. A slender creeping plant, with whorled, threadlike leaves and flat heads of small, fleshy, yellow flowers. **35 cents each; three for 90 cents; ten for \$2.40; \$18.00 per 100.**

S. SEXANGULARE. Hexagon Stonecrop. Very slender stemmed plant with tiny yellow flowers.

S. SPECTABILE. Showy Stonecrop. Erect-growing plant with large heads of rose-colored flowers.

S. STOLONIFERUM. Running Stonecrop. A trailing plant with flat leaves and pink flowers. Any of the above Sedums, **25 cents each; \$2.50 per dozen; \$18.00 per 100.**

SHASTA DAISY (Burbank)

ALASKA. Large pure white. **25 cents each; \$2.50 per dozen.**

ASIA. Large, semi-double, pure white. **35 cents each; \$3.50 per dozen.**

SPIRAEA or ASTILBE

(Goat's Beard, Meadow Sweet.)

Elegant border plants with feathery plumes of flowers and neat, attractive foliage; succeeds best in a half-shaded location in rich, moist soil.

FILIPENDULA FL. PL. (Double-flowered Dropwort.) Numerous corymbs of double white flowers; buds tinted rose-pink; produced on stems 15 to 18 inches high, during June and July. Finely cut distinctive fern-like foliage. **90 cents for three; \$2.50 for ten; \$18.00 per 100.**

THERMOPSIS

THERMOPSIS CAROLINIANA. A tall plant, growing from 3 to 4 feet, blooming in June and July along the upper part of the stalk in pear-shaped blossoms. **50 cents each.**

TRADESCANTIA — SPIDERWORT

TRADESCANTIA ALBA. An all-round plant for wet or dry, sunny or shady situations, continuing in bloom from early Summer until frost. Pure white, three-petaled flowers in clusters on long stems, and long pointed foliage. Height 2 feet. **25 cents each; \$2.50 per dozen.**

TRADESCANTIA VIRGINIANA. An old garden plant, with grass-like foliage and violet-blue flowers all summer. Height 2 feet. **25 cents each; \$2.50 per dozen.**

TRITOMA — THE EVERLASTING FLAME FLOWER

Plants are perfectly hardy in the open ground all winter south of Philadelphia; further north they must be protected of wintered in a cellar. Just bury the roots in sand; nothing more is required. Should be planted out early in Spring, and will commence growth and bloom at once, growing larger and finer every day. Plants show from 6 to 20 grand flower stalks all the time, each holding at a height of 3 to 4 feet a great cluster of flame-colored flowers of indescribable beauty and brilliancy. Fall frosts do not kill or stop its blooming, and it is as brilliant as ever long after all other garden flowers have been killed. For cutting it is unsurpassed, and the beautiful long spikes keep several weeks in water. **50 cents each; \$5.00 per dozen.**

TROLLIUS — GLOBE FLOWER

Very showy flowers of globular shape, resembling giant buttercups, yellow in color. They like damp places and will do well in the shade. **50 cents each; \$5.00 per dozen.**

VERONICA — SPEEDWELL

VERONICA LONGIFOLIA. (Blue Jay.) One of the handsomest blue flowering plants, spikes completely studded with beautiful blue flowers. **50 cents each; three for \$1.20; ten for \$3.50.**

VERONICA RUPESTRIS. (Heavenly Blue.) A splendid light blue, 18 inches to 2 feet. **50 cents each; three for \$1.20; ten for \$3.50.**

VERONICA SPICATA. (Spike Speedwell.) Eighteen inches, June to July, long spikes of violet-blue flowers, one of the best plants for a sunny border. **35 cents each; three for \$1.00; ten for \$2.50.**

VIOLA

VIOLA, JERSEY GEM. An improved variety of Tufted Pansy with showy, violet-blue flowers. **35 cents each; \$3.50 per dozen.**

JERSEY GEM, WHITE. Free. **35 cents each; \$3.50 per dozen.**

YUCCA — ADAM'S NEEDLE

YUCCA FILAMENTOSA. A stately foliage and flowering plant equally imposing in solitary or group planting; always conspicuous. The broad sword-like foliage is evergreen, while in mid-summer it shows great erect, branching stems, bearing a showy display of pendant, creamy white bells. Very fragrant; flowers in July and August. Roots, **25 cents each; \$2.50 per dozen; larger plants, 50 cents each; \$5.00 per dozen.**

VERBASCUM — MULLEIN

VERBASCUM PHOENICEUM. (Purple Mullein.) Flat rosettes of crinkly, woolly leaves from which rise slender spikes of mauve-pink or rosy-violet flowers. **35 cents each; \$3.50 per dozen.**

All Hardy Perennials are shipped prepaid at above prices.

Ornamental and Flowering Shrubs

Shipped by Express at Purchaser's Expense.

A good Shrub collection will present the greatest variety of colors throughout the season, both in flower and foliage.

Irregular massing is the most picturesque method of shrub planting. When right selections are made, they will serve almost as well as Evergreens, to shut out from view fences and other low, unsightly objects. It is my constant aim to grow everything that is useful, hardy, and worthy of cultivation in our climate.

Annual pruning should be done directly after flowering. When planting, the best way to maintain a balance between roots and branches is to cut the latter to half their length. I prune all I ship out, so they are properly pruned, and ready to plant and grow. When pruning, the old scraggy wood and spindly shoots should be cut out. When planting, the holes should be made large enough to allow the roots to be spread out in a natural way. Firm planting is essential to the future well-being of the shrub. In planting, therefore, the soil should be crowded around the roots firmly. The top-soil should be kept cultivated to a depth of two to three inches.

If heavy bushes are desired, I have good large specimens that will produce immediate effect. These are designated by the word specimens throughout the descriptions.

AZALEA MOLLIS

Resembles a dwarf rhododendron with good foliage and bears flowers in all shades of red, yellow, and orange. Perfectly hardy and will thrive in sunny positions anywhere. The roots must not come in contact with barnyard manure and will not live in limey soil. Particularly adapted to shady spots in the garden.

18 to 24 inches **\$4.50**

BERBERIS — BARBERRY

BERBERIS THUNBERGII. Where a low, dwarf, deciduous hedge is wanted, nothing equals this beautiful Barberry. It is spreading of habit, growing extremely thick right from the base and requires but little pruning to keep it in shape. The leaves are small, light green, and toward Fall assume rich, brilliant color, the fruit or berries becoming scarlet; absolutely hardy in all parts of the country.

10 to 15 inches	Doz.	100
15 to 18 inches	\$1.50	\$10.00
18 to 24 inches	2.50	12.00
24 to 30 inches	3.00	18.00
	3.50	25.00

DEUTZIA

We are indebted to Japan for this valuable genus of plants. Their hardihood, fine habit, luxuriant foliage and profusion of attractive flowers place them among the most beautiful and most popular of flowering shrubs at the present time. Flowers in June and through July and August.

PRIDE OF ROCHESTER. A variety of Deutzia Crenata Flore Plena, producing large, double white flowers; backs of the petals slightly tinted with rose. It exceeds all the older sorts in size of flower, length of panicle, profuseness of bloom and vigorous habit; blooms nearly a week earlier.

	Each	Dozen
24 to 36 inches	\$5.00	\$5.00
36 to 48 inches75	7.50
4 to 5 feet specimen bushes	1.00	10.00

HYDRANGEA

HYDRANGEA ARBORESCENS GRANDIFLORA. (Snowball Hydrangea.) This magnificent, perfectly hardy American shrub has snow-white blossoms of largest size. One of its most valuable characteristics is its coming into bloom just after the passing of all the early Spring shrubs, while its long flowering season, from early June until late August, makes it a valuable acquisition in any garden. Small plants, **50 cents each; \$5.00 per dozen;** specimen plants, **\$1.00 each.**

HYDRANGEA PANICULATA GRANDIFLORA. Without doubt the best-known and most-popular Autumn flowering shrub in cultivation at the present time. The flowers, which are borne in dense, pyramidal panicles a foot long in the greatest profusion, are white when they first open, but gradually change to rose color, and remain in good condition for weeks. Extra fine bush plants. **\$1.00 each; \$10.00 per dozen.**

FORSYTHIA — GOLDEN BELL

Familiar to all as the shrub that blooms in the very early spring with its tender yellow blooms on leafless branches, showy and spectacular.

	Each
3 to 4 feet	\$1.00

LONICERA — HONEYSUCKLE

LONICERA JAPONICA HALLIANA. (Hall Japanese Honeysuckle.) A vigorous grower with fragrant yellow and white flowers from midsummer to frost. This makes a good ground cover. **50 cents each; \$5.00 per dozen.**

CALIFORNIA PRIVET

Of all ornamental hedge plants this is the most popular and more of it is planted than all others combined. Its foliage is a rich, dark green and is nearly evergreen, remaining on the plant until mid-winter. It is of free growth and succeeds under the most adverse conditions, such as, under dense shade of trees where other plants would not exist.

To form a dense hedge from the base up the plants should be severely pruned the first two seasons. Plant the one-year-old size 8 inches apart in the row, the larger sizes 10 to 12 inches apart.

	Doz.	100
Strong, 1 year, 18 to 24 inches	\$1.00	\$10.00
Strong, bushy, 2 year, 24 to 30 inches	2.50	12.00

LIGUSTRUM AMURENSE

(Amoor River Privet.)

An ornamental hedge plant somewhat similar to the famous California Privet, but hardier. Leaves dark, glossy green.

	Doz.	100
2 to 3 feet	\$3.50	\$25.00
3 to 4 feet	4.00	30.00

PRUNUS — ALMOND

PRUNUS GLANDULOSA. (Double Pink-Flowering Almond.) Very double, rose-colored flowers in great profusion in the early Spring. A charming early flowering shrub.

2 to 3 feet	\$1.00
P. GLANDULOSA SINENSIS. Similar to the above, but producing an abundance of double white flowers.	
2 to 3 feet	\$1.00

ROSA RUGOSA

A stout shrub growing 6 to 8 feet with tough, wrinkled foliage, immune to insects and disease. The flowers are large, single, and of a purplish red, followed by scarlet fruit.

2 to 3 feet	\$0.50
3 to 4 feet75

R. HUGONIS — (Hugonis Rose)

A big, arching shrub, spiny stems and somewhat feathery foliage of pale green. The flowers are single, yellow in color and followed by red, translucent fruit.

	Each
2 to 3 feet	\$1.50

CLIMBING ROSES

DOROTHY PERKINS. Immense clusters of tiny exquisitely formed little roses of rich, shell-pink in varying shades. **75 cents each.**

EXCELSIOR. Same as Dorothy Perkins in every respect, except the flowers are bright, light crimson. **75 cents each.**

PAUL'S SCARLET CLIMBER. Brilliant scarlet flowers of large size on a moderately growing plant suitable for tying to a post or pillar. **\$1.00 each.**

BABY RAMBLERS. Immense clusters of flowers produced with great freeness; the plants are covered. I offer three colors: rose-pink, red, and crimson, in strong, field-grown plants.

	Each
18 inches to 2 feet	\$1.00

Ornamental and Flowering Shrubs—Continued

SPIRAEA

VAN HOUTTEI. (Bridal Bower.) By many this is regarded as the finest of all Spiraeas, and it is assuredly one of the most esteemed shrubs in cultivation. It forms an erect bush with graceful arching branches, well covered with neat, rich green foliage, and in early Summer a profusion of large, pure white flower clusters. Very hardy and most effective.

	Each	Doz.
12 to 18 inches	\$3.35	\$3.50
18 to 24 inches	.50	4.00
24 to 30 inch specimen bushes	.75	6.00
3 to 4 feet specimen bushes	1.00	10.00

S. BUMALDA. (Anthony Waterer.) A free-blooming, compact shrub with bright crimson flowers in broad, flat heads. The foliage is often variegated with crimson, white, and yellow. Makes a desirable low-growing hedge.

	Each
2 to 3 feet	\$0.75
3 to 4 feet	1.00

S. OPULIFOLIA AUREA. (Viginian Guelder Rose.) An interesting variety of medium growth with golden-tinted foliage and large white flowers in June.

	Each
3 to 4 feet	\$1.00
4 to 5 feet	1.50

SYMPHORICARPOS

RACEMOSUS. (Snowberry.) A well-known dwarf shrub with pink flowers and white berries that hang on the plant the greater part of the winter.

2 to 3 feet	\$0.75
-------------	--------

S. VULGARIS. (Indian Current.) Similar to the above, but with bright red fruit.

2 to 3 feet	\$0.75
-------------	--------

WEIGELA

WEIGELA ROSEA. (Pink Weigela.) A very free-flowering shrub with an abundance of bright-pink, somewhat tubular flowers. Like all the Weigelas, it blooms for a long time.

	Each
2 to 3 feet	\$0.75
3 to 4 feet	1.00

W. ROSEA VARIGATA. A low-growing variety with white margined leaves and almost pure white flowers.

	Each
2 to 3 feet	\$0.75
3 to 4 feet	1.00

W. EVA RATHKE. A hybrid variety and perhaps the most showy of all, with dark brownish-red flowers, with a little lighter center. Flowers very profusely and is very popular.

	Each
2 to 3 feet	\$0.75
3 to 4 feet	1.00

BLACK WALNUT

Well known as a sturdy, dense shade tree, widely spreading and perfect in form. I offer strong, healthy, well-shaped seedlings.

	Each
15 to 18 inches	\$1.00

Perennial Seed

For Fall planting, try some of these seed and have a fine hardy garden.

Fresh select seed, if planted this Fall, will all flower the coming Spring and Summer, and will make fine plants if care is taken in a proper way. Ground Bone Meal is excellent for seed beds; and for wire, grub, and cutworms, use wood ashes on top of your beds, and you will find you will not be troubled very much with worms. If used lightly on all beds after the seed is up, and especially after transplanting, there is nothing better.

AQUILEGIA

AQUILEGIA. Blackmore and Langdon. Long-spurred, select mixed, some of the most beautiful colors ever seen in Aquilegia in this mixture. **25 cents pkg.; six for \$1.25; 50 cents for trade pkg.**

AQUILEGIA. English short-spurred variety, mixed. **25 cents pkg.; 50 cents trade pkg.**

COREOPSIS

COREOPSIS, LANCEOLATA. Clear yellow, single flower, very free. **25 cents pkg.; 50 cents trade pkg.**

DELPHINIUM

BELLADONNA. Long a favorite because of its lovely sky-blue color, grows 2½ feet; **25 cents pkg.; 50 cents trade pkg.**

ENGLISH HYBRIDS. Blackmore and Langdon. Some of the most beautiful colors are found in this strain of Delphiniums, but they run mostly to large single lavender, blue, purple, and pink and white shades. **25 cents pkg.; 50 cents trade pkg.**

HOLLYHOCK HYBRIDS. Blackmore and Langdon. The world's best double hardy Delphinium, some growing to 7 and 9 feet, with enormous great heads; all the lovely shades ever found in Delphinium; soft lavender, lavender-blue, deep purple, violet with deep red shades, as well as pink, salmon-pink, and white shades appeared in all I grew this past season of this type of flower and I claim it the most wonderful strain ever offered. I have tried most of the other strains, but nothing can be found better. Try some of these seed and be convinced. **50 cents pkg.; large pkgs. \$1.00 each.**

DIGITALIS — Foxglove

Select mixed. **25 cents pkg.; 50 cents trade pkg.**

GAILLARDIA — Blanket Flower

One of the best possible mixtures ever offered in mixed seed of this type; golden yellow with bronze and maroon colors. **25 cents pkg.; 50 cents trade pkg.**

JAPANESE IRIS SEED

The Kaempferi

These seed are selected from over two hundred varieties of Japanese Iris and of mostly six-petal types. This is the first time I have ever offered this seed for sale. I have grown some of the most wonderful Japanese Iris plants from this seed ever seen or exhibited. Select mixed seed. **50 cents pkg.; \$1.00 trade pkg.**

LIATRIS, or GAYFEATHER

Long showy spikes of deep lavender-blue. **25 cents pkg.; 50 cents trade pkg.**

PHLOX

Hardy mixed, taken from our named varieties, some of the best ever offered. **25 cents pkg.; 50 cents trade pkg.**

TRITOMA — Red Hot Poker

Mixed early sorts. **25 cents pkg.; 50 cents trade pkg.**

Dahlia Cutting Knives

Made of Finest Steel—
50 cents each.

