

Historic, Archive Document

Do not assume content reflects current scientific knowledge, policies, or practices.

2.75

LIBRARY
FEB 8 1930
U.S. Department of Agriculture

ALMY'S SUPREME DAHLIAS

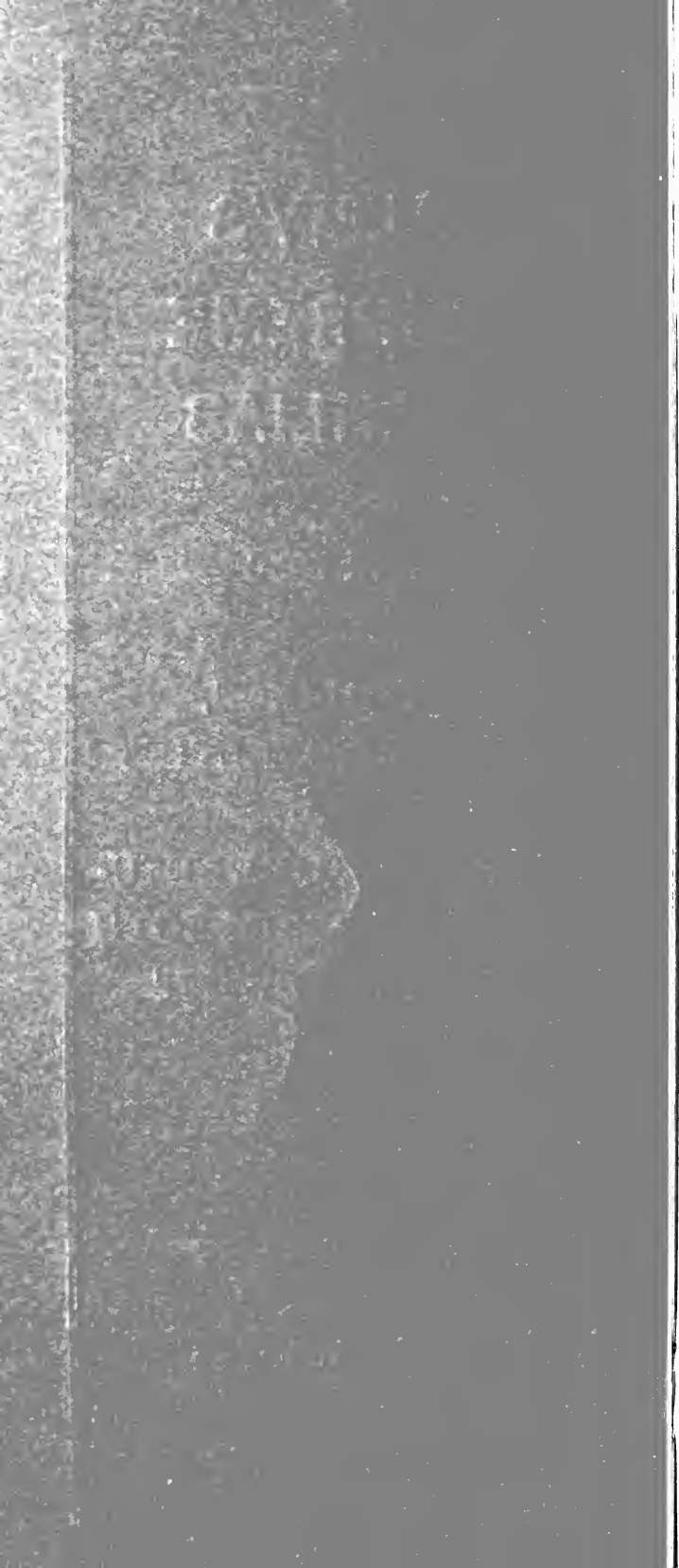
FOR 1930

SEEDLINGS,
CHOICE NOVELTIES
AND
VARIETIES OF UNUSU-
AL MERIT FROM BOTH
EAST AND WEST

F. W. C. ALMY

BOX D

TIVERTON 4 CORN., R. I.



ALMY'S SUPREME DAHLIAS

It is with pleasure I submit my Annual Catalogue of Dahlias for 1930. I wish to call particular attention to my Seedlings listed within, also to my Green Plants described in the back of this catalogue.

Thanking my many customers for their patronage and kind letters of appreciation.

Sincerely,

F. W. C. ALMY.

ABBREVIATIONS

D. or Dec.—Decorative. H. C.—Hybrid Cactus.
C.—Cactus. P—Peony. P.-D.—Peony-Decorative.
(Descriptions are in Most Cases the Originators)

TERMS

Cash with order or in advance of shipment. On large orders, we require a small deposit as evidence of good faith. This List cancels all previous prices.

SEEDLINGS

NEW INTRODUCTIONS FOR 1930

It gives me great pleasure to place before all Dahlia lovers the following, each of which is a distinct addition to the list of new creations.

I grew practically all of the new Introductions of sufficient merit to be on the Honor Roll for 1928, and many beside, and I can truthfully say my great new seedling, "**Supreme Glory**" was in size superior to all, and in most other points as well. This is a Decorative, seedling of Elite Glory, a beautiful golden yellow with reverse of all petals heavily flushed with the red of its parent—Elite Glory—and with face of some petals slightly tinted with the same, particularly in the early blooms, making a flower of rare beauty. The petals are very long and wide, and the center is absolutely full, **always**. One of the first to bloom, it is full of flowers till frost, and is the most **prolific big dahlia** I know. I have picked 5 flowers, each 10 inches or over, from a single plant in one day and there were seven more blooms partly opened or showing color. The stems, which are cane stiff, will average, at least, 2½ to 3 feet in length (and I have cut them 5 feet), carried over a spreading plant 4 to 5 feet tall. It requires **no disbudding** as the crown bud is so much larger than the two side buds that they do not bother at all. The stems are leafless for 18 to 20 inches and very few joints, for balance of their length. Its prolificacy of bloom is due to the great number of flower stalks thrown up, which start from the lower joints and grow far above the bush. It is a fine keeper in the Show Room, and absolutely the most spectacular of any I ever grew in the garden. The flowers, which are deep as well as large in diameter, have been grown to 11½ inches with **no feeding, forcing or disbudding**, and the plant is practically immune to insect pests, even the borers seldom attacking its hard and woody stem. Considered by visitors and practically all who saw it, as the outstanding variety in my gardens. Tubers, \$15 each; 3 for \$40. Plants, \$7.50 each; 3 for \$20.

The following is the report of Dr. A. J. Faulk of Mitchell, Nebraska on "**Supreme Glory**." Dr. Frank maintains a private Trial Grounds where he grew over 400 varieties from the leading growers both East and West and his varieties included all of Derrill W. Harts' Roll of Honor Dahlias of 1929 as well as the Sunkissed Roll of Honor Dahlias. Report in his own words: "Your '**Supreme Glory**' was by far the best gold colored Dahlia on these Gardens. It was the most **prolific bloomer** on the

Gardens. I did not pinch out or disbud, yet had flowers on all the plants (of it) from 8 to 10 inches. I counted the flowers on two of the plants. One had 48 flowers and buds at one time and the other 52 and each plant had 3 blooms over 9 inches. What it would do if properly disbudded I cannot say. It was so beautiful and attractive I left it natural. It bloomed among the earliest and retained full center till frost. It does not burn in the most trying summer heat of this section. Each plant was a golden bouquet so full of flowers that the foliage was hardly discernable. It keeps well, has long, clean stems, that are wirey and hold the flowers right all season. I cannot say too much for Supreme Glory and have recommended it to all my friends."

"Rose Marie," is a H. C., of a lovely shade of rose pink with some blooms showing about an inch of white at base of petals. The color is much like Robert Treat, but will not burn and scarcely fades at all. This is not an immense dahlia—9 to 10 inches—but for sheer beauty it is the best of its color, and the petals are so waved, as to have a positively "marcelled" appearance which added to its lovely color, makes a flower that is very artistic, and exquisitely beautiful. The plants are extremely vigorous and branching, growing 6 feet or more in height, and stems are long and stiff. A prolific bloomer and splendid keeper, and free from insect pests. It is a very liberal producer, and makes large clumps. Price of tubers, \$10 each; Plants, \$5; 3 for \$12.50.

In "Purity" I have a peony of unusual merit. It is one of the five or six really, great peonies I know, and is invaluable to fill out your peony class. A seedling of Elite Glory it has the size and stems (fully 3 feet long) of its parent, and the same long wide petals but—as the name implies—it is pure white, with absolutely no tint of yellow, or cream, and has a big, deep yellow, center, which makes it very beautiful. Outstanding in its class. Tubers, \$7.50. Plants, \$3.75; 3 for \$10.50.

Sakonnett Queen, Dec. This dahlia is one of the most vivid pinks and slightly different in shade from any I know. A very prolific bloomer on stiff stems and a wonderful keeper. Will remain in good condition for a week when picked and even longer on the bush. Plant is an extra sturdy grower 5 feet tall with very dark green foliage which sets off the large vivid blossoms to advantage. A beauty in the garden and fine for Exhibition. Center always closed. Tubers, \$10. Plants, \$5; 3 for \$12.50.

NOVELTIES and ROLL OF HONOR

DAHLIAS OF 1929

(New Introductions for 1930)

American Triumph, Cactus. (Amer. D. Farms)—Winner of The American Home Achievement Medal at New York as Most Worthy New Dahlia. A true cactus of immense size (9 to 10 inches under field conditions) and extra long stiff stems. Its color is a clean, rich red and a wonderful keeper. Also won at Trenton. Tubers (limited), \$10. Plants, \$5.

Dorothy Stone, Dec. (F. and M.)—A large, brilliant pink, brigher and richer than Kathleen Norris and would likely have won sweepstakes prizes if shown in open competition. A beautiful color, healthy habits and good stem. Derrill W. Hart says: "it would not surprise us to see it defeat its own garden companion, Kathleen Norris, in the pink classes of the future" which is praise indeed. Tubers (limited), \$10. Plants, \$5.

Thomas A. Edison, Dec. (Maytrott)—A gorgeous royal purple of Exhibition size and quality and staghorn petal formation. Dark green insect resistant foliage, cane stiff stems and thrifty growing habit. Named by permission of the famous electrical wizard, and selected by him as meeting his complete approval. Plants only, \$10.

W. H. T. Dec. (McCarroll-Schling)—A new giant super Exhibition dahlia of an unusually brilliant deep old rose with faint tints of mauvre on reverse of petals. A most vigorous grower on canestiff stems. Petals extra wide and long recurring so they completely hide the stems making a bloom of immense depth as well as diameter. Plants only, \$10.

Cardinalis, Dec. (Kennedy-Waite)—Winner as Best Undisseminated New Jersey Seedling at Trenton, also won seedling prize at Red Bank. A brilliant Cardinal red, resembling Elite Glory in general formation, but with more attractive foliage and a brighter color which does not fade in sunshine. Tubers, \$10. Plants, \$5.

Monmouth Champion, Dec. (Kemp.)—Winner of a special Award of Merit at Elizabeth, N. J. and as Best Undisseminated Seedling at Red Bank, defeating some of the top-notchers. The only dahlia in its color, a brilliant orange flame that fairly glistens from its own coloring. Beautiful in the garden or for Exhibition, producing perfect blooms the entire season. Tubers, \$10; Plants, \$5.

Gov. Morgan F. Larson, Dec. (Lyndora Gdn's)—The only 1929 dahlia making anything like the 1928

record of Kathleen Norris. Winner of Governor Larson's Cup at Trenton as Most Worthy Undisseminated Dahlia, also won Best Yellow in the Open to all Classes at Camden both red hot Dahlia shows. Color is clear, bright gold and one of the most impressive of the new ones on account of its immense size, but not coarse in appearance. Tubers net, \$10. Plants, \$5.

Orinda Dec. (Newberry-Frazer)—The best New Dahlia at 1929 Boston Show. Winner of The American Home Achievement medal, the Dahlia Society of New England Gold Medal and two other firsts. A rich, deep, mauve pink on long stiff stems. Immense flowers. Plants vigorous and apparently insect and disease proof. Tubers, \$15. Plants, \$7.50.

Buckeye Bride, Dec. (G. A. Dahlia Farms)—A truly, great pink of a beautiful and unusual shade of salmon pink and received the highest rating of any G. R. dahlia—94. Stems always long and perfect, very prolific and a good keeper. "For beauty no other pink we have grown approaches it." Tubers, \$10. (April 15 delivery.) Plants, \$5.

Frank Miller, Dec. (Burch)—A 10 inch Exhibition Commercial flower on a straight stiff stem. "The best yellow Dec. in America"—Warren. Winner every time shown for two years. Tubers (limited), \$10. Plants, \$5.

A number of other outstanding new varieties for 1930 too late to Catalogue. If you miss what you want write us. We likely have it.

ROLL of HONOR and PRIZE WINNING NOVELTIES of 1929 INTRODUCTION

A. O. Kenney, Dec. (Darling)—A large, deep flower, on fine stems. A beautiful, golden buff, with the always full center, slightly tinted with bronze. Mr. Derrill W. Hart says of it: "Never on any flower have I seen more gold dust on the petals." Tubers, \$10. Plants, \$4.

Brockton Beauty, Dec. (Carver)—A very large flower of great depth and size, which commands attention in the garden or on the Exhibition Bench. An early and profuse bloomer, and flowers retain their extreme size till the end of the season. Color a pinkish lavender, shading to a creamy white center with reverse of pinkish lavender. Has a fine stiff stem holding the very large flowers well above the foliage. Won Certificate of Merit at Storrs. Tubers, \$7. Plants, \$3.50.

Chemars Masterpiece, English cactus. (Chemar)—

Seedling from Mrs. I de Ver Warner. Huge incurved cactus flowers 10 inches in diameter on extra long stiff stems. Color similar to Mrs. Warner. Certificate at New Jersey Trial Grounds. Tubers, \$5. Plants, \$2.50.

Chemars Purity, Dec. (Chemar)—A most perfect white seedling of Jersey's Beauty which it resembles except in color. Petals long and straight, size immense, extra long, stiff stems hold flowers high above a sturdy plant. Show a slight touch of ivory toward center when first opening which later changes to pure white. Certificate, American Dahlia Society Trial grounds and scored 86 at Nebraska Trial Grounds. Tubers, \$5. Plants, \$2.

Chemars (U. S. A.)—A large, deep flower with airtight center, stems long, and cane stiff. Color like old U. S. A. Tubers, \$5. Plants, \$2.50.

Coquette, Dec. (F. and M.)—An immense flower and a beautiful combination of red and gold. A thick, fluffy flower with curled and twisted petals on grand stems. Much better in 1929 than 1928. Tubers, 7. Plants, \$3.50.

Derill W. Hart, Dec. (Broomall-Success)—A very large flower on a fine stem, and in color different from anything yet produced. Copper, shading to henna and brown, with a golden tint on some of the center petals. Tubers, \$7. Plants, \$3.50.

Florence Klein, Dec. (F. and M.)—One of the largest of the new Dahlias, a very deep full centered flower of a gorgeous salmon-orange. A vigorous plant with dark green leathery foliage and long, black, stiff stems. An exhibition bloom of remarkable size and exquisite brilliancy. Tubers, \$6. Plants, \$3.

Fordhook Marvel, Dec. (Burpee)—The best of their prize winners at New York, and attracted a lot of attention. A big bold flower, a bright, rich, salmon shading to terra cotta red. A huge flower on grand stems and destined to be a big prize winner. Tubers, \$7. Plants, \$3.50.

Grace Records, Dec. (Records-Maytrott)—An outstanding novelty of 1929. Giving Kathleen Norris a close run at Camden Show. A very large flower of artistic formation tipped and suffused lavender on white ground. Cleft petals and a tall, strong grower. Tubers, \$10. Plants, \$5.

Graf Zeppelin, Dec.—A very large pure white decorative on grand stems which may be cut three feet or more in length. A great prize winner and wonderful keeper being almost as fresh the last day of the shows as the first, making it the outstanding Exhibition white. Tubers, \$10. Plants, \$5.

Jersey's Glory. (Waite)—Another of Mr. Waite's beautiful 1929 introductions, (Dec.) A sparkling orange, mingled with yellow. Long, stiff stems which arch gracefully. Large flowers, freely produced and stems may be cut as long as Jersey's beauty. Tubers, \$7. Plants, \$3.50.

Kathleen Norris, Dec. (Fisher and Masson)—Without doubt the outstanding introduction for 1929. The judges of four leading shows gave it the highest awards: New York—Gold Medal Ribbon and "Garden and Home Builder" Achievement Medal for Best Seedling; Newark, N. J.—Kresge Trophy for best flower in Court of Honor, also "Garden and Home Builder" Achievement Medal; Trenton, N. J.—Silver Medal (Highest Award) for Best Seedling; Camden, N. J.—Gold Medal for Best Seedling and Silver Trophy for Best Flower in Court of Honor.

Bloom of gigantic proportions, a true rose-pink, later deepening to mallow pink. Broad overlapping petals with twisted ends, and center always full and on a stem that holds it right up to be seen and admired. Foliage dark green and leathery and positively insect proof. Tubers, \$10. Plants, \$5.

King Midas, Dec. (Peacock)—A gorgeous, deep, golden yellow and considered by Derrill W. Hart one of the six greatest Exhibition dahlias of Eastern origin and a constant winner 1929. Produces 6 to 8 immense Exhibition blooms at one time on perfect stems. Tubers, \$10. Plants, \$4.50.

Marshall's Matchless, H. C.—A giant flower easily 11 inches in diameter. Spinel pink or bright Cattelya held erect on three foot stems and splendid keeper. Petals end with sharp points. Tubers, \$10. Plants, \$5.

Mary Louise Phelan (Wonder Cactus) (Murphy)—Claimed by the originater as the most wonderful and beautiful dahlia ever produced. American cactus 10 inches bloom, 6 inches deep with unusual colors. Two-tone magenta with plum and purple overcast, pure white center and tips on good stems. A \$25 dahlia. Tubers, \$10. Plants, \$5.

Minner Eastman. (Eastman)—Classed as a Decorative. To my mind it is a true H. C., a beautiful red and gold flower up to 10 inches in size and on 3 foot (or more) stems, stiff as canes. A most prolific bloomer and holds its size all the season. Very striking in the garden and fine for Exhibition. Tubers, \$7.50. Plants, \$3.50.

Miss Longview, H. C. (Tyler)—The best of Miss Tyler's 1929 introductions. This huge dahlia is bright canary yellow reverse jasper red which suf-

fuses the many outer rows of petals as they mature, giving them a soft, salmon tone, while center retains its yellow color; whole flower has glistening sheen, and grows 10 inches without disbudding and 6 inches deep, on long cane-like stems. Center always full. A worthy rival of the great Marmion and should become equally popular. Tubers (limited), \$10. Plants, \$5.

Mrs. Alfred B. Seal, Dec. (Seal)—Described by the originator, as follows—"Undoubtedly the largest and finest pure, rich, glowing, old rose Dahlia ever produced—nothing we have ever seen can even remotely approach it. Such an unusual coloring—the softest, richest shade of pure, glowing, old rose imaginable. The flowers are huge, measuring with Siskiyou, and of great depth and substance, and held proudly erect above a tall, strong bush. It won at Palace Hotel, the Garden and Home Builder Achievement Medal for Best New Dahlia, originated west of the Rocky Mountains. New for 1929 and the outstanding Western Dahlia of the year." Tubers, \$15. Plants, \$6.

My Country, Dec. (Murphy)—The big noise in the red and white class. A 9 to 10 inch flower of great depth on stiff stems, facing the 2-inch wide petals are pure white edged with deep garnet, $\frac{1}{4}$ inch wide, on each side. Later turning to all garnet at base; tipped white. Tight center. Tubers, \$7. Plants, \$3.50.

Orange Beauty, Dec. (Chemar)—A sport from Jersey's Beauty which it resembles in every way except color which is brilliant orange shaded lighter toward the center. Sold last year for \$25. Tubers, \$10. Plants, \$5.

Romance, Dec. (Schling)—Another beautiful novelty. Considered about the most beautiful Dahlia of the year. A lovely, rich, clear pink, charmingly interblended with lighter pink. Massive deep flowers on extra long stiff stems. Certificate of Merit, also First Prize in Pink Color Class. Tubers, \$10. Plants, \$5.

Sunrise, Dec. (Murphy)—Giant blooms, up to 11 inches, deep and full, held high above the foliage on best of stems. A true aristocrat of the dahlia family. Color is a two-tone salmon pink, with gold variations and tips in soft pastel tones. A most perfect Decorative. Tubers, \$7.50. Plants, \$3.50.

The Spirit of St. Louis, Dec. (Carver)—Winner of the Achievement Medal for Best New Dahlia of New England origin, at Boston, which is praise enough. A very large, long petalled Dahlia, of a rich American beauty color, shading toward royal purple. Stems and center O. K. Tubers, \$7. Plants, \$3.50.

The World, Dec. (Maytrott)—Selected at American Dahlia Show by Mr. J. D. Sullivan of the N. Y. World, as best red. Rich, deep rosy magenta, overlaid garnet with silver shadings on edge of petals. Ten inch blooms and 5 inches deep. Robust, leathery foliage. Much better in 1929 than 1928. Tubers, \$7.50. Plants, \$3.75.

Treasure Island, Dec. (Maytrott)—A beautiful, apricot with gold and rose suffusions. Easily grown 10 inches or more, 5 inches deep and stems may be cut 5 feet long. Strong grower. Tubers, \$7.50. Plants, \$3.75.

Watching Wonder, Dec. (Smith)—Next to Kathleen Norris, considered by expert judges, the most spectacular Dahlia of the year and a sensation at New York and Newark. A more impressive flower than Watchung Sunrise, which is "saying a mouthful." Royal red with a touch of gold at center and now and then a petaloid of gold to enhance its beauty. Grew this 11¾ inches, 7 inches deep in 1929. Full center and grand stems. Tubers (very limited), \$10 net. Plants, \$5.

Western Giant, Dec. (Lee)—Well named, a giant of giants, and even larger than Marmion—the mammoth of the Dahlia world. A sure prize winner in the Big-Bloom Sweepstake Class. Stems long and strong and hold the mammoth blooms up to look you in the face. Plant medium height. Color a very bright orange, with tints of gold, reverse salmon rose. A wonderful Dahlia. Tubers, \$10. Plants, \$5.

Yellow Beauty, Dec. (Waite)—A seedling of Jersey's Beauty with same splendid stem, perfect form and habit of growth, and destined to become as popular in the Yellow Class as the former became in the "Pinks" (and Jersey Beauty was the most popular Pink Dahlia ever produced). Winner in 1929. Tubers, \$10. Plants, \$5.

WORTHY and OUTSTANDING VARIETIES of PREVIOUS INTRODUCTION

Betty Ivins, Dec. (F. and M.)—A large and very full flower of a rich salmon, overlaid with an amber glow, with rosy pink reverse. Stems long and stiff. Plants only, \$3.

Col. Charles A. Lindbergh, H. C. (F. and M.)—Beautiful rose "du Barry" shade, overlaid and suffused old ivory, shading to pale gold at center. Reverse, carmine pink; large and free on rigid stems. Tubers, \$2.50. Plants, \$1.25.

Edna Ferler, H. C. (F. and M.)—A 1927 introduction that won everywhere and was easily the outstanding dahlia of the year. An Exhibition H. C.

of huge size. (11 inches and very deep) on long stiff stems. A glistening coral, shading to old gold at base of petals, which are beautifully twisted. A grand novelty within the reach of everyone. Tubers, \$3. Plants, \$1.50; 4 for \$5.

Fort Monmouth, H. C. (Kemp)—One of the giants of the Dahlia World, growing 13 to 14 inches, over a tall, robust plant 7 to 8 feet high. Very prolific and frequently has 5 or 6 immense blooms open at once on extra long, stiff, stems. A rich crimson maroon that does not burn and is a splendid keeper either on the bush or cut. A most spectacular variety and constant winner. Tubers, \$5. Plants, \$2.50.

Galli-Curci, Dec. (Lyndora)—An immense curly petaled decorative of a brilliant salmon orange, intensified with gold tints and has an unusual sheen. Very prolific, stems extra long and stiff. Won Undisseminated Seedling Prize at Camden in a "hot class" and First at Philadelphia both in 1926 and 1927 for Best Established Seedling. A large stock of this lovely dahlia enables me to offer it at a very low price. Tubers, \$3.50; 3 for \$15. Plants, \$2.50.

Jane Cowl (Downs)—This Massive Decorative was the sensation of the New York Show, winning First for Best Undisseminated Seedling and the Garden and Home Builders' Sweepstake Prize for Best New Dahlia. A very large (10½ inches) deep (7 inches) flower, with wonderfully beautiful coloring; a warm buff and old gold blending to salmon at the perfect center a grand stem holds the giant flower above the plant. Tubers, \$6.50; 3 for \$15. Plants, \$2.50.

Jean Hare, H. C. (F and M.)—A beautiful flower and unusual formation—nearly cactus. Opens golden yellow which changes to apricot buff, outer petals, golden bronze. Great size (11 inches) and beauty. Rigid, upright stem. Tubers, \$5. Plants, \$2.50.

Jersey's Masterpiece, Dec. (Waite)—A magnificent, large Exhibition flower of rare beauty; soft strawberry pink, suffused gold. Stems long, strong and stiff. One of the best of this originator and the cream of his 1928 introduction. Tubers, \$5. Plants, \$2.

Kemp's Violet Wonder, Dec. (Kemp)—Bright royal purple, an unique shade and absolutely new. An impressive flower very large and deep on fine stems. Better than ever in 1929. A new shade and great winner. Don't overlook it at my price. Tubers, \$6.50; 3 for \$15. Plants, \$2.50.

My Maryland, H. C. (Downs)—A beautiful, bright pink, each petal tipped ivory, both at center and on

the outside of flower. Won Garden and Home Builders' Achievement Medal at Atlantic City, defeating Jane Cowl for Best Undisseminated Seedling, also Certificate at Storrs and First at New York for Best Undisseminated H. C. Seedling. Giant flower on strong stems. **Tubers (limited), \$7.50. Plants, \$3.00.**

Nannaquaket, Dec. (Richards)—An immense bloom of extraordinary beauty. A most beautiful and delicate shade of orchid pink, each petal bordered with a hair line of deeper orchid pink. Can easily be grown 10 to 12 inches with ordinary dis-budding and on grand stems. An outstanding dahlia in any company. A large stock enables me to quote a very attractive price for this grand variety. **Tubers, \$4. Plants, \$2. Special price in quantity.**

Orange Wonder, Dec. (Truesdale)—Beautiful golden orange shading to burnt orange in center. An 11 inch flower on strong stems over a robust plant. An impressive flower, winner of several Certificates and Medals. **Tubers, \$5. Plants, \$2.50.**

Regal, Dec. (Bessie Boston)—Her largest introduction and a Gold Medal Dahlia grown up to 16 inches in California. This huge flower is bronze, base. Flowers grow well out of foliage (except first bloom) on long stiff stems. A truly "Regal" Dahlia and great prize winner. My best seller in 1929. **Tubers, \$10 each; 3 for \$25. Plants, \$5; 3 for \$12.**

Watchung Sunrise, Dec. (Smith)—A sensation and great prize winner for several years at New York and elsewhere. Beautiful golden amber, with rose pink reverse and each petal has a narrow, clear margin of same. Petals recurve to meet the stems and flower is as beautiful on back as front. Stems extra long and like cane. **Tubers, \$4.50. Plants, \$2.**

Flaming Meteor, Dec. (Barker)—A fine California Decorative, a winner of many prizes in the West. A large, flaming red on perfect stems and a very prolific bloomer, valuable as a cut flower. **Tubers, \$3. Plants, \$1.50.**

Grace M. Lynch, Dec.—A large and beautiful flower of white tinted with old ivory toward the center, stems extra long and rigid and robust grower. New 1929. **Tubers, \$6. Plants, \$3.**

Emily Gass, Dec. (Dr. Gass)—A very large Exhibition flower of delicate beauty, white with a delicate pink suffusion. Plant is a giant 7 to 8 feet in height and the immense 8 to 11 inch flowers are held rigidly erect on stems 4 feet long. Prolific. **Tubers, \$5. Plants, \$2.50.**

Elkridge, H. C. (Griffiths)—A very fine bloomer of large size on good stems. Color a pure white. Good. **Tubers, \$3. Plants, \$1.50.**

Miss Angie P. Chase, P. D. (Chase)—An extremely large and deep bloom of pale, orchid pink, shading to mauve in the center. Stems 3 feet and stiff as cane. A great favorite. Tubers, \$2. Plants, \$1.00.

Margaret Woodrow Wilson, Dec. (F. and M.)—A grand flower, very large and deep of opalescent pink, face creamy white; reverse phlox pink. Great stem and prolific bloomer. Selected by Miss Wilson to bear her name. Tubers, \$2. Plants, \$1.

Pride of Stratford, Dec. (M. and S.)—A strikingly beautiful Dahlia of large size, on long sturdy stems. A brilliant cadmium orange, shading slightly to orange yellow in center. Always in demand. An outstanding variety. Tubers, \$2. Plants, \$1.

Radio, Dec. (Sampson)—Color is blood, red edged and tipped yellow. Will grow up to 12 inches across on best of stems. Very striking. Tubers, \$1. Plants, \$1.00.

Robert Scott, Dec. (Brock)—Another beauty, extra large and deep on perfect, long stems. A lovely apricot yellow with slight rose shadings. It is almost a crime to sell such a dahlia at this price. Tubers, \$1.50. Plants, \$1.

Seal of Connecticut, Dec. (Alling)—A certified dahlia (score 89) and Medal winner. An immense clear, golden yellow both wide and deep on long rigid stems. Thrifty grower. Tubers, \$3. Plants, \$1.50.

The Telegram, Dec. (Marshall)—Unusual and strikingly beautiful, a pale orange tipped pure white. One of the most beautiful varieties; of medium size. Tubers, \$2.50. Plants, \$1.25.

The Bandit, H. C. (Reed)—Very attractive flower of spectrum red, reverse buff yellow. Petals curl most attractively showing both colors. A spectacular combination. Blooms good size, erect, on long, wiry stems. Tubers, \$2.50. Plants, \$1.25.

Valentino, Dec. (B. B.)—One of the most beautiful 1928 Novelties. An exquisitely beautiful flower of great size, held erect on a fine stem. A lovely salmon pink shading to cream at the center. Outstanding East and West and still scarce. Tubers, \$7.50. Plants, \$3.50.

W. J. Erwin, Dec. (Brock)—A grand lavender pink, immense in size and perfect stem. Tubers, \$1.50. Plants, \$1.

Cochegan, Dec. (Brown)—A perfect giant in growth and size of bloom, which are often 11 to 12 inches across, 4 to 5 inches deep. A pure lemon yellow. Striking and very popular. Long stems. Tubers, \$3.50. Plants, \$1.75.

Dr. E. H. Bartley, Dec. (Schwartz)—Listed in Hart's 1929 Roll of Honor. A whale of a bloom—12 inches by actual measure,—on extra long, rigid stems. Orchid lavender in color, it opens very fast and seldom burns or fades. Great for Exhibition in the largest bloom class. Tubers, \$3. Plants, \$1.50.

Elite Glory, Dec. (Kennedy)—A monstrous flower of brilliant red on cane-like stems. One of the most spectacular grown and considered by Hart one of the six best dahlias of Eastern origin. Grown to 14 inches in New Jersey. Tubers (limited), \$2.50. Plants, \$1.

Frances Wheeler, H. C. (Seal)—A 1927 introduction that, next to Edna Ferber, is one of the most beautiful H. C. grown. A very large, delicate, creamy yellow, with streaks of pomegranate purple on reverse. Petals twist to show both colors. Prolific and held facing on good stems. Fine for Exhibition. Tubers, \$3. Plants, \$1.50.

Glory of Sunrise Trail, H. C. (Babylon)—Another very striking and unusual H. C. A large, beautiful flower of maize yellow, tipped violet with lavender reverse. Strikingly beautiful. Tubers, \$3.50. Plants, \$1.75.

Golden Emblem, Dec. (White)—A perfect dahlia. Has size, beautiful color and formation, wonderful keeper and grand stems. Golden yellow, held high and facing. Tubers, \$2. Plants, \$1.

Hathor, Dec.—Another of Mrs. Seal's fine introductions. Color is deep crimson, orange, and all those colors seen in glowing embers. Formation perfect, stems extra fine and stiff and blooms immense and facing. Very striking. Tubers, \$3. Plants, \$1.50.

Jack O'Lantern, Dec. (Success)—A 1928 introduction, scoring 87 at New Jersey Trial Gardens. Flower scarlet, reverse pure yellow, large and striking, stems extra long and fine. One of the best new ones. Tubers, \$4. Plants, \$2.

Jove, Dec. (Ballay)—A beautiful bronze pink that may be grown as largest dahlia in the show. Stems the best. Extra fine, and scarce in the East. Tubers, \$3.50. Plants, \$1.75.

Marjorie Hennessey, Dec. (Seal)—An exceptionally lovely dahlia. Blooms large and perfect, stems extra long and stiff hold them above a tall plant. Color, amber; heavily suffused rose, lightening to true amber at center. One of Mrs. Seal's best recent introductions. Tubers, \$3. Plants, \$1.50.

Marmion, Dec. (Tyler)—Too well known to need any praise from me. A giant plant and giant flower 11 to 12 inches, 6 inches deep and holds size and center. Pure golden yellow with bronzy tints, held

aloft on 4 foot stems, like cane. A wonderful dahlia all should grow. Tubers, \$2. Plants, \$1.

Mrs. Dingee, D. P. (Brock)—Another grand plant with beautiful foliage and extreme vigor. Flowers are lovely,—a combination of salmon-rose, deep, soft pink and gold, and extreme in size. Sometimes comes peony when it is even more beautiful. Tubers, \$2; 3 for \$5. Plants, \$1.

Nagel's Room (Nagel)—Giant cactus, a sensation at New York when first shown. Amber and mallow pink on 3 foot stems. Tubers, \$2. Plants, \$1.

Cyster Bay Beauty, Dec. (Chemar)—A beautiful dark red and will produce more large blooms than any of its color. Plants will produce up to 25 and 30 large blooms at one time, a veritable garden in itself, striking and beautiful. Blooms hold size and center. Plants very sturdy and branching and requires no stakes. Tubers, \$2; 3 for \$5. Plants, \$1.

Primula Rex, Dec. (Brooma'l)—This large dahlia has won many prizes in the Specimen Bloom and Largest Flower Classes. Clear primrose yellow of fine form and distinctive appearance on long, rigid stems. Tubers, \$2. Plants, \$1.

Queen of the Garden Beautiful, Dec. (Burns)—A giant flower of pure, glistening yellow and unique formation petals, very wide and buttercup shape. Stems extra long and rigid. Many prizes for Largest Bloom. Tubers, \$3. Plants, \$1.50.

San Jose, Peo. (Ballay)—A spectacular flower, many blooms a foot across on cane stems over a giant plant. A bright Spanish red. A wonder and one of the five or six worthwhile Peonies. Tubers, \$4. Plants, \$2.

Silverado, H. C. (Seal)—Almost a cactus and the largest of its class to date. The immense feathery blooms are white shading to a delicate silvery lavender at the center. Stems extra long and stiff over a tall, well-branched bush. Always full of huge blooms. Tubers, \$3. Plants, \$1.50.

Sultana, Dec. (Beatrice)—A giant flower whose predominating color is tan, with rose and mulberry shadings at all times. Prolific and will grow 10 to 12 inches across. Tubers, \$3. Plants, \$1.50.

Susan P. McAnneeny, H. C.—Petals very long, narrow and pointed. Large and free on good stems. Lemon yellow, tinged with burnt orange. Tubers, \$3. Plants, \$1.50.

The Lemonade, Dec. (Ward)—One of the best of New England introduction and a fine yellow. Has size, beautiful petal formation and long, rigid stems. A clear lemon yellow and a splendid keeper on the bush or Exhibition table. Tubers, \$3. Plants, \$1.50.

Andreas Hofer, Cac. (Drew)—One of the most exquisite dahlias to date, winning "Best Basket" in the Show at Boston, 1927. A rich salmon with gold center and stiff, spiky petals. Stems rigid and long. Tubers, \$1.50, Plants, \$1.

Color Sergeant, Dec. (Hall)—A rich, deep, salmon bronze. Scored 87. Stems O. K. Tubers, \$2. Plants, \$1.00.

Ellinor Vanderveer, Dec. (Seal)—A big bloom of rose pink on fine, long stems. Tubers, \$1.50. Plants, \$1.00.

Frank Galvin, Dec. (Galvin)—Runner up for Garden and Home Builder's Prize, Boston, 1927. A very large and deep flower, of clean soft pink on long stems. Tubers, \$2. Plants, \$1.

Jersey's Beacon, D. (Waite)—Huge flower of Chinese Scarlet with tan reverse. Great stem, striking. Tubers, \$1.

Dr. Walter Van Fleet, H. C.—Color, Van Fleet rose. Twisting petals. Tubers, \$1.

Fordhook Model, Dec.—Large and deep. Delicate mallow pink. Long stems. An A-1 variety. Tubers, \$1.00.

Jersey's Mammoth, D.—Rightly named, 12 to 14 inches. Golden Mahogany. Tubers, \$1.

Our Country, D.—Very large, deep purple, tipped white always. Formerly, \$50. Tubers, \$1.50.

Shackamaxon, H. C.—Gold, suffused peach, 3 foot stems. 10 blooms (9 to 10 inches) cut from plant in one day. Tubers, \$1.50.

Siskiyou, H. C.—Pink, tinged mauve. Constant winner as "Largest in the Show." Tubers, \$1.50.

The Bashful Giant, D.—Largest grown, buff and amber, Tubers, \$1.

The General, D.—Deep garnet, silver reverse. Immense Exhibition bloom. Tubers, \$1.25.

The Surprise—Light wine, blended chamois. Large, on grand stem. Tubers, \$1.25.

Uncle Sam, Peo.—One of the largest and best, 3 foot stems. Golden yellow, jasper and nopal shadings. Always full of giant blooms on long, stiff stems. Tubers, \$1.

Trentonian, D.—Giant bloom, cane stem. Reddish bronze with old gold and coppery tints. Fine. Tubers, \$1.25.

Wauwegua, D.—A 1927 introduction of deep, old rose, different from any other. Blooms large and deep on strong stems above the foliage. Tubers, \$2. Plants, \$1.

OTHER VARIETIES

I have hundreds of other varieties but have described only outstanding specimens. Can furnish most any wanted dahlia.

Try my \$2 per dozen combinations. They will please you. They include many high class varieties from which tags have been lost. A bargain.

GREEN PLANTS

My Green Plants are different. I did not receive a single complaint in 1929, but many compliments on their thrift and condition upon arrival. One big Ohio grower wrote: "Best I ever received—they were a joy to behold." A large Kentucky grower said: "The plants were fine, I never saw better." A California grower who had a shipment in mid-June with thermometer in the nineties when shipped, wrote me, "Plants arrived in perfect condition, not even wilted, the best I ever bought." Another Californian said: "Your plants produced far larger blooms and of better color, than plants of same varieties, bought and planted the same day."

"THERE IS A REASON"

Our plants are grown cool—not forced, and root system well developed, then properly hardened in cold frames before shipment. We guarantee them to arrive (anywhere in the United States) in good growing condition and will replace, free of charge, any arriving otherwise.

Give them a trial and you will be convinced.

Hoping to merit your continued approval,

Yours for the best in Dahlias,

F. W. C. ALMY, Prop.

TIVERTON 4 CORNERS, R. I.

(Box D)

Telephone 156-11, Little Compton, R. I.

Come and make your selections in the blooming season from September 1st until frost. You are always welcome.

MEMBER

**AMERICAN DAHLIA SOCIETY
DAHLIA SOCIETY OF NEW ENGLAND**
