

Historic, Archive Document

Do not assume content reflects current scientific knowledge, policies, or practices.



SAMUEL T. ALEXANDER

(Hybrid Cactus) One-half actual size.

\$5.00 each See page 13

J. K. ALEXANDER

The World's Largest Dahlia Grower

1930 CATALOGUE

449 CENTRAL STREET

EAST BRIDGEWATER, MASS.



Margaret E. Millis

MARGARET E. MILLIS

A wonderful bloomer on good stems. The coloring is amaranth-pink combined with white in a streaked effect. The flowers are very deep and large with petals inclined to twist. This variety shows up in the field in a manner that makes it very conspicuous and attractive and I can recommend it highly. **\$1.00 each.**

See page 19.

IF YOU ARE INTERESTED IN THIS CATALOG SEND ALONG A FRIEND'S NAME AND WE WILL MAIL YOUR FRIEND A CATALOG.



J. K. ALEXANDER

The Dahlia King

I print this not because I am proud of my own picture, but because most people like to see the man with whom they are doing business.

1930 Retail Catalog

Note: The use of color in a catalog is expensive, and I have decided this year to eliminate it, passing along the saving thus made to my customers in the form of reduced prices. You will find the prices of all varieties reduced to the lowest figure that is consistent with first-class stock and efficient service.



Partial View of My Fields. Maude Adams in Foreground.

Instructions—Information

Please Read Before Ordering

ORDER EARLY — Your orders are filled in rotation. Ordering early will insure the reservation of varieties that later may be sold out, and save you any disappointments.

SUGGESTIONS TO CUSTOMERS — If you are not acquainted with the different classes and varieties of Dahlias, Peonies, Iris, or any of the other plants I list, I would suggest that you leave the selection to me. Send the amount of money you wish to spend, and write me fully if you have any preferences in types or colors, and I will choose the very best varieties possible, in an effort to please you. My liberal selection I assure you will be satisfactory, as I strive to give the very best when you allow me the choice.

TIME OF SHIPMENT — Unless you give a specific shipping date, your order will be shipped to arrive at the proper time to plant in your locality. If you wish your order shipped at any special time, I will appreciate definite instructions, and assure you that you can depend upon me to serve you satisfactorily. It requires all Winter to separate my large number of clumps, but by the first of March I have one box of each variety systematically arranged in my shipping department, and am prepared to ship all varieties offered in this catalog after that date. As I start planting on June 1st, I cannot furnish all varieties listed herein after June 5th, but can supply good selections of all types if the choice is left to me. I assure you I will send the best possible where selections are left to my judgment.

PACKING — No extra charge for packing. I take great pains in packing my orders, and strive to give all my personal attention to insure their arrival in good condition. I assure you that your order will be securely and carefully packed.

SHIPMENTS PREPAID — All orders will be shipped by Parcel Post, Express or Freight, whichever way I deem advisable, prepaid to all parts of the world, unless otherwise stated.

FOREIGN AND SOUTHERN ORDERS that require shipment out of season. The fact that I receive large numbers of Foreign and Southern orders, and from the same customers year after year, leads me to believe my ability to serve is satisfactory to them. In view of the fact that I do not ordinarily complete harvesting before November 10th to 20th, and that it

requires considerable time to separate the clumps of the great number of varieties I grow, and the quantity makes my eight storage cellars very much congested, I would appreciate it if customers who wish their order shipped between November 30th and March 1st would mention a second choice when ordering. If they are not particularly desirous of special varieties it will insure them prompt shipment if they will leave the selection to me. I give Foreign orders special attention, packing them very securely, so that they will arrive in perfect condition.

ACCURACY OF DESCRIPTION — All descriptions and other matter in this Catalog and Cultural Guide will be found to be as nearly in accordance with actual facts as it is possible to write them, great care having been taken to avoid exaggeration in descriptions of varieties. My authority as to colors is Ridgeway's "Color Standards and Color Nomenclature," a complete and authentic chart giving Eleven Hundred and Fifty named colors.

In making comparisons there must be allowance made for variation caused by different soils and climatic conditions.

SUBSTITUTION — The varieties you select are always sent unless you grant me permission to substitute. If you wish a particular color, rather than a particular variety, many times it is to your advantage to mention the fact, as my intimate knowledge and experience oftentimes enables me to improve upon your selection. Therefore, if a substitute is acceptable, be sure to advise me, as otherwise everything is shipped absolutely as ordered.

ERRORS — While my system of handling orders is as nearly perfect as possible, in the rush of business errors occasionally occur, and I hope to be promptly notified of such, giving me an opportunity to make proper adjustments. I would suggest that you keep a copy of your order for comparison.

REMITTANCES — May be made by Check, Post Office or Express Money Order, or Registered Letter, and if for less than \$5.00 can be made in U. S. stamps. Coin and currency should be sent by registered letter. Customers residing outside the United States please do not send Foreign stamps or currency — a Post Office order is preferable. All unpaid orders will be sent C. O. D. unless satisfactory arrangements can be made when the order is given.

GUARANTEE — I wish it distinctly understood that although I take all possible pains, I will not be responsible beyond the purchase price. I guarantee every bulb, root and plant I send out to be just as represented, absolutely true-to-name, reach its destination safely in good growing condition. I will cheerfully replace anything that fails to prove otherwise, and will appreciate your calling my attention to it.

PRICES — The prices herein cancel all previous ones. These prices are void when my 1930 catalog is issued. Any one variety priced at 25 cents each may be had at \$2.50 per dozen; any one variety priced at 35 cents each may be had at \$3.50 per dozen, and so on with 50 cents, 75 cents, \$1.00, \$2.00, \$3.00 and \$5.00 varieties. Six of one variety may be had at the dozen rate. **Please order by number on Special Offers.**

This is a saving of about 20%. If wanted in lots of 25 or more of one variety, write for quantity prices, stating quantity desired.

All stock shipped are strong bulbs. As a special price is given on plants, none are shipped except by request. Bulbs are guaranteed to grow, but due to care and conditions beyond my control plants are **not** guaranteed to grow.

CONNECTIONS — Long Distance Telephone:

Office — East Bridgewater Number One.

Telegraph — Western Union, Brockton, Mass.

Post Office, Express and Freight Office, East Bridgewater, Mass.

TERMS — **Cash with orders** or in advance of shipment.

NAME AND ADDRESS — Please remember to write your name, street and number, Post Office, County, State and Country if Foreign, as plainly as possible. Post Office Box or R. F. D. number if you have one. This will avoid delays and chances for errors.

ALWAYS ADDRESS

J. K. ALEXANDER, *The Dahlia King*

499 Central Street

EAST BRIDGEWATER, MASS.

Classification of Dahlias

As adopted by the American Dahlia Society.

The Dahlia belongs to the family Compositae (or Carduaceae, as the family is now sometimes known) and is a close relative of our native species of *Coreopsis* and *Bidens* ("beggarticks") and our cultivated *Cosmos*. What we commonly call the flower is botanically, as also in the sun-flower, a flower-cluster or head, made up of numerous closely aggregated flowers, which are often of two or more kinds. In the so-called Single Dahlia, a few outer flowers of the cluster have broad, flat, conspicuous expanded corollas or rays (popularly but not botanically the "petals"), while the inner or disc flowers, including most of the flowers of the cluster, have small inconspicuous tubular corollas.

Growers and exhibitors of Dahlias recognize several different classes or groups of Dahlias, based on the form and other characters of the "flower" or head. The extremes in form are very

pronounced, and it is usually easy to say into which class a flower is to be placed; but here, as elsewhere in nature, and more especially where nature has been interfered with by man, the lines of separation are not always hard and fast, and it sometimes happens that a variety may be found classified under two and sometimes three different headings in catalogs of different dealers. The names and their applications as recently defined by the American Dahlia Society follow:—

SINGLE DAHLIAS. Open-centered flowers, small to very large, with 8 to 12 floral rays (petals) more or less in one circle, margins often decurved or revolute (turned down or backward). There are no distinctions as to colors. This class embraces the large Century type as well as the small English varieties. They resemble the Cosmos.

COLLARETTE DAHLIAS. Of the single type, with not more than 9 large floral rays; but with a circle of smaller, narrower, usually different colored rays, standing at the base or in front of the larger rays and forming a sort of collar between them and the open center.

DUPLEX DAHLIAS. Semi-double flowers; center almost exposed on opening of bud, rays more than twelve, in more than one circle, long and flat, or broad and rounded, not noticeably twisted or curled. Many Dahlias previously classed as Peony-flowered belong here.

PEONY-FLOWERED DAHLIAS. Flowers are semi-double, having two, three or more rows of broad, flat, loosely arranged rays or petals, surrounding an open center, which is usually a conspicuous golden yellow. The inner floral rays being usually curled or twisted, the outer rays either flat, or more or less irregular. Sometimes the rays are pointed, occasionally they curl and twist over the center.

DECORATIVE DAHLIAS. Double flowers, full to the center, early in the season at least flat rather than ball-shaped, with broad, flat, somewhat loosely arranged floral rays with broad points or rounded tips which are straight or decurved (turned down or back) not incurved, and with margins revolute, if rolled at all.

BALL-SHAPED, DOUBLE DAHLIAS. Full to the center.

(A) **SHOW TYPE.** Flower globular or ball shaped rather than broad or flat, full to the center, showing regular spiral arrangement of florets, with floral rays or petals more or less quilled or with their margins involute (rolled forward or inward) and rounded tip. (Dahlias of this type with flowers spotted, variegated or parti-colored, were formerly classed as Fancy; a group no longer recognized.)

(B) **HYBRID SHOW, GIANT SHOW OR COLOSSAL TYPE.** Flowers fully double broadly hemispherical to flatly globular in form, loosely built so spiral arrangement of florets is not immediately evident; floral rays broad, heavy, cupped or quilled, with rounded tips and more or less involute margins. Verging towards the Decorative Class and sometimes found classed with the Decoratives.

POMPON TYPE. Same shape and form as A and B, but flowers must be under two inches in diameter.

CACTUS DAHLIAS. Double flowers.

TRUE FLUTED TYPE. Flowers fully double, floral rays or petals, long, narrow, incurved or twisted, with sharp, divided or fluted points and with margins revolute (rolled backwards or outward) forming the outer florets, a more or less perfect tube for more than half the length of the ray or petal.

HYBRID CACTUS. Flowers fully double, floral rays (petals) short as compared with previous type; broad, flat, recurved or twisted, not sharply pointed except when tips are divided (staghorn); margins only slightly revolute, and tubes of outer florets, if any, less than half the length of the ray or petal. This type intergrades with the Decorative and Peony-flowered classes.

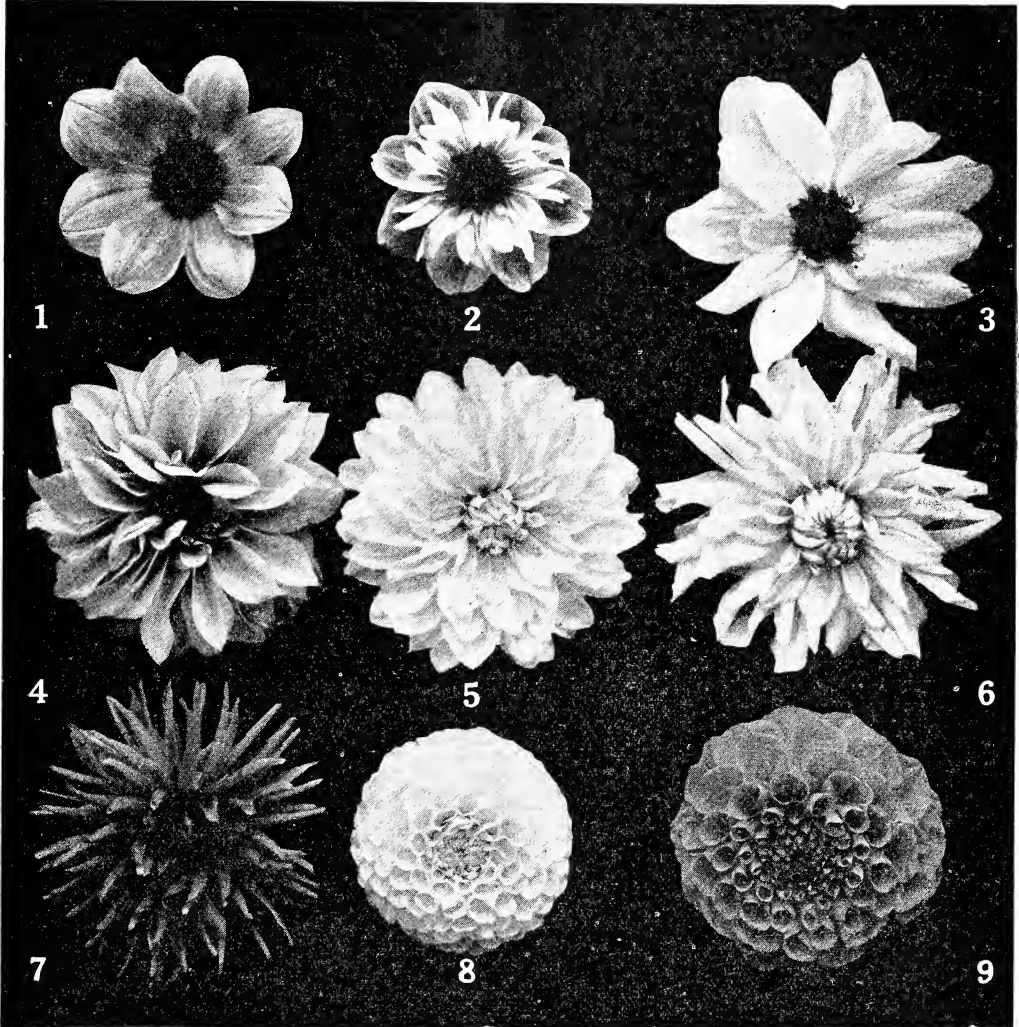
History of the Dahlia

The Dahlia is a native of Mexico, where it grew wild, and in its single form. Earliest history dates back to 1657, when it was called *Acocotli* by the Aztec Indians. Later the name was changed to *Georgiana*, after Professor Georgi of St. Petersburg, which name is still used in some of the foreign catalogs. It was again changed to *Dahlia*, in honor of Dr. Andrew Dahl, a Swedish botanist.

The Dahlia was first cultivated in the Botanic Gardens, at Madrid, Spain, in 1789, and at about the same time was introduced into England by the Marchioness of Butte.

Dahlia Variabilis, from which most of the common or show Dahlias have originated, was single in its wild state. The first double forms appeared in 1814 and were credited to M. Donkelaar of the Botanical Gardens at Belgium. The Pompon form appeared about 1858, followed by the Decorative, the origin of which is not clearly defined, but probably dates back some 40 or 50 years. *Dahlia Juarezi*, the first of Cactus *Dahlia*, was discovered in Juxphaor, Mexico, in 1872, by J. T. Vanderberg, and named *Juarezi* in honor of President Juarez of Mexico. It was sent by Vanderberg to an English florist, who exhibited it in England in 1880.

Dahlia tubers or bulbs were used as a food in Mexico and at one time in France. It was attempted to introduce them into cultivation in all Europe as a food for either man or cattle, but the taste was found nauseous to European palates.



The Different Types of Dahlias

- | | | |
|------------------------------|---------------------|------------------------|
| 1 Single | 2 Collarette | 3 Duplex |
| 4 Peony-flowered | 5 Decorative | 6 Hybrid Cactus |
| 7 Cactus, fluted type | 8 Show | 9 Hybrid Show |

The Culture of the Dahlia

Success Will Follow If You Observe These Instructions

LOCATION. The Dahlia is not as particular as most of our flowers, and will succeed under a great many adverse conditions. There are, however, certain locations where Dahlias seem to outdo themselves. An open sunny location seems to favor them at all times. Dahlias do well on high and low lands, on hillsides or perfectly level land, giving good results in each location.

I find Dahlias are particularly adapted for seashore use, and not only do well, but thrive, for the reason of the moisture, and principally the heavy dews which collect during the nights.

I also find that many varieties do well in partial shade, producing fully as good flowers as they do in the hot sun, especially for exhibition purposes.

Dahlias will grow and do equally well in any kind of soil. I have sand, gravel, heavy and light loam, low land and hills, and find very little difference, as far as the number of flowers is concerned, the only difference being that in sand and gravel they form a short, sturdy, compact plant, and in heavy loam and low land they grow tall and rank, blossoming about a week later than those planted at the same time in sandy soil.

PREPARATION. The soil should be thoroughly cultivated; ploughed or spaded 8 to 10 inches deep, well pulverized and thoroughly worked over, thus affording an opportunity for rapid expansion, and making an easy path for the tiny rootlets. To secure exceptional results, have your soil ploughed or spaded in the Fall or as early as practicable in the Spring; then just before planting have soil thoroughly ploughed or spaded again.

FERTILIZER. Fertilization is one of the most important factors, to be successful with Dahlias. We all know that a growing plant, the Dahlia for instance, requires and takes from the soil certain properties; and in order to keep the soil in correct proportion, the materials the Dahlia takes from the soil must be restored. This must be done by fertilization. You can use dressing (either horse, cow, sheep or hen), or chemicals, or any commercial fertilizer rich in nitrogen, potash and phosphoric acid. Fish and potash, acid phosphate in the form of bone flour, or sulphate of potash, are also very effective. My system of fertilization — every other Fall I give my land a top-dressing of stable manure, ploughing under and alternate with lime, using this as a top dressing.

The manure restores the properties necessary, and makes the soil light and mellow, keeps it from being heavy and caking, while lime has the same tendency and keeps the soil sweet. When planting in the Spring, I use commercial fertilizers exclusively (a complete potato fertilizer and ground bonemeal in equal proportions). Every fourth or fifth year I make a Fall planting of Winter rye, then turn under in the Spring, planting the bulbs with commercial fertilizers.

An application of manure (either in liquid or ordinary form), several times throughout the growing season proves very beneficial, furnishing new material for the growing plants and insuring you the very best results.

At the time of planting, two liberal handfuls of fertilizer around the individual tubers would be what I would recommend. After the plants attain a height of three feet, either a handful of fertilizer or any other dressing or manure should be used, and when hoeing, it should be hoed in around the plants. After the plants commence to bloom, it is always well to use fertilizer or dressing around the top of the plants, broadcast on the ground, so that the rains will carry it down to the roots. If applied every three weeks, it will prove very beneficial, although not absolutely necessary, as the fertilizer used when planting would be sufficient to carry the plants through. However, it helps your plants to produce larger and better quality flowers, giving them nourishment at the time they require it most.

In applying the fertilizer, it is best to sprinkle it around the tuber, two, three or four inches from where the sprout will come through, but every precaution should be taken to be sure it does not fall where the sprout will come in contact with it, when it pushes its way through the ground, as fertilizer will burn the sprout. It's better to have it a trifle farther away, as the roots will find the fertilizer.

TIME OF PLANTING. The time for planting Dahlias varies according to the locality; whether your spot is sheltered or open, earliness or lateness of the season, and the times when the general crop of flowers is desired. Dahlias can be planted any time after danger of frost is over, and under ordinary conditions will bloom in from 6 to 8 weeks after they have been planted. It is always best to wait until the ground becomes thoroughly warmed.

PLANTING. Plant bulbs in hills or drills, laying flat down, 6 inches deep. Do not stand the bulb on end. If you stand the bulb on end, having the sprout near the top of the ground, all the new bulbs which will form will grow near the top of the ground and when you have a dry spell your plant becomes stunted, whereas, if the bulbs were planted flat down 6 inches deep, no matter how dry the season, the bulbs would receive sufficient moisture to keep them growing. If planting with manure, cover manure an inch or so before planting bulbs; fertilizer should be thoroughly worked into the soil. Either fertilizer or manure will burn the sprout; be sure to cover with soil.

By planting the bulb first, then covering an inch or so with soil and applying your fertilizer or manure, your plant receives the entire benefit of the dressing. The dressing is above the bulb and every rain carries the food down to the roots, whereas, if your dressing is below the bulb, each rain takes your dressing further away from your plant.

Summary. Plant bulb 6 inches deep, flat down, having sprout or eye facing upward; cover with soil an inch or so, applying dressing, and cover in level.

CULTIVATION. Cultivation is the principal requirement of the Dahlia — the most important of all operations to insure success. Keep the soil well cultivated and free from weeds; never allow the soil to crust.

CARE OF PLANTS. Give thorough cultivation, deep at first and continued once a week until the plants commence to flower. After they commence to blossom do not cultivate, as then is the time the new roots are forming and you are apt to cut off the new tubers, weakening the growth of the plant. Do not fail to stir the soil after each rain, keeping the soil from forming a crust on the surface, or baking, and conserving the moisture in the soil, thus avoiding the necessity of watering.

As the shoot or plant commences to show itself above the ground, care should be taken at this time for the prevention of cutworms and other pests that destroy the young shoots; I recommend Vermine, Arsenate of Lead, Cutworm Killer, or Tobacco Dust, as best preventatives for these pests.

As soon as the plants attain a height of 8 to 10 inches it is time to commence to "train" your plants.

There are three systems from which you must choose: The staking System, the Branching Method, and the Massing System.

The Staking System is the most popular, many amateurs finding it the most successful. Dahlias under this system should be planted from 2 to 4 feet apart, according to the amount of space you have to devote — the larger, the more robust the plants. Stakes should be set when the Dahlia is planted. As soon as plants attain a height of 2 to 3 feet they should be secured to the stakes, thus protecting them and preventing the brittle stalks from being blown over or getting broken.

The Branching Method. This system is advocated by many professionals and does away with staking. Plant in hills or rows from 18 to 30 inches apart. When your plant has two sets of leaves, pinch off or cut out the whole top of the plant; at each leaf a branch will start, thus making four branches, one at each leaf. Do not pinch off your plant more than once, as this system makes your plants two weeks later in flowering; but you receive four flower stalks, each of which will blossom equal to the one stalk which you would have received had you left your plants growing without pinching. When the plant is grown it will have a short, strong, single stalk, which comes only an inch or two above the ground, with four branches of flowering stalks. The plant is short and has a neat branching appearance; the branches are self-supporting and are not easily blown over by the wind.

The Massing System. This is the system I use in planting my immense fields — avoiding the extra labor and expense of staking, the woody effect of stakes and giving a solid mass of foliage and flowers, more beautiful and effective than where Nature's beauty is broken at each interval with a stake. Plant bulbs in rows from 10 inches to 2 feet apart according to the amount of space you have to devote. The plants are self-supporting, each plant supporting and protecting the others.

At the height of 18 inches spray occasionally with Arsenate of Lead, "Black Leaf 40," Bordeaux Mixture, Hellebore, Pyrox, Slug Shot, Whale Oil solution or other first-class solutions to kill and keep away the aphid or green fly, which often infests Dahlias.

Both wood ashes and lime are good at all times, improving the condition of the soil and are effective as preventatives against insect pests.

To obtain the largest and most perfect flowers, only the best and largest buds should be allowed to mature; the others being taken off, enabling the full strength to develop those into exhibition blooms.

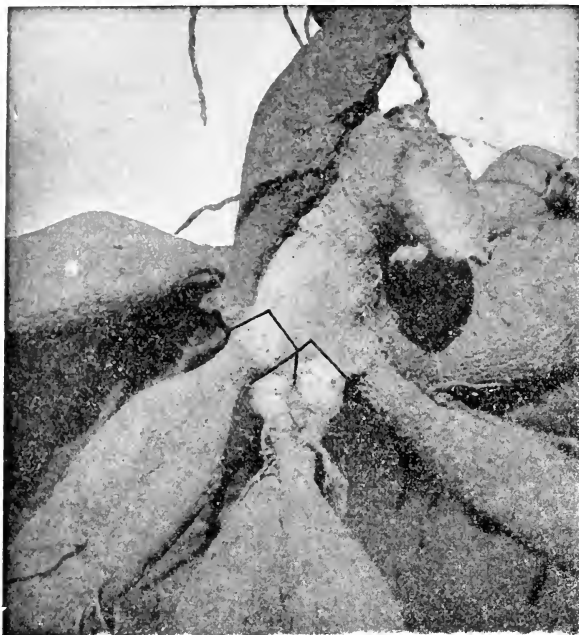
DISBUDDING. Some varieties of Dahlias require thinning and disbudding to produce the best flowers. Varieties having an excessive amount of foliage and small growth should have a considerable part of their branches removed, while those having more buds than can be properly developed or matured should be disbudded. The operation in no way endangers the plants and anyone can do it. Thin and disbud if necessary, moderately or severely as conditions seem to require.

Taking a budded stalk or branch, you will note the large or first bud on the stalk, and also, that at each leaf all the way down the stalk new shoots or budstalks form; these in turn produce buds and flowering stalks, which overtop the first bud. The first bud on every stalk is always the largest and produces the largest and best flower, ordinarily. Before the first flower is in full blossom, the first two side shoots have formed buds and burst into flowers. These in turn become passé, to be replaced by flowering shoots from the set next below, or the second pair of side shoots.

On most varieties the first flower has a short, stiff stem; we disbud to lengthen the stem and to secure larger flowers.

The Proper Way to Disbud: When the first bud is small the first set of side shoots should be removed with a sharp knife. This forces all the plant life that under ordinary conditions would have developed the first two side shoots, into the first bud, making the first flower much larger and giving it a good long stem. Removing the first sets of shoots also forces ahead the second set and they in turn burst into flower.

As you cut and remove your flowers, your plant sends forth new flowering stalks from the



Dahlia Clump, Showing Proper Method of Dividing.

Black lines show where you should cut with knife.

FORCING. To produce the finest flowers for exhibition purposes use staking system. Plant 3 to 5 feet apart, using a liberal amount of manure or fertilizer; cultivate frequently; apply fertilizer or manure, broadcast or liquid form, at each or every hoeing and disbud. Nitrate of soda proves very effective for forcing. Apply in liquid or crystal form, when plants are in bud; make applications often, but do not use too much at a time. Nitrate of soda is very powerful, and if too much is used, it will burn up your plants or force them to such an overgrowth that the roots will decay during the Winter. Apply nitrate of soda in crystal form on top of the ground, or in liquid form, using one tablespoon of nitrate of soda crystals to a gallon of water, using sprayer or water can.

When the flower buds appear, only one bud should be allowed to come to maturity, enabling each branch to produce one exceptionally fine, perfect flower. The flowers, for quality, must not be allowed to receive the drenching rains or scorching sun when nearing full bloom and should be protected from such.

It is always advisable to cut flowers that are to be exhibited as late as possible at night when the dew is on them, placing them in water and keeping them as cool as possible overnight, thereby enabling them to withstand handling, packing, and transportation.

WATERING. The amount of water depends largely upon the locality and amount of rainfall. In regions where the rainfall is scanty and where sprinkling and irrigation must be regularly practised, Dahlias should be watered more frequently than in localities where there is abundant rain. Watering is very beneficial, adding perfection to blossoms and richness to color, but do it judiciously. A thorough soaking, with the soil stirred the following day, is excellent; but a constant surface sprinkling every day causes surface roots and soft growth. When you have continuous dry, hot weather, I recommend that you water your Dahlias as often as you think it beneficial.

HARVESTING. The harvesting and packing for Winter is very important, upon which depends your future success. Should you lose your Dahlias during the Winter, you will be obliged to buy new ones in the Spring; therefore, these suggestions are important.

Dahlias should be harvested shortly after their foliage has been killed by frost. I find from experience that as soon as the frost kills the foliage, the strength of the stalk recedes into the bulbs. By digging two or three days after your plant has been killed by frost, your clumps are in a perfectly dormant condition, having no sprouts, keeping perfectly all Winter and sending forth sprouts in the Spring, which is the proper time.

Dahlias may be dug with fork, spade or plow. In digging or harvesting the clumps great care should be taken. Dig them and dig very carefully; do not pull them up. You have large clusters of bulbs; each bulb has a neck, which is the small portion between the bulb and where it joins the stalk. The clumps should be dug or lifted carefully, so as not to break the necks of

bottom of the plant; the more flowers you cut, the more will grow.

Disbudding is more generally used for flowers for exhibition purposes. When wishing the largest flower possible, for exhibition purposes, you can disbud every side shoot down the entire length of your stalk, forcing all plant life into the one flower, thus growing one flower of gigantic size; this disbudding in addition to forcing with manure (taken up under forcing) insures you much greater success at exhibitions.

Anyone can grow Dahlias of exhibition quality if they will digest these remarks, study plant requirements, and then act accordingly.

After your plant has been blossoming continually and flowers commence to grow smaller, then is the logical and proper time to fertilize. Apply any good fertilizer broadcast, or any kind of manure available, but it is better to make two moderate applications than too much at one time.

the bulbs. If you crack, girdle or break the necks, sometimes they will dry up, other times decay. However, when the clumps are divided, the bulbs with broken necks are weak and not as good and it requires longer for the bulbs to become established before they commence to grow after they are planted in the ground. After removing the clumps, shake gently to remove the soil that would naturally fall off. Cut off tops within two or three inches above tops of clumps, allowing them to be exposed to the sun and air for only an hour or two. Do not allow them to stay out two or three days to dry up, then wonder why they are withered and fail to sprout. Pack in a cool, frost-proof place where extremes of temperature may be avoided — a place having an average temperature of about 45 degrees. Do not cover or pack in any material or with any substance. Cork, sawdust, shavings, coal ashes, sand or earth, all hold and retain a dampness or moisture which is unnatural, making it too close, compact and damp, causing the clumps to start to mildew or decay. Would you pack your potatoes in any of the above? Simply pack clumps one on top of the other, placing each clump upside down. Undoubtedly you are aware that the Dahlia stalk is hollow and that this hollow contains a watery substance or acid. If you pack your clumps with the stalks up, the acid will flow back into the crown of the clumps, causing decay, whereas, if you turn your clumps upside down, the acid must flow out, and clumps will remain in a perfectly dormant condition. Pack clumps upside down in boxes or barrels, packing one on top of the other. Dahlias in an old-fashioned cellar will keep first-class without any covering; in a cellar having a cement bottom or heat, the boxes or barrels should be lined with heavy paper and covered with paper or burlap. Covering with paper or burlap excludes the air and preserves a more even temperature. In heated places the circulation of air and heat causes the bulbs to shrivel and dry up; a covering of this kind prevents the roots from shrivelling.

DIVISION OF CLUMPS. Although I divide clumps all Winter, it is because of the number of clumps I have to divide; I recommend that the amateur wait until Spring before dividing. Dahlias keep during the Winter much better in clump form. In the Spring the clumps commence to send out sprouts which aid in dividing properly.

Take the Dahlia clump as it was harvested with the portion of the original stalk from which the top was removed (same as shown on page 8).

Upon examining the clump you will notice that the tubers formed at the base of the stalk and that each tuber has a crown, neck and body. The crown being the bulging portion where it is connected with the clump, the neck the small portion between the crown and the body of the tuber. By examining carefully, small eyes or sprouts can be detected on the crown and stalkbase. These eyes produce the new plants, so in separating, it is necessary that each tuber have an eye. Without an eye the tuber is absolutely worthless.

In separating a sharp knife should be used and great care taken. The best way is to remove each tuber individually but in cutting it is necessary that each tuber have a crown or a portion of the stalk, as it is upon this that all eyes grow.

First of all, select the tuber that you think can be most easily removed. With the point of your knife cut deeply into the base of the stalk (the black lines in the illustration showing place to cut) cutting so to leave an equal amount of the stalk-base for each tuber, and so that each tuber has its crown. By cutting deeply into the stalk-base on both sides, the tuber becomes separated from the clump, leaving a "V" shaped portion of the stalk-base as a crown or head, upon which the eye is found or will grow. The next tuber favorably located from the separating standpoint can then be chosen, and removed by again cutting the stalk-base, and so on until the stalk-base becomes the crown of each individual tuber.

SIZE OF BULBS. The size of the bulb or tuber does not in any way designate the size or quality of the flower. Some varieties of Dahlias always produce very small bulbs, while other varieties make large ones. Do not consider small bulbs worthless, for they are equally as good and in many cases better than large ones. Medium and small-sized bulbs more often produce the finest and highest colored flowers, and in many cases the best and most effective plants. The only requisite of a Dahlia bulb is: be sure that your bulb has one or two eyes or sprouts, whether large or small, and with proper cultivation, success is generally assured. A clump, root, bulb, or division of a clump, potroot, cutting, sprout, and even a Dahlia seed, will grow and blossom, all equally well. It is not the size, but the care and cultivation — cultivation is the principal requirement of the Dahlia.

CONCLUSION. There are no set rules to follow invariably by all or even by any one grower year after year. In fact, each soil, location, climate, or season may call for different treatment. Study your plants; watch them as they develop; try all experiments along lines in harmony with nature's laws. Success with Dahlias is the same as with anything else; do everything in moderation; excess in any direction is unwise. In many locations conditions are so favorable that Dahlias grow to perfection with practically no attention. So it is with seasons — some years Dahlias do well the entire season, but there is no reason why Dahlias should not be grown successfully year after year. My methods of cultivation are simple and easily followed; the treatment and requirements are so simple, there is no reason why you should not be successful with your Dahlias. The Dahlia is one of the easiest plants to grow and will produce more flowers than any other plant in the garden if properly cared for.



NO. 236. MRS. VICTORIA HYNES
Above illustration one-half natural size.
\$5.00 each

Color: A beautiful Tyrian Rose.
(For description see opposite page)

My New Introductions for 1930

From my stock of hundreds of seedlings I have selected the following to introduce at this time. Each of these varieties possesses outstanding features of particular merit, and for those of my customers who are looking for something new, something original for their dahlia plantings, I feel safe in recommending them as being sure to give satisfaction, for in all my experience I never saw a more beautiful lot of seedlings, in many ways unsurpassed by anything else offered.

This collection of 15 New Introductions for \$50.00. List price \$63.00.

- No. 5. MRS. ARIAL W. GEORGE.** A Peony-flowered dahlia whose first blooms come with a closed center, and will measure 7 to 8 inches across. A delicate coloring of deep cream with touches of lemon, the reverse being a deep pink which shows through with an opalescent effect. The stems are strong and very long. **\$2.00.**
- No. 18. MRS. E. L. TROTTER.** A six-inch decorative of brick-red with shadings of buff. The foliage is particularly distinctive with its light, feathery effect, and the fine stems hold the flowers perfectly erect. The center of the flower is perfect, never opening up. **\$2.00.**
- No. 204. THE ROSS.** A beautiful large, eight-inch decorative of clear, lemon yellow with an edging of white on the tips of each petal. The stem is of good length, stout and strong, holding the deep flower at a perfect angle. Without prejudice, this is one of the best yellows I have seen. **\$5.00.**
- No. 355. MRS. PHILIP H. MAYO.** The coloring is the popular red and yellow combination. A pure decorative in form with large, flat petals, the flower is scarlet with a suffusion or streaks of yellow on each petal, ending in points of clear yellow. A fine center, good stem and general excellent habits make this dahlia a valuable acquisition to any flower garden. **\$5.00.**
- No. 711. MISS CLARA BOWMAN.** The richness of the coloring in this decorative is its distinctive point: a glowing, deep crimson passing to maroon toward the center. The reverse of the petals is very slightly streaked white. The center is perfect, and the stems strong and straight, holding the eight-inch flower erect. **\$5.00.**
- No. 152. BEATRICE A. TAYLOR.** This is an extra good cut-flower variety, with its tall, open habits of growth, very long and gracefully curving stems, and free flowering habits. The coloring is an empire yellow with a distinct gloss over the entire flower, the reverse being a bright tint of rose. It is decorative in form, with the flat petals curling backwards at the tips. **\$3.00.**
- No. 500. ELSIE M. BACON.** A large, pure-gold decorative that will grow eight inches across, tall grower with very stout, stiff stems. A beautiful color with a plant whose habits of growth leave nothing to be desired. **\$5.00.**
- No. 160. BEATRICE STEVENS.** A large, seven-inch flower, decorative in form, of reddish purple passing to maroon in the center, reverse of petals being veined lighter. Fine, strong stem. **\$3.00.**
- No. 113. MRS. MAY LENNON.** This decorative is not one of the large ones, growing from five to six inches, but the coloring is especially attractive: white with each petal broadly edged with crimson, but not tipped. A long, straight stem and free-blooming qualities make it excellent for cutting. **\$3.00.**
- No. 206. MRS. ADA SHERMAN.** Decorative. A brilliant scarlet flower with a very slight edging and tip of yellow. The petals are broad and bold, the flower attaining a diameter of eight inches with no forcing, and help upright on perfect stems. This variety will give a striking splash of color to any garden. **\$5.00.**
- No. 230. EMILY FALL.** Decorative. The coloring is a shade of reddish purple, and each petal is very slightly streaked and tipped with white, the tip nothing but a white point. Both center and stems are all they should be. The flower will easily attain a spread of seven to eight inches. **\$5.00.**
- No. 236. MRS. VICTORIA HYNES.** Decorative. A remarkably free bloomer with flowers of eight inches across. The color is a Tyrian rose, slightly tipped and streaked with yellow. The broad, flat petals are numerous, producing a flower of great depth, but strong, stiff stems have no difficulty in holding it erect. (See illustration p. 10.) **\$5.00.**
- No. 194. MARY E. WILLIS.** Hybrid Cactus in form, this flower is a pure scarlet in color and grows to seven inches in size. Fine long stems and a perfect center, free-flowering qualities, all make it a valuable addition to its class. **\$5.00.**
- No. 707. CORA B. SLEEPER.** A flower whose petals are long and somewhat loose, but with a finely closed center and inclined to curl, place this offering in the hybrid-decorative class. The coloring is burnt-orange passing to a shade of yellow towards the center. The plants are semi-dwarf, but the stems are of good length and very strong. **\$5.00.**
- No. 150. ETHEL E. HICKMAN.** Decorative. A seven-inch flower of scarlet and bright yellow tips to each petal. The stems are strong and so very stiff that the flower is held facing upwards. It has a fine center and blooms with great freedom. Named for one of my customers who admired it greatly. **\$5.00.**

One of the Best of My New Seedlings



ROSA ALEXANDER

Above illustration about one-half natural size.

\$5.00 each

A magnificent flower, large and deep; one of the popular white-tipped combinations.
(For description see opposite page)

My Introductions for 1929

I will ship this collection of 11 seedlings for \$35.00. List price \$41.00.

- NO. 75. ALMA ALEXANDER.** (Decorative.) A very closely built flower of deep orange; according to the chart orange rufous, with the base of the petals a scarlet red. Large flowers growing from six to eight inches across and a remarkably healthy, strong growing plant habit. An ornament to any dahlia garden. **\$2.50.**
- NO. 86. ALICE M. ALEXANDER.** (Decorative.) A nopal red or, to put it in a more popular way, a rich, brick red, each petal veined with orange. A well-formed flower of six inches across and very free flowering. The stems are long, straight and stiff, making it an extra fine cut-flower variety. **\$2.00.**
- NO. 602. BETTY ALEXANDER.** (Decorative.) A beautiful Persian lilac color, with a veining of golden yellow. The stems are perfect, long enough and stiff enough to carry the flower erect and well out of the foliage. The blooms grow six inches in diameter. Free bloomer. A valuable addition to any flower garden. **\$3.50.**
- CHARLOTTE ALEXANDER.** A decorative which is perfectly true to type. White, with a slight edging and veining of purple on the flat, broad petals. Perfect stems and a constant and free bloomer. (See illustration on back cover.) **\$3.00.**
- NO. 31. CATHERINE ALEXANDER.** (Decorative.) Of a shade a little lighter than old rose, this is sure to prove a popular seedling. A solid color flower on stems that are tall and strong, the six-inch flowers give a beautiful effect. I can strongly recommend this variety. **\$2.50.**
- NO. 110. DOROTHY ALEXANDER.** (Decorative.) An extra large flower of eight inches, of a rich apricot yellow throughout, this is a wonderfully strong, tall grower. The brilliant blooms are held erect, and perfectly formed. For a yellow this will be found hard to duplicate. **\$5.00.**
- NO. 72. MARGARET K. ALEXANDER.** (Peony.) This is a shade of buff yellow, on the chart an antimony yellow, with a veining of clear orange through each petal. The blooms run from six to eight inches and are held on good stems in an ideal position. Like most of this type it is an exceptionally strong, free bloomer and can be cut the entire season. **\$2.50.**
- MARIE ALEXANDER.** (Hybrid Cactus.) A very beautiful introduction. The color is a citron yellow, the reverse side of the petals being veined white, a wonderful combination. The immense, eight-inch blooms are held well up with striking effect. **\$5.00.**
- NO. 40. ROSA ALEXANDER.** (Hybrid Cactus.) Here is a remarkable two-color seedling that is a beauty in every way. It is a deep chrome orange with every petal tipped white and is one of the best of that color combination I have seen, — and they are always popular. The stems are extra good in both length and stiffness. It blooms freely and the plant itself is strong and vigorous. (See illustration page 12.) **\$5.00.**
- SAMUEL T. ALEXANDER.** (Hybrid Cactus.) This seedling is named in honor of the memory of my father. One of the finest of this type grown. With no special care the flowers will grow ten inches across, and the color is something new; technically it is a Japan rose which is a buff with a tinge of pink in it, and the reverse of the petals is Corinthian red. The stems grow eighteen inches to two feet long and the habit of the plant is perfect. See illustration front cover. **\$5.00.**
- SUSAN R. ALEXANDER.** (Decorative.) Named in honor of the memory of my mother, this seedling is of striking and novel coloring. According to Ridgeway's color chart the shade is antimony yellow, which is a sort of dull salmon. The bloom will grow eight inches in diameter with no disbudding, the stems are long and stiff, holding the flower well up from the foliage, and it is a strong and continuous bloomer. A truly wonderful introduction, sure to make a hit with everyone. **\$5.00.**

Special Offer No. 1

Five of the best Dahlias grown, a collection of the new Alexander seedlings.

All for \$10.00 prepaid

(Regular Price \$14.50)

ALICE M. ALEXANDER	\$2.00	CATHERINE ALEXANDER	\$2.50
ALMA ALEXANDER	2.50	MARGARET K. ALEXANDER	2.50
ROSA ALEXANDER	\$5.00		

Dahlias Recently Introduced Which are of Superior Merit

This list of 47 varieties for \$100.00. List price \$111.00.

From the latest and best introductions I have selected those following as being of outstanding merit and of particular attractiveness and value to my customers. Each and every one of them has proven its popularity in recent exhibitions and shows and also among the visitors at my own gardens. They are all first-class dahlias, and I can recommend them as sure to give a good account of themselves in your own garden or exhibition bed.

ALICE WHITTIER. A beautiful shade of primrose or sulphur yellow. The bloom is of great depth and will grow nine to ten inches in diameter on a plant five feet tall. An excellent keeper when cut. Winner of the President's Cup at Boston in 1924 for best seedling of New England origin. **\$2.00.**

AMERICA'S GLORY. (Decorative.) (Beatrice.) A grand fancy decorative. A light, bright scarlet, evenly tipped purest white, never producing solid colored flowers. Extra fine, long, stiff stems holding flowers seven to ten inches across perfectly upright. **\$3.00.**

AVALON. (Decorative.) (Broomall.) A pure yellow of distinct and pleasing shade. Always full to the center and producing flowers in great abundance. **\$1.00.**

BECKETT'S ORIENTAL. (Decorative.) (Murphy.) A perfect creation of red and yellow. The flower on opening is dark red with gold tips. As the bloom matures it is about half red and half yellow, very large and never showing an open center. Prolific bloomer. **\$5.00.**

BOB PLEUSE. (Hybrid Cactus.) (Superior.) A rich, dark red, almost maroon, delicately tipped white. Plants are medium height and bloom freely. **\$1.00.**

CAMDEN CURRIER. (Decorative.) A rich bronze-colored flower, of good size and good habits. **\$1.50**

CASPER G. WARE. Flowers are large, usually eight to ten inches across, regularly formed and produced profusely on strong stems. Color, bright, clear violet rose. Heartily recommended as a pleasing novelty. **\$1.50.**

CITY OF LAWRENCE. One of the best yellow decoratives on the market. Eight-inch blooms on fine stems, prolific bloomer, in fact, extra fine in every way. Scored close to 90 points both at Storrs and Hyattsville, Md. **\$1.00.**

CITY OF TRENTON. (Decorative.) A wonderful new decorative that has all the qualifications of a first-class exhibition flower. An autumn colored dahlia with a wonderful sheen and luster, The face of the petals is a glowing tangerine, while the reverse is a crushed strawberry red, giving a two-toned effect. Flower held erect on fine, long stems it is a superb variety of great beauty. **\$5.00.**

CHEMAR'S PURITY. (Decorative.) (Chemar Gardens.) A most perfect white decorative, a seedling from Jersey's Beauty, which it resembles in everything but color. The size of the flowers is immense, the petals are long and straight and the stems extra long and stiff. At maturity the blooms are pure white. Certificate at the Storrs Trial Grounds in 1927. **\$5.00.**

CHARLES STRATTON. (Decorative.) (Chester-F. & M.) A wonderful exhibition variety, fluffy formation of blooms. A beautiful blending of pale gold to old rose on outer petals. Stiff, upright stem. Has been awarded numerous prizes for size and artistic coloring. Profuse bloomer. **\$1.00.**

COLLEEN BAWN. (Hybrid Cactus.) A very large, deep flower, with long, shaggy, slightly twisted petals. A deep pink in color. **\$1.00.**

EASTERN STAR. (Decorative.) (Dahliadel.) A lively coloring of saffron yellow with old gold shadings. Flowers of great substance and good keeping qualities, full centers, on strong stems. Certificate of merit from Dahlia Society of N. J. **\$1.50.**

EDITH BERYL. (Decorative.) Another new seedling, that scored 85 at Storrs Trial Gardens. The coloring is yellow, running in several tones, from empire yellow to jasper pink and a pale lemon yellow, the backs of the petals being mostly jasper pink. Twelve to eighteen-inch stems and very large flowers, make this a valuable variety. **\$3.00.**

ELITE GLORY, D. (Kennedy.) Immense flower, brilliant rich red, without any purple or maroon shading. Blooms and foliage gigantic in size. **\$2.50.**

ELKRIDGE. A splendid white of the hybrid cactus type, but closely approaching the decorative in formation. Good size flowers on fine stems, firm texture making it particularly fine for cutting. Winner of the medal for the best new variety, A. D. S. Show, New York, 1926. **\$2.00.**

ELSIE DANIELS. A wonderful dahlia, hybrid in type, of pale, violet orchid on the long, shaggy outer petals, and running white towards the center; an incomparable combination of coloring. Four-foot plants with strong, tall stems. **\$1.00.**

- EVA PELICANO.** (Decorative.) A very good white decorative; large flower on good stems. **\$1.50.**
- FLYING AMBASSADOR.** (Marshall.) A first-class exhibition decorative. The color is white with a delicate touch of lavender on the back of the petals. The plant is a healthy, rugged grower, the stems are good and the blooms very large. **\$5.00.**
- FORT WASHINGTON.** (Decorative.) (Rindfleisch.) Immense flowers on plants growing eight feet tall. The color is dark mahogany red and is very likely the largest dahlia of this color. A vigorous, robust grower. **\$2.00.**
- GILDA GRAY.** (Decorative.) (F. & M.) This is a flower of pure lilac color shading to deep Tyrian rose towards the center of the flower, giving an effect of great depth. Slender but stiff stems. **\$1.00.**
- GOV. ALVAN T. FULLER.** (Decorative.) (Beatrice.) This exquisite introduction was named after Governor Fuller of Massachusetts with his special permission. A very large and beautiful flower of rich Tyrian rose in color. It was one of the outstanding varieties at recent exhibitions, creating a sensation wherever shown. **\$5.00.**
- JANE COWL.** (Downs.) A massive, deep decorative. Color is a glistening bronzy-buff and old gold, deepening in shade towards the center. A stem of unusual strength holds the gigantic flower erect over a plant of ideal growth. Certificate of Merit, A.D.S. Trial Grounds at Storrs. Considered one of the best dahlias ever introduced. **\$6.00.**
- JERSEY'S IDEAL.** (Waite.) Very large flowers of great depth, best described as a lavender-pink, although it varies to a phlox-pink. A vigorous grower with large leathery leaves and a prolific bloomer. **\$1.50.**
- KEMP'S VIOLET WONDER.** (Kemp.) The predominating color is a rich naphthaline violet, lightening to bluish violet at tips of petals, with a lavender reverse. A very perfectly formed flower, decorative in type and of great size, frequently attaining a diameter of ten inches and over. The stems are stiff and are ten to fourteen inches long. Early and prolific bloomer. Awarded a gold medal at 1927 A.D.S. Show, New York City. **\$7.50.**
- MARGARET WOODROW WILSON.** A large, extremely beautiful decorative. The petals are broad, slightly pointed, and of an opalescent-pink color, and form a flower of great depth and size. Strong, upright stems, dark-green foliage, and a medium-height plant. Certificate of Merit from Dahlia Society of New Jersey with a score of 86. **\$1.50.**
- MARMION.** (Decorative.) (Tyler.) One of the largest flowers in the garden. A pure golden yellow with rich, bronze shadings. The stems are good and the plant is a strong, heavy grower. **\$2.00.**
- MORDELLA.** (Decorative.) (King.) A beautiful, bright clear shade of apricot buff of very artistic formation. Large blooms held high and gracefully above the strong, vigorous plants. A profuse bloomer. **\$1.00.**
- NATURE'S JEWEL.** (Beatrice.) A hybrid of dainty orchid pink, a prolific and free bloomer of flowers seven to nine inches on good stems. The flowers have good substance, making it an ideal cut flower. Strong tuber producer. **\$2.00.**
- PRIDE OF STRATFORD.** A beautiful decorative of striking and beautiful coloring; a brilliant shade of cadmium orange, shading slightly to yellow at the base of the petals. Stems are long and sturdy and the blooms very large. The reverse of the petals is red, which shows up plainly in the center of the flower. **\$1.50.**
- PRIDE OF WAYNE.** A large flower of good depth, wide petals and perfect formation on splendid stems; color rich, brilliant French purple or wine-crimson. A fine exhibition variety. **\$1.00.**
- PRIMULA REX.** (Broomall.) Very light cream or primrose. One of the best decoratives in existence. The flowers are immense with every good quality, certainly a leader in its class and color. A winner of prizes wherever shown. **\$2.50.**
- QUEEN OF THE GARDEN BEAUTIFUL.** (Decorative.) (Burns.) A gigantic lemon-colored flower of the palest shade. One of the largest of all dahlias, growing ten inches without forcing. Unusually strong stems which, with its keeping qualities, make it a wonderful cut-flower variety. Winner of many prizes, **\$2.00.**
- ROSE FALLON.** (Decorative.) (Harding.) One of the world's best dahlias. Giant, old-gold flower of finest form and type. Excellent stems, never opens up in the center, flowers held quite erect. The most outstanding variety at the New York Show in 1925. **\$2.00.**
- ROSE K. DARNELL.** (Decorative.) A clear, luminous rose color of unusual attractiveness. **\$1.00.**
- RALPH BLODGETT.** (Decorative.) A three-colored dahlia of striking effect; cornelian red blending to yellow ochre and each petal tipped white. Flowers six to eight inches in size. **\$1.00.**
- ROMAN EAGLE.** (F. & M.) A decorative ten inches in diameter of flaming, brilliant, burnished copper, a typical Autumn shade. Medium-size plant, dark-green foliage and long stems. Certificate of Merit from Dahlia Society of N. J. with a score of 89. **\$1.50.**

- SALBACH'S WHITE.** (Salbach.) This is a big, pure white decorative carried on a perfect stem, and a good white is always in demand. Free bloomer, good substance, and a fine keeper when cut, make this dahlia an ideal florists' variety. **\$2.50.**
- SANHICAN'S GEM.** (F. & M.) A delightful shade of old gold thickly suffused with amber when first opening. At maturity a clear old-rose shade, petals large and heavy, true staghorn type. **\$2.00.**
- SANHICAN'S DARKEY.** (F. & M.) Color of this decorative is rich Bordeaux crimson, almost black towards the center, the whole covered with a chocolate sheen or bloom, margins of petals distinctly marked amaranth purple. Flower is perfectly formed on a wiry stem. **\$1.00.**
- SANHICAN'S RUBY.** (F. & M.) A decorative of tremendous size and fine stem. The color is a light crimson or "Pigeon's Blood," suffused with bronze. Petals fluffy and pointed, thickly placed to form a very full flower. Certificate of Merit, D. S. of N. J. with a score of 89. **\$1.50.**
- SOMERSET.** (Eierman.) A very large decorative on fine stems. The color is a blending of salmon and old rose, with occasional touches of lavender. A healthy and vigorous grower. A prize winner in California with a score of 90 points. **\$2.00.**
- THE LEMONADE.** (Ward.) One of the finest varieties of New England origin, possessing good quality: immense size, fine formation, long and stiff stems holding the flowers erect. The color is a clear, lemon yellow. **\$2.50.**
- WALKOVER PRINCE.** (Decorative.) (Clark.) A new seedling introduced this year for the first time, this can truly be said to be a wonderful flower in every respect. A two-color flower, each petal is nopal red, which is a shade lighter than brick-red, and is effectively tipped with very pale lemon yellow. Towards the center of the flower the color again passes to the pale yellow. The stems attain a length of eighteen inches and are stiff and straight. When it comes to size, this is probably the largest dahlia ever offered, for I have seen blooms over thirteen inches across. At the Trial Gardens at Storrs, Conn., it scored a total of 86 points. **\$5.00.**
- W. J. IRWIN.** (Decorative.) Probably the best lavender-purple dahlia ever produced. It has size, the best of stems, and is a prolific bloomer. Everyone likes it and it ought to be in every garden. **\$2.00.**
- WORLD'S BEST WHITE.** (Murphy.) A large, pure white decorative which Mr. Murphy claims as his best white: good size, and good stem. **\$1.00.**
- YANKEE KING.** (Decorative.) A new introduction of strawberry pink, center petals passing to spinel red. The plant is covered with very large blooms which are held erect on long, stiff stems, a perfect variety for cutting and a wonderful addition for the dahlia planting of distinction. **\$5.00.**

Special Offer No. 2

Ten of the best Decorative Dahlias grown of recent introductions.

All for \$4.00 prepaid

(Regular Price \$5.75)

BONNIE BRAE, Peach	\$.50	DR. TEVIS, Salmon-rose	\$.50
ELEANOR GRANT, Cameo-Pink50	LE GRAND LILAS, Royal Purple50
MRS. CARL SALBACH, Pink50	MRS. EDITH HAYWARD, Yellow	1.00
ROSA NELL, Bright Rose50	PRIDE OF CALIFORNIA, Red50
SNOWDRIFT, White50	THE GRIZZLY, Crimson75

Special Offer No. 3

A Wonderful Collection for \$2.00 Prepaid

(Regular Price \$2.50)

DR. TEVIS, Salmon-rose	PRIDE OF CALIFORNIA, Red
SNOWDRIFT, White	BONNIE BRAE, Peach
JANE SELBY, Mauve-pink	

General List of Choice Decorative Dahlias

This list of 79 Choice Decoratives for \$45.00. List price \$53.50.

- AL KORAN.** Yellow, suffused with golden rod and amber. The petals have the Marcelle wave which makes it very attractive. **\$1.00.**
- AMANDA M. HOUGHTON.** Here is a Dahlia I recommend highly. It has a very large, pretty pink blossom with long, stiff stem. **\$1.00.**
- BERTHA STORY.** A very large flower of beautiful rose-pink on long stems. Sometimes has a wide white stripe through center of each petal. **50 cents.**
- BONNIE BRÆ.** The color of this wonderful Dahlia is a peach and cream combination of shadings, bringing strong on the peach pink at first, but after well opened comes out much lighter. Very free flowering. **50 cents.**
- BREAK O'DAY.** A delicate, clear sulphur yellow, tinting to sulphur white at the tips. Irregular in formation. **50 cents.**
- BUTTERCUP.** One of the finest Dahlias ever offered in its color, being a pale chalcedony yellow, very large and beautiful. **50 cents.**
- CATHERINE WILCOX.** (Dec.) White with points of petals tipped cerise. A very strong grower and free bloomer. **50 cents.**
- CAROLYN WINTJEN.** A very beautiful salmon-pink with rose shadings. Very large flower with a good stem. **50 cents.**
- CHAMPAGNE.** An immense flower. The color is a delightful warm autumn shade. Very free bloomer, and has long rigid stems. **\$1.00.**
- DAKOTA.** (Marean.) A good exhibition variety. Color a deep tone of rich coral-red with coppery suffusion. This strong-growing variety is very satisfactory. **50 cents.**
- DR. TEVIS.** Beautiful shade of salmon-rose, suffused with old gold. **50 cents.**
- EDNA STORY.** A good reliable pink and white. **50 cents.**
- ELIZABETH SLOCOMBE.** (Slocombe.) (Dec.) Color rich purplish garnet. The large flowers are carried on long, stiff stems. **50 cents.**
- EL DORADO.** Vivid gold coloring, which is emphasized by the deeper tones at the base of the petals. Extra fine flower and a good stem. **\$1.00.**
- ELEANOR GRANT.** A large, compact flower of very light, cameo-pink, almost white, passing to a tinge of yellow at the center with a very fine edging of yellow to each petal. Strong, upright stem. **50 cents.**
- ELLINOR VANDERVEER.** A beautiful Dahlia both in coloring and form. Rose-pink flowers on stiff stems that are two feet long, and a continuous bloomer. **\$1.00.**
- FAITH GARIBALDI.** (Dec.) Deep lavender rose, very large, stem extra strong, growth of plant good. **\$1.00.**
- F.L. MILLIS.** Yellow, base shading to orange. **50 cents.**
- FRAU GEHEIMRAT SCHEIFF.** An exquisite blending of apricot-orange and yellow, with reverse of petals coral red, the unopened central and twisted petals showing the coral red prominently, making a very unusual and attractive flower. **50 cents.**
- GEORGE H. CARR.** The color is a peculiar shade of magenta shading lighter at tips. Free-flowering. **\$1.00**
- GEORGE E. BEMISTER.** (Bemister.) A gigantic clear lemon yellow Decorative. Flowers from five to eight inches in diameter. Long, curling petals make this mammoth flower one of the most beautiful for both exhibition and garden purposes. **50 cents.**
- GLORIANA.** Immense flowers of pure gold color, slightly reddish towards center. Long leafless stems. None better for exhibition or cutting. **50 cents.**
- GLORY OF NEW HAVEN.** (Slocombe.) A beautiful shade of pinkish-mauve. The nearest to lavender to my knowledge in desirable Decorative Dahlias. Plants are tall, robust growers and produce large flowers. **50 cents.**
- GRACE ALLEN FAY.** (Dec.) Rosy crimson shading darker in the center. Large well-formed flowers on good stems. **50 cents.**
- HALLWEEN.** (Dec.) An exceedingly large, stiff stem Dahlia with dwarf habits. Color a light cream overcast with pink and orange bronze. **50 cents.**
- HALVELLA.** Large flowers on long stems. A beautiful shade of rose-pink, a little darker than Jersey's Beauty. Profuse, early bloomer. **\$1.00**
- HARRY DAVIDSON.** A rich mulberry, tipped gold, and golden yellow at center. **50 cents.**
- H. MAIER.** A very large California production of the greatest merit. Of a shade a little darker than primrose-yellow, each petal is slightly flecked carmine. A very fine yellow Decorative. **50 cents.**
- IMMENSE.** Large, white suffused and tipped bright rosy crimson. **50 cents.**
- ISMALIA.** One of the finest large flowering Dahlias ever introduced, and are carried on long, stiff stems, the color being a deep crimson. 6 to 8 inch flowers, without forcing. **\$1.00.**
- JANE SELBY.** Exceptionally large flower of a delicate mauve pink. Great substance and good formation, on strong stems well above the foliage. A prize-winner. **50 cents.**
- JERSEY'S BEACON, D.** (Waite.) Chinese scarlet with a paler reverse, giving a two-toned effect; a very large flower, vigorous grower, good stem. **\$1.00.**
- JERSEY'S BEAUTY.** A very fine true pink, flowers of perfect shape produced on long, straight, stiff stems. Very free bloomer, and a splendid keeper. **75 cents.**
- JERSEY'S RADIANT.** (Waite.) Bitter sweet orange, large flowers produced on long, stiff brown stems well above the foliage. A very attractive variety. **\$1.50.**
- JOHN MCGUIRE.** Alexander's new 1928 Seedling. Color a clear light greenish yellow, 6 to 8 inch flowers borne on long stiff stems. **\$1.00.**
- JOHN H. SLOCOMBE.** A gorgeous flower of an intense deep red, suffused with a beautiful velvety sheen. The petals prettily curled and twisted make this a most attractive variety. The flowers freely produced on unusually long stiff stems. **50 cents.**
- J. M. GOODRICH.** A beautiful salmon-pink, each petal effectively tipped primrose-yellow. **50 cents.**
- JUDGE ALTON PARKER.** A wonderful shade of golden-buff. A wonderful exhibition variety, grown freely on long, erect stems. **50 cents.**
- JUDGE MAREAN.** A blending of salmon-pink, red, orange, yellow and pure gold. Very large flowers borne on strong, stiff stems. **\$1.00.**
- JUNIOR.** An enormous flower, one of the largest Dahlias grown. A pure lavender. Fine for exhibition purposes. **\$1.00.**
- KING OF THE GARDEN.** A beautiful pink and gold Decorative, with good stem. **50 cents.**
- KITTY DUNLAP.** (Decorative.) (Bessie Boston.) The delightful shade of the American Beauty rose. Blooms freely on long stems which are practically free of leaves. Excellent keeper when cut. **75 cents.**
- LA PALOMA.** Orange chrome, yellow center, flaked white, 8 inch flower, fine. **50 cents.**
- LE GRAND MANITOU.** The color of this superb variety is pure white artistically striped, splashed and blotched deep violet-purple. The plants occasionally bear a solid purple-colored flower. **50 cents.**
- LE GRAND LILAS.** Lavender shading to royal purple; very large flower and excellent stem. **50 cents.**
- LOUISE SLOCOMBE.** (Slocombe.) Hybrid decorative in form and of a lively mauve color. Good stem and a free bloomer. **50 cents.**
- MAID OF THE MIST.** (Dec.) A deep cream shading to a beautiful salmon-pink on the outer petals which roll back to a depth of four inches, prettily pointed and twisted. One of the best flowers grown, eight inches in diameter. **\$1.00.**
- MARJORIE LEIGH.** (Decorative.) A pleasing shade of Jasper pink. **\$1.00.**
- MILLIONAIRE.** (Stillman.) Most delicate lavender with faint pink cast overshadowing it, the whole having a blending of white. **50 cents.**
- MONS. LE NORMAND.** A very striking variety of large size and an extremely free bloomer. Color rich clear yellow, penciled and striped rich red. **50 cents.** (See illustration page 22.)

Decorative Dahlias — Continued.

MR. CROWLEY. Famous for its delicate coloring of luminous salmon-pink. Flower of about five inches grows on plants inclined to be dwarf. **75 cents.**

MR. ALEX. WALDIE. One of the most beautiful Dahlias. A creamy ground overlaid with delicate salmon-pink. Gives immense flowers held erect on strong stems. **75 cents.**

MRS. CARL SALBACH. (Salbach.) A sensational Decorative Dahlia of great size. In color, a mauve-pink, with occasional blending of white; the general impression being pink. For exhibition purposes this new creation is very desirable. **50 cents.**

MRS. EDITH HAYWARD. This is one of Alexander's new Seedlings for 1927 introduced in 1926 for the first time. The color is a clear lemon yellow, it will produce flowers from 6 to 8 inches in diameter and has a wonderful stem and will keep longer after being cut than any other Dahlia. **\$1.00.**

MRS. I. DE VER WARNER. Deep mauve-pink. One of the very best Dahlias grown. Long, stiff stems and excellent for cut flowers. **50 cents.**

MRS. JOHN L. EMERSON. (Slocombe.) One of the largest and most attractive Decorative Dahlias grown. In color, a beautiful light golden yellow, overlaid carmine red. A favorite garden and exhibition Dahlia that will produce six to eight inch flowers. **\$1.00.**

MRS. R. R. STRANGE. Autumn shades, buff salmon and orange. Fine form on good stems. **50 cents.**

MRS. J. HARRISON DICK. Color citron yellow at center, outer petals suffused and overlaid salmon pink, a lovely and effective combination, long, stiff stems. **50 cents.**

NOIR ALVAREZ. (Nonin.) A deep, velvety ox-blood red. The plant makes a sturdy, vigorous growth with long, stiff stems. **50 cents.**

PAUL MICHAEL. An immense flower of bright apricot with bronze shadings. Good stems and excellent for exhibition purposes. **75 cents.**

PIERRE LEBLOUD. A French Decorative of great attractiveness. Flowers are large, produced on long stems, and the color is ox-blood red heavily tipped white. Solid flowers of red will often be produced. **\$1.00.**

POLAR SNOW. A very large pure white, full and deep. Plants are strong and healthy and carry the flowers on long, stiff stems. **\$1.00.**

PREFERENCIA. A large flower of rich, deep, clear yellow with long petals. Medium height plants and long stems. **50 cents.**

PRIDE OF CALIFORNIA. (Lohrman.) Called the "American Beauty" Dahlia. Winner of Gold and Silver Medals. Huge crimson red flowers produced on long, straight stems. **50 cents.**

ROSA NELL. The color is a clear bright rose, and the flowers are very large, and is one of the best shaped Decorative Dahlias grown. Good stems and habits. **50 cents.**

SAN MATEO. (Dec.) Large yellow striped red. **\$1.00.**

SEQUOIA GIGANTEA. Very large, buttercup yellow, lightly suffused red. **50 cents.**

SNOWDRIFT. (Broomall.) A giant, clear white. The flower has good depth with broad, waxy petals of the true Decorative type. **50 cents.**

SULPHUREA. Sulphur yellow, long petals, large and free flowering. **50 cents.**

SWIFT. Lemon yellow tipped white. **50 cents.**

THE BASHFUL GIANT. (Dec.) This is one of the largest Dahlias ever produced. It is also of great merit for its beautiful color, being an apricot with golden shadings. Flowers are produced on stout stems. **50 cents.**

THE GIANTESS. (Dec.) (Marean.) A very pleasing shade of amber on fine stems, neck slightly turned, an immense thick bloom. **\$1.00.**

THE GRIZZLY. (Burns.) A prize winning California Dahlia. A dark maroon-red with stems three feet long. The flowers are large with reflexed petals and stand well above the foliage, making a fine effect in the garden. **75 cents.**

THE EMPEROR. (Dec.) Beautiful deep maroon of immense size, long, flat petals. **\$1.00.**

TRYPHINEA. (Dec.) Bright pink, shading lighter at tips of petals, base a golden yellow. **50 cents.**

WINFIELD SLOCOMBE. Not a large flower, but beautifully formed and a wonderful color: gold and burnt orange. A free bloomer on fine stems. **\$1.00.**

WORLD'S WONDER. (Stillman.) The color is a golden-salmon with a very large, deep, full flower on a rather dwarf growing plant. The stems are long and stiff. A profuse bloomer. **50 cents.**

WM. H. SLOCOMBE. (Slocombe.) The largest and best pale yellow Decorative to my knowledge. A clear sulphur yellow passing to martinus yellow at tips. Flowers of gigantic size, from six to eight inches in diameter under ordinary conditions. **50 cents.**

YELLOW MONS. LE NORMAND. (Charmet.) **Giant French Decorative Dahlia.** In color a rich golden-yellow, with occasional reddish markings. One of the most satisfactory garden varieties and equally good as an exhibition sort. **50 cents.**

General List of Select Decorative Dahlias

These Dahlias all 25 cents each, \$2.50 per dozen. The entire collection of 18 Dahlias for \$4.00 prepaid. Regular price \$4.50.

CLARABEL. Color, rich, rosy purple.

CLIFFORD W. BRUTON. A large canary-yellow.

DARLENE. (Alexander.) An exquisite shade of live shell-pink with a dainty blending of white at center.

DOLLY or SYLVIA. White edged pink.

EVENTIDE. (Dec.) A beautiful flesh color shading to white, giving the appearance of white when in flower. Very free.

FRANK A. WALKER. Alexander's Decorative Seedling. A charming shade of deep lavender-pink. For garden decoration or for cut flowers.

GENERAL CUSTER. A combination of yellow-white and coral-red.

JACK ROSE. The identical shade of the rose with the same name.

MINA BURGLE. A glowing and most brilliant scarlet.

MRS. HARTONG. Deep orange, tipped pinkish-white.

OBAN. Mauve. Extra fine form.

ORA DOW. A beautiful velvety maroon, effectively tipped white.

PAUL BONYON. Large salmon, shaded orange.

PROGRESS. A clear lavender, with stripes and blotches of soft crimson.

QUEEN MARY. A large flower with full, rounded center. The color is a soft shade of pink.

SOUVENIR DE GUSTAVE DOAZON. The color is a pleasing shade of orange-red. Long stems.

WILHELM MILLER. Very brilliant purple.

WM. AGNEW. Intense glistening scarlet-crimson.

Cactus Dahlias

Up to Date Cactus Dahlias for 1930

I will ship 23 Cactus Dahlias for \$17.00 prepaid to any part of the world. Regular price \$19.50.

BRIDE'S BOUQUET. (Hybrid.) An ideal white cactus and profuse bloomer, extra long stems, and a Dahlia that stands up well when cut. **25 cents.**

CIGARETTE, H. C. Variegated variety, the color is creamy white heavily edged with red and orange, but no two flowers are alike. Long, strong stems and good form. **\$1.00.**

COUNTESS OF LONSDALE. (Hybrid.) Deep salmon-red. One of the best. Very free. **50 cents.**

DADDY BUTLER. Rosy carmine in color with the reverse of petals lighter. A tall, strong grower and early bloomer. **\$1.00.**

ELSA BONNELL. (Slocombe.) (Hybrid Cactus.) Rich, deep velvety carmine. Deep well-built flowers produced on long, wiry stems. Flowers of large size and produced with great freedom. Almost as abundant as the well-known "Countess of Lonsdale." Long stiff stems, holding flowers upright, making it very desirable. Recommended. **50 cents.**

ELSIE OLIVER. (Hybrid.) Creamy pink shading to white in the center. The bushes are laden with enormous size blooms all summer. **\$1.00.**

ETENDARD DE LYON. (Hybrid.) The color is a trifle darker than rhodamine-purple, described by some as carmine-rose. The flower is held on fine, stiff stems. **50 cents.**

J. HERBERT ALEXANDER. A beautiful incurved Cactus Dahlia of a charming shade of golden-yellow, exquisitely blending to clear, deep salmon-pink. **\$1.00.**

JACQUES FUTRELLE, H. C. This is one of my new 1928 Seedlings. The flowers are of immense size on good, strong, erect stems, well above the foliage. The color is of the most attractive shade of light greenish yellow, one of the most showy of the yellow shades ever introduced. At the base of every petal it has a bright clear yellow filigree petal, which makes the flower very full like a chrysanthemum. This flower is named for the great novel writer who was lost at sea on the Titanic. **\$5.00.**

JEAN CHAZOT. A hybrid cactus of an orange color suffused with gold and frequently tipped golden yellow. Tall, branching bushes and stems that hold the flower erect. **\$1.00.**

KALIF. (Hybrid.) In color, a beautiful pure glowing scarlet. Gigantic flowers, which are produced freely. **50 cents.**

LIBELLE. (Straight.) Clear, deep rose-purple. **25 cents.**
MACGREGOR. A favorite of some years' standing. The color is a pastel shade of brick-red, beautifully formed flower on a perfect stem. **50 cents.**

MARGARET E. MILLIS. (Hybrid.) (Millis.) See illustration on inside cover page. A wonderful bloomer on good stems. The coloring is amaranth-pink combined with white in a streaked effect. The flowers are very deep and large with petals inclined to twist. This variety shows up in the field in a manner that makes it very conspicuous and attractive and I can recommend it highly. **\$1.00.**

MR. SEAGRAVE. (Straight.) Deep purple. **25 cents.**
MT. SHASTA, H. C. Cream yellow shaded pink, one of the best. **\$1.00.**

MRS. C. B. BENEDICT. (Hybrid.) Alexander's New Seedling. 8 to 10 inches across. A clear light yellow, one of the largest grown, a wonderful flower. **50 cents.**

MRS. ETHEL F. T. SMITH. This is a white shading to a greenish lemon tint in the center. A monster Dahlia on a strong stem. Blooms freely and is a splendid exhibition variety. **50 cents.**

THE EAGLE. (Broomall.) Pure yellow, a hybrid formation with long, narrow petals. **50 cents.**

TUSTU. (Straight.) The color is perfectly gorgeous — a beautiful velvety maroon. **50 cents.**

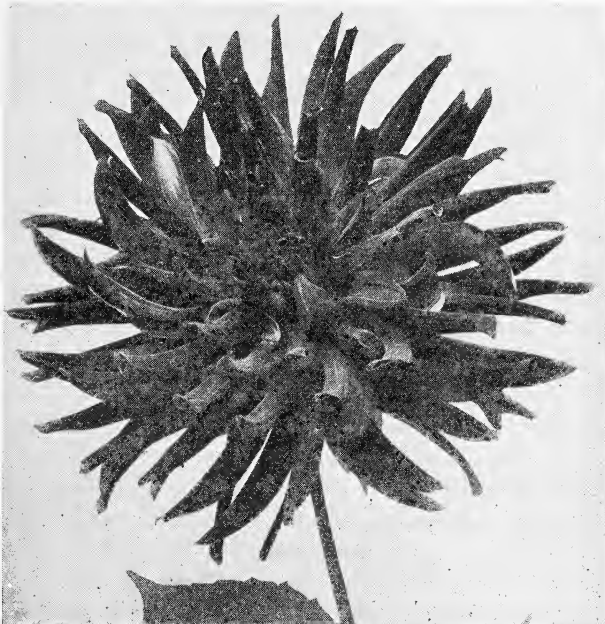
U. S. A. A rich orange in color, a good size, full flower and a free bloomer. **\$1.00.**

VALIANT, Cac. Brilliant crimson, giant flowering, long stems, perfectly incurved long and narrow florets. **\$1.00.**

W. B. CHILDS. (Hybrid Cactus.) A very reliable variety. Color a beautiful dark purple-maroon. **25 cents.**

BRIDE'S BOUQUET (Hybrid.) 25 cents each.

An ideal white cactus and profuse bloomer.



Peony-Flowered Dahlias Varieties of Exceptional Merit

This collection of 14 varieties for \$7.00. Regular price \$9.00

CAECILIA. A wonderfully large creamy-white flower. 50 cents.

CHANSON. The color is deep lilac with a blush sheen. A large full flower on a splendid stem. 50 cents.

CLEOPATRA. (Marean.) Large flowers on good wiry stems. The color is a fine shade of yellow, the reverse of the petals being a tangerine shade. 50 cents.

DR. BARNES. Rich, turkey red with reverse of petals veined red and yellow. Straight stems, free bloomer. The form is a very close to the decorative, being deep and full. \$1.00.

HELEN KELLER. Named by request in honor of one of the world's most noted women; the color is almost identical with the well-known Dahlia, Rosemawr, a lavender-pink, but it is an improvement on that variety, being larger and more beautiful in form. 50 cents.

JEANIE PRESTON. A pale lemon-yellow shading to Martinus yellow, overlaid a delicate Japan rose. Reverse of petals a deep Japan rose. 50 cents.

LA GLORIETTA. Yellow at the base, shading to a beautiful rosy pink shade; the flowers are enormous in size; the habit is pendant; nevertheless, I consider

this the most beautiful Peony Dahlia I have seen; it will be sure to attract attention in any collection; won first prize at Los Angeles Show, 1920, for best Peony Dahlia. \$1.00.

LATONA. An unusual blending of orange, buff and yellow. Flowers are nearly full to the center, and produced freely, upon good stems. 50 cents.

MME. VAN BUSTEIN. A very distinct and new shade, lilac-blue throughout, holding blooms well above the foliage. An early and abundant bloomer. 50 cents.

PEG O' ME HEART. (Marean.) Very beautiful old rose, with yellow center. 50 cents.

POLAR STAR. Large, pure white, of fine form on long stems. 50 cents.

QUEEN MARGUERITE. Salmon pink. A wonderful large flower. \$1.00.

SUSAN COE. A splendid flower of perfect form and size, carried on long, stiff wiry stems, the outer petals a pleasing shade of rose-pink passing to a yellow center suffused salmon. 50 cents.

UNCLE SAM. (Pae.) Orange buff, blending into pink at edge; reverse spinal red. Very large on long stems. \$1.00.

General List of Peony-Flowered Dahlias

These Dahlias all 25 cents each. \$2.50 per dozen. The entire collection of 19 Dahlias for \$3.50 prepaid. Regular price \$4.75.

BESSIE SEABURY. White, very daintily overlaid a delicate mallow-pink.

CARDINAL. A very large flower of a gorgeous maroon-purple.

ELLEN E. KELLEY. A long-stemmed free-flowering golden yellow variety.

GRACE KIRSCHNER. White daintily overlaid cameo-pink.

HORTULANUS BUDDE. A bright scarlet of splendid habit.

IMPROVED GERMANIA. A rich, deep scarlet-red, very brilliant and showy.

KATHINKA ANDERSEN. A beautiful lemon-yellow, exquisitely overlaid pale amaranth-pink.

LOUIS GRATON. A very delicate pale salmon, blending to golden-yellow at the center.

MINA SEABURY. In color, a sulphur-yellow, very daintily overlaid mallow-pink.

MISS BARBARA HAMMOND. An exquisite shade of silvery rosolane-pink, blending to clear pale lemon-yellow at the center.

MISS LYMENA T. BAXTER. The coloring is a very beautiful, clear, pale lemon-yellow.

MRS. BOWEN TUFTS. Deep rosy-purple.

MRS. JACQUES FUTRELLE. An exquisite lemon-yellow, heavily splashed scarlet.

MRS. M. W. CROWELL. Color, a beautiful orange-yellow. Very free-flowering.

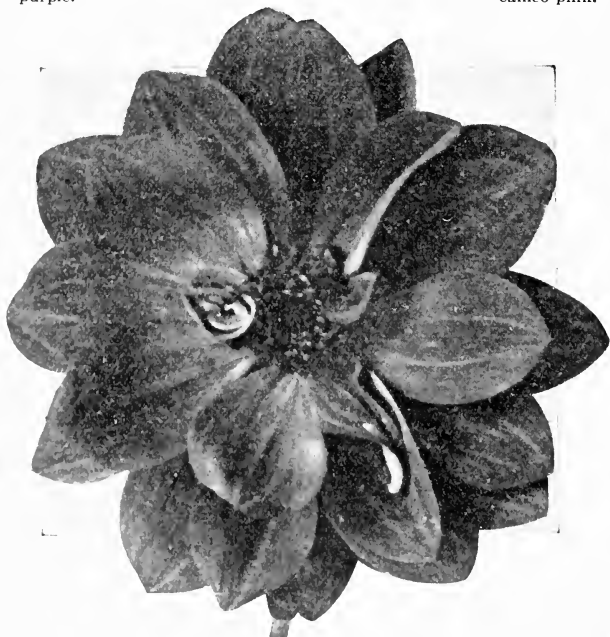
MRS. NEWELL D. ATWOOD. Its color is very rich and brilliant; a gorgeous deep crimson-red.

NEWPORT DANDY. A lilac-pink of the most delicate shade.

PHENOMENE. The color is an exquisite salmon shade, suffused light amber.

PRINCE CAMILLE. Color, velvety crimson, shaded rose.

QUEEN EMMA. It is a charming shade of Hollyhock pink, the inner petals banded with gold.



IMPROVED GERMANIA
25 cents each

(For description see this page)

Show and Fancy Dahlias

These Dahlias all 50 cents each; \$5.00 per dozen. This collection of 9 Dahlias for \$3.50 prepaid. Regular price \$4.50.

DAVID WARFIELD. Beautiful deep cherry-red. Producing its mammoth flowers upon stiff, wiry stems well above the foliage.

DOROTHY PEACOCK. The color is that beautiful, clear, live pink that appeals to everyone.

D. M. MOORE. In this offering we have one of the best "nearly black" varieties to date. It is a rich, deep, velvety Victoria-lake, which is a shade deeper than deep maroon.

GOLDEN WEST. One of the finest and most distinctive pure yellow Dahlias. The petals are deeply serrated, giving the flower a fluffy appearance which is most attractive.

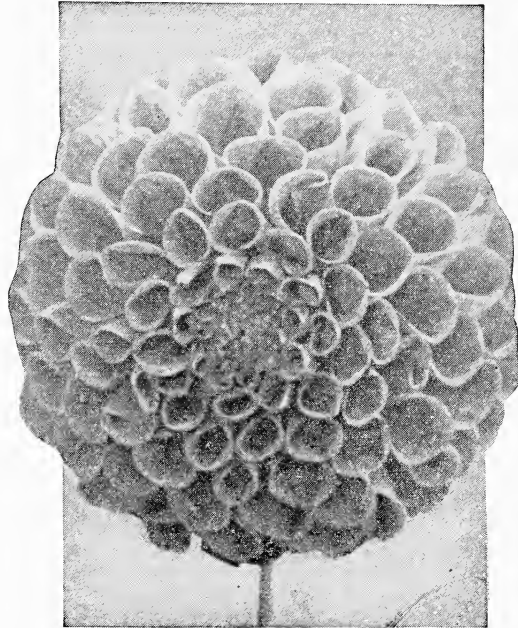
LILY P. HATHAWAY. The coloring is a clear lemon-chrome, blending to deep orange towards the center, giving a general impression of light orange-yellow.

MAUDE ADAMS. (Alexander.) The color is a pure snowy white, very effectively overlaid clear delicate pink.

MISS HELEN HOLLIS. (Alexander.) (See illustration, this page.) Deep scarlet. Blossoms are on long, stiff stems, well above the foliage.

MRS. C. D. ANDERSON. It is a rich purplish crimson and bears large flowers freely on the best of stems.

W. W. RAWSON. The color is pure white overlaid with amethyst-blue.



Miss Helen Hollis. (For description see this page.) Show Dahlia, 50 cents each.

General List of Show and Fancy Dahlias

These Dahlias all 25 cents each; \$2.50 per dozen. This collection of 29 Dahlias for \$5.00 prepaid. Regular price \$7.25.

A. D. LIVONI. Beautiful soft pink. Well formed flowers with long stems. Free-flowering.

AMERICAN BEAUTY. The flowers are of gigantic size. The color of this acquisition is a gorgeous wine-crimson.

ARABELLA. Sulphur-yellow, tipped pinkish-white.

AUGUS MEGAR. The largest and finest lavender-purple Show Dahlia. Tall and sturdy.

DIMANT. Pure white.

GLOBE DE NANTES. Bright scarlet; a perfect model.

GLOIRE DE GUSCARD. In color it is an almost indescribable combination of orange-red, yellow, pink and white.

HENRY GLASSCOCK. Deep lilac, striped purple.

IMPERIAL. Deep purplish-maroon.

JAMES VICK. Purple-crimson.

JOHN THORP. Pink, slightly tinged white at base. Good size.

LES AMOURS DE MADAME. Delicate pale rose, striped scarlet.

LUCY FAUCETT. Pale yellow, striped deep pink or light magenta. Very large and free-flowering.

MAYOR DUNN. A beautiful clear scarlet flower.

Remarkably free bloomer and very showy.

M. SOMERS. A beautiful clear purple. Large.

MRS. DEXTER. Salmon.

POLLY SANDALL. A novel combination of bronze yellow, veined and blotched pinkish-white.

PRINCESS VICTORIA. Pure canary yellow. Long stems, perfect form and free bloomer.

RED HUSSAR. A clear, cardinal red, good stems and a free bloomer.

ROBERT BROOMFIELD. Pure white. Tall grower.

ROSE. (Alexander.) Color, deep rose shade.

ROSEBUD. The color is white, effectively edged with rose pink.

STORM KING. A pure white, flowers produced freely upon long stems, well above the foliage.

STRADELLA. (Alexander.) Rich, deep purple crimson, very free-flowering, long stems.

UNCERTAINTY. A brilliant combination of very light shell pink and scarlet. No two flowers are the same.

VIVIAN. (Alexander.) The color is white, effectively edged rose violet.

WHITE SWAN. Pearly white.

WILLIE AUSTIN. Fawn.

YELLOW DUKE. A splendid primrose-yellow of good form.

Pompon Dahlias

The entire collection of 26 Dahlias for \$7.00 prepaid. Regular price \$8.65.

AMBER QUEEN. Rich, clear amber, shaded apricot. 25 cents.

ARTHUR KERLEY. Deep, rich cherry red. Good long stems. 50 cents.

BRUNETTE. Crimson, blotched white. 35 cents.

CLARA HARSH. Perfect blooms of yellow; tipped with crimson. 25 cents.

CHALLENGE. Red and white. 25 cents.

FASCINATION. Pink and lavender, blotched white. 25 cents.

FASHION. Orange, fine. 25 cents.

GOLDEN GEM. Pure yellow. 50 cents.

GOLDEN QUEEN. (Alexander.) The most perfect yellow Pompon to date. 25 cents.

JESSICA. Yellow, edged red; a very effective combination. 35 cents.

LASSIE. Yellow, edged and tipped white. 25 cents.

LITTLE BEAUTY. (Pom.) Soft pink. 35 cents.

LITTLE DOROTHY. (Alexander.) White occasionally striped and blotched reddish-orange. 50 cents.

LITTLE JENNIE. Primrose-yellow. 25 cents.

LITTLE JACKET. Maroon and yellow. 25 cents.

LITTLE MARION. (Alexander.) The ground color is a soft salmon-pink with a veining of crimson through each petal and effectively tipped with a light reddish amber. 35 cents.

MERRITT. A pale, clear yellow. 35 cents.

MIDGET. Salmon, edged pink. 25 cents.

PHOEBE. Orange, tipped crimson. 35 cents.

PRINCE CHARMING. Cream, tipped purple. One of the best. 25 cents.

RAPHAEL. Very dark maroon of extra fine form. 35 cents.

REGULUS. (Pom.) Crimson purple. 25 cents.

SAN TOY. White, very heavily tipped carmine. 35 cents.

SNOW CLAD. Small white. Free. 50 cents.

SUNNY DAYBREAK. Pale apricot, edged rosy red. 50 cents.

WINIFRED. White tipped violet. 35 cents.



MONS. LE NORMAND

50 cents each

(See page 17)

Color: A deep rich yellow, pencilled and striped in red

Single and Collarette Dahlias

These Dahlias all 25 cents each; \$2.50 per dozen. The entire collection of 14 Dahlias for \$2.50 prepaid. Regular price \$3.50.

ACHIEVEMENT. (Alexander.) The flower is a clear, rich, velvety maroon; collarette, a beautiful snowy white very daintily overlaid with a delicate shade of pinkish crimson.

AMI CACHAT. Orange-red, yellow collarette.

ARIA. White heavily overlaid rhodamine purple. Collar, pure white.

AUBRIGHT BEAUTY. A pure, waxy-white variety.

CARDINAL CENTURY. A very large flower of a gorgeous maroon-purple.

ECKFORD CENTURY. One of the largest of the single varieties. Pure white, streaked and dotted purple-crimson.

EXPOSITION DE LYON. A very gay flower of bright garnet, with exceptionally fine yellow tips; white collarette, daintily suffused lavender and overlaid crimson.

HENRI FARNHAM. Yellow blending to red, collarette a delicate yellow. Large.

MARIE ANTOINETTE. Pure white with the center of each petal heavily splashed with brilliant velvety crimson.

MR. FRANK I. SHOREY. The coloring a beautiful waxy white, effectively veined and shaded delicate pinkish lavender.

ROSE PINK CENTURY. A rose-pink shaded. A very large variety and without doubt the best of its color.

VIOLETTE. Lively shade of crimson.

VIRGINIA LEE. In color, a deep velvety carmine, edged sulphur-yellow; collarette, pale sulphur-yellow.

SOUVENIR DE CHABANNE. Lemon-yellow with coral-red markings; collarette petals very abundant, lemon-yellow, tipped white.

Mixed Dahlias

This mixture is made up of some of the very best Dahlias grown, that have got mixed in handling, also some extra good seedlings. Only **\$1.50 per dozen, prepaid.**

Dahlias Which are Not Catalogued

If you are looking for varieties that are not catalogued, it will pay you to write to me before ordering elsewhere, as I carry a large list of uncatalogued varieties; my stock being insufficient to warrant me to catalogue these varieties. I grow over 3,000 varieties but must have over 250 clumps of a variety before I have sufficient to list herein. If you have any variety in mind that you do not see listed, I will be pleased to have you write me. If it is good, I have it and will be pleased to quote you.

Dahlia Seed

I offer this year seed carefully selected from the best varieties and all types. If you are interested in growing Dahlias in new forms and new colors, you cannot do better than to get a packet of seed. One package will produce 15 to 20 plants.

SPECIAL SEED. I have selected and reserved some hand-pollinised seed and can supply a limited number of packets of this seed, being personally selected from my best and largest varieties. I highly recommend these seed. **\$2.00 per package of 50 seeds.**

SPECIAL MIXED SEED. 50 seed selected from all large flowering varieties Dec., H. C., and Peony-flowered. **\$1.00 per package.**

Dahlia Cutting Knives



Many of my customers have asked me what kind of a knife I use in separating my clumps of Dahlias, so thinking it will make it convenient for my customers, I am offering the knives we use to separate the Dahlia clumps. The above illustration shows their general appearance. This knife has a two-inch blade made of finest tool steel, with nickel-plated closed-end ferrules, and every blade securely riveted in the handle. The blades are ground sharp and hand honed. This knife has an oval taper rubberoid handle. In addition to being used in cutting Dahlias, it is made for grape picking and pruning purposes. A good pruning knife is always handy. The women folks like them for paring apples and potatoes. **50 cents prepaid.**



Bouquet taken from Alexander's mixture. Try them and be convinced.

Gladioli

The Gladioli are without an equal either for bedding or borders. As a cut flower they are far superior to any other Summer bloomer, either for lasting qualities or for the various uses for which they can be employed. If planted by the last of May they will bloom by the first to the middle of August, if cared for properly.

The way to Plant — Dig the row or bed from 8 to 10 inches deep, then spread a liberal amount of good fertilizer in the bottom of the row or bed, then rake it in thoroughly before planting your bulbs; but if stable dressing is used it should be spaded in when the bed is first dug over. I find that hen dressing can be used, giving first-class results, if applied properly; but it must be put in the bottom of the drill or bed, then covered with fully an inch of soil before the bulbs are planted. The bulbs after being planted should then be covered from 4 to 6 inches deep. Just as soon as they show their heads through the ground, they should be cultivated. If this is continued once a week till they commence to flower, one will be sure of first-class results. After the bulbs have flowered, and the stalks commence to turn brown they should be harvested. Dig carefully and allow to dry thoroughly for ten days or two weeks before placing in cellar for Winter storage.

New and Choice Gladioli for 1930

This remarkable collection of one of each 36 Phenomenal Gladioli prepaid for \$4.50 — List price \$5.30.

ALBANIA. Pure, glistening white; the flowers wide open, very large and petals with finely ruffled edges. Certainly a very beautiful white. **10 cents each; \$1.00 per dozen.**

ANTHONY B. KUNDERD. A huge ruffled variety of cream and pink. **15 cents each; \$1.50 per dozen.**

BENGAL TIGER. Large blooms of a peculiar shade of smoky red, striped and lined with smoky blue-gray. Certainly well named. Highly recommended. **15 cents each; \$1.50 per dozen.**

CRINKLES. A rich, dark pink, very heavily ruffled.

A winner of many prizes. **25 cents each; \$2.50 per dozen.**

DOROTHY MCKIBBIN. Outer edges bright pink blending to pure apple blossom throat; heavily ruffled. One of the finest early pinks. **10 cents each; \$1.00 per dozen.**

DORRITT. Large, delicate lavender pink, often splashed with rose-red on all petals. An outstanding variety. **15 cents each; \$1.50 per dozen.**

GENEVIEVE BOTHIN. An excellent example of the so-called smoky shades. **10 cents each; \$1.00 per dozen.**

LONGFELLOW. Entire flower of the clearest La France pink, prominent lighter midrib; large, wide open and fine form. **25 cents each; \$2.50 per dozen.**

MARIE KUNDERD. A beautiful, ruffled white, soft pink line in center of lower petals. **10 cents each; \$1.00 per dozen.**

MISS SHIRLEY SHATTUCK. One of the best yellow grown with a deep bronze throat, with many flowers open at one time. **10 cents each; \$1.00 per dozen.**

MRS. GEO. W. MOULTON. Dark rose-red shading to tyrian rose at the base of upper petals. Except for white dusting in throat entirely self color. **25 cents each; \$2.50 per dozen.**

MRS. L. S. SCHWEPPE. In color, a beautiful and delicate soft peach-pink. **10 cents each; \$1.00 per dozen.**

MRS. FERDERICK C. PETERS. A valuable seedling described by its originator as a beautiful shade of rose violet or lilac, with a crimson blotch on lower segment. Dark green foliage, strong spikes and many flowers open at one time. Late. **15 cents each; \$1.50 per dozen.**

MRS. H.E. BOTHIN. Heavily ruffled. Light geranium pink, flame scarlet center. **15 cents each; \$1.50 per dozen.**

MRS. KEUR. Deep pink, white throat, Very large flowers. **15 cents each; \$1.50 per dozen.**

MRS. LEON DOUGLAS. Light yellow tipped with red, throat light yellow with very fine spots. **15 cents each; \$1.50 per dozen.**

MURIEL. Pale violet blue, strong spike. **15 cents each; \$1.50 per dozen.**

MYSTIC. Bright rose-pink, flaked deeper, and with large prominent pure white blotches on the lower petals. A large flower and tall spike. **10 cents each; \$1.00 per dozen.**

NORA. Beautiful light lavender blue with a darker spot on the lower petals. One of the most attractive blues. **10 cents each; \$1.00 per dozen.**

ORANGE GLORY. Orange color, with lighter throat, very fine. **25 cents each; \$2.50 per dozen.**

PINK WONDER. Fine pink color shading to yellow in the throat, with a slight rose feathering. **15 cents each; \$1.50 per dozen.**

PRIDE OF LANCASTER. Brilliant orange-salmon, deeper orange throat, flowers well ruffled. **10 cents each; \$1.00 per dozen.**

PURPLE GLORY. Deepest velvety maroon red, with almost black blotches, as if burned into the petals. Beautifully ruffled. **15 cents each; \$1.50 per dozen.**

ROSE ASH. Old rose, blended ashes of roses, creamy mark on lower petals. **10 cents each; \$1.00 per dozen.**

RED CANNA. Brilliant red, self color. Very likely the tallest glad grown; has been grown six feet. A fine variety. **15 cents each; \$1.50 per dozen.**

ROMANCE. Large orange-salmon, overlaid rose, throat red and yellow. Petals bordered with wine blue. Very unusual and attractive. **15 cents each; \$1.50 per dozen.**

ROYAL PURPLE. A large bloom of richest violet purple, slightly red cast. Strong plant, tall spike. The most beautiful variety in this color. **50 cents each; \$5.00 per dozen.**

SCARLANO. Bright orange, scarlet finely ruffled flowers, with almost black markings in the throat. **15 cents each; \$1.50 per dozen.**

SEABROOK GEM. Large light rose-lavender, wine-colored feathering in throat. **20 cents each; \$2.00 per dozen.**

SENTINEL. Rose pink, with white penciled throat. **10 cents each; \$1.00 per dozen.**

SHEILA. Immense salmon flowers on stately spikes. **10 cents each; \$1.00 per dozen.**



LONGFELLOW

A wonderful pink for cutting, tall spike, large flowers.

25 cents each; \$2.50 per dozen.

(See this page for description)

SWEET LAVENDER. Light lavender blending into creamy yellow; prominent magenta blotch. **10 cents each; \$1.00 per dozen.**

TEMPA. Pink and old gold, large and fine. **20 cents each; \$2.00 per dozen.**

THE PEARL. Delicate light pink with a creamy throat. A graceful and dainty flower. **10 cents each; \$1.00 per dozen.**

WINE KING. Tall spikes of rich, deep wine-colored flowers with many open at one time. **10 cents each; \$1.00 per dozen.**

YELLOW HAMMER. Soft creamy yellow, solid color. **10 cents each; \$1.00 per dozen.**

Standard Gladioli

I will ship this collection of one of each of 42 varieties for \$3.00. List price \$3.70. 6 at dozen rates, 25 at 100 rates.

A Gladioli bed displaying one color is most effective. The Gladioli are ideal for massing, and add greatly to the surroundings.

BARON J. HULOT. The finest blue to date. A rich, deep color of indigo blue. **10 cents each; \$1.00 per dozen; \$7.50 per 100.**

BEATRICE MAY. (Alexander.) New Gladioli Seedling. An ivory yellow with shading of light Corinthian pink. Deep tyrian rose throat markings. Early bloomer. **15 cents each; \$1.50 per dozen.**

BERTRIX. Wonderful large white. **10 cents each; \$1.00 per dozen.**

CARMEN SYLVA. Pure snow white, throat slightly penciled lilac. **10 cents each; \$1.00 per dozen.**

CRIMSON GLOW. Dark red or crimson varieties, of branching habit, tall grower. While individual flowers are very large they are exceptionally well placed and not coarse. **10 cents each; \$1.00 per dozen.**

CHICAGO WHITE. The Early Snow-White. Extra early and a fine pure white. **5 cents each; 50 cents per dozen.**

CHOCOLATE DROP. Chocolate color, changing to lavender. **15 cents each; \$1.50 per dozen; \$8.00 per 100.**

DIANA. Very large crimson. Strong grower. **10 cents each; \$1.00 per dozen.**

DR. VAN FLEET. Deep rose-pink with cream throat. Tall spike, early bloomer. **5 cents each. 50 cents per dozen.**

EMPRESS OF INDIA. Rich dark red; one of best of recent novelties. **10 cents each; \$1.00 per dozen.**

EVELYN KIRTLAND. Lustrous rose-pink, with delicate shading of lighter pink. **10 cents each; \$1.00 per dozen.**

E. J. SHAYLOR. Tall, very strong plant and large blooms. A beautiful, pure, deep rose-pink. Extra choice. **10 cents each; \$1.00 per dozen.**

GOLD. Pure golden yellow, throat a little deeper shade. A large, beautiful flower. **10 cents each; \$1.00 per dozen.**

GOLDEN MEASURE. Called by many the world's best yellow. Exceedingly tall leaves and spikes, and is a large-flowered wide-opening golden yellow. Only a few good yellows in existence as yet. **10 cents each; \$1.00 per dozen.**

GRETCHEN ZANG. Rose-pink shading into salmon. Tall spikes. **5 cents each; 50 cents per dozen.**

GEO. F. ELCOCK. (Alexander.) Cream-white, effectively overlaid salmon-pink; throat bright crimson-maroon. **15 cents each; \$1.50 per dozen.**

HALLEY. Delightful salmon-rose with beautiful creamy blotch. Very large. **5 cents each; 50 cents per dozen.**

HERADA. The great blooms are pure mauve. **5 cents each; 50 cents per dozen.**

ISA TINKHAM. (Alexander.) A very rich, deep purple-crimson, a very popular shade. Flowers of medium size and produced on long spikes. **10 cents each; \$1.00 per dozen.**

JOE COLEMAN. Popular red. **5 cents each; 50 cents per dozen.**

L'IMMACULEE. Extra tall pure white. **10 cents each; \$1.00 per dozen.**

LILYWHITE. Almost a pure white, reliable for early forcing. **5 cents each; 50 cents per dozen.**

LE MARECHAL FOCH. One of the earliest and largest Gladioli grown. A charming shade of clear light pink without any shadings. **5 cents each; 50 cents per dozen.**

MAGIC. Tall, fine lavender-blue, with large purple throat blotches. **10 cents each; \$1.00 per dozen.**

MARY PICKFORD. Delicate creamy white color. Throat finest sulphur-yellow. Stem and calix also white. **10 cents each; \$1.00 per dozen.**

METROPOLITAN. The flowers are of light crimson-scarlet with a beautiful deep cherry throat, edged salmon pink, the whole being delightfully striped rich crimson. **10 cents each; \$1.00 per dozen.**

MISS FLORA SPRAGUE. (Alexander.) White overlaid salmon-pink; throat deep carmine-red. **10 cents each; \$1.00 per dozen.**

MRS. FRANK PENDLETON, JR. The color is the most exquisite salmon-pink, with a very conspicuous blood-red blotch in the throat on the lower petals. **5 cents each; 50 cents per dozen.**

MRS. DR. NORTON. White edged with soft La France pink, soft sulphurish blotch on lower petals. **10 cents each; \$1.00 per dozen.**

MRS. FRANCIS KING. A pleasing shade of light scarlet. Flowers are large. **10 cents each; 75 cents per dozen; \$5.00 per 100.**

MRS. JOHN HAYS HAMMOND. (Alexander.) A beautiful begonia rose, blending to and streaked with a glowing velvety, carmine-red; throat Baryta-yellow thickly dotted and splashed a dull carmine-red. Gigantic flowers produced upon good sturdy plants. **15 cents each; \$1.50 per dozen.**

NOVELTY. Light salmon color with orange-yellow throat. **5 cents each; 50 cents per dozen.**

PANAMA. Is a deeper pink. Flowers very large and spike long. **10 cents each; \$1.00 per dozen; \$8.00 per 100.**

PEACE. A pure white with tyrian rose blotch on lower petals. Late bloomer and a very strong, vigorous grower. **10 cents each; \$1.00 per dozen.**

PRIMUMELLA. Large, ruffled blossoms of orange saffron. Distinctive flower and a beautiful variety. **10 cents each; \$1.00 per dozen.**

PRESIDENT TAFT. An exquisite variety of delicate salmon-pink, shaded darker at edge with deep crimson blotch in throat and an attractive white line through each petal. **15 cents each; \$1.50 per dozen.**

PRINCEPINE. One of the best of the new reds; carmine-red with large, white blotch. **5 cents each; 50 cents per dozen; \$4.00 per 100.**

PRINCE OF WALES. The color is a delicate coral-pink with practically no throat markings. **5 cents each; 50 cents per dozen; \$6.00 per 100.**

ROUGE TORCH. Large, creamy-white flowers, with a rouge torch-like tongue on the lower petals. **5 cents each; 50 cents per dozen; \$6.00 per 100.**

SCHWABEN. A pure canary yellow, shading to soft sulphur-yellow. **10 cents each; \$1.00 per dozen;**

WILLBRINK. Large bloom of flesh pink, creamy blotch on lower petals, the earliest light-colored variety. **5 cents each; 50 cents per dozen.**

1910 ROSE. A beautiful deep, clear rose color; one of the earliest to bloom. **10 cents each; \$1.00 per dozen.**

Special Gladioli Offer No. 4

TRY THIS COLLECTION OF 6 GLADIOLI, NO BETTER GROWN FOR 35 CENTS, OR 12 OF EACH FOR \$4.00 PREPAID.

CHICAGO WHITE. Pure white, **5 cents each; 50 cents per dozen; \$4.00 per 100.**

GEO. F. ELCOCK. Cream-white overlaid salmon-pink. **15 cents each; \$1.50 per dozen; \$10.00 per 100.**

LE MARECHAL FOCH. Clear light pink. **5 cents each; 50 cents per dozen; \$4.00 per 100.**

MRS. FRANK PENDLETON. Salmon-pink, blood-red blotch in throat. **5 cents each; 50 cents per dozen; \$4.00 per 100.**

PRINCEPINE. Carmine-red with white blotch. **5 cents each; 50 cents per dozen; \$4.00 per 100.**

JOE COLEMAN. Deep red shading to crimson. **5 cents each; 50 cents per dozen; \$4.00 per 100.**

Primulinus Hybrids

It is within this type of Gladioli we find the most varied and beautiful tints — the reds, yellows, oranges, saffrons, pinks and some wonderful color combinations not found in the large flowering varieties. This type of Gladioli is becoming very popular.

5 cents each, 50 cents per dozen, prepaid. 6 at dozen rates, 25 at 100 rates.

ALICE TIPLADY. Perhaps the most popular of the Primulinus type. Large bloom., orange saffron in color.

GOLD DROP. Large bright yellow Prim., with lines pink on lower petals.

JEWEL. A most beautiful Primulinus. Clear salmon-pink with a clear golden throat.

MAIDEN'S BLUSH. Delicate shade of pink, lighter in throat.

MYRA. Deep salmon over yellow ground; yellow throat with pink lines.

RAMONA. Dainty yellow, with deep golden yellow throat beautifully ruffled.

ROANOKE. Rich yellow blooms.

SWEET ORRA. Fine pale sulphur with rich pink lines in the throat; tall grower.

MIXED PRIMULINUS HYBRIDS. They are among the earliest of the Gladioli to blossom, flowering ten days to two weeks before most all other Gladioli. The upper petal droops, forming a "hood." The colors range from primrose-yellow to a beautiful rose. **5 cents each; 50 cents per dozen; \$3.50 per 100; \$25.00 per 1,000.**

Special Offers—Gladioli

If you have never planted any Gladioli begin this season and don't miss trying one of these collections.

Knowing many of my customers are not familiar with the different named varieties, but want good, large flowering varieties, regardless of the name, and wishing to guarantee satisfaction and give them the greatest value possible for their money, I make these Special Offers, all of which I recommend. The varieties I am to use in these offers are only the largest and best.

RECOMMENDED SPECIAL OFFER. For Massing and Borders. 48 Gladioli, one dozen each of Le Marechal Foch, Herada, Halley, Mrs. F. Pendleton. The 48 prepaid for \$3.00. 100 each of the four varieties for \$12.00 prepaid, or 50 of each for \$6.00.

RECOMMENDED OFFER. One dozen varieties, 12 different colors, unnamed, varieties that are large, and that I will guarantee to give satisfaction, prepaid for 50 cents. I make this offer to insure you good results, and in the selection will give you the benefit of my experience.

TRIAL COLLECTION. Six giant-flowering Gladioli, six different colors, for 50 cents, prepaid, or 25 choice mixed Gladioli for \$1.00 prepaid.



The Marvelous Six

ALEXANDER'S SELECT MIXTURE. This strain comprises a large range of colors, flowering red and dark shades. **Blooming size. 50 cents per dozen, prepaid; \$4.00 per 100, prepaid; \$30.00 per 1,000, prepaid.**

MY GRAND MIXTURE. This strain comprises a large range of colors; some of the older types, together with a large number of new varieties, making it perfectly satisfactory and by far the best obtainable for the prices. **Blooming size. 50 cents per dozen, prepaid; \$3.00 per 100, prepaid; \$25.00 per 1,000, prepaid.**

THE MARVELOUS SIX

FOR ONLY 25 CENTS PREPAID

No. 1. Princepine. Scarlet.

No. 2. Halley. Salmon-pink.

No. 3. Mrs. Frank Pendleton. Light Salmon-pink.

No. 4. Lilywhite. White.

No. 5. Rouge Torch. Cream, red blotch.

No. 6. Le Marechal Foch. Light pink.

5 each of the six above varieties, 30 bulbs for \$1.00 prepaid.



MARY BAKER EDDY — \$2.00 (See Page 29)

Peonies

The Peonies are among the noblest and most magnificent of our herbaceous plants. They are the "Queen of Spring Flowers," and are well adapted for massing in beds, and particularly valuable for planting in groups throughout the perennial or shrubby border, where their brilliant hues add beauty to the entire surroundings. Their requirements are so simple — a good rich, deep soil; they are perfectly hardy, and produce their wealth of flowers in great abundance.

TIME TO PLANT. Peonies may be planted with perfect safety any time from the middle of August till the ground freezes in the Fall, and in the early Spring until growth has advanced too far. September and October even as late as the ground is kept open is the best time, as they then make a root growth before Winter sets in, usually blooming the following Spring.

After being transplanted, Peonies will not produce typical blooms the first season, many fine double varieties throwing single or semi-double flowers, and it is not until the third year that the finest flowers are produced.

They will abundantly repay good care and nourishment; but they resent an over abundance of fresh manure too near the roots. Well decayed manure is far better. A division of the clumps at long intervals, when they become so crowded as to interfere with freedom of bloom; and the soil kept loose and free from weeds, is all that is necessary. Where grown for cut flowers, they should not be disturbed oftener than is necessary; where they are grown for the sale of roots, they may be divided every second or third year. Plant so the eyes will be from two to three inches below the surface. Lay roots flat. Do not stand them on ends.

My prices are for good strong roots that, planted in the Fall, and given proper care, may reasonably be expected to bloom the following Spring. Varieties differ so greatly in habit that the expressions one-year and two-year, or the number of eyes, convey no meaning whatever; a strong root with one eye often being far better than a weak one with many. My prices are as low as the true varieties, and the size of the roots I send out will warrant I grow and sell my own roots, and make no pretense of competing with those who have no stock of their own, but buy and sell indiscriminately.

All Peonies shipped prepaid to any part of the world at prices given.

The Famous Hollis Peonies

Special Offer of One of each of the 22 varieties for \$35.00 prepaid. Regular price \$40.50.

ADMIRAL DEWEY. (Hollis 1903.) Rose-pink, shaded heliotrope; large, high built flower. According to color chart, color, total effect, sofferino red, clear; guards sofferino red, center same as guards; fades silver tipped, linear petals concealed throughout bloom. **\$3.00 each; \$30.00 per dozen.**

ADMIRAL TOGO. (Hollis 1907.) Deepest mahogany red, large high-built flower, luminous. According to color chart, total color effect crimson-carmine; guards clear, collar same as guards; center clear. Holds color well, no silver tip. Type of bloom semi-rose. Form of bloom flat, medium compact. Plant medium tall, erect. Mid-season. **\$1.00 each; \$10.00 per dozen.**

DAYBREAK. (Hollis.) A large flowering Peony with long stems. Color a deep rose-pink fading out lighter as the flower gets fully open. Very fragrant. **\$1.00 each; \$10.00 per dozen.**

EDWIN FORREST. (Hollis.) Semi-rose type, late mid-season. Large convex-shaped flower, very full and double. Color light sofferino red with silvery reflex. **\$2.00 each; \$20.00 per dozen.**

EVENING GLOW. (Hollis 1907.) Large semi-double flower. Hydrangea-pink tipped with white. Fragrant. Early. **\$2.00 each; \$20.00 per dozen.**

FLASHLIGHT. (Hollis 1906.) A very large, globular, medium compact to loose bloom of Japanese type. First impression, a crimson-pink with golden center. Not as dark a shade as "Attraction." According to color chart, the total color is tyrian rose; guards have light streak, center clear. The center is amber yellow, shading pink at base. **\$2.00 each; \$20.00 per dozen.**

GEORGE HOLLIS. (Hollis 1907.) Large, globular rose type. Center is a pale rose-pink with lilac-white guards. Very late blooming. **\$2.00 each; \$20.00 per dozen.**

GEORGE WASHINGTON. (Hollis 1904.) A large, flat, loose bloom of semi-rose type. One of the brightest light crimson-red varieties. Guards clear, collar same as guards; center clear, uniform color. Stamens intermingled with petals. Blooming time mid-season. Habit of plant, erect, medium compact, medium height. **\$1.00 each; \$10.00 per dozen.**

GETTYSBURG. (Hollis 1909.) Deep blood-red, large, loose, semi-rose type, tall, upright and strong grower. **\$3.00 each; \$30.00 per dozen.**

GOLDMINE. (Hollis 1907.) Japanese type. Flat, loose, medium size. Guards tyrian rose, center same as guards, tipped golden yellow. Medium tall, erect variety of good habit. Mid-season. **\$2.00 each; \$20.00 per dozen.**

HITY-TITY. (Hollis.) A very attractive Japanese type, outer petals soft tyrian rose, center golden yellow; large flowers of wonderful color, very free flowering. **\$3.00 each; \$25.00 per dozen.**

INNOCENCE. (Hollis 1904.) A medium-sized, flat, compact Japanese type bloom. General impression, pale-pink guard with golden center. According to color chart, lilac-rose; guards clear, center canary-yellow fading to cream-white, pale pink at base of stamens. Mid-season. **\$3.00 each; \$30.00 per dozen.**

JOHN HANCOCK. (Hollis 1907.) A very large, globular, semi-double flower. Its color is one not at all common in Peonies, total effect being bright rosy magenta, guards streaked light; center clear; secondary stamens absent. **\$2.00 each; \$20.00 per dozen.**

JONTEEL. (Hollis.) Large globular, high crown, guards and crown deep pink, outer petals deep rose-pink, center flecked deep carmine. **50 cents each; \$5.00 per dozen.**

LOVELINESS. (Hollis 1907.) Large, compact, flat, rose type. Hydrangea-pink changing to lilac-white. Strong stems and blooms in clusters. **\$2.00 each; \$20.00 per dozen.**

LUCY E. HOLLIS. (Hollis 1907.) Large, flat, medium compact rose-type blossom. First impression, pale pink and white. According to color chart lilac-white, guards clear, collar same as guards; center slightly flecked scarlet; secondary stamens present. Center of bloom, shaded to pale lilac-rose. Fragrance pleasant. Blooming time very late. **\$1.50 each; \$15.00 per dozen.**

MARY A. LIVERMORE. (Hollis 1907.) One of the most beautiful of the rose type. A very large, flat, medium compact, not differentiated, and entirely transformed blossom. General impression rose-pink and white. Petals are a beautiful rose-pink, passing to silver and white at the tips. Fragrance pleasant. Blooming time mid-season to late. **\$1.00 each; \$10.00 per dozen.**

MARY BAKER EDDY. (Hollis.) Large, compact, globular rose type. Deep rose-pink with silvery tips. Plants of medium height, long, strong stems. Mid-season to late. **\$2.00 each; \$20.00 per dozen.**

MAUD L. RICHARDSON. (Hollis.) Large, flat rose type. Pale lilac-rose, center lighter. Fragrant. Blooming time late. **\$2.00 each; \$20.00 per dozen.**

RED CROSS. (Hollis 1904.) A brilliant crimson; medium size, full, double; very late bloomer. **\$3.00 each; \$30.00 per dozen.**

WELCOME GUEST. (Hollis 1904.) One of the very finest of the semi-double Peonies. A very large, loose, bright silvery rose fading to rose-white. Very strong and healthy, with long stem. **\$1.00 each; \$10.00 per dozen.**

ZEST. (Hollis.) A silvery shade of pink, very soft and very beautiful. The petals are long and loosely arranged. Late bloomer. **50 cents each; \$5.00 per dozen.**

Be sure your friends get all my catalogs, as I guarantee all my stock to grow true to name, or stock is cheerfully replaced free of all expense.

Rare and Selected Peonies

Special Offer of 38 Selected Peonies one of each for \$25.00 prepaid. Regular price \$30.50.

ALEXANDER DUMAS. (See illustration.) (Guerin 1862.) Medium-sized, light violet-rose crown; has creamy white collar of narrow petals, mingled with wide center petals; fragrant. Medium height, free bloomer, mid-season. **50 cents each; \$5.00 per dozen.**

AVALANCHE. (Crousse 1886.) Medium to large, fairly compact white crown type, flecked with carmine, with cream-white collar. Collar well differentiated. Tuft of short, narrow, cream petals in center of bloom. Occasional carmine splashed on outside of guards. **50 cents each; \$5.00 per dozen.**

AUGUSTIN D'HOUE. (Calot 1867.) Large, medium compact, showy, bomb-type blossom. General impression, dark reddish pink with slight silvery reflex. According to color chart, a solferino red. Mid-season. Medium tall. **50 cents each; \$5.00 per dozen.**

BARONESS SCHROEDER. (Kelway.) A very beautiful rose-type bloom. Form of bloom, globular compact, not differentiated, not entirely transformed. Color total effect, flesh-white fading to milk-white; guards clear; collar same as guards, center clear; pleasant fragrance. Mid-season. **\$1.00 each; \$10.00 per dozen.**

BEAUTE FRANCAISE. (Guerin 1850.) A good medium-sized, compact, crown type. General impression, pink and white. According to color chart, pale lilac-rose and cream-white, with prominent carmine flecks on center petals. Strong, vigorous plant of rather dwarf habit, strong medium to short stems. **50 cents each; \$5.00 per dozen.**

BERLOTZ. (Crousse 1886.) A very large, beautiful, compact rose-type blossom. A light carmine-rose or rosy magenta, tipped silver with golden-yellow stamens concealed in bloom. Color is somewhat splashed on tips of petals fading to nearly white. Guards not differentiated, perfect rose-type flower. **\$1.00 each; \$10.00 per dozen.**

COURONNE D'OR. (Calot 1872.) Large full flower of pure white with a circle of golden stamens. A very beautiful variety and valuable as a cut flower. Late. **50 cents each; \$5.00 per dozen.**

CURIOSITY. (Dessert & Mechin, 1886.) Type, bloom anemone. Weak blooms nearly single while very strong ones may be semi-double. Form of bloom medium globular, compact. Differentiated. Color, total effect violet-red; guards clear, collar same as guards; center clear, with occasional yellow tips. Occasional wide petals appearing in center. Fragrance pleasant, one of the largest of the anemone type. Blooming time mid-season. **50 cents each; \$5.00 per dozen.**

DORCHESTER. (Richardson 1870.) Large, compact, rose type. Pale hydrangea-pink. Fragrant. Medium dwarf. Upright, free bloomer. **50 cents each; \$5.00 per dozen.**

DUC D'WELLINGTON. (Calot 1859.) Large bomb type. White guards, and sulphur-yellow center. One of the finest white varieties. Medium tall, vigorous grower, free flowering. Very fragrant. Mid-season to late. **50 cents each; \$5.00 per dozen.**



Peony — Alexander Dumas, 50 cents each.
(One-third actual size.)

EDULIS SUPERBA. (Lemojne 1824.) The popular early "Decoration Day" Peony. Large, loose, flat-crown type. Bright, deep mauve-pink; color mixed with lilac. Large tuft of wide petals same color as guards, surrounding a few narrow petals in extreme center of bloom, prominent collar. **50 cents each; \$5.00 per dozen.**

EUGENIE VERDIER. (Calot 1864.) (Also called Pottsi Alba.) Pale pink, center deeper, flecked crimson. Large, flat, rose type, rather loose; fragrant; tall, free. Mid-season. **\$1.00 each; \$10.00 per dozen.**

FELIX CROUSSE. (Crousse 1881.) Large, globular, typical bomb type. First impression, brilliant red. According to color chart, tyrian rose. Same color throughout. Compact and globular when first opening, but opens out somewhat with age, exposing linear petals in extreme center of bloom. Odor pleasant. Strong, vigorous grower, with long stem, rather spreading habit, medium height. **\$1.00 each; \$10.00 per dozen.**

FESTIVA MAXIMA. (Miellez 1851.) Very large, globular, rose type. Pure-white center, prominently flecked crimson; outer petals sometimes faint lilac-white on first opening. Very tall, strong, vigorous grower. **50 cents each; \$5.00 per dozen.**

GOLDEN HARVEST. (Rosenfeld 1900.) Bomb type. Guard petals lilac-rose, creamy-yellow collar. Blooms in mid-season. **50 cents each; \$5.00 per dozen.**

JUBILEE. (Pleas.) Unusually large, flat, compact rose type. Uniform blush-white, with fragrance. Very tall, erect, strong grower. Mid-season. **\$2.00 each; \$20.00 per dozen.**

Rare and Selected Peonies—Continued

KARL ROSENFELD. (Rosenfeld 1908.) A very brilliant crimson-scarlet, high built and a first-class bloomer. Tall, strong grower. **\$1.00 each; \$10.00 per dozen.**

LA COQUETTE. (1861.) Large, globular, high crown. Guards and center light pink; collar rose-white, center flecked carmine. Strong, erect, medium height, free bloomer. Fragrant. Mid-season. **50 cents each; \$5.00 per dozen.**

LA ROSIERE. (Crousse 1888.) A dainty variety with semi-double white blooms having yellow tints like a tea rose. Foliage dark green and "crinkled." Mid-season. **50 cents each; \$5.00 per dozen.**

LORD ROSEBERRY. Crimson. Very fine. **\$2.00 each; \$20.00 per dozen.**

LA TULIPE. (Calot 1872.) Synonym "Multicolore." Very large, flat, semi-rose type flower. Lilac-white, outer petals striped with crimson. Fragrant. Tall, strong grower. Late mid-season. **50 cents each; \$5.00 per dozen.**

LIBERTY. This is without doubt one of the best lively rose-pink shades introduced. The flowers are very large, somewhat flat in appearance. Six to eight inches across, borne on good strong stems; the color grows lighter with age. **\$1.00 each; \$10.00 per dozen.**

MME. BOULANGER. (Crousse 1886.) Glossy soft pink, tinged lilac, silvery flesh border; large, compact, rose type; upright, very fragrant. Late mid-season. **50 cents each; \$5.00 per dozen.**

MME. CROUSSE. (Calot 1866.) A very large and beautiful pure-white flower, sometimes showing a crimson fleck on a central petal. Mid-season. **50 cents each; \$5.00 per dozen.**

MADAME CHAUMY. (Calot 1864.) Medium size, globular, very compact, perfect rose type. Satiny rose-pink, or pale lilac-rose, with silver reflex; central petals slightly darker, flecked crimson occasionally. Mid-season. **50 cents each; \$5.00 per dozen.**

MADAME DUCEL. (Mechin 1880.) Large, globular, typical bomb type, petals incurving somewhat resembling a chrysanthemum. Light mauve-rose, with silvery reflex. Fragrant. Mid-season. **\$1.00 each; \$10.00 per dozen.**

MADAME GEISSLER. (Crousse 1880.) Very large, compact, globular, imbricated, rose type. Violet-rose, tipped silver. Mid-season. **\$2.00 each; \$20.00 per dozen.**

MARIE STUART. (Calot 1856.) Crown type. First impression, white. Cream-white with pale-pink guards, center flecked crimson, all fading to white. Guard petals are well differentiated; thick collar of narrow yellowish petals, on young bloom. **50 cents each; \$5.00 per dozen.**

MILLAIS. Single flowers deep crimson with golden-yellow stamens. **50 cents each; \$5.00 per dozen.**

MONSIEUR BOUCHARLAT AINE. (Calot 1868.) Large, full, compact, semi-rose type. Uniform light violet-rose, with silvery reflex. Mid-season to late. **\$1.00 each; \$10.00 per dozen.**

MONSIEUR DUPONT. (Calot 1872.) Large, flat, semi-rose type bloom. Cream to milk-white, petals are intermingled with stamens at all stages of development, but mostly concealed; petals streaked or splashed crimson. Plant is a strong, tall grower, with a very stout stem, and upright habit. Mid-season to late. **50 cents each; \$5.00 per dozen.**

MONSIEUR JULES ELIE. (Crousse 1888.) A very large, medium compact, bomb-type flower. Total effect, pale lilac-rose, guards and center clear, collar tinted lighter than guards. A very attractive pink; base of collar petals amber-yellow. Fragrance very pleasant. One of the finest pink varieties grown. **\$1.00 each; \$10.00 per dozen.**

PETITE RENEE. (Dessert 1899.) Large blooms in clusters, collar of very broad petals, clear carmine purple; central petals very narrow, clear carmine striped white, golden extremities, yellow background. Free bloomer and very showy. **\$1.00 each; \$10.00 per dozen.**

PROLIFERA TRICOLOR. (Lemoine 1825.) Broad, soft, flesh guard petals, center ligulated golden yellow, with a red tuft. **50 cents each; \$5.00 per dozen.**

QUEEN VICTORIA. (Kelway.) Large, globular in form, medium loose, low crown. Milk-white guards tinted flesh; center cream-white, with crimson flecks. Very fragrant. Medium height, strong, free bloomer. Mid-season. **50 cents each; \$5.00 per dozen.**

SARAH BERNHARDT. (Lemoine 1906.) A very large, beautiful, flat, imbricated, compact semi-rose type blossom. Flowers of remarkable size and freshness in huge clusters, and of unusual perfection in form. First impression is an apple-blossom pink, with each petal silver tipped. According to color chart, a mauve-rose; guards clear, collar same as guards, center clear. Pleasant fragrance, late blossoming. Habit of plant, medium erect, tall, medium compact, growth strong. **\$1.50 each; \$15.00 per dozen.**

SIR THOMAS LIPTON. (Kelway.) Large, loose, flat, semi-double flower. A uniform bright rosy crimson, showing the golden-yellow stamens prominently in the center. Pleasant fragrance. Mid-season. **\$1.00 each; \$10.00 per dozen.**

VENUS. (Kelway 1888.) Rose type, almost white but tinged with shell-pink. Mid-season. Fragrant. **\$1.00 each; \$10.00 per dozen.**

Mixed Peonies

Each season, in handling our Peonies, a small amount becomes mixed, many times the very choicest varieties. It does not prove worth while for me to plant these separately, to ascertain their names, so I am offering them at **35 cents each (3 for \$1.00)** as long as they last. This mixture is apt to include some of the best new creations not offered in my catalog; and includes both Double and Single varieties.

SPECIAL PEONY OFFER. To give you an opportunity to have a more complete choice and collection of Peonies, I am making the following offer:

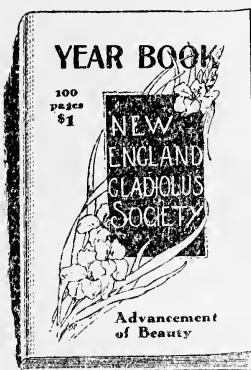
I will ship you Three Choice Peonies for **\$5.00**, transportation charges prepaid to any part of the United States or Canada. These to be three distinct varieties, that I can recommend to give satisfaction.



Photo taken June 19, 1927.

One of my fields of Iris Germanica with 69,000 plants in full bloom, containing 159 varieties.

GLADIOLUS BEAUTIFUL



These two Books
represent an outlay
of about \$3,500.

One copy of each book given
with each membership at \$1
as long as they last.

Copies bound in cloth
50 cents each extra.



These two books will contain many half tones and color plates of outstanding varieties of gladiolus. Articles by practical and expert growers. Disinfectant and fertilizer tests. Hybridizing. Growing Exhibition flowers. Experimental Station work. Color standards. Culture, and many others. Names and addresses of over 1000 members who joined in 1928 and 1929.

Membership Advantages

Free copies of all the Society's publications. Admission to all exhibitions given by the Society. Awards of Merit. First Class Certificates, Medals, Cups, etc.

New England Gladiolus Society

C. W. BROWN, *Secretary*,
Box 343,
ASHLAND, MASS.

_____ 1930

Please enroll me as a member of the NEW ENGLAND GLADIOLUS SOCIETY, and mail a copy of the two Year Books, for which I enclose \$1.00 for dues for this year. (Cloth binding 50c extra if desired).

Name _____ Amateur _____
Professional _____ Mark Out One

Street and Number _____

Post Office _____

State _____

(PLEASE PRINT NAME AND ADDRESS)

Make checks payable to the NEW ENGLAND GLADIOLUS SOCIETY.

RIVERVIEW GLAD GARDENS
BOX 253
ROCK RAPIDS, " IOWA

The Iris

Fleur de Lis or Iris Germanica

Familiar and well-beloved flowers of Spring. The purity of their beauty and their haunting fragrance is decidedly refreshing. The winsome, modest beauty of some, forming a striking contrast to their more glorious sisters arrayed in a sheen of iridescent splendor. They fairly outrival the Orchid in the wide range of coloring, which includes yellows, from light canary to deep golden; blues, from soft lavender to intense purples; red, from pinkish mauve to claret and maroon; beautiful bronzes, and pure whites; while some varieties are marked and margined in exquisite harmony.

The Iris grows well in any kind of soil. Succeeds in partial shade, but gives the most satisfactory results in well-drained, sunny location. Iris Germanica are perfectly hardy and require only ordinary cultivation; growing luxuriantly, but respond quickly to any care, giving larger and more beautiful flowers. They should be planted in the Fall during August, September, and October. Plant the bud or crown about two inches below the surface, hoe or cultivate frequently for best results.

In the following descriptions Standards signify the three standards (erect, or upright curling petals); Falls — the three falls, or drooping petals.

New and Rare Iris

This Collection of 41 New and Rare Iris, one each post paid for \$30.00

- AFTERGLOW.** Misty lavender lit with yellow at center. **\$1.00 each.**
- ALCAZAR.** Standards light bluish-violet, falls brilliant purple. Orange beard. **50 cents each; \$5.00 per dozen.**
- ARAGON.** Deep, bright, golden yellow, falls bright velvety red. Beard, deep orange. **\$1.00 each.**
- BEAUTY'S SECRET.** (Alexander.) Deep soft-blue violet, falls deeper blue violet, veined white. **50 cents each.**
- BERCAGE.** (Alexander.) Pale verbene violet, falls dark violet veined white. **50 cents each.**
- DEJAZET.** Beautiful bronzed rose, the falls darker than the standards. Large flowers. **\$1.00 each.**
- DUSTY MAID.** Pale buff, falls deep mauve-purple, shading lighter to the edge with a border of buff. **\$1.00 each.**
- ELDORADO.** A very distinct and striking blend of bronze, heliotrope, and violet purple. **\$1.00 each.**
- EUGENE.** (Alexander.) Pale campanula blue, falls dark bluish violet veined white. **50 cents each.**
- FENELLA.** White widely branching stalks and flaring falls. **\$1.00 each.**
- GENGHIS KHAN.** Palest rose, the falls velvety blackish purple. A noble flower. **\$1.00 each.**
- IVANHOE.** Gray-blue flower, not large or tall, but very attractive. **50 cents each.**
- KAWENA.** (Alexander.) Pale wisteria violet, falls purple veined white. **50 cents each.**
- KNYSNA.** Clear yellow, falls velvety-red brown. **\$1.00 each.**
- KOYA.** A deep violet self, the haft veined on white, free flowering. **\$1.00 each.**
- LA NEIGE.** Cream white with flaring falls. **\$1.00 each.**
- LORD OF JUNE.** Large fragrant flowers; standards floppy, of lavender blue; falls long, of lavender violet; **\$1.00 each.**
- MAGNATE.** A large flower of deep red-purple tones, stalks widely branched. **\$1.00 each.**
- MANNORA.** (Alexander.) Pale bluish gray, falls dull dusky purple veined white. **50 cents each.**
- MARY ORTH.** Rich, soft, dull violet tones and with flaring velvety falls. **\$1.00 each.**
- MILKY WAY.** Clear white, very delicately etched with lavender on the haft. **\$1.00 each.**
- MIRANDA.** A tall and early violet blue with orange beard. **\$1.00 each.**
- MOLIERE.** A large violet-purple flower, the falls dark and velvety. Yellow center. **\$1.00 each.**
- MONHASSAN.** Lemon yellow, falls maroon veined white. **50 cents each.**
- MOTHER OF PEARL.** Standards and falls pale bluish lavender with a faint creamy undertone. Large flowers of exceptional substance and perfect form on well balanced stems forty inches high. **50 cents each; \$5.00 per dozen.**
- NAUSHON.** Mauve and pansy violet, very free flowering. **50 cents each.**
- OCRACEA COERULEA.** Old gold, falls are flushed blue. **\$1.00 each.**
- PANHATAN.** (Alexander.) Light, dull bluish violet, falls light blue veined white. **50 cents each.**
- PFAUENANGE.** (Alexander.) Standard yellowish citrine, falls Hay's maroon, a novel shade and strong grower. Should be in every garden. **50 cents each.**
- PURPLE LACE.** Deep blue-purple except for the white haft that is laced with purple. **\$1.00 each.**
- QUEEN CATERINA.** A large, iridescent pale lavender violet. **\$1.00 each.**
- QUETICO.** (Alexander.) Dark bluish violet, falls plum-purple veined white. **50 cents each.**
- RACHEL FOX.** Pale gold, falls yellow with an iridescent blue flush. **\$1.00 each.**
- SHERBERT.** Ecu shaded with purple, tall and vigorous. **50 cents each.**
- SINDJKHA.** A very deep, dull lavender of fine size. **\$1.00 each.**
- SYPHAX.** Combination of mauve and red-purple velvet, with striking orange beard. **\$1.00 each.**
- THUNDERCLOUD.** Deep grayish lavender and rich heliotrope gray. **\$1.00 each.**
- TRIANON.** Pinkish buff, falls yellow washed blue. A beautiful blend, of fresh coloring. **\$1.00 each.**
- VALERY MAYET.** Rose-purple and velvety dahlia purple, with a strongly contrasting flush of tawny orange at the center. **\$1.00 each.**
- WALLACE.** (Alexander.) Falls dark violet, standards light bluish violet, a strong grower with long, flowering spikes. Flowers good sized. **\$1.00 each.**
- WHITE KNIGHT.** A compact rounded flower of pure white. **\$1.00 each.**

Let me send copies of this catalog to your friends.

Iris of Exceptional Merit

This superb collection of 47 wonderful Iris one each for \$10.00 prepaid to any part of the world. These varieties, all 25 cents each. Three of any one variety, 50 cents. Twelve of a variety, \$1.50.



WYOMISSING
25 cents each; \$1.50 per dozen

ASSENDUS. Standards lavender-blue; falls same shade of blue but darker toward the tips, and with veining of dark red at the base.

CANDELABRE. Standards pale lavender flecked violet at base; falls plum-purple with white reticulations.

CAPRICE. Standards rosy red; falls deeper rosy red.

CELEBRITY. A clear light blue.

DOROTHEA. This is an intermediate large-flowered pale blue.

DR. BERNICE. Standards bronze-yellow; falls maroon-red.

FLAVESCENS. Standards and falls a delicate shade of soft yellow.

FLORENTINA ALBA, Syn. SILVER KING. The finest white variety. Standards and falls porcelain changing to pure white.

GERTRUDE. Standards and falls same shade, rare violet blue. 34 inches tall, very fine for house decorations where a clear, uniform shade is desired.

HECTOR. Standards soft clouded yellow; falls rich purple color with velvety reflex.

HELGA. Lemon yellow with pearl shading.

HERANT. Standards beautiful lavender-blue; falls blue.

HER MAJESTY. Standards heliotrope of tissue-like delicacy; inner petals straw and lavender; falls light mauve traced with white.

HONORABILIS. The most popular of all Iris. Similar to Sans Souci. Standards beautiful golden yellow; falls rich mahogany brown.

INGEBORG. Pure white. Large flowers of handsome form.

IRIS KING. Standards rich golden yellow with shades of fawn; falls deep crimson-wine; all petals of peculiar velviness and superb coloring.

KHEDIVE. A beautiful soft lavender, with distinct orange beard.

KOCHI OR NIGHT. Standards and falls effective rich purple.

KOENIG. Very similar to Honorabilis with golden-yellow standards and mahogany brown falls. The falls are darker than in Honorabilis.

LOHENGRIN. Standards and falls of catalyca-rose; one of the largest and best of the Irises to my knowledge, and without exception the finest lavender-pink shade.

LORD GREY. Standards fawn; falls fawn overlaid rose.

LORELEY. Splendid landscape variety, with lemon-yellow sometimes splashed with purple. Standards and falls ultra-marine blue, bordered cream, and veined white.

LORD SALISBURY. Standards lavender shaded a smoky fawn; falls deep purple with a veining of white at the base.

MADAME CHEREAU. Standards white, edged and fringed mauve, interspersed with lilac; inner petals white; falls, white, edged the same as the standards.

MAD. PACQUETTE. Rosy claret. Beautiful and fragrant.

MONSIGNOR. Standards violet; falls heavily veined a deeper purple.

MRS. H. DARWIN. A pure white. Falls slightly reticulated violet.

NIBELUNGEN. Standards of fawn-yellow; falls of violet purple with fawn margins.

ORIENTALIS. Deep blue. Very large for its class.

OSSAMEQUIN. Falls reddish bronze; Standards clear creamy yellow.

PALLIDA DALMATICA, or PRINCESS BEATRICE A much-desired variety, with strong, broad leaves, large plants, producing tall, stately, clear lavender flowers.

PALLIDA SPECIOSA or TURKEY FLAG. Standards dark lavender shaded lighter; falls shaded light purple.

PANCHUREA. Standards a light, smoky shade; falls dull violet-red.

PRINCESS VICTORIA LOUISE. An exceptionally good landscape variety with light yellow standards and plum-colored falls bordered cream. Similar to "Loreley," but in general of slightly lighter colors. Mid-season.

PROSPER LAUGIER. Standards light cinnamon-drab with a pinkish sheen; falls velvety carmine; 3 feet.

QUEEN ALEXANDRA. Standards fawn, shot with lilac. Falls lilac, reticulated bronze at base. Beard yellow.

QUEEN OF MAY. An early flowering delicate old rose.

QUEEN OF THE GYPSIES. Standards smoky or dusky light bronze; falls purplish red.

RHEIN NIXE. Standards pure white; falls deep violet-blue, with a white edge.

ROSE UNIQUE. Bright violet-rose. Nearest approach to a pink Iris.

SEA GULL. Standards white, dome shaped; falls white, netted blue. Large and distinct flower, 2 feet.

SHERWINWRIGHT. Color clear, deep golden yellow.

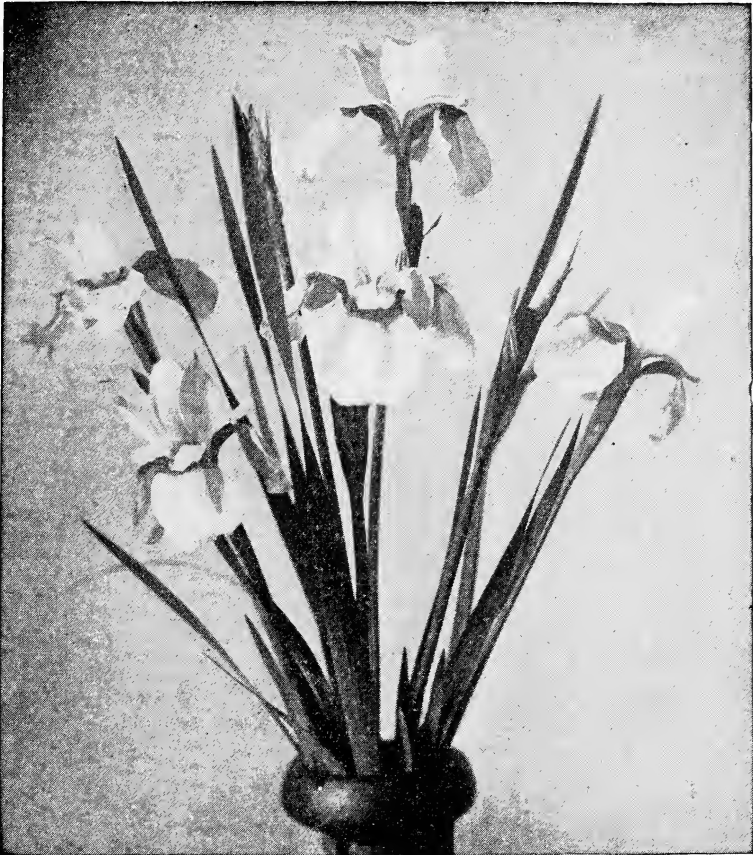
VIOLA. A free flowering Ciengialti hybrid of light violet.

VIOLETTA. Standards a clear rich blue; falls pure violet-blue with prominent yellow beard.

WANETA. Falls light blue; standards silvery.

WALHALLA. Standards lavender; falls wine red. Very showy.

WYOMISSING. Standards, creamy white, suffused soft rose; falls deep rose.



SIBERIAN IRIS: "SIBERICA ALBA"
25 cents each; \$2.50 per dozen. (See below for description.)

Siberian Iris

Siberian Iris is a vigorous free-flowering Iris and should be planted in great masses around shrubbery and trees, and a wonderful flower for a rock garden, also for water-side planting around water pools.

For large estates it is hard to find an Iris that will give more satisfaction for borders and massing.

For massing and borders Iris should be purchased in quantity lots. Liberal prices are allowed in such cases and special quotations will be gladly submitted.

SIBERICA. (Siberian Blue.) Rich blue flowers of exquisite beauty. **25 cents each; \$2.50 per dozen.**

SIBERICA ALBA. Siberian White. A beautiful white flower. **25 cents each; \$2.50 per dozen.**

\$12.00 per 100 express prepaid; \$75.00 per 1,000 express prepaid;
250 at 1,000 rate express prepaid.

Japanese Iris—*Iris Kaempferi*

The Japanese Iris is without doubt the king of all Irises. If grown in a favorable location, the flowers will attain a size of from eight to twelve inches across and stand over four feet from the ground.

They should be planted in a location that has plenty of moisture but which is well drained, especially in Winter. Standing water during the Winter months will probably kill the plants. They should be planted in the Spring or early Fall and if properly planted and cared for will give excellent results the following season.

They start blooming the last of June just at a time when cut flowers are most appreciated in the garden, and continue for about six weeks. When used for cut flowers they should be cut in the bud and allowed to open in water. Order by name or number.

I will sell this complete collection of 30 Japanese Iris, each one labelled with its name or number for \$15.00 prepaid.

No. 39 — A. L. SHERWOOD. Three petals; two-color flowers, lavender, blue, and white. **35 cents each; \$3.50 per dozen.**

No. 8 — AMISKOOKI. Falls plain white with six petals; standards white. **50 cents each; \$5.00 per dozen.**

No. 19 — AOIGATA. Reddish lavender falls, orange dash radiating into lines in dark plum field; standards dark plum. Three petals. **35 cents each; \$3.50 per dozen.**

No. 72 — CHOISEDEN. Six petals. Early. White, bordered light crimson-rose. **\$1.00 each.**

No. 10 — DATEDOGUE. Six petals. Late. Falls, white splashed violet. Petaloid stamens white, tipped violet. **\$1.00 each.**

No. 16 — GOLD BOUND. Tall and showy with flowers of enormous size. Six petals, pure white with gold-banded center. **50 cents each; \$5.00 per dozen.**

No. 6 — GENJIYAMA. Standards and falls rich dark purple, long orange blotch with blue halo, very double, six petals. **\$1.00 each; \$10.00 per dozen.**

No. 7 — GINGYOKU. Three petals. Early. Pure white with orange bar. **35 cents each.**

No. 45 — HATSUKAMURI. Three petals; both standards and falls a purple-blue. **35 cents each; \$3.50 per dozen.**

No. 30 — HELEN VON SEABOLD. Three petals, reddish violet and white shadings, strong grower. **35 cents each; \$3.50 per dozen.**

No. 22 — HOREN. Three petals; falls are white with large orange blotch radiating into white. **35 cents each; \$3.50 per dozen.**

No. 1 — KAGARIBI. A very beautiful all-lavender flower, except a yellow beauty spot in the center of each of its six petals. An exceptionally well-formed flower. **50 cents each; \$5.00 per dozen.**

No. 38 — KBATA. Standards and falls purple blue, three petals. **35 cents each; \$3.50 per dozen.**

No. 37 — KOHIO-HARE. Light lavender ground mottled and veined purple. Three petals, large. **35 cents each; \$3.50 per dozen.**

No. 61 — KMOCHI-GUMA. Six petals, very double. Deep violet-purple. **\$1.00 each; \$10.00 per dozen.**

No. 17 — KUMO-NO-UYE. Six petals, deep purple with yellow center set in sky blue field. **\$1.00 each; \$10.00 per dozen.**

No. 4 — KUMA-FUNGIN. (Excited Bear.) Falls purple-blue, stigmas lighter, long orange bars, six petals, very tall grower. **50 cents each; \$5.00 per dozen.**

No. 44 — KUMA-NO-ISHO. Falls rich dark purple with blue radiating lines, six petals. **50 cents each; \$5.00 per dozen.**

No. 32 — ORIOLE. Rich plum with yellow center markings, six petals. Wonderful flower. **50 cents each; \$5.00 per dozen.**

No. 2 — OTOMENEWOODE. Three petals. Early bloomer. Falls and standards royal purple. **35 cents each; \$3.50 per dozen.**

No. 27 — OYODO. This flower for beauty excels them all, with three large petals with yellow far set in a maroon field, this radiating into a wine-colored margin center. Very large. **\$1.00 each; \$10.00 per dozen.**

No. 20 — POCHONTAS. A late, six-petal variety of beautiful dark blue. **\$1.00 each; \$10.00 per dozen.**

No. 21 — MEIRAN. Falls very light lilac, veined purple. Petaloid stamens lavender-white. Three petals, violet tips. **35 cents each; \$3.50 per dozen.**

No. 12 — MANADZURA. Six petals, white closely veined with blue, standards dark violet, tipped white. **\$1.00 each; \$10.00 per dozen.**

No. 13 — TAKARA-DAMA. Six rich purple falls, with blue halo surroundings, center yellow bars. Strong six-petal flower. **\$1.00 each; \$10.00 per dozen.**

No. 3 — TEMPLETON. Violet-blue mottled pink and white. Extra fine flower, one of the best. Large. **50 cents each; \$5.00 per dozen.**

No. 11 — TSURO-NO-KEGOROMO. Three petals. Mid-season Pure white with yellow blotch. Very large flower. **35 cents each; \$3.50 per dozen.**

No. 9 — WASI-BAURI. Three wide petals, pure white, veined with violet-blue, uprights rhodamine-violet edged white. A wonderful striking flower, very largest strong grower. **50 cents each; \$5.00 per dozen.**

No. 71 — WHITE SWAN. A wonderful new seedling for 1930, with three pure white petals with a golden bar in center. **35 cents each; \$3.50 per dozen.**

No. 15 — YEZONISHITAI. Falls red-lavender shaded purple, and beautifully veined white, yellow blotch in center, three-petal flower. Extra fine. **35 cents each; \$3.50 per dozen.**

Japanese Iris in Mixture

15 cents each, \$1.50 per dozen; \$10.00 per 100.

Special Offer of Japanese Iris

Gold Bound	Kagaribi
Kuma-Fungin	Otomenewoode
Templeton	White Swan

1 each of Six Above Varieties, \$2.00

2 each of Six Above Varieties, \$3.00

Hardy Perennial Phlox

Among hardy herbaceous plants, none are more showy or more easily grown than the Phlox. They are very desirable planted in groups. Individual clumps throughout perennial beds make a very satisfactory display, while mass plantings of one color make the most effective showing.

They produce magnificent trusses of flowers, commencing to bloom in July, and lasting for weeks, making them always favorites of the garden. Their flowers have a very agreeable odor, and are produced in abundance. The plants are perfectly hardy and will grow year after year with but little care. I recommend frequent cultivation, however, as they quickly respond to it, producing much larger trusses, and larger and more beautiful individual flowers. Simply keep the ground clear of weeds and well hoed. They will grow and do well in any soil; but prefer a good rich well-drained loam. They may be planted in the Fall during August, September, and October; and in the Spring during April, May, and until the plants are too far advanced in June. In planting be sure that the crown of the root, that is, the part where the new shoots start, is two inches below the surface of the ground.

Choice New Phlox for 1929

BEACON. Brilliant cherry-red, one of the best red shades grown. **50 cents each; \$5.00 per dozen.**

B. COMTE. Dark red, very large trusses, not so tall a grower as many others. **50 cents each; \$5.00 per dozen.**

BLUE HILLS. A beautiful shade of lavender-blue, very large trusses. **50 cents each; \$5.00 per dozen.**

COQUELICOT. Brilliant new Phlox. The finest and brightest red of all the Phlox; the color is a bright orange scarlet. The plants are dwarf, exceptionally sturdy, and the individual flowers and trusses are very large. **50 cents each; \$5.00 per dozen prepaid.**

CHAMPS ELYSEE. Fine, rich crimson, **35 cents each; \$3.50 per dozen.**

DEBS. The finest red Phlox there is. Color is bright fiery crimson. **50 cents each; \$5.00 per dozen.**

JOHNSON'S FAVORITE. Light salmon-pink with a dark red eye, resembling Elizabeth Campbell, but far superior in every way. **50 cents each; \$5.00 per dozen.**

MAID MARIAN. A soft shade of lavender, very even in color. **50 cents each; \$5.00 per dozen.**

MRS. MILLIE VON HOBOKEN. Pure soft pink without eye. Large flower heads on long, erect stems. **50 cents each; \$5.00 per dozen.**

MAUVE QUEEN. A beautiful mauve-pink with white eye. **50 cents each; \$5.00 per dozen.**

ORNAMENT. Bright clear rose with a light halo, darker center. **50 cents each; \$5.00 per dozen.**

Select Standard Phlox

ALBION. White with faint red eye. **25 cents each; \$2.50 per dozen.**

ATHIS OR LOTHAIR. Deep clear salmon. Very fine. **25 cents each; \$2.50 per dozen.**

BRIDESMAID. White with large rose-crimson center. Very showy and desirable. **50 cents each; \$5.00 per dozen.**

ECLAIREUR. Bright carmine with light halo. Large flower. **35 cents each; \$3.50 per dozen.**

EUGENE DANZANVILLIER. Soft lavender with light center. **35 cents each; \$3.50 per dozen.**

FRAU ANTON BUCHNER. An exquisite pure white variety. Plants are of medium height, and very sturdy. **35 cents each; \$3.50 per dozen.**

GRUPPENKOENIGIN. Deep mallow pink with tyrian rose eye. Very large trusses; individual flower of enormous size. **35 cents each; \$3.50 per dozen.**

L'ESPERANCE. A light lavender-pink with a white center. **25 cents each; \$2.50 per dozen.**

LE MAHDI. The flower is a rich, dark violet-purple, a color rare among Phlox. **50 cents each; \$5.00 per dozen.**

LE SOLEIL. One of the most beautiful Phlox grown. Brilliant china rose, with white ring around a deep rose eye. **35 cents each; \$3.50 per dozen.**

JEANNE D'ARC or SNOW QUEEN. Undoubtedly the very finest pure-white variety to date. The plants are extra-strong growers of medium height, producing exceptionally large heads. **25 cents each; \$2.50 per dozen; \$12.00 per 100; \$100.00 per 1,000.**

JULIUS SANDEAU. Large, fine, very free-flowering, pure white. **35 cents each.**

MISS LINGARD. A pure-white variety and known as the early-flowering phlox. **50 cents each; \$5.00 per dozen.**

MRS. CHAS. DORR. A very beautiful shade of lavender. **25 cents each.**

MRS. E. E. JENKINS. Pure white. Very large truss, and very free flowering. **35 cents each.**

PANTHEON. Brilliant rose with a lighter center; a very effective combination. **25 cents each; \$2.50 per dozen.**

PEACH BLOW. One of the most delicate shades among the new Phlox. Deep rose-pink with white ring and tyrian pink eye. **25 cents each; \$2.50 per dozen.**

PROF. VIRCHOW. Bright carmine, overlaid with orange-scarlet. **25 cents each; \$2.50 per dozen.**

R. P. STRUTHERS. Very strong grower with large heads of fiery salmon-red. Very showy. **35 cents each; \$3.50 per dozen.**

RICHARD WALLACE. White with distinct violet eye. **25 cents each; \$2.50 per dozen.**

THOR. A most beautiful and lively shade of deep salmon-pink, suffused and overlaid with a scarlet glow; with a light, almost white halo surrounding the aniline-red eye. Gigantic size. **35 cents each; \$3.50 per dozen.**

W. C. EGAN. One of the very finest Phloxes yet introduced. The individual flowers, according to color chart, are of a delicate lilac, illuminated by a large, bright solferino eye; the color effect, as a whole, is a pleasing shade of soft pink. **35 cents each; \$3.50 per dozen.**

WIDAR. Pure purple with a prominent white center. **50 cents each; \$5.00 per dozen.**

Mixed Phlox

We have an extra-fine assortment of Mixed Phlox, consisting of the best varieties to date. The mixture contains the following colors: Crimson, scarlet, violet, lavender, pink, white, variegated or striped varieties, and the above mentioned colors with deeper colored eyes. **\$1.50 per dozen, prepaid; \$8.00 per 100, express collect.**



Hardy Perennials

We are sure that nothing gives our customers greater satisfaction about their grounds than a well-arranged flower garden of Hardy Plants. With the proper selection of varieties, flowers may be had in bloom from early Spring until severe frost; many of them will succeed where less hardy varieties would prove a total failure; once planted they make a permanent bed and are therefore less trouble and expense than where tender plants are used, and while they are of the easiest culture and do better with less care than most other varieties, yet they well repay any extra attention that may be given them. A properly prepared bed to receive them should be deeply forked or spaded with a liberal supply of well-rotted manure thoroughly worked in. Bone-dust and also some commercial fertilizers produce excellent results and may be applied in small quantities several times during the season and lightly raked into the soil.

Although not absolutely necessary, a Winter covering of long, strong, coarse litter or similar material will afford such protection as to guard against sudden changes of freezing and thawing, and the plants will be in a stronger condition to make an early start in the Spring to pay for the little trouble incurred. Manure can also be used, but a heavy covering on evergreen varieties would be likely to rot and kill them. Roots cannot be shipped until about March 15th, because our ground is frozen or snow-covered until about that date, usually making it impossible to dig them. All hardy plants shipped prepaid at prices quoted.

ACHILLEA — "The Pearl"

A Summer-blooming variety, worthy of a place in every garden. The flowers are pure white, very double, and are produced in large sprays on long stems; are much used by florists for cut-flower work. Perfectly hardy. Particularly desirable for cemetery planting. 18 inches. **25 cents each; \$2.50 per dozen, prepaid.**

AQUILEGIAS or COLUMBINES

The Columbines are one of the most elegant and beautiful of hardy plants, producing their graceful spurred flowers on stems rising two or more feet above a beautifully divided foliage. No other plant has so airy a grace as the Columbine, is more generous of its blooms, or is more effectively adapted for cut flowers. They are not at all particular as to soil or location, although they prefer a sandy loam and a moist but well-drained, sunny position. Their period of flowering covers the late Spring and early Summer months.

COERULEA HYBRIDS. (Rocky Mountain Columbines.) Including all the well-known colors and shades, blue, pink, red, salmon and yellow. **25 cents each; \$2.50 per dozen.**

A. FORMOSA. (Long-spurred Hybrids.) Blackmore and Langdon strain; a wealth of delicate coloring with spurs extra long and fine. **50 cents each; \$5.00 per dozen.**

ARABIS — Rock Cress

ARABIS, ALPINA. Small white flowers, in clusters. One of the best rock-garden plants. **25 cents each; \$2.50 per dozen.**

ASTILBE

ASTILBE, QUEEN ALEXANDER. Beautiful pink flowers on plants 12 to 18 inches tall. **35 cents each; \$3.50 per dozen.**

ACONITUM — MONKSHOOD

A. NAPELLUS. (True Monkshood.) Grows from 18 inches to 2 feet high, blooms from July to August. Large dark blue flowers in a raceme. **50 cents each; \$5.00 per dozen.**

A. FISCHERI. Azure. Grows from 18 inches to 2 feet high, blooms from July to August. Large dark-blue flowers in a raceme. **50 cents each; \$5.00 per dozen.**

ARTEMISIA

A. VULGARIS LACTIFLORA. (White Mugwort.) 3 to 4 feet. August and September. Unlike the other varieties, which are grown for their foliage, this introduction from China bears sprays of creamy white flowers on tall, erect stems which are clothed with fine cut, dark green foliage. It makes a splendid cut flower for mixing with flowers of decided color or form, such as delphiniums. **50 cents each; \$5.00 per dozen.**

BUDDLEIA or BUTTERFLY BUSH

BUDDLEIA, VARIABILIS VIETCHIANA. Beautiful violet-mauve flowers, with a distinctive odor. A continuous and very satisfactory Summer-flowering plant. Flowers are borne on long, cylindrical spikes, 6 to 12 inches in length. Blossoms satisfactorily first year planted. **50 cents each; \$5.00 per dozen.**

Hardy Perennials—Continued

CAMPANULA — Bellflower

C. TRACHELIUM. (Coventry Bells.) A good border plant of 2 to 3 feet in height with large racemes of purple, bell-shaped flowers which droop a little. **25 cents each; \$2.50 per dozen.**

CENTAUREA

CENTAUREA, MONTANA. (Perennial Cornflower.) Plants from 12 to 15 inches in height; a rosy purple, flowering from July to September. **25 cents each; \$2.50 per dozen.**

CENTAUREA, WHITE LEAVED, or DUSTY MILLER. Fine plants of easy culture, that are suitable for hot, sunny situations, in the border or rockery. Their white foliage contrasting with the foliage of other hardy plants, making them very showy. **25 cents each; \$2.50 per dozen.**

CHIDE

A fine border perennial with onionlike foliage and masses of lavender-pink flowers. **25 cents each; \$2.50 per dozen.**

COREOPSIS

Large, cosmos-like flowers of pure yellow. An excellent showy garden plant, continuous bloomer. **25 cents each; \$2.50 per dozen.**

DELPHINIUM or HARDY LARKSPUR

Mrs. Ely, author of "A Woman's Hardy Garden," says:

"Perennial Larkspur may be planted as soon as the Spring has opened. The ground should be well drained and carefully prepared, but manure must not be allowed to come in contact with the roots, or grubs are apt to destroy the plants. A little finely ground bone meal dug around each plant early in May will be of benefit, and in late Autumn, coal ashes should be sifted over the crowns of the plants to protect them from the white grub, which is their only enemy.

BELLADONNA. The freest and most continuous bloomer of all, never being out of flower from the end of June until cut down by hard frost. The clear turquoise-blue of its flowers is not equalled for delicacy and beauty by any other flower. **35 cents each; \$3.50 per dozen; \$25.00 per 100.**

BELLAMOSUM. A dark-blue form of the popular light-blue Belladonna. A very sturdy grower and a free bloomer. Flowers from June until frost. Grows 3 feet high. **35 cents each; \$3.50 per dozen; \$25.00 per 100.**

HOLLYHOCK VARIETIES. Blackmore and Langdon strain of Hybrids, imported directly from England, and considered the most desirable of all Delphiniums. Wonderful combinations of colors and great size. **\$1.00 each; \$10.00 per dozen.**

CHOICE HYBRIDS. Including all the standard colors. I can supply these in mixtures only. **50 cents each; \$5.00 per dozen.**

DIANTHUS — PINKS

DIANTHUS BARBATUS. (Sweet William.) 10 to 20 inches high, blossoming in July and August. One of the oldest garden flowers, which perpetuates itself by self-sowing. Colors, a good mixture of the most beautiful shades of crimson, white and Newport pink. **25 cents each; \$2.50 per dozen.**

DIANTHUS PLUMARIUS DELICATA. New seedling pink, from *Dianthus plumarius*. The earliest of all to blossom. Very delicate, beautiful cameo-pink flowers, blossoming in June, 9 inches in height. **35 cents each; \$3.50 per dozen.**

DIANTHUS, SEMPERFLORENA. 9 to 12 inches. Single and semi-double flowers. Pink, with crimson-red center. **25 cents each; \$2.50 per dozen.**

DICENTRA

D. SPECTABILIS. (Bleeding Heart.) Large, rose-red, heart-shaped flowers, in April and July. An old-fashioned favorite. **75 cents each.**

DIGITALIS — FOXGLOVE

In mixed colors only; the Foxgloves should be planted at the back of the border or in separate groups and are invaluable for permanent and settled effects. **25 cents each; \$2.50 per dozen.**

FEVERFEW — MATRICARIA

LITTLE GEM. A most useful border plant and valuable as a cut flower with yellowish white flowers blooming from June to October. 18 to 24 inches tall. **25 cents each; \$2.50 per dozen.**

GYPSOPHILA — BABY'S BREATH

GYPSOPHILA PANICULATA. (Bristol Fairy.) A highly improved form of Double Baby's Breath, with larger flowers and blooming two weeks earlier. The stock is still very limited. **75 cents each.**

HARDY GARDEN HELIOTROPE

(*Valeriana* — Spurred Flower.)

VALERIANA OFFICINALIS. The old-fashioned garden Heliotrope with pinkish or lavender flowers with Heliotrope fragrance; flowers in June and July. Height, 4 feet. **25 cents each; \$2.50 per dozen.**

HEMEROCALLIS — YELLOW DAY LILY

Popular hardy plants, belonging to the Lily family. They succeed everywhere and should always be included in the border of old-fashioned, hardy plants.

Our stock of *Hemerocallis* is field-grown, and can be depended upon to be true to name.

APRICOT. Rich apricot-colored flowers. Plants grow 2½ feet tall. **25 cents each; \$2.50 per dozen.**

AURANTIACA. (Carolina Lily.) A beautiful, large trumpet-shaped Day Lily with fragrant orange flowers. One of the most satisfactory; height 2 to 3 feet; flowers in June and July. Easy to grow. **35 cents each; \$3.50 per dozen.**

FLAVA. (Yellow Day Lily.) The best-known variety; very fragrant, deep, clear lemon-yellow; flowers in June; height 2 to 3 feet. **25 cents each; \$2.50 per dozen.**

HELIANTHUS — SUNFLOWER

HELIANTHUS AUREA. A big, showy plant suitable for bordering woodland paths and massing effects before shrubbery. Fine golden-yellow flowers on long, graceful sprays. **25 cents each; \$2.50 per dozen.**

HEUCHERA — ALUM-ROOT

H. BRIZOIDES. (Pink Bells.) Dwarf, compact bushy plants growing from 1½ to 2 feet high, flowering during July and August, with delicate, rosy-carmine flowers on slender red stems. **25 cents each; \$2.50 per dozen.**

HIBISCUS (Mallow or Malva)

From Old Greek, meaning to soften, referring to its soft, mucilaginous qualities.

Tall, vigorous-growing perennials of the most ancient culture. Used among the Romans as a vegetable, and still serves as food to the Chinese.

MALLOW MARVELS or GIANT FLOWERING Hibiscus. (Marshmallow.) An improved form of our native Marshmallow or Rosemallow, in which the colors have been greatly intensified. Robust, upright habit, producing an abundance of flowers of enormous size, in all the richest shades of crimson and pink. Strong roots. **50 cents each; \$5.00 per dozen. Small divisions at 25 cents each; \$2.50 per dozen.**

HOSTA (Funkia) — PLAINTAIN LILY

HOSTA CAERULEA. (Blue Plantain Lily.) Shade-loving plants that look well just at the edge of a heavy shrub border. Shiny foliage and lavender-blue flowers. **25 cents each; \$2.50 per dozen.**

HOSTA VARIEGATA. Blue flowers and a fine foliage plant with leaves variegated with white. **35 cents each; \$3.50 per dozen.**

IBERIS — CANDYTUFT

IBERIS SEMPERVIRENS. Spreading habit and distinctly narrow foliage. Flowers pure white, covering the plant. **25 cents each; \$2.50 per dozen.**

LAVANDULA

L. SPICA. (Spike Lavender.) Grows about 1 foot and blooms July and August with short, dense spikes of fragrant blue flowers. **50 cents each; \$5.00 per dozen.**

LILIUM

LILIUM REGALE. (Royal Lily.) Enormous white flowers shaded pink or purple with a yellow center. Probably the easiest of the white lilies to grow, and will grow almost anywhere. Blooming size, **50 cents each, \$5.00 per dozen.**

LIATRIS — CAT-TAIL GAYFEATHER

LIATRIS PYNOSTACHYA. A striking plant with great rocket-like spikes of pale purple flowers which start to open at the top of the spike. Will grow 4 feet high. **50 cents each; \$5.00 per dozen.**

LYCHNIS — CAMPION

L. CHALCEDONICA. (Maltese Cross.) A most desirable plant blooming in June and July with heads of brilliant orange-scarlet flowers; grows 2 to 3 feet high. **25 cents each; \$2.50 per dozen.**

L. VISCARIA FLORE-PLENO. (Double Rose-pink Campion.) A distinct variety with large double rose-colored flowers blooming in June and July; 12 to 15 inches high. **35 cents each; \$3.50 per dozen.**

MONARDA — BEEBALM

MONARDA DIDYMA. (Oswego Beebalm.) Showy flowers of brilliant scarlet in rich profusion, blooming from June to September. **25 cents each; \$2.50 per dozen.**

M. DIDYMA ROSEA. Same characteristics as above, but flowers are reddish rose in color. **25 cents each; \$2.50 per dozen.**

M. DIDYMA VIOLACEA SUPERBA. (Amaranth Beebalm.) A very distinct sort with purple-red flowers. **25 cents each; \$2.50 per dozen.**

PHYSOSTEGIA

PHYSOSTEGIA VIRGINIANA. (Ladies' Pink.) An elegant plant with dark, glossy, green foliage and long spikes of soft rose flowers; excellent for cutting. It produces its flowers during July, August, and September when few flowers are in bloom. Height, 2 to 3 feet. **25 cents each; \$2.50 per dozen.**

PHLOX AMOENA

Grows 4 to 5 inches and flowers in April and May. Slender, erect plants with clusters of bright pink flowers. **35 cents each; \$3.50 per dozen.**

PHLOX SUBULATA

(Moss Pink.)

PHLOX SUBULATA. Dwarf Moss Pinks. A much-prized old-time garden plant, useful for colonizing, where it is desired to cover the earth with a tufted, dense, evergreen mat. It is much used in cemeteries, rockeries, for borders, and old-fashioned gardens. Blooms profusely in the Spring and is sweetly scented.

ALBA. Pure white. **25 cents each; \$2.50 per dozen.**

LILACIANA. Flowers clear lilac. **25 cents each; \$2.50 per dozen.**

PHYSALIS — CHINESE LANTERN PLANT

PHYSALIS FRANCHETI. Large, heart-shaped leaves, with small, whitish flowers, followed in the Autumn with large, bright orange-red, balloon-shaped bag of papery texture. Fine for winter decorations. **35 cents each; 3 for \$1.00.**

RANUNCULUS — BUTTERCUP

ACRIS FL. PL. Tall, double Buttercup. **35 cents each; \$3.50 per dozen.**

REPENS. Creeping Buttercup. **35 cents each; \$3.50 per dozen.**

RUBBECKIA — CONE FLOWER

Indispensable plants for the hardy border; grow and thrive anywhere, giving a wealth of bloom, well suited for cutting.

GOLDEN GLOW. A well-known popular plant, strong, robust grower, attaining a height of 5 to 6 feet; produces masses of double golden-yellow flowers from July to September. **25 cents each; \$2.50 per dozen.**

SEDUM — STONECROP

S. ALBUM. White Stonecrop. A creeping variety, small foliage and tiny white flowers.

S. KAMTSCHATICUM. Orange Stonecrop. Bright evergreen foliage, golden flowers in flat clusters.

S. PRUINATUM FORSTERIANUM. Small tufted plant with round bunches of tiny yellow flowers.

S. SEXANGULARE. Hexagon Stonecrop. Very slender stemmed plant with tiny yellow flowers.

S. SPECTABILE. Showy Stonecrop. Erect-growing plant with large heads of rose-colored flowers.

S. STOLONIFERUM. Running Stonecrop. A trailing plant with flat leaves and pink flowers.

Any of the above Sedums, **25 cents each; \$2.50 per dozen; \$18.00 per 100.**

SHASTA DAISY (Burbank)

ALASKA. Large pure white. **35 cents each; \$3.50 per dozen.**

SPIRAEA or ASTILBE

(Goat's Beard, Meadow Sweet.)

Elegant border plants with feathery plumes of flowers and neat, attractive foliage; succeeds best in a half-shaded location in rich, moist soil.

FILIPENDULA FL. PL. (Double-flowered Dropwort.) Numerous corymbs of double white flowers; buds tinted rose-pink; produced on stems 15 to 18 inches high, during June and July. Finely cut distinctive fern-like foliage. **35 cents each; \$3.50 per dozen.**

SAUROMATUM SIMLENSE — BLACK CALLA

A rare and curious garden bulb, with odd flowers and luxuriant palm-like foliage. The spathe of this Calla-shaped flower is between one and two feet in length, with tapering point, and is of very large size. Color of bloom: green on the outside, inside yellow, spotted with purple. Flowers do not appear on first, second, and third size bulbs, only the large bulbs bloom the first year planted. The foliage is very large; the leaf-stem being light green thickly dotted a deep green, making it very attractive and novel.

Price, prepaid,	Each	Per dozen
Gigantic Bulbs	\$.75	\$7.50
Large Size Bulbs50	5.00

THERMOPSIS

THERMOPSIS CAROLINIANA. A tall plant, growing from 3 to 4 feet, blooming in June and July along the upper part of the stalk in pear-shaped blossoms. **50 cents each.**

Hardy Perennials—Continued

TRADESCANTIA — SPIDERWORT

TRADESCANTIA ALBA. An all-round plant for wet or dry, sunny or shady situations, continuing in bloom from early Summer until frost. Pure white, three-petaled flowers in clusters on long stems, and long pointed foliage. Height 2 feet. **25 cents each; \$2.50 per dozen.**

TRADESCANTIA VIRGINIANA. An old garden plant, with grass-like foliage and violet-blue flowers all summer. Height 2 feet. **25 cents each; \$2.50 per dozen.**

TRITOMA — THE EVERLASTING FLAME FLOWER

Plants are perfectly hardy in the open ground all winter south of Philadelphia; further north they must be protected of wintered in a cellar. Just bury the roots in sand; nothing more is required. Should be planted out early in Spring, and will commence growth and bloom at once, growing larger and finer every day. Plants show from 6 to 20 grand flower stalks all the time, each holding at a height of 3 to 4 feet a great cluster of flame-colored flowers of indescribable beauty and brilliancy. Fall frosts do not kill or stop its blooming, and it is as brilliant as ever long after all other garden flowers have been killed. For cutting it is unsurpassed, and the beautiful long spikes keep several weeks in water. **50 cents each; \$5.00 per dozen.**

TROLLIUS — GLOBE FLOWER

Very showy flowers of globular shape, resembling giant buttercups, yellow in color. They like damp places and will do well in the shade. **50 cents each; \$5.00 per dozen.**

VERONICA — SPEEDWELL

VERONICA LONGIFOLIA. (Blue Jay.) One of the handsomest blue flowering plants, spikes completely studded with beautiful blue flowers. **50 cents each; \$5.00 per dozen.**

VIOLA

VIOLA, JERSEY GEM. An improved variety of Tufted Pansy with showy, violet-blue flowers. **35 cents each; \$3.50 per dozen.**

YUCCA — ADAM'S NEEDLE

YUCCA FILAMENTOSA. A stately foliage and flowering plant equally imposing in solitary or group planting; always conspicuous. The broad sword-like foliage is evergreen, while in mid-summer it shows great erect, branching stems, bearing a showy display of pendant, creamy white bells. Very fragrant; flowers in July and August. Roots, **25 cents each; \$2.50 per dozen;** larger plants, **50 cents each; \$5.00 per dozen.**

VERBASCUM — MULLEIN

VERBASCUM PHOENICEUM. (Purple Mullein.) Flat rosettes of crinkly, woolly leaves from which rise slender spikes of mauve-pink or rosy-violet flowers. **35 cents each; \$3.50 per dozen.**

Ornamental and Flowering Shrubs

Shipped by Express at Purchaser's Expense.

A good Shrub collection will present the greatest variety of colors throughout the season, both in flower and foliage.

Irregular massing is the most picturesque method of shrub planting. When right selections are made, they will serve almost as well as Evergreens, to shut out from view fences and other low, unsightly objects. It is my constant aim to grow everything that is useful, hardy, and worthy of cultivation in our climate.

Annual pruning should be done directly after flowering. When planting, the best way to maintain a balance between roots and branches is to cut the latter to half their length. I prune all I ship out, so they are properly pruned, and ready to plant and grow. When pruning, the old scraggy wood and spindly shoots should be cut out. When planting, the holes should be made large enough to allow the roots to be spread out in a natural way. Firm planting is essential to the future well-being of the shrub. In planting, therefore, the soil should be crowded around the roots firmly. The top-soil should be kept cultivated to a depth of two to three inches.

If heavy bushes are desired, I have good large specimens that will produce immediate effect. These are designated by the word specimens throughout the descriptions.

AZALEA MOLLIS

Resembles a dwarf rhododendron with good foliage and bears flowers in all shades of red, yellow, and orange. Perfectly hardy and will thrive in sunny positions anywhere. The roots must not come in contact with barnyard manure and will not live in limey soil. Particularly adapted to shady spots in the garden.

	Each	
18 to 24 inches	\$4.50	

BERBERIS — BARBERRY

BERBERIS THUNBERGII. Where a low, dwarf, deciduous hedge is wanted, nothing equals this beautiful Barberrry. It is spreading of habit, growing extremely thick right from the base and requires but little pruning to keep it in shape. The leaves are small, light green, and toward Fall assume rich, brilliant color, the fruit or berries becoming scarlet; absolutely hardy in all parts of the country.

	Doz.	100
10 to 15 inches	\$1.50	\$10.00
15 to 18 inches	2.50	12.00
18 to 24 inches	3.00	18.00
24 to 30 inches	3.50	25.00

DEUTZIA

We are indebted to Japan for this valuable genus of plants. Their hardihood, fine habit, luxuriant foliage and profusion of attractive flowers place them among the most beautiful and most popular of flowering shrubs at the present time. Flowers in June and through July and August.

PRIDE OF ROCHESTER. A variety of Deutzia Crenata Flore Plena, producing large, double white flowers; backs of the petals slightly tinted with rose. It excels all the older sorts in size of flower, length of panicle, profuseness of bloom and vigorous habit; blooms nearly a week earlier.

	Each	Dozen
24 to 36 inches	\$5.00	\$5.00
36 to 48 inches	.75	7.50
4 to 5 feet specimen bushes	1.00	10.00

HYDRANGEA

HYDRANGEA ARBORESCENS GRANDIFLORA. (Snowball Hydrangea.) This magnificent, perfectly hardy American shrub has snow-white blossoms of largest size. One of its most valuable characteristics is its coming into bloom just after the passing of all the early Spring shrubs, while its long flowering season, from early June until late August, makes it a valuable acquisition in any garden. Small plants, **50 cents each; \$5.00 per dozen;** specimen plants, **\$1.00 each.**

HYDRANGEA PANICULATA GRANDIFLORA. Without doubt the best-known and most-popular Autumn flowering shrub in cultivation at the present time. The flowers, which are borne in dense, pyramidal panicles a foot long in the greatest profusion, are white when they first open, but gradually change to rose color, and remain in good condition for weeks. Extra fine bush plants. **\$1.00 each; \$10.00 per dozen.**

FORSYTHIA — GOLDEN BELL

Familiar to all as the shrub that blooms in the very early spring with its tender yellow blooms on leafless branches, showy and spectacular.

3 to 4 feet Each
 \$1.00

LONICERA — HONEYSUCKLE

LONICERA JAPONICA HALLIANA. (Hall Japanese Honeysuckle.) A vigorous grower with fragrant yellow and white flowers from midsummer to frost. This makes a good ground cover. **50 cents each; \$5.00 per dozen.**

CALIFORNIA PRIVET

Of all ornamental hedge plants this is the most popular and more of it is planted than all others combined. Its foliage is a rich, dark green and is nearly evergreen, remaining on the plant until mid-winter. It is of free growth and succeeds under the most adverse conditions, such as, under dense shade of trees where other plants would not exist.

To form a dense hedge from the base up the plants should be severely pruned the first two seasons. Plant the one-year-old size 8 inches apart in the row, the larger sizes 10 to 12 inches apart.

Doz. 100
 Strong, 1 year, 18 to 24 inches . . . \$1.00 \$10.00
 Strong, bushy, 2 year, 24 to 30 inches . 2.50 12.00

LIGUSTRUM AMURENSE

(Amoor River Privet.)

An ornamental hedge plant somewhat similar to the famous California Privet, but hardier. Leaves dark, glossy green.

Doz. 100
 2 to 3 feet \$3.50 \$25.00
 3 to 4 feet 4.00 30.00

PRUNUS — ALMOND

PRUNUS GLANDULOSA. (Double Pink-Flowering Almond.) Very double, rose-colored flowers in great profusion in the early Spring. A charming early flowering shrub.

2 to 3 feet \$1.00
P. GLANDULOSA SINENSIS. Similar to the above, but producing an abundance of double white flowers.
 2 to 3 feet \$1.00

ROSA RUGOSA

A stout shrub growing 6 to 8 feet with tough, wrinkled foliage, immune to insects and disease. The flowers are large, single, and of a purplish red, followed by scarlet fruit.

2 to 3 feet \$0.50
 3 to 4 feet75

R. HUGONIS — (Hugonis Rose)

A big, arching shrub, spiny stems and somewhat feathery foliage of pale green. The flowers are single, yellow in color and followed by red, translucent fruit.

Each \$1.50
 2 to 3 feet

CLIMBING ROSES

DOROTHY PERKINS. Immense clusters of tiny exquisitely formed little roses of rich, shell-pink in varying shades. **75 cents each.**

EXCÉLSIOR. Same as Dorothy Perkins in every respect, except the flowers are bright, light crimson. **75 cents each.**

PAUL'S SCARLET CLIMBER. Brilliant scarlet flowers of large size on a moderately growing plant suitable for tying to a post or pillar. **\$1.00 each.**

BABY RAMBLERS. Immense clusters of flowers produced with great freeness; the plants are covered. I offer three colors: rose-pink, red, and crimson, in strong, field-grown plants. Each 18 inches to 2 feet \$1.00

SPIRAEA

VAN HOUTTEI. (Bridal Bower.) By many this is regarded as the finest of all Spiraeas, and it is assuredly one of the most esteemed shrubs in cultivation. It forms an erect bush with graceful arching branches, well covered with neat, rich green foliage, and in early Summer a profusion of large, pure white flower clusters. Very hardy and most effective.

Each Doz.
 12 to 18 inches \$3.35 \$33.50
 18 to 24 inches50 4.00
 24 to 30 inch specimen bushes75 6.00
 3 to 4 feet specimen bushes 1.00 10.00

S. BUMALDA. (Anthony Waterer.) A free-blooming, compact shrub with bright crimson flowers in broad, flat heads. The foliage is often variegated with crimson, white, and yellow. Makes a desirable low-growing hedge.

Each \$0.75
 2 to 3 feet
 3 to 4 feet 1.00

S. OPULIFOLIA AUREA. (Virginian Guelder Rose.)

An interesting variety of medium growth with golden-tinted foliage and large white flowers in June. Each 3 to 4 feet \$1.00
 4 to 5 feet 1.50

SYMPHORICARPOS

RACEMOSUS. (Snowberry.) A well-known dwarf shrub with pink flowers and white berries that hang on the plant the greater part of the winter.

2 to 3 feet \$0.75

S. VULGARIS. (Indian Current.) Similar to the above, but with bright red fruit.
 2 to 3 feet \$0.75

WEIGELA

WEIGELA ROSEA. (Pink Weigela.) A very free-flowering shrub with an abundance of bright-pink, somewhat tubular flowers. Like all the Weigelas, it blooms for a long time.

Each \$0.75
 2 to 3 feet
 3 to 4 feet 1.00

W. ROSEA VARIGATA. A low-growing variety with white margined leaves and almost pure white flowers.

2 to 3 feet \$0.75

3 to 4 feet 1.00

W. EVA RATHKE. A hybrid variety and perhaps the most showy of all, with dark brownish-red flowers, with a little lighter center. Flowers very profusely and is very popular.

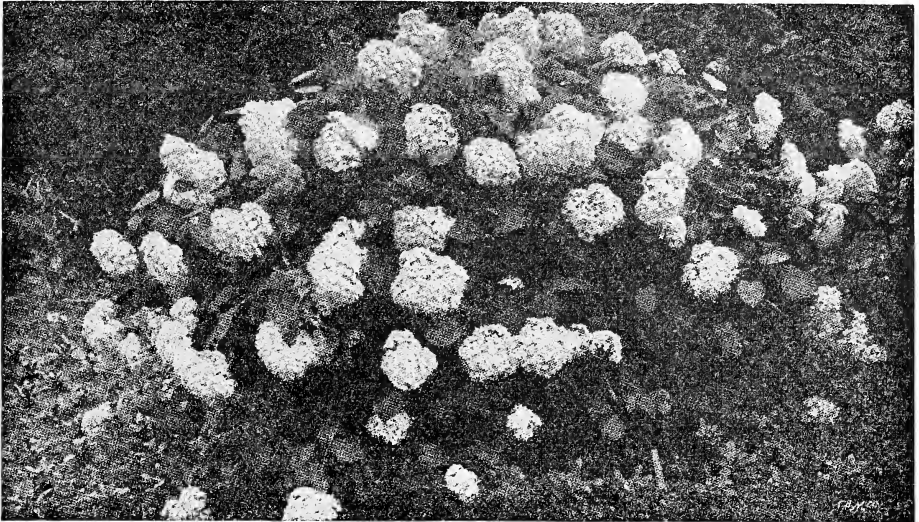
2 to 3 feet \$0.75
 3 to 4 feet 1.00

BLACK WALNUT

Well known as a sturdy, dense shade tree, wide-spreading and perfect in form. I offer strong, healthy, well-shaped seedlings.

Each \$1.00
 15 to 18 inches





HYDRANGEA ARBORESCENS GRANDIFLORA

50 cents each; \$5.00 per dozen

Specimen plants, \$1.00 each. (See page 41.)

Dahlia Labels

Dahlia Labels, Painted, with Wires — 3 1/4-inch, iron wire, 75 cents per 100, prepaid; \$3.00 per 1,000 prepaid. 3 1/2-inch, copper wire, \$1.00 per 100 prepaid; \$4.00 per 1,000, prepaid.

Dahlia Labels, Plain, with Wires — 3 1/4-inch, iron wire, 50 cents per 100, prepaid; \$2.50 per 1,000, prepaid. 3 1/2-inch, copper wire, 75 cents per 100 prepaid; \$3.50 per 1,000 prepaid.

Wooden Plant Labels

For any kinds of plants. These are plain labels to be used either in pots or out of doors, with one end pointed.

Plant Labels. 4-inch, plain, 50 cents per 100, prepaid; \$2.00 per 1,000, prepaid. 5-inch, plain, 60 cents per 100, prepaid; \$3.00 per 1,000, prepaid. 6-inch, plain, 75 cents per 100, prepaid; \$4.00 per 1,000, prepaid. Not less than 600 at 1,000 rates.

Oyama Plant Food

A Wonderful Japanese Discovery

MAKES PLANTS THRIVE

By using OYAMA on house plants it will keep them in bloom all Winter and as green and luxuriant as if grown outdoors in the Summer. It will make your flower and vegetable garden wonderfully productive and the envy of your neighbors.

It makes no difference how healthy or delicate your plants may be, OYAMA will bring out new flowers and foliage and cause a marvelous transformation.

FOOD FOR PLANTS, FLOWERS, VEGETABLES

Clean, Odorless, Safe to Use

Full directions with every package.

PRICE

House Plant Size, makes 6 gallons \$.30
 Garden Size, makes 32 gallons 1.10

NEW WAY TO KILL GARDEN BUGS

PROTECT your flowers and vegetables this new way. Surprisingly easy! Simply sprinkle with a new kind of non-poisonous powder called **PLANTGARD**. Not only are bugs, worms and insects *killed*, but this almost magical powder also *fertilizes* the ground. No wonder flowers grow larger and brighter colored! Vegetables mature quicker and are more tasty. Yet it costs only a few cents to protect an entire garden bed. Ask for Plantgard today.



Plantgard
FOR GARDEN PROTECTION

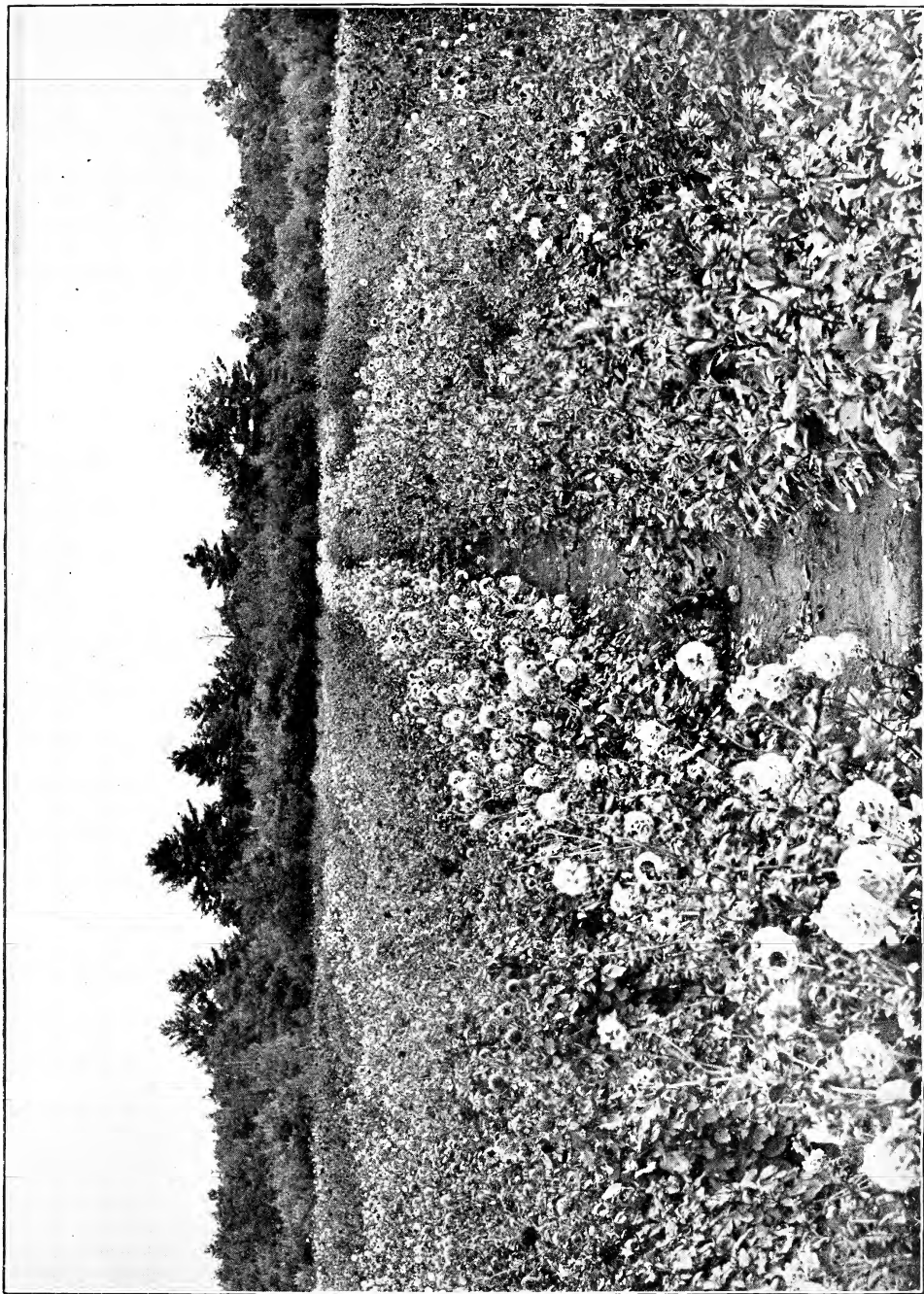
Price Prepaid

Small Size - 12 oz.

50 cents

Large Size - 26 oz.

\$1.00



A Partial View of My Ten-Acre Field No. 19 in Full Bloom



An Exquisitely Beautiful Introduction

CHARLOTTE ALEXANDER

Above illustration about two-thirds natural size.

\$3.00 each

(See description page 13)