

Historic, Archive Document

Do not assume content reflects current scientific knowledge, policies, or practices.

62.07

1930

LIBRARY

RECEIVED

★ JAN 1 1930 ★

U. S. Department of Agriculture

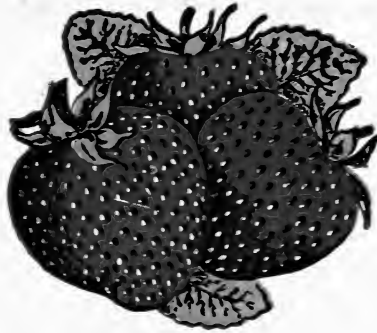
BUSINESS FOUNDED 1880

PRICE LIST OF

Bauer's

Blue Ribbon Brand Strawberry Plants

FIFTY YEARS OF SUCCESSFUL BUSINESS



Local and Long Distance Phones

Office 121 — Residence 125

When You Plant Bauer's Blue Ribbon Brand Plants You Plant
The Very Best Grown

J. A. Bauer

The Strawberry Plant Man

LOCK BOX 38.

JUDSONIA, ARKANSAS

Reference: Bank of Judsonia, Dun or Bradstreet



A Block of Our Improved Klondike Berry Plants. When You Set Bauer Plants
You Get the Best Grown.

Greetings for 1930

The past season was very unfavorable for berry plants, as it was dry a big part of the summer and plants made fewer than usual, but the quality was never so good as this season. In all our experience we have never grown better plants than we have this season.

We have a big stock of Missionary and Improved Klondike, and a limited stock of other common sorts. In Mastodon we have a good stock and we advise placing of orders for plants very early to assure you of your wants.

We can move as many as 500,000 plants per day and we can assure you if weather permits we can get your order off quickly.

We hope you can send us some names of prospective patrons to whom we can send our list.

We thank one and all for past favors and wish you good luck this season.

Every patron must be a pleased patron. When you buy Bauer's Blue Ribbon Brand Plants you buy the best grown.

Yours for better plants, J. A. BAUER.

General Information

SHIPMENTS— We pack all our plants in slatted crates. We guarantee safe arrival on all shipments to April 10th. After that date they travel at purchaser's risk. We do not advise any shipments of berry plants by freight as it is not safe; we advise that all shipments be either by express or mail.

We use lots of damp moss to the roots, and plants should arrive as fresh as the day we ship them. We have tested our packing this fall, by letting some four crates stay in the packing house for twenty days and when we unpacked them most all of the plants were still good. Most all of the plants we ship reach our patrons in from one to five days, so we know by this test that plants will arrive any place in good order.

TERMS— We ask cash before shipment is made or will take one-half cash and the balance c. o. d., you to pay for return of c. o. d. You may send check if you will add 15 cents for exchange, or bank draft or money order as you wish.

MAIL ORDERS— On our mail orders we send you just as large plants as if they went by express, and we sell as few as twenty-five berry plants of one variety and all we ask is for you to make your order for \$1.00 or more as we don't fill orders for less than that amount. In case

you want plants sent by mail, c. o. d. for one-half, you will have to pay return of money and fee for c. o. d. shipments. We guarantee safe arrival by mail as well as by express.

PROMPT SHIPMENTS— When you get ready for your plants what you want is service and that we have. We can pack and ship three million plants per week and do it easily; and if you place your order with us, weather permitting us to dig stock, you will get quick service and the best plants grown. When my father, Jacob C. Bauer, started this business in 1880, little did he think that the business would grow until it was the largest of its kind in the entire southwest, but such is the case. We ship more plants than any other four growers combined in our section. Don't forget that if you have friends who want good plants to pass the good word along that we have them.

PACKING HOUSE— My packing house is located one half mile from the express office. We get orders off sometimes one hour after receipt of same and we use every effort to give you quick service. So, if you are in a hurry for plants send orders to me and we will do the rest. Every patron must be a pleased patron. We make you one if for any reason you are not satisfied.

Descriptions of Varieties

I don't grow a big list but every variety we offer you does well in the south and southwest and we dig up all the rows. We give you the best plants. All plants we sell were set last

spring and we never dig up from two year old beds. You'll make no mistake in placing your order with us.

EXCELSIOR, Per. The very earliest berry grown and one which is

J. A. BAUER'S SOUTHERN GROWN BLUE RIBBON BRAND PLANTS

a fine berry for the home. They make a nice, dark red berry which makes the finest of jelly and preserves of any berry grown. We advise all to plant at least some of this grand old variety.

THOMPSON, Per. The old Lady Thompson, improved over the old variety. This variety is firmer; is a good fruiter and will carry well any place. A good plant maker, will stand hot dry summers well. Season is about a week later than Excelsior and the Excelsior comes on right after the last frost. They can't be earlier than' the Excelsior. This Thompson variety does well all over the south-west.

MISSIONARY, Per. This berry is the leading sort for the south. They grow them with success in Florida, Alabama and South Texas, and we fill all orders up to million lots and advise the planting of them in above states. Season second early; a good selling berry.

IMP. KLONDIKE, Per. A good all around berry. The one we sell more plants of than any other variety of its season. We can furnish them in any amounts wanted. We guarantee satisfaction on all your orders for this grand berry. I introduced this berry and know it to be a good berry. Try them.

DUNLAP, Per. This variety does well in the northern and western states. We don't like them for the south as they are not as good as others of same season in this section. We have the pure stock of them; we can fill all orders.

AROMA, Per. This berry, for its season, sells more than any of the later varieties. We sell more of them each year than all other kinds combined for late fruiting. We have plenty of the best plants and call fill

all orders, large or small. Hope to have your Aroma orders.

Gandy, Per. An old late variety, about four days later than Aroma; a good one.

CHAMPION K., Per. A new early berry; large size; very productive and a good shipper; they will pay to plant.

ST. LOUIS, Per. The best early berry grown today for home and nearby markets; we know of no better berry to grow than the St. Louis; yield is greater than any variety we have ever grown for any season of the year. You can make 400 crates per acre from St. Louis. Don't fail to plant them. Originated and introduced by me.

EVENING STAR, Per. The best real late berry of all, at least a week later than Aroma; will last a week to ten days after Aroma are gone. Big strong plants, very large berries. We have grown both Evening Star and St. Louis where 12 berries filled a quart well rounded up. Don't fail to plant these two grand new berries; introduced by me.

LADY CORNELLIE, Per. A berry grown with success in Florida and one which has commanded the highest market prices.

PREMIER, Per. A berry grown with success in the east and north; not so good for the south.

PROGRESSIVE, Per. We have many calls for Progressive Everbearing. We have a big stock of them and can fill all orders, large or small; guarantee our stock pure and true to name. We can make you better prices in 25,000 lots or more.

MASTODON, Per. The greatest everbearing berry grown and one that will please you. Large to very large in size; a sure cropper all summer.

J. A. BAUER'S SOUTHERN GROWN BLUE RIBBON BRAND PLANTS

ROCKINGHAM, Per. This is a grand new late berry that ripens with the Aroma and is a very productive variety. We like them fine. This berry is a fine one for home markets or for long distance shipments either. We have not had a new variety for years as good as the Rockingham. We consider them one of the very best varieties grown.

TEXAS, Per. This is a grand old

variety we have listed again as we have had many in the past two years who wanted this variety, and so we have added them to our list. They are of second season, a little later than Excelsior. They are great to make a second crop through the summer months; of good size, good flavor and very productive. Don't fail to try them. We have the pure stock.



This is a Picture of a Thousand Cheap Plants

This is the actual photograph of a thousand plants we bought last spring. They were shipped to me loose in a sack, and as soon as we received them, we turned them out and had this photograph made of them. Not 20 per cent of this 1,000 plants were worth setting; they were cheap and you can see why.

Bauer plants are tied 25 in the bunch, trimmed and packed in damp moss, safe arrival guaranteed.

Which kind do you think it pays to buy?

The Great Mastodon

Read these letters from parties to each of whom we sent a crate of berries this last fall. The proof of the pudding is in the eating. This shows that Mastodon does well with us; we think they will do well with you. Now, while we have had entire success with them, in no case do we guarantee them to do well

Sweet Potato Plants from March 10th on.

J. A. BAUER'S SOUTHERN GROWN BLUE RIBBON BRAND PLANTS

with others as all we can do is furnish you pure, true blue stock, and you must take the same chance we did on them doing well in your locality.

Little Rock, Ark.
September 27, 1928

J. A. Bauer,
Judsonia, Ark.
Dear Mayor:

The crate of berries referred to in your letter of the 25th arrived in due time and was enjoyed by the whole family. We thank you for the kind remembrance.

Your friend,
Harvey Parnell,
Governor

Little Rock, Ark.
September 26, 1928

J. A. Bauer,
Judsonia, Ark.
Dear Sir:

We are in receipt of the crate of berries you sent us and we think them very fine for the time of the year. They reached us in good condition and were very much enjoyed by the entire family. We wish to thank you for sending them.

Yours very truly,
Jos. W. Vestal & Son,
Little Rock, Ark.

Sept. 27, 1928

J. A. Bauer,
Judsonia, Ark.
Dear Mr. Bauer,

I am just in receipt of the crate of berries you sent me. They sure are fine for this time of year and sure have the good strawberry flavor. Please accept my thanks for same.

Your friend,
W. N. Wilkes,
Commissioner of Agriculture

(The following are clippings from the Arkansas Democrat of October

11th, 13th and 25th, 1928.)

STRAWBERRIES MAY BE GROWN YEAR AROUND

Since woman as the purveyor of the family table provender is nowadays fully alive to the value of fresh fruits and vegetables on the bill of fare, her interest is the increasingly popular everbearing strawberry is not to be wondered at.

A hundred plants in a bit of garden will do wonders in the way of supplying fruit for the small family and at a season of the year when such an "out-of-season" fruit is most appreciated.

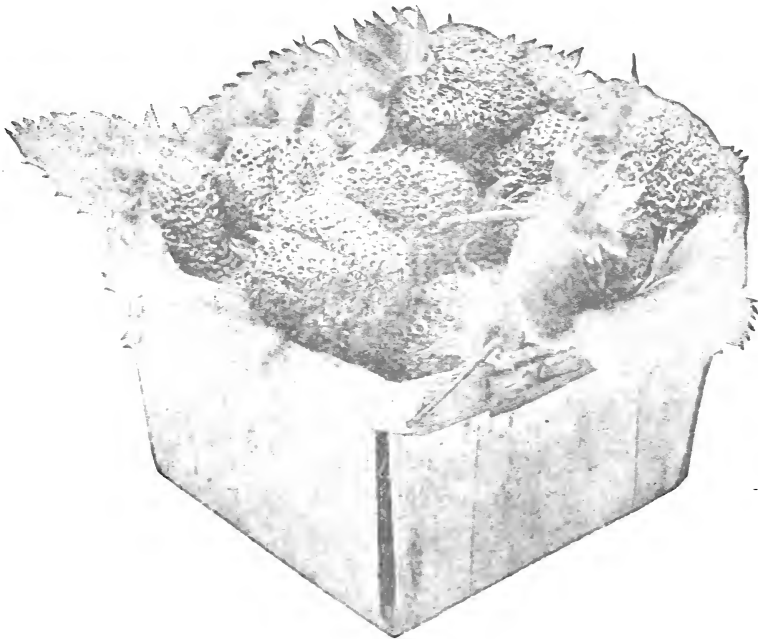
Fresh home grown strawberries for the Thanksgiving dinner table is something not to be overlooked as a "good thing" and many housewives even in the city, will feel it wise to cast about for a small plot for the everbearing bed.

The past week friends in Little Rock have been the recipients of small crates of these luscious berries from a well known grower, who specializes in this field. It is said that berries will probably be gathered by this grower as late as the middle of December, from plants that began bearing last spring.

RIPE STRAWBERRIES ON KENSETT MARKET

Kensett, Oct. 13.— Ripe strawberries were marketed here Wednesday. They sold readily for 25 cents per quart basket. They were of the everbearing variety and are said to have been raised on the J. A. Bauer farm near Judsonia. This

Sweet Potato Plants from March 10th on.



A Quart of Mastodons. Note the Size

is the first time that ripe strawberries have been on the market here this late in the year. It goes to show that two or more crops of berries can be raised here every year and that late berries pay as well or better than the early

In 1878 Jacob C. Bauer engaged in growing strawberries and selling plants at Judsonia. His son, J. A. Bauer is still known as the Strawberry King, since he is able to sell strawberries almost the year round, as a specialist in the Everbearing berry. Mr. Bauer has a display of berries and plants in bloom and in fruit at the Arkansas State Fair, which is attracting much attention, especially among women interested in flower and vegetable gardening.

Fifty to 75 plants planted in good soil as a border to a flower bed will

produce enough fruit for a small family, Mr. Bauer said. The Everbearing strawberry begins to bear early in the spring and continues to produce berries until late fall. Last year, Mr. Bauer gathered his last berries for the season on December 10. The plants will bloom and bear until the temperature goes down to ten above zero. Mr. Bauer ships plants and berries to all parts of the country.

Now, after reading all this, if you are still in doubt that Mastodon will fruit all summer and fall, you may come next summer as my guest and we can show you ripe fruit, green fruit and blossoms on the vines all at one time.

We are limited on supply of this grand new berry. Demand is greater

J. A. BAUER'S SOUTHERN GROWN BLUE RIBBON BRAND PLANTS

each year than the supply. We advise you to place your orders early and we advise you to be careful with whom you place orders, for many sell common sorts for Mastodon. We guarantee pure stock and can fill all orders to April 15th, we feel sure.

We hope to have your orders for them. We have much more copy on

this variety that we haven't room for but this should convince anyone that they are everbearing berries.

The Mastodon have grown so big that 18 berries filled a quart box well rounded. The flavor is as good as any spring variety. We can't say too much for them and 25 plants will give you a start with them.

Price List of Strawberry Plants

All lots of 25 to 100 we send post paid at prices named and all lots of 250 and up are shipped express collect.

Variety	(Post Paid)			(Express Collect)				
	25	50	100	250	500	1,000	5,000	10,000
Excelsior, Per.	.40	.65	\$1.00	\$1.00	\$1.75	\$2.75	\$12.50	\$24.00
Imp. Klondike, Per.	.40	.65	1.00	1.00	1.75	2.75	12.50	24.00
Missionary, Per.	.40	.65	1.00	1.00	1.75	2.75	12.50	24.00
Dunlap, Per.	.40	.65	1.00	1.00	1.75	2.75	12.50	24.00
Thompson, Per.	.50	.90	1.25	1.25	2.00	3.25	15.00	27.50
Aroma, Per.	.50	.90	1.25	1.25	2.00	3.00	14.50	27.50
Gandy, Per.	.50	.90	1.25	1.25	2.00	3.25	15.00	27.50
Rockingham, Per.	.50	.90	1.25	1.25	2.00	3.25	15.00	27.50
Champion K., Per.	.50	.90	1.25	1.25	2.00	3.25	15.00	27.50
St. Louis, Per.	.50	.90	1.25	1.25	2.00	3.25	15.00	26.50
Evening Star, Per.	.50	.90	1.25	1.25	2.00	3.25	15.00	27.50
Lady Cornellie, Per.	.50	.90	1.25	1.25	2.00	3.25	15.00	27.50
Premier, Per.	.50	.90	1.25	1.25	2.00	3.25	15.00	27.50
Texas, Per.	.50	.90	1.25	1.25	2.00	3.25	15.00	27.50
Progressive, Per.	.75	1.00	1.75	1.75	3.50	6.00	27.50	50.00
Mastodon, Per.	1.00	1.40	2.00	3.50	7.00	13.50	60.00	110.00

All of the above are perfect blooming varieties. We ask that you order plants as priced above. We do not allow you to make up an order of 500 of three different kinds at these prices, but sell each variety at price listed, all of the one kind. If you have a mixed order you wish prices on, send your list for special prices. In making out your order write very plainly as we only have your writing to go by and many times it is so dim or so hard to read we get the name wrong, so we ask you as a favor to write plainly. While my list is not large yet all are a success in the southwest and you will make no mistake in planting any of the varieties we list.

TRY OUR BRED UP MISSIONARY PLANTS

We have a fine lot of Missionary plants, bred up to make big crops.

We have one customer in Alabama who sold \$1,800.00 worth of berries

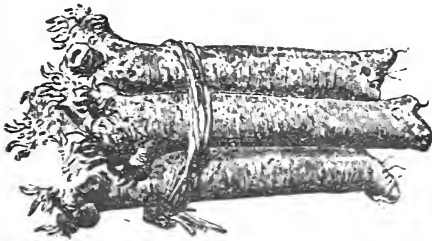
Sweet Potato Plants from March 10th on.

J. A. BAUER'S SOUTHERN GROWN BLUE RIBBON BRAND PLANTS

from two acres of our Missionary last spring. Think of it! \$900.00 per acre. You can not go wrong if you set Bauer's plants. We have many patrons who have cleared as much or more than this man did from berries we furnished the plants for.

We feel sure you want the best plants grown; we have priced them right and can ship promptly any order you give us.

Horseradish Roots



We have the Maliner variety. This is fine for growing in your garden for making sauce and it will stand hard winters. 10, \$1.00; 25, \$1.75; 50, \$2.50; 100, \$4.00.



One of Our Strawberry Plants
Trimmed, Ready for Bunching

We bunch 25 in a bunch; we pack in damp moss; we guarantee safe arrival on all plants, either by mail or express.

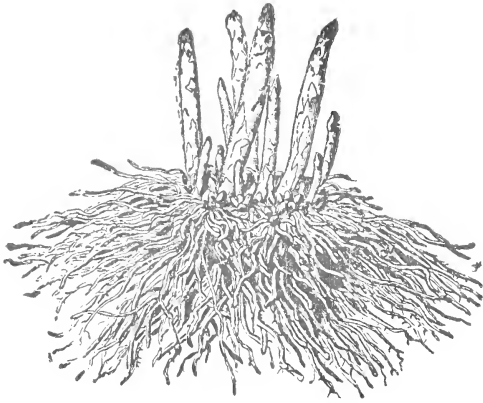
Frost Proof Cabbage Plants

We have our cabbage plants grown in South Texas and we have sold them for several years and have found them very satisfactory in every way. Varieties are Early Jersey Wakefield, Charleston Wakefield,

Flat Dutch, Succession, Copenhagen. We offer in crates of 3,000 plants. Per crate, \$3.90, f. o. b. shipping point. We don't fill orders for less than crate lots.

This season we will ship all Onion and Cabbage plants in crate or basket lots direct from our growers. We price them f. o. b. shipping point in South Texas. We shipped plants last winter when most every grower had his stock frozen out for some time. We filled all orders as we have our plants grown far enough south where they don't freeze out. We hope to have your orders for these plants.

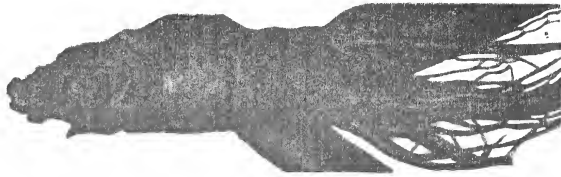
Sweet Potato Plants from March 10th on.



Asparagus Roots

We have one year old roots. We ship post paid in lots of 10 to 100. Over that amount we ship express collect. We can give you Palmetto at the following prices: 10, \$1.00; 25, \$2.00; 50, \$3.00; 100, \$4.25; 250, \$4.25; 500, \$7.50; 1,000, \$14.00.

Rhubarb Roots



We can furnish you this grand garden plants, one of the very earliest things to come on for pies or relishes and it is a good tonic for anyone.

We furnish you 1 year, divided roots, variety Victoria, 10, \$1.50; 25, \$2.50; 50, \$3.00; 100, \$4.25; 250, \$10.00; 500, \$15.00.

Onion Plants

Yellow Bermuda and Crystal White Wax. Fine, well grown, pencil size plants, 6,000 to the crate at cil size plants, 6,000 to the crate.

Crate lots all of one kind, \$4.00; 5 crate lots, \$3.40; 10 crate lots, 60,000 plants, \$3.00 per crate, f. o. b. shipping point. You must order full crate lots of one kind to get these prices.

We do not fill orders for less

than crate lots. We guarantee safe arrival on all stock and we can ship any day now you want, either cabbage or onion plants. My grower is one of the best growers in Texas; we have found him honest and we know that he grows good plants. We can fill orders very promptly and accept all orders subject to freezing weather getting plants, as we have no control over weather conditions.

Sweet Potato Plants

We grow and ship many potato plants we ship into the following states only: Missouri, Nebraska, Kansas, Illinois, Kentucky, Tennessee, Alabama, Texas and Arkansas. If you don't live in one of these states we can't handle your order. Prices made are delivered to your post office.

We offer Nancy Hall and Long Vine Porto Rican plants at the following prices: 100, 75c; 300, \$1.25; 500, \$1.75; 1,000, \$3.25; 10,000 or over \$2.75 per 1,000.

We have a fine new potato in the Blue Porto Rican; very fine flavored, fine for baking. 100, \$1.00; 300, \$2.00; 500, \$2.75; 1,000, \$5.00; 5,000, \$22.50; 10,000, \$40.00. All post paid.

We use the best of care in selecting the potatoes we seed, we get the best seed stock we can grow or buy. We start shipments March 10th and ship to June 20th. We hope to have your orders. On larger lots write for best prices.

A Few More Words, Please, About Our Plants

I know you will receive many price lists and catalogues and all will tell you they grow the best plants. What I want to tell you is that my plants are so large we pack from 1,500 to 2,000 in bushel crates. We have seen many where they pack 3,500 in the same sized crate, yet they will tell you they have the best plants grown. Plants are measured by the size they grow. We have the best and largest plants grown; none of them grown on worn out lands but on new lands and lands not under cultivation over four or five years. This grows big, strong, well-rooted, vigorous plants and the kind I know you want. Now, if you have never tried Bauer's Blue Ribbon Brand Plants you had better do so this spring and get the best plants grown at a fair price.

Another thing we wish to impress on your mind is that we can fill any order, regardless of its size. We are now filling an order for 2,000,000 Improved Klondike berry plants for the State of Alabama. They wanted the best plants they could get, so they are planting Bauer's Blue Ribbon Brand plants. We take the same pains with small orders that we do with larger ones and guarantee satisfaction with every order. You must be a pleased patron and if for any reason any transaction you have with us is not satisfactory, all we ask is a chance to make it satisfactory; we aim to please every patron.

We are well stocked on Improved Klondike, and Missionary. These are the two leading standard varieties. We can fill any order you may place with us for them. Again thanking all for past favors and with the hope of receiving your order again this spring, I await your commands.

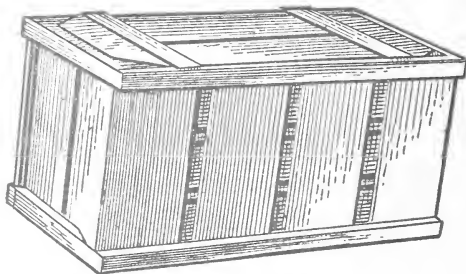
J. A. BAUER

Lock Box 38.

Judsonia, Arkansas

Universal-- BERRY CRATES

(THE FOLDING CRATE)



FOLDING BERRY CRATES
FOLDING BUSHEL CRATES FOR POTATOES
CRATES FOR APPLES OR OTHER FRUITS
SWEET POTATO CRATES

We will be glad to have a list of your wants in the above line. We feel sure that we can please you.

We have sold more potato crates the past season than in any one year before and we cater to the potato crate business. We make millions of berry crates also and we will be glad to make you prices on anything in our line on request

Enterprise Box Co.
Judsonia, Arkansas

I buy all my crate stock from this factory. They are very reliable and I feel safe in saying that they will give you a square deal.—

J. A. BAUER