

Historic, Archive Document

Do not assume content reflects current scientific knowledge, policies, or practices.

Midsummer List

of

CHOICE FLOWER SEEDS

STRAWBERRY PLANTS

PEONY ROOTS

IRISES

DELPHINIUM
Hollyhock-
Flowered
THE
WREXHAM
STRAIN

LIBRARY
JAN 3 1931
U.S. Dept. of Agriculture



19



30



BURNETT BROTHERS, Inc,
Seedsmen

92 CHAMBERS ST.

NEW YORK

TELEPHONE BARCLAY 6138

Vegetable Seed Trials

BURNETT'S SELECTED FLOWER SEEDS

For Summer Sowing

BURNETT'S GIANT PANSIES SELECTED STRAINS

	Pkt.
SCOTTISH CHIEFTAIN. This magnificent strain of Pansies is the most remarkable in existence not only in size, but in the wonderful variety of rich and brilliant coloring ¼ oz. \$4.00, ⅛ oz. \$2.50,	\$0.75
Burnett's Gorgeous. This select strain contains a most beautiful collection of colors and markings. ¼ oz. \$3.00	.50
Masterpiece (Frilled Pansy). Petals beautifully waved. Mixed colors ¼ oz. \$2.00	.25
Mme. Perret. Profuse bloomer, many fine colors, rich red shades ¼ oz. \$2.00	.25
Triumph of the Giants. Flowers extremely large, with beautiful markings. Mixed colors. ¼ oz. \$2.50	.50
Orange King. The lower portion of the flower is of a vivid orange color, shading at the center to a lighter tone ¼ oz. \$2.50	.50
Ullswater. (New.) The flowers are very large and the coloring unusually attractive, being deep wedgewood blue with black-blue center.	1.00
Burnett's Special Greenhouse Mixture. ⅛ oz. \$2.75; 1/16 oz. \$1.50;	.75

PANSIES IN SEPARATE COLORS

	¼ oz.	Pkt.
Adonis. Light blue.	\$1.50	\$0.15
Azure Blue. Sky-blue 1.50	1.50	.15
Bronze Queen. Rich bronze 1.50	1.50	.15
Emperor. Ultramarine blue 1.50	1.50	.15
Fire King. Crimson and gold 1.50	1.50	.15
Giant Snow Queen. Pure white. 1.50	1.50	.15
Giant White. White with purple eye 1.50	1.50	.15
Golden Queen. Pure yellow 1.50	1.50	.15
Giant Golden. Yellow, with dark eye 1.50	1.50	.15
Giant Striped. Mahogany, striped white 1.50	1.50	.15
King of the Blacks. Glossy black 1.50	1.50	.15
Lord Beaconsfield. Purple violet 1.50	1.50	.15
Royal Purple. Rich royal blue 1.50	1.50	.15
Victoria. Wine-red 1.50	1.50	.15
Burnett's Giant Mixture Oz. \$3.00, 1.00	1.00	.10

Giant Winter Blooming Pansies

These Pansies begin flowering early in March and continue right on into Summer. The flowers have a pleasant delicate perfume.

	¼ oz.	Pkt.
Celestial Queen. Sky-blue \$1.50	\$1.50	\$0.25
Ice King. White with dark blotch 1.50	1.50	.25
March Beauty. Dark velvety purple 1.50	1.50	.25
Winter Sun. Golden yellow, dark blotch. 1.50	1.50	.25
Mixed 1.50	1.50	.25

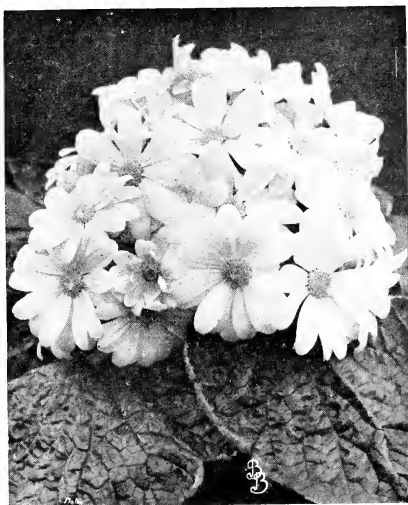
ANTIRRHINUM

Greenhouse Forcing Varieties

Seeds saved from selected spikes grown under glass.

	Pkt.
CEYLON COURT YELLOW. (New.) A beautiful canary yellow, 40-48 inches high, spikes 10-14 inches, with flowers closely set. One of the earliest \$2.00	\$2.00
GENEVA PINK. Color, a delightful glistening rose-pink, long spikes. 1.00	1.00
GOLDEN DELIGHT. Very fine golden yellow 1.00	1.00
JENNIE SCHNEIDER. Beautiful pink Columbia rose color 1.00	1.00

SELECTED FLOWER SEEDS



Cineraria; Burnett's Exhibition

	Pkt.
CALENDULA, The Ball. Bright glowing orange, excellent for forcing	1/4 oz. \$1.00
Monarch. Of great size. Color purest orange.	1/4 oz. \$1.00
Lemon Queen	oz. 50c
Orange King, Improved	1/4 oz. 75c
Radio. (New.) The petals are beautifully quilled of a deep orange color, quite distinct variety.	1/4 oz. \$1.50
Sensation (Campfire). Of vigorous growth. Flowers larger than those of any type previously introduced	1/4 oz. \$1.25
CANDYTUFT, Empress. Pure white	Oz. \$1.00
Giant Hyacinth Flowered. White	Oz. \$1.50
CELSIA, arcturus. A splendid half hardy greenhouse plant with long spikes of bright yellow flowers	.50
cretica. A beautiful plant producing numerous large yellow flowers on long stems	.50
CENTAUREA, Cyanus. (Cornflower). Double blue.	1/4 oz. 50c
Imperialis. (Giant Sweet Sultan.) Rose, white, lilac, each	1/4 oz. 50c
suaveoleus, Yellow Sweet Sultan. Fine for cutting.	1/4 oz. 50c
CHRYSANthemUM. (Single Annual.)	
Evening Star. Golden yellow	1/4 oz. 30c
Morning Star. Primrose	1/4 oz. 30c
Northern Star. Pure white	1/4 oz. 30c
Single Mixed	1/4 oz. 25c

CINERARIA

BURNETT'S EXHIBITION STRAIN. Our strain of this highly prized greenhouse plant we can recommend as being superior to any other.	
Mixed colors	1.00
Hybrida Matador. Brilliant coppery-scarlet	.50
Hybrida Rosamond. A true delicate pink with white center	1.00
Hybrida, Giant Dark Blue	1.00
Hybrida "Purple Mantle." A real purple of compact habit	1.00
Hybrida Multiflora Nana. Produces masses of small flowers on compact heads. Mixed colors	.50
STELLATA. Star flowered. Pink, Blue, White.	
Mixed	Each. .50
Feltham Beauty. A great improvement on the old stellata class. Beautiful mixture of many colors	.75
stellata nana. Cactus flowered, mixed	.50

SELECTED FLOWER SEEDS

	Pkt.
CLERODENDRON Fallax. Large spikes of fiery scarlet bloom.....	.75
CLARKIA elegans fl. pl.	
Salmon	1/4 oz. 50c .15
Scarlet	1/4 oz. 50c .15
Rose Carmine	1/4 oz. 50c .15
CYCLAMEN. BURNETT'S GIANT STRAIN. Pure	
White, Rose, Pink, Salmon, Crimson, Bright Red,	
White with Claret base Each 100 seeds, \$2.50	.75
Choice Mixed	100 seeds, \$1.50 .50
<i>persicum papilio</i> (Butterfly). Flowers beautifully fringed. Mixed50
CYNOGLOSSUM Amabile (Chinese Forget-Me-Not). Produces sprays of blue Forget-me-not like flowers. 18 in.25
DIDISCUS coeruleus. (The Blue Lace Flower.)	
1/4 oz. \$1.0025
DIMORPHOTHECA (African Daisies).	
<i>aurantiaca.</i> H. A. Gorgeous orange flowers, produced in great profusion. 12 in. 1/4 oz. 50c..	.15
New Selected Hybrids. Produces an endless variety of colors.	1/4 oz. 75c .25
<i>Eklonis.</i> Pure white star-shaped flowers with blue disc on long stalks25
DRACAENA. Highly ornamental greenhouse plants,	
<i>Australis.</i> Ornamental leaves	1/4 oz. 35c .15
<i>Indivisa.</i> Long, slender leaves	1/4 oz. 35c .15
<i>Veitchii.</i> Variegated leaves25
EXACUM affine. Beautiful pot plant, producing sweetly scented bright mauve flowers, within six months from sowing. 9 in.50

GERBERA

GERBERA Jamesoni Hybrida. These new hybrids are of great merit and contain a grand diversity of colors.	100 seeds \$1.00 .50
Jamesoni. Orange-scarlet.....	100 seeds \$1.00 .50

GERBERA JAMESONII PLANTS

"The Transvaal or Barberton Daisy"

This is one of the finest of all winter-flowering plants for forcing. Their splendid 2-ft. stems and large brilliant flowers put them in the first rank of winter flowers for cutting.

MASTERPIECE. (New.) Beautiful Old-rose. Strong two-year-old clumps.....dozen \$18.00

SUNRISE. (New.) Red with yellow center. Strong two-year-old clumps.....dozen \$18.00

MIXED HYBRIDS. The colors included in these Hybrids vary from delicate flesh pink to rich scarlet with intermediate shades of cream and orange.

Strong two-year-old clumps, dozen \$12.00;
100, \$90.00.

	Pkt.
GLOXINIA. Charming greenhouse plant. Erect flowering. Mixed50
GREVILLEA Robusta (Silk Oak). A beautiful decorative plant.....	1/4 oz. 75c .15
GYPSOPHILA.	
<i>Elegans grandiflora alba.</i> Large, pure white flowers	Oz. 60c .10
<i>Rosea.</i> Rose flowers	Oz. 60c .10
LARKSPUR. (Annual Delphinium.)	
Double Stock Flowered:	
Pure White, Sky Blue, Shell-Pink, Bright Rose,	
Dark Blue, Scarlet, Mixed	Each, 1/4 oz. 50c .15
Exquisite Pink Improved. Beautiful soft pink shaded salmon	1/4 oz. \$1.00 .25
Newport Pink. Color rosy-scarlet.	1/4 oz. 50c .15
Blue Butterfly. Bright blue.....	1/4 oz. \$1.00 .15
LEPTOSYNE Stillmannii, bright yellow, free flowering, flowers six weeks after sowing	1/4 oz. 50c .15
Maritima. Large-flowered yellow Marguerite, fine for cutting.....	1/4 oz. 50c .15

SELECTED FLOWER SEEDS

LUPINUS (Annual Varieties).	Pkt.
Hartwegii. Light Blue ¼ oz. 25c	.10
Dark Blue, very fine ¼ oz. 25c	.10
Albus. White ¼ oz. 25c	.10
Roseus. Rose ¼ oz. 25c	.10
Mixed oz. 50c	.10
Luteus. Yellow Annual Lupine ¼ oz. 50c	.15
MIGNONETTE. Burnett's Conqueror. The finest Mignonette ever introduced for greenhouse growing 1-16 oz. \$1.00	.50
MYOSOTIS, Burnett's Winter Blooming. Large flower, dark blue, recommended for Winter bloom 1.00	1.00
NEMESIA Strumosa Suttoni. Choice mixed.....	.25
compacta, Blue Gem. Beautiful Forget-me-not blue	.25
White Gem25
Fire King. Carmine scarlet.....	.25
Orange Prince. Golden yellow.....	.25

PRIMULA

Sinensis Fimbriata (Chinese Primula). Single large flowered, fringed.	
White, Pink, Crimson, Salmon, Blue Each	1.00
Single Mixed. Choicest colors75
Double Mixed75

Stellata (Star Primrose).

	Pkt.		
Giant White Star50	Giant Blue Star50
Giant Pink Star50	Giant Crimson Star50

Obconica Gigantea.

Giant White	Giant Crimson
Giant Lilac	Giant Rose
Giant Salmon	Mixed. All colors.

Any of the above, 75c Pkt.

Malacoides.

Lilac. Light lilac75
Rosea. Light rose.....	.75
Superba. Deep rosy pink.....	.75
Fimbriata. Lovely pink, delicately fringed.....	.75
Pink Beauty. Beautiful rosy pink75
Courtland's Seedling. Clear lilac pink, very brilliant75
Snow Queen. Is a vast improvement on the Primula Malacoides Alba hitherto grown, flowers larger and of the purest white.....	.75
Choice Mixed50

Kewensis. Bright yellow fragrant flowers produced in whorls. Fine for Winter bloom.50

Forbesii (Baby Primrose). Small lavender-colored flowers50

SALPIGLOSSIS, Large-Flowering or Emperor.

Light Blue, Crimson, White, Dark Red, Rose, Yellow, Violet. Each ¼ oz. \$1.00	.15
Finest Mixed ¼ oz. 75c	.10

SCHIZANTHUS.

Wisetonensis "Excelsior." An improved Wisetonensis. The flowers have white, buff or rose grounds. 1/16 oz. \$1.50 .50

Pink Pearl. Of elegant pyramidal habit, producing a luxuriant wealth of bloom50

Snowflake. Very compact habit, with a profusion of glistening snowy-white flowers50

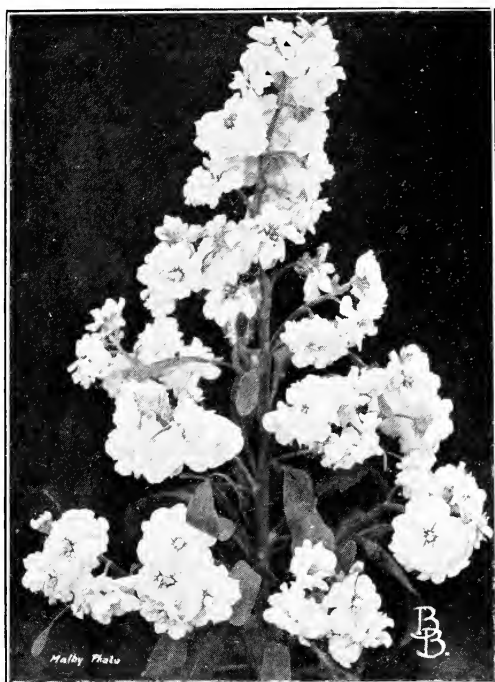
Dr. Badger's Hybrids. Flowers of great substance, produced in large quantities..... .50

Garraway's Hybrids. Of fine form and great range of colors50

Hurst's Monarch Strain. One of the finest strains of large-flowered hybrids, embracing a wide range of colors50

Rose and Amber Shades. Pink and rose tints, most heavily blotched gold and bronze.50

STATICE suworowii. Beautiful soft rose ¼ oz. 75c .25



Stock, Burnett's Perpetual White

STOCKS

WINTER-FLOWERING OR BEAUTY

	1/8 oz.	Pkt.
Burnett's Perpetual White. For forcing purposes this Stock is unrivaled	\$1.50	\$0.25
Beauty of Nice. Delicate pink	1.25	.25
Crimson King. Rich crimson	1.25	.25
Empress Augusta Victoria. Rich blue	1.25	.25
Empress Elizabeth. Deep rose	1.25	.25
Mont Blanc. Purest white	1.25	.25
Queen Alexandra. Fine lilac	1.25	.25
Salmon King. Bright salmon rose	1.50	.25
Soleil de Nice. Purest sulphur yellow	1.25	.25
Summer Night. Deep blue	1.25	.25

EARLY GIANT IMPERIAL (Improved Bismarck).

An especially meritorious class. Growing from twenty-four to thirty inches tall; of branching habit. Very early blooming and producing a high percentage of doubles.

"Antique Copper." Rich Helebores red50
"Elk's Pride." Intense royal purple50
"Golden Rose." Light golden rose50

STREPTOCARPUS. Giant Hybrids. Mixed.50

TECOMA SMITHII. Beautiful autumn and early winter flowering plant, with large heads of orange-colored tubular-shaped blossoms. 18 inches.50

TORENIA. For pots or hanging baskets.

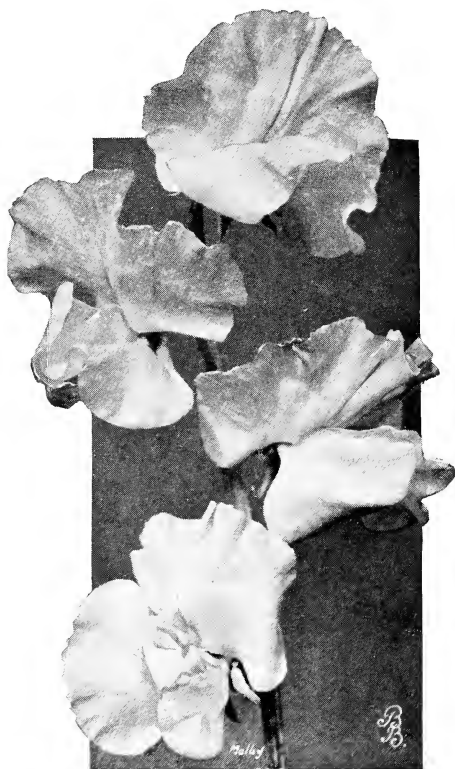
Fournieri. Blue and violet, throat bright yellow.	1/16 oz. 75c	.25
Bailloni. Golden yellow, red throat25

WALLFLOWER. Kewensis—Winter Flowering.

Double Annual Early Wonder. Mixed colors	1/4 oz. \$1.00	.25
		.35

GIANT SWEET PEAS

Winter Flowering



Sweet Pea, Winter Flowering

A valuable race of early-flowering Sweet Peas, which from an August sowing in pots will give an abundance of bloom under glass from Christmas onwards. On account of their delicious perfume, Sweet Peas are particularly welcome during the dark days of Winter.

Three New Varieties

Of great merit for their vigorous growth, length of stem, and size of flower.

	Pkt.
Blue Bonnet. Deep blue of enormous size without the slightest trace of mauve	\$.50
Majestic Rose. Immense deep brilliant rose pink of the popular color of Zvolanek's rose50
Valencia. Bright orange, superior to any other orange variety50

Popular Standard Sorts

	Oz.	Pkt.
Early Blue Bird. A charming shade of blue.	\$1.00	\$0.25
Early King (Improved). A glowing, rich, bright crimson	1.00	.25
Early Snowflake. Pure white	1.00	.25
Burpee's Orange. A clear, pure orange	1.50	.25
Gilda Gray. A lovely shade of salmon-cerise...	1.50	.25

SELECTED FLOWER SEEDS

WINTER FLOWERING SWEET PEAS—Continued

	Oz.	Pkt.
Glitters. A bright fiery orange.....	1.00	.25
Imperial Pink. A clear pink of enormous size, of vigorous growth, long stems.....	1.50	.25
Jeanne Mamitsch. A beautiful shade of rose pink.....	1.50	.25
Lavender King. A rich true deep lavender..	1.00	.25
Mrs. Kerr. The best early flowering salmon	1.50	.25
Pink Profusion. A sparkling shade of rich pink	1.50	.25
Snowstorm Improved. Pure white, large and of fine form.....	1.00	.25
True Blue. A charming shade of true blue.....	1.00	.25
Yarrowa. Pleasing shade of bright rose pink	1.00	.25
Mixed, All Colors75	.15

(Any variety not listed will be procured to order at advertised prices.)

HARDY PERENNIAL FLOWER SEEDS

For Mid-Summer Sowing

If more complete descriptions of the following are required, please refer to our General Spring Catalogue.

Varieties marked thus (*) are recommended for edgings and rock gardens.

		Pkt.
ACANTHUS Mollis. Stately hardy plant, with large decorative leaves, handsome, tall flower spikes. 1/4 oz. 35c		\$0.15
ACHILLEA Ptarmica fl. pl. The Pearl 1/8 oz. \$1.00		.25
ACONITUM (Monk's Hood), 4 ft.		
Napellus. Blue and white.....	1/4 oz. \$1.00	.15
Pyramidatum. Blue.....	1/4 oz. \$1.00	.15
Wilsonii. Light blue.....	1/8 oz. \$1.00	.25
* AETHIONEMA grandiflorum. A very elegant plant which succeeds well on the rockery. Rosy flowers, produced in long racemes. 12 to 18 in....		.50
AGATHEA coelestis (Blue Daisy). Flowers sky-blue with yellow disk.....		.15
AGROSTEMMA coronaria. (Rose Champion.) Dark blood-red. 2 ft.....	1/4 oz. 50c	.10
coronaria alba. White.....	1/4 oz. 50c	.10
coeli-rosa. H. A. Free flowering with bright rose flowers. 18 in.....	1/4 oz. 50c	.10
ALLWOODII. New race of hardy plants belonging to the Dianthus family.....		.50
* Alpinus. Suitable as rock and alpine plants. Height about 6 inches. Colors chiefly pink, white and purple shades.....		.50
ALSTROEMERIA Chilensis. Spotted Lily-like flowers of various shades of pink, rose, red and yellow. Height 2 to 3 feet.		
Mixed colors50
* ALYSSUM Saxatile. Yellow, 1 ft.....	1/4 oz. 75c	.15
Silver Queen. Pale lemon color.....		.25
ANCHUSA Italica, Dropmore var. Deep blue, 4 to 6 ft.....	1/8 oz. 75c	.25

PERENNIAL FLOWER SEEDS

Continued

	Pkt.
ANEMONE. Beautiful Spring flowers, valuable for cutting.	
* coronaria, Single De Caen15
* St. Brigid. Poppy flowered25
* Creagh Castle Strain. The flowers are extremely large and the rang of colors exceptional75
* alpina. A lovely species for the rock garden. Flowers white tinted slaty blue. 1 ft.....	.25
* pulsatilla (The Pasque Flower). Large purple flowers with yellow anthers, covered with silky hairs on outside. 9 in.....	.25
* ANTHEMIS montana. Pretty small flower, like a White Chrysanthemum. Height, 6 in. Excellent perennial border plant15
Tinctoria Kelwayi. Improved strain, with bright yellow, Daisy-like flowers. June to September. 1½ ft.15
AQUILEGIA (Columbine)	
LONG SPURRED BLUE SHADES ¼ oz. \$1.5025
LONG SPURRED ORANGE AND SCARLET SHADES ¼ oz. \$1.5025
LONG SPURRED PINK SHADES ¼ oz. \$1.5025
LONG SPURRED MIXED ¼ oz. \$1.5025
MRS. SCOTT ELLIOTT'S CELEBRATED STRAIN. Mixed Colors50
* alpina. A charming Alpine speses with large and beautiful blue flowers. 1 ft.25
* canadensis. Scarlet and yellow ¼ oz. \$1.5015
chrysantha, Long spurred. Bright yellow, 2 ft.15
coerulea. Blue ¼ oz. \$1.5025
coerulea "Rose Queen." Rose with white center25
Copper Queen. Copper red with long spurs of a darker hue50
Single Mixed ¼ oz. 75c10
Double Mixed ¼ oz. \$1.0015
<hr/>	
* ARABIS alpina (Rock Cross). White. 6 in.15
Rosea. Vivid red ¼ oz. 50c25
ARCTOTIS Scapigera. A half-hardy, dwarf herbaceous species from South Africa. Of vigorous growth and produces large flowers in a great variety of colors. Very showy and effective....	.50
* ARMERIA formosa (Sea Pink). Lavender Pink10
* formosa gigantea. Taller than the preceding15
* Ruby. Forms neat tufts of evergreen foliage, flowers, 2 ft. high, bright rose pink.....	.25
* ARENARIA caespitosa. Dwarf rock plant, bright green foliage, with tiny white flowers, from May to July25
* grandiflora. Effective rock plant of trailing habit, large pure white flowers in Spring. 6 in.....	.25
* montana. Excellent rock plant; it forms mounds of foliage which are covered with white flowers. 8 in.25
ASTER Delavayi. A unique hardy perennial Aster. Nothing more beautiful can be imagined than this wonderful species. Its main feature is possibly the jet black center50
alpinus Goliath. A charming little Alpine, 6 inches high, producing in July dainty lilac flowers with golden centers25
* alpinus, Nancy Perry. Fine variety with lavender-blue ray florets, golden centre, 6 in.25
* subcoeruleus. A Himalayan species of compact habit, bearing deep blue flowers25
Farreri. A lovely soft tone of violet-mauve, greatly enhanced by a large golden-orange disc. 2 to 3 ft. May-June35
Hardy Mixed (Michaelmas Daisy). Fall-flowering, splendid for cutting15

PERENNIAL FLOWER SEEDS

Continued

	Pkt.
*AUBRIETIA. Excellent for rock-work and edging, 9 inches.	
<i>graeca.</i> Purple; trailing25
<i>hendersoni.</i> Large rich purple flowers25
<i>leichtlini.</i> A charming variety, with very bright rosy crimson flowers.....	.25
<i>large flowered hybrids.</i> Exceptionally fine colors.....	.25
<i>purpurea.</i> Purple.....	.25
<i>violet queen.</i> Dark violet, large flowers.....	.25
*AURICULA (Primula auricula). A well-known favorite; choice mixed25
BAPTISIA australis. Producing spikes of pea-shaped blue flowers. 2½ ft.....	¼ oz. \$1.50 .15
*BELLIS. Double Daisy. Beautiful Spring flowers, suitable for edging. ½ ft.	
MONSTROSA, Giant White	¼ oz. \$1.50 .25
MONSTROSA, Giant Red	¼ oz. \$1.50 .25
MONSTROSA, Giant Rose	¼ oz. \$1.50 .25
MONSTROSA, Giant Mixed	¼ oz. \$1.50 .25
Longfellow, Double Rose	¼ oz. \$1.00 .15
Snowball, Double White	¼ oz. \$1.00 .15
Double Mixed	¼ oz. \$1.00 .15
BOCCONIA japonica. (Plume Poppy.) Flowers, creamy white. 4 ft.15
BOLTONIA Asteroides. Showy perennials, closely resembling Hardy Asters, flowers pure white. August and September. 6 ft.25
Latisquama. Flowers pink, tinged with lavender. August and September. 6 ft.25
CALLIRHOE involucrata (Poppy Mallow). A showy, trailing perennial, bright crimson saucer-shaped flowers15

CAMPANULA

MEDIA Single. (Canterbury Bells.)	
Blue, White, Rose, Mauve	¼ oz. 50c .10
Fine Mixed	¼ oz. 50c .10
MEDIA Double. (Canterbury Bells.)	
Blue, White, Rose	Each, ¼ oz. \$1.00 .15
Double Mixed	¼ oz. 75c .15
CALYCANTHEMA (Cup and Saucer).	
Blue, Rose, White	Each, ¼ oz. \$1.00 .15
Mixed. All colors	¼ oz. 75c .15
pyramidalis (Chimney Bell). Very conspicuous towering spikes.	
White and Blue	Each, ¼ oz. 75c .15
Mixed	¼ oz. 75c .15
persicifolia, Telham Beauty. Very large flower, china-blue. 2 ft.....	.50
persicifolia grandiflora. Large flowers.	
White and Blue	Each, ¼ oz. \$1.00 .25
Mixed	¼ oz. \$1.00 .25

Dwarf Campanulas for Rock Work

*carpatica. Blue, showy. 1 ft.	¼ oz. 50c .15
*carpatica alba. White. 1 ft.....	¼ oz. 50c .15
*Garganica. A pretty trailing species, pale blue flowers with white centers. 4 inches.....	.25
*Mirabilis. A most beautiful species from the Caucasus, large pale blue flowers. 3 in.25
*Pusilla. A charming dwarf Harebell, forms tufts of foliage, covered with dainty flowers in various shades of blue, 3 in.....	.25
*RAINERI. Forms creeping masses of dark green foliage, covered with a profusion of saucer-shaped, pale blue flowers. 4 in.....	.50
*Rotundifolia (Scottish Blue Bell). Slender, branching stems. Flowers pale blue and bell-shaped25
*Turbinata. Tufts of neat foliage, and erect, deep blue, cup-shaped flowers. 6 inches.....	.25

Special collection, 6 varieties, for
Rock Gardens, \$1.50.

PERENNIAL FLOWER SEEDS

Continued

	Pkt.
* CANDYTUFT (Iberis).	
Sempervirens. White flowers	1/8 oz. \$1.00 .25
Gibraltarica. Beautiful blush white	1/4 oz. \$1.00 .15
CATANANCHE caerulea. Beautiful blue flowers.	
June to August. 2 ft.	.15
* CARNATION. Early Dwarf Vienna. Same type as the Grenadin. Choice Mixed	1/4 oz. \$1.00 .25
* Grenadin. Bright scarlet; dwarf	1/4 oz. \$1.00 .25
* Grenadin White. Pure white, dwarf	1/4 oz. \$1.00 .25
Hardy Border Double Mixed. A good hardy strain for outdoor culture	1/4 oz. \$1.00 .15
CENTAUREA (Cornflower).	
Montana. Blue, 2 ft.	.20
Montana Alba. White, 2 ft.	.20
* CERASTIUM Tomentosum. White, 3/4 ft.	1/8 oz. \$1.00 .25
CHELONE Hybrida Torreyi. Showy bedding plant, with brilliant scarlet flowers. June to Aug. 2 ft.	1/8 oz. 75c .15
Hybrida Mixed. The colors vary from light pink to deep red and violet, 2 ft.	1/8 oz. 60c .15
* CHEIRANTHUS Allioni (Siberian Wallflower). Showy rock plants with bright orange flowers blooming all Summer. 1 ft.	1/4 oz. 75c .15
* linifolius. Alpine Wallflower. A charming dwarf alpine, producing freely its pretty mauve, fragrant flowers. May, June. 1 ft.	.25
CHRYSANTHEMUM (Maximum).	
King Edward VII. Pure white	.25
Mrs. C. Lothian Bell. Pure white	.25
Shasta Daisy. White	.25
Mayfield Giant. Large, snow white	.25
CIMICIFUGA racemosa. Tall, hardy and ornamental; suited for the back of borders or for partially shaded places; white racemes of flowers. 5 to 6 ft. June-July	.25
COMMELINA Coelestis. A fine border plant, producing an abundance of bright sky-blue flowers. It is tuberous rooted, and should be lifted and stored in Autumn. 1 1/2 feet	.25
COREOPSIS (Perennial Calliopsis).	
grandiflora. Golden yellow	1/4 oz. 50c .15
* Auriculata "Superba." An improved form, several tones deeper than the ordinary Grandiflora, with a serrated band of brownish-red	.35
lanceolata. Bright yellow	1/4 oz. 50c .15
* COWSLIP. A favorite for the Spring garden. 1 ft. finest mixed	.15
* CRUCIANELLA Stylosa. A plant of trailing habit and rapid growth, bright rose-colored flowers; very suitable for the rock garden. 6 in.	.15
CUPHEA (Cigar Plant). Half-hardy perennial, useful for bedding. 1 ft.	
platycentra. Scarlet and purple	.25

DELPHINIUM (Larkspur)

" WREXHAM " STRAIN. The seed of these beautiful Delphiniums we import direct from a celebrated English grower. Considered the finest type of all. Colors range through the entire range known to delphiniums.	3 Pkts. \$5.00	\$2.00
BURNETT'S GOLD MEDAL HYBRIDS. Choice mixed	1/8 oz. \$2.50	1.00
belladonna. Improved. Single flowers of a clear turquoise blue	1/8 oz. \$1.00	.25
bellamosa. Deep blue	1/8 oz. \$1.00	.25
elatum (Bee Larkspur). Clear blue	1/4 oz. 50c	.15
formosum. Rich blue, with white center. 3 ft.	1/4 oz. \$1.00	.15
nudicaule. Scarlet 1 1/2 ft.		.25
Zalil (Hardy Yellow Larkspur)		.25
chinensis. Light Blue, Dark Blue, White and mixed	Each, 1/4 oz. 50c	.15
Blue Butterfly. Rich blue, if sown early will bloom in August	1/4 oz. \$1.00	.15
Dark Blue Hybrids	1/8 oz. \$1.00	.25
Medium Blue Hybrids	1/8 oz. \$1.00	.25
Light Blue Hybrids	1/8 oz. \$1.00	.25
Mixed Hybrids	1/4 oz. \$2.00	.25



Dianthus, Rock Hybrids

***DIANTHUS (or Pinks)**

	Pkt.
Allwoodii. See Allwoodii.	
Plumarius (Pheasant's Eye).	
Single Mixed 1/4 oz. 50c	.15
Double Mixed 1/4 oz. 75c	.15
Semperflorens (Perpetual Pinks). Mixed.	
1/4 oz. 75c	.15
Scoticus. Double Scotch Pink, Mixed25

DWARF ROCKERY VARIETIES

* Dianthus Alpinus (Alpine Pink). Rosy Pink. 4 ins.25
* Arenarius (Sand Pink). White, fringed. Very free. 4 in.25
* Caesius (Cheddar Pink). (Bright pink; fine for dry bank, rockeries and old walls. 6 in.25
* Deltoides (Maiden Pink). Trailing variety; flowers pink with dark circle. 6 in.25
* Deltoides Alba. White, 8 in.25
* Neglectus. Tufts of dark green foliage, brilliant carmine rose flowers. 3 in.25
* sylvestris. A rock garden gem with large soft pink blossoms. 6 in.25
* New Rock Hybrids. A beautiful mixture of colors. Charming for rock garden or walls. 6 in.25
Collection, 6 Rock Garden Varieties, \$1.25.	

DIGITALIS (Foxglove).

gloxinioides. Spotted varieties.	
Pure White, Rose, Rich Purple Each, 1/4 oz. 50c	.15
Mixed. All colors 1/4 oz. 35c	.10
Isabellina. A beautiful sulphur-yellow25
maculata superba. An extra choice strain of beautifully spotted sorts 1/4 oz. 75c	.15
monstrosa (Mammoth Foxglove). Long spikes, surmounted by one enormous flower; very distinct, mixed 1/4 oz. 75c	.15
The Shirley. Colors ranging from white to dark rose, handsomely blotched and spotted. 1/4 oz. \$1.00	.25
Lutzii (New). Distinct salmon25
* DODECATHEON Meadia. (American Cowslip.) For sheltered positions in the rock garden; rosy-purple flowers on stems 9 inches high50
* DORONICUM caucasicum. (Leopard's Bane.) Clear yellow, daisy-like flowers.....	.50
ECHINOPS Ritro. (Globe Thistle.) A hardy perennial with blue, thistle-like flowers. 3 ft.....	.15

PERENNIAL FLOWER SEEDS

Continued

	Pkt.
* EDELWEISS (<i>Leontopodium alpinum</i>). The interesting white-leaved plant so eagerly sought by tourists in the Swiss Alps. 6 in.....	.25
EREMURUS. Gold Medal Hybrids. Stately plants with long spikes of various colored flowers. 6-8 ft.50
* ERIGERON speciosus. Pale mauve flowers, gold centers. 1½ ft.....	.15
* ERINUS Alpinus. A charming Spring-flowering plant with pale purple flowers. Valuable for Rock Garden. 2 ins.....	.50
ERYNGIUM Amethystinum (Sea Holly). Ornamental hardy perennial, blue flowers. 4 ft.....	.25
* ERYSIMUM Linifolium. (The Mauve Alpine Wallflower.) Produces a profusion of flowers of a bright, clear mauve.....	.25
* Rupestre. (The Fairy Wallflower.) A lovely Alpine plant producing pale yellow flowers abundantly in early spring. 6 in.....	.25
EUPATORIUM Fraseri. A pretty, hardy plant; producing clusters of white flowers; fine for cutting. 2 ft.....	.15
GAILLARDIA Portola Hybrids. (New.) Shades of bronzy red, golden tipped..... ¼ oz. \$1.50	.25
kermesina splendens. Rich crimson, narrow yellow border..... ¼ oz. 50c	.15
grandiflora "Dazzler." Bright golden-yellow with rich maroon-red center..... ¼ oz. 50c	.15
grandiflora maxima. Golden yellow..... ¼ oz. 35c	.10
Giant Hybrids, Mixed ¼ oz. \$1.00	.25
GALEGA. (Goat's Rue.) Fine hardy border plant, covering itself with spikes of pea-like blossoms. 3 ft.	
Hartlandi. White and lilac, variegated foliage	.25
officinalis. Blue.....	.15
* GENTIANA acaulis (Blue Gentian). Intense blue bell-shaped flowers. 6 in.....	.15
* GEUM. Mrs. J. Bradshaw. Large, double, scarlet flowers..... ⅛ oz. 75c	.25
Orange Queen. Large and free-blooming.....	.35
Lady Stratheden. Rich golden yellow.....	.35
Coccineum. Single, bright orange scarlet.....	.15
GYPSOPHILA Paniculata. White flowers, fine for bouquets. 2 ft..... ¼ oz. 50c	.15
Paniculata fl. pl. Double flowering Baby's Breath. ⅛ oz. 75c	.25
* Repens. A pretty dwarf trailing species for the rockery. It has pinkish-white flowers, 6 in. ⅛ oz. \$1.00	.25
* Repens Alba. Pure white. 6 in..... ⅛ oz. \$1.00	.25
HELENIUM. Very fine for cutting.	
Bigelow. Flowers bright yellow, black centre.....	.15
autumnale. Pale yellow.....	.15
Riverton Gem, orange, dark centre.....	.15
* HELIANTHEMUM. (Rock Rose, Sun Rose.) Dwarf evergreen plants for rock gardens, walls, or for clothing dry banks. Also useful for edging in the herbaceous border.	
Mutabilis, Mixed ¼ oz. 50c	.15
HELIANTHUS (Sunflower). Perennial Varieties, Mixed ⅛ oz. \$1.00	.15
HELIOPSIS Pitcheriana. (Orange Sunflower.) Deep golden yellow single flowers..... ¼ oz. 50c	.15
* HEUCHERA. Fine for borders or rock garden. 12-18 in.	
* brizoides, distinct new species dwarf habit, pale rose flowers.....	.25
*— gracillima, fine new form with slender, graceful pink sprays.....	.25
* Sanguinea splendens. Bright scarlet-crimson.....	.25
*— Alba. White.....	.25
* Hybrida Grandiflora. Many choice varieties, Mixed	.25

PERENNIAL FLOWER SEEDS

Continued

	Pkt.
HIBISCUS (Marshmallow). 2 to 4 ft.	
moscheutos (Swamp Mallow). Flowers like single Hollyhocks but much larger.	
Roseus. Pink..... $\frac{1}{4}$ oz. 50c	.20
grandiflorus Rainbow Hybrids. New giant flowering Marshmallows. Very large flowers in various colors..... $\frac{1}{4}$ oz. 60c	.15
HOLLYHOCK.	
Chater's Double, Bright Pink, Canary Yellow, Blood Red, Crimson, White, Rose, Maroon.	
Each, $\frac{1}{4}$ oz. \$1.00	.15
Double Fine Mixed $\frac{1}{4}$ oz. 75c	.10
Single Mixed. Choice colors..... $\frac{1}{4}$ oz. 50c	.10
Double "Imperator" (New). Strikingly original type, of delicate tints	.50
INCARVILLEA Delavayi (Hardy Gloxinia). Pink. 2 ft.	.25
Variabilis Hybrids	.50
* INULA Glandulosa grandiflora. (Flea Bane.) A very fine hardy border plant, large golden yellow flowers. June to August	.25
LATHYRUS latifolius (Everlasting Pea.) Ornamental climber for trellises, etc. 6 ft.	
White Pearl, Pink BeautyEach, $\frac{1}{4}$ oz. 60c	.15
Finest MixedOz. \$1.00	.10
LAVENDER. (Lavandula.) Much prized for the delicious fragrance of its violet flowers. 2 ft.	
Spica. Common broad leaved..... $\frac{1}{4}$ oz. 25c	.10
Vera. True lavender..... $\frac{1}{4}$ oz. 35c	.15
LIATRIS spicata (Blazing Star). Slender spikes densely crowded with rosy purple flowers. 4 to 5 ft.	.25
Pycnostachya (Kansas Gay Feather). Rich purple flowers; most effective in the garden and splendid for cutting. 4 to 5 ft.	.25
* LINARIA (Toad Flax). Alpina. A brilliant little rock plant, with glaucous grey leaves, flowers violet with orange lip	.25
Macedonica Speciosa. The flowers resemble large golden yellow snapdragons, borne on stems averaging three	.50
* LINUM. flavum. Golden yellow	.15
* perenne. Blue Flax..... $\frac{1}{4}$ oz. 35c	.15
* alpinum. Dwarf, spreading; lavender blue; fine for rock gardens	.25
LOBELIA cardinalis (Cardinal Flower). A native variety, with spikes of brilliant scarlet flowers; 3 ft.	.25
hybrida. Various shades of scarlet	.25
Queen Victoria, scarlet	.25

LUPINUS

polyphyllus, Blue $\frac{1}{4}$ oz. 35c	.10
Rose $\frac{1}{4}$ oz. 50c	.15
White $\frac{1}{4}$ oz. 35c	.10
Choice MixedOz. 75c	.10
Lavender Queen. Lavender, tinted rose	.25
Moerheimi. A beautiful variety; long spikes of pink and white flowers..... $\frac{1}{4}$ oz. 75c	.25
New Sweet-Scented Hybrids. A wonderful new strain, in shades of blue, mauve, pink, etc.	.25
Golden Spire. Fine golden yellow	.25
Arboreus (Tree Lupine). Fine hardy shrubby plant, covering itself with its long flower spikes.	
"Snow Queen." Pure white..... $\frac{1}{4}$ oz. 75c	.25
—————	
* LYCHNIS. (Campion.) For massing in beds and borders. 2 ft.	
* Alpna. Dwarf rose pink. Splendid rock plant	.25
* Arkwrightii. Beautiful, new hybrids, many distinct and attractive shades..... $\frac{1}{8}$ oz. 75c	.25
* chalcedonica. Scarlet flowers..... $\frac{1}{8}$ oz. 50c	.15
* Haageana hybrida. Mixed..... $\frac{1}{8}$ oz. 50c	.15

PERENNIAL FLOWER SEEDS

Continued

	Pkt.
* LYTHRUM roseum superbum. (Loosestrife.) Spikes of rosy pink flowers	.25
MALLOW, Acer-leaved. A handsome quick-growing perennial from Oregon, about 2½ feet high, bearing long spikes of pale rose blossoms about 2 inches across	.50
MECONOPSIS Baileyii. A new perennial Poppy, discovered in Thibet. Of a glorious sky-blue	.75
Cambrica (The Yellow Welsh Poppy). Showy variety with pale yellow flowers, fine for rock-work	.25
MYOSOTIDEUM Nobile (The Giant Forget-Me-Not of the Chatham Islands). Large heads of beautiful blue flowers, edged white. Height 1½ ft.	.50
* MYOSOTIS (Forget-me-not). Height 6 to 12 in.	
* BURNETT'S WINTER BLOOMING. Large flower, dark blue, recommended for Winter bloom, indoors	1.00
* alpestris. Blue. ¼ oz. 75c	.10
ROYAL BLUE. Rich indigo-blue. ¼ oz. \$1.00	.20
* VICTORIA. Azure blue. Fine for pots, 6 in. ¼ oz. \$1.00	.25
* dissitiflora. Sky-blue. ¾ ft. ¼ oz. \$1.00	.25
* palustris. Blue ½ ft. ¼ oz. 75c	.10
* palustris semperflorens. Perpetual flowering. Bright blue. 6 in. ¼ oz. \$1.00	.20
* HYBRIDA RUTH FISCHER. Very large, pale blue flowers. 6 in.	.50
* Choice Mixed ¼ oz. 50c	.10
* NEPETA Mussini. An invaluable border or rock plant. Lavender violet blooms. 1 ft.	.25
* NERTEA (Madder-worts).	
depressa. Extremely pretty for pots or rockery, dense tufts, thickly studded with tiny scarlet berries	.25
OENOTHERA Fraseri. Large yellow	.15
"Clutei." This handsome new biennial Evening Primrose is a native of Arizona. Bearing in great profusion large flowers of a soft yellow hue	.35
PENTSTEMON. Burnett's Giant Flowered Hybrids Mixed 1/16 oz. \$1.00	.25
PEREZIA Multiflora. Branching umbels of star-shaped flowers, of a clear porcelain blue	.25
PHYSOSTEGIA Virginica. (False Dragon-head.) The delicate pink flowers are much esteemed for cutting ¼ oz. 75c	.15
Virginica grandiflora alba. Large white flowers. ¼ oz. \$1.00	.15
PLATYCODON Mariesi (Japanese Bell Flower). Deep blue ¼ oz. 75c	.15
Grandiflorum. Light blue. ¼ oz. 50c	.15
Album. White ¼ oz. 50c	.15
PHLOX Decussata (Hardy Perennial Phlox). Mixed ¼ oz. \$1.00	.15
Large Flowered Hybrids, Mixed ¼ oz. \$1.25	.15
POLEMONIUM Coeruleum grandiflorum. (Jacob's Ladder or Greek Valerian.) Clusters of handsome blue flowers ¼ oz. \$1.00	.15
Grandiflorum album. Pure white. ¼ oz. \$1.00	.15
* POLYANTHUS (Primula elatior).	
* Munstead Strain. Producing wonderful shades of yellow as well as pure white flowers	.50
* Gold Laced. Brilliant colored flowers with distinct yellow edges	.50
* Choice Mixed	.20

PERENNIAL FLOWER SEEDS

Continued

POPPY (Papaver)

	Pkt.
ORIENTALE APRICOT QUEEN (New). Beautiful apricot shade.....	.25
Mrs. Perry. Brilliant orange scarlet.....	.25
Salmon Queen. Salmon pink.....	.25
Scarlet. Scarlet, spotted black..... 1/8 oz. 50c	.15
Mixed Hybrids. Very choice..... 1/8 oz. 75c	.15
Bracteatum. Brilliant scarlet..... 1/8 oz. 75c	.15
*NUDICAULE or Iceland Poppies.	
*White, Scarlet or Yellow Each 1/4 oz. 75c	.15
*Mixed 1/4 oz. 50c	.15
*Baker's Sunbeam. An improved and glorified strain; very large flowers.....	.25
*Coonara Pink. A delightful pink variety of recent introduction.....	.25
*Thibet. Flowers brilliant orange, quite different from anything else that can be found in Nudicaule Poppies.....	.25
*Alpine Mixed (Papaver Alpinum). A charming dwarf variety for rock work, 6 inches.....	.25
POTENTILLA. Blooming from June to August. 1 1/2-2 ft.	
Single Mixed15
Miss Willmott. (New.) Beautiful dwarf pink variety, excellent for rock work.....	.25
Double Mixed25
*PRIMROSE. (Primula Vulgaris.) Amongst early Spring-flowering plants the hybrid Primrose occupy a prominent place.	
*Dean's Choice Hybrids, Mixed50
*Hybrid Blue. Shades vary from lavender to deep violet.....	.50
*Common Yellow. (Primula Acaulis.) Well-known charming single primrose, 6 in. 1/8 oz. \$1.50	.25
*PRIMULAS, Hardy Varieties	
*Bullesiana Hybrids. These Hybrids are free flowering, adapted both for out-door and greenhouse culture.....	.50
*Cashmiriana. A fine species with large globular heads of deep violet blue flowers; excellent for rockwork. 1 ft.....	.50
*Cortusoides. A distinct Siberian species, with soft, wrinkled, heart-shaped leaves. Flowers deep rose. 10 in.....	.50
*Denticulata Hybrids. Many new shades from white to lilac, rose purple, and blue. 1 ft.....	.50
*Pulverulenta, Bartley strain. A new strain of hardy Primula, embracing all shades of pink, rose, and blush.....	.50
Florindae. This giant primrose stands 3 to 4 feet high with broad leaves, and bearing from June to August 60 to 80 terminal pendant flowers, bright yellow.....	.50
*japonica, Finest Mixed. Large flowers, varying in shade from white to crimson.....	.25
PYRETHRUM (Persian or Painted Daisy). Delightful plants with daisy-like blossoms on long graceful stems. 1-2 ft.	
Roseum. Single Mixed Hybrids 1/8 oz. \$1.00	.15
Roseum. Double Mixed Hybrids 1/8 oz. \$2.00	.25
REHMANNIA angulata. Gloxinia-like flowers of rosy-purple with yellow throat. 3 ft.....	.25
ROCKET, Sweet (Hesperis). Excellent for naturalizing among shrubbery.	
Purple 1/4 oz. 35c	.10
White 1/4 oz. 35c	.10
Mixed Colors 1/4 oz. 35c	.10
ROMNEYA Coulteri (California Tree Poppy). Large, single white flowers, centers yellow. 3 ft.....	.25
RUDBECKIA (Cone Flower).	
hirta. (Black-eyed-Suzan.) Golden yellow. 3 ft.....	.15
Purpurea Grandiflora. (Purple Cone Flower.) 4 ft.....	.15
Newmanii. Large, golden yellow, with velvety maroon center. 2 ft..... 1/4 oz. 50c	.15
*SAPONARIA. Ocymoides splendens. Elegant trailing perennial for pretty rose-colored flowers suitable for rockeries..... 1/4 oz. 35c	.15

PERENNIAL FLOWER SEEDS

Continued

	Pkt.
SCABIOSA. Handsome border plants flowering the entire season.	
Caucasica. House's Sensational Strain. In this hybrid strain will be found colors ranging from white to the darkest blue	.50
Caucasica. Soft blue; 3 feet	1/8 oz. \$1.00 .15
Caucasica Alba. Pure white	1/8 oz. \$1.25 .25
Japonica. Lavender blue	.25
*SEDUM acre. Trailing plant forming a regular green carpet. Flowers bright yellow. 4 in.	.25
Mixed Varieties. Useful for covering rock or old walls; 4 in.	.25
SIDALCEA, New Hybrids. Including shades of rose, pink, red, salmon, lilac and heliotrope. 2 ft.	.25
Rosy Gem. Beautiful deep rose	.25
*SILENE alpestris. Delightful little white rock plant of easy culture	.25
STATICE latifolia. Hardy perennial with large, branching heads of clear mauve flowers, 2 ft.	.15
STOKESIA cyanea (Stoke's Aster.) Flowers large and handsome. 12 to 18 in. Blue	1/4 oz. \$1.00 .15
cyanea alba. A pure white form	1/4 oz. \$1.25 .15
SWEET WILLIAM	
Burnett's Diadem. Beautiful rich deep crimson with white eye	1/4 oz. 75c .15
Giant White. Pure white	1/4 oz. 75c .15
NEWPORT PINK. A distinct color	1/4 oz. \$1.00 .15
Pink Beauty. Fine deep pink	1/4 oz. 75c .15
Scarlet Beauty. Rich scarlet	1/4 oz. 75c .15
Holborn Glory. (Auricula-eyed.) Superb range of colors	1/4 oz. 50c .15
Single Fine, Mixed	1/4 oz. 30c .15
Double Fine, Mixed	1/4 oz. 50c .15
THALICTRUM adiantifolium. A graceful plant with finely cut foliage resembling the Maiden-hair fern	.15
dipterocarpum. Graceful species with pretty rosy-purple flowers	.25
TRITOMA (Torch Flower, Red Hot Poker).	
Stark's Hybrids. The colors embrace yellows and salmons to deep crimson. 2 to 4 ft.	.25
TROLLIUS Europaeus. (Globe Flower.) Bright yellow globular flowers, 2 ft.	3/8 oz. 60c .15
VALERIAN (Garden Heliotrope). Admirable for wild gardens and rockwork. 2 ft.	
Rubra. Bright red flowers in panicles	.15
White. A white form of the above	.15
VERBASCUM Harkness Hybrids. Immense spikes, pure yellow flowers. 5 ft.	.25
Miss Willmott. A lovely white Verbascum 5 to 6 feet. Hardy biennial	.25
Phoeniceum. One of the prettiest species of Verbascum for the herbaceous border	.25
VERONICA. 1 1/2-2 ft.	
longifolia. Long spikes of rich blue flowers.	1/4 oz. 75c .15
spicata. Bright blue flowers	1/4 oz. 75c .15
*VIOLA. "Blue Gem" (Jersey Gem). Pleasing deep violet blue. Blooms profusely for a long period	.35
Apricot. Apricot yellow, tinged orange; distinct variety	.50
*Admiration. Dark blue, blotched	1/4 oz. \$1.50 .20
*Lutea. Yellow	1/4 oz. \$1.50 .20
*Lutea Splendens. Orange	1/4 oz. \$1.50 .20
*Papilio. Lilac	1/4 oz. \$1.50 .20
*Perfection. Blue	1/4 oz. \$1.50 .20
*Purple Queen. Dark blue	1/4 oz. \$1.50 .20
*White Perfection. White	1/4 oz. \$1.50 .20
*Finest Mixed	1/4 oz. \$1.25 .15
*G. Wermig. (New.) Long stems, violet blue flowers	.50
*WALLFLOWER. Well known deliciously fragrant flowers.	
*Single Large Flowering.	
Blood-Red, Golden Yellow, Mixed.	Each, 1/4 oz. 50c .15
*Double Large Flowering, Mixed	1/4 oz. \$1.25 .25

SEEDS OF ALPINE AND ROCK PLANTS

Suitable for Rock Gardens, etc.

Collection 12 Varieties \$3.00

Collection 25 Varieties \$5.00

Our selection.

PEONIES



Felix
Crousse

For best results, transplant during September and October covering the crowns with but two inches of soil. In manuring avoid direct contact with roots. Mulch lightly for winter protection.

Extra-strong roots, 3 to 5 eyes.

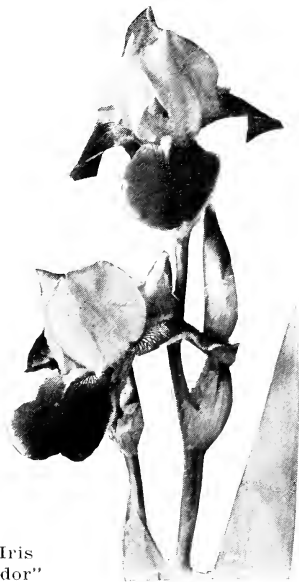
	Each
ADOLPH ROSSEAU. Deep garnet. Early midseason large	\$1.50
ALBATRE. Milk-white, tinged Lilac. Large, fragrant	1.00
ALBERT CROUSSE. Salmon-pink, fragrant, late.....	1.50
ALEXANDER DUMAS. Midseason. Violet-rose, white collar, fragrant, good cut-flower variety75
ALSACE LORRAINE. Creamy-white overlaid with pale yellow. Extra large, late	1.50
ASA GRAY. Pale-pink, dotted lilac, midseason	2.00
AVALANCHE. Cream-white, tinted lilac, flecked carmine, midseason	1.00
AVIATOR REYMOND. Cherry-red, midseason.....	2.00
BARONESS SCHROEDER. Flesh-white, large, fragrant, long bloomer, best of the "Old Timers," midseason	1.50
CHERRY HILL. Deep-garnet, strong stem, conspicuous marking, midseason	4.00
CHRISTINE RITCHER. Violet-rose, of unusual high merits and rating	7.50
CLAIRE DUBOISE. Satiny-pink, large, late mid-season	1.00
COURONNE D'OR. Milk-white with yellow tints, tipped carmine, large, late	1.00
DUCHESS DE NEMOURS. White with lemon-yellow center, fragrant, good cut-flower, early.....	.75
DORCHESTER. Hydrangea-pink, unique color.....	1.00
EDULIS SUPERBA. Dark-pink, large, fragrant, good cut-flower, early75
ELIZABETH B. BROWNING. Pure-white, red markings, fragrant, of wonderful form, late.....	3.50
ELWOOD PLEAS. Light rose-pink, late. One of the best	2.50
EUGENIE VERDIER. Pale Hydrangea-pink, lilac-white outer petals, fragrant, late, erect	1.25
FELIX CROUSSE. Brilliant-red, fragrant, mid-season	1.00
FESTIVA MAXIMA. Pure white, crimson markings, popular, good cut-flower, immense size, another outstanding "Old Timer".....	.75
FRANCES WILLARD. Blush-white, suffused yellow, late midseason	2.50
GERMAINE BIGOT. Pale lilac-rose, with crimson splashes, strong grower, midseason.....	1.00

PEONIES—Continued

	Each
GEORGIANA SHAYLOR. Rose-pink, flecked crimson, large, strong grower, very fine, midseason..	3.00
ISOLENE. Pale yellow effect, magnificent flower, vigorous grower, exceedingly handsome.....	3.50
JAMES KELWAY. Rose-white, with yellow base, deliciously fragrant, early.....	2.00
JUBILEE. Flesh-white, tinged green, very large, midseason	2.50
KARL ROSEFIELD. Dark crimson, very large, strong grower, attractive, midseason	1.50
LADY ALEXANDER DUFF. Pale pink, light center, fragrant, rated very high by the Peony Society, midseason	3.00
LA FRANCE. Violet-rose, lavender base, fragrant, immense size, a very fine high ranking variety, late	4.00
LA TULIPE. Large lilac white, carmine markings, fragrant, late75
LE CYGNE. Milk white, the nearest to perfection, fragrant, extra fine.....	7.00
LONGFELLOW. Cherry-red, golden stamens, dazzling color. Another high ranking variety..	3.00
LIVINGSTONE. Lilac rose, large, flecked carmine, late	1.00
MARGUERITE GERARD. Flesh-pink, fading to white, very large, late	1.00
MILTON HILL. Large lilac rose, excellent for cutting late	3.50
Mlle. LEONIE CALOT. Delicate rose-white, deeper center, carmine tips, distinct, large, late mid-season	1.00
MME. DE VERNEVILLE. Blush-white, flecked carmine, large, fragrant, early75
MME. EMILE GALLE. Lilac-white, milk-white center, early, rated high	1.00
MME. EMILE LEMOINE. Milk-white, very large, extra fine, slightly fragrant, midseason ..	1.50
MME. JULES DESERT. Cream-white, shaded flesh and faint yellow, beautiful form, most perfect of the lot, midseason	3.00
MONS. DUPONT. Milk-white, crimson splashes in center, large, fragrant, midseason	1.00
MONS. JULES ELIE. Lilac-pink, deep rose base, large fragrant, early, unusually beautiful ..	1.50
MONS. KRELAGE. Dark-pink, tipped silver, large, fragrant, late	1.00
MONS. MARTIN CAHUZAC. The darkest peony, dark purple garnet, black reflex, midseason ..	3.00
OCTAVIE DEMAY. Delicate-pink, shaded white, charming, fragrant, early.....	1.00
OFFICINALIS RUBRA PLENA. Rich-red, best of the old fashioned Peonies, brilliant, good cut-flower, early	1.00
PRIMEVERE. The best yellow, very fragrant, mid-season	2.50
RICHARD CARVEL. Brilliant crimson, delicate fragrance, early	3.00
ROSINE. Pale-lilac, highly rated by the Peony Society, late	5.00
SARAH BERNHARDT. Apple-blossom-pink, silver tips, fragrant, admired by all, late	2.00
SOLANGE. Beautiful Cream-coffee color, rated very high by Peony Society and considered one of the three best Peonies in existence, large, late	3.00
SOUV. DE LOUIS BIGOT. Bengal-rose, tinged carmine, fringed, large, beautiful, distinct, mid-season	4.00
THERESE. Soft-pink, the World's best pink, charming, lilac-white center, very large, midseason ..	3.00
TOURANGELLE. Flesh-pink, intensely fragrant, a prize winner at Peoria Flower Show, midseason..	3.00
VENUS. Delicate shell-pink, large, crown type, fragrant, good cut-flower, midseason	1.50
WALTER FAXON. Salmon-rose, has captivating salmon center, fragrant, distinct, midseason ..	3.50

Although we have selected only the most meritorious and popular ones, we can supply any other varieties at advertised prices.

Burnett's Choice Irises



German Iris
"Ambassador"

GERMAN IRISES (Fleur de Lis)

Plant shallow in dry soils with sunny exposure during June, July and August, add Superphosphate to supply the lime needed.

S.—Standard or Upper Petals; F.—Falls or Lower Petals.

	Doz.
AFTERGLOW. Lavender grey shading to buff, yellow haft. 3 for \$1.25.....	\$4.25
ALCAZAR. S.—violet, F.—purple, giant in flower, handsome, height 3½ ft. 3 for \$1.25	4.25
ANN PAGE. A deliciously scented branching Iris bearing pale lavender-blue flowers of splendid shape on stout stems; height 3 ft. 3 for \$2.00	7.25
AMBASSADEUR. S.—brunzy-violet, F.—velvety-maroon, conspicuous orange beard, immense flower, vigorous, height 4 ft. 3 for \$1.75	5.00
ASIA. Magnificent immense flowers of fine form and substance borne on strong vigorous stems, bold and upstanding foliage; S.—broad and massive of pale silvery-lavender color with yellow base, F.—pale reddish-purple, margined lighter with bright yellow beard; height 4½ ft. Each \$1.75; 3 for \$4.50	15.00
CAPRICE. S.—reddish purple, F.—deeper, the best "red," height 2 ft. 3 for 75c	2.75
DALILA. S.—white, F.—reddish purple, most distinct and striking in color, height 2 ft. 3 for \$1.25	4.25
HER MAJESTY. S.—pale coppery-pink, darker and heavily veined, most effective pink, height 2½ ft. 3 for 75c	2.50
IRIS KING. Yellow mauve, strong grower, striking and handsome, height 2 ft. 3 for \$1.00	3.25
ISOLENE. Lilac-purple, most beautiful and yet unmatched, distinct, sweet scented. Height 2½ ft. 3 for \$1.25	4.25
JACQUISIANA. S.—copper-crimson, F.—maroon, extra good, height 2½ ft. 3 for \$1.00	3.25
LENT A. WILLIAMSON. Lavender-violet, very large, luxuriant grower, 3½ ft. 3 for \$1.25	4.25

GERMAN IRISES—Continued

	Doz.
LOHENGRIN. Cattleya-mauve, large flowers, vigorous. 3 for 75c.	2.50
LORD OF JUNE. Lavender blue, exceedingly handsome, sweet scented, height 3½ ft. 3 for \$1.75.	5.00
MAGNIFICA. Enormous sweetly scented blooms, S.—violet-blue, F.—reddish-violet; yellow beard. Distinct. Height 3 ft. 3 for \$2.25.	8.00
Mlle. SCHWARTZ. Pale mauve, exceptionally large flowers, tallest. 3 for \$1.75.	6.00
MONSIGNOR. S.—crimson dotted lavender, inner petals ivory, F.—crimson edged lavender. 3 for 75c.	2.50
MOTHER OF PEARL. Delightful soft lavender, branching stem, height 4 ft. 3 for \$1.75.	5.00
MRS. ALAN GRAY. Mauve and Scarlet, blooms second time in August, lovely mass effect, height 2½ ft. 3 for \$1.00.	3.25
PALLIDA DALMATICA. Large pale blue, broad foliage, sweet scented, height 3½ ft. 3 for 90c.	3.00
PRINCESS BEATRICE. (True.) Silvery lavender blooms, ideal shape, handsomest of all, height 3 ft. 3 for \$1.25.	4.25
PRINCESS VICTORIA LOUISE. S.—pale yellow, F.—rich violet, edged cream. 3 for 75c.	2.50
PROSPER LAUGIER. S.—bronze, F.—crimson, much admired, height 2½ ft. 3 for 75c.	2.50
PROSPERO. S.—pale lavender, flushed yellow base, S.—reddish-purple, lightly shaded margin, orange beard, handsome. 3 for \$1.75.	6.00
QUAKER LADY. Smoky lavender, falls deeper. Much admired. 3 for 75c.	2.50
QUEEN CATERINA. Pale lavender violet, white haft, orange beard, handsome, lasting quality. 3 for \$1.25.	4.25
QUEEN OF MAY. S.—lilac, F.—rose, most charming of the pinks, handsome, height 2¾ ft. 3 for \$1.00.	3.25
REIN NIXE. S.—white, F.—blue, distinct white edge, vigorous, good habit, free flowering, height 2½ ft. 3 for 75c.	2.50
SHERWIN WRIGHT. Golden yellow, vigorous grower. 3 for \$1.00.	3.50
SOUV. de MME. GAUDICHAU. Finest rich purple, fragrant, fine shape. 3 for \$2.00.	7.25
SWEET LAVENDER. S.—lavender violet, F.—rosy lavender, ruffled, six spikes. 3 for \$1.75.	6.00
TROOST. S.—rosy-purple, F.—rose. Remarkable for its color, height 2 ft. 3 for \$1.75.	6.00

JAPANESE IRIS (Kaempferi)

Plant two inches deep in moist acid soils with sunny exposure, during June, July and August.

LATEST INTRODUCTIONS

- Alagoz**—Dbl. True purple. Inner petals white tipped purple. Large flower.
- Azure**—Dbl. Immense flower, exquisitely wavy. Mauve blue with darker halo around the yellow blotch at base of petals.
- Bokhara**—Sgl. Phlox purple, yellow blotch in center edged blue. Wavy petals.
- Chutsai**—Sgl. Hortense violet veined white. Inner petals phlox purple.
- Daghastan**—Dbl. Rosy-red veined white.
- Gold Bound**—Dbl. Pure white, one of the best.
- Kha Khan**—Sgl. White suffused blue, purple stigmas. Extra fine and large.
- La Favorite**—Dbl. Large, fine white, freely veined blue, and a rich purple center.
- Mt. Hood**—Dbl. Light blue shaded darker. Bright orange center.
- Pyramid**—Dbl. Violet purple, veined white in center of each petal.
- Repsime**—Dbl. Blue veined white.
- Yama Yama**—Sgl. White overlaid blue. Center petals white and purple. Crinkled appearance.

Price, any of the above, 50c each, \$5.00 per dozen.

BURNETT'S Strawberry Plants

POT-GROWN

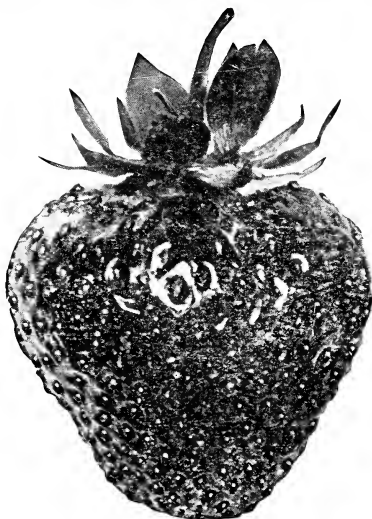


BARRYMORE. A fine midseason to late variety for growing where soil and climatic conditions are inclined to be cool. Its beautiful large firm berries are bluntly conical; of superb quality	100
BIG JOE. Late, ripening at the same time as the Chesapeake. Very large and productive. In flavor it is one of the best; firm and a good shipper. Succeeds upon almost all soils and under all conditions	\$7.00
BRANDYWINE. Berries are large, firm and solid, excellent in quality, with fine aromatic flavor. A vigorous grower. Midseason to late	8.00
BUSHEL BASKET. Winner of the Barry Gold Medal. A giant in growth. Vigorous and healthy. It is enormously prolific and the fruit is of high quality. Mid-season	7.00
CHESAPEAKE. One of the best strawberries grown. It is very large, of fine form, as late as Gandy and in flavor ranks with "Marshall"	8.00
EARLY JERSEY GIANT. Extra early. Berries very large, scarlet-crimson color, has mild, wild strawberry flavor. Large and of vigorous growth	8.00
GANDY. The standard late variety by which all other late varieties are compared. A strong compact grower with large, firm berries of finest flavor	8.00
GLEN MARY. A superb variety of large size, great productiveness and good quality	7.00
MARSHALL. One of the richest flavored strawberries grown. Always the leader. Dark crimson when fully ripe, and of large size. Mid-season	7.00
PREMIER. A grand early variety very productive. The berries are large, uniform in shape, of a glossy, rich red color, extending clear through the berry	7.00
ROYAL SOVEREIGN (True Stock). A splendid variety of English origin. Berries of large size, color rich crimson. Royal Sovereign is the king of all forcing strawberries	14.00

(Continued on next page)

BURNETT'S Strawberry Plants

POT-GROWN



- | | |
|---|------|
| SHARPLESS. Berries are very large, irregular in shape and of good quality. One of the best for table use. Mid-season | 100 |
| STEVEN'S LATE CHAMPION. A grand variety, fruiting very late in the season, yielding large crops of fine berries | 7.00 |
| SUCCESS. It is the best of the large, early varieties that we have fruited. The plant is exceptionally vigorous and prolific. Berries bright crimson | 7.00 |
| WM. BELT. Berries of large size and good quality; flesh solid, meaty, deep crimson in color. It begins to ripen quite early, continuing until almost the close of the season | 7.00 |
- NOTE:** Varieties not mentioned in this list, we can supply at advertised prices.

EVERBEARING STRAWBERRIES

- | | |
|---|-------|
| CHAMPION EVERBEARING. A seedling of Superb, and, like it in many respects, though it is more productive and the fruit is larger | 12.00 |
| MASTODON. This variety the past season produced more fruit and larger fruit than any other. It bears continuously from June until freezing weather, large, decidedly attractive berries, which are of simply superb flavor | 17.50 |
| PROGRESSIVE. One of the best fall-bearing sorts; strong grower; berries round, deep crimson. It begins to ripen with second earlys, bearing fruit until late fall | 9.00 |

BIRD NETTING

For Protecting Strawberry Beds.

This we can supply in 20 and 30-foot widths, 2-inch mesh. (One lb. contains 200 square feet.) One lb. of 20-foot width will cover a bed of 20x10 feet. Three lbs. of 30-foot width will cover a bed of 30x20 feet. **Lb. \$3.00.**

STRAWBERRY BASKETS

1-Qt. Size, Square Shape, 100 \$1.75; 1000 \$16.00
2-Qt. Size, Oblong Shape, 100 2.75; 1000 25.00