

Historic, Archive Document

Do not assume content reflects current scientific knowledge, policies, or practices.

Burpee's Bulbs

FOR FALL
PLANTING
1930

FARNCOMBE
SANDERS

ATRISTESJE

MARVEL

PRINCESS
ELIZABETH

MRS MOON

Collections of Five Giant Tulips

All illustrated on this page

9735	30 Bulbs	(6 of each, value \$2.55)	\$1.95
9736	60 Bulbs	(12 of each, value 4.65)	3.75
9737	125 Bulbs	(25 of each, value 8.90)	7.00
9738	250 Bulbs	(50 of each, value 17.35)	13.50

W. ATLEE BURPEE CO.
PHILADELPHIA, PA.

Burpee's NARCISSUS

PRIMROSE
PHOENIX

LUCIFER

WHITE
LADY

HELIOS

KING ALFRED

Five Showy Narcissus

These collections contain the five hardy, free blooming varieties pictured.

9720 5 Bulbs . . . \$0.75

(1 of each, value \$0.88)

9721 15 Bulbs . . \$1.85

(3 of each, value \$2.39)

9722 30 Bulbs . . \$3.50

(6 of each, value \$4.55)

9723 60 Bulbs . . \$6.75

(12 of each, value \$8.70)

PLANTING THIS FALL

for Spring Flowers

The beauty of your garden early next spring depends primarily on what you plant this fall. A garden full of Tulips, Hyacinths, Narcissus . . . it may be yours by planting NOW!

You need not wait until the beds that are in full bloom now are cleared. Plant the bulbs right between the flowers that are in bloom now and give them an opportunity to settle before cold weather sets in.

Fall-planted bulbs are unsurpassed for solid beds and borders. Yet even in the smallest garden a natural arrangement of a few dozen bulbs placed together in the foreground of some shrubs or grouped amidst perennials will give a colorful display.

For naturalizing among shrubs and perennials, the Snowdrops, Snowflakes, Chionodoxa, Scilla, and Grape Hyacinths are extra fine. Their graceful, showy little flowers give a particularly lovely effect if planted in small groups in the rock garden.

Quality

It always pays to buy the best quality Seeds, Bulbs, and Roots obtainable, as, after all, the cost for these is small compared with the disappointment that is bound to be experienced from cheap goods. Burpee's Seeds, Bulbs, and Roots have a world-wide reputation for unsurpassed excellence. They are produced with the utmost care and are thoroughly tested to assure Burpee customers of planting the "Best That Grow."

We Pay the Postage or Expressage

All Seeds, Bulbs, Plants, Nursery Stock, Books, and Garden Supplies offered in this catalog will be sent **postpaid** or **express prepaid**, excepting larger quantities of a few items listed on pages 31 and 32.

The Burpee Guarantee

We guarantee the vitality and purity of our Bulbs, Roots, and Seeds to the full amount of the purchase price, and we guarantee the safe arrival of all goods. You can have your money back any time within the year if you are not satisfied with the results from Burpee's Bulbs, Roots, or Seeds. But even with Burpee Quality Bulbs and Seeds, success in gardening depends largely upon cultivation, soil, and weather conditions. It is therefore agreed that in no case shall W. Atlee Burpee Co. be liable for more than the amount actually paid for the bulbs and seeds. This is the guarantee that protects all who purchase from Burpee in Philadelphia.

Quick Reference Planting Chart

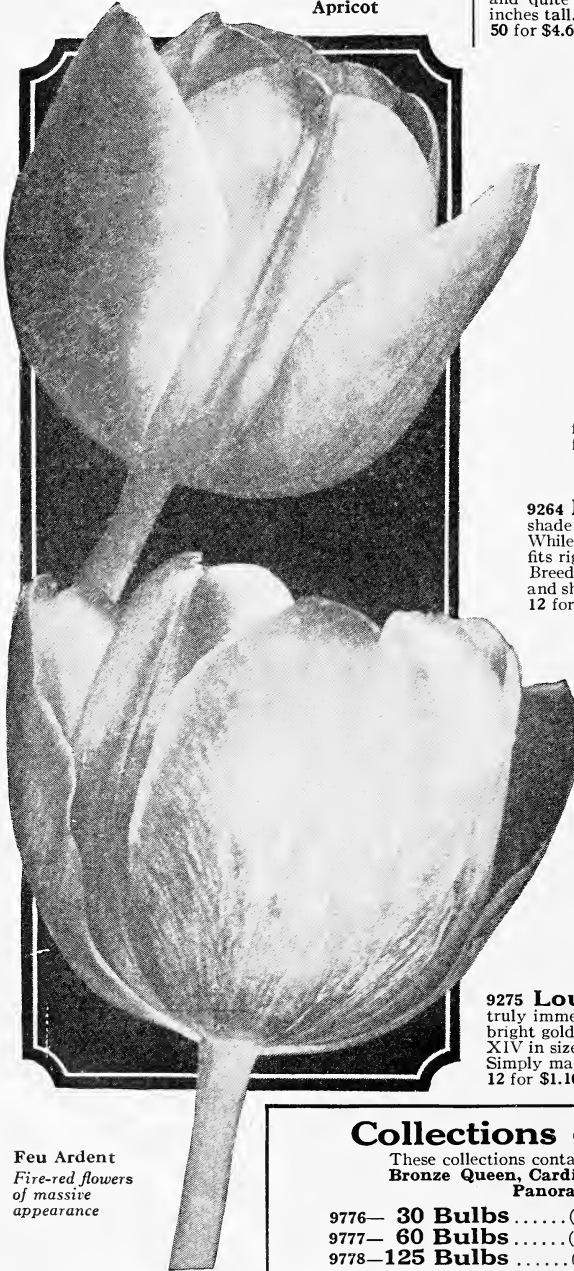
Remember, please, that depth to cover the bulbs depends greatly on the texture of the soil. As a general rule, plant deeper in sandy than in heavy soil. Bulbs for naturalizing or permanent displays should be planted deeply. The distance between the bulbs may also be varied according to the effect that is wanted in the garden.

	Average depth to cover from top of bulb to surface	Distance apart	Approximate number of bulbs required to plant a round bed with a diameter of								
			2'	3'	4'	5'	6'	8'	10'	12'	14'
Anemone	1-2"	5"	18	40	70	115	160	290	450	650	1,015
Chionodoxa	2-3"	3"	50	115	200	315	450	800	1,255	1,800	2,825
Crocus	2-3"	3"	50	115	200	315	450	800	1,255	1,800	2,825
Fritillaria	2-3"	5"	18	40	70	115	160	290	450	650	1,015
Grape Hyacinth	2-3"	3"	50	115	200	315	450	800	1,255	1,800	2,825
Hyacinth	4-6"	8"	8	16	30	45	65	110	175	250	395
Iris, Span. & Dutch	2-3"	8"	8	16	30	45	65	110	175	250	395
Iris, Beard. & Jap.	1"	12"	4	8	12	20	28	50	75	110	175
Jonquils	4-7"	6"	12	30	50	80	110	200	315	450	705
Lilies	6-8"	14"	3	5	10	15	20	35	40	85	130
Narcissus	5-8"	12"	4	8	12	20	28	50	75	110	175
Peonies	2"	36"	1	1	1	3	4	5	8	12	20
Scilla	3-4"	3"	50	115	200	315	450	800	1,255	1,800	2,825
Snowdrops	2-3"	3"	50	115	200	315	450	800	1,255	1,800	2,825
Snowflakes	2-3"	3"	50	115	200	315	450	800	1,255	1,800	2,825
Tulips	5-7"	5"	18	40	70	115	160	290	450	650	1,015

Giant Breeder Tulips—Famous for their Art Shades

Of all Tulips, the Breeders are, without question, the most striking. With their tall majestic growth and truly enormous blooms they rival the finest of the Darwins, but it is their rich coloring which places them in a class by themselves. Hues and tones not found in any other flower are present in the Breeders. They lean toward the unusual and artistic shades, and, therefore, enjoy great popularity with those who appreciate flowers that lend themselves to graceful and quaint displays. They are attractive if planted in beds, but make their finest appeal when grown amid perennials or in the foreground of shrubbery. They are also unexcelled for cutting.

Apricot



Feu Ardent
Fire-red flowers
of massive
appearance

9252 Apricot An excellent flower, combining a lovely ruddy apricot tint with a seam of bright bronzy buff. The base of the petals is yellow, shading into an olive-green halo. Apricot is a magnificent flower of a quaint and artistic color combination. Those who like the unusual will include this showy and free-flowering variety in their planting. The flowers are carried on stems 25 inches tall. 3 for 27¢; 6 for 50¢; 12 for 95¢; 25 for \$1.85; 50 for \$3.60; 100 for \$7.00.

9254 Bacchus Well-shaped blooms of a dark violet-blue color. The outside of the petals is a still deeper tone of blue-violet. At the base of the inside petals the color is relieved by a white star, adding good color contrast. The flowers are large and quite long. They are carried on fine strong stems; 28 inches tall. 3 for 34¢; 6 for 65¢; 12 for \$1.20; 25 for \$2.35; 50 for \$4.60; 100 for \$9.00.

9255 Bronze Queen An attractive buff shade tinged with apricot and golden bronze on the inside. The flowers are remarkably large, carried on long, strong stems. Bronze Queen is excellent for bedding or forcing. The blooms are of artistic proportion, with petals of substantial texture. They grow 26 inches tall. 6 for 40¢; 12 for 70¢; 25 for \$1.35; 50 for \$2.60; 100 for \$5.00.

9257 Cardinal Manning Dull wine-red blooms shaded with rosy brown. A most impressive and stately variety, widely known because of its quaint yet beautiful color. The flowers are very large and substantial. They last a long time, both in the garden and as cut-flowers. Of good strong growth, 24 inches tall. 6 for 40¢; 12 for 75¢; 25 for \$1.40; 50 for \$2.70; 100 for \$5.25.

9261 Don Pedro A beautiful tint of coffee-brown, shaded maroon. The inside of the magnificent flowers is a glossy rich mahogany shade. Don Pedro has a most delightful fragrance and is, therefore, appreciated as a cut-flower. It is also a good forcing variety, with large substantial flowers borne on stiff stems 23 inches tall. 3 for 34¢; 6 for 65¢; 12 for \$1.20; 25 for \$2.35; 100 for \$9.00.

9264 Feu Ardent Large cup-shaped blooms of a rare shade of brilliant fiery red with a cast of light bronze. While bright and rich, it is by no means a glaring color but fits right into the general color scheme represented in the Breeder type of Tulips. The flowers are of immense size and showy appearance; 25 inches tall. 3 for 30¢; 6 for 55¢; 12 for \$1.05; 25 for \$2.00; 50 for \$3.95; 100 for \$7.75.

9269 Godet Parfait This always appeals to a very large number of gardeners, and the dark blue-purple flowers with their white base and blue halo make a most charming display both in the garden or as cut-flowers. It is indeed a striking color; grows 26 inches tall. 3 for 32¢; 6 for 60¢; 12 for \$1.10; 25 for \$2.10; 100 for \$8.00.

9270 Golden Bronze Old gold flushed with Heliotrope on the outside of the petals. The inside is rich mahogany-brown with a contrasting deep yellow base. A showy variety with well-shaped blooms; 25 inches tall. 3 for 27¢; 6 for 50¢; 12 for 95¢; 25 for \$1.85; 100 for \$7.00.

9274 Lucifer Rich coppery orange blooms with a lovely rosy cast and a bright scarlet-orange edge. This combination of colors never fails to attract attention. The base is bright yellow. Height, 28 inches. 3 for 45¢; 6 for 85¢; 12 for \$1.60; 25 for \$3.10; 100 for \$12.00.

9275 Louis XIV The most stately of all Tulips, with truly immense flowers of a rich dark purple shade edged with bright golden bronze. No other Tulip can compare with Louis XIV in size of flower, length of stem, and sturdiness of growth. Simply magnificent. Height, 28 inches. 3 for 32¢; 6 for 60¢; 12 for \$1.10; 25 for \$2.10; 50 for \$4.10; 100 for \$8.00.

Collections of Breeder Tulips

These collections contain the following five Breeder Tulips:
Bronze Queen, Cardinal Manning, Prince of Orange, Panorama, and Don Pedro

9776— 30 Bulbs (6 of each variety, value \$2.50) for **\$2.10**
9777— 60 Bulbs (12 of each variety, value 4.60) for **3.95**
9778—125 Bulbs (25 of each variety, value 8.90) for **7.50**

9278 Madame Lethierry Rich dark cherry-red flowers attractively edged and flushed with bright salmon. A quaint yet beautiful color. As a cut-flower, Madame Lethierry lasts for many days and its cheerful, bright color always makes it welcome for home decoration. For garden growing it is superb, as it makes a substantial, strong growth, carrying its large, well-shaped, heavy flowers on stems 27 inches tall. 3 for 30¢; 6 for 55¢; 12 for \$1.05; 25 for \$2.00; 50 for \$3.95; 100 for \$7.75.

9280 Medea This remarkable variety represents an unusual shade—crushed strawberry shaded with bright Heliotrope, and having a distinct yellow center. It is a quaint and artistic flower of unusual appeal. The plants make a sturdy upright growth; 17 inches tall. 6 for 45¢; 12 for 85¢; 25 for \$1.65; 50 for \$3.20; 100 for \$6.25.

9285 Old Times A grand flower of long, pointed form, with a rather unusual color combination—garnet, edged Primrose-yellow and marked with green near the base. Its strong growth recommends it for both cutting and garden display. The huge flowers are carried on stems 24 inches tall. 3 for 30¢; 6 for 55¢; 12 for \$1.05; 25 for \$2.00; 100 for \$7.75.

9286 Panorama There are many gardeners who consider Panorama a particularly valuable variety because of its many excellent qualities. The color of the blooms is a rich orange-red with a cast of bright mahogany and a rich metallic sheen. The extra large flowers are almost round. They are carried on stems 26 inches tall. 6 for 45¢; 12 for 85¢; 25 for \$1.65; 50 for \$3.20; 100 for \$6.25.

9289 Pink Pearl Magnificent lilac-pink flowers with a rosy sheen. The inside of the blooms is bright rose, shaded with soft, creamy white. Pink Pearl is indeed a beautiful large flower of a lovely artistic color. The egg-shaped blooms are of mammoth size. This combines particularly well with any of the darker colors. Of stately growth, with good, strong stems 26 inches tall. 24¢ each; 3 for 65¢; 6 for \$1.25; 12 for \$2.40; 25 for \$4.65; 100 for \$18.00.

9287 Plutarchus Rich deep orange-bronze, attractively shaded with a lovely tone of pastel-lilac. The inside of the blooms is a somewhat brighter color. The flowers are truly handsome. They are large and well formed. The strong stems carry the blooms in an upright position. Height, 26 inches. 6 for 50¢; 12 for 90¢; 25 for \$1.70; 50 for \$3.35; 100 for \$6.50.

9291 St. James Lovely large flowers on long strong stems. The blooms are of heavy texture. They are well formed and carried on a substantial stiff stem. The color is a deep shade of rosy lilac with a bronze-toned edge and a flush of bright coppery rose at the tip of the petals. The inside is ruddy mahogany, edged golden brown. Height, 28 inches. 6 for 45¢; 12 for 85¢; 25 for \$1.60; 50 for \$3.10; 100 for \$6.00.

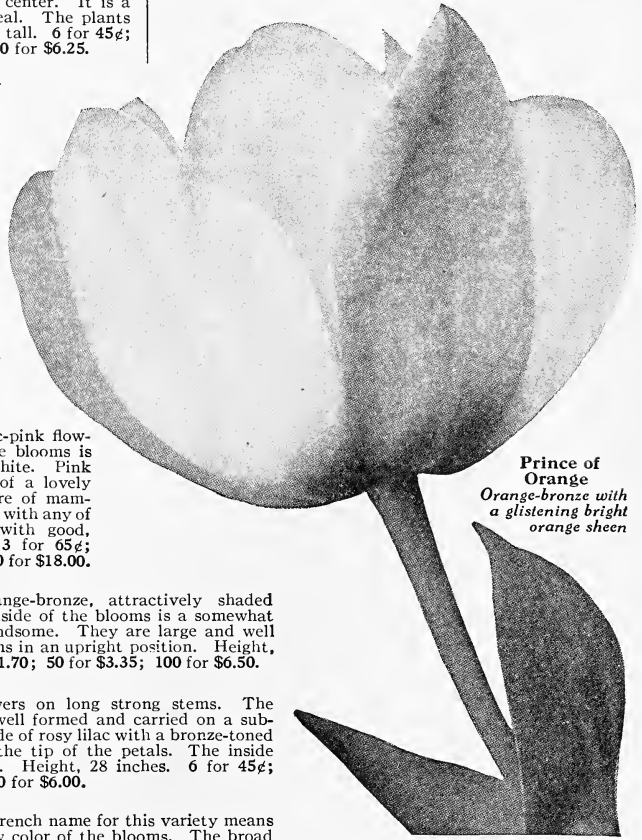
9272 Sunrise (Jaune D'Oeuf) The French name for this variety means "Yolk of egg," referring to the rich yellow color of the blooms. The broad stripe of lilac along the center of each petal gives the whole flower a distinctive and artistic appearance. The inside of the petals is a faint tint of golden bronze, shading into a deep apple-green base. Grows 26 inches tall. 6 for 45¢; 12 for 85¢; 25 for \$1.60; 50 for \$3.10; 100 for \$6.00.

9294 Velvet King Lovers of rich shades should plant this variety in quantity. The blooms are of magnificent size and heavy texture, which gives them exceptional lasting qualities. The color is a fine blend of rich deep purple and deep mahogany; 25 inches tall. 3 for 32¢; 6 for 60¢; 12 for \$1.10; 25 for \$2.15; 100 for \$8.25.

9293 Vulcain Reddish apricot with a broad seam of buff-yellow. The inside of the petals is a somewhat deeper tone of apricot, edged with a brighter shade of yellow. The base is green. Large flowers of fine form, carried on stems 25 inches tall. 3 for 32¢; 6 for 60¢; 12 for \$1.15; 25 for \$2.20; 50 for \$4.35; 100 for \$8.50.

9297 Breeder Tulips, Mixed For mass planting this mixture of Breeder Tulips is particularly fine. It includes all the varieties listed above and in addition a few others to add to the color value of the display. Plant it between shrubs or among perennials. 6 for 40¢; 12 for 75¢; 25 for \$1.40; 50 for \$2.70; 100 for \$5.25; 500 for \$25.00; 1000 for \$48.00.

9288 Prince of Orange Lovers of the artistic and unusual are bound to appreciate Prince of Orange. It is an outstanding variety of a color that will make a lasting impression upon every visitor to the garden. The petals are a glowing shade of orange-bronze. Bright sunlight brings out the marvelous glistening orange sheen of the flowers. Each petal has a distinct broad edge of clear orange-yellow which adds further to the appeal of the blooms. The base of the petals is starred with yellow. We should also mention that this variety is known for its rich pleasing fragrance. Stately stems growing 22 inches tall, 3 for 32¢; 6 for 60¢; 12 for \$1.10; 25 for \$2.15; 100 for \$8.25.



1000 bulbs of a variety will be supplied at 9 times the hundred price



The stately Breeder Tulips make an attractive showing

May-flowering or Cottage Tulips

The May-flowering or Cottage Tulips resemble in general habit and growth the Darwins. They also bloom at the same time. This is a great advantage as it permits the planting together of both types in one bed and having the varieties in bloom all about the same time. For bedding, to be planted either alone or in clumps, placed in the foreground of shrubbery, or in the perennial bed, they are unsurpassed. The May-flowering Tulips are also well suited for winter blooming as they are easily forced and grow into good-sized flowers under average care.

9390 Aegir An excellent variety, with magnificent, large, well-formed flowers of a **brilliant orange** color. The whole flower is shaded with luminous cerise, which adds greatly to its bright appearance. 3 for 32¢; 6 for 60¢; 12 for \$1.10; 25 for \$2.10; 50 for \$4.10; 100 for \$8.00.

9202 Ambrosia A beautiful **lilac-rose** with a broad edge of bright **tan**. The inside of the petals is vivid orange, changing to a light tan as the flowers age. Fine large flowers. Height, 24 inches. 24¢ each; 3 for 65¢; 6 for \$1.20; 12 for \$2.30; 25 for \$4.50; 100 for \$17.50.

9201 Argo A fine variety particularly suited for forcing. The elegant large flowers are a delicate **bronzey salmon** shade. Grown in the open, the blooms are yellow, marked with red, and shaded brown. 15¢ each; 3 for 40¢; 6 for 75¢; 12 for \$1.45; 25 for \$2.85; 100 for \$11.00.

9205 Carnation This is the old English Picotee with white blooms changing to carmine-rose as they age. A wonderful flower of excellent size. 6 for 40¢; 12 for 70¢; 25 for \$1.35; 50 for \$2.60; 100 for \$5.00.

9398 Dido Lovely rich **coral-pink** flowers **edged** with vivid **orange**. The inside of the blooms is a bright flame color with a broad edge of salmon-orange. The yellow base and bright green halo add to the attractiveness of the blooms. Height, 28 inches. 29¢ each; 3 for 80¢; 6 for \$1.55; 12 for \$2.95; 25 for \$5.75; 100 for \$22.50.

9392 Dulcinea A robust round flower of a glowing **orange-red** with a still brighter color on the inside of the petals. The large yellow and green base in the center of the flower gives it added distinction. Magnificent. 3 for 32¢; 6 for 60¢; 12 for \$1.10; 25 for \$2.10; 50 for \$4.10; 100 for \$8.00.

9206 Fairy Queen A lovely soft **rosy lilac** with a broad **margin** of bright **amber-yellow**. The flowers are large, well formed, and of stately habit. The blooms are carried on stiff stems 20 inches tall. 6 for 40¢; 12 for 70¢; 25 for \$1.35; 50 for \$2.60; 100 for \$5.00.

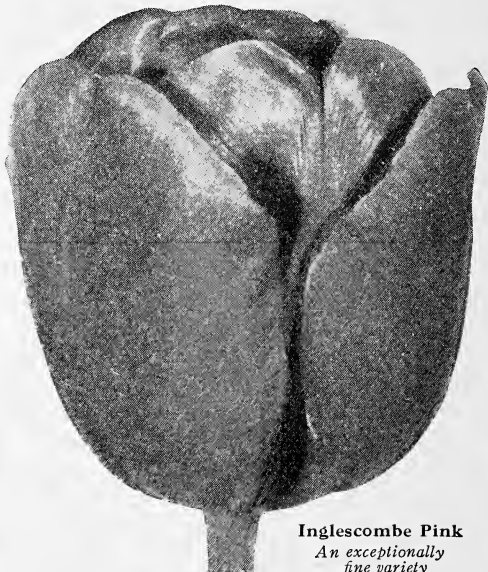
9210 Gesneriana Major Magnificent rich **crimson-scarlet** blooms with a bright blue base. The flowers are large, made up of comparatively long petals which open up widely in the full sun; 23 inches tall. 6 for 45¢; 12 for 80¢; 25 for \$1.50; 50 for \$2.95; 100 for \$5.75.



9209 Gesneriana Lutea A **brilliant yellow** variety of strong habit. It is shown in the picture above, where it makes a beautiful display against a background of hardy perennials. Always good. 6 for 40¢; 12 for 70¢; 25 for \$1.35; 50 for \$2.60; 100 for \$5.00.

9208 Grenadier Huge **orange-scarlet** flowers of fine form and heavy substance. This is a particularly showy variety which dazzles the eye when seen in bright sunlight. It makes its best display if planted in combination with some rich yellow variety. 3 for 32¢; 6 for 60¢; 12 for \$1.10; 25 for \$2.10; 50 for \$4.10; 100 for \$8.00.

9216 John Ruskin A well-known variety with lovely **salmon-rose** blooms **edged** soft **lemon-yellow**. The inside of the flower carries a rosy lilac cast with a broad margin and base of soft yellow. John Ruskin is a well-shaped, large bloom carried on a fine strong stem. Always stately and graceful. Height, 16 inches. 6 for 40¢; 12 for 70¢; 25 for \$1.35; 50 for \$2.60; 100 for \$5.00.



Inglescombe Pink
An exceptionally fine variety

9214 Inglescombe Pink Graceful, large, globular flowers of distinct form. Excellent for planting in the border or for late forcing. The color of the elegant blooms is a lovely soft **rose-pink** with a faint suffusion of salmon. As the flowers age they assume more of a rose tone. Height, 25 inches. 6 for 35¢; 12 for 65¢; 25 for \$1.20; 50 for \$2.35; 100 for \$4.50.

9215 Inglescombe Yellow A popular variety much in demand for planting together with colors of the Darwin type because the latter does not contain any moderately priced yellow shades. The **golden-yellow** flowers are of largest size and perfect form. They are carried on stiff upright stems. Height, 19 inches. 6 for 40¢; 12 for 70¢; 25 for \$1.35; 50 for \$2.60; 100 for \$5.00.

9213 Marvel Beautiful **amber-yellow** with a touch of **rosy lilac** at the center of the petals. The inside is bright yellow, shaded with a lovely brown tone. The blooms are of medium size and gather more of a yellow tone as they age. Sweet scented. Height, 25 inches. 3 for 32¢; 6 for 60¢; 12 for \$1.10; 25 for \$2.10; 100 for \$8.00.

9221 Moonlight A lovely soft quiet tone of clear **canary-yellow**. The blooms are quite oval in shape with the outer petals reflexing at the tips. When fully open the blooms form a beautiful and graceful star of rare beauty. A sturdy variety, 25 inches tall. 6 for 45¢; 12 for 85¢; 25 for \$1.60; 50 for \$3.10; 100 for \$6.00.

9220 Mrs. Moon Fine **deep lemon-yellow** blooms. It is an excellent flower, in shape not unlike a Lily. The blooms when closed are quite long, but when they begin to open the petals reflex at the tips and give the whole flower a Lily-like appearance. 3 for 32¢; 6 for 60¢; 12 for \$1.10; 25 for \$2.10; 50 for \$4.10; 100 for \$8.00.

9211 Nectar This is one of the newer varieties sometimes classed as a "New Hybrid," but for all practical purposes it could be classed under the Cottage Tulips. The color of the blooms is a fiery **crimson-red**, as bright and brilliant as or perhaps more so than any other Tulip. The form of the flowers is graceful and particularly attractive at that state of development when the petals are slightly reflexed. Nectar is not only valuable for garden use but is also much in demand as an early forcing variety. 3 for 32¢; 6 for 60¢; 12 for \$1.15; 25 for \$2.25; 50 for \$4.45; 100 for \$8.75.

9223 Orange King This Tulip should be in every garden as it always draws the greatest admiration. Orange King is indeed a magnificent flower of extreme size and artistic proportion. Whether planted in beds or borders or used for cut-flowers, it will always give entire satisfaction. The color is a **deep orange** with a lovely cast of rose on the outside of the petals. The inside is a deep orange-scarlet relieved by bright yellow markings. Sweet-scented. Height, 19 inches. 6 for 40¢; 12 for 70¢; 25 for \$1.35; 50 for \$2.60; 100 for \$5.00.

9229 Picotee (Maiden's Blush) Here is a variety of outstanding beauty and great artistic appeal. The shape of the flowers is not unlike that of a Lily. The ground color is **white with a broad margin of deep rose**. The combination of these two colors is truly magnificent and goes well with the elegant shape of the blooms. Height, 22 inches. 6 for 45¢; 12 for 80¢; 25 for \$1.50; 50 for \$2.95; 100 for \$5.75.

9212 Pink Glory (Idyll) A charming variety with blooms of grand size, heavy texture, and elegant color. The color is a rich yet delicate **rose** with an appealing satiny sheen. The inside of the petals shows an exquisite salmon-pink cast overlying a rich rose-pink ground. Pink Glory is truly a glorious variety, desirable alike for growing in the garden or as a cut-flower. We recommend planting it liberally either in formal beds or clumped together among perennials. 6 for 40¢; 12 for 75¢; 25 for \$1.40; 50 for \$2.70; 100 for \$5.25.

9225 Scarlet Emperor A stately flower carried on a fine long stem. The color is a brilliant and glowing **scarlet** with the center of the blooms shading into a clear yellow. Very showy. 3 for 40¢; 6 for 75¢; 12 for \$1.45; 25 for \$2.80; 50 for \$5.50; 100 for \$10.75.

9226 Sirene This is another of the so-called Lily-flowered Tulips, with fairly narrow, sharply pointed petals which curve outward when the flower begins to open and give to it its beautiful shape. The color of the blooms is a rich **cerise-pink** with a margin of softer pink and a white base; 16 inches tall. 6 for 50¢; 12 for 90¢; 25 for \$1.75; 50 for \$3.45; 100 for \$6.75.

9233 Sir Harry An unusual soft tone of **orchid-pink** with a yellow base and a subdued blue halo. The flowers are large, of rather pointed shape, and quite broad at the base. The petals are distinctly waved. Height, 26 inches. 3 for 29¢; 6 for 55¢; 12 for \$1.00; 25 for \$1.95; 50 for \$3.85; 100 for \$7.50.

9234 The Fawn A well-shaped flower of large size. When the blooms begin to open, they exhibit a lovely cheerful shade of **rosy amber**. Later, when they open up more fully, the color changes to a decidedly warm cream shade, artistically splashed with rose; 18 inches tall. 6 for 40¢; 12 for 70¢; 25 for \$1.35; 50 for \$2.60; 100 for \$5.00.

9332 Vesta This is sometimes classed as one of the "New Hybrids" which are now generally grouped together with the Cottage Tulips. The flowers, upon opening, are **creamy white**, gradually changing to a pure white color as they age. The base remains yellow throughout the life of the flower, and together with the black anthers forms a most beautiful contrasting color combination. The flowers are quite long in shape. They are carried on strong stems. A majestic variety, growing about 29 inches tall. 3 for 40¢; 6 for 75¢; 12 for \$1.40; 25 for \$2.75; 100 for \$10.50.

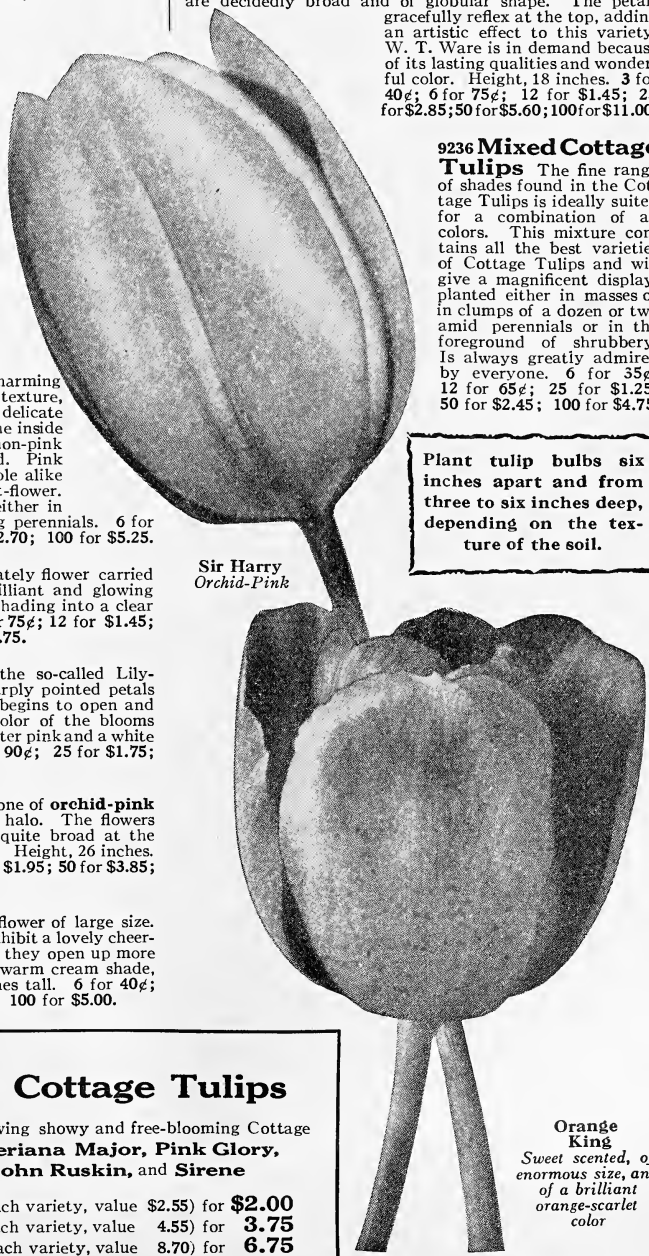
9227 W. T. Ware This variety is considered particularly worth-while on account of its exceptionally good color. The blooms are **deep golden yellow**, richer and more intense than any other late Tulip in existence. The flowers are decidedly broad and of globular shape. The petals gracefully reflex at the top, adding an artistic effect to this variety. W. T. Ware is in demand because of its lasting qualities and wonderful color. Height, 18 inches. 3 for 40¢; 6 for 75¢; 12 for \$1.45; 25 for \$2.85; 50 for \$5.60; 100 for \$11.00.

9236 Mixed Cottage Tulips The fine range of shades found in the Cottage Tulips is ideally suited for a combination of all colors. This mixture contains all the best varieties of Cottage Tulips and will give a magnificent display, planted either in masses or in clumps of a dozen or two amid perennials or in the foreground of shrubbery. Is always greatly admired by everyone. 6 for 35¢; 12 for 65¢; 25 for \$1.25; 50 for \$2.45; 100 for \$4.75.

Plant tulip bulbs six inches apart and from three to six inches deep, depending on the texture of the soil.

Sir Harry
Orchid-Pink

Orange
King
Sweet scented, of enormous size, and of a brilliant orange-scarlet color



Collections of Cottage Tulips

These collections contain the following showy and free-blooming Cottage Tulips: **Carnation, Gesneriana Major, Pink Glory, Gesneriana Lutea, John Ruskin, and Sirene**

9765— **36 Bulbs** ..(6 of each variety, value \$2.55) for **\$2.00**
 9766— **72 Bulbs** ..(12 of each variety, value 4.55) for **3.75**
 9767— **150 Bulbs** ..(25 of each variety, value 8.70) for **6.75**

DARWIN TULIPS

The Darwin Tulips come into bloom after the Early Single varieties have finished flowering. They are stronger in growth, quite a bit taller, and the flowers are considerably larger. Tulip lovers should plant these in quantity because they make a wonderful display with their bright and rich colors. Most gardeners combine their Darwins with varieties from the Breeder and Cottage class because they all bloom about the same time and present an opportunity of more varied color combination.

The Darwin Tulips are also excellent for forcing in the house. Planted in pots or pans, they make a taller growth than the Early Single varieties and their fine range of good colors adds valuable material for house decoration. Ask for a free copy of the Burpee leaflet, "Bulbs for Winter and Spring Blooming."

9153 Afterglow Beautiful bright rosy orange flowers shaded salmon at the edges. The inside of the petals is rich orange. It is a late flowering Darwin Tulip, growing about 26 inches tall. 3 for 30¢; 6 for 55¢; 12 for \$1.05; 25 for \$2.00; 50 for \$3.95; 100 for \$7.75.

9150 Baronne de la Tonnaye Bright rose, margined with delicate blush-rose. It is an excellent variety for garden display and for winter forcing. The blooms are carried on stems 28 inches tall. 6 for 40¢; 12 for 70¢; 25 for \$1.35; 50 for \$2.60; 100 for \$5.00.

9160 Bartigon A rich fiery red flower with a contrasting pure white base. Particularly suited for garden display because of its rich color but just as easily forced for winter blooming. Blooms early; 2 feet tall. 6 for 40¢; 12 for 70¢; 25 for \$1.35; 50 for \$2.60; 100 for \$5.00.

9155 Bleu Aimable Bright orchid-purple with a cast of clear blue. The inside of the petals is dark violet-purple, showing a blue base. The flowers are large and well formed; 20 inches tall. 3 for 32¢; 6 for 60¢; 12 for \$1.10; 25 for \$2.10; 50 for \$4.10; 100 for \$8.00.

9154 Clara Butt Clear bright pink blooms tinted with salmon-rose and marked blue at the base. A great favorite, with large, well-formed flowers. Makes a wonderful display in the garden; 23 inches tall. 6 for 35¢; 12 for 65¢; 25 for \$1.20; 50 for \$2.35; 100 for \$4.50.

9158 Centenaire Lovely violet-rose flowers of large size. Equally well adapted for winter blooming in the house as for garden display. It is an early blooming garden Tulip, growing 30 inches tall. 6 for 40¢; 12 for 75¢; 25 for \$1.45; 50 for \$2.85; 100 for \$5.50.

9163 City of Haarlem Brilliant carmine blooms with a steel-blue base and white halo. A rich strong color of stately habit; 30 inches tall. 3 for 45¢; 6 for 80¢; 12 for \$1.55; 25 for \$3.00; 50 for \$5.85; 100 for \$11.50.



This picture shows the attractive effect obtained by planting Darwin Tulips in clumps in the foreground of shrubbery

9799 Tulip Garden Collection

100 Tulip Bulbs for only \$3.75, delivered

If you will leave the selection of varieties to us, we will send you 100 bulbs—ten each of ten named varieties, of our own selection, **\$3.75** each variety separately packed and plainly labeled, for

While Darwin Tulips are superb for planting in formal beds, their boldness, stately habit, and rich color make them ideal material for planting in clumps of 6 to 12 bulbs amidst the perennial border or in the foreground of shrubs. They are suited for small gardens as well as large ones.

9156 Dream Bright heliotrope with a deep violet hue on the inside and a bright blue base. A well-formed substantial flower carried on a strong, stiff stem. Grows 22 inches tall. It is always admired. 6 for 45¢; 12 for 85¢; 25 for \$1.60; 50 for \$3.10; 100 for \$6.00.

9157 Euterpe Bright lilac—rather an unusual and therefore much admired color. The flowers are large and well formed. They are carried on good wiry stems; 22 inches tall. 6 for 45¢; 12 for 85¢; 25 for \$1.60; 50 for \$3.10; 100 for \$6.00.

9172 Farncombe Sanders Fiery rose-scarlet on the outside and vivid scarlet-red with a blue and white base on the inside. This is one of the best-known varieties because of its brilliance; 27 inches. 6 for 40¢; 12 for 70¢; 25 for \$1.35; 50 for \$2.60; 100 for \$5.00.

9179 Feu Brilliant Glowing vermilion with a contrasting blue and white base on the inside of the flowers. The magnificent size and richness of color have made it a favorite with many gardeners; 28 inches. 6 for 50¢; 12 for 95¢; 25 for \$1.85; 50 for \$3.60; 100 for \$7.00.

9159 Flamingo Shell-pink blooms of a particularly pleasing and luminous shade. The flowers are large and well formed. They are carried on elegant strong stems growing about 22 inches tall. Very fine. 6 for 50¢; 12 for 90¢; 25 for \$1.70; 50 for \$3.35; 100 for \$6.50.

9166 Giant Deep purple blooms with a rich crimson cast. Truly enormous flowers carried on strong stems. Particularly well suited for the semi-shade, where it will make a glorious display; 29 inches tall. 3 for 45¢; 6 for 80¢; 12 for \$1.55; 25 for \$3.00; 50 for \$5.85; 100 for \$11.50.

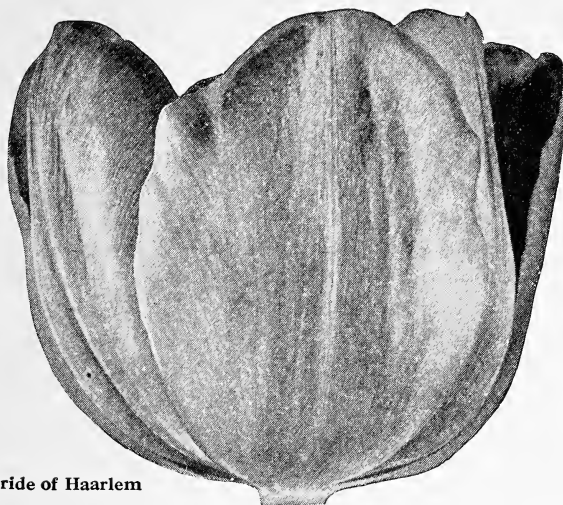
9162 Gretchen (Margaret) Fine silvery rose blooms flushed with satiny white. The inside of the petals is soft pink, shaded with white. A stately variety of elegant growth and graceful habit; 23 inches tall. 6 for 40¢; 12 for 75¢; 25 for \$1.45; 50 for \$2.85; 100 for \$5.50.

9164 Isis Fiery crimson-scarlet blooms with a blue base and a white halo. A variety of striking beauty because of its saturated color and huge size. A late bloomer, of stately habit, carrying its graceful blooms on stems 26 inches tall. 6 for 45¢; 12 for 85¢; 25 for \$1.65; 50 for \$3.20; 100 for \$6.25.

9171 King George V Bright crimson-red—a color which makes an attractive show in any garden. A bold, massive, large flower of majestic appearance; 25 inches tall. 3 for 50¢; 6 for 95¢; 12 for \$1.85; 25 for \$3.60; 50 for \$7.10; 100 for \$14.00.

9167 Jubilee Rich blue-purple flowers with slightly lighter edges. The base is white marked with blue. The blooms are carried on stiff, strong stems. Jubilee is an important variety because it satisfies the demand for a color that gives the general impression of deep blue; 25 inches tall. 3 for 45¢; 6 for 80¢; 12 for \$1.55; 25 for \$3.00; 50 for \$5.85; 100 for \$11.50.

9183 La Fiancee Lovely deep rose blooms shading to old rose with a delicate pink tone at the edges. The base is blue. Huge and well formed. Height, 36 inches. 3 for 32¢; 6 for 60¢; 12 for \$1.10; 25 for \$2.10; 50 for \$4.10; 100 for \$8.00.



Pride of Haarlem

9165 King Harold Deep rich crimson-red with a white base of pleasing contrast. King Harold makes a vigorous growth, carrying on a tall stiff stem a huge, massive, well-shaped flower, composed of gracefully shaped petals of heavy texture. Grows 42 inches tall. 6 for 40¢; 12 for 75¢; 25 for \$1.45; 50 for \$2.85; 100 for \$5.50.

9186 La Tristesse Magnificent flowers of a deep soft tone of lavender-violet with a contrasting white base. Looks best if planted together with red, pink, or yellow. Very artistic; 26 inches tall. 3 for 30¢; 6 for 55¢; 12 for \$1.05; 25 for \$2.00; 50 for \$3.95; 100 for \$7.75.

9168 La Tulip Noire Quaint dark velvety maroon flowers, so dark that they appear almost black. This is not a mere curiosity but a large, well-shaped bloom, particularly showy against a light background; 24 inches. 6 for 50¢; 12 for 95¢; 25 for \$1.85; 50 for \$3.60; 100 for \$7.00.

9169 Loveliness Soft carmine-rose—a shade as lovely and pleasing as may be found anywhere in nature. The combination of color, strong growing habit, size of flower, and general appeal has made many friends for this variety. We consider it one of the best. 6 for 45¢; 12 for 80¢; 25 for \$1.50; 50 for \$2.95; 100 for \$5.75.

9170 Madame Krelage Bright lilac-rose, shading to silvery rose on the edges of the petals. The inside of the flower is deep rose-pink. A sturdy variety, carrying its blooms on stems 27 inches tall. 6 for 40¢; 12 for 70¢; 25 for \$1.35; 50 for \$2.60; 100 for \$5.00.

9187 President Taft Rich dark red blooms with a brighter scarlet-red shade on the inside of the petals. The marking shows a distinct scarlet suffusion. This is a superb newer tulip with flowers of largest size and good substance; grows 26 inches tall. 3 for 32¢; 6 for 60¢; 12 for \$1.10; 25 for \$2.10; 50 for \$4.10; 100 for \$8.00.

9181 Professor Rauwenhof Bright cherry-red flowers with a glistening suffusion on the inside. Sharply contrasting with this color is the ivory white base marked bright blue; grows 28 inches tall. 6 for 40¢; 12 for 70¢; 25 for \$1.35; 50 for \$2.60; 100 for \$5.00.

Collections of Six Darwin Tulips

These collections contain the following:

Clara Butt, Afterglow, Bleu Aimable, White Queen, Pride of Haarlem, and King Harold

9754—36 bulbs \$2.25
(6 bulbs each, value \$2.70)

9755—72 bulbs 4.25
(12 bulbs each, value \$5.00)

9756—150 bulbs 8.25
(25 bulbs each, value \$9.45)

9174 Pride of Haarlem Rich rosy carmine blooms. Every gardener should include this variety in his planting since the color is striking and rich, yet it has a softness free from any gaudiness. The base shows markings of blue. Hand in hand with the magnificent color go an artistic formation of the flower petals and huge size. In addition to this the blooms are delightfully sweet scented; 27 inches tall. 6 for 35¢; 12 for 65¢; 25 for \$1.20; 50 for \$2.35; 100 for \$4.50.

9177 Princess Elizabeth A favorite pink, shading to rose-pink with a white base. Many gardeners consider this one of the finest Darwin Tulips in its color class. Its upright strong habit, large size, and graceful form of the flower are a few of the characteristics that have greatly helped it to its present popular position. We recommend planting it freely. Grows 27 inches tall. 6 for 40¢; 12 for 70¢; 25 for \$1.35; 50 for \$2.60; 100 for \$5.00.

9176 Princess Juliana Brilliant orange-scarlet enhanced by a contrasting white base. The color is most striking planted against a background of evergreens. The blooms are artistic in size and form. They are carried upright on stately stems, 26 inches tall. Where brilliance of color is wanted this variety will give it. 3 for 27¢; 6 for 50¢; 12 for 90¢; 25 for \$1.70; 50 for \$3.35; 100 for \$6.50.

9175 Prince of the Netherlands Bright fiery scarlet with a glistening sheen of salmon-rose. This is another giant Darwin tulip of particularly rich coloring, and it is, therefore, planted extensively where a showy, striking display is wanted. The color effect is greatly enhanced by a snowy white mid-rib running from the base to the tip of each petal. Height 27 inches. 6 for 45¢; 12 for 80¢; 25 for \$1.50; 50 for \$2.95; 100 for \$5.75.

9178 Roi d'Islande (Matchless) Soft rose flowers shaded with bright violet and marked with a narrow seam of pale rose running around the edge of each petal. The blooms are truly majestic. It is an excellent variety for garden planting and also enjoys great popularity for forcing during the winter. When in full bloom the plants measure about 20 inches in height. 6 for 55¢; 12 for \$1.00; 25 for \$1.95; 50 for \$3.85; 100 for \$7.50.



These tulips were planted in the perennial border, where they present a brilliant display of color in advance of Iris, Peonies, and other hardy perennials that will follow them in bloom.

Plant NOW, and enjoy flowers early next spring

9184 Rev. Ewbank A lovely lavender flower shaded with rich violet and dove-gray. This combination of tones gives a striking effect. The color deepens somewhat toward the lower part of the petals. Height, 24 inches. 6 for 40¢; 12 for 70¢; 25 for \$1.35; 50 for \$2.60; 100 for \$5.00.

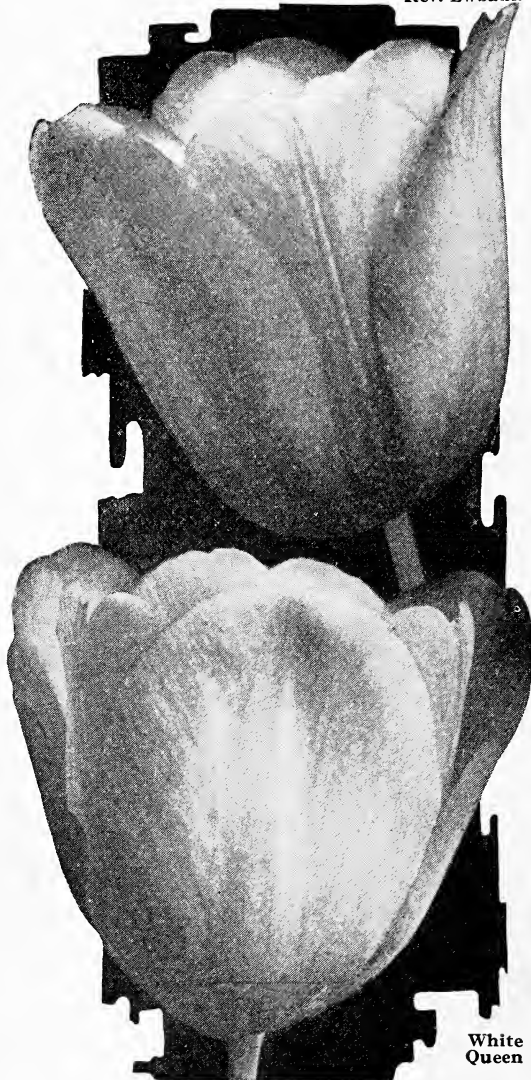
9188 Rudolph Valentino Bright lilac-rose with a satiny pink sheen. Fine for outdoors or forcing. Grows 25 inches tall. 3 for 29¢; 6 for 55¢; 12 for \$1.00; 25 for \$1.95; 50 for \$3.85; 100 for \$7.50.

9191 Scarlet Beauty Pure glowing scarlet of a purity and richness that is unsurpassed. The flowers are large and well formed. They are held upright on strong stems. Fine for the garden or forcing indoors; 25 inches tall. 3 for 29¢; 6 for 55¢; 12 for \$1.00; 25 for \$1.95; 50 for \$3.85; 100 for \$7.50.

9161 Swan Song (Chant de Cygne) Vivid scarlet flowers shaded with soft rose. Large, heavy blooms carried on elegant stems 21 inches tall. 3 for 34¢; 6 for 65¢; 12 for \$1.25; 25 for \$2.40; 50 for \$4.70; 100 for \$9.25.

9194 White City An extra fine white Darwin tulip of large size and heavy substance. The anthers are black, forming a pleasing and interesting contrast to the pure white petals. Of strong, sturdy growth. 3 for 40¢; 6 for 75¢; 12 for \$1.40; 25 for \$2.70; 50 for \$5.25; 100 for \$10.25.

Rev. Ewbank



White Queen

Tulips are easily naturalized in the garden by planting the bulbs 6 to 8 inches deep. Other flowers, such as annuals or shallow-rooted perennials, may be planted over them without in any way interfering with the bulbs. Planted in that way the bulbs will produce fine flowers for three years or longer.



In planting Tulips gardeners should keep in mind the beauty of these early spring flowers for house decoration.

9189 White Queen (La Candeur) Large, massive, white blooms, showing a faint tinge of rose when opening. It is fine outdoors planted in beds or borders and may be grown for winter flowering indoors in pots or pans. The fully expanded blooms are practically white and have white anthers; 30 inches tall. 6 for 45¢; 12 for 80¢; 25 for \$1.50; 50 for \$2.95; 100 for \$5.75.

9195 Wm. Copeland (Sweet Lavender) Rosy lilac flowers but more of a lavender shade when grown indoors. While not particularly large, it has made many friends because grown indoors during the winter it is brought into bloom with particular ease. 6 for 40¢; 12 for 70¢; 25 for \$1.35; 50 for \$2.60; 100 for \$5.00.

9192 Zulu Rich velvety purple-black flowers with a bright purple edge. The blooms are large, decidedly egg shaped, and make a wonderful display, particularly if planted together with brighter colors. It is also highly valued for winter blooming in the house. Height, 27 inches. 6 for 45¢; 12 for 85¢; 25 for \$1.60; 50 for \$3.10; 100 for \$6.00.

9193 Darwin Tulips, Mixed For mass planting or naturalizing in the border this mixture is recommended very highly. It contains a wide range of beautiful colors and is bound to make a wonderful display in the early spring garden. 6 for 35¢; 12 for 65¢; 25 for \$1.20; 50 for \$2.35; 100 for \$4.50.

Opportunity Collections for Home Garden Planting

These special collections will give many home gardeners an unusual opportunity to have a fine display of Tulips at a very reasonable price. The collections contain the following four showy and free-blooming varieties: **Dream, Pride of Haarlem, Loveliness, and Inglescombe Yellow.**

9700—**One Hundred Bulbs \$4.75**
(25 of each variety, value \$5.65)

9709—**Two Hundred Bulbs 9.00**
(50 of each variety, value \$11.00)

Early Single Tulips—First to Bloom



Keizerskroon
Crimson-scarlet,
edged gold

The Early Tulips, by reason of their blooming season, which comes from 2 to 4 weeks ahead of other Tulips, always have been great favorites for garden display. They may be planted in beds, borders, or to supply cut-flowers. For blooming indoors during the winter they are superb.

For outdoor blooming plant the bulbs as soon as available and cover 3 to 5 inches deep with fine soil. Where alternate freezing and thawing is likely to happen, cover the beds with a 2 to 3 inch layer of straw or pine boughs. The object is to shade the surface and not to keep the soil warm.

For indoor blooming in the house, plant in shallow pans, one variety to each pan, and keep cool and dark for from 6 to 8 weeks to start a strong root growth before bringing into the light.

Collections of Early Single Tulips

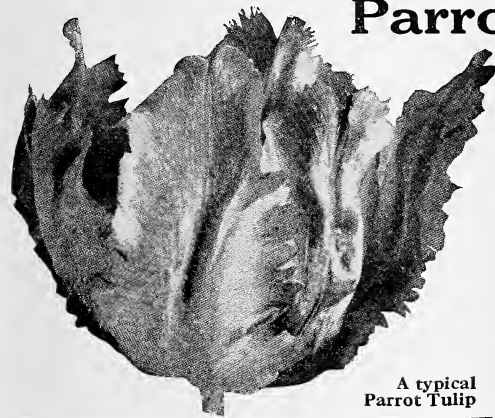
These collections contain the following four showy varieties:
Belle Alliance, Diana, Rising Sun, and Rose Luisante.

9743	24 Bulbs (6 each, value \$2.05) for	\$1.85
9744	48 Bulbs (12 each, value 3.85) for	3.25
9745	100 Bulbs (25 each, value 7.35) for	5.25

The Best Early Single Tulips

	Bulbs	6	12	25	50	100
9106 Belle Alliance Brilliant scarlet blooms of largest size		\$0.45	\$0.85	\$1.60	\$3.10	\$6.00
9108 Chrysolora Large globular flowers of a clear deep golden yellow60	1.10	2.15	4.20	8.25	
9105 Couleur Cardinal Magnificent blooms of a velvety crimson-cardinal shade50	.90	1.75	3.45	6.75	
9109 Crimson Brilliant Glowing crimson-scarlet flowers carried on long stems35	.65	1.25	2.45	4.75	
9110 De Wet The most outstanding deep orange-yellow, early tulip	1.00	1.90	3.75	7.35	14.50	
9111 Diana We consider this the best white early tulip40	.75	1.40	2.70	5.25	
9114 Fire Prince Fiery orange-scarlet flowers with yellow base40	.75	1.40	2.70	5.25	
9115 Flamingo Deep rose blooms with a distinct white stripe50	.90	1.70	3.35	6.50	
9113 Fred Moore Orange-bronze with a rosy sheen, edged gold45	.85	1.60	3.10	6.00	
9120 Keizerskroon Vivid crimson-scarlet with a broad gold edge70	1.35	2.60	5.10	10.00	
9122 L'Esperance Large rosy lilac blooms edged with white50	.90	1.75	3.45	6.75	
9131 Rose Luisante A fine satiny rose shade. Of large size55	1.05	2.00	3.95	7.75	
9129 Rising Sun Enormous flowers of a deep golden yellow shade65	1.20	2.35	4.60	9.00	
9139 Yellow Prince Rich yellow, sometimes flaked orange and orange-bronze50	.90	1.75	3.45	6.75	
9145 Mixed An excellent mixture of all colors. Makes a wonderful show35	.65	1.25	2.45	4.75	

Parrot Tulips—Colorful and Artistic



A typical
Parrot Tulip

The Parrot Tulips are of most artistic and quaint form. The petals of the blooms are laciniated and attractively fringed, as shown in the picture. The flowers are borne on slender stems and because the bulbs do not bloom as profusely as others they should be planted more closely together.

9338 Coffee Color A striking combination of brown and yellow shades. Always admired. 6 for 45¢; 12 for 80¢; 25 for \$1.50; 50 for \$2.95; 100 for \$5.75.

9339 Cramoisi Brilliant Glowing crimson flowers that will appeal to many gardeners. They are very showy and never fail to attract attention. 6 for 45¢; 12 for 80¢; 25 for \$1.50; 50 for \$2.95; 100 for \$5.75.

9342 Fantasy This is a strong upright grower with bright Geranium-red blooms edged cream-pink and shaded white. Emerald-green markings and spots. \$1.50 each; 3 for \$4.25; 6 for \$8.25; 12 for \$16.00; 25 for \$31.00.

9343 Lutea Major A lovely clear yellow flower with a few contrasting stripes and blotches of crimson and rich green—an odd combination of colors. 6 for 45¢; 12 for 80¢; 25 for \$1.50; 50 for \$2.95; 100 for \$5.75.

9346 Perfecta One of the most unusual color combinations we have. The background is yellow, shaded green, attractively striped with bright scarlet. 6 for 45¢; 12 for 80¢; 25 for \$1.50; 50 for \$2.95; 100 for \$5.75.

9353 Superfine Mixed This mixture includes the above varieties and quite a few others worth while growing. 6 for 40¢; 12 for 75¢; 25 for \$1.45; 50 for \$2.85; 100 for \$5.50; 500 for \$26.00; 1000 for \$50.00.

Collections of Four Parrot Tulips

These include the following four varieties:
Coffee Color, Cramoisi Brilliant, Lutea Major, and Perfecta.

9749—**Twenty-four bulbs**
(6 each, value \$1.80) for. **\$1.35**

9750—**Forty-eight bulbs**
(12 each, value \$3.20) for. **2.45**

Early Double Tulips—For Beds and Forcing



Snowball

Growing Early Double Tulips does not require any particular skill. They do well planted in pans for winter blooming in the house and last even longer than the Singles. They are ideal for outdoor bedding because they make a compact growth and are, therefore, less subject to injury by winds. The varieties we list are all fully double and are highly appreciated because of their long blooming season. Their massive appearance suggests their use in formal beds particularly, or in borders where a bold color effect is wanted. For full cultural directions, ask for a free copy of the Burpee leaflet, "Bulbs for Winter and Spring Blooming."

Collections of Double Tulips

These contain **Mr. Van Der Hoeft, Peach Blossom, Rubra Maxima, and Snowball.**

- 9791—24 Bulbs.....\$1.75
(6 of each variety, value \$2.10)
- 9792—48 Bulbs.....3.25
(12 of each variety, value \$3.90)
- 9793—100 Bulbs.....6.25
(25 of each variety, value \$7.45)

Ten of the Best Early Double Tulips

	Bulbs	3	6	12	25	100
9377 Beacon (Vuurbaak)..... Rich scarlet with a bright orange-scarlet sheen		\$0.29	\$0.55	\$1.00	\$1.95	\$7.50
9356 Crown of Gold Rich yellow splashed with orange and red		.30	.55	1.05	2.00	7.75
9358 Electra Large, fully double, rosy violet blooms		.40	.75	1.40	2.75	10.50
9359 Fireglow (Imperator Rubrorum)..... Glowing scarlet-red		.30	.55	1.05	2.00	7.75
9363 Mr. Van Der Hoeft Beautiful pure yellow, double flowers		.30	.55	1.05	2.00	7.75
9362 Murillo White and rose-pink, flushed and striped		.19	.35	.65	1.20	4.50
9366 Peach Blossom A fine rose-pink, flushed with white		.29	.55	1.00	1.90	7.25
9367 Rubra Maxima A fine large double crimson-scarlet flower		.29	.55	1.00	1.95	7.50
9370 Snowball Pure white, Peony-like, double blooms		.25	.45	.85	1.60	6.00
9373 Tea Rose Saffron-yellow, shaded with bright apricot		.25	.45	.85	1.60	6.00
9380 Double Mixed A complete mixture of all colors		.22	.40	.75	1.40	5.25



Rembrandt Tulips

The Rembrandt Tulips represent a class that has the characteristic growth of the Darwins, but the flowers differ in that the colors are "broken," representing color combinations in feathered, striped, and flaked designs of irregular arrangement. The Rembrandt Tulips are as easily grown as the Darwins. They make a striking effect in the garden and look their best if planted in clumps of a dozen or more somewhere in the border or in the foreground of shrubbery. While they can be grown indoors in pots, they are not as well suited for this purpose as other types.

9302 Bougainville A lovely pale lilac-rose flower with broad stripes of deep violet and a few occasional flakes of mahogany. The markings are very attractive. Height, 26 inches. 3 for 32¢; 6 for 60¢; 12 for \$1.10; 25 for \$2.10; 100 for \$8.00.

9305 Caracalla White marked with carmine-red flakes. A large, well-formed flower that adds brilliance to the garden. Good sturdy stems growing 21 inches tall. 3 for 32¢; 6 for 60¢; 12 for \$1.10; 25 for \$2.10; 100 for \$8.00.

9313 Hebe The three-color combination found in this flower never fails to attract attention. The ground is white, attractively relieved by stripes and flakes of soft lilac and deep maroon. 3 for 32¢; 6 for 60¢; 12 for \$1.10; 25 for \$2.10; 100 for \$8.00.

9321 Red Prince This is a particularly showy variety with flakes and stripes of a fiery scarlet shade upon a lovely soft rose ground. Large well-formed blooms. 3 for 32¢; 6 for 60¢; 12 for \$1.10; 25 for \$2.10; 100 for \$8.00.

9326 Semele A white background heavily striped and feathered with subdued old rose. A very effective variety of a quaint old-fashioned appearance. 3 for 32¢; 6 for 60¢; 12 for \$1.10; 25 for \$2.10; 100 for \$8.00.

9330 Suzanna The undertone of the flowers is a soft lilac shade enhanced by stripes and markings of a rich reddish brown. 3 for 32¢; 6 for 60¢; 12 for \$1.10; 25 for \$2.10; 100 for \$8.00.

9333 Rembrandts Mixed This is an excellent mixture, including the above and quite a few others belonging to the Rembrandt type. 6 for 50¢; 12 for 95¢; 25 for \$1.85; 50 for \$3.60; 100 for \$7.00; 500 for \$33.50; 1000 for \$65.00.

Collections of Rembrandt Tulips

These collections contain the four varieties: **Bougainville, Caracalla, Hebe, and Semele.**

9787—24 Bulbs.....\$2.00
(6 of each variety, value \$2.40)

9788—48 Bulbs.....\$3.75
(12 of each variety, value \$4.40)

9789—100 Bulbs.....\$7.00
(25 of each variety, value \$8.40)

Burpee's Hyacinths

Hyacinths are easily grown outdoors in beds or borders. The bulbs must be planted in the fall. Depending on the texture of the soil, they may be covered 2 to 6 inches deep and protected with a 2-inch layer of straw, leaves, or well-rotted manure during periods of severe winter weather. This cover must be removed promptly with the first warm spring days.

While large beds in regular outline planted with Hyacinths make a very good showing, gardeners should not overlook the possibilities that present themselves, particularly where Hyacinths are wanted in the smaller gardens. They are exceedingly showy, planted 6 to 8 bulbs together in clumps, in the foreground of shrubbery or in the perennial border. If planted in that way, the bulbs should be set 4 to 6 inches deep to escape any injury due to the cultivation of the beds in the summertime.

Planted deeply the bulbs will come up for a number of years and delight the gardener with their showy, sweet-scented spikes. While the spikes in subsequent years might not be as large, they are, nevertheless, desirable, and often a number of flower-spikes will develop where originally one bulb was planted.

For winter blooming in the house, place the bulbs in pots or pans filled with soil and keep dark and cool for a period of 6 to 8 weeks or until roots have developed in abundance. Then bring to a light warm room for the flower-spikes to open.

9004 Enchantress A lovely variety with attractive long-stemmed flower-spikes. The individual bells are closely set on a strong stem. They are a beautiful **light delft-blue** shaded with somewhat deeper blue. Valuable for garden display and for forcing.

9006 Gertrude Magnificent compact trusses closely set with rich **carmine-rose** bells. This is the favorite variety for outdoor bedding because the plants make a splendid uniform growth and bloom all at one time. Easily forced.

9007 Grand Maitre A glorious spike of large bells closely set on a long and strong stem. The color is a rich **deep porcelain-blue** of unusual appeal. Grand Maitre is equally well suited for outdoor growing and for forcing.

9009 King of the Blues Those who admire rich deep shades will be particularly pleased with King of the Blues. It is, in our opinion, one of the best belonging to the **deep blue** class, with elegant, long and graceful spikes.

9014 Lady Derby Clear **rich-rose** blooms forming a solid and strong spike of color. Grown indoors the flowers are a shade deeper in color. Magnificent and free blooming.

9019 La Victoire One of the earliest of all Hyacinths to come into bloom. The flowers are a brilliant **scarlet-red**. When grown indoors, they have a tendency to be lighter.

9023 L'Innocence Elegant large **white** bells gracefully arranged on a strong, heavy stem. It makes a beautiful display and is easily forced.

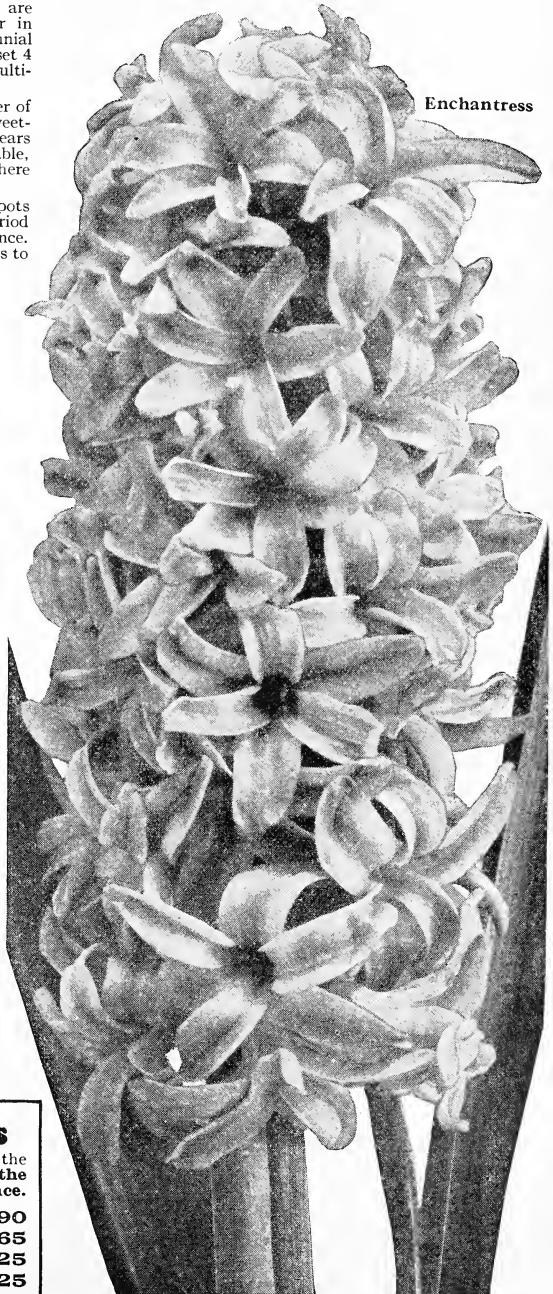
9027 Marconi This variety produces flowers just a shade deeper than Lady Derby. It is a bright **deep rose**, attractively flushed with white. Particularly suited for outdoor growing.

9031 Yellow Hammer This is quite a good deep shade of **creamy yellow**. Yellow Hammer is easily forced and gives elegant long showy flower-spikes. Also suited for outdoors.

Any of the above:

22¢ each; 3 for 60¢; 6 for \$1.15; 12 for \$2.20;
25 for \$4.25; 50 for \$8.40; 100 for \$16.50.

Mammoth Size Bulbs
for Forcing in the House
or Planting in the Garden



Collections of Hyacinths

These collections contain Mammoth Size Bulbs of the following 5 varieties: **Enchantress, King of the Blues, Lady Derby, La Victoire, and L'Innocence.**

9710—5 Bulbs.. (1 of each, value \$1.10) for **\$0.90**
9711—10 Bulbs.. (2 of each, value 2.10) for **1.65**
9712—15 Bulbs.. (3 of each, value 3.00) for **2.25**
9713—30 Bulbs.. (6 of each, value 5.75) for **4.25**

Lend this Catalog to a Friend



Burpee's Hyacinths—continued

Large Size Bulbs for Garden Planting

These bulbs are particularly recommended for garden planting. They are sure to bloom and give a splendid display of color all during April.

- | | | |
|-------------------------------|---------------------|---|
| 9005 Enchantress | Light delft blue | } <i>Any of these:</i>
18¢ each; 3 for \$0.75;
6 for 95¢; 12 for \$1.85;
25 for \$3.60; 50 for \$7.10; 100 for \$14.00;
250 for \$34.00; 500 for \$67.50. |
| 9011 Gertrude | Rich carmine-rose | |
| 9008 Grand Maitre | Deep porcelain-blue | |
| 9010 King of the Blues | Rich dark blue | |
| 9015 Lady Derby | Clear rose-pink | |
| 9020 La Victoire | Brilliant scarlet | |
| 9024 L'Innocence | The finest white | |
| 9028 Marconi | Rose, flushed white | |
| 9032 Yellow Hammer | Creamy yellow | |

Collections of five Hyacinths—Large Bulbs

These collections contain: **Enchantress, King of the Blues, Lady Derby, La Victoire, and L'Innocence.**

- | | |
|--------------------------------------|--------------------------------------|
| 9715— 5 Bulbs (1 of each) for \$0.75 | 9717—15 Bulbs (3 of each) for \$2.00 |
| 9716—10 Bulbs (2 of each) for 1.35 | 9718—30 Bulbs (6 of each) for 3.75 |

Bedding Size Hyacinths

In naturalistic planting, size of the spike is not as important as in formal beds, and for that reason many gardeners prefer this size, which is guaranteed to bloom. This size is ideal for planting in the foreground of shrubbery or for placing in the perennial border.

- | | | |
|-------------------------------|---------------------|---|
| 9070 Enchantress | Light delft blue | } <i>Any of these:</i>
14¢ each; 3 for 37¢; 6 for 70¢; 12 for \$1.35; 25 for \$2.60; 50 for \$5.10; 100 for \$10.00; 250 for \$24.50; 500 for \$48.50. |
| 9071 Gertrude | Rich carmine-rose | |
| 9072 Grand Maitre | Deep porcelain blue | |
| 9073 King of the Blues | Dark blue | |
| 9074 Lady Derby | Clear rose-pink | |
| 9075 La Victoire | Brilliant scarlet | |
| 9076 L'Innocence | The finest white | |
| 9078 Yellow Hammer | Creamy yellow | |

9036 Hyacinths

All Colors Mixed

This low-priced mixture will give every gardener an opportunity to create a most effective display of color by planting it liberally. This mixture is excellent if arranged either in a natural or carefree effect or in straight lines where a showy border with lots of color is the object. While the bulbs are classed as bedding size, they are guaranteed to bloom next spring and develop a showy spike well filled with large bells. 3 for 37¢; 6 for 70¢; 12 for \$1.35; 25 for \$2.60; 50 for \$5.10; 100 for \$10.00; 250 for \$24.50; 500 for \$48.50.

NARCISSUS—for Growing in Water and Pebbles



Paper White Narcissus

9460 Paper White

No other flowering bulb can be relied upon to give as quick and showy a display as the Paper White Narcissus. They may be had in bloom throughout the winter and spring by making succession plantings. All that is needed is a bowl, pebbles or fibre, and water. The American-grown bulbs which we offer are sure to give satisfactory results, but we recommend planting them not before the end of November, in order to insure a display of large, showy blooms. Our experience is that the best results are obtainable by late planting. It is important to get the bulbs to develop a good root system before the top growth begins by placing them in a cool cellar or closet for several weeks before they are brought to light and flowered in a cool room. 10¢ each; 3 for 27¢; 6 for 50¢; 12 for 95¢; 25 for \$1.85; 50 for \$3.60; 100 for \$7.00.

9459 **Soleil d'Or** This splendid Narcissus is in many ways similar to the Paper White but the blooms are an intense yellow color. The center of the cup is shaded with orange. It may be grown in pebbles or fibre, the same as the Paper Whites offered above. 18¢ each; 3 for 50¢; 6 for 90¢; 12 for \$1.75; 25 for \$3.35; 100 for \$13.00.

8650 The Chinese Sacred Lily

To Grow Indoors in Pebbles and Water

The botanical name for the Chinese Sacred Lily is *Narcissus orientalis*. It resembles in many ways the Paper White Narcissus offered above but usually grows taller and produces larger blooms. It is easily grown in pebbles and water or in bowls filled with fibre, moss, or sand. Plant 3 to 4 bulbs to a bowl and keep dark and cool for not less than three weeks before bringing into a warm room. 12¢ each; 3 for 32¢; 6 for 60¢; 12 for \$1.10; 25 for \$2.10; 50 for \$4.10; 100 for \$8.00.

Burpee's Bulbs are Guaranteed to Bloom

NARCISSUS or DAFFODILS

There are a number of outstanding points that recommend Narcissus, or, as they are commonly called, Daffodils, to everyone who has a garden. Above all, they make a showy display in the garden. If grown under average conditions, they are not only permanent but actually increase in size and number with every year. From time to time it may be necessary to replant after the foliage has died down in early summer in order to give the bulbs sufficient space to gather nourishment and bloom freely. The sweet perfume of most varieties has a further attraction that makes Daffodils dear to most gardeners. The varieties we offer on the following two pages are perfectly hardy. They may be left in the ground, needing nothing more than perhaps a two-inch layer of well-rotted manure, straw, or leaves to insure perfect protection against severe freezing weather. Our free leaflet, "Bulbs for Winter and Spring Blooming," gives full planting directions.

Large Trumpet Varieties

9401 Emperor Deep Primrose-yellow perianth and a large rich yellow trumpet. A magnificent and showy early-flowering variety, growing about 20 inches tall. It is fine for the garden, for cutting, and for growing indoors. 18¢ each; 3 for 50¢; 6 for 95¢; 12 for \$1.80; 25 for \$3.50; 100 for \$13.50.

9403 Empress A fine, large, well-formed flower, composed of a showy sulphur-white star-like perianth and a bright golden yellow trumpet that forms a pleasing and artistic contrast to the perianth; 18 inches tall. 18¢ each; 3 for 50¢; 6 for 90¢; 12 for \$1.75; 25 for \$3.35; 100 for \$13.00.

9408 Improved Golden Spur A large and remarkably fine flower of a uniform deep golden yellow shade. It is excellent for forcing, growing 16 inches tall, and is one of the earliest to bloom out-of-doors. 20¢ each; 3 for 55¢; 6 for \$1.00; 12 for \$1.90; 25 for \$3.75; 100 for \$14.50.

9417 King Alfred Both perianth and trumpet are a rich golden yellow color. A flower of well-rounded shape with a broad and heavy perianth and a widely expanding trumpet having a beautiful frilled brim. 24¢ each; 3 for 65¢; 6 for \$1.25; 12 for \$2.40; 25 for \$4.65; 100 for \$18.00.

9415 Olympia A large flower with a twisted perianth of a bright deep Primrose yellow color. The trumpet is rich yellow frilled at the brim. It is an enormous flower, splendid for the garden and pot culture. 29¢ each; 3 for 80¢; 6 for \$1.50; 12 for \$2.90; 25 for \$5.65; 100 for \$22.00.

9413 Princes An easily grown Daffodil, particularly valuable for naturalizing among shrubbery or in the woods. The flowers are of good size. They have a sulphur-white perianth and a clear yellow trumpet. 14¢ each; 3 for 37¢; 6 for 70¢; 12 for \$1.35; 25 for \$2.60; 100 for \$10.00.

9419 Robert Sydenham A glorious Daffodil, with widely expanding perianth of a sulphur-yellow color. The deep yellow, beautifully frilled trumpet harmonizes well with the lighter perianth. 17 inches tall. 30¢ each; 3 for 85¢; 6 for \$1.65; 12 for \$3.15; 25 for \$6.15; 100 for \$24.00.

9422 Spring Glory A splendid bi-color Daffodil with a clear white perianth made up of elegant long petals. The trumpet is well formed and reflexed at the brim. It is a rich cream-yellow color. 18¢ each; 3 for 50¢; 6 for 95¢; 12 for \$1.80; 25 for \$3.50; 100 for \$13.50.

9418 Van Waveren's Giant The largest of all Large Trumpet Daffodils in our list. The perianth is bright Primrose and the trumpet is deep rich yellow. The trumpet is beautifully flanged at the brim. 30¢ each; 3 for 85¢; 6 for \$1.65; 12 for \$3.15; 25 for \$6.15; 100 for \$24.00.

9420 Victoria Creamy white perianth and a rich yellow trumpet. A fragrant variety, with flowers of good form, growing on stems 16 inches tall. The texture of the flowers is substantial and they are carried on a strong stem. 18¢ each; 3 for 50¢; 6 for 90¢; 12 for \$1.75; 25 for \$3.35; 100 for \$13.00.

9470 Large and Medium Trumpet Mixed In this mixture we have combined a good assortment of the best Daffodils that belong to the Large and Medium Trumpet class. Fine for naturalizing. 3 for 29¢; 6 for 55¢; 12 for \$1.00; 25 for \$1.95; 100 for \$7.50.



Spring Glory

Medium Trumpet Daffodils

9433 Autocrat (Incomparabilis) Primrose-yellow perianth and a deep golden yellow, widely expanding cup; 20 inches tall. 16¢ each; 3 for 45¢; 6 for 85¢; 12 for \$1.60; 25 for \$3.10; 100 for \$12.00.

9432 Bernardino (Incomparabilis) Creamy white perianth and a large pale yellow, frilled cup, attractively edged apricot; 20 inches. 27¢ each; 3 for 75¢; 6 for \$1.40; 12 for \$2.65; 25 for \$5.15; 100 for \$20.00.

9426 Conspicuous (Barrii) Large light yellow perianth. Yellow cup, edged orange-scarlet. Very showy. Grows 21 inches tall. 12¢ each; 3 for 32¢; 6 for 60¢; 12 for \$1.10; 25 for \$2.10; 100 for \$8.00.

9434 Evangeline (Leedsii) The broad perianth is pure white, contrasting with the large expanding citron-yellow cup; 18 inches. 15¢ each; 3 for 40¢; 6 for 75¢; 12 for \$1.45; 25 for \$2.85; 100 for \$11.00.

9429 Lucifer (Incomparabilis) Sulphur-white perianth; cup yellow, edged orange. 14¢ each; 3 for 37¢; 6 for 70¢; 12 for \$1.35; 25 for \$2.60; 100 for \$10.00.

9431 Mrs. Langtry (Leedsii). White perianth; Primrose cup, edged lemon. 14¢ each; 3 for 37¢; 6 for 70¢; 12 for \$1.35; 25 for \$2.60; 100 for \$10.00.

9423 Red Chief (Barrii) Broad white perianth, frilled orange-red cup. 16¢ each; 3 for 45¢; 6 for 85¢; 12 for \$1.60; 25 for \$3.10; 100 for \$12.00.

9427 Sea Gull (Barrii) Broad white perianth, lemon cup, edged orange; 17 inches. 16¢ each; 3 for 45¢; 6 for 85¢; 12 for \$1.60; 25 for \$3.10; 100 for \$12.00.

9438 Sir Watkin (Incomparabilis) Primrose-perianth; cream cup, edged orange; 21 in. 16¢ each; 3 for 45¢; 6 for 85¢; 12 for \$1.60; 25 for \$3.10; 100 for \$12.00.

9428 White Lady (Leedsii) Broad creamy perianth; frilled canary-yellow cup; 20 in. 12¢ each; 3 for 32¢; 6 for 60¢; 12 for \$1.15; 25 for \$2.20; 100 for \$8.50.

Collections of Four Large Daffodils

These collections contain the following large-flowering varieties of Daffodils: **Conspicuous, Mrs. Langtry, Emperor, and Empress.**

9724—12 Bulbs (3 each, value \$1.69), for **\$1.45**
9725—24 Bulbs (6 each, value 3.15), for **2.65**
9726—48 Bulbs (12 each, value 6.00), for **5.00**

Double Trumpet Narcissus

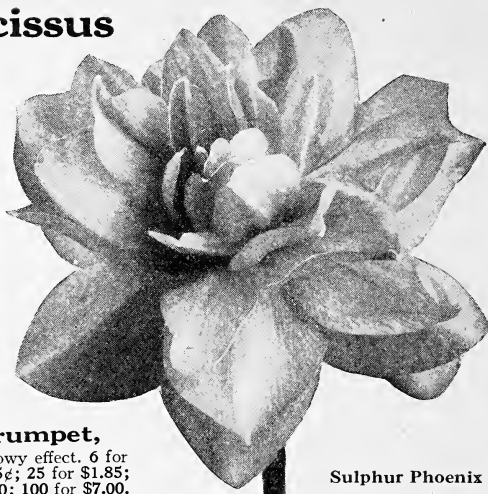
In showy appearance the Double Trumpet Narcissus take their place right alongside the Large Trumpet varieties. They give a fine display in the garden either planted in beds or grouped together a dozen or so among perennials or shrubs. Also fine for winter forcing and cutting.

9447 Sulphur Phoenix We like this variety particularly well. It has large, well shaped, almost round blooms, with creamy white petals shaded sulphur-yellow. 18¢ each; 3 for 50¢; 6 for 90¢; 12 for \$1.75; 25 for \$3.35; 50 for \$6.60; 100 for \$13.00.

9446 Primrose Phoenix Lovely large Primrose-yellow double flowers carried on stems 20 inches long. Particularly fine for cutting. 20¢ each; 3 for 55¢; 6 for \$1.05; 12 for \$2.00; 25 for \$3.85; 50 for \$7.60; 100 for \$15.00.

9445 Von Sion Golden yellow flowers, with a double trumpet and a single perianth. 16¢ each; 3 for 45¢; 6 for 85¢; 12 for \$1.60; 25 for \$3.10; 100 for \$12.00.

9448 Albus plenus odoratus Elegant large white double blooms. Sweet-scented. 3 for 22¢; 6 for 40¢; 12 for 70¢; 25 for \$1.35; 50 for \$2.60; 100 for \$5.00.



Sulphur Phoenix

Ornatus



9472 Double Trumpet, Mixed Gives a showy effect. 6 for 50¢; 12 for 95¢; 25 for \$1.85; 50 for \$3.60; 100 for \$7.00.

Poet's Narcissus—Poeticus

This is a very showy type of Narcissus with a large sweet-scented flower carried on a fine long stem. They are highly valued for garden display and cutting. Whether planted in masses or singly they always make a satisfactory display. They bloom profusely and are permanent if planted in a location where the bulbs will not be disturbed. It is best to set the bulbs about six inches deep and a foot apart.

9456 Ornatus A splendid large flower with a pure white perianth and a white cup margined bright crimson. 3 for 34¢; 6 for 65¢; 12 for \$1.20; 25 for \$2.35; 50 for \$4.60; 100 for \$9.00.

9453 Horace A snow-white perianth composed of large, well-rounded, overlapping petals. The small white cup is edged crimson-red. 3 for 45¢; 6 for 85¢; 12 for \$1.60; 25 for \$3.10; 50 for \$6.10; 100 for \$12.00.

9458 Pheasant's Eye This likes somewhat drier soil than others. Snow-white perianth, small white cup, edged scarlet. An old favorite. 6 for 50¢; 12 for 90¢; 25 for \$1.75; 50 for \$3.45; 100 for \$6.75.

9471 Poeticus and Poetaz Mixed

In this mixture we have combined the best varieties of these two types. We recommend it particularly for naturalizing among perennials, shrubs, or light woods. 3 for 27¢; 6 for 50¢; 12 for 90¢; 25 for \$1.70; 50 for \$3.35; 100 for \$6.50.



Elvira

Poetaz or Cluster-Flowered Narcissus

Somewhat smaller flowers than those of the Poeticus type, but the blooms are arranged in clusters of from 3 to 6 on the top of each spike. Whether grown in the garden, in beds, or naturalized among shrubs, perennials, or in the woodland, they give an attractive display early in the spring before the tulips come into bloom. Also fine for winter blooming.

9454 Helios Elegant clusters of pure golden yellow flowers carried on fine strong stems. Blooms early and freely. Easily forced for winter flowering. 18¢ each; 3 for 50¢; 6 for 95¢; 12 for \$1.80; 25 for \$3.50; 50 for \$6.85; 100 for \$13.50.

9455 Laurens Koster Charming flower-clusters composed of two to six large, pure white blooms with a contrasting orange-yellow cup. 15¢ each; 3 for 40¢; 6 for 75¢; 12 for \$1.45; 25 for \$2.85; 100 for \$11.00.

9452 Elvira The splendid large blooms are borne in clusters of from 2 to 6 flowers each. The perianth is pure white and the cup rich yellow. 15¢ each; 3 for 40¢; 6 for 75¢; 12 for \$1.45; 25 for \$2.85; 100 for \$11.00.

The Popular Jonquils

9463 Single Campernelle Graceful, golden yellow blooms produced in clusters on stems 1½ feet tall. Perfectly hardy, free flowering, and delicately perfumed. Jonquils are wonderful for naturalizing in the woodland or meadow, but they are as fine for garden display, and also easily grown indoors for winter blooming. 12¢ each; 3 for 32¢; 6 for 60¢; 12 for \$1.15; 25 for \$2.20; 50 for \$4.35; 100 for \$8.50.

Beautiful Lilies—to plant this Fall

Please note the different delivery dates of Lilies. Where winter is likely to make its appearance before these dates, cover your ground with 2 feet or more of manure, leaves, or straw, to prevent freezing of the surface until the bulbs have been planted. Set your bulbs deeply, covering with about three times as much soil as their largest diameter. The one exception to this is Madonna Lily, which should be covered only 2 inches deep. All Lilies listed are hardy and will increase in size and beauty with every year.



Bermuda Easter Lily

8602 Bermuda Easter Lily (*L. Harrisii*) The Bermuda Easter Lily is the strongest of all Longiflorum Lilies, commonly known as Easter Lilies. An excellent variety for winter blooming, growing 4 feet tall and carrying 4 to 12 large waxy white flowers on each stem. Delightfully fragrant. The blooms are 4 to 6 inches long and often are tinged with green near the base. Planted in the open they bloom during July and August. *Ready for delivery in September.* 35¢ each; 3 for 95¢; 6 for \$1.80; 12 for \$3.50.

8614 Easter Lily (*L. formosum*) This is quite similar to the Bermuda Easter Lily, but does not make as tall a growth and, therefore, is better suited for outdoor growing in the garden. Many people call this the Japanese Easter Lily. The plants grow from 1 to 3 feet tall and bear at the top a whorl of 2 to 10 flowers. The blooms are waxy white with a green tinge at the base. Perfectly hardy, blooming during July and August. *Ready for delivery November 1st.* 40¢ each; 3 for \$1.05; 6 for \$2.00; 12 for \$3.90.

8644 Turk's Cap Lily (*L. Batemanii*) An excellent Lily, native of Japan. Hardy, sturdy, easily grown. Carries as many as 12 blooms on each stem; 2 to 4 feet tall, of a pale orange-red or apricot color. The blooms measure 3 to 5 inches across. *Ready November 1st.* 35¢ each; 3 for 95¢; 6 for \$1.80; 12 for \$3.50.

8603 Canadian Lily (*L. canadense*) Elegant plants 2 to 5 feet tall, bearing from 1 to 10 showy flowers on a single stem. The individual blooms are 2 to 3 inches long and nearly as wide. They are bright orange-yellow spotted purplish brown. Blooms from June to August. The anthers are bright red. *Ready November 1st.* 30¢ each; 3 for 85¢; 6 for \$1.60; 12 for \$3.05.

8654 Yellow Show Lily (*L. Henryi*) A native of Central China and one of the very best Lilies in existence. Long-lived, hardy, sturdy, growing 4 to 8 feet tall and bearing as many as 20 orange-yellow flowers spotted reddish brown. Marked green at the base. Blooms during August and September. *Ready November 1st.* 75¢ each; 3 for \$2.05; 6 for \$3.95; 12 for \$7.75.

8655 White Show Lily (*L. speciosum album*) Large white flowers of heavy substance with a greenish band running through the center of each petal. An easily grown, hardy, and showy variety that will persist almost indefinitely. *Ready November 1st.* 60¢ each; 3 for \$1.60; 6 for \$3.05; 12 for \$5.95.

8634 Show Lily (*L. speciosum rubrum*) A beautiful variety growing 2 to 4 feet tall. The blooms are white, suffused rose-pink in the center and spotted rich red. Blooms during August and September. *Ready November 1st.* 45¢ each; 3 for \$1.20; 6 for \$2.30; 12 for \$4.50.



Please note the different dates on which Lilies are ready for shipping

8619 Golden Banded Lily of Japan (*Lilium auratum*) A magnificent variety growing 3 to 6 feet tall with 2 to 15 large white flowers attractively spotted with bright crimson. Each petal has a yellow center stripe. *Ready for delivery November 1st.* 40¢ each; 3 for \$1.05; 6 for \$2.00; 12 for \$3.90; 25 for \$7.65; 100 for \$30.00.

8653 Yellow Japanese Lily (*L. Hansonii*) A permanent, very strong, and easily grown Lily, 3 to 5 feet tall, bearing on each stem as many as 10 showy, bright golden yellow flowers spotted purplish brown. *Ready for delivery November 1st.* 75¢ each; 3 for \$2.05; 6 for \$3.95; 12 for \$7.75.

8638 Swamp Lily (*L. superbum*) Magnificent large flowers of a brilliant orange-scarlet, shaded yellow and spotted brown; 3 to 8 feet tall. Blooms from July till September. *Ready for delivery in October.* 30¢ each; 3 for 85¢; 6 for \$1.60; 12 for \$3.05.

Madonna Lily (*Lilium candidum*)

8625 Madonna Lily (*L. candidum*) A very popular Lily growing 2 to 4 feet tall and bearing fine large flowers in clusters from 3 to 20 at the top of each stem. The blooms are waxy white and have yellow anthers. The individual blooms are 3 to 4 inches long and fully as wide. They have a delightful fragrance. Blooms during June and July. *Ready for delivery in September.* Selected bulbs: 30¢ each; 3 for 85¢; 6 for \$1.60; 12 for \$3.05.

8626 Madonna Lily Extra large selected bulbs that will produce more flowers to a bulb than the smaller bulbs offered above. *September delivery.* 40¢ each; 3 for \$1.05; 6 for \$2.00; 12 for \$3.90.

8631 Regal Lily (*L. regale*) The flowers measure 4 to 6 inches across and have a sweet fragrance. The blooms are bright canary-yellow in the throat shading to bluish-white toward the edges. Blooms profusely during June and July. *Ready for delivery November 1st.* 65¢ each; 3 for \$1.75; 6 for \$3.35; 12 for \$6.55; 100 for \$51.50.

9797 Collection of Four Beautiful Lilies

This collection contains one bulb each of **Golden Banded Lily of Japan, Show Lily, Swamp Lily, and Regal Lily**, value \$1.80, postpaid **\$1.50**

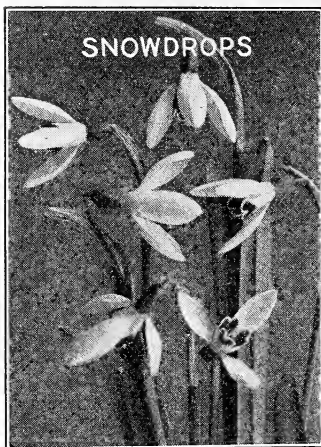


Show Lily

(*Speciosum rubrum*)

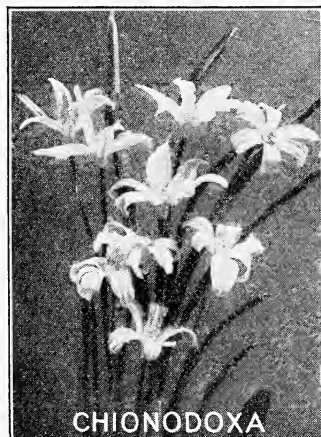
Please note the different shipping dates on Lilies

The First Flowers of Spring



9496 Snowdrops

(*Galanthus nivalis*) The earliest of all outdoor flowering bulbs, ideal for naturalizing among perennials or in the foreground of shrubs. By making plantings in different locations it is easy to have a succession of blooms for three weeks and longer. Plant 2 inches deep and 3 to 4 inches apart. 6 for 35¢; 12 for 60¢; 25 for \$1.05; 50 for \$2.05; 100 for \$4.00; 500 for \$18.00.



9480 Chionodoxa Luciliae

(*Glory of the Snow*) Of all the small early-flowering bulbs *Glory of the Snow* is our first choice. Its graceful flowers are white, more or less tipped with rich blue at the end of each petal. Plant 3 inches deep and 2 inches apart. Fine for rock gardens. 3 for 17¢; 6 for 30¢; 12 for 50¢; 50 for \$1.85; 100 for \$3.50.

9498 Snowflakes

(*Leucojum*) This is somewhat similar to the Snowdrops listed above but, if anything, still more attractive. The dainty white flowers are tipped with green gracefully nodding on a stem 7 to 8 inches tall. Easily grown and fine for cutting. Plant 2 to 3 inches deep and 2 to 3 inches apart. The flowers are borne in early spring. 3 for 25¢; 6 for 45¢; 12 for 85¢; 25 for \$1.65; 50 for \$3.20; 100 for \$6.25.

The early spring flowers have always had a particular appeal to all kinds of gardeners. It is only natural that after months of cold and freezing weather people will greet the tender little shoots that have pushed through the ground, even though snow and ice have not vanished entirely. First of all, we find the Snowdrops making their appearance. Planted in groups of twenty-five to five hundred bulbs, according to the effect wanted, they will present a great attraction in the early spring garden. Soon after the Snowdrops, Crocus with their brilliant colors will come into the picture. For permanent results, they should be planted among the shrubbery, where they will bloom year after year. Chionodoxa is the next spring flower to appear, and right here we want to urge all gardeners to give this little easily grown and showy spring-flowering bulb an opportunity to prove just how much of a display it will make. Not much later we find Scillas, Grape Hyacinths, and Fritillaria preceding the Daffodils, Hyacinths, and Tulips.

Crocus—Harbingers of Spring

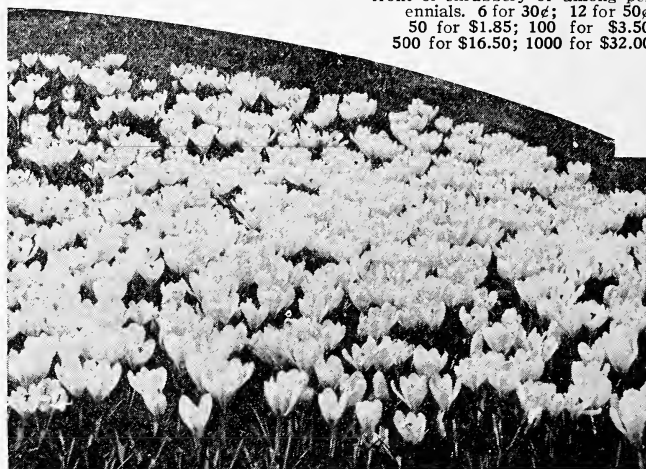
Hardly any other flower is so well adapted for naturalizing as the Crocus. Many people plant it in the lawn, where indeed it will make a good display. Yet, for permanent results, we suggest that it be planted in the foreground of shrubbery where the foliage can ripen properly and insure continued existence. Plant the bulbs about 4 inches apart and cover with 2 inches of fine soil. They bloom very early and make a wonderful display with their bright colors. Easily grown in shallow pots for winter blooming in the house.

- | | |
|---|--|
| 9504— Baron Brunov Deep purple flowers. | } 6 for 35¢
12 for 60¢
25 for \$1.15
50 for \$2.20
100 for \$4.25
500 for \$20.00
1000 for \$38.00 |
| 9523— Mont Blanc White with orange anthers. | |
| 9526— Pallas White ground, striped lilac. | |
| 9533— Sir Walter Scott White, striped pale lilac. | |
| 9535— Purpurea Grandiflora Rich purple. | |
| 9515— Golden Yellow 6 for 40¢; 12 for 70¢; 25 for \$1.35;
50 for \$2.60; 100 for \$5.00; 500 for \$24.00; 1000 for \$45.00. | |

Crocus by Colors

- | | |
|---|--|
| 9538— Blue and Purple Shades Very fine. | } Any of these:
6 for 30¢; 12 for 50¢; 50 for \$1.85;
100 for \$3.50; 500 for \$16.50; 1000 for \$32.00. |
| 9539— Striped, Mixed Various striped varieties. | |
| 9540— White All white varieties. | |
| 9541— Yellow Shades Light and dark yellow. 6 for 35¢; 12 for 60¢; 25 for \$1.10; 50 for \$2.10; 100 for \$4.00; 500 for \$19.00; 1000 for \$36.00. | |

9542 **Fine Mixed Crocus** A magnificent and complete mixture of all the finest varieties of Crocus. Plant them in masses of a hundred or more in the front of shrubbery or among perennials. 6 for 30¢; 12 for 50¢; 50 for \$1.85; 100 for \$3.50; 500 for \$16.50; 1000 for \$32.00.




Collections of Crocus

These collections contain Golden Yellow, Mont Blanc, Pallas, and Purpurea Grandiflora.

- | | | |
|----------------|---------------------------------|--------|
| 9701—24 Bulbs | (6 bulbs each, value \$1.45), | \$1.25 |
| 9702—48 Bulbs | (12 bulbs each, value 2.50), | 2.25 |
| 9703—100 Bulbs | (25 bulbs each, value 4.80), | 3.95 |
| 9704—200 Bulbs | (50 bulbs each, value 9.20), | 7.35 |
| 9705—400 Bulbs | (100 bulbs each, value 17.75), | 14.00 |

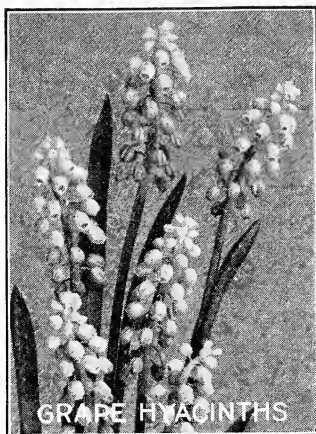
Scilla—Bluebells

9490 Sibirica  A popular early spring flower of an attractive rich blue color, coming into bloom shortly after the Snowdrops. Excellent for naturalizing by planting 3 to 5 inches apart and about 3 inches deep. They are perfectly hardy. Also fine for indoor growing. 6 for 35¢; 12 for 65¢; 25 for \$1.20; 50 for \$2.35; 100 for \$4.50.

Scilla campanulata

This interesting class blooms during May and early June. The bell-shaped flowers are carried on slender, graceful spikes. Plant 3 to 4 inches deep and 6 inches apart.


9491 Blue	} Any of these:	6 for 35¢; 12 for 65¢;
9492 Pink		25 for \$1.20; 50 for
9493 White		\$2.35; 100 for \$4.50.

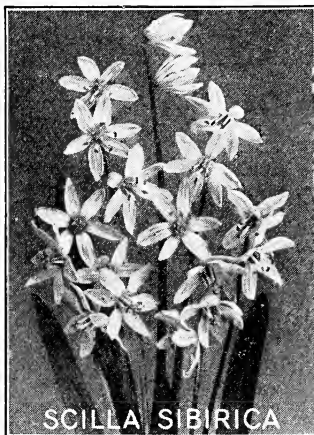


GRAPE HYACINTHS

Grape Hyacinths

9485 Heavenly Blue  Graceful and dainty early spring-flowering bulbs, producing slender little spikes closely set with small round bells of a bright blue color. They bloom profusely during April and will last almost indefinitely if planted about 4 to 5 inches deep. For best effects, set them in clumps 3 to 4 inches apart. They can also be grown for winter blooming, but must not be forced by high temperature. 12 for 50¢; 25 for 95¢; 50 for \$1.85; 100 for \$3.50; 500 for \$16.50.

9486 White  Not long ago a visitor who saw our White Grape Hyacinths remarked about the wonderful showing they were making. In fact, the little white bells on the graceful spikes 6 inches long are a beautiful subject for the spring garden. They are perfectly hardy. 12 for 70¢; 50 for \$2.60; 100 for \$5.00.



SCILLA SIBIRICA

Fritillaria

8925 Mixed (Snake's Head) These are comparatively little known but deserve to be grown more widely. They are perfectly hardy and excellent for planting among shrubbery or in the perennial borders. Along streams and where the ground is shaded they do particularly well. The fairly large bell-shaped flowers are curiously marked, not unlike the scales on a snake's head. They come in various shades and combinations of colors. There are very bright purple and bronze tints, also white ones, but all of them are marked with contrasting colors, including green. Plant the bulbs about 4 to 5 inches deep and about 8 inches apart. 6 for 35¢; 12 for 65¢; 25 for \$1.25; 100 for \$4.75.

9397 Tulipa Clusiana

Lovely, medium size, elongated flowers of a bright cherry-red on the outside and creamy white on the inside. Fine for the rock garden or perennial border. A botanical species that gives a good effect. 3 for 30¢; 6 for 55¢; 12 for \$1.05; 25 for \$2.00; 50 for \$3.95; 100 for \$7.75.

Spanish Iris (*Iris Xiphium*)

Graceful slender stems bearing showy, large blooms during May and June. Also fine for growing indoors in pots. Has grass-like foliage and is excellent for rock garden planting.

8561 Cajanus Canary, blotched yellow	} 6 for 50¢; 12 for 95¢; 25 for \$1.85; 50 for \$3.60; 100 for \$7.00.
8562 King of the Blues Deep blue	
8564 King of the Whites White	
8563 Flora White and lavender	

8565 Spanish Iris, Mixed This mixture contains the above and many other fine showy colors. 6 for 40¢; 12 for 75¢; 25 for \$1.45; 50 for \$2.85; 100 for \$5.50.

Dutch Iris (*Xiphium Hybrids*)

This is a giant flowering strain of the Spanish Iris, blooming two weeks earlier. Very showy, coming into bloom right after the Cottage Tulips. Delicately sweet scented. Fine for cutting.

8580 Albert Cuyt Primrose and blue	} 6 for 50¢; 12 for 90¢; 25 for \$1.70; 50 for \$3.35; 100 for \$6.50.
8581 David Teniers Yellow and blue	
8582 Hart Nibbrig Brilliant clear blue	
8584 Rembrandt Blue, orange blotch	
8583 Imperator Brilliant blue	
8585 White Excelsior Large white	} 6 for 55¢; 12 for \$1.00; 50 for \$3.85; 100 for \$7.50.
8586 Yellow Queen Bright yellow	
8587 Dutch Iris, Mixed All colors.	6 for 40¢; 12 for 75¢; 25 for \$1.45; 50 for \$2.85; 100 for \$5.50.

Anemone

8909 St. Brigid An easily grown Anemone that blooms profusely from early March until May. Autumn is the right time for planting, placing the bulbs 2 to 3 inches deep and from 5 to 6 inches apart. Firm the soil around the roots thoroughly to give them a satisfactory start. Includes all colors, such as pink, rose, purple, lavender, etc. 3 for 25¢; 6 for 45¢; 12 for 85¢; 50 for \$3.10; 100 for \$6.00.

8969 Single Poppy-Flowered, De Caen

A magnificent variety, including a surprisingly large number of colors. It blooms early in the spring and prefers a medium rich, moderately moist soil. This type distinguishes itself by its strong growth and profusion of blooms. 3 for 25¢; 6 for 45¢; 12 for 85¢; 50 for \$3.10; 100 for \$6.00.



Anemone

Bulbs for Winter-Flowering in the House



Amaryllis

8903 Johnsoni A beautiful, large, trumpet-shaped, crimson flower marked with a broad white stripe. Easily grown in the house in any moderately cool room. Keep rather dry until the bulb begins sprouting. 60¢ each; 3 for \$1.60; 6 for \$3.05; 12 for \$5.95.

8902 Equestris Brilliant orange-scarlet flowers with a green and white throat. 35¢ each; 3 for 95¢; 6 for \$1.80; 12 for \$3.50.

8907 Giant American Hybrids This is an assortment of a particularly wide range of excellent colors. The flowers are all large and they are carried on strong stems. Easily grown. 70¢ each; 3 for \$1.90; 6 for \$3.65; 12 for \$7.15.



Calla

These are easily grown for winter blooming in the house. The bulbs require quite large pots filled with rich soil. Keep the plants fairly cool, say at about 40 to 50 degrees F., until they are wanted for blooming, when the temperature should be about 10 degrees more.

8919 Ethiopica (Lily-of-the-Nile) This is the well-known white Calla, with its beautiful trumpet-shaped blooms and rich green foliage. 35¢ each; 3 for 95¢; 6 for \$1.80; 12 for \$3.50.

8918 Elliottiana (Yellow Calla) A most attractive variety, with rich golden yellow flowers and variegated green and white foliage. 35¢ each; 3 for 95¢; 6 for \$1.80; 12 for \$3.50.

The bulbs offered on this page are easily grown for winter blooming either in the greenhouse, the conservatory, or in any room where the temperature is not allowed to drop below 45 degrees F. In addition to the varieties given here we offer in this catalog a wide assortment of hardy bulbs which are also well adapted for growing in the house for winter blooming. **Narcissus** or **Daffodils**, particularly Paper Whites, as well as **Tulips**, **Hyacinths**, **Scillas**, **Grape Hyacinths**, **Spirea**, **Lilies**, **Crocus**, **Snowdrops**, and **Chionodoxa**, make excellent flowers for growing indoors during the winter.

Freesia—Purity



Freesia

9550 Purity Glistening pure white flowers carried in long racemes. An excellent cut-flower which does best in the greenhouse. Delightfully sweet scented. Grow at a temperature of about 50 degrees F. 6 for 35¢; 12 for 65¢; 50 for \$2.35; 100 for \$4.50.

9557 Rainbow Hybrids A beautiful strain with flowers ranging through yellow, lavender, pink, and purple. All very beautiful and delicate. The flowers have a rich fragrance. 6 for 40¢; 12 for 70¢; 50 for \$2.60; 100 for \$5.00; 500 for \$24.00.

Oxalis Suitable for pot culture and winter blooming. Unlike other bulbs, they need not be set away to form roots, but begin to grow as soon as potted. Place 4 to 6 bulbs in each pan and keep moderately moist at all times.

8971 Bermuda Buttercup Rich buttercup-yellow.

8973 Grand Duchess Pink Very beautiful.

8974 Grand Duchess Lavender Free flowering.

8996 Grand Duchess White A superb variety.

8999 Bowiei Large deep pink flowers. Blooms profusely.

Any of the above: 6 for 35¢; 12 for 60¢; 25 for \$1.05; 50 for \$2.05; 100 for \$4.00.

8952 Hirta Shades of rose and lavender. Free blooming. 6 for 40¢; 12 for 70¢; 25 for \$1.35; 50 for \$2.60; 100 for \$5.00.

Ranunculus



Ranunculus 8980 French Mixed

Easily grown plants which will make a wonderful display of flowers during the winter months. The blooms are double and come in many bright colors excepting blue. The plants grow 6 to 12 inches tall, branching freely and blooming profusely. Plant the bulbs 3 inches deep in boxes filled with fine soil and keep moderately moist and warm. Ranunculus are excellent for pots and cutting. 3 for 25¢; 6 for 45¢; 12 for 85¢; 50 for \$3.10; 100 for \$6.00.

Peonies for Your Garden

What looks prettier than a well-grown Peony plant covered with a mass of gigantic flowers? With ordinary care the plants will increase in size and number of blooms with every year. Our leaflet, "Peonies," will be mailed free.



Mons. Jules Elie

Our Peony divisions have 3 to 5 strong eyes

Four Glorious Peonies

These contain the following four remarkable varieties: **Baroness Schroeder**, **Karl Rosefield**, **Mons. Jules Elie** and **Eugenie Verdier**.

98P94 One each	\$3.50
(4 roots, value \$4.00)	
98P98 Three each	10.00
(12 roots, value \$10.80)	
98P99 Six each	19.00
(24 roots, value \$21.00)	

87P00 Baroness Schroeder A rose type, late-flowering variety, considered the best all-around Peony in existence. Sweet-scented baby-pink blooms shading to white. \$1.00 each; 3 for \$2.70; 6 for \$5.25; 12 for \$10.00.

87P05 Duchess de Nemours An early-flowering crown type Peony with magnificent snow-white, cup-shaped blooms. Of upright branching growth; lovely fragrant flowers. 55¢ each; 3 for \$1.45; 6 for \$2.80; 12 for \$5.50.

87P06 Edulis Superba Very early-blooming crown type. The color is a clear mauve-pink with a beautiful silvery sheen cast over it. The blooms are delightfully fragrant. 55¢ each; 3 for \$1.45; 6 for \$2.80; 12 for \$5.50.

87P31 Eugenie Verdier A fragrant midseason variety of a delicate Hydrangea-pink shade. Large blooms of semi-rose type. Long stemmed and free blooming. \$1.00 each; 3 for \$2.70; 6 for \$5.25; 12 for \$10.00.

87P13 Festiva Maxima A fine early-flowering white Peony belonging to the rose type. It is considered the best of all white varieties because of its large blooms and strong growth. A magnificent variety of substantial habit. 60¢ each; 3 for \$1.60; 6 for \$3.10; 12 for \$5.85.

87P09 Felix Crousse Rose type; late midseason variety, of a clear rich red shade. The flowers are large, globular, solid, and substantial. Blooms most profusely. 75¢ each; 3 for \$1.90; 6 for \$3.60; 12 for \$6.75.

87P12 Jeanne d'Arc A lovely flower with a glory all its own. The collar is yellow, whereas the guards are a beautiful shade of soft pink. Well-formed blooms with a high center of a delicate pink shade with a few occasional carmine spots. A magnificent tricolored variety, blooming profusely during midseason. 60¢ each; 3 for \$1.75; 6 for \$3.30; 12 for \$6.00.

87P20 Karl Rosefield Velvety crimson blooms of semi-rose type, produced during midseason. It takes first place for strength, good habit, and rich color. A truly magnificent variety. \$1.00 each; 3 for \$2.70; 6 for \$5.25; 12 for \$10.00.

87P28 Le Cygne This is a most remarkable Peony and because it is a slow propagator it will always be rare. The large full blooms are thickly packed with small cup-shaped petals. The color is milky white, shading to pure white as the flowers open up fully. \$9.00 each; 3 for \$25.00; 6 for \$48.00; 12 for \$90.00.

87P30 Madame Ducl Bomb type; midseason. Lilac-pink, shaded rose. 60¢ each; 3 for \$1.60; 6 for \$3.10; 12 for \$5.85.

87P27 Madame August Dessert Midseason; large cup-shaped blooms of a rich and beautiful flesh tint. 85¢ each; 3 for \$2.30; 6 for \$4.50; 12 for \$8.50.

87P19 Milton Hill A late-blooming variety, with large and beautiful shell-pink flowers of exquisite texture. Very valuable. \$4.00 each; 3 for \$10.00; 6 for \$19.00; 12 for \$37.00.

87P17 Mons. Jules Elie An early midseason bomb type. The color is a glossy lilac-pink shading to deep rose. \$1.00 each; 3 for \$2.70; 6 for \$5.25; 12 for \$10.00.

87P16 Mons. Martin Cahuzac Semi-rose type. Rich deep maroon flowers, shaded scarlet; midseason. \$2.25 each; 3 for \$6.00; 6 for \$11.50; 12 for \$22.50.

87P11 Officinalis Rubra fl. pl. Few other Peonies make such a wonderful display as this well-known variety. The flowers are a rich deep crimson of great intensity. 85¢ each; 3 for \$2.30; 6 for \$4.50; 12 for \$8.50.

87P26 Primevere A midseason bomb Peony with large solid flowers of a clear sulphur-white shade. \$2.25 each; 3 for \$6.00; 6 for \$11.50; 12 for \$22.50.

87P37 Richard Carvel An early flower and one of the few red varieties that is sweet scented. Deep clear red. \$5.00 each; 3 for \$14.00; 6 for \$27.00; 12 for \$53.00.

87P18 Rubra Superba Brilliant deep crimson blooms borne very late in the season. A rose type, making a most magnificent show. A good strong grower and free bloomer. 85¢ each; 3 for \$2.30; 6 for \$4.50; 12 for \$8.50.

87P23 Sarah Bernhardt A semi-rose variety, blooming late in the season. A fine silver-pink shade. \$1.35 each; 3 for \$3.70; 6 for \$6.90; 12 for \$13.45.

87P25 Solange Lovely blush-white with salmon center, having a bright coffee-brown sheen. Of remarkable size. \$4.00 each; 3 for \$10.00; 6 for \$19.00; 12 for \$37.00.

87P10 Therese Rich satiny pink with a silky sheen. Of enormous size, well shaped, and blooming most profusely. \$3.00 each; 3 for \$8.00; 6 for \$15.50; 12 for \$30.50.

87P22 Umbellata Rosea A fine early-blooming rose type Peony with large well-shaped blooms. The petals are a bright violet-rose, shading to amber-white in the center. 60¢ each; 3 for \$1.60; 6 for \$3.10; 12 for \$5.85.

87P29 Walter Faxon Semi-rose type, blooming during midseason. Bright rosy pink blooms of wonderful size. \$4.50 each; 3 for \$12.00; 6 for \$23.00; 12 for \$45.00.

Six Standard Peonies

An assortment of six showy, free-flowering varieties at a price that is within reach of every gardener: **Umbellata Rosea**, **Duchess de Nemours**, **Edulis Superba**, **Felix Crousse**, **Festiva Maxima**, and **Jeanne d'Arc**.

98P66 One each (6 roots, value \$3.70)	\$3.00
98P67 Three each (18 roots, value 9.75)	8.50
98P68 Six each (36 roots, value 18.70)	16.00

BEARDED IRIS



Pallida
Dalmatica

The Bearded or Flag Iris comprise the various classes of Iris germanica and other species, all being of tall, strong growth, and doing well in a fairly dry, well-drained location. They are perfectly hardy, and when in full bloom present a beautiful sight. The flowers are borne on long, strong stems above the foliage. They make good cut-flowers, lasting a long time in water. The plants are in full bloom during May and June. Iris grow well in a sunny situation, but are not averse to semi-shade. Any average garden soil will grow good Iris. In planting be sure that the root (rhizome) is placed not more than one inch below the surface.

98P60 Eight of the Best Bearded Iris

This will make a fine display in any garden. Contains one root each of **Alcazar, Aurea, Her Majesty, Jeanne d'Arc, King of Iris, Ma Mie, Monsignor, and Pallida Dalmatica**, Value \$2.45, for **\$2.00**

85P28 Ma Mie White standards, beautifully frilled with lavender. The falls are white, penciled and margined lavender. An early-blooming variety of showy appearance. 30¢ each; 3 for 75¢; 6 for \$1.40; 12 for \$2.65.

85P20 Monsignor Bluish lavender standards and rich violet falls with white pencilings in the throat. The beard is bright orange, tipped with mahogany brown. A large well-formed flower; 2 feet tall. 30¢ each; 3 for 75¢; 6 for \$1.40; 12 for \$2.65.

85P22 Pallida Dalmatica Few Iris, even of recent introduction, have the stately habit and large blooms of Pallida Dalmatica. The plants grow 4 feet tall and have beautiful soft lavender standards and deep lavender falls. Whether planted in masses or grown in clumps among other perennials, it always stands out because of its color and size. 30¢ each; 3 for 75¢; 6 for \$1.40; 12 for \$2.65.

84P91 Shekinah A very fine Iris with well-formed medium-size blooms of a bright lemon-yellow deepening toward a rich lemon-yellow color. An excellent yellow Iris with a bright orange beard. 65¢ each; 3 for \$1.75; 6 for \$3.35; 12 for \$6.55.

84P93 Souv. de Mme. Gaudichau The standards are violet-blue and the falls are a deep velvety purple. A most beautiful Iris on stems 3 feet tall. Of great size, excellent substance, rich color, and splendid vigor. \$1.00 each; 3 for \$2.80; 6 for \$5.45; 12 for \$10.75.

85P29 Bearded Iris Mixed This mixture of Bearded Iris includes a wide range of showy colors. 20¢ each; 3 for 50¢; 6 for 90¢; 12 for \$1.70.

Siberian Iris

These Iris make a graceful slender growth. They do well in a fairly moist soil and make a fine showing in beds or borders. Also valuable for planting in the lower moist portions of the rock garden.

85P59 Alba (Snow Queen) This is excellent for contrast as the flowers are a pure white. They are borne profusely on stems 3 feet tall.

85P51 Blue King A stately plant 2 feet tall, bearing bright clear blue flowers that are sure to attract favorable attention.

85P55 Orientalis A strong, sturdy variety, bearing its rich violet-blue flowers on stems measuring 3½ feet and more in height. Always greatly admired.

Any of the above:

30¢ each; 3 for 75¢; 6 for \$1.40; 12 for \$2.65.

98P57 Collection of Siberian Iris

This collection contains one each of the three named varieties, value 90¢, postpaid for **75¢**

86P92 Dwarf Iris—Pumila

An early flowering dwarf strain with showy large flowers in white, violet, red, blue, yellow, etc. The plants grow about 10 inches tall and do best in a dry soil. Their compact growth makes them admirably adapted for planting in the rock garden, where their large flowers are sure to be greatly admired. The rich green, grass-like leaves are attractive throughout the year. 30¢ each; 3 for 75¢; 6 for \$1.40; 12 for \$2.65.

85P03 Alcazar The standards are a bright mauve, and the falls are a dark purple marked with bronze and yellow penciling in the center. Grows vigorously; 3½ feet tall. 30¢ each; 3 for 75¢; 6 for \$1.40; 12 for \$2.65.

85P06 Ambassadeur A magnificent variety with smoky bronze standards, contrasting well with the velvety purple falls. It is an outstanding Iris of fine size, carrying its majestic blooms on strong stems 3 ft. tall. 65¢ each; 3 for \$1.75; 6 for \$3.35; 12 for \$6.55.

85P00 Aurea This sometimes is called California. The standards and falls are a rich chrome-yellow color. The flowers are quite large and of good form; 2 feet tall. 35¢ each; 3 for 85¢; 6 for \$1.60; 12 for \$3.05.

85P70 Cecil Minturn The standards and falls are a uniform shade of soft Cattleya rose. Beautiful dome-shaped ruffled flowers on plants growing 2 feet tall. 60¢ each; 3 for \$1.60; 6 for \$3.05; 12 for \$5.95.

85P11 Florentina Alba Beautiful, large, and perfectly formed white flowers, produced with the greatest profusion on strong, vigorous plants. This is an extraordinary bloomer of elegant appearance. Delicately fragrant. 30¢ each; 3 for 75¢; 6 for \$1.40; 12 for \$2.65.

85P32 Her Majesty Lovely rose-pink standards and bright crimson falls in shades of varying degrees. An excellent variety of an unusual yet most attractive shade. 30¢ each; 3 for 75¢; 6 for \$1.40; 12 for \$2.65.

85P10 Jeanne d'Arc This is a particularly attractive and lovely Iris. Both the standards and falls are white, beautifully penciled and marked light blue at the edges. 30¢ each; 3 for 75¢; 6 for \$1.40; 12 for \$2.65.

85P18 King of Iris Clear lemon-yellow standards with rich maroon falls, bordered yellow. A majestic variety, making an excellent display in any garden. 30¢ each; 3 for 75¢; 6 for \$1.40; 12 for \$2.65.

85P69 Lent. A. Williamson An imposing variety of strong growth. The standards are bright Campanula violet, contrasting with rich velvety purple falls. The plants make a tall, stately growth and bloom freely. 65¢ each; 3 for \$1.75; 6 for \$3.35; 12 for \$6.55.

99P96 Four Beautiful Iris

This collection contains one vigorous, healthy root each of the following: **Ambassadeur, Lent. A. Williamson, Souv. de Mme. Gaudichau, and Shekinah**. Value \$2.95, for **\$2.25**

JAPANESE IRIS

The Japanese Iris enjoy great popularity. They are perfectly hardy, and do best if planted in soil which is fairly moist and cool. They are excellent for naturalizing along streams and ponds. The richly colored blooms are borne profusely during June and July.

85P37 Gold Bound Excellent double blooms of pure white color with a band of gold in the center. A great favorite. 45¢ each; 3 for \$1.20; 6 for \$2.30; 12 for \$4.50.

85P91 Hercule This compares well in size with the other varieties listed. The large double flowers are a clear lilac-blue color. 45¢ each; 3 for \$1.20; 6 for \$2.30; 12 for \$4.50.

85P94 Purple and Gold Enormous double flowers measuring 10 inches across. Violet-purple blooms with white center and yellow throat. 45¢ each; 3 for \$1.20; 6 for \$2.30; 12 for \$4.50.

85P95 Universe These large, six-petaled flowers are a magnificent combination of sky-blue with gold and white center. It blooms continuously and is always greatly admired. 45¢ each; 3 for \$1.20; 6 for \$2.30; 12 for \$4.50.



The Japanese Iris are admirably adapted for planting along streams or ponds

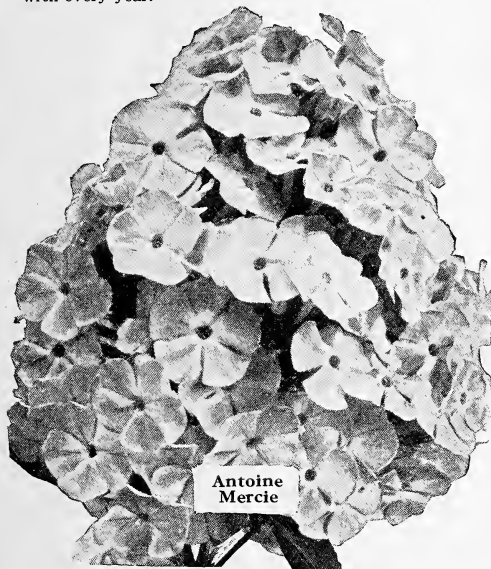
98P54 Collection of Four Japanese Iris

This collection contains one root each of the four showy and free flowering Japanese Iris varieties described above. It will be mailed (value \$1.80) postpaid for **\$1.50**

85P48 Mixed A grand mixture of many lovely varieties of Japanese Iris, particularly suited for planting in masses along streams and ponds. 30¢ each; 3 for 75¢; 6 for \$1.40; 12 for \$2.65.

Burpee's Hardy Phlox

Every garden needs its share of Hardy Phlox, as they are easily grown and give a glorious display of color all during the spring and early summer. The plants are perfectly hardy and after once being established grow more showy with every year.



Antoine Mercie

87P50 Antoine Mercie Attractive bright lilac blooms with a distinct white eye. 40¢ each; 3 for \$1.05; 6 for \$2.00; 12 for \$3.90; 25 for \$7.65; 50 for \$15.15.

87P51 Beacon The magnificent flowers are a brilliant cherry-red. Large, massive flower-heads carried on strong stems. 35¢ each; 3 for 95¢; 6 for \$1.80; 12 for \$3.50; 25 for \$6.90; 50 for \$13.65.

87P56 B. Compte A brilliant and showy Phlox of a fresh French-purple shade. 35¢ each; 3 for 85¢; 6 for \$1.60; 12 for \$3.05; 25 for \$6.00; 50 for \$11.90.

87P64 Commander (Von Hindenburg) A gorgeous crimson-red with a darker eye. Blooms profusely. 40¢ each; 3 for \$1.05; 6 for \$2.00; 12 for \$3.90; 25 for \$7.65; 50 for \$15.15.

87P57 Elizabeth Campbell Beautiful light salmon with a pink center. 40¢ each; 3 for \$1.00; 6 for \$1.95; 12 for \$3.80; 25 for \$7.50; 50 for \$14.90.

87P59 Europa White with a large crimson-red eye. A strong grower. 35¢ each; 3 for 85¢; 6 for \$1.60; 12 for \$3.05; 25 for \$6.00; 50 for \$11.90.

87P68 Firebrand Very large blooms of glistening flaming cerise-orange. 40¢ each; 3 for \$1.00; 6 for \$1.95; 12 for \$3.80; 25 for \$7.50; 50 for \$14.90.

87P66 Jules Sandeau Well-expanded blooms of a bright pink shade; semi-tall. 35¢ each; 3 for 95¢; 6 for \$1.80; 12 for \$3.50; 25 for \$6.90; 50 for \$13.65.

87P73 Miss Lingard Pearly white flowers with a faint shading of pink in the center. 35¢ each; 3 for 95¢; 6 for \$1.80; 12 for \$3.50; 25 for \$6.90; 50 for \$13.65.

87P65 Milly Van Hoboken Bright orange-pink blooms of exceptionally large size. 35¢ each; 3 for 95¢; 6 for \$1.80; 12 for \$3.50; 25 for \$6.90; 50 for \$13.65.

87P74 Mrs. Wm. Jenkins Pure white blooms on plants 3 feet tall. 30¢ each; 3 for 75¢; 6 for \$1.40; 12 for \$2.65; 25 for \$5.15; 50 for \$10.15.

87P75 Professor Virchow Large flower-heads composed of bright orange-scarlet blooms. 35¢ each; 3 for 85¢; 6 for \$1.60; 12 for \$3.05; 25 for \$6.00; 50 for \$11.90.

87P78 Rynstrom The large, bright rose-pink flowers form magnificent trusses. 35¢ each; 3 for 85¢; 6 for \$1.60; 12 for \$3.05; 25 for \$6.00; 50 for \$11.90.

87P84 Thor Rich silky salmon-pink with deep crimson eye. 35¢ each; 3 for 85¢; 6 for \$1.60; 12 for \$3.05; 25 for \$6.00; 50 for \$11.90.

98P75 Collection of Six Hardy Phlox

This collection contains one strong root each of the following six varieties: **Antoine Mercie, Jules Sandeau, Miss Lingard, Beacon, Commander, and Milly Van Hoboken.** All these, value \$2.20, will be mailed postpaid to your door for **\$1.85**

All Plants will be sent PREPAID

Hardy Perennial Plants

Perennial Plants will be Shipped Direct from the Nurseries

They will be forwarded in the fall, when it is perfectly safe to transplant them. With each shipment we shall send you special planting instructions which, if carefully followed, will insure the success of the plants.

Achillea—Milfoil

89P10 Ptarmica, The Pearl White, double flowers produced on sturdy plants all during the summer. Grows 2 feet tall. 35¢ each; 3 for 85¢; 6 for \$1.60; 12 for \$3.05; 25 for \$6.00.

Aconitum—Monkshood

89P08 Fischeri Showy perennial, 3 feet tall, bearing during September and October showy spikes of large, dark blue flowers. Perfectly hardy everywhere. 35¢ each; 3 for 85¢; 6 for \$1.60; 12 for \$3.05; 25 for \$6.00.

Anchusa—Alkanet

89P13 Dropmore A tall-growing stately perennial with large, brilliant blue flowers during June; grows 6 to 8 feet tall. 30¢ each; 3 for 75¢; 6 for \$1.40; 12 for \$2.65; 25 for \$5.15.

Anthemis—Chamomile

89P01 Tinctoria (Hardy Golden Marguerite) Handsome, finely cut foliage and large golden yellow flowers during the summer. The plants grow 2 feet tall. 35¢ each; 3 for 80¢; 6 for \$1.50; 12 for \$2.90; 25 for \$5.65.



Aquilegia—Columbine

89P99 Mrs. Scott Elliott Hybrids Beautiful, large, long-spurred flowers in many exquisite colors and color combinations. Blooms profusely during May and June. 30¢ each; 3 for 75¢; 6 for \$1.40; 12 for \$2.65; 25 for \$5.15.

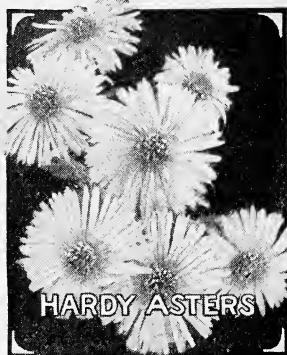
Armeria—Sea Pink

89P79 Maritima Dwarf plants, 3 inches tall, with rose-pink flowers in spring and early summer, on slender stems 12 inches long. 35¢ each; 3 for 85¢; 6 for \$1.60; 12 for \$3.05; 25 for \$6.00.

Artemisia

88P58 Silver King (Ghost Plant) Gives the effect of frosted silver with its delicate foliage and glistening blooms. 35¢ each; 3 for 85¢; 6 for \$1.65; 12 for \$3.20; 25 for \$6.25.

Hardy Asters



89P16 Anita Ballard A double-flowered variety with clear Petunia-violet blooms. Very showy and strong growing.

89P51 Blue Gem The semi-double flowers of this variety are quite large. They are a blue shade of great richness.

89P17 Climax Majestic spikes of single light lavender-blue flowers; 5 feet.

89P39 White Climax A fine companion to Climax and of as stately tall growth, with lovely white flowers; 5 feet.

89P43 Mrs. Raynor The deepest red of all perennial Hardy Asters. Large.

Any of the above Asters:

30¢ each; 3 for 75¢; 6 for \$1.40; 12 for \$2.65; 25 for \$5.15.

98P20 Aster Collection

One each of the above five varieties, value \$1.50, for **\$1.25**

89P38 Mixed A complete mixture of all colors. Showy and free blooming. 3 for 75¢; 6 for \$1.40; 12 for \$2.65; 25 for \$5.15; 50 for \$10.15.

Campanula

Canterbury Bells

88P56 Single Mixed Mostly grown as biennials, with large, bell-shaped blooms during July. Height, 2 to 3 feet. 30¢ each; 3 for 75¢; 6 for \$1.40; 12 for \$2.65; 25 for \$5.15.

88P73 Calycanthema Mixed The beautiful Cup-and-Saucer Canterbury Bells in rose, white, and blue. Blooms during July. 30¢ each; 3 for 75¢; 6 for \$1.40; 12 for \$2.65; 25 for \$5.15.



ASTILBE

Astilbe—Spirea

86P64 Gladstone Immense trusses of pure white flowers on elegant long stems.

86P70 Granat One of the brightest, with magnificent trusses of deep crimson flowers. Very effective.

86P71 Kriemhilde A new variety with lovely feathered spikes of pure salmon-pink flowers. Always admired.

86P66 Peach Blossom A beautiful peach-bloom-pink shade. Fine for forcing and for the garden.

Any of the above:

50¢ each; 3 for \$1.30; 6 for \$2.55; 12 for \$5.00; 25 for \$9.90.

97P95 Astilbe Collection

One each of the four varieties, value \$2.00, for **\$1.75**

Carnation

Hardy Grenadin

These excellent hardy Carnations bloom very profusely during summer and fall. In cold sections the plants require winter protection with straw or manure.

88P46 Giant White Fine large double white flowers borne very freely on fine strong stems. Most attractive.

88P47 Giant Pink This is a particularly popular color. Blooms very profusely during the summer and fall.

88P48 Giant Red Adds a good shade of color to the perennial bed.

88P49 Giant Mixed We have included in this all colors listed.

Any of the above:

35¢ each; 3 for 85¢; 6 for \$1.60; 12 for \$3.05; 25 for \$6.00.

Collections of

Three Hardy Carnations

Giant White, Giant Pink, and Giant Red

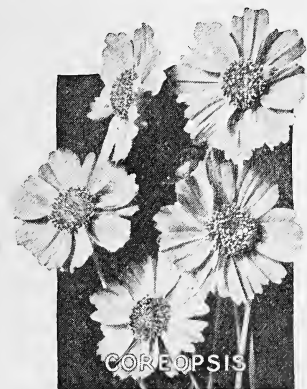
98P09—One each (3 roots) postpaid for.. \$0.85

98P10—Three each (9 roots) postpaid for.. 2.15

98P11—Six each (18 roots) postpaid for.. 4.00

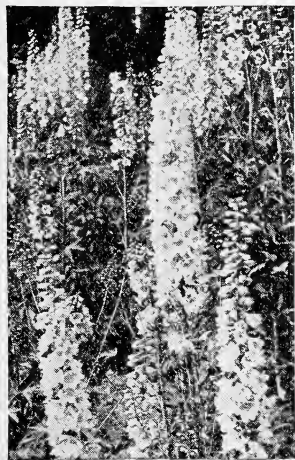
Chinese Lantern

88P38 *Physalis Franchetti* Grown for the bright red, lantern-like seed-pods used for winter bouquets. Grows 1½ ft. tall. 35¢ each; 3 for 85¢; 6 for \$1.60; 12 for \$3.05; 25 for \$6.00.



Coreopsis—Golden Wave

88P37 *Lanceolata* One of the showiest of all perennials, with large, golden yellow blooms all during the summer. Grows 2 feet tall and provides a wonderful bit of yellow color to combine with blue Delphiniums and others. 25¢ each; 3 for 65¢; 6 for \$1.20; 12 for \$2.25; 25 for \$4.40; 50 for \$8.65.



Delphinium

Hardy Larkspur

88P29 *Floradale Hybrids* All those who have seen this strain are unanimous in proclaiming it unusually fine. It includes a wide range of colors. The flowers come double, semi-double, and single. Very showy. 35¢ each; 3 for 95¢; 6 for \$1.80; 12 for \$3.50.

88P31 *Belladonna* Fine showy plants, producing an abundance of sturdy, long flower-spikes closely set with large, single, sky-blue blooms. The plants grow 4 feet tall. 25¢ each; 3 for 65¢; 6 for \$1.20; 12 for \$2.25; 25 for \$4.40.

88P32 *Bellamosum* An excellent strong-growing, free-blooming variety. Grows 4 feet tall and has large, single, dark blue flowers. 25¢ each; 3 for 65¢; 6 for \$1.20; 12 for \$2.25.

Collection of Hardy Plants

96P92 *Thirty Plants*, 3 each of the following 10 popular, free-blooming varieties, delivered, **\$3.50**

Aquilegia, Mrs. Scott Elliott Hyb.
Astilbe, Mixed
Coreopsis lanceolata
Delphinium, Floradale Hybrids
Gaillardia, Mixed
Hibiscus, Giant Mallow Marvels
Hollyhocks, Double Mixed
Phlox, Mixed. Hardy varieties
Pyrethrum, Single Mixed
Scabiosa caucasica

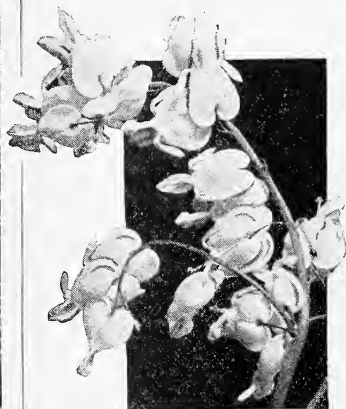
Dianthus—Hardy Pinks

89P05 *Deltoides* A dwarf variety with lovely, bright pink blooms. Often called Maiden Pink. Grows 12 inches tall and is planted extensively in rock gardens. 30¢ each; 3 for 75¢; 6 for \$1.40; 12 for \$2.65; 25 for \$5.15.

89P27 *Gladys Cranfield* Lovely sweet-scented, fringed, rose-pink flowers with velvety maroon centers. 12 inches. 35¢ each; 3 for 95¢; 6 for \$1.80; 12 for \$3.50; 25 for \$6.90.

89P20 *Plumarius Double Mixed* Comes in many fine colors; always fully double. 30¢ each; 3 for 75¢; 6 for \$1.40; 12 for \$2.65; 25 for \$5.15.

89P23 *Plumarius Single Mixed* Perfectly hardy, free-blooming, dwarf, spreading plants with finely fringed single blooms in all colors. 30¢ each; 3 for 75¢; 6 for \$1.40; 12 for \$2.65.



Dicentra—Bleeding Heart

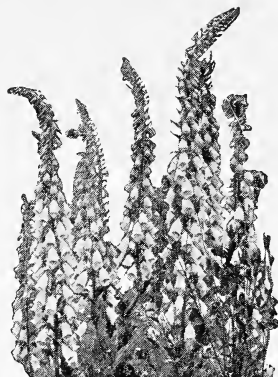
96P10 *Spectabilis* A nearly blooming perennial with quaint, heart-shaped flowers borne in long racemes during the spring. Thrives in light soil and disappears during the summer and fall, to come up again the following spring. 65¢ each; 3 for \$1.75; 6 for \$3.35; 12 for \$6.55; 25 for \$13.00.

96P28 *Eximia* Lovely pink blooms somewhat smaller than those of the preceding variety. Bright green foliage. 40¢ each; 3 for \$1.05; 6 for \$2.00; 12 for \$3.90; 25 for \$7.65.

Eupatorium

Hardy Ageratum—Thoroughwort

86P85 *Coelestinum* Blue flowers, not unlike the annual Ageratum, during the fall. Starts growth in June; 2 feet tall. Perfectly hardy. 30¢ each; 3 for 75¢; 6 for \$1.40; 12 for \$2.65.



Foxglove—Digitalis

86P83 *Gloxinia-Flowered* A most showy biennial, with large, bell-shaped blooms on tall spikes. Includes many colors. 30¢ each; 3 for 75¢; 6 for \$1.40; 12 for \$2.65; 25 for \$5.15.



Gaillardia—Blanket Flower

86P76 *Mixed* This is known as *Blanket Flower*, because of its bright yellow and red blooms; 2 feet tall. 30¢ each; 3 for \$1.40; 6 for \$2.65.

Gypsophila—Baby's Breath

88P81 *Bristol Fairy* Large panicles covered with small white double blooms. Attractive in the garden and fine for cutting. 85¢ each; 3 for \$2.25; 6 for \$4.35; 12 for \$8.55; 25 for \$17.00.

88P80 *Paniculata* Dainty small white blooms during August and September on plants 2 feet tall. Excellent for cutting. 30¢ each; 3 for 75¢; 6 for \$1.40; 12 for \$2.65; 25 for \$5.15.

Hemerocallis—Day Lily

89P48 *Thunbergii* Sweet-scented yellow flowers during July and August. Perfectly hardy everywhere.

89P42 *Florham* Rich yellow flowers during June and July on plants 3½ feet tall. Blooms profusely.

89P45 *Dr. Regel* Fragrant orange-yellow blooms during May; grows 1½ feet tall. Very graceful.

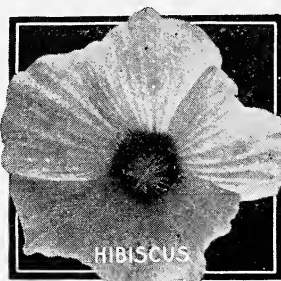
89P41 *Flava* Rich yellow blooms during May and June on plants 16 inches tall. Exquisitely sweet scented.

89P46 *Kwanso fl. pl.* Large, double, golden bronze blooms during June and July; 3½ feet.

Any of the above: 30¢ each; 3 for 75¢; 6 for \$1.40; 12 for \$2.65.

Heuchera—Coral Bells

89P50 **Sanguinea** [R] Dwarf compact plants bearing attractive, rich crimson blooms from May until July. The plants grow 12 inches tall and bloom profusely. 35¢ each; 3 for 95¢; 6 for \$1.80; 12 for \$3.50.



Hibiscus Giant Mallow

96P24 **Giant Mixed** Magnificent tall-growing plants which do well in any garden soil, producing strong canes 5 to 6 feet long, bearing immense mallow-like blooms in red, pink, and white. Perfectly hardy and excellent for the background. 30¢ each; 3 for 75¢; 6 for \$1.40; 12 for \$2.65; 25 for \$5.15.



Hollyhocks

86P78 **Double Mixed** A stately strain of Hollyhock with fully double flowers placed closely together on stems 6 to 8 feet tall. 30¢ each; 3 for 75¢; 6 for \$1.40; 12 for \$2.65; 25 for \$5.15.

Incarvillea—Hardy Gloxinia

89P53 **Delavayi** Large, bell-shaped, rich rose blooms produced all during the summer; grows 18 inches tall and flowers profusely. 40¢ each; 3 for \$1.05; 6 for \$2.00; 12 for \$3.90.

Lathyrus—Perennial Pea

A hardy climbing or trailing plant with showy clusters of fine Sweet-Pea-like flowers from June until September.

86P95 **Red** 86P97 **White**
86P96 **Pink** 86P98 **Mixed**

Any of the above:

35¢ each; 3 for 85¢; 6 for \$1.60; 12 for \$3.05; 25 for \$6.00.

Liatris—Gay Feather

89P54 **Pycnostachia** Brilliant carmine-rose flowers crowded together into a magnificent spike; blooms during August and September; 3½ feet tall. A showy hardy perennial. 35¢ each; 3 for 85¢; 6 for \$1.60; 12 for \$3.05.

Lily-of-the-Valley

89P55 We offer strong, field-grown clumps which will give quick effects and bloom freely. 55¢ each; 3 for \$1.45; 6 for \$2.80; 12 for \$5.50; 25 for \$10.90.



Lupinus

American gardeners never have come to realize as yet the value of Lupines in the perennial garden. The plants thrive in a rich sandy soil and make a wonderful showing, particularly if planted in masses. Blooms from June until August, growing 2 to 4 feet tall.

88P85 **Blue** } 35¢ each; 3 for 85¢;
88P86 **White** } 6 for \$1.60; 12 for
88P87 **Rose** } \$3.05; 25 for \$6.00.

Collections of Lupines

Contains **Blue, White, and Rose**

97P06—One each (3 roots) .. \$0.85

97P07—Three each (9 roots) .. 2.25



Oriental Poppies

Few flowers can compare and none can equal in brilliance the Oriental Poppies with their gorgeous flowers, borne during late May and early June. Every garden should include at least a few plants.

86P79 **Orientele** Large, glistening orange-scarlet flowers. 35¢ each; 3 for 85¢; 6 for \$1.60; 12 for \$3.05; 25 for \$6.00.

86P80 **Mrs. Perry** Glorious salmon-pink blooms of enormous size. 35¢ each; 3 for 95¢; 6 for \$1.85; 12 for \$3.55; 25 for \$7.00.

Pyrethrum—Parsian Daisy

86P81 **Single Mixed** [O] Lovely large Daisy-like blooms in white, pink, rose, and crimson, borne during the spring and fall; 2 to 3 feet tall. 25¢ each; 3 for 65¢; 6 for \$1.20; 12 for \$2.25.

Rudbeckia

96P30 **Purpurea** Bronzy purple flower-petals with a dark brown cone-shaped center. 3 feet tall. 35¢ each; 3 for 75¢; 6 for \$1.40; 12 for \$2.65.

96P29 **Golden Glow** [O] The well-known tall Rudbeckia with double, golden yellow blooms on plants 8 feet tall. 30¢ each; 3 for 65¢; 6 for \$1.20; 12 for \$2.25.

Scabiosa—Blue Bonnet

86P94 **Caucasica** Lovely lavender-blue flowers during the summer, borne on plants 2 feet tall. 35¢ each; 3 for 85¢; 6 for \$1.60; 12 for \$3.05.

Shasta Daisy

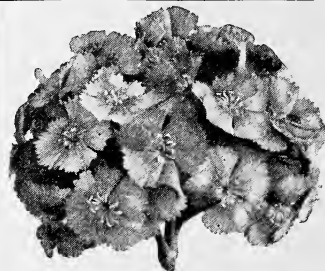
88P45 **Mrs. C. Lothian Bell** Sturdy plants with large, glistening white blooms during June and July. 35¢ each; 3 for 85¢; 6 for \$1.60; 12 for \$3.05.

Statice—Sea Lavender

89P79 **Latifolia** [R] Masses of light blue flowers; 15 inches tall. 35¢ each; 3 for 85¢; 6 for \$1.60; 12 for \$3.05.

Stokesia—Cornflower Aster

89P83 **Cyanea, Blue** Blue Cornflower-like blooms during July and August. Grows 2 feet tall. 35¢ each; 3 for 85¢; 6 for \$1.60; 12 for \$3.05.



Sweet William

88P53 **Mixed** Contains many fine colors. Very showy and free blooming. The plants grow 1½ feet tall. 30¢ each; 3 for 65¢; 6 for \$1.20; 12 for \$2.25; 25 for \$4.40; 50 for \$8.65.

Valerian—Garden Hellebore

89P90 **Coccinea** [O] Golden rose flowers from June until October. The plant grows 2 feet tall. 30¢ each; 3 for 75¢; 6 for \$1.40; 12 for \$2.65.

Veronica—Japanese Speedwell

89P91 **Longifolia subsessilis** [O] Blue flowers from July to September. Very handsome; 2 feet tall. 35¢ each; 3 for 85¢; 6 for \$1.60; 12 for \$3.05.

Viola—Tufted Pansies

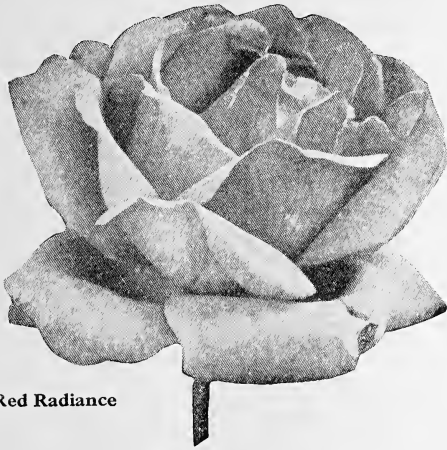
89P92 **Jersey Gem** Rich violet blooms borne very profusely. 35¢ each; 3 for 85¢; 6 for \$1.60; 12 for \$3.05.

Sweet Scented Violets

89P95 **Double Russian** [O] Large, double, deep blue flowers. 35¢ each; 3 for 85¢; 6 for \$1.60; 12 for \$3.05; 25 for \$6.00.

89P85 **Prince of Wales** [O] A large Violet with deep purple blooms. 35¢ each; 3 for 85¢; 6 for \$1.60; 12 for \$3.05.

ROSES for Every Garden



Red Radiance

Hybrid Tea or Everblooming

We are offering high-grade field-grown quality plants of two-year-old roses budded on especially selected stock. These roses will bloom freely next year if planted this fall and protected by a mound of earth. All our roses are guaranteed to grow and bloom. Please note that Roses cannot be shipped C. O. D.

96N57 Duchess of Wellington Deep orange-yellow flowers shading to lemon as they age. The buds are long-pointed and have a delightful tea scent.

96N47 Hadley Beautifully formed, velvety crimson-scarlet flowers retaining their brilliance at all seasons of the year. A strong and rapid grower with long, stiff stems.

96N48 J. J. L. Mock A very dependable rose, exceedingly large and full. The petals are silvery rose inside and the outside is carmine-pink. Very fragrant.

96N56 Lady Hillingdon Beautiful apricot-yellow shading to orange. No collection of roses is complete without this handsome variety. Strong and vigorous.

96N51 Los Angeles The color is a beautiful luminous flame-pink with a cast of bright coral and shaded with translucent gold at the base of each petal.

96N40 Mme. Edouard Herriot Semi-double blooms of fiery copper changing to a bright orange-pink with a metallic sheen when fully open.

96N54 Mrs. Aaron Ward Buds deeply cupped, producing, when open, a delightful and attractive deep orange bloom shading to creamy white.

96N52 Ophelia A most desirable rose for both garden culture and greenhouse use. The blooms are a beautiful salmon-pink. They are borne on long stems.

96N41 Red Radiance A real gem, with bright red flowers which are particularly attractive when half open. Large, bold, free-flowering, and sweet scented.

96N43 Souv. de H. A. Verschuren Light buff-yellow blooms of almost perfect form, deepening to orange in the center. The blooms are sweetly perfumed.

Any of the above roses: \$1.00 each; 3 for \$2.75; 6 for \$5.25; 12 for \$10.00, delivered.

96N89 Collection of

Four Hybrid Tea Roses

This collection contains one strong two-year-old blooming size plant of each: **Duchess of Wellington, J. J. L. Mock, Mme. Edouard Herriot, and Red Radiance.** Value \$4.00, sent postpaid for **\$3.50**

Planting Roses in the Fall

Roses and Shrubs cannot be dug until the first few frosts have ripened the foliage and the plants in general—that accounts for late delivery. Cover the ground where you intend to plant your roses with leaves or straw just deep enough to prevent the soil from freezing. In this way you will be able to plant your roses, no matter how late in the season they are received. After planting and when severe freezing weather is expected, heap soil over the pruned branches to completely cover them. The plants will be well protected by this mound of soil which should be removed early in the spring when the sap begins to flow. This is a sure way to avoid frost damage.

Hybrid Perpetual or June Roses

The most satisfactory, all-around class for sections where winters are severe, because with a cover of earth over the young plant they will stand extreme freezing weather. Hybrid Perpetual Roses are vigorous and free blooming. Their hardiness, size, and free flowering habit have made them very popular. Because of late shipments, keep your soil frost-free until they arrive by placing a heavy layer of leaves, straw, or manure over the bed.

96N63 American Beauty Beautiful carmine-red blooms of largest size and always very double. Usually classed as a Hybrid Perpetual, owing to its vigorous growth.

96N60 Frau Karl Druschki A pure white variety with immense long buds and perfectly double flowers. Especially fine for bedding. Very large blooms.

96N61 General Jacqueminot Bright crimson flowers with a delightful sweet fragrance. Highly valued as one of the most desirable of all Hybrid Perpetual Roses. Perfectly hardy and a most profuse bloomer.

96N62 Paul Neyron Fiery cerise-red. One of the largest of all roses under cultivation. Of strong growth, with clean foliage of a rich green color.

96N65 Ulrich Brunner Immense blooms of a bright cherry-red shade with a lovely rich fragrance. Ideal for trailing on a pillar.

Prices of all Hybrid Perpetual Roses:

\$1.00 each; 3 for \$2.75; 6 for \$5.25; 12 for \$10.00.

96N82 Collection of

Five Hybrid Perpetual Roses

This collection contains one each of the five Hybrid Perpetual Roses described on this page. Value \$5.00, delivered for **\$4.25**

Climbing or Rambler Roses

These are particularly suited for fall planting because of their remarkable hardiness. No other hardy plant can compare with them for porches, arbors, etc., where a good display of flowers is wanted.

96N72 Climbing American Beauty Rich rosy crimson blooms on a strong-growing, climbing vine. Flowers very profusely and is sweet scented. Highly recommended.

96N67 Dorothy Perkins Beautiful shell-pink flowers with a faint fragrance. The blooms are borne in magnificent clusters that completely cover the vines.

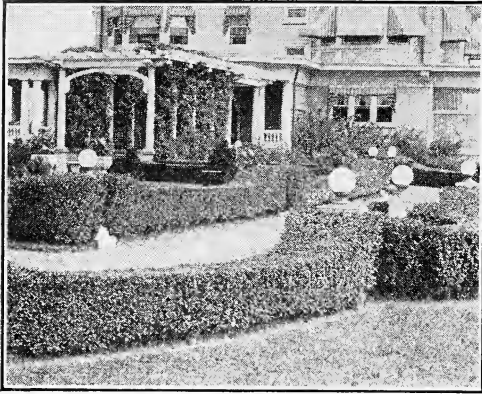
96N68 Dr. W. Van Fleet A very showy Climbing Rose, considered one of the best. The large blooms are an attractive pinkish red shade, always greatly admired.

96N70 Paul's Scarlet An intense red rose that has no equal among the Climbers. Never fades out even in the hottest sun. This belongs in every garden.

96N76 Silver Moon Large semi-double flowers of a Primrose shade while in the bud stage, but changing to white with rosy anthers when fully developed.

Any of the Rambler Roses: 75¢ each; 3 for \$2.00; 6 for \$3.75; 12 for \$7.00.

Plant Your HEDGE This Fall



Amoor River Privet

The stock we offer is known to nurserymen as Amoor River Privet North, and represents a strain which is particularly adapted to northern locations because of its unusual hardiness. Compared with the California Privet it can stand considerably more cold weather and has foliage which is not quite as glossy. Amoor River Privet is a fast and upright grower, easily trimmed, forming a solid, even green wall or fence.

95N51 *Size 2 to 3 feet*
12 for \$2.65; 25 for \$4.75; 50 for \$8.50; 100 for \$16.00, delivered. Not prepaid, 250 for \$31.00; 500 for \$55.00; 1000 for \$100.00.

95N55 *Size 1½ to 2 feet*
12 for \$2.15; 25 for \$3.75; 50 for \$7.00; 100 for \$13.00, delivered. Not prepaid, 250 for \$25.00; 500 for \$45.00; 1000 for \$85.00.

95N54 *Size 1 to 1½ feet*
12 for \$1.65; 25 for \$2.95; 50 for \$5.25; 100 for \$10.00, delivered. Not prepaid, 250 for \$17.00; 500 for \$32.50; 1000 for \$60.00.

Japanese Barberry

A beautiful hedge plant with drooping branches. The brilliant green foliage turns to a rich crimson in the fall. All during the winter the branches carry their bright scarlet berries. It forms an impenetrable low hedge.

95N52 *Size 1½ to 2 feet*
45¢ each; 3 for \$1.00; 6 for \$1.85; 12 for \$3.50; 25 for \$6.50; 50 for \$12.00; 100 for \$23.00, delivered.

95N56 *Size 1 to 1½ feet*
3 for 90¢; 6 for \$1.60; 12 for \$2.75; 25 for \$4.90; 50 for \$9.00; 100 for \$17.50, delivered.

Hardy Flowering Shrubs

95N43 Flowering Almond (*Prunus japonicus fl. pl.*) Showy pink double flowers early in the season before the leaves appear. Of dwarf, compact growth, and therefore highly valued for planting in the foreground. (*Size, 2 to 3 feet.*) 75¢ each; 3 for \$2.00; 6 for \$3.75; 12 for \$7.00.

95N63 Golden Bell (*Forsythia suspensa Fortunei*) Everybody knows this handsome, early, spring-flowering shrub with its rich golden yellow, star-shaped blooms, borne before the appearance of any leaves. Of upright growth. (*Size, 2 to 3 feet.*) 60¢ each; 3 for \$1.60; 6 for \$3.00; 12 for \$5.50.

95N11 Bridal Wreath—Spiraea (*Van Houttei*) Graceful long drooping sprays of small, single, white blooms during May and June. The plants grow from 6 to 8 feet tall and make a spread of about 6 feet. Extremely hardy and can be used to good advantage either as a specimen or in a mixed planting of shrubs. Very showy. (*Size, 2 to 3 feet.*) 55¢ each; 3 for \$1.45; 6 for \$2.75; 12 for \$5.25.



95N65 Hydrangea paniculata grandiflora
Large, globe-shaped, white panicles, changing to pink when frosted. Is entirely hardy and grows well in almost any kind of soil. 5 feet tall and 4 feet in diameter. (*Size, 1½ to 2 feet.*) 70¢ each; 3 for \$1.85; 6 for \$3.50; 12 for \$6.50.

95N71 Weigela—Eva Rathke Brilliant crimson flowers during summer and fall (*Size, 2 to 3 feet.*) 70¢ each; 3 for \$1.85; 6 for \$3.50; 12 for \$6.50.

Please note that Nursery Stock cannot be shipped until late in the season. Therefore, prepare your ground and cover with straw or manure to prevent freezing until the plants arrive.

Hardy Climbing Plants

Provide Shade and Privacy to Porch and Arbor

96N09 Boston Ivy (*Ampelopsis tricuspidata Veitchii*) This is the widely known hardy perennial climber that will adhere to old walls of stone and brick. It is a quick grower after once having become established, with large rich green foliage that gives ample shade. In the fall the foliage turns to a bright red color. 60¢ each; 3 for \$1.60; 6 for \$3.00; 12 for \$5.50.

95N78 Climbing Honeysuckle (*Lonicera Halleana*) Wherever a dense growth is wanted for shading the porch or arbor, this Climbing Honeysuckle will be found most valuable. The plants make a quick growth, bearing an abundance of showy white flowers changing to Primrose yellow. The blooms have a rich fragrance and are borne continuously throughout the summer. 55¢ each; 3 for \$1.45; 6 for \$2.75; 12 for \$5.25.

95N74 Clematis Jackmani A showy, hardy climbing Clematis with rich green leaves and large, showy, star-shaped blooms, borne during July and August. The plants do best if planted in limestone soil with the crowns just about 3 inches below the surface. It is an elegant and showy variety. 90¢ each; 3 for \$2.50; 6 for \$4.75; 12 for \$9.00.

95N73 Japanese Clematis (*Paniculata*) A quick growing variety bearing a profusion of sweet-scented fleece-like flowers during September. Even where the tops winter kill, the roots will send forth new strong shoots every year. 60¢ each; 3 for \$1.60; 6 for \$3.00; 12 for \$5.50.

95N75 Aristolochia (*Dutchman's Pipe*) Large, heart-shaped, rich green leaves which give excellent shade on account of their single-like arrangement. The interesting flowers are brownish green, resembling a miniature pipe in shape. 90¢ each; 3 for \$2.50; 6 for \$4.75; 12 for \$9.00.

95N79 Trumpet Vine (*Bignonia*) A graceful, quick-growing climber with large, brilliant red flowers during July and August. Hardy and free from diseases and insect attacks. Grows quickly to a height of 30 feet or more. 60¢ each; 3 for \$1.60; 6 for \$3.00; 12 for \$5.50.

95N72 Chinese Wisteria This excellent Hardy Climber is too well known to need much of a description. The lovely lavender flowers are produced in large clusters during the spring. When well established, it will bloom again in the fall. Our plants are guaranteed to produce flowers. 75¢ each; 3 for \$2.00; 6 for \$3.75; 12 for \$7.00.

Perennial Flower Seeds

Perennials are the chief stand-by of the old-fashioned gardens. They require little attention and respond generously to increased care and thorough cultivation. After once being established they will not only last many years, but also increase in beauty with every season. The seed of perennials may be sown outdoors almost any time of the year.

Summer and fall sowings should be made in specially prepared beds, preferably boxed in with 8- or 10-inch boards and covered with a screen of lath or wide-meshed burlap. During the winter a covering of leaves or strawy manure, after the frost has touched the foliage, is all the protection needed to carry the plants safely through the winter.



Achillea—Milfoil

37F02 Ptarmica, fl. pl. The Pearl [R] Easily grown. The plants are 2 feet tall and produce a profusion of small white double flowers. Blooms during July and August. Pkt. 20c; 1/16 oz. 55c; 1/8 oz. 95c.

Agrostemma

37F04 Mixed The blooms come in white, rose, and rich crimson. Easily grown in any kind of garden soil, and averaging about 2 feet in height. Blooms during May and June. Pkt. 10c; 1/4 oz. 25c; 1/2 oz. 40c; 3/4 oz. 70c.



Anchusa—Alkanet

37F10 Italica Dropmore Variety One of our finest blue-flowering perennials, growing 5 feet tall. The magnificent spikes are a mass of color from mid-June on. Pkt. 10c; 1/8 oz. 25c; 1/4 oz. 40c.

Anemone

37F23 Coronaria St. Brigid An excellent spring-blooming perennial, growing about 10 inches tall, with large double blooms in carmine, violet, purple, rose, lilac, pure white, etc. Pkt. 15c; 1/16 oz. 40c.

37F29 Coronaria, De Caen A beautiful single Poppy-flowered Anemone with large blooms in many bright colors. Of strong growth. Pkt. 15c; 1/16 oz. 35c; 1/8 oz. 55c; 1/4 oz. 95c.

Anthemis—Chamomile

37F11 Kelwayii Yellow A perfectly hardy variety, producing aromatically scented, golden yellow flowers from July until fall. It is excellent for sunny locations. Pkt. 15c; 1/8 oz. 35c; 1/4 oz. 55c.

Arabis—Rock Cress

37F20 Alpina [R] An excellent early blooming dwarf perennial, covered with a mass of white flowers. It makes a fine border to taller perennials. Blooms during April. Pkt. 10c; 1/4 oz. 25c; 1/2 oz. 40c.

Armeria—Sea Pink

37F03 Formosa [R] Dwarf compact plants with grass-like foliage and large clover-like flower-heads. The blooms are bright rose, carried on stems 18 inches long. Plant in a rich soil. Pkt. 15c; 1/16 oz. 40c; 1/8 oz. 65c.

Aquilegia—Columbine

37F14 Caerulea Lovely long-spurred blue and white flowers, produced freely during June. Pkt. 15c; 1/16 oz. 35c; 1/8 oz. 55c.

37F13 Mrs. Scott Elliott Hybrids A wonderful strain of Columbine, noted for its unusual assortment of colors. Pkt. 50c; 1/16 oz. 85c; 1/8 oz. \$1.45; 1/4 oz. \$2.50.

37F15 Pink Shades This strain includes many excellent shades of pink. Of compact habit, growing about 2 feet tall. Pkt. 20c; 1/16 oz. 40c; 1/8 oz. 70c.

37F16 Long-Spurred Hybrids A mixture of fine long-spurred flowers, borne profusely during June. Pkt. 20c; 1/16 oz. 35c; 1/8 oz. 55c; 1/4 oz. 95c.

Aubrietia

37F22 Large Flowering Hybrids [R] Excellent dwarf spreading plants with rose, blue, and lilac blooms early in spring. Pkt. 15c; 1/16 oz. 35c; 1/8 oz. 55c.

Bellis—English Daisy

37F24 Giant Dark Rose Extra-large double rose flowers from April on. Prefers a cool, shady place. Pkt. 15c; 1/8 oz. 50c; 1/4 oz. 85c.

37F25 Giant White Beautiful white double flowers produced on compact and sturdy plants. Pkt. 15c; 1/8 oz. 50c; 1/4 oz. 85c.

37F26 Double, Mixed This mixture includes a well-balanced proportion of all colors. Pkt. 10c; 1/8 oz. 45c; 1/4 oz. 75c.

37F27 Double Quilled, Mixed In this strain the flowers are quilled. All colors mixed. Pkt. 15c; 1/8 oz. 50c; 1/4 oz. 85c.

Campanula—Bellflower

Cup and Saucer Varieties [R]

37F35 Dark Blue 37F37 Rose

37F36 Light Blue 37F39 White

Any color: Pkt. 15c; 1/8 oz. 40c.

37F41 Mixed Fully double blooms, all colors. Pkt. 15c; 1/8 oz. 40c; 1/4 oz. 65c.

Single Campanula

37F21 Dark Blue 37F40 Rose

37F38 Light Blue 37F42 White

Any color: Pkt. 10c; 1/8 oz. 25c.

37F33 Single Mixed Large bell-shaped flowers, all colors. Pkt. 10c; 1/8 oz. 25c.

37F34 Double Mixed Double blooms in many colors. Pkt. 10c; 1/8 oz. 30c.

37F43 Carpatica, Blue [R] Blue bell-shaped flowers; 1 ft. Pkt. 15c; 1/8 oz. 35c.

37F44 Carpatica, White [R] White bell-shaped flowers; 1 ft. Pkt. 15c; 1/8 oz. 35c.

37F45 Pyramidalis, White Blooms profusely. Pkt. 15c; 1/8 oz. 40c; 1/4 oz. 65c.

37F47 Pyramidalis, Blue Rich blue flowers. Pkt. 15c; 1/8 oz. 40c; 1/4 oz. 65c.

37F46 Persicifolia, Mixed Blue and white in mixture. Pkt. 15c; 1/8 oz. 45c.

Centaurea—Cornflower

37F63 Montana Showy, thistle-like, blue flowers on sturdy plants, growing 2 feet tall. Blooms freely from late April until late June. Pkt. 10c; 1/4 oz. 30c.

37F62 Macrocephala Large golden yellow flowers from June until August, borne on plants 3 to 4 feet tall. Very showy. Pkt. 15c; 1/8 oz. 40c; 1/4 oz. 70c.

Carnation

37F51 Chabaud White } Pkt. 20c;
37F52 Chabaud Rose } 1/8 oz. 50c;
37F53 Chabaud Scarlet } 1/4 oz. 85c.

37F56 Chabaud, Mixed Beautiful large round flowers in all colors. Pkt. 15c; 1/8 oz. 45c; 1/4 oz. 75c; 1/2 oz. \$1.25.

37F57 Early Dwarf Vienna, Mixed Dwarf compact plants; all colors. Pkt. 15c; 1/8 oz. 35c; 1/4 oz. 55c; 1/2 oz. 95c.

39F15 Perpetual, or Tree Mixed Immense, brightly colored, double flowers. Pkt. 15c; 1/8 oz. 50c; 1/4 oz. 85c.

Cheiranthus

37F65 Allionii Lovely orange-yellow flowers, borne profusely during May and June; 12 inches tall. Fragrant. Pkt. 10c; 1/4 oz. 45c; 1/2 oz. 75c; 3/4 oz. \$1.25.

37F66 Linifolius Clear lavender flowers during May and June on dwarf well-branched bushes. Pkt. 15c; 1/4 oz. 60c.

Chinese Lantern Plant

38F56 (Physalis Franchetti) Grown for its scarlet-red, lantern-like seed-pods. Pkt. 15c; 1/8 oz. 35c; 1/4 oz. 55c.

Coreopsis—Golden Wave

37F68 Grandiflora Large, intense golden yellow flowers from June on; 2 feet tall. Pkt. 10c; 1/4 oz. 30c; 1/2 oz. 50c.

37F58 Large-Flowered Double Double and semi-double golden yellow flowers in great masses during June. Pkt. 15c; 1/8 oz. 30c; 1/4 oz. 50c; 1/2 oz. 85c.

Chrysanthemum

37F50 Fordhook Early-Flowering Single, semi-double, and double flowers, 3 inches across, borne profusely from late August until October. Perfectly hardy; 3 feet tall. Many bright colors in mixture. Pkt. 20c; 1/32 oz. 45c; 1/16 oz. 75c.

Delphinium

Hardy Larkspur

37F28 Floradale Hybrids A wonderful strain that grows 3 to 5 feet tall and produces a wealth of long stately flower-spikes covered with round semi-double and double blooms. Many lovely colors. Pkt. 50c; 1/16 oz. \$1.00; 1/8 oz. \$1.80.

37F98 Wrexham Strain A wonderful long-spiked, large-flowered strain of Delphinium in many colors. Pkt. 50c.

37F80 Bellamosum Long graceful spikes closely set with rich blue single flowers. Pkt. 20c; 1/16 oz. 50c; 1/8 oz. 85c.

37F74 Belladonna, Light Blue Lovely, light blue, single blooms. Most magnificent. Pkt. 20c; 1/16 oz. 45c; 1/8 oz. 75c.

37F72 Belladonna Seedlings Includes a wide range of light blue shades. Fine spikes. Pkt. 15c; 1/16 oz. 40c; 1/8 oz. 65c.

37F75 Compact White Pure white flowers on spikes 15 inches long. Graceful. Pkt. 10c; 1/16 oz. 30c; 1/8 oz. 50c.

37F77 Compact Blue Rich blue flowers on spikes 15 inches long. Pkt. 10c; 1/16 oz. 30c; 1/8 oz. 50c; 1/4 oz. 85c.

Erigeron

37F97 Speciosus superbus Single Daisy-like mauve flowers on plants 2 feet tall. Pkt. 15c; 1/16 oz. 40c; 1/8 oz. 65c.

Dianthus—Hardy Pinks

39F48 **Plumarius, Double Mixed** [R] Double blooms in many colors during May and June; 1 foot tall. Pkt. 10c; ¼ oz. 35c; ½ oz. 60c.

37F83 **Plumarius, Single Mixed** [R] Thick tufts with star-like rose flowers borne profusely during June. Pkt. 10c; ¼ oz. 30c; ½ oz. 50c.

37F12 **Deltoides Brilliant** [R] Glowing crimson-red blooms in May and June, to inches tall. Pkt. 20c.

Gaillardia

38F05 **Grandiflora (Blanket Flower)** Beautiful large crimson flowers with contrasting yellow tips; 2 feet tall. Blooms from late spring until frost. Easily grown. Pkt. 10c; ¼ oz. 25c; ½ oz. 35c.

39F41 **Portola Hybrids** A new strain of Gaillardia of strong growth. The long-stemmed, well-shaped flowers are golden yellow, marked with rich scarlet. Pkt. 20c; 1/16 oz. 50c; ¼ oz. 85c.

Foxglove—Digitalis

37F89 **White** 37F88 **Rose**
37F86 **Yellow** 37F90 **Purple**

Any of the above: Pkt. 10c; 1/16 oz. 30c.

37F94 **Shirley** Pkt. 20c; 1/16 oz. 45c.

37F87 **Mixed** Pkt. 10c; 1/16 oz. 25c.

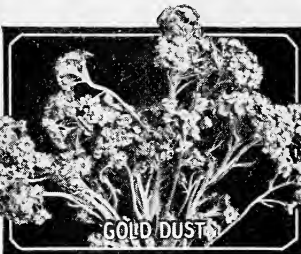
Geum

38F06 **Coccineum, Mrs. Bradshaw** [R] Graceful, double, orange-scarlet flowers produced during the summer on plants 2 feet tall. Pkt. 15c; 1/16 oz. 45c; ½ oz. 75c.

38F04 **Lady Stratheden** [R] Fine, double, golden yellow flowers borne on graceful stems. Blooms during the summer; 2 feet. Pkt. 15c; 1/16 oz. 45c; ½ oz. 75c.

Globe Thistle—Echinops

37F93 **Sphaerocephalus** Thistle-like foliage and ball-shaped blue flower-heads; 6 feet. Pkt. 10c; ¼ oz. 25c; ½ oz. 40c.



Gold Dust

37F06 **Alyssum saxatile** [R] An excellent dwarf border plant, blooming profusely during April and May. Covered with bright golden yellow flowers; 12 inches tall. Pkt. 10c; ¼ oz. 30c.

36F30 **Saxatile compactum sulphureum** [R] An excellent border plant, 6 to 9 inches tall, covered with bright sulphur-yellow flowers during early spring. Pkt. 20c; ½ oz. 75c.

Helenium—Sneezewort

38F09 **Autumnale superbum** Daisy-like, golden yellow flowers during the fall; 8 feet tall. Pkt. 15c; 1/16 oz. 40c.

38F03 **Riverton Beauty** Terra-cotta shading to Wallflower red; 5 feet tall. Pkt. 15c; 1/16 oz. 35c; ½ oz. 55c.

Heliopsis

37F60 **Scabra zinniaeflora** Often called Hardy Zinnia. Almost double, rich golden yellow blooms produced all during the summer. Grows 2 feet tall. Pkt. 15c; ¼ oz. 35c; ½ oz. 55c.

Heuchera—Coral Bells

38F11 **Sanguinea Hybrids** [R] White, pink, rose, and crimson flowers from May until July; 1 foot. Pkt. 20c; 1/16 oz. 45c.

Hibiscus—Giant Mallow

38F12 **Giant Mallow Marvels** White, pink, rose, and crimson flowers during summer; 6 feet tall. Pkt. 10c; ¼ oz. 30c.

Hollyhocks

Double

38F14 **Light Pink**

38F15 **Maroon**

38F16 **Rose**

38F17 **Scarlet**

38F18 **Yellow**

38F19 **White**

38F20 **Salmon-Pink**

38F23 **Crimson**

Any of the above: Pkt. 15c; ¼ oz. 35c.

38F28 **Single, Mixed** A fine mixture of single Hollyhocks, including many bright and showy colors. Pkt. 10c; ¼ oz. 25c; ½ oz. 35c.

38F26 **Allegheny** A wonderful type of Hollyhocks with single and semi-double flowers in all colors with finely fringed and curled edges. Pkt. 10c; ¼ oz. 25c; ½ oz. 35c.



38F22 **Double, Mixed** A glorious assortment. Pkt. 10c; ¼ oz. 30c; ½ oz. 50c.

38F21 **Newport Pink** An outstanding new variety with long graceful flower-spikes covered with double blooms of an exquisite shade of bright pink. Pkt. 15c; ¼ oz. 35c; ½ oz. 55c.

Iceland Poppy

39F93 **Exquisite, Mixed** [R] A particularly fine strain, noted for its brilliant and showy colors. Blooms freely during the spring. Pkt. 20c; ¼ oz. 50c; ½ oz. 85c.

39F97 **Double Mixed** [R] A splendid mixture of many fine colors; 18 inches tall. Pkt. 20c; ¼ oz. 50c.

Incarvillea—Hardy Gloxinia

38F31 **Delavayi** Bright rose flowers of Gloxinia shape. Blooms during summer; 2 feet tall. Not hardy in the North. Pkt. 15c; 1/16 oz. 50c; ¼ oz. 85c.

Lavender

38F55 **True** Lovely sweet-scented blue flowers, often dried for use in the linen closet. Pkt. 10c; ½ oz. 40c; oz. 70c.

Lathyrus—Perennial Peas

38F33 **Pink** [R] Pkt. 15c; ¼ oz. 30c.

38F35 **Red** [R] Pkt. 10c; ¼ oz. 25c.

38F37 **White** [R] Pkt. 15c; ¼ oz. 30c.

38F39 **Mixed** [R] Pkt. 10c; ¼ oz. 25c.

Lilium Regale

38F40 **Regal Lily** Magnificent paper-white blooms shaded pink. This lily is easily grown from seed and will bloom during June the second year after sowing. It is perfectly hardy; 6 feet tall. Pkt. 25c; 1/16 oz. 50c; ¼ oz. 85c; ½ oz. \$1.45.

Lobelia—Cardinal Flower

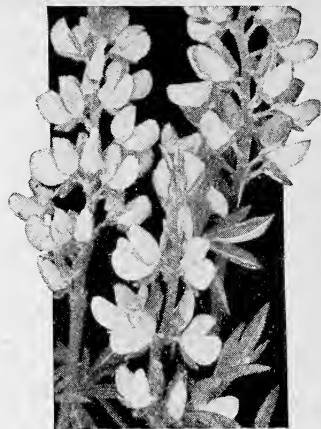
38F43 **Cardinalis** Rich crimson blooms on plants 2 to 4 feet tall, from June until September. Does best in fairly moist soil. Pkt. 25c; 1/128 oz. 45c.

Linaria—Kenilworth Ivy

39F66 **Cymbalaria** An excellent trailing plant with small bright green leaves and attractive small lilac-blue flowers, 6 inches tall. Pkt. 15c; ¼ oz. 55c.

Lythrum—Loose-strife

38F38 **Roseum superbum** Fine long spikes with rich purplish red flowers from July until September. 2 to 4 feet tall. Pkt. 15c; 1/16 oz. 50c; ½ oz. 85c.



Lupinus

38F44 **White** Pkt. 10c; ¼ oz. 25c;

38F44a **Rose** ½ oz. 40c; oz. 70c.

38F45 **Blue**

38F42 **Mixed**

38F46 **Moerheimi** Blooms of rose and white. Pkt. 15c; ¼ oz. 35c; ½ oz. 55c.

39F50 **Burpee's Improved Hybrids** Magnificent tall and showy spikes, closely set with large blooms. Comes in many bright colors. Pkt. 20c; ¼ oz. 45c.

Lychnis—Burning Star

38F53 **Chalcedonia** Scarlet flowers in umbels during summer. Grows 2 feet tall. Pkt. 10c; ½ oz. 25c; ¼ oz. 35c.

38F46a **Viscaria splendens (Maltese Cross)** Deep red flowers during summer; 2 feet. Pkt. 10c; ½ oz. 25c.

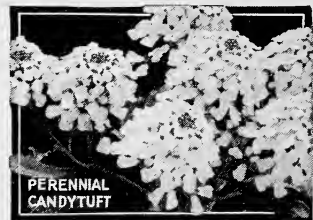
38F63 **Haageana Hybrids, Mixed** All colors mixed. Blooms during June and July; 2 feet. Pkt. 10c; 1/16 oz. 30c.

Lunaria—Honesty

38F67 **Biennis** A graceful biennial, grown for the round, silvery, paper-like parts of the seed-pods. Pkt. 10c; ½ oz. 25c.

Perennial Flax—Linum

38F41 **Sibiricum** Large, light blue flowers continuously from May until frost. Grows 15 to 24 inches tall. Pkt. 10c; ¼ oz. 25c; ½ oz. 40c; oz. 70c.



Perennial Candytuft

38F29 **Iberis sempervirens** [R] Small heads of white flowers, covering the plants during May; 1 foot. Pkt. 20c; ½ oz. 60c; ¼ oz. \$1.00.

Oriental Poppies

38F51 **Oriental** Produces large, fiery scarlet-red blooms during May and June. The plants grow 2 to 3 feet tall and are very showy. Pkt. 10c; ½ oz. 30c.

38F47 **Choicest Mixed** An excellent mixture of Oriental Poppies, including many bright shades of scarlet, red, pink, light pink, blush, and also white. Large flowering. Pkt. 10c; ½ oz. 30c.

Perennial Baby's Breath

Gypsophila paniculata

38F07 Single Small white blooms on slender stems during June and July. Pkt. 10c; ¼ oz. 30c.

37F99 Double Baby's Breath Small, white, double flowers, borne profusely during the summer. Pkt. 25c; 1/16 oz. 50c.

37F09 Repens Of creeping habit with small white flowers during June and July; 4 inches tall. Pkt. 15c; ½ oz. 35c.

Physostegia

38F62 Virginica gigantea Beautiful bright pink blooms borne on vigorous plants from June until August. Grows about 2 feet tall. Pkt. 15c; 1/16 oz. 35c.

Platycodon—Balloon Flower

38F57 Grandiflorum Mariesii Rich blue bell-shaped flowers during summer and fall; 18 inches. Pkt. 15c; 1/16 oz. 25c.

Plume Poppy—Bocconia

37F32 Cordata Large stately plants with beautiful ornamental foliage, bearing large panicles of creamy buff flowers during August; 6 feet tall. Pkt. 10c; ¼ oz. 30c.

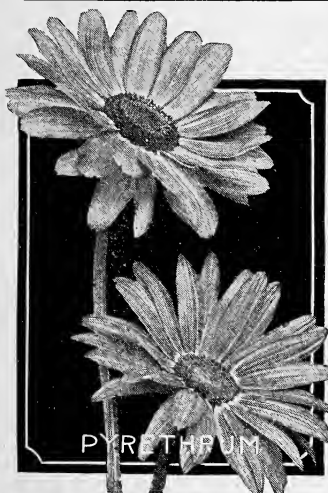
Polyanthus—Cluster Primrose

38F59 Large Flowering Mixed A favorite early spring-flowering perennial, growing about 6 inches tall. The well-rounded plants produce a mass of gaily-colored blooms. Pkt. 15c; 1/16 oz. 45c.

Primula—Primrose

38F61 Auricula Many bright colors, including orange, copper, brown, and other pastel shades. An excellent hardy Primrose for the border; 6 inches tall. Blooms during spring. Pkt. 20c; 1/16 oz. 50c.

38F65 Vulgaris (English Primrose) Large, rich yellow flowers during the spring; 6 to 8 inches tall. A favorite variety. Pkt. 15c; 1/16 oz. 40c.



Pyrethrum—Persian Daisy

38F70 Roseum, Mixed A showy perennial with Daisy-like flowers, blooming during May and June. The plants grow 2 feet tall and come in shades of rose, pink, red, and white. Pkt. 15c; ½ oz. 40c.

38F68 Aureum, Golden Feather This is an excellent border plant, growing about 10 inches tall. The foliage is a striking rich yellow shade and the small flowers are pure white. The compact and even growth makes it valuable for borders. Pkt. 10c; ½ oz. 35c; ¼ oz. 55c.



Rudbeckia purpurea

Rudbeckia

38F73 Purpurea A handsome variety producing large, dull, rosy purple flowers with a black center. Blooms from July until October; 2 feet. Pkt. 15c; ½ oz. 50c.

38F74 Speciosa (Cone Flower) Rich brilliant yellow blooms, purple center. Fall blooming; 2 feet. Pkt. 15c; ½ oz. 50c.

Saponaria—Soapwort

38F75 Ocyroides Beautiful rose flowers from April until June; 6 inches tall. Pkt. 10c; ½ oz. 25c; ¼ oz. 35c.

Scabiosa—Blue Bonnet

38F76 Caucasica Flower Large, light blue flowers during the summer; 2 feet. Pkt. 15c; 1/16 oz. 35c; ½ oz. 55c.

Shasta Daisy

37F70 Maximum Immense pure white blooms during the summer. Grows 3 feet tall. Pkt. 10c; ½ oz. 30c; ¼ oz. 50c.



Snow-in-Summer

37F67 Cerastium tomentosum A valuable creeping plant with silvery white foliage and white star-shaped flowers during May and June; 8 inches. Pkt. 15c; ½ oz. 35c; ¼ oz. 55c.

Shell Flower—Chelone

37F64 Barbata Coral-red flowers on long spikes. June to September; 18 inches. Pkt. 10c; 1/16 oz. 25c; ½ oz. 40c.

Statice—Sea Lavender

38F79 Latifolia A lovely quaint hardy perennial with clear mauve flowers. Easily dried for winter use; 18 inches. Pkt. 15c; ½ oz. 40c; ¼ oz. 65c.

Stocks—Emperor

38F80 Perpetual Includes a wide range of colors. Blooms during May and June; 12 to 18 inches tall. Protect during the winter. Pkt. 20c; ½ oz. 45c; ¼ oz. 75c.

Sunflower—Helianthus

39F04 Perennial Mixed Glorious yellow blooms shading from light Primrose to old gold. Mostly of tall growth, blooming during the fall. Pkt. 15c; ½ oz. 35c.

Sun Rose—Helianthemum

38F01 Mutabile An excellent dwarf creeping plant for dry and sandy limestone soil, bearing a profusion of small, pink, rose, and white blooms during May and June. Pkt. 10c; 1/16 oz. 25c.

Sweet Rocket

38F72 Mixed (Hesperis matronalis) Large panicles of white and purple blooms; 3 feet tall. Pkt. 10c; ¼ oz. 25c.



Sweet William

38F85 Newport Pink A lovely new variety with fine single flowers of a rich shade of salmon-pink. Very showy. Pkt. 15c; ½ oz. 40c; ¼ oz. 70c.

38F86 Pink Beauty Rich salmon-pink flowers always fully double and borne very freely. Height, 18 inches. Pkt. 15c; ½ oz. 35c; ¼ oz. 55c.

38F90 Scarlet Beauty The fine single flowers are a rich shade of scarlet; 18 inches tall. Pkt. 15c; ½ oz. 35c; ¼ oz. 60c.

38F92 Double Mixed A complete mixture of many colors; excellent double flowers during June. Pkt. 10c; ½ oz. 25c.

38F84 Perfection Single Mixed A splendid strain of single Sweet Williams, including a wonderful assortment of colors. Pkt. 10c; ½ oz. 25c; ¼ oz. 35c.

Thalictrum—Meadow Rue

38F03 Diphtherocarpum Graceful small hanging bill of a beautiful rosy lilac shade, from July on; 5 feet. Pkt. 20c; 1/16 oz. 40c; ½ oz. 65c; ¼ oz. \$1.10.

Tritoma—Poker Plant

38F93 Early Hybrid Massive orange-scarlet flower-spikes produced on plants 3 feet tall. Blooms during June. Pkt. 20c; ½ oz. 55c; ¼ oz. 95c; ½ oz. \$1.65.

Tunica saxifraga

38F89 A lovely hardy perennial, 8 inches tall, blooming from June until September. The airy tufts are covered with rose flowers. Pkt. 10c; ½ oz. 25c; ¼ oz. 35c.

Valeriana—Garden Heliotrope

38F98 Coccinea Bright red flowers during June and July. Grows 3 feet tall. Pkt. 10c; ½ oz. 25c; ¼ oz. 35c.

Veronica—Speedwell

38F93a Spicata Mixed Graceful spikes with blue, pink, and white flowers during the summer. Pkt. 10c; 1/16 oz. 25c.

Viola—Tufted Pansies

38F96 Finest Mixed A grand mixture of free-blooming and showy tufted Pansies, blooming profusely from May until frost. Pkt. 10c; 1/16 oz. 30c; ½ oz. 50c; ¼ oz. 85c.

Violets—Sweet Scented

39F01 Giant-Flowered Dark Blue This variety produces very large flowers. Pkt. 15c; 1/16 oz. 40c; ½ oz. 65c.

Wallflower

38F94 Fine Double Mixed Double flowers in chocolate, orange, crimson, and red during May. Pkt. 15c; 1/16 oz. 45c.

Showy Annuals for Fall Sowing

There are many sections in the country where fall-sown Annuals give better results than those grown from spring-sown seed. The Hardy Annuals are suited for fall sowing in sections where snow and ice prevail during the winter.

The Hardy Annuals in this list have been marked (H) after the name.

28F33 **Acroelinium** Mixed (H) Pkt. 10¢; ¼ oz. 25¢.

Ageratum

15F05 **Mexicanum Blue** Pkt. 10¢; ⅙ oz. 25¢.
 15F08 **Imperial Dwarf Blue** Pkt. 10¢; ⅙ oz. 25¢.
 15F09 " **Dwarf White** Pkt. 10¢; ⅙ oz. 25¢.
 15F02 **Blue Ball** Pkt. 15¢; ⅙ oz. 50¢; ⅙ oz. 85¢.
 15F70 **Anchusa capensis** (H) Pkt. 15¢; ⅙ oz. 25¢.
 15F24 **Alyssum Little Gem** (H) Pkt. 10¢; ½ oz. 40¢.
 15F20 " **Sweet** (H) Pkt. 10¢; ½ oz. 25¢.

Antirrhinum

Giant Snapdragons (H) Pkt. ⅙ oz.

17F21 **Canary Bird** canary-yellow..... \$0.15 \$0.45
 17F15 **Fordhook Rose** rose-pink..... .15 .45
 17F13 **Orchid** lavender-pink..... .15 .45
 17F02 **Ruby** deep red..... .15 .45
 17F01 **Sunnybrook** salmon-orange..... .15 .45
 17F18 **Wallflower** copper-crimson..... .15 .45

Half-Dwarf Snapdragons (H)

15F15 **Empress** deep red..... .15 .45
 15F19 **Golden Monarch** yellow..... .15 .50
 15F44 **Purity** white..... .15 .50
 15F36 **Hawmark Salmon**..... .10 .35
 15F51 **Mauve Beauty**..... .10 .35
 17F09 **Silver-Pink**..... .15 .50

Asters

16F14 **Giant Crego** Mixed..... \$0.10 \$0.30
 16F42 **Royal** Mixed..... .20 .50
 16F74 **California Giants** Mixed..... .10 .30
 16F21 **King** Mixed..... .10 .30

Early American Beauty

16F46 **Purple**..... .15 .50
 16F47 **Rose-Pink**..... .15 .50
 16F48 **Crimson**..... .15 .50
 16F50 **Charm** lavender..... .15 .50
 16F51 **Snowball** white..... .15 .50
 16F49 **Famous** rose..... .15 .50
 16F53 **Mixed**..... .15 .50
 27F74 **Blue Lace Flower** (H)..... .15 .35
 18F02 **Calendula** Orange King (H) Pkt. 10¢; ½ oz. 35¢.
 18F05 " Double Mixed (H) Pkt. 10¢; ½ oz. 20¢.
 18F06 **Calliopsis** tinctoria (H) Pkt. 10¢; ¼ oz. 25¢.
 18F13 " Tall Mixed (H) Pkt. 10¢; ¼ oz. 25¢.
 18F16 **Candytuft** Mixed (H) Pkt. 10¢; ¼ oz. 20¢.
 18F87 **Centaurea** cyanus, Blue (H) Pkt. 10¢; ¼ oz. 25¢.
 18F85 " cyanus, Mixed (H) Pkt. 10¢; ¼ oz. 25¢.
 17F52 " suavolens (H) Pkt. 10¢; ¼ oz. 30¢.
 19F06 **Clarkia** Double Mixed (H) Pkt. 10¢; ¼ oz. 35¢.
 19F47 **Cosmos** Giant Mixed (H) Pkt. 10¢; ¼ oz. 20¢.
 19F50 " Double Crested Mixed (H) Pkt. 10¢; ¼ oz. 45¢.

20F32 **Dianthus** Mixed (H) Pkt. 10¢; ¼ oz. 25¢.
 19F94 " Hedd., Double Mixed (H) Pkt. 10¢; ¼ oz. 40¢.
 19F81 " Double Chin., Mixed (H) Pkt. 10¢; ¼ oz. 35¢.
 20F86 **Gaillardia** Double Mixed (H) Pkt. 10¢; ¼ oz. 25¢.
 20F84 " Single Mixed (H) Pkt. 10¢; ¼ oz. 25¢.
 20F91 **Gypsophila** White (H) Pkt. 10¢; oz. 30¢.
 20F93 " Rose (H) Pkt. 10¢; oz. 30¢.
 21F11 " Carmine (H) Pkt. 10¢; oz. 40¢.
 21F12 **Hunnemannia fumarisefolia** Pkt. 10¢; ¼ oz. 30¢.
 21F18 **Kochia trichophylla** (H) Pkt. 10¢; ¼ oz. 20¢.

Tall Double Larkspur (H) Pkt. ¼ oz.

21F27 **Sky-Blue**..... \$0.10 \$0.25
 21F39 **Dark Blue**..... .10 .25
 21F36 **Flesh-Pink**..... .10 .25
 21F38 **Lustrous Carmine**..... .10 .25
 21F25 **White**..... .10 .25
 21F24 **Mixed**..... .10 .25
 21F31 **La France** salmon-pink..... .15 .35
 21F63 **Pink Delight** Dwarf pink..... .15 .35
 21F28 **Leptostiphon** Hybrids (H)..... .10 .30
 21F18 **Lupinus subcarneus** Pkt. 10¢; oz. 30¢.
 21F62 " Hartwegii, Mixed Pkt. 10¢; oz. 25¢.
 21F78 **Marigold** Orange Ball Pkt. 10¢; ¼ oz. 35¢.
 21F70 " African Double Mxd. Pkt. 10¢; ¼ oz. 25¢.
 21F96 **Marvel-of-Perth** Mixed (H) Pkt. 10¢; ¼ oz. 20¢.
 22F26 **Mignonette** White Pearl Pkt. 10¢; ¼ oz. 40¢.
 22F13 " Giant Machet Pkt. 10¢; ¼ oz. 35¢.
 22F32 " Fordhook Mixed Pkt. 10¢; ¼ oz. 25¢.

20F75 **Myosotis** Ruth Fischer (H) Pkt. 25¢; ½ oz. 75¢.
 20F70 " Alpestris Blue (H) Pkt. 10¢; ⅙ oz. 25¢.
 31F10 **Nasturtium** Tall Mixed Pkt. 10¢; oz. 15¢.
 23F54 " Dwf. Gorgeous Mixed Pkt. 10¢; oz. 20¢.
 23F80 **Nemophila** (H) Pkt. 10¢; ⅙ oz. 25¢.
 23F75 **Nicotiana sylvestris** Pkt. 10¢; ¼ oz. 25¢.
 23F82 **Nigella** Double Mixed Pkt. 10¢; ¼ oz. 20¢.
 23F83 " Miss Jekyll Pkt. 10¢; ¼ oz. 20¢.
 23F88 **Oenothera Lamarkiana** (H) Pkt. 10¢; ¼ oz. 25¢.

Pansies (H)

	Pkt.	⅙ oz.
24F54 Oregon Giants	\$0.50	\$2.00
24F58 Sunnybrook Giants50	1.00
25F13 Burpee Blend (Oz. \$8.00)	.25	.85
24F57 Trimardeau Mixed15	.30
24F20 Bedding Mixed10	.25

Petunias

25F57 **Balcony Rose** Pkt. 15¢; ½ oz. 40¢.
 25F53 " **Blue** Pkt. 5¢; ½ oz. 40¢.
 25F52 **Brilliant Rose** Pkt. 10¢; ⅙ oz. 35¢.
 25F38 **Rose of Heaven** Pkt. 15¢; ⅙ oz. 45¢.
 25F60 **Rosy Morn** Pkt. 10¢; ⅙ oz. 40¢.
 25F81 **Phlox** Mixed (H) Pkt. 10¢; ⅙ oz. 25¢.
 26F31 **Poppy** Fordhook Hybrids (H) Pkt. 10¢; ¼ oz. 35¢.
 26F29 " **Tulip** (H) Pkt. 10¢; ¼ oz. 35¢.
 27F07 **Scabiosa** Double Mixed (H) Pkt. 10¢; ¼ oz. 30¢.
 27F43 **Stokess** Beauty of Nice (H) Pkt. 10¢; ⅙ oz. 40¢.
 27F30 " **Ten Weeks, Mixed** Pkt. 10¢; ⅙ oz. 30¢.
 27F76 **Verbena** Fordhook Famous (H) Pkt. 10¢; ⅙ oz. 30¢.

Giant Mammoth Zinnias

	Pkt.	¼ oz.
28F30 Canary Yellow	\$0.10	\$0.40
28F22 Golden Yellow10	.40
28F29 Purple10	.40
28F21 Rose10	.40
28F25 Scarlet10	.40
28F27 White10	.40

Dahlia-Flowered Zinnias

	Pkt.	⅙ oz.
29F01 Canary Bird	\$0.20	\$0.40
28F92 Crimson Monarch20	.40
28F94 Dream lavender.....	.20	.40
28F96 Exquisite rose.....	.20	.40
28F97 Oriole orange.....	.20	.40
29F00 Polar Bear white.....	.20	.40

Summer-Flowering Sweet Peas (H)

The summer-flowering Sweet Peas are particularly suited for fall sowing in cooler sections of the country. They may be planted just before frost sets in, or, if started earlier, may be protected by boxes with glass tops. Write for the Burpee leaflet on "Sweet Peas," which will be mailed free.

	Pkt.	Oz.	Lb.
35F00 Adorable salmon on cream.....	\$0.20	\$0.90	\$10.00
34F19 Daffodil Improved cream.....	.10	.40	4.00
34F13 Fuffy Ruffles cream-pink.....	.15	.70	7.50
34F66 Fordhook Blue azure.....	.10	.40	4.00
34F65 Fordhook Orange orange.....	.10	.35	3.50
34F75 Giant White white.....	.10	.30	2.50
35F03 Hawmark Salmon-Pink10	.30	2.50
35F44 Joan Ryder white.....	.15	.45	5.00
35F40 Orchid Improved lavender.....	.10	.30	2.50
35F54 Royal Blue dark blue.....	.15	.70	7.50
34F87 Ruffled Rose beautiful.....	.20	1.45	15.00
35F77 Sunset soft rose.....	.10	.30	2.50
35F99 Mixed , All Colors.....	.10	.30	2.50

Early or Winter Flowering Sweet Peas (H)

The Early or Winter Flowering type of Sweet Peas has proven particularly valuable for fall sowing in the extreme South, where they give better results than the Summer-Flowering type. This is the same class of Sweet Peas as grown for blooming in the greenhouse during winter and early spring. Some gardeners in the North use this type to a limited extent for their fall or spring sowing, as the plants come into bloom one to two weeks earlier.

	Pkt.	Oz.	Lb.
33F36 Burpee's Orange orange.....	\$0.15	\$0.75	\$8.00
33F05 Chevalier rich rose.....	.15	.45	6.00
33F74 Early King bright crimson.....	.15	.45	5.00
33F71 Gleam Geranium-pink.....	.20	1.45	15.00
33F73 Illumination bright carise.....	.15	.55	6.00
33F95 Sunburst Imp. very fine.....	.15	.45	5.00
33F94 Sunburst Imp. cream-pink.....	.15	.55	6.00
33F14 Pink Profusion deep pink.....	.15	.65	7.00
33F91 White Star white.....	.15	.45	5.00

Burpee's Lawn Grass

The Best Time to Start a Lawn is August and Early September

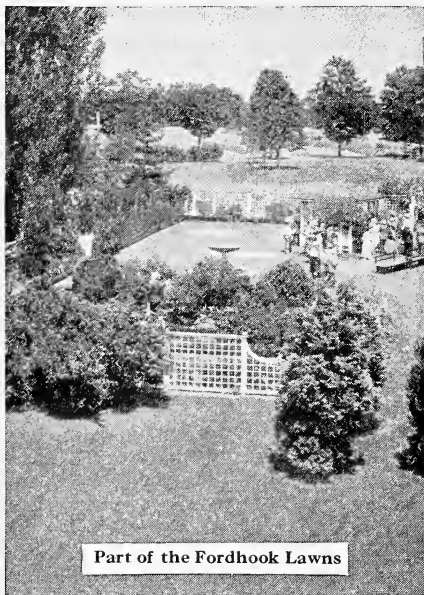
61F45 Burpee's Fordhook Finest

Gardeners who appreciate a rich, deep green lawn that is thick and smooth will find Burpee's Fordhook Finest Lawn Grass particularly suited for their purpose. It contains only the better kind of grasses, particularly adapted for making good lawns of a velvety appearance and thick bottom. The grasses included are deep-rooting and permanent. The mixture is free from common varieties which produce clumps and knots in the lawn, thereby spoiling the desired smooth effect. Fordhook Finest contains a small quantity of White Clover for the purpose of thickening the sod. It contains no chaff and weighs from 25 to 27 pounds per measured bushel. Lb. 60¢; 2 lbs. \$1.10; 5 lbs. \$2.50; 10 lbs. \$4.75, postpaid. By express: 25 lbs. \$10.00; 50 lbs. \$19.00; 100 lbs. \$36.00; 250 lbs. \$87.00; 500 lbs. \$170.00.

61F49 Shady Nook This mixture is particularly adapted for semi-shaded locations. It will make a fine lawn where trees or buildings give shade during the greater part of the day. Shady Nook is composed of choice clean seed of the finest and most costly grasses. Adapted to shady locations. It makes a close, thick turf of a deep green color. Sow one pound for 200 square feet or 150 to 200 pounds per acre. Lb. 60¢; 2 lbs. \$1.10; 5 lbs. \$2.50; 10 lbs. \$4.75, postpaid. By express or freight: 25 lbs. \$10.00; 50 lbs. \$19.00; 100 lbs. \$36.00; 250 lbs. \$87.00; 500 lbs. \$170.00.

61F44 Terrace Sod The terrace lawn often is a source of great disappointment and this is due to the fact that the grass seed mixture sown does not suit the purpose. Our special Terrace Sod Mixture contains deep-rooted grasses which will hold the soil firmly after once being established. Lb. 60¢; 2 lbs. \$1.10; 5 lbs. \$2.50; 10 lbs. \$4.75, postpaid. By express or freight: 25 lbs. \$9.00; 50 lbs. \$17.50; 100 lbs. \$34.00; 250 lbs. \$83.00; 500 lbs. \$160.00.

61F13 White Dutch Clover Those who prefer an extra heavy growth of Clover in their lawn should add this at the rate of 4 ounces to every two pounds of grass seed. Pkt. (4 ozs.) 40¢; lb. 70¢; 2 lbs. \$1.30; 5 lbs. \$3.00; 10 lbs. \$5.50, postpaid. By express or freight, 100 lbs. \$50.00.



Part of the Fordhook Lawns

ONION SETS

9937 Yellow Sets These sets are of handsome appearance. They have been grown carefully and will mature into large onions with a bright golden yellow skin and pure white flesh. Our sets are well ripened and can be, therefore, depended upon to give the best results. Lb. 35¢; 2 lbs. 65¢; 5 lbs. \$1.40; 10 lbs. \$2.35, postpaid. By express or freight, 25 lbs. \$4.00; 100 lbs. \$14.00.

9940 White Sets These sets are grown from our choice strain of White Silverskin or Portugal type onions. They are round, firmly ripened, and have a thin neck. Particularly valued for growing scallions. Plant deeply in order to get the lower part of the stems well blanched. Lb. 35¢; 2 lbs. 65¢; 5 lbs. \$1.40; 10 lbs. \$2.35, postpaid. By express or freight, 25 lbs. \$4.50; 100 lbs. \$16.00.

9938 Yellow Potato Sets These are sometimes called Yellow Multiplier, producing a cluster of small to medium size onions from a single bulb. The onions are very attractive, with light brown skin and pure white flesh. They are mild and sweet. Lb. 40¢; 2 lbs. 70¢; 5 lbs. \$1.60; 10 lbs. \$3.00, postpaid. By express or freight, 25 lbs. \$5.75; 100 lbs. \$21.00.

9942 White Multiplier Sets These White Multiplier Sets develop into a large cluster of small to medium size onions of exceptionally mild and sweet flavor. They are easily grown and very productive. Lb. 40¢; 2 lbs. 70¢; 5 lbs. \$1.60; 10 lbs. \$3.00, postpaid. By express or freight, 25 lbs. \$5.75; 100 lbs. \$21.00.

9945 Ebenezzer or "Japanese" Sets This is a comparatively recent introduction, representing a foremost strain of onions which quickly has become known for its unusual quality. The onions are almost round or just slightly flattened at the top. They are slow in running to seed. The skin is light golden brown and the flesh is pure white. Always mild and sweet. Lb. 35¢; 2 lbs. 65¢; 5 lbs. \$1.40; 10 lbs. \$2.35, postpaid. By express or freight, 25 lbs. \$4.50; 100 lbs. \$16.00.

9935 Egyptian or Perennial Tree This is a hardy variety of Onion Sets, producing a large quantity of irregularly shaped bulbs of excellent flavor. They may be left outdoors all through the winter without being in any way injured by frost. Lb. 35¢; 2 lbs. 65¢; 5 lbs. \$1.40; 10 lbs. \$2.35, postpaid. By express or freight, 25 lbs. \$4.75; 100 lbs. \$17.00.

Mary Washington Asparagus Roots

In nearly all sections south of Philadelphia Asparagus Roots have proven to do particularly well if they are planted in the fall just before cold weather sets in. Since the introduction of the Washington varieties all the older kinds have become more or less obsolete, at least for the home gardener, and we are, therefore, offering the variety Mary Washington, which we consider the best. In answer to the question whether to plant one-year-old roots or two-year-old roots, we wish to state that for permanent results the one-year-old roots are preferable; but, of course, they take longer before they will give a good cutting.

Mary Washington is known for its resistance to rust. It produces thick, heavy, and long shoots which are straight, and closely folded at the tips. The color of the stalks is a rich dark green, and the tips are still a deeper green. When blanched, they are a beautiful creamy white. Mary Washington is known as a tremendous yielder and strong grower.

9912 One-year-old-roots 50 for \$1.30; 100 for \$2.30, postpaid. By express or freight: 1000 roots \$14.00; 5000 for \$65.00.

9913 Two-year-old-roots 50 for \$1.60; 100 for \$3.00, postpaid. By express or freight: 1000 roots \$16.00; 5000 for \$75.00.

F9 Seed of Mary Washington We offer seed of the true strain. Pkt. 10¢; oz. 25¢; 4 ozs. 60¢; ½ lb. 85¢; lb. \$1.50, postpaid.

9982 Rhubarb Roots

Myatt's Victoria This is a most popular variety, with large luscious green stalks shaded bright crimson. They should be grown on rich soil, where they will increase in size and quality every year. For best results do not cut until the second spring after planting. Two roots for 35¢; 5 for 75¢; 10 for \$1.25, postpaid. By express: 100 roots \$7.50; 500 roots \$32.50.

Garden Books

400K35 The Book of Bulbs By F. F. Rockwell. A splendid book, giving complete cultural directions for growing all kinds of bulbs. It gives full details about the bulbs for fall planting that are listed in this catalog, 272 pages. Cloth cover. \$3.00, postpaid.

300K41 Bulbs that Bloom in the Spring By T. A. Weston. A complete treatise on how to grow fall-planted spring-flowering bulbs. 144 pages. \$2.20.

300K24 A Little Book of Annuals By A. C. Hottes. A reliable guide on the use of annuals, seed sowing, transplanting, watering, fall sowing, etc. Cloth bound. \$1.65, postpaid.

300K26 A Little Book of Perennials By A. C. Hottes. Gives species, varieties, height, flowering period, color, and complete cultural directions of over 125 special species. \$1.50, postpaid.

300K38 Milady's House Plants By F. E. Palmer. Tells of the care of house plants, including palms, ferns, rubber plants, etc. Cloth bound. \$1.25, postpaid.

300K37 1001 Garden Questions Answered By A. C. Hottes. Answers all kinds of questions on growing vegetables, flowers, fruits, etc. Cloth bound, 293 pages. \$2.15, postpaid.

300K42 Plant Culture By Oliver and Hottes. A splendid volume of 442 pages with concise information on how to grow all kinds of annuals, perennials, shrubs, etc. \$3.65, postpaid.

300K15 Practical Landscape Gardening By Cridland. Tells how to plant your garden, where to place flowers, roses, rock gardens, etc. 280 well-printed pages. \$2.65, postpaid.

400K90 Lawns By F. F. Rockwell. Every home gardener should have this excellent little volume. Complete cultural directions on how to have a beautiful lawn. Cloth bound. \$1.00, postpaid.

600K29 Garden Lilies By Isabella Preston. Full information on planting, cultivation, propagation, hybridizing, pot growing, and a list of varieties. 126 pages, cloth bound. \$1.25, postpaid.

400K55 Irises By F. F. Rockwell. A handy guide describing all types, with cultural methods, fertilizers, planting, care, etc. 80 pages. \$1.10, postpaid.

600K25 The Iris By John C. Wister. 122 pages and a number of excellent photographic reproductions. Gives full cultural requirements. Cloth bound. \$1.25, postpaid.

400K52 Rock Gardens By F. F. Rockwell. How to build a rock garden on a small or large scale at little expense. 86 pages, cloth bound. \$1.00, postpaid.

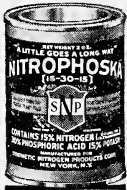
600K18 American Rock Gardens By S. S. Hamblin. Full information on preparation, construction, planning, maintenance, with complete planting lists. Cloth bound. \$1.25, postpaid.

300K43 Commercial Floriculture By Fritz Bahr. 560 pages, well printed, giving expert information about all kinds of plants usually grown by florists. A book every florist should have. \$5.50, postpaid.

600K20 Starting Early Vegetables and Flowering Plants under Glass By C. H. Nissley. This 303 page book includes details of construction, heating, and operation of small greenhouses, sash houses, hotbeds, and cold-frames. It gives full cultural directions. \$3.00, postpaid.

Fertilizers and Plant Food

200X15 Nitrophoska



An ideal complete fertilizer, containing 15% nitrogen, 30% phosphoric acid, and 15% potash. Clean, odorless, stainless, highly concentrated, and quickly available.

Could anyone wish for a fertilizer with more valuable qualities? Excellent for lawns, vegetables, flowers, trees, shrubs, and house plants.

For the lawn, apply 4 to 6 lbs. per thousand square feet. 1 lb. 65c; 5 lbs. \$2.10, postpaid. Not prepaid, 10 lbs. \$3.00; 25 lbs. \$5.00.

200X14 Floranid

Contains 55.9% of ammonia, which is easily and quickly taken up by all plants. Very economical. Clean, odorless. Makes things grow and thrive. One level teaspoonful makes one gallon of liquid fertilizer. Use 2 to 3 pounds for 1,000 square feet of garden. Apply while dry and rake in or thoroughly water into the soil surface. Fine for lawns, flowers, vegetables, shrubs, etc. 1 lb. 65c; 5 lbs. \$2.10, postpaid. Not prepaid, 10 lbs. \$3.00; 25 lbs. \$5.00.

200X17 PlanTabbs

An odorless plant food in tablet form containing 11% nitrogen, 75% available phosphoric acid, and 20% potash. Easily dissolved in water. Immediately available, clean, easy to handle, and very effective. Postpaid prices:

30 Tablets.....	\$0.25
75 Tablets.....	.50
200 Tablets.....	1.00
1000 Tablets.....	3.50

Pot and Garden Labels

250X81	4 in. long..100 for 35c.
250X82	5 in. long..100 for 45c.
250X83	6 in. long..100 for 60c.

Postpaid

200X45 Vigoro

A valuable general fertilizer, good for lawns, flowers, vegetables, shrubs, trees, and house plants. Vigoro is easily applied and each package contains full directions on how to use it. It is a quick acting fertilizer that will show results within a short time after it has been used. Use it now to stimulate your garden. 5 lbs. \$1.00, postpaid. Freight prepaid, 50 lbs. \$25.00. Not prepaid, 25 lbs., \$2.00; 50 lbs., \$3.00; 100 lbs., \$5.00.

200X22 Bone Meal

This is a particularly high-grade material, finely ground, and valuable for lawns, flowers, vegetables, shrubs, and trees. Some of the plant food is available immediately, whereas other has a lasting effect. 5 lbs. 75c, postpaid. Not prepaid, 25 lbs. \$2.00; 50 lbs. \$3.00; 100 lbs. \$4.00.

200X28 Pulverized Sheep Manure

This high-grade fertilizer enjoys great popularity with many gardeners because it gives quick results and is easy to apply. Useful for lawns, vegetables, flowers, shrubs, and trees. Not prepaid, 5 lbs. 45c; 10 lbs. 70c; 25 lbs. \$1.40; 50 lbs. \$2.25; 100 lbs. \$3.75.

200X42 Oyama Plant Food

A clean, odorless plant food, excellent for use on house plants and potted bulbs. It surely makes them thrive and gives them the healthy appearance. Also used in the flower and vegetable garden. Contains 17% nitrogen. House size, 30c; garden size, \$1.00, postpaid.

Green Plant Stakes

250X87	12 in. long..100 for 35c.
250X88	18 in. long..100 for 45c.
	1000 for \$3.85, Postpaid.

Insecticides

200X25 Non-Poisonous Sheps Plant Spray Controls and Kills Insects

A perfectly safe, non-poisonous spray which does not discolor the foliage or flowers. Use it as often as insects are discovered. Eliminate insects in the soil by mixing 1/2 oz. of Sheps with one gallon of water and spray around the plants. Kills aphids, lice, green fly, red spider, thrips, mealy bug, rose bug, caterpillars, scales, potato bugs, cabbage worms, tomato worms, leaf hoppers, etc. Used greatly diluted. 2 oz. bottle 40c; 8 oz. bottle 90c; 16 oz. bottle \$1.50, postpaid.

200X48 Ever Green

A non-poisonous spray, effective against all kinds of injurious beetles, aphids, worms, cut-worms. Use it freely on tender plants even when in flower, as it will not injure them in any way. Dilute with 100 to 800 parts of water. Complete directions with every package. 1 oz. bottle 40c; 6 oz. bottle \$1.10; 16 oz. bottle \$2.10; 32 oz. bottle \$4.10, postpaid.

200X29 Fish Oil Soap

A non-poisonous soap to be diluted with water to kill soft-bodied insects, such as aphids, red spiders, thrips, etc. 1 lb. can 35c; 5 lb. can \$1.60, postpaid.

Sprayers



250X76 Blizzard All Brass

A well-made, substantial sprayer giving a fine mist. Has two nozzles, one for spraying forward and another at an angle. Produces a continuous unbroken misty spray. Capacity 1 qt. Postpaid, for \$2.10

250X75 Smith U. T. K. Continuous Sprayer Made of galvanized steel with a brass nozzle. Throws a continuous fine misty dropless spray. Tank is double sealed, strong, and durable. Postpaid, for \$1.15



250X77 Banner Compressed Air Sprayer This galvanized-tank compressed air sprayer holds a gallons of liquid. Home owners, with plots 50 x 100 feet or larger, will do their spraying considerably quicker, more thoroughly, and with less effort with the Banner than with any of the smaller hand sprayers. Delivered, for \$6.75

Burpee's

GIANT FLOWERED

Hyacinths



L'Innocence

Enchantress

La Victoire

Collections of Five Mammoth Hyacinths

These include the five varieties illustrated

9710	5 Bulbs	(1 of each variety, value \$1.10)	\$0.90
9711	10 Bulbs	(2 of each variety, value 2.10)	1.65
9712	15 Bulbs	(3 of each variety, value 3.00)	2.25
9713	30 Bulbs	(6 of each variety, value 5.75)	4.25

*Lady
Derby*

*King of
the Blues*

Burpee's FIVE GLORIOUS

May-Flowering
TULIPS

PINK
GLORY

INGLESOMBE
YELLOW

ORANGE
KING

PICOTEE

Collections of Five Glorious Tulips

Illustrated on this page

9761	30	Bulbs (6 of each, value \$2.25)	\$1.75
9762	60	Bulbs (12 of each, value 4.00)	3.35
9763	125	Bulbs (25 of each, value 7.65)	6.25
9764	250	Bulbs (50 of each, value 14.95)	12.00

GESNERIANA
MAJOR