

Historic, Archive Document

Do not assume content reflects current scientific knowledge, policies, or practices.

62,57

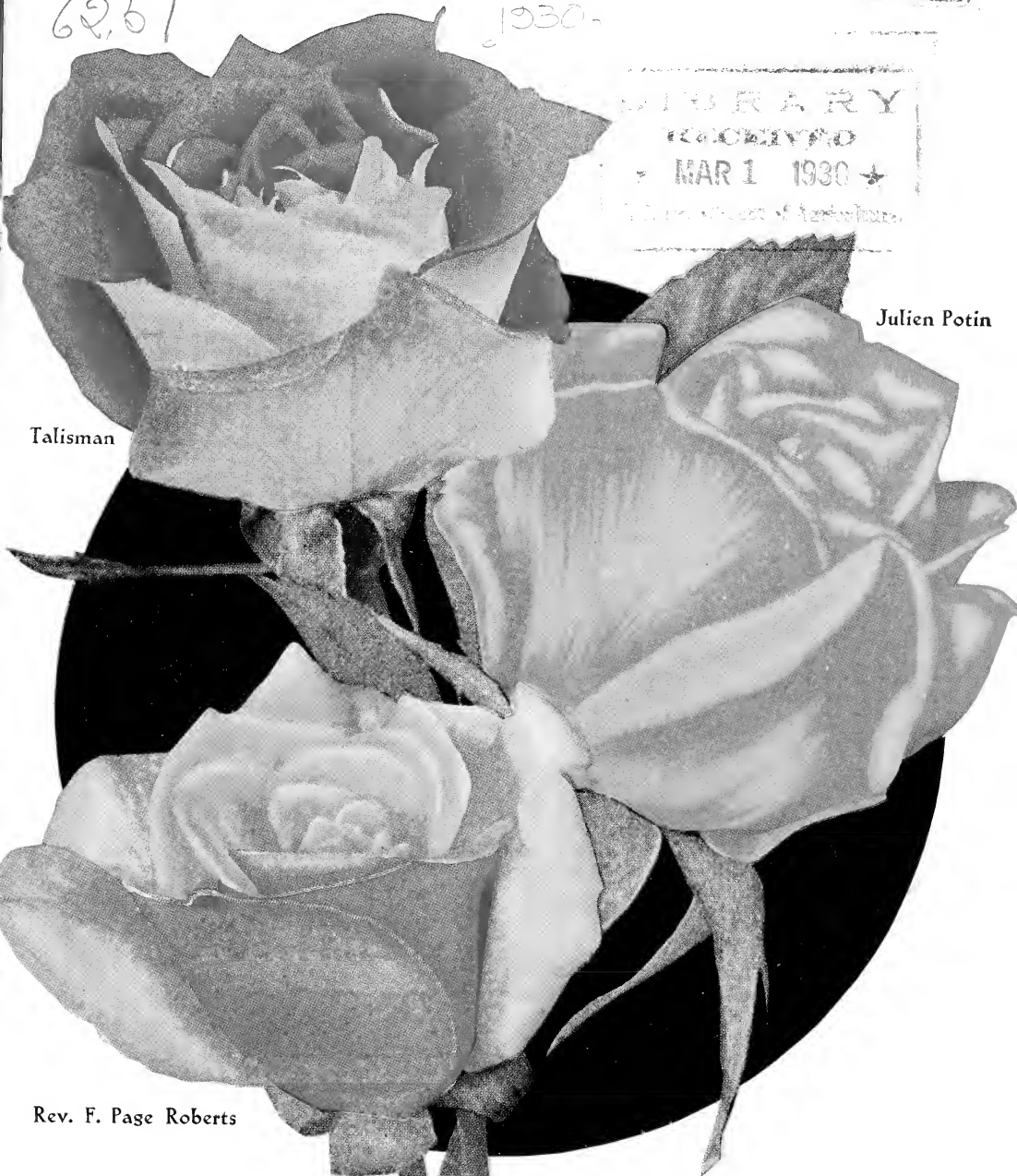
1930-

INDEXED

LIBRARY
RECEIVED
MAR 1 1930
U.S. Department of Agriculture

Julien Potin

Talisman



Rev. F. Page Roberts

These three newest
yellow roses, our gifts
to you—see' page 2

COLLINS NURSERIES

Moorestown, New Jersey

Founded 1860

Vegetable Seed Trials
A. N. Sprockman
FEB 20 1930



FREE

with all ten ANNIVERSARY ROSES—illustrated above and on facing page—FREE the rose of your choice from the three new outstanding yellow varieties illustrated on front cover. Read this offer—then act NOW.



Collins Anniversary Collection

Many thousands of pleased purchasers of our "Faultless Five" roses have asked for a similar special offer on highest quality roses of different, newer varieties. Hence this anniversary offer of ten notable new roses—outstanding in vigor, production and color blendings—at reduced group prices, as long as the supply lasts. Big, thrifty 2-year-old, No. 1, field-grown plants.

GUARANTEED to grow and bloom this season or money refunded

"LUXEMBOURG GROUP"

Francis Scott Key. Crimson red.
Los Angeles. Flame pink, coral, gold.
Luxembourg. Orange-yellow.
Mme. Caroline Testout. Satiny-rose.
Red Radiance. Cerise-red.

"SUNBURST GROUP"

Etoile de France. Garnet-red; cerise center.
J. J. L. Mock. Deep pink. Silvery rose.
Mme. Butterfly. Rose-pink, apricot, gold.
Radiance. Carmine pink, salmon tinted.
Sunburst. Yellow. Orange at center.

Regular price of individual bushes, \$1 and up
For fuller descriptions, see pages 4 to 7

5 2 yr. No. 1 field-grown bushes—either group **\$3.75**

Postpaid

10 2 yr. No. 1 field-grown bushes. Includes both groups **\$7.50**

Postpaid

FREE All purchasers of both groups, 10 bushes in all, may select FREE any one of the three new outstanding yellow varieties—Julien Potin, Rev. F. Page Roberts or Talisman—shown in colors on front cover, and described at bottom of page 2. An equal number of all three have been reserved for first 3000 purchasers—act at once to assure gift rose of your choice. **MUST BE** asked for when ordering.

Our 70th Anniversary Gifts to Old and New Customers

To all our new customers—and to the many thousands of people throughout the United States and in foreign countries who buy from us year after year—we are offering remarkable gifts to commemorate our 70th Anniversary. Our friends—our customers—have made possible the great growth of this business, till today it covers over 400 acres, and its products go all over the world; and for three years we have been planning to make this year one they will long remember.

We have propagated extra quantities on all finer and newer varieties, and this increased production makes possible the greatly lowered prices on highest quality plants shown in this 70th Anniversary catalog. Extra values in rose bushes, hardy perennials, flowering shrubs and trees, gladiolus and all other items in this catalog—**plus these**

remarkable gifts or bonuses

The Front Cover Three Newest Yellow Roses

shown in color photo on front cover and described below—all three given FREE with your paid order of \$25.00 or more. Or select your own bonus, choosing instead \$3.25* worth of plants, etc., from this catalog.

The "Anniversary" Three Guaranteed Roses

our selection from the ten varieties shown on page one and facing cover, FREE with your paid order for \$15.00. Or your choice of \$1.75* in plants, etc., from catalog.

The 36 for \$1 Glads (Plus 3 Cracker Jack, p. 37)

shown in color and described on inside rear cover given FREE with your paid order for \$10.00. Or your choice of \$1.00* worth of plants, etc.

Three Hardy Phlox

from group on page 25, illustration page 22, given FREE with your paid order for \$5.00. Or your choice of 50c* worth of plants, etc.

A "Hardy Carnation"

from group illustrated and described on rear cover given with your paid order for \$3.00. Or your choice of 30c* worth of plants, etc.



IT'S NOT A HOME UNTIL IT'S PLANTED
Member, American Assn. of
Nurserymen

*Any gift listed—or any bonus in goods, if you prefer that—**MUST BE ASKED FOR WHEN ORDERING.** Gifts of our selection (shown above) are grouped ready to ship, miscellaneous items selected by you must be assembled by special employees—hence the cash value in the gifts (mentioned first) is correspondingly greater.

Collins Nurseries
(Arthur J. Collins & Sons, Inc.)

Moorestown, N. J.
Founded 1860

The 3 Best Yellow Roses for 1930

(Shown in color on front cover; offered above as Gift on orders of \$25.00 or more)

Julien Potin. ("The Golden Pernet"). Brilliant golden yellow—beyond doubt the masterpiece of that famous producer of gorgeous roses, Monsieur Pernet. More petals than Souv. de Claudius Pernet, no black center. As the rose expands its color intensifies into richest gold. Exceptional fragrance. Excellent foliage. Splendid grower. Each \$1.75.

Rev. F. Page Roberts. Long-pointed, exquisite buds of golden yellow stained rich copper-red outside, opening into full double fragrant unfading orange-apricot blooms, with flame red on outer petals. Very fine garden rose, retains color well both cut and on plant. Beautiful all stages. Free blooming. Good foliage. Each \$1.75.

Talisman. Most astounding new American Rose. Brilliant apricot buds, handsomely formed; large fragrant high-pointed blooms. As petals unfold the rose appears as a golden yellow mass, with indescribable blends of copper-red and apricot-rose on the inside of the petals. Long stems, fine glossy foliage. Very profuse bloomer. Radiance hardness. \$1.75.

All three above roses (illustrated in color on front cover) strong, 2-yr., No. 1, field-grown plants, a \$5.25 value for \$4.90. Individual bushes, Free with Anniversary group—see page 1.

Collins Gold Medal and Cup-Winning Roses

These ten varieties, outstanding because of vigor and color display, are among the newest roses—many of them being introduced in 1929.

They are primarily desirable for our customers who already have roses from our general list. Selected by exacting standards, strictly No. 1, strong, sturdy bushes. All, we believe, will be sought eagerly in the future.

Dame Edith Helen. Brilliant pink. Gold medals—England, New York and Philadelphia. Certificates and cups. Best new rose; best old-rose scent. Continuous, great, perfect blooms on long, well - foliated, stout canes. Outer petals roll gracefully, emphasizing height of exquisite bud. Vigorous. \$1.25 each.

Duchess of Athol. An unusual, delightful golden-orange, flushed peach-pink. Spectacular in bud and open flower. Very profuse in bloom and a vigorous grower. \$1.50 each.

Gladys Benskin. Reverse of petals salmon-cerise over golden yellow. Inside, bright rose-cerise shaded orange. Distinct coloring. Vigorous and perpetual flowering. A striking novelty. Certificate of Merit National Rose Society of England. 1929 introduction. \$2.50 each.

Golden Dawn. Light lemon yellow. Crimson buds open into full double fragrant flowers on stiff upright stems. Free flowering; usually three or more flowers on each branch. Australian origin. Introduced 1929. \$1.50 each.

James Gibson. Glowing crimson-scarlet with a velvety sheen. Full, beautifully formed flowers develop to perfection on long stems. Vigorous, upright, bushy growth with disease resistant foliage. Introduced 1928. \$2.50 each.

Lady Florence Strong. Old-rose petals, a touch of violet, pinker edges, shading to yellow base, prominent scarlet veins. Large, continuous, fragrant double flowers. \$1.25 each.

Lady Margaret Stewart. Immense long, copper-orange buds opening to bright golden - yellow flowers. Full double, wonderful form, and delightfully sweet-scented. A rival of any yellow. \$1.50 each.

Mrs. A. R. Barraclough. Bright pink, opening into deeper rose - pink double flowers, yellow at petal bases. Gold Medal, National Rose Soc. of England. Perfect, long buds. Exceptional size and fragrance. Introduced 1927. \$1.25 each.

Mrs. Pembroke Thom. An outstanding yellow with dark bronzy, disease-resisting foliage. Well-formed buds develop into richly scented deep lemon-yellow flowers. Free bloomer throughout season. \$1.50 each.

Portadown. Deep crimson with velvety sheen. A 1928 introduction. Cert. of Merit National Rose Society of England. Large, beautifully formed flowers. Dark green foliage. Free bloomer and vigorous. \$2.50 each.



Collins "Gold Cup" Rose Collection

All 10 of above roses, strong 2 yr. No. 1, vigorous plants, firmly established in a rich ball of earth, \$15.00, by express. A \$17.25 value.

James Gibson
Crimson
Scarlet

Collins Hybrid Tea Roses

THEY BLOOM ALL SUMMER AND FALL—beautiful long-stemmed roses—right in your own garden. Plant these beautiful monthly-blooming varieties.

Ours are sturdy rugged **two-year old No. 1, field-grown** plants, full of vigor. They will bloom abundantly the first season.

Every rose on this list was selected for its long-blooming qualities, for its usefulness for cut flower purposes and for its abundance of beautiful blooms. From the following pages, in addition to the roses described on pages 1, 2 and 3, you are sure to find the particular rose quality you like best, whether it be the sweet tea fragrance, the perfectly formed bloom, the unusual color, mass of blooms, or a carefully balanced rose color garden. To help you get best results from the roses you buy from us, we include a leaflet "How to Grow Roses" free with each shipment.

Prices, unless otherwise noted, of all the following Roses are \$1.00 each, \$11.00 per doz., \$90 per 100, all by express.

Betty. Coppery - rose. Suffused with yellow. Sweet scented. Excellent autumn bloomer.

Chateau de Clos. Vougeot. Brilliant red. Blooms unfold to deep velvet crimson. Exceptionally fragrant.

Columbia. Rose pink. Vigorous, free bloomer. Fragrant.

Constance. Orange yellow. Free flowering, long buds, excellent form. \$1.25 each.

Duchess of Wellington. Safiron and yellow. Fragrant. Large thick petals give lasting qualities.

Edel. Best white. Ivory touch at base of petals. Enormous, well - formed blooms. Sweet.

Eldorado. Golden yellow. Red tints at base of petals. Sweet scented and vigorous. \$1.25 each.

Etoile de France. Crimson. Marking of deeper color. Long stems. Excellent for cutting.

Felicity. Soft pink, shading to cerise edges. Long bud, sweet scent. One of the best pink roses.

Florence Pemberton. Creamy white with pink. High pointed center. Excellent bedding rose.

Francis Scott Key. Crimson. Perfect in bud and flower. Very large and double.

Frank Reader. Yellow. 1927 introduction. Extra long well-pointed buds of light yellow, great flowers of deep yellow. Delightful fragrance. \$1.50 each.

General MacArthur. Crimson scarlet. A sweet-scented, prolific bloomer.



Columbia
Mammoth Pink

COLOR OFFER

Three leading PINK:

Caroline Testout
Killarney
Radiance

Above 3 for
\$2.60

Gorgeous. Amber - yellow. With red - coppery veins. Strong grower.

Gross An Teplitz. Velvety crimson. Scarlet shadings. Constantly in bloom.

Hadley. Velvety crimson. Excellent buds. Fragrant. Long period of bloom. \$1.25 each.

Mme. Edouard Herriot
Coral Red
(described on
page 6)



COLOR OFFER

Three RED Roses, embracing
wide variations in glowing red:
Hadley
H. V. Machin
Red Radiance
Above 3 for \$2.85

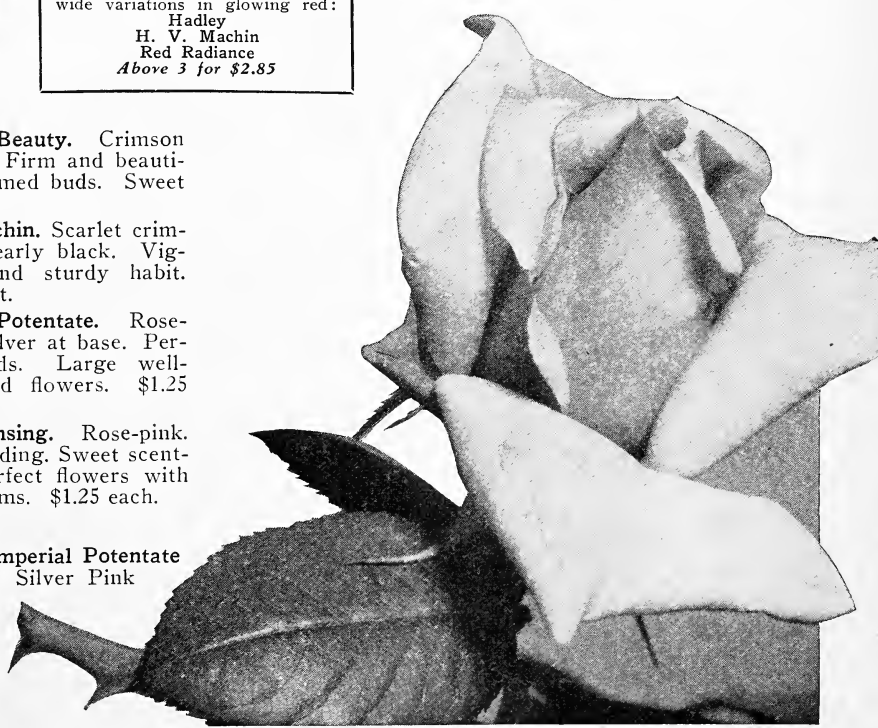
Hoosier Beauty. Crimson scarlet. Firm and beautifully formed buds. Sweet scented.

H. V. Machin. Scarlet crimson. Nearly black. Vigorous and sturdy habit. Excellent.

Imperial Potentate. Rose-pink. Silver at base. Perfect buds. Large well formed flowers. \$1.25 each.

J. C. Mensing. Rose-pink. Soft shading. Sweet scented. Perfect flowers with long stems. \$1.25 each.

Imperial Potentate
Silver Pink



J. J. L. Mock. Rich carmine and silvery rose. Inside imperial pink. Very large and perfect form. Fragrant.

Julien Potin. Rich golden yellow. See front cover and description on page 2. \$1.75 each.

Kaiserin Augusta Victoria. Pure snow-white. Long-pointed buds produced on long, stiff stems. Healthy, strong grower.

Killarney. Brilliant pink. Famous Irish Hybrid Tea. Nearly always in bloom. Excellent for cutting.

Killarney Brilliant. Carmine. Resembles above with the exception of its deeper coloring.

Lady Ashtown. Delicate rose. Yellow at base of petals. Excellent for cutting.

Lady Hillingdon. Apricot-yellow. Color lasts. Practically in bloom from June to late frosts. Highly scented.

Lady Alice Stanley. Coral rose. Flesh pink inside. Perfect buds and flowers.

Laurent Carle. Velvety-carmine. Brilliant. Vigorous grower and producer even in hottest weather.

Mme. Jules Bouche. Nearly pure white. Exquisite bud. Double, continuous bloomer.

Mme. Leon Paine. Silvery salmon. Orange scarlet center. Large flowers.

Miss Lolita Armour. Deep carmine-red, with a gold coppery - red suffusion. Base of petals yellow. Remarkable coloring. Quite double. \$1.25 each.

Mrs. Aaron Ward. Indian yellow. Probably most abundant producer. Most attractive buds and flowers.

Mrs. Lovell Swisher. Rich salmon-pink. Exceptional double flowers, highly scented. Long, pointed buds. New. \$1.50 each.

Mrs. Henry Morse. Pink and yellow. High pointed flowers. One of the best.

Mrs. Wakefield Christie-Miller. Pink. Abundant producer of large - sized flowers.

Radiance. Carmine - pink. Lovely salmon tints. The ideal bedding rose.

Red Radiance. Cerise-red of above and equally worthy.

Rev. F. Page Roberts. Rich yellow. See front cover and description on page 2. \$1.75 each.

H. V. Machin
Scarlet
Crimson
(described on
page 5)

COLOR OFFER

Roses of two or more striking, unusual colors and shadings, marvelously blended.

Los Angeles
Miss Lolita Armour
Mme. Ed. Herriot
Above 3 for \$3.25

Louise Catherine Breslau. Coppery-orange and pink. Buds coral-red with dark yellow shadings.

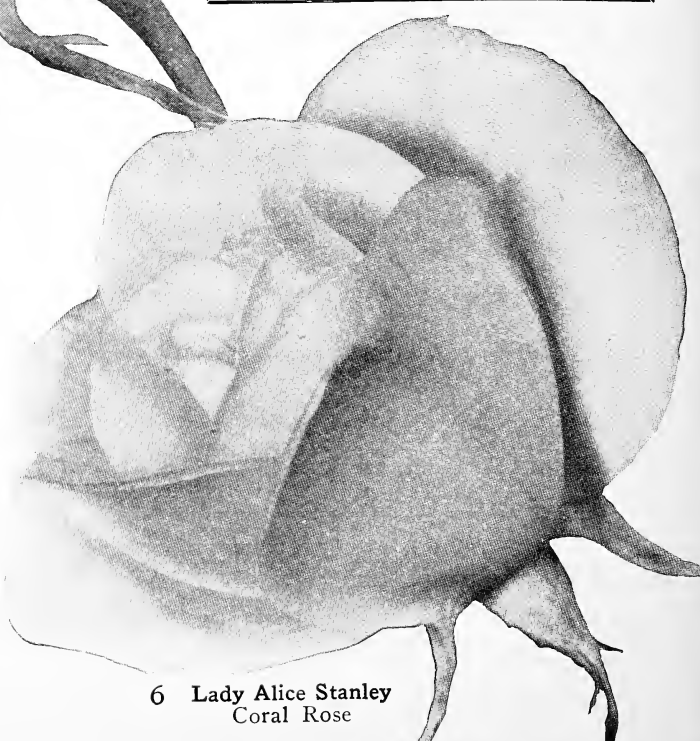
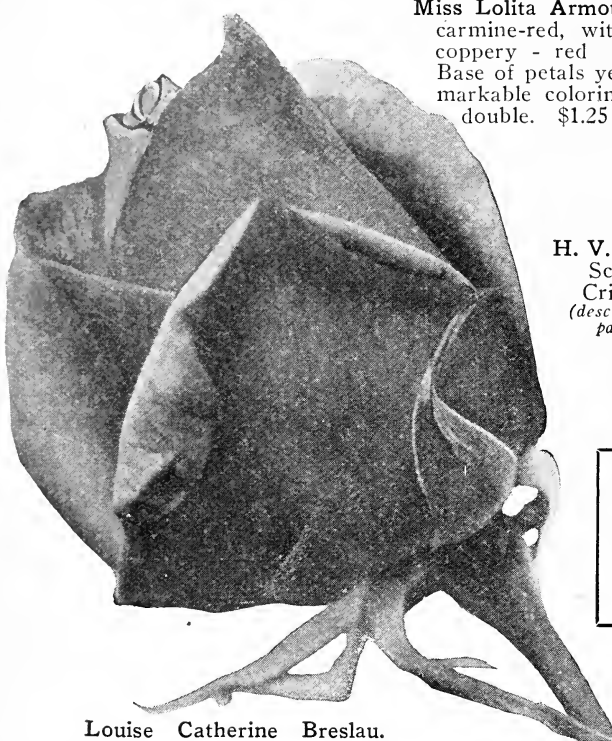
Los Angeles. Flame pink and coral yellow. Graceful buds and flowers. Excellent for cutting.

Luxembourg. Yellow. Excellent for cutting. Large size and rare fragrance.

Madam Butterfly. Pink and gold. Apricot blendings. Exquisite in bud and flower. Floriferous.

Mme. Caroline Testout. Rich pink. Delicately edged with silvery rose. Produces blooms very freely.

Mme. Edouard Herriot (Daily Mail). Coral-red. Buds shaded yellow. Beautiful full flowers of bright rosy scarlet. Fine bloomer. \$1.25 each.



== COLLINS HYBRID TEA ROSES ==

Rose Marie. Rosy-pink. Fine bedding variety with large quantity of blooms.

Shell Pink Radiance. Similar to Radiance in type. Color more silvery. Equally prolific.

Sir David Davis. Deep brilliant crimson. Unfading, sweet, tea-scent. Large well-pointed buds. \$1.25 each.

Souv. de
Georges Pernet
Fiery Red

Special Offer on the Seven Roses

Illustrated on pages 4 to 7

Striking color range.

Columbia. Largest pink. Fragrant.
Mme. Edouard Herriot. (Daily Mail.) Coral red, yellow shaded.

Imperial Potentate. Rose pink, silver tinted.

H. V. Machin. Scarlet crimson, almost black.

Lady Alice Stanley. Coral rose; flesh pink inside.

Souv. de Georges Pernet. Fiery Oriental red; carmine edged.

Ville de Paris. Clear buttercup yellow throughout.

7 Strong 2-yr. old No. 1 Field-grown bushes. One each of above varieties. **\$6.90** by express
(Regular price, \$7.75)

Souv. de Claudius Pernet. Yellow. "The perfect yellow rose," of unfading sunflower yellow. Fine buds and handsome flowers.

Souv. de Georges Pernet. Fiery Oriental red. Petals edged brilliant carmine. Golden sheen over all. Vigorous.

Sunburst. Yellow. Deepens to orange at center of flower. Exquisite type. Sweet scented.

Talisman. Golden yellow and apricot-rose. See front cover and description on page 2. \$1.75 each.

Ville de Paris. Buttercup yellow. No trace of any other color. Similar to Radiance type. New. \$1.25 each.

Prices, except where noted — \$1.00 each; \$11.00 per doz.; \$90.00 per 100, all strong 2-yr.-old bushes by express.



Ville
de Paris
Yellow

Two ROSE OFFERS — Exciting to Rose Enthusiasts!



"90 Grade"

Here are 5 very popular leading favorites "tried and true":

Lady Hillingdon. Cup-shaped, apricot-yellow, continuous blooms June to frost. Foliage bronzy. Thornless.

Shell Pink Radiance. Silvery-pink. Similar to Radiance in vigor and productiveness.

Kaiserin Augusta Victoria. Perfect white. Leading rose for profusion of long, pointed buds.

Columbia. Rose-pink. Vigorous and healthy. Exceptionally free bloomer.

Hadley. Velvety-crimson. Beautiful buds; excellent foliage; constantly in flower.

Sale on this group limited to 3500 collections for the entire season. Never before have we been able to price these at less than one dollar each. Until the supply is exhausted, we offer

5 Thrifty Field-Grown Bushes. Strong-rooted, two years old.

\$1.95
Postpaid



Our rose bushes must pass rigid tests and meet severe standards to claim the right to be "Collins two-year field-grown No. 1 plants." Among the hundreds of thousands we raise obviously not all can qualify. (We wish to make this very clear and to put it another way—All Collins Roses offered earlier in this book and Collins Climbing Roses rate "100," while the bushes listed on this page rate approximately "90," owing to number of limbs, height of bush, length of roots and general appearance.)

Collins "Newer Five" Roses, "90 Grade"

The coming varieties, easily holding favored positions in the rose gardens of those who know.

Dame Edith Helen. Enormous pink blooms. "Gold Cup" collection, page 3.

J. C. Mensing. Rose-pink. Hybrid Tea List, page 5.

Lady Margaret Stewart. Orange and yellow. "Gold Cup" collection, page 3.

Mrs. Pembroke Thom. Rich lemon-yellow. "Gold Cup" collection, page 3.

Ville de Paris. Bright yellow. Hybrid Tea List, page 7.

Each \$1.10; SPECIAL. One each of above 5 varieties, \$4.50; two of each (10 in all), \$8.50, postpaid.

We list the roses described above in answer to repeated requests for certain much desired varieties at the lowest possible price. The difference is in size, not quality, and we have no doubt that the profusion and perfection of bloom will be entirely pleasing to you.

Collins Reconditioned Florists' Roses

Frequently our customers have expressed a desire to secure varieties of roses like those they have seen at flower shows and in florists' windows. These varieties are generally better suited to growing in greenhouses, but we have found that by putting the bushes through a scientific reconditioning process, which we have developed, they give surprising results. Often they start blooming in the garden within three or four weeks after planting and bloom abundantly the first year until frost, and if protected like **field-grown roses** will survive many winters. We have been able to secure some of the choicest and newest varieties. They all bear their flowers on long stems and quite continuously. The blooms are magnificently formed and, without exception, very fragrant.

Reconditioning is completed sooner with some varieties than with others. Customers may indicate their choice, however, and as far as possible we will follow it. If it is desired that order be held until all varieties mentioned are ready, please indicate this plainly on the order. In selecting varieties to fill orders we will cover the color range as completely as possible.

Any 4 bushes, \$1.00 (minimum order); 8 bushes, \$1.75; 12 bushes, \$2.50. (If desired by parcel post add 3c per plant for postage and special packing.)

Measured alone by their gracefully formed flowers, we feel these bushes would have a place in any garden, for which our reconditioning makes them wholly desirable.

Amelia Gude. Yellow. Deeper yellow shadings on reverse petals. Buds large and full.

America. Peach-pink. Full flowers. Free bloomer. Practically thornless.

Briarcliff. Rose pink. High-pointed center. Massive in full bloom. Very sweet scented.

Crusader. Velvety - crimson. Strong - growing, robust bush. Great producer.

Matchless. Cerise. Deep veined. Brilliant flowers. Long pointed buds.

Mrs. Calvin Coolidge. Golden-yellow. Flowers deepen to rich orange. Abundant blooms.

Premier. Pink. Most fragrant. Graceful bud.

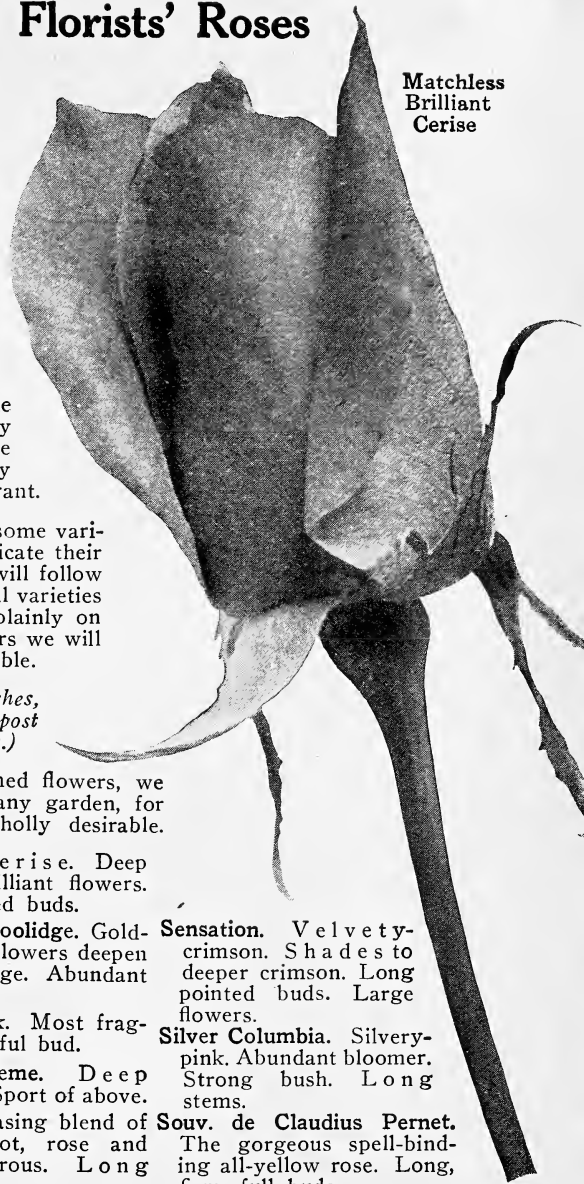
Premier Supreme. Deep rose-pink. Sport of above.

Rapture. Pleasing blend of coral, apricot, rose and gold. Vigorous. Long stems.

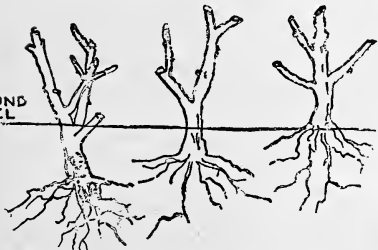
Sensation. Velvety-crimson. Shades to deeper crimson. Long pointed buds. Large flowers.

Silver Columbia. Silvery-pink. Abundant bloomer. Strong bush. Long stems.

Souv. de Claudius Pernet. The gorgeous spell-binding all-yellow rose. Long, firm, full buds.



Matchless Brilliant Cerise



Too deep Proper depth Too shallow
Drawing, Courtesy Dept. of Agriculture

Brief Planting Directions for Roses

Dig hole $1\frac{1}{2}$ times as large as spread of roots; **don't cramp them.** As each bush is planted fill earth to $\frac{2}{3}$ of depth, then add water plentifully, or pack earth firmly above roots to drive out air-holes, being careful not to skin bark. Then fill remainder of hole with loose earth. Don't pack. Leave ground slightly lower around each bush. We have compiled a complete set of Rose Cultural Instructions, copy of which will be sent with every rose order.

For Best Rose Fertilizer, see page 31

Climbing Roses



Cl. American Beauty

*Chaplins' Pink, Primrose and Le Reve — three of the best, newest climbers, most popular colors, \$4.75 postpaid. Valuable addition for the real rose lover.

A choice selection of the finest two-year-old bushes; includes 3 NEW outstanding introductions indicated by *.

American Beauty. Rosy-crimson. Strongest and fastest grower. Great quantities of flowers on individual stems.

American Pillar. Rosy-pink and carmine. Glossy leaves. Often 3,000 flowers on a bush.

***Chaplins' Pink.** NEW. Offered for the first time this year. It is the PINK form of the Paul's Scarlet Climber. The flowers are larger and fuller. The plant is more vigorous and makes an excellent growth in one season. It is a rose that will be in every one's garden as soon as it becomes known. \$2.50 each.

Dr. Van Fleet. Flesh pink. Pointed buds open to 4-inch flowers.

Emily Gray. Yellow. Buds orange-yellow. Holly-like foliage. \$1.00 each.

Gardenia. Golden - yellow. Double flowers. Wax y leaves. June and July.

***Le Reve.** Unfading yellow. NEW. Large double flowers. Dark, glossy foliage. Very hardy. \$1.25 each.

Mary Wallace. Rose-pink. Salmon base. 4 in. flowers. Prolific in spring. Many buds, summer and fall.

Paul's Scarlet. Vivid scarlet. Most popular red climbing rose. Flowers produced all over bush.

***Primrose.** Canary - yellow. NEW. Profuse bloomer. Double, hardy, and choicest yellow. \$1.50 each.

Silver Moon. White. Beautiful, semi-double, 4½-inch flowers. Grows thirty feet in one season.

Thousand Beauties. White to deep pink. Luxuriant, double, thousands of blooms.

Extra strong 2-yr. bushes, 90c each postpaid (except where noted). \$10.00 per doz.; \$75.00 per 100. Any four 90c varieties for \$3.45.

Collins Polyantha or Baby Roses

A popular type for bedding purposes. Eighteen inches high, compact, and constantly in bloom till late frosts. Excellent for edging purposes.

Cecil Brunner. Rose - pink. Masses of bloom. "The Sweetheart Rose."

Chatillon. Silvery - pink. Enormous trusses.

Edith Cavell. Scarlet - red. Most desirable deep colored rose.

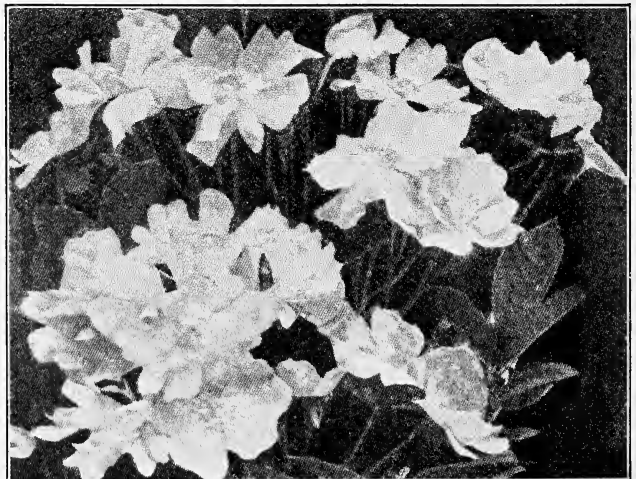
Golden Salmon. Golden - orange. NEW. Brilliant. Never out of bloom. Vigorous. \$1.25 each.

Gruss an Aachen. Flesh pink. Salmon and yellow shadings. Exceptionally large flowers. Mass of bloom throughout season. 90c each.

Ideal. Red. Large, effective trusses.

Prices, except where noted — 75c each; \$7.50 per doz.

SPECIAL: One each of above 6 roses, \$4.75.



Golden Salmon

Climbing Hybrid Tea Roses

This increasingly popular type of rose produces flowers all through the season. Climbs over trellises and arbors. Very fragrant and succeeds well in sheltered places or with winter protection.

Climbing Francis Scott Key.

Crimson. Very large double flowers. Vigorous.

Climbing General MacArthur. Red. Bright blooms in June and thereafter.

Climbing Gruss an Teplitz. Scarlet branching habit. Constantly in bloom.

Climbing Lady Hillingdon. Apricot-yellow. Long, well-formed buds. Blooms constantly.

Prices: \$1.00 each; \$10.00 per doz.; any pair for \$1.85.

Climbing Lady Ashtown.

Pale rose-pink. Best and hardiest. Pointed blooms.

Climbing Los Angeles. Salmon and gold. Strong, healthy growth. Sweet-scented.

Climbing Red Radiance.

Red. The same as its popular parent. Very hardy.

Climbing Sunburst. Yellow-orange. Beautiful yellow buds. Sweet-scented.



Climbing Sunburst

HYBRID PERPETUAL ROSES

American Beauty. Dark carmine. Very popular variety.

Frau Karl Druschki. White. (White American Beauty.) Double flowers. 4 to 5 inches. Abundant blooms.

General Jacqueminot. (General Jack.) Scarlet crimson. Hardy anywhere. Abundant bloomer.

George Ahrends. (Pink Frau Karl Druschki.) Soft rose. Sweet-scented; large size; marvelous form.

Mme. Albert Barbier. Yellow. NEW. Practically

ever-blooming. Many petaled. Double. Long, graceful buds. Golden apricot suffusion. \$1.25 each.

Prices, except where noted, \$1.00 each; \$11.00 per doz. Special price for all five, \$4.75. All strong 2-year-old bushes.

OTHER ROSE FAVORITES

Rosa Hugonis. Canary-yellow. Chinese Rose. Shrub-like. Scarlet berries in the fall. \$1.00 each.

F. J. Grootendorst. Crimson. Summer and fall flowers. Useful as hedge. Showy. \$1.00 each; \$10.00 per doz.

Pink F. J. Grootendorst. Like F. J. Grootendorst, but a warm pink. NEW. \$1.25 each; \$12.00 per doz.

Hermosa. Pink. Excellent bedding rose. Never without flowers. Popular. 90c each; \$9.00 per doz.

STANDARD OR TREE-FORM ROSES

Budded high on strong stems 3½ feet tall, they give the effect of miniature trees when in bloom (flowers normal size, bloom all summer and fall). Gruss an Teplitz, Mme. Caroline Testout, Mme. Butterfly, Radiance, Red Radiance, Betty, Mrs. Aaron Ward, Souv. de Claudius Pernet.

Price: Any of the above, \$3.50 each; \$6.75 per pair; \$18.00 per half-dozen.

MOSS ROSES

The buds of these interesting rose bushes seem to be covered with moss. Trim only previous years' old wood.

Crested Moss. Deep pink.

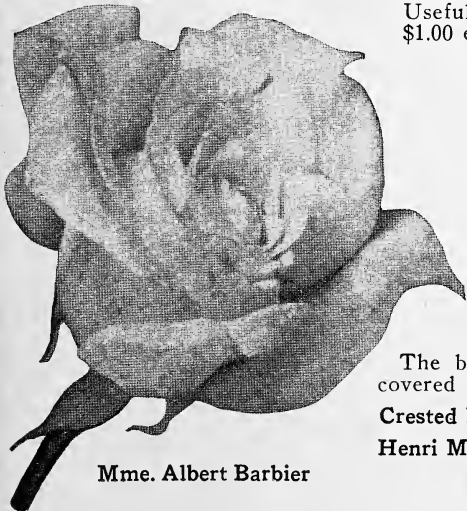
Princess Adelaide. Rosy pink.

Henri Martin. Crimson.

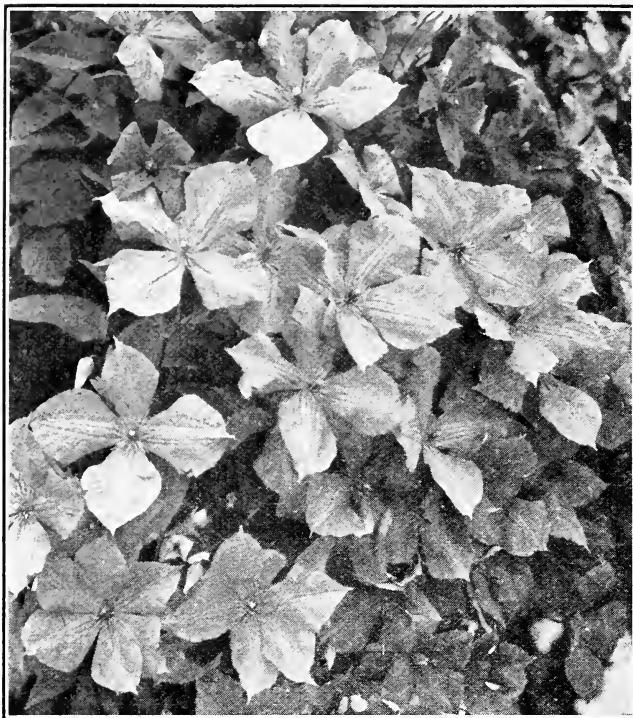
White Moss. Pure white.

Price: 2-yr., 75c each; all four, \$2.75.

Mme. Albert Barbier



Get your bonus (see page 2)



Clematis Jackmani

Vines and Climbers

Clematis. Jackmani. Purple. Prefers moist, rich, fertile soils. Set crowns 3 inches deep. Most popular. 90c each; \$9.00 per doz. postpaid.

Paniculata. Creamy white. Handsome clusters. Sweet. Easy to grow. 2-yr. 50c each; 4 for \$1.50 postpaid.

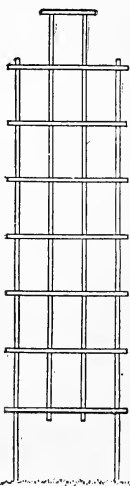
Honeysuckles. Monthly Fragrant. White. Cream tints. Very fragrant flowers.

Red Coral. Coral red. Hardy, rapid growth, suitable for walls, rock work, etc.

Halliana. Yellow. Intensely sweet-scented. Almost evergreen. Shiny leaves. Profuse bloomer.

Hardy vines, 2-yr. size, 50c each; \$5.00 per doz. 3-yr. size, 75c each; \$7.50 per doz. Special: 1 each of above 3 varieties, 3-yr. size, \$1.95. All postpaid.

Kudzu Vine. Rosy-purple blossoms. Summer. 50 feet in a season. 2-yr. 75c each postpaid.



Trellis No. 57

Trellises

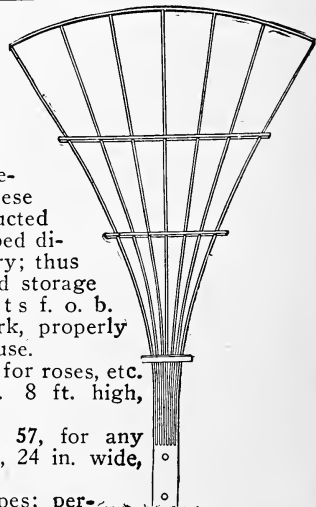
Durable Wood Painted White

At the request of many customers we have made arrangements to have these sturdily constructed wood trellises shipped direct from the factory; thus saving handling and storage costs. Shipments f. o. b. Unadillo, New York, properly crated, ready for use.

Fan Trellis, No. 37, for roses, etc. 6 ft. high, \$2.40. 8 ft. high, \$2.90.

Porch Trellis, No. 57, for any vines. 8 ft. high, 24 in. wide, \$2.90.

Prices of other types; pergolas, etc., on request.



Fan Trellis No. 37

Ivy. Japan or Boston. Crimson foliage in autumn. Rich olive color throughout season. Clings to any surface.

American. Yellow, crimson and scarlet shades in autumn. "Virginia Creeper." Hardy.

English. Dark green. Glossy evergreen leaves. Hardy climber.

All strong vines, 2-yr. 50c ea.; \$5.00 per doz.; 3-yr. 75c ea.; \$7.50 per doz. Postpaid.

Dutchman's Pipe. Dense shade. Pipe-shaped flowers. 2-yr., 85c each; \$8.50 per doz. postpaid.

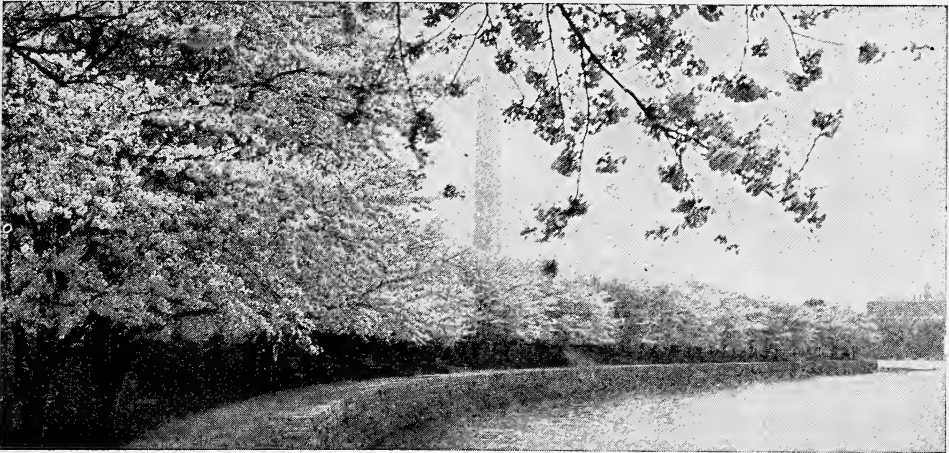
Silver Lace. Creamy white. Most desirable flowering climber. Produces foamy sprays through summer and fall. Attains height of 25 feet. 2-yr., 75c each; \$7.50 per doz. postpaid.

Wistarias. Best hardy rapid climbers. Flowers in long pendulous clusters in May. Scattering blooms later in season. Grafted plants only—sure to bloom.

Chinese Blue. Violet-purple. Sweet-scented.

Chinese White. Pure white. Similar to the Blue Wistaria.

Prices: All sturdy grafted vines, sure to bloom, 2-yr., \$1.00; 3-yr., \$1.25. Postpaid.



The Japanese Flowering Cherries

For those who have journeyed to Washington, D. C., to see the Japanese Flowering Cherries in bloom along the bank in Potomac Park we need only to mention the picture of blossoming trees, blue skies, the bud-green of a Southern spring, and the exquisite reflections in the water to bring back those memories to you.

For those who have never made the trip to see the Cherry Blossoms there is a curiosity and eagerness to know more about them. In addition to its fragrant pink flowers, the Japanese Cherry is an attractive tree, with its glossy green leaves in summer turning to a brilliant scarlet and crimson in the autumn—a blaze of color. Supplies have always been scarce, but we have them for you **now** in the following varieties:

Fugenzo. Deep double pink. Late flowering. One of the best.

Kwansan. Double dark pink. Bushy, vigorous. \$2.75.

Shirofugen. Single light pink. Clusters of 3 to 5 flowers.

Shirotae. Double snowy-white. Late. Floriferous.

Sieboldii. Semi-double pinkish white. Purple or redd-tinted foliage.

Yeodensis Yoshino. Single double pink. Fast growing. Much in evidence at Capitol grounds.

Prices of above, except where noted, \$2.50 each. Size 3 to 4 feet.

SPECIAL OFFER. Any 2 of above, except Kwansan, \$4.50.

Japanese Weeping Cherry. Mass of pink flowers all over the branches from top of tree clear to ground. Exceedingly graceful. One year head to bloom this year, \$4.50.

The Chinese Flowering Crabs

Even though they are not so well known as the Japanese Flowering Cherries they rival them in beauty. Can be planted as specimen trees, among shrubbery, at entrance of garden, or together—wherever they are planted they make a striking appearance with their pink, red, or white blossoms which cover all the branches and which are followed in most cases by showy fruit. The following varieties will bloom the first or second year.

Atrosanguinea. Brilliant carmine shading to soft pink. Appear before the leaves. Useful as hedge, plant every 4 feet, trim frequently. Beautiful as a specimen on lawn. 4 to 5 feet.

Bechtel's. Charming rose-pink. Large quantity of very double and large flowers. Long period of bloom. 4 to 5 ft. \$1.50.

Niedzwetzkyana. Flowers, bark, stems and leaves all red or purple. Fruit reddish-purple. Flowers profusely. 4 to 5 feet.

Parkmans. Double pink flowers on drooping red stems. Dwarf type. Excellent for formal gardens or shrubbery. 3 to 4 feet.

Prices of Flowering Crabs, except where noted, \$1.75 each.

SPECIAL OFFER: One each of above, 4 for \$5.75. Regular value, \$6.75.

COMBINATION SPECIAL: Any 2 of above Flowering Cherries, except Kwansan and Weeping Flowering Cherry, and any 2 of above Flowering Crabs for \$7.00. Regular \$8.50.

Shade and Other Ornamental Trees on pages 28 and 29



Collins Antique Boxwood

Rich, fragrant boxwood, hardy, slow growing, always a lustrous green, is excellent for window boxes and urns, and for compact edging of garden paths, and beds of perennials — preventing untidy spreading.

	Each	5	12	50	100
3- 5 in. 2 yr. size.....	\$.25	\$1.00	\$2.00	\$6.00	\$11.00
5- 8 in. 3 yr. size.....	.35	1.25	2.35	8.00	13.50
8-12 in. 5 yr. size.....	.90	4.00	9.00	30.00	50.00

10-12 in. sheared globes, ea., \$1.90; per pair, \$3.50; per half dozen, \$8.75.
1½ ft. light specimens, ea., \$2.50; per pair, \$4.50. 1½-2 ft. heavy, ea., \$4.00; per pair, \$7.50.

Hardy Evergreen Azaleas

We offer only the truly hardy Evergreen Azaleas. As shown by illustration at right, the attractive bushes are covered with a profusion of gorgeously brilliant blooms, in the unusual colors shown by illustrations on rear cover.

Hinodigiri (Glowing fiery red) Compact, bushy plants, always remain dwarf. For color of flowers and prices, see rear cover page.

New Hardy Evergreen Kaempferi Hybrids. Not to be mistaken with older hybrids, which lacked their color brilliancy and hardiness. Winners of gold medal, First and Special Prizes at most recent shows. Bright carmine rose, light lilac rose and brilliant salmon rose — color photos and prices on rear cover.



Collins Window Boxes



There is no better way to add a "homey" touch to your windows than by one of these window box assortments. **Assortment No. 1** (at left) — two Berkman's Arborvitae (12-15 in.) and two cone-shaped Greek Junipers (15-18 in.). At nursery, \$5.50.*

Assortment No. 2 includes three Berkman's Arborvitae (12-15 in.) and two dwarf Boxwood (10-12 in.). At nursery, \$7.50.*

Both lots fit in a porch box 1 ft. x 1 ft. x 3 ft. 6 in. Such a box, green painted, \$2.00 extra. *Packed for shipment, express, add 40c.

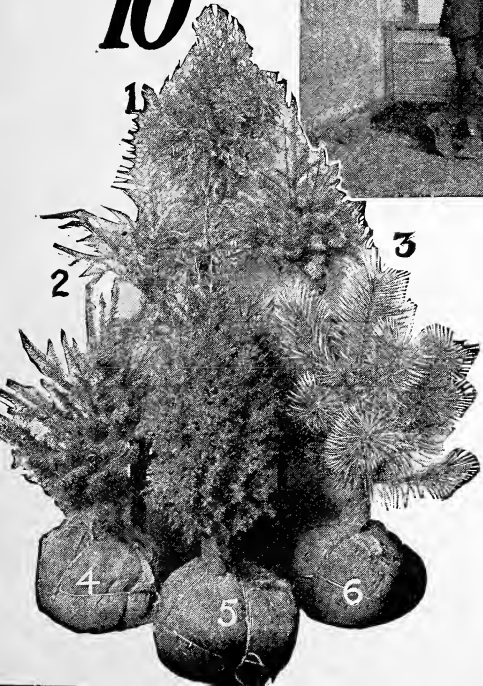
Collins Evergreens

Visitors never fail to marvel at our Evergreen plantings. Thirty acres of them! Rows upon rows of bright greens, blues, yellows—every popular variety grown and many rare novelties! In all sizes, from "baby" trees (offered at right), "immediate" sizes (below) to largest trees.

And we give them painstaking care; frequent transplantings, heavily manured soils and once-a-year trimmings to assure compact, shapely specimens.

In addition to these two collections (values we do not believe can be duplicated) we offer you a helpful landscaping service. Tell us your problem in person, or write, stating full conditions, existing plantings, size of property, compass directions, and what you most desire, and our Landscaping Department will be glad to advise you—without obligating you.

6 finest Evergreens
GUARANTEED TO GROW
\$10⁰⁰



Young Evergreens

Grow them yourself! It's easy! Low priced, well-rooted, with firm ball of earth. Prices include postage and safe delivery.

Golden Plumed Cypress (2). Evergreen with gold tips. 35c each; 3 for \$1.00.

Green Plumed Cypress. Feathery-green foliage. 35c each; 3 for \$1.00.

Moss Cypress. Soft blue. Vigorous. 40c each; 3 for \$1.10.

Pyramidal Arborvitae (1). Deep green. Thin tall shaft. 35c each; 3 for \$1.00.

Siberian Arborvitae. Rich dark green. Cone-shaped. 40c each; 3 for \$1.00.

Compact Arborvitae. Bright green. Ball-shaped. 35c each; 3 for \$1.00.

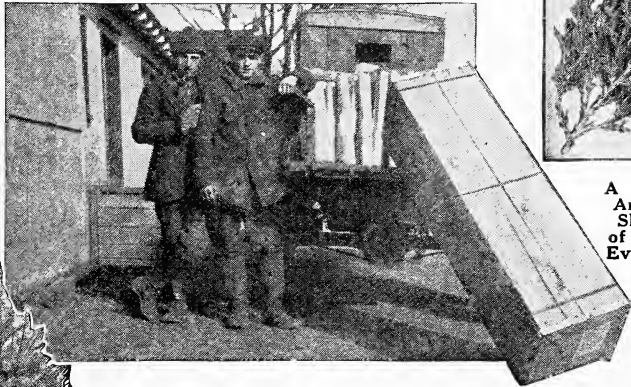
Berkman's Oriental Arborvitae (5). Formal. Tight vertical layers. Gold tips. Dwarf. 60c each; 3 for \$1.65.

Greek Juniper (4). Bright blue, cone-shaped. Formal. 50c each; 3 for \$1.35.

Pfitzer's Juniper (3). Dark green. Graceful spread. 50c each; 3 for \$1.35.

Irish Juniper. Tall shaft of bluish-gray. Formal. 35c each; 3 for \$1.00.

SPECIAL OFFER: One each of \$3.75 above 10. Value, \$4.15; only Postpaid



A South American Shipment of these Evergreens

Beautiful Young Specimens

Average nearly 2 feet high above ground

Just the thing you need in front of your porch in groups, or singly on your lawn. They give a beautiful finishing touch all year 'round. Easy to plant, of a size for immediate effect, and guaranteed to grow under all climatic conditions.

Every tree is carefully selected giving you remarkable range of forms and colors. All dug with large ball of earth, keeping roots in perfect condition.

All six, guaranteed to grow, \$10.00.

1. American Arborvitae
2. Canadian Hemlock
3. Douglas Blue Spruce
4. Norway Spruce
5. Red Juniper
6. Austrian Pine

Bulletin of our largest size Evergreens and Landscaping Service on request.

Water Lilies (Best Hardy Sorts)

We have prepared a leaflet on "How to Grow Water Lilies" to be mailed with all orders.

Lovely Water Lilies with their exquisite form and coloring now possible in the smallest garden—a sunken wooden tub or water-tight half-barrel provides the "pond" at any desired spot. Easy to grow in cask, formal pool or natural ponds.

NYMPHAEAS

Between 1888 and 1900 M. Latour-Marliac of France obtained magnificent results with *Nymphaea*, producing, by methods still a mystery, very hardy free flowering varieties. Our first three are his creations.

Marliacea Chromatella. Gorgeous yellow flowers, 4 to 6 in. wide, stamens yellow. One of the best. \$2.00.

Albida. Glistening white, very large, with yellow stamens. Fragrant; \$1.50.

Carnea. Lovely glowing flesh pink, intensified in depths of flowers. \$1.50.

Each of above three new outstanding varieties for \$4.75.

Odorata. The white Water Lily of our natural lakes. Fragrant. Fine for cutting. Used in large plantings. 50c.

Rosea. The handsome pink Water Lily of Cape Cod; fragrant and large. Blooms nearly 6 in. across. \$1.50.

Helen Fowler. Deep rose pink, very fragrant. Useful for cutting. \$1.25.

LOTUS

So highly valued by the Egyptians that its flowers, buds and leaves were used freely in their designs, and even influenced the form of their columns.

Speciosum (Egyptian Lotus). Charming deep rose-colored flowers and tropical foliage. Splendid in groups. Easy to grow. \$2.

Luteum. (American Lotus). Gorgeous yellow, very large, splendid variety. \$2.

TROPICAL WATER LILIES

Zanzibariensis Azurea. Rich azure-blue, many petals, large flowers, 6 to 12 in. across. Very satisfactory. \$1.

Rosea. Charming pink, similar to above. \$1.

Pulcherrima. Lovely light blue flowers, 10 to 12 in.; blooms all year. \$2.

NIGHT-BLOOMING TROPICAL LILIES

Dentata. Sparkling pure white 8 to 10 in. flowers, open until 1 P. M. \$1.

Rubra Rosea. Bright rosy-carmine, 6 to 10 in. across, open 8 P. M. until 11 A. M. Many flowers. \$1.50.

Kewensis. Flesh pink, similar to above. \$2.

OTHER WATER PLANTS

For 6-8 in. below surface
Acorus Japonicus Variegatus. (Variegated Sweet Flag.) Erect, sword-shaped leaves, striped deep yellow, height 2 ft. 25c.

Eichhornia Crassipes Major. (Water Hyacinth.) Showy rosy-lilac flower-spikes like Hyacinths. Interesting foliage. 25c.

Limncharis Humbolti. (Water Poppy.) Beautiful yellow flower clusters and leaves float on the surface. Blooms abundantly all season. 25c.

WATER PLANTS FOR THE AQUARIUM

A selection of the easiest-to-grow plants, grasses, etc., some of which grow entirely below water, while others float. Interesting characteristics. Necessary to fish. With a few pebbles or small rocks clever submarine gardens are developed. 6 different plants for \$1.25.

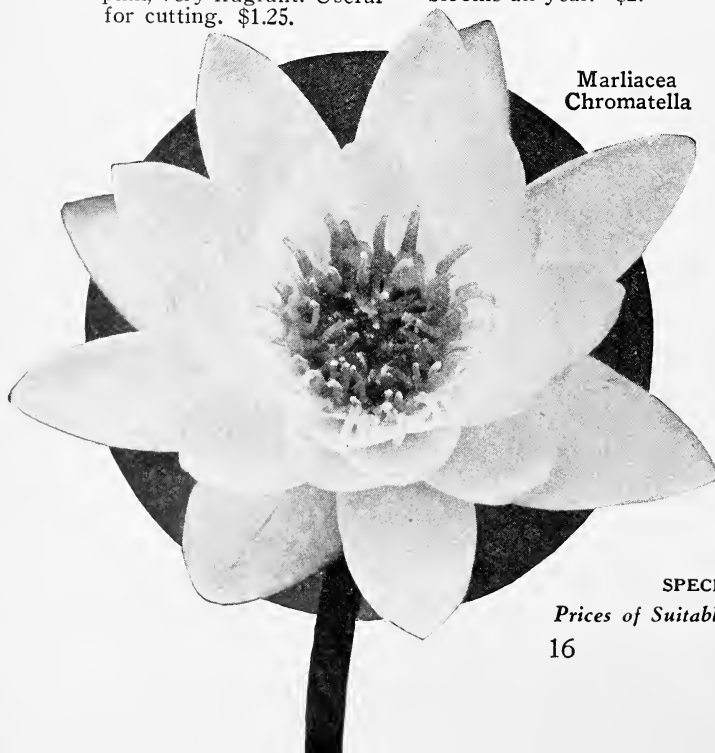
WATER GARDEN GROUP

6 Water Plants, all different, for \$1.25
6 Perennial Plants for edging pool, varieties labeled 1.35
1 Water Lily, any \$1.50 variety (your selection) ... 1.50

\$4.10

SPECIAL OFFER: Above 13 for \$3.75

Prices of Suitable Tubs on Application



Marliacea
Chromatella



NEW BEAUTY BUSH

A graceful ornamental shrub from Central Asia, growing in long, arching sprays. In June these bear clusters of tubular flowers (like honeysuckles), of charming bluish-pink in utmost profusion. Described as a "fountain of pink loveliness," 6 to 9 feet high. Very hardy. Has year-round beauty. 2 yr., 12-18 inches, \$1.35; 2 yr., 18-24 inches, \$1.75; 3 yr., 2-3 feet, \$2.75.

Collins Flowering Shrubs

GIVE YOU FLOWERS AND BERRIES ALL YEAR 'ROUND

Althea (Rose of Sharon). Pink, red, white or blue. Bloom all summer. Useful for hedge. 18-24 in., 65c each. 5 for \$2.95.

Deutzia Gracilis. Most choice. White flowers profusely borne. Dwarf. Good for edging shrubbery. 12-15 in., 60c each.

Hydrangea Arborescens (Hills of Snow). Pure white flat flower heads. June to September. 2-yr. heavy 1½-2 ft., 65c.

Otaksa (Blue Hydrangea.) Rear color cover. 3 smaller plants, \$1.25 p. p.

Paniculata Grandiflora. Large white flowering heads change to pink in autumn. Excellent for cutting. Will last.

Bush form: 2 yr., 18-24 in., 60c each; 3 yr., 3-4 ft., 90c each.

Tree form: On upright trunks like small trees. \$1.50 each; per pair, \$2.75.

Japan Flowering Quince (Japonica). Orange red flowers early spring before leaves appear. Best red. 1-1½ ft., 75c each.

Lilac: Old-Fashioned Purple. Sweet-scented purple clusters. 18-24 in., 50c.

Old-Fashioned White. Fragrant white clusters. 18-24 in., 65c.

President Grevy. Double. Soft blue.

Marie Legraye. Single, pure white, fragrant.

Souv. de L. Spaeth. Single, enormous purple violet.

Charles Joly. Double. Dark velvety purple. Silvery beneath petals.

Charles X. Single. Lilac-tinted violet.

Each of above 90c. One each of last 5, \$3.75.

Mock Orange (Philadelphia), Virginal: NEW. Pure white blooms borne monthly in profusion. Most fragrant. 2 to 3 ft., 3 yr., 95c.

Spirea. Anthony Waterer. Rich, rosy-red flowers all summer. Dwarf. 12-18 in., 50c; 2-3 ft., \$1.50.

Bridal Wreath. Double white flowers profusely in May. Orange foliage in fall. 12-18 in., 50c; 2-3 ft., 75c.

Korean. NEW. Immense dome of rounded clusters of snow-white flowers. Glossy foliage. 12-18 in., \$1.25; 18-24 in., \$1.50.

Thunberg. White flowers, mist-like, cover plant. April-May. 18-24 in., 50c.

Snowball Carlesi. NEW. Rare Korean variety. Flowers delicate rose, tinted white. Exceptionally sweet scented. Bushy. April. 18-24 in., \$2.00 each.

Opulus Sterile (old-fashioned). White flowers in May; red berries in fall. 2-3 ft., 85c.

Plicatum (Japan). Ball shaped, white flowers. Purple tints in green foliage. Most popular. 18-24 in., 75c; 2-3 ft., \$1.00.

Weigela. Trumpet shaped; like honeysuckle flowers.

Candida. White. June. Profuse. 2-3 ft., 75c.

Eva Rathke. Dark red carmine. Produced through summer. 12-18 in., 45c; 18-24 in., 65c.

For other shrubs see pages 20 and 21

For a Riot of Bloom Every Fall

Plant Hardy Chrysanthemums This Spring

Nothing else in the hardy garden so captivates us all in Fall as these "Mums." Eagerly sought by "garden beginners," cherished by the most experienced of flower-lovers. The most prolific, satisfactory and reliable of all flower favorites, the Hardy Chrysanthemums are the frame-work and backbone of the Hardy Garden in Autumn, and even after frost and snow have "put to sleep" everything else in the garden.

The "Mum" Color Photo shown on facing page, shows what one flower-lover accomplished in brightening her garden by planting the REMARKABLE SPECIAL OFFER, shown below. For as is our custom, we had this offer tested out thoroughly before it was included in our catalog.

What profusion of blooms she had! What color range! What variety of forms and shapes, astounding to the person who associates the term "hardy chrysanthemums" with the drab, dwarf flowers of our grandparents! And, marvel of marvels, the blooms shown in this color photo were picked after a heavy snow had fallen!

Collins "Mum" Color Photo Offer

From the 30 leading kinds listed below (ball shaped, Aster Flowered, convex and incurving, tight and formal, full opening and expanding) we choose for you a varied selection of 12 superb "Mums" covering the color range equal to or better than the 12 shown in the color photo for \$1.95 POSTPAID. (If west of Mississippi River, add 25c for postage.) They are selected from these

Finest Aster-Flowering and Choicest Early Flowering Varieties

They will give you armloads of spicy blooms—all types and colors—which will retain their color and freshness for many days. They give an increasing yield yearly with little care. Our plantings are observed carefully year after year for greatest quantity of finest blooms, unusual colors for Fall months, hardiness and yearly increase. Here are the remarkable varieties which led on every count:

30 Choicest Chrysanthemums, Including Largest-Flowering, Aster-Formed, Early-Flowering Sorts, and Choicest Exquisite Single-Flower Varieties

Alice Howell. Rich orange-yellow and bronze.

Belle Mauve. Early. Delightful bluish-pink.

Chrysolora. Large clear yellow.

Delmar. Early. Bright rose-pink.

Excelsior. Aster-flower. Bright yellow. Early.

Golden Oriole. Excellent single-flower canary-yellow. Rich.

Golden Sun. Startling brilliant yellow.

Helios. Unusual yellow type, rich chestnut-scarlet.

Ida Catherine Skiff. Delightful bronze-amber.

Idol. Charming salmon-pink.

Joyce Strowlger. Sturdy flowers of salmon-pink, tinged bronze.

Julia. Unusual Amaranth-pink.

Kathleen May. Brilliant crimson-scarlet. Single flower form.

LaGaronne. Buff and rose. Very early.

Lilian Doty. Large incurved soft pink.

Lucifer. Deep ox-blood red. Large, old-fashioned.

Marie Dupont. Early, free flowering excellent pure white.

Mme. L'Argentage. Pleasing bluish-white. Aster-flower.

Mrs. Albert Phillips. Deep lavender-pink.

Mrs. C. Robinson. Deep rose-pink. Aster-flower.

Mrs. F. H. Bergen. Aster-flower. Light pink.

Mrs. H. Harrison. Early, free flowering, bluish.

Murillo. Clear light rose. Aster-form.

Oconto. Old-fashioned sort. Pure white. Large.

Old Homestead. Excellent salmon-pink. Aster-form. An old-fashioned sort.

Philadelphia. Bright clear rose. Aster-form.

Provence. Dainty pale pink. Very early.

Red Doty. Red form of famous Lilian Doty.

Tints of Gold. Burnished old-gold and deep rich yellow. Very early.

Viola. Most unusual violet-rose.

25c each; one each of the above 30 kinds, \$4.75 postpaid; \$15 per 100, by express.

For Pompon or Button Chrysanthemums see page 23

Shall We Plan Your Perennial Garden?

Many have asked us to prepare plans for their properties, giving profusion of bloom at all periods and a pleasing color combination. So often have these plans brought us commendation, that we have decided to extend this service, which includes

First, a plan of the perennial garden so keyed that it is easy to plant.

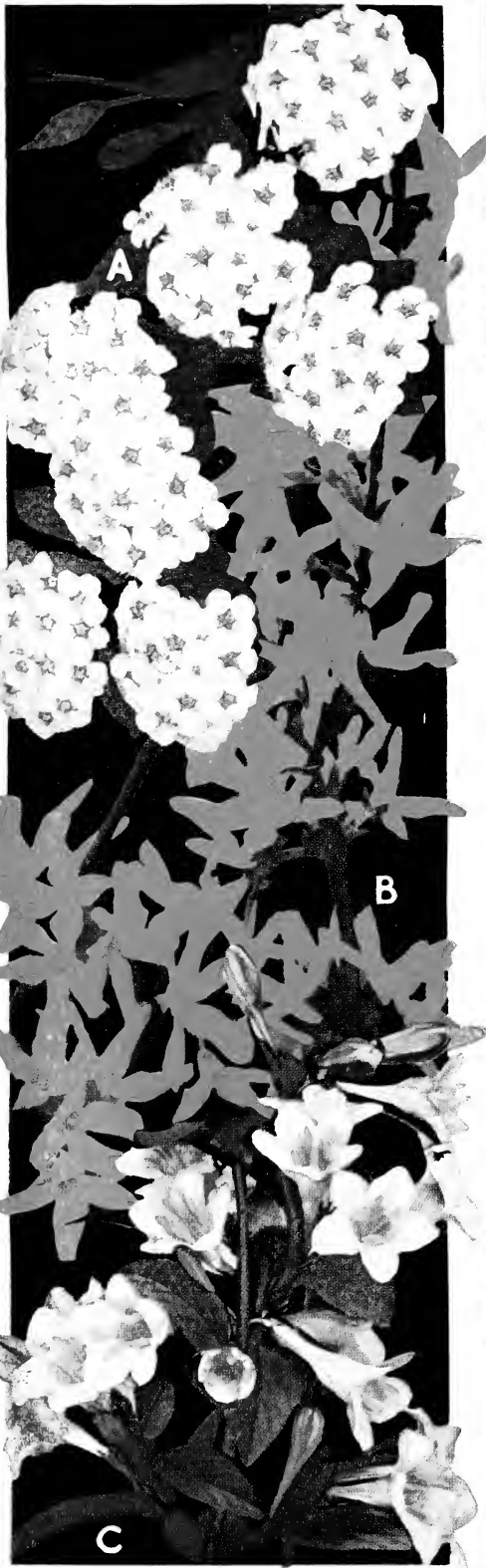
Second, a general color effect of the planting recommended.

Third, a list of the plants called for by the plan, and an estimate of the total cost of these, which you will find most moderate.

NO CHARGE is made for this service, the one dollar fee required (to avoid mere "curiosity" inquiries) with each request for plan, you deduct from your payment for any perennials ordered to a value of \$5.00 or more. Please forward rough sketch of property, indicating size of bed or beds available, any existing plantings near it, its general relation to the rest of the property, and INDICATE approximate amount you wish to spend (to give us some indication of elaborateness desired). Show North and East on plan.

See Perennial Section, pages 23-26, and Color Gardens on page 26





Collins Dozen Flowering Shrubs

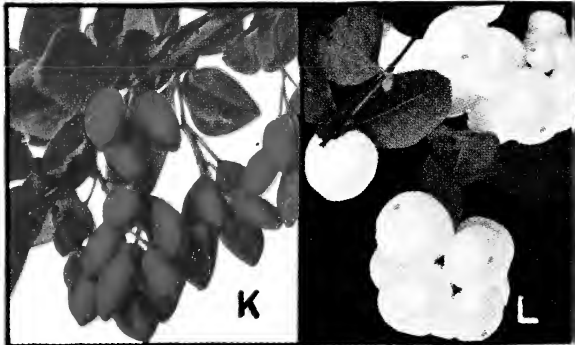
Illustrations in natural colors on these two pages are about 2 5 of natural size, except Bush Honeysuckle (E) which is only 1 10 natural size.

This remarkable offer includes:

- 1 Red-Leafed Japanese Barberry—most popular new introduction. Gorgeous red-leaved shrub (J), bearing bright red berries (K) in fall and winter.
- 2 Spirea Van Houtte—long pendulous branches loaded with white flowers (A).
- 2 Forsythia—best-known early flowering favorite yellow flowers (B).
- 1 Snowberry—attractive coral-pink flowers (G); large white berries (L).
- 1 Philadelphus—handsome white flowers (F) in great profusion.
- 1 Deutzia Crenata Pink—delicately formed pink flowers (D) in foamy masses.
- 1 Weigelia Rosea—sweet-scented trumpet-shaped blooms of rich pink (C).
- 1 Butterfly Shrub—immense flower spikes of violet-lilac, sweet-scented (H).
- 1 Bush Honeysuckle—honeysuckle-like flowers (E), followed by red berries (M).
- 1 Indian Currant—myriads of gorgeous crimson-red berries (N).

12 All 12 Sturdy Plants \$2.95
for

Choice Shrubs, good roots, good tops, all to bloom this season. If desired by parcel post, send 25 cts. extra for postage and special packing.





As a border planting, a screen, or a bed, these twelve shrubs give you a profusion of bright, colorful

flowers, April to October

as noted below

and berries all winter

FOR your convenience we list below, in chart form, the sizes and prices of **individual** shrubs in this color photo—all of which can be supplied in larger sizes:

<i>Starts blooming</i>		<i>12-18 inches</i>	<i>2-3 feet</i>	<i>3-4 feet</i>
July	Butterfly Shrub35	.60	.85
June	Deutzia Crenata35	.65	.90
June	Honeysuckle Bush..	.35	.65	
April	Forsythia35	.60	.80
June	Indian Currant35	.65	1.00
June	Mock Orange (Philadelphus)35	.65	.95
May	Spiraea Van Houtte.	.35	.70	.95
July	Snowberry35	.60	
June	Weigelia Rosea35	.60	.80

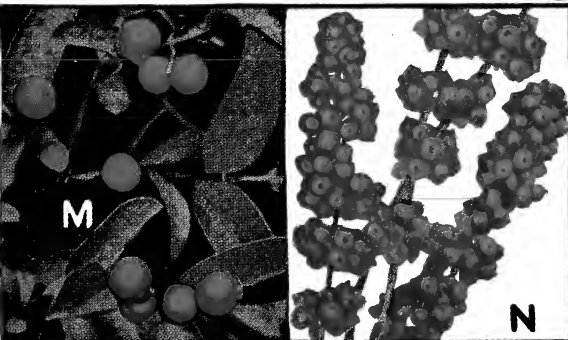
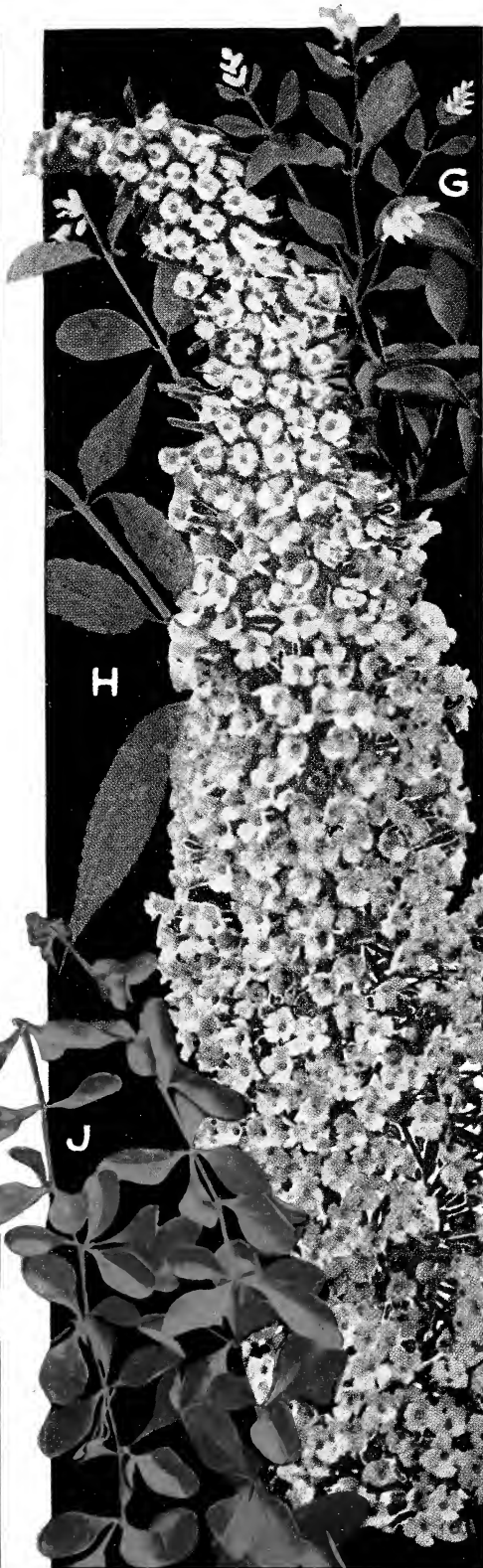
Red Leaf Barberry

9-12 in., Strong plants; 50 cents each;

\$5.00 per doz.; \$35.00 per 100

12-15 in., 75 cents each;

\$7.50 per doz.; \$60.00 per 100



2 PLANTS FREE
Your Choice **FREE**
Special Offer — see below

Old Fashioned Hardy Flowers

Brightest colors, months of bloom, year after year.
New types in gorgeous long season varieties,
offered below:



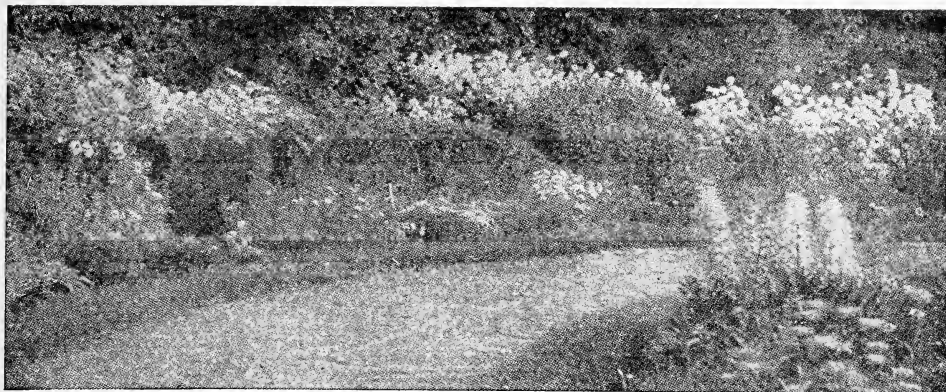
12 HARDY FLOWERS \$1.95 Postpaid

Including 2 FREE PLANTS, your choice of Forget-me-not (blue), Blanket Flower (orange), Sweet William (all colors), or Flax (sapphire-blue).

plus offer illustrated.

- 2 Golden Coreopsis
- 1 Columbine, long spur
- 4 Phlox, bright colors
- 3 Larkspur, rare blues

10 illustrated and 2 FREE
Descriptions, pages 23 to 26.



Collins Hardy Perennials

Armloads of beautiful blooms, of every conceivable shape and color from this perennial garden, was the feature of the first blooming season. Increased wealth of bloom each succeeding year, for hardy perennials increase amazingly. What wondrous flowers for cutting, what delights every month from the improved varieties as follows.

Prices of all Perennials include postage and safe delivery to you. Since groups of 3 are the general preference, individual prices are not quoted. Plants at \$2.00 or \$2.50 per doz. are 25c each; \$3.00 per doz., 30c each; \$3.50 per doz., 35c each; \$4.00 per doz., 40c each.

Achillea, The Pearl. Myriads of snow-white ball-shaped flowers, 2 ft. May to Oct. 3 plants, 65c.

Rosy Milfoil. Dense heads bright pink, 1½ ft. June to Oct. 3 plants, 65c.

Anchusa Italica, Dropmore Variety. Gentian - blue. Immense spikes. 3-6 ft. May-Aug. 3 plants, 65c.

Anemone Japonica, Queen Charlotte. Silvery-pink 3 in. flowers, 2½ ft. Sept., Oct. 3 plants, 80c.

Whirlwind. White. Large, semi-double flowers. 3-4 ft. Aug.-Oct. 3 plants, 80c.

Aquilegia (Columbine)
Chrysantha. Yellow. Long spurs. 3 ft. May and June. 3 plants, 65c.

Mrs. Elliott's Strain. Long-spurred, of pink, lavender, yellow, etc., all different. 2½ ft. May, June. 3 plants, 80c. (See color plate.)

Arabis Alpina. (Alpine Rock Cress). Quantities of white flowers. Very early. 6 in. April. 3 plants, 65c.

Aster, Climax. Mauve, yellow. Long, slender stems.
Perry's White. White. Large, graceful. 4 ft. Sept. to Nov.

All Asters, 3 plants, 65c.

Campanula, Carpatica. Purple-blue. Cup-shaped. June to Oct. Rock work. 8 in.

Carpatica Alba. White. Same as preceding. June to Oct. 8 in.

Canterbury Bells. Blue, pink and white bells, 1 to 2 in. long. 3 ft. June-Aug. 3 plants, 65c.

All Campanulas, 3 plants, 65c.

Chrysanthemum Max. (Shasta Daisy). Daisy-like white flowers, 4 in. across. Favorite for cutting. 2 ft. June-Sept. 3 plants, 65c.

Chrysanthemums (See Color Plate Offer, page 19).

Pompon. Boutonniere favorites.

Golden Crest—golden top.

Neo—shell-pink. **Iva**—deepbronze.

Model of Perfection—pure white. **Little Dot.**—Crimson mahogany.

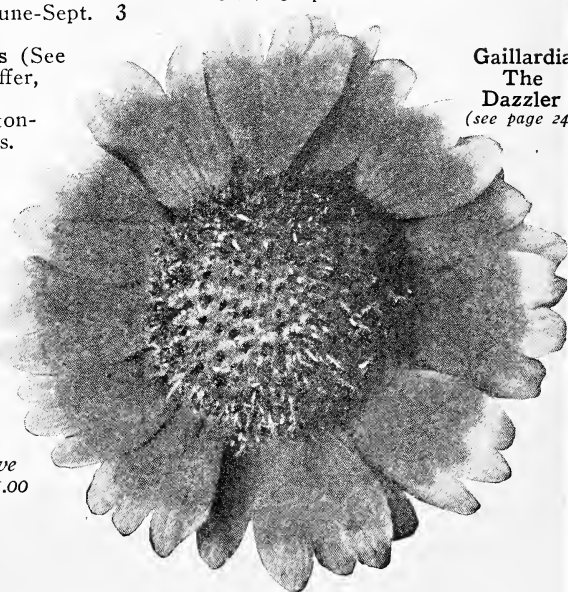
All pompons 25c each.

One each of above 5 varieties for \$1.00 postpaid.

Coreopsis. Large bright orange yellow, graceful. Fine to cut. 2 ft. June to Oct. 3 plants, 55c. (See color photo).

Delphinium (Hardy Larkspur) Belladonna. Sky-blue. 1½ in. flowers on 12 in. spikes. June to frost.
Bellamosum. Royal-blue. Dark form of Belladonna.
Chinense. Gentian-blue. Feathery foliage.

Above Delphiniums, 3 plants, 65c, \$2.50 per doz.



**Gaillardia
The
Dazzler**
(see page 24)



Delphinium Hybrids

Delphinium

Collins Mixed Hybrids.

Excellent assortment from original stock of H. J. Jones Collection. All shades from lightest blue to dark purple with blue, black, white or gray centers. Huge flower spikes 2 ft. long on 4 to 8 ft. plants. June-October. 3 plants, 80c.

Dianthus (Pinks) Allwoodi.

(Perpetual Hardy Pinks.) Spicy fragrance. Rose, white, red or crimson, blooms all summer in edgings or rockeries. 1 ft. 3 plants, 65c.

Plumarius. Clover-scented.

Edging. Attractive foliage. May-June. 6 to 12 in. 3 plants, 65c.

Miss Gladys Cranfield.

Rose-pink with velvety-maroon centers. NEW. Long stems. Fine for cutting. 3 plants, 80c.

Dianthus Barbatus (Sweet

William). Newport Pink. Salmon-pink. Dense 4 in.

clusters. 18 in. 3 plants, 65c.

Holborn Glory. Deep, mixed colors. 18 in. May to July. 3 plants, 65c.

Dianthus Caryophyllus.

(Hardy Carnation.) Flowers large and double. Rival greenhouse Carnations in size and beauty. Prices and varieties in color on rear cover.

Dielytra (Bleeding Heart).

Rosy-red, heart-shaped flowers on long stems. Fern-like foliage. Particularly good in shade. 18 in. April-June. 50c each; \$5.00 per doz.

Digitalis (Foxglove).

Giant Shirley Hybrids, 7 ft. high. White to deep rose, chocolate spotted. June-July. 3 plants, 65c.

Eupatorium Coelestinum.

Blue masses. One of best for cutting. 18-24 in. Aug.-Oct. 3 plants, 65c.

Gaillardia (Blanket Flower).

The Dazzler. (Illus., page 23). NEW. Broad petals of glowing red-maroon with golden-yellow tips. Blooms all summer. 3 ft. 35c each; \$3.50 per doz.

Grandiflora.

Yellow petals shading to colorful red center. 3 ft. June-Nov. 3 plants, 65c.

Gypsophila (Baby's Breath).

Myriads of tiny white flowers, fine for garnishing bouquets. 2½ ft. July-Aug. 3 for 65c.

Bristol Fairy.

Double flowering. NEW. Larger and whiter flowers throughout season. Stronger growth. Grafted plants, 50c each; \$5.00 per doz.

Heuchera (Coral Bells).

Graceful spikes of coral-red. Very hardy. Suitable for rockery or border. 1½ to 2 ft. July-Aug. 3 plants, 80c.

Hibiscus (Mallow).

Pink, red, or white. Large flowers nearly 12 in. across. Bloom this year. Aug.-Oct. 3 plants, 65c.

Iberis Sempervirens (Ever-

green Candytuft). Large trusses, white flowers. Evergreen foliage, 9 in. April-May. 3 plants, 65c.

Hollyhocks. Excellent in beds or for wall planting. Flowers 5 in. across, offered by colors. July-Aug. 7 ft.

Single: Assorted, 3 for 65c.

Double: Apple Blossom, Bright Rose, Cerise, Crimson, Newport Pink, Salmon, White and Yellow.

SPECIAL: 1 each of above 8 double colors, \$1.95.

Iris. See description German Iris on page 26.

Japanese Iris.

Follow German Iris in bloom. Huge flowers, white, blue, deep purple, etc. 2-3 ft. June-July. All colors, 20c each; 3 plants, 55c; doz., \$2.00.

Lily-of-the-Valley.

Dainty, bell-like flowers, fragrant, fine foliage. Grows in shady places and barren corners. 50c per group; 10 groups, \$4.50.

Linum. (Flax.)

Succession of sapphire-blue flowers all summer. 1-2 ft. 3 plants, 65c.

Lobelia (Cardinal Flower).

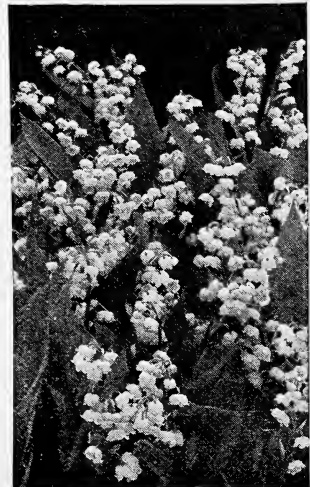
Cardinal-red spikes 2-2½ ft. Sun or shade. 2 to 4 ft. July-Sept. 3 plants, 65c.

Lupinus.

Effective clear blue spikes. Good to cut, fine foliage. 3 ft. May-June. 3 plants, 80c.

Myosotis (Forget-me-not).

Dainty bright blue with yellow eye. Pink buds. 6-10 in. May-Oct. 3 for 65c.



Lily-of-the-Valley

COLLINS HARDY PERENNIALS

Papaver Oriental (Oriental Poppy). Gorgeous blooms 6 to 8 in. across. 3-3½ ft. May-June.

Goliath. Fiery brilliant scarlet. Huge.

Orange Queen. Orange-red.

Mrs. Perry. Salmon-rose. Above varieties, 3 for 80c.

Assorted Colors. Unusual shades, 3 for 65c.

Peonies. Collins Chosen Dozen. Plant in rich earth, 2 to 3 in. deep, 3 to 4 ft. apart. Valuable in bed or alone. Dark green foliage.

Couronne d'or. Immense ball-shaped snowy white blooms. 90c.

Duchess de Nemours. Early fragrant sulphur-white. 75c.

Edw. Andre. Brilliant crimson shaded black. Large. 90c.

***Edulis Superba.** Light pink, silver shadings, one of earliest, a favorite. 75c.

***Felix Crousse.** Considered finest brilliant red. Delightful fragrance. \$1.25.

***Festiva Maxima.** Snow-white—fleck of carmine in center. Very fine. 75c.

***Fragrans.** Solferino - red, silvery reflex. Fine to cut. 75c.

Livingstone. Splendid late soft rosy-pink, compact, massive. \$1.25.

Mons. Jules Elie. Rosy-lilac, often 9 in. across. Early. Fragrant. Good for cutting. Said to be Crousse's Masterpiece. \$1.50.

Officinalis Rubra - Plena. One of earliest. Brilliant double crimson. \$1.00 each.

***Rosea Plena Superba.** Delicate pink and salmon. Full flowers. Fine to cut. 90c.
Rosea Superba. Brilliant, deep cerise-pink. Fine for cutting. \$1.00.

***Special:** One each of these starred (*) Peonies, 5 in all, \$3.35. Full color range.

Peonies: Pinks or Reds or Whites in choicest mixture, 50c each; \$5.00 doz.; \$35.00 per 100.

Hardy Phlox. Most valuable perennial. Excellent for massing. June-Oct. 2-3 ft.

Note: Exceptionally heavy strong plants, grown in the fields. Vigorous roots—to bloom abundantly this year.

Antoin Mercier. Soft lilac-blue, white center.

Bacchante. Fiery pink, crimson eye.

Baron von Dedem. Cochineal-red, salmon shadings.

La Vogue. Fragrant rosy-pink.

Mrs. Jenkins. Large, white.

Prof. Virchow. Carmine, and orange-scarlet.

Rheinlander. Salmon-pink, red eye. Huge.

R. P. Struthers. Rosy red with crimson eye.

Rynstrom. Rose pink.

Thor. Large, dazzling salmon-pink.

Vesuvius. Glowing carmine and salmon.

Widar. Reddish violet, white center.

Prices: 3 plants, 65c.; \$2.50 per doz.; \$15.00 per 100.

One each of above 12 kinds, \$2.25; 24 (2 of each kind), \$4.00 postpaid.

SPECIAL: 12 plants assorted varieties, many colors, \$1.95 postpaid.

Early Phlox, Miss Lingard.

Best white. Starts blooming in May, continuing to October. Fine for cutting. 3 plants, 65c.



Oriental Poppy

Other Phlox. Subulata (Mountain Pink). Flower masses carpet mossy evergreen foliage. 6 in.

Lilacina—pale lilac; **Rosea**—bright rose; **Vivid**—warm salmon

rose. April-May. 3 plants, 65c.

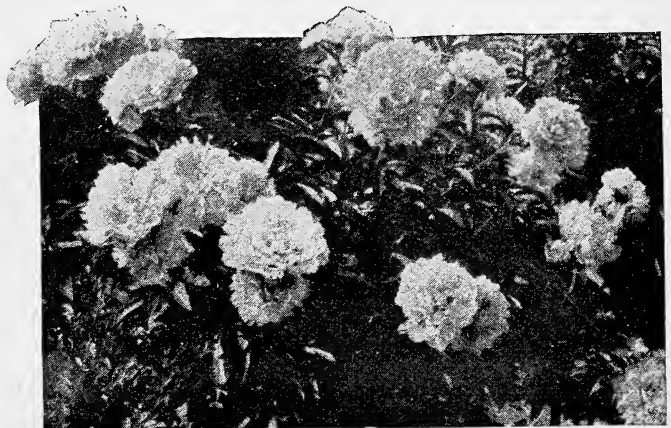
Physalis (Lantern Plant). Orange lantern-like cases contain cherry-like fruit.

Dry for winter. 2 ft. Oct. 3 plants, 65c.

Plumbago Larpentae. Deep blue flowers. Summer and fall. 6-8 in. 3 for 65c.

Pyrethrum (Painted Daisy). Fine to cut. Flowers vary pink to rich crimson, pale yellow to pure white. Excellent in masses. 2½ ft. July-Aug.-Sept. 3 plants, 65c.

Ranunculus (Dbl. Buttercup). Myriads of golden yellow flowers. 18 in. May-June. 3 plants, 65c.



Fragrant Peonies

Salvia Pitcheri (Meadow Sage). Large gentian-blue flowers. Branching habit. Blooms at a time when blue flowers are scarce. 3 ft. Aug-Oct. 3 plants, 80c.

Statice Latifolia (Sea Lavender). Countless blue-purple flowers on branching flower stems. 1½-2 ft. July-Aug. 3 plants, 65c.

Stokesia (Cornflower Aster). Large double purple-blue, 4 in. or more across. Cutting. 1 to 2 ft. July-Nov. 3 plants, 65c.

Tritoma (Red Hot Poker). Pointed, rich orange-scarlet flowers. Valuable for cutting. 3 to 4 ft. Aug-Nov. 3 plants, 85c.

Veronica (Speedwell). Showy 12 in. spikes, lavender-blue. 2 to 3 ft. July-Oct. 3 plants, 80c.

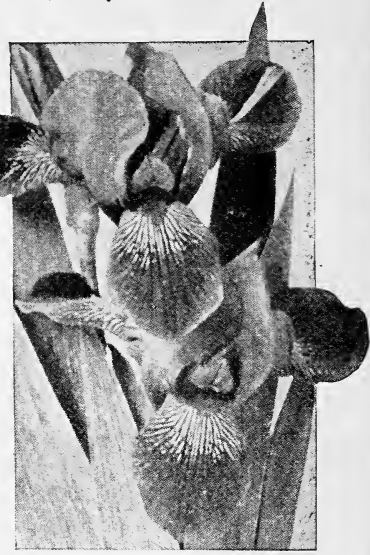
Viola Jersey Gem (Tufted Pansy). Blooms freely and constantly from early spring to winter. Royal purple flowers excellent for cutting. Use freely to edge beds or paths. Fine foliage. 6 in. Apr. to Dec. 3 plants, 80c.

Iris, German. (Shown at right). Fine for massing, borders and cutting. Adaptable to sun or shade. Pleasing foliage. May-June. 2-3 ft. **Aurea.** Large rich chrome yellow. **Her Majesty.** Standards rose pink, falls bright crimson. **Lohengrin.** Enormous. Soft pink standards and falls. **Lorely.** Standards yellow, falls rich ultramarine. **Princess Vic. Louise.** Sulphur yellow standards, falls rich plum. **Rhein Nixe.** Standards white, violet blue falls margined white.

SPECIAL: 1 each of any 5 above, 95c.

Pallida Dalmatica. Vigorous foliage and enormous flowers. Standards lavender-blue, falls deep lavender. Fragrant. 3 ft. 50c each; 6 for \$2.50.

Mixed Colors. Exceptional varieties, 15c each; \$1.50 per doz.; \$10.00 per 100.



Iris

Note: Any one of the varieties in our Rock Garden Collection on page 27 is desirable for edging and delightful effects can be obtained by their use with taller plants. Prices: 3 plants (same variety), 65c; \$2.50 per doz.

COLLINS COLOR GARDENS

Color—that is the first consideration of the true garden lover. Choose any groups below for a mass of clear hue to delight you spring, summer and fall. Here is the rare blue, the gay yellow, the soft pink and the striking red. A bed three by six feet will hold a set, but better still combine two colors and achieve rare harmonies.

BLUE GARDEN

	Height
5 groups of 3 each	
3 Delphinium Belladonna	4'-5'
3 Anchusa Italica	3'-6'
3 Lupinus Polyphyllus	3'
3 Linum	18"-24"
3 Plumbago	6"-8"

15 Plants, \$2.95 Postpaid
(Regular value, \$3.45)

YELLOW GARDEN

	Height
5 groups of 3 each	
3 Hollyhock, double yellow	5'-7'
3 Chrysanthemum Chrysolora	2'-3'
3 Aquilegia Chrysantha	3'
3 Coreopsis	2'
3 Alyssum Saxatile Compactum (Basket of Gold)	12"

15 Plants, \$2.90 Postpaid
(Regular value, \$3.35)

PINK GARDEN

	Height
5 groups of 3 each	
3 Hibiscus, pink	4'-5'
3 Chrysanthemum Lilian Doty	2'-3'
3 Phlox Thor	3'
3 Iris Lohengrin	2'-3'
3 Phlox Subulata Rosea	6"

15 Plants, \$2.85 Postpaid
(Regular value, \$3.30)

RED GARDEN

	Height
5 groups of 3 each	
3 Hollyhocks, double red	5'-7'
3 Lobelia	2'-4'
3 Papaver Goliath	3'-3½'
3 Chrysanthemum Lucifer	2'-3'
3 Dianthus Caryophyllus, red	10"
(Hardy Carnation)	

15 Plants, \$3.50 Postpaid
(Regular value, \$4.15)

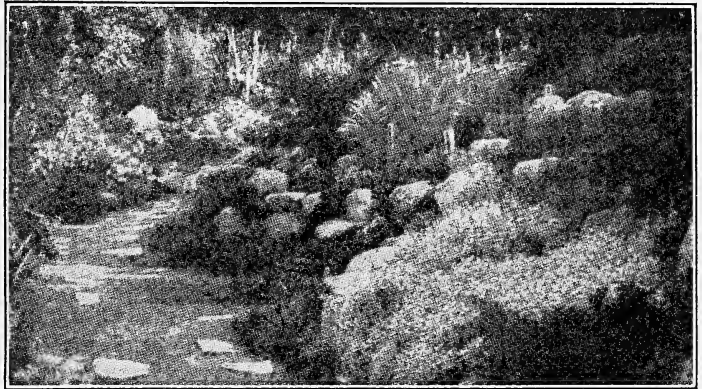


Veronica

Rock Gardens

are today's fad—and more! What a wonderful opportunity to adapt to that rocky outcropping which was your problem, these rare, charming plants accustomed to mountain tops, sparse soil and privations? Results are gratifying with no care; with a little care they are beyond description.

*Illustration by courtesy
U. S. Dept. of Agriculture*



SPECIAL OFFER: A remarkable collection of hardy 50 ROCK GARDEN PLANTS—mostly Alpine—selected from our 16 unusual, new and rare varieties, \$9.75 express prepaid. All plants are labelled and may be set out in groups over the Rockery. They form a permanent ROCK GARDEN which will grow more pleasing every year.

OFFER "B": Contains 25 ROCK GARDEN PLANTS from 8 varieties for \$5.45, by express prepaid to any address. All labelled as in the larger collection above.

Aubrietia Deltoidea. Pale lavender flowers. Very free flowering. April-May.

Erinus Alpinus. A dainty plant of tufted habit bearing pink flowers. Unusual. May.

Lychnis Alpina. Compact cushions of rich green leaves studded with heads of pink flowers. April and May.

Iris Pumila. Violet-purple flowers. May.

Veronica Rup. Deep blue, trailing. June.

Tunica Saxifraga. Grass-like foliage; rosy-pink flowers. June-September.

Phlox Amoena. Vivid pink flowers. April-May.

Dianthus Deltoides. Dark green foliage, with exquisite crimson, or white, or pink flowers. June-July.

Alyssum Saxatile Compactum. Masses of yellow flowers. April-May.

Saponaria Ocymoides. Trails over the rocks spangled with bright pink flowers through the spring.

Sedum Album. Handsome foliage, turning red in the fall; white flowers. June.

Sedum Acre. Carpet of vivid green foliage hidden by yellow flowers. May.

Cerastium Tomentosum. Silvery foliage, pure white flowers. May.

Gypsophila Repens. Excellent for cascading down the slopes of the Rock Garden. Masses of tiny white flowers, June-July.

Mazus Rugosus. NEW. Dense green carpet covered with large violet flowers, spotted with gold. April-May.

Phlox Subulata Atrolilacina. Masses of deep lilac flowers, almost blue, entirely cover the plants. April. May.



Rare Cactus Plants

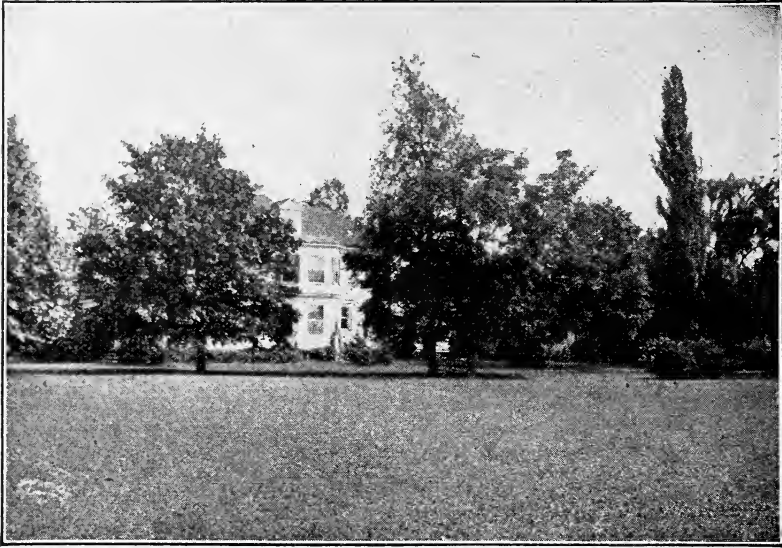
(Blooming Plants, 5 to 35 years old)

From the collection of the foremost cactus expert of the United States, who has devoted 50 years to cactus culture, we are able to offer these interesting plants, which thrive in sunlight on a window sill.

Artist that he is, he makes no two collections alike. Each is a harmonious group in soft shades of green, gray, purple and olive, with bright glowing flowers—red, orange, white or salmon—orchid-like in variety.

Collection pictured is \$6.00, including fancy bowl (approx. 6½ in. in diameter). Our specialty is a "Japanese Garden" effect at \$9.00, including round or rectangular bowl (approx. 5 x 9 in.). Other groups at \$3.00, \$2.00, \$1.50, \$1.00. Decide what you wish to pay and we will see that you get full money's worth. We can guarantee satisfaction only because all plants are shipped by express, growing and established in bowls.

Excellent gifts. We enclose your card.



How comfortable and "homey" a house looks, set in a well-clipped lawn

Collins Blended Lawn Grass Seed

Sow 1 qt. to 100 sq. ft.; 4 qts. to 600 sq. ft.; 1 pk. to 1500 sq. ft.; 1 bu. to 7000 sq. ft.

- 999. Collins Velvet Lawn.** Ideal mixture of deep-rooted, spreading, tall-growing and dwarf varieties producing a velvety texture of bright green color. We most highly recommend it.
- 1000. Collins Evergreen Lawn.** A perfect blending of short-growing, fine-

- bladed grasses producing permanent sod in a few weeks. Contains Dutch clover, valuable in renovating old lawns. Best mixture for new ground.
- 1001. Collins Shady Lawn.** A blending of varieties best for shady places. Succeeds where other grasses fail. Dense growth.

- 1002. Collins Seashore Lawn.** A mixture for salt air conditions. Fine at shore resorts.
- Clover, Collins Fancy White.** Excellent for old lawns or new. Enables grass to start and keeps it from burning out in dry, hot months. Green all winter. ½ lb., 55c; per lb., \$1.00, postpaid. Expr. or frgt., 5 lbs., \$4.00.

SOW COLLINS LAWN GRASS SEED AND HAVE A LUXURIANT GREEN TURF

PRICES		Per	Post-	2	Post-	4	Post-	1	Post-	1 Bu.	Post-
		Qt.	paid	Qts.	paid	Qts.	paid	Peck	paid	(20	Post-
										lbs.)	paid
Collins Velvet Lawn.....	.35	.45	.65	.75	1.25	1.40	2.25	2.50	8.00	8.75	
Collins Evergreen Lawn.....	.30	.40	.55	.65	1.00	1.15	1.75	2.00	6.50	7.25	
Collins Shady Lawn.....	.45	.55	.80	.90	1.50	1.65	2.75	3.00	10.00	10.75	
Collins Seashore Lawn.....	.45	.55	.80	.90	1.50	1.65	2.75	3.00	10.00	10.75	

Collins Shade and Ornamental Trees

- Norway Maple.** Large tree, compact round head. Smooth, bright green leaves. Yellow and gold in Fall. 8-10 ft., \$3.25; 10-12 ft., \$4.25. At left in above photo.
- Sugar Maple.** Large, dense. Green leaves become scarlet, orange and yellow in Fall. Quick grower. 8-10 ft., \$3.50; 10-12 ft., \$5.00. Center in above photo.

- American Elm.** Beautiful specimen tree. Diverging branches form flat head, called "vase type." Gray trunk, many veined leaves. 8-10 ft., \$2.25.
- Buttonwood or Oriental Plane.** Massive and rugged. Quickest grower. Gray bark. Excellent specimens. 8-10 ft., \$2.50.

- Weeping Willow.** Sweeping mass of foliage. Drooping. Fast grower. At extreme right in above photo.
- Lombardy Poplar.** Stately, tall, picturesque. Quick grower. Excellent screen. At right in above photo.
- Prices of Willows & Poplars**
- | Size | Each | 6 | 12 | 100 |
|---------|--------|--------|-----|------|
| 4 ft. | \$0.75 | \$2.75 | \$5 | \$40 |
| 6'-8' | 1.00 | 4.50 | 8 | 60 |
| 8'-10' | 2.00 | 9.00 | 16 | 120 |
| 10'-12' | 3.75 | | | |

White Birch. Showy white bark. Well-shaped. Excellent with evergreens. 5-6 ft., \$2.00; 8-10 ft., \$4.75.

Cut-leaf Weeping Birch. Like White Birch with gracefully drooping branches. Foliage beautifully cut. Specimen for lawns. 3-4 ft., \$2.75; 4-5 ft., \$3.75.

Umbrella Tree. Rounded head grafted on upright stems. Formal use in gardens and lawns. 5-6 ft., light heads, \$2.50; heavy heads, \$3.00.

Weeping Mulberry. Weeping, drooping ornamental

tree. Bears attractive fruit. Light head, \$2.75; heavy head, \$3.75.

Red or Pink Dogwood. Flowers beautiful pink to red. Leaves turn red in Autumn. 2-3 ft., \$3.75.

White Dogwood. Abundant white showy flowers. Scarlet leaves in Fall. Scarlet fruit. 3-4 ft., \$2.50.

Double Red-Flowering Almond. Myriads of deeply-colored red flowers resemble little roses early in spring. Cloth entire bush. 2-3 ft., 85c.

Double White-Flowering Almond. Same as above. White flowers, 2-3 ft., 85c.

Purple Leaf Plum. Purple leaves throughout summer. Pruning intensifies color. Unusual. 4-5 ft., \$1.50.

Double Flowering Plum. Double pink flowers before leaves. 3-4 ft., \$1.50.

Double Red-Flowering Peach. Double red blossoms cover all limbs. Decorative. Early. 3-4 ft. \$1.50.

Hawthorne — Paul's Scarlet. Numerous, showy, double, bright scarlet flowers. Red fruit. Easily transplanted. Benefited by pruning. 4-5 ft., \$2.50.

Other Ornamental Trees offered on page 13

Collins Hedge Plants

Japan Barberry. The ideal plant for a dwarf, dense hedge. Arching sprays add grace. Beautiful green foliage changes to a fiery blaze of bright orange and scarlet in Autumn. Scarlet berries (photo shown), remain all winter. Our plants are well rooted, well grown and very bushy. Plant one foot apart. Very little trimming required.



Barberry Hedge and Barberry Berries

8-12 in. 1 yr. single branch, good roots, postpaid	10	100	1000
12-18 in. 2 yr. very bushy	\$0.90	\$7.50	\$50.00
18-24 in. 3 yr. very bushy	1.95	20.00	175.00
2 to 3 ft. 4 yr. very bushy (fully developed)	3.50	30.00	275.00
	5.00	45.00	400.00

SPECIAL OFFER: 12 carefully selected strong plants well branched and well rooted (12-18 inch size), \$2.25 postpaid. So hardy they thrive anywhere.

New Red-Leaved Japanese Barberry

Brilliant red foliage all Spring and Summer, turning in Autumn to flaming orange and richest scarlet. Glistening red berries all winter. Use with evergreens. Ideal for hedge on front of property. Showy.

Strong plants, 9 to 12 in.	Each	12	100
Strong plants, 12 to 15 in.	\$0.50	\$5.00	\$35.00
	.75	7.50	60.00

Collins California Privet

Sturdy, vigorous, well branched and well rooted. Liberal use of manure has made our plants of extra size and vitality. Uses: As a hedge, a screen, or among shrubs or evergreens, on account of its dark green foliage which lasts late into the Winter.

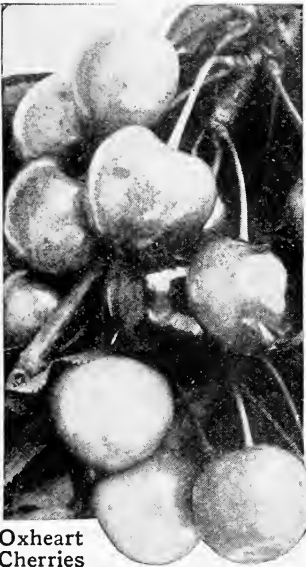
REDUCED PRICES FOR 1930			
12-18 in., strong-rooted, 3 branches and up	12	100	1000
18-24 in., strong-rooted, 4 branches and up	\$0.50	\$2.95	\$25.00
2-3 ft., strong-rooted, 5 branches and up	.75	4.95	40.00
3-4 ft., strong-rooted, 5 branches and up	1.00	6.50	55.00
	1.25	8.00	65.00

Collins Fruit Department

Cherries

Montmorency. Sour. Red. Best for pie and preserving.
 Oxheart. Sweet. Red. Solid, meaty.
 Windsor. Sweet. Black ox-heart. Heart-shaped. Firm.

Prices of Cherries: Ea. 10 Trees
 4 to 5 ft. \$.90 \$8.10
 5 to 6 ft. 1.10 9.90
 XX size 1.25 11.25



Oxheart Cherries

Apples

Delicious. Red. Large, juicy, crisp. September.
 Grimes Golden. Yellow. Excellent eating. Tender. October.
 Stayman's Winesap. Red. Juicy. Lasts all winter. Late October.

Prices of Apple
 Trees: Ea. 10 Trees
 2 yr. 4 to 5 ft. \$.70 \$6.30
 2 yr. 5 to 7 ft.85 7.65
 2 yr. XX size 1.00 9.00

Pears

Bartlett. Yellow. Rich flavor, juicy.
 Seckle. Yellow russet. Delicious flavor. Small.

Prices of Pear
 Trees: Ea. 10 Trees
 4 to 5 ft. \$.90 \$8.10
 5 to 6 ft. 1.10 9.90
 XX size 1.35 12.75

Dwarf Apples & Pears

These dwarf trees remain small, produce as much as standard trees. Ideal for small garden. Offered in same varieties as listed above under the standard apples and pears. \$1.00 each; \$10.00 per doz.

Collins Grapes

Excellent over arbor or fences. Easily grown.

Catawba. Red. This is the standard red grape.
 Concord. Blue-black. Best and most popular garden grape.
 Niagara. White. Large, very sweet and juicy.

Prices: 30 cents each for any above grape vines; \$2.25 for 10; \$18.00 per 100.
 Special: 6 grape vines (2 of each variety), \$1.50 postpaid.

Collins Asparagus

"ASPARAGUS FOR HEALTH"

Collins Offer Pedigreed Mary Washington Asparagus Extra Selected Roots

100 Fat, thrifty Roots, 3-yr. size . . \$2.50 Postpaid
 100 Fat, thrifty Roots, 2-yr. size . . 1.95 Postpaid
 100 Fat, thrifty Roots, 1-yr. size . . 1.75 Postpaid

Prices on larger quantities on request

Peaches

Belle of Georgia. Freestone. White. Excellent flavor. July.
 Elberta. Freestone. Yellow. Outstanding. Canning. September.
 Iron Mountain. Freestone. White. Large. Firm. October.

Prices of Peach

Trees: Ea. 10 Trees
 4 to 5 ft. \$.50 \$4.50
 5 to 6 ft.60 5.40
 XX size75 6.75

Plums

Burbank. Orange-yellow. Firm and meaty.
 German Prune. Purple. Sweet and firm.

Prices: Ea. 10 Trees
 4 to 5 ft. \$.80 \$7.50
 5 to 7 ft. 1.00 9.25
 XX size 1.25 11.25



Mary Washington—rust resistant

Collins Fertilizers, Insecticides and Accessories

Pulverized Sheep Fertilizer. Concentrated fertilizer. Probably most generally used in growing flowers. Excellent for roses. Easily applied. 10 lb. trial bag, 70c; 100 lb. bag, \$3.50.

Bone Meal. Ideal for rose beds and all purposes. Will not burn. 5 lbs., 40c; 10 lbs., 65c; 25 lbs., \$1.50; 50 lbs., \$2.50.

Wood Ashes. Unleached. Gives available potash. Stimulant for roses, dahlias. 5 lbs., 40c; 10 lbs., 70c; 50 lbs., \$2.00; 100 lbs., \$3.00; 500 lbs., \$12.00; ton, \$40.00.

Collins Plant Crutches. Galvanized steel. Lasts forever and won't rust. Supports plants; marks bulb positions; locates seeds; fasten metal labels to these for plant identification; rope off grass plot, etc. 75c per doz. postpaid. 50 for \$2.00; 100 for \$3.50; expr.

Collins Rose Bed Fertilizer. As a result of our many tests, we have made up a Special Rose Bed Fertilizer package for your convenience:

5 lbs. Bone Meal, 40c
10 lbs., Sheep Fertilizer, 70c
Four 3-oz. pkgs. Nitrate of Soda, 35c
10 lbs. Unleached Wood Ashes, 70c

The entire lot, value \$2.15, for \$1.95. Sufficient for 24 rose bushes for one year; or a dozen for two years or more.

If desired by Parcel Post add 30c up to and including 3rd postal zone; beyond, add additional postage.

Mulch Paper. Use it on prepared soil before setting out plants, eliminate weeds, control moisture. Larger flowers, earlier bloom. In rolls of 300 yards; 18-inch wide, \$3.50; 36-inch, \$7.00.

Booklet with directions on request.

Vigoro. Prepared specially for lawns, plants, trees, etc. An exceedingly high test fertilizer. "A balanced diet" for your plants. 5 lbs., 50c; 25 lbs., \$1.75; 50 lbs., \$3.00; 100 lbs., \$5.00.

Collins "Hydrangea Blue." Because of its chemical reaction with the soil, it tends to remove the pink tints and enrich the beautiful blue tones of the **Hardy Otaksa Hydrangea.** $\frac{3}{4}$ lb., enough for 1 plant all season, 30c; 4 lbs., enough for 6 plants, \$1.25.

Collins Garden Loam. Excellent, rich garden earth from fertilized plots. Per sack, \$1.00 by freight. Special price on truck loads.

Peat Moss. Automatically controls moisture in the ground. Excellent for window boxes, lawns, rose beds, etc. Produces ideal growing conditions. Mix liberally with dirt when making new lawn area. 10 lb. trial bag, 60c; per bale, large size, \$3.75.

Humus. Excellent for all soils. Renders clayey soils lighter and sandy soils heavier. It is decomposed organic matter. Excellent nitrogen carrier. 10 lbs., 60c; 50 lbs., \$1.35; 100 lbs., \$2.00; 500 lbs., \$9.50; 1000 lbs., \$15.00; ton, \$25.00.

Collins All-in-One Mixture. Most effective rose poison. A dust mixture of 1½% Nicotine, 9% Arsenate of Lead, and 65% Sulphur. Controls black spot and mildew, and safeguards against both chewing and sucking insects. 1 lb., 75c; 5 lbs., \$2.50. Not available.

"Duster Brown" Spray Duster. Direct compression; ejects complete dust cloud every stroke. One quart tank. \$1.50 each.

Nicotine. A concentrated nicotine solution. Kills aphid and slugs on roses. Destroys all sucking insects on shrubs, vines and trees. 1 oz., 35c (4 gals. water); ½ lb., \$1.25; 2 lbs., \$3.50. Not available.

Continuous Sprayer. Efficient, economical. Brass ball check valve. One quart tank. 85c each.

Collins Improved Metal Labels. Copper. Unaffected by weather. Permanent identification label. Write with a nail or stylus, the latter included free with each box of 100 at \$3.50 postpaid. 50c per doz., postpaid. Shown at left.

If the above items are desired by parcel post please add to your remittance: 10c for 1 lb.; 20c for 5 lbs.; 30c for 10 lbs., up to and including 3rd postal zone. Beyond this zone send additional postage, according to zone in which your post-office is located.

Collins Famous \$1.95 Dahlia Offer

Includes **Eagle**, gorgeous yellow chrysanthemum type; **Rene Cayeux**, cardinal red cactus; **Bertha Story**, beautiful rose pink Decorative giant; **Noir Alvarez**, rich, deep ox-blood red—almost black; **Darlene** (see below); and **Elizabeth Slocombe**, gigantic brilliant glowing purple.

6 Dahlias \$1.95

Postpaid

Guaranteed to grow & bloom or money refunded.

Collins Best Grade Dahlias GUARANTEED TO GROW

We confine our Dahlia offerings to those few with outstanding merit—in color, size, unusual shape, and particularly with regard to the **keeping qualities of the tubers over winter**. Our policy in thus limiting our varieties and offering them to you in groups has resulted in many letters of praise over the magnificent blooms from these collections.

The new dahlias listed this year are exceptional creations. In addition, you will find the outstanding varieties which have stood the test of time. All have been thoroughly proven and are recommended as the best of their color and kind obtainable.

We supply you with dormant, field-grown roots or generous divisions of fully matured, field-grown clusters; strong, healthy, plump, well-developed and full of vitality. And, as an added protection to you, we **guarantee every tuber to grow, and will replace FREE, on proper proof, any that fail to sprout.**

Collins Phenomenal New Dahlias for 1930

A wonderful group, the foremost Dahlias of our entire collection. The kinds people order when they see them in bloom—the best test of any Dahlia.

Al Koran. Early, tall, continuous blooming, golden yellow overlaid apricot. \$1.00 each, 3 for \$2.75.

Arthur J. Collins. Decorative. Largest and most extraordinary of our recent creations. A giant in size, with extra long, stiff, wiry stems, especially desirable for garden and cut-flower purposes. Remarkable vitality. Rich royal purple with a silvery sheen. For the most exclusive garden. \$3.00 each.

President Hoover. A most unusual color combination, making it one of the finest new Dahlias in existence. Brilliant orange with tips of white—one visitor described it as pure white with heart of gold. Exceptionally abundant, flowering from early July until killed by frost in late October. \$3.00 each.

Radio. Decorative. Greater size than any other dahlia we have grown; ordinarily (without forcing, etc.) it

produces flowers 8" to 10" in diameter. A continuous bloomer, producing its magnificent flowers on strong stiff stems. Attractive combination of deep "American Beauty" red blending to yellow at center, with tips of gold. Very sturdy and vigorous—a dahlia we can recommend to the most critical enthusiast. \$2.00 each.

SPECIAL OFFER: *One strong selected tuber each of the above four for \$7.95.*

Six Different Colored Dahlias for \$1

A. D. Livoni. Perfect ball-shaped exceptional shell-pink. Abundant bloomer, fine for cutting. 25c each.

Frank A. Walker. Early, always a favorite. Beautiful lavender pink. 25c each.

Libelle. Abundant, rich bright purple. Excellent for cutting. 25c each, 5 for \$1.00.

Little Jennie. Primrose-yellow Pompon of great beauty. Fine for button-hole bouquets or cutting. Free-flowering. 25c each; 5 for \$1.00.

Souv. de Gustave Doazon. Beautiful orange-red flowers, 5" to 10" in diameter. Sturdy grower. 25c each; 5 for \$1.00.

SPECIAL OFFER: *One each of above six for \$1.00 postpaid. (Value \$1.50.)*

Darlene. Finest of cut-flower Dahlias. Live, shell-pink, with dainty blend of white at center.

Very early and abundant. Stems long and sturdy, flowers uniform and perfect, ideal Decorative. 25c each.

All Dahlias Postpaid at Above Prices

Advance

(Described on page 33)

Exceptional Dahlias

Amun Ra. First prize for three consecutive years on Pacific Coast. Gigantic. Decorative. Copper and bronze, with orange and gold tints. 50c each, 6 for \$2.50, \$5.00 per dozen.

George Walters. One of the largest and finest Hybrid Cactus dahlias. Salmon-pink, blending to old gold. Perfectly formed flowers on exceptionally long stems, well above foliage. Strong, sturdy; fine for all purposes. \$1.00 each, 3 for \$2.50, 6 for \$5.00, \$10.00 per dozen.

Mrs. Elmer O. Drew. First prize as largest and best dark red. Velvet purple-maroon; long broad petals which curl at ends. \$1.00 each.

Mrs. John L. Emerson. Favorite for garden and exhibition. 6 in. to 8 in. flowers all season. Light golden yellow overlaid carmine-red. Irregular. \$2.00 each.

Paul Michael or California Gold. One of the largest, 6 in. to 9 in. flowers continually produced, a rich pure gold in color. \$1.00 each.

SPECIAL OFFER: One each of the above FIVE EXCEPTIONAL DAHLIAS (five distinct colors), \$5.00.



California Enchantress

Collins Dahlia "Novelties"

Advance. Bright fire-scarlet, with slight blend of yellow at center. English Cactus, long quilled, twisted petals. Photo page 32. 50c ea.

Amy Peabody. Large, loosely formed irregular petals. Some solid purple flowers; some heavily tipped white; others slightly splashed white. Usually all are different. Occasional solid purple flowers. \$1.00.

California Enchantress. A Hybrid Cactus nearest to ideal; very large flowers,

long stiff stems. Blooms abundantly. Rose - pink blending to orchid pink, shading white at center. Fine for cutting. 50c each, 6 for \$2.50.

Mildred Alger. Large flowers of unusual pale buff to bronze, thickly splashed and striped with deep blacking-maroon. Continuous and abundant. \$1.00.

Maurice Rivoire. Rich velvet maroon, with shorter white petals within surrounding yellow pollen

RAINBOW MIXTURE

A choice assortment of all colors and types including purple, scarlet, salmon, pink, crimson, white, yellow, apricot and almost black; from ball-shaped double Dahlias, and fluffy Peony types, to single flowered and Cactus.

6 roots, \$1.00 postpaid;
10 roots, \$1.50 postpaid.

center. Ideal for cutting, good stems, and good bloomer. 25c ea., 3 for 70c.

SPECIAL OFFER: One each of above Five Novelties, \$2.75.

Aida. Continuous flowering, beautiful formation; huge rich, deep, crimson-maroon flowers, long stiff stems. 50c ea., 3 for \$1.40.

Bashful Giant. One of the largest decorative dahlias. Excellent for exhibition, because of size and beautiful coloring. Apricot with buff and gold tints. Abundant and continuous. 50c each, 3 for \$1.40, \$5.00 doz.

Giant Dahlias

Bonnie Brae. Produces freely throughout season. Exquisite cream and yellow, effectively overlaid rose-pink. One of the best large flower decoratives. 50c each, 3 for \$1.40, 6 for \$2.50, \$5.00 per doz.

Kalif. Largest and best brilliant scarlet Hybrid Cactus. Truly majestic, perfect for exhibition or gar-

den. Deep glowing scarlet. 50c each, 3 for \$1.40, 6 for \$2.50, \$5.00 per doz.

Millionaire. Lavender, white at center. Dwarf grower. One of the largest, often 10 in. in diameter. A perfect decorative. 35c each, 3 for \$1.00, 6 for \$1.75, \$3.50 per doz.

SPECIAL OFFER: One each of above Five Giant Dahlias, \$2.20 postpaid.

All Dahlias Postpaid at Prices Above

Collins Gladiolus for 1930

"The Cream of the World's Best Glads"
(postpaid for prices named)

In making up our Gladiolus Offerings for 1930 we have studied all new improvements and developments carefully and you will find that quality of bloom has guided us rather than quantity of listings. The variety of Gladiolus that you would not buy if you saw it in bloom will not be found in this catalog. We have always included those varieties worth the money—and worth growing—and our customers have signified their approval by the large number of their repeat orders.

This year we have added the finest of the newest Gladiolus in existence. You will also find many old favorites. The bulbs are strong, healthy, free from disease, fully matured and properly cured. Growers tell us they have never seen healthier bulbs.

NOTE: To new customers we state that we do NOT substitute bulbs or sell undersized ones. We guarantee to protect you on these points. Our bulbs are all No. 1 grade, strictly first class, 100 per cent true to name. As to size, gladiolus bulbs are more nearly oval than circular in cross-section, and the usual practice of stating the larger diameter is therefore all too likely to be misleading. For clarity, we are stating sizes wherever mentioned in terms of circumference—where not stated the circumference will average $2\frac{3}{4}$ to $5\frac{1}{2}$ inches (usually classed 1 to 2 inch bulbs, or larger).

Newest and Rarest Creations

Annie Laurie. A real gem. White, flushed, fresh rosy-pink, with ruffling of carmine-pink; the general effect is a dainty tone of pink. 35c each; 3 for \$1.00; 6 for \$1.75; \$3.50 per doz.

Bengal Tiger. A very rare and attractive combination, which is distinctive both for its oddity and its barbaric gorgeousness. A peculiar shade of smoky-red, or reddish-salmon, — tiger striped. 35c each; 3 for \$1.00; 6 for \$1.75; \$3.50 per doz.

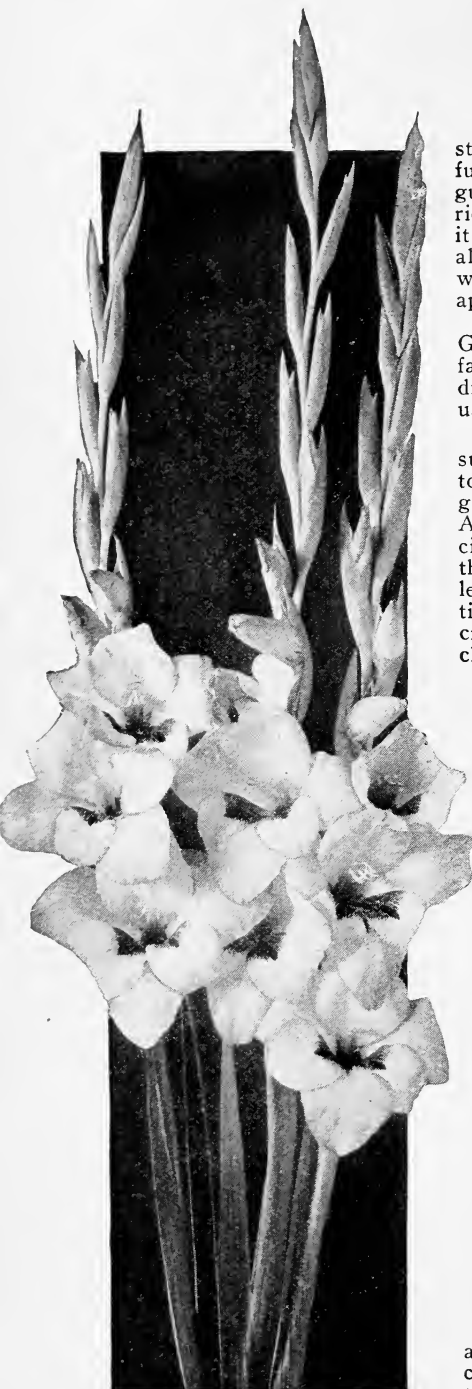
Longfellow. Clearest La-France pink, with prominent lighter mid-rib. Large, wide-open flowers of excellent form and perfectly placed on tall spikes. One of the most beautiful. 25c each; 6 for \$1.25; \$2.50 per doz.

Marjorie Smith. An exceptional new creation of deep rich wine-red. Very strong, sturdy spike with flowers perfectly arranged; remarkable in size; excellent in every way. 50c each; 6 for \$2.50; \$5.00 per doz.

Pearl of California. Clear-est, softest La-France pink blending to rosy white throat. \$1.00 each; 3 for \$2.75; \$10.00 per doz.

Rotary Pink. A most beautiful and rare shade — between watermelon red and coral pink with a lovely rose blending; its throat feathered rose-doree with a dainty white dash. Early bloomer. 35c each; 3 for \$1.00; 6 for \$1.75; \$3.50 per doz.

SPECIAL OFFER: One each of the above 6 Finest and Newest creations for \$2.50 postpaid. The unusual color blendings and remarkable habits of growth make this collection one of the best and most popular. 3 of each (18 bulbs in all), \$6.95 postpaid.



Henry C. Goehl
(described on page 35)

Choice and Rare Gladiolus

Aristocrat. A very rare and unusual color combination and one of the earliest to bloom. A good addition to the most exclusive collection. A lovely shade of apricot-pink with slate-colored throat marks. 35c ea.; 3 for \$1.00; \$3.50 a doz.

Dorritt. A rare combination—white blended by pale orchid-lavender, excellently striped and splashed rose-red. Very desirable. 35c each; 3 for \$1.00; \$3.50 per doz.

Dr. F. E. Bennett. Brilliant flame-scarlet, most perfect red. Throat markings are deep peach-red, speckled ruby and white. Large flowers, many open at once. 35c each; 3 for \$1.00; \$3.50 per doz.

Fern Kyle. Extraordinary variety introduced at \$25 per bulb. One of the finest ruffled creations, soft creamy white. Flowers of unusually large size, great beauty and perfection of form. 25c each; 6 for \$1.25; \$2.50 per doz.

Gladdie Boy. Probably the earliest of the ruffled Glads, and a good novelty. Coppery bronze with blends of salmon. Distinct formation, intensely ruffled. 35c each; 3 for \$1.00; \$3.50 per doz.

Henry C. Goehl. A giant in size, it possesses a very rare combination of colors making it most desirable. White with a very conspicuous crimson blotch. One of the very finest Glads. Photo on page 34. 35c each; 3 for \$1.00; \$3.50 per doz.

Loella. One of the finest of autumn tints, a rare

blend of old-rose, flecked deep smoky blue, much desired by Gladiolus enthusiasts. Very rare. 75c each; 3 for \$2.00.

Mr. W. H. Phipps. Enormous flowers of LaFrance pink, overlaid light rose-salmon. Lower petals faintly striped ruby. Exceptionally fine. 25c each; 3 for 70c; \$2.50 per doz.

Mrs. H. M. Whitcomb. One of the largest Glads. A flaming salmon-red with from six to eight flowers open at once. Very late, desirable for the most exclusive collections. 50c each; 3 for \$1.40; \$5.00 per doz.

Richard Diener. A sensational California production, with a rare blending of geranium-pink and a delicate speckling of ruby in its creamy-yellow center. 35c each; 3 for \$1.00; \$3.50 per doz. (See photo.)

Serrata. One of the rarest of novelties with the edges of the petals serrated. Pale yellow with blends of salmon and cream. 35c each; 3 for \$1.00; \$3.50 per doz.

Sheila. A beautiful light coral, somewhat similar to "Alice Tiplady," but with more salmon shading. Very early. 35c each; 3 for \$1.00; 6 for \$1.75; \$3.50 per doz.

SPECIAL OFFER: One each of the above 12 varieties (12 bulbs in all), \$4.00 postpaid. Many are rare and still listed under other growers' catalogues as the newest. 3 of each variety (36 bulbs in all), \$10.90 postpaid. 6 of each variety (72 bulbs in all), \$19.90 postpaid.

—8 Stated Color Offer—40 Bulbs, \$1.00—

Forty blooming-size bulbs (5 each of 8 different colors—orchid, white, salmon, dark red, yellow, blotched, pink and pastel shades), \$1.00 postpaid. Large stalks, with many flowers on each spike. Bulbs $\frac{1}{4}$ to $2\frac{3}{4}$ inch in circumference. (In this collection only.)



Richard Diener

Gigantic Gladiolus

Carmen Sylvia. Large snow-white with throat delicately pencilled lilac. Tall, straight spike. 15c each; \$1.50 per doz.

Diana. Large crimson flowers, many opening at one time. The best early crimson. Strong grower. 15c each; \$1.50 doz.

Giant Nymph. A giant, reaching nearly 6 feet tall. The massive blooms are often over 6 inches across. Rose-pink, with creamy yellow throat. 35c each; 3 for \$1.00; \$3.50 per doz.

Golden Measure. Barium yellow suffused amber yellow. Large, vigorous grower, best yellow. 25c each; \$2.50 per doz.

Mrs. Dr. Norton. Delicate pink shading to rose-pink at the tips of noticeably pointed petals. Lower petals are blotched sulphur-yellow, with rose outside. Has received highest awards. 10c each; \$1.00 per doz.

Mrs. Frank Pendleton. Giant flowers of beautiful flushed salmon-pink with rich maroon blotch. 10c each; 6 for 50c; \$1.00 per doz; \$7.00 per 100.

Mrs. Keur. One of the largest Gigantic Gladiolus. Broad, well-opened flowers, deep pink, with attractive yellow throat markings. Very scarce this year. 35c each; 3 for \$1.00; \$3.50 per doz.

Mrs. Leon Douglas. Enthusiastically declared the most wonderful Gladiolus in existence. Giant flowers 4 to 6 inches across on an enormous spike. Of three

rows the past summer, fully half of them reached 5½ feet tall. Begonia-rose, effectively marked with brilliant scarlet, with lip of pale lemon-yellow, speckled ruby. 25c each; 3 for 70c; \$2.50 per doz.

Pink Wonder. One of the largest and finest clear pink varieties. Vigorous grower, many blooms open at once. A silvery sheen covers the flower. Stippled pink at edges. 15c each; \$1.50 per doz. Photo, p. 37.

Rose Ash. Decidedly new. Old-rose blended daphne-pink and red, petal bases straw-yellow dusted eugenia red. Fine in the garden and as a cut flower. Gigantic blooms on strong spikes. 15c each; \$1.50 per doz.

White Wonder. A massive white that sometimes shows a flush of pink. Flowers are extra large, many open at one time. 15c each; \$1.50 per doz.

Willis E. Fryer. Velvety mallow-purple, shading to aster purple at edges. Throat is blotched primrose yellow, stippled purple, with mid-rib of lower petal primrose. 25c each; \$2.50 per doz.

SPECIAL OFFER: One each of this group of 12 splendid colors, many of the latest gigantic varieties (12 bulbs in all) for \$2.10 . . . 3 of each variety (36 bulbs in all) for \$6.00 postpaid; 6 bulbs of each variety (72 bulbs in all) for \$10.75.

All offers postpaid.

(We recommend this group very highly.)



Mrs. Leon Douglas

This Glad group planted in your rose bed produces a remarkable result.

\$1 COLOR PHOTO GLAD OFFER
36 big bulbs
GUARANTEED to Bloom this year

See inside rear cover showing part of group in colors. Large flowering varieties. Includes Neoga, Mrs. Frank Pendleton, also rare orchid and pastel shades. 36 big bulbs, 2¼ to 5½ inches in circumference.

Select Gladiolus

Crimson Glow. Large wide open flowers of glowing crimson-red. Best commercial red. 10c each; 6 for 50c; \$1.00 per doz.

Empress of India. Very dark maroon, almost black. 15c each; 6 for 75c; \$1.50 doz.

Gold. Beautiful pure yellow. One of the very finest. 25c each; 6 for \$1.25; \$2.50 doz.

Herada. A favorite and rare color, very beautiful orchid lavender, or deep lavender purple. Very desirable. 10c each; 6 for 50c; \$1.00 per doz.; \$8.00 per 100.

Mary Pickford. A delicate creamy - white, throat markings of soft sulphur-yellow; considered by many the best early white. 10c each; 3 for 25c; \$1.00 per doz.

Niagara. Primrose - yellow, occasionally flecked lilac. 15c each; 6 for 75c; \$1.50 per doz.; \$10.00 per 100.

Peace. Giant glistening white with purplish - red throat markings. Very late. Best commercial white. Exceptionally long strong spike. 10c each; 6 for 50c; \$1.00 per doz.; \$7.00 per 100.

Principine. Large carmine red with prominent white throat. 10c each; \$1.00 per doz.; \$7.00 per 100.

Sweet Lavender. Pale lavender with deeper lavender throat markings. 15c each; \$1.50 per doz.

1910 Rose. Beautiful deep, clear rose; one of the earliest; very desirable. 20c each; 6 for \$1.00; \$2.00 per doz.; \$15.00 per 100.

SPECIAL OFFER: One each of the above 10 kinds (10 bulbs in all), \$1.25 postpaid. 3 of each variety (30 bulbs in all), \$3.50 postpaid; 6 of each variety (60 bulbs in all), \$6.50 postpaid.

Standard Gladiolus

Alice Tiplady. Finest of all primulinus Hybrids, rare blend of salmon-apricot and orange. 5c ea.; 50c a doz.; \$3.50 per 100.

America. The popular clear lavender pink. 5c each; 50c per doz.; \$3.50 per 100.

Cracker Jack. Very deep velvety, maroon-red with unusual yellow throat markings. Very large, long spike. 5c each; 50c per doz.; \$3.50 per 100.

Halley. Salmon-pink. Large, open flowers. Tall, very early and prolific. 5c each; 50c per doz.; \$3.50 per 100.

Le Marechal Foch. Very delicate clear blush, large open lily-like flower. 5c ea.; 50c a doz.; \$3.50 per 100.

Mystic. Beautiful flame pink with white throat. 10c each; 3 for 25c; 75c per doz.; \$5.00 per 100.

Myra. Deep salmon on yellow ground, yellow throat. 5c each; 50c per doz.; \$3.00 per 100.

Panama. Large deep pink. 5c each; 6 for 25c; 50c per doz.; \$3.50 per 100.

Sweet Orra. Very pale primrose-yellow, early flowering, very dainty. 5c each; 12 for 50c; \$3.00 per 100.

Wilbrink. One of the earliest; very delicate lilac-pink, with deeper lilac throat marking. 5c each; 50c per doz.; \$3.50 per 100.

SPECIAL OFFER: One each of above 10, distinct varieties for 50c postpaid.

Three each of the above 10 varieties (30 bulbs) for \$1.40; 6 of each (60 bulbs) for \$2.50; 12 of each (120 bulbs) for \$4.50 postpaid.



Pink Wonder
(described on page 36)

Choice Ruffled Gladiolus

Anthony B. Kunderd. Large, intensely ruffled; delicate deep cream color, over-spread blush pink, lower petals primrose cream flushed pink at edges. 15c each; 3 for 40c; \$1.50 per doz.

E. J. Shaylor. A very large beautiful deep rose-pink. Certificate of merit, Royal Horticultural Society of England. Tall strong grower. 10c each; 6 for 50c; \$1.00 per doz.

Fontaine. One of the daintiest and most exquisite of Glads, a pale pink with cream throat markings. Probably the best of the new ruffled creations. Late flowering, making a splendid addition extending the season of flowering. 35c each; 3 for \$1.00; \$3.50 per doz.

Marie Kunderd. Flowers of purest white with an almost invisible soft pink line in the center of lower petal. Very early bloomer. Bronze medal, American Gladiolus Society; a variety of exceptional merit. 35c each; 3 for \$1.00; 6 for \$1.75; \$3.50 per doz.

Neoga. Rich dark garnet red with deeper throat; very prolific, two to four spikes from one bulb. Ideal for

mass effects, as it is dwarf. Excellent in landscape work. 10c each; 6 for 50c; \$1.00 per doz.; \$8.00 per 100.

Pink Lily. Magnificently ruffled deep clear rose-pink. Deeper rose-pink blotch in throat. 25c each; 6 for \$1.25; \$2.50 per doz.

Remembrance. Beautiful salmon-pink with distinctive rich velvety maroon throat markings. Very early. 35c each; 3 for \$1.00; 6 for \$1.75; \$3.50 per doz.

Rose Glory. Very large and beautifully ruffled; an exquisite deep rose-pink, deeper in throat. 15c each; 6 for 75c; \$1.50 per doz.

Violet Beauty. Very tall, growing large cerise-violet colored flowers, beautifully formed with red throat blotches. Two and three flowers on one stem, which is unusual for Glads. 35c each; 3 for \$1.00; \$3.50 per doz.

SPECIAL OFFER: One each of the above 9 kinds (9 bulbs in all), \$1.95 postpaid. Much desired by those who want color and abundance of flowers. **3 of each variety (27 bulbs in all), \$5.50 postpaid; 6 of each variety (54 bulbs in all), \$10.50 postpaid.**



E. J. Shaylor

COLLINS RAINBOW MIXTURE

A rare mixture of all colors and blends. All are of the large flowering type, and exceptionally fine. Includes in addition to the reds, whites, pinks and yellows, many mottled and striped varieties, as well as a few of the rare blues and pansy purples.

\$1.00 per doz.; \$7.00 per 100.

COLLINS SURPRISE MIXTURE

60 bulbs for \$1.95 postpaid

A very good combination including some of the large flowering varieties as well as the dainty Primulinus Hybrids. Wide color range.

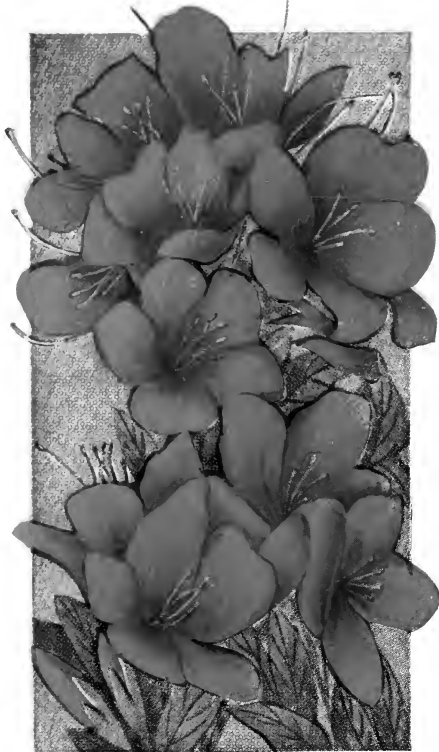
50 cts. per doz.; \$3.25 per 100.



\$1 Glad Offer
36 Big Bulbs
(2¼ to 5½ inch
circumference)
GUARANTEED
to grow & bloom.

Enormous Flowers

—*bigger than shown at right*—all colors and types.
Dark garnet red **NEOGA**, ruffled; salmon pink **MRS. FRANK PENDLETON**, maroon blotched, also rare orchid and pastel colors. *Not to be confused with small flowered mixtures.* Illustration shows blooms from less than half these 36 big bulbs, all for \$1.00.



AZALEA HINODIGIRI

The well-known *real fiery red*—the brightest color of all, so much in demand—evergreen. Ideal for planting in front of evergreens. Hardy, lasts years. Well-budded plants 10 to 12 in. high, \$2.50; choice pair, \$4.50.



Unique outdoor HARDY CARNATIONS

rivaling greenhouse varieties in size, color and spicy fragrance. Salmon pink, white, dazzling scarlet, lilac, pure yellow and dark purple. Blooms constantly June to November, year after year. 35c each; all 6 for \$1.75 postpaid.

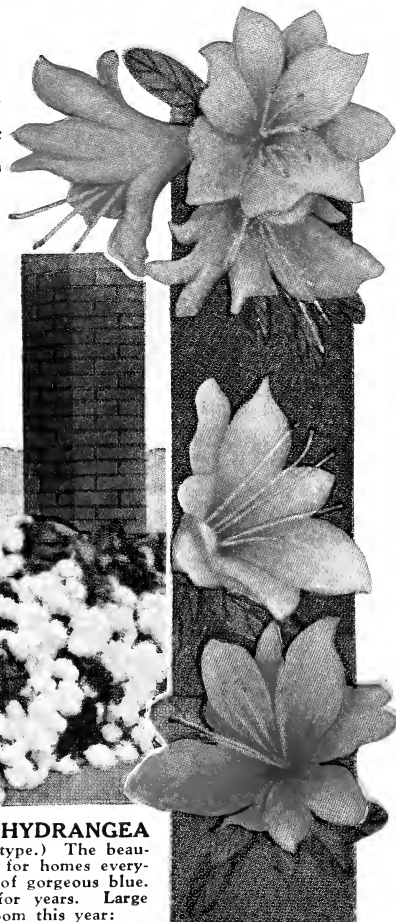
Newest HARDY Evergreen AZALEAS

(At Lower Right)

Won Gold Medal, First and Special Prizes, N. Y. and Phila., 1929. Wonderful colors, spectacular!

- CARMEN, bright carmine rose.
- CLEOPATRA, light lilac rose.
- FEDORA, perfect salmon rose.

Heavily budded plants 12 to 18 inches high, \$5 ea.; per pair, \$9.50



BLUE HYDRANGEA

(Hardy type.) The beauties of the seashore lawns, for homes everywhere. Many huge heads of gorgeous blue. Flowers all summer and for years. Large plants, many shoots, to bloom this year: 85c each; 3 for \$2.45; 6 for \$4.75 (if by parcel post, add 10c each).