

## **Historic, Archive Document**

Do not assume content reflects current scientific knowledge, policies, or practices.



6-10-11  
Roses



Radiance



J. B. Clark



Frau Karl  
Druschki



Souvenir  
de Claudius  
Pernet



Catalog  
Number  
Fifteen

# East Lawn Nursery

ORNAMENTAL TREES -- SHRUBS --  
ROSES -- BEDDING PLANTS -- -- --

Folsom Boulevard  
at 46th Street

2 Telephones  
Capitol 2060 - 2061

Sacramento  
California

# Introductory

WE HAVE endeavored to list, in this catalog, most of the important items that we carry and grow here in our own nursery in Sacramento. However, we do have a full and complete line, so should you desire some item not listed, kindly write us about it and we can, in all probability, furnish it.

Bear in mind that all of the stock listed has been produced with the idea of meeting general climatic conditions in the Sacramento Valley and most of it has been growing here for years; thus assuring you that in case of doubt, select from the listed items, and you can be reasonably sure that the stock will not curl up and die the first hot spell.

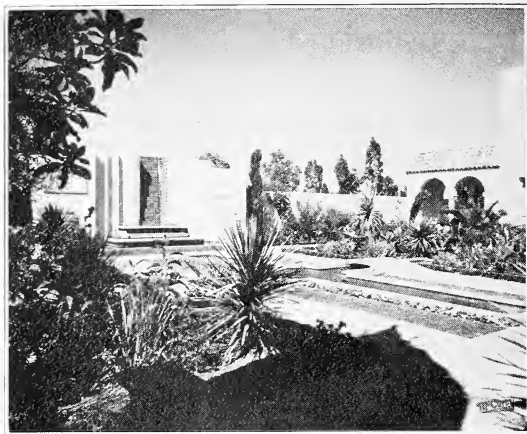
We are an established house; for over twenty years we have been in business, and doing business every day. If you find that there are complaints to offer, or good words of cheer to bestow, you'll find us ever willing to listen. We're here now, have been, and are trying to conduct our business in such a way as to continue to grow bigger and better able to serve you faithfully and well.

You can obtain advice here—freely—as to varieties best suited to Sacramento Valley conditions, and as to their culture and habits. No order is too large for us to execute, nor too small for us to appreciate.

For information on Cut Flowers and Floral Work of all kinds, refer to page 12 of this catalog.

**WE HAVE NO AGENTS.**

**WE DEAL DIRECT.**



**Alhambra Gardens, Alhambra Theatre**  
(Bedding Stock and Shrubs Supplied by East Lawn Nursery)

## An Invitation

We keep open house the year around, visitors being welcome at East Lawn Nursery and Greenhouses at any time. There is a wonderful fascination in growing things and watching them grow. This is especially so around holiday time. Plant lovers and garden enthusiasts will find much of interest on our grounds—come early and don't hurry away.

We are open from 8 a. m. to 5 p. m. every day except Sunday, and we close at 12 noon on Sunday. If driving, come out Folsom Boulevard to 46th Street, then turn south one block. The E. L. Car—giving a ten-minute service—passes the Greenhouse door; it runs out J Street.

## The East Lawn Nursery Landscape Service

Feel free to call upon us when confronted with Landscaping Problems. Your individual requirements in this connection depend greatly upon certain conditions existing on your home grounds. We make a determined effort to create plans of distinction and further suggestions for the beautification of the home grounds. Our equipment and knowledge, combined with long experience, permit us to render this service.

Please make a notation of the accurate dimensions of the property, home and other buildings, the location of roads and walks and the exposure of the house. Also the locations and names, if possible, of any trees, shrubs, evergreens, etc., now growing on the grounds. These few details are very necessary before we can plan intelligently, yet (you'll be surprised) over half of the requests for plans that we receive omit these few simple requirements.

Then if you'll tell us whether you want evergreens or deciduous plants, or better, the amount of money you would like to spend, we can plan accordingly.



**Sacramento Junior College**

# East Lawn Nursery

### Cut Flowers

Ralph Manshaen    A. Guidotti  
Bert Gardiner     Wm. Rosenberg

**A. Cruikshanks, General Manager**  
**Charles Bruner, Superintendent**

### Trees and Shrubs

C. Stefani  
Paul King

### Members

American Rose Society    American Association of Nurserymen    Florists' Telegraph Delivery Association  
Folsom Blvd. at 46th Street    Sacramento Chamber of Commerce    Sacramento, California  
Telephones, Capitol 2060-2061



**Your Back Yard? - - - Then Why Not?**

## *Your Outdoor Living Room*

**E***VIDENCE to the effect that the people of today are taking more interest in the appearance of the surroundings of their home is at every hand. We no longer consider that an ornamental planting is something for the very few, the very rich.*

*It is coming to pass that the smallest yard, the little lawns and the small home grounds should be carefully planned and planted to give the utmost of beauty and enjoyment therefrom. The proper setting for a home is being considered today, equally as much as the home itself, or the interior decorations.*

*Ornamentals, such as shrubs, evergreens, trees, flowers and other decorative plants are the materials with which we must work, having ever in mind that the planting itself, not as a unit in itself, but as a part of the picture, with home grounds and home all harmonizing in general effect.*

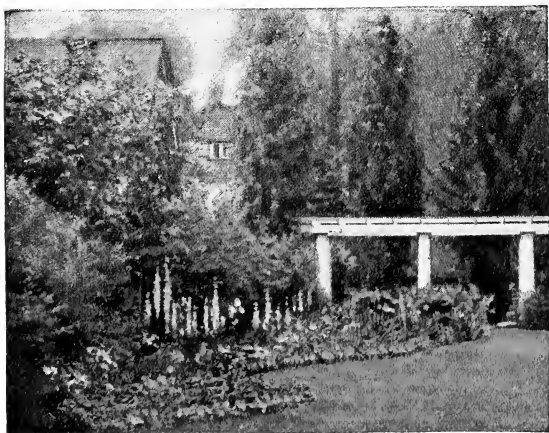
*The appearance of a man's home is of as much importance as his personal appearance and from the fact that we enter his home at the entrance of his grounds it is expedient that the attractiveness begin at the gateway and that we should plant for the joy of others as well as for ourselves.*

*The attractive planting gives publicity to property and aside from the beautiful and sentimental reasons for adornment as a matter of investment there is ample justification for abundantly planting the home grounds, large or small.*

*Our Landscape Department is organized for those customers needing general landscape service, where grading, preparation of the beds, laying out walks and drives, building of pools, rock gardens, rustic work, lawns, are required.*

*It is just as important in planting the home grounds to have a definite plan, furnished by a competent landscape man, as to have a plan for building a modern dwelling. Attractive landscape effects are not made by guesswork, but are the result of careful study and thinking.*

*On orders amounting to \$50.00 or more our service department will deliver within a radius of 20 miles and plant any stock listed in this catalog, at an additional charge of 25%. Preparation of beds, fertilizer and black dirt, extra.*



**Your Home Garden**

### **The City Lot**

The planting of a city lot calls for as much consideration, and gives as much pleasure as the most spacious gardens of country estates. Is there a graceful unbroken lawn area? Do trees frame your home? Are the shrubs correctly placed and correctly planted? What about the hardy border?

These are a few of the questions we shall be happy to help you answer satisfactorily.

**It's Not A Home Until It's Planted.**

### **Plan Early**

One other suggestion, and that is, don't wait until you are ready to plant. Our business is all crowded into a few weeks of fall and spring and we must move our products hurriedly. We like to give these plans personal attention, so please do not wait until the last minute as we cannot be expected to give our best service in the midst of the busy season.

Try to send in your plan early and we can make a layout for you with more thought.

**We Furnish Complete Landscape Service.**

# Evergreens



## How and where to use them

**E**VERGREENS properly placed and arranged add a charm and dignity to the home that present to the passing public an emblem of the character of the home inside.

Those wishing to express these thoughts of loveliness and beauty through the background of landscaping, make no mistake by using evergreens.

Our Mr. Bruner has given the evergreen situation on the Pacific Coast special consideration. He has been directly interested in the Nursery and Landscape field for more than thirty years. Knowing that evergreens should be kept in a healthy condition, he has worked out a program for the cultivation, fertilization of the soil, preparing the beds before planting and arranging varieties that will blend well together.

The varieties that we recommend and use are all adapted to Landscape development in the Sacramento Valley. All of the evergreens in our list have been transplanted several times, which is most essential in making a root development that is close and compact, so as to withstand the change of transplanting, without showing the effect of having been moved.

## Acacia

Beautiful, fast-growing evergreen trees, well suited to California, many of them covered with bloom in early spring. All are fine shade trees. 75c to \$2.00 each.

- A. *mollissima*—Yellow flowers.
- A. *melanoxylon* (Black)—No flowers.
- A. *baileyana*—Lemon-yellow flowers, very early bloomer.
- A. *cultriformis*—Knife-leaved.



American Arborvitae (*Thuja occidentalis*)



Outdoor Christmas Tree at East Lawn Nursery (*Cedrus deodara*, priced \$1.50 up to \$25.00)

## Arborvitae (*Thuja*)

- T. occidentalis** (American Arborvitae)—Specimens \$3.00 to \$10.00.
- T. occidentalis aurea** (Golden)—Tall columnar with golden foliage. \$1.25 to \$3.50 each.
- T. orientalis** (Chinese Arborvitae)—\$3.00 to \$6.00 each.
- T. orientalis beverleyensis**—(Golden tip)—\$3.00 to \$5.00 each.
- T. aurea nana** (Berkman's Golden)—Dwarf and compact. Bright yellow. \$2.00 to \$5.00 each.

## Araucaria

- A. excelsa** (Norfolk Island Pine)—Only a few available since importation was prohibited by quarantine No. 37. Very handsome symmetrical tree with branches growing in tiers. Makes a very striking house plant. \$3.00 to \$10.00 each.

## Camphor Tree

- officinalis**—Very handsome tree. Leaves glossy-green and scented with camphor. Turns crimson in the autumn and fall. In cans, \$3.00 each.

## Cedrus

- C. deodara** (Indian Cedar)—An especially handsome tree. Branches have a graceful droop; foliage silvery-green. One of the most rapid-growing and picturesque of all cedars. Makes a very fine outdoor Christmas Tree. You can raise one for your lawn at \$1.50 to \$25.00 each.
  - atlantica**—\$4.00 each.
- Grow your own Christmas Tree.

## Chamaecyparis

- C. lawsoniana** (Lawson Cypress)—Handsome pyramid-like tree; very ornamental. \$1.00 to \$6.00 each.
- C. lawsoniana alumi** (Scarab Cypress)—\$1.00 to \$5.00 each.
- C. obtusa rosedale** (Rosedale Cypress)—Dwarf type. \$2.50 each.
- C. obtusa gracilis** (Slender Golden Cypress)—Yellow foliage, turning to green. \$2.00 each.

## Cryptomeria

- C. japonica** (Japanese Cedar)—A handsome, rapid-growing tree. 50c to \$2.00 each.



## Evergreen Trees—Continued

### Cupressus

**C. arizonica** (Arizona Cypress)—Silvery foliage with red bark; very handsome. \$1.00 to \$3.00 each.

**C. sempervirens fastigiata** (Italian Cypress)—A tall slender variety, much used in formal work. \$1.00 to \$10.00 each.

### Eucalyptus

**E. globulus** (Blue Gum)—So well known that no description is needed. 75c to \$1.50 each.

### Fir

**Nordmann's**—The rich, glossy, dark-green effect of this compact, slow-growing, conical tree is especially attractive. \$2.50 to \$6.00 each.

### Grevillea

**robusta** (Silk Oak)—Rapid-growing, medium-sized tree. Sweet-scented orange-yellow flowers. Stands drought well. Keep well cut back. \$1.00 each.

### Juniperus

**J. excelsa stricta**—Upright juniper. \$2.00 to \$3.50 each.

**J. chinensis pfitzeriana**—A new handsome, hardy variety, very ornamental. \$2.00 to \$6.00 each.

### Magnolia

The tree usually reaches a medium height but it does not do well on limestone soil. They seem to thrive best in moist, porous soils, demanding an abundance of fertility. Where it does succeed, planters are well repaid, the flowers being especially large and attractive, very fragrant, followed by scarlet seed.

**M. grandiflora**—A slow-growing tree. Very hardy and long-lived. Large green leaves. Flowers are very large and pure white. In cans, \$2.00 to \$7.50 each.



Colorado Blue Spruce

### Picea (Spruce)

**P. excelsa** (Norway Spruce)—Extremely hardy and a very rapid grower. \$2.75 to \$8.00 each.

**P. pungens** (Colorado Blue Spruce)—Very regular and compact tree, foliage varies from green to silvery white. A fine specimen. \$4.50 to \$150.00 each.

### Pinus (Pine)

**P. nigra** (Austrian Pine)—Bright pleasing green; good alone or with other shrubbery. \$1.00 to \$5.00 each.

### Schinus

**molle** (California Pepper Tree)—So well known here that it needs no description. A native of Mexico. 75c to \$1.50 each.

### Sequoia

**sempervirens** (Redwood)—\$1.00 to \$1.50 each.

### Taxus (Yew)

**T. baccata**—English yew. \$8.00 each.

**T. baccata fastigiata**—Irish yew. \$10.00 each.



## Planting Evergreens

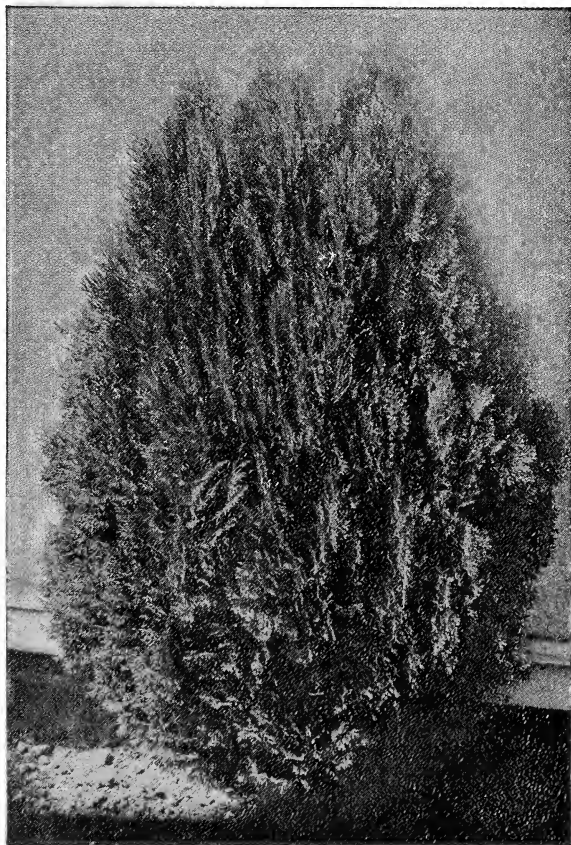
1—Dig hole a foot larger and deeper than ball of earth. Provide good loamy top soil to fill in around ball.

2—Loosen burlap at top of ball and roll back or cut off. **DO NOT BREAK BALL OF EARTH ON TREE.**

3—Set tree in hole a trifle lower than it stood in nursery.

4—Fill good top soil up around ball. Pack firmly with feet or settle by filling hole with water.

5—Fill hole with soil. Pack firmly and leave top of ground covered with loose earth, or better, mulch with straw.



Berkman's Golden Arborvitae



Well-Planted Home Grounds Reflect Permanency and Stability

## Deciduous Trees

**S**UPPLYING trees and shrubs that are suited to the Sacramento Valley conditions has been our business for a good many years, and what we have accomplished has been largely due to the fact that we have tried to be honest, fair and square.

Most people know very little about trees and shrubs, and have to depend very largely on the advice given them by the nurseryman. You can absolutely depend upon the advice given you by our men, and we stand behind them with our entire resources.

In planting, or planning to plant, mass the trees and beds on the boundaries so as to leave a broad space for the lawn, and, where there is a pretty view, leave an opening. Where there is an unsightly object, conceal it by planting trees or climbing vines. Remember, too, that planting large trees on the sunny side of the house will give you shade when you need it most.



Oriental Plane (*Platanus orientalis*)

### Ash (*Fraxinus*)

**American White Ash—\$1.50 each.**

**F. velutina (Arizona Ash)—**Good street tree, rapid grower. **\$1.50 each.**

### Birch (*Betula*)

**B. penula laciniata (Cut-leaf Weeping Birch)—**The most beautiful tree in cultivation. 5 to 6 ft. **\$1.50 to \$2.00 each.**

**B. alba (White Birch)—\$1.50 each.**

### Elm (*Ulmus*)

A well known species of ornamental tree especially suitable for street or avenue planting. Tall, spreading, vase-shaped heads. Rapid growers. We stock three varieties. **English, American, and Cork, 6 to 8 ft., \$1.50 to \$2.00 each.**

### Ginko (*Maiden Hair Tree*)

**G. biloba—\$1.25 to \$1.50 each.**

### Leptospermum (*Australian Tea Tree*)

Thrives well in this state. **75c to \$1.50 each.**

### Linden (*Tilia*)

**T. europa (Lime Tree)—**The famous street tree of Europe. 6 ft. **\$1.50 each.**

### Locust (*Robinia*)

**R. hispida (Rose Acacia) (Sweet Pea Tree)—**Does well in all parts of California. Fast grower. Very hardy. 8 ft. **\$3.50 each.**

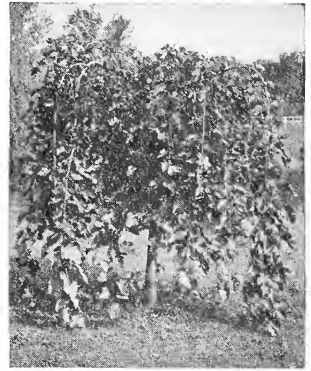


## Deciduous Trees—Continued

### Maple (*Acer*)

As a group they contain the most popular trees that are being planted today, and justly so. For quick effect, shade, brilliancy of color, adaptability to all conditions there is nothing to compare with the maple family.

- A. platanoides** (Norway Maple)—A large and very handsome tree, well adapted to the superior California conditions. **\$1.00 and \$2.00.**
- A. dasycarpum** (Silver Maple)—Rapid growing tree, foliage a bright green on top of leaf and silver below. Does well here. **\$1.00 and \$2.00.**
- A. palmatum** (Japanese Maple)—Extremely handsome shrub or small tree. Slow growers. Do best in partial shade. **\$1.50.**
- A. campestre** (English Cork-Barked Maple)—**\$1.50.**
- A. rubrum** (Scarlet or Red Maple)—**\$2.00.**



### *Melia*

**Texas Umbrella tree.**  
**\$2.00.**

### *Mulberry (Morus)*

**M. tatarica pendula** (Tea's Weeping Mulberry)—A most uncommon but very graceful weeping tree, forming an umbrella-shaped head with slender willowy branches drooping to the ground. Foliage is beautiful, leaves being distinctly lobed. Tree perfectly hardy, enduring the severe cold of the north and the extreme heat of the south. It is one of the most desirable of all the weeping trees. 6 to 8 ft. **\$4.00 each.**

### *Oak (Quercus)*

**Q. coccinea** (Scarlet Oak)—Bright green foliage, changing to a brilliant scarlet. 6 to 8 ft. **\$2.00.**

### *Plane, Oriental (Platanus)*

**P. orientalis** (European Sycamore)—Most highly recommended by all authorities for street planting in California. Fast and vigorous grower, stands pruning well and can not be excelled as shade trees. Free from disease and insect pests. We can thoroughly endorse it as a good street tree. Largely planted in Sacramento's newer sections and around the Postoffice. We have a fine lot of straight trees. This tree being a specialty with us. **\$1.00 to \$2.00 each.**

### *Poplar (Populus)*

Poplars can be planted with slower-growing, more permanent trees among them, and when the latter are big enough the Poplars can be cut away.

**P. fastigiata** (Lombardy Poplar)—A very tall, slender, quick-growing tree. Very distinct. **50c to \$1.50 each.**

### *Plum (Prunus)*

**P. pissardi** (Purple-Leaved Plum)—Very hardy. **\$1.25 to \$3.00.**

### *Tamarix*

A very hardy and fast grower, easily grown anywhere. **75c to \$1.50.**

### *Willow (Salix)*

**S. babylonica** (Weeping Willow)—The well-known common variety. Very fine for planting along the banks of streams and lakes. Handsome and distinctive. **50c to \$1.50 each.**

## Flowering Trees

**Quince**—Apple blossom and red. **50c to \$1.00 each.**

**Peach**—Red, crimson and white. **\$1.25 to \$1.50 each.**

**Japanese**—Double Cherry and Plum. **\$1.50 up.**

**Hawthorn**—Paul's Double Scarlet, Paul's White English, Paul's Pink. The three varieties mentioned, 6 to 8 ft. **\$2.00 each.**

**Pomegranate**—Bright glassy foliage brilliant flowers; 6 to 8 ft. **\$2.00 each.**

**Ceris canadensis** (Judas Tree)—Small tree, every twig of which is literally covered with pink bloom in early spring. **\$1.25 to \$1.75 each.**

**Malus spectabilis** (Flowering Crab)—Fragrant double-flowering, pink. **\$1.50 each.**

## Fruits and Nuts

**Black Walnuts**—6 to 8 ft. trees. **50c to \$2.00 each.**

**English Walnuts**—Grafted Franquette, Mayette and Eureka. 4 to 6 ft. trees. **\$2.00 to \$2.75 each.**

**Chestnut**—European. 4 to 6 ft. trees. **\$1.25 each.**

**Olives**—Mission. **\$1.00 to \$1.50 each.**

**Figs**—Mission. **50c to \$1.50 each.**

**Oranges**—Washington Navel and Valencia. **\$3.00 each.**

**Lemons**—Eureka. **\$2.75 each.**

**Pomelo** (Grape Fruit)—**\$2.75 each.**

### Other Fruit Trees

Although we carry most of the varieties of fruit trees, and can fill orders for almost any of them, we are not listing them this season as most of our customers who plant other fruit trees than listed either write in their needs or visit our nursery. Prices run about 60c each.



Flowering Almond

# Evergreen and Deciduous Shrubs

## The Cash Value of Landscaping a Small Home

**T**HIS was the subject of an address given by Mr. Albert D. Taylor, landscape architect of Cleveland, Ohio, before a recent convention of the American Association of Nurserymen. The lecture was extremely interesting and instructive. We can only touch upon a few of the points brought out in the course of this address, yet suffice to say that the main points he made were emphasized in a very conclusive way. Stress was made of the fact that the cash value was only an incident, that the real value was in making the home and grounds livable and beautiful. The planting should reveal the personality of the owner and should cater to real enjoyment.

It was brought out very forcefully that suitable planting of the home grounds was not really an expense, that properly placed suitable plants were an asset that invariably added value to the property; also that the reverse was true, that improperly placed plants or unsuitable ones were a liability. In other words, landscape gardening is a profitable investment, while haphazard planting was very likely to be a waste of time and money. The biggest danger lies in the overuse of material, which is an unnecessary expense. Consult with your nurseryman.

### ABELIA

**A. grandiflora**—A most beautiful evergreen shrub. Graceful arching branches of bright color. Dark, glossy-green leaves. Flowers are white, tinged with pink, and are borne in clusters from early spring until late fall. **50c to \$2.50 each.**

### ALTHEA (Rose of Sharon)

Covered with bloom during several months in the summer. Hardy, tall shrubs of various colors from white to purple. **\$1.00 to \$3.00 each.**

### ARBUTUS

**A. unedo** (Strawberry Tree)—Fruits at Christmas time with round berry-like fruits. **\$1.00 each.**

### ARALIA

**A. sieboldi** (fatsia japonica)—Splendid tub plant for shady places. Slow grower. **\$1.00 each.**

### AUCUBA

**A. japonica**—A fine evergreen shrub for tubs. **35c to \$2.00 each.**

### AZALEA

**A. indica alba**—White flowers, light-green foliage.

**A. indica rosea**—Pink flowers.

Both varieties from **\$3.50 to \$6.00 each.**

### BERBERIS (Barberry)

**B. knighti**—A fine new introduction, yellow flowers.

**B. wilsonae**—Light-green foliage turning scarlet in fall.

Both varieties **35c to \$2.50.**

**B. darwini** (Mahonia or Evergreen Barberry)—Attractive shrub with spiny leaves, brown branches and orange-yellow flowers. Dark purple berries follow bloom. **35c to \$1.50 each.**



Boxwood (Buxus) at East Lawn

### BUDDLEIA (Butterfly Bush)

Blooms continuously throughout the summer. Flowers resemble lilacs in color and form. Does well planted in masses. **50c each.**

### BOXWOOD (Buxus)

**B. sempervirens**—We carry many beautiful specimens either globe or standard shapes. Prices are **\$1.00 to \$10.00 each.**

### CALLISTEMON (Bottle Bush)

These are particularly interesting shrubs. **\$3.00.**

### CAMELLIA JAPONICA

Beautiful winter flowering evergreen—especially suited to Sacramento climate. Flowers—single or double—unusually beautiful and wax-like. Blooms in November and carries all through the winter. An especial favorite with all plant lovers. Red, pink or white. **\$1.00 to \$50.00 each for fine specimens.**

### CARPENTERIA

**C. californica** (White Tree Anemone)—A fine native shrub, foliage glossy-green with white flowers. **\$1.50.**

### CARYOPTERIS (Spirea)

Blue, free-flowering. **\$1.25 each.**

### CEANOETHUS

**C. thyrsoiflorus** (California Wild Lilac)—**\$1.00 each.**

### CHOISYA

**C. ternata** (Mexican Orange)—**35c to \$1.50 each.**

### CHORIZEMA

**C. ilicifolium**—Brilliant green foliage, orange-red flowers. **\$1.50.**

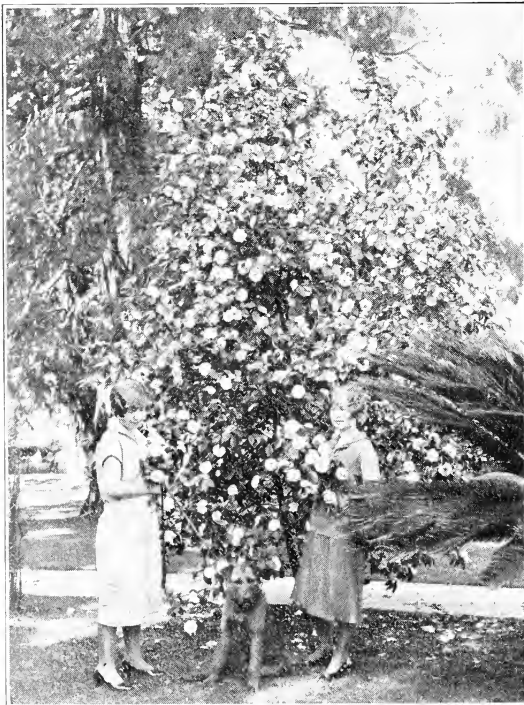
### CISTUS

**C. crispus** (Rock Rose)—Flowers a deep rose. Does best in a sunny location. **\$1.25.**

**C. ladaniferus maculata** (Spotted Rock Rose)—Flowers white with crimson spot. **\$1.50.**

### COPROSMA

**C. baueri**—Foliage glossy deep-green. Adapted for hedges or bedding. With age it forms a compact shrub. **\$1.00 each.**



Camellia Japonica at East Lawn

## Evergreen and Deciduous Shrubs—Continued

### CORNUS (Dogwood)

*C. capitata* (Evergreen Dogwood)—\$3.00 each.

### COTONEASTER

Ornamental shrubs well adapted to rockeries on account of their low, almost horizontal growth. Thrive in any well-drained soil, but dislike very moist and shady positions. All have ornamental fruit.

*C. francheti*—An upright form, with small pink flowers. \$1.50 to \$2.00 each.

*C. pannosa*—Tall with white flowers. \$1.25 to \$2.00 each.

*C. horizontalis*—Very low branches with pink flowers. 50c to \$2.50 each.

*C. microphylla*—Densely branched, low sort. White flower. Red fruit. 50c to \$2.50 each.

### CRAPE MYRTLE

*Lagerstroemia indica*—A well-known and desirable flowering shrub. Bright green, shining leaves. Flowers in profusion for several months in late summer. Four colors of flowers, pink, white, purple and rose. 35c to \$3.50 each, according to size.

### DAPHNE

*Odora*—A native of Japan, flowers white or creamy, very fragrant and massed in clusters at ends of branches. 50c to \$10.00 each.

*O. marginata*—Pink flowers. Same prices as above.

### DIOSMA

*D. ericoides*—A small heath-like shrub with white flowers; fragrant foliage. 50c to \$1.50 each.

### ERICA (Heather)

*E. carnea* (Spring Heather)—Flowers rosy-pink. 35c to \$2.50 each.

*E. mediterranea*—Bright pink, blooms all winter. 35c to \$2.50 each.

*E. melanthera*—Flowers rosy-pink. 35c to \$2.50 each.

### ESCALONIA

*E. berteriana*—Free bloomer, white. 35c to \$2.50.

*E. montevidensis*—Blooms in fall and winter, one of the very best. White. 35c to \$2.50.

*E. rosea*—Fragrant red flowers. Rapid grower. 35c to \$2.50 each.

*E. rubra*—Resembles roses, but darker. 35c to \$2.50.

### EUGENIA

*E. myrtifolia* (Brush Cherry)—\$1.00 each.

### EUONYMUS

*E. japonicus microphyllus*—Foliage small and dark-green. 25c to \$2.00.

*E. japonicus*—Hardy, dense, upright with lustrous dark evergreen foliage. 50c to \$2.50 each.

*E. japonica variegata*—Silver, brilliant variegated foliage. 35c to \$2.75 each.

*E. aurea marginatus*—Gold-bordered leaves. 50c to \$1.50 each.

*E. aurea variegatus*—Similar to above except that the color is variegated. 35c to \$2.00 each.

### FEIJOA

*F. sellowiana* (Pineapple Guava)—Very handsome, hardy evergreen shrub, egg-shaped fruit with pineapple-guava flavor. \$2.50 each.

### FIGUS (Rubber Tree)

*F. elastica*—The common rubber tree, very hardy, suitable for indoor or veranda use. Large, smooth, waxy leaves. \$1.00 to \$12.00 each.

### FORSYTHIA (Golden Bell)

*F. viridissima*—One of the earliest blooming shrubs, February; flowers golden-yellow on bare branches. 75c each.

### GENISTA (Broom)

*G. scoparius* (Scotch Broom)—Large, clear yellow flowers. 35c to \$1.50 each.

*G. hispanica* (Spanish Broom)—Of upright habit; yellow flowers produced on long leafless branches. 50c to \$1.50 each.

*G. racemosus*—Dwarfer and more compact. 50 to \$1.25 each.

### HAKEA

Native of Australia, drought-resistant and hardy; needle-like prickly foliage. White flowers. 35c to \$1.50 each.

### HYDRANGEA

*H. hortensis*—One of our most popular shrubs, practically evergreen. 35c to \$2.00 each.

### HYPERICUM

*H. moserianum*—Of drooping habit, suitable for borders; golden-yellow. 35c to \$1.75 each.

*H. henryi*—Tall bushy shrubs, hardy and fast growers. 35c to \$1.00 each.

### ILEX (Holly)

*Ivan tol* (Dutch Holly)—Specimens, \$5.00 each.

*I. aquifolium* (English Holly)—Very uncommon in California. Foliage lustrous, with red berries in fall and winter. \$2.00 to \$10.00 each.

### KERRIA

*K. japonica* (Japanese Yellow Rose)—Slender, upright shrub. Black berry-like foliage, flowers orange. \$1.50 each.



Forsythia (Golden Bell)

### LANTANA

Drought-resisting, sun-loving plants that bloom continuously except in extreme cold weather. Most colorful of all shrubs. Need little water. 25c each.

### LAURUS

*L. nobilis* (Bay Tree)—Our stock originally imported from Europe in 1912. 50c to \$3.50 each.

### ELONOTIS (Lion's Tail)

Woody with hairy stems. Fast-growing shrub with an unusual striking appearance. \$1.25 each.

### LEPTOSPERMUM

*L. laevigatum* (Australian Tea Tree)—Fast grower and very hardy, covered in spring with white flowers. 75c to \$2.00 each.

### LILAC (Syringa)

White, double white, purple, double purple and Persian, 2 to 3 ft. \$1.25 to \$1.50 each.

### LIPPIA

*L. citriodora* (Lemon Verbena)—Fast-growing hardy shrub; foliage having strong lemon fragrance. 50c up.

### MAHONIA

*M. aquifolium* (Oregon Grape)—A native of the Pacific Coast. Purplish prickly leaves, with bright yellow flowers; blue-black berries; fine, strong bushy plants. \$1.00 to \$3.00 each.

### MYRTUS (Myrtle)

*M. communis* (Sweet or English Myrtle)—One of our very best small-leaved shrubs. Bright green and exceedingly hardy. Good for hedges also. \$1.50 to \$2.50 each.

*M. myrphylla* (German Myrtle)—Also called Rosemary Myrtle. A very neat, compact shrub, very small leaves. \$1.50 to \$2.50 each.

*M. C. variegata*—Foliage striped. \$1.50 to \$2.50 each.

### NANDINA

*N. domestica*—Japanese leafy shrub, resembling dwarf bamboo, but bushier. Carries brilliant scarlet berries. Very unique; good tub plant. \$1.00 to \$2.50 each.

### NERIUM (Oleander)

The Oleander is well adapted to California, although a native of Asia. Large evergreen foliage; bloom all summer.

Red, pink and white. \$1.00 each.

### PHILADELPHUS (Syringa or Mock Orange)

A shrub of graceful, spreading form, very hardy and a fast grower. 75c to \$1.50 each.

### PHOTINIA

*P. arbutifolia* (Toyon) (California Holly or Christmas Berry)—Native of California. Much admired in November and December for the bright red berries with which it is loaded. From \$1.00 and up.

## Evergreen and Deciduous Shrubs—Continued

### PITTOSPORUM

- P. nigricans**—Much used for clipped hedges and mass plantings. Single specimens often reach height of 20 feet. **35c to \$2.50 each.**  
**P. tobira** (Japanese)—Winter flowering, with very fragrant, pure white blossoms. **35c to \$2.50 each.**  
**P. eugonides**—**50c to \$2.00 each.**  
**P. variegatum**—**50c to \$2.00 each.**

### POLYGALA

- P. dalmaisiana**—Everblooming shrub, very hardy, purple pea-shaped flowers, almost always in bloom. **50c to \$1.50 each.**

### PRUNUS

- P. ilicifolia** (California Wild Cherry)—Glossy, prickly leaves resembling holly. **75c to \$1.50 each.**  
**P. laurocerasus latifolia** (English Laurel)—**75c to \$3.00 each.**  
**P. laurocerasus camelliaefolia** (Camellia-leaved Laurel)—White flowers followed by black fruit. **35c to \$3.00 each.**

### PYRACANTHA

- P. augustifolia**—Fast-growing straggly Hawthorn, late.  
**P. coccinea**—Compact, bushy shrub, fast grower.  
**P. coccinea lalandi**—Tall grower, orange berries, very abundant.  
**P. crenulata**—Foliage long, narrow and dense; berries dark-crimson.  
**P. crenulata yunnanensis** (Chinese)—Spreading habit and vigorous grower; good ground cover, berries orange to scarlet. New.  
 All of the above are priced **35c to \$5.00 each.**

### RHODODENDRON

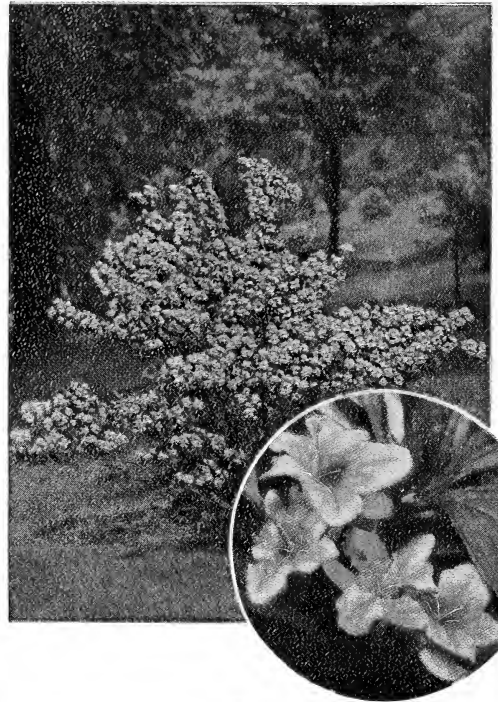
- R. Pink Pearl**—Do best in partial shade. **\$4.00 to \$10.00 each for fine specimens.**

### SYMPHORICARPOS (Snowberry)

- S. racemosus**—Sprays and clusters of milk-white berries the size of small marbles. **\$1.00 each.**

### VERONICA

- V. decussata**—Flowers deep blue, very compact bright green foliage.  
**V. imperialis**—Flowers reddish-purple; foliage tinged with red.  
**V. andersoni**—Flowers violet-purple, strong grower.  
**V. andersoni variegata**—Flowers blue; foliage variegated.  
**V. buxifolia**—Foliage resembles boxwood. White flowers.  
**V. cupressoides**—Lilac flowers, fast grower.  
**V. decumbens**—Low spreading habit; dark foliage.  
 All prices at **35c to \$1.50 for finer specimens.**



Weigelia

### VIBURNUM (Snowball)

- Common Snowball**—Well-known bushy shrub, blooms in March with snowball-like flower clusters. **75c each.**

### WEIGELIA (Diervilla)

- Should be better known as it is a hardy beautiful shrub without pests and very easily grown. Red and pink. **\$1.00 each.**

# Hedge Plants

**A** LIVING fence—one made of plants—attractive with their green leaves, formally-trained or arched branches, colored foliage or bright berries is surely more pleasing than the still, rigid, mechanical effect obtained by the similar use of wood or metal.

### BERBERIS (Barberry)

- B. thunbergi**—Nothing equals this beautiful deciduous hedge, where a dwarf hedge is wanted. Leaves small, rich green, turning to rich brilliant colors in fall. Scarlet berries. Perfectly hardy. Plant 15 to 18 inches apart. **75c to \$1.50 each for specimens.**

### DWARF BOXWOOD

- Makes a beautiful, low, evergreen border plant. **10c, 15c and 20c each.** Larger plants, for immediate effect at **35c and 50c each.**

### LAURUSTINUS (Viburnum Tinus)

- Makes a very beautiful hedge or screen. Covered with white blossoms or buds almost continuously. **35c to \$2.50 each for specimens.**

### LIGUSTRUM (Privet)

- L. ovalifolium** (California Privet)—**\$3.00 to \$6.00 per 100.**  
**L. ovalifolium aureomarginatum** (Yellow Edge California Privet)—**\$1.75 each.**  
**L. vulgare** (European Privet)—**\$3.00 to \$6.00 per 100.**

### LONICERA (Honeysuckle)

- L. nitida**—Compact-growing dwarf shrub of dense but graceful habit; fine for a dwarf hedge. **35c to \$1.00 each for fine specimens.**

### SPIREA

- S. van houttei** (Bridal Wreath)—Makes a beautiful, informal flowering hedge. In late spring it is literally covered with a profusion of white bloom. **50c to \$1.00 each for specimens for immediate effect.**  
**S. thunbergi**—Dwarf habit, graceful form. Flower small white. Foliage narrow and yellowish green. **50c to \$1.00 each.**  
**S. prunifolia flora plena**—Very distinct with a profusion of small double white flowers. **\$1.00 each.**  
**S. anthony waterer**—A deep crimson-flowered variety, dwarf, low and compact, flowering throughout the season. **\$1.00 each.**

## Suggestions for Planting Hedges

**Clipped Hedges**—Plant Privet 12 inches apart, depending upon compactness desired; plant Barberry 1 to 2 feet apart.

**Flowering Hedges**—Altheas and Honeysuckles when planted about 2 feet apart make beautiful flowering hedges and screens. Spirea Van Houttei, planted 2 to 3 feet apart in the hedge row can be trimmed or allowed to grow naturally.

**Other details**—The East Lawn Landscape Service, as outlined on page 2, will be glad to advise you freely and thoroughly. Bring out a rough outline or sketch and we will try to set you right. You can also see the various shrubs and other plants just as they are.

# Ornamental Vines & Trailing Plants

**VINES** are useful in many ways. They give quick results when planted on a new place, before trees and shrubs become established. For covering fences, rocks, walls, banks and trellises, they are particularly adapted. A porch without a vine is desolate and incomplete.

## AMPELOPSIS

**A. Veitchi** (Boston Ivy)—See illustration. The most popular climbing plant for covering walls. Clings to the smoothest surface like Ivy. Rich, olive-green in summer, changing to scarlet in fall. Cut plants back to six inches when planting. **50c each.**

**Virginia Creeper**—Rapid grower, its deep green foliage assumes brilliant shades of yellow, crimson and scarlet in the fall. Large plants. **50c each.**

**A. quinquefolia**—Short jointed. Very fine. **\$1.00.**

## BIGNONIA

Popularly known as Trumpet Vine. **\$1.00 each.**

## BOUGAINVILLEA

Free bloomer and very showy. **\$1.50 to \$2.50 each.**

## CISSUS

**C. striata** (*A. sempervirens*)—Tree vine. **75c each.**

## CLEMATIS

**C. montana**—The best of the early spring-flowering climbers. Perfectly hardy and a rapid grower. Covered with masses of white flowers. Clings to any support. **\$1.00 each.**

## FICUS

**F. repens**—Handsome climber, clings to walls. **75c each.**

**F. pumila minima**—A low climber, suitable for window boxes. **75c each.**

## HEDRA (Ivy)

**H. helix** (English Ivy)—**35c each.**

## HONEYSUCKLE (Lonicera)

**L. halliana**—Flowers pure white, turning to yellow. Very fragrant. **50c each.**

**L. red tatarian**—Brilliant coral-red clusters of flowers. **50c to \$2.00 each.**

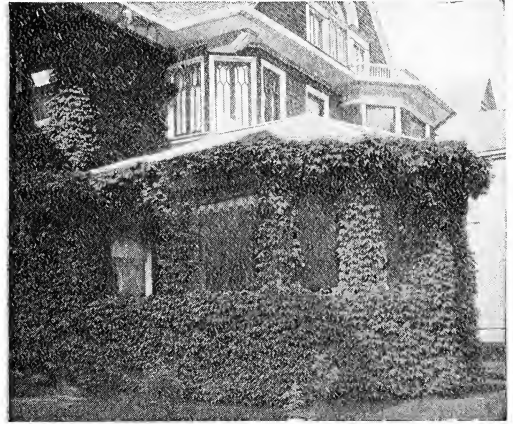
(We also have many other varieties that space does not permit us to list).

## JASMINUM (Jasmine)

**White and Yellow.** Either variety, **35c each.**

## PASSIFLORA (Passion Vine)

Large rose-colored flowers. **50c each.**



Boston Ivy (*Ampelopsis Veitchi*)

## VINCA (Periwinkle)

**V. major**—Big-leaved Periwinkle. **15c to 25c each.**

**V. major variegata**—Mottled. **15c to 25c each.**

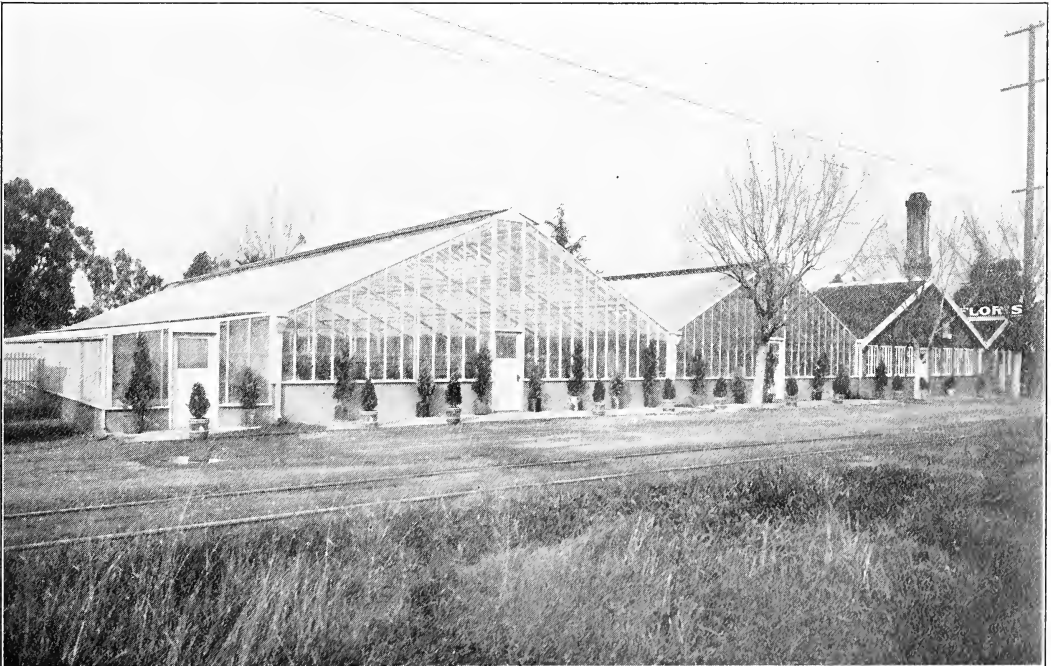
## WISTERIA

One of the best hardy climbers, producing great clusters of flowers. The Wisteria is the queen of the climbing vines, and for porch decoration without too much shade it has no superior.

**W. chinensis**—The favorite, violet-blue, perfumed. **\$2.00 to \$3.00 each.**

**W. alba**—Similar to above but white. **\$1.00 each.**

**YOU** build a new house at great expense and it begins to deteriorate from the moment that you enter it. The minute you plant good trees, flowers and shrubs your property value begins to increase. Beautify your home grounds and double the value of your land.



Exterior East Lawn Nursery Greenhouses (Each house 100 feet long)



# Ferns

One greenhouse—100 feet long by 35 feet wide—almost exclusively devoted to ferns. They are one of our many specialties.

**Boston**—An old favorite and always popular. **\$1.00 to \$15.00 for exceptionally fine ferns.**

**Whitmanii**—One of the newer ones. More feathery than the Boston. **\$1.50 and \$2.50 each.**

**Roosevelt**—A beauty, one look generally sells it. **\$1.00 up to \$5.00 each.**

# Palms, Etc.

Nothing adds so much to the party as a few fine palms. We carry a large stock at all times and deliver and call for. Rental, according to size and quantity desired, from 50c each.

**Chamaerops**—Dwarf fan palm. **\$2.00 each.**

**Cycas revoluta**—Sago palm. **\$3.00 to \$8.00 each.**

**Kentia fosteriana**—For indoor decoration. **\$1.50 to \$18.00 each.**

**Kentia Belmoreana**—For indoor decoration. **\$1.50 to \$18.00 each.**

**Phoenix canariensis** (Canary Island Date Palm)—For outdoor planting. Gives that oriental appearance so much desired. Extremely hardy. We have well-established plants. 4 to 5 feet, in 5-gallon cans. **\$5.00 to \$10.00 each.**

**Trachycarpus**—Windmill palm. **\$5.00 each.**

## Miscellaneous Items

**Aspidistra**—The easiest of all decorative plants to grow well. **\$2.00 to \$5.00 each.**

**Cordylone australis** (Green Dracaena)—Noted for the odd and beautiful foliage. **\$1.00 to \$10.00 each.**

# Bamboos and Grasses

**Cortaderia argentea** (Pampas Grass)—Well-known hardy grass, very harsh, sharp edge blades, beautiful soft plumes. September to November. **\$1.00 to \$3.00 each.**

**Phormium tenax** (New Zealand Flax)—Very hardy, broad-bladed plant. Leaves two inches wide; dark green. **\$1.00 to \$4.00 each.**

**SPECIAL attention to small home grounds.** A discussion of your landscape problems with us entails no obligations on your part, and will undoubtedly prove greatly to your advantage and afford you much delight in learning the possibilities of the grounds around your home. Efficient landscape—even on a small scale—adds hundreds of dollars to the value of any home.



Phoenix Canariensis (Canary Island Date Palm)

**Phormium tenax variegata**—Same as above with striped foliage. **\$1.00 to \$4.00 each.**

**Bamboo**—The use of this unusual plant gives a tropical touch to any landscape, especially if used with palms and other large-leaved specimens. **\$1.00 to \$3.00 each.**

# Floral Work



Interior Flowering Plant House, East Lawn Nursery

Being growers of large quantities of Cut Flowers, it is only natural to suppose that we are in an exceptional position to furnish floral pieces that are away above the average for freshness. Many of the flowers used in our pieces are cut only a few minutes before using. Expertly made up by experienced whire help (we do not employ Japanese), our Floral Work is sure to please. Packing for shipment we take special pains with and solicit orders from our out-of-town friends.

Prices for Floral Work varies with the season, but you can be assured that the price charged by East Lawn is the very lowest consistent with the quality of material.

**Prices for Sprays for Funeral Work run from \$1.50 up to \$15.00.**

**Wreaths from \$3.50 to \$15.00.**

**Pillows from \$5.00 to \$15.00**

**Baskets for weddings and other occasions, \$3.00 up to \$50.00.**

A large selection of Ornamental Plant stands for rent. Many original designs. We deliver and call for.



We are equipped to handle decorations for Grand Openings, Conventions, Weddings and all other events where assurance of successful and distinctive results are required.

# Bedding and Ornamental Plants

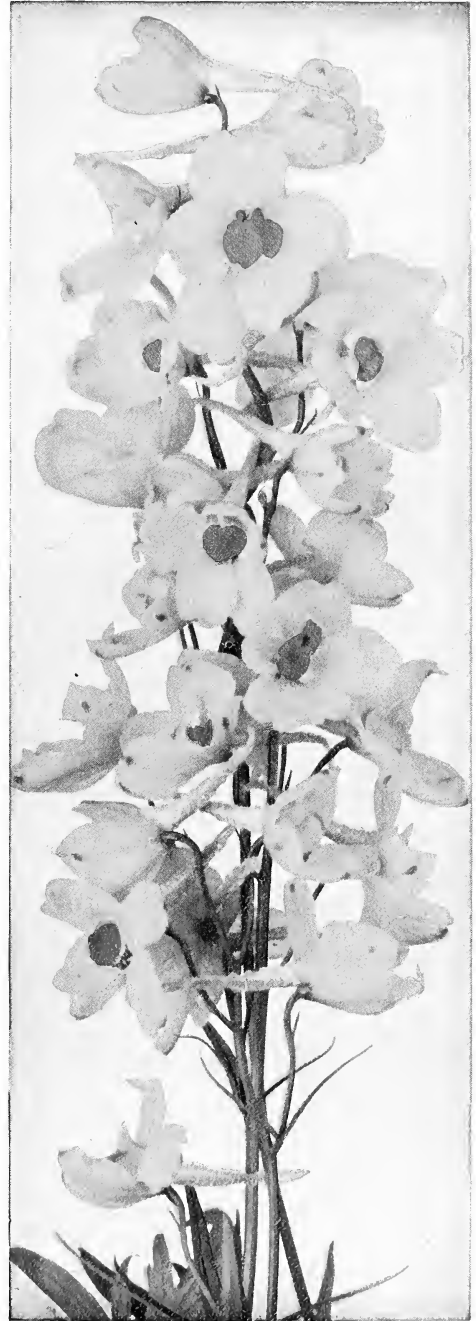
We stock all of the popular annual bedding plants and offer these to you at 50 cents per dozen.

## Specialties with us

- Chrysanthemum**—Best varieties. **\$1.00 to \$12.00** per doz.  
**Cyclamen**—Very fine and beautiful. **\$1.00 to \$5.00** each.  
**Daisies**—English Giants from Sutton's Seeds. 50c per doz.  
**Delphinium** (Larkspur)—Beautiful hardy plant, grown in borders for their stately habit and handsome spikes of light and dark-blue flowers. Ours are a special strain, **Vanderbilt Hybrids**. None better. Fine strong plants, **\$1.50 to \$2.50** each.  
**Geraniums**—Single and double, red, white and pink. **\$1.50 to \$2.50** per dozen.  
**Geraniums** (Ivy-Leaved)—Running and climbing. 15c each; **\$2.50** per dozen.  
**Mesembryanthemum rosea** (Ice Plant)—**\$1.00** per dozen.  
**Pansies**—This is another of our specialties. The seed from which our pansies were grown was imported from Switzerland, so our Pansies are **extra choice**—not to be compared with or to the common or garden variety of Pansies usually offered. **Giant Flowered**, 50 cents per dozen; **\$3.50** per 100.  
**Petunias**—Single or double. 25 to 50 cents each.

## Perennials

Name	Description	Per dozen.
<b>Aconitum, anthora</b>	—Yellow	<b>\$1.50</b>
<b>Aconitum, fischeri</b>	—Dwarf, pale blue	1.50
<b>Arabis, flore plena</b>	—White, double	1.50
<b>Arabis, rosea</b>	—Rose colored	1.50
<b>Anchusa, angustifolia</b>		1.50
<b>Anemone, coronaria</b>	—Mixed colors	1.50
<b>Aquilegia</b>	—Long-spurred Columbine	1.50
<b>Cynoglossom amabile</b>	—Chinese Forget-me-not	2.50
<b>Calla Lilies</b>	—Both white and yellow	1.00
<b>Campanula</b>	—Double and single, mixed colors and types	1.50
<b>Calamintha, alpine</b>	—Lavender blue	1.75
<b>Cheiranthus, allioni</b>	—Siberian Wall-flower	1.00
<b>Dianthus (Pinks), plumarius</b>	—Cyclops, single	1.50
<b>Dianthus (Pinks)</b>	—Double early-flowering, mixed	1.50
<b>Delphinium, chinensis</b>	—Dwarf, gentian-blue	2.00
<b>Dicentra, spectabilis</b>	—Bleeding Heart, very rare	5.00
<b>Dictamnus, fraxinella</b>	—The Gas Plant	1.75
<b>Digitalis</b>	—Foxgloves, giant mixed	1.50
<b>Digitalis, bux baumii</b>	—Golden-yellow	2.00
<b>Edelweiss</b>	—Alpine plant. Grey leaves, yellow flowers, each	1.00
<b>Gerbera</b>	—Transvall Daisy	3.00
<b>Gaillardia</b>	—The King, extra large	1.50
<b>Geum, bulgaricum</b>		2.00
<b>Geum</b>	—Lady Stratheden	1.50
<b>Geum</b>	—Mrs. Bradshaw	1.50
<b>Gypsophila, paniculata</b>	—Baby's Breath	1.50
<b>Helleborus</b>	—Christmas Rose. Each	1.00
<b>Heliotrope</b>	—King of the Blacks and White. 10c to 35c each	
<b>Lavender, antrop. nana</b>	—French lavender	1.50
<b>Lobelia</b>	—Queen Victoria	2.00
<b>Lupinus</b>	—Harkness' Royal Mixture	2.00
<b>Myosotis</b>	—Forget-me-not	1.00
<b>Papaver, orientalis</b>	—Oriental Poppy, "Olympia"	1.50
<b>Papaver, orientalis</b>	—Double-flowering	2.00
<b>Penstemon</b>	—Sensation Mixed	1.50
<b>Penstemon</b>	—Red	1.50
<b>Phlox decussata</b>	—Collection of named varieties	2.00
<b>Pyrethrum, grandiflora</b>	—Mixed	1.50
<b>Primula, auricula</b>		2.50
<b>Primula, veris hybrids</b>		2.00
<b>Salvia, azurea</b>	—Sky-blue Rocky Mountain species	2.00
<b>Sweet William, dianthus barbatus</b>	—Mixed colors	1.50
<b>Scabiosa, caucasica</b>		2.00
<b>Stokesia</b>	—Mixed	2.00
<b>Tritoma</b>	—Red Hot Poker	2.00
<b>Verbena</b>	—Red, Pink and Blue	1.00
<b>Viola, bosniaca</b>	—Mixed	1.25
<b>Violets</b>		1.00
<b>Wallflower</b>	—Double Mixed	1.00
<b>Water Lilies</b>	—Nymphaea in variety, <b>\$1.00 to \$2.50</b> each.	



**Delphinium (Perennial Larkspur)**  
 One of the most attractive garden flowers. Having a beautiful shade of blue and growing on tall stem. Grows 4 feet tall. Blooms June and July. **\$1.50 to \$2.50** each.

# Roses

## How to Succeed With Them

Good soil is the first requisite. Roses are strong feeders and while they can exist in poor soil they will not furnish the rapid growth and quantity of first class flowers that good, rich soil insures. This is emphasized because failures from planting in poor soil, poorly prepared are inexcusable.

No material is better for enriching the soil than well-rotted animal manure. Cow manure is desirable but not essential, and ordinary stable manure, if thoroughly decomposed, is satisfactory. It should be thoroughly intermixed with the ground, though under no condition must clods of manure come in contact with the roots.

The actual operation of planting is simple, but care must be taken. In the previously prepared ground an ample hole should be dug to receive the roots of the plant, spread out much as they were in the nursery. A little mound at the bottom of the hole on which the roots may be separated and spread is an advantage. Bunching the roots is an outrage—DON'T DO IT. The best way is to either plant the Rose at the same depth as it stood in the nursery row, as indicated by the earth marks on the stem, or to place the **uppermost** roots 3 to 4 inches below the surface of the finished bed, **AND NO MORE.**

If the roots are healthy and alive, planting properly done, and they have the right care, the plants will grow and do well. As the roots need additional depth, they will get it while they grow. Leave something for them to do, some place for them to go. Perhaps there is such a thing as doing too much for plants.

In the Sacramento Valley, Roses need lots of water. Plenty of water at the roots will insure success, but it must pass quickly through the soil, as they can not stand wet feet.



General McArthur

## Pruning

In planting, trim them back to three or four good buds, as they will grow off much better. The ever-blooming roses should be shortened back each year, about one-half the previous season's growth. The rambles may be pruned by taking out the older canes after they are through blooming, leaving only the younger canes or by removing the flower spikes from the older canes.

Winter protection in the way of soil mounded up several inches around the plant, straw, coarse manure, leaves or litter, especially about the tender varieties, repays in flowers for the extra trouble.

Plant only in a sunny position in soil free of all tree roots and protected, if possible, from severe weather. Roses like fertile, well-drained soil and if one will prepare a bed especially well, he will be rewarded in wealth of bloom and vigor of plant.

## The New Hybrid Tea Rose "Commonwealth"

This Montgomery Rose was registered with the American Rose Society, and its description, transcribed from the standard card of the Society as published in the 1923 Rose Annual follows:

"Buds large, long pointed; flowers large, open, double, very lasting, deep pink. Solid color. Borne singly on medium strong stem, moderate fragrance. Foliage sufficient, leathery, medium size, rich green, disease-resistant. Few thorns. Vigorous, upright, continuous bloomer." Its heat endurance qualities should make it a favorite in the Sacramento Valley. Each, 75 cents.

## Prices

All two-year-old, each 75 cents; \$7.50 per dozen; unless otherwise noted.

**American Beauty**—Deep rose to carmine-cerise.  
**Bessie Brown**—Creamy white, large and fragrant.  
**Caroline Testout**—Beautiful pink; free-bloomer. Highly recommended.  
**Cecile Brunner**—Salmon-pink. A great favorite.  
**Columbia** (H. T.)—Lively bright pink, sweetly scented, of exquisite shape. Free-flowering, good grower; healthy foliage.  
**Constance** (H.T.)—Orange buds, streaked crimson and medium, globular flowers of pure yellow which last well. This is a splendid yellow and has few equals.  
**Frau Karl Druschki** (White American Beauty)—Snowy white, large flowers, very beautiful, tapering buds. Strong grower. The very best of the whites. Superb.  
**General McArthur**—A magnificent fiery-red. Very free bloomer and has the richest fragrance. Highly recommended.  
**Golden Emblem**—Put this one at the top of your list. It is a rich golden-yellow. One of the very best yellows introduced. Foliage bright, glossy-green.  
**Gruss an Teplitz**—Of the most exquisite scarlet, shading to velvety-crimson. It is a vigorous grower, free bloomer. Very satisfactory.

**Hadley**—Brilliant deep velvety-crimson. Very scarce.  
**Hoosier Beauty**—Glowing crimson, beautiful in both bud and flower. Buds are long and slender. Flowers large and full.  
**Irish Elegance** (Single)—Apricot, shaded orange and pink. Extremely handsome in the bud. Always in bloom. A great favorite.  
**Irish Fire Flame** (Single)—One of the most pleasing color combinations in any variety.  
**Kaiserin Augusta Victoria**—White. Blooms are very large, full and globular. Produces until late autumn.  
**Los Angeles**—One of the finest roses ever introduced. Flame-pink, toned with coral, shaded translucent gold at base of petals. Very fragrant. Buds are long and pointed. Nothing finer.  
**Lady Hillingdon**—Pleasing shade of orange-yellow. Very fine in the bud stage. Very free bloomer.  
**La France**—Silvery-pink, one of the best of the pinks. Constant bloomer and very sweet-scented.  
**Mme. Edouard Herriott** (Daily Mail Rose)—The buds, which are long and pointed are coral-red, shaded yellow at base. A vigorous grower.  
**Madame Cochet**—Both white and pink varieties. White—clear white buds. Pink—one of the finest.  
**Mrs. Aaron Ward**—Distinct shade of apricot-yellow. Free bloomer; flowers full and very well formed.

## Roses—Continued—Prices on page 14

- Mrs. John Laing**—Soft pink, free-flowering, exceedingly fragrant. A very beautiful rose.
- My Maryland**—Bright salmon-pink. Strong grower. Very fragrant and a free bloomer.
- Ophelia**—Light salmon, flesh-pink, shading to yellow. Many rosarians consider this the very best rose of its color. Blooms freely all season.
- Paul Neyron**—The largest of all roses. Very clear salmon-pink. Bright and double. Highly perfumed.
- Papa Gontier**—A magnificent rose. Brilliant carmine; very fragrant and a great favorite.
- Pink Killarney**—Brilliant sparkling-pink with pointed buds.
- Prince Camille De Rohan**—Deep velvety-crimson. One of the best red roses.

- Radiance**—Soft carmine-pink. Very sweet fragrance. Vigorous grower; free bloomer.
- Rose Marie**—Clear bright pink. One of the best of its color.
- Sarah Van Fleet**—Distributed only by the American Rose Society (of which we are members), and upon terms prescribed by the Bureau of Plant Industry of the U. S. A. **\$2.00 each.**
- Souvenir De Claudius Pernet** (H. T.)—Fine buds of fadeless yellow, paling somewhat toward the edge. Blooms freely, early and late.
- Sunburst**—A magnificent yellow, shaded orange-copper. Long buds on strong stems. One of the best.
- Ulrich Brunner**—Bright, cherry-red; very fine. Long stems and beautiful flowers. Highly recommended.

# Climbing Roses

We also have many other Climbing Roses. However in quantities not sufficient to list. Call on us for any special variety.

- Climbing Banksia** (White)—A thornless climbing rose; glossy foliage; flowers small but bloom in great profusion in early summer.
- Cl. Banksia** (Yellow)—Same as white only deep yellow.
- Cl. Belle of Portugal**—Flesh pink.
- Cl. Caroline Testout**—Large, beautiful pink flowers. Blooms all season.
- Cl. Cherokee**—Clear pink, foliage glossy, dark-green. Vigorous climber.
- Cl. Cochet**—Very strong climber. Creamy white; long pointed solid bud.
- Cl. Daily Mail**—Each **\$1.00.**
- Cl. Dorothy Perkins**—Shell pink. Blooms in spring-time only. Sweet fragrance.
- Cl. General McArthur**—Each **\$1.00.**
- Cl. Hadley**—One of the best high colored varieties; an intense, rich, dazzling crimson-scarlet, shading to velvety-crimson. Of perfect form and delicious fragrance, particularly fine in the autumn. Each **\$1.00.**
- Cl. K. A. Victoria**—Very popular white.
- Cl. Lady Hillingdon**—Brilliant golden-yellow. Very fine long slender buds. Continuous bloomer.

- Cl. Los Angeles**—One of the finest varieties ever introduced. This is a "Native Son" (or is it daughter?) being introduced by Howard & Smith of Los Angeles. Flame-pink, toned with coral, and shaded gold at base of petals. Beautifully formed, fragrant, vigorous grower and free bloomer. Nothing better. Each **\$1.00.**
- Cl. Mme. Cecile Brunner**—Beautiful salmon-pink. The well-known "Baby Rose." Same as bush rose of same name.
- Cl. Papa Gontier**—Dark, rosy-crimson, fine, large, sweet-scented buds. Continuous bloomer.
- Paul's Scarlet Climber**—No other rose in its class can compare with it for brilliancy of color which is a vivid scarlet. Will not burn or bleach until the petals drop. Flowers medium size, semi-double, freely produced in clusters of from 3 to 20 flowers each, on much branched canes, being literally covered with blooms from top to bottom. Awarded Gold Medal by National Rose Society.
- Cl. Red Radiance**—Each **\$1.00.**
- Cl. Reine Marie Henriette**—Cherry-red. Flowers large and fragrant. A fine climber. Liable to mildew in the early season.
- Cl. Rose Marie**—Each **\$1.00.**
- Cl. Sunburst**—An intense shade of golden-orange and yellow. Buds large and well formed. One of the very finest.



**Paul's Scarlet Climber**  
(Flowers are from 2 to 3 inches across and borne in clusters.) Each 75 cents.

Beautiful surroundings need not appeal to our taste for the beautiful only, but from a commercial standpoint, the beautifying of the home greatly adds to its value. Who, in seeking for a home would pass a house surrounded by a lawn judiciously planted to shrubs, trees and flowers which had been tenderly cared for for years, and choose one barren of tree, shrub or vine, some of which would take years to mature?

## Trees

"For 20 years I have heard the call of the wild from the mountains and forests of the West. I have visited the silent places, alone and unarmed, in the flowers and the snow. Intense and happy days and weeks I have had, with only bark and berries to eat. But what did eating matter? The world was young; the pines were my friends; life out with nature is always great. I know what it is to be alone with the moon upon a high peak. I know the magic spell that holds the lonely wayfarer when on a still night he feels the touch of the summer air, while the leaves rustle and glisten in the moonlight. Throughout the ages, the trees have been our friends and in the future's golden days we must be their friends."—Enos A. Mills.

## Building Good Will

that's our persistent effort; by showing a spirit of service in dealing with you; by supplying Cut Flowers and Plants that will be a continual satisfaction, to you; by prices that represent good value for your money.

We are succeeding in all of these points.

## East Lawn Nursery

Growers of Choice Cut Flowers and Plants

Folsom Boulevard at 46th Street

Telephones, Capitol 2060-2061

Own Root  
Roses

Distinctive  
Types



*East Lawn's*  
COLLECTION  
*of twelve Hardy*  
EVERBLOOMING  
TEA ROSES

*All*  
*Two-*  
*Year-*  
*Old,*  
*75c*  
*Each*

- 1 Frau Karl Druschki
- 2 Pink Killarney
- 3 Sunburst Bud
- 4 Gruss an Teplitz
- 5 La France
- 6 Ophelia
- 7 Los Angeles
- 8 Sunburst
- 9 Hoosier Beauty
- 10 Pink Cochet
- 11 Daily Mail
- 12 K. A. Victoria
- 13 Pink Radiance
- 14 Pink Killarney Bud

The 12  
Roses for **\$8.00**

Folsom Boulevard  
at 46th Street

**East Lawn Nursery**  
SACRAMENTO, CALIFORNIA

Telephones  
Capitol 2060-2061