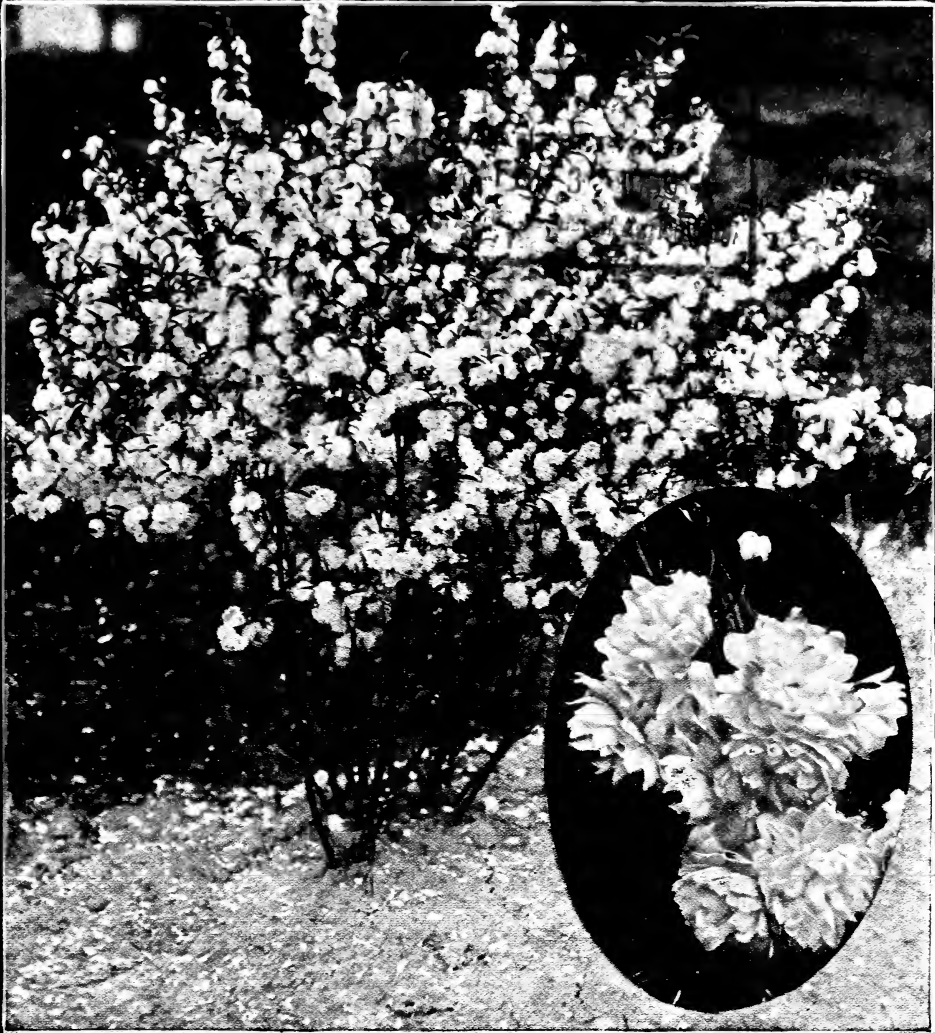


## **Historic, Archive Document**

Do not assume content reflects current scientific knowledge, policies, or practices.





PRUNUS TRILOBA (See Page 25)

# **FINGER LAKES NURSERIES**

**1930**

*Geneva, N. Y.*



**COLORADO BLUE SPRUCE**  
 Glistening Silver Blue Tips  
 1½-2 ft. \$ 6.00 each, 2 for \$11.00  
 2-3 ft. 10.00 each, 2 for 18.00  
 Balled and Burlapped  
 The "best" of all Specimen Evergreens

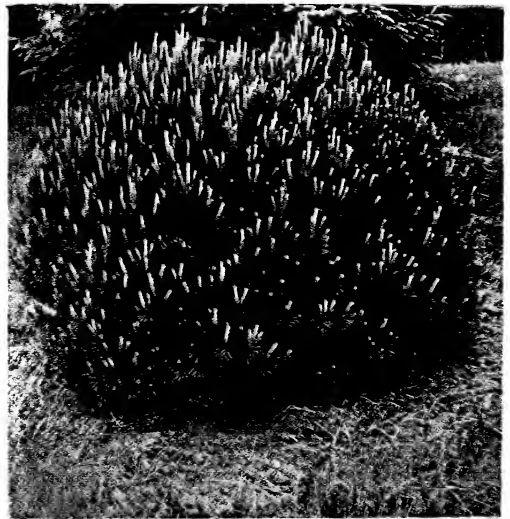


**PYRAMIDAL ARBOR VITAE**  
 Beautiful Feathery Foliage  
 2-3 ft. \$4.00 each, 2 for \$7.25  
 Excellent for Foundation or Group Planting

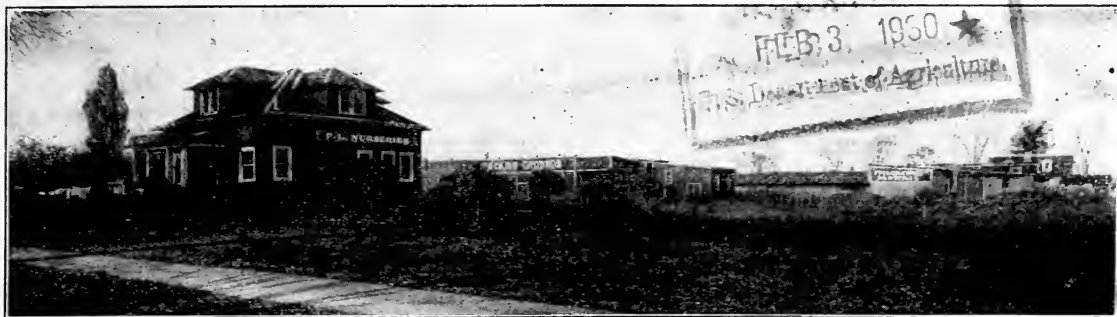
<b>SPECIAL OFFER</b>	1 Each of these	<b>\$15.00</b>
	Beautiful	
	<b>EVERGREENS</b>	
<i>Col. No. 20</i>		



**AUSTRIAN PINE**  
 Broad-based—Heavily Needled  
 2-3 ft. \$3.50 each, 2 for \$6.25  
 A rapid grower—hardy anywhere.



**MUGHO PINE**  
 The Aristocrat of Dwarf Evergreens  
 1½-2 ft. \$3.50 each, 2 for \$6.25  
 Compact Grower—excellent spread-ornate tips.



Home Office and partial view of our Packing and Shipping Plant which covers over two acres. All packing and sorting is done under cover so that stock is never exposed to sun or wind while packing. We extend a cordial invitation to visit our Plant anytime you are in this locality. (Geneva is located on main route between New York and Buffalo. Route 5 and U. S. route 20).

## *Get Your Order in Early*

### FOR BETTER SELECTION AND BIGGER DISCOUNT

**15% DISCOUNT ON CASH ORDERS RECEIVED WITH CASH WITHIN TEN DAYS AFTER RECEIPT OF THIS CATALOG.**

**10% DISCOUNT ON CASH ORDERS RECEIVED BEFORE MARCH 1st.**

**6% DISCOUNT ON CASH ORDERS RECEIVED BEFORE APRIL 1st.**

**3% DISCOUNT ON CASH ORDERS RECEIVED AFTER APRIL 1st.**

**Orders Shipped C.O.D. if One-fourth Cash Accompanies Order**

**No Discount on C.O.D. Orders**

## INDEX

	Page		Page
Apples and Crab Apples .....	28-29	Ornamental Lawn Trees .....	25
Apricot .....	31	Out-Door Living Room Collections .....	18-19
Asparagus .....	33	Peach Trees .....	32
Berries .....	34-35-39	Pears .....	30
Cherries .....	33	Peat Moss .....	30
Climbing Roses .....	5	Perennials .....	15-16-17-20-21
Dwarf Fruit .....	36	Plums .....	31
Early-to-Bear Fruit .....	38-39	Pussy Willow .....	9
Evergreens and Evergreen Shrubs .....	2-3-4	Quinces .....	31
Fertilis .....	27	Rhubarb .....	33
Garden Furniture .....	27	Roses .....	5-6-7-8-40
Gladiolus Bulbs .....	16	Shade and Ornamental Trees .....	23-24-25
Grape Vines .....	37	Shrubs .....	10-11-12
Grass Seed .....	36	Sprayer .....	38
Hedge Plants .....	26	Vegetable Seed .....	37
Horseradish .....	33	Vines .....	9
Landscape Collections .....	13-14		

**Order early and we will hold stock at no additional cost to you, and we will ship at proper time for planting in your locality.**

**WE CAN'T AFFORD TO HANDLE ORDERS OF LESS THAN \$1.00.**

**USE ORDER BLANK ATTACHED TO THIS CATALOG**

## *It's Simple and Safe to Order the F. L. N. Way*

In this catalog we have endeavored to give you helpful information on planting your Home Grounds and making your garden and orchard more profitable. Our Mr. Rice has been propagating and growing Nursery Stock for nearly half a century. We have under cultivation over 300 acres of Nursery Stock located in this most favorable section for the growing of Trees and Plants.

Thoughtful buyers realize that trees and plants of honest and dependable quality are the cheapest in the long run.

If you don't find the information in this catalog you require, write us on any of your planting problems. We're here to help you.

### **GUARANTEED VIGOROUS AND PRODUCTIVE**

We guarantee all Trees and Plants sold by us to be strong, vigorous, healthy, productive and to reach you in good condition. Should they arrive otherwise, or should a shortage occur, notify us immediately, and we will make adjustment.

When good stock reaches you in good condition, there should be no difficulty in getting it to grow and do well; obviously we cannot guarantee continued growth against poor cultivation, or climatic conditions over which we have no control.

Every possible care is taken to have varieties true-to-name and description. If anything proves untrue, we will replace free of charge or refund the purchase price.

No Sale is Complete Unless You Are Satisfied.

## *Growers for Nearly Half a Century*

### **ONE PRICE FOR ALL**

Whether you live near here or at a distance you pay the right price. We consider it unfair to list prices that include transportation charges; whereby one living in New York State or a neighboring state would have to pay the same prices as one living at a distance in order for the nurseryman to cover on transportation to all points.

**Certificate of Inspection**—By New York State Agricultural Department certifying that our stock is clear and free from all diseases and insects, will accompany each shipment.

**Buy Direct From Grower**—Buy direct from a responsible and dependable grower and save money and time.

**Packing and Shipping**—We make no charge for packing or boxing. Prices, F.O.B. Geneva, except as noted.

If Roses, Perennials, Shrubs and Small Fruits ordered from this Catalog are to be sent by Parcel Post, add 5% to the amount of your order. (Minimum mailing charge, 15 cents.) We cannot trace Parcel Post shipments unless sent Special Delivery.

#### **PLANTING DIRECTIONS**

Plant stock promptly on arrival in a well-drained location. Soak roots well with water and don't allow them to be exposed to the sun or wind while plant-

ing. Dig holes plenty large enough to admit roots without crowding and plant a little below the surface mark where stock stood in the nursery. Tamp the soil well around roots and don't allow any air pockets. Mound up the soil well around the roots and water well. In dry weather soak roots well two or three times a week, and don't allow the soil to "cake."

If these simple directions are followed with Finger Lakes Nurseries Stock, you can't lose.

#### **DISTANCE FOR PLANTING**

Shrubs for foundation planting, about 2 feet apart.

Shrubs for hedging, about 18 inches apart.

Evergreens for foundation planting, about 2½ to 3 feet apart.

Barberry and Privet, about 1 foot apart.

Roses, about 18 inches apart.

Perennials, about 12 inches apart.

Grape Vines, about 8 feet apart.

Berry Plants, about 3 feet apart.



What a Transformation Has Been Accomplished Here. Imagine the Home Without the Planting, Certainly Worth Many Times Its Cost in Appearance, Comfort and Contentment. Frank E. Taft, D.D.S., of Conklin, N. Y., Proudly Sends This Photograph, Emphasizes the Dependable Nursery Stock The Finger Lakes Nurseries Furnishes and Says, "Every Shrub and Tree Planted Lives. Dealing With You O. K. Your Stock 'Do' Grow."

## The Friendly Evergreens

Wonderfully Effective for Color in Winter, for Charming Contrasts in Summer

### "GET ACQUAINTED" EVERGREEN COLLECTION, No. 30

6 Beautiful Evergreens for \$15.00

- |                          |                            |
|--------------------------|----------------------------|
| 1 Norway Spruce, 2-3 ft. | 1 Am. Arbor Vitae, 2-3 ft. |
| 1 Irish Juniper, 2-3 ft. | 1 Scotch Pine, 2-3 ft.     |
| 1 Austrian Pine, 2-3 ft. | 1 Globosa Arbor Vitae, 18" |

Suitable for Border or Foundation Planting.  
A \$25.00 Value for \$15.00 — It's Real Value.

**AMERICAN ARBOR VITAE (White Cedar)**—With its deep green, feathery foliage and upright, conical shape, it makes an attractive Evergreen for foundation or specimen planting. Excellent for windbreak, as it makes a very dense hedge. Can be sheared to any height.

- 18 to 24 in., \$1.75 each, 2 for \$3.00  
2 to 3 ft., 2.25 each, 2 for 4.00  
3 to 4 ft., 3.50 each, 2 for 6.25

**ARBOR VITAE GLOBOSA**—Forms a natural globe without any trimming. An excellent dwarf variety. 18 to 24 in., \$3.00 each; 2 for \$5.50.

**ARBOR VITAE, HOVEY'S GOLDEN**—A compact grower of distinct conical shape, with light golden-green foliage. 1½ to 2 ft., \$2.50 each; 2 for \$4.50.

**ARBOR VITAE PYRAMIDAL**—A most beautiful feathery, upright Evergreen of a most pronounced pyramidal shape. 2 to 3 ft., \$4.00 each; 2 for \$7.25.

**ARBOR VITAE SIBERIAN**—A tapering pyramidal Evergreen, with heavy blue-green foliage. 1½ to 2 ft., \$2.50 each; 2 for \$4.50.

**JUNIPER CANADENSIS**—This very hardy Evergreen of dense, grayish-green type is especially valuable in rockeries and for ground covering. A dwarf grower. 1½ to 2 ft., \$3.00 each; 2 for \$5.50.

**JUNIPER, IRISH**—A somewhat fine-leaved, bluish Juniper, medium to tall. The top is pointed and the base broader. 18 to 24 in., \$2.25 each; 2 for \$4.00; 2 to 3 ft., \$3.00 each; 2 for \$5.50.

**JUNIPER, SAVIN**—A low, many branched Evergreen, with spreading branches much ramified and abundantly clothed with foliage. 18 to 24 in., \$3.00 each; 2 for \$5.50.

*Certain types of home architecture require Evergreens to furnish the proper setting. Evergreens give character. They are aristocrats of the plant world.*

**JUNIPER, PFITZER'S**—This low spreading Evergreen of greenish blue is equally satisfactory in the extreme North as well as South, and will survive in shady or sunny exposure. 18 to 24 in., \$3.00 each; 2 for \$5.50.

**HEMLOCK**—Regular, conical form, tapering from a broad base. Stands shearing well. Has rich, dark green foliage. Will not succeed in a hot, dry location. 2 ft., \$4.00 each; 2 for \$7.25.



**PFITZER'S JUNIPER (Dwarf)**  
Very Effective in Foundation Plantings

**FIR, DOUGLAS**—Of compact and symmetrical growth, with rather short needles. Will obtain a height of fifty or sixty feet. Hardy in any location. 2 to 3 ft., \$4.00 each; 2 for \$7.25.

**PINE, AUSTRIAN**—Broad-based, heavily needled, with rich, dark green foliage. 2 to 3 ft., \$3.50 each; 2 for \$6.25.

**PINE, MUGHO**—A low, compact grower, stiff needles of an excellent green color. The new growth closely resembles tiny candlesticks over the entire tree. 18 to 24 in., \$3.50 each; 2 for \$6.25.

**PINE, SCOTCH**—A pale green, with branches that shoot out obliquely. 2 to 3 ft., \$3.50 each; 2 for \$6.25.

**SPRUCE, COLORADO BLUE**—A magnificent, upright Evergreen, with glistening, steel-blue foliage and horizontal branches. 18 to 24 in., \$6.00 each; 2 for \$11.00. 2 to 3 ft., \$10.00 each; 2 for \$18.00.

**SPRUCE, NORWAY**—A tall graceful, pyramidal shaped tree, with broad, drooping branches of deep green foliage. Fine for foundation planting and is excellent for windbreaks.

12 to 18 in., \$1.00 each, 2 for \$1.75  
18 to 24 in., 1.50 each, 2 for 2.75  
2 to 3 ft., 2.50 each, 2 for 4.50

**YEW, CANADIAN**—Very dense, compact grower, with short, dark green leaves. 18 to 24 in., \$3.50 each; 2 for \$6.25.

*Please don't confuse our Evergreen offers with "seedlings" oftentimes sold. These latter are safe only under scientific treatment and are a nurseryman's proposition.*

**DE LUXE EVERGREEN PLANTING No. 40**

6 of the "BEST" Evergreens for \$25.00

- |                                   |                               |
|-----------------------------------|-------------------------------|
| 1 Pyramidal Arbor Vitae, 2-3 ft.  | 1 Mugho Pine, 15-18 in.       |
| 1 American Arbor Vitae, 2-3 ft.   | 1 Globosa Arbor Vitae, 18 in. |
| 2 Savin Juniper (Dwarf), 1½-2 ft. |                               |

These Evergreens are Absolutely Dependable.

Each Evergreen Transplanted—Each One Different.

## Hardy Broad-Leaved Flowering Evergreens

**AZALEA ARBORESCENS**—Very fragrant white flowers, with pink stamens, appear in profusion in June, lasting for weeks. The foliage is deep green, and often colors striking shades of red in late Autumn. 1½ to 2 ft., \$3.85 each.

**AZALEA FLAME (Calendulacea)**—This is certainly the most gay and brilliant-flowering shrub yet known. No more striking landscape effect can be produced than a collection of Flame Azalea in full bloom. The flowers range in color from light sulphur-yellow to deep red. 18 to 24 in. specimens, \$5.00 each.

**AZALEA NUDIFLORA**—This handsome, broad-leaved Evergreen is covered in April and May with gorgeous, showy, pink flowers and its deep green, very distinctive foliage makes it an object of beauty the year around. Many a corner in the home grounds that has lost its interest can be brightened up into an attractive cozy corner with this truly beautiful Azalea. **Strong, well rooted,** 1½ to 2 ft. specimens, \$3.50 each; 3 for \$9.50.

*Evergreen Shrubs furnish flowers in Spring and are Evergreen during the entire year.*

**KALMIA LATIFOLIA (Mountain Laurel)**—Kalmia is a favorite medium sized evergreen shrub for drive, path and foundation planting. Perfectly hardy on both wet and dry soils; it endures much shade. Large corymbs of beautiful rose-tinted flowers in June. 1½ to 2 ft., \$3.75 each.

**RHODODENDRON MAXIMUM**—Foliage very large and smooth. In July it flowers in shades of rosy blush and white. Very attractive for natural effects along shaded walks and drives, and best for massing. 2 to 3 ft., \$4.00; 3 to 4 ft., \$5.00.

**RHODODENDRON CATAWBA**—Ranges from lavender to pink in color, and pretty dark green leaves. Perfectly hardy and fine for massing on hillsides and rockeries. Perfect for foundation plantings, paths, gardens, and shady places. 1 to 1½ ft., \$5.00 each; 3 for \$12.50.

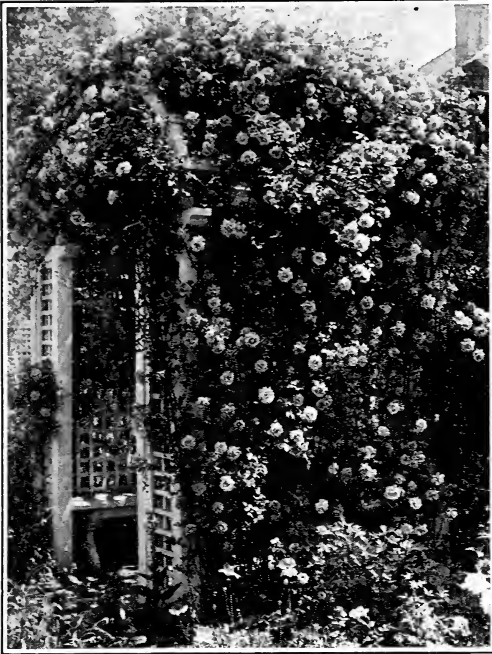


# Climbing and Trailing Roses

The Climbers, or Ramblers, not only afford a burst of bloom upon trellises, over fences and hedges, against a porch or entrance, but having attractive foliage, they are an object of beauty throughout the entire season. No home is properly planted without a liberal display of Climbing Roses.

Price, 2-year-old, No. 1, 65c each; 3 for \$1.75.

(Except as noted)



CLIMBING AMERICAN BEAUTY

Gracefully Cover Barren Walls and Bleak Places

**BABY RAMBLER**—The low growing, shapely bushes are covered with a gorgeous bloom from June till frost. Red, pink and white.

**BLUE ROSE (Veilchenblau)**—Here's something entirely different from any other rose in cultivation. The flowers are borne on loose clusters and are a delightful shade of blue. Will cover a large porch in a single season. Price, 65c each; 10 for \$5.50.

**CLIMBING AMERICAN BEAUTY**—Clusters of rich rose to carmine. Beautiful until snowfall.

**CRIMSON RAMBLER**—A marvelous profusion of rich and glowing crimson flowers in June and July.

**DOROTHY PERKINS**—Beautiful clear shell-pink blooms borne in large clusters with prettily crinkled petals.

**DR. VAN FLEET**—Its beautiful clustered buds open into large, shapely flowers of shell-pink.

**EXCELSA**—Large clusters of intense crimson, shading lighter at edges of petals.

**GARDENIA**—Beautiful yellow buds, opening to creamy flowers with rich yellow centers. Hardy anywhere. Price, 60c each; 10 for \$5.00.

**MARY WALLACE (New)**—Semi-double, clear rose-pink, salmon base. Blooms late in spring and intermittently during the season.

**MRS. ROBERT PEARY**—The great white ever-blooming Climbing Tea Rose. Magnificent throughout the season and absolutely hardy.

**PAUL'S SCARLET CLIMBER**—Vivid scarlet flowers which hold their color for a long season.

**SILVER MOON**—Pure white, with thick clusters of yellow stamens.

**TAUSENDSCHON**—Superb, double clusters of varying colors of pink, white and rose, from June until August.

## Special Offer on Baby Ramblers

No. 50

12 Strong, Field Grown Plants, Well Branched, with Plenty of Good, Fibrous Roots, for..... **\$5.00**

A planting of Baby Ramblers in back of everblooming Tea Roses makes an ideal combination. Excellent for bordering Perennial or Vegetable garden.

F. J. GROOTENDORST

New Everblooming Red Rugosa Rose

75c Each, 10 for \$7.00

The most beautiful of the Rugosa Roses. Foliage of the true Rugosa Type, always healthy, clean and attractive, free from mildew. Plants of vigorous but compact growth, ultimately reaching 4 to 5 feet in height. Flowers in clusters, double, with edges beautifully fringed, so that each cluster of bloom resembles a bunch of red carnations. Blooms continuously from early summer until fall. Extremely hardy, thrives everywhere.

Very effective as single specimens, or in foundation plantings to give color contrast throughout the season, and especially valuable for landscape work for mass and hedge planting.

## Finger Lakes Arbor Group

No. 51

4 Climbing Roses for..... **\$1.75**

1 Crimson Rambler—Brilliant Red.

1 Mrs. Robert Peary—Creamy White.

1 Dr. Van Fleet—Beautiful Pink.

1 Thousand Beauties—Combination of Beautiful Colors.

# EVERBLOOMING TEA ROSES

*New Varieties-Old Favorites*

**EVERY BUSH HAS ALREADY  
BLOOMED IN OUR NURSERY**

Finger Lakes' Tea Roses are famous for their exquisite form, delicate color shadings, delightful perfume and perpetual blooming. Buds and flowers are produced at the terminal of every shoot.

Insist on 2-yr. Field Grown Roses. They are the strongest roses with healthy fibrous roots—it's the roots you know that make the plant.



**RADIANCE—A Marvelous Red Rose**

- BETTY**—A truly unique color, ruddy gold.
- BRIARCLIFF**—Fine handsome blooms of silvery rose-pink. **Price, \$1.00 each.**
- CRUSADER**—A bright hue of rich, velvety crimson.
- THE GREAT COLUMBIA**—Deep peach pink.
- DUCHESS OF WELLINGTON**—A novel saffron yellow. Very dependable.
- ELDORADO**—Solid golden-yellow buds open to handsome bright yellow blooms. **Price, \$1.00 each.**
- ETOILE DE FRANCE**—Massive, cup-shaped flower of clear red or velvety crimson.
- GEN. MAC ARTHUR**—Brilliant, glowing scarlet crimson, exquisitely perfumed.
- GLOIRE LYONAISE**—Rich creamy white, changing to a pale shade of salmon-yellow.
- GRACE MOLYNEUX**—A gorgeous combination of pale Apricot with deep pink center. **Price, \$1.00 each.**
- GRUSS AN TEPLITZ**—A dazzling crimson, with dark velvety sheen.
- HOOSIER BEAUTY**—Glowing crimson scarlet with darker velvety shadings.
- JULIET**—Rich rosy red, petals suffused with gold. One of the best.
- JONKHEER J. L. MOCK**—Imposing, clear pink; reflexed petals of a lighter shade.

- KAISERIN AUGUSTA VICTORIA**—Large buds of pure white, with a drop of lemon in center.
- KILLARNEY**—Brilliant, sparkling shell-pink of the most exquisite shade.
- LADY ALICE STANLEY**—Beautiful silvery pink, suffused with coral shadings on outside. **Price, \$1.00 each.**
- LADY ASHTOWN**—Silvery carmine-pink of a very pleasing shade.
- LOS ANGELES**—Luminous flame pink, toned with coral, shaded translucent gold.
- MME. BUTTERFLY**—Bright pink, intensified with apricot and gold.
- MAD. C. TESTOUT**—Satiny rose, deepening to clear red in the center.
- MRS. AARON WARD**—Most exquisite buds of golden buff in fawn, opening to full, well developed bloom of pinkish color.

**Strong, Field Grown, 2 yr. Plants**  
**PRICE—75c each, 10 for \$6.50**  
(except as noted)

## FINGER LAKES NURSERIES ROSE QUARTETTE

Collection No. 60

4 of the Best for only **\$2.85** (Post paid)

Lady Hillington—Apricot yellow.  
Radiance—Red.  
Gruss an Teplitz—Fiery Crimson.  
Killarney—Pink.

**MRS. ROBT. PEARSON**—Cardinal red. A crimson Rose flooded with sunshine.

**MME. EDOUARD HERRIOT**—Coral red, shaded yellow.

**OPHELIA**—Salmon-flesh, shaded with rose in perfect tints.

**RADIANCE RED**—A marvelous Rose of strong, clear red, with no trace of any other color.

**SENSATION**—An entrancing shade of red.

**SOUV. DE C. PERNET**—Clear, shining yellow, absolutely free from any orange shading.

**SOUV. DE GEORGES PERNET**—Large brick-red, buds opening to a gorgeous pink of gigantic size. Price, \$1.00.

**SUNBURST**—Superb, orange copper or golden orange, with deep orange center.

**TALISMAN—NEW!!!** The most vividly colored rose ever introduced and exceptionally easy to grow. Entirely distinct and unlike any golden yellow, shading to coral and old gold and bright red at tips. The only way one can gain any conception of its magnificent blending of colors is to plant it. Price, \$2.00 each.

ORDER EARLY — 15% DISCOUNT  
See Page 2-A

## The Rose Lover's Dozen

Collection No. 70

12 Field-grown, 2 yr. Plants for ..... \$7.00

GAURANTEED TO BLOOM THIS SEASON

These 12 varieties selected for perfection in bud, range of color, glory and profusion of bloom, fragrance and hardiness.

**ETOILE DE FRANCE**—Velvety crimson.

**MRS. AARON WARD**—Indian yellow, tinged pink.

**KAISERIN AUG. VICTORIA**—Pure white.

**RADIANCE**—A distinct, clear red.

**KILLARNEY**—Sparkling shell-pink.

**SOUV. DE CLAUD. PERNET**—A perfect yellow.

**LOS ANGELES**—Luminous flame pink, suffused with gold.

**GEN. MAC ARTHUR**—Brilliant scarlet.

**LADY ASHTOWN**—Silvery pink.

**GLORIE DE LYONNAISE**—Creamy white, shaded yellow.

**MME. EDW. HERRIOT**—Coral red shaded yellow.

**LADY HILLINGTON**—Apricot yellow.

No change in assortment can be permitted at this price.

Sept. 2, 1929.  
Finger Lakes Nurseries,  
Geneva, N. Y.

Gentlemen:

I am pleased to advise you that all the ten flowering shrubs began to "leaf out" after they had been planted two weeks and one broke out a small flower at three weeks, which I enclose. These results were obtained by only normal conditions and thus shows the high quality of the stock you sent me, for which I thank you.

Very truly yours,  
J. L. Wohlgenuth,  
Canajoharie, N.Y.



What a Satisfaction You Will Get from Cutting Roses From Your Own Garden

# Hybrid Perpetual Roses Always Dependable

This class of Roses is hardier, blooms average larger than the Hybrid Teas, are produced on long stems, making them especially desirable for cutting. They bloom profusely in June, sparingly in Summer, and in Fall, until the snow flies, they will produce an abundance of gorgeous Roses.

Each subsequent season after planting they should be cut back to 6 or 8 buds before growth starts in the Spring. Blooms are apt to be sacrificed if too much foliage is permitted to grow.

All Varieties, 2 yr. FIELD-GROWN  
60c each, 10 for \$5.00

**AMERICAN BEAUTY**—Brilliant pink to red, heavily clothed with foliage.

**BARON DE BONSTETTIN**—Dark, velvety crimson.

**CLIO**—Satinny flesh, with pink center. Cup-shaped. Beautifully enhanced by a rosette of foliage.

**FRAU KARL DRUSCHKI**—A perfect double, pure white Rose. Truly the "Snow Queen."

**GENERAL JACQUEMINOT**—Brilliant scarlet crimson—blazes like a bonfire.

**GEORGE AHREND**s—A delicate pink; the pink Frau Karl Druschki.

**GLORIE LYONNAISE**—Rich creamy white, opening to a pale shade of salmon yellow.

**HUGH DICKSON**—Intense crimson! Good size, fine form.

**J. B. CLARK**—Deep scarlet overlaid with a beautiful crimson.

**MAGNA CHARTA**—Beautiful rosy pink. An excellent forcing Rose, only blooms once.

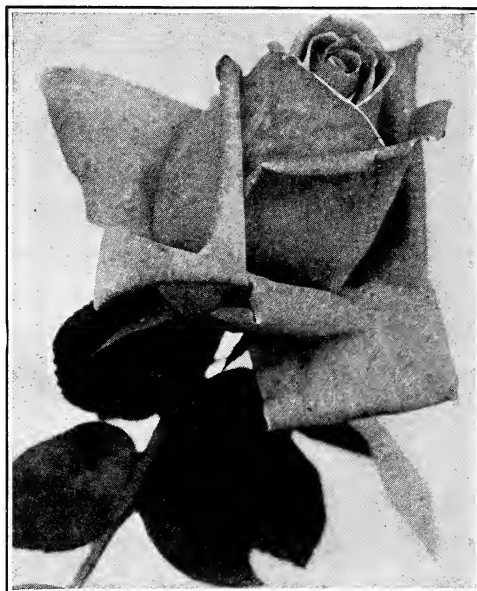
**M. P. WILDER**—Bright crimson-scarlet.

**MRS. JOHN LAING**—Clear, bright, shining pink, exquisitely shaded.

**PERSIAN YELLOW**—Golden yellow.

**PAUL NEYRON**—A rich, ruddy pink. "Color Spot" of the fall.

**ULRICH BRUNNER**—An exquisite cherry red.



J. B. CLARK—Exquisite Scarlet

**THE PRIZE ROSE COLLECTION, No. 80**  
8 Beautiful and Dependable Roses  
for only \$3.00

**Baron de Bonstettin**—Crimson.

**Frau Karl Druschki**—White.

**George Ahrends**—Pink.

**Persian Yellow**—Yellow.

**J. B. Clark**—Scarlet Rose.

**Mrs. Jno. Laing**—Pink.

**Ulrich Brunner**—Cherry Red.

**Paul Neyron**—Ruddy Pink.

Makes an excellent Rose Bed for either  
Amateur or Professional.

**Radio Rose Collection**  
No. 81

3 Beautiful Roses for only \$1.00

1 Paul Neyron—The best Pink.

1 Gen. Jack—Brilliant Scarlet.

1 Frau Karl Druschki—White.

If Parcel Post add 15c

## Ornamental Vines

Add Beauty and Charm to the Porch, Fence, Arbor and Pergola

When used close to building, rich garden soil should be used to a depth of one foot. Plant about 6 feet apart.

Add 10c Extra for Parcel Post.

**AMERICAN IVY (Virginia Creeper)**—A very fast and vigorous grower. A fine, rich green in summer, changing to vivid hues of crimson in fall. **50c each; 3 for \$1.35.**

**BIGNONIA (Trumpet Vine)**—Has showy, orange-scarlet flowers and evergreen leaves. **60c each; 3 for \$1.70.**

**BOSTON IVY (Amp. Veitchi)**—Beautiful, three-lobed leaves, overlapping, and forms a tapestry of rare charm. The only vine that will cling to brick or cement wall. A fast grower. **75c each; 3 for \$2.00.**

**CLEMATIS JACKMANI**  
—Large, velvety purple flowers. **\$1.00 each; 3 for \$2.50.**

**CLEMATIS MME. E. ANDRE**—Medium flowers of a striking dark red color. **\$1.00 each; 3 for \$2.50.**

**CLEMATIS PANICULATA**—In August this becomes a mass of dainty white, star-like flowers, with an alluring and penetrating fragrance. **50c each; 3 for \$1.35.**

**DUTCHMAN'S PIPE (Birthwort)**—Has large, heart-shaped leaves, with peculiar brownish flowers that resemble a miniature pipe. **\$1.00 each; 3 for \$2.50.**

**EVERGREEN BITTER-SWEET (Euonymus Radicans)**—Handsome, glossy foliage. Its clusters of orange-yellow capsules cling to the vine throughout the winter months, and makes a charming house decoration. **75c each; 3 for \$2.00.**

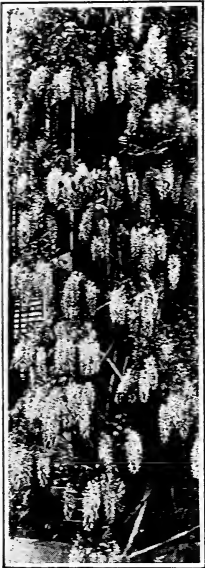


**HALL'S JAPAN HONEYSUCKLE**  
Covered All Summer with Charming and Fragrant Flowers

**HONEYSUCKLE (Hall's Japan)**—From June till September this vine is covered with handsome blossoms which open and turn to a striking yellow. Deliciously fragrant. Will succeed in sandy soil, partial shade or in any location. **50c each; 3 for \$1.35.**

**WISTARIA, CHINESE PURPLE**—With lavender-purplish flowers in dense, pendulous clusters it is unsurpassed for beauty and picturesqueness. Blooms in May and June and later in lesser profusion. **75c each; 3 for \$2.00.**

When you cut twigs from your Flowering Quince, Forsythia, Goldenbells or Pussy Willow to bring indoors, keep them in the basement for several days and spray them with warm water. This will assist in softening the buds so that they will open quickly.



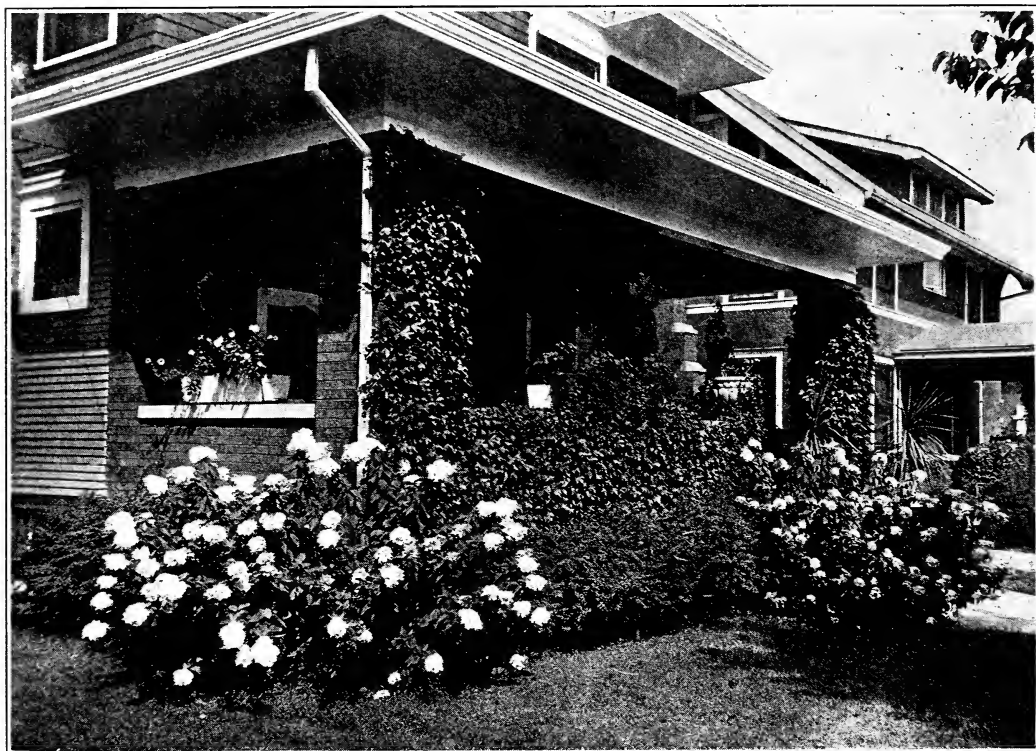
**WISTARIA (Chinese Purple)**  
The Glorious Long Panicles of Delicate Blue Blossoms are Always a Pleasing Sight

## New French Pussy Willow

The Only Outdoor Shrub Grown from which You Can Cut Bouquets During the Winter Months

A select and improved new type of Pussy Willow, perfectly hardy anywhere in the United States. The branches of this cultivated variety are being used by florists in cities for winter decorations and are bringing high prices. They are very fragrant. Very large buds—a promise of springtime—bouquets in winter—makes fine hedges—when dried they will keep indefinitely—blooms the first year—a beautiful shrub. The most interesting plant for the home grounds.

Special Price of French Pussy Willow Plants, Size 2-3 ft., 50c each; 5 for \$2.00.



A Beautiful Planting of *Hydrangea Arborescens*, Japan Barberrry, and Boston Ivy.  
Special Offer—3 *Hydrangea*—15 Japan Barberrry, 1½-2 ft.—1 Boston Ivy, for \$5.00.

## Ornamental Flowering Shrubs

Beautify your home grounds and give that home-like, permanent appearance in place of a stark, bare house. Without shrubs the foundation planting would lose all its bloom and fragrance. Plant the tall-growing varieties in the background and at corners where height is needed, the lower-growing shrubs between the taller ones, where the view should not be obstructed. In each case we have given ultimate height. Plant about 2 feet apart, and if used for foundation planting, about 1½ feet away from building.

**ALMOND**—Covered in May with double pink blossom like small roses, before the leaves appear. Grows 6 to 8 ft. 2 to 3 ft. plants, 85c each; 3 for \$2.25.

**ALTHEA**—Very symmetrical, with brightly colored, rosette-like flowers and beautiful variegated foliage. Blooms from August on, and is the "color spot" of the fall. Pink, red, purple and white. Grows 8 to 10 ft. (See page 22.) 2 to 3 ft., 50c each; 3 for \$1.35.

**TREE FORM ALTHEAS**—Flowers are the same as bush form. Grown on a single stem instead of being branched from ground as bush form. 3 to 4 ft., \$1.00 each.

**BUDDLEIA (Everblooming Butterfly Bush)**—It produces long, graceful stems which terminate in tapering panicles of beautiful lilac-colored flowers, borne by the hundreds on a flower head frequently ten inches long. Exceedingly fragrant and attracts butterflies. A rapid grower, ultimate height, 4 to 5 ft. Blooms all summer. (See page 22.) 2 to 3 ft., 50c each; 3 for \$1.35.

**CORALBERRY (Indian Currant *Vulgaris*)**—Similar to Snowberry: berries are smaller and cluster in thick ropes along weighted down stems. 2 to 3 ft., 50c each; 3 for \$1.35.

**CARAGANA ARBORESCENS (Siberian Pea Tree)**—Makes a very handsome show in the late Spring with its compound bright green foliage and numerous small clusters of bright yellow flowers. Perfectly hardy and valuable for either group or individual planting. 3 to 4 ft., 75c each; 3 for \$2.00.

**CORNUS ELEGANTISSIMA (Variegated Leaf Dogwood)**—Valuable for its colored bark, greenish-white flowers in May and June, followed by black berries in fall. Beautifully variegated foliage. Grows 5 to 8 feet. 2 to 3 ft., 85c each; 3 for \$2.35.

**DOGWOOD (*Cornus Alba*)**—Its blood-red bark in winter is very conspicuous with its light blue berries. In early summer it is a mass of exquisite white flowers, contrasting beautifully with red twigs. 6 to 8 ft. 2 to 3 ft., 65c each; 3 for \$1.75.





A Foundation Planting of Japan Barberry

**JAPAN BARBERRY (Thunbergi)**—Its graceful drooping branches with red berries are ornamental for Foundation, Entrance, or Hedge.

	Per 10	Per 25	Per 100
12 to 18 in.....	\$1.50	\$3.25	\$10.00
18 to 24 in.....	2.50	5.00	15.00
2 to 3 ft.....	3.00	6.75	20.00

**DEUTZIA GRACILIS (Dwarf)**—White flowers, May and June. Slender, arched branches. 3 to 4 ft. 12 to 18 in., 65c each; 3 for \$1.75.

**DEUTZIA CRENATA**—Tall-growing, with fragrant, rose-colored flowers blooming in June. 2 to 3 ft., 50c each; 3 for \$1.35.

**DEUTZIA, PRIDE OF ROCHESTER**—Has showy clusters of white flowers, tinged with pink in May and June. Grows 5 to 7 ft. 2 to 3 ft., 50c each; 3 for \$1.35.

**FORSYTHIA (Golden Bell)**—Their bright, golden masses of glinting yellow appears before the leaves and are welcome harbingers of spring. (5 to 7 ft.) 2 to 3 ft., 50c each; 3 for \$1.35.

**GOLDEN ELDER**—This golden-leaved shrub is a pleasing contrast among shrubs of green foliage. Flat-topped cymes of white flowers in early summer; (6 to 8 ft.) 2 to 3 ft., 50c each; 3 for \$1.35.

**HYDRANGEA ARBOR-ESCENS (Hills of Snow)**—A really marvelous shrub that blooms from July to October. Resembles the Snowball but much larger. Excellent for sunny or shady loca-

tions. Grows 5 to 6 ft. 2 to 3 ft., 50c; 3 for \$1.35. (See planting, page 10.)

**HYDRANGEA PEE GEE (Paniculata Grandiflora)**—During the hot summer months this shrub is covered with great pyramidal panicles, white on opening and assuming rose and bronze tints on the sunny side, and drooping gracefully from their own weight. Excellent for winter decoration. Grows 5 to 7 ft. 1½ to 2 ft., 50c each; 3 for \$1.35.

**HONEYSUCKLE TARTARIAN**—A rapid grower. Makes a wonderful showing the first season. Fragrant, pink flowers in May and June, followed by a wealth of orange-red berries. 6 to 8 ft. 1½ to 2 ft., 50c each; 3 for \$1.35.

**HIGH BUSH CRANBERRY**—Very ornamental. Its red berries resemble cranberries, which hang on until destroyed by frost. 2 to 3 ft., 50c each; 10 for \$4.50.

**JAPAN QUINCE (Cydonia Japonica)**—In May, just before apple blossom time, this shrub is startlingly brilliant, with dazzling, scarlet flowers, followed later by quince-shaped, fragrant fruit. Grows 4 to 6 ft. 1½ to 2 ft., \$1.00 each; 3 for \$2.75.

**KERRIA JAPONICA**—Slender, green branches and pretty, closely serrated leaves. The double flowers are deep orange-yellow and are produced in profusion throughout the summer. 2 to 3 ft., 75c each; 3 for \$2.00.

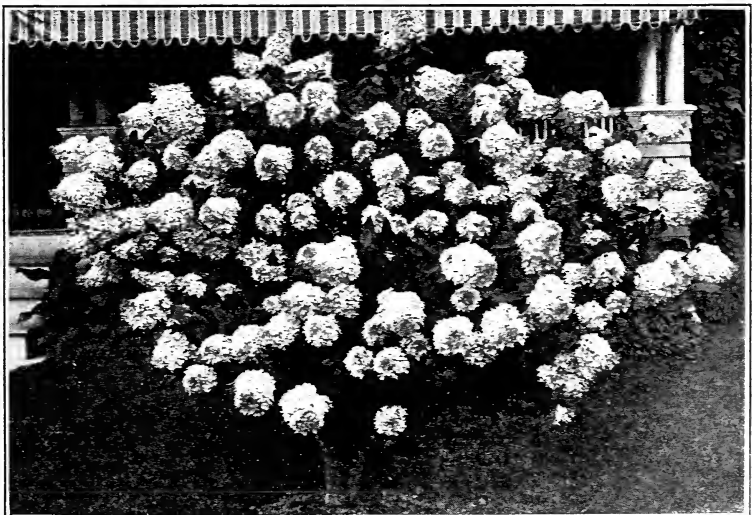
**LILACS**—If you want a good, showy shrub that is easy to grow, plant Lilacs. Plant singly or in masses. They make an excellent flowering hedge.

**COMMON WHITE LILAC**—Splendid panicles of pure white, single flowers in May and June. 2 to 3 ft., 65c each; 3 for \$1.75.

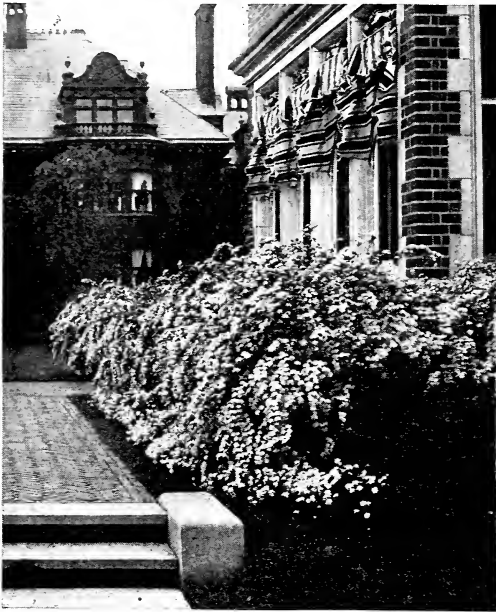
**COMMON PURPLE LILAC**—Similar to white, but more vigorous. 50c each; 3 for \$1.35.

**FRENCH LILACS**—These improved Lilacs, with their large trusses of flowers, are marvels of beauty and elegance. (See page 19.)

**PHOTINIA VILLOSA (Christmas Berry)**—A charming and unique ornamental. Liberally set with small corymbs of white flowers in June. Later the foliage is a most gorgeous red; the bird-proof berries carry the same scarlet gleam through the winter. This should be in every landscape. Excellent for winter decoration. Grows about 8 ft. 2 to 3 ft., \$1.00 each; 3 for \$2.75.



Hydrangea Pee Gee—It never fails to give "value received"



A Planting of Spirea Van Houttei

**SPIREA VAN HOUTTEI**

Grandest of all Spireas. With arching branches of white flower clusters, resembling snow covered Evergreen or a cascade of bloom. As a flowering hedge it is par excellence. Grows 6 to 8 ft.

	Each	Per 10	Per 100
1½ to 2 ft.....	35c	\$2.50	\$18.00
2 to 3 ft.....	45c	3.85	20.00
3 to 4 ft.....	50c	4.50	25.00

**SPIREA ANTHONY WATERER**—A beautiful, dwarf shrub, with showy crimson flowers in flat clusters from June until frost. Grows about 3 ft. 1½ to 2 ft., 65c each; 3 for \$1.50.

**SPIREA AUREA (Golden)**—Green foliage, bordered with rich, golden yellow. In June covered with conspicuous white flowers. Grows 5 to 7 ft. 2 to 3 ft., 50c each; 3 for \$1.35.

**SPIREA BILLARDI**—Has dense spikes of rose-pink flowers that crown sparsely twigged, erect branches. For shrubby groups, border plantings and moist places. July to September. 1½ to 2 ft., 65c each; 3 for \$1.35.

**SPIREA THUNBERGI**—Forms a dense, fluffy bush, 3 to 5 ft.; its feathery foliage is a pleasing shade of yellowish-green, changing in autumn to bright red and orange. Pure white flowers in early spring. 2 to 3 ft., 50c each; 3 for \$1.35.

**KOREAN BRIDAL WREATH**

† This worthwhile new shrub, discovered in Korea, forms a big, dome-shaped bush, covered with large, rounded clusters of snowy flowers, marked with darker eyes. Blooms two weeks later than the familiar Spirea Van Houttei. It retains its beautiful glossy foliage late into the Autumn. 2 year stock plants, \$3.00 each.

**THE MAGNIFICENT BEAUTY BUSH**  
(Kolkwitzia Amabilis)

One of the Handsomest Shrubs Introduced in Years

This exceedingly handsome Flowering Shrub has come to us from China and Central Asia. Its arching branches are covered in spring with clusters of tubular flowers, borne in such profusion that the bush is one cloud of delicate pink. The foliage and habit are attractive when bush is out of flower, and is perfectly hardy as far north as Montreal. Ultimate height, 6-9 feet. \$3.00 each.

**SNOWBALL (Viburnum)**—The large, rounded balls of snow white flowers in May and June on drooping branches make this a most attractive shrub. Grows 6 to 8 ft. 2 to 3 ft., 75c each; 3 for \$2.00.

**SNOWBERRY (Racemosus)**—Has dainty, pink flowers in June and July which in August form waxy, white berries, about the size of cherries. They hang nearly all winter. The combination of pink flowers and white berries on the same twig is charming. Will succeed in dense shade and sunlight as well. Grows 3 to 5 ft. 50c each; 3 for \$1.35.

**SYRINGA (Mock Orange)**—A choice, fragrant shrub, with a wealth of large, creamy white flowers resembling orange blossoms. Blooms in May and June and intermittently until fall. 6 to 8 ft. 2 to 3 ft., 50c each; 3 for \$1.35.

**WEIGELA ROSEA**—Remarkably showy, trumpet-shaped flowers of brilliant pink in June and July. Grows 4 to 6 ft. 2 to 3 ft., 50c each; 3 for \$1.35.

**WEIGELA EVA RATHKE**—Attractive, deep carmine flowers. A continual bloomer. Grows 2 to 4 ft. 1½ to 2 ft., 75c each; 3 for \$2.00.

**WEIGELA, VARIEGATED LEAF**—In contrast with rose-colored flowers, the finely variegated foliage is gorgeous. Grows 2 to 4 ft. 1 to 1½ ft., 65c each; 3 for \$1.75.

**EXTRA LARGE SHRUBS FOR QUICK RESULTS**

- Caragana Arborescens—page 10  
5 to 6 ft., \$1.00 each
- Honeysuckle Tartarian—page 11  
3 to 4 ft., \$1.00 each
- Photinia Villosa—page 11  
4 to 5 ft., \$1.50 each

- Spirea Van Houttei—page 12  
4 to 5 ft., \$1.00 each
- Spirea Billardi—page 12  
3 to 4 ft., \$1.00 each
- Weigelia Rosea—page 12  
3 to 4 ft., \$1.00 each

Hydrangea P. G., in Tree Form—page 11  
3 to 4 ft., \$2.00 each

We have only a limited quantity of these extra large shrubs

Order Early





An Effective Foundation Planting Accomplished by Hedging, Catalpa, Vines and Shrubs. The Col. Blue Spruce makes a Superb Lawn Specimen.

## LANDSCAPE SUGGESTIONS

You are going to landscape the grounds around your home! You may not be giving the matter a great deal of thought just now, but eventually you will come to it, for people everywhere are commencing to realize that the lawn and garden are just as necessary factors in the well-planned home as are the windows or the floor coverings.

The following collections will transform your home into a picture and at the same time, increase Real Estate value. Why not begin Right Now?

*On receipt of your order we will gladly send you a diagram showing how these collections should be planted.*

### COLOR FOLIAGE COLLECTION No. 130

10 Assorted Shrubs, All Different Colored Foliage, for \$5.00

- |                       |                         |
|-----------------------|-------------------------|
| 2 Red Barberry        | 3 Golden Spirea         |
| 2 Weigelia Variegated | 2 Hydrangea Arborescens |
| 1 Prunus Pissardi     |                         |

The contrast of foliage in this Collection is gorgeous.  
Suitable for Foundation or Border Planting.

### CONTINUOUS BLOOM COLLECTION No. 131

18 Beautiful Shrubs for \$7.00

(Regular Price \$8.90)

- |                          |                         |
|--------------------------|-------------------------|
| 3 Forsythia              | 3 Weigelia Rosea        |
| 3 Spirea Van Houttei     | 2 Flowering Almond      |
| 3 Spirea Anthony Waterer | 2 Hydrangea Arborescens |
| 2 Hydrangea P. G.        |                         |

Suitable for either Foundation or Border.

18 Shrubs that will produce a continuous bloom from early Spring to October.

### POPLAR FOUNDATION PLANTING COLLECTION No. 132

39 Plants for \$12.00

- |                       |  |
|-----------------------|--|
| 20 Spirea Van Houttei | 15 Dentzia Lemoine—Dwarf. <i>Spreading branches, handsome clusters of large white flowers.</i> |
| 2 Japan Barberry      | 2 Climbing American Beauty Roses   |

This Collection is very decorative, showy, and hardy.

### ALL-AROUND FOUNDATION PLANTING COLLECTION No. 133

Especially Priced, \$3.50

40 Japan Barberry, 1 to 1½ ft. Plants

The Japan Barberry makes a very beautiful planting, either sheared or allowed to grow in its natural drooping form.

**CORNER PLANTING No. 140**

5 Japan Barberry      1 Hydrangea P. G.  
Special Price, \$1.00

**CURVED CORNER PLANTING No. 141**

6 Barberry      3 Hydrangea Arborescens  
1 Prunus Triloba  
Special Price, \$2.50

**PORCH PLANTING COLLECTION No. 142**

26 Beautiful Shrubs for \$8.50  
4 Spirea Anthony Waterer      4 Deutzia Gracilis  
10 Spirea Van Houttei      2 Bush Honeysuckle  
6 Hydrangea Arborescens

Just the proper setting for a planting around a porch.

**SUPERB FOUNDATION PLANTING COLLECTION No. 143**

24 Shrubs for \$7.50  
12 Hydrangea Arborescens      12 Red Dwarf Spirea

A planting of Hills of Snow with Red Spirea in front is a gorgeous sight from June until frost.

**DAPHNE CNEORUM (Rose Daphne)**

A delightfully fragrant flowering evergreen shrub. It is a broad-leaved Evergreen keeping its leaves during the winter months. The fragrant pink flowers almost completely cover the plant early in spring. It blooms during April and extends until May. It blooms again in the fall months. It does well either in a shady or sunny location.

A bed of Daphne Cneorum is a gorgeous sight and is a wonderful addition to your Foundation Planting, whether Evergreens or Shrubs. An ideal plant for rockeries.

**PRICE, 14-16 in. plants, \$3.00 each, 6 for \$15.00.**

**ORDER EARLY—See Discounts on Page 2-A**



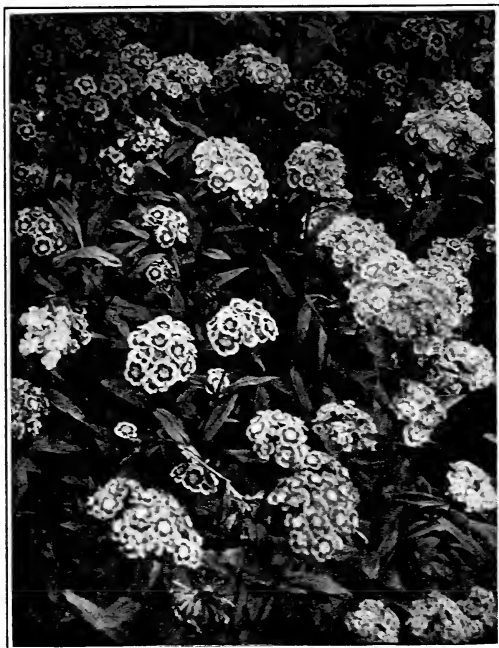
What a Transformation a few Shrubs and Shade Trees will make. This Beautiful Side Planting is all Accomplished by Collection 131 and Silver Maple and Horse Chestnut Trees for Shade.

# Hardy Old-Fashioned Perennials

Strong, Field Grown Plants that Bloom the Same Season Planted

Price—25c each; 3 for 65c (except as noted)

(A) under 1 ft., (B) 1 to 2 ft., (C) 2 to 3 ft., (D) 3 to 4 ft., (E) over 4 ft.



The Dianthus blooms profusely the first year

**CHRYSANTHEMUMS**—These hardy flowers will give a riot of color through September, October and November. Colors, bronze, red, pink, white and yellow. (B)

**DIANTHUS (Sweet William)**—Flowers in large clusters of various patterns and colors. June-July.

**DELPHINIUMS (Larkspur)**—See page 21.

**ELEGANS LILY (Orange Lily)**—Various shades of orange red, dotted more or less with dark brown spots. 30c each; 3 for 75c. (C)

**FOXGLOVES (Digitalis)**—See page 20. (C)

**GAILLARDIA (Blanket Flower)**—Attractive, daisy-shaped, yellow flowers, with reddish brown centers. Blooms all summer. (B)

**GOLDEN GLOW**—Large, golden-yellow colored blooms. July to September. Very showy. (E)

**GYPSOPHILA (Baby's Breath)**—Graceful, tiny white flowers in fairy-like clusters. June. (B)

**HOLLYHOCKS**—Their colossal spikes of white, pink, red, maroon and yellow produce bold and dazzling effects. (E)

**ANEMONE WHITE**—Tall, pure white blooms, with deep yellow stamens. September to October. White or pink. (D)

**DAHLIA**—No flower garden is complete without its many colored flowers and bright foliage. Colors: yellow, lavender, purple, red, white, pink and variegated. Dahlia Bulbs must be taken up in the Fall.

**ANCHUSA**—Small panicles of blue flowers. June to September. (D)

**ACHILLEA PEARL**—Small, double white flowers in July. (B)

**BLAZING STAR (Liatris)**—Combines beauty and unusual appearance. Blooms in August and September, throwing up long, narrow spikes of a rich lavender flower, which lasts very well. 35c each; 3 for 85c.

**BLEEDING HEART (Dicentra)**—Rose-colored, heart-shaped. May, June and July. 75c each; 3 for \$2.00. (B)

**CANDYTUFT**—Foliage almost hidden with a mass of white flowers. An excellent dwarf border. (A)

**CANTERBURY BELL**—Bell-shaped flowers in shades of pink, purple and white. June and July. (C)

**CHINESE LANTERN PLANT**—Dense bushes growing about 2 ft. high, producing bright orange-scarlet, lantern-light fruits which may be cut for decorations that last all winter.

**COREOPSIS**—(B). See page 20.

**COLUMBINE**—A delicate combination of scarlet yellow, purple and pink. Excellent for a shaded location. May and June. (B)

**CARNATIONS**—Will give an abundance of bloom from June until late fall. Colors, pink, white and red. (B)

## QUEEN ALEXANDRIA SPIREA (Astilbe)

This unusual plant is a vigorous grower and produces gorgeous, feathery plumes of delicate pink flowers in June and July. They prefer a half-shaded location. Excellent for forcing.

45c each; 3 for \$1.00

## SUMMER HYACINTH

This new bulb or plant is similar to the spring blooming Hyacinth, except that it blooms continuously all summer. Loaded with pendant, bell-shaped, creamy white flowers. on strong stalks. A rare plant.

15c each; 10 for \$1.00

**IRIS (German)**—A wealth of showy flowers, resembling orchids, in a combination of beautiful colors on long stems. Easy culture. June to July. Blue, purple yellow, white, pink, and striped. 20c each; 10 for \$1.35, Postpaid.

**GERMAN IRIS, SELECTED LIST**

35c each; 3 for 85c; 10 for \$2.50

**Mad. Chereau**—White bordered with Blue.

**Honorabilis**—Golden Yellow—Rich Mahogany.

**Perfection**—Lavender—rich velvety.

**Her Majesty**—Rose Pink, bright Crimson.

**Queen of May**—Pink.

**Gertrude**—Blue.

**Florentina Alba**—Creamy White.

**AURATUM LILY (Golden Band)**—Very large, delicate ivory white, thickly dotted with rich, chocolate-crimson spots. A bright golden band runs through the center of each petal. Finest of the lilies. 75c each; 3 for \$2.00.

**MADONNA LILY (Candidum)**—Glistening, pure white and very fragrant. Blooms profusely in June and July. Can be forced inside for Easter blooming. 50c each; 3 for \$1.35.

**REGAL LILY**—White flowers, suffused with pink and a beautiful glow of canary yellow at center. Exquisitely perfumed. June through to August. 75c each; 3 for \$2.00.

**TIGRUM LILY**—Very showy, orange-colored flower from July to August. 50c each; 3 for \$1.35.

## Gladiolus

No garden is complete without these showy summer-flowering bulbs which can be grown with very little care. Will thrive in any rich, light garden soil, exposed to the sun. If your garden is heavy, work in some well rotted manure. Planting can be done just as soon as the frost is out of the ground in the spring. Set bulbs 2 to 4 inches deep and 6 to 9 inches apart. Gladiolus Bulbs must be taken up in the Fall.

After an exhaustive study of innumerable varieties of Gladiolus we made this select list, each variety being the best procurable in its color and price class.

**ALICE TIPLADY**—A grand, large Primulinus of beautiful orange saffron color. 20c each; 10 for \$1.75.

**CRIMSON GLOW**—The best crimson. 15c each; 10 for \$1.25.

**GOLDEN MEASURE**—Pure golden yellow, no markings. 25c each; 10 for \$2.00.

**MRS. FRANK PENDLETON, Jr.**—Bright salmon pink, with blood red blotch on lower petals. 15c each; 10 for \$1.25.

**PEACE**—Very large white, with faint markings on lower petals. 20c each; 10 for \$1.75.

**ROSE ASH**—Corinthian red, shading ashes of roses, large flower. 20c each; 10 for \$1.75.



GOLDEN MEASURE—A Golden Yellow

**GLORIOUS GLADIOLUS MIXTURE**

Offer No. 161  
25 Bulbs for \$1.00

Offer No. 162  
100 Bulbs for \$3.50

This group contains all colors and types. Bulbs of many high priced varieties are included. In lots of 100, we guarantee to send at least 20 varieties.

**COLLECTION No. 160**

1 Each of the Above Varieties, \$1.00



Plant Phlox for Long-season Bloom

Among hardy perennial plants no class is of more importance than the Phloxes, succeeding in almost any soil and position and flowering through a long season.

Colors: Pink, Salmon, White, Lavender, and Red.

Price, 25c each; 6 for \$1.00.

**PHLOX, SELECTED LIST**

35c each; 3 for 85c; 10 for \$2.50

- Mrs. Jenkins—Pure White, late.
- Bridesmaid—White with Crimson eye.
- Pantheon—Beautiful Rose-pink.
- Richard Wallace—White, Carmine eye.
- Champs Elysee—Brilliant Crimson purple.
- Eclairer—Brilliant Carmine-rose.
- Mrs. Chas. Dorr—Beautiful shade of Lavender.
- Mrs. R. P. Struthers—Bright Rose-carmine.
- Rhineland—Soft Pink with Deeper Eye.
- Rhinestrom—Solid Deep Pink.

**HERBACEOUS PAEONIES**

The Prince of the Flower Garden. Rivals the Rose in beauty of form and color. Decoration Day usually finds the early varieties in their prime of bloom. Paeonies are free from all diseases and insects.

Price, Standard Varieties of Pink, White, Red, 50c each; 6 for \$2.50.

**SELECTED PAEONIES—A Dependable and Choice List.**

Price, 75c each; 6 for \$4.00, except as noted.

**EDUALIS SUPERBA**—Early, an exquisite rose-pink. Very fragrant and reliable. One of the best for cutting.

**PAEONIES—Continued**

**FESTIVA MAXIMA**—The ideal white.

**FELIX CROUSSE**—Reliable, bright red; mid-season. \$1.00 each.

**FRANCIS ORTEGAT**—Pinkish crimson; early.

**QUEEN VICTORIA**—White cream center. Mid-season.

**MAD. EMILE GALLE**—Shell pink. Late.

**MRS. DOUGLAS**—Bright pink. Mid-season.

Why trouble about preparing beds and sowing annuals each Spring, when one planting of Hardy Perennials will afford continuous bloom for a number of years.

**MALLOWS (Hibiscus)**—See page 20.

**MONARDA**—Brilliant, bright red flowers from June to September. (C)

**ORIENTAL POPPY**—See page 21.

**PINKS (Dianthus)**—Fragrant flowers, with fringed petals. May and June (A)

**PYRETHRUM (Painted Daisy)**—The aristocrat of the Daisy family; elegantly borne on long stems, in a variety of pleasing color combinations.

**SHASTA DAISY**—See page 21.

**TRITOMA (Red-Hot-Poker)**—Everblooming variety with cone-shaped spikes of orange-scarlet flowers produced on stems 3 ft. high.

**VERONICA**—Spikes of deep blue flowers in August and September. (B)

**YUCCA**—An evergreen plant, with cream-colored flowers borne on long stalks. 35c each; 3 for 85c.



**EDUALIS SUPERBA PAEONY**  
One of the Best for Cut Flowers

# "It's Not a Home Until It's Planted"



The Vogue for the Outdoor Living Room Sweeps the Country.

The Outdoor Living Room has arrived! Everywhere—in city, village and country—the old-fashioned "back-yard" is disappearing. In its place appears a beautiful Outdoor Living Room.

Plan it as you would a room inside. Let grass provide a soft velvety carpet of green; plant Shade Trees, Shrubs, Evergreens and Hedging to give privacy and screen unsightly views—add color and fragrance by means of hardy Perennials and Roses. Do this and you have a modern outdoor Living

Room—a place of beauty, rest and contentment with never ending appeal to each member of the family.

The creation of an Outdoor Living Room may be simple and inexpensive. Moreover, unlike a room inside, it increases in beauty and value each year. You will find any of the following Offers are helpful suggestions and will soon transform your grounds into a Bower of Beauty.

## Outdoor Living Room Suggestions

- 50 California Privet, 1½ to 2 ft. . . . . \$2.50
- 50 Japan Barberry, 1-1½ ft. . . . . 4.45
- 5 Assorted Climbing Roses. . . . . 1.95
- 2 Excelsa                      2 Dorothy Perkins
- 1 Crimson Rambler
- Rose Collections, pages 6, 7 and 8.
- Perennial Collections, pages 20 and 21.

### BRISTOL FAIRY

A wonderful advance over the old-fashioned Gypsophila, with misty sprays of perfectly double, pure white flowers like stars seen through a cloud. Exquisite for mixing with larger, bolder flowers, adding that touch of elegance and grace so desirable in the arrangement of cut flowers.

Easy to grow, perfectly hardy, blooms all season, and the flowers last for many weeks, drying like strawflowers.

Strong, grafted plants from 3-in. pots.  
PRICE, 85c each; 10 for \$7.00.

- 25 Spirea Van Houttei, 1½-2 ft. . . . . \$3.75
- Prunus Pissardi—page 25.
- Prunus Triloba—front cover.
- Silver Maples. Page 24.
- Fruit Collection pages 29, 32 and 34 will furnish welcome shade and fruit as well.
- 5 Hydrangea Arborescens for . . . . . 1.25

**SYRINGA VIRGINALIS**—A magnificent new variety. Its rose-shaped double flowers are the largest, handsomest, and most sweetly fragrant of any known variety. Medium tall, compact habit and good foliage. Price, 2-3 ft. plants 85c each; 10 for \$7.50.

*All Perennials and Roses will be brightened and made more attractive with a touch of Bristol Fairy.*

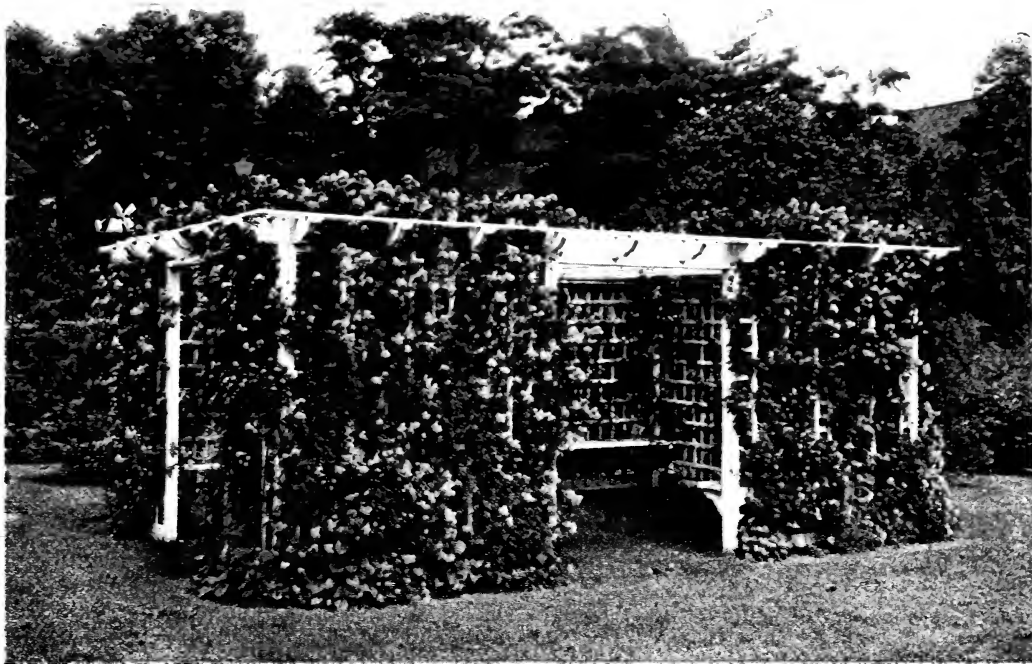
## Outdoor Living Room Collection No. 180

67 First Class Trees and Plants for \$12.00

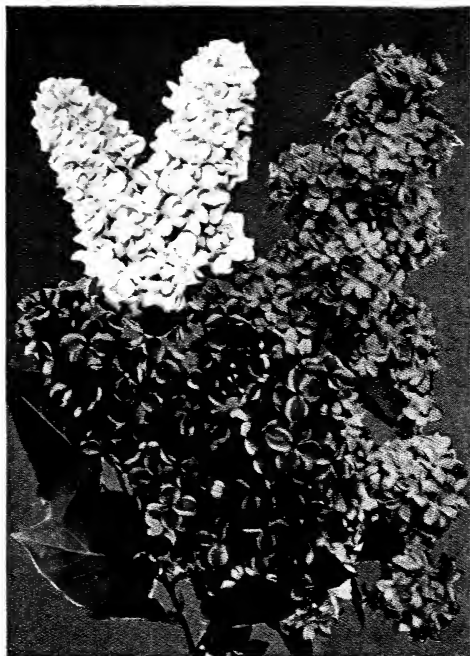
- 35 California Privet
- 2 Catalpa (Umbrella Trees)
- 10 Spirea Van Houttei
- 3 Climbing Roses (Excelsa)
- 1 Prunus Pissardi (Red Foliage)
- 3 Hydrangea Arborescens
- 3 Paeonies Assorted — 5 Iris Assorted — 5 Phlox Assorted

Plant this inexpensive Group in your Back Yard and note the transformation.





The Dorothy Perkins, Climbing Over an Arbor or Fence will Make a Gorgeous and Enjoyable Addition to Your Outdoor Living Room.



**PREFERRED FRENCH LILACS**

These are the much improved variety. They bloom, usually soon after planting and their large trusses are marvels of beauty and elegance—far superior to the common varieties. They must be seen to be appreciated.

PRICE—\$1.00 each, 4 for \$3.65.  
If Parcel Post, 10c per plant extra.

**PRESIDENT GREVY**—Beautiful Blue.

**MME. LEMOINE**—Enormous trusses of pure white flowers, perfectly shaped.

**CHARLES X**—Beautiful purplish red. Strong, rapid grower.

**JOSIKEA**—Distinct and superb purple.

**SPECIAL OFFER**  
5 Strong, 2-yr. Dorothy Perkins for \$2.25  
Postpaid



**FLOWERING ALMOND**

In May this beautiful Shrub is very attractive, with its dainty double blossoms, that cover the branches in a cloud of bloom. Excellent for specimen, clumps of shrubbery and is very effective in evergreen plantings. Comes in pink, red and white.

PRICE—2-3 ft. Plants 85c each, 3 for \$2.25.  
By Parcel Post, add 10c per plant.





# Old-Fashioned Garden Favorites

## EVERY GARDEN NEEDS THEM

PRICE—25c each; 5 for \$1.15, Postpaid

Plant these select Perennials for pleasure and for colorful display along the front of Shrubbery, in beds, in borders, as Hedges and along drives or paths, and for an all season supply of cut flowers. Once planted they will appear each Spring with greater strength and beauty.

SPECIAL—18 Plants (3 of each variety) for \$3.50

20c extra for Parcel Post



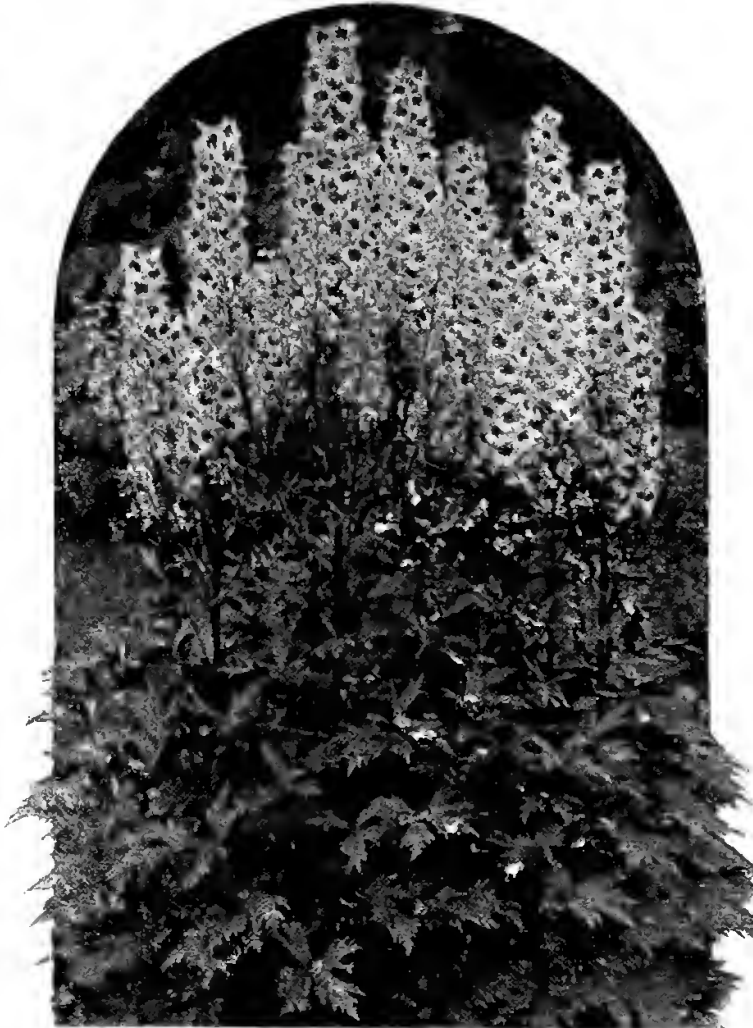
GIANT MALLOWS (Hibiscus)

This beautiful plant, with its showy wax-like blooms and attractive foliage will give continuous bloom from June to October. Absolutely hardy anywhere. Grows 3-4 ft. tall.



DIGITALIS or FOXGLOVE

This beautiful old-fashioned flower is good and wholesome in beds or planted in front of shrubbery. Will thrive in either a sunny or shady location. The blooms are in white, pink, lavender and rose, while the throats of the individual are heavily spotted.



DELPHINIUM or LARKSPUR

The Delphinium excites admiration everywhere with its tall and stately flowers of wondrous beauty. The flowers are in various shades of blue from very light to very deep indigo. Blooms profusely in June and July, but cutting will prolong the season. Can you imagine a planting of Delphinium with Shasta Daisy?



ORIENTAL POPPY—As Dazzling as a Flame

These brilliant orange scarlet flowers, with large black blotches at the base of the petals, and a great mass of bluish-black stamens sometimes measure several inches across. Lights up the garden in such tropical and barbaric splendor.



COREOPSIS

This wonderful plant has shiny, daisy-like flowers and rich foliage. Excellent for cutting, beds or borders. If cut every day, it will bloom from June 'til Fall



SHASTA DAISY

This beautiful flower with its snow-white petals and small yellow centers is excellent for beds and is very decorative as cut flowers. If well cared for it will produce showy blossoms, often 3 or 4 inches across.

## ROCK GARDEN PLANTS

12 Selected Rocky Plants for \$2.85

Single Plants 35 Cents Each

ARABIS ALPINA—Completely covers itself with pure white flowers in early Spring.  
 CONVULARIS—Lily-of-the-Valley.  
 DIANTHUS PLUMARIUS—Hardy Garden Pinks.  
 GYPSOPHILA REPENS—A trailing variety, producing clouds of small white flowers.  
 IBERIS SEMPERVIRENS—White flowers in large heads. May.  
 MYOSOTIS PALUSTRIS (Forget-me-not)—Small blue flowers.  
 PHLOX SUBLATA—Moss pink. Evergreen moss-like foliage. Covered with pink flowers.

SEDUM ACRE (Golden Moss)—Bright yellow flowers—excellent ground cover.  
 VIOLA CORNUTA (Tufted Pansies)—Mixed color. Blooms all season.  
 GERMAN IRIS—All colors, beautifully marked.  
 LINARIA CYNBALARIS (Kenilworth Ivy)—A beautiful trailing plant with lavender purple flowers.  
 LYCHNIS VISCARIA SPLENDENS—A choice border plant with bright red flowers.  
 This Collection of Plants will make an ideal and picturesque Rock Garden. Easy to care for.  
 Add 15c for Parcel Post.



**EVERBLOOMING BUTTERFLY BUSH (Summer Lilac)**  
Blooms All Summer



**ALTHEA OR ROSE OF SHARON**  
Blooms from August on

*All-Season Bloom Collection No. 220*

6 Dependable 2 yr. Shrubs for \$2.50  
18 Dependable 2 yr. (3 of each) for \$6.00

**BUTTERFLY BUSH**—Blue, lilac-like flowers, attracts Butterflies.

**ALTHEA**—Bright rosette-like flowers, unusual foliage.

**SNOWBERRY**—Combination of pink flowers and white berries on same twig is charming. Trims the Winter landscape—attracts birds.

**FORSYTHIA**—Golden masses of glinting yellow before foliage appears.

**SPIREA ANT. WATERER**—Showy crimson flowers in flat clusters.

**HYDRANGEA PEE GEE**—Great pyramidal panicles which open white—later assume rose and bronze tints.

This Collection is guaranteed to grow and give results the first season.



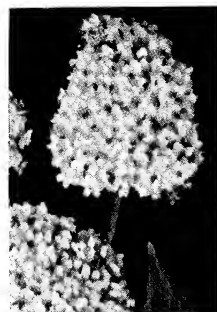
**SNOWBERRY (Racemosus)**  
Conspicuous all Season



**FORSYTHIA**  
(Golden Bell)  
Blooms April and May



**SPIREA ANTHONY WATERER—**  
The Best Dwarf Shrub  
Blooms July, August and September



**HYDRANGEA PEE GEE**  
Constant Bloomer  
July-October

# Shade Trees

## FOR LAWN OR STREET PLANTING

Have you ever noticed that the homes which look the most attractive to you invariably are those with a few well-placed Ornamental Trees around them? It is well recognized that shade trees not only add to its beauty and comfort, but greatly increase the value of the property. We do not advise planting big, overgrown Ornamental Trees. They do not transplant as successfully as the sizes offered herein.

### HOW FAR APART TO PLANT

Trees planted on the sunny side of the house should be planted close enough to each other to give the needed shade without waiting too many years. For this reason the following trees may be planted on a lawn 15 to 20 feet apart. Smaller growing Ornamental Lawn trees about 10 feet apart. Trees for street planting about 30 feet apart.

**AMERICAN LINDEN OR BASSWOOD**—A stately, rapid growing tree, with large, showy leaves and fragrant flowers. Very desirable on account of its fine, luxuriant foliage. Valuable for its beautiful, white wood. 5 to 6 ft., \$2.00 each; 3 for \$5.00.

**HORSE CHESTNUT (White Flowering)**—A well known variety. Its magnificent spikes of white flowers make it very attractive. Fine for street planting. 5 to 6 ft., \$1.00 each; 3 for \$2.50.



**SILVER MAPLE**

A Very Rapid Grower—Hardy and Very Ornamental



**AMERICAN ELM**  
Ideal for Street Planting

**AMERICAN ELM**—One of the noblest and most picturesque of American trees. Easily distinguished by its wide, arching top, vase-like form and pendulous branches. Used extensively for street planting, forming perfect Gothic arches over the streets. A rapid and vigorous grower.

- 6 to 8 ft. .... \$1.00 each; 3 for \$2.50
- 8 to 10 ft. .... 1.50 each; 3 for 3.85
- 10 to 12 ft. .... 2.50 each; 3 for 6.75

**CATALPA SPECIOSA**—Large spreading head, large heart-shaped leaves; large panicles of sweet scented, white flowers spotted violet and yellow. Valuable for posts and timber as well as ornamental.

- 5 to 6 ft. .... .50c each; 3 for \$1.35
- 6 to 8 ft. .... .85c each; 3 for 2.00

**MT. ASH, EUROPEAN**—Hardy, erect, 20 to 30 feet high, with smooth bark and dense, regular heads; berry clusters large and bright.

- 6 to 8 ft. .... \$1.50 each; 3 for \$4.00
- 8 to 10 ft. .... 2.00 each; 3 for 5.50

## Landscape Service

If you desire a pencil plan, send us a sketch of the grounds, together with the measurements. We will make a pencil plan for you, together with a planting list.

The cost for making this pencil plan is \$3.50. Send us your check for this amount. On receipt of your order for the material for the planting, we will credit your account with the \$3.50 you have sent us. In this way the plans will not cost you anything.

This charge is for the ordinary plantings. Where an estate or park plan is necessary, we will be pleased to have you write for special prices.





NORWAY MAPLE—Perfect in Form

**MAPLE, NORWAY**—Most beautiful shade tree. Perfect in form; free from disease. Sturdy, compact and vigorous grower, forming a rounded head of stout branches and clean, broad, deep green foliage. Perfectly hardy. Excellent for street planting or for shade on lawn.

6 to 8 ft. . . . . \$2.50 each; 3 for \$6.00  
 8 to 10 ft. . . . . 3.25 each; 3 for 9.00

**MAPLE, ASH-LEAF**—A fine, rapid growing variety, with handsome, light green foliage and spreading head; very hardy, desirable for street planting and succeeds in many places where other varieties do not thrive.

6 to 8 ft. . . . . \$ .85 each; 3 for \$2.00  
 8 to 10 ft. . . . . 1.00 each; 3 for 2.50  
 10 to 12 ft. . . . . 1.50 each; 3 for 4.00

**MAPLE, SILVER-LEAF**—If a quick growing tree for immediate shade is desired, we recommend the Silver-Leaf Maple. Forms a large, spreading head; foliage bright green above, and silvery beneath. Excellent for street planting.

6 to 8 ft. . . . . \$1.00 each; 3 for \$2.50  
 8 to 10 ft. . . . . 1.50 each; 3 for 3.85  
 10 to 12 ft. . . . . 2.00 each; 3 for 5.00

**WILLOW, WISCONSIN WEEPING**—A common, well-known weeping variety. Forms a large, round-headed, graceful tree. Requires plenty of room and is highly desirable where space is available. 6-8 ft., \$1.50 each; 3 for \$4.00.

Aside from the pleasure of having fine trees in the grounds surrounding a home, few realize how much these add to the commercial value of the place.

**SCHWEDLERII MAPLE**—A rare shade tree, with beautiful foliage which attracts attention at all seasons. Their gleaming red and purple contrasts brightly with the delicate green of other trees. In mid-season they are purplish green and in autumn golden yellow. 6 to 8 ft., \$4.50 each; 2 for \$8.50.

**ORIENTAL PLANE**—A rapid, upright, clean grower and long lived; beautiful, dense foliage. The bark peels off the trunk and branches in autumn, leaving the whole tree of a creamy white color all through the winter. Its large, round head of heart-shaped foliage is majestic in aspect and attractive the year around. 6 to 8 ft., \$2.00 each; 3 for \$5.00.

**POPLAR, CAROLINA**—A remarkably rapid, luxuriant grower. Very large leaves, very glossy, deep green. Will grow in any kind of soil. For a quick-growing shade tree there is none that equals the Carolina Poplar. Also useful for planting as a screen to hide unsightly buildings or as a windbreak for orchard or garden plot.

6 to 8 ft. . . . . 50c each; 3 for \$1.35  
 8 to 10 ft. . . . . 75c each; 3 for 2.00  
 10 to 12 ft. . . . . 85c each; 3 for 2.00



Lombardy Poplar—A striking feature in any landscape

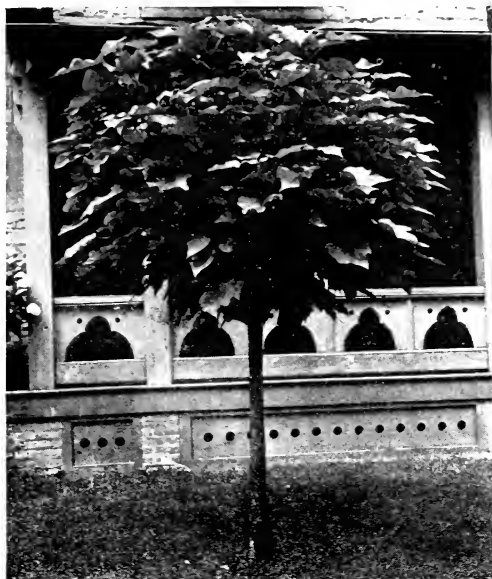
**POPLAR, LOMBARDY**—Well known for its erect, rapid growth and spire-like form; used for screens and formal plantings.

6 to 8 ft. . . . . \$ .85 each; 3 for \$2.00  
 8 to 10 ft. . . . . 1.00 each; 3 for 2.50

**MAPLE, WEIR'S CUT LEAF**—One of the most remarkable and beautiful trees, with cut and dissected foliage. Growth rapid, shoots slender and drooping, giving it habit almost as graceful as cut-leaved birch.

6 to 8 ft. . . . . \$1.25 each; 3 for \$3.25  
 8 to 10 ft. . . . . 1.75 each; 3 for 4.85

## Ornamental Lawn Trees



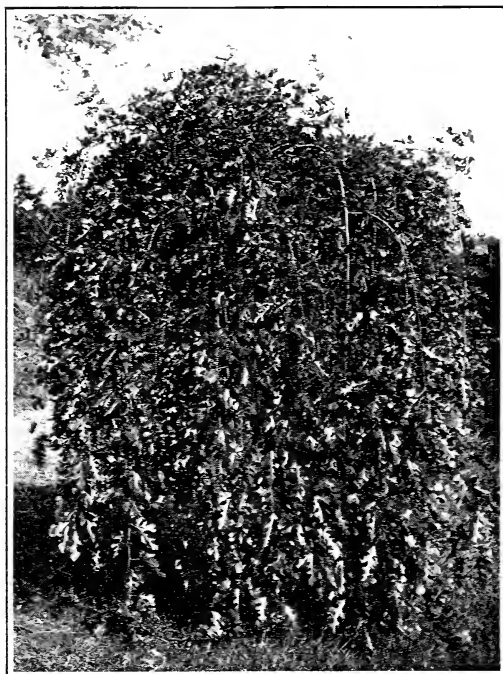
**CATALPA BUNGEII (Umbrella Trees)**—This is the dwarf, round-headed tree. Their symmetrical head forms a perfect umbrella-shaped top without pruning. Attractive in pairs along a driveway, or planted singly. Excellent for entrance planting. Hardy anywhere.

5-6 ft., \$1.00 each; 10 for \$7.50  
6-8 ft., \$2.00 each; 10 for \$15.00

**BECHTEL'S CRAB**—This beautiful tree, with spreading branches and dark green foliage, has double pink flowers. One of the finest for lawn decoration. Ultimate height about 10 feet.  
2 to 3 ft. specimens . . . . . \$1.00 each  
3 to 4 ft. specimens . . . . . 1.50 each

**CUT-LEAVED WEEPING BIRCH**—This noble tree is not only the most popular of the weeping trees, but it is indeed a picture of delicacy and grace. Its tall, slender, yet vigorous growth, graceful branches, silvery white bark and delicately cut foliage present a combination of attractive characteristics rarely met with in a single tree. Weeping trees are necessary on a lawn for contrast. Ultimate height 30 to 40 feet.  
4 to 5 ft. trees, \$2.50 each.

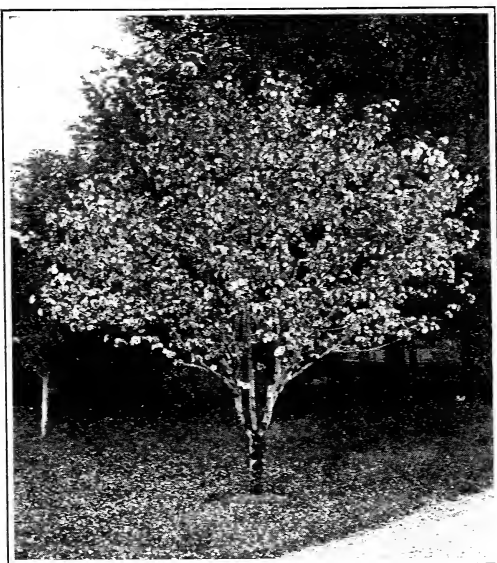
**PAUL'S DOUBLE SCARLET THORN**—Flowers bright carmine red. Superior to any of its kind. Very fine for small grounds. Fruit very ornamental. Will thrive in any soil. 3 to 4 ft., \$2.25 each.



The Graceful Tea's Weeping Mulberry

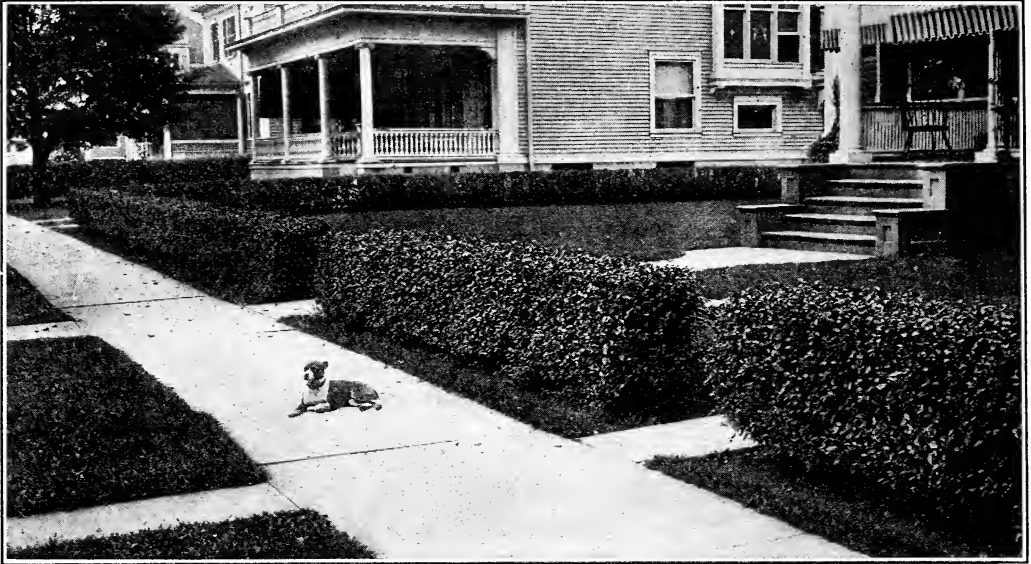
**TEA'S WEEPING MULBERRY**—One of the most graceful and hardy weeping trees in existence. Forms a perfect shaped head, with long slender and willowy branches of dark green foliage, drooping fountain-like to the ground. In gracefulness, delicacy of form and motion in the breezes, ranks supreme. Admirably adapted for large or small grounds. Grows 8-10 ft. tall. 2-year-old heads, \$2.50 each.

**PRUNUS TRILOBA (see Front Cover)**—A charming shrub of vigorous growth. Very early in spring, before its leaves appear, the whole tree is decked in a fleecy cloud of very double, light pink blossoms. Its effect on a still, leafless landscape is magnificent. Blooms in May. Hardy anywhere.  
3 . 4 ft., \$1.00 each; 3 for \$2.50.



**PRUNUS PISSARDI (Red-foliaged)**—Foliage is a beautiful reddish-purple, and in May tree is covered with a gorgeous mass of pink blossoms. No other red-leaved tree or shrub retains its color like this variety. For best results, plant a clump of three trees. Contrast is gorgeous on a green lawn or planted among other flowering shrubs. Ultimate height 10 to 12 feet.

3 to 4 ft. specimens . . \$ 75 each; 3 for \$2.00  
4 to 6 ft. specimens . . 1.00 each; 3 for 2.85



California Privet Furnishes Light Green Foliage in Summer, Almost Evergreen. Charming Effects with These Practical Ornamental Hedges.

# Ornamental Hedges

BEAUTIFY AND SERVE

Hedges form a magnificent background for Shrubs, Roses and Perennial Beds, screen the vegetable garden, and are ideal for outlining lawns and formal gardens. They form a privacy that cannot be overlooked. Superior to fences, for unlike fences, they get better every year.

**JAPAN BARBERRY (Thunbergi)**—A dwarf grower of thick, compact habit, graceful drooping branches, stands pruning well. Its brilliant red fruit clings through most of the winter. Leaves light green, changing to a beautiful coppery red in the fall. Also valuable for foundation planting, facing taller shrubbery or for planting singly on the lawn. Perfectly hardy.

	<i>Per 10</i>	<i>Per 25</i>	<i>Per 100</i>
12 to 18 in.....	\$1.50	\$3.25	\$10.00
18 to 24 in.....	2.50	5.00	15.00
2 to 3 ft.....	3.00	6.75	20.00

**AMOR RIVER PRIVET**—Very similar to California Privet, but much hardier. Will stand the coldest winters. For a thornless hedge in a section where the California Privet will freeze down, we recommend Amor River Privet. Price, strong, 2-year plants:

	<i>Per 10</i>	<i>Per 25</i>	<i>Per 100</i>
12 to 18 in.....	\$1.00	\$2.25	\$ 8.00
18 to 24 in.....	1.50	3.35	10.00
2 to 3 ft.....	1.75	4.25	13.50

Success with your planting depends upon the quality of the trees, plants, vines, shrubs, etc., you buy. You save time, money and disappointment when you get the best Nursery Stock available. Our stock will come to you healthy, vigorous, and true-to-name.

**JAPAN QUINCE**—Glossy, dark foliage with reddish tints. Large, deep scarlet flowers in profusion in early spring. Prices:

	<i>Each</i>	<i>Per 10</i>	<i>Per 100</i>
1½ to 2 ft.....	\$ .50	\$4.00	\$35.00
2 to 3 ft.....	.70	6.00	50.00

**PRIVET, IBOTA**—A beautiful Japanese shrub, spreading and tall growing; very hardy. Fragrant, white flowers followed by blue-black berries. Prices:

	<i>Each</i>	<i>Per 10</i>	<i>Per 100</i>
1½ to 3 ft.....	\$ .20	\$1.50	\$10.00
2 to 3 ft.....	.25	2.00	13.50

**PRIVET, CALIFORNIA**—The best of all hedge plants and is easily kept at any height desired. Has no thorns, does not sucker from the roots and is not objectionable in any way. A universal favorite. Almost Evergreen.

	<i>Per 10</i>	<i>Per 25</i>	<i>Per 100</i>
12 to 18 in.....	\$ .85	\$1.75	\$ 4.00
18 to 24 in.....	1.00	2.25	6.00
2 to 3 ft.....	1.25	2.75	8.00
3 to 4 ft.....	1.50	3.50	10.00

**LOW HEADED CATALPAS** 2 TO 3 FEET

Excellent for planting at corners and ends of your hedges. They give the hedge a perfect ball-shaped head for a finish.

Special Price—2 for \$1.00

# Garden Accessories For the Home Beautiful



A Beautiful Bird Bath

**THIS BEAUTIFUL BIRD BATH  
ONLY \$17.50**  
A Charming Addition to Your Lawn  
or Garden

This Bird Bath is useful, and very ornamental. It will create a constant source of pleasure and delight, by drawing the feathered songsters to your grounds. Summer and Winter it will add a real touch of charm and beauty to the Home Grounds.

This Bird Bath is well designed and of substantial construction. Height, 31½ inches; diameter of bowl, 23 inches; shipping weight, 79 lbs. Price, \$17.50.

### THE "ORNECO" SUN DIAL

A very charming and interesting addition to your grounds. This Sun Dial is well balanced of classical lines and substantially constructed. The hours are marked in Roman Numerals. Height to top of stile, 31 inches; diameter of Dial 12 inches. Shipping weight, 53 lbs. Special Price, \$15.00.



Orneco Sun Dial

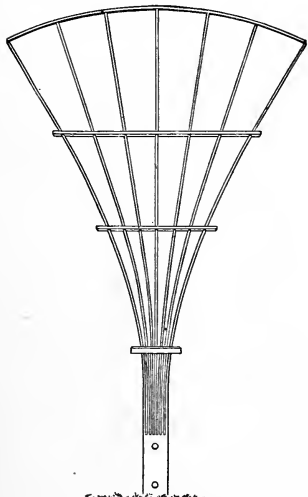


## FERTILIS TABLETS

**FERTILIS DOUBLES THE LIFE OF CUT FLOWERS.** When arranging cut flowers each day with fresh water, drop in a Fertilis Tablet. Flowers will hold their original freshness and beauty much longer.

**Fertilis Tablets keep your Ferns and Potted Plants healthy and beautiful.** These little tablets feed the roots, thereby producing an abundance of bloom and healthy colors.

Fertilis comes in two convenient size containers. In packages of 50 Tablets, for 25c; or tins of 1000 Tablets, for \$2.00. Simple directions for use will be found in each package.



Fan Trellis No. 37

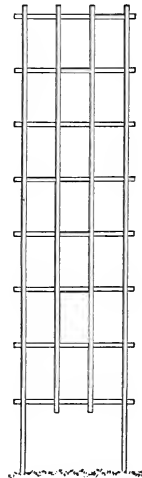
You will be surprised what an addition these Trellises will be to your grounds. They are useful and beautiful. Sturdily built, yet artistically right. Considering their top-notch price, you will be pleasantly surprised with our introductory prices.

If your needs aren't just exactly suited by these illustrations, write us and we will welcome the opportunity of quoting and making up anything in the line of trellises, fences or arbors, on special orders.

**No. 37—Popular Fan Trellis, height 8 ft., top spread, 44 inches. Price, \$1.50 each.**

**No. 77—Ornate Trellis for Porch or side of building. Height, 8 ft. Very attractive.**

Price, \$1.50 each.



Trellis No. 77



Block of Over 300,000 Fruit Trees Grown at Proper Distance to Make Quality Trees. Quantity Production Enables us to Price Our Goods Reasonably, but We do not Sacrifice Quality for Price.

## Apple Trees

Plant strong, heavily rooted fruit trees grown in the famous Finger Lakes region. Hardy specimens that take hold at once, mature earlier and yield heavier crops of better quality fruit than ordinary trees, so often set out by the inexperienced planter

### PRICES OF ALL VARIETIES OF APPLE TREES

Grade	Age	Height	Each	Per 10	Per 100
XXX	2 and 3 yr.	5 to 7 ft.	\$ .75	\$5.00	\$30.00
XX	2 and 3 yr.	4 to 6 ft.	.70	4.00	25.00
X	2 and 3 yr.	3½ to 5 ft.	.50	3.00	15.00

### Summer Varieties

**EARLY HARVEST**—Medium size pale yellow. Early.

**RED ASTRACHAN**—The very best early, red summer apple. Excellent for cooking and eating out of hand. Fruit tender, juicy, crisp and sub-acid flavor. Very hardy and bears the fourth year. Ripens in July.

**SWEET BOUGH**—Large, pale yellow; sweet, tender and juicy. Tree a compact grower and abundant bearer. August.

**YELLOW TRANSPARENT**—Fruit of good size; skin clear white, turning to a pale yellow; flavor acid and very good. Ripens in August.

### Autumn Varieties

**DUCHESS OF OLDENBURG**—Vigorous growth; large; striped; tender, juicy, sub-acid; good; regular and abundant bearer. One of the hardiest kinds known. Ripens in September.

**GRAVENSTEIN**—This is a large, handsome apple streaked and splashed with red over a strong yellow. September to November.

**WEALTHY**—Medium size, attractively striped and splashed with dark red; flesh white, well flavored. Very hardy.

### Winter Varieties

**BALDWIN**—The leading variety in the commercial orchards in New York, New England, Southern Canada, Ohio and Southern Michigan, the so-called "Baldwin Belt." The fruit is large, deep red, crisp and juicy, thick skin stands handling

well, of fine flavor, slightly sub-acid. Delightfully aromatic. Is an excellent shipper and one of the leading apples used for export trade. Quality excellent. Ripens in November.

**BEN DAVIS**—Fruit is medium to large, of a bright, deep red color, or red striped over clear yellow. Has a thin, tough skin. It is one of the best keeping apples on the market today, lasting in cold storage until June or July.

**CORTLAND**—(New variety developed by the New York State Experimental Station). A fine apple resulting from the cross pollinization of McIntosh and Ben Davis. Inheriting only the good qualities of each, the new apple has found additional good qualities of its own. The Cortland is a beautiful red apple, larger than the McIntosh, and matures a month later. A good keeper.

**DELICIOUS**—A truly delicious apple with a rich, distinctive flavor. Successfully grown in any apple section; conically shaped, large, beautifully striped with red and yellow. A good keeper and shipper and a good money maker. A handsome apple that brings fancy prices on fruit stands. November.

**FAMEUSE (Snow)**—Well known dessert apple, beautiful in appearance and of medium size. Flesh is very white, tender and juicy. Fruit hangs well to the tree. Skin bright red. Tree is very hardy; succeeds well in cold sections. Ripens in November.

**PLANT FINGER LAKES' EARLY-TO-BEAR APPLE TREES** for quick shade and an abundance of fruit in the shortest possible time. See pages 38 and 39.



## WINTER APPLES—Continued

If you are going to buy 100 or more fruit trees, you want the best stock you can get and buy at the right price. If so, it will pay you to refer to our 100 rate, Finger Lakes' Guaranteed Fruit Trees.

**GRIMES' GOLDEN**—Of just medium size, but very delicious; matures in early winter.

**JONATHAN**—Late winter. Round, of medium size, fine grained and of acid flavor.

**KING**—The fruits are a beautiful red on a yellow background, uniformly large and symmetrical. It is crisp, tender, juicy, aromatic and richly flavored. King requires fertile, well-drained soil and sheltered situations to do its best. Early winter.

**McINTOSH RED**—This fruit has a splendid early winter market, brings higher prices in all the Eastern markets. Fruit bright red in color with tender, white flesh. Very juicy and agreeably aromatic, sub-acid, becoming mild and nearly sweet when very ripe. The tree is vigorous grower and a good, reliable bearer. November.

**N. W. GREENING**—Hardier than the Rhode Island Greening and valuable in districts where the climate is too severe for that variety. Fruit is medium to large, smooth skin somewhat waxy, clear pale yellow or greenish, oftentimes faintly blue blushed. November.

**NORTHERN SPY**—Large, striped red, quality excellent; free grower and productive. December to June.

**R. I. GREENING**—Large, green; tender, rich sub-acid; productive; very popular. December to April.

**ROME BEAUTY**—Large, yellow shaded and striped with red; juicy, tender, sub-acid; productive. October to December.

**STARK**—Is regarded as a good variety for the commercial orchard because the tree is thrifty, hardy and very productive. Fruit is large to medium, pale green, becoming yellow and mottled with red. January.

**STAYMAN'S WINESAP**—One of the finest Apples for fancy trade and always in demand. Of delicious, spicy flavor and juiciness. November.

**WINTER BANANA**—A comparatively new Apple, very flashy in appearance and large in size, deep yellow striped with red; tender and delicious, with a distinctive banana perfume and flavor. Tree comes into bearing very young. November.

15% DISCOUNT IS A BIG SAVING  
ORDER WITHIN 10 DAYS.  
See Page 2-A

Crab Apple Trees (Same Price as Standard Apples), Transcendent (early); Hyslop (late).

## Preferred Apple Collection No. 280

5 Big, 5 to 7 ft. Trees for \$2.00

(A very special price)

**YELLOW TRANSPARENT**—Best Early Apple.

**DUCHESS OF OLDENBURG**—Early Fall.

**CORTLAND (New)**—A late Fall variety.

**NORTHERN SPY**—The best early Winter Apple.

**N. W. GREENING**—The best of all Greenings.

The Best Collection for the Family Garden and the Roadside Stand

# VIGORO

*Specially prepared plant food*

For Lawns, Gardens, Flowers, Shrubby, and Trees

Vigoro is a superior combination of plant foods that meets nature's most exacting requirements. It is completely balanced in every sense of the word. When Vigoro is used, no supplementary substances such as bone-meal, potash, liquid manure, etc., are required. Trees and Plants that feed heavily from the soil do not remove anything that Vigoro does not replace. Odorless and absolutely free from weeds.

### PRICE OF VIGORO

5 lb. Bags—\$ .50 each

25 lb. Bags— 1.75 each

100 lb. Bags— 5.00 each

Buy Your Vigoro Now—We'll Help You Figure the Amount You Need

### HERE'S WHEN TO USE VIGORO

- 1. Lawns**—As soon as grass shows green, or any time thereafter, apply plantfood.
- 2. Flowers**—Work plantfood into soil before seeding or for perennials, as soon as plants appear. For larger, richly colored blossoms, make later application.
- 3. Vegetables**—Work plantfood into soil before seeding. To hasten maturity make second application later.
- 4. Shrubs, Trees**—Apply plantfood any time after leaves appear.

Easy to Use—Can be sown by hand like grass.

Sept. 8, 1929.  
Auburndale, Mass.

Manager, Finger Lakes Nurseries.

My Dear Sir:

The Shrubs bought of you through your June advertisement were not only the greatest bargain of this season; they were the best bargain I ever received since I began planning gardens. Every one lived—resisting New England's longest drought.

Faithfully yours,

Mary Boyle O'Reilly.



This is What Does It. Deep Digging of Young Trees to Preserve Every Root Fibre, on One of the Finger Lakes Nursery Farms. It Takes Money to Grow Fruit Trees Right.

## PEAR TREES

The home orchard is not complete without pears and they are a very profitable commercial crop in nearly all parts of the country. Pears will do well on almost any good soil, but thrive best in rather heavy clay or loam. The quality of the pear is much improved by picking before maturity and by proper ripening indoors.

### Price List of Standard Pear Trees

Grade	Age	Height	Each	Per 10	Per 100
XXX	2 and 3 yr.	5 to 7 ft.	\$ .75	\$5.00	\$30.00
XX	2 and 3 yr.	4 to 6 ft.	.70	4.00	25.00
X	2 and 3 yr.	3½ to 5 ft.	.50	3.00	15.00

Parcel Post, 3 ft. 3 Trees for \$1.00, Postpaid

**BEURRE D'ANJOU**—Large, greenish-yellow fruit tinged with dull red and russet, flesh white, buttery, fine grained and richly flavored. Looks and keeps well until mid-winter. October to January.

**BEURRE BOSC**—One of the best of the russet varieties, having distinctive, long neck. Highly flavored and well suited for storage and marketing. October to December.

**BARTLETT**—A general favorite both for home use and market; the leading variety for canning; fruit always commands top prices. Fruit is large and attractive; yellow tinged with red, buttery, juicy and high flavored. August and September.

**CLAPP'S FAVORITE**—This is a very large, long, yellow pear, tinted with crimson and russet. Flesh is fine grained and white, juicy and exceptionally tasty. Ripens about ten days ahead of Bartlett. August to September.

**DUCHESS D'ANGOULEME**—Attractive for its enormous size. Bears early, often fruiting the season after planting. Fruit is bright golden yellow, with white, juicy flesh and excellent flavor. October and November.

**FLEMISH BEAUTY**—Its color a greenish yellow and brown; is very juicy and sweet. Ripens early in season. September to October.

**KIEFFER**—In great demand as a canning pear, as it retains its light color well and possesses a rich, vinous flavor. Commands the highest price on the market. Fruit is large, golden-yellow, tinged with red; trees are strong, vigorous and very healthy. Bears young and heavily and makes a large tree. October and November.

**SECKEL**—The smaller size and peculiar, rich, juicy flavor of this variety makes it most desirable for pickling and preserving. It is generally prized as a dessert fruit to eat fresh out of the hand. Very much in demand.

### X-Cello Peat Moss

All soils need humus. X-Cello Peat Moss is humus in its purest form and is just what's needed for soils that are deficient in humus. It is very beneficial for clay soil as well as sandy soil. X-Cello Peat Moss will improve the texture of all soil, making it more spongy, and will put the soil in perfect condition for roots to thrive and develop in.

X-Cello Peat Moss comes in bales, securely packed, 40 inches high, 22 inches wide by 22 inches deep. Contains about 20 bushels, with a spreading capacity of 375 feet, 1 inch deep. PRICE, \$3.00 per bale.

# PLUM TREES

For Bearing Age Trees, see Page 38

The market for Plums is rarely overstocked. They are easy to grow and will do well on any land that is not too wet and will withstand the most severe winter. Being generally free from disease, the plum is commercially profitable and most desirable for family use.

## PRICE LIST OF PLUM TREES

Grade	Age	Height	Each	Per 10	Per 100
XXX	2 and 3 yr.	5 to 7 ft.	\$ .75	\$5.00	\$30.00
XX	2 and 3 yr.	4 to 6 ft.	.70	4.00	25.00
X	2 and 3 yr.	3½ to 5 ft.	.50	3.00	15.00

**ABUNDANCE**—The chief asset is its name, abundance of fruit. Tree bears early, a pinkish red, changing to a darker red mottled with thin bloom. August.

**BRADSHAW**—The plums are large, attractive in appearance, being a light purplish red, changing to dark reddish at maturity. Keeps and ships well. August.

**BURBANK**—Most profitable variety for the market. The most popular Japan sort. A good keeper and an excellent shipper. Valuable for canning and market. Fruit is large, excellent quality, juicy, tender and fine flavored. Skin is dark red, over a yellow ground, thick bloom. June.

**FINGER LAKES PRIDE**—The plum we recommend, for we have thoroughly tested this variety. A beautiful, large, dark purple, very showy plum, often measuring 2 inches in diameter; fruit is firm, juicy, and a most delicious flavor. This variety is an excellent canner. **\$1.00 each; \$9.00 per 10.**

**GERMAN PRUNE**—Large, dark blue, rich and agreeable flavor; well thought of for drying and therefore commercially desirable. September.

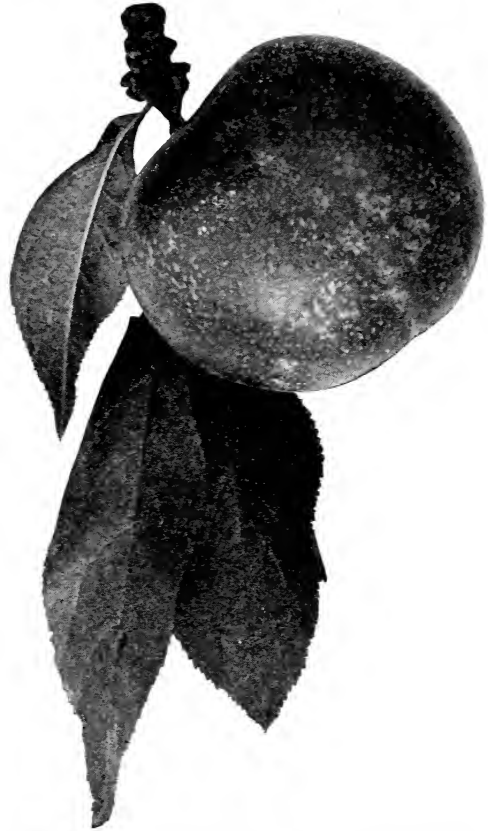
**LOMBARD**—Probably the most widely planted in America, medium size, violet-red in color, hardy and productive, having a good market value. Adapts itself to any soil and will thrive in any climate. August.

**RED JUNE**—Closely follows Abundance and Burbank in popularity. The color is a mottled, garnet-red overlaid with thin but very distinct and delicate bloom. Ripens early in July.

**REINE CLAUDE**—For the qualities that gratify the sense of taste, richness of flavor, consistency and texture of flesh, the Reine Claude is unsurpassed. Fruit ripens in September and is of yellowish-green.

**SHROPSHIRE DAMSON**—It is the best known of the Damsons, being found not only in nearly all commercial plantations, but in the smallest home collections as well. Enormously productive, bearing its load of fruit year after year. October.

**WICKSON**—The largest of the oriental plums, if not the largest of all plums. Its handsome color of red and distinct form make it very attractive. A good market variety. September.



REINE CLAUDE—A Golden Yellow—Delicious Flavor

## Early-to-Bear Apricots

PRICES OF APRICOT TREES

Grade	Height	Each	Per 10
XXX	4 to 5 ft.	\$ .75	\$7.00
XX	3 to 4 ft.	.65	6.00

**J. L. BUDD**—Ripening in August; is a very vigorous grower and profuse bearer. Fruit large, white, with red cheek; sweet, juicy. Best variety.

**EARLY MOORPARK**—Is a deep orange or brownish-red; flesh firm and juicy; ripens in early August.

## QUINCE TREES

No Finer Fruit for Jellies, Preserves and Canning

PRICES OF ALL VARIETIES OF QUINCE TREES

Height	Each	Per 10	Per 100
4 to 5 ft.	\$1.00	\$9.00	\$65.00
3 to 4 ft.	.85	7.50	50.00

Champion, Meech's Prolific, Orange, Rea's Mammoth

# PEACH TREES

For Bearing Age Trees, see Page 38

## PRICES OF ALL VARIETIES OF PEACH TREES

Grade	Age	Height	Each	Per 10	Per 100
XXX	1 yr.	4 to 5 ft.	\$ .60	\$5.00	\$30.00
XX	1 yr.	3 to 4 ft.	.50	4.00	25.00
X	1 yr.	2 to 3 ft.	.40	3.00	15.00

X Grade of Peach Trees can be sent by Parcel Post, 3 for \$1,00, Postpaid

**BELLE OF GEORGIA**—Elicits praise from all who know it because of the great beauty of its fruits. At its best, it is one of the glories of the peach orchard, the fruits being large, creamy-white with a beautiful crimson cheek. Is an excellent shipper. August. Freestone.

**CARMAN**—A general favorite in nearly every peach region on this continent. Red, splashed with a darker red on a creamy-white background. Fruit matures early. August. Freestone.

**CHAMPION**—This is the best of the white freestone varieties. Skin creamy-white with red flush. Extremely hardy. Late August. Freestone.

**CRAWFORD'S EARLY**—This peach has all the characters that gratify the taste. Color, rich red splashed and mottled with darker red and golden yellow. Matures in mid-season. First of September. Freestone.

**CRAWFORD'S LATE**—Fruit is unsurpassed in appearance and scarcely equalled in texture of flesh and richness of flavor. Color, tints of red and yellow. Fruit matures late. Used extensively in commercial orchards. Last of September. Freestone.

**CROSBY**—Is noted for its hardiness of bud, so marked, it is often called the "Frost-Proof" Peach. Matures late in season. Last of September.

**ELBERTA**—Leads all peaches in quantities planted, the most popular in the market. It is grown with profit in every peach growing state in the Union. Being hardy in budding and a consistent yielder of good crops, adaptable to almost any climate. Early September. Freestone.

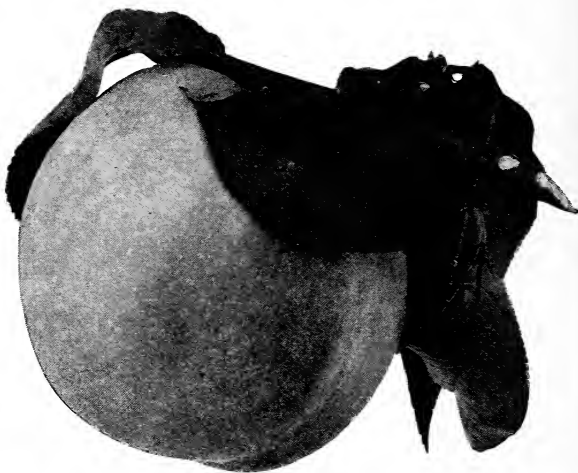
**GREENSBORO**—One of the leading early, white-fleshed peaches. Good shipper. Bears early. Color, creamy-white, blushed with red; flesh white, very juicy, tender and melting; mild, sprightly flavor. Freestone.

**HALE**—This is a new peach combining the most desirable qualities of the other varieties. Brilliantly colored with deep golden yellow and red. Flesh deep yellow, firm and fine grained. Stone is exceptionally free. Late August. Freestone.

By planting a few fruit trees about your Home Grounds you will get shade and ornament as well as fruit for the table.

**HILL'S CHILI**—Medium sized, yellow peach. Skin yellow, shaded with dark red. Very rich and sweet. First of September. Freestone.

**ROCHESTER**—It recommends itself for commercial purposes and home consumption. It is of good size, yellow, freestone and among the best shippers. Fruit golden yellow and red, highly flavored. Juicy and delicious. The tree is a hardy and young producer. Middle of August.



THE NEW HALE

Larger Than Elberta, Ripens Earlier and a Much Superior Flavor

**THE NEW WILMA**—Fruit is large and handsome and of good quality, yellow mottled and blushed with showy dark red. A dependable, productive peach. Ripens about the middle of September. We cannot recommend this variety too highly for the home garden or for commercial planting. Price of the New Wilma, 4-5 ft., 75c each; 10 for \$6.50. 3-4 ft., 60c each; 10 for \$5.00. 2-3 ft., 35c each; 10 for \$2.50.

### ALL-SEASON PEACH COLLECTION

No. 320

5 Big XXX Grade Peach Trees, \$2.25

Early Crawford      Elberta      Hale  
Belle of Georgia      Crosby

*Fine succession of Peaches all Summer and Fall*

### HERE'S A BARGAIN

5 Assorted Fruit Trees for \$1.00

Big, 4-ft., Well-Rooted Trees  
Cortland Apple (New)      Bartlett Pear  
Elberta Peach      Red June Plum  
1 Orange Quince

A Fine Start for Your Fruit Garden

# CHERRIES

For Bearing Age Trees, see Page 38

## PRICES OF ALL VARIETIES OF CHERRY TREES

Grade	Age	Height	Each	Per 10	Per 100
XXX	2 and 3 yr.	6 to 7 ft.	\$1.00	\$7.50	\$60.00
XX	2 and 3 yr.	5 to 6 ft.	.80	6.00	50.00
X	2 and 3 yr.	4 to 5 ft.	.60	3.50	30.00

Parcel Post Size, 3 for \$1.25, Postpaid

## Sweet Cherries

**BLACK TARTARIAN**—Is widely known as the favorite dooryard and roadside sweet cherry. It has a very sweet, rich flavor and is earlier than most sweet cherries, bearing in June.

**GOVERNOR WOOD**—Heart-shaped and large. Light yellow and red. Tasty and sweet. We highly recommend this variety on account of its earliness, beautiful appearance and delicious flavor. Last of June.

**NAPOLEON BIGARREAU (Ox-heart)**—An ideal light colored sweet cherry, much sought after by canners and fruit dealers; very attractive coloring of pale yellow with amber cheek. Fruit large, heart-shaped; flesh firm and of delightful flavor.

**WINDSOR**—Among the best in quality, deep red in color. Flesh firm and rich. Especially successful in the Eastern States.

## Sour Cherries

**EARLY RICHMOND**—Has long been the leading sour cherry of its season, the first of its kind in the markets. It is a very good culinary fruit and when well ripened may be eaten out of the hand. July.

**ENGLISH MORELLO**—Is the best standard late sour cherry. The fruit is handsome in appearance, bears harvesting and shipping well. Ripens in August.

**MONTMORENCY**—It leads in demand for fruit in the markets, cannery, and for home use. Less susceptible to brown rot than any other variety, because of its firm flesh and thick skin. It stands shipping well. Best money maker in the cherry orchard. Fruit is beautiful, large, red, acid. Last of June.

## Cherry Orchard Holds Farmer's "Pot of Gold"

Elk Rapids, Mich. (A.P.)—William Blanchard has found the fabled pot of gold at the end of the rainbow. It was in his cherry orchard.

During the last half decade Blanchard has picked a small fortune from four and one-half acres of sour cherries. The orchard has averaged \$1,000 an acre. Sales in 1928 totaled \$6,200.

Complete returns on the 1929 crop have not been received but it is indicated they will amount to \$5,000. It cost Blanchard \$125 to set out the orchard in 1910.

## Horseradish

Will stand a great deal of hardship and exist in same soil year after year. 10 for 85c; 25 for \$2.00; 50 for \$3.25; 100 for \$5.00.

## Rhubarb

PRICES, 2 YEAR, STRONG ROOTS

Each, 20c; 10 for \$1.50; 25 for \$3.00; 100 for \$10.00; 1000 for \$70.00.

## Extra Fine Asparagus

25 for 75c; 100 for \$2.00; 1000 for \$15.00

The earliest and finest of spring vegetables, very profitable, rich and delicious flavor; very healthy. A bed once planted suffers no deterioration for thirty years or more, if it is properly attended to and well manured. Most delicious when cut from your own garden. Easy to grow.

**WASHINGTON**—A new rust-resistant variety, thoroughly tested. Produces more asparagus, has larger and more tender stalks and has a rich, delicious flavor. The stalks are dark green, with a heavy purplish overtone. Rightfully called "the vegetable aristocrat."

**CONOVER'S COLOSSAL**—This is the standard of high quality; can be recommended without hesitation. Remarkably tender and fine flavored.

**PALMETTO**—The most popular variety both for home garden and commercial planting. Larger, more productive and earlier than Conover's Colossal.

# Early-to-Bear Strawberries

THAT ARE DEPENDABLE

We are exceedingly fortunate in being able to offer our patrons, this season, a limited quantity of these new Strawberries, originated and recommended by the New York State Experimental Station here at Geneva. These varieties ripen in succession. Plant some of each and enjoy your favorite fruit throughout the season. There is absolutely nothing better than these big, handsome, excellent flavored berries.

## June Bearing Strawberries

EARLY-TO-BEAR PLANTS

25 for \$1.00; 100 for \$2.50; 1000 for \$20.00.

All Varieties Listed are Perfect Varieties.

**BIG JOE**—Large, brilliant red. Early.

**BRANDYWINE**—Large crimson berries. Mid-season.

**GIBSON**—Extra large; dark glossy red. Mid-season.

**GLEN MARY**—Medium size, bright deep red. Mid-season.

**GANDY**—Handsome deep red. Late.

**SENATOR DUNLAP**—Berries glossy red and good size. Early.

**WM. BELT**—Extra large; brilliant glossy red. Mid-season.

## Everbearing Varieties

20 for \$1.00; 100 for \$3.25; 1000 for \$25.00.

**MASTODON**—A strong and reliable cropper. Its Fall pickings are very profitable and are very productive from only a few plants.

**PROGRESSIVE**—A wonderful Everbearing Strawberry. The June yield is so heavy that it is a profitable variety at this time, and in the fall it yields freely until freezing weather. Deep crimson, glossy and of good quality. Vigorous and hardy.

## Family Garden Collection No. 340

5 Fruit Trees, 9 Small Fruits—ALL FOR \$2.50

1 Cortland Apple (New)	1 Bartlett Pear	1 Abundance Plum
3 Concord Grape Vines	1 Orange Quince	1 Elberta Peach
	3 Columbian Raspberry	3 Erie Blackberry

This Collection will give you your own supply of fresh fruit from your own garden for one whole year. "It's a Real Buy."

## Gooseberries

**DOWNING**—Large, handsome, pale green gooseberry of splendid quality. Soft and juicy. 35c each; 10 for \$3.00; 100 for \$25.00.

**HOUGHTON**—A very productive, hardy berry of pale red; sweet and juicy. 2 year old bushes, 30c each; 10 for \$2.50; 100 for \$22.50.

**JOSELYN (Red Jacket)**—Large size, prolific and hardy; of best quality. 2 year old bushes, 50c each; 10 for \$4.50; 100 for \$40.00.

## Currants

Prices, 2 year, No. 1 Plants—3 for 75c; 10 for \$2.00; 100 for \$15.00 (except as noted)

**CHERRY**—Red currants of good quality. Fruit large.

**FAY'S PROLIFIC**—A popular red currant. As its name indicates, it is very productive and hardy.

**PERFECTION**—Color red. Clusters average longer and the size of berries is maintained to the end of the bunch. Each, 40c; 10 for \$3.50; 100 for \$30.00.

**RED CROSS**—Clusters are long and of medium size; berries are large in size. Probably the sweetest of all varieties.

**WILDER**—A new red currant, with large, fine flavored fruit of a bright, attractive red color.

### IMPORTANT NOTICE

Due to a Federal Quarantine, Currants or Gooseberries cannot be shipped into the following States: Arizona, California, Colorado, District of Columbia, Idaho, Maine, Maryland, New Hampshire, New Mexico, South Dakota and Washington.

# BLACKBERRIES

## EARLY-TO-BEAR PLANTS

Price of Strong, 2 Year Plants, 10 for \$1.25; 25 for \$2.00; 100 for \$5.85

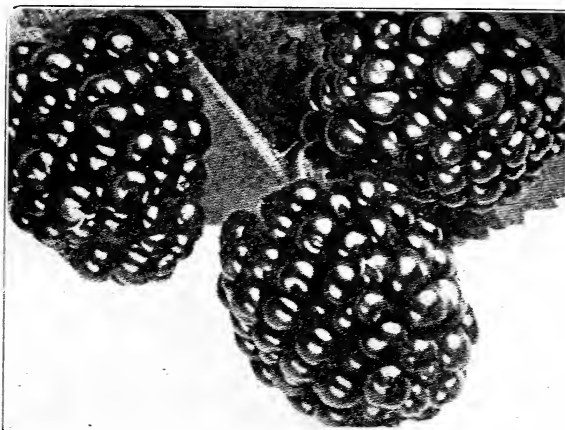
Blackberries will yield as high as 4000 quarts per acre, if thoroughly cultivated, and the fruit will sell right out of the field. Planted between rows of young trees, they will not only pay for themselves, but pay for the trees as well. A liberal use of berries and other good fruits will save doctor's bills. Will do well on land where other fruit could not succeed.

**BLOWERS**—An upright, mammoth grower; very hardy and enormously productive. A single plant produced over 2000 berries. It commences to ripen about middle of July and bears about two months.

**ERIE**—The mammoth blackberry. An extremely large, handsome and well flavored berry, coming into market early and demanding top notch price. Very highly recommended by our State Experimental Station here at Geneva. The fruit is exceedingly sweet, and positively the best flavored blackberry. The Erie will never disappoint.

**SNYDER**—Medium size. Plants hardy, healthy and vigorous. This blackberry bears well and is considered a profitable berry.

**LUCRETIA DEWBERRY**—The standard dewberry. It ripens in advance of the earliest blackberry, is sweeter and equals in size the best varieties of this near relative. Of slender, trailing habit.



ERIE BIG BLACKBERRY

The Biggest and Best of All Blackberries—Clean, Sweet and of Excellent Flavor.

## Early-to-Bear Raspberries

### PRICES OF RASPBERRY BUSHES

No. 1 Plants, 10 for \$1.25; 25 for \$2.00; 100 for \$5.85; 1000 for \$35.00

### Black Raspberries

**CUMBERLAND**—An early season, high quality berry; largest of all the black raspberries; possesses shipping qualities as good as any; a good variety for the market.

**PLUM FARMER**—Hardy grower, good for all berry sections. Thick meated, with a dark and brilliant bloom. Ripens early and commands a big price.

### Purple Raspberries

**COLUMBIAN**—For canning purposes it is undoubtedly the best raspberry in cultivation, yielding as high as 8000 quarts per acre. Fruit is firm and adheres to the bush well; very large, reddish purple, juicy and delicious; wonderfully prolific.

### Red Raspberries

**THE GIANT NEW JUNE**—An outstanding, worthwhile new variety. Mammoth in size, rich in flavor, sweet and very juicy. The plants are hardy, yield early and heavy, and is distributed

over a long season. The fruit is a bright, handsome red, and ripens early. The choice of all berries on local market. 10 for \$2.00; 25 for \$2.75; 100 for \$6.50. Strong, early-to-bear plants, balled in moss.

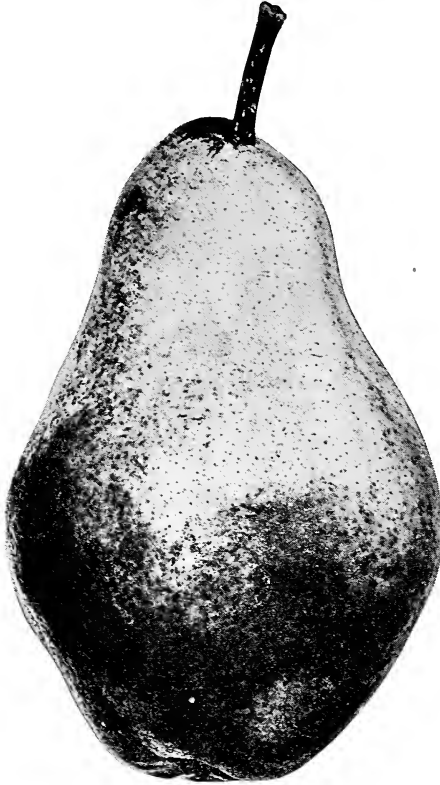
**LATHAM (Red)**—A new variety that is very highly recommended by the New York Agricultural Station here in Geneva. It is a splendid, strong growing variety and produces immense quantities of bright red, extra large berries. It is the earliest berry to ripen. Hardy anywhere.

**CUTHBERT (Queen of the Market)**—A remarkably strong, hardy variety; stands the Northern winters and the Southern summers better than any other variety. Season medium to late.

**ST. REGIS**—This everbearing red raspberry bears the first season. One of the greatest ever introduced. Plants of the St. Regis put out in the fall or early April gave ripe berries on the 20th of June. For weeks thereafter the yield was heavy.

# DWARF FRUIT for Garden Homes with Limited Space

Price, Strong, Healthy, 2-year, 4 to 5 ft.  
Trees, 75c each; 10 for \$6.00



BARTLETT PEAR—The Perfect Fruit

Why not plant a charming little fruit tree in place of a shrub or tree, and each year pick quantities of delicious, juicy fruit for eating and cooking instead of "just leaves?"

Dwarf Fruit Trees are especially desirable for many reasons:

1st—Large sized fruit, identical with same variety in standard trees.

2nd—Take less room in field or garden. A fact that is noteworthy, especially to those who have limited garden space.

3rd—Fruit can be picked from ground or small stepladders.

4th—Dwarf trees are very productive, bearing abundantly for home use.

5th—Being low-headed, they are more easily taken care of and shade less ground, which can be devoted to other garden crops.

You can plant dwarf fruit trees for a hedge along or through your garden, requiring very little space. Used as a filler in an orchard they are of great commercial value.

## Apples

STAYMAN'S WINESAP—Winter.  
YELLOW TRANSPARENT—Summer.  
DUCHESS OF OLD.—Autumn.

## Pears

BARTLETT—Early.  
BUERRE DE ANJOU—Mid-season.  
DUCHESS D'ANG.—Late.

## Japanese Plums

RED JUNE—July.  
ABUNDANCE—August.  
WICKSON—September.

### Special Offer No. 360

1 Abundance Plum—(Dwarf)  
1 Bartlett Pear—(Dwarf)  
1 Duchess of Old. Apple—(Dwarf)  
All for \$2.00

## Finger Lakes' Superfine Lawn Grass Seed

Finger Lakes' Grass Mixtures are proportioned according to the specifications of the New York State College of Agriculture, at Ithaca, N. Y., and all seeds are tested as to purity and germination before mixing by the New York State Agricultural Experiment Station here in Geneva. This assures you of the very best mixture of dependable Grass Seed. It is free from all chaff, dirt and inert matter. Use one lb. for each 300 square feet.

PRICES of Finger Lakes' Superfine Lawn Grass Seed—1 lb., 55c; 5 lbs., \$2.50; 10 lbs., \$4.80; 25 lbs., \$11.25, Prepaid.

## Finger Lakes' Shady Lawn Mixture

This wonderful mixture will make a good thick sod under trees or in the shade of buildings where common kinds of grass seed would not grow. 1 lb., 75c; 5 lbs., \$3.50, Prepaid.



# GRAPE VINES

PRICES OF ALL VARIETIES OF GRAPE VINES, EXCEPT CONCORD AND CACO

	Each	Per 10	Per 100
Strong, 2-year No. 1, extra size.....	\$ .30	\$2.50	\$20.00
Concord, 2-year No. 1.....	.25	2.00	15.00
Caco (New).....	.60	5.00	40.00

**AGAWAM**—Red in color; skin thick and berries large. Ripens early and is very vigorous. Late September.

**BRIGHTON**—An almost seedless variety of good quality; clusters are exceptionally large; vines are hardy. Middle of September.

**CAMPBELL'S EARLY**—Flavor rich and sweet; clusters are large and handsome, black with light purple bloom; vine strong and vigorous grower.

**CATAWBA**—A good, long lived market variety; much in demand for wine and champagne; large berries, copper-red and purplish. Requires a long season. Excellent keeper. Late September.

**CONCORD**—Leading commercial grape. It can be produced cheaper than any other grape on the market, owing to its adaptability to any soil and its high degree of fruitfulness. Grape juice is

made almost entirely of Concord. Bunches large and compact, berries large, glossy black, with a rich bloom; good quality. Requires long season.

**DELAWARE**—Small bunches and small berries; juicy and sweet, a highly satisfactory table grape; thin skin. Free grower, perfectly hardy.

**MOORE'S DIAMOND**—Leading early white grape with yellowish tinge; bunches large, very few seeds; juicy and free from pulp. Early September.

**MOORE'S EARLY**—A large, purplish-black berry; sweet and of good quality, ripens about ten days earlier than Concord. Vine vigorous and hardy.

**NIAGARA**—A leader among the white varieties; a highly profitable market grape; both the berry and bunch are large, greenish-white tinted with pale yellow when ripe.

**SALEM**—Coppery-red berries, large; flesh juicy and of fine quality. Very productive. Ripens in September.

**THE NEW CACO**—Red; has a most delicious flavor of the highest quality. Cross between Concord and Catawba. Ripens early.

**WORDEN**—Bunches large, almost black when fully ripe; berries large, thin skinned; juicy, highly flavored; about ten days ahead of Concord.

**GRAPE SPECIAL**  
Collection No. 370

**5 Big, 2-year Vines \$1.25 (Postpaid)**

**2 Concord      1 Agawam      2 Worden**

Every Home Owner should have this Collection

## FINGER LAKES' VEGETABLE SEEDS

GARDEN COLLECTION No. 1—\$1.00 POSTPAID

At a Much Reduced Price

This collection of vegetable seeds is suited to the needs of those who have only a small garden. The varieties chosen are those that have proven to be best adapted to the home garden. The collection is made up of one packet of each of the following seeds:

**BEEF**—Detroit Dark Red.

**BEANS**—Sure Crop Wax.

**BEANS**—Stringless Green Pod.

**CARROT**—Coreless.

**CUCUMBERS**—Early Fortune.

**TURNIP**—Golden Ball.

**SWEET CORN**—Early Yellow Bantam.

**LETTUCE**—Black Seeded Simpson.

**ONIONS**—Yellow Glove Danver.

**PEAS**—Laxtonian (½ lb.)

**RADISH**—Icicle.

**RADISH**—Early Scarlet Globe.

**SPINACH**—Harris' Big Crop.

**SWISS CHARD**—Lucullus.

GARDEN COLLECTION No. 2—\$2.50 POSTPAID

At a Much Reduced Price

For those who have more space to devote to garden, we recommend this collection. This will supply the family with an abundance of fresh vegetables for the table and a surplus for canning if desired.

**BEEF**—Detroit Dark Red, 1 oz.

**BEANS**—Sure Crop Wax, ½ lb.

**BEANS**—Stringless Green Pod, ½ lb.

**LIMA BEANS**—Leviathan (pole), ½ lb.

**CUCUMBER**—Early Fortune, 1 pkt.

**CUCUMBER**—Improved Long Green, 1 pkt.

**LETTUCE**—Big Boston, 1 pkt.

**LETTUCE**—Black Seeded Simpson, 1 pkt.

**MUSKMELON**—Lake Champlain, 1 pkt.

**ONIONS**—Yellow Globe Danver, 1 oz.

**PARSLEY**—Dwarf Perfection, 1 pkt.

**TURNIP**—Golden Ball, 1 pkt.

**PEAS**—Laxtonian, 1 lb.

**PEAS**—Advancer, 1 lb.

**PARSNIP**—Harris' Model, 1 pkt.

**RADISH**—Early Scarlet Globe, 1 pkt.

**RADISH**—Icicle, 1 pkt.

**SQUASH**—Giant Crookneck, 1 pkt.

**SQUASH**—Des Moines, 1 pkt.

**SPINACH**—Harris' Big Crop, 1 oz.

**SPINACH**—King of Denmark, 1 oz.

**SWEET CORN**—Early Bantam, ½ lb.

**SWISS CHARD**—Lucullus, 1 pkt.

**SOMETHING NEW—EXTRA EARLY GOLDEN BANTAM CORN**  
Special Price, 40c lb.

This new seed is a true Bantam type and quality, 8 rows to the cob. Only takes 64 days to maturity; heavy yielder, almost always two ears to each stalk.

# Time-Saving, Early-to-Bear 5 Year Fruit Trees

**FRUITS**  
that are Home Grown  
taste better



**Plant Some Fruit Trees  
this Spring**

**F**RUIT trees serve a double purpose and should be included in your spring planting program.

First they provide fresh, tree-ripened fruit for the family table and by this means they soon pay for themselves.

Secondly, their blossoms, foliage and fruits add an ever changing beauty to the appearance of the home grounds.



### GARDEN POLICE

To protect your plants from insects and disease. These two kinds of Dust come in convenient packages and will protect your plants from all kinds of disease and insect pests.

**POMO—GREEN**—For insects, worms and caterpillars which eat portions of the plant; for mildew, blights, Black Spot and all fungus diseases. 1 lb. pkg., 50c; 5 lb. pkg., \$2.00.

**A-1 DUST**—For Alphis (plant lice) which suck the plant juices. 1 lb. pkg., 60c.

**HAND DUST GUN**—Simple, efficient and easy to use in applying any dust. Price, \$1.25 each.

### GARDENETTE FLOWER BOX

This Gardenette flower box is sturdily built of pressed metal and very ornamental. Equipped with self watering feature, making it necessary to water only once every week or two weeks.

**PRICE**—Box 24" long, \$1.50 each; 36" long, \$2.60 each

If you have room for only a few trees, don't wait years for results. Plant our big, five-year trees and pick fruit in the shortest possible time. These trees are not ordinary over-grown stock, generally offered, but grown especially for this purpose, root pruned, transplanted, cultivated. We have spent the time—the immediate enjoyment is yours. If you want big trees for immediate results, order today.

**Finger Lakes' Early-to-Bear Trees Have Been Scientifically Cared for and Do Not Need Pruning**

It is impossible to accurately tabulate the age and height at which fruit trees will bear, due to varying conditions, soil, climatic conditions and care given; also, varieties differ. These early-to-bear trees have been scientifically cared for in our nurseries for at least five years, and will run from 7 to 8 feet, according to the nature of the variety.

**5-Year, Early-to-Bear, Heavily Rooted Fruit Trees**  
Price, \$2.50 each; 3 for \$6.00; 10 for \$15.00

### PLUMS, EARLY-TO-BEAR

VARIETIES		
Abundance	German Prune	Red June
Burbank	Lombard	Shropshire Damson
Finger Lakes Pride	Reine Claude	Wickson

### STANDARD PEARS, EARLY-TO-BEAR

VARIETIES		
Bartlett	Clapp's Favorite	Kieffer
Beurre d' Anjou	Flemish Beauty	Seckel

### CHERRIES, EARLY-TO-BEAR

VARIETIES		
Black Tartarian, Sweet	Nap. Bigarreau, Sweet	
Early Richmond, Sour	Montmorency, Sour	
Gov. Wood, Sweet		

### STANDARD APPLES, EARLY-TO-BEAR

VARIETIES		
Baldwin	N. W. Greening	Stayman's Winesap
Delicious	Red Astrachan	Wealthy
Northern Spy	Stark	Yellow Transparent

### PEACHES, EARLY-TO-BEAR

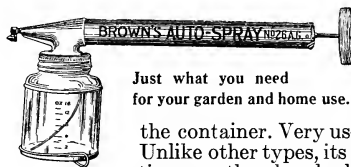
VARIETIES		
Champion	Elberta	Rochester
Crawford's Late	Hale	

**CRAB APPLES**—Transcendent (early); Hyslop (late).

### AUTO-SPRAY PUMP EFFICIENT AND DURABLE

This simple, powerful and effective Spray-Pump is made of strong lithographed tin with a new feature, the glass tank. This glass tank prevents corrosion, is more easily cleaned and enables the operator to know how much liquid is in the container. Very useful around the home. Unlike other types, its spraying action is continuous, thereby doubling speed and effect with no greater effort. Every part is built extra heavy to make it give super service. Filling and cleaning are extremely simple.

**IT SPRAYS CONTINUOUSLY**



Just what you need for your garden and home use.

Auto-Spray No. 26-AG Complete \$1.35 (Postpaid)

Use This Blank When Ordering

# FINGER LAKES NURSERIES

404 Washington Street, Geneva, N. Y.

15% DISCOUNT ON CASH ORDERS RECEIVED WITHIN 10 DAYS AFTER RECEIPT OF CATALOG.  
 10% DISCOUNT ON CASH ORDERS RECEIVED BEFORE MARCH 1st.  
 6% DISCOUNT ON CASH ORDERS RECEIVED BEFORE APRIL 1st.  
 3% DISCOUNT ON CASH ORDERS RECEIVED AFTER APRIL 1st.  
*Orders will be sent C. O. D. if one-fourth cash is sent with order*

Gentlemen:

Send me the goods ordered on reverse side of this order blank for which I am enclosing a money order

or ..... for \$.....

<b>Write Your Name Here</b> 	Mrs., Miss or Mr.	First Name	Middle Initial	Last Name
Street and No. } ..... R. F. D. and Box } ..... Post Office ..... County ..... State ..... Ship by ..... Express or Freight. If Parcel Post, add P.P. Charges To .....			Do Not Use This Space Order No. .... Date Rec'd ..... Acknowledged ..... Shipped .....	

## LIST YOUR ORDER ON REVERSE SIDE

Do not worry if stock does not always come as soon as you may expect. Remember, it is to our advantage as much as yours to have the trees reach you in time for safe planting.

**GUARANTEE**—All goods are guaranteed up to grade and to reach you in good condition. Mistakes, if made, will be promptly rectified, providing you notify us within TEN DAYS. Accept shipment, examine and count on receipt and notify us at once if there should be any errors, and the carrier as well if there should be any damaged stock. Poor soil, unfavorable weather, careless culture all contribute to failure and all are beyond our control. If any of Finger Lakes Nurseries' trees prove untrue to label, we will, upon satisfactory proof, replace free of charge, or refund the purchase price.

**Any Friends of Yours** who you know would like to receive a copy of our catalog, from which to order, will receive a copy in a few days, if you give us their names and addresses below.

Names	Street or R. F. D.	Post Office	State

When you order, if you give here names and addresses of five possible purchasers of our goods, you may add free to your order one Spirea Van Houttei or one Excelsa Climbing Rose.



# Ready-to-Bear Collection

AVOID NEEDLESS WAITING—PLANT BIG TREES

Big, healthy, ready-to-bear trees. Heavily rooted and symmetrically branched, with well-developed fruit spurs, ready to yield full-sized, juicy fruit in the quickest possible time.

You are relieved of the years of waiting, the training and development necessary to produce a high-grade, heavy bearing fruit tree.



THE  
NEW  
CORTLAND

Good Keeper—Delicious Flavor

## FOUR BIG TREES

- 1 Finger Lakes Pride Plum
- 1 Elberta Peach
- 1 Delicious Apple
- 1 Bartlett Pear

5 Year *Early-to-Bear*

All for

**\$5.00**

---

Nov. 5, 1929.

Finger Lakes Nurseries,  
Geneva, N. Y.

Gentlemen:

All your shipments to me arrived in good condition. We were pleased with the careful packing and excellent root system.

Thank you for shipping the Baldwins so promptly.

Robert F. Tighe,

West 56th St., New York City.

---

## High Bush Blueberries

Sturdy Specimens, Nursery Grown Plants, Hardy Everywhere. As Easily Grown as Other Garden Berries

The Blueberry is the first of fruits and the very finest of all berries for pies, preserves or eaten fresh with cream, and is almost unknown to the average gardener. This is due to the scarcity of nursery-grown plants, the only kind that transplant easily and successfully. **Blueberries bear the first or second season.** It is almost impossible to describe the flavor, with its delicious melting flesh, full of rich creamy juice and a delicate wild tang all its own. In autumn the foliage of the Blueberry is more brilliant than any other shrub and their red twigs brighten up the winter landscape. Each plant has been transplanted in the Nursery, insuring excellent root system, and is dug with earth attached to roots, and balled in burlap, hence will reach you in good, moist condition. Price, **\$2.00 each; 3 for \$5.00.**

Plant Blueberries where there is good sunlight about 4 ft. apart. No pruning is necessary. Water plants well the first year for best results.



**BLUEBERRY**

You Will Enjoy Eating These Old-fashioned Blueberries



KILLARNEY QUEEN

5 Super-Quality Roses for \$3.25 (postpaid)  
Every One of Rare Beauty



SOUVENIR DE CLAUDIUS PERNET



GRUSS AN TEPLITZ



FRAU KARL DRUSCHKI

THE  
STAR  
ROSE  
COLLECTION



LADY HILLINGTON

PLANT THIS SPRING—BLOOM THIS SUMMER