

## **Historic, Archive Document**

Do not assume content reflects current scientific knowledge, policies, or practices.



62,39  
RECEIVED  
★ DEC 30 1929 ★  
U.S. Department of Agriculture

# COMMERCIAL FOREST PLANTING

1930



Plantations Guaranteed  
under Contract

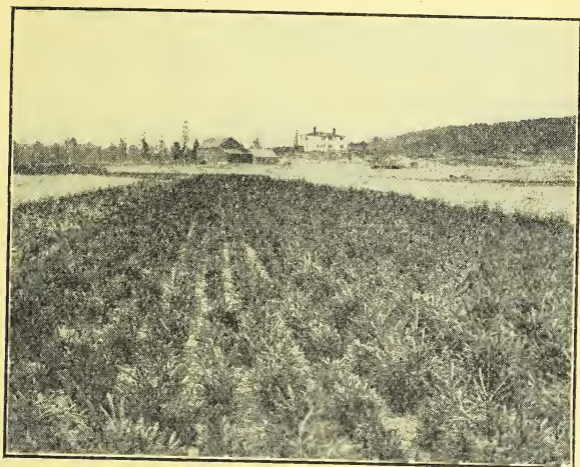
**Franklin Forestry Co.**  
BOSTON,  
MASSACHUSETTS

---

---

*THIS COMPANY MAKES A SPECIAL-  
TY OF RAISING BOTH FOREST  
AND ORNAMENTAL NURSERY  
STOCK FROM SEED AND OF  
PLANTING THIS STOCK EITHER  
WITH OR WITHOUT GUARANTEE.*

*THE GUARANTEE (AS PRINTED  
ON A FOLLOWING PAGE) HAS  
BEEN VERY BENEFICIAL, AND A  
LARGE PART OF OUR FOREST  
PLANTING, COMPRISING MANY  
THOUSANDS OF ACRES, HAS BEEN  
DONE UNDER IT.*



NURSERY BLOCK OF NORWAY SPRUCE

Our nurseries are three in number, all located in Massachusetts, as follows:

Colrain, Mass.

Superintendent—Mr. John P. Galvin

P. O. RFD Griswoldville, Mass.

Telephone Colrain 16-11.

Sudbury, Mass.

Superintendent—Mr. Harold B. Bent

P. O. Box 78, Sudbury Centre, Mass.

Telephone Sudbury 77-3.

Plymouth, Mass

Franklin Forestry Company

89 State Street, Boston.

A detailed description of our stock and planting will be found on the following pages.

---

---

## CONTRACT FOREST PLANTING

### With One-Year Guarantee

(See opposite page)

This work has been for many years and still is our specialty.

### 25% Discount

If we write a contract for a period of 3 years, it carries this liberal discount, explained on pages 7 and 8.

### Time to Plant

Forest planting may be done at any time when there is no frost in the ground with the exception of the summer months, when the new growth is too tender to bear shipment.

### Prices

Detailed prices are given on the center pages, covering the most commonly used sizes—viz., 3 and 4 years old—and various species and areas.

## PLANTING OTHER STOCK

### No Guarantee

We will plant stock obtained from sources other than our own nurseries if desired, and every year we do a considerable amount of such planting.

### Prices

Our regular schedule of prices for this work will be given on application.

---

---

## ONE-YEAR GUARANTEE

The FRANKLIN FORESTRY COMPANY hereby makes the following guaranty with the party of the second part named in the above contract, to which this guarantee is attached and of which it becomes a part:

If after three months and within one year from the completion of the planting work prescribed by said contract, written notice from said party of the second part or his legal representatives shall be received at the principal business office of said Company, to the effect that less than 75% of the trees planted under said contract are then alive, then said FRANKLIN FORESTRY COMPANY shall, at its own expense, make an examination of such planting or plantings, and if, in its judgment, the condition so reported exists, the Company shall, within a period of 18 months from the completion of the said planting, plant a sufficient number of trees (of the same variety and age as the original planting, if possible) to bring the total number of living trees up to at least 75% of the original setting; this work to be done at no expense whatever to the party of the second part.

It is hereby expressly understood and agreed that this guaranty *shall not* apply in case of loss due to fire; nor in case of loss due to convulsions of nature such as landslips, floods, cyclones, or hail storms; nor in case of loss due to any appearance, development, or increase of insect enemies or fungous diseases, except when such insects or fungi were plainly present on the stock when it was originally planted; nor shall it apply in case of loss or damage caused by third parties, whether man or beast, nor in case of loss or damage due to the acts or omissions of the party of the second part, his agent or agents.

But that it *shall* apply only in case of losses caused by unfavorable and extreme climatic conditions, such as heat, cold, drought, or early or late frosts.

The Company further guarantees that no weak or inferior stock shall be used in any planting, and that the trees at the time of setting shall be free from injurious insects or diseases. All stock set by the Company bears the certificate of the State Nursery Inspector.

FRANKLIN FORESTRY COMPANY

by



---

---

## ORNAMENTAL PLANTING

We have opened at our Sudbury nursery a retail landscape department, in charge of a man trained in landscape work. He will be pleased to confer with you regarding your special problems, and to carry out such work as may be decided upon, either furnishing the stock or doing the planting, or both.

He may be seen at the nursery, or addressed in care of our Boston office. Local address: Mr. Abel Cutting, R.F.D. So. Sudbury; Telephone, Sudbury, 46-22.

## NURSERY STOCK

We can of course furnish stock to those who wish to do their own planting, whether forest or ornamental and as this stock is of our own raising we feel able to recommend it.

### Nurseries

Our three nurseries are all located in Massachusetts and are so situated geographically that we are able to begin our shipping season early and continue well into June without injury to the stock.

Shipments of course can also be made in the fall, preferably during the months of September and October.

### Prices

Prices for various sizes and kinds of stock are given on following pages.



---

---

## WOODS WORK

Under this head we handle the following kinds of work:

### Estimating, Surveying and Mapping

We make timber estimates with the degree of accuracy wanted, depending chiefly on the quality of the timber and the time the owner wishes to spend. When desired, the area will be surveyed and mapped and the whole combined to form an accurate working plan for the owner's guidance in operating.

### Forest Thinning and Brush Cutting Cordwood Cutting

The importance of thinning and firelines as a means of improving and protecting forest growth continues to be more and more recognized. Besides the resulting benefit to the stand a profit can often be realized from the cordwood frequently obtained from the operation.

We are also prepared to trim out the brush in young plantations. This is done either by partial or complete lopping around planted trees that are being interfered with, and the cost in many cases is only a few dollars per acre.

Our charge for all woods work of this sort varies with conditions and will be given on application.

### Weevil Removal

The insect known as the White Pine Weevil, while seldom fatal to the tree, sometimes causes injury to young plantations by destroying some of the leading shoots. It is best controlled by cutting and burning the infested tips in late spring or early summer.

Basis of charge similar to preceding paragraph.



---

---

## CONTRACT PLANTING PRICES 1930

(The prices given on these pages include both stock and planting)

Land will be set with the following-named species at the rate of approximately 1000 plants to the acre, spaced about 6½ feet apart each way. Other spacings and species at increased rates.

No parcel less than five acres in area accepted at these prices, and we reserve the right to decline any parcel that in our judgment is too small or too inaccessible to allow us a reasonable profit.

Trees will be set by the thousand unless it is specifically desired to set by the acre, in which case accurate estimate of area must be furnished; if not furnished, land will be surveyed by us at a nominal charge. If set by the thousand, survey is not necessary.

To owners willing to make contracts covering a period of three years, we will allow a DISCOUNT of 25% from these prices, because of the advantage to us of being able to plan our nursery stock requirements ahead. The total amount of stock planted under such 3-year contracts must be at least 30,000 trees, with a minimum of 10,000 each year; and the question of whether a given year's planting is to be done in spring or fall must be left at our option, with due regard for the owner's preference.

---

---

### 3-year WHITE PINE, RED PINE, SCOTCH PINE, or NORWAY SPRUCE TRANSPLANTS

#### GUARANTEED FOR ONE YEAR

5 to 25 acres . . . . .	\$28.00	per thousand
25 to 100 " . . . . .	27.00	" "
100 acres and upward . .	26.00	" "

3-year seedlings of the above species without guarantee, \$20.00, \$19.00, and \$18.00 per thousand

---

---

### 4-year WHITE PINE, RED PINE, SCOTCH PINE, or NORWAY SPRUCE TRANSPLANTS

#### GUARANTEED FOR ONE YEAR

5 to 25 acres . . . . .	\$38.00	per thousand
25 to 100 " . . . . .	37.00	" "
100 acres and upward . .	36.00	" "

---

---

Special plantings made for growing Christmas trees. Ask for particulars.

Older trees of all the above species and many others furnished and planted at varying prices from 10c each up, according to size and quantity, with or without guarantee.

Such trees are useful for ornamental purposes, wind-breaks, screens, etc.

The above prices supersede all previous lists and apply in the New England States only.

Special prices are made for work outside New England.

## CONIFEROUS TREES

WHITE PINE ( <i>Pinus strobus</i> )		Each	100	1,000
Seedlings	3 to 6 in.		\$ 1.00	\$ 5.00
Seedlings	6 to 10 in.		1.40	7.00
3-year transplants	3 to 6 in.		1.60	8.00
4-year transplants	4 to 8 in.		2.00	10.00
5-year transplants	8 to 12 in.		3.00	15.00
Transplants*	12 to 18 in.	\$ .50		
Transplants	18 to 24 in.	.75		
Transplants	2 to 3 ft.	1.00		
Transplants	3 to 4 ft.	1.50		
Transplants	4 to 5 ft.	2.00		
Transplants	5 to 6 ft.	3.00		
Transplants	6 to 7 ft.	4.50		
Transplants	7 to 8 ft.	6.00		
Transplants	8 to 10 ft.	8.00		

RED PINE ( <i>Pinus resinosa</i> )				
Seedlings	2 to 4 in.		1.00	5.00
Seedlings	6 to 10 in.		1.60	8.00
3-year transplants	3 to 6 in.		2.00	10.00
4-year transplants	4 to 10 in.		2.80	14.00
Transplants	12 to 18 in.	.50		
Transplants	18 to 24 in.	.75		
Transplants	2 to 3 ft.	1.00		
Transplants	3 to 4 ft.	1.50		
Transplants	4 to 5 ft.	2.00		
Transplants	5 to 6 ft.	3.00		
Transplants	6 to 7 ft.	5.00		
Transplants	7 to 8 ft.	7.00		
Transplants	8 to 15 ft.	9. to 15.	<i>(at nursery)</i>	

SCOTCH PINE ( <i>Pinus sylvestris</i> )				
Seedlings	2 to 4 in.		1.00	5.00
Seedlings	12 to 18 in.		1.80	9.00
3-year transplants	3 to 6 in.		2.00	10.00
4-year transplants	8 to 12 in.		2.80	14.00
5-year transplants	12 to 18 in.		3.00	15.00
Transplants	12 to 18 in.	.50		
Transplants	18 to 24 in.	.75		
Transplants	2 to 3 ft.	1.00		
Transplants	3 to 4 ft.	1.50		
Transplants	4 to 5 ft.	2.00		
Transplants	5 to 6 ft.	3.00		
Transplants	6 to 7 ft.	5.00		
Transplants	10 to 18 in.	18. to 20.	<i>(at nursery)</i>	

AUSTRIAN PINE ( <i>Pinus austriaca</i> )				
3-year transplants	3 to 7 in.		4.00	20.00
5-year transplants	6 to 14 in.		8.00	40.00
Transplants	8 to 12 in.	.25		
Transplants	12 to 18 in.	.75		
Transplants	18 to 24 in.	1.50		
Transplants	2 to 3 ft.	3.00		
Transplants	3 to 4 ft.	5.00		

MUGHO PINE ( <i>Pinus mughus</i> )				
4-year transplants	3 to 6 in.		4.00	20.00
Transplants	8 in. spread	.30		
Transplants	8 to 12 in. spread	.40		
Transplants	12 to 18 in. spread	.75	71.50	

\* Usually several times transplanted.

<b>PITCH PINE (<i>Pinus rigida</i>)</b>		Each	100	1,000
Seedlings	2 to 4 in.		\$1.00	\$5.00
Transplants	4 to 5 ft.	\$2.00		
<b>JACK PINE (<i>Pinus banksiana</i>)</b>				
Transplants	18 to 24 in.	.75		
Transplants	2 to 3 ft.	1.00		
Transplants	3 to 4 ft.	1.50		
Transplants	4 to 5 ft.	2.00		
Transplants	5 to 6 ft.	3.00		
<b>LIMBER PINE (<i>Pinus flexilis</i>) (Good blue color)</b>				
Transplants	4 to 8 in.	.25		
Transplants	8 to 12 in.	.50		
Transplants	12 to 18 in.	1.00		
<b>JAPANESE RED PINE (<i>Pinus densiflora</i>)</b>				
3-year transplants	3 to 7 in.		6.00	30.00
4-year transplants	6 to 12 in.		8.00	40.00
Transplants	18 to 24 in.	1.00		
Transplants	2 to 3 ft.	1.50		
<b>JAPANESE BLACK PINE (<i>Pinus thunbergii</i>)</b>				
3-year transplants	3 to 6 in.		6.00	30.00
Transplants	18 to 24 in.	1.00		
<b>NORWAY SPRUCE (<i>Picea excelsa</i>)</b>				
Seedlings	2 to 4 in.		1.00	5.00
Seedlings	3 to 7 in.		1.40	7.00
Seedlings	6 to 12 in.		1.80	9.00
3-year transplants	2 to 5 in.		2.00	10.00
4-year transplants	4 to 8 in.		2.80	14.00
5-year transplants	6 to 14 in.		4.00	20.00
Transplants	12 to 18 in.	.50		
Transplants	18 to 24 in.	.75		
Transplants	2 to 3 ft.	1.00		
Transplants	3 to 4 ft.	1.50		
Transplants**	8 to 20 ft.		9. to 25.	(at nursery)
<b>SITKA SPRUCE (<i>Picea sitchensis</i>)</b>				
4-year transplants	4 to 8 in.		10.00	
<b>BLUE SPRUCE (<i>Picea pungens</i>)</b>				
Seedlings	3 to 5 in.		5.00	25.00
3-year transplants	3 to 5 in.		6.00	30.00
Transplants	4 to 8 in.		12.00	
Transplants	8 to 10 in.		20.00	
Transplants	12 to 18 in.	4.00		
Transplants	18 to 24 in.	6.00		
Transplants	24 to 30 in.	7.50		
Transplants	36 inch	10.00		
Transplants	42 inch	12.50		
Transplants	48 inch	15.00		
Transplants	60 inch	20.00		
<b>WHITE SPRUCE (<i>Picea alba</i>)</b>				
4-year transplants	4 to 10 in.		6.00	30.00
Transplants	6 to 10 in.	.25		
<b>ENGLEMAN SPRUCE (<i>Picea englemanni</i>)</b>				
Transplants	8 to 12 in.	.75		(selected blue)
<b>BALSAM FIR (<i>Abies balsamea</i>)</b>				
3-year transplants	3 to 6 in.		6.00	30.00
4-year transplants	4 to 8 in.		8.00	40.00
Transplants	8 to 12 in.	.25		
Transplants	12 to 18 in.	.50		
Transplants ( <i>bushy</i> )	2 to 3 ft.	3.00		
Transplants	4 to 5 ft.	4.00		
Transplants	5 to 6 ft.	5.00		

\*\* *Special individual specimens for living Christmas trees.*

---

---

**DOUGLAS FIR (*Pseudotsuga taxifolia*)**

		Each	100	1,000
4-year transplants	3 to 6 in.		\$8.00	\$40.00
Transplants	2 to 3 ft.	\$ 4.00		

**SILVER FIR (*Abies concolor*)**

Transplants	4 to 8 in.	.10		
Transplants	6 to 10 in.	.25		
Transplants	9 to 14 in.	.75		
Transplants	18 to 24 in.	1.50		
Transplants	2 to 3 ft.	3.00		

**HEMLOCK (*Tsuga canadensis*)**

Transplants	4 to 8 in.	.10	9.50	90.00
Transplants	6 to 10 in.	.15	14.25	120.00
Transplants	8 to 12 in.	.25		
Transplants	12 to 16 in.	.50		
Transplants	2 to 3 ft.	3.00		
	(bushy)			
Transplants	3 by 3 ft.	6.00		
	(bushy)			
Transplants	4 to 5 ft.	9.00		
	(bushy)			

**ARBORVITAE (*Thuja occidentalis*)**

Transplants	3 to 6 in.		6.00	30.00
Transplants	8 to 12 in.	.25		
Transplants	12 to 18 in.	.50		
Transplants	18 to 24 in.	.75		
Transp'ts (bushy)	24 to 30 in.	1.50		
Transplants (bushy)	3 to 4 ft.	3.00		
Transplants (bushy)	4 to 5 ft.	5.00		

**GLOBE ARBORVITAE**

Transplants	18 by 18 in.	3.00		
-------------	--------------	------	--	--

**EUROPEAN LARCH (*Larix europea*)**

Transplants	10 to 36 in.		10.00	
Transplants	2 to 3 ft.	1.00		
Transplants	3 to 4 ft.	1.50		
Transplants	5 to 6 ft.	3.00		

**JAPANESE LARCH (*Larix leptolepis*)**

Transplants	5 to 6 ft.	1.50		
Transplants	6 to 7 ft.	3.00		

**BROADLEAF TREES****WHITE ASH (*Fraxinus americana*)**

Seedlings	4 to 12 in.		2.00	10.00
Transplants	2 to 3 ft.	.25		
Transplants	3 to 4 ft.	.50		

**AMERICAN ELM (*Ulmus americana*)**

Transplants	2 to 3 ft.	.25		
-------------	------------	-----	--	--

**EVERGREEN SHRUBS****RHODODENDRON MAXIMUM (White)**

Transplants	2 to 3 ft.	3.00		
-------------	------------	------	--	--



---

---

**MOUNTAIN LAUREL (Kalmia latifolia)**

Each

Transplants 12 to 24 in. \$2. to 4.

**RETINOSPORA (Chamaecyparis)**

Ret. pisifera	2 to 3 ft.	3.00
Ret. aurea	2 to 3 ft.	3.00
Ret. filifera	2 to 3 ft.	4.50
Ret. plumosa	12 to 18 in.	1.50

**ARBORVITAE (Thuja)**

T. wagneri	2 to 3 ft.	3.00
T. hoveyi	18 to 24 in.	2.00
T. pyramidalis	2 to 3 ft.	3.50

**DECIDUOUS SHRUBS****VANHOUTTE SPIREA (Spirea vanhoutteii)**

2 to 3 ft. .50

**JAPANESE BARBERRY (Berberis thunbergii)**

Transplants 12 to 18 in. .15

**CALIFORNIA PRIVET (Ligustrum ovalifolium)**

Transplants 18 to 24 in. .20

Lower prices on lots from 10,000 to 100,000 and up.

We have larger sizes and various species other than those listed which we will gladly quote on application.

Note conditions on inside back cover.

In the case of all sizes, we reserve the right to decline any order for a quantity too small to make shipment profitable.

The two white pines (strobis & flexilis) cannot be shipped outside the New England States.

**SPECIAL LOTS OF STOCK FOR SALE  
SPRING 1930**

WHITE PINE (Pinus strobus)	Each	100	1,000
200,000 Seedlings 12 to 18 in.		<i>Low prices large lots</i>	
100,000 Transplants 8 to 12 in.	5,000 & up		\$10.00
20,000 Transplants 12 to 18 in.			15.00
25,000 Transplants 18 to 24 in.			20.00
1,000 Transplants 4 to 5 ft.		190.00	900.00
300 Transplants 5 to 6 ft.		285.00	
50 Transplants 10 to 12 ft.	\$10.00		B&B
	(extra bushy)		

**RED PINE (Pinus resinosa)**

50,000 Seedlings 12 to 18 in.		<i>Low prices large lots</i>	
150,000 Transplants 6 to 12 in.			18.00
2,000 Transplants 18 to 24 in.		30.00	250.00
2,000 Transplants 2 to 3 ft.		75.00	500.00
250 Transplants 5 to 6 ft.	3.00	285.00	B&B
700 Transplants 8 to 10 ft.	4.50		B&B
	(branches begin 3 ft. from ground)		
20 Transplants 8 to 10 ft.	7.00		B&B
	(bushy)		
10 Transplants 12 to 15 ft.	15.00		B&B
	(bushy)		
10 Transplants 18 ft.	20.00		B&B
	(bushy)		



<b>SCOTCH PINE (<i>Pinus sylvestris</i>)</b>			
Each	100	1,000	
500 Transplants	2 to 3 ft.	\$ 95.00	
500 Transplants	3 to 4 ft.	143.00	
500 Transplants	4 to 5 ft.	190.00	
50 Transplants	7 to 9 ft.	\$7.00	
<b>MUGHO PINE (<i>Pinus mughus</i>)</b>			
1,000 Transplants	18 to 24 in. spread	100.00	
<b>JAPANESE RED PINE (<i>Pinus densiflora</i>)</b>			
200 Transplants	3 to 4 ft.	3.00	200.00
<b>JACK PINE (<i>Pinus banksiana</i>)</b>			
300 Transplants	3 to 4 ft.	100.00	
100 Transplants	4 to 5 ft.	150.00	B&B
100 Transplants	5 to 6 ft.	285.00	B&B
<b>NORWAY SPRUCE (<i>Picea excelsa</i>)</b>			
50,000 Seedlings	6 to 10 in.		\$ 8.00
2,000 Transplants	12 to 18 in.		100.00
2,000 Transplants	18 to 24 in.		150.00
500 Transplants	2 to 3 ft.	1.00	95.00
30 Transplants	6 to 8 ft.	6.00	B&B
<b>ENGLEMAN SPRUCE (<i>Picea englemanni</i>)</b>			
1,000 Transplants	8 to 12 in. ( <i>extra, blue</i> )	1.00	95.00
<b>RED SPRUCE (<i>Picea rubra</i>)</b>			
100 Collected stock	5 to 6 ft. ( <i>bushy</i> )	4.00	B&B
<b>DOUGLAS FIR (<i>Pseudotsuga taxifolia</i>)</b>			
200 Transplants	18 to 24 in.	1.00	95.00
<b>HEMLOCK (<i>Tsuga canadensis</i>)</b>			
5,000 Transplants	5 to 10 in.		200.00
<b>ARBORVITAE (<i>Thuja occidentalis</i>)</b>			
20 Transplants	4 to 5 ft. ( <i>headed—3 ft. spread</i> )	6.00	B&B
<b>EUROPEAN LARCH (<i>Larix europea</i>)</b>			
200 Transplants	4 to 5 ft.	2.00	B&B
<b>JAPANESE LARCH (<i>Larix leptolepis</i>)</b>			
100 Transplants	3 to 4 ft.	1.00	B&B
100 Transplants	4 to 5 ft.	1.50	B&B
200 Transplants	6 to 8 ft.	2.50	B&B
<b>MOUNTAIN LAUREL (<i>Kalmia latifolia</i>)</b>			
Collected Stock	12 to 24 in.	50.00	B&B

B&B means roots in ball of dirt, wrapped with burlap; not included unless noted, except included in carload lots.

---

---

## SPECIAL OFFERS

### FOR GROUP OR FOUNDATION PLANTING

4 Mugho Pine	12 by 12 in.	} Price, \$18.00
2 Red Pine	24 in.	
2 Scotch Pine	24 in.	
1 Concolor Fir	12 to 18 in.	
2 Norway Spruce	18 to 24 in.	
1 Arborvitae	18 to 24 in.	

### FOR HEDGE PLANTING

25 Norway Spruce	18 to 24 in.	Price, \$10.00
25 Arborvitae	18 to 24 in.	Price, \$15.00

Prices on nursery stock given on the preceding pages are net, F. O. B. cars, except as noted, packing added at cost.

All stock is listed subject to previous sale.

While we do not guarantee our stock when not planted by us, we use every effort to satisfy and please our customers, and if notified within 5 days of any unsatisfactory shipment received from our nurseries we will either make it right or take the stock back.



NURSERIES:

COLRAIN — SUDBURY — PLYMOUTH  
MASSACHUSETTS



BOSTON OFFICE — 89 STATE STREET

*Telephone — Hubbard 5169*

RUSSELL S. LANGDELL..... *President*  
WALTER L. DANE..... *Vice-President*  
HARRY F. GOULD..... *Treasurer*