

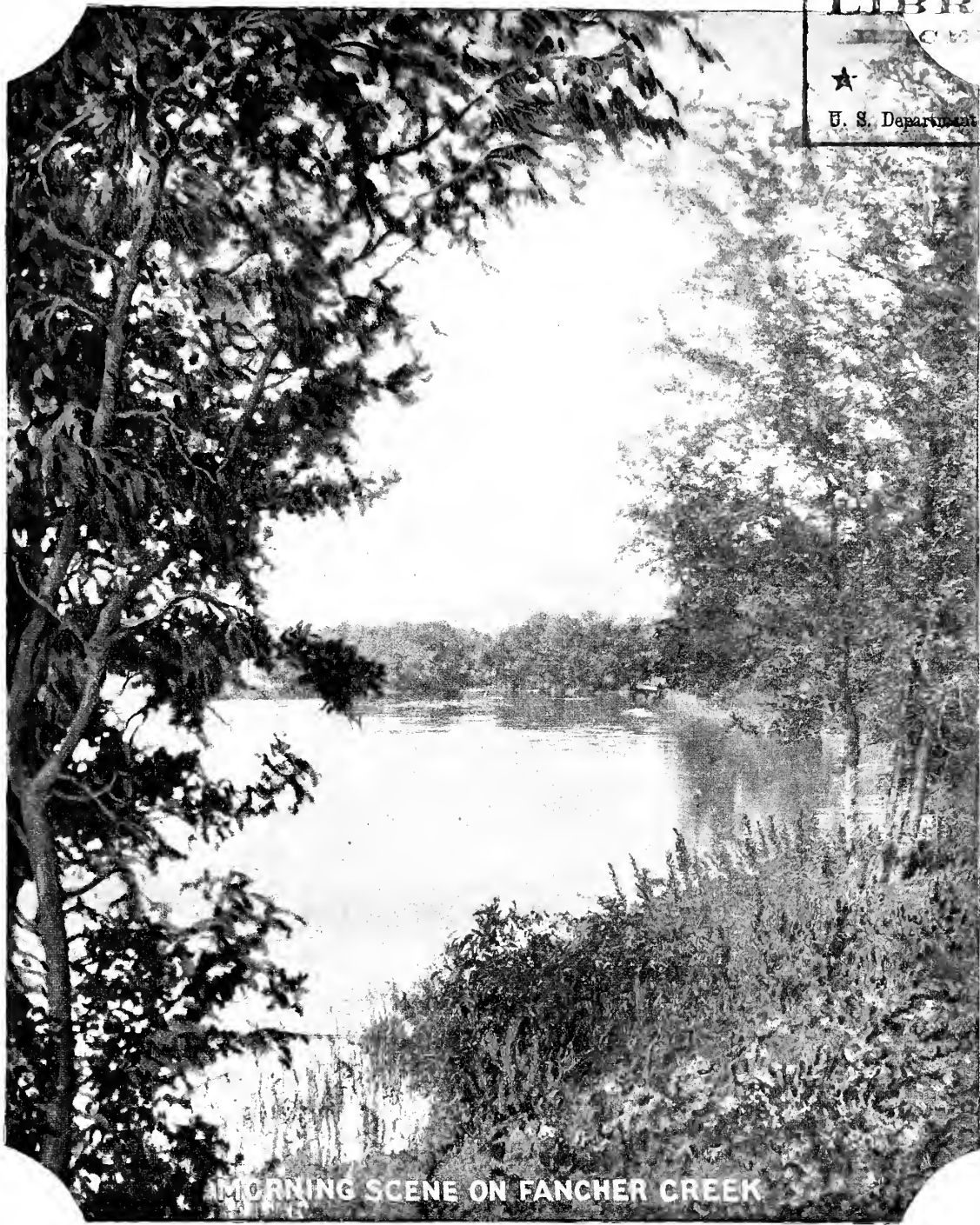
Historic, Archive Document

Do not assume content reflects current scientific knowledge, policies, or practices.

62.09

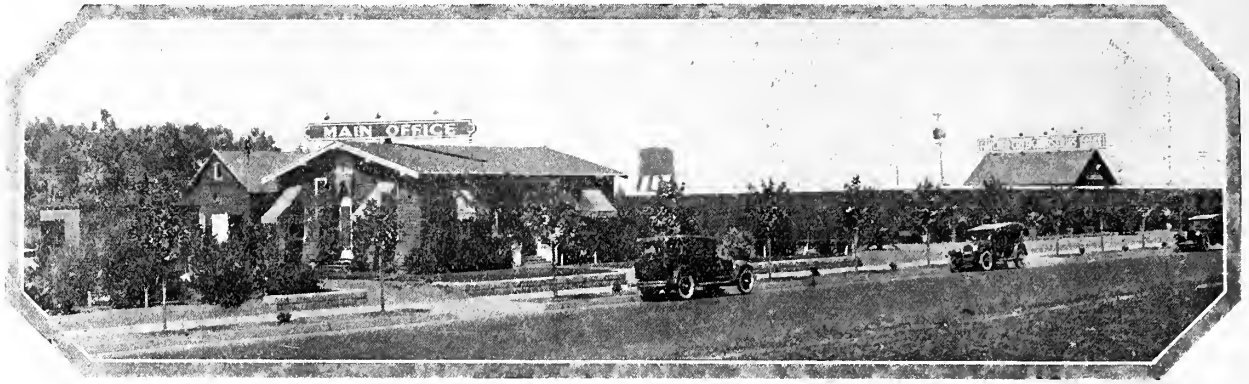
DEC 27 1929

LIBRARY
RECEIVED
★ ★
U. S. Department of Agriculture



MORNING SCENE ON FANCHER CREEK

1930



View of Main Office and portion of our Gigantic Plant Store.

FOUNDED IN 1884—The Fancher Creek Nurseries under the direction of the late Geo. C. Roeding, who was one of California's outstanding figures in horticulture, have proven an invaluable aid to thousands of planters and growers throughout the country annually. Starting on a small scale this company has improved and enlarged its plant until, at the present time, it stands among the foremost in the West. Fruit Trees, Vines, and Ornamental stock which have been given the best of care from the time of planting to date of shipment; stock that is true to name; courteous and conscientious treatment in all our dealings with our customers have helped to build up and make this nursery what it is to-day.

Hundreds of prosperous orchards and vineyards in all parts of the world give testimony to the quality of nursery fruit trees and vines grown in the extensive propagating grounds of the Fancher Creek Nurseries. Only on a basis of merit and service is your business solicited and accepted. The orders of intending planters are solicited with a feeling of confidence that we can meet their requirements with reliable trees and a service that satisfies and makes old patrons out of new ones.

USE THE ORDER SHEET AND SELF ADDRESSED ENVELOPE enclosed with this catalogue. Send us your order today. Trees or vines planted this season will soon return their initial cost.

FANCHER CREEK NURSERIES

Read Carefully Before Placing Your Order

PLEASE USE THE ORDER SHEET—It saves your time and ours and will facilitate the filling of your order.

PRICES—Prices quoted in this catalog are for stock at Fresno, Freight or express charges are to be paid by purchaser.

TERMS—Cash. Orders to be shipped C.O.D. must be accompanied by one-quarter the amount of the order. Send post-office money order, registered letter, express order, draft or check. All orders from foreign countries must be accompanied by draft or international money-order payable in U. S. Gold coin.

EXPORT ORDERS—Freight charges must be prepaid on all orders to foreign countries. Full amount of the order in cash and in addition thereto should be added at least one-half of the amount for transportation charges. Any amount remitted and not used will be returned to the purchaser.

SUBSTITUTION—Please state on the order sheet whether substitution will be permitted, as we feel at liberty when no instructions accompany the order to substitute with varieties as nearly similar as possible. We never substitute on commercial orders without first obtaining consent of purchaser.

PACKING—No Charge will be made for packing.

INSPECTION—We guarantee all stock to pass inspection.

ERRORS—Mistakes made in filling orders will be cheerfully rectified, but we must respectfully request prompt notice of any error found.

QUANTITY ORDERS—Articles mentioned in this catalog will be furnished as follows:—5 of a variety at the 10 rate, 50 at the 100 rate, 500 at the 1000 rate. Purchasers will please bear in mind that the quantity rates will apply only where multiples of the same variety of trees are ordered and not on assortments.

GUARANTEE—The Fancher Creek Nurseries will exercise care to have all stock true to name; nevertheless it is understood and agreed that should any stock prove untrue to name, the Fancher Creek Nurseries shall be liable for the sum paid for the stock which may prove untrue, and shall not be liable in any greater amount.

We accept all orders on condition that same shall be void should injury befall our stock from fire, frost, floods, drouth or any other cause which could not be prevented and over which we have no control.

Address all Correspondence to

FANCHER CREEK NURSERIES

Telephone, Telegraph, Post Office and Express Address

FRESNO, CALIFORNIA

Name
Postoffice
R. F. D. No. Box
State
Street Address

FANCHER CREEK NURSERIES,

P. O. Drawer 1310,

FRESNO, CALIFORNIA

ITS NOT A HOME UNTIL ITS PLANTED

BEFORE SEALING THIS ENVELOPE

**Be sure you have written your name,
postoffice and point to which you wish
this order shipped plainly on your order. Be
sure you have given size of trees wanted.**



FANCHER CREEK NURSERIES

SINCE.....1884



MISCELLANEOUS SUPPLIES

KNIVES—SHEARS

We have selected the following European manufacture of Knives and Shears, having tested them and found them made of the very best quality of steel and entirely suitable for the work for which they were intended. We do not hesitate in recommending them to our customers.



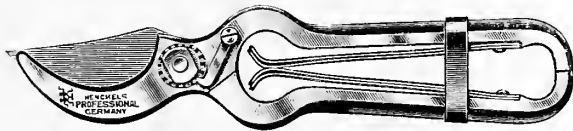
Henckels Stationary Handle Budder. Maple wood; fine quality steel. 75c each.



Henckels Stationary Handle Pruning Knife No. 305 1/2. Beechwood handle with three inch blade, glazed finish. A fine quality knife. Price \$1.25 each.



Henckels Stationary Handle Crafting Knife. Maplewood handle, patterned after most approved style; fine quality steel; heavy size. \$1.00 each.



Henckels "Professional" Pruning Shears No. 220. Blade of toughest steel ground to a thin edge. Extra heavy frame gives stability to shear while in operation. Brass springs of special temper, durable and pliable. One extra blade supplied with each shear. Price \$6.00 each postage prepaid.

T. & O. TREE SUPPORT

Here's a time and money saver. An economical device for wiring trees that will not grow into the limbs or come unfastened when properly installed. The T. & O. Tree Support makes a good permanent job on heavily laden fruit trees by using the circle wire system as shown in the picture at the right. Many are using this system on YOUNG trees, because it is quickly installed and easy to change. In wiring a tree with the circle system, snap the tree supports on the main limbs and thread the circle wire through the loops made for this purpose and so on around the tree. Now cut the wire and bring the two ends to-gether. The lower, outstanding limbs below the circle wire, usually called pick-ups, may be supported by placing a T. & O. tree support on said limbs and running a lighter wire up to the circle wire. If you anticipate raising the circle wire as the tree grows, cut your wire about three feet longer than necessary to bring the ends to-gether and this will give you the extra wire required when you wish to raise the supports.

Supports are furnished in three sizes and are constructed of high grade galvanized iron.

	Per Doz.	Per 100	Per 1000
No. 1 Yoke 2 1/4" mouth-----	\$.50	\$1.75	\$13.60
No. 2 Yoke 2 3/4" mouth-----	.50	2.00	16.00
No. 3 Yoke 3 1/4" mouth-----	.60	2.50	18.40

Complete instructions for installing with each order. Orders of 100 or more will be shipped direct from Factory at Sacramento, express or freight collect. Parcel post orders will be shipped with postage collect. Cash must accompany orders.



ORDER NOW. Don't be unprepared when enemies of your garden appear.

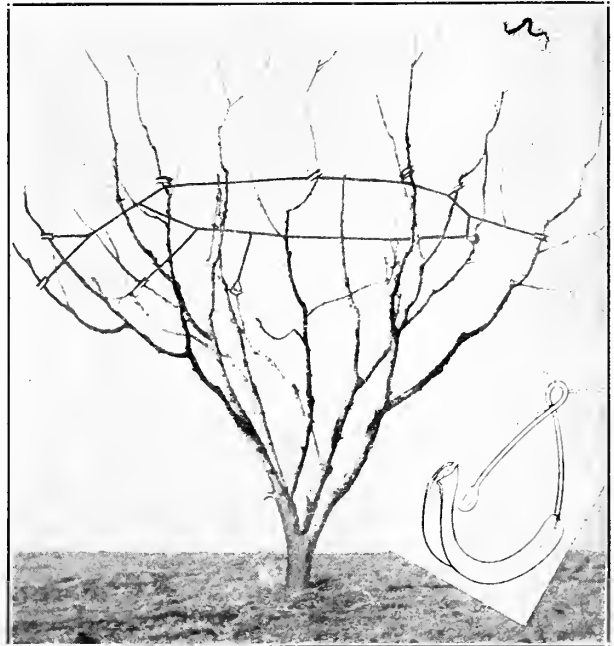
Small garden size (makes 6 qts. of spray) \$.25
Half-pint size (makes four gal. of spray)60

This is a tested and proven spray for flowers, shrubs, trees, fruits and vegetables. It kills rose-bugs, aster beetles, aphid (plant lice) caterpillars, slugs, inch worms, potato worms, cabbage worms, and many other insects.

SAFE: J-O Plant Spray is non-poisonous to humans or animals when diluted as directed.



The makers of J-O Plant Spray, who have been insecticide specialists since 1874, are aware of the confidence our customers place in us, and they unhesitatingly authorize us to refund the full price of J-O Plant Spray to any dissatisfied customer.



THE T. & O. TREE SUPPORT
Showing the Circle Wire System of wiring fruit trees. Note the Pick ups for outside limbs.

FANCHER CREEK QUALITY SINCE 1884



FANCHER CREEK NURSERIES

SINCE.....1884



All Plant Life Must Be Fed
Better Lawns—Better Vegetables—Better Flowers



Sunshine, air, and water cannot grow plants without food. Supply the necessary nourishment by using Vigoro, the specially prepared plant food.

CLEAN—ODORLESS—EASY TO APPLY

100 lb. bag.....\$6.00
 50 lb. bag.....\$3.75

VIGORO
Specially prepared plant food

25 lb. bag.....\$2.00
 5 lb. bag.....\$.60

A Swift & Company Product

HORTICULTURAL BOOKS

Roeding's Fruit Growers Guide. Third edition. The illustrations in this book in many cases, convey the information desired. There are few men in California who have given more thought and who have had a wider experience in diversified horticulture than Geo. C. Roeding. This book contains practical information presented in a clear, concise manner which will be appreciated by the novice as well as the experienced fruit grower. Price \$1.25 per copy, prepaid.

Farm and Garden Rule Book. By Prof. L. H. Bailey. A new edition of the Horticulturists' Rule Book and Compendium of Useful Information for Nurserymen, Florists, Seedmen, and Fruit-Growers. Size of book, 12 mo., containing 600 pages. Price \$2.50 postage prepaid.

California Vegetables in Garden and Field. Fourth edition, revised and extended. A manual of practice with or without irrigation for semi-tropical countries. By Edward J. Wickson, A. M. Size of page, 6 by 9½, 368 pages, well printed and strongly bound in cloth; illustrated. Postage prepaid, \$2.00.

Number of Trees or Plants to An Acre

SQUARE METHOD

No. Plants	No. Plants
9 feet apart each way..... 537	22 feet apart each way..... 90
10 feet apart each way..... 435	24 feet apart each way..... 75
12 feet apart each way..... 302	25 feet apart each way..... 69
14 feet apart each way..... 222	30 feet apart each way..... 48
15 feet apart each way..... 193	35 feet apart each way..... 35
16 feet apart each way..... 170	40 feet apart each way..... 27
18 feet apart each way..... 134	50 feet apart each way..... 18
20 feet apart each way..... 109	60 feet apart each way..... 12

RULE—Square Method. Multiply the distance in feet between the trees by the distance the plants are apart in the rows, and the product will be the number of square feet for each plant or hill, which, divided into the number of feet in an acre (43,560) will give the number of plants or trees to the acre.

Yucca Tree Protectors

Made From the Yucca Palm

A perfect protection against rabbits, grasshoppers, borers, heat of the sun, etc.

No tree should be planted without protection. Our extremely long, hot dry summers makes it imperative for all fruit growers to shade the bodies of young trees. The Yucca protectors are open grained allowing free circulation of air.

The method of tying is guaranteed not to girdle or injure your trees. These protectors are not affected by rain. Soak the bundles in water before using.

Length	Width	Wt. per 100	Per 25	Per 50	Per 100	Per 1000
30 in.	7 in.	22 lbs.	\$1.50	\$2.00	\$3.00	\$23.00
24 in.	7 in.	22 lbs.	1.25	1.75	2.50	20.00
18 in.	7 in.	13 lbs.	1.00	1.50	2.25	18.00
16 in.	7 in.	12 lbs.	.90	1.25	2.00	15.00
14 in.	7 in.	10 lbs.	.80	1.00	1.75	14.00
12 in.	7 in.	9 lbs.	.70	.90	1.50	13.00
10 in.	7 in.		.60	.80	1.25	11.00

LAWN SEED

For best results we recommend mixing the Blue Grass and Clover half and half. One pound of either Blue Grass or Clover will cover 300 square feet.

Kentucky Blue Grass. Best Grade 50c per pound, or \$4.50 per ten lbs.

White Lawn Clover. 50c per lb. or \$4.50 per ten lbs.



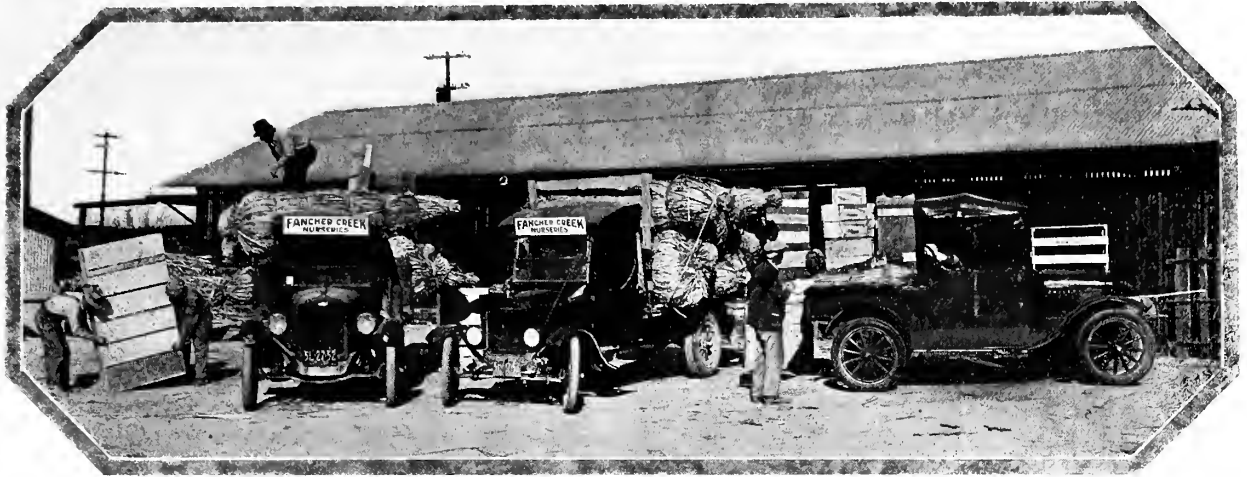
GRAFTING WAX. Half Pound 25c; Pound 40c

YUCCA PROTECTORS MAKE THRIFTY TREES



FANCHER CREEK NURSERIES

SINCE ... 1884



OUR STOCK IS SHIPPED TO ALL PARTS OF THE WORLD

FRUIT TREE DEPARTMENT

Whether you own a large ranch or only a small city lot, and regardless of whether you wish to plant one tree or several thousand you will find listed in this catalogue worthwhile commercial and home orchard varieties of fruit trees, grapevines and berry plants.

Home grown fruit is a distinct asset in this day of high-priced food. The home orchard will provide the family with well ripened, luscious fruits of your choice. Don't put off ordering. It's your duty to your family. Trees or vines planted this season will soon return their initial cost.

RIPENING DATES:—The season for ripening as given with the descriptions are at the best only approximate, and apply more especially to the San Joaquin Valley. In the coastal regions and higher mountain valleys the season will be a little later.

GRADING OF TREES:—We grade all of our fruit trees by caliper rather than by height. This method of grading gives our customers a more uniform grade of tree than by the old method of grading by height. Trees graded by caliper, when planted in orchard form and properly cut back, will be of uniform size and much more satisfactory to the planter than trees graded by height. We grade our trees on the following basis:

- 6 to 8 grade trees to caliper not less than $\frac{3}{4}$ inch.
- 4 to 6 grade trees to caliper not less than $\frac{1}{2}$ inch.
- 3 to 4 grade trees to caliper not less than $\frac{3}{8}$ inch.
- 2 to 3 grade trees to caliper not less than $\frac{1}{4}$ inch.

THE INEXPERIENCED PLANTER should bear in mind that deciduous fruit trees **MUST BE CUT BACK WHEN PLANTED** if results are to be obtained.

Varieties, Descriptions and Prices

THE APPLE

Apples do exceedingly well in all the coast counties as well as in the foothills and mountains of the Sierra Nevada, but broadly speaking, the hot interior valleys are not suitable to commercial apple culture hence in these sections farmers should limit planting to a few trees and sorts for family or local use.

Our list includes all the desirable varieties for home and commercial planting on the Pacific Coast.

PRICE EACH	1 to 4 Trees	5 to 49 Trees	50 to 299 Trees	500 or More
2 to 3 grade	\$.55	\$.40	\$.30	\$.25
3 to 4 grade65	.50	.40	.35
4 to 6 grade70	.55	.45	.40
6 to 8 grade75	.60	.50	.45

Arkansas Black. Season, November-December; quality shipping and market. Fruit roundish and uniform; skin a deep rich maroon red decidedly "waxy" to the touch; flesh a deep cream in color, fine firm, crisp and of good flavor; a good keeper. Tree large and vigorous, upright spreading, limbs large, stout and open. Fine for planting in the interior valleys for family use.

Delicious. No apple of late introduction has been more extensively planted. Fruit long and tapering, visibly ribbed; skin yellow overspread with dark red, bright crimson on the sunny side; flesh white, fine grained, sweetly acid with a pleasant aroma. Tree large, uniform, spreading, hardy, productive with smooth and stout branches. Does well in the mountain and foothill regions of the state. Season, November.

Gravenstein. A most popular market, shipping and culinary fruit. It is of uniform size but irregular shape; skin a greenish yellow, striped with light and dark red shadings; flesh yellow, of good texture, crisp, juicy and tender. Tree a robust grower. Being one of the earliest commercial varieties the fruit commands a good price on the market. Season, August.

Jonathan. Ripens in October; a favorite market, shipping and culinary variety. Fruit medium size, roundish and oval, on the sunny side quite dark and in some specimens almost black; flesh a delicate cream with a faint suggestion of red; flavor excellent. It does well in practically all sections.

Red Astrachan. A July apple, fine for home use and local market. Fruit of fair size, slightly flat; skin thin, tender, a mild green in color, overspread with deep crimson stripes; flesh white with a faint greenish tinge, tender, subacid, juicy and of good flavor. Tree a good producer and adapted to all sections of California. No home orchard is complete without this variety.

Red June. A beautiful red dessert apple of uniform size and shape. Fruit medium size; skin deep red suffused with yellow; flesh white, tender, with a pleasant subacid flavor. Tree a fairly reliable bearer, with short, stout, curved branches. Does well in our interior valleys. Season, July.

Rome Beauty. Season, November; quality shipping and market. Fruit medium in size and somewhat oblong in shape; skin rather tough

GROW YOUR OWN "APPLE PIES." PLANT AN APPLE TREE.



FANCHER CREEK NURSERIES

SINCE .. 1884



but smooth, splashed and mottled with brilliant red over a base of yellow; flesh white, tinged with green, fine grained, juicy, with a subacid flavor. Tree dwarf, dense and a prolific bearer.

Stayman Winesap. Does well in the interior valleys and foothills, although there are also successful orchards in the coastal region. Fruit large and round; skin dull carmine, smooth and thick; flesh greenish yellow, firm and quite acid in flavor. Tree vigorous, spreading and open. Season, December.

White Astrachan. Fruit large, almost round, slightly flattened at either end; skin deep yellow suffused with pink and red; flesh white and decidedly acid, making it desirable for cooking. Tree hardy, compact, robust and productive. One of the best of the early varieties. Season, July.

White Winter Pearmain. A splendid shipping and market variety. Fruit medium to large in size and oblong in shape; skin pale yellow with a brilliant blush on sunny side, surface covered with russet dots; flesh yellow, fine grained, tender and juicy. Tree vigorous, producing regularly abundant crops. Will grow on most any kind of soil; fruit a good keeper. Season November.

Winter Banana. A large, shapely, yellow apple with a distinct musky fragrance. Fruit large, almost round, somewhat conical, flattened at base; skin thick, tough, yellow in color with a dark pink cheek on sunny side; flesh crisp and tender, subacid in flavor and of good quality. Does fine in our coastal regions. Season October.

Yellow Bellflower. California's staple market and shipping variety. Fruit large, oblong and ribbed, which is intensified toward the blossom end; skin yellow suffused with a tinge of green, pink blush on sunny side; flesh nearly white, firm, tender and juicy. Season, October.

Yellow Newtown Pippin. A prime favorite for home orchard and commercial plantings. Fruit irregular, oblate and somewhat angular; skin rather tough, overspread with russet dots, yellow in color shading to pink; flesh cream white, firm, tender and slightly acid. Season, December.

THE CRAB APPLE

Red Siberian. Fine for cooking and preserving. Fruit rather small, round, and somewhat flat at the base; skin a bright red on a yellow field; flesh subacid, fine for cider making, jellies and spiced sweet pickles. Tree hardy, vigorous, long lived and a good bearer. Grown successfully in all parts of California. Season, August.

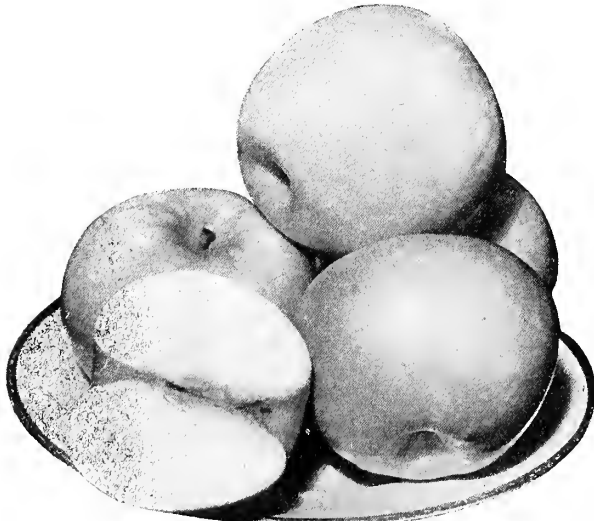
Transcendent. Season, September; quality home use. Fruit quite large and flattened at the end; skin golden yellow with rich red cheek; flesh crisp, tender and subacid. Tree large, spreading, drooping, curved and overhanging branches. The best large crabapple.

Whitney. A handsome dessert fruit, also a good local market seller. Fruit extra large, uniform in shape, round-conic or ovate; skin a bright green with yellow tinge striped red; flesh yellow, crisp, firm, juicy and of excellent flavor. Tree somewhat spreading, medium size, with long, stout, curved branches. Season, August.

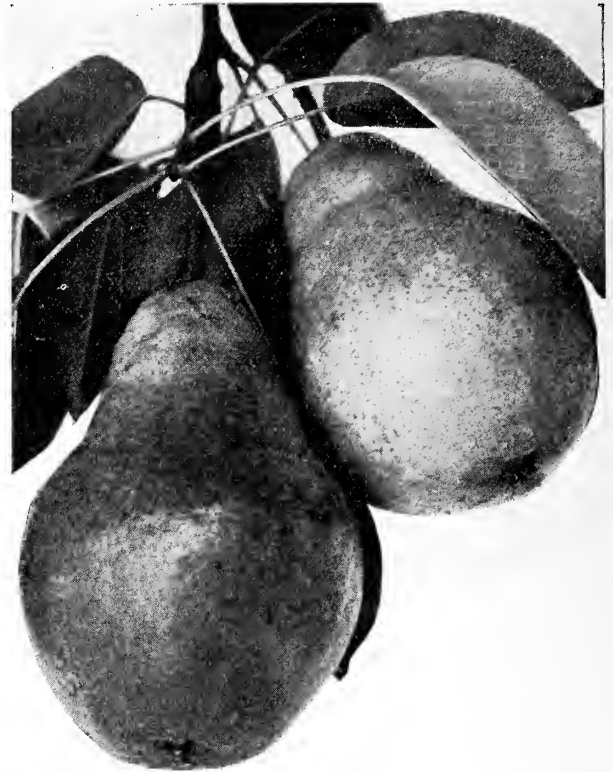
THE PEAR

Our Pear trees are all budded on French root with the exception of the Bartlett which we can supply on either French or Calleryana root. State root desired when ordering this variety.

PRICE EACH	1 to 4 Trees	5 to 49 Trees	50 to 299 Trees	300 or More
2 to 3 grade	\$.55	.40	\$.30	\$.25
3 to 4 grade	.65	.50	.40	.35
4 to 6 grade	.70	.55	.45	.40
6 to 8 grade	.75	.60	.50	.45



WHITE WINTER PEARMAIN



BARTLETT PEARS

Bartlett. Season, August; quality canning, drying, market and shipping. Fruit large and regular in shape; oblong-obtuse-pyriform, tapering slightly toward the apex; skin bright yellow with rose blush on sunny side; flesh fine grained, white, buttery, juicy and a decided pear flavor. Tree tall and upright, medium size, with stocky branches. This is the outstanding market canning and drying pear of California.

Beurre Bosc. A valuable pear for market and distant shipments. Fruit uniform in size, acute egg-shaped with long tapering neck; skin brownish yellow in color; flesh yellowish white, tender, melting, juicy and a rich aromatic flavor. Tree medium in size, very upright in habit. Requires pruning regularly to develop fruit spurs. The fruit is unique for its graceful shape and beautiful color. Season, September.

Beurre Hardy. A popular variety in the Eastern states which does equally well under California conditions. Ships well. Fruit regular and of medium size with tapering neck; skin yellow in color with pink blush on sunny side; flesh white, somewhat granular, juicy, tender, sweet with a pleasant vinous flavor. Tree large, upright, vigorous. Used for double working pears because of its affinity for the quince root.

Beurre d'Anjou. A fine variety for table and market. Fruit is large, russet yellow, shaded with crimson; juicy and delicious. Tree is medium size and of upright habit. Season, September.

Doyenne du Comice. A valuable commercial pear on this Coast chiefly for shipping and home use. Fruit large, roundish, tapering toward the stem end; skin greenish-yellow shaded crimson on the sunny side; flesh rich, buttery, melting, and pleasantly aromatic. Tree dense, upright productive; comes into bearing at an early age. Season, October.

Easter Beurre. An excellent shipping pear, and good for home market and storage. Fruit large to extra large and roundish in shape; skin yellowish green covered with russet dots; flesh white, juicy, fine grained and of a sprightly sweet flavor. Tree vigorous, upright spreading with open top. Valuable as a pollinizer when planted with other winter varieties. Season, October.

Glou Morceau. Known to have produced forty tons to the acre. Fruit egg-shaped but irregular and somewhat ribbed; skin russety, of a pale greenish-yellow with numerous small dots; flesh tinged yellow, good grain tender, buttery, sweet and pleasantly aromatic. Tree a rapid grower, a wonderful producer, free branching and spreading, upright and vigorous. Season, November.

Madeline. Medium size; yellowish green; very juicy, melting and sweet; the earliest sort we have. June and July.

P. Barry. Large to very large; elongated pyriform; deep yellow, nearly covered with rich golden russet; flesh whitish, fine, juicy, buttery, melting, rich and slightly vinous; tree healthy and regular bearer. January to March.

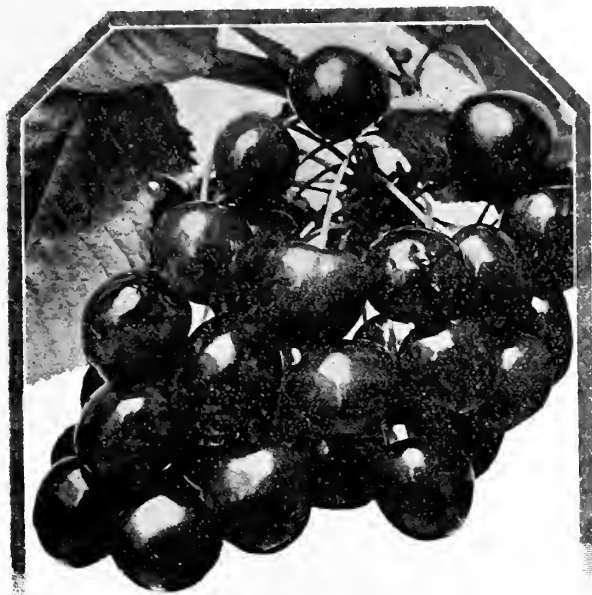
Winter Nelis. The standard winter variety in the United States. Fruit medium in size and of a roundish formation; skin decidedly brown dotted with gray russet, flesh cream colored, fine grained, juicy and of a rich aromatic flavor. Tree a strong grower and of spreading habit. Produces enormous crops when pollinized with Easter Beurre. Season, November.

PEARS ARE DELICIOUS FRUITS.—GROW YOUR OWN.



FANCHER CREEK NURSERIES

SINCE.....1884



BLACK TARTARIAN CHERRIES

THE QUINCE

Though a fruit long and widely cultivated in many regions, the quince has never attained commercial rank in the fruit trade of America. This is somewhat anomalous, as its fine qualities for jellies, preserves and sauces are superior to those of any other fruit. Such varieties as Pineapple and Smyrna are ideal for culinary purposes. Of late there has been a wider interest manifested in quince culture in California, resulting in carload shipments to eastern markets. It thrives best in a deep loamy, moist soil and is particularly adapted to planting on low damp land where other kinds of fruit will not thrive.

On Quince Roots:

PRICE EACH	1 to 4 Trees	5 to 49 Trees	50 to 299 Trees	300 or More
2 to 3 grade.....	\$.55	\$.40	\$.30	\$.25
3 to 4 grade.....	.65	.50	.40	.35
4 to 6 grade.....	.70	.55	.45	.40
6 to 8 grade.....	.75	.60	.50	.45

Apple, syn. Orange. Ripens in September; fine for shipping, market and home use. Fruit large, roundish, with small necks; skin smooth and of a rich golden color; flesh orange yellow, fine grained, and when preserved or made into sauce, of a rich acidulous, aromatic flavor. Tree robust, hardy and productive.

Pineapple. A comparatively new variety of California origin. Fruit apple shaped and nearly round; skin smooth and light golden yellow in color; flesh white, tender, with a flavor suggestive of pineapple. Tree thrifty, medium size and free fruiting. Season, September.

Smyrna. Introduced by us from Smyrna in 1886. Fine for shipping and local market. Fruit large, round-oblong, surface lightly furrowed; skin a beautiful shade of lemon yellow; flesh tender, aromatic, mildly subacid. Tree a strong vigorous grower with large foliage. A consistent bearer. Fruit has a very strong quince perfume. Season, September.

THE CHERRY

Cherry producing sections of California are limited mainly to the counties near San Francisco Bay. In the counties north of the bay where the benefit of the mild sea air is felt cherry growing should be encouraged. In the upper San Joaquin Valley and in sections of the Sacramento Valley and the adjacent foothill regions there are many good cherry orchards. The ever increasing demand for this popular fruit should be an incentive to plant more orchards. In the hot dry interior sections cherries should be planted only for home use.

The sweets and sour. The Hearts, or Bigarreus, are the sweet cherries, the trees being strong and vigorous growers. These are designated by the letter "H"; the Dukes, or Mo-

rellos, which are the sour cherries, by the letter "D". These grow slowly, the branches are slender; the leaves are thicker, smaller and of a deeper green.

On Mazzard Root:

PRICE EACH	1 to 4 Trees	5 to 49 Trees	50 to 299 Trees	300 or More
2 to 3 grade.....	\$.65	\$.50	\$.40	\$.36
3 to 4 grade.....	.75	.60	.50	.45
4 to 6 grade.....	.80	.65	.55	.50
6 to 8 grade.....	.85	.70	.60	.55

Bing, (H) Season, middle June; the best market and shipping cherry. Fruit of large size, firm heart-shaped and regular; skin smooth, glossy, deep maroon verging to black in color; flesh sweet, meaty and of a delicious flavor. Tree a good grower and cropper when pollinated.

Black Tartarian, (H) One of the best black cherries, good for market and shipping. Fruit very large, heart-shaped and uniform; skin an intense glossy black; flesh reddish purple in color, sweetly aromatic; fine grained and melting. Tree vigorous grower and heavy bearer; much prized in California. Ripens its fruits early, hence always commands good prices. Valuable as a pollinizer for other sweet cherries.

Chapman, (H) Season, April-May; quality home use and local markets. Fruit medium size and of heart formation; skin purplish black and thin; flesh deep pink with dark colored juice, meaty, tender, melting and of good quality. Tree large and spreading, vigorous and productive. One of the earliest cherries, which insures a good market at top prices.

Early Richmond, (D) Long the leading sour cherry of its season. Valuable for cooking. Fruit medium in size, round-oblate and compressed; skin dark red overspread with russet dots; flesh light yellow and pink tinged juice, tender and acidulous. Tree decidedly umbrageous, medium size, prolific and of good habit. Season, May.

English Morello, (D) Ripens in July; valuable for home use, market and canning. Fruit round-cordate, uniform and solid; skin dark red to black with numerous russet-like dots; flesh red with dark juice, tender melting and tart. Tree small, round headed and drooping.

Governor Wood, (H) An excellent variety for canning and table use. Fruit large and of good shape; skin bright pink yellow shaded; flesh quite tender, juicy and pleasantly acidulous. Tree an upright grower and productive. A favorite in the interior valleys and also in the coastal counties. Season, early June.

Lambert, (H) One of the leading market varieties ripening in June. Fruit heart-shaped, compressed and uniform; skin thin, dark red changing to black; flesh dark red with a lighter red colored juice, firm, sweet and fine flavored. Tree large, healthy, productive and upright-spreading. Not a heavy bearer unless pollinated.

Lewelling, (H) A splendid variety and exceptionally profitable as a shipping cherry. Fruit large, cordate and somewhat compressed; skin purplish black splashed and netted with russet-like dots; flesh firm, abundant, yellowish white tinged with red, tender, sprightly and pleasantly acid. Tree of medium growth, vase form, robust, and a good bearer. Also known as the Oregon Black; popular throughout the Pacific Coast.

May Duke, (D) One of the oldest and most profitable cherries. Fruit heart-shaped to conical; skin pink changing to dark red at maturity; flesh dark red with pink colored juice, tender, melting and delightfully subacid. Tree fruitful, hardy, vigorous, healthy and vase-form in shape. Season late June.

Napoleon Bigarreau, (H) Syn. Royal Ann. Ripens in late June; the popular canning variety in California. Fruit rather long and heart-shaped; skin pale yellow to deep amber suffused with red and dotted; flesh yellow clear juice, crisp and pleasantly sweet. Tree large, vigorous, open top and shaggy.



SANTA ROSA PLUMS

QUINCES MAKE RICH JELLIES, PRESERVES AND SAUCES.



FANCHER CREEK NURSERIES

SINCE.....1884



THE PLUM

The plum in its geographical distribution on the West Coast of the United States, and particularly in California, covers a wide range of soils and climates, being thrifty both along the Coast Regions and in the interior valleys, and well up into the foothills.

There are two distinct lines in the classification of plums; those which are especially shipping sorts and other types which are primarily used for canning. The very fact that plums may be picked considerably riper than many other fruits makes them very valuable for long distance shipments, due to their fine shipping qualities. Plums need not be peeled when canned, a great point in their favor as a preserving fruit.

Plums—On Peach or Myrobolan Roots:

PRICE EACH	1 to 4 Trees	5 to 49 Trees	50 to 299 Trees	300 or More
2 to 3 grade.....	\$.55	\$.40	\$.30	\$.25
3 to 4 grade.....	.65	.50	.40	.35
4 to 6 grade.....	.70	.55	.45	.40
6 to 8 grade.....	.75	.60	.50	.45

June Bud trees of Beauty, Kelsey Japan and Santa Rosa may be had at the same price as yearling trees on either Peach of Myrobolan roots.

Beauty. The earliest of the commercial varieties of Japanese plums. Valuable for market and shipping. Heart-shaped; skin crimson sprinkled with white dots; flesh amber streaked with scarlet, excellent flavor. Adapts itself to most any location. A vigorous grower, and most prolific bearer; self fertile. Season early June.

Climax. Ripens middle June; a good shipping and local market plum. Fruit heart-shaped and uniform in size; skin deep vermilion red in color; flesh yellow, firm, fragrant and of excellent flavor. Tree vigorous and productive. Fine for planting in the warm, interior sections.

Formosa. Blooms late, thus escaping early spring frosts; a good keeper and shipper. Fruit large and heart-shaped; skin smooth and a light cherry red in color; flesh pale yellow, firm, sweet, and of a delicious apricot flavor. Tree robust and productive; requires pollination with either Wickson or Santa Rosa. Season, July.

Gaviota. Another Burbank introduction of real merit; fine for market and shipping. One of our best plums. Fruit large and oval, pit very small, slightly cordate; skin dark red on a yellow background, very showy; flesh firm, yellow, sweet, fragrant, aromatic, and of a fine delicate plum flavor. Tree a good grower and bearer. Should be pollinated with Beauty and Wickson. Season, July.

Kelsey Japan. A fine shipping and market variety ripening in September. Fruit large, cordate, conical and uniform; skin thick, green, turning to yellow blotched with red when fully ripe; flesh delicate yellow, firm, juicy and sweet. Tree an early and regular bearer but a medium grower. Fruit will hang on tree for a long time without deteriorating, affording a long marketing period.

Santa Rosa. This plum runs remarkable fine, even in size, is smooth and clear of defects. Fruit large, conical, uniform in type, skin purplish crimson in color with a pale yellow bloom; flesh yellow, mottled and streaked with crimson, juicy and a decided plum flavor. Tree an upright robust grower and good bearer; self pollinizer. Most attractive of all plums on account of its brilliant color. Middle June.

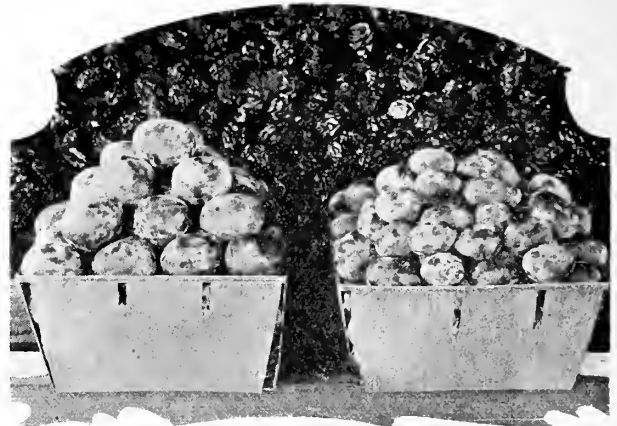
Satsuma. (Blood Plum.) Fine for culinary purposes, and particularly preserves. Fruit large and almost round in shape, pit small; skin a deep dark red; flesh red in color, firm, juicy, and of fine flavor. Tree medium to large, upright-spreading, and a good average producer. One of the most popular home orchard variety. Season, July-August.

Shropshire Damson. A late August variety; desirable for home canning and local market. Fruit oval and medium to large in size; skin thin, purplish-black overspread with a thick bloom; flesh greenish-yellow, juicy, tender, firm and agreeably tart. Tree very productive and a regular and persistent bearer. Very popular for home use; demand invariably exceeds the supply.

Simon Plum. Syn. Prunus Simoni. One of the best of the foreign plums: fine for shipping and market. Fruit large, in shape resembles a tomato; skin a rich cinnabar red color; flesh yellow, firm, sweet, with a marked pineapple flavor. Tree thrifty and an erect grower. Season, July.

Tragedy. Probably classified as a prune because of its shape. A plum in ever sense of the work. Valued highly as a dessert fruit and for shipping. Skin dark purple; flesh cream shaded yellow, firm, sweet and juicy. Season early July.

Yellow Egg. Well and favorably known for home use and canning. Fruit long oval, of good size and compressed; skin a deep golden yellow covered with a white bloom; flesh deep yellow, firm, juicy, good flavor but rather acid. Tree large, hardy, round-topped, open and productive. Popular with the commercial canneries on account of its rich golden color. Season, August.



BURTON

PETITE D'AGEN

THE PRUNE

The area for growing prunes is being extended very rapidly to almost every section of California. The coastal regions from San Luis Obispo County northward and the silty soils of the river bottoms of the Sacramento and San Joaquin valleys not only produce thrifty orchards but are very dependable in their production of crops.

On Myrobolan Roots:

PRICE EACH	1 to 4 Trees	5 to 49 Trees	50 to 299 Trees	300 or More
2 to 3 grade.....	\$.55	\$.40	\$.30	\$.25
3 to 4 grade.....	.65	.50	.40	.35
4 to 6 grade.....	.70	.55	.45	.40
6 to 8 grade.....	.75	.60	.50	.45

June Bud trees of French Improved Prune on Myrobolan root may be had at same price as yearling trees.

Burton Prune (New). This is pre-eminently a drying fruit, meeting every requirement of a superior dried product, as the following particulars clearly show:

Season—Middle August-September; Quality—Distinctly drying, through in a limited way also desirable in the fresh state; Fruit—In type like the French prunes; Petite d'Agen; but in size the largest and best drying commercial prune yet introduced; in shape obovate, necked at the base. The remarkable size the fruit attains on unirrigated land in the Vacaville Valley is a pronounced factor in its favor; Skin a rich violet purple covered with a light blue bloom; Flesh a rich golden yellow, fine grained, tender, sweetly acidulous, aromatic and sprightly; Pit oval, flattened and somewhat ribbed, separates freely from the flesh when fully ripe. The pit is small when compared to the immense size of the fruit, which averages 20-30 to the pound. Tree a strong, vigorous, upright grower, a consistent and regular bearer of good crops, leaves very large, thick, smooth, with serrated margins; resistant to the attacks of red spider. Should be inter-planted with XX French or French Improved for pollenization.

Double XX French. The amous prune of the Saratoga; Santa Clara County district. Fruit of fine shape and good size; skin a deep purple blue overspread with a light blue bloom; flesh abundant, sweet and sugary yielding a very high sugar content; pit small and somewhat flat. Dries to the large sizes. Tree strong, upright grower, free branching and free fruiting. August.

French Improved. A fine commercial sort, averaging 30-40's to the pound over a series of years. Fruit true to type and identical with the well-known French prune; skin of good texture, dark blue in color; flesh clear golden yellow, firm, fine grained and high sugar content. Trees vigorous and productive. Season, August.

Hungarian Prune. Syn. Grosse Prune d'Agen. This variety invariably brings good prices on the Eastern market in the fresh state. Fruit large, ovate, tapering to the stalk, good shape and regular; skin good protective quality, reddish violet with brown dots and covered with bloom very showy; flesh abundant, good grain, juicy and of a sprightly flavor. Tree a strong grower and regular bearer. Season, August-September.

Robe de Sargent. Valuable both for drying and preserving. Fruit large to medium and somewhat oval; skin deep purple and vncered with a thick blue bloom; flesh greenish-yellow, sweet and of good flavor, sugary. Tree a vigorous grower, well clothed with foliage, and therefore desirable in arid sections.

Sugar. Extremely early, very large, tender and sugary. Tree an unusually vigorous grower and very productive. Skin dark purple covered with a thick white bloom. It is distinguished as a heavy bearer. Season early August.

GROW PLUMS AND PRUNES—SELL YOUR SURPLUS.



FANCHER CREEK NURSERIES

SINCE.....1884



THE APRICOT

The apricot thrives particularly well in the coast counties as well as in the warmer interior valleys. The fact that the apricot ripens so far in advance of the prune and at a time when there is no danger from rain should prove an incentive for prune growers to plant them in connection with their prune orchards.

For canning, evaporating and drying, as well as in the fresh state this fruit can hardly be excelled.

On Apricot, Myrobolan or Peach Root:

PRICE EACH	1 to 4 Trees	5 to 49 Trees	50 to 299 Trees	300 or More
2 to 3 grade.....	\$.50	\$.35	\$.30	\$.25
3 to 4 grade.....	.65	.50	.40	.35
4 to 6 grade.....	.70	.55	.45	.40

Blenheim. Season, middle June; quality canning, drying and home use. Fruit mund-oblong or round-oblate, above medium size, sides compressed; skin clear orange, yellow with bright red blush, tender and free; flesh clear orange yellow, juicy and sweet. Tree an early and regular bearer. Extensively planted in all parts of the State.

Hemskirke. Especially desirable for home canning and local market. Fruit large, round or round-oblate, compressed; skin of good protective quality; color orange yellow with brown spots, pink blush on sunny side; flesh clear yellow, melting, juicy, and plum-like flavor. Tree large, spreading, healthy and productive. Said to be a varietal strain of Moorpark. Fine for home planting. Season, June.

Newcastle Early. A California introduction, valuable for its earliness and fine shipping qualities. Fruit medium size and round in shape; skin lemon yellow with pink orange blush on sunny side; flesh deep yellow, juicy, buttery and sweet, rich. Tree robust grower; an early and regular bearer, with large and abundant foliage. June.

Routier's Peach. A popular apricot in the Sacramento and San Joaquin Valleys. Dries a deep golden yellow. Fruit extra large, somewhat flattened on sides; skin orange yellow, mottled and splashed with red on sunny side; flesh saffron-yellow, juicy, fine grained, good apricot flavor. Tree a good grower, vigorous, and productive. Fruit attractive because of its immense size and rich golden color. Season, June.

Royal. A French variety which is widely popular in California among canners and fine as a dried product. Fruit large, oval, slightly compressed; skin medium yellow with orange cheek tinged red with a scattering of darker dots; flesh deep yellow, firm, juicy, and of fine quality. Season, middle of June.

Tilton. A chance seedling first noticed on J. E. Tilton's orchard in Kings County. Fruit large, symmetrical, freestone, skin orange yellow tinged shell pink on sunny side; flesh clear yellow, fine grained, and very firm. One of our best canning and drying sorts. Particularly adapted to the hot interior valleys. July.



MOWRY'S STRAWBERRY CLING
The finest of all for home canning.

THE PEACH

The California peach needs no introduction. Our list comprises all of the desirable varieties for commercial and home orchard plantings.

PRICE EACH	1 to 4 Trees	5 to 49 Trees	50 to 299 Trees	300 or More
2 to 3 grade.....	\$.50	\$.35	\$.30	\$.25
3 to 4 grade.....	.65	.50	.40	.35
4 to 6 grade.....	.70	.55	.45	.40

We can furnish June Bud trees of the Alexander and Mayflower at the same price as yearling trees.

Alexander. Widely grown as one of the best early varieties. Fruit large, round, and sides equal; skin greenish-white with deep maroon shadings, separates readily from the pulp; flesh greenish-white, juicy, melting and of a piquant and sweet flavor. Tree hardy, robust, upright-spreading and free fruiting. Fruit commands good prices in the Eastern markets. Season, June.

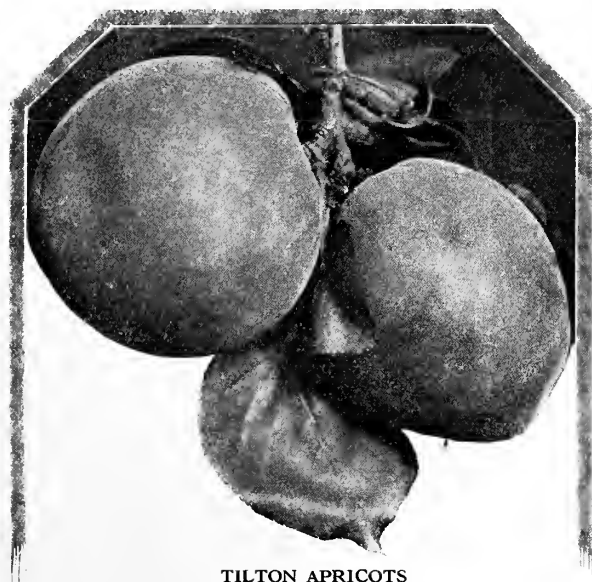
Admiral Dewey. Season, middle June; quality early market and dessert. Fruit roundish in shape but somewhat irregular, with medium sized pit; skin orange yellow blushed with dark red, tender and adhering; flesh yellow, veering to red toward the pit, juicy, melting, sweet and of a pleasant flavor. Tree large, vigorous, upright-spreading and productive.

Billyeu's Late. Does especially well in the foothill regions; fine for local markets and home use. Fruit round, regular and large; pit rather large and free; skin greenish-white with red cheek on sunny side; flesh white, firm, juicy, sweet and of good texture. Tree vigorous and productive. Season, October.

Brigg's Red May. A California variety of special value for local market and home use. Fruit round or round oblong, large, pit rather small and nearly free; skin pale green with bright red cheek; flesh white, melting, juicy, sweet. Tree round-topped, spreading and robust. Season, middle June.

Early Crawford. Widely planted in California; quality, shipping, home use and local market. Fruit extra large, round oval, bulged near the apex, pit medium small and free; skin deep yellow with rich red cheek; flesh deep red strongly tinged with red near the pit, firm, tender, juicy, and decidedly "peachy" in flavor. Tree large, vigorous and prolific. Season, July.

Elberta. The leading shipping peach in the United States; in California a prime favorite for shipping, drying and canning. Fruit round-oblong or cordate, compressed with a slight bulge at one side, pit free and sharp pointed; skin greenish to orange yellow overspread with red, good protective quality and separates freely from the pulp; flesh yellow stained red near the pit, tender, sweet to subacid and sprightly. Tree of uniform habit, a strong grower and good hearer. Season, July.



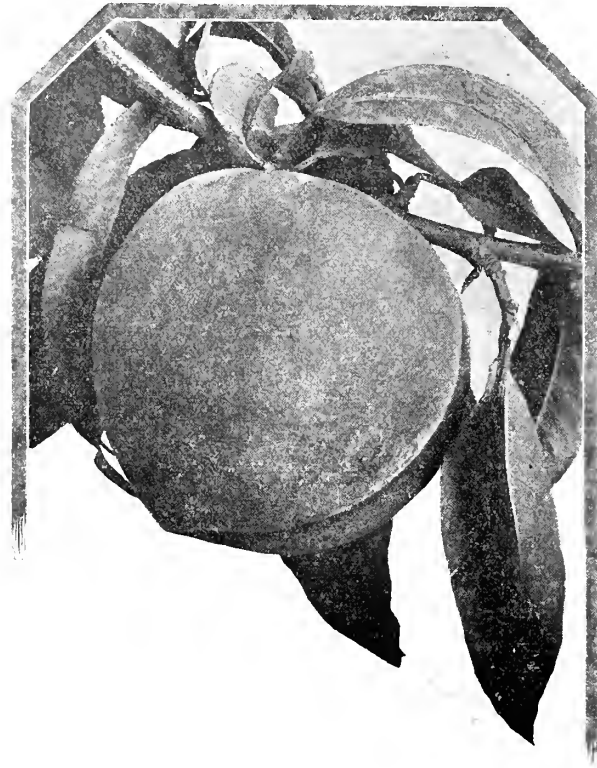
TILTON APRICOTS

APRICOTS—EVERY HOME SHOULD HAVE A TREE.



FANCHER CREEK NURSERIES

SINCE.....1884



PEAK CLING

Foster. Popular and widely planted in California; an excellent variety or drying, shipping and canning. Fruit extra large, round-cordate, pit small and free; skin clear yellow with dark red cheek, separates freely from pulp when fully ripe; flesh deep yellow, bright pink near the pit, firm, tender, sweet and spicy. Tree large and vigorous. Season, middle June.

Heath Cling. Popular for home canning, pickling and preserving. Fruit round-oval, somewhat angular with unequal sides; skin creamy-white, thin, adhering to pulp; flesh white, juicy, firm, tender, sweet and of good quality. Tree upright-spreading, hardy, and productive. Season, late September.

J. H. Hale. The coming peach for Eastern shipments because an improvement on the Elberta, being firmer, larger, with a smaller pit, and practically free from fuzz. Fruit very large, regular, round, with equal halves; pit free; skin clear yellow overspread with mottlings and splashes of carmine, separates freely from the pulp; flesh yellow, red around the pit, fine grained, sprightly, firm and sweet. Tree of spreading habit, large, robust, and regularly productive. Season July. For best results inter-plant Elberta as a pollinizer.

Lovell. Probably the most popular freestone for canning and drying. Fruit nearly perfectly round and regular in shape and size, pit small and free; skin clear yellow with a marbled blush; flesh yellow to the pit, firm, heavy and of fine flavor. Tree robust, spreading, somewhat drooping and a good bearer. Season, August.

Mayflower. Considered one of the best of the early shipping varieties hence invariably commands a good price. Fruit round and medium to large, pit ovate and of fairly good size; skin creamy-white with red blush, mottled and splashed, flesh greenish-white suffused with red near the skin, juicy, tender, subacid. Season, May.

RED BIRD. The best early moneymaker. An exceptionally high colored peach of excellent quality. Skin creamy white, overspread with bright, glowing red. Extra large in size for an early peach. A fine shipper. Beyond question one of the most attractive peaches of all on account of its large size and its wonderful creamy white and red color. No trouble to dispose of this fruit, the market is waiting for your crop. Order early; supply of trees limited. Season, early June.

Muir. Fine for drying because of density of flesh, one of the best seedlings of California origin. Fruit large to extra large, round-cordate or oval with unequal halves; pit small and free; skin clear yellow with little or no blush, thin, separating from pulp when fully ripe; flesh yellow faintly tinged at the pit, tender, sweet and mild. Tree a moderate grower. Season, late July.

Palora Cling. A magnificent canning peach of recent introduction. Really a midsummer variety ripening between Tuscan and Phillips Cling,

which makes it in great demand by the canneries. Fruit large and round; pit round and small; skin a deep solid golden yellow; flesh clear yellow to the pit, firm, good grain and fine flavor. Tree upright, somewhat spreading, a good grower and productive. Our trees are propagated from the original Palora orchard near Stockton. Season, late August.

Peak Cling. An introduction from the San Joaquin Valley, originating at Selma, peculiarly a canning peach. Ripens between Tuscan and Phillips Fruit round-oval, large, pit small; skin a golden yellow slightly tinged with red on sunny side; flesh clear yellow to the pit, fine grained and of excellent flavor. Tree an upright grower and a heavy bearer. Season, late August.

Phillips Cling. Popular because ripening so that harvesting will cover two weeks without falling from the trees. Fruit round-oblong and of uniform size, pit ovate and quite large; skin a pronounced yellow with bright red tinge on sunny side, thin and somewhat adherent; flesh yellow, to the pit, firm, fine grained, and of an excellent flavor. Tree very large, upright, healthy and productive. Recognized by the trade as the best late canning peach. Season, middle September.

Salway. The standard late peach of California, valuable for table use drying and preserving. Fruit round-cordate, bulged near the apex, pit oval, plump and free; skin greenish-yellow, brownish-red blush, splashed with dark red, thin, adheres to the pulp; flesh clear yellow, tinged with red near the pit, tender, sweet, and good quality. Tree of medium size, upright, with a drooping tendency, productive. Season, late September.

Seller's Orange Cling. A fine canning and shipping variety ripening in early August; popular in the Sacramento and San Joaquin Valleys. Fruit large to very large, round-oblong, somewhat flattened; pit medium size; skin a rich golden color, with a faint tinge of red on sunny side; flesh deep yellow clear to the pit; firm, juicy, sweet and rich. Tree large, good grower and cropper and upright-spreading.

Strawberry. Due to its long ripening period it can be recommended for home planting. Fruit large size, round-oblong and regular; pit oval and free; skin pale yellow marbled with dark red; flesh white, melting, juicy and vinous in flavor, red from the pit. Tree a good grower and free fruiting. Season, July-August.

Mowry's Strawberry Cling. The best white cling for home use. Fruit large and oval; skin yellowish white splashed with red and somewhat downy; flesh firm, creamy turning to pink at the pit and of fine flavor. Tree a strong grower, and heavy producer. Season, September.

Tuscan. Syn. Tuskena, Yellow Tuscan. Season, late July; quality canning. Fruit round, large and uniform; pit of medium size; skin yellow with dark red cheek; flesh evenly yellow to the pit, solid, sweet and vinous. Tree large, open, robust and productive. The earliest of the commercial canning varieties, affording ready money to the growers.

Yellow St. John. One of the best of the early peaches. Fruit large in size, roundish, orange yellow color with deep red cheek. Juicy, sweet, and a perfect freestone. Recommended for the home orchard as well as for commercial plantings. Late June.



RED BIRD
The best early peach.

DELICIOUS PEACHES—SO EASY TO GROW—REAP THE PROFITS



FANCHER CREEK NURSERIES

SINCE ... 1884



THE NECTARINE

There is a prevailing opinion among many people that the nectarine is a hybrid, the result of crossing the peach with some other fruit, while really it is nothing more nor less than a smooth skinned peach of extraordinary flavor.

For canning, drying, and shipping, it has so many points in its favor that it is difficult indeed to comprehend why planters have not engaged in nectarine culture more extensively than they have.

PRICE EACH	1 to 4 Trees	5 to 49 Trees	50 to 299 Trees	300 or More
2 to 3 grade.....	\$.50	\$.35	\$.30	\$.25
3 to 4 grade.....	.65	.50	.40	.35
4 to 6 grade.....	.70	.55	.45	.40

Gower. An introduction from the San Joaquin Valley. Because early the Gower nectarine invariably commands good prices on the Eastern markets. Fruit large and round; skin a pronounced yellowish-green over-spread with a mantle of deep red; flesh a creamy white tinged with green, reddish pink at the pit, juicy, firm, good vinous flavor. Tree a strong grower and good bearer. Season, early July.

Humboldt. Season, August; quality local market and home use. Fruit large, oblong-oval and reasonably uniform; skin yellow orange, stained and streaked dull red; flesh yellow orange, tender, juicy, red to the pit, sweet, rich and aromatic. Tree a robust grower and consistent bearer. Valuable for home orchard planting.

New White. Commended wherever nectarines are grown in California hence widely planted. Fruit quite large and nearly round; skin greenish white with an occasional touch of red; flesh white, tender, juicy with rich vinous flavor. Tree a good grower, upright spreading and free fruiting. Season, early July.

Stanwick. An English variety of excellent qualities, being a good shipping and drying variety. Fruit large, round-oval, heart shaped at the base; pit rather large; skin pale green, purplish red or violet on sunny side; flesh white, tender, juicy, aromatic and delicious. Tree of medium size, vigorous and compact with dark green foliage. Fruit like the Stanwick will encourage nectarine culture wherever its fine qualities become known. Season, August.

Victoria. Popular in the East. In California recognized as a drying fruit and for shipping. Fruit medium large and roundish-oval, small pit; skin greenish-yellow, crimson on the sunny side; flesh medium firm, sugary, flavor of the best. Tree a strong grower and a heavy bearer. The dried product is attractive because nearly transparent. Season, August.

THE NUT FRUITS

Nut trees are admirably adapted to boulevard and roadside planting, giving a beauty to the landscape in addition to their economic values for their crops of edible nuts. In Europe a large per cent of the nut crops in the Mediterranean region are the result of roadside plantings. A similar practice can be advantageously followed in the adornment of California highways by the use of nut bearing trees.



GOWER—THE EARLIEST NECTARINE. NOTED FOR ITS GOOD SHIPPING QUALITIES

THE ALMOND

Almond trees are budded on almond and peach roots, never on apricot root. The peach root should always be given the preference on loamy, compact soils, which are retentive of moisture. A well-drained warm soil and a locality where there is not too frequent an occurrence of frost in the spring are the requisites to make almond culture a success. Cross-pollination is an interesting phase of almond culture and alternating three to six rows of a variety has a very marked effect on improving the yield.

On Almond and Peach Roots:

PRICE EACH	1 to 4 Trees	5 to 49 Trees	50 to 299 Trees	300 or More
2 to 3 grade.....	\$.50	\$.35	\$.30	\$.25
3 to 4 grade.....	.65	.50	.40	.35
4 to 6 grade.....	.70	.55	.45	.40

June Bud trees of Drakes Seedling, Texas Prolific, Nonpareil, Ne Plus Ultra and I. X. L. can be furnished on Almond root at the same prices as yearling trees.

Drake's Seedling. Nut of medium size, large and easily hulled; shell medium soft, of good color and substance; kernel large and plump and of good flavor. Tree spreading, a good grower and cropper, fine for borders or planted singly on account of its uniform habit of growth and fine foliage of a rich light green color; valuable as a pollinizer.

IXL. Nut large and readily hulled, no machine required; shell soft smooth, and of good color; kernels single, large and plump and sweet. Tree a strong upright grower and good cropper. In this, as in other varieties, it is advisable to alternate stocks of three to four varieties to encourage cross-pollination.

Nonpareil. Nut large, long and narrow; shell thin and of good color kernel long, filling the shell completely, and of excellent quality. Tree of a weeping habit, medium size and free fruiting.

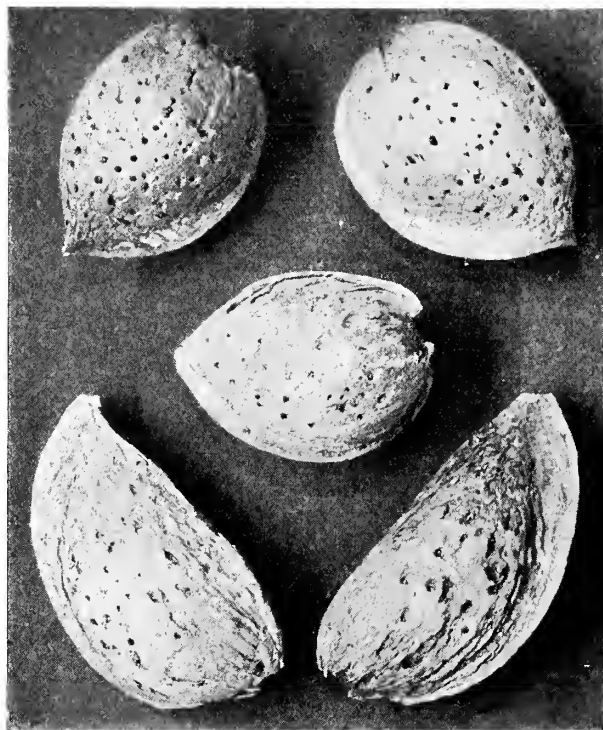
Ne Plus Ultra. Nut of good size, long and tapering; shell soft and hulls easily; kernel single, large, sweet and highly flavored. Tree a strong grower. An old and standard variety.

IF YOU'VE NEVER TASTED A NECTARINE, YOU'VE MISSED A TREAT



FANCHER CREEK NURSERIES

SINCE.....1884



COMMERCIAL ALMONDS

Top I. X. L., center Drake's Seedling, lower Ne Plus Ultra

THE CHESTNUT

This nut tree does best when planted on river bottom land; nevertheless good specimens may be seen at different points throughout the state growing in soils varying from sandy to loamy, and even heavy clay. The requisite being plenty of moisture with subsoil that will permit free root penetration.

4 to 6 grade.....	\$ 1.50
5 to 4 grade.....	\$ 1.25

Italian. Syn. Spanish. Nuts large and hull readily; shell thin and a handsome shade of brown in color; kernel large, plump, full and sweet Tree a strong grower, finely spreading umbrageous top; highly ornamental and well suited to roadside plantings and the adornment of parks and gardens.

THE WALNUT

No nut yields larger or more profitable crops than the walnut. While it prefers a rather loamy, deep rich soil and responds quickly to good cultivation, it yields excellent crops even under adverse conditions.

The walnut makes a splendid shade and sidewalk tree and should be given due consideration in making up your planting list. The varieties which we list are adapted to climatic conditions of the San Joaquin and Sacramento valleys.

Grafted on California Black:

PRICE EACH	1 to 4 Trees	5 to 49 Trees	50 to 299 Trees	300 or More
5 to 4 grade.....	\$1.50	\$1.25	\$1.00	\$.75
4 to 6 grade.....	1.75	1.50	1.25	1.00
6 to 8 grade.....	2.00	1.75	1.50	1.25
8 to 10 grade.....	2.25	2.00	1.75	1.50

Eureka. Nut large and fairly uniform, elongated; shell smooth, medium thick and well sealed; kernel cream color, medium plump, cracks out easily whole and is of good flavor. Tree a vigorous grower, clean branches, open top, bark slightly rough, tinged red, not subject to sunburn.

Franquette. Nut large, elongated and tightly sealed; shell rather thick and smooth; kernel plump, white, sweet, and of a rich nutty flavor. Tree reasonably free from blight, a good grower and bearer. The Franquette is a late bloomer, the trees being dormant until the middle of April, thus escaping the dangers of late frosts and also insuring regular crops. Our trees have their origin from parent trees imported many years ago by the late John Rock, direct from Grenoble, France.

Payne's Seedling. A new variety and does exceptionally well in the Sacramento and San Joaquin Valleys. The tree is a vigorous grower and comes into bearing at an early age. It produces good crops of fine large nuts.

SUB-TROPICAL FRUITS

THE FIG

A glance at the literature of the fig will reveal the existence, from a botanical standpoint of hundreds of varieties; but commercially the number grown in California are but few. The dominant varieties are divided into two classes, viz: the Smyrna types which require pollination and the Adriatics which mature figs without pollination. Our list comprises only those of recognized commercial importance.

PRICE EACH	1 to 4 Trees	5 to 49 Trees	50 to 299 Trees	300 or More
2 to 3 grade.....	\$.55	\$.40	\$.30	\$.25
3 to 4 grade.....	.65	.50	.40	.35
4 to 6 grade.....	.70	.55	.45	.40

(Purchasers should order Capri Fig trees with all orders of Calimyrna trees.)

SMYRNAS

Calimyrna. (Genuine Smyrna.) A name originating with us to give distinction to the real Smyrna fig after the introduction of the fig wasp. Fruit large to very large, turbinate, pyriform, very short, stalk short, ribs distinct, orifice large, of a pale ochre color and widely opened when the fig is matured or before shriveling; skin lemon yellow; flesh reddish amber, sometimes pale amber, turning to dark amber just before falling. Flavor and quality unsurpassed. To grow this variety successfully it is necessary to have the aid of the wasp; *Blastophaga grossorum*; which dwells in the wild or Capri varieties and conveys the pollen into the edible fig.

ADRIATICS

Mission. Syn. California Black. The oldest and most popular shipping and drying variety grown in California, being an introduction of the Mission Fathers in the last century. Fruit medium to large, turbinate, long necked and short stalk, ribbed, eye pronounced, skin rough, mahogany violet; flesh good grain, dull red or brownish amber, sweet and of good flavor. Tree a strong grower, spreading head and regular bearer. Does well in any situation. Season, midsummer.

White Adriatic. A splendid drying sort for the interior, though not so good in sugar content as Calimyrna. Fruit medium size, roundish, stalk short, neck medium, eye open with red iris; skin thin, greenish-yellow; flesh red or white with violet streaks, quality good. Tree a good grower and regular cropper. Season, August.

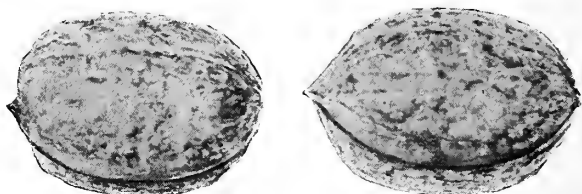
Kadota. The canning and preserving variety of California. Fruit of medium size and good shape; skin thin and light green in color; flesh white tinged with pink and of good flavor. Tree a rampant grower, of distinct foliage, free fruiting and a long ripening period. Season, August.

CAPRI FIGS (Non-edible)

Roeding's Capri No. 1. Particularly valuable on account of producing all the crops necessary for successfully carrying through all the generations of the *Blastophaga*. A rapid grower and produces an abundance of all crops.

Roeding's Capri No. 3. Figs of the Profichi crop very large, heavily ribbed and developing a larger number of galls with insects than either of the other two varieties; much heavier and more closely jointed than Nos. 1 and 2; leaves small and serrate. The first figs ripening June 8. A rather uncertain bearer of the other crops.

Capri Stanford. This fig is large, and ripens about the same time as Roeding Capri No. 3. It caprifies well and always has a good over-winter crop of Mamme figs. The tree is a dwarf grower, but a heavy producer of Profichi figs.



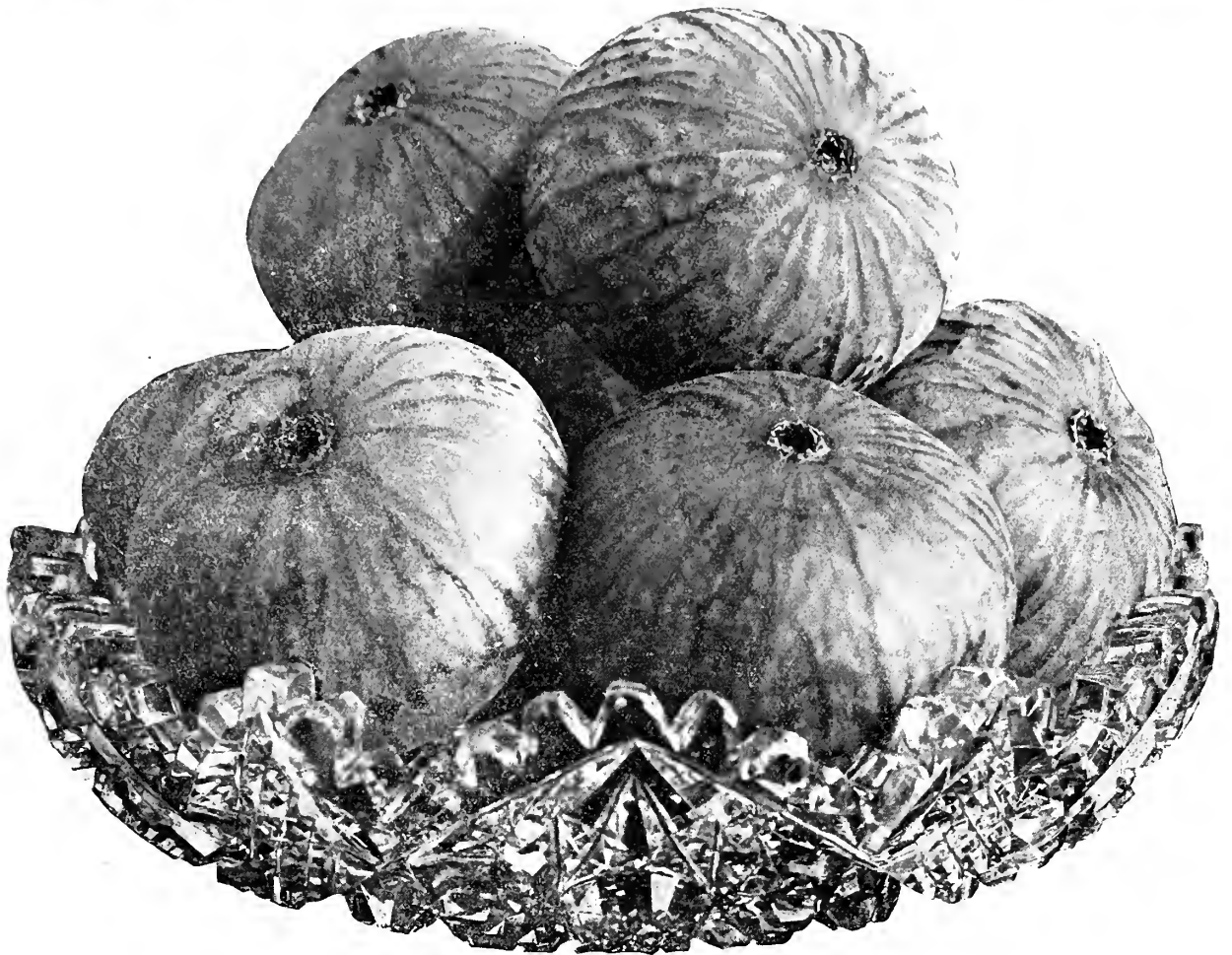
EUREKA WALNUT
The best for the Interior Valleys

NUT TREES FOR BEAUTY AND PROFIT.



FANCHER CREEK NURSERIES

SINCE.....1884



CALIMYRNA FIG

Genuine Fig of Commerce. Finest of all.

THE LOQUAT

A beautiful evergreen shrub or tree attaining a height of fifteen to twenty feet, bearing pear-shaped fruit of a pleasant acidulous flavor and of lemon-yellow color. The fruit is used for making jellies, jams and preserves. Trees are easily grown and may be planted 20 to 24 feet apart.

Gallon container, 2 to 3 ft. \$ 1.00
Five gallon container, 3 to 4 ft. \$1.50

Select Seedlings. Fruit medium, borne in immense clusters, varying in color from yellow to deep orange. Flesh melting, juicy and sweet.

THE OLIVE

The olive does well in all sections of California, as we possess a similar soil and climate to its native habitat the Mediterranean region. Olive trees are now a pronounced feature of our California landscape being used extensively as border and avenue trees, and are not only very ornamental but profitable as well.

PRICE EACH	1 to 4	5 or
	Trees	More
3/8 to 1/2 inch caliper.....	\$1.50	\$1.25
1/2 to 5/8 inch caliper.....	1.75	1.50

Manzanillo. A splendid pickling and oil making variety. Fruit nearly round, large, with a round-oval pit; skin a pronounced purplish black, covered with specks of a lighter shade; flesh solid, good grain and oil content. Tree hardy, robust and free fruiting. Earliest variety to ripen. Season, October.

Mission. The oldest variety grown in California, and one of the best. Fruit medium to large and oval in shape, pit medium in size; skin deep purple veering to black; flesh abundant, firm, of good texture and oil content. Tree handsome and upright, productive; valuable for roadside and border planting. Season, October.

CITRUS FRUITS

Taking inception in the warm belt of Southern California, citrus culture has gradually found its way farther north year by year until now these trees are successfully grown within the very shadow of Mount Shasta. There are few soils in California where the citrus trees will not thrive, though they are partial to a friable sandy loam, retentive of moisture but well drained. Like the olive, citrus trees are also being planted for their landscape effect. The golden and yellow fruits contrasting against the dark green foliage of the trees add beauty to any landscape.

1/2 inch Caliper	\$2.50
5/8 inch Caliper	2.75

Eureka Lemon. A California variety originated by C. R. Workman of Los Angeles. Fruit medium to large, uniform and regular; skin smooth, fine grained, and good substance; flesh abundant, juicy, little pulp, and decidedly acid. Tree a good grower and prolific bearer, blooming and setting fruit every month of the year, nearly thornless; a heavy cropper in summer when its fruits are in greatest demand.

Marsh Seedless Pomelo. "Grape Fruit." The dominant variety in our leading markets; a good shipper. Fruit medium to large and practically seedless, skin of good texture and protective quality; flesh juicy, melting, free from rag and a delightful aromatic flavor. Tree a fine grower well branched, robust and free fruiting. Season, January.

THE FIG—ALWAYS POPULAR, FRESH, PRESERVED OR DRIED.



FANCHER CREEK NURSERIES

SINCE.....1884



MARSH SEEDLESS POMELO (Grapefruit)

Valencia Late Orange. The great summer market orange of California. Fruit oblong-roundish, medium and regular in size; skin pale yellow, fine grained and good protective quality; flesh ample, juicy, crisp, amber in color and decidedly aromatic and sweet. Tree large, good and regular bearer. Season, April-September.

Washington Navel Orange. The orange that made Riverside; the place of its introduction; famous. Fruit medium to large, solid and heavy; skin of fine texture and substance, smooth with a kidglove surface and bright orange in color, flesh juicy, melting, sprightly sweet and agreeable, and practically seedless with no rag. Tree a good bearer, medium thorny and a healthy grower. Season, November to March.

MISCELLANEOUS FRUITS

THE POMEGRANATE

The Wonderful pomegranate finds conditions to its liking in the San Joaquin valley, where a number of commercial orchards are proving quite profitable, the bulk of the crop being sent east. In addition to its economic values the pomegranate also possess distinction as an ornamental tree. Its glossy green foliage contrasts beautifully with its scarlet red flowers; later the large magenta red fruits appear like crimson globes among the leaves, while as a packed product they form a conspicuous feature on city fruit stands. Our strain of trees are grown from cuttings carefully selected from and cut from record performance trees, hence are dependable from every point of view.

PRICE EACH	1 to 4 Trees	5 or More
4 to 6 grade.....	\$.75	\$.65
3 to 4 grade.....	.60	.50

Wonderful. The leading variety in the San Joaquin Valley, and the only one possessing commercial rank. Fruit extra large; round, flattened at the ends; skin pale green yellow suffused with pink and red; flesh a rich garnet color, abundant juice, of a delightful piquant flavor. On account of its gorgeous red flowers, bright glossy green foliage, and the brilliantly colored fruits, the tree is admirably adapted for aligning streets, drive ways, for grouping, mass effects, and borders. Season, October.

THE JUJUBE

A comparatively little known fruit from China, where it is known as the Chinese Date, because when processed it much resembles that fruit. Tree upright spreading with dark green

glossy foliage, rendering it desirable for ornamental planting. The method of processing is simple. First select good firm fruits. After passing them over a pricking board to perforate the skin, they should be placed in a syrup composed of one cup of sugar to one cup of water and boiled for twenty minutes. They should then be removed, the syrup permitted to drain and placed on drying trays in the sun for two or three days. They will then not only have the appearance of the date but will have a flavor even superior to it.

PRICE EACH	1 to 4 Trees	5 or More
2 to 3 ft.....	\$1.25	\$1.00
3 to 4 ft.....	1.50	1.25
4 to 6 ft.....	1.75	1.50

Mu Shing Hong, "Chinese Date." Season, September-October; quality home use, preserving and confections. Fruit long pear-shaped; skin smooth and a reddish mahogany in color; flesh fine grained and when processed flavored like the date. Tree thrifty, good cropper and does well in soils heavily impregnated with alkali.

THE PERSIMMON

PRICE EACH	1 to 4 Trees	5 to 49 Trees	50 or More
2 to 3 grade.....	\$1.25	\$1.00	\$.75
3 to 4 grade.....	1.50	1.25	1.00
4 to 6 grade.....	1.75	1.50	1.25

Hachiya. Season, October; quality drying, market and home use. Fruit large, oblong, conical pointed toward the apex; skin bright red with dark dots or blotches; flesh ample, melting, buttery, aromatic, pleasantly astringent and sweet. Tree a good grower, spreading and free fruiting. The recognized commercial variety in California.

Fuyu. Without doubt the finest persimmon yet introduced into this country. Because of its nonastringent qualities, compact firm flesh, splendid shape and the fact that it is a good shipper, we believe it is destined to become the leading commercial variety in the United States. The fruits are of medium size, somewhat flattened and of deep red color, resembling a tomato somewhat in appearance. Owing to limited stock this season we cannot supply over two trees to a customer. Price each \$2.00.



WONDERFUL POMEGRANATES
Valuable for its superb fruits, handsome foliage and gorgeous flowers

WHY DEPEND ON SOMEONE ELSE TO GROW YOUR FRUIT?



FANCHER CREEK NURSERIES

SINCE 1884



OLIVETTE BLANCHE



RIBIER



MARAVILLE DE MALAGA

WINE, RAISIN AND TABLE GRAPES

Grape culture is not only the oldest commercial fruit in California, but in volume and value of product, in acreage planted and in amount of capital invested, the largest and most widely cultivated. By reason of soil and climate all classes of grapes do well in California, clearly putting the state far in the lead as a grape-growing region. The San Joaquin and Sacramento valleys, veritable empires in themselves, produce the major portion of the table, raisin and wine varieties. The coastal regions grow the juice or wine sorts mostly. Fresno is the recognized center of the raisin industry in this country and annually markets more of this product than any other city in the world. The growing of grape vines has for over forty years been a leading division of the Fancher Creek Nurseries.

Our stock of vines are grown on new land, causing them to have a fine, vigorous root system.

Grape Vines—Staple Varieties:

PRICE EACH	1 to 4 Vines	5 to 49 Vines	50 to 299 Vines	300 or More
Standard No. 1 grade—	\$.15	\$.12½	\$.06	\$.05
Light No. 1 grade—	.12½	.10	.05	.04

TABLE VARIETIES

Black Monukka. A splendid raisin, shipping and table variety. Berries seedless, medium size and decidedly elongated and borne on large cylindrical clusters; skin thin, nearly black when fully ripe; flesh solid, amber yellow, sweet and juicy. Vine a strong grower, prolific when long pruned, either cordon or half cordon. Season, July.

Black Cornichon. Syn. Red Cornichon. Desirable for its handsome appearance, late ripening and shipping qualities. Berries long, borne in long, loose bunches; skin thick, dark and spotted, covered with bloom; flesh firm and good. Vine a medium grower, short jointed wood, large leaves; a good bearer. Season, October.

Black Hamburg. A great favorite as a juice and table grape. Berries large round oval; skin rather thick, dark purple, becoming black when fully ripe; flesh firm, very juicy, sweet and vinous. Vine a good grower and cropper. Season, late September.

Black Prince. Syn. Rose of Peru. Season, September. Valuable for home use and shipping. Berry large, round, borne on shouldered clusters; skin brownish-black with a thick bloom; flesh dark, juicy and sweet. From a standpoint of growth and production is in a class by itself.

Emperor. An excellent shipping table grape of wide culture in the Sacramento and San Joaquin Valleys. Berry long, oblong and large, borne in heavy bunches; skin deep rose colored covered with bloom and thick; flesh crisp, abundant and of good flavor. Vine a strong grower and heavy bearer. Used largely for storage, packed in drums with redwood sawdust. Season, October.

Flame Tokay. The most extensively planted shipping grape in California; in some sections does not color up well. Berry large and oblong, borne in immense bunches; skin pale red covered with lilac bloom; flesh firm, juicy, crackling, abundant and good vinous flavor. Vine a good grower, robust, with light green foliage. Season, September.

Fresno Beauty. Another name for Gros Colman, one of the recognized hot house grapes of Europe. Season, October; quality table and local market. Berry large as a Damson plum, set on a loose cluster; skin thin dark, covered with bloom; flesh firm and of a pleasant vinous flavor. Vine a strong grower, with large, dark green, glossy leaves, downy beneath; a wonderful producer.

Malaga. The popular California white grape for Eastern shipments. Berry of good size, oval in shape, borne on loose clusters; skin tender yellowish-green; flesh sweet, tender, crackling and good flavor. Vine a strong grower and productive. Season, August.

RAISIN VARIETIES

Muscat. The renowned raisin and table grape. Berries large, slightly oval, produced in large clusters; skin pale amber covered with a thin white bloom; flesh firm, with a very distinctive aroma and pleasing flavor. This variety has the remarkable faculty of producing a second crop of grapes even more desirable for shipping than the first. Season, September.

Thompson's Seedless. This is the celebrated Sultana Blanche of Asia Minor. Immense quantities are now being used in breads, cakes and for confections. It is much in demand for shipping. Berry oval and seedless on long cylindrical clusters; skin greenish-yellow; flesh abundant, mildly flavored. Vine a vigorous grower. Should be cane pruned. Valuable as an arbor grape. August.

JUICE VARIETIES

Alicante Bouschet. Our most popular juice grape. Berry medium round, borne in compact bunches; skin black and thick; flesh high in sugar, juice red, somewhat tart. Vine medium grower and an enormous producer; comes into bearing early. Fruit used largely for coloring soft drinks, ices, confections, etc. Season, September.

Black Malvoise. Widely grown in California as an early wine grape. Berries medium size and oblong, borne on loose branching bunches; skin reddish black with faint bloom; flesh firm, juicy, sweet and of good flavor. Vine vigorous and productive. Also desirable as a dessert fruit. Season August.

Carignan. One of the leading wine grapes. Berries very large and round, borne on medium sized, compact clusters; skin a deep blue-black and tough; flesh amber, very juicy and sweet. Vine a strong grower, heavy bearer and adapted to a wide condition of soils and climate. Brings high prices as a wine making grape for Eastern shipments.

Mission. A wine grape. Berry medium size and round; skin purple black; flesh crackling, sweet and delicious. Vine a good grower and free fruiting. This is the original wine grape introduced by the Padres in the early gardens of the California Missions. Season, September.

Zinfandel. Widely used as a juice grape. Berry round borne in compact clusters; skin dark purple covered with a heavy bloom; flesh abundant, juicy, and a good vinous flavor. Vine a medium grower and good bearer. Season, August.

LATE INTRODUCTIONS

PRICE EACH	1 to 4 Vines	5 to 49 Vines	50 to 299 Vines	300 or More
Standard No. 1 grade—	\$.20	\$.15	\$.07½	\$.06
Light No. 1 grade—	.15	.10	.06	.06

Maraville de Malaga. (Red Malaga). One of the few hard grapes noted for its fine flavor and aroma; commands good prices in the Eastern

GRAPE VINES CAN BE GROWN ON THE FENCE, ARBOR, OR OVER OUTBUILDINGS.



FANCHER CREEK NURSERIES

SINCE.. 1884



MUSCAT
California's finest raisin grape

market. Berry large, conical, oval on long and loose clusters; skin a beautiful sparkling red; flesh firm, crisp, crackling and delicious flavor. Vine a strong grower and heavy bearer. Season, September.

Dizmar. Promises to become a leading shipping table and market variety, because of its early ripening qualities. Berry medium to large somewhat flattened at the ends; skin a rich yellow, semi-transparent; flesh firm, crisp, tender, with a sweet but pleasant flavor. Vine a strong grower with large, dark-green glossy foliage; a good bearer if properly long pruned. Season, July.

Khandahar. Season, July. A recent introduction which is recognized as a good commercial variety as well as for home use. A Persian grape of the lady finger type. Bunches loose and of medium size, berries yellow in color, oval and very large. Stock limited.

Olivette Blanche. Sometimes called the Salad Grape owing to its large size, firm flesh and beautiful rich color. Delightful for preserves and fruit salads. Berry large, oblong, tapering to a point, on the lady finger type, borne on large solid conical shaped clusters; skin thick, yellowish white; flesh amber in color and firm, juicy, sweet and crackling. Vine prolific, with long canes and spreading habit. A splendid producer and wonderful shipper. Season September.

Ribier. The Blue Black Grape. Introduced by us in 1901 under the name of Gros Guillaume. We regard it as one of the most valuable of our introductions; commands high prices in the open market. Berries extra large, carried on medium sized bunches, their intense blue-black color giving the appearance of being moulded in wax when used for table decorations. Vine an enormous producer; should be pruned to spurs or bilateral cordon. To get best results fruit should be thinned and a strong vine should not be allowed to bear more than 25 bunches of grapes. Fine for arbors. Season, middle August.

RESISTANT VINES

Resistant Vines:

PRICE EACH	1 to 4 Vines	5 to 49 Vines	50 to 299 Vines
Standard No. 1 grade.....	\$.25	\$.20	\$.15
Except Rup. St. George which are same price as Table Varieties.			

Aramon X Rupestris Ganzin No. 1. Said without question to be one of the best of the Franco-Rupestris, and which has given excellent results

and general satisfaction. Thrives well on a light and heavy, compact soil, and grows luxuriantly on a soil containing a large percentage of lime. It is better adapted to moist than to dry soils. Grafts well.

Riparia Glorie de Montpellier. It does well in California, where conditions are favorable for its development, growing well in very shallow soils, providing they have the necessary amount of fertility. It is not suited to dry compact soils, but should be planted in moist alluvial soils.

Rupestris St. George. Adapts itself to a great range of soils, does equally as well in a moist, very heavy compact clay soil as in the driest hillsides providing they are deep, having the remarkable faculty of sending its roots straight down in search of moisture. In rich virgin soils they must be generously pruned to allow plenty of wood to bear the fruit and regulate the vegetation. Will thrive in soils with a moderate amount of lime but should never be planted in shallow soils.

Mourvedre X Rupestris, 1202. Gives assurance of being a valuable stock. Particularly adapted to alluvial as well as compact, heavy soils underlaid with lime formations.

Riparia X Rupestris, 3309. (Couderc). Will withstand a very large amount of lime, and thrives in the driest locations; does equally well in a compact clay, or in gravelly soil, where the water is not too close to the surface.

Riparia X Rupestris, 3306. Will thrive in soils having a large percentage of lime, hence is particularly recommended for moist soils.

AMERICAN VARIETIES

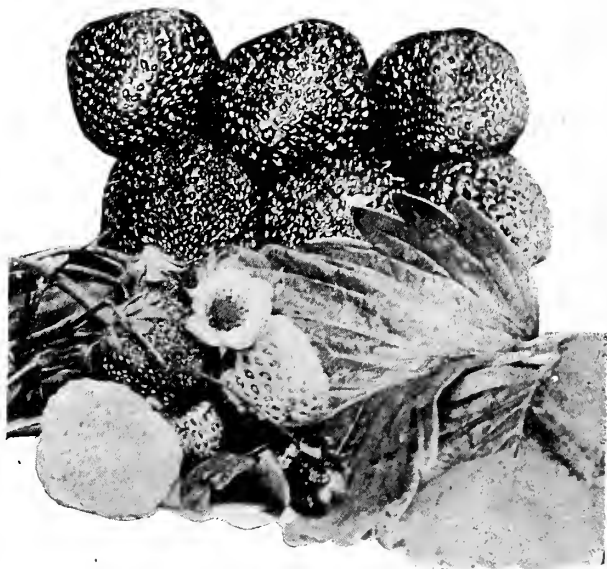
The criticism that the American grapes fail to bear in California is not in keeping with the facts, for experience has demonstrated that when properly cared for good crops are the rule. They are especially desirable for arbors and to run over unsightly outhouses and should be planted much more largely than they are. All do well in all sections of the Pacific Coast, and in California are partial to the coastal regions and the higher mountain plateaus. The vines do not require the severe pruning that some of the European varieties do. We list the best of the black and red sorts. Our stock is grown in a suitable soil for producing vigorous vines and a strong root system.

PRICE EACH	1 to 4 Vines	5 to 49 Vines	50 or More
Standard 2 yr. No. 1.....	\$.35	\$.25	\$.20

Agawam. A favorite local market variety. Fruit large on medium compact clusters; skin carmine red in color and very attractive; berries large and sweet tender pulp, and has that decided "Concord" flavor. Vine robust with large foliage, a good cropper.

Catawba. A splendid table and shipping grape. Berry medium size and round on medium clusters; skin thick, pale red, deepening as it ripens; flesh glutinous, juicy, sweet and musky. Vine productive and hardy. Season, September.

Concord. The standard table grape of the Eastern states; fine for its juice and jelly making. Berry round and solid on medium sized compact clusters; skin thick and blue black; flesh somewhat coarse, abundant, with a decided musky tang. Vine productive and relatively immune to disease. One of the best in the American class. Season, August.



BANNER STRAWBERRIES
"Queen of the strawberry family"

FORTY-SIX YEARS AGO THE NURSERY WAS FOUNDED ON THE BANKS OF FANCHER CREEK



FANCHER CREEK NURSERIES

SINCE.....1884



THE BUSH FRUITS

This term usually applies to the berry family—Blackberries, Raspberries, Currants, Gooseberries, Strawberries, etc. The whole Pacific slope, wherever fruit soils and sufficient moisture prevail is adapted to their successful culture. In California there is almost a continuous growth and intermittent cropping can be carried on almost during the entire year.

BLACKBERRIES

PRICE EACH	1 to 4	5 to 49	50 or More
Transplants.....	\$.25	\$.20	\$.15

Mammoth Blackberry. A superb local market and shipping variety. Fruit long, full and large; color a deep purple glossy black; flesh abundant juicy, and of a delightfully sweet blackberry flavor. Canes are good growers and enormously productive in early spring.

Cory's Thornless Blackberry. Valuable and pre-eminently fine for local market, shipping and culinary purposes. Fruit very large, sometimes two inches long, core small; skin tender, color glossy black; flesh sweet, delightfully acidulous flavor piquant and suggestive of wild raspberry, heavy and firm. Vine vigorous, sending out strong, stocky canes in early spring, which are absolutely thornless; thrives in any good garden soil. Season, May to August.

DEWBERRIES

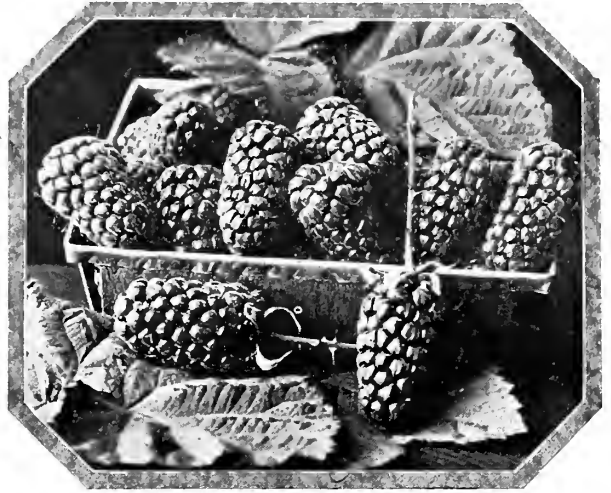
PRICE EACH	1 to 4	5 to 49	50 or More
Transplants.....	\$.25	\$.20	\$.15

Lucretia Dewberry. The dewberries or trailing blackberries are very popular, both as a home fruit and the local market. Berries extremely large and good substance; color a rich glossy black; flesh sweet, melting and of fine flavor. Vine a good grower, dense foliage and good bearer. Plants should be set four feet apart, and the rows six feet. Season, May.

LOGANBERRIES

PRICE EACH	1 to 4	5 to 49	50 or More
Transplants.....	\$.25	\$.20	\$.15

Loganberry. Distinctly desirable for shipping, local market, and culinary purposes and summer drinks. Fruit large round elongated and solid; color a deep purplish red; flesh abundant, deep red in color with a pleasant tarty flavor suggesting a blend of blackberry and raspberry. Vine a vigorous and rampant grower and very prolific; should be trellised or staked. Season, May.



MAMMOTH BLACKBERRIES

RASPBERRIES

PRICE EACH	1 to 4	5 to 49	50 or More
Transplants.....	\$.25	\$.20	\$.15

St. Regis Raspberry. The earliest and best raspberry to date; quality local market and home use. Fruit round-oval and large; color a clean, bright magenta red; flesh rich, full and a pronounced raspberry flavor. Vine a strong grower with abundant foliage.

YOUNG BERRIES

PRICE EACH	1 to 4	5 to 49	50 or More
Transplants.....	\$.25	\$.20	\$.15

Youngberry. A comparatively new berry on the Pacific Coast although it originated in Louisiana on the B. M. Young ranch nearly 20 years ago. Is said to be a cross between the Dewberry and Loganberry, purplish black in color, large in size, and with a flavor similar to the Raspberry. The berries are very sweet and make excellent preserves. A prime favorite with the bakers. The vines are strong growers and very productive.

STRAWBERRIES

PRICE EACH	1 to 4	5 to 49	50 to 299	300 or More
Plants.....	\$.05	\$.03	\$.02½	\$.01½

Banner Strawberry. The queen of the strawberry family; for California planters it has no equal. Fruit medium to large, firm and heavy; color a deep red; flesh sweetly acidulous, melting, and deliciously piquant. Vine robust and free fruiting. Season, May to September.

THE CURRANT

PRICE EACH	1 to 4	5 or More
Rooted Plants----	\$.40	\$.30

Cherry. A fine variety for the local market and home garden. Fruit round and large, on somewhat short clusters; color a clear crimson red; flesh bright red; firm, juicy and of a delightful tarty flavor. Bush a good grower, vigorous and productive when grown on good soil and properly cultivated. Season, May-June.

THE GOOSEBERRY

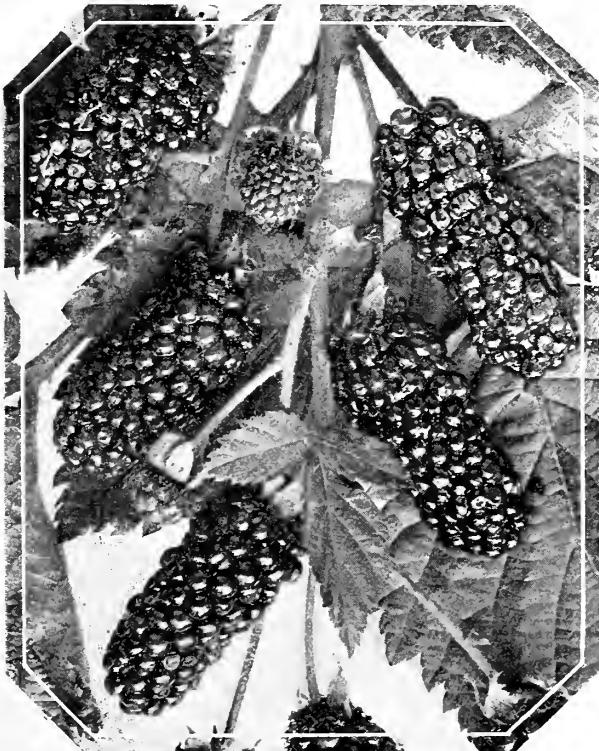
PRICE EACH	1 to 4	5 or More
Plants.....	\$.40	\$.30

Oregon Champion. A general favorite in California, valuable for shipping, culinary and local market. Berry large, round-oval; skin greenish-yellow to clear yellow, thin and smooth; flesh juicy, sprightly sweet and buttery. Bush medium size, vigorous and productive, free from mildew. Season, July-August.

RHUBARB

PRICE EACH	1 to 4	5 or More
Plants.....	\$.20	\$.15

Rhubarb, Wagner's Giant. It is a strong, rapid grower and very productive. Stems extra large, unsurpassed in flavor and yields much heavier than any of the old time sorts. It will prove a great money maker



CORY THORNLESS BLACKBERRIES

BERRIES TAKE UP LITTLE ROOM AND ARE HEAVY PRODUCERS



FANCHER CREEK NURSERIES

SINCE.....1884



MME. ED. HERRIOT



CLB. LADY HILLINGDON



GOLDEN EMBLEM

THE ROSE GARDEN

In our collection of flowering and ornamental shrubs the rose, "Queen of Flowers," occupies first place; hence we have been careful to select only those sorts producing freely of blooms, possessing good substance and strikingly individual characteristics. Hundreds of new varieties have been brought out by rose growers and hybridizers the past few years, but in making up our list we have selected only those which we believe have proven meritorious and worthy of further propagation.

KEY TO ROSE CLASSES

TEA. (T.) Slender of growth and not very vigorous as a rule. Foliage nearly always very glossy. Have tendency to bloom continuously. More tender than Hybrid Teas and Hybrid Perpetuals.

HYBRID TEA. (H.T.) A class of comparatively recent origin and today the most important of all. They thrive almost everywhere but in the colder climates of the eastern and northern states should be given some winter protection. They show a blending of beauty, delicacy and perpetual blooming habit of the Teas with the vigor and great hardiness of the Hybrid Perpetuals.

HYBRID PERPETUAL. (H.P.) Fragrant as a class, and vigorous and upright in growth. Hardy and resistant to cold. Stems are strong bearing the flowers erect. Foliage rough.

POLYANTHA. (Poly.) "Baby Roses." Usually dwarf, flowers borne in clusters.

NOISETTE. (Nois.) Tender climbers of strong growth similar to the Teas.

CHEROKEE, WICHURIANA, (Wich.) and MULTIFLORA. All hardy climbers having as a rule but one main blooming season, though some of the newer hybrids are continuous bloomers.

LATE INTRODUCTIONS

Dame Edith Helen. (H.T.) (A Dickson & Sons, 1926) A new and brilliant pink rose of immense size and exquisite form. The buds are borne on long stiff stems, and open slowly to large perfectly formed flowers. The color in all stages from the opening of the bud to the falling petal is an even shade of brilliant pink. Its wonderful fragrance won it the Clay cup in England in 1926 for the best sweet-scented rose shown that year. Every rose grower should have this splendid new rose. Price \$1.50.

Etoile de Feu. (H.T.) (Pernet-Ducher, 1921) A low growing bushy plant producing an abundance of globular buds that open to large cupped flowers of flaming orange-salmon. The blooms are very double and the inner petals beautifully frilled and crinkled. The best formed of the many new fire-colored roses. Bright glistening foliage and very resistant to mildew. Price \$1.00.

John Russell. (H.T.) (Dobbie & Co., 1924) An upright growing bush bearing enormous blooms of dark velvety crimson color. The flowers are full and of good form, borne on long straight stems. One of the best red roses. Price \$1.00.

Margaret McGredy. (H.T.) (McGredy & Son, 1927) Large semi-double blooms of orange-scarlet and oriental red changing in the mature flowers to carmine-rose make this new variety the sensation of the rose world. The wonderfully beautiful blooms are borne on strong stems that carry the flower upright. The plant is an unusually strong grower and produces an abundance of bloom. Price \$1.50.

Mrs. Henry Bowles. (H.T.) (Chaplin Bros. 1921) Glowing Pink flushed with salmon. The flowers fragrant and well shaped are borne in great profusion. The bush is a strong grower and blossoms freely over a long period. Price \$1.00.

OUR ROSES ARE ALL STRONG NO. 1 PLANTS—WILL BLOOM THIS SEASON



FANCHER CREEK NURSERIES

SINCE.....1884



HOOSIER BEAUTY

REV. F. PAGE ROBERTS

LOS ANGELES

Mrs. F. R. Pierson. (H.T.) (F. R. Pierson, 1926) A dark cardinal red rose, very sweetly scented, borne on long stems. The foliage is large dark and abundant. A good garden variety. Price \$1.00.

Rev. F. Page Roberts. (H.T.) (B. R. Cant & Sons, 1921) Long buds varying in color from deep coppery-pink to orange and red. Petals of open blooms are of pure golden yellow on the inside and stained on the outside copper and red. Flowers are large and full with a rich fruity fragrance. The gorgeous and unusual coloring of the blooms which are produced abundantly throughout the season, the strong, though somewhat low growth of the bush, combined with bright and abundant foliage, make this rose a leader wherever grown. Price \$1.00.

Shot Silk. (H.T.) (A. Dickson & Sons, 1924) Well formed buds of gold and orange opening to flowers of coppery rose shot with golden yellow. Petals of good substance with a silky sheen; coloring most unique and attractive. The fragrance, though delicate, is unusually pleasing. Beautiful clear bright foliage carried in abundance. Price \$1.00.

The Queen Alexandra. (H.T.) (S. McGredy & Son, 1918) A rose with an astonishing and sensational color combination-intense vermillion on inside and old gold on reverse of petals which spring from a deep orange base. A rose of unusual beauty in all stages from the brilliant buds to the very double open blooms. Its moderate height and free flowering habit make it an exceptionally good bedding rose. Price \$1.00.

Una Wallace. (H.T.) (S. McGredy & Son, 1921) An exquisitely modeled rose of luminous old rose color. The medium sized blooms are carried erect on good strong, long stems, and are quite fragrant. The bushes are vigorous growers. One of the best roses of recent introduction Price \$1.00.

NEW CLIMBING ROSES

Climbing Mme. Butterfly. (Clg. H. T.) (Boston Rose Farms, 1926) Slender shapely buds of deep shell pink with gold base, borne erect on good stems. Has all the charm of the bush type in addition to its vigorous climbing qualities. Price \$1.00.

Climbing Rose Marie. (Clg. H.T.) (Pacific Rose Co., 1927) An enormous grower and heavy producer of bloom a combination seldom found in roses. Beautifully formed, deep rose-pink blooms literally cover the bush. Flowers are larger than the bush form and equally as fragrant. A very effective climber. Price \$1.00.

GENERAL COLLECTION

Betty Uprichard. (H.T.) (A. Dixon & Sons, 1922) Buds coppery red; flowers, semi-double; color, a charming salmon pink with the reverse of the petals orange cerise. Buds are of good form and borne on long stems. A favorite because of its unique coloring. Price 75c.

Cheerful. All that the name implies. Shining pink illumined with orange and yellow at the base of the petals. Flowers large, full and perfect shape and form. A cheerful and persistent bloomer. Price 75c.

Columbia. (H.T.) Flowers a handsome shade of pink, deepening as they open to a glowing pink, and produced on long, stiff stems. Delightfully fragrant. Price 75c.

Constance. (H.T.) A handsome cadmium yellow; blooms large, full and globular; buds long and pointed, deep yellow streaked with carmine. Foliage glossy green, and the bush is of robust growth, and a profuse bloomer. Price 75c.

Duchess of Wellington. (H.T.) Saffron yellow, stained with a rich crimson changing to a coppery yellow; fragrant; a splendid decorative variety and free flowering. Price 75c.

Eldorado. (H.T.) (Howard & Smith, 1923) A clear yellow rose that holds its color when fully opened. The lovely cupped flowers are very double with petals crinkled at the center of the bloom. Foliage clean and abundant. An exceptionally good garden rose. Price \$1.00.

General McArthur. (H.T.) This is probably the greatest favorite of all the garden roses. The flowers are a vivid crimson scarlet and retain their brilliancy when the flowers are fully expanded. Very highly perfumed and practically free from mildew. Buds are usually borne singly on long stout stems. Price 75c.

Golden Emblem. (H.T.) (S. McGredy & Sons, 1917) The steadily increasing popularity of this wonderful rose is fully justified by its remarkable beauty. The large, perfectly formed buds are of an even golden yellow. The evenness and purity of color in this rose is most remarkable and it is quite generally conceded to be the outstanding golden rose of the day. The foliage is bright elm green and the stems are strong and upright. Price 75c.

Golden Ophelia. (H.T.) An excellent new seedling of the Ophelia. The flower is of medium size, deep golden yellow in the center, paling slightly toward the outer petals; of perfect symmetrical form. The plant is a sturdy stiff-stemmed grower. Price \$1.00.

Gruss An Teplitz. (H.T.) There is no better rose grown for hedge purposes than the Gruss an Teplitz. A vigorous grower and when properly trained makes an almost compact hedge. The flowers when first opened are rich and dark crimson, changing to velvety fiery red. Delightfully fragrant and blooms continuously. Price 50c.

Hoosier Beauty. (H.T.) The flowers are of dark glowing maroon with darker shadings, reverse of petals show silver sheen texture like velvet. Double, very pretty in the bud, opens showing yellow stamens. Deliciously fragrant. Leaves dark green, flowers borne on long stiff thorny stems. Strong grower, free and continuous bloomer. Price 75c.

Hortulanus Budde. (H.T.) Buds, long and pointed; flowers dark red with a yellow center. Strong, vigorous and branching, always covered with a profusion of blooms. An excellent variety for bedding. Price 75c.

Imperial Potentate. (H.T.) (Clarke Brothers, 1923) This fine new garden rose bears splendidly formed buds of rich rosy carmine which open to crisp-petaled blooms of dark shining rose-pink shaded lighter on reverse of petals. Fragrance is exceptionally fresh and fine. Foliage thick and leathery. A strong growing rose that we highly recommend. Price 75c.

Independence Day. (H.T.) Flowers sunflower yellow overlaid with orange-apricot. The buds are gracefully olive shaped, with charming curved petals, foliage glossy dark green. Price 50c.

Irish Elegance. (H.T.) Single bronze pink blooms, which, while expanding, assume varied apricot hues. Blooms abundantly from early spring to end of flowering season. Bush a strong grower. Price 75c.

Irish Fireflame. (H.T.) Orange and Crimson buds, opening to very large single blooms of gold and apricot with pink shadings. Foliage bronzed and dark green. An unusually strong growing rose. Price 75c.

NOTE OUR SPLENDID ASSORTMENT OF CLIMBERS



FANCHER CREEK NURSERIES

SINCE.....1884



SOUV. DE GEORGES PERNET

Jonkheer J. L. Mock. (H.T.) A beautiful rose in the bud, being full and well formed, and is equally good when it opens up. In color it is a mixture of bright red and salmon pink, with a silvery reflex. A strong grower. Price 75c.

K. A. Victoria. (H.T.) Finest of all for cut flowers. Produces blooms of enormous size, white, faintly suffused lemon-yellow. Large pointed creamy white buds, strong stems, glossy foliage. Easily the most widely known and popular of the white varieties. Price 75c.

K. of K. Kitchener of Khartum. (H.T.) Semi-double and intense scarlet, with large velvety petals, produced abundantly; vigorous grower and free branching; a rose of distinction and beauty. Price 75c.

Lady Hillingdon. (T.) Flowers a deep apricot yellow which do not fade, blooms large and loose, buds long and pointed; foliage first dark violet turning to green with age; growth strong and vigorous. A valuable rose in every way. Price 75c

La France. (H.T.) Silvery Pink. One of the finest roses; the color is a most lovely rose, with silver lustre; a constant bloomer and very sweet scented. A rose that has enjoyed a long popularity solely on its merits. Price 75c.

Los Angeles. (H.T.) Luminous flame pink toned with coral and shaded translucent gold at the base of petals. Reflex of petals silvery, base creamy orange. Originated in California and emblematic of the Golden West with its rich flame pink and golden yellow colors. Buds long and full on fairly reddish stems. Price 75c.

Louise Catherine Breslau. (H.T.) Flowers shrimp pink, shaded with orange and chrome yellow, large, full and globular. Growth of plant is low but very sturdy with strong branches. Practically mildew-proof. Price 75c.

Miss Lolita Armour. (H.T.) One of the most striking color combinations ever seen in a rose. As the flowers expand, they develop to a deep coral-red with a gold coppery-red suffusion, the base of the petals being a rich golden yellow with coppery sheen. The flower is very double and cup-shaped, the vigorous plants are a continual mass of brilliant bloom. Price 75c.

Mme. Butterfly. (H.T.) A sport of Ophelia. Flowers a brilliant pink suffused apricot and gold, buds carried on erect stems; foliage and habit of growth unsurpassed. A very fragrant rose with buds of almost perfect form. Price 75c.

Mme. Caroline Testout. (H.T.) Flowers a bright pink, large size, good shape and fragrant; foliage free and strong; bush a good grower and free blooming. A favorite in the coastal region and the northwest. In the interior valleys it should be given a northern exposure and shady situation. Price 75c.

Mme. Edouard Herriot. (H.T.) (Pernet-Ducher, 1913) Superb coral red shaded yellow at base passing to shrimp red. Flowers large and semi-double, buds perfectly formed and magnificently colored, continuous

bloomer, flowers do not last long but are always coming. Produces a profusion of exquisitely formed and sweet scented buds of reddish copper and coral tints. The foliage is bright green and forms a fitting setting for this garden gem. Price 75c.

Mrs. Aaron Ward. (H.T.) Flowers Indian yellow, occasionally washed with rose, good form and slightly fragrant; foliage good and reasonably abundant; hush an upright grower with substantial stems, free branching and flowering. Price 75c.

Mrs. W. C. Egan. (H.T.) (Howard & Smith, 1922) Deep flesh color, softly contrasted with a lighter shade of soft pink and with golden glow at the base of petals. The flowers which are borne on long stems last for a long time either on the plant or when cut. A rose of unusually beautiful form. Price 75c.

Mrs. Wakefield Christie Miller. (H.T.) One of the finest and most popular in our collection. Charming flowers of clear rose and light pink, sweetly perfumed. A dependable strong, upright growing rose with large foliage. A free bloomer and one we can highly recommend as a bedding rose. Price 75c.

Ophelia. (H.T.) Salmon flesh shaded with chamois center. A rose that is lovely at any stage. The buds and flowers are beautifully formed and colored, enhanced by a rich veining on the petals. Stems are long and carry the flowers erect. A deliciously fragrant rose. Price 75c.

Padre. (H.T.) (B. R. Cant & Sons, 1921) There is a charm of coloring in this rose that immediately challenges attention—a coppery red, shaded with yellow at base of petals. The fully opened, semi-double blooms with their curiously notched petals of soft, deep rose retain their beauty until the last petal drops. The lovely buds on long, straight stems make it a most attractive cut flower. A great rose standing as a new creation with a type distinctly its own. Price 75c.

Pink Maman Cochet. (T.) A beautiful pink rose with light creamy yellow center. A vigorous grower and profuse bloomer. One of the most popular Tea roses. Price 75c.

Red Radiance. (H.T.) One of our best red roses. Flowers are a lovely deep red color, borne on erect stems, and in great profusion. The hush is exceedingly vigorous, considered one of the hardiest in the Tea section, blooms freely and every flower is a gem. Price 75c.

Rose Marie. (H.T.) Stands in the same class as the Hoosier Beauty and Sunhurst and is said to be a cross between these two splendid varieties. Flowers are a deep pink, wonderfully perfumed, and of perfect form. A continuous bloomer with long stems and clear green foliage which is mildew resistant. No garden should be without this magnificent rose. Price 75c.

Souv. De Claudius Pernet. (H.T.) (Pernet-Ducher, 1920). Flowers of the most striking sunflower yellow color, deeper in the center; long pointed and exquisitely shaped buds, carried on long stiff stems. A vigorous grower with brilliant green foliage. This rose is sometimes disappointing the first season, but the glorious blooms on a well developed bush amply make up for the imperfect flowers of the first summer. Price \$1.00.



SOUV. DE CLAUDIUS PERNET

NO HOME COMPLETE WITHOUT A FEW CLIMBING VINES



FANCHER CREEK NURSERIES

SINCE 1884



Souv. De Georges Pernet. (H.T.) (Pernet-Ducher, 1919) Substantial buds of distinctive form opening to immense flowers of metallic rose, shading through copper to gold at base of petals. This rose has every quality needed in a garden rose. The bush is an exceptionally strong grower, and the wonderfully beautiful blooms are borne in utmost profusion. One of the very best bedding roses. Price \$1.00

Souv. De H. A. Verschuren. (H.T.) This rose presents one of the colors so much sought after by rosarians, a beautiful apricot yellow shading into saffron yellow at the edges. The roses are borne on strong stiff stems. The bush is a medium grower with few thorns. A superb rose and sure to be a great favorite. Price \$1.00

Sunburst. (H.T.) A handsome yellow rose with coppery orange shadings, fairly full, cup-shaped, with long pointed buds borne singly on strong stiff stems. It has a splendid fragrance of the tea character. The plant is a vigorous grower sending up strong canes heavily clothed with handsome foliage. Price \$1.00

White Killarney. (H.T.) It is a sport of the well known Killarney and very similar except it is more vigorous in growth and resists disease better. Flowers are pure white and stays a long time in the bud. Excellent for cutting. Price 75c.

White Maman Cochet. (T.) White, flushed with shrimp pink on the outer petals, suffused with carmine in the bud opening to a large full handsome flower with yellow shadings toward the center. The finest of all the cochets. Price 75c.

Wm. F. Dreer. (H.T.) Soft, silvery shell pink, base of petals a rich golden yellow; beautiful in all stages of development. Vigorous in growth and free flowering it has become exceedingly popular. Price 75c.

HYBRID PERPETUALS

Frau Karl Druschki. (H.P.) Sometimes called Snow Queen or White American Beauty. Largest and most popular of the white roses. Blooms six inches across not uncommon. The immense buds are egg shaped, long and pointed, opening into superb beautifully formed white waxy petaled rose without a tinge of color. Growth strong and vigorous with abundant foliage. One of the hardiest roses. Price 75c.

George Arends. (H.P.) Delicate pink. A large, handsome rose of solid color and good form. Widely heralded as "Pink Frau Karl Druschki" but does not look like a sport from that variety. Growth is so rampant that it could be easily trained as a climber and might be classed as such. Price 75c.

Juliet. (H.P.) Outside of petals old gold, interior rich rosy red, changing to deep rose as the flowers expand. Flowers are rather large, double, fragrant and borne in moderate quantity. An extremely vigorous grower. Price 75c.

Paul Neyron. (H.P.) Pure Rose Red. One of the largest roses in cultivation. The buds are larger than the best American Beauties grown under glass are borne freely in the open ground. Growth is strong and vigorous. A fine Red Rose. Price 75c.

POLYANTHAS (Baby Roses)

Superba. (Poly.) Glowing dark red flowers of small size borne in large, compact clusters. A very profuse bloomer. Plant quite vigorous. The best dark red "baby rose". Price 75c.

CLIMBING ROSES

Belle of Portugal. (H.) Gigantea. Flowers a soft pink fused with yellow at the base of petals; buds long and pointed, expanding into blooms of large size and good form and substance; foliage light green; growth rampant and vigorous. Price 75c.

Cherokee Pink. (Cher.) A California introduction. Ruddy Pink flowers of large size, single and borne profusely in the spring months. In great demand for fences, pergolas, etc. Price 75c.

Clg. Cecile Brunner. (Clg. Poly.) Salmon pink with daintily reflexed petals. Flowers are borne so freely as to often hide the bush. Identical with the bush variety, of exquisite form and color. Only climber in the polyantha division that flowers after the main crop in the spring. Price 75c.

Clg. Hoosier Beauty. (Clg. H.T.) (Western Rose Co., 1918) Splendid dark red blooms of perfect form and delightful fragrance. The buds are long slender and of exquisite delicacy of form. Bloom is identical with Hoosier Beauty bush rose. The velvety texture of the flowers borne on strong stiff stems makes it rank among the best of the climbers. Price 75c.

Clg. K. A. Victoria. (H.T.) One of the very best climbing white roses; a strong and rapid grower, making shoots fifteen feet in a season; flowers superb, of good texture and substance, extra large, deep and full very double, and are produced on long stiff stems; buds long and pointed; deliciously fragrant. Price 75c.

Clg. Lady Hillingdon. (T.) Deep apricot yellow. Can be told at a glance from any other rose known; even after the flower is cut the color will deepen. It never fades. Color is solid without any shading and absolutely unique. Growth strong and vigorous. Foliage at first dark violet, becoming a very deep green with slight violet hue. Flowers large and loose, with long pointed buds and remarkably large petals. Price 75c.

Clg. Los Angeles. (H.T.) A luminous flame pink with golden shading at the base of each petal. The buds and bloom are of exceptionally good form and pleasingly fragrant. The blooms are identical with those of the bush variety except they are somewhat larger. Price 75c.

Clg. Mme. Caroline Testout. (H.T.) Flowers rose with brighter center, large full and globular; identical with that most beautiful and very free flowering rose Mme. Caroline Testout, except that it is a vigorous climber, making growth from 12 to 15 feet in a season and an inch through. No garden should be without this magnificent rose. Price 75c.



PAUL'S SCARLET CLIMBER

Clg. Mme. Edouard Herriot. (H.T.) A fine climber strong and vigorous. Brilliant coral-red buds opening to flowers of flaming pink and orange. Flowers are slightly larger and more brilliant than the bush form. A profuse bloomer and one of the most striking climbers in our list. Price 75c.

Clg. Mrs. Aaron Ward. (H.T.) Yellow, tinted salmon rose. Color variable. In spring it is nearly white outside, with blush of light salmon center. In the fall the color deepens to a good yellow. Handsomely formed on strong stems. Price 75c.

Clg. Papa Gontier. (T.) A vigorous grower with beautifully formed buds. Flowers rosy crimson with carmine center, are borne freely over a long season. Possesses all the merits of the bush variety. Price 75c.

Clg. Sunburst. (H.T.) Flowers large and full and a distinct ochre yellow color. Buds are long and pointed. A vigorous, strong growing yellow climber and a profuse bloomer. Price \$1.00.

Emily Gray. (H.W.) Foliage glossy and attractive; flowers of rich golden yellow. A good climber and without doubt the finest yellow Wichuriana rose yet introduced. Price 75c.

Fortune's Yellow. (Beauty of Glazenwood). (Nois.) A vigorous fast climber sending forth a mass of bloom in the early spring. Flowers are a combination of copper, carmine and salmon yellow. The foliage is a bright green. When in full bloom, it is a sight not soon forgotten. Price 75c.

Marchal Neil. (Nois.) Flowers a deep golden yellow, large, full and beautifully formed, fragrant; foliage abundant; bush a strong grower but should be given a northern exposure and a partially shady environment. This grand old rose originated over sixty years ago and still retains its popularity. Price \$1.00.

Paul's Scarlet Climber. (H.W.) This peerless climbing rose of purest vivid scarlet color, remaining bright until the flowers fall, is in a class by itself. The blooms are of medium size, semi-double and perfect in bud form and clothe the plant with a blazing mantle in the early summer months. It has been awarded many medals by the Rose Societies at home and abroad. Price 75c.

WHEN PLANTING ROSES—

They should be planted with the junction of the bud two or three inches under the ground. This will prevent suckering and will make a better root system. Spade the earth to a depth of about 18 inches. When planted point the roots down, slanting to the side of the hole. Press the soil firmly around the roots and settle by watering freely. Broken or bruised roots should be removed when planting. Bear in mind that roses require a lot of water and especially in dry climates. Use fertilizer as a top dressing. Roses should be pruned while they are in a dormant condition. A light pruning is sometimes advisable between blooming seasons. Keep the dead wood cut out of your rose bushes.

Our roses are pruned ready for planting when they leave the nursery.

WE BEAUTIFY AND FEED THE WORLD

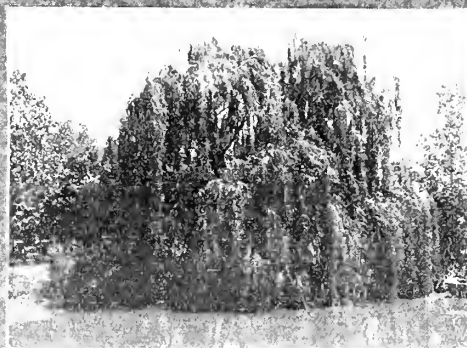


FANCHER CREEK NURSERIES

SINCE 1884



BALM OF GILEAD "POPLAR"



SALIX "WEeping WILLOW"



PLATANUS "SYCAMORE"

ORNAMENTAL DEPARTMENT

EVERYONE admires beautiful well-planted grounds. The home without the softening beauty of trees, shrubs, vines and flowers looks bare and uninviting. It has been truly said that "First impressions are always the most lasting," and the public judge the inside of a home to a great extent by its surroundings. Homes large and small need the finishing touch of trees, shrubs, and flowers. For over forty-six years the Fancher Creek Nurseries have done much research work in an endeavor to learn the shrubs and trees that do well under California conditions and more particularly as they exist in the great interior valleys. You will find listed in this catalogue the very trees you need for your sidewalk and avenue planting. Beautiful flowering shrubs for the foundation lines, borders and boundaries. Shrubs that will bear a wealth of brilliant colored berries during the winter months. Climbing vines for the porches, pergolas and outbuildings. Choice new roses for the rose garden; in fact everything you need to make your homegrounds beautiful.

That this book may be plain to our customers not familiar with botanical names, we have used the botanical name followed by the common name where possible, and these names are cross indexed for your convenience. The nativity is given as nearly as known but in some instance this can only be given in a general way.

Where the height is given it has reference to the height the tree or plant finally attains under normal conditions.

We grade our ornamental trees and shrubs as follows: Upright growing trees and plants are graded by height, this particularly pertains to conifers, shade trees, and deciduous shrubs. Prostrate varieties such as some of the Junipers and Cotoneasters which do not make an upright growth are graded according to spread. In grading the evergreen shrubs both height and spread is taken into consideration.

Plants mentioned as "balled" means that they have been dug at the nursery with a ball of earth about the roots, and this ball has been wrapped with burlap. In planting a balled plant do NOT remove the burlap, cut top strings only. Plants mentioned as "Gallon Container" means they are established in gallon cans which should be cut down each side with either shears, or hatchet and removed without disturbing the roots of the plant when planting.

Deciduous Shrubs and Trees

ACER. Maple

Acer dasycarpum. "Silver (or Soft) Maple". Eastern N. America. 60 feet. A large tree of rapid growth; foliage bright green above, silvery beneath. A favorite tree for streets and parks; grows well in the interior valleys. The foliage assumes beautiful autumnal tints in the fall. 6 to 8 ft. \$1.25, \$11.00 per ten.

BETULA. Birch

Betula Alba. "White European Birch." 40 feet. Tree medium to large with white bark on the older limbs and trunks; branches of a drooping habit; growth irregular but robust. Valuable either as a specimen or

grouped in masses. Will thrive in any soil, even though of poor quality. Branched trees 8 to 10 ft. \$2.50, Whips 6 to 8 ft. \$1.50.

CERCIS. Judas Tree

Cercis canadensis. "Judas Tree". Europe. 20 feet. A beautiful object in the spring when covered with a mass of rose-tinted colored flowers. Fine as a specimen plant or for grouping. Very ornamental. 4 to 6 ft. \$1.00 each.

CRATAEGUS. Thorn

Crataegus monogyna pauli. "Paul's Double Scarlet Thorn." 12 feet. Tree rather small but erect in habit and a quick grower; flowers bright carmine and double; berries dull red and free fruiting. One of the most showy small deciduous trees. 4 to 6 ft. \$1.25 each.

SHADE TREES COST LESS THAN A PARASOL AND SERVE FOR YEARS



FANCHER CREEK NURSERIES

SINCE 1884



GINKGO. Maidenhair Tree

Ginkgo biloba. "Maidenhair Tree." China and Japan. 60 feet. This strange species is said to be of great antiquity. Does best in a deep moist soil and in a comparatively cool or warm damp climate. Not suited to hot dry atmospheres. Leaves wedge or fan shaped. Bare root 3 to 4 ft. \$1.50 each.

POPULUS. Poplar

Populus balsamifera. "Balm of Gilead." N. America. 75 feet. A handsome, upright, spreading tree, rendering it fine for avenue planting, aligning driveways; foliage a glossy green and abundant, giving a dense shade. These trees are very rapid growers and do not bear the objectionable cottony seed. Where quick shade is desired they have no equal. 6 to 8 ft. 75c each; 4 to 6 ft. 60c each.

ROBINIA. Locust

Robinia pseudacacia. "Black Locust." Eastern United States. 80 feet. Tree quite ornamental and used for street and avenue purposes; wood hard and durable, hence valuable for posts and railroad ties. Tree in bloom early spring and summer, a vigorous grower. Flowers borne in long pendulous racemes and fragrant. 6 to 8 ft. 75c each.

PLATANUS. Sycamore

Platanus. "Sycamore". 60 feet. Erect growing tree, with bright green foliage and beautiful mottled trunk. In great demand for shade and avenue planting; a rapid symmetrical grower, thriving in almost any soil. Regarded as one of the best trees for California and the Southwest. 8 to 10 feet. \$1.50 each; 6 to 8 ft. \$1.00. each.

PRUNUS. Plum

Prunus Vesuvius. "Purple Leaved Plum." 15 feet. Prized mainly for its wealth of beautiful purple foliage borne on long graceful limbs. In form the tree resembles the elm. It is very superior to the other varieties of purple leaved plums in that it is a more vigorous grower and more heavily set with much larger leaves of a decidedly more pronounced crimson color. Fruit is small and of no commercial value. 4 to 6 ft. 75c each; 3 to 4 ft. 65c each.

Weeping Deciduous Trees

MORUS. Mulberry

Morus alba tatarica pendula. "Tea's Weeping Mulberry." 8 ft. A very graceful weeping tree, with long slender branches, drooping to the ground, parallel to the stem; one of the most graceful and vigorous weeping trees. Very effective when used as a specimen on the lawn. Price \$3.00 each.

SALIX. Willow

Salix babylonica aurea. "Golden Weeping Willow." 40 feet. Of identical habit with common weeping willow. Differs in the intense golden hue of the branches, making it particularly handsome during the winter. 6 to 8 ft. \$1.25 each.

Flowering Fruit Trees

CYDONIA. Flowering Quince

Cydonia japonica. "Japan Scarlet Quince." 10 feet. The Japanese quinces are beautiful dwarf species, remarkable for the brilliancy of their blossoms, which vary from the richest scarlet to the most delicate blush color. They are well adapted for single plants, on the lawn, for the edges or borders of groups of trees and for planting ornamental hedges. The foliage is very ornamental. The fruit has a delicious fragrance but is worthless.

RED FLOWERING. Deep Red. Balled plants 3 to 4 ft. \$1.50.

PERSICA. Flowering Peach

Double Red Flowered. 15 ft. Flowers semi-double, bright red. 4 to 6 ft. 65c each; 3 to 4 ft. 50c each.

Double Pink Flowering. 15 feet. Flowers Double Pink. Very beautiful and in demand by florists. 4 to 6 ft. 65c each; 3 to 4 ft. 50c each.

Double White. 15 feet. Flowers large, double and pure white. Branches covered with bloom in the spring. 4 to 6 ft. 65c each; 3 to 4 ft. 50c each.

PUNICA. Flowering Pomegranate

Punica Alba. "White Flowering Pomegranate." Asia. 6 to 10 feet. Flowers double and creamy white, followed by brilliant showy fruits. Foliage glossy and handsome with ruddy tints on new growth. Gallon containers 2 to 3 ft. 75c each.

Punica Rubra. "Double Scarlet Flowering Pomegranate." S. Asia. 15 feet. Rapid growing shrub similar to Alba except flowers are deep double scarlet. Gallon containers 2 to 3 ft. 75c each.

Deciduous Shrubs

CAESALPINA. Poinciana

Caesalpinia gilliesii. "Bird of Paradise." 8 feet. Adapts itself to the poorest soils. Flowers light yellow pear-shaped, 2 inches long, with brilliant, protruding, red stamens, appearing all summer. Gallon containers 5 to 6 ft. \$1.50 each.

DEUTZIA

Deutzia. "Pride of Rochester." 8 feet. Tall growing variety. Flowers double, white, tinged light pink on back of petals. An attractive shrub of free blooming habit which should be more widely planted in California. Gallon containers 3 to 4 ft. 75c each.

FORSYTHIA. Golden Bell

Forsythia suspensa. China. 10 feet, quite tall, with drooping branches; can be trained to arbors; flowers bright yellow. Gallon containers 1 to 2 ft. 75c each.

HIBISCUS. Rose of Sharon

Althea, or Rose of Sharon. "*Hibiscus syriacus*." Asia. 12 feet. Of the easiest cultivation and with large, delicate hued, bell shaped flowers appearing very profusely during the summer months. Bare root plants 2 to 3 ft. 75c each.

HYDRANGEA.

Hydrangea hortensis. 4 feet. A native of Japan, has large dark green leaves, and globular heads of rose-colored flowers. Their luxuriant foliage and rich delicate flower globes render them very attractive. Gallon containers 75c each.

KERRIA JAPONICA

Kerria Japonica. Japan. 6 feet. Has deeply veined leaves and yellow flowers, followed by small black berries. Known also as Japanese rose, the flowers resemble small, double, yellow roses. Gallon containers 3 to 4 ft. \$1.00 each.

LAGERSTROEMIA. Crape Myrtle

Lagerstroemia indica rosea. "Crape Myrtle." 12 feet. A free blooming shrub with rosy, pink flowers, of curiously crimped petals, produced in very large panicles at the ends of the branches during the entire summer. Balled 2 to 3 ft., \$1.50 each.

LIPPIA CITRIODORA. Lemon Verbena

Lippia Citriodora. "Lemon Verbena." South America. 6 feet. The old fashioned favorite shrub, with long narrow pointed leaves, which emit a delightful lemon scented fragrance. Established in quart containers. 2 to 3 ft. 60c each.

PHILADELPHUS. Mock Orange

Philadelphus. "Mock Orange, Garden Syringa." Europe, Asia. 10 feet. Flowers pure white, delightful orange-blossom fragrance; one of the first to bloom in the spring. Gallon containers 1½ to 2 ft. 75c each.

SPIRAEA. Spiraea

Spiraea cantoniensis. "Double-Flowered Spiraea." 3 feet. Purest double white flowers along the entire length of the small twigs; foliage oval, deep glossy green, assuming a brilliant shade in autumn. Bare Root plants 2 to 3 ft. 75c each.



FLOWERING QUINCE

FLOWERING SHRUBS ARE EVERLASTING BOUQUETS



FANCHER CREEK NURSERIES

SINCE.....1884



Spiraea prunifolia flore pleno. "Double-Flowered Plum-leaved Spiraea." Graceful, arching branches, round clusters of double, pure white flowers borne in profusion. A very showy shrub. Bare Root plants 2 to 3 ft. 75c each.

SYRINGA. Lilac

Double Purple Lilac. 8 feet. An old favorite, very fragrant. Of easy culture, hardy, and free blooming. 2 to 3 ft. \$1.00 each.

Double White Lilac. 8 ft. Bears immense trusses of double, pure white flowers. 2 to 3 ft. \$1.00 each.

TAMARIX. Tamarisk

Tamarix hispida aestivalis. Japan. 15 feet. Shrub four feet high with slender upright spreading branches; flowers pinkish appearing in early spring and again in summer in dense racemes forming terminal panicles; foliage bluish-green, handsome and feathery. Fine as a single specimen or in mass effects. Does fine in the interior valleys. Bare Root 4 to 6 ft. 75c each.

VIBURNUM. Snowball

Viburnum opulus sterilis. "Common Snowball." N. America. 8 feet. Produces an abundance of pure white, globular flowers in May and June. Will thrive in most any kind of soil. Gallon containers 2 to 3 ft. \$1.00 each.

WEIGELA.

Weigela rosea. "D. Florida." China. 6 feet. An old favorite and probably still the most popular. Flowers pink, large and borne in the utmost profusion. Bare Root 2 to 3 ft. 75c each.

The Evergreen Trees

ACACIAS.

Valuable trees for park and garden, roadside and boulevard planting. All are rapid growers and thrive in nearly all sections of the state. Their free-flowering habits render them valuable acquisitions in the adornment of home surroundings. Although there are some 400 species of Acacia, we have confined ourselves to varieties of well-known merit, the uses of which are enumerated below.



ARAUCARIA BIDWILLI. "Bunya Bunya Tree."

Acacia baileyana. 30 feet. An attractive shrub or tree either singly or in groups; foliage a gray-blue arranged spirally around the branchlets, leaves long and feathery; flowers in heads on peduncle, of an intense yellow which literally cover the whole plant in late winter and early spring. One of the best; should be widely planted. Gallon containers 4 to 5 ft. \$1.50 each.

Acacia dealbata. Syn. *A. Mollissima.* "Silver Wattle." 60 feet. Decidedly a favorite tree in California. Foliage varies from silvery to green and feathery in character; flowers fragrant, a clear-yellow, and borne in clusters covering the plant. Tree vigorous, fine shaped and very free flowering, a rapid grower when young. Gallon containers 4 to 5 ft. \$1.00 each. 3 to 4 ft. 75c each.

Acacia Melanoxydon. "Black Acacia." 75 feet. A good sized tree of pyramidal form; flowers a pale yellow borne in heads; foliage large and oblong. Tree a vigorous grower and free blooming; due to its symmetrical shape, renders it valuable for aligning walks and driveways, streets and avenues. Gallon containers 6 to 8 ft. \$1.25 each; 5 to 6 ft. \$1.00 each.

BRACHYCHITON. Bottle Tree

Brachyhiton diversifolia. "Bottle Tree." Australia. 40 feet. A magnificent avenue tree with graceful, tapering trunk. Foliage bright, glossy green, deeply lobed, the shape of which changes throughout the season. Tree of fine pyramidal shape and clean trunk. Also listed as *Sterculia diversifolia.* 4 to 5 ft. \$1.00 each.

CAMPHORA. Camphor Tree

Camphora officinalis. China and Japan. 40 feet. A symmetrical ornamental tree, thriving in poor soil; foliage bright green. Well adapted for lawn and street planting. Gallon containers 2 to 3 ft. 75c each; 3 to 4 ft. \$1.00 each.

CASUARINA. Beefwood

Casuarina stricta. Australia. 50 feet. The red color of the wood has given it the popular name of beefwood. The branches are long and slender and weeping with jointed needle-like leaves. An odd but beautiful ornamental tree, growing well even in alkali soils; of very rapid growth. Stands pruning well and as formal street trees and for hedges we recommend them highly. Gallon containers 4 to 5 ft. \$1.00 each; 3 to 4 ft. 75c each.

EUCALYPTUS. Gum Trees

Eucalyptus globulus. "Blue Gum." 150 to 200 feet. Broad bluish leaves when young. More extensively planted than any other variety; wood when polished resembles hickory. Valuable for wagon work, bridges, tool-handles and for firewood. Gallon containers 4 to 6 ft. 75c each. \$6.50 per ten; 4 inch pots 3 to 4 ft. 40c each, \$3.00 per ten; flats of 100 plants \$4.00 per flat.



EUCALYPTUS RUDIS. "Desert Gum."

EVERGREEN TREES FOR BOULEVARDS, ROADSIDE AND GARDEN



FANCHER CREEK NURSERIES

SINCE.....1884



The Coniferous Trees

This division embraces the most beautiful evergreen trees suitable for the Pacific Coast. Their evergreen habit and conical shapes render them especially desirable either as single specimens on the lawn, planted in small groups, or as backgrounds interspersed with other deciduous trees and shrubs.

ARAUCARIA.

Araucaria Bidwilli. "Bunya-Bunya Tree." Australia. 150 feet. A magnificent tree; branches in regular whorls, closely set with spiny, deep green leaves; handsome for lawn, and by far the finest and most attractive of all evergreen trees. Does well in the interior valleys. 6 inch pots 12 to 15 inches \$1.00 each; 5 inch pots 12 to 15 inches 75c each.

CEDRUS. Cedar

Cedrus atlantica. "Mt. Atlas Cedar." Africa. 120 feet. A handsome pyramidal tree; silvery green foliage; branches have an upright tendency. Balled 4 to 5 ft. \$4.50 each.

Cedrus deodara. "Himalayan or Indian Cedar." Himalaya Mountains. 100 to 150 feet. This magnificent tree from the Himalaya Mountains is a picture of grace and beauty. Pyramidal in general outline; the lower limbs lie on the ground, all the upper ones drooping gracefully. Foliage silvery green, and decidedly glaucous when the trees are young. The most rapid growing of all cedars and much in demand for avenue and lawn plantings. This tree is being widely planted in California for living Christmas Trees. Balled plants 2 to 3 ft. \$2.00; 3 to 4 ft. \$3.50 each; 4 to 5 ft. \$5.00 each; 5 to 6 ft. \$6.00 each.

CUPRESSUS. Cypress

Cupressus Arizona. "Arizona Cypress." Arizona. 40 feet. Tree slender and columnar in habit of growth; foliage a pale glaucous green, turning to a brownish shade in winter. Fine in rows, groups and as single specimen plants in a proper environment. Balled plants 2 to 3 ft. \$1.50 each.

Cupressus macrocarpa. "Monterey Cypress." California. 40 feet. The well known rapid-growing native cypress. Useful where quick effect is wanted. Makes a dense compact hedge. When young can be pruned to form low or tall hedge. 4 inch pots 35c each; Flats of 100 plants \$5.00.

Cupressus sempervirens fastigiata. "Italian Cypress." Europe and Asia. 75 feet. A tall, very slender tapering tree with erect branches lying close to the stem. The classical cypress of the Greek and Roman writers. Excellent for architectural effect. Should always be planted in dry situations. Balled 5 to 6 ft. \$3.00 each; 6 to 7 ft. \$4.00 each. Gallon containers 2 to 2½ ft. 75c each.



CEDRUS DEODARA
Popular as "Living Christmas Tree."

Eucalyptus rostrata. "Red Gum." 120 feet. Outgrows any other variety in the interior valleys. Wood takes a handsome finish and is desirable for interiors. Called "Red Mahogany." Valuable for ties, fence posts, etc. Stands considerable frost. 4 inch pots 4 to 6 ft. 75c each; 3 to 4 ft. 60c each; flats of 100 plants \$4.00 per flat.

Eucalyptus rudis. "Desert Gum." 75 to 100 feet. An excellent avenue tree, of very rapid growth, and withstands both heat and cold. Wood hard and close grained. Gallon containers 4 to 5 ft. 75c each; flats of 100 plants \$4.00 per flat.

MAGNOLIA. Bull Bay

Magnolia grandiflora. "Bull Bay." Southern U. S. 60 feet. One of the grandest of broad-leaved evergreens; flowers pure waxy white, very fragrant and measure from 10 to 12 inches across. Very free flowering, blooms appearing in May and June, succeeded by cone-like fruits, bearing seeds of deep coral-red in October. Foliage thick, brilliant green on the upper surface, and rusty underneath. Adapts itself to a wide range of locations. Gallon containers 2 to 3 ft. \$1.00 each.

SCHINUS MOLLE. Pepper Tree

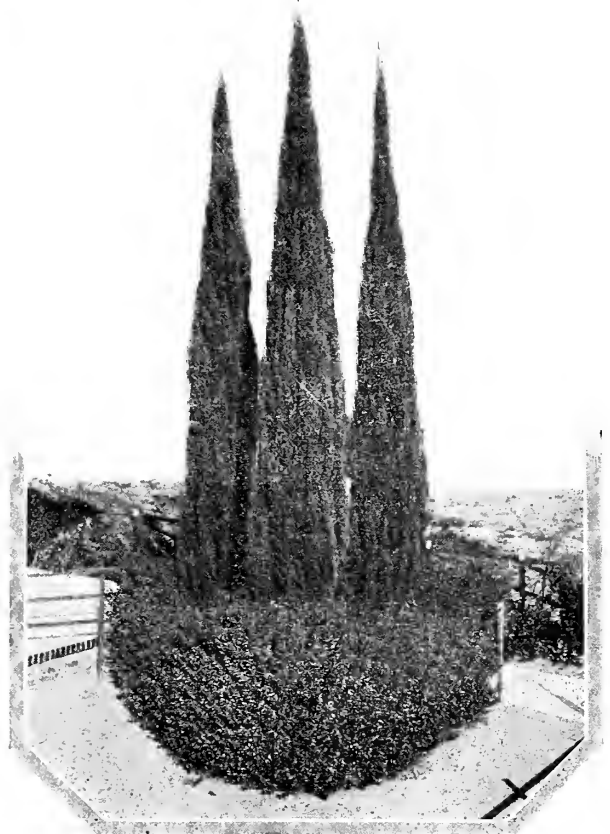
Schinus Molle. "Pepper Tree." Peru. 50 feet. A most picturesque park, avenue or shade tree. Feathery fern-like foliage, yellowish white blossoms followed by rose-colored or deep red berries. Gallon containers 3 to 4 ft. 75c each.

GREVILLEA. Silk Oak

Grevillea robusta. "Silk Oak." Australia. 150 feet. Very graceful fern-like leaves; of rapid growth; covered with bronze-yellow flowers in early summer. Resists drouth; stately for avenue and lawn. Gallon containers 3 to 4 ft. \$1.00 each; 2 to 3 ft. 75c each.

UMBELLULARIA. California Laurel

Umbellularia californica. "California Bay Tree." 25 feet. A very rapid growing tree with glossy lanceolate oblong leaves. Along the coast and near water courses it grows to perfection developing into a handsome tree. Gallon containers 2 to 3 ft. 75c each.



CUPRESSUS SEMPERVIRENS FASTIGIATA—ITALIAN CYPRESS

PLANT A LIVING CHRISTMAS TREE—CEDRUS DEODARA



FANCHER CREEK NURSERIES

SINCE.....1884



JUNIPERUS. Juniper

Juniper chinensis pfitzeriana. "Pfitzer's Juniper." 8 feet. A handsome and hardy variety of spreading habit forming a broad pyramidal head with horizontal drooping branches. Foliage a grayish green. Very ornamental. Balled plants 2 to 2½ ft. spread \$2.50 each.

Juniper sabina. "Savin Juniper." 6 to 8 feet. A low spreading shrub with trailing branches; foliage dense and dark green in color. Plant does well in poor soil. Balled plants 3 to 4 ft. spread \$3.00 each; 2 to 2½ ft. \$2.50 each.

LIBOCEDRUS.

Libocedrus decurrens. "Incense Cedar." California. 100 feet. An ornamental, distinct, erect, compact, growing tree, with a stout trunk; foliage bright, rich glossy green. A native of the mountain regions of California and Oregon. Does exceedingly well on the coast and in the interior. Valuable for parks or lawns, either when planted singly or in masses. 3 inch pots 25c each; gallon containers 1½ to 2 ft. 75c each; 2½ gallon containers \$1.50 each.

PINUS. Pine

Pinus halepensis. "Aleppo Pine." Western Asia. 60 feet. A fast growing variety desirable for hillside planting where immediate effect is desired. Foliage dense and of bluish green color. Balled 4 to 5 ft. \$2.50 each; 3 to 4 ft. \$2.00 each.

Pinus radiata. "Monterey Pine." California. 100 feet. Leaves slender and dark green, very bushy. One of the fastest growing pines, well adapted to the coast regions. Balled 3 to 4 ft. \$3.00 each.

SEQUOIA. California Big Tree

Sequoia gigantea. "California Big Tree." California. 350 feet. The pride of the state and the monarch of the timber forests of the world. A magnificent park, avenue or specimen tree, of pyramidal form; lower branches sweeping the ground. Foliage blue-green. Reaches a diameter of 40 feet. Balled plants 2 to 3 ft. \$5.00 each; gallon containers 10 to 16 inches \$2.00 each.

Sequoia sempervirens. "California Redwood." California. 300 feet. A valuable ornamental tree of rapid growth and of a tapering pyramidal habit. Does well in all parts of the state. Tree free branching; needles dark green with two pale bands beneath; a good grower. The timber of this tree is world famous. Established in containers 4 to 5 ft. \$3.00 each; 3 to 4 ft. \$2.50 each; 2 to 3 ft. \$1.50 each.

TAXODIUM. Bald Cypress

Taxodium. "Bald Cypress." Southern U. S. 100 feet. A deciduous coniferous tree of slender habit. Trunk straight and tapering. Foliage similar to the Redwood. Does well in California. A fine avenue tree. Very desirable for high hedge. Gallon containers 4 to 5 ft. 75c each.



SEQUOIA GIGANTEA
"The Nation's Christmas Tree"

THUJA. Arborvitae

Thuja orientalis aurea nana. "Berckman's Dwarf Ever-golden Arborvitae." 10 feet. Shrub or small tree with spreading and ascending branches; foliage a bright, pleasing shade of green, turning to a bronzy hue in winter. Valuable in formal garden effects and indoor decoration. Balled 1½ to 2 ft. \$1.75 each; 1 to 1½ ft. \$1.50 each; 8 to 12 inches \$1.25 ea.

Thuja orientalis pyramidalis. "Oriental Pyramidal Arborvitae." 15 feet. Of upright growth and columnar habit; foliage light green; desirable for formal effects. Balled plants 2 to 3 ft. \$3.50 each.

The Evergreen Shrubs



SHRUBBERY MAKES "THE HOME BEAUTIFUL"

ABELIA.

Abelia grandiflora. 6 feet. A pretty shrub of straggling growth, bearing small, fragrant, tube-like flowers during the entire summer, color: light rose on the outside and white on the inside. Foliage turns coppery in the fall. Balled plants 2 to 3 ft. \$1.50 each. Gallon containers 75c each.

ACUBA. Gold Dust Plant

Acuba japonica aureo maculata. "Japanese Laurel." S. Asia to Japan. 4 feet. Foliage rather large, dark-green and shining, yellow spotted; flowers small in terminal panicles; berries varying scarlet. Shrub quite vigorous but should be grown in partial shade. Established in gallon containers 75c each.

ARBUTUS. Strawberry Tree

Arbutus unedo. "Strawberry Tree." Europe. 10 feet. Foliage dark green, peculiarly beautiful in the fall, when the tree is covered at the same time with blossoms and ripe edible fruits which are almost identical with the strawberry in size, form and color. A hardy shrub which should be more widely planted. Gallon containers 75c each.

BUDDLEIA.

Buddleia magnifica. China. 10 feet. A beautiful arching shrub of robust habit; foliage a bright green, long and narrow; flowers of a deep rose purple, with an orange eye and the margin of the petals reflexed; panicles dense; blooms in August. Gallon containers 2 to 3 ft. 75c each.

Buddleia variabilis. "Butterfly Bush." (Davidii) China. 3 to 8 feet. Fast growing shrub remains half evergreen, except in very cold climates; flowers borne in long purple spikes appearing from June to November. Should be pruned severely in winter; cut back flower stems as soon as they fade. Gallon containers 2 to 3 ft. 75c each.

BUXUS. Boxwood

Buxus sempervirens. "Common Box." England. 3 feet. Of dense growing habit; foliage dark green above and pale beneath; flowers pale green with yellow anthers. Plants vigorous and hardy. Useful in formal garden effects as specimen plants, borders, etc. Can be trained in any shape desired. Balled cone shaped plants 16 to 20 inches \$1.50 each; 20 to 24 inches \$2.25 each; 24 to 26 inches \$2.75 each.

CALLISTEMON. Bottle-Brush

Callistemon lanceolatus. "Lemon Bottle-Brush." (Metrosideros semperflorens.) Australia, New South Wales. 6 to 12 feet. A native of the Pacific Islands and thriving perfectly in California, this showy, flwery shrub should be given consideration when making up your planting list. Leaves long and narrow, branches drooping. Flowers red, and the exact shape of a bottle brush. Very hardy and is not particular as to soil. Potted 1½ to 2 ft. 75c each.

EVERGREEN SHRUBS—PRETTY FLOWERS, BRIGHT BERRIES



FANCHER CREEK NURSERIES

SINCE 1884



CAMELLIA.

Camellia japonica. China, Japan. 6 to 10 feet. Common and well-known Camellia. Grows very slowly, but begins blooming when very young. Foliage ovate, dark green, thick and glossy; flowers large, double and of various shades of color. Prefers a shady situation. Double Red and Double White. Potted in 5 inch pots \$5.00 each.

CEANOTHUS.

Ceanothus thyrsiflorus. "California Lilac." 10 to 12 feet. A splendid variety with fine dark green foliage; flowers light blue. A free flowering shrub especially valuable for its late flowering habit. Prefers a sunny position and will thrive in most any soil. Gallon containers 75c each.

CHOISYA.

Choisya ternata. "Mexican Orange." 6 feet. A beautiful shrub with bright green clean cut foliage; flowers white, fragrant and borne in clusters. Thrives in most any situation. Balled 2 to 3 ft. \$1.25 each.

CHORIZEMA.

Chorizema ilicifolia. Australia. 3 feet. An interesting shrub of low dense habit of growth and drooping branches; flowers orange red in loose racemes; foliage brilliant green. May be planted singly or in groups. Gallon containers 75c each.

CISTUS. Rock Rose

Cistus ladaniferus maculata. "Spotted Rock Rose." Spain. 3 feet. Flowers pure white with a dark brownish crimson spot above base of each petal. Prefers sunny situation. Gallon containers 75c each.

CORNUS. Dogwood

Cornus capitata. "Evergreen Dogwood." Himalayas. 15 feet. A large sized shrub with flowers similar to those of the eastern flowering dogwood. The plant does well in California. Flowers cream colored becoming ruddy before falling, followed by black showy fruits, edible but insipid. A beautiful shrub deserving to be widely planted. Gallon containers 3 to 4 ft. 75c each.

COTONEASTER.

Cotoneaster franchetti. China. 6 feet. Spreading grower, leaves long and narrow. Berries orange yellow, persisting all winter. Unexcelled for grouping and edging. Balled plants 2 to 3 ft. \$2.00 each. Gallon containers 75c each.

Cotoneaster horizontalis. China. 2 feet. Branches stout, almost horizontal; large, rose-colored flowers; leaves small, berries bright red in fall. One of the best trailing shrubs. May be used for edging large plantings, shrubbery, borders, etc. Gallon containers 1 to 1½ ft. spread 75c each. Balled 2 to 3 ft. spread \$1.75 each.

Cotoneaster microphylla. "Rock-spray Cotoneaster." Himalayas. 2 feet. Low growing and dense, foliage dark green and round, berries purplish red, borne along the stem; flowers white. Balled plants 2 to 3 ft. spread \$1.75 each.

Cotoneaster pannosa. "Silver-leaf Cotoneaster." China. 8 feet. Shrub of upright growth, branches long and slender, leaves deep green above, silvery beneath. Flowers white followed by enormous quantities of red berries in the fall. The branches loaded with berries can be cut and kept in water for weeks. Balled plants 4 to 5 ft. \$2.50 each; 2 to 3 ft. \$1.50 each; gallon containers 2 to 2½ ft. 75c each.

DIOSMA. Breath of Heaven

Diosma ericoides. "Breath of Heaven." Africa. 3 feet. Foliage heatherlike; agreeably fragrant; flowers white, small, star-shaped; used in floral work. Plant hardy; very easily grown. 4 inch pots 12 to 14 inches 60c each.

ELAEAGNUS. Evergreen Oleaster

Elaeagnus pungens argentea. "Bronze Oleaster." Japan. 10 feet. Spreading shrub, broad brown branches; leaves glossy green and silvery. Thrives remarkably well in the interior valleys. An attractive hedge plant and is very decorative as a lawn or single specimen plant. Gallon containers 12 to 18 inches. 75c each.

ERICA. Heather or Heath.

Erica melanthera. South Europe. 5 feet. Dwarf shrub with numerous short branches, densely clothed with small needle-like leaves. Very showy plants producing exquisite purplish pink flowers in early spring. Balled plants 1½ to 2 ft. \$1.75 each.

ESCALLONIA.

Escallonia montevidensis. South America. 10 feet. Erect bush with cylindrical branches; roundish dark glossy leaves. Flowers are pure white borne in large compact clusters in the late summer and fall months in such great profusion as to completely cover the entire plant. Fine for massed and border effects. Does well in the coastal regions, also the interior valleys and foothills. Balled plants 2 to 3 ft. \$1.50 each. Gallon containers 2 to 3 ft. 75c each.

Escallonia rosea. South America. 8 feet. Growth strong and upright, the flowers are a pronounced pink, in conspicuous terminal racemes. Leaves rough serrate and with resinous glands beneath. Very handsome. Balled 2 to 3 ft. \$1.50 each. Gallon containers 1½ to 2 ft. 75c each.

Escallonia rubra. South America. 6 feet. Branches erect, hairy; dwarf; shining green leaves. Flowers rather dark red, in short terminal clusters. A compact shrub of rather slow dense growth. Gallon containers 1 to 1½ ft. 75c each.

EUONYMUS.

Euonymus japonica albo-marginata. "Silver Margined Euonymus" 4 feet. Of upright growth; foliage narrow margined with silvery white. Balled 2 to 3 ft. \$1.50 each.

Euonymus japonica albo variegata. "Silver Variegated Euonymus." 4 feet. Foliage almost white around the edges, changing to yellow with the season. Beautiful for hedges and fine in landscape gardening. Balled plants 2 to 3 ft. \$1.50 each.

Euonymus japonica. "Evergreen Euonymus." Japan. 6 feet. An upright densely leafy evergreen shrub; flowers greenish white borne in cymes; foliage lustrous dark green. Fine for grouping or massed effects. Balled plants 2 to 3 ft. \$1.50 each. Gallon containers 12 to 18 inches 75c each; 2½ inch pots for hedge purposes 15c each.

Euonymus japonica aurea. "Golden-leaved Euonymus." 5 feet. In character like the preceding, but highly prized for its rich golden foliage. Gallon containers 12 to 18 inches \$1.00 each.

Euonymus japonica microphylla. (E. Pulchellus) "Small-leaved Euonymus." 2 feet. Distinct and individual in character, dwarf and of compact habit of growth. Leaves dark green, slender and small. Effective for edging and borders. Hardy and of easy culture. Balled plants 8 to 12 inches 75c each.

Euonymus japonica President Gauthier. 6 feet. Of spreading habit; foliage silvery variegated margined pink. Balled plants 2 to 3 ft. 1.75 each. Gallon containers 2 to 3 ft. 75c each.

FABIANA IMBRICATA.

Fabiana imbricata. South America. 3 feet. A very erect growing shrub with heath-like foliage and white funnel-shaped flowers. Established in 4 inch pots 1½ to 2 ft. 75c each.

GENISTA. Broom

Genista canariensis. "Canary Island Broom." Canary Islands. 6 to 8 feet. Makes a dense growth; branches downy; flowers borne in dense racemes, bright yellow in color and fragrant. Valuable as a contrast in solid green shrubbery. Established in quart containers 3 to 4 ft. 75c each.



ARBUTUS UNEDO—"STRAWBERRY TREE"

PALMS ADD TO THE TROPICAL APPEARANCE OF THE LANDSCAPE



FANCHER CREEK NURSERIES

SINCE. ..1884



Genista hispanica. "Spanish Broom". Europe. 8 feet. An upright growing shrub; flowers yellow, on long drooping, leafless branches. A hardy, drouth resistant plant. Very effective as a specimen plant. Established in quart containers 2 to 3 ft. 75c each.

Genista racemosus. "Sweet Broom." Canary Islands. 6 feet. The best of all, medium in size; flowers yellow and fragrant. Slender branches with small green leaves lending the plant a feathery appearance. A solid mass of pea shaped blooms cover the plant in the spring. Will stand plenty of heat and requires a sunny location. Established in 5 inch pots 75c each.

HYPERICUM. Gold Flower

Hypericum moserianum. "Gold Flower." France. 3 feet. Hardy; abundant single yellow flowers 2 inches across; leaves dark green, ovate. Blooms almost continually. Does best in partial shade. Established in gallon containers 75c each.

LEPTOSPERNUM. Australian Tea Tree

Leptospermum laevigatum. "Australian Tea Tree." Australia 15 feet. A tall gracefully arching shrub; foliage grayish green; flowers white borne in the greatest profusion. A fine shrub for rapid effects; not particular as to soil and situation. Established in gallon containers 2 to 3 ft. 75c each.

LIGUSTRUM. Evergreen Privet

Ligustrum japonicum. "Japanese Privet." Japan. 6 to 12 feet. Glossy dark leathery leaves. White flowers in clusters; purplish berries. Standard specimens trimmed globes, balled 4 to 6 ft. \$3.00 to \$5.00 each depending on size of head. Gallon containers 1½ to 2 ft. 75c each.

Ligustrum ovalifolium. "California Privet." Japan. 4 to 8 feet. A pyramidal shrub with bright green narrow leaves; producing white flowers in June. Good hedge plant, partially deciduous. Bare root 2 to 3 ft. \$10.00 per hundred.

Ligustrum ovalifolium aurea marginata. "California Golden Privet." Japan. 6 to 15 feet. Same as preceding only that the foliage is beautifully margined with yellow variations. Gallon containers 1½ to 2 ft. 75c each.

MAHONIA. Barberry, Grape

Mahonia aquifolium (Berberis aquifolium) "Oregon Grape." Pacific Coast. 6 feet. Shining purplish, prickly leaves; bright yellow flowers; berries blue-black, borne like grapes, hence the common name. A native widely used where autumn leaf color effects are a consideration, and also for thicket effects. Balled plants 2 to 3 ft. \$1.50 each; gallon containers 75c each.

MELALEUCA.

Melaleuca Wilsonae. "Wilson Melaleuca." Australia. 10 feet. Fine erect growing shrub with medium sized, lance-shaped leaves. Foliage soft and pleasing. New growths ruddy red affording pleasant color contrasts. Gallon containers 2 to 3 ft. 75c each.



NANDINA DOMESTICA

MYRTUS. Myrtle

Myrtus communis. "Common Myrtle." Europe. 8 feet. Classic shrub, with handsome, aromatic foliage, and fragrant white flowers, which appear in summer, followed by berry shaped fruits of blue-black color. Fine for grouping, as single specimens, hedges, pot or tub plants. Balled plants 2 to 3 ft. \$1.50 each; gallon containers 1 to 1½ ft. 75c each; 2½ inch pots for hedge purposes 15c each.

Myrtus communis microphylla. "Small Leaved Myrtle." 6 feet. Habit of growth somewhat spreading and compact; foliage quite small; shrub distinct and effective, robust and free flowering. Makes a fine hedge plant. Balled plants 1½ to 2 ft. \$1.75 each. Gallon containers 1 to 2 ft. 75c each; 2½ inch pots for hedge purposes 15c each.

Myrtus communis variegata. "Variegated Roman Myrtle." 6 feet. Habit of growth similar to microphylla. Foliage marked and striped green and white. Free flowering and free fruiting. Fine for small hedge. Balled plants 1½ to 2 ft. \$1.50 each. Gallon containers 75c each.

NANDINA.

Nandina domestica. "Japanese Nandina." China and Japan. 4 to 6 ft. A beautiful upright growing shrub with a number of reed-like stems about as thick as a finger and crowned with deep, glossy green leaves and tall spikes of white flowers. The young growth is tinged with red which in winter assumes beautiful coppery tones. In the fall the plant is covered with masses of small red and white berries borne in clusters; does well on the coast and in the interior valleys. Balled plants 2 to 3 ft. \$1.50 each; 3 to 4 ft. \$2.00 each; gallon containers 12 to 16 inches 75c each.

NERIUM. Oleander

Oleanders are particularly adapted to this climate and deserving of wider planting; their large deep green foliage combined with fragrant flowers of many hues, which appear all summer, renders them attractive and effective. We specialize in the production of these beautiful shrubs, hence heartily recommend any of the following as among the best.

Gallon containers 2 to 3 ft. \$1.50 each; 2 to 2½ ft. \$1.00 each; 1½ to 2 ft. \$1.00 each.

Madam Sarah Bernhardt. Immense truss; single, delicate white streaked pink.

Mrs. F. Roeding. Originated by us; strong fringed, color of La France rose.

Sister Agnes. Very large truss; single; pearly white; very free blooming. **Splendens Giganteum.** Double Rose; very fragrant; largest of all Oleanders; blooms all summer.

Dr. Golfin. Bears immense trusses of single, soft rose flowers two inches across, corolla streaked white. Plant a good grower.

Prof. Durand. A free bloomer. Flowers semi-double with two corollas, color changing from creamy white to a deep amber-yellow, throat permanent amber.

PHOTINIA.

Photinia Arbutifolia. (Heteromeles) "Christmas Berry." California. 10 feet. A native shrub of California, growing quite abundantly in the coast counties and thriving equally well in the hot, dry climate of the interior. In bloom in the summer, in numerous white panicles. Valued highly not only as a striking decorative plant, but also for the deep red berries which hang in immense clusters on the ends of the branches from November to February. These are extensively used during the holidays



PHOTINIA ARBUTIFOLIA "CHRISTMAS BERRY"
Bears immense crops of bright red berries

HUGE SUMMER BOUQUETS—THE OLEANDERS



FANCHER CREEK NURSERIES

SINCE.....1884



PITTOSPORUM TOBIRA

and are known as CHRISTMAS BERRIES, HOLLY BERRIES, etc. Makes a large spreading bush and should be given plenty of room. Established in containers 1 to 1½ ft. 75c each; 2 to 2½ ft. \$1.25 each; 2½ to 3 ft. \$1.50 each.

Photinia serrulata. "Evergreen Photinia." China. 20 feet. Large shrub of rounded form, leaves drooping, six or seven inches long by two or three broad, dark green and glossy on upper surface, some turning vivid red in fall and holding on through the winter. Bears in great profusion small, white flowers in large convex heads from six to twelve inches broad. Is in bloom most of the year except during the summer. Perfectly hardy and seems to have no diseases or enemies. Balled 2 to 3 ft. \$1.75 each.

PITTOSPORUM.

Pittosporum tobira. "Japanese Pittosporum." Japan. 5 to 8 feet. A shrub that commends itself to garden lovers for the beauty of its foliage and symmetrical habit of growth. Dark glossy green leaves; fragrant flowers, of pure white appear in winter. May be used as single plants or in groups. Quite hardy and of easy culture. Boxed or Balled 2 to 3 ft. \$1.50 each.

Pittosporum tobira variegatum. "Variegated Japanese Pittosporum." Japan. 10 feet. A variegated form of same habit as preceding; foliage margined white. Balled 2 to 3 ft. \$1.75 each. Gallon containers 8 to 16 inches 75c each.

PRUNUS. Evergreen Cherry

Prunus caroliniana. "Carolina Cherry-Laurel." So. Eastern U. S. 20 to 40 feet. A handsome evergreen, with shining, thick dark green, oval, saw-toothed leaves. Does best along the coast or near streams. Gallon containers 2 to 3 ft. 75c each.

Prunus ilicifolia. "California Evergreen Cherry." California. 10 to 20 feet. Brilliant holly-like foliage, margined like the English Holly. Fine for hedges. A handsome evergreen for back-ground screening. Gallon containers 75c each.

Prunus laurocerasus latifolia. "English Laurel." 5 to 8 ft. Large shrub; foliage broad, heavy and glossy; flowers white in racemes, followed by black cherry-like fruits. Gallon containers 2 to 3 ft. 75c each.

PYRACANTHA. Hawthorn, Burning Bush

Pyracantha argustifolia. "Evergreen Hawthorn." China. 6 to 10 feet. Shrub with long slender spreading prostrate branches; young growth yellowish tomentose; foliage long and narrow and of a pleasing green; flowers white, borne in large clusters; berries bright orange color and profuse, developing their color in the fall and lasting until spring. Balled 2½ to 3 ft. \$2.00 each.

Pyracantha coccinea lalandii. "Burning Bush." Europe. 10 feet. A thick, thorny shrub, foliage rich, bronzy, glossy-green color, white flowers, followed by masses of orange-colored berries persisting all winter. Balled 2 to 3 ft. \$2.00 each; gallon containers 75c each; 2½ inch pots for hedge purposes 15c each.

Pyracantha crenulata. "Chinese Evergreen Hawthorn." Himalayas. 6 to 10 feet. Leaves long and narrow, glossy dark green. Brilliant in winter with its masses of bright crimson berries. Balled 2 to 3 ft. grade \$2.25 each; gallon containers 75c each; extra fine plants 3 ft. in gallon containers \$1.00 each. Hedge plants in 2½ inch pots 15c each.

Pyracantha crenulata yunnanensis. China. 8 feet. A splendid form of the preceding; growth prostrate and more vigorous; foliage larger and glossy; flowers white followed by masses of large bright red berries, which remain on the plant until in the spring. Excellent for general ornamental planting; birds do not molest the fruit. Gallon containers 1½ to 2 ft. 75c each; 2½ to 3 ft. extra fine \$1.00 each; 5 gallon containers 3 to 4 ft. \$2.25 each.

Pyracantha formosiana. 8 feet. A compact low growing shrub; foliage quite small and of a good shade of green; berries very large and a bright scarlet red. Balled plants 2½ to 3 ft. \$2.25 each; small plants in 2½ inch pots for hedge purposes 15c each.

RAPHIOLEPIS.

Raphiolepis japonica. Japan. Compact growing shrub; dark green leaves; white flowers in summer, followed by black berries. Very ornamental. Balled plants 1½ to 2 ft. \$1.50 each.

ROSMARINUS. Rosemary

Rosemarinus officinalis. "Rosemary." Mediterranean region. Small growing shrub. Leaves are long and highly aromatic. Flowers lavender color and very fragrant. Gallon containers 75c each.

TEUCRIUM.

Teucrium fruticans. Southern Europe. 3 feet. A small almost everblooming shrub suitable for dry locations. Leaves ovate and of grayish color. Flowers blue. Gallon containers 1 to 1½ ft. 75c each.

VERONICA.

Veronica decussata. New Zealand. 3 to 5 feet. Hardy and of dense growth; foliage oval, bright green and compact. Flowers deep blue. Seems to do well in the hot interior valleys when given a northern exposure or partial shade. Fine for banking. Balled plants 2 to 3 ft. \$1.50; gallon containers 1 to 1½ ft. 75c each.

Veronica decussata variegata. 3 to 5 feet. Of recent introduction. Foliage brilliant yellow variegated; flowers light blue. Balled plants 2 to 3 ft. \$1.50 each. Gallon containers 1½ to 2 ft. 75c each.

VIBURNUM.

Viburnum tinus. "Laurustinus." Mediterranean region. 10 feet. A well known and popular shrub planted widely in California as a specimen plant and effective for hedges. Bears an abundance of white flowers in the winter. Very hardy. Balled 2 to 3 ft. \$1.75 each; gallon containers 12 to 16 inches 75c each.

Viburnum tinus lucidum. "Grandiflora." Mediterranean Region. 8 to 12 feet. A strong grower; foliage large and glossy; flower clusters of immense size. Balled 2 to 3 ft. \$1.75 each; gallon containers 12 to 16 inches 75c each.

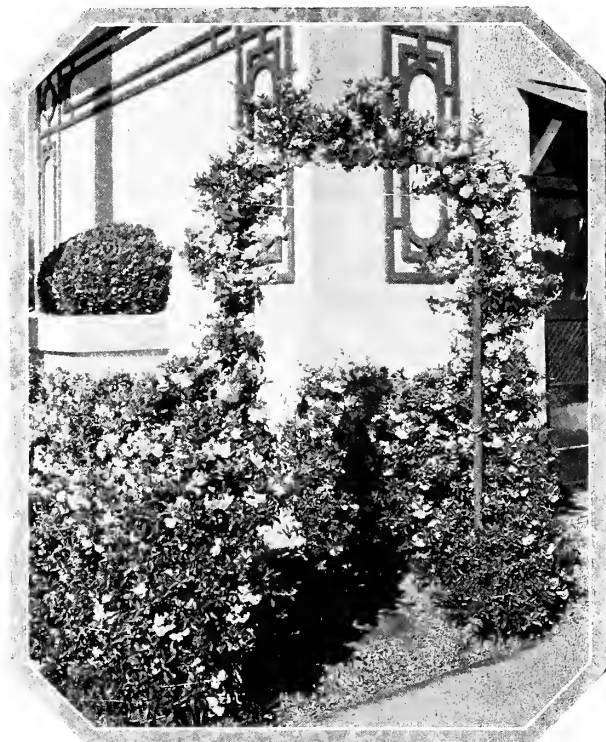
The Climbers and Trailers

This list comprises the best deciduous and evergreen climbing and trailing vines. No home is complete without a few climbing vines to shade the porches and pergolas. In the interior climbers should be used extensively in any situation where shade is desired.

AMPELOPSIS.

Ampelopsis quinquefolia. "Virginia Creeper." Eastern U. S. Common American Ivy; luxuriant foliage, assuming gorgeous colors in autumn. For covering brick and stone walls, chimneys, and houses it is one of the best. Potted 50c each, \$4.00 per ten.

Ampelopsis veitchii. "Boston Ivy." Japan. Leaves glossy green, glorious autumnal coloring; flowers small, dense clusters of deep blue berries. Climbing by tendrils it is useful for covering walls, chimneys, etc. Potted 50c each, \$4.00 per ten.



PYRACANTHA COCCINEA LALANDII
Showing the heavy clusters of orange colored berries

FOR WINTER BEAUTY—COTONEASTER, ARBUTUS, PHOTINIA, PYRACANTHA



FANCHER CREEK NURSERIES

SINCE .. 1884



The Palms

CHAMAEROPS.

Chamaerops humilis. "Dwarf Fan Palm." Mediterranean region 8 ft. Somewhat of a slow grower but hardy. Leaves fan-shaped but small. Useful for small lawn, planted in groups or as a tub plant. Balled 1½ to 2 ft. \$3.00 each; gallon containers 75c each.

Chamaerops excelsa. (*Trachycarpus*) "Windmill Palm." Asia. 20 feet. Trunk slim and very hairy; in old specimens thicker at the top than at the base. Leaf segments are narrow and flexible; the outer three usually droops on older leaves. An excellent species for street plantings. Hardest palm known. 10 inch pots \$1.25 each; gallon containers 75c each.

COCOS.

Cocos australis. "Pindo Palm." Paraguay, 10 to 15 feet. Slow-growing, but a graceful and handsome palm; leaves silvery green, strongly arched and recurved. Fine for small lawns, because less vigorous and massive than the date palm. Hardy, vigorous and worthy of wider cultivation. Boxed 3 to 4 ft. \$4.00 each; 2 to 3 ft. \$2.50 each; gallon containers 12 to 18 inches 75c each.

PHOENIX.

Phoenix canariensis. "Canary Island Palm." Canary Isles. 60 feet. The handsomest of hardy palms; leaves pinate, deep dark green; on long pendulous fronds. Few palms have done more to add to the semi-tropical appearance of our landscape than this massive, majestic palm. Ideal for street, avenue, park and lawn. Tubs 6 to 7 ft. \$5.00 each; 4 to 6 ft. \$4.00 each; balled 4 to 6 ft. \$3.50 each; gallon containers 75c each.



PHOENIX CANARIENSIS PALM

BIGNONIA. Trumpet Flower

Bignonia grandiflora. "Trumpet Vine." Japan. A strong climber, large orange scarlet flowers; deciduous foliage. Potted 50c each, \$4.00 per ten.

Bignonia tweediana. S. America. A rampant grower, clinging; small evergreen leaves; flowers canary yellow, trumpet shaped. Will cling to any surface; a fine wall cover. Potted 50c each, \$4.00 per ten.

BOUGAINVILLEA.

Bougainvillea spectabilis. Leaves large, bright green; flowers rosy magenta. 5 inch pots \$1.25.

FICUS. Fig

Ficus Repens. "Climbing Fig." Japan. A handsome evergreen climber admirable for walls, fences, buildings, etc. Hardy in all parts of California excepting the higher mountain regions. Leaves small, roundish and dark green; attaches itself to walls like ivy. Potted 50c each, \$4.00 per ten.

HEDERA. Ivy

Hedera helix. "English Ivy." Popular everywhere; foliage dark green and leathery; flowers of a greenish color followed by clusters of black berries. Vine very vigorous and is used for covering walls, trunks of trees, screens, houses, or can be used as a ground covering. Will thrive with little or no care in any situation. Potted 50c each, \$4.00 per ten.

Hedera variegata. "Variegated Ivy." A form of the preceding with bright green leaves, margined and blotched with shades of creamy white. Potted 50c each, \$4.00 per ten.

JASMINUM. Jasmine

Jasminum humile. "Jasminum Revolutum." Italian Yellow Jasmine. Strong grower. Foliage pinnate, leaflets slender; flowers bright yellow in open clusters. Potted 50c each.

Jasminum nudiflorum. "Naked Flowered Jasmine." China. Drooping branches enveloped with bright yellow flowers in winter before leaves appear. Vine hardy and especially handsome during the blooming period. Potted 50c each, \$4.00 per ten.

Jasminum primulinum. China. A new variety. Valuable because a fast grower. Foliage consists of three good sized leaflets; flowers a clear primrose yellow, large and usually double. Potted 50c each, \$4.00 per ten.

LONICERA. Honeysuckle

Lonicera chinensis. "Chinese Honeysuckle." Strong grower. Foliage dull green new growth reddish purple; flowers white inside, purple outside. Potted 50c each.

Lonicera halliana japonica. "Japanese Honeysuckle." Rampant evergreen climber; dark green, ovate leaves, flowers fragrant, white, changing yellow. A great favorite in the interior valleys and coastal regions for covering pergolas, porches trellis-work, fences, etc. Potted 50c each, \$4.00 per ten.

MUEHLENBECKIA. Wire Vine

Muehlenbeckia complexa. "Maiden Hair Vine." New Zealand. Very rapid and showy climber; flowers small, thick, waxy white, followed by transparent glistening, icicle-like fruits. Potted plants 50c each.

PLUMBAGO. Leadwort

Plumbago capensis. S. Africa. Of upright straggling climbing habit; foliage long and tapering; flowers in short spikes and a beautiful azure blue in color. Vine hardy and free growing. Gallon containers, 75c each; \$6.50 per ten.

Decorative Bedding and Border Plants

PHORMIUM. Flax

Phormium tenax. "New Zealand Flax." Large erect, dark green leaves, with narrow, reddish brown margins. Gallon containers 1½ ft. \$1.00.

HARDY FERNS.

Asparagus Sprengeri. Useful for decorative purposes; white flowers; red berries; fronds rich green, valuable for cutting, remaining fresh for weeks; fine for hanging baskets, and an excellent house plant. 4 inch pots 50c each.

Asparagus Plumosus. Beautiful climbing plant; bright green, arching feathery foliage. Fine for cut flower sprays. 4 inch pots 50c each.

Woodwardia radicans. The most hardy California fern. It is commonly called "California Mountain Fern" as its natural habitat is the mountain and mountain valleys of California. Fronds long and bright green in color. Makes a beautiful bedding plant. Potted bushy plants 75c each.

DRACAENA.

Dracaena indivisa. New Zealand. 30 feet. Fine for avenue and street trees for the coast; does not do well in the interior. Balled 5 to 6 ft. \$5.00 each; gallon containers 75c each.

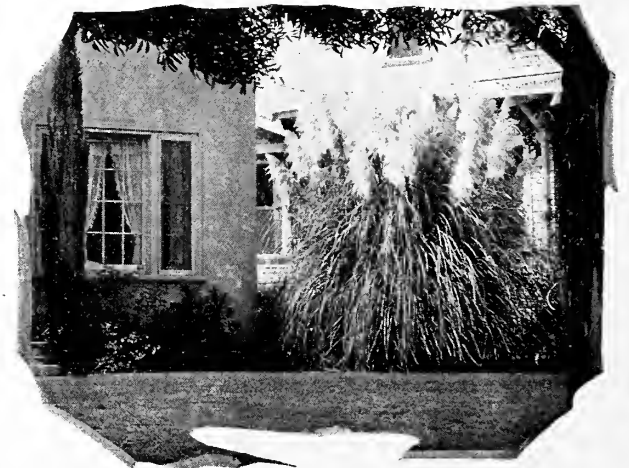
BAMBOO.

Bambusa Aurea. China and Japan. 10 to 15 feet. Easily recognized by the very short nodes at the base of the culms. Branches or stalks yellowish, often brilliant in color, the internodes at the base remarkably short; leaves narrowed from near the base to apex. 2 to 4 inches long, light green and glaucous beneath. Sheaths deciduous, marked purple. Clumps 4 to 6 ft. \$1.50 each.

PAMPAS GRASS.

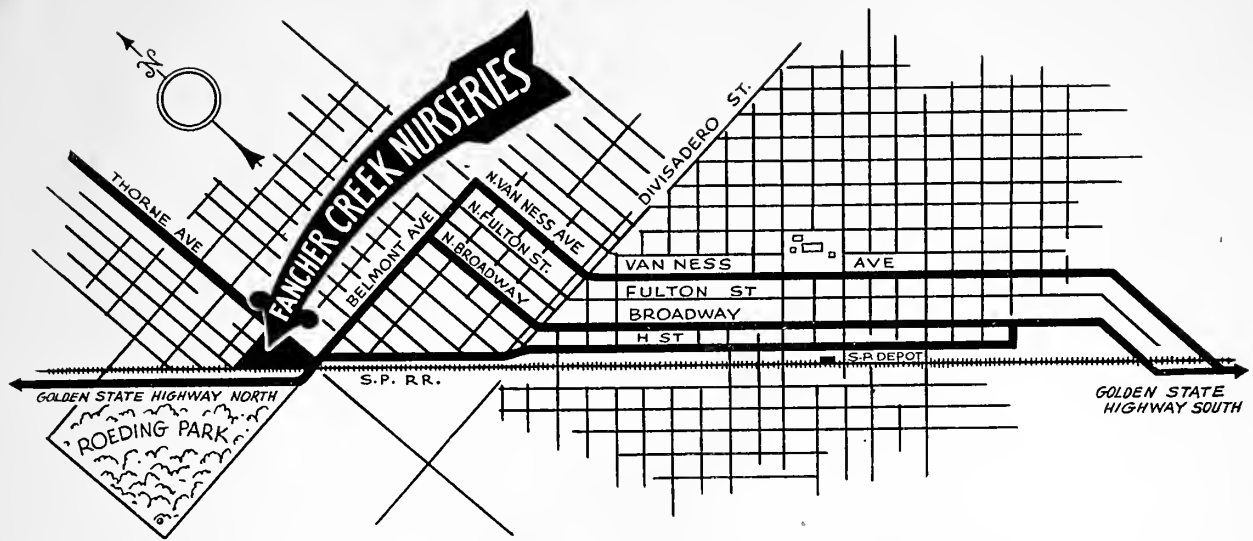
Cortaderia argenteum. "Pampas Grass." Argentine. 6 to 3 feet. Leaves long and narrow, drooping; gorgeous silvery plumes. Clumps \$1.50 each.

Cortaderia roi des rosea. Argentine. 6 to 8 feet. A winter bloomer leaves narrow, plumes rosy purple. Clumps \$1.50 each.



PAMPAS GRASS

CHECK OUR CATALOG AGAIN—PERHAPS YOU HAVE OVERLOOKED SOMETHING



HOW TO GET TO THE FANCHER CREEK NURSERIES

The Fancher Creek Nurseries main office, display grounds, and retail plant yards are located at the junction of the Golden State Highway at Belmont and Thorne Avenues in the City of Fresno and just opposite Beautiful Roeding Park. Visitors coming from the North on the State Highway will note by the map that they are obliged to pass the nursery in getting into the business section of the city. Visitors coming from points south of Fresno will note that three main boulevards lead directly into Belmont Ave. from the Golden State Highway on the South. The shortest and most convenient route from the South is via Broadway or H Street as indicated by the map.

VISITORS ARE ALWAYS WELCOME

A trip thru our gigantic plant store will prove most interesting. Here you will find the largest assortment of Fruit trees, Grape vines, Shade Trees, Ornamental shrubbery, Climbing vines and Roses. We have many items in stock which are not listed in this catalog owing to insufficient quantities. Plan a trip to our nursery. You'll enjoy every minute of your visit and perhaps our salesmen can offer suggestions which will help you with your planting problems.

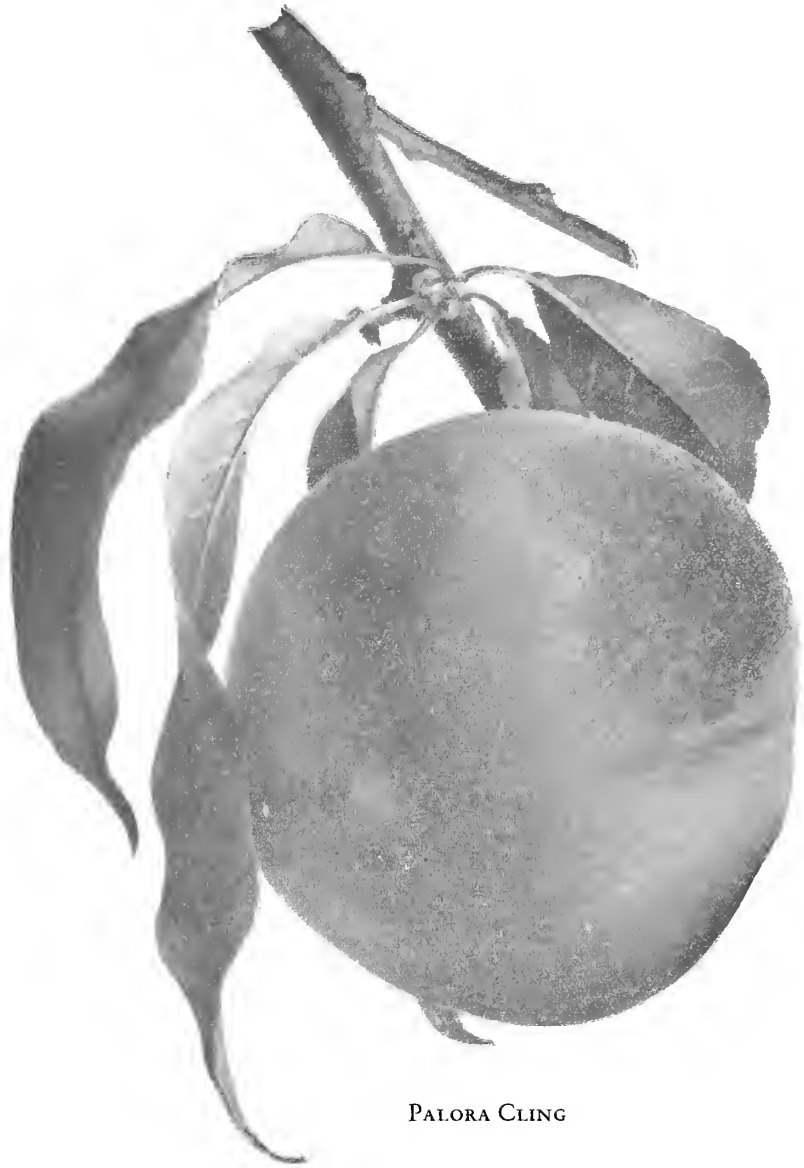
TOPICAL INDEX

Almonds	Page 11	Crabapples	Page 6	Knives	Page 3	Pears	Page 6	Seed	Page 4
Apples	5-6	Currants	17	Lawn Seed	4	Persimmons	14	Shears	3
Apricots	9	Dewberries	17	Lemons	13	Planting Distances	4	Strawberries	17
Blackberries	17	Fertilizer	4	Loganberries	17	Plum	7-8	Spray	3
Bush Fruits	17	Fig	12	Loquat	13	Pomegranate	14	Supplies	3-4
Capri Figs	12	Gooseberries	17	Nectarine	11	Pomelo	13-14	Tree Protectors	4
Cherry	7	Grapefruit	13-14	Prune	11	Quince	7	Tree Supports	3
Chestnut	12	Jujube	14	Oranges	14	Raspberries	17	Vegetable and Garden	
Chinese Date	14			Peaches	9-10	Rhubarb	17	Roots	17
Citrus Fruits	13-14							Walnut	12

ORNAMENTAL DEPARTMENT

Abelia	Page 26	California Redwood	Page 26	Eucalyptus	Page 24-25	Laurus	Page 29	Platanus	Page 23
Acacia	26	Camelia	27	Euonymus	27	Laurustinus	29	Plumbago	30
Acer	22	Camphor Tree	24	Evergreen Cherry	29	Leadwort	30	Prunus	23-29
Ampelopsis	29	Canthara	24	Evergreen Privet	28	Lemon Verbena	23	Poinciana	23
Araucaria	24-25	Canary Island Broom	28	Evergreen Shrubs	26-29	Leptospermum	28	Poplar	23
Arborvitae	26	Casuarina	24	Evergreen Trees	24-25	Libocedrus	26	Privet, evergreen	28
Arbutus Unedo	26-27	Ceanothus	27	Flax	27	Liriodendron	28	Punica	23
Aucuba	26	Cedar	25	Fan Palms	30	Lilac	24	Pyracantha	29
Australian Tea Tree	28	Cercus	22	Ferns	30	Lippia Citriodora	23	Raphiolepis	29
Balm of Gilead	23	Chamaecyparis Excelsa	30	Ficus Repens	30	Locust	23	Redwood Trees	26
Bald Cypress	26	Choisya	27	Flowering Fruit Trees	23	Lonicera (Climber)	30	Robinia	23
Bamboo	30	Christmas Berry	28	Forsythia	23	Logat	13	Rock Rose	27
Barberry, evergreen	28	Cistus	27	Ginkgo	27-28	Magnolia	25	Roses	18-21
Beefwood	24	Climbing Fig	30	Gold Flower	26	Mahonia	28	Rosemary	29
Betula	22	Climbing and Trailing Plants	29-30	Golden Bell	23	Maiden Hair Tree	23	Rose of Sharon	23
Bignonia	20	Cocos Australis	30	Grape	28	Maple	22	Salix	23
Birch	22	Conifers	25-26	Crape	28	Melaleuca	28	Sequoia	26
Bird of Paradise	25	Cornus	27	Crevilla	25	Metrosideros	26	Shinus Molle	25
Books	4	Cortaderia	30	Cum Trees	24-25	Mexican Orange	27	Silk Oak	25
Boston Ivy	30	Cotoneaster	27	Hawthorn	29	Mock Orange	23	Snowball	24
Bottle Brush	26	Crategeus	22	Heather or Heath	27	Muehlenbeckia	30	Spiraea	23-24
Bottle Tree	26	Crape Myrtle	23	Hedera	30	Mulberry	23	Strawberry Tree	26-27
Bougainvillea	30	Cupressus	25	Hibiscus	28	Myrtle	28	Sycamore	23
Boxwood	26	Cydonia	23	Hibiscus	23	Nandina	28	Syringa	24
Brachychiton	24	Cypress	25	Holly	28	Nerium	28	Tamarix	24
Breath of Heaven	27	Deciduous Shrubs	22-24	Honeysuckle	30	Oleander	28	Taxodium	26
Bridal Wreath	23-24	Decorative Border Plants	30	Horticulture Books	23	Oregon Grape	28	Teucrium	29
Broom	27-28	Diutzia	23	Hydrangea	23	Palms	30	Thorn	22-29
Buddleia	26	Diosma	27	Hypericum	28	Pappas Grass	30	Thuja	26
Bull Bay	25	Dogwood	27	Incense Cedar	26	Pepper Tree	25	Tree Protectors	4
Bunya Bunya Tree	24-25	Dracaena	30	Ivy	30	Persica	23	Trumpet Vine	30
Burning Bush	29	Dwarf Fan Palm	30	Jasmine	30	Philadelphia	30	Umbellularia	25
Butterfly Bush	26	Elaeagnus	27	Judas Tree	22	Phlox	28-29	Veronica	29
Buxus	26	Erica	17	Juniper	26	Phoenix Canariensis	30	Viburnum	24-29
Caesalpinia	23	Eriobotrya Japonica	23	Kerria Japonica	23	Phormium	30	Virginia Creeper	29
Callistemon	26	Escallonia	27	Lagerstroemia	25	Photinia	28-29	Weeping Trees	23
California Big Tree	25			Laurel	29	Pine	26	Weivelia	24
California Laurel	25					Pittosporum	29	Willow	23
California Lilac	27							Wire Vine	30
								Wisteria	30

HOME GROWN FRUIT IS THE BEST. ORDER TO-DAY



PALORA CLING