

Historic, Archive Document

Do not assume content reflects current scientific knowledge, policies, or practices.

6261

LIBRARY

JAN 25 1930
U. S. Department of Agriculture

▼ 1930 ▼
WHOLESALE PRICE LIST

HARRIS' SEEDS

for MARKET GARDENERS and FLORISTS



GILL'S EARLY MARKET

The Earliest Sweet Corn

See Page 7

JOSEPH HARRIS Co., Inc.

Moreton Farm

COLDWATER, N. Y.

Seeds Delivered Prepaid

All seeds included in this price list, *except*, Peas, Beans and Corn, will be sent **prepaid** by parcel post, express or freight at our option. *Please give the name of the town nearest you in which is an express office or railroad station if different from your postoffice address.*

Shipments of Peas, Beans and Corn which, including other seeds, weigh 100 lbs. or more will be sent by freight prepaid to all points east of the Mississippi River and north of Tennessee.

If the shipment is less than 100 lbs. add 5c per lb. for all Peas, Beans and Corn to places east of the Mississippi River and north of Tennessee (except Canada), and 10c per lb. to places west of the Mississippi and south of Tennessee (except New York State *west* of Utica and Binghamton where *no* extra amount for transportation charges is required). **To places in Canada add 10c per lb.**

Make Your Order 100 Pounds or More

You will notice we prepay charges on all shipments weighing 100 lbs. or more going to places east of the Mississippi and north of Tennessee (Canada excepted).

If your order does not amount to as much as this it will pay to get your neighbor to order with you so as to get free transportation.

The above offer to prepay transportation charges does not apply to Potatoes, Fertilizers, etc. but to seeds only. Articles other than seeds which are listed in the price list are to be sent at purchaser's expense.

About Ordering, Shipping, Etc.

Orders may be sent at any time and goods will be shipped at the time specified on the order. Freight shipments are now handled by the railroads much more promptly than formerly and we advise having all heavy shipments (100 lbs. or more) sent in that way.

Seed ordered sent **by express** are sent at purchaser's expense.

When ordering seeds shipped by freight or express please be sure to give the name of the place to which you wish the seeds sent if it is different from your postoffice address.

Terms and Discounts

Cash with order. When cash is sent with the order we allow a discount of 3 per cent which may be deducted from the total amount of the order.

Time payments. To gardeners of established credit and to those who furnish us with satisfactory references we allow the following terms:

Bills for seeds, plants, etc. shipped after January 1st are due and payable August 1st.

Bills for goods shipped after August 1st are due December 1st.

December 1, 1929.

JOSEPH HARRIS COMPANY, Inc.
Coldwater, N. Y.

"Have had excellent results with your seeds in the past, good germination and true to name and I want to congratulate you on your very prompt service as it is worth money to a man when he wants such things in a hurry." T. J. GRANT, Laconia, N. Y., April 23, 1929.

"I have bought all my garden seeds from your company for a number of years. They have always proven to be just what you had described in your seed catalogue. I would recommend the Joseph Harris Co., to any person who wishes to raise a good garden." JOHN ARNETT, Jefferson, Ohio, June 5, 1929.

"I tried to piece out with other seeds bought locally, but while I think they run true to name, the spinach, radishes and other early vegetables have not the quality or size of the Harris product. I am more than ever satisfied with my ten years' experience with Harris seeds."

GEORGE H. BOYDEN, Boylston, Mass., June 29, 1929.

*"We have found your seed very satisfactory." WHITMORE & RICHARDSON,
Sunderland, Mass., July 8, 1929.*

"Have used Harris' seed for several years, and always could depend on true to name seed, and one of the best things is that the germination is marked on each package. We had twenty-four hour service through the telephone. FALCONE BROS., Forestville, N. Y., Nov. 1, 1929.

Be sure Your Name and Address is on the Order Sheet.

FLORISTS' SPECIALTIES

of Joseph Harris Company, Inc.

COLDWATER, NEW YORK

A Few of Our Leading Varieties For the Flower Grower

In case you may never have used our Flower Seeds we want you to know that our Flower Seeds are of the same high standard of quality as our Vegetable Seed.

Harris' Flower Seeds Grow. We know they grow, because every stock is given a careful test for germination and the exact percentage is put on every package.

We make no substitutions. You can feel sure you will get the varieties and colors you order.

We also have some special varieties and strains that can not be obtained elsewhere.

SALVIA SEED THAT GROWS



Harris' Bonfire Salvia

Harris' Special New England Grown High Germinating Bonfire Salvia

Here is a strain of true Bonfire Salvia that you can depend upon to grow and give your customers satisfaction.

Our Bonfire Salvia seed is absolutely all new crop seed of good germination. The exact percentage is given on all packages.

Our Bonfire Salvia seed is grown especially for us in the North where only an early blooming strain will mature.

Our Bonfire Salvia is a very much improved strain of uniformly medium height and blooms profusely.

W4600—Large Pkt. 25c; $\frac{1}{4}$ oz. 70c; $\frac{1}{2}$ oz. \$1.25; oz. \$2.50; $\frac{1}{4}$ lb. \$9.00; 1 lb. \$35.00.

COLEUS

Harris' Extra Fancy Leaved The Best Strain of Coleus Seed in the World

We can stand back of this statement with an exceptionally fine stock of Coleus seed which we believe is unequalled by any other.

It is a special stock grown exclusively for us by the world's best grower of Coleus seed.

It contains a marvelous variation of colors and types, and florists who have once grown our strain now use no other.

Early sown seed makes good large plants for spring trade and is more profitable than carrying cutting stock in the greenhouse all winter.

W2511—Harris' Extra Fancy Leaved Coleus. Large Pkt. 85c; $\frac{1}{32}$ oz. \$5.00; $\frac{1}{16}$ oz. \$9.00.

FLORISTS' SPECIALTIES



New Petunia, Lavender Queen

THE DEMAND FOR PETUNIA PLANTS IS INCREASING Have the Newest and Best Petunias in Your Section

In order to keep pace with the demand and be one jump ahead of the other fellow it is absolutely necessary to have the finest Petunias it is possible to grow.

Three New Leaders

Dwarf Ruffled Giants of California. A new strain especially adapted for pot culture. It is a dwarf, compact plant covered with large ruffled flowers in a variety of colors. For handling in pots it is superior to the taller growing kind. W3806—Large Pkt. (200 seeds) 40c; 500 seeds, 75c; 1000 seeds, \$1.25; 1/16 oz. \$6.50; 1/8 oz. \$12.00; 1/4 oz. \$23.00.

Theodosia. A new very fascinating fringed bright pink of a beautiful soft shade that always sells well. A good grower and free flowering. Open throat beautifully veined. W3813—Large Pkt. (200 seeds) 50c; 500 seeds, 90c; 1000 seeds, \$1.50.

Lavender Queen. A new popular color in the dwarf, compact, bedding type of Petunias. This is the clear light lavender-blue color so much in demand for porch-boxes, vases, combinations, bedding, etc. There are no end of uses for a really good light blue plant, and this new Petunia will fill a popular demand. Wonderful in combination with pink Rose of Heaven or any other pink flower. W3826—Large Pkt. 40c; 1/4 oz. \$1.00; oz. \$4.00.

Other Popular Florists' Varieties

W3800—Harris' Perfection Double. Our strain of Double Petunia is exceptionally fine, coming 85% to 95% true double and semi-double. The flowers are very large and in a splendid range of colors. Large Pkt. (200 seeds) 55c; 500 seeds, \$1.20; 1000 seeds, \$2.00.

W3814—Harris' Giant Ruffled Quaker Lady. A splendid Petunia of immense size and wonderfully ruffled. The color is a delicate bluish-grey beautifully veined deep blue. It is the largest of the ruffled sorts. Large Pkt. (200 seeds) 40c; 500 seeds, 65c; 1000 seeds, \$1.00.

W3811—Giant White. An immense satiny pure white with large yellow throat. Large Pkt. (200 seeds) 40c; 500 seeds, 65c; 1000 seeds, \$1.00.

W3824—Rose of Heaven. A new Petunia much like the Rosy Morn but a little more dwarf and of a little clearer color without the white eye. Large Pkt. 20c; 1/4 oz. 60c; oz. \$2.00.

FLORISTS' SPECIALTIES



Giant Dahlia-Flowered Zinnia, Oriole

ZINNIAS

Two Excellent Florists' Varieties

Although we have the best Zinnias it is possible to obtain in all of the leading kinds, there are two that stand out as being especially desirable.

Giant Dahlia Flowered Oriole

W8152—One of the most beautiful mammoth flowered Zinnias. The immense full double flowers are a charming combination of orange and gold. Large Pkt. 30c; $\frac{1}{4}$ oz. 60c; oz. \$2.00.

Dwarf Pompon, Salmon Gem

W8232—These new Pompon Zinnias are rapidly becoming very popular as cut-flowers. The flowers are small, with good stems and a profusion of bloom on a plant in 5 weeks after sowing the seed out doors. Salmon Gem is a charming light Salmon with a bright rosy shading. Large Pkt. 20c; oz. 75c.

New Salpiglossis For Cut Flowers

Harris' Special Light Shade Mixture

There are few flowers that are better for cutting than Salpiglossis, except that most mixtures have too large a percentage of dark and undesirable colors. For this reason we have made up a special mixture of the light shades which now makes it a wonderfully fine florists' flower.

W4510—Light Shade Mixture. Large Pkt. 20c; $\frac{1}{4}$ oz. 35c; oz. \$1.00.

New Giant Heliotrope

W3133—Giant Blue Shades. We have an exceptionally fine stock of the large-flowering Heliotrope that has been especially grown for us and which we can sell for the same price as the ordinary strains. The flowers are larger and the plants more compact growing. Plants grown from this seed are sure to make pleased customers. Large pkt. 30c; oz. \$2.50.

See our Catalog for other Varieties

FLORISTS' SPECIALTIES



Evelyn Kirtland

GYPSOPHILA FOR PROFIT

Our selected Florists' Strain of *Gypsophila elegans alba* grdf. (Annual Baby's Breath) is always a profitable flower to grow, both outdoors and under glass. Make a liberal sowing every 10 to 15 days.

Special Offer. We are making a special low priced offer of only \$1.15 per lb.; 35c per 1/4 lb., 15c per oz.

GLADIOLI ARE PROFITABLE If Only the Best Cut Flower Varieties Are Grown

Do not waste time and money trying out a lot of unsatisfactory kinds. We are large wholesale growers constantly trying out new kinds and are in a position to select the most satisfactory.

Free From Disease

Our bulbs are all of our own growing and are free from disease. We are pleased to invite inspection of our fields and stock at any time. It is throwing away money to attempt to build up a stock from diseased bulbs.

EXTRA SPECIAL BARGAIN

Los Angeles (Cut-And-Come-Again)

Here is a real bargain for any grower. As we have had an exceptional crop of this wonderful variety we are able to offer it this year at a ridiculously low price.

It is a mammoth flowering extra early bright shrimp pink with a glowing carmine blotch. Most large bulbs throw two or more excellent spikes. **Bargain price per 1000 bulbs. (100 at the 1000 rate.)**

1st size, \$30.00; 2nd size, \$24.00; 3rd size, \$18.00.

HARRIS' CUT FLOWER SPECIALS

Golden Swallow. A new extra early yellow of exceptional character. When we discovered this variety we immediately purchased the originator's entire stock. We are now able to offer this excellent florists' yellow at a reasonable price. Extra early

Evelyn Kirtland, (True). We are now offering an absolutely true stock of the best cut-flower bright pink that has ever been introduced and never surpassed

Flaming Sword. One of the newer varieties with a big future. The color is a clear pure scarlet of a delightful warm tone that blends well with other colors. The placement is beyond criticism and it is one of the earliest kinds to bloom

Carmen Sylva. We consider this the best commercial white of perfect form

Mrs. Dr. Norton. As yet there has been no light pink introduced to take the place of this variety for the florist

Orange Queen. Although a *Primulinus* variety, it is of such an exquisite shade and form that it should be in every grower's collection

Mrs. F. C. Peters. A wonderful light lilac or lavender shade with a rich crimson blotch. This is an ideal florists' variety, better than Louise

	Price per 1000 (100 at same rate)		
	1st size	2nd size	3rd size
Golden Swallow	\$50.00	\$40.00	\$32.00
Evelyn Kirtland, (True)	30.00	24.00	18.00
Flaming Sword	40.00	32.00	25.00
Carmen Sylva	40.00	32.00	25.00
Mrs. Dr. Norton	38.00	30.00	23.00
Orange Queen	50.00	40.00	32.00
Mrs. F. C. Peters	45.00	36.00	28.00

If You Are Interested In Other Varieties

As we are large wholesale growers of all the best varieties we suggest you inquire for our **Special Gladioli Price List.** There will be no reduction of prices of the kinds described above

Gladioli are shipped by express NOT prepaid.

JOSEPH HARRIS COMPANY, Inc.
Moreton Farm, Coldwater, N. Y.



HARVESTING HARRIS' MODEL PARSNIP SEED ON MORETON FARM

Get Seeds from the Grower

On Harris' Seed Farms are raised more vegetable and flower seeds (except beans) than are produced in all the rest of New York state.

Harris' Seeds are sold direct to gardeners—not to other dealers.

The most careful breeding methods are employed to insure the purity and high quality of Harris' seeds.

More gardeners every year are taking advantage of the opportunity we offer of buying seeds *direct from the grower*. They get fresh seeds of strong germination and seed that produces crops of the very best type.

Seed Crops

Our crops of seeds at Moreton Farm have been fairly satisfactory the past season. The weather was wet in the spring and very dry during the summer which reduced the yield of some crops such as sweet corn, peppers and squash. Beets, parsnips, onions, etc. yielded good crops. Frost on the 17th and 18th of September cut off the yield of tomatoes, squash and some crops of beans that were planted late. Beans will again be short and it will be well for gardeners to secure what they need before the supply is exhausted. Fortunately we are in a better position to supply our customers than last season.

Germination Marked on Label

According to Our Tests

96 per cent

of this seed germinates

No seeds are sent out that do not show good germination in our tests which are made both in soil and germination apparatus. *The results of the tests are marked on the label of each lot of seed we sell.* The purchaser can therefore tell just how much seed to use to

get a perfect stand for plants. Do you get this information when you buy from any other dealer?

"Find your seeds far superior to others and your germinating tests a great help in planting."

EDW. ROBSON, Belleville, Mich., March 9, 1929

A Guarantee

Harris' Seeds are so carefully grown and so thoroughly tested before they are sent out we know they are of the highest quality. Nevertheless if any seeds or plants bought of us do not grow or fail to be as represented we will replace them without charge or return the money paid for them. In other words every purchaser of Harris' Seeds is protected to the full amount of the purchase price.

There are so many conditions that affect the growth of crops over which we have no control that we cannot hold ourselves responsible for any loss beyond the amount paid for the seeds.

Harris' Special Varieties and Strains

These are varieties which we have introduced or of which we have very finely bred strains much superior to the seed usually sold.

Tendergreen Bean

We have been much impressed with the value of this new round pod bean as grown in our trial grounds the past two seasons. It seems to us to be the most desirable of the round podded green beans.

The pods are long, rather slender, light green, round as a pencil, stringless and of very high quality, being unusually tender and delicious when cooked.

The vines are very vigorous, strong and productive. The pods mature about the same time as Black Valentine and much resemble that variety in appearance but are far superior in quality.

The Tendergreen is what we have long been looking for—a *stringless* bean as early in production and handsome in appearance as Black Valentine without the handicap of the poor quality of that variety.

The combination of *high quality*, handsome long straight light green pods, the strong growth of the plant and early maturity will place this bean among the very best in its class.

7½ lbs. \$2.90; 15 lbs. \$5.50; 100 lbs. \$35.00.

"I have bought seed from you for 45 years and have never had any but what grew and were true to name." C. W. ROGERS, Unadilla Forks, N. Y., Apr. 5, 1929

Sugar Rock Muskmelon

We were very favorably impressed with this new melon as grown on our grounds the past season.

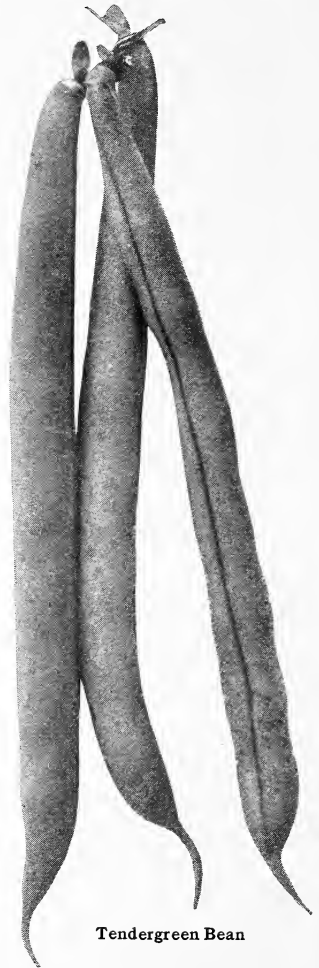
We have never eaten a melon of finer quality and every one of them as of high flavor which can be said of very few other varieties. The melons are of very light green, almost perfectly round and are covered uniformly with heavy netting. The flesh is of deep orange color, quite firm and of delicious sweetness and very high flavor.

The fruit has a hard shell and will stand shipping well. They are very uniform in size being 4 to 5 in. in diameter and 5 to 6 in. long.

On account of its exceptionally high quality and handsome appearance we are sure this melon will prove a profitable variety. Oz. \$.35; ¼ lb. \$1.00; lb. \$3.00.



Sugar Rock Muskmelon



Tendergreen Bean

Italian Purple Cauliflower

This peculiar variety of cauliflower has been in great demand for the past few years among Italians who know good vegetables. The heads when they first form are green but later turn to a deep purple on top. When cooked it is deep green like Broccoli. The quality is superior to any cauliflower or Broccoli we have eaten, being very tender and of delicate flavor.

The seed of this cauliflower has always been difficult to procure but we are now able to offer seed of the true variety at a very reasonable price. ¼ oz. 65c; Oz. \$2.10; ¼ lb. \$7.50, postpaid.

"I bought seed of you last year and found them satisfactory in every way, so you have a larger order this year." FLOYD R. OWEN, Hopewell Jct., N. Y. Feb. 18, 1929

BEET—Harris' Special Crosby's Egyptian

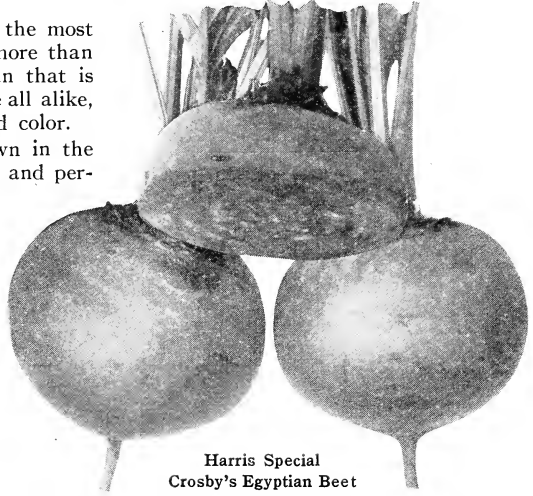
Particular gardeners who want the very finest beets both in shape and color will find this special stock the best obtainable.

The seed is of our own growing and the most careful selection has been practiced for more than twenty years until now we have a strain that is practically "fixed" so that the beets come all alike, nearly every one a model for shape and color.

The beets are globe shape as shown in the accompanying photograph, very deep red and perfectly smooth and with very small tap roots. The tops are unusually small. This beet grows very rapidly and is ready for market as early as any other kind we know of. It is much earlier than Detroit Dark Red and Early Blood Turnip. It is just as early as Early Wonder and grows more uniform in shape and color.

This is the finest strain of Crosby's Egyptian beet obtainable no matter what price is charged for the seed.

$\frac{1}{4}$ lb. 40c; lb. \$1.20; 10 lbs. or more at \$1.10 per lb.



Harris Special
Crosby's Egyptian Beet

"Your special strain of Crosby's Egyptian beet is the earliest one I have ever tried for picking out in the field from my hot-bed, and I had the first load of native beets on the Boston Market last year."—Cornelius Shea, Concord, Mass. July 24, 1929.

Broccoli

Italian Green Sprouting or Calabrese

This vegetable which belongs to the cauliflower family has become very popular and is a profitable crop. It produces a central head (as shown in the photo at the left below), which when cut out allows the side sprouts to grow up and head (as shown in the right hand photo). These heads are also cut, allowing a third crop of sprouts to grow out and head. The heads are deep green when ready to use.

The culture of Broccoli is the same as cauliflower and as several cuttings can be made from each plant it is a very profitable crop.

Market gardeners will find this a very easy vegetable to grow and one that commands the highest prices on the market.

Our seed is of the true Italian strain producing large compact heads. We have tried many different varieties of Broccoli and think we now have the most desirable strain.

Price: $\frac{1}{4}$ oz. 40c; oz. \$1.25; $\frac{1}{4}$ lb. \$4.25; lb. \$15.00.

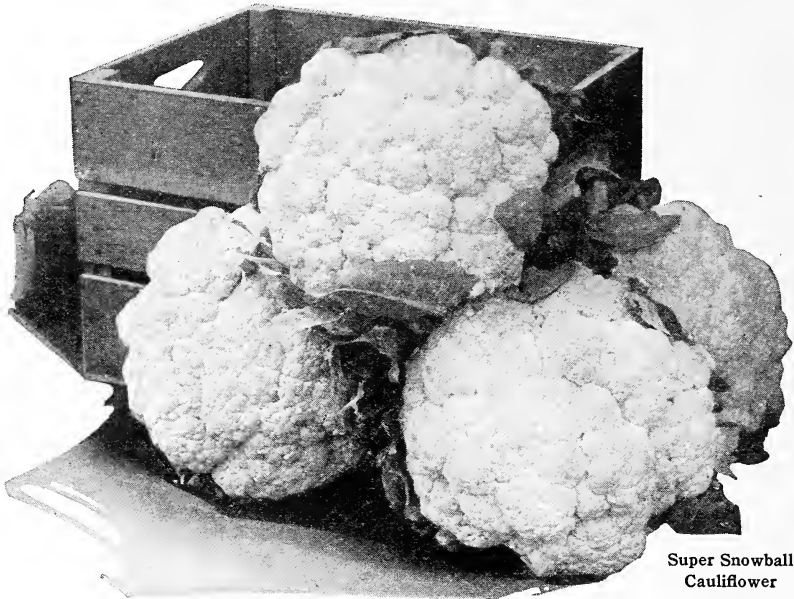


Photograph showing the first head



Broccoli

Photograph showing the second growth of heads



Super Snowball
Cauliflower

Super Snowball Cauliflower

We offered this new strain of Snowball cauliflower for the first time last year. It has given wonderful results in many places when planted early.

The Super Snowball is simply a *larger, earlier and better* Snowball. The heads are very large and they form *ten days to two weeks earlier* than Snowball. This is a distinct advantage as early cauliflower nearly always brings higher prices than the late crop.

The Super Snowball heads very uniformly. 90 per cent of the plants produce fine large heads within two weeks from the time the first heads mature.

The plants are very strong and vigorous, having large, distinctly characteristic leaves which are somewhat blistered and curl over the head so as to give good protection from the sun.

We regard this as the most pronounced improvement made in cauliflower in many years and we are sure gardeners will find it a profitable variety to raise. A word of caution is necessary, however. The heads of this variety, as we have said, mature nearly at the same time. Should the weather condition just at this time be favorable, a wonderful crop of large handsome heads will result. But if the weather happens to be unfavorable when the heads form, a larger part of the crop will be affected than would be the case with another variety which matured over a longer period of time. For this reason it is well not to depend entirely on one strain. We therefore advise using Super Snowball for part of the acreage and Snowball or Erfurt Early Dwarf for the balance.

Oz. \$3.75; $\frac{1}{4}$ lb. \$12.50; lb. \$45.00.

"Your Super Snowball is the finest early cauliflower we have ever grown considering the very unfavorable weather conditions. Very uniform, large heads, exceptionally few riced heads, stands well after maturity without growing out or discoloring." JUENGLING BROS., Eden, N. Y., Oct. 25, 1929

"Altho we had a very hot and dry season this year at least 95% of your Super Snowball cauliflower made good heads, was early and of large size." HARRY SAVILLE, Orchard Park, N. Y., Oct. 25, 1929.

"Your Super Snowball Cauliflower this year was the best I have ever tried, being larger, earlier and more uniform than any other variety. Most of my crop was all marketed within a week." —MICHAEL MITCHELL, Unionville, Conn. Oct. 4, 1929.

BEEET—Harris' Special Detroit Dark Red

The Detroit beet is used more extensively for canning than any other variety. The beets are perfectly round or globe shaped, have small tops and slender tap roots. The color is deep red with but faintly defined rings which disappear entirely when the beet is cooked. The quality is exceptionally fine, the young beets being very sweet and without toughness.

Our special strain produces beets that are much more uniform in shape and color than the strains usually sold. We can confidently state that there is no better strain to be obtained at any price.

$\frac{1}{4}$ lb. 40c; lb. \$1.10; 10 lbs. or more at \$1.00 per lb.

Golden Plume or Wonderful Celery

We have a very superior strain of this popular celery which is now rapidly taking the place of other varieties. The stalks of our special strain are *very large* with remarkably *heavy hearts* and with *thick solid stems, unusually long* between the root and first joint. There is not one green stalk in a thousand and no soft ones.

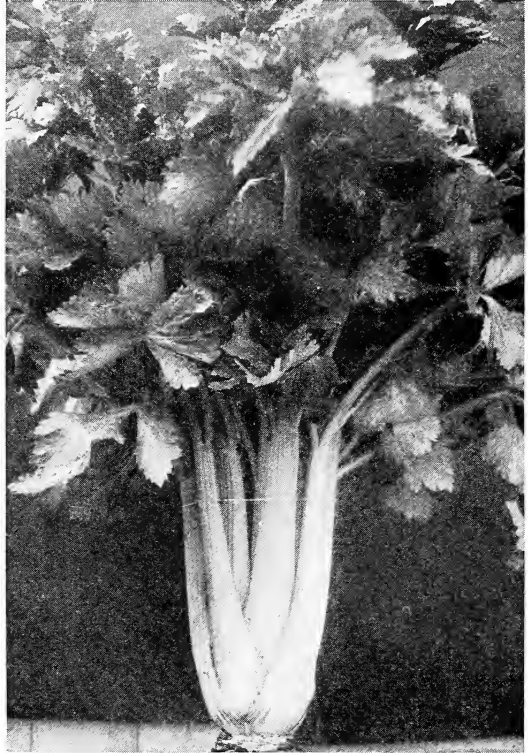
The seed we offer is "*proved*." That is a crop of celery has been raised from it so we *know* just what it produces. We have never seen better celery than the crops produced from this seed this past season. The seed is of strong germination and we can confidently recommend it. There is no finer strain obtainable *at any price*.

Oz. \$1.25; $\frac{1}{4}$ lb. \$4.25; lb. \$15.00.

"We ordered all our seeds from you last year and found them to be the best we have ever had." MERRILL E. THOMAS, Malone, N.Y. Feb. 4, 1929.

"Have grown your Wonderful or Golden Plume celery for four years and find it far superior to any other that I have tried from any other seed company. It grows larger, brittler, and keeps better. I never worry about germination when I get my seeds from Joseph Harris Co." LESLIE H. HURD, Mantua, Ohio. Feb. 17, 1929.

"I got my seeds from you last year. They were all fine. The Golden Plume celery grew to be extra fine."—W. Harkins, Ivyland, Pa.



Golden Plume Celery

Golden Self-Blanching Celery

We are now able to offer "*proved seed*" of the true old type of this variety. The stalks are of medium height with well developed heart and are unusually firm and solid. This is one of the best varieties or strains of celery for storing.

The "*proved*" seed we offer has produced several crops the past season which were remarkably fine. We did not discover any green or soft stalks and never saw better celery of this variety.

Oz. 80c; $\frac{1}{4}$ lb. \$2.60; lb. \$9.00.

French's Success Celery Harris' True Original Stock

We know of no green celery quite equal to French's Success. The stalks are of good length, very thick, firm and brittle. When grown from our selected seed there are no soft stalks.

The keeping qualities of this celery are remarkable and it will keep all winter when properly stored. Many gardeners keep it until spring and get high prices for it.

The stalks are of medium length, compact with a well developed heart, crisp and solid and of fine quality. It blanches clear white and is extremely brittle.

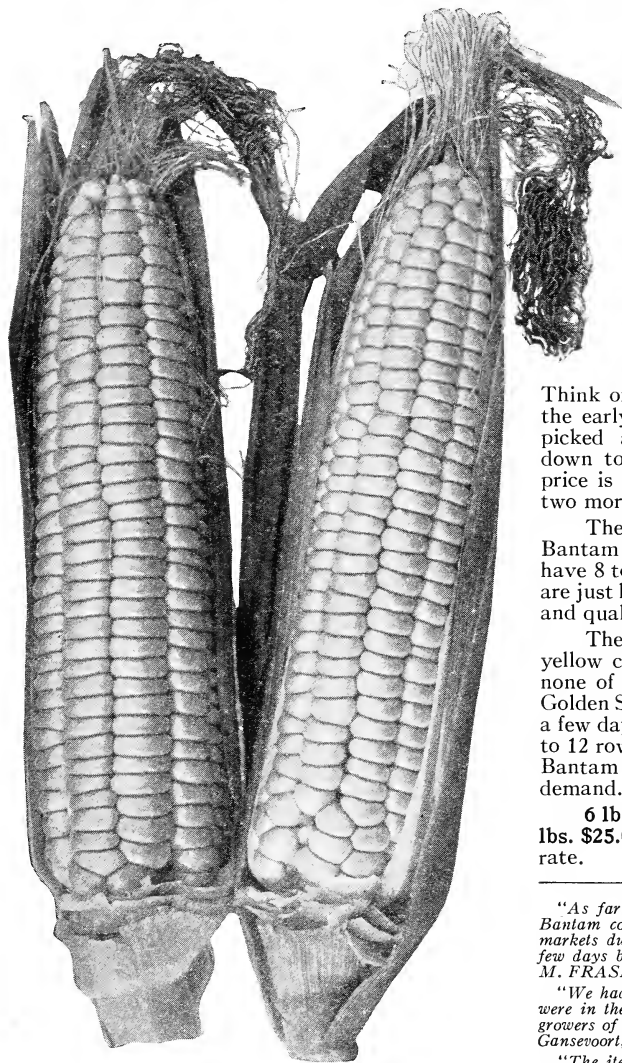
Seed of our own growing. Oz. 85c; $\frac{1}{4}$ lb. \$2.85; lb. \$10.00.

Rhubarb Roots

We have some very fine **one year old** Rhubarb Roots—which we are able to offer at the following low prices!

1000 roots \$3.50; 1000 roots \$25.00. (See also page 37.)

Harris' Extra Early Bantam Sweet Corn



Harris' Extra Early Bantam Corn

No variety that we have ever introduced has met with such marked approval as this new strain of Golden Bantam corn. The demand has grown so fast that we have never had enough seed to supply it.

This corn is simply a strain of Golden Bantam that is ready for market *ten days before* that variety is ready. With this corn a grower can market Golden Bantam long before others who raise the standard variety have any ready. He can get 40, 50 or even 60 cents per doz. while the old variety when it comes in brings 15 to 25 cents per doz.

Think of the difference in the profit from the early strain. The whole crop can be picked and sold before the price gets down to 25 cents per dozen. The extra price is all profit except for the dollar or two more paid for the seed.

The ears of Harris' Extra Early Bantam are usually 7 to 8 inches long and have 8 to 10 rows of yellow kernels. They are just like Golden Bantam in appearance and quality but they mature much earlier.

There are two or three other kinds of yellow corn that are as early as this but none of them are really Golden Bantam. Golden Sunshine is somewhat similar but is a few days later and has thick ears with 10 to 12 rows so it does not resemble the true Bantam which is always so much in demand.

6 lb. \$1.75; 12 lbs. (peck) \$3.25; 100 lbs. \$25.00. 25 lbs. or more at the 100 lb. rate.

"As far as I can find out, Harris' Extra Early Bantam corn was the first yellow corn in the local markets during the past season. It followed only a few days behind the first white corn." WILLIAM M. FRASER, Lewiston, Me. Jan. 8, 1929.

"We had Extra Early Bantam corn last year and were in the Saratoga market 10 days ahead of most growers of Golden Bantam." CHAS. S. PHELPS, Gansevoort, N. Y. Mar. 11, 1929.

"The item of seed corn gave a return of \$480.00. Sold for 45c and 50c per doz. Planted Early." C. A. TRENKLE, Cuba, N. Y. Aug. 27, 1929.

"Last year we included your Extra Early Bantam for the first and it created very much favorable comment. It is a very fine corn for first early followed with Whipple's Yellow for a second early, even Whipple's Yellow coming in a little before ordinary Bantam. While the trend is for yellow sweet corn there is still some demand for an extra early white and Gill's Early Market fills the bill." W. B. NISSLEY, Specialist in Veg. Gardening, State College, Pa. Jan. 14, 1929.

"We retail all our vegetables on the roadside, and we were the only stand that had Early Bantam, the first last year, and sold every ear by the dozen, grown from 40 lbs. and did not have enough—so I want to get more."—T. E. Stag, Lodi, N. Y. Feb. 1, 1929.

"Harris' Extra Early Bantam (some corn!)"—McKenzie and Shaffer, Utica, N. Y. Jan. 1, 1928.

Treat Your Sweet Corn Seed

Actual experience in our own farm over a number of years has convinced us that it pays to treat seed corn with SEMESAN Jr. before planting. It protects the seed from seed borne diseases, and under unfavorable weather conditions treated seed usually does not rot in the ground. The cost is very low—**less than 3c per acre**. See back cover of this catalogue for prices, etc.

Gill's Early Market Sweet Corn The Earliest Sweet Corn

Without exception this is the earliest sweet corn yet produced. Alpha matures about the same time but has much smaller ears. The Gill's Early Market is not only extremely early but in addition the ears are large, having 12 to 14 rows and often measure 8 inches long. The quality is very good for such an early variety.

This is really a remarkable corn. No very early variety hitherto has been anywhere near the size or quality of this new kind.

This is one of the most profitable varieties a gardener can raise. By planting some of the Gill's Early Market the grower can begin selling corn before any one else and get the cream of the demand and high prices before the market is flooded with the late kinds.

The Gill's Early Market and Harris' Extra Early Bantam make a combination that in our opinion will prove the most profitable to raise. The Gill's will mature a week or 10 days earlier than the Bantam and will be practically gone when that variety is ready to market.

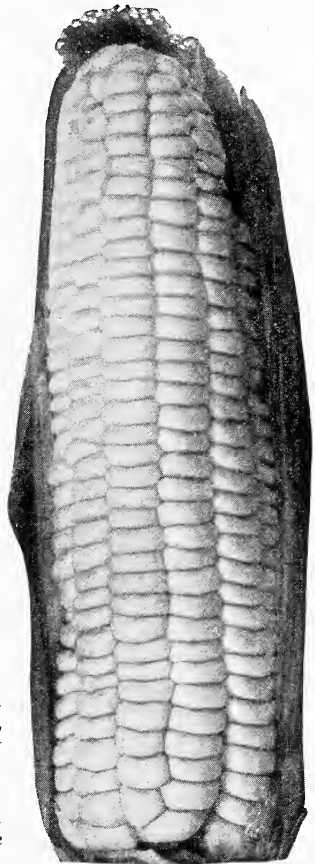
Although not of our own introduction we have raised the Gill's Early Market for several years and have improved it both in earliness and size. The seed we offer is of our own growing and of the highest quality.

6 lbs. \$1.45; 12 lbs. (peck) \$2.65; 100 lbs. \$20.00.
25 lbs. or more at the 100 lb. rate.

"We were selling Gill's Early Market corn planted May 5th on July 18th as nice full ears as you ever saw. Splendid Corn. HARRIS W. LEGGETT, Schuylerville, N. Y., July 25, 1929.

"This is the first year I have used any of your seeds and as far as I can see now all seeds will prove satisfactory. Your Gill's Early Market corn is surely the earliest white corn I have ever heard of. I am picking this now and getting 50c per dozen on Buffalo market." ARTHUR ECKHARDT, Eden, N. Y., July 30, 1929.

"This last season we planted thirty acres of your seed corn (Sweet), 'Gill's Early Market' and 'Extra Early Bantam.' The results were satisfactory and profitable." GEO. L. WIDMER, Temperance, Mich.



Gill's Early Market Sweet Corn

Buttercup—The Sweetest Sweet Corn

Sweeter than Golden Bantam and the ears are larger!

This is the sweetest corn we have ever eaten and it is deliciously succulent and tender.

The Buttercup is really an improved Golden Bantam with *larger ears*. It always sells better than Golden Bantam.

The kernels are as yellow as June butter. The ears are of good length (8 to 10 inches) and have 8 to 10 rows of large kernels of a rich butter yellow. It is medium early, maturing the same time as Golden Bantam, and is more prolific. Many stalks produce two good ears.

The Buttercup contains more sugar than any variety we have tried. Some people think it is almost too sweet.

For market the Buttercup is a very profitable corn. There is always a good demand for yellow sweet corn, and the large attractive ears of the Buttercup command a premium over other kinds.

Price: 6 lbs. \$1.20; 12 lbs. (peck) \$2.15; 100 lbs. \$16.00. 25 lbs. or more at the 100 lb. rate.

"Had your Buttercup corn last year. It was the best of all the corn we ever had." JAMES S. COATES, Andover, N. J. May 3, 1929.

Long Season Beet

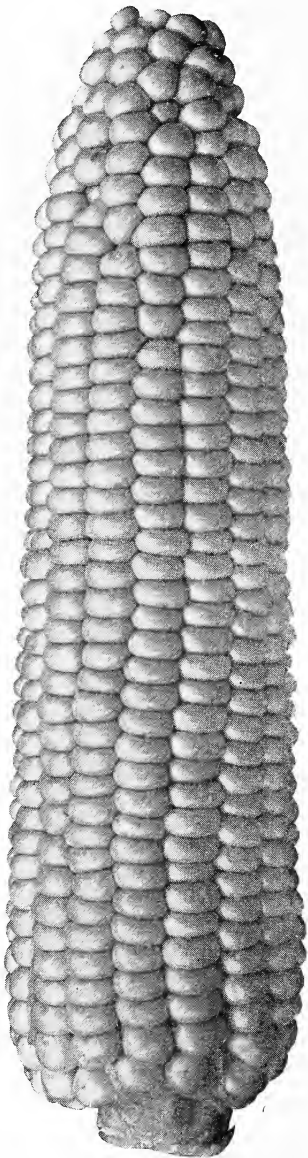
This beet is known also as "Winter Keeper" and "Coal Black."

This is a late beet not of handsome shape but of exceptionally fine quality, remaining sweet and tender even when very large.

The beets will keep all winter and retain their fine quality until spring.

The beets are half long, very dark red and have green foliage.

Market gardeners whose trade requires "quality" will find this a good beet to raise for winter trade. **1/4 lb. 70c; 1b. \$2.25; 10 lbs. \$21.50.**



Whipple's Yellow Sweet Corn

Whipple's Yellow Sweet Corn

Earlier than Bantam and as large as Evergreen

This is a wonderful early *yellow* corn that has proved very profitable to raise for market. The ears are very large, 8 to 9 inches long, having 14 to 18 rows of deep kernels. They mature ready for use two or three days earlier than Golden Bantam. The quality of the corn is very fine, but possibly not quite as sweet as Buttercup.

Its large size and earliness make it a most profitable market variety. The big handsome ears, as yellow as butter always command the highest prices. The ears are of the same type as Whipple's Early and mature at about the same time. This variety was introduced by us some years ago and has become so popular and proved so profitable as a market corn that many other seedsmen are offering inferior strains as Whipple's Yellow. To keep its earliness, size and quality requires the greatest care in selecting the corn from which to raise seed instead of using the whole crop as is done by most growers. The only safe way is to buy seed direct from headquarters.

NOTE—When ordering please write "Whipple's Yellow" *not* "Whipple's Early Yellow" as that is likely to confuse it with Whipple's Early which is a white corn.

Price: 6 lbs. \$1.20; 12 lbs. (peck) \$2.15; 100 lbs. \$16.00.
25 lbs. or more at the 100 lb. rate.

"The Whipple's Yellow corn I got from you last year was the best I ever had."—F. A. Merrell, Waltz, Mich. May 22, 1929.

"The seed I bought from you last year convinced me that they are more hardy. Whipple's Yellow corn from you was the best corn seed I ever had."—August Waaramaa, Fitchburg, Mass. Feb. 19, 1929.

"Last year I had the satisfaction of raising for the first time 5 acres of your Whipple's Yellow sweet corn. It is certainly a fine corn and I wish you would send me a bushel of seed for this season."—R. H. Watts, Whitman, Mass. April 3, 1929.

Replanting corn is expensive. We find crows and other seed pulling birds do not bother seed corn treated with **STANLEY'S CROW REPELLANT**. The cost is small.

Small can \$1.00 (treats 1 bu. corn)

Large can 1.50 (treats 2 bu. corn)

Whipple's Early (White) Sweet Corn

The Largest Early Variety

Since we first introduced this corn in 1919 it has gained steadily in popularity. Every gardener who raises it finds it profitable.

To describe it briefly it is like Stowell's Evergreen in size and shape, but matures very early— as early as Pocahontas and Red Cory, *and a few days earlier* than Kendel's Early Giant, Golden Bantam, etc. The quality of the corn is equal to Evergreen, the corn being sweet, tender and delicious. The ears are 7 to 8 inches long and very large round, as they have 14 to 18 rows of good sized kernels. Each ear is filled right out to the tip. The kernels are long and narrow like Evergreen.

A profitable market variety—Where a white corn is in demand this is one of the most profitable kinds to raise. The ears are large and handsome, the quality so fine and the yield so heavy and above all they mature so *early* that it has proved one of the *most profitable corns ever grown*. It is like having Evergreen corn *two weeks earlier* than other people and getting nearly *twice as many dozen per acre*.

Price: 6 lbs. \$1.20; 12 lbs. (peck) \$2.15; 100 lbs. \$16.00. 25 lbs. or more at the 100 lb. rate.

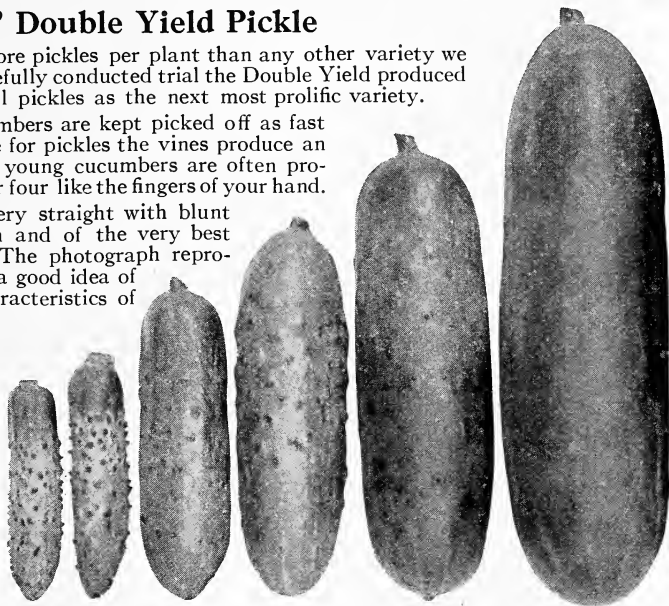
Harris' Double Yield Pickle

This variety yields more pickles per plant than any other variety we have ever grown. In a carefully conducted trial the Double Yield produced *three times* as many small pickles as the next most prolific variety.

When the small cucumbers are kept picked off as fast as they get to the right size for pickles the vines produce an astonishing number. The young cucumbers are often produced in clusters of three or four like the fingers of your hand.

The cucumbers are very straight with blunt ends, medium deep green and of the very best shape for small pickles. The photograph reproduced on this page gives a good idea of the shape and general characteristics of this variety.

The Earliest Cucumber. Harris' Double Yield is not only much more prolific than other kinds but it is also *earlier*. These cucumbers mature two weeks before other kinds are ready. On this account many gardeners find it profitable as a market variety. The fruit is 5 to 6 inches long when ready for slicing.



Harris' Double Yield Pickle
(Note the uniform shape at the different stages of growth)

Price: $\frac{1}{4}$ lb. 60c; 1b. \$1.90; 10 lbs. \$17.50.

"Last year I ordered some Harris' Double Yield Pickle and I will say they are the finest pickle I ever raised. This year I bought a pound of seed and I sure expect a wonderful crop of pickles. Will say that it only takes a few pickles to pay for that seed if weather conditions are favorable.

"I never had any bad seed from your company." LUTHER FELGER, New Springfield, Ohio. Feb. 25, 1929.

"California Iceberg" Lettuce Can Now be Raised in the East!

We are now able to offer a new strain of New York or Wonderful lettuce which matures earlier than the old strain and is better adapted to growing conditions in the eastern states. The strain is called *New York No. 12*. If given proper culture the strain will produce large, firm heads almost perfectly round and which mature 10 days earlier than the old strain, and head much better under eastern conditions.

There are several ways of getting good results from this type of lettuce. The seed can be sown under glass and the plants set out early in the open ground. Another way is to sow the seed in July so the lettuce will head in the fall when the weather is cool. Overhead irrigation is of great benefit to this crop. No lettuce of this type does well on muck land.

New York No. 12 Lettuce. Oz. 30c; $\frac{1}{4}$ lb. 85c; 1b. \$2.75; 10 lbs. \$25.00.

Creamy Heart Lettuce

A very desirable head lettuce for upland culture. It forms large firm heads of the Salamander, a Black Seeded Tennisball type, but has thicker leaves than these varieties and heads more uniformly and stands hot weather better. The heads are quite large and of a creamy white inside. The outer leaves are somewhat crumpled, medium deep green and quite thick. Gardeners have found this one of the best of the heading varieties for upland culture as it heads quite uniformly and stands hot weather well without bolting or "burning."

We offer seed grown by the originator. Oz. 30c; $\frac{1}{4}$ lb. 90c; 1b. \$3.00.

Growers of vine crops have found that it pays to use **Hot-Kaps**; They protect the plants from frost, beating winds, striped beetles and other insects.

See back cover for full description and prices.



Germaco
Hotkaps
New Method of
Plant Protection

Bender's Surprise Muskmelon

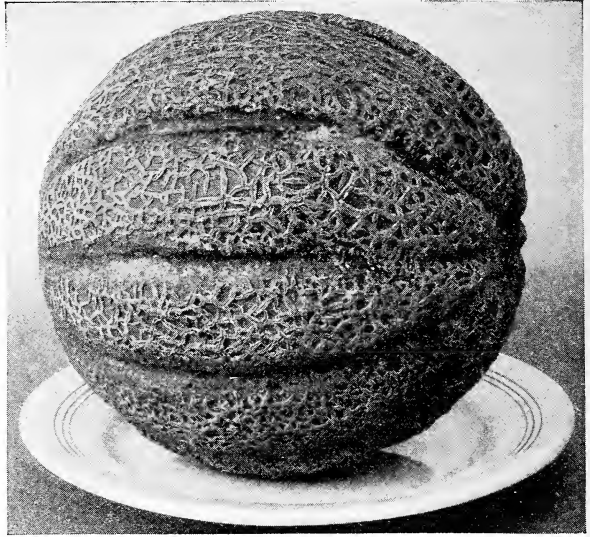
Harris' Special Strain

A Grand Melon for Both Shipping
and the Home Market

We have raised muskmelons for many years, but have never seen a melon quite equal to the Bender in fine flavor, size and keeping qualities combined.

The melons are round to oval in shape, ribbed and covered with coarse netting. The flesh is very thick, especially so at the blossom end so that the melons rarely crack.

When ripe the melons turn a golden tint which shows through the netting and gives the fruit a very attractive appearance.



Bender's Surprise Muskmelon

The size
of the
melons
averages
quite
large, many weighing 10 lbs. and more. We have had melons that weighed 16 pounds.

A valuable point about these melons is that they will keep in good condition five or six days after picking, and actually improve in flavor during that time. The flesh is so firm and thick that the melons remain firm and in good condition much longer than other large melons of this class. For market and shipping this is an important consideration.

We have bred the Harris' Strain of Bender melon on our own farms for over ten years, paying special attention to high quality and trueness to type, so that the Harris Strain is much superior to ordinary strains of this variety.

Seed of our own growing: Oz. 30c; $\frac{1}{4}$ lb. 85c; lb. \$2.75; 10 lbs. \$25.00.

"I raised nearly 480 bu. from the 2 lbs. of Bender's Surprise melon seed purchased of you last year."—C. L. Luce, Dunkirk, N. Y. May 17, 1929.

Delicious Muskmelon

This is the *earliest* large high quality melon we have ever raised. In our trials the past season the Delicious was fully as early as Golden Champlain and much earlier than Emerald Gem, while the melons were much larger and of higher quality than either of these varieties.

The melons are of oval shape, light green with close, fine netting. The flesh is deep orange color and of *exceptionally high flavor*.

We highly recommend this melon for the home garden and home market. The flesh is rather too soft for long distance shipping but its sprightly flavor and delicious sweetness will always be appreciated.

Oz. 50c; $\frac{1}{4}$ lb. \$1.35; lb. \$4.50.

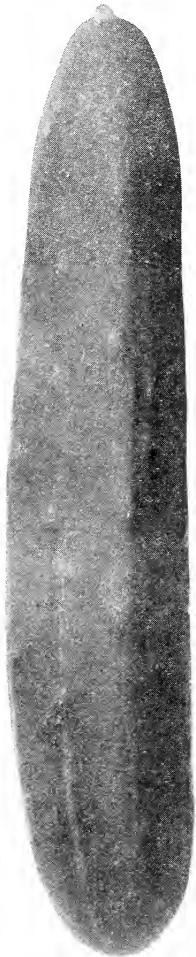
Longfellow Cucumber

Those who want a *long, slender very dark green* cucumber will find the Longfellow a very satisfactory variety. The fruit when ready to use is 9 to 10 in. long and 2 in. in diameter. When nearly fully matured the cucumbers are often 12 to 14 in. long.

This variety closely resembles hot house cucumber and always sells for the highest prices.

Compared with Early Fortune, Harris' Perfection and Davis Perfect, the Longfellow is longer, more slender and of deeper green color. The vines are vigorous and quite productive.

Oz. 25c; $\frac{1}{4}$ lb. 75c; lb. \$2.50; 10 lbs. \$22.50.



Longfellow Cucumber



Over 1000 bushels per acre!

"The 12 acre field of Ohio Yellow Globe Onions from Harris' seeds which we were harvesting when this picture was taken yielded over 1000 bushels of U. S. No. 1 onions per acre of the best color onions we have ever seen. We used only $4\frac{1}{3}$ lbs. of seed per acre." F. J. RITZ & SON. Elba, N. Y. Oct. 17, 1929.

Ohio Yellow Globe Onion

This is a very fine strain of Yellow Globe onion which is especially well adapted for raising on muck land. The onions grow to a large size of deep yellow color and globe shaped except a slight flattening on the bottom. The onions mature the same time as Yellow Globe Danvers and a week earlier than Southport Yellow Globe.

We have an exceptionally fine strain of this variety.

$\frac{1}{4}$ lb. 55c; lb. \$1.65; 10 lbs. or more \$1.60 per lb.

Mountain Danvers Onion

A very early maturing strain of Yellow Globe onion originating in the mountains of Colorado. The onions are of fine globe shape, deep yellow color and very firm. They ripen *two or three weeks earlier* than Yellow Globe Danvers, and are valuable on this account where the *seasons are short*. These onions have remarkable keeping qualities and can be safely stored all winter. They do not get quite as large as the Yellow Globe Danvers, but are of good size and are often found more profitable than the later kinds because they can be marketed before other kinds are ready. Muck growers find it profitable to plant a portion of their onion acreage in Mountain Danvers.

Price: $\frac{1}{4}$ lb. 75c; lb. \$2.50; 10 lbs. \$24.00.

White Boston Lettuce

We are now able to offer a very fine strain of this excellent lettuce which heads with almost perfect uniformity, forming very compact light green heads blanched perfectly white inside and with no purple or pink tinge on the outer leaves. The heads are similar to Big Boston but are lighter green and have no red tinge and they mature earlier.

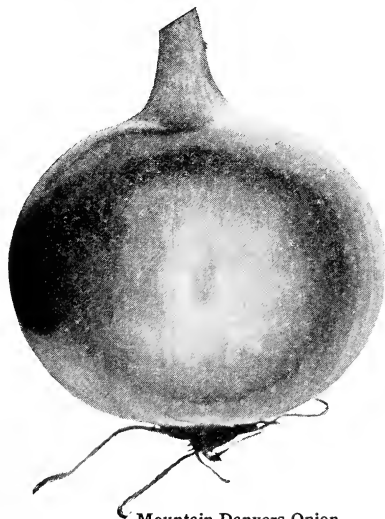
Our strain of this variety is the very best that money can buy. *It is fully equal to any strain obtainable* even at twice or three times the price we charge for the *seed*. You cannot get better seed no matter what you pay for it. Try it and see.

Oz. 20c; $\frac{1}{4}$ lb. 55c; lb. \$1.75; 10 lbs. \$16.50.

Roadside Marketing

by Gilbert S. Watts

All who grow vegetables for the roadside trade should have this book. The many practical suggestions it contains are drawn from the author's experience in conducting a successful wayside market. (128 pages). Well illustrated. \$1.25 postpaid.



Mountain Danvers Onion

Harris' Early Giant Pepper

The Earliest and Most Prolific Large Pepper

We have at last developed a *very large* pepper that is not only early but yields large numbers of peppers on every plant. Hitherto all large peppers have been late and did not yield well in the North. By careful breeding a really remarkable result has been attained.

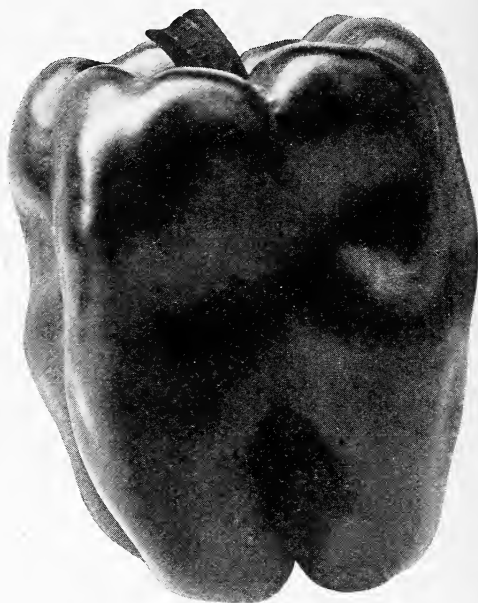
Harris' Early Giant has fruit that stands 4½ in. high and 4 in. across. *21 peppers fill a 14 qt. basket and 45 completely fill a bushel crate.* It is larger than Ruby King and Giant Crimson and fully as large as Chinese Giant and three or four weeks earlier and *much more prolific.*

On a great many plants there are 10 to 12 large peppers and 8 or 10 smaller ones at one time, the yield is therefore, immense.

The plants grow 18 in. to 2 ft. tall and produce such a large number of peppers that there is hardly room for them on the plant. The peppers are deep green turning to a brilliant red. The flesh is thick and of a very sweet pleasant flavor. Harris' Early Giant is only a week or ten days later than Harris' Earliest, the earliest pepper grown.

The price of seed may seem a little high compared with older varieties, but when it is realized that it costs only \$2.00 more to get seed enough for an acre, it seems absurd to consider this small expense as the increase in yield and earliness is worth at least \$100.00 per acre.

Seed of our own growing: Oz. 85c; ¼ lb. \$2.85; 1b. \$10.00.



Harris' Early Giant Pepper

Harris' Earliest Pepper

The Earliest and Most Prolific Sweet Pepper

Gardeners who have trouble getting peppers that will produce a good crop of fruit early enough for the Northern States should try *Harris' Earliest.*

This is by far the *earliest* sweet pepper we know of. The fruit is of good size, resembling the Large Bell or Bull-Nose, but unlike that variety is mild and sweet. The peppers are bright red when ripe and very firm. The plants are of dwarf, compact growth and are *literally covered with fruit*, there being often a dozen large ripe peppers on a plant at one time and many green ones. They can be set out closer together than other varieties and an immense number of peppers are produced on a small amount of land. It always produces lots of fruit and is so early that the fruit gets ripe before frost. With this kind you can get peppers on the market before any others have them.

We are improving the size and shape of this pepper every year. It is now *much larger* and of better shape than it was two or three years ago. Some gardeners tell us that we do not say enough about this pepper. They say they get more peppers from 100 plants than from 500 of any other kind that bears sweet peppers.

Seed of our own growing. Oz. 85c; ¼ lb. \$2.85; 1b. \$10.00.



Oshkosh Pepper

Oshkosh Pepper

We highly recommend this new pepper to those who wish to raise green peppers for market or home use where smooth form, thick flesh and **exceptionally** fine quality is more desired than earliness.

The peppers, before they mature, are of a deep green, large, smooth and of the best shape for stuffing. When ripe the color is a deep golden yellow. The flesh is **exceptionally thick.**

Another important point is that the Oshkosh is the **sweetest** pepper grown. We have never tasted a pepper of such mild, sweet flavor. It is quite distinct in this respect.

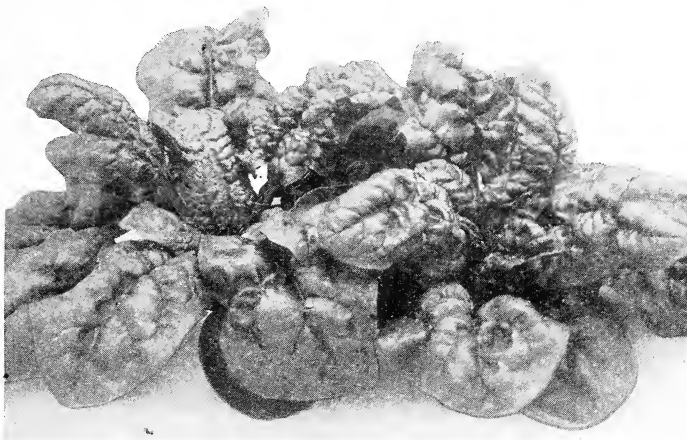
Oz. 85c; ¼ lb. \$2.85; 1b. \$10.00.

Long Standing Bloomsdale Savoy Leaf Spinach

This new spinach has proved to be a great value. It grows rapidly, forming large deep green leaves which are much curled and blistered. It is like the best type of the old Norfolk Savoy or Bloomsdale, but is larger and stands *fully a week longer without running to seed.*

This spinach is one of the very best early varieties for spring sowing, and is also excellent for fall sowing for early spring use, as it is very hardy. Our seed of this variety is exceptionally well bred, every plant being of the true type with very large crumpled leaves of deep green color and we highly recommend it to all who grow spinach for home use or market.

Lb. 35c; 10 lbs. \$3.00; 100 lbs. \$26.00.



Long Standing Bloomsdale Savoy Leaf Spinach

Nobel Giant Leaved Spinach

This new spinach grows very rapidly and attains a large size *very early.* The yield is consequently large and the fact that it is produced early makes this one of the most profitable varieties for spring sowing. The plants stand well without bolting. The leaves are of the very largest size, nearly smooth, thick and quite deep green. We advise gardeners to try this new variety. We are sure it will prove profitable.

Lb. 35c; 10 lbs. \$3.00; 100 lbs. \$26.00.



Photo of our Fall Spinach Trials showing how **Blight-Resistant Savoy** stands without blighting. The two middle rows are Blight-Resistant. Picture taken in October.

Blight-Resistant Savoy Spinach

We recommend this variety very highly for the fall crop. Because of its blight-resistant qualities, it will yield large crops of *very fine deep colored heavily curled spinach* in the fall, when the other varieties are often a complete failure on account of blight. For spring sowing when blight does not ordinarily affect spinach we do not recommend this variety, as it will not stand at that time without bolting as well as some of the other kinds.

Lb. 35c; 10 lbs. \$2.80; 100 lbs. \$24.00.

25 lbs. or more of any variety furnished at 100 lb. rate.

King of Denmark Spinach

Named and Introduced by us in 1920

Those who have tried this spinach know it is a wonderful improvement over all other kinds. It not only grows fast and produces a large yield, but it stands *two weeks* longer before running to seed. The leaves are broad, heavy, dark green and somewhat blistered like a Savoy cabbage. The remarkable thing about it is that it stands so long before putting up a seed stalk. This is a great advantage to the gardener as he does not have to sell the whole crop within a few days as with other kinds. The leaves are quite thick *very dark green* and have small stems. On account of the deep color and small stems this is one of the best varieties for canning as well as market.

We have the true original strain which is much superior to most of the seed of this variety that is offered by other dealers.

Lb. 35c; 10 lbs. \$3.20; 100 lbs. \$28.00.



**Giant Summer
Straightneck Squash**

Giant Summer Straightneck Squash

The Straightneck squash is replacing the old Crookneck with many growers because the squash are much more easily handled and a larger number can be put in a crate. Aside from the straightneck the squash are identical with the Giant Crookneck.

We are glad to be able to offer this season seed of our own growing of a superior strain. While no strain is as yet one hundred per cent true Straightneck, as some fruits will still revert back to the old Crookneck type, yet the seed we offer this year will, we are sure, produce a very high percentage of Straightnecked squash.

The fruit is deep yellow 15 to 20 in. long, very much warted and with a thick meaty neck.

Oz. 40c; ¼ lb. \$1.10; lb. \$3.50; 10 lbs. \$32.50.

"I find I can depend on your seeds. Your Model Parsnip did well with me, had a big crop and every seed grew."—Henry Carver, Peterboro, Canada. Feb. 28, 1929.

"Have been buying my seed from you for a number of years but have never told you how I liked them. The Harris' Model Parsnips I dug this spring are wonderful and are certainly rightfully named."—Lynn E. Merchant, Sidney, N. Y. March 14, 1928.

Harris' Model Parsnip

We have been improving the old Hollow Crown parsnip by careful selection for some years until we have obtained a very fine strain, which we call "Harris' Model."

The parsnips grow to a good length, but not too long. The roots are smooth, snow white, and have practically no side roots or prongs. Their whiteness is quite remarkable and gives the roots a very attractive appearance.

Our seed is of our own growing from transplanted and very carefully selected roots and it will be found far superior to the seed usually sold.

Oz. 15c; ¼ lb. 40c; lb. \$1.10; 10 lbs. \$10.00.



Photograph showing how we transplant our Model Parsnips for seed on Moreton Farm

Harris' Pedigree Strains of Tomatoes



Picking Tomatoes for Seed on Moreton Farm

We have for years made a specialty of raising tomato seed of the best possible quality and we think our strains of some of the new and standard varieties are as fine as can be found anywhere and far superior to what is usually sold. The seed of these special varieties is all grown on our own farm and the greatest care is taken to improve the stock by the most careful breeding methods.

Bonny Best Tomato Harris' Special Strain

This magnificent early variety should be largely planted. It is only a week later than Earliana and the plants produce enormous crops. The tomatoes are large and smooth as an apple and of a deep scarlet color, which extends right up to the stem. There is no trace of green tinge. There are practically no rough specimens and the fruit does not often crack. This is one of the best tomatoes for market and home use. We are sure there is no finer strain of Bonny Best than the seed we are offering. This is of our own growing from carefully selected plants, and will be found of the highest quality, producing the smoothest and most perfect fruit.

Seed of our own growing. Oz. 50c; $\frac{1}{4}$ lb. \$1.45; lb. \$4.75.

Harris' Success Tomato

This is one of the finest tomatoes which we know of.

The fruit is practically perfect—large, well colored, smooth, firm, and of exceptionally fine quality, being quite free from acidity when cooked. In addition it yields enormous crops, more than any other kind we raise. Ripens almost as early as John Baer and Bonny Best and is larger, more solid and yields more. Market gardeners will find this one of the most profitable main crop varieties to grow. We do not know of any kind that yields such large crops of smooth handsome fruit. Seed of our own growing. Oz. 50c; $\frac{1}{4}$ lb. \$1.45; lb. \$4.75.

John Baer Tomato

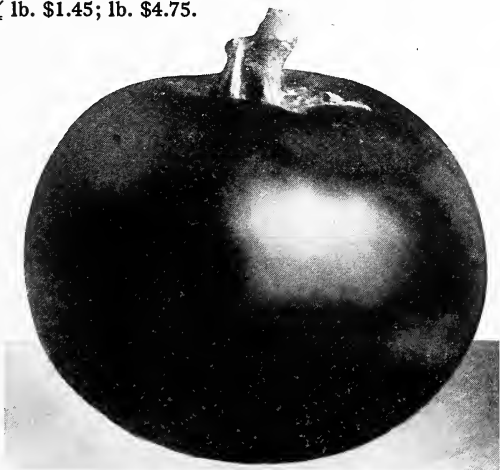
We have improved our stock of John Baer so that it is now even better than when first introduced.

The fruit is large, smooth, deep red and colors right up to the stem. The vines are vigorous and healthy and produce heavy crops, the yield being as great as any variety we raise.

We regard this variety as *one of the best medium early tomatoes for market or canning.*

Seed of our own growing from very choice fruit.

Oz. 50c; $\frac{1}{4}$ lb. \$1.45; lb. \$4.75.



John Baer Tomato

"I enclose you a snap taken in August of Bonny Best tomatoes. I never had nicer, smoother tomatoes as I have this year and big yielders. Your seed has the pep in it alright!"—H. Carver, Peterboro, Ont., Canada. Sept. 18, 1929.

Crackerjack

A Fine New Forcing Tomato

This new greenhouse tomato which has been developed by a prominent grower in the famous Irondequoit, N. Y. gardening section, will be found a valuable addition to the list of forcing varieties. The plant is a vigorous robust grower and resistant to blight. The plant should be trimmed to about six feet for best results in the greenhouse.

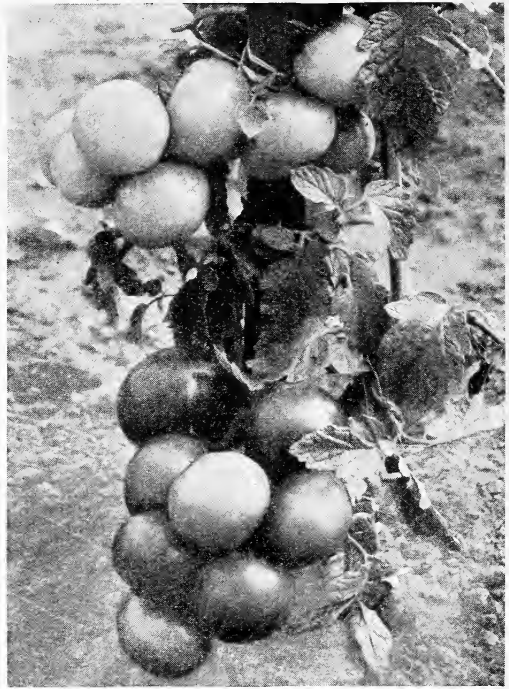
The fruit is of good size, round, perfectly smooth and without cracks and of a fine deep red color which goes all the way to the stem. The fruit sets heavily and the clusters are close together on the stem. There are usually five to nine good tomatoes in a cluster, making the yield very high.

$\frac{1}{4}$ oz. \$1.00; oz. \$3.00; $\frac{1}{4}$ lb. \$10.00.

"The finest tomatoes I ever grew, were grown from Bonny Best and John Baer last year."—N. A. Brown Corfu, N. Y.

"I have a fine crop of John Baer, Bonny Best and Marglobe, about 1000 plants in all, staked and trimmed."—Bert E. Seager, Sennett, N. Y., Aug. 31, 1922.

"My Harris' Success Tomatoes sold for 25c to 50c more per bushel than others received, owing to their superior looks and quality."—Geo. A. Webster, Glens Falls, N. Y.



Crackerjack Tomatoes

Earliana Tomato

We are quite sure that all our customers who have raised our special strain of Earliana tomato will agree with us that it is the *smoothest* and *best colored* stock of Earliana obtainable. There are other tomatoes offered under different names which are said to be earlier than Earliana, but we have found none to be any earlier and most of them are irregular in shape and not colored well.

This special strain of Earliana is not only extremely early, but the fruit is *perfectly smooth*, very solid and firm and is well colored right up to the stem.

Gardeners find this a most profitable tomato to raise. The early crop brings high prices and the fruit that ripens later is of such good shape and color that it brings almost as much as the later varieties.

We offer seed of *our own growing at Moreton Farm*. It is *Northern grown* as we are on the north border near Lake Ontario. Oz. 50c; $\frac{1}{4}$ lb. \$1.50; lb. \$5.00.

Harris' Early STONE Tomato

The Stone has been considered for many years one of the very best tomatoes on account of its firmness and lack of acidity. The only objection to it was the fact that it ripened late. By raising the seed in this northern latitude and making selections with special reference to earliness we have obtained a strain that ripens *almost as early as Bonny Best and John Baer* and at the same time has retained its other good qualities. For canning it is important to get a variety that is not acid and for this reason the Stone is especially valuable for this purpose. The fruit is smooth deep red, solid, firm and very sweet. The yield is high and market gardeners with a discriminating trade will find this a very profitable tomato to raise.

Seed of our own growing. Oz. 50c; $\frac{1}{4}$ lb. \$1.45; lb. \$4.75.

Marglobe Tomato

A new *blight-resistant* variety that has been found valuable for canning, market and shipping. The fruit is large, globe shaped, perfectly smooth, deep red, very solid and firm. The vines are vigorous and healthy and do not blight. Because of this fact the vines remain green until frost or until the whole crop is matured, so the late fruit is as good as the first to ripen.

This is not an early variety but matures about the same time as Stone. It is especially valuable where the seasons are long.

We have a very fine strain of this variety.

Seed of our own growing. Oz. 60c; $\frac{1}{4}$ lb. \$1.75; lb. \$6.00.

General Wholesale Price List

The prices here quoted apply only to orders from market growers and institutions, who use seeds in considerable quantities. For prices of seeds in quantities less than listed here please refer to our general catalogue.

This is NOT A COMPLETE CATALOGUE and does not include field seeds, grass seeds, etc., nor all the varieties of vegetables and flower seeds and plants which we sell. For these see our general catalogue which is mailed in January of each year.

ARTICHOKE

The Globe Artichoke produces the flower buds which are used for food the second year after sowing the seed. The plants are not hardy and require protection in winter north of Virginia.

	Oz.	¼ lb.	lb.
Large Green Globe. The standard variety.....	\$.50	\$1.50	\$5.00

ASPARAGUS SEED

	¼ lb.	lb.	10 lb.
MARTHA WASHINGTON. A new rust-resistant strain originated by the U. S. Department of Agriculture at Washington. For full description see our general retail catalogue.....	\$.30	\$1.00	\$ 9.00
MARY WASHINGTON. The latest improved variety. Very large shoots, early, vigorous and quite rust resistant.....	.45	1.40	12.50
Palmetto. Standard variety.....	.25	.65	6.00

ASPARAGUS ROOTS. See page 37

BEANS—Dwarf Wax Varieties

Of the wax or yellow-podded bush beans, the earliest variety is *Webber Wax* with flat pods. *Wardwell's Kidney Wax* is a day or two later and has very long and flat pods of high quality. This bean is quite apt to rust in wet weather and for this reason *Currie's Rust-proof* is preferred by many, although the pods are not as long and are somewhat stringy. *Sure Crop Wax* resembles *Currie's Rust-proof* but has longer pods which are stringless. *Unrivalled Wax* is very prolific and has handsome flat yellow pods of good length. *Pencil Pod Black Wax* is one of the best wax beans with round pods. *Refugee Wax* is late and has round pods of the highest quality. It is largely used for canning.

Note—30 lbs. or more of one variety will be sold at the 100 lb. rate. A pound is a pint, 15 lbs. a peck, 60 lbs. a bushel. For prices of beans in quantities of less than 7½ lbs. see our general catalogue.

	7½ lb.	15 lb.	60 lb.	100 lb.
			Bu.	
SURE CROP WAX. Pods 4 to 5 in. long, flat, bright yellow stringless and rust resistant. One of the best flat podded wax beans and a profitable market variety.....	\$1.95	\$3.60	\$13.20	\$22.00
WEBBER WAX or "Cracker Jack." The earliest wax bean. The pods are long, straight, flat, stringless and quite free from rust. A heavy bearer.....	1.95	3.60	13.20	22.00
WARDWELL'S KIDNEY WAX. Very long, flat, deep yellow pods. One of the earliest and most prolific wax beans for market.....	2.10	3.90	14.40	24.00
BURPEE'S NEW KIDNEY WAX. Has narrower and thicker pods than Wardwell's.....	1.85	3.45	12.60	21.00
ROUND POD KIDNEY WAX. Pods 5 to 6 in. long, round, clear yellow and stringless, medium early and fairly prolific...	2.20	4.05	15.00	25.00
Brittle Wax. Same as Round Pod Kidney Wax.....	2.20	4.05	15.00	25.00
PENCIL POD BLACK WAX. Pods perfectly round, nearly straight clear yellow, stringless and of highest quality. Plant healthy and prolific. Matures early. Seed black. We consider this the best round pod wax bean.....	1.80	3.30	12.00	20.00
UNRIVALED WAX. Flat pods of good length, clear yellow and of fine quality.....	2.10	3.90	14.40	24.00
Davis' White Wax. Hardy and prolific. Long, flat, yellow pods of fair quality. Matures early.....	2.20	4.05	15.00	25.00
Hodson Wax. Late, very prolific, long, straight, flat pods....	2.20	4.05	15.00	25.00
CURRIE'S RUST-PROOF BLACK WAX. Hardy and very prolific. Pods, broad, flat, deep yellow. A very early and profitable market variety of fair quality.....	1.80	3.30	12.00	20.00
REFUGEE WAX. Round pods of fine quality, very prolific, matures late.....	2.00	3.75	13.80	23.00

BEANS—Dwarf Green-Podded Varieties

If your market requires a round-pod bean, *Full Measure*, *Giant Stringless Green Pod* and *Tendergreen* and *Black Valentine* are the most profitable. If a flat pod is required *Bountiful* is one of the best varieties.

	7½ lb.	15 lb.	60 lb.	100 lb.
TENDERGREEN. Early and prolific with long round pods of fine quality. See description on page 2.	\$2.90	\$5.50	\$21.00	\$35.00
FULL MEASURE. Long, round stringless pods of high quality, early and a very profitable market variety.	2.40	4.50	16.80	28.00
Stringless Green Pod. Round, thick, light green pods of high quality.	2.40	4.50	16.80	28.00
GIANT STRINGLESS GREEN POD. Larger than Stringless Green Pod and fully as early. Round, light green pods of high quality.	2.55	4.80	18.00	30.00
BLACK VALENTINE. A profitable market bean. Produces immense crops of long, straight, light green pods, round as a pencil and very attractive in appearance but not stringless.	1.80	3.30	12.00	20.00
BOUNTIFUL. Very early and prolific. Long, flat pods, stringless and of fine quality. One of the best green podded varieties for market and shipping.	2.70	5.10	19.20	32.00
Improved Round Pod Valentine. Extra early, long, straight, round pods, but not stringless.	1.80	3.30	12.00	20.00
Refugee or 1000 to 1. Late, very prolific.	2.20	4.05	15.00	25.00
New Stringless Refugee. A stringless strain of the old Refugee.	2.55	4.80	18.00	30.00
Lowe's Champion. One of the Horticultural or Cranberry beans. Pods 5 in. long, flat, green, straight and stringless.	2.10	3.90	14.40	24.00
Ruby Dwarf Horticultural. Used for shelling green. Pods light green splashed with deep red.	1.65	3.00	10.80	18.00
FRENCH HORTICULTURAL. The best strain of dwarf Horticultural beans. More prolific and vigorous than other kinds. Pods long, straight and highly colored. Matures a little later than Ruby Dwarf Horticultural and has taller vines. We have a very fine true strain of this variety.	2.20	4.05	15.00	25.00

LIMA BEANS—Dwarf or Bush Varieties

Where beans are sold in the pods, *Fordhook* is the most popular bush Lima. The beans are of good size and very plump, and the vines are prolific. For shelling, *Burpee's Bush Lima* of the old type and *Burpee's Improved* are often used. The beans are large and flat. *Henderson's* is small, early, and very prolific.

	7½ lb.	15 lb.	60 lb.	100 lb.
FORDHOOK BUSH LIMA. The most popular bush Lima. Beans large, thick and deep green. The best of this class. Most profitable to raise for market where beans are sold in the pod.	\$2.70	\$5.10	\$19.20	\$32.00
BURPEE'S BUSH LIMA, Wonder Strain. Large, flat beans, medium early.	1.85	3.45	12.60	21.00
Burpee's IMPROVED Bush Lima. Larger pods and thicker beans than the old variety and of deeper green color.	1.95	3.60	13.20	22.00
Henderson's Bush Lima. Small flat pods and beans, early and very prolific.	1.80	3.30	12.00	20.00

LIMA BEANS—Pole

IDEAL. Very large pods often 8 in. long, early and prolific. We regard this <i>the best large podded Pole Lima</i>	1.80	3.30	12.00	20.00
Early Leviathan Lima. Early, prolific, and pods of large size.	1.80	3.30	12.00	20.00
Challenger Lima. An improved strain of Dreeer's Pole Lima. Large plump beans of the "Potato" class.	2.20	4.05	15.00	25.00
EARLY JERSEY. Pods and beans of medium size, matures early and yields well.	1.80	3.30	12.00	20.00

OTHER POLE BEANS

IDEAL MARKET. A very early green podded pole bean. It is 10 days earlier than Kentucky Wonder. The beans are 5 to 6 in. long, round, stringless of very fine quality, and borne in clusters of 4 to 6 pods. A very productive variety.	2.25	4.20	15.60	26.00
Golden Cluster Wax. Long, broad, deep yellow pods of finest quality; beans white. Pods often 7 in. long and an inch broad.	2.25	4.20	15.60	26.00
Kentucky Wonder. Long, slender, green pods of fine quality. Early and very prolific.	1.60	2.85	10.20	17.00
Kentucky Wonder Wax. Long, flat, yellow pods of fine quality. One of the best wax pole beans.	1.80	3.30	12.00	20.00

POLE BEANS—Continued

	7½ lb.	15 lb.	60 lb.	100 lb.
SCOTIA. Long, slender, green pods of the very best quality. Wonderfully prolific.....	\$1.95	\$3.60	\$13.20	\$22.00
White Dutch Runner. Very large white beans often used in place of Limas. Very prolific and early.....	2.20	4.05	15.00	25.00
Scarlet Runner. Used principally as an ornamental vine.....	2.20	4.05	15.00	25.00
KING HORTICULTURAL. Much superior to the old London Horticultural. Earlier, longer pods of brighter color and stringless.....	1.80	3.30	12.00	20.00
Speckled Cranberry or London Horticultural.	1.80	3.30	12.00	20.00

FIELD BEANS

BOSTON MARROW or White Marrowfat. (Perry Strain). The best strain of this variety. Large plump white beans....	1.40	2.55	9.00	15.00
Red Kidney. Large red beans, very prolific and a profitable variety. Special disease resistant strain.....	1.35	2.40	8.40	14.00
WHITE KIDNEY. Large, white, kidney-shaped beans; yields heavy crops and are of the highest quality for baking....	1.50	2.70	9.60	16.00
ROBUST PEA BEANS. A select strain of Pea beans that is resistant to the mosaic disease and yields much more....	1.25	2.20	7.80	13.00
IMPERIAL or PROLIFIC TREE. The beans are white, kidney-shaped, somewhat smaller than White Kidney and of fully as high quality. Yields heavy crops.....	1.50	2.70	9.60	16.00
Yellow Eye. Large plump white beans with a yellow blotch at the "eye".....	1.40	2.55	9.00	15.00

BEETS

For early bunching *Crosby's Egyptian* and *Early Wonder* are the most popular kinds and if really first-class strains are used there are no better beets for the purpose. Some gardeners prefer the old flat *Egyptian Blood Turnip* beet, because it makes salable beets a little quicker than Crosby's. *Early Wonder* is very similar to Harris' Special Strain of Crosby's Egyptian. For later use *Detroit Dark Red* is excellent. For late fall and winter use it is best to sow the seed about the middle of July in the North and a little later further South. Sow about 10 lbs. of seed to acre.

	¼ lb.	lb.	10 lb.
CROSBY'S EGYPTIAN, Harris' Special Strain. The finest bred strain of this beet. Deep red color. See description page 3. Seed of our own growing.....	\$.40	\$1.20	\$11.00
CROSBY'S EGYPTIAN, Bright Red Strain. Color lighter red than Harris' Strain.....	.30	.85	8.00
EARLY WONDER. Quite similar to our special strain of Crosby's Egyptian. Early and of good deep red color. Our strain of this variety is very fine.....	.40	1.10	10.00
Egyptian Blood Turnip. Flatter than Crosby's, and is preferred by some for early bunching.....	.25	.75	7.00
DETROIT DARK RED, Harris' Special. Seed of our own growing, very superior stock. See description on page 4.....	.40	1.10	10.00
ECLIPSE. Early, globe-shaped and very handsome beet, of somewhat lighter color than Detroit but earlier.....	.30	.85	8.00
Early Blood Turnip. A good old variety, large flat beets.....	.30	.85	8.00
Early Bassano. Large, flat, light-colored beets.....	.25	.70
LONG SMOOTH BLOOD RED. 8 to 10 inches long and very dark red. Grows half out of the ground.....	.30	1.00	9.00
LONG SEASON. A very late variety of fine quality. See description on page 7.....	.70	2.25	21.50

MANGELS AND SUGAR BEETS FOR STOCK

	¼ lb.	lb.	10 lb.
DANISH YELLOW GIANT. An immense yielder. Very large, oval, deep yellow and rich.....	\$.20	\$.45	\$4.00
Golden Tankard. Oval and easily harvested; yellow flesh. The strain we offer is very fine.....	.20	.45	4.00
NEW "HALF SUGAR" MANGEL. Intermediate between a sugar beet and mangel. Yields immense crops of beets rich in sugar.....	.20	.45	4.00
MAMMOTH LONG RED. Very large, long red roots of good quality. One of the best yielders and keeps well.....	.20	.45	4.00
Giant Yellow Eckendorf. Very large yellow mangel. Blunt at the bottom, easily harvested and immense yielder.....	.20	.45	4.00

BROCCOLI

ITALIAN GREEN SPROUTING or CALABRESE. This popular vegetable is a very easy one to raise. The culture is the same as cauliflower. Broccoli commands high prices on the market, and as two or three cuttings may be made from each plant this is a very profitable crop to grow. Our stock is the true type which is in demand in the markets. See full description on page 3. $\frac{1}{4}$ oz. 40c \$1.25 \$4.25 \$15.00

Oz. $\frac{1}{4}$ lb. lb.

BRUSSELS SPROUTS

Cultivation is the same as for cabbage or cauliflower. There is always a good demand for the sprouts, and they bring profitable prices. *The point is to get the right seed.* We are pleased to be able to offer a strain of *Long Island Improved Dwarf* that produces heavy yields of sprouts. Gardeners will find this a profitable crop.

Special Strain Long Island Brussels Sprouts

We are able to offer a very fine strain of Long Island Improved Brussels Sprouts that produces a high percentage of firm, large sprouts so that the yield is high. The plants are not tall but the stems are completely covered with large and very firm sprouts. Growers find this a very profitable strain to use. **Oz. 75c; $\frac{1}{4}$ lb. \$2.35; 1 lb. \$8.00.**

	Oz.	$\frac{1}{4}$ lb.	lb.
Danish Improved. A good late variety that yields well if set out before the middle of June in the North.	\$.35	\$1.00	\$3.50
LONG ISLAND IMPROVED DWARF. See description above.75	2.35	8.00

CAULIFLOWER

Super Snowball is the best strain for early market making solid heads very early. *Snowball* is about a week later and makes large solid heads. *Danish Perfection* has more leaves than *Snowball*, which protects the head better. It is a week or ten days later than *Snowball*, and a little earlier than *Danish Giant* or *Dry Weather*, which produces large solid heads, but should be set out earlier. *Large Algiers* makes loose, flat heads of large size and of high quality.

	Oz.	$\frac{1}{4}$ lb.	lb.
SUPER SNOWBALL. The earliest and heads most uniformly. See page 4 for description.	\$3.75	\$12.50	\$45.00
SNOWBALL, Perfected Strain. A very fine improved strain of the true Snowball type. The plant is dwarf and compact and the heads are large, solid, snow white, and with no protruding leaves when well grown under favorable conditions. The seed we offer is the very finest strain obtainable, 95 per cent of the plants make good heads	2.10	7.50	28.00
CATSKILL SNOWBALL. A fine strain of Snowball grown extensively in the Catskill Mountain region. Matures early and the heads are very compact and uniform.	2.10	7.50	28.00
DANISH PERFECTION. A strain of Snowball Cauliflower with more leaves to cover the head, which does away with tying to some extent. Heads very solid and without protruding leaves. Matures a week later than Snowball.	2.10	7.50	28.00
Danish Giant Snowball or "Dry Weather." Ten days or two weeks later than Snowball and of more vigorous growth and stands drought better.	2.10	7.50	28.00
ERFURT EARLY DWARF. Madsen's Stock No. 3. Much like Snowball, but has somewhat shorter stems and matures a little earlier. This strain has proven the best in several trials made in New York State	2.10	7.50	28.00
Large Algiers. Large rather loose heads, but of fine quality.	1.00	3.50	12.00
ITALIAN PURPLE. Forms heads like white cauliflower, but is a rich purple in color which turns to green when cooked. Of very high quality. See also page 2. $\frac{1}{4}$ oz. 65c	2.10	7.50

CABBAGE—Early Varieties

Early Jersey Wakefield has long been the standard extra early cabbage, but a round head sells better in most markets and on this account *Golden Acre* and *Copenhagen Market* have proved more profitable. *Enkhuizen Glory* has larger heads and is a week later and is the best variety to grow for kraut. *Burpee's All Head Early* has large flat heads and is a week or two later than the *Enkhuizen Glory*.

	Oz.	$\frac{1}{4}$ lb.	lb.
GOLDEN ACRE. The earliest cabbage, maturing a week earlier than Jersey Wakefield. The heads are round and very uniform, every plant making a good head. They resemble a fine type of Copenhagen Market, are very firm and a good bright green in color. This variety has proved very profitable for the first early crop.	\$.70	\$2.15	\$7.50

CABBAGE—Early Varieties—Cont.

	Oz.	¼ lb.	lb.
EARLY JERSEY WAKEFIELD. The standard early variety. Heads pointed, of medium size and very hard. Our strain is particularly fine, the heads being very uniform and early.	\$.25	\$.75	\$2.50
COPENHAGEN MARKET. Very early. Our strain is earlier and more uniform than usual strains of this variety. Heads round, hard and have few outside leaves. Larger but about 10 days later than Golden Acre.50	1.50	5.00
ENKHIJZEN GLORY. A very large, early cabbage. Heads as large as late kinds and mature as early as Charleston Wakefield. Has proved to be a most profitable variety for market and kraut.35	1.10	3.50
Burpee's All Head Early. Heads flat and of good size. Medium early. Used for main crop, for fall market and shipping.25	.75	2.50

Late or Main Crop Varieties

For fall market or for kraut the medium early kinds are better than the very large late kinds. *Midseason Market* and *Enkhuizen Glory* are excellent.

For late fall and winter market the *Danish Ballhead* is the most profitable. The *Short Stemmed* strain we offer yields more than any other of the Danish type, which have smaller heads and do not yield quite as many.

Savoy cabbage is often profitable for home market. Red Cabbage is profitable on rich land, and often brings high prices.

	Oz.	¼ lb.	lb.
MIDSEASON MARKET. A new cabbage which has proved one of the most uniform and heaviest yielding medium early varieties grown. The heads are almost perfectly round, large and solid. We highly recommend this variety for market, shipping and kraut.	\$.40	\$1.15	\$3.75
DANISH BALLHEAD, Short Stemmed. Matures quicker than the Solid Emperor strain, has shorter stems and larger heads, but not quite as deep green color. Has proved to be the heaviest yielding of the Danish types.50	1.35	4.50
Surehead. Deep, heavy heads. A good late variety.25	.75	2.50
SUCCESSION. A popular cabbage for fall market. Large flat heads.25	.75	2.50
All Seasons. Large flat heads.25	.75	2.50
Volga. The heads are large, round and solid; a heavy cropper.30	.85	2.75
Premium Flat Dutch. Old standard kind. Large, heavy head.25	.75	2.50
Winningsstadt. Pointed heads of medium size.25	.75	2.50
MAMMOTH ROCK RED. The largest red cabbage. Hard, round, deep red. One of the best red varieties for market or shipping.35	1.10	3.50
SAVOY, Perfection Drumhead. Heads large of fine quality and quite firm; color very deep green, and leaves are very much curled. Matures late and keeps all winter.30	.90	3.00

CHINESE OR CELERY CABBAGE—PE-TSAI

This Chinese cabbage has proved to be a very profitable crop for muck land. There is a good demand for it in New York and other large markets in carload lots. The seed is sown in July or August and the crop matures in eight to ten weeks.

	Oz.	¼ lb.	lb.
Pe-Tsai. Large heads. 18 to 20 in. high.	\$.30	\$.85	\$2.75
Wong Bok. Short compact heads of fine quality.30	.90	3.00
CHIH LI. A new variety. The earliest and surest header. The plant produces long solid cylindrical heads of fine quality. The heads are often two feet long.55	1.60	5.50

CRESS

Extra Fine Curled, also called "Pepper Grass".12	.30	.85
WATER CRESS, Improved Broad-leaved. Much better than common Water Cress.50	1.30	4.25

CORN SALAD or Fetticus

Large Round-leaved.15	.45	1.40
--------------------------------------	-----	-----	------

CHICORY

WITLOOF or FRENCH ENDIVE. We have a very fine strain of this popular salad plant. For description and price of seed see page 24.

CARROTS

Carrots often prove very profitable. They do best on muck or soil of that nature, although very good crops are raised on sandy loam. For late fall market the seed is usually sown in June or first of July. If small carrots for bunching are wanted the seed may be sown as late as August 1st in the North and later further South. It requires 2 to 4 lbs. of seed for an acre, depending upon how far the rows are apart.

Chantenay is considered one of the best varieties for market or table use. The roots grow very smooth and not too long. *Danvers Half Long* grows an inch or two longer and yields more, so is preferred when the crop is to be used for feeding stock. *Pride of Denmark* is 2 inches longer than *Danvers* and yields very large crops. *Coreless or Amsterdam Forcing* is of fine quality for table use. *Perfection* is similar but larger. *Oxheart* makes a nice short, thick carrot for bunching. *Early French Short Horn* is very short, but grows rapidly and is best for forcing. All of these varieties are deep orange in color.

	¼ lb.	lb.	10 lb.
CHANTENAY. The most popular market variety, five to six inches long, stump-rooted, deep orange color and very smooth.	\$.30	\$ 1.00	\$ 9.00
CHANTENAY, Long Strain. This new strain grows an inch longer than the standard strain.30	1.00	9.00
DANVERS HALF LONG. Grows 6 to 7 in. long, deep orange color, not quite as smooth as Chantenay. A heavy cropper.30	1.00	9.00
PRIDE OF DENMARK. A wonderfully fine carrot growing 8 to 9 in. long and 2 to 3 in. through, being practically the same size the whole length. It closely resembles the Hutchinson but has less core and deeper color. We think it superior to that variety. Yields immense crops.75	2.50	22.50
NANTES. One of the best "coreless" varieties, 6 to 7 in. long the same size the whole length, and stump rooted. Color deep orange and "coreless"35	1.10	10.00
CORELESS or Amsterdam Forcing. The carrots grow about 5 to 6 in. long and 1 to 1½ in. through and the same size the whole length. The end is blunt and with very fine rat-tail root. The color is deep orange red all through the root including the core. This is a beautiful carrot for bunching or to market in bulk.85	2.75
PERFECTION. A new carrot, similar to Amsterdam Forcing, but are larger being 6 to 8 in. long. They are practically the same size the whole length, <i>coreless</i> and very smooth. A fine carrot for fall market.	1.00	3.25
HUTCHINSON. The roots are 8 to 9 in. long, nearly the same size the whole length and stump-rooted. Color deep orange. Our seed is of the finest market garden strain.	1.10	3.50
OXHEART or Guerande. Short, thick carrots, used for bunching and table use. Very easily pulled. About 4 inches long, deep orange yellow, and of fine quality.30	1.00	9.00
MASTODON or WHITE VOSAGE. Large, white carrot for stock feeding. Immense yielder. 8 to 10 inches long.25	.65	6.00
Long Orange. Roots a foot long, yields large crops.30	1.00	9.00
Early French Short Horn. For forcing. About 3 inches long; very early.55	1.75

CELERY

An ounce of seed will produce about 8,000 plants. It requires 20,000 plants to the acre. For very early planting the seed should be sown in February or first of March. For late crop the seed is sown in the open ground as early as possible. Great care must be taken not to cover the seed too deep. More failures to get the seed to germinate are due to this cause than any other. *Golden Self-Blanching*, or "*Paris Golden*," which is the same thing and *Golden Plume* are grown more than any other kinds. These are the most profitable varieties for market up to January. *Easy Blanching* will keep longer than *Golden Self-Blanching*. *French's Success* is one of the very best for late winter market and keeps longest.

	Oz.	¼ lb.	lb.
GOLDEN SELF-BLANCHING. There are now several distinct strains of this variety. We are offering two strains, each of which is excellent in its place.			
"Old" Strain. The same as has been raised for many years. The stalks are large, rather short and form large heavy hearts. See also page 5. Proved Seed.	\$.80	\$ 2.60	\$ 9.00
"New" Strain. Grows very rapidly and is strong and healthy, resisting blight well. Some growers think it is too tall for late crop and storage, but for the early crop it is preferred.80	2.60	9.00

CELERY—Continued

	Oz.	¼ lb.	lb.
GOLDEN PLUME or WONDERFUL. The stalks are larger than Golden Self-Blanching but resemble that variety very closely. It is of the same color and general appearance but of more vigorous, sturdy growth, forming heavy, solid stalks which blanch quickly and are of fine quality. We have a very fine strain of Golden Plume which will be found equal, if not superior to any sold, even at much higher prices. See also page 5. Proved Seed.	\$1.25	\$4.25	\$15.00
EASY BLANCHING or Sanford Superb. A very good variety to follow Golden Self-Blanching. It is of the same dwarf, compact habit of growth, blanches easily and quickly, and is of fine quality. The leaves are green and the stalks pure white when blanched. It is superior to the Golden Self-Blanching in keeping qualities. The strain we offer is very carefully grown and is far superior to the California seed usually sold. We highly recommend this strain. . .	1.00	3.40	12.00
FRENCH'S SUCCESS. One of the best green varieties for winter storage. The stalks are of medium length, with a compact, well-developed heart, very tender and brittle. Blanches slowly to a pure white and keeps better than any other kind with which we are acquainted. See also page 5.85	2.85	10.00
GIANT PASCAL, Special Strain. This strain of Giant Pascal is largely used in New England and is considered one of the very best for late winter market. The stalks are large, very solid and blanch pure white. This strain is far superior to the ordinary Giant Pascal.60	1.75	6.00
EMPEROR. The stalks are large, very thick, crisp and solid and of superior quality. Blanches pure white.50	1.50	5.00
White Plume. We have a very fine, pure strain of this popular celery. . .	.30	.90	3.00
Columbia. Much resembles Golden Self Blanching in growth and appearance, but is a green celery and does not blanch so quickly and keeps longer. A valuable kind for early winter market.60	1.75	6.00

CELERIAC—Turnip-Rooted Celery

	Oz.	¼ lb.	lb.
Large Smooth Prague.	\$.25	\$.75	\$2.50
DELICACY. A new variety of Celeriac of medium size and of fine quality	.30	.90	3.00

CUCUMBERS

To market for slicing *Harris' Perfection* is one of the best. *Early Fortune* is a little shorter but otherwise similar. Both are excellent for "dills." *Harris' Double Yield Pickle* produces more pickles than any other kind. It is also very early and valuable on that account for market as a slicing cucumber. *Longfellow* is a dark green, very long, slender and fine for slicing.

	¼ lb.	lb.	10 lb.
LONGFELLOW. A new variety of great merit. See page 10.	\$.75	\$2.50	\$22.50
HARRIS' PERFECTION. We consider this the best white spine variety for market and shipping where a long deep green cucumber is wanted, it being more uniform in size, shape and color than any variety we know of. The fruit is long (12 in.) straight and <i>deep green</i> with small white rays at the blossom end. This variety is also well adapted for dill pickles. Seed of our own growing.70	2.25	21.00
HARRIS' DOUBLE YIELD PICKLE. See description on page 9.60	1.90	17.50
DAVIS' PERFECT. One of the best white spine varieties. Long straight fruit, tapering at both ends, very dark green and holds its color well.40	1.20	11.00
EARLY FORTUNE. A very fine strain of White Spine. It is medium early and productive, excellent for market and pickles. The fruit is 7 to 9 inches long, slightly tapering and of deep green color. It holds its color well when shipped.40	1.25	11.50
China. Grows 15 to 20 in. long and very slender. For description see our retail catalogue.	1.75	6.00
IRONDEQUOIT HOTHOUSE. For forcing. See description and price on next page.
Earliest of All. An early strain of White Spine.30	1.00	9.00
Fordhook Famous. A good variety of the White Spine class. Fruit large, matures early and valuable on this account, but of lighter green than Davis' Perfect and Early Fortune.40	1.25	11.50
WOODRUFF'S HYBRID. One of the best of the white spines for market. Grows 8 to 10 in. long and stays green a long time. We have a very fine strain of this cucumber.45	1.40	13.00
Arlington White Spine. Of medium length, early and of good shape.30	1.10	10.00

CUCUMBERS—Cont.

	¼ lb.	lb.	10 lb.
Extra Long White Spine. A little later than Early White Spine, but has longer fruit.	\$.40	\$1.25	\$11.50
Cumberland. Used largely for pickles.40	1.35
IMPROVED LONG GREEN. Very popular for both table use and for pickles.40	1.25	11.50
EARLY WHITE SPINE. Early and very productive. Excellent for pickles as well as for slicing.30	1.10	10.00
CHICAGO PICKLING. Very prolific and profitable for pickles. The young fruit is straight, square ended and of medium deep green color.30	1.10	10.00
Perfect Jersey Pickle. Longer and more slender than Chicago and Boston Pickling. An excellent variety.30	1.10	10.00
KLONDIKE. A popular White Spine variety for pickles. Dark green, straight and very prolific.30	1.10	10.00
Green Prolific or Boston Pickling. Very prolific; short, bright green fruit. A profitable variety for pickles.30	1.10	10.00
Early Green Cluster. Short fruit produced early and in great abundance. Of rather light green color.30	1.10	10.00
Everbearing. Starts bearing early and continues a long time.30	1.10	10.00
Japanese Climbing. A vigorous grower; long, smooth fruit of excellent quality.45	1.50
West India Gherkin. Used for pickling.45	1.50
Lemon Cucumber. A real cucumber about the size and shape of a lemon, used both for table and pickling.50	1.75

IRONDEQUOIT HOTOUSE CUCUMBER

The gardeners around Rochester have developed this very fine hothouse cucumber which has proved the most profitable variety to raise under glass.

The fruit is long, slender, deep green and nearly perfectly solid, there being very few seeds and in some fruit none at all.

The vines are wonderfully vigorous and very prolific.

The seed we offer was saved entirely from fruit grown under glass and will produce very fine uniform fruit. **100 seeds \$1.00; 500 seeds \$4.00.**

DILL

	Oz.	¼ lb.	lb.
Long Island Mammoth. Much superior to common dill.	\$.10	\$.20	\$.60

DANDELION

Large Thick-leaved. Much superior to the common variety, having thicker and broader leaves.90	3.15	11.00
--	-----	------	-------

ENDIVE

Seed can be sown any time from early spring to August 1, in the Northern States. For late fall market sow in July. Sow in rows 20 to 24 inches apart and thin the plants to a foot apart. To blanch, tie up the leaves with soft cord or raffia. It requires about 20 days to blanch thoroughly in cool weather. *Green Curled* is the most popular market variety. *Broad-leaved Batavian* is also in good demand. "*French Endive*" is Witloof Chicory and is quite distinct from true Endive, and its culture is entirely different.

	Oz.	¼ lb.	lb.
GREEN CURLED. Large leaves finely cut and curled.	\$.12	\$.30	\$1.10
EVER WHITE CURLED. The leaves are dense, finely cut and curled and very light green, almost white, so blanch very quickly.12	.30	1.10
Moss Curled. Finely cut and curled; not so large as Green Curled.15	.40	1.25
Broad-leaved Batavian (Escarolle). Broad leaves curled at the edges.12	.30	1.10

"FRENCH ENDIVE"—WITLOOF CHICORY

This is a crop that can be grown during the winter in a dark place and with very little expense. There is a growing demand for "French Endive" in the markets of all the large cities.

The seed we offer is an exceptionally fine strain, being grown from *especially selected fully developed forced heads*. This seed will give a very high percentage of perfect heads when the roots are forced. **Oz. 50c; ¼ lb. \$1.50; lb. \$5.00.**

SWEET CORN

We make a specialty of high grade Sweet Corn seed. It is raised in the North and is *earlier* and far sweeter and better than Western grown seed. The seed is very carefully cured and is of strong germination.

It requires about 12 lbs. of seed to plant an acre.

Note—25 lbs. of one variety will be supplied at the 100 lb. rate. A bushel weighs 40 to 50 lbs., depending on the variety.

For prices of sweet corn in quantities of less than 6 lbs. ($\frac{1}{2}$ peck) see our general catalog.

Yellow Varieties

	6 lb.	12 lb.	100 lb.
HARRIS' NEW EXTRA EARLY BANTAM. The earliest yellow sweet corn. See description on page 6.	\$1.75	\$3.25	\$25.00
WHIPPLE'S YELLOW. A grand early yellow corn. One of the most profitable market varieties. See description on page 8.	1.20	2.15	16.00
GOLDEN BANTAM. Small, medium early, kernels yellow and of fine quality. Our stock is carefully bred to the true strain and is far superior to most Golden Bantam.	1.20	2.15	16.00
Golden Sunshine. A new extra early yellow corn. Matures a week earlier than Golden Bantam. Ears 6 to 7 in. long, 12 rowed and deep yellow. Quality very good.	1.35	2.40	18.00
Bantam Evergreen. A large, medium late yellow corn of fine quality. Ears nearly as large as Stowell's Evergreen but yellow like Golden Bantam and with something of the Bantam quality.	1.25	2.30	17.00
BUTTERCUP. A large improved Golden Bantam. See page 7.	1.20	2.15	16.00
Golden Giant. A good yellow corn to follow Bantam as it matures a week later and has larger ears, 12 rowed, and the corn is of high quality.	1.20	2.15	16.00

White Varieties

GILL'S EARLY MARKET. The <i>earliest</i> sweet corn. A most profitable variety for market gardeners. See description on page 7.	1.45	2.65	20.00
Alpha. Very early. Small 8 rowed ears.	1.35	2.40	18.00
WHIPPLE'S EARLY (White). The largest of the early white varieties. See description on page 8.	1.20	2.15	16.00
Harris' Mammoth White Cory. One of the earliest varieties with large ears and one of the most profitable for market.	1.25	2.30	17.00
Pocahontas. Early, large ears, white cob; as early as Red Cory and much larger and of finer quality.	1.20	2.15	16.00
MIMMS' HYBRID. One of the best and most prolific medium late kinds. Ears have 12 to 14 rows of white kernels. Little earlier than Evergreen, and has larger ears of better quality and more of them.	1.25	2.30	17.00
HOWLING MOB. Large, 12 to 14 rowed ears, medium early and of good quality. A popular market corn. Our strain is very fine, being earlier than others and the ears more uniform.	1.20	2.15	16.00
Black Mexican. Of very fine quality. Our stock is true.	1.20	2.15	16.00
HICKOX IMPROVED. Very large ears, longer than Evergreen and earlier than that variety and of better quality.	1.20	2.15	16.00
Early Mammoth. Earlier than late Mammoth, with immense ears. Matures with Evergreen and has much larger ears.	1.35	2.40	18.00
LONG ISLAND BEAUTY. A late corn with immense ears, often over a foot long and 7 to 9 inches around, 16 to 20 rows of pure white kernels that are of fine quality. A profitable late market corn.	1.25	2.30	17.00
STOWELL'S EVERGREEN. The standard late corn. We have a very fine strain grown in this neighborhood that is <i>10 days earlier</i> and far better than western grown seed.	1.15	2.05	15.00
Country Gentleman. Late; small ears, of fine quality.	1.20	2.15	16.00

POP CORN

A bushel weighs 56 lbs. 10 lbs. will plant an acre. 30 lbs. or more of one variety will be supplied at the 100 lb. rate.

WHITE RICE. The best and most popular variety for market.	7 $\frac{1}{2}$ lb.	15 lb.	100 lb.
Japanese Hullless. Very small ears, white corn of high quality.	\$1.20	\$2.10	\$12.00
Black Diamond. Black or blue kernels of high quality.	1.60	2.85	17.00

KEEPING CROP RECORDS

We have prepared a Crop Record Book which many gardeners have found very convenient to use in keeping track of their crops. This booklet will be sent free to any grower upon request.

EGG PLANT

Black Beauty produces fruit of good size and of deep purple color, and is the most popular market variety. *New York Improved* is very similar, but the plant grows a little taller and the fruit matures a little later. *Extra Early Dwarf Purple* is the earliest, but the fruit is small.

	Oz.	¼ lb.	lb.
BLACK BEAUTY. Large, handsome, dark purple fruit, almost black. It matures early and is the most popular variety.	\$.50	\$1.35	\$4.40
New York Improved (Thornless). The standard variety, having large dark purple fruit.50	1.35	4.40
Extra Early Dwarf Purple. Very early and prolific, but not as large as above kinds.40	1.20	4.00
EARLY LONG PURPLE. Fruit 10 to 12 inches long, not over 2 to 3 inches through, deep purple and of high quality. Matures early and is very prolific.40	1.15	3.75

FENNEL

Florence. Forms a large bulb which is excellent when cooked. We offer a very fine imported stock which runs very true to type forming uniformly large bulbs.20	.60	2.00
---	-----	-----	------

GARLIC

The bulbs should be separated into flakes or "cloves" and set out like onion sets. Bulbs for planting: **lb. 35c; 5 lbs. or more 25c per lb.**

KALE

Used principally in the late fall and winter. Sow seed in July and treat like cabbage.

	¼ lb.	lb.	10 lbs.
Dwarf Curled Green or Blue Scotch. Very finely curled leaves of dwarf spreading and deep bluish-green color.	\$.25	\$.75	\$7.00
Tall Scotch Curled. Grows two feet tall with finely curled leaves. A very hardy variety.25	.70	6.50
Siberian. Also called Sprouts. Dwarf spreading broad leaves curled only on the edges. Color blue gray. Very hardy.20	.60	5.00

KOHL RABI

	Oz.	¼ lb.	lb.
EARLY WHITE VIENNA. The best variety for table use, very early and can be used 10 weeks after sowing.	\$.20	\$.50	\$1.75
Early Purple Vienna. Differs from White Vienna only in the color of the bulb which is light purple.20	.55	1.85

LEEK

Large American Flag. The most popular variety. 5 lbs. or more \$1.65 per lb.20	.50	1.75
--	-----	-----	------

LETTUCE

For forcing *May King* is an excellent head variety. It will stand more heat than *Big Boston*, and matures quicker. *Big Boston* is fine for cool houses and cold frames. For a curly leaf lettuce *Grand Rapids* is by far the most popular. Grows rapidly and the leaves stand upright so it can be planted close.

For summer planting in the open ground, *Iceberg*, *White Boston*, *Creamy Heart*, *Salamander* and *Holyhood Hot-Weather* are good. *Big Boston* is most largely grown on muckland for both early and late crops.

Romaine or *Cos Lettuce* can be grown both in the hothouse and open ground and is in good demand in many markets. *Trianon Self-Folding* is the largest kind; the heads often being nearly a foot high. *Eclipse* is shorter and forms the head earlier. Both do best in cool weather.

HARRIS' SPECIAL BIG BOSTON LETTUCE

Our strain of this lettuce is exceptionally fine. Heads uniformly solid and compact, and stands a long time without bolting. Some of the largest growers in this country are using Harris' Big Boston and find it equal if not superior, to any other stock obtainable at any price. We are confident there is no better Big Boston. **Oz. 15c; ¼ lb. 40c; lb. \$1.25; 5 lbs. or more \$1.10 per lb.**

LETTUCE—Cont.

	Oz.	¼ lb.	lb.	10 lbs.
May King. A very early head lettuce for open ground or forcing	\$.15	\$.40	\$ 1.25	\$ 11.00
Holyrood Hot-Weather. Large, firm heads. Stands well in the summer and is very slow to run to seed.	.15	.40	1.25
BIG BOSTON. Our strain has been carefully bred for many years and is the most uniform stock we have seen. See preceding page.	.15	.40	1.25	11.00
WHITE BOSTON. Like Big Boston, but lighter green and without the red tinge; stands hot weather better and heads earlier. Our strain is very fine, there is none better.	.20	.55	1.75	16.50
Salamander. Large heads, light green; stands well in hot weather	.15	.40	1.25	11.50
DREER'S ALL HEART. Much resembles Salamander but larger and more uniform. A very fine summer head lettuce.	.15	.45	1.50	14.00
WONDERFUL or NEW YORK. Very large firm heads; almost as large as Wakefield cabbage. We have a very fine strain. This is the "Iceberg" lettuce grown on the West coast and shipped to our Eastern markets during the winter.	.20	.60	2.00	19.00
NEW YORK No. 12. An improved early strain of this variety especially valuable for Eastern conditions. See page 9.	.30	.85	2.75	25.00
ICEBERG. One of the best for open ground. Large, firm heads, curled and blistered leaves; light green.	.15	.45	1.50	14.00
Deacon. Large heads, smooth leaves, of finest quality.	.15	.45	1.50
CREAMY HEART. A very fine new head lettuce. See page 9.	.30	.90	3.00
Prize Head. Early, crisp, loose heads of good quality; leaves curled and tinged with reddish brown.	.20	.55	1.75	16.50
Crisp as Ice. Forms compact, medium size heads very early. The heads are tinged with deep brown. The quality is very fine.	.30	.75	2.50
GRAND RAPIDS. Of upright growth. Curled leaves. Valuable for forcing. Our strain is very fine.	.15	.45	1.50	14.00
Ohio Grand Rapids. Grows larger and is deeper green than ordinary Grand Rapids.	.15	.45	1.50	14.00
Hanson. Large heads of fair quality.	.15	.45	1.40	13.00
Black Seeded Simpson. Loose heads of curly leaves; grows very large.	.15	.40	1.25	11.50
Early Curled Simpson. Forms bunches of much curled leaves. Light green.	.15	.45	1.40	13.00
COS or ROMAINE, Trianon Self-Folding. Used for forcing and open ground. Large, long heads of fine quality.	.20	.55	1.75	16.50
Cos, Eclipse. Forms compact heads very early. A valuable variety for forcing as well as the open ground. Every plant makes a nice firm head.	.20	.60	1.90	18.00
Chicken. Immense leaves. Runs up rapidly. Use for green feed for chickens.	.15	.40	1.25	11.50
Mignonette. An early small headed brown tinged lettuce.	.30	.75	2.50

WATERMELON

Harris' Earliest, Cole's Early and Ice Cream or Peerless are valuable for the North because they will ripen before frost. *Hungarian Honey* is small but early and of very fine quality.

For places south of New York City, *Tom Watson* and *Kleckley Sweets* are better because they are larger and of high quality.

	¼ lb.	lb.	10 lb.
FORDHOOK EARLY. A very desirable variety for cool climates. It is early, fairly large and of very good quality.	\$.25	\$.70	\$ 6.50
HARRIS' EARLIEST. A very early large melon. It is of only fair quality and is valued principally on account of its earliness.	.25	.70	6.50
COLE'S EARLY. Very early and of good quality.	.25	.70	6.50
Halbert Honey. Long, dark green, flesh red and of finest quality. Medium early.	.25	.70	6.50
Tom Watson. The most popular melons for shipping. Fruit long, medium green with lighter markings. Rind strong so the melons stand shipping well.	.20	.65	6.00
KLECKLEY SWEET. Long, deep green, attaining a large size and of fine quality. One of the best kinds. Our Northern grown seed is superior to Southern grown. Seed saved from the best melons only.	.20	.65	6.00
Ice Cream or Peerless. One of the best early varieties. Large, light green, early and of fine quality.	.25	.75	7.00
HUNGARIAN HONEY. Small, round, dark green, with bright red flesh of delicious sweetness. Very early.	.30	1.00
GREEN CITRON, or Colorado Preserving. (Green Seeds). Used for preserves. Very prolific.	.25	.75	7.00

MUSKMELON or Cantaloupe

Nearly every market wants a different muskmelon. *Fordhook* is popular in many markets, and is excellent for shipping. *Admiral Togo or Gold Nugget*, as it is now called, is an improved variety of this class and better than the older types. *Hearts of Gold* is another one of this class; small, firm, heavily netted and deep yellow flesh of high quality. *Osage* is in demand in some cities and is a large, handsome, round melon of high quality and good for nearby markets. *Bender's Surprise* is now the most popular of the large melons. It is very firm and keeps a long time after picking and is of the highest quality. *Emerald Gem* is small, but very early and of high quality. It is not good for shipping. *Golden Champlain* is the earliest melon grown and valuable on that account. *Delicious* is very early and excellent for market.

	¼ lb.	lb.	10 lb.
GOLDEN OR LAKE CHAMPLAIN. The earliest melon and valuable on that account. The melons are medium size, nearly round, fairly well netted and light green color turning to golden when ripe. The flesh is pink, sweet and of good flavor. The vines are very prolific. We have a fine true stock of this variety..... Oz. 30c	\$.85	\$2.75	\$25.00
SUGAR ROCK. A new melon of great merit. See description and illustration on page 2..... Oz. 35c	1.00	3.00
FORDHOOK. Small round netted melons with deep yellow flesh of high quality. Ripens early. A popular market variety in many places.....	.40	1.25	11.00
Ironquoit. Large, round, netted; yellow flesh. A fine strain of the well-known Surprise or Tip Top melon.....	.60	2.00	19.00
BENDER'S SURPRISE. A grand melon. Unequaled in fine flavor, size and keeping qualities. See page 10..... Oz. 30c	.85	2.75	25.00
DELICIOUS. Very early. Popular with growers in many sections because of its earliness and high quality. See page 10..... Oz. 50c	1.35	4.50
ADMIRAL TOGO or GOLD NUGGET. Oval, netted; flesh yellow and of finest flavor. Very prolific, medium size, slightly larger than Rocky Ford.....	.45	1.40	13.00
Hearts of Gold. A fine melon for shipping in baskets—medium in size, round and well netted. Flesh orange yellow and of high flavor. Very firm and holds up well a long time after picking.....	.30	1.00	9.00
Miller's Cream, or Osage. Oval, dark green, slightly netted, yellow flesh of the highest quality. A very fine melon and a profitable one for market.....	.40	1.25	11.00
Osage, Perfected Strain. A very carefully bred strain of Osage melon which is 10 days earlier than the old type and the fruit is almost as large and is more uniform in shape and quality.....	.45	1.40	13.00
EMERALD GEM. Small, round, green, slightly netted, with yellow flesh of finest flavor; very early and prolific.....	.30	1.00	9.00
Extra Early Knight. A very early melon popular in markets where known. The fruit is of medium size, oval in shape and well netted. The flesh is green and is sweet and of good flavor.....	.40	1.25	11.00

MUSTARD

	Oz.	¼ lb.	lb.
FORDHOOK FANCY. Finely cut and curled leaves, very ornamental. This is the finest variety for salads and garnishing.....	\$.10	\$.25	\$.65
Giant Southern Curled. Very large curled leaves.....	.10	.20	.60

OKRA or GUMBO

White Velvet. Smooth light green pods of medium length.....	.10	.20	.50
Perkins' Long-pod. Long green pods of the best quality.....	.10	.20	.50

ONION SETS

White sets make the whitest and most attractive bunching onions. The *Yellow* sets, especially the *Ebenezer*, are best to produce large dry onions for early use.

	Pk. (8 lbs.)	Bu. (32 lbs.)
Yellow Sets. Sound and clean.....	\$1.10	\$3.75
White Sets. Silverskin.....	1.35	4.50
EBENEZER or "JAPANESE" SETS.	1.25	4.25

NOTE—Prices subject to change. Please write for price if a considerable quantity is required.

ONIONS

For market and storage a globe-shaped, yellow onion is usually preferred, although in some markets a red onion sells best. *Yellow Globe Danvers* is nearly round. *Ohio Yellow Globe* is slightly flattened on the bottom and *Southport Yellow Globe* is more pointed at the bottom. The Danvers and Ohio strains are a little earlier than Southport and are the most popular varieties. *Mountain Danvers* is the earliest yellow globe onion. *Round Yellow Danvers* is flatter than the Globe and matures earlier. *Prizetaker* is larger than the Globe Danvers and a little later.

Ebenezer or "*Japanese*" is a flat yellow onion that keeps the year around. It is especially valuable for raising large onions early in the summer from sets.

For pickles *Early Barletta* is best. The seed should be sown very thick so the onions will be small and the yield heavy.

White Welsh is the most popular variety for early green bunching onions or scallions.

Yellow Varieties

	¼ lb.	lb.	10 lb.
MOUNTAIN DANVERS. A new <i>early</i> globe onion which matures two to three weeks earlier than <i>Yellow Globe Danvers</i> . See description on page 11.	\$.75	\$2.50	\$24.00
YELLOW GLOBE DANVERS. The standard yellow market variety. Our seed is grown with great care and the onions are of uniform globe shape and deep yellow color.55	1.65	16.00
OHIO YELLOW GLOBE. A very fine strain of <i>Yellow Globe Danvers</i> onion especially suited to muck land. See also page 11.55	1.65	16.00
ROUND YELLOW DANVERS. Earlier and flatter than <i>Yellow Globe Danvers</i> , but otherwise very similar.45	1.50	14.00
SOUTHPORT YELLOW GLOBE. Of perfect globe shape, large size. Matures a week later than <i>Yellow Globe Danvers</i>55	1.65	16.00
EBENEZER or " Japanese. " A very fine yellow onion that will keep all winter and is of mild, pleasant flavor. The onions are flattened and of a light yellow color.60	2.00	19.00
GIANT GIBRALTAR. This is the largest Spanish onion which is sold in our markets. The onions are almost perfectly round or globe shaped, bright yellow and of very mild flavor. They grow very large, often weighing a pound or more. Matures rather late and should have plenty of room to develop. Genuine imported seed.75	2.50	24.00
PRIZETAKER. Large yellow onion of very handsome globe shape and mild flavor. Does not keep as well as <i>Danvers</i> . Fine for fall market.55	1.75	16.50
Australian Brown. Will keep the year around; matures early. The onions are flattened, of a golden brown color, and of fine quality.50	1.60	15.00

White Varieties

Mammoth Silver King. Very large white, flat onion used principally for bunching while green. Seed sown in the spring will make large bunching onions in July and August.75	2.50	24.00
WHITE PORTUGAL or SILVER SKIN. Flat, white onion of mild flavor and early. Excellent for pickling and early green onions.75	2.40	22.00
EXTRA EARLY BARLETTA. The best small white onion for pickling. Our seed is the real <i>Bartletta</i> onion, producing very small round, white onions that mature very early. Sow at the rate of 40 lbs. per acre.85	2.75	26.00
SOUTHPORT WHITE GLOBE. The largest and finest white onion. A very profitable variety for experienced growers as it always commands the highest prices.75	2.40	22.50
White Welsh. Does not form a bulb, but can be sown in late summer for early spring bunching onions.70	2.25	21.00

Red Varieties

SOUTHPORT RED GLOBE, Harris' Special Selected. Large, perfectly round, deep red onions; keeps well and is the best red variety.60	1.85	17.00
LARGE RED WETHERSFIELD. Very large, deep red, flat.55	1.70	16.00
Early Large Red. Large, flat, red. Yields well and early.60	2.00	19.00

ONION SETS—See preceding page

NOTE—All our Onion seed is tested for germination before it is sent off, and the per cent that germinates is marked on the label. We should be glad to give results of our tests to any grower who is interested.

PARSLEY

	Oz.	¼ lb.	lb.
DWARF PERFECTION. The finest parsley we have ever seen. Deep green and very finely curled	\$.15	\$.40	\$1.25
Champion, or Triple Moss Curled. Finely curled deep green leaves.10	.25	.75
Plain. Leaves not curled.10	.20	.60
HAMBURG or Turnip-Rooted, THICK SUGAR. Forms smooth white roots of medium length and of the best quality.12	.30	.95
Hamburg, Long or Parsnip Rooted. The roots are 8 in. long parsnip-shaped, smooth and white.12	.30	.95

PEAS

The very earliest peas like *Alaska* and *Surprise* have small pods, but *Thomas Laxton*, *World's Record* and *Gradus* are only three or four days later and have much larger pods. *Laxtonian* and *Hundredfold* are two or three days later than *Gradus* and have still larger pods. *Laxton's Progress* is an improved *Hundredfold* with larger pods. *Blue Bantam* is the same as *Hundredfold*. *Little Marvel* matures a day or two earlier than *Sutton's Excelsior* and produces wonderful crops, but the pods are not as large.

Duke of Albany and *Alderman* are strains of *Telephone*, but are better than the old type, having darker colored peas and larger pods. *Prizewinner* is a little later than *Telephone*, has short heavy vines and very large, deep green pods, and is one of the best late varieties.

NOTE—We are now selling peas by weight only. A pound is about 1 pint, 15 lbs. equal a peck and 56 lbs. a bushel. 30 lbs. or more of one variety will be supplied at the 100 lb. rate. For prices of peas in amounts of less than 7½ lbs. (½ peck) please refer to our general catalogue.

Early Varieties

	7½ lb.	15 lb.	(Bu.) 56 lb.	100 lb.
Alaska. Very early, small pods. 2 ft.	\$1.60	\$2.85	\$ 9.52	\$17.00
Surprise or Eclipse. Very early and of fine quality. Small pods Very prolific. 2 ft.	1.60	2.85	9.52	17.00
First and Best. Extra early; pods three inches long, well filled. This is the earliest variety. 2 ft.	1.65	3.00	10.08	18.00
LAXTON'S PROGRESS. A new pea which we consider the largest and best of the early dwarf peas. It resembles <i>Hundredfold</i> , but is a little earlier and larger. These two points together with the large yield makes it a very profitable market variety. 18 in.	1.85	3.45	11.76	21.00
THOMAS LAXTON. Very early; medium-sized pods. One of the most profitable market peas. Our stock is very fine. 3 ft.	1.65	2.95	9.80	17.50
SUTTON'S IDEAL. A new early pea. Very similar to <i>Thomas Laxton</i> but a day earlier and the pods are a little larger. Bears heavy crops and is a profitable market variety. 3 ft.	1.65	3.00	10.08	18.00
GRADUS, or Prosperity. Large pods, early and of the highest quality. A standard market garden variety. 3 ft.	1.65	2.95	9.80	17.50
WORLD'S RECORD. An improved <i>Gradus</i> , being a little earlier and larger and has shorter vines. It is of the finest quality and a profitable variety for market. 2½ ft.	1.65	3.00	10.08	18.00
LITTLE MARVEL. Very prolific, matures a day or two later than <i>Nott's Excelsior</i> and has pods a little larger; vines stocky. 15 in.	1.60	2.85	9.52	17.00
Nott's Excelsior. Early dwarf vines, medium-sized pods; one of the best early dwarf peas. 15 in.	1.60	2.85	9.52	17.00
Sutton's Excelsior. Larger pods than <i>Nott's</i> and only a day or two later. 18 in.	1.60	2.85	9.52	17.00
American Wonder. Very dwarf, early. 15 in. high.	1.60	2.85	9.52	17.00
Laxtonian (Pioneer). A dwarf pea with pods nearly as large as <i>Telephone</i> and matures as early as <i>Little Gem</i> . Pods and peas dark green. 18 in. high.	1.65	3.00	10.08	18.00
HUNDREDFOLD or Blue Bantam. Much like <i>Laxtonian</i> , of the best strains. Vines very strong and sturdy, 16 to 18 in. high. Pods 4 in. long and deep green. A very fine early dwarf pea.	1.65	3.00	10.08	18.00

PEAS—Medium and Late Varieties

	7½ lb.	15 lb.	(Bu.) 56 lb.	100 lb.
SENATOR. Pods 5 in. long and closely filled with deep green peas which are of very fine quality, vines 2 ft. high	\$1.80	\$3.30	\$11.20	\$20.00
LINCOLN. Long narrow pods completely filled with 9 to 10 large deep green peas; vines 2½ ft. and produce immense crops. Matures a few days earlier than Alderman. . .	1.80	3.30	11.20	20.00
Advancer. Pods three inches long, well filled; a heavy yielder. Vines 2 feet tall	1.60	2.85	9.52	17.00
DWARF CHAMPION. Good large pods 4 in. long, vines 2½ ft. and very prolific. One of the best late peas with short vines	1.55	2.80	9.24	16.50
Carter's Daisy or Dwarf Telephone. Similar to Telephone except that the vines grow only 20 inches tall.	1.70	3.15	10.64	19.00
PRIZEWINNER. A new variety of the Stratagem type, but is much more productive. Vines 2½ ft. tall, very sturdy and produce good crops of large, deep green pods. A very fine late market pea	1.65	3.00	10.08	18.00
IMPROVED STRATAGEM. Large pods, stocky vines, 2 ft. tall. A very fine late market pea of highest quality.	1.65	3.00	10.08	18.00
DUKE OF ALBANY. An improved Telephone with dark green pods well filled; called in some localities "Dark Telephone." 4 ft.	1.60	2.85	9.52	17.00
ALDERMAN. Pods larger than the old Telephone and much better filled. One of the very best, if not the best pea of the Telephone class. Pods often 6 in. long and of deep green color. 4 ft.	1.60	2.85	9.52	17.00
Telephone. Our seed is of a superior strain, having large pods of very deep green. 4 ft.	1.60	2.85	9.52	17.00
Champion of England. The standard tall, late pea. 4½ ft.	1.50	2.70	8.96	16.00
Mammoth Melting Sugar. Edible pods, 4 ft.	1.95	3.60	12.32	22.00

PARSNIPS

	Oz.	¼ lb.	lb.	10 lb.
HARRIS' MODEL. A very superior strain of our own growing. See description on page 14.	\$.15	\$.40	\$1.10	\$10.00
Long Hollow Crown. Long, smooth roots.10	.25	.60	5.00

PUMPKINS

	Oz.	¼ lb.	lb.
SMALL SUGAR or Pie Pumpkin. Small, round, deep yellow and of good quality. Early and prolific, the best variety for the market.	\$.10	\$.25	\$.70
WINTER LUXURY. A little larger than Small Sugar, netted skin, light yellow, and of fine quality. Keeps well.12	.30	.90
Mammoth Potiron, or King of Mammoths. Immense fruit, often weighing over 100 lbs. Color salmon pink, flesh deep yellow. Easily raised, a valuable pumpkin for stock feeding.15	.40	1.20
Large Cheese. Flattened, ribbed, mottled green and light yellow.10	.20	.60
CONNECTICUT FIELD, or Big Tom. The common yellow field pumpkin10	.20	.60

POTATOES

About Shipping.—The potatoes are shipped in sacks holding 150 pounds (2½ bu.) or barrels holding 180 lbs. (3 bu.). We can usually ship safely by the 25th of March, but not before, except to the Southern States.

Prices Subject to Change.—The prices here quoted are subject to changes of the market and to our acceptance on receipt of order. Lowest prices will be quoted by letter any time. Please state the kinds you are interested in.

IRISH COBBLER. The most popular round white early potato. <i>Certified seed</i>	\$3.25	\$7.50
Irish Cobbler, Second Size —(<i>Certified</i>) From same certified fields, but not large enough for first size. Not less than 2½ bu. (sack) of this size sold.	6.00
Irish Cobbler. Grown from certified seed, 1st size.	2.75	6.50
No. 9 or Heavy Weight. One of the heaviest yielding late potatoes we know of. Round, white, medium shallow eyes, vines very strong and free from disease. <i>Certified seed</i>	3.00	7.00
GOLDEN RURAL or RURAL RUSSET. One of the very best potatoes, almost blight-proof, vines very strong and vigorous and produce immense yields of handsome round, white potatoes. We think larger crops can be raised with this variety than any other kind with which we are acquainted. <i>Certified seed of the highest quality</i>	3.00	7.00

Potatoes in Barrels.—We can ship potatoes in wooden barrels holding 3 bu. (180 lbs.) if so ordered. The price of a barrel is three times the single bushel price. For example, if the single bushel price is \$3.00, a barrel would be \$9.00.

PEPPERS

Giant Crimson, *Magnum Dulce* and *Chinese Giant* are very large peppers, but do not bear as well as the varieties with smaller fruit, such as *Neapolitan* and *Harris' Earliest* which are also earlier. *Harris' Early Giant* is very large and much earlier and more prolific than other large kinds. *California Wonder* is very large and has exceptionally thick flesh. *Ruby King* and *Worldbeater* produce well and are very large peppers, but somewhat late for the northern parts of the country.

Of the pungent or "hot" peppers, *Giant Cayenne*, *Heifer Horn* and *Hungarian Wax* are the best.

	Oz.	¼ lb.	lb.
HARRIS' EARLIEST. The earliest pepper. See description on page 12..	\$.85	\$2.85	\$10.00
HARRIS' EARLY GIANT. The largest early pepper. See description on page 12..	.85	2.85	10.00
Chinese Giant. Immense peppers that are mild and sweet.....	.65	2.00	7.00
GIANT CRIMSON or OHIO CRIMSON. As large as Chinese Giant but earlier and more prolific.....	.60	1.75	6.00
MAGNUM DULCE. The largest pepper of which we have any knowledge. Medium late.....	.65	2.00	7.00
CALIFORNIA WONDER. A new sweet pepper with very thick flesh. Fruit very large, smooth and very heavy. Medium early and yields well. A valuable variety.....	.75	2.30	8.00
Ruby King. Large, sweet, deep green, turning to bright red when ripe. Fruit 5 to 6 inches high, 3 inches through.....	.35	1.00	3.25
NEAPOLITAN. Very early, medium size and mild. Fruit 3½ to 4 in. high and 2 in. through. Rather light green when young, bright red when ripe. The fruit stands upright on the plant.....	.40	1.15	3.75
Sweet Mountain. Large fruit, 4½ in. high and 3 in. across. Deep green turning to red. Mild and sweet.....	.35	1.10	3.50
WORLDBEATER. One of the best large red peppers. The fruit resembles Ruby King but is larger; the flesh is mild and quite thick. A high yielder when well grown.....	.45	1.20	4.00
OSHKOSH. The largest and best yellow pepper we know of. See page 12	.85	2.85	10.00
Golden Dawn. A fine yellow pepper. Large and sweet.....	.50	1.50	5.00
Pimiento. Very thick, heavy fruit of medium size, pointed at the bottom. Very deep green when young, bright red when ripe. Of mild flavor. Matures rather late, but plants are quite prolific....	.35	1.10	3.50
SQUASH OR TOMATO. Small round peppers the shape of a tomato. Very prolific and the peppers are mild and sweet, and have very thick flesh, excellent for salads.....	.50	1.50	5.00
BURPEE'S SUNNYBROOK. Practically the same as Squash or Tomato pepper. We have a very fine strain with large smooth fruit.....	.50	1.50	5.00
Large Bell or Bull Nose. Early, medium size, quite prolific, somewhat pungent or "hot".....	.35	1.00	3.25
Hot Squash. Same type as Squash but has a somewhat pungent or "hot" flavor.....	.50	1.50	5.00
GIANT CAYENNE. Much larger than the old Cayenne and equally pungent. Fruit 3 to 4 in. long and 1½ in. through at top, coming to a point at the bottom. Very early and prolific.....	.55	1.60	5.50
HEIFER HORN. A hot pepper, longer than Giant Cayenne but later and not quite so hot.....	.55	1.60	5.50
HUNGARIAN WAX. The peppers are of a waxy yellow when young, turning red when ripe. Somewhat "hot" or pungent.....	.60	1.75	6.00

RHUBARB or PIE PLANT

	¼ lb.	lb.	10 lb.
Myatt's Linnaeus. Early, large red stalks.....	\$.45	\$1.40	\$13.00
RHUBARB ROOTS. See page 37.			



"Damping Off" Controlled

We formerly had a lot of trouble with plants damping off in the greenhouse and frames. "Damping off," caused by a fungus disease, can be controlled by steaming the soil, but this is a very expensive and laborious method. For several years we have found that by treating the soil with "Semesan," a new mercurial disinfectant, we have been able to absolutely stop damping off in the greenhouses, in some cases almost over night. The method is very easy and not expensive. Simply water the bed with a solution of Semesan.

For prices and further details see back cover of this catalogue.

RADISH

For forcing, *Early Scarlet Globe* and *Harris' Special Scarlet Forcing* are the most popular. The former is oval in shape, while the latter is round. Both grow very rapidly. *Crimson Giant Globe* is similar to *Early Scarlet Globe*, but grows larger and requires a little more time to mature.

For the open ground, *Early Scarlet Globe* is excellent. *Earliest Scarlet White Tipped* is very handsome and resembles *French Breakfast*, which is more oval in shape. *Icicle* is a fine long, white radish, smooth and of fine quality.

Earliest White Forcing is round, grows rapidly and is excellent for forcing and open ground. *White Strasburg*, *Giant White Stuttgart* and *Delicacy* are large, white radishes for summer and fall use.

Winter radishes are sown in July or August and used in the fall and winter.

	¼ lb.	lb.	10 lb.
EARLY SCARLET GLOBE, Special Strain. The most popular variety for forcing and outdoor culture. Oval to round in shape, very bright red, flesh white, firm and crisp. The strain we offer is especially good for forcing as the tops are small, the radishes clear scarlet without purple tinge, and grow very rapidly, being ready to pull in about 20 days.	\$.30	\$.90	\$8.00
Early Scarlet Globe. As usually sold. Tops not as small as our Special Strain, and for this reason is better for open ground than for greenhouse use.25	.65	5.50
HARRIS' SPECIAL SCARLET FORCING. Round, deep red, small leaves and extremely early. A very superior variety for forcing and the open ground.30	.90	8.00
CRIMSON GIANT GLOBE. Very large forcing radish. Not so early as <i>Early Scarlet Globe</i> , but larger and stands longer without becoming pithy.25	.85	7.50
EARLIEST SCARLET WHITE-TIPPED (Sparkler). The radishes are round and are white on the bottom and part way up the sides. This is the finest strain of white-tipped radish.25	.80	7.50
EARLIEST WHITE FORCING (Hailstone). A fine pure white, round, or ball-shaped radish with short tops and excellent for forcing or open ground. The radishes are handsome and of the best quality.30	.90	8.00
ICICLE. Long, slim, white radish of very rapid growth. The best long white radish for forcing and in open ground. Our strain has unusually small tops.25	.70	6.50
PEARL FORCING. Similar to <i>Icicle</i> . Very fine strain.25	.70	6.50
Delicacy. A very fine white radish for summer or late fall use. Of globe shape, pure white and of fine quality. One of the best white summer varieties.25	.80
French Breakfast. Oval, bright red with white tips; early.25	.75	7.00
Long Scarlet Short Top. Excellent long radish for open ground.25	.70	6.50
Chartier. Grows 4 to 5 inches long, bright red with white tips.25	.70	6.50
White Strasburg. Large, long, white summer radish.25	.70	6.50
Giant White Stuttgart. Very large, round or top shaped white summer radish.25	.75	7.00

Radish—Winter Varieties

Sow in August and store in moist sand for winter.

Chinese Rose. About 5 inches long, red skin, with white flesh of best quality.30	.90	8.50
Long Black Spanish. Skin black, flesh white and very solid, 6 inches long.25	.70	6.50
Black Spanish Turnip. Round or turnip-shaped roots.30	.90	8.50
CELESTIAL, or Chinese White. Long, pure white, crisp, very mild.30	.85	7.50

SALSIFY OR VEGETABLE OYSTER

Mammoth Sandwich Island. The largest and best variety.	¼ lb. \$.60	lb. \$1.85	10 lb. \$17.50
---	--------------	------------	----------------

SWISS CHARD or SPINACH BEET

The *Silver Leaf* has smooth, dark-green leaves with very broad, white ribs and is the most popular variety for market. *Lucullus* grows very large and has crinkled leaves. Both varieties are quite hardy and will survive the winter if given some protection.

Silver Leaf. Large, green leaves with white ribs.	¼ lb. \$.25	lb. \$.80	10 lb. \$ 7.50
LUCULLUS. Very large crinkled, deep green leaves with broad white ribs. Grows larger and is of better quality than the old kinds.30	.90	8.50

SPINACH

Norfolk or *Bloomsdale Savoy-leaf* has deep green blistered leaves, but runs to seed very quickly. It is very hardy and is used principally for fall sowing for which it is one of the best kinds. The new *Blight Resistant Strain of Norfolk Savoy-leaf* is valuable where spinach blight is troublesome. It should be sown in the summer or fall only. *Long Standing Bloomsdale* is a much superior strain of *Savoy-leaf* for spring sowing. *King of Denmark* is large, stands up well and remains without running to seed a long time.

The new *Big Crop* has still larger leaves and grows very rapidly. *Nobel Giant-Leaved* is darker green than *Big Crop*. *Victoria* has round, very dark green leaves and stands well without running to seed. For wintering over, we recommend *Eskimo*, *Norfolk Savoy-leaf* and *Victoria*, all of which are hardy.

	lb.	10 lb.	100 lb.
HARRIS' BIG CROP. Early, large leaved. Grows very rapidly and is large enough to cut sooner than most other kinds. Gardeners will find this a profitable early variety for spring sowing.	\$.40	\$3.40	\$30.00
KING OF DENMARK. Stands longer in hot weather than any other kind. Description on page 14.35	3.20	28.00
ESKIMO or GIANT THICK-LEAVED. An improved variety with very large, thick, dark green leaves; grows rapidly and stands well without running to seed. Hardy and an excellent kind for wintering over.30	2.50	22.00
NOBEL GIANT-LEAVED. A new large leaved early spinach of merit. See description on page 13.35	3.00	26.00
Victoria or Long Standing. Round, thick leaves, deep green and blistered. An excellent kind for spring sowing.35	2.90	25.00
Norfolk Savoy-Leaf. Round, blistered leaves. One of the best for late fall sowing.30	2.50	22.00
LONG STANDING BLOOMSDALE OR SAVOY-LEAF. A great improvement over the old type as it stands much longer without running to seed. The leaves are dark, well curled and blistered. One of the very best for spring sowing. See also page 13.35	3.00	26.00
BLIGHT RESISTANT SAVOY-LEAF. A strain of <i>Norfolk Savoy-leaf</i> that is resistant to the leaf blight or "yellows" which often ruin whole crops of spinach in some localities. Recommended for summer or fall crops only. See page 13.35	2.80	24.00
PRINCESS JULIANA. A valuable new variety. Has thick crumpled leaves. Stands better than most varieties and retains its crispness quite long after cutting.35	3.00	27.00
NEW ZEALAND. Not a true spinach. Valuable for summer.55	5.00	45.00

SORREL

	¼ lb.	lb.	10 lb.
Improved Broad-Leaved.	\$.45	\$1.50	\$14.00
Narrow Leaved. This type is in demand on some markets.	1.20	4.00	35.00

SQUASH—Summer Varieties

The *Giant Crookneck* usually sells best in market, although *Mammoth White Bush Scallop* (called "*Cymling*" in the South) is in demand in many cities. The fruit is saucer-shaped and scalloped around the edge. *Giant Summer Straightneck* is similar to *Giant Crookneck* except in shape.

Italian Vegetable Marrow, called also "*Cocozelle*," is now in much demand. The fruit is long, mottled, dark and light green, and grows on a bushy plant without runners. It is used when half grown.

	¼ lb.	lb.	10 lb.
EARLY GIANT CROOKNECK. Larger than the old <i>Bush Crookneck</i> and equally early. Our strain is very fine.	\$.30	\$1.00	\$ 9.50
GIANT SUMMER STRAIGHTNECK. A new variety which is very popular. The squash are the same as <i>Early Giant Crookneck</i> , but without the curved neck of that variety. We offer a fine strain of our own raising. See also page 14.	1.10	3.50	32.50
Mammoth White Bush Scallop. Large, flat, white fruit.30	.95	9.00
Early Yellow Bush Scallop. Similar to the white, except in color.30	1.00
ITALIAN VEGETABLE MARROW (Cocozelle). Long, mottled green fruit of high quality.40	1.25	11.50
Vegetable Marrow (English). The fruit is 8 in. to a foot long, 4 to 5 in. in diameter and of a creamy white color. It is used when half grown.40	1.25

SQUASH—Fall and Winter Varieties

Boston Marrow and *Prolific Marrow* are first to ripen and are excellent for canning and pies. The *Improved Warted Hubbard* grows larger than the true *Hubbard*, and the shell is covered with lumps or "warts" making a squash that sells well in market, but we do not think the quality is quite as good as the true old *Hubbard*. *Blue Hubbard* keeps better than the others and is a popular market variety. *Delicious* and *Quality* are both finer squashes than *Hubbard*, but do not yield quite as much and are profitable for market only where there is a demand for squash of high quality rather than size and appearance.

	¼ lb.	lb.	10 lb.
QUALITY. A winter squash, small in size, but of very fine quality. Of finer quality than any squash we know of.	\$.75	\$2.50
Boston Marrow. Popular fall squash, deep orange color. Used principally for canning and pies.25	.80	\$ 7.50
Prolific or Orange Marrow. Very similar to above, but earlier. A valuable squash for canning or pies.30	.85	8.00
WARREN (Improved Essex Hybrid). Large, flattened at ends. Color deep orange red. Thick flesh of high quality.45	1.50	14.00
DELICIOUS. Smaller than <i>Hubbard</i> , but of finer quality.30	1.10	10.00
HUBBARD—True. Dark green fruit of high quality. We have a very fine strain of this variety.30	1.10	10.00
IMPROVED WARTED HUBBARD. Larger and more warted than the true <i>Hubbard</i>30	1.10	10.00
Golden Hubbard. Deep orange yellow.35	1.20	11.00
BLUE HUBBARD. A very fine large squash of the <i>Hubbard</i> type but the color is blue-gray. The shell is very hard and the squash keep a long time.55	1.75	16.50
Table Queen or Des Moines. Small dark green fruit 5 to 6 in. long, 4½ in. in diameter, deeply ribbed and very hard. Flesh light yellow and of fine flavor.40	1.25	11.50

TOMATOES

The very earliest tomatoes are never quite as large and well colored as the later varieties, but *Earliana* of a carefully selected strain is the nearest perfect of any really early variety we know of. *Harris' Extra Early Earliana* is earlier than the old strain, and also colors better. *John Baer* is about a week later than *Earliana*, ripening with *Bonny Best* and has slightly larger fruit than that excellent variety. *Marglobe* is a fine canning variety and resistant to blight. *Chalk's Jewel* is very similar to *Bonny Best*. *Success* is the heaviest yielding variety, similar to *Stone*, but ripens earlier.

Of the pink varieties, *June Pink* is the earliest and resembles *Earliana*, except in color. *Early Detroit* is a little later, but has large, smooth, well-colored fruit. *Globe* is a few days later and the fruit is as round as an apple. *Ponderosa* is very large, but irregular and does not color well around the stem and is not suitable for market.

	Oz.	¼ lb.	lb.
EARLIANA. Harris' Extra Early Strain. See description on page 16.	\$.50	\$1.50	\$5.00
CANADIAN. An extremely early variety. Quite similar to <i>Earliana</i> . The fruit is of good size, smooth and of a deep red color.60	1.75	6.00
MARGLOBE. A very fine new globe variety. See page 16.60	1.75	6.00
JOHN BAER. Large, smooth fruits, colors uniformly bright red all over. One of the best second early kinds. See description on page 15.50	1.45	4.75
BONNY BEST. Very early, large, smooth and bright red with no green around the stem. See page 15.50	1.45	4.75
June Pink. Very similar to <i>Earliana</i> except as to color, which is pink like <i>Beauty</i>50	1.50	5.00
EARLY DETROIT. A pink variety with smooth, evenly colored fruit of good size. A very fine pink tomato.50	1.35	4.50
Chalk's Early Jewel. Medium early, smooth and well colored.35	1.10	3.50
HARRIS' SUCCESS. A very fine main crop variety. Smooth, well colored and solid. See also page 15.50	1.45	4.75
HARRIS' EARLY STONE. Has all the good qualities of <i>Stone</i> , but ripens considerably earlier. See page 16.50	1.45	4.75
Dwarf Stone. Plants like <i>Dwarf Champion</i> with fruit like <i>Stone</i> , very prolific and a valuable variety.50	1.35	4.50
GLOBE. As round as an apple; color deep pink. One of the very best varieties of this color.50	1.35	4.50
PONDEROSA. Magnificent, heavy, solid fruit, often weighing 2 lbs. or more; light pink; medium early; does not color very well and is somewhat irregular.55	1.60	5.50
Dwarf Champion. Early, pink, medium size, dwarf plant.50	1.30	4.25
Livingston Beauty. Large, late, pink, very smooth.50	1.30	4.25
Red Cherry. Very small, globe shaped, red fruit in clusters.50	1.45	4.75

TOMATOES—Continued

	Oz.	¼ lb.	lb.
Yellow Plum. Plum shaped, small, yellow fruit.....	\$.50	\$1.35	\$4.50
Red Plum. Small plum shaped fruit.....	.50	1.35	4.50
Red Pear or Fig. Small pear-shaped, red fruit.....	.50	1.45	4.75
Yellow Pear. Small pear shaped, yellow fruit.....	.50	1.35	4.50
GOLDEN QUEEN. Large, smooth yellow fruit.....	.50	1.45	4.75
Ground Cherry or Husk Tomato. Yellow fruit in husks.....	.50	1.45	4.75
CRACKERJACK. A very fine tomato for greenhouse forcing. See page 16 for full description.....	¼ Oz. \$1.00	3.00	10.00

TURNIPS

Both the *Purple Top* and *White Milan* grow rapidly and are the first to mature. *Purple Top Strap-leaf* is very similar but a little later. *Purple Top White Globe* is a little later than *Strap-leaf* but a much better turnip and is the most popular variety for market. *White Egg* is a handsome white egg-shaped turnip, and *Golden Ball* a nice, smooth, round yellow variety which grows rapidly. *Snowball* is round and snow white. *Yellow Stone* is larger and more flat, while *Yellow Aberdeen* is globe-shaped and grows to a larger size, but is better suited for feeding stock than for market.

	¼ lb.	lb.	10 lb.
EARLY WHITE MILAN. Very early, flat white turnip.....	\$.25	\$.75	\$7.00
EARLY PURPLE TOP MILAN. The earliest purple top turnip, very fine.....	.25	.75	7.00
PURPLE TOP WHITE GLOBE. Like <i>Strap-Leaf</i> , but round instead of flat. Very fine fall turnip.....	.20	.50	4.50
Purple Top Strap-leaf. White, purple top, flat, very rapid grower....	.20	.50	4.50
Snowball. Pure white, round as a ball; early, with small tops.....	.20	.60	5.50
White Egg. Pure white, globe shape.....	.20	.60	5.50
GOLDEN BALL. Round, smooth yellow. A fine turnip.....	.20	.60	5.50
Cowhorn. Long, white, green top.....	.20	.60	5.50
Yellow Stone. Very firm, flat, light-yellow, medium early.....	.25	.65	6.00
Yellow Aberdeen. Large, round yellow turnip; very firm and keeps a long time.....	.20	.55	5.00
SHOGOIN. The best turnip for greens, very much superior to <i>Seven Top</i> . The turnips are white, flat and of fine quality.....	.30	1.00	9.50

RUTA BAGAS OR SWEDE TURNIPS

	¼ lb.	lb.	10 lb.
MACOMBER. A white purple top Swede of very fine quality for table use.....	\$.60	\$2.00	\$19.00
IMPROVED LONG ISLAND. A very fine strain of yellow <i>Purple Top Ruta Baga</i> . The roots are smooth and handsome with very small neck and few side roots. The flesh is yellow and of fine quality....	.25	.75	7.00
Perfection Selected Swede. A fine selected strain of purple top yellow Swede. Grows large but is very smooth and of fine grain.....	.25	.75	7.00
White Sweet or French. A good White Swede with green top.....	.25	.65	6.00

HERBS FOR FLAVORING, Etc.

	Oz.	¼ lb.	lb.
Basil. Used for flavoring soups and sauces. Plant about 18 in. high...	\$.20	\$.60	\$2.00
Borage. Often used for bee pasture. Sow in spring in the open ground..	.20	.60	2.00
Caraway. Hardy, biennial, seeding the second year after sowing. Sow in spring or fall.....	.10	.25	.75
Coriander. Sow in spring in the open ground.....	.10	.25	.75
DILL. <i>Long Island Mammoth.</i> The largest and most productive variety	.10	.20	.60
SWEET MARJORAM. Easily grown from seed sown in the open ground in the spring.....	.30	.75	2.50
Fennel (Sweet). The leaves are used for flavoring. Easily raised.....	.15	.40	1.25
Lavender (true)50	1.35	4.50
Rosemary. Hardy perennial.....	.50	1.35	4.50
SUMMER SAVORY. Easily grown by sowing seed in the open ground in the spring. Plant grows about a foot high with small, narrow leaves, which are dried on the stems and used for seasoning.....	.15	.45	1.35
SAGE, Broad-leaved. When once started will last for years. Should be in every garden. Sow in the open ground and thin the plants to six inches apart.....	.15	.45	1.50
THYME. Very largely used for flavoring. The plant will survive the winter if given a little protection.....	.60	1.75	6.00
Wormwood. A medicinal herb used largely for planting in poultry yards for chickens to feed on.....	.30	.90	3.00

VEGETABLES, PLANTS, ROOTS, ETC.

Orders for plants will be entered at any time and the plants sent when ready or when it is time to set them out. 500 plants will be supplied at the 1000 rate.

Shipping plants. At the prices given below the plants are sent by **express** at the expense of the purchaser (except those marked "postpaid"). If plants are wanted by parcel post an extra charge is made for postage at the following rate; To places in the 2nd zone (150 miles) 1c per lb., 3rd zone 2c per lb., 4th zone 4c per lb., 5th zone 6c per lb.

ASPARAGUS ROOTS. We raise asparagus roots quite extensively on our own farms and can furnish roots of very superior quality and freshly dug, which is very important.		
MARY WASHINGTON. The largest and best variety. It is rust-resistant and very vigorous. Stalks are deep green with purple tops.	100	1000
1-year-old roots, first class. Weight 100-10 lbs., 1000-70 lbs.....	\$1.50	\$ 9.00
2-year-old roots, very strong. Weight 100-14 lbs., 1000-125 lbs.....	2.00	14.00
HORSE RADISH, New Bohemian. ("Maliner-Kren.") Superior to common Horse Radish. Write for special price for large lots. Weight 100-5 lbs., 1000-40 lbs.....	1.00	8.00
RHUBARB ROOTS, Myatt's Linneaus		
1-year-old. Weight 100-40 lbs.....	3.50	25.00
2-year-old. Weight 100-75 lbs.....	5.00
SAGE, Holt's Mammoth. The best Sage. Weight 100-20 lbs.....	3.50	30.00
SPEARMINT. Weight 100-15 lbs.....	3.50
CHIVES. Good sized clumps. Weight 100-15 lbs.....	8.00
BRUSSELS SPROUTS, Long Island Improved Dwarf. Ready June 20.....	.60	3.50
BROCCOLI. Green Sprouting or Calabrese. Ready June 20. Weight 100-5 lbs. 1000-25 lbs.....	.75	4.50
CABBAGE PLANTS. Early transplanted plants, ready April 15 to May 15. Well hardened in cold frames and will stand considerable frost. Early Jersey Wakefield, Golden Acre, Copenhagen Market. Weight 100-5 lbs., 1000-25 lbs.....	1.25	10.00
Field grown plants, ready middle of June. All leading varieties. Weight 100-5 lbs., 1000-25 lbs.....	.40	2.50
CAULIFLOWER. Early transplanted plants ready from April 25 to May 15. Snowball and Super-Snowball. Weight 100-5 lbs., 1000-25 lbs.....	1.50	12.00
Field grown plants, ready June 20. Snowball, Super-Snowball and Danish Giant. Weight 100-5 lbs., 1000-25 lbs.....	.75	4.50
CELERY. Greenhouse grown plants ready May 15. Golden Self Blanching, and Golden Plume. Weight 100-4 lbs., 1000-25 lbs.....	1.00	8.00
Field grown plants, ready last of June. Varieties: Golden Self Blanching, Golden Plume, French's Success, Giant Pascal, Easy Blanching. Weight 1000-25 lbs.....	2.75
EGG PLANT. Strong potted plants, Black Beauty. Weight, 100 plants 20 lbs. 50 plants \$2.75	5.00
PEPPERS. Strong transplanted plants, ready last of May. Harris' Early Giant, Harris' Earliest, Giant Cayenne. Weight 100 plants 4 lbs., 1000-25 lbs....	1.75	15.00
PEPPERS. Untransplanted Plants. These plants should be grown in frames for two or three weeks before planting in the open ground. Ready April 25 to June 1. Same varieties named above. Postpaid.....	.60	4.50
TOMATOES. Strong Transplanted Plants, well hardened, ready May 10 to June 25. Extra Early Earliana, John Baer, Bonny Best, Success, Stone, Ponderosa (pink). Weight 100-6 lbs., 1000-30 lbs.....	1.75	15.00
TOMATOES. Untransplanted Plants. These are taken direct from the seed bed and should be set in frames and allowed to grow for two weeks or more before setting in the field. They are strong seedlings 3 to 4 in. high. Ready April 10 to May 15. Same varieties as named above. Postpaid.....	.60	3.75

NOTE—Special prices will be made on orders for plants in considerable quantities placed early in the season so they can be raised especially for the order. We can raise other varieties of tomatoes or peppers if wanted in considerable quantities.

OUR GENERAL RETAIL CATALOGUE

This price list does not include all the seeds and plants we sell. Our general catalogue for 1930 will be issued in January at which time it will be mailed to all our customers and to others who ask for it. If you do not get a copy, it would give us pleasure to send it if you will notify us. The catalogue contains more detailed descriptions of varieties than it is possible to give in this price list.

HARRIS' FLOWER SEEDS

Our flower seeds are maintained at the same high standard of quality as our vegetable seeds. They are all tested for germination as well as carefully tried out in our extensive trial-grounds, where our customers are always welcome to come and inspect our stocks.

Please Notice

NOTE—We do not furnish any ¼ ounces at less than 20c. Fractions of ounces will be supplied as follows:
 Price per ounce.....30c 40c 50c 60c 75c \$1.00 \$1.25 \$1.50 \$1.75 \$2.00 \$2.25 \$2.50 \$2.75 \$3.00 \$3.50 \$4.00
 ½ oz. for.....15c 20c 25c 30c 40c .50 .65 .75 .90 1.00 1.15 1.25 1.40 1.50 1.75 2.00
 ¼ oz. for..... 20c 25c .30 .35 .40 .50 .60 .65 .70 .75 .80 .90 1.00



Royal White Aster

ROYAL ASTERS. The same form as Late Branching but earlier.

	Large Pkt.	Oz.
W1301—White.....	\$.25	\$1.75
W1302—Shell Pink.....	.25	1.75
W1303—Rose.....	.25	1.75
W1304—Lavender.....	.25	1.75
W1305—Purple.....	.25	1.75
W1300—Variety Mixture.....	.20	1.50

W1018—AURORA—The large yellow center surrounded by a circle of delicate blue makes this a fine cut flower40 4.00

W1025—MORETON PINK. A beautiful bright pink, and the only Aster of this color. Large fluffy flowers. Early25 1.75

W1061—BALL'S WHITE. A popular florists' white. Full round flowers of the Late Branching type. Midseason to late.25 1.75

W1066—PEERLESS PINK—Although one of the older varieties, it is still unsurpassed as an all-around, dependable light pink.25 1.75

W1067—NEW PEERLESS YELLOW. An interesting novelty for the plant trade.35 2.00

W1078—HEART OF FRANCE. The most popular red Aster for both cutting and plant trade.25 1.75

W1083—CRIMSON GIANT. A large brilliant red on an upright plant.25 1.75

ASTERS

Harris' Treated Aster Seed is the Best

In order for you to have a profitable crop of Asters it is necessary that we do our part by furnishing you with good seed of high germination, and the very best quality in the most desirable varieties.

Although we have been trying our best to give you seed with these qualifications, we are going still further and chemically treating our seed as a preventative against any of the diseases that may be carried on the seed.

Of course, we cannot guarantee your Asters against diseases they may acquire from your soil, but we do claim that the seed, after our treatment, is less liable to acquire other diseases than the same seed would if not treated.

We maintain an extensive testing garden for Asters where we compare all different varieties while growing side by side. In this way we carefully select the most desirable sorts.

NEW CALIFORNIA SUNSHINE. The upright plants, long stems, profusion of blooms and excellent colors of this Aster are making it one of the most popular for florists and wayside stands.

	Large Pkt.	Oz.
W1011—Flesh.....	\$.50	\$5.00
W1012—Pink.....	.50	5.00
W1013—Carmine.....	.50	5.00
W1014—Lavender.....	.50	5.00
W1015—Violet.....	.50	5.00
W1010—Mixed colors.....	.40	4.00

CREGO OR OSTRICH FEATHER ASTERS. The following list provides an unusual range of colors selected from the best of the fluffy or Crego type.

	Large Pkt.	Oz.
W1401—White.....	\$.20	\$1.25
W1402—Shell Pink.....	.20	1.25
W1403—Rose.....	.20	1.25
W1404—Lavender.....	.20	1.25
W1405—Purple.....	.20	1.25
W1406—Lavender—Pink.....	.20	1.25
W1407—Crimson.....	.20	1.25
W1400—Variety Mixture.....	.15	1.00

LATE BRANCHING ASTERS. The leading mid-season to late variety for all purposes. The large full double flowers on long stiff stems are the best for shipping. They are also the most dependable for growing.

	Large Pkt.	Oz.
W1601—White. An improved strain. . . .	\$.20	\$1.25
W1602—Shell Pink.....	.20	1.25
W1603—Rose.....	.20	1.25
W1604—Lavender. A bright clear shade. .	.20	1.25
W1605—Purple.....	.20	1.25
W1606—Crimson.....	.20	1.25
W1607—Peach Blossom.....	.20	1.25
W1608—Dark Violet.....	.20	1.50
W1600—Variety Mixture.....	.15	1.00

"The Sunshine Asters which I raised from your seed last year were remarkably beautiful. They seemed to be the first of their kind raised in this vicinity and were admired by everybody." MRS. E. E. WEBSTER, No. Girard, Pa.

"The Asters I bought of you last year were lovely. They were the talk of the whole neighborhood." W. B. STEPHENS, West Haven, Conn.

ASTERS, Continued

EXTRA EARLY EXPRESS ASTERS. The earliest Asters for cutting. Large fluffy flowers about one week earlier than Queen of the Market. Start indoors and plant out in very rich soil.

	Large Pkt.	Oz.
W1141—White.....	\$.30	\$2.50
W1142—Rose.....	.30	2.50
W1140—Mixed Colors. Several colors...	.25	2.00

QUEEN OF THE MARKET ASTERS. The standard extra early and one which has been profitably grown for years. The flowers are full double, and of a type that makes a desirable flower for shipping. Start indoors and plant in very rich soil.

	Large Pkt.	Oz.
W1201—White.....	\$.20	\$1.00
W1202—Shell Pink.....	.20	1.00
W1203—Rose.....	.20	1.00
W1204—Azure Blue.....	.20	1.00
W1205—Purple.....	.20	1.00
W1200—Variety Mixture.....	.15	.75

CALIFORNIA GIANT ASTERS. A new strain of remarkable Asters on immense, robust plants. The flowers have long twisted petals, somewhat like the Crego type, and are colossal in size. They bloom very late and should be sown early.

	Large Pkt.	Oz.
W1811—White.....	\$.35	\$2.50
W1812—Deep Rose.....	.35	2.50
W1813—Peach Blossom.....	.35	2.50
W1814—Light Blue.....	.35	2.50
W1815—Dark Purple.....	.35	2.50
W1810—Variety Mixture.....	.30	2.00

AMERICAN BEAUTY ASTERS. A very late blooming class that are splendid for extra late cutting, after all other Asters are gone and prices are higher. The plants are large and vigorous with long, clean, non-lateral stems. The full-double flowers have long incurved petals making them almost globe shaped.

Early Beauty Asters. The Early Beauties follow the Late Branching varieties and are the best of this type for the northern growers.

	Large Pkt.	Oz.
W1901—White.....	\$.25	\$1.50
W1902—Flesh Pink.....	.25	1.50
W1903—Bright Rose.....	.25	1.50
W1904—Azure Fairy.....	.25	1.50
W1905—Purple.....	.25	1.50
W1900—Variety Mixture.....	.20	1.25

Late American Beauty Asters. These are exceedingly late and will not come into full bloom in many places except in a favorable season. However, it is well worth trying a few each year in order to catch the latest possible market.

	Large Pkt.	Oz.
W1800—Variety Mixture.....	\$.20	\$1.50

W1000—CHOICE VARIETIES—TALL MIXED. An exceptional mixture made up of the best varieties of tall Asters, such as Royals, Late Branchings, Cregos, and American Beauties. It is all fresh seed of good germination and not a mixture of discards. $\frac{1}{4}$ lb. \$2.50 .15 .75

Acroclinium

	Large Pkt.	Oz.
W2000—Double, Mixed Colors.....	.15	.40

Ageratum

	Large Pkt.	Oz.
W2015—Swanley Blue.....	.15	.60
W2011—Little Blue Star.....	.40	3.00

Alyssum

	Large Pkt.	Oz.
W2020—Sweet Maritimum..... $\frac{1}{4}$ lb. 6oc	.10	.20
W2021—Little Gem.....	.15	.50

Arctotis

	Large Pkt.	Oz.
W2085—Grandis. A good white outdoor cut flower.....	.15	.40

Asparagus (Ornamental)

These are the varieties so highly prized by the florists, surpassing the most delicate ferns in elegance of habit and delicacy of spray. Our seed is a fine strain of the correct type and of good germination.

W2090—Plumous Nanus. 30c per 100 seeds; \$2.00 per 1000 seeds; \$8.00 per 5000 seeds.
W2091—Sprengerii. 20c per 100 seeds; \$1.00 per 1000 seeds; \$4.00 per 5000 seeds.

Balsam

	Large Pkt.	Oz.
W2110—Camellia-Flowered Double Brilliant Mixture.....	\$.10	\$.30

Begonia

The Semperflorens and Gracilis or fibrous-rooted Begonias are rapidly becoming popular all over the country, both for out-door summer bedding and for pot plants in the winter. They are easily grown from seed and usually prove profitable. We have the best seed of the most satisfactory varieties.

	Large Pkt.	Oz.
W2131—Gustav Knaake. Glowing scarlet flowers with large light-green leaves. This is one of the newest florists' varieties.....	\$.60	...
W2132—Fire Dwarf. A new bright scarlet. Plant extra dwarf.....	.60	...
W2133—Salmon Queen. A brilliant deep salmon with dark foliage. Smaller leaves and exceptionally free blooming.....	.50	...
W2134—Erfordia. A bright rosy carmine that blooms profusely.....	.50	...
W2135—Gracilis Luminosa. Fiery dark scarlet with dark foliage.....	.50	...
W2136—Gracilis Prima Donna. A free flowering attractive light rose shade. Larger light-green leaves.....	.50	...
W2130—Semperflorens Special Mixture. All colors.....	.30	\$3.00

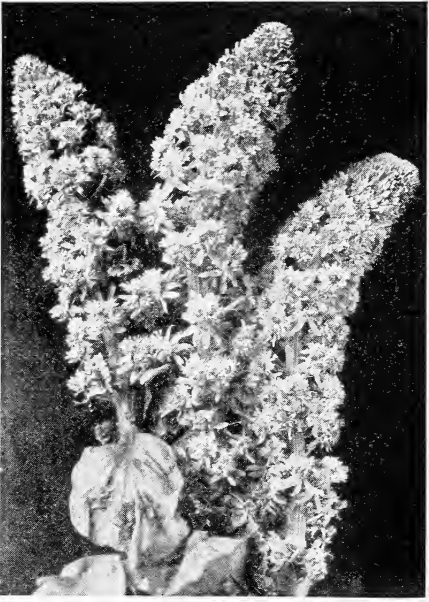
Tuberous-Rooted Begonias

	Large Pkt.	Oz.
W2120—Double, large-flowering, Mixed Colors.....	\$1.50	...

Bellis Perennis (Double English Daisy)

Popular for spring plant sales together with Pansies and Forget-Me-Nots. Sow at the same time.

	Large Pkt.	Oz.
W2141—Snowball. White.....	\$.25	\$2.00
W2142—Longfellow. Rose.....	.25	2.00
W2140—Double Mixed Colors.....	.15	1.50



Mignonette, Goliath

Browallia

W2185—Speciosa Major. Blue. One of the best blue flowers for porch boxes, hanging baskets, or the garden. . . . \$1.00 . . .

Calendula

Profitable to raise for both cut-flowers and spring bedding-plant trade.

	Oz.	¼ lb.
W2201—Orange King. Special Strain..	\$.25	\$.75
W2204—New Campfire (Sensation)	1.50	5.00
W2205—Ball's Orange	1.00	2.50
W2207—Ball's Gold	1.00	2.50
W2209—Radio. Yellow, quilled petals		
W2200—Harris' Variety Mixture20	.60

Candytuft

	Large Pkt.	Oz.
W2272—Rose Cardinal.	\$.15	\$.40
W2274—Flesh Pink.15	.40
W2275—Giant Hyacinth-flowered or Improved Empress. The best white for cutting.	¼ lb. \$1.50	.15 .50
W2276—Lavender15	.40
W2270—Rainbow Mixture.	¼ lb. \$.75	.10 .25

Carnation

New Giant Chabaud's Double. A new strain of outdoor annual Carnations far more satisfactory than the older varieties, blooming earlier and more double. The plants sell well in the spring.

	Large Pkt.	Oz.
W2291—Jeane Dionis. White.	\$.25	\$2.50
W2292—The Pearl. Pink.25	2.50
W2293—Marie Chabaud. Yellow.25	2.50
W2294—Sparkler. Red.25	2.50
W2290—Variety Mixture20	2.00
W2300—Giant Marguerite, Mixed Colors. Large double flowers in all colors.15	1.25

Calliopsis

	Large Pkt.	Oz.
W2210—Special Tall Mixture	\$.10	\$.30
W2212—Special Dwarf Mixture.10	.30

Centaurea

Centaurea Cyanus or Double Bachelors Buttons are proving very profitable as cut-flowers in many markets. Our strains are true double and of good clear colors.

	Large Pkt.	Oz.
W2321—White.	\$.15	\$.40
W2322—Rose.15	.40
W2325—Blue.	¼ lb. \$1.25	.15 .40
W2334—Americana. Lavender.15	.75
W2340—Imperialis. Mixed colors.15	.60
W2350—Gymnocarpa (Dusty Miller).15	.50
W2320—Variety Mixture.	¼ lb. \$.80	.10 .30

Cardinal Climber

W2315—Ipomea Quanoctit.20	1.00
---------------------------------	-----	------

Cockscomb (Celosia)

W2360—Childsii, Chinese Woolflower. Mixed colors.	\$.20	\$1.00
W2370—Plumed Celosia Plumosa. Thompson's Magnifica.15	.75
W2380—Cristata. Crested. Mixed colors20	1.25

Chrysanthemum

W2400—Annual Variety Mixture.10	.25
---------------------------------------	-----	-----

Clarkia Elegans

W2420—Double. Mixed Colors.10	.50
W2423—Double. Queen Mary.15	.60

Cineraria

W2540—Hybrida Grandiflora. A splendid mixture of large flowers and dwarf plants. This is the best strain we can obtain.	1.00	. . .
---	------	-------

Cobea Scandens

W2572—Blue. (Cathedral Bells). A good annual vine for the plant trade.15	.50
--	-----	-----

Coleus

W2511—Harris' Extra Fancy-Leaved Mixture. This is absolutely the finest strain of Coleus we have ever known	⅓ oz. \$5.00; ⅙ oz. \$9.00	.85 . . .
W2510—Choice Large-Leaved Mixture35	3.50

Cosmos

Our Early Flowering Giant is an especially fine stock of our own that is true early and large flowering.

	Large Pkt.	Oz.
W2451—White.	\$.15	\$.50
W2452—Pink.15	.50
W2453—Red.15	.50
W2450—Variety Mixture.10	.40
New Early Double Crested. The best California grown stock we can get.		
W2461—White.	\$.40	\$2.50
W2462—Pink.40	2.50
W2463—Red.40	2.50
W2460—Variety Mixture.30	2.00
W2470—Late Mammoth Flowering. Mixed colors10	.30

Castor Oil Bean (Ricinus)

	Oz.	¼ lb.
W2500—Harris' Tropical Mixture	\$.15	\$.50
W2501—Red Spire.25	.75

Cyclamen

	100 seeds	1000 seeds
W2490—Persicum. Giant Mixed colors	\$.75	\$7.00

Cynoglossum

	Large Pkt.	Oz.
W2583—Amabile Blue. A very popular annual recently introduced. Often called Chinese Forget-Me-Not	\$.20	\$1.00

Dahlia

W2600—Double Flowered. Mixed colors	.25	1.50
W2604—Peony-Flowered. Mixed colors	.30	2.00
W2605—Coltness Hybrids. Mixed colors	.30	2.00

Dianthus (Pinks)

W2670—Heddewigii. (Double Japan Pinks). A fine mixture of the annual Pinks	.15	.60
--	-----	-----

Dimorphotheca

W2730—New Hybrids. Mixed colors	.15	1.00
---------------------------------	-----	------

Dolichos (Hyacinth Bean)

	Oz.	¼ lb.
W2740—Mixed colors	\$.15	\$.50

Didiscus (Blue Lace Flower)

	Large Pkt.	Oz.
W2746—Coeruleus. A pretty clear lavender-blue lace-like flower that is very satisfactory for cutting	\$.20	\$1.25

Dracaena

W2750—Indivisa. The popular plant for porch boxes, cases, etc. The seed should be out of the hulls before sowing	¼ lb.	\$1.00	.10	.30
--	-------	--------	-----	-----

Everlastings

For the different Everlasting flowers see Acroclinum, Helichrysum, Rhodanthe, Honesty, Nigella, Statice, Xeranthemum.

W2760—Harris' Special Mixture. A mixture of several different kinds of annual "everlasting flowers"	¼ lb.	\$3.00	.20	.90
---	-------	--------	-----	-----

Eschscholtzia

W2780—New Hybrids	.15	.50
W2775—Bush Yellow (Hunnemannia)	.15	.50

Gaillardia

W2900—Double, Mixed colors	.10	.40
----------------------------	-----	-----

Godetia

W2950—Mixed colors	.15	.50
--------------------	-----	-----

Gourds

	Oz.	¼ lb.
W2989—All Varieties Mixed	\$.15	\$.50

Gypsophila (Baby's Breath)

W2991—Elegans alba. (Florists' Selected Strain.) Much better than the ordinary variety	1.15 per lb.	.15	.35
--	--------------	-----	-----

Helichrysum (Strawflowers)

The most popular "everlasting" and extensively used for the florists' trade. This is the large flowering double variety.

	Large Pkt.	Oz.
W3071—White	\$.15	\$.60
W3072—Red	.15	.60
W3073—Violet	.15	.60
W3074—Yellow	.15	.60
W3075—Salmon	.15	.60
W3076—Rose	.15	.60
W3070—Variety Mixture	.10	.50

Heliotrope

W3133—New Giant Blue. One of the best plants to grow for the spring plant trade	.30	2.50
---	-----	------

Humulus Japonica

W3175—Japanese Hop Vine	.15	.75
-------------------------	-----	-----

Kochia (Summer Cypress)

W3190—Childsii	.10	.30
----------------	-----	-----

Lavatera (Mallow)

W3280—Loveliness	.10	.40
------------------	-----	-----

Larkspur

Tall Double Stock-flowered. Most excellent to raise as cut-flowers. The following are the finest colors.

	Large Pkt.	Oz.
W3241—White	\$.15	\$.60
W3242—Empress Rose	.25	1.50
W3244—Lustrous Carmine	.15	.60
W3245—Sky Blue	.15	.60
W3246—Dark Blue	.15	.60
W3248—Los Angeles	.40	4.00
W3249—LaFrance	.20	1.00
W3240—Variety Mixture	.10	.30

Lobelia

W3300—Crystal Palace Compacta. Pretty little blue-flowered plants for edging in the garden or to use in porch-boxes, etc. The plants sell well	.20	2.00
W3292—Sapphire. A new trailing variety for boxes, hanging baskets, etc.	.30	3.00

Lunaria (Honesty)

W3178—Biennis. A biennial "everlasting" with silvery seed pods. Also called "moonwort"	.15	.75
--	-----	-----

Lupins

	Large Pkt.	Oz.
W3310—Annual. Mixed colors	\$.10	\$.20

Books for the Flower Grower

"Wayside Marketing" by Schuyler Arnold. Full of suggestions and new ideas for those growing flowers and selling them at wayside stands, \$1.50.

"Commercial Floriculture" by Fritz Bahr. An invaluable aid to the commercial grower. Pays for itself in no time, \$5.50.

Please Notice

NOTE—We do not furnish any ¼ ounces at less than 20c. Fractions of ounces will be supplied as follows:
 Price per ounce.....30c 40c 50c 60c 75c \$1.00 \$1.25 \$1.50 \$1.75 \$2.00 \$2.25 \$2.50 \$2.75 \$3.00 \$3.50 \$4.00
 ½ oz. for.....15c 20c 25c 30c 40c .50 .65 .75 .90 1.00 1.15 1.25 1.40 1.50 1.75 2.00
 ¼ oz. for.....15c 20c 25c .30 .35 .40 .50 .60 .65 .70 .75 .80 .90 1.00

PETUNIAS

Each year there is an increasing demand for good Petunias and the florist or plant grower who can offer plants with the assurance that his customers will be satisfied is bound to make money. Those which we list have been tried out with others and selected because of their superiority.

W3800—Harris' Perfection Double. Our strain of Double Petunia is exceptionally fine, coming 85% to 95% true double and semi-double. The flowers are very large and in a splendid range of colors. 200 seeds 55c; 500 seeds \$1.20; 1000 seeds \$2.00.

W3801—Ruffled Giants or Giants of California. The best Petunias we can possibly obtain. 200 seeds 30c; 500 seeds 60c; 1000 seeds \$1.00; $\frac{1}{16}$ oz. \$3.50.

W3806—Dwarf Ruffled Giants of California. The best Giant Petunias for pot culture. Large flowers with open, beautifully veined throats on low compact plants. 200 seeds 40c; 500 seeds 75c; 1000 seeds \$1.25; $\frac{1}{16}$ oz. \$5.00

W3810—Harris' Giant Ruffled Variety Mixture. We make up this mixture from equal proportions of the different named varieties of the Giant Ruffled kinds. This assures you a definite color range. 200 seeds 30c; 500 seeds 50c; 1000 seeds 85c; $\frac{1}{16}$ oz. \$3.00.

Giant Ruffled Petunias

	200 seeds	500 seeds	1000 seeds
W3811—White	\$.40	\$.65	\$1.00
W3813—Theodosia Rosy Pink	.50	.90	1.50
W3814—Quaker Lady, Steel Blue	.40	.65	1.00
W3816—Royal Blue, Rich Purple	.50

New Balcony Petunias

Large flowers in good clear colors on plants of a semi-trailing habit.

	Large Pkt.	Oz.
W3841—White	\$.25	\$3.00
W3843—Rose	.25	3.00
W3845—Blue	.30	4.00
W3846—Crimson	.25	3.00
W3840—Variety Mixture	.20	2.50

Single Bedding Petunias

W3821—Snowball	\$2.20	\$2.00
W3823—Rosy Morn	.20	2.00
W3824—Rose of Heaven	.20	2.00
W3825—Dark Blue	.25	2.50
W3826—Lavender Queen	.40	4.00
W3827—Heavenly Blue	.50	5.00
W3805—Special Dwarf Mixture	.20	1.50

Marvel of Peru (Four O'clocks)

W3380—Mirabilis. Mixed Colors. 15

Mignonette

	Large Pkt.	Oz.
W3429—Common Sweet	$\frac{1}{4}$ lb. \$.35	.10 .15
W3430—Harris' Special Variety Mixture		.10 .25
W3434—Red Goliath		.15 1.00

Morning Glory (Ipomea)

W3480—Mixed Colors	.15
W3474—Heavenly Blue	.15 .60

Marigold

	Large Pkt.	Oz.
W3401—Lemon Queen	\$.20	\$.75
W3402—Orange Prince	.20	.75
W3403—Primrose Queen	.20	1.00
W3400—Mixed Colors	.10	.50
W3410—Variety Mixture Double French	.10	.50
W3420—Tagetes Signata Pumila Dwarf Scotch	.15	.75

Myosotis or Forget-Me-Not

We take a great deal of pains to have the very best strains of Myosotis seed. Our Royal Blue is a bushy, upright plant with clear blue flowers.

	Large Pkt.	Oz.
W3493—Alpestris Royal Blue	\$.25	\$2.00
W3494—Alpestris Blue	.15	.50
W3490—Alpestris Mixed Colors	.15	.75
W3495—Palustris semperflorens	.30	2.00

Nigella

W3681—Miss Jekyll. 10 .25

Nasturtiums

	Oz.	$\frac{1}{4}$ lb.	lb.
W3500—Tall, Finest Mixture	\$.10	\$.25	\$.75
W3600—Dwarf, Finest Mixture	.10	.25	.75
W3601—Dwarf, Queen of Tom Thumbs, Mixed Colors	.15	.30	.90
W3602—Dwarf, Dark Foliage Varieties, Mixed Colors	.15	.30	.90

Nemesia

	Large Pkt.	Oz.
W3650—Large-flowering Hybrids	\$.20	\$1.75

Nicotiana

W3672—Crimson King. New	.25	2.50
W3671—Affinis, White	.10	.50

Phlox Drummondii

W3851—White	.30	2.00
W3852—Yellow	.30	2.00
W3853—Scarlet	.30	2.00
W3850—Dwarf Variety Mixture	.20	1.50
W3860—Grandiflora Mixed Colors	.15	.75

Portulaca

W3870—Double, Mixed Colors	.20	1.50
W3880—Single, Mixed Colors	.15	.50

Poppy

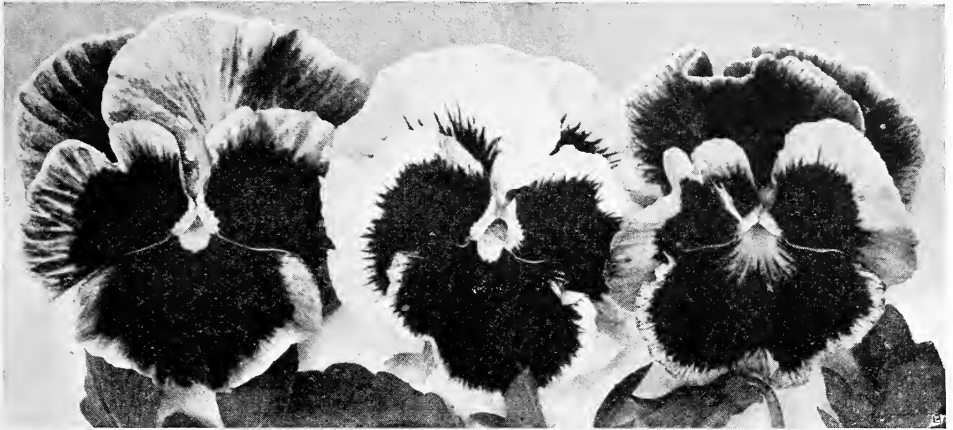
W3900—Shirley Exquisite Mixture	.10	.25
W3904—Mammoth Double, Mixed Colors	.10	.25
W3907—American Legion	.15	.50
W3922—Peony Flowered Shrimp Pink	.10	.30

Rodanthe

W4200—Mixed Colors. An "everlasting" 10 .50

Please Notice

NOTE—We do not furnish any $\frac{1}{4}$ ounces at less than 20c. Fractions of ounces will be supplied as follows:
 Price per ounce. 30c 40c 50c 60c 75c \$1.00 \$1.25 \$1.50 \$1.75 \$2.00 \$2.25 \$2.50 \$2.75 \$3.00 \$3.50 \$4.00
 $\frac{1}{2}$ oz. for. 15c 20c 25c 30c 40c .50 .65 .75 .90 1.00 1.15 1.25 1.40 1.50 1.75 2.00
 $\frac{1}{4}$ oz. for. 20c 25c .30 .35 .40 .50 .60 .65 .70 .75 .80 .90 1.00



Harris "Best" Pansy Mixture

PANSIES

Each year we improve the quality of our Pansy seeds selecting from our extensive trials those that by comparison are superior. Repeated tests for germination are made throughout the year to insure a high percentage on all seed that is sent out.

Harris' Special Mixture

W3700—This is our own mixture that is especially made up from some of the very best varieties and choicest colors. We make a special point of this medium price mixture. The flowers are all large, many ruffled and with bright colors predominating. Large pkt. 30c; ¼ oz. 90c; oz. \$3.50.

Harris' "Best" Pansy Mixture

W3704—As the name implies, these are our BEST Pansies. The flowers are extremely large with the deep, velvety colors. A large percentage have fluted or ruffled petals. Our mixture this year is superior to any pansies we have ever had and our price for this quality of Pansies is very low. Large pkt. 50c; ½ oz. 65c; ¼ oz. \$1.25; oz. \$5.00.

New Swiss Giants

W3705—Special Mixture. No description can do justice to this new strain of Pansies. The enormous flat blooms measure three inches or more in diameter and the colors which are unusually blotched include many never associated with pansies. Stems are long and foliage luxuriant adapting them to greenhouse as well as outdoor culture. Large pkt. 75c; ½ oz. \$1.25; ¼ oz. \$2.50; oz. \$10.00.

W3738—New Blue Swiss—A solid blue with darker blue blotch. Excellent for bedding purposes. Large pkt. 90c; ½ oz. \$1.90; ¼ oz. \$3.75; oz. \$15.00.

Miscellaneous Pansies

	Large Pkt.	Oz.
W3731—Snowflake	\$.15	\$1.50
W3732—Golden Yellow15	1.50
W3733—Giant Vulcan (Red)15	1.75
W3734—Bright Blue Shades15	1.50
W3735—Red Shades15	1.50
W3737—Giant Frilled Purple15	1.75
W3710—Good Mixed Colors. ¼ oz. 30c	.10	.75

Giant Trimardeau Pansies

W3701—Mixed Colors. A high grade mixture of choicest colors of the large-flowering Trimardeau Pansies. Large pkt. 15c; ¼ oz. 30c; oz. \$1.00.

Tufted Pansies (Viola Cornuta)

The neat plants and profusion of bloom make these doubly attractive for bedding plants or edging to bulb plantings or borders.

	Large Pkt.	Oz.
W3761—White	\$.15	\$1.50
W3763—Bright Yellow20	2.00
W3764—Blue15	1.50
3765—Blue Gem (Jersey Gem) Pkt. 40c.
W3771—Bosniaca Rosy Purple15	1.50
W3760—Mixed Colors15	1.25

Masterpiece or Giant Ruffled Mixture

W3702—The flowers of this mixture have fluted or ruffled petals which adds much to the beauty of the wonderfully rich colors. This stock may be depended upon to be well ruffled. Large pkt. 40c; ½ oz. 60c; ¼ oz. \$1.15; oz. \$4.00.

SNAPDRAGON (Antirrhinum) New Giant-Flowered

These new giant types have recently made Snapdragons one of the most popular flowers. The flowers are much larger and the stems longer than the older kinds. Our varieties embrace the choicest colors and our seed is of the very best quality.

	Large Pkt.	Oz.
W5002—Gotelind. Light orange.....	\$.20	\$2.00
W5003—Defiance. Deep orange.....	.20	2.00
W5004—Purple King. Rich purple.....	.20	2.00
W5005—Tuft of Lilacs. Light Violet.....	.20	2.00
W5006—Maralda. Bright rose.....	.20	2.00
W5007—Snowflake. Pure white.....	.20	2.00
W5008—Fascination. Flesh pink.....	.20	2.00
W5009—Canary Bird. Yellow.....	.20	2.00
W5010—Wallflower. Brownish red.....	.20	2.00
W5000—Variety Mixture.....	.15	1.50

Half Dwarf Snapdragons

The lower growing kinds are the ones preferred by the florists for forcing in the greenhouse for cut-flowers. They are also favored by many for formal bedding. These are the choice of a long list of varieties.

	Large Pkt.	Oz.
W5101—Purity. White.....	\$.15	\$1.25
W5102—Red Empress. New Deep Scarlet.....	.20	2.00
W5104—Philadelphia Pink.....	.15	1.50
W5106—Golden Monarch. Yellow.....	.15	1.50
W5107—Majestic, Orange King. New.....	.30	3.00
W5108—Majestic, Sunset. New.....	.30	3.00
W5100—Variety Mixture.....	.15	1.00

Tall Large-Flowering Snapdragons

	Large Pkt.	Oz.
W5030—Mixed Colors.....	\$.10	\$5.00

Stocks—New Giant Imperial

We spare no effort to have our stocks the very best that money can buy. Our varieties will give you real satisfaction both out-doors and under glass. The flowers are the largest percentage double and the colors are clear and bright.

	Large Pkt.	Oz.
W6001—Snowdrift. White.....	\$.30	\$3.00
W6002—Flesh Pink.....	.25	2.50
W6003—Elk's Pride.....	.65	8.00
W6004—Canary. Yellow.....	.30	3.00
W6005—Lavender. Light Blue.....	.30	3.00
W6006—Bright Red. Crimson.....	.50	6.00
W6008—Golden Rose. Rosy Buff.....	.65	8.00
W6000—Variety Mixture.....	.20	2.00

Salvia

Salvia or "Scarlet Sage" is one of the best of the popular bedding plants for spring sales. Our stocks are the best obtainable.

	Large Pkt.	Oz.
W4600—Bonfire. Our own strain.....	¼ lb. \$9.00	\$.25 \$2.50
W4601—Splendens.....	.15	1.50
W4603—Farinacea. Blue.....	.25	2.50
W4605—Tom Thumb.....	.40	4.50

Scabiosa

The improved Large-flowering Scabiosa are among the most desirable of out-door cut-flowers. The plants are also very popular for the spring trade.

	Large Pkt.	Oz.
W4648—Giant Shasta. New.....	\$.20	\$1.00
W4649—Giant Peach Blossom. New.....	.20	1.00
W4654—Azure Fairy.....	.15	.50
W4658—Black Prince.....	.15	.50
W4659—Fire King.....	.15	.50
W4650—Variety Mixture.....	.10	.40

Smilax

W4950—Aspargoides—A greenhouse plant that every grower should give a little space to. oz.50c; ¼ lb. \$1.50.



New Giant Imperial Stocks

Schizanthus

	Large Pkt.	Oz.
W4640—Large-flowering Hybrids.....	.15	.75

SWEET PEAS

Each year the introducers offer long lists of new varieties of Sweet Peas, many of which are no better than varieties already on the market. In our trial grounds the old and new varieties are compared and those which prove themselves superior will be found in the following lists. For color descriptions see our retail catalog.

Spencer Sweet Peas

The wonderful large wavy or "orchid-flowered" Sweet Peas for outdoor blooming. Our list includes the best of the newer varieties and the finest kind of the most popular colors.

	Oz.	¼ lb.
W7501—Constance Hinton.....	\$.20	\$.50
W7502—Pinkie.....	.50	1.50
W7503—Prince of Orange.....	.55	1.75
W7524—Jack Cornwall.....	.20	.50
W7527—Sapphire.....	.20	.60
W7532—Miss California.....	.20	.50
W7534—Doreen.....	.20	.60
W7536—Campfire.....	.20	.60
W7537—Crimson King.....	.20	.50
W7538—Powerscourt.....	.20	.50
W7541—Mary Pickford.....	.20	.75
W7548—Glengary.....	1.15	4.00
W7550—Variety Mixture.....	1 lb. \$2.25	.20 .70
W7500—Mixed Colors.....	1 lb. \$1.25	.15 .45

Spencer Duplex

Unexcelled as a cut flower for the florist.

W7545—Duplex Winnie Morse.....	\$1.15	\$4.00
W7546—Duplex Kitty Pierce.....	1.15	4.00

Early Flowering Sweet Peas

These new Winter or Early Flowering Sweet Peas are the best for forcing under glass or for early blooming out doors. We have carefully selected the best variety in each color, all with large Spencer type flowers.

	Oz.	¼ lb.
W7002—Superior Pink.....	\$.50	\$1.75
W7003—White Harmony.....	.45	1.50
W7004—Spring Song.....	.70	2.50
W7006—Giant Rose.....	.60	2.00
W7023—Harmony.....	.45	1.50
W7026—Aviator.....	.45	1.50
W7029—Chevalier.....	.45	1.50
W7037—Vulcan.....	.45	1.50
W7040—Blue Boy.....	.45	1.50
W7041—The Blaze.....	1.30	5.00
W7050—Variety Mixture.....	1 lb. \$4.50	.35 1.25
W7000—Mixed Colors.....	1 lb. \$3.00	.30 .90

Early Flowering Duplex

These new Sweet Peas have immense flowers that because of the curled and wavy wings have the effect of being double.

	Oz.	¼ lb.
W7042—Duplex Gem.....	\$2.00	\$7.00
W7043—Duplex Pioneer.....	2.00	7.00

Grandiflora Sweet Peas

W7700—Mixed Colors. A good mixture at a low price..... 1 lb. \$.75 .10 .35

Salpiglossis

	Large Pkt.	Oz.
W4510—Light Shade Mixture. A most attractive mixture of light colors.....	\$.20	\$1.00
W4500—Emperor—Mixed Colors.....	.15	.75

Solanum (Jerusalem Cherry)

	Large Pkt.	Oz.
W5170—Cleveland Red. The best kind..	\$.25	\$2.00

Snow-on-the-Mountain

	Large Pkt.	Oz.
W5192—Euphorbia Variegata.....	\$.10	\$.30

Verbenas, New Colossal

Since the introduction of the new Colossal types, Verbenas have rapidly increased in popularity and they are now among the most profitable plants to raise for the spring trade. Our Colossal Verbenas have the largest flowers and are in the best colors.

	Large Pkt.	Oz.
W8005—Purple King.....	\$.20	\$1.50
W8006—Rose Queen.....	.25	1.75
W8007—Red Emperor.....	.30	2.00
W8008—Snowstorm.....	.20	1.50
W8015—New Colossal Mixture.....	.15	1.00
W8009—Mammoth Golden Queen. A yellow Verbena is something unusual but this one in the mammoth type has proved most satisfactory.....	.35	2.50
W8010—Verbena, Moss Erinoides.....	.15	1.00

Statice (Everlasting)

	Large Pkt.	Oz.
W6170—SINUATA, Mixed Colors.....	\$.10	\$.30
W6171—SINUATA, White.....	.10	.40
W6172—SINUATA, Superb Rose.....	.15	.50
W6173—SINUATA, Royal Blue.....	.15	.50
W6174—BONDUELLI, Bright Yellow.....	.10	.40

Sunflower

	Large Pkt.	Oz.
W6195—Harris' New Double.....	...	\$.30

Annual Sweet William

	Large Pkt.	Oz.
W6140—Mixed Colors.....	\$.20	\$1.00

Wallflower

	Large Pkt.	Oz.
W8070—Paris Extra Early Mixture.....	.10	.40

Vinca (Periwinkle)

	Large Pkt.	Oz.
8055—Delicata. Soft Pink. A most satisfactory bedding plant with shiny green foliage which sets off the soft pink blossoms most effectively. Seed must be started indoors with plenty of heat.....	.10	1.00

"No where have I seen annual larkspur that could compare with the ones grown from your seed. Also Harris' Best Pansy is a wonderful mixture in every way." R. T. CARSON, Batavia, N. Y.

Please Notice

NOTE—We do not furnish any ¼ ounces at less than 20c. Fractions of ounces will be supplied as follows:
 Price per ounce..... 30c 40c 50c 60c 75c \$1.00 \$1.25 \$1.50 \$1.75 \$2.00 \$2.25 \$2.50 \$2.75 \$3.00 \$3.50 \$4.00
 ¼ oz. for..... 15c 20c 25c 30c 40c .50 .65 .75 .90 1.00 1.15 1.25 1.40 1.50 1.75 2.00
 ½ oz. for..... 20c 25c .30 .35 .40 .50 .60 .65 .70 .75 .80 .90 1.00

ZINNIAS

The new Zinnias with their large size, fine form and most attractive colors are becoming a favorite cut flower for florists and roadside stands.

Good Zinnias are one of our specialties and we put forth a great deal of effort to have the best possible. Each year we select only the best kinds from our extensive test gardens and discard those less desirable.

Harris' Double Giant Zinnias

A new strain of immense size, very double, and in splendid colors. We heartily recommend this variety as being more true to type and color than the Dahlia-flowered. They are just as large but with flatter petals.

	Large Pkt.	Oz.
W8123—Enchantress. Carmine rose....	\$.25	\$1.50
W8124—Purity. White.....	.25	1.50
W8125—Lemon Queen. Yellow.....	.25	1.50
W8126—Orange King.....	.25	1.50
W8127—Rose Queen.....	.25	1.50
W8128—Scarlet Gem.....	.25	1.50
W8100—Variety Mixture.....	.20	1.00

New Pompon Zinnias

This new race of Zinnias is especially good for cut flowers. The flowers are small, full double and borne in profusion eight weeks from sowing. Many of our florist customers are very enthusiastic about these Zinnias

	Large Pkt.	Oz.
W8231—White Gem.....	\$.20	\$.75
W8232—Salmon Gem.....	.20	.75
W8233—Canary Yellow.....	.20	.75
W8234—Scarlet Gem.....	.20	.75
W8230—Variety Mixture.....	.15	.60

Giant Double Dahlia Flowered Zinnia

Another recent introduction from the leading California Zinnia grower. Immense flowers in the most striking colors and we have selected the best of them. The true type resemble a giant Show Dahlia.

	Large Pkt.	Oz.
W8151—Golden State.....	\$.30	\$2.00
W8152—Oriole. Orange and Gold.....	.30	2.00
W8153—Exquisite. Rose.....	.30	2.00
W8154—Old Rose.....	.30	2.00
W8155—Crimson Monarch.....	.30	2.00
W8156—Scarlet Flame.....	.30	2.00
W8158—Dream. Light Violet.....	.30	2.00
W8150—Variety Mixture.....	.25	1.50

Curled and Crested Zinnias

W8290—Mixed Colors. The petals are twisted and curled into the most fantastic and graceful forms. Large pkt. 20c; oz. 75c.

Large Flowering Double

W8200—The best to be had of good sized flowers in a wide range of colors at a low price. Large pkt. 10c; oz. 75c.

"... A note of sincere appreciation to the people of Moreton Farm for the splendid service and many courtesies extended us on our visit to the farm last summer." G. E. VAN FLEET, Binghamton, N. Y.

SEED OF HARDY PERENNIALS

Anyone who is growing flowers for sale realizes that there is a very steadily increasing demand for perennials. For years we have been working on these, comparing, selecting and discarding. Some varieties do not come true from seed but for those that do we believe we have by far the best seed that is being offered today, much of it being grown here on our own farm and picked from only the best plants. Since many varieties even at their best germinate very slowly it is most important that only the freshest and best seed be sown. There is no more profitable outdoor line for either florist or roadside market than perennial plants. Those grown from Harris' seeds will insure satisfaction and increasing sales.

For more complete descriptions of the following varieties see our general catalog.

	Large Pkt.	Oz.
W1990—Aster Alpinus, Goliath.....	\$.40	\$...
W2030—Anemone Caen.....	.25	2.00
W2025—Alyssum saxatile compactum...	.20	.60
W2040—Anchusa Italica, Dropmore Var.	.15	.50
W2080—Arabis alpina.....	.15	.40
W2050—Aubretia, Large Flowering Hybrids.....	.40	3.50
W2053—Aubretia Leichtlinis.....	.45	4.00

	Large Pkt.	Oz.
W2310—New Hardy Carnation. Mixed Colors.....	.40	...

Coreopsis

W2440—Coreopsis Lanceolata. Harris' Sunbeam. An improved strain with larger and better flowers.....	.10	.30
---	-----	-----

Delphinium

Our extensive Delphinium trials insure seed of the best possible strains of both our own and European grown. Only fresh seed of good germination is offered.

Aquilegia

W2074—Aquilegia, Harris' Exhibition Hybrids. An exceptionally fine strain of unusual colors. Long spurs and immense flowers.....	.35	2.50
W2072—Aquilegia Coerulea.....	.30	2.00
W2077—Aquilegia alpina.....	.25	1.50
2078—Aquilegia, Edelweiss, Pkt. 45c		

	Large Pkt.	Oz.
W2640—Improved Moreton Hybrids. We began years ago to select the best Delphiniums from our plantings and have constantly improved the original strain. This is an excellent strain to use for large plantings where mass effects are wanted and sturdy free blooming plants are desired.....	\$.25	\$2.00

Bellis

W2140—Bellis perennis, Double-Mixed	.15	1.50
W2141—Bellis perennis, Snowball.....	.25	2.00
W2142—Bellis perennis, Longfellow.....	.25	2.00

W2641—Monarch Strain. Flower lovers are becoming keenly interested in Delphiniums. They want a wide range of colors from very deep blue to the very lightest. They want enormous spikes and large individual blossoms and are willing to pay for them. Our Monarch strain is seed of our own growing combining the best qualities of all the strains we have tried out.....	1.00	12.00
---	------	-------

Campanula

Campanula Medium (Canterbury Bells). Seed of these should be planted each year since they are biennials. The colors are excellent and germination most satisfactory. The demand for good plants of these usually greatly exceeds the supply.

	Large Pkt.	Oz.
W2221—Single White.....	\$.15	\$.40
W2222—Single Rose.....	.15	.40
W2223—Single Blue.....	.15	.40
W2220—Single Mixed Colors.....	.10	.30
W2231—Cup and Saucer, White.....	.30	1.50
W2232—Cup and Saucer, Rose.....	.30	1.50
W2233—Cup and Saucer, Blue.....	.30	1.50
W2230—Cup and Saucer, Variety Mix.	.25	1.00
W2240—Double, Variety Mixture.....	.20	.75
W2249—All Varieties Mixed.....	.15	.75
W2251—Campanula persicifolia (Peach Bells) White.....	.40	4.00
W2252—Campanula persicifolia (Peach Bells) Blue.....	.40	4.00
W2253—Carpatia, Blue.....	.15	.75
W2256—Campanula Pyramidalis Chimney Bell Flower. Blue.....	.15	1.50
◆		
W2279—Candytuft, Hardy (Iberis).....	.25	2.50
W2359—Centaurea Montana, Blue.....	.15	.70
W2395—Cerastium Tomentosum (Snow-in-Summer) White.....	.15	1.25

W2644—Blackmore & Langdon Strain. We believe that of the various English Delphiniums Blackmore and Langdon's take the lead. The seed we offer is the best that can be obtained from these famous growers. It contains many doubles and an unusual color range....	.90	10.00
---	-----	-------

W2643—Viking Strain. For large blooms many of which are double try this strain. The seed of this is grown for us by one of the leading European growers	.85	9.00
---	-----	------

W2660—Wrexham Strain or Hollyhock Delphinium. This strain is popular because of its large tall spikes which tower above many varieties like Hollyhocks. Contains some doubles and a wide range of colors.....	.80	8.00
---	-----	------

W2645—Bella Donna. Our strain is conceded to be the best true Bella Donna seed obtainable.....	.30	2.50
--	-----	------

W2646—Bella Mosum. Dark blue of the Bella Donna type.....	.35	2.75
---	-----	------

W2650—Chinensis (Butterfly Delphinium). Blue and white mixture.....	.10	.60
---	-----	-----

W2651—Chinensis White.....	.15	.75
----------------------------	-----	-----

W2652—Chinensis Dark Blue.....	.15	.75
W2653—Chinensis Light Blue.....	.15	.75

Please Notice

NOTE—We do not furnish any ¼ ounces at less than 20c. Fractions of ounces will be supplied as follows:

Price per ounce.....	30c	40c	50c	60c	75c	\$1.00	\$1.25	\$1.50	\$1.75	\$2.00	\$2.25	\$2.50	\$2.75	\$3.00	\$3.50	\$4.00
¼ oz. for.....	.15c	20c	25c	30c	40c	.50	.65	.75	.90	1.00	1.15	1.25	1.40	1.50	1.75	2.00
¼ oz. for.....		20c	25c	.30	.35	.40	.50	.60	.65	.70	.75	.80	.90	1.00		

Dianthus or Hardy Pinks	Large Pkt.	Oz.
W2700—Plumarius Mixed colors.....	\$.20	\$1.00
W2704—D. Perfection, Mixed colors.....	.20	1.00
2705—D. Sweet Wivelsfield Packet 40c
W2709—D. Latifolius, Double Atroc.....	.20	1.00
W2711—D. Caesius (Cheddar Pink)....	.20	1.00
W2715—D. Deltoides, Brilliant.....	.25	2.00
2717—D. Alwoodii, Mixed colors Pkt. 30c
2718—D. Alwoodii, Alpinus Packet 30c

Digitals		
W2725—Digitalis, The Shirley. Mixed colors. A new improved variety.....	.15	1.00

W2765—Echinops Ritro.....	.15	.60
W2910—Gaillardia grdf. The Dazzler.....	.20	1.00
2911—Gaillardia grdf. Bremen Pkt. 40c
W2921—Geum, Mrs. Bradshaw.....	.25	2.00
2922—Geum, Orange Queen... Pkt. 40c

Gypsophila Paniculata		
W2995—Single White.....	.10	.40
W2996—Double White.....	.40	4.00

Hollyhocks		
We Make a Specialty of Good Hollyhocks		
W3101—Chater's Double White.....	.20	1.25
W3102—Chater's Double Newport Pink.....	.25	1.50
W3103—Chater's Double Rose.....	.20	1.25
W3104—Chater's Double Red.....	.20	1.25
W3105—Chater's Double Yellow.....	.25	1.50
3110—Double Emperor Mixed colors. Ret. Pkt. 40c
W3112—Double Prince of Orange.....	.40
W3100—Variety Mixture.....	.15	1.00
W3117—Ruffled Allegheny, Jupiter.....	.30
W3118—Ruffled Allegheny Exquisite Rose.....	.30
W3115—Ruffled Allegheny Special Mixture.....	.15	1.00
W3120—Single Radiant Mixture.....	.10	.50

W3143—Heuchera Sanguinea (Coral Bells).....	.60
W3178—Honesty (Lunaria Biennis).....	.15	.75
W3250—Lathyrus Latifolius Mixed.....	.15	.60
W3260—Linaria Macedonica.....	.15	2.00
W3273—Lavendula Vera.....	.15	.75
3293—Lobelia Cardinalis, The Bishop. Pkt. 40c

Lupinus Polyphyllus		
W3321—Virgin.....	.40	2.50
W3322—Downer's Delight.....	1.00	5.50
W3323—Blue.....	.10	.25
W3325—Downer's Strain.....	.15	.60
W3326—Elliott's Sweet Scented Mixed	.25	1.00
W3328—Lavender Queen.....	.65	2.00
W3329—Sunshine.....	.65	4.00
W3330—Buff and Amber shades.....	1.00	5.50

W3334—Lychnis Chalcedonica.....	.15	.50
3445—Meconopsis Baileyi... Packet 40c

Myosotis		
W3490—Alpestris, Mixed.....	.15	.75
W3493—Alpestris, Royal Blue.....	.25	2.00
W3494—Alpestris, Blue.....	.15	.50
W3495—Palustris semperflorens.....	.30	2.00

Oenothera		
W3694—Oenothera, Afterglow.....	.10	.50
W3695—Oenothera, Youngii.....	.30	4.00

Viola Cornuta (Tufted Pansy)	Large Pkt.	Oz.
W3761—White.....	\$.15	\$1.50
W3763—Yellow.....	.20	2.00
W3764—Blue.....	.15	1.50
W3760—Mixed Colors.....	.15	1.25
3765—Blue Gem (Jersey Gem) Pkt. 40c
W3771—Bosniaca Free Blooming Rosy Purple.....	.15	1.50

W3780—Pentstemon, Sensation, New Hybrids.....	.40	3.50
W3865—Phlox decussata—Mixed.....	.20	1.50
W3894—Platycodon grandiflorum. Tall upright blue.....	.20	1.50

Oriental Poppy		
W3950—Scarlet.....	.15	.75
W3951—New Hybrids.....	.25	2.00
W3952—Dark Red.....	.25	2.00

Iceland Poppy (P. Nudicale)		
3965—Roseum—Coonara Pink Pkt. 20c
W3960—Mixed Colors.....	.20	1.25
W3970—Alpine Poppy, Mixed Colors....	.40	4.50

W3983—Phyalis Franchetti. (Chinese Lantern Plant).....	.15	.75
--	-----	-----

Pyrethrum		
W4000—Pyrethrum Hybridum Single, Mixed Colors. Splendid variety of our own growing.....	.20	2.00
W4010—Pyrethrum Double. Mixed Colors	.60	6.00

Primrose		
W4023—Primula. Moreton Mixture.....	.25	2.00
4024—Primula, Hardy New Blue Celeste. Ret. Pkt. 85c

W4211—Rudbeckia purpurea.....	.15	1.50
W4562—Saponaria Ocmoides.....	.15	.75
W4610—Salvia Azurea, Blue.....	.25	2.50
4631—Saxifraga Cordifolia Pkt. 85c
4632—Saxifraga Hypnoides... Pkt. 55c
4633—Saxifraga Rhei Superba. Pkt. 40c

Scabiosa		
W4663—Scabiosa Caucasica Perfecta Lavender.....	.40	3.00
4665—Scabiosa Caucasica Isaac House Strain..... Ret. Pkt. 40c

W4670—Shasta Daisy Giant Alaska....	.25	2.00
W4682—Sidalcea Pink Beauty.....	.25	1.50
4700 Sedums Dwarf Varieties Harris Special Mixture..... Pkt. 60c
4735—Sempervivums, Mixed Varieties. Pkt. 85c

Sweet William		
W6132—Pink Beauty.....	.15	.75
W6133—Scarlet Beauty.....	.15	.75
W6135—Holborn Glory.....	.15	.60
W6130—Mixed Colors.....	.10	.30

W6164—Stokesia Cyanea Blue.....	.20	1.00
W6179—Statice latifolia.....	.15	1.50

Veronica		
W8041—Veronica Officinalis.....	.20	2.50
W8042—Veronica Repens.....	.10	1.00
W8043—Veronica Teucrium Royal Blue..	.25	3.00

HARRIS' GLADIOLI

Prepaid Wholesale Prices on Gladioli in Quantities of 50 to 100 are 20% less than the prices in the Retail Catalog.

Send for our special price list of Gladioli for prices of bulbs in larger quantity.

Special Wayside Mixture for Roadside Stands

We began making this special mixture in response to a demand for good reasonably priced bulbs that would produce good spikes for cut flowers to be sold in mixed bouquets. The first year it was more or less of an experiment. Satisfied customers were so loud in their praise of it that we continue to offer our Wayside Mixture, improving it each year both in choice of colors and quality of bulbs.

The bulbs are free from disease, large enough to produce excellent blooms and in a wide range of the most popular colors including both early and late blooming varieties.

Successive plantings will provide a profitable income. Wayside Mixture \$3.00 per 100; \$14.00 per 500; \$27.50 per 1000.

Our "Special Price List of Gladioli" contains some unusually attractive offers. Send for it.

Don't gamble with inferior bulbs. You can't afford to use valuable space and labor planting diseased stock that is not true to name simply because it is a little cheaper. Our bulbs are large, clean, true to name and free from disease.



Gladiolus Early Sunrise

"Last year I ordered one of your special Wayside Mixtures of Gladiolus. These bulbs produced blooms equal to, or better than any I grew. From them I have about 120 choice bulbs for this year. We sell the flowers in the local curb market here at 50c to 70c per dozen stems." WILLIAM H. SHIPE, Danville, Pa.

"We had 1000 bulbs of your Wayside Mixture Gladiolus and were more than pleased with them. Kindly send us 1000 more." SCOTT & SMILEY, E. Syracuse, N. Y.

INSECTICIDES AND FERTILIZERS, ETC.

KILLS PLANT INSECTS

We have found this new spray material very effective against the common garden insects, such as Cabbage worms, Aphis, Rose slugs, Cucumber and Squash bugs (Striped Beetle). When applied regularly it is the only thing we know of that will effectively control the Tarnished Plant Bug (Aster Beetle).

In the greenhouse it is very effective against a wide range of greenhouse insects, including Aphis, rose insects, White Fly, etc.

NON-POISONOUS! Evergreen is harmless to man, and animals. It will not injure the most delicate plants and flowers.

1 oz. bottle.....	\$.35	Postpaid	32 oz. can (quart).....	\$ 3.50	By express
6 oz. bottle.....	1.10	Postpaid	1 gal. can.....	13.00	By express
16 oz. bottle (pint).....	2.15	Postpaid	5 gal. can.....	50.00	By express

The active principle in EVERGREEN is Pyrethrum, endorsed as a killing agent by entomologists and horticulturists everywhere. Evergreen is economical to use, as it must be diluted from 100 to 300 times.

Send for free booklet containing many valuable facts about Evergreen as well as Spray Chart and Dilution Table.

TOBACCO DUST. Used extensively for dusting plants to destroy or repel bugs and plant lice. For fumigating greenhouses the tobacco dust we sell is most excellent. It burns evenly and will light without the use of kerosene. Five pounds will fumigate a house 20 x 100 feet. 2 lb. 30c; 10 lb. 50c; 100 lb. \$3.50.

BLACK LEAF 40. (40 per cent Nicotine). A very effective insecticide for aphids, "lice" and all soft-bodied insects, such as rose aphid, apple tree aphid, etc. It is so concentrated that one part to 800 or 1000 parts of water makes an effective spray, costing less than two cents per gallon. Directions for use are printed on the can. 1 ounce bottle 35c; ½ lb. tin \$1.25; 2 lb. tin (qt.) \$3.25; 10 lb. tin \$11.85.

FORMALDEHYDE, (40 per cent). A valuable disinfectant for destroying germs that cause diseases in plants. It is very effective when used to destroy smut germs in oats and scab on potatoes. To treat oats use 1 pound (pint) formalin to 50 gallons of water and soak for ten minutes. For potatoes use 1 lb. to 30 gallons of water and soak two hours. In one-pound cans 35c per can; 6 cans \$1.80. 125 lb. kegs (about 16 gal.) \$20.00.

ARSENATE OF LEAD. This is the best poison to use against worms and insects that eat leaves of plants, fruits, etc. The powdered form may be used either in water or dusted on the plants. In water use 1 lb. to 30 gal. Powder. 1 lb. package 35c; 5 lb. bags, \$1.50 per bag.

CORROSIVE SUBLIMATE (Bichloride of Mercury). This powerful disinfectant is used to treat potatoes, and in the control of cabbage maggots. For the best way to use, see your local Farm Bureau Agent. ¼ lb. 90c; lb. \$3.35; 5 lbs. or more at \$3.00 per lb.

BORDEAUX MIXTURE. Used for spraying plants and trees to prevent fungus diseases which often greatly injure the crop. This material is in powdered form and is to be mixed in water before using, at the rate of 1 lb. to 36 quarts of water. Directions for use on the package. ½ lb. box 25c; 1 lb. 40c; 5 lbs. \$1.50.

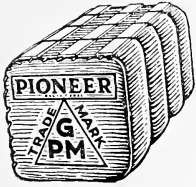
CUT WORM KILLER. A poisonous bait which kills cut worms. Very effective if used when the worms first appear. 1 lb. package 40c; 5 lb. \$1.50.

Protect Your Seed Corn From Crows

If you are troubled with crows and other birds pulling up your seed corn, treat it with **STANLEY'S CROW REPELLENT**. We use it on our own farm for corn, melons and cucumbers and find that birds will not bother seed that has been so treated. It will not harm the seed or clog the planter.

Small can (enough for 1 bu.) \$1.00

Large can (enough for 2 bu.) \$1.50



Peat Moss

We consider Peat Moss to be one of the most valuable materials for conditioning soil which we have yet found.

It is really a light colored virgin soil formed by the growth and decay of mosses (mostly Sphagnum) and aquatic plants. It is entirely free from fungus and from weed seeds. Peat Moss is remarkable in its ability to absorb and retain moisture.

We use a large amount of Peat Moss in our greenhouses. Soil mixed with Peat Moss makes ideal material for seedlings and potted plants, as it is light, very friable, has good drainage and will not crust or bake after watering. The Peat Moss becomes incorporated in the soil and adds humus to it. Peat Moss is superior to sand or ashes for pot planting and greenhouse benches.

Outdoors Peat Moss makes an ideal mulch for roses, peonies, rhododendrons, etc. There is nothing better to recondition the soil of old and worn out lawns.

Our Peat Moss is of very superior brand finely granulated, and free from any foreign matter. It is put up in bales, of about 180 lbs. each—enough to cover more than 240 square feet 1 inch deep.

Price—Single bale, \$3.50; 5 bales or more, at \$3.25 per bale

PULVERIZED SHEEP MANURE. This is an excellent fertilizer for all crops. It is rather costly to use on a large scale but for small gardens and especially for greenhouses and frames it can be used to great advantage. It not only furnishes actual plant food but also humus which is not supplied by chemical fertilizers. This is high grade material. There is no straw or other rubbish in it. It is pure dried and pulverized sheep manure. Use about 1 lb. to 4 or 5 square feet of surface.

10 lb. bag.	\$.60	100 lb. bag.	\$ 3.00
50 lb. bag.	2.00	1000 lbs. 10 bags.	21.00
1 ton.			\$40.00

NITRATE OF SODA. Gardeners should always have some nitrate of soda on hand and use it whenever they want to promote a quick, strong growth in plants. A little nitrate dissolved in water at the rate of about a tablespoon (1 oz.) to 2 gallons of water will stimulate a rapid growth either when applied to plants in frames, greenhouses or the open ground. If your plants don't grow well try nitrate on them—but don't use too much. 10 lbs. 65c; 50 lbs. \$2.50; 100 lbs. \$4.25; 200 lb. bag \$7.50; 1 ton \$65.00.

BONE MEAL. This is one of the best fertilizers for gardens, lawns, shrubs, fruit trees, etc. It is perfectly harmless and can be used with safety in any quantity desired. The plant food in bone meal is not immediately available so its benefit extends over a longer time than is the case with other fertilizers that are more soluble.

This bone meal is raw bone finely ground and contains 4½ per cent ammonia (nitrogen) and 50 per cent phosphate of lime. 10 lbs. 60c; 50 lbs. \$2.25; 100 lbs. \$4.25. Bags of 167 lbs. \$5.60 per bag.

Lowest prices will be quoted on large lots at any time.

Pot Labels and Garden Stakes

Keep a record of the kind and variety of seeds sown, dates, etc. Every gardener should use stakes and labels.

Pot Labels	Plain		Painted		Garden Stakes	100	1000	100	1000
	100	1000	100	1000		12" long, 1½" wide.	\$1.25	\$9.40	\$1.50
4 in. long.	\$.20	\$1.60	\$.25	\$2.00					
5 in. long.22	1.80	.28	2.20					

These are nice, smooth, white wooden labels of best quality. Weight for mailing: Pot labels 3 lbs. per 1000. Garden stakes 2 lbs. per 100.

GARDEN LINE. Good strong hemp garden line. 50 feet 50c; (by mail 55c); 100 feet 75c; 200 feet \$1.25. Weight 1 lb. per 100 feet.

RAFFIA—Better Than String

Our "AA Westcoast" Brand of Natural Raffia is far superior to all other grades for the cut flower grower. The strands are longer and wider and the color is lighter. Do not be misled by cheaper prices as only the best possible grade is economical for florist's use. Lb. 45c; 5 lbs. \$2.00.

Red Star Brand is a cheaper grade for Nurserymen, etc., but not adapted to florist's use. Lb. 30c; 5 lbs. \$1.25.

"Auto-Spray" No. 9

This is the most convenient hand sprayer we know of. We use it on our own farm and can highly recommend it. In construction and workmanship it is superior to other similar sprayers.

To operate: Remove pump with a half turn, fill tank two-thirds full of solution. Replace pump and with a few strokes compress air on solution. Then direct the spray. Two pumpings will discharge contents.

Uses. For spraying trees, shrubs, vines, field crops, greenhouses and country houses; for applying Paris green, arsenate of lead, bordeaux, lime and sulphur emulsions, disinfectants, cattle-fly oil, white-wash, cold water paints, etc.

Construction and Equipment. Tank (4 gal.) is of heavy best quality sheet brass or strong copper bearing galvanized sheet steel, corrugated to strengthen the can and prevent it from denting. It also makes it easier for the operator to pick the can up while loaded, without the danger of its slipping out of the hands. **Air Pump.** One piece seamless brass with new all metal check valve and special air release. Pump cylinder is one piece, insuring against leaking. **Hose**—2 ft. ¾" diameter, 5 ply wire bound. **Carrying strap** adjustable, with bronze snaps, **Auto Pop**, Automatic shut-off. To stop the flow of spray it is necessary only to release the fingers. **2-ft. Brass extension rod**—with elbow, and new Non-Clog Nozzle. The screw cap locking device locks in the pump cylinder and not in the gasket, which prevents the cap chewing or breaking the gasket.

PRICE:

Auto-Spray No. 9 B—Brass tank \$10.50; Auto-Spray No. 9 D—Galvanized tank \$6.95.

Extra Extension pipe 2 ft. length brass each \$.55.

For other Auto-Sprays, tools, etc., see our general catalogue.



Make Good Seeds Grow Better

Prevent "Damping off"! Stop Seed Rotting in the Ground!

We have found from practical experience on our farm and in our greenhouses that it **pays to use SEMESAN**. The process of treating seed and soil is so easy, and the cost so small that no grower can afford not to take these simple precautions to **Insure Better Crops**.



SEMESAN is now available in four forms:

SEMESAN—Can be applied in either the **liquid or convenient dust form** to prevent or control effectively a great variety of parasitic diseases and fungoid growths borne by seeds, bulbs, seed pieces, plants, grafts and soils. Semesan is harmless to seed and plant life but extremely poisonous to disease and fungous organisms. It generally also hastens germination. 2 oz. 50¢; 1 lb. \$2.75; 5 lbs. \$13.00; 25 lbs. \$56.25.

SEMESAN Jr.—A less expensive but equally effective form of Semesan for the dry dust disinfection of both field and sweet corn seeds. Two ounces will treat 1 bu. of seed corn. 4 oz. 50¢; 1 lb. \$1.75; 5 lbs. \$8.00; 25 lbs. \$31.25.

SEMESAN Bel (New Improved)—One pound of the New Improved Semesan Bel will treat 16-20 bushels of cut potatoes. It also possesses great disease control properties especially in respect to Rhizoctonia and seed-borne Scab.

The "Instantaneous Dip" method of applying new Semesan Bel saves time and labor. 4 oz. 50¢; 1 lb. \$1.75; 5 lb. \$8.00; 25 lbs. \$31.25.

CERESAN—The new disinfectant for seed treatment of small grains, has proved effective in controlling seed-borne diseases of wheat, barley, oats, etc. Will not injure seed or grain drill. Only 2 oz. required to treat a bushel of wheat or rye, and 3 oz. to a bushel of oats. 1 lb. 75¢; 5 lbs. \$3.00; 25 lbs. \$12.50.

Write today for booklets describing the use of Semesan Products to better the crops you grow. They will be sent free.

Germão Hotkaps Make early planting safe and profitable.



In order to grow profitable vine crops, the grower must do everything possible to insure the greatest yield of early fruit at a minimum cost. The use of *Hotkaps* has proved very profitable in growing many early crops.

This remarkable invention consists of a scientifically constructed wax paper cone which is placed over the plant or hill of seeds in the field. They act as **miniature hot houses** and enable the grower to set out his plants or plant his seed as soon as the ground gets warm, as they afford perfect protection from frost. **Hotkaps** also protect the plants from insects, such as the striped beetle which does so much damage to the young plants, wind, beating rains and prevents the ground around the plant from baking. **This insures earlier and better fruit.**

We find on our own farm that the cost of using *Hotkaps* on vine crops is many times repaid by the earlier and better fruit. Growers of **early sweet corn** find they can plant their seed earlier without danger of the plants being killed by late frost.

Hotkaps are easy to set out. The method is seen in the picture above and full directions are sent with each lot of *Hotkaps*.

PRICES—50 *Hotkaps* (with special setter and tamper) \$1.50; 100 *Hotkaps* (with special setter and tamper) \$2.50 Postpaid. Not prepaid: 250 with special setter and tamper \$4.00 (weight 9 lbs.) 1000 *Hotkaps*—\$11.50 (weight 26 lbs.) 5000—\$11.00 per 1000; 10,000 or more \$10.75 per 1000.

Steel *Hotkap* setter and tamper—\$2.50 (weight 3 lbs.)

Folder giving full description and directions for using Hotkaps will be sent to anyone interested on request. Please write.

MULCH PAPER

It has been found that waterproof paper placed over the soil before sowing seed or setting out plants not only prevents weeds from growing but also keeps the soil warm and stimulates the growth of the crop.

The most striking results we got in our trials with *Mulch Paper* last season was with sweet corn planted on rather heavy land. The row under the paper grew taller and yielded much more than the row along side which was left uncovered. Lima beans also came up more evenly and quickly when protected by *mulch paper* than without it.

It is always difficult to keep weeds out of melons and cucumbers, especially close to the hills. By covering with *mulch paper* before planting the seed, weeds can be kept out without any trouble. The paper is placed over the rows or hills and a hole cut in it where the seeds are to be planted. The only weeds that can come up are the very few which can get through the opening for the plants. These can easily be removed. The paper also stimulates the growth of the vines making them more vigorous and productive. Circulars and directions for using will be mailed on application.

"Gator Hide" *Mulch Paper* (in rolls)

18 in. wide, 300 yards. \$3.50 per roll 36 in. wide, 300 yards. \$7.00 per roll
Special prices for large lots. Please write us before buying.