

Historic, Archive Document

Do not assume content reflects current scientific knowledge, policies, or practices.



*Glenwood Nursery
Since 1866*

GLEN BROTHERS

INCORPORATED

ROCHESTER, N.Y.

"We Furnish the Home-OUTDOORS"



THE FIRST THINGS TO KNOW

What is there about the trees and plants that come from Glenwood Nursery that gives them especial importance in your estimation?

1. **They are dependable.** Every possible care is taken to have the stock that leaves this Nursery true to name and description.
2. **They are healthy.** We take extraordinary precautions against insect and fungus attacks, and it is our earnest endeavor to have all our trees and plants entirely free from disease.
3. **They are hardy.** We are located in the cold North; the stock that we propagate and grow becomes acclimated to the conditions as here existing, and if we can successfully winter over stock under temperatures of 15 to 20 degrees below zero, it will withstand the same temperatures for you.
4. **They are vigorous.** Ample spreading space has been given each tree or plant in the Nursery; where pruning has been necessary, we have pruned; where fertilizing has been indicated by unsatisfactory growth, we have fertilized; where spraying has been an ounce of prevention, we have sprayed—the whole idea being to make our stock vigorous and of sturdy, persistent growth.
5. **They are productive.** Whether planted for nuts, fruit, flowers, or for ornamental foliage, the trees and plants we send out are prepared by the treatment they have received at our hands to do the best that Nature has deemed possible. And, frequently, by reason of the fulness and excellence of their product, they surpass what we considered to be the limit of possibility for them.

IMPORTANT INFORMATION

The Order Blank which accompanies this Catalogue is for the convenience of customers. It will greatly facilitate filling orders.

Always Give Full Address—name, post office, county, and state. It is very important that this information be plainly written.

Shipping Instructions. Give your nearest express office and railway station, or stage route, and the name of the transportation company. State how you wish us to ship—by freight or express; also designate the route; otherwise we use our own discretion in forwarding.

Prices in this catalogue are f.o.b. Rochester, N. Y. There are no charges for packing or boxing.

Terms Cash on or before delivery to transportation companies. **Accounts.** When requested, we will open accounts with persons or firms of approved credit, or with those who offer satisfactory references. Express C.O.D. Orders will be filled, provided one-half of the amount is sent with the order.

Guaranty. It is obviously to our advantage to have all stock that leaves our Nursery true to name and to grow to the entire satisfaction of the purchaser. Every effort is put forth to have these conditions a part of every sale. But conditions of soil, climate, care, are sometimes such that it is difficult for any tree or plant to grow; and, because there are so many things that influence the life of a tree or plant after it leaves our Nursery, we do not give any warranty as to description, quality, or productiveness. If it proves that stock is not true

to name, by error on our part, we will replace such plants immediately; and it is agreed between the purchaser and ourselves that we shall not be held responsible for an amount greater than the purchase price of the stock.

Guaranteeing Plants. This is not done by any reputable nurseryman unless he charges prices sufficiently high to more than offset any possible loss. When good stock is received in good condition, no difficulty should be experienced in getting it to grow and do well unless the conditions are not favorable, and it is obviously not just or logical for the nurseryman to have to assume responsibility for cultural failures!

And it would also hardly be fair to the customer who takes proper care of stock and who understands the requirements of different plants, to charge him a price higher than normal merely to protect the nurseryman from losses incurred by guaranteeing stock to careless, incompetent, or unscrupulous persons. The logic of this should appeal to any sound business judgment.

Errors. If mistakes are made in filling orders, we will gladly rectify them if notified within ten days after receipt of stock.

Care of Stock When Received. Soak the roots of the trees and plants with water, and either place them in a cellar and keep damp or bury them in a trench until the holes are ready for their transplanting. If dry and shriveled, the best plan is to bury them for a few days, root and branch, in damp earth; if frozen when received, bury in earth until the frost is out.

RELIABILITY

FOR more than sixty years "From Glenwood Nursery" has been a guarantee of first quality stock, true to name, handled and packed right, delivered to customers in the best possible condition. We point with pride to the ornamental trees and shrubs in private and public grounds, parks and streets; the roses and plants growing and blooming in garden and house, the beaming orchards in every fruit locality for evidence in regard to how well we are succeeding in our endeavor to produce the best.

Located near the shores of Lake Ontario, with wide variations of temperature, at times 15 degrees below zero, the conditions are extremely favorable for the production of hardy, robust trees and plants. These conditions—with the soil best suited to produce the healthiest conditions of growth, namely, that solid, firm texture of the wood, with abundant fibrous root, so necessary to successful transplanting—enables us to offer the choicest nursery stock with entire confidence to planters in all sections of the country.

Our experience of more than sixty years has taught us that good cultivation is of supreme importance, hence we spare no pains or expense to maintain the highest efficiency in this direction.

To the planter or purchaser of nursery stock, at least three things are indispensable: first, varieties true to name; second, healthy, vigorous, well-matured trees or plants; and third, careful and judicious packing, without which all may be lost.

We give to our packing and shipping careful, personal supervision. And still further to protect our patrons, as well as ourselves, against loss in this direction, we employ the most skilled and competent hands to assist us.

GET GOOD NURSERY STOCK

THE most economical trees and shrubs to plant are seldom the ones quoted at the lowest prices. Cheap stock sometimes is good, but more often it is priced low because it is cull stock or poorly grown and carelessly handled. There is, in general, a price below which good stock cannot be grown and sold at a fair profit by even the most efficient nurseryman, and the man who professes to give most of his profits to you, a stranger, is seldom a safe man to do business with. Every nurseryman grows some cull stock; some nurserymen destroy it. Too much of it is sold every year to make trouble later for the planter.

A good apple tree may be bought for a dollar or less, but if it cost five dollars it usually would be cheaper at that price than cull stock shipped free of charge. The cost of the nursery tree is not the important part of the transaction. You are not after a nursery tree—you are bent upon getting a series of worth-while crops and the nursery stock is the first step only. If you must care for the tree for even one extra year, and wait a year longer for the first worth-while crop, you will have lost right there more than the difference between the price of good and poor stock, while every experienced gardener and fruit grower can testify that it may take five years longer for poor stock to grow into real trees, if indeed, it ever amounts to anything.

The poor tree starts under a handicap from which it is likely never to recover. In ten or twelve or fifteen years come the big losses on such stock when losses may be measured each year in bushels per tree.

On the other hand, the highest prices are no guarantee of vast superiority in the stock. A comparison of prices from several extensive dealers will give an idea of a fair level of prices.

—“The Flower Grower.”

THE PRICES quoted herein for trees and plants are fixed after careful, painstaking computation of the exact cost of production, and are made to fit the quality of “Glenwood Grown” stock and allow ourselves a fairly legitimate margin of profit. We are not controlled by the prices of other nurserymen, which in many instances are the result of haphazard guess-work, and the goods must necessarily be of a quality to fit the price, for no one will continue to sell goods at a loss.



This Big Surprise Box of 6 Big Evergreens (exactly as pictured) \$16.50

To commemorate this 63rd Anniversary of Glen Brothers, Inc., we have selected from the large stock of evergreens at Glenwood Nursery, 6 of the choicest varieties growing there, as follows:

- | | |
|----------------------------------|-------------------------------------|
| 1 Norway Spruce.....size 2-3 ft. | 1 American Arborvitae..size 2-3 ft. |
| 1 Irish Juniper.....size 2-3 ft. | 1 Scotch Pine.....size 2-3 ft. |
| 1 Red Pine.....size 3-4 ft. | 1 Globe Arborvitae.....size 18 in. |

Every plant has been transplanted. Every plant is shipped balled and burlapped.

Every plant is a different variety.

A \$21.50 VALUE for \$16.50

We invite every customer wanting evergreens to take advantage of this SPECIAL OFFER—It's real value.

Evergreens

PLANTING that depends entirely upon deciduous trees for ornamental effects is sure to have a bleak appearance during the winter months. The leaves are gone, and bare limbs and trunks do not, for some reason, impart the same impression of life as do trees carrying their green covering throughout the year.

That is one very important reason for planting evergreen trees—they provide living green coloring during an otherwise bleak season, imparting a sense of continuous growth to beholders. They have importance, too, as windbreaks or shelter-belts, as screens for undesirable views, or as a means of insuring privacy.

We are careful to dig all evergreens with a ball of earth, which we wrap with burlap, thus assuring safe shipment. In ordinary seasons, the most favorable times for planting are the latter part of April, or during May or early June, or toward the end of summer and early fall.

ABIES (Fir)

These beautiful, luxuriant evergreens are invaluable for windbreaks and indifferent to unfavorable circumstances.

Abies Balsamea. (*Balsam or Balm of Gilead Fir*). A rapid-growing tree 50 to 80 feet high, with dark green, spicy foliage; very hardy.

2-3 feet.....	Each	\$4.00
3-4 feet.....	Each	5.00
4-5 feet.....	Each	7.50

A. concolor. (*White Fir*). Of graceful form; handsome foliage, glinting blue and silver.

2-3 feet.....	Each	\$7.00
3-4 feet.....	Each	8.50

A. Nordmanniana. (*Nordmann's Silver Fir*). Dense Evergreen of symmetrical form; vigorous; foliage dark, lustrous, with a silvery sheen.

1 ½-2 feet.....	Each	\$3.00
2 -3 feet.....	Each	5.00
3 -4 feet.....	Each	8.00

CHAMAECYPARIS (*Retinospora and Cypress*)

These low-growing evergreens of compact, symmetrical form, retain their ornamental value many years. The foliage is feathery and lace-like, and ranges through shades of green, steel-blue, and orange-yellow.

Chamaecyparis obtusa nana. (*Dwarf Retinospora*). Bushy, very dense, short, dark green foliage.

1-1 ½ feet.....	Each	\$5.00
-----------------	------	--------

C. obtusa nana aurea. (*Golden Dwarf Retinospora*). Similar to the preceding, but a beautiful golden color.

1 ½-2 feet.....	Each	\$5.00
-----------------	------	--------

C. pisifera. (*Sawara or Pea-fruited Cypress*). Bright green, feathery foliage with somewhat pendulous branches. Altogether lovely.

2 ½-3 feet.....	Each	\$6.00
3 -4 feet.....	Each	8.00

C. pisifera aurea. (*Golden Pea-fruited Cypress*). A distinct form of the above. The new growth is rich golden yellow.

2 ½-3 feet.....	Each	\$6.00
3 -4 feet.....	Each	8.00



Austrian Pine Savin Juniper Pyr. Arborvitae Canadian Hemlock Irish Juniper Globe Arborvitae

Chamaecyparis (Continued)

C. pisifera filifera. (*C. filifera*). Thread-branched Cypress. The branches are thread-like and droop gracefully; foliage bright green.

	Each
2-2 ½ feet.....	\$6.00
3-4 feet.....	8.00

C. pisifera plumosa. (*C. plumosa*). Plume-like Cypress. The favorite for hedges or extensive plantations, with dense, yet fleecy, light green foliage.

	Each
2 ½-3 feet.....	\$4.50
3 ½-4 feet.....	6.00

C. Pisifera squarrosa. (*C. Squarrosa*). Silvery blue, feathery foliage. May be kept at any height by pruning.

	Each
2-3 feet.....	\$3.00
3-4 feet.....	5.00

C. Plumosa Aurea. (*Golden Retinospora*). Golden yellow foliage, soft and plume-like. Very attractive in spring and summer. A pleasant color contrast when planted with other evergreens.

	Each
2-3 feet.....	\$5.00
3-4 feet.....	7.50

C. Thunbergii. (*Rare*). Has a soft, steel colored foliage unlike any other evergreen withstanding shearing well and as specimens planted on a lawn are very effective.

	Each
2-3 feet.....	\$6.00
3-4 feet.....	8.50

JUNIPERUS (*Juniper and Cedar*)

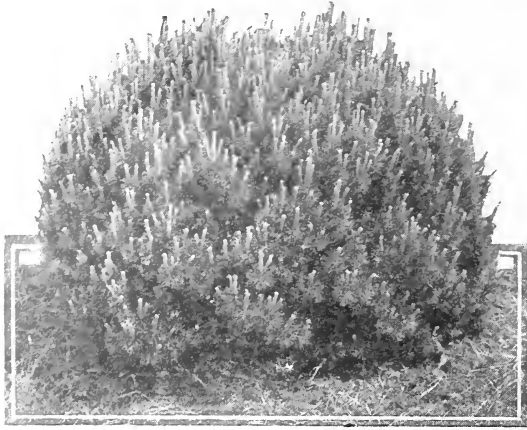
Evergreens of much beauty, ranging from low, prostrate or trailing shrubs to tall trees. Effective either as specimens on the lawn or in groups. The low forms are adaptable to rocky slopes or sandy banks. Some make excellent hedges, shelters and windbreaks.

Juniperus communis aurea. (*Golden Common Juniper*). Low-growing and spreading; particularly useful for edging. The tips of the branchlets are a bright golden yellow.

	Each
1-1 ½ feet.....	\$2.50
2-3 feet.....	4.00



ARBOR VITAE—Thuya occidentalis, var. Pyramidalis



Mughus Pine

Junipers (Continued)

J. communis hibernica. (*Irish Juniper*). A slender, columnar form. Branches upright, densely covered with the dark green foliage.

	Each	10
1 ½-2 feet.....	\$2.50	\$22.50
2 -3 feet.....	3.50	32.50
3 -4 feet.....	5.50	

J. communis suecica. (*Swedish Juniper*). Upright form, similar to the preceding, but more open branches. Foliage glaucous green, lighter, and more bluish than that of the Irish Juniper.

	Each	
1 ½-2 feet.....	\$2.50	
2 -3 feet.....	3.50	

J. Prostrata. (*Creeping Juniper*). Low prostrate habit; bluish-green foliage.

	Each	
2-3 foot spread.....	\$3.50	
3-4 foot spread.....	5.00	

J. Sabina. (*Savin Juniper*). Low, bushy, spreading, with very dense, dark green foliage that emits a strong odor when bruised.

	Each	
1 -1 ½ feet.....	\$3.50	
1 ½-2 feet.....	4.50	
2 -3 feet.....	5.50	

J. Sabina tamariscifolia. Trailing; valuable on light soils and for rock-gardens. Foliage bright green, bronzy in winter.

	Each	
10-12 inch spread.....	\$2.50	
12-15 inch spread.....	3.50	
15-18 inch spread.....	4.00	
18-24 inch spread.....	5.00	

J. virginiana. (*Red Cedar*). Tall native tree of great beauty, hardness and handsome appearance.

	Each	
2-3 feet.....	\$3.00	
3-4 feet.....	4.50	
4-5 feet.....	6.00	

J. virginiana glauca. (*Blue Cedar*). Allied to the preceding, but has beautiful, silvery blue foliage. Perfectly hardy and transplants easily.

	Each	
3-4 feet.....	\$6.00	
4-5 feet.....	8.00	

J. pfitzeriana. Spreading, graceful habit, with silvery green color. Distinct and charming.

	Each	
1 ½-2 feet.....	\$5.00	
2-3 feet.....	6.00	

PICEA (*Spruce*)

Some of the most ornamental and useful of the conifers. Many are rapid, symmetrical growers.

Picea canadensis. (*Black Hills Spruce*). A very hardy western variety of the well-known white Spruce. Heavy dark foliage and compact form.

1 ½-2 feet.....	Each	\$3.50
2 -3 feet.....		5.50

P. excelsa. (*Norway Spruce*). A tall, picturesque tree, popular as an ornamental and for shelters and windbreaks; hardy; rapid grower. Foliage shining dark green. Stands pruning well.

	Each	10
2-3 feet.....	\$3.00	\$27.50
3-4 feet.....	4.00	37.50
4-5 feet.....	6.00	
5-6 feet.....	8.00	
6-7 feet.....	10.00	

P. glauca. (*Colorado Blue Spruce*). A very hardy tree from the Rocky Mountains. Its regular, pyramidal shape and beautiful silvery blue foliage are exceptionally ornamental.

	Each	
1 ½-2 feet.....	\$6.00	
2 ½-3 feet.....	10.00	
3 -4 feet.....	15.00	

P. Douglasi. Douglasi Spruce. A pyramidal tree that grows to tremendous proportions. Horizontal branches and pendulous branchlets; foliage bluish green.

2 ½-3 feet.....	\$4.00
3 -4 feet.....	5.00
4 -5 feet.....	6.00

PINUS (*Pine*)

Strong, rapid growers, that will thrive better on poor soils than on extremely rich ones, although they are grateful for medium conditions.

Pinus nigra austriaca. (*Austrian Pine*). Robust grower; rigid; very dark green. Wonderfully adaptable to conditions and does especially well at the seashore.

	Each	
2-3 feet.....	\$5.00	
3-4 feet.....	7.50	

P. Mughus. (*Dwarf Mountain Pine*). Spreading in growth, usually broader than high. One of the most valuable dwarf evergreens.

	Each	
15 x 15 inch.....	\$4.00	
24 x 24 inch.....	6.50	

P. Resinosa. (*Red Pine*). One of the hardiest and most vigorous growing pines. Its spreading branches covered with long, green needles make it an outstanding variety of pine. Splendid for sea-shore planting or near lakes.

	Each	10
2-3 feet.....	\$3.50	\$30.00
3-4 feet.....	5.00	45.00

P. sylvestris. (*Scotch Pine*). A tall-growing, broadly pyramidal tree with strong, erect shoots and bluish green needles. Quite hardy, and makes good growth, even in very poor soil.

	Each	10
2-3 feet.....	\$3.50	\$32.50
3-4 feet.....	4.50	

TAXUS (*Yew*)

Evergreen, slow-growing trees with dark green foliage densely clothing the branches. In autumn, the bright scarlet berries that generously dot the green background make a great showing.

Taxus canadensis. (*Canadian Yew*). A prostrate shrub with wide-spreading, slender branches, densely clothed with the yellowish-green leaves that in winter usually assume a reddish tint.

	Each	
1 ½-2 foot spread.....	\$3.50	
2 -2 ½ foot spread.....	4.50	

T. cuspidata capitata. (*Clustered Japanese Yew*). A free-growing open tree of the highest merit and of great hardness. Warm green needles. A rare acquisition.

	Each	
1 ½-2 feet.....	\$5.00	
2 -2 ½ feet.....	7.50	



Evergreen Foundation Planting

TSUGA

Tsuga canadensis. (*Canadian Hemlock*). Beautiful free, drooping trees, but may be used as a tall hedge; dark green, the rich coloring being retained all winter. **Each**

2-3 feet.....	\$5.00
3-4 feet.....	6.50

THUJA (Arborvitae)

There are widely varying forms adaptable to many locations—spire-like forms, pyramidal forms, globular forms. The color likewise varies—light green, bright green, dark green, bluish green, golden green, golden yellow, bronze, so that there is an Arborvitae to supply the color-note and form needed in any landscape.

Thuja occidentalis. (*American Arborvitae*). Will develop into a tree 60 feet tall, of compact, pyramidal form; leaves bright green above, yellowish beneath. Young trees make excellent specimens in tubs, for decorations of porches, etc.; also much used in formal gardens and as hedges.

	Each	10
2-3 feet.....	\$3.50	\$32.50
3-4 feet.....	4.50	42.50
4-5 feet.....	6.00	
5-6 feet.....	8.00	

T. occidentalis compacta. (*Parson's Compact Arborvitae*). A low-growing, dense, globular form of the above, with grayish green foliage. **Each**

1 ½-2 feet.....	\$3.00
-----------------	---------------

T. occidentalis globosa. (*Globe Arborvitae*). Symmetrically globular in form and of low, dense growth; beautiful light green. In great demand for formal effects. **Each**

1 ½-2 feet.....	\$3.00
-----------------	---------------

T. occidentalis Hoveyi. (*Hovey's Golden Arborvitae*). A compact-growing variety of distinct conical shape; light golden green. **Each**

2-3 feet.....	\$3.00
3-4 feet.....	5.00

T. occidentalis lutea. (*George Peabody's Golden Arborvitae*). Dwarf, dense-growing, pyramidal form with golden yellow foliage. **Each**

2-3 feet.....	\$4.25
3-4 feet.....	6.50
4-5 feet.....	10.00

T. occidentalis pyramidalis. (*Pyramidal Arborvitae*). Of much value in formal gardens because of its narrow outline. Branches densely clothed with dark green leaves. **Each**

	10
2-3 feet.....	\$5.00
3-4 feet.....	7.00
4-5 feet.....	8.50
5-6 feet.....	12.50

T. occidentalis. (*Tom Thumb*). Fine low-growing form of slow, symmetrical growth. Hardy. **Each**

18-24 inch.....	\$3.00
2-3 feet.....	5.00

T. occidentalis Wareana. (*Siberian Arborvitae*). Broad-pyramidal in shape, of slow, dense growth, with stout branches and bluish green foliage. **Each**

2-3 feet.....	\$4.00
---------------	---------------

T. orientalis. (*Biota orientalis*). (*Chinese Arborvitae*). Up-right, parallel sprays of brilliant green. Compact growth. **Each**

2-3 feet.....	\$3.00
3-4 feet.....	4.00
4-5 feet.....	5.00



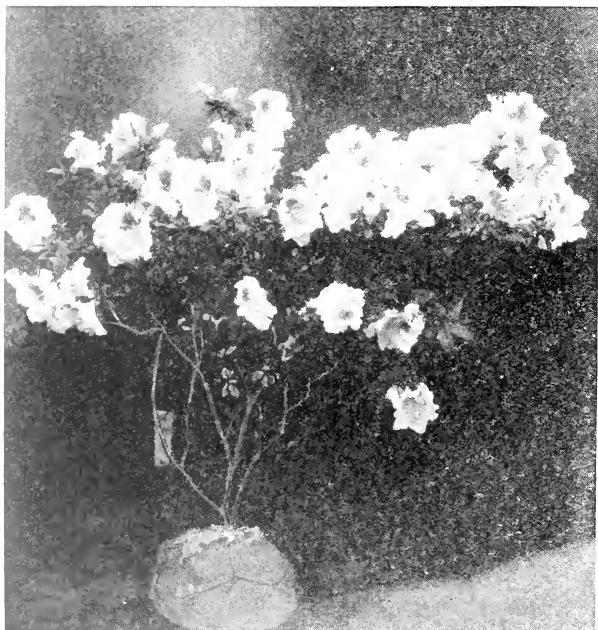
Evergreen Entrance Planting
Consult Our Landscape Department with Reference to Like Problems



Rhododendrons. These enchanting plants produce the most delightful effect in ornamental planting

Broad-Leaved Evergreen Shrubs

THE winter aspect of home grounds may be greatly enhanced by a planting here and there of some of the luxuriant shrubs listed in this department. Properly grouped in beds and borders or as foundation plantings, their rich, lustrous green foliage adds color and charm to the whole planting-scheme. The flowers and berries that appear in their respective seasons make these shrubs stand out strongly as year-round ornamentals. A cool, moist soil, with a porous substratum, and a northern exposure, is preferred location with most members of the group. We ship all these Evergreen Shrubs with a ball of earth, wrapped in burlap. They will bloom the first season.



An Azalea balled and burlapped

ABELIA (*Bush Arbutus*)

L. Grandiflora. One of the most beautiful shrubs in cultivation. Graceful, arching stems bear semi-evergreen dark, glossy leaves. Flowers pinkish-white about an inch long, borne from July until checked by frost.

	Bushy Plants	Each	10
2- 3 feet.....		\$1.00	\$ 9.00
18-24 inches.....		.75	6.50

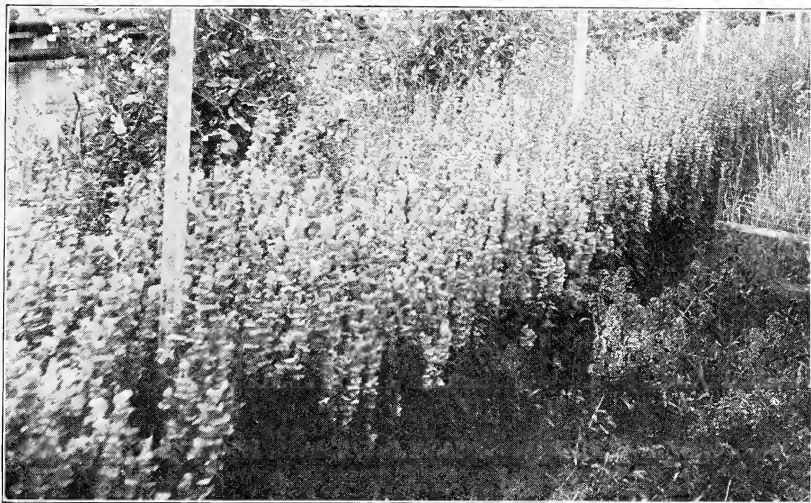
AZALEAS

A. amoena. (*Japanese Evergreen Azalea*). A bushy, dwarf evergreen with small green leaves that deepen to a lustrous coppery hue in winter. Its neat appearance is attractive at all seasons, but in April or May the whole plant is clothed with a mass of brilliant claret-colored flowers, that hold their beauty three or four weeks. Such beautiful little plants are ornaments anywhere, and are especially desirable for edging drives and walks, for dwarf hedges, groups or for bordering Rhododendron and Kalmia beds. The habit of this Azalea is so dense and compact that it makes splendid flowering hedges, for which purpose we highly recommend it.

	Each	10
12-15 inches, balled.....	\$2.50	\$22.50
10-12 inches, balled.....	2.00	18.50

Azalea Kaempferi. (*Rhododendron Kaempferi*; *R. indicum*). Richness of coloring and profuseness of bloom are two of the qualities that make this shrub such a pleasing subject in the summer-time. The dark green leaves, attractive the year round, make a fitting background for the rich masses of bloom and also make it an ornamental specimen during the winter months. Very hardy, withstanding the cold weather at the Arnold Arboretum without winter-killing. If planted in a partially shaded position, the brilliant flowers remain longer in good condition than if planted in full sunlight. Splendid bushy plants.

	Each	10
12-15 inch, balled.....	\$3.00	\$27.50
10-12 inch, balled.....	2.50	22.50



PRICE-LIST AND RUST CIRCULAR

Snapdragons are becoming one of the most profitable crops and the flowers are used for almost every purpose—even wedding bouquets. Now that rust can be entirely prevented they are practically a sure crop if ordinary judgment is used in growing them.

Snaps are usually planted about 12 in. each way, or given about that amount of room, and in good growing soil. They must be staked or supported in some way so stems will not get crooked. They may be grown wild with good results, but with much better success if trimmed to a certain number of stems and all unnecessary growth removed.

In the year 1920 we had a bed of Snaps that seemed completely destroyed with rust—even the ground under the plants was red with rust. It was discarded as worthless and the bed would be used for another crop as needed. Several weeks passed before it was needed and we noticed strong new growth free from rust coming on the plants. They looked so promising we thought we would experiment with them and did not even wet the soil for weeks. This new growth kept perfectly clean and produced as fine a crop of flowers as we have ever had. To further carry on the experiment for two years after this we grew Snaps in the same bed and same soil—with the addition of manure—and have had two good crops entirely free from rust grown in this “rusty” soil in a “rusty” house and only one condition was different, viz: the plants were never sprayed or foliage wet with water at any time.

Therefore, from actual experience we say **DO NOT WET THE FOLIAGE OF SNAPS AT ANY TIME AND YOU WILL HAVE NO TROUBLE WITH RUST IN GROWING THEM.**

We make a specialty of Snapdragons for the wholesale trade, buy our seed from specialists—using Ramsburg’s seed on all the varieties he grows. We are offering the following varieties from pots for this season, topped and branching, well established and free from rust.

\$5.00 per 100 \$45.00 per 1000

Philadelphia, the most popular clear pink
Keystone, dark pink, taller than Nelrose
Silver Pink, silvery pink, great producer
Garnet, rich velvety red
Scarlet, bright and gay

Nelrose, rose pink
Phelps White
Phelps Yellow
Orlando, lovely bronze
Ramsburg’s Fancy Mixed

\$6.00 per 100 \$55.00 per 1000

Helen, exquisite delicate salmon
Golden Pink Queen, attractive and popular
Hybrid Pink, delicate orchid shade
Jennie Schneider, exceptionally fine

Geneva, glistening rose pink
Chestnut, a novelty in its color
White Rock, new and choice
Penn Orange

It is discouraging to buy a lot of plants and have them arrive all “jumbled together.” We pack in shallow boxes, each plant wrapped separately and all well cleated so they cannot move. This is a part of our business and we have had the experience and know how to do it right.

You cannot go wrong if you plan to give a part of your greenhouse to Snaps. Samples mailed for 25c postage.

GENEVA FLORAL CO., GENEVA, N. Y.

A. Hinodigiri. A hardy, vigorous-growing variety with bright carmine flowers in such profusion as almost to hide the dense, round, dark green foliage. The flowers remain open for a long time. In winter, the leaves take on a reddish tinge.

	Each	10
12-15 inch, balled.....	\$3.50	\$32.50
10-12 inch, balled.....	3.00	27.50

BUXUS (Boxwood)

Buxus sempervirens suffruticosa. (*Dwarf Box*). A low-growing, compact edging plant with small, oval leaves; much used in formal plantings.

	100	1000
4-6 inch transplants.....	\$30.00	\$250.00

COTONEASTER

Cotoneaster microphylla. A low, spreading shrub, with minute, glossy, persistent leaves. Native of the Himalayas. Flowers pure white, in late spring; fruit bright red, persistent until midwinter. This is a very attractive and ornamental shrub the year round.

	Each	10
Field Grown Plants, Extra Fine.....	\$2.00	\$17.50

ILEX (Holly)

Ilex opaca. (*American Holly*). Especially familiar because of its use at Christmas. A slow-growing tree with thorny, shining leaves; bright red berries in winter.

	Each
12-18 inch, balled.....	\$3.00
18-24 inch, balled.....	3.50

KALMIA

Kalmia latifolia. (*Mountain Laurel*). Bushy shrubs, with bright, evergreen leaves and a profusion of charming pink and white flowers. We can supply strong, bushy, well-shaped plants in almost any size and quantity. Write us for prices on carload lots (300 to 600 plants, according to size). We lift all plants with a ball of earth so that there will be no shock in transplanting.

	Each	10	100
2- 3 feet, well furnished.....	\$4.00	\$35.00	\$300.00
18-24 inch, well furnished.....	2.50	22.50	200.00

PACHYSANDRA

Pachysandra terminalis. (*Japanese Spurge*). A low evergreen plant, with glossy dark green foliage. Adapted for covering the ground, where it is difficult to establish grass.

	10	100	1000
Field-grown Plants.....	\$2.50	\$20.00	\$150.00

Rhododendrons

FOR years Glenwood Nursery have supplied the private estates of many prominent American people with NATIVE RHODODENDRONS. This year our stock is larger and better than ever. The greatest of all the broad leaved evergreens, there is absolutely nothing that can give the same pleasure and satisfaction when planted in masses. For covering banks, for grouping and massing in shady situations, as an undergrowth in wooded places or for planting beside drives and paths, nothing is more pleasing. The heavy, glossy, green leaves make a magnificent setting for the large showy flowers. These strong, hardy plants bloom profusely in June and July. The flowers are of large size, borne in dense trusses; colors, white and pink. Nothing in horticulture can give the same result as the Native Rhododendrons.

Rhododendron carolinianum. This is one of our finest introductions and fills a long-felt want for an absolutely hardy dwarf Rhododendron, with clear pink flowers free from any hint of magenta. Stands exposure unusually well and is invaluable as a single specimen or for massing.

	Each	10	100
2-3 feet, balled specimen.....	\$4.00	\$35.00	\$300.00

R. catawbiense. The hardiest Rhododendron. We recommend it as the finest for general use, withstanding exposure and extremes of temperature where other Rhododendrons fail. It is a very free bloomer, with foliage of a dark, rich, lasting green, which never rusts. The trusses of flowers are a bright red-purple.

	Each	10	100
2-3 feet, balled specimen.....	\$4.00	\$35.00	\$300.00
3-4 feet, balled specimen.....	7.50	70.00	650.00

R. maximum. (*Great Laurel*). A well-known native of our mountain regions, with great clusters of white or rose-pink flowers in June and July, just after the hybrid varieties have ceased blooming.

	Each	10	100
2-3 feet, balled specimen.....	\$3.00	\$25.00	\$225.00
3-4 feet, balled specimen.....	4.00	35.00	325.00
4-5 feet, balled specimen.....	6.00	50.00	400.00

The number of plants that can be safely packed in a car: 2-3 feet, Single Deck, 275, Double Deck, 500; 3-4 feet, Single Deck, 225, Double Deck, 400; 4-5 feet, Single Deck, 200.

SPECIAL

“Get Acquainted with Rhododendrons” OFFER

To introduce our strong bushy plants, balled and burlapped we will accept a trial order of one plant each of

Carolinianum, Catawbiense, Maximum

size 2-3 feet — for **\$8.50**

Only one collection at this price to a customer.

Money back if not satisfied.



One of our Maximum 2-3 ft. size



One of our Catawbiense 2-3 ft. size



Aside from the pleasure of having fine trees in the grounds surrounding a home, few realize how much these add to the commercial value of the place

Deciduous Trees as Ornaments

THE American forests have given us some of the most majestic specimens of tree life to be found anywhere on the globe—trees that are giants in height and spread. Here, too, are to be found symmetrically formed trees, irregular trees, compact trees, open-head trees, dwarf trees, some with beautiful flowers, others with richly colored foliage—in fact, Nature seems to have lavished upon the American continent a complete arboretum so far as varying forms are concerned.

We have gathered together at Glenwood Nursery such trees as have particular ornamental value, and are growing them and their varieties under conditions that promote vigor of growth and assure continued sturdiness when transplanted to a customer's grounds. Some are especially adapted to lawn planting; others for streets and avenues; others for parks and large estates. There are few places that will not be improved in appearance by the addition of some Deciduous Trees, and a wisely planned and planted home grounds or estate takes on financial value away in excess of the amount expended in adding the trees. Plant more trees around you; they will give shade, beauty, food for birds and bees, provide nesting-places for birds, and bring generous financial recompense.

ACER (*Maple*)

Highly valued for street and park planting. Handsome foliage rich in autumnal color.

Acer dasycarpum. (*Silver-leaved Maple*). Height, 60 feet. Rapid-growing, wide-spreading; bark smooth and gray; leaves bright green on upper surface, silvery white beneath, clear yellow in autumn. Succeeds almost anywhere.

6- 8 feet.....	Each	\$1.50
8-10 feet.....	Each	2.00

A. dasycarpum Wieri. (*A. Wieri laciniatum*). Wier's Cut-leaved Silver Maple. A variety of the above, with gracefully drooping branches and finely divided foliage. Will make a large tree if undisturbed, although it may be pruned and adapted to small lawns.

6- 8 feet.....	Each	\$2.50
8-10 feet.....	Each	3.00

A. Negundo. (*Ash-leaved Maple*). Height 70 feet. Rapid-growing, spreading; bark smooth, grayish brown; branchlets green; seeds borne in drooping racemes. Attractive form in winter.

8-10 feet.....	Each	\$2.00
10-12 feet.....	Each	3.00

A. platanoides. (*Norway Maple*). Height, 100 feet. Handsome spreading head; leaves large, pale yellow in autumn.

6- 8 feet.....	Each	10	\$2.50
8-10 feet.....	Each	10	\$22.50
10-12 feet.....	Each	10	32.50
			5.00

A. platanoides Schwedleri. (*A. Schwedleri*). Purple-leaved Norway Maple. Strikingly beautiful; leaves at first bright red, changing to dark green, in autumn golden yellow.

6- 8 feet.....	Each	\$5.00
8-10 feet.....	Each	7.00

A. rubrum. (*Red, Scarlet, or Swamp Maple*). Height 50 to 100 feet. Branches spreading; red blossoms in spring before the foliage; in autumn the leaves are brilliant red and scarlet.

4-5 feet.....	Each	\$2.50
6-8 feet.....	Each	3.00

A. saccharum. (*Sugar or Rock Maple*). Height, 120 feet. Symmetrical, dense head; leaves bright green above, lighter beneath, in autumn yellow and scarlet. Maple syrup is made from its sap. Much favored for planting along avenues.

6- 8 feet.....	Each	\$2.50
8-10 feet.....	Each	3.50

AESCULUS (*Horse Chestnut*)

Aesculus carnea. (*Ae. ribicunda*). Red-flowering Horse-chestnut. Height, 20 to 40 feet. Foliage dark green; showy red flower-spikes.

4-5 feet.....	Each	\$3.00
---------------	------	--------

Ae. Hippocastanum. (*White-flowering Horse chestnut*). Height 60 to 80 feet. Vigorous, rapid-growing tree, giving dense shade; showy white flowers; dark green leaves.

6-8 feet.....	Each	\$3.00
---------------	------	--------

Horse chestnut (Continued)

Ae. Hippocastum Baumanni. (*Ae. alba fl.-pl.*). Double white-flowering Horse chestnut. A fine double-flowering sort that does not bear fruit; especially desirable as there is no litter of shells and nuts. **Each \$3.00**
4-5 feet.....

BETULA (Birch)

Betula alba. (*European White Birch*). Height 60 feet. Rapid growing tree; handsome silvery white bark, sometimes ridged at base of trunk, exposing dark inner bark. **Each \$2.50**
5-6 feet.....
6-8 feet..... 3.00

B. alba pendula laciniata. (*Cut-leaved Weeping Birch*). A rapid-growing, graceful tree that is hardy everywhere. Bark silvery white; delicately cut dark green foliage. **Each \$3.00**
4-5 feet.....
6-8 feet..... 4.00

B. papyrifera. (*Paper or Canoe Birch*). Height, 60 to 80 feet. Irregularly rounded head; bark of chalky white, the outer bark peeling in thin, paper-like layers. **Each \$2.50**
6- 8 feet.....
8-10 feet..... 3.50

CATALPA

Catalpa Bungei. (*Umbrella Catalpa*). Rapid-growing ornamental tree, grafted on stems 6 to 8 feet high, forms an umbrella-shaped top without pruning; leaves large, glossy, deep green, heart-shaped. **Each \$3.00**
6-8 foot stems, 2 year heads.....

C. speciosa. (*Hardy Western Catalpa*). Height, to 100 feet. Broad, heart-shaped foliage; white flowers in large panicles. **Each 10**
8-10 feet \$2.00 \$17.50
10-12 feet 3.00 27.50

CORNUS (Dogwood)

Cornus florida. (*White Dogwood*). Height, 15 to 20 feet. Foliage turns to deep red in autumn; flowers and scarlet berries very showy. **Each \$1.50**
2-3 feet.....
3-4 feet 2.00
4-5 feet 3.00

C. florida rubra. (*Red or Pink-flowering Dogwood*). Flowers deep pink, an unusual attraction where the white is familiar. Blooms young. **Each \$5.00**
2-3 feet.....
3-4 feet 7.50

FAGUS (Beech)

Tall-growing, hardy trees of symmetrical appearance, free from insects and fungi.

Fagus Americana. (*American Beech*). A beautiful shade and ornamental tree, highly valued for park and landscape planting because of its beautiful foliage and bark. Its nuts are sweet and good. **Each \$3.00**
4-5 feet.....

F. sylvatica. (*European Beech*). Height, 60 to 70 feet. Leaves small and shiny, in autumn reddish brown. **Each \$3.00**
5-6 feet.....

FRAXINUS (Ash)

Fraxinus Americana (*White Ash*). Fairly rapid grower. Assumes pleasing golden tones in Autumn. Makes a splendid street tree with clean straight trunk. **Each \$2.50**
6- 8 feet.....
8-10 feet..... 3.50

GLEDITSIA (Locust)

Gleditsia triacanthos. (*Honey Locust*). Height, usually 40 to 50 feet. Vigorous, rapid-growing; feathery, fern-like foliage. As a hedge its thorny branches form an impassible barrier. **100 1000**
1 ½-2 feet (for hedge) \$5.00 \$40.00
Each 10
6- 8 feet \$2.00 \$17.50
8-10 feet 3.00 27.50

LARIX (Larch)

Larix europaea. (*L. decidua*). (*European arch*). Height 60 to 100 feet. Rapid-growing pyramidal trees, with feathery, pine-like light green foliage which turns yellow in autumn. **Each \$3.00**
3-4 feet, balled.....

LIQUIDAMBAR (Sweet Gum)

Liquidambar styraciflua. (*Sweet Gum*). Height, 60 to 140 feet. A stately tree with star-shaped, dark green leaves, turning intense crimson-scarlet in autumn. The swinging seed-balls are ornamental in winter. Desirable for street or park planting. **Each \$3.00**
4-5 feet.....

LIRIODENDRON (Tulip Tree)

Liriodendron tulipifera. (*Tulip Tree*). Height, to 150 feet. Large, peculiarly shaped, glossy leaves; flowers large, tulip-shaped, of mingled green, yellow, cream and orange. Magnificent for street, park, or lawn planting. **Each \$2.00**
6- 8 feet.....
8-10 feet..... 3.00

MAGNOLIA

The great cup-shaped, white flowers appear in profusion, in some species before the leaves of other trees. In front of evergreens, the contrasting background adds to the striking effect.

Magnolia acuminata. (*Cucumber Tree*). Height, 60 to 90 feet. Rapid-growing, pyramidal tree, with large, deep green leaves, yellow in autumn; large, creamy white flowers in midsummer, succeeded by cucumber-shaped fruits, at first green, later deep scarlet. **Each \$3.00**
4-5 feet.....



Lombardy Poplars—Colorado Blue Spruce in the foreground

Magnolia (Continued)

- M. glauca.** (*Sweet Bay*). A slender, beautiful tree or large shrub, thriving in any good soil or situation. Leaves oblong, glossy green, creamy white, fragrant, cup-shaped flowers in spring. Fruit dark red with scarlet seeds. **Each \$4.00**
- 2-3 feet, balled..... **\$4.00**
 3-4 feet, balled..... **5.00**
- M. tripetala.** (*Umbrella Tree*). Height, 40 feet. Whorled large, glossy leaves; both hardy and vigorous. The giant white blossoms 4 to 8 inches across, open in June. **Each \$3.00**
- 4-5 feet..... **\$3.00**

MALUS (Crab)

- Malus ioensis plena.** (*Bechtel's Double-flowering Crab*). A low, bushy tree that is sturdy, hardy, and blooms young. The flowers are double, delicate pink, and delightfully fragrant. **Each \$1.50**
- 2-3 feet..... **\$1.50**
 3-4 feet..... **2.00**
- M. Parkmani (P. floribunda Parkmani).** (*Parkman's Double-flowering Crab*). Resplendent in early spring with long-stemmed, semi-double, rose-colored blooms that last a long time as cut-flowers. **Each \$1.50**
- 2-3 feet..... **\$1.50**
 3-4 feet..... **2.00**

MORUS (Mulberry)

- Morus alba tatarica.** (*Russian Mulberry*). Bushy tree, with white to violet-colored fruit, greatly relished by birds. **Each \$1.50**
- 6- 8 feet..... **\$1.50**
 8-10 feet..... **2.50**
- M. alba tatarica pendula.** (*Teas' Weeping Mulberry*). An unusually fine weeping tree. Foliage is glossy and handsomely lobed; fruit reddish purple. **Each \$3.00**
- 4-5 feet stems, 2 year heads..... **\$3.00**
- M. Downingi.** (*Downing's Everbearing Mulberry*). A beautiful lawn or street tree, bearing large, black, subacid fruits that are delightfully refreshing. **Each \$2.00**
- 6-8 feet..... **\$2.00**

PLATANUS (Plane)

- Platanus orientalis.** (*Oriental Plane*). Height, to 80 feet. Foliage dense, bright green, usually five-lobed, entirely free from attacks of insects and fungous diseases, and not affected by coal-smoke. **Each \$2.50**
- 6- 8 feet..... **\$2.50**
 8-10 feet..... **3.50**

POPULUS (Poplar)

Easy-growing trees with a happy tendency to grow rapidly. Where quick effects rather than permanency are desired—plant Poplars.

- Populus tremuloides.** (*American Aspen*). Slender, pendulous branches; narrow, round head. Leaves tremble with the slightest current of air. **Each \$1.50**
- 6- 8 feet..... **\$1.50**
 8-10 feet..... **2.00**
- P. deltoides carolinensis.** (*Carolina Poplar*). Foliage glossy, silvery beneath, heart-shaped, always in motion. Useful for screening unsightly buildings. **Each \$1.00**
- 8-10 feet..... **\$1.00**
 10-12 feet..... **\$1.25**
 12-14 feet..... **1.75**
- P. nigra italica.** (*Lombardy Poplar*). Tall, spire-like outline, prominent among other trees. Makes rapid growth. **Each \$1.50**
- 8-10 feet..... **\$1.50**
 10-12 feet..... **2.00**
 12-14 feet..... **2.50**

- P. suaveolens (P. balsamifera suaveolens).** Small-leaved Chinese Poplar of pyramidal habit, similar to the Lombardy but even more effective. **Each \$1.50**
- 6- 8 feet..... **\$1.50**
 8-10 feet..... **2.00**

PRUNUS (Flowering Plum, Cherry, Peach and Almond)

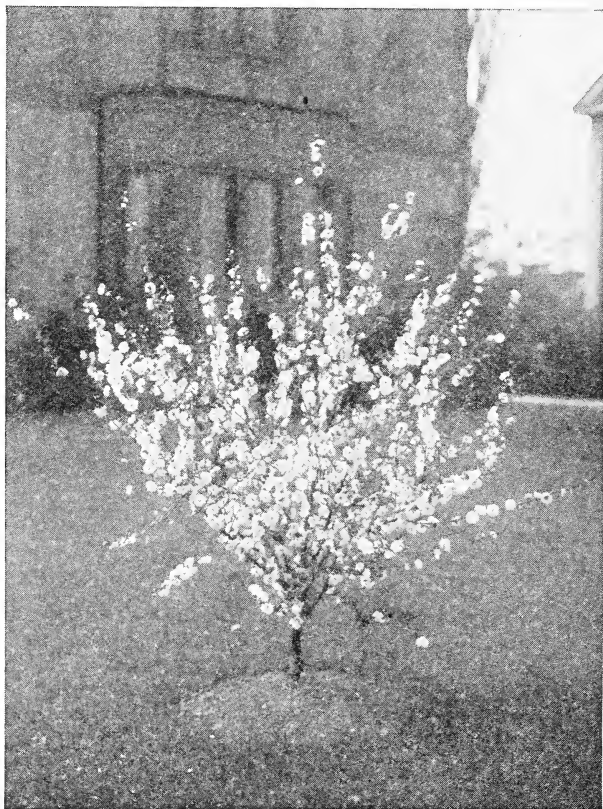
The species described below are charming, on account of their habit of growth and profuse bloom that almost hides the limbs from view. They should be a part of every planting scheme.

- Prunus avium plena.** (*Double-flowering Cherry*). A medium-sized tree; clusters of double, pink flowers in May in such profusion that the branches are completely hidden. **Each \$3.50**
- 3-4 feet..... **\$3.50**
- P. cerasifera Pissardi (P. cerasifera atropurpurea).** (*Pissard's Purple-leaved Plum*). Compact, ornamental tree with dark crimson foliage, changing to purple as it matures. **Each \$30.00**

- 3-4 feet..... **Each 10**
 4-5 feet..... **\$2.00 \$17.50**
 5-6 foot specimen..... **3.00 27.50**
 5.00
- P. communis flore-pleno.** (*P. japonica; Amygdalus communis flore-pleno.* (*Double-flowering Almond*). Low-growing, bushy; double white and rose-colored flowers in early summer in great profusion. **Each \$1.50**
- 3-4 feet..... **\$1.50**
- P. triloba plena.** (*Double-flowering Plum*). Small tree, with graceful, slender branches literally covered with double rosy flowers in early summer. **Each \$1.50**
- 3-4 feet..... **\$1.50**
- Blood Leaf Peach.** Brilliant red bark. Dark red foliage. **Each \$1.50**
- 3-4 feet..... **\$1.50**
- P. Persica plena.** (*Double-flowering Peach*). A vision of loveliness not equaled by anything else that blooms at the same time. The profusion of its bloom is amazing. **Each \$12.50**
- 3-4 feet..... **\$1.50**
 4-5 feet..... **2.00**
- P. subhirtella pendula.** (*P. pendula.* (*Japanese Weeping Rose-flowered Cherry*). Small tree, with drooping, crooked branches, resplendent in early spring with its profusion of dainty pink flowers. **Each \$5.00**
- 2-year Grafted Heads..... **\$5.00**

QUERCUS (Oak)

- Stately trees of noble and majestic habit, long-lived, wide-spreading, and frequently giants in height. Splendid for shade and much used along avenues.
- Quercus alba.** (*White Oak*). Height, to 100 feet. Forms a broad, open head. **Each \$3.00**
- 5-6 feet..... **\$3.00**
- Quercus bicolor.** (*Swamp White Oak*). Resembles White Oak but is less spreading in growth. Bark shaggy, like the shagbark hickory, twigs coarse and tough. **Each \$3.00**
- 5-6 feet..... **\$3.00**
- Q. coccinea.** (*Scarlet Oak*). Height, to 80 feet. Splendid, round-topped, rapid-growing tree, with sharp-pointed leaves, brilliant scarlet in autumn. **Each \$3.50**
- 5-6 feet..... **\$3.50**
 6-8 feet..... **4.50**



Flowering Almond

Chinese Elm

(*Ulmus Pumila*)

"Greased lightning" would be a better name for this remarkable tree. It's the fastest growing shade tree we know of. We illustrate—a 4 year old tree that was but 5 ft. in height when planted. In 4 years this tree has grown to a height of 20 ft. with a spread of 18 ft. and measures 20 inches in circumference 18 inches from the ground. Think of it, a real shade tree in 4 short years.

Beautiful—Fast Growing—Hardy

Our country is speeding up to a fast pace, where once the automobile satisfied because it was faster than the horse, we now demand the airplane. Radio and Air Mail speed up communications. People want results NOW. They want shade for themselves—not for future generations only. **Chinese Elm solves the problem.**

Good for Wind Breaks or Screens

Its habit of growth makes it an ideal tree for street planting in the city—for roadside planting in the country, or for shade around the home in either city or country. The tree is healthy and beautiful and will give an abundance of shade in a very short time. It fully justifies the claims of the United States Department of Agriculture wherein they state—"It is very hardy and has proved valuable under a greater variety of climatic soil conditions than any tree yet introduced."

Home Owners, Real Estate Men, City Park Boards and Others equally interested in securing quick shade with a minimum of time and expense will find in this tree the essential characteristics they desire.

Size	PRICES		
	Each	10	100
4-5 ft.	\$2.00	\$17.50	\$150.00
5-6 ft.	3.00	27.50	250.00
6-7 ft.	4.00	35.00	300.00

Order early—our supply is limited.



Chinese Elm
This tree grew 20 feet in 4 years

Quercus (Continued)

Q. macrocarpa. (*Mossy Cup or Bur Oak*). Height, usually 60 to 80 feet. Leaves handsomely lobed; acorns large, half embraced by the fringed, mossy cup.

5-6 feet.....	Each \$3.00
6-8 feet.....	4.00

Q. palustris. (*Pin Oak*). Height, 60 to 120 feet. Rapid-growing, pyramidal tree; foliage lobed, bright green, changing to red and yellow.

4-6 feet.....	Each \$3.00
6-8 feet.....	4.00

Q. rubra. (*Red Oak*). Height about 80 feet. Rapid-growing, majestic tree, forming a broad, round head; foliage dark red in autumn.

6-8 feet.....	Each \$3.00
---------------	-------------

SALIX (Willow)

Makes a cool shade for hot days, and enlivens the winter landscape with the colorful bark peculiar to certain of the species.

Salix babylonica. (*Weeping Willow*). Height 30 to 40 feet. Familiar in cemeteries and along water.

6- 8 feet.....	Each \$1.50
8-10 feet.....	2.00

S. Caprea. (*Goat or Pussy Willow*). The silky flowers in early spring are curious and beautiful.

6- 8 feet.....	Each \$1.50
8-10 feet.....	2.00

S. pentandra. (*Laurel-leaved Willow*). Small tree with large shining leaves.

6-8 feet.....	Each \$1.00
---------------	-------------

S. vitellina aurea. (*Golden Willow*). Light green leaves and golden yellow branches.

6- 8 feet.....	Each \$1.00
8-10 feet.....	1.50

SORBUS (Mountain Ash)

Sorbus Aucuparis. (*Rowan Tree or European Mountain Ash*). Medium-sized tree that flowers in broad corymbs, followed by clusters of bright red berries.

6- 8 feet.....	Each \$2.00
8-10 feet.....	3.00

S. Aucuparia pendula (Pyrus Pendula). (*Weeping Mountain Ash*). Graceful slender branches; bright red berries. Plant near the house.

6-8 foot stems, 2 year heads.....	Each \$4.00
-----------------------------------	-------------

S. quercifolia (Pyrus quercifolia). (*Oak-leaved Mountain Ash*). Height about 40 feet. Foliage like oak leaves. Very hardy; recommended for lawns or in dooryards.

6- 8 feet.....	Each \$2.00
8-10 feet.....	3.00

TILIA (Linden)

Tilia americana. (*American Linden, or Basswood*). Bark dark gray. The yellowish white blossoms are fragrant and in favor with bees.

8-10 feet.....	Each \$3.00
----------------	-------------

T. vulgaris. (*Common or European Linden*). Smaller than the American variety, but sturdy, providing dense shade and the fragrance of the flowers and their honey-producing properties are the same.

8-10 feet.....	Each \$3.00
----------------	-------------

ULMUS (Elm)

Ulmus americana. (*American or White Elm*). Height, 50 to 120 feet. Forms majestic, vase-like specimens beautiful both in summer and winter.

8-10 feet.....	Each \$2.50	10 \$22.50
10-12 feet.....	3.50	32.50
12-14 feet.....	5.00	45.00

Delightful Flowering Shrubs for the Home Grounds

A LONG the roadway, along the pathway, along the house foundation, as borders, for massing—one might mention a large number of special places where Deciduous Shrubs will supply a well-defined need in a planting scheme. Wherever the place may be, however, a wise selection from the list which follows will make possible flowering shrubs around the home or scattered over the estate from early spring to late summer; and the ornamental season is prolonged by the subsequent white or brightly colored berries and the handsome vari-colored leaves that form the characteristic autumnal garb of certain of the genera.

Our Shrubs are well established, two and three years old, and of a size to give immediate effect.



Azalea Canescens

ARALIA

Aralia spinosa. (*Hercules' Club*). A large shrub with stout, prickly stems; huge panicles of creamy white flowers in August, followed by dark purple berries.

	Each	10	100
2-3 feet.....	\$.75	\$7.00	\$65.00
3-4 feet.....	1.00	9.00	80.00

AMALANCHIER

Amalanchier Canadensis. (*Juneberry*). An attractive and very free flowering shrub with numerous flowers in early spring in small racemes. Fruits purplish ornamental and edible. Effective if planted in masses with other shrubs.

	Each	10	100
2-3 feet.....	\$1.00	\$9.00	\$80.00
3-4 feet.....	1.25	11.50	100.00

BENZOIN

Benzoin Aestivale. (*Spice Bush*). An attractive shrub valued for its handsome flowers, which come before the leaves in early spring. The aromatic foliage turns bright yellow in autumn. Fruit scarlet and conspicuous.

	Each	10	100
2-3 feet.....	\$1.00	\$9.00	\$80.00

ARONIA

Aronia Arbutifolia. (*Red Chokeberry*). Very ornamental shrub; bright autumn tints; pure white flowers and bright red berries.

	Each	10	100
2-3 feet.....	\$1.00	\$9.00	\$80.00

AZALEA

Arborescens. (*Sweet Azalea*). Very attractive white, or faintly rose-tinted, fragrant flowers whose beauty is enhanced by the long, bright red filaments of the stamens. The flowers are borne after the foliage appears, and it is one of the most beautiful of all the hardy Azaleas. In sheltered places it often reaches 15 to 18 feet in height. May.

	Each	10	100
12-18 inch.....	\$2.00	\$17.50	\$150.00

Canescens. (*Piedmont Azalea*). Rosy pink or whitish trumpet-shaped flowers of great beauty, borne in May before or with the unfolding leaves, fill the air with sweet fragrance. Plant in masses against a dark background to show the flowers to the best advantage.

	Each	10	100
12-18 inch.....	\$2.00	\$17.50	\$150.00

Nudiflora. (*Pinxter Bloom*). An extremely beautiful Azalea. Rosy pink or whitish blooms; after or before the foliage develops, of strong, sweet fragrance, and borne in great profusion at about the same time as *A. canescens*. Fall, foliage assumes attractive shades of orange and bronze. Fine for dry open places.

	Each	10	100
12-18 inch.....	\$2.00	\$17.50	\$150.00

Viscosa. (*Swamp Azalea*). The last of the Azaleas to flower, nearly all the other shrubs having passed out of bloom when it bears its heavy load of pure white, fragrant flowers, clothed with sticky hairs.

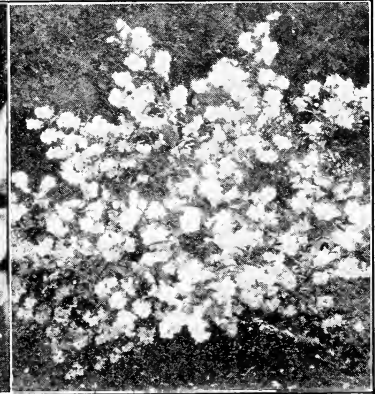
	Each	10	100
12-18 inch.....	\$2.00	\$17.50	\$150.00



Butterfly Bush



Forsythia



Mock Orange Syringa

Azaleas (Continued)

Vaseyi. (*Pink Shell Azalea*). One of the earliest flowering Azaleas, blooming in April, and its glorious pink flowers open before the foliage appears. It is the most beautiful of all the Azaleas, and in delicacy and purity of color is unsurpassed by the flowers of any other plant.

	Each	10	100
12-18 inch	\$2.00	\$17.50	\$150.00

Azalea lutea (A. calendulacea). (*Great Flame Azalea*). The gayest and most brilliant-flowering shrub yet known. Splendid clumps, with a mass of buds ranging from light sulphur-yellow to deep red. No more striking landscape effect can be produced than a hillside of *A. lutea* in full bloom.

	Each	10	100
12-18 inch	\$2.00	\$17.50	\$150.00
18-24 inch	2.50	22.50	200.00
2- 3 feet	3.00	27.50	250.00

BERBERRIS

Berberis Thunbergi. (*Thunberg's Japanese Barberry*). Hardy dense, low-growing shrub, with spreading, deeply grooved, thorny branches and small, bright green leaves turning brilliant orange and yellow in autumn. The large, red berries remain on the bushes throughout the winter giving a cheery bit of color to the place where it grows. Fine for low, ornamental hedges. Bushy plants, with abundant roots.

	10	100	1000
12-18 inch	\$1.50	\$15.00	\$150.00
18-24 inch	2.50	24.00	240.00
2- 3 feet	3.00	28.00	280.00

Berberis Thunbergi Atro Purpurea. (*Red Leaved Japanese Barberry*). Similar in all respects to the green leaved Japanese Barberry which is so popular for mixing in a shrubbery border, as single specimens, or for planting in clumps on the lawn, as well as for foundation plantings and for hedge, but the foliage of this new variety is of a rich, lustrous, bronzy red, similar to the richest red leaved Japanese Maple.

	Each	10	100
2 years, fine	\$1.00	\$9.00	\$75.00

BUDDLEIA

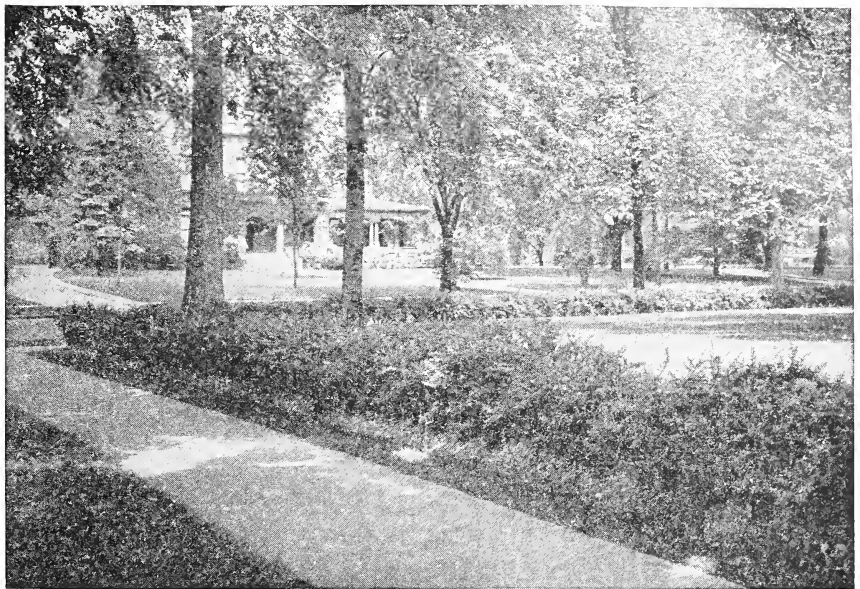
Buddleia Davidi magnifica. (*Butterfly Bush*). Fragrant, rose-purple flowers, with orange eye, in dense, drooping panicles, about the middle of August.

	Each	10	100
Extra fine plants, 2-3 feet	\$.50	\$4.50	\$40.00

CALYCANTHUS

Calycanthus floridus. (*Sweet Shrub*). The old-fashioned "shrub." Flowers are double, of a rare chocolate color; of spicy fragrance. Blooms in June and at intervals after that.

	Each	10	100
Strong plants, 18-24 inch	\$.75	\$6.50	\$55.00
2-3 feet	1.00	9.00	80.00



Barberry Thunbergi is the ideal hedge plant

CERCIS

Cercis canadensis. (*Judas Tree, or Red-Bud*). Large, rapid growing shrub; showy, pink flowers in early spring before the leaves.

4-5 feet	Each	10
	\$1.25	\$12.00

CEANOTHUS

Ceanothus americanus. (*New Jersey Tea*). A low, spreading, free-flowering shrub particularly fine for rockeries. Delicate foam-like flowers on slender stems. Very hardy.

2-3 feet	Each	10
	\$1.00	\$ 9.00

CEPHALANTHUS

Cephalanthus Occidentalis. (*Button-Bush*). A pretty shrub with good foliage and attractive flowers in dense, globular heads.

2-3 feet	Each	10
	\$.75	\$ 6.50

CHIONANTHUS

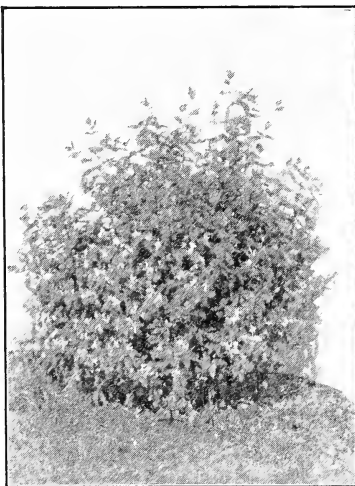
Chionanthus virginica. (*Fringe Tree*). Tall-growing shrub; flowers snow-white, in drooping panicles 4 to 6 inches long, appear in May or June; dark, blue berries.

	Each	10
2-3 feet	\$1.00	\$ 9.00
3-4 feet	1.50	12.50

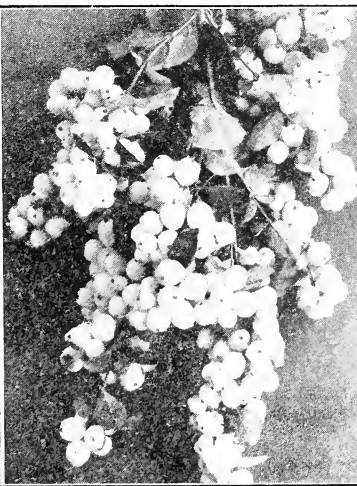
CLETHRA

Clethra alnifolia. (*Sweet Pepper Bush*). Fragrant white flowers in lavish profusion from July to September. Excellent for shady spots.

2-3 feet	Each	10
	\$.75	\$ 6.50



Honeysuckle



Snowberry



Weigela Rosea

Azaleas



Six Beautiful Hardy Azaleas

For
Outdoor Planting

All Plants 12-18 in. high

- Azalea Arborescens
- Azalea Canescens
- Azalea Lutea
- Azalea Nudiflora
- Azalea Vaseyi
- Azalea Viscosa

This splendid assortment, only

\$10.00

CORNUS

Hardy ornamental shrubs with handsome foliage, attractive flowers, conspicuous berries, and brightly colored bark.

All following varieties cornus	Each	10	100
2-3 feet.....	\$.75	\$6.50	\$55.00
3-4 feet.....	1.00	9.00	80.00

Cornus Amomum. (*Silky Dogwood*). Reddish purple twigs; flowers creamy white, in early summer; fruit blue. Grows 6 to 10 feet tall.

Cornus Lutea. A striking yellow branched form of stolonifera, very satisfactory for contrasting.

C. paniculata. (*Panicled Cornel*). Much-branched shrub; flowers white, in loose clusters; white fruits on red stems supply a rich color combination.

C. sanguinea. (*Crimson-barked Dogwood*). Height, 8 to 10 feet. Purple or dark blood-red branches, and greenish white flowers; berries black in flat-topped clusters.

Cornus Siberica. Grows 6 to 10 feet high with clusters of fine white flowers succeeded by Fall crop of ornamental berries. Stem and branches blood red.

C. stolonifera. (*Red-Osier Dogwood*). Bushy; blood-red branches and dark green foliage, lighter beneath; fruit white.

CRATAEGUS (*Hawthorne*)

Crataegus coccinea. (*Scarlet Thorn*). Single white flowers in spring and scarlet fruit in autumn.

	Each	10
3-4 feet.....	\$1.50	\$12.50

C. Crus-galli. (*Cockspur Thorn*). Sharp spines; bright red fruit; very showy and distinct.

	Each	10
3-4 feet.....	\$1.25	\$10.00

C. Oxycantha Pauli (**C. Oxycantha coccinea fl.-pl.**) (*Paul's Double Scarlet Thorn*). Quick-growing, shrubs, with glowing crimson flowers in May.

	Each	10
3-4 feet.....	\$2.00	\$17.50

CYDONIA

Cydonia japonica. (*Japanese or Flowering Quince*). Low shrub with formidable thorns and dazzling scarlet flowers.

	Each	10	100
2-3 feet.....	\$.75	\$6.50	\$55.00
3-4 feet.....	1.00	9.00	80.00

Cydonia Maulei. (*Flowering Quince*). A distinct and beautiful species of the Japan Quince, with large scarlet flowers about 1½ inches across.

	Each	10
2-3 feet.....	\$1.00	\$ 9.00

DEUTZIA

Ornamental shrubs grown because of their profusion of showy white or blush flowers. Very effective for borders of shrubberies.

All varieties, except as noted

	Each	10	100
2-3 feet.....	\$.75	\$6.50	\$55.00
3-4 feet.....	1.00	9.00	80.00

Deutzia gracilis. (*Dwarf Deutzia*). Slender shrub; flowers pure white, in long, graceful racemes.

	Each	10	100
18-24 inch.....	\$.75	\$6.50	\$55.00

D. Lemoinei. (*Lemoine's Deutzia*). Small shrub; large flowers. Very effective.

Deutzia Rosea. A dwarf deutzia similar to *Deutzia Gracilis* except that the flowers are pink. Excellent for edging shrub borders.

Deutzia Scabra Candidissima. (*Snowflaky Deutzia*). Graceful habit, double white flowers in June. Grows vigorously and is one of the best *Deutzias* we offer.

D. scabra plena (D. crenata plena). (*Double Pink Deutzia*). Tall-growing; resplendent in early summer with double white flowers suffused with rose.

D. scabra. (*Pride of Rochester*). Vigorous; delights the eye with large, double, white flowers tinged with pink in the bud.

ELAEOAGNUS

Elaeagnus angustifolia. (*Oleaster, or Russian Olive*). A large shrub with silvery branches and leaves; flowers and berries yellow, with silvery scales.

	Each	10	100
2-3 feet.....	\$.75	\$6.50	\$55.00
3-4 feet.....	1.00	9.00	80.00

E. longipes. (*The "Gumi" of Japan*). Large shrub; flowers yellowish white, fragrant; fruit bright scarlet, used in jams and jellies.

	Each	10
1½-2 feet.....	\$.90	\$ 8.50
2-3 feet.....	1.25	10.00

EUONYMUS

Euonymus Alatus. (*Winged Euonymus*). Spreading in growth with peculiar corky bark along the branches. Leaves small, oval. Berries scarlet, ornamental. The foliage turns a most beautiful crimson in autumn.

	Each	10
2-3 feet.....	\$1.50	\$12.50

Euonymus americanus. (*Strawberry Bush*). Tall shrub with odd yellowish or reddish green flowers; fruits pink, warty; scarlet seed-coats.

	Each	10	100
2-3 feet.....	\$.75	\$6.50	\$55.00
3-4 feet.....	1.00	9.00	80.00

E. europaeus. (*Spindle Tree*). Larger than the American variety and more showy. Yellowish flowers in early spring; fruits rose-pink.

	Each	10
2-3 feet.....	\$.75	\$ 6.50
3-4 feet.....	1.00	9.00

E. radicans variegatus. Low, trailing shrub, usually grown as a vine; will climb 20 feet; the leaves are variegated with silvery white; fruits pink.

	Each	10	100
Two year.....	\$.75	\$6.50	\$55.00

FORSYTHIA

	Each	10	100
All varieties 2-3 feet.....	\$.75	\$6.50	\$55.00
3-4 feet.....	1.00	9.00	80.00

Forsythia suspensa. (*Drooping Golden Bell*). Graceful, drooping branches covered with the golden yellow flowers before the leaves appear.

F. intermedia. (*Hybrid Golden Bell*). Tall shrub with slender branches; flowers golden yellow, borne in great profusion. Grows 8 to 10 feet high; very floriferous.



Hydrangea P. G. bordering walk

Forsythia (Continued)

F. suspensa Fortunei. (*Fortune's Golden Bell*). Golden yellow flowers borne in great profusion along the branches before the leaves appear. One of the best.

F. viridissima. (*Green-barked Golden Bell*). Erect, green-barked branches and flowers a bit darker than other varieties; petals twisted.

HALESIA

Halesia Tetraptera. (*Silverbell*). Open in growth, and best if planted among or back of other shrubs. Flowers resemble snow-drops and completely cover the shrub.

	Each	10	
2-3 feet	\$1.00	\$ 9.00	

HAMAMELIS

Hamamelis virginiana. (*Witch-Hazel*). Large, hardy shrubs with peculiar yellow flowers in September and October, remaining for a long time.

	Each	10	
2-3 feet	\$.75	\$ 6.50	
3-4 feet	1.00	9.00	

HIBISCUS SYRIACUS

(*Althea*, or *Rose of Sharon*)

Almost tree-like; flowers in August and September.

Prices on following varieties:

	Each	10	100
2-3 feet	\$.75	\$6.50	\$55.00
3-4 feet	1.00	9.00	80.00

Albo-plenus. Double; white, crimson center.

Ardens. Double; bluish purple; distinct.

Carneo-plenus. Double flesh-color.

Comte des Flandres. Double; dark red.

Jeanne d'Arc. Double; pure white.

Lady Stanley. Double; bluish-white.

La Reine. Double; deep rose.

Pearl. Double; a beautiful white.

Totus Albus. Single; pure white.

Variegatus. Lavender; leaves variegated.

We offer **TREE-FORM** plants of the above varieties at following prices:

	Each	10	
3-4 feet	\$1.25	\$10.00	

HYPERICUM

Hypericum Moserianum. (*Gold Flower*). Low, erect subshrub; golden-yellow flowers in July and August.

	Each	10	100
1 1/2 feet	\$.75	\$ 6.50	\$ 55.00

HYDRANGEA

Showy white, pink, or blue flowers. Effective as specimen plants or in masses.

Hydrangea arborescens grandiflora. (*Hills of Snow*). A showy Hydrangea, with snow-white clusters of flowers. The heads are 5 to 7 inches across.

	Each	10	100
2-3 feet	\$.75	\$ 6.50	\$ 55.00
3-4 feet	1.00	9.00	80.00

H. opuloides otaska. (*H. hortensis otaska*). Dwarf; bears in profusion large heads of pink or blue flowers.

	Each	10	
Pot-plants	\$1.00	\$ 9.00	

H. opuloides, Thomas Hogg (*H. hortensis, Thomas Hogg*). Flowers in great heads of the purest white.

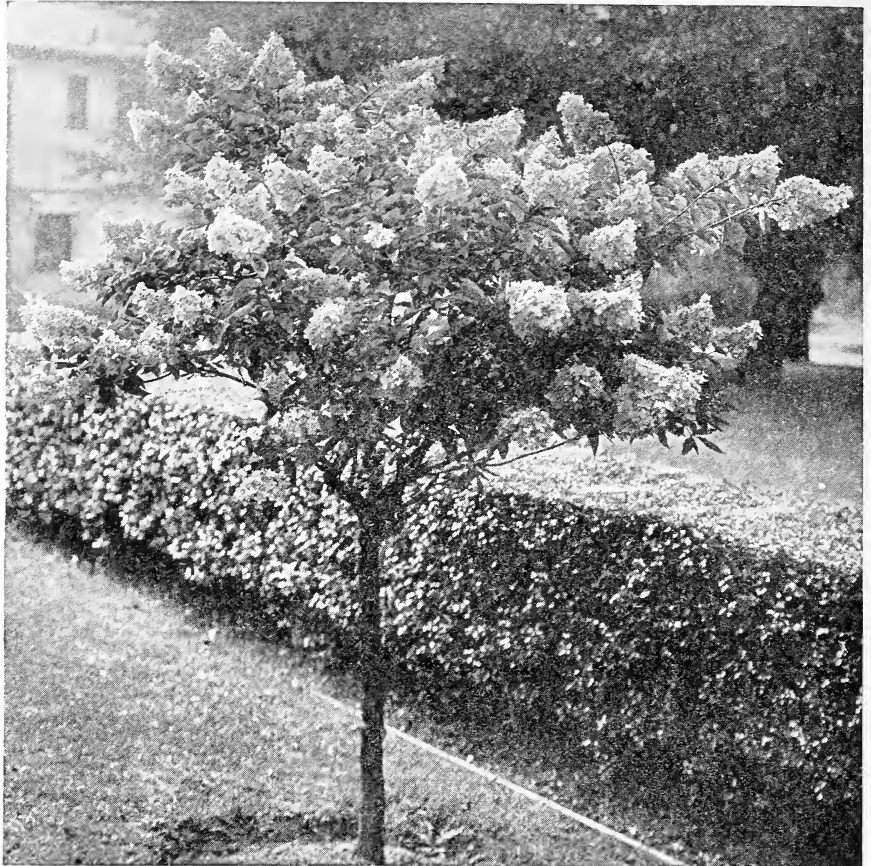
	Each	10	
Pot-plants	\$1.00	\$ 9.00	

H. paniculata grandiflora. The hardiest and most popular Hydrangea. In July and August massive plumes of white flowers, later changing to pink, bend the branches with their weight.

	Each	10	100
2-3 feet	\$.75	\$ 6.50	\$ 55.00
3-4 feet	1.00	9.00	80.00

H. paniculata grandiflora. (*Tree-Form*). We have trained a limited number into tree-form, which are ideal for tubs or lawn planting.

	Each	10	
3-4 feet	\$1.50	\$12.50	
4-5 feet	2.00	17.50	



Hydrangea Paniculata Grandiflora. (*Tree form*)

KERRIA

Kerria japonica fl.-pl. (*Globe-Flower*). Attractive shrub; double flowers bright yellow, large and showy; vigorous but not entirely hardy in the far North.

	Each	10
1 1/2-2 feet	\$.75	\$ 6.50

LABURNUM

Laburnum vulgare (*Cytisus Laburnum*). (*Golden Chain*). Height, to 20 feet. A picturesque shrub; long racemes of golden yellow flowers in June.

	Each	10
4-6 feet	\$1.50	\$12.50

LIGUSTRUM (*The Deciduous Privet*)

Extensively used for hedges and screens; hardy and vigorous, stands clipping.

Ligustrum Amurense. (*Northern Amoor River Privet*). Grows very much like the California Privet, but is much harder; erect in habit; fine for hedges.

	Each	10	100	1000
18-24 inch	\$.20	\$1.50	\$10.00	\$ 90.00
2-3 feet	.35	3.00	25.00	200.00

L. Ibota. (*Japanese Privet*). A large shrub, with graceful branches; flowers white, in panicles, followed by bluish black berries.

	Each	10	100	1000
18-24 inch	\$.35	\$3.00	\$25.00	\$200.00

L. Ibota Regelianum (*L. Regelianum*). (*Regel's Privet*). Low-growing panicles of white flowers in June and July; foliage bright red in autumn.

	Each	10	100
18-24 inch	\$.75	\$7.00	\$60.00

Ligustrum Nanum Compactum. (*Lodense Privet*). This is a new dwarf, distinct form of Privet of extremely compact low-growing habit. The foliage is rich, dark green and of extreme hardiness. It is particularly useful for low hedges and borders, as it stands shearing very well and can be kept low and compact very easily.

	10	100	1000
12-15 inch	\$3.50	\$30.00	\$200.00

L. ovalifolium. (*California Privet*). Ideal hedge plant. Dark green glossy foliage retained until late winter; flowers white, in panicles; very hardy.

	100	1000
18-18 inch	\$6.00	\$50.00
12-24 inch	10.00	75.00

2-3 feet, transplanted

3-4 feet, transplanted, 3 year

50 at 100 rate; 500 at 1000 rate

Ligustrum (Continued)

Ligustrum pulaski. (*Polish Privet*). Its hardiness for far Northern planting is thoroughly established. Foliage deep and rich waxy green. Blooms profusely and is as fragrant and showy as the lilacs.

	Each	100
2-3 feet.....	\$.50	\$40.00

LONICERA (*Honeysuckle*)

Handsome, ornamental shrubs, popular because of their early fragrant flowers.

All varieties Lonicera:	Each	10	100
2-3 feet.....	\$.75	\$6.50	\$55.00
3-4 feet.....	1.00	9.00	80.00

Lonicera fragrantissima. (*Early Fragrant Honeysuckle*). Large, half-evergreen shrub; flowers creamy white or light yellow, fragrant in spring. Very desirable.

L. Morrowi. Height, 6 feet. Spreading; flowers white, changing to yellow; red fruit.

L. Ruprechtiana. (*Manchurian Honeysuckle*). Large; white flowers in May and June, changing to yellow; fruit red or yellow.

L. Standishi. Medium size; spreading; flowers white, very fragrant, in March and April; fruit scarlet.

L. tatarica. (*Tartarian Honeysuckle*). Height, 8 to 10 feet. Fragrant white or pink flowers in May and June; red or orange fruit.

L. tatarica alba. (*White Tartarian Honeysuckle*). A white variety of the above. Bright red berries.

PHILADELPHUS (*Syringa; Mock Orange*)

Popular, ornamental shrubs, attractive and fragrant. Nearly all varieties blossom in June.

All varieties Philadelphus:	Each	10	100
2-3 feet.....	\$.75	\$6.50	\$55.00
3-4 feet.....	1.00	9.00	80.00

Philadelphus coronarius. (*Common Mock Orange*). Height, 8 to 10 feet. Flowers fragrant, pure white or cream. An old favorite.

P. coronarius foliis aureis. (*Golden Mock Orange*). Pleasing golden yellow foliage.

Philadelphus Primulaeflorus. (*Double-flowered Mock Orange*). A medium size shrub producing fragrant double white flowers—a very fine variety of double mock orange.

P. Falconeri. (*Falconer's Mock Orange*). A medium-sized shrub with graceful branches; flowers pure white, fragrant.

P. grandiflorus. (*Large-flowered Mock Orange*). Height, 10 feet. Large, pure white, fragrant flowers.

P. Lewisii. Upright late-blooming. Flowers profuse, pure white, and rather fragrant.

RHAMNUS

Rhamnus Cathartica. (*Common Buckthorn*). A good hedge plant with dull green foliage; wood black and thorny, with clusters of shiny black berries in autumn and early winter.

	Each	10
2-3 feet.....	\$.75	\$ 6.50
3-4 feet.....	1.00	9.00

RHODOTYPOS

Rhodotypos kerrioides. (*White Kerria*). Graceful shrub, 3 to 6 feet high. Pure white flowers in May and June; shiny black berries in autumn.

	Each	10	100
2-3 feet.....	\$.75	\$6.50	\$55.00
3-4 feet.....	1.00	9.00	80.00

RHUS

Rhus Aromatica. (*Fragrant Sumac*). Spreading in growth. Leaves trifoliate, aromatic. Flowers small, in clusters, and come before the leaves appear. Excellent for covering dry, sandy banks or for massing with other shrubs.

	Each	10	100
2-3 feet.....	\$.75	\$6.50	\$55.00
3-4 feet.....	1.00	9.00	80.00

R. Cotinus. (*Purple Fringe or Smoke Tree*). A medium-sized shrub with fringe-like flowers. In full bloom it has the appearance of a cloud of smoke.

	Each	10	100
2-3 feet.....	\$1.50	\$12.50	\$100.00
3-4 feet.....	2.00	17.50	150.00

R. Glabra. (*Smooth Sumac*). Handsome foliage, scarlet in autumn; greenish flowers in July; crimson, hairy seeds.

	Each	10	100
2-3 feet.....	\$.75	\$6.50	\$55.00
3-4 feet.....	1.00	9.00	80.00

R. typhina. (*Staghorn Sumac*). Large shrub; flowers greenish, in dense panicles in June and July. Grows in the driest

soils, and is particularly desirable because of its brilliant autumn color.

	Each	10	100
2-3 feet.....	\$.75	\$6.50	\$55.00
3-4 feet.....	1.00	9.00	80.00

ROBINIA

Robinia hispida. (*Rose Acacia*). Height 3 feet. Flowers rose-pink or pale purple, in nodding racemes. Fine top-grafted plants.

Two year.....	Each	10
	\$1.50	\$12.50

SAMBUCUS

Sambucus canadensis. (*American or Sweet Elder*). Handsome, familiar shrub; flowers white, in cymes 3 to 10 inches across; fruit purplish.

	Each	10	100
2-3 feet.....	\$.75	\$6.50	\$55.00
3-4 feet.....	1.00	9.00	80.00

S. nigra aurea. (*Golden-leaved Elder*). Handsome golden yellow foliage; flowers and fruit similar to *S. Canadensis*.

	Each	10	100
2-3 feet.....	\$.75	\$6.50	\$55.00
3-4 feet.....	1.00	9.00	80.00

SPIRAEA

All varieties Spirea, except as noted:

	Each	10	200
2-3 feet.....	\$.75	\$6.50	\$55.00
3-4 feet.....	1.00	9.00	80.00

Spirea arguta. Vigorous, hardy shrub; pure white flowers, borne in great profusion in early spring.

S. aurea. Golden yellow foliage and double white flowers in June. Effective in shrubbery, for planting along banks or as screens.

S. Opulifolia. A large shrub producing an abundance of delightful fragrant white flowers in flat clusters during June.

	Each	10	100
4-5 feet.....	\$1.00	\$9.00	\$80.00

S. Douglasi. (*Spirea Douglass*). An upright shrub, 5 to 6 feet tall with reddish brown branches. Leaves narrow oblong, green above, white woolly underneath. Flowers deep pink. Very showy.

S. Billardi. Rather tall; flowers bright pink, in July and August. Very showy.

S. Bumalda. Height, 2 feet. Deep pink flowers in flat cymes, foliage sometimes variegated with yellow.

	Each	10	100
18-24 inch.....	\$.75	\$6.50	\$55.00

S. Bumalda, Anthony Waterer. (*S. Anthony Waterer*). Variety of the above, with bright crimson flowers.

	Each	10	100
18-24 inch.....	\$.75	\$6.50	\$55.00

S. prunifolia plena. (*S. prunifolia*). (*Bridal Wreath*). In early spring literally covered by small, double, white flowers; autumn leaves orange and scarlet.

S. Thunbergi. Pure white flowers in April and May, like a mantle of snow.

S. Vanhouttei. Height, 6 feet. Numerous clusters of white flowers

	Each	10	100
2-3 feet.....	\$.60	\$5.00	\$45.00
3-4 feet.....	.85	7.50	70.00

SYMPHORICARPOS

Symphoricarpos racemosus. (*Snowberry*). Height, 3 to 5 feet. Pinkish flowers, white berries.

	Each	10	100
2-3 feet.....	\$.75	\$6.50	\$55.00
3-4 feet.....	1.00	9.00	80.00

S. vulgaris. (*Coral Berry or Indian Currant*). Plump red fruits clustered along the branches.

	Each	10	100
2-3 feet.....	\$.75	\$6.50	\$55.00
3-4 feet.....	1.00	9.00	80.00

STEPHANANDRA

Stephanandra flexuosa. Spirea-like shrub; leaves brilliant reddish purple in autumn; flowers profuse snowy white.

	Each	10	100
2-3 feet.....	\$.75	\$6.50	\$55.00
3-4 feet.....	1.00	9.00	80.00

TAMARIX

Africana. Very graceful shrub with feathery foliage and long, slender racemes of pink flowers in early summer. Very striking at the edge of an evergreen border.

	Each	10	100
2-3 feet.....	\$.75	\$6.50	\$55.00
3-4 feet.....	1.00	9.00	80.00



View of Lilacs in Highland Park, Rochester, N. Y.

Syringa—The Lilacs

SYRINGA. (*Lilac*). Without a doubt among the most popular of the early spring bloomers. Their bright green foliage and large, fragrant panicles of flowers contribute brightness and perfume to the shrubbery of which they are a part. We offer any of the following kinds in either tree or bush form at the prices given. *Syringa vulgaris* and *S. vulgaris alba* are grown on their own roots; the others are grafted upon English privet to prevent suckering.

***Syringa chinensis* (*S. rothomagensis*.)** (*Rowen Lilac*). Slender, arching branches and narrow leaves; large, loose, reddish purple flower-plumes that are variable in color.

	Each	10	100
2-3 feet.....	\$1.00	\$9.00	\$80.00
3-4 feet.....	1.25	10.00	90.00
Tree 3-4 feet.....	2.00	17.50	

***S. japonica*.** (*Japanese Tree Lilac*). A native of the forests of northern Japan that reaches a height of 40 feet with a tall stem sometimes a foot or more in diameter. Leaves large, dark, lustrous green; flower clusters white, 12 to 18 inches long and 12 to 14 inches wide. Magnificent.

	Each	10	100
2-3 feet.....	\$1.00	\$9.00	\$80.00
3-4 feet.....	1.25	10.00	90.00
Tree 3-4 feet.....	2.00	17.50	

***S. josikaea*.** (*Hungarian Lilac*). One of the late-blooming kinds that is valuable for prolonging the Lilac season into June. Broad, dark green leaves and lilac-purple flowers in large panicles.

	Each	10	100
2-3 feet.....	\$1.00	\$9.00	\$80.00
3-4 feet.....	1.25	10.00	90.00
Tree 3-4 feet.....	2.00	17.50	

***S. villosa*.** Stout, warty branches and bright green, oblong, sharp-pointed leaves; large panicles of pinkish lilac flowers in May and June.

	Each	10	100
2-3 feet.....	\$1.00	\$9.00	\$80.00
3-4 feet.....	1.25	10.00	90.00
Tree 3-4 feet.....	2.00	17.50	

***S. vulgaris*.** (*Common Purple Lilac*). Hardy and vigorous, blooming profusely even under adverse conditions; flowers light purple, fragrant, and borne in good-sized clusters in May.

	Each	10	100
2-3 feet.....	\$1.00	\$9.00	\$80.00
3-4 feet.....	1.25	10.00	90.00
Tree 3-4 feet.....	2.00	17.50	

***S. vulgaris alba*.** (*Common White Lilac*). The well-known old-fashioned pure white variety, with fragrant flowers and luxuriant foliage.

	Each	10	100
2-3 feet.....	\$1.00	\$9.00	\$80.00
3-4 feet.....	1.25	10.00	90.00
Tree 3-4 feet.....	2.00	17.50	

New and Rare Hybrid Lilacs

All following varieties:	Each	10
2-3 feet.....	\$2.00	\$17.50
3-4 feet.....	2.50	22.50

Adelaide Dunbar. Semi-double. Deep maroon in bud, flowers violet-red when fully opened. Open branching habit.

Gen. Kitchener. Semi-double. Buds reddish lilac, flowers when fully opened bluish lilac, tinged violet. Branching habit, compact.

Gen. Pershing. Semi-double. Buds deep lilac, opening to bluish lavender flowers with a tinge of very delicate azure-lilac. Branching habit; medium dense.

Gen. Sherman. Single. Deep lavender bud, flowers creamy lavender-lilac when fully open, with a faint tinge of porcelain-blue at center. Compact, branching habit.

Hiram H. Edgerton. Single. Reddish lilac in bud, flower bluish lilac to violet-lavender when open. Branching habit, compact.

President Harding. Single. Buds deep crimson, flowers reddish lilac when fully open; clusters 7 to 8 inches long. Branching habit, low and compact.

President Roosevelt. Single. Bud deep purple-red, bright purplish red when open. Branching habit; open and vigorous.

Princess Alexandra. Single. White flowers. One of the best.

Princess Marie. Single. Light creamy lilac flowers.

Viviani-Morel. Double. Clear lilac flowers, having white center with violaceous reverse.

William C. Barry. Single. Buds reddish lilac, flowers silvery lavender or pearly lavender when fully opened. Branching habit; open and vigorous; tall.

Hybrid Lilacs

All following varieties:	Each	10	100
2-3 feet.....	\$1.50	\$12.50	\$100.00
3-4 feet.....	2.00	17.50	150.00

Alphonse Lavallee. Double. Very large panicles of beautiful blue flowers, shading lilac.

Belle de Nancy. Double. Great panicles of pink flowers with white center.

Charles X. Single. Strong, rapid grower; rather loose trusses of reddish purple flowers.

Congo. Single. Flowers a beautiful deep wine-red.

Docteur Masters. Double. Fine clear lilac.

Frau Bertha Dammann. Single. Large panicles of pure white flowers. Very fine variety.

Lamarck. Double. Long clusters of rosy lilac flowers.

Leon Simon. Double large flowers of a purplish crimson shade.

Marie Legraye. Single. Dwarf sort, with creamy white flowers of immense size.

Mme. Abel Chatenay. Double. Sweetly scented pure white flowers in large panicles.

Mme. Lemoine. Double. A pure white variety that has won many prizes. Good forcer.

Philemon. Single. Red-flowered variety that is very pleasing.

President Grevy. Double. Beautiful lilac-blue flowers in huge panicles.

Souvenir de Ludwig Spaeth. Single. Long panicles of dark purplish red flowers. Splendid sort.

VIBURNUM (Snowball)

Large shrubs of good habit. Fine for planting along shrubbery or roads; some species are showy alone on the lawn.

All varieties Viburnum, except as noted:	Each	10	100
2-3 feet.....	\$.75	\$6.50	\$55.00
3-4 feet.....	1.00	9.00	80.00

Viburnum cassinoides. (Wither-Rod). Medium size; rich green foliage; creamy white flowers in June; pink berries turning blue.

V. dentatum. (Arrow-Wood). Upright, bushy shrub; foliage changes to purple and red; flowers creamy white in May; berries blue-black.

V. Lantana. (Wayfaring Tree). Large shrub, particularly adapted to dry situations and limestone soil. Flowers white, in May and June; berries bright red, turning black.

V. Lentago. (Sheepberry). Large hardy shrub; white flowers, fruit oval, blue-black.

V. Opulus. (High-Bush Cranberry). Medium size; particularly brilliant in autumn; white flowers; red fruits.

V. Opulus sterile. (Snowball). The old-fashioned favorite. Globular clusters of white flowers the latter part of May.

V. tomentosum. (Single-flowered Japanese Snowball). Rather tall; flowers white, in flat clusters; berries red to bluish black.

V. tomentosum plicatum (V. plicatum). (Japanese Snowball). Handsome pure white globular heads of flowers.

	Each	10	100
2-3 feet.....	\$1.00	\$9.00	\$80.00

WEIGELA (Diervilla)

Hardy, vigorous shrubs with dainty flowers, of variable color.

All varieties Weigela, except as noted:	Each	10	100
2-3 feet.....	\$.75	\$6.50	\$55.00
3-4 feet.....	1.00	9.00	80.00

Weigela aurea variegata. (Variegated Weigelia). Attractive foliage variegated yellowish white; flowers rose-color.

W. candida. Vigorous, but refined appearance. Pure white flowers in June and at intervals during the summer.

W. hybrida. (Eva Rathke). The most beautiful Weigela. Gorgeous crimson flowers throughout the season

	Each	10	100
18-24 inch.....	\$1.00	\$9.00	\$80.00

W. rosea. Height, 6 feet. Rose-colored flowers in May.

YUCCA

Yucca filamentosa. (Adam's Needle). Handsome evergreen plant with sword-like leaves. In June or July sends up tall stalks bearing creamy white bell-like flowers. Very effective as cornerpieces for shrubbery hedges.

	Each	10	100
Two year.....	\$.50	\$4.50	\$40.00

VARIEGATED LEAF YUCCA

Something New Under the Sun

An Evergreen, with large, dense, circular tufts of long, stiff, sharp-pointed leaves about one and one-half inches wide, the center of the leaf being green with deep yellow margins. This green and yellow leaf is the feature winter attraction. The plant grows to three or four feet high, stout, branching near the top and supporting hundreds of large, drooping, waxen like flowers (same as Yucca Filamentosa) that remain perfect for several weeks, starting late in June.

	Each	10	100
Two year.....	\$1.00	\$9.00	\$80.00



Our Plants Soon Make Lovely Specimens

Lilacs That Remind One of Highland Park

Showy—Hardy—Easy to Grow

We offer the following selections of French Hybrids. We were assisted in the selection of our collection by the late Mr. John Dunbar, famous as the Assistant Superintendent of Highland Park, Rochester, N. Y. Highland Park contains the largest collection of Hybrid lilacs in the United States. One of the chief attractions in Rochester is the Highland Park lilac collection. Nearly 200,000 people visited Highland Park last Spring when the lilacs were in bloom.

One of the most gorgeous shrubs we grow is the lilac. Lilacs have been one of our hobbies, and in order that everyone may enjoy these delightful shrubs, we offer any three of the following varieties, your selection, for \$4.25. No order accepted for less than three plants at this price. Here is an opportunity for you to get started with some real choice varieties of Lilacs at a very reasonable price.

Rich Colors—Large Bloom—Sweet Scented.

Alphonse Lavelle, Belle De Nancy, Charles X, Congo, Frau Bertha Dammann, Lamarck, Souvenir De Ludwig Spaeth, Docteur Masters, Leon Simon, Marie Le Graye, Mme. Abel Chatenay, Mme. Lemoine, Philemon, President Grevy.

"We Furnish the Home—OUTDOORS"



This COLLECTION of

12 Beautiful Shrubs for \$5.00

(A \$7.00 Value)

The planting of choice flowering and foliage shrubs will make any home a picture.

PLANT MORE FLOWERING SHRUBS

This collection consists of one each of the following varieties—total One Dozen.

Varieties

Weigela Rosea. (*Pink Weigela*). An elegant variety with fine rose colored flowers appearing in June.

Forsythia. Graceful, drooping branches covered with the golden yellow flowers before the leaves appear.

Red Flowered Upright Honeysuckle. Bears a profusion of bright pink flowers in the spring; orange scarlet berries.

Snowberry Shrub. Pinkish flowers, white berries.

Viburnum Dentatum. Upright, bushy shrub; foliage changes to purple and red; flowers creamy white in May; berries blue-black.

Spirea Billardi. Rather tall; flowers bright pink in July and August. Very showy.

Hydrangea Paniculata Grandiflora. The hardiest and most popular Hydrangea. In July and August massive plumes of white flowers, later changing to pink, bend the branches with their weight.

Spiraea Golden Leaf. Golden yellow foliage and double white flowers in June. Effective in shrubbery for planting along banks or as screens.

Deutzia, Pride of Rochester. Large double white flowers which are tinged with pink in the bud.

Red Bark Dogwood. Spreading shrub, purple or dark blood red branches, greenish white flowers, berries black.

Old Fashioned Sweet Syringa. Flowers fragrant, pure white or cream.

White Flowered Upright Honeysuckle. A white variety with a profusion of bright red berries ripening in summer and persisting until Autumn.

Ever notice the difference in attitude toward furnishing the INSIDE of the house—and furnishing the OUTSIDE? It's a curious study in psychology—the working of the mind.

FOR INSTANCE—The house cost \$8,000—lot cost \$2,500—Total \$10,500.

INSIDE, owner spends—

Living Rooms—Rugs, chairs, davenport, books, etc.....	\$ 600.00
Piano, Victrola or Radio, pictures, curtains, etc.....	1,000.00
Three Bedrooms—Furniture, bedding, rugs, etc., each \$300....	900.00
Dining Room—Table, chairs, linen, silver, china, etc.....	300.00
Kitchen—Range, crockery, utensils, laundry, etc.....	200.00

Total—a moderate estimate for a modern home.....\$3,000.00

Nothing unusual, nothing remarkable, nothing to get excited about.

OUTSIDE, owner invests—(too often)—

Lawn—scratched in—seeds and labor.....	\$ 75.00
Geraniums—from the neighbors.....	Free
Roses and perennials.....	15.00
Shade Trees.....	12.00
Fruit Trees.....	6.00
Flowering Shrubs and Porch Vines.....	11.00
Miscellaneous small plants—(perhaps).....	6.00

Total—(and he thinks it a good job).....\$ 125.00

Nothing unusual—nothing remarkable—except that it doesn't look as cheap as it really is.

Indoors, \$3,000—Outdoors, \$125. Is that justice to the home?

SUPPOSE—The owner would ask our Landscape Dept. to Change his property into a Picture. Change his house into a Home. We might ask \$100 to \$1,000 for the job—and right here the average man goes clear up in the air; but—

Let's see—THE CONTRAST five years later. Business makes it necessary to move. He sells out.

The Household Goods—if he is lucky—sell for \$1,000. Loss \$2,000.

The House and Grounds—beautifully planted—sells for \$14,000. Gain \$3,500.

HERE IS OUR POINT

Indoor Furnishings are Expense—wear out, never return outlay.

Outdoor Furnishings are Investment—increase in value yearly.

Hardy Perennial Plants

GIVE great satisfaction when used for borders—along the front of shrubberies—along driveways and walks, or planted in masses on lawns, because being perennial they do not require replanting each season. Once planted they give but little trouble. When the foliage dies or is killed by frost their usefulness is not ended, for they will appear each spring with greater strength and beauty. They are the old-fashioned garden plants of our grandmothers, always beautiful, always entitled to our most affectionate regard, making our homes more attractive. They hold a strong place in the hearts of all plant lovers and should be planted generously. They combine diversity of foliage and great variety in form and color, while many varieties are excellent for cutting.

ACHILLEA

Ptarmica. (*The Pearl*). Double; white flowers in clusters. July. 1½ to 2 feet.

Price: 35c each; \$1.50 per 5; \$25 per 100

ACONITUM

Fisherii. Glossy, deep green foliage. Hooded, deep blue flowers in fall. Good cut flower.

Price: 35c each; \$1.50 per 5; \$25 per 100

ANCHUSA

Italica, Dropmore. Blue. July to October. 3 feet.

Price: 35c each; \$1.50 per 5; \$25 per 100

ANEMONE JAPONICA

Graceful, airy flowers of delicate form on clean stems in autumn. Easily grown, and one of the most attractive perennials.

Alba. White. 2 feet.

Queen Charlotte. Soft Pink. 2 feet.

Whirlwind. Double; white. 2 feet.

Price all varieties: 35c each; \$1.50 per 5; \$25 per 100

AQUILEGIA (*Columbine*)

Canadensis. Scarlet and yellow. April to June. 2 feet.

Chrysantha. Golden yellow. May to August. 3 feet.

Chrysantha alba. Pure white. 2 to 3 feet.

Price all varieties: 35c each; \$1.50 per 5; \$25 per 100

ASTILBE HYBRIDS (*Spiraea*)

Queen Alexandra. Soft, delicate pink, feathery plumes.

Gladstone. Similar to the above but pure white.

**Price all varieties:
35c each; \$1.50 per 5;
\$25 per 100**

CAMPANULA

Carpatica. (*Harebell*). Flower large, light blue and white, compact in growth not exceeding 8 inches in height. Fine for border, edging or excellent for rockery.

Medium. (*Canterbury Bells*). Large, cup-shaped flowers, blue, rose or white and mixed.

Persicifolia. (*Peach Bells*). Handsome spikes of flowers in July and August. Blue or White. 2 feet.

Price all varieties: 35c each; \$1.50 per 5; \$25 per 100

HARDY CHRYSANTHEMUMS

Aberdeen. Rich bronze; button type.

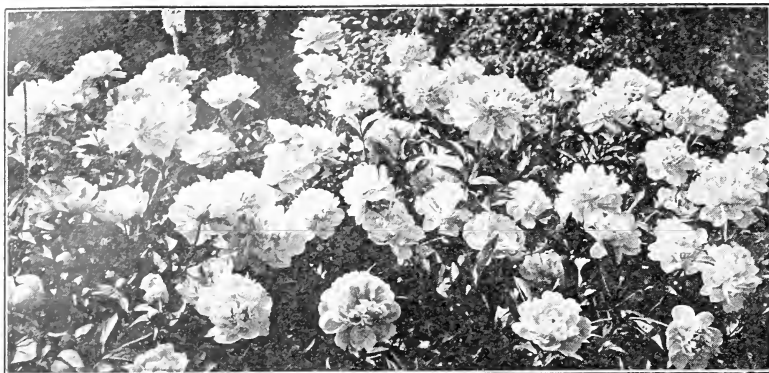
Apple Blossom. Large; pale pink.

Autumn Glow. Rosy crimson, warm and bright.

Eva. Delicate pink.



**Our Phlox are
tremendously popular**



Peonies rival roses in beauty, form and exquisite coloring and excel them in size.

Chrysanthemums (Continued)

- Glory of Seven Oaks.** Dwarf; golden yellow; very free-flow-
ering and very early.
Indian. Red shaded bronze.
L'Argentenillais. Chestnut brown.
Lucifer. Dark purplish red.
Marie Antoinette. Attractive rose color.
Normandie. A very good pink variety.
Old Homestead. Dark red.
White Flora. Large pure white.
Price all varieties: 35c each; \$1.50 per 5; \$25 per 100

COREOPSIS

- Grandiflora.** Yellow. June to Sept. 3 feet.
Price: 35c each; \$1.50 per 5; \$25 per 100

CONVALLARIA

- Lily of the Valley.** Well known.
Price: 35c each; \$1.50 per 5; \$25 per 100

DELPHINIUM (*Larkspur*)

- Price all varieties: 35c each; \$1.50 per 5; \$25 per 100
Chinense. Gentian-blue. 2 1/2 feet.
Chinense album. White. 4 feet.
Formosum. Dark blue. 4 to 5 feet.
Belladonna. Light blue. 4 feet.

DIANTHUS

- Price all varieties: 35c each; \$1.50 per 5; \$25 per 100
Barbatus. (*Sweet William*). Crimson, white and Newport
pink, and mixed colors. 1 1/2 feet.
Plumarus. Scotch Pink. June. 9 inches.

DICENTRA

- Spectabilis** (*Bleeding Heart*). Long, drooping racemes of
graceful, rose-pink, heart-shaped flowers.
Price: 60c each; \$5.50 per 10

DIGITALIS (*Foxglove*)

- Price all varieties: 35c each; \$1.50 per 5; \$25 per 100
Gloxiniaeflora. White and pink. June, July. 3 feet.
Gloxiniaeflora alba. White. June, July. 3 feet.
Purpurea. Purple and white. June, July, 3 feet.

PHLOX

NEW DWARF LARGE-FLOWERED

Price all varieties: 35c each; \$1.50 per 5;
\$25 per 100

- Antonin Mercie.** Clear lilac with white eye.
Extra-large flowers in massive clusters.
Athis. Deep, clear salmon. Very fine.
B. Comte. Rich satiny amaranth.
Beacon. Brilliant cherry-red.
Champs Elysees. Fine, rich crimson.
Crepuscle. White with delicate mauve suf-
fusion and rosy purple eye.
Eclaircur. Bright carmine with light halo.
Large flowers and heavy compact heads.
Europa. A new variety, white with large crim-
son carmine eye. Very large flower and
truss.
Jules Sandeau. Large; fine; very free-flow-
ering; pure pink flowers in noble panicles.
Mrs. Jenkins. White; immense panicles; free
bloomer, large individual flowers.

Mrs. Scholten. New. Dark salmon-pink flowers in enormous
pyramidal spikes.

Pantheon. Clear, deep, carmine-pink with faint halo.

Peach Blossom. Soft pink.

Prof. Virchow. Bright carmine, overlaid with orange-scarlet.
One of the showiest Phloxes.

Rosenberg. Bright reddish violet with blood-red eye. A most
striking variety.

Rheinlander. A beautiful salmon-pink, with flowers and
trusses of immense size.

R. P. Struthers. Bright rosy carmine, claret-red eye.

Rijnstroom. Lively rose-pink, much like Paul Neyron rose.
Immense trusses of flowers.

Thor. A beautiful lively shade of deep, salmon-pink, suffused
and overlaid with a scarlet glow, aniline-red eye.

Tapis Blanc. Very large white florets. Panicles are very
large and plants very dwarf.

W. C. Egan. Beautiful soft rose. Florets extremely large.
Medium.

Widar. Attractive violet-blue with a pure white eye.

PEONIES

Among the most hardy, showy, and easily grown of all
garden flowers; the plants are practically immune from the
attacks of insects or diseases; the flowers are the largest of all
double-flowering perennials, and each succeeding year adds
to the vigor of the plant and to the abundance and perfec-
tion of the blooms. The varieties that we name below we
have selected with great care as being excellent specimens of
the types and colors they represent.

Price all varieties of Peonies:

75c each; \$7 per 10; \$50 per 100

Agida. Violet-rose; early blooming, free-flowering, semi-
double type of medium size.

Berlioz. Rosy magenta; large, compact, rose type; strong
grower; free bloomer.

Canari. Yellowish; globular bomb type of medium size;
fragrant; late.

Charlemagne. Lilac with blush center; large, rose type;
fragrant; late.



(*Dicentra Spectabilis*) Bleeding Heart, an old, old flower, but for attractiveness it has never been surpassed.



Nothing can give one more color, larger period of bloom, at slight cost than Perennials

Peonies (Continued)

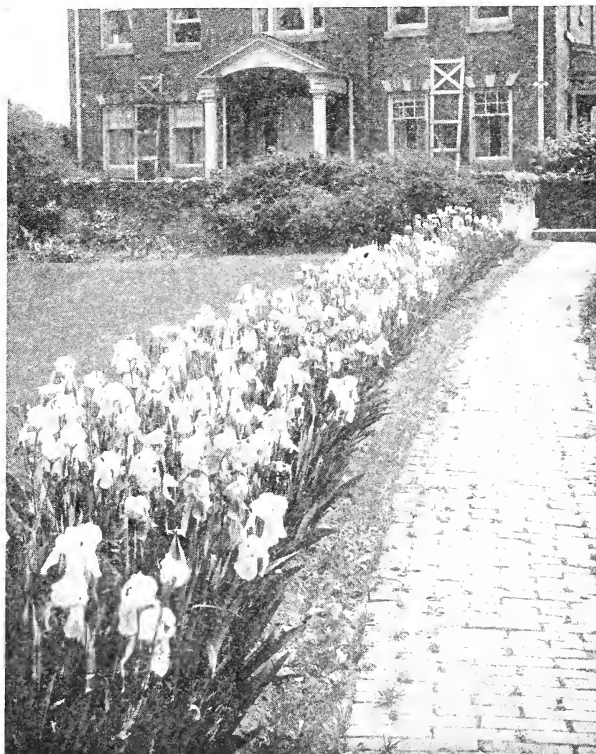
- Delachei.** Rosy magenta; large, rose type; very fine bloomer; late. Extra-fine variety.
- Duc de Wellington.** White with sulphur center; large, bomb type; very free bloomer; very fragrant; late.
- Duchesse de Nemours.** Pure white; medium-sized, crown type; fragrant; two days earlier than Festiva Maxima.
- Edulis Superba.** Bright mauve-pink; large, rather flat, crown type; strong, upright grower, free bloomer; fragrant; early.
- Festiva Maxima.** Pure white; flecked with carmine; very large, rose type; free-flowering; fragrant; medium early.
- L'Eclatante.** Brilliant red; very large bomb type; strong growing; midseason.
- L'Indispensable.** Lilac-white, changing to violet-rose; large, bomb type; free-blooming; medium early.
- Louis Van Houtte.** Dark red; medium-sized, semi-double type; fragrant; late.
- Marechal MacMahon.** Rich, dark red; large, bomb type; a fine flower of rare beauty.
- Mme. Calot.** Pale hydrangea-pink, center shaded darker; large, rose type, free flowering; fragrant; early. Very good.
- Mme. de Verneville.** Pure white, center blushed; very large and full, bomb type; fragrant; early.
- Queen Victoria.** Milk-white guards tinted flesh, the center creamy white with crimson spots; medium-sized bomb type; free blooming; fragrant, midseason.
- Rubens.** Very dark crimson; large, semi-double type; fragrant; early. Extra-fine variety.
- Rubra Triumphans.** Dark crimson; large, semi-double type; free-flowering; fragrant; early; midseason.
- Paecnia officinalis.** The old-fashioned "Piney" of Grandmother's day—large, double flowers having a pleasingly rich fragrance. They come into bloom ten days or two weeks earlier than do the herbaceous sorts.
- P. officinalis rubra.** The deep crimson variety that makes such a strikingly handsome showing when in bloom. Very fragrant and among the earliest blooming of the species.
- P. officinalis rosea superba.** The light rose-colored, fragrant, double flowers make this plant very attractive at blooming time.
- President Roosevelt.** Semi-rose type; color deep, rich, brilliant red; mid-season; fine.

FUNKIA (Plantain Lily)

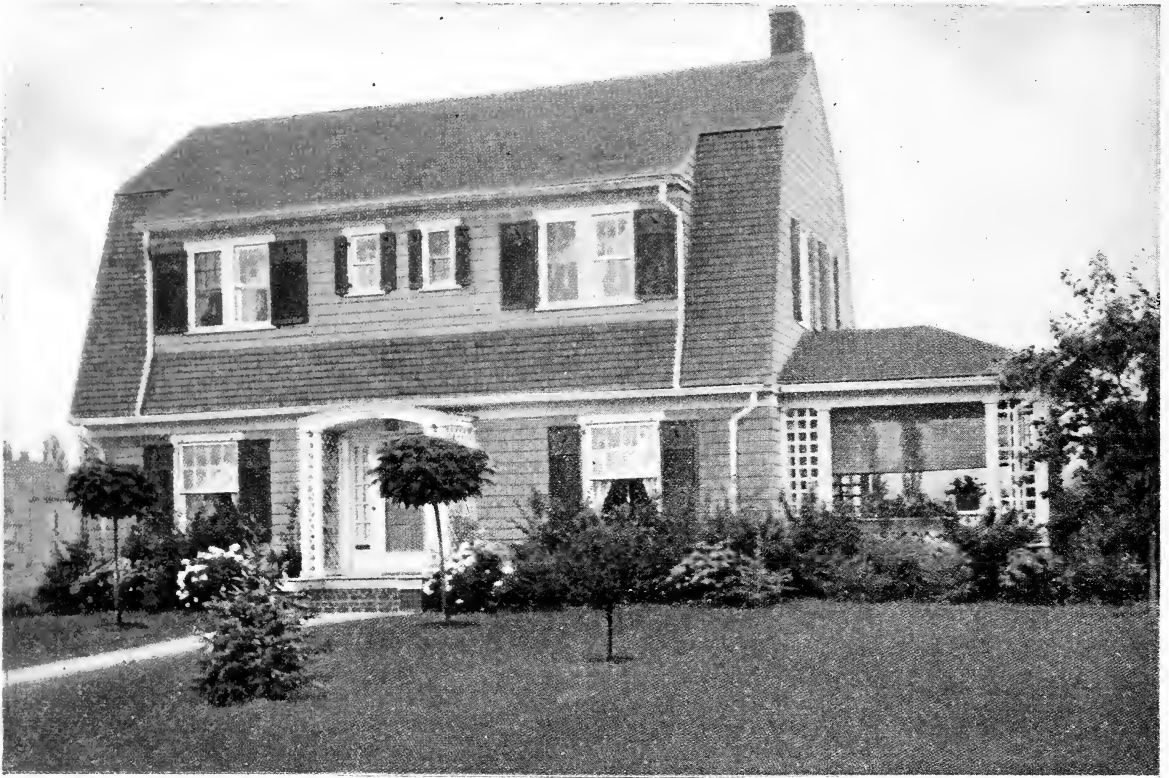
- Price all varieties: 35c each; \$1.50 per 5; \$25 per 100**
- Subcordata grandiflora.** Pure white. July and September. 2 feet.
- Lanceifolia.** Lilac. August. 2 feet.
- Ovata.** Lavender-blue. 1 to 2 feet. June, July.

GAILLARDIA

- Grandiflora.** (Blanket Flower). Red and yellow. June to November. 2 feet. One of the easiest grown perennials. **Price 35c each; \$1.50 per 5; \$25 per 100**



German Iris—their orchid-like beauty is very striking



BEAUTIFY YOUR HOME

Consider the expensive homes you have admired. What makes them so attractive? The grounds!

ANY house without its setting of shrubbery or flowers is unattractive, and any house, no matter how unattractive it may be, can be made attractive and pleasing with a proper planting.

Many people forego the pleasure of a beautiful exterior because they think it is so expensive they cannot afford the outlay. Nothing could be farther from the truth. You can get more for the money you spend on beautifying the lawn than from any other investment you may put into the place. Nothing else will make such a big showing for a small expenditure—nothing else will give you such returns in beauty, in

pleasure or in actually enhanced real estate value.

And don't forget that the more modest the home, the lower the cost of beautifying it.

If you are one of them who have felt you cannot afford to make the most of your home on the outside, you have probably said, "That requires landscaping and a landscape architect and all the rest of it."

Of course, you need the advice of a landscape architect to do the thing properly, but landscaping need not be expensive. The services of our landscape architects are available to you at a very nominal cost. Write us.

“We Furnish the Home—OUTDOORS”

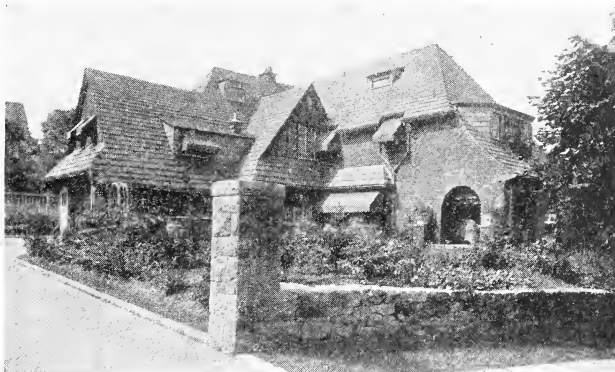
BEAUTIFUL EFFECTS WITHOUT EFFORT

SOMETIMES the house looks barren; the bare foundation walls are visible from every side; the sharp angles of the house and the flat grass plot of the lawn are unbroken by a bush or shrub—and this unlovely appearance is all due to the owner's feeling that plants are a nuisance because they require too much care and attention! This is entirely erroneous.

If you want the maximum effect with the least effort, let us draw up suggestions for a planting confined to shrubbery, trees and evergreens. You will be surprised to find how little attention you have to give them.

Naturally, pleasing, well - kept grounds require some care just as every other desirable thing does, but if the planting is restricted to healthy ornamental trees, hardy shrubs, evergreens, etc., you will enjoy the immensely improved appearance of your place, with the necessity of devoting scarcely any time to their care.

If on the other hand you desire to go into rose gardens, rock gardens, perennial borders, sun dials, pergolas, benches, etc. we can plan your garden embodying these delightful features.



Residence of John F. Kraft, Esq., Pittsburgh, Pa. Glen Bros., Inc., Landscape Architects. A dignified treatment in keeping with this English style of Home.



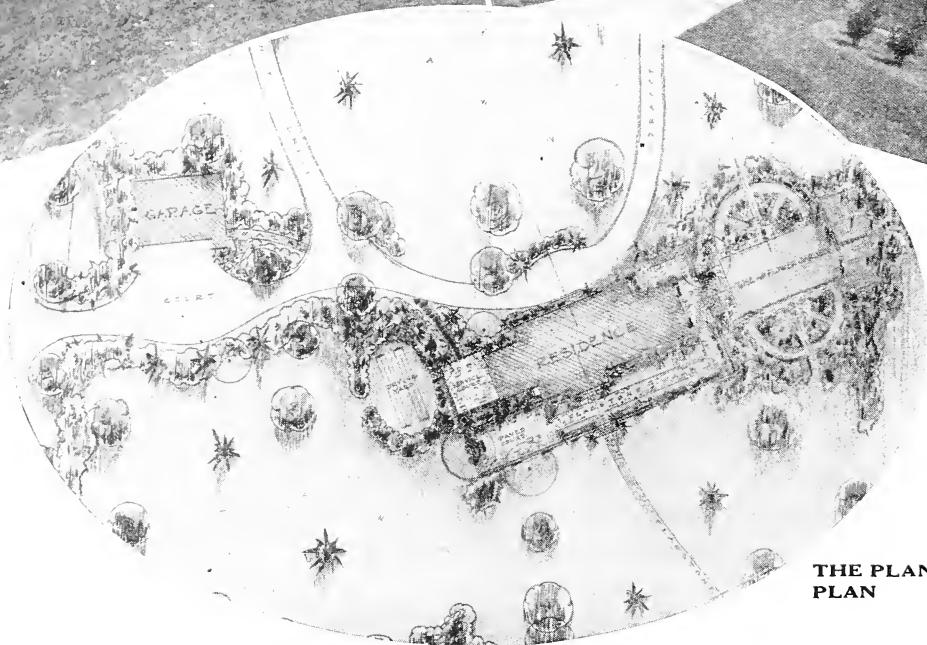
An informal garden. Residence of Robert D. Platt, Esq., Pittsburgh, Pa. Glen Brothers, Inc., Landscape Architects.



Making the most of natural advantages. Residence of H. D. Haight Rochester, N.Y. Glen Brothers, Inc., Landscape Architects.

BEFORE PLANTING

AFTER 3 MONTHS



THE PLANTING PLAN

The two photographs above show the new residence of H. M. Carruthers, Esq., in Grove City, Pa. They were taken three months apart.

Our Complete Landscape Service

IN APRIL, Mr. Carruthers had a nice new house in a barren field—plus a Glen prepared plan for planting. In August the new house was a *home*, in a beautiful setting of ornamental shrubs, with a formal garden in full bloom and that appearance of years gained in three short months produced the finished effect. The entire work was handled by Glen Brothers landscape service from the actual planting, the preparation of the planting plan, the supplying of all planting material and garden furniture and the actual supervision of the planting.

You can also have a plan and at nominal cost which will enable you to visualize your

home in its proper setting—a setting which will make the most of any natural advantages and which will enhance the re-sale value of your property out of all proportion to the money spent. No matter how modest or how large your place may be, send us a rough pencil sketch showing the layout of your grounds with proper location and dimensions of the house and other buildings, walks, driveway and other permanent objects together with a photograph, if possible, taken from the opposite side of the street. The plan we send, like the one illustrated above, will enable you to see what the finished result will be like before a spade of earth is turned.



Perennials give the most for the least—plant them generously

Perennials (Continued)

HEUCHERA

Sanguinea. Makes a tuft of heart-shaped glossy green leaves, from which the flowering stems rise a foot or more in height. Flowers small, bright red.

Price 35c each; \$1.50 per 5; \$25 per 100

HIBISCUS

Price, all varieties: 35c each; \$1.50 per 5; \$25 per 100

Moscheutos. Gigantic flowers of glistening pink. August. 5 feet.

Moscheutos. Crimson Eye. Very large flowers of snowy white with a deep red center. August, September. 5 feet.

Mallow Marvels. Giant mixed, white, pink, and red. 5 to 6 feet.

HOLLYHOCKS

Graceful spire-like plants of the utmost hominess and charm. Double white, red, pink, yellow, salmon, and carmine.

Price 35c each; \$1.50 per 5; \$25 per 100

IBERIS

Sempervirens. (Candytuft). White. May, June. 8 feet.

Price 35c each; \$1.50 per 5; \$25 per 100

IRIS GERMANICA (German Iris)

Price, all varieties: 35c each; \$1.50 per 5; \$25 per 100

The tall, sword-like leaves are interesting in themselves until the gorgeous flowers, with their unusual form, their beautiful variegation, and numerous shades of color, make their appearance in May. We have a great number of different varieties, in all colors.

In the following descriptions, S, is for standards, or upper petals; and F, for falls or lower petals.

Agnes. S. white, frilled and shaded lilac; F. white, traced lilac.

Caprice. S. rosy red; F. rosy red with yellow beard. Very beautiful. 2 feet.

Gertrude. S. and F. beautiful blue. Early.

Her Majesty. S. lovely rose pink; F. bright crimson shaded darker. Very handsome.

Innocenza. Ivory white. 18 inch.

Iris King. S. clear lemon yellow; F. rich maroon, bordered yellow. Large and beautiful.

Khedive. Soft lavender. 33 inch.

Loreley. S. light yellow; F. ultramarine blue bordered cream.

Mary Garden. S. pale yellow, flushed pale lavender; F. creamy white, dotted and veined maroon. 2 feet.

Mrs. H. Darwin. S. pure white; F. slightly reticulated violet at base. One of the best whites. 2 feet.

Quaker Lady. S. smoky lavender, shaded yellow; F. aegeratum blue and old gold, yellow beard. 38 inch.

Sherwin Wright. Golden Yellow, self. Very free flowering.

IRIS KAEMPFERI (Japanese Iris)

Price, all varieties: 50c each; \$4 per 10; \$35 per 100

In June and July, the 2 to 3-foot flower-stems are topped with flat, expanded, lightly poised blossoms 6 to 9 inches across, in rich color combinations of white, blue, purple, lavender-pink, lilac-yellow and maroon. And the plants are hardy, requiring no protection in the coldest winters. Spreads rapidly. We have fifty named varieties, several of which we list below.

Bandai-No-Nami. Double white.

Beauty. Lavender, yellow and white.

Date-Dugo. Single, dark rich maroon.

Fairy. Dark purple; early.

Ho-O-Jo. Double, reddish maroon.

Kan. Double violet, pink center.

Kichi-cohuo. Single, pure white.

Osho-Kum. Double rich blue.

Paragon. White; very large and fine.

Royal Rose. Rose edged, white.

Shi-Chu-Ha. Double, white, with red edges.

Shikai-Nami. Double beautiful pale blue.

Silver Cloud. White and lavender.

Uchu. Very double, light lavender.

Yedo-Jiman. Single deep violet, purple center.

LIATRIS

Pycnostachya. (Kansas Gay Feather). Flowers purple, in dense spikes, 4 to 5 feet high. Thick, grass-like foliage. Very choice.

Price 35c each; \$1.50 per 5; \$25 per 100

LOBELIA (Cardinal Flower)

Cardinalis. Spikes of intense scarlet flowers. Very brilliant. 4 feet high.

Price 35c each; \$1.50 per 5; \$25 per 100

LYCHNIS (Campion)

Price, all varieties: 35c each; \$1.50 per 5; \$25 per 100

A fine old-fashioned flower, bearing large heads of brilliantly colored flowers, that liven up the border during Summer and early Autumn.

Alpina. Dwarf, rose-pink.

Chalcedonica. Heads of vivid scarlet flowers, blooming a long time. One of the brightest plants in the hardy border. 3 feet.

Haageana. 1 foot. June to August. Very showy; producing orange-red, scarlet or crimson flowers nearly 2 inches across

Viscaria flora plena. A fine double variety; fine for cutting.

Viscaria Splendens. Brilliant red.

LYTHRUM

Loosestrife. Produces long spikes of rose-colored flowers from July to September. 4 feet.

Price: 35c each; \$1.50 per 5; \$25 per 100

MONARDA

Didyma. (*Cambridge Scarlet*). Heads of brilliant scarlet flowers in July and August. 3 feet.

Price: 35c each; \$1.50 per 5; \$25 per 100

MYOSOTIS

Palustris. (*Forget-Me-Not*). A dwarf plant producing small dark blue flowers in profusion.

Price: 35c each; \$1.50 per 5; \$25 per 100

PAPAVER (*Poppy*)

Price all varieties: 35c each; \$1.50 per 5; \$25 per 100

Nudicaule. (*Iceland Poppy*). Unquestionably hardy, for it is the glory of the arctic regions, where it flaunts its cup-shaped, white, yellow to orange-scarlet flowers over an immense territory.

Oriente. (*Oriental Poppy*). The showiest of the Poppies, with great silky scarlet and red flowers on long stems, borne well above the foliage.

PHYSOSTEGIA (*False Dragonhead*)

Virginica. Spikes of delicate pink tubular flowers. 3 to 4 feet high.

Price: 35c each; \$1.50 per 5; \$25 per 100

PLATYCODON

Grandiflora. (*Balloon Flower*). Related to the campanulas. Covered with large blue flowers, 3 inches in diameter, in July or August. 2 feet.

Price: 35c each; \$1.50 per 5; \$25 per 100

PRIMULA

Price all varieties: 35c each; \$1.50 per 5; \$25 per 100

Auricula. An old-time favorite that is again becoming popular because of the ease with which it is established and the great variety of cheery colors represented in the flowers.

Veris superba. (*Giant Cowslip*). Noteworthy because of the great trusses of large flowers, the individual blossoms being 1 to 2 inches across; color, bright canary-yellow.

PYRETHRUM (*Feverfew*)

Fine for cut-flowers, the white, pink, and red aster-like flowers making a splendid showing indoors as well as out.

Price: 35c each; \$1.50 per 5; \$25 per 100

SEDUM

Spectabile. (*Stonecrop*). Large heads of pink flowers. A fine border plant and one of the best for foliage or flower effects. 1 1/2 feet. August, September.

Price: 35c each; \$1.50 per 5; \$25 per 100

STOKESIA

Cyanea. (*Cornflower Aster*). Light blue. Centaurea-like blossoms throughout the late summer.

Price: 35c each; \$1.50 per 5; \$25 per 100

TRITOMA (*Red-Hot Poker Plant*)

Pfitzeri. (*Flame Flower*). A striking lilaceous plant which is one of the richest flowering bedding subjects of its season, the tall spikes surmounted by brilliant orange-scarlet flower-heads over 1 foot long, rising from a cluster of long lancelike leaves. Extremely free flowering, showy and unusual, but it needs some protection in winter.

Price: 35c each; \$1.50 per 5; \$25 per 100

TROLLIUS

Europeus. (*Globe Flower*). Giant yellow and orange Buttercup-like blossoms nearly all summer. A choice plant, preferring a moist situation.

Price: 35c each; \$1.50 per 5; \$25 per 100

VERONICA

Longifolia Subsessilis. Pretty spikes of blue flowers in late summer. A very choice blue flowering plant. 2 feet.

Veronica Spicata. (*Speedwell*). Long spikes of bright blue flowers. 2 feet. July and August.

Price all varieties: 35c each; \$1.50 per 5; \$25 per 100

Ornamental Reeds and Grasses

Erianthus Ravennae. (*Plume Grass, or Hardy Pampas*). Greatly resembles pampas grass, but blooms more abundantly; attains a height of from 9 to 12 feet; perfectly hardy and valuable for decoration of lawn.

Price, strong plants: 50c each; \$4.00 per 10

Eulalia gracillima univittata. (*Japan Rush*). A handsome ornamental variety with narrow graceful foliage; very valuable; 4 feet.

Price, strong roots: 50c each; \$4.00 per 10

Eulalia Japonica variegata. Similar to the type with handsome variegated leaves; 4 feet.

Price, strong roots: 50c each; \$4.00 per 10

Cyperium argenteum. (*Pampas Grass*). Grows from 9 to 12 feet high, frequently throwing up from 30 to 50 flower spikes.

Price, strong roots: 50c each; \$4.00 per 10

Rockery Plants

Price all varieties: 35c each; \$1.50 per 5; \$25 per 100

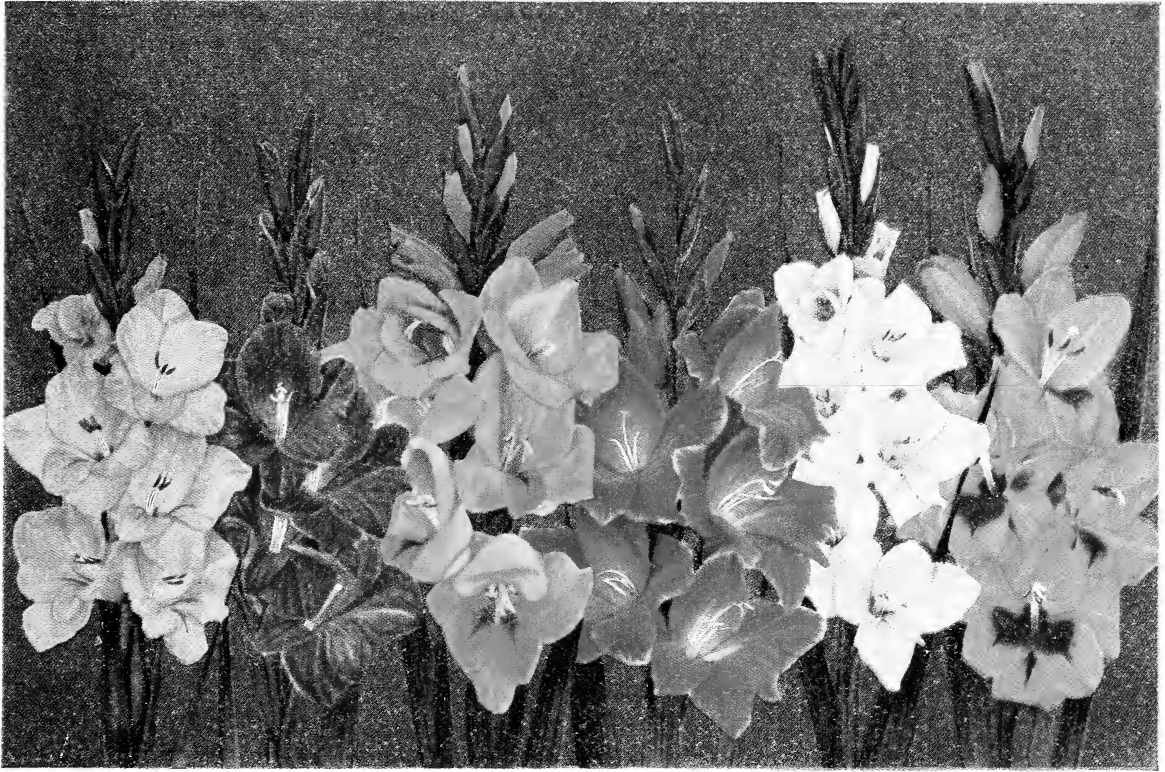
Variety	Height Inches	Color
Ajuga Reptans	4	Blue
Arenaria Montana	3	White
Bellis Perennis Longfellow	4	Pink
Calamintha Alpina	6	Purple
Cerastium Tomentosum	4	White
		Silvery white foliage
Delphinium Chinese	12	White
Dianthus Caesius	6	Pink
Erysimum Pulchellum	4	Yellow
Linum Perenne	15	Blue
Lychnis Haageana	12	Orange red
Oenothera Missouriensis	10	Yellow
Phlox Sublata Rosea	6	Pink
Polemonium Coerulea	15	Blue
Primula Veris	5	Mixed
Prunella Grandiflora		Violet



Oriental Poppy

Rockery Plants (Continued)

Variety	Height Inches	Color	Variety	Height Inches	Color
Ranunculus Repens	6	Yellow	Silene Saxifraga	8	White
Sedum Acre	4	Yellow	Tunica Saxifraga	4	White
Sedum Album	4	White	Viola Cornuta	5	Various
Sedum Spurium	6	Red	Gypsophila Repens	6	White
Silene Schafta	8	Red	Sempervivum Tectorum	2	Yellow



A selection of our Gladioli will give a wide range of color variations

Gladioli

You will be Glad you planted our "Glads"

JUST read over the description of the following list of "Glads." Not a poor variety in the lot. Not even the semblance of a poor variety. We have seen to that by weeding out of our collection all but the following and these are real thoroughbreds. Gladiolus bulbs can be planted in April, May and June and should bloom in July, August and September. Each bulb will make from one to four spikes of bloom and a dozen or more flowers on each bloom. We send out only large size, blooming bulbs. Prices, all varieties: Giant Bulbs, \$1.00 per 10; \$7.50 per 100; \$60.00 per 1000.

Alice Tiplady. Orange salmon. Very choice. Alice Tiplady was awarded the first class Certificate of Merit by North Shore Horticultural Society, Manchester, Mass., summer of 1919. Winner of hundreds of later awards.

Evelyn Kirtland. Conceded to be the most beautiful, brilliant Gladiolus in existence. Beautiful shade of rose-pink, shading to light pink towards the center with brilliant blotches of scarlet on lower petals.

Gold. Golden yellow, throat darker yellow, little stippled; a rival of Golden Measure, which we consider superior.

Halley. The most attractive early blooming sort with large well opened flowers of delicate salmon-pink.

Le Marechal Foch. Beautiful shade of apple blossom-pink flowers. Twice as large as America.

Lily White. An extremely fine novelty. Early. Pure white flower.

Maiden Blush. Exquisite blush-pink.

Louise. The showiest of all Gladiolus. Distinct in form. Clear, pure lavender. A velvet red toward center. Resembles the orchids grown by leading florists. This variety is in a class by itself.

Mrs. Helen Franklin. Pure white. Heavily ruffled. Lavender in the throat.

Mrs. Francis King. A beautiful "Besnard" shade of flame pink. Flowers of giant size on spikes growing 4 feet high. A magnificent variety.

Mrs. Frank Pendleton. The sensational beauty. Winner of awards and prizes everywhere. Petals beautiful rose-pink on a pure white ground, contrasting in a most striking way with the deep, rich, velvety, blood-red blotch on the lower petals. As showy as an orchid.

Odin. Deep salmon-rose.

Peace. Giant white flowers with lilac feathering in throat of two of the petals.

Red Canna. Real red. One of the finest.

Souvenir. Most superb. Deep yellow. An extra fine Gladiolus.

Capt. Fryatt. Carmine red. This valuable variety must be seen to be appreciated. We suggest that you include at least a nominal number in your order.

Flaming Sword. A variety that is coming to the front very fast. A brilliant red color.

Rose Pearl. A beautiful pink. Sport of Halley. Superior to Wilbrinck.

FRENCH PUSSY WILLOW

THE TALK OF THE TOWN

This great shrub at our low price means a quick sell out—order yours to-day.

Plant one, one hundred, one thousand. The cost is slight compared with the heaps of genuine pleasure and satisfaction that is yours, if you plant **French Pussy Willow**.

The Only Outdoor Shrub Grown from which You Can Cut Bouquets During the Winter Months

A select and improved new type of Pussy Willow, perfectly hardy anywhere in the United States. The branches of this cultivated variety are being used by florists in cities for winter decorations and are bringing high prices. They are very fragrant.

Buds and Blooms Very Large

The buds, or catkins, are from one to two inches long after they come out in bloom, and make a very dainty yellowish pink and silvery bouquet.

Finest Winter Bouquets

The branches can be cut in December, January or February, placed indoors in a vase of water, and they will at once burst open into bloom. When they are in full bloom they can be taken out of the water and they will retain their beauty for months, or until they become soiled from dust or other causes.

Wonderful Gifts

There is nothing you can give friends that they will appreciate quite as much as a bouquet of these beautiful flowers in the winter time.

They Make Fine Tall Hedges or Screens

These plants will fit in any landscape planting and should be planted on home grounds everywhere. They can be used as a background like any tall shrub such as the Lilac or Snowball. They can be used as tall hedges or screens and should be planted about four feet apart for this purpose. Planted alone, the branches cut each winter, they make a beautiful round shrub, an ornament to any home grounds.

Very large buds—a promise of springtime—bouquets in winter—makes fine hedges—when dried they will keep indefinitely—blooms the first year—a beautiful shrub.

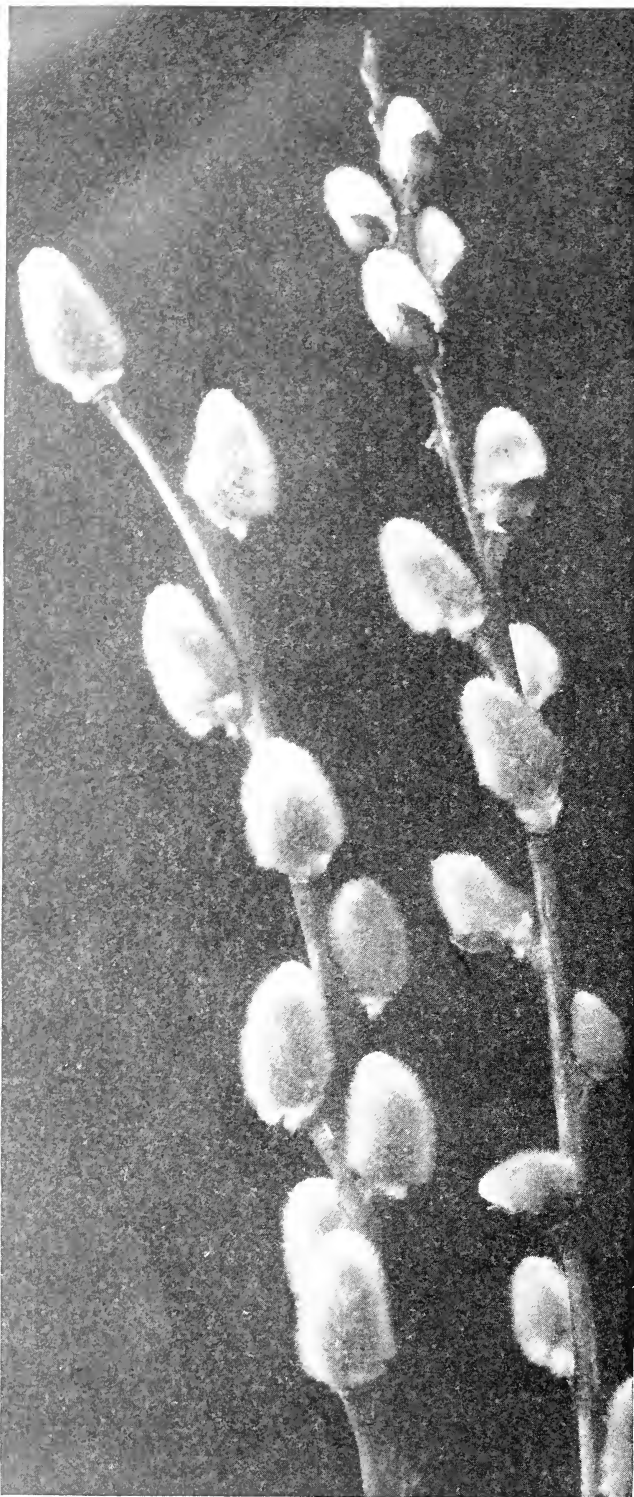
The most interesting plant for the home grounds.

PRICE FRENCH PUSSY WILLOW PLANTS

—Size 2 to 3 feet

2	12	100	1000
\$1.00	\$5.00	\$35.00	\$250

(We cannot accept orders for less than \$1.00 worth)



How Late Can I Plant Nursery Stock in the Spring?

This is the question that comes up every spring during the month of May, after the first few warm days have come and made the buds swell. Dormant nursery stock may be planted with safety throughout the United States and Canada even late in the spring. We keep our stock dormant

by special methods until late in May. Last year our stock was dormant and we shipped until about the 10th of June. Our advice, however, is to place your order as early as possible. The earlier you plant, the longer the growing season.



Radiance is one of the best, if not the best pink rose yet introduced

ROSES

WOULDN'T you like to have a Rose-garden this year—such a fine one that you could conscientiously make a real hobby out of it? You can do it, and by selecting your Roses from the following lists it is possible to have a garden abloom throughout the season—Roses in beds along the walks, on trellises, or pergolas, or over the garden wall. Put part of your recreation hours into caring for them, ministering to their needs, and combating their enemies. The result in sturdy plant-growth and richness and profuseness of bloom will be seemingly phenomenal. And my! what a feeling of satisfaction will be yours when your friends pause to admire the beauty and inhale the fragrance of the Roses that have resulted from choosing Rose-growing as *your* hobby.

Hybrid Tea Roses

The following varieties bloom all Summer

American Beauty. Magnificent, large, globular flowers of a beautiful rosy crimson, on vigorous stems; delightfully fragrant.

Columbia. Pink, deepening as it opens. Strong grower and soon makes a great display.

Gruss an Teplitz. The clusters of bright crimson flowers are brilliant all summer, very fragrant, hardy and vigorous.

Joanna Hill. A 1929 Gold Medal Rose. This wonderful new yellow Rose made its debut as a cut-flower in Pittsburgh, Cleveland, and Chicago last winter, and was pronounced by wholesalers and retailers as well, the best yellow Rose yet introduced. The blooms are clear yellow, deepening at the center, and hold their color under artificial light. Flower Show patrons have been most profuse in expressing their delight with this Rose. **Price \$2.00 each.**

Imperial Potentate. Introduced only five years ago, this beautiful variety has already found a place among the most popular garden sorts. Its splendidly shaped buds develop into large, sweet scented double flowers of crisp, glistening rose-pink with silvery suffusion at the base of the petals. Of strong, vigorous erect habit of growth, and very free flowering. **Price \$1.50 each.**

Irish Fireflame. A glorious single-flowering variety, bearing its flowers in clusters of five or more; splendid for cutting in sprays in bud form. These buds are wonderfully rich in coloring, a rich deep orange, splashed with crimson, opening to a large single flower of a satiny old-gold, shaded with ochre. **Price \$1.50 each.**

Jonkheer. (J. L. Mock). Very large, fragrant flower with high-pointed center. Silvery rose on inside and carmine on outside.

Killarney. Buds long and pointed; flowers flesh, suffused pink, deliciously perfumed. Lovely and distinct.

Lady Hillingdon. Superb cup-like yellow flowers, very delicate and fragrant.

LaFrance. Silvery rose, outside of the petals deeper in color. Full, finely formed, and extremely fragrant. Vigorous, hardy.

Laurent Carle. Glorious velvety carmine flowers of perfect form and giant size.

Los Angeles. Flame-pink, shaded gold. Intensely fragrant, and one of the most beautiful Roses.

Maman Cochet. Flowers rose, shaded with carmine and outer petals splashed bright rose; very large and full. Vigorous and floriferous.

Miss Lolita Armour. Orange-salmon, very double and fragrant.

Mme. Butterfly. Pale pink and gold. One of the most beautiful.

Mme. Caroline Testout. Bright satiny rose, bordered carmine-pink; very large, globular. Free flowering and vigorous. Famous as the "Portland" Rose, being used by the thousands for street planting in the Pacific Northwest.

ALL Hybrid Tea Roses offered
by us are strong 2-year old, field grown plants. Each plant has been given plenty of room in the nursery row to develop a good root system and a good top. Such plants should and will bloom the first season planted.

**PRICE OF ALL HYBRID
TEA ROSES**

Each	Ten	Hundred
\$1.00	\$9.00	\$75.00

Except where otherwise noted.

Mme. Edouard Herriot. *The Daily Mail Rose*. HT. Coral red buds, shaded yellow; flowers copper-orange, semi-double, tinted yellow and scarlet; hardy. Winner of the \$50,000 prize offered by the London Daily Mail.

Mrs. Aaron Ward. One of the best yellows in the Hybrid Tea class. The long buds open to rather small full flowers of elongated form. Indian-yellow washed with salmon.

Mrs. Calvin Coolidge. The beautiful new Rose named after the good wife of our President, is a sport of that wonderful Rose, Ophelia. Its color is a bright yellow, changing to deep orange as the flower develops. **Price \$1.50 each.**

Mrs. S. K. Rindge. Red, yellow and orange, becoming pink with age.

National Emblem. Velvety, crimson, shading to vermilion; flowers quite full; delightfully sweet-scented.

Old Gold. Flowers vivid reddish-orange with rich coppery-red and coppery-apricot shadings. Sweetly scented. Growth vigorous. Continuous flowering.

This Rose is regarded one of the most beautiful decorative and bedding roses.

Ophelia. White tinted salmon-flesh, shaded with rose. Growth strong; flowers on long stems, in great profusion all summer. Hardy in almost all localities.

Radiance. Supreme as the best pink Rose in cultivation. Elegant large flowers are cup-shaped, light silvery flesh to salmon-pink, with opaline. A constant bloomer and delightfully fragrant.

Red Radiance. Exactly like Radiance except bright cerise-red flowers. A very fine variety.

Rose Marie. One of the best bedding Roses grown, remarkably free-flowering, producing large, long, ideal buds which develop into full flowers of beautiful form, of a most pleasing clear rose-pink.

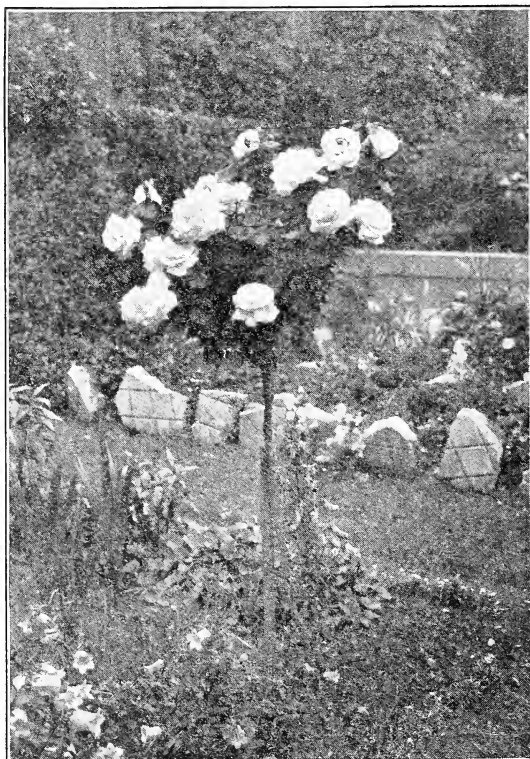
Sensation. Bud is large, long pointed; the expanded flower very double, averaging 5 inches across; very lasting. The finish suggests rich velvet, in color a scarlet-crimson deepened over all by glossy maroon. The foliage is dark, and the scented bloom profuse. **Price \$1.50 each.**

Soleil d'Or. Flowers orange-yellow to ruddy gold, shaded with nasturtium-red.

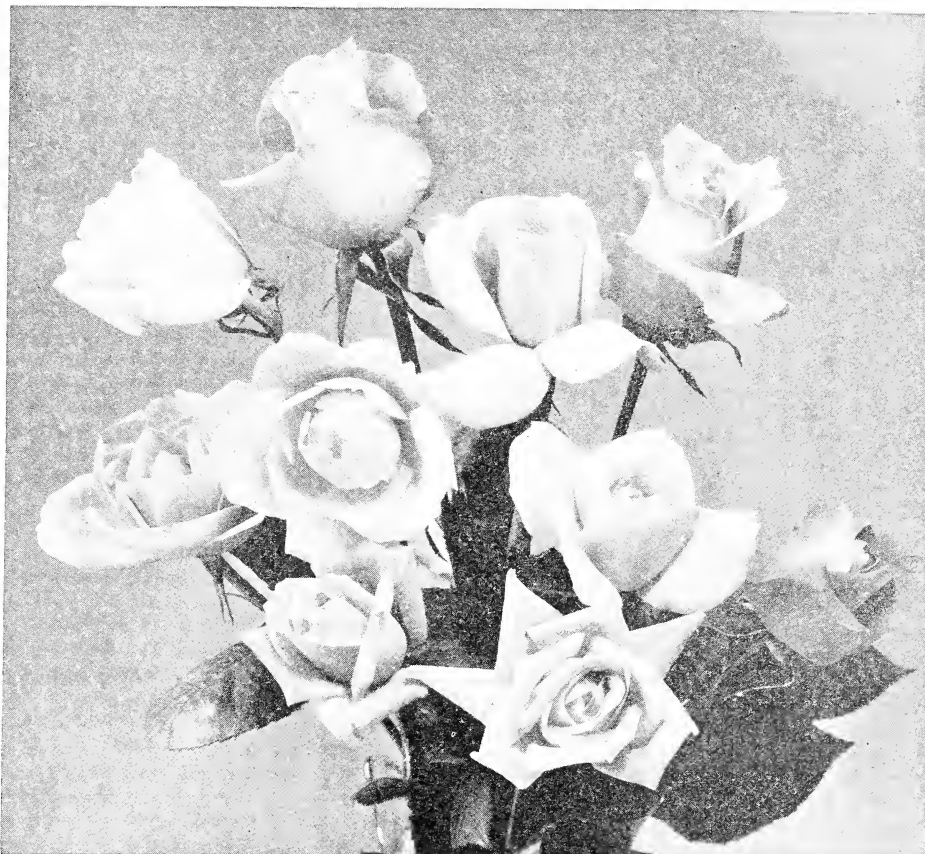
Souvenir de Claudius Pernet. Clear yellow without other shading and does not fade white. The best tested yellow garden Rose.



Our stock of roses is very large and exceptionally fine



Standard or Tree Rose



Madam Butterfly. Tried and true.

Sunburst. Flowers full, of fine elongated form, yellow, orange in the center.

Willowmere. Shining pink with yellow glow; perfect flowers; very floriferous.

Hybrid Perpetual Roses

The price of all Hybrid Perpetual Roses, strong 2-year old, field grown plants:

Each...\$.90 Ten...\$8.00 Hundred...\$60.00

Captain Hayward. Scarlet-crimson of perfect form; fragrant. Vigorous, continuous bloomer.

Clio. Large, globular; flesh color, with rosy pink shading; handsome foliage. Very vigorous grower and free bloomer.

Frau Karl Druschki. The buds are handsome, long-pointed, opening to very large pure snowy white cupped flowers of great substance. A very vigorous grower and exceptionally hardy; very free and continuous bloomer.

General Jacqueminot. Beautiful buds; flowers crimson-scarlet, large, full, very fragrant. Vigorous.

Heinrich Munch. Delicate pink blooms, resembling those of the Frau Karl Druschki. The flowers are very large and full. A vigorous grower.

Hugh Dickson. Brilliant crimson, shaded scarlet; good size, fine form; fragrant. Vigorous and free flowering.

Juliet. Large; cupped; very double; fragrant. Petals coral-red inside and old-gold outside. Profuse bloomer. Unique.

Magna Charta. Large full, well-formed flowers of bright pink. Very fragrant. Exceedingly vigorous; fine for forcing under glass.

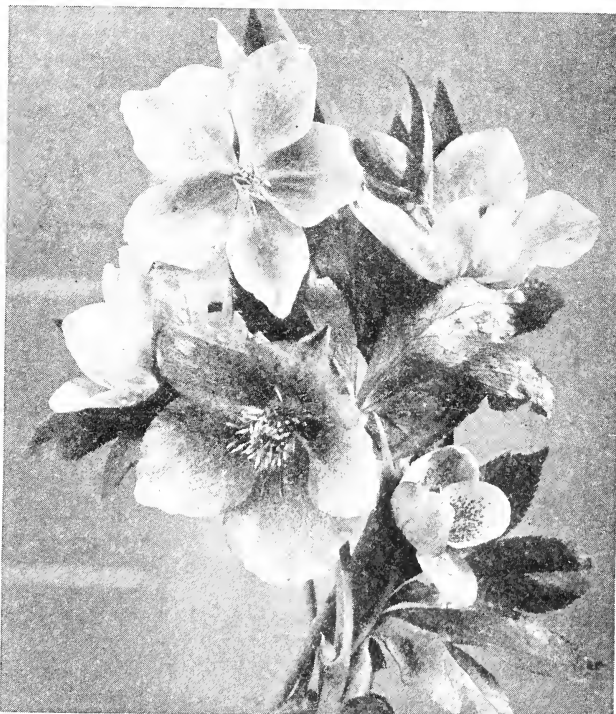
Margaret Dickson. White, pale flesh center; large, fine form. Very vigorous.

Marshall P. Wilder. Bright cherry-red blooms of good size, perfectly double, and very fragrant. Vigorous grower.

Mme. Gabriel Luizet. An extra-early, light satiny pink Rose with delicate fragrance; the broad, thick petals are heavily recurved; of very vigorous growth.

Mrs. John Laing. Fine long buds; very large flowers of an exquisite soft pink, finely formed and very fragrant. Vigorous and free blooming.

Mrs. R. G. Sharman-Crawford. Clear rosy pink, outer petals shaded pale flesh on white ground; large, full, perfectly formed. Free blooming.



Christmas Rose (*Helleborus Niger*)

During mild days of winter, from December to early spring, well-established plants will produce their white, waxy flowers, resembling single roses. **\$1.50 each.**



Souvenir de Claudius Pernet

New 1929 Gold Medal Rose Talisman

“Like a choice rare cameo”

A rose so unique that it is almost impossible to describe. The colors are old-rose pink, copper and old gold. Entirely distinct and unlike any rose we have ever seen. The only way one can gain any conception of its magnificent blending of colors is to plant it.

Awarded four gold medals: American Rose Society, Louisville, 1928; President Coolidge, New York, 1928; also at Philadelphia and New York shows, 1928.

Price \$2.00 each

Hybrid Perpetual Roses (Continued)

aul Neyron. Enormous deep pink blooms of perfect form and delightful fragrance. Very vigorous; floriferous. One of the largest Roses in cultivation, frequently reaching 6 inches in diameter.

ersian Yellow. A Briar Rose with small, deep golden yellow flowers of large size and fairly full. Vigorous grower.

ince Camille de Rohan. One of the best and most useful dark Roses. The flowers are large, full, well-formed, of a deep velvety crimson, shaded with maroon. Very free flowering and vigorous.

rich Brunner. Large cherry-crimson flowers of fine form. Very free flowering and vigorous. A fine all-purpose Rose of standard excellence.

Standard or Tree Roses

Price: \$3.50 each; \$6 per pair; \$28 per 10

Grown in tree form, 4 to 5 feet high. Covered with their lovely double flowers, they are a beautiful sight, and the formal garden is not complete without them. They come in the following varieties:

Gen. Jacqueminot
Gruss an Teplitz
Kaiserin Aug. Victoria
Killarney
Lady Hillingdon
Mme. Edouard Herriot
Magna Charta

Maman Cochet
Mrs. Aaron Ward
Ophelia
Paul Neyron
Radiance
Sunburst
Tausendschon

White Maman Cochet

Hardy Climbing Roses

Price all varieties: 75c each; \$6.50 per 10; \$55 per 100

American Pillar. Gorgeous clusters of brilliant pink single flowers. Very vigorous and hardy.

Climbing American Beauty. Hundreds of perfect blooms at one time; large, rich rosy crimson, and very fragrant. Hardy.

Crimson Rambler. One of the most vigorous climbers, often growing 10 to 18 feet the first season; flowers small, double, brilliant crimson, in immense clusters.

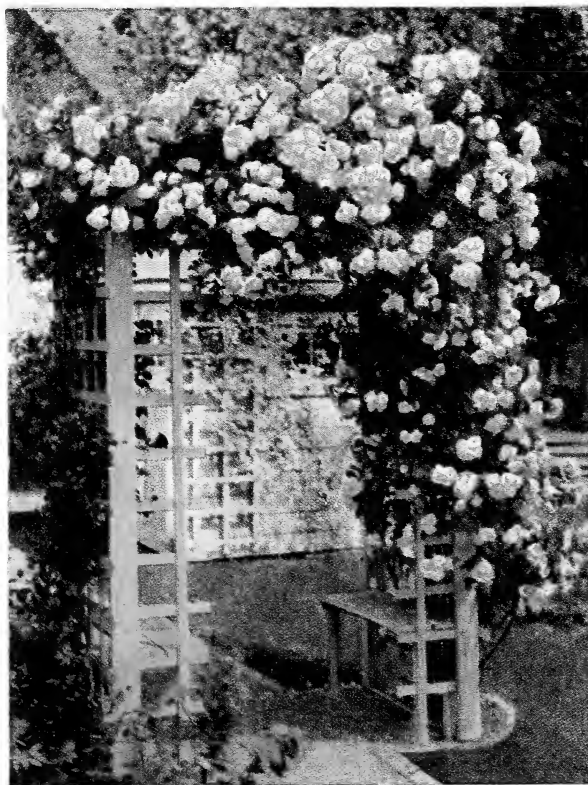
Dorothy Perkins. Shell-pink flowers, borne in large clusters; fragrant; very vigorous and free blooming.

Dr. W. Van Fleet. Buds long, pointed, deep pink; deliciously fragrant.

Excelsa. (*Red Dorothy Perkins*). Very double flowers produced in large clusters; intense crimson-pink, with tips tinged scarlet.

Paul's Scarlet Climber. A large-flowered, low climber of brilliant dazzling red. Does particularly well as a pillar rose, trained to a post.

Tausendschon. Well merits the name "Thousand Beauties," for the large clusters of flowers vary in color from pink to white. Magnificent foliage. No thorns.



Dorothy Perkins on Arbor



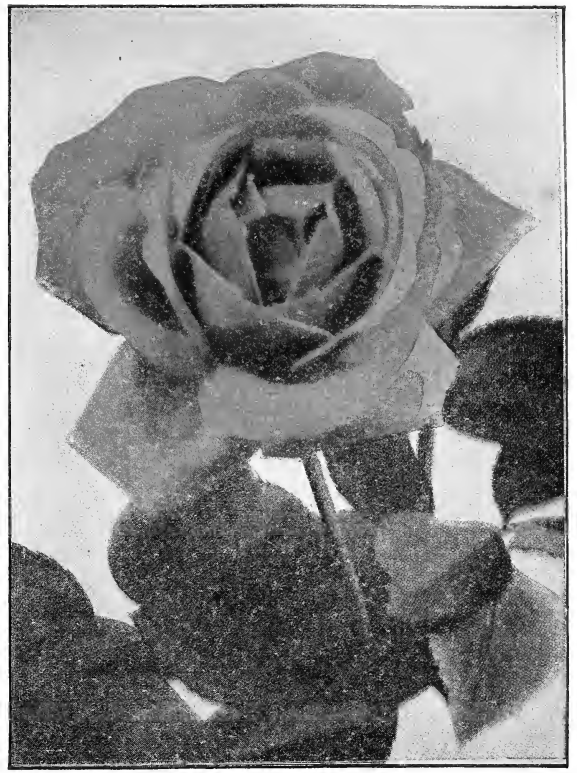
Frau Karl Druschki

Polyantha Roses

Price all varieties: \$1 each; \$9 per 10

Baby Dorothy. Bright pink, in large corymbs; incessant bloom; hardy; rapid grower. 20 inches.

Mme. Norbert Levasseur. (*Red Baby Rambler*). Bright red flowers, which last a long time, are borne in clusters of twenty or more. Always in bloom. 1½ to 2 feet.



Red Radiance

Rugosa Roses

Price all varieties: \$1 each; \$9 per 10

F. J. Grootendorst. A rugosa with small red flowers like a carnation. One of the finest Roses for shrub or hedge planting. It is continually in flower.

Rosa rugosa alba. Single, white, five-petaled flowers, brilliant red berries; foliage wrinkled, dark lustrous green; stems thickly covered with thorns and bristles.

Rosa rugosa rubra. Same as above, but flowers are deep rosy carmine.

And Now

The Rose Collection of the Century

The Surprise of the Year—10 Magnificent Roses for \$10

Including the New Rose, President Hoover

President Hoover. This marvelously colored new rose was named with the consent of the President. The color is a happy blend of orange and pink, free but very vivid copper red on the buds to glowing orange yellow at base of the petals. Flamed and suffused with vivid rose pink. It is receiving the following awards: Gold Medal by the American Rose Society at the International Flower Show, New York City, 1929, and the Society Silver Medal at the Centennial Exhibition of the Massachusetts Horticultural Society of Boston, 1929.

Also that Wonderful New Rose

Talisman. This rose is so unique it is almost impossible to describe. The colors are old rose pink, copper and old gold, entirely distinct and unlike any other rose we have ever seen. Awards: Four Gold Medals, American Rose Society at Louisville, 1928; Pres. Coolidge medal at New York, 1928, and also at the Philadelphia and New York shows.

Red Letter Day. Flower velvety brilliant, glowing scarlet crimson; opening to medium size, curiously cactus shaped, flower large—will not fade or burn in the sun, as the reflex of the petals is satiny crimson-scarlet colored. Continuous flowering throughout the season.

Queen of Fragrance. Flower bright real pink, tipping with silver. Large, double and very elegantly shaped, recalling the painter's rose of the old masters.

Gorgeous. Flowers deep orange yellow, flowing coppery yellow and veined richly copper, large full and exquisitely formed.

Golden Emblem. Flower cadmium-yellow as the bloom begins to open, toning to Sun-Flower yellow when full expanded. Large.

Premier Supreme. Pure brilliant rose pink, deliciously fragrant and long lasting. Marvelously free flowering.

Matchless. Bud very large, long pointed, deep cerise pink. Flowers immense, full, very double. Intensely fragrant.

Irish Charm. A new introduction from Ireland with beautiful shaped blush pink blooms, richly shaded with apricot and gold.

Courtenay Page. Beautiful shaped blooms of bright scarlet crimson overlaid with a fine velvety sheen. Intensely fragrant.

We offer only strong two year old, field grown plants, one of each variety for \$10.00. This price is extremely low, considering that the President Hoover retails at \$2.50 each, Talisman at \$2.00 each and the other 8 varieties at \$1.50 each.

A \$16.50 Value for \$10.00



Climbing and Trailing Vines

ORNAMENTAL Vines provide shade for porches, pergolas, arbors; as screens, they contribute privacy; as wall-coverings, they lend a dignified, homelike permanent atmosphere to a place, such as mere coats of paint can never give. The foliage is restful, the flowers gorgeous; some have brilliantly colored berries and autumnal leaf-colorings that are the envy and despair of artists. Plant these vines freely about your home, for in them are possibilities for greatly increasing the charm and value of your property.

AMPELOPSIS (*Ivy*)

Ampelopsis quinquefolia. (*Virginia Creeper*). Vigorous; clings to walls, making quick, dense shade; leaves gorgeous in autumn; blue berries.

	Each	10	100
Strong Plants, field grown	\$.50	\$4.00	\$30.00

A. tricuspidata Veitchi (**A. Veitchi tricuspidata.** (*Japanese or Boston Ivy*). Rapid-growing; clings to the smoothest surface; the deep green foliage turns crimson in autumn; blue berries.

	Each	10	100
Three year, strong	\$.75	\$6.50	\$45.00

ARISTOLOCHIA (*Dutchman's Pipe*)

Aristolochia Siph. (*Dutchman's Pipe*). Leaves large, affording dense shade; curious yellow-brown flowers.

	Each	10	100
Two year, strong	\$1.50	\$12.50	\$100.00

BIGNONIA (*Trumpet Vine*)

Bignonia grandiflora. (*Trumpet Vine*). Beautiful vine, with orange-red, trumpet flowers.

B. radicans. (*Scarlet Trumpet Vine*). Deep scarlet flowers in August.

	Each	10	100
Three year, strong	\$.50	\$4.00	\$30.00

EUONYMUS (*Evergreen Vines*)

Euonymus radicans. (*Creeping Euonymus*). Attractive evergreen climber; rich green foliage; fruits pink.

	Each	10	100
Two year plants, heavy	\$.50	\$4.00	\$30.00

E. radicans vegetus. (*Evergreen Bittersweet*). Climbing Euonymus Vegetus, beautiful 365 days of the year. Particularly adapted to cover garden walls, old stumps or embankments with any exposure, but the fruiting is best when the plants receive the warm sun; the plants are strong, robust climbers and in fall and winter bear a profusion of bright red berries. The vine is covered the whole year with green foliage, and absolutely holds the color even in hottest summer or coldest winter.

	Each	10	100
Good strong plants	\$.75	\$6.50	\$55.00

A Special Offer of 3 Delightful Vines, All Different for \$2.00

1 Wisteria: Picturesque climber with great clusters of pale bluish violet, pea-shaped flowers that make a handsome showing when a vine has been properly trained over a porch or arbor. After becoming established, the vine makes an enormous annual growth.

1 Hall's Honeysuckle: Evergreen climber with deliciously fragrant white flowers that change to yellow.

1 Evergreen Euonymus: A beautiful, low-trailing evergreen with aerial rootlets which cling to any support. Forms a lovely decoration on walls or trees, with its masses of pink berries in winter. As an evergreen, absolutely hardy wall cover, this plant is unequalled.

CELASTRUS

Celastrus scandens. (*American Bitter-sweet*). Orange-yellow capsules that display crimson seeds. Fine on trees or lattice.

	Each	10	100
Two year, large plants.....	\$.50	\$4.00	\$30.00

CLEMATIS

Showy vines adapted to training over porches, balconies, trellises, walls, fences, and arbors.

SMALL-FLOWERING CLEMATIS

Clematis coccinea. (*Scarlet Clematis*). Graceful vine with attractive foliage and nodding red flowers.

	Each	10
Two year, strong plants.....	\$.75	\$6.50

C. paniculata. Rapid grower; free bloomer; fragrant white flowers almost hide the foliage.

	Each	10
Two year, strong plants.....	\$.50	\$4.00

LARGE-FLOWERING CLEMATIS HYBRIDS

Duchess of Edinburgh. Double; pure white; fragrant. Requires protection.

	Each	10
Two year, extra strong.....	\$1.00	\$10.00

Henryi. Flowers white, large, and very showy.

	Each	10
Two year, extra strong.....	\$1.00	\$10.00

Jackmani. Large, velvety purple flowers.

	Each	10
Two year, extra strong.....	\$1.00	\$10.00

Mme. Baron Veillard. One of the strongest growers of all the large flowering clematis. Its large pink blossoms are produced in profusion. Its color holds as long as the flower lasts. For those desiring a pink clematis, Mme. Baron Veillard is the most dependable variety we have ever offered.

	Each	10
Two year, extra strong.....	\$1.00	\$10.00

HEDERA (Ivy)

Hedera helix. (*English Ivy*). Hardy and generally satisfactory on a northern exposure.

	Each	10
Two year plants.....	\$.75	\$ 6.50

LONICERA (Honeysuckle Vine)

Lonicera japonica aureo-reticulata. (*Golden Honeysuckle*). Golden variegated leaves. Very handsome.

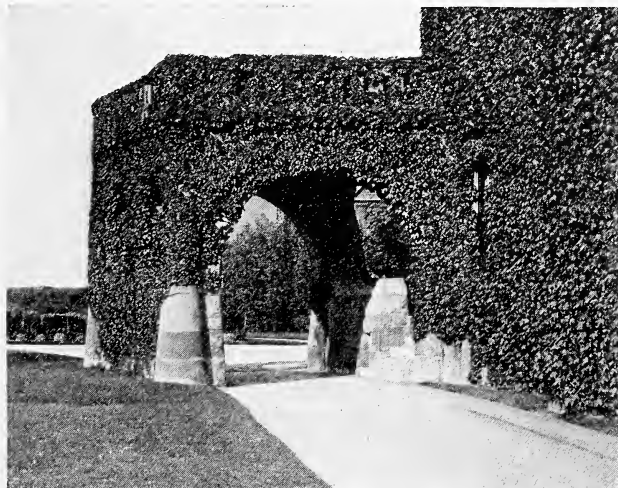
	Each	10	100
Two year, strong plants.....	\$.50	\$4.00	\$30.00

L. japonica Halliana. (*Hall's Honeysuckle*). Evergreen climber with deliciously fragrant white flowers that change to yellow.

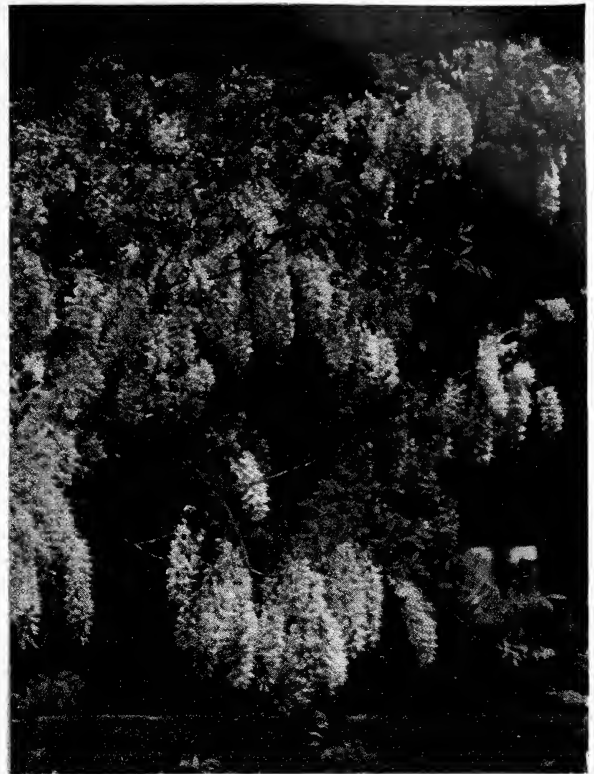
	Each	10	100
Two year, strong plants.....	\$.50	\$4.00	\$30.00

L. Periclymenum belgica. (*Monthly Fragrant Honeysuckle*). Yellowish white, and pale purple all summer.

	Each	10	100
Two year, strong plants.....	\$.50	\$4.00	\$30.00



Boston Ivy, once established grows rapidly



Wisteria Sinensis, great clusters of pale violet flowers

L. sempervirens. (*Scarlet Trumpet Honeysuckle*). Rich scarlet flowers throughout the summer.

	Each	10	100
Two year, strong plants.....	\$.50	\$4.00	\$30.00

LYCIUM

Lycium chinense. (*Matrimony Vine*). Hardy, pink or purple flowers and scarlet berries.

	Each	10	100
Three year, heavy plants.....	\$.35	\$3.00	\$25.00

POLYGONUM

Polygonum Auberti. (*Silver Lace Vine*). One of the most desirable flowering climbers, the plant is of strong, vigorous growth, attaining a height of 25 feet or more, producing through the summer and fall great foamy sprays of white flowers, and a well established plant during its long flowering period is a mass of bloom.

	Each	10
Two year plants.....	\$.75	\$ 6.50

PUERARIA

Pueraria Thunbergiana. (*Kudzu Vine*). Grows 50 feet in one season; dense shade; purple, pea-shaped blossoms.

	Each	10
Two year plants.....	\$.40	\$ 3.50

VINCA

Vinca Minor. (*Periwinkle, or Myrtle*). Hardy, trailing plant valuable for covering ground in deep shade; shining evergreen foliage and lilac-blue flowers.

	Each	10	100
Field grown plants.....	\$.35	\$3.00	\$25.00

WISTERIA

Wisteria sinensis. (*Chinese Wisteria*). Great clusters of pale violet flowers. When established, the vine makes an enormous annual growth.

	Each	10
Strong seedling plants.....	\$1.00	\$10.00
Strong grafted plants.....	1.50	12.50

W. sinensis alba. Magnificent clusters of white flowers.

Two year plants, strong.....	\$1.00	\$10.00
------------------------------	--------	---------

W. Tree-Form. We have a number of Tree-Form Wisterias in two colors—white and purple—desirable for lawns.

	Each	10
Either color, 4-5 feet.....	\$5.00	\$40.00

FRUITS FOR HOME AND MARKET



"Big Buster" Apple Tree



"Big Buster" Pear Tree

Apples

GROWING the Apple is a profitable commercial proposition, holding out to planters the possibility of an income from this source about four times as great as could be derived from a similar acreage devoted to ordinary farm crops. Areas planted to Apple trees may be intercropped with grains or small-fruits while the trees are coming to bearing age, so that it is possible to have some income from such a plantation each year. The varieties we offer have been selected for their sterling worth, productiveness, disease-resistance, flavor, time of ripening, and for other special reasons mentioned in the various descriptions.

The home garden that has the necessary space available is not complete without one or more Apple trees. The healthfulness of this fruit is proverbial, and surely it is more pleasurable to buy an Apple tree than it is to pay a doctor's bill.

SUMMER APPLES

	Each	10	100
Two year, 5-7 feet	\$.60	\$5.50	\$50.00
Big Buster size, four year, 7-9 feet.	2.00	18.50	150.00

Early Harvest. (*Yellow Harvest*). Medium size; bright straw color; fine, rather acid flavor; good bearer. August.

Red Astrachan. Large; deep crimson; juicy, rich, acid; productive. August.

Yellow Transparent. Medium size; pale yellow; pleasantly acid, good. July and August.

AUTUMN APPLES

Fall Pippin. Large; rich yellow when ripe; flesh firm, juicy, aromatic; strong grower and long-lived. September.

Fameuse. (*Snow*). Medium size; bright red deepening to almost purplish black in highly colored specimens; flesh white, juicy, aromatic; heavy yielder. October.

Gravenstein. Large; yellow overlaid with red; flesh firm, juicy, slightly sub-acid; productive. September to November.

Maiden Blush. Medium size; yellow with red cheek; very juicy, subacid; reliable cropper. September to December.

Oldenburg. Rather large; light red streaks on yellow ground; tender and juicy; very hardy. Handsome appearance and good cooking qualities are two points in favor of this variety. Early autumn.

Twenty-Ounce. (*Cayuga Red Streak*). Very large; yellow splashed with red; quality good, especially for cooking, heavy yielder. Late September to early winter.

WINTER APPLES

Arkansas Beauty. Large, handsome; deep red; flesh tender, yet firm; very productive. December to May.

Baldwin. Large; deep red; crisp and juicy; vigorous grower; heavy bearer. November to March.

Banana. Large and showy; yellow pinkish red blush; flesh tender and exceedingly aromatic, fairly heavy bearer. November to February.

Delicious. A relatively new Apple, ranking high as a variety for commercial or home orchards. Large; brilliant dark red; flesh fine-grained, crisp, melting, juicy, with a delightful aroma; splendid keeper and shipper; tree bears heavy crops annually; a profitable sort to grow. November to February.

McIntosh. Large; deep red; flesh crisp, tender, juicy, and agreeably aromatic; reliable cropper. Deserves the best we can say. October to December.

Grimes Golden. Medium size; golden yellow; flesh firm, crisp, rich, subacid, aromatic; good bearer. November to February.

Northern Spy. Large; bright red, spread with delicate bloom; flesh tender, rich, delicious; bears well. November to March.

Opalescent. The handsomest Apple ever put on the market. Large to very large; light red shading to very dark crimson, with many yellow dots; skin smooth and susceptible to very high polish; flesh yellowish, tender, juicy and good; productive. One of the best varieties we have. December to March.

Rhode Island Greening. Large; greenish yellow; flesh tender, rich, subacid; bears regularly and profusely. December to April.

Stayman Winesap. Medium size; yellow ground covered with red; flesh fine, crisp and high-flavored; reliable and heavy cropper. November to April.

Tompkins King. Large; red; flesh crisp, aromatic, juicy, subacid; bears abundant annual crops. November to March.

Wagner. Medium to rather large; beautiful bright red; flesh firm, subacid, well-flavored; annually productive. December to May.

Wealthy. Medium to large; deep red, juicy. October to January.

Westfield Seek-No-Further. Medium size; yellow, striped with red. October to late winter.

Wolf River. Large; greenish yellow, flushed with crimson; flesh white, juicy, tender, with a mild subacid flavor; good cropper. September to December.

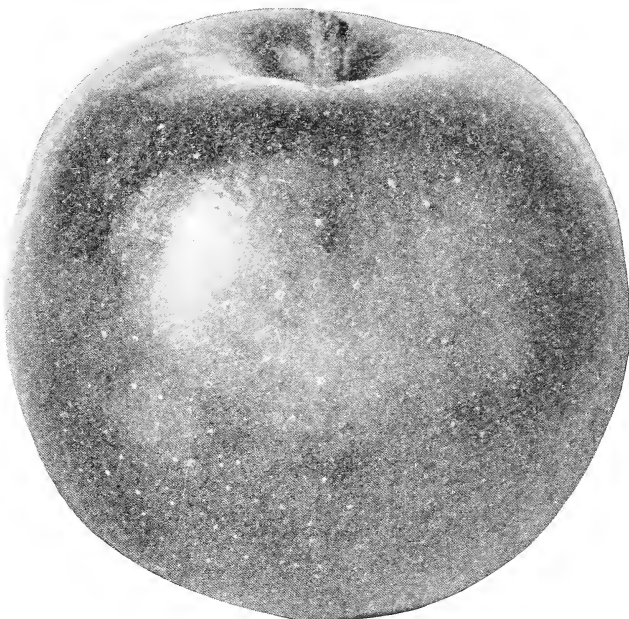
CRAB APPLES

Two year trees, 4-6 feet..... Each 10 \$1.00 \$ 9.00

Transcendent. Yellow, striped with red; crisp and juicy; excellent for culinary use.

Hyslop. Large, deep crimson fruit, hanging in clusters.

Whitney. Large; glossy green splashed with carmine; pleasant flavor; hardy and productive.



An apple each day keeps the doctor away

Dwarf Apple

There are pleasant surprises in store for the planter who sets out dwarf Apple trees. They have the advantage of growing low, fruiting early, may be planted as close as 6 feet apart each way, and bear almost unbelievable loads of the largest and handsomest Apples. They begin bearing in three years and produce good crops thereafter.

Strong, two-year, branched..... Each 10 100 \$1.00 \$9.00 \$80.00

- *Baldwin
- *Bismarck
- *Delicious
- *Fameuse
- *Gravenstein
- *King
- *McIntosh
- *Northern Spy

- *Oldenburg
- *Red Astrachan
- *Rhode Island Greening
- *Rome Beauty
- *Wealthy
- *Winesap
- *Yellow Transparent

SIX BEST DWARF APPLES

An All-Season Dwarf Apple Collection

Come into bearing immediately, producing same quality and size fruit as standard trees. Excellent for planting where area is limited—may be planted as close as 8 feet apart.

One each of the six starred varieties for \$5.00

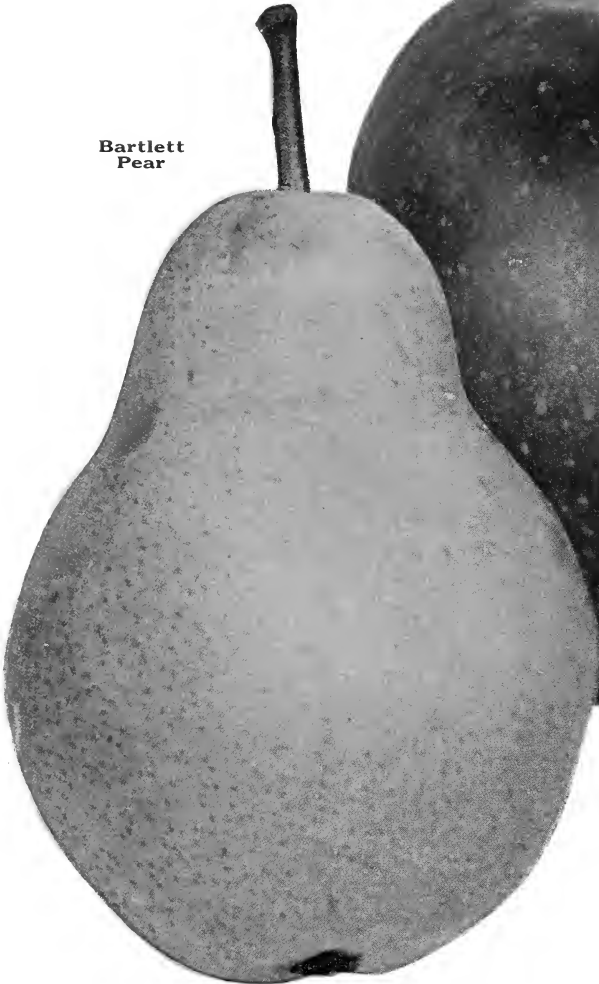


A few 4-year-old apple trees at "Glenwood"

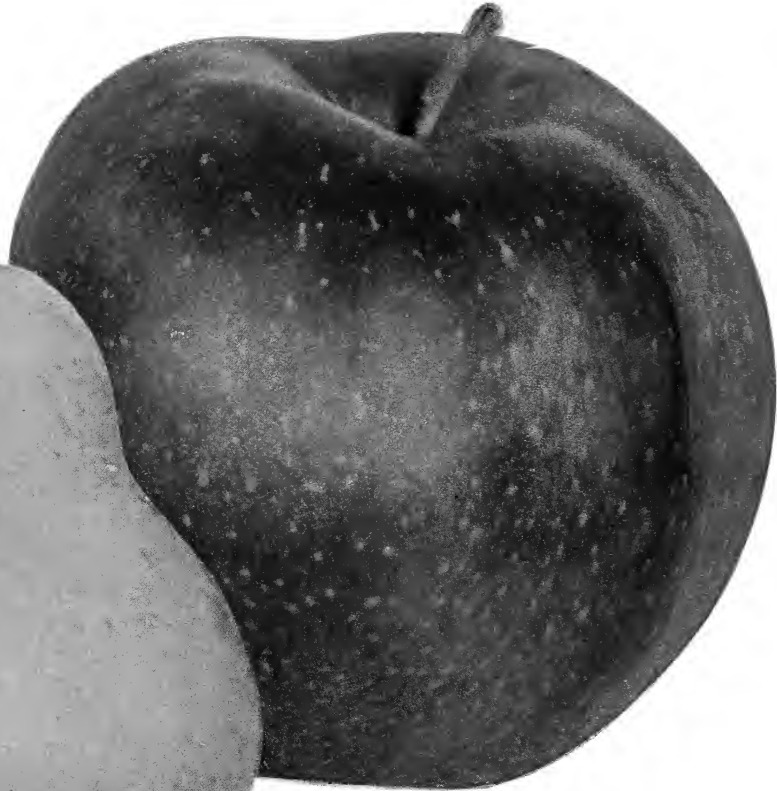
Pears

EXCELLENT fruit for eating out of hand or for canning purposes. Varieties are now available that make possible Pears in excellent eating condition from August until early spring. Particularly responsive to good cultivation and care, the Pear proves a profitable crop when so favored. It is indispensable in the home-garden. The fruit should be gathered ten days to two weeks before fully ripe and kept in a dark place until matured. When the trees are heavily laden, the fruit should be thinned.

Bartlett Pear



Mc Intosh Apple



	Each	10	100
Strong, two year tree, 5-7 feet...	\$1.25	\$10.00	\$85.00
Big Buster, four year tree, 7-9 feet	2.00	18.50	150.00

SUMMER PEARS

- Bartlett.** Large; waxen yellow with red blush; buttery, very juicy and high-flavored; bears early and abundantly.
- Buerre Bosc.** This is a Pear which we can give our unqualified praise. A regular bearer; always preferred. Fruit large, pyriform, with flesh white; melting, very buttery. Of a rich, delicious flavor. Best of all Pears. Double worked trees.
- Clapp's Favorite.** Very large; yellowish green to full yellow, marbled with dull red in the sun and covered with small russet specks, vinous, melting and rich.

AUTUMN PEARS

- Wilder.** Medium size, pyriform; pale yellow, with brownish red cheek; flesh fine-grained, tender, subacid, juicy and sweet; tree bears good crops early and annually.
- Angouleme.** Large; greenish yellow, splashed with russet; flesh yellowish white, melting, buttery, juicy; a good bearer.
- Anjou (Buerre d'Anjou).** Large, handsome; greenish yellow, with a dull red cheek on the exposed side; flesh fine-grained, buttery, melting, with a rich, vinous, excellent flavor; tree hardy and very productive

Flemish Beauty. Large, surface slightly rough; greenish yellow and brown; flesh juicy, melting, very rich and sweet; tree hardy, producing good crops annually.

Kieffer. Large, very handsome; rich yellow, tinged with red, somewhat russety; flesh white, buttery and juicy—sometimes palatable, though always excellent when canned. Tree vigorous grower and early and tremendous bearer. One of the favorites for canning and preserving.

Seckel. Small, but handsome and delicious; yellowish russet with a red cheek; flesh whitish, buttery, very juicy and melting; tree makes somewhat slow but stout and erect growth. Probably the richest and highest-flavored Pear known

Sheldon. Large, roundish; greenish-russet, becoming cinnamon-brown; flesh juicy, melting, sweet, and vinous; tree vigorous, hardy, and fruitful.

DWARF PEARS

A special list of Pears most suitable as dwarfs. Angouleme is the best of all.

	Each	10	100
Two year, extra fine.....	\$.75	\$ 7.00	\$65.00
Angouleme		Bartlett	Kieffer
Anjou		Clapp's Favorite	Seckel

Quinces

THE Quince is highly valued for preserves, marmalades, jellies, and for flavoring purposes, and is worthy of much more extensive planting. Thrives in warm, fertile soil, and the quality of the fruit improves in proportion as its cultural requirements are met.

	Each	10
Two year tree, 3-5 feet.....	\$1.00	\$ 9.00
Orange. Large; brilliant golden yellow; flesh tender and flavor good; tree productive if well cultivated. Late September.		
Rea. Larger than Orange; in other respects much resembling that variety; of excellent quality; trees a strong grower with large, dark foliage.		

Plums

BEAUTIFUL dessert fruits of rich and luscious flavor; equally fine for cooking and for canning. For home use the fruit should be allowed to ripen on the tree, but for shipment to distant markets it must be gathered a few days earlier. All the varieties in the following list are hardy and vigorous in severe climates.

	Each	10	100
Selected trees, two year, 5-7 feet . .	\$1.00	\$9.00	\$75.00
Big Buster tree, four year, 7-9 feet	2.00	18.50	150.00

EUROPEAN PLUMS

Bradshaw. Very large; dark violet-red; flesh yellowish, juicy, pleasantly subacid; tree vigorous and productive.

German Prune. Large, oval; dark purple; flesh firm, sweet and pleasant; tree moderately vigorous. Popular variety for drying and preserving.

Green Gage. Rather small but highly esteemed; yellowish green with reddish brown dots; flesh melting, juicy and unequalled in flavor.

Lombard. Medium size; violet-red; flesh yellow, juicy, pleasant; tree hardy and very prolific.

Shipper's Pride. Large; dark purple; flesh firm and sweet. An excellent variety for shipping and for canning.

Shropshire Damson. (*Prune Damson*). Medium size; blue; flesh juicy, tender, sweet; reliable grower. Fine for preserving.

Yellow Gage. (*Prince's Yellow Gage*). Large, oval; golden yellow, slightly clouded; flesh deep yellow, rich, sugary, melting.

JAPANESE PLUMS

Burbank. Large, nearly globular; clear cherry-red with a thin lilac bloom; flesh deep yellow, sweet, meaty, and quite firm; tree vigorous.

October Purple. Large, round; purple; good quality; tree strong grower and productive.

Red June. Professor Bailey says, "By all odds the best Japanese Plum." Large; brilliant red; flesh delightfully subacid; ripens early and keeps well; tree reliably productive.

Wickson. Very large; glowing crimson with white bloom, flesh thick, sugary and delicious; tree bears unusually heavy crops. Splendid market variety.

Apricots

RIPE fruit can be had a month or two earlier than the best early peaches, and granted suitable soil and location, the Apricot is practically as hardy.

	Each	10
Extra fine tree	\$1.00	\$9.00

Acme. Large; yellow with red cheek; flesh of good quality; freestone. August.

Harris. Large; bright yellow with red cheek; flesh juicy, of good quality. July, August.

Moorpark. Large, nearly round; orange with orange-red cheek; flesh very juicy, with rich flavor. August.

Special—A Hardy California Plum

Imperial Epineuse Plum

Purple, thin skin, golden flesh, juicy, sweet, tender. A real California plum—100% perfect. Your first taste will be a revelation. "Cyclopedia of Hardy Fruits" by Prof. U. P. Hedrick, Vice-Director and Horticulturist of the N. Y. Agricultural Experiment Station, describes it as follows:

"The fruits of Imperial Epineuse are not surpassed in quality by those of any plum; moreover, they are most pleasing in appearance, being large, beautiful in shape, and made further attractive by a handsome reddish-purple color which is lighter or darker according to the exposure to the sun. The tree-characters are exceptionally good; the crop is so borne on the main limbs as to be protected from the sun; and the tree is particularly large and vigorous, its strong growth being a striking characteristic of the variety. The variety is much grown in California and should be grown in all plum regions. Wherever tried in the East, fruit and tree are liked, and the variety is certain to grow in popularity in eastern orchards for both home and market plantations."

	Each	10	100
Price 2 year, 5-7 feet	\$1.50	\$12.50	\$100.00



German Prune



Plant a nice Cherry tree in your garden

Cherries

A MONEY-MAKING crop for the progressive farmer, as the trees require but little attention, are thrifty, vigorous, and prolific bearers. There are two principal classes of Cherries: (1) Hearts and Bigarreaus and (2) Dukes and Morellos. The former are strong and vigorous growers, making large, open, spreading heads; their fruit is large, heart-shaped, meaty and sweet. The Dukes and Morellos do not attain so large a size, and the fruit is usually sour.

	Each	10	100
Selected, two year tree, 5-7 feet	\$1.50	\$12.50	\$100.00
Big Buster, four year tree, 7-9 feet	2.00	18.50	150.00

HEARTS AND BIGARREAUS (*Sweet*)

Bing. Very large; dark brown, almost black; flesh firm, rich, and delicious. Considered one of the most profitable sorts.

Dikeman. Large; black; flesh meaty and solid. Ripens two or three weeks after other sorts are gone, giving it value as a commercial variety. Always brings high prices.

Governor Wood. Large, light yellow shaded and mottled with light red; nearly sweet, rich, excellent; tree often overbears, which calls for timely thinning. An excellent variety.

Lambert. Very large; dark purplish red, turning to almost jet-black when fully ripe; flesh firm, solid, rich, and juicy; tree hardy, strong grower, enormous bearer, makes a fine appearance and sells well in the markets.

Napoleon. Very large; pale yellow, spotted and shaded with deep red; flesh firm and of fine flavor.

Schmidt. Large; deep crimson-black; tender, juicy, well flavored; bears abundantly.

Spanish. Large; pale yellow with red cheeks; flesh firm, with a fine rich flavor.

Tartarian. Very large; black; tender. One of the most popular varieties.

DUKES AND MORELLOS (*Sour*)

Early Richmond. (*Richmond*). Medium size; red; flesh very juicy, acid, moderately rich; tree very productive. A splendid variety for cooking.

Montmorency. Large; bright, clear, shining red; flesh solid, juicy, rich, acid; tree early, annual, prolific, and very hardy. Finest acid Cherry grown.

Grapes

	Each	10	100
Strong, two year.....	\$.35	\$3.00	\$27.50
Big Buster, four year.....	.75	6.00	55.00

WITH the almost general adoption of cold-storage methods for keeping Grapes, the season in which this delicious fruit is available for eating has been so prolonged that, lacking a few months, it practically circles the year. With its capacity for early bearing, the Grape combines such desirable qualities as hardiness, rapid growth, generous shade, and abundant crops. With the exercise of a little foresight, it may be made to serve a distinct purpose in an ornamental planting scheme—over a trellis, along a wall, or trained to cover a pergola.

Soil of moderate fertility is considered most suitable for the Grape, heavily enriched land usually producing a rampant growth of canes and leaves at the expense of the fruit. Good drainage is an essential, and a warm, sunny exposure desirable, while a regular and thorough cultivation of the soil has a distinct bearing on the quality and quantity of the fruit.

The highest type of product is obtained when the above conditions are met and the fruit is bagged as soon as the bunches are formed. The extra labor involved in this preventive measure against intrusive insects and diseases is fully repaid in excellence of ripened product.

BLACK GRAPES

Campbell. (*Campbell's Early*). Bunches thickly set with handsome, large, round berries with a light purple bloom; pulp tender, rich, and sweet; vine healthy, hardy, vigorous and a profuse bearer. Fruit ripens very early and keeps in fine condition for weeks.

Concord. Bunches large and compact; berries large, round, almost black, covered with bloom; pulp juicy and sweet; vine very hardy and equally productive. A great favorite in the markets, although too tender for shipping long distances.

Ives. (*Black*). [Bunch extremely large, shouldered, compact, handsome; berry large, tender, juicy, sprightly vinous, rich, sweet without pulp. Vine is vigorous, healthy, hardy.

McPike. Bunches large and compact, like its parent, Worden; berries very large, black; pulp tender and very juicy. Healthy and hardy.

Moore. Bunches large; berries large, round, black, with a heavy blue bloom; pulp of good quality; vine notably resistant to disease and very hardy, withstanding temperatures of 20 degrees below zero without injury. Maturing twenty days before Concord makes it a desirable variety for early selling.

Worden. Bunches large, compact, and handsome; berries larger than Concord and superior to that variety in flavor; vine healthy and hardy. A seedling of Concord, ripening a few days earlier.

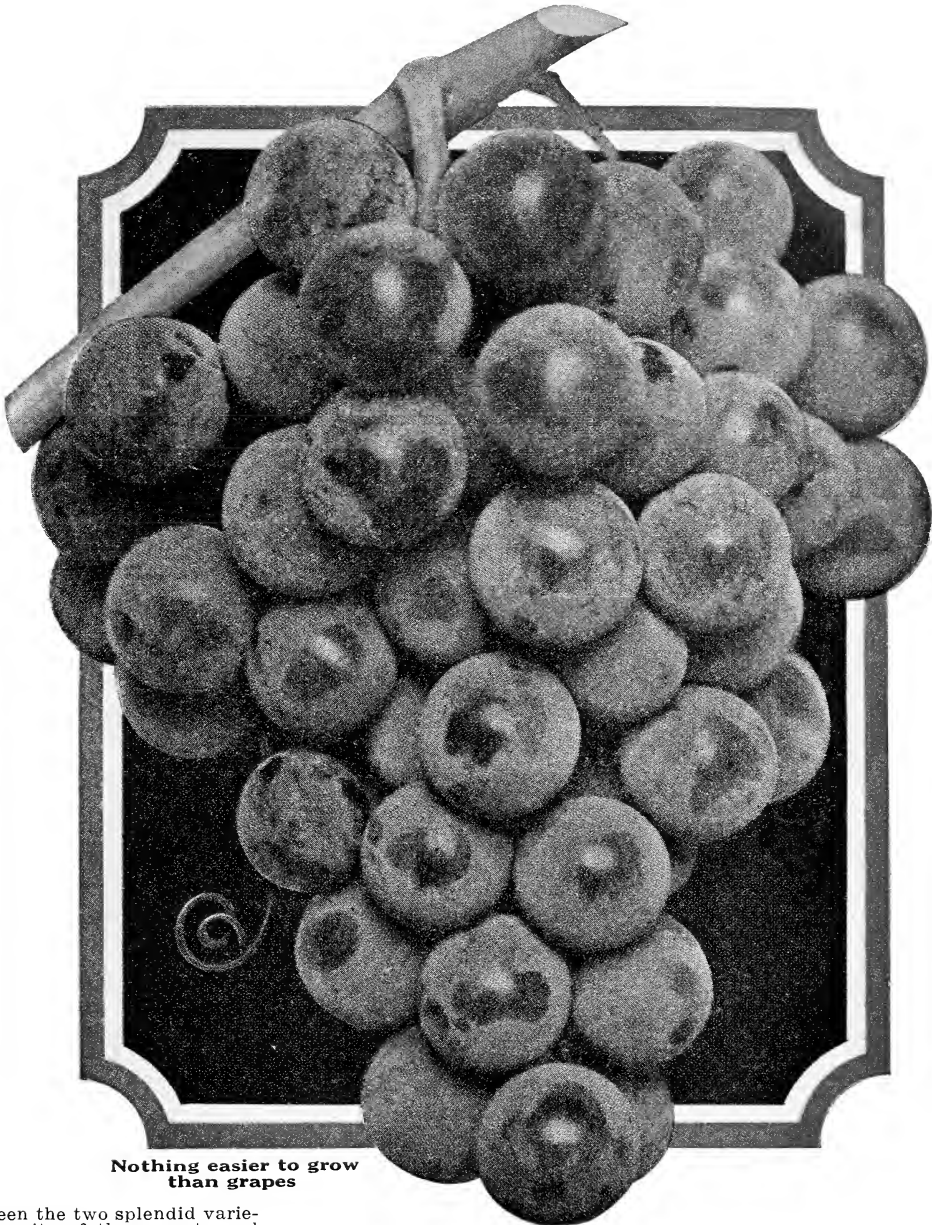
RED GRAPES

Brighton. Bunches large, compact, shouldered; berries rich wine-red, with purpled bloom; pulp tender, almost seedless, juicy, sugary, and rich; vine vigorous grower, prolific and early bearer. A superior variety, ripening about a week earlier than Delaware.

Catawba. Bunches large, loose, shouldered; berries large, of a coppery red color; pulp juicy, sweet, rich, slightly musky, vine productive, but needs warm exposure in the far North. An excellent table and wine Grape.

Catawba-Concord. A cross between the two splendid varieties named, possessing all the merits of the parents and none of their defects. Berry sparkling light red, with abundant bloom; pulp, tender, juicy, sweet, luscious, and aromatic. Strong vines. A splendid variety.

Delaware. Bunches small, compact, shouldered; berries rather small, round, light red; pulp juicy, very sweet, delicious; vine vigorous grower and profuse bearer. A splendid dessert Grape, ripening early.



Nothing easier to grow than grapes

Jefferson. Bunches large, shouldered; berries bright red, medium to large; pulp tender, sweet, aromatic. Fine keeper and good market Grape.

Lucile. Bunches very large and compact; berries large, rich dark red; pulp sweet and delicious; vine extremely hardy, healthy, and bears tremendous crops. An indispensable variety for the far North, ripening its wood to the tip under a load of fruit of which the Niagara would not ripen one-half. Should be largely planted.

WHITE GRAPES

Diamond. Bunches large, handsome, compact, slightly shouldered; berries large, delicate greenish white with rich yellow tinge when fully ripe; pulp tender, with few seeds, rich, juicy, and sprightly; vine vigorous grower, with dark, healthy foliage entirely free from mildew. Ripens a few days before Concord.

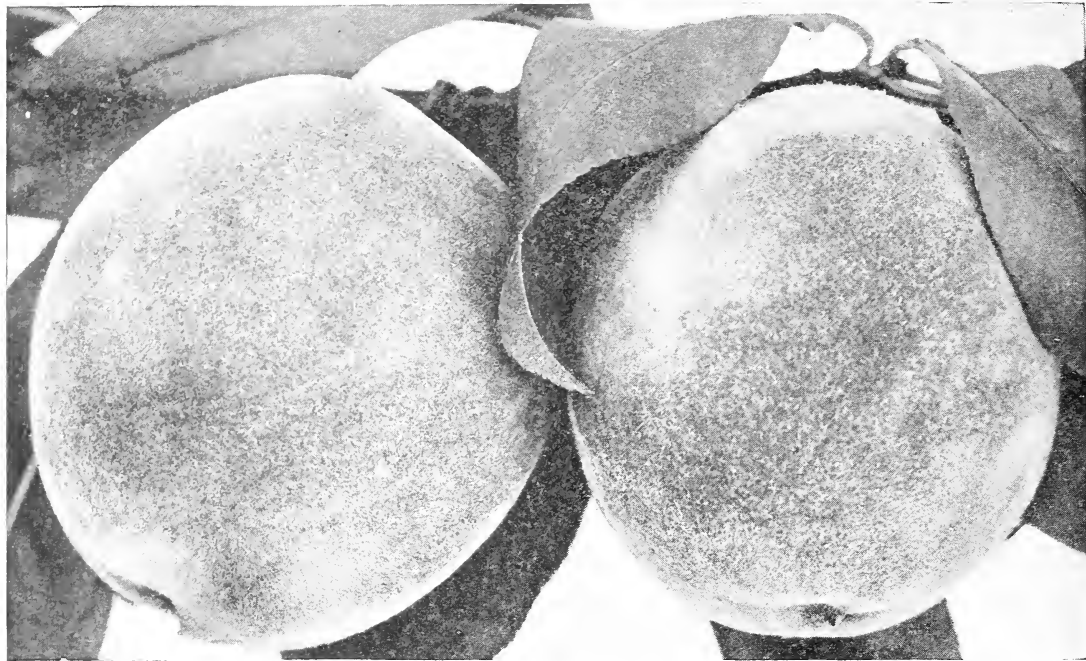
Green Mountain. (*Winchell*). Bunches long compact, shouldered; berries oval, greenish white; pulp tender, juicy, very sweet and rich; vine hardy, vigorous, healthy and very productive. Ripens three weeks earlier than Concord.

Niagara. Bunches very large, uniform, and compact; berries large, pale yellow, with a thin white bloom; pulp melting, sweet, and delightful; vine strong grower and very hardy. An excellent variety for either home or market-garden. Ripens a little before Concord.

Special—New Champagne Grape Two Year Size

A sterling variety of greatest merit. Color a beautiful copper red, berries very large—immense bearer, Champagne never having been known to winterkill, always producing an immense crop of fruit even during seasons when many other varieties fail to fruit. Champagne is a strong grower, 15 to 20 feet or more a season being common. The flesh is tender, extremely juicy and sweet with a rich aromatic flavor. Its keeping qualities are superior. Fine for eating fresh or grape juice. Order now as stock is limited.

\$1 Each; \$9 per 10; \$75 per 100



Rochester Peach

Peaches

WITH the introduction of hardy varieties and the adaptation of cultural requirements to local conditions the Peach has gradually extended its range throughout the United States and Canada, the United States alone, in 1926, producing over 64,000,000 bushels of this fruit. The varieties in the following list comprise what we believe to be the best in Peaches. They furnish a succession for about two months, commencing the early part of August. The trees are all shipped with one-year tops and two-year roots. The size will vary according to the season and variety. Plant 16 to 18 feet apart.

Extra selected trees:	Each	10	100
Medium, 3-4 feet	\$.50	\$4.50	\$40.00
Large, 4-5 feet75	7.00	65.00
Extra large, 5-6 feet	1.00	9.00	75.00

Carman. Large; creamy white or pale yellow, with deep blush; skin very tough; flesh tender and pleasantly flavored; tree remarkably hardy. August.

Champion. Creamy white, splashed with carmine, with a blush of darker red; very juicy, sweet and tender; tree vigorous and very productive; has stood 18 degrees below zero and produced a full crop the following summer.

Crosby. Has stood 22 degrees below zero without injury to tree or fruit-buds. Orange-yellow, blushed with dull red, splashed with darker red; flesh deep yellow, juicy, pleasantly flavored. An ideal home sort.

Early Crawford. Large to very large; golden yellow, blushed with dark red; flesh deep yellow, juicy, tender, highly and pleasantly flavored; tree large and vigorous. Early September.

Elberta. The great market Peach. Large, handsome, orange-yellow, nearly overspread with red, much mottled; flesh yellow, firm but tender, mildly subacid.

Fitzgerald. Very large; golden yellow, overspread with dull red blush, mottlings of deeper red; flesh yellow, rather firm, tender, sweet, mildly subacid; tree hardy and bears early. Ripens just after Early Crawford.

J. H. Hale. Very large; rich golden yellow, with carmine blush; flesh firm but of delicious texture, dripping with rich, sweet juice. Very hardy and stands shipping better than any other variety.

Late Crawford. Large; yellow or greenish yellow, blushed with red, splashed with darker red; flesh yellow, firm, juicy, richly flavored; tree large and vigorous.

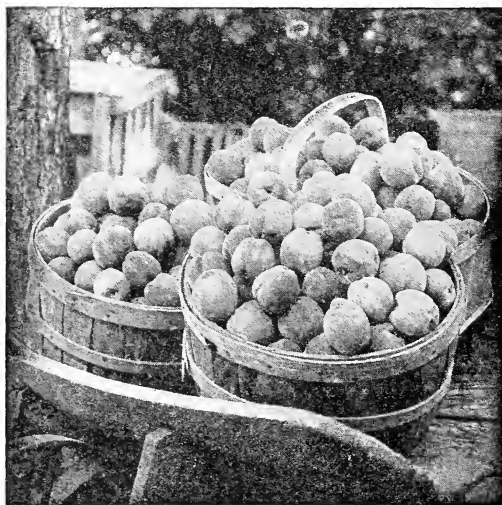
Marion Hayward. New. Often called the perfect Peach. Strong, vigorous grower, hardy. Resplendent color, yellow flesh; irreproachable quality. Freestone. Ripens August 20 to September 10. A awarded first premium by the Hamilton County Agricultural Society, as being of the finest color and flavor and largest in size of any Peach exhibited.

Niagara. A dependable mid-season variety. Tree large, upright, spreading, hardy. Beautiful fruit, yellow with a handsome overcolor of red. The flesh, too, is attractive and delectable—yellow, thick and firm, with a rich, sweet flavor, making it one of the most palatable Peaches. Free.

Oldmixon Cling. Large; pale yellow with red cheek; juicy, rich, and high-flavored; tree large, vigorous, hardy. One of the best clingstone Peaches. September.

Oldmixon Free. Large; creamy white, blushed and mottled with red; flesh tender, rich and good; tree vigorous and rather productive of freestone fruits. First to middle of September.

Rochester. Very large; orange-yellow, blushed with deep dark-red, mottled; flesh yellow, stained with red near the pit, very juicy, melting, highly flavored; freestone; tree large, vigorous, upright-spreading, productive. Middle of August.



Bushels of peaches at low cost when you grow your own

Raspberries

WITH the spring-bearing Strawberry season over, the Raspberry ripens just in time to fill what would otherwise be a gap in our summer eating of fresh fruit. In the home it is prized for desserts and jams; on the markets it finds a ready sale at prices that make it a profitable crop; for drying and canning it is much in favor, the Raspberry being one of the very few fruits that retain the original flavor when subjected to these preserving processes.

Good, deep, rich soil is suggested for Raspberries. The hills should not be less than 4 feet apart each way, with two or three plants in a hill. Cut out the old and weak shoots each year, preserving not over six for fruiting. Weed out surplus suckers, for they take the strength away from the bearing plants.

If the location is so much exposed that the plants have a tendency to winterkill, bend them over in autumn on mounds of earth formed at one side of the hills, and cover sufficiently to keep them down until spring.

All varieties, except as noted:

	10	50	100	1000
Strong 2-year plants	\$1.50	\$6.00	\$10.00	\$90.00

Columbian. Very large, somewhat conical; dark red; rich, juicy, of exceptional quality; seed small, bears large crops. Very valuable for both table and for canning. Fruiting season from July 12 to August 5.

Cuthbert. (*Queen of the Market*). Large, conical; deep rich crimson; firm and of excellent quality; vigorous and produces fine crops.

Herbert. The great commercial Raspberry. Extraordinarily large, oblong; bright red and handsome; very sweet and juicy, with a delicate wild taste all its own; nearly twice as productive as former standard varieties. Its hardiness is unquestioned, growing vigorously and producing heavy crops as far north as Hudson Bay.

EVERBEARING RASPBERRIES

Erskine Park. (*Everbearing Red Raspberry*). Pick berries all through next summer and autumn. The Erskine Park Everbearing Red Raspberry is a seedling from the old Reliable Cuthbert, discovered on the Westinghouse Estate (Erskine Park) at Lee, Mass., by Mr. Edward Norman. This magnificent estate is in the midst of the beautiful Berkshire Hills, with temperatures in winter of 30 or 40 degrees below zero so that the hardiness of this berry is unquestioned. The estate is surrounded by the summer homes of many wealthy people, and much to the surprise of his neighbors and not without a great deal of personal satisfaction, Mr. Norman furnished large, luscious raspberries throughout the fall for various dinner parties.

	10	50	100	1000
Strong two year transplants	\$3.00	\$12.00	\$20.00	\$150.00

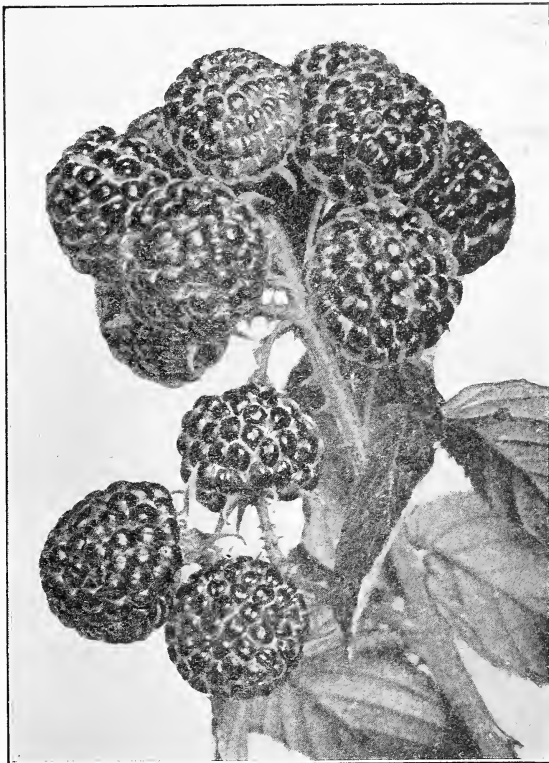
BLACK RASPBERRIES

Cumberland. Largest black Raspberry known; berries glossy, firm, and unsurpassed in quality; perfectly hardy and very productive. A splendid shipper, ripening just before Gregg.

Honeysweet. A distinctive Black Raspberry. Fruits in July, sweet and delicious. Unlike any other Black Raspberry. It is extremely hardy, bears every year; large size. We regard it as the best Black Raspberry yet introduced. As a dessert berry, in pies, as a canned sauce, as a jam, Honeysweet stands in a class by itself—a Raspberry from tip to root. We offer strong, two-year old fruiting plants.

YELLOW RASPBERRIES

Golden Queen. Large; beautiful amber color; firm, delicious; vigorous grower, immensely productive, and hardy enough for extreme northern latitudes.



Honeysweet Black Raspberry

Blackberries

MUCH the same conditions called for in successful raspberry-culture are needed for the Blackberry. Being a more rampant grower, however, the rows should be kept 6 to 8 feet apart, with single plants 2 feet apart in the rows. Pruning during the summer will serve to keep the stalks within bounds and add to their productiveness. Thorough shallow cultivation of the land will be more beneficial than much manuring.

	10	50	100	1000
Strong, two year plants ...	\$1.50	\$6.00	\$10.00	\$85.00

Blowers. Extremely large, averaging 1 inch in diameter and 1 1/2 to 1 3/4 inches long; exceedingly sweet, with no perceptible core; wonderfully vigorous, many of the canes reaching 14 feet in length; perfectly hardy.

Early Harvest. Berries rather small, very juicy, sweet, and of excellent quality; canes strong and upright in growth, with few thorns; an enormous bearer.

Mersereau. Extra large; brilliant black, retaining that color sweet, rich and melting, without core; remarkably strong grower; producing stout, stocky canes. Withstands temperatures of 15 to 25 degrees below zero.

Snyder. Medium size; sweet and melting, with no hard, sour core; extremely hardy and enormously productive; very few thorns. A popular variety where earliness and hardiness are important considerations.

Glen's Home Garden Collection of Small Fruits

12 Latham Raspberries

25 Beacon Strawberries

6 Golden Queen Raspberries

25 Jumbo Strawberries

12 Blowers Blackberries

12 Gold Coin Strawberries

\$5.00

Strawberries

As a dessert fruit or in preserves, the Strawberry is an assured favorite with the whole family. The market-gardener finds ready sale for his choice berries, and there is an attractive financial aspect to Strawberry-growing. The varieties we offer herewith are all staminate (self-fertilizing), have been thoroughly tested over a wide range, and we have confidence born of experience in their sterling qualities. When plants are received, immerse immediately in water and then bury the roots in fine, moist soil, in a shady place, until ready to set them out.

Extra fine, field grown plants..... 100 1000
\$2.50 \$20.00

EXTRA-EARLY STRAWBERRIES

Beacon. The best early variety in existence. Very productive. Large, glossy red, firm and refreshing.

Marshall. Large; handsome; dark crimson; flesh firm, rich; moderately productive.

MID-JUNE STRAWBERRIES

Bouquet. Big plant, berry, and crop. Glossy red, firm, delicious. Ships long distances.

Bliss. Berry of supreme quality, fragrant, high-flavored; glossy red, large; very productive.

Glen Mary. Large sometimes flattened; light red, sweet and rich; very productive.

Jumbo. A mammoth plant and a whale of a berry. It's a good one, too. Try it.

McKinley. Large; handsome; of excellent quality, and very productive.

Sunset. Strong growing plants. Berries deep red. Excellent either fresh or cooked.

Table Queen. A big producer of large, bright red berries, delicious and pleasing. A good canner.

LATE JUNE STRAWBERRIES

Brandywine. Very large, heart-shaped; glossy red to the center; fine flavor.

Ettersburg Late. Best of all very late Strawberries. High quality, and round red berries are produced bountifully.

EVERBEARING STRAWBERRIES

All varieties, everbearers..... 10 100 1000
\$1.00 \$7.50 \$50.00

The unusual experience of eating fresh berries in autumn may now be enjoyed by all. The varieties below have exceptional merit. Try some this year.

Gold Coin. The best Everbearer. Heavy producer from June until winter comes. Large bright red, golden seeded, fragrant, and richly flavored.

Superb. Very attractive and of finest flavor. Yields as much in autumn as the average spring-bearing varieties do in May. Will bear continuously until checked by hard freezing.

Progressive. Large and moderately firm; of exquisite flavor, far sweeter than standard varieties; strong grower, with healthy-looking foliage, and a prolific bearer. So hardy that uncovered plants usually come through the winter in good condition. Fruit ready for picking a week before the first early varieties of all the old kinds, continuing until frozen in the fall. Needs rich soil to sustain its wonderful activity.

Asparagus

Choice, two year, crowns..... 100 1000
\$3.00 \$25.00
Big Buster, three year, crowns..... 7.00 55.00

Mary Washington Asparagus is the first result of a blister proof campaign for the eradication of asparagus rust and is as far as possible an extremely resistant, vigorous, and high yielding strain of giant asparagus. The plants represented in Pedigree of the last three generations are the best found in a ten-year search among millions of plants tested.

By best, we mean the ones that have produced offspring uniform, rust resistant, high yielding, large size, unbranched shoots, with good top buds of rapid growth which indicates tenderness.

Conover's Colossal. Large size, remarkably tender and high flavored, vigorous grower, sending up from fifteen to twenty sprouts each year, from one to two inches in diameter, color deep green and crown very close. Can be cut one year sooner than the other varieties.

Palmetto. An extra early variety, tender and of good flavor, productive.

Rhubarb

(Pie Plant)

Two year roots..... Each 10 100
\$.35 \$2.50 \$20.00

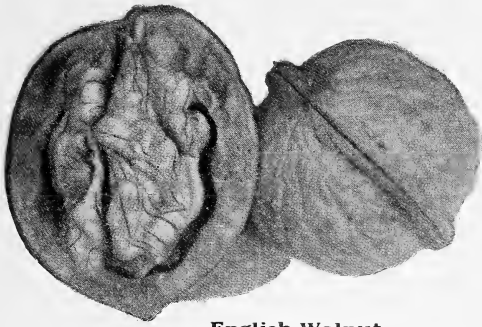
Ten to twenty good plants will furnish enough of this delicious garden vegetable to satisfy the average family. An extra-early supply may be obtained by placing barrels over a few of the plants and piling warm horse-manure about them.

Burbank Giant Crimson. Extra large, of fine bloom, and crimson clear through, this new variety of appetizing "pie-plant" should be in every garden and will be when known. Plant a few this spring along beside that you now have growing in your garden and note the difference. BURBANK GIANT CRIMSON is superior in size and quality to any variety we have ever tested. It is an early variety, without being in the least tough or stringy, with a mild sub-acid flavor. Largest and best of all for market or home use.

Early Scarlet. Rather small, early and good.

Myatt's Linnaeus. Those who have never grown this variety, which is of superior quality, will hardly recognize the old "Pie Plant." It is an early, tender variety, without being in the least tough or stringy, with a mild, sub-acid flavor.





English Walnut

ENGLISH WALNUT (*Juglans Regia*)

The English or Persian Walnut was brought to America in the early Colonial days but varieties sufficiently hardy to withstand the rigorous climate were not to be had then. In later years new and harder varieties have developed and in and about Rochester, N. Y., are growing English Walnut trees that withstand 15 degrees below zero without winter-killing. It is reasonable to expect these acclimated trees to thrive wherever peaches succeed. Our trees are grown from nuts produced by hardy bearing trees growing in this vicinity.

	Each	10
2-3 feet.....	\$1.50	\$12.50
3-4 feet.....	2.00	17.50
4-5 feet.....	2.50	22.50

AMERICAN BLACK WALNUT

The Black Walnut is one of America's most useful nut-bearing trees.

	Each	10
5- 6 feet.....	\$1.00	\$ 9.00
6- 8 feet.....	1.50	12.50
8-10 feet.....	3.00	27.50

JAPANESE WALNUT

Nearly as hardy as the Black Walnut and is especially appropriate for farm and dooryard planting.

	Each	10
4- 5 feet.....	\$1.25	\$10.00
5- 6 feet.....	1.50	12.50
6- 7 feet.....	2.00	17.50
8-10 feet.....	3.00	27.50

ALMOND (*Amygdalus Communis*)

Hardy wherever peaches grow; easy of culture. **Hard-Shell.** Very showy in bloom; nuts plump and sweet.

	Each	10
3-4 feet.....	\$1.00	\$1.00
4-5 feet.....	1.50	

BUTTERNUT (*Juglans Cinerea*)

One of our finest native nut trees.

	Each	10
5- 7 feet.....	\$1.50	\$12.50
6- 8 feet.....	2.00	17.50
8-10 feet.....	3.00	27.50

CHESTNUT (*Castanea*)

American Sweet. An excellent tree with nuts that are eagerly sought.

	Each	10
4-5 feet.....	\$1.50	

Paragon. Nuts of large size, fine appearance and excellent flavor.

	Each	10
3-4 feet.....	\$2.00	



Black Walnut

**Hardy
Nut
Trees**



Butternut

Spanish. Large nuts not so sweet as the American variety, but sell at good prices.

	Each
4-5 feet.....	\$1.50

HICKORY

Shagbark. *Hicoria ovata.* Esteemed as the choicest of native nuts.

	Each
2-3 feet.....	\$1.50
3-4 feet.....	2.50

FILBERT (*Corylus*)

Trees grown at our Nurseries are withstanding temperatures of 15 degrees below zero without winterkilling, which should be sufficient warranty of their hardiness throughout the eastern and northeastern sections to call for extensive plantings.

Purple-leaved. One of the best American varieties.

	Each
18-24 inch.....	\$1.50
2- 3 feet.....	2.50

Hazelnut. (*American Filbert*). Ranks high as an ornamental and bears large quantities of sweet-flavored nuts.

	Each
2-3 feet.....	\$1.00
3-4 feet.....	1.50

Kentish Cob. (*English Filbert*). Productive of large, oblong nuts of rich flavor. Layered plants.

	Each	10
2-3 feet.....	\$1.50	\$12.50
3-4 feet.....	2.00	17.50
4-5 feet.....	3.00	27.50

Cosford. (*Paper-Shell*). European variety highly prized for thin-shelled nuts of richest flavor.

	Each	10
2-3 feet.....	\$1.50	\$12.50
3-4 feet.....	2.00	17.50
4-5 feet.....	3.00	27.50
5-6 feet, bearing trees.....	5.00	

Italian Red. One of the finest of the Improved Filberts. Nut large, of fine brown color, oblong, shell remarkably thin and kernel of excellent flavor. A fine upright grower and a prolific bearer.

	Each
2-3 feet.....	\$1.50

Medium Long. Tree upright and vigorous, somewhat bushy. Fruit long, narrow, medium to large, beautifully striped. We consider this a very fine nut.

	Each
2-3 feet.....	\$1.50

White Lambert. Tree of low and drooping growth. Nut short and broad, large and a very fine variety.

	Each
2-3 feet.....	\$1.50

Minna's Zeller. Tree low, drooping. Nut large, almost round, quite early. A very valuable variety and an excellent pollinizer.

	Each
2-3 feet.....	\$1.50



English Filbert

INDEX

- Abelia 6
 Abies 2
 Acer 8
 Achillea 21
 Adam's Needle 19
 Aesculus 8, 9
 Almond, flowering 10
 Almond, Hard Shell 47
 Althea 16
 Amalanchier 12
 Ampelopsis 36
 Anchusa 21
 Anemone 21
 Apples, crab 39
 Apples, dwarf 39
 Apples, standard 38, 39
 Apples, super 38, 39
 Apricots 41
 Aquilegia 21
 Aralia 12
 Arborvitae 5
 Aristolochia 36
 Aronia 12
 Arrow Wood 19
 Asparagus 46
 Astilbe 21
 Azaleas 6, 7, 12, 13

 Balloon Flower 28
 Barberry 13
 Beech 9
 Benzoin 12
 Berberis 13
 Betula 9
 Bignonia 36
 Birch 9
 Bittersweet 36, 37
 Blackberries 45
 Black Walnut 47
 Blanket Flower 23
 Bleeding Heart 22
 Blueberries back cover
 Boxwood 7
 Buckthorn 17
 Buddleia 13
 Butterfly Bush 13
 Butternut 47
 Button Bush 13

 Calycanthus 13
 Campanula 21
 Candytuft 27
 Cardinal Flower 27
 Castanea 47
 Catalpa 9
 Ceanothus 13
 Cedar 3, 4
 Celastrus 37
 Cephalanthus 13
 Cercis 13
 Chamaecyparis 2, 3
 Cherry, flowering 10
 Cherries 42
 Cherries, super size 42
 Chestnut 47
 Chionanthus 13
 Chokeberry 12
 Christmas Rose 33
 Chrysanthemum 21, 22
 Clematis 37
 Clethra 13
 Columbine 21
 Convallaria 22
 Coral Berry 17
 Coreopsis 22
 Cornus 9, 14
 Corylus 47
 Cotoneaster 7

 Cowslip 28
 Crab, Flowering 10
 Cranberry, High Bush 19
 Crataegus 14
 Cucumber Tree 9
 Cydonia 15
 Cypress 2, 3

 Delphinium 22
 Deutzia 15
 Dianthus 22
 Dicentra 22
 Diervilla 19
 Digitalis 22
 Dogwood 9, 14
 Dutchman's Pipe 36

 Eleagnus 15
 Elder 17
 Elm 11
 English Walnut 47
 Euonymus 15, 36
 Evergreens 2, 3, 4, 5
 Evergreen Shrubs 6, 7

 Fagus 9
 Feverfew 28
 Filbert 47
 Fir 2
 Flame Flower 28
 Forget-me-not 28
 Forsythia 15, 16
 Foxglove 22
 Fringe Tree 13, 17
 Funkia 23

 Gaillardia 23
 Gladiolus 29
 Gleditsia 9
 Globe Flower 16, 28
 Golden Bell 15, 16
 Golden Chain 16
 Grapes 42, 43
 Great Laurel 7

 Hamamelis 16
 Hawthorne 14
 Hedera 37
 Halesia 16
 Helleborus Niger 33
 Hemlock 5
 Hercules Club 12
 Heuchera 27
 Hibiscus 16, 27
 Hicoria 47
 Hickory 47
 Holly 7
 Hollyhocks 27
 Honeysuckle, bush 17
 Honeysuckle, climbing 37
 Horse Chestnut 8, 9
 Hydrangea 16
 Hypericum 16

 Iberis 27
 Ilex 7
 Indian Currant 17
 Iris 27
 Ivy 36, 37

 Japanese Walnut 47
 Judas tree 13
 Juglans 47
 June Berry 12
 Juniper 3, 4
 Juniperus 3, 4

 Kalmia 7
 Kerria 16
 Kudzu Vine 37

 Laburnum 16
 Lace Vine 37
 Larch 9
 Larix 9
 Larkspur 22
 Liatris 27
 Ligustrum 16, 17
 Lilacs 18, 19
 Lily of the Valley 22
 Linden 11
 Liquidambar 9
 Liriodendron 9
 Lobelia 27
 Locust 9
 Lonicera 17, 37
 Lychnis 27
 Lycium 37
 Lythrum 28

 Magnolia 9, 10
 Malus 10
 Maple 8
 Matrimony Vine 37
 Mock Orange 17
 Monarda 28
 Morus 10
 Mountain Ash 11
 Mountain Laurel 7
 Mulberry 10
 Myosotis 28
 Myrtle 37

 New Jersey Tea 13
 Nut Trees 47

 Oak 10, 11
 Oleaster 15
 Ornamental Reeds
 and Grasses 28
 Pachysandra 7
 Pampas Grass 28
 Papaver 28
 Peaches 44
 Peach, Flowering 10
 Pears, Standard 40
 Pears, Super size 40
 Peonies 22, 23
 Perennial Plants
 21, 22, 23, 27, 28
 Periwinkle 37
 Philadelphus 17
 Phlox 22
 Physostegia 28
 Picea 4
 Pine 4
 Pinus 4
 Plane 10
 Plantain Lily 23
 Platanus 10
 Platycodon 28
 Plume Grass 28
 Plums 41
 Plums, Super size 41
 Plum, Flowering 10
 Polygonum 37
 Poplar 10
 Poppy 28
 Populus 10
 Primula 28
 Privet 16, 17
 Prunus 10
 Pueraria 37
 Pyrethrum 28

 Quercus 10
 Quince, Flowering 15
 Quinces 40

 Raspberries 45
 Red Bud 13
 Red-Hot Poker 28
 Red Osier 14
 Refinospora 2, 3
 Rhamnus 17
 Rhododendron 7
 Rhodotypos 17
 Rhubarb 46
 Rhus 17
 Robinia 17
 Rose Acacia 17
 Rose of Sharon 16
 Roses, climbing 34
 Roses, Hybrid Tea 31, 32
 Roses, Hybrid Perpetual
 33, 34
 Roses, Polyantha 35
 Roses, Rugosa 35
 Roses, Standard or Tree 34
 Russian Olive 15

 Salix 11
 Sambucus 17
 Sedum 28
 Sheepberry 19
 Shrubs 12 to 20
 Silver Bell 16
 Smoke Tree 17
 Snowball 19
 Snowberry 17
 Sorbus 11
 Spice Bush 12
 Spindle Tree 15
 Spiraea 17, 21
 Spruce 4
 Spurge 7
 Stephanandra 17
 Stokesia 28
 Strawberries 46
 Strawberry bush 15
 Sumac 17
 Sweet Bay 10
 Sweet Pepper Bush 13
 Sweet Shrub 13
 Sweet William 22
 Symphoricarpus 17
 Syringa 18, 19

 Tamarix 17
 Taxus 4
 Thorn 14
 Thuja 5
 Tilia 11
 Trees, Deciduous, 8, 9, 10, 11
 Tritoma 28
 Trollius 28
 Trumpet Vine 36
 Tsuga 5
 Tulip Tree 9

 Ulmus 11
 Umbrella Tree 9, 10

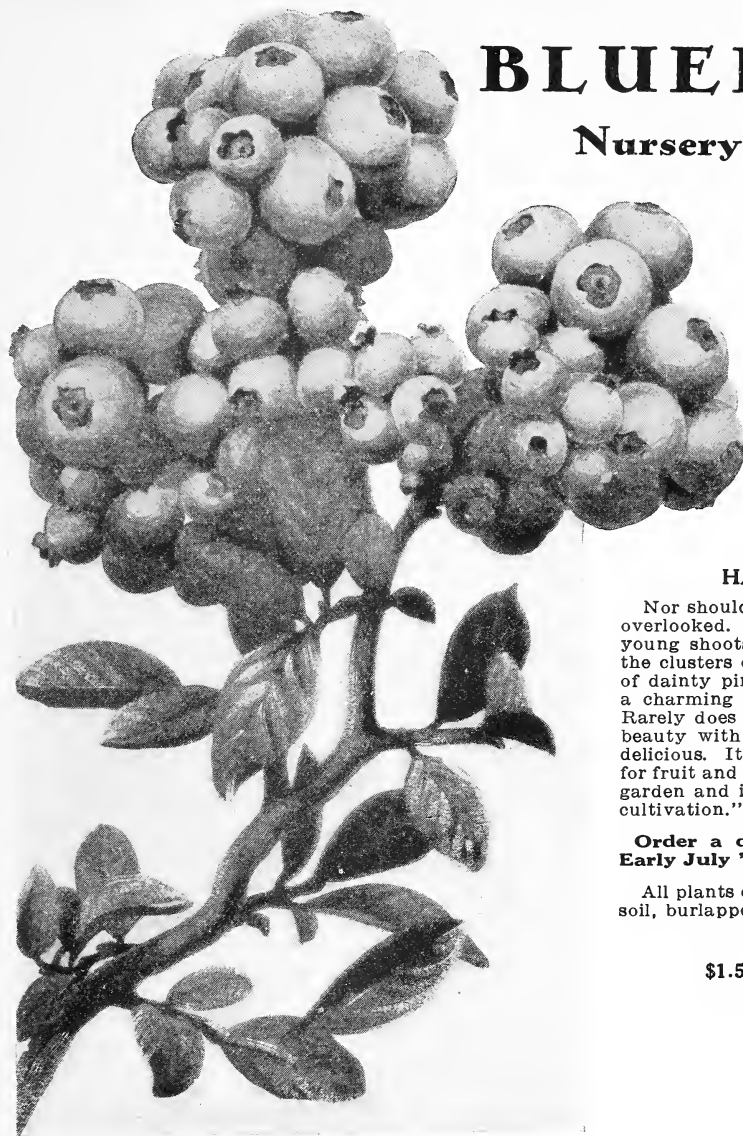
 Veronica 28
 Viburnum 19
 Vinca 37
 Vines 36, 37
 Virginia Creeper 36

 Walnut 47
 Wayfaring tree 19
 Weigela 19
 Willow 11
 Wisteria 37
 Witch Hazel 16

 Yew 4
 Yucca 19

BLUEBERRIES

Nursery Grown Plants



CAN you imagine anything more satisfactory than having delicious blueberries growing in your own garden? No doubt you have enjoyed these wonderful fruits on the hotel or restaurant menu, served with cream for breakfast, or as blueberry pie or dumplings for luncheon or dinner. They are a fruit that satisfies for three meals a day and one dozen plants are quite sufficient to supply the average family with blueberries. They can be used freely for making breakfast muffins or preserves.

HARDY and ORNAMENTAL

Nor should the ornamental value of Blueberries be overlooked. Prof. Bailey says: "In the Spring the young shoots and leaves are a rich bronzy red, later the clusters of long white flowers, followed by clusters of dainty pink buds. In winter the red bark creates a charming tracing of red twigs against the snow. Rarely does a plant or shrub combine such exquisite beauty with a fruit, than which there is none more delicious. It is one of the most valuable species both for fruit and as an ornamental shrub. It thrives in the garden and is readily susceptible to improvement by cultivation."

Order a dozen plants now. Fruiting Season Early July 'till Late Summer.

All plants dug and shipped with roots in ball of acid soil, burlapped.

PRICE

\$1.50 each \$15.00 per dozen
\$100.00 per 100

CULTURAL DIRECTIONS

Blueberries require an acid soil to produce the best results. This is prevalent in many sections of the country. Where your soil is not acid, we suggest the following method to get the most from your plants. Choose a well-drained location, easily supplied by water during the dry summer months. Blueberries do best with full sun, although they will grow and produce fruit in partial shade. In order to get the proper acid condition to your soil, mix partly rotted leaves with the soil of your garden. A heavy mulch each fall of partly rotted leaves will maintain the acidity of the soil. Do not remove this mulch, but let it remain throughout the year.

Never use manure or compost near a blueberry plant. No pruning is necessary except as a branch may become damaged or stop bearing. Water your plants well the first year, soaking the ground two or three feet away from the roots.



Nursery grown Blueberry plant balled and burlapped ready to pack for safe shipment to any part of U. S.

LATHAM — the Wonder Red Raspberry

Big—Sweet—Satisfying. Our Big Plants Planted this spring, should fruit this summer. Latham is 100% raspberry.

SENSATIONAL IN YIELD AND PROFIT

5430 quarts per acre — \$1629.00 per acre

THE superior yielding ability of Latham is fairly represented by the following comparative figures. Reprinted from the Connecticut Agricultural College Review, September, 1925. W. H. Darrow, Fruit Specialist.

Report on three-year-old field: **Latham, 5430 quarts per acre.** Herbert, 3648 quarts per acre. Cuthbert, 3600 quarts per acre. **5430 quarts per acre at 30c per quart, make the neat return of \$1629.00 PER ACRE.**

Latham is so good that we will pay \$1000 cash for the exclusive selling rights to any new raspberry that is superior to Latham in hardiness, bearing qualities, size and color.

FROM THE "GARDENER'S CHRONICLE"

Harold M. Bryant, in "Gardener's Chronicle"

"The Latham is without doubt the best red raspberry for the grower to plant today. It has proven entirely hardy in the Dakotas and the Northwest. It is a splendid cropper, bearing fruit the largest and firmest I have ever seen of any variety and holding the size throughout a long picking season. It is a pleasure to pick berries of such size and of delectable appearance."

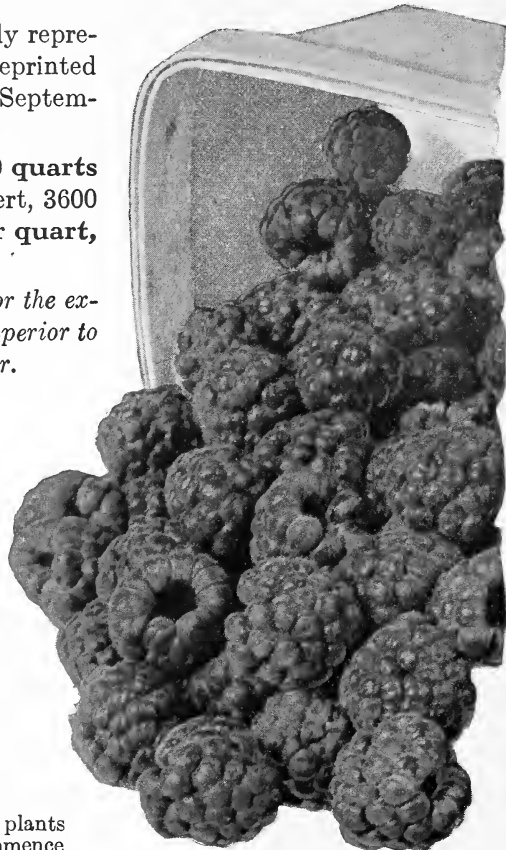
EASY TO GROW: Latham Raspberries can be easily grown in the home fruit garden and they require little care.

A Source of Pleasure and Economy for Home Owners

Why pay 20c a pint for raspberries at the stores when fresher berries can be so easily raised in your garden? Enjoy the pleasure and profit of growing your own.

Latham doesn't require expert attention. Our Mosaic-free plants are healthy and vigorous and produce abundantly. They commence to bear soon, and continue for many years. Latham will produce the most berries for the least work of anything you can plant.

Extra strong 2-year transplants: **Price: \$2.50 per 12; \$15.00 per 100; \$100.00 per 1000.** If our Latham are not the biggest, best rooted raspberry plants you ever bought, just send them back and we will return your money.



LATHAM
The Big Red Raspberry

GLEN BROTHERS, INC.

Glenwood Nursery

Established 1866

Office and Warehouse: 1762 to 1772 Main Street

ROCHESTER, N. Y.