

Historic, Archive Document

Do not assume content reflects current scientific knowledge, policies, or practices.

243

LIBRARY
RECEIVED
MAR 1 1930
U.S. Department of Agriculture



"HOME LANDSCAPES"

1930

The Park Nurseries

HOLM & OLSON INC.
SAINT PAUL, MINNESOTA

CATALOGUE INDEX

This index shows all items listed in this catalogue. Both the botanical and common names are given.

	Page		Page		Page		Page
Abies	9	Crataegus	19	Iris	29	Populus	8
Acer	7, 8	Cress, Rock	23	Ivy	21	Potentilla	17
Achillea	23	Cup-and-Saucer	24	Jerusalem Cross	26	Prunus Triloba	
Aconitum	23	Currant, Flowering	13	Juglans	6, 8	(Flowering Plum)	17
Adam's Needle	27	Currant, Moun-		Juneberry	15	Pyrethrum	27
Aesculus	7	tain	13, 20	Juniper	9, 10		
Alaska Daisy	23	Currants, Fruiting	35			Raspberries	35
Almond, Flowering	12	Daisy, Alaska	23, 24	Lantern Plant, Chi-		Regal Lily	26
Althaea	26	Daisy, Giant	27	nese (Physalis)	27	Rhamnus	13, 20
Alyssum	23	Daisy, Persian	27	Larkspur	24, 25	Rhubarb	35
Amelanchier	15	Day Lily	25, 26	Lavender, Sea	27	Rhus	19
Ampelopsis	21	Delphinium	24, 25	Lawn Grass Seed	36	Ribes	13
Amygdalus	12	Deutzia	13	Lilac	15, 16	Robinia	16
Anchusa	23	Dianthus	25	Lilium	26	Rock Gardens	5, 28
Anthemis	23	Dictamnus	25	Lily	26	Rosa Rugosa	17, 20
Apples	35	Dicentra	25	Lily-of-the-Valley	26	Rose, Red-leaved	17, 34
Aquilegia	23	Digitalis	25	Linden	7	Roses	32, 33, 34
Arabis	23	Dogwood	13, 14	Linum	26	Rudbeckia	27
Aralia	12	Dragonhead, False	27	Locust, Flowering	16	Russian Olive	17
Arborvitae	9	Dutchman's Pipe	21	Lonicera	14, 15, 21		
Aristolochia	21	Echinops	25	Loosestrife	27	Salix	8
Armeria	23	Elaeagnus	17	Lupinus	26	Salvia	27
Arrowwood	19	Elder	14	Lychnis	26	Sambucus	17
Artemisia	24	Elm	7	Lycium	21	Sedum	27
Ash	6	Elymus Glaucus	25	Lythrum	27	Shasta Daisy	27
Asparagus	35	Engelman's Ivy	21	Maidenhair Tree	7	Shrubs	12
Asters	24	Euonymus	14	Mallow	26	Siberian Pea Tree	17
Astilbe	24	Evergreens	9	Maple	7, 8	Snowball	19
				Marguerite, Hardy	23	Snowberry	17
Baby's Breath	25	Ferns	25	Matrimony Vine	21	Sorbus	8
Barberry	12, 20	Fertilizers	36	Meadowsweet	27	Spearmint	27
Basswood	7	Filipendula	25	Mentha	27	Speedwell	27
Beard Tongue	27	Fir	9	Milfoil	23	Spiraea	17, 18, 20, 27
Berberis	12, 20	Flax	26	Mint	27	Spruce	11
Betula	6	Forget-me-not	25	Mock Orange	16, 17	Statice	27
Birch	6	Forsythia	14	Monarda	27	Stoncrop	27
Bittersweet	21	Foxglove	25	Monardella	23	Strawberries	35
Blanket Flower	25	Fraxinus	6	Mountain Ash	8	Strawberry Bush	14
Bleeding-Heart	24, 25	Funkia	25	Myosotis	27	Sumac	19
Bocconia	24			Oenothera	27	Sunflower, Orange	25
Boltonia	24	Gaillardia	25	Olive, Russian	17	Sweet William	25
Boston Ivy	21	Gas Plant	25	Ornamental Trees	6	Symphoricarpos	13, 17
Bridal Wreath	18, 20	Ginkgo	7	Oswego Tee	27	Syringa	15, 16
Buckthorn	13, 20	Globe Thistle	25				
Burning Bush	14	Golden Bell	14	Pachysandra	27	Tamarix	19
Butternut	6	Golden Glow	25	Papaver	27	Taxus	11
		Golden Moss	27	Pea Tree, Siberian	17	Thalictrum	27
Campanula	24	Golden Tuft	23	Pentstemon	27	Thorn Apple	19
Canterbury Bell	24	Gooseberries	35	Peonies	31	Thuja	9
Caragana	17	Grapes	21, 35	Perennials, Hardy	22	Tilia	7
Catalpa	6	Gypsophila	25	Persian Daisies	27	Trollius	27
Cedar, Red	9, 10	Hackberry	7	Philadelphus	16, 17	Ulmus	7
Celastrus	21	Harebell	24	Phlox	30	Valeriana	27
Celtis	7	Hawthorn	19	Physalis	27	Vegetable Roots	35
Centaurea	24	Hedges	20	Physostegia	27	Veronica	27
Cherries	35	Helenium	25	Picea	11	Viburnum	19
Cherry, Black	6	Heliopsis	25	Pie-Plant	35	Vines and Creepers	21
Cherry Plum	35	Heliotrope, Garden	27	Pine	10	Viola	27
Chrysanthemum	24	Hemerocallis	26	Pinks	25	Virginia Creeper	21
Cinquefoil	17	Hercules Club	12	Pinus	10		
Clematis	21, 24	Heuchera	26	Plantain Lily	25	Walnut, Black	8
Columbine	23	Hibiscus	26	Platycodon	27	Wayfaring Tree	19
Coneflower, Purple	27	Hollyhocks	26	Plum, Flowering	17	Weigela	19
Corallberry	13	Honeysuckle	14, 15, 20, 21	Plum, Purple	8, 17	Willow	8
Coreopsis	24	Horse-Chestnut	7	Plums	35		
Cornflower	24	Hydrangea	15	Poplar	8	Yew	11
Cornus	13, 14			Poppy	27	Yucca	27
Cotoneaster	13, 20						
Crab, Flowering	6						
Craberry, High-							
Bush	19						

1930 "HOME LANDSCAPES"

*Dedicated to Home Owners and Garden
Lovers of the North Central States*

A PRACTICAL BOOK of Landscaping
and Planting Suggestions and a Complete
Catalogue of Hardy Nursery Stock
Adapted to this Section of the Country.



THE PARK NURSERIES Holm & Olson, Inc.

Landscape Architects :: Nurserymen

20-22-24 W. 5th St., Saint Paul

St. Paul Phone Cedar 6083

Minneapolis Phone Drexel 7245

Extension Landscape Office and Nursery
At Rochester, Minnesota

Beautiful Home Grounds



You want your home grounds to be just as attractive as you can have them. We all admire well-improved places with fine lawns, noble trees and beautiful flowers and shrub plantings and, in truth, we judge the home-owner by the appearance of his property. The fact that suitable landscape improvements permanently increase the property value by many times the moderate cost of the planting work is an additional benefit that is not to be overlooked.

We Help You With a Plan

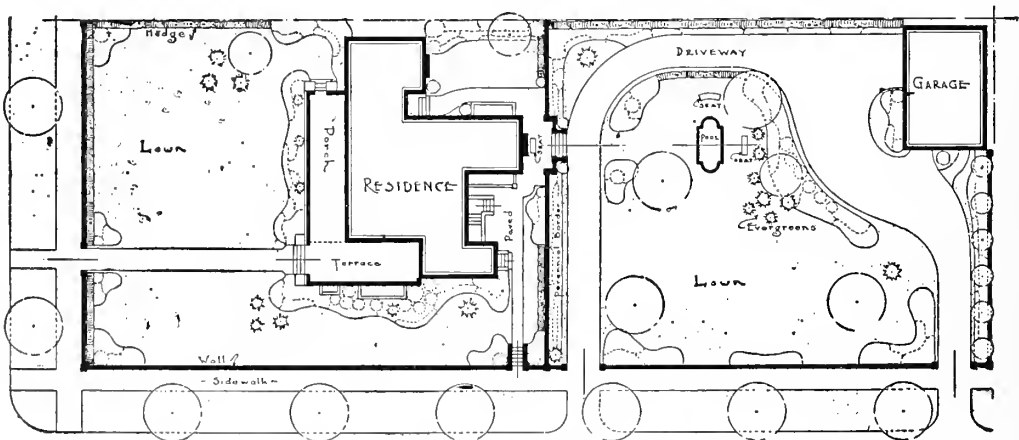
Whether your requirements are merely a few flowering shrubs to beautify the door-yard or the elaborate development of a large estate, the work is equally worthy of proper study and planning. Haphazard, hit-or-miss landscaping is both expensive and unproductive. There is some one landscape scheme that will create the most in charm and beauty together with the greatest use on your particular grounds and our skilled garden experts will help you determine upon it and arrive at a scheme or plan for the improvement. The work can then be carried out partially from season to season if you wish and you will know that every dollar spent on the yard is wisely invested.

Use Our Special Plan-by-Mail Service

Should you live out of town your landscape problems can be solved through our special "plan-by-mail service" working with information that you can easily provide. Send us a sketch or plat of your property showing the position of the house, walks, trees and other features and giving distances from point to point and if possible a few snap shots taken from different angles to show the general situation. Our designer can then suggest practical ways of improving and beautifying your grounds and will give you careful cost estimates.

Consult Us. We Plan With You

You will like the way our landscape architect studies your needs and plans with you. Practical experience and technical training enables our staff to help you create the most beautiful garden results by methods that are economical and efficient. Landscape consultation calls are made without charge in the Twin Cities and telephone requests receive prompt attention. Our planning service is available, however, wherever you may live. Write or telephone our Landscape Service Department.



THE LANDSCAPE PLAN IS OF UTMOST IMPORTANCE

A carefully prepared landscape plan will show you how to get the most satisfying results on your grounds. The plantings can be placed in part each season if you prefer. Consult us.

Your Outdoor Living Room

The old-fashioned "back yard" is rapidly disappearing. It was both unsightly and uneconomical. From one-half to two-thirds of the average home lot is in that area behind the house and we are just becoming awake to the daily pleasures and enjoyments this can give when developed and furnished as an "out-door living room."

Privacy and Seclusion

The front yard no matter how beautiful is open to the street and does not lend itself to intimate uses. The new back yard, the modern "out-door living room," has walls and furnishings quite like the room in-doors. It gives seclusion from the public and an opportunity to enjoy the out-of-doors with privacy and repose. Boundary planting of flowering shrubs and evergreens or sometimes close hedges where space is limited, will create the protecting walls. These permanent plantings increase in beauty year after year.

Out-door Furnishings

To create cheerfulness and to delight the eye the bright colors of annual, bulb and perennial flowers are introduced. These follow the tall border plantings in a boundary fashion and are so arranged that there are flowers in color all season—from the earliest tulips of spring to the sturdy, hardy Asters resisting October's frosts. There can always be beauty in the "out-door living room"—a happy vision too from the house windows.



Children are safe from the dangers of the street

For ease and comfort lawn furniture such as tables, chairs, benches, swings, garden-houses, etc., depending on one's wishes and requirements, can be purchased or made. Bird fonts, gazing globes, sun-dials, bird-houses, are some of the additional furnishings that will help to increase the enjoyment of this room out-of-doors.

The Family Playground

Children can play here safe and free of the dangers of the street. During the day opportunity is given the household to rest or to entertain guests here in comfort out-of-doors. Here, too, the men can relax and find recreation in the evenings. The "out-of-door living room" appeals to and serves every member of the family.

We Help You Plan

Send us a rough sketch of your back yard, giving dimensions and showing any present plantings and we will suggest a way to create your "out-of-door living room." These garden furnishings cost so much less than those in-doors that you will be agreeably surprised at what a very modest sum will accomplish.



An invitation to enjoy the out-of-doors with privacy and repose.
Home of Mr. C. F. Aldrich, St. Paul.

Landscape Results Without Waiting

Our Complete Landscape Service



PLANNING HELP. To achieve satisfying and artistic landscape results the plan is most important. This plan with its specifications is made by our experts after a careful study of the characteristics of the property together with your personal needs and wishes. It serves as a basis for figuring and explains in detail just what is to be done and the exact costs. It insures you of getting just what you want and permits doing the work a little at a time if you prefer. A good plan pays for itself many times over.

CONSTRUCTION SERVICE. The actual accomplishment of your landscape improvements can be taken care of to the smallest detail by our efficient organization. We will take the responsibility of seeing that everything is properly done in the most economical manner. Our men, skilled and experienced in landscape development, are ready to undertake and complete the construction and planting work to your entire satisfaction.

NURSERY SERVICE. In our nursery located in St. Paul we are growing plants that are hardy and are adapted to use under northern climatic conditions. Your gardening success depends very closely on using only such hardy, acclimated varieties. Our nursery stock is grown solely for landscape uses and is all heavy substantial plants that will thrive and quickly produce results on your home grounds.

MAINTENANCE SERVICE. As the seasons pass your plantings will need some attention. We are always interested in your success and invite inquiries as to the care and culture of your lawn, trees and garden. In the Twin Cities a maintenance crew operates throughout the year under a skilled superintendent whose help is available for any character of gardening work. Our out-of-town customers are invited to write for any horticultural information wanted.

OURS IS A COMPLETE LANDSCAPE SERVICE.



Home of Mr. D. W. Aberle, Saint Paul.



Before planting.

RESULTS WITHOUT WAITING

With but two season's growth the landscape plantings have already added tremendously to the attractiveness of this handsome residence.



A Rock Garden will bring new interest to the home yard.

shade trees are not at all desirable. Many a pleasing rock garden has been built in a curve of the shrub or perennial border where a few partially-buried stones have provided a setting for the plants.

Construction Simple

Lime stone, boulders, ledge-rock or old river-bank and water-marked stones are all adaptable to use. In any event the rocks are to be merely construction materials for their main purpose is to provide a setting for an interesting arrangement of plants. The fewer rocks used the better and endeavor to have them of varying shapes and sizes with their bulk in proportion to the extent of the feature. The rocks are very pleasingly arranged in drifts or in irregular tiers partially buried in the ground and with plenty of room between them in which the plants are to grow. Height, contrary to popular opinion, is not at all necessary for the low horizontally-placed rocks will appear more naturalistic. As a rule the stones should never be placed on edge.

Consult With Our Experts

A suitable location for a rock garden can be found in every home yard. Our designers are experienced in rockery construction and will help you with ideas in both building and planting.

Make use of our "Complete Service" if you wish and have our skilled workmen build your rock garden for you. We can supply all necessary construction materials together with the choicest of plant varieties and can assure you of the most satisfactory results. Write or phone and get our practical suggestions.

Perennials For The Rock Garden

These hardy varieties are appropriate in size and habit for Rock Garden uses. (They are all described and priced in this catalogue.)

Adam's Needle (Yucca).	Harebell (Campanula).
Armeria (Sea Pink).	Iceland Poppy.
Bleeding Heart—dwarf plumy var.	Iris (Pumila dwarf).
Blue Flax (Linum).	Japanese Spurge (Pachy- sandra).
Coral Bells (Heuchera).	Phlox (dwarf Subulata).
Clove Pink (Dianthus).	Plantain Lily (Funkia).
Ferns (Hardy vars.).	Rock Cress (Arabis).
Forget-me-not (Myosotis).	Sea Lavender (Statice).
Golden Tuft (Alyssum).	Sedum, in variety.
Grasses, ornamental vars.	Speedwell (Veronica).
Viola—Jersey Gem.	

Rock Gardens

A New Adventure in Gardening



BUILD a rock garden this year and enjoy a novel and unusual feature on your grounds this summer. You will find a new interest and delight in the growing of alpine and the less common perennial plants in a rockery.

Rockeries Are Suitable For Any Yard

Rock gardens fit naturally into slopes or terraces and so are particularly suited to lots where there are differences in levels. However a rock garden can be made quite at home on a flat piece of ground by providing the proper back-ground and setting. A favorable position is often available toward one corner of the rear yard, near the garage or in some spot where a substantial background of shrubbery or evergreen growth of an informal character can be provided. Let the position be in the open however with plenty of sunshine so that the plants used can thrive and blossom. Positions under large



A slope gives an ideal opportunity for rock gardening. Grounds of Mr. W. R. Kueffner.



The splendid shade trees are an important feature in the charm of this landscape development. Home of Mr. John E. Cable, River Boulevard, Saint Paul.

Ornamental Trees

Bring Comfort and Beauty to the Home Grounds

YOUR home will offer the greatest comfort and charm when shade trees contribute their delightful shade and beauty. Our northern grown trees with their well developed root systems will help you get the best results quickly.

Ash

ASH, American White (*Fraxinus americana*). A native shade and forest tree. Straight, clean growth. Few insect troubles. A splendid shade tree for the lawn or boulevard. 70 ft.

	Each
6 to 8 ft.....	\$1.50
8 to 10 ft.....	2.00
10 to 12 ft.....	3.50
2 to 2½ in. diameter...	5.00

Birch

BIRCH, Cutleaf Weeping. White bark; graceful branches; much used as a specimen tree on lawns. 35 ft.

6 to 8 ft.....	\$4.00
8 to 10 ft.....	6.00
10 to 12 ft.....	7.50
10 to 12 ft., 2 to 2½ in diam.	10.00

Birch, European White (*Betula alba*). White Bark; erect growth. 50 ft.

6 to 8 ft.....	\$2.25
8 to 10 ft.....	3.25

BUTTERNUT (*Juglans cinerea*). A hardy, nut producing tree. 70 ft. 6 to 8 ft.....\$2.25

CATALPA, Western (*Catalpa speciosa*). The hardiest of the Catalpas. White flowers. 50 ft.

6 to 8 ft.....	\$1.50;	8 to 10 ft.....	\$2.00
----------------	---------	-----------------	--------

CHERRY, Black (*Prunus serotina*). A native tree. White, fragrant flowers. Glossy leaves. **Hardy**. The fruit attracts birds. 50 ft.

6 to 8 ft.....	\$2.00;	8 to 10 ft.....	\$2.50
----------------	---------	-----------------	--------

Flowering Crab

CRAB, Bechtel's Double Flowering. Desirable lawn specimen. Covered in spring with rose-like pink flowers. A splendid symmetrical, small lawn tree. 15 ft.

3 to 4 ft.....	\$1.75
4 to 5 ft.....	2.25



BECHTEL'S DOUBLE FLOWERING CRAB
Beautiful Rose-like Flowers in Springtime.
Plant Trees for Pleasure and Profit.

NEW FLOWERING CRAB,
Hopa. Abundant rose-colored flowers cover the branches in May. Strikingly ornamental red fruits.
5 to 6 ft.\$2.00

Ornamental Trees—Continued.

American Elm

ELM, American (*Ulmus americana*). Unquestionably the most popular tree in America for shade, street and lawn planting. It is tough grained and fast growing which places it at the head of the "permanent" class of ornamental trees. Very hardy. 60 ft.

	Each
6 to 8 ft.....	\$1.75; 8 to 10 ft.....\$2.25
10 to 12 ft., 1½ to 2 in. diameter.....	4.50
2 to 2½ in. diameter.....	6.50
2½ to 3 in. diameter.....	9.00

Larger trees priced on request.

Elm, Chinese (*Ulmus parvifolia*). A new and beautiful lawn tree from Asia. Small, refined leaves. Quick growing. Very hardy.

6 to 8 ft.....	\$2.50; 8 to 10 ft.....\$3.75
10 to 12 ft.	5.00

GINKGO or Maidenhair (*G. biloba*). Peculiar fan-shaped leaves make this tree an interesting lawn specimen. 50 ft. 6 to 8 ft.....\$3.25
8 to 10 ft. 5.00

Hackberry

HACKBERRY (*Celtis occidentalis*). The foliage somewhat resembles the Elm. Wide spreading tops giving good shade. Very hardy. 50 ft.

6 to 8 ft.....	\$2.00; 8 to 10 ft....\$2.75
10 to 12 ft.	4.00
1¾ to 2 in. diameter	5.00

HORSECHESTNUT

— (Buckeye).

(*Aesculus hippocastanum*). Five-fingered leaves. White flowers in spikes. 40 ft.

5 to 6 ft..	\$2.50
6 to 8 ft..	4.00

CULTURAL NOTE

Leave a shallow depression around any newly planted trees. This helps retain the water. Never mound up the soil about the trunks except as a winter protection. An occasional cultivation of the soil around the trees during the summer months will be a great aid to their growth.



A young Linden Tree from our Nursery. Note the well-developed top and the full fibrous roots.



The Norway Maple.

Linden—Basswood

LINDEN, American (*Basswood*) (*Tilia americana*). Broad, heart-shaped leaves; fragrant white flowers. Quite hardy, native, fine for lawn planting.

	Each
6 to 8 ft.....	\$2.00; 8 to 10 ft....\$3.25
10 to 12 ft., 1½ to 2 in. diameter	5.00
2 to 2½ in. diameter	7.50

Larger trees priced on request.

Maples

MAPLE, Norway (*Acer platanoides*). Handsome tree; rounded head; broad, dark-green leaves. The leaves stay green late in the fall turning yellow at last. A splendid lawn tree.

6 to 8 ft.....	\$3.00; 8 to 10 ft....\$4.25
10 to 12 ft., 1½ in. diameter.....	6.00
2 to 2½ in. diameter	9.00
2½ to 3 in. diameter	12.00

Larger trees priced on request.

Maple, Purple Leaf (*Acer platanoides* Schwedler). Leaves are bright reddish-purple in spring toning to a deep purplish-green later. Highly prized for lawn planting.

6 to 8 ft. (slightly branched).....	\$4.00
8 to 10 ft.	7.50
1½ to 2 in. diameter	12.00

Larger trees priced on request.

Maple, Silver (*Acer dasycarpum*). Foliage light green, silvery beneath. Rapid growing. Succeeds anywhere. 50 ft.

6 to 8 ft.....	\$1.25; 8 to 10 ft....\$2.00
10 to 12 ft., 1½ to 2 in. diameter.....	3.00
10 to 12 ft., 2 to 2½ in. diameter.....	4.50

Larger trees priced on request.

Maple, Sugar (*Acer saccharum*). A symmetrical tree of great beauty. Hardy native. Deeply lobed, dark-green leaves. Brilliant fall colors. Fine for streets, lawns and parks. 50 ft.

6 to 8 ft.....	\$2.50; 8 to 10 ft....\$4.00
10 to 12 ft., 1½ in. diameter	5.50
10 to 12 ft., 2 to 2½ in. diameter	8.00

Plan to Plant Another Tree and Plant for This Year's Growth.

Ornamental Trees—Continued

Maple, Tatarian (*Acer tataricum* Ginnala). A splendid lawn ornamental. Beautiful red fall color. 18 ft. Each
 2 to 3 ft.\$0.75; 3 to 4 ft.\$1.00

Mountain Ash

MOUNTAIN ASH (*Sorbus aucuparia*). White flowers in May followed by bright, orange-red berries, which hang on for months. Very ornamental. Used as a specimen on the lawn or as an accent in the border. 30 ft.

6 to 8 ft.\$1.50; 8 to 10 ft.\$2.25
 10 to 12 ft. 4.00
 2 to 2½ in. diam. 6.00
 2½ to 3 in. diam. 7.50

Plum, Purpleleaf. Dark-purple leaves all summer. Attractive lawn specimen, or to give color to shrub groups. 10 ft.

3 to 4 ft.\$1.00; 4 to 5 ft.\$1.50
 5 to 6 ft. 2.00

Poplars

POPLAR, Bolleana (*Populus bolleana*). Upright, columnar growth. Glossy-green leaves with downy-white undersides. Makes a strong vertical accent, striking in appearance. 30 ft.

Each
 6 to 8 ft.\$1.75; 8 to 10 ft.\$2.75
 10 to 12 ft. 4.00



The Mountain Ash with its white flowers and red berries is a popular lawn tree.

Willows

WILLOW, Golden (*Salix vitellina aurea*). Rapidly growing with branches of rich golden yellow. Very hardy. 35 ft.

Each
 8 to 10 ft.\$1.50

How to Plant a Tree

Poplar, Carolina (*Populus eugenei*). Quick growth. Dense foliage. Grows anywhere. 50 ft.

6 to 8 ft.\$1.00
 8 to 10 ft. 1.25
 10 to 12 ft. 2.00

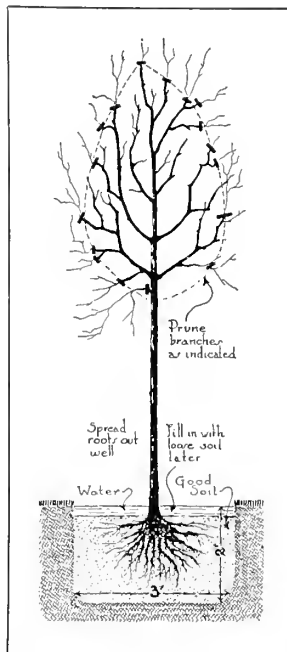
Poplar, Lombardy (*Populus fastigiata*). Erect and pyramidal in form. Planted for landscape effect, as an accent or for screening purposes. Grows quickly. 40 ft.

6 to 8 ft.\$1.00
 8 to 10 ft. 1.50
 10 to 12 ft. 2.50

Larger trees priced on request.

WALNUT, Black (*Juglans nigra*). A native tree of majestic proportions. Large leaves of 13 to 17 leaflets. Edible nuts. 70 ft.

6 to 8 ft.\$2.00
 8 to 10 ft. 3.00



Willow, Laurelleaf (*Salix pentandra*). Glossy-green leaves. Grows rapidly. 30 ft.

6 to 8 ft.\$1.00
 8 to 10 ft. 1.50
 10 to 12 ft. 2.50

Willow, Niobe Weeping. Golden-bark; pendulous branches. 30 ft.

6 to 8 ft.\$1.50
 8 to 10 ft. 2.50

Willow, Wisconsin Weeping. The hardiest of the weeping willows. Very desirable for a quick-growing, ornamental lawn specimen. 30 ft.

6 to 8 ft.\$1.50
 8 to 10 ft. 2.50

An Attractive Yard is a Splendid Investment.

Evergreens

THE splendid form and color of evergreens is most keenly appreciated in the winter when by contrast their rich green gives a note of warmth and cheer to the cold winter landscape. This same characteristic beauty of evergreens gives them individual distinction even in the summertime. Their hardiness, their variation in form, color and habit make evergreens almost indispensable in any planting.

Our evergreens are given special care, handled carefully, and transplanted frequently to put them in the proper condition to be successfully moved from the nursery.

Ask our Landscape Service Department for planting suggestions.



Landscape plantings at the home of Mr. D. D. Tenney, Park Ave., Minneapolis. Large trees of Spruce and Cedar with Mugho Pines as a border screen the rear yard from the street.

Arborvitae—Thuja

ARBORVITAE, American (*Thuja occidentalis*). A native tree with fan-shaped leaves. Foliage is soft and flexible, usually bushy at bottom and tapering toward top. Used very generally in planting singly or with other evergreens. Stands trimming well to any size. 20 ft.

- | |
|--|
| Each |
| 18 to 24 in. \$ 2.50; 2 to 3 ft. \$ 3.75 |
| 3 to 4 ft. 5.75; 4 to 5 ft. 8.50 |
| 5 to 6 ft. 12.00; 6 to 7 ft. 15.00 |
| Larger specimen trees priced on request. |

Arborvitae, Globe (*Thuja occidentalis globosa*). A dwarf, bushy evergreen that grows naturally into a rounded, ball-like form. Keeps its rounded shape without trimming. Fine for low borders, foundation groups, tubs and urns. 4 ft.

- | |
|-----------------------------------|
| 12 to 18 in. spread. . . . \$4.00 |
| 18 to 24 in. spread. . . . 6.00 |
| 24 to 30 in. spread. . . . 7.50 |
| 30 to 36 in. spread. . . . 9.00 |

Larger specimen trees priced on request.

Arborvitae, Pyramidal (*Thuja occidentalis pyramidalis*). An attractive, solid pyramid of green that retains its shape without shearing. Seldom measures over 30 inches in diameter at the base even when mature. 18 ft.

- | |
|------------------------------|
| 18 to 24 in. \$ 4.00 |
| 2 to 2½ ft. 5.50 |
| 2½ to 3 ft. 7.00 |
| 3 to 3½ ft. 9.00 |
| 3½ to 4 ft. 11.00 |
| 4 to 5 ft. 13.50 |
| 5 to 6 ft. 18.00 |



PFITZER'S JUNIPER
A graceful, medium-height evergreen.

Arborvitae, Siberian (*Thuja wareana siberica*). A compact, dense, bushy evergreen, conical in outline; foliage rich dark green. The hardiest of the Arborvitae. 8 ft.

- | |
|--|
| Each |
| 18 to 24 in. . . \$5.00; 2 to 2½ ft. . . . \$ 7.00 |
| 2½ to 3 ft. . . . 8.00; 3 to 3½ ft. . . . 10.00 |

CEDAR. See Juniper.

Fir—Abies

FIR, Douglas (*Pseudotsuga douglasi*). Quick growing tree of open, broad, sharp pointed pyramidal shape. Large bluish-green needles. A splendid ornamental evergreen where a large tree is wanted. 40 ft.

- | |
|----------------------------|
| 3 to 4 ft. \$ 7.50 |
| 4 to 5 ft. 11.00 |
| 5 to 6 ft. 15.00 |
| 6 to 7 ft. 20.00 |

Juniper—Juniperus

JUNIPER, Pfitzer's (*Juniperus pfitzeriana*). Branches horizontally spreading and slightly drooping. A graceful, bushy form suited to foreground plantings. 8 ft.

- | |
|----------------------------|
| 2 to 3 ft. \$ 7.50 |
| 3 to 4 ft. 12.00 |
| 4 to 5 ft. 20.00 |
| 5 to 6 ft. 25.00 |

Juniper, Redcedar (*Juniperus virginiana*). Pyramidal shape with rich green foliage. Probably the most useful of all ornamental evergreens because of its beauty, adaptability and hardiness. Stands trimming. 30 ft.

(Prices given on Page 10.)

Our Northern-grown Evergreens have remarkably good color.

Evergreens—Continued.

Juniper—Redcedar

(Description given on page 9.)

	Each
2 to 3 ft....\$ 5.00	3 to 4 ft....\$ 7.50
4 to 5 ft.... 11.00	5 to 6 ft.... 15.00
6 to 7 ft.... 18.50	7 to 8 ft. . . 27.00

Larger specimen trees priced on request.

Juniper, Savin's (*Juniperus sabina*). Thickly branched, low spreading tree. Can be trimmed. Excellent for use as a low bush to foreground plantings. 5 ft.

18 to 24 in. spread	\$ 5.00
24 to 30 in. spread	7.00
30 to 36 in. spread	10.50

Larger specimen trees priced on request.

Juniper, Silver (*Juniperus virginiana glauca*). Rich, silvery-gray foliage all seasons. Valued for its contrasting color when planted with other evergreens. 15 ft.

3 to 4 ft.....\$10.00;	4 to 5 ft.....\$14.00
5 to 6 ft.	18.00

Juniper, Prostrate (*Juniperus canadensis*). A dwarf many-stemmed evergreen shrub that grows closely to the ground. Suited to foreground plantings or for rock gardens.

18 to 24 in. spread	\$4.50
24 to 30 in. spread	6.50

Pine—Pinus

PINE, Austrian (*Pinus nigra*). Long, dark-green needles; vigorous growing, very decorative, large-growing evergreen. 60 ft.

3 to 4 ft.\$6.50;	4 to 5 ft.\$ 9.00
5 to 6 ft.	12.50

Pine, Dwarf Mugho (*Pinus montana mughus*). Desirable dwarf evergreen; bushy and globe-shaped. Foliage deep green. Very hardy. 4 ft. Our best dwarf evergreen.

12 to 18 in. spread	\$ 5.00
18 to 24 in. spread	7.00
24 to 30 in. spread	10.00
30 to 36 in. spread	15.00

Larger specimens priced on request.



Evergreens make a colorful and dignified entrance planting. Arborvitae, Mugho Pines and Junipers are in this group.

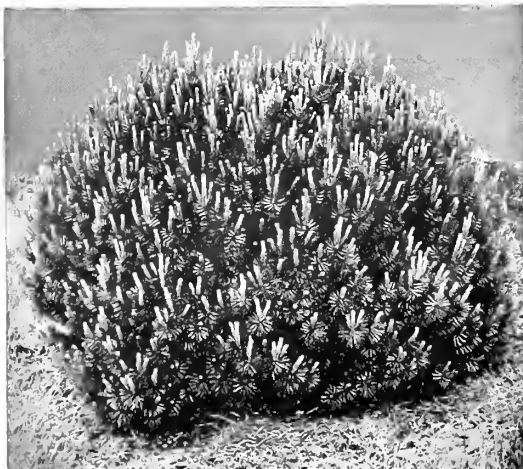
Pine, Mountain (*Pinus montana*). A compact conical-shaped pine with the short leaves thickly crowded along the ascending branches. Desirable as a lawn specimen or grouped with other evergreens.

30 to 36 in. spread	\$ 8.00
36 to 40 in. spread	11.00

Pine, White (*Pinus strobus*). Our stately native Pine. Soft, light-green foliage.

4 to 5 ft.....\$7.50;	5 to 6 ft.....\$10.00
6 to 7 ft.	15.00

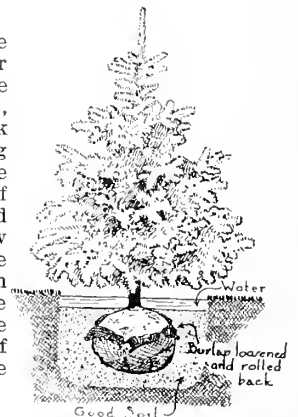
Larger specimen trees priced on request.



Dwarf Mugho Pine.

Planting Evergreens

A hole should be dug of ample size for the ball of earth. Place the tree in the hole, loosen and pull back the burlap covering and after filling the hole two-thirds full of good soil, then flood with water and allow this to soak into the ground. Soil can then be filled nearly to the ground level. Give the Evergreens plenty of water throughout the summer.



Evergreens Will Give Beauty to the Yard Throughout the Whole Year.

Evergreens—Continued.

Spruce—Picea



A specimen Blue Spruce as prepared for planting at our Nurseries.

Spruce, Blue Colorado (*Picea pungens glauca*). A hardy American Spruce with rich silvery-blue foliage. A tree of special value as a lawn specimen because of good color and symmetrical growth. 35 ft.

2 to 2½ ft.	\$12.00
2½ to 3 ft.	15.00
3 to 3½ ft.	18.00
3½ to 4 ft.	21.00
4 to 5 ft.	25.00
5 to 6 ft.	30.00
6 to 7 ft.	35.00

Larger trees priced on request.

Spruce, Black Hills (*Picea canadensis albertiana*). A valuable ornamental tree of close, dense growth. Stands dry soils and severe climatic conditions. Foliage varies from green to bluish color. 30 ft.

2 to 2½ ft.	\$5.00;	2½ to 3 ft.	\$ 6.00
3 to 4 ft.	8.00;	4 to 5 ft.	11.00
5 to 6 ft.	15.00;	6 to 7 ft.	18.00

Larger specimen trees priced on request.

SPRUCE, Colorado (*Picea pungens*). Very attractive in appearance with even, symmetrical growth and bluish-green foliage. Very hardy. Thrives almost anywhere and is always a good lawn specimen. 35 ft.

2 to 3 ft.	\$ 8.00;	3 to 4 ft.	\$10.50
4 to 5 ft.	14.00;	5 to 6 ft.	20.00
6 to 7 ft.	25.00		

Larger trees priced on request.

Spruce, Douglas. See **Fir, Douglas.**

Spruce, Norway (*Picea excelsa*). A rapidly growing evergreen of graceful outline. Pyramidal growth. Dark-green foliage. The older branches are wide spread and drooping in outline. 50 ft.

3 to 4 ft.	\$ 5.00;	4 to 5 ft.	\$ 7.50
5 to 6 ft.	10.00		

Spruce, White (*Picea canadensis*). A hardy, native tree of compact, upright growth. Leaves have silvery-green appearance. 50 ft.

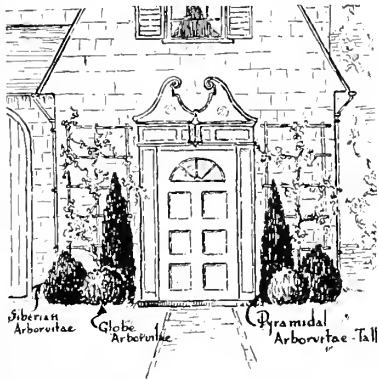
2 to 3 ft.	\$ 5.00;	3 to 4 ft.	\$ 7.00
4 to 5 ft.	10.00;	5 to 6 ft.	13.00
6 to 7 ft.	18.00;	7 to 8 ft.	22.00

Specimen trees, large sizes, priced on request.



The Black Hills Spruce makes a fine lawn specimen.

A Beautiful Entrance Planting of Hardy Evergreens



2 Globe Arborvitae, 12 to 18 in.	\$ 8.00
2 Siberian Arborvitae, 18 to 24 in.	10.00
2 Pyramidal Arborvitae, 2 to 2½ ft.	11.00

Catalog value\$29.00

Our Special Group Price **\$24.50**
with full planting directions
(Freight or express extra)

Yew—Taxus

YEW, Canada (*Taxus canadensis*). A shrub-like evergreen with spreading slender branches. Dark green leaves. 3 ft.

24 to 30 in.	\$9.00
-------------------	--------

Yew, Japanese (*Taxus cuspidata*). A small growing evergreen for foreground planting. Longer leaves than the Canadian Yew. 3 ft.

18 to 24 in.	\$8.50;	24 to 30 in.	\$12.00
-------------------	---------	-------------------	---------

Hardy Trees and Plants Make Ideal Gifts for Anniversaries and Birthdays.



Flowering Shrubs, in a border planting, make a frame for this pleasing lawn picture. Designed and planted by the "H. & O. Service" for Mr. Gustaf Lindquist, Saint Paul.

Flowering Shrubs

Hardy Varieties For Northern Gardens

MUCH of the beauty in the landscape planting of any home is supplied by shrubs. Their uses are legion and their cost is nominal. It is the softening grace of such shrubs as Spiraea (in variety) Snowberry, Hydrangea, Barberry and others of like nature used about the angles and corners of the house, which makes the transformation from bareness to beauty. Tall shrubs, such as Lilacs, Honeysuckles, Mock-orange, etc., find their proper place in the border along the boundary or in plantings which serve to screen out unattractive views. In fact there is a place where most every type of shrub can be effectively used. By choosing carefully it is possible to have practically continuous bloom in the shrub border. A few of the colored twig sorts will live up the planting in winter.

Our
LANDSCAPE DEPARTMENT
will gladly assist you in making
your shrub selections.
See catalog page 2.

Flowering Almond

ALMOND, Pink Flowering
(*Amygdalus communis rosea*).
Rose-like, pink flowers in early spring. Should be planted deeply to prevent sprouting of the plum root on which, for hardiness, this variety must be grown.

Each
2 to 3 ft. \$1.25; 3 to 4 ft. \$1.75

Almond, White Flowering
(*Amygdalus communis alba*).
White-flowering variety of the above. 4 to 5 ft.
2 to 3 ft. \$1.25



The Flowering Almond is very colorful in early spring.

ARALIA chinensis. HERCULES CLUB. Tropical appearing bush with long, compound leaves. Needs protected situation. Branches are thorny. General appearance is upright and club-like. 8 to 10 ft. **Each**
3 to 4 ft. \$1.25
Aralia pentaphylla. FIVE-LEAVED ARALIA
Stands shade. Good autumn color. 5 to 6 ft.
2 to 3 ft. \$0.60

Barberry

BARBERRY, Japanese or Thunberg's (*Berberis thunbergi*). The best and most popular hardy, dwarf shrub. Red berries and brilliant foliage in the fall. Grows most anywhere—in partial shade, sunny, moist or dry places. This variety of Barberry does not carry wheat rust. 2 1/2 ft.
12 to 18 in. \$0.35
18 to 24 in. .50
24 to 30 in. .70

Red-Leaved Barberry

A splendid addition to our hardy shrubs. Similar to the popular Japanese Barberry but has rich bronzed leaves that hold their color all summer. The fruit is a scarlet berry. Plant these in with other shrubs for a bright contrast.
15 to 18 in. \$1.50
18 to 24 in. 2.00

BRIDAL WREATH. See Spiraea Van Houttei.

A Landscape Plan of Your Yard Shows Just What Shrubs to Plant. See page 2

Flowering Shrubs—Continued.

BUCKTHORN, Common (*Rhamnus cathartica*). Very hardy. Lustrous leaves and black berries. Desirable in groups or for hedges. 8 to 10 ft. (See page 20 for hedge.)

	Each
18 to 24 in.	\$0.30
2 to 3 ft.40
3 to 4 ft.50
4 to 5 ft.75

CARAGANA. See Siberian Pea Tree.

Coralberry

CORALBERRY (*Symphoricarpos vulgaris*). Stands sun or shade and poor soil. Red to purple berries in late summer. A native shrub that is hardy and easy to grow where other plants fail. 3 to 4 ft.

18 to 24 in.	\$0.35;	2 to 3 ft.	\$0.50
3 to 4 ft.70



Japanese Barberry, one of the best dwarf shrubs, used as a hedge.

Cotoneaster

COTONEASTER acutifolia. PEKING COTONEASTER. Dense growing with ornamental, dark, glossy-green leaves. Stands shade. Very desirable for foundation plantings where a neat, dignified effect is wanted. 6 ft.

	Each		
18 to 24 in.	\$0.40;	2 to 3 ft.	\$0.50
3 to 4 ft.70

Currants—Ornamental

CURRENT, Mountain (*Ribes alpinum*). Dwarf shrub. Dense growth. Stands shade. One of the best low to medium height shrubs for planting under most all conditions. 4 ft.

12 to 18 in.	\$0.50;	18 to 24 in.	\$0.70
24 to 30 in.			1.00
Specimen bushes			\$1.50 to 3.50

Currant, Yellow Flowering (*Ribes aureum*). Large, yellow, fragrant flowers early in spring. Black, edible berries. Stands shade. 6 ft.



A lily pool is always a source of pleasure and interest in the garden.

Currant, Yellow Flowering—Continued

	Each		
2 to 3 ft.	\$0.75;	3 to 4 ft.	\$1.00
4 to 5 ft.			1.50

DEUTZIA gracilis. SLENDER DEUTZIA. White flowers in June. Needs protection. 2 1/2 ft. 12 to 18 in. \$0.60

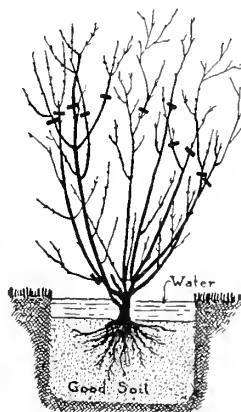
Deutzia, Pride of Rochester (*D. Scabra*). Double, white flowers in May. 6 ft. 2 to 3 ft. \$0.60; 3 to 4 ft. \$0.80

Dogwood

DOGWOOD, Goldentwig (*Cornus siberica aurea*). Valued for its bright yellow branches in fall and winter. White flowers. 6 ft.

2 to 3 ft.	\$0.50;	3 to 4 ft.	\$0.75
4 to 5 ft.			1.25

How to Plant Shrubs



Space the tall shrubs, such as Lilac, 4 to 6 feet apart; the medium-height shrubs, such as Bridal Wreath, 3 to 4 feet apart; and the dwarf growers, such as Barberry, 2 to 2 1/2 feet apart. Dig the holes of a ample size, place the plant and after filling in the hole two-thirds with top-soil, add water. Allow this to settle then complete the filling with soil up to the ground level. ALWAYS SHORTEN

BACK THE TOP GROWTH BY CUTTING AWAY AT LEAST ONE-THIRD THE LENGTH OF THE BRANCHES. The heavy lines on the branches indicate where to trim them. Use no fertilizer excepting as a surface dressing.

Complete Planting Instructions Are Sent With Every Order.

Flowering Shrubs—Continued

Dogwood, Red-Twigged (*Cornus siberica alba*).
White flowers in June. The red stems are highly attractive during the winter. Old wood should be kept out and new growth encouraged to get best color. 6 to 8 ft.
2 to 3 ft.\$0.50; 3 to 4 ft.\$0.75
4 to 5 ft. 1.25

Dogwood, Silver (*Cornus elegantissima*). Highly decorative because of its white-striped green leaves and red bark. 6 ft.
18 to 24 in.\$1.00; 2 to 3 ft.\$1.25
3 to 4 ft. 1.50

Elderberry

ELDER, Black-Fruited (*Sambucus canadensis*).
Heavy, broad, clusters of fragrant, white flowers in July. Edible, black fruit. A very rapidly growing hardy shrub. Stands partial shade. 6 ft.
2 to 3 ft.\$0.50; 3 to 4 ft.\$0.75

Elder, Cut-Leaved (*Sambucus nigra laciniata*).
Divided, fern-like leaves. Stands shade. The delicate foliage makes a pleasing contrast when planted with other shrubs. 5 to 6 ft.
2 to 3 ft.\$0.50; 3 to 4 ft.\$0.75
4 to 5 ft. 1.25

Elder, Golden (*Sambucus aurea*). The golden leaves hold their color well all season through; white flowers. 7 ft.
2 to 3 ft.\$0.60; 3 to 4 ft.\$0.85
4 to 5 ft. 1.25

Elder, Red-Berried (*Sambucus racemosa*). Bright red berries in July. Stands shade. 8 ft.
2 to 3 ft.\$0.60; 3 to 4 ft.\$0.85
4 to 5 ft. 1.25

ELAEAGNUS. See Russian Olive.

EUONYMUS americanus, STRAWBERRY BUSH.
Erect growing to 8 ft. Slender, green branches. Ornamental pink fruits in the fall.
2 to 3 ft.\$0.80
3 to 4 ft. 1.00



The birds enjoy the juicy red berries of the Bush Honeysuckle.

FORSYTHIA, suspensa. GOLDEN BELL. Pendulous in habit. Lustrous, dark foliage. Golden flowers in April. Needs protection. 5 ft.
2 to 3 ft.\$0.60

Forsythia viridissima. GREEN-STEM GOLDEN BELL. Erect, green branches. Needs protection. 7 ft.
2 to 3 ft.\$0.60

HIGH BUSH CRANBERRY. See *Viburnum*.

Honeysuckle

HONEYSUCKLE, Morrow's (*Lonicera morrowi*).
Hardy shrub with wide-spreading branches. Yellowish-white flowers. Brilliant red berries in July. One of the best all around shrubs for the home yard. Thrives in sun or shade, wet or dry places. 6 ft. **Each**

2 to 3 ft.\$0.50; 3 to 4 ft.\$0.75
4 to 5 ft. 1.25



The Story in Pictures

Residence of Mr. G. W. Robinson
Summit Ave., Saint Paul
These actual photographs show the delightful landscape beauty that developed just four years after planting. You can do likewise. Consult us. We help you plan.

Beautify your home with a foundation planting of shrubs. Ask us for suggestions.

FROM

FIRST CLASS
Permit No. 250
Sec. 384½ P. L. & R.
St. Paul, Minn.



BUSINESS REPLY ENVELOPE
NO POSTAGE STAMP NECESSARY IF MAILED IN THE UNITED STATES

3c—POSTAGE WILL BE PAID BY—3c

THE PARK NURSERIES
(HOLM & OLSON, Inc.)

20-24 W. Fifth Street

Landscape Architects

ST. PAUL, MINN.

FOLD ON THIS LINE



Before Sealing Be Sure

Your Name and Address are Written
plainly on the other side of this Blank

IMPORTANT

Flowering Shrubs—Continued



The Large-Flowered or Hydrangea P. G. They make a colorful winter bouquet.

Honeysuckle, Pink (*Lonicera tatarica rosea*). Quantities of pink to red flowers in spring. The fruit is a red berry that colors the bush in July and August. A long-lived and very popular shrub that is always ornamental. Easy to grow. 8 ft.

18 to 24 in.\$0.40; 2 to 3 ft.\$0.50
3 to 4 ft.75; 4 to 5 ft. 1.25

Specimen shrubs\$1.50 to 3.00

Honeysuckle, White (*Lonicera tatarica alba*). Desirable white-flowering, bush honeysuckle. 8 ft.
2 to 3 ft.\$0.50; 3 to 4 ft.\$0.75
4 to 5 ft. 1.25; 5 to 6 ft. 2.00

Hydrangea

HYDRANGEA, Large-Flowered (*H. paniculata grandiflora*). Conical, flower-heads of white which later change to pink in August and September. Always wanted in home yard plantings because of the large flowers when other shrubs are out of bloom. 4 ft. Each

18 to 24 in.\$0.75; 2 to 3 ft.\$1.00
3 to 4 ft. 1.25

Hydrangea, Snowhill (*H. arborescens grandiflora*).

Heavy, snowball-like flowers of white from late June to frost. Makes a pleasing compact bush with large leaves. Should have plenty of water. Stands partial shade. 3 to 4 ft.

18 to 24 in.\$0.60
2 to 3 ft.80
3 to 4 ft. 1.00



The Snowhill or Summer-blooming Hydrangea. Abundant flowers and a splendid medium-height shrub.

Hydrangea, Tree. A tree form of the large-flowered fall-Hydrangea.
3 to 4 ft.\$2.00

JUNEBERRY (*Amelanchier alnifolia*). White flowers in May. Black berries. 5 to 8 ft.
2 to 3 ft.\$0.60

French Lilacs

LILAC, French Hybrid Varieties. Improved sorts that have heavier flowers than the common purple and white, and in a wider range of colors. 6 to 8 ft. The French lilacs are particularly desirable for garden planting where their beautiful trusses contrast splendidly with spring flowers planted beneath. All the varieties listed below are hardy, free flowering sorts, which will prove highly satisfactory.

2 to 3 ft.\$1.50
3 to 4 ft. 1.75
4 to 5 ft. 2.50

- Alphonse Lavalle.** Blue, shaded violet.
- Belle de Nancy.** Satiny pink.
- Charles X.** Reddish purple; large clusters.
- Chas. Joly.** Deep reddish purple. Very popular.
- Ludwig Spaeth.** Dark purplish-red.
- Marie Legraye.** One of the finest white Lilacs.
- Michel Buchner.** Clear lilac flowers. Double.
- Madame Lemoine.** Pure white.
- President Grevy.** A beautiful light blue.

Lilac, Hungarian (*Syringa josikaea*). Light, violet-colored flowers in June, after the common lilacs have finished blooming. 8 to 10 ft.
2 to 3 ft.\$1.25; 3 to 4 ft.\$1.50
4 to 5 ft. 2.00

Lilac, Japanese Tree (*Syringa japonica*). Small tree in habit of growth. Flowers come in loose clusters of creamy-white, in June. 15 ft.
2 to 3 ft.\$1.25; 3 to 4 ft.\$1.50

Flowering Shrubs, Once Established, Last For Years.

Flowering Shrubs—Continued.

Lilac, Late Flowering (*Syringa villosa*). Bushy, upright growth. Rich dark foliage with pinkish-lilac flowers in June. A desirable, hardy shrub, ornamental both in and out of flower. 8 ft.

Each
 2 to 3 ft. \$1.00; 3 to 4 ft. \$1.25
 4 to 5 ft. 1.50
 Heavy specimen bushes \$2.00 to 3.00

Lilac, Persian (*Syringa persica*). Slender growth; smaller leaves than the Common Lilac. Pale purple flowers in May. 7 ft.

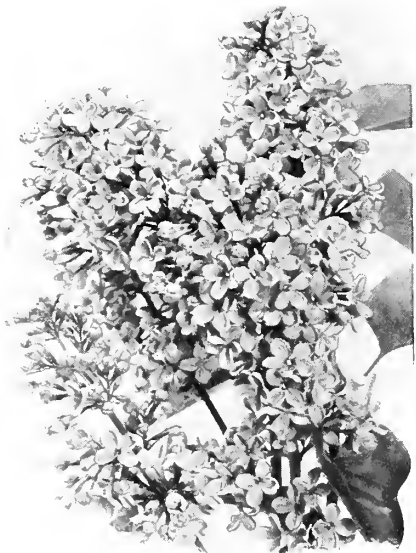
2 to 3 ft. \$1.00; 3 to 4 ft. \$1.25
 4 to 5 ft. 1.50
 Specimen shrubs \$2.00 to 3.00

Lilac, Purple (*Syringa vulgaris*). The well-known, old-fashioned Lilac. Fragrant flowers in May. 9 to 12 ft.

2 to 3 ft. \$0.75; 3 to 4 ft. \$1.00
 4 to 5 ft. 1.50

Lilac Rothomagensis (Rouen Lilac). Late blooming, reddish purple flowers. Delicately formed leaves.

2 to 3 ft. \$1.25; 3 to 4 ft. \$1.50
 4 to 5 ft. 1.75



The Lilacs bring both fragrance and beauty to the garden.

Lilac, White (*Syringa vulgaris alba*). A white-flowering lilac. 9 to 12 ft.

2 to 3 ft. \$0.75; 3 to 4 ft. \$1.00
 4 to 5 ft. 1.50

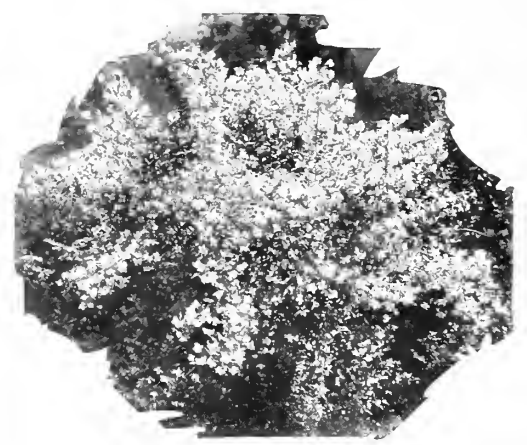
LOCUST, Pink Flowering (*Robinia hispida*). Showy rose-colored flowers in June. 5 ft.

2 to 3 ft. \$1.00; 3 to 4 ft. \$1.25

Mockorange—(*Syringa*)

PHILADELPHUS Aureus. GOLDEN MOCKORANGE. Bright, golden-yellow foliage. 3 ft.

12 to 18 in. \$1.00; 18 to 24 in. \$1.25
 Specimen bushes \$2.00 to 3.50



Le Moine's Mockorange is one of the best of the medium height shrubs. The flowers are sweet-scented.

Philadelphus coronarius. SWEET MOCKORANGE. Flowers are pure white and very fragrant in May and June. Good foliage. Quite a large and hardy old-fashioned shrub that is well placed as a lawn specimen or as a screen planting. 7 ft.

Each
 2 to 3 ft. \$0.50; 3 to 4 ft. \$0.75
 4 to 5 ft. 1.25
 Specimen shrubs \$1.50 to 3.00

Philadelphus lemoinei. LEMOINE'S MOCKORANGE. Medium height, very useful for foundation plantings. Fragrant white flowers. 5 ft.

18 to 24 in. \$0.50; 2 ft to 3 ft. \$0.60
 3 to 4 ft. 1.00
 Specimen shrubs \$2.00 to 4.00



Plant and half-sized flower of Philadelphus, Mock Orange

Fruiting Shrubs Encourage the Song Birds.

Flowering Shrubs—Continued.

A New Mockorange

Philadelphus virginial. A choice, fragrant variety, with large creamy white flowers over a prolonged blooming season. 4 to 5 ft.
 2 to 3 ft. \$1.25; 3 to 4 ft. \$1.50
 4 to 5 ft. 2.00

Flowering Plums

PLUM, Doubleflowering. Large, double, pink, rose-like flowers in early spring. Brilliant and remarkable in bloom. Hardier than the flowering almond. 5 ft.

2 to 3 ft. \$1.00; 3 to 4 ft. \$1.50
 4 to 5 ft. 2.00
 Specimen shrubs. \$3.00 to 7.50

Plum, Purpleleaf. NEWPORT. Dark purple leaves. Holds purple color all summer and makes a bright contrast with other foliage. 10 ft.

3 to 4 ft. \$1.00; 4 to 5 ft. \$1.50
 5 to 6 ft. 2.00

POTENTILLA fruticosa. CINQUEFOIL. Low shrub; yellow flowers all summer. 2 ft.

12 to 18 in. \$0.40; 18 to 24 in. \$0.50

ROSE RED-LEAVED. (Rosa rubrifolia). A hardy rose with red leaves all summer. Makes a beautiful contrast in the shrub groups.

2 yr. plants \$1.00 each

ROSE RUGOSA (Rosa Rugosa). A very hardy bush rose that needs no winter covering. Dark green crinkled foliage and bright pink flowers make it exceedingly ornamental. Bright scarlet fruits appear during late summer and fall.

2-yr. plants. \$0.70; 3-yr. plants. \$0.90

RUSSIAN OLIVE (Elaeagnus angustifolia). Silvery, willow-like leaves. Fragrant yellow flowers followed by yellow fruits. Used in plantings for its silvery foliage and good size. Very hardy. 12 ft.

3 to 4 ft. \$0.80



The Snowberry has pendulous clusters of large, white berries.

SIBERIAN PEA-TREE (Caragana arborescens). Bright green, pea-like leaves. Clusters of yellow flowers in May followed by long slender seed pods. Very hardy and will stand dry locations and poor soils. 8 ft. Each
 2 to 3 ft. \$0.50; 3 to 4 ft. \$0.75
 4 to 5 ft. 1.25
 Specimen shrubs. \$2.00 to 5.00

Snowberry

SNOWBERRY, White (Symphoricarpos racemosus). Medium height shrub. Stands shade. Large, waxy berries in September that persist well into the winter. A graceful and pleasing bush. 4 ft.
 2 to 3 ft. \$0.50; 3 to 4 ft. \$0.75
 Specimen shrubs. \$1.00 to 2.00

Spiraeas

SPIRAEA, Anthony Waterer. CRIMSON SPIRAEA. A very free flowering dwarf shrub of compact form. Crimson flowers all summer. Always blooms the first season. Makes a fine color combination planted with Hydrangea Snowball. 2 ft.
 12 to 18 in. \$0.60; 18 to 24 in. \$0.75
 24 to 30 in. 1.25

Spiraea arguta. GARLAND SPIRAEA. Many small, white flowers in May. 4 ft.
 2 to 3 ft. \$0.70; 3 to 4 ft. \$1.00



Children like to linger in the yard that is made attractive. Ask our Landscape Dept. for planting suggestions.

Shrubs to Grow in Shade

Honeysuckle, in variety	Dogwood, in variety
Hydrangea, Snowball	Currant, yellow flowering
Elder, in variety	Currant, Alpine
Philadelphus, in variety	Coralberry
Viburnum, in variety	Snowberry
	Barberry

Tall Shrubs for Border and Screen Planting

(Bushy, Tall-Growing and Very Hardy.)
 Siberian Pea tree Philadelphus coronarius
 Russian Olive " grandiflorus
 Maple, tatarian Buckthorn
 Honeysuckle, tatarian Lilac, in variety
 Viburnum, in variety

Use Shrubs About the House Front.

Flowering Shrubs—Continued.



Spiraea Anthony Waterer with crimson flowers all summer.

Spiraea billardi. PINK SUMMER SPIRAEA. Pink flowers in terminal spikes during July and August. 5 ft.
2 to 3 ft.\$0.60; 3 to 4 ft.\$0.80

Spiraea Japonica (Callosa alba). White flowers in clusters all summer. A dwarf shrub of compact symmetrical form. Refined foliage. 3 ft.
12 to 18 in.\$0.60; 18 to 24 in.\$0.75

EXCELLENT MEDIUM-HEIGHT SHRUB
Spiraea callosa rosea. Rose colored flowers in flat-topped clusters. Well suited to house foundation plantings. July and August. 3½ ft.
 12 to 18 in.\$0.40; 18 to 24 in.\$0.60
 24 to 30 in.80



Bridal Wreath (Spiraea Vanhouttei) always pleases. It thrives everywhere.

Spiraea opulifolia. NINEBARK. Tall, vigorous shrub with heavy foliage and many small clusters of white flowers. Well suited for planting as a screen or background. 8 ft.
2 to 3 ft.\$0.50; 3 to 4 ft.\$0.75
4 to 5 ft. 1.25
Specimen shrubs.\$2.00 to 4.00

Spiraea opulifolia aurea. GOLDEN SPIRAEA. An ornamental, golden-leaved shrub. 6 ft. Has peculiar shredded bark. The profuse clusters of white flowers are followed by seeds which are brilliant orange-red in summer. Useful for screens and as a filler in masses and borders.
Each
2 to 3 ft.\$0.50; 3 to 4 ft.\$0.75
4 to 5 ft. 1.25
Specimen shrubs\$2.00 to 3.50

Spiraea sorbifolia. PLUME SPIRAEA. Foliage resembling a Mountain Ash. Long spikes of white flowers in July. Begins growth very early. Stands either full sun or partial shade. 5 ft.
2 to 3 ft.\$0.60; 3 to 4 ft.\$0.75

Spiraea thunbergi. SNOW GARLAND. Graceful slender branches. Light feathery foliage. Abundant white flowers in May. One of the earliest shrubs to bloom in the spring. 3 ft.
18 to 24 in.\$0.50; 2 to 3 ft.\$0.75
Large heavy bushes 1.25



Spiraea Snow-Garland (Thunbergi). Blooms before its leaves appear.

Spiraea vanhouttei. BRIDAL WREATH. The most admired of all shrubs. A round, graceful bush with arching branches. White flowers in masses in late May. The most popular and most planted of all shrubs. Will grow in almost any location. Very hardy. 5 to 6 ft.
18 to 24 in.\$0.40; 2 to 3 ft.\$0.50
3 to 4 ft.75; 4 to 5 ft. 1.25
Specimen shrubs\$1.50 to 3.50

Our Thirty-four Years of "Growing Hardy Plants for Northern Gardens" Means Satisfied Customers.

Flowering Shrubs—Continued.

Sumac

SUMAC, Fern-Leaved (*Rhus glabra laciniata*). Very desirable small shrub with deeply-cut leaves. 3 to 4 ft.
18 to 24 in.\$1.25; 2 to 3 ft.\$1.50

Sumac, Tall Cut-Leaved (*Rhus typhina laciniata*). Delicate, deeply-cut leaves that show crimson in the fall. Splendid to add variety to heavier shrub masses. 8 to 10 ft.
2 to 3 ft.\$0.75
3 to 4 ft. 1.00

TAMARIX Pentandra. SUMMER TAMARIX. Feathery, bluish-gray foliage; with carmine-pink flowers in long loose terminal clusters. June and July. The delicate foliage is often used in flower bouquets. The appearance is so unlike other shrubs as to always attract attention. Does best in a protected spot. 6 ft. Each
2 to 3 ft.\$1.00; 3 to 4 ft.\$1.25
Specimen shrubs.\$2.00 to 3.00

THORN APPLE. (*Crataegus*). A hardy Hawthorn. White flowers. Red fruits. 10 to 12 ft.
2 to 3 ft.\$0.80; 3 to 4 ft.\$1.00

Viburnums

VIBURNUM, Arrowwood (*V. dentatum*). Glossy-green leaves; white flowers in June. Crimson berries, turning to blue. Stands partial shade. 8 ft.
2 to 3 ft.\$0.80; 3 to 4 ft.\$1.00
4 to 5 ft. 1.25

Viburnum, High-bush Cranberry (*V. opulus*). White flowers in spring followed by brilliant red edible berries. Very hardy. A large growing shrub always ornamental but especially so during the fall because of its bright berry clusters and autumn foliage coloration. 8 ft.
2 to 3 ft.\$1.00; 3 to 4 ft.\$1.25



The High-bush Cranberry. Clusters of bright red berries.

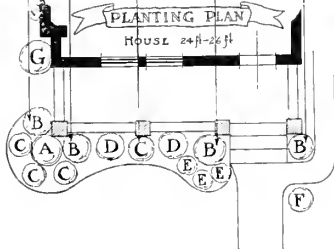
Viburnum, Snowball (*V. opulus sterile*). The hardy, old-fashioned Snowball bush. Globular white flowers. 7 ft.
2 to 3 ft.\$1.25; 3 to 4 ft.\$1.50

Viburnum, Wayfaring-tree (*V. lantana*). Large, white flower clusters in May. Red berries later turning black. Splendid foliage. 10 ft.
2 to 3 ft.\$1.00; 3 to 4 ft.\$1.25

Weigela

WEIGELA, Eva Rathke. Large, crimson, trumpet-shaped flowers. Free blooming. Needs protection 4 ft.
18 to 24 in.\$0.75; 2 to 3 ft.\$1.00

Weigela rosea. Pink, bell-shaped flowers in profusion. Good foliage. Needs protection. 5 ft.
18 to 24 in.\$0.50; 2 to 3 ft.\$0.75



Reverse this plan if your entrance is on the left hand side of your house.

A Special Foundation Planting

A pleasing and practical arrangement of hardy, flowering shrubs to permanently beautify the front of your home.

Full instructions for planting and care will be given. Anyone can do the planting.

Designed for either a right or left hand side front entrance.

Key Plants	No. of	Size	Price
A	1 Persian Lilac	3'- 4'	\$1.25
B	4 Bridal Wreath	3'- 4'	3.00
C	4 Hydrangea Snowhill	2'- 3'	3.20
D	2 Snowberry	2'- 3'	1.00
E	3 Spiraea Anthony Waterer	18"-24"	2.25
F	1 Rugosa Rose	2 yr.	.70
G	1 Pink Honeysuckle	3'- 4'	.75
V	1 Engelman's Ivy	2 yr.	.50

Value, \$12.65

Total 17 Flowering Shrubs. All bushy and substantial plants. **OUR SPECIAL PRICE \$10.75**

Let Our Gardeners Tell You How to Make Your Yard Beautiful



A hedge of Buckthorn—dense and solid as a wall. Residence grounds of Mr. L. A. Weidenborner, Saint Paul.

HARDY HEDGES Make Friendly Fences



HEDGE planting will bring privacy and seclusion to your grounds. It makes an ornamental wall-of-green along the lot boundaries to protect your property yet has none of the objectionable features of a fence. Year by year a hedge grows into greater beauty and usefulness.

BARBERRY, Thunberg's (*Berberis thunbergii*). Very satisfactory for a low hedge of close growth. Can be trimmed or allowed to grow naturally. Bears attractive red berries in the fall.

Per 10 Per 100

12 to 18 in.....	\$3.00	\$25.00
18 to 24 in.....	4.50	35.00

BUCKTHORN (*Rhamnus cathartica*). An ornamental plant of great hardiness that makes a dense hedge. Can be kept trimmed to any desired height or outline. Always satisfactory.

2 to 3 ft.....	\$3.00	\$20.00
3 to 4 ft.....	3.50	25.00
4 to 5 ft.....	5.00	40.00

COTONEASTER acutifolia (Quinceberry). A dense-growing shrub with dark-green, glossy, oval

leaves. A splendid hedge plant for the Northwest. Perfectly hardy.

Per 10 Per 100

2 to 3 ft.....	\$4.00	\$30.00
3 to 4 ft.....	5.00	45.00

CURRENT, Alpine (*Ribes Alpinum*). A dense, low-growing plant with attractive green leaves. Makes a desirable low hedge.

12 to 18 in.....	\$4.50	\$40.00
18 to 24 in.....	6.00	55.00

HONEYSUCKLE (*Lonicera tatarica*). In addition to great hardiness the Honeysuckles have attractive flowers and berries. Suitable where a tall untrimmed hedge is wanted.

2 to 3 ft.....	\$5.00	\$40.00
3 to 4 ft.....	7.00	60.00

ROSA RUGOSA (Japanese Rose). Desirable for an open, untrimmed division hedge. Foliage and bright flowers are highly ornamental.

Strong, 2 yr. plants\$6.00 \$50.00

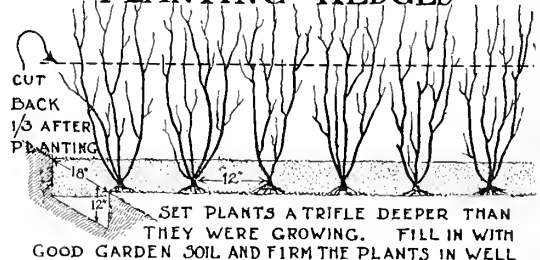
SPIRAEA vanhouttei (Bridal Wreath). The most satisfactory of hardy shrubs for use as a flowering hedge. Plant only where close trimming is not required

2 to 3 ft.....	\$5.00	\$40.00
3 to 4 ft.....	6.00	50.00

How to Plant Hedges

A trench should be dug where the planting is to be done, excavated to a depth of a foot, and 18 inches wide. Such a trench gives an even line to guide the planter. Discard any soil of poor quality and use surface loam. Varieties such as Japanese Barberry, Buckthorn and Cotoneaster, or those that are to be kept closely cut, should be spaced a foot apart in the row. In using Bridal Wreath or other open-growing varieties which are not to be kept sheared, a spacing of 2 to 2½ ft. is proper. After planting, cut off at least one-third of the top of the plants to insure good lateral growth. Water thoroughly.

PLANTING HEDGES



SET PLANTS A TRIFLE DEEPER THAN THEY WERE GROWING. FILL IN WITH GOOD GARDEN SOIL AND FIRM THE PLANTS IN WELL

A hedge gives privacy to the home yard.

Climbing Vines

For Shade and For Beauty



CLIMBING vines fill an important place in the planting of every home. Without them there frequently is ugliness and bareness. They will quickly drape themselves over suitable support or sprawl pleasingly over a wall or slope.

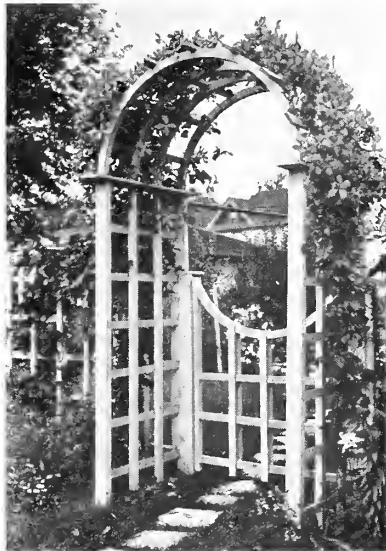
BITTERSWEET (*Celastrus scandens*). A hardy, native climber with glossy leaves. Red berries. Useful for trailing effects or banks, or for trellises, arbors, pergolas, fences, etc.
 2 yrs. Each, \$0.60; 3 yrs. \$0.80
 Extra strong plants 1.25

BOSTON IVY (*Ampelopsis veitchi*). Small glossy leaves that cling closely to walls but is not altogether hardy in Minnesota. 2 yrs. \$1.00

CLEMATIS Coccinea (*Scarlet Clematis*). Vase-shaped flowers of bright scarlet. Strong potted plants; 2 yrs. \$1.25

Clematis Henryi. Large creamy-white flowers. Strong potted plants; 2 yrs. \$1.50

Clematis Jackmani. Broad flowers of violet pur-



The Purple (Jackmani) Clematis.

ple. The most popular and the hardiest of the large flowering Clematis.

Strong potted plants; 2 yrs. \$1.50

Clematis, Mme. Edouard Andre. Large crimson flowers with long blooming season. Strong potted plants; 2 yrs. \$1.50

Clematis Paniculata (*Sweet Autumn Clematis*). Rapid growth. Of graceful twining habit, with light green foliage; and in late summer is a mass of fragrant starry white flowers.
 Strong potted plants; 2 yrs. \$1.00

DUTCHMAN'S PIPE (*Aristolochia siphon*). An excellent vine for porches as the large heart-shaped leaves create a cooling shade. The purple flowers have an interesting pipe-like form.
 2 yrs., strong. . \$1.00; 3 yrs., strong. . \$1.25
 Extra strong plants 2.00

ENGELMAN'S IVY (*Ampelopsis engelmanni*). This is the only Ivy that is perfectly hardy in Minnesota, and that will cling to brick, stone or plaster. It has innumerable uses.

Each
 2 yrs. \$0.50
 3 yrs.75

GRAPE, Beta. Desirable for fruit or foliage. Useful on pergolas, arbors, fences, etc. Hardy, rapid in growth and has large attractive leaves which quickly cover its support.

2 yrs., strong. . \$0.50; 3 yrs., strong. . \$0.75
 Extra strong plants 1.00



Plant Engelman's Ivy to cover walls.

HONEYSUCKLE, Hall's Japan (*Lonicera halliana*). Fragrant, buff-colored flowers from mid-summer to frost. Plant in a protected place.
 2 yrs., strong \$0.80

Honeysuckle, Scarlet Trumpet (*Lonicera sempervirens*). An interesting twiner with smooth, grayish leaves which surround the stem of the vine. Flowers clear scarlet, with yellow throat.
 2 yrs., strong. . \$0.60; 3 yrs., strong. . \$0.80

MATRIMONY-VINE (*Lycium chinense*). Excellent as a trailer for banks and slopes and often used on house lattices. Bright, star-shaped purple flowers followed by brilliant red berries.
 2 yrs. \$0.50; 3 yrs. \$0.75

VIRGINIA CREEPER (*Ampelopsis quinquefolia*). A well known native vine of the twining type, for fence, posts, arbors, pergolas and the like.
 2 yrs. \$0.50; 3 yrs. \$0.75
 Extra strong plants 1.00



The Beta Grape is well suited for covering arbors and trellises.

Plant Engelman's Ivy to cling on a brick or stucco chimney.

Perennial Flowers

This Chart Makes It Easy To Plan Your Borders

In the table is given height of growth and color and season of bloom of the more popular flowering perennials. The data has been compiled from actual Minnesota gardens. It will be easy to group flowers in harmonious color arrangements by following this chart. Naturally the lower growers should be placed near the front of the border.

SEASON						VARIETY NAME	HEIGHT					COLOR						
MAY	JUNE	JULY	AUGUST	SEPT.	OCT.		IN FEET					WHITE	PINK	YELLOW	ORANGE	RED	BLUE	PURPLE
							1.	2.	3.	4.	5.							
						ACHILLEA - BALL OF SNOW												
						ACONITUM - MONKSHOOD												
						ANCHUSA - ALKANET												
						ANTHEMIS - HARDY MARGUERITE												
						AQUILEGIA - IN VARS - COLUMBINE												
						ASCLEPIAS - BUTTERFLY WEEED												
						ASTER - NEW ENGLAND												
						ASTILBE - HYBRID VARIETIES												
						BOCCONIA - PLUME POPPY												
						BOLTONIA ASTEROIDES												
						CAMPANULA - HARE BELL												
						CHRYSANTHEMUM - ALASKA DAISY												
						COREOPSIS - TICKSLED												
						DELPHINIUM - IN VARS - LARKSPUR												
						DIELYTRA - BLEEDING HEART												
						DIANTHUS - SWEET WILLIAM												
						DIANTHUS - SCOTCH PINK												
						FUNKIA - WHITE PLANTAIN LILY												
						FUNKIA - BLUE PLANTAIN LILY												
						GAILLARDIA - BLANKET FLOWER												
						GYPSOPHILA - BABY'S BREATH												
						HELIOPSIS - ORANGE SUNFLOWER												
						HEUCHERA - CORAL BELLS												
						HEMEROCALLIS - LEMON DAY LILY												
						HOLLYHOCKS - IN VARS												
						IRIS - GERMANICA - IN VARS												
						LILIUM - TIGER LILY												
						LILY - OF-THE-VALLEY												
						LYCHNIS - JERUSALEM CROSS												
						LYTHRUM - LOOSESTRIPE												
						MONARDA - OSWEGO TEA												
						MYOSOTIS - FORGET-ME-NOT												
						PEONIES - IN VAR.												
						PAPAVER - ORIENTAL POPPY												
						PHLOX - IN VARS												
						PLATYCODON - BELLFLOWER												
						PYRETHRUM - PERSIAN DAISY												
						PYRETHRUM - OX-EYE DAISY												
						RUDBECKIA - GOLDEN GLOW												
						SEDUM - STONE CROP												
						STATICE - SEA-LAVENDER												
						TROLLIUS - GLOBE FLOWER												
						YUCCA - ADAM'S NEEDLE												

Flowering Perennials

THE Perennials persist over winter and renew their growth with increased vigor in the spring. Their first cost is small, so that one can enjoy a good assortment at a modest outlay.

Soil and Planting. Perennials are best arranged in beds or borders with varieties selected so that there will be some in bloom at all times. The time of blooming is given in the descriptions. The soil should be well worked up and fertilized if necessary. Surface cultivation of the ground between the plants should be practiced. A location free of tree roots and dense shade is desirable.

PRICES

Quantity Rate. Ten or more plants of a single variety will be supplied at 5c less per plant. Example: Plants priced at 35c each are \$3.00 for ten.

- ACHILLEA millefolium roseum. ROSY MILFOIL.** Pink flowers in compact heads. Feathery foliage. 2 ft. June to Sept. 35 cts.; 2 yr., 50 cts.
- Achillea, Perry's White.** Pure white flowers like a small pom-pom chrysanthemum. Blooms June to Sept. 1½ ft. Fine cut flowers. 35 cts.; 2 yr., 50 cts.
- ACONITUM fischeri. LATE MONKSHOOD.** Strong spikes of dark blue, helmet-shaped flowers. 3 ft. Sept. and Oct. 40 cts.; 2 yr., 60 cts.

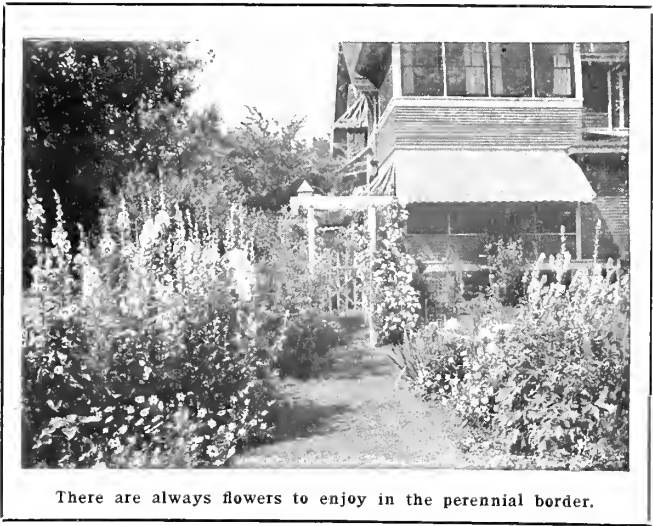


Aconitum gives a note of blue to the garden.
der. 12 in. 35 cts.; 2 yr., 50 cts.

Aconitum autumnale. MONKSHOOD. Loose spikes of blue flowers from Sept. until frost. 4 ft. 40 cts.; 2 yr., 60 cts.

ALASKA DAISY. 30 cts.; 2 yr. 50 cts. (See Chrysanthemum Maximum.)

ALYSSUM saxatile compactum. GOLDEN TUFT. Masses of yellow flowers in early spring. For rockery or border.



There are always flowers to enjoy in the perennial border.

- ANCHUSA italica, Dropmore. ALKANET.** Turquoise blue flowers in June and July. Four to five feet. Large heavy leaves. 40 cts.; 2 yr., 60 cts.
- ANTHEMIS tinctoria kelwayi. HARDY MARGUERITE.** Daisy-like flowers of golden-yellow. 1½ ft. June to Oct. Finely cut foliage. 35 cts.; 2 yr., 50 cts.

AQUILEGIA canadensis. NATIVE CANADA COLUMBINE. Flowers red and yellow. Medium short spurs. 2 ft. June to Aug. 35 cts.; 2 yr., 50 cts.



Aquilegia or Columbine.

Aquilegia chrysantha. GOLDEN COLUMBINE. Yellow flowers with long spurs. 2 ft. June to Aug. 35 cts.; 2 yr., 50 cts.

- Aquilegia helenae. BLUE COLUMBINE.** 1½ ft. June to Aug. 35 cts.; 2 yr., 50 cts.
- Aquilegia Hybrids.** Long-spurred flowers in a variety of beautiful colors. 35 cts.; 2 yr., 50 cts.

ARABIS alpina. ROCK CRESS. An early blooming dwarf border plant completely covered with white flowers in April and May. 35 cts.; 2 yr., 50 cts.

ARMERIA Formosa. SEA PINK. Dwarf border or rockery plant. Pink flowers on wiry stems. 9 in. All season bloom. 35 cts.; 2 yr., 50 cts.

Our Perennials are Field-Grown—Strong Plants to Bloom This Year

Hardy Perennials—Continued

ARTEMISIA lactiflora. MOUNTAIN FRINGE. Large branching plumes of sweetly scented creamy-white flowers. 4 ft. Aug. to Sept. 40 cts.; 2 yr., 60 cts.

ASTER novae-angliae. NEW ENGLAND ASTER (Michaelmas Daisy). Hardy purple aster. 4 to 5 ft. Sept. and Oct. 35 cts.; 2 yr., 50 cts.

Aster, Lil Fardell. Showy flowers are rich, mauve pink. 4 to 5 ft. Sept. and Oct. 35 cts.; 2 yr., 50 cts.

Aster tataricus. Tallest and latest to bloom. Violet blue flowers. 5 ft. 35 cts.; 2 yr., 50 cts.

Aster White Climax. Pure White Aster. 4 to 5 ft. Sept. and Oct. 35 cts.; 2 yr., 50 cts.

ASTILBE, Hybrids. Showy garden plant of easy culture. Airy plumes of pink flowers. June and July. 3½ ft. 50 cts.; 2 yr., 75 cts.

Astilbe japonica. (Spirea Japonica.) Heavy spikes of white, feathery flowers in June and July. Showy in the garden. Good for cutting. 2½ ft. 50 cts.; 2 yr., 75 cts.

BABY'S BREATH. See Gypsophyla, page 25.

BLEEDING HEART (*Dicentra spectabilis*). Rose-crimson heart-shaped flowers in drooping racemes. The old garden favorite. 18 in. April and May. Partial shade. 60 cts.; 2 yr., \$1.00.

BOCCONIA cordata. PLUME POPPY. Tall growing perennial fine for background. 6 ft. Creamy white plummy flowers in August. 35 cts.; 2 yr., 50 cts.

BOLTONIA asteroides. FALSE STARWORT. Pure white, Aster-like flowers in profusion. Excellent cut flowers. 4 to 5 ft. Aug. and Sept. 35 cts.; 2 yr., 50 cts.

Boltonia latisquama. Bears quantities of daisy-like pinkish lavender flowers. 35 cts.; 2 yr., 50 cts.

CAMPANULA carpatica. CARPATHIAN HARBELL. Dwarf habit and compact growth. Bell-shaped, light blue flowers in July and August. 8 to 10 inches, 35 cts.; 2 yr., 50 cts.

Campanula calycanthemum. CUP-AND-SAUCER BELL-FLOWER. A biennial. Blooms July and Aug. 3 ft. Colors mixed in blue, rose and white. 35 cts.; 2 yr., 50 cts.

Campanula glomerata. CLUSTERED BELL-FLOWER. Dense tuft of dark green foliage with globular dark-blue flowers topping each stem. 18 in. June and July. 40 cts.; 2 yr., 60 cts.

Campanula medium. CANTERBURY BELLS. A biennial. Large bell flowers of rose, blue and white. July. 3 ft. 35 cts.; 2 yr., 50 cts.

CENTAUREA montana. PERENNIAL CORN-FLOWER. Violet-blue, resembling cornflowers. 1½ ft. July to Sept. 35 cts.; 2 yr., 50 cts.



Bleeding Heart (*Dicentra*).

CHRYSANTHEMUM maximum. ALASKA DAISY. An improved Daisy that blooms in middle to late summer. White flowers with yellow center. Height 12 to 15 in. 30 cts.; 2 yr., 50 cts.

Chrysanthemum maximum. SHASTA DAISY. The popular June-flowering white daisy. 3 ft. June. 30 cts.; 2 yr., 50 cts.

CLEMATIS davidiana. A bush form Clematis with pale blue flowers in small clusters. Fragrant. 3 to 4 ft. Aug. and Sept. 60 cts.; 2 yr., \$1.00.

Clematis recta. A shrubby Clematis. 3 ft. Flowers are white in showy clusters on long stems. June and July. 60 cts.; 2 yr., \$1.00.

COLUMBINE. See *Aquilegia*, page 23.

COREOPSIS lanceolata grandiflora. TICKSEED. Golden yellow flowers on long graceful stems from June until frost. Fine for cutting. Narrow light green leaves. 2 ft. 30 cts.; 2 yr., 50 cts.

DAY LILY. See *Hemerocallis*.

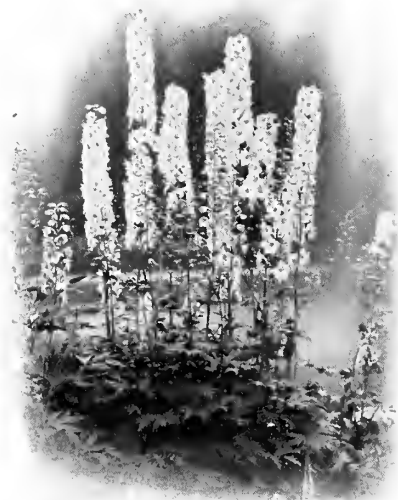
DELPHINIUM chinense. SLENDER LARKSPUR. Heads of bright blue flowers in open sprays from June until frost. Finely cut, fern-like foliage. 3 ft. 35 cts.; 2 yr., 50 cts.

Delphinium chinense alba. White flowering form of the Slender Larkspur. 35 cts.; 2 yr., 50 cts.

Delphinium Belladonna. Clear, turquoise blue flowers with long blooming habit. 3 to 4 ft. 35 cts.; 2 yr., 50 cts.



Astilbe—airy plumes of flowers.



Hardy Larkspur (*Delphinium*).

Perennials Bloom Year After Year—They Are Economical.

Delphinium Bellamosa. A dark blue Larkspur of free-blooming habit. 3 to 4 ft. 35 cts.; 2 yr., 50 cts.

LARGE FLOWERING LARKSPUR

Delphinium Hybrids. Large spikes of beautiful flowers of varied shades of blue. Some double and some are single in form. 35 cts.; 2 yr., 50 cts.

DIANTHUS barbatus. SWEET WILLIAM. Flowers in variations of red, white and rose colors. May to July. 18 ins. 30 cts.; 2 yr., 50 cts.

Dianthus plumarius. CLOVE PINK. The fragrant white to scarlet flowers bloom in early summer. Grass-like leaves. 9 ins. 30 cts.; 2 yr., 50 cts.

DICTAMNUS fraxinella. GAS PLANT. Bushy growth. Terminal clusters of white and rose-pink flowers in June and July. 2½ ft. 60 cts.; 2 yr., \$1.00.

DICENTRA eximia. PLUMY BLEEDING HEART. Rosy-pink heart-shaped flower in bloom from May through August. Delicate, finely-cut foliage. 9 to 12 inches. 40 cts.; 2 yr., 60 cts.

Dicentra spectabilis. BLEEDING HEART. The favorite old-fashioned flower. 2½ ft. April and May. 60 cts.; 2 yr., \$1.00.

DIGITALIS. GIANT SHIRLEY FOXGLOVE. Long flower heads of bell-shaped blossoms. Colors, rose, shell-pink and blue. 4 ft. July. 35 cts.; extra strong, 50 cts.

ECHINOPS ritro. GLOBE THISTLE. Ball-shaped metallic-blue flowers; thistle-like foliage. 3 ft. July to Sept. 40 cts.; 2 yr., 60 cts.

ELYMUS glaucus (Blue Lyme Grass). A handsome hardy grass with silvery leaves. Attractive in flower bouquets or as a garden plant. 2 ft. 35 cts.; 2 yr., 50 cts.



Coreopsis blooms all summer.

FERNS, Hardy.

Strong - growing native varieties suitable for yard planting. 40 cts.; 2 yr., 60 cts.

Filipendula ulmaria (Spiraea). MEADOW SWEET. Tufted, fern-leaved plant. Masses of white flowers on 18 in. stems in June and July. 35 cts.; 2 yr., 50 cts.

A SHOWY GARDEN FLOWER
FILIPENDULA palmata (Spiraea). CRIMSON MEADOW SWEET. Deep pink to carmine flowers in loose clusters. Purplish, leafy stems to 3 ft. June and July. 30 cts.; 2 yr., 50 cts.

FORGET-ME-NOT (*Myosotis scorpioides*). Dainty blue flowers from May to Sept. Fine dwarf border plant. 10 ins. 30 cts.; 2 yr., 50 cts.

FUNKIA (*Hosta*) **caerulea.** BLUE PLANTAIN LILY. Drooping flowers of blue in July and August. 15 ins. Excellent border plant. Dark green, glossy foliage. Stands shade. 25 cts.; 2 yr., 40 cts.

Funkia Undulata Variegata. Broad, waxy foliage, beautifully variegated with white. Very attractive border plant. Blue flowers in July. 15 ins. Stands shade. 30 cts.; 2 yr., 40 cts.



Funkia—Blue Plantain Lily.

GAILLARDIA Grandiflora. BLANKET FLOWER. Rich red and crimson petals with broad border of yellow. A brilliant garden flower unsurpassed for cutting. June to Oct. 2 ft., 30 cts.; 2 yr., 50 cts.

GOLDEN GLOW. See *Rudbeckia laciniata*. 30 cts.; 2 yr., 40 cts.

GYPSOPHILA Paniculata. BABY'S BREATH. Cut-flower. Tiny white blossoms cover the plant through July and August. 2 to 3 ft., 30 cts.; 2 yr., 50 cts.

DOUBLE BABY'S BREATH
Gypsophila. BRISTOL FAIRY. A new and improved variety. Full, double flowers of snow white borne in large sprays. Blooms from June until frost. Grafted plants, \$1.00 each.

HELENIUM autumnale superbum. YELLOW-STAR. Golden yellow flowers in August and Sept. 4 to 5 ft. 35 cts.; 2 yr., 50 cts.

Helenium Riverton Gem. New. Old-gold shaded with terra-cotta and red. For cutting or garden show. 3 ft. Aug. to frost. 35 cts.; 2 yr., 50 cts.

HELIOPSIS pitcheriana. ORANGE SUNFLOWER. Single, thick-textured flowers of deep golden yellow. June to Sept. 3 ft. 35 cts.; 2 yr., 50 cts.

Heliopsis scabra zinniaeflora. Grows into a compact head of double zinnia-like flowers of golden yellow. July and Aug. 24 ins. 40 cts.; 2 yr., 60 cts.



Gaillardia—Rich red and yellow in color.

See the Special Perennial Collections Offered on Page 28.

Hardy Perennials—Continued



Hemerocallis (Day Lily) Will Grow in shade.

H E M E R O - C A L L I S *fulva*. LEMON DAY LILY. Sweetly scented lemon-yellow flowers in June and July. 2½ ft. 35 cts.; 2 yr., 50 cts.

H e m e r o c a l l i s *fulva*. TAWNY DAY LILY. Very hardy, vigorous perennial with orange colored Lilies. 3 ft. July. 30 cts.; 2 yr., 40 cts.

HEUCHERA *Pleu-de-Feu*. ALUM ROOT. Crimson flowers are borne in graceful sprays from middle to late summer. About the size of Lily-of-the-Valley bells. 18 ins. Evergreen leaves. 50 cts.; 2 yr., 75 cts.

Heuchera *sanguinea*. CORAL BELLS. Bright coral-crimson bells are held pendant from slender flower stems. 18 ins. July to Sept. Evergreen, geranium-like leaves. 40 cts; 2 yr., 60 cts.

HIBISCUS *Crimson-Eye*. ROSEMALLOW. Large pure white flowers with deep crimson center. Aug. and Sept. 4 ft. 40 cts.; 2 yr., 60 cts.

Hibiscus *Mallow Marvels*. Giant flowering varieties in crimson, pink and white. 4 to 5 ft. 40 cts.; 2 yr., 60 cts.

HOLLYHOCK, *Althaea*. ALLEGHENY MAMMOTH. Single flowers of delicately fringed petals. Mixed colors. 5 to 7 ft. July and Aug. 30 cts.; extra strong, 50 cts.

Hollyhock. DOUBLE FLOWERING. Yellow, white, pink and red colors. July and Aug. 5 to 7 ft. 30 cts.; extra strong, 50 cts.



Heuchera or Coral Bells.

IRIS. *Fleur-de-Lis*. See list page 29.

LARKSPUR. See *Delphinium*.

L I L I U M *auratum*. GOLD-BANDED LILY. Fragrant white flowers spotted crimson with central yellow band. Red anthers. 3 ft. July and August. Started and potted plants, 75 cts.

Lilium elegans. ORANGE LILY. Very hardy variety producing orange-red flowers in great numbers. 18 ins. July. 35 cts.; 2 yr., 50 cts.

Lilium speciosum album. JAPANESE LILY. White flowers with recurved petals. 2 ft. Aug. and Sept. Started, potted plants, \$1.00.

Lilium speciosum rubrum. A fragrant lily, under color white, shaded and spotted with crimson. 2 ft. Aug. and Sept. Started, potted plants, 75 cts.

THE REGAL LILY

Lilium regale. The acknowledged peer of all lilies for Northern gardens. Recently introduced from N. W. China, and proving hardy in Minnesota. The flowers are white with pink tinge on the outer side, with canary yellow shadings within the cup. Deliciously fragrant. 3 to 4 ft. July. Large dormant bulbs, 60 cts. ea.; started, potted plants, 75 cts. ea.



The Regal Lily.

Lilium tigrinum Fl. Pl. DOUBLE TIGER LILY. A double flowering form of this well-known, hardy Lily. Orange-red spotted with black. Late July and August. 4 ft. Bulbs, 35 cts.; extra size, 50 cts.

LILY-OF-THE VALLEY

Pure white, dainty bell-shaped flowers in May and June. Fragrant. 8 to 10 ins. Field clumps, 25 cts.; extra heavy, 40 cts.

L I N U M *perenne*. BLUE FLAX. Graceful foliage with delicate flowers of pearly blue. May to August. 18 ins. 35 cts.; 2 yr. 50 cts.



Hardy Orange Lily (elegans).

LUPINUS *Polyphyllus*. Azure blue, pea-shaped flowers in long spikes. Late May and June. 3 to 4 ft. 40 cts.; 2 yr., 60 cts.

LYCHNIS *chalcedonica*. JERUSALEM CROSS. Flowers of vermilion-scarlet in immense heads. 2½ ft. June to mid-July. 35 cts; 2 yr., 50 cts.

You are Welcome at Our Nursery. Select Your Plants There if You Like.

Hardy Perennials—Continued

LYTHRUM roseum. ROSE LOOSE-STRIPE. Tall spikes of rose-colored flowers July to Sept. 3 to 4 ft., 35 cts.; 2 yr., 50 cts.

MEADOW SWEET (*Filipendula*). Pink to crimson flowers in feathery heads. June and July. Mixed colors. 50 cts.; 2 yr., 70 cts.

MENTHA spicata. SPEARMINT. Hardy garden mint. 30 cts.; 2 yr., 40 cts.

MONARDA didyma. OSWEGO TEA. Compact heads of bright red flowers. Aromatic foliage. June to Sept. 3 ft. 35 cts.; 2 yr., 50 cts.

MYOSOTIS. See Forget-Me-Not.

OENOTHERA missouriensis. EVENING PRIM-ROSE. Large golden-yellow poppy-like flowers from June to August. 12 inches. 35 cts.; 2 yr., 50 cts.

PACHYSANDRA terminalis. A valuable dwarf Evergreen perennial for ground cover planting. 6 to 9 ins. 30 cts.; 2 yr., 50 cts.

PENTSTEMON barbatus torreyi. BEARD TONGUE. Tall spikes of brilliant scarlet flowers. Very showy. 3½ ft. July. 35 cts.; 2 yr., 50 cts.

PEONIES. See lists, page 31.

PERSIAN DAISY. See *Pyrethrum Hybridum*.



Platycodon or Balloon Flower.

2 to 3 ft. 35 cts.; 2 yr., 50 cts.

PLATYCODON grandiflorum. BALLOON FLOWER. Star shaped blue flowers at the tip of each branch. Compact, bushy growth to 18 ins. June to Sept. 35 cts.; 2 yr., 50 cts.

Platycodon grandiflorum album. A white flowered variety of the above. 35 cts.; 2 yr., 50 cts.

POPPY, Oriental (*Papaver orientale*). Massive cup-shaped flowers of deep scarlet. May and June. 2½ ft. 35 cts.; 2 yr., 50 cts.

Poppy, Oriental: New Named Varieties—50 cts. each. BEAUTY OF LIVERMORE, crimson with dark shadings. MRS. J. HARKNESS, bright salmon pink. MRS. PERRY, orange apricot.

Poppy, Iceland (*Papaver nudicaule*). Cup-shaped flowers of clear colors, white, yellow and orange scarlet. Blooms all summer. June to Sept. 12 ins. 35 cts.; 2 yr., 50 cts.

PYRETHRUM Hybridum. PERSIAN DAISY. Daisy-shaped flowers in white to shades of pink, rose and red. Splendid for cutting. 2½ ft. May and June. 30 cts.; 2 yr., 50 cts.

PYRETHRUM Uliginosum. GIANT DAISY. Large white flowers in Aug. and Sept. Splendid for cutting. 4 to 5 ft. 35 cts.; 2 yr., 50 cts.

REGAL LILY. The best garden Lily. See *Lilium Regale*. Large bulbs, 60 cts.; started plants, 75 cts.

R U D B E C K - I A laciniata. G O L D E N G L O W. The popular, double yellow blossoms of Aug. and Sept. 5 to 6 ft. 30 cts.; 2 yr., 40 cts.



The Iceland Poppy.

Rudbeckia purpurea. P U R P L E C O N E - F L O W - E R. Rose-purple flowers with tall, brown cone center. 3 to 4 ft. Aug. to Oct. 35 cts.; 2 yr., 50 cts.

SALVIA pitcheri. MEADOW SAGE. Every stem tipped with spikes of pretty sky blue flowers. Aug. and Sept. 3 to 4 ft. 35 cts.; 2 yr., 50 cts.

SEDUM acre. GOLDEN MOSS. Bright yellow flowers cover the dwarf plant in June and July. Useful for rockery or borders. 30 cts.; 2 yr., 50 cts.

Sedum spectabile. BRILLIANT STONECROP. Pink to rosy-red flowers in heavy flat clusters. 18 ins Aug. and Sept. 30 cts.; 2 yr., 50 cts.

SHASTA DAISY. See *Chrysanthemum*.

SPIRAEA. See *Astilbe* and *Filipendula*.

STATICE latifolia. SEA LAVENDER. Delicate, small blue flowers cover the branching tops in Aug. and Sept. 2 ft. 35 cts.; 2 yr., 50 cts.

THALICTRUM Aquilegifolium. MEADOW RUE. Has leaves like the Columbine. Feathery white flowers in June. Grows in shade. 3 ft. 35 cts.; 2 yr., 50 cts.

TROLLIUS. GLOBE FLOWER. A glorified Buttercup. Handsome dark green foliage with yellow to orange cup-like flowers in May and June. 2 ft. 40 cts.; 2 yr., 60 cts.

VALERIANA officinalis. HARDY GARDEN HELIOTROPE. Sweetly fragrant, gray-pink flowers in June and July. Deeply cut foliage. 3 ft. 35 cts.; 2 yr., 50 cts.

VERONICA longifolia. JAPANESE SPEEDWELL. Long spikes of attractive blue-violet flowers. 2 ft. Aug. and Sept. 35 cts.; 2 yr., 50 cts.

Veronica spicata. SPEEDWELL. Spikes of blue flowers in June. 1½ ft. 35 cts.; 2 yr., 50 cts.

VIOLA. JERSEY GEM. Rich green foliage with blue flowers like small Pansies. 8 ins. May to Sept. Splendid border plant. 30 cts.; 2 yr., 50 cts.



Rudbeckia Purpurea—Purple Cone Flower.

YUCCA filamentososa. ADAM'S N E E D L E. Stiff, sword-shaped leaves with tall spikes of white, drooping flowers in July. 4 ft. 50 cts. each; 2 yr., 75 cts.

Those Who Buy H. & O. Perennials Always Come Back for More.

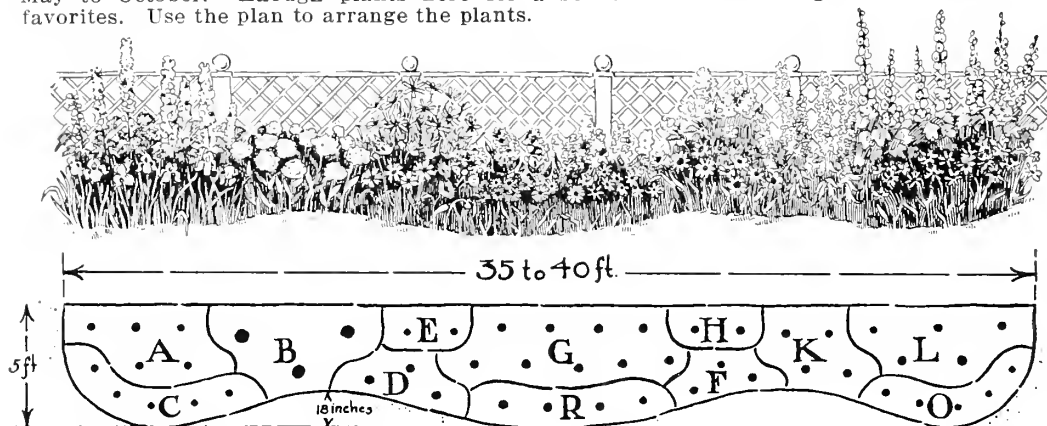
Our Famous Perennial Collections



HERE are some special groupings of H. & O.'s strong, field-grown perennials. The adaptability of these groupings to any home yard and the money saving values have made these collections popular.

H. & O.'s Complete Back-Yard Perennial Border

Plant this border of hardy perennials along the property line and enjoy flowers from May to October. Enough plants here for a bed 35 to 40 feet long of the old garden favorites. Use the plan to arrange the plants.

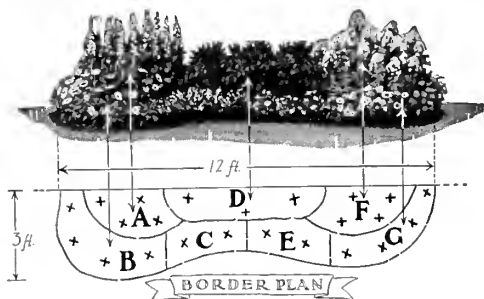


Key	No.	Variety	
A	5	Hybrid Larkspur	\$ 1.75
B	3	Peonies—Red, White, Pink	2.25
C	5	Iris—Assorted colors	1.75
D	3	Coreopsis	.90
E	2	Tall Fall Daisy (Pyrethrum)	.70
H	2	Yellow Star (Helenium)	.70
G	9	Hardy Phlox—Assorted colors	3.15
R	4	Shasta Daisy	1.20
F	3	Gaillardia (Blanket Flower)	.90
K	4	Sky Blue Larkspur	1.40
L	5	Hollyhocks—Double flowering	1.75
O	5	Persian Daisy	1.50
50 Catalogue value.....			\$17.95

This Complete Garden—50 Hardy Perennials in strong, field-grown stock—selected for a long season of bloom and harmonious colorings—Catalogue value, **\$17.95.**

SPECIAL COMBINATION PRICE
with full planting instructions **\$14.50**
(F. O. B. St. Paul—No packing charge.)

A Special 12-ft. Perennial Bed



Key	No.	Variety	
A	4	Larkspur	\$1.40
B	4	Gaillardia	1.20
C	2	Achillea	.70
D	3	Peonies (red, white, pink)	2.25
E	2	Iceland Poppy	.70
F	4	Phlox, Pink	1.40
G	4	Alaska Daisy	1.20
Catalogue value			\$8.85

23 Flowering Perennials,
Special Group Price \$7.25

Rock Garden Collection

18 Choice Perennials.

- | | |
|------------------------------|--------------------------|
| 2 Columbine (aquilegia) | 2 Stonecrop (Sedum) |
| 2 Pinks (Dianthus) | 2 Rock Cress (Arabis) |
| 2 Dwarf Iris (Pumila) | 2 Plantain Lily (Funkia) |
| 2 Harebell (Campanula) | 2 Viola (Jersey Gem) |
| 2 Meadow Sweet (Filipendula) | |

18 Choice Rockery Plants
Value \$5.60.

SPECIAL GROUP PRICE
\$4.50

Use This Special Collection

A rock garden, simple to make and easy to care for will prove an interesting addition to your yard.



Colorful Iris

Brilliant In The Garden—Splendid For Cutting

PLANTING. Set the roots only deep enough to have them covered with soil and avoid any fresh manure as a fertilizer. Iris will thrive in any good soil and prefers a sunny location.

Quantity Rate—5 or more of a single variety will be supplied at 5c less per plant, viz.: plants priced at 35c each are \$1.50 for 5.

NOTE. In the description "S" or "Standards" refer to the three upright petals. The letter "F" or "Falls" refers to the three drooping or lower petals.



Hardy Iris. Colorful in the garden—excellent for cutting.

	1-Yr.	2-Yr.
Ambassadeur. S., red-violet; F., velvet purple-maroon	\$0.75	\$1.25
Ambigue. S., smokey red; F., brown . .	.50	.75
Aurea. Pure rich yellow30	.50
Bridesmaid. White, frilled lilac25	.40
Caprice. S., reddish purple; F., deeper claret. Grape fragrance25	.40
Celeste. Soft azure blue30	.50
Edouard Michel. Large ruffled flower of bright rose lilac60	1.00
Eldorado. A blend of rich, yellowish bronze, shaded heliotrope30	.50
Florentina. White, flushed lavender . .	.25	.40
Halo. A very large flower of light blue-violet	1.00	1.50
Her Majesty. S., rose-pink; F., reddish lilac, veined with crimson30	.50
Iris King. S., buff-yellow; F., maroon, bordered golden yellow35	.60
Isoline. S., lilac-pink; F., mauve with golden throat. Very large flowers . .	.35	.60
Juniata. Clear blue-violet, fragrant . .	.35	.60
Kochi. A rich, dark purple30	.50
Lent A. Williamson (New). S., soft violet; F., large, royal purple with golden beard. An outstanding Iris50	1.00
Lohengrin. Silvery pink-mauve30	.50
Lord of June. An immense flower of clear lavender blue. Very unusual . .	.75	1.50
Loreley. S., light yellow; F., purple, bordered yellow25	.40
Madame Chereau. White, frilled with violet at edges25	.40
Mithras. Effect, yellow and red-purple .	.30	.50
Monsignor. S., bluish violet; F., purple-crimson with white veinings . .	.30	.50
Mother of Pearl. Soft bluish lavender with pearly sheen. Aptly named60	1.00
Mrs. Alan Gray. Light lilac-pink30	.50
Opera. Rich violet-red50	1.00
Oriflamme. S., lavender blue; F., violet-purple. Bright orange beard . .	.35	.60
Pallida Dalmatica. Clear lavender blue flowers on tall strong stems30	.50
Parc de Neuilly. A rich purple35	.50
Parisiana. S., lavender pink, mottled; F., creamy white pink border35	.60
Perfection. S., light blue; F., rich dark velvety violet. Bright orange beard .	.30	.50

	1-Yr.	2-Yr.
Prospero. S., deep lavender; F., rich, deep violet-purple. Large flowers . .	\$0.60	\$1.00
Quaker Lady. S., smoky lavender; F., blue overlaid with old gold30	.50
Queen of May. Soft rose-lilac (Pink) .	.30	.50
Rhein Nixe. S., white; F., rich violet-purple, edged white30	.50
Salonique. S., creamy white; F., red-purple50	1.00
Seminole. Rich, dark, violet-rose. The best "red" Iris50	1.00
Sherwin-Wright. Clear golden yellow .	.30	.50
Souv. de Mme. Gaudichau. The largest and finest dark purple iris	1.00
Spectabilis. Violet-blue25	.40
Violacea Grandiflora. S., clear lavender; F., violet blue. Clear colors . .	.25	.40
White Knight. A fine pure white50	1.00

Early Dwarf Iris

Pumila. Yellow, purple or white25	.40
--	-----	-----

Japanese Iris

A large-flowering Iris that blooms in July. Not as hardy as the Germanica type. We offer choice plants in WHITE, LIGHT BLUE, VIOLET-BLUE, REDDISH CRIMSON.

Strong roots, 40 cents each.

Siberian Iris

Narrow, grassy foliage; delicate flowers and early July blooming.

Siberian Blue. Violet-blue	\$0.25	\$0.40
Snow Queen. Ivory-white25	.40

HOME YARD COLLECTION
CHOICE HARDY IRIS

Enough for plenty of beautiful cut-flowers, 12 strong roots—6 different kinds.

Special Group Price \$2.50
(A \$3.30 value—postage prepaid)

An Iris Planting Will Make Your Garden Bright With Spring Color.

Bright Phlox

For Mid-Summer Flowers



PHLOX are very hardy floriferous perennials that give bold, brilliant color effects from July to frost. They can be had in pure white, pink, lavender and crimson and in varying combinations of these colors.

WHERE TO PLANT—They are exceedingly attractive when planted in masses of a single kind in a bed or border. Their midsummer bloom makes them a most valuable addition to beds where such spring-blooming plants as Iris, Peonies, Poppies, etc., are located.

CULTURE—Phloxes are gross feeders and react quickly to plenty of rich soil and to abundant watering in dry seasons. The old clumps should be divided and re-planted at least every fourth year.



Hardy Phlox make a colorful border.

Quantity Rate—5 or more of a single variety will be supplied at 5c less per plant, viz., plants priced at 35c each are \$1.50 for 5.

Pink Phlox

- Elizabeth Campbell.** Very large heads, with flowers of quite a new color—light salmon changing to pink in the center. 50c. 2-year, 75c.
- Mme. Paul Duetrie.** Opens a soft lilac-rose which gets lighter as it ages. 35c. 2-year, 50c.
- Pantheon.** Deep Salmon-rose; light center. Very large flower. Tall. 35c. 2-year, 50c.
- Rheinlander.** A most beautiful salmon-pink with deeper center. Immense size. 35c. 2-year, 50c.
- Rijnstroom.** A lovely rose pink, much like Paul Neyron rose. Very large flower heads. 35c. 2-year, 50c.
- Thor.** A rich salmon pink with crimson eye. 35c. 2-year, 50c.
- W. C. Egan.** Soft shade of lilac with dark pink eye. General effect is a soft rose color. 35c. 2-year, 50c.

White with Pink Eye

- Bridesmaid.** Tall, with flowers of pure white, with large crimson-carmine eye. 35c. 2-year, 50c.



Special Offer

Choice Phlox Assortment

12 field-grown roots, 2 each of six standard varieties, selected for variation in colors. Value, \$4.20.

Special Combination Price (12 plants) **\$3.50**

Parcel post prepaid.

White Phlox

- Frau Anton Buchner.** Undoubtedly the finest white Phlox which has as yet been raised. Large flowers of perfect form. 35c. 2-year, 50c.
- F. G. Von Lassburg.** Purest white; individual flowers very large. Tall, mid-season. 35c. 2-year, 50c.
- Miss Lingard.** The most popular white. Immense heads of white flowers in late June and again in September. 35c. 2-year, 50c.
- Mrs. Jenkins.** Immense trusses of pure white flowers. Early. 35c. 2-year, 50c.
- Mia Ruys.** The finest of the dwarf white Phlox. Snow-white flowers of large size. Height 8 to 9 inches. 35c. 2-year, 50c.

Lavender and Purple Phlox

- Eugene Danzanviller.** Soft lavender shading lighter to center. 35c. 2-year, 50c.
- Champs Elysees.** Large trusses of dark crimson-purple, medium height. 35c. 2-year, 50c.
- Mrs. Chas. Dorr.** A beautiful shade of lavender. Very large conical heads. 35c. 2-year, 50c.

Red Phlox

- B. Comte.** Bright purplish-crimson with satiny sheen. Medium height. One of last to flower. 40c. 2-year, 60c.
- Beacon.** A bright cherry-red. Large flower heads carried on tall stems. 35c. 2-year, 50c.
- Coquelicot.** A bright orange-scarlet of outstanding color. 35c. 2-year, 50c.
- Dr. Konigshofer.** Brilliant orange-scarlet, with dark blood-red eye. Medium height, Midseason. 35c. 2-year, 50c.
- Gen. Van Heutz.** Brilliant salmon-red, with light center changing later to deep red eye. 35c. 2-year, 50c.
- Mme. Bezanon.** Rich crimson, medium height. 40c. 2-year, 60c.
- R. P. Struthers.** Rosy carmine with claret-red eye. Very bright; tall. 35c. 2-year, 50c.

Dwarf Phlox for Borders

- Phlox Subulata.** An early spring-flowering type which during the flowering season is a mass of bloom. An excellent plant for the rockery and border, and invaluable for carpeting the ground or covering graves.
- Rosca.** Pink. 25c. 2-year, 40c.
- Alba.** White. 25c. 2-year, 40c.

Phlox Make the Garden Bright With Color in Mid-Summer.

Exquisite Peonies

"The Flower of the Great Northwest"

The Peony has the largest and most gorgeous flowers of all perennials. Here, under our northern conditions, it grows so easily and blooms so profusely that everyone can enjoy these beautiful plants in his home yard.

PLANTING—The roots should be set with the "eyes" 2 to 3 inches below the surface and the soil tightly packed about them. Allow a spacing of about 3 feet between the plants.

The soil should be of good substance and the location free of tree roots and dense shade. Bone meal is preferred as a fertilizer.

QUALITY—The "roots" are substantial plants with 3 to 5 strong eyes.

White Peonies

	Roots each
Avalanche. Ivory-white, of perfect form. Very fragrant. Late midseason	\$1.00
Baroness Schroeder. Light pink tint, opening to pure white. Full globular flowers of great fragrance.....	1.50
Couronne d'Or. Snow-white with circle of golden stamens. Large blooms. Late. Excellent cut-flower.....	.75
Festiva Maxima. Early and very large. Center flaked crimson. Splendid in every way.....	.75
Marie Lemoine. Latest blooming creamy-white. Gigantic flowers75

Pink Peonies

Claire Dubois. Clear violet-rose, tipped silvery white. Large flower. Late	\$1.00
Edulis Superba. Bright mauve pink. Early. Large rose type75
Eugene Verdier. Delicate Hydrangea-pink. Fragrant. Late mid-season	1.50
Livingstone. Large, full. Soft rose-pink with silvery tipped petals. Late	1.00
Mme. Emile Galle. Delicate shell-pink. Sweetly fragrant. Blooms late.....	1.00
Mons. Jules Elie. Lilac-rose with silver sheen. Very large. Fragrant. Early. Has the appearance of a giant chrysanthemum.....	1.00
Reine Hortense. Delicate pink with center flecked crimson. Perfect flowers on tall, stiff stems. Midseason	1.50
Sarah Bernhardt. Bright apple-blossom pink with petals silver-tipped. Agreeable fragrance	2.00
Souv. De Louis Bigot. An extra fine and large flower of rich salmon-pink	4.00
Therese. Unexcelled light pink. Large, exquisitely lovely flowers of true rose type. Delightful fragrance	3.50
Walter Faxon. Brilliant salmon-pink, outstanding color. Mid-season.....	4.50



Peony plants give plenty of flowers for cutting.

Red Peonies

Felix Crousse. Bright rose-red. Large globular flower. Fragrant	\$0.75
Grover Cleveland. Dark crimson. Large flowers of rose type. Vigorous grower. Late	1.50
Karl Rosefield. Rich, glowing crimson. Immense, solid flower. Superb variety with abundance of blooms. Mid-season	1.25
Longfellow. Crimson with cherry tones. One of the best bright reds. Color never fades	3.00
Mary Brand. Deep red. Mid-season. Large flowers in profusion. A Minnesota origination	2.00
Mons. Martin Cahuzac. Darkest maroon-red peony. A large, full flower	3.00
Officinalis Rubra. The earliest red. An old favorite. Always blooms	1.00
Tenuifolia fl. pl. Early crimson. Very finely cut, fern-like foliage. Unusual	2.50

Jap and Single Peonies

Popular taste is rapidly awakening to the beauty and charm of these striking flowers. Their simplicity and delicate structure leads many to prefer them to the heavy, double type. You will like the single and Japanese Peonies.

Albiflora (The Bride). Large flower with silky white petals and long, yellow stamens	\$2.00
Etienne Dessert. Large, cup-shaped china-pink flower with golden stamens	3.50
Handoi (Jap). Amaranth-purple (dark red) with glossy sheen. Center petaloids light. No yellow stamens	2.00
L'Etincelante. Large petals of clear carmine with silvery margins	3.00
Mikado (Jap). Dark crimson. Like a giant red poppy. Gold center. Blooms freely..	2.00



A Special Collection

Choice Double-Flowering Peonies

Six good roots, all different. Each assortment will have early and late blooming varieties in white, pink and red colors. Value ... \$4.50

SPECIAL COMBINATION PRICE
(6 plants) (Postage Prepaid) \$3.50

Ask Us About Any Peonies Not Listed—We Grow Many Others.

You Can Grow Beautiful Roses

"The Queen of Flowers"

YOU can grow very beautiful roses here in these northern states, although this was once thought to be impractical. If you have not had roses to enjoy and to cut right in your own yard, a real pleasure awaits you.

In the following lists will be found many choice varieties of both the old favorites and the newer sorts. Actual tests have shown all these to have real merit.



Have Roses in your yard.

You are sure to succeed with "H. & O. QUALITY" POTTED ROSES

To off-set the short season of the northern summers we now offer strong rose plants that are growing in pots when delivered. These are big, 2-year old roses that have been brought in from the fields, potted and started into growth. These are ready to set right into your garden beds and give splendid and immediate results.

Hybrid-Perpetual Roses

Make June "The Month of Roses"

These are the hardiest of the large-flowering garden Roses. They grow into sturdy bushes with their heaviest blooming season during June and July.

PRICE—Strong 2-year plants started and growing in pots.....\$1.50 each.

Red H. P. Roses

Anna de Diesbach. A very double brilliant crimson. A fine rose for the north.

Capt. Hayward. A fragrant, crimson-carmine flower of large perfect form. Blooms almost constantly.

General Jacqueminot. A large silvery white that is considered the best white of any of the roses.

J. B. Clark. An intense scarlet flower on a tall thrifty bush.

Prince Camille de Rohan. A dark velvety crimson, the darkest of all the roses. Sweetly fragrant.

Ulrich Brunner. A brilliant cherry-crimson flower of cupped form. Very fragrant.

Pink H. P. Roses

George Arends. A large, delicately-scented, rose-pink. A most beautiful pure pink rose.

Magna Charta. A brilliant pink shaded with carmine. Noted for its fragrance and hardiness.

Paul Neyron. A fully double, large flower of beautiful, deep rose. A constant bloomer.

White H. P. Roses

Frau Karl Druschki. A large silvery white that is considered the best white of any of the roses.

SPECIAL—A Yellow-tinted H. P. Rose—Mme. Albert Barbier

Mme. Albert Barbier. Full flowers of fawn-yellow with white and pink shadings. A new variety of unusual color. Growth vigorous and foliage a rich green. Price. Potted plants,\$2.00 each.



Suggestions for Rose Culture

TIME TO PLANT—Spring planting is the safest in our section. Our potted plants can be planted as soon as danger of heavy frost is past, about May 15, and from then on throughout the entire summer. Dormant stock should be planted in early spring.

LOCATION—Roses require a good warm location where they will get plenty of sunlight; near large trees they suffer from shade and from the roots and never do well. They will grow in any rich soil.

PRUNING—In the spring, cut out all short and spindly growth and remove winter-killed wood. Cut back the main shoots until they stand about 4 to 6 inches long. Watch carefully during the summer for any shoots appearing to grow from below the graft and cut these away. These are sprouts from the wild root which, because of greater vigor, would starve out the grafted top.

WINTER PROTECTION—In late fall heap the ground up around the base of the plants 9 to 12 inches high. After freezing weather bind the tops with hay or straw and over this tie a covering of tar paper.

We Will Help You Plan Your Rose Garden.

Hybrid-Tea Roses

Everblooming or Monthly Roses Will Blossom for You All Summer

A class of roses originated by crossing the tender Tea Rose with the Hybrid-Perpetuals. They are not as hardy nor as heavy-growing as the Hybrid-Perpetuals, but have a longer blooming season. Their rich coloring, fragrance and extended blooming season makes them very popular.

PRICES—Strong 2 year old plants started and growing in pots, \$1.50 each (except as noted). They are sure to bloom.

Pink and Rose Shades

- Columbia.** A lively bright pink. Sweetly scented. Exceptionally free blooming.
- Los Angeles.** Luminous flame-pink, touched with coral, shaded with gold at the base of the petals. Splendid grower and very fragrant.
- Ophelia.** Salmon-flesh color, tinted with rose. One of the best.
- Radiance.** Brilliant pink. Strong grower. Profusion and continuity of bloom. Very fragrant.
- Rose Marie.** A clean rose-pink. Large flowers borne freely.
- Willowmere.** Rich salmon-pink, shaded yellow. Persistent in bloom.



Hybrid-Tea Roses.

Scarlet, Carmine and Crimson Shades.

- Etoile de Hollande.** (New) Large flowers of a brilliant crimson. Very fragrant. Called the "best red rose grown today." Price \$2.00 each.
- Betty Upprichard.** A new and choice variety. Brilliant orange-carmine with salmon reflex. Spicy fragrance.
- Gruss an Teplitz.** Double blooms of brilliant crimson. The best of all for garden decoration.
- Margaret McGredy.** (New) Long lasting flowers of rich oriental red shading to carmine. Spicy fragrance. Price, \$1.75 each.
- Red Radiance.** Large, globular flowers of deep red. Erect sturdy stems; blooms freely until frost.
- Patience.** (New) Orange scarlet shading to rich carmine at tops of petals. Price \$2.00 each.

White Hybrid-Tea Roses

- Kaiserin Augusta Victoria.** Creamy white; sweetly fragrant; very full and large flowers. Strong growth.
- Killarney, White.** A continuous blooming white variety. Very attractive in both bud and flower.

Yellow, Salmon and Copper Shades

- Golden Emblem.** A rich deep golden yellow.
- Mme. Edouard Herriot.** Coral-red, shaded yellow and scarlet. A brilliant color. Considered the best of its class.
- Miss Lolita Armour.** Deep coral-red with gold and coppery-red suffusion.
- Mrs. Aaron Ward.** Distinct Indian yellow, shading light toward edges. Always in bloom. Very healthy holly-like foliage.
- Soleil d'Or.** Gold and orange-yellow of unrivaled color.
- Souvenir de Claudius Pernet.** A pure sun-flower yellow. Strong growth and splendid foliage.
- Wm. Kordes.** (New) A warm salmon with red veinings and a coppery suffusion. Very fragrant. Price \$1.75 each.

Special Collection Monthly Roses



Hybrid Teas

These will give many fragrant flowers over a long season. Wonderful for cutting.

4 choice roses—all different, in shades of Red, White, Pink and Yellow.

These 4 potted, growing plants, value \$6.00

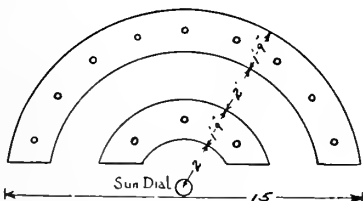
Special group price... \$5.00

(Packing free—Express extra)

Home Yard Rose Garden

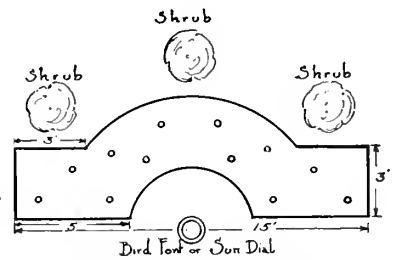
A Special Collection
12 H. & O. Potted Roses

Use these plans and have a beautiful rose garden this summer.



A semi-circular rose bed.

SPECIAL—"HOME YARD ROSE GARDEN"—12 choice Rose Plants
In assorted colors. Potted, growing stock. Special price



A pleasing group for the lawn.

\$15.00

Plant Our "Potted, Growing Roses" and Be Sure of Flowers."



Dorothy Perkins Climber.

Climbing Roses

For House Wall and Garden Trellis

Plant Climbing Roses near the porch or on the house walls to have their fragrance and color close at hand. Use them in the garden also to decorate lattices, arbors or pergolas and as festoons over walls.

PRICES—Strong 2-year plants growing in pots \$1.25 each.
(except as noted).

- Climbing American Beauty.** Double, beautifully-shaped flowers of rich carmine.
- Dorothy Perkins.** Drooping sprays of clear shell-pink. Dainty foliage. \$1.00 each.
- Dr. W. Van Fleet.** Large flowers of light pink, shading deeper at center. Very fragrant. Splendid to cut.
- Excelsa.** Double crimson flowers in clusters. The improved Crimson Rambler. \$1.00 each.
- Mary Wallace.** (New) Perfect double flowers of vivid pink shaded salmon at the base. Splendid foliage and moderately fragrant.
- Paul's Scarlet Climber.** Full double flowers of bright scarlet. Very free blooming.

Hardy Rugosa Roses

Their extreme hardiness, vigorous growth and dark ornamental foliage makes the Rugosas highly valued for northern plantings. They do not need winter protection.

Plant the Rugosas in the shrub borders, in foundation groups or wherever hardy shrubs are wanted. Their color and fragrance will delight you.

PRICES (except where noted) \$1.00 each—strong
2-year dormant bushes.

- Belle Poitvine.** Clusters of large, double, bright pink flowers.
- Blanc de Coubert.** Fragrant, double white. Crinkled foliage.
- F. J. Grootendorst.** Continuous bloomer. Bright, double crimson roses in clusters. Flowers until frost. \$1.25 each.
- Hansa.** A large double deep-red rose. Dependable and always blooms. Very hardy. Fragrance is very pleasing.
- Rugosa Rosea.** The original type. Pink flowers followed by bright red fruits. 70 cts. each; 3 yr. plants, 90 cts. each.
- Sarah Van Fleet.** (New) Soft rose-pink and fragrant flowers on a vigorous and sturdy bush. Continuous in flowering. Price, \$1.25 ea.



Rosa Rugosa—Japanese Rose.

Polyantha (Baby Rambler) Roses



Heavy clusters of roses that bloom continuously through the summer. The bushes are compact in growth and moderate in size and so particularly suited to borders and home yard plantings.

PRICES—Strong 2-year growing potted plants
\$1.50 each. They are sure to bloom.

- Baby Rambler.** Clusters of crimson roses over a long season.
- Baby Tausendschon.** Flesh-pink flowers.
- Ellen Poulsen.** Deep pink flowers. Vigorous.

Hardy Bush Roses

A hardy class of roses used as flowering shrubs in borders, on banks and in naturalistic plantings.

- Blanda.** Soft pink flowers followed by red fruit Thornless canes 3 to 4 ft. high. 60c each.
- Rubrifolia.** Intensely pink flowers. Reddish purple leaves all summer. Its bright foliage makes a colorful contrast to other shrubs and plants \$1.00.
- Harrison's Yellow.** Clear golden-yellow semi-double flowers. Perfect foliage. \$1.00 each.
- Crested Moss.** A much loved, old-fashioned Rose with delicate mossy covering on the buds. Pink flowers. Very fragrant. \$1.00 each.

Sweet Briar Roses

- Sweet Briar. Rubiginosa.** The well-known Sweet Briar with aromatic foliage and sweetly fragrant pink flowers. \$1.00 each.

Everyone Loves Roses. Have Them In Your Yard.



Delicious Fruits

For the Home Garden

Fruits Are Easy to Grow. Know the Delight of Eating Fruit Fresh from Your Own Garden

Hardy Apples

Prices—Strong trees, 5 to 6 feet, \$1.00 each.
Duchess. Yellow with red stripes.
Haralson. Deep red winter apple.
Northwestern Greening. Large fruit of pale green.
Wealthy. Big red fruits in abundance.
Yellow Transparent. An early table fruit.

Hardy Crab Apples

Price—Strong trees, 5 to 6 feet, \$1.00 each.
Early Strawberry. An early, red-striped fruit.
Transcendent. Yellow and carmine. Very juicy.
Whitney. An early, large, red fruit.

Hardy Plums

The best from the Minnesota State Fruit-breeding farm.

Price—Strong trees, 5 feet and up, \$1.00 each.
La Crescent. Our best quality yellow plum.
Monitor. Large, dark-red clingstone. Late.
Tonka. Semi-freestone; red fruit. Mid-season.
Underwood. Early ripening free-stone. Red.

Cherry-Plums

Price—Strong trees, 4 to 5 feet, \$1.00 each.
Nicollet. Very close to a true sour cherry.
Zmmbra. Large dark-red fruit with small pit.

Cherries

Price—Strong trees, 4 to 5 feet, \$1.50 each.
Wragg. Heavy bearer of dark-red, meaty fruit.

Grapes

Prices—Strong plants, 50 cts.; 3 yr. roots, 75 cts.
Beta. Very hardy black grape, sprightly flavor.
Brighton. Fine flavored red grape ripening early.
Concord. The large, popular, black grape.
Pocklington. An early, sweet, white grape.

Raspberries

Prices—\$1.50 for ten; \$10 per 100.
Latham. Large red berries in abundance.
Older. A juicy and sweet black raspberry.
St. Regis. A continuous-fruiting red raspberry.

Currants

Prices—Strong 2 yr. plants, 30 cts; \$2.50 per 10.
Cherry. Large bright-red, rather acid berries.
Perfection. Heavy clusters of very large, red fruit.
White Grape. A white, sweet currant of good size.

Gooseberries

Prices—Strong 2 yr. plants, 30 cts.; \$2.50 per 10.
Downing. A large, oval, pale-green berry.
Carrie. Bright red fruit of good size.

Strawberries

June-Bearing Variety

Senator Dunlap. Large crops of big, deep-red berries.
 Price—Strong plants, 40 cts. dozen; \$2.50 per 100.

Everbearing Variety

Progressive. Fruits from late June until frost.
 Price—Strong plants, 50 cts. doz.; \$4.00 per 100.



Mastodon (new). Largest berries of any variety.
 Price—Strong plants, 75 cts. dozen; \$6.00 per 100.

Asparagus

Washington Rust Proof. An excellent green asparagus.
 Price—Strong roots, 60 cts. dozen; \$4.00 per 100.

Rhubarb or Pie Plant

Price—Strong roots, 25 cts each; \$2.00 per dozen.

Apple Trees Give Flowers, Shade and Fruit.

Enjoy A Beautiful Lawn

Plant H. & O's. High Test Grass Seed



SOFT carpet of grass over the yard—it's luxuriant green, restful and inviting—is the most sought after of all landscape embellishments. Even the most modest home has great charm and beauty when surrounded by a trim, neat lawn. Good lawns are the logical result of sowing good grass seed on fertile, prepared soil and bestowing a reasonable amount of after-care and consideration on its upkeep.

Seeding. The best quality seed costs only a few cents more per pound than unreliable, cheap mixtures. Use the best obtainable and realize the most from your work and planting. Sow one pound to every 200 square feet of area. Sow evenly, rake lightly and water thoroughly.

How to Make a Lawn

Our booklet—"The Principles of Lawn Making," will be mailed without charge to our customers who request it.

(Note. Add 8c per pound to prices listed on all grass seed wanted by Parcel Post.)

Velvet Sod Seed

A very high grade mixture of those hardy grasses that will combine to make a beautiful and lasting lawn. Especially prepared to withstand our Northern climatic conditions. Its weight, over 20 pounds per bushel, clearly indicates its purity and freedom from chaff and adulteration. We use this mixture on all our landscape contracts and recommend it highly.

Lb., 50 cts. 5 lbs., \$2.25 10 lbs., \$4.25 20 lbs. \$8.00

Shady-Side Seed

By using this seed it is possible to get a growth of lawn under trees and in shady places where the ordinary grasses will not grow. Has always proven satisfactory for such positions.

Lb., 60 cts. 5 lbs., \$2.75 10 lbs., \$5.25 20 lbs., \$10.00

Terrace Seed

A special mixture of spreading, deep-rooting grasses that will thrive and hold the soil on terraces and slopes. It is very resistant to drought and poor soils and gives results where the ordinary grasses fail.

Lb., 50 cts. 5 lbs., \$2.25 10 lbs., \$4.25 20 lbs., \$8.00



A good lawn is of first importance. Our "Velvet Sod" seed produced this one.



Sow "Velvet Sod"—the best grass seed.

White Clover

The best Clover for lawn uses because of its small leaves and dense, close growth. It is often sown on new lawns for its protection to the tender grasses the first year. Admired by many for its fragrant dainty flowers.

½ lb., 40 cts. 1 lb., 75 cts. 5 lbs., \$3.50 10 lbs., \$6.75

Red Top Grass

A fine-leaved grass that is becoming popular when mixed with Blue Grass as a lawn seed. Develops very quickly.

Lb., 40 cts. 5 lbs., \$1.75 10 lbs., \$3.25 20 lbs., \$6.00

Kentucky Blue Grass

A beautiful grass that should be the main constituent of every good lawn here in the North. Sometimes used alone, but becomes better established if sown in mixtures. Our seed is choice grade carefully re-cleaned of the high average weight of 21 lbs. per bushel.

Lb., 50 cts. 5 lbs., \$2.25 10 lbs., \$4.25 20 lbs., \$8.00

We offer special service to parks and golf clubs. Let our lawn experts help you.

Fertilizers

For Lawn and Garden

Keep your lawn fresh and green by giving it the needed plant food each season. Healthy lawns have very few weeds.

Our specially prepared fertilizers are inexpensive and easy to apply and will give the grass new life.

ALWAYS THOROUGHLY WATER THE LAWN IMMEDIATELY AFTER SPREADING THE FERTILIZER.

"SPECIAL LAWN FERTILIZER." A mixture of the best plant foods that will revive the grass growth and add nourishment. Sow evenly using 25 pounds per 1,000 square feet and wet down.

10 lbs., 85 cts. 25 lbs., \$1.50 50 lbs., \$2.75 100 lbs., \$5.00

BONE MEAL. A splendid fertilizer for Roses, Peonies, flower or shrub beds. High phosphate content. Frequently used on the lawn (30 pounds to 1,000 square feet).

10 lbs., 75 cts. 50 lbs., \$2.50 100 lbs., \$4.25

HARDWOOD ASHES. Valued as a lawn fertilizer because of its high potash content. Use 40 pounds per 1,000 square feet.

10 lbs., 50 cts. 50 lbs., \$1.75 100 lbs., \$3.00

SHEEP MANURE (Pulverized). A quick acting plant food for general use about the lawn, flower beds or garden. For lawns use 30 pounds per 1,000 square feet and wet down. This is a pure, natural manure rich in nitrogen and potash and free of weed seeds or litter.

10 lbs., 75 cts. 50 lbs., \$1.75 100 lbs., \$3.00

SULPHATE OF AMMONIA. A nitrogen fertilizer that will quickly stimulate grass or plant growth. For the lawn use one cupful in a large sprinkling can for an area of 100 sq. ft. Wet the sod with water immediately after applying.

10 lbs., \$1.00 50 lbs., \$3.75 100 lbs., \$7.00

Make Your Lawn and Garden Prosper—Use Fertilizer.

How We Serve You

Our Liberal Terms and Policies

READ BEFORE ORDERING

Planting and Shipping Time. The regular planting time in this section of the country is from April 10th to June 1st and from September 10th. to November 15th in the fall.

Your order will be shipped at just the right time for planting. Order early so that we can reserve the plants and arrange for the most timely delivery. Early orders enable us to serve you better.

No charge for packing is made on any materials listed in this catalogue or for delivery to the St. Paul Express or Railway Terminals. This means a substantial saving to our out-of-town customers. Deliveries are made free of charge to any St. Paul or Minneapolis address. Catalogue prices are all based on stock at our nurseries.

Give Shipping Instructions as to Freight, Express and Parcel Post (the latter suitable only for very small packages) and any preference as to route. When not instructed we will use our best judgment. Express shipments are recommended as the most advantageous and desirable and we guarantee safe arrival when shipped in this way.

Terms. Cash with orders is expected. When credit must be arranged please advise us in ample time and supply the usual business references. All accounts are due by the 10th of the month following date of purchase. We prefer not to ship C. O. D.

Liberal Replacement Offer. Everyone knows that there is some risk and hazard in the transplanting of trees and shrubs. Such matters as soil conditions, inclement weather, planting methods, after-care, etc., are some of the factors effecting the success of a planting that are hard to control.

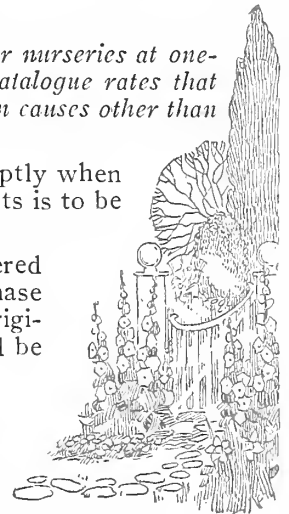
We have every confidence in the vitality of our hardy, northern-grown plants and know that they will succeed when planting conditions are at all favorable so we agree to share any loss of plants with you.

Our agreement: *"We agree to re-supply F. O. B. our nurseries at one-half of the purchase price any nursery stock bought at catalogue rates that may fail to make growth the first season after planting from causes other than abuse or neglect."*

This agreement applies only to accounts that are paid promptly when due and any labor involved in planting such replacements is to be charged for as used.

Guarantee. Should any plant prove untrue to variety ordered we will replace it without charge or refund the purchase price but in no case are we to be liable for more than the original cost of the plants. Any errors or complaints should be reported promptly for adjustment.

Planting Instructions are sent with the acknowledgment of every order. Consult us freely for any further information you may need. We welcome the opportunity to help you.



THE PARK NURSERIES

HOLM & OLSON, Inc.

Landscape Architects

Saint Paul

