

## **Historic, Archive Document**

Do not assume content reflects current scientific knowledge, policies, or practices.



# Jackson's

## Catalog

LIBRARY  
RECORDED  
FEB 19 1930 ★  
U.S. Department of Agriculture

SPRING  
AND  
SUMMER

1930



MADAME  
BUTTERFLY  
See Page 5

ROSES and CHRYSANTHEMUMS  
LARGEST GROWER OF ROSES IN THE SOUTH

# J.E. JACKSON

PIEDMONT GREENHOUSES

GAINESVILLE GEORGIA

# Jackson's Flowers and Plants are First Quality and Sure to Please



We take pleasure in presenting to you our 41st Annual Catalog with the assurance that we will do all within our power to merit the continuance of your loyal patronage and confidence. We devote all our time and energy to propagating and growing plants and flowers, sparing no effort to keep both the quality of our merchandise and our dealing up to the highest ideal. Our success in maintaining quality and service is evidenced by the fact that we hold our customers, many of them, over a third of a century, and we seek new friends upon the same and single basis of reliability in merchandise and in methods. Our stock of plants is clean, healthy, vigorous, and true to name.

Visitors are always welcome; our greenhouses are open to the public.

## Have You a Flower Garden?

Nothing is so inspiring, repaying you so richly, for such little expense, as your flower garden. It is as fascinating to the children as to the grown-ups, intriguing your interest and fancy, and providing a constant source of pleasure and loveliness. Flowers have a place in our lives which nothing else can fill.

"To live 'mongst lush and growing things  
Is like to give the spirit wings.

Who works 'mongst roses soon will find  
Their fragrance budding in his mind."

Wherever you find a home worthy of the name, you will find flowers growing somewhere around it.

## Roses Our Specialty

We have roses for every garden—old fashioned and right up to the latest and best varieties. Grown in 2½ and 4-inch pots, they will bloom profusely the first year. We do not advertise varieties that are not uniformly and consistently successful. You will note the sensational "Jackson Set of 12 Everblooming Roses" on page 2. It consists of the most dependable new and the finest old garden favorites, and if you don't know roses we urge you to try this set. One trial will make you a lover of Roses.

## Chrysanthemums

Our "Mum" list is a wonderful collection of the best in America. We ship you plants that will grow and be prize winners. We grow thousands of these beautiful flowers for the trade. Our Mums are known all over the country.

Each year the demand for chrysanthemums and dahlias grows greater and more exacting and each year finds us making greater efforts to meet this demand with only the most perfect stock.

## Dahlias

These beautiful flowers are each year becoming more popular. The craze for size alone has about run out. A dahlia now must have more than size to commend it. Of course we all like to exhibit a flower larger than ever before shown, but, nothing can take the place of those brilliantly colored beauties, or those exquisitely formed, delicately tinted flowers, that lend themselves most admirably to all kinds of decorations—for perfect taste runs to the beautiful and artistic, rather than to the bizarre.

## Service

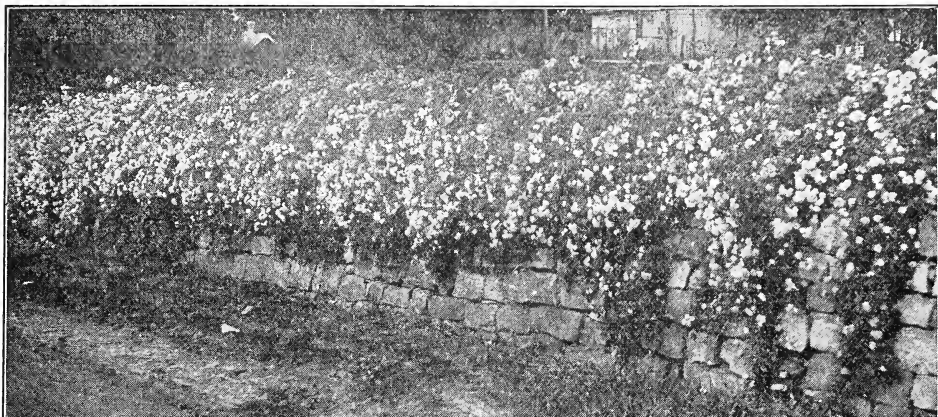
We take a personal interest in every order that is sent out. In all that we do, we consider the interests of our customers first and we want you to know that we are here to serve you and never consider a transaction complete until you are pleased.

It is always a pleasure to hear from our customers. If you have been successful with our plants, it is encouraging to know it. If you have cause to be dissatisfied, give us the opportunity, and we will adjust the trouble.

We thank you for past favors and courtesies and beg to remind you again that our ambition is to please you.

J. E. JACKSON, Gainesville, Ga.

# Terms of Sale



**SILVER MOON CLIMBING ROSE**

**ORDER EARLY**—Our aim is to execute all orders upon receipt, but during the rush season in the spring, delays are sometimes unavoidable, which can be partly overcome by our patrons anticipating their wants and ordering early. We give every order, no matter how large or small, prompt and careful attention.

**GUARANTEE**—We guarantee our goods to reach their destination in good condition, satisfactory to you, or they will be duplicated or money refunded. We are very careful to keep each variety true to name as labeled, and are ready at any time to replace, on proper proof, any that may prove otherwise.

**NON-WARRANTY**—Most failures with plants and bulbs are due to causes entirely beyond our control, such as unfavorable weather or soil conditions, too deep or too shallow planting, etc., which renders it impossible for us to guarantee success and although we take all possible care to supply only such goods as will, under proper conditions, produce satisfactory results, we can give no warranty as to productiveness of any of the plants or bulbs we send out. It must, however, be plain to everyone who gives the matter the slightest thought, that it is to our best interest to send out only such stock as will reach perfection.

**PLEASE NOTE**—It is not unusual for us to receive orders without any signature or identification mark attached—if you do not get a response to your order within a reasonable time, please write again enclosing your copy of order so we may be able to trace same quickly.

Please send cash with the order sufficient to cover the whole bill. No C. O. D. orders accepted unless remittance be made on account to guarantee acceptance. Coin should not be sent by mail. 10 cents extra on all orders less than \$1.00, unless postage is included for soil on roots.

**ERRORS**—We exercise the utmost care in filling orders, striving to do a little more than we offer; yet in the press of business, errors sometimes occur. In such a case, please notify us at once, and correction will be promptly and cheerfully made.

**MAIL**—If we prepay postage on plants shipped via mail we remove the dirt, the roots are wrapped in damp moss, then placed in a heavy paper tube; this is a very satisfactory way to ship but they take a little time to recover, as they must be potted in fresh soil and handled with care for a few days. If you wish soil left on the roots, include postage at rate of 15 cents per dozen plants. In this way small orders reach you with roots undisturbed. For two-year Roses by mail, add postage at rate of 50 cents per dozen.

**EXPRESS**—This is the ideal way to ship plants as the roots are undisturbed and they start growing from the first. Under the new ruling they go at special rates making the cost very reasonable.

**QUALITY**—The many kind letters we receive every year complimenting us on the stock sent out are evidence enough that the quality of our goods cannot be surpassed.

**J. E JACKSON, Gainesville, Ga.**

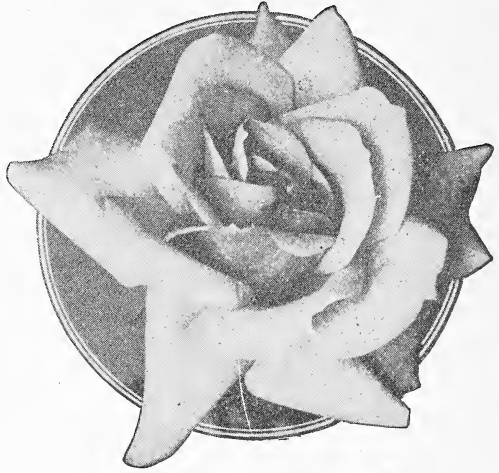
# JACKSON'S

## Set of 12

### Everblooming

## ROSES for

# only \$1.25



These are selected from among our very best and most beautiful Roses and will surely please any lover of fine Roses. Blooming this year, they will continue blooming longer and more profusely each succeeding year.



Photograph showing size and vigor of my 15c Roses from 2½-inch pots, ready to pack for express orders.

**REMEMBER**—The twelve Roses below are from two and one-half inch pots, for \$1.25, or strong 2-year-old plants from four inch pots, for \$4.00. Satisfaction guaranteed.

**ALEXANDER HILL GRAY**—Deep lemon-yellow which intensifies as the blooms develop. A perfectly formed flower with a high-pointed center. 25c; 2 years, 50c.

**BRIDE**—White with delicate flush on outer petals; very beautiful in bud or open flowers; blooms profusely.

**MADISON**—A greatly improved Bride, and when we say improved we mean a genuine improvement. Best feature of Madison is the foliage does not mildew. After being well established, Madison will cut as many flowers as Killarney.

**DR. W. VAN FLEET**—Flowers when open run 4 inches and over in diameter. The color is a remarkably delicate shade of flesh-pink on outer surface, deepening to rosy-flesh in center. Flowers are full and double, delicate perfume.



Photograph showing the vigorous roots of my 15c Roses, ready to pack for mail orders.

**DUCHESS DE BRABANT**—Soft, rosy pink; good bloomer. A general favorite.

**EDWARD MAWLEY**—A very fine dark red rose. 25c; 2 years, 50c.

**ETOILE DE LYON**—Beautiful chrome yellow, deepening at center to pure golden yellow.

**ETOILE DE FRANCE**—The Gold Medal Rose of France, and claimed by the raiser, J. Pernet Ducher, of Lyons, France, to be the finest rose he has ever sent out. The flowers are very large and borne on good, long, stiff stems; color a lovely shade of clear crimson velvet; very fragrant. 25c; 2 years, 50c.

**LADY ROBERTS**—A rich golden yellow

rose. A very vigorous grower and fragrant. 25c; 2 years, 50c.

**MAD. FRANCISCA KRUGER**—Deep yellow, sometimes rich and glowing, and at other times dark, with shadings of copper and rose; large and double.

**RADIANCE**—A splendid and popular rose; deep pink in color. Will produce 3-foot breaks without pinching. Almost mildew proof, and a wonderfully fine rose. 25c; 2 years, 50c.

**MRS. B. R. CANT**—A splendid garden rose; solid even color; clear, bright rosy pink; large size, perfectly double and full; heavy bloomer, particularly fine in the fall, and is a clean, handsome grower.

#### IN ORDERING, ASK FOR JACKSON'S SET OF 12 ROSES

In case any of the above list of roses become exhausted we reserve the right to substitute some rose equally as good.

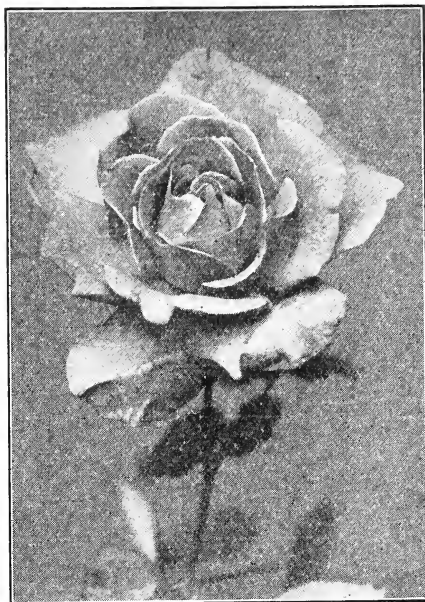
MY CATALOGUE IS THE ONLY REPRESENTATIVE I SEND OUT

## Roses

No flower is so universally popular as the Rose, the "Queen of Flowers." It is everywhere wanted and always admired.

### DIRECTIONS FOR PLANTING

Roses will grow in any ordinary fertile ground, but they are particularly fond of a heavy clay soil, liberally enriched and well cultivated. The ground should be well spaded and pulverized to the depth of eighteen inches or more, and enriched by thoroughly mixing through the soil a good coat of any well-decayed manure, cow manure preferred. When the ground is well prepared, fine and in nice condition, put in the plant slightly deeper than it was before, and cover it with fine earth, taking care to draw it closely around the stems and pack firmly. It is important that the earth be tightly pressed on roots; water liberally immediately after planting, enough to settle the soil, and if hot or windy, it may be well to shade for a few days. The ground should not be allowed to bake or become hard, but should be stirred frequently, but not deeply with hoe and rake so as to keep light and mellow, as well as free from weeds and grass. The proper time to prune is early in the spring before growth has commenced; no exact time can be given, as that depends upon the locality. The Hybrids must be cut back severely. They bloom best on strong new wood. In pruning the everblooming Roses all winter killed branches should be removed, also the wood which has become exhausted after several years' blooming, and younger shoots should be allowed to take their place.



Souvenir de Claudius Pernet (Page 5)

## Cream of the New Roses

We here offer what is good in the new Tea and Hybrid Tea Roses. Strong, well-rooted plants, from 2½-inch and 4-inch pots.

**PRICE:** 25c each; \$2.50 doz. Strong 2-year-old plants, 50c each; \$5.00 per dozen, except where noted.

**ALEXANDER HILL GRAY**—Deep lemon-yellow which intensifies as the blooms develop. A perfectly formed flower with a high-pointed center. 25c; 2 years, 50c.

**COLUMBIA (H. T.)**—A very vigorous grower of a true pink shade, deepening as it opens to glowing pink. A peculiarity of this variety is that the shades become more intense until the full maturity of the open flower is reached, and this color is enduring. 25c each; 2-year-old plants, 50c.

**GRUSADER (H. T.)**—The growth is heavy and the flower stem strong. It is free flowering and the blooms are big and double, in color a rich velvety crimson. A free flowering red Rose that is a wonder. 25c; 2 years, 50c.

**DOUBLE WHITE KILLARNEY**—Pure white sport from White Killarney; has much larger bud. 35c; 2 years, 75c.

**DUCHESS OF WELLINGTON**—Long shapely buds, with petals of great substance, color an intense saffron-yellow stained deep crimson, delightfully fragrant and very free flowering. 25c; 2 years, 50c.



Wm. R. Smith (Page 5).

## New Roses—Cont'd

**ETOILE DE FRANCE**—The Gold Medal Rose of France, and claimed by the raiser, J. Pernet Ducher, of Lyons, France, to be the finest rose he has ever sent out. The flowers are very large and borne on good, long, stiff stems; color a lovely shade of clear crimson velvet; very fragrant. 25c; 2 years, 50c.

**EDWARD MAWLEY**—By its marvelous outstanding qualities is now regarded by rosarians as the greatest advance and most wonderful rose yet raised. Fine dark crimson Rose. 25c; 2 years, 50c.

**FRAU KARL DRUSCHKI** (The White American Beauty or Snow Queen)—An everywhere hardy, vigorous grower, with bright green leaves delicately veined; splendid long buds and magnificent snow white blooms with large saucer-shaped petals. Rightly named. 35c; 2 years, 75c.

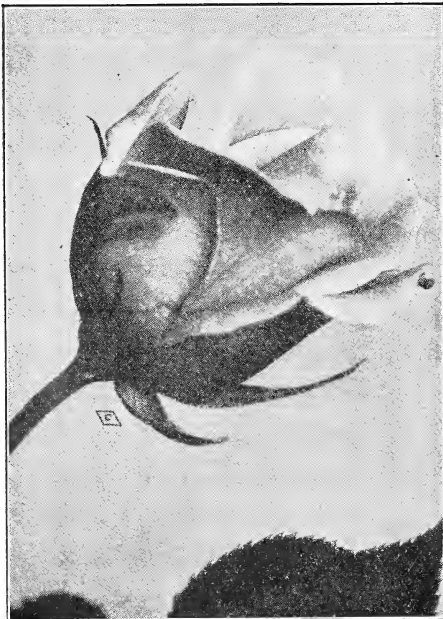
**FRANK W. DUNLOP**—Won silver medal for the best new pink Rose at the International Flower Show in New York. Very double and fragrant. 35c; 2 years, 75c.

**FRANCIS SCOTT KEY** (H. T.)—The flowers are from large to very large, with sixty or more petals opening to a high center. The color is a magnificent deep red rose. Grand for the garden. 25c; 2 years old, 50c.

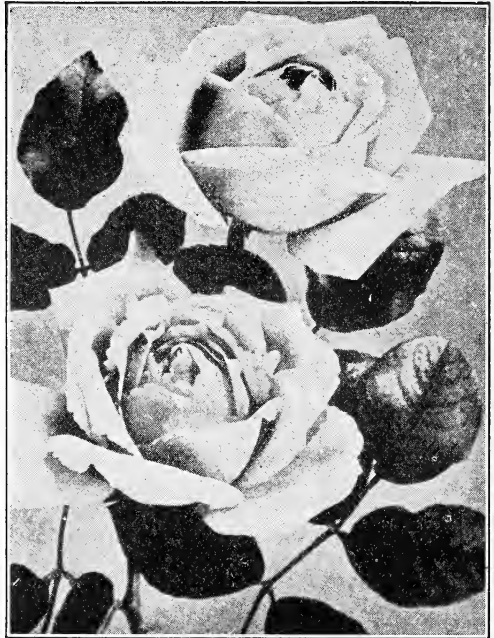
**GENERAL SUPERIOR ARNOLD JANSEN**—A fine new rose. Claimed to have all the good qualities of Jonkheer J. L. Mock as an outdoor rose. Color, a deep glowing carmine. Free bloomer. Buds long and pointed on long, stiff stems. 25c; 2-year-old, 50c.

**HELEN GOULD**—One of the strongest growing and freest blooming Hybrid Teas ever known. In color a rich, glowing crimson. Buds long and pointed, forming full double blooms. 25c; 2 years, 50c.

**HADLEY**—Color a deep velvety crimson, retaining its brilliancy at all seasons. The variety is double and buds are well formed. The fragrance is excelled only by American Beauty. 25c; 2 year, 50c.



Gen. Sup. Arnold Jansen



Mad. Caroline Testout (Page 5).

**HILLS AMERICA**—Color a glowing, deep rose-pink. Buds long and pointed, opening to a high pointed center and very full flower. One of the best of the new roses. 25c; 2 years, 50c.

**HOOSIER BEAUTY**—If you need a better red rose than you are growing, Hoosier Beauty will fill the bill. Color, glowing crimson-scarlet with velvety crimson shadings. The bud is long and opens into a magnificent bloom, dazzling in its velvety brilliance. 25c; 2-year-old, 50c.

**JONKHEER J. L. MOCK**—This grand rose is the strongest growing in Hybrid Tea class. Color clear imperial pink, reverse of petals carmine-rose. 25c; 2 years, 50c.

**KAISERIN AUGUSTA VICTORIA**—A vigorous grower, buds pointed, flowers extra large, and very double. Color creamy white. 25c; 2-year-old, 50c.

**KILLARNEY**—A splendid new rose, beautiful pointed buds and extra large flowers; bright coral pink, very fragrant and beautiful. 25c; 2 years, 50c.

**LADY ASHTOWN**. One of the best garden roses and a fine long lasting cut flower. Flowers large, of a pleasing carmine-pink shading to a golden-yellow base, fragrant and free flowering. 25c; 2 years, 50c.

The roses we offer are the most vigorous growing and disease-resistant varieties of their separate types, roses that will prove faithful growers and free, as well as beautiful, bloomers. We do not advertise varieties that are not uniformly and consistently successful.



**LADY HILLINGDON**—A long, slender pointed bud of brilliant, deep apricot-yellow; very free flowering and a good grower; a very striking decorative rose. 25c; 2 years, 50c.

**LADY ROBERTS**—A rich golden yellow rose. 25c; 2 years, 50c.

**MAD. BUTTERFLY**—Ophelia-like in appearance, but far deeper and richer color. Very attractive. 25c; 2 years, 50c.

**MAD. CAROLINE TESTOUT**—A charming variety of the LaFrance type; flowers large and double; color, bright satiny pink with rose center; strong grower; free flowering and very fragrant. 25c; 2 years, 50c.

**MADAME JENNY GUILLEMOT**—Deep saffron-yellow, opening canary with dark golden shadings; buds long and pointed; petals and blooms immense, a very beautiful and upright grower and free bloomer. 25c; 2 years, 50c.

**MRS. AARON WAED**—Coppery-orange in the open bud, golden-orange when partly developed, pinkish-fawn of lovely shade when fully open, when it looks like a full fluffy-silk rosette. Color effect of the whole flower is Indian yellow. 25c; 2 years, 50c.

**MRS. GRAS. RUSSELL**—Pink American Beauty, enormous in size, which lines into beautiful shape in flower, stem and foliage. 35c; 2 years, 75c.

**OPELLIA**—Salmon-flesh, shaded with rose; large, and of perfect shape; of excellent habit, the flowers standing up well on long, stiff stems, and produced in great profusion. 25c; 2 years, 50c.

**PREMIER**—Already too well known to need description. A magnificent novelty in the class with Russell. Deep rose; fragrant; thornless; free bloomer. 25c; 2 years, 50c.

**RADIANCE**—A splendid and popular rose; deep pink in color. Will produce three-foot breaks without pinching. Almost mildew proof, and a wonderfully fine rose. 25c; 2 years, 50c.

**RED RADIANCE**—A glowing crimson sport of Radiance with all the magnificent qualities of the parent; the enormous globular flowers on heavy canes are a sight to be long remembered. The color is dazzling crimson-scarlet. 25c; 2 years, 50c.

**RED LETTER DAY**—Beautiful scarlet crimson rose. One of the freest blooming Roses extant. Makes a fine decorative subject and equally desirable for bedding. 25c; 2 years, 50c.

**REEA REID**—Flowers large and double; very free-blooming and exquisitely fragrant; rich, dark velvety red. The best of all red garden roses to date. 25c; 2 years old, 50c.

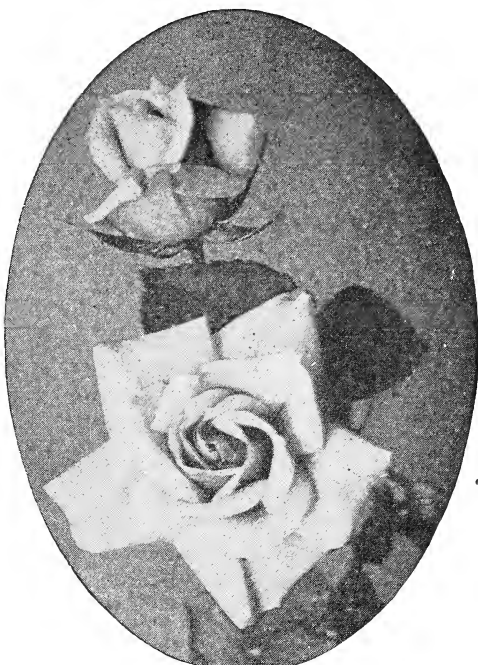
**REV. F. PAGE ROBERTS**—A Rose of remarkable beauty in form and color. Copper-red buds of great length, opening to golden yellow blooms stained outside with red, fully double and very large; fragrant. Strong, branching plant with healthy foliage. 2 years only, \$1.00 each.

**ROSE MARIE**—One of the very finest Roses grown, remarkably free-flowering, producing large, long, ideal buds, which develop into full flowers of beautiful form, of a most pleasing clear rose-pink. 2 years only, 50c.

**SOUVENIR DE CLAUDIUS PERNET**—A clear shining yellow, deeper in the center, which does not fade even in the warmest weather. Vigorous grower of erect branching habit; beautiful, brilliant green foliage, long pointed buds of exquisite shape, carried on long, stiff stems. Very large flowers with elongated deep petals, a beautifully formed bloom. 2 years only, 75c each.

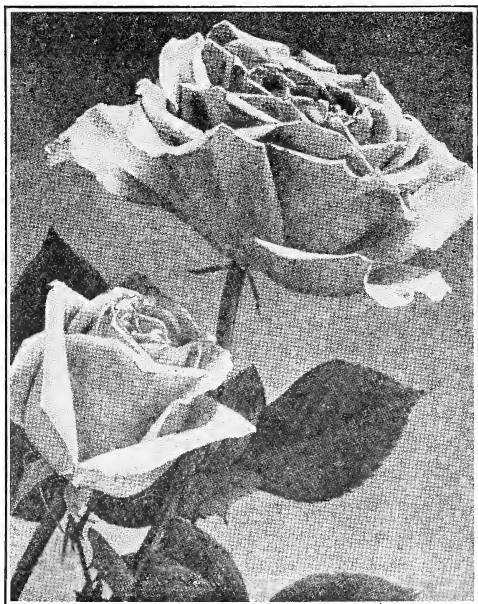
**SUNBURST**—A magnificent giant yellow rose, well adapted for outdoor growing, being a vigorous and healthy rose. Buds long and pointed, borne singly on long, stout stems. The color is superb orange copper, with a deep orange center. 25c; 2 years, 50c.

**WHITE KILLARNEY**—An offspring of the famous pink Killarney as described on page 4, identical with it except that the flowers are pure white. 25c; 2 years old, 50c.



Rose Marie.

**WILLIAM B. SMITH**—Creamy-white with shadings of pink; a seedling from Maman Cochet and Kaiserin Augusta Victoria. Beautiful in form and color; glossy foliage; long stiff stems; vigorous in growth; a superb summer bedder. 25c; 2 years, 50c.



Bessie Brown (Page 6).

## Select Roses

All Nice, Strong, Well-rooted Plants, from 2½-inch and 4-inch Pots.

**PRICE:** 15c each; \$1.25 doz. Strong 2-year-old plants, 35c each; \$4.00 per doz. Our selection, labeled, 12 2½-inch pot plants for \$1.00.

**AUGUSTINE GUINOISSEAU** (White La France)—Sport from La France, identical in habit, form and vigor, but in color it is a delicate blush.

**BESSIE BROWN**—A rose of transcendent beauty, and one of the largest and fullest we have ever seen, color pure white, sometimes faintly flushed pink; petals enormous, shell shape.

**BLUMENSCHMIDT**—Pure, citron-yellow, outer petals edged tender rose. A sport from Mad. Francisca Kruger.

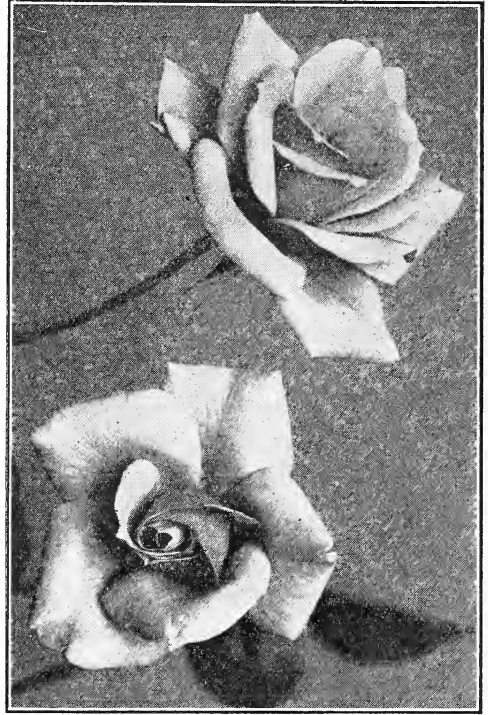
**BRIDE**—White with delicate flush on outer petals; very beautiful in bud or open flowers; blooms profusely.

**BRIDESMAID**—A fine, clear, dark pink.

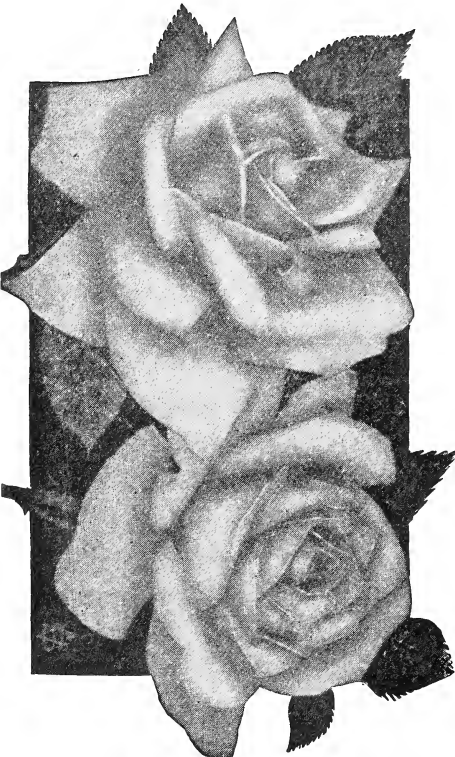
**BURBANK**—A free-flowering everbearing rose, raised by Mr. Luther Burbank, known the world over as the "Wizard of Horticulture." Color deep pink.

**CATHERINE MERMET**—Bright flesh color, full and finely formed.

**CORNELIA COOK**—This beautiful rose is in great demand for its magnificent buds, which are large, perfect and pure white.



Mad. Jenny Guillemot (Page 5).



Wellesley (Page 3)

**DUCHESS OF ALBANY**—A sport from La France, retaining all of the characteristics of the type, with the bloom three or four shades darker.

**DUCHESS DE BRABANT**—Soft, rosy pink; good bloomer. A general favorite.

**ETOILE DE LYON**—Beautiful chrome yellow, deepening at center to pure golden yellow.

**F. E. PATZER**—A most beautiful and distinct rose of very free-flowering character. The color is creamy-buff, back of petals delicate warm pink. Valuable for garden culture.

**GENERAL DE TABTAS**—A first-class rose for bedding, brilliant carmine, large size; very double, full and fragrant.

**GOLDEN GATE**—Flowers are large, very double and full. Color rich creamy white, tinged and shaded with yellow; petals large, broad and frequently bordered with clear rose.

**GRUSS AN TEPLITZ**—As a bedding rose this is one of the finest. Color scarlet, shaded to velvety crimson.

**HELEN GOOD**—Helen Good is a genuine Cochet, being a sport from the world-famous variety, Maman Cochet. A delicate pink, each petal edged deeper, is totally distinct from Maman Cochet.

We are the largest growers of Roses in the South. Our years of experience are plainly visible in the character of plants we furnish our customers.

**HELEN CAMBIER**—Flowers large and full, varying from rosy-flesh and salmon to copper; an extra fine and showy variety.

**IVORY or WHITE GOLDEN GATE**—Pure white.

**ISABELLA SPRUNT**—Bright canary yellow; beautiful buds.

**JULES FINGER**—Extra large and finely formed flowers; full and fragrant. Color rosy scarlet, beautifully shaded with crimson.

**LA FRANCE**—The oldest and best of the Hybrid Teas; deliciously fragrant; very large, full, round, globular form; color true pink.

**LOUIS PHILIPPE**—Rich, dark, velvety-crimson; profuse bloomer.

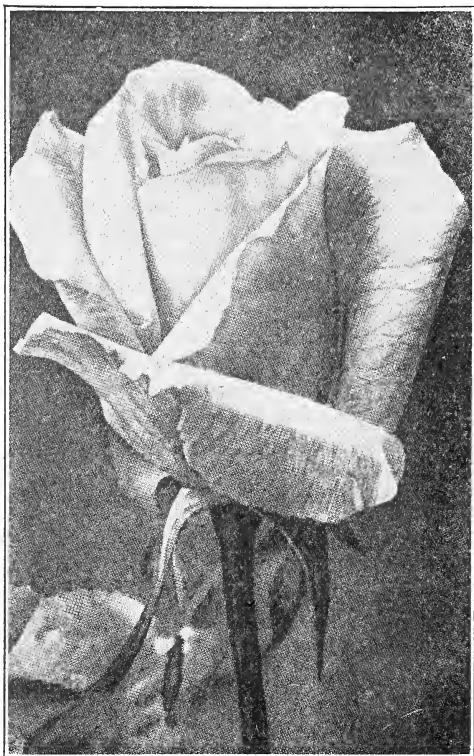
**LUCULLUS (The Black Rose)**—Splendid, rich crimson garden rose; fragrant and strong growing; a constant and profuse bloomer.

**MAD. CAMILLE**—Delicate rosy-flesh, changing to salmon-rose; immense double buds.

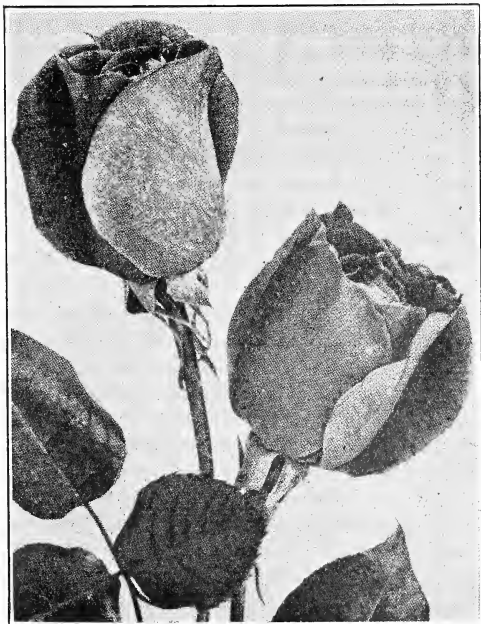
**MAD. FRANCISCA KRUGER**—Deep yellow, sometimes rich and glowing, and at other times dark, with shadings of copper and rose; large and double.

### Jackson's Rose Plants

Combine the best of plants, producing beautiful blooms and are furnished you at a moderate price. You will be more than pleased with them.



Jonkeer J. L. Mock (Page 5).



Helen Gould (Page 4).

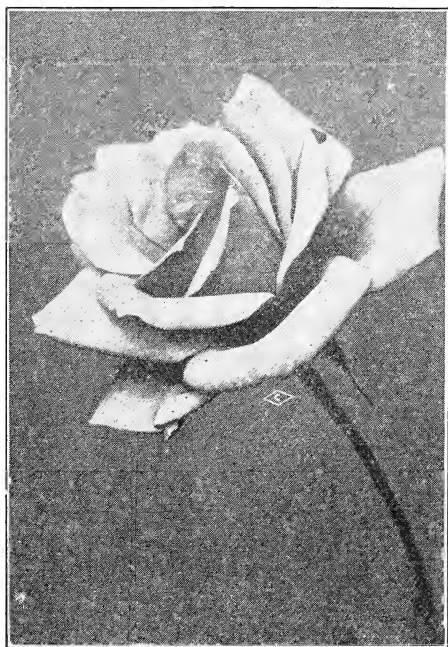
**MADISON**—A greatly improved Bride, and when we say improved we mean a genuine improvement. Best feature of Madison is the foliage does not mildew. After being well established, Madison will cut as many flowers as Killarney.

**MAD. LAMBARD**—A first-class rose; extra full flower, double; beautiful rose color; tinged salmon and buff; buds and reverse of petals crimson.

**Mlle. CECILE BRUNNER. (Poly.)**—Also called "Sweetheart Rose" and "Mignon." Small, exquisitely formed buds and flowers of light pink with yellow base, graceful clusters.

The roses we offer are the most vigorous growing and disease-resistant varieties of their separate types, roses that will prove faithful growers and free, as well as beautiful bloomers. We do not advertise varieties that are not uniformly and consistently successful.

## Roses—Cont'd



Bride (Page 6).

**MRS. B. R. CANT**—A splendid garden rose; solid even color; clear, bright rosy pink; large size, perfectly double and full; heavy bloomer, particularly fine in the fall, and is a clean, handsome grower.

**QUEEN SCARLET**—A constant and profuse bloomer; color rich velvety-scarlet.

**SOUVENIR DE PIERRE NOTTING**—A seedling of M. Niel and Maman Cochet, with beautiful closely set foliage. Bloom is very large, perfectly full, of elegant form, and has a beautiful long bud; the colors make a very gorgeous effect; orange-yellow, bordered in carmine-rose.

**SAFRANO**—Bright apricot yellow, tinged with rose; valued for its beautiful buds.

**WHITE MAMAN COCHET**—Identical with Maman Cochet, except the color is white; very desirable. Best white rose grown.

**WELLESLEY**—Bright, clear, salmon-rose, reverse of petal silvery-rose.

**MALMAISON**—Rich, creamy flesh, changing to lovely fawn with rose center; very large, perfectly double.

**MAMAN COCHET**—One of the best. It is of strong, vigorous growth; the flowers are large, of perfect form and produced on long, stiff stems. Color deep rose pink, the inner side of the petals being of silvery rose.

**MARIE GUILLOT**—One of the standard varieties of Tea Roses; splendid for any use; especially desirable for summer rose beds; color pure white.

**MARIE VAN HOUTE**—A lovely rose; color white tinged with yellow; delicately shaded with pale rose on outer petals; full and double; sweet tea scent.

**METEOR**—A rich, velvety-crimson, bright and striking; a constant bloomer.



Mrs. B. R. Cant



Reine Marie Henriette, the Everblooming Climber.

## Climbing Roses

The Noisettes and Climbing Teas are included in this class, which is especially valuable in the South for covering porches, arbors, trellises and the like.

The plants obtain great luxuriance in our climate.

All nice, strong plants, well rooted, from 2½-inch pots. Price, 15c each; \$1.25 per dozen. Strong 2-year-old 50c each; \$5.00 per dozen, except where noted.

**AMERICAN PILLAR**—The flowers are of enormous size, three to four inches across, of a lovely shade of apple-blossom pink, with a clear white eye and cluster of yellow stamens. These flowers are borne in immense bunches. They last in perfection a long time, and are followed by brilliant red hips or berries, which are carried late into the winter. 20c; 2-year-old, 50c.

**AMOENA**—Pink flowering Cherokee. The color is a glowing pink with a golden yellow center. Resembles huge apple blossoms.

**CLIMBING KILLARNEY**—Climbing sport of the famous Irish Rose Killarney. Vigorous growth and free blooming. Identical with the parent, beautiful shell-pink color. Finely shaped buds. 20c; 2 years, 50c.

**CLIMBING METEOR**—A rich, velvety-crimson; very bright and striking; a continuous and profuse bloomer; very sweet.

**CLIMBING MAD. C. TESTOUT**—An exact counterpart of C. Testout, except that it is a very vigorous climber.

**CLIMBING WHITE MAMAN COCHET**—If there is one rose that stands out in the affections of the people more than another it is White Maman Cochet. Here we have a climbing form that will become as popular a climber as its parent has as a bush rose.

**DOUBLE WHITE CHEROKEE**—The famous Cherokee rose so well known in the South. Thornless, evergreen. Full, double flowers.

**DE. W. VAN FLEET**—Flowers when open run four inches and over in diameter. The color is a remarkably delicate shade of flesh-pink on outer surface, deepening to rosy-flesh in center. Flowers are full and double, delicate perfume.

**EMILY GRAY (H. W.)**—A yellow climbing Rose with glossy holly-like foliage. Buds are long and flowers of golden yellow large semi-double, produced singly and in clusters.



Thousand Beauties

**CLIMBING ROSES—CONTINUED**

**GARDENIA** (The Hardy Marechal Niel)—This rose has proven itself hardy in Virginia and Tennessee. It is deep cream-yellow of vigorous growth.

**HLAWATHA**—Flowers are produced in long, pendulous sprays. In color it is brilliant, ruby-carmine, with a clear white eye and a mass of golden stamens; strong, vigorous growth, with bright green, glossy foliage, which is retained all winter.

**LAMARQUE**—Pure white, with lemon-colored center; a good grower. An old favorite.

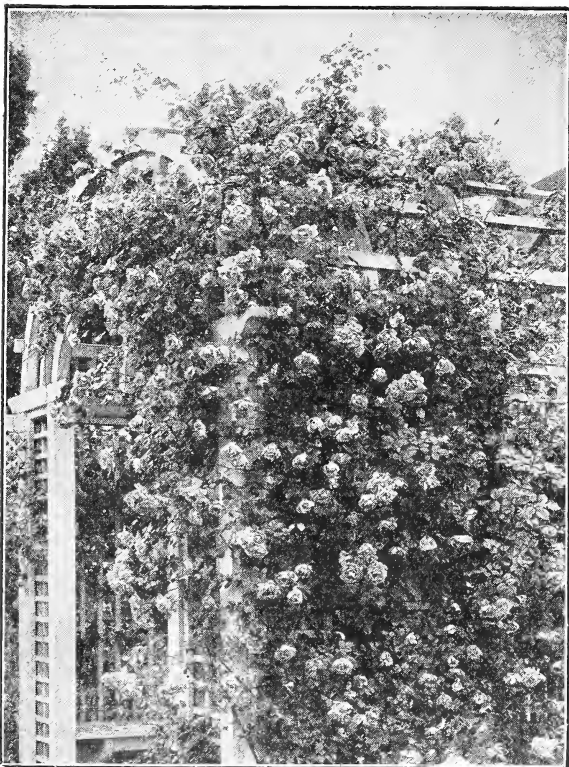
**MADAM JULES GRAVEBAUX**—A splendid rose of highest value. Makes long-pointed buds and extra large, double flowers of excellent substance. Color a pretty shade of chamois yellow, with rosy-peach center.

**MARECHAL NIEL**—The grandest rose of any kind or color. The immense size and dark yellow-golden color of Marechal Niel flowers are familiar to all. 15c, 25c, 35c and 50c, up to \$1.00 each.

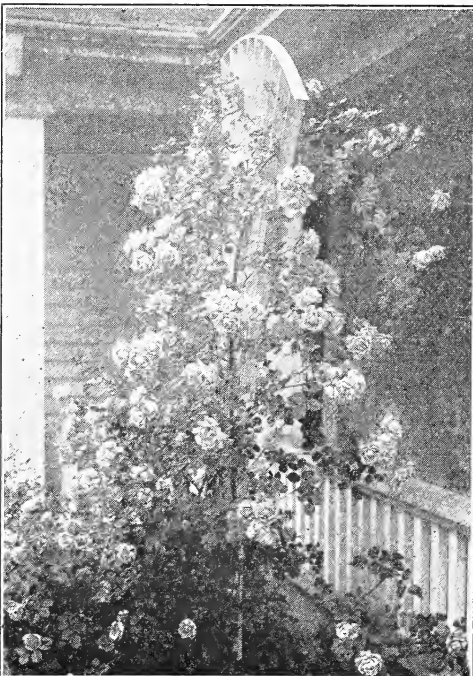
**CLIMBING MAMAN COCHET**—No Rose we grow is so popular as Maman Cochet. Here we have an exact counterpart of that popular variety, except that it is a vigorous climber. All will welcome this new Rose. Clear pink.

**CLIMBING AMERICAN BEAUTY**—A seedling from American Beauty with Wichuralana and Tea blood in its veins. Same color, size and fragrance as American Beauty, with the addition of the climbing habit. Good foliage and better blooming qualities.

**CLIMBING KAISERIN, or MRS. ROBERT PEABY**—A most remarkable rose of recent introduction. An offspring of that grand variety Kaiserin Augusta Victoria.



Climbing American Beauty.



Dr. W. Van Fleet.

**MARY WASHINGTON**—Flowers pure white, very sweet and produced in large clusters from early spring till frost. It is a strong grower and quite hardy.

**PAUL'S SCARLET CLIMBER**—Vivid scarlet, shaded crimson, makes a brilliant display for a long period of time in the garden. A wonderful new climbing Rose. Received the gold medal and cup for the best show climber at the National Rose Society's exhibit. Price, 20c each; 2-year-old plants, 50c.

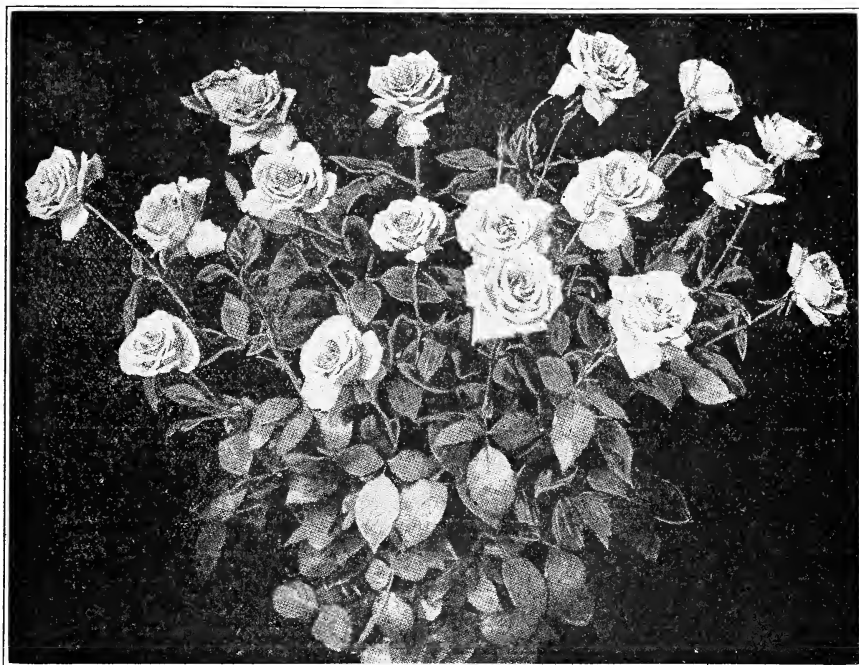
**REINE MARIE HENRIETTE**—Clear cherry red. A strong, vigorous grower and free bloomer.

**SILVER MOON**—Flowers very large,  $4\frac{1}{2}$  inches and over in diameter. Pure white in color; petals of great substance, beautifully cupped, forming a clematis-like flower. The large bunch of yellow stamens in the center adds to its attractiveness. These flowers are borne on strong stems 12 to 18 inches long, and are delicately scented. Is strong grower, with large, glossy, bronze-green foliage.

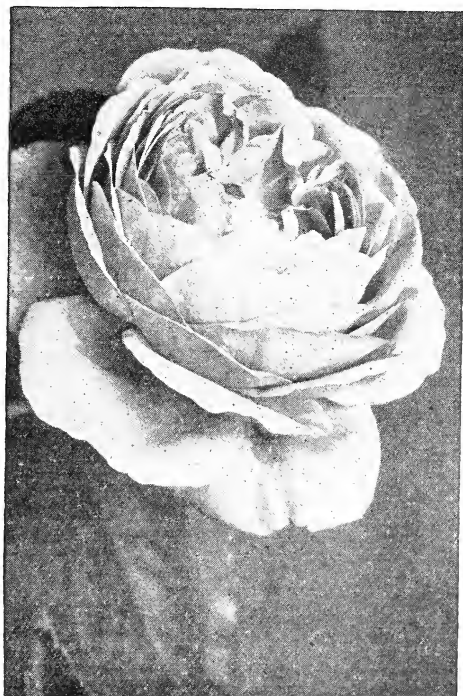
**SOLFATERRE**—Sulphur-yellow, large, full, handsome.

**TAUSENDSCHOEN, or THOUSAND BEAUTIES**—A beautiful new climbing Rose which has leaped into popularity by its inherent merit and beauty. The name, "Thousand Beauties" refers particularly to the wonderful variety of colorings found on any one plant. The flowers are soft pink at first, but as they age most beautiful shades of carmine- cerise, blush and soft white with a gleam of light yellow, soft crimson and intermediate tints; a combination of charming coloring, which is bewildering.

**WILLIAM ALLEN RICHARDSON**—Orange-yellow; outer petals lighter, center coppery yellow; strong grower; good bloomer.



White Maman Cochet—See page 8



Paul Neyron.

## Hybrid Perpetual Roses

All Roses of this class are perfectly hardy. The flowers are very double and of the most gorgeous and dazzling colors, but they do not bloom perpetually as their name would lead one to suppose. They will give one grand crop of bloom in the spring, and some sorts bloom occasionally in the summer and fall.

Price, from 2½-inch pots, 25c each; 2-year-old plants, 50c each.

**GENERAL JACQUEMINOT**—Crimson, scarlet; large, full; very fragrant; excellent.

**MAD. MASSON**—Flowers as large as American Beauty, and same color. A deep rose or bright red; highly perfumed; a constant and free bloomer. Fine.

**PAUL NEYRON**—Flowers immense; probably the largest rose grown, and one of the finest; color deep pink; very double and full; finely scented, with no suspicion of coarseness.

You will be thoroughly pleased  
with

### Jackson's Rosebushes

They are sturdy plants with fine root systems. You will be surprised and delighted with the beautiful blooms, too.



Golden Glory

## Chrysanthemums

### How An Amateur May Grow Chrysanthemums

It is a mistake to set out plants too early. The results at blooming time are great tall plants, inclined to be spindling and not of that sturdy, stocky nature which invariably produce the better blooms. Besides you have worked a month or more at your plants which is wholly unnecessary.

The first important step in growing potted Chrysanthemums is the proper preparation of the soil. One-third manure and two-thirds sod stacked together and rotted (must be thoroughly rotted), and run through a coarse sieve is best. To one bushel of this soil add a double handful of pure "bone-meal," one handful of lime and one of wood ashes, and you are ready for potting. Drainage is of utmost importance, for without it the surplus water will sour the soil, the root will decay, and all your labor will have been in vain. From April 15 to June 25, according to the locality, get good, healthy plants from some reliable florist and repot them at once in 3½ or 4-inch pots, and when the pots are filled with roots, repot into 6-inch pots, and from these when filled with roots, into 9 or 10-inch pots.

In making the final shift, leave 1½ or 2 inches of space at the top of the pot to receive water, and later on, when the buds appear, this space can be filled with manure to act as a stimulant. Immediately after the last potting, plunge your pots in the ground up to the rim, place your pots in rows 2 feet apart by 1 foot, and water only when it is needed. Never allow the soil to become dry enough to wilt the plant. With a soft cord fasten the plant to a small neat cane-stake plunged deep enough to make steady, and if the branches are inclined to fall over, tie around the plant a cord which will act as a hoop and keep it in shape.

If a bushy plant is desired, when the plant is about 6 inches high, pinch out the top, this will cause other branches to appear, and when these branches are 4 or 5 inches long, pinch the top out, and so on until July 15, when you must give the final pinching. At this season you can

begin to feed your plants with manure water, made by putting a shovelful of cow manure into a half-barrel of water. Give this once a week until the buds begin to form; then you can increase to twice a week. As the buds begin to swell, give it three times a week until the buds begin to show color; then give it once a week and as the buds begin to unfold withhold all stimulants. It should be said that soot water is good, given, say, once in two weeks in place of manure water.

Now to grow fine flowers on long stems, you must watch the plant, and as soon as the buds are large enough you must remove all as fast as they appear, except the largest and strongest bud on the end of each branch; also remove all growth that appears at the junction of the leaves, and fine, large flowers will be your reward. Disbudding should be done as soon as the buds are of sufficient size to do the work without injuring the one retained, and should be confined to the early hours of the day as far as possible, at which time the growth is more brittle and easily removed with the thumb and finger.

As to the plants grown in the open ground, it is best not to have it too rich; prepare as you would for your vegetable garden. In case you have some plants that have stood over winter and which come up in clumps, you must take them up and plant them, only one sprout in a place.

Let me tell you how I grow some of my finest blooms: I prepare the ground as above stated, and then plant in rows 2½ feet apart and 6 or 8 inches apart in the rows, and train plants to one flower each. Place stakes 1x1 inch thick and 4 feet high, 17 feet apart in the rows, and fasten to these stakes by giving a cord one turn around each stake. Three cords, 12 inches apart will be necessary, the first one 12 inches from the ground. Stretch them from one end of the row to the other, and tie the plants to these cords as fast as they grow up to them. Keep up a high state of cultivation, and water if



needed during dry, hot weather. When the buds appear take all off except one to each plant as fast as they appear, following directions for disbudding as given above. At this time give them manure water same as used for pot plants, about every ten days until they show color, then leave off the manure water, and use soft water. Watch for insects closely and at the first indication of them spray with tobacco tea to prevent them getting a strong foothold.

## Cream of the New Chrysanthemums

**BETSY ROSS**—One of the finest whites yet produced. Its perfect incurved form, purity of color and sturdy upright growth are qualities most essential. It produces a very high percentage of perfect blooms regardless of the date of planting. Maturing about November 5. Height, 4 feet from June planting. Date of bud, August 25. 15c.

**CORNETO**—An exhibition of the size and form of Mrs J. Leslie Davis and about the same shade of pink. An unusually fine Mum. Tall. 25c.

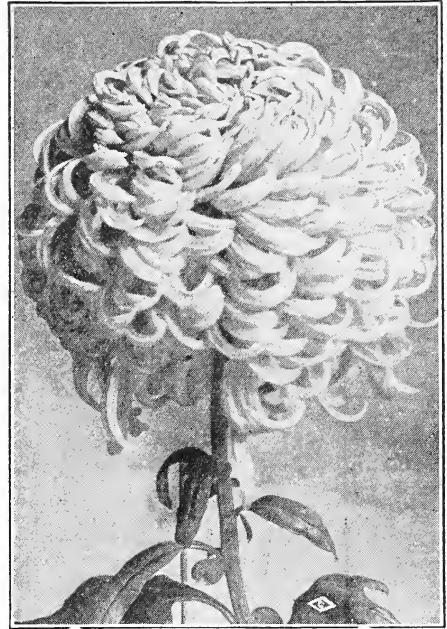
**CHADWICK IMPROVED**—A pure white sport from W. H. Chadwick. Japanese incurved. Height, 5 feet. Date of bud, September 15. 25c.

**FLORENCE PULLMAN**—A good commercial variety, snow white and perfect in form, round as a ball, of very fine finish; can be planted close; stiff stems, of moderate height. 15c.

**GLADYS PEARSON**—The upper surface of the petals is apricot and reverse buff, illuminating to bright orange. Strong grower, 5 feet from June planting. 25c.

**GOLDEN GLORY**—Bright golden yellow, slightly incurved. Early mid-season. Semidwarf, easy grower. Strong stems with foliage up to the flower. 15c.

**GOLDEN MISTLETOE**—A light yellow sport from Mistletoe. Height 5 feet. Date of bud, September 30th. 25c.



Vermont

**GOLDEN CHADWICK**—A yellow sport from W. H. Chadwick. By planting late this may be had for Thanksgiving. Height, 5 feet. Date of bud, September 15. 25c.

**GOLDEN KING**—A beautiful yellow of the finest, incurved form, producing massive blooms. Excellent stem and foliage. Height, 4½ feet. 15c.

**G. F. MOSEMAN**—Fine old favorite; crimson with gold reverse. 15c.

**HONEYDEW**—Brilliant canary-yellow; a fine addition in the yellow class; fine grower. Stiff stem, handsome foliage. Early mid-season. Incurved. 15c.

**MISTLETOE**—Blush white with strong, upright growth. Late. Date of bud, September 30. 25c.

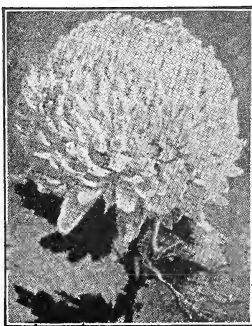
**MAJESTIC**—Buff bronze. Petals wide with pointed ends, forming reflexed, spherical bloom. Vigorous medium dwarf growth. Select bud August 20. 25c.

**MRS. J. LESLIE DAVIS (Pink Turner)**—It is absolutely identical with Turner in every respect except color, which is a clear lavender-pink. The growth and habit are a duplicate of the original parent and no other description is necessary. Pink Turner will find a premier place on its own merits. Height, 5 feet. 15c.

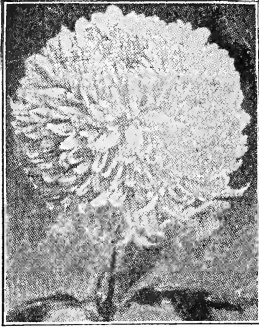
**MRS. O. H. KAHN**—A fine bronze; should not be overlooked by growers. Dwarf. Date of bud, August 20. 15c.

**MRS. G. M. PULLMAN**—Extra large, deep yellow, fine form and a prize winner wherever staged. 25c.

**MRS. WOODROW WILSON**—Fine, incurved early white; tremendous in size and every bud produces a perfect flower. Take bud August 5th to September 1st. Height, 4 to 5 feet. 25c.



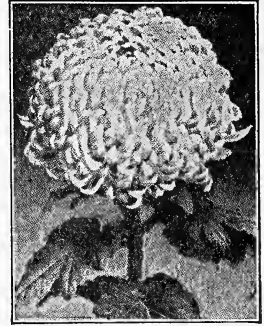
Rose Perfection



Towantic



Nagirroo



Gladys Pearson

**NAGIREOC (Golden Champion)**—Finest exhibition bronze; color, deepest glowing orange bronze, 45 inches in circumference; every petal reflexing showing the color to the best advantage. Every bud makes a splendid flower. Stem and foliage perfect. Any bud after August 15th. 25c.

**NERISSA**—Bright, rosy mauve. Fine form and stiff, upright growth, with rigid stem. 15c.

**NAGOYA**—Fine late yellow; can be grown for Thanksgiving if desired. 15c.

**ROSE PERFECTION**—A seedling from Chieftain. Is brighter and more constant in color. Can remain uncut after full maturity without impairing its beauty. An easy grower, maturing the first week in November. Bud about September 10th. 15c.

**SMITH'S ENCHANTRESS**—The color is bright rose pink of a very even shade. Produces a higher percentage of fine blooms than any other early pink. Select early September bud. 15c.

**SMITH'S SENSATION**—A fine variety of soft cameo-pink. This flower is composed of an immense mass of feathery, incurved petals. Mid-season. 25c.

**SUNGLOW**—A bright yellow of the Maj. Bonaffon type, producing a high percentage of perfect blooms. Select buds August 15 onward. Matures about October 25. 25c.

**TIGER**—There is no yellow which possesses so many points of excellence, especially for those who cannot give the highest state of cultivation. It is always double with very sturdy stems; a good bright yellow regardless of date

of planting or when the bud is selected. Date of bud, September 5. 15c.

**TOWANTIC**—An excellent pure white of fine incurved form, excellent stem and foliage. 25c.

**VERMONT**—It is a most welcome addition to our exhibition list of pinks. The flowers are of enormous size reminding one very much of the old variety M. L. Rosseau. Every bud produces a perfect flower and we feel sure Vermont will rank as one of the very best pink varieties in cultivation. Bud August 1st to 15th. Height, 5½ to 6 feet. 25c.

**THANKSGIVING PINK**—Strong grower. A late, dark rose pink for Thanksgiving use. 15c.

**WM. TURNER**—This variety has created a sensation as exhibited at several shows. Makes a perfect ball of the purest possible white. 15c.

**WHITE FRICK**—Identical with Helen Frick, excepting in color it is snow white. One of the best. 15c each.

**WHITE SURPRISE**—White as the name implies. We are certain this variety will become a peer among the Thanksgiving white, occupying the same exalted place as Betsy Ross among the mid-season. The growing plants are red-stemmed with wonderful tenacity when mature, and small, dark green foliage. Four to 4½ feet, maturing November 20 from buds selected September 20. 25c.

**YELLOW WM. TURNER**—Same as Wm. Turner, its parent, except that it is a beautiful lemon yellow. A monster. 15c.

## New, Scarce and Desirable Chrysanthemums

Plants in this list 10c each; \$1.00 per dozen. Our Selection, not labeled, 15 for \$1.00.

**CHIEFTAIN**—A beautiful incurving pink of perfect shape. Perhaps the finest incurved pink commercial variety in cultivation today.

**CHRYSOLOBA**—This new variety can be briefly described as an early Col. D. Appleton, coming in fifteen days earlier; is of larger size, stronger stem, not quite as tall and in color is intermediate between this variety and Major Bonaffon. Best buds are those selected August 1st to 15th.

**CHAS. RAGER**—Flower nicely incurving in form; pure snow-white with a grand stem, and foliage as handsome as "Eaton;" a very easy doer.

**COL. D. APPLETON**—A large Japanese incurved yellow, of fine finish and form. The color, a deep yellow, is of an even shade. Excellent stem with foliage to the flower. Mid-season.

**CALUMET**—One of the very finest exhibition bronzes; large bloom, perfect in form and one of the easiest doers.

**DR. ENQUEHARD**—A beautiful true pink, without the slightest trace of purple. Stem and foliage perfect. Equally valuable for exhibition or commercial purposes. Perfectly double.

**GOLDEN QUEEN**—Fine, incurved yellow; form very double from any bud; a suggested improvement on Golden Glow.

**GOLDEN WEDDING**—Richest golden yellow, intense and dazzling in color.

**GLENVIEW**—An enormous incurving globe of dark bronze and clear red. Dwarf grower with stiff stem; easy doer; a magnificent sort for exhibition or for commerce, as the color is very pleasing.

**HARVARD**—A particularly attractive flower and fine for exhibition; color is very dark crimson; grand stem and foliage. November 15th. Good from any bud.

**LYNNWOOD HALL**—Pure white. One of the largest in size; perfectly incurved.

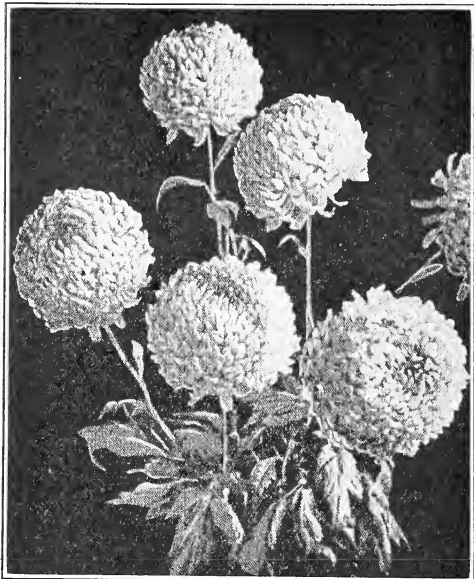
**MRS. E. A. SEIDWITZ**—A very late variety, of beautiful incurving form, quite full, brilliant pink, good enough to follow Chieftain. It is a fine addition to the list of commercial varieties. Flowers November 15th and later.

**MARIGOLD**—A monster yellow; flower unsurpassed both in size and color in its season; our first flowers of this variety were cut October 5th this year. Must be secured on an early bud.

**MAJOR BONNAFFON**—Grand, incurved yellow of large size, full to the center; stem dwarf and erect.

**MISS HELEN FRICK**—A pure soft pink. Very perfect shades; very perfect in form. Grand Thanksgiving variety.

**MEUDON**—An immense flower of bright pink. Habit of plant absolutely ideal. One of the strongest growers we have ever sent out. Dwarf grower, with beautiful foliage right up to the flower. Bud August 20th.



Honeydew (Page 13)

**OCONTO**—Very popular as an early mid-season white. The large blooms are produced on strong upright stems. Height, 4 feet. Date of bud, August 25th.

**ODESSA**—A seedling from Merza, but much freer in growth and better in every way. Splendid incurved form, bright-yellow. It eclipses all the yellows in size and finish. Equal to William Turner. Tall. Date of bud, August 30th.

**PINK PATTY**—A beautiful Enchantress pink, which is permanent in color. Vigorous grower, yet of dwarf habit. Height, 2½ feet. Date of bud, August 25.

**RICHMOND**—A new golden yellow; noticeable for its long blooming season, fine form, perfect fullness and silky finish.

**ROMAN GOLD**—From September buds; a Japanese incurved and darker yellow. From August bud it produces a large reflexed flower, very suitable for exhibition tables but not so intense in color. Best bud for August 15th.

**SNOW WHITE**—Large, incurved white. Good form, stem and foliage. An easy doer. Early.

**SILVER WEDDING**—Purest white, very broad petals reflexed, forming a bold, handsome flower. Equal to all the yellows in size and finish.



Improved Hardy Chrysanthemums

## Improved Hardy Garden Chrysanthemums

Splendid collection in Red, White, Pink, Bronze and Yellow. Both pompons and singles. Price, not labeled, 10c each; \$1.00 per doz.; \$6.00 per 100.

# Geraniums

## Double and Semi-double Varieties

15c each; \$1.25 per dozen.

**ALPHONSE RICARD**—Large, semi-double flowers of bright vermilion; borne in enormous trusses, on long flower stems. Continue in bloom the entire season.

**BEAUTE POITEVINE**—One of the best semi-double bedders among the light salmon shades. The color is a beautiful shade of shrimp pink, delicately shading to white.

**DOUBLE GEN. GRANT**—A vigorous grower, free blooming, splendid foliage, large trusses, color intense orange-scarlet.

**EDMOND BLANC**—One of the most handsome and brilliant Geraniums; color is a bright carmine shaded around a white eye, and on upper petals with bright scarlet.

**HELEN MICHELL**—The most brilliant and finest scarlet Geranium ever put on the market. The blooms are gigantic, the number of flower heads on the individual plant is remarkable.

**JEAN VIAUD**—An attractive, bright, clear shade of mauve rose, fading to a distinct white throat. The flowers are large and trusses enormous, sometimes measuring six inches in diameter.

**LA FAVORITE**—One of the finest double whites in this class; pure in color. Unsurpassed as a white bedder.

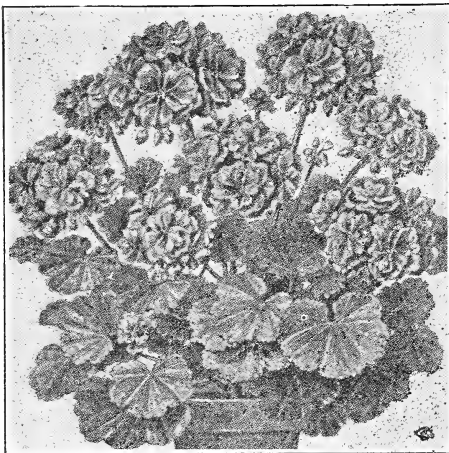
**MARQUISE DE MONTMOET**—Deep crimson-carmine; a very novel and beautiful shade.

**MISS F. PERKINS**—An exquisite shade of deep rose pink with a distinct white throat; large, handsome flowers.

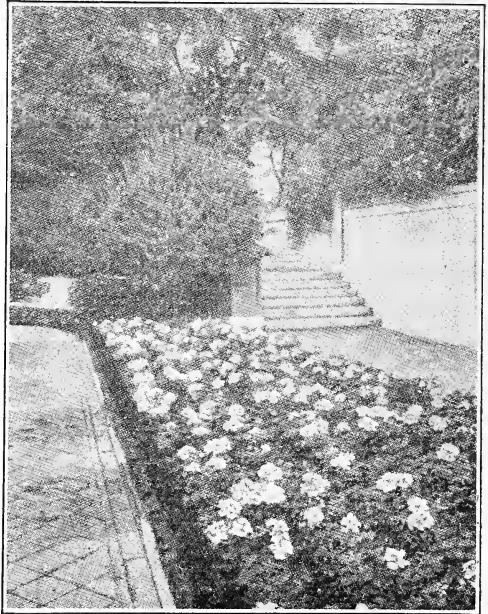
**MME. JAULIN**—Color delicate peach pink, shading to a shade of Daybreak pink in the center.

**MME. LANDRY**—Distinct salmon pink, with slight shading of scarlet; habit semi-dwarf, vigorous, broad, heavy deep zoned foliage. It has all the best points of a Bruant Geranium.

**MRS. LAWRENCE**—Without exception, the finest geranium of this color; clear, healthy foliage; splendid dwarf, compact habit of growth; wonderfully free flowering; indispensable as a pot plant, being strongly recommended for winter blooming. The color is an artistic shade of bright satiny salmon-pink, slightly tinged white.



S. A. Nutt



La Favorite

**M. ANATOLE ROSELEUE**—A most beautiful shade of deep rose pink, rivaling in beauty and freshness the color of the Paul Neyron rose. The flowers are large, semi-double, showing a distinct white center, enormous trusses, borne on long stems well above the clean extremely handsome foliage.

**S. A. NUTT**—This is a standard dark red geranium, more generally used than any other, both as a pot plant and for bedding. Brilliant deep scarlet, with maroon shading.

## Single Varieties

**GRANVILLE**—A fine bedding variety, with large flower trusses. The color is a clear pink. One of the best.

**JEAN PABON**—Robust and free-flowering, enormous trusses held well above the foliage; grand round flowers, blood red color, small white eye.

**MRS. E. G. HILL**—The center of each petal is a soft light salmon, bordered with rosy salmon and veined deep rose. Frequently throws six petals. Resembles a rare begonia bloom more than a geranium.

**NUIT POITEVINE**—A remarkably strong and vigorous variety, which we have no hesitation in recommending to those who wish a handsome dark single geranium; color beautiful rosy-purple; lower petals feathered rich scarlet; splendid habit and growth.

**PAMELA**—Immense round flowers, with a large, pure white center shading through a manipulated effect to a broad distinct outer margin of crimson-lake.

## Ivy Leaved Geraniums

Price, 15c each; \$1.50 dozen.

**GARDEN GLORY**—Double. Fine deep scarlet; best red.

**SOUV. DE CHAS. TURNER**—Deep bright carmine pink; full and double; fine.

## Scented Geraniums

10c each; \$1.00 per dozen, except where noted.

**APPLE SCENTED**—An old favorite. A plant of it will fill a room with its delicious odor, which is precisely like the fragrance of apple blossoms. 15c.

**LEMON SCENTED**—Small leaves strongly scented.

**BALM**—Large flowers, upper petals light lilac, lower petals dark; large leaves with very strong fragrance.

**NUTMEG**—Very fragrant.

**OAK-LEAVED**—Shape of oak leaf; almost black.

**ROSE**—The old fragrant variety. Always a favorite.

**STAGHORN**—Finely cut foliage; strongly scented. 15c.

## Peonies

We offer strong, healthy, quick-blooming Peonies in the very best kinds. Peonies do best in soil put in condition of good rich garden soil. If clay soil, or mixed with clay, so much the better. Fertilize with thoroly rotted cattle manure, thoroly mixed and spaded into the soil 2 feet below the surface. Then in the top foot of soil, mix liberal quantity of bone meal. Having thus prepared your bed, plant the divisions so the eyes will be 2 or 3 inches below the level of soil. Keep them well cultivated which will do more good than further frequent fertilizing. If these directions are carried out the result will be most satisfactory. Plant during Fall and early Spring.

**FELIX CROUSSE**—Most reliable red peony for the South. Vigorous grower. Late. Fine form and color.

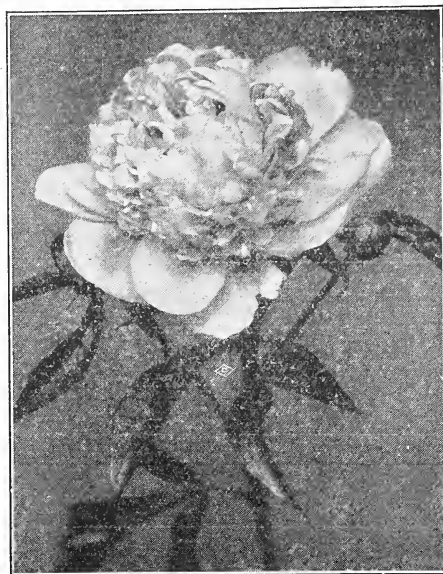
**EDULIS SUPERBA**—One of the best early pinks. Crown type.

**FESTIVA MAXIMA**—Very large. Pure white, flecked crimson. Early. Rose type.

**QUEEN VICTORIA**—Midseason white. Ignores abuse. Buds in clusters. Very old and reliable variety. Bomb type.

All four varieties are very fragrant and free blooming. 50c each; \$5.00 dozen.

**UNNAMED PEONIES**—In separate colors, pink, white and red. 35c each; \$3.50 dozen.



## Gladioli

Price, 10c each; 3 for 25c; 75c per dozen.

**AMERICA**—A most popular Gladiolus. Immense spikes, color delicate peach-blossom pink.

**HALLEY**—An extra early bloomer with large open flowers. Color delicate salmon-pink. One of the best.

**MRS. FRANCIS KING**—A most beautiful flame-pink with vermillion shading. Immense flowers in spikes, 3 to 4 feet high. A magnificent variety.

**MRS. FRANK PENDLETON**—A spectacular variety producing large well expanded flowers. Light pink, heavily blotched with blood-red on lower petals. One of the most beautiful varieties.

**WILBRINK**—Immense blooms of a delightful flesh pink, on a graceful spike. An early and profuse bloomer. A few spikes make a splendid decoration.

## General Collection of Plants

### Asparagus

No other green mingles with cut flowers as well as Asparagus.

**PLUMOSUS**—An excellent plant for window culture, the lacelike texture of the foliage excelling that of Maiden Hair Fern in grace and daintiness. It is fine as a pot plant, and in floral decorations and sprays is almost indispensable. Price, 10c, 25c and 50c.

**SPRENGERI**—Useful for fine cut flower work with roses, etc. Pretty decorative house plant. Fine for hanging baskets. Price, 10c, 25c and 50c.

**TENUISSIMUS**—We cannot praise too highly this beautiful plant. If desired it can be grown like smilax or on a trellis; a great acquisition for decorative purposes or cut flower work. Price, 15c, 25c and 50c.

### Achillea Alba (The Pearl)

**THE PEARL**—A hardy perennial. Its flowers are perfectly double, pure white and are produced in great profusion throughout the summer. Valuable for bouquets and designs. Also unsurpassed for cemetery planting. 10c each; 7 for 50c; 75c per dozen.



Asparagus Plumosus



Acalypha Tricolor



Acalypha Sanderi

### AGERATUM

For a border in a beautiful shade of blue, or in your porch boxes, plant Ageratum. It blooms the summer long. For description see this page.

### Alternanthera

Price, 10c each; 75c per dozen; \$3.50 per 100.

Beautiful dwarf plants of compact habit, growing about six inches high, admirably adapted for edgings, beds or ribbon lines. Attractive and ornamental.

**AUREA NANA** — Bright golden-yellow and green.

**BRILLIANTISSIMA**—Crimson scarlet and pink. Its gorgeous color gives it the name of "Rain-bow Plant."

### Achyranthus

**ACHRYANTHES**—Yellow variegated crimson, also the deep solid crimson. Fine for baskets, vases and boxes. 10c; 75c doz.; \$3.50 per 100.

### Acalypha (Chenille Plant)

**SANDERI**—This is the most sensational new plant introduced for many years, and very ornamental. It is of strong, free growth, with large, dark green leaves, from each axil of which rope-like racemes of velvety crimson flowers, 1 to 2 feet long and nearly 1 inch thick, are gracefully suspended. 10c, 25c and 50c. (See cut.)

**TRICOLOR**—Foliage broad, mottled, and blotched crimson scarlet and rose; always of bright color; neither fades nor burns during our warmest weather; bushy plant; fine bedder. (See cut.) 10c, 25c and 50c.

### Ageratum

**STELLA GUERNY**—Compact, even habit; color a fine, deep blue, and literally a sheet of bloom the entire season; finely adapted to winter blooming in the window-garden or conservatory. Price, 10c each; 75c per doz.; \$4.00 per 100.

### Aloysia Citriodora

**LEMON VERBENA**—A well-known plant, noted for its delightful fragrance; indispensable for bouquets. Each, 15c; per doz., \$1.25.

### Alyssum

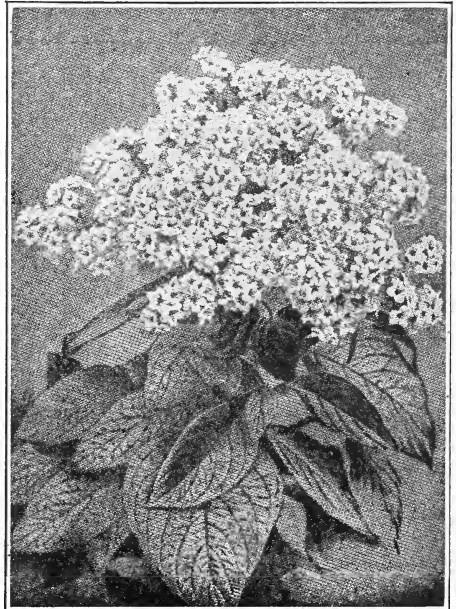
Similar to the single variety, but far preferable. 10c each; 75c per doz.

### Asters

Separate or Mixed Colors, White, Blue, Pink and Crimson. 75c per doz.; \$4.00 per 100.

### Abelia

**ABELIA GRANDIFLORA**—Beautiful, satisfactory broad-leaved evergreen. Graceful, drooping stems and branches are covered with dark, glossy leaves which in winter assume a metallic sheen. From the middle of May until frost this plant produces an immense quantity of small bell-shaped white flowers borne in clusters. During the growing season it is advisable to pinch off the ends of the long shoots. This will make the plant dense and compact. For single specimens or for massing we strongly recommend this plant. Hardy. Price, 25c and 50c each.



Mad. Bruant Heliotrope—See page 25.



Beefsteak Begonia



Begonia Ione

### Begonias—Flowering Varieties

**ALBA PICTA IMPROVED**—Same as *Alba Picta* except that it has larger foliage and flowers which are twice the size of the old one. This fine variety originated here with me many years ago and has proved worthy of a place. 10c and 25c.

**ARGENTA GUTTATA**—An elegant begonia. Rich green leaves, spotted with silver; produces white flowers in bunches, on ends of growth stems; very handsome. 10c and 25c.

**BEGONIA, IONE**—This beautiful little gem originated with me, and attracts more attention than anything in my houses on account of its beautiful compact form and pretty blooms. The foliage is a glossy-green, touched with orange, flowers pink—an entirely new shade of begonia. A true everbloomer, being entirely covered with blooms all the year. 15c, 25c and 50c.

**CORALLINA LUCERNA**—Immense trusses of bronzy red flowers. Blooms almost continually. This is the choicest of the flowering type. 25c and 50c.

**FEASTII** (Beefsteak Begonia)—The old-fashioned "beefsteak" Begonia. Thick, rounded leaves of deep green, with red on reverse side. 15c, 25c and 50c.

**GLOIRE DE CHATELAIN**—There is no equal to it as an outdoor bedder; very prolific bloomer. It is continually covered with large rosy-pink flowers, a good substitute for *Cincinnati* as a Xmas pot plant. 15c and 25c.

**GRACILIS LUMINOSA**—As the name implies, it is one of the most symmetrical and yet graceful plants we have ever known; very strong and robust, but still keeping its shape so as to make a very attractive winter house plant. Its foliage is rich glossy green, often shaded deep bronze. The flowers, when first opening, are bright cherry, changing to a clear coral red. 10c, 25c and 50c.

**MANICATA**—Large smooth, bright green leaves, hairy on stem and under side of leaf; large panicles of pink flowers high above the foliage; a strong grower and one of the best of recent introductions. 10c and 25c.

**MCBETHII**—Foliage fern-like and distinct from other begonias. Flowers of waxy texture. 10c, 25c and 50c.

**EDWARDSONII**—Flowers white, foliage finely cut. 10c and 25c.

**RUBRA**—A magnificent Begonia. Bright, clear red in large trusses; beautiful, attractive, handsome glossy foliage; constant bloomer. 15c, 25c and 50c.

**THURSTONII**—A beautiful stately plant with remarkably handsome glossy foliage. The under side of the leaves is a rich purplish red, the veins very prominent, while the face or upper side is a bronzy-green, shaded with crimson and olive, with a peculiar glossy metallic luster over all. Flowers rosy-white, in large clusters well above the foliage. 10c and 25c.

**MAPLE BEGONIA**—The old original kind with pink flowers. 15c, 25c and 50c.

**METALLICA**—A fine erect-growing Begonia, with dark, rough leaves. The surface is a lustrous bronze-green with a metallic hue; flowers pure waxy-flesh. 10c and 25c.

**MME. DE LESSEPS**—A decided improvement on *B. Argenta Guttata*, the leaf being four times the size seen in that variety, while the silky texture is the same. It is beautifully spotted with silver. A very strong, free-growing variety; will succeed with ordinary care. 10c, 25c and 50c.

**NITIDA ALBA**—A strong growing, profuse blooming variety, producing immense panicles of pure white flowers, standing well above the foliage. 10c, 25c and 50c.

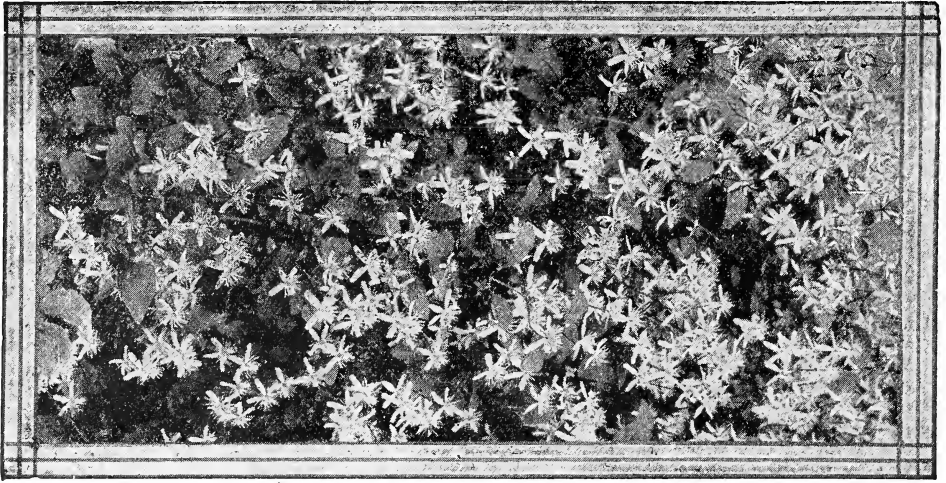
**OTTO HACKER**—In a class by itself. A strong vigorous grower, of fine upright habit, with large shining deep green leaves eight to ten inches long. Flowers bright coral red, borne in immense clusters eight to ten inches across. 25c and 50c.

**PRESIDENT CABNOT**—A strong growing variety of stiff, upright habit; foliage large, somewhat in style of *B. Rubra*, but more than twice as large; upper side deep green, under side purplish red; flowers beautiful coral red, in pendant panicles. 10c, 25c and 50c.

Due to frequent losses and delay in the Parcel Post system, we can recommend shipping only small orders by mail. See "Mail," page 1.

**CHATELAIN SUPREME**—A flowered pink, free branching, and always in bloom. Grand pot plant that will thrive under ordinary dwelling room treatment. 25c and 50c.

**BEGONIA REX** (Ornamental Leaves)—This class, with so many of the shades combined with an endless variety of markings and richness of color, stands unrivaled for beauty and elegance. Price, 25c. Large 3-inch pot plants. 50c.



Spray of Clematis Paniculata

### Buddleia

**"BUTTERFLY BUSH"** (Summer Lilac)—One of the most admired and sought after shrubs in the trade. Of quick bushy growth; when the lovely bloom-spikes appear in July, the shrub which had probably died down nearly to the ground during winter, is now a perfect specimen of about five feet; radiating a delightful perfume and glowing with the tints and flow-ershapes of the Spring Lilacs. 10c; \$1.00 per doz.; 4-in. pot size, 25c; \$2.50 doz. Open ground plants, 50c and 75c.

### Coleus

These make the showiest and cheapest bedding plants we have. There is such an endless variety in their color and markings that, with a little taste in planting varieties, the most gratifying results can be obtained at a trifling cost. They are easy of cultivation and make fine specimens in a very short time. Plants should be set about a foot apart, so that it is easy to figure out how many plants are needed. We grow them in large supply of best sorts. 10c each; 50c per doz.; \$3.50 per 100.

### Trailing Queen Coleus

An excellent variety for hanging-baskets and vases on account of its trailing habit; center of leaves fiery crimson surrounded with deep maroon; deeply serrated edges of bright olive-green. 10c each; 50c per dozen; \$4.00 per 100.

### Yellow Trailing Queen Coleus

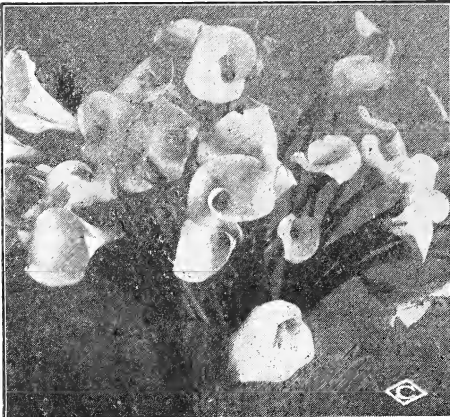
Same as Trailing Queen except center of leaves a bright yellow bordered with olive-green, with deeply serrated edges intermingled with yellow. 10c each; 50c per doz., \$4.00 per 100.

### Clematis Paniculata

The flowers are pure white and are borne in great panicles or clusters of bloom, fairly covering the plant, so that it is a mass or sheet of fleecy white. The fragrance is delicious, resembling the English Hawthorne blossom. It begins to bloom early in August, when other hardy climbers are out of bloom. Grows quickly and strongly, reaching a height of 15 to 20 feet. Hardy in all sections of the country. There is no better hardy vine. Strong plants, in pots, 15c each; 50c for 4; 2-year-old plants now in pots, 25c each; \$2.50 per doz.

### Callas

**CALLA ETHIOPICA**—Lily of the Nile. Blooming plants, \$1.00 and \$2.50 each.



Calla Lily

## Coleus and Cannas

Make very beautiful flower beds either for foundation planting or circular beds in lawn. Plant the cannas in back with the Coleus in front of them.

**Our Plants Are Well  
Rooted**





## Cannas

In beds, borders or foundation plantings, the Cannas are indispensable on account of their beauty and low cost.

### New Dwarf French Cannas

Few flowering plants combine so many good qualities as the modern cannas. Nothing equals their combination of bloom and tropical effect, and the low prices, for the very choicest, place them within the reach of all.

**ALLEMANIA**—A splendid variety. The outer petals are bright scarlet with a broad yellow border, the inside colors being scarlet and dark red, beautifully mottled and variegated. Height 5 feet. Dormant roots. 10c each; \$1.00 doz. Started Plants, 25c.

**AUSTRIA**—Grows to 6 feet high, with leaves 15 to 18 inches broad. Flowers 6 to 7 inches across; color pure golden yellow; a vigorous grower. 10c each; \$1.00 doz. Started Plants, 25c.

**CITY OF PORTLAND**—3½ ft. Glowing pink, deeper in color than its parent, Mrs. Alfred F. Conrad; profuse bloomer. 15c each; \$1.50 doz. Started Plants, 25c.

**EUREKA**—In our opinion the best white-flowered Canna. The immense trusses of substantial flowers are borne upon very vigorous plants in greatest profusion. 4½ ft. 15c each; \$1.50 doz. Started Plants, 25c.

**GLADIATOR**—The big, round flowers of bright yellow petals are thickly spotted with pure crimson, smaller center petals are solid crimson, rich and glowing; blooms profusely. Heads are unusually large and borne on large strong stalks, with tough, deep green foliage. Gladiator will stand the storms much better than any other canna. Height 4 to 5 feet. 15c each. Started Plants, 25c.

**HUNGARIA**—Flowers large, in good-sized trusses, freely produced. The color is a beautiful rose-pink, which has been compared to that of the Paul Neyron Rose. It impresses one with its refinement. 3½ feet. 15c each; \$1.50 doz. Started Plants, 25c.

**KING HUMBERT**—Has flowers as large as the largest of the orchid flowering cannas. Bright orange-scarlet, streaked with crimson. Foliage

is bronze with brownish-green stripes, large, thick and leathery. A strong, robust grower. Height 4 feet. 15c each; \$1.50 doz. Started Plants, 25c.

**MRS. ALFRED CONRAD**—The best pink canna ever introduced and unsurpassed for planting either singly or in large beds. The exquisite salmon-pink flowers are of largest size and so freely produced as to keep up a superb showing for months. 4 feet, 20c each; \$2.00 doz. Started Plants, 25c.

**STATUE OF LIBERTY**—6 to 7 ft. Foliage bronze and half as large again as its nearest rival. Color, flame red. Price, 25c; \$2.50 doz. Started Plants, 40c.

**THE PRESIDENT**—The flowers are produced in immense trusses of the most brilliant red. It possesses all the good points of Fire Brand enhanced by extraordinary vigor and perfectly healthy foliage. 15c; \$1.50 doz. Started Plants, 25c.

**WINTZER'S COLOSSAL**—Colossal indeed are the flowers and bloom-heads of this magnificent Canna. The effect produced by the vivid scarlet flowers is very striking. It is the largest-flowered Canna yet introduced, also the earliest, most persistent, and most prolific bloomer. 15c each; \$1.50 doz. Started Plants, 25c.

**WYOMING**—A beautiful Orchid-flowering variety, with rich purplish bronze foliage. Flowers are large as King Humbert, and of good substance; bright orange, slightly rimmed and flaked with rose. 15c each; \$1.50 per doz. Started plants, 25c.

**YELLOW KING HUMBERT** (Queen Helen)—This is a sport of the well-known bronze-leaved variety, but this sort has green foliage; makes an attractive, symmetrical plant, growing about 4 feet high, surmounted with masses of golden yellow flowers, dotted red; occasionally some will be streaked red. It is of strong, vigorous habit, and makes a splendid variety to bed with the bronze-leaved King Humbert where a combination of red and yellow is wanted. 15c each; \$1.50 doz. Started Plants, 25c.

## Carnations

Price 15c each; \$1.50 per dozen.

The great improvement made in this grand race the past few years has directed popular attention to them until now they are exceeded by the rose alone in the number annually grown for cut flowers. Our collection contains only sorts of approved merit and our plants are in the finest possible condition.

**BEACON**—Fine scarlet variety, in front of the class of "reds." The color is brilliant and a variety of strong, sturdy growth; a very free blooming sort.

**ENCHANTRESS**—A beautiful shade of light pink, deepening towards the center. Immense, attractive flowers.

**ROSE PINK ENCHANTRESS**—A pure clear pink flower without markings, having the extra large size and other good qualities of Enchantress.

**WHITE ENCHANTRESS**—This needs no further description than to say that it is just what its name implies, a white sport from Enchantress.

## Cineraria—White Leaved

**DUSTY MILLER**—These are called "Dusty Millers." Fine for bedding, ribbon-beds and margins; prized for their beautiful downy, silvery foliage; half hardy perennials. 10c each; 3 for 25c; 75c per doz.; \$5.00 per 100.

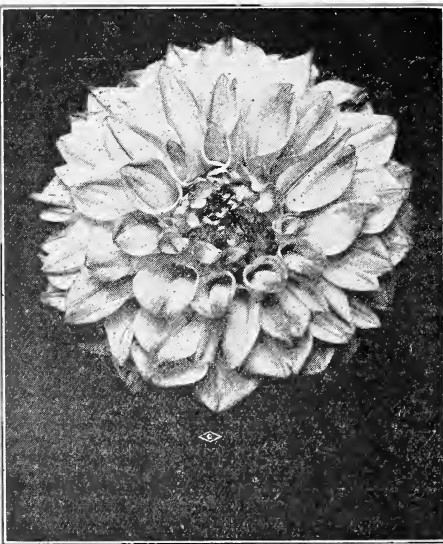


## Cissus Discolor

A well-known climber, with leaves shaded dark green, purple and silver, the upper surface of the leaf having a rich, velvet-like appearance. In a warm place it is an extremely handsome and notable plant. Eight of these vines, planted as late as July 15th, completely covered my veranda and was the admiration of the whole town. Price, 15c; \$1.50 per doz.

# Jackson's Dahlias

Plants Ready April, May and June. Dahlias are Fall flowers; the later you can reasonably set them out the finer blooms you produce in the Fall, besides saving a month or more of unnecessary labor and care.



Mrs. I. de Ver Warner

## Select Dahlias

**ALASKA**—One of the very finest white decorative dahlias. Flowers of large size, finest form and borne erect on rigid stems. Exhibition or cut flower. Bulbs, 35c; plants, 15c.

**A. D. LIVONI (Show)**—Beautiful, soft pink, with quilled petals. The standard pink for cutting. Bulbs, 25c; plants, 10c.

**AYESHA (Show)**—A wonderfully handsome, clear light yellow dahlia, that has attracted great attention. The flowers are of immense size; beautiful regular form, with large shell-like petals, and borne on long stiff stems. The plant is a strong, vigorous grower and a most profuse bloomer. Excellent for garden, exhibition and commercial purposes. Bulbs, 35c; plants, 15c.

**ATTRACTION (Cactus Type)**—The real flower and the habit of the plant must be seen to fully appreciate this splendid variety. The flowers measure invariably over 6 inches in diameter and are made up of gracefully twisted petals still uniform in shape; an exquisite shade of orchid. Bulbs, 50c; plants, 25c.

**BESSIE BOSTON (Decorative)**—Cardinal red. Bulbs, 35c; plants, 15c.

## Dahlias—Continued

**BIANCA (Hybrid Cactus)**—Of large size and splendid form. Color is beautiful rose-lilac with white shadings and bloom is held erect on strong, stiff stems. Free-flowering. An early and continuous bloomer. 35c; plants, 15c.

**BREAK O'DAY (Hybrid Cactus)**—A new giant flowered Dahlia that should be in every collection. Its immense size is relieved by a beautiful irregular formation and its soft color. A delicate clear sulphur yellow, tinting to sulphur white at the tips. The petals are of great substance, illuminated by a satiny sheen, giving the flowers a waxy appearance. A strong vigorous grower and free bloomer with long erect stems. An acquisition. 35c; plants, 15c.

**COUNTESS OF LONSDALE (Cactus)**—A pleasing blend of salmon, pink and amber; the freest bloomer of all the Cactus Dahlias. Bulbs, 25c; plants, 10c.

**CUBAN GIANT (Show)**—Very large ball shaped flowers of a bright maroon, free and early. 25c each; plants, 15c.

**CIGARETTE (Hybrid Cactus)**—Very fine scarlet-tipped white; fine flowers erect on stiff stems. An early, free and continuous bloomer. Plants only, 35c.

**DR. TEVIS**—Bronzy old gold, shaded and suffused violet rose. Fine, exhibition flowers borne on erect stems. Bulbs, 50c; plants, 25c.

**DELICE (Decorative)**—A beautiful new shade of pink; large flowers on long, rigid stems. 35c; plants, 15c.

**EMMA MARIE**—Splendid variety of real merit. Deep rose, tinting to cream at center. Flowers large, with full high centers, borne erect on stiff stems. An early and free bloomer. Plants only, 50c.

**GEISHA DUFLEX (Peony Dahlia)**—Cerise shading to white center, graceful drooping stems; vigorous grower. Bulbs, 35c; plants, 15c.

**GEORGE WALTERS (Hybrid Cactus)**—Another large flowering Dahlia with extra strong stems. Color, salmon and shrimp-pink shades. 35c; plants, 15c.

**GRAND DUKE ALEXIS (Show)**—White, quilled, slightly shaded lavender. 35c; plants, 15c.

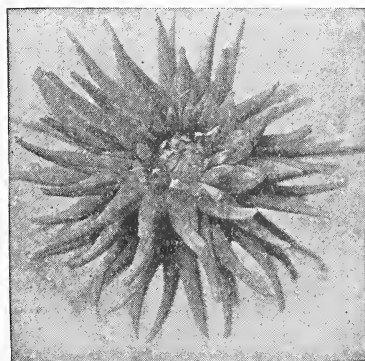
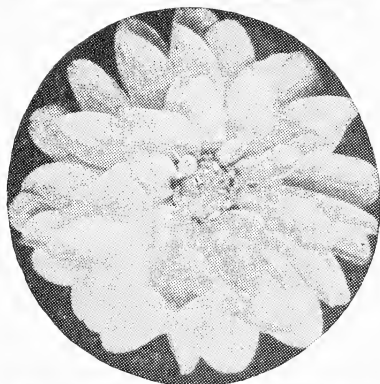
**HORTULANUS PIET (Decorative)**—A colossal flowered variety with blooms over eight inches in diameter, of the most delicate shade of shrimp-pink, the tip of each petal barely touched with gold. The entire flower has a suffusion of delicate tints of red and yellow; which gives a glow yet softness of color difficult to describe. 50c; plants, 25c.

**INSULINDE**—The finest and most artistic Dahlia, of distinct form with petals twisted and curled. Stems are two to three feet long, and flowers 9 to 10 inches across. Color, a rich saffron yellow shaded russet orange. One of, if not the grandest of Holland's introductions. 75c; plants, 50c.

**JOFFA (Decorative)**—Large flowers, held very erect on woody stiff stems, dark salmon rose, combined with apricot and gold flowers, eight to ten inches across. 50c; plants, 25c.

**JERSEY'S BEAUTY (Decorative)**—Beautiful large pink flowers of perfect form, on long, stiff straight stems. Early and free flowering, continuing perfect to the end of season. A fine cut flower and equally valuable for garden decoration. Bulbs, 75c; plants, 50c.

**JUDGE MAREAN (Decorative)**—Wonderful blending of yellow, gold and orange suffused pink and edged red. Plants, 50c.



Jersey Beauty  
Ayesha  
Kalif

**KALIF (Cactus)**—A truly majestic flower, frequently measuring 8 to 9 inches in diameter; a perfect Cactus form, in color a pure scarlet. 35c; plants, 15c.

**L. KRAMER PEACOCK (Decorative)**—The flowers are pure white of splendid form, with slightly cupped petals, something of the shape of Ayesha and of the greatest substance, being thick, leathery and keeping longer than any other white. 35c each; plants, 15c.

**MARIPOSA (Hybrid Cactus)**—Pink, toned violet; very large, fine form. Plants, 35c.

## Dahlias—Continued

**MADONNA (Decorative)**—White. Shown in our fields this year as Mrs. Pillow. Petals of extreme length and artistically arranged, making it a very attractive flower. 25c; plants, 10c.

**MINA BURGLE (Decorative)**—Another year has again demonstrated that this is the best red Dahlia in the world. The plant is a strong, vigorous grower, with dark glossy foliage and an early free and continuous bloomer. The flowers are of large size, perfect form and produced on long stiff stems. The color is a vivid vermilion-red. It has no faults, and requires no special care or attention. 25c; plants, 10c.

**MARJORIE CASTLETON (Cactus)**—The best standard pink cactus Dahlia. It is much softer than most of the pinks, and is an early continuous bloomer. The color is soft pink, tinting lighter toward the center. It is a very rapid grower, with good stems and keeps well after cutting. 25c; plants, 15c.

**MRS. J. GARDNER CASSATT (Decorative)**—A large-flowered variety of elegant shape, mauve-pink of a shade that is very pleasing in a Dahlia; a fine cut flower. 25c; plants, 15c.

**MRS. ROOSEVELT (Decorative)**—One of the quaint flowered type, with broad flattish flowers which keep well. An exquisite suffusion of white and shell pink. 50c; plants, 25c.

**MAUD ADAMS**—A very free-flowering white with delicate lavender suffusion. Long stems and a lovely Show Dahlia. 25c; plants 15c.

**MRS. B. B. STRANGE**—A beautiful shade of burnished copper shaded gold. Long-stemmed. Bulbs, 75c; plants, 50c.

**MRS. I. DE VER WARNER**—Mauve pink; very large of finest form, on large stiff stems. Bulbs, 50c; plants, 25c.

**OREGON BEAUTY (Decorative)**—A brilliant gorgeous flower that attracts much attention on account of its rich color, an intense Oriental-red with golden sheen and garnet suffusion. Produces its large flowers on long stems in the greatest profusion. A splendid garden variety. Bulbs, 25c; plants, 10c.

**PATRICE O'MARA (Decorative)**—The flowers are eight inches or more in diameter and borne on long, strong, erect stems. They are firmly set at right angles close to the stem. The color is an unusual soft and pleasing shade of orange-buff, slightly tinged with Nevron rose. An autumn shade in great demand. 50c; plants, 35c.

**PERLE DE LYON (Decorative)**—A most valuable white Decorative Dahlia, and one of the best whites of any class for cut flower purposes; its flowers are of good size, and held erect on long, stiff, waxy stems. 25c; plants, 10c.

**QUEEN MARY (Decorative)**—Exquisite New Decorative Dahlia. This is a stronger grower than Delice. A large flower with full, rounded center. The color is a soft shade of pink. 35c; plants, 15c.

**SHANNON (Decorative)**—Large buff colored flowers, tall, fine grower. Bulbs, 75c; plants, 50c.

**SHUDOW'S LAVENDER**—Very large flowers of a silvery lavender slightly shading to white. It blooms continuously and freely and has excellent keeping qualities as a cut flower. Plants only, 50c.

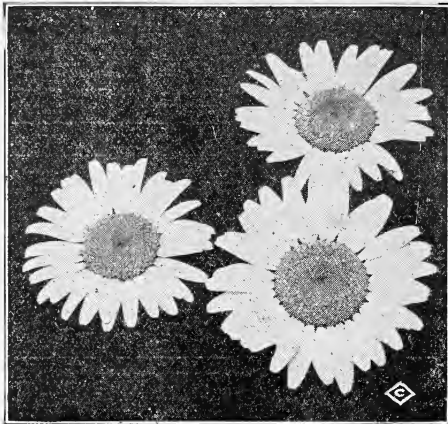
**THOS. OBERLIN**—Very large fine flower, with long incurved petals. Color intense scarlet. 25c; plants, 10c.

**WM. AGNEW (Decorative)**—The most popular standard red. 25c; plants, 10c.

**WODAN**—Old gold at center, shading to a salmon rose. Extremely vigorous grower, producing big flowers profusely on very long stems. One of the best. Bulbs, 25c; plants, 15c.

**YELLOW COLOSSE (Decorative)**—Clear canary yellow of fine form and produced freely on long stems. Strong, vigorous grower with luxurious lace like foliage. Bulbs, 25c; plants, 20c.

**YELLOW KING (Hybrid Cactus)**—One of the finest and largest of all cactus Dahlias, being of gigantic size. Color light yellow, tinting to cream at the tips, giving it a most pleasing effect. Immense flowers are borne on long stiff but slender stems. It is a strong sturdy grower and a free continuous bloomer under all conditions, making it one of the most reliable for all purposes. Should be in every collection. Bulbs, 35c; plants, 25c.



New Shasta Daisy

In growth the plants are as strong as a common field daisy, very tall, well branched with huge white flowers borne in profusion on long stiff stems. The flowers are pure white with gold center, petals very long and center soft and velvety. It is a very pretty hardy plant and one of the novelties that has come to stay. 10c; 6 for 50c; \$1.00 per doz.

## Jackson's Ferns

The popularity of ferns has increased wonderfully. In the past few years I have added greatly to my collection, which is now the largest in the South. Ferns are indispensable in all choice table and house decorations. Where there can be a little moisture and shade all varieties listed will do well. They delight in a good leaf mold. Good drainage must be provided, as stagnant water allowed to remain about the roots is fatal to ferns as well as other plants.

**ADIANTUM CROWEANUM (New)**—This is not only the best and most profitable Maidenhair to grow for cutting but it is also the best variety to recommend to the retail buyers for house culture, standing the dry atmosphere of the room better than any variety we have yet tried. Strong 2½-inch pot plants, 25c; 4-inch, 50c.

**A. CUNEATUM**—The Maidenhair. This variety is a general favorite. 25c and 50c.

**A. CAPILLIUS VERNERIS**—Handsome, hardy Maidenhair Fern. 2½-inch plants, 10c; strong 3-inch plants, 25c to 50c, according to size.

### The Boston Fern and Its Varieties

**NEPHROLEPSIS BOSTONIENSIS (The Boston Fern)**—The fronds grow 6 feet long. It has been commonly called the Boston Fern. Nice young plants, 15c; 3-inch pots, 25c; 4-inch pots, 50c; 6-inch pots, \$1.00 to \$2.50 and up.

**NEPHROLEPSIS NOBWOOD**—The most beautiful form of Nephrolepis to date; graceful, compact and symmetrical; best of all the ostrich plume types; a vigorous, healthy grower. All are invited to inspect it at our greenhouses. Strong 2½-inch pot plants, 20c; 4-inch, 35c up to \$3.00.



Asparagus Sprengeri

**NEPHROLEPSIS WHITMANI**—In this we have a most valuable Nephrolepsis of the Ostrich Plume type. Not only is it of more dwarf and compact habit than the *N. Elegantissima*, but the plume being more deeply divided, gives the plants a more graceful appearance. Strong  $\frac{1}{2}$ -inch pots, 15c; 3-inch pots, 25c; 4-inch pots, 50c; and 6-inch pots, \$1.00 to \$1.50.

**NEPHROLEPSIS SCOTTI** (The Dwarf Boston Fern)—This is the best house plant of all the Sword Ferns, identical with the celebrated Boston Ferns, except that it is smaller in all its parts, more compact and makes a nice specimen in a short time.  $\frac{1}{2}$ -inch pots, 15c; 3-inch pots, 25c; 4-inch pots, 50c.

**NEPHROLEPSIS MACAUII** (New)—One of the grandest ferns of late introduction; far superior to any we have yet grown; it stands erect, a wonderful fern for the home.  $\frac{1}{2}$ -inch pots, 15c; 3-inch, 25c; 4-inch, 50c.



Boston Fern

**NEPHROLEPSIS VERONA** (New)—Ostrich Plume. This is far superior to Whitmani; a wonderful fern that we strongly recommend. We have had it for several years and it pleases us very much. (Give it a trial.)  $\frac{1}{2}$ -inch pots, 25c; 3-inch pots, 50c; 4-inch pots, \$1.00.

## Hydrangeas

### NEW FRENCH VARIETIES—HARDY

**AVALANCHE**—Large corymbs of pure white flowers; a splendid advance on all white sorts. 25c and 50c.

**E. G. HILL**—Trusses of immense size; color a most pleasing shade of pink which does not fade; growth vigorous. 25c and 50c.

**OTASKA**—The well-known garden variety, producing immense heads of bright pink flowers. 25c and 50c.

**PANICULATA GRANDIFLOEA**—Continues to be one of the best and handsomest hardy ornamental shrubs grown. It blooms finely the first year and gets better and grows larger with age. The flowers are pure white. In great demand for lawn, cemetery and park planting. 50c and 75c each.

## Heliotropes

Below we give a list of choice and distinct varieties of this popular and indispensable plant, so much valued for its fragrant flowers and successive bloom. Price 10c each; \$1.00 doz.

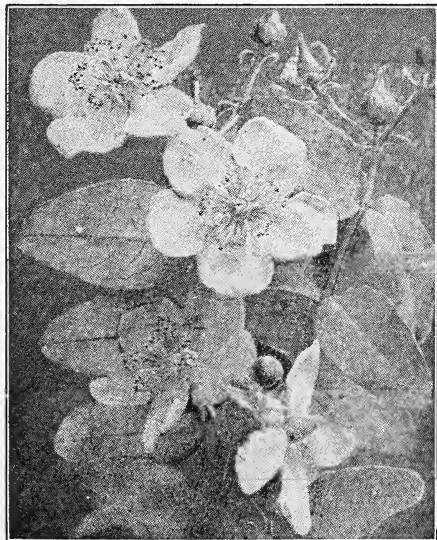
**QUEEN OF THE VIOLETS**—Deep violet purple, with large almost white center; very fragrant; has recently become very popular.

**MAD. BEUANT**—Plant dwarf and exceedingly free bloomer. Immense panicles of very large flowers, rich purple with a large white eye.

**SNOW WEEATE**—The nearest approach to pure white; large trusses, compact growth.

## Hypericum

**HYPERICUM MOSERIANUM** (Golden St. John's Wort)—A beautiful dwarf shrub, attaining a height of one to two feet. In this section usually an evergreen; leaves dark-green; large, single, golden-yellow flowers two inches in diameter resembling a wild rose; most effective when planted in masses. Blooms from early May throughout the entire summer. 4-inch pot plants, 25c; open ground plants, 50c each.



Hypericum

## Hibiscus Rosa—Sinensis

These plants are becoming very popular as bedding plants, being almost continually in bloom and very effective, either planted out or cultivated in pots. The greater the heat the more numerous and beautiful are the large and magnificently colored flowers.

**PEACHBLOW**—This is one of the finest plant novelties offered in recent years. The flowers are double and from 4 to 5 inches in diameter, and of a charming, rich, clear pink color with a small deep crimson center. It blooms abundantly and continuously even on small plants; may be easily wintered in greenhouse or dwelling. 15c, 25c and 50c.

**JOAN**—Double yellow. 15c, 25c and 50c.

**RUBRA**—Double red. 15c, 25c and 50c.

**CRIMSON PEACHBLOW**—A sport from Peach-blow. Identical with the parent except in color, which is a beautiful cerise red. Strong grower and wonderfully free bloomer. Originated in 1911 in my house No. 6. We are the only growers of this variety. 15c, 25c and 50c.

**CRIMSON EYE**—A remarkably showy and handsome hardy plant. Robust grower. The color is of the purest white with a large spot of deep velvety crimson in the center of each flower. It will succeed anywhere and is perfectly hardy in all sections of the country. Plant in open ground. 10c and 25c.

**SOUTHERN BEAUTY**—A wonderfully, beautiful herbaceous Hibiscus, a remarkable bloomer and so fine as to be generally cultivated by all. It forms pyramidal-shaped specimens, lower branches slightly reclining, clothed with five-cleft leaves, segments toothed and crimson margined, presenting a fine appearance. In open ground it is covered with handsome deep crimson flowers, shaded darker to throat till almost black. Entirely hardy and of the easiest culture. Plant in open ground. 10c, 25c and 50c.



Southern Beauty Hibiscus



Peachblow Hibiscus

## Impatiens Sultani

This is one of the most distinct and beautiful pot plants in winter or for summer bedding, of compact, neat habit, and always in bloom; the flowers are bright and contrast finely with the glossy, lovely green leaves. We have this plant in all shades of pink, salmon pink, delicate apple blossom pink, also purple and bright orange scarlet. Price, 10c each; \$1.00 per doz.

## Parlor Ivy

A very rapid grower, with smooth, glossy light green leaves; fine for baskets, vases, etc. (See cut, page 27.)

Price, 10c each; 7 for 50c; 75c doz.

## Jasmine

**GRANDIFLORUM** (Catalonian Jasmine)—Flowers pure white, star-shaped and very fragrant. Blooms from October to May. 15c and 25c.

## Lantanas

One of the best summer flowering plants for our climate; equally fine in dry or wet weather. There are few bedding plants that bloom more continuously or afford a greater variety of color. Price 10c each; \$1.00 per doz.

**COUNTESS MOBNY**—Flowers lemon color.

**FAVORITE**—Yellow, merging into crimson.

**FRANCINE**—Flowers large and rosy lilac.

**JAVOIL**—Purest white; very large flowers.

**HARKETT'S PERFECTION**—A new variety, with beautiful flesh and yellow flowers, and golden variegated foliage.

**MRS. MCKINLEY**—This charming new weeping Lantana is admirable for baskets, vases or boxes and is, if possible, more beautiful still when bedded out. Lavender pink flowers; in bloom all the time.

## The Wonderful Giant Moon-Flower

(*Ipomoea Maxima*)

"A Giant in Growth and Flowers, and Wonderfully Fragrant"

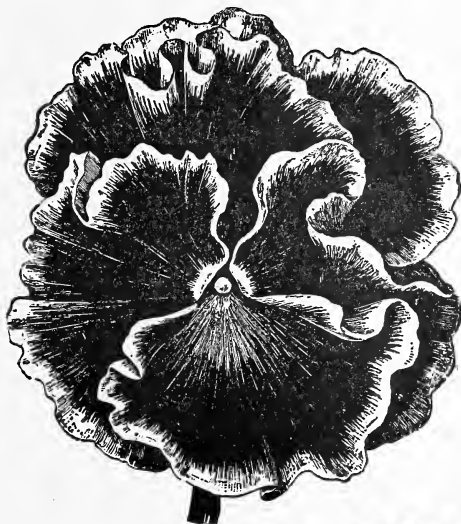
This grand new Moon-flower is a decided improvement over the well-known variety *Ipomoea Grandiflora*. The flowers are more than twice the size of the old variety, often measuring from 6 to 7½ inches across, and produced in such wonderful profusion that they completely cover the vine with a veil of glistening white. Its growth is very rapid when planted in good rich light soil, nothing to equal it as a tender vine for porch and lattice shading. 15c each; \$1.50 per dozen.

### Moon-Flower

(Price 10c each; \$1.00 per dozen.)

**IPOMOEA GRANDIFLORA**—Large Moon-flower, or Evening Glory. Flowers pure white, 4 to 5 inches in diameter. Very rapid grower and free bloomer.

**IPOMOEA LEAII**—The Blue Moon-flower. This is a grand companion for the white variety. It is similar in all respects except the color, which is a lovely satin blue with crimson bars. When grown with white the effect is grand.



### Pansies— Giant Mixed

The ground must be rich, using only well decayed manure, and avoid planting in a dry, exposed place. They delight in partial shade and moisture. 5c each, 50c per doz., \$3.50 per 100.

Get acquainted  
with  
**Jackson's Roses**  
by ordering our  
special Rose collection on Page 2.  
A real bargain in  
high grade plants.



Parlor Ivy



Impatiens Sultanii

## Double Petunia

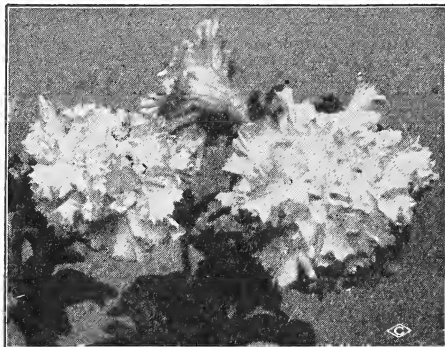
The collection offered this season is particularly rich in color. Flowers of the largest size; fine in form and double. Price, 10c each; 12 for \$1.00.

**PETUNIA, PINK BEAUTY**—Large, clear pink.

**GEM**—Variegated, white and crimson.

**MAJESTIC**—Rich deep purplish crimson.

**SEAFOAM**—Best of double whites.



## Plumbago

These Plumbagoes are desirable on account of their beautiful shades of flowers, which they produce abundantly the whole summer. They stand the sun admirably.

**CAPENSIS**—Light blue; very free-flowering. 10c each; \$1.00 per doz.

**CAPENSIS ALBA**—The exact counterpart of *Capensis* except in color, which is a creamy white. It is constantly in bloom through the season. 10c each; \$1.00 per doz.

## Russelia Multiflora

Profuse bloomer, a well-known plant, bearing a perfect shower of bright coral-red flowers; the most gaily basket plant extant. 10c each; \$1.00 per doz.

## Umbrella Palm

One of the most useful of our house plants. It is exceedingly hardy in constitution, and if given plenty of water will thrive where others would die. Being semi-aquatic in its nature, it is very pretty when grown in a bowl and kept filled with water above the soil. 15c, 25c and 50c

## Salvia

Excellent summer blooming plants, especially brilliant in the fall months; fine for bedding and of easy culture. Price, 5c each; 50c per doz., \$3.50 per 100.

**NEW DWARF SALVIA BONFIRE**—Forms a compact bush completely covered with rich scarlet flowers all summer; grows 12 inches high.

**SPLENDENS (Scarlet Sage)**—Long flower spikes of the most dazzling scarlet.

**AMERICA**—A new variety that will supersede all other dwarf kinds on all-round merit. The growth is vigorous and healthy, but dwarf and compact. It commences flowering early and continues a mass of glowing scarlet until heavy frosts occur. Can also be flowered in pots from Christmas on. 10c each; 7 for 50c; 75c per doz.

## Wandering Jew

Two distinct varieties. Green striped white or cream and bronze striped pink and silver. Also plain green. 10c each; 7 for 50c; 75c per doz.

## Vinca

**MAJOR (Variegated-Leaved)**—An elegant climbing vine, glossy green leaves, widely bordered creamy white; always bright and pretty; extra nice for pots, vases, baskets, window boxes and rockeries; good everywhere; always wanted. Price, 10c each; 12 for \$1.00. Larger plants, 15c and 25c; \$1.50 and \$2.00 doz.

**PERIWINKLE**—Everblooming bedding plants, flowers phlox shaped. In separate colors, rose or white. 10c; \$1.00 per doz.; \$7.00 per 100.

## Mammoth Verbenas

With the exception of the geranium the verbenas is the most popular and useful of our bedding plants. Colors run from the purest white to scarlet and maroon through all shades of blue to deepest purple; some have white or cream centers; others are striped, etc. 10c each; \$1.00 per doz.; \$4.00 per 100.

## New Semi-dwarf Antirrhinums (Snapdragon)

This type is becoming very popular for bedding purposes owing to their dwarf and compact habit of growth; height about 18 inches. 10c each; \$1.00 per doz.



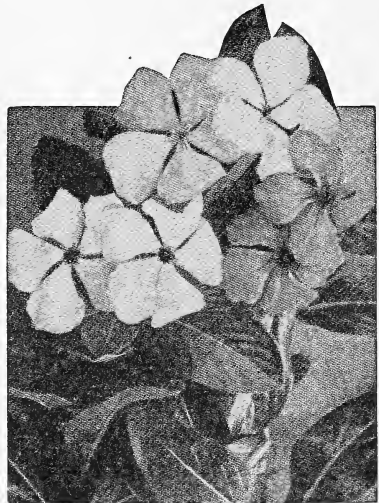
Snapdragon



Sansevieria Zealanica

## Sansevieria Zealanica

A decorative plant of great beauty and value. Splendidly adapted for the decoration of drawing rooms or halls, as it stands drought or dust with impunity and requires scarcely any water. The leaves grow to a length of 3 to 4 feet and are beautifully striped crosswise with variegations on dark green ground. 10c, 25c and 50c.



Vinca Periwinkle



# Vegetable Plants

ALL POT GROWN



## EGG PLANTS

**Black Beauty**—From  
2½ inch pots.  
5c each, 50c doz.

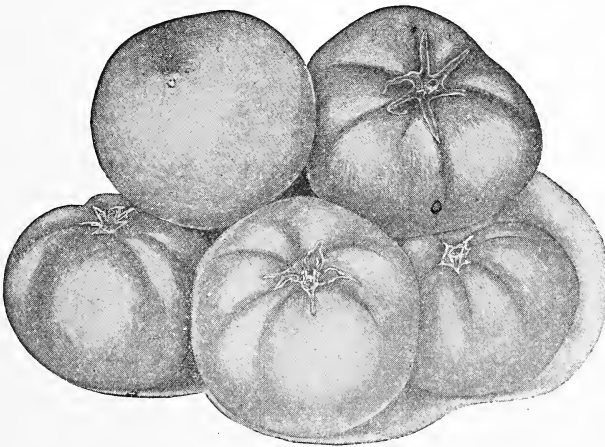


---

## PEPPERS

**Chinese Giant**—From  
2½ inch pots.  
**Glory or Pimento,**  
5c each, 50c doz.

## Tomato Plants



From 2½ inch pots  
5c each, 50c dozen,  
\$3.50 per 100.

**Mortgage Lifter**, the  
best Red Tomato we  
ever grew, and few-  
er seeds.

**Ponderosa.**  
**Trucker's Favorite.**

---

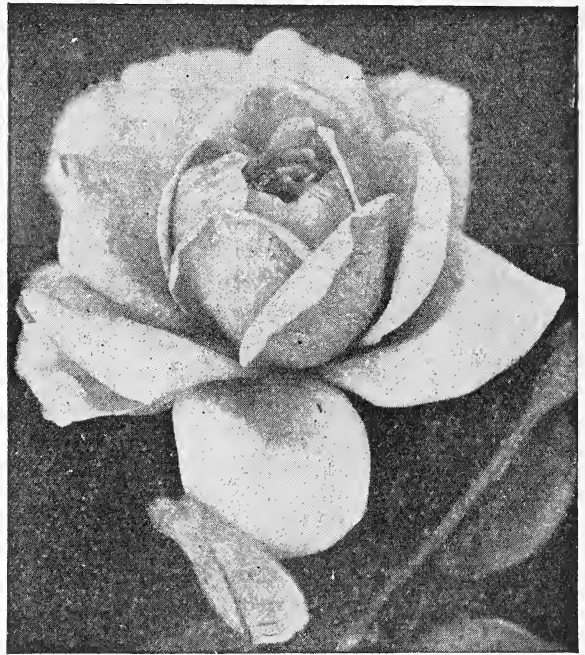
**WE DO NOT SEND OUT ANY REPRESENTATIVES**

---

## INDEX

Page

Abelia Grandiflora.....	18
Achillea Alba.....	17
Achryanthes .....	18
Acalypha .....	18
Ageratum .....	18
Alternanthera .....	18
Aloysia Citriodora .....	18
Alyssum .....	18
Antirrhinum .....	28
Apple Geranium .....	17
Asparagus Ferns .....	17
Asters .....	18
Begonias .....	19
Boston Ferns .....	24
Buddleia .....	20
Butterfly Bush .....	20
Calla Lily .....	20
Cannas .....	21
Carnations .....	22
Chrysanthemums .....	13-15
Chrysanthemum Culture .....	12
Cineraria .....	22
Cissus Discolor .....	22
Clematis .....	20
Climbing Roses .....	9-10
Coleus .....	20
Dahlias .....	22-24
Daisy .....	24
Double Petunias .....	27
Dusty Miller .....	22
Egg Plants .....	30
Ferns .....	24-25
French Hydrangeas .....	25
Geraniums .....	16-17
Gладиoli .....	17
Heliotropes .....	25
Hibiscus .....	26
Hydrangea .....	25
Hypericum .....	25
Impatiens Sultani .....	26
Insecticides .....	Inside Back Cover
Ipomoea .....	27
Ivy .....	26
Ivy Geraniums .....	16
Jasmine .....	26
Lace Fern .....	17
Lantana .....	26
Lemon Verbena .....	18
Moon Flower .....	27
Pansies .....	27
Parlor Ivy .....	26
Peonies .....	17
Pepper Plants .....	30
Periwinkle .....	28
Petunias .....	27



Radiance

	Page
Plant Food.....	Inside Back Cover
Plumbago .....	27
Plumosus .....	17
Pompom Chrysanthemums .....	15
Roses .....	2-11
Rose Planting .....	3
Rose Culture.....	Inside Back Cover
Russelia Multiflora .....	27
Salvia .....	28
Sansevieria .....	28
Scented Geraniums .....	17
Shasta Daisies .....	24
Snapdragons .....	28
Sprengeri .....	17
St. John's Wort.....	25
Sultani .....	26
Summer Lilac .....	20
Sweet Alyssum .....	18
Tenuissiums .....	17
Terms of Sale.....	1
The Pearl .....	17
Tomato Plants .....	30
Trailing Coleus .....	20
Umbrella Plant .....	27
Verbena .....	28
Vinca .....	28
Vegetable Plants .....	30
Wandering Jew .....	28

Spring, 1930

**J. E. JACKSON**

**PIEDMONT GREENHOUSES**

**Gainesville, Georgia**

The Largest Rose Grower in the South

M. O. .... Cash .....

Ex. M. O. .... Stamps .....

Draft ..... Total .....

Opened by ..... Date .....

Addressed by ..... Packer .....

O. C. ....

DO NOT WRITE IN THIS SPACE

Name .....

Street and No. ....

Post Office .....

County ..... State .....

Express Office .....

How to be sent (Mail or Express) .....

Date of Order .....

Amount enclosed

P.O. Order ..... \$ .....

Draft on N. Y. or Atlanta ..... \$ .....

Cash (in registered letter) ..... \$ .....

Check including exchange ..... \$ .....

Cash (by Express) ..... \$ .....

Express Money Order ..... \$ .....

Money sent in either of the above ways is at my risk; if sent in any other way, it is your risk.

**Please fill in the above blanks with your full name, address, etc., plainly written, and state in what way plants are to be sent. Carry out the Catalogue price of each item and carefully add up the full amount. Use this sheet for ordering only, and do not write letters on it. Careful observance of these directions will oblige me, and enable me to fill order with greater accuracy and dispatch. ALWAYS SIGN YOUR NAME THE SAME AND PLAINLY.**

Quantity	ARTICLES WANTED	PRICE
.....	.....	.....
.....	.....	.....
.....	.....	.....
.....	.....	.....
.....	.....	.....
.....	.....	.....
.....	.....	.....
.....	.....	.....
.....	.....	.....
.....	.....	.....
.....	.....	.....
.....	.....	.....
.....	.....	.....
.....	.....	.....
.....	.....	.....
.....	.....	.....
.....	.....	.....
.....	.....	.....
.....	.....	.....
.....	.....	.....
.....	.....	.....
.....	.....	.....

If you want plants by mail to carry to the very best advantage, include postage at rate of 15c per dozen plants. See "Mail," page 1.



# Care and Cultivation of Roses

Roses need continuous cultivation during all but the winter months. Keep the soil stirred, but not deeper than 2 inches. This forms a dust mulch preventing both drying out and overheating by the sun. A 3-inch mulch of tobacco stems, the refuse from cigar factories, around the plants in the early spring and summer is also beneficial and aids in keeping the earth cool and aphids repelled. Water your roses once a week during the growing season, if the weather is dry. This means a thorough soaking, not a sprinkling, nor hard washing.

**WELL ROTTED** manure, thoroughly mixed through heavy clay soil, is the secret of fine roses. Allow about two shovelfuls of manure to each rose, thoroughly mixed through the soil from the bottom of the bed up, and then the bed lightly packed. See further directions for planting on page 3. Each spring more well-rotted manure should be thrown on the bed and lightly dug in. If, in delayed transportation, the soil has become hard and caked around the roots, it should be broken and loosened gently, so as not to break the fibrous roots.

The pot-grown plants have an advantage over field-grown plants for, in transplanting, the roots of pot-grown plants are not cut or broken, and as the root system of our roses are very strongly developed, their growth is thrown forward instead of receiving a set-back as is the case with field-grown plants.

In severe climates roses are protected by hilling up around each plant with earth and also by protecting the tops with evergreen boughs and other coverings, but this is not essential in the South.

**PREVENTION OF BLACK SPOT AND MILDEW.** Beginning while the plants are still dormant, and several times up through June, spray with Bordeaux Mixture as a protection against rose bothers of all kinds. The 1922 American Rose Annual advises the use of a sulphur arsenate dust, which is a mixture of nine parts of dusting sulphur to one part of powdered lead arsenate, as a preventive of black spot. It can be applied with a dust gun or simply shaken from a sack, and this treatment repeated each two weeks during the summer also acts as a protection against mildew and certain insects.

If, however, black spot actually shows up on your plants, all affected leaves should be picked off the plants, all leaves dropped around the plants picked up, and all burned. The bushes should then be sprayed twice weekly, in the late afternoon when the plants are dry, with Bordeaux Mixture, until the black spot disappears. In spraying you should spray underneath the leaves as well as on top. Bordeaux Mixture consists of 5 lbs. of copper sulphate (blue stone or blue vitrol), 5 lbs. of good stone or hydrated (not slacked) lime to 50 gallons of water. For green aphid, or plant louse, spray with a weak solution of some Nicotine preparation.

To cultivate your roses thoroughly, which does not mean deeply, and cut the flowers with liberal stems, produces a vigorous growth and further acts as a protection against both insects and diseases.

## VIGORO

A specially prepared plant food for pot plants, flowers, lawns, etc. It supplies to the plant the right amount and kind of plant food, producing maximum blooms, beauty and production. No unpleasant odors and easily applied.

5-lb. carton.....\$0.50      25-lb. bag.....\$1.75

## VOLCK

For Pest control use VOLCK. This is a good remedy for Red Spider, Midge, Thrips, White Fly, Mildew, Mealy Bug and other Plant Pests.

Volck can be mixed with other spray materials, such as Nicotine, Arsenate of Lead and Bordeaux Mixture. A very effective remedy and easy to handle. One quart will make 50 gallons of spray.

**Above Prices F. O. E. Gainesville. Liquid Insecticides Cannot Be Sent By Mail.**

½ pint cans.....\$0.50	Quart cans.....\$1.00
Pint cans......75	Gallon cans.....3.00
5-gallon cans.....\$12.00	

## BLACK LEAF "40"

(Nicotine-Sulphate)

Recommended for OUTDOOR Spraying on Roses, Fruit Trees and Shrubs. Can be used in combination with Arsenate of Lead, Bordeaux, Lime-Sulphur, etc.

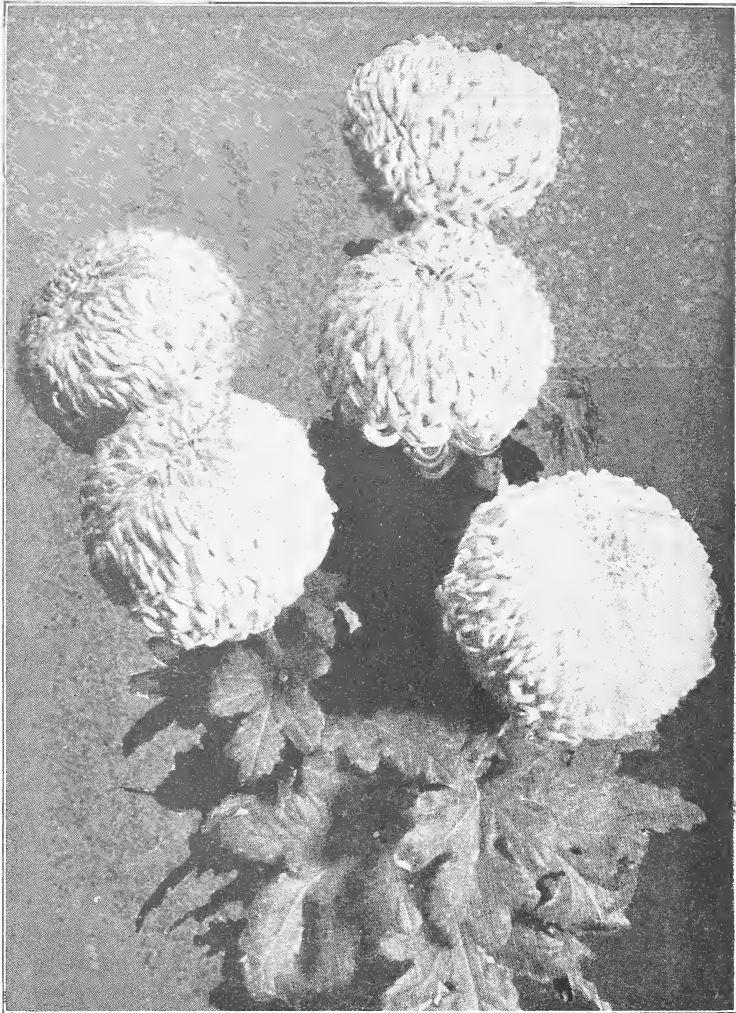
1-oz. bottles.....\$0.35	2-lb. can.....\$ 3.50
½-lb. can.....1.25	10-lb. can.....13.50

## FUNGTROGEN

**CONTROLS MILDEW AND BLACK SPOT.** A most effective and scientific preventive and remedy for Mildew, Black Spot and other fungoid diseases of roses.

½ pint.....\$0.75	½ gallon.....\$3.50
Pint.....1.25	Gallon.....6.00
Quart.....2.00	

**Above Prices F. O. E. Gainesville.  
Liquid Insecticides Cannot Be Sent By Mail.**



Betsy Ross

For description see page 13.

# CHRYSANTHEMUMS and ROSES are Our Specialties

J. E. JACKSON,

GAINESVILLE, GEORGIA