

Historic, Archive Document

Do not assume content reflects current scientific knowledge, policies, or practices.

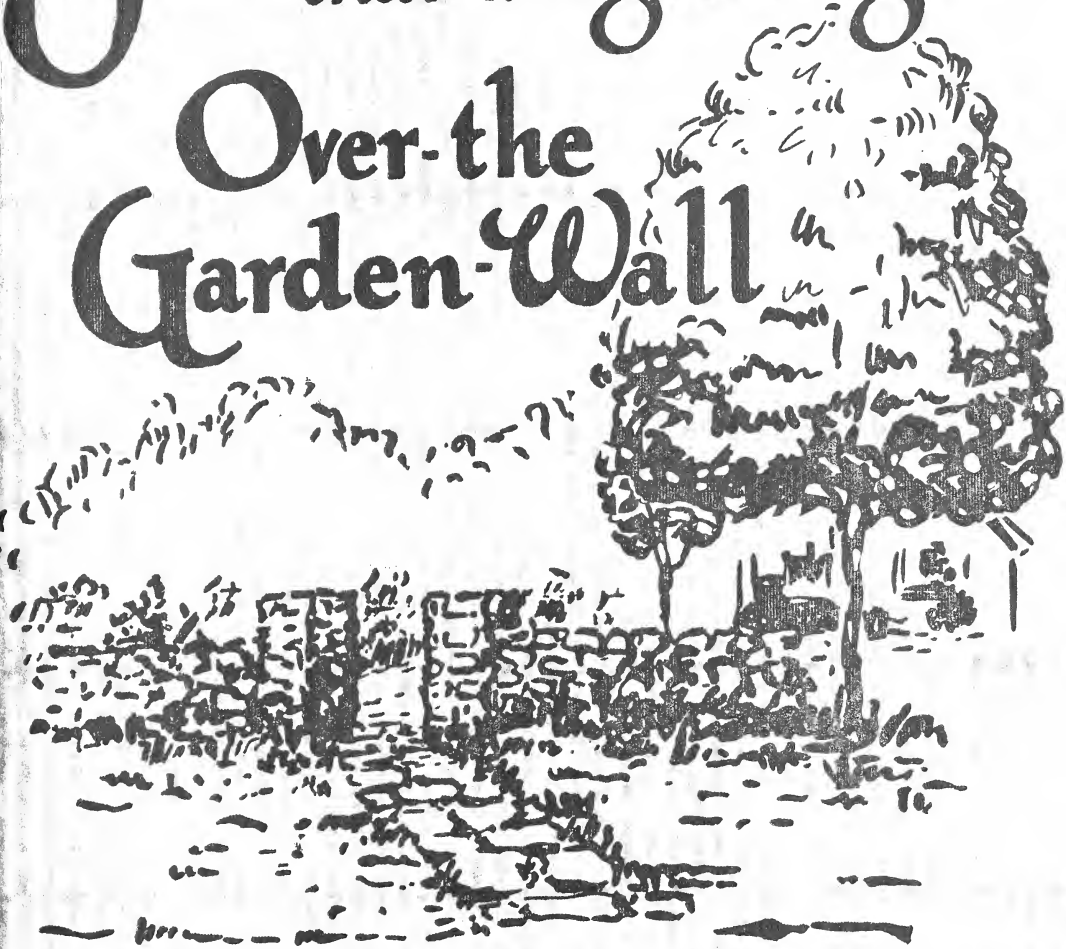
62,13

LIBRARY
RECEIVED
★ MAY 2. 1930 ★
U. S. Department of Agriculture.

Prises

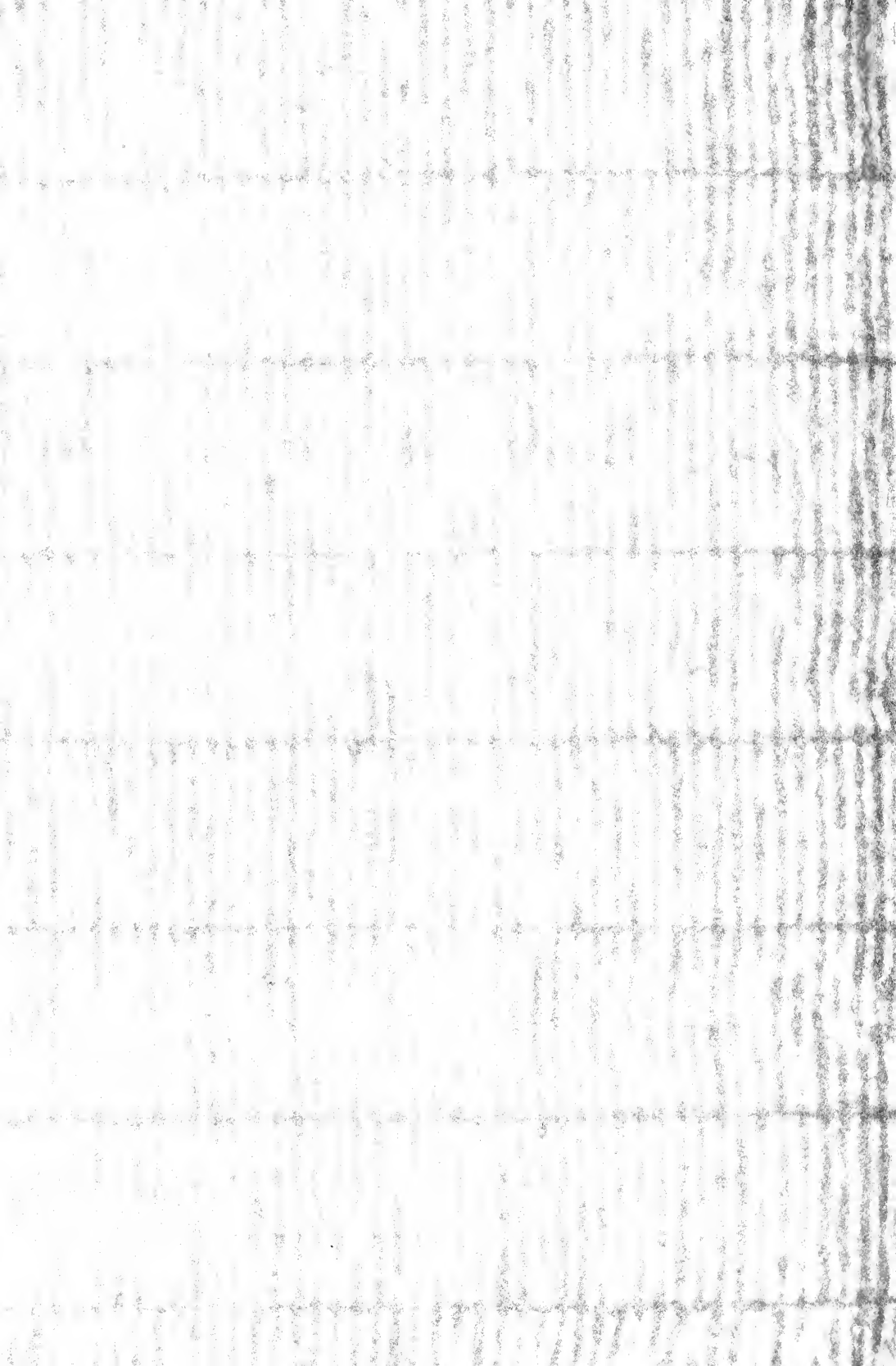
that are growing

Over-the Garden-Wall



60 NO. MAIN ST. WEST HARTFORD, CONN.
MRS. L. W. KELLOGG, Owner

1930



Mrs. Louise M. Kellogg

cordially invites you to meet the

Iris

that are growing

“Over-the-Garden-Wall”

West Hartford, Connecticut

during the season of

1930

. . *Just a word*

Before we take you down the receiving line.

We are especially anxious to have you meet the irises that are growing Over-the-Garden-Wall, because you will find among them, a very enjoyable collection of American introductions. One high authority in the iris world tells us that our collection of these is "second to none in the country." Emphasis is placed on this part of our planting because it represents a measure of wisdom gained from costly experience. Five years ago, when we adventured in this line, the foreign irises were the most beautiful. So we bought them — and lost them. Not once but several times. The soil here is heavy and cold. Sand was dug in, and the beds were raised, sometimes a foot. Still the damage during wet weather was too great. A check-up showed that a greater proportion of the Americans would thrive under conditions that proved fatal to the foreigners. True, some of the latter like our climate, and everyone should have them. Some others are so beautiful, that it may be well worth while to give them the necessary coddling. But the average buyer for the average garden, prefers stock that is reasonably certain to beautify his borders with the minimum amount of care and worry.

American iris breeders have raised the standard of beauty, tremendously during the last few years. And in the term beauty, we include not only the new range and blend of colors, but the general make-up of the plant: the low branching of the stalk, the form and substance of the flower, and its poise on the stem.

The evil of too many introductions is always with us. Each breeder is most enthusiastic over his own offerings. Scattered as these enthusiasts are, over the entire country, it would seem to be the function of the commercial specialist to bring together in one locality, as complete a collection of their irises as is possible. This we have tried to do for New England and the east.

It is a heavy undertaking, and there will always be disappointments. Some much-heralded novelties will slip into oblivion after a year or two. Advancing ideas of beauty in form and color, of hardiness and of productiveness, will cause others to be superseded. Any possible loss along these lines should be ours, not yours. Our aim is two-fold. First, that the collector of irises may find, Over-the-Garden-Wall, an almost complete showing of the new American introductions. (And to this end, we ask

the cooperation of all hybridizers.) Second, that the home gardener may have a reliable report on the qualities of irises grown in such competition.

Those of you who visit the garden, will appreciate the new approach to the main reception line of irises. This new path is through an opening in the lilac hedge, and across what was the old tennis court, now planted as a formal garden. In this new garden, we have tried to hint at pleasurable iris combinations, that have not been feasible in the older plantings. Scattered with them, you find salmon Oriental poppies, delphinium, rose and white peonies, with a hedge of pink and yellow roses.

Readers of the catalogue, and visitors here, will miss many of the old "stand bys." For a time, we entertained a dream of the "biggest and most complete" showing of irises, regardless of much advice to the contrary. We now bow to the limitations of time and equipment, and will leave to the larger nurseries, the quantity growing of the older varieties. We will try to grow for you every new American introduction; and after it has bloomed for us will give you our honest opinion of it. Each year we will add a few of the outstanding foreign irises, that we know you will want. Last season, we planted as complete a collection of the named Japanese irises as we could find. Also many of the Siberian. And a start was made on the various iris species, that are gaining in popularity each year. To make room for the new things we will list each year a page of bargains, made up of desirable items of excess stock.

Now, let us hasten down the receiving line, which is made up as follows:

The Debutantes, or American novelties —	page 5
The Grown-ups or older members of the family of tall, bearded irises —	page 11
The Kiddies, or dwarf irises —	page 31
The Children, or Intermediates —	page 30
The Dainty Cousins, or Siberians —	page 32
The Regal Ladies, or Japanese —	page 34
The Cosmopolites — various hybrids and species —	page 38

Recent American Introductions

These are listed, as last year, under the originators' names. Descriptions are copied. Many of the names of these irises are intriguing; they catch the fancy and are laid away in the memory for future consultation. The price may be too high this year. We list them for one, and usually two seasons, at the originator's price. If they prove outstanding, you will find them more available, as stock increases. At present, the stock of all of these is limited.

from Mr. Andrews

JACKROSE ('29) The deep reddish purple of Ed. Michel. Submitted as an improvement in color, substance and constitution. \$10.00

from Dr. Ayres

INDIAN CHIEF ('29) S. strong reddish overtone; F. deep red. A vigorous red iris, with flowers of fine shape and balance. \$10.00

PERSIA ('29) S. smoky blue; F. rich blue-purple. "It is aptly named, as the coloring is that of a rich oriental rug." \$30.00

from Mr. Berry

ACROPOLIS ('29) "This iris combines the deep richness of color of the pollen parent (Moa) with the size and rampancy of the seed parent (Conquistador)." S. clear lavender-purple; F. deep velvety blackish-purple. About four feet. \$50.00

CRUCIBLE ('29) "Grayish lavender, with conspicuous golden throat, which lends it noteworthy garden value. Large, floriferous and distinct. \$15.00

from Mr. Bralliar

BLACK EAGLE ('30) "A giant, very dark self, with striking bronze beard and and bronze undertone for the dark pansy-purple falls.

EVA BRALLIAR ('30) "Much like Dominion, with the smokiness omitted. Strong growing and free flowering."
(Mr. Bralliar has sent us no prices on the two irises mentioned above.)

from Mr. Chase

SKITCHEWAUG ('28) The coloring is that of Isoline, but darker and richer. F. are wider, and not in hanging. Brilliant golden beard. \$5.00

from Mr. Cooley

SURPRISE ('28) "A seedling of Mme Gaudichau, identical in shape and size, but altogether different in color, being a soft shade of heliotrope." \$15.00

from Mr. Danenhauer

BRONZE SPHYNX ('29) A large and beautifully ruffled yellow bronze. \$10.00

GOBELIN RED ('27) "This iris is actually oxblood red." \$20.00

MANEN LESCAUT ('29) "A symphony in yellow, brown, violet and white." \$10.00

NAIAD ATLANTA ('27) "An entirely flesh-pink effect, with true pink standards. \$15.00

ORANGE GUIDON ('27) A warm-toned orange. \$15.00

Over-the-Garden-Wall

PENN TREATY ('29) Rich deep velvety falls of blackish violet. "For vigor, mass and texture, Penn Treaty stands alone." \$20.00

from Mrs. Dean

VIOLET LAKE ('29) The name would seem to be its description. \$15.00

from Miss Edlmann

GOLD STREAM ('29) "A pale creamy bicolor, with a conspicuous beard, tipped with orange-chrome." \$15.00

from Mr. Essig

CALIFORNIA BLUE ('29) A tall, rich bluish-violet. \$3.00

MODOC ('29) Almost black. "The color, velvety texture and inherent strength and vigor make this a most desirable iris." \$25.00

PACIFIC ('29) Splendid deep blue. Slow increase. \$10.00

PINK LASS ('29) An exquisite pink plicata of medium size. S. nearly wholly rose-purple; F. bordered same. \$5.00

ROSE MITCHELL ('29) A clear, pure rose-colored self. \$10.00

ROSULTRA ('29) Bright rich pink. \$5.00

SUNDEW ('29) A medium sized yellow, most attractive. \$5.00

WESTERN SKIES ('29) "Finest pale blue, of silk-like texture." \$5.00

from Homewood Gardens

CHANTICLEER ('28) A red bicolor. \$5.00

DANUBE ('28) A large-domed dark blue. \$2.00

LALLA ROOKH ('28) A plicata. \$2.00

ROSARY ('28) A pink plicata. \$2.00

VIN ROUGE ('28) A red-toned purple. \$2.00

from Dr. Kirkland

ANDREW JACKSON ('29) S. Saccardo's violet; F. raisin purple, shading to Rood's violet at edges. General effect is rich, velvety red-violet. "Most vigorous and hardy. It blooms early and a few clumps will dominate the early garden." \$10.00

BLUE BANNER ('29) "A new beautiful and unique combination of color. The flower is on the order of B. Y. Morrison, but the falls are light blue, instead of raisin-purple, shading to lighter at the edge." A rampant grower. \$10.00

MARY ELIZABETH ('29) "The various colors in the petals and style-arms seem combined into one harmonious whole of rosy red brilliance, with darker velvety falls." Rather early. \$25.00

MORNING GLORY ('29) Type of Morning Splendor, but larger and much brighter. \$20.00

from Dr. Kleinsorge

OREGON BEAUTY ('30) "Strongly along the Dominion lines, very red in general color tone, there being a most remarkable and brilliant terra-cotta red in the falls slightly shaded to buff at edges. The S. are extremely beautiful, a coppery-rose. \$50.00

OREGON GIANT ('30) "Truly a mammoth, with stiff and towering stems. The flower is very dark, both S. and F., with barbaric striping of yellow and brown at the haft, and considerably down on the F." \$50.00
 (Both the above descriptions are quoted from Mr. Cooley, as they were much more picturesque than others I had.)

from Mr. Koehler

NEPTUNE'S DAUGHTER ('29) (no description) \$2.00
WALDHEIM ('28) S. wine red; F. a deeper, velvety color. \$1.00

from Mr. Loomis

BLUE VELVET ('29) "A new iris of superlative beauty — it looks like the richest shade of deepest blue velvet. "(Not for sale in '30).

from Mr. Mead

CLARET CUP ('29) "Glowing petunia violet. Is shoulder high. The firm textured flowers are borne on slender, well-branched stems that will withstand any weather." \$5.00

ION ('29) "Almost identical with Swazi in color, tho' the S. are purer in tone. A lovely Bradley's violet of iridescent texture with extremely heavy substance. Prominent cream-colored beard. All the best of the Dominion characteristics, without the difficulty of growth." \$25.00

IRISCREST ('29) "The characteristic feature of this iris is the huge, broad, finely-rounded petals, and the gradation of it's beautiful tones of light lavender-blue, resembling Ballerine, but with a reddish tinge." \$10.00

KING MIDAS ('29) S. golden buff, suffused with garnet-brown; F. velvety garnet-brown, edged golden-buff. "The heavy beard is of the deepest orange, and the center of the flower and the hafts are illuminated with intense golden lights." \$25.00

from Mrs. Mindleff

PEGGY BABBITTON ('29) An Intermediate yellow, said to be particularly desirable for it's fall-blooming habits. \$5.00

from the Mohr-Mitchell gardens

MIRASOL ('29) Clear bright yellow, unmarred by veining. Name is Spanish for sunflower. \$15.00

MONTEREY ('29) Dark bronzed red-violet. \$12.00

SACRAMENTO ('29) A giant plicata with a white ground. The S. heavily edged with red-purple; F. reticulated with the same. \$27.50

SAN DIEGO ('29) Identical in color with Mme. Gaudichau, but a great improvement in size, height, form and finish. \$12.50

SONOMA ('29) An attractive pale corn-yellow. Late \$5.00

from Mr. Morrison

HONEYDROP ('29) A blend of henna, brown, yellow and old rose. Large blooms of fine substance. \$30.00

IMPRESSARIO ('27) S. Lobelia-violet; F. livid purple, blending thru aconite-lobelia-violet. Three to four feet in height, low-branched, and with a conspicuous beard. \$10.00

from Col. Nicholls

FIRE-GOD ('29) S. Red-brown, shading to honey-yellow at base; F. deep brown-garnet. Velvety. Effect is a fiery brown--a new color. Large spreading bloom on 40" stems, of good shape and substance. \$7.50

GLEAM ('29) Uniform pale blue, almost a true blue, very clear. Bright gold beard. Large blooms of exceptional substance, with flaring falls, on 44" stalks. Floriferous. \$7.50

from Mrs. Rowell

GRAND MONARCH ('29) Velvety bronze-red, with brilliant golden beard, style arms and haft. \$25.00

from Mr. H. P. Sass

EUPHONY ('29) S. mustard yellow, tipped with chamois, and ruffled; F. same, overlaid with veins. \$5.00

MRS. WICHT ('29) S. Light cadmium-yellow; F. maroon. \$5.00

OLD GOLD ('29) A real yellow plicata. \$2.00

OTOE ('27) Reddish. \$3.00

RAGUSA ('29) S. pansy purple; F. blackish red-purple. An Intermediate. \$5.00

RAMESES ('29) S. light russet; F. pink, with an apricot beard. \$10.00

RED WING ('26) S. light brown; F. dahlia carmine. \$7.50

from Mr. Jacob Sass

CHALLENGER ('30) S. dark purple, overlapping; F. dark blackish-violet. Intermediate — one of the largest. \$5.00

CHESTNUT ('29) S. cinnamon drab, ruffled; F. cream, faintly dotted with petunia. \$5.00

GOLDEN HARVEST ('29) S. olive yellow, with a bluish sheen at the haft; F. yellow citron. Sometimes blooms in the fall. \$7.50

JUMBO ('27) A very deep purple. \$3.00

MATILDA ('29) S. soft bluish-violet sprinkled on a white ground; F. the same. \$2.50

NEHAWKA ('29) A soft-colored plicata, the darkest blue-purple. \$5.00

PADUSOY ('29) Dull, dark purple. H. M., A. I. S. '28. \$10.00

from Mr. Shull

NOCTURNE ('26) "Of Gaudichau coloring, but more velvety and much more highly finished. \$10.00

from Mr. Simpson

ELFIN WHITE ('28) Very white. \$10.00

GAMALIA ('27) A dark violet and purple iris, with enormous bloom. \$4.00

MONTPELIER ('28) An unusual plicata. \$4.00

- ROZANNA** ('28) A charming blend of pinkish-lilac, fawn and yellow. \$3.00
SENATOBIA ('28) A dusky violet-purple bicolor. \$3.00

from Miss Sturtevant

- AIRY DREAM** ('29) Lighter and pinker than Susan Bliss, with white beard. \$10.00
ANDELIA ('29) S. light lilac, ruffled; F. white, bordered with fine rose-purple venations. \$10.00
JADU ('29) Similar to Anndelia (described above) but the color of the standards and style arms is blush pink. Name means a charm. \$10.00
SUNLIGHT ('29) "The largest clear yellow we have introduced." A rapid grower. "Outstanding for size and luminous effects in the garden." H. M., A. I. S. '28. \$25.00

from Mr. Timmerman

(We have had no prices quoted on these).

- GREAT PLAINS** ('29) S. yellow; F. same, flushed wax-yellow at tips.
KANSAS ('26) S. Chinese-violet, shading to lilac; F. dull purple, shading to violet. 42", of firm, somewhat crinkled texture.
KAW CHIEF ('29) S. pinkish cinnamon, flushed with pale rose; F. pansy purple, veined with crea,. Three feet.
LA SALLE ('29) S. Daphne red; F. between Bordeaux and violet-carmine.
LITTLE CHIEF ('29) S. Bishop's purple; F. Bordeaux. A small, low growing red.
PIONEER MOTHER ('29) Tall, clear white, shading to wax-yellow at tips. Large bloom, late.
PRAIRIE STATE ('29) S. wax yellow; F. slightly darker. 30"
QUINDARO ('29) S. dark, venacious purple; F. white, flushed and veined purple. 28".
SHAWNEE ('29) S. primrose yellow, slightly flushed at tip with Bordeaux; F. Bordeaux, shading to primrose at tip.
TONGANOXIE ('29) S. deep hellebore-red, shading to buff towards center; F. white, edged and flushed purple. 30"
WYANDOTTE CHIEF ('29) S. venacious brown, flushed yellowish; F. blackish-red-purple. 34", early and fragrant.

from Mr. Tuthill

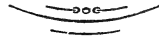
- EVENING GLOW** ('27) Pale, silvery lavender-blue, with marked orange beard. Center lit with iridescent pink and orange. Grey-green foliage. \$5.00

from Mr. Williamson

- ALCANNA** ('29) "General garden effect is a rich bright bronzy yellow and red." \$1.00
ALPENGLow ('29) "Garden effect is a plum-colored bicolor of striking size and carriage." \$1.00
AMANECER ('29) "Effect is a yellow and pinkish-lavender bicolor, the flowers gracefully carried on erect stems." 50c

Over-the-Garden-Wall

CHIANTI ('29) "Similar to Archeveque, but taller, more floriferous, redder and with a brighter garden effect."	50c
DOROTHY DIETZ ('29) S. Opening a light chicory blue, fading to white; F. pansy violet, paler at margin. "A large and unexcelled amoena, distinct and refined."	\$10.00
FLAMINGO ('29) S. purple; F. Bordeaux. A light, warm, rosy red.	\$2.00
FRIAR TUCK ('29) S. livid purple; F. blackish-red-purple.	50c
GAY HUSSAR ('29) "The most brilliant variegata known to the various judges who have seen it in our garden." S. lemon chrome; F. deep velvety oxblood red. with paler margins.	\$5.00
MUSCATEL ('29) A bicolor of wine purple shades, "valuable for color, grace, height and vigor."	\$1.00
SEGOVIA ('29) "General effect a solid blue-purple self, with no fading."	50c
SONATA ('29) S. deep lilac-buff; F. lilac, with margins the color of the S. Delicate and refined.	\$5.00
TUSCANY GOLD ('29) A distinct reddish-gold color.	\$15.00
TUSCARORA ('29) A bright light red.	\$1.00
ZAMORA ('29) Much like Ed. Michel, but vigorous in growth.	\$1.00



WET WEATHER comes to all gardens; all too often it is followed by an attack of rot, in some well-beloved iris. An operation is necessary: the infection must be cut out, and the rhizome doctored with corrosive sublimate, or with dry plaster of paris. Protection is wise, lest the next day's rain undo your surgery. We have ordered from England, a supply of the wire holders for the glass cloches. These are intended for spring forcing, but seem admirably adapted for iris protection, instead of a glass-bottomed box. We wish we had a cut to show you this cloche; it is simply two panes of glass, 9 x 14", held tent-shaped by the patented holders. The manufacturers give us permission to resell, if any of you are interested. Price will be 25c each, unless import duties are unexpectedly high.

General List of Tall Bearded Irises

(See page 29 for those offered at special prices).

These irises come into bloom, here in New England, from the last of May, until the middle of June. The early and late varieties will be so designated; all the others may be expected to bloom early in June. Remember that these newer irises have more buds to the stalk than the older ones; it is not unusual to have a clump in bloom for three weeks. This is one reason why the older irises in our gardens should be replaced, whenever possible, by the newer ones. Also, in the latter, the individual blooms are larger; the blossom stalk branches nearer the ground, and the flowers are less crowded on the stalk. All who have seen a planting of irises introduced during the last ten years, know the wide color range now available. Descriptions are always inadequate, especially of the blends; color names convey one picture to one reader, another to another. For this reason, all garden-lovers are urged to visit an iris planting, that they may make a careful selection of the shades desired.

In the following lists, the figures at the left are the garden ratings, as given in the 1928 Symposium of the American Iris Society. In the parentheses will be found the name of the originator, and the year of registration. Readers may be interested in a list of the hybridizers, whose irises will be found on these pages, the abbreviations used for names, and the locality where each lives.

Mr. Andrews, (And.) Colo., Mr. Baker, England; Dr. Bales, Ohio; Mr. Berry, Calif.; Mr. Bliss, England; Mr. Bralliar, (Bral.) Tenn.; Mr. Bratt, Nebr.; Cayeux et LeClerc (Cay.) France; Mrs. Cleveland, (Cleve.) N. J.; Mr. Connell, (Con.) Tenn.; Mrs. Cumbler, (Cumb.) Penn.; Mrs. Dean, Calif.; M. Denis, France; Mr. Dykes, now deceased: work being carried on by Mr.s Dykes, England; Miss Edlmann, (Edl.) Mass.; Prof. Essig, Calif.; Mr. Farr, deceased, Penn.; Mr. Fendall, (Fen.) Va.; Sir Michael Foster, deceased, England; Mr. Fryer, Minn.; Goos and Koenemann, (G. & K.) Germany; Mr. Gersdorff, Washington, D. C.; Mr. Hall, Penn.; Sir Arthur Hort, England; Prof. Jackson, (Jack.) now in Canada; Mr. Koehler, (Koeh.) N. J.; Dr. Magruder, (Mag.) Ohio; Mrs. McKinney, (McK.) N. J.; Millet et Fils, (Mil.) France; Mr. Mohr, whose work, since his death, has been carried on by Prof. Mitchell, (M. M.) Calif.; Mr. Morgan, (Morg.) Canada; Mr. Morrison, (Mor.) Washington, D. C.; Mr. Murrell, (Mr.) England; Dr. Neely, Ohio; Col. Nicholls (Nic.) N. Y.; Mr. Perry, England; Mr. Presby, (Pres.) N. J.; Sass, H. P. and Jacob, Nebr.; Mr. Scott, deceased, Penn.; Mr. Shull, Md.; Mr. Spitzer, Ind.; Miss Sturtevant, (Sturt.) Mass.; Miss Van Name, (Van N.) Conn.; Vilmorin- Andrieux et Cie, (Vilm.) France; Mr. Williamson, (Wmsn.) Ind.; Mr. Yeld, England.

- | | | |
|----|---|--------|
| 77 | AK-SAR-BEN (Sass, J. '23) S. and F. are cream-colored, with fawn and brown markings. 27" | \$2.50 |
| | ALABASTER (And. '26) A pure white, of exceptionally fine form, and very good substance, with no veining. Fairly early. | \$3.00 |
| | ALAMEDA (M. M. '27) White, suffused and veined with blue-violet. Growth is slow; the bloom large and distinctive, of good height. | \$3.00 |
| 88 | ALIQUIPPA (Hall '24) A pale yellow, with luminous center of a deeper shade Free-flowering and of vigorous growth. Over 30". Received the Silver Medal from the American Iris Society, in '26. | \$3.00 |

- ALLURE** (Mur. '27) The S. are iridescent shell-pink, with a yellow flush at the base; F. are pink and pale lavender, with a gold flush at base. Flowers are beautifully formed and poised, of the most alluring coloring. Received the Silver Medal at the English Iris Show, in '27. Late, tall and vigorous, Stock limited. \$18.00
- 91 **AMBASSADEUR** (Vilm. '20) S. smoky lavender, suffused with bronze; F. very dark, velvety maroon. Large bloom on tall, strong stems; rapid increase. Easily the best late, dark iris, at a low price. 50c
- 88 **AMBER** (Dykes '24) Deep yellow, with prominent reddish-gold beard. Of medium height; averse to wet feet. \$2.50
- AMBROSIA** (Sturt. '28) "A white iris, with enough pale pink coloring matter to make it faintly luminous when seen in shadow, or in a mass" Originator's description. Stock limited. \$15.00
- AMERIND** (And. '26) A metallic-bronze self, aptly named for the American Indian. Medium sized bloom, on tall, well-branched stalks. \$4.00
- 77 **ANNA FARR** (Farr '13) White, daintily bordered with pale lavender. Of medium height, and well worth while, in a dry situation. 50c
- 84 **ANNE BULLEN** (Hort '22) S. blue-lavender; F. deep, velvety purple, with bronze veinings. 75c
- 85 **ANN PAGE** (Hort '19) A wisteria-violet, with garden effect of blue. Blooms are large, finely poised, and so lovely that it is still a favorite tho' not a very recent introduction. 75c
- ANTARES** (Vilm. '26) S. yellow, lighter at edges, and dotted with ageratum-blue; F. white, with a yellow reverse, same markings. A very different iris. Stock limited. \$5.00
- 81 **ANTONIO** (Hort '21) A marvelously deep blue-violet iris, of large size, on three-foot stems. 75c
- 88 **APHRODITE** (Dykes '22) Bright violet-pink, the F. having a noticeable white flush at the center. The shade is so intense, that surroundings must be considered. Very lovely with Mystic. \$2.00
- ARCTURUS** (Vilm. '26) A yellow, that has not yet bloomed for us. \$10.00
- ARGENTINA** (Mohr '24) An early white, tall and of unusual size, with a vivid orange beard. 75c
- ARGOS** (Vilm. '26) Dark, reddish toned. Has not bloomed for us. \$10.00
- 76 **ARIADNE** (Dykes '21) S. silvery light blue, with waved edges; F. deeper, with a violet base. Very delightful. 75c
- 84 **ARLINGTON** (Simp. '24) S. clear rosy-lavender; F. bright reddish violet, shading to lighter at the edges, where they meet a wire edge. Tall and a strong grower. 75c
- ARZANI** (Sturt. '26) A tall, dark reddish-mauve, well branched and very vigorous. \$6.00
- 88 **ASIA** (Yeld '16) A blend of silvery lavender and yellow. quite indescribable. Needs a "close up" to be appreciated. Blooms are large, and well carried on strong stems. \$1.00

- 89 **ASPHODEL** (Mor. '26) A very clear tone of light lavender-violet. Tall, with large flowers. \$5.00
- AURELLE** (Denis '24) S. light purple; F. glowing crimson-purple, long and velvety. Especially fine in partial shade. \$1.25
- AURIFERO** (M. M. '27) Two shades of lavender, with a brilliant gold haft and beard. Name means goldfinch. \$3.00
- AUTUMN GLOW** (Sturt. '26) A pale yellow, with blooms of great delicacy. \$5.00
- 81 **AVALON** (Sturt. '18) Light, lustrous mauve. Very lovely, but slow to establish itself. \$1.00
- AVATAR** (Wmsn. '27) A smoky-purple blend, perhaps the most brilliant of the early irises of this coloring. The standards have the base and partial edge, suffused with gold; also an exceptionally long and brilliant beard. \$2.00
- 84 **AZRAEL** (Mor. '24) A very beautiful flower of two shades of violet, very blue in effect, with flaring falls. Large and sturdy. Early. \$1.00
- 84 **AZULADO** (Mohr. '24) Pearl, with the falls flushed with lavender. Huge blooms of silvery sheen. \$1.50
- 82 **BALBOA** (Mohr '23) A bright red-violet bicolor, very tall and a lusty grower. Use at back of border, as it is slightly too high branched. 75c
- BALDER** (G. & K.) S. olive-yellow; F. red-purple. Not as bad as it sounds! 50c
- BALDWIN** (Sass, H. P. '27) A dark, almost navy blue, the falls having an electric-blue sheen at center. Very large blooms, well carried on a strong, well-branched stalk. Deservedly a favorite. Late. \$6.00
- 89 **BALLERINE** (Vilm. '20) Light violet-blue flowers, very large. Slightly more difference in shade between the S. and F., than in Lord of June, and the S. do not droop. Tall and sweet-scented. 50c
- 83 **BELISAIRE** (Cay. '24) S. copper-rose; F. heliotrope. An exquisite flower, on tall, well-branched stems. \$2.50
- 82 **BELLORIO** (Mohr '24) Mouse-grey, with lavender tones. Early. 75c
- BELVIDERO** (Mag. '26) A metallic mauve bicolor. \$1.00
- 87 **BERTRAND** (Bliss '20) S. bright lavender-violet; F. brilliant rich mulberry-purple, velvety. A large-flowered Dominion seedling. \$2.50
- BETTY BALES** (Bales '25) A very delicate blend of lavender, mauve and yellow. 50c
- 72 **BLACK PRINCE** (Perry '00) Very dark violet-purple, low and slow-growing. Usually the last iris to bloom. 75c
- BOHEMOND** (Mag. '26) A little-known iris, much the same tone as Crusader, but with the falls carried very horizontally. \$1.00
- BONITA** (M. M. '28) One of the lovely new yellows, which seems to be hardy anywhere. Buttercup yellow, with the falls slightly lighter at center, and flaring. \$5.00
- BONNIE BLUE** (Sturt. '28) One of the low-growing irises, that Miss Sturtevant is sponsoring at present. A mass of jaunty blue blossoms, of marvelous finish. Early. \$2.50

- 82 **BRANDYWINE** (Farr '20) One of the most pleasing of the blue irises — very light, but with character. Unfortunately, it's character (of growth) is not dependable! If happy, you'll be delighted; if unhappy, the gardener might as well pass it up. 50c
- BRAVURA** (M. M. '26) A deep, rosy lilac, slightly darker than Crimson Glow. Large blooms on slender stems. 75c
- 85 **BRENTHIS** (Wmsn. '27) A rich dark violet, much the color of Gaudichau, but taller, and with slightly crinkled standards. 75c
- 90 **BRUNO** (Bliss '22) To say that the S. are bronze, and the F. deep, rich velvety red-purple, conveys no adequate idea of the marvel of this brown Dominion seedling. Late. Always a favorite, and at last coming down in price. \$5.00
- BUTO** (Sass H. P. '26) The darkest and largest of the early, dark blue-purple. Stunning in mass planting. \$6.00
- CALEBEE** (Simp. '23) Lavender on a white ground, with red-brown markings on the falls. 75c
- CAMELIARD** (Sturt. '27) Miss Sturtevant says of this; — "One of my absolutely distinct novelties. The huge, but well-proportioned flowers are over seven inches long, and are in color amber-yellow overlaid with wine-purple." A beautiful iris, with the unusual effect of having been sprinkled with gold dust. \$12.50
- 85 **CAMEO** (Sturt. '24) Apricot, cream-buff and pink, with a fine contrast between S. and F. Small and charming. \$1.00
- 91 **CANDLELIGHT** (And. '26) "Pale pinkish lavender strongly illuminated from within with a rich golden glow, difficult to describe, and very lovely — the name is realistically descriptive." \$5.00
- 83 **CANOPUS** (Bliss '21) The first of the Dominions to bloom, a dusky mass, continuing in bloom for weeks. Tall, and exceptionally well-branched. 50c
- CANYON MISTS** (Berry '26) An exquisite orchid-toned iris, with more white in the haft than Queen Caterina, and less reticulation. \$1.00
- 90 **CARDINAL** (Bliss '19) A Dominion seedling, of rich red-purple tones. Impossible for a description to do it justice. Late. \$7.50
- CARNIVAL** (Wmsn. '28) S. yellow; F. ochre red, with violet. Some like it — at least, there's nothing like it! 50c
- 83 **CAROLINE E. STRINGER** (Sass, J. '24) The most delicate shade of rose. \$1.50
- 82 **CASSANDRA** (Perry '24) S. rose-violet; F. very dark crimson. Large flowers. 75c
- CASSIOPEE** (Vilm. '26) A dark blue-purple bicolor. \$10.00
- CHALCEDONY** (Wmsn. '28) A very different iris, the undertone grey, with some light purple, and maroon veinings. Well named. \$4.00
- 82 **CHALICE** (Sturt. '24) A beautiful clear yellow, low growing and early. 75c
- 89 **CHARTIER** (Hall '25) A smooth, clear white. Silver Medal, A. I. S. '27. \$4.00
- 85 **CHASSEUR** (Vilm. '23) A very fine late yellow, with almost black bud sheaths. May be planted with *Ambassadeur*. \$1.00

- 77 **CHATELET** (Vilm. '23) A pale orchid bicolor. 75c
- CHURCHMOUSE** (Sass '29) A quiet grey-brown. Very different. \$2.50
- CINDERELLA** (Koeh. '24) Shades of pearl, buff and lavender. 50c
- CINNABAR** (Wmsn. '28) A very marvelous rich, dark red mass. The falls are velvety. Tall, well-branched, and sturdy. \$7.50
- 85 **CITRONELLA** (Bliss '22) A clear yellow, with the falls heavily washed with chestnut. \$1.25
- COLUSA** (M. M. '28) (Called **CONSUELO** last year). A copperish-mauve in tone, the falls having a metallic-blue midrib. Flowers of fine form and poise on slender, rigid stems. \$3.00
- CONCHITA** (M. M. '28) S. pale bronze; F. same, veined with red. A new color note. \$2.50
- 85 **CONCHOBAR** (Bliss '21) A purple bicolor, with flaring, velvety falls. A Dominion seedling, low-branched. \$3.00
- 83 **CONQUISTADOR** (Mohr '23) Deep mauve, shading to light lavender. Very tall, and fairly hardy. 75c
- COPPERSMITH** (Shull '26) The description reads — "S. purple to cinnamon drab; F. mahogany red reticulations on haft, passing to solid Indian lake, dahlia carmine and purple"—but this conveys to the reader no idea of the glorious copper sheen that gives this iris its name. \$5.00
- 86 **CORONADO** (Mohr '24) A metallic blending of lavender and red-purple; very brilliant. \$1.50
- 84 **CORRIDA** (Mil. '14) One of the older varieties, but still a desirable, free-flowering blue-violet. 50c
- 83 **CRIMSON GLOW** (Perry '24) Bright crimson-rose. \$1.00
- 85 **CRUSADER** (Foster '13) Another of the older irises, but such a marvelous tone of blue, that it remains a general favorite. The flowers have a very alert "stance." 50c
- 82 **DAMOZEL** (Mor. '22) S. ruffled white; F. white, netted and bordered with delicate mauve. 75c
- DAUNTLESS** (Con. '29) Red, underlaid with brown. The S. beautifully infoliate; F. broad, almost straight hanging, shading slightly lighter at edges. The blossom stalks came from side fans, the first year, and were easily three feet in height. Each bloom started a seedpod; and the increase was as heavy as any iris in the garden. Awarded the Dykes Medal, a well-deserved honor. \$30.00
- 83 **DELIGHT** (Sturt. '23) White, with rose-pink style branches, A. M., A. I. S. '28. \$3.00
- DIONE** (Edl. '28) "A distinct and pleasing white; on either side of the projecting red-orange beard, extend bright blue veins for an inch onto the falls. Good form and substance." \$8.00
- 73 **DIONYZA** (Hort '23) A very lovely lavender, of rather slow growth. \$1.25

- 91 **DOLLY MADISON** (Wmsn. '27) A flower of exquisite poise and coloring, the slightly ruffled standards of dull mauve blending with the darker falls, which flare just enough to make a bloom of perfect form. The whole is made luminous by the intense red-orange beard, and the yellow hafts and style arms. Low and well-branched. Fragrant. Early. \$12.50
- DON QUIXOTE** (M. M. '27) S. deep lavender, almost entirely overlaid with yellow; F. hyssop violet, with heavy brown reticulations. \$2.00
- 82 **DOMINION** (Bliss '17) A dark violet bicolor, chiefly of interest to hybridizers. \$3.00
- DOXA** — see list of Intermediates.
- 84 **DREAM** (Sturt. '18) Almost pink. A flower of delightful color and form. 50c
- 82 **DREAMLIGHT** (Sturt. '23) A delicately pink flushed flower. 75c
- 87 **DUKE OF BEDFORD** (Bliss '22) S. deep violet, with a reddish tone; F. velvety black-purple. A vivid colored Dominion seedling. \$3.00
- DUKE OF YORK** (Perry '23) As near a real blue as there is — clear and exquisite in coloring; very large blooms, well carried; and strong increase. Should be more widely grown. 75c
- 85 **DULCINEA** (M. M. '25) Lavender and violet blue, an iris with charming coloring and ruffled texture. 75c
- 80 **DUQUESNE** (Hall '23) S. violet; F. velvety prune-purple. A great favorite with visitors. \$1.00
- 83 **DUSK** (Mor. '21) A dark iris, with brilliant orange beard and hafts. \$1.00
- 83 **EDEN PHILPOTTS** (Perry '21) A steel-blue self. 50c
- EDGEWOOD** (Hall '26) Two shades of deep pink. Very tall, with large blooms, sturdy stems and fine substance. \$7.50
- 87 **ELAINE** (Shull '25) "A silken-sheened combination of yellow and violet, where both colors have remained clear and beautiful." One of the most delightful of the blends. \$3.00
- ELINOR FUNK** (Bral.) S. deep celestial blue, crinkled; F. pansy purple. Late. 75c
- ELSINORE** (Hall '25) Primrose yellow, suffused and bordered with veronica purple. Always a favorite. \$4.00
- 84 **EMBER** (Sturt. '24) Violet-red, not quite amethyst. \$1.00
- 76 **EMPIRE** (Sturt. '18) A free and dependable yellow. Rated rather low, but nothing seems to take it's place. 50c
- ENDYMION** (Sturt. '25) A charming iris of soft creamy yellow, with a lilac flush. \$2.00
- 86 **ESPLENDIDO** (Mohr '24) A red-purple bicolor, of splendid effect. \$1.00
- ESTEREL** (Edl. '28) "A soft clear pink iris, with prominent primrose-yellow hafts and strong projecting red-orange beard, giving a beautiful central glow. Well branched and floriferous." \$10.00
- ESTRELLON** (M. M. '28) S. white, flushed with lavender and red; F. red-purple, veined and bordered with color of S. \$3.00

- ETOILE du MATIN** (Vilm. '26) A blue-white. Limited stock. \$10.00
- 87 **EVADNE** (Bliss '21) A beautiful bronze red, with a conspicuous golden beard. Fragrant. \$3.00
- EVENTIDE** (Sass, H. P. '26) A slaty lavender, distinctive and very lovely. \$2.00
- FASCINATION** (Cay. '27) A greatly improved Aphrodite — bright, clear pink, of pallida habit. Stock limited. \$25.00
- FELDSPAR** — see list of Intermediates.
- FIREFALL** (Essig '28) Very bright red, with cadmium-yellow beard and center. \$5.00
- FIRELIGHT** (Sass, H. P. '27) Another new red. Neither this, nor Firefall bloomed for us last year. \$3.50
- FLAMBEAU** (Sturt. '24) A very beautiful new yellow, with the S. slightly darker in tone, than the F. Cinnamon venations on the haft, changing to gold on the falls — very different! The beard is a strikingly vivid orange. The poise and form of the blooms are perfect; stalks were slightly too high branched, the first year. \$8.00
- 80 **FLAMMENSCHWERT** (G. & K. '20) This iris retains it's prestige as about the best of the yellow and browns. 50c
- 79 **FLUTTERBY** (Sturt. '24) A soft, clear yellow of medium height, with the falls lighter than the standards. \$1.00
- 84 **FOLKWANG** (G. & K. '25) An interesting low-growing rose and claret iris. 50c
- FRA ANGELICO** (Vilm. '26) "S. light bronze-gold; F. same, overlaid with metallic light lavender-blue. One of the finest of the new things from France." Description copied, as we have had no bloom. Stock limited. \$7.50
- 85 **FRIEDA MOHR** (M. M. '26) The most outstanding of the two-toned pinks in the garden, last year. Tall and sturdy, of marvelous coloring, and fast growing. Appears to be very hardy in New England. \$5.00
- 87 **GABRIEL** (Bliss '23) S. bright, clear steel-blue; F. bright violet-blue. Tall, and very vigorous. \$6.00
- 81 **GARDEN WHITE** (Sturt. '25) A flower of purest white, with flaring falls. \$2.50
- GARGANTUE** (Mil. '24) Lobelia-blue, the falls having a suffusion of violet-purple. Almost four feet in height, with stiff stems. Stock limited. \$5.00
- 82 **GAVIOTA** (Mohr '24) A good-sized creamy-white iris, both S. and F. distinctly edged with yellow. 50c
- 88 **GEO. J. TRIBOLET** (Wmsn. '26) Very dark shades of violet, with a coppery suffusion through the entire flower. The darkest color tone among the early irises. \$1.00
- 85 **GEORGE YELD** (Perry '23) Apricot, rose and crimson. Tall and very free-flowering. \$1.00
- 90 **GERMAINE PERTHUIS** (Mil. '24) Rich violet and violet-purple in coloring, a descendent of Mme. Gaudichau. Blooms are large, well carried on strong, 36" stems. \$3.50
- 86 **GLAMOUR** (Bliss '22) S. light lobelia-violet, edged with buff; F. velvety black-purple, lighter at margins. \$4.00

Over-the-Garden-Wall

- 78 **GLORIAE** (Cay. '24) Clear blue, almost a self, the falls having a metallic lustre. \$4.00
- 86 **GLOWING EMBERS** (Sturt. '23) "The violet-flushed S. and dahlia-purple F. enclose a glowing center of yellow-netted hafts and orange beards." \$1.50
- GOLDEN GLORY** (Jack. '27) A happy blending of yellow and cream. This iris, when established, is tall and sturdy, with excellent form. Rather late. H. M., A. I. S. \$10.00
- 81 **GOLDEN PROMISE** (Neely '24) A yellow that opens with cream tones, growing deeper after opening. \$2.00
- 87 **GOLD IMPERIAL** (Sturt. '24) Probably the best known of the fairly recent yellows. A beautiful clear chrome yellow; not very tall, but a splendid grower H. M., A. I. S. '22. \$1.00
- GOLD STANDARD** (Edl. '27) Both S. and F. are a creamy yellow, the latter flaring, with an exceptionally brilliant red-orange beard. \$10.00
- 87 **GRACE STURTEVANT** (Bliss '26) Dark red-brown and carmine. The magnificent Dominion seedling that Mr. Bliss has honored with the name of our foremost hybridizer. Very slow growing, so that our stock is still limited. \$25.00
- GREY DAWN** (Bales '25) Two shades of grey-blue, intriguing for table decoration. \$1.00
- GREY FRIAR** (Bral. '25) London-smoke in color. 50c
- GRISELDA** (Wmsn. '28) S. grey, shading to a paler margin; F. raisin-purple, shading to grey at margins. Rather dull. \$3.00
- GRISSETTE** (Wmsn. '28) Walnut brown, shot with violet. Another iris of sombre tones. \$4.00
- 81 **HALO** (Yeld '17) Two shades of violet blue, very pleasing in carriage and garden effect. 50c
- 82 **HARMONY** (Dykes '23) A deep, rich, blue-purple self, with the added dark effect of a blue beard. Rapid increase. 50c
- 77 **HARPALION** (Perry '23) A lavender-blue, the S. overlaid with bronze, the F. held horizontally. Very free. 75c
- HENRI RIVIERE** (Mil. '27) Mr. Mead writes of this iris; — "S. purest lemon yellow, lightening to canary yellow at the base; F. mauve, with yellowish reflex, blending to canary yellow at the throat and edged with canary yellow. An extremely late flowering iris of the greatest vigor." Stock limited. \$17.50
- 81 **HERMIONE** (Hort '20) A blue-lavender bicolor. 75c
- 80 **HIPPOLYTE** (Hort '21) A charming clear lavender, of the most exquisite finish. Late. 50c
- HIS EMINENCE** (McK. '25) A larger, taller Archeveque. Over 40". \$4.00
- HOMER C.** (Mor. '24) An iris of the coloring of Opera, but much larger and more gorgeous. \$4.00
- HORIZON** (Mor. '24) A uniform light blue-lavender, particularly nice in mass effect. \$2.50
- HYPERION** (Bliss '21) Another of the blue-lavender bicolors. \$1.50

- HYACINTHUS** (Wmsn. '28) A very large dusky, reddish bicolor, with a heart of gold. Even the first year's bloom received it's accolade of superiority, the four X's. \$3.00
- HYDROMEL** (Wmsn. '28) S. deepest orange; F. darkest mahogany, with very narrow gold edge. Quite stunning in effect. \$2.00
- IDUNA** (G. & K. '26) S. white, with amber edge; F. red-purple, shading to almost white at margin, with a wire edge. 30". Late. 50c
- 84 **IMPERATOR** (Cay. '23) Clear violet to violet-red. Vigorous. 50c
- INGOMAR** (Mag. '26) S. slate, edged with yellow; F. white, heavily veined with purple. 50c
- 82 **INNER GLOW** (Sturt. '24) Ivory toned, lit with yellow and orange at the center. Fine form and texture, medium height. \$1.00
- 83 **ISIS** (Bliss '19) Almost China-blue, tinged with violet. 50c
- 80 **JACINTO** (Berry '24) "A tall pale blend of neutral tone, with pinkish cast; the soft colorings often seen on the beautiful mountain whose name it bears." (Berry) An exquisite color note, added to height and tremendous increase. This was the best-branched iris in the garden, last year. \$1.00
- 83 **JACQUELINE GUILLOT** (Cay. '24) One of the favorites among the light blues. Large blooms and fast increase. 75c
- JANE WILLIAMSON** (Wmsn. '28) "General effect is a pink pastel, in the sunlight it glows with iridescent colors." More yellow in the center than Mme. Cheri. A first-year plant carried four stalks of bloom. Late. \$6.00
- 81 **JEAN CHEVREAU** (Cay. '23) Creamy yellow, with brown-violet dots. A free-blooming, low growing little plicata. 50c
- 85 **JULIA MARLOWE** (Shull '24) A marvelous, glowing iris, in shades of pink and red. Over four feet in height, with sturdy stems. \$2.00
- KATHERINE McFARLAND** (Spitzer, '28) About the darkest of the black-purple irises. Flowers are medium size, and of exceptional substance. First-year stalk, 24". My notebook reads — "the perfect blue-purple self." H. M., A. I. S. '26. \$8.00
- 84 **KESTRAL** (Mor. '22) A very fine red-purple bicolor. \$3.50
- 83 **KING KARL** (Sass, J. '25) The cream ground, and sanding of pinkish dots, give this plicata a "peachy" tone. Low-growing. \$1.50
- 85 **KING TUT** (Sass, H. P. '26) Mr. Sass describes this as cocoa and Hessian brown. It is an entirely new shade in the iris world, much more brilliant than the description would imply. \$6.00
- LA BOHEMIENNE** (Mil. '26) Deep hellebore red, flushed with bronze. Stock limited. \$6.00
- LABOR** (Cay. '26) A dark heliotrope-violet, the S. flushed with copper, the F with an electric-blue sheen. Very striking in color, and beautiful in the garden. Stock limited this year. \$7.00
- 83 **LADY BYNG** (Bliss' 22) One of the most charming of the orchid-colored irises. 50c

- 78 **LADY CHAS. ALLOM** (Perry '21) Rich dark blue. 75c
- 83 **LADY LOU** (Dean '21) An early lavender. 75c
- 87 **L'AIGLON** (Shull '26) One of Mr. Shull's captivating blends. A joy in blended tone, finish and poise. Coppery red, early. \$5.00
- LAMIA** (Sturt. '27) A mauve, with large flowers and strong growth. \$2.00
- 78 **LA NEIGE** (Verd. '12) Mighty good for a low-growing, low priced-white. 50c
- LE CORREGE** (Vilm. '27) S. smoky bronze, shot with lavender and suffused with red; F. dark, velvety red. Brilliant beard. \$12.00
- 83 **LE GRAND FERRE** (Cay. '24) A mass planting of this iris carries, at a little distance, as a charming dull, soft pink, with an undertone of buff. \$2.00
- 78 **LEONATO** (Hort '22) A delicious soft lavender-blue, interestingly veined and "watered." The S. are slightly crinkled, the F. long and wide, with a marked white throat extending down onto the fall. Blooms are very large, on tall, strong stalks. Early. \$1.50
- LEREMA** (Wmsn. '27) Several shades darker and redder than "Lent A.", the falls having a rich carmine undertone. Low and well branched. Very early. 75c
- LODESTAR** (Hall '25) S. yellow; F. velvety claret-brown, with lemon border. Very slow growing. \$4.00
- 83 **LONA** (Sass, J. '23) Soft buff, sanded with purple. \$1.50
- 85 **LORD LAMBOURNE** (Perry '23) A dusky, copper-red in effect. Tall and early. \$1.00
- 78 **LORD OF JUNE** (Yeld '11) We like to have it, even if the hot sun does cause the standards to droop. The crisp blueness, and delightful fragrance in the early morning, make up for the other. 50c
- LOS ANGELES** (M. M. '27) A gigantic white, with the standards faintly edged with pale blue, and style arms the same shade. \$12.50
- LOUDOUN** (Fendall '24) A very unusual plicata. S. yellow, lightly veined with chestnut; F. heavy, creamy white, edged with a sanded border of chestnut; reverse of F. yellow, which shows as edges are waved. Early, and medium in height. H. M., A. I. S. '24. \$1.50
- 81 **LOUIS BEL** (Denis '21) Velvety dark pansy violet. \$5.00
- LUSTRE** (Dykes '25) A reddish lavender pallida, very early. \$2.50
- 76 **LYCAENA** (Wmsn. '25) S. White; F. rich purple with light border. 75c
- MAGENTA** (Cay. '27) Deep amethyst violet — a new color accent in the garden. Stock limited. \$20.00
- 85 **MAGNIFICA** (Vilm '20) Shades of rose and red-purple. Large flowers on tall stems. Very showy. 50c
- 79 **MAGNIFICENT** (Fryer '23) A purple with an unusually fine substance. H. M., A. I. S. '20. \$2.50
- 87 **MAJESTIC** (Bliss '23) A Dominion seedling, large and husky. Lavender and raisin purple, with some bronze. Very satisfactory. \$2.00

- 81 **MAORI PRINCESS** (Shull '23) S. empire yellow; F. burnt lake, with a beautiful clear border of yellow. Slow increase. \$1.50
- 81 **MARJORIE TINLEY** (Perry '22) Much the same shade as Duke of York-soft lavender-blue, with large blooms. \$1.25
- MARQUISSETTE** (Cay. '26) An entirely new break in color — shrimp pink. It hasn't bloomed for us yet, so we make no comments. Stock limited. \$10.00
- 90 **MARY BARNETT** (Cumb. '26) Picture a Princess Beatrice, larger and fuller in bloom, with a beard of such brilliant gold, that it gleams thro' the entire flower. \$3.50
- 85 **MARY GIBSON** (Perry '22) A light blend of old rose and bronze, with an orange beard that runs into a metallic blue midrib. \$1.00
- 80 **MARY WILLIAMSON** (Wmsn. '21) White and purple, ruffled. Vivid. 75c
- 86 **MAUNA LOA** (Berry '26) "A tall, upstanding bicolor of a strong reddish cast, the rich dahlia-purple falls giving the dominant color note. H. M., A. I. S. Not really happy in New England. Not for sale in 1930.
- 81 **MAY SADLER** (Perry '25) S. rose-violet; F. dark madder crimson, with a bronze beard. \$7.50
- 87 **MEDRANO** (Vilm. '20) A low-growing brownish-red, with crinkled texture. 75c
- MELROSE** (Simp. '26) "A large lavender bicolor, both S. and F. being shades of lavender and purple. Thrifty and profuse." \$1.50
- 82 **MENTOR** (Perry '23) S. rosy lavender; F. crimson purple. \$1.00
- MESSALINE** (Mil. '27) S. pale gold, shading lighter at edges, and flushed with pink; F. Corinthian red, shading to gold at throat. Stock limited. \$10.00
- MESTOR** (Perry '23) A combination of bright violet-blue and dark velvety purple, very intense in color tone. \$1.00
- 87 **MICHELINE CHARRAIRE** (Denis '24) An exquisite pure white, with golden reticulations in the throat. Objects to damp ground. \$3.00
- MIDGARD** (Sass, H. P. '26) The best-beloved of the newer blends; an indescribable soft pink, with slight yellow flush. Try planting it with Old Ivory or Cameo. \$5.00
- 87 **MILDRED PRESBY** (Farr '23) S. white, flushed with violet; F. dark velvety violet, with light edge. 75c
- 80 **MILKY WAY** (Sturt. '22) A very clear white, the lavender etchings of the haft so delicate, that they are not discernable at a little distance. Very fine substance. And a popular price. 50c
- 86 **Mme ABEL CHATENEY** (Cay. '24) A red-lilac, with metallic blue sheen. Much the coloring of Steepway, but a larger, better flower. 75c
- 83 **Mme CHERI** (Sturt. '18) "Ageratum violet washed with pink and warmed by the yellow undertone." 50c
- 89 **Mme DURRANDE** (Denis '12) Iridescent buff, flushed with amber and lilac. Very lovely — when it blooms! \$1.50

Over-the-Garden-Wall

- Mme EMMA NEVADA (Perry '23) A tall iris, in tones of pale blue, irregularly marked with crimson. 75c
- 85 MME HENRI CAYEUX (Cay. '24) S. slaty, reddish violet-purple; F. deepest velvety red-purple. \$2.50
- 87 MOA (Bliss '19) Very large flowers of violet and violet-purple. \$3.00
- MONTOUR (Hall '25) A small, low-growing iris, the S. pinkish cinnamon; F. velvety burnt-lake. \$2.50
- 81 MONTERRAT (Mor. '23) An exceptionally strong grower, in buff and lavender. A large spathe leaf is carried well up on the stalk. \$1.50
- 84 MOONLIGHT (Dykes '23) Garden effect is almost white. Actually, the S. are the faintest lavender, tipped with yellow; F. having a pale lavender center, with cream border and reverse. Beard is a brilliant orange. Very early, and most lovely. \$1.25
- MORERA (M. M. '28) A hybrid, that should be kept dry during the summer. 30" stems, with many mulberry-colored blooms. \$3.00
- 91 MORNING SPLENDOR (Shull '23) Petunia violet and raisin purple. A gorgeous red, when the sun shines thro' the petals. The great favorite, now at a popular price. H. M., A. I. S. '22. Gold Medal, Garden Club of Am. '26 \$1.00
- MOUNT ROYAL (Morg. '29) A large purple bicolor, outstanding in effect. Stock limited. \$10.00
- MRS. A. S. HOYT (Sass, J. '27) S. white, charmingly flushed with red-lilac, full and ruffled; F. white, flushed and dotted with a darker lilac. Early, and not tall. H. M., A. I. S. '27. \$6.00
- MRS. CUTHBERTSON (Perry '23) Rose, apricot and crimson. Much like Lord Lambourne. \$1.25
- MRS. EDWARD HARDING (Perry '25) A very beautiful, large iris, of purple shades, the falls overlaid with black. \$6.00
- 78 MRS. E. T. VIEUSSEUX (Perry '23) A bright, dark mauve. .50
- 80 MRS. HETTY MATSON (Perry '23) Mauve and purple, with a heavy wire edge. Sturdy, tall, tremendous increase. .50
- 83 MRS. H. F. BOWLES (Perry '23) S. brown, overlaid with old-gold; F. brick-red. Unique and makes a brilliant mass. 75c
- 79 MRS. MARION CRAN (Perry '23) A brilliant light rose, slightly more of a blue tinge than Aphrodite, less white in the throat, and more ruffled. \$3.00
- 71 MRS. ROBERT EMMET (Perry '25) Milk White, with a conspicuous yellow beard, and yellow base. Stock limited. \$10.00
- MRS. VALERIE WEST (Bliss '25) Mr. Mead says of this iris:—"The immense branching spikes of great height bear massive flowers that are marvelous in form and finish, at least double the size of Ambassadeur, similar in color, but redder and richer.. The highest development of the Dominion race." We hope to bloom this, this season, and will place orders for stock, if possible.
- MUSCADINE (McK. '25) A rich ruffled dark purple. \$2.00

	MY LADY (Mck. '24) White, feathered with pink. A. M., A. I. S. '25.	\$1.00
	MYSTERY (Sturt. '28) Pearl, flushed with olive, yellow and grey. Old gold at center, and orange beard.	\$12.50
82	MYSTIC (Bliss '20) White, with vivid lilac veinings in the throat.	\$1.00
81	NANCY ORNE (Sturt. '21) A blend of reddish lilac shades.	50c
86	NAOMI (Sturt. '25) S. bright lilac; F. greaming dahlia-carmine.	\$1.25
	NATHALIS (Wmsn. '27) Pale violet and purple, pinkish in garden effect, and very lovely.	75c
	NEBRASKA (Sass, H. P. '28) Mr. Sass says of this: "S. apricot yellow, ruffled; F. same color, striped and clouded brown; dark yellow beard." This gives the reader no idea of the glory of this iris, as seen in the garden. The standards are so brilliant, that one forgets the brown in the falls. Late.	\$5.00
	NEBULAE (Bratt '27) "A pink plicata, the F. evenly and minutely dotted pink on a white ground; S. are dotted and suffused with pink." Blooms large and ruffled. Late.	\$4.00
82	NIMBUS (Shull '22) A sombre violet, the S. having a heavy wire edge. A fine dark accent for the border.	75c
79	OBERON (Koeh. '24) A mighty gay blue-lavender, of slow growth. Has waved edges and a golden glow at the heart.	75c
82	ODAROLOC (And. '24) A luminous orchid in color, with large flowers, well carried on strong stems.	\$1.50
83	OLD IVORY (Sturt. '24) Pale yellow, with an orange beard. Very charming, and aptly named.	75c
83	OLYMPUS (Perry '23) S. slaty mauve; F. very red-purple, bordered lighter. A tall, strong grower, with massive blooms.	50c
	OMAHA (Sass, H. P. '26) A copperish pink. One of the outstanding irises in last year's color parade. Flowers are slightly too much bunched.	\$5.00
	ONYX (Wmsn. '28) S. white, deepening to yellow at margins; F. violet, with paler margins. Late.	\$3.00
83	OPERA (Vilm. '16) One of the best reds.	50c
	OPHELIA (Cay. '25) S. golden copper, shaded mauve; S. sulphur yellow, shaded light mauve, with margins of golden copper. Very lovely planted with Mary Barnett. Stock limited.	\$5.00
73	OPHIR GOLD (And. '25) A yellow iris of medium size, much the color of Sherwin Wright, but taller. Late.	75c
84	OREAD (Mor. '27) A very early bronze and crimson, slightly less brown than Lerema, and with velvety falls.	\$4.00
	ORION (Vilm. '26) Much the coloring of the great favorite Alcazar, but with enormous flowers. Stock limited.	\$5.00
	ORIZABA (Berry '25) A dark reddish-violet, almost a self, with the S. peculiarly crinkled. Very tall.	\$4.00

- ORTRUD** (Mr. '28) A rich, reddish blend. It's chief distinction would appear to be a heavy midrib on the standards. \$5.00
- OSPREY** (Berry '27) The loveliest, most charming pale lavender, lit with gold at the center. Perfect in tone, poise and form. My note reads: "the longer one gazes, the lovelier it grows." Bloomed well, the first year after coming from California. \$15.00
- PALADIN** (Bliss '19) A greatly improved Oriflamme; S. pure violet-blue; F. have some indigo. Stock limited. \$5.00
- 74 **PATRICIAN** (Bliss '21) Handsome, large purple flowers. 75c
- 82 **PEAU ROUGE** (Cay. '23) Copper red, and blood red; an interesting accompaniment for Mary Gibson. 75c
- PEGASE** (Vilm. '26) A pink-red bicolor, one of the interesting novelties from France. Stock limited. \$12.50
- PHILETUS** (Mag. '25) S. are straw-yellow; F. the same, with lavender flush. The tone effect is unexpectedly good. \$1.50
- 90 **PIONEER** (Bliss '24) A gorgeous red-purple flower, true Dominion seedling, with it's blooms of fine substance. \$2.00
- 84 **PRAIRIEGOLD** (Sass, H. P. '26) A clear yellow, not unlike Sherwin Wright in shade, but taller and with larger blooms. \$2.00
- 88 **PRIMROSE** (Sturt. '25) A deep, clear yellow, of fine form. The S. slightly darker than the F. A. M., A. I. S. '28. \$3.00
- 80 **PRINCE CHARMING** (Sturt. '24) White, flushed and frilled with pink. \$1.00
- 90 **PRINCESS BEATRICE** (Barr 1898) Irises come and irises go, but still this reigns supreme among the exquisitely beautiful clear lavenders. 50c
- 78 **PRISCILLA** (Hall '23) S. pale violet; F. rich velvety black-purple, bordered with violet. A great favorite with our customers. 75c
- 76 **PROSPERITY** (Sturt. '24) Lilac and hyacinth violet. \$1.50
- 95 **PURISSIMA** (M. M. '27) The marvelous big, tall, large white, that came to us from California a few year's ago. \$12.50
- PURPLE HAZE** (Sass, P. H. '27) (formerly Twilight) A French-grey self. Very interesting when planted with Eventide. H. M., A. I. S. '27. \$3.50
- QUEEN CHEREAU** (Bral. '25) As the name suggests, a greatly improved Mme. Chereau, early, fragrant and a rapid grower. 50c
- 82 **RAJPUT** (Sturt. '22) A bright violet self, with large blooms. 75c
- 81 **RAMELDO** (Mohr. '25) A blend with much metallic lustre. Hardy and sturdy. 75c
- REALM** (Baker '20) An intense pure rich blue self. Very tall and vigorous. Stock limited. \$10.00
- 80 **RENE CAYEUX** (Cay. '24) One of the few really lovely white and crimson irises. S. white, slightly tinged with lilac; F. crimson-red-violet, veined with white at throat. A hybrid, with some I. macrantha heritage. Stock limited \$5.00

- 77 **RENEE de LABORDE** (Denis '26) White, the falls with wavy edges. \$10.00
- 82 **REVERIE** (Sturt. '20) A clear pink-copper bicolor. Late. \$1.00
- RHEA** (Wmsn. '28) A very lovely new blend of mauve and gold. Flowers somewhat the shape of *Isoline*, but darker in tone. First-year stalks were over three feet. \$3.00
- 87 **RHEINGAUPERLE** (G. & K. '24) A very delightful "pink" \$1.50
- 82 **RIALGAR** (Sturt. '24) S. a glorious clear yellow, ruffled and interlapping; F. russet and yellow, edged with yellow. The brightest of the very early yellows, almost orange. \$2.00
- 73 **RICHARD II** (Dykes '14) A short iris, of intense contrast between the white S. and the black-purple F. 75c
- RITA** (Mohr. '24) A nice, blue-purple iris. 75c
- 83 **ROBERT W. WALLACE** (Perry '23) Rich violet and purple-black tones. When introduced, this was hailed as the finest large, tall, very dark iris. \$2.00
- 89 **ROMOLA** (Bliss '24) "The most graceful and delicate of the Dominion race." S. pale lilac, tinged ivory at base; F. velvety red-violet. \$6.00
- ROSA BONHEUR 2d.** (Cay. '26) S. deep metallic crystalline yellow; F. same, overlaid with lavender-violet. Late. Stock limited. \$6.00
- ROSADO** (Mohr. '23) A clear, soft pink, tall and a fine grower. \$2.00
- 83 **ROSE MADDER** (Sturt. '20) A brilliant rose-madder in tone, the S. lighter than the velvety F. Some white in throat. 75c
- 83 **ROTA** (G. & K. '24) A beautiful carmine-pink of two tones, mass effect being a fine red. For front of border. Most attractive of early reds. 75c
- 83 **RUBYD** (Dykes '22) *Petunia* violet. Very tall. Very wavy edges. 75c
- SAGAMORE** (Berry '28) We regret that this iris fails to appreciate our wet New England spring weather. It is being tried once more, and we shall hope to have it acclimated, sometime. —
- 88 **SAN FRANCISCO** (M. M. '27) The largest *plicata*. White, both S. and F. distinctly edged with lavender. \$12.50
- SAN LUIS REY** (M. M. '28) A large, tall *Opera*, with velvety falls. The height, size, and hardness promise a popular future for this iris. \$5.00
- 89 **SANTA BARBARA** (Mohr. '25) A very blue-lavender, of perfect poise. Well over three feet in height, and very hardy. \$2.50
- Sass' Seedling No. 129 1-2.** A very large, tall inky-blue, not velvety. The stem is very finely branched, about three feet tall. Very fast growing, and far superior to many of the older named varieties. 50c
- Sass' Seedling No. 102.** A marvelous purple, with heavy wire edge. Same remarks as above. \$1.00
- SEA FOAM** (Sturt. '28) White, the falls tinged with sea-foam yellow. Flowers with the last of the *Intermediates*, but because of its fine substance, lasts into the next group. Fast increase. \$2.50

Over-the-Garden-Wall

- 83 **SEMINOLE** (Farr '20) Very fine garnet. The best tall, low-priced red. 50c
SENORITA (M. M. '28) Pale lavender, overlaid with luminous yellow. Absolutely charming, dainty, ruffled, and in good proportion, on a well-branched, tall slender stem. \$2.50
- 86 **SEQUOIAH** (Shull '26) S. light lilac at the tips, to tawny olive at base; F. pansy purple to velvety black-purple. \$5.00
SILVERADO (Mohr. '23) S. silvered lavender; F. plumbago-blue. \$1.00
SERENADE (Hall '26) A real pink, crisp in tone, with good substance, and large blooms. Medium height. \$7.50
- 83 **SHASTA** (M. M. '27) Pure white, with faint amber reticulations on the haft. Late. \$5.00
SILVER QUEEN (Perry '24) Aptly named; an even, attractive silvery white, with palest yellow beard and throat. Early, and not tall. \$1.00
- 82 **SILVER RIBBON** (Wmsn. '26) The flower seems to have been cut from fuchsia-colored velvet, with a pale band down the center of the falls. Nothing else of just this color. Medium height. 50c
- 84 **SIMONNE VAISSIERE** (Mil. '21) S. white, heavily shaded with azure; F. brilliant blue, carried horizontally. Most desirable. Early. 75c
SIMPLICITY (McK. '21) A creamy plicata, with pink style arms. Masses well. 75c
- 80 **SINDJKA** (Sturt. '18) A subdued lavender and buff, tall growing. 50c
- 84 **SIR GALAHAD** (Shull '24) An early, vivid reddish bicolor. \$1.00
SIR MICHAEL (Yeld '25) S. clear lavender-blue; F. deep purple, suffused with red-brown. Red beard. Mrs. Patterson says that this is the best iris Mr. Yeld has raised; — it is "striking, a magnificent grower with exceedingly strong stems, four feet high, which are widely branched." Stock in this country is somewhat limited. \$25.00
SNOW (Bales '25) "A white that will stand rain and wind, and keep on smiling." \$3.00
- 87 **SNOW WHITE** (Sturt. '26) Pure white, with very pale green veinings in the throat. A flower of the greatest delicacy and charm, on slender stems. \$7.50
- 85 **SOLFERINO** (Cay. '25) A lilac-red self, that has received many honors. The exceedingly lovely bloom is larger than Aphrodite, and slightly darker than Mrs. Marion Cran. \$6.00
SOPHRONIA (Mor. '23) Similar to Kashmir White, but more sturdy. \$7.50
- 90 **SOUV. de LETITIA MICHAUD** (Mil. '23) A flower of enormous size and rare beauty. Lobelia-blue, the S. shading lighter at the margins; the F. beautifully veined with yellow. No description can do it justice. \$2.50
- 88 **SOUV. de Mme GAUDICHAU** (Mil. '14) The best early dark purple, at a low price. An iris that everyone should have; form, color and habit are all that can be desired. 50c
SPEED (Hort '22) S. clear luminous light blue; F. darker. 75c

	STIPPLES (Essig '28) White, stippled with blue, the F. more heavily than the S. A novelty.	\$3.00
	STRIATE (Bratt '28) A dainty, fresh flower; white, veined with blue.	\$3.00
82	SUNSET (Denis '19) Buff, smoky gold, copper yellow and violet suffusion. This interesting, very late blend, shows to best advantage in partial shade.	50c
86	SUSAN BLISS (Bliss '22) A free-flowering rose-pink. Also, a very rapid grower.	50c
82	SUZANNE AUTISSIER (Denis' 21) A popular blue and violet iris, early, and of "alive" carriage.	50c
84	SWAZI (Bliss '22) Much like Dominion, but larger and brighter.	\$7.50
81	TAJ MAHAL (Sturt. '21) Miss Sturtevant's choice of names for her irises is always apt. One realizes it especially, when this beautiful white blooms, with it's smooth texture.	\$1.00
75	TANSY (And. '25) A tall yellow, that proved unexpectedly popular last season.	50c
88	TENEBRAE (Bliss '22) Violet and black-purple. Later and darker than Canopus.	\$1.25
	THAIS (Cay. '26) An attractive shade of soft pink, slightly deeper than Susan Bliss. Stock limited. Cert. N. H. de F.	\$7.50
83	THESEUS (Hort '23) A beautiful creamy white, of exceptionally fine form. Has gold border on the throat. A poor bloomer on our heavy soil.	\$2.00
	THORSTEN (G. & K. '26) S. pleasing lavender, shading to buff at edge; F. velvety red, with lighter margin. Late.	\$1.00
76	TINTALLIAN (Sturt. '21) White, melting into purple at tips of F.	75c
	TITAN (Bliss '19) S. slatey lavender; F. reddish-purple.	\$1.00
	TOPAZIN (Simp. '26) Coppery-yellow. H. M., '27.	\$4.00
	TROPIC SEAS (Shull '24) "The blue sister to Morning Splendor." Large blooms, and a husky grower.	75c
	TROSTRINGER (Sass, H. P. '26) An exquisite light rose color.	\$3.00
	TROYON (Cay. '27) S. bronzy old-gold; F. heliotrope, edged with gold. Late. Stock limited.	\$6.00
84	TRUE CHARM (Sturt. '20) A tall, delightful plicata, white with the margins delicately etched with lavender. Tall, and very cool-looking, on a hot day in the garden.	75c
85	TRUE DELIGHT (Sturt. '24) And it's the truth! The observer is truly delighted every time he sees this charming white and pink plicata. Tall and strong growing.	\$1.50
	UNCLE REMUS (Essig '28) The biggest, most gorgeous early mulberry-purple one can imagine. Very early, and a free bloomer. Seems to be perfectly hardy here in the east.	\$7.50
80	27" AVRIL (Denis '23) An outstanding iris, with exceedingly blue velvet falls.	75c
81	VALKYRIE (Sturt. '19) Lake and maroon purple. "Conveys an impression of grim strength".	\$1.00

- VAN CLEVE (Van Name '28) Much the color of Swazi (rich mulberry purple) but taller, larger-flowered, and a much faster grower. As far as I know, the only iris registered from Connecticut. \$4.00
- VAN DYKE (Vilm. '26) A light blue self. Limited stock. \$15.00
- 89 VESPER GOLD (Wmsn. '26) The softest imaginable shade of old-gold, charming in form, poise, proportion and color. H. M., A. I. S. \$3.00
- 75 VINCENTIO (Hort '21) Tones of purple, with spreading red-purple falls. \$1.00
- 85 VINGOLF (G. & K. '24) An intense contrast in colors. S. cream to bronze; F. violet-blue, edged with color of S. 50c
- 77 VIRGINIA MOORE (Shull '20) A very late yellow, medium height and size. 50c
- 77 WARRIOR (Sturt. '22) Dusky, rich shades of purple and prune. Tall and well-branched. 50c
- WATTEAU (Vilm. '26) One of the new French introductions, that we have not seen in bloom. A blue-purple. Stock limited. \$10.00
- W. C. TERRY (Perry '23) Violet-blue and bright crimson-purple. Very tall. 75c
- 82 WEDGWOOD (Dykes '23) An exquisite shade of soft blue-violet, very striking in some lights. Large bloom, with white beard. \$1.00
- WHIM (McK. '23) A little, terra-cotta iris, very attractive. \$1.00
- WHITE AND GOLD (Nich. '27) Pure gleaming satiny white, with no venations. Form, finish and texture all fine. \$7.50
- WHITE STAR (Nich. '27) Another good white, slightly too high-branched, but of very good texture. \$3.00
- 80 WILD ROSE (Sturt. '21) A very delicately tinted rose-pink. 50c
- 78 WILLIAM MARSHALL (Perry '13) An odd lavender shade, with large blooms So tall, that it must be used at back of border. 50c
- 81 WILLIAM MOHR (M. M. '25) A hybrid of Parisiana and Gatesii, but usually listed with the pogoniris section, as it blooms at the same time. The ground color is pale lilac-grey, veined and flushed with manganese violet. Not tall, but large blooms of ravishing shades. Needs protection until established. \$8.00
- WOODLAND (Hall '25) A Chinese-violet self, very tall, and of exquisite finish. \$4.00
- 85 YELLOW MOON (Sturt. '23) An extraordinarily heavy-substanced iris, cream colored, lit with gold at the center. Edges are waved. Very early, and a joyful thing to have in the garden. \$1.25
- 85 YEOMAN (Bliss '22) Tones of blue-violet, with some red in the F. Sturdy, and good for mass effect. 75c
- 82 YOLANDE (Mil. '23) A magnificent dark blue seedling of Mme Gaudichau. \$1.00
- 81 YVONNE PELLETIER (Mil. '16) Skyblue, with a prominent gold beard. Small, but prolific, and an exquisite color. 50c
- ZINGARA (Wmsn. '28) S. deep chrome; F. same, with veinings of oxblood red. "General effect, distinct orange." 24". \$2.50
- 85 ZULU (Bliss '25) S. clear steely aniline blue; F. dark velvety purple. \$6.00

BARGAIN PAGE

Our garden is a very personal affair — we like to do much of our own work. We can accomplish this only by limiting the size of our planting. Since we will buy the new varieties the older ones must make way for them. Numbers at left of names, apply to ratings.

87	Alcazar	2 for	.50	84	Mlle Schwartz	2 "	.50
74	Anne Leslie	2 "	.50		Mme Bazes	3 "	.50
75	Anosia	2 "	.50	80	Mme Chobaut	2 "	.50
81	Archeveque	2 "	.50	74	Mme Denis	2 "	.50
75	Argonaut	2 "	.50		Mme Masse	3 "	.50
83	Argynnis	2 "	.50	81	Mme. Vernoux	2 "	.50
	Armand Clavaud	2 "	.50	79	Moliere	2 "	.50
80	B. Y. Morrison	2 "	.50	77	Mons. Hubert	2 "	.50
81	Cecil Minturn	2 "	.50	80	Morwell	2 "	.50
80	Cluny	2 "	.50	84	Mother of Pearl	2 "	.50
79	Colias	2 "	.50	78	Mrs. Walter Brewster	3 "	.50
76	Cretonne	3 "	.50	75	Naushon	2 "	.50
	Dainty Lady	3 "	.50	71	Navaho	2 "	.50
72	Daniel Lesueur	3 "	.50	79	Neptune	2 "	.50
78	Dimity	3 "	.50	79	Nine Wells	2 "	.50
	Don Juan (Mcg.)	2 "	.50	74	Nirvana	3 "	.50
83	Eclairer	2 "	.50	78	Olivier Perthuis	3 "	.50
77	Eglamour	2 "	.50	88	Pallida Dalmatica	3 "	.50
81	E. H. Jenkins	2 "	.50	80	Parc de Neuilly	3 "	.50
71	E. L. Crandall	2 "	.50		Pete Deatrick	2 "	.50
75	Fedora	2 "	.50	77	Pocahontas	3 "	.50
74	Fenella	2 "	.50	81	Prince Lohengrin	2 "	.50
79	Forsete	2 "	.50	82	Prospero	2 "	.50
76	Gold Crest	2 "	.50	88	Queen Caterina	2 "	.50
81	Grapta	2 "	.50		Ramona	2 "	.50
69	Helene Koehler	2 "	.50	79	Regan	2 "	.50
82	Hesperis	2 "	.50	77	Rodney	3 "	.50
84	Isoline	3 "	.50	84	Rosalba	2 "	.50
75	Ivanhoe	3 "	.50	72	Rosalind	2 "	.50
71	Jennett Dean	3 "	.50	71	Rose Salterne	2 "	.50
73	Kathryn Fryer	3 "	.50	78	Salonique	2 "	.50
82	Lady Foster	2 "	.50	73	Sarabande	2 "	.50
76	Lancelot	3 "	.50	76	Shalimar	2 "	.50
88	Lent A. Williamson	2 "	.50	84	Shekinah	2 "	.50
76	Lepinous	3 "	.50	76	Sherbert	3 "	.50
	Lucida	2 "	.50	78	Splendour	2 "	.50
80	Mady Carrier	3 "	.50	77	Stamboul	2 "	.50
80	Ma Mie	3 "	.50	82	Steepway	2 "	.50
77	Merlin	3 "	.50	87	Sweet Lavender	2 "	.50
80	Midwest	2 "	.50		Tangiers	3 "	.50
73	Miranda	2 "	.50	79	Thecla	3 "	.50
	Miss Boughton	2 "	.50	83	Viking	3 "	.50
74	Mistress Ford	2 "	.50	74	Zilia	3 "	.50

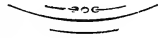
In ordering these, please note that we sell none, singly. Either two or three of a kind must be bought. Of some, we have only a few plants; others are plentiful. Of the latter, we will sell those listed "2 for 50c." at \$2.25 a dozen; the "3 for 50c." at \$1.50 a dozen.

Intermediate Irises

Soon after the middle of May, when the dwarf irises are beginning to fade, we greet the Intermediates; so-named because they bloom between the dwarfs and the tall bearded, both as regards time and height. Until the last few years, little advance has been made in this section, since the French and German introductions of 1901-1910. But various American hybridizers are giving us, now, a new race of these: — larger in size, with increased substance, and a wider range of color. No iris planting is complete without a few of these. Height is 16 to 24 inches.

- 77 **BLUET** (Sturt. '18) Perky little wisteria-violet blossoms, daintily poised on slender stems. Very floriferous. 2 for 50c
- 69 **CHARMANT** (Cap. '01) A pale blue self, F. darker at center. Opens flat the second day. 35c
- CHIEF** (Sass, J. '26) Almost royal purple, with very large blooms. \$3.00
- 83 **CRIMSON KING** (Barr '93) Rich claret-purple. 35c
- 80 **DOLPHIN** (Cap. '01) S. lilac; F. dark mauve, with vivid beard. 2 for 50c
- 70 **DOROTHEA** (Cap. '01) Porcelain tinted, opening flat. 2 for 50c
- DOXA** (Sass, H. P. '28) S. is a creamy blend; F. flushed with mauve, shading to rich chestnut at haft. Flower glistens in the sun, is of heavy substance and form. H. M., A. I. S. '28. We sold very low on this, last season, and Mr. Sass writes us that his supply is limited. We hope to have a few for sale at \$10.00
- 81 **EMPRESS** (Cap. '01) Creamy white. 35c
- 83 **FELDSPAR** (Mor. '23) The first day, the coloring much resembles Sunset, but blooms are larger, with broad S. The second shows a fading of the pearly sheen from the F., which flare. Very low branching and of fine substance. Bloomed May 19, last season, tho' the check list gives it as a tall bearded. \$2.00
- 78 **FRITJOF** (G. & K. '10) A violet bicolor, giving good mass effect. 3 for 50c
- 67 **GERDA** (G. & K. '10) A very pleasing yellow, with crinkled S. 2 for 50c
- 64 **GOLDEN FLEECE** (Cap. '01) A bright clear yellow, with only fair substance 3 for 50c
- 72 **JOHN FOSTER** (Foster '13) Pearl white. Very slow growth. 75c
- 74 **JOSEPHINE** (Cap. '02) Another creamy yellow, low growing. 2 for 50c
- 74 **KHARPOT** (Asiatica) Deep violet and purple. The tallest and richest of the Intermediates. 50c
- 68 **KING CHRISTIAN** (Cap. '01) Very pale cream. 2 for 50c
- LEOTA** (Fryer '23) White, flecked with violet. 3 for 50c
- LURIDA** (Collected) Very dark mahogany-red self, with small blooms. Interesting for it's color. 75c
- NYMPH** (Sass, H. P. '27) A beautiful Empire yellow. \$3.00
- 80 **PRINCE VICTOR** (Cap. '01) A mauve and purple bicolor. 2 for 50c

- 92 **SOLEDAD** (Mohr '22) A marvelous luminous yellow, very tall. 50c
- 73 **WALHALLE** (G. & K. '08) S. lavender; F. wine red. 3 for 50c
- 88 **YELLOW HAMMER** (Denis '20) A bright amber yellow. F. are long. When established in a warm corner, this is very pleasing. 75c
- 74⁷_{6m} **ZUA** (Craw. '14) White, slightly tinged with lavender. "Heavy frosted crepe, crimped and crinkled." 35c
- 82⁸₆ **ZWANNENBURG**. (Denis '12) A hybrid, showing a queer blend of bronze, old gold, fawn and maroon. 53c



Dwarf Irises

In some protected corner of your border, or on a warm slope of the rock garden, the black buds of the first little dwarf or pumila iris will delight you on an early spring morning. Soon a carpet of blue and gold and amethyst will be laid before your eyes, to charm you with its brilliance and fragrance. The range of color is not yet as great as among the taller members of the family, but drifts of blues, yellows and purples, may adorn any garden.

Visitors here will find a reference collection of these along one border. It contains the following varieties: — Albatre, Alpin, Aramis, Baby Mine, Bouquet, Buzzer, Candida, Chameiris Aurea Maculata, Dixmude, Graminea, Harbor lights, Haydn, Judy, Leopold, Lutea, Mandarin, Mons. Steichen, Moqueto, Orange Queen, Phoebus, Purity, Reflection, Silver Elf, Urchin, Wendy, Wigan, Zanzibar, Zobeida. We are trying also Mr. Sass' Puck and Titania. There will be a small surplus from some of these, if any are interested in them.

From our stock, we can offer a few each of :

- 77 **BLACK MIDGET** (McK. '23) Very black-purple. \$1.00
- 82 **GLEE** (McK. '23) A bright clear yellow. \$1.00
- LOBELIA** (Mil. '07) A lavender-blue bicolor. 35c
- 85 **MAROCAINE** (Mil. '14) Very dark purple. 50c
- YLO** (Sturt. '26) Lemon yellow. \$1.00

For large plantings, we strongly recommend seedlings, that we can obtain for our customers from one of the breeders. Either mixed or in assorted colors.

\$15.00 per 100

Iris Cristata. This seems the logical place to list this, the most adorable of the low-growing irises. The six petals open flat, the flowers being carried on slender 4" stems. I. cristata blooms with the tall bearded irises, in varied shades of hyrangea-blue.

3 for \$1.00

Siberian Irises

Those dainty, ravishing little irises, in many shades of blue, purple and white, growing from 2 to 4 feet high, with great clumps of narrow foliage, are the Siberians. They bloom with the last of the bearded section, and seem to flourish anywhere — in sun or shade, in moist or dry locations. Their increasing popularity is well deserved, even tho' their period of bloom is rather quickly over. Mrs. Cleveland, of New Jersey, is our foremost breeder of these irises, and we are delighted to be able to offer a fairly complete line of her introductions. If we have your orders in time, we will obtain stock from her, if ours is not sufficient. Newly-set plants should have a slight protection for the first winter.

BLUE FLAME (Cleve. '27) A large, wide-petaled flower of brilliant light blue.	\$4.00
BLUE HERON (Cleve. '27) A tall, fine blue.	\$1.00
BLUE KING (Collected by Barr '03) The old, dark blue-purple, rather low-growing.	35c
BLUE OWL (Cleve. '27) Large dark blue, with deeper halo.	\$1.50
BLUE RIDGE (Cleve. '29) Large spreading flower of clear light blue. Center is turquoise, with fringed stigmas.	\$3.00
BLUE STAR (Cleve. '27) A large, deep blue flower. "The stigmas are large and drooping, giving the flower the appearance of a six-pointed star."	\$1.50
BLUE WINGS (Cleve. '29) "Tall, with flowers of beautiful clear light blue, somewhat darker than Blue Ridge. Petals wide and spreading; flower very large, with bright color effect."	\$5.00
BOB WHITE (Cleve. '25) Tall, pure white, with no veining.	\$1.00
EMPEROR (Species collected in Japan.) Large flowers, borne on 4 ft. stalks, of very fine form and deep violet in color.	50c
FLORRIE RIDDLER (Perry, before '20) An interesting medium-colored blue.	75c
KINGFISHER BLUE (Wallace '24) Great improvement on Perry's Blue, being much larger, with brighter and lighter color.	\$1.50
LADY NORTHCLIFFE (Perry, before '20) Broad petals of rich violet, reticulated white.	50c
LLEWELLYN (Cleve. '29) "Very tall, with flowers of most unusual shade of soft blue. Entirely distinct and outstanding in every way."	\$10.00
MRS. PERRY (Perry '12) Very pale lavender, flushed darker. Charming.	50c
MRS. SANDERS (Perry '12) Of medium color and height.	50c
PERIWINKLE (Cleve. '27) "A brilliant blue seedling of Perry's Blue, somewhat larger, taller and darker."	\$10.00
PERRY'S BLUE (Perry '12) One of the finest of the Siberians. Bright sky blue. Lovely and unusual.	50c
RED EMPEROR (Sturt. '18) "A seedling of Emperor, with the large flowers and very wide petals of it's parent, but of a striking shade of wine-red. Veined and shaded with blue.	\$1.50

- RED RAIDER** (Cleve. '27) "A brilliant rose-purple seedling of Red Emperor. Very velvety when first open." \$1.00
- ROYAL FLUSH** (Cleve. '29) "Another distinct and rarely beautiful Siberian. Very tall flowers, held well above the foliage. Color a wonderful deep purple with an overlay of red, which gives a very velvety effect." \$10.00
- SILVERTIP** (Cleve. '29) Dark clear blue with very light stigmas. Distinct and beautiful. \$5.00
- SKYLARK** (Cleve. '23) "The flowers, airily poised on tall graceful stems, are better branched than most Siberians. Large and an exquisite color of blue. Falls edged with a fine thread of white." \$1.00
- SKYROCKET** (Cleve. '27) Tall, blue, finely-shaped flowers. \$1.50
- SNOW QUEEN** (Collected by Barr, 1900) Has been one of the most satisfactory irises in my garden, growing under tall maples, where little else will grow. Is especially useful to naturalize around shady pools, where the white blooms look especially cool. 35c
- SUNNYBROOK** (Cleve. '20) A seedling of Blue King, with taller growth and more spreading falls. Alice-blue in color. 50c
- TURQUOISE CUP** (Cleve. '27) "Large beautiful flowers of Orientalis type, of an exquisite soft sky blue, with turquoise blue stigmas." \$5.00
- WHITE DOVE** (Cleve. '27) A very tall seedling of Emperor. Pure white with drooping falls. \$5.00

Japanese Irises

For some years the names and stock of Japanese irises has been sadly mixed. Dr. Reed and his assistants at the Brooklyn Botanic Gardens, have been attempting to straighten out the confusion. We now have what we hope is an authoritatively named collection, perhaps the most complete in New England, of these beautiful irises. They will grow in a more moist situation than the bearded irises; they require a lot of water before coming into bloom, tho' they do not like to stand in it, during the winter. There are two types, the single and the double; the first with three petals, the other with six. Blooming season is about July first to twentieth. In the following descriptions, all of which are copied, S. refers to the small upright petals at the center of the flower. Abbreviations are: — Chi., John Lewis Childs, Inc.; and Cleve., Mrs. Cleveland.

AGNES REED (Chi. '26) sgl. Mulberry purple with halo of royal purple.	75c
AIRSHIP (Chi. '19) sgl. Deep lavender-blue, shaded pinker at edges, with a white halo. Very wide and crepy. S. wide, soft plum.	\$1.00
ALAGOZ (Chi. '28) db. True purple. S. white, tipped with purple.	75c
AMETHYST (Chi. '19) sgl. Very large wavy petals, of exquisite lavender shade.	75c
APOLLO (Hallock '85) sgl. Pure white with pink center.	50c
AZURE (Chi. '19) db. Immense, beautiful waved flowers of soft mauve blue, with dark halo surrounding the yellow blotch.	50c
BEAUTY (Chi.) sgl. Silvery white, distinctly veined and suffused with indigo. S. plum, edged with white.	35c
BETH HALLOCK (Hallock '85) db. White, with a wide band of plum at edges.	50c
BETTY JEAN CHILDS (Chi. '26) sgl. White, faintly veined and splashed with orchid.	75c
BLUE JAY (Hallock '89) db. Skyblue, with distinct white lines on each petal.	50c
BOKHARA (Chi. '28) sgl. Phlox purple. Yellow blotch, surrounded by blue.	60c
CARLTON CHILDS (Chi. '24) sgl. Very wide petals, white ground, with a dark blue halo. S. pink.	50c
CAROLINE G. CHILDS (Chi. '24) sgl. White, veined blue violet. S. purple and white.	75c
CATHARINE PARRY (Chi. '26) db. Blue, overlaid with rosy-red. High tufts in center.	35c
CELESTINE (Kemp '27) sgl. Deep silvery pink, veined with blue. Orange blotch, surrounded with stripes and splashes of light purple. A flower of great beauty.	\$1.00
CHOSEIDEN (Chivers '11) db. Ruby crimson; halo white, surrounding the yellow blotches, and radiating into broad lines. S. light violet.	50c
CHUTSAI (Chi. '28) sgl. Hortense violet, veined white. S. purple.	60c
CLARICE CHILDS (Chi. '26) sgl. Petunia violet, with a conspicuous yellow center, surrounded with a blue cast.	75c

DAGHASTAN (Chi. '28) db. Rosy red, veined with white.	60c
DAISY HERRINGTON (Chi. '26) sgl. Pinkish-blue, veined with purple.	75c
DATEDOGUS (Kelway '10) Rich claret-red, with orange blotches and blue halo, radiating into heavy lines. S. claret and white. Very large.	50c
DELLA (Chi. '24) sgl. Light to pale wisteria violet.	35c
DORIS CHILDS (Chi. '26) db. Pearl white, deeply veined with rosy plum. S. deep plum, edged with white.	75c
ECLAIR (Hallock '93) db. White, veined blue, with an amber throat.	50c
ELEANOR PARRY (Chi. '26) db. Claret red, flamed white and blue. A compact medium size flower.	75c
ETHEL J. MARSHALL (Chi. '26) sgl. Ivory white, splashed and veined dull violet. S. same.	75c
FANNY HAMLET CHILDS (Chi. '26) db. Violet-purple, mottled and splashed white.	75c
FASCINATION (Chi. '26) db. Blue, lightly veined white. Has pink tinge.	75c
FIREFLY (Uji-No-Hotaru) (Farr '12) db. Very deep purple, with golden blotch. Tall and imposing. The last to bloom.	75c
FIRST LOVE (Cleve. '27) db. Soft mauve, with blue halo, and radiating white lines. Pinker at edges. Often has six blooms to a stalk.	75c
FRANCES E. CLEVELAND (Chi. '26) sgl. A very large, crepy blue-lavender, shading to mauve at edges. White halo.	75c
GEKKA-NO-NAMI (Tokyo '96) db. Pure white with yellow blotches.	75c
GOLD BOUND (about '85) db. One of the best of the pure whites.	35c
GRACE SPERLING (Chi. '24) sgl. Hortense violet. S. lighter. Early.	50c
GRANITE (about '85) sgl. Purple, spotted and flaked white. Lilac center.	30c
HARMONY (Kemp '27) sgl. Oxide-blue, veined and edged with lilac-pink.	75c
HELEN WELLS (Chi. '24) sgl. Amethyst violet. S. purple.	50c
INDO (Chi. '20) sgl. Rich dark blue, with broad wavy petals, only slightly veined. Unusually brilliant yellow blotch. Flower very large.	35c
ISPAHAN (Chi. '28) db. Phlox purple, veined white.	60c
JEANNETTE PARRY (Chi. '26) sgl. White suffused with lines of bluish violet. S. amethyst violet.	35c
JOHN LEWIS CHILDS II (Chi. '26) sgl. White, lightly veined blue. High center petals of mauve.	50c
JOSEPHINE HEYWOOD (Chi. '26) sgl. Blue, with a purple sheen.	75c
KAMATA (Chi. '24) sgl. Sky-blue, veined with white. Very distinct.	50c
KATHERINE HAVEMEYER (Chi. '24) db. Blue, veined with white. Tall and large.	75c
KHA KHAN (Chi. '28) sgl. White, suffused with blue. S. purple. Extra fine and large.	75c

Over-the-Garden-Wall

KUMO-NO-OBI (Band of Clouds) (Kelway '10) db. Sky blue, with distinct white lines on each petal.	50c
KURO KOMO — db. Purple, overlaid with dark blue. Yellow blotches. S. dark blue, bordered with purple.	50c
LA FAVORITE (Chi. '23) db. A large fine white, freely veined with blue and has a rich purple center.	50c
LESTER LOVETT (Lovett '97) db. Bright, clear blue, with a white halo. Large and fine.	60c
LILLA COX (Chi. '28) db. Light blue, with white veins at center.	60c
LUCIE MARSHALL (Chi. '26) db. Pansy violet, with white veins. White centers, with yellow blotches.	75c
MAHOGANY (Hallock '93) db. Very dark red-purple, veined maroon.	50c
MARGARET S. HENDRICKSON (Chi. '26) Tri. Soft bluish-violet, with white center, and cast of blue radiating out. Large wavy petals.	\$1.00
MARJORY PARRY (Chi. '26) db. Delicate light mauve, tufted center.	75c
MARS (about '93) sgl. Reddish-purple, striped and blotched with white.	35c
MONGOL KHAN (Chi. '28) Deep rosy-red. Extra large.	75c
MRS. GEORGE STUMPP (Chi. '24) sgl. White, with a blue cast.	50c
MRS. J. ALEXANDER HAYDEN (Chi. '26) db. White, edged and shaded pale violet. S. same.	40c
MRS. SAXTON (Chi. '10) db. A large and very double white.	50c
MT. HOOD (Roozen '97) db. Light blue, shaded darker. Bright orange center.	35c
NORMA (Hallock '93) db. Exquisite lavender-pink, with clear blue halo surrounding the yellow blotch. Very large.	75c
NORMANDY (Kemp. '27) sgl. White, with faint blue lines radiating from a yellow blotch. S. conspicuous in contrast of blue-violet, edged with white.	\$1.00
OLYMPIA (Kemp '27) sgl. A very beautiful iris, whose color of blended roseline pink and soft lavender makes a delightful effect.	\$1.00
PAINTED LADY (Chi. '26) sgl. White, with center of deep rose, shading to white. White tufts.	50c
PYRAMID (named by Hallock.) db. Violet purple, center veined white.	25c
QUAKERESS (Hallock about '85) "Old, but one of the most beautiful of all the Japanese irises. The color combination of deep mauve with a sky-blue halo makes it an acquisition for any garden."	\$1.50
RED RIDING HOOD (Hallock about '85) sgl. Fine amaranth, veined and suffused white.	40c
REPSIME (Chi. '28) db. Blue, veined with white.	60c
ROSE ANNA (Chi. '24) db. Ivory white, with heavy ruby-red veins, a conspicuous yellow blotch. S. dark plum.	50c
ROSE H. SHEEPERS (Chi. '26) db. Mauve grey, overlaid with blue.	75c

SCHENLEY (Chi. '26) db. Rosy-red, centers overlaid with blue.	75c
SADARABAD (Chi. '28) sgl. White, overcast with pale phlox pink.	75c
SENJO-NO-HARA (Chi. '24) db. Purple, marked with grey. Primrose blotches, radiating out into sky-blue.	75c
SHADOW (Hallock about '85) sgl. Reddish-purple self.	40c
SUBOTAI (Chi. '28) sgl. A very fine rosy-red.	75c
TAIHERAKU (Chi. '24) db. Rich purple, with conspicuous yellow blotches, tipped blue, and radiating out into purple veins and feathers. S. gray and lavender.	25c
TALMANGA (Kemp '26) "Finely ruffled flower of pale blue, irregularly splashed and marked with Venetian blue. Bright orange blotch."	\$1.00
TARTAR PRINCE (Chi. '28) sgl. Rosy-crimson, with white veins and blue halo, and high center.	60c
TEMPLE FLOWER (Chi. '28) sgl. Ivory white, heavily blended with soft bluish-violet. Veined white, edged phlox pink. S. white.	75c
TEMPLETON (Hal. '85) db. Light violet, mottled with reddish pink and white. Often triple.	50c
TOLEDO (Chi. '19) sgl. White, with light pink center.	50c
TOTTY'S TRUE BLUE (Chi. '24) db. Dark violet blue.	75c
T. S. WARE (Ware '82) db. Reddish violet, veined white, and white center, marked with lemon.	50c
TURBAN (Hallock about '89) db. Gray, heavily overlaid and veined with blue.	50c
VAN HOSEN (Kemp '27) sgl. Dull bluish violet, veined with lilac-pink. S. lilac-pink, tipped bluish.	\$1.00
VENICE (Kemp. '27) db. Lavender pink. A flower of great charm.	\$1.00
VICTOR (Hallock about '85) db. White, veined blue. Has a long period of bloom.	75c
VIOLET BEAUTY (Chi. '24) sgl. Pansy violet, with conspicuous yellow blotch, surrounded by a blue cast.	50c
VIOLET HERRINGTON (Chi. '26) db. Bradley's violet, with white veins and tufted center. Large bloom. Low.	75c
YAMA YAMA (Chi. '28) sgl. White, overlaid with blue. Crinkled. S. white and purple.	60c

Iris Species and Hybrids

An article in an English periodical, last summer, told of the "Girdle of Iris," extending around the earth, from Japan, east, to our California coast. This girdle includes a large portion of Asia and Europe, with northern Africa, and many of our states. In all countries covered by the girdle, various iris species are found wild. Collectors have been bringing them together; the craftsmen of our hobby have been hybridizing them. And now the public is beginning to want them.

Last season, came the realization that this garden had been neglecting them. We made a file of all the varieties of these species, that we could find offered. To our surprised horror, there were nearly 200 of them! Orders were hastily sent out, and we started our collection with about fifty of the easiest-to-grow, of the species and their crosses. Frames were not available; we planted here and there in sheltered spots, and are hoping not to lose too many of the tender ones. Today, March 15, shows husky green shoots on many of them.

We will list the few, of which we should have some excess stock. Those who visit the garden, may see others in bloom. If any of you are interested in other varieties, we shall be delighted to consult our files, and tell you where they may be obtained — or to order them for you. We trust that next year's catalogue may list for you, many more of these iris species.

First a few well-known hybrids —

- CACIQUE** (Berry '25) A fulva hybrid, of prune and black-purple, with a vivid signal-patch of gold. Very hardy. \$2.50
- DOROTHEA K. WILLIAMSON** (Wmsn. '18) Large velvety flowers of vivid purple/
Likes some moisture, but will grow anywhere. A hybrid of fulva and foliosa. 50c
- SAGAMORE** (Berry '28) This is Mr. Berry's latest hybrid, and we hope to acclimatize it, sometime.

WILLIAM MOHR — Listed with the bearded irises.

Also —

- I. cristata.** We described this with the dwarfs, but it is so lovely, that it may well be listed again. 3 for \$1.00
- I. dichotoma.** Also called the Vesper Iris, as it opens about three o'clock in the afternoon. A pink-lavender, the tiny flowers borne on a spray. Blooms in August. 75c
- I. foliosa** (Hexagona family) A native of the South, brilliant blue in color. Likes partial shade, in a moist location. 50c
- I. fulvala** (fulva x lamancea) Much like Dorothea K. Williamson. 75c
- I. gracilipes** (crested) Pale lilac, touched with orange. Very desirable. Said to prefer semi-shade and a sandy soil. \$2.00
- NEFERT** (Foster '00) A hybrid of soft blue coloring, with no markings except the darker signal. \$3.00
- I. pseudacorus.** The well-known yellow, blooming with the Siberians, that will grow anywhere. 3 for 50c

SPURIA GROUP —

- Aurea** — Hardy, but difficult to establish. Rich golden yellow, about 36". \$1.50
Halophila — Colors vary from white and cream to lavender. 4'. \$1.00
Notha — A beautiful pale lavender. 75c
Ochroleuca — Ivory white, with an orange blotch on the throat. "Rugged, hardy, majestic (60")." Fine at edge of water. 75c

STYLOSA, OR UNGUICULARIS GROUP.

- Stylosa** — Dainty lilac blue, with touch of orange. Grassy foliage, 6-12". 50c
— **alba**. White and gold. 50c
— **marginata**. Bluer than type. Luxuriant. 50c
— **speciosa**. Violet. \$1.00
I. versicolor. The native wild iris of our northern states. 2 for 50c
I. Virginica. The wild swamp iris of Indiana. 35c



5% Discount

to all A. I. S. members on orders of
\$10.00 and up.

(Except where stock is too limited)

Notice

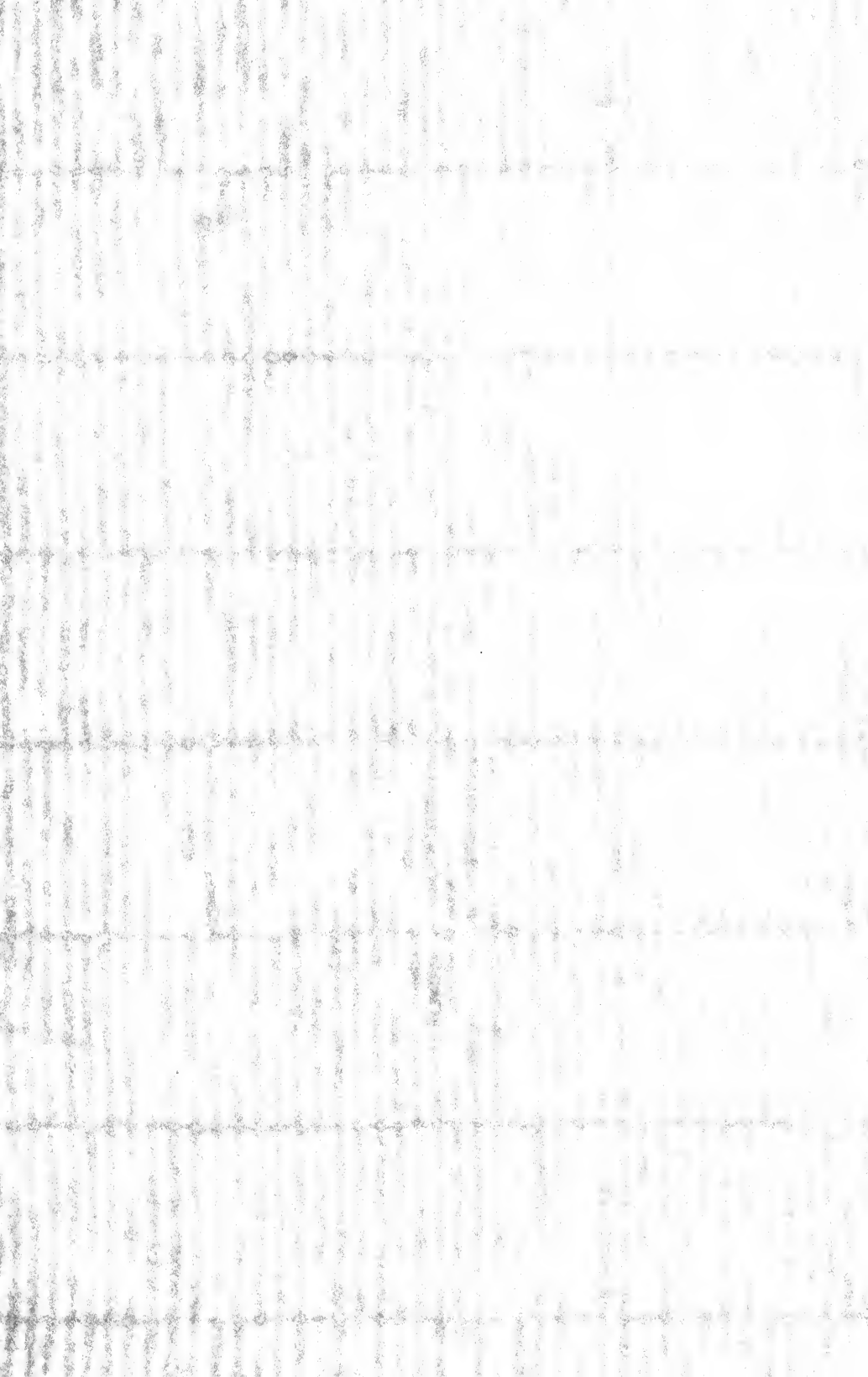
IT IS more important than ever before, that customers see the irises before ordering them, there are so many varieties, differing very slightly in tone or carriage. Also, color terms do not convey the same ideas to everyone. Of many of the varieties listed, we have a very limited stock, so early orders are advisable. We reserve the right to withdraw from sale any irises of which the stock is depleted.

Shipments will be made by parcel post, as early in July as possible; or later, at the customer's convenience. Except for the dwarf irises, no plants will be dug during the blooming season. We undertake to have irises true to name, and in healthy condition when shipped. If an error does occur, we shall appreciate having you tell us of it. We cannot hold ourselves responsible for misfortunes that will happen in all gardens, tho' we are glad to offer advice as to which varieties should prove hardy.

Terms are cash with order, and refunds will be made for any varieties we are not able to supply.

Visitors are welcome at any time during the blooming season; on week days only, the rest of the summer. The garden is situated just north of West Hartford center.

OVER-the-GARDEN-WALL
60 North Main St., West Hartford, Conn.
MRS. L. W. KELLOGG, *Owner.*



JOIN the AMERICAN IRIS SOCIETY

\$3.00 a year

Four bulletins each year, with iris notes, names of new varieties, etc. Checks should be made payable to the American Iris Society and sent to the

**SCIENCE PRESS PRINTING COMPANY
LANCASTER, PENN.**