

Historic, Archive Document

Do not assume content reflects current scientific knowledge, policies, or practices.

Kelly Bros. Dependable True To Name Fruit Trees



Sec. 435 1/2, P. L. & R.

U. S. Postage
Paid
Permit No. 36

The Finest Grown At The Most Reasonable Prices

Horticulture Dept. Diseases
Bureau Plant Industry
Wash.
D. C.

Kelly's Inspected Apple Trees

After another careful inspection, Dr. J. K. Shaw of the Mass. State Agricultural Station has again issued a statement that to the best of his knowledge all the salable Apple trees in Kelly Bros. Nurseries are true to name. Our Apple trees are grown on the finest whole root French Seedlings under ideal soil and climatic conditions. As a result they have nice clean, straight bodies, an abundance of fibrous roots and well branched tops.

Prices of Inspected Apple Trees

				Each	Ten	Hundred
Largest Size	2 Year	5 to 7 ft.	3/4 and up	XXX \$0.70	\$5.00	\$35.00
Medium Size	2 Year	4 to 5 ft.	5/8 to 3/4	XX .60	4.00	23.00
Smaller Size	2 Year	3 to 4 ft.	1/2 to 5/8	X .50	3.00	15.00
Largest Size	1 Year	3 to 5 ft.	Sturdy Buds	XXX .60	4.00	25.00

Summer Varieties

Early McIntosh—New. Red. Aug.
Early Harvest—Yellow. Sweet. Aug.
Red Astrachan—Deep crimson. Aug.
William's Early Red—Dark red. Aug.
Yellow Transparent—Pale yellow. Aug.

Hubbardston—Red striped. Nov.
Jonathan—Beautiful red. Nov.
King—Large. Red. Nov.
McIntosh—Superior. Red. Oct.
Northern Spy—Bright red. Nov.
N. W. Greening—Yellowish green. Oct.

Autumn Varieties

Duchess of Oldenburg—Red striped. Sept.
Fall Pippin—Yellow. Oct.
Fameuse—(Snow). Red. Nov.
Gravenstein—Red streaked. Sept.
Maiden's Blush—Red and yellow. Sept.
Pound Sweet—Yellow. Sweet. Oct.
Red Gravenstein—Improved sport. Solid red. Sept.
Wealthy—Brilliant red. Oct.

Old Winesap—Dark red. Dec.
Opalescent—Crimson. Dec.
Rambo—Red and yellow. Oct.
R. I. Greening—Greenish yellow. Dec.
Red Spy—Improved sport. Solid red. Nov.
Rome Beauty—Red striped. Dec.
Smokehouse—Mottled red. Oct.
Stark—Striped red. Jan.
Stayman's Winesap—Striped red. Dec.
Tolman Sweet—Yellow. Sweet. Nov.
Twenty Ounce—Red striped. Oct.
Wagener—Pinkish red. Dec.
Winter Banana—Yellow crimson cheek. Nov.
Wolf River—Large. Red. Sept.
Yellow Belleflower—Golden, red blush. Dec.

Winter Varieties

Baldwin—Bright red. Nov.
Ben Davis—Red and yellow. Jan.
Cortland—New. Bright red. Nov.
Delicious—Dark red. Nov.
Golden Russet—Yellowish russet. Nov.
Golden Sweet—Yellow. Sweet. Sept.

Crab Apples

Hyslop—Large. Crimson. Oct.
Transcendent—Yellow and red. Sept.

Kelly's Certified Apple Trees

In addition to inspecting for trueness to name all of Kelly Brothers Apple trees, Dr. Shaw has attached to some trees of each of the leading commercial varieties the Official Certification Tag of the Mass. Fruit Growers' Association. This tag bears on its face the name of the variety of fruit the tree is certified to bear and on the reverse side the official stamp of the Mass. Fruit Growers' Association. Owing to the cost of attaching Certification Tags we are obliged to make a slight additional charge for trees with Certification Tags attached.

We can furnish the following varieties with Official Certification Tags attached:

Red Spy Baldwin Delicious McIntosh Red Gravenstein Stayman's Winesap
Early McIntosh Cortland Fameuse Northern Spy R. I. Greening Wealthy

Prices of Certified Apple Trees

				Each	Ten	Hundred
Largest Size	2 Year	5 to 7 ft.	3/4 and up	XXX \$0.75	\$5.50	\$40.00
Medium Size	2 Year	4 to 5 ft.	5/8 to 3/4	XX .65	4.50	28.00
Smaller Size	2 Year	3 to 4 ft.	1/2 to 5/8	X .55	3.50	20.00
Largest Size	1 Year	3 to 5 ft.	Sturdy Buds	XXX .65	4.50	30.00

Plant This Fall and Insure Early Vigorous Growth Next Spring

Trees and bushes planted in the Fall get the full benefit of late Fall and early Spring rains. Their roots become well established in the ground during the Winter. New growth is started long before soil conditions would permit Spring planting. As a result of this very early start they are in much better condition to withstand the dry hot days of the first Summer after planting.



XXX 5 to 7 ft.
XX 4 to 5 ft.
X 3 to 4 ft.
3/4 and up 5/8 to 3/4 1/2 to 5/8



Black Tartarian Cherries

Authorities Recommend Fall for Planting Cherry Trees

We heartily agree with authorities throughout the country that Fall is the most desirable time to plant Cherry trees. Years of experience have convinced us that the Fall planting of Cherry trees is attended with the greatest degree of success. In a recent bulletin the Illinois Agricultural Experiment Station strongly recommends that Cherry trees be planted in the Fall when possible.

Cherry Trees

We are, as you probably know, one of the largest producers of Cherry trees in the United States. Fifty years experience—ideal soil and climatic conditions—an abundance of good fertilizer—and the finest whole root French Seedlings all combine to produce in Kelly's Cherry trees the utmost in vigor and vitality. We are justly proud of our Cherry trees and gladly welcome comparisons.

Prices of Cherry Trees on Mahaleb Roots

					Each	Ten	Hundred
Largest Size	2 Year	5 to 7 ft.	3/4 and up	XXX	\$0.75	\$6.00	\$40.00
Medium Size	2 Year	4 to 5 ft.	5/8 to 3/4	XX	.65	5.00	33.00
Smaller Size	2 Year	3 to 4 ft.	1/2 to 5/8	X	.50	4.00	25.00
Largest Size	1 Year	3 to 5 ft.	Sturdy Buds	XXX	.65	5.00	33.00

Sweet Varieties

Bing—Large. Black. July.
 Black Tartarian—Large. Black. Late June.
 Governor Wood—Light yellow. Late June.
 Lambert—Very large. Purple. Late July.
 Napoleon—(Royal Ann) Yellow. Late June.
 Schmidt's Biggareau—Mahogany color. July.
 Windsor—Dark red. July.
 Yellow Spanish—Yellow. Late June.

Sour Varieties

Early Richmond—Early. Dark red. June.
 English Morello—Late. Dark red. July.
 Large Montmorency—Midseason. Bright red. July.
 May Duke—Very early. Bright red. June.
 Olivet—Large. Red. June.
 Ostheime—Dark red. Late. July.

Prices of Cherry Trees on Mazzard Roots

					Each	Ten	Hundred
Largest Size	2 Year	5 to 7 ft.	3/4 and up	XXX	\$0.85	\$7.00	\$50.00
Medium Size	2 Year	4 to 5 ft.	5/8 to 3/4	XX	.75	6.00	43.00
Smaller Size	2 Year	3 to 4 ft.	1/2 to 5/8	X	.60	5.00	35.00
Largest Size	1 Year	3 to 5 ft.	Sturdy Buds	XXX	.75	6.00	43.00

Trees and bushes can be successfully transplanted as soon as they are thoroughly ripened and matured. The Fall planting season usually begins about Oct. 15th and extends until the ground is frozen. If you will leave time of shipment to us we will guarantee delivery at the best time for successful Fall planting.

Plum Trees

It has generally been conceded by authorities everywhere that the finest Plum and Cherry trees are grown here under our ideal soil and climatic conditions. Certainly no finer Plum and Cherry trees are grown elsewhere. We again welcome comparisons.

Prices of Plum Trees

					Each	Ten	Hundred
Largest Size	2 Year	5 to 7 ft.	3/4 and up	XXX	\$0.70	\$5.00	\$35.00
Medium Size	2 Year	4 to 5 ft.	5/8 to 3/4	XX	.60	4.00	25.00
Smaller Size	2 Year	3 to 4 ft.	1/2 to 5/8	X	.50	3.00	15.00
Largest Size	1 Year	3 to 5 ft.	Sturdy Buds	XXX	.60	4.00	25.00

European Varieties

Bradshaw—Large. Violet red. Aug.
 Fellemburg Prune—Dark purple. Early Sept.
 German Prune—Popular. Purple. Sept.
 Geuii—Very large. Blue. Sept.
 Grand Duke—Fine late. Violet red. Last Sept.
 Imperial Gage—Greenish yellow. Aug.
 Lombard—Dark red. Excellent cropper. Aug.
 Monarch—Bluish purple. Sept.
 Reine Claude—Yellow and red. Sept.
 Shipper's Pride—Fine quality. Dark purple. Sept.
 Shropshire Damson—Fine for preserves. Dark purple. Oct.
 Yellow Egg—Large. Golden yellow. Sept.
 York State Prune—Most productive. Dark blue. Sept.

Japanese Varieties

Abundance—Excellent canner. Cherry red. Aug.
 Burbank—Reddish purple. Very productive. Aug.
 Climax—Excellent. Bright red. Very early.
 Red June—Very early. Deep red. Early Aug.
 Satsuma—Purple and red. Late.
 Shiro—Very sweet. Yellow. Sept.
 Wickson—Maroon red. Early Sept.

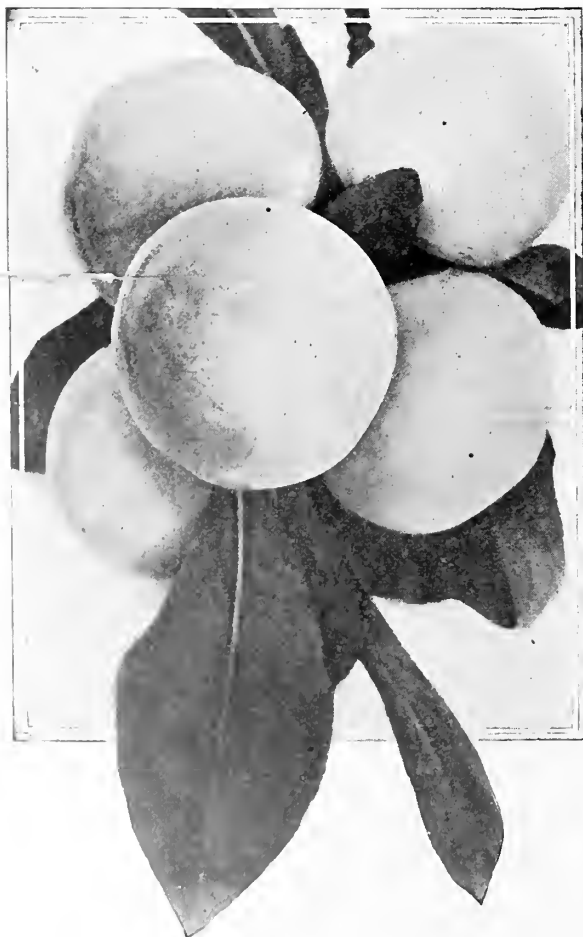
Quince Trees

We offer this Fall only the Wayne County Orange Quince. Years of experience have convinced us this is by far the finest of all Quinces. Why plant other varieties?

Prices of Wayne County Orange Quince Trees

					Each	Ten	Hundred
Largest Size	2 Year	4 to 5 ft.	5/8 and up	XXX	\$0.75	\$6.00	\$40.00
Medium Size	2 Year	3 to 4 ft.	1/2 to 5/8	XX	.65	5.00	30.00
Largest Size	1 Year	3 to 5 ft.	Sturdy Buds	XXX	.65	5.00	30.00

Shropshire Damson



Kinds and Varieties Particularly Suited to Fall Planting

We had such an unprecedented demand for copies of our complete general Catalog for 1930 that all copies of the 1930 edition have been completely exhausted. This abbreviated supplementary edition offers only those items that are particularly suited to successful Fall planting. Our New General Catalog for 1931 will be issued in January and a copy will be mailed you at that time.

Peach Trees

We have always been large growers of Peach trees and careful supervision has kept our Peach blocks free from any possible mixture of varieties. Indications are that Peach trees will be very scarce this year and we advise our customers to buy early.

Prices of Peach Trees

					Each	Ten	Hundred
Largest Size	1 Year	4 to 5 ft.	$\frac{3}{16}$ and up	XXX	\$0.55	\$4.00	\$25.00
Medium Size	1 Year	3 to 4 ft.	$\frac{7}{16}$ to $\frac{9}{16}$	XX	.45	3.50	20.00
Smaller Size	1 Year	2 to 3 ft.	$\frac{3}{16}$ to $\frac{7}{16}$	X	.35	2.50	15.00

Varieties Listed in Order of Ripening

Greensboro—White fleshed. Late Aug. Free.	Fitzgerald—Very hardy yellow. Middle Sept. Free.
Rochester—Best early yellow. Early Sept. Free.	Elberta—Best commercial yellow. Last Sept. Free.
Carman—White fleshed. Early Sept. Free.	Ray—White fleshed. Last Sept. Free.
Yellow St. John—Early yellow. Early Sept. Free.	J. H. Hale—Extra large yellow. Last Sept. Free.
Champion—White fleshed. Middle Sept. Free.	Chair's Choice—Yellow. Last Sept. Free.
Early Elberta—Early yellow. Middle Sept. Free.	Crawford's Late—Fine late yel. Early Oct. Free.
Hiley—White fleshed. Middle Sept. Free.	Gold Drop—Late yellow. Early Oct. Free.
Belle of Georgia—White fleshed. Middle Sept. Free.	Smock—Yellow. Middle Oct. Free.
Crawford's Early—Large yellow. Middle Sept. Free.	Salway—Yellow. Middle Oct. Free.

Dwarf Apple Trees

Our Dwarf Apple trees are grown on Doucin roots, a semi dwarfing root stock. Most varieties under average conditions will attain a height of about 20 feet at maturity.

Prices of Dwarf Apple Trees

					Each	Ten	Hundred
Largest Size	2 Year	4 to 5 ft.	$\frac{5}{8}$ and up	XXX	\$0.75	\$6.00	\$35.00
Medium Size	2 Year	3 to 4 ft.	$\frac{1}{2}$ to $\frac{5}{8}$	XX	.65	5.00	25.00
Smaller Size	2 Year	2 to 3 ft.	$\frac{3}{8}$ to $\frac{1}{2}$	X	.55	4.00	20.00

The Following Varieties Do Well on Dwarf Roots

Baldwin	Stayman's Winesap	McIntosh
Delicious	Wealthy	Northern Spy
Duchess of Oldenburg	Winter Banana	R. I. Greening
Golden Sweet	Yellow Transparent	Red Astrachan
King		Rome Beauty

Dwarf Pear Trees

For the suburban or home orchard planter dwarf trees are ideal. They require less room—come into bearing sooner—the fruit is easier to pick and generally averages larger in size.

We Offer Only Two Varieties on Dwarf Roots

Duchess	Seckel
---------	--------

Prices of Dwarf Pear Trees

					Each	Ten	Hundred
Largest Size	2 Year	4 to 5 ft.	$\frac{5}{8}$ and up	XXX	\$0.60	\$4.50	\$30.00
Medium Size	2 Year	3 to 4 ft.	$\frac{1}{2}$ to $\frac{5}{8}$	XX	.40	3.00	20.00

Standard Pear Trees

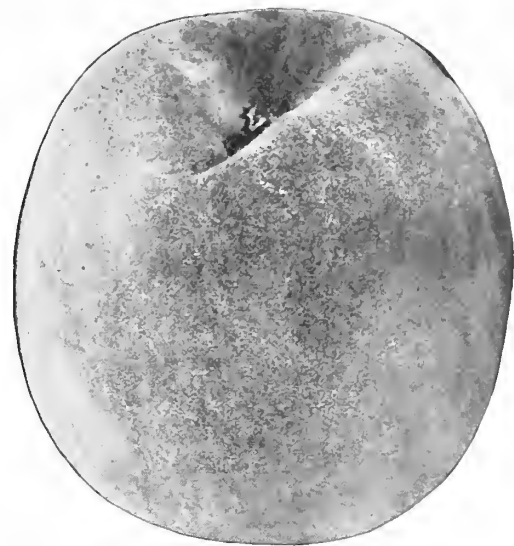
We are exceedingly fortunate in having on one of our farms an unusually fine piece of clay land that is ideal for growing good Pear trees. We honestly believe that the Pear trees we have this year are the finest that have ever grown anywhere. We know that all purchasers will be more than pleased with them.

Prices of Standard Pear Trees

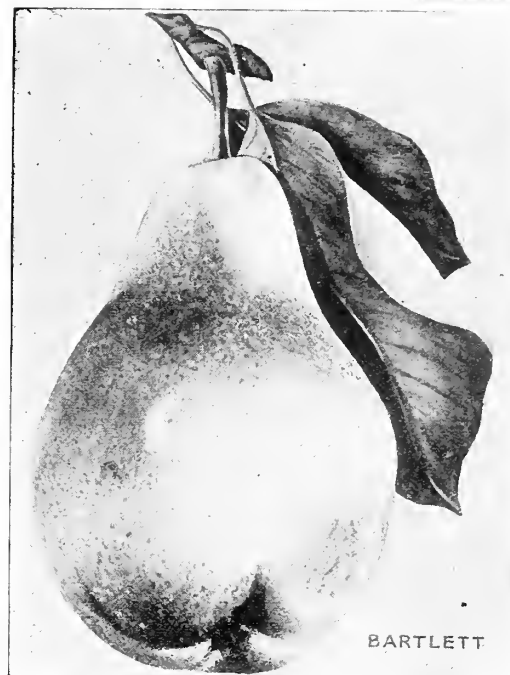
					Each	Ten	Hundred
Largest Size	2 Year	5 to 7 ft.	$\frac{3}{4}$ and up	XXX	\$0.80	\$6.00	\$40.00
Medium Size	2 Year	4 to 5 ft.	$\frac{5}{8}$ to $\frac{3}{4}$	XX	.60	4.50	30.00
Smaller Size	2 Year	3 to 4 ft.	$\frac{1}{2}$ to $\frac{5}{8}$	X	.40	3.00	20.00
Largest Size	1 Year	3 to 5 ft.	Sturdy Buds	XXX	.60	4.50	30.00

List of Varieties

Anjou—Best late Fall. Oct.	LeConte—Pale yellow. Oct.
Bartlett—Leading commercial sort. Sept.	Lincoln—Medium. Fair quality. Aug.
Beurre Bosc—High quality. Gourd shape. Oct.	Louise Bonne—Excellent quality. Sept.
Clapp's Favorite—Very hardy. Early Aug.	Seckel—Best for preserving and pickling. Sept.
Duchess—Large. Dependable cropper. Oct.	Sheldon—Large, round. Fine quality. Oct.
Flemish Beauty—Very hardy. Yellow. Sept.	Vermont Beauty—Excellent cropper. Oct.
Garber—Large. Good canner. Oct.	Wilder—Best early sort. Early Aug.
Kieffer—Excellent grower. Prolific. Sept.	Worden Seckel—Larger than Seckel. Oct.
Lawrence—Large. High quality. Nov.	



Elberta Peach



BARTLETT

Bartlett



McIntosh Red Apple



Spiraea Van Houttei in Full Bloom

Flowering Shrubs

We offer an abbreviated list of leading shrubs—varieties particularly suited to successful planting in the Fall.

Forsythia Viridissima—Deep yellow flowers very early in the Spring. 2½ to 3 ft., 45c each.

Hydrangea Arborescens—(Everblooming Hydrangea)—Produces a profusion of round white snowball shaped blooms. 2½ to 3 ft., 30c each, \$2.50 per 10, \$20.00 per 100.

Hydrangea Paniculata Grandiflora—Enormous cone shaped blooms of pink and white turning to bronze. 2½ to 3 ft., 40c each, \$3.50 per 10.

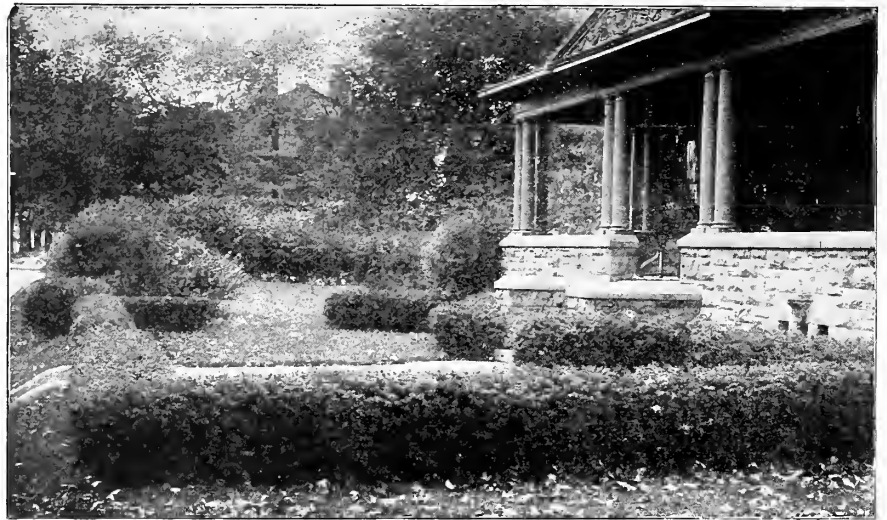
Tree Hydrangea—Same as P. G. but grown in tree form with a single stem. 3 to 4 ft., \$1.00 each.

Spiraea Prunifolia—Double white flowers in profusion. 2½ to 3 ft., 45c each.

Spiraea Callosa Rosea—Large panicles of deep rosy blossoms. 2½ to 3 ft., 45c each.

Spiraea Van Houttei—By far the most popular and most desirable shrub grown. A mass of pure white flowers completely covering bushes. 2 to 3 ft., 25c each, \$2.00 per 10, \$15.00 per 100; 3 to 4 ft., 35c each, \$3.00 per 10, \$20.00 per 100.

Weigela Eva Rathke—Rich, deep scarlet blossoms in June. 2½ to 3 ft., 45c each.



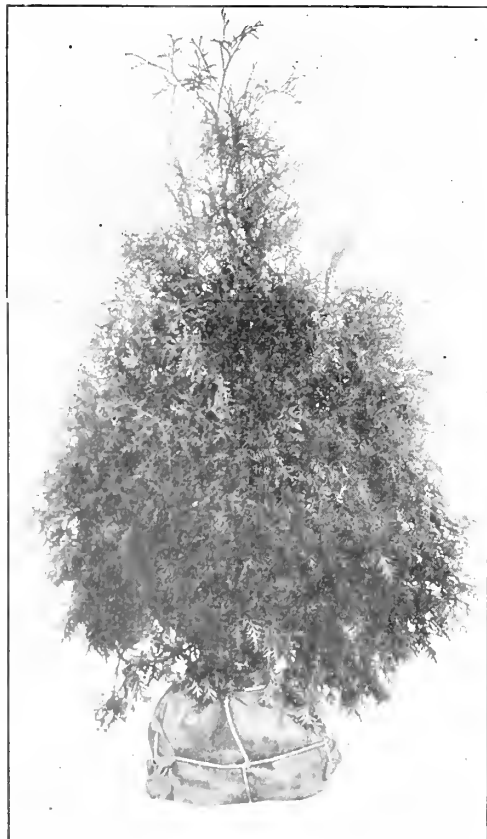
Hedge of Barberry Thunbergii

Ornamental Hedges

Why use unsightly and expensive wire and wooden fences when the same ends can be attained with less costly and vastly more ornamental living hedges? We offer the two most popular and universal shrubs for this purpose.

Barberry Thunbergii—Best for informal hedge 2 to 3 ft. high. Plant 2 feet apart. Strong bushes, 18 to 24 in. high, 25c each, \$2.00 per 10, \$15.00 per 100.

California Privet—Best trimmed hedge 3 to 5 ft. high. Set in single row 10 inches apart. If broad hedge is desired plant in double rows—rows 1 foot apart and bushes 1 foot apart in each row, but staggered so as to come 6 inches apart in hedge. Strong bushes, 18 to 24 in. high, 70c per 10, \$4.00 per 100, \$35.00 per 1000. Extra strong bushes, 2 to 3 ft. high, \$1.00 per 10, \$5.00 per 100, \$45.00 per 1000.



Evergreen Ready for Shipment

Shade and Ornamental Trees

We offer this Fall only a limited list of shade and ornamental trees—only varieties that experience has taught us do well when set in the Fall.

Bechtel's Flowering Crab—Medium size tree. Small double rose flowers. 2 to 3 ft., 75c each, \$6.50 per 10.

Norway Maple—Universally popular shade and street tree. Compact foliage. 6 to 8 ft., \$2.50 each, \$22.50 per 10; 8 to 10 ft., \$3.00 each, \$27.50 per 10.

Carolina Poplar—Hardy—fast growing tree with large leaves. 6 to 8 ft., 50c each, \$4.00 per 10, \$30.00 per 100; 8 to 10 ft., 60c each, \$5.00 per 10, \$35.00 per 100.

Lombardy Poplar—A tall spire-like formal tree, fine for marking lanes or boundaries. 6 to 8 ft., 50c each, \$4.00 per 10, \$30.00 per 100; 8 to 10 ft., 60c each, \$5.00 per 10, \$35.00 per 100.

Evergreens

Evergreens retain their foliage all year and after deciduous shrubs and trees have dropped their leaves in the Fall, give your home surroundings a touch of warmth and coziness not obtained with any other class of ornamentals. This Fall we offer the two leading and most popular varieties.

American Arbor Vitae—Tall pyramidal shaped. Flat lacy foliage. Fine for hedges, windbreaks and screens. Specimens balled and burlapped, 2 to 3 ft. high, \$1.50 each, \$12.50 per 10, \$100.00 per 100; 3 to 4 ft. high, \$2.00 each, \$17.50 per 10, \$150.00 per 100.

Norway Spruce—Lofty tree of pyramidal habit. Short spiny needles completely encircling branches. Universally used for Christmas trees. Specimens balled and burlapped, 18 to 24 in. high, \$1.00 each, \$9.00 per 10, \$75.00 per 100; 2 to 3 ft. high, \$1.50 each, \$12.50 per 10, \$100.00 per 100.