

Historic, Archive Document

Do not assume content reflects current scientific knowledge, policies, or practices.

6233
1330
Kelsey-Highlands

Economic and Systematic Botany
Economic Collections
Nursery 1931
Assured



Photo by Herbert W. Gleason, Boston.

CARMINE CRAB (*Malus atrosanguinea*)

LIBRARY
RECEIVED
☆ JUN 1 1936 ☆
U. S. Department of Agriculture

MALUS, THE FLOWERING CRAB

At Kelsey-Highlands Nursery you will find thirty of the choicest varieties known to horticulture.

Write for our 1930 catalog which describes all of these and many other rare and interesting plants, including Rhododendrons, Mountainlaurel, Azaleas, Leucothoe, Andromedas, and the best Ground Covers.

You are Welcome. A visit to Kelsey-Highlands Nursery is always interesting and instructive — and good automobile roads reach us from all directions.

HARLAN P. KELSEY, Owner

Kelsey-Highlands Nursery

EAST BOXFORD, MASSACHUSETTS

Telephones: Topsfield 71 and 72

HARDY NEW ENGLAND GROWN—BEST BY TEST

KELSEY-HIGHLANDS NURSERY



JAPANESE FLOWERING CRAB (*Malus floribunda*)

Photo by George King

HARDY NEW ENGLAND GROWN—BEST BY TEST

KELSEY-HIGHLANDS NURSERY

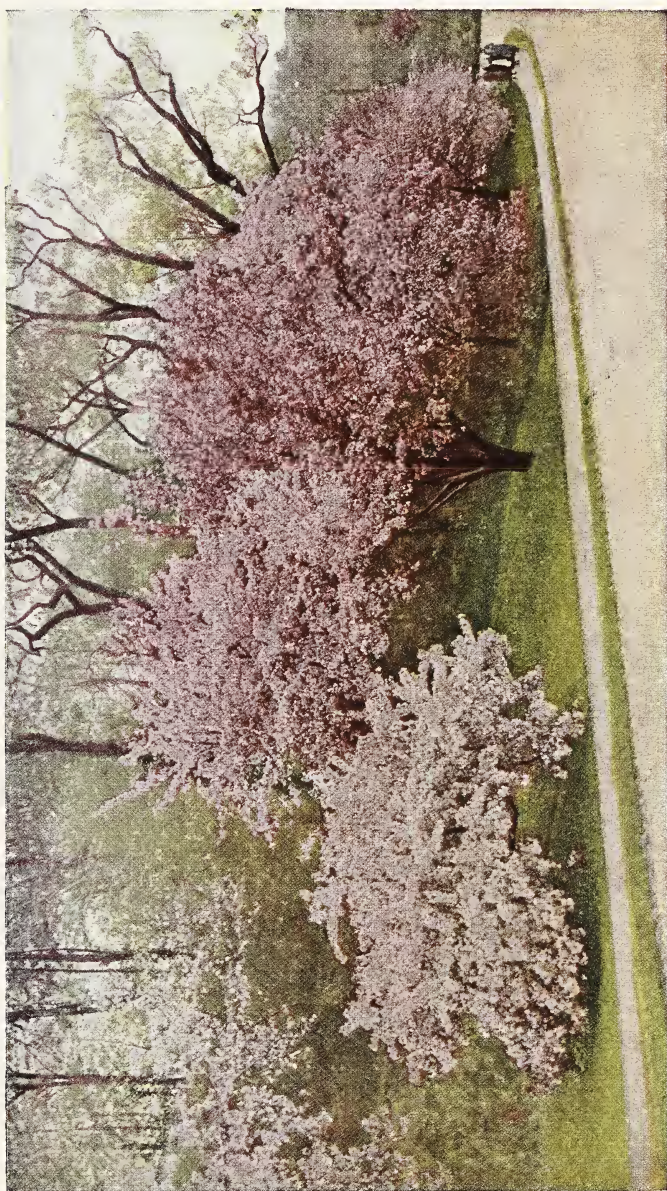


Photo by Harlan P. Kelsey

Copyright 1925 by Harlan P. Kelsey

FLOWERING CRABS AT ARNOLD ARBORETUM

From left to right, *Malus arnoldiana*, *spectabilis* and *scheideckeri*

HARDY NEW ENGLAND GROWN—BEST BY TEST

KELSEY-HIGHLANDS NURSERY

Malus, The Flowering Crab

THE Flowering Crabs have few rivals among gorgeous Spring flowering trees and shrubs. At the Arnold Arboretum one of the important events of the year is the blooming of the Crabs, followed by the showy fruit.

They are of easy culture, and whether planted singly or in masses, give remarkable and quick results. Not only are the Flowering Crabs beautiful on the lawn, but they are used to the greatest advantage on a large scale in woodland and other mass plantings, as are Dogwoods and Hawthorns. No group of plants has greater value for enlivening open forest parks and the country roadside.

As soon as the ground can be worked in Spring is an ideal time for planting and again in Fall after foliage is well ripened. Give rich soil and mulch heavily. Use all the water the soil will take in planting.

Prices of Flowering Crabs unless otherwise noted

1-2 ft.....	\$.80 each	\$ 7.20 per 10	\$ 63.00 per 100
2-3 ft.....	1.00 each	9.00 per 10	81.00 per 100
3-4 ft.....	1.50 each	13.50 per 10	120.00 per 100
4-5 ft.....	2.00 each	18.00 per 10	162.00 per 100
5-6 ft.....	3.00 each	27.00 per 10	

MALUS, Crab

arnoldiana, Arnold Crab.
 atrosanguinea, Carmine Crab.
 baccata, Siberian Crab.
 baccata mandshurica, Manchurian Crab.
 coronaria, Wild Sweet Crab.
 Dolga.
 Double Pink Chinese Crab.
 floribunda, Japanese Flowering Crab.
 halliana parkmani, Parkman Crab.
 Hopa Redflowering Crab.
 ioensis, Prairie Crab.
 ioensis plena, Bechtel Crab.
 Mathew Crab.

MALUS, Crab

microcarpa prunifolia.
 niedzwetzkyana, Redvein Crab.
 prunifolia rinki, Chinese Apple.
 purpurea, Purple Crab.
 robusta, Cherry Crab.
 sargenti, Sargent Crab.
 scheideckeri, Scheidecker Crab.
 sieboldi, Toringo Crab.
 sieboldi arborescens.
 toringoides, Cutleaf Crab.
 tschonoski.
 zumi, Zumi Crab.
 zumi calocarpa.

augustifolia rosea, 1-2 ft. at \$1.00 each, 2-3 ft. at \$1.50 each.

baccata, yellow fruited form, 1-2 ft. at \$1.50 each, 2-3 ft. at \$2.00 each.

Eley Flowering Crab, 2-3 ft. at \$1.50 each, 3-4 ft. at \$2.00 each.

micromalus, Midget Crab, 1-2 ft. at \$1.00 each, 2-3 ft. at \$1.75 each, 3-4 ft. at \$2.50 each, 4-5 ft. at \$3.25 each, and 5-6 ft. at \$4.00 each.

theifera, Tea Crab, 4-5 ft. at \$3.00 each, 5-6 ft. at \$4.00 each, and 6-7 ft. at \$5.00 each.

For descriptions of the above varieties write for our 1930 catalog.

HARDY NEW ENGLAND GROWN—BEST BY TEST

KELSEY-HIGHLANDS NURSERY



Photo by Herbert W. Gleason

SARGENT CRAB
Malus sargentii at Arnold Arboretum

Very spreading Japanese variety. Pure white flowers with bright yellow anthers. Scarlet fruit hanging till Spring.

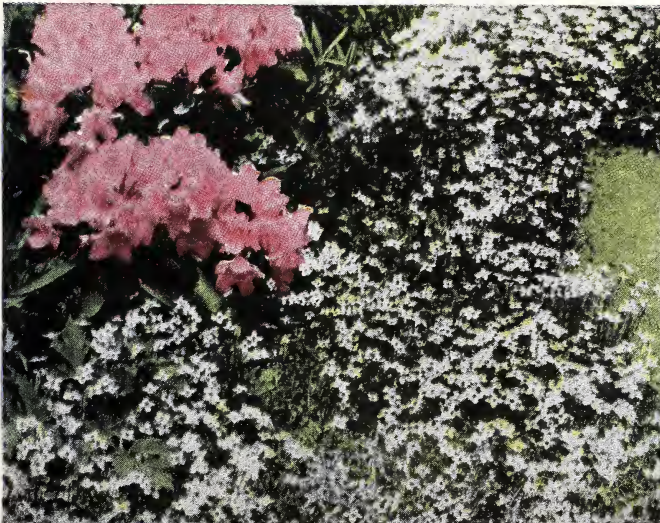


Photo by Plateau Studios, Asheville, N. C.

CATAWBA RHODODENDRON AND BLUEETS (Houstonia)

The hardiest and best all-round Rhododendron and the one which supplied color and hardiness to the cultivated hybrids. Color, bright red-purple but with considerable variation. Leaves dark shiny green.

18-24 inch clumps..... \$4.00 each, \$36.00 per 10

HARDY NEW ENGLAND GROWN—BEST BY TEST

KELSEY-HIGHLANDS NURSERY



JAPANESE IRIS (*Iris kaempferi*)

Our Japanese Iris are grown from selected strains imported directly from Japan. They are *mixed* and come in the greatest variety of shades and colors. Many might well be taken for gorgeous Orchids.

Strong plants..... \$ 30 each, \$2.40 per 10, \$18.00 per 100
 Clumps60 each, 5.40 per 10, 45.00 per 100



KOREAN CHRYSANTHEMUM

A remarkable new perennial of iron-clad hardiness from Korea, forming fine large clumps 2 to 3 feet in both height and diameter. The large white flowers have golden centers, resembling a glorified Oxeye Daisy, the petals often turning to a light claret pink. It blooms in the greatest profusion *October* and *November*. Our introduction.

Strong plants..... \$.25 each, \$2.25 per 10, \$20.00 per 100
 Clumps60 each, 5.40 per 10, 48.00 per 100

HARDY NEW ENGLAND GROWN—BEST BY TEST

KELSEY-HIGHLANDS NURSERY



Photo by Herbert W. Gleason, Boston

AZALEA ARBORESCENS (Sweet Azalea)

Delightfully spicy, fragrant white flowers with pink stamens appear in profusion, lasting for weeks. Becomes a spreading clump 3-6 feet broad in cultivation. The foliage colors striking shades of red in late Autumn.

12-18 inch clumps.....	\$2.00 each, \$18.00 per 10
2-3 feet clumps.....	4.50 each, 40.50 per 10



SPIRAEA TRICHOCARPA

Another beautiful Arnold Arboretum introduction coming from Korea

Handsome species from Korea introduced by Arnold Arboretum. Abundant large white flowers in umbel-like racemes.

1-2 feet.....	\$1.00 each, \$9.00 per 10
---------------	----------------------------

HARDY NEW ENGLAND GROWN—BEST BY TEST

KELSEY-HIGHLANDS NURSERY

"The Most Beautiful American Conifer"

Botany
Economic Collections
SEP 11 1930



Copyright 1923 by Harlan P. Kelsey

Photographed by Harlan P. Kelsey at the Arnold Arboretum, Jamaica Plain, Mass.

CAROLINA HEMLOCK, (*Tsuga caroliniana*)

Its dense, dark foliage, sweeping semi-pendulous branches and eventually pyramidal form combine to give a charm not found in any other evergreen known to cultivation.

6-7 feet..... \$30.00 each, \$270.00 per 10

7-8 feet..... 40.00 each, 360.00 per 10

A Kelsey-Highlands Nursery introduction

HARDY NEW ENGLAND GROWN—BEST BY TEST