

Historic, Archive Document

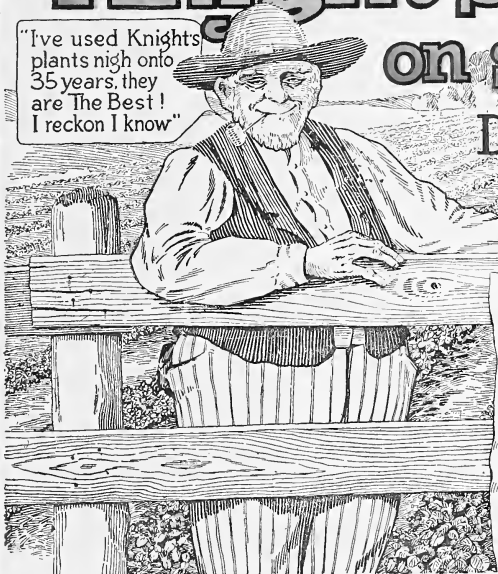
Do not assume content reflects current scientific knowledge, policies, or practices.

Knights Book

on small fruits

"I've used Knights
plants nigh onto
35 years, they
are The Best!
I reckon I know"

DAVID KNIGHT & SON
SAWYER, MICH.



SEASON
1930

“PUREBRED”

Strawberry - Raspberry - Blackberry
Dewberry - Grape - Asparagus
PLANTS

Flowering Shrubs - Climbing Vines
ROSES

Evergreens - Perennials
BULBS

DAVID KNIGHT & SON
SAWYER, MICHIGAN

Four Matchless Bargains

Sturdy 2-Year Roses

- 1 GENERAL JACK
Rich Crimson Scarlett
- 1 FRAU KARL DRUSCHKE
"White American Beauty"
- 1 PAUL NEYRON
Bright Pink
- 1 RADIANCE
Beautiful Light Red
- 1 SUNBURST
Golden Yellow

ALL FIVE FOR

\$1.50

(Express Collect)

(If wanted by mail, add 25c postage)

Hardy Perennials

- 4 JAPANESE IRIS
Yellow, Mauve, Lavender, Violet
- 4 HARDY PHLOX
Red, Pink, Salmon, White
- 4 DELPHINIUM
Dark Blue, Light Blue
- 4 HARDY
CHRYSANTHEMUM
White, Red, Pink, Yellow

THESE SIXTEEN STRONG
PLANTS FOR

\$2.25

(Postpaid)

Peonies

3 to 5 Eyes

- 2 KARL ROSENFELD
Red
- 2 ROSE FRAGRANCE
Pink
- 2 COURONNNE D'OR
White

FOR THE SIX

\$2.00

(Express Collect)

(If wanted by mail add 25c postage)

Evergreens

All trees balled and burlapped

- 1 PYRAMIDAL ARBOR
VITEA
- 1 AMERICAN ARBOR
VITEA
- 1 IRISH JUNIPER
- 1 SCOTCH PINE
- 1 NORWAY SPRUCE

\$5.00

FOR THESE FIVE GRACEFUL
EVERGREENS

(Express Collect)

(Evergreens shipped by Express only)

Compare prices with other firms and you will then appreciate what wonderful bargains these are.

AND BESIDES—we will send you 25 choice Gladioli bulbs FREE with each bargain offered above—twenty-five full flowering size bulbs that will give you a riot of bloom and beauty this very summer.

Knight's "Purebred" Strawberry Plants

ARE THE NATURAL RESULT OF OUR 44 YEARS'
SUCCESSFUL GROWING AND SQUARE DEALING

FOR the past five years our large acreage of small fruit plants has been sold to our old customers and their friends. We have used no expensive newspaper and radio advertising and this big yearly saving has been spent for the propagating of better plants and selling them at reasonable prices.

In 1885 this business was started by David Knight, who is Michigan's Pioneer in the growing of small fruit plants. He visioned the immense proportions to which the berry business would grow and his ambition has always been to study and test new varieties, to try out and work out new and better methods of propagation and to grow, pack and ship only such selected stock as would insure our customers the maximum in quantity and quality of fruit produced.

The principles of growing good stock and treating all customers fairly, that were inaugurated forty-four years ago, have been, and still are, our constant aim and we feel we have been successful in this and that we have the entire confidence of thousands of growers, for every year our entire supply of plants is ordered and used by people who know the quality of Knight's plants and will have no others.

Last year we could not begin to fill the orders that came to us. Thousands of dollars had to be returned to those who waited too long in placing their orders. On an average our patches have made more plants than last year but some varieties did not run as well as they should and this condition seems prevalent over this entire small fruit section, and in view of the unusually heavy demand for plants, the shortage

of stock will appear as great as it was last season. For this reason we urge you to make up your order and send it to us as soon as this catalog reaches you.

We want to assure you that our plants for this spring are excellent in quality. No finer stock can be grown and, because our selling expense is less than any other firm doing our volume of business, we have made our prices such that it means a real saving to you.

This year we are making it possible for you to have flowering shrubs and roses, vines, evergreens and perennials

at prices never before heard of. A few dollars spent for a perennial or rose garden, a bed of peonies or a few graceful evergreens scattered over your grounds will give you more pleasure than can be had in any other way and it will add twenty dollars to every one expended in the value of your home.



DAVID KNIGHT

Michigan's Pioneer Grower of Small Fruit Plants

**DON'T FAIL TO ORDER AT LEAST ONE OF THE
BARGAINS LISTED ON OPPOSITE PAGE**

When the world was young the Mastodon roamed upon the face of the earth, and in the animal kingdom it had no peer. Larger, stronger, with more vitality and no knowledge of fear—it was verily “The Bull of the Woods”

MASTODON (Per)

“The Bull of

The Woods”



By Far
**THE BEST
EVER-BEARER
GROWN**

Unequaled for
**Size
Quality
Productiveness**



IT IS hard to write anything about Mastodon that you don't already know. No use to tell you it is the most wonderful Everbearer ever grown—you know that. No use to tell you of it's wonderful size, appearance and productiveness and that, after producing a big crop of berries three months after setting, it does the same thing again the following spring—you know all that. No berry of any kind has ever been written and talked about as much as Mastodon. No berry has ever had the thousands and thousands of dollars spent on its advertising as Mastodon enjoys—and no berry has ever warranted the good things said of it so much as Mastodon. In fact Mastodon is so well and widely known and the demand for Mastodon plants is so great that we plant growers will not be able to get a sufficient supply of plants on hand to meet the demand for years to come. Many hundreds of dollars was again returned last spring to those who did not order their Mastodon plants early enough and the same condition will exist this year. Of course you want a Mastodon patch for your garden, or a larger one to grow berries for roadside stands or to supply near-by markets, for no crop can be grown that will give as much pleasure and as much profit for the money expended as Mastodon. Just think of setting plants in April and commencing to pick large delicious berries from those plants in July—think of the weeks of strawberry enjoyment until freezing weather stops their producing, and then think of harvesting another bumper crop during the regular strawberry season the next June. But you will have to act, as well as think, if these desirable things come to you. We have a fairly good supply of excellent Mastodon plants, but “not a drop in the bucket” to what we should have to fill the many orders that will come to us. So don't put off sending your order for, if you do, it may mean a severe disappointment to you.

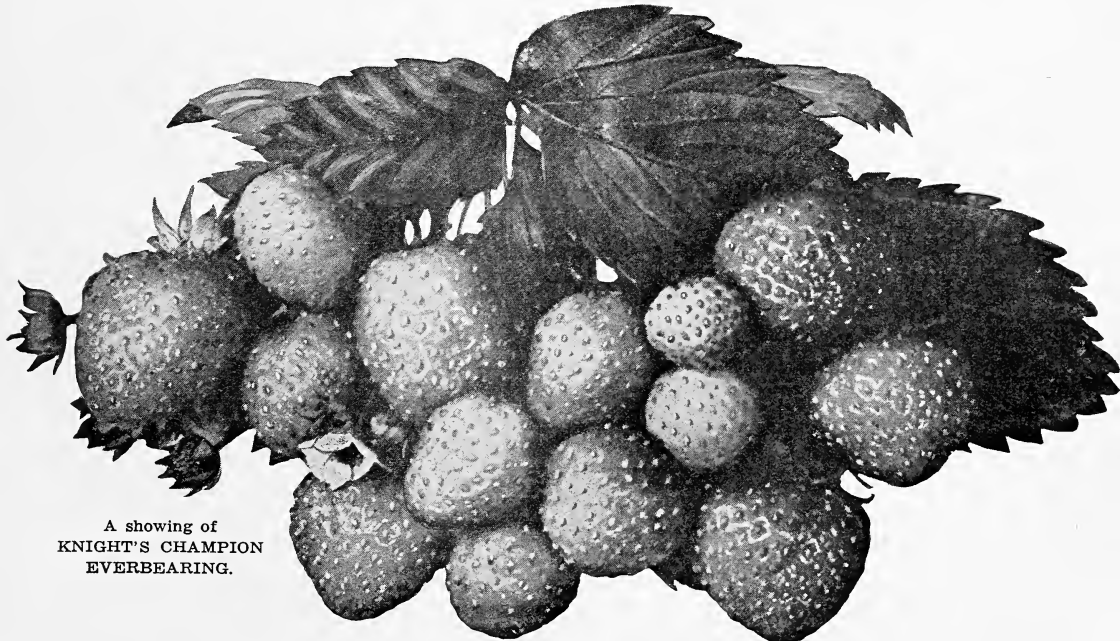
Million Dollar Everbearer (Per)

Out of the West comes a new Strawberry which has been called the "Million Dollar Everbearer". It is of the Superb type, producing enormous quantities of large, beautiful, rich flavored berries and it hasn't the tendency that Superb has of being a shy bearer and a poor plant maker. On the other hand it is nearly as productive as Mastodon and makes new plants as freely. This new berry will be giving you wonderful ripe berries within three months after being planted. It will produce a bumper crop the following spring and another the second fall. It has been wonderfully successful wherever tried and in some sections has proven far superior to all other everbearers. Our supply of plants of this new berry is not large and for that reason we must limit each purchase to a maximum of 100 plants for we want as many of our customers as possible to get started with them.

We have made the price of these plants \$4.00 per hundred which is very reasonable for a new variety of such outstanding qualities. Place your order early for we haven't enough plants to last through the season.

CHAMPION (Per)

For years known as the "\$2,000 per acre Everbearer" as its introducer actually produced 352 sixteen quart crates of Champion berries from one acre in 1920 and sold this fruit for a total of \$2,057.20. Champion is very similar to Progressive in plant growth and the size, quality and appearance of the fruit produced; however it is much more productive and it is really surprising the amount of fruit that can be grown in a favorable season. Champion is of excellent quality and, while of medium size in most sections, some of our customers in the West write us that it grows very large on their soil. Champion makes very few plants and there has never been sufficient stock available to meet the demand. With a crop not up to normal this year it will only be the early orders that can be supplied.



A showing of
KNIGHT'S CHAMPION
EVERBEARING.

Knight's Wonderful Midseason

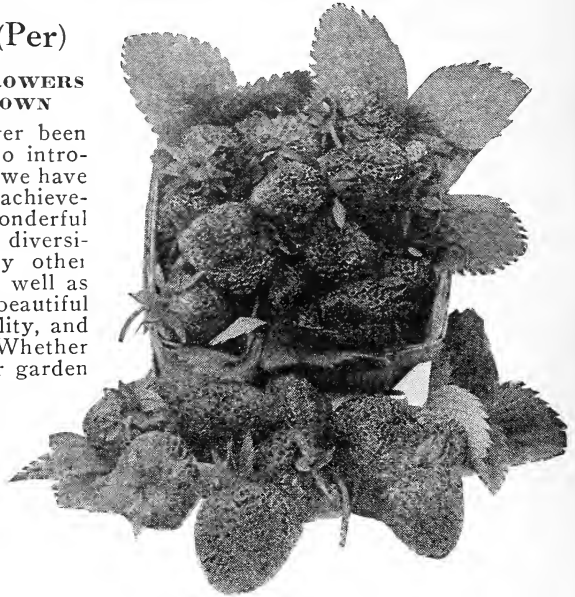
GIBSON (Per)

HAS MADE MORE MONEY FOR FRUIT GROWERS
THAN ANY OTHER VARIETY EVER GROWN

No better mid-season strawberry has ever been grown than Gibson. It was our privilege to introduce this variety about fifteen years ago and we have always considered it one of our greatest achievements. Gibson will grow and produce wonderful fruit over a wider area of country and more diversified soil and weather conditions than any other strawberry we know. Canning factories, as well as the housewife, prefer it on account of its beautiful dark red color, large size and excellent quality, and it daily receives a higher price in market. Whether you are growing only a small patch in your garden or several acres for commercial purposes, you should plant heavily of Gibson for, in its season, it will give you more and better berries than any other variety. We supply hundreds of thousands of Gibson plants to our customers every season and the fact that they are so largely and widely grown is proof of their value. We have a large and excellent supply of Gibson plants this season, carefully grown, healthy, true to name and priced right. Let us have your order.

COOPER (Per) Midseason

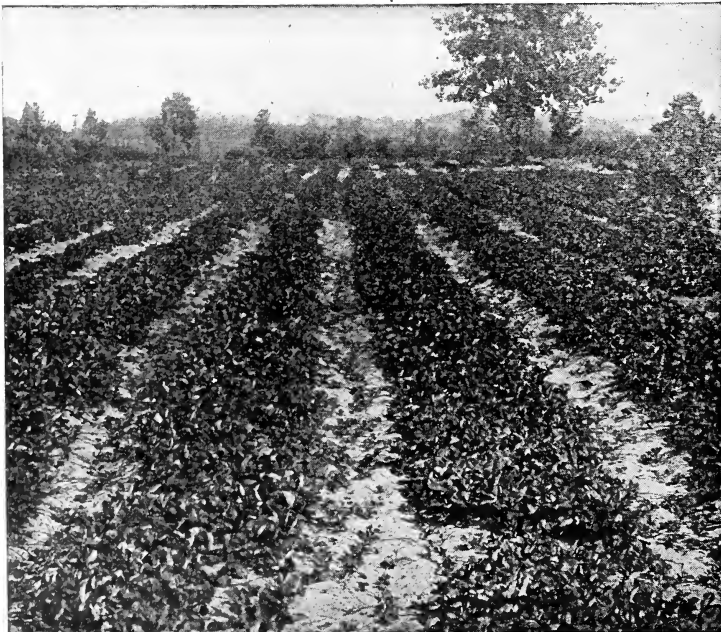
This variety has had a wonderful sale during the past few years and it seems to merit the confidence placed in it. Cooper is probably the largest strawberry grown and it is also a heavy cropper, so the amount of fruit produced is enormous. It is a mid-season, staminate variety. The fruit is of a beautiful bright red color and of excellent quality. On account of its large size and beautiful appearance it sells at a premium over most other sorts and is especially recommended for supplying home markets.

**DR. BURRILL** (Per) Midseason

It is claimed that Dr. Burrill is an improved Dunlap. We can find very little, if any, difference between them. But it is surely a wonderful producer of good size, handsome color and fine quality berries, and is very profitable to grow on account of the immense crops produced. For home use, home market or distant shipping it will give good service and we recommend planting freely of it.

PEARL (Per)

A wonderful late variety that is needed by every strawberry grower. It is the latest June berry and its large fancy fruit always demands a good price in market as other varieties are then nearly gone. Plants of Pearl are strong and healthy, producing enormous dark red berries of the very finest quality.



One of Our
Patches of
Gibson Plants



Note the
Exceptionally
Strong Growth

Knight's Reliable Midseason

DUNLAP

(Per)

**"KING OF THE
CANNERS"**

For more than twenty-five years Sen. Dunlap has been a big money maker for commercial strawberry growers. It makes plants freely, assuring an ample fruiting bed; it does well on any type of

soil and in any section of the country and it produces enormous crops of good sized, excellent quality berries that are a dark, rich, beautiful color—red all the way through. One of our customers sold \$4,230 worth of

Gibson. Nearly \$1,000 to the acre for so large a patch is a wonderful showing and was due largely to the use of two such good varieties as Dunlap and Gibson.

AROMA (Per)

LATE

One of the old standard varieties that, in certain sections, continues to be a favorite in spite of the many new varieties being introduced. Fruit is very large, bright red in color to the center, and has a delicious flavor. It is productive and firm of texture, making it a great shipping berry. It has a long fruiting season and continues good until the end. The demand for this variety is usually far in excess of the supply.

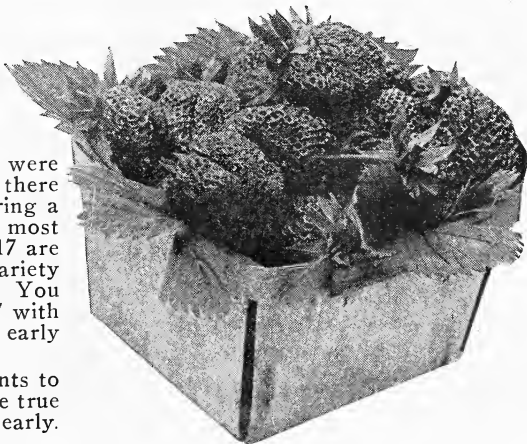
PREMIER (Howard No. 17) (Per)

We have discarded all other early varieties because Premier is so superior to them, not only here but in every other section of the country where strawberries are grown. Some of the outstanding characteristics of Premier are: Handsome, glossy, rich red color;

Size, large to very large and beautifully uniform and symmetrical in shape; Quality, delicious, unsurpassed by any other variety. Very firm, making it an excellent shipping berry. Immensely productive. No variety will yield

more fruit to the acre, as it ripens early and continues through a long season. As frost-resistant as a berry can be. Makes a good growth of strong, healthy plants which produce good crops when less sturdy sorts fail. Should have good soil and care but will do well on any soil in any climate. We had the opportunity to be on several of the large markets when berries were being brought in and sold last season and there was scarcely a day that Premier did not bring a premium of from 50c to \$1.00 per crate over most other varieties. Premier and Howard No. 17 are very similar if not identical, although the variety was first introduced under the latter name. You can order either Premier or Howard No. 17 with the assurance that you will receive the best early strawberry ever known.

Never has there been enough Premier plants to supply the demand. The same conditions are true this year and the only safe plan is to order early.



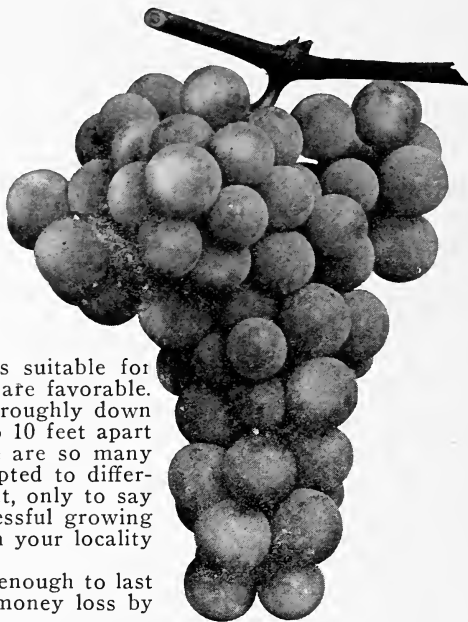
KNIGHT'S "Purebred" GRAPES

The Big Money Crop

If you live within ten miles of any city of 5,000 or more people, then set an acre—two acres—five or ten acres of grapes—mostly Concord—**this very spring**. The demand for them is increasing faster by far than the ability to supply and those who grasp the opportunity right now will reap the harvest. Knight's "Purebred" Northern grown, heavily rooted plants will give you quicker returns, larger crops and bigger profits. Don't be misled. Set Knight's Purebreds and you will harvest some fruit the second year, considerable the third year and a full crop the fourth year.

Any good dry soil with sufficient drainage is suitable for growing Grapes, if the exposure and the climate are favorable. Before planting, plow, harrow, and pulverize thoroughly down to a depth of 12 to 18 inches. Plant in rows 8 to 10 feet apart and the plants 10 to 12 feet in the rows. There are so many methods of pruning, different methods being adapted to different localities, that we will not dwell on that point, only to say that proper pruning is very essential to the successful growing of Grapes, and the method that is proving best in your locality is the one for you to follow.

We have a good supply of fine plants, but not enough to last through the season. Avoid disappointment and money loss by ordering today.



CONCORD

Decidedly the most popular Grape in America, and deservedly so. Bunch large, compact; berries large, covered with rich bloom; skin tender, but sufficiently firm to carry to distant markets; flesh juicy, sweet, pulpy, tender; vine strong grower, very hardy, healthy and productive. For general cultivation the most reliable and profitable variety grown.

NIAGARA

Occupies the same position among the white varieties as Concord among the black, the leading profitable market sort. Bunch and berries greenish white, changing to pale yellow when fully ripe. Skin thin but tough, quality much like Concord. Niagara will thrive and produce big crops almost anywhere. It does well in Michigan and south to the most southern states.

MOORE'S EARLY

This is the most popular early market grape grown. It ripens ten days before Concord and always brings a good price. The fruit is larger than either Concord or Niagara. It has a beautiful dark blue color and the quality is excellent. We are glad to recommend Moore's Early very highly as we know it will please you.

Topeka, Kan., Feb. 21, 1929.

Gentlemen:—Several years ago I purchased some plants from you and they were good and gave me fine results. As I am now going to raise some Strawberries. Wish you would send me your catalog.
Yours truly, W. J. GIBBS.

New London, Ohio, March 30, 1929.

Dear Sirs:—The grape vines came today, the finest lot I have ever received from any source at any price. Thank you for same, also for the fine lot of premium Gladioli bulbs.
Yours truly,
NATHAN PALMER.

Plymouth, N. H., April 27, 1929.

Dear Sirs:—Please let me know at once if you can fill my order. I had a big lot of Strawberry plants from you a few years ago and they were wonderful.
Respectfully,
MABEL H. WALKER.

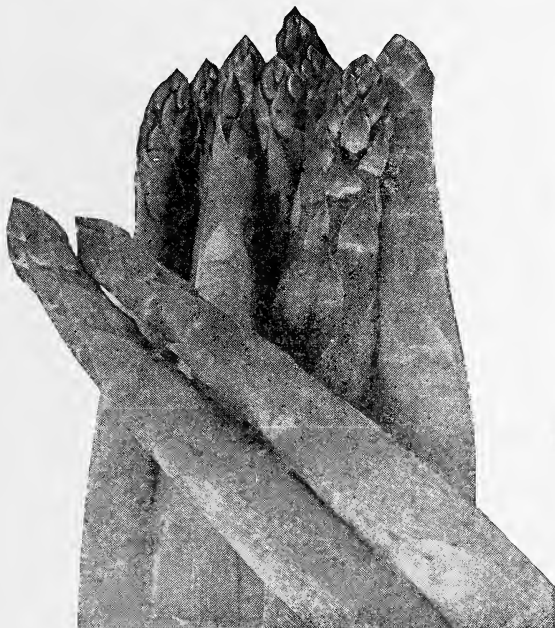
Albion, Mich., May 12, 1929.

Gentlemen:—I am very grateful to you for replacing the Mastodon Strawberry plants. They are certainly the finest plants I have ever set. I always buy my plants from you for I feel and know I am getting the best.
Yours truly,
F. J. CRANSON.

East Brookfield, Mass., April 6, 1929.

Gentlemen:—Enclosed, please find check and order for Strawberry plants. Permit me to thank you for the plants shipped me last year. They arrived in excellent condition and were satisfactory in every respect.
Yours very truly,
FREDERICK BUCKLIN.

Knights "Purebred" Asparagus



Just Read this

**\$100 Per Year for 14 Years from 3,000
KNIGHT'S Asparagus Plants**

Danville, Ill.

Gentlemen:

Just 14 years ago I bought 3,000 Palmetto asparagus roots from you, and each year I average \$100 from the patch and my asparagus is a noted thing in the city. As to its merit, no one will take any other, in the two stores that handle it for me if there is any of mine to be had.

Respectfully yours,

PAUL WICKERT.

Anyone Can Grow Asparagus

ASPARAGUS will grow well in almost any soil except low, damp ground, but the land should be under good cultivation and free from weeds. Mark the rows off $4\frac{1}{2}$ feet apart, making the trenches in which the roots are to be set by plowing in the same furrow with a two-horse plow and then shoveling out the loose earth, making a trench about 10 inches deep with a smooth, flat surface. The plants are now placed in this trench at a distance of 12 to 18 inches apart, spreading the roots out flat. Then cover with 2 or 3 inches of soil, allowing the shoots to come up through, and get a foot or so in height before the trench is filled up level full. Or, if you wish, while you are hoeing during the summer to keep the weeds down, you can fill in the trench a little at a time until it is full. After the first good freeze the tops will die down and should be cut off and burned, after which the bed should have a liberal covering of well-rotted manure, or, if you do not have that, in the spring you can apply some commercial fertilizer and harrow in well before growth starts. It takes such a small piece of ground to supply asparagus for a good sized family, that everyone should have a patch. For instance, fifty plants will set a piece 10 x 18 ft. and you will be surprised at the quantity of asparagus this will produce.

Washington

The Department of Agriculture at Washington introduced this variety several years ago and it is now more widely grown than any other sort. The stalks are of a purplish-green color, tender, large and of excellent flavor, but the thing that recommends it the most is its resistance to rust—a disease that has been a menace to asparagus patches of other varieties. With proper care you can depend upon a patch of Washington asparagus giving you an abundant supply of this most delicious of all spring vegetables for years to come.

Palmetto

Palmetto is the old stand-by that for years has been grown so profitably by gardeners who make a business of producing asparagus for market. It is early—large—very productive and has a flavor unsurpassed. You make no mistake in setting either Washington or Palmetto.

Bristow, Neb., April 23, 1929.

Sirs:—The plants you sent me on the 11th arrived on the 15th in fine condition and every plant seems to be doing fine. Thanks to you for such healthy plants, they'll be a good advertisement when people notice them on the parsonage property.

Yours, satisfied,

A. A. KERBER.

Cameron, W. V., Feb. 26, 1929.

Gentlemen:—Please mail me your late catalog of nursery stock. I have some of your plants, all true to name and producing fine and this year I want about a thousand each of Eldorado Blackberry and Cumberland Raspberry.

Very truly yours,

STANLEY GRAY.

Knight's "Purebred" BLACKBERRIES



ELDORADO BLACKBERRY

PROFITABLE - PRODUCTIVE - HARDY

We have grown practically all varieties of blackberries, but Eldorado is so much superior to all others that we now grow and sell only that one variety. Eldorado is unusually hardy. We have never known it to winter-kill or fail to produce an exceptionally fine crop of fruit. Even in the far northwest it is grown without winter protection. The berries are very large, jet black and of excellent quality. They are borne in large clusters and ripen well together. In a word, Eldorado is the greatest blackberry in cultivation and we can assure you that you will not be disappointed in it. Our plants are strong and heavily rooted. Just the kind to make you a heavy producing profitable patch.

In planting your Blackberry patch, select land that is full of humus and retains moisture well, for this crop ripens at a time when we can naturally expect dry weather, and if your patch is on land that quickly dries out, the crop will suffer. Culture for Blackberries is the same as raspberries, only they need more room and should be set 3 to 4 feet apart in the row and the rows from 7 to 8 feet apart.

Buy Root Cutting Plants

SAVE A YEAR

This year we have grown as fine a lot of root cutting Eldorado blackberry plants as we have ever seen, and we are offering them at a price but little higher than the common sucker plants. You cannot afford to buy sucker plants when root cuttings can be had at such a reasonable price, for they will make a growth that will surprise you the first season and will give you nearly a full crop next spring.

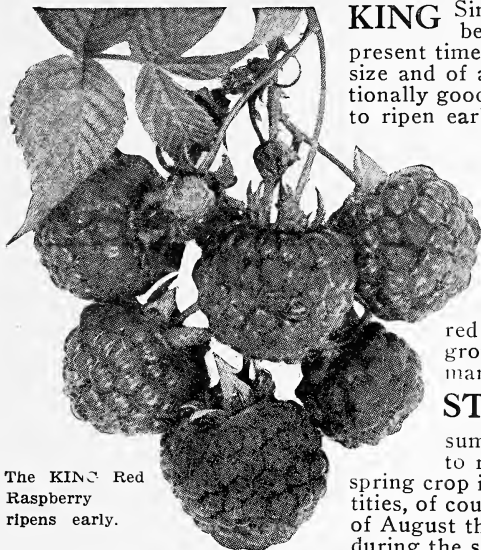
The supply is never equal to the demand for root cutting plants and if you are planning to set a blackberry patch this spring then place your order for a quantity of Knight's root cuttings at once.

Dewberries

We strongly recommend the growing of dewberries for they come after raspberries are gone and before blackberries commence—when the market is bare of berries and prices are high. Dewberries thrive in any soil, even light land that will not grow other berries successfully. Get started with a patch of dewberries this season and you will find it one of the most profitable parts of your farm.

LUCRETIA Acknowledged by all fruit growers and horticulturists to be the finest dewberry grown. Lucretia commences to ripen from a week to ten days earlier than blackberries. The fruit is very large, of a shiny black color and deliciously sweet and luscious. Don't be without this wonderful berry. Our superior, heavily rooted plants cost no more than ordinary ones. Get your order placed early for our supply is limited.

RED RASPBERRIES



The KING Red Raspberry ripens early.

KING Since its introduction several years ago, the King has been rapidly growing in public favor, until at the present time it takes the lead of all varieties. Fruit is of good size and of a bright, beautiful color; it is firm and of exceptionally good quality. Immensely productive and commencing to ripen early, it always commands a good price in market.

Plant King for early and Cuthbert for late, and you will always be assured of a profitable crop.

CUTHBERT This is one of the most valuable of the old standard varieties. It has been widely grown in all sections of the country and has given excellent results both for home use and commercial purposes. Cuthbert is a good, vigorous grower and produces bountifully of large and bright red berries. Probably no other red Raspberry is grown so extensively as the Cuthbert and the demand for plants is always heavy.

ST. REGIS This variety is unusual from the fact that it produces fruit from early summer until late fall. It is the earliest Raspberry to ripen, coming with the last of Strawberries. The spring crop is the main crop; but they continue, in small quantities, of course, all during the summer and autumn. By the last of August the new growth of wood, which has been maturing during the summer, is ready to bear fruit and continues to do so until stopped by frosts. The fruit is of good size, a beautiful brilliant crimson color, of delicious flavor and firm enough to ship to distant market. In our opinion St. Regis will never

be grown as extensively as Cuthbert and King for commercial purposes, but everyone should have some of them in order to enjoy delicious red Raspberries on their tables all during the season.

LATHAM

A NEW RED RASPBERRY OF UNUSUAL MERIT

We have known about Latham for several years but did not wish to offer it to our customers until we had satisfied ourselves that it possessed the merits claimed for it. However, since fruiting it two summers, we are convinced that it is one of the greatest red raspberries we have ever seen. Every Agricultural College testing Latham has reported very favorably as to the large size and excellent quality of its fruit; its entire resistance to frost during the coldest winters and the enormous quantities of fruit it will produce. The Connecticut Agricultural College have a record of 5,430 quarts per acre from a three year old patch.

Latham ripens its fruit at same time as Cuthbert or a week to ten days later than King. It

is large, handsome and delicious from beginning—an excellent shipping variety—and last summer sold for as much as \$1 per crate more than other varieties.

Our supply of Latham plants is limited this spring, but is of unexcelled quality, being positively pure and disease free.



Year in and year out raspberries are an exceedingly profitable crop. This patch of them cleared better than \$500.00 to the acre.



BLACK PEARL Raspberry which produces big loads of luscious fruit.

Knight's "Pure Bred" BLACK RASPBERRIES

Come to you with a Certificate of Double Nursery Inspection, an Assurance of Disease Free Plants

BLACK PEARL

THE BEST NEW BLACK CAP. Year after year this wonderful early black cap maintains its superior value and grows in public esteem. Although originated in western Missouri, where it is grown more widely and more profitably than any other sort, it has now been thoroughly tested in every section where raspberries are grown and always with wonderful success. One grower writes: "I have grown the Black Pearl Raspberry now for three years, and find it the best and earliest blackcap Raspberry grown in the middle west. Earlier than Kansas and much more prolific than Cumberland." Another grower writes: "I have found them to be superior in many ways to the Cumberland and Kansas blackcap. They seem to be good drought-resisters and never winter-kill. The bushes will stand up under a big load of fruit and never tumble down like other varieties do."

Black Pearl ripens from a week to ten days earlier than Cumberland and when planted with that grand old variety will give you a length of season and quality and size of fruit that cannot be produced in any other way. It is deeper rooted than any other black cap and for that reason is the best drought resister, often ripening a good crop of fruit when the berries of other varieties dry up on the vines. Also it is very hardy and can be grown where severe

climates prevail as we have never known it to winter kill. Our supply of Black Pearl is not large this year but the quality is excellent and we urge you to order freely as we know you will be more than pleased when fruiting time comes.

KANSAS, The Standard Early Variety

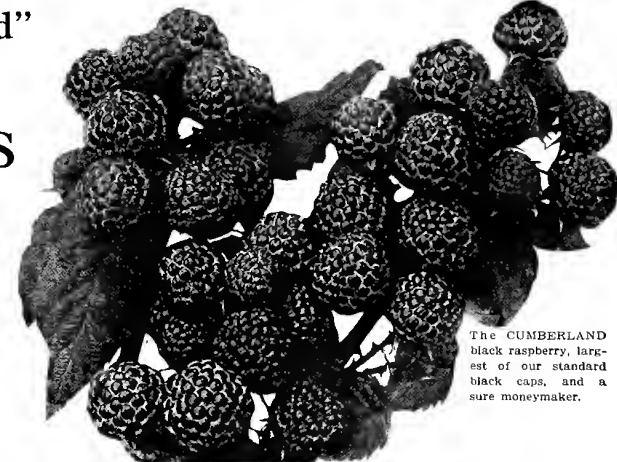
Kansas is one of the best and most widely known early varieties. In some sections it is planted more extensively than any other sort. The canes are strong and healthy and produce large crops of fruit. Berries are jet black, of good size, firm, sweet, and of best quality.

Kansas has been a general favorite for several years and we have sold thousands of plants from which we hear of excellent results. No matter whether you grow for your own table or for market, Kansas should be in your garden.

David Knight & Son,
Sawyer, Mich.

Gentlemen:—Am enclosing small order, part for a new customer. Must tell you that our Black Raspberries last year were wonderful and the Gladiolus bought from you were something grand.

Yours,
MRS. L. DOLESON.



The CUMBERLAND black raspberry, largest of our standard black caps, and a sure moneymaker.

CUMBERLAND THE OLD STANDBY--NONE BETTER

No Black Raspberry is grown as extensively and none has made as much money for fruit growers as Cumberland. Wherever black caps can be grown Cumberland is grown, and with wonderful success in all sections. Cumberland plants are healthy, vigorous growers, throwing up stout, stocky, well-branched canes that produce immense crops of magnificent berries—large, a rich black in color, firm and of the highest quality. They ripen their fruit in mid-season and continue in bearing for two or three weeks. Cumberland is less susceptible to disease than most varieties and if planted on well drained land and properly cultivated, hoed and pruned, a patch once established, will produce profitable crops for several years.

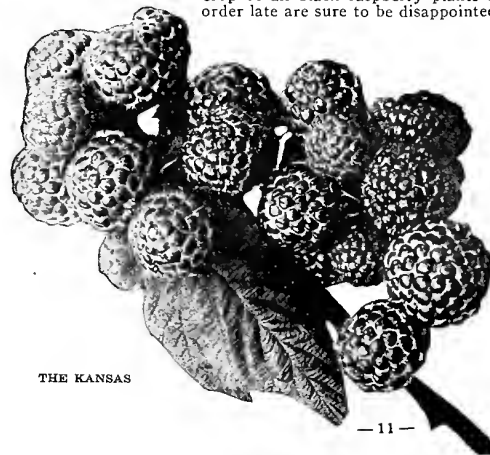
Our Cumberland, as well as all other raspberries, are inspected twice each year by the State Department of Agriculture and you can depend upon it that our stock is healthy, vigorous and true to name. If you will take our advice and set a good sized acreage of Black Pearl and Cumberland you will have a patch that will be a surprise to your neighbors and a pleasure and profit to yourself, for the price of black raspberries has been high for a number of years and will surely continue for years to come. But don't delay ordering, for the crop of all black raspberry plants is short this year and those who order late are sure to be disappointed.

For Your Information

Either red or black Raspberries are a profitable crop wherever grown, and after being planted are not hard to care for. As with strawberries the same land that will produce good corn or potatoes will also grow good Raspberries and with just about the same amount of cultivating and hoeing.

Black Raspberries should be set from 3 to 3½ feet in the row and the rows 7 feet apart. As soon as growth starts and plants are from 18 to 20 inches high, pinch out the top of each cane, which causes them to send out laterals and gives a larger fruiting surface for the next year. Red Raspberries should be set 2 feet in the row, and the rows 6 to 8 feet apart. Do not pinch off the tips of these, but the rapid-growing kinds, such as Cuthbert, should be cut back somewhat in the spring.

After the fruiting season of both reds and blacks, cut out the old wood, thus allowing the new stalks to make a good growth for the coming season.



THE KANSAS

Why Order Plants from Knight

OUR SPECIAL METHODS OF PROPAGATING AND GROWING INSURE BIG CROPS OF BIG BERRIES. The plants which we use in setting our new patches are all selected with the greatest care. In other words, they are "the cream of the cream," proven out by years of consecutive growing. So careful is our inspection that no weak or imperfect plants are permitted to be the mother plants of the stock we send you. We set out our strawberry patches in the Spring. The plants make their growth of runners and new plants during the fast growing season of Summer and early Fall. The following Spring we dig up the whole row. The mother plant and the smaller and weaker young plants are all thrown away, thus only the best selected stock is sent out to the trade. You, therefore, not only receive selected stock; but the plants are produced from mother plants that have never borne fruit.



A. R. KNIGHT, Gen. Mgr.

FRESHLY DUG AND CAREFULLY PACKED. We could fill several pages quoting enthusiastic letters from customers in nearly every State in the Union, complimenting us upon our efficient packing, and

the safe arrival of our shipments. These letters did not just happen. In fact, nowhere is the result of our years of experience more evident than in our careful methods of digging and packing.

KNIGHT'S "PURE-BREAD" PLANTS are so carefully dug, that the entire root systems are preserved. Wire bound crates of different sizes, baskets and packages take care of strawberry plants, and smaller orders of cane plants. Large orders of cane plants are packed in strong boxes and barrels. Spaagnum moss, secured in carload lots in Wisconsin, is the packing material. Through long experience we have learned how damp this moss must be and just how to pack for different distances. Accordingly, wherever our customers live, the plants will reach even the most remote destinations in perfect condition.

This is of the utmost importance to you. Whoever you patronize should have this knowl-

edge, gained only by long experience, and many failures with berries can be traced to a lack of careful packing. **Often improperly packed plants fail to produce, even when they still retain sufficient vitality to live.**

You can rest assured that your shipment of **KNIGHT'S "PUREBREDS"** will come to hand in perfect growing and producing shape.

MICHIGAN STATE DEPARTMENT OF AGRICULTURE

Orchard and Nursery Inspection

CERTIFICATE OF NURSERY INSPECTION, NO. 633

This is to certify that David Knight & Son, Sawyer, Mich., has filed affidavit showing that his nursery stock has been inspected and is apparently free from dangerous insects and dangerously contagious tree and plant diseases.

HERBERT C. POWELL, Commissioner.

This Certificate to be void after September 15th, 1930.

BUREAU OF AGRICULTURAL INDUSTRY,

A. C. CARLTON, Director.
Lansing, Mich., Nov. 26, 1929.

E. C. MANDENBERG,
In Charge of Nursery and Orchard Inspection.

OUR GUARANTEE IS YOUR PROTECTION

We guarantee that all of our plants are strong, healthy, free from diseases, full count and true to label. That they are freshly dug, properly packed, and promptly shipped.

That all plants shipped by express will reach their destination in good growing condition.

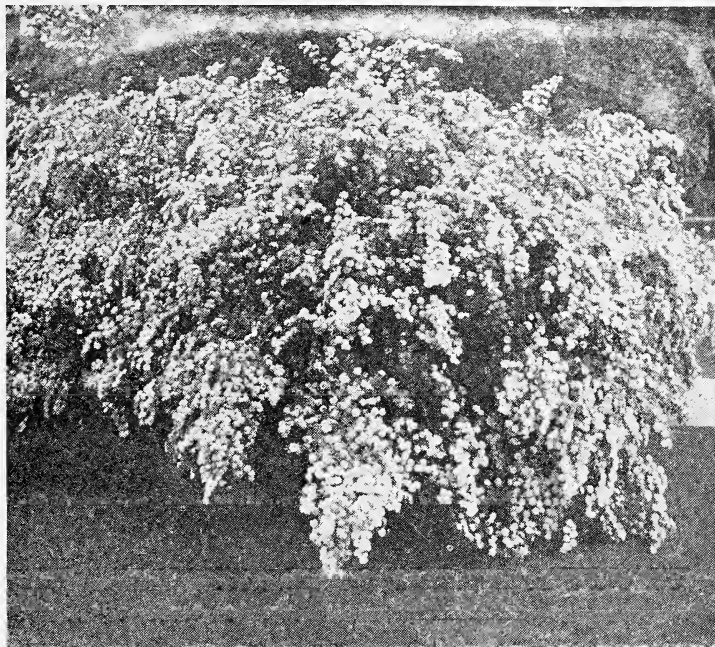
That if any order from us does not reach you in just the condition mentioned we will, upon immediate notice and proper proof, refill your order or refund your purchase price.

It is mutually understood, however, between the purchaser and ourselves that we shall not be liable for a greater sum than that paid for such stock.

WE FURTHER GUARANTEE that all plants we ship you WILL LIVE AND GROW through the first summer. If any fail to do so we will replace them at one-half the original purchase price; providing the complaint, proof of loss and remittance is received on or before October 15th, 1930.

KNIGHT'S Beautiful Hardy Ornamental Shrubs

The last finishing touch to landscape planting—what wonderful effects can be had with these graceful, glowing shrubs—and at a cost everyone can afford. We believe you have never had the opportunity of buying them at so low a price before, and the stock is excellent, heavily rooted, sure to grow. Knight's enviable reputation of 45 years is behind each plant.



Spirea V. H.

ALTHEA—Rose of Sharon. This is one of the most valuable of all shrubs for it gives its profusion of large, highly colored flowers late in August—past the blooming season of most flowering shrubs. The flowers much resemble the tender hibiscus in form and are the color spots of fall just as the Spireas and Weigelias are of spring. The bushes are ornamental in shape and grow to a height of eight to ten feet, covering themselves in fall with beautiful double white, purple, red, rose and striped flowers.

BARBERRY—Thumbergi. No shrub in existence is so generally planted and has so many practical purposes as Japanese Barberry. It hasn't one serious fault and can be grown in semi-shady, moist, dry or sunny locations. When grown as specimen plants or as an edging to taller shrubs its graceful arching branches covered with the most luxuriant deep green foliage in summer and beautiful bright red berries all winter are the most attractive sight imaginable.

BARBERRY—New Red Leaved. Never has a new shrub attracted the universal attention as this Red-Leaved Japanese Barberry. It is nearly identical to the green leaved Barberry Thumbergi with exception that its foliage is a rich lustrous

bronze-red, changing in the fall to vivid orange scarlet and red. Its only requirement is plenty of sunshine.

BUTTERFLY BUSH—“Summer Lilac.” This bush grows from four to six feet in height and produces its beautiful Lilac colored bloom from the tips of every particle of new growth. It flowers from July to September, but more profusely during August and at that time the mass of conspicuous purple and violet flowers attract many butterflies, adding much to its attraction.

DEUTZIA—Gracilis. A dwarf shrub growing from 20 to 30 inches in height. Its graceful drooping branches are wreathed with pure white flowers in May. When used for borders it is most valuable and beautiful.

DEUTZIA—Pride of Rochester. This is the most hardy and popular of the Deutzia family. It grows from six to eight feet in height and its mass of pinkish white bloom in June is a joy to all beholding it. It adapts itself to any type of soil or growing conditions and for specimen or mass planting it is indispensable.

FORSYTHIA—Golden Bell. These attractive old shrubs, growing six or eight feet tall, light up the garden with glowing masses of golden yellow before any other bloom appears in the spring, in fact the flowers appear before the leaves and enliven a landscape that is otherwise leafless and bloomless.

BUSH HONEYSUCKLE—Tartarian Rubra. For a tall hedge to screen an unsightly view there is no shrub so valuable as it will grow from ten to twelve feet high in a few years. Besides it is a beautiful thing both summer and winter as it is the first shrub to clothe itself with leaves in spring. Its light crimson flowers and luxuriant foliage are a delight in summer and the thousands of bright red berries give a charming touch of color to the winter landscape.

HYDRANGEA—Aborescens (Hill of Snow). The flowers of this shrub are much like those of snowball in appearance. They are conspicuously white and enlivening during July, August and September. By keeping the crowns cut back each spring it makes a symmetrical dense hedge of from three to five feet in height. The plants are perfectly hardy and free from diseases.

HYDRANGEA—P. G. Everyone knows and loves this hardy old fashioned shrub. The large spikes of greenish-white blossoms first appear in August and last until autumn but as time goes on they change to pure white, then to a pinkish tinge and last to a rich bronze. No grounds are complete without a liberal planting of this grand old shrub.

PERSIAN LILAC. This has become the most popular lilac grown. The large trusses of deep purple flowers are borne in profusion and their sweet fragrance carries over the entire grounds.

PHILADELPHUS—Mock Orange. One of the tallest shrubs grown and excellent for hedges as well as for individual planting. It flowers very profusely, much resembling strawberry blossoms, but larger and its waxy-white fragrant bloom is a delight to all. Don't fail to plant at least a few Mock Orange.

SNOWBERRY. This shrub has small pinkish flowers in June and July, followed by large clusters of milk white berries that remain on the bushes far into the winter. The growth of this shrub is graceful and attractive and the combination of pink flowers and white berries on the same twig is charming.

SNOW BALL. The popular old-fashioned Snow Ball is so well known that it needs no description. No planting is complete without it. You should have at least two or three of these beautiful shrubs in your yard or garden.

SPIREA—Anthony Waterer. A compact dwarf shrub with dense deep green foliage. On account of its graceful low growing habits it is very valuable for foundation planting and edging in front of taller shrubbery. The flowers are a showy red born in full flat clusters on erect stems.

SPIREA—Van Houttei. What would spring be without this most popular of all flowering shrubs, Bridleweath, as it is sometimes called. A mantle of beautiful white spreads over the entire country when Spirea V. H. puts forth its bloom in May and June. It can be used with striking effect in both individual and mass planting and if you are ever in doubt what to use for a certain location, then plant Bridleweath and you are sure to be right. Note—For hospitals, public grounds or private planting where a large quantity of Spirea is needed and price is an object, use the 18 to 24-inch grade for they are sturdy, well rooted plants and in a few years will be as large as the more expensive grades. You cannot equal our low prices anywhere and the quality of all of our shrubs is unsurpassed.

WEIGELIA—Rosea. The most popular Weigelia grown. It will attain a height of from five to six feet and its long, graceful arching branches, literally covered with delicate pink bell-shaped blossoms during June, is a sight that cannot be forgotten. There is also a scattering of bloom all during the summer. The leaves are large and beautiful, free from disease and themselves add a charm to the landscape.

WEIGELIA—Eva Rathke. Similar in appearance to Weigelia Rosea but somewhat smaller in growth. It attracts much attention at blooming time for its profusion of brilliant carmen red flowers with white throats.

PRIVET—Amoor River. This privet has all of the good qualities of California privet but, in addition, is perfectly hardy and is the one that should be used wherever severe winter temperatures are experienced. It is used mostly as a clipped hedge but is also valuable for semi-screening and mass planting as it is graceful in its growth and its rich dark green leaves stay on the branches longer than any other shrub.

Hardy Ornamental Vines Add Beauty and Charm

BOSTON IVY—A self clinging vine which is valuable for completely covering any object to which it attaches itself. The foliage is a beautiful deep green turning to many attractive shades of red and bronze in the fall. Price, each, 25c; 5 for \$1.00; 10 for \$2.00.

BITTERSWEET—This is a native vine, unusually valuable and attractive for its handsome glossy foliage and beautiful orange crimson berries retained all during the winter. Price, each, 35c; 5 for \$1.60; 10 for \$3.00.

HALL'S JAPAN HONEYSUCKLE—An evergreen twining vine that is extensively used to cover trellises and fences. Its bloom is an intermingling of white and yellow with a charming fragrance. Price, each, 15c; 5 for 65c; 10 for \$1.20.

WISTERIA—One of the most handsome vines for use on trellises, porches and pergolas. It is a vigorous grower, the foliage is attractive and the flowers borne in dense drooping clusters are of matchless beauty. Price, each, 20c; 5 for \$1.10; 10 for \$1.60.

CLEMATIS—Jackmani. Probably the most popular of the Japanese Clematis. Its flowers are violet purple and from four to six inches in diameter. Very attractive. Price, each, 60c; 5 for \$2.75; 10 for \$5.00.

CLEMATIS—Paniculati. Flowers of this are white and rather small but very fragrant and produced in the greatest profusion. One of the most desirable and hardy garden vines. Price, each, 25c; 5 for \$1.10; 10 for \$2.00.

Evergreen Trees

“Aristocrats”

There is nothing more desirable for landscape work than evergreen trees. Their cost has been a little prohibitive in the past and you will undoubtedly be surprised to learn our low prices. Everyone can now afford to have these “Aristocrats” and you can depend upon it that Knight's Evergreens are just the best that can be had, every one with a strong root system and top growth, bailed and burlapped so as to reach you in prime condition and sure to grow.

ARBOR VITEA—American. A rapid growing beautiful evergreen with a soft bright green foliage from the ground up. Is used for specimen planting but very valuable for hedge work as it stands shearing better than any other evergreen. Each, 75c; 3 for \$2.00.

ARBOR VITEA—Pyramidal. This is a strikingly attractive tree as it is perfectly pyramidal in shape and the most compact and erect of the entire species. Foliage is a beautiful deep green and it retains its color throughout the year. Each, \$1.25; 3 for \$3.25.

ARBOR VITEA—Globosa. Usually called Globe Evergreen as its shape is absolutely round, or globular. The tree when fully grown is not more than four feet high and, with its handsome shade of dark green, gives a distinction to any spot where it may be planted. Each, \$1.00; 3 for \$2.50.

ARBOR VITEA—Hovey's Golden. A small hardy tree, very compact and elliptical in shape. The foliage is light green with a tinge of gold that is alluring and very distinctive. Each, \$1.00; 3 for \$2.50.

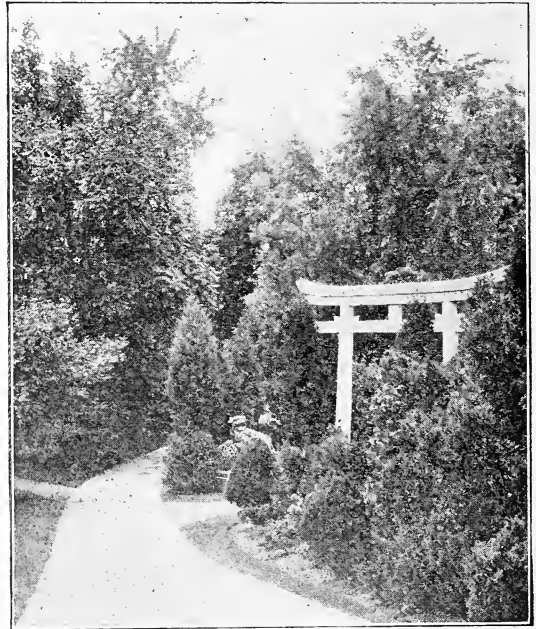
IRISH JUNIPER—This charming tree immediately attracts attention on account of its glaucous sage green color and slender erect formal habit of growth. It has a decided advantage over anything else you can use for formal effect in contrast with other trees. Each, \$1.25; 3 for \$3.25.

JUNIPER—Pfitzeriana. One of the newer evergreens but acknowledged as the most popular of the spreading type. It has a peculiar graceful spreading growth all its own. Flowing lines are especially valuable in landscape work and this Juniper seems to meet this requirement better than any other, however, it will stand severe pruning if it outgrows its location. Foliage is a beautiful green with blue-gray tinge. Each, \$2.00; 3 for \$5.50.

MUGHO PINE—This is an excellent dwarf pine—globe shaped with erect branches. The foliage is dark green and is especially beautiful in spring when the new growth appears. Each, \$2.00; 3 for \$5.50.

WHITE PINE—Perhaps the best of the pine family on account of its rapid growth which attains great height with age. It has beautiful silvery light green foliage in long swaying clumps of soft needles. Each, \$1.25; 3 for \$3.25.

SCOTCH PINE—Where quick effect is wanted this is the pine to use as it has the ability to establish itself quickly and grow rapidly. Its foliage is a dark green, very effective when grown with Norway Spruce. Each, \$1.25; 3 for \$3.25.



Effective Evergreen Planting

A Fine Stock of Berkman Golden

Which Always Sells Quickly At Retail.

Thuja Orientalis Aurea Nana (Biota)

Berkman Golden Arborvitae makes a dwarf, compact rounded cone, the vertically placed foliage edged bright golden yellow. One of the most brightly colored of the formal dwarf evergreens; excellent for tubs. We have some exceptionally fine plants of this popular variety.

Prices

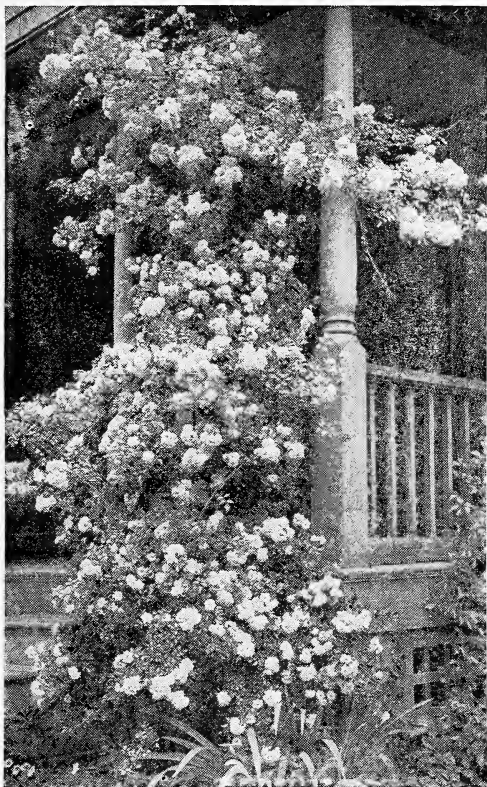
	Each	10	100
9-12"	1.25	10.00	75.00
12-15"	1.75	15.00	125.00
15-18"	2.25	20.00	175.00
18-21"	2.75	25.00	200.00
21-24"	3.25	27.50	

NORWAY SPRUCE—This has long been the most popular spruce as it grows to a lofty noble tree and its foliage and manner of growth is indeed beautiful. It can be used equally well for specimen planting or in groups where contrast is desired. Each, \$1.00; 3 for \$2.50.

COLORADO BLUE SPRUCE—One of the showiest and most impressive evergreens on account of its sharply defined pyramidal form and the entrancing silvery blue luster of its foliage. No more ornamental tree can be grown and it thrives in nearly all climates and soils. Each, \$5.00; 3 for \$12.50.

Hardy Bush Roses Field Grown

Price, each, 30c; 3 for 80c; 10 for \$2.40



Dorothy Perkins

Compare the prices of these sturdy, heavily rooted two year roses and notice how much money you can save by sending us your orders.

AMERICAN BEAUTY—Most widely known American rose. Especially valuable for cut flowers. Deep pink, nearly crimson, large and very fragrant.

FRAU KARL DRUSKI—“White American Beauty.” Lovely in bud and full blossom. Gorgeous large waxy white flowers in June with a final burst of bloom in the midst of the first snow.

GENERAL JACQUEMINOT—A universal favorite. The perfectly formed fragrant blossoms come early and are borne on long graceful stems. In color a rich scarlet crimson. Beautiful.

GRUSS EN TEPLITZ—The value of this rose is its intense richness of color—a velvety crimson red. It makes small plants but blooms profusely all summer.

LADY HILLINGTON—An exquisite Hybrid Tea Rose with long pointed buds that open into gorgeous double blossoms. An entrancing deep apricot yellow, the pride of every rose grower.

MRS. JOHN LAING—A strong vigorous growing rose producing many immensely large flowers, of a beautiful clear soft pink, all during the summer. There is no better pink rose grown.

PAUL NEYRON—The largest variety in cultivation and grown by all rose lovers. It blooms from June until November and is particularly good during autumn. The bloom is produced on long, smooth thornless stems and is a clear rose pink. Sometimes called “Pink American Beauty.”

PINK RADIANCE—A gorgeous clear salmon-pink rose of glowing loveliness. The bloom is very large and abundant borne on long strong stems. One of the finest of all roses.

RED RADIANCE—A duplicate of Pink Radiance in everything except color, this being a lovely brilliant crimson. Both Radiance roses are valuable for cut flowers and should be planted freely.

SUNBURST—This exquisite new glowing orange rose slightly paling at petals edge to resemble a true sunburst has captured the love of all rose growers. It is one of the very best of the Hybrid Teas, blooms freely and excellent for cut flowers. Sunburst has always sold for a high price, never less than \$1.00 each, until our present price this spring.

Hardy Climbing Roses

Price, each, 30c; 3 for 80c; 10 for \$2.40

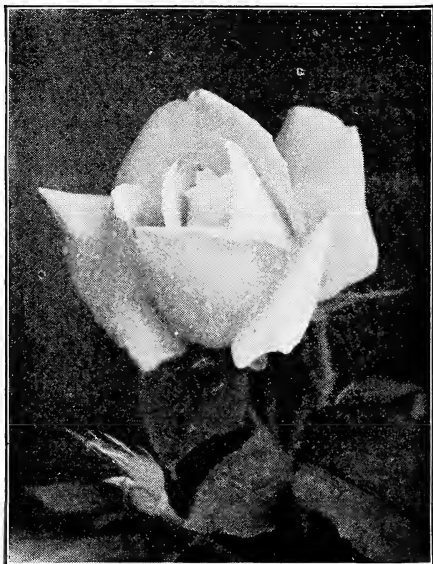
CLIMBING AMERICAN BEAUTY—This is the true American Beauty rose, having the same lovely, fragrant deep pink bloom, with the one exception that it has a strong climbing habit of growth. The abundant blossoms are at their best before the bush roses commence and their loveliness is not excelled even by those grown in hot houses.

CRIMSON RAMBLER—This grand old rambler is a favorite everywhere on account of its brilliant color and sturdy habit of growth. Can be used as a climber or in bush form and in either case its large clusters of beautiful crimson flowers cover the branches their entire length.

DOROTHY PERKINS—A beautiful shell pink climbing rose, the showiest and hardest of the pink climbers. It has the same sturdy habits of Crimson Rambler and its flowers are borne in great clusters of from thirty to forty and sometimes more.

DR. VAN FLEET—A new and desirable type of climber with flowers as large as tea roses and admirable for cutting, the stems being from twelve to eighteen inches long. The color is a delicate flesh white, very attractive at blooming time.

PAUL'S SCARLETT—This has been a decided sensation ever since its introduction several years ago. Many claim it to be the best climber grown. Its bloom, which is borne in large clusters, is a vivid scarlet which it retains until the petals fall. The individual flowers are larger than most climbers. Don't fail to plant some Paul's Scarlett this spring.

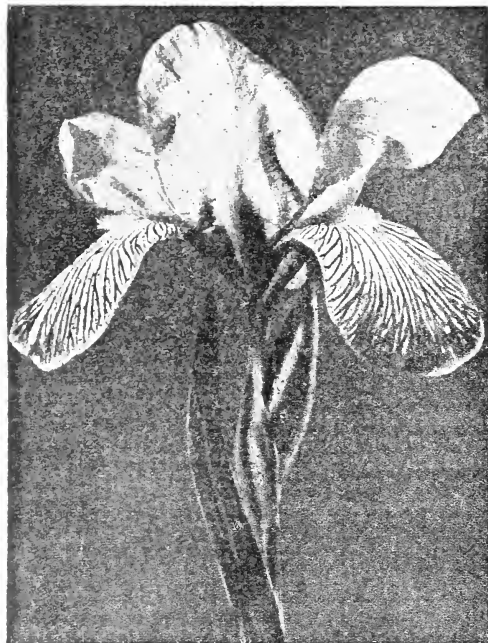


Sunburst

Hardy Perennials

Postpaid Prices, each, 20c; 5 for 90c; 10 for \$1.70

Beautiful flowers of every conceivable color can be had every week of the growing season with hardy perennials. Just set them out and every spring they greet you with an ever greater profusion of bloom. We have selected a few of the very best and offer them to you at a price that will allow you to have a perennial garden for only a few dollars cost.



Japanese Iris

attract the greatest attention. This class of Iris should be well cultivated to assure the greatest extent of bloom and beauty.

HARDY PHLOX. These beautiful perennials can be used as borders, large groups in the lawn or as an edging for shrubbery. A continuous bloom can be had until frost by pinching back and removing the faded flowers. We have them in red, pink, salmon and white. Order by color.

ACHILLEA—The Pearl. The best white flowered border plant. Resembles Pompon Chrysanthemum.

ACQUILLEGIA—Columbine. Flowers borne on slender spurred stems. Comes in various beautiful shades. Valuable for borders.

HARDY CHRYSANTHEMUM. Flowers very attractive and borne in large quantities during September and October. The red, yellow, pink and white bloom makes a gorgeous display.

COREOPSIS. Rich golden yellow flowers in profusion all during the summer. Excellent for cut flowers. No more desirable perennial grown.

DELPHINIUM—Larkspur. The long showy spikes of Larkspur, attaining a height of 3 to 4 ft., are a beautiful sight from June to frost. Order by color, either the light turquoise blue or rich dark blue.

GAILLARDI—Blanket Flower. One of the most gorgeous perennials grown, producing flowers that often measure three inches in diameter. Bright orange and yellow with circles of crimson, red and maroon. Blooms all summer and splendid for cut flowers.

GYPSOPHELIA—Baby's Breath. This tiny white flower—a mist of feathery bloom—is largely used for mixing with sprays of high colored flowers and in this way gives a delightful effect.

HOLLYHOCK—Known by everyone. With their long spikes of many colored flowers borne in profusion, no wonder hollyhock has been called "King of the Garden". All of our varieties are double and come in red, pink, white and orange.

HIBISCUS. Plants grow to four or five feet in height and produce large showy flowers of white and the various shades of pink and red.

JAPANESE IRIS. This is the latest blooming Iris but by far the tallest growing and most beautiful. No other Iris can compare with it. Flowers often eight to ten inches across and of such shape and color as to attract the greatest attention.

Peonies

Everyone knows the gorgeous beauty of peonies and no one should be without a garden of them for it is the best loved spring flower. They can be grown in any soil with sunny exposure and for years to come their entrancing loveliness will be a delight to all beholding them. Peonies come in red, white and pink and we have selected one variety of each color that is the very best. It pays to buy the good ones.

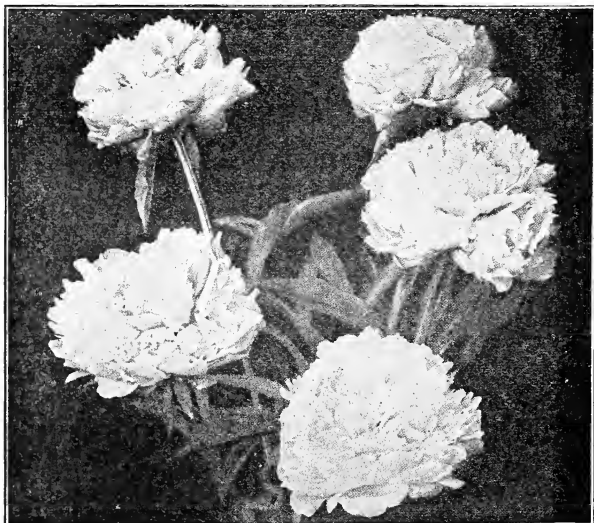
KARL ROSENFELD—A most striking velvety crimson peony of the rose type. This is probably the best red peony grown usually selling for \$2.00 or more and rarely as low as \$1.00. By a fortunate circumstance we are able to sell them at the very low price listed. Each, 60c; 3 for \$1.50.

ROSE FRAGRANS—The most popular pink peony grown. Large double blossoms with delightful fragrance. Each, 30c; 3 for 75c.

COURONNE d'OR—The grandest of the whites, with large compact blossoms—a beautiful thing. Each, 40c; 3 for \$1.00.

All Peonies have 3 to 5 eyes. No better can be had at any price.

(If Peonies are wanted by mail add 5c each for postage.)



Karl Rosenfeld

Knight's Beautiful Gladiolus



If gladioli are desired by parcel post, add 5c for 12 bulbs, 8c for 25 bulbs, or 12c for 50 bulbs, to cover postage.

THE varieties listed here are the very cream of all Gladiolus. Every desirable color is represented and every variety is a proven producer of the most gorgeous flowers imaginable. Send us your order for as many of these large, full flowering size bulbs as you can find room for and you will experience a new thrill from growing flowers.

ANN EBERIUS—Dark beautiful purple, a general favorite.

FLORA—The best canary yellow, extra large flowers.

LE MARECHAL FOCH—Beautiful light pink. Extra large flowers. One of the earliest.

LOUISE—Called "Queen of the Lavenders. Unusually beautiful, resembling an orchid.

MRS. FRANK PENDLETON—A lovely flushed salmon-pink with rich maroon blotch in throat.

PEACE—Beautiful large pure white flowers with a touch of carmine markings in lower petals.

WAR—Magnificent dark, real blood red color. Flowers unusually large and plentiful.

Varieties above, 8c each, 12 for 85c, 25 for \$1.75

<p>SPECIAL OFFER NO. 1 Three each of the above. Total of 21 bulbs, only.....\$1.50</p>	<p>SPECIAL OFFER NO. 2 Five each of the above. Total of 35 bulbs, only.....\$2.50</p>	<p>SPECIAL OFFER NO. 3 Ten each of the above. Total of 70 bulbs, only.....\$4.75</p>
---	--	---

ALICE TIPLADY—Real orange. Very fine flower with lasting qualities.

CHATEAU THIERRY—Extra fine red with large creamy blotch.

INDEPENDENCE—Coral pink. One of the finest for cut flowers.

MRS. FRANCIS KING—A striking shade of pure scarlet or flame color. One of the most effective.

MAIDENBLUSH—Apple blossom color. A beautiful "Glad" and a favorite everywhere.

1910 ROSE—Extra fine dark rose pink, lower petals lined with white through center.

Varieties above, 6c each, 12 for 65c, 25 for \$1.25

<p>SPECIAL OFFER NO. 4 Three each of the above. Total of 18 bulbs, only.....\$1.00</p>	<p>SPECIAL OFFER NO. 5 Five each of the above. Total of 30 bulbs, only.....\$1.50</p>	<p>SPECIAL OFFER NO. 6 Ten each of the above. Total of 60 bulbs, only.....\$2.75</p>
---	--	---

Knight's Choice Gladioli Mixture

This is an extra fine mixture comprised of the very best varieties grown, dozens of them—every shade—every color—gorgeous at blooming time—beautiful beyond description. Every bulb is FULL FLOWERED SIZE, ready to give you a riot of bloom and beauty this very summer.

12 bulbs, 40c; 25 bulbs, 75c; 50 bulbs, \$1.25; 100 bulbs, \$2.25.

Special Offer, Good Until April 1

For every order for plants or bulbs accompanied by cash and reaching us by April 1st, we will include FREE, 12 Gladioli bulbs from our choice mixture for every \$2.50 order, 25 bulbs for every \$5.00 and 50 bulbs for every \$10.00 order.

Please express your wish to receive these free bulbs when ordering.

Read Carefully Before Making Out Order

ORDER EARLY. Do not delay placing your orders until you are ready to plant. The earlier orders are placed the better it is for you and for us. All orders are booked in rotation as received, therefore it is to your advantage to get your order placed early before varieties you wish are gone.

HOW TO ORDER. Use the order sheet found in this catalog, being sure to write your name and address plainly, and fill out all blanks carefully with reference to where you want your plants shipped, whether you want them sent by express, freight or mail, and at what time.

COMPLAINTS. Complaints, if any, must be made within ten days after receipt of stock.

SHIPPING SEASON commences about March 15 and continues until about May 15.

HOW WE SHIP. Express and parcel post are much the safer way. We guarantee express and parcel post shipments to reach destination in good condition. Raspberry, blackberry and other heavy plants can be shipped safely by freight early in the season. However, all freight shipments go at consignee's risk.

TERMS. Cash with order, or part cash when order is sent, the balance to be sent before shipment.

REMITTANCES. Send money by Check, Draft, Postoffice Money Order, Express Money Order or Registered Mail. Currency sent in a letter without registering is at sender's risk.



A BARGAIN

Occasionally labels are misplaced on plants in field or packing house and we cannot be sure what variety they are. Some days we have more of certain varieties dug than we can ship on orders. All such stock we call BARGAIN PLANTS. These are plants from our very best varieties and will give excellent fruit at a considerable saving.

\$3.00 per Thousand

To Compute Amount Postage on Your Order

First ascertain the group in which you are located and then refer to list below which will tell you the amount of postage to send.

Group 1—Central and northern Michigan, southeast Wisconsin, northeast Illinois, central and northern Indiana, western Ohio.

Group 2—Balance of Wisconsin, Illinois, Indiana and Ohio.

Group 3—Minnesota, Iowa, Missouri, Arkansas, Kentucky, Tennessee, North Carolina, Virginia, West Virginia, Pennsylvania, New York.

Group 4—North Dakota, South Dakota, Nebraska, Colorado, Kansas, Oklahoma.

Group 5—Montana, Wyoming, Idaho, Utah, California.

Group 1—Add 10c for each 100 strawberry or asparagus plants.

Group 2—Add 14c for each 100 strawberry or asparagus plants.

Group 3—Add 21c for each 100 strawberry or asparagus plants.

Group 4—Add 28c for each 100 strawberry or asparagus plants.

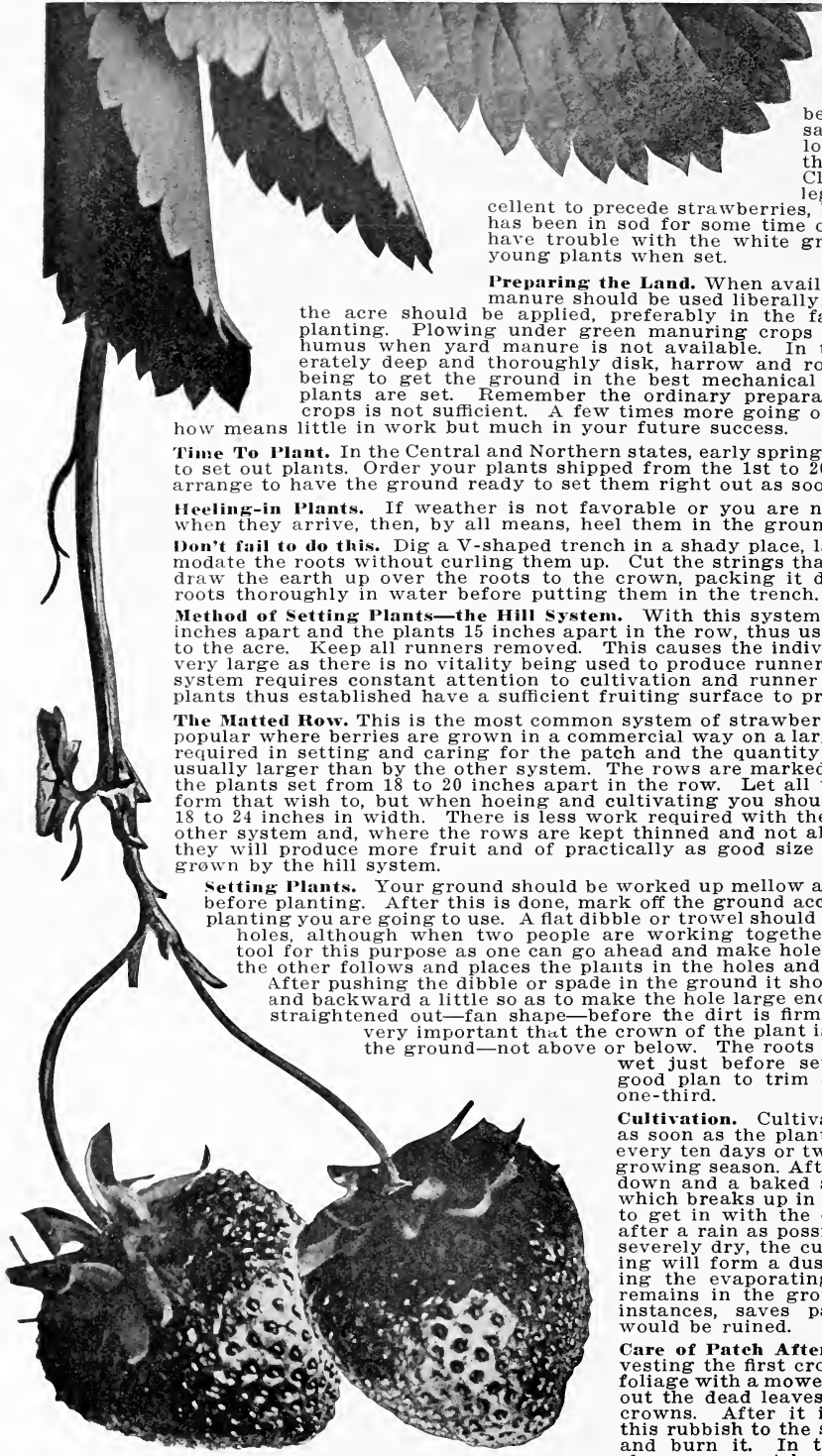
Group 5—Add 35c for each 100 strawberry or asparagus plants.

25 raspberry or blackberry plants takes the same postage as 100 strawberry.

6 shrubs, roses or grapes takes the same postage as 100 strawberry.

100 Gladioli bulbs takes the same postage as 100 strawberry.

Timely Hints that Spell Strawberry Success



Kind of Land Required. Any good, well drained soil suited to the growth of ordinary farm crops will grow good strawberries. But a mellow, sandy soil, or a sandy loam, is preferable to the heavier types of soil. Clover, vetch and other leguminous crops are excellent to precede strawberries, but don't use land that has been in sod for some time or you will very likely have trouble with the white grub which eats off the young plants when set.

Preparing the Land. When available, well-rotted stable manure should be used liberally; ten to twenty tons to the acre should be applied, preferably in the fall previous to spring planting. Plowing under green manuring crops is excellent to supply humus when yard manure is not available. In the spring, plow moderately deep and thoroughly disk, harrow and roll the land. The idea being to get the ground in the best mechanical shape possible before plants are set. Remember the ordinary preparation for general farm crops is not sufficient. A few times more going over with disk and harrow means little in work but much in your future success.

Time To Plant. In the Central and Northern states, early spring is the best time of year to set out plants. Order your plants shipped from the 1st to 20th of April and try to arrange to have the ground ready to set them right out as soon as they arrive.

Heeling-in Plants. If weather is not favorable or you are not ready to set plants when they arrive, then, by all means, heel them in the ground until you are ready.

Don't fail to do this. Dig a V-shaped trench in a shady place, large enough to accommodate the roots without curling them up. Cut the strings that bind the bundles and draw the earth up over the roots to the crown, packing it down firmly. Soak the roots thoroughly in water before putting them in the trench.

Method of Setting Plants—the Hill System. With this system the rows should be 30 inches apart and the plants 15 inches apart in the row, thus using about 14,000 plants to the acre. Keep all runners removed. This causes the individual plants to become very large as there is no vitality being used to produce runners and new plants. This system requires constant attention to cultivation and runner cutting, but the large plants thus established have a sufficient fruiting surface to produce enormous crops.

The Matted Row. This is the most common system of strawberry growing and is very popular where berries are grown in a commercial way on a large scale, as less labor is required in setting and caring for the patch and the quantity of berries produced is usually larger than by the other system. The rows are marked off $3\frac{1}{2}$ feet apart and the plants set from 18 to 20 inches apart in the row. Let all the runners and plants form that wish to, but when hoeing and cultivating you should keep the rows from 18 to 24 inches in width. There is less work required with the matted row than any other system and, where the rows are kept thinned and not allowed to get too wide, they will produce more fruit and of practically as good size and quality as though grown by the hill system.

Setting Plants. Your ground should be worked up mellow and free from clods just before planting. After this is done, mark off the ground according to the system of planting you are going to use. A flat dibble or trowel should be used for making the holes, although when two people are working together the spade is a good tool for this purpose as one can go ahead and make holes with the spade while the other follows and places the plants in the holes and firms them in.

After pushing the dibble or spade in the ground it should be worked forward and backward a little so as to make the hole large enough for the roots to be straightened out—fan shape—before the dirt is firmed around them. It is very important that the crown of the plant is just at the surface of the ground—not above or below. The roots of the plants should be wet just before setting and it is also a good plan to trim off the roots by about one-third.

Cultivation. Cultivation should commence as soon as the plants are set and continue every ten days or two weeks all during the growing season. After a rain the soil packs down and a baked surface is soon formed which breaks up in large clods, so it is best to get in with the cultivator just as soon after a rain as possible. When a season is severely dry, the cultivator constantly going will form a dust mulch, thus preventing the evaporating of such moisture as remains in the ground and this, in many instances, saves patches that otherwise would be ruined.

Care of Patch After Fruiting. After harvesting the first crop of fruit, mow off the foliage with a mower or scythe. This cleans out the dead leaves but does not hurt the crowns. After it is well dried out rake this rubbish to the space between the rows and burn it. In this way you not only clean your patch and make it easier to work but also destroy all insects and plant diseases. After getting rid of the foliage it is a good plan to plow a furrow on each side of the row, cutting the bed to about eight or twelve inches.

work but also destroy all insects and plant diseases. After getting rid of the foliage it is a good plan to plow a furrow on each side of the row, cutting the bed to about eight or twelve inches.

KNIGHT'S PRICES FOR 1930

IMPORTANT NOTICE—All plants shipped by express go charges collect. If mail shipment is wished add postage as shown in table at bottom of page 18.

5% DISCOUNT FOR EARLY ORDERS

We allow a special discount of 5% from catalog rates, on all orders sent in before March 20th, accompanied by cash in full.

EVERBEARING STRAWBERRIES

	25	50	75	100	200	300	400	1000
Mastodon	\$0.60	\$1.10	\$1.50	\$1.85	\$3.50	\$5.00	\$6.35	\$15.00
Champion45	.75	1.10	1.45	2.65	3.60	4.40	10.00
Million Dollar	1.52	2.40	3.25	4.00				

JUNE BEARING VARIETIES

	.30	.50	.65	.80	1.45	2.00	2.40	5.50
Aroma30	.50	.65	.80	1.45	2.00	2.40	5.50
Cooper35	.60	.85	1.00	1.85	2.55	3.10	7.00
Dr. Burrill25	.40	.60	.70	1.10	1.50	1.80	4.00
Gibson25	.40	.60	.70	1.10	1.50	1.80	4.00
Pearl35	.60	.85	1.00	1.85	2.55	3.10	7.00
Premier35	.55	.80	.95	1.65	2.25	2.70	6.00
Gen. Dunlap.....	.25	.40	.60	.70	1.05	1.45	1.75	3.75

RED AND BLACK RASPBERRIES

	1.00	1.60	2.20	2.60	4.40	6.00	7.75	18.00
Cuthbert, Red.....	1.00	1.60	2.20	2.60	4.40	6.00	7.75	18.00
King, Red.....	1.00	1.55	2.15	2.50	4.25	5.75	7.50	17.00
Latham, Red.....	1.10	1.95	2.65	3.20	5.85	8.00	9.70	22.00
St. Regis, Red.....	1.00	1.75	2.40	2.90	5.30	7.25	8.80	20.00
Black Pearl, Black.....	1.10	1.95	2.65	3.20	5.85	8.00	9.70	22.00
Cumberland, Black.....	1.00	1.75	2.40	2.90	5.30	7.25	8.80	20.00
Kansas, Black.....	1.00	1.75	2.40	2.90	5.30	7.25	8.80	20.00

BLACKBERRIES—DEWBERRIES

	1.00	1.75	2.40	2.90	5.30	7.25	8.80	20.00
Eldorado—Root Cuttings.....	1.00	1.75	2.40	2.90	5.30	7.25	8.80	20.00
Eldorado—T Root.....	1.00	1.55	2.15	2.50	4.25	5.75	7.50	17.00
Lucretia Dewberry.....	.90	1.50	2.05	2.35	4.10	5.50	7.15	16.00

ASPARAGUS

	.45	.75	1.10	1.45	2.65	3.60	4.40	10.00
Washington45	.75	1.10	1.45	2.65	3.60	4.40	10.00
Palmetto40	.65	.90	1.20	2.15	2.90	3.50	8.00

GRAPES

	1	6	12	25	50	75	100	200	300	400	1000
Concord, 1-yr.....	\$0.10	\$0.50	\$0.90	\$1.50	\$2.60	\$3.50	\$4.15	\$6.50	\$8.50	\$11.00	\$25.00
Concord, 2-yr.....	.15	.55	1.00	1.65	2.80	3.55	4.50	7.50	11.50	15.50	35.00
Moore's, 2-yr.....	.15	.75	1.50	2.70	5.00	6.60	8.25	13.00	17.00	22.00	50.00
Niagara, 2-yr.....	.15	.75	1.50	2.70	5.00	6.60	8.25	13.00	17.00	22.00	50.00

HARDY ORNAMENTAL SHRUBS

	Each	5	10	25	50	75	100
Althea, 2-yr., 18-24 in.....	\$0.15	\$0.65	\$ 1.20	\$ 2.85	\$ 5.45	\$ 7.80	\$ 14.00
Althea, 2-yr., 2-3 ft.....	.20	.90	1.60	3.90	7.50	11.00	17.00
Barberry-Green, 2-yr., 12 in.....	.10	.45	.80	1.90	3.60	5.15	7.20
Barberry-Green, 2-yr., 12-18 in.....	.20	.90	1.60	3.90	5.45	7.80	10.00
Barberry-Red, 2-yr, 12 in.....	.60	2.75	5.00	12.00	23.75	34.00	45.00
Barberry-Red, 2-yr., 12-18 in.....	1.25	6.50	12.00	29.00	57.00	90.00	108.00
Butterfly Bush, 1-yr., strong.....	.20	.90	1.60	3.80	7.20	10.30	13.25
Butterfly Bush, 2-yr., strong.....	.25	1.10	2.00	4.75	9.00	12.85	16.40
Deutzia Grac., 2-yr., strong.....	.25	1.10	2.00	4.75	9.00	12.85	16.40
Deutzia P. R., 2-yr., 18-24 in.....	.10	.45	.80	1.95	3.80	5.45	7.20
Deutzia, P. R., 2-yr., 2-3 ft.....	.25	1.10	2.00	4.75	9.00	12.85	16.40
Forsythia, 2-yr., 18-24 in.....	.10	.45	.80	1.95	3.80	5.45	7.20
Forsythia, 2-yr., 2-3 ft.....	.25	1.10	2.00	4.75	9.00	12.85	16.40
Bush Honeysuckle, strang, 1-yr.....	.15	.60	1.00	2.35	4.45	6.35	8.00
Bush Honeysuckle, strong, 2-yr.....	.30	1.45	2.80	6.65	12.60	18.00	23.00
Hydrangea Abor., 2-yr., 10-12 in.....	.25	1.10	2.00	4.75	9.00	12.85	16.40
Hydrangea Abor., 2-yr., 18-24 in.....	.35	1.60	3.00	7.15	13.60	19.40	24.00
Hydrangea P. G., 2-yr., 12-18 in.....	.25	1.10	2.00	4.75	9.00	12.85	16.40
Hydrangea P. G., 2-yr., 18-24 in.....	.35	1.60	3.00	7.15	13.60	19.40	24.00
Persian Lilac, 2-yr., 12-18 in.....	.35	1.60	3.00	7.15	13.60	19.40	24.00
Persian Lilac, 2-yr., 18-25 in.....	.55	2.60	5.00	12.00	22.80	32.50	41.00
Philadelphus, 2-yr., 18-24 in.....	.15	.65	1.20	2.85	5.50	7.80	10.00
Philadelphus, 2-yr., 2-3 ft.....	.25	1.10	2.00	4.75	9.00	12.85	16.40
Snowberry, 2-yr., 18-24 in.....	.10	.45	.80	1.90	3.60	5.15	7.20
Snowberry, 2-yr., 2-3 ft.....	.35	1.60	3.00	7.15	13.60	19.40	24.00
Snowball, 2-yr., 12-18 in.....	.35	1.60	3.00	7.15	13.60	19.40	24.00
Snowball, 2-yr., 18-24 in.....	.60	2.75	5.00	12.00	23.75	34.00	45.00
Spirea A. W., 1-yr., strong.....	.15	.65	1.20	2.85	5.45	7.80	10.00
Spirea A. W., 2-yr., strong.....	.35	1.60	3.00	7.15	13.60	19.40	24.00
Spirea V. H., 2-yr., 18-24 in.....	.10	.45	.80	1.90	3.60	5.15	7.20
Spirea V. H., 2-yr., 2-3 ft.....	.20	.90	1.60	3.90	7.60	10.90	14.40
Weigelia Rosea, 2-yr., 12-18 in.....	.10	.45	.80	1.90	3.60	5.15	7.20
Weigelia Rosea, 2-yr., 2-3 ft.....	.35	1.60	3.00	7.15	13.60	19.40	24.00
Weigelia E. R., 2-yr., 12-8 in.....	.25	1.10	2.00	4.75	9.00	12.85	16.40
Weigelia E. R., 2-yr., 2-3 ft.....	.55	2.60	5.00	12.00	22.80	32.50	41.00
Privet A. R., heavy, 12-18 in.....	.15	.60	1.00	2.40	4.50	6.45	8.20

(NOTE—For larger size, etc., ask for particulars.)

KNIGHT'S SPECIAL COLLECTIONS

— AT —

Special Bargain Prices

Beautify
your
Home
Grounds

Nothing can give
you more
pleasure

Nothing can add
so much in
appearance
and value

Surprise Collection

*Add One Hundred Dollars to your home
in appearance and actual value for
only \$4.75*

- 2—Spirea V. H.
- 2—Weigelia Rosea
- 2—Hydrangea P. G.
- 2—Bush Honeysuckle
- 2—American Beauty Rose
- 2—General Jack
- 2—Paul Neyron
- 2—Sunburst
- 1—Dorothy Perkins Climber
- 1—Crimson Rambler
- 1—Paul's Scarlet

ALL FOR **\$4.75**

Never
Before

Have you been
able to get so
many beautiful
Ornamental
Plants, Roses
and Trees for so
little money

Take advantage of
this opportunity
—it may not
come again

—SPECIAL— Strawberry Garden

- 25—"Million Dollar"
Everbearer
- 100—Mastodon Everbearer
- 100—Premier
Best Spring Bearer
- 25—Choice Gladioli (Free)

ALL FOR
\$3.75

—SPECIAL— Ornamental Garden

- 6—Japanese Iris
Assorted Colors
- 6—Hardy Phlox
Assorted Colors
- 2—Boston Ivy
- 2—American Beauty
Climber

ALL FOR
\$2.75

NO SPECIAL DISCOUNT OR PREMIUMS ON ABOVE

For Postage Rate see Page 18