

Historic, Archive Document

Do not assume content reflects current scientific knowledge, policies, or practices.

LIBRARY

RECEIVED

★ OCT 16 1930 ★

U. S. Department of Agriculture



Bulbs

for

Spring
Flowers

FALL
1930

LOHRMAN
SEED CO.

Macomb at Brush
Rand. 1270

DETROIT

Hardy Garden Lilies

LILIUM CANDIDUM (Madonna Lily). One of the oldest, loveliest and best known Lilies. Can be planted only in the fall. Our bulbs of this splendid Lily are grown in Northern France, and are of the thick-petalled type. They are superior in flowering habit to the southern grown bulbs. Large size, 35c each; \$3.50 per doz. Mammoth size, 50c each; \$5.00 per doz.

Regal Lily

(Regale or Myriophyllum)

It is absolutely hardy, and is an excellent forcer. This is likely to become the Easter Lily of the future, and being hardy, may be grown at home. The flowers are white, slightly suffused with pink, with a beautiful shade of canary-yellow at the center, and extending part way up the trumpet. It is delightfully perfumed. Blooms outdoors in July.

	Each	Doz.
MEDIUM SIZE	\$0.45	\$4.50
MAMMOTH SIZE60	6.00

AURATUM (Gold-Banded Japan Lily). Undoubtedly one of the finest. Its large, graceful, fragrant flowers are composed of six petals of a delicate ivory-white color, thickly studded with chocolate-crimson spots and striped through the center with golden yellow. 3 to 5 feet. July to September. Large bulbs. 50c each; \$5.00 per doz.

ELEGANS. Deep blood-red flowers spotted black. Hardy. 2 to 3 feet. June and July. 35c each; \$3.50 per doz.

SPECIOSUM RUBRUM. This fine, late-blooming plant from Japan is one of the most showy of Lilies. Height 2 feet. Not difficult to grow. Blooms in August and September. Large flowering bulbs. 50c each; \$5.00 per doz.

SUPERBUM. 3 to 4 feet. July. Flowers bright reddish orange, conspicuously spotted. 35c each; \$3.50 per doz.; \$27.50 per 100.

GIGANTEUM. Pure white, trumpet-shaped flowers, similar to the Bermuda Easter Lily. June-July. 60c each; \$6.50 per doz.

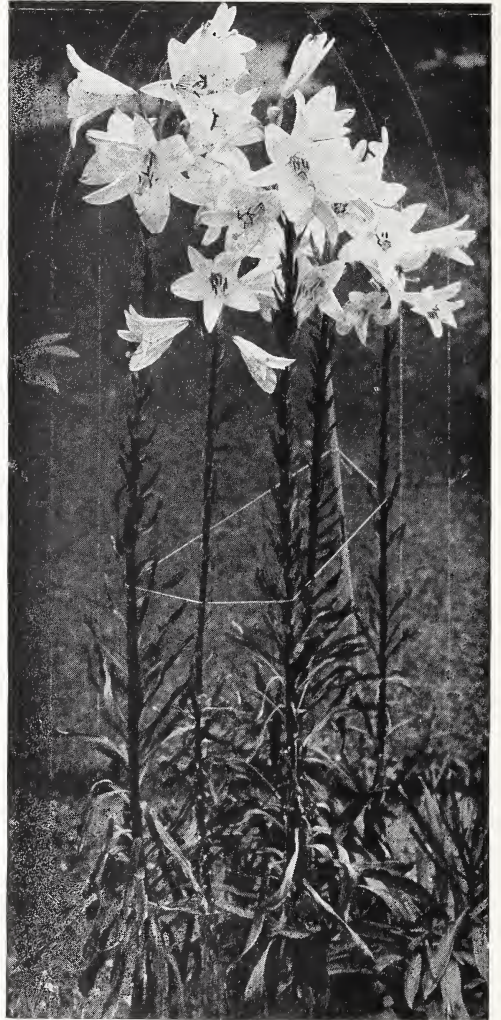
Indoor Bulbs

GIANT-FLOWERED AMARYLLIS. Bulbs, 85c each; \$8.50 per doz.

YELLOW CALLA LILY. Bulbs, 50c each; \$5.00 per doz.

WHITE CALLA LILY. Bulbs, 40c each; \$4.00 per doz.

LILY-OF-THE-VALLEY. Pips, 25c per doz.; \$1.85 per 100; \$7.00 per 1000.



Lilium Candidum—Madonna Lily.

Freesias

PURITY. White. 85c per doz.; \$6.00 per 100.

GEN. PERSHING. Pink. 85c per doz.; \$6.00 per 100.

CALIFORNIA. Yellow. \$1.00 per doz.; \$8.00 per 100.

MARC PETERS. Lavender. 85c per doz.; \$6.00 per 100.

Lilium Harrisii

The chaste snow-white flowers supply a long-felt want for purposes of decoration. The exquisitely perfumed flowers are produced in clusters on a stem varying from 2 to 4 feet in height. Invaluable for early flowering from Christmas onward.

	Each	12	100
9-11 in.	\$0.60	\$6.00	\$45.00
10-12 in.85	8.50	67.50

Paper-White Narcissus

Suitable for growing in water and gravel, sand or fiber.

We handle only the **Giant Grandiflora** variety, which is a great improvement over the ordinary Paper-White Narcissus. It can be had in bloom from Christmas until Easter, either in pots, bowls, or boxes. Upon arrival, plant them immediately, if wanted early, and put in a cool place in cellar or pit, free from frost. When well rooted they can be taken into heat, and if watered freely they will produce an abundance of beautiful blooms. They are not hardy.

	12	100	1000
Large Size	\$0.85	\$7.00	\$60.00
Jumbo or Exhibition Size	1.00	7.50	70.00



Paper-White Narcissus.

Darwin Tulips

Giant Flowers—Gorgeous Colors

Until you have tried and grown Darwin Tulips you do not know to what splendor the Tulip attains. To know them is to love them and want more of them each season. Their colors are brilliant, flowers immense, big balls on tall, strong stems. They are true aristocrats among Tulips; flowering in May and succeed everywhere.

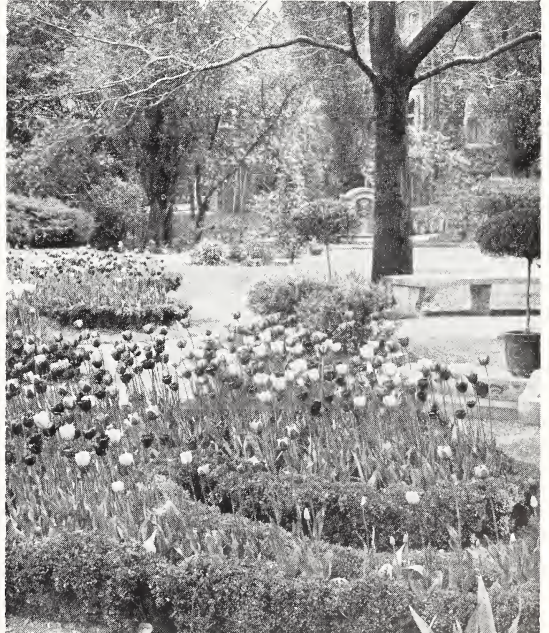
CULTURE. Plant bulbs 4 to 5 inches deep and 4 to 5 inches apart, during October and November and until the ground freezes up. Bone meal is the best fertilizer for Tulips.

Novelty Darwin Tulips

	Each	12	100		Each	12	100
APHRODITE. Clear silvery pink, deeper within. Edge of petals shaded a soft buff when the flower is opening. Height 32 inches.	\$.025	\$2.10	\$16.75	the finest and the most beautifully formed and the best colored Darwins in the entire collection. Height 28 inches	\$.20	\$1.50	\$11.75
AVIATOR HAWKES. Bright deep rose-pink. Large, beautifully formed flower on a tall, strong stem. Height 32 inches	.60	6.15	50.00	LOUISE DE LA VALLIERE. A clear tone of cherry-pink with no trace of mauve. Height 28 inches.	.20	1.50	11.75
CHANT DE CYGNE. Brilliant deep rosy red tinged soft salmon-pink. A bold, large flower on a sturdy, erect stem. Height 30 inches	.20	1.65	12.50	PRINCESS MARY. Carmine-rose, with rose-pink margin. A very large flower. Height 35 inches	.90	9.75	80.00
CITY OF HAARLEM. Fiery cardinal-red. Deep violet base, outlined in white, gives it a striking effect when open. Height 31 inches.	.15	1.35	10.00	PRINCE OF WALES. Very bright crimson with scarlet flush. Bright blue base. Large. Height 28 inches	.20	1.55	12.00
JUBILEE. Blue-purple, with a white base, marked blue; a flower of large size and heavy substance. Height 29 inches	.15	1.35	10.00	RICHMOND. Brick-red, a sport of Clara Butt. Exceedingly beautiful for bedding. Height 28 inches.	.15	1.15	8.25
KING GEORGE V. Brilliant cherry-rose, base slightly starred blue, with white halo. This is one of				THE BISHOP. Finest deep violet, blue base, white halo. Beautiful and a very fine variety. Height 29 inches	.70	7.35	60.00
				ZWANENBURG. Pure white Darwin. Height 28 inches	.30	2.75	21.75

NOTE—6 bulbs at dozen rate; 25 bulbs at 100 rate.

	12	100	1000		12	100	1000
AFTERGLOW. Deep rosy orange, with salmon shading at edges of petals; inside deep orange with yellowish base. Height 26 inches	\$.110	\$8.50	\$80.00	PRESIDENT TAFT. Large, deep crimson-red. Late flowering. Height 20 inches	\$.095	\$7.00	\$65.00
BARONNE DE LA TONNAYE. Rose-pink, paler shadings. Height 26 inches.	.80	5.75	52.50	PRINCE OF WALES. Very bright crimson with scarlet flush. Bright blue base. Large. Height 28 inches	1.55	12.00	
BARITON. Clear crimson-red; the best red forcing variety. A trial of this variety is recommended. Height 28 in.	.85	6.00	55.00	PRINCESS ELIZABETH. Large, clear pink; good forcer. Height 23 inches	.80	5.75	52.50
CENTENAIRE. Splendid violet-rose with blue center. Very beautiful and a good forcer. Height 27 inches	.85	6.00	55.00				
CLARA BUTT. Clear pink and salmon-rose. One of the oldest and most popular kinds. A very attractive color. Height 21 inches	.75	5.25	47.50				
DREAM. Large, lilac; very tall; popular kind. Height 27 inches	1.00	7.25	67.50				
EDMEE. Cherry-rose edged soft rose; the best in this color. Height 25 inches.	.90	6.25	57.50				
FAUST. Deep wine-purple. Height 30 in.	1.25	9.50	90.00				
FARNCOMBE SANDERS. Bright rosy scarlet with clear white base, a most pleasing color, a large flower on a tall stem. Fine for beds and a good forcer. Height 25 inches	.80	5.50	50.00				
FEU BRILLIANT. Large, deep crimson. Height 28 inches	1.00	7.25	67.50				
GIANT. Deep reddish purple, shaded violet with white base and blue star. Height 29 inches	1.25	9.50	90.00				
LA FIANCEE. Deep rose, shading to old rose and pink at edges, with blue base. Large flower on a tall stem. Height 30 inches	1.10	8.50	80.00				
LA TULIPE NOIRE (The Black Tulip). Blackish maroon. Large flower on tall stem. Height 25 inches	1.00	7.50	70.00				
MADAME KRELAGE. Soft pink with lighter border. A very good variety for forcing. Height 28 inches	.80	5.75	52.50				
PETRUS HONDIUS. Splendid bright carmine-rose; a very brilliant variety. Distinct. Height 23 inches	.90	6.50	60.00				
PRIDE OF HAARLEM. Cerise-scarlet; one of the most popular varieties; splendid color; large flower; excellent bedder and fine forcer. Height 25 in.	.80	5.75	52.50				



Darwin Tulips.

Darwin Tulips—Continued

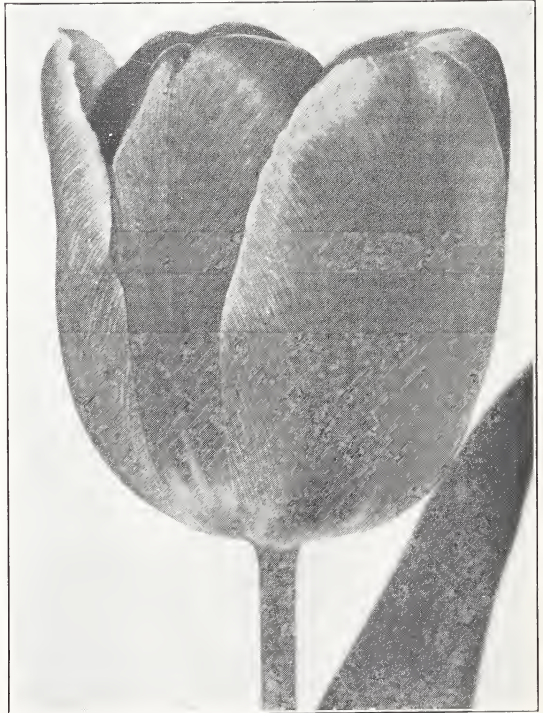
	12	100	1000		12	100	1000
PROF. RAUWENHOF. Cherry-red with scarlet glow inside. Large flower, and of special value for forcing. Height 28 inches	\$0.85	\$6.00	\$55.00	VIKING. Plum purplish violet, with steel glow. Distinct. Height 27 inches.	\$1.00	\$7.75	\$72.50
REV. H. EWBANK. Heliotrope, lighter at edge; the best and most popular in this color. Excellent bedder. Height 20 inches85	6.00	55.00	WHITE QUEEN. Almost white when mature; with black anthers; medium size. Height 24 inches85	6.00	55.00
ROLAND GUNN. Blue-violet with lighter edge. Distinct. Height 24 inches ..	1.00	7.75	72.50	WILLIAM COPLAND. Lilac-rose. Good for forcing. Height 25 inches90	6.50	60.00
SALMONEA. A rounding cup of warm tapestry-like pink with buff-edged petals of strong texture. Height 28 inches	1.65	12.50		WHISTLER. Glowing red with fiery edge; a very brilliant variety; medium size stem. Excellent bedder90	6.50	60.00
				YOLANDE. Beautiful, full pink Tulip with a buff colored base. Height 29 inches	1.60	12.00	
Lohrman's Superb Mixture of Darwin Tulips From named varieties85	6.00	55.00				

Breeder Tulips

The Flower With a Startling History

Breeder Tulips bloom at the same time as the Darwins and their immense blooms are erectly held on long, strong stems. The colors of the Breeders are what modernists term as "art" or pastel shades, embracing rich tones of bronze, yellow and purple. For association with the brighter hued Darwins, they are unsurpassed.

	12	100	1000		12	100	1000
ATTRACTION (Xerxes). Glossy deep violet. Height 24 inches	\$1.15	\$8.75	\$82.50	PRINCE OF ORANGE. Deep orange-red with golden orange margin. Height 23 inches	\$1.10	\$8.00	
APRICOT. Apricot, shaded orange, large flower often consists of more than six petals; tall stems. Height 25 inches	1.00	7.50	70.00	SALOMON. Silvery lilac, flushed buff, inside deeper buff, pure white base. Height 30 inches	1.00	7.50	70.00
BACCHUS. Intense deep violet, covered with a peculiar bloom. Large, egg-shaped flower on a tall stem; one of the best among dark Breeders. Height 30 inches	1.15	8.75	82.50	ST. JAMES. Dark lilac, edged bronze-brown with yellow and green base95	7.00	65.00
BRONZE QUEEN (Clio; Bisquit). A pleasing shade of bronzy buff, inside golden bronze; a popular variety. The best forcer. Height 26 inches85	6.00	55.00	VELVET KING. Dark glossy purple-maroon, with yellowish base marked blue. Large. Height 25 inches	1.15	8.50	
CARDINAL MANNING (King's Court; Goliath). Rosy violet tinted salmon and bronze to the edge; very large and of robust growth. Height 28 inches80	5.75	52.50	VULCAN. Reddish apricot with orange edge. Height 26 inches	1.00	7.75	
CHESTER J. HUNT. Reddish violet with white base, soon changing to blue-purple with ashy bloom. Large. Height 28 inches	1.50	11.50		YELLOW PERFECTION. Bronzy, coppery yellow. Beautiful. Height 24 inches.	.90	6.25	
CHESTNUT. Dark purplish maroon. Height 24 inches80	5.50	50.00				
DOM PEDRO. Coffee-brown; one of the finest Breeders; best in this color	1.20	9.00	85.00				
FEU ARDENT. Deep fiery crimson, large flower on a tall stem. Height 21 inches.	1.20	9.00	85.00				
GODET PARFAIT. Bright deep violet. Very popular. Height 30 inches	1.10	8.00	75.00				
GOLDEN BRONZE. Golden bronze, tinted old gold, inside golden brown; very distinct and beautiful. Height 20 inches.	.95	7.00	65.00				
INDIAN CHIEF. Reddish mahogany flushed purple. A huge flower of great substance and most artistic shape; very tall	Each, \$1.00.	11.00	85.00				
JAUNE D'OEUF. Lively yellow, with broad strip of lilac, inside golden bronze. Height 26 inches90	6.50	60.00				
LORD CURZON. Silvery white, margined and striped cherry-crimson, deepening with age	1.15	8.75	82.50				
LOUIS XIV. Rich, deep purplish violet, golden bronze margin, a wonderful flower outstanding among all other Breeders. Height 30 inches	1.00	7.50	70.00				
LUCIFER. Bright orange, tinted rose. Very bright. Height 26 inches	1.60	12.00					
PANORAMA. Orange-scarlet color, olive-green base, yellow pistil and dull violet anthers. Height 27 inches80	6.00	55.00				
PINK PEARL. Violet-rose, suffused white at base of petals, inside white. Large. Height 27 inches	2.75	21.75					



Breeder Tulip, Bronze Queen.

Single Late or Cottage Tulips

These usually come into flower after the middle of May and are in their greatest perfection about Memorial Day; many of these are very fragrant. For grouping in mixed shrubbery and in front of borders as well as for planting in beds, either alone, or with tall, double flowering, late blooming sorts, they are unequalled.

	12	100	1000
AVIS KENNICOTT. Large chrome-yellow flower, with black spots at the base, black anthers. Height 24 inches	\$1.35	\$10.00	
ARGO. A unique color, golden yellow spotted orange	1.30	9.25	87.50
AEGR. Brilliant orange, large, well formed flowers. The whole flower is shaded with luminous cerise, which greatly adds to its bright appearance.	1.25	9.00	
CARRARA. This pale Tulip has created by its beauty, a sensation at the English shows; it is round and pure white. A most beautiful flower. Height 25 inches.	2.25	18.00	
COLUMBUS (French Crown, Gala Beauty). Bright yellow, with carmine flames, pointed petals; one of the finest Cottage Tulips. Height 20 inches	1.30	9.25	87.50
DIDO. A perfect flower, excellent in color and form, poised firmly at the top of its straight stem. Color is deep, rich pink with yellow stripes. It is an unusual and magnificent Tulip. Fragrant. Height 30 inches	3.00	24.00	
FAIRY QUEEN. Rosy violet with yellowish margin; large; recommended. 20 inches85	6.00	55.00
GESNERIANA SPATHULATA MAJOR. Brilliant crimson-scarlet with blue base; an old and still popular variety. 24 inches80	5.75	52.50
GLARE OF THE GARDEN. Deep crimson-scarlet, large flower, beautiful for beds. Height 17 inches90	6.25	57.50
GRENADE. Dashy orange-scarlet, very large. Height 21 inches	1.10	8.00	75.00
INGLESCOMBE YELLOW. Bright canary-yellow; a splendid globular flower; excellent for beds and may be slightly forced. Height 24 inches75	5.25	47.50

	12	100	1000
INGLESCOMBE PINK. Beautiful soft rosy pink, slightly flushed salmon. Height 24 inches	\$0.85	\$6.00	\$55.00
ISABELLA. Opening almond-yellow with crimson-carmine spots; the whole flower becomes rosy carmine with age; very handsome. Height 15 inches80	5.50	50.00
JOHN RUSKIN. Salmon, with mauve-rose-apricot, a very large flower of unique color; should be more widely known. Height 16 inches80	5.50	50.00
LA CANDEUR. Silvery white. 16 in.80	5.50	50.00
LEDA. Beautiful, brilliant, vivid, rosy red shading light rose toward the center. Height 30 inches	1.00	7.25	
MOONLIGHT. Soft canary-yellow, large, oblong bloom; an outstanding flower. Height 20 inches85	6.00	55.00
MRS. MOON. Deep golden yellow, slightly reflexed petals; one of the most beautiful of all late Tulips. Height 30 inches	1.10	8.00	75.00
ORANGE KING. Glowing deep orange, large flower of good substance; the best in this color. Height 23 inches80	5.50	50.00
PICOTEE. White edged with rosy pink, which suffuses the whole flower as it ages. Elegantly recurved petals. Very popular. Height 20 inches80	5.50	50.00
ROSABELLA. Very delicate pink, with lighter edge, cream colored, the flower resembles a rosebud. Height 26 inches.	2.25	18.00	
THE FAWN. Silky soft rose, tinted fawn-rose; a very delicate and beautiful color. Height 20 inches85	6.00	55.00
WALTER T. WARE. Deep golden yellow, the deepest and richest color among late Tulips. Height 18 inches	1.35	10.50	
SIRENE. Soft lilac-rose, slightly paler at edges. Height 16 inches	1.10	8.00	75.00

Early Double Tulips

	12	100	1000
COURONNE D'OR. Golden yellow, shaded orange. Height 10 inches	\$1.00	\$7.50	\$70.00
LAC VAN HAARLEM. Rosy violet; large flower. Height 12 inches	1.20	9.00	85.00
PEACH BLOSSOM. Large, very double, bright pink flowers, flushed white	1.00	7.25	67.50
RUBRA MAXIMA. Deep red. Height 10 inches	1.00	7.75	72.50
SCHOONOORD. Pure white sport of Murillo. Height 12 inches95	7.00	65.00
TEA ROSE. Primrose-yellow, flushed rose. Height 10 inches90	6.50	60.00

Single Early Tulips

	12	100	1000
ARTUS. Brilliant scarlet, yellow center; fine bedder. Height 12 inches	\$0.80	\$5.75	\$52.50
COTTAGE MAID. Beautiful rosy pink, outside white. Height 12 inches85	6.00	55.00
KEIZERSKROON. Scarlet, bordered deep yellow. Height 16 inches	1.60	12.00	110.00
PRESIDENT LINCOLN. Soft violet with lighter border. Height 12 inches	1.10	8.00	75.00
PRINCE OF AUSTRIA. Orange shaded scarlet; fragrant. Height 14 inches85	6.00	55.00
WHITE HAWK. Beautiful pure white delicately crinkled petals. Height 13 inches90	6.50	60.00
YELLOW PRINCE. Pure yellow; sweet scented. Height 12 inches	1.00	7.25	67.50

Tulip Clusiana

The Little Lady Tulip. A beautiful dwarf variety suitable for perennial borders and rockeries. Outer petals bright cherry-red, inner petals creamy white with violet base. Plant 8 inches deep. Height 8 inches. **\$1.00 per doz.**; \$7.50 per 100.

Bunch-Flowered Tulips

A new type producing many flowers on a stem; very unusual and handsome.

MONSIEUR MOTTET. The color of this Tulip is ivory-white, and instead of producing one flower on a stem as other Tulips do, it carries from 4 to 6 blossoms, which are in bloom all at the same time, on a stem about 18 inches tall. The result is a unique cut flower and also an excellent garden variety. We would like to see it included in every collection; it is not a freak but a useful addition. **\$1.50 per doz.**; **\$10.00 per 100.**

Bizarre and Bybloem Tulips

The Bybloemen are queerly striped and feathered rose or violet on a white ground; the Bizarres dark brown striped and feathered on a yellow ground. They flower about the same time as the Breeder and Darwin Tulips but do not grow quite so tall. **Assorted colors, 95c per doz.**; **\$6.75 per 100**; **\$62.50 per 1000.**

Parrot Tulips

The petals of these Tulips have peculiarly feathered and fringed edges, and the shape of the flower, especially before it opens, resembles the neck of a parrot. Height 15 inches.

ASSORTED COLORS. 75c per doz.; \$5.25 per 100.

SUNDEW. This Tulip is called the Bartigon Parrot. Color a brilliant fiery crimson. The edge of the petals are finely fringed, like tiny icicles. Very attractive and out of the ordinary. **\$3.00 per doz.**; **\$25.00 per 100.**

Rembrandt Tulips

In general habit of growth these resemble the popular Darwin Tulips. All are striped or splashed with a rich shade on lighter ground. Very beautiful. Height 25 inches. Stock carried in four colors. **\$1.00 per doz.**; **\$7.50 per 100.**

Narcissi or Daffodils

Loved By Everyone

Daffodils are an indispensable factor in the pageant of spring floral beauty, and whether grown as specimens in the garden borders or planted "au naturel" in woodland or glade, each blossom seems a concentrated gleam of golden sunshine. Absolutely hardy, they increase in beauty and size, year after year. Our list has been carefully compiled and contains all that is best in these splendid bulbs.

Varieties marked with a (*) are adapted for naturalizing.

Large Trumpet

	12	100
* EMPEROR. Primrose-yellow perianth, large golden yellow trumpet; long, graceful stems; fine for cutting; excellent for garden and forcing in the greenhouse	\$2.00	\$15.00
KING ALFRED. Golden yellow perianth and trumpet of immense size, a veritable giant; stands unrivalled in size and beauty	2.65	20.00
VAN WAVEREN'S GIANT. The giant of the race, with large, bright yellow trumpet and primrose perianth. A splendid forcer. Exceptionally fine flowers	4.35	35.00
GLORY OF SASSENHEIM. Creamy white perianth with overlapping petals; long trumpet of deep golden yellow; large. Height 15 inches.	2.00	15.00
SPRING GLORY. Pure white perianth, deep golden yellow trumpet; enormous flower on long stem	2.00	15.00

CULTURE. The bulbs should be planted as convenient in the autumn to make root growth before winter sets in. The bulbs may be left undisturbed for several years on good loamy soils. The depth to plant varies according to the size of the bulbs—a covering of 2 to 3 inches of soil is about the average. The distance apart should be 3 to 6 inches, according to the size of the variety.

	12	100
VAN SION. The popular "Double Yellow Daffodil." Very early. Great favorite for garden planting	\$2.15	\$16.00
DUBLOOM. Deep lemon-yellow, suffused golden yellow, center orange; finely pointed petals, tall, graceful stem; good keeper	2.15	16.00

Mixed Narcissi and Daffodils

For Naturalizing in Borders, Wild Gardens, Etc.

These are a special mixture of all varieties. They are very suitable for growing in masses for garden decoration, and are particularly adapted for mixed borders, "naturalizing" in shrubbery by woodland walks, in woods by streams and lakes and semi-wild, outlying grounds. They are perfectly hardy and will flourish and increase for many years. Price, \$1.00 per doz.; \$7.50 per 100; \$70.00 per 1000.

Poetaz Hybrid Daffodils

This class produces its flowers in clusters. They have a very short trumpet or eye, giving each flower a striking appearance. They are very satisfactory for forcing.

	12	100
IRENE. Perianth silky sulphur-white, changing into light yellow; orange eye; large, broad clusters, bearing 5 to 8 flowers	\$2.15	\$16.00
LAURENS KOSTER. White with light yellow eye; large flower of remarkably good substance. The tallest, and an excellent cut flower	1.50	10.00

Medium Sized Trumpets

The flowers of this class have a cup or trumpet measuring from one-third to nearly the length of the perianth segments.

	12	100
* AUTOCRAT. Primrose perianth, golden yellow cup; refined and stately; a real beauty	\$1.90	\$14.00
* SIR WATKIN. Primrose-yellow perianth, deep yellow cup. The tallest and largest of this type	1.85	13.00

Narcissi Leedsii

A class with short trumpets, long, graceful stems, usually quite fragrant and well adapted for cutting.

	12	100
* MRS. LANGTRY. White perianth; cup pale primrose passing into white, with a narrow margin of lemon-yellow; a very free-flowering variety. Height 16 inches	\$1.40	\$10.00
QUEEN OF THE NORTH. Large, glistening snow-white perianth, primrose-yellow cup, edged creamy white, stands alone in its imposing, immaculate white luster	1.80	13.00

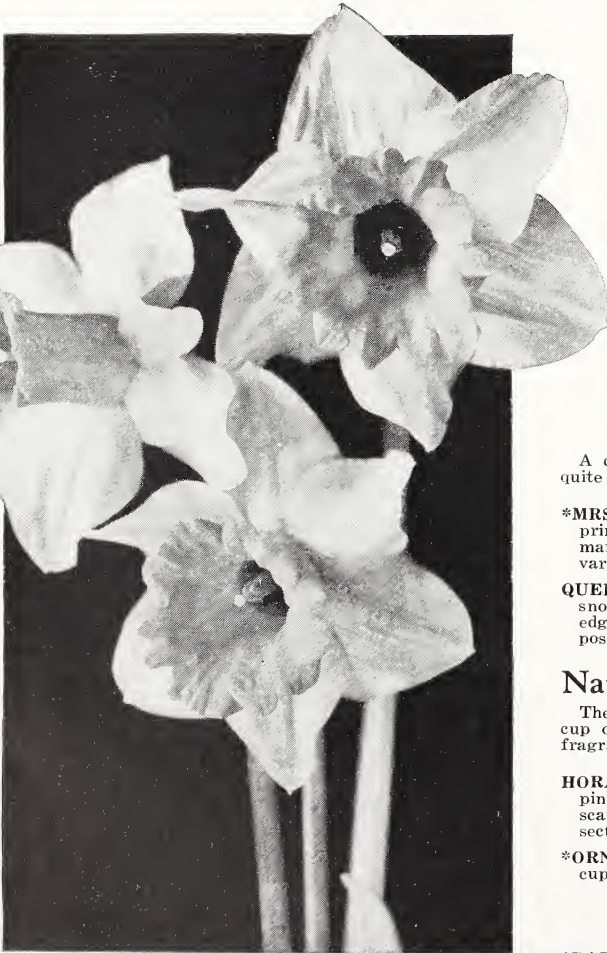
Narcissus Poeticus (Poet's Narcissus)

These have a white perianth with a small, flattened yellow cup or eye. Perfectly hardy and easy to naturalize. Very fragrant.

	12	100
HORACE. Pure white perianth with overlapping, round petals; large cup with rim of scarlet-red; one of the early varieties in this section. Height 16 inches	\$1.80	\$13.00
* ORNATUS. Pure white petals, small, yellow cup with orange edge. A splendid cut flower.	1.30	9.00

Small Cupped or Star Narcissi

	12	100
* BARRI CONSPICUUS. Light yellow perianth; short yellow cup edged orange-scarlet	\$1.30	\$9.00



Narcissus, Emperor.

Hyacinths

Stalwart Soldiers of the Garden

OUTDOOR CULTURE. The bulbs may be planted in beds any time after the beginning of October and before the winter frosts set in. Any good, well drained garden soil will answer. Set the bulbs from 4 to 5 inches below the surface, and about 6 inches apart; after the ground becomes frozen, give them a good covering of bone meal.

POT CULTURE. For winter blooming in the house, place the bulbs in pots or pans filled with soil, and keep dark and cool for 6 to 8 weeks before placing in a light, warm room.

Price List of Hyacinths

	Each	12	100
Exhibition Size. 20 cm. and over	\$.25	\$2.50	\$18.50
First Size. 18-19 cm.	.20	1.75	13.25
Bedding Size. 16 cm. and over	.15	1.35	10.00

Single Blue

GRAND MAITRE. Deep lavender-blue; the most popular blue Hyacinth; excellent forcer and bedder.

KING OF THE BLUES. Rich dark blue; very large truss. **MYOSOTIS.** Forget-me-not blue. The only variety of this shade. Large spike; early.

QUEEN OF THE BLUES. Clear porcelain blue; broad truss. The best in the light blue section.

SCHOTEL. Soft light blue; very long and perfect truss, with large bells. Very easily forced, and splendid for bedding.

Single White

ARENTE ARENSEN. One of the finest whites; long spikes with large, snowy white bells. Early, fine for forcing and good bedder.

L'INNOCENCE. The well known pure white variety, unsurpassed for forcing and splendid for beds.

Single Red and Pink

GARIBALDI. Brilliant vermilion-red; good early forcing variety.

GERTRUDE. Rosy pink, most popular in this color.

LADY DERBY. Soft rosy pink; easy forcer and fine bedder.

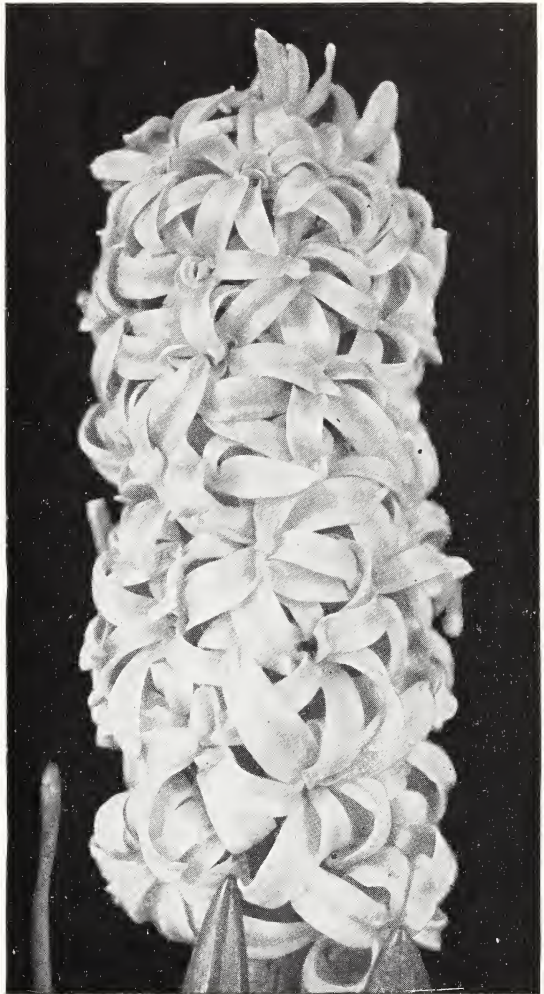
LA VICTOIRE. Carmine-rose; best in this color.

MARCONI. Bright deep rose, short, broad trusses, borne on stiff stems. A good forcer but particularly fine outdoors.

QUEEN OF THE PINKS. Lovely rose-pink; large truss. Late.

Single Yellow

CITY OF HAARLEM. Yellow. The finest of the yellows. Well formed trusses of orange-yellow bells. An excellent variety for forcing and bedding.



Hyacinth, L'Innocence.

Miscellaneous Bulbs

SCILLAS (Squills). (Hardy).

Sibirica Blue. Produces drooping, bell-like flowers on stems 3 to 4 inches in height. Succeed very well in the rock garden. 75c per doz.; \$5.00 per 100.

MUSCARI (Grape Hyacinth). Beautiful little flowers for planting in masses either in shade or sun. Also adapted for growing indoors. Plant 6 bulbs in a 5-inch pot. Perfectly hardy.

Heavenly Blue. The best blue. 60c per doz.; \$4.00 per 100. **White.** 80c per doz.; \$5.00 per 100.

IXIAS.

Mixed Colors. The beautiful star-shaped flowers are borne in clusters on good, clean stems about 1 foot high, and in a wonderful variety of the most dazzling and brilliant colors. 40c per doz.; \$3.00 per 100.

CHIONODOXA (Glory of the Snow). (Hardy).

Luciliae. Deep blue, with a white center. 60c per doz.; \$4.00 per 100.

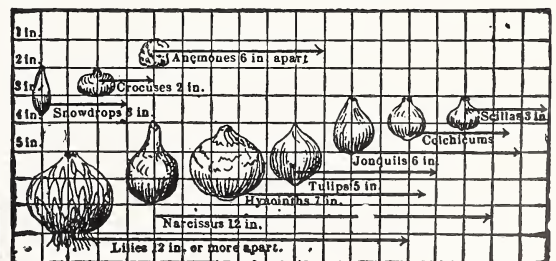
SNOWDROPS. (Hardy). They are the first to open in the spring and are very lovely. Excellent for naturalizing. **Single Flowered.** 50c per doz.; \$3.50 per 100. **Double Flowered.** 75c per doz.; \$5.00 per 100.

ERANTHIS HYEMALIS (Winter Aconite). (Hardy—give slight protection). A bulbous plant with beautiful, bright yellow flowers, produced in early spring on 6-inch stems. 50c per doz.; \$3.50 per 100.

Spring Flowering Crocus

KING OF THE WHITES. Extra large.	12	100	1000
BARON VON BRUNOW. Purplish blue.	\$.65	\$4.50	\$40.00
SIR WALTER SCOTT. Violet striped	.65	4.50	40.00
CLOTH OF GOLD. Golden yellow striped brown	.65	4.50	40.00
CLOTH OF SILVER. White, striped purple	.65	4.50	40.00
MAMMOTH YELLOW. Extra large. Choiceest bulbs	.70	5.50	50.00
MIXED CROCUS IN SEPARATE COLORS. Blue, white, striped and yellow	.50	4.50	40.00

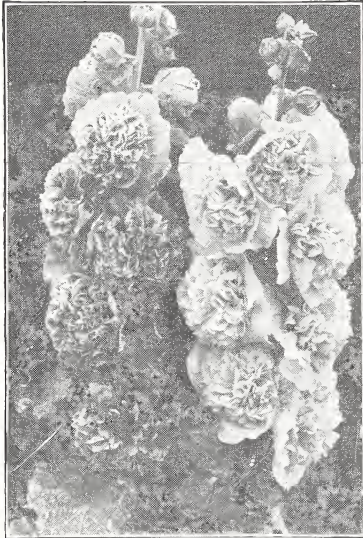
The following diagram shows the depth and distance apart the different varieties of bulbs should be planted.



Perennial Plants for Planting This Fall



Delphinium, Belladonna.



Double Hollyhocks.

Aconitum (Monks-hood)

Bold spikes of hood-shaped flowers, valuable for cutting; very effective in flower borders and shrubberies, thriving anywhere. Do not plant near vegetable gardens. Roots are poisonous.

FISCHERI. 2 feet. September. Large porcelain blue flowers.

Achillea

BOULE DE NEIGE. The white, double flowers are borne in attractive small heads from midsummer until frost. The well formed plants measure two to 3 feet in height, and they are a perfect mass of bloom during many months.

Alyssum (Madwort)

SAXATILE COMPACTUM (Basket of Gold). 1 foot. May and June. Producing masses of golden flowers very early. May be planted effectively with Arabis.

Due to limited space, the perennial plants named below are only a partial list of the varieties that we carry in stock. Hardy perennials may be set out this fall in time to become established before winter sets in; and next year will see them better developed, and bearing finer flowers than can be obtained from plants set in your border next spring. This advantage is accompanied with very little risk. We do not list the kinds which need special protection through the winter. It is well to apply a mulch over newly planted perennials, after the ground has frozen. This will tend to prevent winter thaws and frost heaving. Plants should not be placed where water stands, as excessive dampness in the winter causes rot. We offer only two-year-old, field-grown plants.

PRICE: 25c each; \$2.50 per dozen, except where noted.

Anchusa

DROPMORE. A stately perennial, 4 to 5 feet tall, with a wealth of rich, deep blue flowers, borne most profusely from May until early July.

Aquilegia (Columbine)

MRS. SCOTT ELLIOTT HYBRIDS. It forms compact, well rounded plants, sending forth during May and June a mass of strong, wiry flower stems crowned with large, graceful, and well formed, long-spurred blooms. The color range represented in this strain is particularly noteworthy.

Bleeding Heart

The well branched, showy plants grow about 3 feet tall and produce an abundance of hanging, bright rose, heart-shaped flowers from April until June. Does as well in the semi-shade as in full sun. 60c each; \$6.00 per doz.

Campanula Medium

(Canterbury Bells)

These imposing herbaceous, hardy biennials are profusely covered with large, bell-shaped flowers; extremely showy in shrubberies and mixed borders. Height 3 feet.

CALYCANthemA (Cup and Saucer). Large, semi-double flowers, resembling a cup and saucer. Pink, blue and white.

MEDIUM (Single Canterbury Bells). Pink, blue and white.

Carnations - Hardy Border

CHOICE MIXED. Strong plants that will furnish an abundance of bloom. We strongly recommend this grand strain for cut flowers. They keep up a most wonderful supply from June till frost.

Chrysanthemums

Chrysanthemums should only be planted in the spring.

Centaurea

(Perennial)

BACHELOR'S BUTTON. Makes a fine display in the border.

MONTANA (Perennial Cornflower). Grows 2 feet high, bearing large, violet-blue flowers from July to September.

DEALBATA. Large and striking rose-pink flowers. June and July. 2 feet.

Coreopsis (Tickseed)

GRANDIFLORA. An improved variety with large, bright yellow flowers; one of the best hardy plants. Fine for cut flowers all summer long.

Delphinium

(Perennial Larkspur)

ENGLISH HYBRIDS. (See illustration). These new Hybrids represent a marked improvement over the older type of Delphinium. Most noticeable is the fact that the blooms are produced so closely together as to form a solid spike of color. This strain includes a wide range of blue, purple, and garnet shades.

BELLADONNA. The beautiful soft rich blue flowers are borne profusely, forming handsome, well set spikes of most showy appearance. Excellent for cutting.

BELLAMOSUM. The blooms are a rich dark blue shade. Of strong, sturdy growth, bearing its magnificent flower spikes during June.

Dianthus

(Hardy Garden Pinks)

These very desirable sweet scented, low-growing, early-blooming and free-flowering Hardy Garden Pinks are unequalled for the borders of beds, drives, and the old-fashioned garden.

Gaillardia (Blanket Flower)

GRANDIFLORA. The large, daisy-like flowers come in various combinations of bright golden yellow, scarlet, and crimson. They are produced profusely from June until October.

Digitalis (Foxglove)

Should only be planted in the spring.

Geum (Avens)

MRS. BRADSHAW. A stout, branching little plant of recent introduction, bearing double, scarlet flowers of about 1½ inches in diameter from May to June. 2 feet tall.

Gypsophila

(Perennial Baby's Breath)

PANICULATA. This blooms during August and September, forming a symmetrical plant 2 to 3 feet in height, bearing small, pure white flowers with the greatest profusion.

Hollyhocks

Colossal spikes of bloom 6 to 8 feet high, produce a bold and stately effect among shrubs, in the background of the hardy border, or in specimen clumps.

DOUBLE MAROON, YELLOW, NEW-PORT PINK, RED and WHITE.

Lathyrus (Perennial Peas)

An excellent hardy perennial with showy flowers. Suited for planting along fences or for trailing over embankments. They require a good, rich garden soil.

Hemerocallis (Lemon Lily)

Very useful and attractive plants with showy, variegated foliage and large, lily-shaped blooms carried on erect stems.

Lupinus (Lupine)

The Lupines produce beautiful long spikes of pea-shaped flowers a foot long on stems three feet high.

Lychnis (Maltese Cross)

CHALCEDONICA. Two to three feet high, with scarlet flowers in good sized corymbose heads.

Mertensia (Blue Bells or Virginia Cowslip)

A lovely plant for choice spots in borders, or rock gardens, preferring a southwest aspect; will thrive in any good soil and in the shade.

VIRGINICA. May and June. Light blue. 18 inches.

Pentstemon (Beard Tongue)

BARBATUS TORREYI. Spikes of bright scarlet flowers from June till August. A very effective plant for hardy beds.

Physalis (Chinese Lantern Plant)

FRANCHETI. An ornamental variety of the Winter Cherry, forming dense bushes about 2 feet high, producing freely its bright orange-scarlet, lantern-like fruits, which, when cut, will last all winter. Very attractive plant.

Phlox Decussata (Hardy Phlox)

Perennial Phlox succeed in almost any soil enriched with manure in spring, and in hot weather an occasional soaking of water.

BEACON. Cherry-red.

LORD RALEIGH. Dark mauve with decided purplish tint.

MRS. JENKINS. Pure white.

RIJNSTROOM. Rose-pink.

THOR. Deep salmon-pink.

Platycodon (Balloon Flower)

GRANDIFLORA. Blue. 18 inches. June to October. Large, showy, deep blue flowers. Good for rock garden and border.

Perennial Poppies

ORIENTALE. Magnificent bright scarlet-red blooms during June on plants 2 feet tall. Very spectacular.

MRS. PERRY. Excellent rich salmon blooms of enormous size during June. Very showy.

Pyrethrum

SINGLE MIXED. Lovely large, daisy-like blooms in white, pink, rose and crimson. Borne during the spring and again in the fall. 2 to 3 feet.

Rudbeckia (Golden Glow)

A well known fall-blooming perennial with quite large, double, golden yellow blooms on plants 6 to 8 feet tall. A popular and free flowering variety.

PURPUREA. Bronzy purple flower petals with a dark brown, cone-shaped center. 3 feet.

Salvia

Beautiful plants, with long spikes of tubular, blue flowers, makes a grand showing in the fall.

Shasta Daisy

A glorious large-flowering Daisy 2 feet tall, carrying a magnificent display of long-stemmed flowers during June and July.

Statice (Great Sea Lavender)

LATIFOLIA. Tufts of leathery leaves and immense candelabra-like heads, frequently 1½ feet high and 2 feet across, of purplish blue, minute flowers during July and August.

Sweet William

They make a great show, with their large, solid and thick flower heads borne profusely during the month of June. Sweet Williams are easy to grow in ordinary garden soil.

Veronica

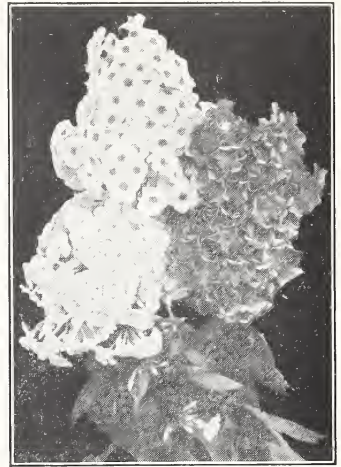
LONGIFOLIA SUBSESSILIS. Blue. A graceful plant, 2 feet tall, with handsome flower spikes closely set with rich blue flowers. Blooms from July until September.

Viola

JERSEY GEM. This splendid large-flowering, rich violet variety is most outstanding. Of compact growth.

Yucca

FILAMENTOSA. Stately spikes 6 feet tall, set with large, creamy white bells on massive stalks.



Rijnstroom. Mrs. Jenkins.

Beacon.

Rock Plants

We carry in stock over thirty varieties of low-growing, hardy perennial plants that are especially adapted for use in rockeries. Lack of space prohibits listing the separate varieties in this catalog. Price, 25c each; \$2.00 per doz.

Peonies

PLANTING. Avoid planting too deeply, as this is often the cause of shy blooming; 2 to 3 inches of soil over the crown (eyes) being sufficient. A handful of bone meal placed around each root when planting will help materially in the growth of the plant.

We offer two sizes of roots. The 3- to 5-eye divisions are very large roots and will bloom satisfactorily; the clumps, however, are divisions that have been grown one year and developed a wealth of fibrous roots. Therefore, they will make larger plants and give more bloom than the divisions.

	3-5 eye Divisions Each	1-yr.-old Clumps Each
BARONESS SCHROEDER. Rose type; flesh pink, tinting to milk white; very large, globular flower; tall stem; fragrant; good keeper. Late midseason	\$0.85	\$1.25
COURONNE D'OR. Semi-rose type; pure white, reflecting golden stamens; extra good stem and flower, the best late, white cut flower. Late50	.60
FELIX CROUSSE. Rose type; brilliant ruby-red; one of the best and popular kinds for cutting purposes. Late midseason65	1.00
FESTIVA MAXIMA. Rose type; the finest pure white in existence; extra for cutting purpose. Early40	.50
KARL ROSENFELD. Semi-rose type, brilliant deep crimson; large, very full flower on long, stiff stem; extra for cutting purpose. Early75	1.00
L'ECLATANTE. Bomb type; brilliant velvety crimson; full, very double flowers on extra tall, strong stems. Midseason50	.75
MADAME EMILE GALLE. Rose type; delicate shell-pink with touches of heliotrope and lavender; large, double, cup-shaped, imbricated flowers; extra fine and very free blooming. Late midseason50	.75
MADAME GEISSLER. Rose type; glossy pink, shading to bright rose at the base of the petals; very large, double, imbricated flowers on strong, erect stems; a real giant. Midseason65	1.00
MARECHAL VAILLANT. Rose type; light red, shaded mauve; full, globular flower, probably the largest red Peony grown. Midseason50	.75
MONSIEUR JULES ELIE. Bomb type; glossy pink, shading into deeper rose at the base, overlaid with a sheen of silvery lilac-rose; large, globular flowers on long, strong stems; good cut flower and excellent keeper. Early85	1.25
PIERRE DUCHARTRE. Rose type; even shade of lilac-pink; large, compact, globular flowers; fragrant. Late50	.75
PRESIDENT TAFT (Syn., Reine Hortense). Rose type; soft flesh-pink, deepening to shell-pink, with crimson splashes; enormous, compact, flat flowers, well formed and of striking appearance; fragrant. Midseason85	1.25
SARAH BERNHARDT. Semi-rose type; apple blossom-pink, silver tipped; flowers of remarkable size and grandeur and perfect form; strong, long stems; the strongest growing Peony of all. Late midseason85	1.25
THERESE. Rose type; satiny pink, changing to lilac-white in the center, with a glossy reflex; enormous, compact flowers on long, strong stems; considered by many the best pink Peony yet produced. Midseason	2.00	3.00

Iris Germanica or Tall Bearded

Iris will do best in well drained, airy positions, and most surely in full sun. They demand at least what the gardener calls "half sun". Give them "clean dirt"—no manure, no damp mulches. The bloom season past, they thrive on drought. Use ground limestone to correct an unhealthy sour soil condition. A handful of bone meal worked around each plant at the time of planting and added every spring and fall afterward will insure continued growth and fine large flowers.

The thick root stalk, rhizome, from which the leaf fan grows should never be planted more than an inch below the surface with the rootlets spread out lower down for anchorage.



Iris, Mother of Pearl.

- AFTERGLOW** (82—Sturtevant 1917). Light lavender and yellow blend. 25c each.
- ALBERT VICTOR** (76—Barr 1885). Medium blue-toned. 25c each.
- ALCAZAR** (87—Vilmorin 1910). Mauve, red-purple; tall, large, striking. 50c each.
- AMBASSADEUR** (91—Vilmorin 1920). Bronze bi-color with dark, velvety red falls. 3½ feet. Probably the most popular Iris. 50c each.
- ARCHEVEQUE** (81—Vilmorin 1911). Deep, rich red-purple. 2 feet. For effective mass. 25c each.
- BALLERINE** (89—Vilmorin 1920). Large, frilly, light blue-violet with a shimmer of frost; fragrant. 75c each.
- BLUE JAY** (71—Farr 1913). Well named. There are probably better blues, but few for its late season effect in clump. 25c each.
- CAMELOT** (80—Bliss 1918). Warm white, lightly penciled violet. 3 to 4 feet. 25c each.
- CAPRICE**. Certificate N. H. F., 1916. Standards rosy red; falls deeper rosy red. Large and handsome. 24 inches. 25c each.
- CECIL MINTURN**. Soft Cattleya rose. A beautiful flower with broad petals, gracefully waved and crinkled; one of the finest Irises for size and extreme beauty. 50c each.
- CRUSADER**. One of the finest lavender-blue varieties, the falls being a deeper tone than the standards. A tall, strong grower with very large flowers of good substance. 50c each.
- DALILA** (79—Denis 1914). Flesh tint; red-purple with narrow pinkish border. 2 feet. Sometimes slow to become established. 50c each.
- E. H. JENKINS** (81—Bliss 1919). Light, blue-toned bi-color; fine form; beautifully branched; fragrant. A fine Iris. 30 inches. 50c each.
- ETTA** (77—Caparne 1901). An early bloomer of pale yellow with bright yellow beard and throat. 25c each.
- FAIRY** (78—Kennecott 1905). White with an eerie quality in the blue tone of the styles at the center of its cup. Justly popular; fragrant. 25c each.
- DREAM** (84—Sturtevant 1918). A "pink" Pallida of merit. 3 feet. 50c each.
- GEORGIA** (83—Farr 1922). "Pink." 3 feet. (A. I. S.: "Probably the most effective 'pink' in mass."). 25c each.
- GERTRUDE** (65—Peterson 1907). Early dark blue-violet. Fine color but fragile. Rated too low, season considered. 25c each.
- GOLDEN PROMISE** (81—Neely 1926). Tall, citron and chrome-yellow; falls with faint suffusion of lavender. Good form and substance. 3 feet. \$1.00 each.
- GOLD IMPERIAL**. The greatest golden yellow Iris known; might be called the Golden Pallida Dalmatica. Limited stock. 75c each.
- HELGE**. Lemon-yellow with pearl shading. Huge flower. 25c each.
- HER MAJESTY** (74—Perry 1903). Effect rose color in mass. Justly popular. 25c each.
- ISOLINE**. Round standards of pale pinkish buff, strongly flushed mauve; the sharply reflexed falls are Chinese violet with russet tints at the sides; bewildering shades but most attractive. 50c each.
- LADY BYNG** (83—Bliss 1922). Exquisite refinement of form, clear, smooth rosy lavender. 50c each.
- LENT A. WILLIAMSON** (88—Williamson 1918). A justly popular blend. Standards yellow-lavender; falls pansy-violet. Large, tall. 50c each.
- LORELEY** (78—Goos & Koemann 1909). Standards deep yellow, irregularly splashed with the raisin-purple of the falls. Fragrant. 30 inches. 25c each.
- MADY CARRIERE** (80—Millet 1905). Delicately blended yellow and lavender. 50c each.
- MIDNIGHT**. A rich, deep purple, the finest in this color; a fine cut flower. 25c each.
- MILDRED PRESBY** (87—Farr 1923). Probably the finest of many good ones produced by the late Mr. Farr. Standards creamy; falls velvety pansy-violet. 30 inches. Very bright and contrasty. 75c each.
- MIRANDA** (77—Hort 1919). Effect a strong blue. Standards domed; falls flaring. 40 inches high on stout stems. Early. 50c each.
- MONSIGNOR**. It possesses a distinctive and pleasing shape, rich coloring and a dark outline to the segments for emphasis. Standards violet; falls heavily veined purple, leaving a border of the violet; late to flower. 25c each.
- MOTHER OF PEARL**. Standards and falls pale bluish lavender with a faint creamy undertone. Large flowers of exceptional substance and perfect form on well branched stems. Vigorous in growth and producing its wonderful flowers freely. 50c each.
- MME. CHOBAUT**. A clover-scented Plicata type. Prussian-red with light brownish veins, on a pale chalcedony ground. One of the most beautiful of all Irises. 25c each.
- OPERA** (82-83—Vilmorin 1916). 24 inches. This is one of the richest violet-red toned bicolors. It is quite deservedly one of our most popular varieties. Even the beard is of a distinctly reddish tone. The falls are just like a piece of velvet. This variety, like many of the very finest sorts, produces small rhizomes, but blooms profusely. 50c each.
- ORIFLAMME** (Vilmorin 1904). Cert., N. H. F., 1905; A. M., R. H. S., 1916. Standards light blue; falls rich violet-purple. Immense, handsome flowers of Ames form. 30 inches. 50c each.
- PRINCESS BEATRICE** (90—Barr 1898). A pale, cool blue with a silvery sheen. Rare refinement of form and color. Season late. Height 42 inches, with strong stems and graceful poise. 50c each.
- PROSPER LAUGIER**. Cert., N. H. F., 1905; A. M., R. H. S., 1916. Standards light bronze-red; falls velvety ruby-purple, with white beard yellow tipped. Very handsome. Vigorous growth. 36 inches. 50c each.
- QUAKER LADY** (75—Farr 1909). Olive-buff. A dainty blend of violet and buff. 25c each.
- QUEEN CATERINA** (88—Sturtevant 1918). Large, light lavender-violet. Outstanding quality and softness of color. 50c each.
- QUEEN OF MAY** (74—Salter, before 1859). Very popular for light "pink" mass effect. 25c each.
- SEMINOLE** (83—Farr 1920). Brilliant red-violet bi-color. One of the finest. Gorgeous in the sun. 50c each.
- SHEKINAH** (84—Sturtevant 1918). Tall, good carriage. A pale yellow of Pallida habit. 25c each.
- TRUE CHARM** (84—Sturtevant 1920). White, margined delicately with blue-lavender. Good grower. Tallest, largest, best white Plicata in my garden. 44 inches. Meets all the garden purposes of a tall, large white better than any white of my acquaintance. 50c each.
- WHITE KNIGHT** (80—Saunders 1916). Standards and falls pure white. Good growth. 50c each.

Plant Roses This Fall

Rose bushes planted this fall will become well established before winter sets in; and next year will see them better developed and bearing a greater abundance of well formed blooms than those plants set out next spring.

This advantage is accompanied with very little risk providing the following simple directions are followed. In fall, just before cold weather sets in and frost enters the ground, mound the soil around the branches of the plant at least ten inches high and cover with a little straw or some other loose litter. This will prevent the wind and sun from drying the branches during the winter. These directions are illustrated in sketch below.

Price of All Roses, 75c each;
\$7.50 per dozen

Hardy Hybrid Tea Roses Everblooming

COLUMBIA. The flowers are large, fully double, bright lively pink in color, shading darker at maturity.

DUCHESS OF WELLINGTON. The buds are long; the flowers large, well formed, of few petals of intense saffron-yellow, changing to deep coppery yellow as they expand; delightfully fragrant and disease resistant.

GRUSS AN TEPLITZ. In color it is richest scarlet, shading to a velvety crimson; very fragrant; a free, continuous bloomer.

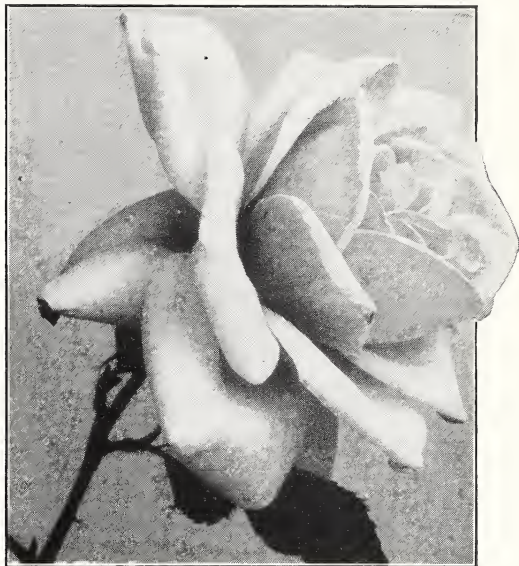
HOOSIER BEAUTY. A remarkable Rose of American origin; glowing crimson with darker shadings. Buds large, long pointed; blooms very large, full, borne several together, on long stems; sweetly fragrant. Good variety for show purposes; stands up well.

LOS ANGELES. Its color is a luminous flame-pink toned coral, shaded translucent gold at base of petals.

MME. BUTTERFLY. Color a blending of bright pink, apricot and gold.

MME. CAROLINE TESTOUT. The streets of Portland are bordered with thousands of these Roses, because the beautiful blooms are borne abundantly all summer on the strong, vigorous plants. The large, rounded flowers are bright satiny rose, with darker center, and edges of petals bordered with soft carmine-pink.

PINK KILLARNEY. Large, long-pointed buds, opening to large, loose blooms of beautiful flesh color, borne on long, strong stems.



Red Radiance.



Los Angeles.

WHITE KILLARNEY. Sport of Killarney and very similar to it in size, shape and fragrance, but pure white in color.

PINK RADIANCE. Brilliant rosy carmine shaded with rich opaline-pink tints in the open flower.

RED RADIANCE. A bright, cheerful and even shade of pure red. Size, foliage, growth and habit same as in the parent "Radiance." A splendid bloomer and fine variety for outdoor planting.

PREMIER. Rich, dark pink flowers of full form, fine size, and pleasing fragrance, borne singly on stiff, almost thornless stems by a vigorous and robust plant with very fine, disease-resistant foliage.

SUNBURST. A magnificent Rose. The color is orange-copper or golden orange, with a deep orange center.

WILLIAM F. DREER. A wonderfully beautiful flower of golden fawn and orange-pink; moderately fragrant. Fair growth, with average foliage and blooming qualities.

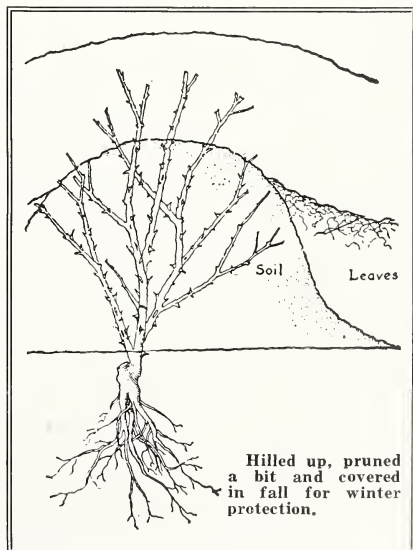
Hardy Climbing Roses

AMERICAN BEAUTY. Brilliant carmine flowers of fine form and rich perfume.

DOROTHY PERKINS. Clear cherry-pink, slightly fragrant flowers in great profusion and lasting for a long time.

EXCELSA. A radiant, blood-red cluster Rose, as free and double as Dorothy Perkins, of which it is the red prototype.

PAUL'S SCARLET CLIMBER. The brightest and purest red of all the Pillar Roses. Vivid scarlet, shaded crimson; semi-double.



Fertilize Rose Beds With Bone Meal or
Sheep Manure



Fall is the Time to Sow Evergreen Lawn Seed

When seed is sown in September the weather is favorable for its growth, because of no drought or excessive heat and it becomes better established before winter sets in. The winter ordeal is not so severe as the summer; and after it comes a long, cool spring, for further growth before midsummer and seeding time arrive. Fall, therefore, is the best time to sow grass, so much so that experts of the Department of Agriculture advise never to sow in the spring, when it is possible to sow in the fall.

LOHRMAN'S EVERGREEN LAWN SEED

Lohrman's Evergreen is a compound of grasses which ripen successively, thereby always presenting a green, velvety and cheerful appearance. In order to produce permanent results, first quality goods only must be used. Prices, lb., 50c; 3 lbs., \$1.45; 5 lbs., \$2.35; 10 lbs., \$4.50; 20 lbs., \$8.50; 100 lbs., \$37.50.

How to Make a Lawn with Evergreen Lawn Seed

PREPARATION OF SOIL. Dig the soil about 8 inches deep, breaking up into very fine particles.

FERTILIZING. Scatter either Pulverized Sheep Manure on the dug earth at the rate of 1 ton to the acre, 100 lbs. to 1000 sq. ft., 10 lbs. to 100 sq. ft., or use Sacco Plant Food, an odorless fertilizer, at the rate of one-half ton per acre, 50 lbs. per 1000 sq. ft., 5 lbs. per 100 sq. ft.

SOWING THE SEED. Sow our Evergreen Lawn Seed at the minimum rate of 100 lbs. per acre or 1 lb. to each 300 sq. ft., 15x20 ft. Double the quantity when a thick turf is needed quickly. After sowing rake the land lightly. The idea is to bury the seed not more than one-eighth inch deep. Roll the seeded area, but should rain fall before the work is complete, defer the rolling until the land has dried.

Shady Lawn Grass Seed

On nearly all lawns there are unsightly spots caused by the fact that ordinary varieties of grasses used for lawns do not do well in the shade; consequently we have prepared a mixture of grasses which naturally grow in shady spots. Before sowing in such places it is well to rake off the surface thoroughly and then apply Evergreen Lawn Lime. Use one pound of Shady Spot for every 300 sq. ft. of lawn. Lb., 70c; 3 lbs., \$2.00; 5 lbs., \$3.35; 10 lbs., \$6.25; 100 lbs., \$55.00.

Creeping Bent Seed

SOUTH GERMAN MIXED BENT is a mixture of Bents including true Creeping Bent, Velvet Bent, and a large percentage of Rhode Island Bent. It has been in high favor as a putting green grass. The important advantage

of the Bent Grasses on lawns is that they like acid soils and can be fed with acid reacting fertilizers, such as Ammonium Sulphate, the constant use of which discourages weeds. Seed at the rate of 3 to 4 lbs. per 1000 square feet. Lb., \$1.25; 3 lbs., \$3.60; 5 lbs., \$5.65; 10 lbs., \$11.00; 100 lbs., \$100.00.

Lohrman's Fairway Mixture

This special mixture produces beautiful and permanent lawns. It is made from our own formula, and composed of grasses which are adapted for the purpose of producing turf which retains its rich green color and velvety appearance throughout the entire summer and fall. This mixture does not contain any clover. In making up this brand we are careful to use only seed that has been thoroughly re-cleaned. Lb., 60c; 3 lbs., \$1.75; 5 lbs., \$2.75; 10 lbs., \$5.00; 20 lbs., \$9.50; 100 lbs., \$45.00.

FERTILIZERS FOR FALL USE

Adco Artificial Stable Manure Make it yourself, in your own garden. To each ton of straw, hay, cornstalks or dried leaves add 150 pounds Adco to make four tons of fresh or three tons of rotted manure. Adco contains nothing injurious to health or harmful to animal or plant life. Shipments accompanied by full directions. 25-lb. bag, \$2.50; 150 lbs., \$11.50. Write for booklet.

Sacco Plant Food Makes things grow. It is a specially prepared plant food that supplies the necessary elements in just the right proportions for healthy plant growth. Use 4 lbs. per 100 sq. ft. for lawns or garden. 1-lb. can, 25c; 5-lb. pkg., 50c; 10-lb. pkg., 85c; 25-lb. pkg., \$1.75; 50-lb. bag, \$3.00; 100-lb. bag, \$5.00; 500 lbs., \$22.50; 1000 lbs., \$42.50; ton, \$80.00.

Bone Meal (FINE GROUND). Excellent for rose beds, flower beds, gardens and for top dressing lawns. Use 50 lbs. for lawn or garden 20x50 feet or 1000 square feet. 10 lbs., 85c; 25 lbs., \$1.75; 50 lbs., \$3.00; 100 lbs., \$5.00; 500 lbs., \$22.50; 1000 lbs., \$42.50; ton, \$80.00.

Limestone (PULVERIZED). Fall is the proper time to apply Lime because it reacts throughout the winter. It supplies the element calcium to plants; it makes "sour soil sweet," changes an acid condition to a slightly alkaline one; it has the power to shrink clay and abode soils. Apply 100 lbs. for lawn or garden 40x50 feet or 2000 sq. ft. In sacks, 10 lbs., 50c; 80 lbs., \$1.25.

Sheep Manure (WIZARD). FREE FROM WEEDS. This is a pure, natural manure and one of the most nutritious foods for plants. Pulverized Sheep Manure acts quickly and for the garden, lawn, or

greenhouse nothing surpasses it. Use 50 lbs. for lawn or garden 20x50 feet or 1000 square feet. 2 lbs., 25c; 5 lbs., 40c; 10 lbs., 75c; 25 lbs., \$1.25; 50 lbs., \$2.00; 100 lbs., \$3.00; 500 lbs., \$13.25; 1000 lbs., \$25.00; ton, \$45.00.

Peat Moss (IMPORTED GRANULATED). This Peat is used with excellent results in the making of garden soils, especially those soils that are very heavy or very dry. Peat stimulates the development of roots of all plants and in the summer it is an excellent moisture retainer, as it absorbs more than eight times its own weight in water. For mulching perennial beds it is ideal. When the winter is over, peat may be dug in and should not be removed. One bale covers 240 square feet, one inch deep. ½ bale, \$3.50; bale, \$5.00.

Vigoro is a specially prepared plant food, containing all the elements necessary to grow flowers, lawns, vegetables, shrubbery and trees. Clean, odorless, easily sown by hand like grass seed. Complete directions in every bag. Use 4 lbs. per 100 square feet for lawn or garden. See opposite page for further description. 1-lb. can, 25c; 5-lb. pkg., 50c; 10-lb. pkg., 85c; 25-lb. pkg., \$1.75; 50-lb. bag, \$3.00; 100-lb. bag, \$5.00.

Loma Beautifies lawns and gardens. A scientifically prepared plant food for lawns, flowers, vegetables, shrubbery and potted plants. Rich in nitrates, phosphates and potash. Lb., 25c; 5 lbs., 50c; 10 lbs., 85c; 25 lbs., \$1.75; 50 lbs., \$3.25; 100 lbs., \$6.00.

Weed Killer For dandelions and other weeds in the lawn. Use 1 to 1½ lbs. to gallon of water for every 1000 square feet. Should be sprayed on grass 3 or 4 times at intervals of about a week. Lb., 25c; 5 lbs., \$1.00.

LOHRMAN SEED CO.,

Macomb at Brush Streets
Telephone: Randolph 1270

Detroit, Michigan