

Historic, Archive Document

Do not assume content reflects current scientific knowledge, policies, or practices.

62,43

LIBRARY
RECEIVED
★ NOV 25 1929 ★
Department of Agriculture.

OTTO M. LOCKE & BROS. NURSERY CO.

SEASON 1929-30



MAIN OFFICE
NEW BRAUNFELS, TEXAS

NURSERIES AND ORCHARDS
POTEET, TEXAS

BRANCH OFFICE AND LANDSCAPE DEPARTMENT
SAN ANTONIO, TEXAS

To Our Patrons and Friends

WE HEREWITH hand you our second catalog which lists all of the trees and plants we grow at Poteet, Texas, and which we will distribute through our main place of business located on the San Antonio-Austin Post Road, one-half mile South of the Comal County Court House at New Braunfels, Texas.

This is the second year the three Locke Brothers, Emil, Walter F. and Otto Martin are conducting this new nursery business and it is with a great deal of pride we announce that during the past year we have acquired customers numbering thousands and it is still a greater source of satisfaction to us to hear everywhere that our products and treatment have given entire and complete approval. We have indeed achieved success from the very start and will endeavor in the Future to live up to the good reputation our customers and friends give us.

Through our landscape department we have created some of the most admired plantings in San Antonio and other places and we take great pride in showing these to prospective customers. We employ a real artist, Dr. F. Schubart, who designs a landscape on paper, in colors, to give the prospective customer a picture of the planting on his own grounds before a contract is made. We make these color designs free and a customer is under no obligation to buy from us for this service, provided it is his intention to spend \$100.00 or more on plants to beautify the grounds to be landscaped.

Again we wish to extend an especial invitation to all of those who receive this booklet and to their friends to visit our orchards, vineyards, pecan groves and nurseries at Poteet, Texas. Here we test everything new that comes out in the horticultural and floricultural lines and here on our grounds we are always ready to explain the comparative merits of varieties and help our customers to make their selections. To reach our place take the Palo Alto Highway out of San Antonio and guided by road signs one hour's ride brings you easily to the nursery. You will be rewarded for your effort, for you have never seen a place like this one in South Texas. You never imagined that such things could be grown here.

You will be convinced when you visit our grounds that in selecting this place for our growing grounds, that we did so in the interest of our customers. The entire place is free from insect pests, scale or diseases and its isolation makes it no difficult task to keep it that way, though we use every precaution to keep our stock clean and healthy.

For those who cannot visit us at Poteet we bring a number of pictures taken on our grounds. If you will examine these carefully you will gain an idea of the thrifty and healthy stock we grow there. It costs you no more to get the best as you will see by comparing our prices with those of other nurseries and if you should doubt that we have the best a visit to the grounds will convince you. Our Walter F. Locke lives on the place at Poteet and will always be happy to show you the trees and plants we are so proud of.

OTTO M. LOCKE AND BROTHERS NURSERY CO.

Main Office and distributing depot at New Braunfels, Texas.

Landscape and information department at San Antonio, Texas.

NURSERIES AT POTEET, TEXAS.

Preparations Before Planting

Before setting out an orchard or planting shrubbery in your yard, it is important to plow or spade the ground deeply. Unless soil is extremely impoverished fertilization is not necessary. In case it is desired it is well to consult some experienced gardener who knows what your particular soil needs in that line.

After thoroughly pulverizing your soil and leveling it, where that is necessary, stake out your places where trees or shrubs are to be planted. Then dig the holes around the stake. In the case of fruit trees the holes should be dug about two feet square and two feet deep, but if for pecan trees a hole a foot or more wide and four feet deep should be dug. For roses small holes are required and for balled shrubbery a hole just the size of the ball is sufficient, in fact, is most desirable in order to set the plant firmly in the ground.

DISTANCES FOR PLANTING—Different trees and plants vary with the kind of trees and character of soil. The richer soils require planting at greater distance as fertility makes for larger trees. The following distances are recommended and are given as a result of many experiments made by us:

Apple, peach, apricot, cherry, plum and persimmon are planted 18 to 24 feet apart, either each way or otherwise, as for instance, 18x22 ft.

Kieffer Pears, 20 to 25 feet each way or otherwise.

Le Conte and other upright growing varieties of Pears 18 to 20 feet each way or otherwise.

Pecans 40 to 60 feet each way or otherwise, as desired. This admits of planting fruit trees between trees in the rows. Plum, peach, pear and persimmon have been grown very successfully between pecan trees in the rows and berry plants between the rows. The berries were continued for 15 years and by that time many of the fruit trees also began to die out, thus leaving the pecan to enjoy all of the ground. We also have grown grapes successfully in the rows and between the rows, and we are still growing our grapes in the young pecan orchards without any apparent damage to the pecan.

Figs 15 to 18 feet each way.

Grapes 10 by 16 feet.

Dewberries 1 by 4 feet.

Blackberries 2 by 5 feet.

Strawberries 8 inches by 2 feet.

NUMBER OF TREES OR PLANTS REQUIRED TO THE ACRE

You can easily figure the number of plants by following the example given.

For instance:—You wish to plant trees twelve feet apart in the rows and the rows to be sixteen feet apart. Multiply $12 \times 16 = 192$ sq. ft. An acre of ground contains 43,560 sq. ft. To determine the number of trees needed to plant one acre divide 43,560 by 192. The result is 22 or 23 trees to the acre. If the space is less than an acre or irregular in shape, just measure and determine the number of square feet available and follow above example.

Instructions for Planting

Space in our catalog does not permit the giving of minute planting instructions for all plants that we offer for sale, but a few general directions, to those who have little experience in the planting of nursery stock may be of benefit to our customers.

Upon arrival of your package unpack in a sheltered place, so as not to expose roots to drying winds. If you are ready to plant wrap a few plants in a wet burlap and take them out into the garden or field. Never let plants lie for even a few minutes with roots exposed. Assuming that you have all your holes dug, take out one plant at a time and first trim the top. Take off half of the wood, in some cases two-thirds when planting fruit trees. Trim top first, then trim off all broken or bruised roots and cut new surface on all root ends. Then place tree into the hole and fill in loose dirt, preferably the top dirt into the bottom of the hole and around the roots. Press dirt firmly and when tree is set it should stand about two inches deeper than it stood in the nursery. It is easy to tell just how deep a tree was buried in the ground. After planting give a plentiful watering in order to thoroughly settle dirt around roots. After all water has soaked in mulch with several inches of loose dry dirt.

If weather is very dry trees should be thoroughly watered about once every two weeks.

As young trees generally are planted in more or less fertile soil we do not recommend fertilizing until trees are ready to bear fruit. Too often fresh manure is improperly used and does more harm than good and if used after the tree has become well rooted it is difficult to get the fertilizer too near the roots.

In planting evergreens, especially the balled plants, pruning is not so necessary except where the plant may have a shape which is not desired. Fertilizer is not generally needed for growing evergreens, in fact, some varieties resent it.

Roses and other flowering plants appreciate fertilization but we rather recommend good cultivation and watering than the use of fertilizer except by those who know how to apply it. Roses should be severely pruned back every Winter to induce the plant to grow new shoots in Spring on which the best flowers develop.

For more detailed information on the care of trees and plants, read books listed in the back part of the catalog.

WE DO NOT PAY FREIGHT.—Give us your shipping instructions on the order blank enclosed herewith and we will follow them closely. In case you order roses or small plants which can be mailed by parcel post we will prune plants back as much as possible and charge you with the postage.

All nursery stock leaves our grounds in first class condition. If it suffers while in transit the rail road or express company will be responsible. If it suffers after the customer has accepted the package the loss will be that of the purchaser.

WE HAVE NO AGENTS and any one claiming to be our agent should be treated as a fraud.

SHIPPING SEASON begins about November 1 and ends April 1. Evergreens when balled may be moved at any time during the Summer and our landscaping department plants these during the entire Summer as well as in Winter. If any of our customers wish evergreens shipped out of the regular season we will accommodate. We make a nominal charge for crating balled Evergreens.

UNSERE DEUTSCHEN KUNDEN moegen sich in deutscher Sprache an uns wenden. Wir selber lesen heute noch lieber einen Brief in unsere Muttersprache geschrieben als wie in irgend eine andere und es soll uns eine besondere Freude bereiten deutsche Bestellungen auszufuehren. Man richte alle Briefe an **OTTO M. LOCKE AND BROS. NURSERY CO., New Braunfels, Texas.**



Threshing 8 year old Daisy Pecan on our grounds at Poteet, young strawberry plants between rows

PECANS

The last shall be first and the first shall be last. So it has been with the pecan. Only a quarter of a century ago the nurseries of the South thought it hardly worth while to give space to the pecan in their catalogues. We are among those who now give this nut first place. To state just how much a good variety of pecan will earn for the man who cares for the tree sounds like exaggeration. To illustrate more clearly just what we mean we show you on back cover three pictures. The first is a picture taken in 1914, when Mr. D. D. Heinen was building the house on the place where we now grow our nursery stock. Note the prickly pear in front of the house. The land was just being cleared then. The second picture shows the same house in 1916. You will notice several small pecan trees planted around the house. The third picture was taken in August, 1928, or twelve years later. This makes the oldest trees on the place, 13 years old from the time of planting, as they were one year old when the picture was taken in 1916.

The house cost at that time \$3,000.00 and figuring a deterioration of 5% per annum will soon be worth practically nothing. It was a necessity, but has earned or brought in no real money.

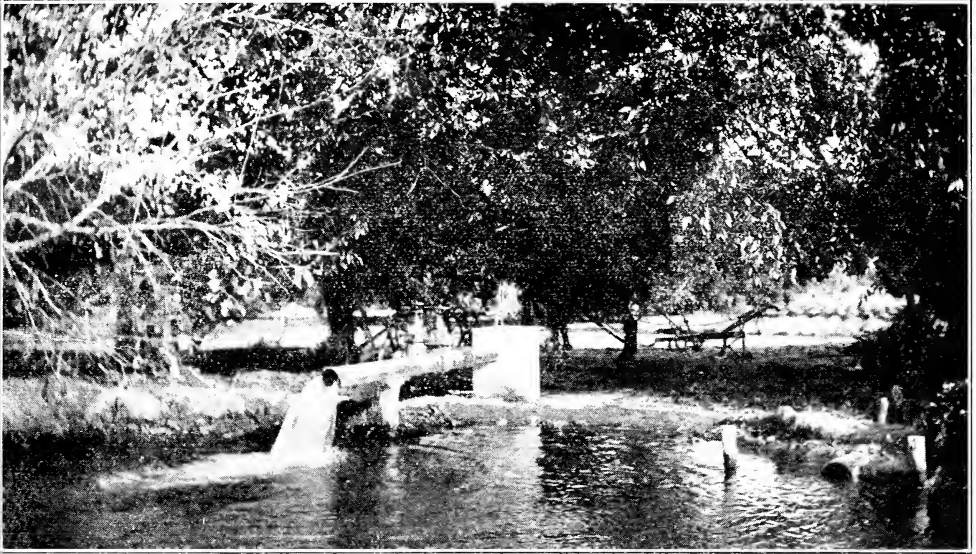
The six pecan trees planted in 1915 have produced pecans during the past 8 years and Mr. Heinen's books show that he sold the same at a little more than \$2,500.00. In this year the crop is worth \$500.00. The trees are surely worth \$5,000.00, in fact they are worth much more than that. One

tree, a Delmas, which is shown on another picture, we consider worth \$5,000.00 alone and it will bring good interest on that sum during the lifetime of any of these three brothers. The original investment was only \$15.00.

In our orchard we have many younger trees, 8, 9 and 10 years old now, which are better trees still than those shown in this third picture and we will be glad to show them to visitors at any time. Take the Palo Alto Road out of San Antonio and follow the signs until you get to the nursery. For those who may not have that opportunity we are reproducing some of the latest photos of individual trees.

Pecans will thrive in most soils but a good water supply is essential. Do not try and raise pecan trees West and Southwest from San Antonio where they cannot be irrigated, except in some river bottom where the ground water can be reached by the roots.

We sell only trees which we grow on our own grounds and are able thus to guarantee that the trees are all true to name, fresh and healthy. We use special care in selecting the nuts we plant for root stock, thus assuring a healthy stock and we use only grafting wood from the finest bearing trees. This accounts for so many of our trees bearing right in the nursery rows the first year after grafting. We show a picture of one tree, a Western Schley, which matured 18 nuts. Was grafted in February, 1928, picture was taken in October of same year.



Schley Pecan Trees near our Artesian Well at Poteet.



Row of "Onlyone" Pecans in our orchard at Poteet. Persimmons between rows.

WESTERN VARIETIES

PRICES:—Western Varieties—1-2 ft. \$1.00 each; 3-4 ft. \$1.25 each; 4-5 ft. \$1.75 each; 5-6 ft. \$2.00 each; 6-7 ft. \$2.50 each; 7-8 ft. \$3.50 each; 8-10 ft. \$4.00 each; 10 ft. and up \$5.00 each.

✓ **WESTERN SCHLEY** — A very prolific bearer. Nut longer than Eastern Schley and kernel of fine quality.

✓ **ONLY ONE**—About the thinnest shell of them all. This is a round nut, pointed end, well filled, medium to large in size and we find it a very good bearer. Note how the limbs are bent in the picture.

✓ **SAN SABA IMPROVED** — One of our very best. The tree is prolific and the nut is of medium size, but very sweet and fine.

✓ **TEXAS PROLIFIC**—This surely is named right. Texas for size and it is prolific indeed. We are planting extensively in our own orchards of this variety. Nut long, rather a little flat, well filled and finds ready sale because of its size.

✓ **DAISY**—Before ripening this pecan looks like the largest of them all. It is a long, soft shell pecan, originated by the Comal Springs Nursery. The kernels are very sweet, but sometimes one will be short, the other side will be the better filled. Tree is exceptionally healthy and limbs spreading rather than compact. See picture.

✓ **BURKETT**—Large, almost round. Shell thin, flavor good and bears well.

EASTERN VARIETIES

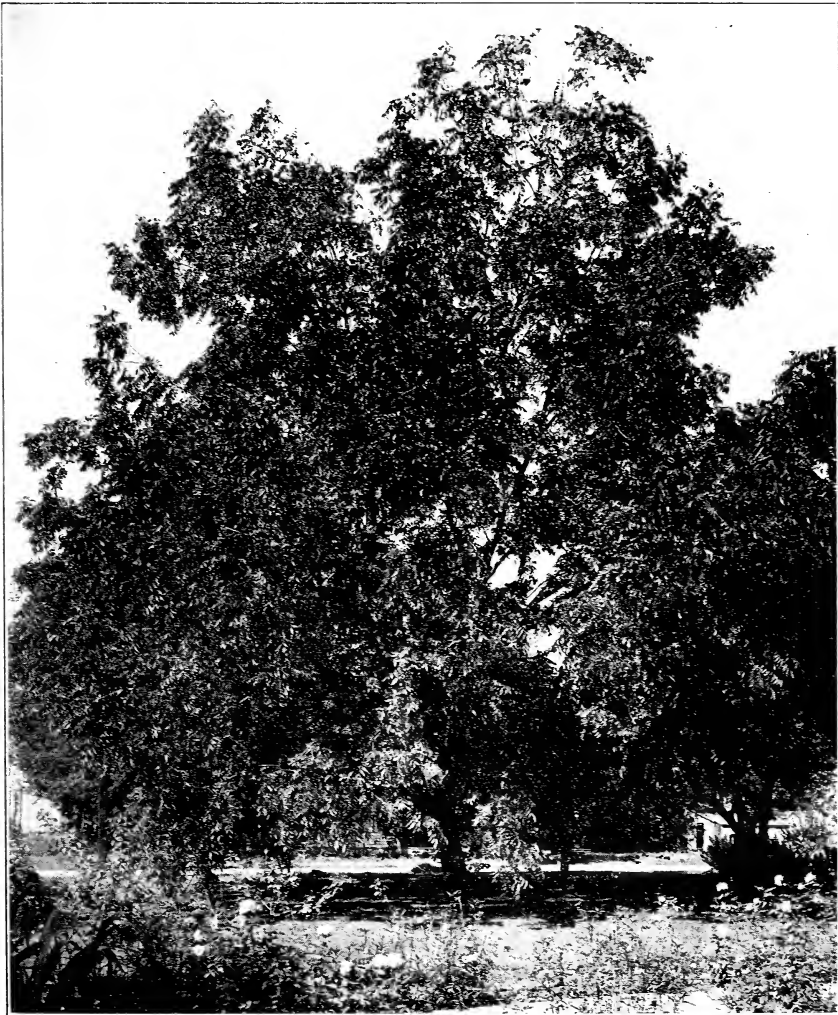
Eastern Varieties—Half price—

Dozen price—10% Discount.

100 price—15% Discount.

1000 price—20% Discount.

✓ **EASTERN SCHLEY**—This is the finest nut of them all. It has all of the redeeming qualities but one. It is large, soft shell, well filled, sweet but the tree does not bear as regularly as some of the other varieties. We get a better price for the nuts than we do for any other.



This Daisy Pecan in front yard of Mr. Hugo Starcke, at Seguin, Texas, was delivered 19 years ago by one of the Locke Bros.—Over 200 pounds of nuts this year.



Western Schley matured 18 Pecans 8 months after grafting in our nursery.

DELMAS—The tree about which we said that we considered it worth \$5,000.00 is a Delmas and from this tree we take all of our grafting wood. Delmas is a regular bearer. The nut is very large, well filled and the kernel of fine flavor. The tree grows dense and round in shape. If a shade tree is desired as well as a useful tree, plant the Delmas.

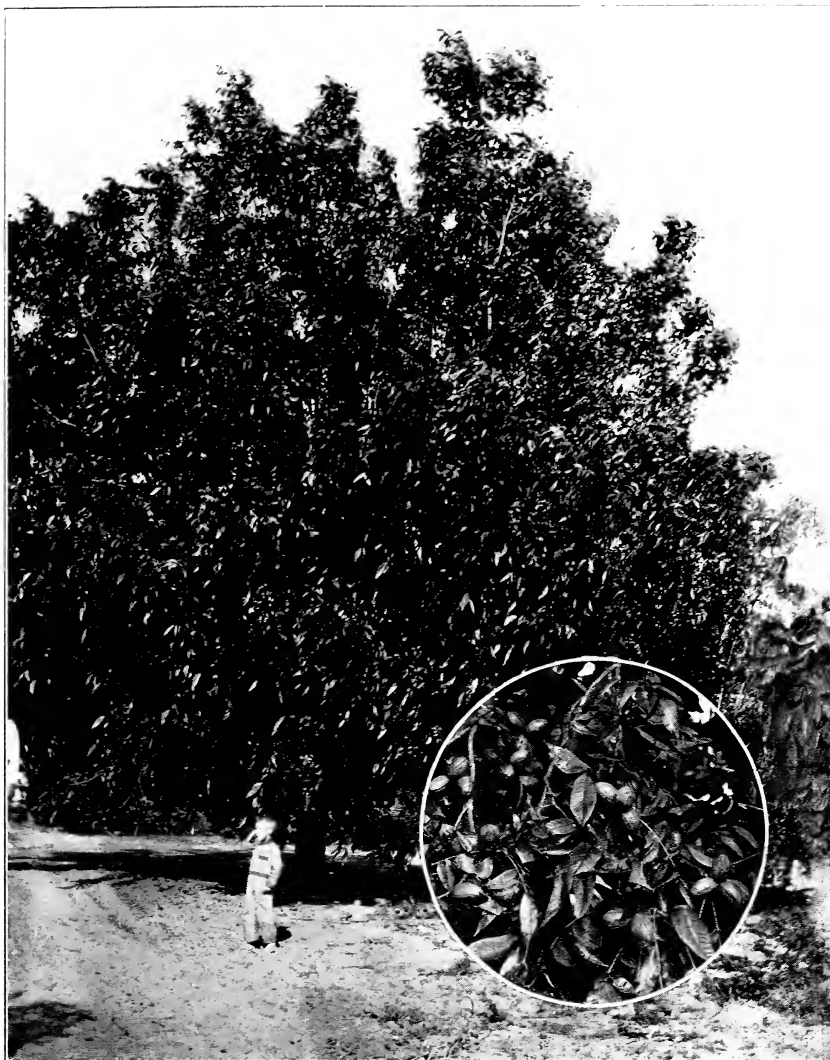
STUART—We have some fine bearing trees of this variety but will not plant any more, as there are so many better varieties.

MONEY MAKER—Large size nut, blunt

on both ends. Thin shell. Heavy bearer and our trees are not subject to blight or disease, always look clean and healthy.

SUCCESS—One of the finest we have. The nut is very large, round, well filled and one of the best sellers.

WE HAVE A SCORE or more additional varieties bearing on our grounds but will not grow any of the trees as we have found them lacking in some necessary quality. Among these are some new varieties which we wish to give more time to see if they are worth propagating.



This is our best tree—A Delmas—Picture was taken in 1926—This Delmas has earned over \$100.00 each year since it was 6 years old.

CHRISTMAS PACKAGES OF PECAN NUTS

In order that our customers should have an opportunity to secure the finest pecans grown, fresh, true to name, directly from the grower, we have stored away several thousand pounds of the various varieties which we grow. While these last we will

book orders and ship to any part of the World by mail or Express, charges to be paid by the customer, at prices given below. These nuts are well ripened, cured and dried and packed in cartons of five, ten and twenty-five pounds, net weight.

	5 lb. Pkg.	10 lb. Pkg.	25 lb. Pkg.	100 lb.
DAISY	\$3.50	\$6.50	\$15.00	\$50.00
EASTERN SCHLEY	5.00	9.00	21.00	80.00
WESTERN SCHLEY	4.00	7.50	17.50	65.00
TEXAS PROLIFIC	4.00	7.50	17.50	65.00
SAN SABA	3.50	6.50	15.00	50.00
MONEY MAKER	3.50	6.50	15.00	50.00
ONLYONE	4.00	7.50	17.50	65.00
SUCCESS	4.00	7.50	17.50	65.00
STUART	4.00	7.50	17.50	65.00
BANQUET	3.50	6.50	15.00	50.00
CURTIS	3.50	6.50	15.00	50.00
BRADLEY	4.00	7.50	17.50	65.00
SQUIRREL'S DELIGHT	4.00	7.50	17.50	65.00
BIG Z	4.00	7.50	17.50	65.00



Top—Our 200,000 Pecan seedlings 1 year old. Bottom—A block of Texas prolific 1 year tops, 3 year roots.



A row of Le Conte Pears on our grounds at Poteet, planted between Pecan rows.

PEARS

2-3 ft. 35c; 4-5 ft. 50c; 6-7 ft. 75c.

Dozen price—10% Discount.

100 price—15% Discount.

1000 price—20% Discount.

KIEFFER—Fruit large, yellow with red cheek. Heavy bearer and not subject to blight. Because this pear does not ripen on the tree it is considered only a cooking pear. If allowed to remain on the tree until October and then carefully picked and each pear wrapped in a separate sheet of paper and then packed into a box, it will soon cure up and soften. Then it is a most delicious table pear.

LE CONTE—A very prolific bearer. Ripens in July. Often the fruit softens on the tree. It can however be eaten even if not entirely soft, for the meat is of fine texture and very sweet. In size it is somewhat smaller than the Kieffer.

GARBER—About the size of Kieffer but ripens in August and the fruit resembles Le Conte in the softer texture of the meat.

PINEAPPLE SAND PEAR—None of our pears bear so well as this one, in fact, the trees try to destroy themselves by overloading. This is a large round pear, ripens in

September. It becomes a rich yellow in color and is about the best we grow for canning.

BARTLETT — This is the best market pear. Fruit is yellow with bright red cheeks and of fine flavor and softens up without becoming mushy. Good shipper. Ripens in August.

SUMMER BEAUTY — This variety was brought to Texas by some of the early settlers from Germany and is the one variety of European pears which is a success here. It ripens very early and is the most beautiful pear we can grow here. Ripens perfectly on the tree and has a most excellent flavor. Whatever name it may have had in Germany was forgotten and so Mr. Otto Locke, Sr., who introduced it, named it Summer Beauty. This variety requires rather more attention than Kieffer and Le Conte, and you may have to wait longer for it to bear, but once it bears one is well repaid for the extra work and time.

All of the above varieties we have bearing in our orchards. Take the Palo Alto road out of San Antonio, follow the signs and look them over.

JAPAN PERSIMMONS

2-3 ft. trees 50c each—4-5 ft. trees 75c each

This fine fruit is fast becoming popular with us. It is the sweetest fruit we grow.

We show you a picture of a row of Tane Nashi planted between the rows of pecan and you will note the size these trees are. The largest tree is only 12 years old. Our

persimmons bear heavily every year and we figure that the fruit brings us more per acre than citrus fruit does in the Rio Grande Valley. We find ready sale for all we produce and demand for more. The trees live very long and we can only recommend that more persimmons be planted.



Tane Nashi Persimmon on our grounds at Poteet.

TANE NASHI — (Seedless) Very large fruit, oval shaped. This is one of the very best varieties and sells well.

TAMEPAN—We show a few branches in the picture. Large flat fruit which has a ring around the center. Sweetest of them all.

YEMON—Shaped like a tomato. This is

a very large variety and sells well.

HACHIYA—Large to very large, oblong, conical with a sharp point. Skin reddish yellow. Tree vigorous grower.

TRIUMPH — Its quality is the best, size medium, tomato-shaped; color of skin dark red, handsome and showy, flesh with but few seeds. It is very productive.

PEACHES

Prices—2-3 ft. 20c; 3-4 ft. 25c; 4-5 ft. 30c; 5-6 ft. 50c each.

Dozen price—10% Discount.

100 price—15% Discount.

1000 price—20% Discount.

I.—Ripening Here from May 20 to June 10.

MAYFLOWER—A new variety of extreme early ripening; a late bloomer, and being almost entirely covered with red, it is a good market variety. Tree a strong thrifty grower; size large, nearly round.

DWARF JAPAN BLOOD—Tree of dwarf habit, surest bearer of all the early peaches; fruit is large, pointed; red cheek and end, and sometimes blood-red flesh.

GREENSBORO—Early and large, fine flavor and attractive appearance.

ARP BEAUTY—Size, color and quality the same as Elberta, but ripens two to three weeks earlier.

TRIUMPH—“The earliest yellow peach.” A perfect freestone; of excellent quality. A good keeper, very prolific.

HONEY—The sweetest of all peaches, good eating peach but poor preserver, and about the surest bearer. Late frosts have never killed the young fruit here.

MAMIE ROSS—Fruit very large, nearly covered with a delicate carmine, flesh white juicy and of good quality; a regular and prolific bearer.

BOKARA—The hardiest peach known. It is of fine quality and a good bearer. Does remarkably well here.

II.—Ripening June 20 to August 31.

PALLAS — Large, flesh white, melting with a rich, vinous aroma; profuse annual bearer; as sweet as Honey peach.

CARMAN—A large, white free-stone with red cheeks. Fine flavor; rippens July 5.

EARLY BELL—Very large; skin white, with red cheeks; flesh white, firm and excellent flavor.

LEONA — Best yellow free stone peach, ripens week earlier than Elberta, large, good grower.

J. H. HALE — Huge; beautiful golden yellow; freestone; solid; delicious; round as a ball; great shipper.

ELBERTA — The peach that everyone knows. A large yellow free-stone, red to the pit. The peach for the market.



SALISBURY PEACH—Originated some 20 years ago from seed planted by Mrs. A. Salisbury, in her back yard at No. 602 Burselon Street, San Antonio, Texas, where a member of this firm first admired it some 15 years ago. At that time we secured some budding wood and budded about 20 trees which were planted in the orchard now on our place near Poteet. There these trees have been bearing heavily ever since and have never failed us in a single year. We have thus had ample opportunity to observe this peach closely and we are today of the opinion that it is the only late peach that need be planted in this part of Texas.

There is no peach more beautiful, none larger (except Chinese Cl.) none known to us that bears so abundantly and as regularly as the Salisbury Peach. It is a very late bloomer, a characteristic not expected of a late ripening peach. The fruit is very beauti-

fully shaped, of a rich yellow color and highly colored red cheeks. Flesh is deep yellow, firm, juicy and sweet. Pit round and extremely small. Around the pit the meat is deep crimson color. While this is a good eating peach when fully ripe, it is a fine pickling peach while still hard and the finest of all preserving and canning peaches. None to equal it in color, flavor and keeping qualities. One tree of Salisbury is worth more than a dozen of any other late variety. Especially do we recommend it for planting in the city where water is plentiful.

At all fairs where we have exhibited the Salisbury Peach it has taken first prize and when we exhibited two plates, it took first and second. No other late peach can compete with this one.

After filling orders we have booked for trees of this variety we will only sell one tree to a customer. Price \$1.00 each.



Our Fig trees are strong and healthy.

CARPENTER—Cling, July 8. Medium size, light color, regular heavy bearer. This is one of the few peaches that is entirely successful from extreme southern Texas to Oklahoma. Delicious flavor, and best of shipping qualities.

BEST JUNE—Freestone June 28. Light color, red cheek. Fruit large, most delicious. Regular and prolific bearer. A prize for Central and South Texas.

SMITH—Freestone July 10. Surest bearer we know. For regular and abundant bearing and for deliciously sweet fruit, I know nothing which equals it.

AUGBERT—Yellow, resembling Elberta; ripening later; more prolific and fruit is of highest quality.

OLD MIXON CLING—The juiciest and best flavored white cling-stone peach; of very large size and best bearing qualities.

HERO—The tree grows to a very large size and produces beautifully colored, white fleshed juicy clingstone peaches in great abundance; sure to bear every year; flowers very resistant against frost.

CHINESE CLING — Spreading habit; healthy; not very prolific; flesh white with little red at seed; tender, very juicy; the largest peach in cultivation.

INDIAN CLING OR BLOOD CLING — Red inside, ripens in August, bears regular.

III.—Ripening from September into October
Only one late variety worth planting and that is the "SALSIBURY."

FIGS

Price 25c each.

Dozen price—10% Discount.

100 price—15% Discount.

1000 price—20% Discount.

GREEN ISCHIA — Green; medium size; of excellent quality.

MAGNOLIA — Large; rich fruit, yellowish brown. Hardy here. Small one-year trees bear fruit first summer.

BROWN TURKEY—Medium, brown, very sweet and excellent; very prolific and hardy. The most reliable fig for open field culture.

CELESTIAL — Small pale violet; very sweet; prolific, hardy.

PLUMS

Prices—2-3 ft. 25c; 3-4 ft. 35c; 5-6 ft. 50c.

Dozen price—10% Discount.

100 price—15% Discount.

1000 price—20% Discount.

METHLEY—The earliest and best flavored plum we grow. Ripens May 10th. Color blueish red and meat blood red. Fruit sells for \$3.50 bushel on market when other plums bring only \$1.00.

McCARTNEY—Originated in Texas. Egg-shaped, golden yellow color; enormous bearer.

SHIRO—Rank grower, enormously productive; fruit will keep a month, and is so transparent the pit can be seen through the flesh; apple-shaped; the earliest of all Japanese plums.

GONZALES—A cross between the American and Japanese plum. The fruit is large, it is sweet and juicy and will keep for a week after ripening. It ripens the middle of June.

HAPPINESS—A new hybrid. The fruit is very large, color glowing red, and good quality. It is really the most productive of all plums.

NONA—Large, oblong, red cheeks; heavy bearer; meat yellow and very sweet, ripens in July; tree a healthy grower and long lived.

GOLD—Medium sized round plum. Meat firm; good shipper; bright golden yellow color.

BARTLETT—Has the quality and flavor of the Bartlett pear. Fruit turns a deep crimson when fully ripe, light salmon colored flesh. Tree has a beautiful upright growth.

SWEET BOTAN—Japanese; one of the finest and oldest varieties. Red with yellow meat and sweet.

WICKSON—Japanese; tree grows upright. Fruit changes to white when about half grown, a few days before ripening, when it changes to a glowing carmine, and will keep two weeks after ripening.

THE SANTA ROSA—Quality of fruit is unequalled. Plums are a deep purplish crimson, each fruit averaging 6 inches in circumference each way. Ripens a week before Climax and two weeks earlier than the Burbank. Tree is strong, vigorous, upright grower.

BURBANK—Japanese; named after the introducer of this and most of the other good plums. The best bearing variety we have. When fully ripe the fruit is deliciously sweet.

SATSUMA—A large and well flavored plum with blood red flesh, skin bluish red, pit is very small; a very good bearer.

BRUCE—June 5. Large red, productive. A hybrid. One of the best plums. Extensively planted for market.

MULBERRIES

(for those who like them, we prefer pecan)

5-6 ft. 25c each; 6-8 ft. 40c each.

Dozen price—10% Discount.

100 price—15% Discount.

1000 price—20% Discount.

HICK'S EVERBEARING—Profuse; ripens fruit for three months, fine grower for shade and suited for the fowl yard.

RUSSIAN—The tree is very hardy and long-lived, and grows rapidly to a beautiful round shape. The fruit is small and does not drop from the tree when ripe; some trees do not produce fruit at all.

ENGLISH—A very quick growing mulberry, with very large and well shaped leaves. The fruit is large and black of color; stem is very straight, and can be topped at any desirable height.

POMEGRANATES

Price—50c each.

OLD FAVORITE—Is the best of all the fruiting pomegranates. Refreshing and sweet.

DWARF EVERGREEN—Very ornamental.

CITRUS FRUITS

Prices 75c each.

Dozen price—10% Discount.

100 price—15% Discount.

1000 price—20% Discount.

SATSUMA ORANGE—Best hardy variety.

MARSH SEEDLESS GRAPEFRUIT—This is about the best of all Texas Grape Fruits and we grow only this variety.

LEMON — NEW WONDER—The best lemon to plant here.

KUMQUAT—This is the smallest edible citrus fruit. It is a very beautiful tree and bears heavily. The fruit is of the size and shape of a pigeon egg and is eaten, skin and all, just as it is picked off the tree.

APRICOTS

Prices—3-4 ft. 35c each; 5-6 ft. 50c each.

Dozen price—10% Discount.

100 price—15% Discount.

1000 price—20% Discount.

Unless you know that apricots bear well in your section do not plant extensively.

ROYAL—Fruit large, oval; color of fruit dull yellow, tinted red on sunny side. Flesh

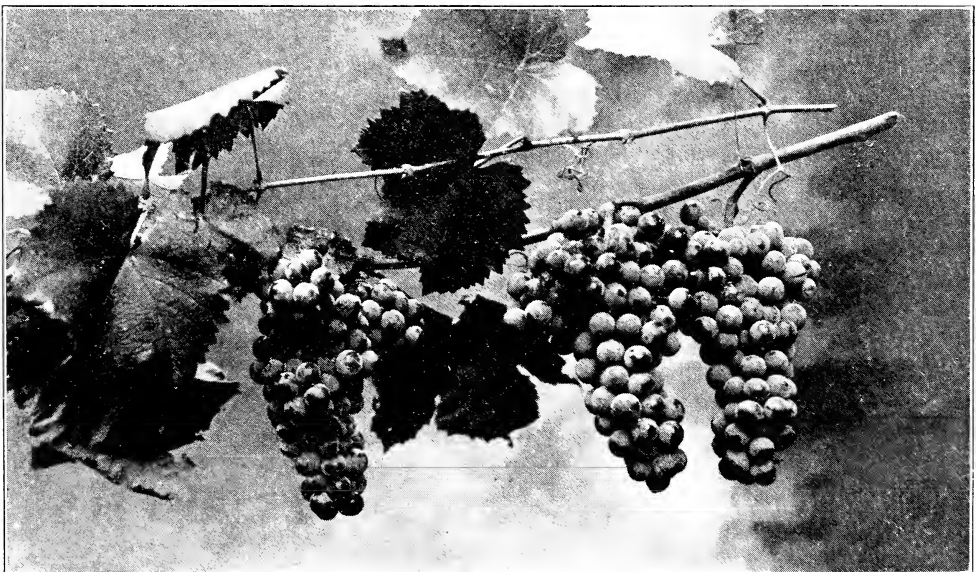
pale orange yellow, juicy, rich and vineous. Ripens in June.

MOORPARK—one of the largest varieties. Some consider it the best of all. Ripens in June.

CLUSTER—This tree bears heavily every year and ripens a large yellow fruit in May.



Edna Grapes in our Poteet Vineyard, 1928.



Muensch as we grow them at Poteet.

QUINCES

50c each.

Dozen price—10% Discount.

100 price—15% Discount.

1000 price—20% Discount.

ORANGE—The name describes the looks

of the fruit. Flesh is yellow, fine texture juicy and well flavored.

CHAMPION—Again the name means much. It might well be the champion anywhere. Cooks as tender as an apple and has a delicate flavor which it imparts to any other fruit that it is cooked with.

APPLES

Prices—3-4 ft. 35c each; 5-6 ft. 50c each.

Dozen price—10% Discount.

100 price—15% Discount.

1000 price—20% Discount.

Outside of a few varieties of crab apples, we have only a few apple trees in our own orchard and we do not grow any young trees. We will sell you apple trees, however, if you wish to plant a few. The trees we sell have been grown by nurseries in the apple country and we will list a few varieties

below which are about the best for Southwest Texas.

RED JUNE—Tree slow grower but bears young. Small to medium size fruit; bright red; tart and good for table use.

DELICIOUS—Most every one is familiar with this beautiful and really delicious apple. It is a vigorous grower and does well wherever apples grow.

BLACK TWIG—Large bright yellow shaded red. Good quality.

CRAB APPLES

Prices same as Apples.

TRANSCEDENT—An attractive yellow with red. Bears early and well thereafter.

HYSLOP—A bright red variety, very fine for preserves and jelly.

BERRIES

We have all of these berries growing and fruiting on our place at Poteet and invite you to come and visit us in the early Spring

when you can see the bearing plants and make your selection.

BLACKBERRIES

COREY THORNLESS—Profuse bearer and easy to pick. 10c each, \$1.00 per dozen.

DALLAS—The best blackberry for this section. Grows canes 5 feet long and bears

very profusely. 50c per dozen plants.

McDONALD BERRY—The link between blackberry and Dewberry. Large, juicy and of fine quality. 50c per dozen.

DEWBERRIES

AUSTIN'S THORNLESS—Large even sized berries, fine for shipping. It is all the name implies. \$1.00 per dozen.

MAYE'S—This is the first of the real good varieties and still holds its own. 50c per dozen plants.

STRAWBERRIES

Poteet, where we have our nurseries, is the place which ships 90% of all the strawberries which are shipped to northern markets from West Texas. We have 85 acres on our own grounds planted to strawberries. There is one variety which we

consider the best and it is called there the **MISSIONARY** variety. Of these we can supply plants in any quantity from the first of September to the first of March at 10c per dozen, 50c per 100, \$3.00 per 1000 and at \$2.50 when desired in 100,000 lots.

GRAPES

Price 15c each.

Dozen price—10% Discount.

100 price—15% Discount.

1000 price—20% Discount.

All of our plants are being grown from our own bearing vineyards; come and see them in June and first part of July and taste them yourself.

This list contains the best and most successful.

MUENCH—Vine, very vigorous and free from all diseases; clusters large to very large; purplish black; sells readily in the market; fine for table.

ELLEN SCOTT—Vine beautiful, healthy,

prolific; clusters large to very large, conical; berry large, translucent, violet covered with a delicate bloom; skin thin and tough; pulp tender, very juicy and pure; high quality.

EDNA—Finest white grape for Texas. No vineyard complete without this wonderful white grape. Very hardy one year plants.

BRILLIANT GRAPE—Growth strong. Clusters large, cylindrical, or somewhat conical; berries large, light to dark red, translucent, with a thin bloom; skin thin, pulp meaty yet very tender, melting and delicious.

JACQUES—(Black Spanish, Le Noir Blue French); berry small; large clusters; black; red wine.



6 Acres of Carmen Grapes on our grounds at Poteet.

HERBEMONT — (McKee, Bottsi, Brown French.) Small; large clusters; purple; finest quality; table, wine; best old grape in Southwest Texas.

THOMPSON SEEDLESS GRAPES — 2-year; strong. 25c each, \$2.50 per dozen.

R. W. MUNSON—Very early; strong. clusters medium to large, cylindrical often

shouldered; berries black; pulp tender, juicy, very fine quality; good wine grape.

MUSTANG GRAPE—1 year from seeds, 5 cents each, 50 cents per dozen, \$4.00 per 100, \$25.00 per 1000.

CARMEN — Dark brown, sweet, large, compact clusters. Good seller as table grape.

SHADE AND ORNAMENTAL TREES

We list a number of different kinds of shade trees but recommend planting only Pecan trees for that purpose

Dozen price—10% Discount.

100 price—15% Discount.

1000 price—20% Discount.

UMBRELLA CHINA—The densest shade we can produce through a tree we get from planting the Umbrella China. It has dark green leaves and grows into a beautiful shape without pruning the tree; 3 to 4 feet trees 25c each and large branched trees 5 to 6 feet high we sell at 50c each.

SILVER LEAF POPLAR—This is a beautiful tree, the leaves are silvery white on the under side and a bright green on the upper side. Not suited for lawn planting as the tree sprouts from the roots. 5 to 6 feet, 35c each.

CAROLINA POPLAR—A hardy tree suited well for street and avenue planting. 6 feet and over, 50c each.

AMERICAN ASH — This grows into a shapely and stately tree within a few years, is very hardy and lives long. Price, 6 feet and up 50c each.

JUDAS TREE—Also called redbud. Slow grower and does not grow to a very large size. Makes a fine lawn tree and especially attractive in early Spring when it is the first tree to bloom and is entirely covered with purple flowers which remain for about two weeks. 4 to 6 feet from 40c to 50c each.

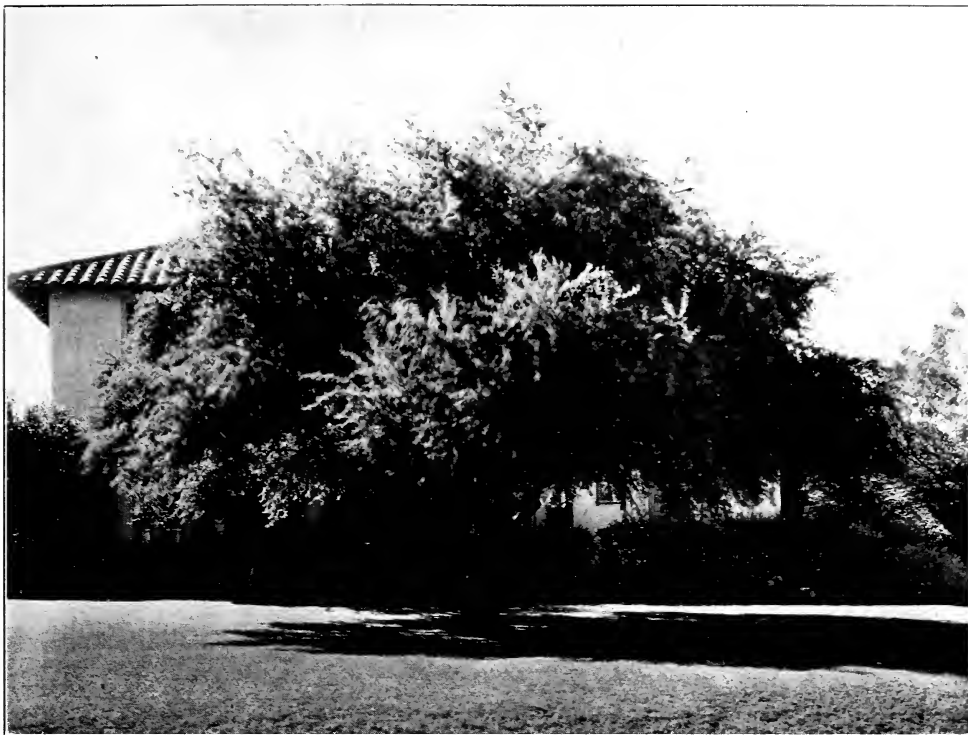
SYCAMORE — One of our native Texas

trees. Grows to great size and is fine for street planting. For lawn planting not desirable for it sheds leaves during the greater part of the summer. 6 to 8 feet, branched trees, 75c each.

HUISACHE — The most beautiful native lawn tree. In the early Spring the tree is entirely covered with its golden yellow flower balls the fragrance of which fills the air for blocks around a single tree. The foliage is delicate, feathery; fernlike leaves of bluish green. We have grown a fine lot of these trees from seed in our nursery and offer these nursery grown trees, two years old and about 5 feet high at 50c each.

CHINESE ELM—The fastest growing elm we have. Especially is it valued for street planting. 5-6 ft. \$1.00 each; 7-8 ft. \$1.50 each; 10 ft. \$2.00 each.

JAPAN VARNISH TREE—This is not a widely known tree, never has been fully appreciated by the public for that reason. We think it is the best looking shade tree we have, outside of pecan, which always looks better to us than any other. The Varnish Tree has a smooth stem and limbs of green color and always appears to be varnished, which peculiarity gives it the name. Leaves are very large, larger and more beautiful than the catalpa. Bears large clusters of straw colored flowers. 4 to 5 feet trees 50c each. 6 to 8 feet \$1.00 each.



Huisache in San Antonio, Texas.

EVERGREENS

ARBORVITAE

Dozen price—10% Discount.

100 price—15% Discount.

1000 price—20% Discount.

BONITA — This, the most beautifully shaped of all the arborvitae; originated in the Comal Springs nursery, when all of these three brothers were still living there. It was a dwarf and stood four years in the nursery rows and could not be sold because of its size. When it was noticed that the small tree developed into a strikingly beautiful specimen it was taken from the nursery and transplanted, by one of these brothers, on to the private grounds where it developed into the most beautiful evergreen we have ever known. From this tree cuttings were later sent to greenhouses and it was found that they could be grown successfully from cuttings, thus making it possible to grow exact duplicates of the old plant in any quantity. Today it is found in every Southern nursery. The tree grows, without trimming, into a perfect globe. Foliage is dark green and arranged almost like the leaves in a book. Balled plants from 12 to 18 inches \$1.50. Large plants up to \$2.00 and \$2.50.

GOLDEN — Green with a golden tint, grows compact and coneshape. Balled \$1.00 per foot.

BERKMAN'S AUREA NANA — Same as above, only a dwarf form, very beautiful. Balled, \$1.00 per foot.

GOLDEN PYRAMIDAL—Same as Golden except that it grows more slender. Balled, \$1.00 per foot.

COMPACTA — The same as Bonita, but grows much faster and larger. Balled, \$1.00 per foot.

SEEDLINGS — For windbreaks, Chinese, Compacta, etc., make very pretty evergreens but there is no assurance that the trees will not become straggly and homely looking in later years. These we sell at 25c each for a good sized plant, not balled.

CYPRESS

ARIZONA CYPRESS—A blue green handsome and fast growing tree. Potted plants at \$1.00 per foot.

ITALIAN CYPRESS—*Pyramidalis* — The handsomest of all cypress trees. It grows tall and straight and compact, has dark green foliage and is used at corners in foundation planting. Potted plants at \$1.00 a foot.

ITALIAN CYPRESS — *Horizontalis* — Same as above with exception of its branches growing horizontally from the stem, thus giving it the appearance of a cedar. Potted plants at \$1.00 per foot.



The Majestic "Cedrus Deodora" on grounds surrounding the magnificent Otto Koehler home in San Antonio, Texas

TAMARIX OR SALT CEDAR

Dozen price—10% Discount.

100 price—15% Discount.

1000 price—20% Discount.

This can not be classed as a shrub nor as a tree. A very beautiful willowy plant with feathery leaves. It is also well suited for hedge and will stand considerable drought. We have several varieties of salt cedars. Price, 4 to 5 ft. 35c each. For hedges, smaller trees at \$10.00 per 100.

ODESSEANA—Neat grayish foliage. Rose colored flowers in great profusion.

AFRICANA—Upright growth—small pink flowers on long stems.

CEDARS

Dozen price—10% Discount.

100 price—15% Discount.

1000 price—20% Discount.

CEDRUS DEODORA—A beautiful silver colored cedar of the most strikingly cone

shaped growth. \$1.50 per foot for balled trees. See picture.

RED CEDAR—A fast growing handsome cedar with dark green foliage. \$1.00 per foot, balled.

WHITE MOUNTAIN CEDAR— This is the cedar which grows in the hills of the Edward's Plateau. It is used extensively for Christmas trees. Balled at \$1.00 per foot.

JUNIPERS

PROSTRATE JUNIPER— Dwarf, compact, trailing habit. Is used at the margin of grouped evergreens. \$2.50 for trees one foot high, balled. Specimens higher.

IRISH JUNIPER—Slow growing dwarf. Horizontal graceful branches. Balled \$1.00 foot.

SPINEYGREEK— Very slow upright growth, dwarf, compact, conical. 1 ft. high \$2.50 each.

PFITZER—Horizontal graceful branches of bluish green color. 1 ft. high \$2.50 each.

CHINESE JUNIPER — Shiny, silvery, short and compact foliage. Branches trail right on the ground. \$1.50 per foot for balled trees.

LIGUSTRUMS

LUCIDUM — This evergreen is the one most generally used for foundation planting. It has large, thick, glossy leaves. Balled plants from \$1.00 to \$2.00 each. Bare rooted at half price.

JAPONICUM—Used for hedge, foundation planting and also as individual park tree. In June it bears large clusters of fragrant white flowers and in the Fall and Winter these flowers have transformed into beautiful dark blueish berries which resemble clusters of small grapes. 3 to 4 feet, bushes at 50c each. Single stem trees with tops, 5 to 6 feet. \$1.00 each.

ALBOMARGINATUM — Same as above except that leaves are green near center and the margin is marked with pale green splotches. Balled 2 feet, \$2.00 each.

AMOR RIVER—This is the small leaf variety. Very fine for hedges and also for foundation planting. 3 to 4 ft. each 75c. When desired for hedges. 2 to 3 ft. \$10.00 per 100.

CALIFORNIA—Most commonly used for hedging. We can furnish this at 10c per plant and for less when quantities are desired. Please state number desired and we quote special price. You need about as many plants as you have feet of hedging.

PITTOSPORUM

P. TOBIRA—A very handsome compact growing shrub which is used for foundation planting and also in group planting on lawn. Has a very glossy green leaf and grows perfectly round. Potted plants at \$1.50 per foot.

P. T. VARIEGATUM — Same as above with white spots on leaf. \$2.00 per foot. Potted.

PHOTINIA

P. DENTATA — A hardy plant growing upright and sturdy. Leaves glossy slightly spiny and somewhat crinkled at edge. Round growth, colors highly. Potted \$1.00 foot.

P. SERRULATA — Same as above, but leaves not spiny and plants not as compact. Potted \$1.00 foot.

EUONIMUS

E. JAPONICA — One of the finest evergreens. Has a large green leaf and grows compact and very rapid. Balled \$1.00 per foot. Not balled, 25c per foot.

E. ALBO MARGINATUS—Same as above, with exception that leaves have a broad silver margin. \$1.00 per foot, balled.

E. AUREA VARIEGATUS — Same as above with a gold margin instead of silver. \$1.00 per foot, for potted plants.

E. NANUS PULCHILLUS — This is the dwarf Euonimus. Pot plants 25c each.

GOLD SPOT—Dark green leaf with gold centre. Very handsome. \$1.00 per foot balled.



1—Nandina. 2—Medlar. 3—Pittosporum. 4—Monterrey Cypress.

BOXWOOD

B. ARBOREA—English tree box—This is the well known Buxus used for hedging. 50c each, \$5.00 per dozen.

B. SEMPERVIRENS SUFRUTICOSA—True Dwarf Box which is used for a border plant. Balled at \$1.00 per foot. Does not grow much taller than a foot.

JAPAN (Plum) MEDLAR

This is one of the handsomest of large leaf evergreens. It grows into quite a good sized tree. The Medlar blooms in the Fall and in winters when we have no severe cold spells it ripens its yellow plums in the month of February. Potted plants at \$1.00 per foot.

CAPE JASMINE

The sweetest flower of them all. Does best in a sandy soil but will grow well and flower in our heavier soils. Has a particularly glossy leaf and pure white, large, double and very fragrant flowers. Potted at \$1.00 per foot. Not balled 45c each.

JASMINE HUMILE — The Italian Jasmine. Very hardy and dark green leaves.

Yellow flowers. \$1.00 per foot for potted plants.

LAVENDER

LAVENDULA VERA OR TRUE LAVENDER—Dwarf round form with silver foliage. \$1.00 per foot.

CEDONIA JAPONICA

Scarlet Flowering Quince

A shrub of striking appearance. In the early Spring when the plant is covered with its intensely colored scarlet flowers it stands out above every other plant in the garden. 35c each.

COTONEASTER PANOSA

Foliage oft grey-green; flowers white, laden with red berries in Winter. Very graceful plant. \$1.00 per foot balled.

FEIJOA SELLOWIANA OR PINEAPPLE GUAVA

Leaves silvery green with whitish velvety growth on under sides. Flowers purplish crimson. Greenish egg-shaped fruit with pineapple flavor. Bush spreads something like Ligustrum Lucidum. Price \$1.00 per foot, balled.



Sabal Palmetto in San Pedro Park, San Antonio, Texas.

CHERRY LAUREL

LAUROCERASUS CAROLINEANA — A very compact dark green evergreen. Balled at \$1.00 per foot.

L. OFFICIALIS — English cherry laurel, at \$1.00 per foot for balled plants.

MAGNOLIA

MAGNOLIA GRANDIFLORA—The great Magnolia of the South. Broad Glossy leaves and immense fragrant flowers. 2 to 3 foot. 75c. 3 to 5 foot \$1.20 each.

HARDY PALMS

SABAL PALMETTO — The hardiest of them all. A slow grower. Fan shaped leaves. Balled at 50c a foot.

WASHINGTONIA FILIFERA—The fast growing fan palm. Leaves very large and have white strings hanging from the edges. Balled at 50c a foot.

COCOS AUSTRALIS — Pinnate grayish green leaves beautifully arched and curved. \$1.00 per foot, balled.

DATE PALM — This is the ornamental variety, not the one which bears the edible dates. Quick growing and attains great size. Price \$1.00 per foot, balled.

SHRUBS**LILACS**

35c each

PURPLE LILAC — Everyone knows this fragrant flower.

WHITE LILAC—Flowers double.

RED PERSIAN LILAC—Profuse bloomer.

SUMMER LILAC (*Buddleia Lindleyana*) — Blooms all summer, each new twig producing a cones shaped skipe of violet color and extremely fragrant. 50c each.

TEXAS ASH PLANT

(*Leucophyllum Texanum*)

This is one of the handsomest shrubs we have. It is a native of Western Texas and Northern Mexico, where it thrives on the poorest and driest of hills. The plant has a beautiful ashen grey leaf, is evergreen and during the Summer, after every shower, produces a profusion of lilac flowers. A member of our firm was the first to grow these plants from seed and sold his first plants to the city of San Antonio in the year 1902. All of these were planted in Crockett Park, where they still grow and bloom every year. Potted plants from \$1.50 to \$2.00 each.

CREPE MYRTLES

This is the South's most showy flowering shrub. From May to October the great plumes of bright colored flowers may be seen most anywhere. We have all four colors, viz: **PURPLE, CRIMSON, PINK** and **WHITE** and can supply large plants, 2 to 3 ft. high, of any desired color or colors, we will furnish to our customers at 35c each, or 2 years old 50c each.

**SPIREA
(Bridal Wreath)**

VAN HOUTTEI — Its drooping branches cover themselves entirely with snowy white flowers in the spring time. 25c each.

ANTHONY WATERER — This is very different in habit from Van Houttei. Its rich red flowers are borne in large clusters on upright stems. 40c each.

BUSH HONEYSUCKLE

ALBA—Creamy white flowers, very fragrant. 25c each.

MORROWII — Handsome white flower. Blooms in May and is covered with bright red berries in Fall. 25c each.

RED—Has pink flowers. 25c each.

NANDINA

A beautiful shrub which has a number of upright canes from 2 to 4 feet high, beautiful leaves which at times turn brown and red and bears large clusters of red berries on top of canes.

Pot grown plants from 50c to \$2.00 for specimens.

FLOWERING WILLOW

This is one of our profuse blooming desert plants. It has purple flowers borne in clusters. Will grow with little care most anywhere. 25c each.

Abelia Grandiflora

This has become one of the most popular evergreens. It has a small glossy green leaf and on the end of each twig a cluster of flower buds forms in early Summer and on each cluster a few flowers will open every day during the entire Summer, thus the plant is always in bloom. The flowers are white, trumpet shaped and about an inch long. Balled plants of good size \$1.00 each. Bare rooted—50c each.

ALTHEAS

2 to 3 ft. 25c each

BALL OF FIRE—A fine double red rarity.

DUCHESS DE BRABAND—White with red center. Double.

LADY STANLEY—Large double pink.

TOTA ALBA — Single White. Flowers very large and blooms early.

LUCY—Large double red flowers.

JOAN D'ARC — The nearest pure white double althea.

NEW BANNER—Flowers as large as a rose, clear rosy pink, striped crimson.

PRINCESS LOUISE.

HARDY HIBISCUS

These flowers are of enormous size, gorgeously beautiful and bloom most profusely. There is no flowering shrub you can plant that attracts the attention of the passerby as does this. We have three colors, WHITE, PINK and CRIMSON. Price for a large sized field grown bush, 50c each.

LANTANAS

WEeping LANTANA—Plant a few of these at the edge of your shrubbery and have a carpet of very beautiful, delicate, clear, brilliant rosy-lilac flowers during the entire Spring, Summer and Fall and in our climate even throughout most of the Winter this plant spends its profusion of color. 35 cents each.

PINK BEAUTY—Color rose, with yellow centre. 35 cents each.

SUNSET—Flowers deep orange red, changes to crimson. 35c each.

ALBA PERFECTA—As the name states, perfect white. 35c each.

A. COOK—This is a dwarf variety. Flowers open yellow and change to bright rose. 35c each.

ORNAMENTAL POMEGRANATE DWARF—A beautiful flowering shrub. Buds and open flowers scarlet crimson in color. Bears a red fruit, very ornamental. Price 50c each.

OLEANDERS—We have grown all colors, single and double, of this well known flower and will be glad to furnish any color desired at 25c each.

FRENCH — HYDRANGEAS—Latest varieties \$1.50 each. H. Hortensis at 75c each.

ROSES

No need of a flowery introduction; you have met them before.



Francis Scott Key

Strong field grown, grafted. 1 year old, 25c each, except where otherwise noted; 2 year old, extra strong, 35c each; 3 year old, extra strong, 50c each.

Dozen price—10% Discount.

100 price—15% Discount.

1000 price—20% Discount.

CRIMSON AND RED

ALBERT PIKE—Handsome buds, expanding into full well shaped flower of cupped form. Every flower carried erect on fine strong stems. The color is a lovely clear cerise, rich and glowing, and peach flush at times.

CHARLES K. DOUGLAS—Flaming scarlet, flushed velvety crimson, sweetly scented. Vigorous, upright grower.

AMERICAN BEAUTY—Hardy rose of largest size, brilliant red, shading to a rich carmine crimson. The flowers are borne on long, stiff stems, hence a splendid rose for cutting.

CRIMSON QUEEN—A beautiful crimson hybrid Tea; a fine grower with broad, beautiful foliage.

CRUSADER—A Wonderful Crimson — A big strong-growing variety, robust and rugged in every characteristic. The growth is heavy and the flower stems are strong and heavy, producing very little blind wood. It is free-growing and free-flowering, and, in color, a rich, velvety crimson.

DARDANELLE—Well shaped buds of cherry red, grand in size, the expanded flowers changing to a pretty shade of cherry rose, sweetly scented.

ETOILE DE FRANCE (Hybrid Tea)—A very strong, vigorous grower, with handsome green-bronze foliage and exceedingly free flowering. The flowers are very large and borne on long, stiff stems. Color, a clear red crimson velvet. Very fragrant and keeps well.

HELEN GOULD—An incessant grower and bloomer. Long, beautiful buds and full, double flowers of warm, rosy-crimson, resembling a red ripe watermelon.

FRANCIS SCOTT KEY—Named in honor of the writer of the Star Spangled Banner—the new American rose, Francis Scott Key. Dazzling crimson globular rose of gigantic size. The rose is deliciously perfumed, strong, vigorous, free branching with large and handsome foliage.

FREDERICK VON MARSHALL—Magnificent crimson-scarlet Hybrid Tea Rose with long and pointed buds; deliciously fragrant. Wonderfully strong growing and hardy.

GENERAL McARTHUR—A grand, ever-blooming crimson scarlet rose. In all the rose family we know of nothing that can compare with this in dazzling color, fragrance of flower and profusion of bloom. It makes a strong, stately plant that may be depended upon for strong flower shoots.

HADLEY—The color is magnificent, rich velvety-crimson, retaining its brilliancy throughout the season. The fragrance is delightful and refreshing. The flowers are borne on long stems and keep in good condition a long time when cut. The growth is splendid, sturdy and healthy, the foliage large and abundant.

IDEAL—Color a rich garnet red, flowers

are semi-double, comes in great heads of thirty or more, and is one of the best roses for out-door culture.

LARENT CARLE—A beautiful Rose, with extra large, handsomely formed, rich velvety carmine buds and flowers. It is a phenomenally strong and robust grower, hardy in every locality and continually in bloom.

LE PONCEAU—Garnet or mahogany-red, the darkest of the Polyanthas; vigorous growth, flowering in corymbs.

LORD CHARLEMONT—Clear crimson to carmine crimson, perfectly shaped, large and full; very sweetly scented.

MAD JULES GROLETZ (Red Kaiserin Augusta)—The color is a distinct and charming shade of cherry-red. The fine form and attractive shape of the old white Kaiserin makes them excellent for cutting.

METEOR—A very velvety red everbloomer of the deepest glowing crimson, as fine as a hybrid. Flower very double and petals slightly recurving. A beautiful open rose.

QUEEN'S SCARLET—Very best all red Roses for bedding. Entirely hardy. The flowers are fiery scarlet. A bed of these Roses produces a mass of red equal to a bed of Geraniums.

SERGE BASSETT—Buds long and pointed on stout stems, opening full and double, each one coming to perfection, and produced in marvelous profusion throughout the entire season. Its color is a deep crimson overlaid with velvety crimson, shading to vermilion toward the edges.

VICTOR—A sweetly fragrant Rose, having fine bronzy foliage, with long, finely shaped buds. The flowers are large, full and globular, an dare carried well above the foliage upon rigid and strong stems. The color is a deep rose and carmine, edges of petals carmine-like.

RED RADIANCE—Same rank grower as Radiance, bright red color flowers, double, borne on long stiff stems; one of the finest for cut flowers.

RHEA REID—One of the Very Best Red Bedding Roses. Rhea Reid is as fragrant as a Rose can be; has good sized flowers and blooms continuously. The bud, when first opening, is the brightest crimson scarlet and the flower retains this perfect coloring until it drops its petals.

ROYAL RED—A very distinct red Rose of enormous size and magnificent growth. In the bud and half open stage the coloring is magnificent, scarlet red with almost black shading. The fully expanded flower is of great size, but lighter in color. The flowers are very full, sweetly scented, with fine foliage, powerful stems, and at its best during summer weather.

WINSOME—It has the most magnificent foliage, a continuous bloomer of deep full double flowers, the beauty of which is nothing short of superb, a deep cherry Rose. Every one wants a hardy everblooming Rose. From early summer until frost it can be depended upon to produce flowers in abundance, making it one of the best garden Roses.

TEMPLAR—Bright velvety crimson. The flowers are quite free with petals of wonderful depth and substance; with its fine

branching habit and ideal growth it makes a fine bush Rose.

MISS C. E. VAN ROSSEN—Flower well formed, velvety red; fragrant. Vigorous grower, bushy.

MADAME EUGENE MARLITT—Heavy leathery foliage like June rose; large, full double crimson flowers of extraordinary beauty and exquisite fragrance.

PINK

ALIDA LOVETTE—The color is a lively bright shell-pink with shadings of rich sulphur at the base of the petals—a combination that is both novel and beautiful. It is very much brighter than those of the justly popular Dr. Van Fleet Rose.

ANTOINE RIVOIRE—Very large, very full, perfect in form. Color flesh tint with orange center and carmine edge.

BRIDESMAID—Has handsome foliage and the flowers are a much livelier pink. The most popular pink rose ever introduced.

CITY OF LITTLE ROCK—A bright rosy-pink or rose-shaded with hydrangea-pink. The buds which open perfectly are long and of ideal form. The growth is vigorous and the flowers are produced profusely. Its pronounced fragrance will attract all Rose lovers.

CATHERINE MERMET—A fine pink rose; a good grower and bloomer; one of the best pink roses.

COLUMBIA—Glowing pink, deepening as it opens; a marvel of freedom in growth and bloom, with long stems, nearly thornless, quite fragrant, lovely in the bud state, and handsome in the full open flower which turns to deep rose.

FRANK W. DUNLOP—Large double rose, like Premier in shape and color; fine cut flower variety. Large foliage, few thorns.

HELEN GOOD—A genuine Cochet, being a sport from Maman Cochet. It is identical in foliage, growth, size and shape of flower, different only in color. It is a delicate pink, fully distinct from Maman Cochet.



Freiherr von Marshall.



Pink Mamam Cochet

HERMOSA — Popular for many years; cup-shaped, finely formed and full flowers of soft, deep pink; ever-blooming, beautiful and hardy.

JONKHERR J. L. MOCK—This beautiful rose quickly found its place among our best bedding varieties. The flowers are of large size and perfect in form, of a deep imperial pink, the outside of the petals silvery rose white; highly perfumed.

JOSEPHINE VESTAL—It might be described as salmon-flesh tinted Rose, with a touch of yellow at the base. Buds of unusual attractiveness, opening full and double, like the old Malmaison, but decidedly brighter; unusually long and beautifully pointed with petals of wonderful depth and substance, retaining their shape longer than most Roses.

KILLARNEY—No rose has attracted so much attention as Killarney. The color is brilliant sparkling pink. The flowers are extra large and full, with broad, thick petals and delightful tea fragrance.

LADY ASHTOWN—Tender rose shading to yellow at base of petals with silvery

LADY URSULA—Color a most beautiful shade of flesh-pink, of great substance and good form; petals large, circular and delicately perfumed.

MADAME PAUL EULER—The color is a lovely shade of deep rose pink, petals waved or undulated on the edges, giving it an elegance of form, seen in no other Rose.

MRS. B. R. CANT—A fine garden variety of even shade of bright rose, round and full, the form of a good H. P. A very free grower and free bloomer.

MADAME SEGOND WEBER—Rosy salmon or flesh pink.

MRS. CYNTHIA FORD — Color a deep brilliant Rose shading on the back of the petals to a light rosy-pink. The flowers are large, full of perfect form and great substance, very free-flowering and fragrant.

WM. R. SMITH — Produces immense

quantities of fine flowers of creamy white with pink shading. Has fine, firm, glossy foliage; long flowering stems.

LA FRANCE—Is exceedingly sweet and handsome, and altogether one of the loveliest and most desirable roses one can plant. The color is a delicate shade of peach blossom, changing to amber rose, elegantly tinged with crimson.

LOS ANGELES—A continuous succession of long-stemmed flowers of a luminous flame pink, toned with coral and shaded with translucent gold at the base of the petals. Buds are long and pointed and expand into a flower of form and ever-increasing wealth of color is maintained from the incipient bud until the last petal drops.

MME CAROLINE TESTOUT—A magnificent hybrid Tea, of the very loveliest shade of pink.

MAMAN COCHET — A magnificent pink rose of the Mermet type. Color very bright, rose with shading of yellow in center.

MALMAISON—The color is a beautiful rich, creamy flesh, with a rose center; flowers very large, perfectly double and deliciously fragrant.

PAUL NEYRON—Deep pink, very large and extra fine rose, and very free bloomer. The rose without thorns.

WELLESLEY—Bright, clear, salmon-rose, reverse of petals silvery-rose; retains the forms of Liberty and the fullness of Bridesmaid, its parents; tall, stiff canes; vigorous, healthy and free.

SOUV. DE PRESIDENT CARNOT—Rosy flesh, shaded white; large, fine form, semi-double.

RADIANCE — A grand rose, with long stems and globular blooms of intense rose pink color; very fragrant. A fine summer variety and the finest of all the out-door pink bedding roses.

YELLOW

ALEXANDER HILL GRAY — The best and largest pure yellow tea rose yet introduced. Its color is a solid deep throughout, Marechal-Neil-Like lemon-yellow; strongly tea scented.

AMELIA GUDE—A unique and charming yellow rose; color of Sunburst, with deeper shadings on the reverse; a true fancy yellow. The blooms have an individual beauty not always found in the big buds of the modern varieties.

AARON WARD—A color that catches the eye at once, copperage, golden orange in the full flower; fine pointed buds.

BABY DOLL OR TIP TOP — Brilliant golden yellow tipped with clear, bright cerise, lovely miniature "Sweetheart" buds and blooms of perfect form and finish, borne in erect panicles of single, deep, glossy green foliage.

SOUVENIR DE PIERRE NOTTING — Seedling of Marechal Niel and Maman Cochet, with beautiful closely-set foliage and strong, sturdy habit of growth. The bloom is very large, perfectly full, of elegant form, has a beautiful long bud. The colors are very bright, distinct and clear, and have no unpleasant tones—orange, yellow, bordered in carmine rose.

ETOILE DE LYON—Many new varieties of yellow roses have been introduced since this was a novelty, but none combine more good qualities than this good old sulphur-yellow rose. Buds are of beautiful shape and flower is very full.

HUGONIS —“Golden Rose of China” — Spectacular in its exotic beauty. A many branched shrub, growing 6 to 8 feet tall, rearing slender sprays in all directions, gracefully arching beneath loads of bright yellow single flowers, an inch and a half in diameter. The flowers are borne on the previous season's growth and appear very early in the spring, before the foliage.

GOLDEN OPHELIA—Similar in habit of growth and freedom to Ophelia but with a pretty golden yellow suffusion.

MABEL DREW — A deep cream in the young state, to intense canary yellow in the center as the flower develops.

MRS. ARTHUR WADDELL—A strong, rampant grower; buds long and pointed; rose scarlet, opening coppery salmon; large and semi-double, but a wonderful keeper. One of the showiest roses extant.

FRANCISCA KRUEGER — The flowers are deeply shaded copper-yellow in color and are of large size. Always in bloom.

HELENE GAMBRIER—Flowers are of a delightful shade of deep, rich yellow, free bloomer.

LUXEMBURG—Grand golden yellow rose, strong grower, heavy foliage; a good rose, rose.

MADAMOISELLE HELENE CAMBIER — Beautiful orange-yellow, coppery at center, shading to almost white at outer edges, with a shade of salmon on reverse side; petals recurve to a point, forming a very full bloom; strong fragrant.

MME CECILE BRUNNER — Synonyms: Mignon and Sweetheart. The tiny pink Polyantha rose, extremely useful in the cut flowers trade.

MME. BUTTERFLY — A harmony of bright pink, apricot and gold. The tight buds are a lovely shade of Indian red, yellow at base. The opening flowers are perfect in form and texture, clear and brilliant in color and of delicious perfume.

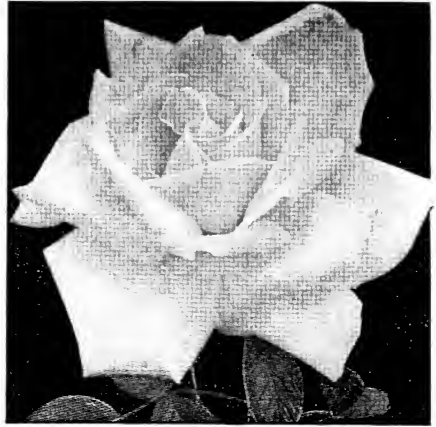
LADY HILLINGTON — The buds are slender and graceful, a deep shade of yellow which does not easily fade.

OPHELIA — Is grown by every wide-awake florist. The queen of fancy roses; orange salmon. It is the most fragrant of forcing varieties, with the full June-rose fragrance.

SUNBURST—This big yellow rose is in a class by itself. It is a fine cut flower variety throughout summer, and is a marvelous keeper, the color being beautiful, whether it comes light or deep orange. Being an all-the-year round rose makes it profitable.

WHITE

CLOTHILDE SOUPERT—The best, biggest and freest blooming of all Polyanthas. Known anywhere. Flowers borne in clusters; free, double and delicious scented. Color white, center flushed silvery rose. Blooms all the time. A grand pot Rose.



Sunburst.

CATHERINE ZEIMET (White Baby Rambler) — This is surely a beauty. It grows to a height of 15 to 20 inches, and produces double pure white flowers in wonderful abundance. It has a fragrance similar to hyacinths. Of free, compact growth and very attractive, a sheet of white and always in bloom.

GLENN DALE—A perfectly hardy and vigorous, but not rampant, climber, with heavy dark green hybrid-tea-like foliage, resistant to black spot and mildew. The lemon-colored buds are long, beautiful, and uniform in shape, like a hybrid tea; borne in cluster of up to 20 flowers on laterals long enough for cutting.

WHITE OPHELIA — Erect habit, faultless form, stiff long stems; handsome bright foliage; pure white; a perfect rose.

KAISERIN AUGUSTA VICTORIA—This still is one of the grandest of all roses. It is a strong, vigorous grower, producing buds and flowers of enormous size. Color pure ivory white.

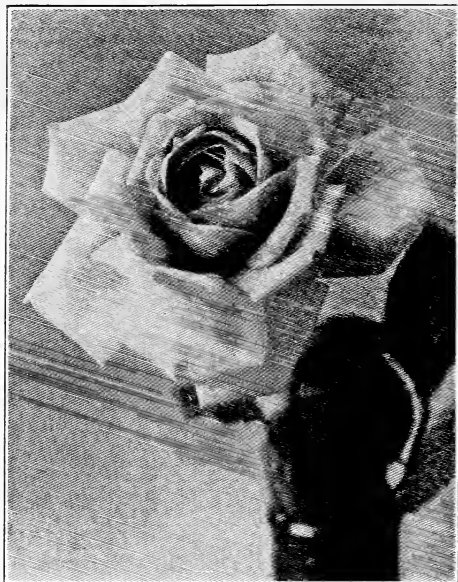
BESSIE BROWN — The color is snow-white, faintly flushed and tinged with pink. A fine, strong free grower, producing long stems.

FRAU KARL DRUSCHKE (White American Beauty) — Form of flower identical with American Beauty. Color clear white, beautiful in bud and half open.

THE BRIDE—This is decidedly a most beautiful white rose. The flowers are very large and double, on stiff stems of fine texture and substance, and last a long time after being cut. During extremely hot weather it becomes a pinkish white; at other times a beautiful pure white.

MRS. MACKELLER — A deep citron or delicate pure canary color. As the large bloom gracefully expand the guard petals charmingly reflex and become pearly primrose-white of great decorative beauty.

WHITE COCHET — The charming new white tea rose. The flowers are of enormous size, round and delicately tea-scented. It is without doubt the largest white rose, both in bud and flower.



Madame Butterfly

MARIE GUILLOT — This beautiful Tea Rose continues in popular favor, and still maintains its position as one of the best white roses of its class; flowers of unusual style, entirely double to the center; very sweet-scented.

CLIMBING ROSES

BESS LOVETTE — Resembles Climbing American Beauty in shape of bloom, but is very much brighter in color and much more fragrant. The flowers are clear bright red, of good size and of double, full, cupped form, lasting a long time in good condition. Beautiful in bud and bloom and the most fragrant of the Climbing Roses.

CLIMBING COLUMBIA—It is identical with the great "Columbia," having all the parent's desirable features and in addition it is a wonderful climber, growing ten to fifteen feet in a single season.

CLIMBING PINK RADIANCE—A Lovely Rose-Pink Color—Very free in growth and production of bloom, has good habit, and the lasting qualities of the flowers are wonderful.

CLIMBING RED RADIANCE—An even better Rose than its parent, Radiance, in habit, bearing big, globular flowers of deep rose-red on strong, individual canes which are freely produced all summer until frost.

CLIMBING RUTH VESTAL — A strong and vigorous grower. Pure snow-white buds, and flowers are of the largest size and perfect form.

CLIMBING SUNBURST — Same as the well known bush. It is strong, vigorous and quite hardy.

"CLIMBING COLUMBIA" — A hardy everblooming pink climbing rose, the latest and most beautiful rose of recent introduction. Grows 10 to 15 feet in a single season. Foliage deep glossy green, immune from disease and insects. Hardy in any location. Blooming with the greatest freedom the entire season. Buds and blooms of immense

size, often measuring six inches in diameter, and perfect formation, borne single on long shoots. Color, clear imperial pink with paler edges, beautifully dark evined; delightfully fragrant.

FREEDOM or Climbing White American Beauty—A hardy disease-resisting variety similar to Kaiserin, but of more vigorous growth and greater freedom of bloom. It is much more double than Silver Moon with but one flower to a stem.

PAUL'S SCARLET CLIMBER — Flowers are scarlet, shaded crimson; large, semi-double. Corresponds with Cl. Am. Beauty, as to size, shape and habit. Blooms very long, holding in flower after many June bloomers have dropped their petals.

CLIMBING AMERICAN BEAUTY — A seedling of American Beauty crossed with Wichuriana. Same size, color and fragrance as American Beauty. A vigorous climber. Profuse bloomer.

CLIMBING HELEN GOULD — Everyone is familiar with this warm-watermelon red grand climber.

CLIMBING ETOILE DE FRANCE — Brilliant red, crimson velvet. Centering to vivid cerise. Identical with Etoile de France, except in its vigorous climbing habit.

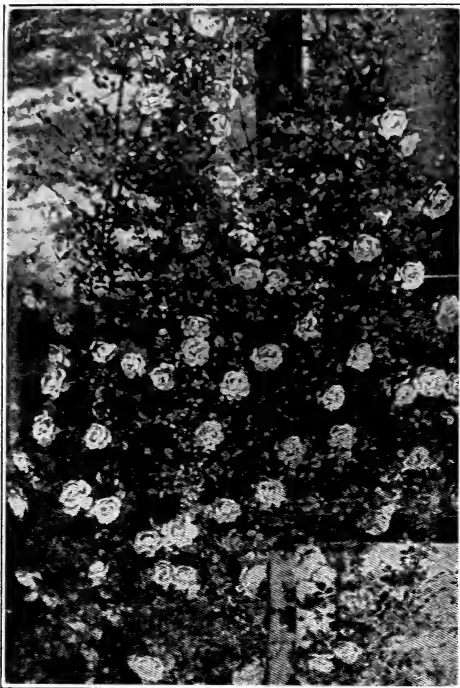
CHRISTINE WRIGHT — This sister to Climbing American Beauty is an equally strong grower, and produces a great burst of large, double wild-rose-pink flowers, borne individually and in cluster.

CLIMBING KAISERIN AUGUSTA VICTORIA — Flowers same as the Kaiserin, which is too generally known to require description here.

CLIMBING METEOR — In color a dark velvety crimson, the equal of any rose in cultivation, and possibly more glowing than its illustrious parent.



Golden Ophelia



Climbing American Beauty

CL. MAMAN COCHET—Same as Maman Cochet a strong pink climber and good bloomer, flowers are double and keep well.

CRIMSON RAMBLER—Rich clusters of bloom form a mass of vivid crimson beauty until late in the season. A native of Japan.

REINE MARIE HENRIETTE—A congenial companion to the Marechal Niel; a sturdy climber and everbloomer, thriving especially well in the South. Elegant in bud, with large full, finely formed flowers of rich brilliant crimson.

DOROTHY PERKINS—Beautiful, hardy pink, blooming in clusters. An extra good climber for the South.

FLOWER OF FAIRCHILD—A counter-except that it shows ever blooming tendencies.

MARECHAL NEIL—Beautiful, deep yellow; very large, full globular form, sweet, free bloomer; the finest climbing rose; two years, budded.

VEILCHENBLAU—The blue rose. Color steelblue or amethyst, sometimes reddish lilac; a seedling of Crimson Rambler, with double florets in fine clusters. The leaves are exceedingly long and slender, with high gloss.

TAUSENDSCHOEN—Soft pink, blooming in clusters. The branches look like large pink ostrich plumes.

YELLOW BANKSIA—Yellow, small flowers; very fragrant. Banksia roses are very hardy.

SOUV. CLAUDIUS PERNET—A "Golden Queen of Roses" for all who have learned to grow it well; foliage like Holly; continues in bloom, wonderful in build, color and size.

DAVID O. DODD—A magnificent rich

crimson, flushed scarlet, with well shaped buds, carried erect and opening into a large beautifully shaped flower. Very free flowering.

ROSARIE—A great improvement on the popular Thousand Beauties (Tausendschon). The color is superior—a deeper and more even shade of cerise-pink or carmine.

ELDORADO—Un-named seedling + Mme. Edouard Herriot. Golden yellow, with the peculiar tint of Marechal Niel, base of the petals slightly tinted red. Large flowers of distinct formation. Free flowering and very fragrant.

CL. SUNBURST—Same as the well-known bush rose. It is strong, vigorous and quite hardy.

NEW ROSES

Prices of newest roses is \$1.00 each

TALISMAN—No rose has ever been produced which has the gorgeous colors of this. The buds are lovely gold and scarlet and open up to a perfectly shaped flower of supreme beauty and delicate fragrance. This is a prize winner wherever it is shown.

E. G. HILL—This is the best red all around garden rose yet introduced. It has the old time real rose fragrance, strong flower stems and is a constant bloomer.

JOANNA HILL—Descended from Mad. Butterfly. The flowers are large and shapely, produced abundantly upon strong stems and of a rich creamy yellow with apricot center.

JOSEPHINE VESTAL—A rose of attractive coloring. Color is so difficult to describe that any description can only be a partial one. It might be described as a salmon-flesh, tinted rose, with a touch of yellow at the base. Its fragrance fills the room. Ranks as one of the best hardy garden roses.

TREE ROSES

In our landscaping work we find that many of our customers do not wish to plant roses in the front yard, because they become bushy and spread over the walks and other places where an unobstructed passage is desired. Often roses are objected to because they grow close to the ground and screen the view of foundation plantings and shrubbery. In many of these cases we have had splendid success with tree roses which produce the branches and flowers several feet above the ground. Tree roses do not require much space and they always give a certain rich effect most anywhere they are used.

The method of propagation is such, however, that entails a much greater expense than the growing of ordinary rose bushes and the plants are therefore more expensive. On account of the high cost of tree roses we only use buds from the very choicest varieties. When desired, two or more varieties may be had on one stem,



Tree Roses

thus producing the effect of a bouquet of roses growing on a tree. The accompanying picture taken in our own yard gives a good idea of how tree roses look when in bloom.

When ordering state colors desired.

Price, with single variety on one stem—\$3.00
Two varieties on one single stem..... 3.50

FLOWERING PLANTS

Dozen price—10% Discount.

100 price—15% Discount.

1000 price—20% Discount.

We grow, from the best seeds obtainable, strong and healthy plants which we will send by mail or express in their proper season.

SWEET WILLIAMS — Mixed colors, 25c per dozen.

SHASTA DAISY—This is the Daisy produced by Luther Burbank, the finest of them all. Large white flowers. 10c each.

GOLDEN GLOW—A plant which grows to four or five feet in height and blooms from July till Frost. Divided bunches, 15c each, \$1.50 per dozen.

TRITOMA—This is an everblooming plant which sends forth peculiar spear-shaped spikes of orange colored flowers. Very attractive and easy to grow. 25c each, \$2.50 per dozen.

BEGONIAS—35c each.

STOCKS—(Seedlings)—25c Doz.

STOCKS—(Double)—25c each, potted.

CARNATIONS—Very finest, mixed colors, 20c dozen.

VIOLETS—Prince of Whales, finest variety known. Price 25c per dozen.

HOLLYHOCKS—Latest and best varieties mixed colors, 10c each, \$1.00 per dozen.

PANSIES — Giant Flowering in mixed colors. 15c dozen.

PHLOX—Mixed colors, from seed 25c per dozen.

PERENNIAL PHLOX—Clumps, 25c each, \$1.50 per dozen.

CHRYSANTHEMUM—10c each, \$1.00 per dozen. Yellow, white, Brown and red. Best for outdoor planting. Hardy. Flowers medium size. Produces masses of blooms in fall.

GERANIUM — We have grown a large number of red, pink and white geraniums which we offer for outdoor planting next Spring. Price 10c each.

MALVAVISCUS DRUMMONDI — This has large broad leaves, purple flowers and produces a small fruit which some people call Mexican Apples. The fruit is sweet and edible. Price 10c each, \$1.00 per dozen.

SALVIA — (Greggii). Native of West Texas. Almost evergreen; 2 to 3 feet. Covered with dark crimson flowers from spring to frost. Of compact growth that is improved by pruning. Hardy everywhere, and suitable for many purposes, especially for low borders and massing. 25c.

CALLICARPA AMERICANA—Also called **FRENCH MULBERRY** — A very beautiful plant which produces long drooping canes which cover themselves completely, with purple berries in the Fall. Very striking. Price 25c each.

CLIMBING VINES

Under this heading we list those vines which quickly ramble over porches, old fences and up trees, not those which cling to or creep over objects.

KUDZU VINE—Large thick green leaves. Grows very quickly and covers most effectively. Has clusters of extremely fragrant flowers. 25c each.

QUEEN'S WREATH (Kaiserkrone)—This is the Mexican Mountain Rose. It is not however a rose, but a quick growing vine, which produces in the Fall of the year great racemes of rose red flowers. Tubers 15c and 25c each.

WHITE QUEEN'S WREATH — potted plants—75c each.

CLEMATIS

CLEMATIS PANICULATA — Beautiful climbing vine with pure white flowers which are borne in great panicles, fairly covering the plant. The delicious fragrance resembles English Hawthorne. 25c each.

CLEMATIS DRUMMONDII—This is the best of our native West Texas Clematis vines. The flowers are white and completely cover the plant. No fragrance, 25c each.

WISTERIA

PURPLE WISTERIA (Senesis) — Quick growing climbing vine which produces in the Spring of the year elegant drooping clusters of purple flowers, 25c each.

WHITE WISTERIA — Same as above with white flowers, 25c each.

HONEYSUCKLES

COCCINEA (Woodbine)—Flowers are red. 25c each.

HALLEANA—Blossoms from May till November, Flowers white and change to cream the second day. Very fragrant and almost evergreen. 25c each.

TRUMPET VINE

RED T. V.—A vine which is used to cover dead trees and old buildings. Has clusters of red flowers. 25c each.

ORANGE—This is a Trumpet Vine which bears great racemes of orange colored flowers many times the size of the ordinary kind. Grafted plants \$1.00 each.

PASSION FLOWER — Blue flowers that have a delicate wheel shaped center—bears edible fruit.

SOLANUM

There are several varieties of the Solanum or Potato Vine. We have only the large flowering kind. The vine is quick growing, has a beautiful green thick leaf somewhat resembling in shape an oak leaf. Produces clusters of blue flowers several feet long and a foot in diameter. The flowers give the effect of baskets of flowers hung into the mass of green foliage. Pot grown plants \$1.00 each.

CLINGING and CREEPING VINES

VINCA

V. EVERGREEN—Dark green foliage, 15c each.

V. VARIEGATA — Green foliage with white borders. 15c each.

V. HARRISSEMII—Shades of green and Gold. 15c each.

IVY

ENGLISH—This is the evergreen variety. Hardy and covers rock and brick walls most completely. Price 25c each.

BOSTON—Grows more rapidly than the English but loses its foliage in the Winter. Price 25c each.

FICUS RIPENS — Clings to walls more firmly than ivy.

CANNAS

The Canna is a very beautiful flower and the newer varieties are truly grand. 15c each. \$1.50 per dozen.

MRS. ALFRED F. CONARD—Pink and salmon.

EUREKA—White.

MOHAWK.

QUEEN HELEN.

ROSEA GIGANTEA—Rose pink.

VENUS.

WYOMING.

APRICOT—The color is buff-yellow base over-spread with salmon pink.

AMBASSADOR — (**Bronze-Leaved President**)—The brilliant rich cherry red flowers are of immense size, growth very vigorous and massive, foliage and stalks bronze.

CUPID—The lively fascinating shade of pale lilac rose is remarkably attractive. Very dwarf.

DRAGON — An incessant bloomer which keeps sending up new bloomstalks until cut down by frost.

ENCHANTRESS — The color on opening is a delicate old rose passing to very delicate rosy salmon.

FIERY CROSS—Large, fine flowers, color vivid crimson, shading to scarlet.

FANAL—Rich crimson, flowered Canna. A splendid dwarf, compact grower.

KING HUBERT—Immense dark bronze

NEW JAP—**Morning Glory**—Color between pink and Lavender—25c each.

VERBENA

Red, White, Pink or Purple. Plants 10c each. \$1.00 per dozen.

ORNAMENTAL GRASSES

BAMBOO—Grows ten to twenty feet high, even on uplands. Large clumps, 50c.

PAMPAS GRASS—Used for grouping on a lawn. The plant itself is very ornamental with its long drooping blades, but in the month of August it produces great plumes of silvery white feathery plumes which present a very striking and pleasing appearance. 50c each.

ZEBRA GRASS—The blades of this grass are striped, hence its name. Clumps grow about half as large as the Pampas grass does. 25c each.

JAPANESE VARIEGATED GRASS—Has very graceful flower stocks. 25c each.

UMBRELLA PLANT—25c each.

LEMON GRASS—25c each.

BARBERRY — **New Red Leafed** — For low hedges—50c each.

BARBERRY—**Jap. Thunbergia**—25c each.

SANTILINAS—**Evergreen**—25c each.

SANSEVEIRA—(**Snake Plant**)—25c each.

COLEUS—10c each.

COLEUS—**Christmas Gem**—25c each.

TURKIS CAP—25c each.

ALTERNANTERA — (**Border Plant**) — Red; green; green and yellow—10c each.

ACALPHA—All varieties—25 and 50c ea.

CALENDULAS—25c each.

ARTILLERY PLANT—15c each.

BOUGAINVILLEA — (**Crimson Lak and Braziliensis**)—50c to \$2.00.

foliage with great heads of orange scarlet flowers striped crimson.

LOUISIANA—The flowers are more than 7 inches across, and every inch a vivid scarlet.

MRS. PIERRE S. DUPONT— This new Canna surpasses all other pink Cannas. The color a vivid watermelon pink.

MRS. ANTOINE WINTZER—Color a pure warm unshaded yellow throughout. This is without question, the loveliest pure yellow Canna yet introduced.

NOKOMIS—Large vivid crimson flowers with a rich silky sheen on the petals. Bronze foliage.

PRESIDENT—The best red variety yet introduced. Produces immense heads of glowing crimson flowers.

PALM BEACH—Broad long petaled flowers of maize yellow, with a faint blush of pearly pink. The throat and lower petal are soft buff yellow, shaded apricot producing a harmony of delicate shades.

RICHARD WALLACE — Canary yellow, the largest and best of its color.

WILMER ATKINSON—Flower is purest buttercup yellow.

YELLOW KING HUBERT— A sport from the bronze foliage variety of the same name, but with blooms of yellow, dotted with red, green foliage.

BULBS

AMARILLIS JOHNSONII — Also called the Red Lily. Blooms very early in Spring. On 2 ft. long stems it bears clusters of three and four lilies of very bright red. 25c each.

GERMAN IRIS — Commonly known as Flags. Blue and White. 25c each.

GLADIOLUS—Blooms about 30 days after the bulbs have been set out. A succession or continuation of blooms may be had by planting about every two weeks, as the long spikes produce flowers during about that time. The flowers come in all the different colorings and markings imaginable. 25c per dozen bulbs. \$2.50 per 100.

TUBEROSES — Produce long graceful white flower stems during the entire summer. Very fragrant and used extensively for funerals. Bulbs at 25c a dozen.

DAY LILY — This is easy to grow anywhere. It blooms all Summer and bears graceful flower stems and yellow flowers. Price 10c each.

CRINUM LILY—A very robust growing variety which will thrive anywhere. Forms great clumps of fresh looking leaves four feet long and produces its strong lily-bearing stems during the entire growing season. Milk and wine color. Large bulb at 25c.

GIANT BLUE WATER LILY—Wonderful plant for tank or aquarium. \$1.00 each.

WATER HYACINTH — Purple flowers. 10c each.

DAHLIAS

We have on hand a fine assortment of these beautiful flowers. There are now hundreds of varieties of these flowers on the market, in fact, some growers specialize exclusively on Dahlias.

We offer to you tubers which have been well cured and properly divided and you may order by colors or we will send you a general mixture. The following colors we have on hand all the time.

RED AND RED SHADES—10c each or \$150 per dozen.

ORANGE AND ORANGE SHADES—15c each or \$1.50 per dozen.

YELLOW AND YELLOW SHADES—20c each. \$2.00 per dozen.

WHITE—15c each or \$1.50 per dozen.

MAROON AND DARK SHADES — 15c each or \$1.50 per dozen.

PURPLE AND PURPLE SHADES—15c each or \$1.50 per dozen.

PINK AND PINK SHADES—15c each or \$1.50 per dozen.

MIXED COLORS—\$1.00 per dozen.

ORINOCO BANANA—This is a very attractive plant for the center a head of Cannas. Large suckers \$1.00 each.

CALADIUM

(ELEPHANTS EAR)

C. ESCALENTUM—The common variety which grows along the banks of the Comal River at New Braunfels. Leaves are very large, droop and a solid green in color. 25c each.

C. ARBOREA—This is the giant variety with leaves growing upright and of dark green color. 50c each.

C. FANCY LEAF — The smaller delicate varieties which have the beautifully shaped and colored leaves. These plants when kept in pots make most magnificent house and sun-parlor decorations. Mixed colors. Bulbs 35c each.

ALOCASIA ILLUSTRIS — An excellent plant grown in connection with fancy leaved Caladiums or for planting in the open borden in a partly shaded position. The foliage is large, of a dark green, clouded with a velvety blue black. Leaf stems 3 feet high and of blueish color. A very striking plant and especially recommended by us as being well adapted to our climate. Price 35c each.

ORINOCO BANANA PLANTS—This is a very attractive plant for center of a group of cannas, or other lilies. Large sucker at \$1.00 each.

FLOWER SEEDS

ZINNIA

DAHLIA FLOWERED—The latest development and the most beautiful of them all. We have a supply of home grown seed, all colors mixed which we can sell at 15c per package, \$1.50 per dozen packages.

GIANT ZINNIAS—Mixed colors. at 10c package.

CORN FLOWER—A beautiful purple summer flower. 10c package.

COSMOS, KLONDIKE—The best Cosmos for our climate. Grows into a beautiful plant and by Fall produces in great profusion its orange yellow flowers.

GLOBE AMARANTH—Hardy straw like flower grows anywhere and blooms in our hottest Summer months. 10c package.

LARKSPUR — Mixed colors. single and double. 10c package.

SNAPDRAGON—10c package.

SUNFLOWER — Double. Chrysanthemum flowered variety. very beautiful. 10c pkt.

MARIGOLD — The best dwarf varieties. 10c package.

SWEET PEAS—Latest and best varieties, 15c package.

CHINESE PINKS — Best mixed colors. 10c package.

SWEET WILLIAMS—Mixed. 10c pkt.

BALSAM—Improved double, mixed, 10c.

MORNING GLORY—Large blue flowers, 10c package.

CYPRESS VINE—Fast growing vine with feathery green foliage and star shaped scarlet flowers. 10c package.

VERBENAS — Large flowered varieties, mixed. 10c package.

BLUE BONNETT — The Texas Flower. 10c package.

VEGETABLE SEED

TOMATO—McGEE'S IMPROVED — This is the finest tomato. The best proof that this is a real achievement in improvement over the old varieties is that others who offer seed for sale always compare their novelty with the McGee. We have tried everything that has come out and we can not see that there has been any improvement so we feel that we are offering the very best when we list this variety. It is a pink, smooth, solid tomato and a most prolific bearer. A large package 50c.

CUCUMBER-EARLY WHITE SPINE — There is none better than this variety for all around use. Package 10c.

WATER MELON—TOM WATSON—Blue rind, long, very sweet and fine for the market, package 10c.

WATER MELON—WONDER MELON — Blue rind, an improvement over Tom Watson. This is the finest melon marketed from the Poteet section. package 15c.

CANTALOUPE — ROCKY FORD — The best of all cantaloupes. Package 10c.

CORN—SURECROPPER — Early white corn. Best corn we have grown on our farms, especially in dry years, peck 75c. ½ bushel \$1.25, bushel \$2.00.

YELLOW DENT—Best yellow corn for this section. Price same as above.

POPCORN—WHITE RICE—A fine white finty corn which pops nearer 100% than any other.

We will be glad to furnish any kind of seed which may be desired. We have the connections and know just where to secure whatever is needed in that line and we know what to pay and how to buy and we will be very glad to serve our customers in anything they may wish in this line. We will charge only the prevailing prices and will collect for our services from the dealer from whom we buy. Just let us know what you need and we will get it for you.

ANTS		RATS
FLIES		MICE
WASPS	CYANO GAS	MOLES
FLEAS		SNAKES
BED BUGS	"THE GAS KILLS THEM"	GOPHERS
SPARROWS		CRAYFISH
MELON APHIS		SQUIRRELS
CHINCH BUGS		PRAIRE DOGS
GRAPE LEAFHOPPER		GROUND HOGS

Price:—1 lb. tins, 75c; 5 lb. tins, \$3.00;
25 lb. tins, \$10.00; 100 lb. drums, \$30.00.

CYANO GAS A-DUST is a grayish powder which gives off a poisonous gas upon exposure to the air moisture. It is simply confined near a pest and the air finishes the job.

The gas evolved from CYANO GAS is a trifle lighter than air; is non-inflammable; non-explosive; and has a distinctive odor.

The residue after the evolution of the gas is harmless slacked lime.

CYANO GAS is readily handled in the open air by the layman as shown by its many uses and world-wide distribution.

It is packed in air-tight tins in which it will store for years without deterioration. These convenient sizes are 1 lb., 5 lbs., 25 lb. tins; and 100 lb. drums.

Every farm has a need for this effective chemical to kill such pests as are listed above.

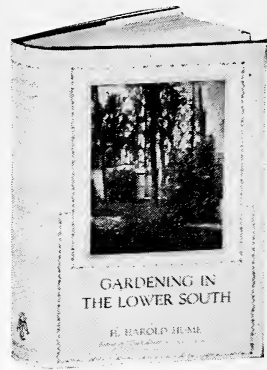
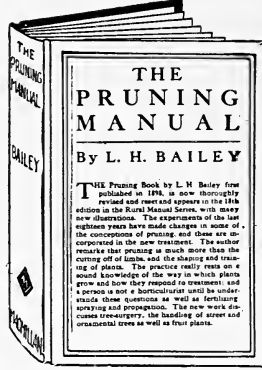
SEEDLINGS

Many of our customers have in the past year asked us for seedling trees of pecans and peach and for these we have grown the following:

PECANS—We have planted the nuts of Delmas and Schley pecans which have been crossed with other paper shell varieties and have had no chance to become pollinized by wild pecans. These, in many instances, may produce nuts as good and in rare instances one will be a distinct improvement over its parents. These trees we wished to plant in our own orchard and try for improved varieties. We find that we have more than we can possibly plant and it would be waste to throw these fine trees away, so we will dig them carefully for our customers and sell at the following prices, with the request, however, that if any new varieties develop, which really have merit, that we be given first chance to introduce these through our nursery.

3 year old seedlings, 6 to 8 feet high.....	75c each
2 year old seedlings, 4 to 6 feet high.....	50c each
1 year old trees 1 to 3 feet high.....	25c each

PEACH—We have a fine lot of seedlings from the Salisbury and the Honey Peach, which generally produce a very high grade fruit and are very prolific. 4 to 6 ft. 10c each.



FOR YOUR LIBRARY

We keep a stock of the following books which we will be pleased to mail to you anywhere, postage paid by us.

MANUEL OF GARDENING — By **L. H. Bailey** — A companionable book in Winter and a problem solver in Spring, Summer and Fall. Subjects: Landscaping; care and preparation of the soil; handling of plants; treatment of diseases and insects; how to select and grow ornamentals, fruits and vegetables. 539 pages; 32 plates and 318 engravings; 5x7 $\frac{1}{4}$ in. Cloth; \$3.00.

AROUND THE YEAR IN THE GARDEN — By **Frederick F. Rockwell** — Tells the work to be done with flowers, fruits, vegetables and lawn each week in the year, and just how to get results. 350 pages; 31 half tone plates and numerous sketches; 5 $\frac{1}{4}$ x7 $\frac{3}{4}$ in.; cloth; price \$2.50.

ROCK GARDENS — By **F. F. Rockwell** — It shows how to develop a charming and individualistic rockery on a tiny plot of ground as well as where space is unlimited. About 90 pages; many illustrations; 5x7 $\frac{1}{2}$ in.; cloth, \$1.00.

EVERGREENS — By **F. F. Rockwell** — 1. — Uses, characteristics and types of tall and dwarf evergreens.

2. — Types and varieties of Junipers, Cypresses, Cedars, Yews, Firs, Spruces and Pines.

3. — Soil preferences of evergreens; fertilizer to use.

4. — Planting, transplanting, staking, seedlings, pruning, watering control of insects.

5. Classified list of kinds for special purposes. About 90 pages; many illustrations; 5x7 $\frac{1}{2}$ in.; cloth, \$1.00.

SHRUBS — By **F. F. Rockwell** — The home owner will find in this book brief but complete and usable information on how to enhance the beauty and value of his place with shrubs. It tells: 1. — How to use shrubs in a well planned landscape.

2. — How to use them for flower, foliage, fruit and bark.

3. — How to buy shrubs.

4. — How to plant, water, mulch, prune, and care for them.

5. — How to select shrubs.

76 pages; 49 illustrations; 5x7 $\frac{1}{2}$ in.; cloth, \$1.00.

GLADIOLUS — By **F. F. Rockwell** — 79 pages; 45 illustrations; 5x7 $\frac{1}{2}$ in.; cloth; \$1.00.

THE BOOK OF BULBS — By **F. F. Rockwell** — The last word on bulbs and their culture; 26 $\frac{1}{2}$ pages; 50 page illustrations; 5x7 $\frac{3}{4}$ in.; cloth, \$3.00.

THE ROSE IN AMERICA — By **Horace McFarland** — The standard guide to rose growing 233 pages; 20 full-page plates in color and sepia with line plates; 5 $\frac{1}{2}$ x8 in.; cloth, \$3.00.

THE PRUNING MANUAL, by **L. H. Bailey**. Instructions on just how and when to prune trees, shrubs, and vines. Explains the physical structure of plants, their habits of growth, methods of flower and fruit bearing and how pruning can be fitted intelligently to these. 381 illustrations, 400 pages. \$2.50.

THE DESIGN OF SMALL PROPERTIES — By **M. E. Bottomley** — landscape architect.

1. — How to beautify your home property.

2. — How to meet your special problems.

3. — How to choose and where to use garden accessories.

4. — How to make a special garden spot.

5. — How to set out and care for plants.

6. — What plants to select and where to use them.

233 pages; 6 $\frac{1}{2}$ drawings; charts; 5x7 $\frac{7}{8}$ x8 $\frac{3}{4}$ in.; cloth; \$3.00.

MY GARDEN COMES OF AGE — By **Julia H. Cummins** — 180 pages; 16 full-page half-tones; 5 $\frac{1}{2}$ x8 in.; cloth; price \$3.00.

A WOMAN'S HARDY GARDEN — By **Helene Rutherford Eli** — 216 pages; 49 illustrations; 5x7 $\frac{3}{4}$ in.; cloth; price \$2.00.

ANOTHER HARDY GARDEN BOOK — By above author; 243 pages; 49 illustrations 5x7 $\frac{3}{4}$ in.; cloth; \$2.00.

GARDENING IN THE LOWER SOUTH, by **H. H. Hume**. The first and only complete garden guide for the South. It tells what flowers to plant for steady succession of bloom, how to have fresh vegetables throughout the year, how to grow fruits, what varieties to plant, what trees and evergreens grow best, and all about Southern soils, fertilizing, lawn making, palms, roses, azaleas, bulbs, bamboos, vines, and other plants. 102 illustrations, 472 pages. \$5.00.

A MIS AMIGOS DE MEXICO:—

Como en la República Mexicana vive la mayoría de mis mejores amigos, a ellos me dirijo particularmente para ofrecerme a sus estimables órdenes.

Verán Uds. que he vuelto a dedicarme al trabajo o especialidad en que fui educado por mi padre, y al hacerlo he secundado no solamente mi inclinación natural hacia ello, sino los consejos que frecuentemente he recibido de mis amigos.

Por espacio de 25 años no me he dedicado a los negocios de botánica, y considero que no estoy bien interiorizado de todos los adelantos y métodos modernos concernientes al ramo, por lo que tengo que confiar en gran parte en la aptitud y experiencia de mis dos hermanos menores que están al corriente de todo lo que a estos negocios se refiere.

Continuaré activamente dedicado a mi negocio de colonización, y al mismo tiempo deseo atender a todos los amigos con que cuento en México, en lo que pueda ofrecérseles en asuntos relacionados con la botánica.

Hasta en tanto el monto de los negocios con México justifiquen la impresión de nuestro catálogo en español, me veré precisado a atender a todos por correspondencia, suplicándoles atentamente se dirijan a mí pidiéndome los informes que necesiten, los que suministraré inmediatamente a vuelta de correo.

Soy de Uds. afmo. atto. amigo y S. S.,

EMILIO LOCKE.

Housron Bldg., San Antonio, Texas.

STATE OF TEXAS
DEPARTMENT OF AGRICULTURE
OFFICIAL NURSERY INSPECTION CERTIFICATE

THIS IS TO CERTIFY That the Nursery and Floral Stock grown, exhibited or held for sale by Otto Martin Locke and Brother at New Braunfels, County of Comal, State of Texas, has been inspected by a duly authorized Inspector of this Department in accordance with the provisions of the Orchard and Nursery Inspection laws of the State of Texas, and was found to be apparently free from Dangerously Injurious Insect Pests and Plant Diseases.

A printed copy of this Certificate on any shipping tag attached to any shipment of nursery and floral stock is authority to any freight or express agent in Texas to accept same for transportation.

THIS CERTIFICATE IS VOID AFTER SEPTEMBER 1, 1930.

Approved:

GEO. B. TERRELL,
Commissioner of Agriculture.

Austin, Texas, September 12th, 1929.
J. S. WOODARD,
Chief Inspector of Orchards and Nurseries.

STATE OF TEXAS
DEPARTMENT OF AGRICULTURE
OFFICIAL NURSERY INSPECTION CERTIFICATE

THIS IS TO CERTIFY That the Nursery and Floral Stock grown, exhibited or held for sale by Otto M. Locke & Bros. Nursery Co. at New Braunfels, County of Comal, State of Texas, has been inspected by a duly authorized Inspector of this Department in accordance with the provisions of the Orchard and Nursery Inspection Laws of the State of Texas, and was found to be apparently free from Dangerously Injurious Insect Pests and Plant Diseases.

A printed copy of this Certificate on any shipping tag attached to any shipment of nursery and floral stock is authority to any freight or express agent in Texas to accept same for transportation.

THIS CERTIFICATE IS VOID AFTER SEPTEMBER 1, 1930.

Approved:

GEO. B. TERRELL,
Commissioner of Agriculture.

Austin, Texas, September 16, 1929.
J. S. WOODARD,
Chief Inspector of Orchards and Nurseries.

STATE OF TEXAS
DEPARTMENT OF AGRICULTURE
OFFICIAL NURSERY INSPECTION CERTIFICATE

THIS IS TO CERTIFY That the Nursery and Floral Stock grown, exhibited or held for sale by Otto M. Locke and Brothers Nursery Co. at Poteet, County of Atascosa, State of Texas, has been inspected by a duly authorized Inspector of this Department in accordance with the provisions of the Orchard and Nursery Inspection Laws of the State of Texas, and was found to be apparently free from Dangerously Injurious Insect Pests and Plant Diseases.

A printed copy of this Certificate on any shipping tag attached to any shipment of nursery and floral stock is authority to any freight or express agent in Texas to accept same for transportation.

THIS CERTIFICATE IS VOID AFTER SEPTEMBER 1, 1930.

Approved:

GEO. B. TERRELL,
Commissioner of Agriculture.

Austin, Texas, September 16, 1929.
J. S. WOODARD,
Chief Inspector of Orchards and Nurseries.



Upper Left:—Building house in 1914.

Upper Right:—Same place in 1916—(Note small Pecan Trees).

Lower:—Same place in 1928—Showing Pecan Trees now 12 years old—Pecan nursery shown in foreground.