

Historic, Archive Document

Do not assume content reflects current scientific knowledge, policies, or practices.



NEBRASKA GROWN

THE CHEAPEST TO BUY
AND THE BEST TO PLANT

HARRISON NURSERY CO.
INCORPORATED
YORK, NEBRASKA

SPRAYING CALENDAR

EXPLANATION—While the number of applications recommended will be found desirable in seasons when the fungi are particularly troublesome, a smaller number may often suffice. An asterisk (*) cautions against spraying with poisons while the plants are in blossom; two asterisks (**) indicate that there is danger in making an application within three weeks of the time the fruit is to be used as food.

PLANTS	1st Application	2d Application	3d Application	4th Application
APPLE Scab, codling moth, bud moth, caterpillar, canker worm.	After the blossoms have formed, but before they open, Bordeaux.	Within a week after blossoms fall, Bordeaux and Paris Green.	10 to 14 days later, Bordeaux and Paris Green.	10 to 14 days later, Bordeaux.
CHERRY Rot, aphid, curculio, slug, knot.	As flower buds appear, but before they open, Bordeaux; for aphid use Kerosene Emulsion.	When fruit has set, Bordeaux and Paris Green.*	10 to 14 days later, if signs of rot appear, repeat.	10 to 14 days later, Ammoniacal Carbonate of Copper.
CURRENT Mildew, worms.	As soon as worms are found on lower and inner leaves, Paris Green.	If they reappear, repeat, adding Bordeaux for mildew.**	If worms still trouble, Pyrethrum or Hellebore.*	After fruit is picked, Bordeaux.
GOOSEBERRY Mildew, worms.	As leaves open, Bordeaux and Paris Green.	In 10 to 14 days, repeat with both.	10 to 14 days later, Sulphide Potash, on English varieties.	10 to 14 days later, repeat.
GRAPE Fungous diseases, flea beetle.	When first leaves are half-grown, Bordeaux and Paris Green.	As soon as the fruit has set, repeat.*	10 to 14 days later, repeat.	10 to 14 days later, if disease is present, apply Bordeaux.
PEACH and APRICOT Rot, curculio, leaf curl, mildew.	Before blossoms open, Bordeaux.	Within a week after fruit has set, Bordeaux and Paris Green.*	7 to 12 days later, repeat.	7 to 12 days later, repeat.
PEAR Leaf blight, scab, psylla, codling moth.	Just before blossoms open, Bordeaux.*	Within a week after blossoms fall, Bordeaux and Paris Green.	8 to 12 days later, repeat.	10 to 16 days later, Bordeaux.
PLUM Fungous diseases, rot, curculio, knot.	Within a week after blossoms have fallen, repeat.*	10 to 12 days later, repeat.	10 to 20 days later, Bordeaux.	Note—If black knots are found on plum or cherry trees, they should at once be cut out and burned.
QUINCE Leaf and fruit spots.	When blossom buds appear, but before they open, Bordeaux.	When fruit has set, Bordeaux and Paris Green.*	10 to 12 days later, repeat.	10 to 20 days later, Bordeaux.
BLACKBERRY, RASPBERRY Anthracnose, rust.	Cut out canes badly diseased with anthracnose and burn. Before buds open, spray with Copper Sulphate solution.	When new canes appear, Bordeaux and Paris Green.** 10 days later, Bordeaux and Paris Green.	10 to 14 days later, repeat.**	Note—If red rust appears, the entire stool affected should be grubbed out and burned.
ROSE Aphid, worms.	Kerosene Emulsion for aphid.		Afterwards keep lice and caterpillars off by turning a fine stream from hose on under side of leaves.	

Do not spray with arsenites or copper compounds within three weeks of the time the sprayed portions are to be eaten. Bordeaux mixture and other lime compounds should not be used upon rough or full-grown vines even as late as that time.

A SQUARE DEAL

**WE DO NOT DEMAND PAYMENT
FOR STOCK UNTIL YOU HAVE RE-
CEIVED AND EXAMINED SAME**

**WE PREPAY TRANSPORTATION
CHARGES to All Railroad Towns When
the Orders Amount to One Dollar or More**

**WE REPLACE STOCK AT ONE-HALF
PRICE—This is our way of doing business**

OFFICERS *and* DIRECTORS
Harrison Nursery Co.

(INCORPORATED)

W. A. HARRISON, President
E. H. SMITH, Secy. & Treas.

H. S. HARRISON, Vice-President
E. E. MASON, Field Mgr.



G. G. Pippin, Unpruned

G. G. Pippin, Properly Pruned

Tree should be planted two inches deeper than it stood in nursery. (See line on illustration showing depth to plant.)

INTRODUCTORY

A TALE

Over twenty-five years ago, the Harrison Brothers started the Harrison Nursery at York. The most of Nebraska at that time was a treeless plain. The idea of raising a stick of timber sufficiently large to make a fence post seemed preposterous. The very thought of growing fruit was considered ridiculous. The general impression prevailed that the country was adapted only to the production of corn and hogs. The obstacles that confronted the young men seemed almost insurmountable. They had no capital. The advice of all friends and acquaintances was against the project, but they had as assets, youth, hope and the genius of labor coupled with a prophetic faith in the ultimate greatness of Nebraska. For a number of years every tree was grafted, planted, trimmed, hoed, cultivated, dug out of the ground with a spade, graded, tied up and labelled by the firm. In fact you might say this first excursion in the realm of experimental horticulture was personally conducted—no one but a proprietor officiating.

The demand for Nebraska-grown stock became so great it was found necessary to enlarge the nursery field, packing rooms, cellars and to erect a modern office structure. It was also found necessary to add more timber to the managing force, and to reorganize the company in order to accommodate the large volume of business, consequently in the spring of 1910, the company was incorporated under the laws of the State of Nebraska for \$100,000.00, with a fully paid-up capital stock of \$73,700.00 E. H. Smith, a Nebraska-grown product, who had formerly been employed by the Burlington Railroad for sixteen years in the operating and traffic departments, became a director and was elected secretary and treasurer. E. E. Mason, another Nebraska boy, who had been employed by the Harrison Brothers since fifteen years of age, also became a director and was made superintendent of the nursery farm. In order to enlist the permanent assistance and support of employes, several of the field and office men were given an opportunity to become stockholders.

Note the change in a quarter of a century. York can today boast of one of the largest retail nurseries in the West. Where grafts and trees were originally planted by hand, they are now put in by a machine with a capacity of planting as many as 80,000 trees a day. Instead of chopping them off with a spade, they are dug with an enormous tree digger, operated by ten horses and every root and rootlet is preserved. In the early days the stock was served to patrons by wagon. Now the shipping business is so enormous that the Burlington people send extra men during the month of April to take care of this extra business. Work that was once done by two partners is now giving employment to dozens of men.

The Harrison Nursery Co. has one of the most complete packing houses in the West. Trees are hauled immediately from the field and graded and handled in a frost and heat-proof building. They have a most thorough and complete packing system. To make a mistake in filling an order is almost impossible.

This little tale relating to Nebraska-grown trees and Nebraska-grown men, is to call your attention to this proposition: The average tree planter knows little about trees, their culture and adaptability of variety to locality. Hence you must rely greatly on your nurseryman for advice and counsel. Horticulture requires technical knowledge, and the man who comes up from the stubble has acquired the fundamental principles which enables him to give the most practical advice. Harrison Brothers do not want to be considered as deprecating a book-learned education, because they have been students of horticultural works and magazines all their lives, but sometimes you read a thing and forget; but when you have been up against the real experience, then you know something permanently.

The Harrison Brothers know a few things about trees, for they have learned from actual experience. They have had black lines under their finger nails, and know something about soil. They have a large experimental orchard and have thoroughly tested hundreds of varieties, and they can tell you about some kinds that you ought not to plant, which is something. They have traveled all over Nebraska and Western states for years, and by constant observation they have discovered a great variety of conditions, in different parts of the country. They are always ready and willing to give their patrons the benefit of their experience and observation.

LOCATION

We want, right at this point, to lay stress on one fact, and that is that the Harrison Nursery Co. is located at YORK. We make this emphatic because we are proud of York, and we hope York is somewhat proud of us. York, you know, is noted for its citizenship, its thrift and progressiveness, and especially for its beautiful homes and well-kept lawns, and here the nursery influence can be seen, because there are more distinct species of different ornamentals in York than in any other town in the state. It is a well-known fact that York is located in one of the richest agricultural districts of the United States. York is located on a system of railroads that give excellent service to all parts of the country. Express is handled by two of the leading express companies and prompt service is assured.

TREES GROWN ON HIGH GROUND

The Harrison Nursery Co. field is located on a high divide, with no creek bottoms, river bottoms or low lands to force the growth of their nursery stock. It is just as essential to select nursery stock from high, dry ground, as it is seed corn. The soil is peculiarly adapted to the successful growth of trees, giving them a strong, vigorous root system and a well-developed, symmetrical body.

QUALITY

All stock grown by the Harrison Nursery Co. is graded by caliper and height, and everything not up to the standard is consigned to the brush pile and burned. The caliper proves the physical condition of a tree. For instance, a tree may be 5 to 6 feet in height and caliper $\frac{1}{2}$ inch, or on the other hand may measure 3 to 4 feet in height and caliper $\frac{3}{4}$ inch. In either case the tree is not in a healthy condition for planting. The tree family may rightly be compared with the human family. For instance, a man may measure 6 feet in height and weigh 100 pounds, or on the other hand he may be 5 feet tall and weigh 300 pounds. You will concede in either case the man is not in a normal condition. Thus you will see the importance of properly grading nursery stock; it costs us more to grade the stock, but we believe in giving our customers the best that can be had, regardless of expense. Quality is considered above all things else, and the demand for such is constantly increasing. People are beginning to realize the importance of planting good trees for permanent improvements, instead of planting a cottonwood in the front yard, as did the early settlers, a nice hardy ornamental tree is selected. Instead of planting a cheap whip cherry tree or apple tree in the back yard, first-class graded trees are used. Instead of using the swine to mow the grass in the front yard, a lawn mower is used with great care to insure the safety of the flowering shrubbery and roses which adorn the home.

PRICES

Just a word in regard to prices. Those wishing cheap trees at a cheap price will waste both their time and ours. We put out to our trade nothing but first-class trees, at reasonable price. We do not intend to compete with cheap catalogue nurseries in foreign states. A row of trees is made up of many grades. We want our customers to get the best and the other fellow the culls. You are very foolish to hesitate over the small difference in price between a good and an indifferent tree. If you were to go to your neighbor's to buy some hogs, would you pick out the runts because they happened to be a few cents cheaper? No; you would pick the choicest and pay the price, because you realize they would be cheaper in the end. Do not get the impression, however, that we are high-priced. We guarantee to compete with anyone, both in price and quality. We simply refuse to sell the trade inferior trees at any price. "Good goods at honest prices," is our motto. We have built up what reputation we have on that platform, and we intend to adhere to this rule to the end.

INSPECTION

Our nursery is inspected each year by the State Entomologist, and a certificate issued by him showing stock to be free from San Jose scale and insect pests, and to be in a healthy condition, is attached to each shipment.

GUARANTEE OF GENUINENESS

While we exercise the utmost diligence and care to have varieties true to name, and stand ready at all times on proper proof, to replace all stock that may prove otherwise, or refund the amount paid, it is mutually understood and agreed between purchaser and ourselves that we shall in no case be liable for any sum greater than the amount originally received for said trees, etc., that prove untrue.

NOTICE

Our patrons are requested to read carefully "Hints on Transplanting," "The Preparation of the Soil," "Preparing Trees for Planting," "After Culture." The information under these headings is important, and success in planting will largely depend upon the careful observance of the suggestions made.

CLAIMS

for errors should be made promptly on receipt of goods, as we cannot rectify them unless promptly made.

REMITTANCES

In remitting please use Bank Draft, Express Money Order, or Postoffice Money Order. If check is used add for exchange.

REFERENCES

Ask your home bank to look up our rating in the commercial reports, or write the German-American Bank, York, Nebraska.

NEBRASKA-GROWN, THE CHEAPEST TO BUY AND THE BEST TO PLANT

GENERAL INSTRUCTIONS FOR TRANSPLANTING AND MANAGING FRUIT TREES

1. PREPARING THE GROUND—Before planting fruit trees the soil (except new ground), should be made mellow by repeated plowing, and where the soil is densely packed, a sub-soil plow should be used and the ground stirred up from twelve to fifteen inches deep. If this is neglected the roots are soon surrounded by an almost impenetrable wall and cannot be expected to live many years. Whenever this system has been practiced, healthy and vigorous trees and fine fruit have been the result.

2. RECEIVING AND CARING FOR TREES—Trees are frequently ruined through the lack of care or bad management after they fall into the hands of the purchaser. When trees are received the roots should be covered with a blanket, sack or straw until they reach their destination. The bundle should then be opened and the trees separated from the moss in which they are packed. If the roots have become dry from long exposure, straw should be spread upon the ground, the trees laid upon it, then covered entirely (roots and tops) with straw and the whole well watered. If holes are not yet dug or the ground too wet to plant when the trees are received, dig a trench and lay the trees in a slanting position, so that you can cover up the roots and two-thirds of the body or stalk. In this position let them remain until the holes are dug or the ground is in a suitable condition to receive them.

3. DIGGING THE HOLES—If the soil for an orchard has been properly prepared by sub-soiling and deep plowing, then the opening of the holes becomes a very simple matter, and really this is by far the easiest, cheapest and best plan; for if the soil is thoroughly pulverized to a depth of from twelve to fourteen inches, all that is necessary is to measure off the distance at which the trees shall stand from one to another and the order of planting. Where only a few trees are to be planted and the soil has not been sub-soiled, or where the trees are to be planted in sod, then the holes ought to be at least four feet wide and eighteen to twenty inches deep, the sub-soil thrown back and the hole filled up to the proper depth with fine top soil to receive the trees.

4. PRUNE BEFORE PLANTING—Both root and top should be pruned at time of planting and before the tree is set in the ground. First cut off the ends of the broken and bruised roots with a sharp knife, in a slanting direction on the under side. This will cause the wound to heal over readily, by throwing out plenty of fibrous root at the end. Then cut back each branch or side limb to a bud not more than four to six inches from the body. Then cut back the leader or central limb so as to leave it about four or five inches above the highest side limb. When there are no side limbs the tree should be headed back to a height proper to form a top. None of the lower limbs should be cut off entirely, as it is best to form the heads as low as possible, so that the limbs and leaves will protect the trunk from the direct rays of the sun.

5. DEPTH TO PLANT—Immense numbers of trees are ruined by being planted too deep. Most kinds of fruit trees, except dwarf pears and plums on peach and quince roots, should be planted not over two or three inches deeper than they grow in the nursery row. Dwarf pears and plums on peach and quince roots should be set so that the joint where the body and roots are united will be about four inches below the top of the ground. By this means roots will be thrown out from the body that is covered and larger and longer lived trees secured.

6. PLANTING—When ready to plant, take from the trench a few trees at a time; place the tree in position and arrange it to the proper depth by filling in or raking back the soil to or from where the tree will stand; then fill in the fine mellow soil between and around the roots with the hand, arranging the roots in their natural position and packing the soil carefully around them. When the roots are barely covered, sprinkle on water to moisten the soil and settle it among the roots; then fill to the top, press the earth very firm around the tree with the foot as you fill in. Throw a bucket of water around each tree to settle the ground, and scatter a little soil on to prevent baking.

7. MULCHING—Mulching prevents the moisture from escaping and maintains equitable temperature about the roots. The material used may be long manure, litter, straw, grass or hay, which should be spread on the surface around the tree for the space of four or five feet and three to six inches deep. Bearing trees may be benefited by mulching heavily in winter, which will tend to prevent an early development of the fruit buds and assist them to escape the effect of late frosts.

8. AFTER CULTURE—The trees should be kept free from grass and weeds, and no crops should be grown in the orchard while the trees are young, except such as can be cultivated with the plow or hoe. Cultivate well in the spring and summer.

9. AFTER PRUNING—The great majority of people do not take proper care of their trees after planting. This is a great mistake. If a tree or vine does not receive the right kind of care and enough of it when young, it will never attain a healthy old age. Very much has been said

HIGH-GROUND STOCK IS THE BEST

about pruning by various authors. Judging these and our own experience and observation, we would say: The best time to prune fruit trees, and about all kinds of trees and shrubs, is during May and June, May preferred; but be governed by the health and vigor of the tree. We do not advise severe pruning, as too much would injure the tree. Keep all superfluous forks and limbs cut off and the heads in proper shape to admit air and sunshine as long as the tree lives. Currants and Gooseberries should be trimmed late in the fall or early in the spring, before commencing to grow; Grape vines late in November or any time during the winter up to March 1st; after this trimming is apt to excite bleeding or flowing of sap from the wounds. If desirous of getting rubbish removed from the orchard during the winter, cut limbs off eight to ten inches from the body and cut balance off May or June following.

A TABLE SHOWING THE NUMBER OF TREES OR PLANTS TO THE ACRE

Distance	Number of trees	Distance	Number of trees
1 foot apart each way.....	43,560	13 feet apart each way.....	257
2 feet apart each way.....	10,890	14 feet apart each way.....	222
3 feet apart each way.....	4,840	15 feet apart each way.....	193
4 feet apart each way.....	2,702	16 feet apart each way.....	170
5 feet apart each way.....	1,742	17 feet apart each way.....	150
6 feet apart each way.....	1,210	18 feet apart each way.....	134
7 feet apart each way.....	888	19 feet apart each way.....	120
8 feet apart each way.....	680	20 feet apart each way.....	108
9 feet apart each way.....	537	25 feet apart each way.....	69
10 feet apart each way.....	434	30 feet apart each way.....	48
11 feet apart each way.....	360	35 feet apart each way.....	35
12 feet apart each way.....	302	40 feet apart each way.....	28

RULE—Multiply the distance in feet between the rows by the distance the plants are apart in the rows, and the product will be the number of square feet for each plant or hill, which, divided into the number of feet in an acre (43,560), will give the number of plants or trees to the acre.

SUITABLE DISTANCES FOR PLANTING

Apples, Standard	30 to 40 feet	Grapes	8 to 10 feet
Apples, Dwarf	8 to 10 feet	Currants	3 to 4 feet
Pears, Standard	18 to 20 feet	Gooseberries	3 to 4 feet
Pears, Dwarf	10 feet	Raspberries, Red	3 to 4 feet
Peaches	16 to 18 feet	Raspberries, Black	4 to 5 feet
Nectarines and Apricots	16 to 18 feet	Blackberries	5 to 7 feet
Cherries, Sweet	18 to 20 feet	Strawberries, rows	1 by 3½ feet
Cherries, Sour	15 to 18 feet	Strawberries, in beds.....	1½ by 1½ feet
Plums	16 to 20 feet	Asparagus, in beds.....	1 by 1½ feet
Quinces	10 to 12 feet	Asparagus, in field.....	1 by 3 feet



DO YOU GO TO DRAWS OR LOW LANDS TO SELECT YOUR SEED CORN?

FRUIT DEPARTMENT

APPLES

The apple is the first in importance of all fruits. It will thrive on nearly any well-drained soil. Its period of ripening, unlike other fruits, extends nearly through the whole year. By making careful selection, a constant succession can be obtained. For family use there is no fruit that is more indispensable. No fruit is so healthful and many physicians say that if a person would eat an apple a day they could dispense with doctor bills. Besides this, and just as important, is the fact that the average price on the market is steadily increasing and the immense demand for home consumption, foreign shipping, canning and evaporating assures high prices. The apple if given the same care and attention as other farm crops, will yield greater returns per acre. The following list we consider to be the best.



PRICES

Hardy Standard Apples:	Each	Dozen	Per 100
5 to 6 ft., No. 1, 3 yrs.....	\$.40	\$4.50	\$35.00
4 to 5 ft., No. 1, 2 yrs.....	.35	3.75	30.00
3 to 4 ft., No. 1, 2 yrs.....	.25	3.00	20.00
1 to 2 ft., No. 1, 2 yrs.....	.20	2.00	15.00

Northwestern Ironclads

Peerless, Estelle, Salome, Hybernal, Pat. Greening, Windsor:	Each	Dozen	Per 100
5 to 6 ft., No. 1, 3 yrs.....	\$.60	\$6.00	\$50.00
4 to 5 ft., No. 1, 2 yrs.....	.50	5.00	40.00

SUMMER APPLES

Duchess (Duchess of Oldenburg)—Origin, Russia. Season, July and August. Tree upright, vigorous and extremely hardy. An early and annual bearer of uniformly large crops. Fruit large, greenish-yellow, with red stripes. Flesh light yellow, medium fine grained, firm; flavor a pleasant acid; a great cooking favorite and prime market sort. A good shipper for an early apple and commands good prices. Should

be planted in every orchard. The most profitable early apple for commercial purposes.

Early Harvest—Size medium, roundish, usually more or less oblate, smooth, bright straw color when ripe; flesh nearly white, flavor rather acid, fine. Season July. Productive. Needs rich cultivation to be fine. Good throughout the Northern states and Southwest.

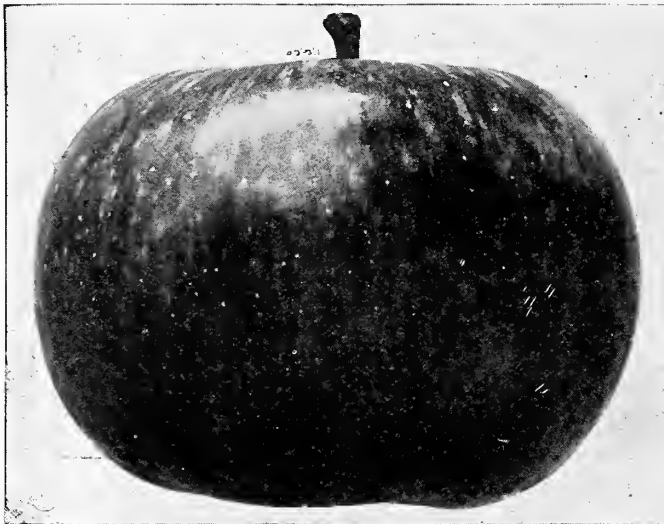
A GOOD ROOT SYSTEM WILL MAKE A TREE

Estelle—Seedling of Duchess apple. Tree a more rapid grower. Fruit almost identical to Duchess as to season and quality.

Red Astrachan—Origin, Russia. Season, July. First imported into England with the White Astrachan from Sweden in 1816. Tree upright, spreading, vigorous growth; an early and abundant bearer. Fruit above medium, greenish-yellow, almost covered with mottled and striped crimson; flesh white, crisp, juicy, brisk acid; good.

Red June—Size medium, oblong, very red; flesh white, tender, juicy, sub-acid, with a sprightly agreeable flavor; quite early and continues to ripen for four weeks and will keep long after ripe for a summer apple; profitable for market. The tree is a fine, erect grower, very hardy, bears young and abundantly. A valuable early apple.

Yellow Transparent (White Transparent, Thaler, etc.)—Origin, Russia. Season, July.



Duchess of Oldenburg

Imported from St. Petersburg by United States Department of Agriculture. One of the most valuable early apples. Fruit medium, smooth, transparent skin; clear white, becoming pale yellow when fully ripe; flesh white, tender, fine grained, of splendid quality. Tree is moderately vigorous and a good annual bearer.

AUTUMN APPLES

Chenango Strawberry—Rather large, oblong-conic, angular; striped and splashed with light crimson on whitish-yellow ground; cavity, narrow and deep; basin narrow; flesh white, very tender, with a pleasant, mild, sub-acid flavor. September and October.

Fameuse (Snow Apple)—Origin, Canada. Season, October and November. An old and well-known variety. Tree a moderate grower, productive. Fruit medium in size; color pale greenish-yellow, mixed with stripes of red, with splashes of same on shady side; flesh

white, tender and juicy, slightly perfumed; flavor sub-acid, extra good.

Maiden Blush—Of uniformly good size, smooth, round, beautifully flushed with red on creamy yellow ground; flesh tender, of pleasant but not high flavor. A good market sort because of its attractiveness and the tree's heavy crops. September and October.

Peerless—Origin, Minnesota. Season, September to October. Fruit medium to large; yellowish-green with stripes and splashes of carmine; flesh yellowish-white; fine grained; flavor agreeable sub-acid, but not rich. Tree a vigorous, upright grower.

Price's Sweet—Of very strong, upright growth in nursery and orchard. Popular in parts of the West. Fruit medium, regular, oblong, conical, often unequal; surface yellowish-green, mostly thinly covered with mixed and marbled dull red, obscurely splashed and striped; dots, large distinct, numerous, russet, rough; flesh yellowish-white, moderately juicy, very sweet, good. October to November.

Rambo—Size medium, oblate, smooth; streaked and marbled with dull yellowish red on pale yellowish ground; dots large, whitish; flesh tender, rich, mild sub-acid, fine flavored, often excellent. Late autumn and early winter.

Utter (Utter's Red)—Origin, Wisconsin; a vigorous, upright grower. Season, September to October. Fruit above medium to large; surface yellow, splashed, mottled, striped and much dotted with bright red. Flesh white, fine grained, tender, juicy, mild pleasant sub-acid.

WINTER APPLES

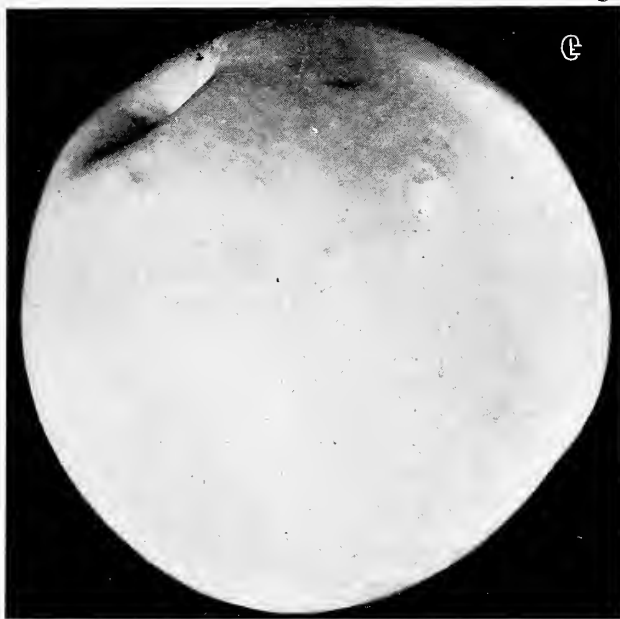
Arkansas Black—A remarkably handsome crimson-black apple; large, perfectly smooth, roundish flat, lightly dotted with white, the flesh is yellow, juicy and delicious, keeping late. December to April.

Baldwin—Origin, Massachusetts. Season, December to March. The great commercial late winter keeper of the Eastern states. Tree a vigorous, open grower, upright in tendency and very productive where hardy. Fruit large, rounded, deep red; flesh rich, crisp and juicy.

Banana—Fine vigorous grower, large healthy foliage; early bearer. Fruit medium to large, smooth and handsome, golden yellow usually shaded with red blush; flesh fine grained, rich, sub-acid, aromatic; highest quality. One of the best dessert apples. A valuable market variety in some sections. Originated in Indiana.

Ben Davis—Origin, Kentucky. Season, January to April. Vies with Baldwin as a profitable commercial variety in many sections; quality not so good, but a better bearer and keeper. Tree very vigorous and hardy in the Central States. Fruit large, handsome, brightly striped with red; flesh medium quality.

THE BEST IS THE CHEAPEST



Northwestern Greening

Black Ben Davis—So nearly like Gano in every respect that it needs no further description.

Gano—Originated in Missouri. Similar but superior to Ben Davis. It has all the good qualities in a higher degree, more brilliant coloring, runs more even in size, and keeps fully as late. The tree is vigorous and hardy; is a rapid grower; bears while young. Color bright red without stripes or blotches, and large and even in size. Season, February to March.

Grimes' Golden—Origin, Virginia. Season, November to January. Tree vigorous, upright, spreading, a good early annual bearer. Fruit above medium, regular; surface rich golden yellow, sometimes with net veining of russet; flesh yellow, firm, compact, crisp, aromatic, rich, spicy, sub-acid; quality the best. A valuable early winter apple and particularly desirable for its late blooming.

Hibernal—Origin, Russia. Season, November and December. This variety represents what is probably the hardiest type of the Russian race. Tree sturdy, vigorous, very spreading and productive. Fruit large to very large, irregular; greenish yellow with dull bronze red on sunny side; flesh acid, juicy, very good for cooking. Succeeds in the most exposed locations and is popular in the Northwest on this account.

Hubbardston Nonsuch—Large, handsome, yellow, overlaid with red; tender fleshed, with distinct, delightful flavor. Strong grower and heavy bearer. A native of Hubbardston, Massachusetts. Season, November to January.

Ingram—A seedling of Janet. Tree more upright and a better grower. Fruit medium size, roundish, inclined to conical; smooth, yellow ground, striped, bright red, flesh greenish-yellow, delicate, tender, juicy, sub-acid. A late keeper.

Iowa Blush—Origin, Iowa. Tree very productive, a strong grower in nursery and orchard. Fruit small, roundish conical; surface smooth, yellow with bright mottled red blush. Flesh white, juicy, mild, sub-acid, good. November to January.

Janet (Rawl's Neverfail)—Medium in size, roundish, approaching oblong or obtuse-conical, often oblique; color pale red, distinct stripes on light yellow ground; flesh nearly white, fine, mild, sub-acid, fine texture, crisp, juicy. Growth slow; a profuse bearer. Keeps through spring. The blossoms open ten days later than usual kinds, thus sometimes escaping spring frosts, and hence the name Neverfail.

Jonathan—Origin, New York. Season, November to January. A seedling of Spitzenburg, which it resembles in fruit, and is a much better tree. Hardy in latitude of Central Iowa, where it is a vigorous and productive variety. A delicious and strictly dessert apple that always commands highest market prices. Fruit good size, roundish; surface is very smooth, clear light yellow, almost covered with rich dark red on sunny side; flesh white, tender, juicy, spicy, aromatic.

Mammoth Black Twig—Excels Winesap in nearly every important point; a better grower, hardier, and the fruit much larger; color even a darker red; flesh firmer; flavor milder, but fully equal. A long keeper.



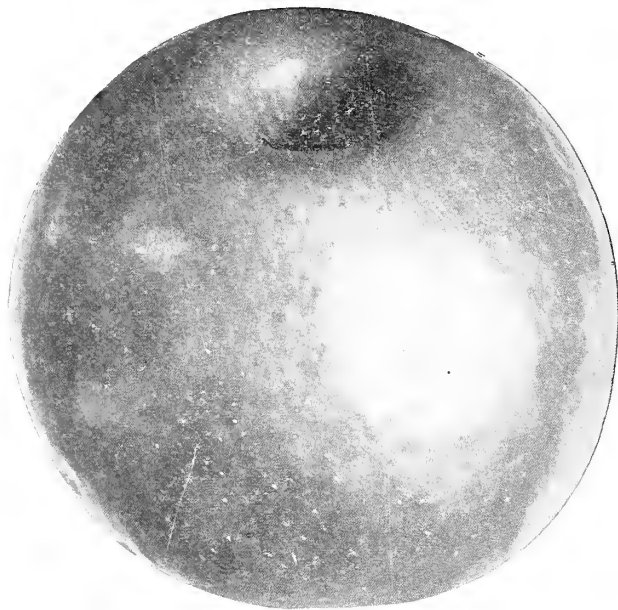
Wealthy

TREE PLANTING IS FOR A PERMANENT IMPROVEMENT

McIntosh Red—Origin, Ontario. Season, December and January. A choice variety of the Fameuse type. Tree vigorous with spreading head; a good annual bearer. Fruit above medium to large, highly perfumed; smooth polished yellow, almost covered with brilliant solid crimson, a beautiful fruit; flesh snow white, crisp, very tender, sprightly aromatic, sub-acid; very good quality.

Missouri Pippin—Large, oblong, bright red with numerous gray dots, very handsome and of fair quality, an early and very abundant bearer, and very profitable orchard fruit; vigorous. December to March.

Northern Spy—Large, roundish conical, often flattened, slightly ribbed; handsomely striped with red; flavor rich, aromatic, mild sub-acid, fine. Keeps through winter and late into spring; a tardy bearer. To afford fine fruit,



Gano

tree must be kept thrifty by good cultivation. A fruit of the highest quality, and profitable for market.

Northwestern Greening—Origin, Wisconsin. Season, December to March. Tree a splendid, vigorous grower, quite hardy. Fruit large to very large; green, becoming yellowish green when ripe; flesh yellow, fine grained and firm; flavor a good sub-acid; very smooth and attractive; should be given plenty of room in the orchard to secure large, even fruit. One of the best growers we have in the nursery and in the orchard, is very prolific and regular when mature.

Patten's Greening—Origin, Iowa. Introduced by C. G. Patten. Season, October to December. A seedling of Duchess of Oldenburg. Fruit large to very large, when well grown;

green with often a blush of red or brown; flesh yellowish white, rather coarse, but firm; core small; flavor a pleasant acid. Tree vigorous and spreading, and exceptionally hardy; an early and regular bearer. The fruit is very smooth and attractive and keeps well in home orchard and for market and is highly recommended for general planting.

Rome Beauty—Large, roundish, very slightly conical; mostly covered with bright red on pale yellow ground; flesh tender, not fine grained, juicy, of good quality. Ripens early in winter. The large size and beautiful appearance of this Ohio apple render it popular as an orchard variety.

Salome—Flesh whitish-yellow, half fine, tender, mild, slightly aromatic, very good; January to May. Its hardiness, long keeping, good quality, uniform size, retention of its flavor quite late, makes it valuable for the West and Northwest.

Senator—A very beautiful apple. Smooth, red, flesh white, sometimes faintly pink. Took first premium at the Denver Apple Show in 1910.

Stayman's Winesap—It is now attracting attention everywhere as a profitable market variety. It has large size, bright red color, great productiveness and best quality to commend it. The tree is a vigorous grower and, like its parent, is irregular and drooping in habit, and adapts itself readily to different soils and situations. Season, November to February.

Walbridge—Medium size, striped with red, good cooking; vigorous grower and productive; very hardy and considered of value in the North and Northwest. December to January.

Wealthy—Originated about 1861 by the late Peter M. Gideon, Excelsior, Minn. This one variety is an enduring monument for its originator. Season, September to January. Almost too well known to need description. Since its origination it has become extensively planted in all the apple growing states. Fruit large, regular,

smooth, light yellow with crimson stripes and splashes; flesh white, often stained with red, tender, very juicy, sprightly sub-acid with delicious aroma. Splendid dessert and cooking apple. Market demand never supplied.

White Winter Pearmain—Rather large, conical, angular or ribbed; light yellowish green, with a brownish-red cheek; stem short; flesh whitish, fine grained, with a mild sub-acid, rich, fine flavor. Is one of the best and most productive winter apples in the West.

Windsor (Windsor Chief)—Medium to large; greenish yellow, suffused with red splashes, becoming quite red when ripe; gray dots, flesh pale yellow, sometimes streaked with red; fine grained, juicy, sub-acid, quality excellent. Tree an upright, moderate grower, becoming stronger as it attains age. Early annual bearer; very prolific. Winter. Originated in Wisconsin.

A PERMANENT IMPROVEMENT DEMANDS THE BEST

Winesap—Origin, New Jersey. A valuable, old, well-known variety. Season, December to May. One of the leading export apples. Fruit medium, roundish, skin moderately thick and very tough; dark yellow, almost entirely covered with dark red; flesh yellow, fine grained, firm, rich, crisp, sprightly sub-acid; quality excellent. Moderately vigorous; rather open, irregular head. Very productive; an early bearer.

Wolf River—Origin, Wisconsin. Season, October to January. One of the largest apples

grown. Color yellowish-green with stripes and splashes of carmine, very handsome and showy; flesh nearly white, firm and rather coarse grained; flavor sub-acid, fair to good. Tree vigorous and fairly productive.

York Imperial (Johnston's Fine Winter)—Origin, Pennsylvania. Medium, oblong, angular, oblique, smooth; yellow, shaded red, indistinct red stripes; flesh yellow, firm, juicy, sub-acid, good. Winter. An excellent shipping apple, always brings high prices.

CRAB APPLES

Within the past few years a good many people have given much attention to improving this class of fruit. Their efforts have been attended with marked success. Crab apples succeed equally well in all sections and are valuable for cider, preserving and jellies, and some of the improved sorts are excellent for eating. Every orchard should contain a few, as the trees are handsome, annual bearers, and usually fruit the second year.

PRICES

	Each	Dozen	Per 100
5 to 6 ft., No. 1, 3 yrs.....	\$.50	\$5.00	\$40.00
4 to 5 ft., No. 1, 2 yrs.....	.40	4.00	30.00
3 to 4 ft., No. 1, 2 yrs.....	.25	3.00	22.50

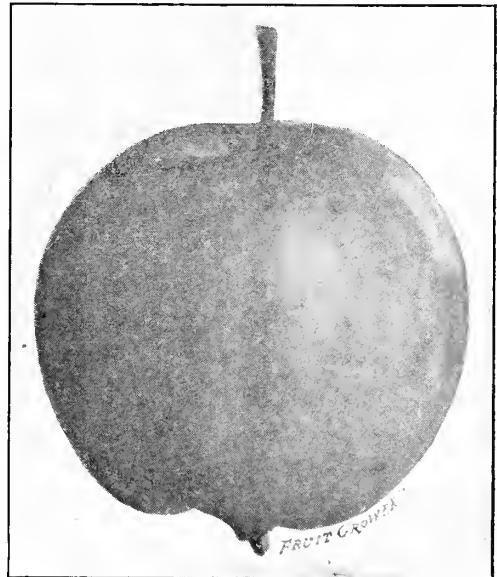
Florence—Origin, Minnesota. Season, August. Originated with Peter M. Gideon, who also produced the Wealthy apple. A hardy, spreading tree; bears young and inclined to over-bear. Fruit medium; color carmine when well colored; flesh yellowish, medium fine, acid; excellent for cooking. A fine jelly crab, and valuable for early market, as well as home use.

Golden Beauty—Medium size; flesh white, fine grained, mild, sub-acid; one of the best crabs grown; tree vigorous grower.

Hyslop—Origin, America. Season, September to October. Tree vigorous where hardy. Blights in some localities. Fruit medium; yellow ground with heavy shadings of deep crimson and splashes of maroon with heavy blue bloom; flesh fine, firm, yellow, astringent; bears abundantly in clusters, which make tree exceedingly ornamental. Its high color always commands a fancy market price for it. One of the most desirable crabs for culinary purposes.

Martha—Origin, Minnesota. Season, August and September. Tree a vigorous grower and very free from blight. Fruit large, yellow with heavy blush of light red; flesh fine grained, firm; flavor sub-acid, very juicy and exceptionally fine for cooking. Not productive.

Transcendant—Origin, Russia. Season, September. Fruit medium to large; color brownish yellow with blush of carmine; flesh firm and crisp, yellowish, fine grained, very juicy, acid. Tree is a vigorous grower. Hardy. Subject to blight and should not be planted near other orchard trees.



Crab Apple, Martha

Whitney (Hybrid) (Whitney No. 20)—Origin, Illinois. Season, August. Fruit large to very large for a hybrid; yellow, striped with red and mostly covered with red on sunny side; flesh yellow, very juicy and fine grained; flavor rich and almost sweet. Its crab parentage is shown in the health and vigor of the tree. The fruit equals many apples in size and quality.

QUALITY IS OUR HOBBY

PEARS

The cultivation of this fruit is rapidly extending as its value is appreciated and the demand is increasing every year, making it one of the most profitable to plant. The range of varieties is such that, like apples, they can be had in good eating condition from August until early spring. The melting, juicy texture, the refined flavor and the delicate aroma of the pear give it rank above all other fruits, excepting the grape. One of the most important points about the management of pears is the gathering at the proper time. Summer pears should be gathered at least ten days before they are ripe, and autumn pears at least two weeks. Winter varieties may hang until the leaves begin to fall, then place in a cool, dry cellar.

When the pear trees are heavily laden the fruit should be thinned when about one-third grown, else it will be poor and the tree injured.

PRICES

Pears, Standard:	Each	Dozen	Per 100
5 to 7 ft., No. 1, 3 yrs.....	\$.75	\$8.00	\$60.00
5 to 6 ft., No. 1, 2 yrs.....	.60	7.00	50.00
4 to 5 ft., No. 1, 2 yrs.....	.50	6.00	45.00
Pears, Dwarf, 3 to 4 ft.50	6.00	45.00

SUMMER PEARS

Bartlett—Large size, with a beautiful blush next the sun, buttery, very juicy, and highly flavored; tree a strong grower, bears early and abundantly. A very popular pear. Ripens in August and September.

Clapp's Favorite—A large, fine pear, resembling the Bartlett, but without its musky flavor; pale lemon-yellow with brown dots, and fine texture, melting, buttery, juicy with a deli-

cate flavor; tree hardy and productive. August and September.

Early Harvest—Large, golden-yellow, with bright red cheek, quality not the best, but grown extensively for market on account of its size, beauty and hardiness; ripens ahead of Bartlett.

Wilder—Medium to small, greenish yellow with a brownish red cheek; melting, sweet and very pleasant; tree a vigorous grower and good bearer.

AUTUMN PEARS

Duchess d'Angouleme—Very large, greenish-yellow, sometimes russeted; makes a beautiful tree and heavy bearer; buttery, melting and sweet. October and November.

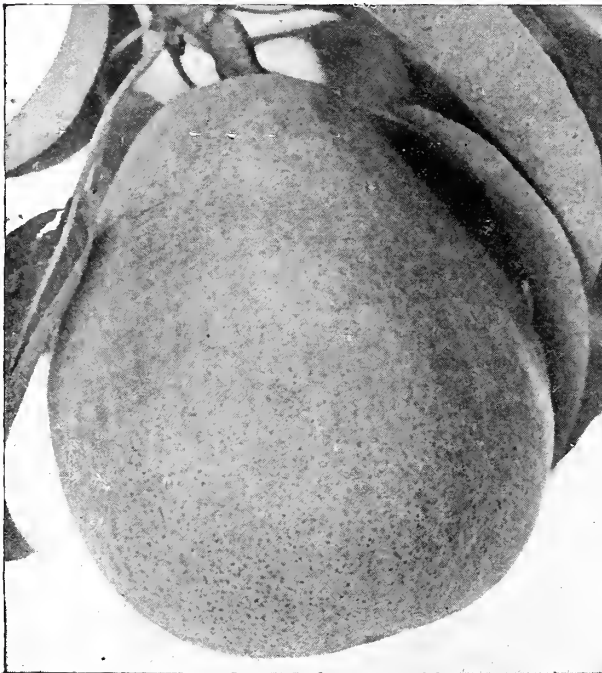
Flemish Beauty—Large, juicy, melting and rich; strong grower and good bearer, very hardy. September and October.

Garber—Large, bright yellow, with red, juicy and good; a splendid canning pear; tree vigorous and hardy, not subject to blight; ripens just after Bartlett.

Kieffer—This is the most popular pear grown; fruit of fine size, rich color and good quality; tree very vigorous and seldom blights; should be picked at maturity and ripened indoors. October and November.

Seckel—Small, rich, yellowish-brown; one of the best and highest flavored pears known; very productive. September and October.

Vermont Beauty—Of medium size, roundish, yellow, heavily shaded with carmine; flesh exceedingly fine, sweet and juicy. The tree makes a strong, healthy growth and bears good crops. October.



Duchess d'Angouleme

STOCK THOROUGHLY ACCLIMATED

CHERRIES

There are few more desirable fruits than the Cherry. They are being planted more and more each year and there is always a brisk demand on the market for good fruit. Aside from their fruit value, they make very ornamental trees for the lawn, especially the Heart and Biggreau varieties, which are strong, vigorous growers, with large glossy leaves, and open, spreading heads. Cherries thrive in most any dry or well-drained soil; the fruit is delicious whether eaten out of hand or preserved. No home garden is complete without a few cherry trees.

PRICES

Cherries:	Each	Dozen	Per 100
5 to 6 ft., No. 1, 3 yrs.....	\$.60	\$7.00	\$50.00
4 to 5 ft., No. 1, 2 yrs.....	.50	6.00	45.00
3 to 4 ft., No. 1, 2 yrs.....	.45	5.00	40.00
2 to 3 ft., No. 1, 1 yr.....	.25	3.00	20.00
Cherries, Sweet, Windsor and Bing:			
5 to 6 ft., No. 1, 3 yrs.....	\$1.00	\$10.00
4 to 5 ft., No. 1, 2 yrs.....	.75	8.00

Baldwin—One of the best of the Morello type; very large, round, color dark yet almost transparent, stem quite large, medium in length; fruits usually in pairs; flesh sub-acid and very good; it fruits early, is hardy; very productive.

Bing—A new black cherry; originated in Oregon; size large, color blackish purple; flesh very solid and of the highest flavor; tree vigorous, upright, hardy and productive; a fine shipping and market cherry.

Black Tartarian—Very large, bright purplish-black; half tender, juicy, very rich and flavor excellent; tree a vigorous grower and producer. June.

Dyehouse—Partakes of both the Duke and Morello in wood and fruit; a very early and sure bearer; ripens a week earlier than Early Richmond.

Early Richmond—Medium size, dark red, melting and juicy, acid flavor; one of the most valuable and popular of the acid cherries and is unsurpassed for cooking; tree slender grower, exceedingly productive and very hardy; will stand the most severe weather.

English Morello—Medium to large, roundish; dark red, nearly black when ripe; flesh purplish-red, meaty, juicy, slightly astringent and good; very productive. August.

Governor Wood—Large, rich, light yellow with red cheek, juicy and sweet; late June.

Large Montmorency—Large, roundish, red; flesh tender, mildly acid and good quality; larger than Early Richmond and about ten days later; one of the most popular sorts; late June.

Late Duke—Large, heart-shaped, dark handsome red when fully ripe; flesh light colored, sub-acid; flavor good; one of the latest.

Ostheim—Large, roundish, one side compressed, dark red and much darker when fully ripe; flesh liver colored, tender, juicy, sub-acid



Early Richmond Cherry

and very good; early and ripens over a long period.

Windsor—Of Canadian origin and noted for the hardiness of fruit and bud; large, dull red, almost liver colored; substantial and meaty; without doubt the hardiest of the sweets. Popular in the East.

Wragg—Large, roundish, heart-shaped; dark crimson and when fully ripe, black or nearly so; flesh and juice light crimson, firm and good; very productive. One of the hardiest and is usually a sure cropper.

NURSERY STOCK ENHANCES THE VALUE OF YOUR LAND

COMPASS CHERRY-PLUM

Compass Cherry-Plum—Originated at Springfield, Minnesota, by M. H. Knudson, through scientific hybridization by applying pollen of the English Morello Cherry and Miner Plum to the blossom of the Sand Cherry (*Prunus Besseyii*). It is absolutely hardy, wonderfully prolific, frequently producing fruit on young trees in nursery row. In shape, size and coloring of the fruit the characteristics of the Plum and Cherry are about equally divided. Color bright red, deepening as it becomes well ripened, until it reaches a rich dark wine color. Valuable for canning and preserving.

The Compass fills a unique place in the North, where it stands today as the principal hardy fruit approaching the Cherry, and is especially recommended for planting where cherries of the Morello type are not successful.

PRICES

	Each	Dozen	Per 100
5 to 6 ft.	\$1.00	\$10.00	\$80.00
4 to 5 ft.75	8.00	60.00
3 to 4 ft.50	6.00	45.00

DWARF ROCKY MOUNTAIN CHERRY

(*Prunus Pumila Besseyii*)—A very hardy native dwarf cherry, growing in shrub form. Bears large crops of medium sized black cherries, which when fully ripe are of fair quality; used for cooking and preserving with good results. 3-4 ft. only.



Compass Cherry-Plum

PLUMS

The plum, like the pear and other finer fruits, succeeds best in heavy soil with some clay and being almost entirely free from disease, they can be grown very profitably. Of late years the demand has been growing very rapidly. The finer kinds are excellent dessert fruits of rich and luscious flavor; for cooking and canning they are unsurpassed. For home consumption they should be allowed to remain on the trees until fully ripe, but for shipping they should be gathered a few days earlier. Some of the varieties are inclined to overbear and should be thinned in order to produce perfect fruit. Most all the varieties, especially the native sorts, are extremely hardy and will withstand the most severe weather.

PRICES

European, Japanese and Native sorts:

	Each	Dozen	Per 100
5 to 6 ft., No. 1, 3 yrs.	\$.60	\$7.00	\$50.00
4 to 5 ft., No. 1, 2 yrs.50	6.00	45.00
3 to 4 ft., No. 1, 2 yrs.45	5.00	40.00

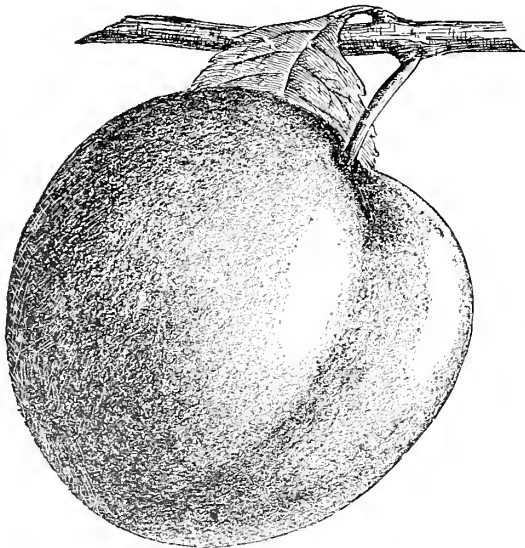
EUROPEAN PLUMS

Bradshaw—Very large, dark violet red; flesh yellowish-green, juicy and pleasant; tree vigorous, erect and productive. August.

German Prune—Medium, oval, purplish-blue; rich, juicy and of high flavor; tree vigorous and very productive.

Gold—This was Luther Burbank's first great origination and was his first choice from among twenty million native, hybrid and cross-bred seedlings grown by him. Small, slender limbs, a rather dwarfish-growing, but strong tree. One of the hardiest. Color, transparent light golden yellow, nearly overspread with a beautiful blush. One of the handsomest plums in existence.

Imperial Gage—Large, oval, yellowish-green with marbled green stripes, heavy white bloom,



Wolf Plum

EXPERIENCED MEN GROW TREES OF QUALITY

flesh greenish, juicy, melting, rich and best quality; tree upright and vigorous. September.

Lombard—Medium, roundish-oval, violet-red, juicy and pleasant; adheres to stone; a valuable market sort, hardy and adapted to light soils; nearly always produces a crop.

Moore's Arctic—Grows in large clusters, large, dark purple; flesh very fine; splendid for preserving and dessert; tree vigorous and prolific; fruit is a long keeper.

Shipper's Pride—Large, nearly round, dark purple, juicy and sweet; a splendid shipper and good market variety; tree moderate grower, but productive.

JAPANESE PLUMS

Abundance—One of the best Japan plums. Tree is a very rapid grower, healthy and comes into bearing quite young and yields abundantly; medium size, rich, bright cherry-red with distinct bloom and highly perfumed; flesh light yellow, juicy and tender and excellent quality; tree vigorous and hardy.

Burbank—Medium to large, orange-yellow, dotted and marbled with red; flesh meaty, yellow, sweet and good; valuable for canning and a good market plum; mid-June. Hardest and most prolific of the Japan varieties.

Wickson—Large, heart-shaped, deep maroon red; flesh very firm, yellow, sub-acid, rich and good; a good shipping plum; tree upright, but in some localities a shy bearer.

NATIVE PLUMS

Cheney—Large, roundish, oblong, deep mottled red on greenish-yellow ground; blue bloom; flesh yellow, firm and of good quality. Middle of August.

De Soto—Large, oval, orange overlaid with

crimson, numerous dots and thin blue bloom; flesh firm, juicy and high-flavored; one of the best natives in quality.

Forest Garden—Large, nearly round, deep red when fully ripe with numerous yellow specks; flesh firm, sub-acid, good quality; season late.

Hawkeye—Very large, dark red, handsome, rich and good; tree a moderate grower, with broad shining leaves; hardy and profitable. August.

Klondike—Medium to small, roundish-oval, bright yellow, shaded with red and many small dots; flesh juicy, pleasant, sub-acid; quality good; early August.

Stoddard—Largest American plum known. It is a pure American, but shows strong markings of the Japan type in leaf and fruit; the tree is a good, stout grower, beautiful enough for the lawn. An early bearer and perfectly hardy. August.

Surprise—Large, roundish-oval, dark red with many small yellow dots; flesh pale yellow, firm and of good quality.

Weaver—Large, oblong, flattened at ends, dark mottled red with purplish bloom; flesh firm, meaty and very good; a constant and regular bearer and very hardy.

Wild Goose—Medium to large; roundish-oblong, skin light red and shining, making an attractive market plum; flesh yellow, pulpy and sweet; very popular, but a poor fertilizer. Should be planted with other trees of abundant pollen.

Wolf—Medium to large, yellow mottled with red; flesh yellow, firm and good quality; tree vigorous and a prolific bearer.

Wyant—Medium to large, oblong, purple-red on yellow ground; flesh firm and good quality; one of the most popular of the American sorts.

APRICOTS

A beautiful and delicious fruit; a close relative of the plum and peach, combining the qualities of both. The fruit ripens after the early cherries and just before the plums and peaches. Tree is as hardy as the peach and requires about the same cultivation. It ships well and commands a good price in the markets and for drying and canning, it has no superior. The Russian varieties are the most hardy, earliest and most productive.

PRICES

Russian:	Each	Dozen	Per 100
5 to 6 ft., No. 1, 3 yrs.....	\$.60	\$7.00	\$50.00
4 to 5 ft., No. 1, 2 yrs.....	.50	6.00	45.00
3 to 4 ft., No. 1, 2 yrs.....	.45	5.00	40.00

Alexander (Russian)—Medium to small, light orange, yellow flecked with red; flesh tender, juicy, sweet and good quality; hardy; very productive. July.

Budd (Russian)—Medium to large; light orange with blush on sunny side; flesh sweet, juicy with flavor of the peach; hardy and productive. August.

PEACHES

To secure healthy, vigorous and fruitful trees, the ground must be well drained and kept clean and mellow. Peach trees are easily cultivated and their freedom from disease, the short time it takes to come into bearing and the immense demand for the fruit, makes them extreme-

WE GROW OUR OWN STOCK



ly profitable. Peaches are borne on wood of the previous season's growth, and this makes it absolutely essential to prune the trees yearly, remove dead branches and let in light and air. Keep the trees in good shape and you will have splendid returns.

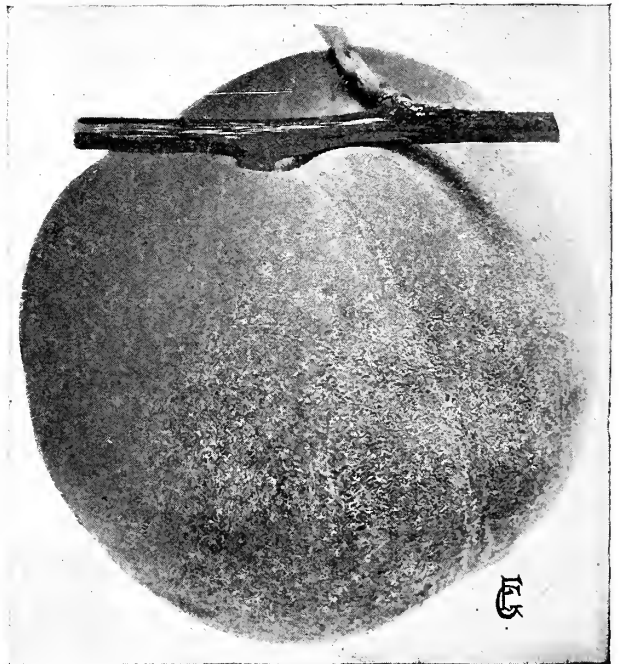
Budded Peaches:	PRICES	Each	Dozen	Per 100
5 to 6 ft., No. 1, 2 yrs.....		\$.50	\$5.00	\$40.00
4 to 5 ft., No. 1, 2 yrs.....		.40	4.00	30.00
3 to 4 ft., No. 1, 2 yrs.....		.30	3.00	20.00

Alexander (Cling)—Medium size; greenish-white, nearly covered with rich red; flesh sweet, juicy; vigorous, productive. Good market peach.

Hill's Chili (Free)—One of the best; medium to large oval, yellow with red; flesh rather dry, but good. Valuable sort for drying. September.

Bokara No. 3 (Free)—Large, yellow with red cheeks; flesh yellow, firm and melting; an excellent keeper.

Champion (Free)—Large, round, quite regular; yellowish-white mottled with red on sunny side; flesh white with red at the pit; one of the best in quality.



Crosby (Free)—Medium to large; orange-yellow splashed with red; flesh yellow, red at pit, juicy and rich; tree hardy and prolific; fruit should be thinned in order to make good sized peaches; a popular market sort. Middle of September.

Champion Peach

Early Rivers (Cling) — Large, creamy-white with delicate pink cheek; flesh melting with rich, racy flavor; one of the best for home or market.

Elberta (Free)—The great market peach of the Southwest; perfectly hardy in the North and is believed by many growers to be the best all around peach; color lemon-yellow with blush on sunny side; flesh pale yellow, tender and juicy; tree vigorous; a good shipping peach.

Hale's Early (Semi-Cling) — Medium, greenish-white with red cheek; flesh white, melting, juicy; vigorous, healthy; abundant bearer. July-August.

ONCE A CUSTOMER ALWAYS A CUSTOMER

Triumph (Free)—Medium to large, round, somewhat flattened, greenish-yellow, broken stripes of purplish-red and pink dots; flesh yellow with red stains, juicy and very good; one of the early sorts.

Wright—An Iowa seedling; tree dwarfish,

spreading, willowy habit; fruit slightly below medium size, light yellow splashed with red on sunny side; flesh white, best quality, small pit. Profuse bearer; has proven to be much hardier than any of the old varieties; worthy of a trial. Season, September.

GRAPES



Everyone should have a few grape vines in the home garden. They require very little cultivation and the returns are so abundant. If proper selection of varieties is made, one may have grapes on the table for several months in the year. They can be trained over fences, trellises, or hillways and thus be ornamental as well as useful. To grow for market, they can be planted on hillside that are unsuitable for other crops. They should in all cases have a free exposure to the sun and air.

PRICES

	Dozen	Per 100		Dozen	Per 100
Concord, 2 yrs., No. 1.....	\$1.50	\$ 8.00	All Other Sorts:		
Concord, 1 yr., No. 1.....	1.00	6.00	No. 1, 2 yrs.....	\$3.00	\$15.00
Campbell's Early 2 yrs., No. 1... 5.00	No. 1, 1 yr.....	2.00	10.00

Agawam (Red)—Bunch large, compact, shouldered, berry large, dark red or nearly black; flesh tender juicy, vinous and good quality; later than Concord.

Brighton (Red)—Bunch medium to large, quite compact, flesh rich, sweet and best quality, color dark crimson or brownish red; vine vigorous and hardy.

Campbell's Early (Black)—A strong, vigorous and hardy sort; ripens early and bears abundantly; berry large, black with blue bloom; tender, sweet and rich; good market berry; it is a good shipper and long keeper.

Catawba (Red)—Bunches medium, shouldered; berries large, deep coppery red, becoming purple when ripe; flesh somewhat pulpy, juicy, sweet aromatic and rich. One of the latest. Does not ripen well in the North.

Champion (Black)—Bunch medium, compact; berries medium, quality fair; on account

of the vigor of vine, showy fruit and heavy bearing, it is extensively grown for market.

Clinton (Black)—Bunches medium, compact; berries round, small, with thin blue bloom pulpy and juicy; hardy and late; good keeper and valuable as a wine grape.

Concord (Black)—Too well known to need much description; is considered by many to be the best all around grape grown; is extremely hardy, vigorous and productive; bunches large, compact; berries large, juicy, buttery and sweet; will succeed well almost anywhere.

Delaware (Red)—One of the best red grapes; bunch small and compact, berry small, round, beautiful light red; flesh rich, vinous, sweet and delicious; best quality. Good market grape.

Elvira (White)—Bunch medium, shouldered and very compact; berry medium, pale green with yellow shade, sweet, tender and free from foxiness; grown in the West as a wine grape.

POOR STOCK GOES TO THE BRUSH PILE

Empire State (White)—Bunch long and large; berry medium, light green or white, yellow tinged, covered with a white bloom; tender, sweet and sprightly; good keeper.

Green Mountain (White)—The earliest white grape; bunch medium to large, shouldered; berries medium, greenish white, tender, sweet and excellent quality, combines hardiness, fruitfulness, vigor and health.

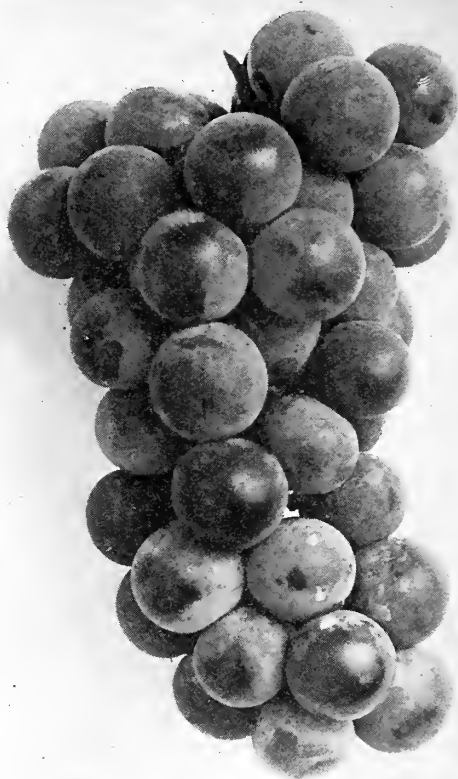
Janesville (Black)—Its hardiness, vigor and productiveness has made it one of the best black sorts. It is especially adapted to the North: bunch medium to large, short and shouldered; berries round, with slight blue bloom, tender and vinous; quality fair.

Lindley (Red)—Bunch large, long and compact; berry medium, pale red with violet bloom, sweet, juicy, high-flavored and good, hardy and vigorous.

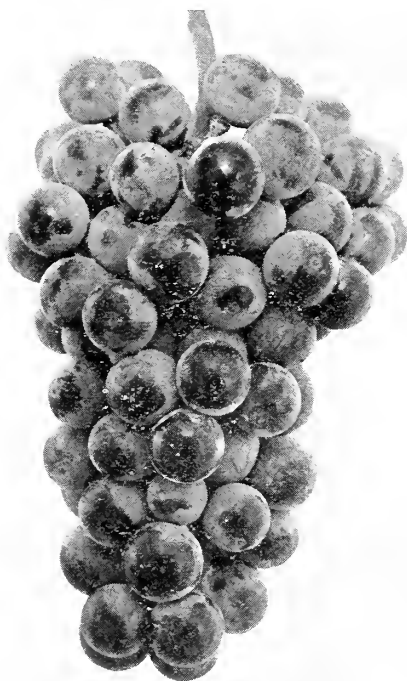
Martha (White)—One of the most reliable white grapes; bunch medium, compact and shouldered; berry medium, greenish yellow with bloom, sweet, juicy and tender; ripens a little earlier than Concord.

Moore's Diamond (White)—A vigorous grower entirely free from mildew and a prolific bearer; bunches large and compact, slightly shouldered; color delicate greenish-white with yellow tinge when ripe; berries tender, juicy, nearly transparent, sweet, rich; ripens about two weeks before Concord.

Moore's Early (Black)—Bunch large, berry round with heavy blue bloom, quality said to be better than Concord; hardy, prolific; a good market grape; ripens about two weeks before Concord.



Moore's Early Grape



Concord Grape

Niagara (White)—One of the leading white sorts; bunch large, shouldered, compact; berry large, yellowish white, juicy; vinous and sprightly, quality good; skin tough; good for market.

Pocklington (White)—The great vigor and hardiness of the vine with the beauty and size of the clusters, place this in the front rank of white grapes; berry a light lemon-yellow, tender, sweet and fine aromatic flavor; very prolific.

Salem (Red)—Bunch medium, shouldered and compact; vine strong and vigorous; berry large, coppery red, thin skin, sweet and sprightly; a good market berry. Ripens in September.

Vergennes (Red)—Bunch large and compact; berry large, amber red with grayish bloom, tender, vinous, rich, good. Splendid market grape.

Wilder (Black)—Bunch large, compact and generally shouldered; large, black with thin blue bloom, tender, sweet, slightly aromatic, good.

Worden (Black)—A seedling of the Concord; bunch large and compact, berry round, black with blue bloom, pulpy, juicy and very pleasant; ripens several days earlier than Concord.

Woodruff (Red)—Bunch very large, shouldered and roundish; berries are round, red with some bloom, juicy, sub-acid and good.

Wyoming (Red)—Bunch small and compact; berry medium, red, brighter than Delaware; tender, juicy, sweet and very good; a hardy, vigorous and prolific grape. It is one of the best early red grapes.

A TREE TOP CAN NOT PRODUCE A ROOT SYSTEM

STRAWBERRIES

Strawberries can be successfully grown in any good garden soil. It is easily placed in the front rank among small fruits and owing to the wide range in which it can be grown, there is always a good market for several weeks of the year. No fruit lends itself so readily to the varied uses of the table or for canning purposes or preserving. The varieties that we list are all standard and the best. "S" or staminate varieties fertilize themselves. "P" or pistillate varieties require to be planted with staminate in order to produce good crops.

PRICES

	Per 100	Per 1000
Senator Dunlap	\$2.00	\$15.00
All other sorts	1.50	10.00

Bederwood (S)—A very desirable early berry; medium to large, very firm, sweet and good. A vigorous grower and enormous yielder.

Brandywine (S)—A good market berry; medium to large; dark scarlet, firm and somewhat acid; a good bearer and does well in clay soil. Mid-season.

Bubach (P)—Large, conical and irregular; dark red or crimson, sweet and good quality; plant vigorous, healthy and a good bearer; popular as a home garden berry and for nearby market. Mid-season.

Clyde (S)—One of the best; very large, bright dark scarlet; flesh firm, pinkish-white, quality good and a prolific bearer. Mid-season.

Crescent (P)—Medium size, conical, light red or scarlet; seeds prominent; an old, well-known, popular variety; succeeds in all soils.

Gandy (S)—Large, regular and conical; bright glossy crimson, firm, fine flavor, vigorous and prolific; a fine late sort and a good shipper.

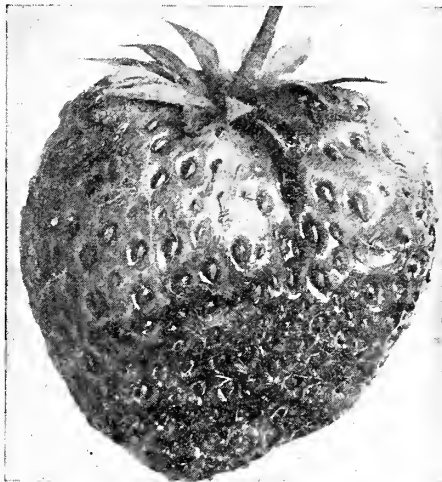
Glen Mary (S)—Berry is large to very large, conical and ribbed, crimson, flesh pinkish-white and good quality; plant strong, healthy and productive; ranks with the best in flavor. Mid-season.

Haverland (P)—Berries are large, long and light red; quality very good; a prolific bearer and plants are strong and healthy.

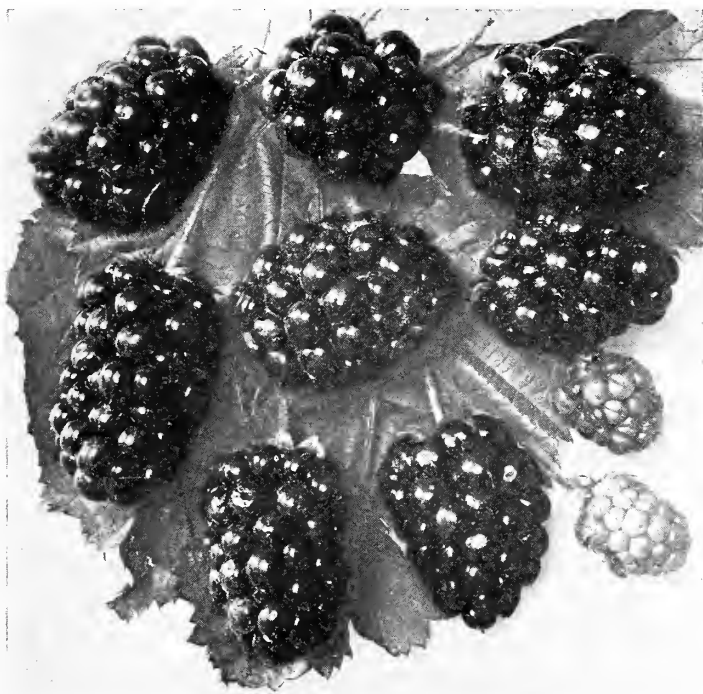
Michel's Early (S)—Small, dull red, flesh pink, firm and ships well; vigorous and prolific; a good pollenizer for other varieties; very early.

Senator Dunlap (S)—The great market berry; fruit medium to large, regular; bright glossy red; sweet and good quality; exceptionally firm, making it a good keeper and shipper; ripens early and continues a long time; immensely prolific. Mid-season.

Warfield (P)—Plant is a vigorous grower, with long penetrating roots; a good berry for dry seasons; dark crimson, firm, sub-acid and very good; popular as a market variety.



Senator Dunlap Strawberry



Lucretia Dewberry

COURTEOUS TREATMENT TO ALL

DEWBERRIES

The Dewberry is a dwarf and trailing form of the Blackberry. The fruit is highly prized as a market fruit owing to its large size and fine quality. Set the plants two feet apart in the row and cover in winter with coarse litter. Should be mulched in the spring to keep them off the ground.

2 years Dozen, \$1.50 Per 100, \$8.00 1 year Dozen, \$1.00 Per 100, \$5.00

Austin—Glossy shining black color; flavor is most excellent and when fully ripe will fairly melt in your mouth; has the hardy characteristics of the Dewberry family; very productive.

Lucretia—Perfectly hardy and remarkably productive; said to be the best of this class of fruit; ripens early; is often one and one-half

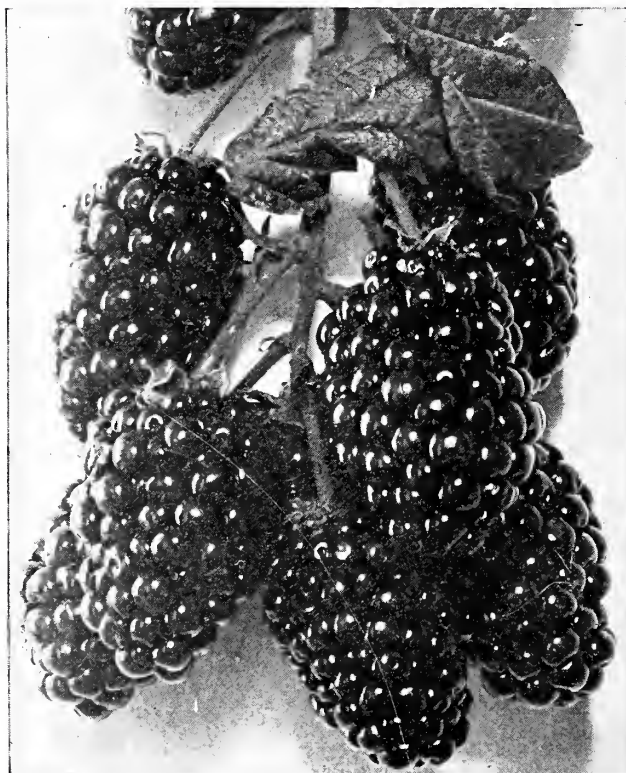
inches long by one inch in diameter; sweet, luscious and melting; this variety is recommended most highly.

Premo—Very large, jet black and good, crop ripens fast and evenly from seven to ten days earlier than Lucretia; is better and firmer in quality; an extra early sort.

BLACKBERRIES

Blackberries are among the best known and most valued of our berries. No fruit of any kind is more wholesome. A liberal use of berries and other good fruit will save doctors' bills. Blackberries should be planted in rows six or seven feet apart, three to four feet in the row. Keep the ground light, rich and clean, and pinch the canes back when they have reached four feet in height. The demand for blackberries is always good.

	Dozen	Per 100
Snyder	\$1.00	\$5.00
All other sorts	1.50	8.00



Snyder Blackberry

Early Harvest—One of the earliest, berry medium sized, good quality and very prolific; firm and attractive in appearance. A good market sort.

Eldorado—Vine is vigorous and hardy; berries are very large, black, borne in clusters; ripens well together; sweet, melting and pleasing to the taste.

Erie—One of the very best large new blackberries; absolutely hardy, very black, firm and solid; ripens early.

Mersereau—Large, oval, sparkling black, sweet, rich and melting, hardy and productive.

Rathbun—A strong, erect grower and hardy; fruit is sweet, luscious, without a hard core; high flavor; jet black, small seeds; firm enough to ship and handle well. One of the largest sized berries.

Snyder—The hardiest blackberry known; fruit medium sized and of a good quality; a standard market variety.

Stone's Hardy—A vigorous grower; berry glossy black and of a good flavor. A little later than the Snyder; very hardy.

Taylor—Large, oblong, soft; juicy, sub-acid and rich; later than Snyder.

Wilson's Early—Very large, black, sweet, rich and good quality; ripens early and is productive.

PLACE A FEW ORNAMENTAL TREES IN YOUR FRONT YARD

RASPBERRIES

The Raspberry is one of the most delicious and popular fruits grown. They are always in demand in season and command good prices on the market. For canning purposes they are unexcelled. They are easily cultivated and require little care. Cut out the old and weak shoots each year; plant in good soil in hills about four feet apart. With a little care and attention they will produce large crops of berries. For winter protection, bend the canes over and cover with straw or leaves and remove early in the spring.

PRICES

2 yrs., No. 1 Dozen, \$1.50 Per 100, \$8.00 1 yr., No. 1 Dozen, \$1.00 Per 100, \$5.00

Brandywine (Red)—Large, bright and very firm; a good market berry and valuable for its shipping qualities.

Cardinal (Red)—One of the new sorts; it is extremely hardy and productive; fruit is rich, red and highly flavored. It is the opinion of leading horticulturists that it is the best of the good varieties now being grown.

Columbian (Red)—Resembles the Shaffer, but is much better; the berry is firmer, dark red and adheres to the bushes much longer; a strong grower, attaining large size. One of the hardiest and most productive and stands at the head for canning, jams, etc.

Cumberland (Black)—The largest of all black caps; a healthy, vigorous grower, throwing up stout, stocky, well branched canes that produce immense crops of magnificent berries. Fruit very large, firm, quality about the same as Gregg; keeps and ships as well as any of the blacks. The most profitable market variety.

Cuthbert (Red)—Large, bright scarlet-crimson, excellent quality, firm, juicy and refreshing, vigorous grower, hardy and productive. Very popular as a home garden and market berry.

Eureka (Black)—Berry medium to large, round, firm, juicy and good quality. Has a long season and is valued as a splendid market sort.

Gregg (Black)—Of good size, fine quality, productive and hardy, firm, sweet and rich; strong grower and good bearer. Ripens late and evenly. Good market berry.

Kansas (Black)—Large, round and firm, moderately juicy, strong grower and very productive. Ripens early. Considered one of the best market berries on account of its handsome appearance.

Loudon (Red)—Large, firm and of good quality; dark crimson; very productive, hardy and vigorous.

Marlboro (Red)—The largest early red; bright scarlet, sub-acid, pleasant and good; hardy and productive.

Miller (Red)—Bright red color; is a healthy, vigorous grower, canes strong, well adapted to carrying their heavy load of berries; firm and a good shipper; an early ripener.

Minnetonka-Ironclad (Red)—Medium size, bright scarlet, sweet, rich and good quality. Considered by some to be equal to Turner and in some places better.

Munger (Black)—Resembles the Gregg; excels it in size and flavor and also a better shipper; sweet, juicy and good; large and of fine quality; a strong, vigorous grower and extremely hardy.

Turner (Red)—A fine old variety and a general favorite everywhere; owing to its good

Older (Black)—One of the lately introduced varieties which has been receiving considerable attention in the Northwest. Ripens a trifle in advance of Gregg. Fruit similar to Gregg in size, but is very distinct from all other black caps in general appearance; jet black, sweet and of excellent quality; hardy; adheres well to the bush.



Cumberland Raspberry

size, fine appearance and great productiveness is a profitable market sort. A strong grower and produces good crops annually.

Plum Farmer (Black)—A vigorous, stocky growing black cap, very healthy and attractive in appearance; productive, bearing heavy crops of large, fine jet black berries; excellent quality and a good shipper. One of the most valuable market berries, as it commands top prices.

NO FARM IS COMPLETE WITHOUT A FARM ORCHARD

CURRENTS

The Currant is one of the most valued of the small fruits. They mature just before raspberries and can be used either raw or cooked. Being very hardy, they do not winter-kill and are easy of cultivation, requiring little care. They can be grown in any good garden soil.

PRICES

	Dozen	Per 100
Perfection	\$5.00
All other sorts: 2 yrs., No. 1.....	3.00	\$15.00
All other sorts: 1 yr., No. 1.....	2.00	10.00

Black Champion—Very productive, large bunch and berry, excellent quality and a strong grower.

Black Naples—Very large, black, rich, tender and excellent for jellies and wine; very productive.

and immensely productive. Is classed with the black varieties.

Long Bunch Holland—One of the best late varieties; bush very vigorous and hardy, clusters long; berry medium to large, bright red and good quality.

North Star—Said to be the strongest grower among the red varieties; bunches average four inches in length and are freely produced; extra quality and extremely hardy.

Perfection—Berries are a beautiful bright red and larger than Fay's Prolific. In quality it is said to be superior to anything in the market today; rich, mild, sub-acid flavor, with plenty of pulp and few seeds; clusters are long and size of berry is maintained to the end.

Pomona—Fruit of good size and flavor; bright red; has long stems and hangs in fine condition after ripening; is a good shipper; bush bears early and is wonderfully prolific. Good market sort.

Red Cross—A strong growing variety with long clusters; berry medium to large, bright red, mild; good quality and fine flavor.

Red Dutch—An old well-known standard variety; berries dark red, sub-acid and sprightly flavor; clusters medium to large.

Versailles—A French variety resembling the Cherry; deep red, bunch and berry large and handsome; very productive.

Victoria—Clusters medium, berries medium to large, bright red, mild sub-acid. One of the most valuable late varieties.

White Dutch—Clusters two to three inches long; berries medium, translucent, a little darker than white grape; quality excellent and ripens early, vigorous and productive.

White Grape—Bush vigorous and productive; clusters long; berries large, very attractive, mild flavor and good quality; a good table variety. Distinct from White Dutch.

Wilder—Clusters above medium length and berries large, bright red, of excellent quality, with mild, sub-acid flavor; ripens early and is a good keeper.



Fay's Prolific Currant

Black Victoria—An English variety of exceptional merit; said to be the largest black currant in cultivation; good flavor and very productive.

Cherry—Large, deep red; rather acid, short branches, very productive.

Crandall—A seedling of the Missouri River wild currant, much larger and much more prolific.

Fay's Prolific—A cross between the Cherry and Victoria; one of the most popular of the red currants and immensely prolific.

Lee Prolific—A new English variety; the fruit is large and of superior quality; vigorous

YOU CULTIVATE CORN TO OBTAIN A CROP

GOOSEBERRIES

This fruit is very useful for cooking either green or ripe and is used for canning extensively. Requires the same cultivation and treatment as Currants.

PRICES

	Dozen	Per 100
Industry, 2 yrs., No. 1.....	\$5.00
Houghton, 2 yrs., No. 1.....	2.00	\$12.00
All other sorts, 2 yrs., No. 1.....	3.00	18.00

Champion (Oregon)
—Berries medium size, round, smooth, greenish-white with thin and transparent skin; good quality, ripens early; bush vigorous and very free from mildew.

Downing—Large and round, light green, with distinct veins; fruit is soft, juicy and finely flavored; vigorous and productive variety; skin smooth. One of the best.

Houghton—Size medium, pale red, sweet and juicy; is a vigorous grower, abundant bearer and free from mildew.

Industry—One of the best English varieties yet introduced; berries very large, dark red, hairy, rich and agreeable; bush vigorous and a great producer.

Pearl—Similar to Downing, but fruit a little larger, very hardy, free from mildew and very



Pearl Gooseberry

productive. Valuable for home use or market.

Smith's Improved—Bush moderately vigorous, very productive; fruit large, pale yellow, thin skin. Excellent for dessert or cooking.

QUINCES

The Quince is attracting a good deal of attention as a market fruit. The tree is hardy and compact in growth and requires little space; is productive, gives regular crops and comes into bearing early; the fruit is much sought for canning. When put up in the proportion of one quart of quinces to about four quarts of other fruit, it imparts a delicious flavor. It will grow in any good garden soil, which should be kept mellow, and well enriched. Fruit should be thinned out if it bears too freely.

4 to 5 ft., No. 1, 3 yrs.....Each 60c Per Doz. \$6.00

Champion—Very large and handsome; flesh cooks as tender as an apple without hard spots; flavor delicate; tree very handsome and bears abundantly; valuable sort; greenish-yellow.

Meech's Prolific—Very large, bright yellow; quality very good and quite fragrant; bears

early and is very productive; one of the best. Mid-season.

Orange—Large, roundish, somewhat irregular with a small and short neck at the base; fine golden-yellow flesh and of excellent flavor. October.

MULBERRIES

The Mulberry is valued as an ornamental shade tree and the fruit is quite popular in some sections. Should be planted in deep, rich sandy loam. Requires little care and is of easy culture. The fruit is sprightly and refreshing and is a valuable addition to any fruit garden.

WHEN YOU BUY A HORSE YOU WANT THE BEST AND ARE WILLING TO PAY THE PRICE

PRICES

	Each	Dozen	Per 100
5 to 6 ft.....	\$.30	\$3.00	\$20.00
4 to 5 ft.....	.25	2.50	17.50
3 to 4 ft.....	.20	2.00	15.00

Downing's Everbearing—A beautiful tree for the lawn or street; bears an abundant supply of sweet, refreshing fruit for several weeks; berries are about one and one-half inches long; color blue-black.

New American—Equal to Downing in all respects and a much hardier tree; vigorous grower and very productive; ripe from middle of June until September; color black.

ASPARAGUS

This delicious and healthy vegetable should be found in every garden. Nothing can be more easily grown and no plant gives such a healthful food for such little outlay. Set in the fall or spring with the crown of the plant about three inches below the surface of the ground. Ten to twelve inches by two feet is a good distance to plant.

Prices Dozen, 50c Per 100, \$3.00

Barr's Mammoth—The largest of all, is very early, and quite tender and delicious; light color. The yield is simply enormous.

Columbian—A distinct variety of mammoth size, great yield and superior quality. Remarkable for the clear whiteness of its stalk, which retains the clearness of its color until several inches above the surface.

Conover's Colossal—A standard kind of first-class quality. Tender and high flavored; valuable market and garden sort.

Palmetto—Extensively grown for market on account of earliness, large size and fine appearance.

Russian—A very hardy rapid-growing, limber tree of great value, especially in the West; foliage abundant and said to be very desirable for silk worm culture; fruit good size and produced in large quantities. Introduced into this country by the Minnonites.

White—This is the variety used most for feeding silk worms; it forms a large spreading tree.

RHUBARB OR PIE PLANT

This very desirable vegetable comes early in the spring. The large stems of the leaves are used for pie-making and stewing. It is also valuable for medicinal purposes. A deep, rich soil is indispensable to secure large, heavy stalks. Plant in rows four feet apart, with the plants three feet distant. Set so that crowns are about one inch below the surface. Top dress in the fall with stable manure and fork under in the spring.

Prices Dozen, \$1.50 Per 100, \$8.00

Linneaus—This variety produces a small stem, fine quality; early; excellent for cooking.

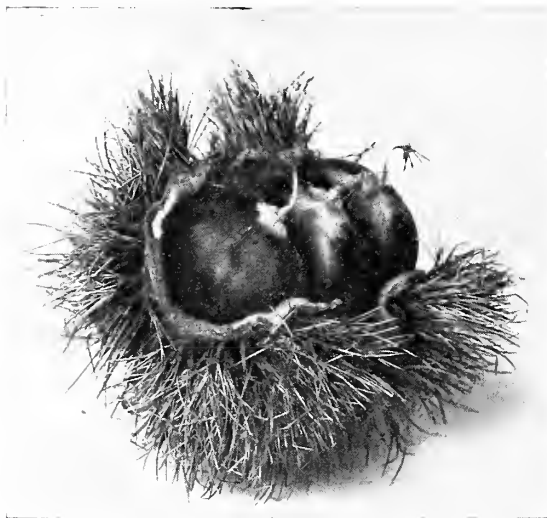
Victoria—Very large and valuable for market. Early.

MISCELLANEOUS

	Dozen
Strawberry-Raspberry	\$1.50
Dwarf Juneberry	3.00
Logan Berry	2.00
Buffalo Berry	3.00
Blueberry	3.00

NUT TREES

For prices see price list, page 59



American Sweet Chestnut

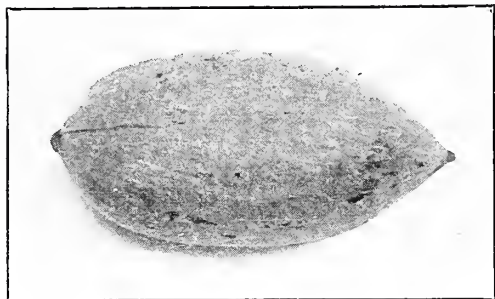
There has been more attention paid to the planting of nut trees the last few years than ever before. Few farms but contain land that, if planted to nut-bearing trees, would pay better than anything else to which it could be devoted. Besides the value of the wood for commercial purposes, the crop of nuts of nearly all kinds commands a high price in the market.

Butternut (White Walnut)—A native of the Eastern states. It is a beautiful growing tree and yields a large nut with a rough hard shell within which are full white oily kernels, sweet, rich and of the most delicate flavor; tree has a wide spreading head, reddish colored, dark foliage; is a native of this country and well adapted to nearly all sections.

Chestnuts (American Sweet)—The American Sweet Chestnut is much superior to both the European and Japanese kinds, although it does not as yet approach in size to either of them. Chestnuts are much easier to propagate than other nut trees and come

DON'T LOSE SIGHT OF THE FACT THAT TREES NEED CULTIVATION

into bearing earlier. It does not do well in limestone or clayey soils, or in wet boggy land. The nut is sweet and well flavored; makes a valuable shade tree for either street or lawn.



Pecan

Chestnut (Japan)—Very distinct from all other chestnuts, dwarf grower, productive, usually producing nuts when two or three years old. Nuts of immense size, far surpassing all other kinds; of fair quality when outside skin is removed.

PECANS

Good budded or grafted trees of good prolific varieties properly planted and cared for under proper conditions, usually begin to bear a few nuts in five or six years after planting,

and should produce a profitable crop in eight or ten years from planting, after which the yield should be abundant for many years.

The pecan is a very deep-rooted, hardy, long-lived tree, and is infested with fewer insect pests or diseases, perhaps, than any other fruit or nut tree of anything like equal importance; and when planted on land naturally rich and moist, the tree will thrive with little care or attention after well established, but there is no tree that responds more liberally to good treatment than does the pecan.

WALNUTS

Black Walnut (*Juglaus Nigra*)—This species is a common and stately forest tree in the Middle and Western states; grows from forty to sixty feet high; has an open, spreading head and is rapid in growth; produces large crops of nuts with rough hard shell containing rich oily kernels of fine flavor.

Japanese Varieties

Sieboldiana—If it produced no nuts, it would be well worth cultivating as an ornamental tree; is a vigorous grower and produces nuts borne in clusters of 12 to 15 each; has a smooth shell, thicker than the English, much resembling pecans; meat is sweet and good flavor; tree is perfectly hardy.

ORNAMENTAL DEPARTMENT



There is nothing that adds so much to the beauty of the home place as shrubs, trees and flowers. Care should be taken to make the selection so that the general effect will be harmonious. A good many people spoil the surroundings by filling the grounds with all sorts of shrubs, giving no attention to the height or time of blooming, placing a low-growing shrub behind a tall one and planting without regard to design or uniformity. This is really worse than none at all. We will be glad to make suggestions, and help you select the varieties that are best adapted to the grounds surrounding your home, that will produce a pleasing effect and increase the value of your property.

WHAT IS A HOME WITHOUT SHRUBS AND FLOWERS

If the grounds surrounding the house are extensive, beautiful effects can be produced by planting shade trees, shrubs, vines and flowers according to some pre-arranged plan. If the grounds are small, a few shrubs such as the Altheas, Hydrangeas, Spireas and other sorts can be used to good advantage. Vines trained over porches, trellises, fences, etc., can be made very effective at a small cost. Real estate owners who have vacant property to sell are beginning to plant fine trees and shrubs, knowing that they can secure a larger percentage on their investment, as purchasers will pay more for a fine looking lot than one given over to unsightly surroundings. We would also emphasize the fact that you should **buy none but the best**. A little thought will convince you that it is not the quantity, but the quality that counts. Buy none but the best stock, properly grown by reliable nurserymen, who have given their best thought to the careful propagation and best varieties. We have a large stock of all kinds of shade trees, ornamental shrubs, etc., that has been selected with the greatest care and attention, both as to variety and quality.

HOW TO PLANT

A fine, well-cut lawn is one of the handsomest features of a place. Trees and the larger shrubs may be planted along a lane or avenue leading to the house, or dotted about the lawn on lines radiating from it. This will secure light, air and a good view from the house. In laying out the grounds, take into consideration economy in labor, and make as few walks as possible. Upright shrubs, roses and flowers should be planted in clumps, each kind by itself, and avoid making the lawn look like a checker board. These beds should be well cultivated and the plants pruned annually. Mass the trees and beds on the boundaries so as to leave a broad space for the lawn, and where there is a pretty view leave an opening. Where there is an unsightly object, conceal it by planting trees or climbing vines. Do not plant large trees near the house, except enough on the sunny side for shade.

Plant shrubs and small trees twice as thick as they should be when fully grown. This will make a good showing at once, and when the growth of the plants has made them too thick, some should be taken out. It will not do to plant so little that years must elapse before a fine effect can be produced, but, by planting a surplus at first, they can gradually be taken out.

VINES

Should be planted near to and allowed to climb upon and about the house, or trained on posts, trellises, arbors or stakes placed in suitable locations on the lawn.

Groups of trees and shrubs possessing bright-colored bark or foliage, and groups of flowering trees and shrubs, are highly effective when in blossom and should be more generally planted.

Weeping trees are especially desirable on small lawns.

NEW VARIETIES

We are constantly adding to our list of ornamentals, as well as in other departments. Before placing new varieties on the market, we give them a thorough trial in the nursery, and thus weed out undesirable varieties, offering only the best in each class.



Evergreens

SPIREA ANTHONY WATERER WOULD MAKE A NICE HEDGE FOR THE LOT LINE

VARIETIES NOT LISTED

In every large, well-conducted nursery there are many varieties of extra size, but in too small quantities to list in the catalogue; also new varieties which have not been thoroughly tested. If you wish any variety in a special size or variety not listed, write to us for special quotations, and if we have it in stock, we shall be pleased to supply.

EVERGREENS

For prices see price list, page 59

ARBOR VITAE. *Thuja*

American Arbor Vitae (*T. Occidentalis*)—A beautiful native tree commonly known as the white cedar; valuable for screens and hedges.

Chinese Arbor Vitae (*T. Orientalis*)—The hardiest for the West.

FIR. *Abies*

Balsam Fir (*A. Balsamea*)—A very erect, regular pyramidal tree with dull, dark green foliage; rapid growth and very hardy.

Concolor Fir (*A. Concolor*)—A very beautiful species with yellow bark on the young branches; leaves green, arranged in double rows; equal in color and beauty to the Colorado Blue Spruce.

JUNIPER. *Juniperus*

Irish Juniper (*J. Communis*, var. *Hibernica*)—A distinct and beautiful variety of erect, dense conical outline, resembling a pillar of green.

Swedish Juniper (*J. Communis*, var. *suecica*)—A small sized handsome pyramidal tree with yellowish-green foliage; quite hardy.

PINE. *Pinus*

Austrian or Black Pine (*P. Austriaca*)—A native of Syria; tree robust, hardy and spreading; leaves long, stiff and dark green; rapid growth; very valuable for this country.

Bull Pine (*P. Ponderosa*, var. *Scopulorum*)—Forms a stout, spreading tree; a rapid grower; branches heavy and rough coated with bark; foliage dark green, the needles growing out at right angles to the wing; very hardy.

Jack Pine (*P. Divaricata*)—The most northern of all American pines; valued for its extreme hardiness and vigor; withstands long drouths and hot dry winds; of rather irregular and shrubby growth; foliage bright green, needles short and stiff.

Scotch Pine (*P. Sylvestrus*)—A native of Europe; a fine, robust, rapid-growing tree with stout, erect shoots and silvery-green foliage; very hardy.

White Pine (*P. Strobus*)—The most ornamental of all our native pines; foliage light, delicate silvery green; will grow in the poorest of sandy soils. A long-lived tree and rapid grower.

SPRUCE. *Picea*

Black Hills Spruce (*P. Nigra*)—A beautiful tree with drooping branches and fine yew-like foliage; perfectly hardy.

Colorado Blue Spruce (*P. Pungens*)—One of the most beautiful and hardy of all the spruces; in form and habit similar to the White Spruce; foliage a rich light bluish-green.

Douglas' Spruce (*A. Douglasii*)—A native of Colorado; large, conical form; branches spreading, horizontal; leaves light green above, silvery white below.

Englemann's Spruce (*P. Engelmanni*)—Resembles the Colorado Blue Spruce in general effect; foliage coloring from bluish-green to steel blue; needles are not as long and are more soft and flexible.

Koster's Blue Spruce (*P. Pungens*, var. *Kos-*



Colorado Blue Spruce

teriana)—A type of the Colorado Blue Spruce; it is the highest colored and most striking of all the Evergreens for lawn planting; the foliage is a rich and beautiful silvery-blue; very hardy.

Norway Spruce (*A. Excelsa*)—From Europe. An elegant tree; extremely hardy, of lofty, rapid growth and pyramidal form. The branches assume a graceful, drooping habit when the tree attains 15 to 20 feet in height. One of the most popular evergreens for plant-

DON'T LET YOUR NEIGHBOR GROW ALL THE FLOWERS
TRY A FEW FOR YOURSELF

ing, either as single specimen trees, or in masses for effect or shelter. It is one of the best evergreen hedge plants.

White Spruce (*P. Alba*)—A native tree of medium size and pyramidal form; bark light colored and foliage silvery-gray; very hardy.

UPRIGHT DECIDUOUS TREES

For prices see price list, page 59

AILANTHUS. Tree of Heaven

A. Glandulosa—From Japan. A lofty, rapid-growing tree, with long, elegant, feathery foliage, free from all diseases and insects. One of the most distinct of ornamental trees.

ALNUS. Alder

European or Common Alder (*A. Glutinosa*)—A remarkably rapid-growing tree, attaining a height of from 30 to 60 feet. Foliage roundish, wedge-shaped and wavy. This species is specially adapted to moist situations.

Imperial Cut-Leaved Alder (Var. *Laciniata Imperialis*)—A stately tree, of graceful habit, with large and deeply lacinated foliage; at the same time vigorous and perfectly hardy. Unsurpassed as a lawn tree.

ASH. *Fraxinus*

American White Ash (*F. Americana*)—A well-known native tree; tall, very straight, with broad, round head and dense foliage. (See Common Shade Trees.)

European Ash (*A. Glutinosa*)—A lofty tree of rapid growth, with spreading head and gray barred pinnate leaves and black buds.



Scotch Pine (See page 27)

Green Ash (*F. Lanceolata*; *F. Viridis*)—A tree of medium size with slender, spreading branches forming a shapely round head; grows 50 to 60 feet high.

BEECH. *Fagus*

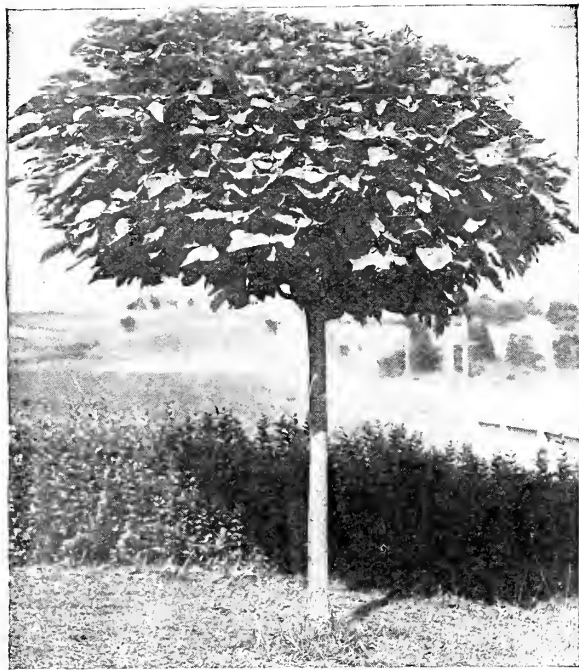
American Beech (*F. Ferruginea*)—A large, stately native tree with smooth bark, spreading branches and symmetrical head; grows 80 to 100 feet high; one of the handsomest trees for lawns or streets.

Purple-Leaved Beech (*F. Purpurea*)—Originated in Germany. An elegant, vigorous tree, growing 50 to 60 feet high; the foliage in spring is a deep purple, changing to crimson in the fall.

BIRCH. *Betula*

European White Birch (*B. Alba*)—Remarkable for its elegance. A graceful tree with silvery bark and slender branches; quite erect when young, but afterwards assumes an elegant drooping habit, rendering it very effective for landscapes or lawns.

Purple-Leaved Birch (*B. Atropurpurea*)—A variety possessing the vigorous habit of the birches and having purple foliage; branches slightly pendulous.



Catalpa Bungei (See page 29)

USE SOME SHRUBS AND FLOWERS AND YOU WILL HAVE LESS LAWN TO MOW

CATALPA

Chinese Catalpa (*C. Bungei*)—A remarkable species forming a dense, round, umbrella-like head; makes a beautiful lawn tree when grafted or budded on a high stem.

Hardy Catalpa (*C. Speciosa*)—A variety which is said to have originated in the West; it is very hardy and a rapid grower and is being extensively planted for commercial purposes; has broad deep green leaves and beautiful large blossoms, making it a highly ornamental tree for lawn or street. Valuable for planting in groves for growing poles, posts and railroad ties.

CERRY. *Cerasus*

Common Wild Bird or Pin Cherry (*C. Pennsylvanica*)—Suited to rocky, sandy and poor soils. White flowers and bright red fruits that attract birds.

Double White Flowering Cherry (*C. Avium, alba flore pleno*)—At period of flowering in May is a beautiful and attractive tree; the flowers are numerous and present to the eye nothing but a mass of bloom; valuable variety.

CHESTNUT. *Castanea*

American Sweet Chestnut (*C. Americana*)—The well-known variety. A stately tree with spreading head; when in full bloom, one of the handsomest trees; produces a quantity of edible nuts.

CHESTNUT, HORSE. *Aesculus*

Common or White Flowering (*A. Hippocastanum*)—A handsome tree of regular form with showy foliage and covered in the spring with panicles of white flowers marked with red. As a lawn or street tree it has no superior.

Double-Flowering Horse Chestnut (*A. H. var. alba flore pleno*)—A superb tree with double white flowers in large panicles and of fine pyramidal habit; it is one of the best of the ornamental trees.

Ohio Buckeye (*A. Glabra*)—A native of the Western states forming a large sized tree; leaves are smooth and the flowers yellow; blooms before other varieties.

Red Flowering Horse Chestnut (*A. H. var. rubicunda*)—One of the finest trees in cultivation; flowers a showy red; blooms a little later than the white; when the two varieties are planted together they make a very effective contrast.

CRAB. *Pyrus*

Bechtel's Double-Flowering Crab (*P. Angustifolia*)—One of the most beautiful of the flowering crabs; tree of medium size, covered in early spring with large, beautiful fragrant flowers of a delicate pink color; very popular for lawns, as it blooms when quite young.

DOGWOOD. *Cornus*

Red-Flowering Dogwood—A variety producing flowers suffused with bright red; blooms when quite young. One of the finest flowering trees.

White-Flowering Dogwood (*C. Florida*)—Grows from 20 to 25 feet high; spreading, ir-

regular form; flowers produced in spring before the leaves appear, about 3½ inches in diameter, white and showy; very durable, lasting two weeks; foliage is a grayish-green, glossy and handsome, turning to a deep red in the fall. A valuable tree for ornamental planting.

ELM. *Ulmus*

American White Elm (*U. Americana*)—A magnificent tree growing 80 to 100 feet high, with drooping, spreading branches; one of the grandest of our native trees; makes a beautiful lawn or street tree. (See Common Shade Trees.)



Catalpa Speciosa

English Elm (*U. Campestris*)—An erect, lofty tree of rapid, compact growth, with smaller and more regularly cut leaves than the American; the branches project almost at right angles, giving the tree a noble appearance.

Huntingdon Elm (*U. Huntingdoni*)—A very handsome tree of erect habit, rapid, vigorous growth; bark clean and smooth. One of the finest of this family.

Purple-Leaved English Elm (Var. *Stricta Purpurea*)—A striking variety with erect branches and purple leaves.

Red or Slippery Elm (*U. Fulva*)—Not so large as the American; foliage larger and head more open; inner surface of bark used extensively for medical purposes.

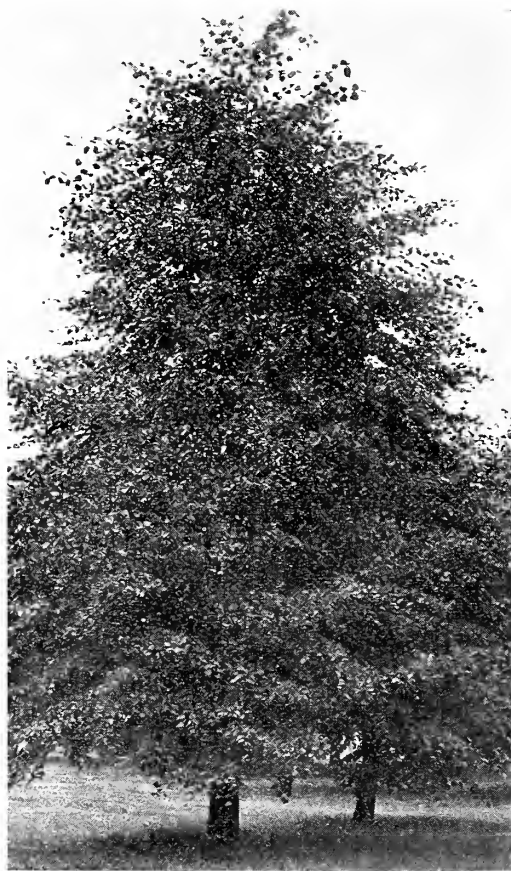
AN ORNAMENTAL TREE IS MORE HANDSOME THAN A COTTONWOOD

HACKBERRY. Celtis

American Nettle Tree (*C. Occidentalis*)—A rare native tree with numerous slender branches which spread horizontally, and thick rough bark; apple-like foliage, but more pointed and a bright shiny green; a very desirable tree for street planting.

KENTUCKY COFFEE TREE**Gymnocladus**

A very ornamental, hardy tree of upright, rapid growth with rough bark and coarse branches; foliage of a bluish-green color; flowers white followed by long pods. The name coffee tree comes from the fact of the seeds in the pods having been used by early settlers as a substitute for coffee.



Linden

LARCH. Larix

American Larch (*L. Americana*)—A tall tree, forming a pyramidal head; bark reddish-brown, branches slender; leaves long and slender, of a light blue color; cones small and oval; makes a very beautiful lawn tree and is also serviceable as a windbreak.

European Larch (*L. Europea*)—A native of the Alps of the south of Europe; an elegant growing, pyramidal tree. Valuable for timber.

LINDEN. Tilia

American Linden or Basswood (*T. Americana*)—Grows about 60 feet high, rapid growing, large size, forming a broad round-topped head; leaves broadly oval, dark green above, light green underneath; flowers are creamy-white and fragrant; a splendid street or lawn tree.

European Linden (*T. Europea*)—A very fine pyramidal tree of large size with large leaves and fragrant flowers; the leaves change in the fall to beautiful tones of yellow and brown.

European Broad-Leaved Linden (*T. var. platiphylla*)—A tree about the same size as above, but distinguished by its larger and rougher leaves and more regular growth.

Silver-Leaved Linden (*T. Argentea*)—Showy, heart-shaped foliage, light green above and silvery underneath; grows about 40 feet high; its handsome form and foliage make it one of the best of our ornamental trees.

LOCUST. Gleditschia

Honey Locust (*G. Tricanthos*)—A rapid-growing native tree with powerful spines and delicate foliage; the greenish flowers appearing in early summer are followed by flat pods 8 to 10 inches long; used extensively for hedges.

LOCUST or ACACIA. Robinia

Black or Yellow Locust (*R. Pseud-acacia*)—A native tree of large size, rapid growth and valuable for timber as well as ornamental; flowers are white or yellowish, very fragrant and appear in June.

MAGNOLIA

Cucumber Tree (*M. Acuminata*)—A majestic pyramidal tree growing to a height of 90 feet with large bluish-green leaves 6 to 8 inches long; flowers yellowish-white; fruit when green resembles a cucumber.

Soulang's Magnolia (*M. Soulangeana*)—A large shrub or small tree; leaves dark green, expanding after the flowers have fallen; flowers large cup-shaped, white flushed with rosy pink and quite fragrant.

MAPLE. Acer

Box Elder or Ash-Leaved Maple (*A. Negundo*)—Large spreading tree of rapid growth, 70 feet high; foliage smaller than in other maples; very frequently planted for windbreaks and timber; very hardy. (See Common Shade Trees.)

Norway Maple (*A. Platanoides*)—A large, handsome tree, with broad, deep green foliage; has a very compact growth; attains a height of 100 feet; a valuable tree for parks, lawns or streets.

Schwedlers Maple (*A. Platanoides Schwedleri*)—A beautiful variety with very large bronze-red leaves and young shoots of the same color; a vigorous grower and a most effective ornamental tree; grows about 50 feet high.

Silver-Leaved or Soft Maple (*A. Dasycarpum*)—A rapid-growing tree of large size, irregular rounded form; foliage bright green above and silver beneath; a favorite street and

NATURE CREATED FLOWERS TO PLEASE THE EYE

park tree; attains about the same height or taller than the Norway. (See Common Shade Trees.)

Sugar or Hard Maple (*A. Saccharum*)—A well-known native tree, valuable both for the production of sugar and wood. Very desirable as an ornamental shade tree.

Wier's Cut-Leaved Maple (*A. Wierii Laciniatum*)—A variety of the silver-leaved and one of the most beautiful with cut or dissected foliage; rapid growth, shoots slender and drooping. Ranks among the best as an attractive lawn or street tree.

MOUNTAIN ASH. Sorbus

European Mountain Ash (*S. Aucuparia*)—A fine tree with dense and regular head, covered from mid-summer to winter with great clusters of bright scarlet berries.

Oak-Leaved Mountain Ash (*S. Quercifolia*)—A hardy tree of fine pyramidal habit; foliage deeply lobed, bright green above and downy underneath. One of the finest lawn trees.

MULBERRY. Morus

Russian Mulberry (*M. Alba Tartarica*)—See Mulberries, pages 23-24.

White Mulberry (*M. Alba*)—See Mulberries, pages 23-24.

OLIVE. Eleagnus

Russian Olive (*E. Augustifolia*)—A very large shrub or small tree; leaves narrow and silvery-white, flowers yellow and fragrant; very hardy.

OAK. Quercus

Black Oak (Var. *Tinctoria*)—Beautiful colored foliage in autumn.

Chestnut Oak—(*Q. Prinus*)—One of the finest species; leaves resemble those of the chestnut.

Mossy Cup or Bur Oak (*Q. Macrocarpa*)—Native tree of spreading form. Foliage deeply lobed, and the largest and most beautiful among oak leaves. Cup-bearing, acorn-fringed and bur-like. Bark corky. One of the noblest of the family.

Pin Oak (*Q. Palustris*)—A magnificent tree for lawn and street planting, with deep green foliage which changes to a rich scarlet and yellow in the fall. A most shapely and graceful tree.

Red Oak (*Q. Rubra*)—Makes a tree of great height, 80 to 100 feet; a native of large size and rapid growth; leaves dark dull green, turning to orange and brown in autumn; acorns very large; a beautiful specimen tree for park and street planting.

Scarlet Oak (*Q. Voccinea*)—A rapid-growing pyramidal tree, especially beautiful in the fall, when the foliage changes from green to a bright scarlet. Very symmetrical in outline.

PERSIMMON. Diospyros

American Persimmon (*D. Virginiana*)—A native variety with round top head and spreading, often pendulous branches; foliage dark green and very dense, fruit over an inch in diameter, pale orange-yellow, with a whitish bloom; deli-

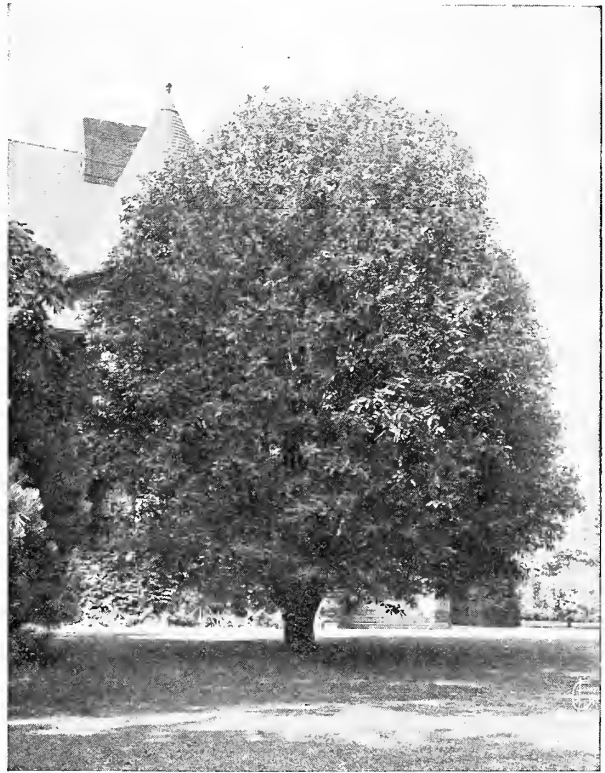
cate flower; very astringent until full ripe or after early frosts. Makes a beautiful lawn tree.

PLUM. Prunus

Double-Flowering Plum (*P. Triloba*)—A charming shrub or small tree, 3 to 5 feet high, of spreading, vigorous growth. Very early in spring before its leaves appear the whole tree is decked in a fleecy cloud of very double, light pink blossoms. Its effect on a still leafless landscape is very bright.

Hanson's Purple Plum—Tree of beautiful foliage, much resembling the *Pissardi*, the hardiest of all purple plums.

Purple-Leaved Plum (*P. Pissardi*)—Tree of medium size, wood and leaves dark purple;



Mountain Ash

fruit is also purple until ripened; a native of Persia. One of the most conspicuous ornamental trees.

POPLAR. Populus

Balm of Gilead (*P. Balsamifera Candicaris*)—A strong growing spreading native tree; esteemed for its vigor and hardiness; leaves broad and heart-shaped, green above and rusty white beneath; makes a good street tree and is perhaps the best of the poplars for shade.

Carolina Poplar (*P. Monolifera*)—Pyramidal in form and vigorous in growth; leaves large, glossy, pale to deep green; valuable for street planting on account of its rapid growth.

Norway Poplar or "Sudden Sawlog"—This is just what people are looking for—a tree that

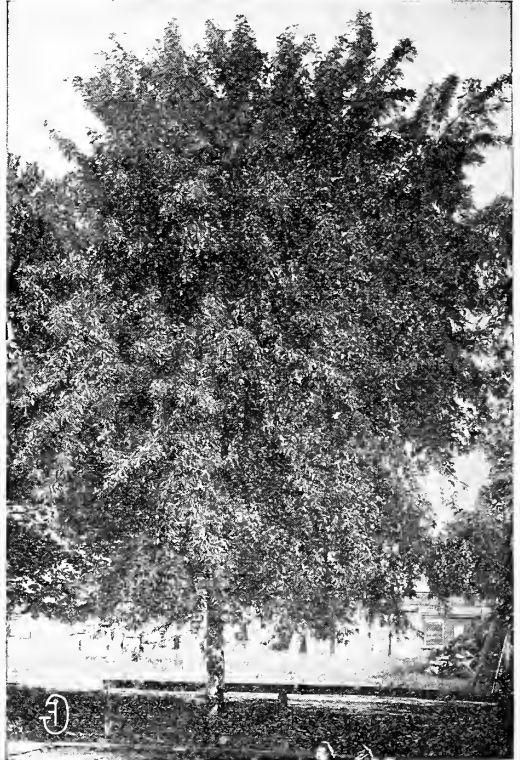
DO YOU SEE ANY FLOWERS IN YOUR FRONT YARD?

will get a move on itself and turn out lumber in the shortest space of time. Our forests are rapidly disappearing, and they must be replaced with some rapid-growing tree. The Norway poplar promises to be to the North what the Eucalyptus is to the South. It is by far the most rapid grower we have. Slips planted at the experiment station at York, Neb., made trees 16 feet tall and 3 inches through at the base in two years. This tree does not, like many others, waste its energy in side limbs. It retains its size as it mounts upward and thus produces more lumber material than any other. It outgrows the cottonwood, the Carolina and Asiatic poplars, and in a succession of dry years will survive them all. It is well known that a vigorous tree must have a good deal of leaf surface, like the Lombardy poplar, for instance. On a healthy tree you find leaves nearly a foot long from the end of the stem to the apex and nine inches broad. Here we have a tree of tremendous growth retaining its size as it mounts upward, with large leaves waving like fans, in the breeze. This tree is well adapted to the middle states; success in the North.

Silver-Leaved Poplar (*P. Alba* var. *Nivea*)—A tree of wonderfully rapid growth and wide, spreading habit; leaves large, glossy green above and white underneath; prefers a moist soil, but grows anywhere.

RED BUD. *Cercis*

Judas Tree or Red Bud (*C. Canadensis*)—A medium size tree with large irregular head and



Wier's Cut-Leaved Maple (See page 31)

perfect heart-shaped leaves; derives its name Red Bud from the profusion of delicate reddish-pink blossoms with which it is covered in early spring before the foliage appears. One of the finest ornamental trees.

SALISBURIA

Maiden Hair or Ginkgo (*S. Adiantifolia*)—Very effective for lawns, foliage fern-like, yellowish-green marked with delicate, hair-like lines. The fruits which mature in the fall have a sweetish, resinous taste.

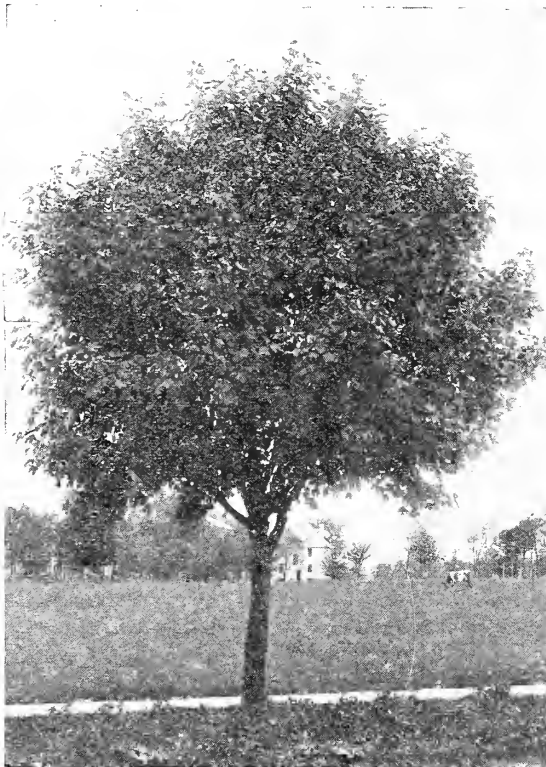
SYCAMORE. *Platanus*

American Sycamore or Plane Tree (*P. Occidentalis*)—A well-known tree, very common throughout the United States; leaves heart-shaped at base, the short lobes sharp pointed; branches are wide spreading.

Oriental Plane or European Sycamore (*P. Orientalis*)—A rapid-growing, erect tree with bright green foliage; much more esteemed than the American variety as a shade tree; very desirable for parks, streets and lawns.

THORN. *Crataegus*

Double White Thorn (*Oxyacantha*, var. *alba flore pleno*)—A small tree, with spreading, spiny branches; very hardy and will thrive in any dry soil; has small double, white flowers. A very highly ornamental tree.



Norway Maple (See page 30)

HOW NICE A BED OF ROSES WOULD LOOK

Double Pink Thorn (*C. Oxyacantha*, var. *rosea flore pleno*)—Same as above, but with flowers of a beautiful pink color.

English Hawthorne (*C. Oxyacantha*)—The well-known English variety extensively used for hedges; flowers single white.

Paul's Double Scarlet (*C. Oxyacantha*, var. *coccinea flore pleno*)—Flowers a bright carmine red; superior to any of its color.

TULIP TREE. Liriodendron

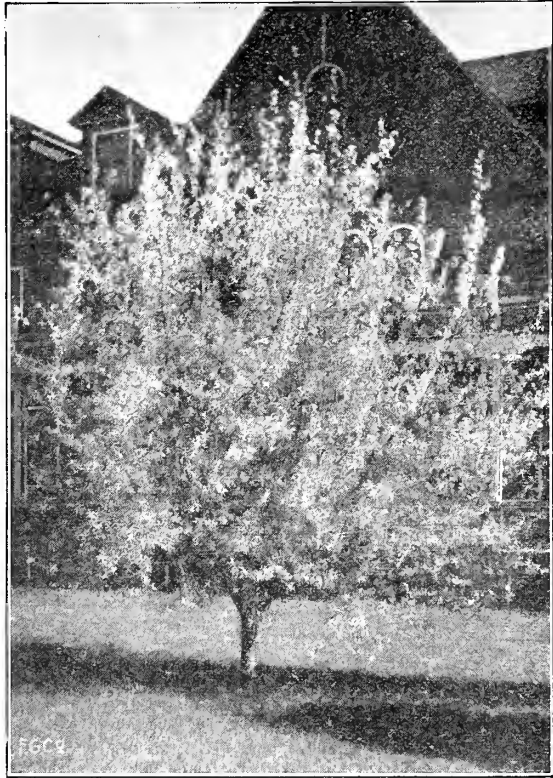
Tulip Tree (*L. Tulipifera*)—A magnificent rapid growing tree of pyramidal form, attaining a height of 150 feet, with light green, glossy fiddle-shaped leaves and greenish-yellow tulip-shaped flowers; also known as white wood.

WALNUT

Black—See page 25.

WILLOW. Salix

Russian Golden (*S. Vitellina aurea*)—At the present time one of the most planted of all the willows and a very important tree, both from an economical and ornamental standpoint. It makes a round-topped tree of symmetrical form. One of its strongest ornamental features is the bright, clear, golden-yellow bark which offers a pleasing contrast wherever it is used. The variety which is now generally grown under this name is quite distinct from that to which it was formerly given. This type was brought



Russian Olive (See page 31)

from Russia by Prof. Budd, under the name of *Salix Aurea*, and it is superior not only for its hardiness, but for its ornamental features also.

Laurel-Leaved Willow (*S. Laurifolia*)—Fine ornamental tree with very large shining leaves.

SEEDLING TREES

Elm, Ash, Box Elder, Maple, Russian Mulberry, Black Locust, Honey Locust. See price list for prices.

WEEPING TREES

For prices see price list, page 60.

BIRCH. Betula

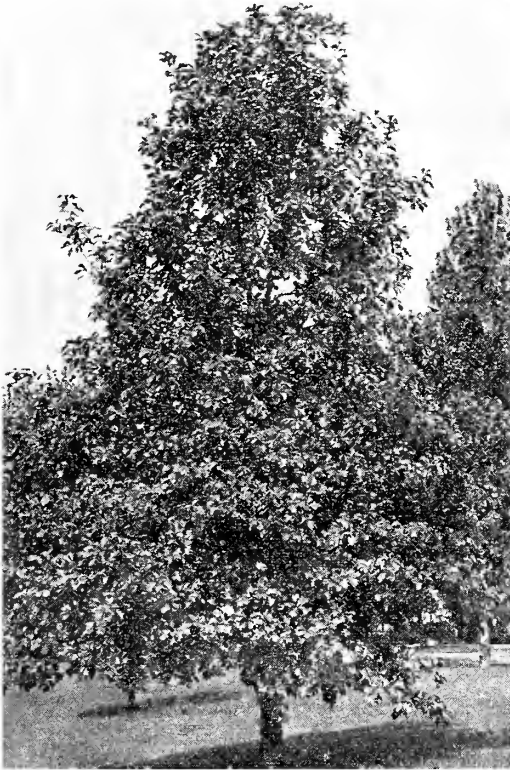
Cut-Leaved Weeping Birch (*B. Alba*, var. *pendula laciniata*)—Undoubtedly one of the most popular of all weeping or pendulous trees; tall and slender, graceful drooping branches, silvery-white bark, delicately cut foliage; makes an attractive tree; vigorous.

ELM. Ulmus

Camperdown Weeping Elm (*U. Scabra* var. *pendula*)—This forms one of the most picturesque of the drooping trees; forms a large, umbrella-like head, spreading many feet in every direction; very rapid grower, making a growth of several feet in a season; leaves are large, dark green and glossy, and cover the tree with a dense mass of verdure.

LINDEN

Weeping Silver-Leaved—An elegant medium sized tree, 10 to 15 feet tall, of gracefully pen-



Red Oak (See page 31)

THE FARM HOME CAN BE MADE AS ATTRACTIVE AS THE CITY HOME



Norway Poplar (See page 31)

dulous habit, that holds its large, silver-lined leaves through the season. Hardy, grows fast and is quite striking. 4 to 6 feet.

MOUNTAIN ASH. *Pyrus*

Weeping Mountain Ash (*P. Sorbus Aucuparia*, var. *pendula*)—A beautiful tree of rapid growth and decidedly pendulous and trailing habit. One of the most desirable of lawn trees.

MULBERRY. *Morus*

Tea's Weeping Mulberry (*M. Alba*, var. *tartarica pendula*)—One of the most graceful and hardy weeping trees; forms a perfect umbrella-shaped head with long, slender, willowy branches drooping to the ground; admirably adapted to ornamenting lawns or cemetery; the foliage is beautiful and the tree is wonderfully vigorous and healthy; will withstand the cold of the North and the heat of the South; in every way a most desirable tree.

WILLOW. *Salix*

American Weeping Willow (*S. Purpurea*, var. *pendula*)—A dwarf, slender variety; grafted 5 or 6 feet high, it makes one of the most ornamental of small weeping trees; more hardy than the *Babylonica*.

Babylonian Weeping Willow (*S. Babylonica*)—The well-known, common weeping willow; makes a large tree covered with drooping branches.

Kilmarnock Weeping Willow (*S. Caprea*, var. *pendula*)—A distinct variety having reddish shoots and large glossy foliage; grafted about five feet from the ground it makes a very desirable small lawn tree, with the branches drooping gracefully to the ground; well suited to planting in cemetery lots or small enclosures; hardy and of vigorous growth.

Niobe Weeping Willow—Imported by Prof. N. E. Hansen, who gave it the name. It is a golden barked Willow of a decided weeping

habit. It is extremely hardy and for this reason will, we think, be of especial value to the Northwest, where we are badly in need of a strictly hardy weeping willow. We offer it this season for the third time, and have great hopes for it.

Wisconsin Weeping Willow (*S. Babylonica*, var. *dolorosa*)—Of drooping habit and considered the hardiest. Valuable on account of its ability to resist severe cold.



Weeping Mulberry

CLEMATIS PANICULATA WILL PROTECT YOU FROM THE SUN IF PLANTED AT YOUR PORCH

ORNAMENTAL SHRUBS

For prices see price list, page 60.

ACACIA. *Robinia* Flowering Locust

Rose Acacia (*R. Hispida*)—A native species of spreading irregular habit; long clusters of pea-shaped, rose-colored flowers in June and at intervals through the season. Foliage a light green.

Rose Acacia (*R. Neo-Mexicana*)—Grows five to six feet high; branches covered with stiff prickles; flowers rose color in drooping racemes.

ALTHEA. *Hibiscus Syriacus*

Rose of Sharon—One of the most showy and beautiful of shrubs; flowers large, double and many brilliant colors; blooms freely in August and September, when few other trees and shrubs are in blossom.

Ardens—Violet color; petals quilled, very large and double.

Boule de Feu—Violet red color; very double; blooms late.

Coelestis—Single; flowers blue.

Duchess de Brabant—Reddish-lilac color, very large and double.

Elegantissima—Double white.

Rubra Flore Pleno—Double red.

Jean de Arc—One of the best; pure white and double.

Lady Stanley—Very double; white, with beautiful blush.

Pulcherima—Large, double, rosy-white.

Totus Albus—Single, pure white, very fine.

Variegated Leaved—Foliage finely marked with light yellow; flowers purple and double.

ALMOND. *Amygdalus*

Pink Double-Flowered Almond (*A. Flore pleno Rosea*)—A vigorous, beautiful tree, covered in May with rose-colored blossoms like small roses; hardy.

White Double-Flowered Almond (*A. Flore pleno Alba*)—Same as above except blossoms are pure and white.

BARBERRY. *Berberis*

Canadian Barberry (*B. Canadensis*)—A native variety of shrub or small tree with handsome foliage, and yellow flowers in May, succeeded by bright colored fruit; very ornamental in the fall and winter.

European Barberry (*B. Vulgaris*)—A handsome shrub with yellow flowers in May or June; followed with orange-scarlet fruit.

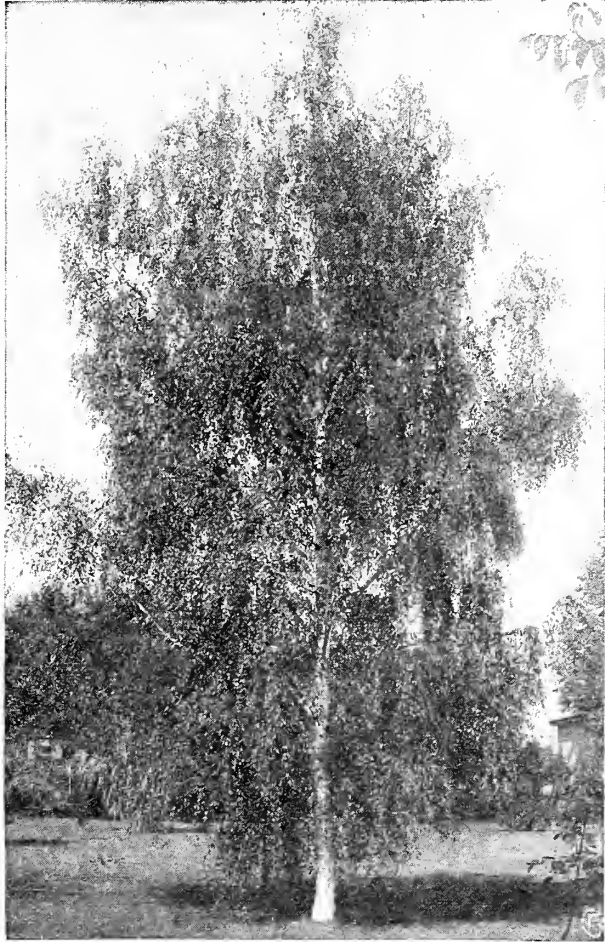
Japanese Barberry (*B. Thunbergii*)—From

Japan; of dwarf habit, small foliage, changing to a beautiful coppery red in the fall. Is very ornamental when used as a hedge.

Purple-Leaved Barberry (*B. Vulgaris*, var. *purpurea*)—Grows three to five feet high; foliage and fruit violet purple; very effective in groups or masses; yellow blossoms.

BUCKTHORN. *Rhamnus*

R. Cartharticus—A very fine vigorous, hardy shrub of European origin with dark green foli-



Weeping Birch (See page 33)

age, white flowers and small black fruit. A popular hedge plant.

CALYCANTHUS. Sweet Scented Shrub

C. Floridus—A native species with double purple flowers, very fragrant, and the wood is also fragrant; foliage rich dark green; blooms in June and at intervals afterward.

CARAGANA. Siberian Pea

Siberian Pea Tree (*C. Arborescens*)—A shrub or low tree with pea-shaped yellow flowers; hardy and useful for massing.

THE IRIS IS A BEAUTIFUL FLOWER AND WILL THRIVE IN ALMOST ANY SOIL

CEPHALANTHUS

Button Bush (*C. Occidentalis*)—A tall-growing native shrub with globe-shaped heads of white flowers in July.

COLUTEA

Bladder Senna (*C. Arborescens*)—A large shrub with small, delicate foliage, and yellow pea blossom shaped flowers in June, followed by reddish pods.

CURRENT. Ribes

Crimson-Flowered Currant (*R. Sanguineum*)—A native variety with deep red flowers, blooms early in the spring.

Crandall's—A seedling from the West; blooms profusely; bright yellow flowers. Fruit of a red black color.



Althea (See page 35)

Gordon's Flowering Currant (*R. Gordonianum*)—Very hardy and profuse blooming; flowers are beautiful crimson and yellow in pendent bunches; blooms in May.

Yellow-Flowered Currant (*R. Aureum*)—A native species with beautiful shining foliage and yellow flowers.

DESMODIUM

Sweet Pea Shrub (*D. Penduleflorum*)—A low growing shrub having rose-purple pea-shaped blossoms in great profusion; blooms in September and continues until late October; tops die down after frost, but come up again in the spring. A valuable shrub for massing or borders.

DEUTZIA

Golden-Leaved Deutzia (*D. Gracilis*, var. *aurea*)—Foliage a beautiful yellow; flowers white and more showy than the slender branches.

Double-Flowered Deutzia (*D. Crenata flore pleno*)—A very hardy shrub with luxuriant foliage and a profusion of double white flowers tinged with rose, produced in late June on long racemes; one of the most desirable in cultivation.

Lemoine (*D. Lemoinei*)—Flowers pure white; shrub dwarf and free flowering; excellent for forcing.

Pride of Rochester—Produces large double white flowers, tinged with rose; vigorous grower, profuse bloomer and one of the earliest to bloom.

Slender Branched Deutzia (*D. Gracilis*)—Of dwarf habit; flowers pure white; one of the first to bloom. Fine for pot culture and winter blooming.

DOGWOOD. Cornus

European Red Dogwood (*C. Sanguinea*)—A valuable shrub for grouping and massing; very ornamental in winter when the bark is blood-red; foliage variegated in summer.

Red-Flowered Dogwood—A variety producing flowers suffused with bright red; blooms when young. One of the finest flowering trees.

Red Osier Dogwood (*S. Stolonifera*)—Produces white flowers in early June; in winter young shoots are a blood-red color.

Siberian Dogwood—Free growing, 6 to 10 feet tall, and very hardy; forms a small, handsome tree in some situations; its clusters of small white flowers in early summer are very dainty, and its bark is a showy, dark red in winter. All the Siberian Dogwoods bear in early fall a profusion of whitish blue berries, making them distinctly ornamental after the flowers have gone.

Variegated-Leaved Dogwood (*C. Elegantisima Variegata*)—Foliage a pale yellow, turning to a rose color in the fall; branches blood-red.

ELEAGNUS

Japanese Silver Thorn (*E. Longipes*)—A shrub about six feet high; flowers yellowish-white and fragrant; fruit very ornamental with an agreeable slightly acid flavor; one of the most desirable for lawns.

ELDER. Sambucus

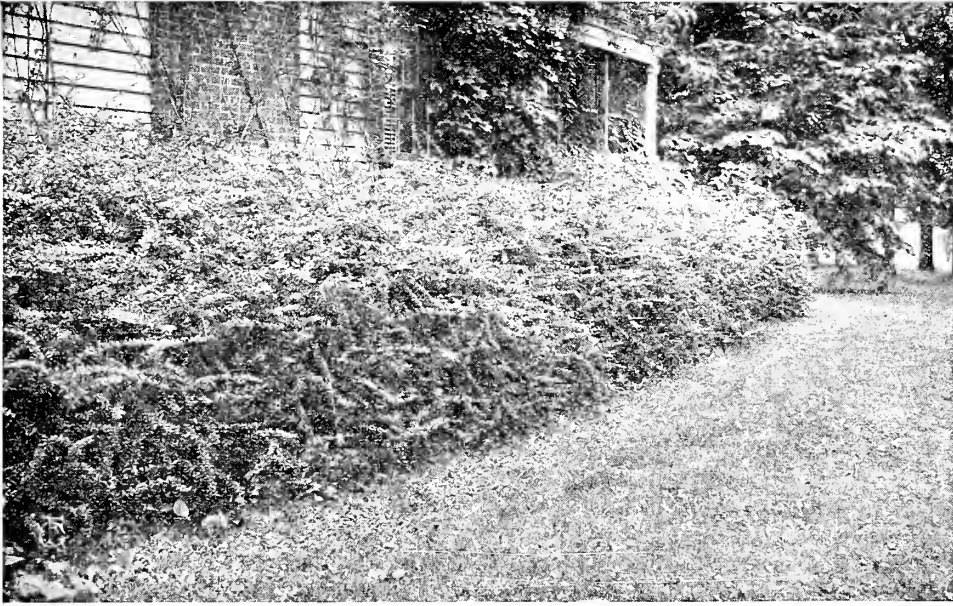
Common Elder (*S. Canadensis*)—A large showy shrub, very ornamental in foliage; fruit and flowers and blossoming in June; flowers white, borne in large panicles; fruit reddish-purple berries in the fall.

Cut-Leaved Elder (*S. Nigra* var. *Laciniata*)—One of the best cut-leaved shrubs; a valuable variety with elegantly divided leaves.

Golden Elder (*S. Nigra*, var. *aurea*)—A handsome variety with golden-yellow foliage.

Variegated-Leaved Elder (*S. Nigra*, var. *variegata*)—The foliage is mottled with yellow and white; one of the best of variegated leaved.

DON'T OVERLOOK PLANTING SOME HARDY PHLOX



Barberry (See page 35)

EXOCHORDA. Pearl Bush

Pearl Bush (*F. Grandiflora*)—A fine shrub, producing large white flowers in May; one of the finest in its season.

FORSYTHIA. Golden Bell

Fortune's Forsythia (*F. Fortuneii*)—A beautiful shrub of medium size; flowers are a bright yellow and appear before the leaves; foliage deep green; the best of the early flowering shrubs.

F. Intermedia—Flowers bright golden yellow; foliage glossy green; resembles the *Viridissima*, but hardier. A valuable variety.

F. Viridissima—A fine hardy variety; leaves and bark deep green; flowers deep yellow, early bloomer.

Weeping Forsythia (*F. Suspensa*)—Resembles the *Fortune* in its flowers, but the growth is somewhat drooping.

FRINGE or SMOKE TREE. Rhus

Purple Fringe (*R. Cotinus*)—A valuable ornamental shrub with curious fringe or hair-like flowers that cover the whole tree, giving the appearance of mist or smoke; wide, spreading habit, which requires some room to grow to the best advantage.

White Fringe or Chionanthus (*C. Virginica*)—A very ornamental shrub of easy cultivation, dark green foliage, flowers pure white, having narrow fringe-like petals; blooms in May and June.

HALESIA. Silver Bell

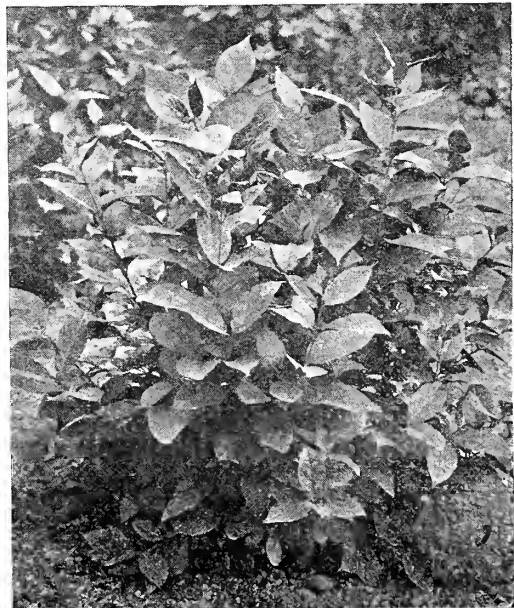
Silver Bell Tree (*H. Tetraptera*)—A beautiful large shrub forming a low, wide head, profusely covered with a mass of small snowy white flowers; blooms about the middle of

May; foliage dark green. A valuable acquisition to any lawn.

HONEYSUCKLE BUSH. Lonicera

Fragrant Bush Honeysuckle (*L. Fragrantissima*)—A spreading shrub with deep green foliage and fragrant small flowers which appear before the leaves; bushes are erect in growth.

Pink Tartarian Honeysuckle (*L. Tartarica rosea*)—Pink flowers that make a lovely contrast with the foliage; planted with the *Grandiflora*, the two make a beautiful display.



Calycanthus (See page 35)

OUR LINE OF FLOWERS EXCELS THAT OF ANY NURSERY IN THE WEST

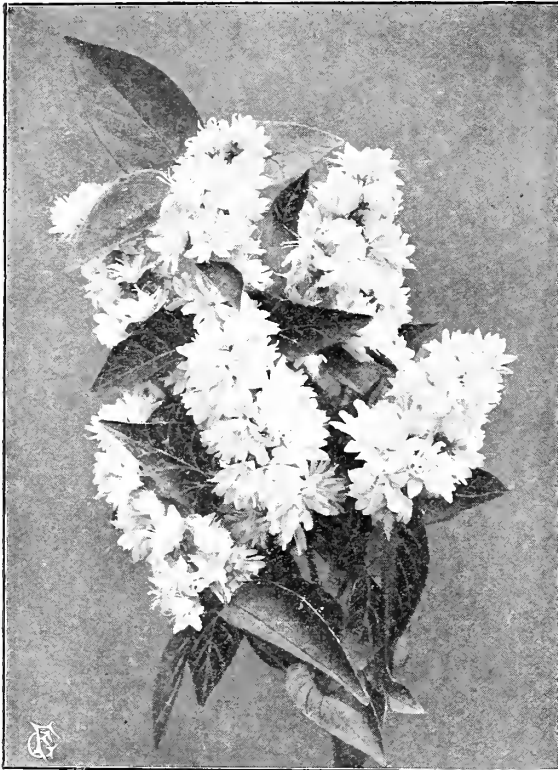
Pink-Flowered Honeysuckle (L. T. var. *grandiflora*)—Produces large, bright red flowers striped with white; blooms in June.

Red Tartarian Honeysuckle (L. T. var. *rubra*)—Blooms early in the spring; flowers a beautiful bright red.

White Tartarian Honeysuckle (L. T. var. *Alba*)—Produces creamy white, fragrant flowers in May and June; forms a high bush.

HYDRANGEA

Hardy Hydrangea (*H. Paniculata grandiflora*)—A beautiful, tall shrub with leaves of bright, shiny green; flowers borne in huge panicles from 8 to 12 inches long, light pink, changing to brown later in the fall; blooms in August and September; can be grown in tree



Deutzia (See page 36)

form successfully and makes a very desirable lawn ornament.

Japanese or Garden Hydrangea (*H. Hortensis*, var. *Thos. Hogg*)—One of the hardiest; well adapted to pot culture and outdoor cultivation; flowers pure white. A profuse bloomer.

White Flowered Hydrangea (*H. Arborescens Alba Grandiflora*)—Resembles the *Paniculata* in general form and shape of flowers; borne in panicles of pyramidal shape from 5 to 8 inches in diameter and 8 to 10 inches long; changing to a greenish-white. One of the best.

Hydrangea Arborescens—June and July. A bushy plant from our native woods, with co-

rymbs of white flowers in June and July. It is the most hardy of Hydrangeas, and particularly desirable for planting in shady places.

JAPAN QUINCE. *Cydonia*

Scarlet Japan Quince (*C. Japonica*)—One of the best flowering shrubs; flowers a bright scarlet crimson, borne in great profusion in early spring; foliage retains its color of bright glossy green the entire summer; hardy; make good hedge plants.

KERRIA. *Corchorus*

Globe Flower (*C. Japonica*)—A slender green branched shrub, 5 to 6 feet high, with globe-shaped yellow flowers from July to October. Very ornamental.

LILAC. *Syringa*

Lilacs are well known, beautiful shrubs, indispensable in every collection. They can be moved with every success in the fall, but water must be used generously.

Alphonse Lavalle—Very large trusses of double blue flowers with violet shading. A desirable, dependable free bloomer.

Charles the Tenth—Large, long trusses of single, reddish purple flowers.

Charles Jolly—Double, blood red. Buds opening a dark reddish purple. Strikingly beautiful and extra choice.

Chinese Tree Lilac—The genuine in both this and Japan Tree Lilac are scarce. Many of the bush forms are trimmed high and offered as trees. The true Chinese grows about 20 feet high, resembling the cherry tree in shape, with the trunk light green in color. Trees 4 inches through at the base were literally covered with snowy white flowers in early July this year. Fast growing and excites the greatest comment wherever seen. Hard to keep them on hand until they make much growth, as the demand keeps them always cleaned up.

Dr. Bretschneider—Large, coarse leaves. Great masses of flowers nearly white. A prolific bloomer. Comes into flower about the 10th of June. We consider this the most desirable of the late bloomers. Blooms while exceedingly young. Bushes, this year, 24 inches high, carried as high as 50 open bunches at one time.

Emile Lemoine—Large trusses of double flowers, rosy lilac. Favorite of all doubles.

Grandiflora Alba—A good white variety.

Japan Tree Lilac—Matures into taller trees than the Chinese. Darker in bark and color, but habits much the same. Immense spikes of grayish blossoms. Both varieties are extremely hardy, lacking the natural enemy of the lilac.

Jean Bart—Fine clusters of double rosy carmine. Free bloomer.

Madame Casimir Perier—Very large, double, creamy white trusses, very beautiful. Free blooming, commencing while very young.

Persian Purple—A small-leaved variety, in habits and shape much like the Rouen. Bloom forms at end of branch. Laterals from this

SEPARATE GARDEN FROM LAWN BY A HEDGE OF SPIREA VAN HOUTTEI

branch blooming join in making one large cluster sometimes over 12 inches in length.

Persian White—Delicate white, fragrant flowers, shaded with purple.

President Grevy—Double, light purple, bunches very compact.

Pyramidalis—A beauty. Light soft lavender flowers, usually in double clusters.

Rouen—A cross between the old common purple and the Persian. Color reddish purple. Prolific bloomer and valuable for hedge purposes. Does not sucker like the common sorts, but stools heavily. Grows about 8 feet high and forms a windbreak, dividing line or screen.

Senator Volland—Dense compact blooms of brilliant rosy red. A very free bloomer.

Siberian White—Pinkish white blossoms. Very hardy and desirable.

Teas' Mammoth—Single reddish-purple flowers. An imported variety.

Villosa—A stout, bushy shrub. Rich, bright green foliage. Buds light purple, opens light purple bordering on white. Very rare and desirable. June bloomer.

SINGLE LILACS

Charles X—A strong rapid-growing variety, large shining leaves; flowers reddish purple.

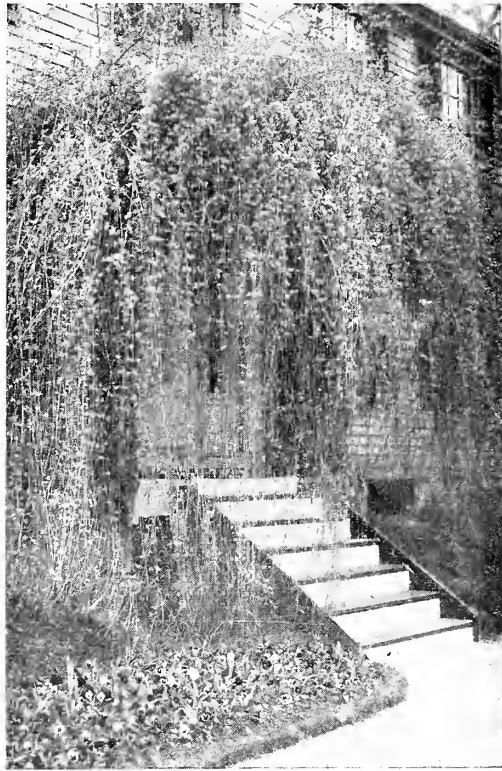
Marie Le Graye—Large panicles of white flowers; the finest white lilac.

Rubra de Marlay—Flowers very dark lilac.

Souvenir de Ludwig Spaeth—Flowers a dark purple borne in large panicles. The best of the dark varieties.

MAHONIA. Ashberry

Holly-Leaved Mahonia (*M. Aquifolium*)—A native shrub, very handsome, with purplish-



Forsythia (See page 37)

shining prickly leaves and bright yellow flowers in May, followed by bluish berries; very ornamental.

PRIVET. Ligustrum

Amoor River Privet (*L. Amurense*)—A valuable ornamental shrub for hedges and borders; very hardy; foliage glossy green and holds its color almost the entire year; will stand shearing to any extent.

California Privet (*L. Ovalifolium*)—The well-known variety; vigorous and hardy; deep glossy green; useful for hedges and borders.

Chinese Privet (*L. Ibotia*)—A native of China and Japan; foliage long and shining; flowers large, white and fragrant; a distinct sort, valuable for its flowers and foliage.

Regel's Privet (*L. Regelianum*)—A dense low shrub with spreading branches, pendent at the end; a very graceful bush for hedges; needs very little trimming.

SNOWBALL. Viburnum

Common Snowball (*V. Opulus Sterilis*)—Grows 6 to 8 feet high, the old-fashioned snowball; its large globular clusters of pure white flowers are produced in May and June and make a very attractive appearance.



Fringe or Smoke Tree (See page 37)

DON'T SAY YOU CAN'T RAISE FLOWERS—YOU KNOW WHAT YOUR TEACHER TAUGHT

High Bush Cranberry (*V. Opulus*)—It has handsome broad foliage of a shining dark green color, changing to rich coppery tints; flowers are white and very conspicuous; the fruit is a brilliant scarlet and hangs in long pendent clusters nearly all winter. A very desirable ornament to any lawn.

Lantana, Wayfaring Tree—A rugged tree-shaped shrub, covered with dense, rich foliage, wrinkled like sage. Flowers are borne in flat clusters, followed by large red fruit, turning to black later. In early winter when other shrubs are bare the foliage of the Lantana is still green and cheerful.

SNOWBERRY. *Symphoricarpus*

Coral Berry (*S. Vulgaris*)—A slender branched upright shrub, valuable for planting in shady places, as the foliage is very persistent; the



Hydrangea (See page 38)

fruit is a purplish red and hangs on well into winter; flowers small and rose colored.

Snowberry (*S. Racemosus*)—Same as the above except the berries are a pure snow white; flowers rose colored, but larger.

SUMACH. *Rhus*

Cut-Leaved Staghorn Sumach (*R. Typhina laciniata*)—A showy, broad-headed shrub with large, long, deeply cut foliage, light green in color, changing to shades of red and yellow in the fall; the new growth is clothed with a peculiar down, giving an appearance of the growing horn of a deer; the bark below is a rich orange color.

Cut-Leaved Sumach (*R. Glabra*, var. *laciniata*)—A variety of the smooth Sumach with deeply-cut fern-like foliage.

Smooth Sumach (*R. Glabra*)—A shrub 8 feet high, with handsome green foliage, changing to beautiful autumn tints; showy spike of crimson fruit.

SPIREA. Meadow Sweet

S. Arguta—Of dwarf habit, spreading head; flowers clear white; the best of the very early flowering white varieties; blooms in May.

Ash Leaved (*S. Sorbifolia*)—A vigorous grower with foliage similar to the Mountain Ash and long spikes of beautiful white flowers; blooms in July.

Billard's Spirea (*S. Billardi*)—Flowers are rose colored; blooms nearly all summer.

Bridal Wreath (*S. Prunifolia flore pleno*)—Foliage a dark shining green, changing to autumn tints in the fall; flowers double, pure white and are borne the entire length of the twigs; one of the most popular varieties.

S. Bumalda—A handsome variety from Japan; dwarf habit and vigorous growth; foliage narrow; flowers rose colored and borne in great profusion; blooms a long time.

Anthony Waterer—A fine dwarf Spirea with dark crimson flowers.

Douglas' Spirea (*S. Douglasi*)—A beautiful variety with spikes of deep rose colored flowers in July and August.

Fortune's Dwarf White Spirea (*S. callosa alba*)—A white flowering variety of dwarf, symmetrical form; keeps in flower all summer. A valuable sort.

Golden-Leaved Nine Bark (*S. Opulifolia*, var. *aurea*)—A beautiful variety with golden-yellow foliage and double white flowers in June.

Nine Bark (*S. Opulifolia*)—One of the most vigorous growers; foliage light green; flowers white and produced in great profusion.

Thunberg's Spirea (*S. Thunbergii*)—Dwarf habit and rounded graceful form; branches slender and drooping; flowers pure white and borne the entire length of the twigs; foliage narrow and long, turning to orange scarlet in the fall.

Van Houttei Spirea (*S. Van Houttei*)—This is undoubtedly the most popular of all the varieties; foliage a rich green, changing to beautiful tints in the fall; in blooming season the bush is a perfect mass of pure white flowers, the branches bending to the ground; indispensable ornament for lawns and hedges.

SYRINGA or MOCK ORANGE Philadelphia

Garland Syringa (*P. Coronarius*)—A well-known shrub, pure white, fragrant; first bloom.

Golden-Leaved Syringa (*P. Coronarius*, var. *Aureus*)—A handsome variety with golden-yellow foliage; keeps its color the entire season. Is splendid for grouping with other varieties for pleasing effects.

Gordon's Syringa (*P. Gordonianus*)—A vigorous grower and profuse bloomer; flower white, fragrant and a late bloomer.

Large-Flowered Syringa (*P. Grandiflorus*)—Has very large, showy flowers, somewhat fragrant; bark reddish; a rapid grower.

HOME SHOULD BE THE MOST ATTRACTIVE SPOT ON EARTH

Lemoine's Syringa (*P. Lemoinei*)—A graceful shrub with very rich foliage and large, pure white fragrant flowers in June.

TAMARIX

T. Amurensis—Growth is slender and graceful, with silvery foliage; pink flowers borne on short spikes on the young growth only.

WEIGELIA. Diervilla

The Weigelias are shrubs of erect habit while young, but gradually spread and droop as they acquire age; flowers are large, trumpet-shaped, of all shades and colors; very effective for grouping and borders; blossoms are produced in June and July.

D. Candida—Flowers pure white, produced in June and continue to bloom nearly all summer.

D. Eva Rathke—Flowers a brilliant crimson; a beautiful, clear, distinct shade.

D. Floribunda—A fine variety, flowers a dark red and a profuse bloomer.

D. Rosea—An elegant variety with fine rose colored flowers appearing in June.

D. Nana Variegata—Of dwarf habit and clearly defined silvery-variegated leaves; flowers rose colored.

D. Van Houttei—Flowers are a rich shade of carmine and are produced profusely.



Lilac (See page 38)

HARDY VINES

For prices see price list, page 60.

AKEBIA

Akebia Quinata—Japanese variety of climbing shrub with large leaves and white, purple-centered flowers.

AMPELOPSIS

American Ivy or Virginia Creeper (*A. quinquefolia*)—One of the finest vines for covering walls, verandas or trunks of trees; foliage green, turning to a rich crimson in autumn; a rapid grower and quickly fastens to anything it touches.

Boston Ivy (*Veitchii*)—Leaves smaller than the American; forms a dense sheet of green as leaves overlap each other; it a little difficult to start, but when once established requires no further care; foliage changes to a crimson scarlet in the fall, very valuable for covering brick and stone structures, rockeries, walls, etc.

Engelman's Ivy or Woodbine (*A. quinquefolia*, var. *Engelmanni*)—A type of *quinquefolia*, which has long been desired. It has shorter joints and smaller and thicker foliage. It is better equipped with tendrils, by which it will climb walls of stone or brick as closely as the *Veitchii* (*Boston Ivy*). It should be



California Privet (See page 39)

HOME-GROWN FLOWERS ARE BETTER THAN HOTHOUSE PLANTS

planted in the central and northwestern states, in place of the *Victhii*, as it is perfectly hardy, withstanding heat and cold much better.

BIGNONIA. *Tecoma*

Trumpet Creeper (*B. Radicans*)—A hardy climbing plant with large trumpet-shaped scarlet flowers appearing in August.

Large Flowered Trumpet Creeper (*B. Radicans*, var. *Grandiflora*)—A beautiful variety with very large flowers, salmon colored, yellow center and striped with red.

CELASTRUS. *Bitter Sweet*

Climbing Bitter Sweet (*C. Scandens*)—A native climber with fine large leaves, yellow flowers and clusters of capsuled orange fruit; a rapid grower.

CINNAMON VINE. *Dioscorea*

Chinese Cinnamon Vine (*D. Batatas*)—A beautiful, hardy, very fragrant, immensely rapid growing vine; requires no attention and will continue to grow for years; one of the most valuable.

CLEMATIS. *Virgin's Bower*

A beautiful class of hardy climbers, many of the varieties have flowers 5 to 6 inches in diameter. They are very valuable for training around and over pillars, verandas, fences, rock work, etc.

Large Flowering Varieties

Duchess of Edinburg (Fine, large, double white flowers; blooms freely.

Jackmanni—Immense flowers of an intense violet-purple; bloom continually all summer.

Henryi—Flowers creamy-white and very large. A free bloomer.

Madam Edouard Andre—Flowers are a beautiful shade of crimson; a free bloomer.

Ramona—A vigorous grower and perpetual bloomer; flowers a deep rich lavender.



Spirea Van Houttei (See page 40)



Snowball (See page 39)

Small Flowering Varieties

Coccinea—Flowers thick, bell shaped, of a bright coral-red color; blooms profusely.

Crispa—A slender dwarf variety with purple flowers, bell shaped, rather fragrant.

Flammula—Flowers small, white and sweet-scented; needs plenty of sun.

Paniculata—Probably the most popular of the small flowering sorts; vine is a rapid grower with glossy, green foliage; in September the flowers appear in a perfect mass of white, giving the appearance of a bank of snow; the fragrance is most delicious and penetrating.

Virginiana (*American White Clematis*)—Produces immense quantities of small white flowers in August; a very rapid climber.

Viticella—A well-known variety; produces a profusion of medium sized flowers of a bright wine-red color from June to August.

HONEYSUCKLE. *Lonicera*

Chinese Twining Honeysuckle (*L. Japonica*)—A well-known vine, holding its foliage nearly all winter; blooms in July and September; very fragrant. Also known as the Evergreen Honeysuckle.

Hall's Japan Honeysuckle (*L. Hallena*)—A strong, vigorous vine with pure white flowers, changing to yellow; foliage remains green well into winter; very fragrant and covered with flowers almost the entire season. One of the best bloomers.

Japan Golden Leaved Honeysuckle (*L. Aurea reticulata*)—A handsome variety, with the foliage beautifully netted or variegated with yellow.

Monthly Fragrant Honeysuckle (*L. Periclymenum*, var. *Belgica*)—Blooms all summer; flowers red and yellow and very fragrant.

PLANT A SNOWBALL IN ONE CORNER OF YOUR YARD

Scarlet Trumpet Honeysuckle (*L. Semper virens*)—One of the handsomest in cultivation; a strong, rapid grower. Flowers a bright scarlet; not much odor.

Yellow Trumpet Honeysuckle (*L. Flava*)—A strong native vine with brightest orange-yellow trumpet-shaped flowers.

MADEIRA VINE

Madeira Vine—A rapid climbing plant, with thick, glossy green foliage and fine white, fragrant flowers.



Spirea Anthony Waterer (See page 40)

MATRIMONY VINE. Lycium

Chinese Matrimony Vine (*L. Sinensis*)—A creeping or trailing vine; foliage a grayish-green; flowers appear in June and continue blooming until September; color varies from pink to purple; fruits are a bright crimson and make a beautiful contrast with the green foliage. Valuable for trellises and fences.

SILK VINE. Periploca

Silk Vine (*P. Graeca*)—A beautiful, rapid climber; splendid for training around pillars, trees or other tall supports; grows to 30 or 40 feet; foliage a smooth, glossy green and very showy; flowers a purplish brown, borne in clusters.

WISTARIA

American Purple Wistaria (*W. Magnifica*)—Flowers are borne in dense, drooping clusters of a pale blue color; vine vigorous, hardy and a rapid grower.

Chinese Purple Wistaria (*W. Sinensis*)—One of the best of the Wistarias; rapid growing and elegant, attaining 15 to 20 feet in a season; flowers a pale-blue, borne in long pendulous clusters in May and June.

Chinese White Wistaria (*W. Sinensis*, var. *Alba*)—Same as the

Chinese Purple, except the flowers are pure white; very beautiful variety.

DECIDUOUS HEDGE

For prices see price list, page 60.

BARBERRY. Berberis

Japanese Barberry (*B. Thunbergii*)—A low, spreading bush, with small branches covered with small sharp thorns and in spring with small yellow flowers, succeeded by bright scarlet berries; foliage changes in the autumn to shades of scarlet and gold; makes a dense, thick hedge.

HONEY LOCUST. Gleditschia

Three-Thorned Honey Locust (*G. Tracanthos*)—A rapid growing native tree with strong spines and delicate foliage. Very useful for hedges.

OSAGE ORANGE. Machura

Osage Orange (*M. Aurantiaca*)—A native tree of medium size and spreading habit; leaves bright shining green, broad and sharp pointed; the fruit resembles an orange in size and color.

JAPAN QUINCE. Pyrus Japonica

Scarlet Japan Quince (*Japonica*, var. *rubra*)—A beautiful flowering shrub, suitable for hedges, thorny enough to form a good defense; flowers a bright scarlet crimson, in great profusion in the early spring.

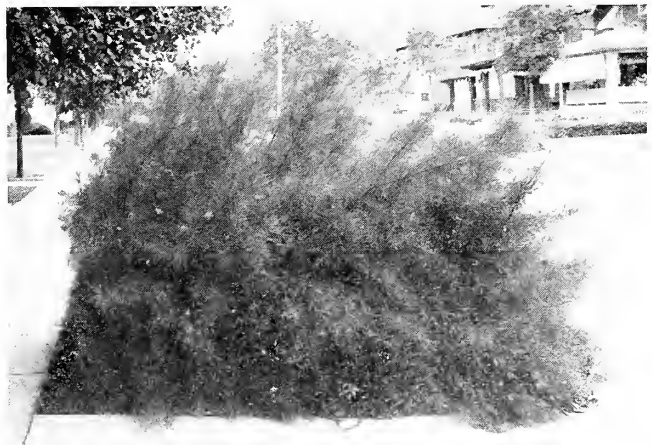
Altheas, Privet, Roses, Russian Olive, Spireas, Tartarian Honeysuckle

For descriptions of above see index for pages.

HERBACEOUS PAEONIES

Varieties marked "F" are fancy. For prices see price list, page 61.

The Paeonies are recognized as a fine, effective flower. They are extremely hardy and easily cultivated. The flowers are lasting and many of them are finely finished and exquisite-



Tamarix (See page 41)

THE BOSTON IVY WILL GROW IN A SHADY SPOT

ly colored. No other hardy plant of our gardens thrives so well, nor has as much practical, permanent value.

In planting paeonies for cut flowers, do not plant a long list of varieties. For good results they must be cut at just the right time, which is hard to do if you have too many different varieties.

Andre Laures (Crousse 1881) F—Magenta red, fragrant. The last flower to bloom. Seldom misses.

Baron Jas. Rothschild—One of the best cheap flowers in our collection. Guard petals very regular, rose in color. Very compact bomb shape center of salmon, the tip of which shows purple.

Carnation (Terry) F—Very attractive, bright crimson, broad guard petals, inside finely fringed.



Weigelia (See page 41)

Charles Verdier—Large lilac carmine bloom, transparent slate reflex. Compact and a good keeper as a cut flower.

Couronne d'Or (Crown of Gold, Calot) F—Imbricated petals. Compact solid white, with golden reflex. Center touched with carmine A fine variety. Late and a good keeper.

Cytheree—Medium white with light touch of carmine in center.

Cyclops (Kelway)—Rose type, dark crimson.

Dorchester (Richardson) F—A free blooming dwarf plant. Rose type, delicate light pink. Extra good.

Edulis Superba (Lemon 1824)—A fine flower. Violaceous pink mixed with narrow whitish petals, giving a silvery reflex.

Festiva Maxima (Meillez) F—Glorious queen of the whites, often seven inches across. A large, loose flower of driven white, center marked with carmine. Perhaps the most popular paeony grown today.

Faust (Meillez) F—Soft, lilaceous flesh colored, with deep chamois center; a full, shapely, splendid flower. Very desirable.

Felix Crousse (Crousse) F—One of the most resplendent of its class, rich brilliant ruby red of effulgent splendor. One of the best of the class of deep, glowing red.

Flambeau (Crousse) F—Very large loose pink, silver tipped. Fine.

General Custer (Terry)—Very robust, large, variable pink, loose leaved, liberally sprinkled with yellow stamens.

Glori d'Douai (Kelway) F—Purplish crimson with brilliant dark reflex. A very showy and popular flower.

Glorie of Somerset F—Enormous bloom, full bomb shape, deep pink edged with silver, a dark pink tuft showing in center of flower. Very popular and desirable.

Golden Harvest (Rosenfield) F—Soft pink, cream and gold and often in center a dainty Festiva Maxima, blood drops and all.

Grandiflora Alba—Early standard sort. Opens straw color fading to pure white. Tuft in center sometimes marked with carmine. Often sold for Festiva Maxima.

Grandiflora Carneia Plena (Lemon)—Lilaceous mottled pink, one of the best keepers. Very charming, flowers in clusters. Should be in every garden.

Grandiflora Rosea (Guerin 1850)—Fine, fragrant, rose pink, one of the surest bloomers.

Humei (Anderson)—An immense late cinnamon scented flower of varnished pink. An old favorite.

L'Esperance—Very large sweet pink, fragrant. A great favorite.

Lady Bramwell—A ball of soft silvery pink. One of the largest.

La Coquette (Guerin)—Large pink crown, with a deeper pink center. A good bloomer and a very showy flower.

La Sublime (Parmentier) F—This is a fine flower of deep crimson. Very striking on account of its rich color. A reliable bloomer.

La Tulipe (Calot)—This belongs in a class by itself. The bud is very beautiful, interlaced with green and red. The flower is soft blush mingled with carmine, fading to pure white. Fragrant.

Louis Van Houttij (Calot)—Vivid purplish cherry. Very striking and satisfactory.

Labolas (Kelway) F—Japanese type. Rose purple. Broad guards, narrow short petals tipped yellow. A striking flower.

Livingstone (Crousse) F—Large full bloom, soft pink tinted white, carmine center. Very desirable.

Madam Forel (Crousse)—Large fine, glossy ash pink, darker center. Very choice.

Madam Ducel (Mechin) F—A large bomb-shaped flower with a frill of guard petals, sil-

A GRAPE ARBOR IS ORNAMENTAL AS WELL AS USEFUL

very pink in color. Fine cut flower; excellent keeper; very desirable.

M. Vaillant (Calot)—Immense, late, deep violaceous red. Synonymous Grandiflora Rubra.

Madam Jules Elie (Calot 1873) F—Large soft pink, silvery reflex. Fine.

Mad. Chaumy (Calot)—Late, fragrant ball of pink, touched with silver.

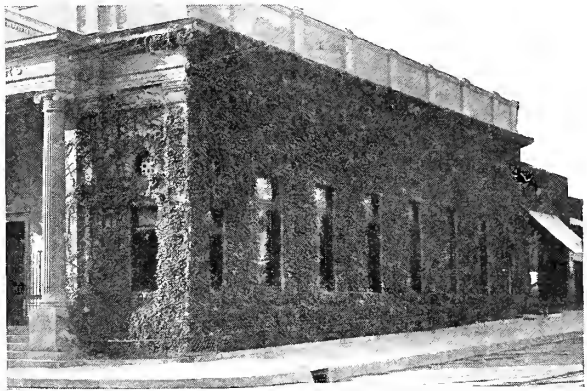
Mme. Crousse (Calot) F— Splendid white, center sometimes edged with carmine; fragrant; one of the latest blooming whites; very choice.

Mme. d'Vernville (Crousse) F—Considered by Terry as one of the finest of all. Flowers of exquisite beauty, sulphur white, with broad guard petals; very attractive.

Madame Schmidt (Calot)—Good form, soft pink; late.

Mons. Dupont (Calot) F—One of our favorites; also one of the most reliable bloomers we have. Large, creamy white, tinged with brilliant carmine in the center. Makes a fine cut flower and is a good keeper.

Mons. Paillet (Guerin)—Large, compact, soft pink, liberally sprinkled with stamens. Petals



Ampelopsis Veitchii (Boston Ivy) (See page 41)

have a waxy finish, a quality sign. A pretty flower.

Mons. Rousselon (Syn. Compte d' Paris, Guerin) F—Lilac pink, deep chamois center. A tuft of lilac pink petals in extreme center of bloom. Crown is generally flecked with carmine. A handsome flower.

Mons. Guerin (Guerin)—Bears a profusion of bloom in clusters. One of the choice, reliable varieties. A compact, bright purplish carmine.

Mons. Crousse F—The American beauty peony. A grand red; choice variety.

Pottsi—A very free blooming purplish crimson. Early.

Prince Imperial (Calot 1859)—Brilliant purplish scarlet; one of the best medium priced reds; flowers in clusters.

Plutarch—A glorious orb of radiant, glistening crimson.

Queen Victoria (English)—Flesh fading to pure white; one of the florists' standard flowers. A great favorite.

Queen Victoria (Terry) — Pink blooms.

Reevesij (Mechin 1850) — Very soft silvery pink. Choice.

Reine Victoria (Guerin 1845)—Pink, tufted center.

Richardson's Rubra Superba F—Rose type, large, rather compact bloom of deep red. Very late.

Sarah Bernhardt (Syn. Umbellata Rosea, Dessert) F—The earliest to bloom. Large bloom with violet rose guards and amber white narrow petals in center with wide petals same color as guards found occasionally in center of bloom. A good variety.

Sir Thos. J. Lipton (Kelway) F—Free blooming, large flower with golden stamens in the center of rosy petals.

Thos. Meehan (Terry) F—Light rose tipped with silver; large, full



Clematis Paniculata (See page 42)

THERE IS NOTHING NICER THAN A BED OF PAEONIES

flower and a free bloomer. One of the good medium priced ones.

Villa d'Nancy F—Bright red. One of the most prolific and sure bloomers we have. Very desirable.

Weir's Crimson F—Dark crimson; a free bloomer.

Wacht Am Rhine F—Brilliant purple, violet shade; a good bloomer.

JAPANESE PAEONIES

This class represents the first change in the transformation from a single to a double flower. The stamens turn to narrow petaloids, producing different formations in the center. In some the tuft appears as a bunch of narrow



Hall's Japan Honeysuckle (See page 42)

ribbons with a stamen on the end of each ribbon. From others a tuft resembling colored corn silk hangs from the center. In short the formations are without number, with a wide range of colors. Like the singles they do not hold their petals long, but they are an oddity unknown by many. They are on their way and you cannot always depend on them. Some spring you may see that your Jap has turned to one of the most gorgeous double flowers. This year our seedlings brought us over 200 double flowers, some of them far ahead of anything in the imported line we have yet seen.

Officinalis (Old Fashioned Type)

Rubra—The early intense red. Blooms before Decoration Day.

Alba—A variable white.

Tenuifolia—Fern-leaved. An intense crimson flower.

Moutan or Tree Peony F—These differ from the Herbaceous Peony by assuming a dwarf shrub effect which in time reaches a height of 3 to 4 feet. The flowers are large and of delicate shades.

There is no flower that can take the place of the Peony. Order a few plants today.

THE IRIS

The Iris is the rainbow personified. A goddess who visits us in garments of indescribable splendor and while she is with us we are in wonderland. The lure of her loveliness is irresistible. The delicacy, refinement and harmonious interweaving of colors in which she is clothed is beyond the brush of man. Whenever invited they become favorites and their fame is spreading and the day is fast approaching when they will have their rightful place in every garden.

Some of the new varieties are exceedingly beautiful. There is an infinite range and variation of color. The winsome, modest beauty of some, forming a striking contrast to their more glorious sisters arrayed in a sheen of iridescent splendor. There is no flower that will give you a greater range of color for your garden and by purchasing the different varieties you will have bloom from April until the middle of July. Much care was taken in obtaining our descriptions and we know that they are true and complete.

Planting—German Iris succeeds in partial shade, but they are at their best in the full sun. They will grow most anywhere, but do best in a well drained rich loam or garden soil. They should be planted very early in the fall or very early in spring. Plant the bud or crown about two inches below the surface.

The Siberian type is hardy as an oak, and very beautiful. Plant as you would the German.

The Japanese like a moist earth and a moist air. They will do well planted along streams or ponds. If planted on high ground they should be watered until blooming season is over. They produce large flowers of great beauty. They are very attractive.

IRIS GERMANICA

Tall Bearded Irises

The upright or standard petals are indicated by S, the drooping petals or falls by F.

Black Prince—Bears many other names. A strikingly beautiful flower. Large and conspicuous petals of dark purple veined at the base. No collection should be without it. Medium height.

Bergiana—S and inner petals pure gold. F, maroon with rich golden tracing. Medium height.

PLANT SOME CRIMSON RAMBLERS ALONG THE ALLEY FENCE

Cherion (Syn. Nemises)—S, smoky lavender, inner petals lavender and straw; F, lilac finely veined. A tall flower.

Celeste (Syn. Lady Francis)—This is one of the purest and sweetest of flowers. S, pale blue of ultra marine cast; F, light violet edged lighter, golden beard. Tall.

Chalcedonia (Syn. Johan d'Worth-Brooklyn)—An old sort of medium height. S, light mauve; F, purple, heavily veined. A prolific bloomer.

Delicata—S, pale lavender; F, white, veined and edged lavender; medium height.

Elizabeth—S, pale lavender, darker in the center. F, mauve, melting into pale blue. A very large attractive flower. Medium height.

Elegans (Syn. Vidonne, La Martine)—A very winsome flower. S, nearly white, dashed and splashed with violet. These markings are striking and unusual. Inner petals light lavender; F, violet veined with white. Sometimes variable in bloom. A beautiful flower.

Florentina Alba (Syn. Silver King)—Porcelain, changing to pure white. Medium height.

Gracchus—Medium height. S, pure lemon, inner petals also yellow; F, violet, completely interwoven with delicate tracery.

Her Majesty—Very attractive on account of its rich and unusual color. S, heliotrope of tissue-like delicacy, inner petals straw and lavender; F, light mauve traced with white. A very fine rich flower. Medium height.

Honorablis—S, intense yellow; F, bronze. Much like San Souci, only a taller growing plant.

Jacquesiana—Tall growing. S, bright cop-



Paeony, General Custer (See page 44)

perly crimson. F, rich dark maroon, veined with white near base.

Khedive—Tall. S, clouded lavender veined at the base. Inner petals light lavender flecked with white. F, dark lavender, orange beard. Tall.

Lady Jane—S, light lavender, charmingly veined at the base. F, fawn color traced with heliotrope. A choice flower. Medium.

La Tendresse—A charming, delicate, fragile flower. S, lavender; F, lilac color. Medium.

Leonidas (Syn. Murat, Yolandie)—Of radiant beauty. S, purple; F, dark purple, with glistening sheen. Very handsome. Tall.

Madam Chereau (Syn. Imogene)—A tall stately, queenly flower. If new it would be in great demand. S, white, edged and fringed mauve interspersed with lilac. Inner petals white; F, white edged, the same as the standards.

Madam Pacquette—S, very delicate light purple, inner petals lavender striped with heliotrope; F, are of great beauty, these are of deeper purple, very large, with threads of violet. A strikingly beautiful flower. Tall.

Monhassan—S, golden yellow; F, white and yellow, veined and mottled with brown. Medium.

Nymph—S, pale lavender, shaded darker, inner petals light lilac and yellow. F, purple, reticulated white. Medium.

Purple Queen (Syn. Florentina Blue, German Blue, Blue Beard Pansis) — Very robust plant,



Paeony, Festiva Maxima (See page 44)

THE IRIS—HANDSOME AS AN ORCHID, HARDY AS A DANDELION

large purple flower, petals of velvety purple, very showy and imposing.

Pallida Dalmatica—The noblest of all the Iris family, height three feet or better. Foliage broad and ornamental when flower is in bloom. Large pale blue flowers, very fragrant. A beautiful flower.

Perfection—S, mauve often dashed with deeper colors, inner petals mauve lavender; F, droop outward to show the most beautiful soft velvety petals ever possessed by a flower. The color is rich deep violet veined and traced in the most exquisite manner. A magnificent flower, borne on stems three to four feet tall. Rare.

Queen of May—A soft rose lilac, almost pink, a color rare among irises. Medium.

Rosamond (Syn. Dove)—S, lavender buff; F is darker.

Sambuciana Beethoven (Syn. Miss Brough)—Not a large flower, but a very pretty one. S, lilac, finely reticulated, inner petals light yellow; F, rosy purple, with orange crest. Very striking. Medium to tall.

Sans Souci (Syn. Rebecca)—This is a hardy plant and a prolific bloomer. Fine for massing and for border effect. S, canary, base reticulated dove color. F, yellow, charmingly veined and interlaced with brown fading to light maroon. Medium.

DWARF BEARDED IRISES

Pumilla and Hybrid Crimean Varieties

These lovely Irises are very suitable for border effects or for planting in front of the taller growing varieties. They commence to flower the last of March and are in bloom until about the time the German Iris comes into bloom. Postpaid, 4c additional.

Pumilla (the old-fashioned Flag)—Rich blue, lilac, purple and other colors.



German Iris (See pages 46-47)



Paeony, Japanese (See page 46)

Verna—Flowers violet purple, yellow at the base.

Other Varieties

Aurea (From the Himalayas)—A handsome flower of deep golden yellow.

Orientalis Gigantea—Very tall grower, handsome foliage, flowers of ivory whiteness with an orange yellow blotch at the base of the falls.

SIBERIAN IRISES

We strongly recommend these hardy Irises. They have handsome foliage and beautiful flowers and will survive extremes of weather and other untoward conditions that prove fatal to other perennials. There is no other firm that has as many varieties of these as we have, and we are so well pleased with them that we intend to increase this list as fast as dependable varieties can be obtained.

Acuta—Blue, interlaced with white.

Lactea—A tall growing milky white.

Orientalis—Tall growing. S, violet; F, rich bluish violet.

Siberica (Siberian Blue)—Rich blue flowers of exquisite beauty. Much prized as a cut flower. Very choice.

Siberica Alba (Siberian White)—Has a beautiful white flower. Choice.

Snow Queen—S, white; F, white, golden yellow at the base. The color is so intense it gives a golden reflex inside the flower. This is a rare and beautiful flower borne on tall strong stems. A flower we strongly recommend as well worth while.

PHLOX

The Phlox will always continue to be an old standby. They take you through the trying heat of July and August, a perfect mass of bloom when many other summer flowers are gone. Commencing to bloom in June they continue until it freezes up in an endless variety of colors. Planted in masses they present a charming appearance, while the lower growing varieties used as a border

PHLOX WILL GIVE YOU ENJOYMENT ALL SUMMER LONG

produce a very striking effect. They have a very sweet and delicate fragrance.

La Nuit—Purplish garnet; large florets; a beautiful flower. Medium.

Lothair—Deep clear rose, large carmine eye. Medium.

Le Pole Nord—Very tall, late variety with white floret and red eye.

Pyramid—Dwarf early white; compact head and a free bloomer. One of the most satisfactory phloxes we have. A rapid multiplier.

Richard Wallace—Very robust plant, large full head, white with crimson eye.

Zouave—Medium size, fine red. A ready propagator, very desirable.

Arete—A cross between Richard Wallace and Crepuscule. Symmetrical head, a prolific bloomer, florets large white with red center. In cool weather tinted with lavender. Medium height, very robust, resisting the heat and also the blight in wet weather. Rapid multiplier, very desirable.

Crepuscule—We consider this the finest phlox in the world. Single flowers much larger than a dollar; massive heads, which at a distance look like one enormous flower. In color, white shaded violet, striking large purple carmine eye.



Phlox

ROSES

For prices see price list, page 60.

Among all the flowering shrubs that make for beauty, grace and ornamentation, there is none that can compare with the Rose. The wide range of color, shape and size of the blooms and the diversity and character of the foliage gives it a wider range for decoration than any other single group of plants. When added to these qualifications are ease of culture, quick and ample response in blossoms, it is not to be wondered that the rose has been aptly termed the "Queen of Flowers." In most collections of flowering or ornamental shrubs it is in first place.

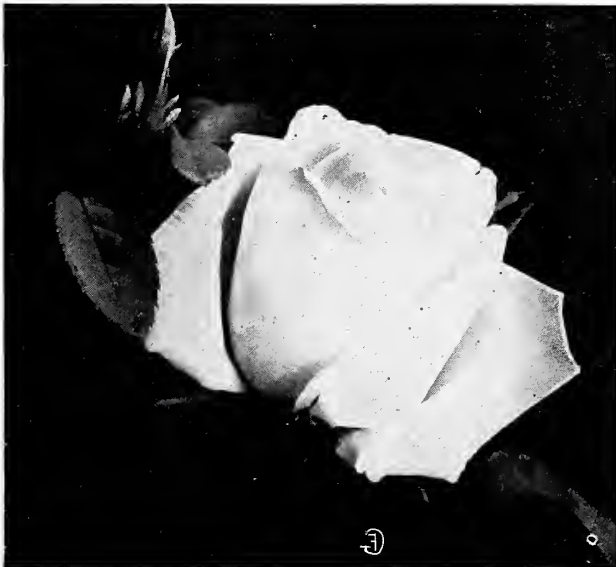
CULTURAL DIRECTIONS

Roses thrive best in a clay loam enriched with well-rotted manure. They should also have an open, airy situation unshaded by trees or buildings wherever possible. Dig up the soil thoroughly to a depth of 12 to 15 inches. Soak the beds occasionally with weak manure water.

HARDY ROSES

Roses delight in an open, airy situation, unshaded by trees and buildings. Always plant in solid beds and each class by itself. Hardy roses may be planted in the fall or spring, but for this latitude we recommend spring planting. Dormant plants set in the spring should be planted early, before growth is started.

As roses are raised mostly for their flowers, it is necessary to give that culture to the plant best adapted to produce this result. A very rich soil



Coquette des Alps (See page 50)

THE SOIL ON YOUR PLACE IS JUST AS GOOD AS THAT OF YOUR NEIGHBORS'

is of the first importance and it must be made so by thoroughly working into it plenty of old composted stable manure in which leaf mold has been decomposed.

All roses should be cut back closely at the time of planting. For Hybrid Perpetuals remove at least one-half of the previous year's growth annually in the spring. In the ever-blooming class two-thirds of the previous year's growth. Strong growing varieties require less pruning back than weak ones.

As soon as severe freezing weather sets in, raise the earth around the plant 3 to 4 inches, with leaves, straw or mellow soil.

Insects and Diseases—It is very important to keep your plants healthy and vigorous and free from diseases and insects. If troubled with green fly, spray vigorously, covering thoroughly every part of the foliage with sulpho-tobacco, soap or kerosene emulsion, made by mixing two parts of kerosene with one part of sour milk. Dilute with twenty parts of soft water. Bordeaux mixture is one of the best preventives from mildew and black spots, which are fungous diseases usually caused by continuous wet weather. By careful attention the diseases and insects may be kept down and plants will reward you with their beautiful blooms and foliage.

HYBRID PERPETUALS

Alfred Colomb—Brilliant carmine-crimson; very large, full and globular shaped; very fragrant and a superb rose.

Anne de Diesbach—Beautiful shade of car-



Marshall P. Wilder (See page 51)



General Jacqueminot

mine; very large and fragrant; quite hardy and a good forcing rose.

Baron de Bonstetten—Rich, velvety maroon, large and full; a splendid sort.

Baroness Rothschild—Light pink; a fine show rose, but without much fragrance; hardy and a late bloomer.

Captain Hayward—Very large, bright carmine-crimson; vigorous and free flowering.

Clio—One of the best; large, fine, globular form, flesh color, shading to rose in center; very vigorous.

Coquette des Alps—White, tinged with carmine; very fine; a free bloomer.

Coquette des Blanchés—A pure white rose, very beautiful; one of the best of the white sorts.

Eugene Furst—Velvety crimson, shading to a deeper crimson; large, full and good shape; fragrant and beautiful.

Francois Levet—A splendid rose; cherry-red; medium size, well formed; vigorous and a free bloomer.

Frau Karl Druschki—Very large, perfect form and snow white; a vigorous grower and a free bloomer.

General Jacqueminot—One of the most popular of the red roses; brilliant crimson, large and very effective, very fragrant and one of the hardiest.

Gloire de Lyonnaise—A grand rose; a beautiful shade of pale salmon-yellow, sometimes passing to creamy white; very fragrant.

GROUND THAT PRODUCES WEEDS WILL PRODUCE FLOWERS

Gloire de Margottin—Brilliant scarlet; large semi-double, long bud; vigorous, fragrant and a free bloomer.

Hugh Dickson—A magnificent crimson, shaded with scarlet. Flowers very large, of perfect shape and fully double. Plant strong, vigorous and productive.

John Hopper—Bright rose with carmine center; large and full; very free bloomer and a standard rose.

Jubilee—A splendid large flowering variety of intense color, bright maroon-crimson, often almost a black-red; very showy; fragrance very lasting.

Jules Margottin—Bright cherry-red; large, full and very fragrant.

Louis Van Houtte—Red, shaded crimson, very vivid; large and fine form; fragrant; one of the best.

Mabel Morrison—White tinged with blush; a very valuable white rose.

Magna Charta—Extra large and full, bright rosy-pink; a profuse bloomer and very hardy.

Margaret Dickson—Beautiful form, white with pale flesh center; petals very large; fragrant.

Marie Bauman—Brilliant carmine-crimson; large, full and very fragrant; extra fine.

Marshall P. Wilder—Extra large, full deep red; a free bloomer and very handsome.

Mrs. John Laing—Soft pink, beautiful form, exceedingly fragrant and very free flowering.

Mrs. R. G. Sherman-Crawford—Deep, rosy pink, very double and full; vigorous and a free bloomer.

Paul Neyron—Said to be the largest rose in

Silver Queen—Lovely silver-rose, passing to delicate rosy-pink; delightfully fragrant and a free bloomer.

Tom Wood—Very large, bright cherry-red with shell-shaped petals.

Ulrich Brunner—Rich crimson - scarlet, highly perfumed, vigorous and hardy; a very desirable sort.

Vick's Caprice—A fine striped rose of great beauty; full, double and finely formed; deep clear pink, striped with white; hardy and a good bloomer.



Gruss an Teplitz (See page 52)

cultivation; bright, clear pink, very fragrant, hardy and a strong grower.

Prince Camille de Rohan—Very dark, velvety crimson, almost black, large and full; a beautiful sort.

Soliel d'Or (Sun of Gold)—A strong, hardy rose; large, full and double; golden orange-yellow tinged with red and rosy-pink; a magnificent rose.



Dorothy Perkins (See page 52)

CLIMBING ROSES

Baltimore Belle—A rapid growing, dark leaved Prairie Rose; blooms in large clusters of pale blush and white flowers late in the season.

Multiflora Japonica—Single white; fragrant; very pretty.

Prairie Queen—A rapid climber; flowers are very large; a bright rosy-red, changing lighter as the flowers open; strong and vigorous.

Seven Sisters—One of the best of the old-fashioned sorts; flowers borne in clusters and color varies from dark to light red or pink.

RAMBLER ROSES

Crimson Rambler—The best-known and most popular of all the climbing roses. A rapid grower, making sometimes 15 to 20 feet in a season; flowers are borne in clusters of 15 to

their color for a long time; vine is very hardy and a strong grower.

Pink Rambler—Flowers are double, of a clear shell pink; borne in large clusters. A valuable rose for cutting.

White Rambler—Flowers are pure white, very double and remain on the vine a long time.

Yellow Rambler—Same as the pink, excepting flowers are a light yellow, changing to straw color; very fragrant.

CLIMBING TEA and NOISETTE ROSES

Climbing Meteor—A rich velvety crimson, strong-growing shoots 12 to 15 feet long in a single season; one of the best ever-blooming climbing roses in cultivation.

Marechal Niel—Beautiful deep yellow, large, full and of a globe shape form, very highly perfumed.

William Allen Richardson—Flowers are a beautiful orange-yellow, medium size, very showy and distinct. One of the most valued of the climbers.



Crested Moss (See page 53)

25 perfectly shaped blossoms of a rich glowing crimson; when in full bloom the vine appears to be a perfect mat of rich red flowers; perfectly hardy everywhere.

Dorothy Perkins—This is one of the new Rambler types; has the same strong habit of growth as the Crimson; flowers are borne in large clusters of 25 to 30 and are a beautiful shell pink; the individual flower is larger than the Crimson Rambler. A valuable acquisition to the climbing roses.

Lady Gay—Another new type fully equal to the Crimson; bud opens a deep pink, shading to almost pure white when flower is matured; borne in large clusters and very double.

Philadelphia—A splendid climbing rose with flowers more than two inches in diameter; very double, deep rich crimson, more intense than the Crimson Rambler; borne in large clusters completely covering the bush; the flowers hold

FIELD GROWN TEA and HYBRID TEA ROSES

Especial attention is directed to this selection of choice roses which we have grown outdoors, and now offer in strong two-year size. As the stock is limited, orders should be placed early to insure acceptance.

American Beauty—The flowers are a deep crimson color, of very large size, and the most fragrant of its class. It is a continuous bloomer. Should be protected in winter.

Burbank—Bright cherry-crimson flowers of great substance and durability. Does well outdoors.

Gross an Teplitz—One of the richest colored roses grown. When first opened, it is dark, rich crimson, which quickly changes to bright scarlet, shaded with velvety fiery red.

Hermosa—Always in bloom and very fragrant; a most pleasing shade of pink.

Kaiserin Augusta Victoria—A beautiful rose, with elegant, large pointed buds and very large, full double flowers; color, delicate creamy white; deliciously fragrant. The plant is a strong, healthy grower and constant bloomer, one of the choicest and most trustworthy garden roses.

Killarney—Queen of the Irish roses, of exquisite form and fragrance. Bright carmine-pink, marbled in creamy white, with petals large and durable; the buds extremely long.

La France—Delicate silvery rose, shaded with cerise pink, often silvery pink, with peach shading.

Mamam Cochet—A valuable pink bedding or pot rose, with rich, healthy foliage and large flowers on long, straight stems; color, deep rose-pink, the inner side of petals silvery rose.

White Mamam Cochet—A beautiful snow-white, sometimes tinged with the faintest sug-

IF YOU DESIRE A BOUQUET AT ANY TIME, PLANT SOME BABY RAMBLERS

gestion of blush. Hardy, with but slight protection.

POLYANTHA ROSES

Clotilde Soupert—Flowers are borne in large clusters all over the bush; large, full and double; very fragrant; beautiful cream-white, tinged with amber at center and clear bright pink.

Crimson Baby Rambler—One of the best hardy bedding roses; vigorous and grows 18 to 24 inches; flowers are borne in clusters of 20 or more to the cluster. Perfectly hardy and is good for pot culture for winter blooming. Color a bright crimson-pink.

Pink Soupert—A new ever-blooming rose as beautiful as Clotilde Soupert, but deeper color.

Pink Baby Rambler (Anna Mueller)—Of the same free flowering class as the Crimson Baby Rambler. Blossoms a shade of deep rose with petals curled and twisted, producing a fluffy effect. Hardy, vigorous grower and foliage is very beautiful.

White Baby Rambler—Blooms all summer and blossoms are produced in great abundance. Cream-white, passing to snow-white.

Baby Dorothy Perkins—Pink.

HYBRID TEAS

Auguste Guinnoisseau (White La France)—Flowers extra large, full, pure white, delicate, shaded with soft rose, very fragrant.

Helen Gould (Baldwin)—Flowers very large, perfectly double and very sweet; color a rich bright crimson with beautiful shades of pink; very hardy, strong, vigorous grower and produces great quantities of flowers. One of the very best.

Souvenir President Carnot—Lovely shell-pink, delicately tinted with golden fawn or rich cream white. A very desirable rose.

JAPANESE TRAILING ROSES

Wichuriana Hybrid

Manda's Triumph—Flowers are medium-sized, perfectly double, pure white and very fragrant; plant an erect grower; dark green foliage and is very hardy.

Pink Roamer—Flowers are single, and from two to three inches in diameter; rich pink, with silvery white center and orange red stems; exceedingly fragrant.

South Orange Perfection—Belongs to the Pink Roamer class, and blooms freely in clusters; color rosy blush, changing to white; flowers are perfect rosettes in form.

Universal Favorite—Flowers are bright pink, double and in every way equal to the double white varieties.

TREE ROSES

These are grafted on stems from four to five feet high, forming a head that is somewhat tree-shaped. They may be planted in tubs, and make very ornamental additions to lawns, verandas, etc. Can be supplied in leading Hybrid Perpetuals, Crimson Rambler, Baby Rambler, etc.

MOSS ROSES

Blanch Moreau—Pure white, large and full,

perfect form and well furnished with deep green moss. Very strong grower.

Captain John Ingram—Dark velvety purple, large size, double.

Countess of Murinais—One of the best pure white moss roses. Flowers large, full and fragrant; a good bloomer.

Crested Moss—Deep pink colored buds, surrounded with a mossy fringe and crest; a very fragrant and beautiful variety.

Glory of Mosses—A moderate grower; flowers very large, color a pale rose.



Baby Rambler

Henry Martin—Medium size, flowers large and rosy-red, well mossed, fragrant.

John Cranston—Deep crimson; very double.

Luxemberg—Bright crimson, large and beautifully mossed.

Princess Adelaide—Extra large, flowers very double and sweet, color bright rosy-pink; moss a bright green.

Perpetual White—Pure white with a nicely pointed burr. One of the most beautiful white varieties.

Paul Fontaine—Deep crimson; a constant bloomer.

Salet—A bright light rose, large and full. It sometimes blooms in the autumn.

MISCELLANEOUS ROSES

Harrison's Yellow—Bright golden yellow, very hardy; fine for planting in groups; early bloomer.

Madam Plantier—A pure white rose recommended for lawn and cemetery; plant does not winter-kill and is a strong, vigorous grower and an enormous bloomer.

LOOK AT YOUR NEIGHBORS' FLOWER BEDS

Persian Yellow—Flowers a deep yellow, rather small, but borne in great profusion. Considered one of the best of the yellow roses.

Rosa Rugosa (var. *Rubra*)—A Japanese variety with flowers of a beautiful bright rose-crimson, single and succeeded by large berries of rich rosy-red. A good hedge rose. Very ornamental.

R. (var. *Alba*)—Same as above, with exception flowers are pure white; very highly perfumed.

R. var. **Agnes Emily-Carman**—Flowers semi-double and borne in clusters, bright crimson and a free and continuous bloomer.

R. var. **Mad. Geo. Bruant**—Flowers are borne in clusters, buds are semi-double, long and pointed, pure white.

R. var. **Blanc Double de Coubert**—Purest paper white, blooming in clusters of from five to ten flowers; double, very sweet; a strong, rampant grower, having the true *Rugosa* foliage. Flowers nearly 5 inches in diameter, produced freely and lasting well. Perfectly hardy.

R. var. **New Century**—Flowers three to four inches across, full and double and borne in large clusters, color a clear flesh pink with bright red center. Has the delightful fragrance of the Sweet Briar.

R. **Rubiginosa** (English Sweet Briar)—Very highly valued for the delightful fragrance of its young foliage as well as flowers, entirely hardy and will take care of itself. Makes a fine hedge or is equally good for grouping or single specimens. Flowers are pink.

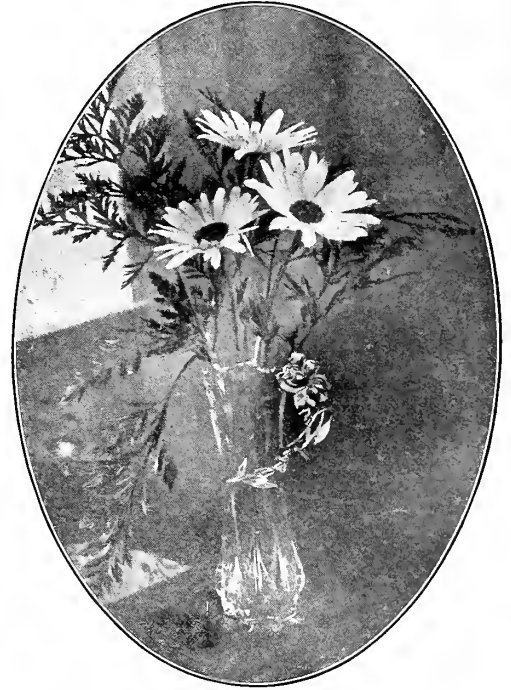


Hibiscus (See page 56)

HARDY PERENNIAL PLANTS

For prices see price list, page 60.

The following collection embraces the most desirable varieties. They are all showy, of easy cultivation and the flowering season is from



Shasta Daisy (See page 55)

May to November. By a careful selection a continuous display of flowers may be had the entire season. If you desire we can make selection for you.

Achillea, The Pearl—Has very showy heads of pure white, double flowers, on strong, erect stems; 2 feet high; blooming constantly.

Alyssum, Golden Tuft—A fine border plant, not over 12 inches high, which bears numerous clusters of bright yellow flowers in May, similar in shape to the well-known Sweet Alyssum.

Anemone, Windflower—One of the most showy of all our autumn-blooming herbaceous plants. Blooms freely from August till cut down by frost. In somewhat moist, rich soil, the plants make a beautiful, hardy border or bed. A slight covering of leaves or straw is sufficient protection in most severe winters.

Aquilegia, Columbine—These are plants of elegant habit, distinct in foliage and flowers. The latter form a showy crown well above the clear-cut leaves. All the species like partially shaded, well-drained soil. One of the best plants for rock work, or growing under trees.

Astilbe, Spirea—A beautiful herbaceous plant, blooming in dense spikes of pure white feather-like flowers.

SUNFLOWERS ARE PRETTY, BUT TOO COMMON

ASTERS

Michaelmas Daisies—Tall, leafy perennials, blooming in the fall when flowers are scarce.

Alpine Asters—A rich purple.

Italian Starwort—Light blue.

Nevadensis (A. Coccineus)—Red, yellow center.

Nevadensis (A. Lilacinus)—Lilac.

New England Aster—Bluish purple.

Bocconia Cordata (Plume Poppy)—Stately, growing from 6 to 8 feet high, with large foliage and long spikes of white flowers in August.

Boltonia (Asteroides)—Tall, 4 feet or more in height, with white, aster-like flowers in broad heads during August. A handsome plant for borders and masses.

Boltonia (var. *Latisquama*)—Aster-like flowers in a broad head; rosy purple; free blooming, showy and fine; 5 feet; July to October.

Campanula, Bellflower (Harebell)—A lovely hardy little perennial, widely planted everywhere for its delicate sprays of drooping white bells and their delightful fragrance. The leaves are a rich dark green; the plant vigorous, soon forming fine clumps which bloom early in the spring; largely forced in winter.

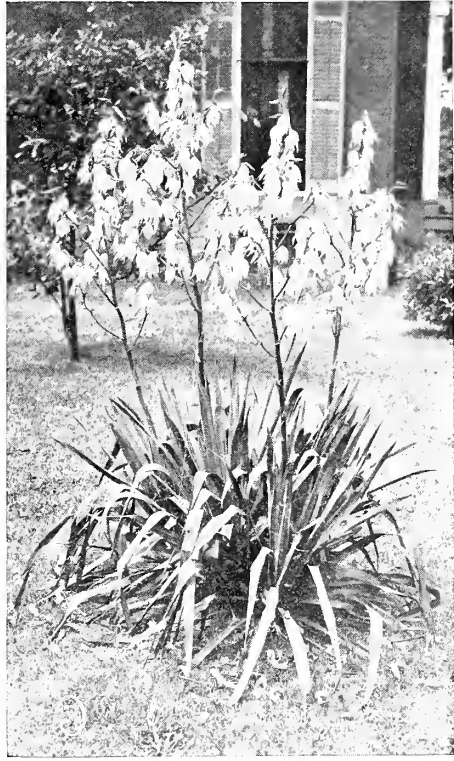
Coreopsis (Tickseed)—Showy and valuable free flowering perennials. Produces bright golden yellow flowers in great profusion the entire season.

Chrysanthemum (Hardy Pompon)—This class of beautiful plants is now so universally popular for outdoor bedding, and justly so. They produce a lavish profusion of blooms, giving color, life and beauty to the garden at a time when other plants have been nipped by frost. They are quite hardy, but it is well to give a slight covering of leaves or manure during winter. Grow from 2 to 3 feet high.

Daisy, Shasta—Large snowy-white flowers, 4 inches across; in bloom all summer. A good cut-flower variety.

Delphinium (Larkspur)—The hardy Larkspurs are one of the most important and most satisfactory plants in the herbaceous garden, and should be planted extensively, even in the smallest garden. Their long spikes of flowers are produced continuously from June until late in the fall, if the precaution is taken to remove the flower stems before they can produce seed.

Desmodium (*Penduliflorum*)—A beautiful Japanese perennial, with clover-like foliage and long, pendulous racemes of rosy-purple flowers. The stems are 4 feet long, and in early autumn are literally loaded with the flowers.



Yucca (See page 57)

Very hardy and showy, and a fine plant for growing in front of shrubbery.

Dianthus (Sweet William)—The old-time favorite, growing 1½ to 2 feet high, and bearing during May and June a profusion of round-topped clusters of flowers of all shades of red and pink to white.

Dicentra (Bleeding Heart)—A hardy perennial with heart-shaped rose colored flowers in drooping spikes. One of the best border plants; perfectly hardy and easily cultivated. Flowers in April or May.

Digitalis (Foxglove)—Long bell-shaped flowers, on stems 3 to 4 feet high; white and red; very showy. July to September.

Funkia (Day Lily)—A superb autumn flower, having broad, light green leaves, prettily veined, and long, trumpet-shaped, pure white flowers, that possess a delightful, though delicate fragrance.



Crocus (See page 57)

Gaillardia Grandiflora (Blanket Flower)—A showy plant with dense tufts of drooping leaves and flower stems, producing daisy-like blossoms 2 to 3 inches across, of gorgeous colors; blooms in the most wonderful profusion from June to November.

Gypsophila Paniculata (White Veil Flower)—Two to three feet

EVER-BLOOMING ROSES WILL GIVE YOU BLOSSOMS ALL SUMMER

in height and most graceful in effect, with mist-like white flowers that are popular for cutting, as they give an air of grace and harmony to any arrangement. Blooms July to September.

Hibiscus (Militaris)—Strong growing, 4 to 6 feet high, with white, blush or pale rose flowers, with purple eye blooming in August and September.

Hibiscus (Crimson Eye)—Immense flowers of purest white, with large centers of velvety crimson. Blooms very profusely, the plants being covered all summer with a wealth of most beautiful, attractive flowers.

Hollyhocks—Few hardy plants combine as many good qualities as the Hollyhock. For planting in rows or groups on the lawn, or for interspersing among shrubbery, they are invaluable. The flowers form perfect rosettes of the most lovely shades of yellow, crimson, rose, pink, orange, white, etc. The Hollyhock requires a rich, deep soil, well drained and will repay in quality and elegance of bloom any extra care. A slight protection in the winter will be beneficial.

Hyacinthus (Candicans)—A magnificent yucca-like plant producing in July and August, a flower stem 3 to 4 feet high, covered with from 20 to 30 pure white, pendent, bell-shaped flowers.

Iberis Sempervirens (Candytuft)—Of spreading habit; flowers pure white, covering the



Hyacinths (See page 57)

plant with bloom. One of the finest border plants, beautiful with flowers very early in spring; good for cutting.

Myosotis (Forget-Me-Not)—The Forget-Me-Nots are familiar flowers of many gardens, hardy, easy to grow, with bloom sprays of exquisite blue.

Papaver (Poppy)—Nothing can equal these in gorgeous effect and, whether planted singly or in masses, their large flowers, rich brilliant colors and freedom of bloom render them conspicuous in any position.

Platycodon (Chinese Bell-Flower)—A valuable perennial, forming a dense branching bush of upright habit, 1 to 2 feet high, with neat foliage. From the middle of July until late September it bears a constant succession of handsome, large bell-shaped, deep blue flowers. Succeeds well in any ordinary soil.

Rudbeckia (Golden Glow)—A distinct, tall-growing, hardy perennial, from 6 to 7 feet high. Foliage deeply cut, handsome bright green; flowers very double, rich golden-yellow; 2 to 3 inches in diameter; borne on long, smooth stems, forming for the tall plant a solid head of bloom.

Salvia (Meadow Sage)—A handsome species of the well-known Sage, with a profusion of crimson flowers in August and September.

Stokesia Cyanea—A grand large flowered, hardy perennial, growing 18 to 24 inches high, and covered with centaurea-like flowers of a beautiful lavender-blue shade, and often 4 to 5 inches across. Of earliest possible culture, flourishing wherever given an open, sunny exposure. As a single specimen plant, used in mixed borders or in large masses by itself, it is equally valuable, and by its use, some very effective planting may be worked out. Blooms from July to October continuously.

Tritoma (Red-Hot Poker)—These are tall and striking plants of much beauty when well placed and properly grown. The great spikes of flowers sent up from the center of a broad circle of green leaves, have quite a rich and



Tiger Lily (See page 57)

DAHLIAS GIVE A CONSTANT SUCCESSION OF BLOOMS

tropical appearance. Give some protection in cold climates. Bloom from July to September.

Yucca, Filamentosa (Adam's Needle)—Very conspicuous plant. The flower stalks 3 and 4 feet high are covered with large, whitish, bell-shaped flowers.

HARDY BULBS FOR FALL PLANTING

For prices see price list, page 61.

Crocus—These are delicate and tasteful in form and varied and gay in color. Until the flowering of the Hyacinth, and through the most changeable and unpleasant of the spring weather, the garden depends almost alone upon the Crocus for its brightness. Plant the bulbs in autumn about 3 inches apart and cover with 2 inches of soil. Cover in fall with a little straw or coarse manure to keep the bulbs from being thrown out by frost.

Hyacinths—Among all the bulbs used for winter flowers, the Hyacinth stands foremost. Flowers may be produced by placing the bulbs in a glass filled with water or placed in pots or boxes in soil; colors, blue, red, white, with various shades.

Jonquils—Sweet-scented, yellow. It is one of the early blooming bulbs.

LILIES. *Lilium*

No class of plants capable of being cultivated out-of-doors possesses so many charms; rich and varied in color, stately and handsome in



Dahlia (See page 58)



Tulip (See page 58)

habit, profuse in variety, and of delicious fragrance, they stand prominently out from all the other hardy plants. Lilies thrive best in a dry, rich soil, where water will not stand in the winter. After planting they require very little care, and should not be disturbed for several years. Established plants bloom more freely than if taken up annually. Plant in groups of five or six, or in large beds.

Lilium Auratum (Gold Band or Lily of Japan)—Flowers very large, delicate ivory-white, thickly dotted with rich, chocolate-crimson spots. A bright golden band runs through the center of each petal. The finest of all lilies.

Lilium Harrisii (Bermuda Easter Lily)—Flowers large, trumpet-shaped, pure waxen-white, gracefully formed and delightfully fragrant. The ease with which it can be forced into flower in winter has made it wonderfully popular.

Lilium Longiflorum—Large, snow-white, trumpet-shaped; very fragrant.

Lilium Melpomene—Flowers large and abundant; rich blood-crimson; heavily spotted.

Lilium Tigrinum (Double Tiger Lily)—Orange-scarlet, with dark spots.

Lilium Speciosum—White, shaded with rose, spotted red.

Lilium Speciosum Album—White, with a slight rose tint on the ends of the petals.

NARCISSUS

Some varieties bloom as early as the Crocus. The flowers assume many forms and present many charming combinations of white, gold, primrose, orange, sulphur and pure yellow. Some are quite fragrant; all are very hardy, except the clustered Polyanthus. Double and single.

MAKE YOUR HOME GROUNDS BEAUTIFUL BY PLANTING FLOWERS

TULIPS

These are the most glowingly brilliant and effective of all the early spring flowers. Plant them thickly and lavishly in the fall and they will reward you with abundant cheer during the cold, dull months of early spring. Colors many. Double and single.

DAHLIAS

For prices see price list, page 61.

These showy and pretty flowers are becoming very popular and justly so. The Dahlia is one of the showiest of all fall flowers, commencing to flower in July, they are a perfect bloom until stopped by frost. Flowers are most perfect and of beautiful form. Dahlias are divided in classes as follows: Cactus, Decorative, Show, Fancy, Pompon, Single, Collarette and Seedling; each class is comprised of a number of different varieties.

Cactus Dahlias

Countess of Lonsdale—A peculiar but pleasing blending of salmon-pink and amber, a color difficult to describe. This is the Dahlia for the millions. Flowers freely under all conditions.

Gen. Buller—Cardinal-red, each petal tipped with white.

J. H. Jackson—Brilliant crimson-maroon; very free.

Kriemhilde—A most popular cut flower variety; perfect flowers on long stems; color a brilliant pink, gradually shading to white at the center.

Mrs. H. J. Jones—Very large, perfect, rich, bright scarlet with cream-colored edge; occasionally comes self-colored.

Decorative Dahlias

A. D. Livoni—Beautiful clear pink, of perfect form and very free.

Catherine Duer—Iridescent red; a favorite for cutting.

Grand Duke Alexis—Large, massive flowers, ivory-white, with a faint tinge of rose at the extremities of the petals.

Jack Rose—Brilliant crimson red, rich and glowing, similar in shade to the popular "Jack" Rose, which suggested its name. The habit of the plant is perfect for garden decoration, while its stiff stems, holding the large flowers erect, secure for it a foremost place as a high-colored cut flower.

Souvenir de Gustave Doazon—A decorative variety of mammoth proportions, which under ordinary cultivation will produce flowers 6 inches across, and can be grown to measure full 9 inches. It is of free growth, remarkably profuse-flowering, and pure red in color.

Queen Wilhelmina—Immense, fluffy flower of pure white with yellow center.

Zulu—Deep maroon with black shadings.



Canna

BULBS AND TUBERS

For prices see price list, page 61.

For Spring Planting

Amaryllis—Velvety crimson flowers early in summer. Planted out in May in rich ground. The roots are stored like Dahlias during winter.

Caladium Espulentum (Elephant's Ear)—For obtaining tropical effects in lawn and garden planting, this beautiful plant takes a prominent place. Grows well in any ordinary soil, but should have plenty of water and good rich soil to obtain best results. Bulbs must be taken up in fall and kept in a dry, warm place.

Cannas—Very attractive plants, with large green leaves, often shaded with red and crimson. Cannas are the most satisfactory plants one can use for producing a gorgeous display of brilliantly colored flowers all summer long; they bloom until frost.

Gladioli—The Gladioli is the most attractive of all the summer flowering bulbs and deserves a place in every garden, as it is sure to flower and do well with little care. Flowers are of most every desirable color. By cutting the spikes when two or three of the lower flowers are open and placing them in water, the entire spike will open beautifully. Plant bulbs in April or May for early, and late in June for fall blooming.

Tuberoses—One of the best known and most easily grown summer flowering bulbs. Easily recognized by its exquisite fragrance and beautiful flower spikes, which are borne on long stems, making it an admirable cut flower for house decoration.

A CANNA BED MAKES A BEAUTIFUL SPOT OF COLOR

PRICE LIST

Evergreens

	Each	Per 100
Black Hill and White Spruce 2 to 3 ft.	\$0.75	\$60.00
" 18 to 24 in.	.50	40.00
" 12 to 18 in.	.30	25.00
" 6 to 12 in.	.20	15.00
Jack, Scotch, Austrian White and Bull Pine 3 ft.	.75	60.00
" 2 to 3 ft.	.50	40.00
" 18 to 24 in.	.35	30.00
" 12 to 18 in.	.25	20.00
" 6 to 12 in.	.15	12.00
Each		
Pungens 2 to 3 ft.	\$1.50	
" extra color 2 to 3 ft.	3.00	
" 18 to 24 in.	1.00	
" extra color 18 to 24 in.	2.00	
" 12 to 18 in.	.50	
" extra color 12 to 18 in.	1.00	
Norway Spruce 2 to 3 ft.	.50	
" 18 to 24 in.	.35	
" 12 to 18 in.	.25	
Swedish and Irish Juniper 2 to 3 ft.	.75	
" 18 to 24 in.	.50	
" 12 to 18 in.	.30	
American and Chinese Arbor Vitae 2 to 3 ft.	.75	
" 18 to 24 in.	.50	
" 12 to 18 in.	.25	

Upright Deciduous Trees

	Each	Per 100
Ailanthus 6-8 ft.	\$1.00	
Ash, American—(See Common Shade Trees.)		
" European 5-6 ft.	6-8 ft. \$0.50	\$60.75
" Oak-Leaved75	1.00	
Beech, American 1.00	2.00	
" Purple-Leaved 2.00		
Birch, European50	.75	
" Purple-Leaved 2.00		
Box Elder—(See Common Shade Trees.)		
Catalpa Bungei 2.00		
" Speciosa50	.75	
" 8-10 ft.	1.00	
Cherry, White Flowering75		
" Wild Bird50		
Chestnut, American Sweet75	1.00	
" Horse75	1.00	
Crab, Double Flowering 1.00		
Dogwood 3-4 ft.	.50	4-5 .75
Elm—(See Common Shade Trees.)		
" Purple-Leaved 5-6 ft.	6-8 ft. \$.75	\$1.00
" English75	1.00	
Hackberry50	.75	
" 8-10 ft.	1.00	
Kentucky Coffee Tree75	1.00	
Larch 4-5 ft.	.50	
" 5-6 ft.	6-8 ft. \$.50	\$1.00
Linden50	.75	1.00
Locust, Honey40	.60	.75
" Black35	.50	
Magnolia75	1.00	

	Each	Dozen	Per 100
Maple, Norway and Hard50	1.00		
" Purple-Leaved 1.50	2.00		
" Soft—(See Common Shade Trees.)			
" Weir's Cut-Leaved... .50	.75	1.00	
Mulberry, White 5-6 ft.	.60		
Each Dozen Per 100			
Mulberry, Russian 3-4 ft.	\$.20	\$2.00	\$15.00
" Russian 4-5 ft.	.25	2.50	17.50
" Russian 5-6 ft.	.30	3.00	20.00
Each Each Each			
Olive, Russian 4-5 ft.	\$.50	5-6 \$.75	6-8 \$1.00
Oak, each 5-6 ft.	1.00		
Pecan 12-18 in.	.50		
Persimmon, American, each.....	5-6 ft. 1.00		
Plum, Prunus, each.....	3-4 ft. 50c	4-5 ft. .75	
Each Per 100			
Poplar, Carolina.....	10 to 12 ft. \$.75	\$60.00	
" 8 to 10 ft.	.50	40.00	
" 6 to 8 ft.	.35	30.00	
" 5 to 6 ft.	.20	15.00	
" 4 to 5 ft.	.15	12.00	
" 3 to 4 ft.	.10	8.00	
" Norway 10 to 12 ft.	1.00	75.00	
" 8 to 10 ft.	.75	60.00	
" 6 to 8 ft.	.50	40.00	
" 5 to 6 ft.	.30	20.00	
" 4 to 5 ft.	.20	15.00	
" 3 to 4 ft.	.15	10.00	
Each Each Each			
" 5-6 ft.	6-8 ft.	8-10 ft.	
" Balm of Gilead... .50	\$.75	\$1.00	
" Silver-Leaved... .25	.50		
Red Bud, each.....	.75	1.00	
Salisburya, each 1.00			
Sycamore, each.....	.50	.75	1.00
Thorn, White and Pink, each.....	4-5 ft. 1.00		
Tulip Tree, each.....	5-6 ft. .75	6-8 ft. 1.00	
Walnut, each 4-5 ft.	.35	5-6 ft. .50	
" 6-8 ft.	.75	8-10 ft. 1.00	
Willow, Golden, per 100 2-3 ft.	5.00	3-4 ft. 10.00	

Common Shade Trees

	Each	Per 100
Elm, Maple, Ash and Box Elder:		
10 to 12 ft.....	\$1.00	\$75.00
8 to 10 ft.....	.60	50.00
6 to 8 ft.....	.40	35.00
5 to 6 ft.....	.25	20.00
4 to 5 ft.....	.20	15.00
3 to 4 ft.....	.15	10.00

Seedling Trees

	Per 100	Per 1000
Elm, Ash, Box Elder, Maple, Russian Mulberry, Black Locust and Honey Locust:		
2 year, No. 1.....	2 to 3 ft. \$5.00	\$30.00
2 year, No. 2.....	18 to 24 in. 2.00	15.00
1 year, No. 1.....	12 to 18 in. 1.00	8.00
Cottonwood 2 to 3 ft.	2.00	10.00
" 18 to 24 in.	.75	7.00
" 12 to 18 in.	.60	5.00
Catalpa Speciosa.....	12 to 18 in. ...	10.00
" 18 to 24 in.	... 15.00	
Walnut 12 to 18 in.	2.00	15.00

Weeping Trees

	Each
Birch, Cut-Leaved	5 to 6 ft. \$1.50
"	6 to 8 ft. 2.00
Elm, Camperdown	6 to 7 ft. 2.00
Linden, Silver-Leaved	6 to 7 ft. 2.00
Mountain Ash	5 to 6 ft. 2.00
Mulberry, Tea's	6 to 7 ft. 2.00
Willow	5 to 6 ft. 1.50

Ornamental Shrubs

	Each	Each
Acacia	5-6 ft. \$1.00	...
Althea	2-3 ft. .50	3-4 ft. \$.75
Almond	2-3 ft. .50	3-4 ft. .75
Barberry	2-3 ft. .50	3-4 ft. .75
Buckthorn	3-4 ft. .50	4-5 ft. .75
Calycanthus	2-3 ft. .50	3-4 ft. .75
Caragana	2-3 ft. .50	3-4 ft. .75
Cephalanthus	2-3 ft. .50	3-4 ft. .75
Colutea	2-3 ft. .50	3-4 ft. .75
Currant, Flowering. 2-3 ft. .50	3-4 ft. .75	
Desmodium	12-18 in. .50	18-24 in. .75
Deutzia	2-3 ft. .50	3-4 ft. .75
Dogwood, Flower'g 3-4 ft. .50	4-5 ft. .75	
Elaeagnus	3-4 ft. 1.00	...
Elder	3-4 ft. .50	4-5 ft. .75
Exochorda	2-3 ft. .50	3-4 ft. .75
Forsythia	2-3 ft. .50	3-4 ft. .75
Fringe Tree	3-4 ft. .50	4-5 ft. .75
Halesia	2-3 ft. .50	3-4 ft. .75
Honeysuckle, Bush. 2-3 ft. .50	3-4 ft. .75	
Hydrangea	2-3 ft. .50	3-4 ft. .75
Japan Quince	2-3 ft. .50	3-4 ft. .75
Kerria	2-3 ft. .50	3-4 ft. .75
Lilac	3-4 ft. .50	4-5 ft. .75
" Villosa	4-5 ft. 1.00
Mahonia	12-18 in. .50	18-24 in. .75
Privet	12-18 in. .50	18-24 in. .75
Snowball	2-3 ft. .50	3-4 ft. .75
Snowberry	2-3 ft. .50	3-4 ft. .75
Sumach	2-3 ft. .75	3-4 ft. 1.00
Spirea, Arguta 12-18 in. .50	18-24 in. .75	
" Ash-Leaved .. 2-3 ft. .50	3-4 ft. .75	
" Billardi .. 2-3 ft. .50	3-4 ft. .75	
" Bridal Wreath 2-3 ft. .50	3-4 ft. .75	
" Bumalda 12-18 in. .50	18-24 in. .75	
" An. Waterer 12-18 in. .50	18-24 in. .75	
" Douglas .. 2-3 ft. .50	3-4 ft. .75	
" Fortune's 12-18 in. .50	18-24 in. .75	
" Golden Leaved 2-3 ft. .50	3-4 ft. .75	
" Nine Bark ... 2-3 ft. .50	3-4 ft. .75	
" Thunberg's .. 2-3 ft. .50	3-4 ft. .75	
" Van Houttei... 2-3 ft. .50	3-4 ft. .75	
Syringa, M'k Orange 2-3 ft. .50	3-4 ft. .75	
Tamarix	3-4 ft. .25	4-5 ft. .50
Weigelia	2-3 ft. .50	3-4 ft. .75

Vines

	Each
Akebia	\$.50
Ampelopsis, Virginia Creeper, Boston Ivy, Woodbine50
Bignonia, Trumpet Creeper.....	.50
Cinnamon Vine50
Clematis, Large Flowering Varieties.....	.75
" Small Flowering Varieties.....	.50
Honeysuckle	2 to 3 ft. 50c 3 to 4 ft. .75
Madeira Vine.....	.50
Matrimony Vine50
Silk Vine50

Deciduous Hedge

	Per 100
Tartarian Honeysuckle	12 to 18 in. \$15.00
Privet	12 to 18 in. 7.00
"	18 to 24 in. 10.00
Barberry Thunbergii	12 to 18 in. 10.00
"	18 to 24 in. 15.00
Buckthorn	12 to 18 in. 10.00
Spirea Anthony Waterer.....	6 to 12 in. 15.00
"	8 to 15 in. 20.00
" Collosa Alba	6 to 12 in. 15.00
" Arguta	12 to 18 in. 20.00
Japan Quince	12 to 18 in. 10.00
"	18 to 24 in. 15.00
Russian Mulberry	12 to 18 in. 1.00
"	18 to 24 in. 2.00
Honey Locust	12 to 18 in. 1.00
"	18 to 24 in. 2.00
Per 1000	
Osage, No. 1.....	\$5.00
" No. 2.....	3.00

Roses

	Each	Doz.
Baby Ramblers, 2 year.....	\$.75	\$7.00
Climbing Roses, 2 year, heavy.....	.60	6.00
Dorothy Perkins, 2 year.....	.60	6.00
Hybrid Perpetual, 2 year.....	.60	6.00
Moss Roses, 2 year, large.....	.60	6.00
Rambler Roses—Crimson, Pink, White, Yellow60	6.00
Tree Roses, No. 1.....	1.50	...

Hardy Perennials

	Each	Doz.
Achillea	\$.25	\$2.50
Alyssum25	2.50
Anemone, Windflower25	2.50
Aquilegia, Columbine25	2.50
Astilbe50	5.00
Asters25	2.50
Boltonia25	2.50
Campanula35	3.00
Coreopsis35	3.00
Chrysanthemums25	2.50
Daisy, Shasta35	3.00
Delphinium, Larkspur35	3.00
Desmodium25	2.50
Dianthus, Sweet William.....	.25	2.50
Dicentra, Bleeding Heart.....	.25	2.50
Digitalis, Foxglove35	3.00
Funkia, Day Lily25	2.50
Gaillardia, Blanket Flower25	2.50
Gypsophila35	3.00
Hibiscus35	3.00
Hollyhocks25	2.50
Hyacinthus35	3.00
Iberis Sempervirens, Candytuft35	3.00
Iris25	2.50
Myosotis, Forget-Me-Not35	3.00
Oriental Poppy25	2.50
Pansies25	2.50
Papaver, Poppy35	3.00
Phlox, Assorted25	2.50
Platycodon, Chinese Bell Flower..	.25	2.50
Rudbeckia, Golden Glow.....	.25	2.50
Salvia, Meadow Sage25	2.50
Stokesia35	3.00
Tritoma, Red-hot Poker.....	.35	3.00
Yucca, 18 to 24 inches.....	.50	5.00

Bulbs and Tubers

For Fall Planting

	Each	Doz.
Crocus	\$.10	\$1.00
Hyacinths25	2.50
Jonquils25	2.50
Lilies25	2.50
Narcissus25	2.50
Peonies, Assorted50	5.00
“ Fancy	1.00	8.00
Tulips, Single, Double and Parrot.	.05	.50

For Spring Planting

	Each	Doz.
Amaryllis50	5.00
Caladium, Elephant's Ear.....	.35	3.00
Cannas25	2.50
Dahlias, Cactus35	3.00
“ Decorative35	3.00
Gladiolus10	1.00
Tuberose25	2.50

Spirea Anthony Waterer

See Page 40

A recent improvement over the S. Bum-
ulda. Forms a low bushy hedge from 2 to
2½ feet high and is covered all summer with
a small flat head of bright pink flowers. A
new scarce dwarf shrub of high merit, abso-
lutely hardy and especially adapted for
hedge purposes. It furnishes not only a
rich green foliage, but has an almost per-
petual bloom of beautiful flowers. Plant in
April, about 18 inches apart in row. The
first period of blooming is from the middle
of June until the first of August. Imme-
diately after these flowers disappear, shear
back to a uniform height. The next crop
appears about the first of September and
lasts until a hard freeze. Shear back again
in late fall or early spring.

Catalpa Bungeii or Umbrella Tree

See Page 29

Grafted on stem 6 to 8 feet high, it makes
an umbrella-shaped top without pruning.
Perfectly hardy, and flourishes in almost all
soils and climates. Leaves large, glossy,
heart-shaped, deep green; lie like shingles
on a roof; always making a symmetrical
head. One of the most unique trees; desir-
able for lawn and park planting. Plant in
April. Plant trees 6 to 8 feet in height, and
the best specimens only. Wrap bodies of
all ornamental trees the first season to
guard against sun scald.

INDEX

	Page		Page
A			
Abies	27	Catalpa	29
Acacia	30, 35	Celastrus	42
Acer	30	Cephalanthus	36
Achillea	54	Celtis	30
Adam's Needle	57	Cerisus	29
Aesculus	29	Cercis	32
Ailanthus	28	Cherries	13-14, 29
Akebia	41	Chestnuts	24, 29
Alder	28	Chionanthus	37
Almond	35	Chinese Arbor Vitae	27
Alnus	28	Chinese Bell Flower	56
Alyssum	54	Chinese Tree Lilac	38
Althea	35	Chrysanthemum	55
Amaryllis	58	Cinnamon Vine	42
American Ivy	41	Clematis	42
Ampelopsis	41	Columbine	54
Amygdalus	35	Colutea	36
Anemone	54	Compass Cherry-Plum	14
Apples	7-11	Cornus	29, 36
Apples, Crab	11	Corchorus	38
Apricots	15	Coral Berry	40
Aquilegia	54	Coreopsis	55
Arbor Vitae	27	Crab	11, 29
Asparagus	24	Crataegus	32
Ash	28, 31	Cranberry	40
Ashberry	39	Crimson Eye	56
Astilbe	54	Crocus	57
Asters	55	Cucumber Tree	30
B			
Balsam Fir	27	Currants	22, 36
Balm of Gilead	31	Cydonia	38
Barberry	35, 43	D	
Basswood	30	Dahlias	58
Bechtel's Flowering Crab	29	Day Lily	55
Beech	28	Deciduous Trees	28-33
Bellflower	55	Dewberries	20
Berberis	35, 43	Desmodium	36, 55
Betula	28	Deutzia	36
Bignonia	42	Delphinium	55
Birch	28	Dicentra	55
Bitter Sweet	42	Diervilla	41
Blackberries	20	Distance to plant	6
Black Locust	30	Diospyros	31
Blanket Flower	55	Dioscorea	42
Bladder Senna	36	Dianthus	55
Bleeding Heart	55	Digitalis	55
Blueberry	24	Dogwood	29, 36
Boltonia	55	E	
Boston Ivy	41	Elder	36
Box Elder	30	Eleagnus	31, 36
Buckthorn	35	Elm	29
Buckeye	29	Elephant's Ear	58
Buffalo Berry	24	Evergreens	27-28
Bulbs and Tubers	57, 58	Exochorda	37
Button Bush	36	F	
Butternut	24	Fagus	28
C			
Caladium	58	Fir	27
Calycanthus	35	Flowering Cherry	29
California Privet	39	Flowering Locust	35
Campanula	55	Forsythia	37
Candytuft	56	Forgct-Me-Not	56
Cannas	58	Foxglove	55
Caragana	35	Fraxinus	28
Castanea	29	Fringe Tree	37
		Fruit Department	7-24
		Funkia	55

	Page		Page
G			
Gaillardia	55	Machura	43
Gingko	32	Madeira Vine	43
Gladiolus	58	Matrimony Vine	43
Gleditschia	30, 43	Meadow Sweet	40
Globe Flower	38	Meadow Sage	56
Golden Bell	37	Michaelmas Daisy	54
Golden Tuft	54	Mock Orange	40
Golden Glow	56	Morus	23, 31
Gooseberries	23	Mountain Ash	31
Grapes	17-18	Mulberries	23-24
Gymnocladus	30	Myosotis	56
Gypsophila	55	N	
H			
Hackberry	30	Narcissus	57
Halesia	37	Nettle Tree	30
Harebell	55	Norway Poplar	31, 32
Hawthorne	33	Number of Trees to Acre	6
Hedge Plants	43	Nut Trees	24-25
Horse Chestnut	29	O	
Hibiscus	35, 56	Oak	31
High Bush Cranberry	40	Olive	31
Honey Locust	30, 43	Ornamental Shrubs	35-41
Honeysuckle	37, 42	Ornamental Department	25-58
Hollyhocks	56	Osage Orange	43
Hydrangea	38	P	
Hyacinthus	56	Papaver	56
Hyacinths	57	Paenonies	43-46
I			
Iberis	56	Pears	12
Introductory	3	Peaches	15, 16, 17
Information (General)	4	Pea Tree	35
Instructions for Planting	5, 6, 25, 26, 49	Pearl Bush	37
Iris	46-48	Pecans	25
J			
Japanese Silver Thorn	36	Persimmon	31
Japan Quince	38, 43	Periploca	43
Jonquils	57	Perennials	54-57
Juniperus	27	Philadelphus	40
Juneberry	24	Phlox	48-49
Juniper	27	Pie Plant	24
Judas Tree	32	Pine	27
K			
Kentucky Coffee Tree	30	Pinus	27
Kerria	38	Picea	27
L			
Lantana	40	Plums	14, 15, 31
Larch	30	Platanus	32
Larkspur	55	Plane Tree	32
Larix	30	Plume Poppy	55
Lilac	38, 39	Platycodon	56
Linden	30	Poplar	31
Lilies	57	Populus	31
Lilium	57	Poppy	56
Ligustrum	39	Poker Plant	56
Liriodendron	33	Privet	39
Loganberry	24	Prunus	31
Location of Nursery	3	Price List	59-61
Locust	30	Pyrus	29
Lonicera	37, 42	Q	
Lycium	43	Quince	23, 38
M			
Magnolia	30	Quercus	31
Maple	30-31	R	
Maiden Hair	32	Raspberries	21
Mahonia	39	Red Bud	32
		Rhubarb	24
		Rhamnus	35
		Rhus	37, 40
		Ribes	36
		Rock Mountain Cherry	14
		Robinia	30, 35
		Rosa Rugosa	54
		Rose of Sharon	35

	Page		Page
Roses	49-54	Sycamore	3
" Climbing	52	Symphoricarpus	4
" Hybrid Perpetual	50, 51	Syringa	38, 40
" Miscellaneous	53, 54		
" Rambler	52	T	
" Tea	52, 53	Tamarix	41
" Trailing	53	Tecoma	42
" Tree	53	Thorn	32, 33
Rudekia	56	Thuja	27
Russian Olive	31	Tickseed	55
		Tilia	30
S		Tree of Heaven	28
Salisburia	32	Tritoma	56
Salix	33	Trumpet Creeper	42
Salvia	56	Tuberose	58
Sambucus	36	Tulips	58
Seedling Trees	33	Tulip Tree	33
Shasta Daisy	55		
Shrubs	35-41	U	
Siberian Pea Tree	35	Ulmus	29
Silk Vine	43		
Silver Bell	37	V	
Silver Thorn	36	Viburnum	39
Smoke Tree	37	Vines	41-43
Snowball	39	Virginia Creeper	41
Snowberry	40	Virgin's Bower	42
Sorbus	31		
Spirca	40	W	
Spruce	27-28	Walnuts	25
Starwort	55	Wayfaring Tree	40
Stokesia	56	Weeping Trees	33, 34
Strawberry-Raspberry	24	Weigelia	41
Strawberries	19	White Veil Flower	55
"Sudden Sawlog"	31, 32	Willow	33
Sumach	40	Windflower	54
Sweet Chestnut	24, 29	Wistaria	43
Sweet Pea Shrub	36	Woodbine	41
Sweet-Scented Shrub	35		
Sweet William	55	Y	
		Yucca	57



FORMULAS

KEROSENE EMULSION. In making kerosene emulsion for spraying trees for lice, be sure and follow the correct method. Dissolve in two quarts of water, one quart of soft soap or one-fourth pound of hard soap by heating to the boiling point, then add one pint of kerosene oil and stir violently for from three to five minutes. This may be done by using a common force pump and putting the end of the hose back into the mixture again. This mixes the oil permanently, so that it will never separate, and it may be diluted easily at pleasure. This mixture should be diluted to twice its bulk with water or about fourteen times as much water as kerosene. The kerosene emulsion is successful in destroying cattle lice and sheep ticks, as well as all varieties of plant lice.

BORDEAUX MIXTURE. Six pounds of sulphate of copper are dissolved in six gallons of water. In another vessel four pounds of fresh lime are slacked in six gallons of water, after the latter solution has cooled, slowly turn it into the other solution and add ten gallons of water. This, when all is thoroughly mixed and strained, is ready for use. In straining this mixture reject all of the lime sediment, using only the clear liquid. Strain the whitewash through a coarse gunny sack stretched over the head of a barrel.

COPPER SULPHATE SOLUTION. Copper sulphate, 1 pound; water, 15 gallons. Dissolve the copper sulphate in the water, when it is ready for use. This should never be applied to foliage, but must be used before the buds break. For peaches and nectarines use 25 gallons of water. Use for fungous diseases.

PARIS GREEN. Paris green, 1 pound; water, 200 gallons. If this mixture is to be used upon peach trees, 1 pound of quicklime should be added. Repeated applications will injure most foliage, unless lime is added. Paris green and Bordeaux mixture can be applied together with perfect safety. Use at the rate of 4 ounces of the arsenites to 50 gallons of the mixture. The action of neither is weakened, and the Paris green loses all caustic properties. Use for insects which chew.

HELLEBORE. Fresh white hellebore, 1 ounce; water, 3 gallons. Apply when thoroughly mixed. This poison is not so energetic as the arsenites and may be used a short time before the sprayed portions mature. Use for insects which chew. Can also be used dry by dusting on plants.

LONDON PURPLE. This is used in the same proportion as Paris green, but as it is more caustic it should be applied with two or three times its weight of lime or with Bordeaux mixture. The composition of London purple is exceedingly variable, and unless good reasons exist for supposing that it contains as much arsenic as Paris green, use the latter poison. Do not use London purple on peach or plum trees unless considerable lime is added. Use for insects which chew.

LIME, SULPHUR AND SALT. Stone lime, 15 to 30 pounds; flowers of sulphur, 15 pounds; salt, 15 pounds; water, 50 gallons. Slake the lime in a small quantity of hot water, gradually adding and thoroughly stirring in the sulphur. Dilute the mixture with twelve gallons of water and boil in an iron kettle or cook by steam in a covered tank or barrel for one and one-half hours. Then add salt, continuing the boiling for one-half hour more. Fill vessel up with water to the required fifty gallons. Strain wash through a fine mesh strainer and apply hot. In using an iron kettle, keep the mixture vigorously boiling and thoroughly stirred to prevent caking and burning of materials. Wash cooked by steam is more easily prepared and better made. Apply wash just as the buds begin to swell in the spring. Cover all parts of the tree with a heavy coat of the wash. The wash seems best adapted to orchardists who have not yet learned to use petroleum with safety or are afraid that their trees are beginning to show injury from the oil or will not stand many more applications of it. It is **especially recommended for the treatment of peach trees.** It is believed that the substitution of one and one-fourth pounds of blue vitriol dissolved in hot water for the salt results in quicker-acting wash. This formula is known as the Oregon Wash. Use for scale and fungous diseases.

Any of the Agricultural Experiment Stations will furnish bulletins so arranged that the grower may see at a glance what to apply, when and how to make the applications.

GROWN
*The cheapest to buy
and the best to plant.*

*Harrison Nursery Co.,
York, Neb.*

