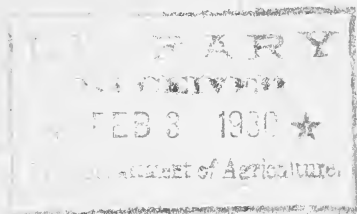


Historic, Archive Document

Do not assume content reflects current scientific knowledge, policies, or practices.

62.69



For
Your
Garden



MISS RIE

“If you have loved a garden,
My roses bloom for you.”

—LOUISE DRISCOLL

PRICE LIST

R. E. Moss

FLORIST

Vinita, Oklahoma

Spring 1930

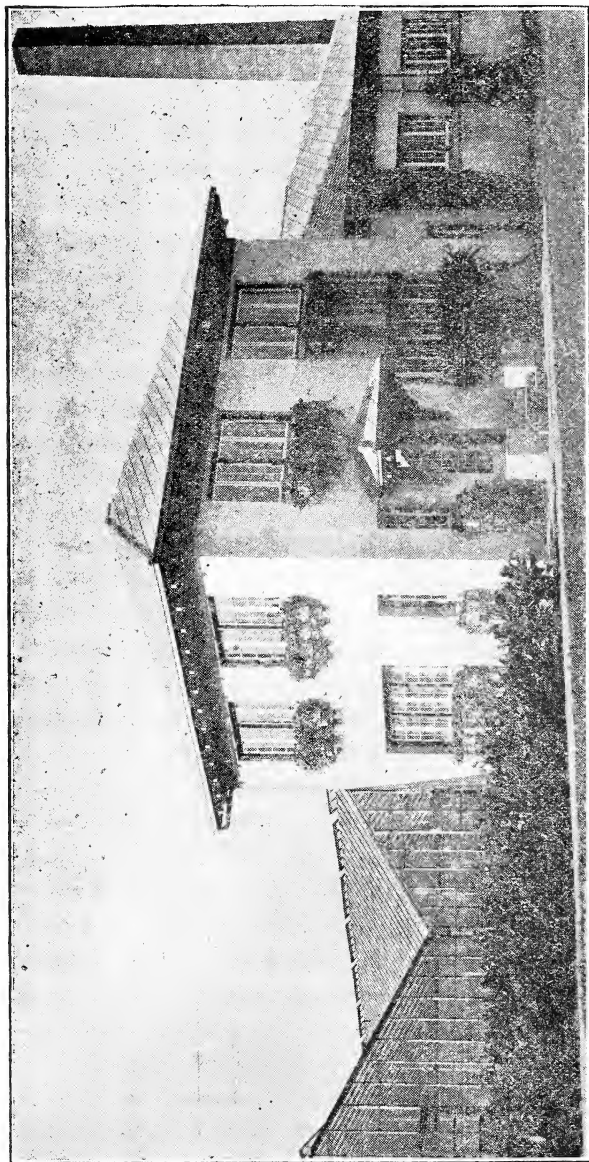


BULBS

PLANTS

FUNERAL DESIGNS

CUT FLOWERS



"In appearance, convenience, and substantiality, this establishment is a leader in the Southwest."—The Florists, Review, Chicago.

VEGETABLE PLANTS

We send out only stocky, well-rooted vegetable plants that have been transplanted at least once. Transplanting makes a stronger and heavier root system, which enables the plant to stand the drouth. The spindling, light-colored vegetable plants frequently sold out of seed flats are worthless, even as gifts. Transplanted plants give quicker and better returns with much less labor.

Most of our garden plants are grown from seed that have received special chemical treatment, which eliminates surface-borne disease spores. This treatment accelerates germination besides greatly stimulating subsequent plant growth. Seed that have received this treatment cost more than untreated seed, but we are quite willing to give our customers the benefit of this expense.

Besides using seed that have been disinfected with one of the new organic mercuric compounds, all our seed are planted in soil that has been thoroughly sterilized by live steam. The seedlings are later transplanted into flats that have received the same treatment or into soil that has been treated with formaldehyde.

It is our aim to send out sturdy plants, grown from the best seed that can be obtained from reliable firms, free from injurious insects and diseases, and of the latest and best varieties suited to this climate. We take especial pains to keep the varieties labeled, but we give no warranty as to description, quality or productiveness of any plants we send out, nor will we be in any way responsible for the crop.

CABBAGE

Golden Acres—This is considered by many authorities as an early strain of the famous Copenhagen Market, but not so large as that variety. It is earlier than Early Jersey Wakefield. Heads range from 3 to 5 pounds, and the size can be increased by broader spacing and higher fertilization. This is one of the best for the family garden or for commercial purposes. As seed of this variety cannot be sown before January 15th, plants are not ready to send out until March. Strong plants set in the open the last week in March will make larger and earlier heads than the southern-grown, so-called "frost-

proof" plants.

15c per dozen; \$1 per 100; \$1.50 for 200; \$3.75 for 500; \$6 per 1,000. Postage extra about 8c on one or two dozen.

CAULIFLOWER

Early Snowball—One of the best in size, color and quality.

25c per dozen; \$2 per 100. Postage extra, about 8c on one or two dozen.

TOMATOES

Earliana—A good, early tomato for the family garden. Not a main crop variety. Seed of the famous Penn State strain, developed by the Department of Plant Breeding, Pennsylvania State College, the product of 11 years' scientific selection.

Bonny Best—Bright scarlet, smooth, uniform in size, and very early. Better than Earliana in many respects. Seed from an extra fine strain.

Ponderosa—Extra large, very solid, fine color and flavor, producing enormous crops. Seed from the originators of this famous variety.

Marvana—An early variety, similar to Earliana in every respect except that it is wilt-resistant.

Marglobe—The strong, vigorous vines produce large, beautifully shaped, globular, scarlet fruit, even under unfavorable conditions. A main crop variety very similar to one of its parents, the Globe. Highly resistant to nailhead rust and wilt.

NOTE—Fusarium wilt is a common disease through the south. A full-grown plant, loaded with fruit, will suddenly wilt, seemingly almost over night. This disease is in the soil and there is no known remedy for it except to plant wilt-resistant varieties. The last two varieties listed above should be used in soil infested with wilt. The former is a cross between Marvel and Earliana and the latter a cross between Marvel and Globe. Both were originated by Dr. F. J. Pritchard of the Bureau of Plant Industry, U. S. Department of Agriculture.

PRICES—All of the above varieties, transplanted at least once, 15c per dozen; \$1.20 per 100; \$10 per 1,000. Postage extra, about 8c on one or two dozen.

PEPPERS

Neapolitan—Extra early, medium size, light green, excellent flavor. This variety will set fruit when many other varieties fail entirely.

Pimiento—The thick flesh is valuable for can-

ning when ripe.

California Wonder—A thick-walled variety of immense size. Larger and earlier than Chinese Giant.

Golden Dawn—A mild sweet yellow pepper. Desirable for its color in making salads.

Cayenne—Long, narrow, pungent pods.

20c per dozen; \$1.50 per 100. Postage extra, about 8c on one or two dozen.

EGG PLANT

Black Beauty—Early, strong grower, purple fruit.

25c per dozen; \$2 per 100. We usually furnish these in potted plants. Postage extra, about 8c per dozen.

ASPARAGUS

Palmetto—An early, prolific variety. Best quality.

2-year-old roots, 50c per dozen; \$2 per 100. Postage extra.

RHUBARB

Linnaeus—Large stalks. Fine cooking variety. 2-year-old roots, 10c each; \$1 per dozen.

SWEET POTATO PLANTS

Nancy Hall—Best table variety grown.

For small quantities remit 35c per 100. For large quantities, write for quotation, stating number you need.

FLOWERING PLANTS

BEDDING PLANTS

GERANIUMS

All the varieties listed below have been tested and are the best suited to the wind and heat of this climate. Geraniums require a sunny position and a sandy loam soil. Under ordinary conditions they will blossom profusely all summer. For winter blooming they should be potted up firmly in any good garden soil to which a little sand has been added and run somewhat on the dry side. Use as small a pot as will conveniently hold them and give full sunlight. Failure to get winter blooms may be caused by keeping them too wet, having them in too large pots, soil too rich, or not enough sunlight.

Alphonse Ricard—Semi-double flowers of bright vermilion scarlet.

Beaute Poitevine—A light salmon in color. Robust grower. Double flowers.

Jean Viaud—A bright, clear shade of mauve rose with white throat. Double.

Mme. Buchner—Snow white in color. Double. Very prolific.

S. A. Nutt—Dark velvety crimson. Double. Used more than any geranium ever introduced.

Prices—From 2-inch pots, 15c each; \$1.50 per dozen. From 3-inch pots, 25c each; \$2.50 per dozen. Postage extra.

CANNAS

Cannas are the most effective bedding plants we have. Considering their wealth of blossom, they are also the most economical. They bloom from early summer until frost and the roots may be stored and used another season. They succeed in any sunny position and in almost any kind of soil. For best results, however, plant in good, deep, rich soil, using an abundance of manure and watering freely throughout the season. They are most attractive when planted in masses of one variety. Plant from 2 to 3 feet apart.

The varieties listed below are best suited to the wind and heat of the southwest. They are furnished in growing plants about April 1st, or after danger of frost is over.

Add postage to prices named, about 10 cents per dozen.

Allemania—Rich orange-red, with golden yellow border. Orchid flowers. Six feet.

10c each; \$1 per dozen.

Hungaria—Large flowers of soft rose-pink. Exceedingly fine bloomer. Four feet.

15c each; \$1.50 per dozen.

Mrs. Alfred F. Conard—The beautiful salmon-pink flowers are produced in abundance on a strong plant, with glossy green foliage. A striking variety and one of the best in existence. Four feet. 20c each; \$2 per dozen.

Yellow King Humbert—An orchid flowered sport from King Humbert with green foliage and yellow flowers spotted with red. Five feet.

10c each; \$1 per dozen.

President—Immense flowers of rich glowing scarlet. The petals are firm and of splendid sheen and substance. The foliage is a rich green. Neither foliage nor blossoms will burn in the

hottest weather. By far the finest red and the most prolific bloomer yet introduced. Four feet. 20c each; \$2 per dozen.

City of Portland—A deep, glowing pink, considered by many as the best pink to date. Similar to Mrs. Conard, but deeper in color. Green foliage. Four feet. 20c each; \$2 per dozen.

Victory—A new variety, and a prolific bloomer. Large flowers of a soft apricot. Green foliage. Three feet. 20c each; \$2 per dozen.

Wintzer's Colossal—Perhaps the largest flowers of any variety grown. A bright orange-scarlet. 10c each; \$1 per dozen.

King Midas—A glittering gamboge-yellow. One of the recent introductions of superior merit. It is a strong, vigorous grower and the most free-flowering, pure yellow variety we have ever tested. A mass of this will be sure to attract attention. 20c each; \$2 per dozen.

The Ambassador—Another recent introduction. A brilliant cherry red with bronze foliage. Often referred to as the "Bronze Leaved President." Should be planted instead of King Humbert, which has been deteriorating the past few years. 20c each; \$2 per dozen.

MISCELLANEOUS BEDDING PLANTS

Plants in this section are ready about April 1st. They are from 2 to 3-inch pots, and strong, vigorous specimens, free from injurious insects and diseases. Prices do not include postage. Add 10 cents per dozen for postage in the first and second zones.

Ageratum—Blue Perfection—This is the darkest colored of all large flowered ageratums. Color deep amethyst blue. Fine for bedding or edging. 5c each.

Asters—Assorted colors of the best varieties in early, mid-season and late branching kinds. 5c each.

Alyssum—The dwarf kind is much used for edging. Sweet scented. White. 5c each.

Alternanthera—Green and yellow, and green and red border plants. Sometimes called Joseph's Coat. 10c each; \$1 per dozen.

Calendula—An old-fashioned bedding plant much improved in late years. We carry the latest va-

riety, "Sensation," an orange yellow with scarlet sheen. 5c each.

Coleus—Used for bedding and for edging. We carry about a dozen varieties of the most brilliant and beautiful varieties, such as Defiance, Beckwith's Gem, Golden Bedder, Verschaffelti, President Harding, Helen and others. 5 cent each.

Coleus Christmas Gem—This is the most dazzling variety in existence. The colors are especially rich and gorgeous. The plant is a strong grower. From 2-inch pots, 10c each; from 3-inch pots, 25 cents each.

Dusty Miller—Low growing plants with beautiful silvery foliage. Used for edging and boxes. 10c each; \$1 per dozen.

Fuchsias—Used for bedding or boxes. Beautiful, pendent, bell-like flowers.

15c each; \$1.50 per dozen.

Heliotrope—Used for bedding and boxes. Popular because of their fragrance. The large trusses of blossoms are very effective. White and dark blue. 15c each.

Lantana—Very popular for bedding purposes. Can be supplied in pink, light yellow, orange and white. 15c each.

Marigold—Another old-fashioned bedding plant much improved in late years. The recent introductions are really sensational in size. Dark orange and lemon. 5c each.

Pansies—Assorted colors, grown from the finest seed obtainable. Set in partial shade and as early as possible. 5c each.

Petunias—Double—Large-flowered, fringed and ruffled varieties, in white, pink and red. Valuable for bedding or boxes.

15c each; \$1.50 per dozen.

Petunias—Large-Flowered Single—Fringed Ruffled Giants and Giants of California. Especially valuable for bedding. 5c each.

Petunias—Small Flowered Single—We usually carry such varieties as Rosy Morn, Blue Bird and Theodosia, which are used for bedding, borders, boxes and baskets. 5c each.

Snapdragon—Valuable for bedding and for cut flowers. We carry the latest and finest varieties, such as Helen, Keystone, Silver Pink, Nelrose, Philadelphia, White Rock, Laura, Jennie Schneider, Mohr's Pink, and Roman Gold.

10c each; \$1 per dozen.

Stocks—Valuable for bedding. The improved

Bismarck strain, in white, blue, pink and the finer varieties, such as Golden Rose and Belle of Naples.

Salvia—The variety we offer is Bonfire, which is splendid for bedding or bordering a bed of cannas. 10c each; 75c per dozen.

Sultani—Valuable for house culture or the open ground. Does well in partial shade. We offer a numbr of colors varying from light salmon to deep cerise. 5c each.

Vinca (Periwinkle)—When once established this plant seems to stand more heat and drouth than anything in the whole list of bedding plants. It is covered with blossoms during the entire summer. Two colors, pink and white.

5c each.

Viola, Jersey Gem—The most valuable bedding viola yet introduced. Blooms throughout the summer. Large, fragrant flowers of pure rich violet. Long stems, fine for cutting.

25c each; \$3 per dozen.

Verbenas—We offer only the mammoth blooming varieties, in white, pink shades, blue shades, and red shades. 5c each.

Verbenas—Beauty of Oxford—A fine, free-blooming, deep pink. Is resistant to the mosaic disease that sometimes affects plants grown from seed. This variety is one of the finest plants for window boxes that we have ever used. Very effective. 15c each; \$1.50 per dozen.

Zinnias—The famous dahlia-flowered strain, originated by Bodger. White, scarlet, yellow, pink, old rose. Also several colors in the California Giants strain, such as Miss Willmott, Enchantress, and Cerise Queen. 5c each.

PLANTS FOR PORCH AND WINDOW BOXES

For best results, porch boxes should be at least seven inches wide and seven inches deep. Four feet is a convenient length for handling, although they may be longer. He sure to have proper drainage. Put an inch or so of well-rotted manure on the bottom of the box and then fill with rich, sandy loam. Keep boxes well watered during the growing season. And watch out for mealey bug on coleus and petunias.

For a shady porch use Boston ferns, aspara-

gus sprengeri, asparagus plumosus, parlor ivy, wandering jew, sultani, umbrella plants, etc.

For a sunny porch use geraniums, coleus, single and double petunias, sultani, periwinkle or lantanas, along with any of the following:

Balcony Petunias—Fine for boxes and baskets. We carry Balcony Blue, Balcony Rose and Balcony Crimson. 5c each.

Parlor Ivy—A quick-growing vine for trailing or climbing. 5c each.

Rose Geraniums—The delightful fragrance of the leaves and their fern-like appearance make this a valuable plant for boxes. 15c each.

Ivy Geraniums—Trailing plants with white, pink and red blossoms. 15c each.

Vinca Variegata—By far the best vine for boxes or baskets. The glossy leaves of olive green are broadly margined with creamy white. 15c each; larger plants 25c each.

Wandering Jew—An old favorite and easily grown. Three colors, green and red, green, and green and white. 5c each.

Weeping Lantana—A trailing variety of lantana with lavender blossoms. Very popular for boxes and baskets. 15c each.

Sweet Alyssum—The trailing variety is very effective. 10c each.

Trailing Coleus—There are two varieties. Trailing Queen is dark green with pink and red markings. Yellow Trailing Queen is an especially beautiful combination of olive green, yellow and creamy white. 5c each.

Dracaena Indivisa—Much used for the center of boxes and baskets. 25c each.

Pandanus Veitchii—Foliage light green striped with white. It is valuable for individual specimens as well as for the center of boxes or baskets. 75c, \$1 and \$1.50.

NOTE—Prices do not include postage.

HARDY VINES

English Ivy—Dark green foliage, beautifully shaped. Valuable for cemetery use. 25c each.

Honeysuckle—25c each.

Ampelopsis Veitchii (Boston or Japan Ivy)—The most popular climbing plant for covering smooth walls. Light green foliage.

2-year-old plants. 50c each.

Clematis Paniculata—The choicest hardy vine

you can grow. Beautiful foliage, which is insect proof. The plant is covered in September with masses of feathery white blossoms, deliciously fragrant. Strong plants, 50c each.

Lathyrus Latifolius—**Hardy Sweet Pea**—Free-flowering, hardy perennial climber, fine for cutting. Colors white, cerise and delicate pink. Price, 25c each.

QUICK GROWING VINES

Madeira Vine—Rapid growth, dense foliage, fragrant white flowers.

Tubers, 10c each; 75c per dozen.

Moonvine—Most satisfactory for a quick screen. Three colors, white, pink and blue.

10c each; \$1 per dozen.

NOTE—Prices on vines do not include postage.

SPRING BULBS

CALADIUM

Usually called Elephant's Ear. An effective tropical plant used as single specimens on the lawn or for the center of a bed. Good-sized bulbs. 20c each; larger sizes, 30c and 40c.

TUBEROSE

Dwarf Excelsior Pearl—The dwarf double variety. Very fragrant. 7c each; 75c per dozen

Armstrong's Everblooming—Single.

7c each; 75c per dozen.

DAHLIAS

Dahlias thrive best in a deep, sandy loam. Lay the tuber flat on its side and cover 4 or 5 inches deep. Cultivate thoroughly during the summer, and stake before the plants are blown over by the wind. Do not plant too early, as they do not bloom very freely until the fall rains come and the nights get cool. The last of April is about the proper date. Plant 3 feet apart in a sunny position. The standard varieties listed below have all been tested for this climate.

Corona—A miniature decorative, pure white, very free blooming.

Countess of Lonsdale—A lustrous salmon-pink overlaid with amber. Cactus.

Delice—Decorative. A beautiful shade of shell pink.

Floradora—Deep blood red cactus.

J. B. Seth—Decorative. Brilliant scarlet.

King of Commerce—Decorative. A free-blooming, rich tango.

Mrs. Thos. Burch—Decorative. A rich old gold.

Mina Burgle—A free-blooming dark scarlet decorative.

Purity—A pure white, well rounded pompon and a prolific bloomer.

Princess Juliana—Decorative. An early white. Very fine.

Perle de Lyon—A pure white Cactus

Queen Mary—A rose pink decorative.

Standard Bearer—Cactus. A rich fiery scarlet.

Yellow Duke—A large show yellow.

Prices—Strong divisions, 25c each; \$2.50 per dozen.

GLADIOLUS

Gladiolus are the most popular, useful and attractive of the summer flowering bulbs, taking first place as a cut flower through the summer months. They may be planted in the border, but if wanted for cut flowers, should be planted in a sunny position in the garden. They prefer a sandy loam, but adapt themselves to almost any soil or climate. Plant 4 or 5 inches deep and about 8 inches apart. For a long season of bloom, plant at intervals of two or three weeks throughout the spring. Do not let fresh manure come in contact with the bulbs. The varieties listed below are those that best withstand the hot winds.

Alice Tiplady—Rich orange saffron. 10c each; \$1 per dozen.

America—Soft, lavender pink. Very popular. 7c each; 75c per dozen.

Chicago White—A fine white variety with lavender stripes on the lower petals. 7c each; 75c per dozen.

Crimson Glow—Large scarlet crimson. 15c each; \$1.25 per dozen.

Evelyn Kirtland—One of the most beautiful and brilliant in existence. A rose pink at the edges passing to shell pink in the throat. 15c each; \$1.50 per dozen.

E. J. Shaylor—A deep rose-pink with ruffled petals. A sensational variety. 15c each; \$1.50 per dozen.

Flora—A beautiful golden yellow, large flowers and a strong grower. 15c each; \$1.50 per dozen.

Gold Drop—A large, tall, ruffled pure deep yellow. 10c each; \$1 per dozen.

Halley—A delicate salmon pink. Early. 7c each; 75c per dozen.

Herada—Large blossoms of pure mauve. 10c each \$1 per dozen.

Le Marechal Foch—Immense flowers of light pink. 10c each; \$1 per dozen.

Mrs. Frances King—A light scarlet. Very fine. 7c each; 75c per dozen.

Mrs. H. E. Bothin—Ruffled flowers of shell pink, tinted salmon. 15c each; \$1.50 per dozen.

Mrs. Frank Pendleton—A beautiful rose-pink with a velvety blood-red blotch on each lower petal. Rivals an orchid in richness. 7c each; 75c per dozen.

Maiden's Blush—An exquisite blush pink. 5c each; 50c per dozen.

Myra—A giant flowered yellow with a salmon suffusion. 5c each; 50c per dozen.

Peace—A large white with violet featherings on lower petals. 10c each; \$1 per dozen.

Romance—Orange salmon with red and yellow throat. 20c each; \$2 per dozen.

Rose 1910—A very desirable early rose-pink. 10c each; \$1 per dozen.

Schwaben—One of the best yellows. 10c each; \$1 per dozen.

Tycko Zang—Clear salmon pink with white throat dotted cerise. 30c each: \$3 per dozen.

Youell's Favorite—A large, ruffled, rosy pink. 15c each; \$1.50 per dozen.

SPECIAL OFFER—One dozen standard named varieties in assorted colors, sent postpaid, for 50 cents.

SUMMER BULBS

Callas—These make striking pot plants for winter blooming, being at their best from November to June. Ready in August.

Dry roots, large size, 50c each.

Freesias—Dainty, bell-shaped flowers that appear in January. Delightfully fragrant. A dozen bulbs may be planted in a 7-inch pot. Ready in August. 30c per dozen.

FALL BULBS

Tulips, Hyacinths, Narcissus, Daffodils, Jonquils, and other fall bulbs are usually imported or ready for planting about the first week in October. Write about September 1st for list of varieties and prices.

HARDY LILIES

The lily bulbs listed below are ready for delivery in late autumn and early winter. They should be planted as soon as received in well-drained soil. They prefer partial shade.

Lilium Regale—This recent introduction from China is hardy and vigorous. The fragrant trumpet-shaped flowers are white, slightly shaded pink outside. Strong, blooming size bulbs, 50c each.

Lilium Auratum—The Gold Banded Lily of Japan. Flowers white, dotted crimson, with a gold band through the center of each petal. Very fragrant, 50c each.

Lilium Speciosum Album—A popular white lily with gracefully curved petals. 60c each.

Lilium Speciosum Rubrum—Beautiful rose with crimson trimmings, shaped as above. 40c each.

Lilium Tigrinum Splendens—Orange flowers, spotted purple. Very hardy and should be in every hardy border. 25c each.

Lilium Tigrinum Flore Phena—The double tiger lily. 25c each

Lilium Superbum—Magnificent orange-scarlet shaded yellow and spotted purplish brown. Each 25 cents.

Lilium Candidum—The Madonna Lily. Flowers pure white and fragrant. 35 cents each.

POTTED PLANTS

No general rule can be given for the care of potted plants, as different kinds require different treatment. Geraniums, poinsettias and begonias should be kept on the dry side and the foliage kept dry. Asparagus sprengeri, umbrella plants and cyclamen require lots of water and the foliage of the last named should be sprinkled several times daily when the weather is bright. Most plants need a night temperature of around 55 degrees, but carnations and chrysanthemums may be kept somewhat cooler. Nearly all require a sunny window during the winter months, but

ferns must be slightly shaded during the summer.

FERNS

Boston Fern—The old standard of decorative plants.

Macawii—Similar to Boston, but more upright in growth and more finely cut.

Adiantum Cuneatum—The best form of the Maidenhair.

From 3-inch pots, 25c each. Larger sizes 50c up.

BEGONIAS

Chatelaine Supreme—An easy grower with bright coral pink flowers. Blooms the entire year. By far the most satisfactory house plant that can be grown.

From 2-inch pots, 15c. Larger sizes up to \$3.

Coralline de Lucerne—Bronze foliage and large trusses of coral red flowers. Grows to immense size. 25c, 50c and 75c.

Beefsteak Begonia—Large, thick, oramental leaves, red underneath, bronze on top. Pink flowers held well above the foliage. 25c each

Melior—The famous Christmas Begonia. We carry this only for the holidays.

\$2.50 and \$3 each.

MISCELLANEOUS

Asparagus Plumosus—Strong, bushy plants. From 3-inch pots, 25c each. Larger sizes, 50c and \$1.

Asparagus Sprengeri—Strong plants from 3-inch pots, 25c. Larger sizes, 50c and \$1.

Cyclamen—Blooming plants. Thanksgiving to Easter. \$1 to \$4 each.

Swainsona—Two-inch pots, 15c each.

Umbrella Plants—Two-inch pots, 15c each. From 3-inch pots, 25c each.

CARNATION PLANTS

Super Supreme—A beautiful salmon pink.

White Ward—Pure white.

Mrs. C. W. Ward—A bright rose-pink.

Edna—A bright scarlet.

Any of the above are 15c each; \$1.50 per dozen. May be grown in the garden during summer and brought indoors in early fall. Ready April 1st.

CHRYSANTHEMUMS

The large flowered varieties used by florists bloom so late that the blossoms will be burnt

by frost if left outdoors. However, they may be grown in the garden during the summer and potted up about September 1st. After shading a few days, place in a sunny window. Large blossoms may be produced by topping the plants when 6 inches high and then permitting only one blossom to a shoot. The early varieties may be flowered outside if they are protected from light frosts. In each list below the varieties are arranged in the order of their blooming. Plants ready about April 1st.

LARGE FLOWERED VARIETIES

Tiger—An early globular yellow. .

Josephine Foley—A very fine early white. Large and full.

Chieftain—A globular, incurved rose-pink.

J. W. Price—A rose-pink.

Nellie T. Ross—Globular yellow.

Nagoya—A shaggy, reflexed, deep yellow.

Sungold—A glowing yellow.

Mefo—Immense globular white.

Thanksgiving Pink—A late deep pink.

Helen Frick—Deep lavender of fine substance.

White Frick—Ivory white.

Towantic—A fine incurving white.

Harvard—Deep scarlet crimson.

Mistletoe—An incurved globular blush white. May be had for Christmas.

Golden Mistletoe—Light yellow.

Pink Mistletoe—Light pink.

SMALL FLOWERED VARIETIES

Uvalda—An extra early white pompon.

Elva—A pure white pompon.

Mrs. Buckingham—An old rose single.

Chestnut—A bright zinc-orange, shading to yellow-Anemone type.

Cc-Ed—A pale lilac anemone.

Varsity—A button yellow pompon.

Bell—An anemone white.

Vinita—A deep, bright orange yellow pompon with full crown. A fine keeper. One of our own creations.

Western Beauty—A full-crowned lavender pompon.

Sunshine—A brilliant orange anemone.

Christmas Gold—A small button pompon of orange-yellow, blooming in December.

Golden Nymph—A late bronze.

Gold Coin—A very fine golden yellow pompon.
Dainty Maid—A very small button white pompon.

White Yuletide—A very late white pompon.

Yellow Yuletide—A light yellow pompon. Same date as the white.

Prices—Any of the above 15c each; \$1.50 per dozen.

HARDY VARIETIES

Autumn Glow—A large rosy crimson.

Mrs. Roberts—A fine rose.

Marie Antoinette—Rose pink.

Indian—Copperish red.

Victory—A large pure white

Yellow Queen—Golden yellow.

Prices—15c each; \$1.50 per dozen.

HARDY PLANTS

Achillea, The Pearl—Small white flowers borne in profusion throughout the summer.

15c each; \$1.50 per dozen.

Columbine—Assorted colors. Splendid for shady corners. 15c each; \$1.50 per dozen.

Shasta Daisies—15c each; \$1.50 per dozen.

Delphinium or Hardy Larkspur—Belladonna and Hybrids. Delightful shades of blue.

15c each; \$1.50 per dozen.

Dicentra Spectabilis (Bleeding Heart)—An old-time favorite. Showy spikes of rose-pink flowers. 50c each.

Feverfew—Double white and double yellow. 10c each; \$1 per dozen.

Golden Glow—Strong divisions, 15c each; \$1.50 per dozen.

Gaillardia—Brilliantly colored, daisy-like flowers, mostly shades of red and yellow. Valuable for cutting or for the border.

15c each; \$1.50 per dozen.

Lily of the Valley—Pure white bell-shaped flowers. Delightfully fragrant. Plant in a moist, shady place. Large clumps. 60 cents each.

Gypsophila Paniculata (Baby's Breath)—Graceful, small white flowers, blooming in mid-summer. 25c each; \$2.50 per dozen.

Hollyhocks—Double red, white, yellow and pink. 15c each; \$1.50 per dozen.

Sweet William—In white, scarlet, Newport pink and Holborn Glory.

15c each; \$1.50 per dozen.

Tritoma—Red Hot Poker plant. Variety Pfitzeri. Orange scarlet. Free and continuous bloomer. 25c each; \$2.50 per dozen.

HARDY PHLOX

The phlox is one of the most important hardy perennials. It succeeds in almost any soil, flowering through a long season, and will last for years with ordinary attention. We list some of the latest and best varieties.

Hindenburg—New. A beautiful orange scarlet.

Miss Lingard—A pearly white with delicate pink eye. A free bloomer.

Mrs. Jenkins—Considered the best pure white.

Pantheon—Carmine rose.

Rheinlander—Salmon-pink with claret eye.

Rynstrom—Carmine rose.

Thor—A dark salmon pink with an aniline red eye.

Lavender—A splendid lavender pink. Strong grower.

20c each; \$2 per dozen. Postage extra.

IRIS GERMANICA

The Iris are desirable and easily grown hardy plants, producing in early spring showy flowers of rich and varied coloring.

Fairy—White, delicately bordered and diffused soft blue. 10c each; \$1 per dozen.

Mme. Chereau—White with a wide border of clear blue. 10c each.

Queen of May—A lovely, soft, rose-lilac, almost pink. 10c each.

Ceieste—Pale azure blue. Tall. 10c each.

Pallida Speciosa—The standards are dark lavender, the falls shaded light purple. 10c each.

Pallida Dalmatica—Very tall, large, fragrant flower. Standards lavender, falls lavender shaded blue. 15c each; \$1.50 per dozen.

Sherwin-Wright—A rich pure golden yellow with no shadings or markings. A striking variety. 25c each; \$2.50 per dozen.

PEONIES

The Peony is the "Queen of the Spring Flowers." They are easily grown and will last for years with very little attention. They may be planted in beds, or arranged in groups in the

hardy border. They do best when planted in late summer or early fall.

Andre Lauries—Dark tryrian rose. 50c each.

Duchess d'Orleans—Salmon pink. 50c each.

Felix Crousse—A dazzling ruby red. 75c each.

Festiva Maxima—Pure white, flecked with crimson. A popular variety that has held first rank for 60 years. 50c each.

Fragrans—Light red. 50c each.

Francois Ortegat—A deep crimson. 75c each.

Fulgida—Ruby red. 50c each

Meissonier—A rich crimson. The same color as the American Beauty rose. 75c each.

Officinalis Rubra—Deep red. 75c each.

Mons. Jules Elie—Probably the largest flowered peony grown. Pale lilac rose with silvery reflex. \$1 each.

Edulis Superba—A fine brilliant pink, shaded violet, silvery reflex. 50c each.

Queen Victoria—A full strong white with creamy center. 50c each.

ROSES

Culture—Roses require a deep, rich clay soil. Spade the bed two feet deep and pulverize the soil thoroughly. Cultivate frequently during the growing season. They require a sunny position. Do not plant near Bermuda grass nor close to trees. Set the plants about two inches deeper than they grew in the greenhouse or nursery. If watering is resorted to during dry weather, soak the bed thoroughly about once a week. A mulch of cow manure about July 1st will help keep the soil cool and moist in case of drouth. For winter protection hill up with earth or mulch with manure. Also wrap the branches with straw or burlap. In the spring prune out all weak and dead wood. Early spring is generally considered the best time for setting plants.

Diseases—Black spot and mildew are two of the most disastrous diseases. Both can be kept in check by spraying with Bordeaux mixture. Powdered sulphur also is good for mildew. Apply to the leaves while they are wet with dew.

Insects—Green aphid is a louse-like insect that works on the tender shoots. Spray with nicotine extract. Red spider is a mite-like insect that works on the under side of the leaves. It can be destroyed by spraying with Volck. Thrips work in the

unopened buds and hence are hard to reach by spray. By combining nicotine and Volck all three of these insects may be held in check at the same time.

TEAS AND HYBRID TEAS

The varieties listed below are those that give best results in this climate. All are hardy under ordinary conditions.

Briarcliff—A new introduction. A beautiful bright clear rose pink; vigorous and free-flowering. An improvement on Columbia.

Francis Scott Key—Rich crimson red. Large double flowers. Sturdy grower.

Golden Ophelia—Long, well-shaped buds of deep golden-apricot. A fine keeper.

Hadley—An intense, rich dazzling velvety crimson.

Helen Gould—Rosy crimson.

Hoosier Beauty—An intense, dazzling crimson scarlet.

Jonkheer J. L. Mock—A good bedding variety. The color is a deep imperial pink.

Kaiserine Augusta Victoria—Soft, pearly white. Very free blooming.

Lady Hillingdon—Long pointed buds of coppery tan.

La France—Silvery rose of unsurpassable beauty

Maman Cochet—Silvery rose pink.

Rapture—A sport of Madam Butterfly, but superior to that variety. Long, shapely buds, richly perfumed, of gorgeous shadings of apricot and gold on a salmon pink ground.

Rose Hill—Another new rose and the most charming of all the sports from Columbia. A brilliant, pure rose pink. Virtually thornless and a strong grower.

Radiance—Brilliant carmine pink. Very hardy.

Richmond—Brilliant scarlet with long pointed buds. A good outdoor variety.

Rhea Reid—A brilliant scarlet-crimson. A strong grower and resists mildew and black-spot.

Sunburst—Intense shades of golden orange and yellow.

Templar—A clear shade of crimson. Long oval buds and very durable.

White Maman Cochet—Pure white flecked with pink.

Prices—Strong, 2-year-old plants from 3½-inch pots at 50c each; \$5.00 per dozen.

HARDY CLIMBING ROSES

American Pillar—Large single flowers, borne in immense heads. Brilliant carmine. Heavy foliage that does not mildew.

75c each for strong plants.

Dr. W. Van Fleet—A delicate satin pink, pointed buds and flowers, full double. Foliage does not mildew. 75c each.

Dorothy Perkins—Small shell pink flowers, borne in clusters. 50c each.

Paul's Scarlet Climber—Semi-double flowers, borne in trusses. Vivid scarlet.

2-year-old plants, 75c each.

Silver Moon—Single blossoms of silvery white with a mass of yellow stamens. Good stems suitable for cutting. Vigorous grower. Foliage does not mildew. 75c each.

Climbing American Beauty—Same as its namesake in size, color and fragrance. Good foliage. 75c each.

Mary Wallace—An attractive new climber. Large semi-double blossoms of bright, clear rose pink with salmon at the base of the petals. 75c each.

Emily Gray—A new yellow climbing rose of unusual merit. The long, pointed buds are a beautiful orange yellow, changing to pale orange as they expand. The stems are of good length, suitable for cutting. The dark green, holly-like foliage, is very ornamental. It is a prolific bloomer. 75c each for strong plants.

Gardenia—Called the hardy "Marechal Neil." A bright yellow, opening cream. Early, fragrant, and free-flowering. 75c each.

DWARF POLYANTHIA ROSES

The roses of this type form shapely, compact bushes about 18 to 24 inches high. Flowers are produced in great profusion from June until severe frost. Very valuable for bedding or garden decoration, as the single or semi-double blossoms are retained for a great length of time.

Baby Dorothy—Soft, shell pink.

Chatillon Rose—A new and effective variety of silvery crimson pink with lighter center.

Mme. Norbert Levavasseur (Baby Crimson Rambler)—Similar in color to the Climbing Rambler. Blooms in profuse clusters.

Orleans—Large-sized flowers of brilliant geranium red and large white center.

Ideal—One of the new baby roses. The large

trusses are an intense, rich, lustrous garnet.

Prices—Strong plants of any of the above varieties 50c each by express. Postage extra.

ORNAMENTAL SHRUBS

Althea—Double pink. 75c each

Barberry, Japanese—A good shrub for all locations. The handsome green foliage is attractive throughout the entire season. 75c each.

Barberry, The New Red Leaved—Foliage is a rich, lustrous, bronzy red. Strong plants, 12 to 15 inches high. \$1 each.

Buddleia (Summer Lilac or Butterfly Bush)—Bears long racemes of rich lilac-purple flowers in late summer. 35c each.

Crepe Myrtle—The pink blossoms are borne in late summer and autumn. \$1 each.

Forsythia Fortunei—Graceful shrubs with golden bell-shaped blossoms. 75c each.

Hydrangea Paniculata Grandiflora—Large white flowers, borne in mid-summer. 75c each.

Hydrangea Arborescens—Large blossoms of snow white. Perfectly hardy. 75c each.

Lilac—Well known shrubs that need no description. White, purple, and red. 75c each.

Spirea Von Houttei—The most satisfactory shrub that can be set on the premises. Grows to perfection in Oklahoma. It is a fountain of white bloom in June. 75c each.

Spirea Thunbergi—Beautiful fine cut foliage. Small white flowers in early spring. 75c each.

Spirea Anthony Waterer—bright crimson heads of flowers borne throughout the summer. 75c each.

Spirea Prunifolia—Showy, double white flowers which open in early spring. Known as the Bridal Wreath. 75c each.

Spirea Billardi—Bright, lavender pink flowers borne in spikes. 75c each.

Spirea Callosa Alba—A dwarf form with white, flat heads of flowers. 75c each.

Philadelphus Coronarius—This is the popular Mock Orange. Fragrant white flowers with yellow centers. 75c each.

Philadelphus Virginal—One of the most graceful shrubs grown. Large, pure white flowers, slightly fragrant. 75c each.

Snowball—An old-fashioned shrub with large balls of white flowers. \$1 each.

Privet—Valuable for hedges. The Amour-River is the best variety for this climate, although the California is cheaper. Write for prices, stating quantity needed.

EVERGREENS

Arbor Vitae, American Pyramidal—Dark green, pyramidal in form 20 to 25 inches, \$4.00 each.

Arbor Vitae, Globe—A perfect globe. Foliage light green. 18 to 24 inches, \$5.00 each.

Arbor Vitae, Berckman's Golden—A compact pyramidal form, golden in color. 18 to 24 inches, \$5 each.

Arbor Vitae, Woodward's Globe—A perfect globe with dark green foliage. One of the best dwarf forms. 18 to 20 inches, \$5 each.

CUT FLOWER DEPARTMENT

We endeavor at all times to carry an adequate supply of cut flowers of all varieties that are in season. Most of these are grown in our own green houses. We are prepared to take care of orders on the special days, such as Christmas, St Valentine's Day, Easter, Mother's Day and Decoration Day. Our prices, which vary with the season, will always be reasonable.

We can furnish all the standard funeral designs and casket sprays, as well as corsages and bride's bouquets, at prices depending upon the size wanted and flowers used. Our designer studied under Max Schling, the leading Fifth Avenue florist, New York City, who is noted for his floral creations. So we feel confident that our work will please you.

Our terms are strictly cash except to those who have established credit with us. A remittance should accompany your order. Otherwise goods will be sent C. O. D.

POSTAGE

Prices in this catalog do not include postage except where noted.

Be sure to include plenty of postage if you want large and thrifty plants. If too much is sent, the balance will be returned to you at once.

The postage on one or two dozen garden plants will be about 8 cents for all points in the First and Second Zones. On one dozen plants from 2-inch pots it will be about 10c for the First and Second Zones. For larger packages estimate from the following:

First and Second Zones (within 150 miles of Vinita)—7 cents for the first pound and 1 cent for each additional pound or fraction.

Third Zone) within 150 to 300 miles of Vinita)—8 cents for the first pound and 2 cents for each additional pound or fraction.

PARCEL POST SHIPMENTS

Small packages of plants, especially transplanted garden plants, and packages of cut flowers, may be safely sent by parcel post. They may be insured for a small sum and a special delivery stamp will bring them to your door immediately on their arrival.

EXPRESS SHIPMENTS

Large orders for plants, plants in earthen pots, and funeral designs should be shipped by express only. If express shipments are unreasonably delayed in transit or if they are frozen, crushed or damaged on arrival, refuse the shipment and file claim immediately against the express company for the amount of your loss.

CORRESPONDENCE

If you wish further information regarding any of the plants offered in this list, feel free to write us. If you think we may be able to help you in solving any of your horticultural problems, consider us at your service.

HOW TO ORDER

Order early.

Write plainly.

Don't forget to give your postoffice.

Place each item on a line by itself.

State quantity you want and the price.

Tell how you want your order shipped.

Don't forget to include postage if plants are to be sent by mail.

Keep a copy of your order.

Sign your name.

Address Your Envelope to

R. E. MOSS, Florist,

Vinita, Oklahoma

